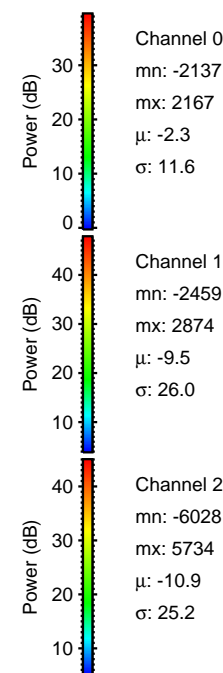
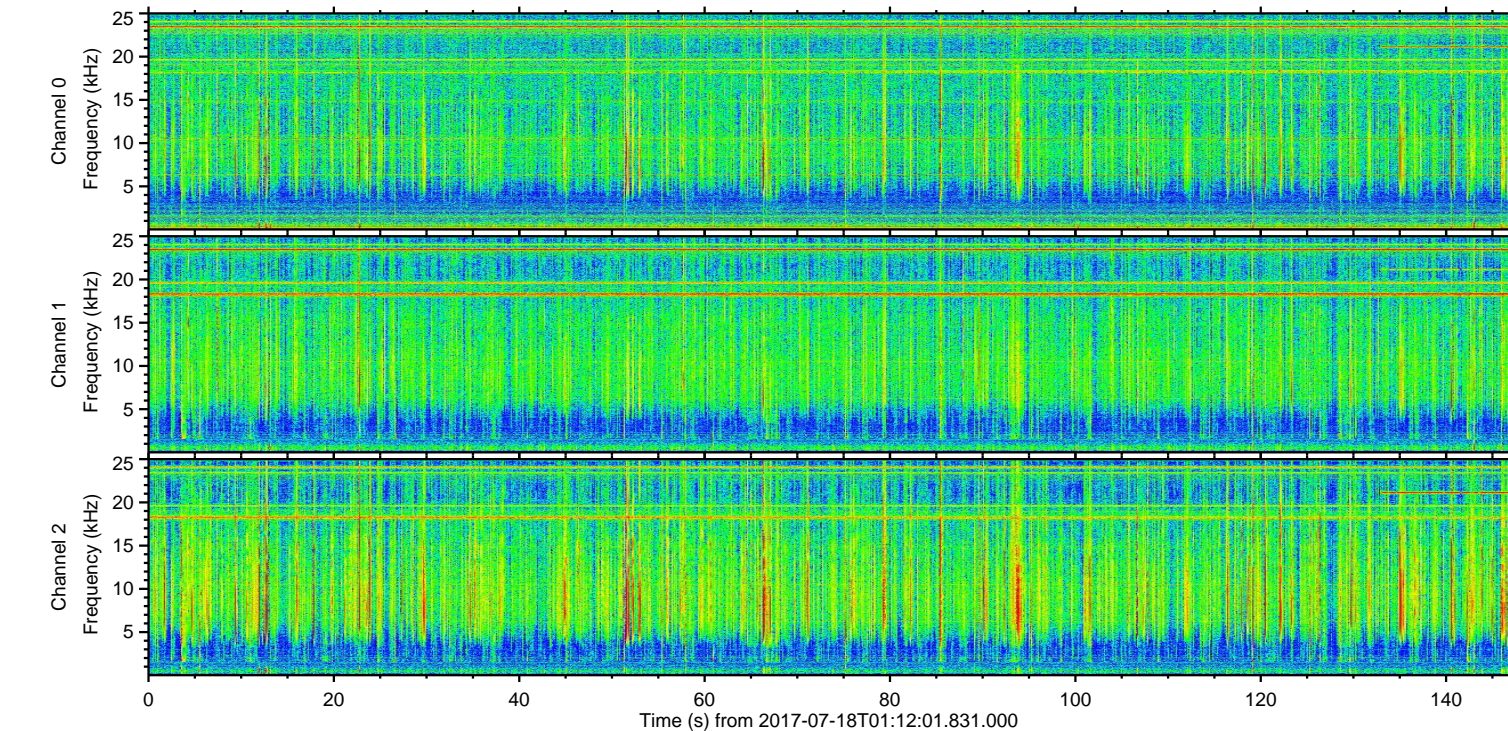
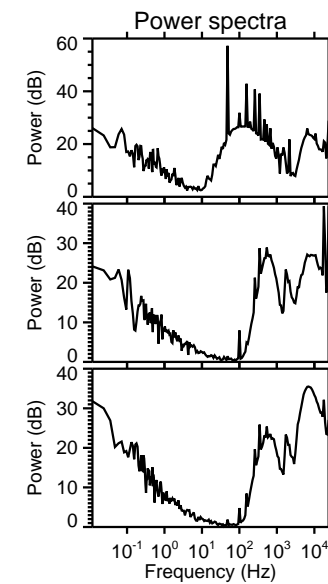
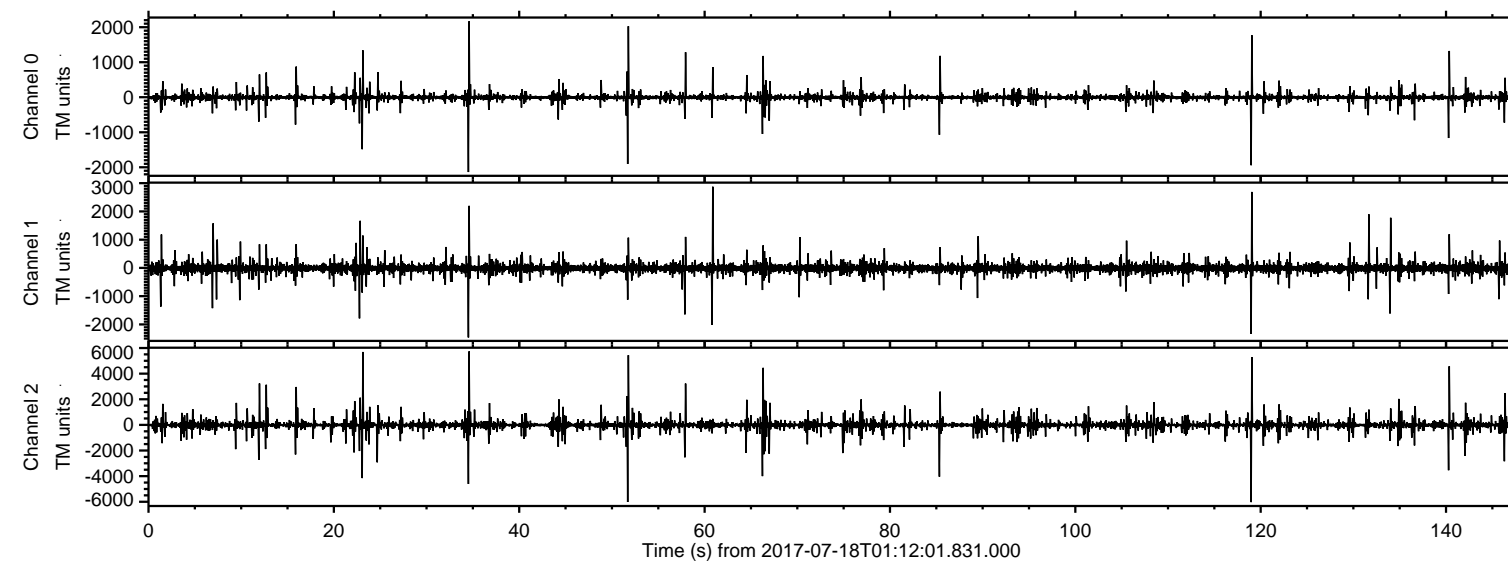


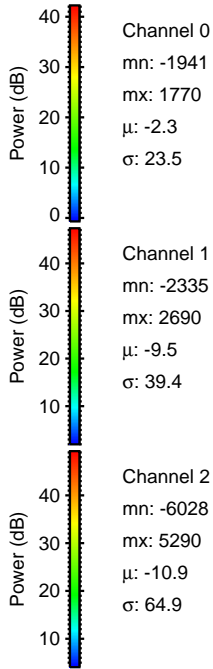
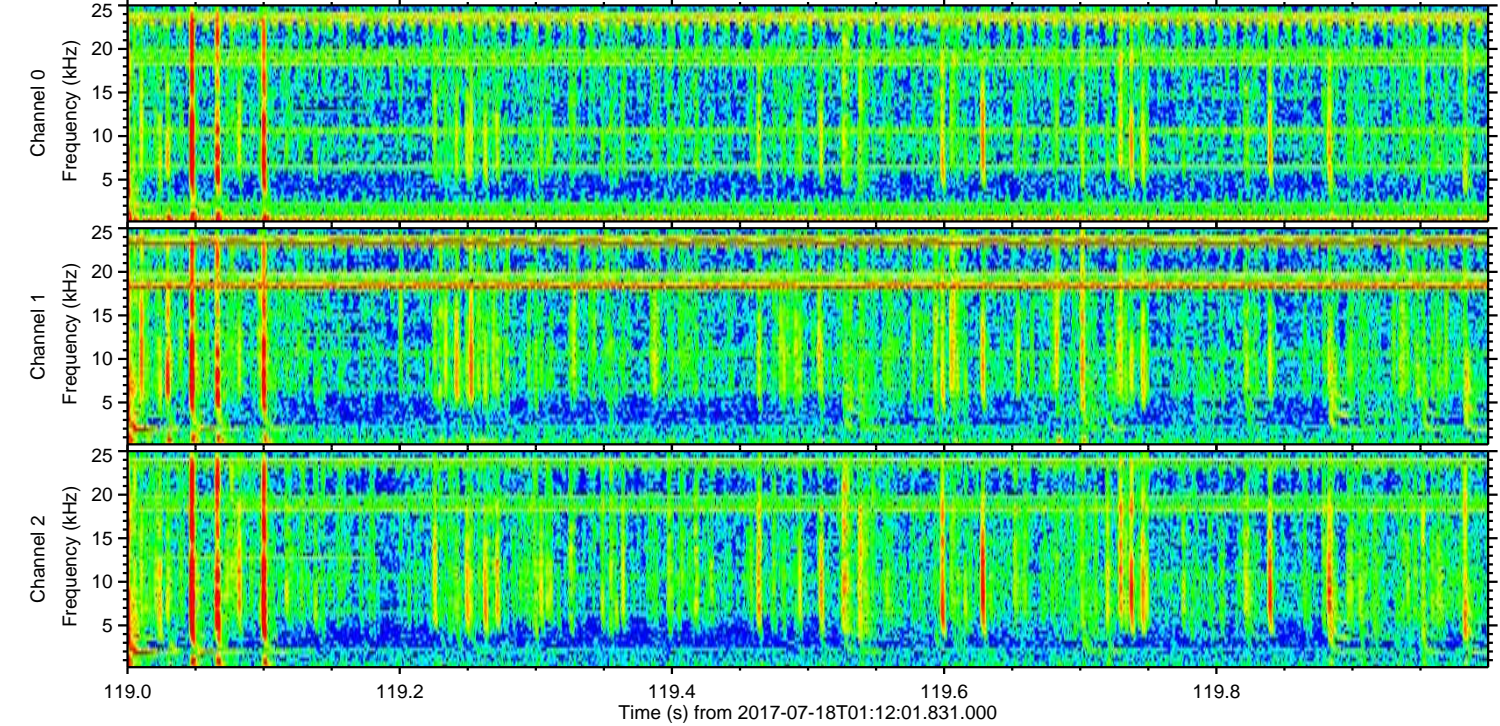
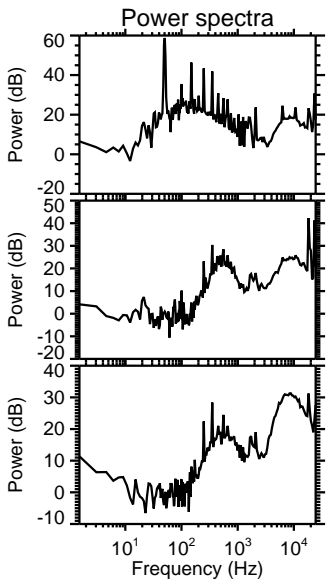
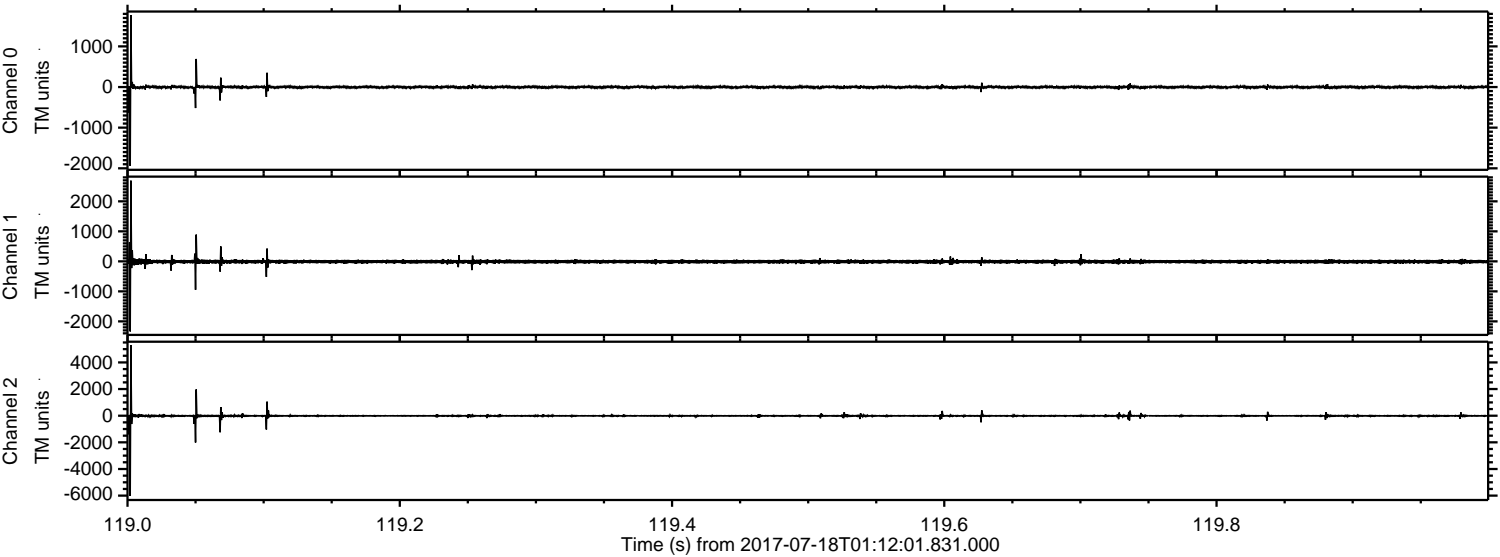
ELMAVAN 3D WAVEFORMS (Measured data sampled at 50 kHz) 51000 packets of 144 samples from 2017-07-18T01:12:01.831.000.

Processed Thu Jul 20 20:06:37 2017 by ELM ver.2012-10-06 from 001__elm20170718_011200__dat00.bin

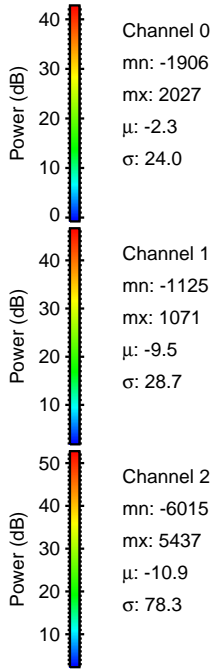
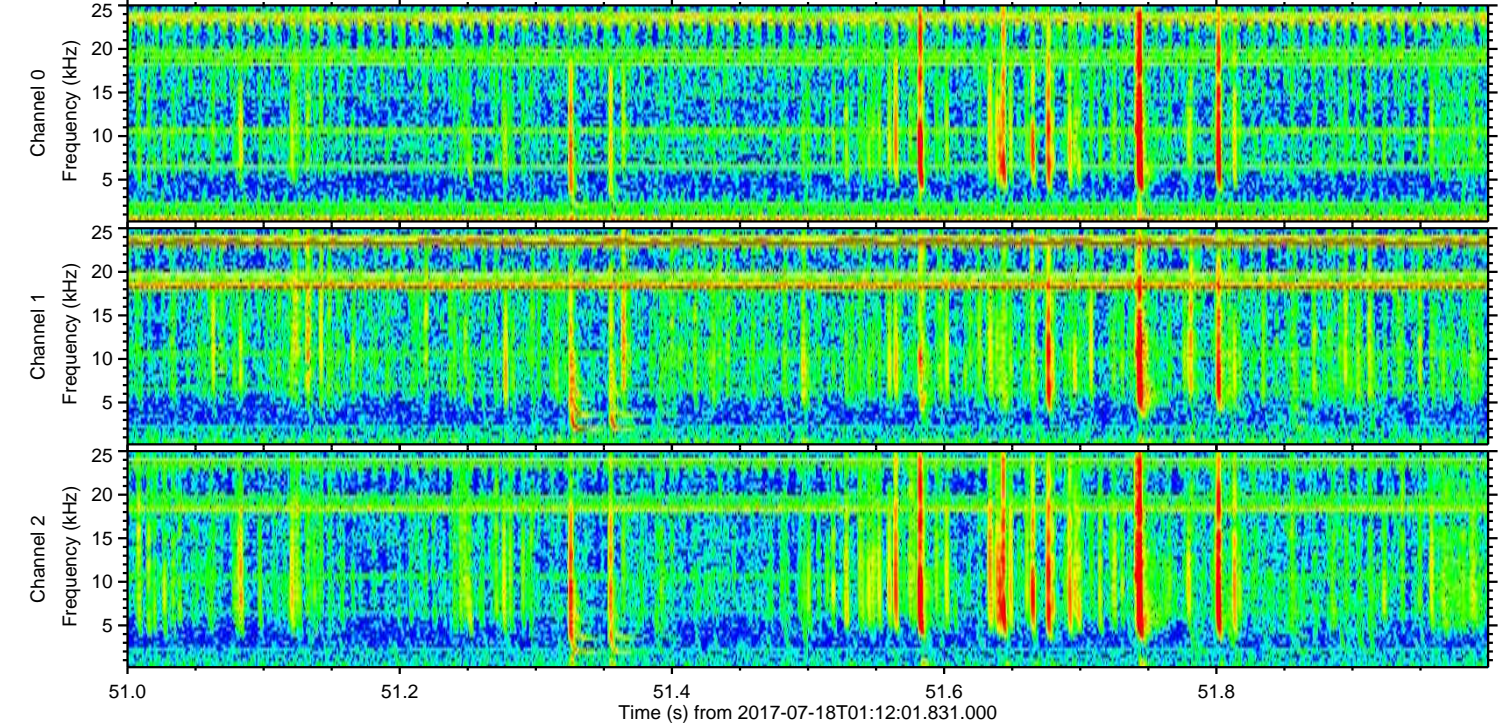
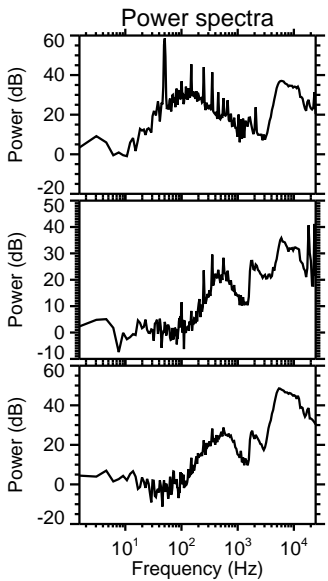
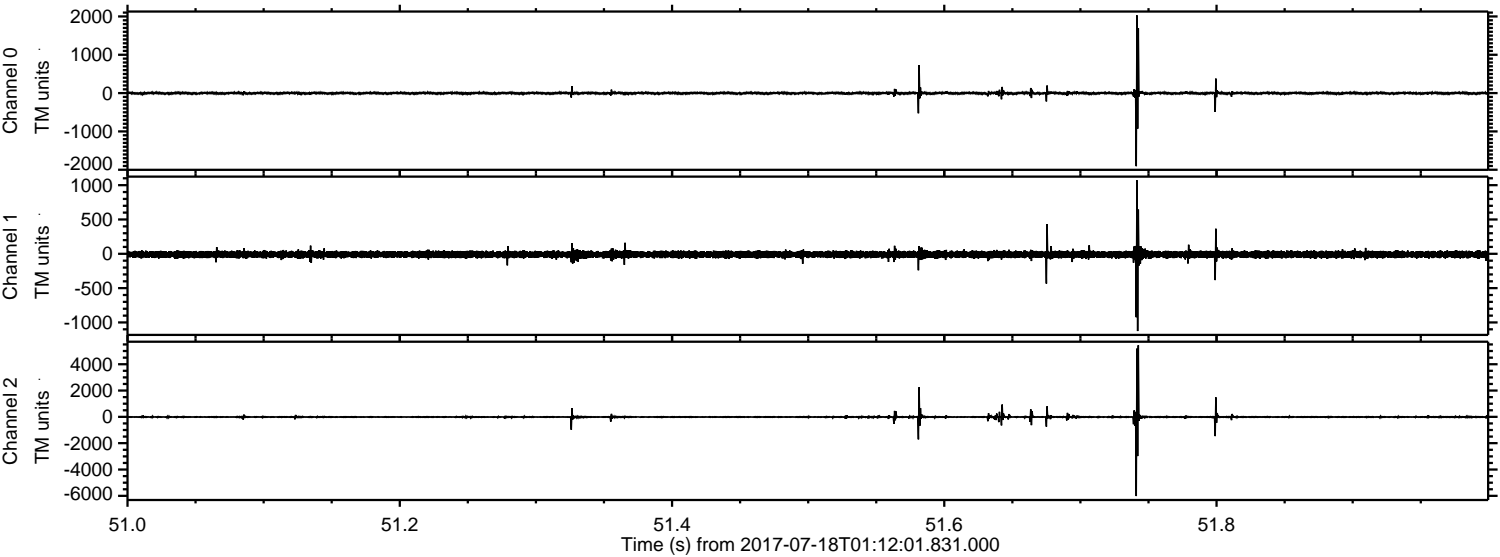


ELMAVAN 3D WAVEFORMS (Measured data sampled at 50 kHz) 51000 packets of 144 samples from 2017-07-18T01:12:01.831.000. Part 120/147

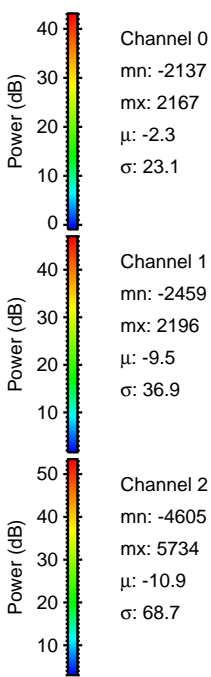
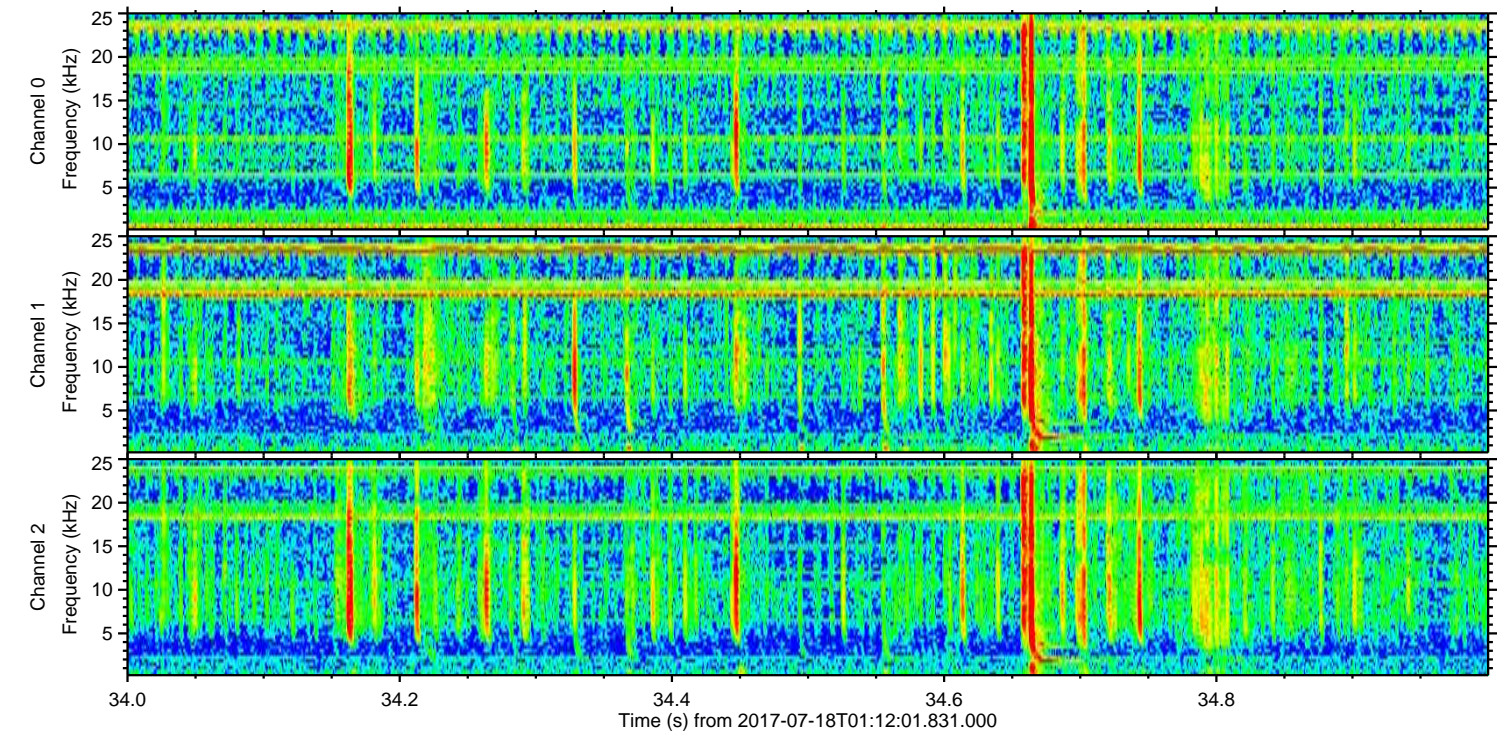
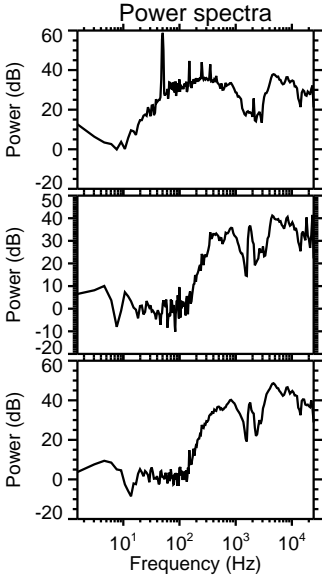
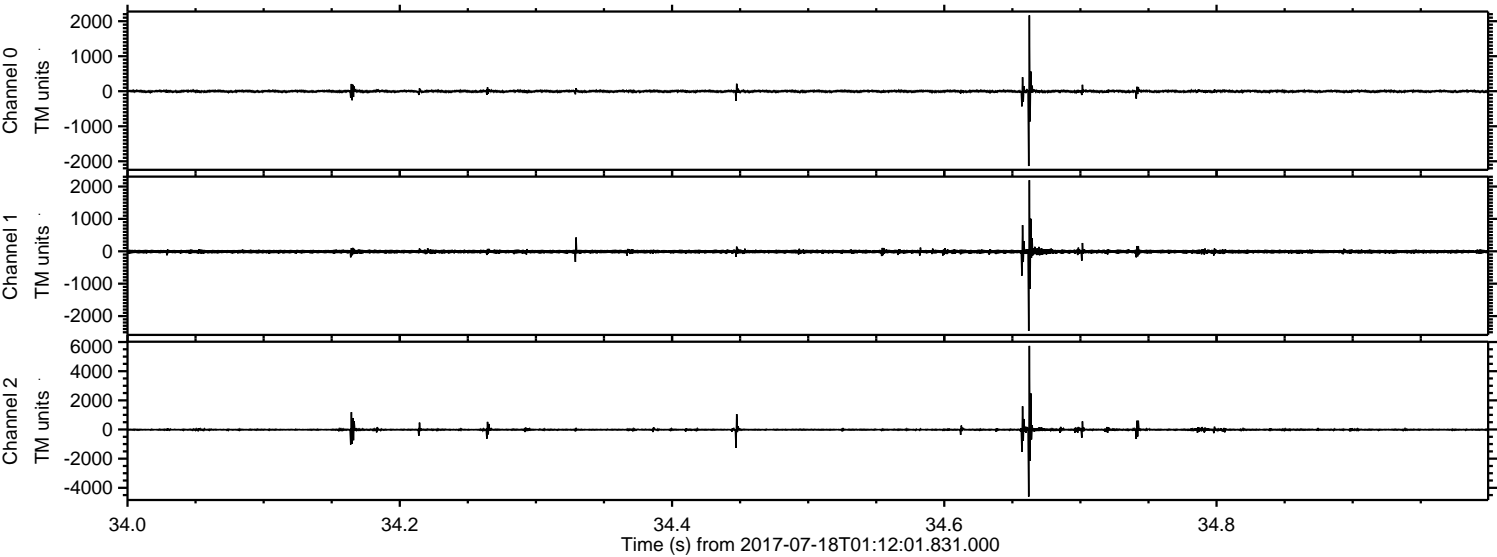
Processed Thu Jul 20 20:06:47 2017 by ELM ver.2012-10-06 from 001__elm20170718_011200__dat00.bin



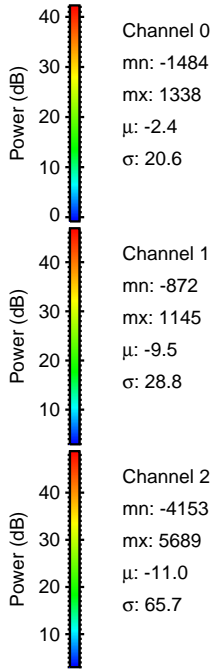
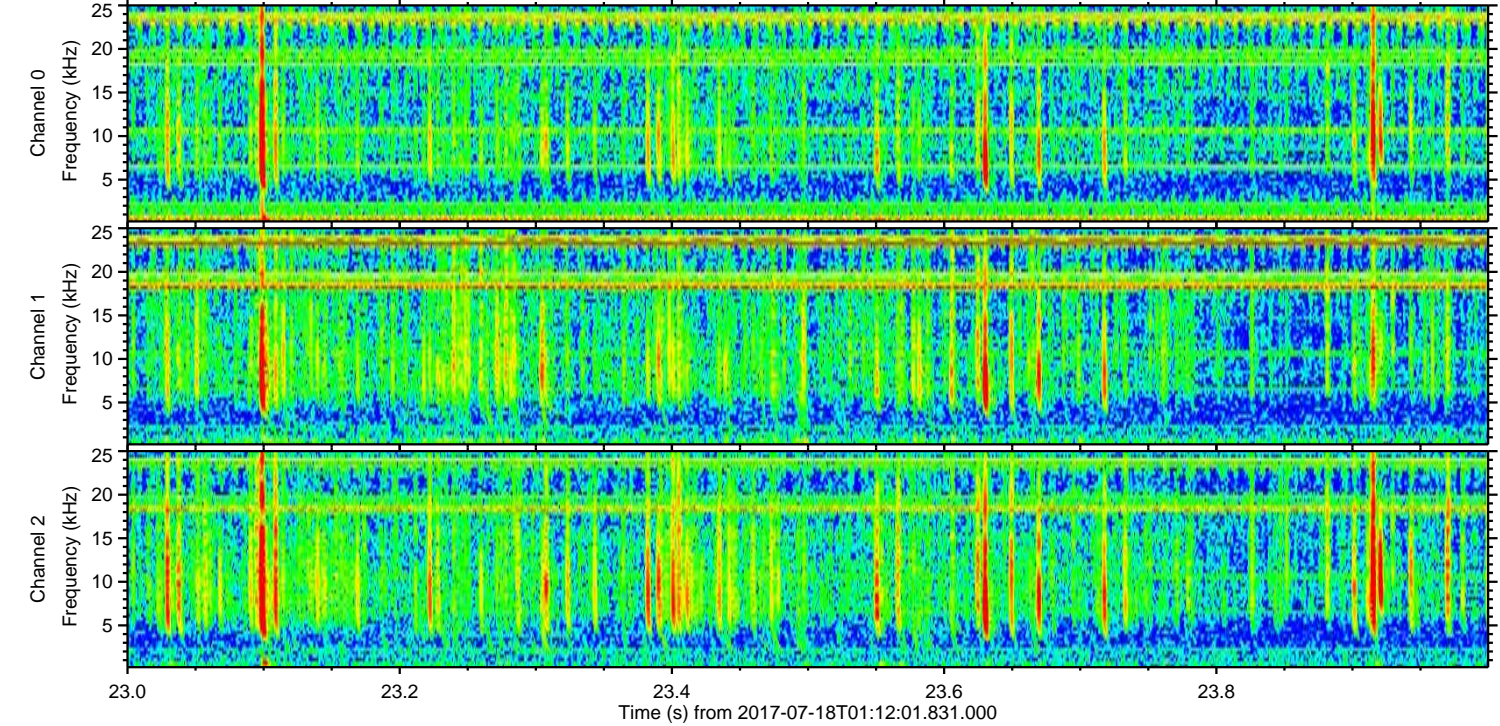
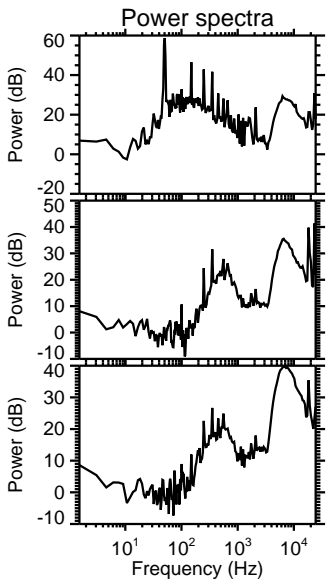
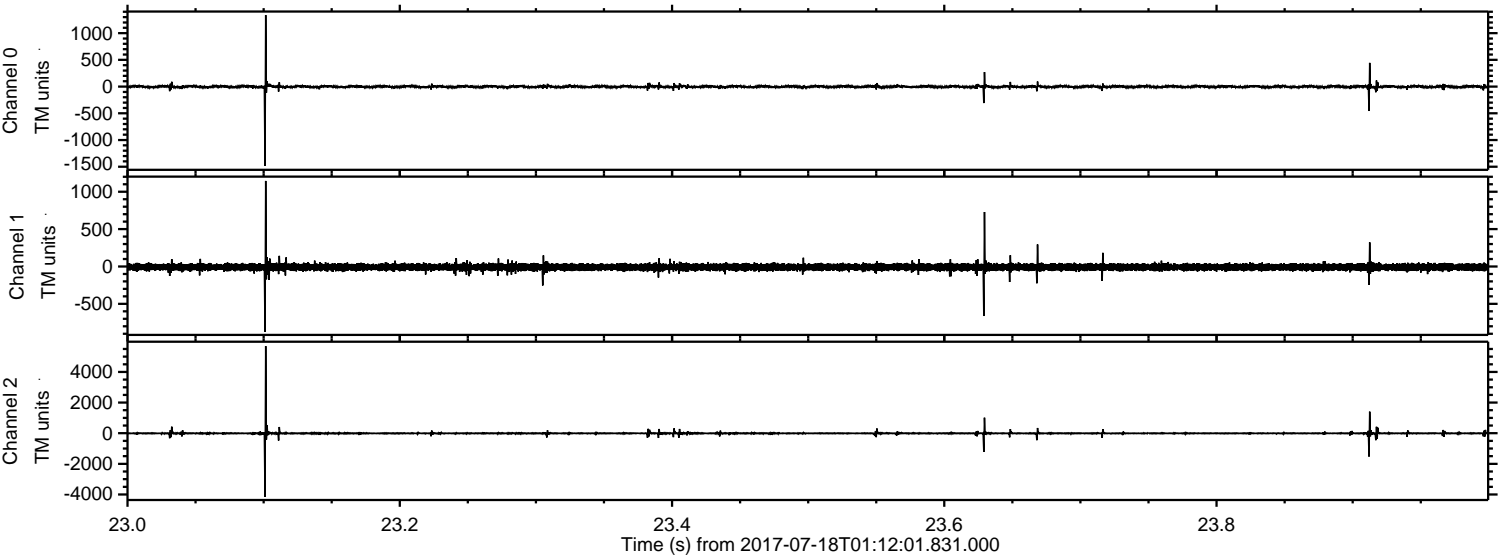
Processed Thu Jul 20 20:06:48 2017 by ELM ver.2012-10-06 from 001__elm20170718_011200__dat00.bin



Processed Thu Jul 20 20:06:49 2017 by ELM ver.2012-10-06 from 001__elm20170718_011200__dat00.bin

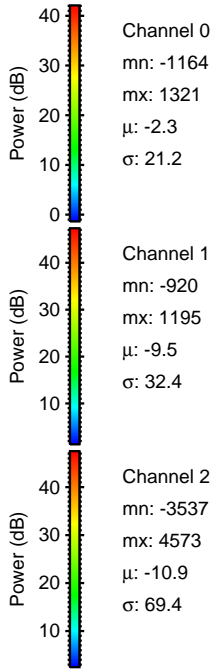
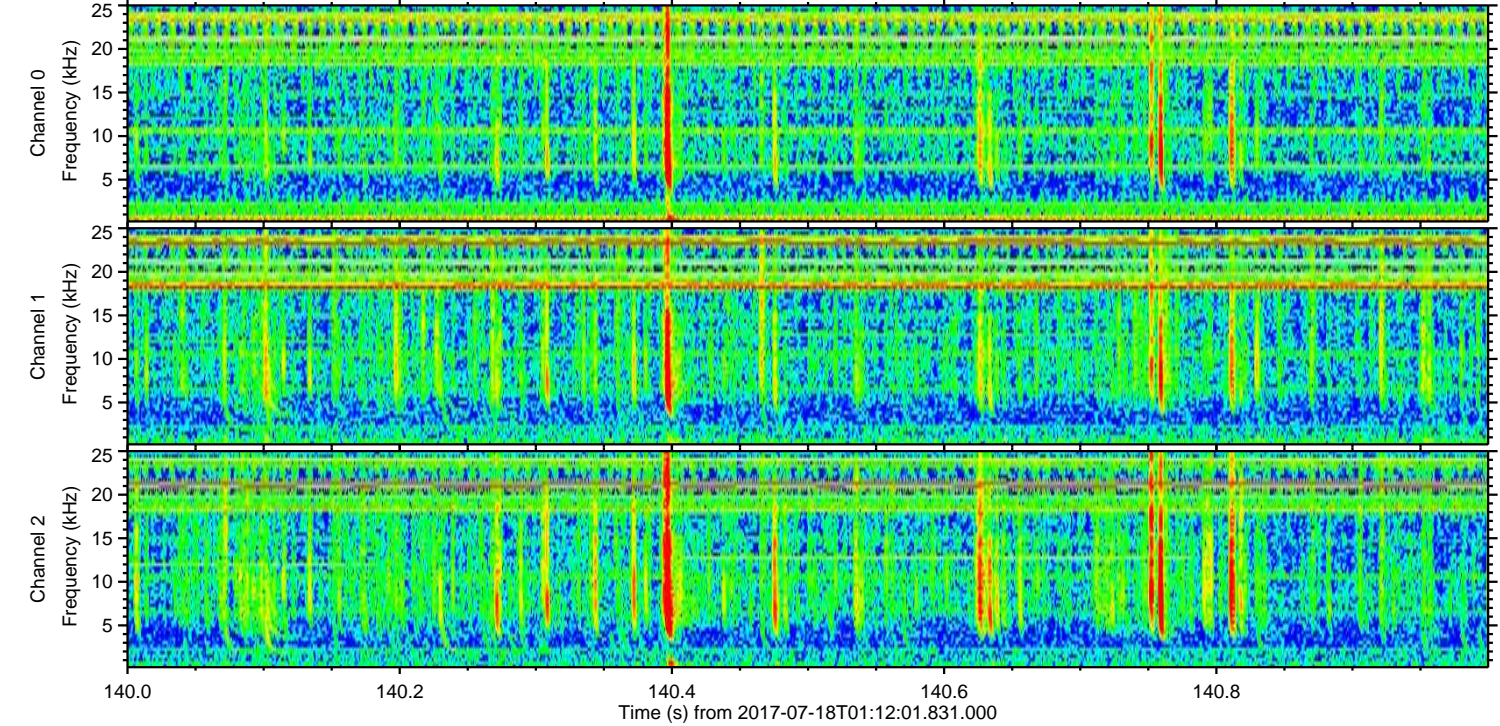
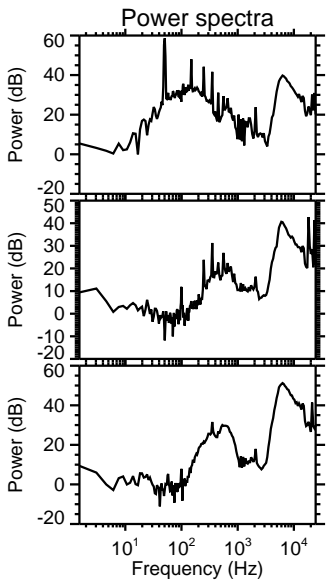
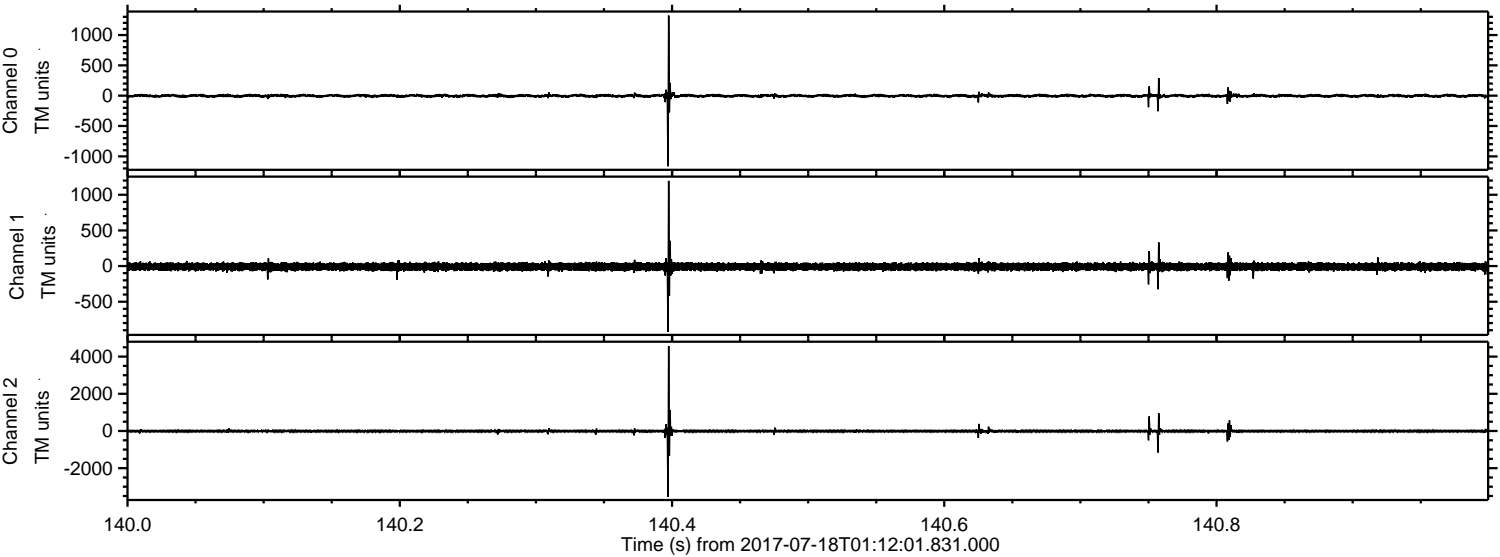


Processed Thu Jul 20 20:06:50 2017 by ELM ver.2012-10-06 from 001__elm20170718_011200__dat00.bin

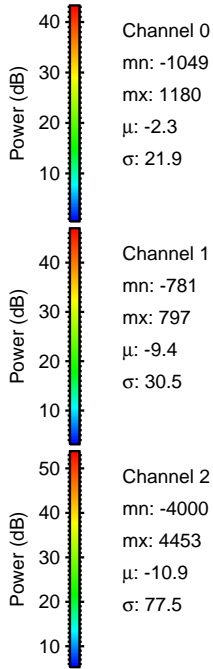
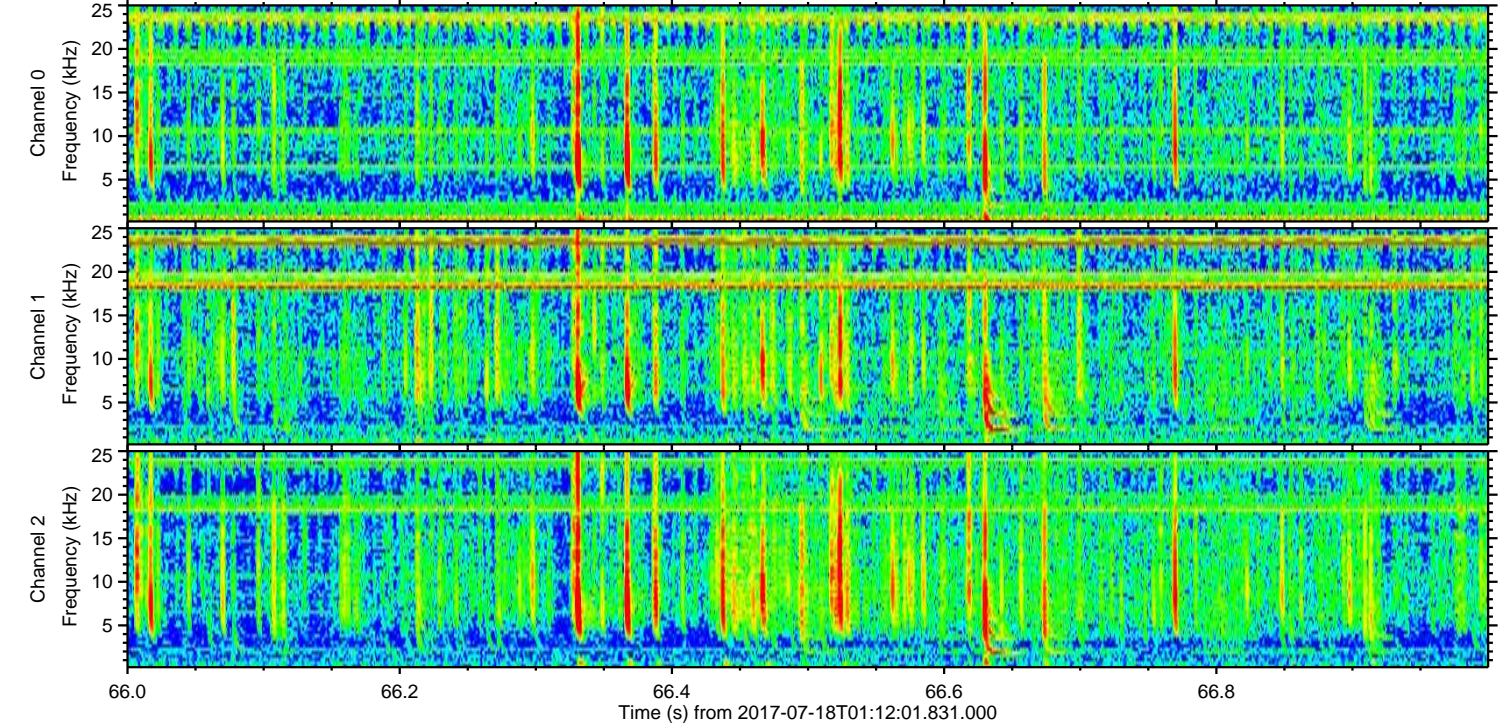
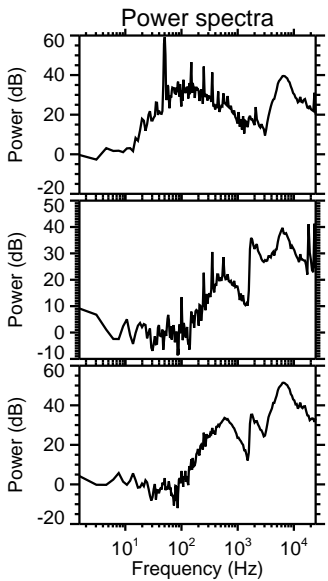
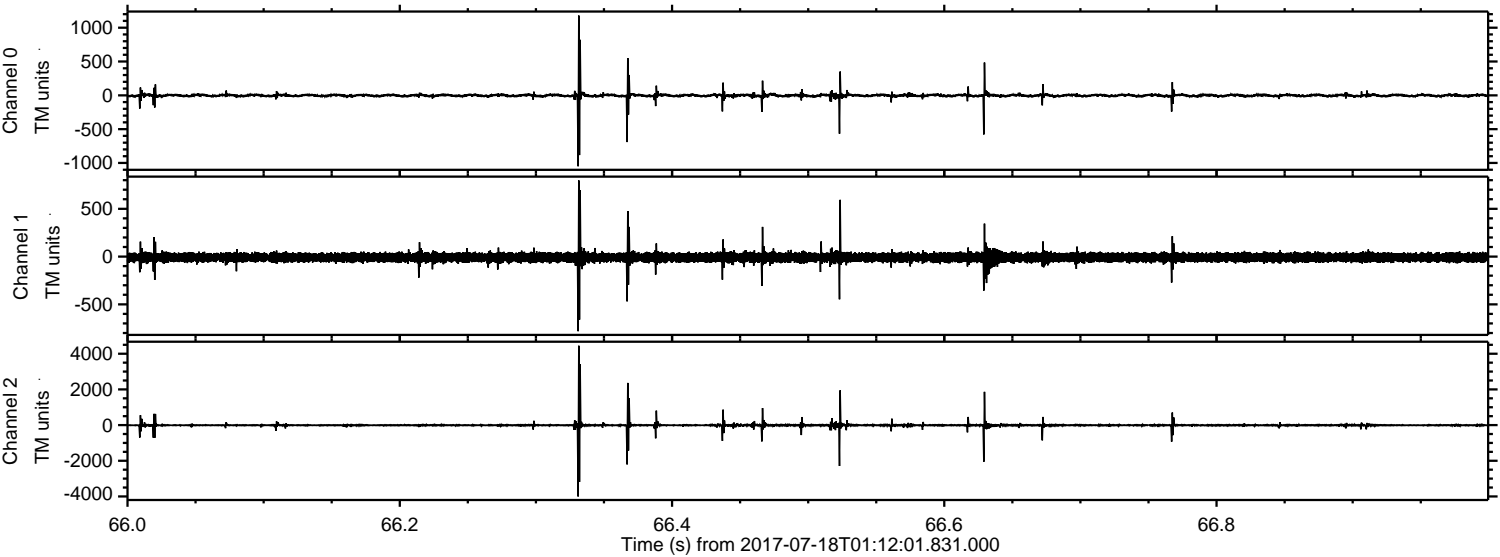


ELMAVAN 3D WAVEFORMS (Measured data sampled at 50 kHz) 51000 packets of 144 samples from 2017-07-18T01:12:01.831.000. Part 141/147

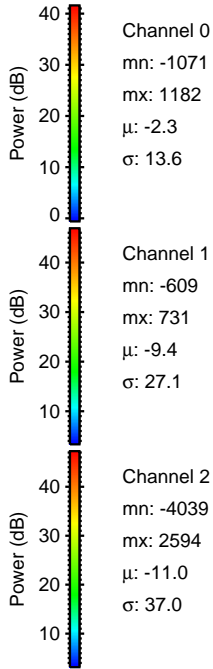
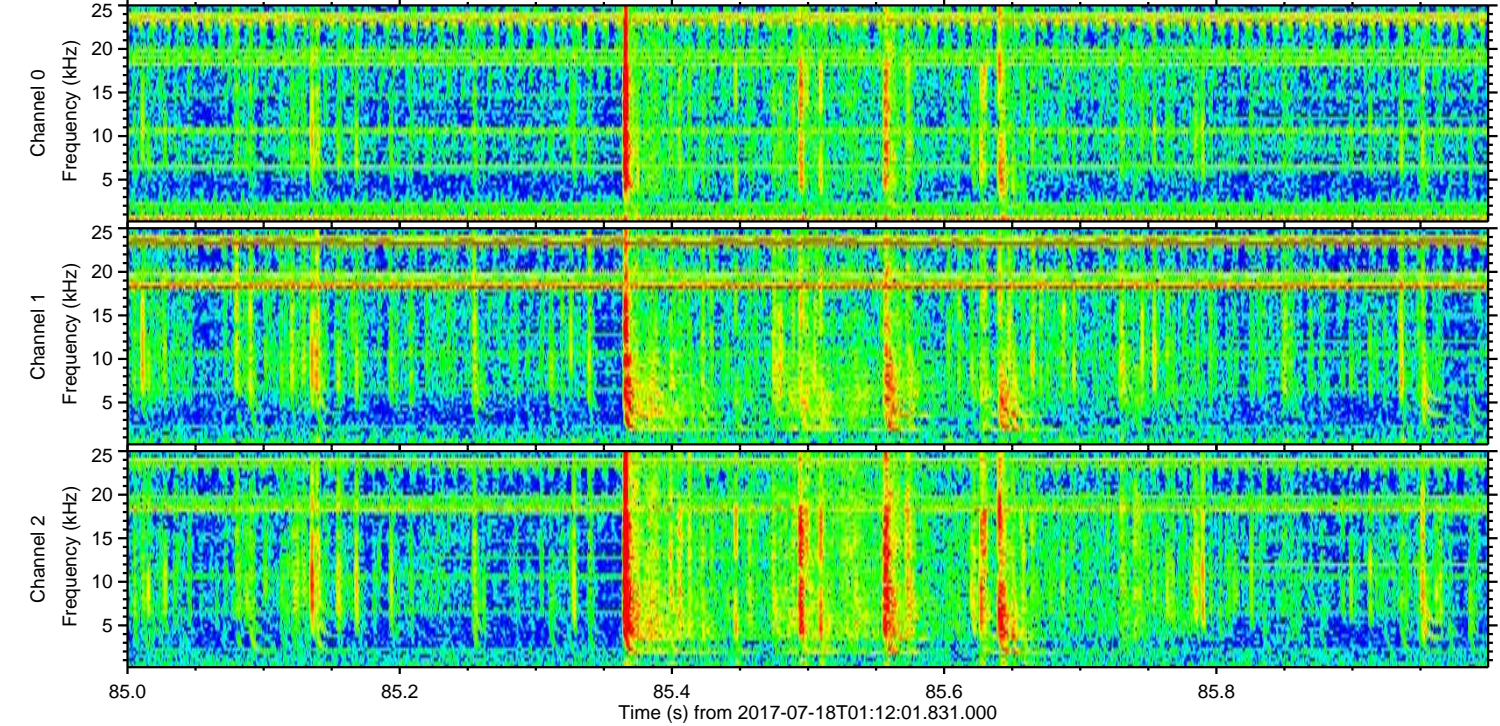
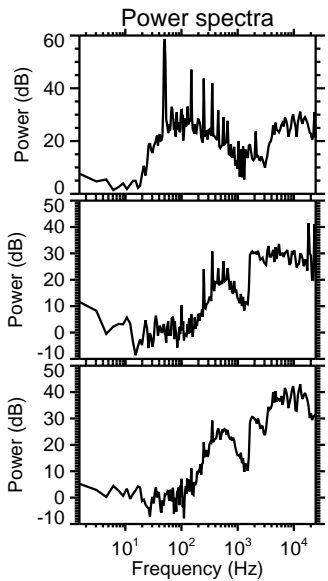
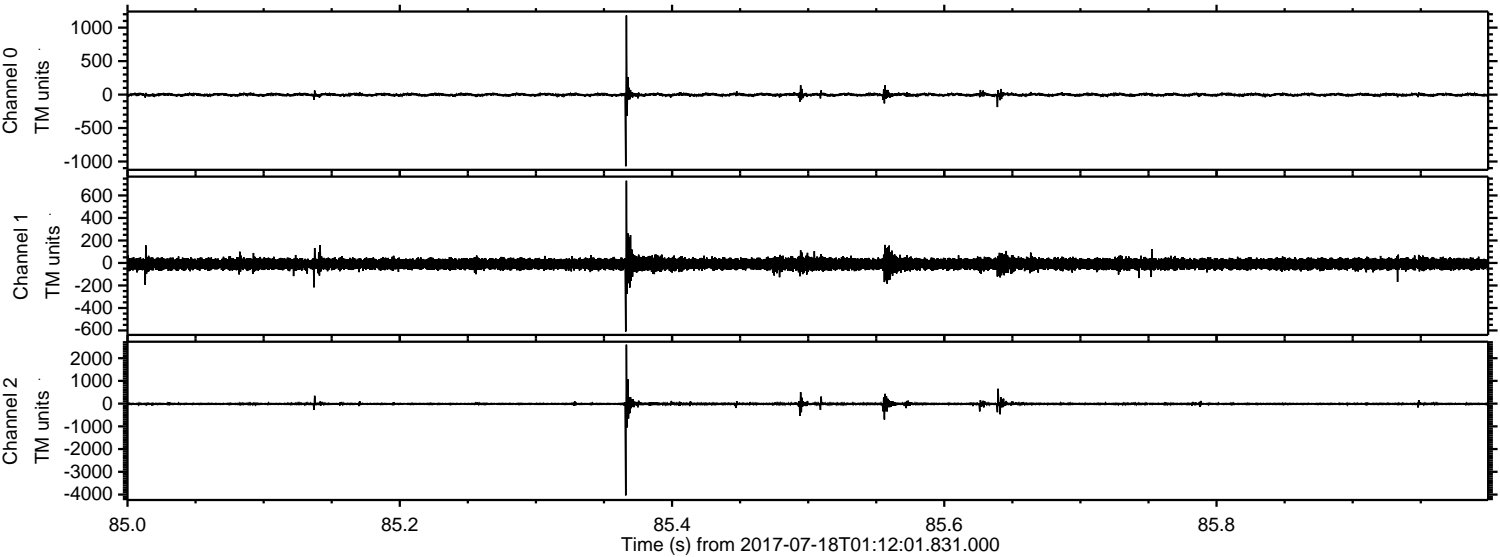
Processed Thu Jul 20 20:06:51 2017 by ELM ver.2012-10-06 from 001__elm20170718_011200__dat00.bin



Processed Thu Jul 20 20:06:52 2017 by ELM ver.2012-10-06 from 001__elm20170718_011200__dat00.bin



Processed Thu Jul 20 20:06:53 2017 by ELM ver.2012-10-06 from 001__elm20170718_011200__dat00.bin

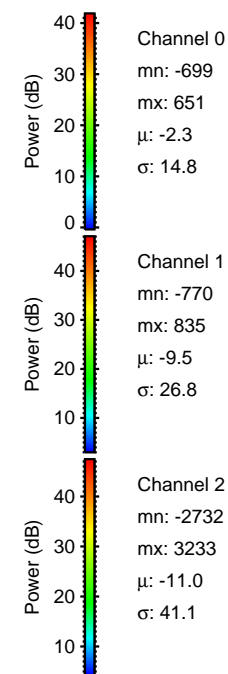
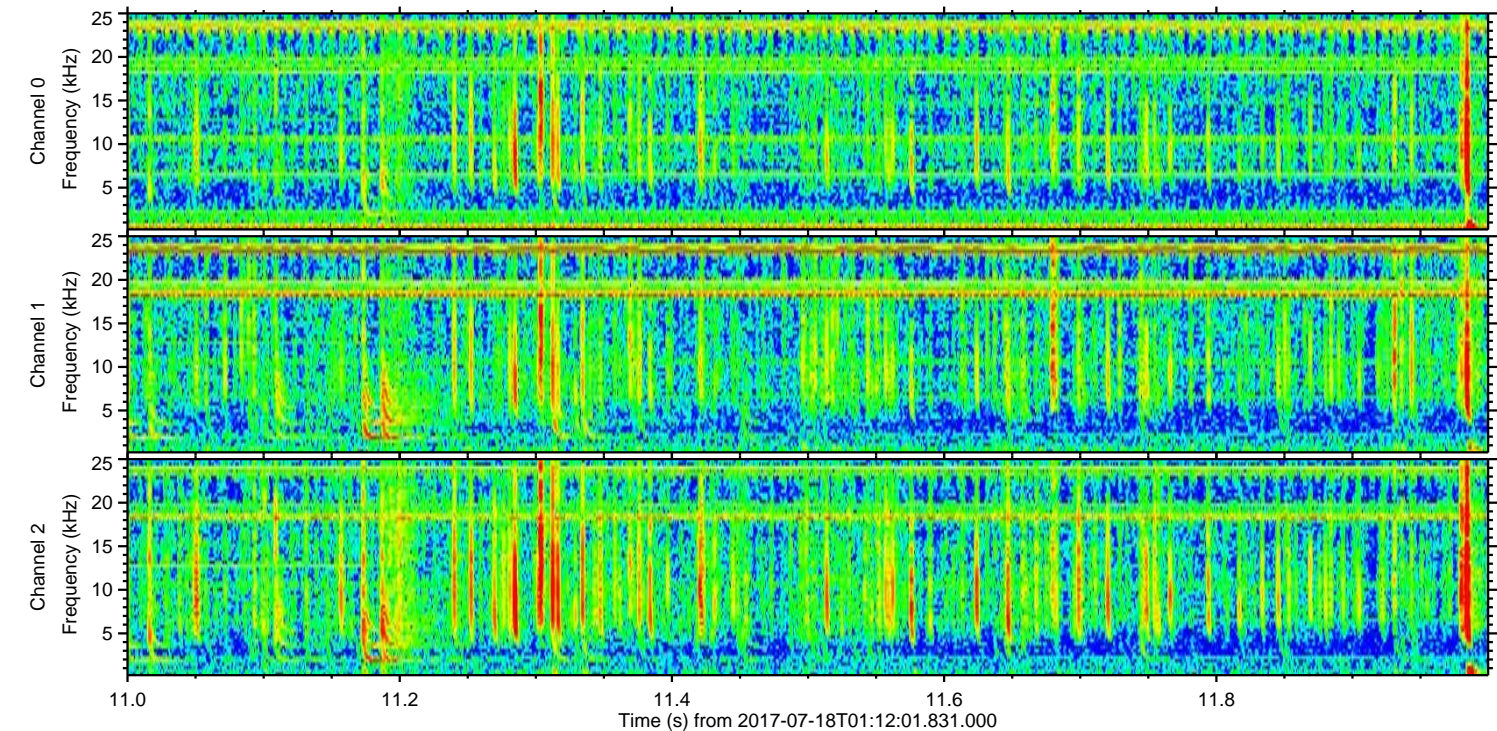
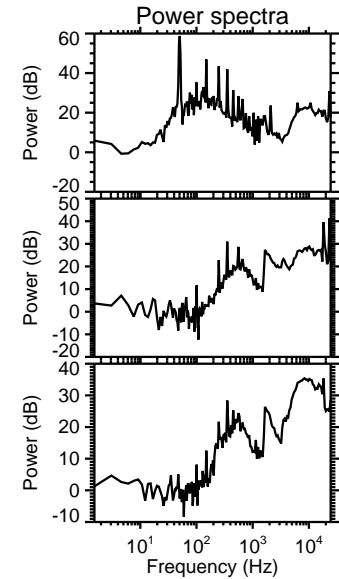
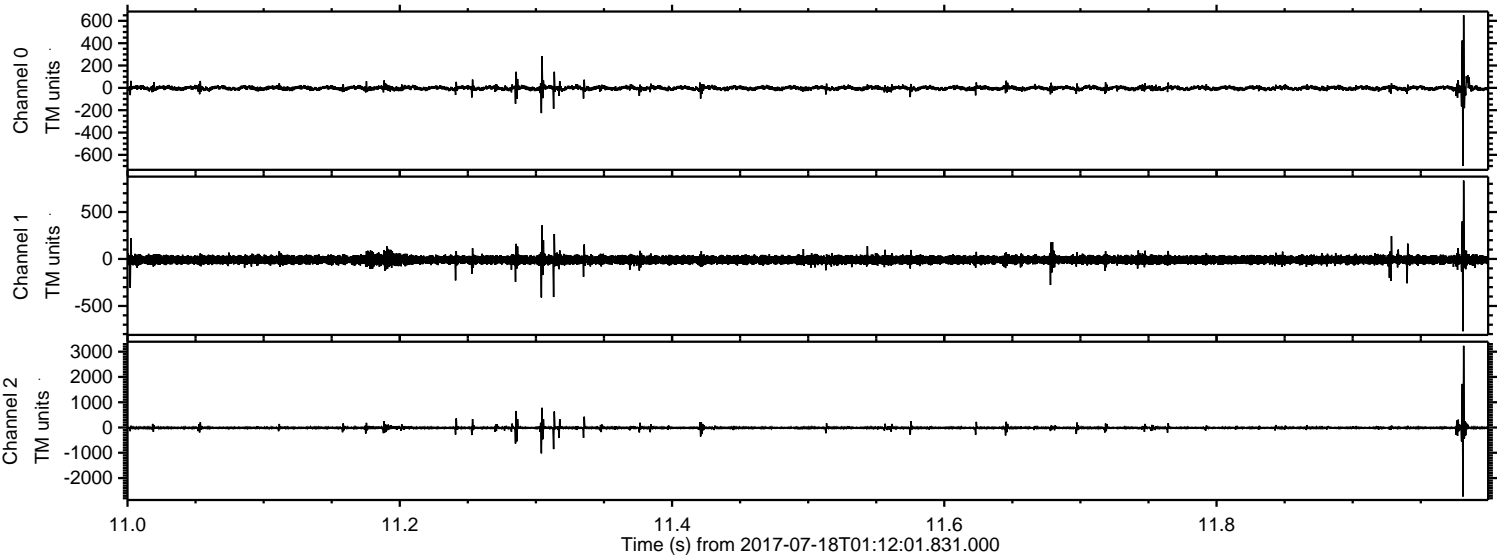


Channel 0
mn: -1071
mx: 1182
 μ : -2.3
 σ : 13.6

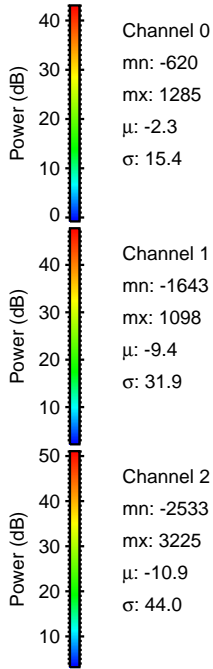
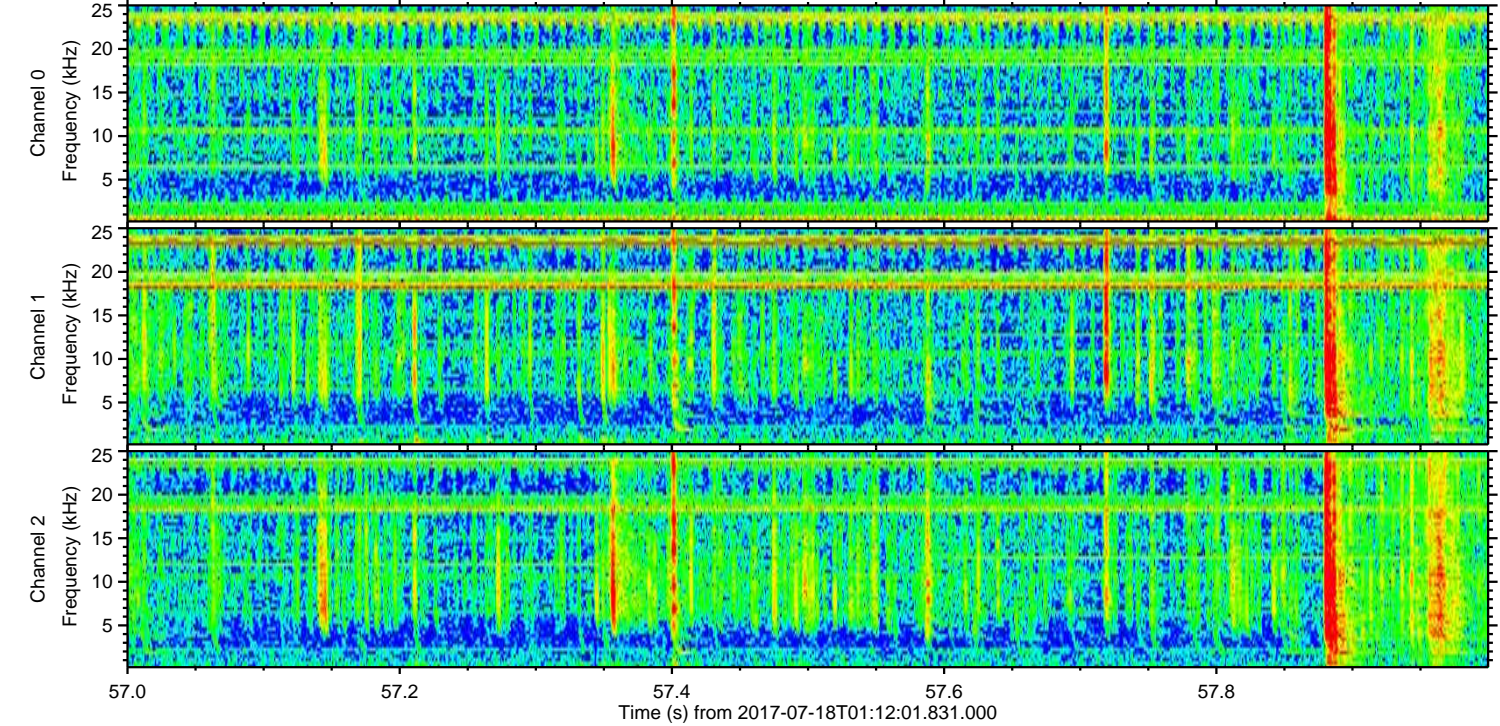
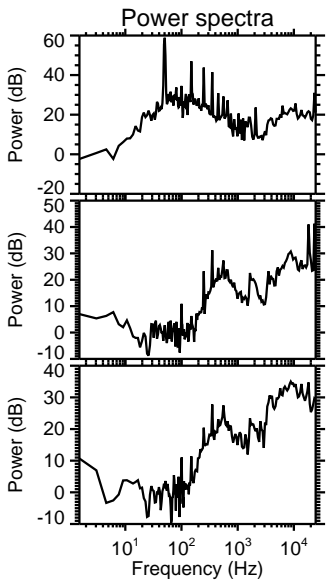
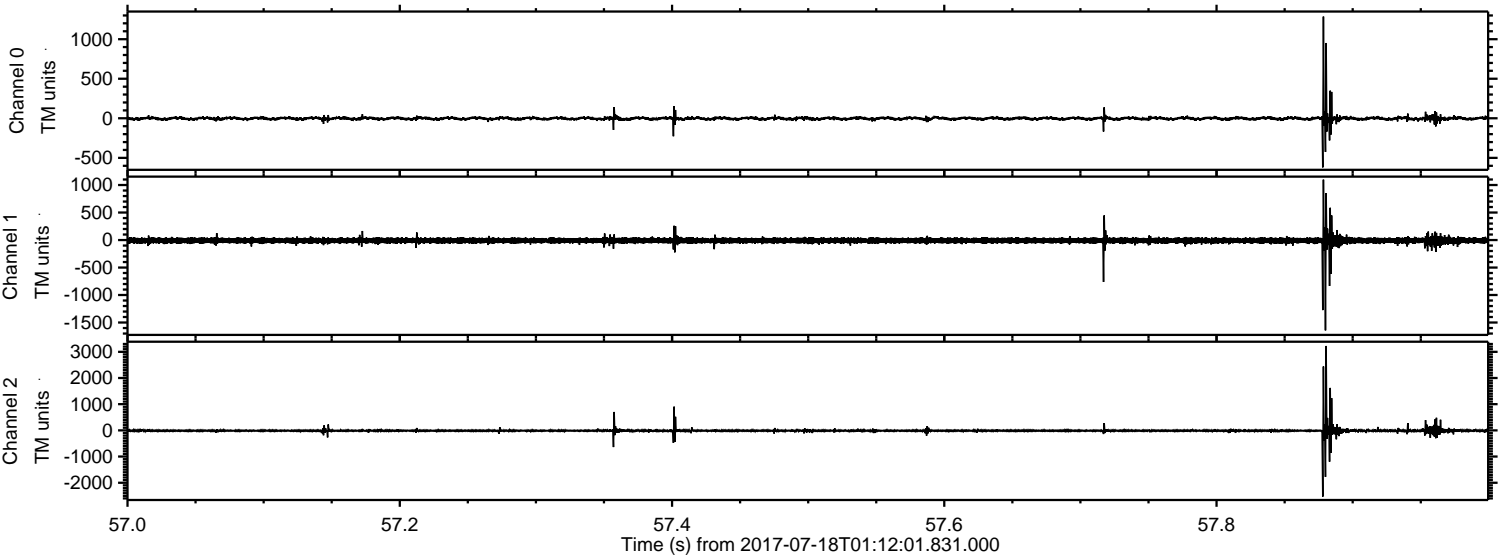
Channel 1
mn: -609
mx: 731
 μ : -9.4
 σ : 27.1

Channel 2
mn: -4039
mx: 2594
 μ : -11.0
 σ : 37.0

Processed Thu Jul 20 20:06:54 2017 by ELM ver.2012-10-06 from 001__elm20170718_011200__dat00.bin



Processed Thu Jul 20 20:06:55 2017 by ELM ver.2012-10-06 from 001__elm20170718_011200__dat00.bin



Channel 0
mn: -620
mx: 1285
μ: -2.3
σ: 15.4

Channel 1
mn: -1643
mx: 1098
μ: -9.4
σ: 31.9

Channel 2
mn: -2533
mx: 3225
μ: -10.9
σ: 44.0

