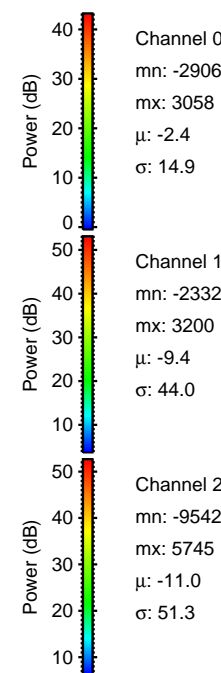
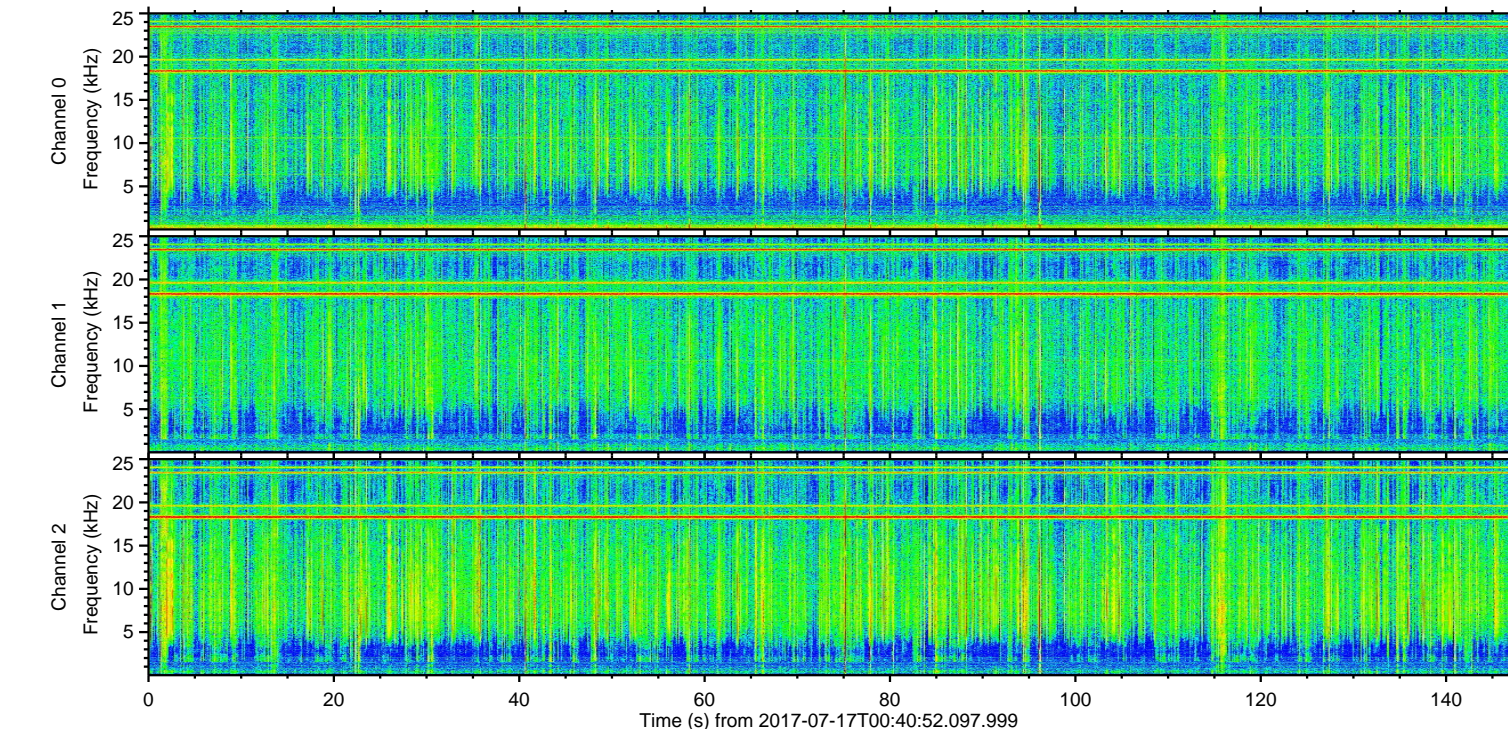
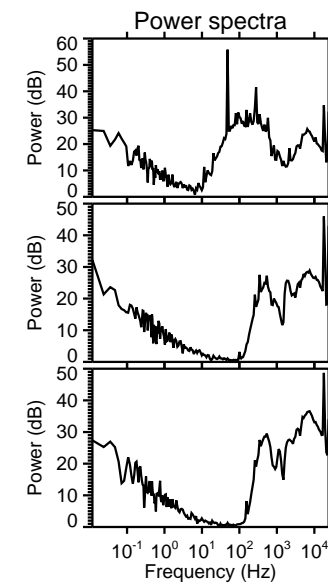
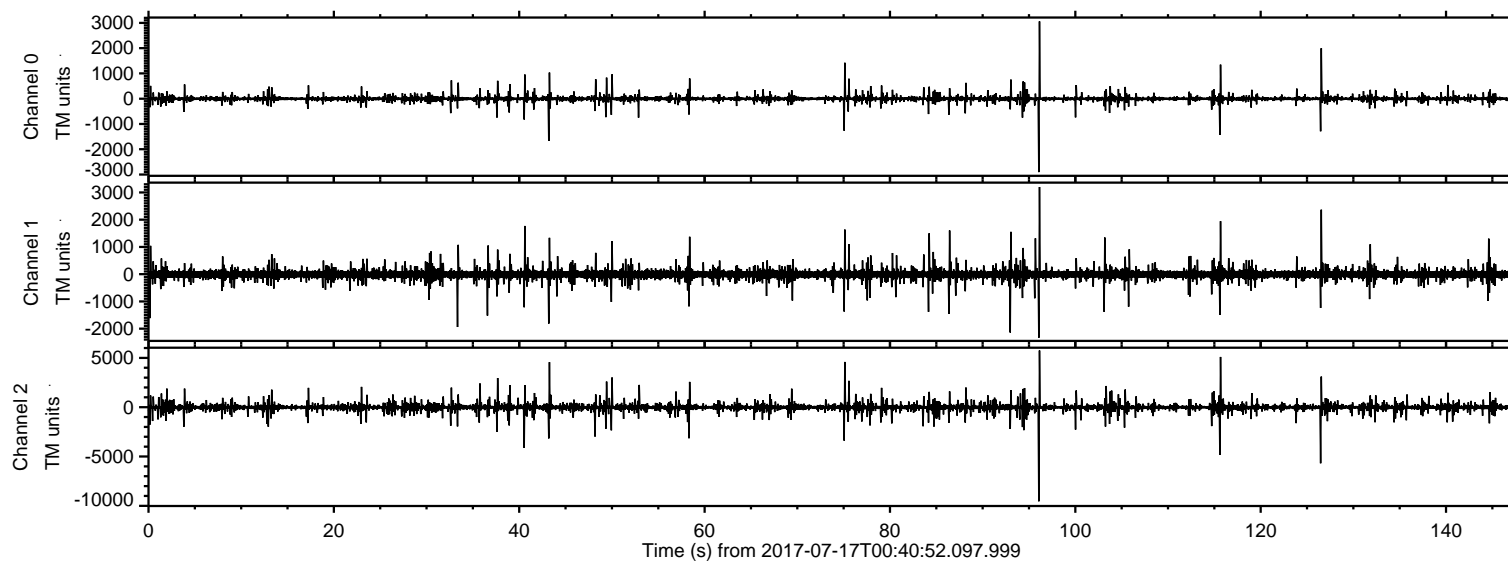
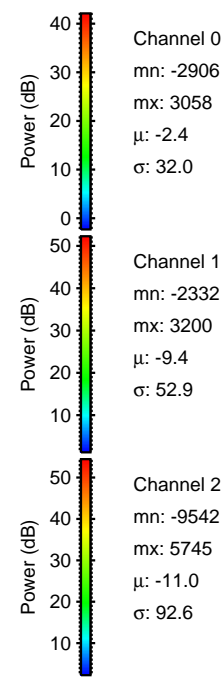
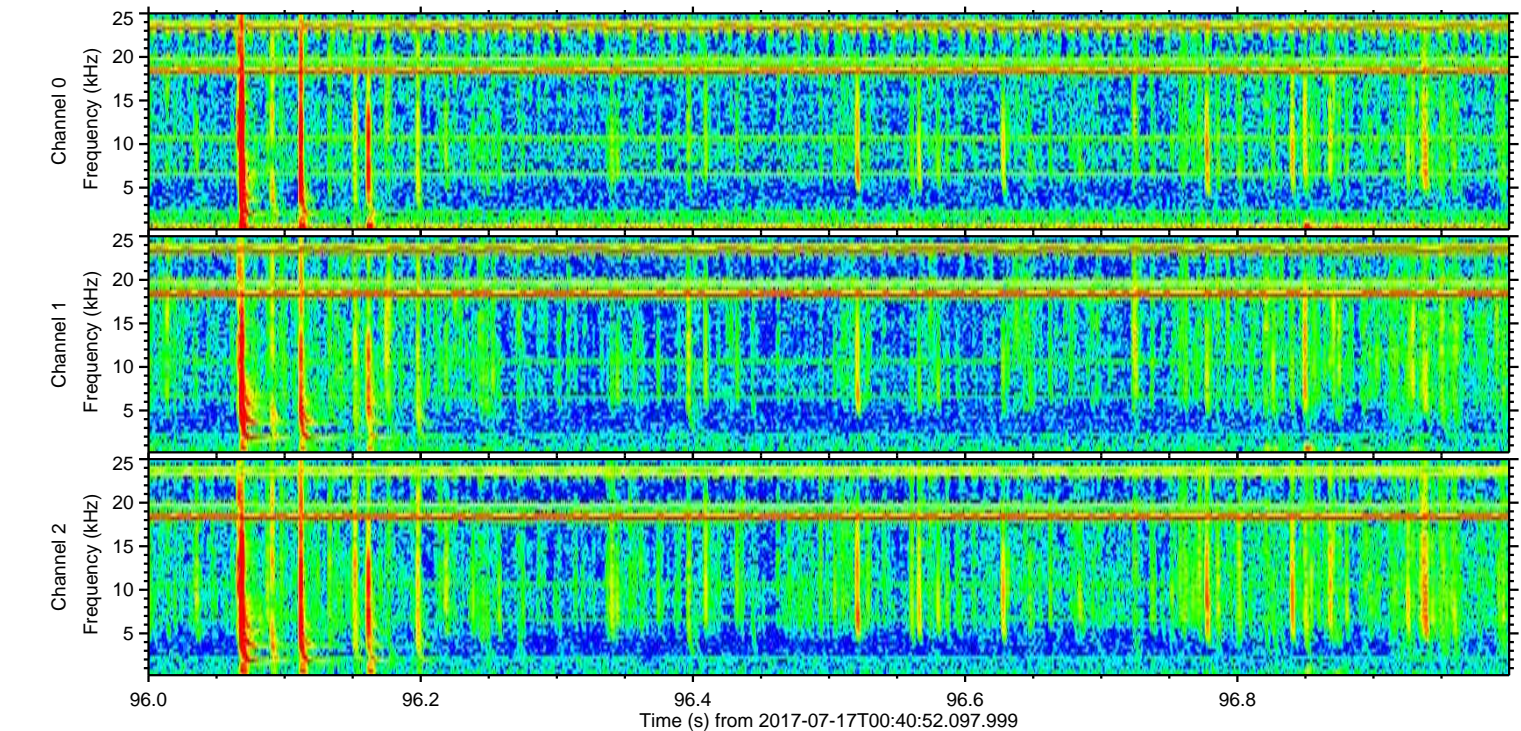
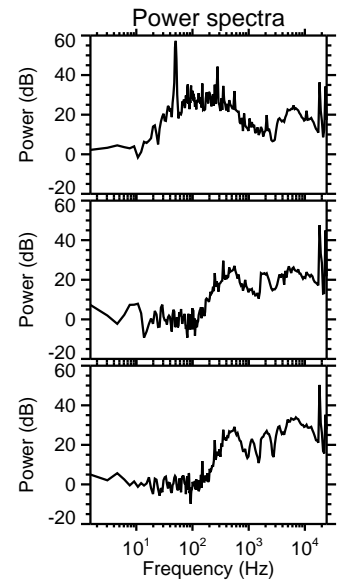
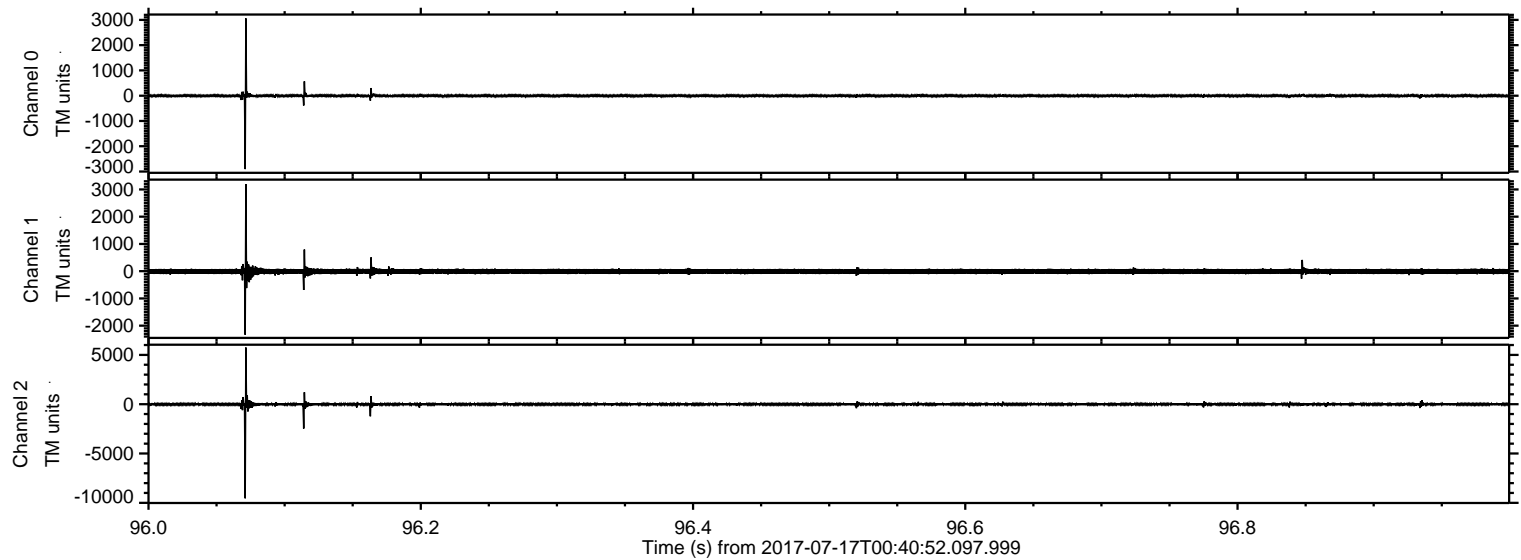


ELMAVAN 3D WAVEFORMS (Measured data sampled at 50 kHz) 51000 packets of 144 samples from 2017-07-17T00:40:52.097.999.

Processed Thu Jul 20 16:46:33 2017 by ELM ver.2012-10-06 from 001__elm20170717_004051__dat00.bin

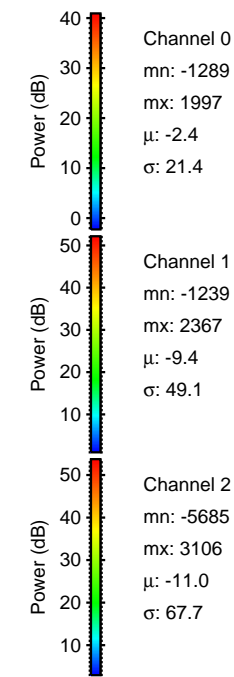
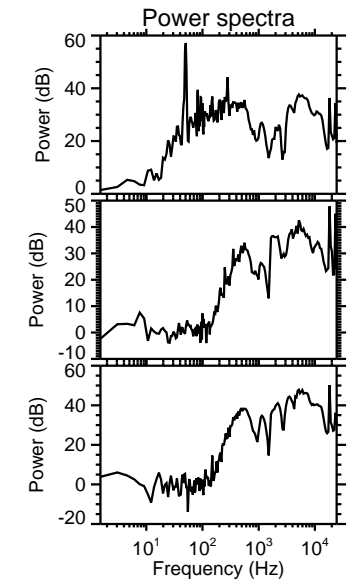
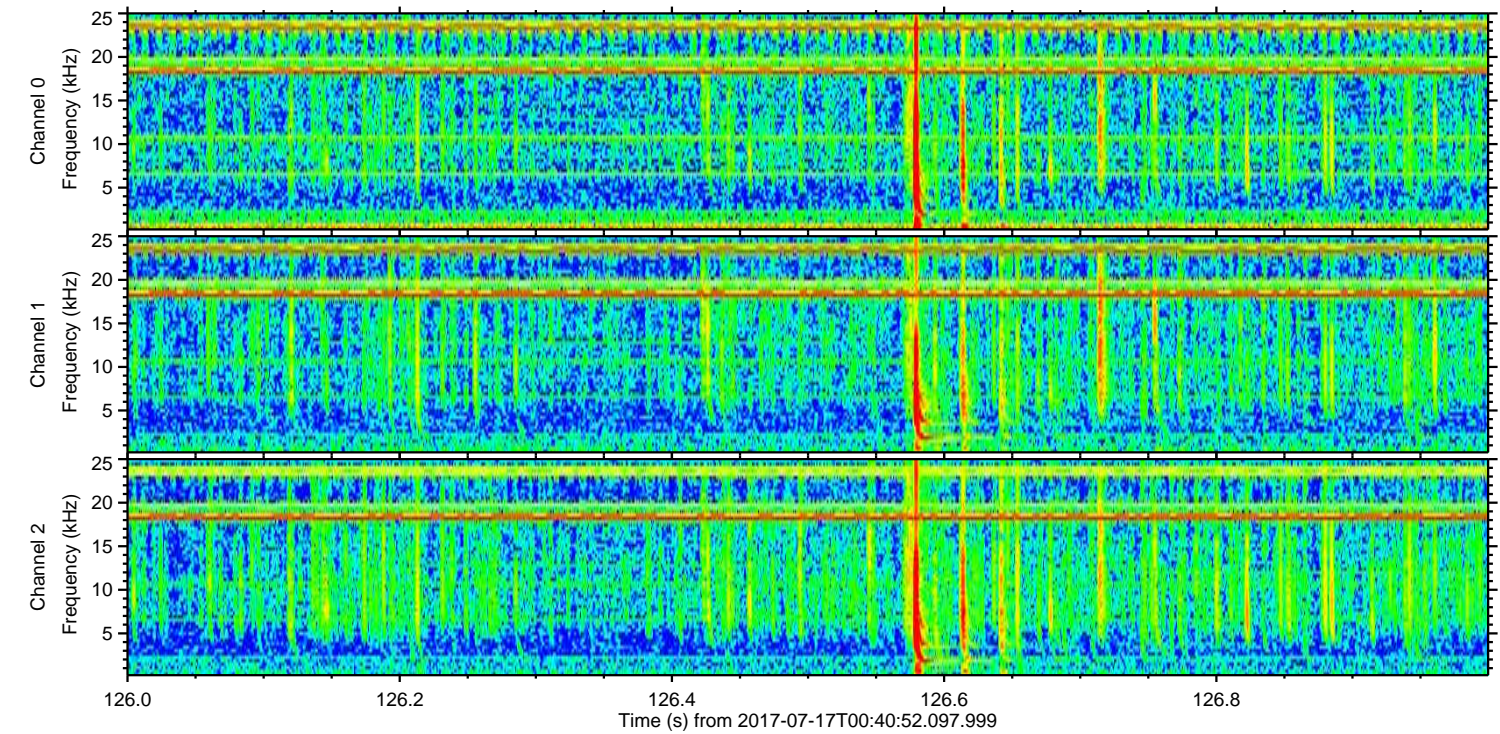
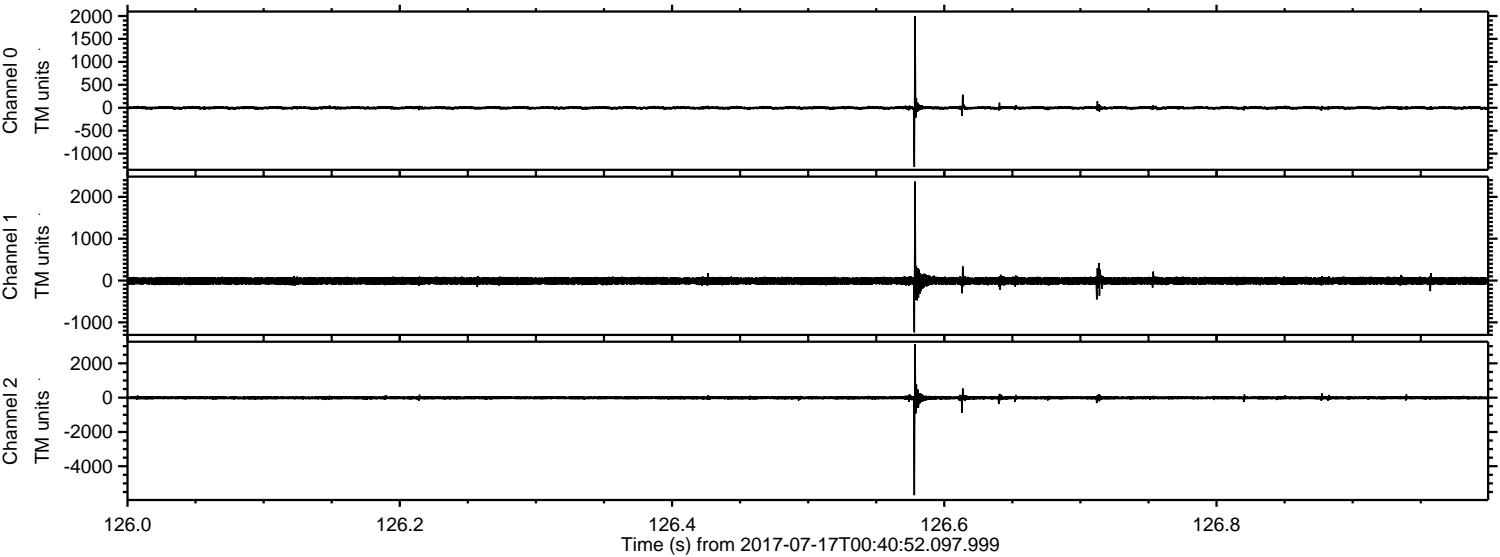


Processed Thu Jul 20 16:46:40 2017 by ELM ver.2012-10-06 from 001__elm20170717_004051__dat00.bin



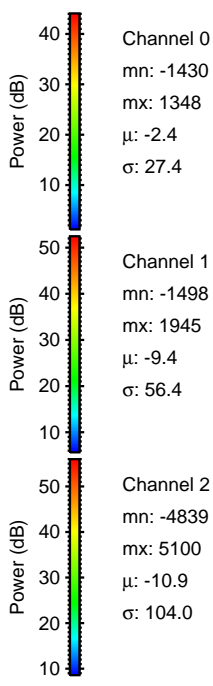
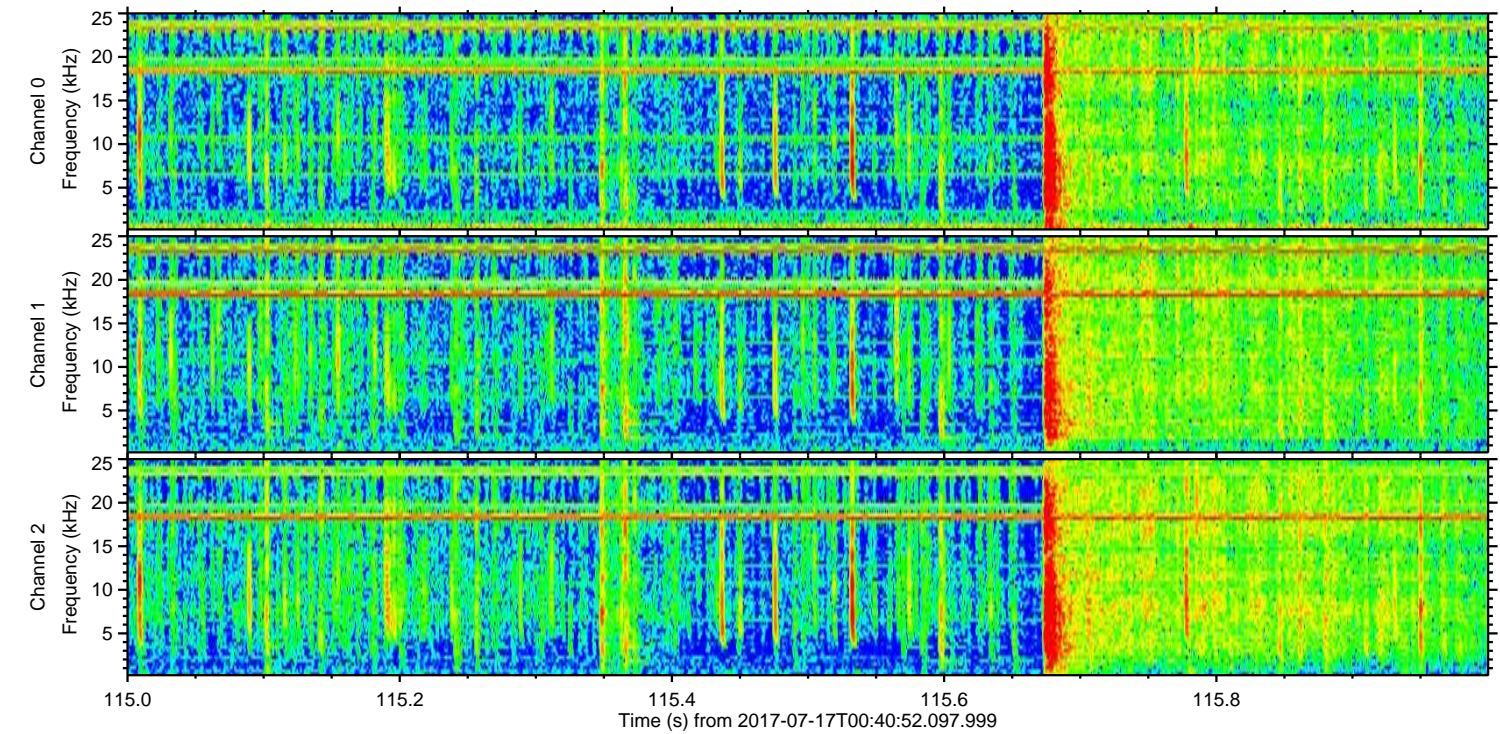
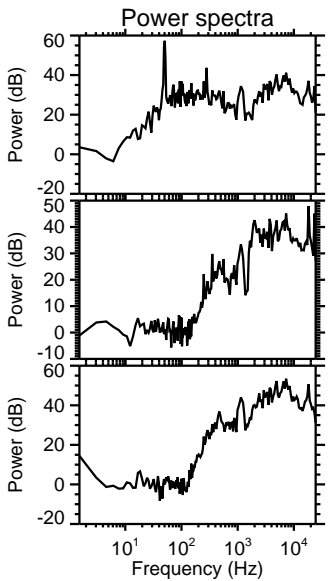
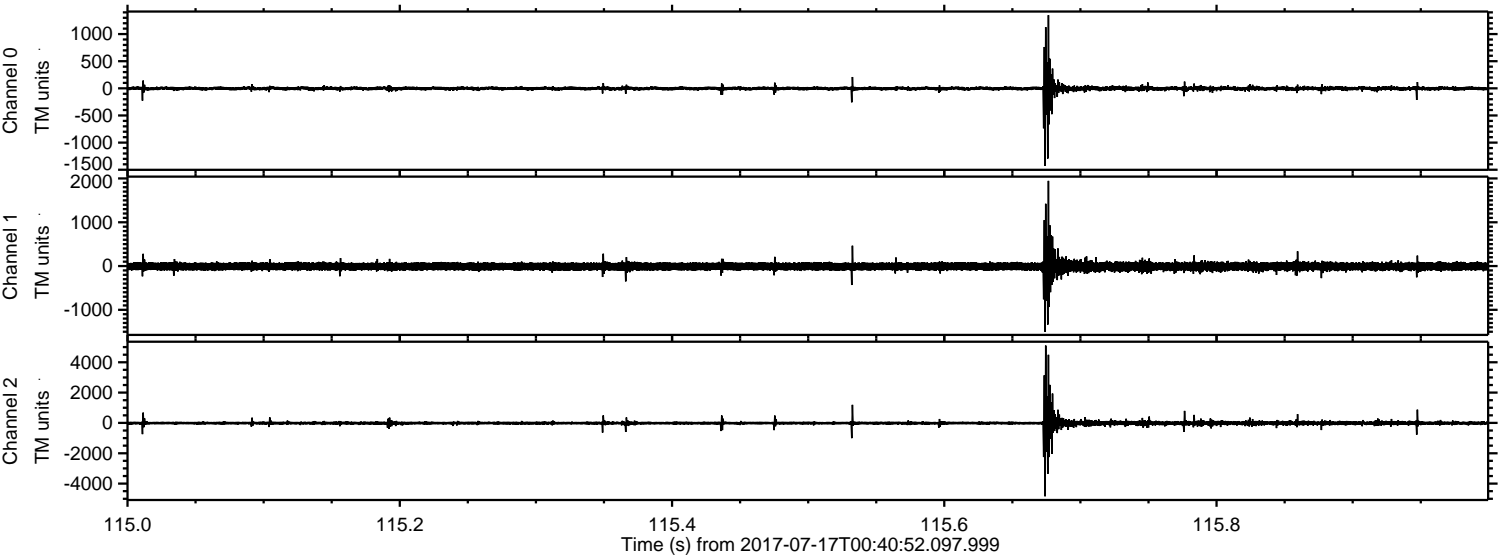
ELMAVAN 3D WAVEFORMS (Measured data sampled at 50 kHz) 51000 packets of 144 samples from 2017-07-17T00:40:52.097.999. Part 127/147

Processed Thu Jul 20 16:46:41 2017 by ELM ver.2012-10-06 from 001__elm20170717_004051__dat00.bin

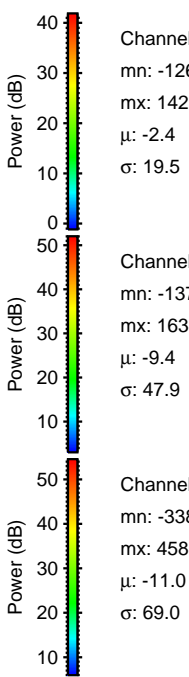
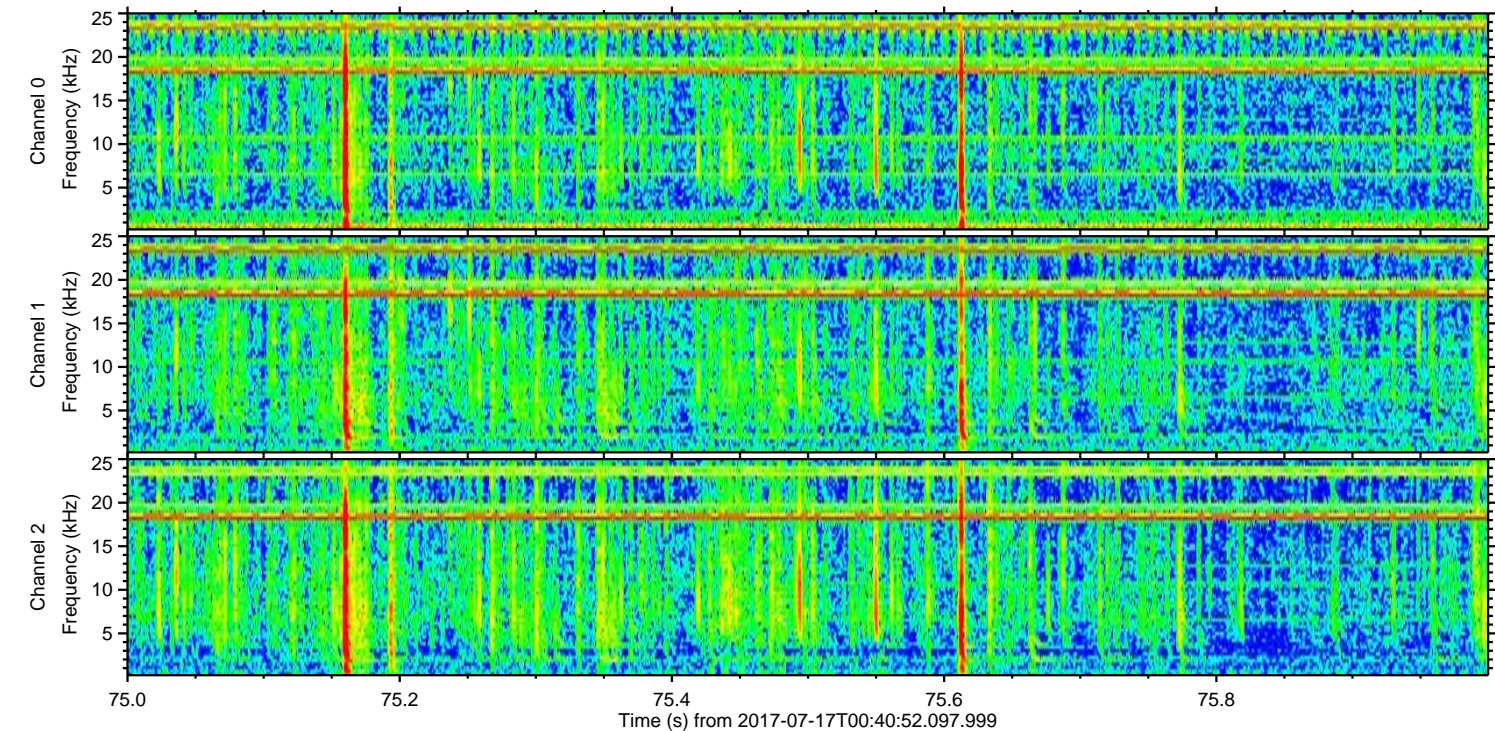
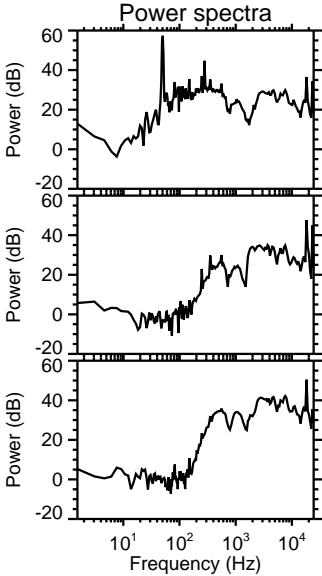
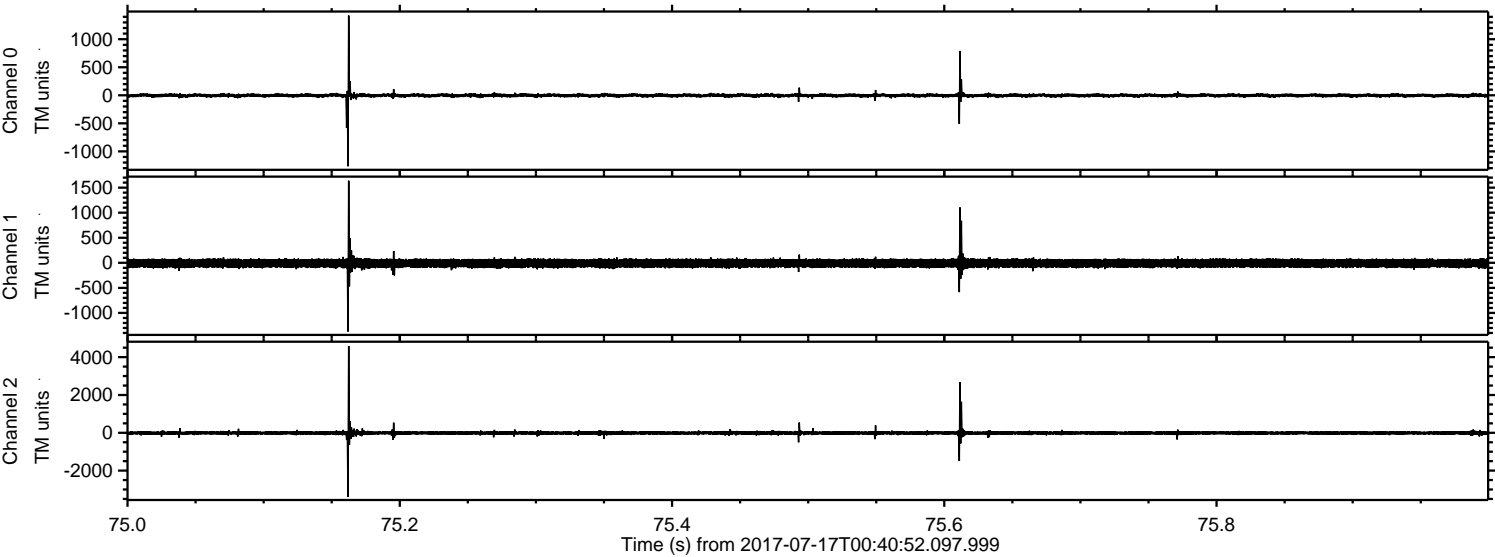


ELMAVAN 3D WAVEFORMS (Measured data sampled at 50 kHz) 51000 packets of 144 samples from 2017-07-17T00:40:52.097.999. Part 116/147

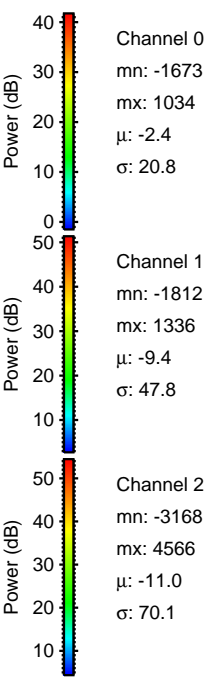
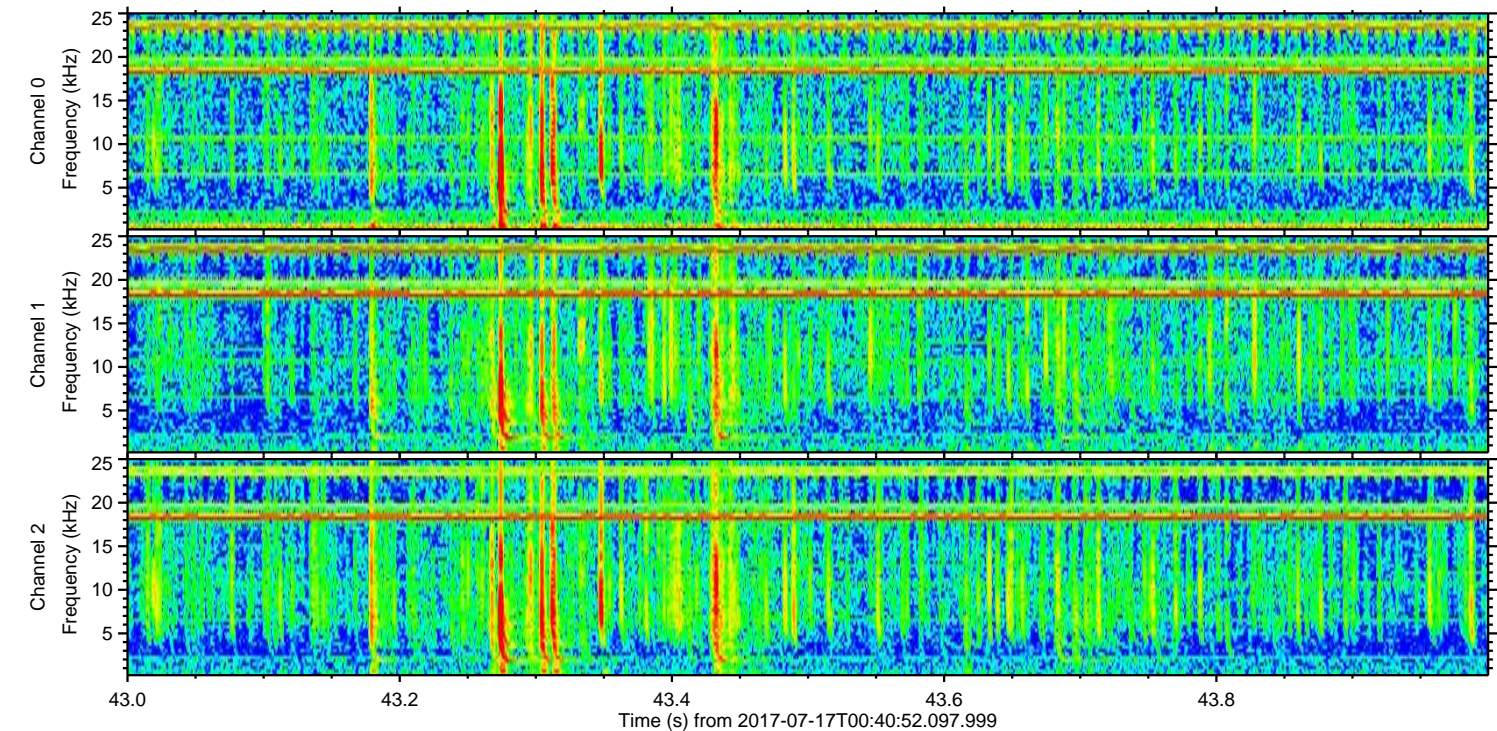
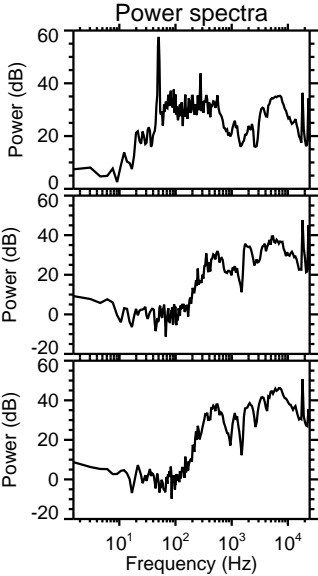
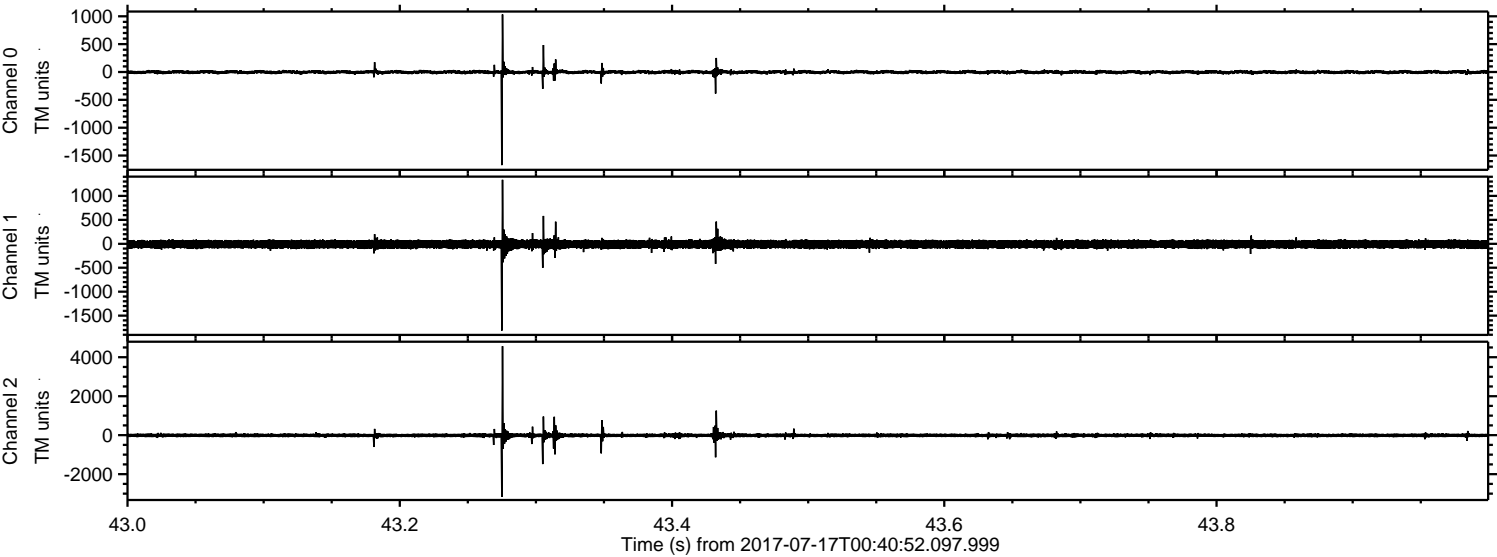
Processed Thu Jul 20 16:46:42 2017 by ELM ver.2012-10-06 from 001__elm20170717_004051__dat00.bin



Processed Thu Jul 20 16:46:42 2017 by ELM ver.2012-10-06 from 001__elm20170717_004051__dat00.bin

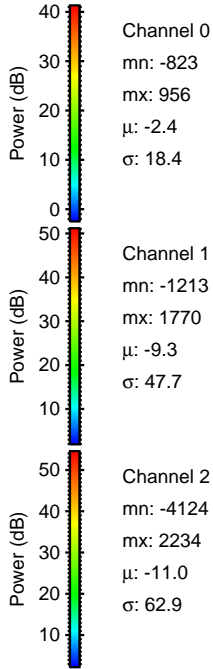
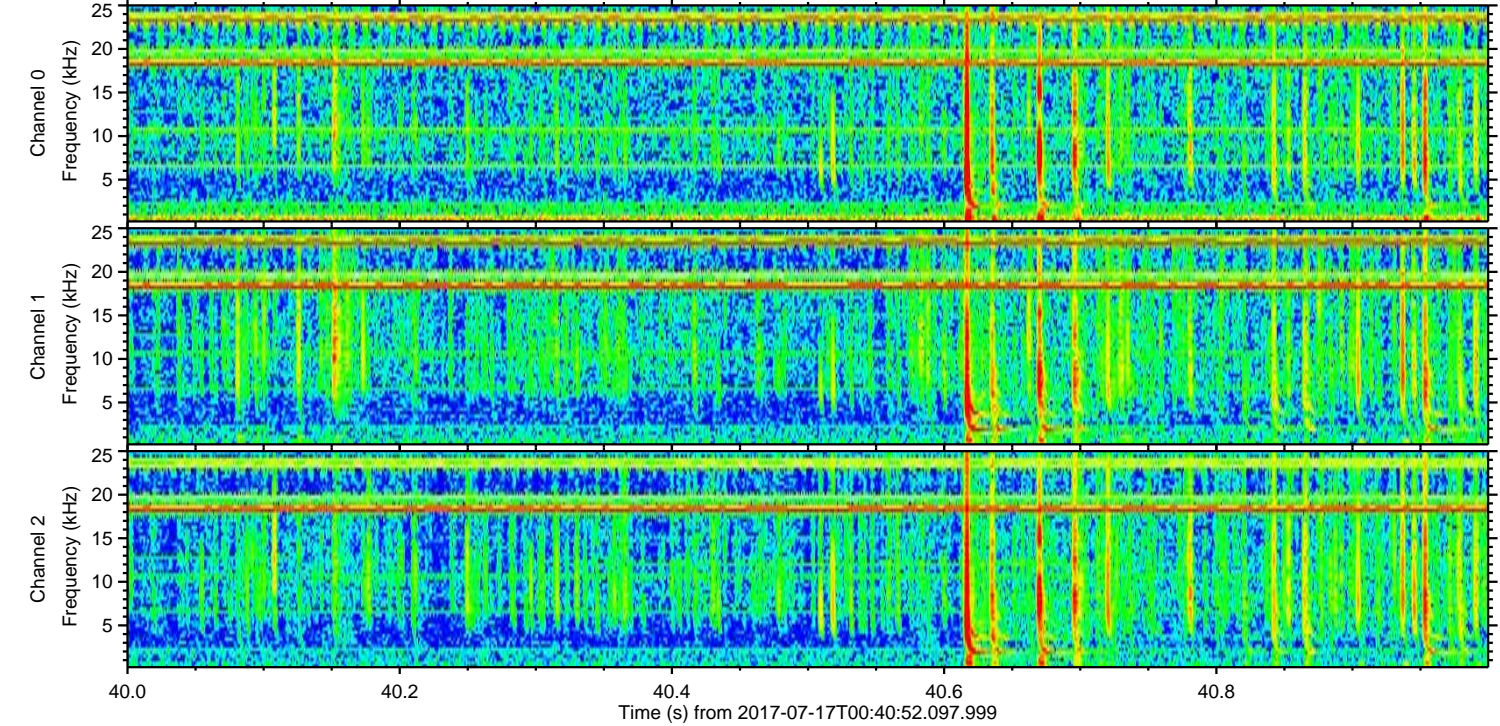
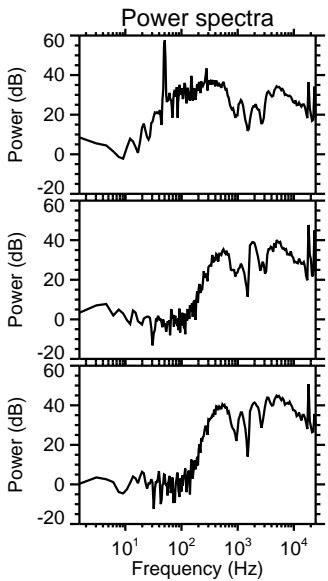
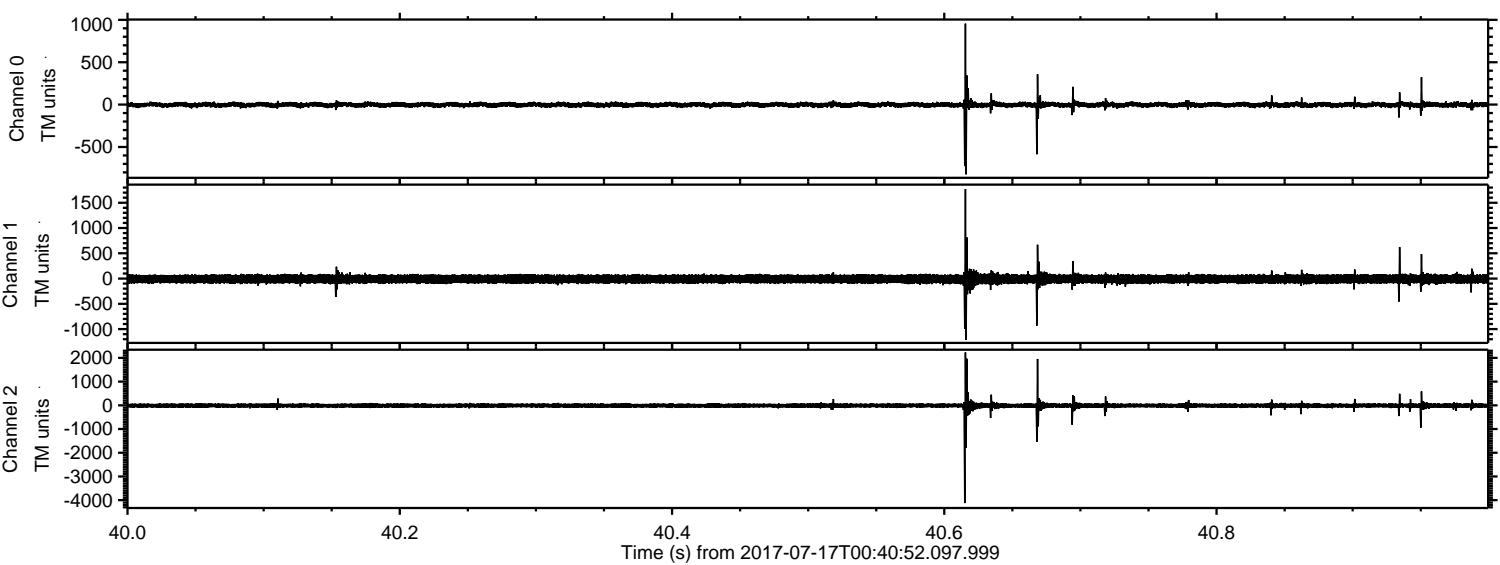


Processed Thu Jul 20 16:46:43 2017 by ELM ver.2012-10-06 from 001__elm20170717_004051__dat00.bin

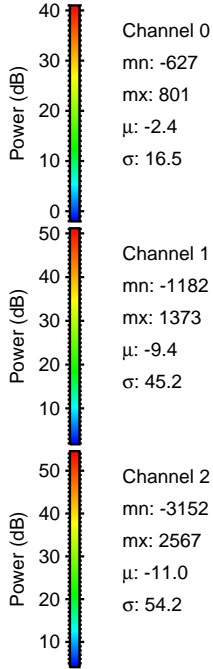
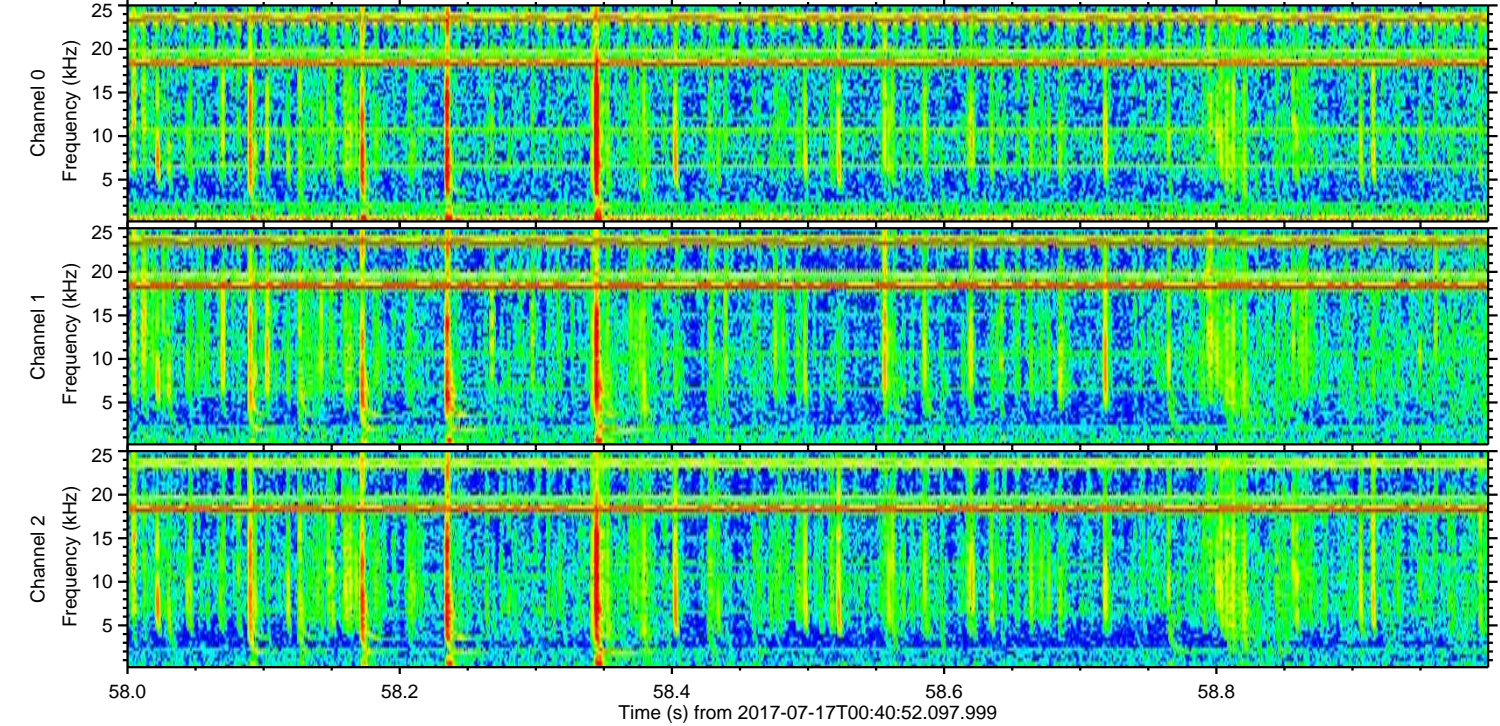
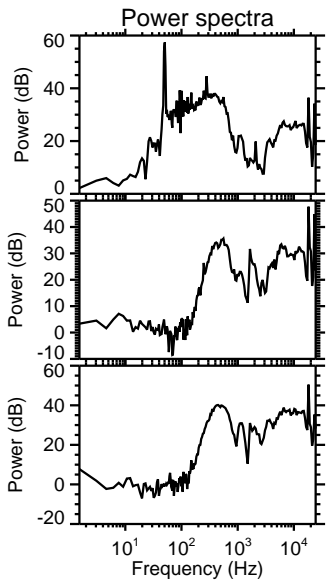
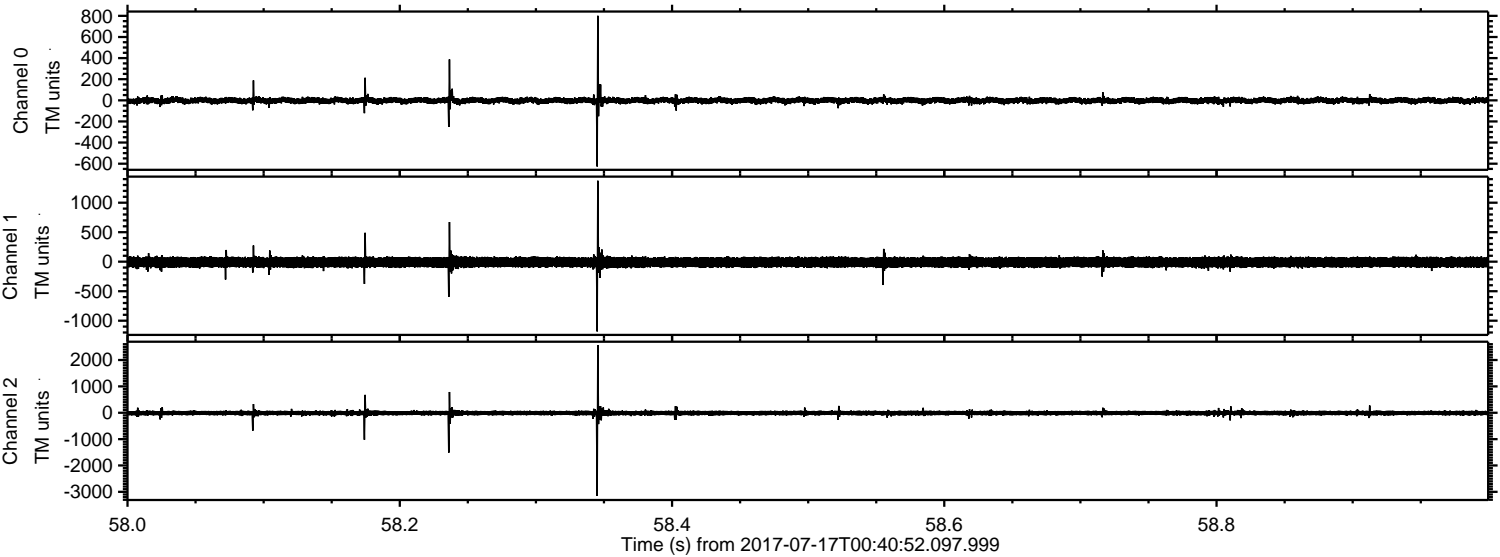


ELMAVAN 3D WAVEFORMS (Measured data sampled at 50 kHz) 51000 packets of 144 samples from 2017-07-17T00:40:52.097.999. Part 41/147

Processed Thu Jul 20 16:46:44 2017 by ELM ver.2012-10-06 from 001__elm20170717_004051__dat00.bin



Processed Thu Jul 20 16:46:45 2017 by ELM ver.2012-10-06 from 001__elm20170717_004051__dat00.bin

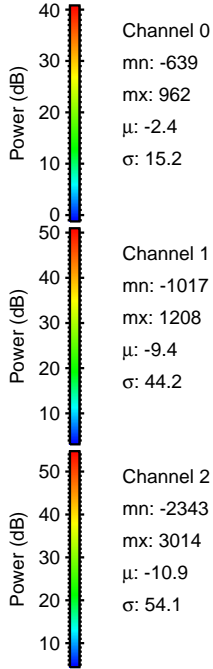
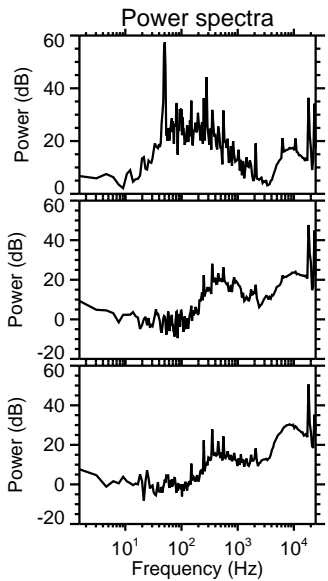
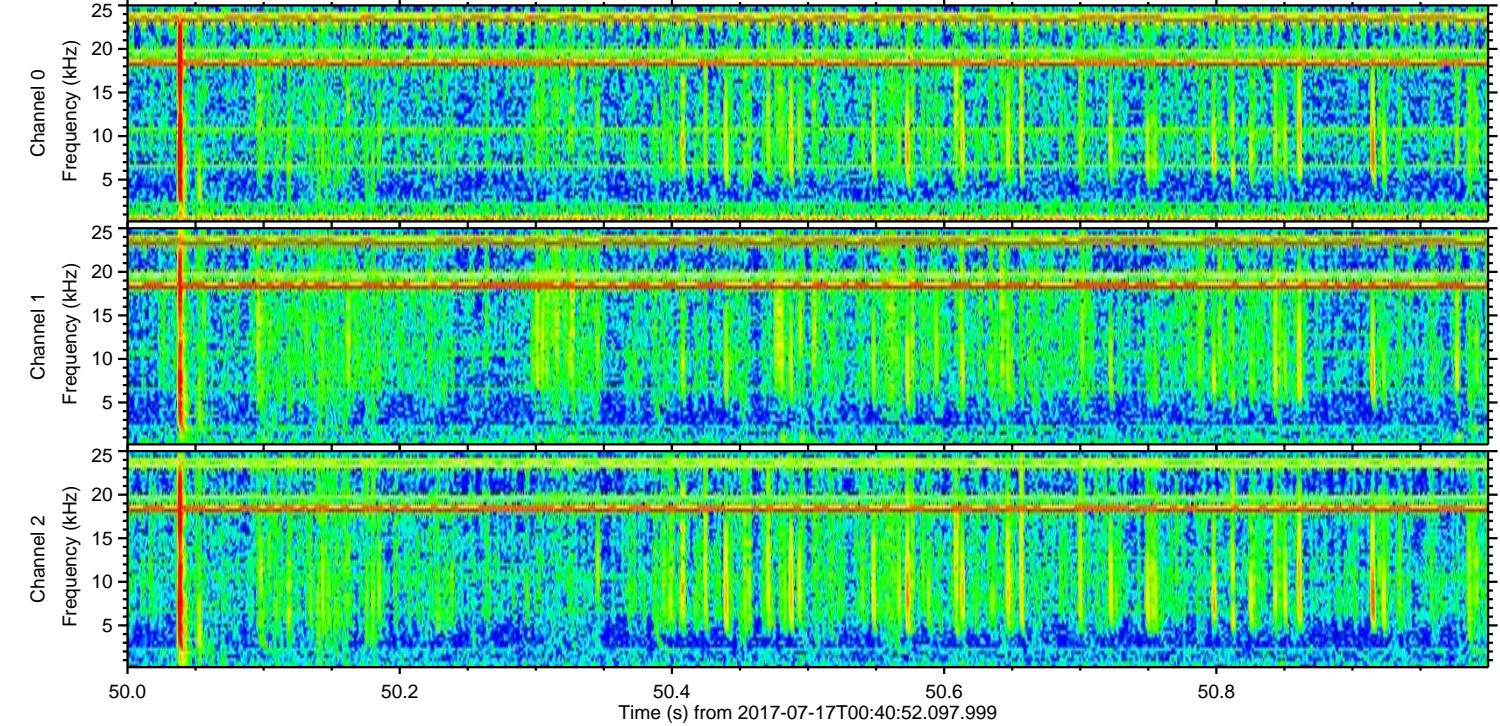
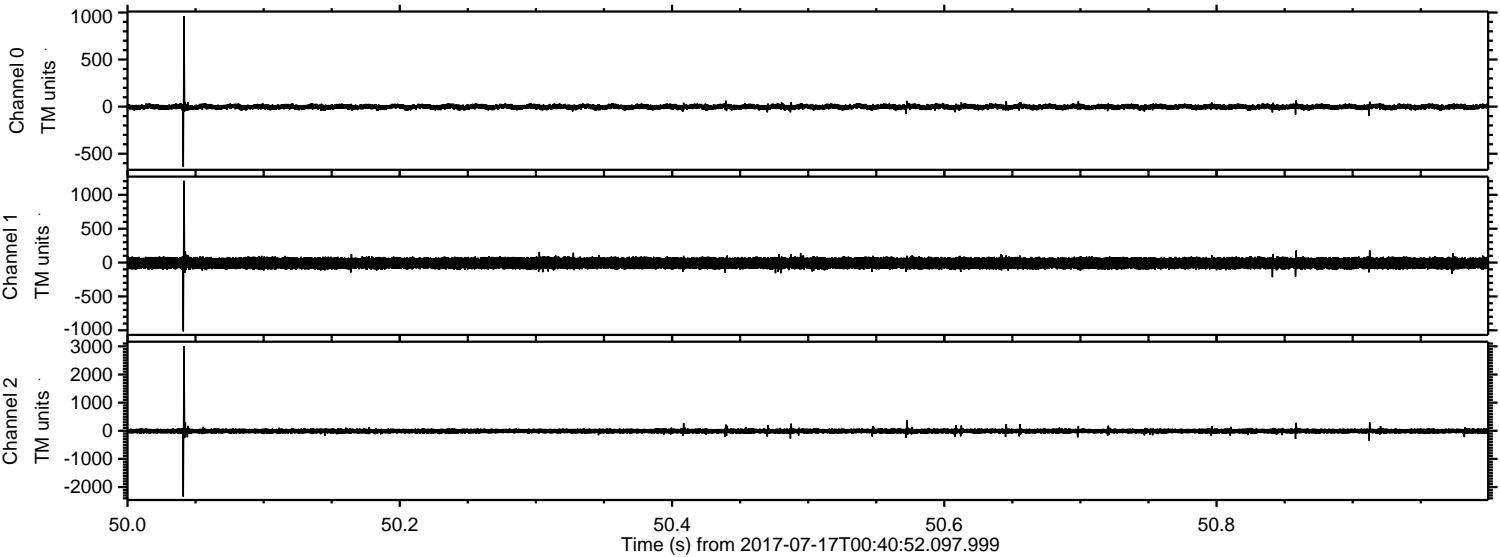


Channel 0
mn: -627
mx: 801
 μ : -2.4
 σ : 16.5

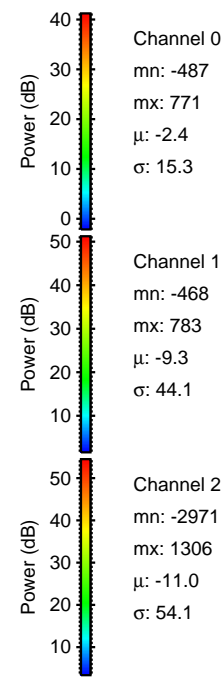
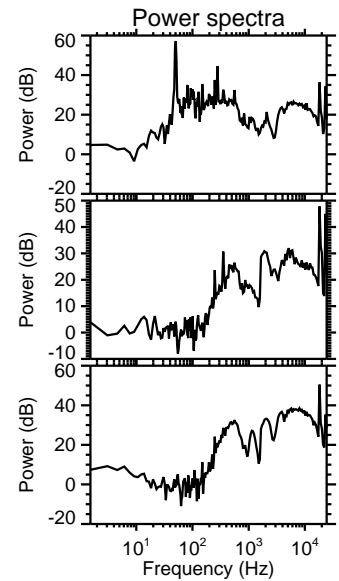
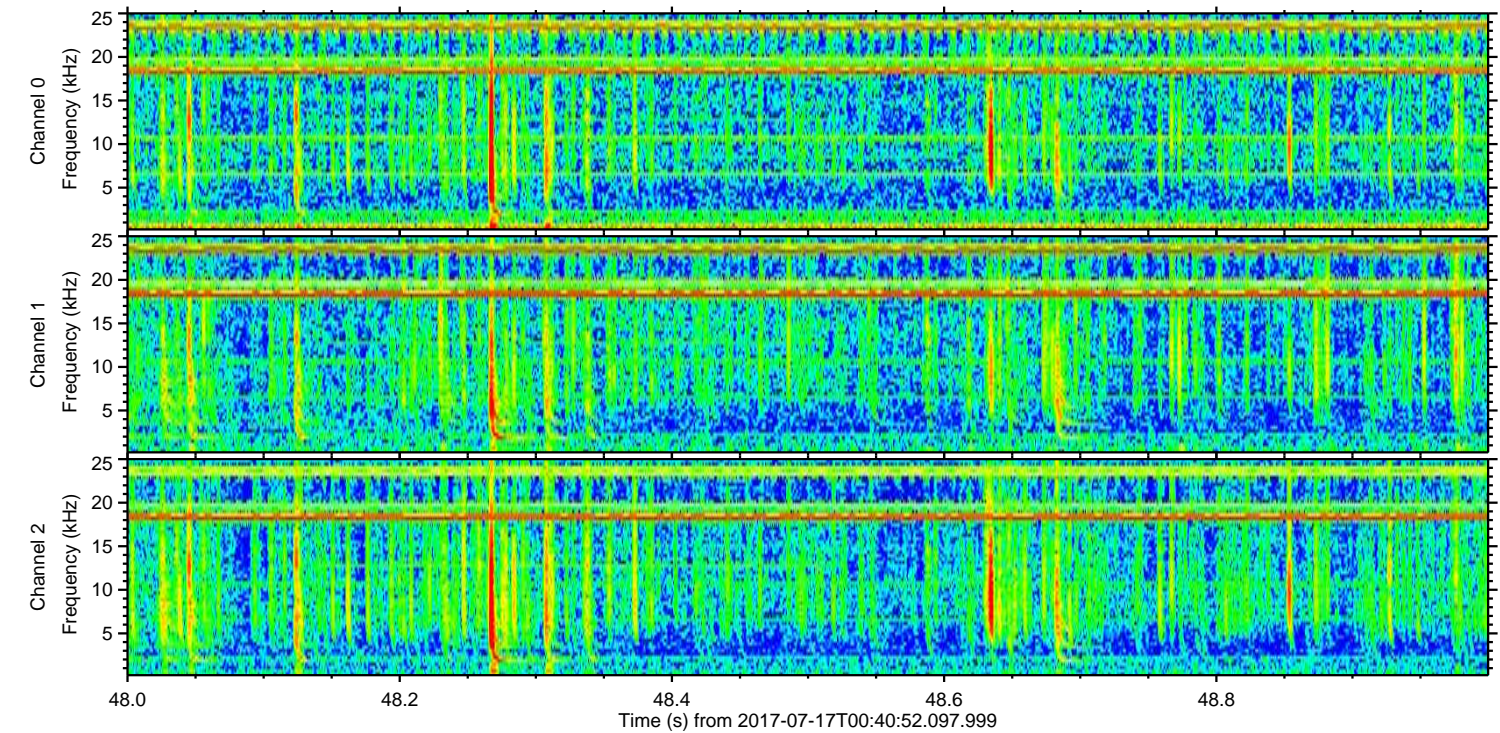
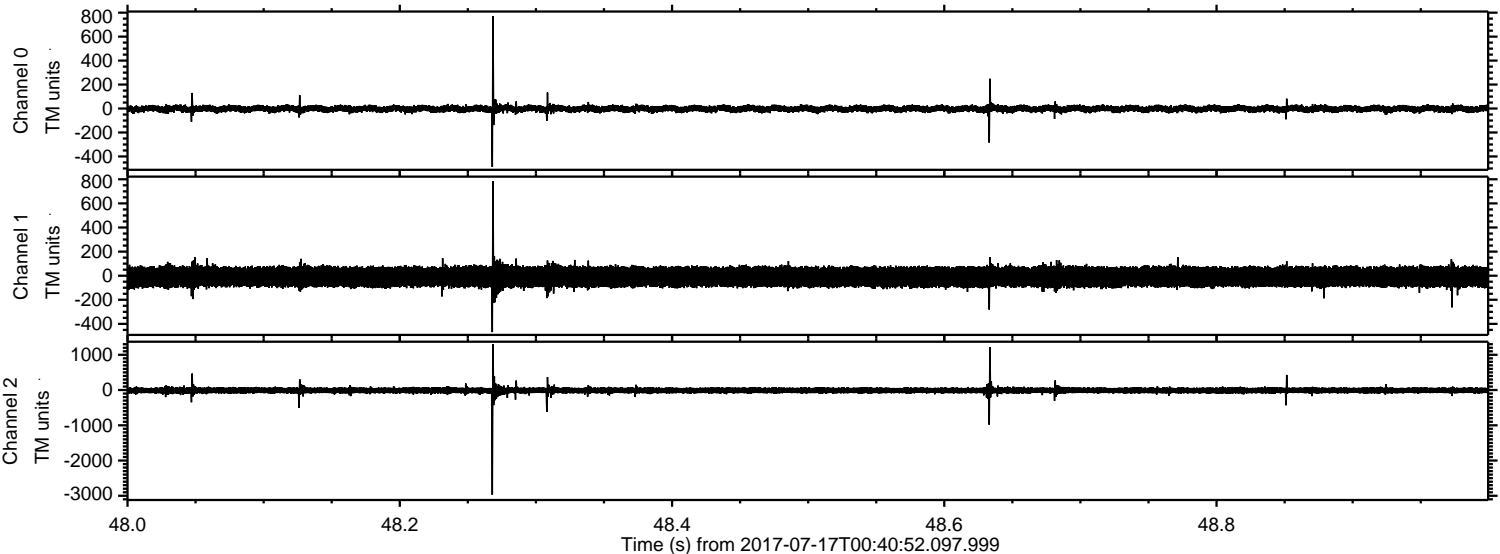
Channel 1
mn: -1182
mx: 1373
 μ : -9.4
 σ : 45.2

Channel 2
mn: -3152
mx: 2567
 μ : -11.0
 σ : 54.2

Processed Thu Jul 20 16:46:45 2017 by ELM ver.2012-10-06 from 001__elm20170717_004051__dat00.bin



Processed Thu Jul 20 16:46:46 2017 by ELM ver.2012-10-06 from 001__elm20170717_004051__dat00.bin



Processed Thu Jul 20 16:46:47 2017 by ELM ver.2012-10-06 from 001__elm20170717_004051__dat00.bin

