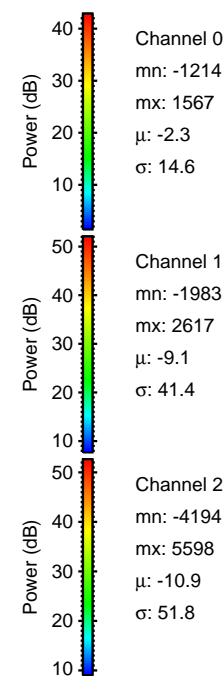
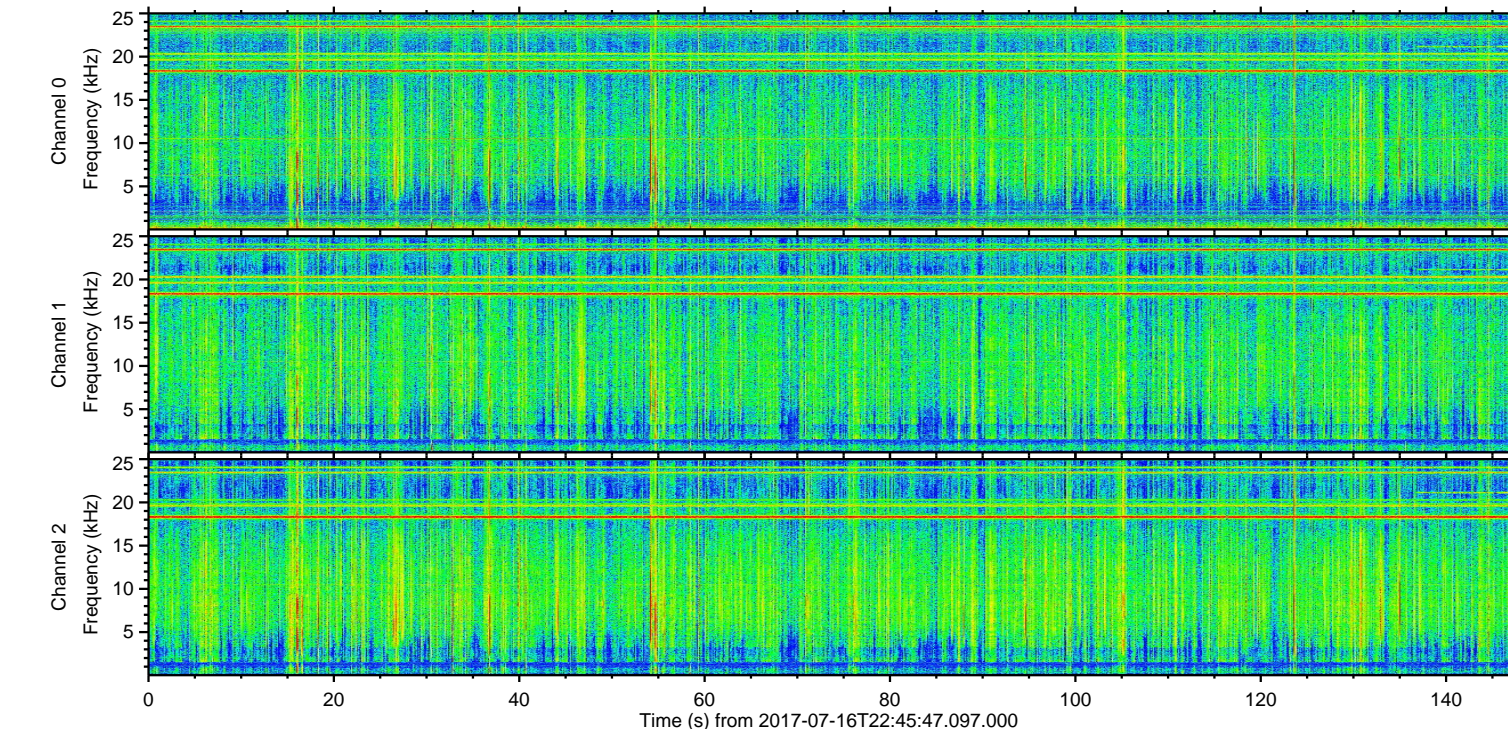
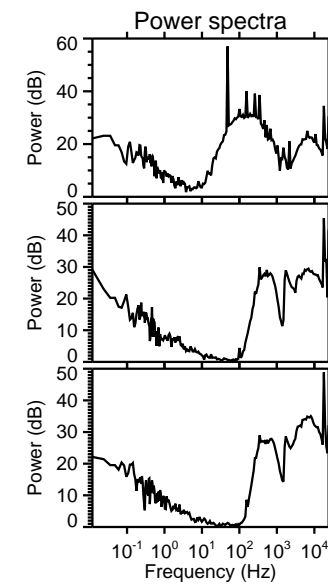
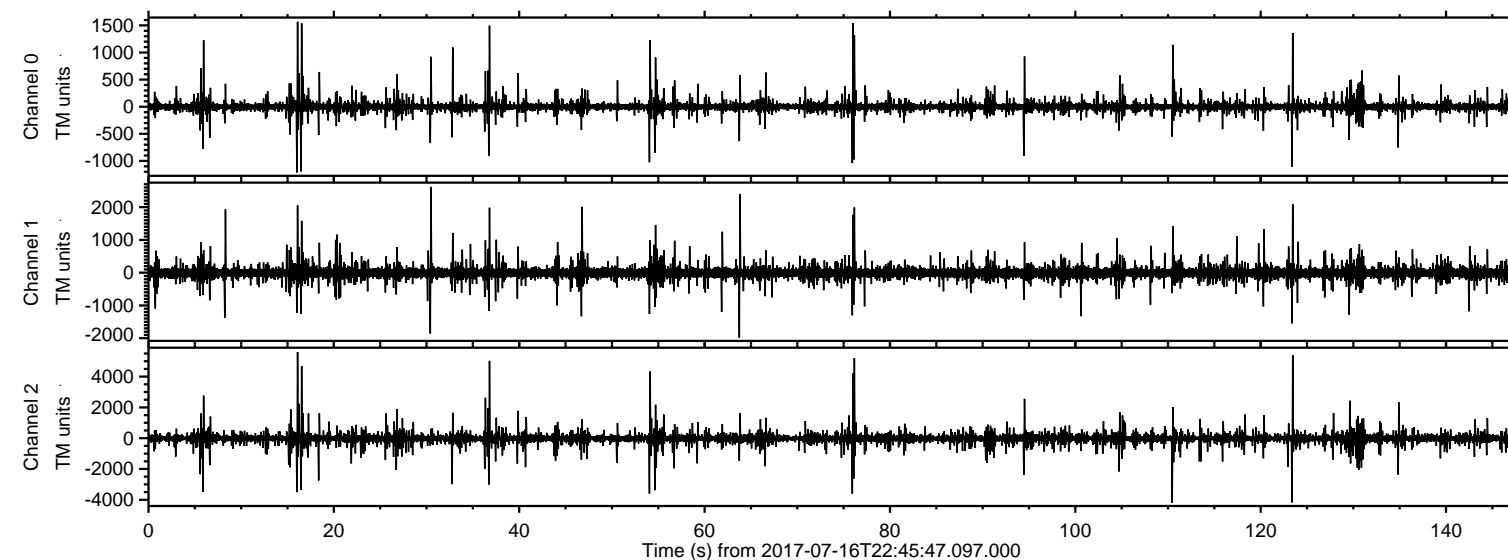
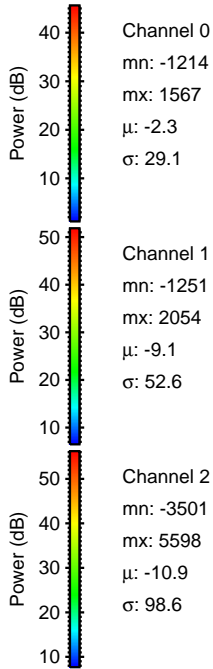
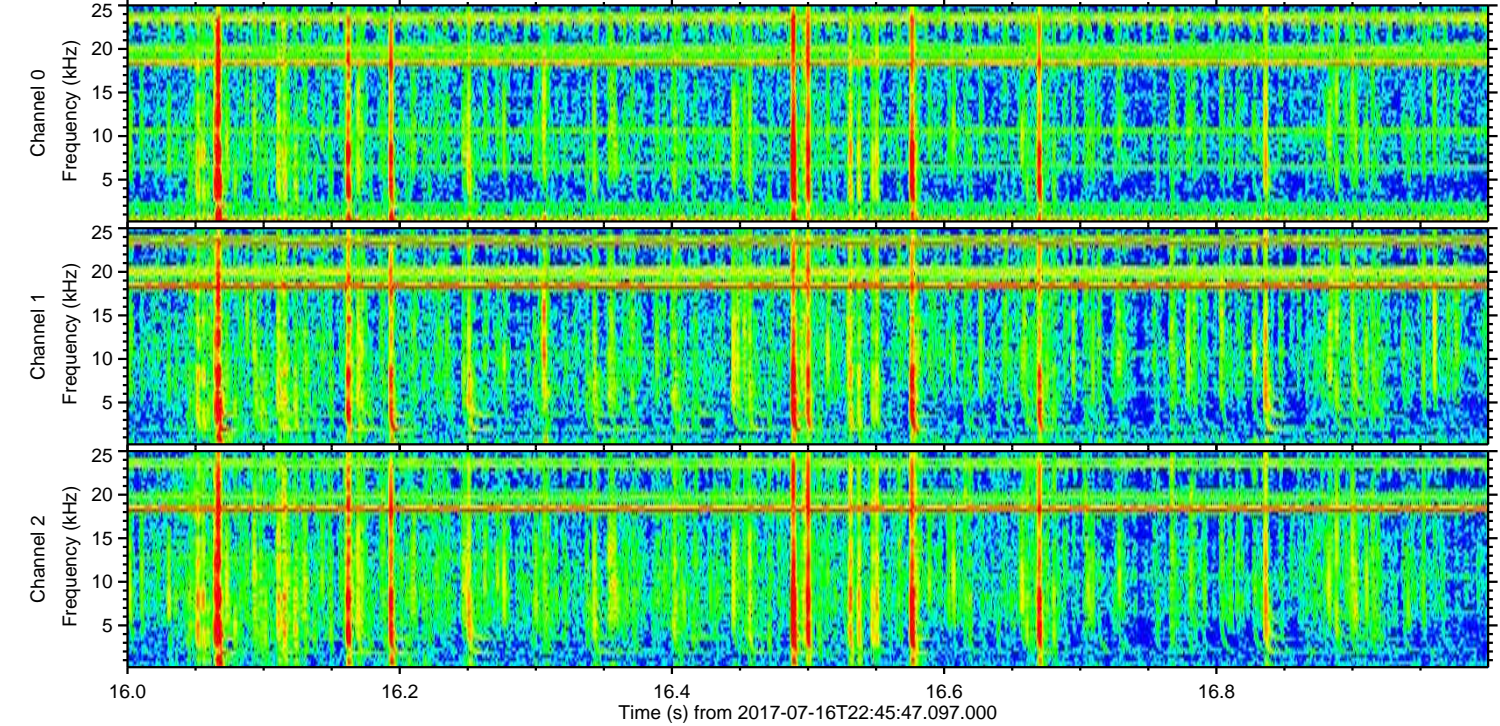
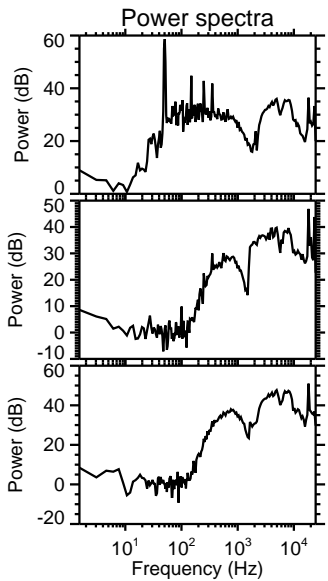
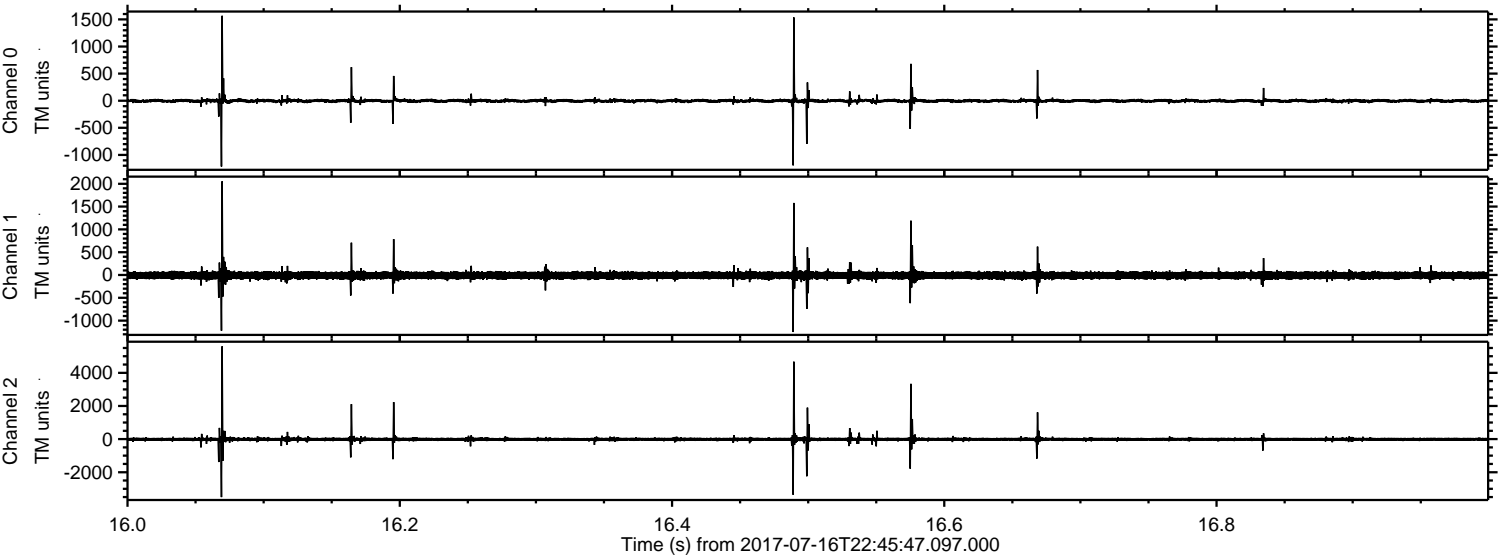


ELMAVAN 3D WAVEFORMS (Measured data sampled at 50 kHz) 51000 packets of 144 samples from 2017-07-16T22:45:47.097.000.

Processed Thu Jul 20 16:29:00 2017 by ELM ver.2012-10-06 from 001__elm20170716_224546__dat00.bin



Processed Thu Jul 20 16:29:08 2017 by ELM ver.2012-10-06 from 001__elm20170716_224546__dat00.bin



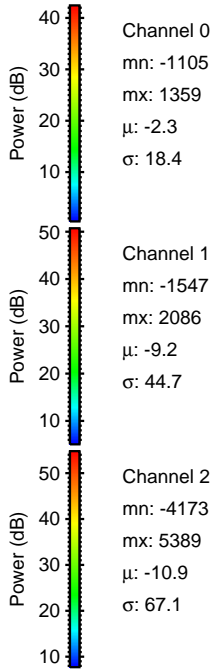
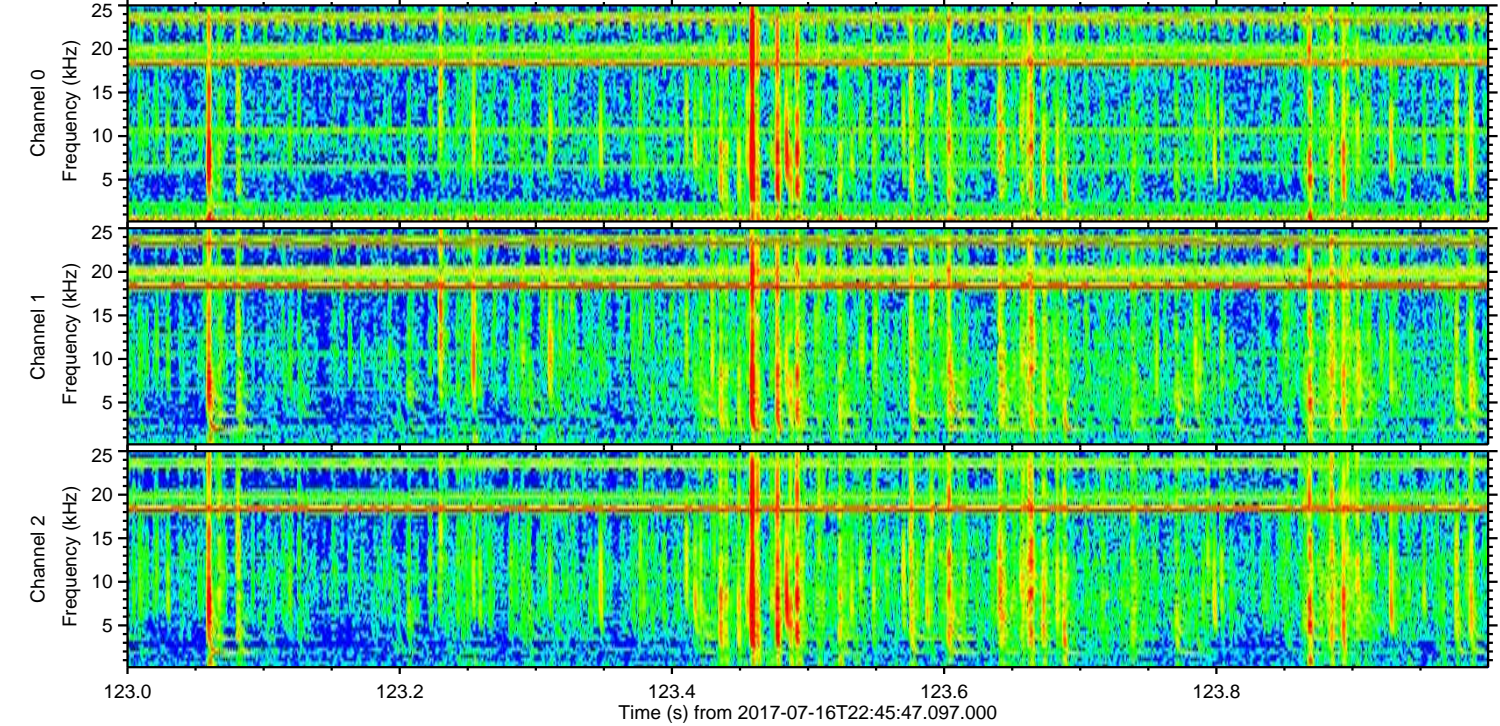
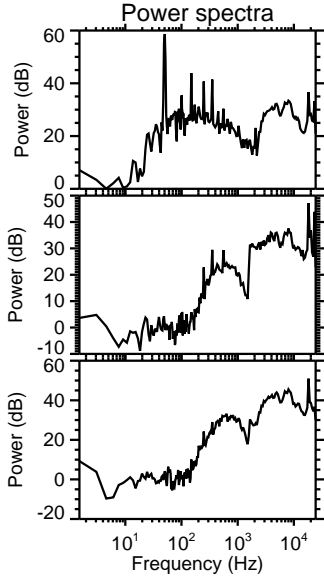
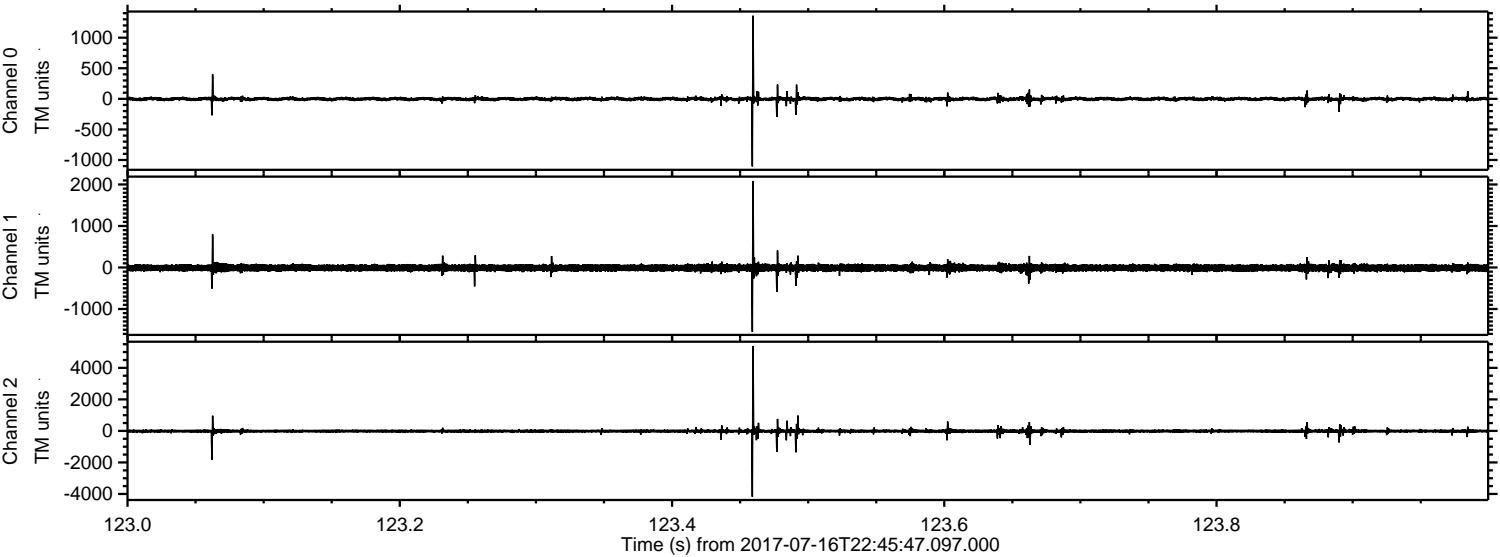
Channel 0
mn: -1214
mx: 1567
 μ : -2.3
 σ : 29.1

Channel 1
mn: -1251
mx: 2054
 μ : -9.1
 σ : 52.6

Channel 2
mn: -3501
mx: 5598
 μ : -10.9
 σ : 98.6

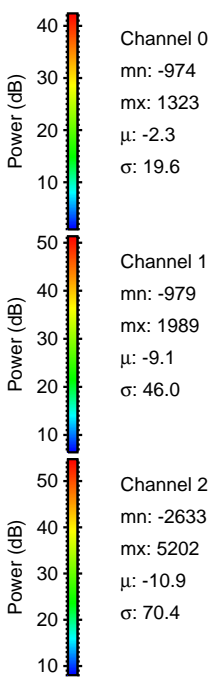
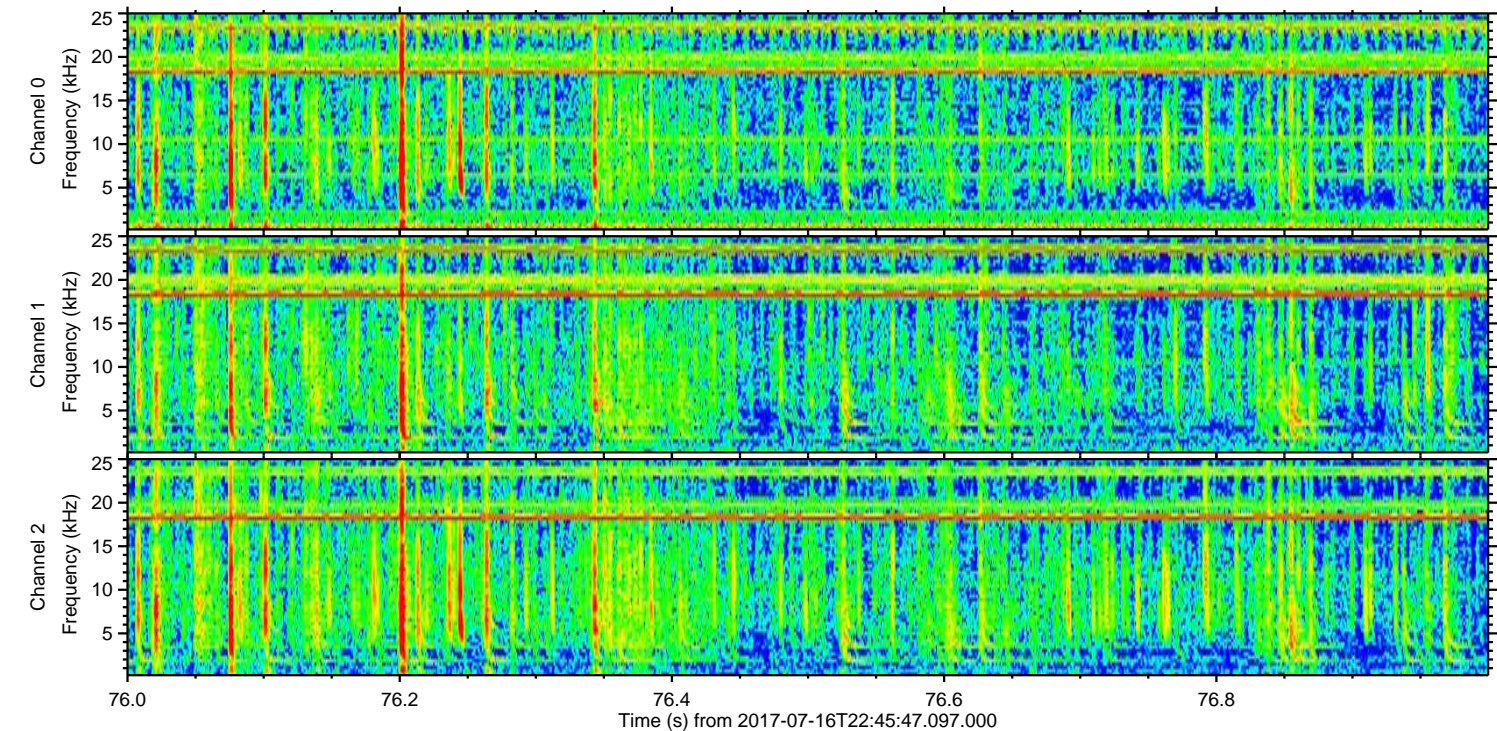
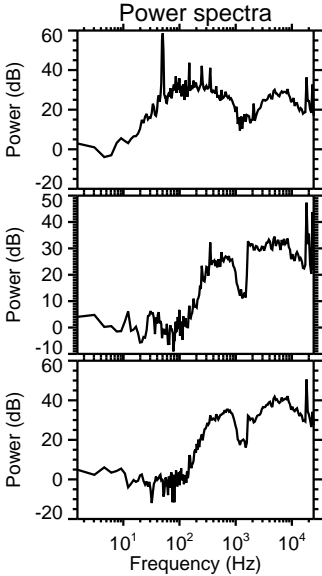
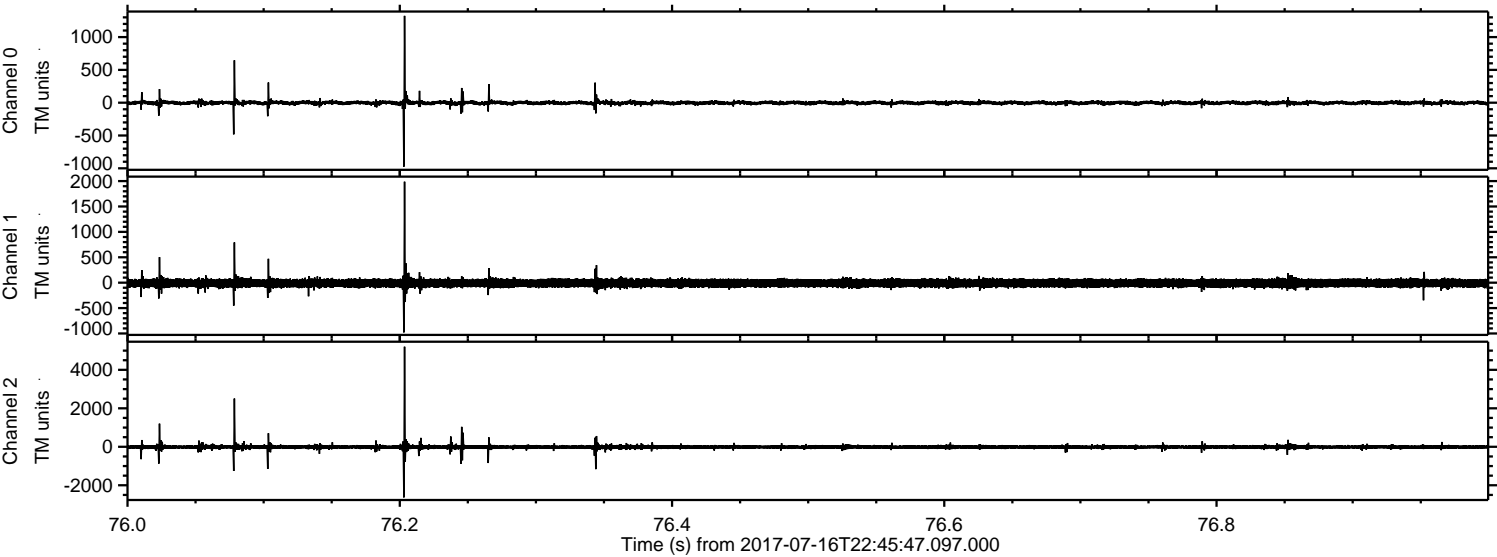
ELMAVAN 3D WAVEFORMS (Measured data sampled at 50 kHz) 51000 packets of 144 samples from 2017-07-16T22:45:47.097.000. Part 124/147

Processed Thu Jul 20 16:29:09 2017 by ELM ver.2012-10-06 from 001__elm20170716_224546__dat00.bin

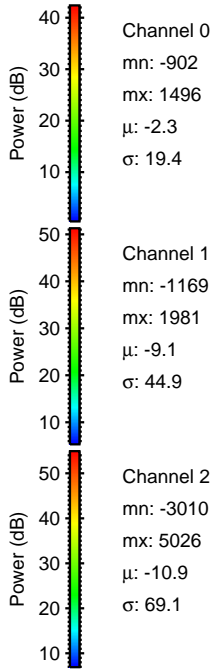
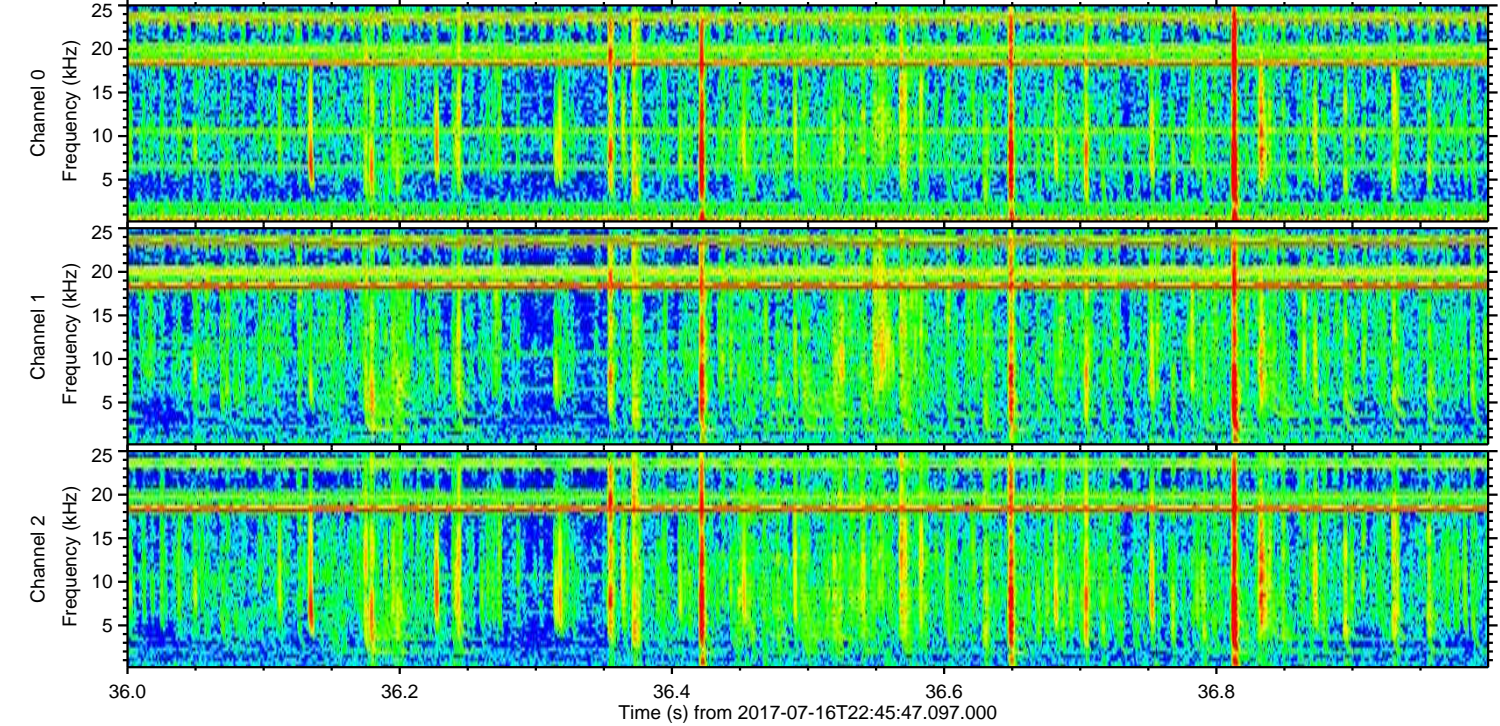
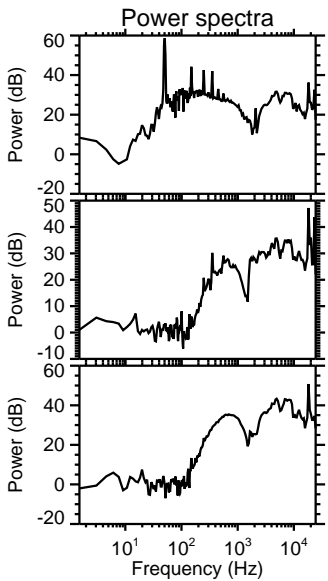
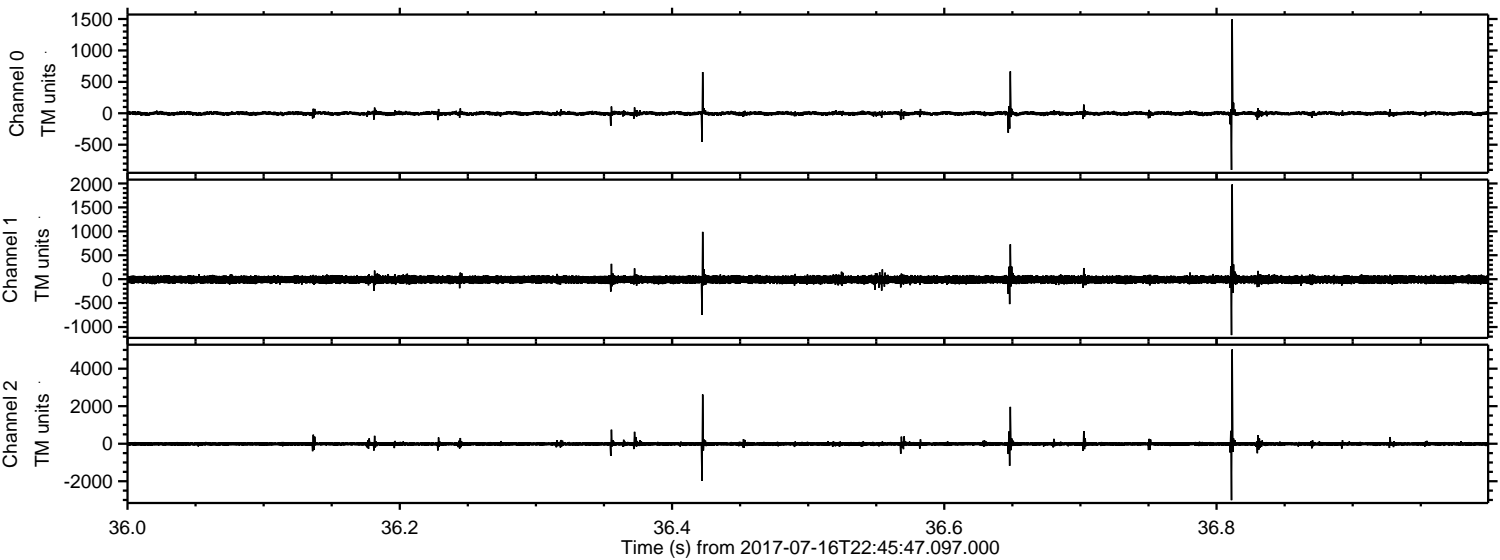


ELMAVAN 3D WAVEFORMS (Measured data sampled at 50 kHz) 51000 packets of 144 samples from 2017-07-16T22:45:47.097.000. Part 77/147

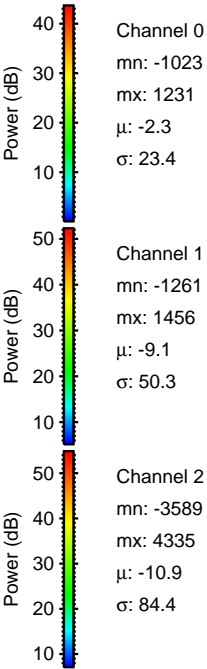
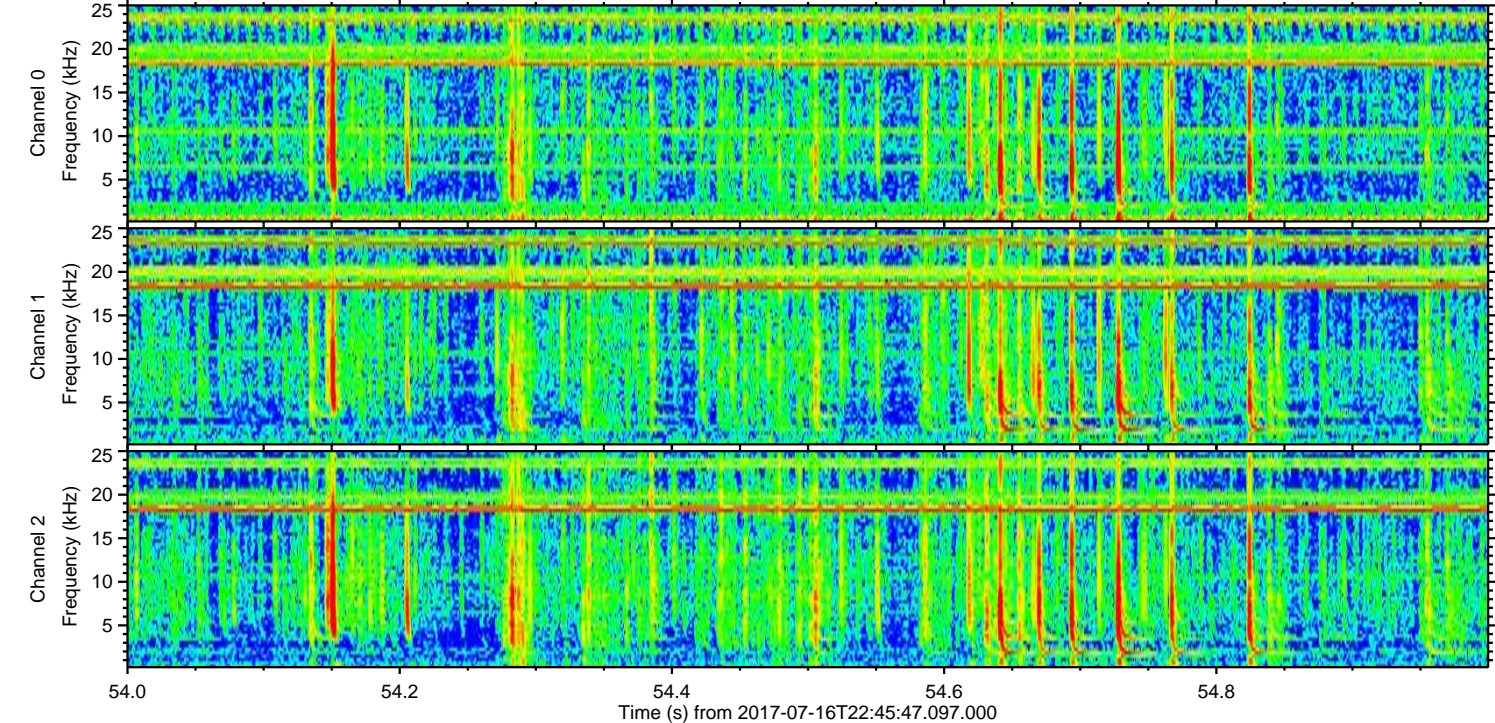
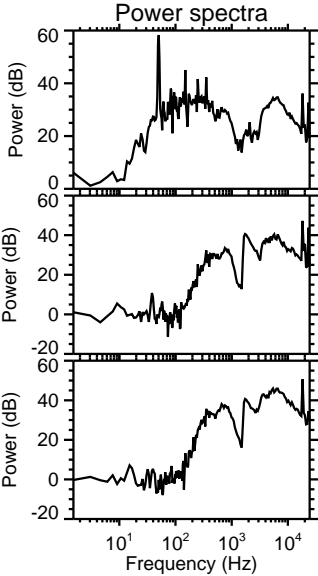
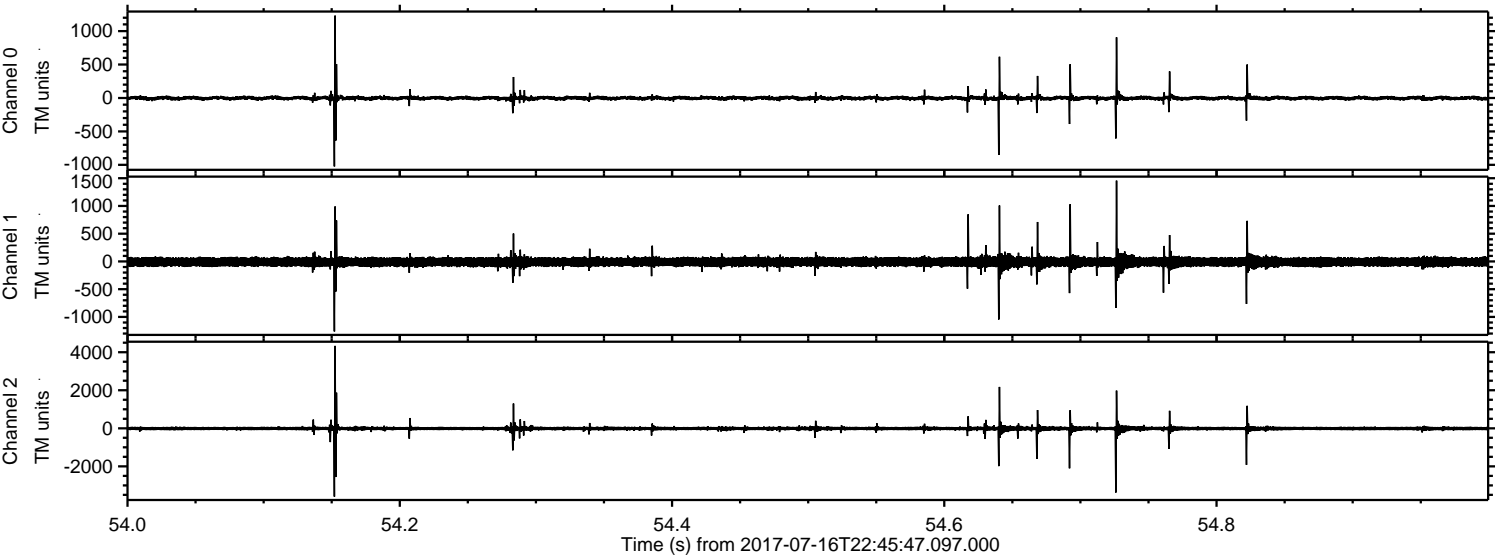
Processed Thu Jul 20 16:29:10 2017 by ELM ver.2012-10-06 from 001__elm20170716_224546__dat00.bin



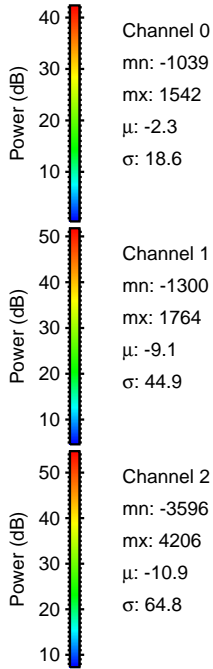
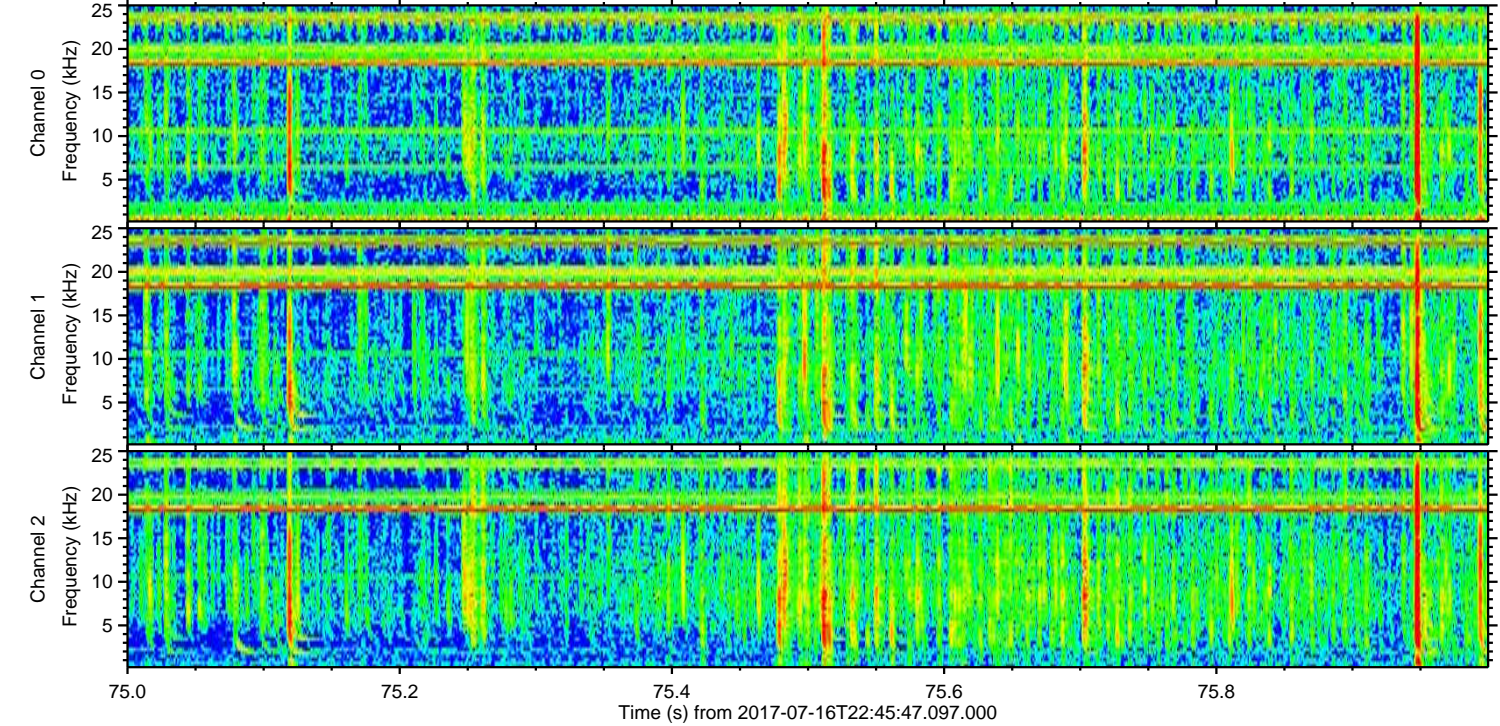
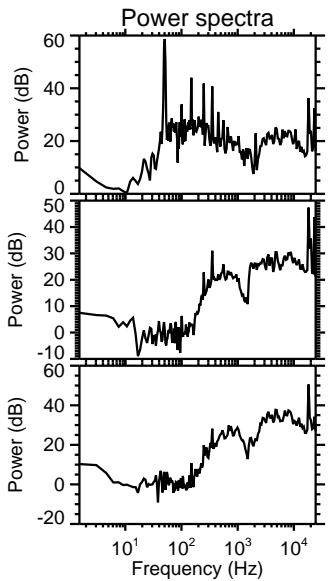
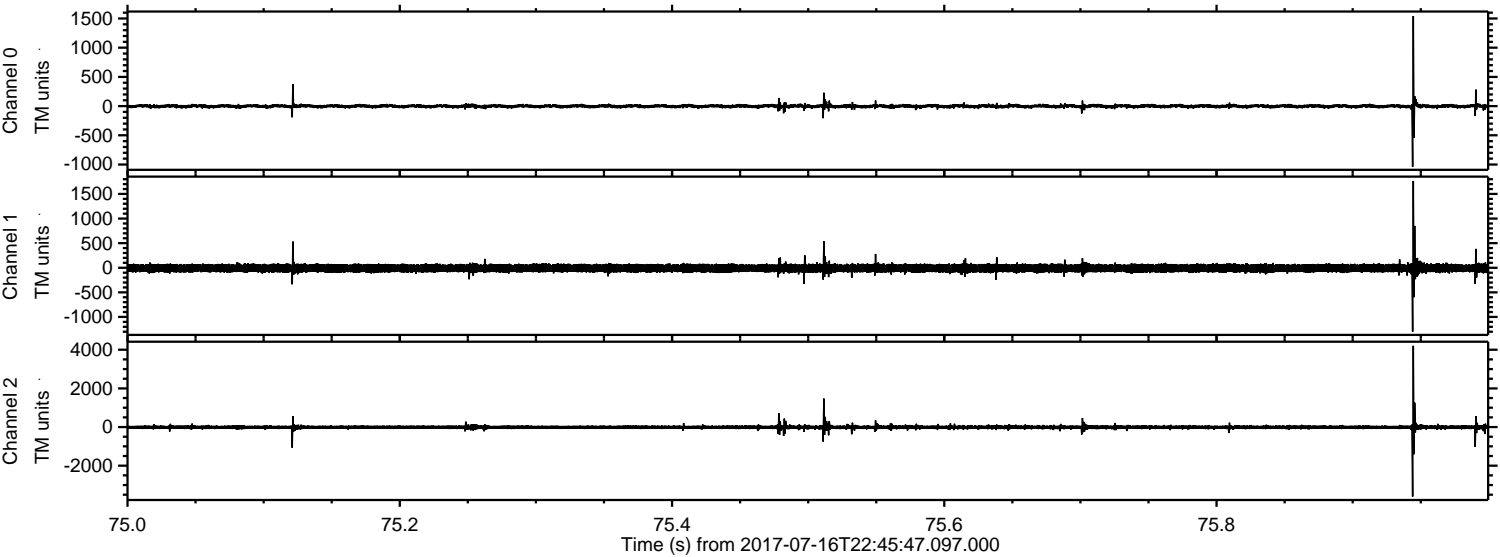
Processed Thu Jul 20 16:29:11 2017 by ELM ver.2012-10-06 from 001__elm20170716_224546__dat00.bin



Processed Thu Jul 20 16:29:12 2017 by ELM ver.2012-10-06 from 001__elm20170716_224546__dat00.bin

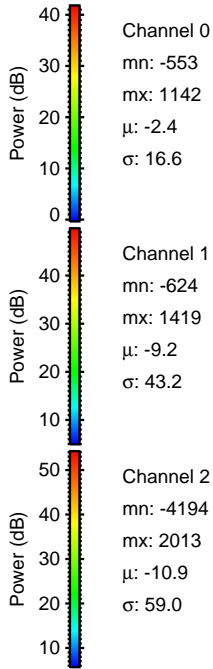
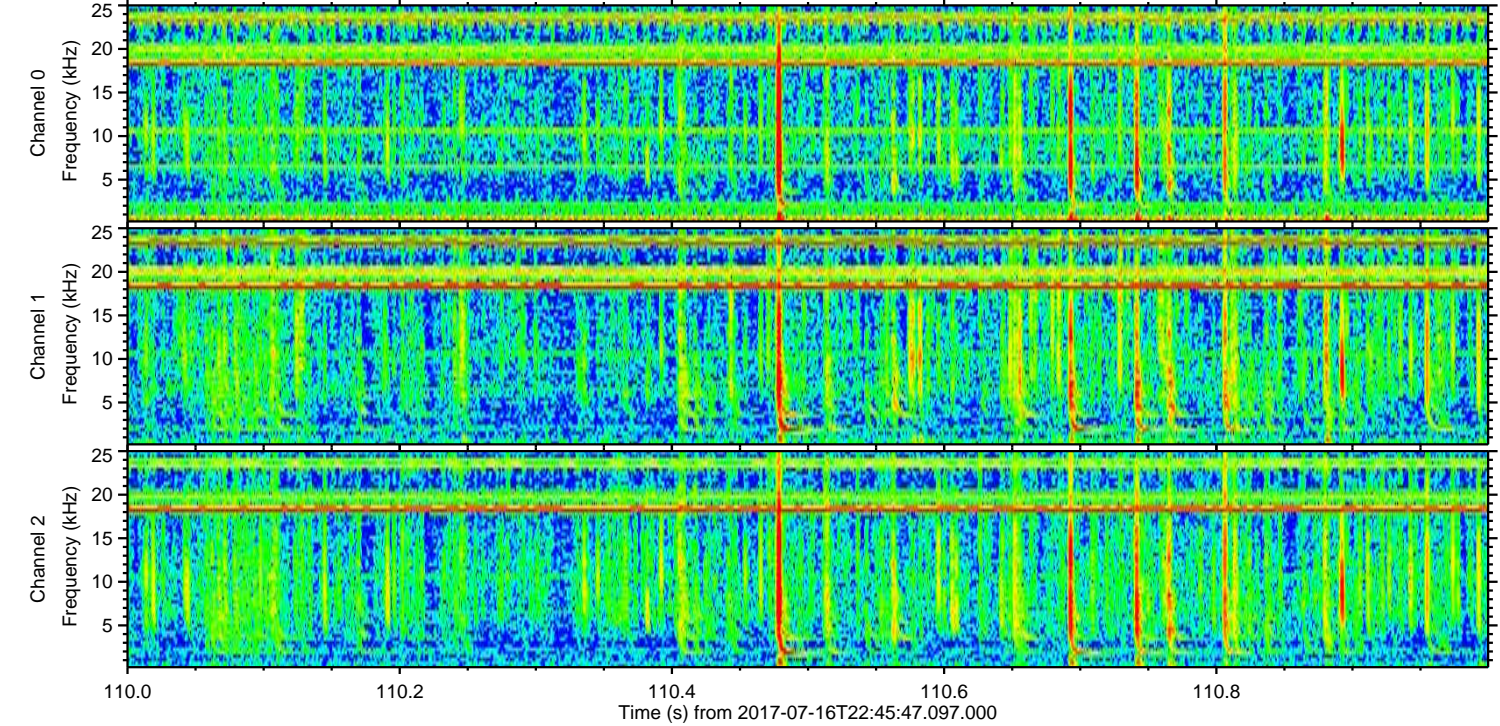
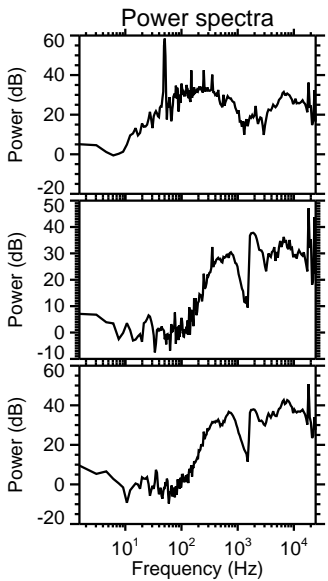
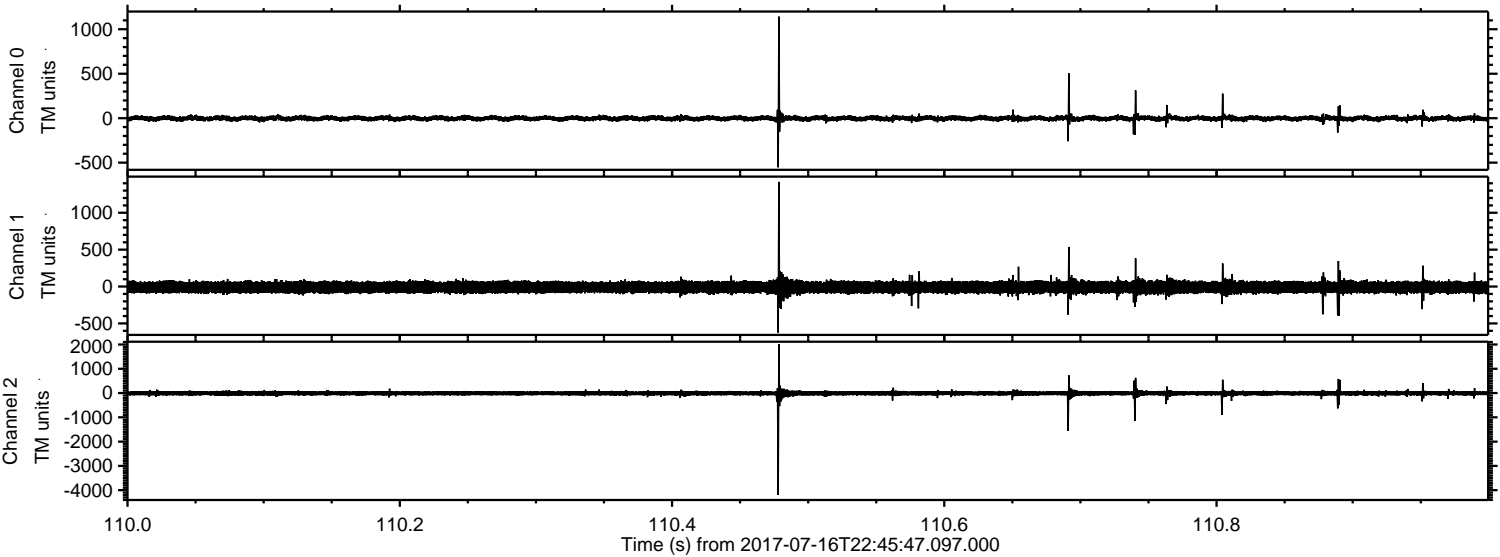


Processed Thu Jul 20 16:29:12 2017 by ELM ver.2012-10-06 from 001__elm20170716_224546__dat00.bin

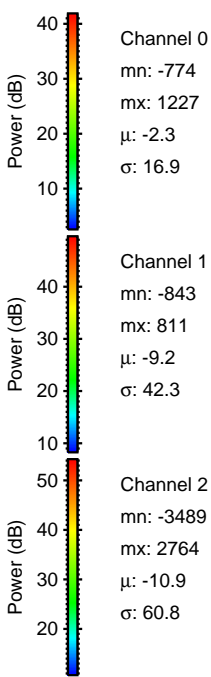
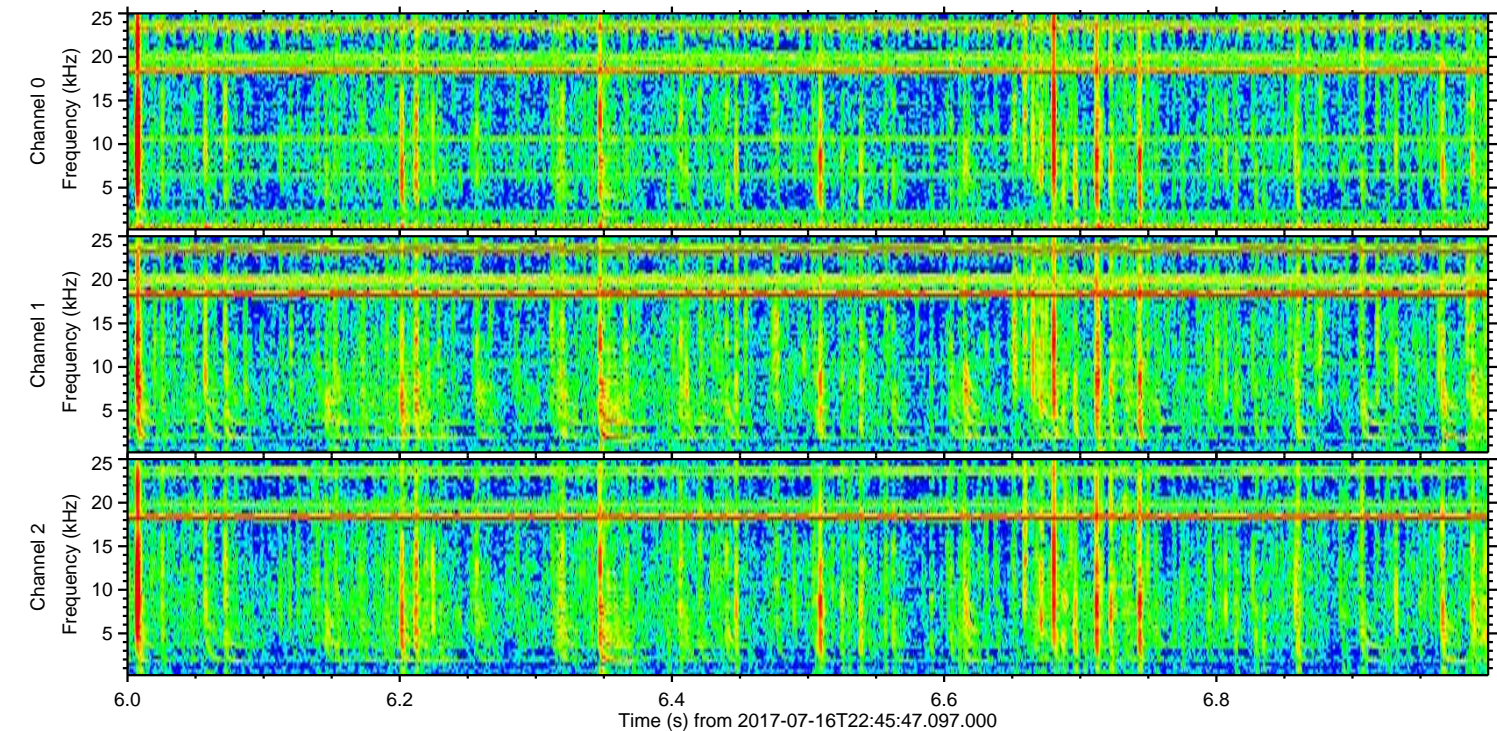
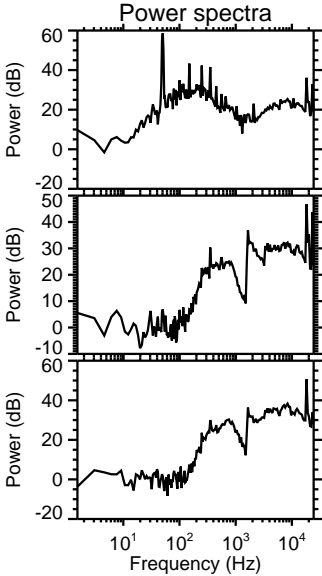
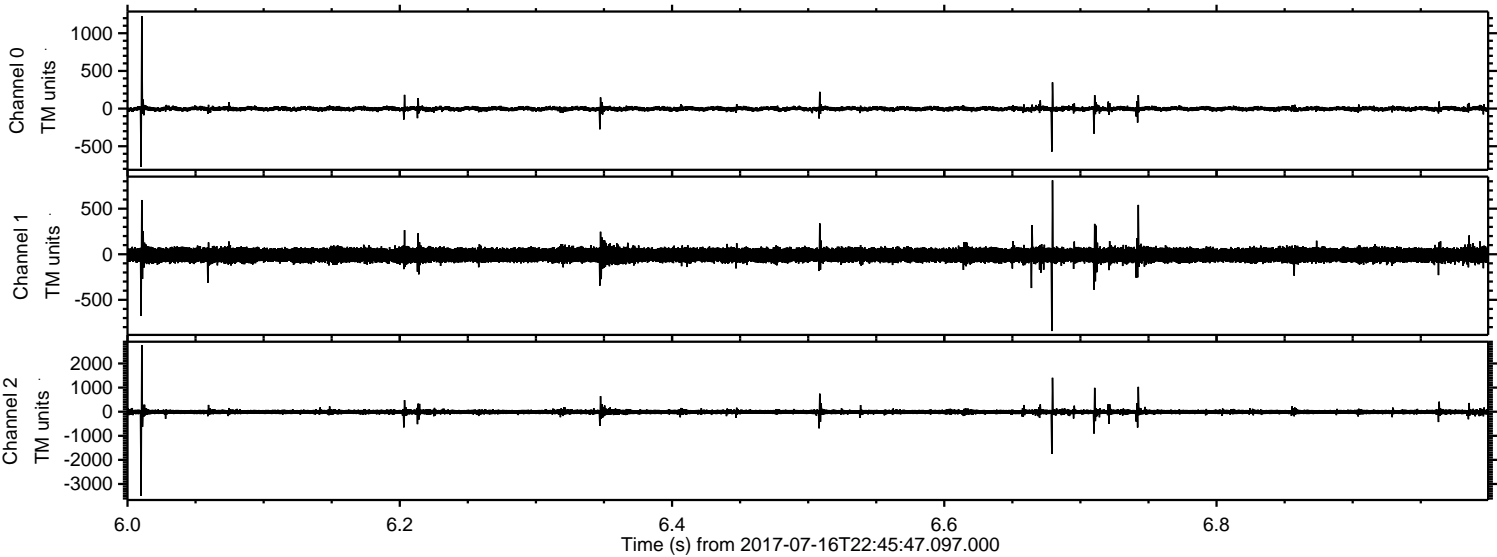


ELMAVAN 3D WAVEFORMS (Measured data sampled at 50 kHz) 51000 packets of 144 samples from 2017-07-16T22:45:47.097.000. Part 111/147

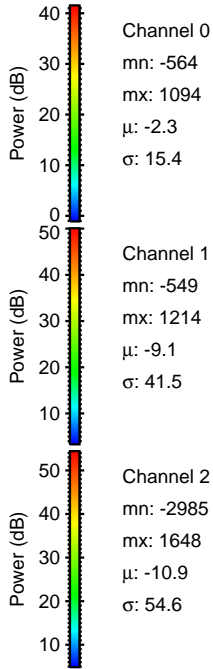
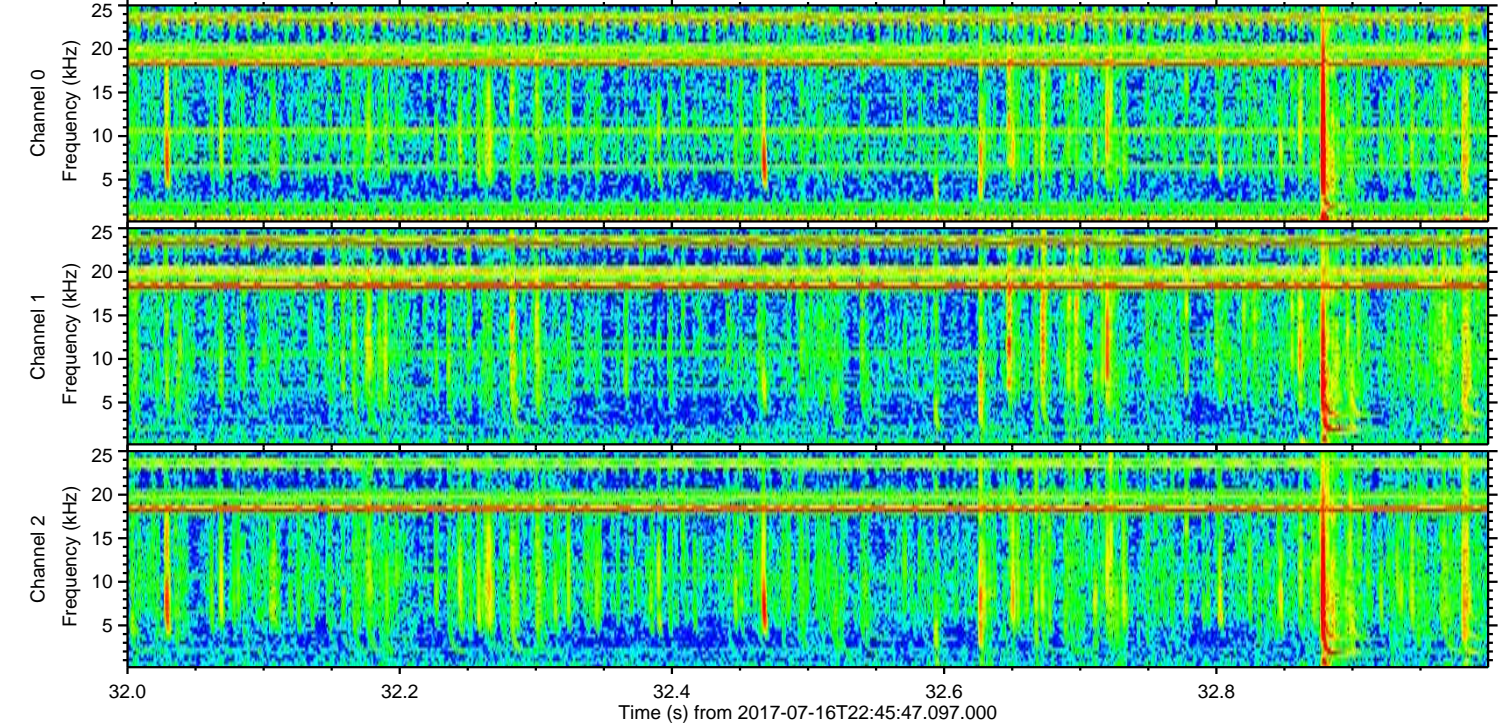
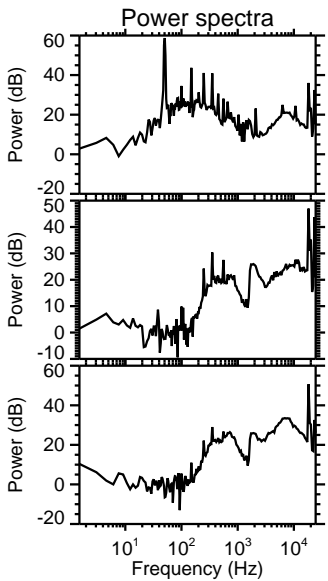
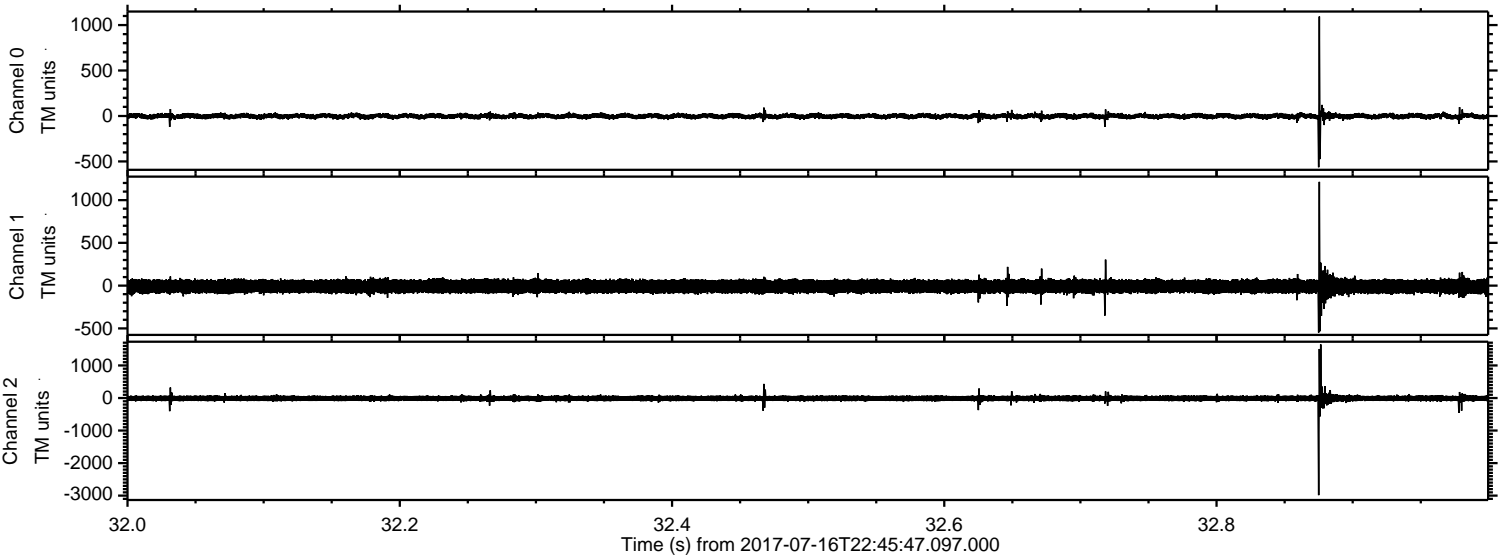
Processed Thu Jul 20 16:29:13 2017 by ELM ver.2012-10-06 from 001__elm20170716_224546__dat00.bin



Processed Thu Jul 20 16:29:14 2017 by ELM ver.2012-10-06 from 001__elm20170716_224546__dat00.bin



Processed Thu Jul 20 16:29:15 2017 by ELM ver.2012-10-06 from 001__elm20170716_224546__dat00.bin



Channel 0
mn: -564
mx: 1094
 μ : -2.3
 σ : 15.4

Channel 1
mn: -549
mx: 1214
 μ : -9.1
 σ : 41.5

Channel 2
mn: -2985
mx: 1648
 μ : -10.9
 σ : 54.6

