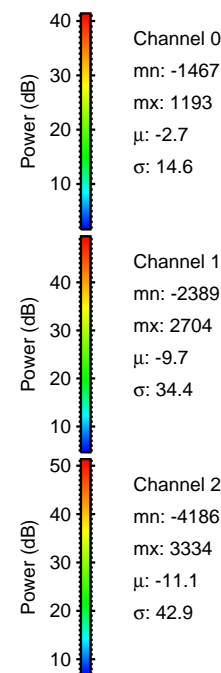
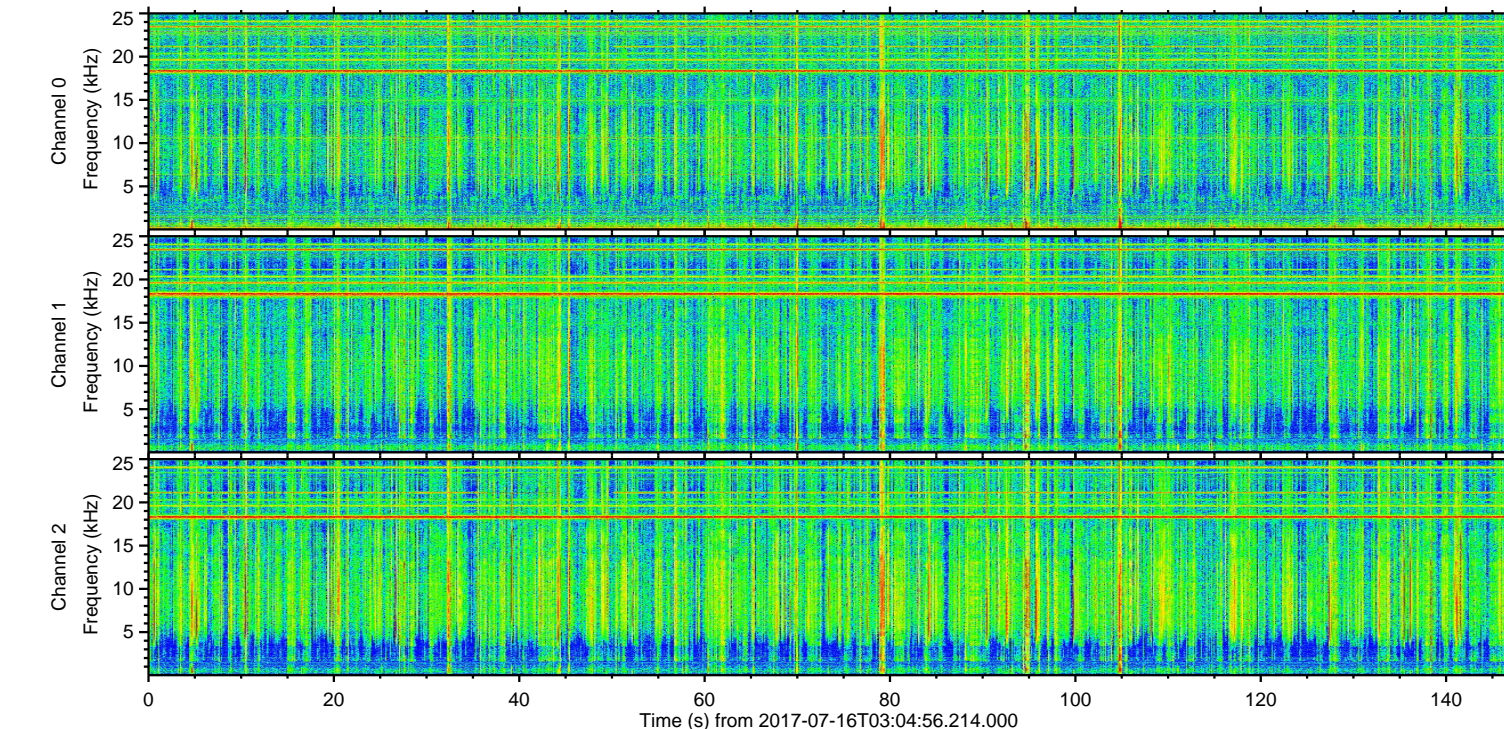
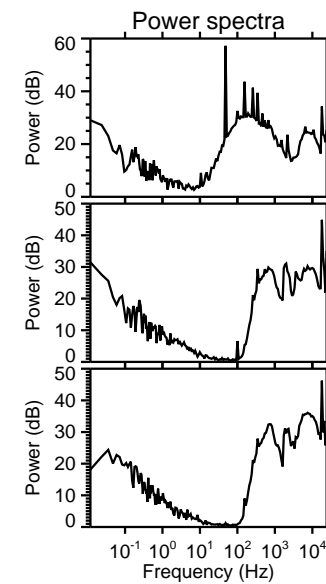
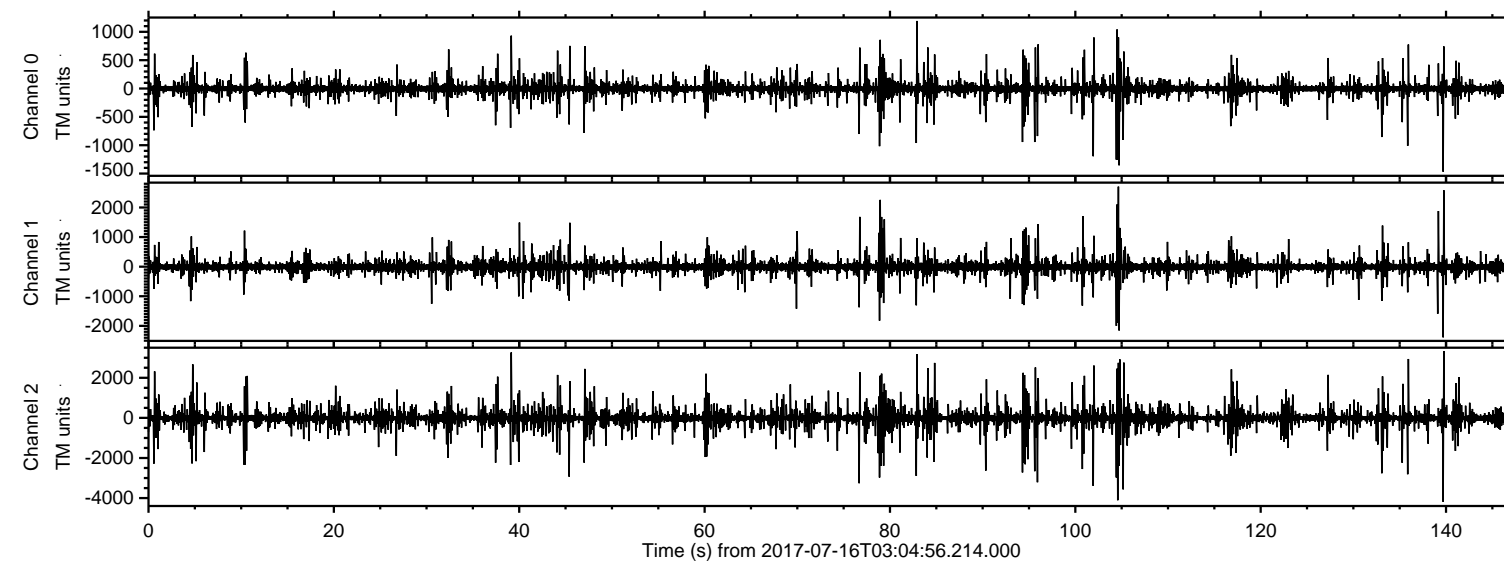


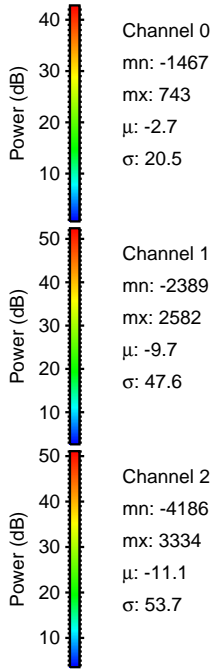
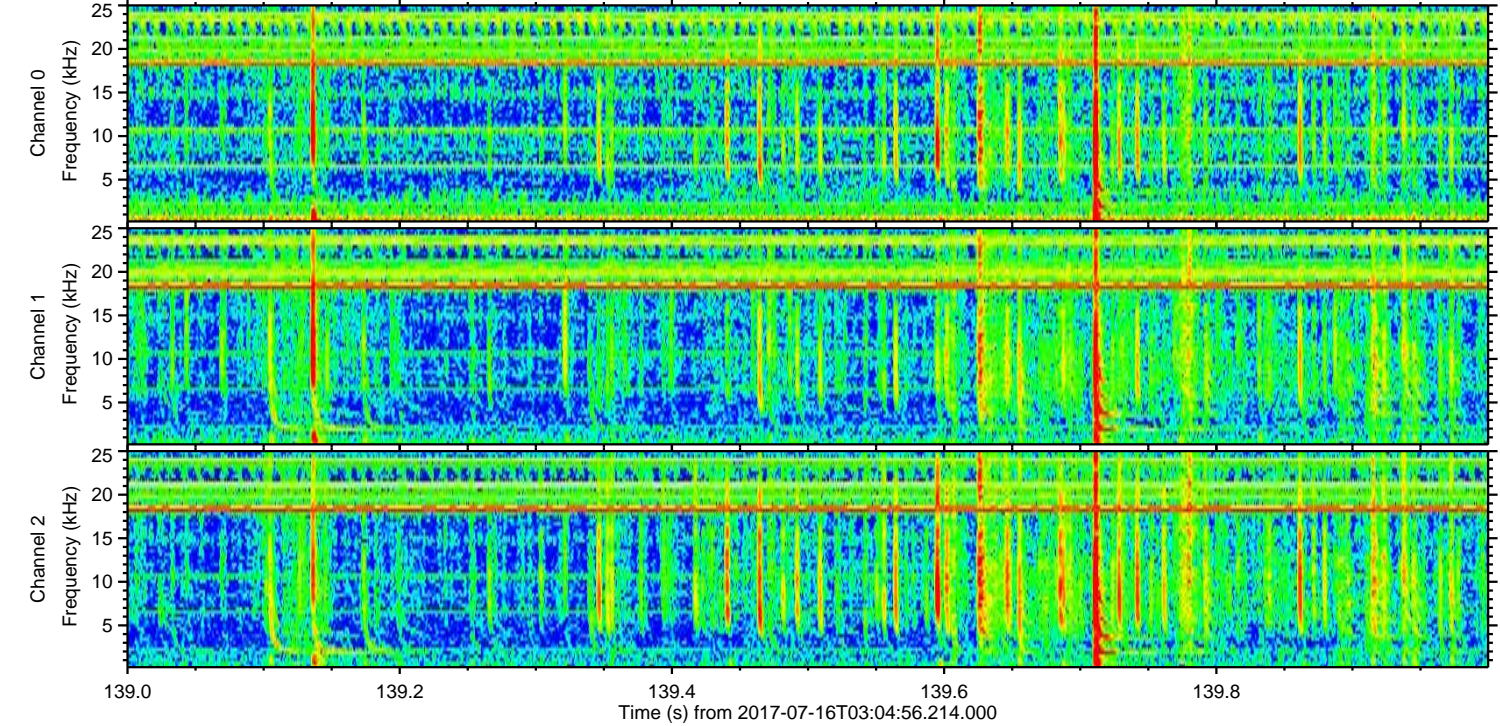
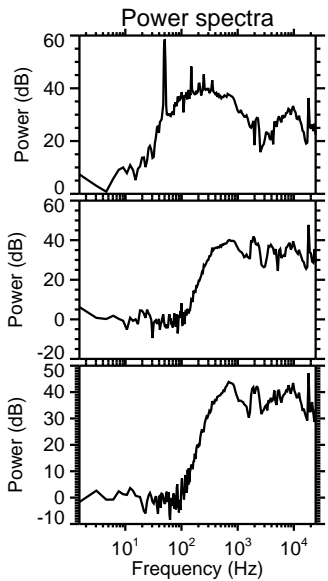
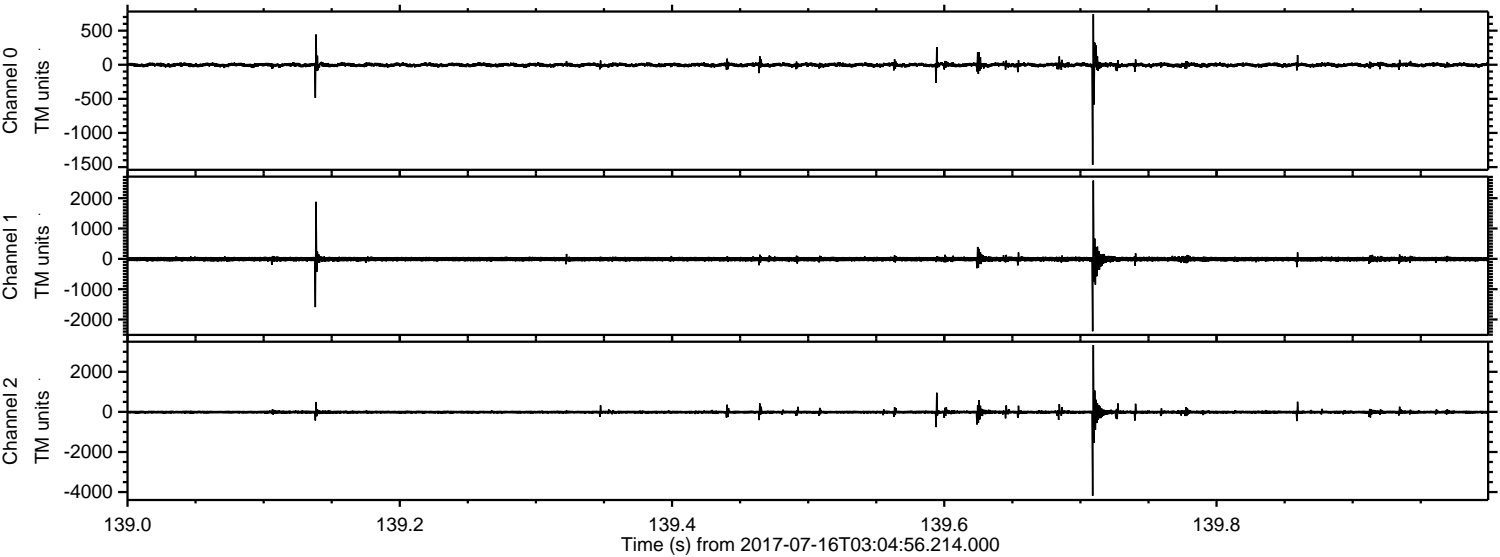
ELMAVAN 3D WAVEFORMS (Measured data sampled at 50 kHz) 51000 packets of 144 samples from 2017-07-16T03:04:56.214.000.

Processed Thu Jul 20 13:32:48 2017 by ELM ver.2012-10-06 from 001__elm20170716_030455__dat00.bin



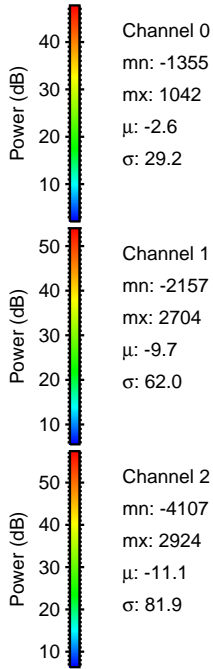
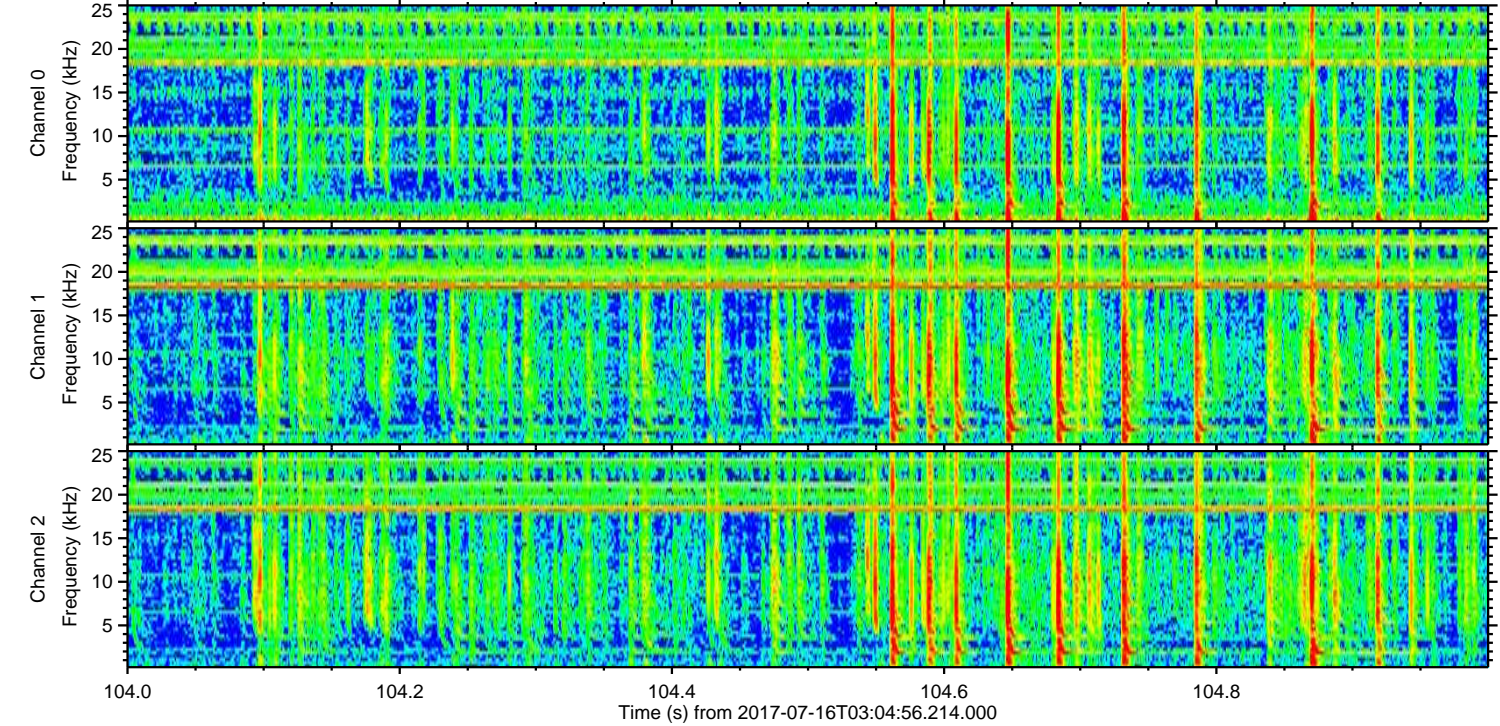
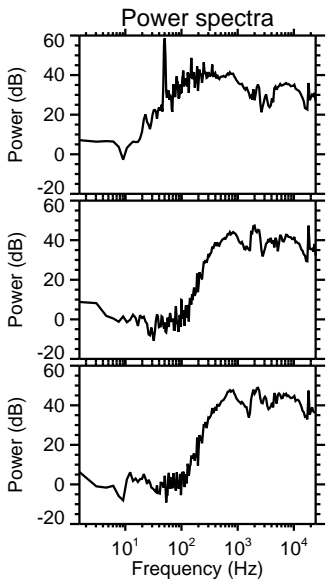
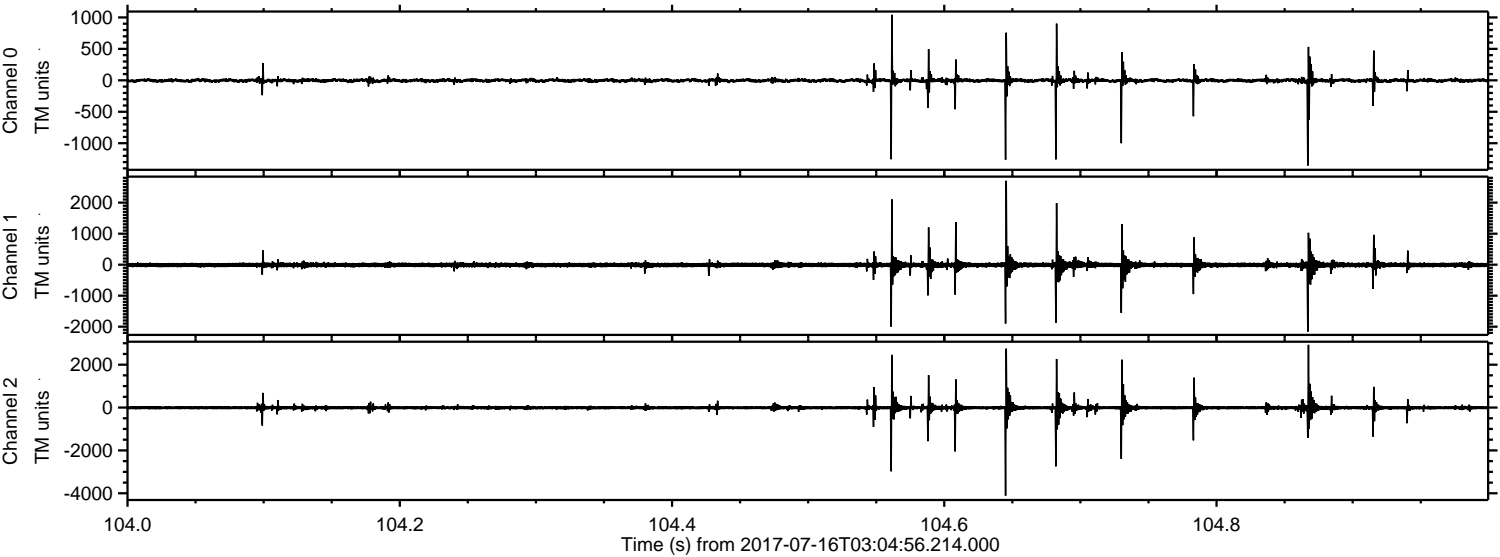
ELMAVAN 3D WAVEFORMS (Measured data sampled at 50 kHz) 51000 packets of 144 samples from 2017-07-16T03:04:56.214.000. Part 140/147

Processed Thu Jul 20 13:32:55 2017 by ELM ver.2012-10-06 from 001__elm20170716_030455__dat00.bin



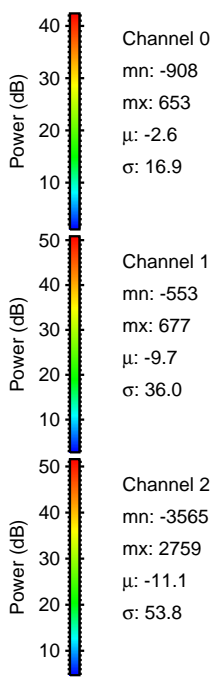
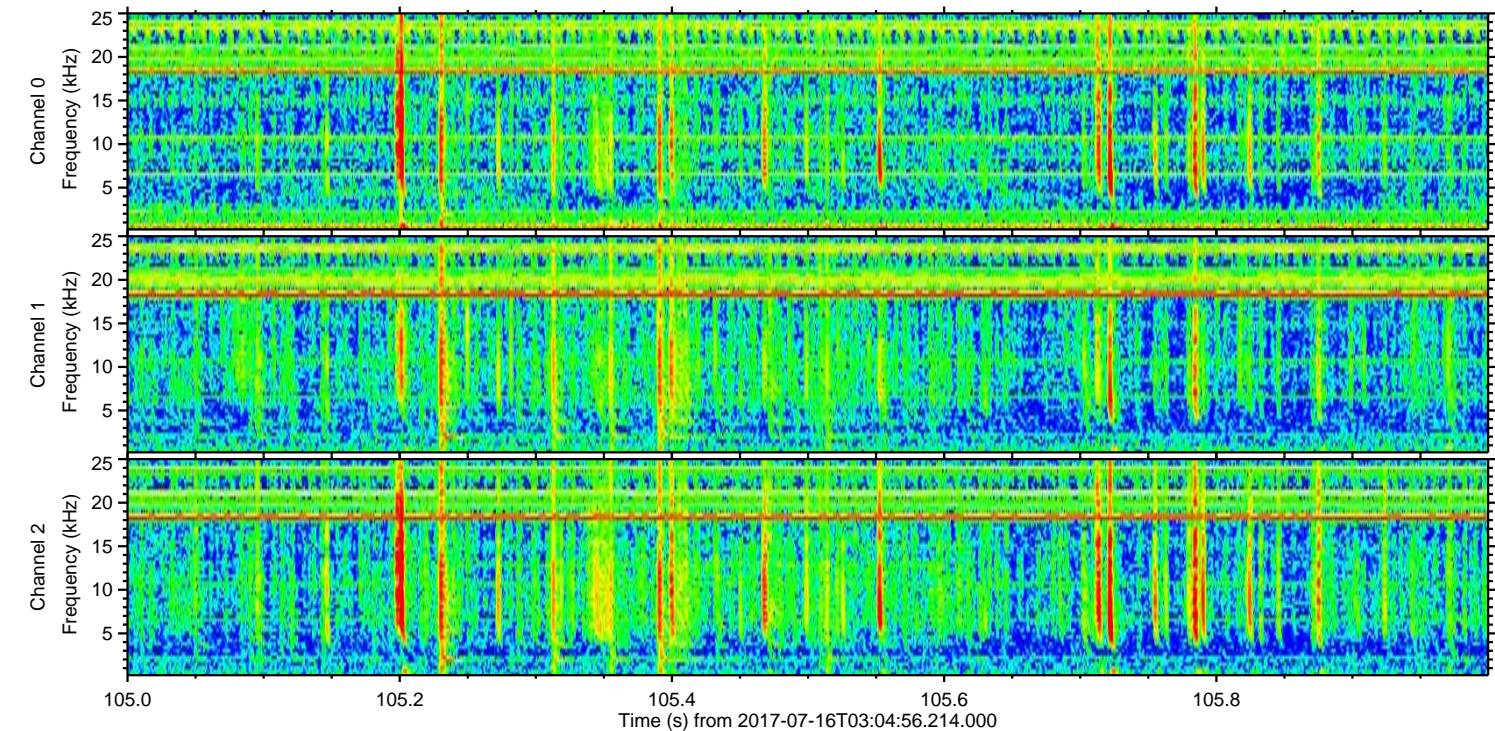
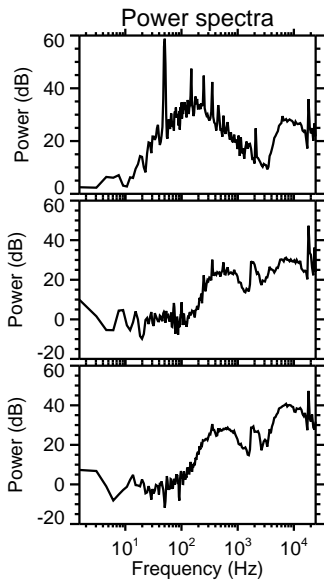
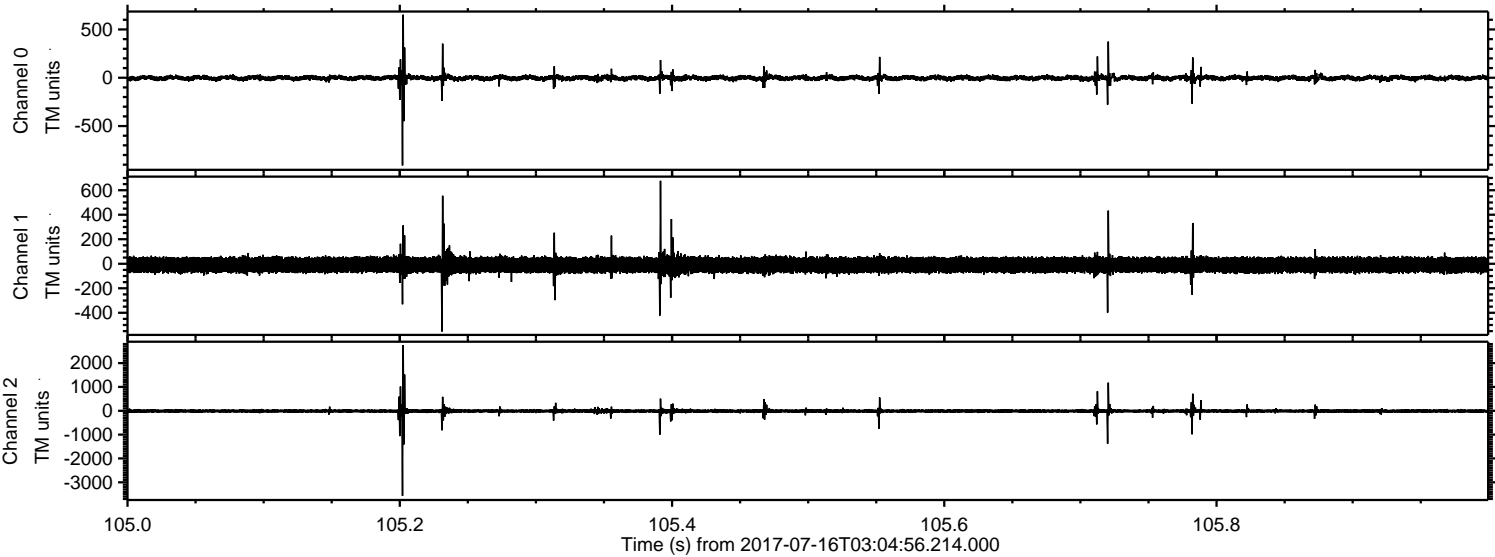
ELMAVAN 3D WAVEFORMS (Measured data sampled at 50 kHz) 51000 packets of 144 samples from 2017-07-16T03:04:56.214.000. Part 105/147

Processed Thu Jul 20 13:32:56 2017 by ELM ver.2012-10-06 from 001__elm20170716_030455__dat00.bin



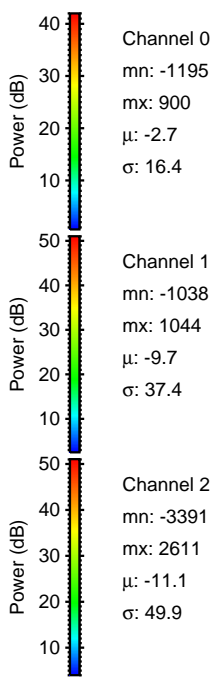
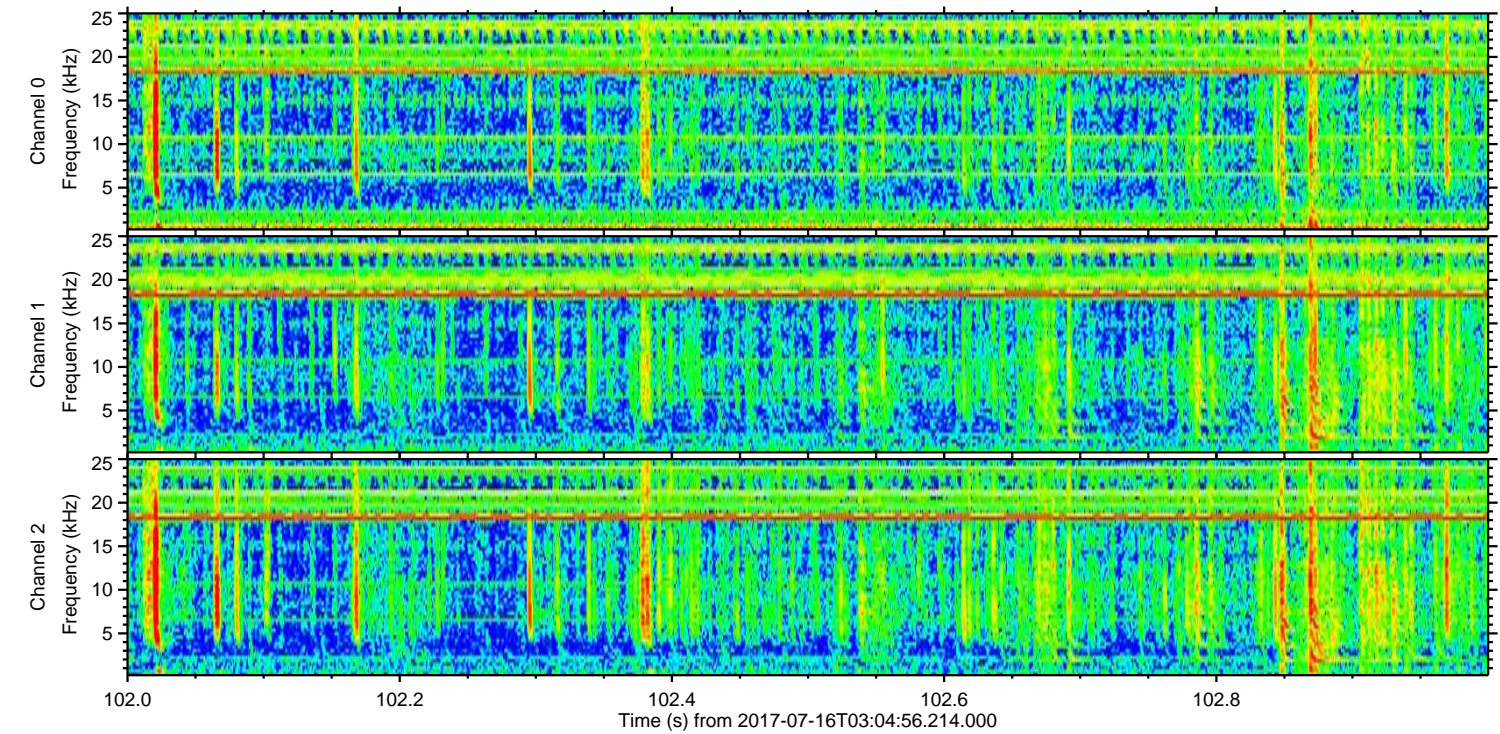
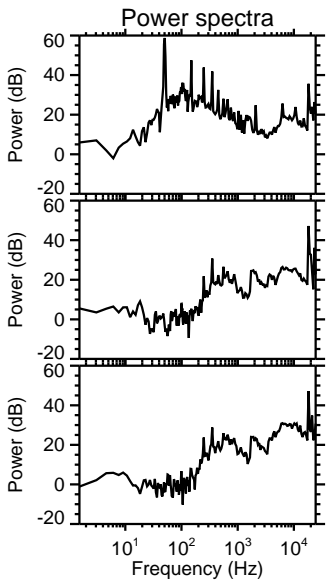
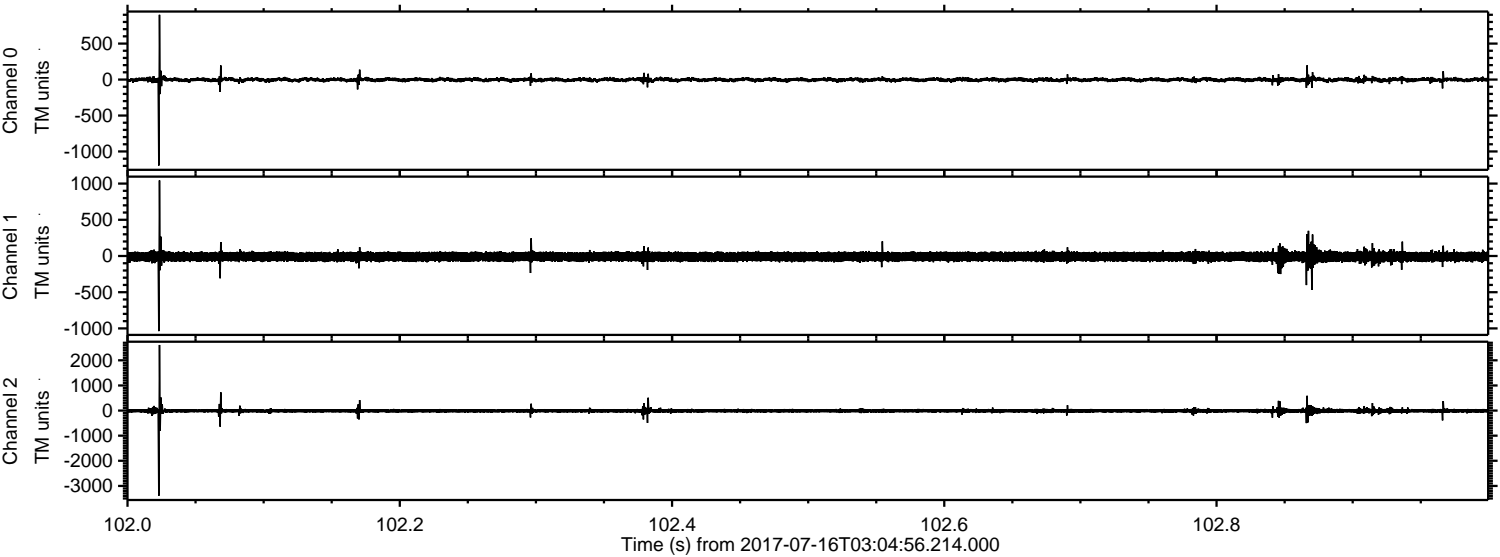
ELMAVAN 3D WAVEFORMS (Measured data sampled at 50 kHz) 51000 packets of 144 samples from 2017-07-16T03:04:56.214.000. Part 106/147

Processed Thu Jul 20 13:32:57 2017 by ELM ver.2012-10-06 from 001__elm20170716_030455__dat00.bin



ELMAVAN 3D WAVEFORMS (Measured data sampled at 50 kHz) 51000 packets of 144 samples from 2017-07-16T03:04:56.214.000. Part 103/147

Processed Thu Jul 20 13:32:58 2017 by ELM ver.2012-10-06 from 001__elm20170716_030455__dat00.bin

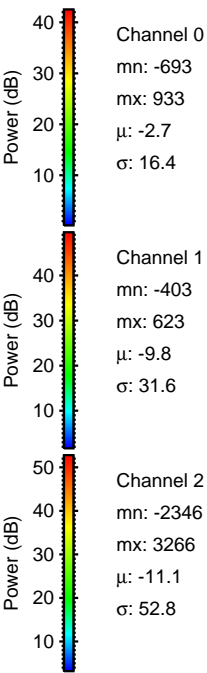
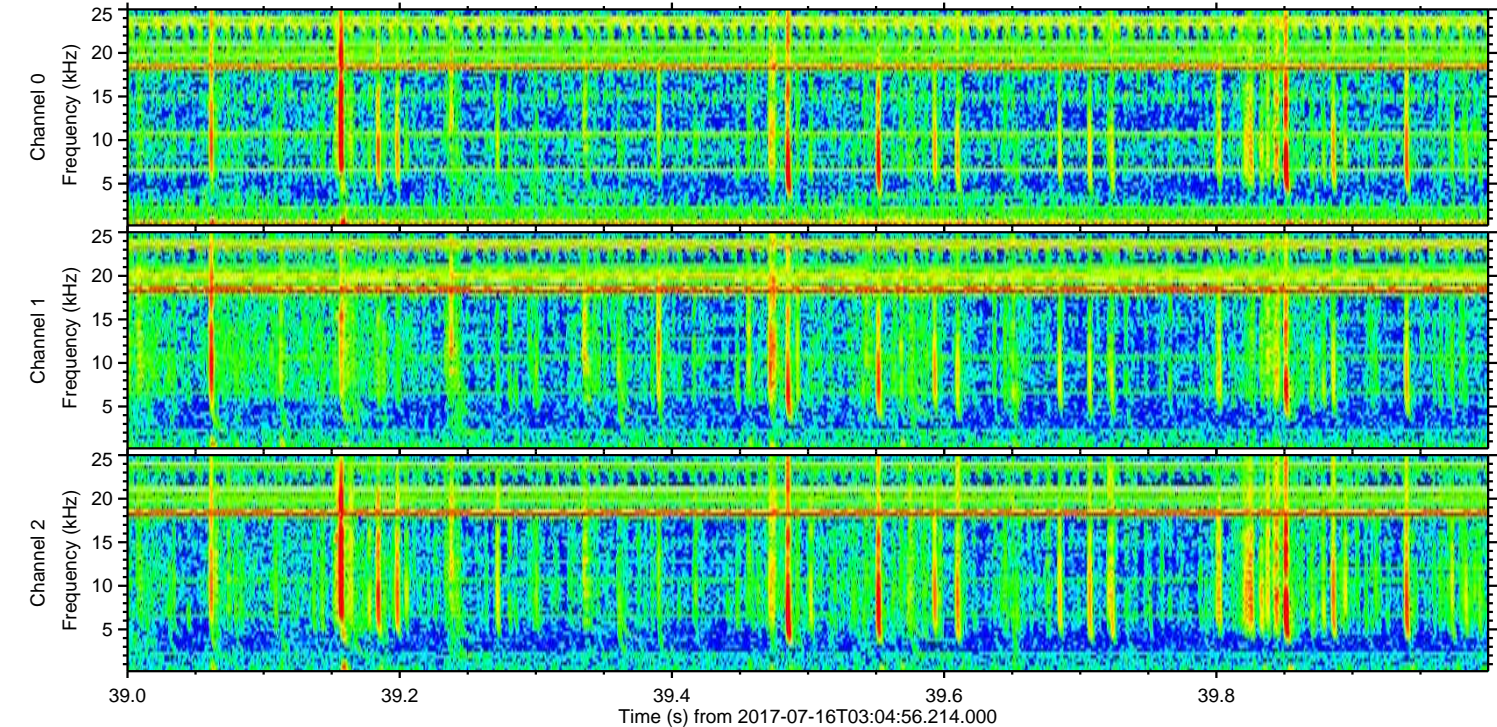
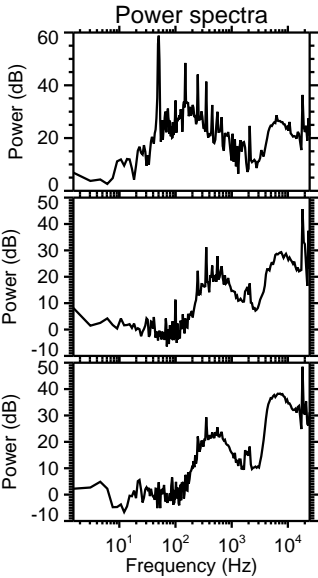
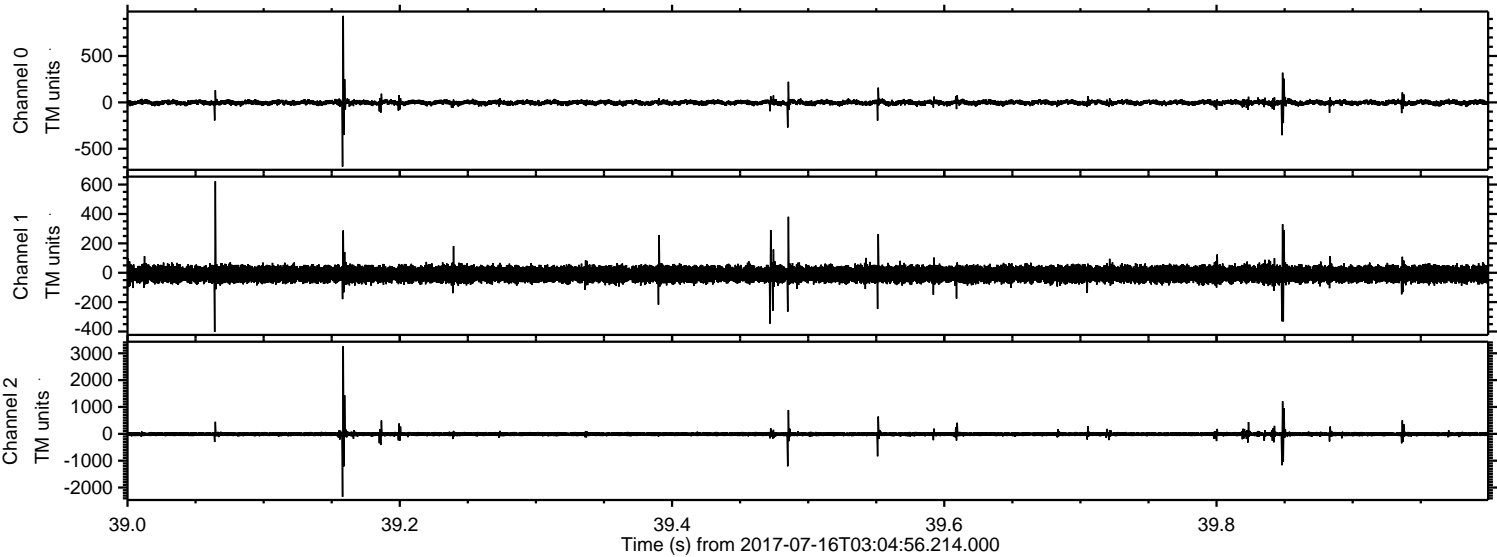


Channel 0
mn: -1195
mx: 900
 μ : -2.7
 σ : 16.4

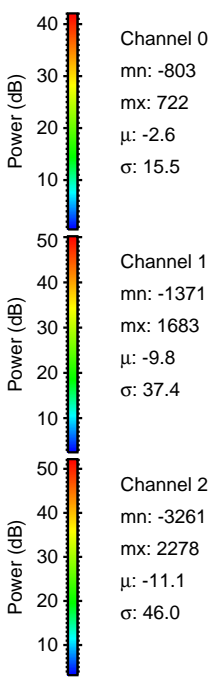
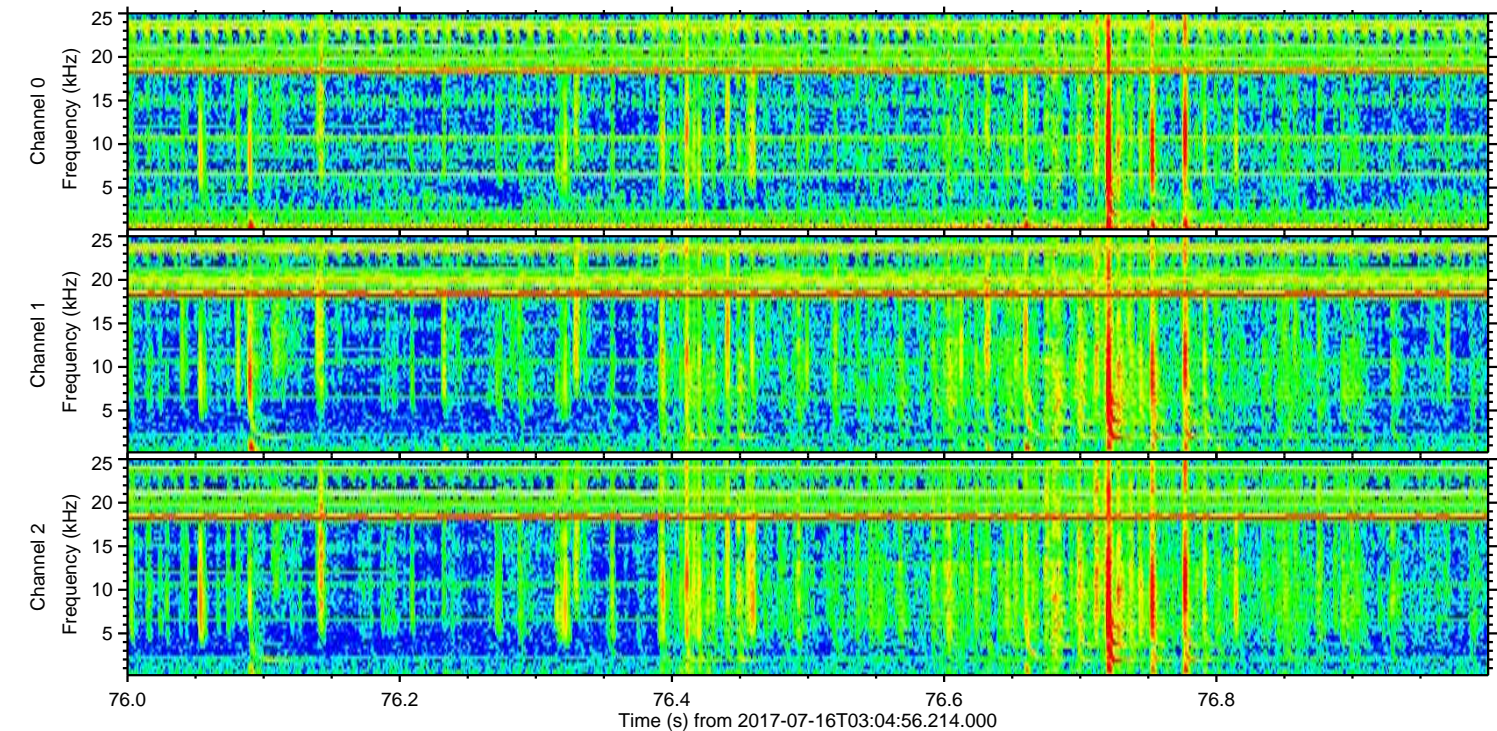
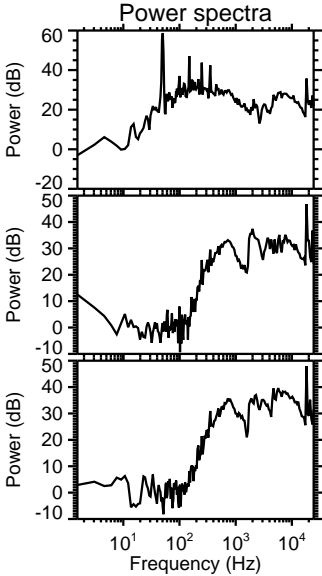
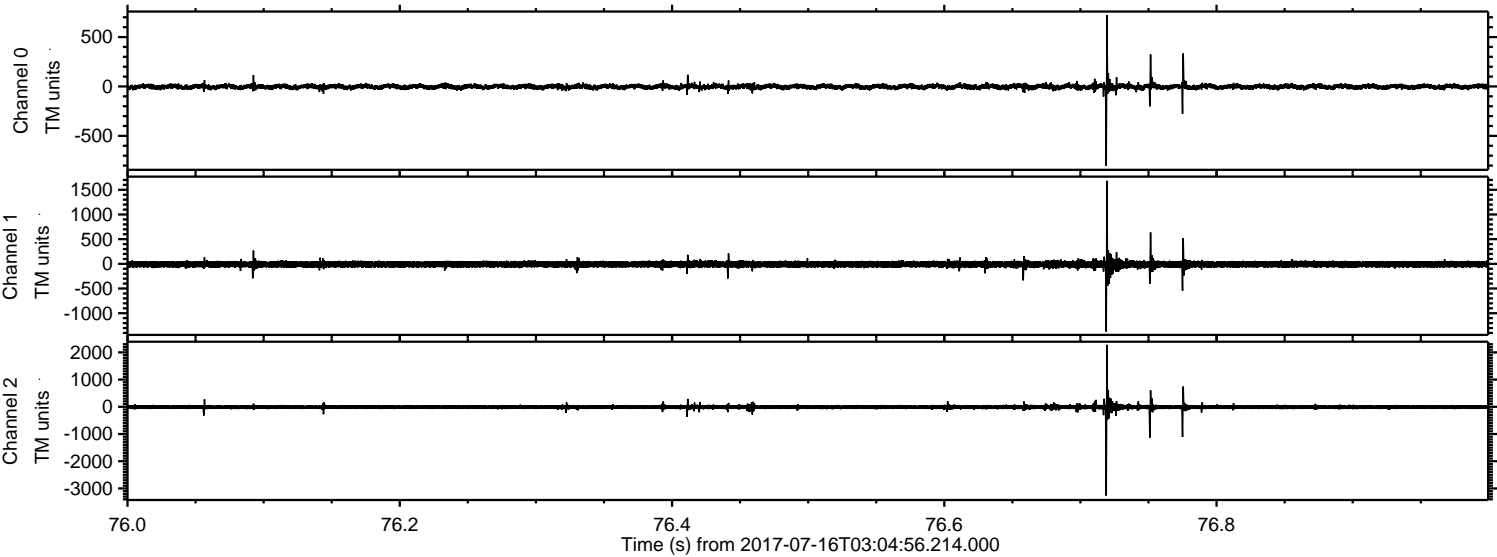
Channel 1
mn: -1038
mx: 1044
 μ : -9.7
 σ : 37.4

Channel 2
mn: -3391
mx: 2611
 μ : -11.1
 σ : 49.9

Processed Thu Jul 20 13:32:58 2017 by ELM ver.2012-10-06 from 001__elm20170716_030455__dat00.bin



Processed Thu Jul 20 13:32:59 2017 by ELM ver.2012-10-06 from 001__elm20170716_030455__dat00.bin

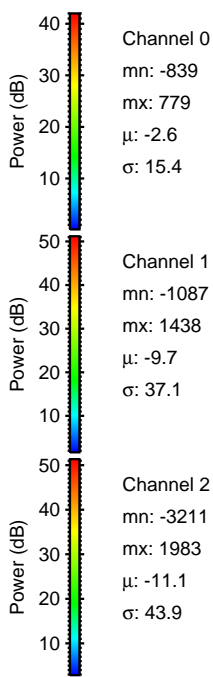
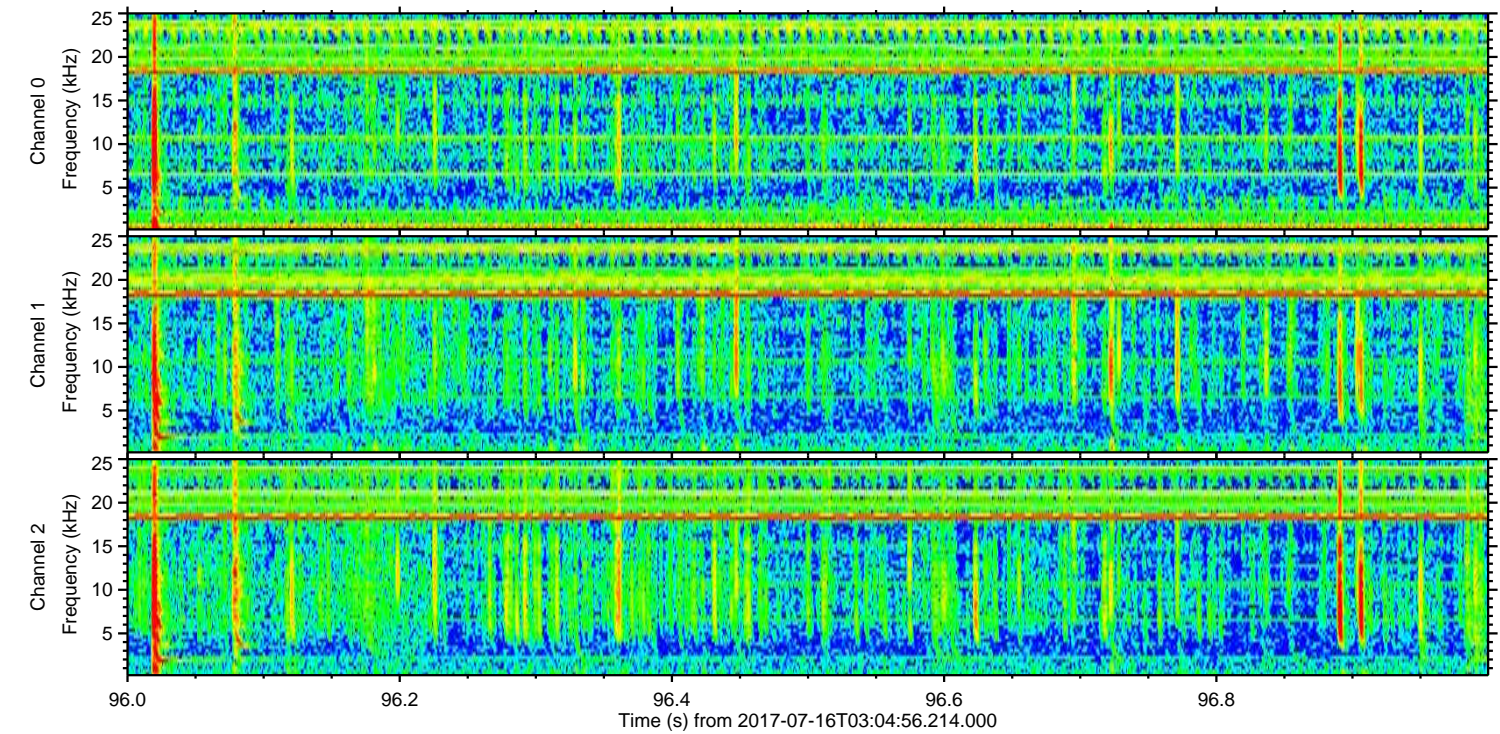
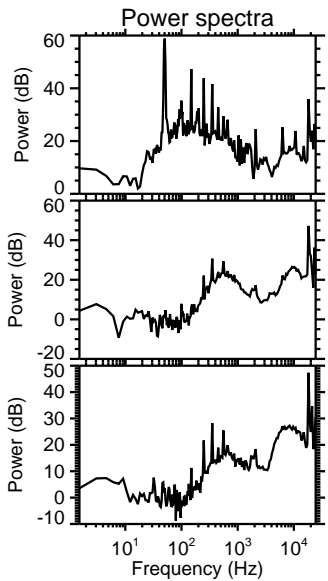
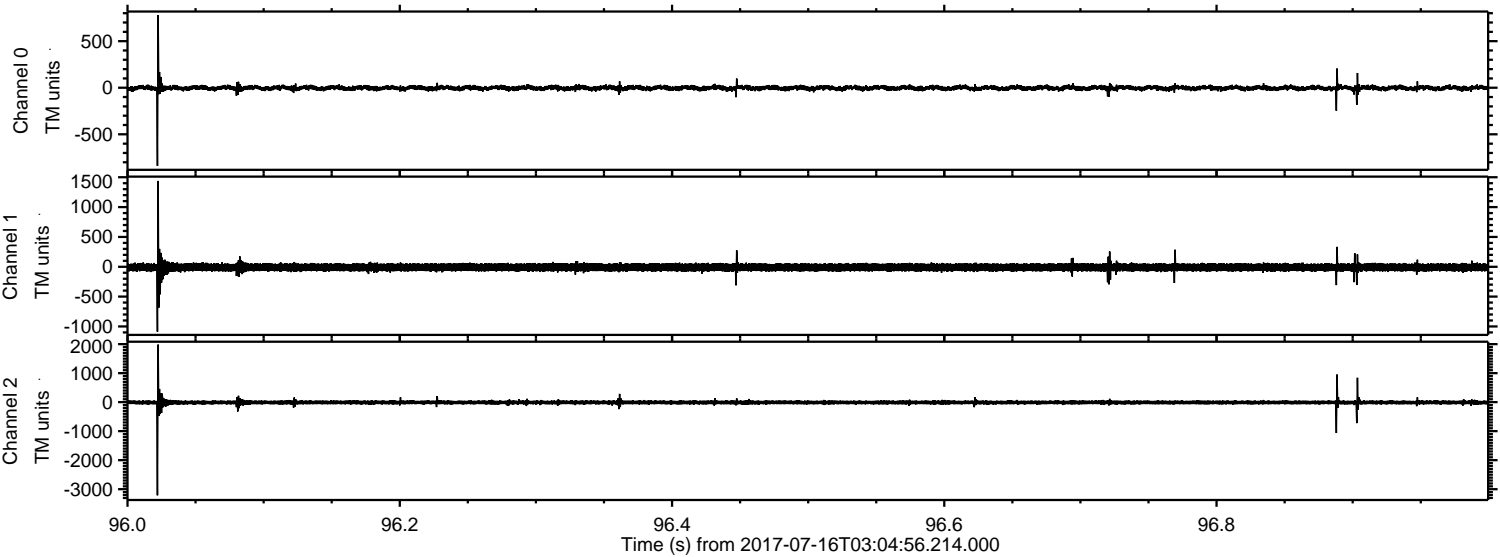


Channel 0
mn: -803
mx: 722
 μ : -2.6
 σ : 15.5

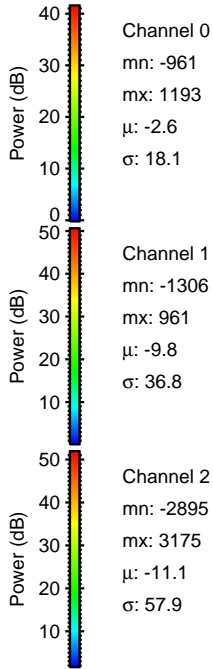
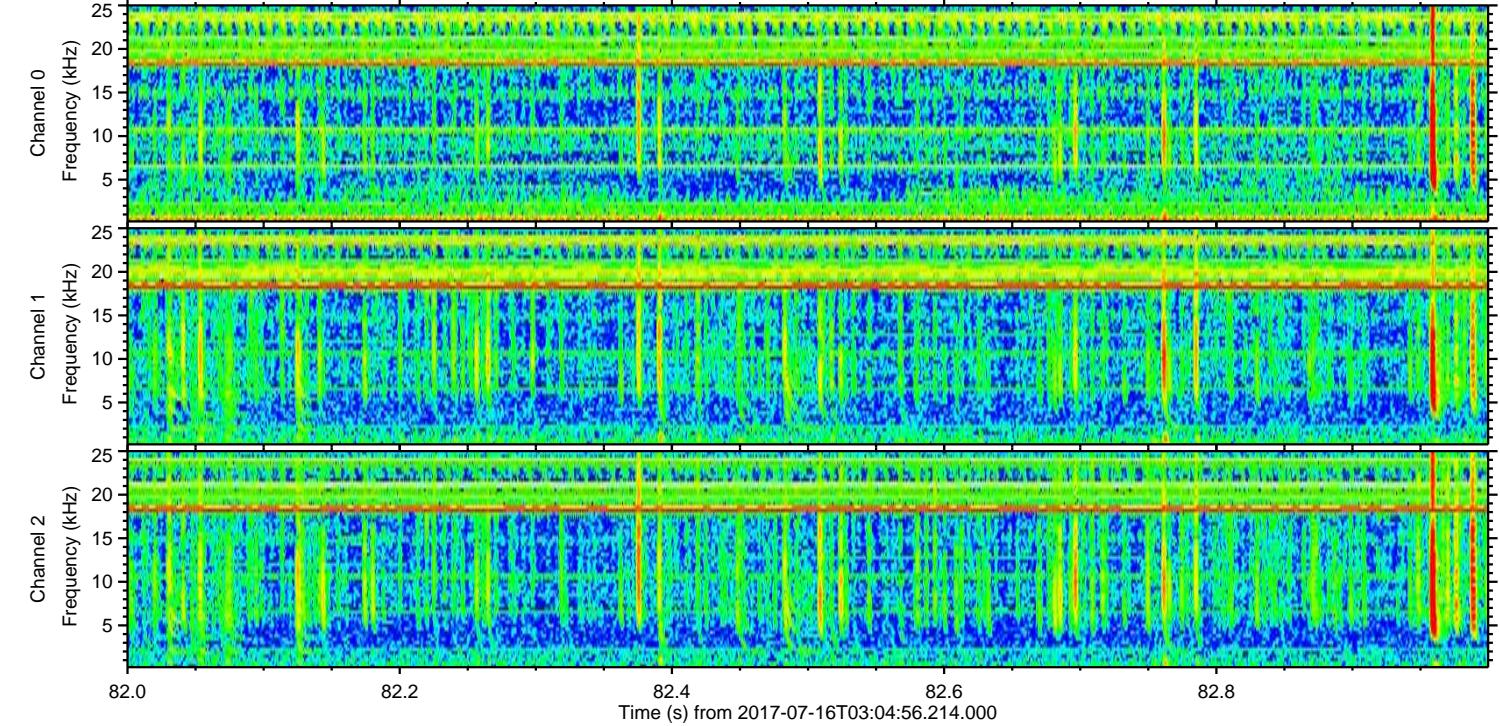
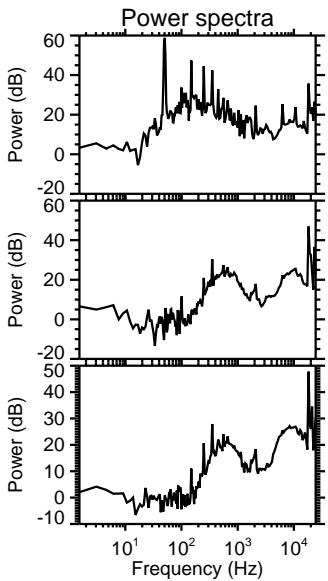
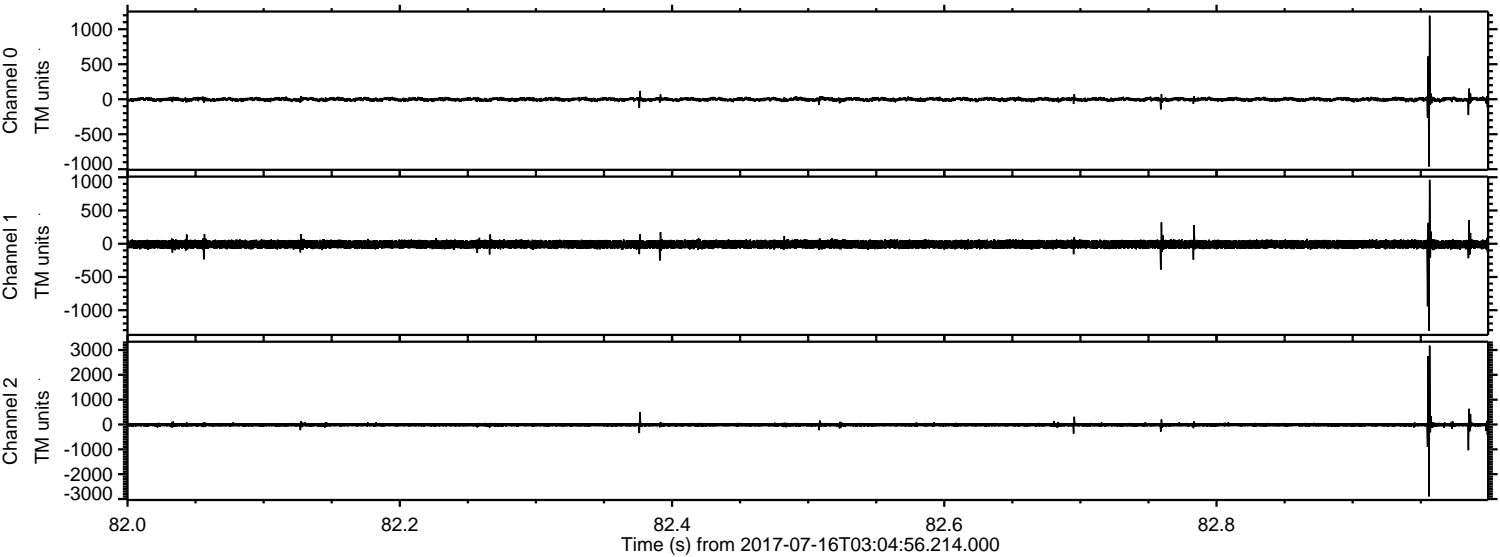
Channel 1
mn: -1371
mx: 1683
 μ : -9.8
 σ : 37.4

Channel 2
mn: -3261
mx: 2278
 μ : -11.1
 σ : 46.0

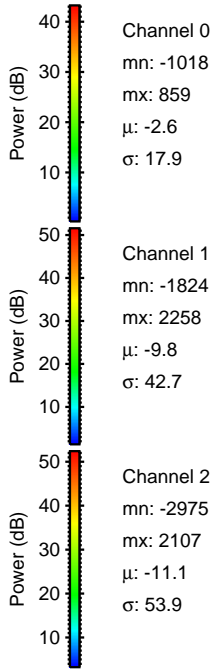
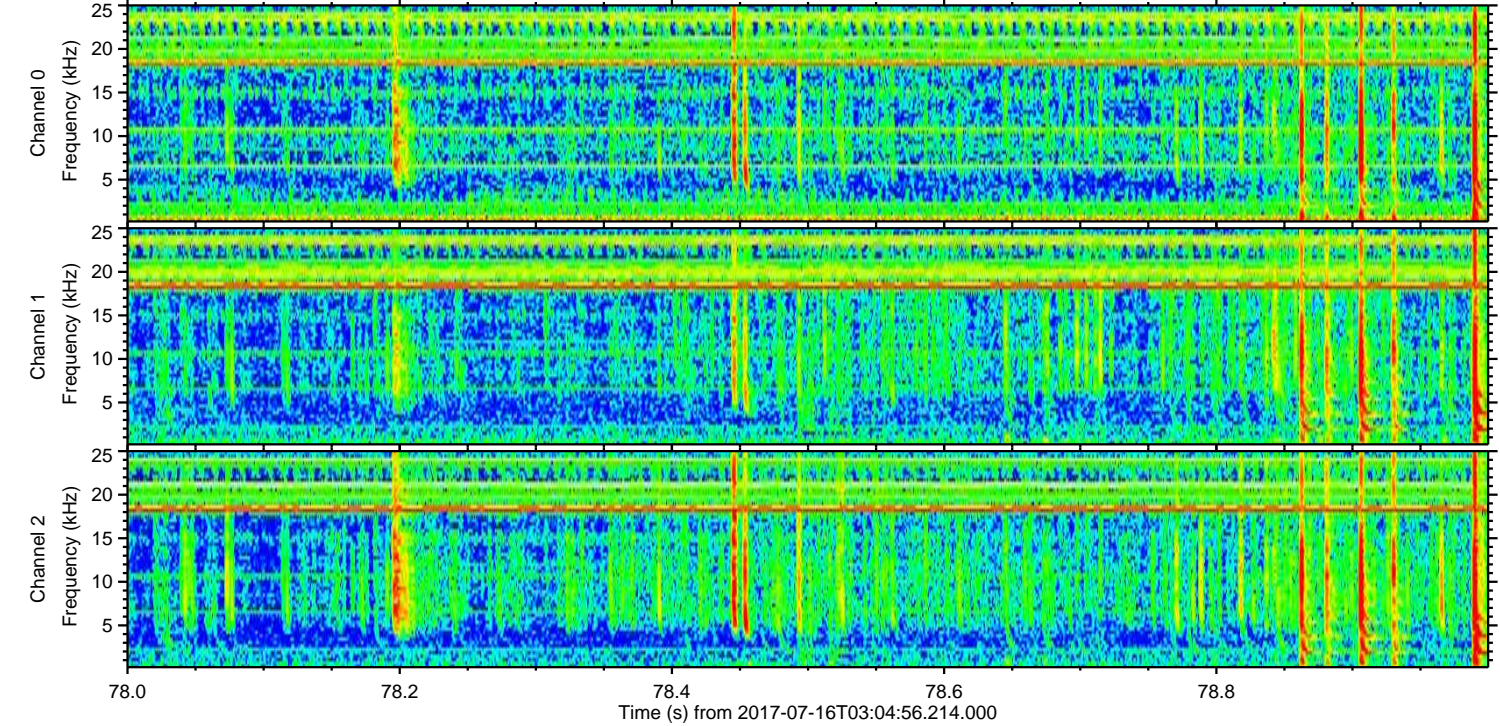
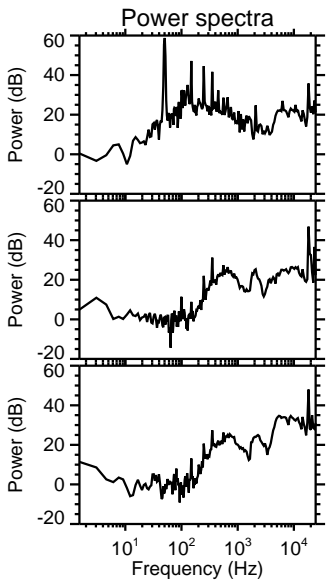
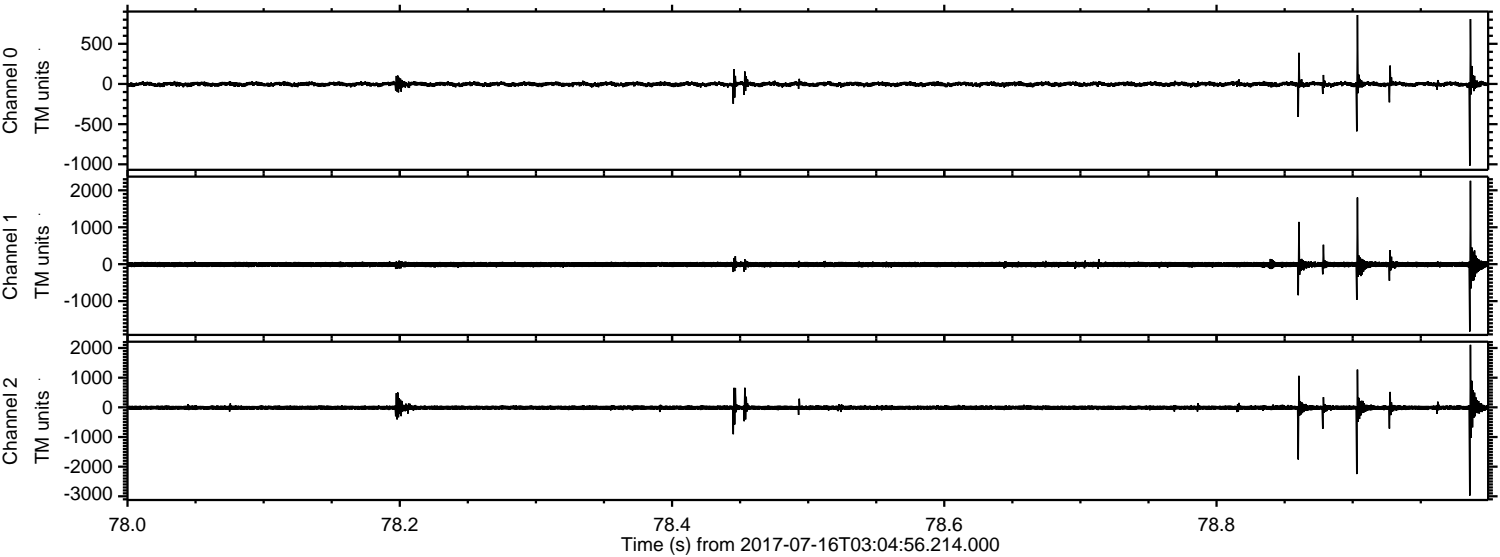
Processed Thu Jul 20 13:33:00 2017 by ELM ver.2012-10-06 from 001__elm20170716_030455__dat00.bin



Processed Thu Jul 20 13:33:01 2017 by ELM ver.2012-10-06 from 001__elm20170716_030455__dat00.bin



Processed Thu Jul 20 13:33:01 2017 by ELM ver.2012-10-06 from 001__elm20170716_030455__dat00.bin



Channel 0
mn: -1018
mx: 859
 μ : -2.6
 σ : 17.9

Channel 1
mn: -1824
mx: 2258
 μ : -9.8
 σ : 42.7

Channel 2
mn: -2975
mx: 2107
 μ : -11.1
 σ : 53.9

Processed Thu Jul 20 13:33:02 2017 by ELM ver.2012-10-06 from 001__elm20170716_030455__dat00.bin

