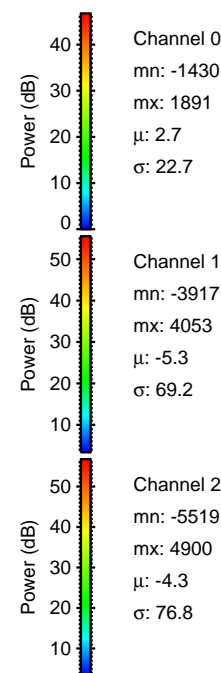
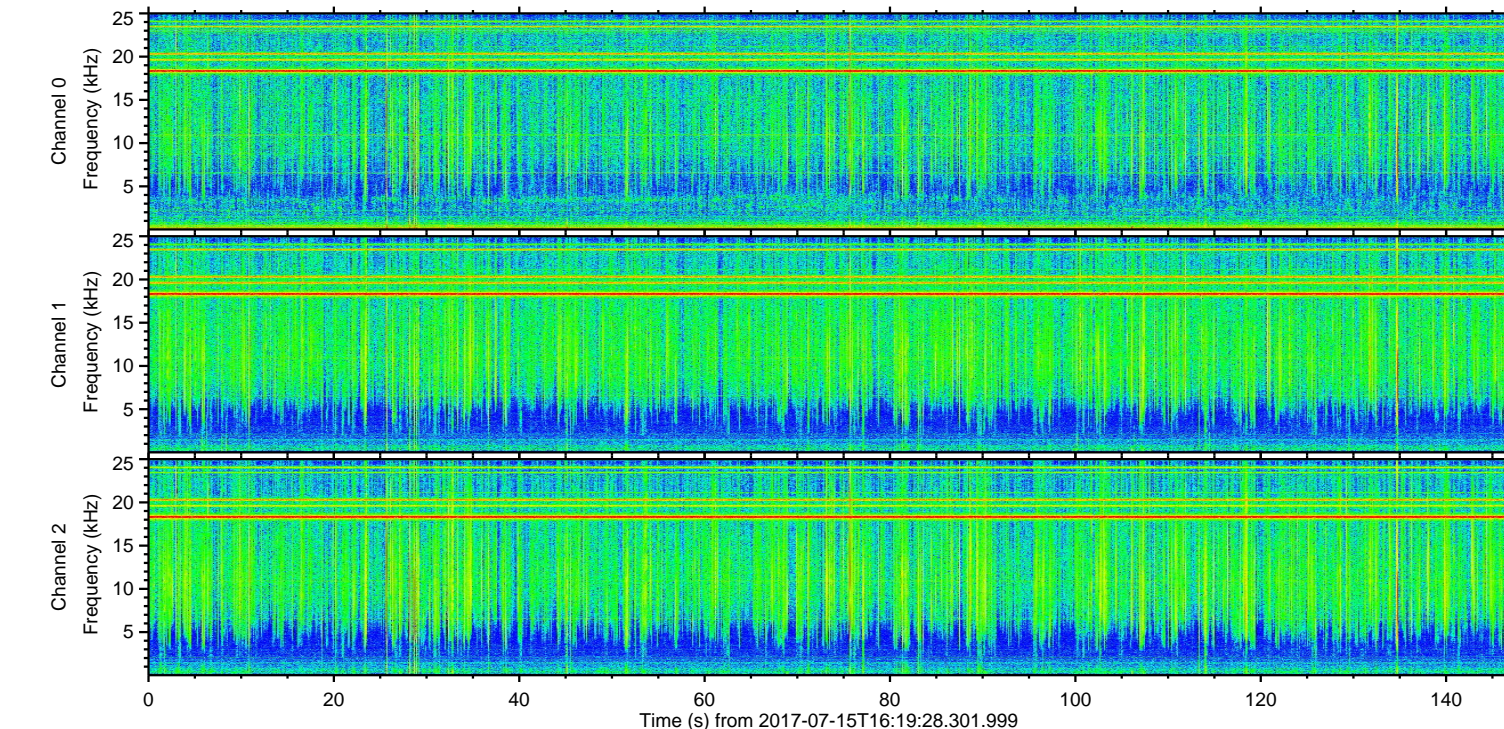
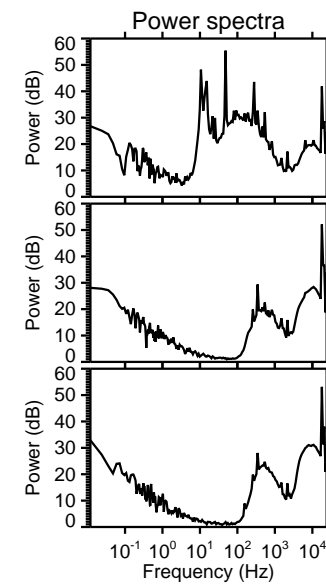
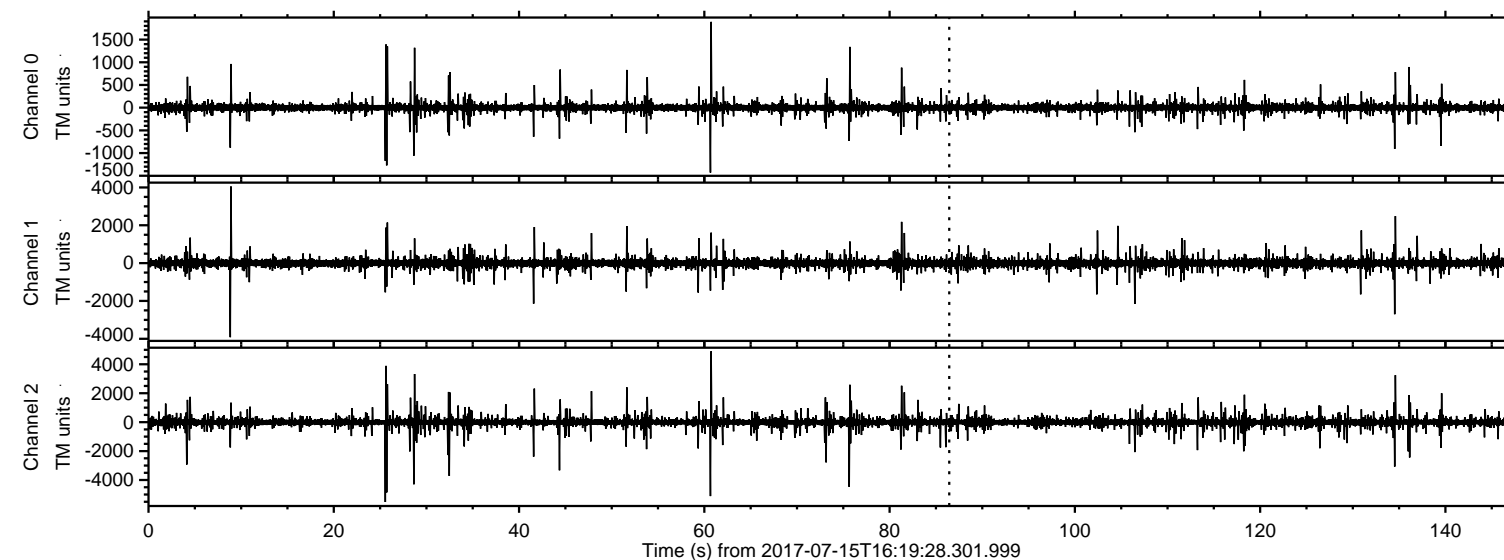
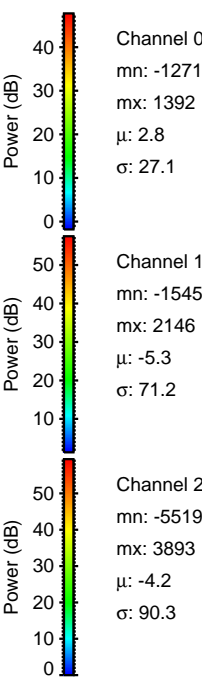
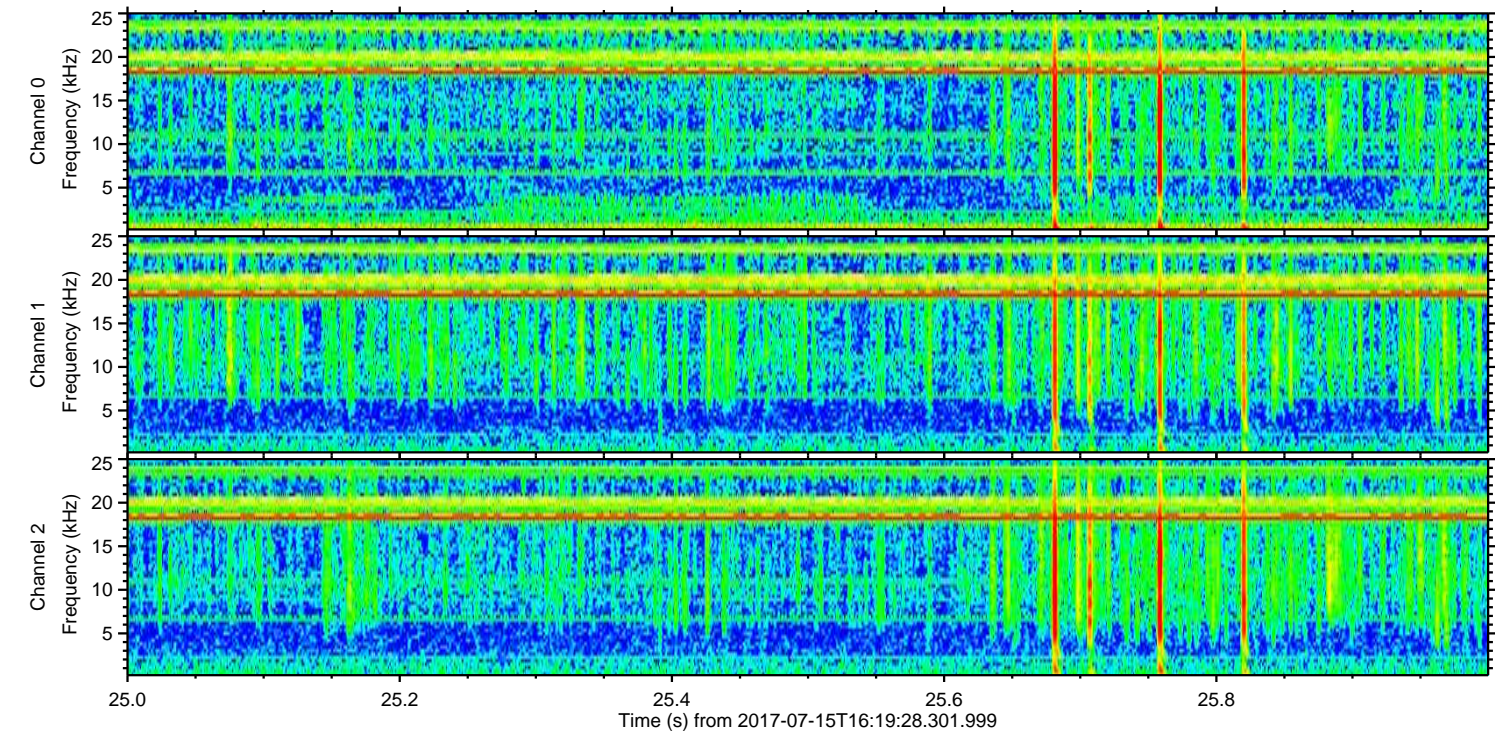
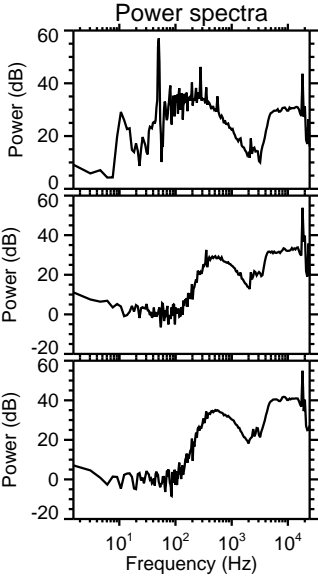
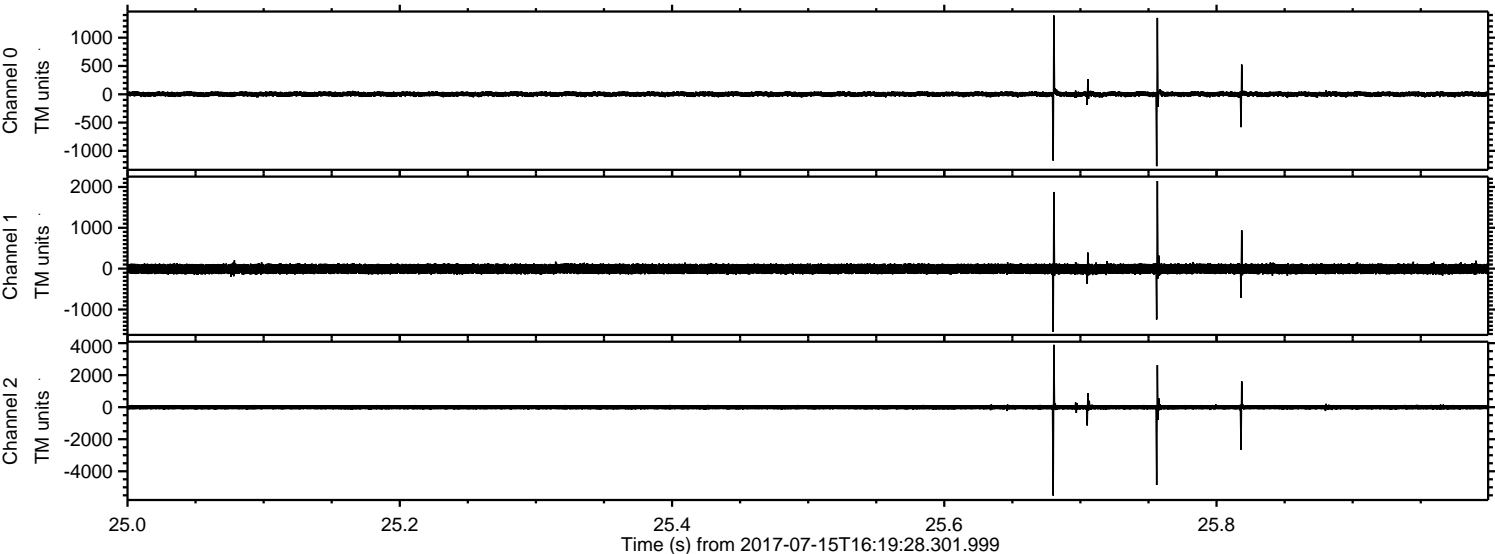


ELMAVAN 3D WAVEFORMS (Measured data sampled at 50 kHz) 50999 packets of 144 samples from 2017-07-15T16:19:28.301.999.

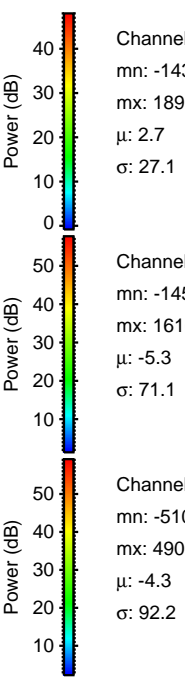
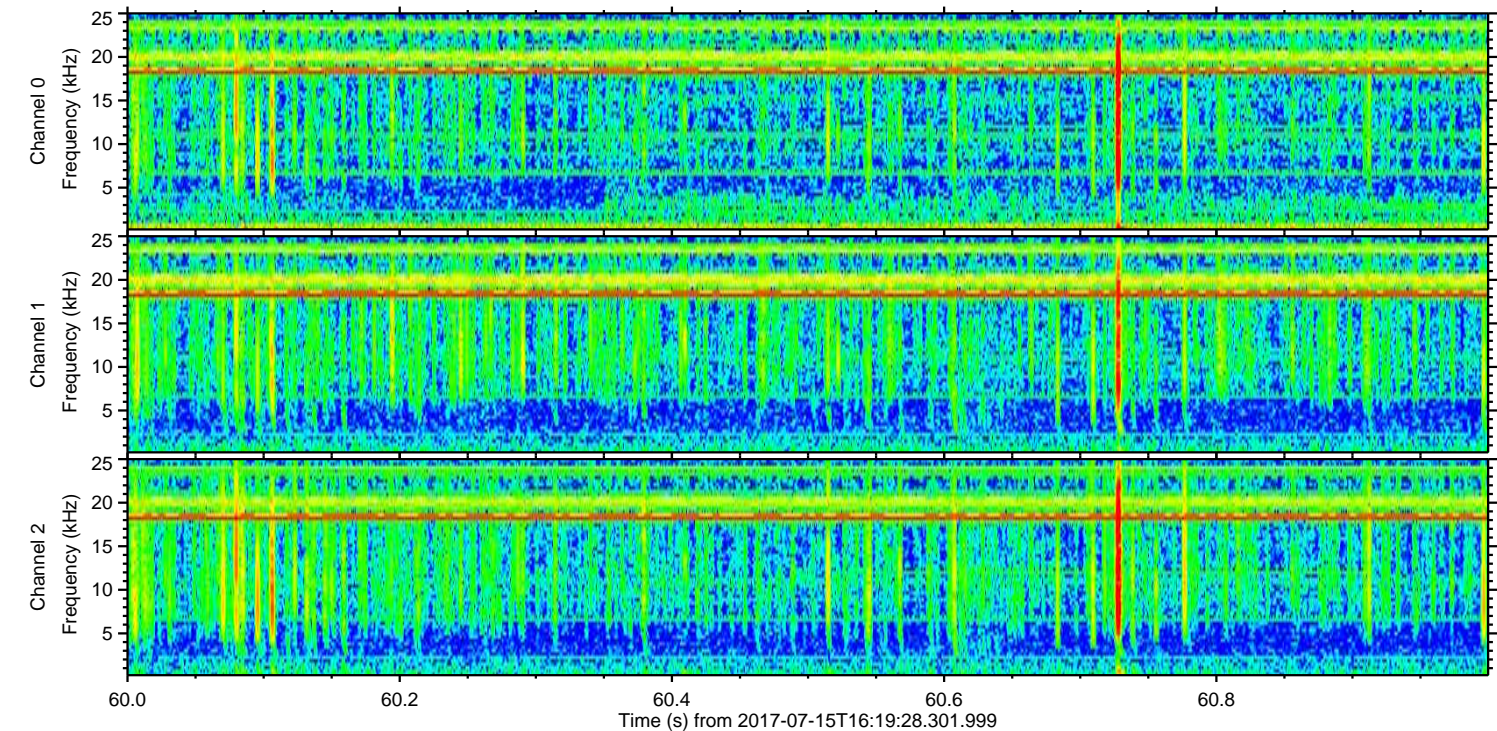
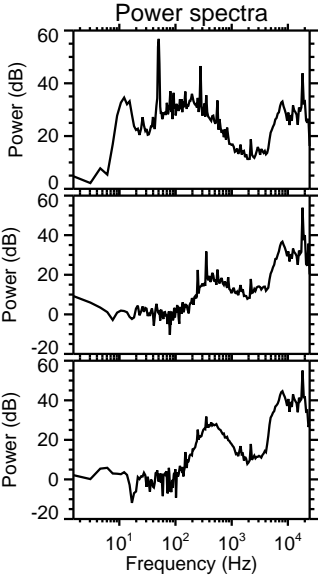
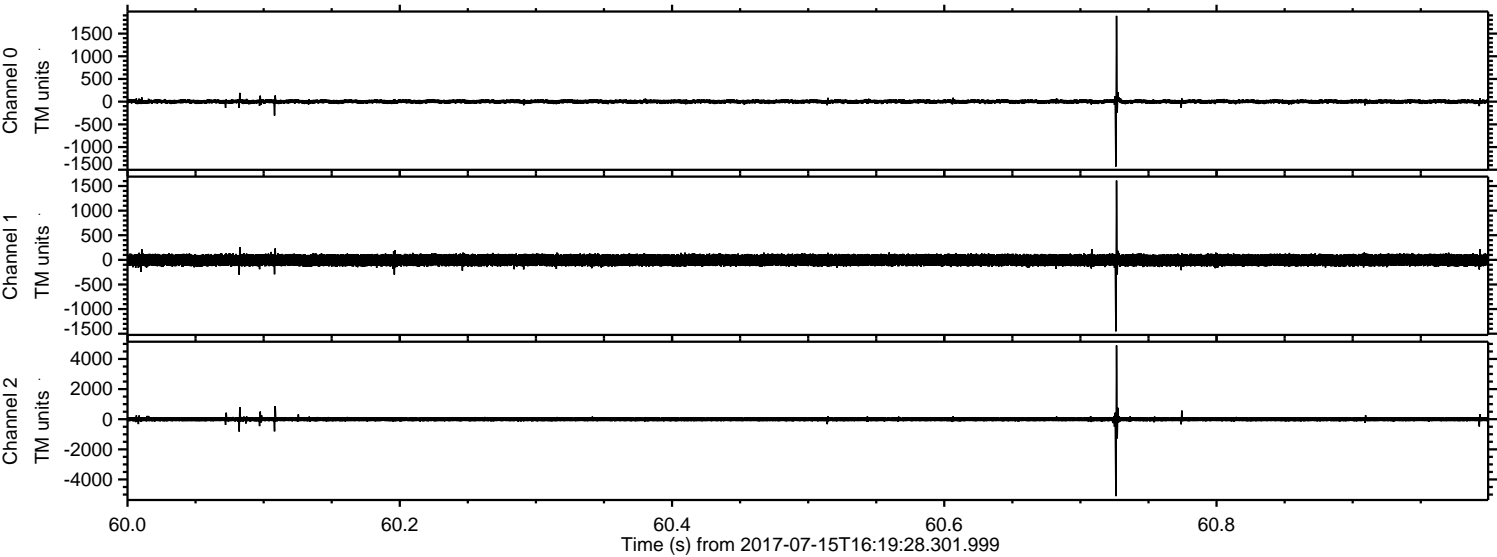
Processed Thu Jul 20 11:59:13 2017 by ELM ver.2012-10-06 from 001__elm20170715_161927__dat00.bin



Processed Thu Jul 20 11:59:21 2017 by ELM ver.2012-10-06 from 001__elm20170715_161927__dat00.bin



Processed Thu Jul 20 11:59:22 2017 by ELM ver.2012-10-06 from 001__elm20170715_161927__dat00.bin



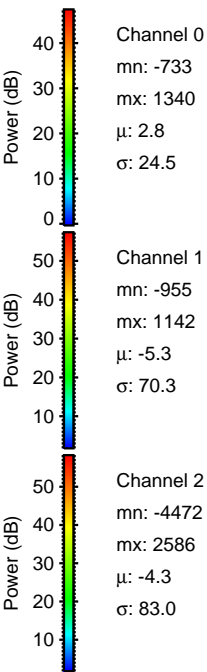
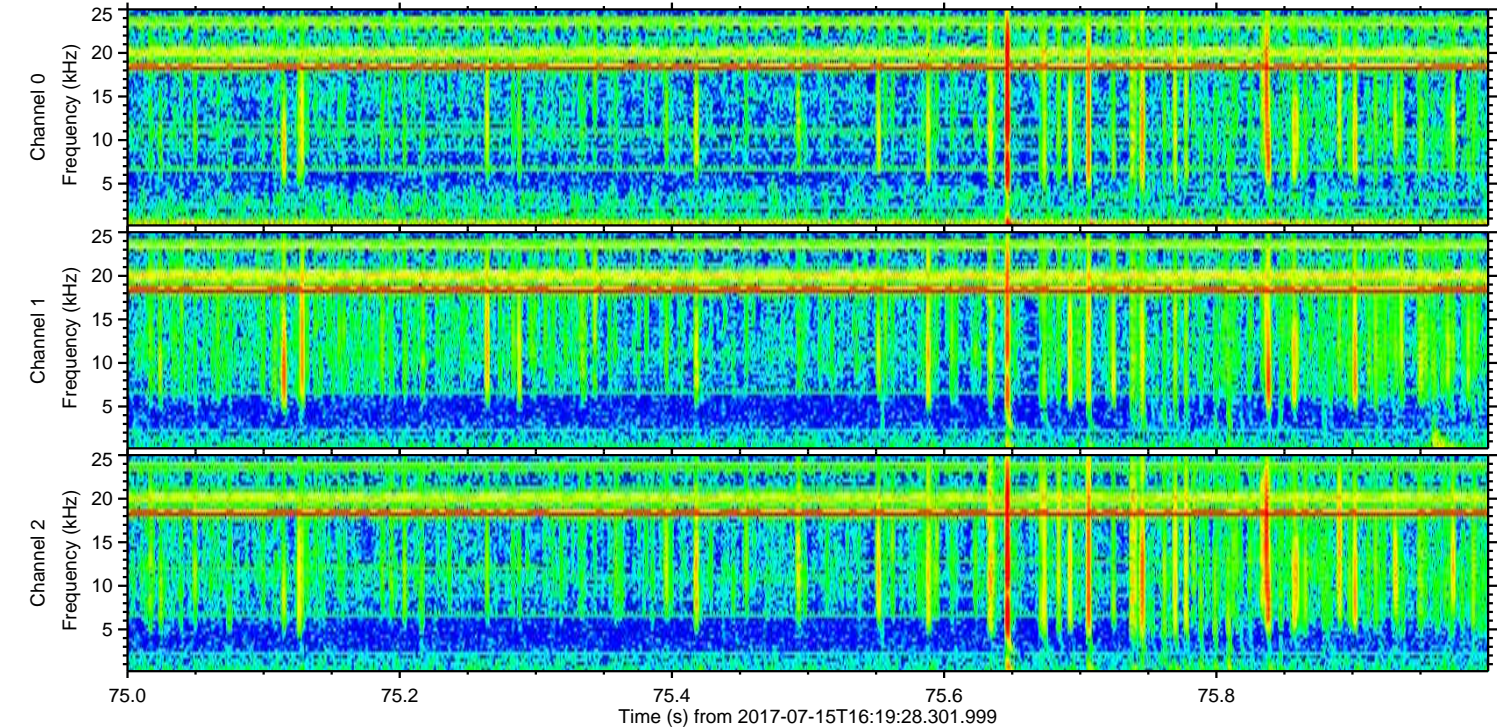
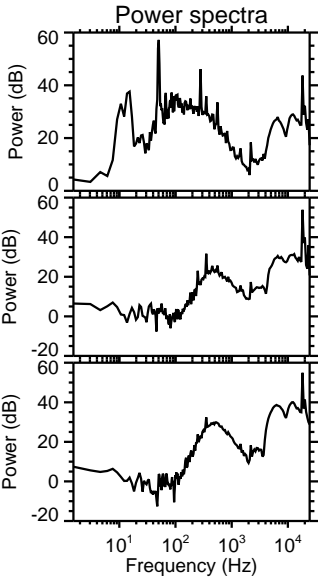
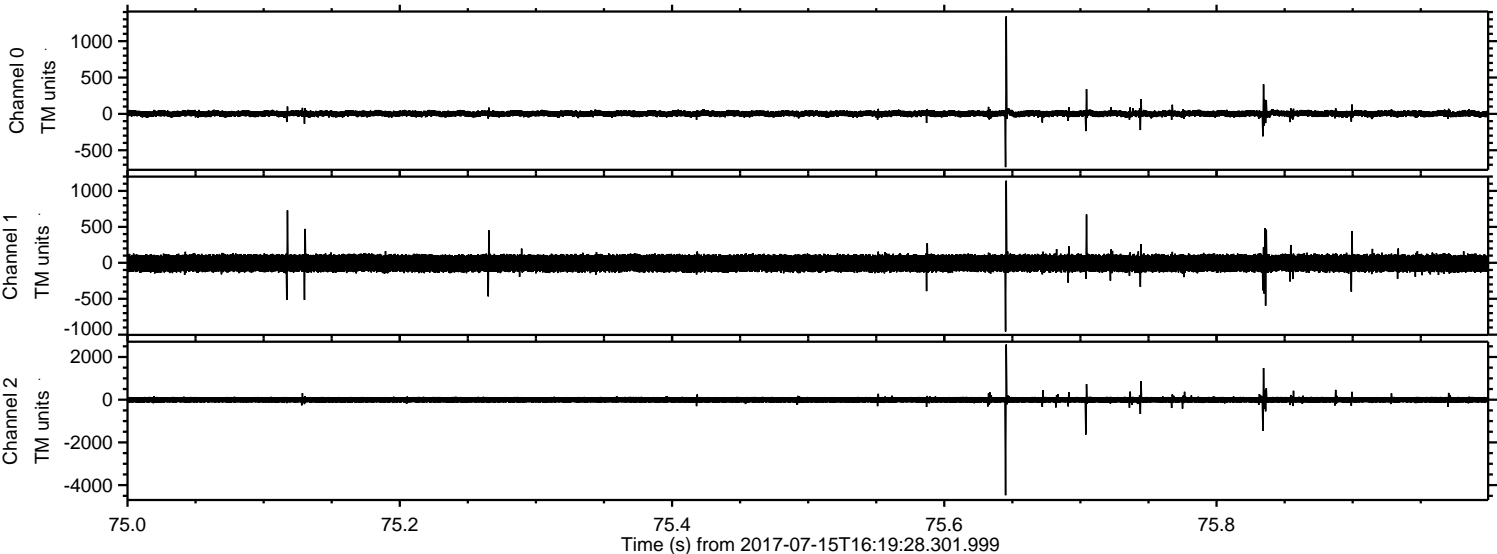
Channel 0
mn: -1430
mx: 1891
 μ : 2.7
 σ : 27.1

Channel 1
mn: -1452
mx: 1610
 μ : -5.3
 σ : 71.1

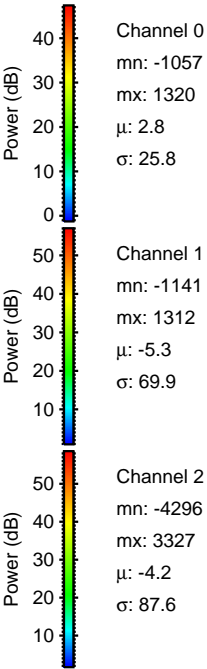
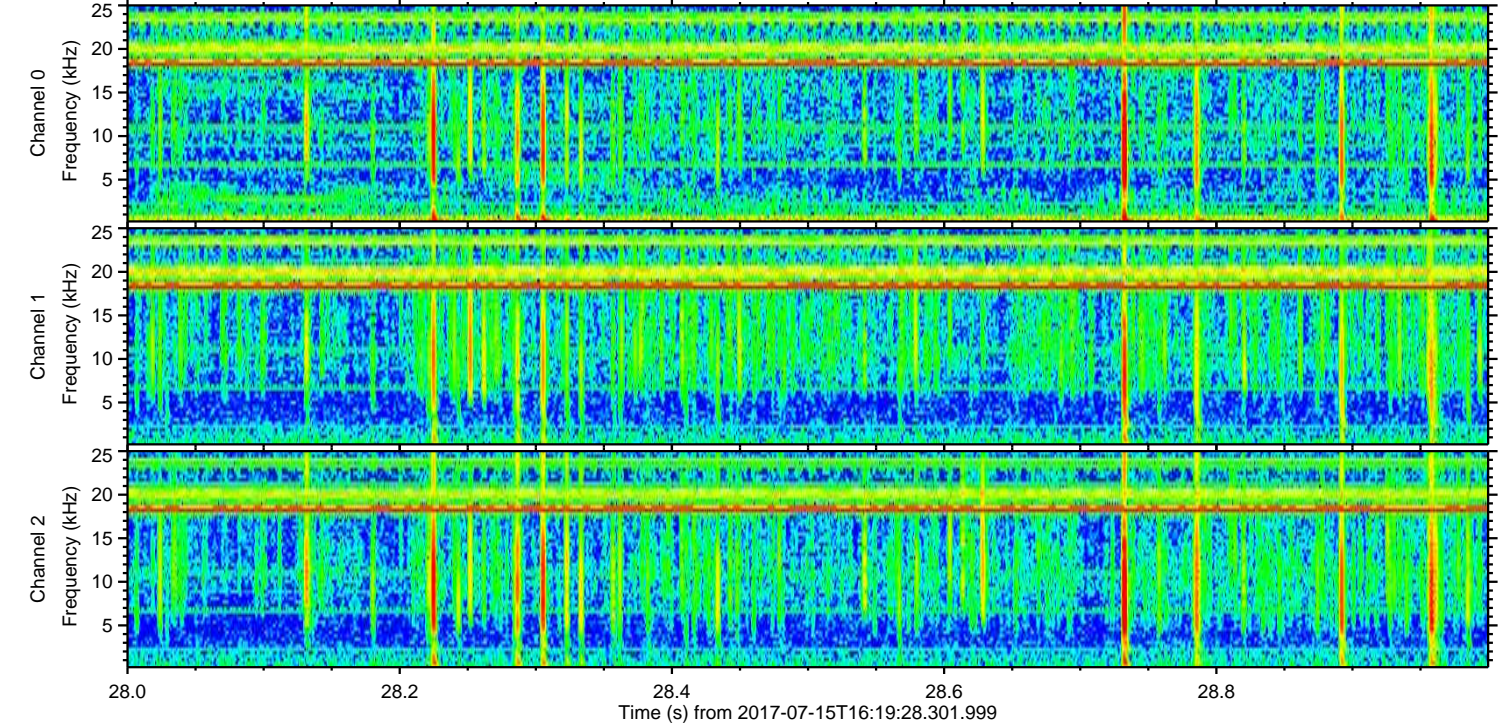
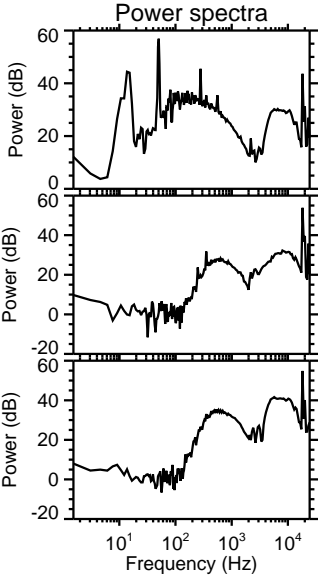
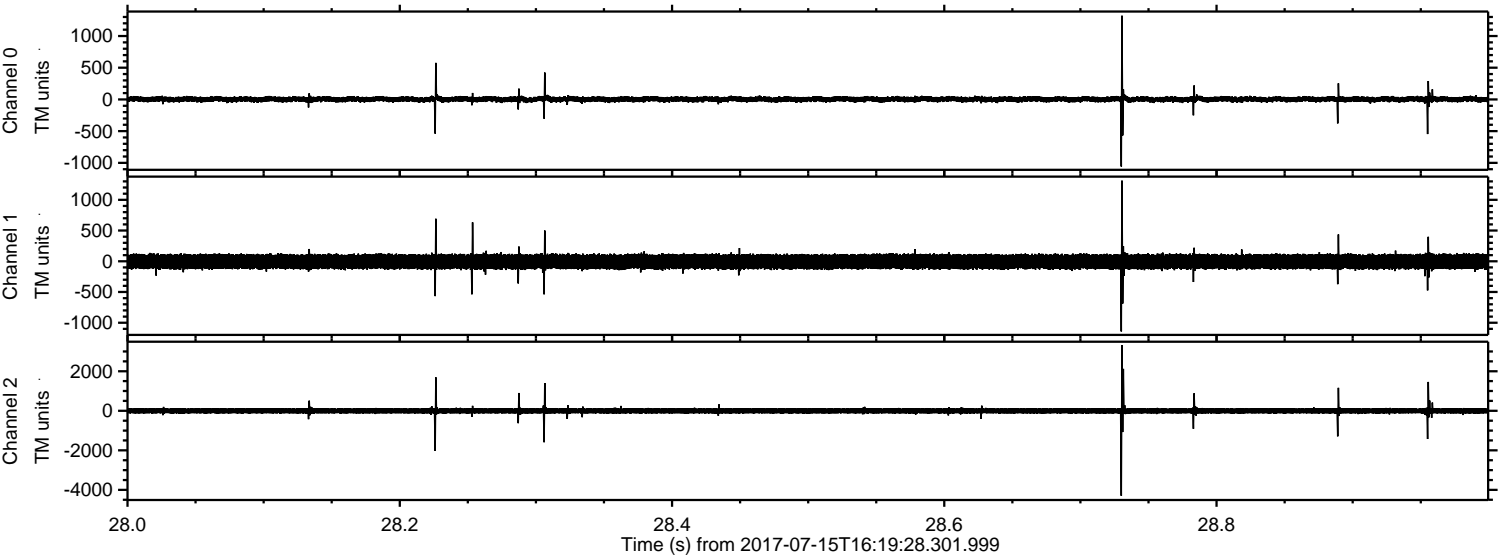
Channel 2
mn: -5108
mx: 4900
 μ : -4.3
 σ : 92.2

ELMAVAN 3D WAVEFORMS (Measured data sampled at 50 kHz) 50999 packets of 144 samples from 2017-07-15T16:19:28.301.999. Part 76/147

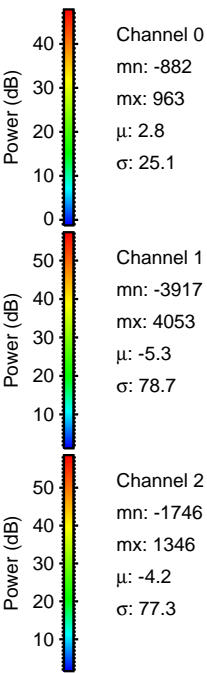
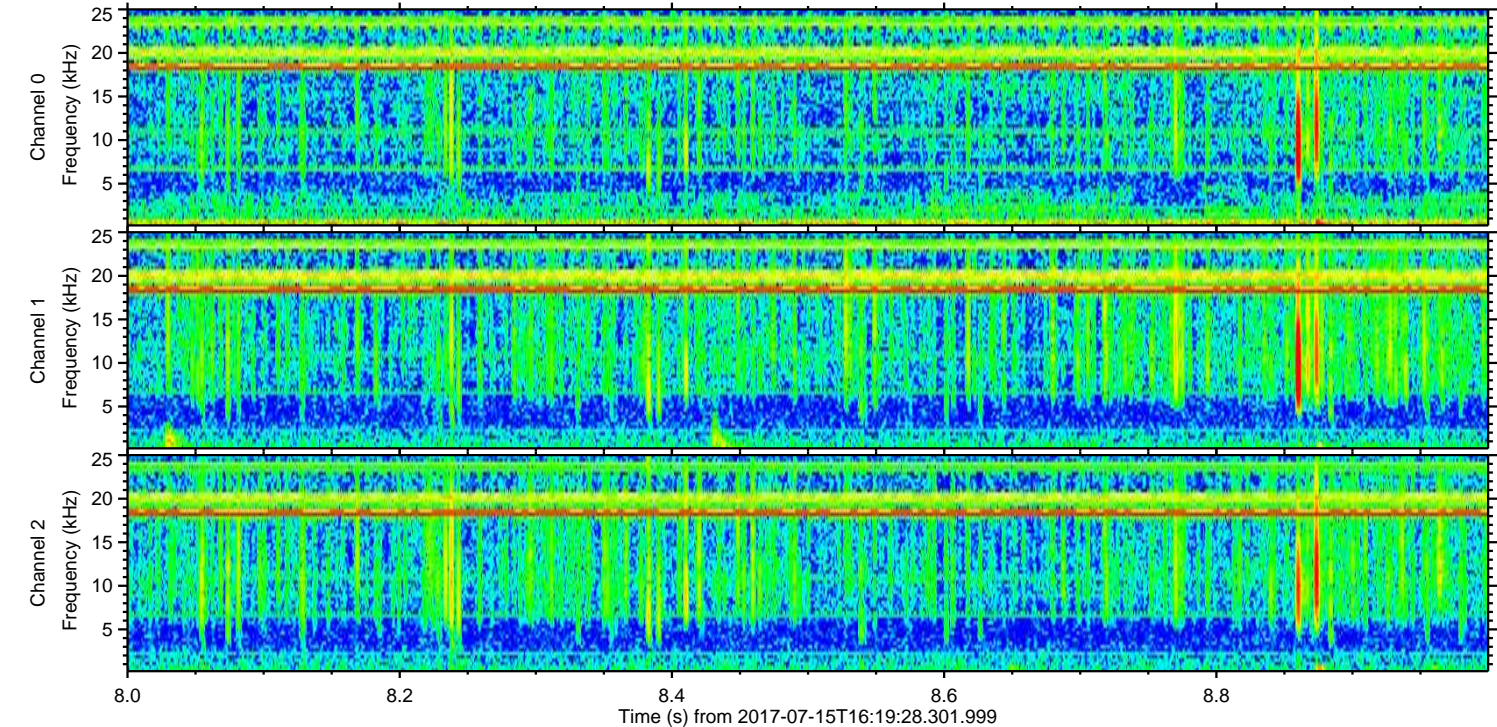
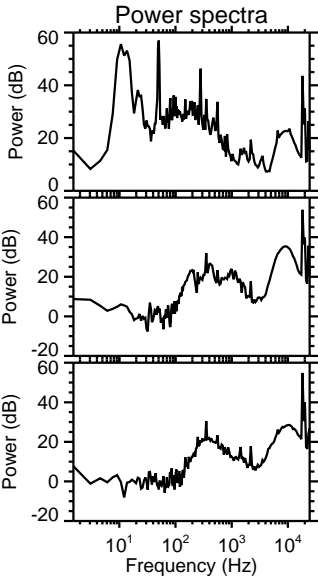
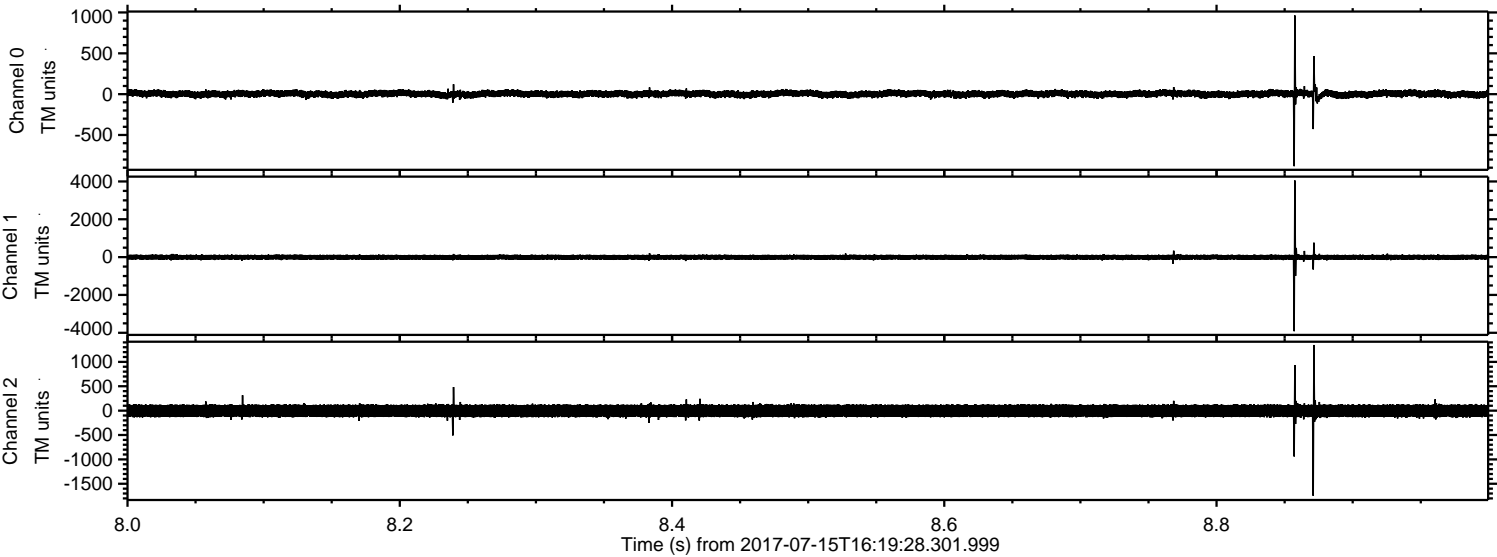
Processed Thu Jul 20 11:59:22 2017 by ELM ver.2012-10-06 from 001__elm20170715_161927__dat00.bin



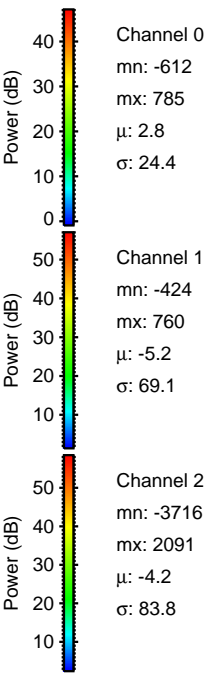
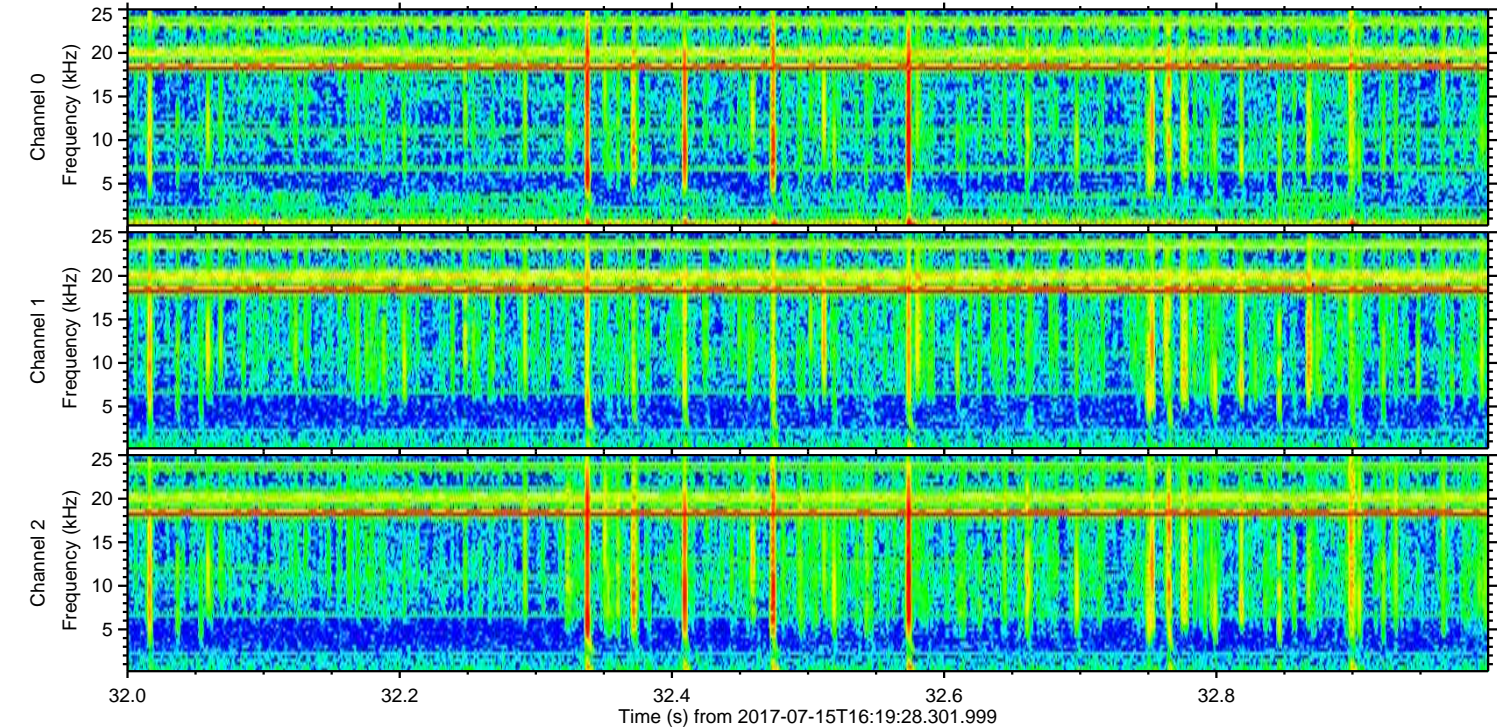
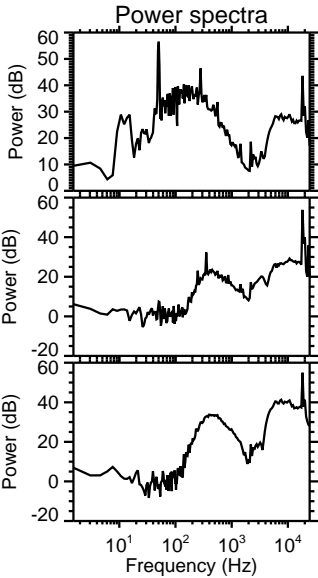
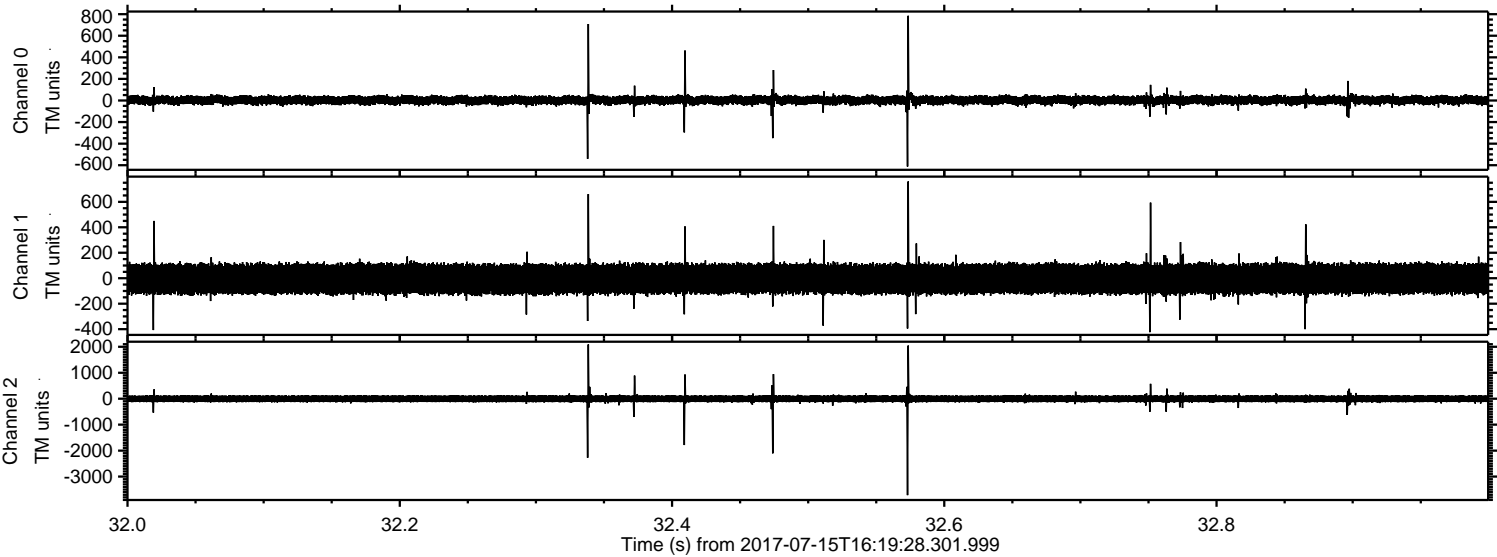
Processed Thu Jul 20 11:59:23 2017 by ELM ver.2012-10-06 from 001__elm20170715_161927__dat00.bin



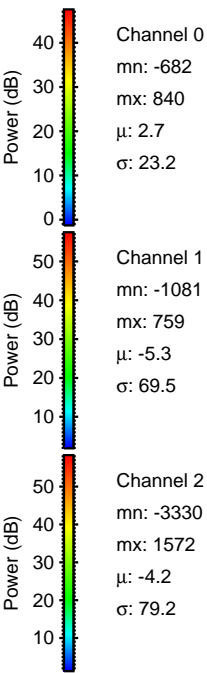
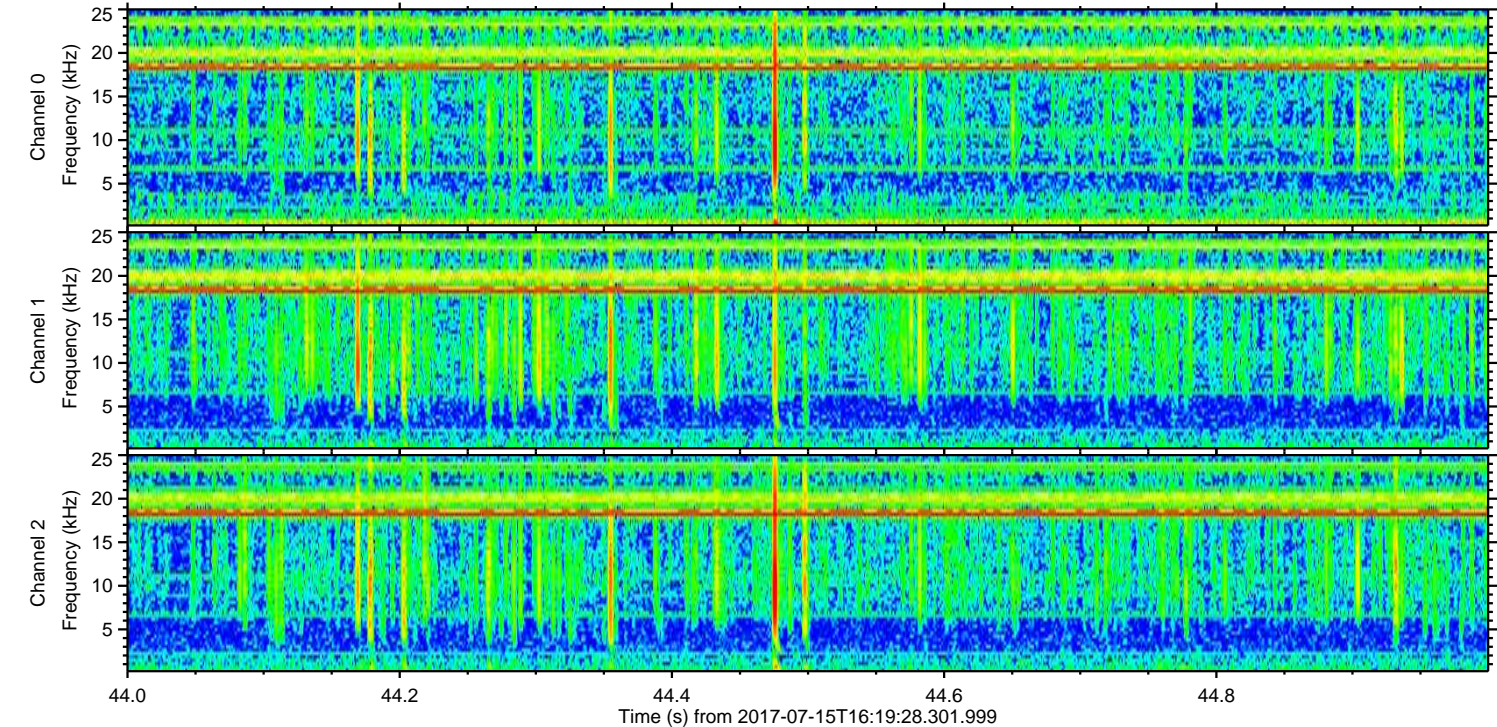
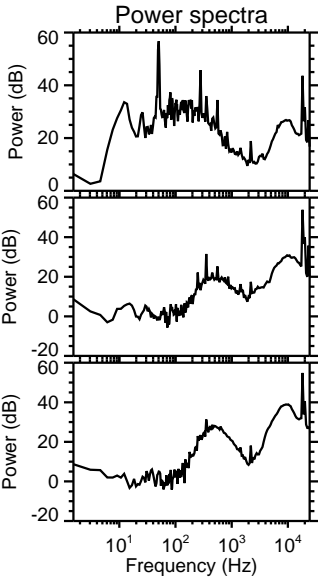
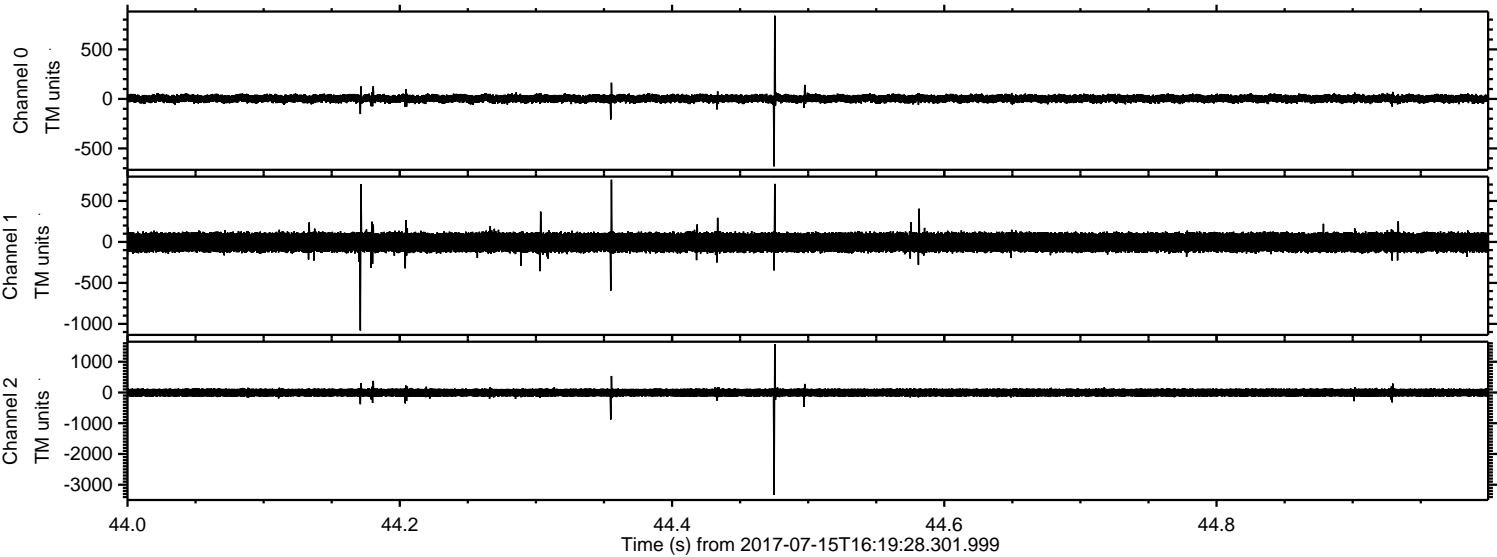
Processed Thu Jul 20 11:59:24 2017 by ELM ver.2012-10-06 from 001__elm20170715_161927__dat00.bin



Processed Thu Jul 20 11:59:25 2017 by ELM ver.2012-10-06 from 001__elm20170715_161927__dat00.bin

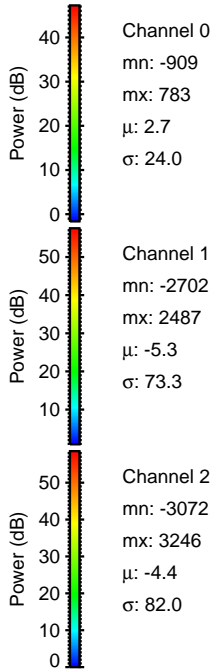
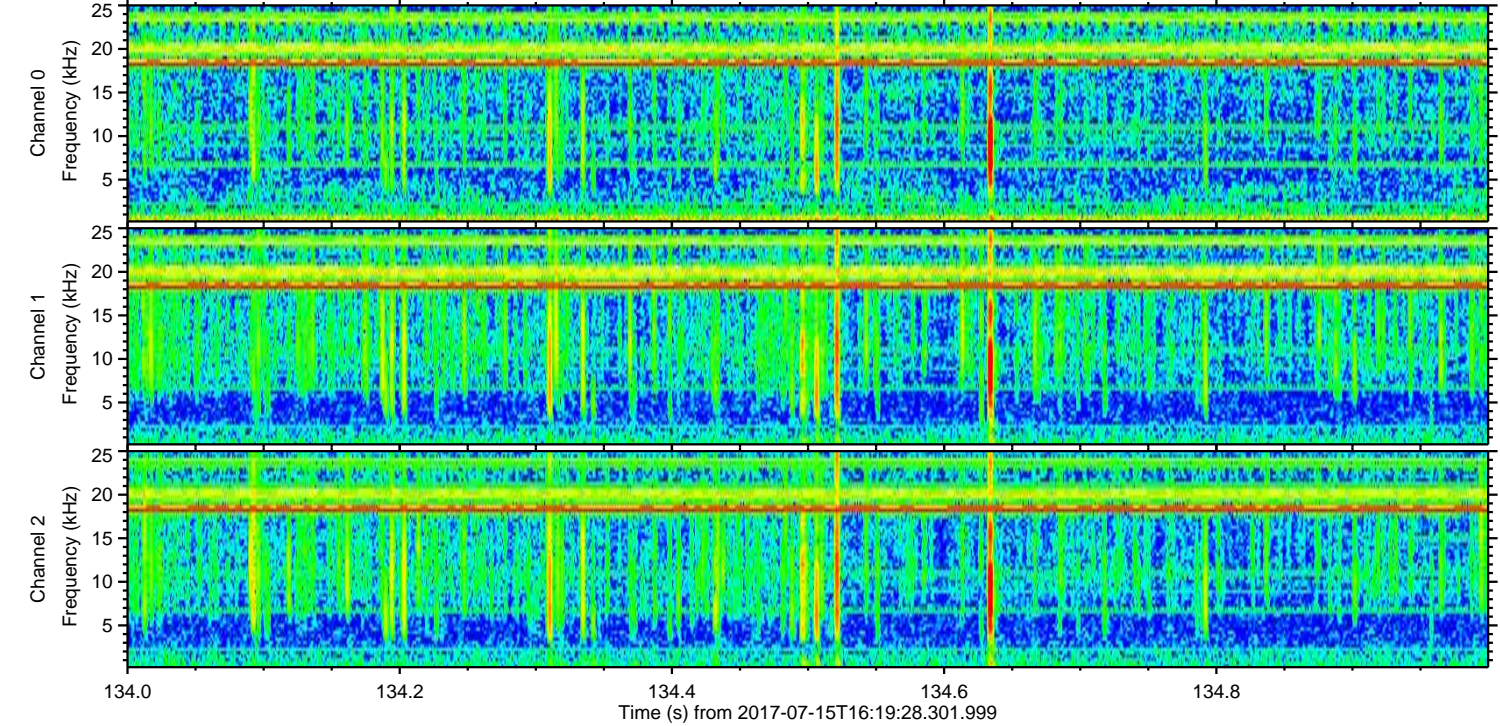
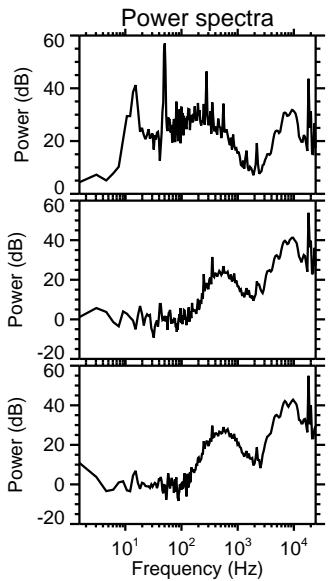
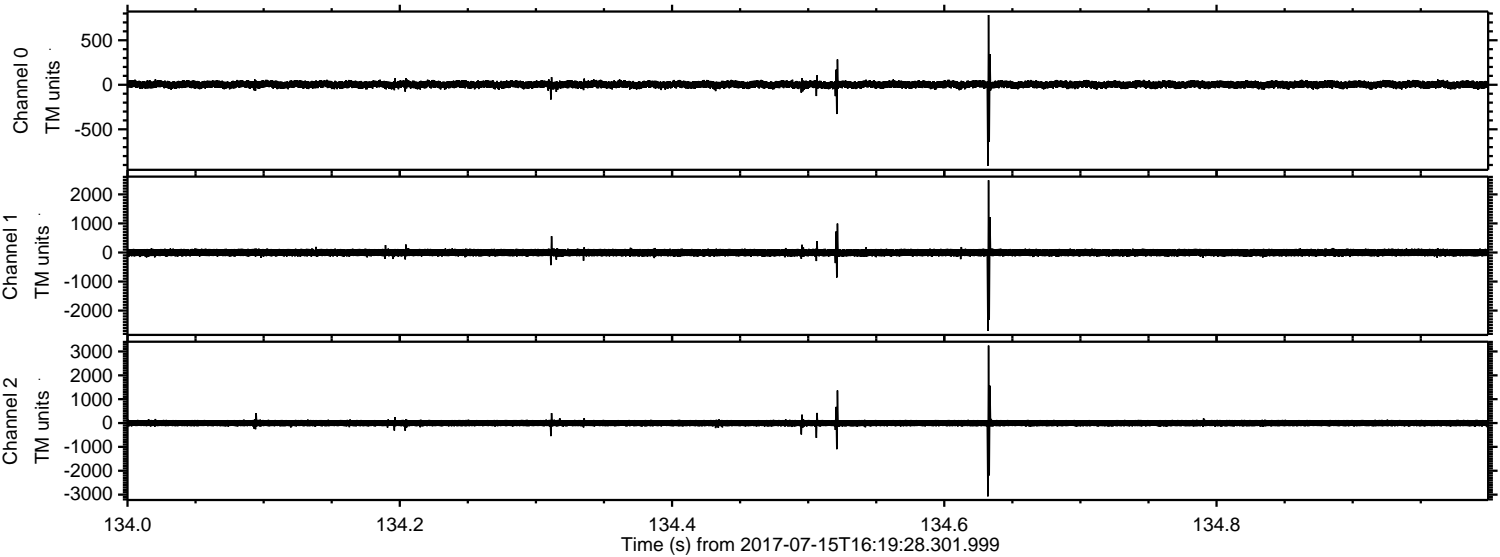


Processed Thu Jul 20 11:59:25 2017 by ELM ver.2012-10-06 from 001__elm20170715_161927__dat00.bin



ELMAVAN 3D WAVEFORMS (Measured data sampled at 50 kHz) 50999 packets of 144 samples from 2017-07-15T16:19:28.301.999. Part 135/147

Processed Thu Jul 20 11:59:26 2017 by ELM ver.2012-10-06 from 001__elm20170715_161927__dat00.bin



Channel 0
mn: -909
mx: 783
 μ : 2.7
 σ : 24.0

Channel 1
mn: -2702
mx: 2487
 μ : -5.3
 σ : 73.3

Channel 2
mn: -3072
mx: 3246
 μ : -4.4
 σ : 82.0

Processed Thu Jul 20 11:59:27 2017 by ELM ver.2012-10-06 from 001__elm20170715_161927__dat00.bin

