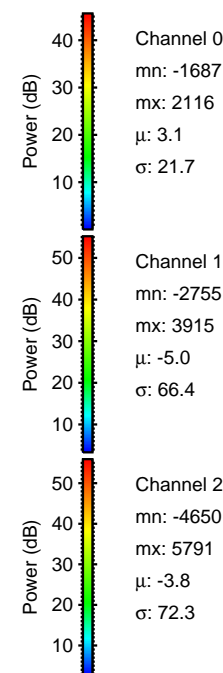
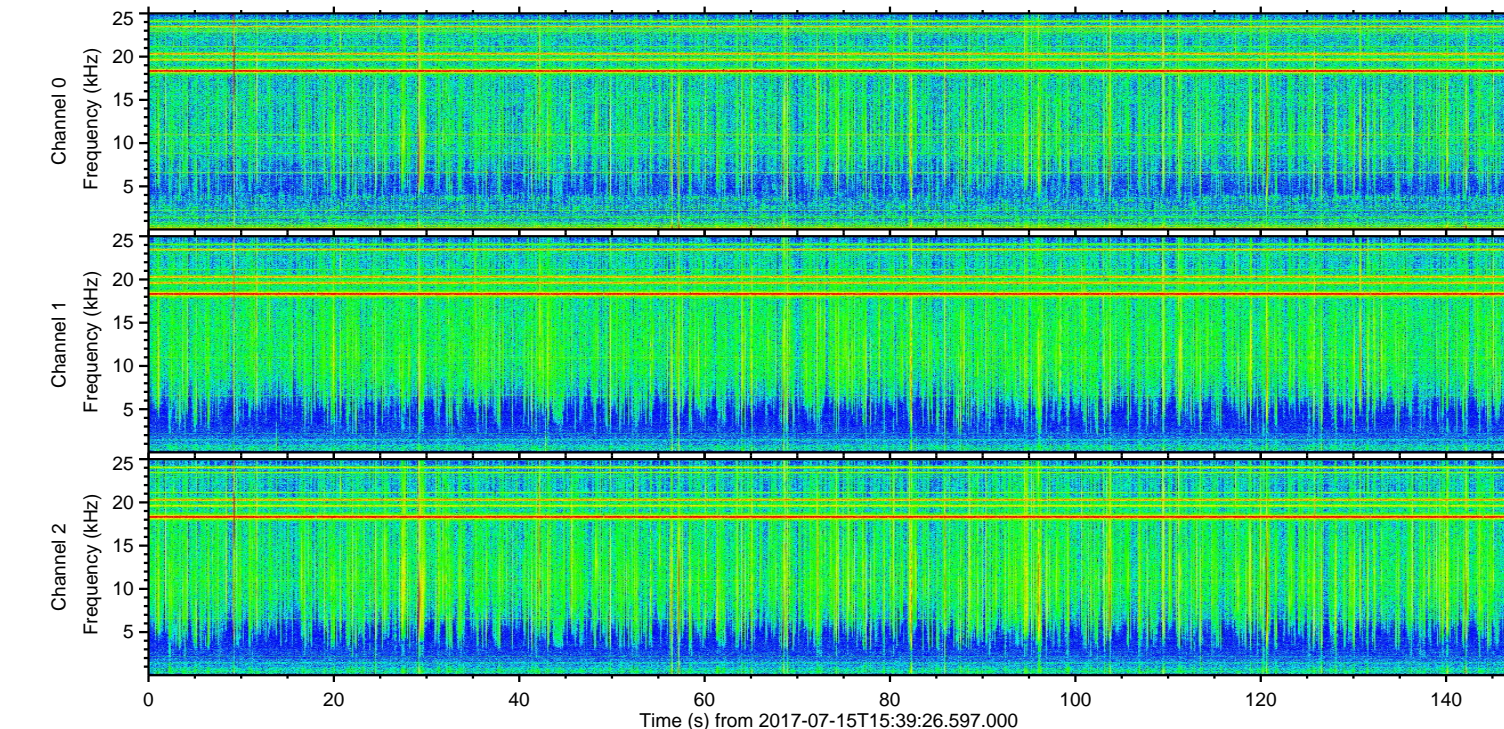
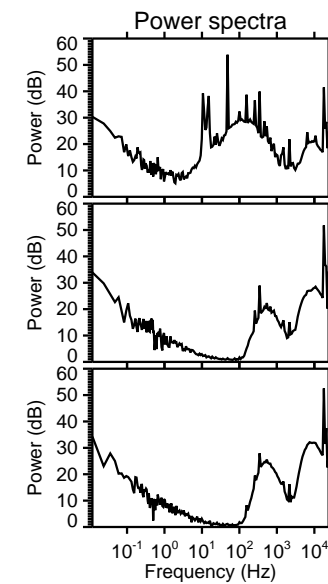
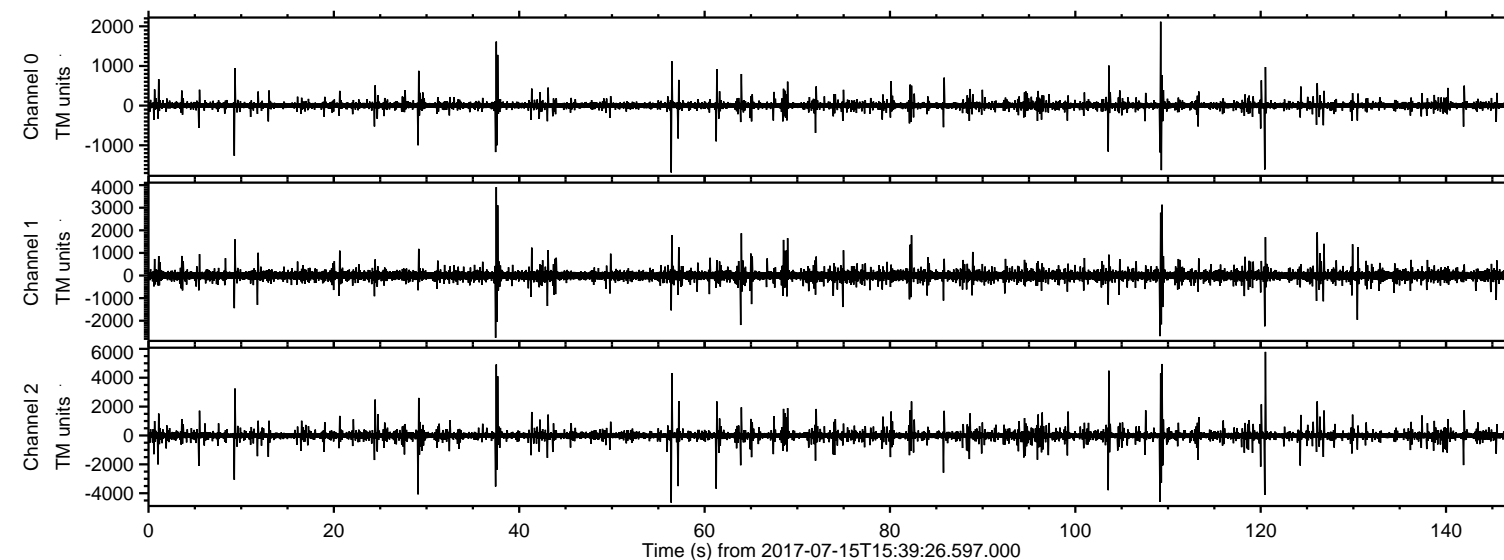


# ELMAVAN 3D WAVEFORMS (Measured data sampled at 50 kHz) 51000 packets of 144 samples from 2017-07-15T15:39:26.597.000.

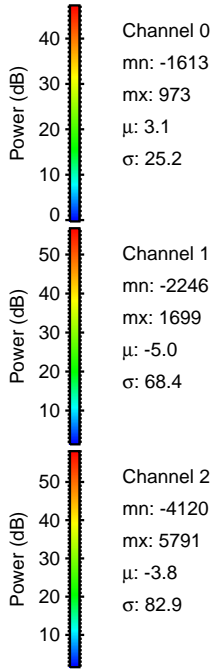
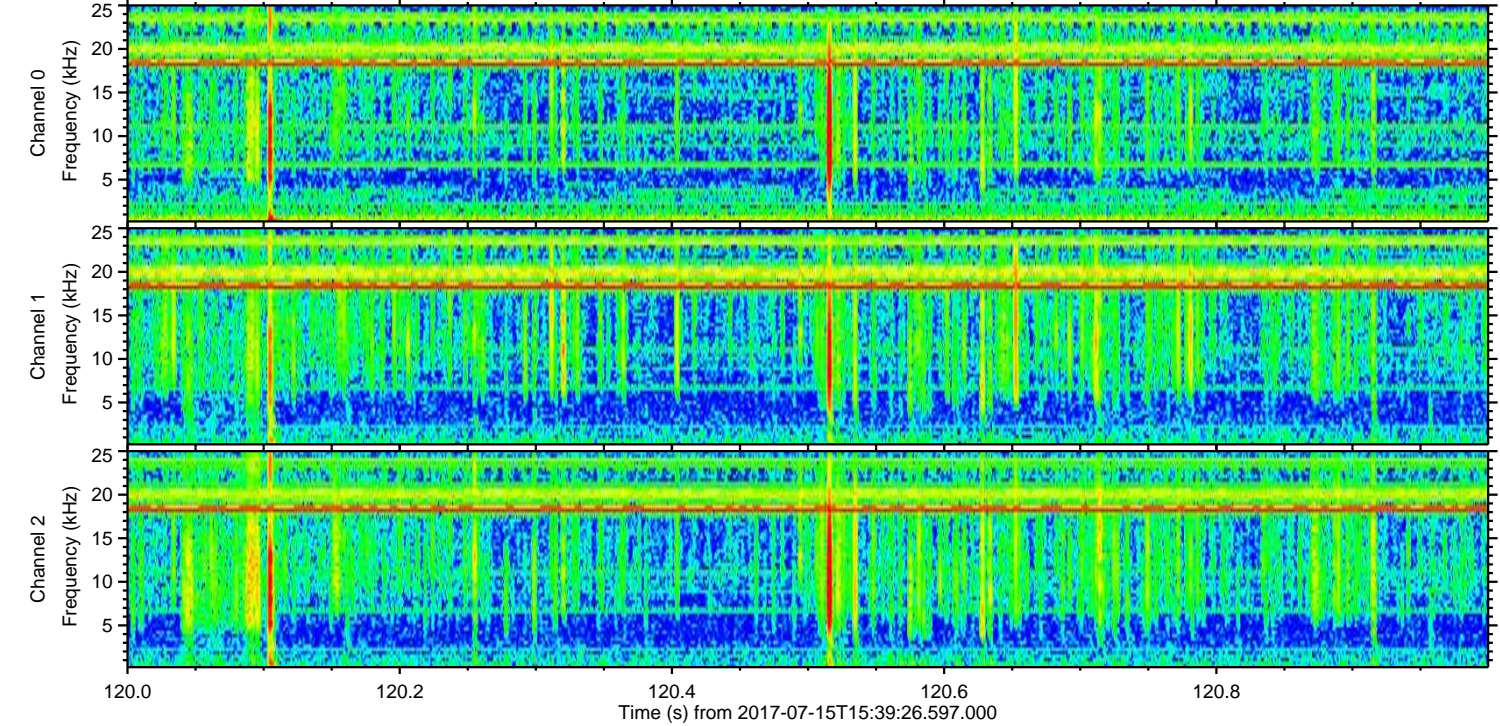
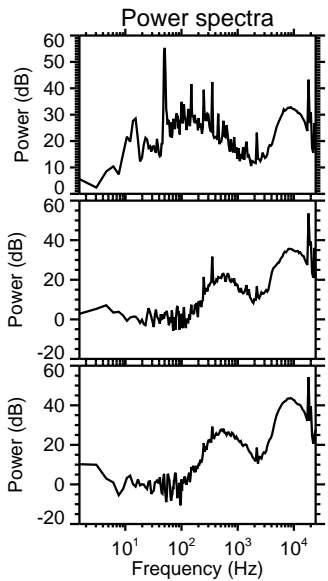
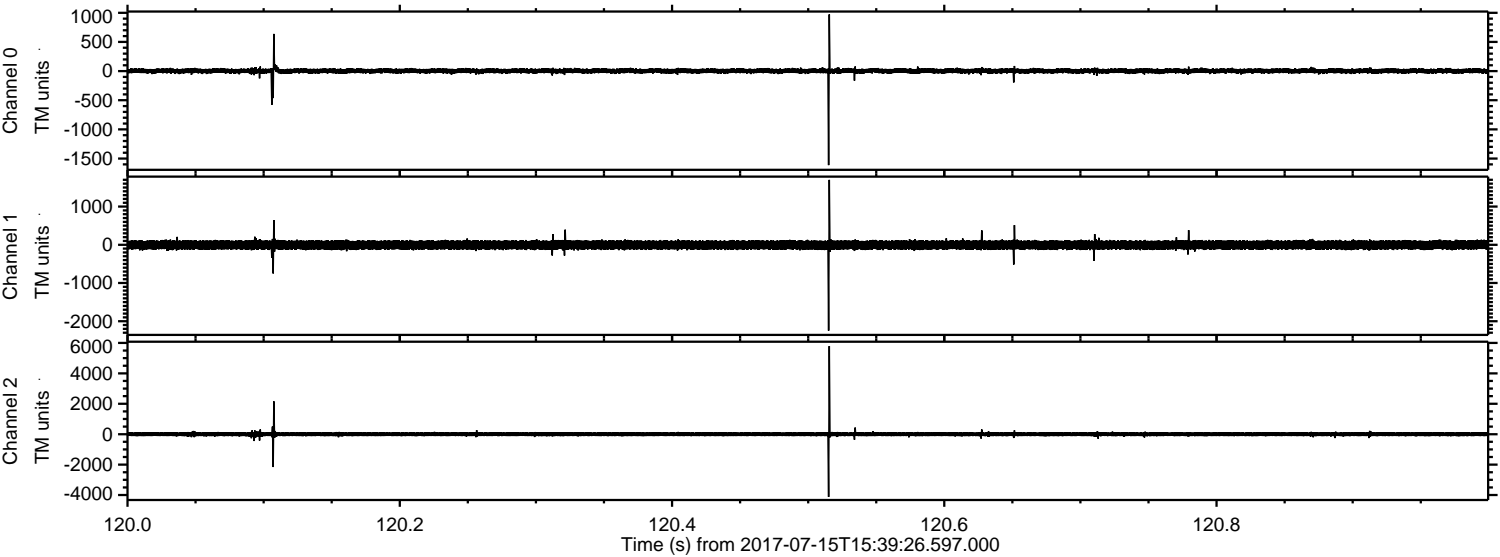
Processed Thu Jul 20 11:53:21 2017 by ELM ver.2012-10-06 from 001\_\_elm20170715\_153925\_\_dat00.bin





ELMAVAN 3D WAVEFORMS (Measured data sampled at 50 kHz) 51000 packets of 144 samples from 2017-07-15T15:39:26.597.000. Part 121/147

Processed Thu Jul 20 11:53:31 2017 by ELM ver.2012-10-06 from 001\_\_elm20170715\_153925\_\_dat00.bin



Channel 0  
mn: -1613  
mx: 973  
 $\mu$ : 3.1  
 $\sigma$ : 25.2

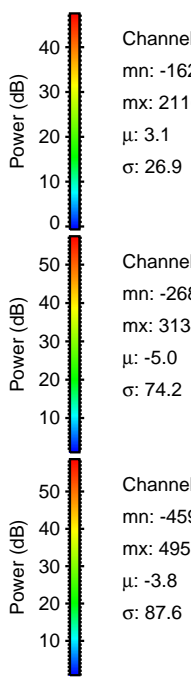
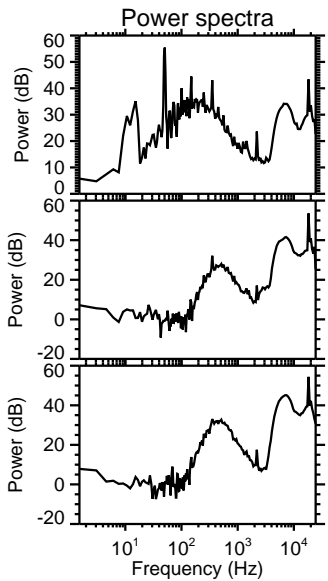
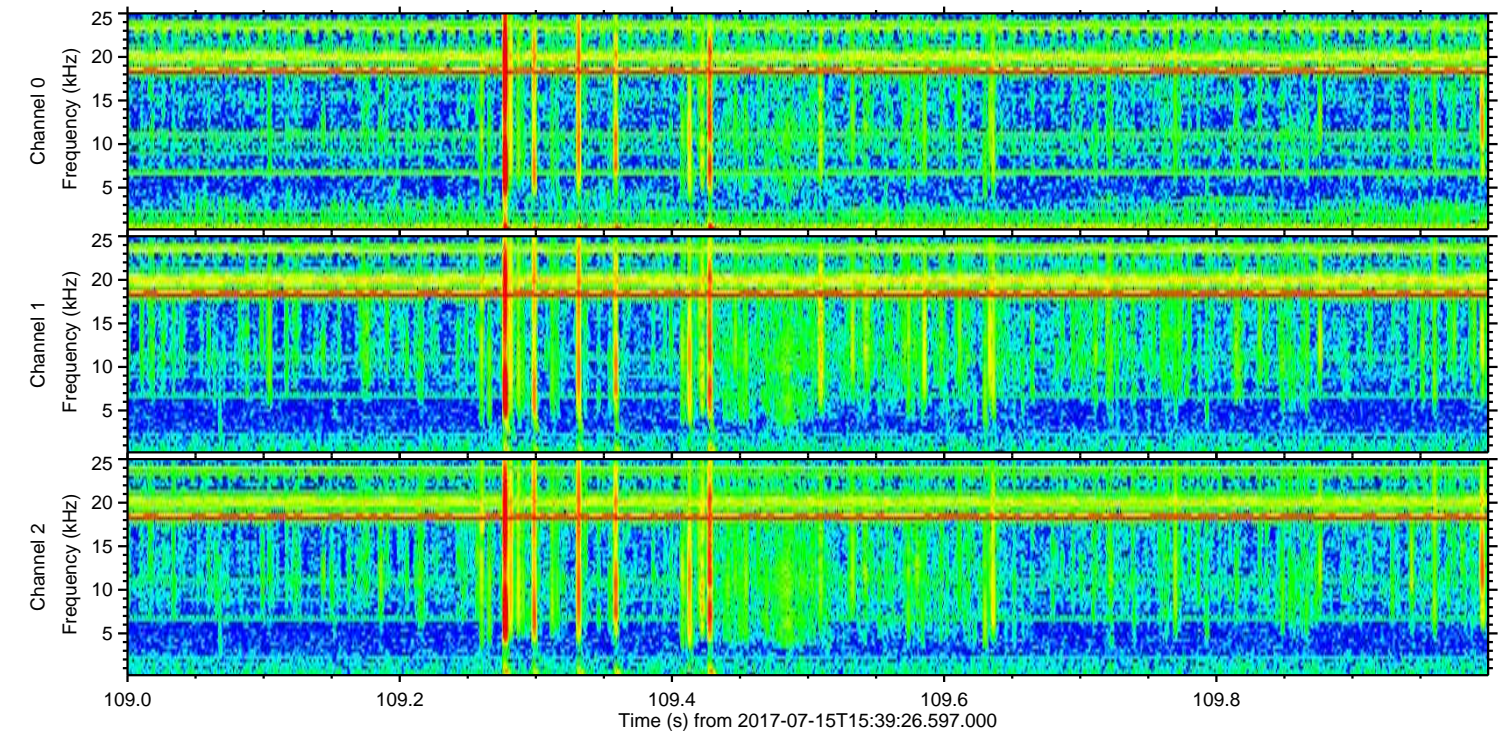
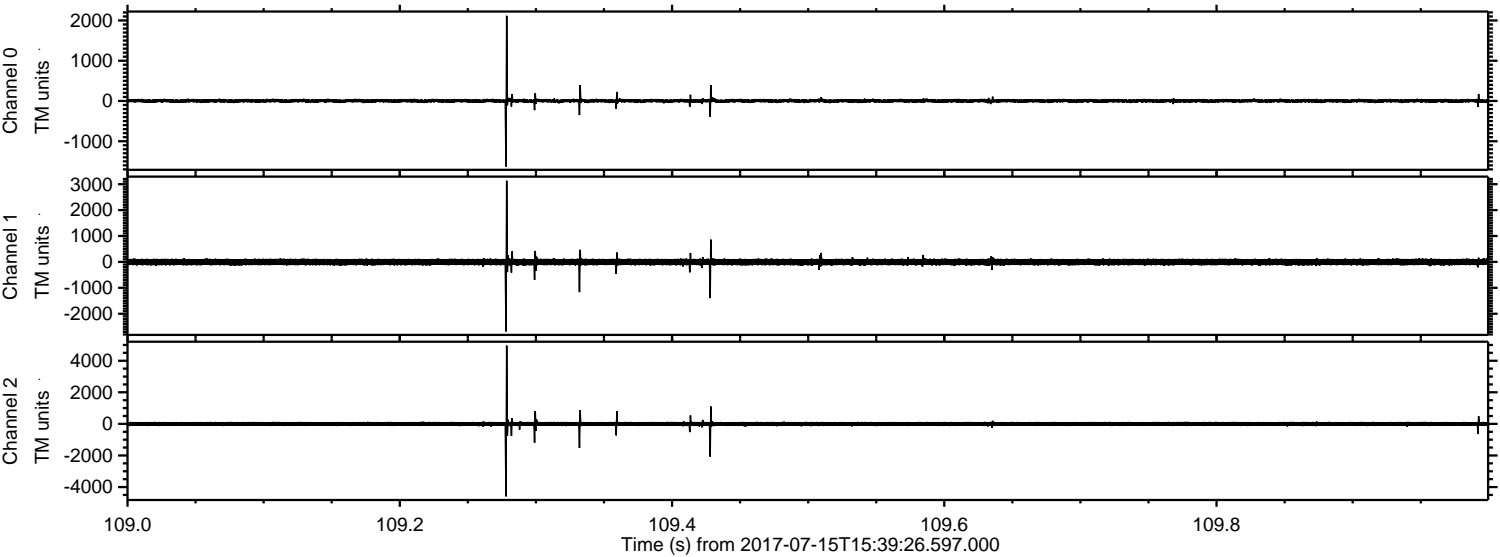
Channel 1  
mn: -2246  
mx: 1699  
 $\mu$ : -5.0  
 $\sigma$ : 68.4

Channel 2  
mn: -4120  
mx: 5791  
 $\mu$ : -3.8  
 $\sigma$ : 82.9



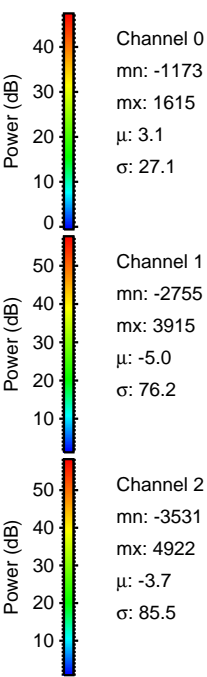
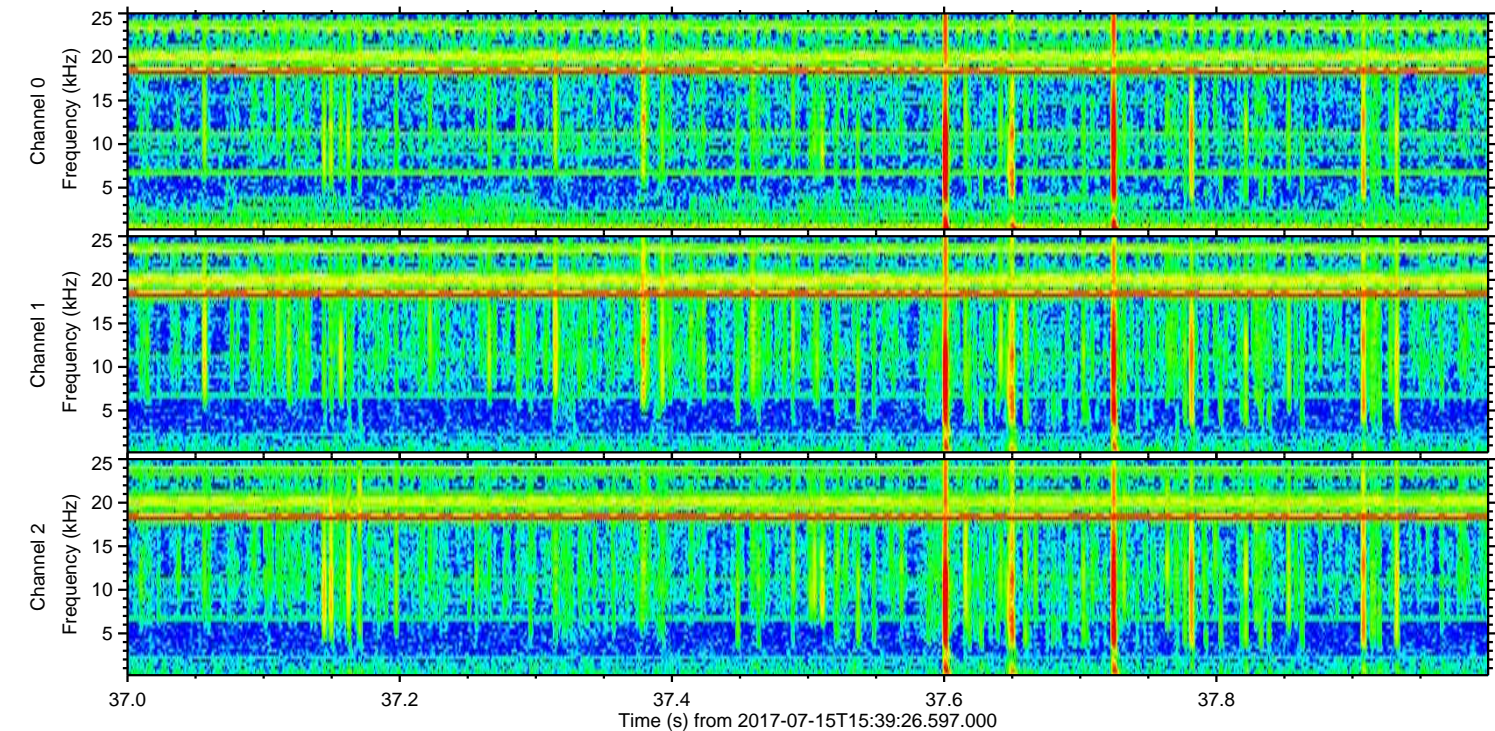
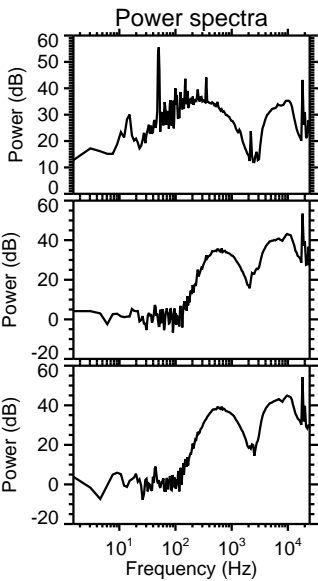
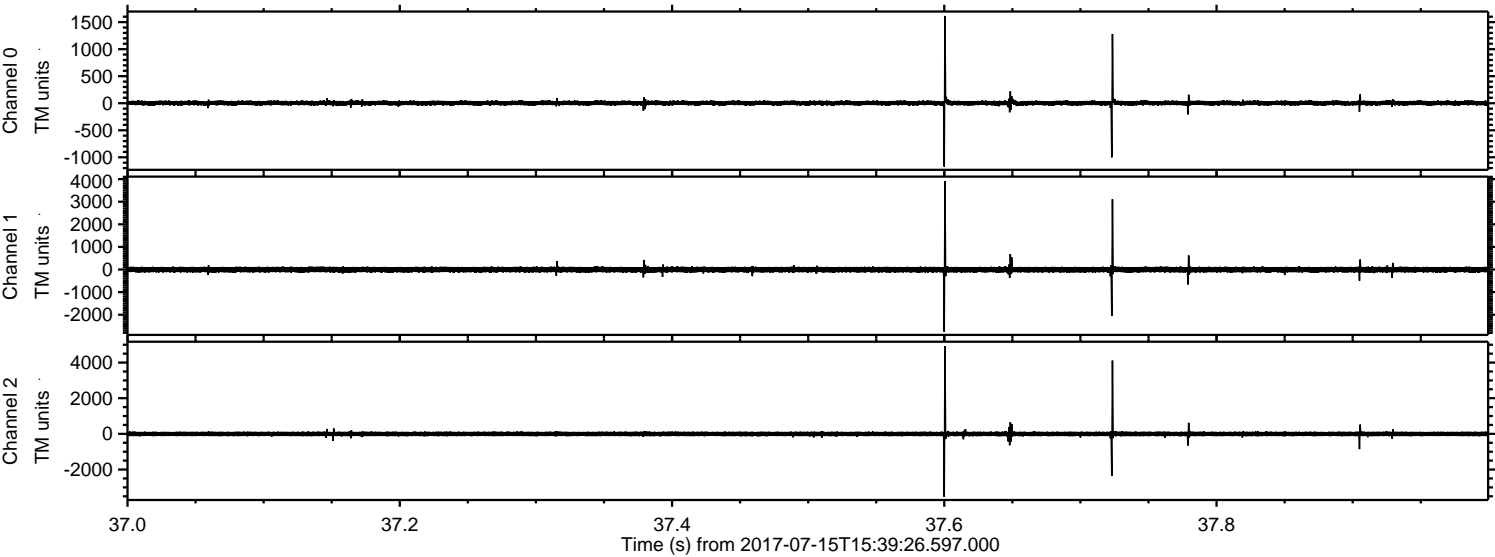
ELMAVAN 3D WAVEFORMS (Measured data sampled at 50 kHz) 51000 packets of 144 samples from 2017-07-15T15:39:26.597.000. Part 110/147

Processed Thu Jul 20 11:53:32 2017 by ELM ver.2012-10-06 from 001\_\_elm20170715\_153925\_\_dat00.bin



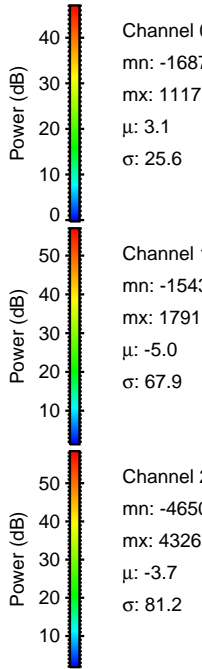
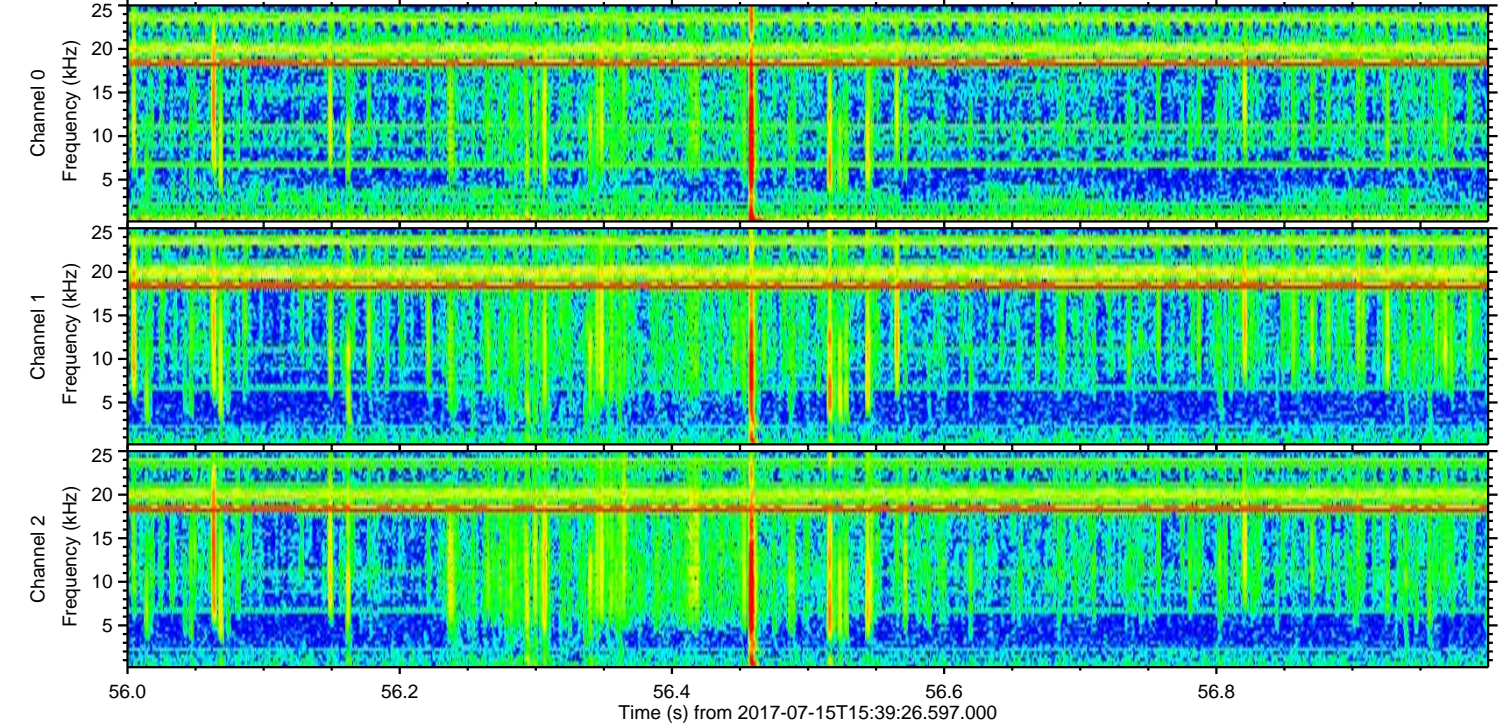
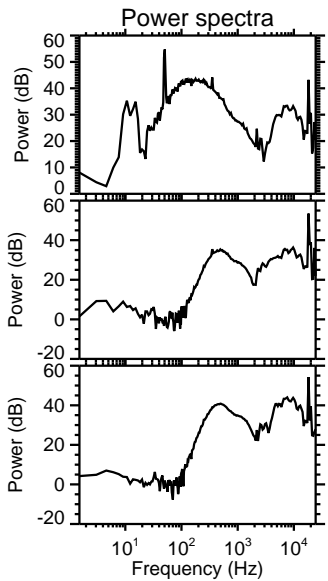
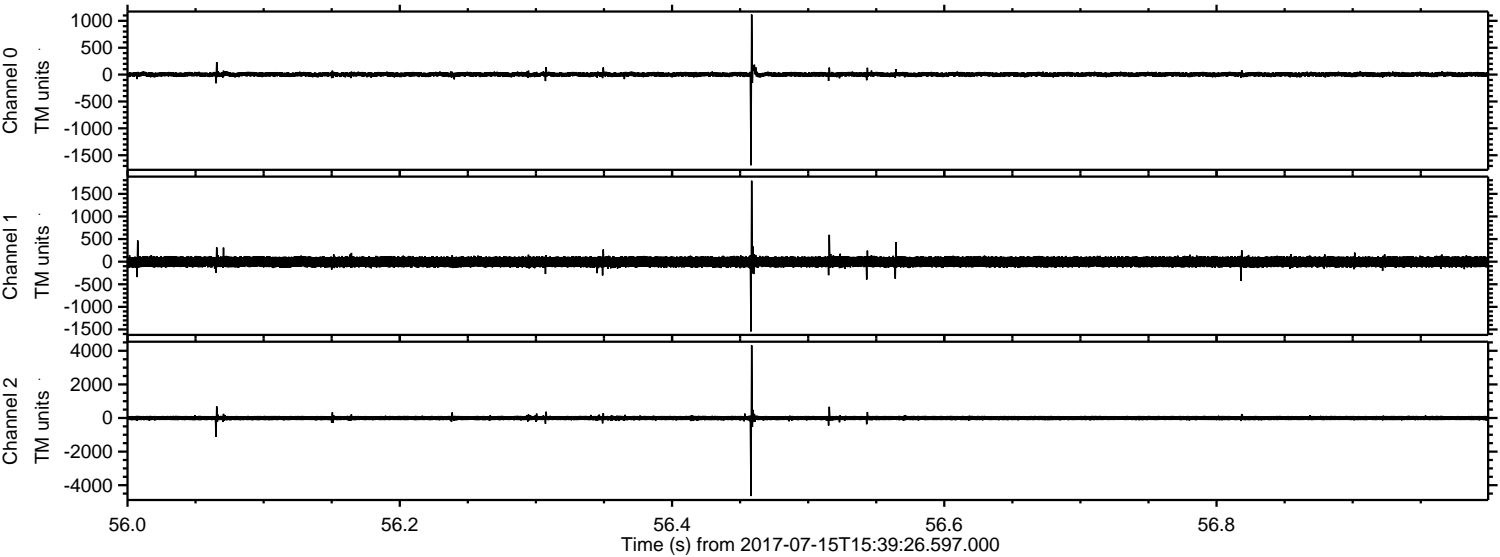


Processed Thu Jul 20 11:53:32 2017 by ELM ver.2012-10-06 from 001\_\_elm20170715\_153925\_\_dat00.bin





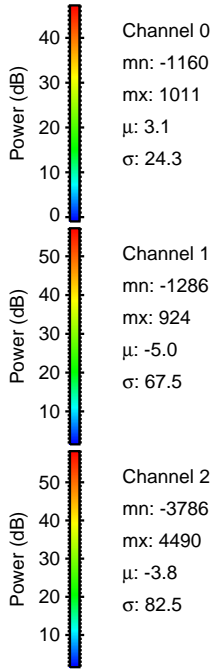
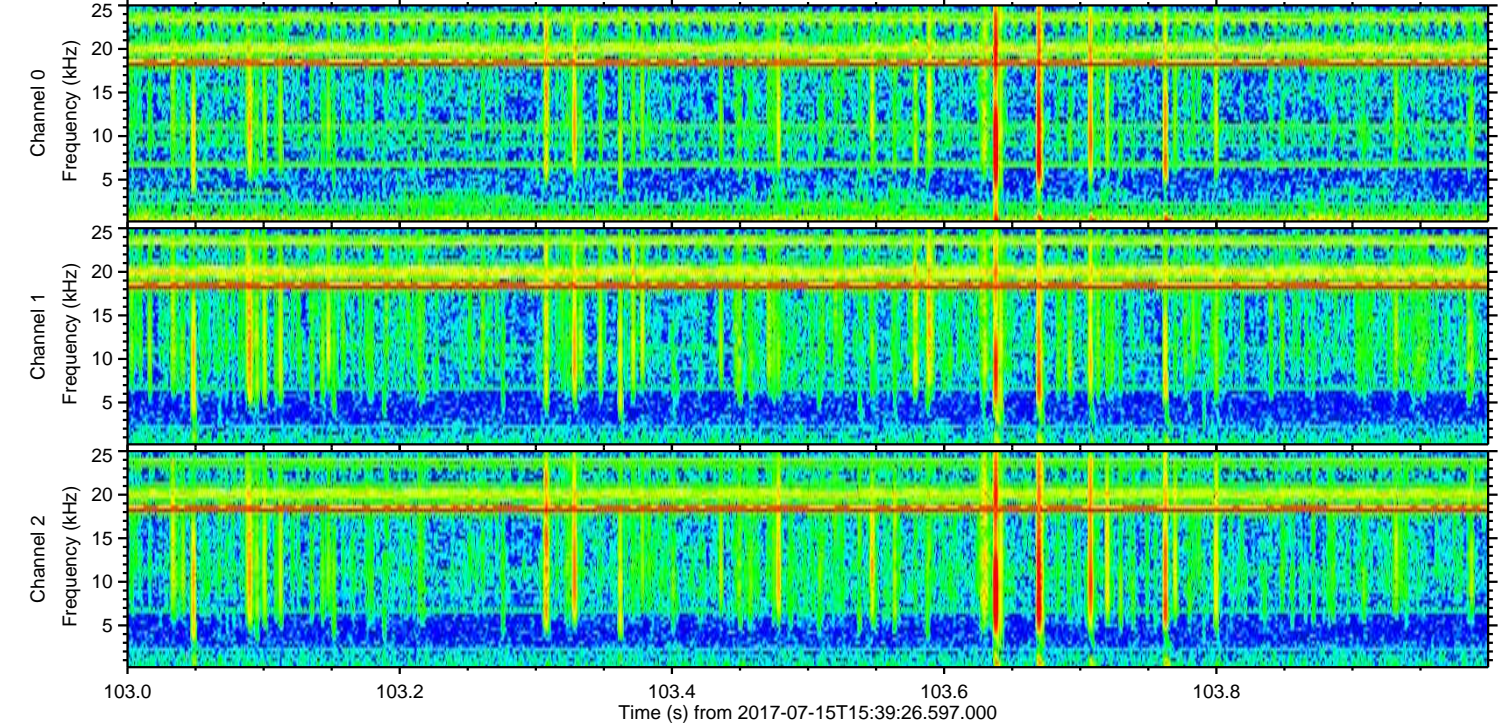
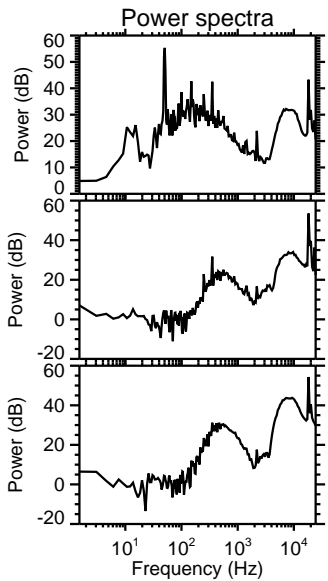
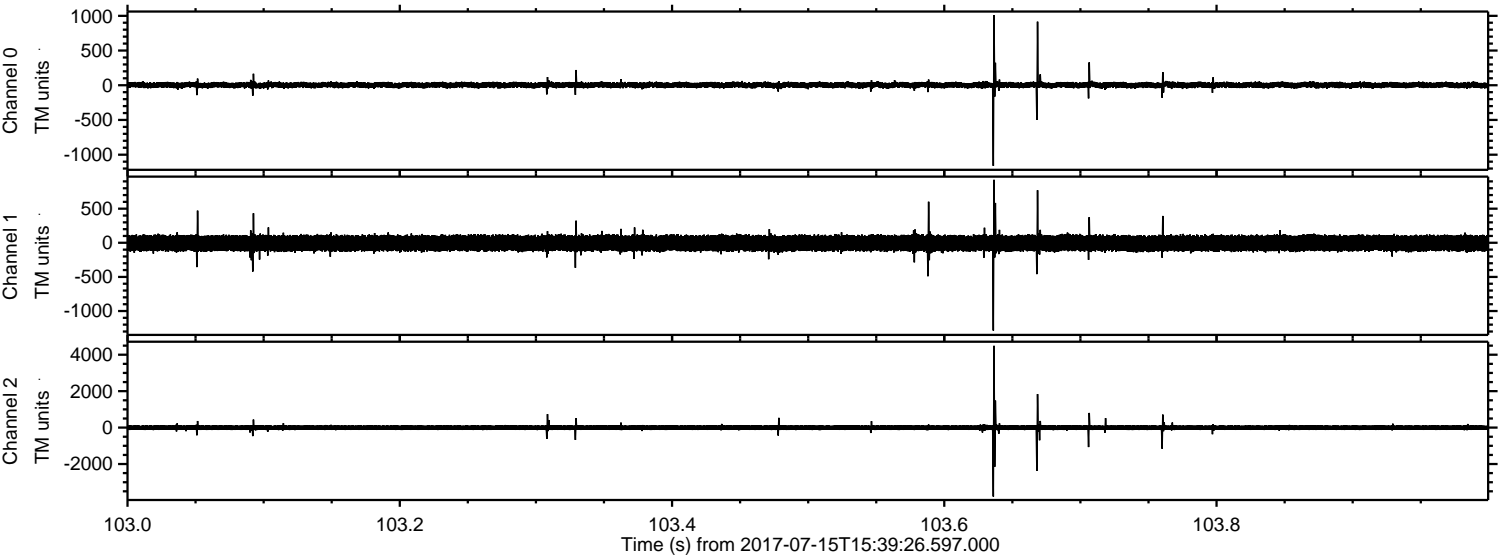
Processed Thu Jul 20 11:53:34 2017 by ELM ver.2012-10-06 from 001\_\_elm20170715\_153925\_\_dat00.bin





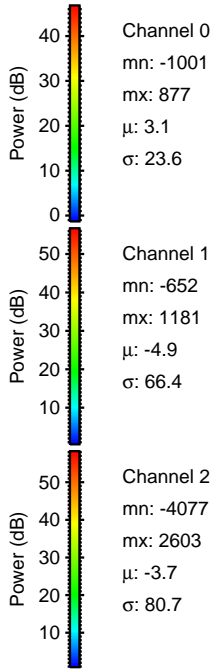
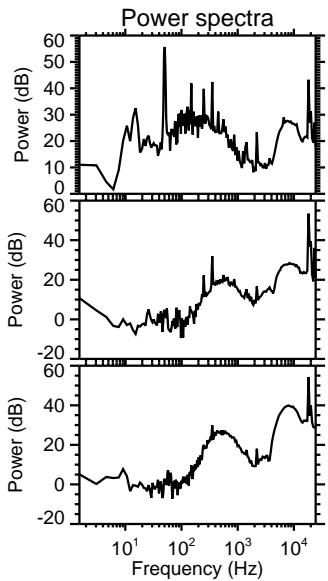
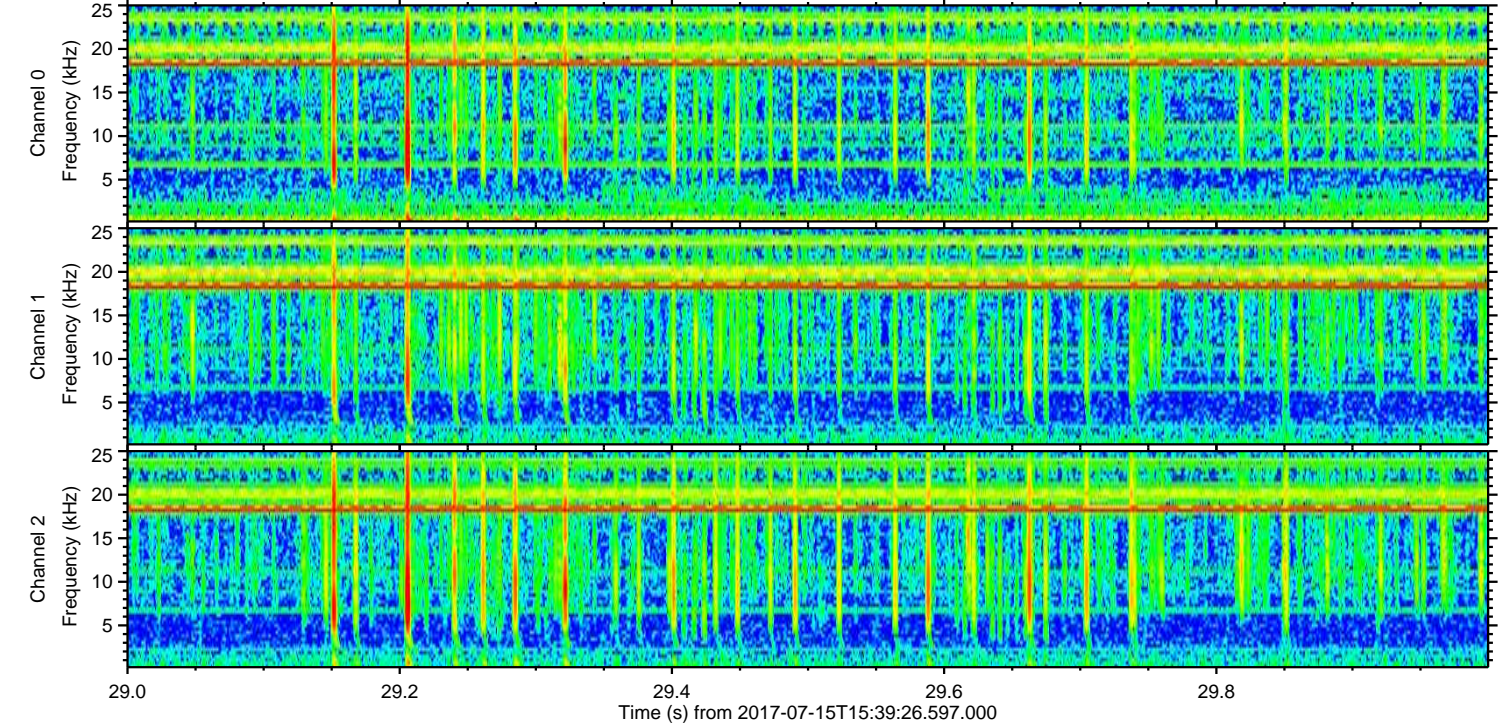
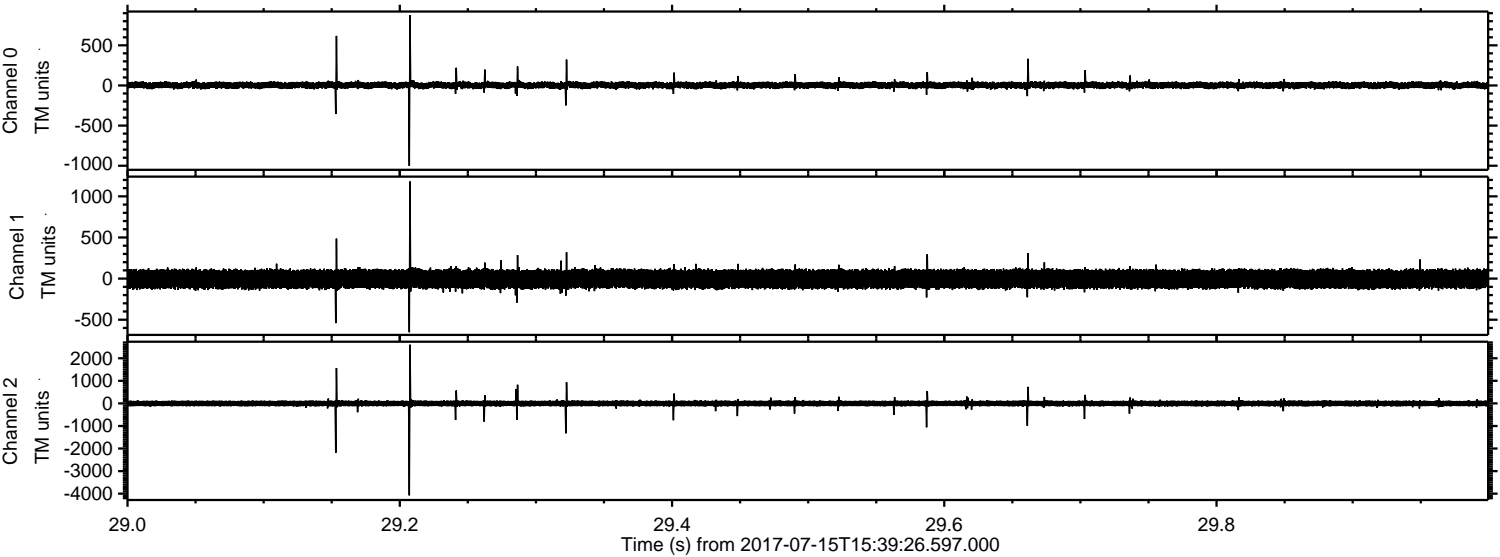
ELMAVAN 3D WAVEFORMS (Measured data sampled at 50 kHz) 51000 packets of 144 samples from 2017-07-15T15:39:26.597.000. Part 104/147

Processed Thu Jul 20 11:53:34 2017 by ELM ver.2012-10-06 from 001\_\_elm20170715\_153925\_\_dat00.bin





Processed Thu Jul 20 11:53:35 2017 by ELM ver.2012-10-06 from 001\_\_elm20170715\_153925\_\_dat00.bin



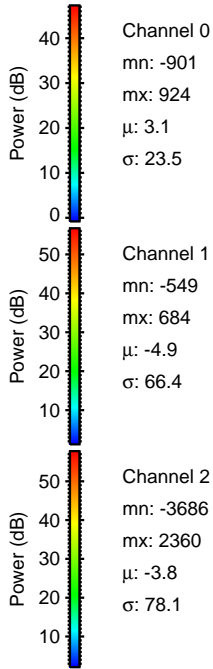
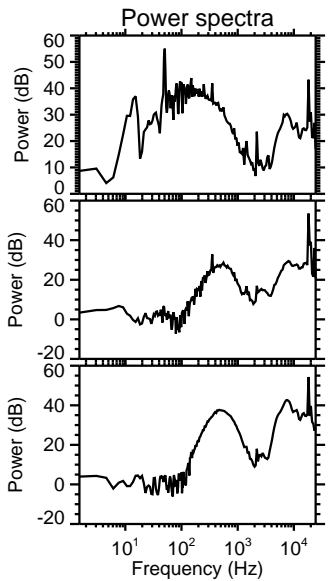
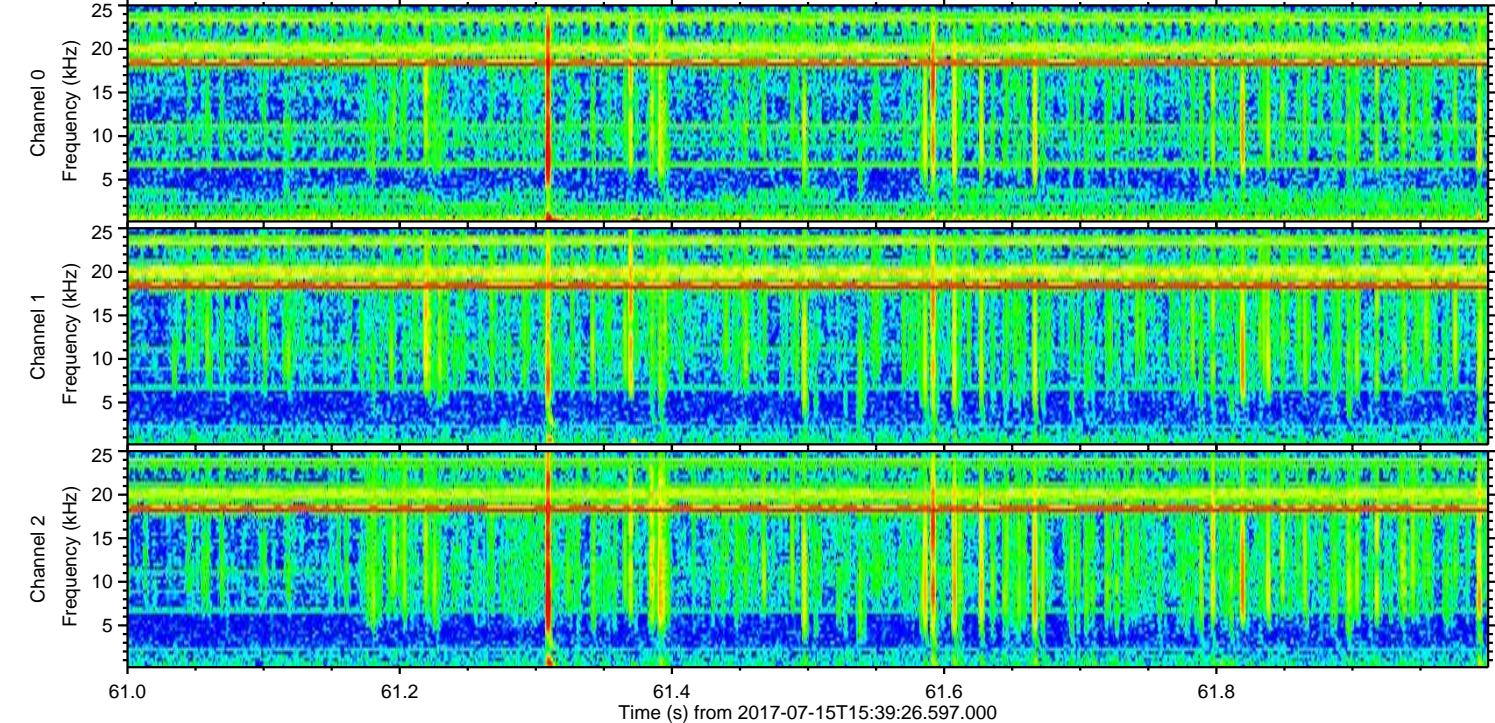
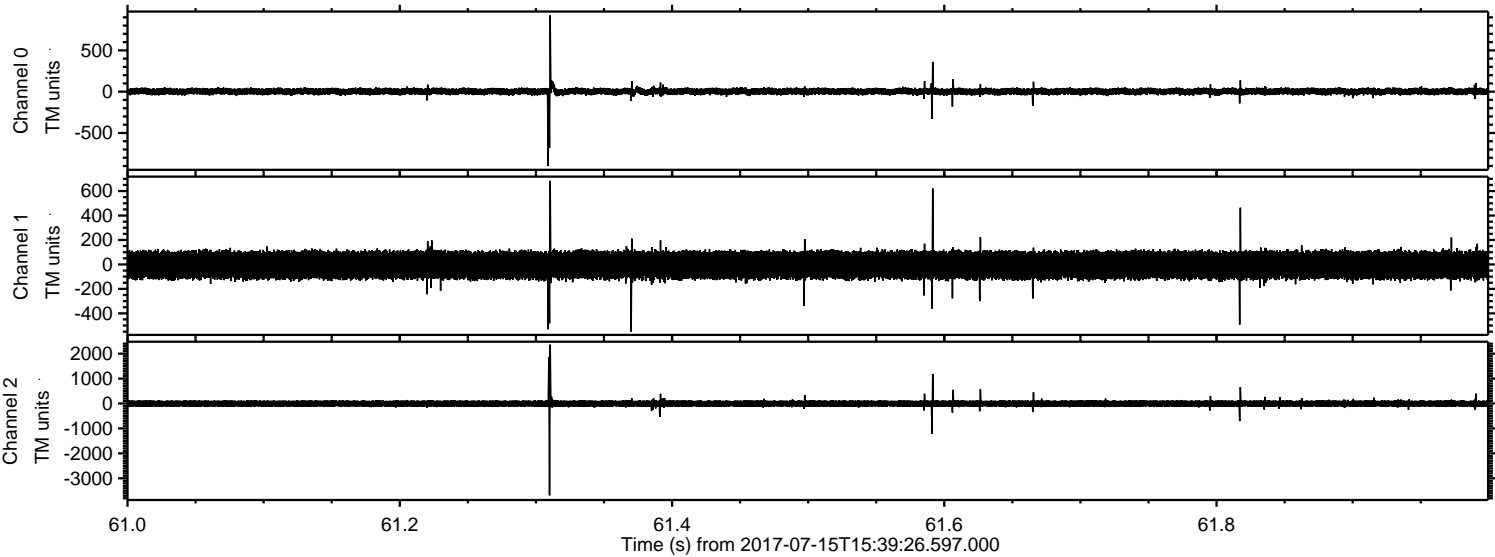
Channel 0  
mn: -1001  
mx: 877  
 $\mu$ : 3.1  
 $\sigma$ : 23.6

Channel 1  
mn: -652  
mx: 1181  
 $\mu$ : -4.9  
 $\sigma$ : 66.4

Channel 2  
mn: -4077  
mx: 2603  
 $\mu$ : -3.7  
 $\sigma$ : 80.7



Processed Thu Jul 20 11:53:36 2017 by ELM ver.2012-10-06 from 001\_\_elm20170715\_153925\_\_dat00.bin



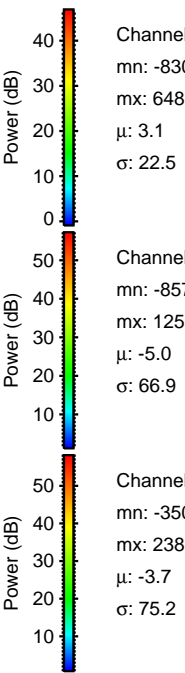
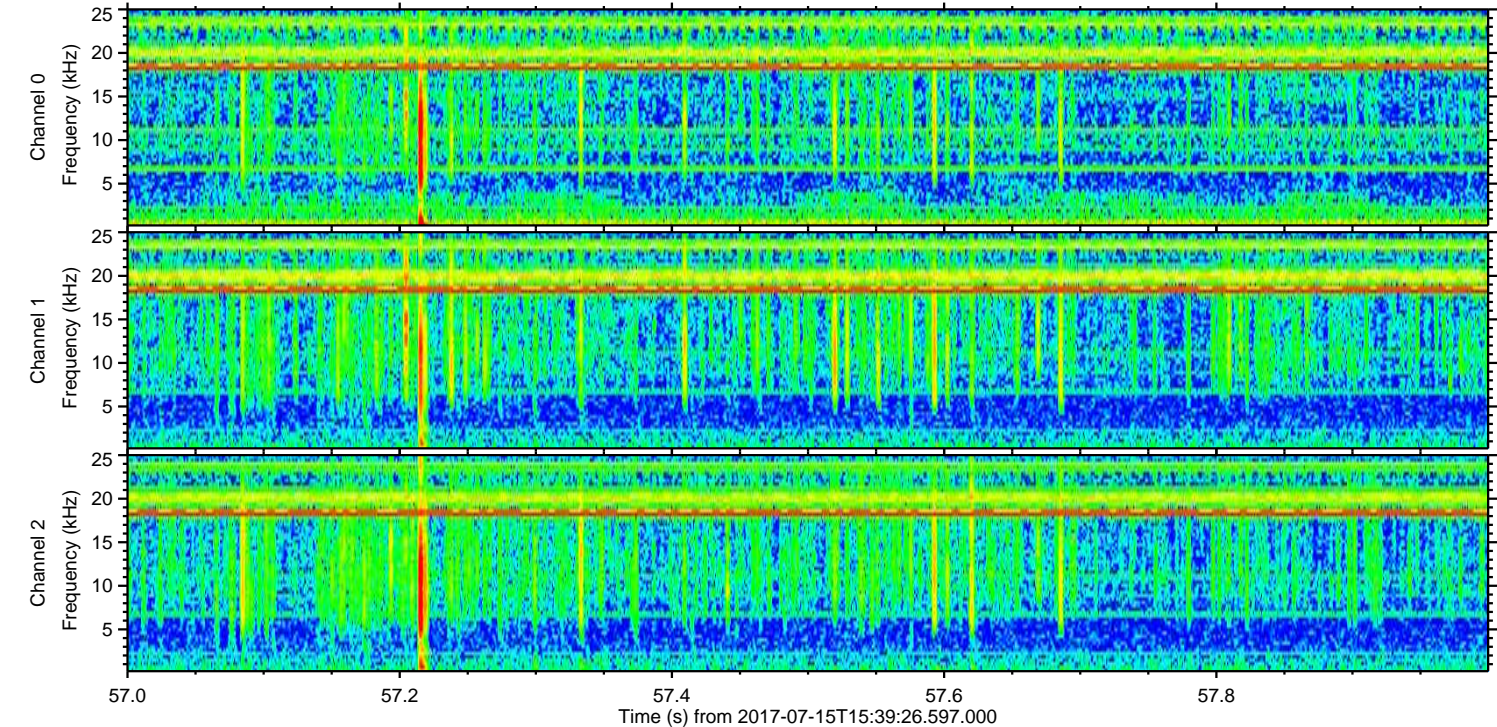
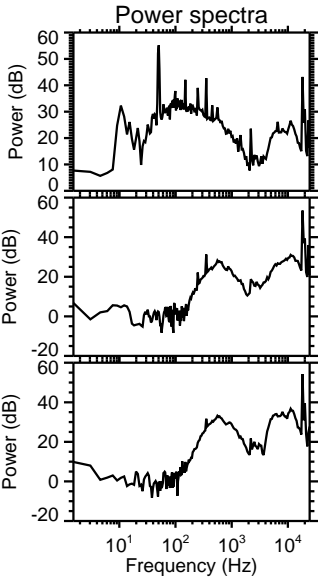
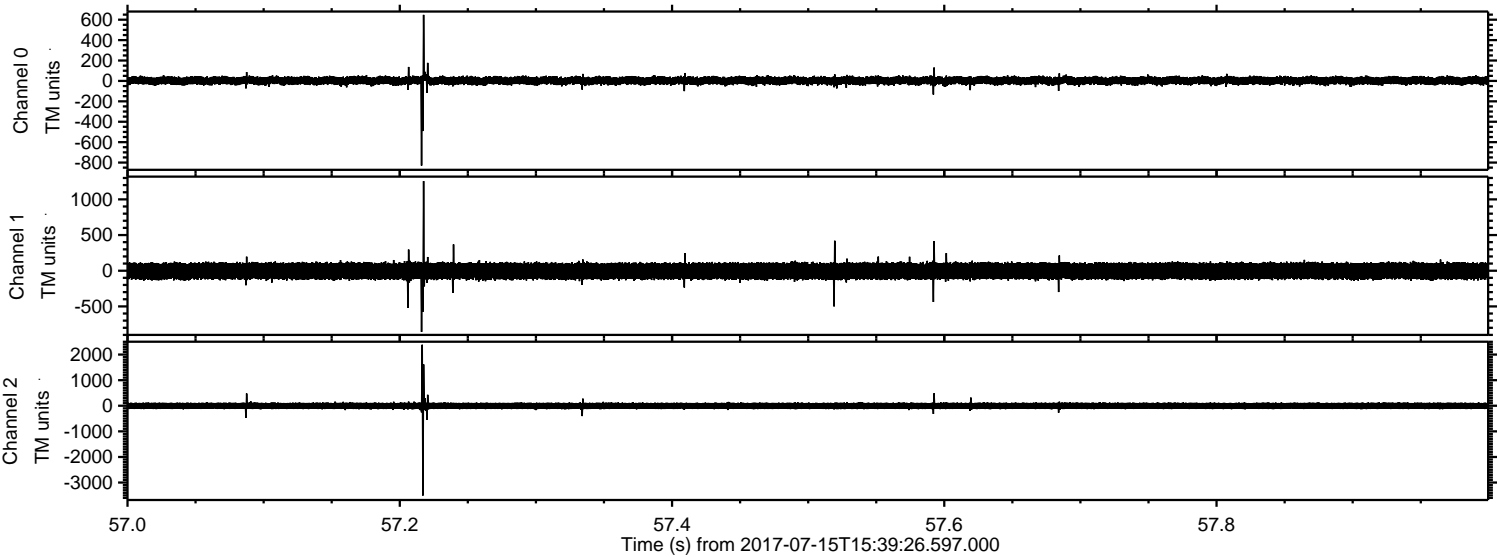
Channel 0  
mn: -901  
mx: 924  
 $\mu$ : 3.1  
 $\sigma$ : 23.5

Channel 1  
mn: -549  
mx: 684  
 $\mu$ : -4.9  
 $\sigma$ : 66.4

Channel 2  
mn: -3686  
mx: 2360  
 $\mu$ : -3.8  
 $\sigma$ : 78.1



Processed Thu Jul 20 11:53:37 2017 by ELM ver.2012-10-06 from 001\_\_elm20170715\_153925\_\_dat00.bin





Processed Thu Jul 20 11:53:38 2017 by ELM ver.2012-10-06 from 001\_\_elm20170715\_153925\_\_dat00.bin

