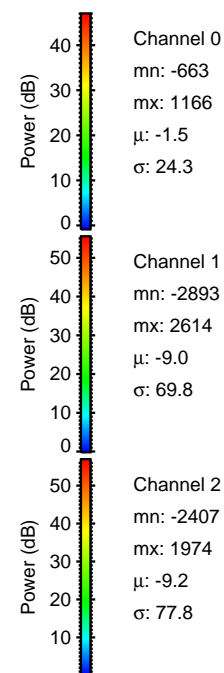
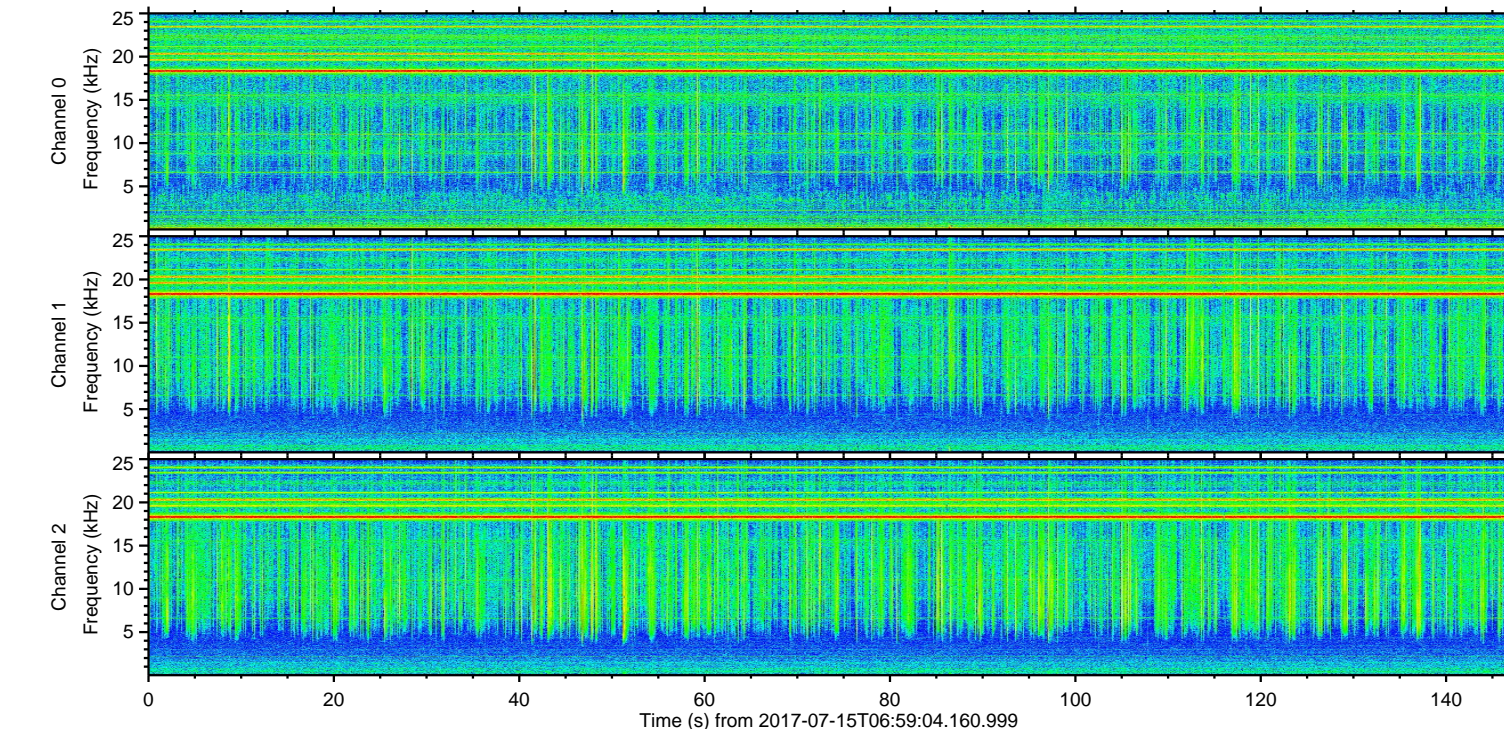
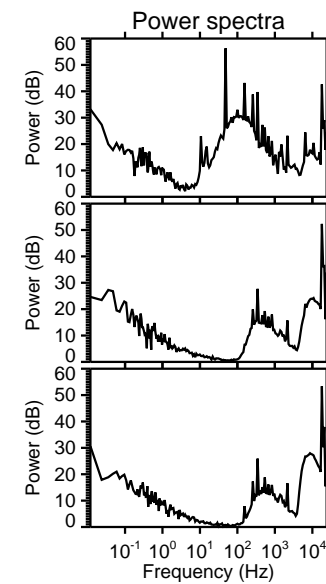
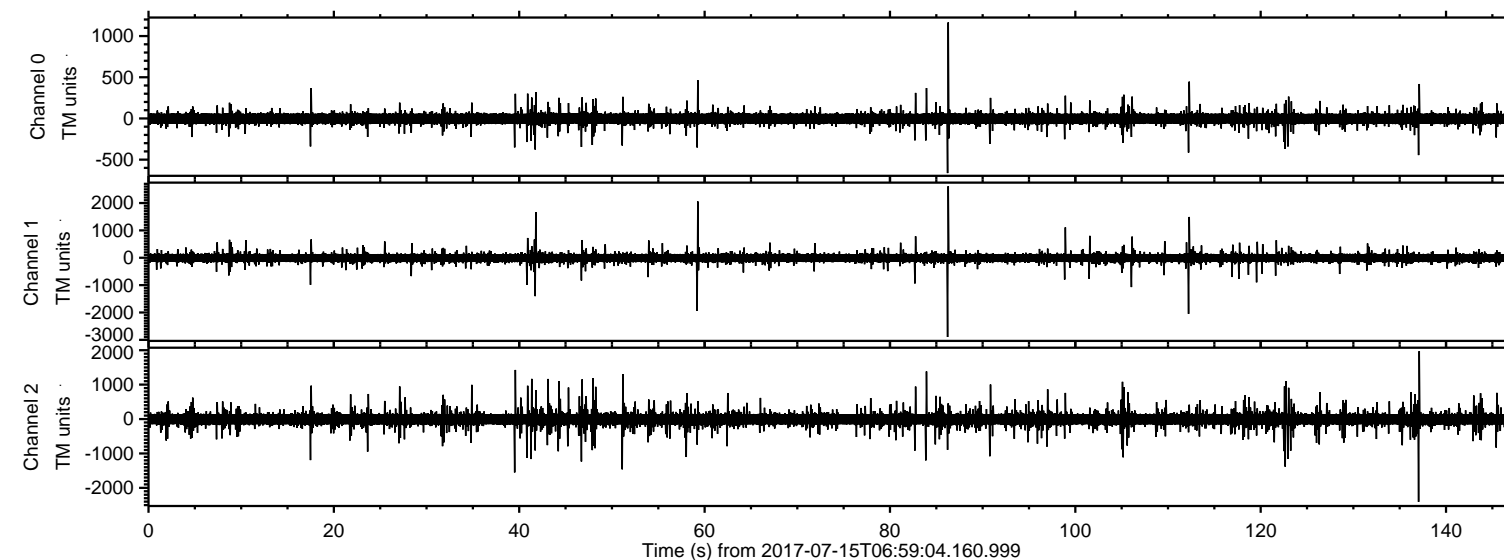
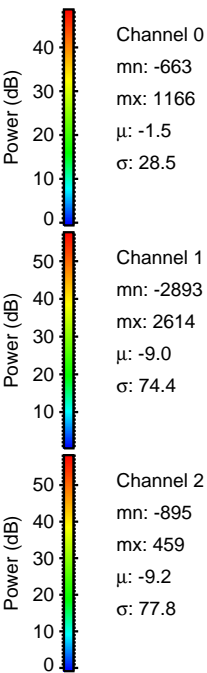
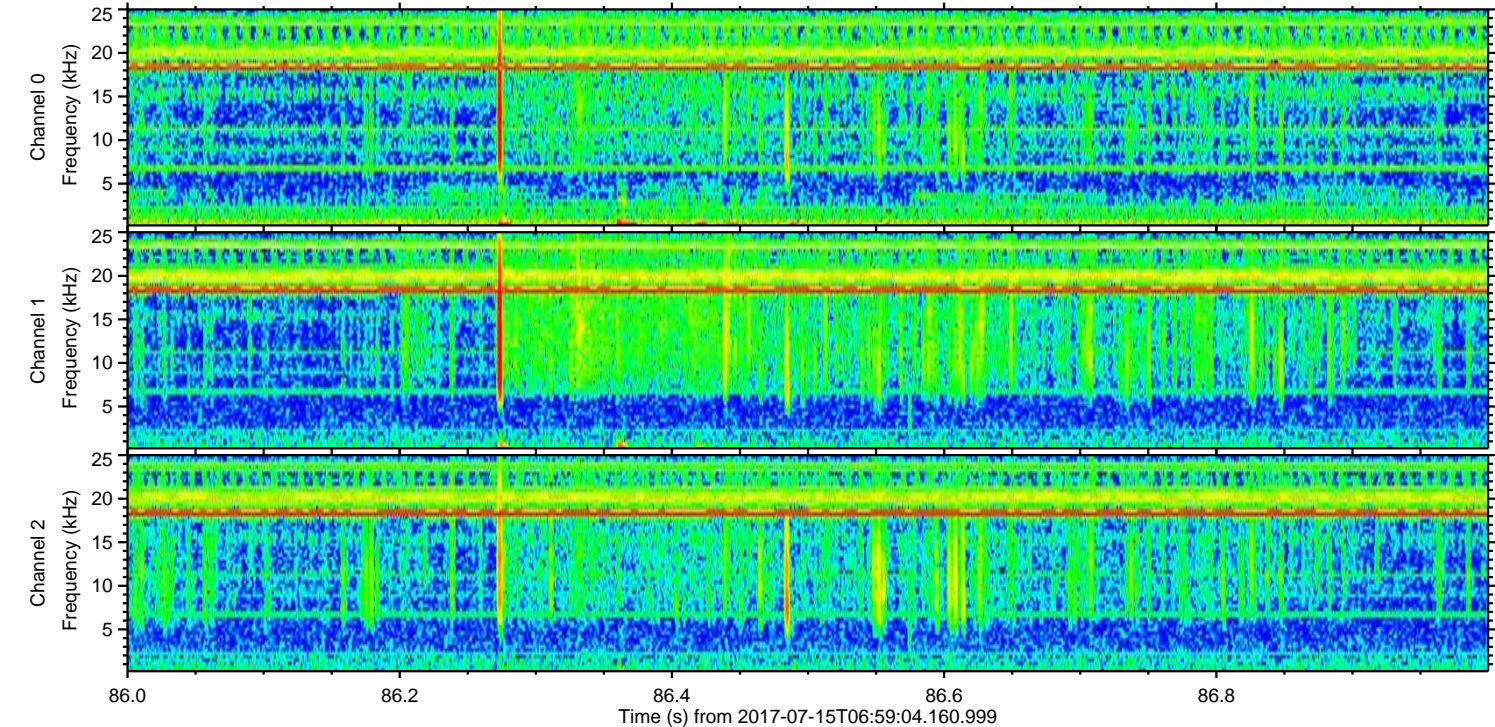
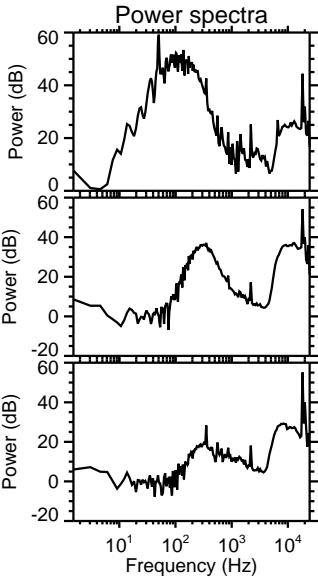
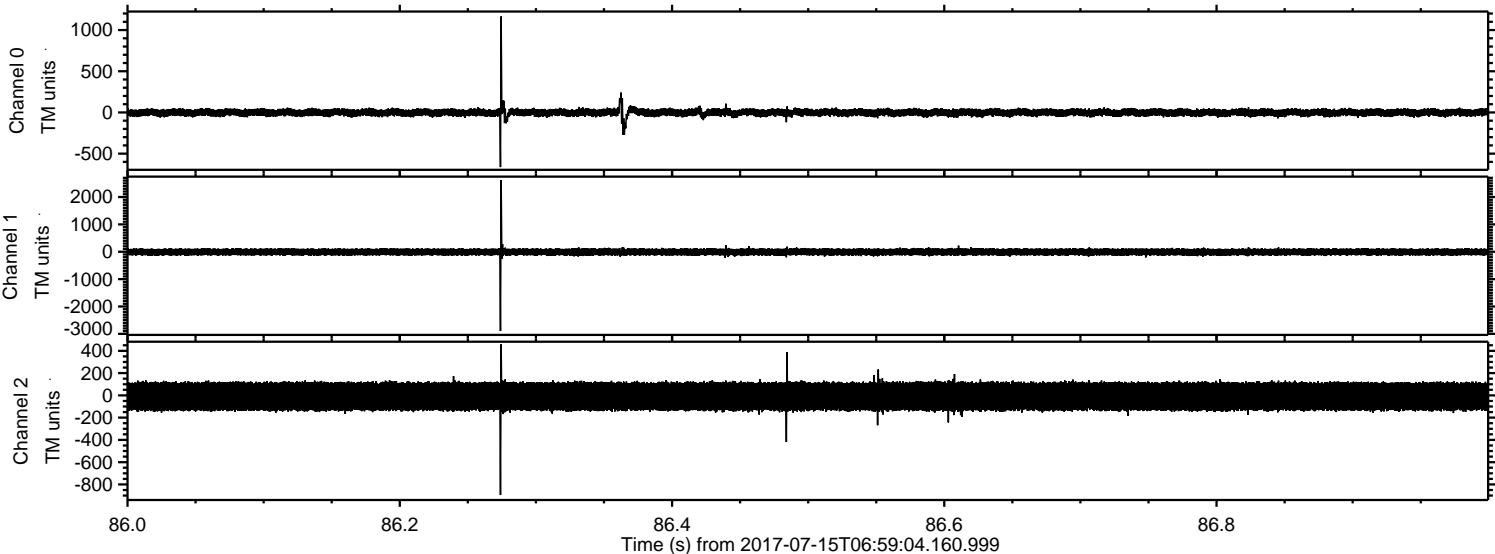


ELMAVAN 3D WAVEFORMS (Measured data sampled at 50 kHz) 51000 packets of 144 samples from 2017-07-15T06:59:04.160.999.

Processed Thu Jul 20 10:38:54 2017 by ELM ver.2012-10-06 from 001__elm20170715_065903__dat00.bin

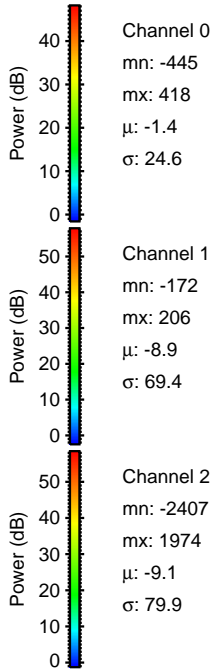
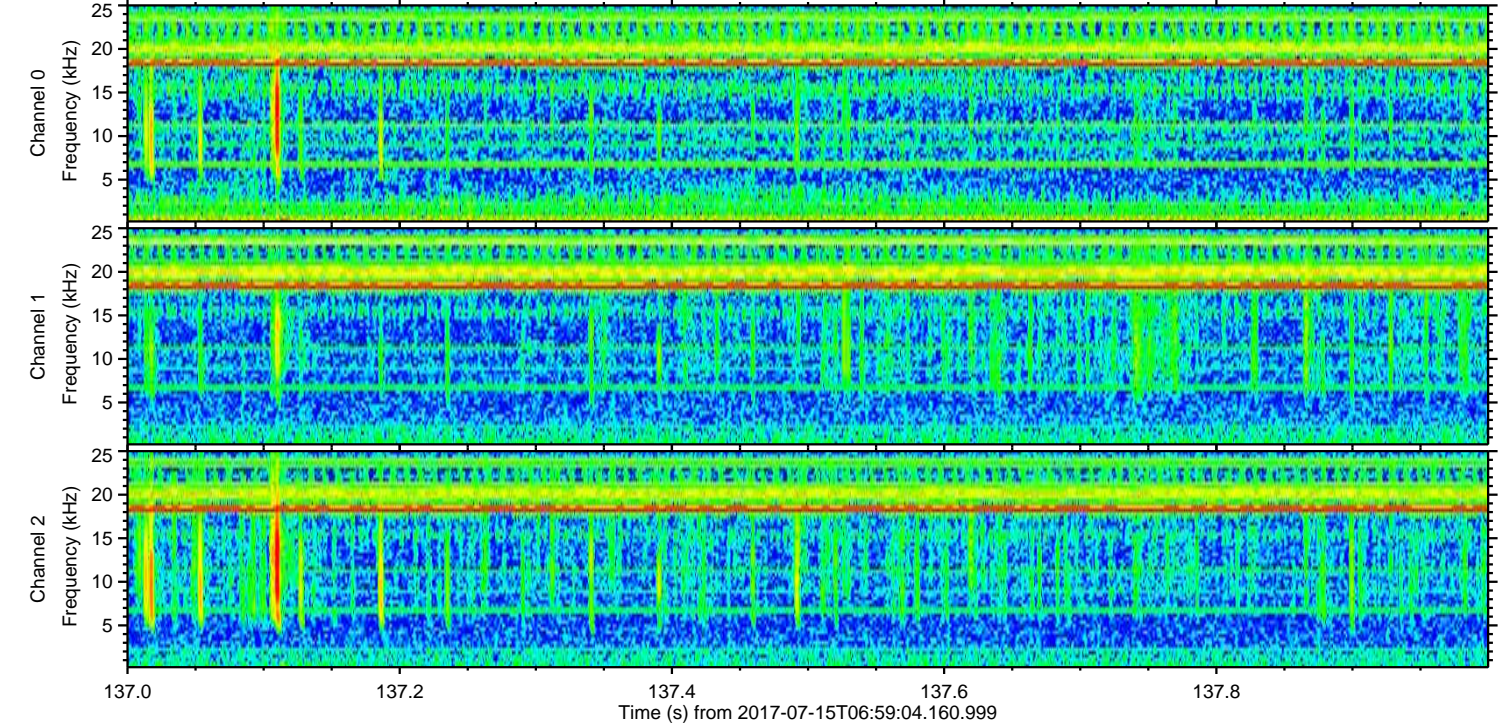
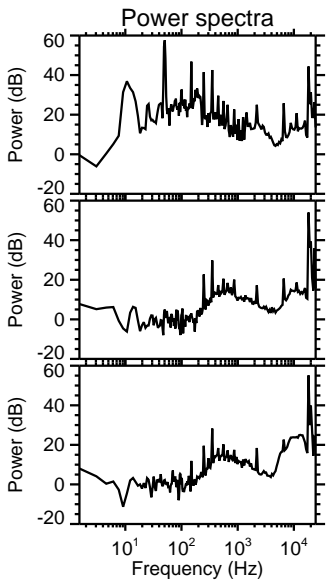
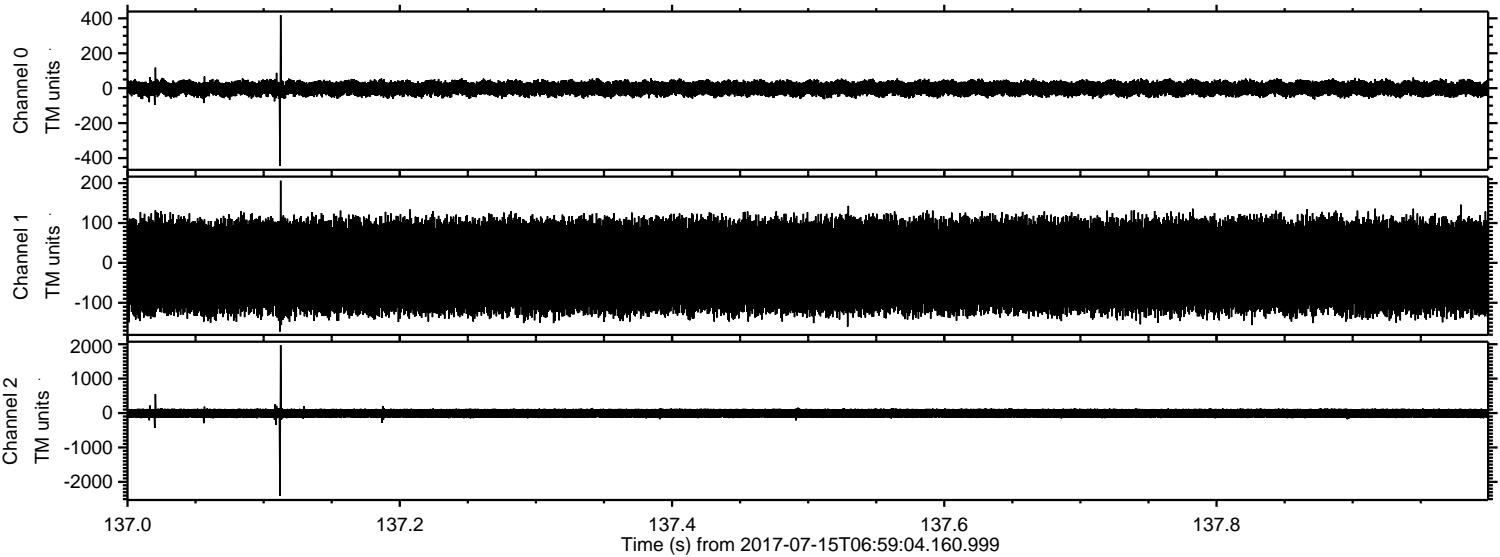


Processed Thu Jul 20 10:39:02 2017 by ELM ver.2012-10-06 from 001__elm20170715_065903__dat00.bin

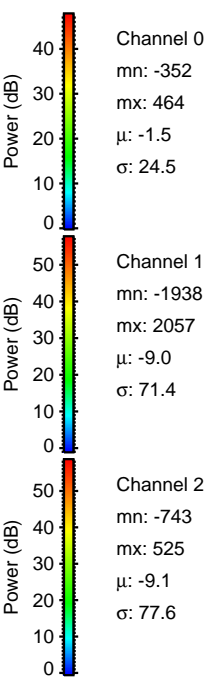
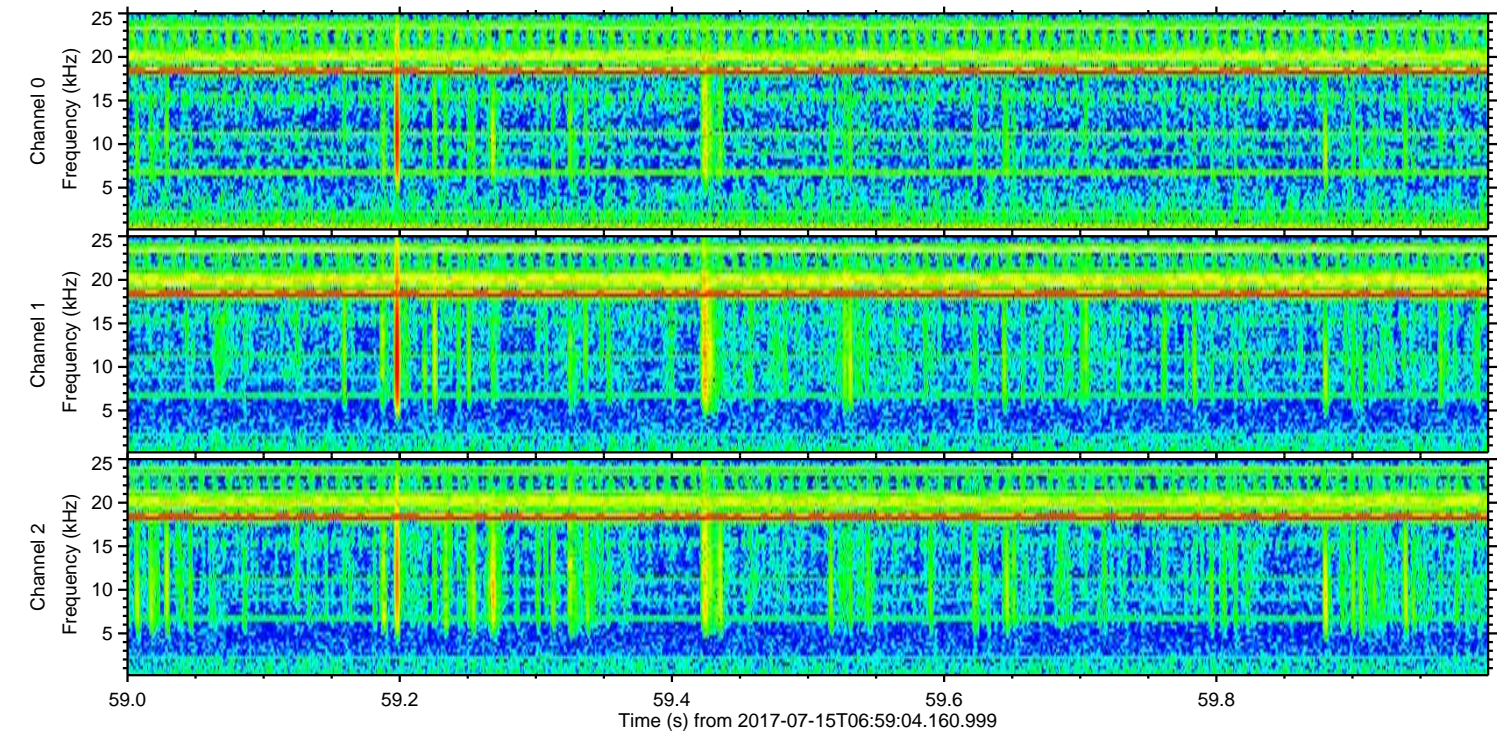
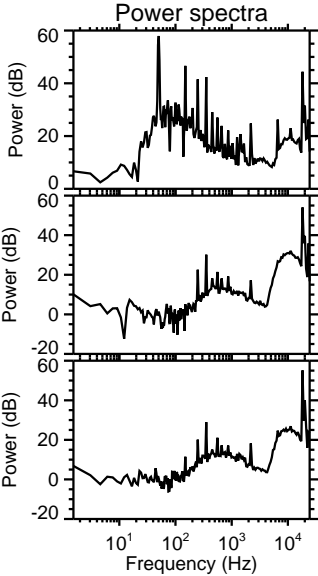
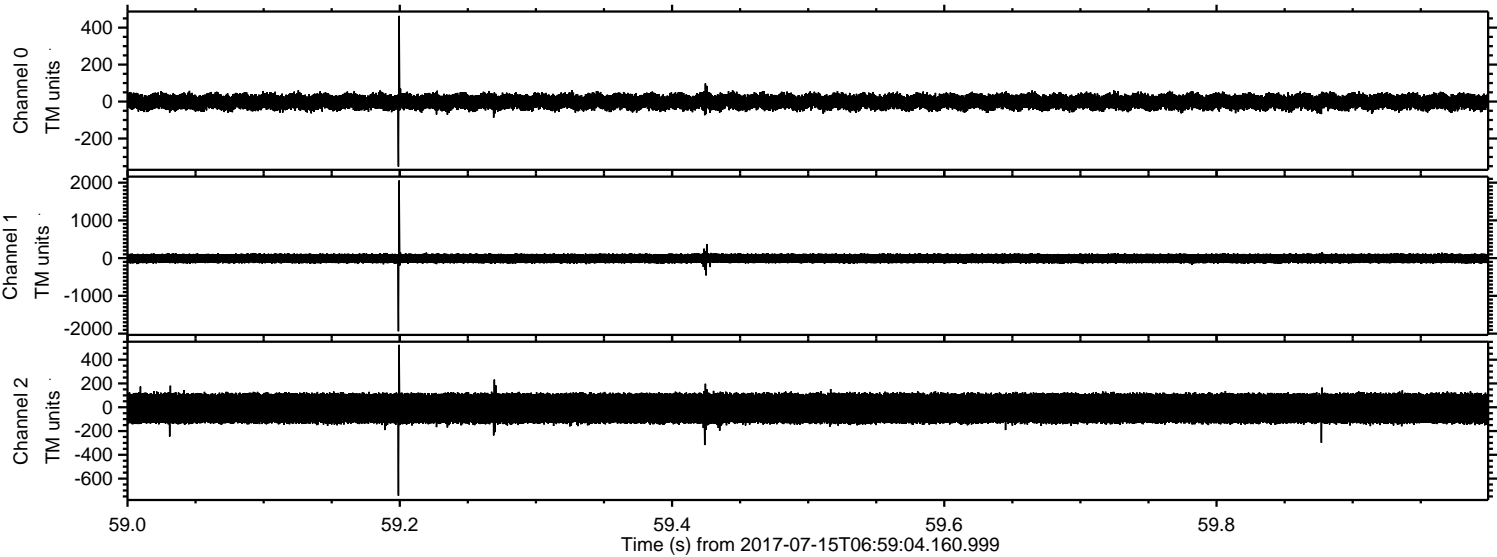


ELMAVAN 3D WAVEFORMS (Measured data sampled at 50 kHz) 51000 packets of 144 samples from 2017-07-15T06:59:04.160.999. Part 138/147

Processed Thu Jul 20 10:39:03 2017 by ELM ver.2012-10-06 from 001__elm20170715_065903__dat00.bin

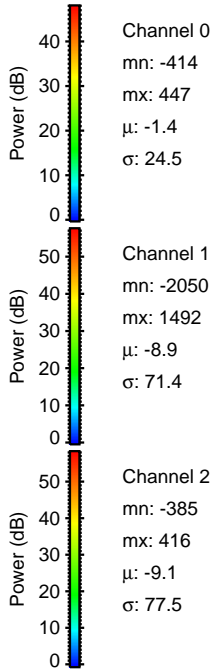
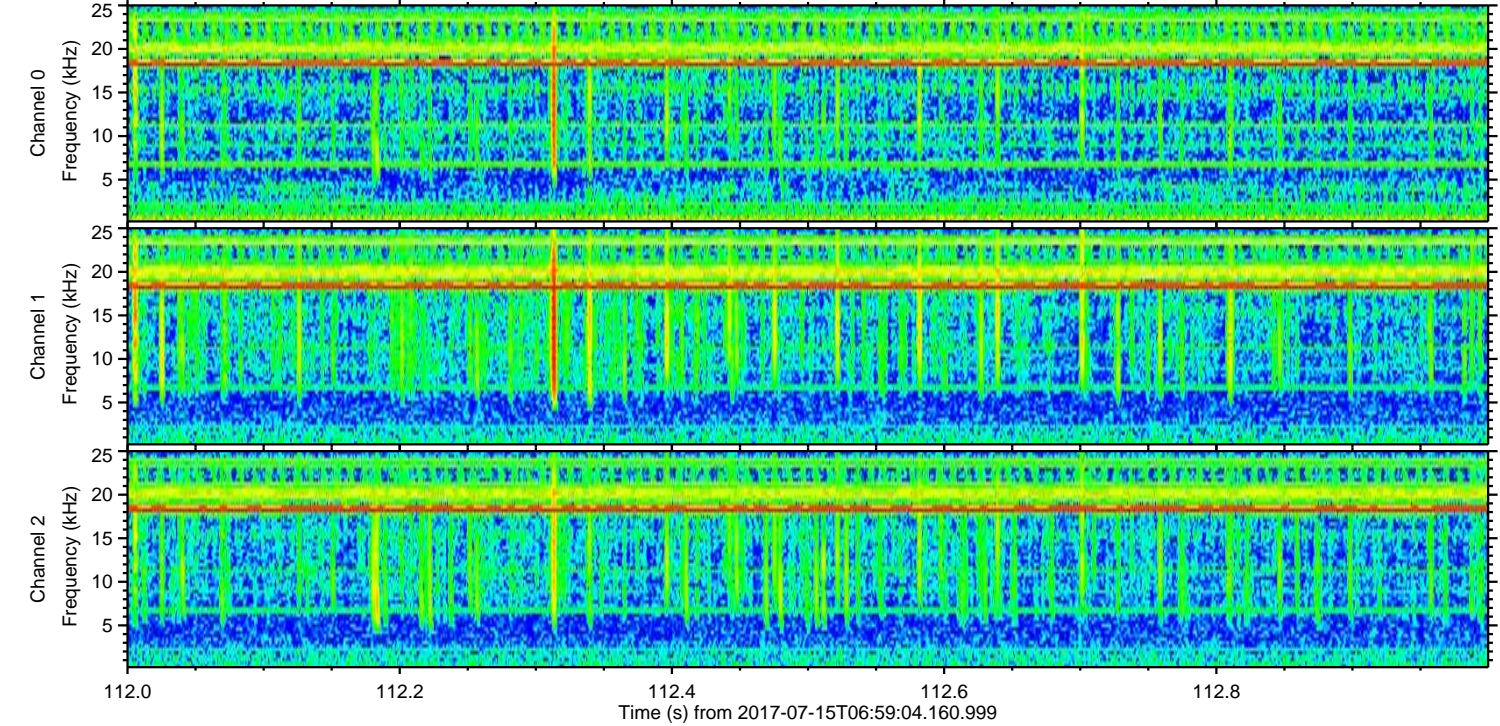
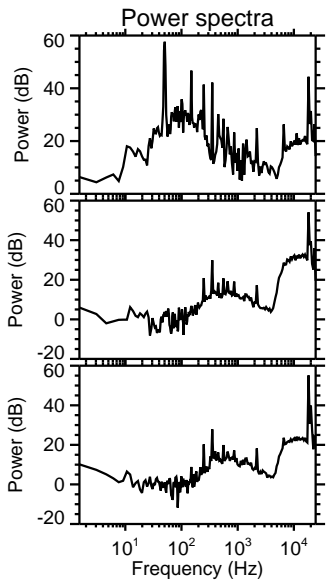
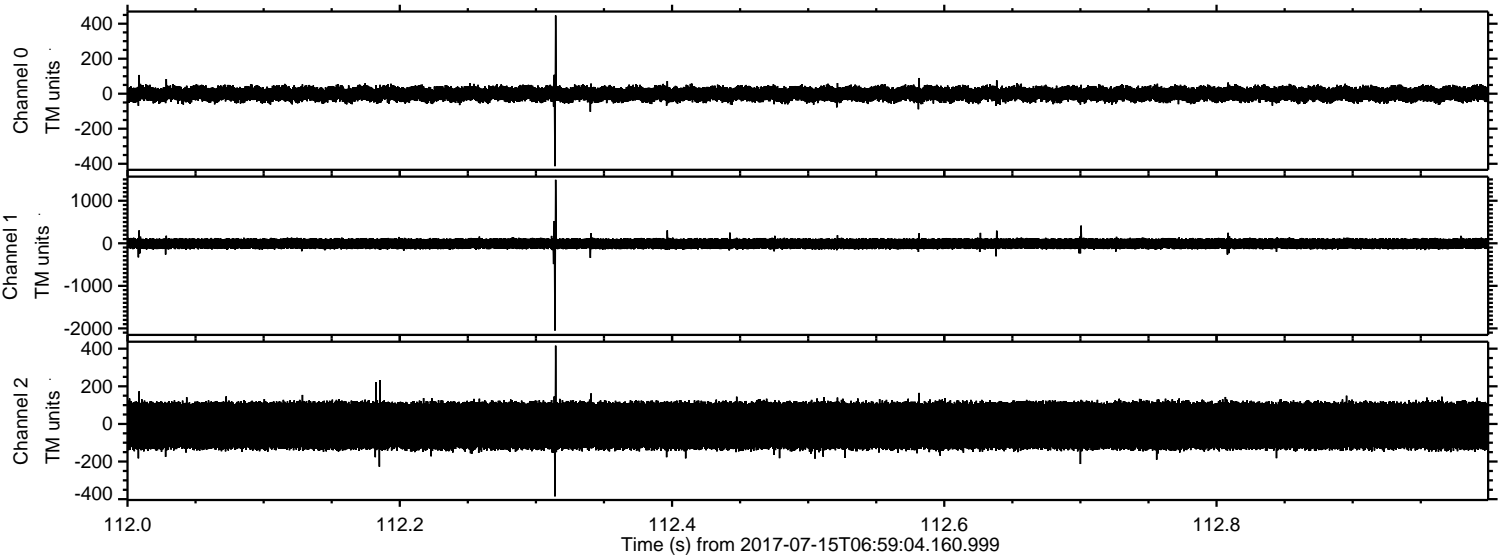


Processed Thu Jul 20 10:39:04 2017 by ELM ver.2012-10-06 from 001__elm20170715_065903__dat00.bin

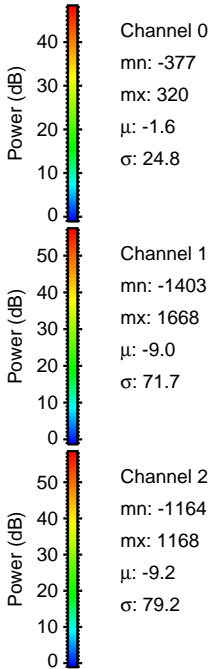
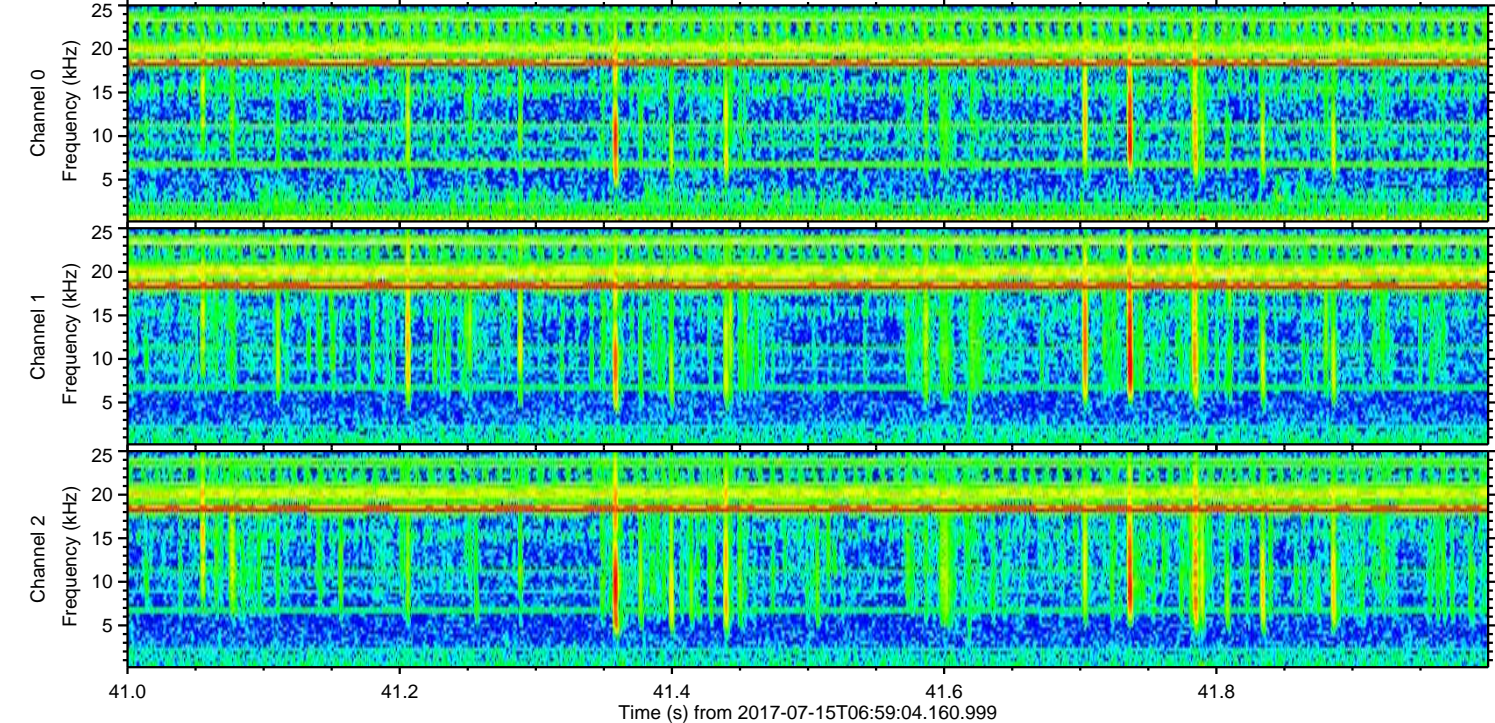
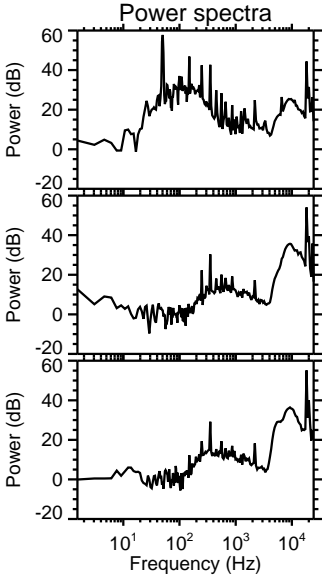
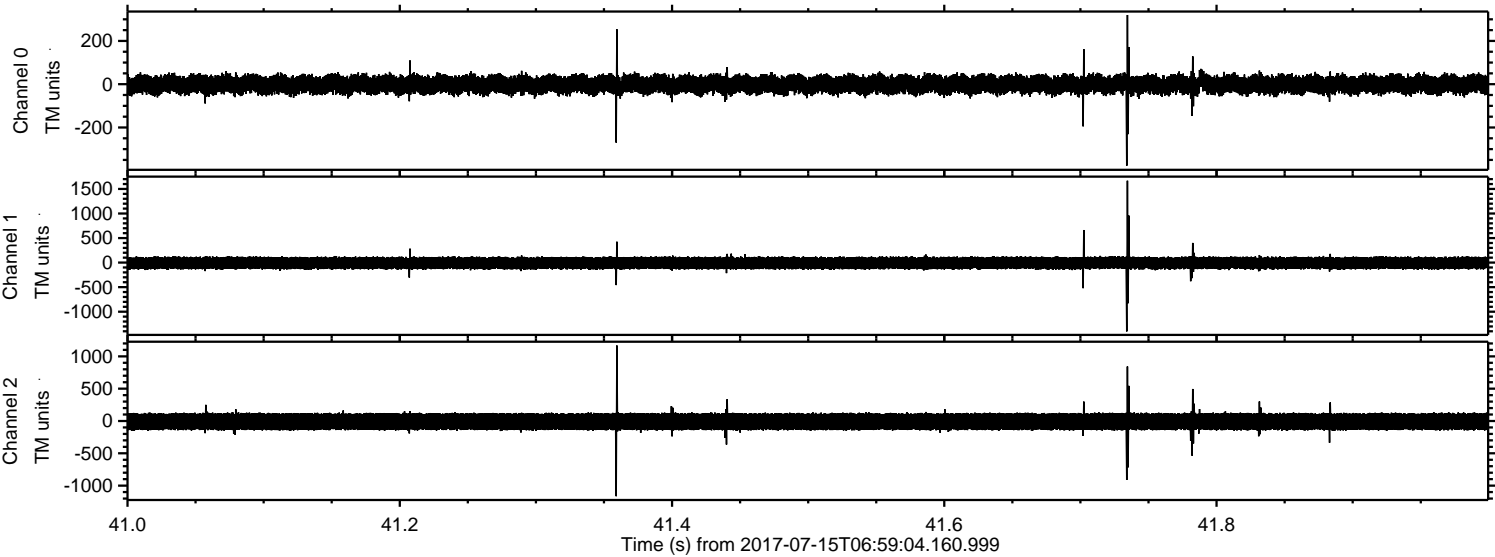


ELMAVAN 3D WAVEFORMS (Measured data sampled at 50 kHz) 51000 packets of 144 samples from 2017-07-15T06:59:04.160.999. Part 113/147

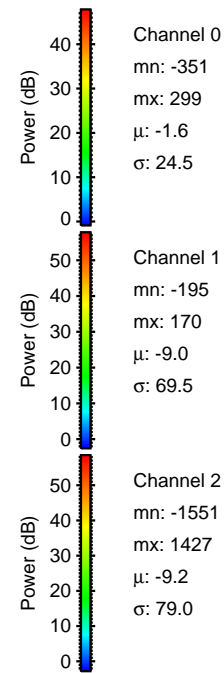
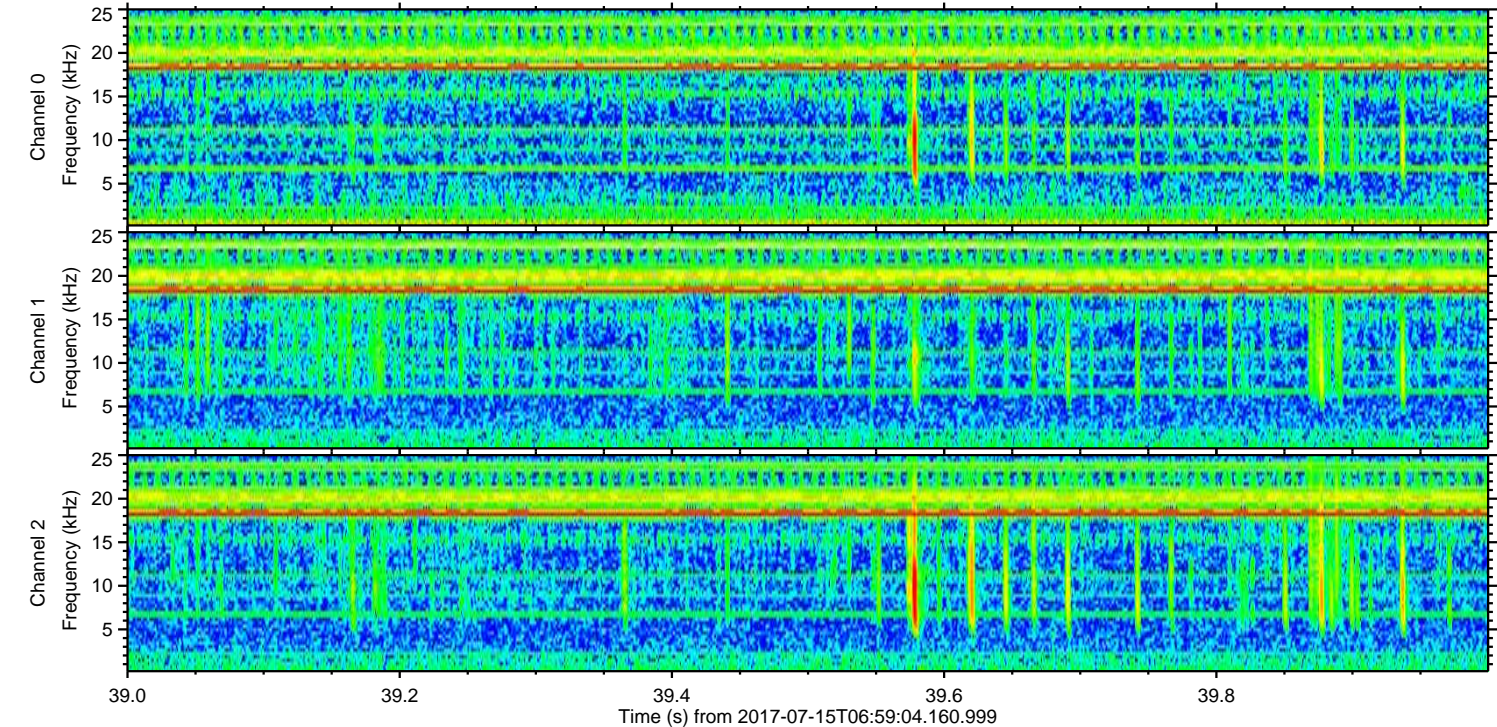
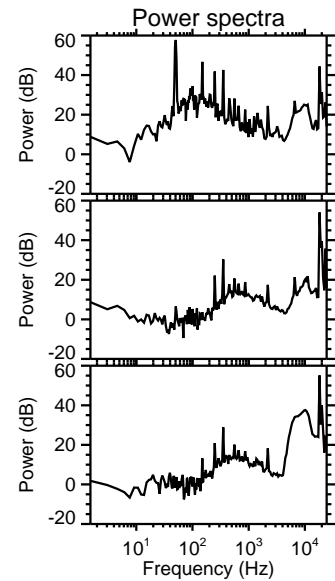
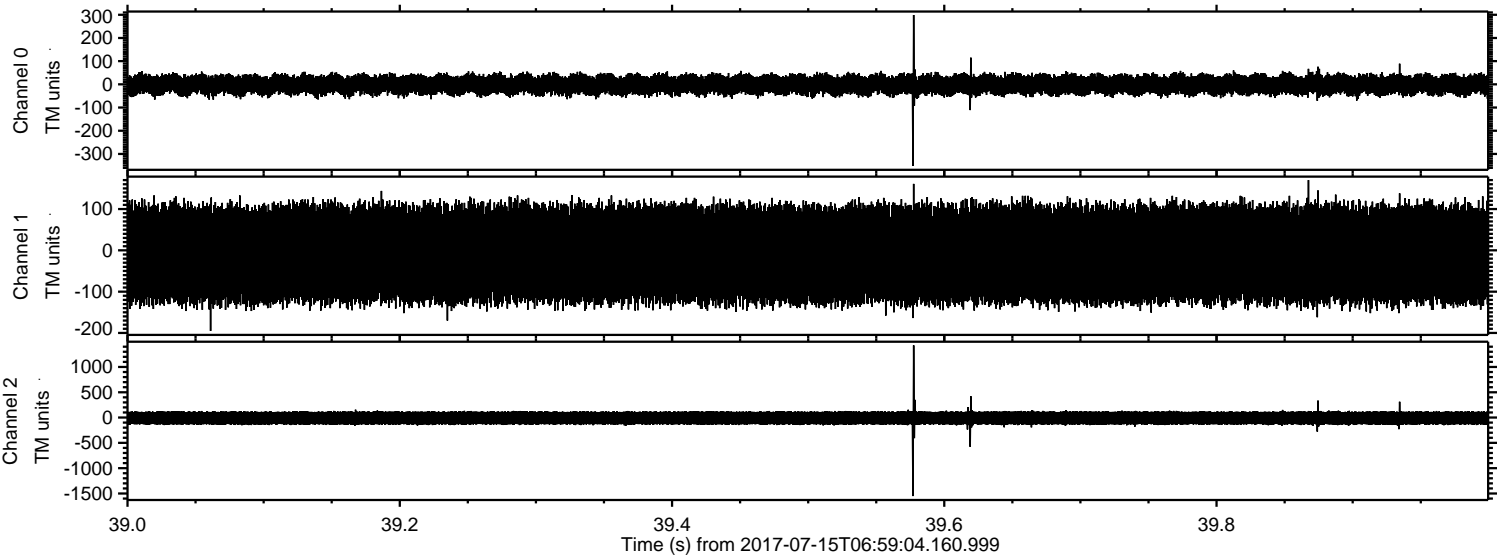
Processed Thu Jul 20 10:39:05 2017 by ELM ver.2012-10-06 from 001__elm20170715_065903__dat00.bin



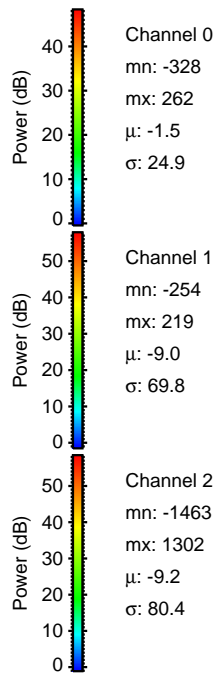
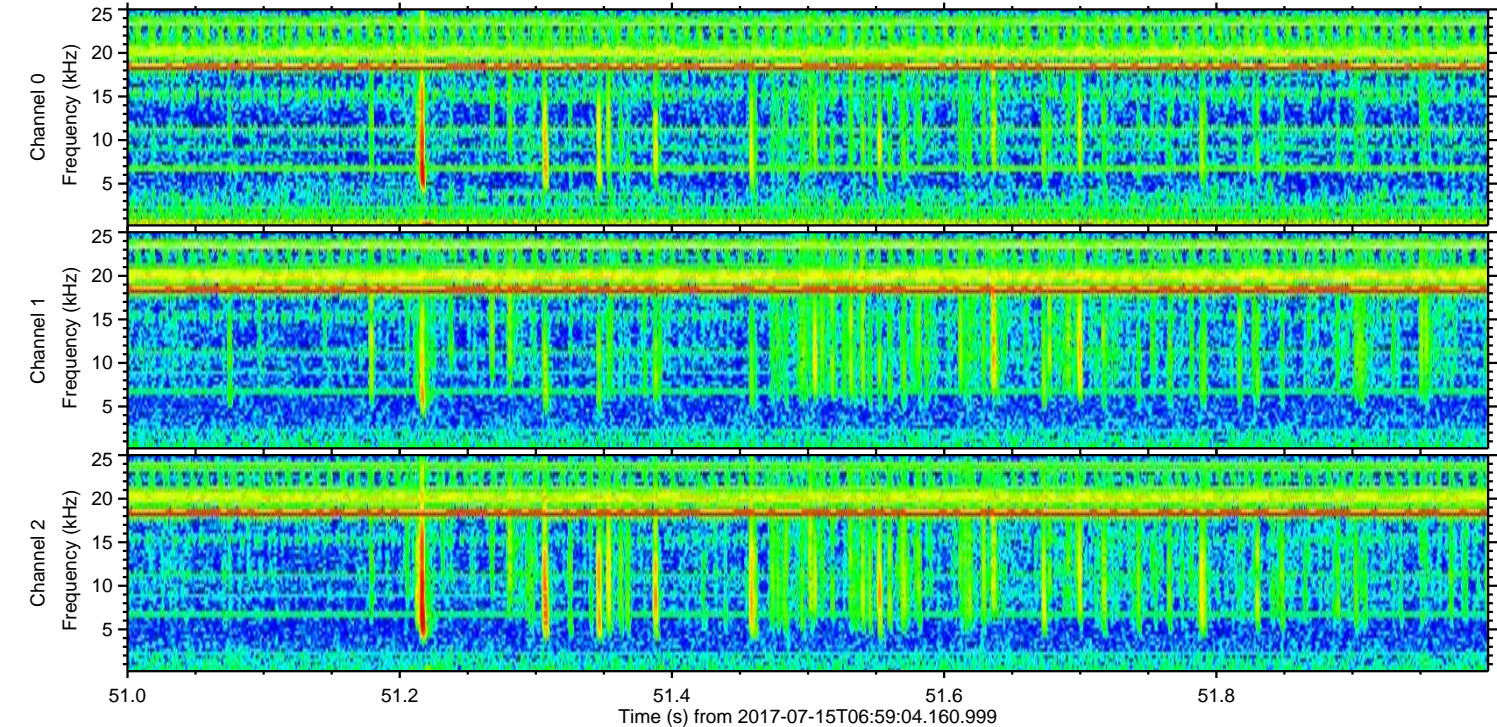
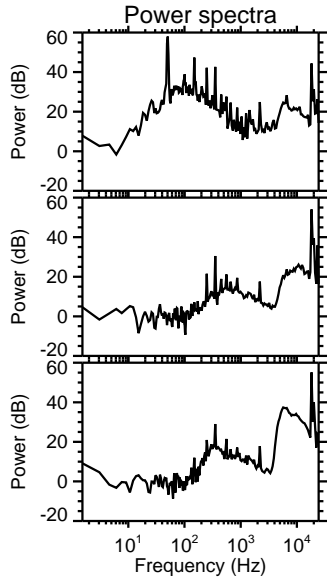
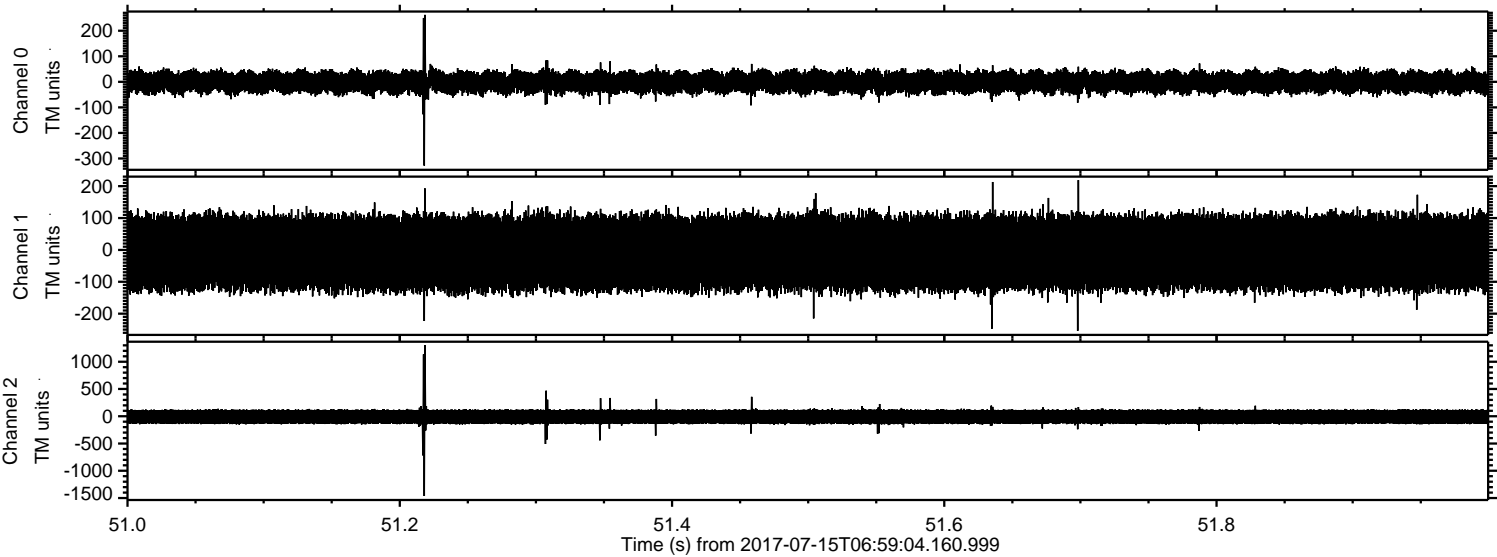
Processed Thu Jul 20 10:39:06 2017 by ELM ver.2012-10-06 from 001__elm20170715_065903__dat00.bin



Processed Thu Jul 20 10:39:06 2017 by ELM ver.2012-10-06 from 001__elm20170715_065903__dat00.bin

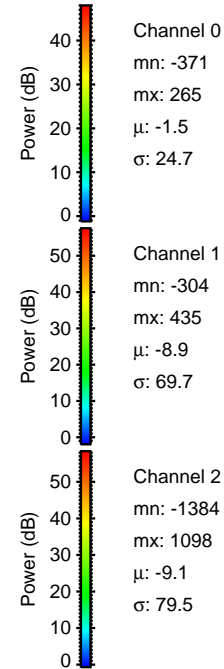
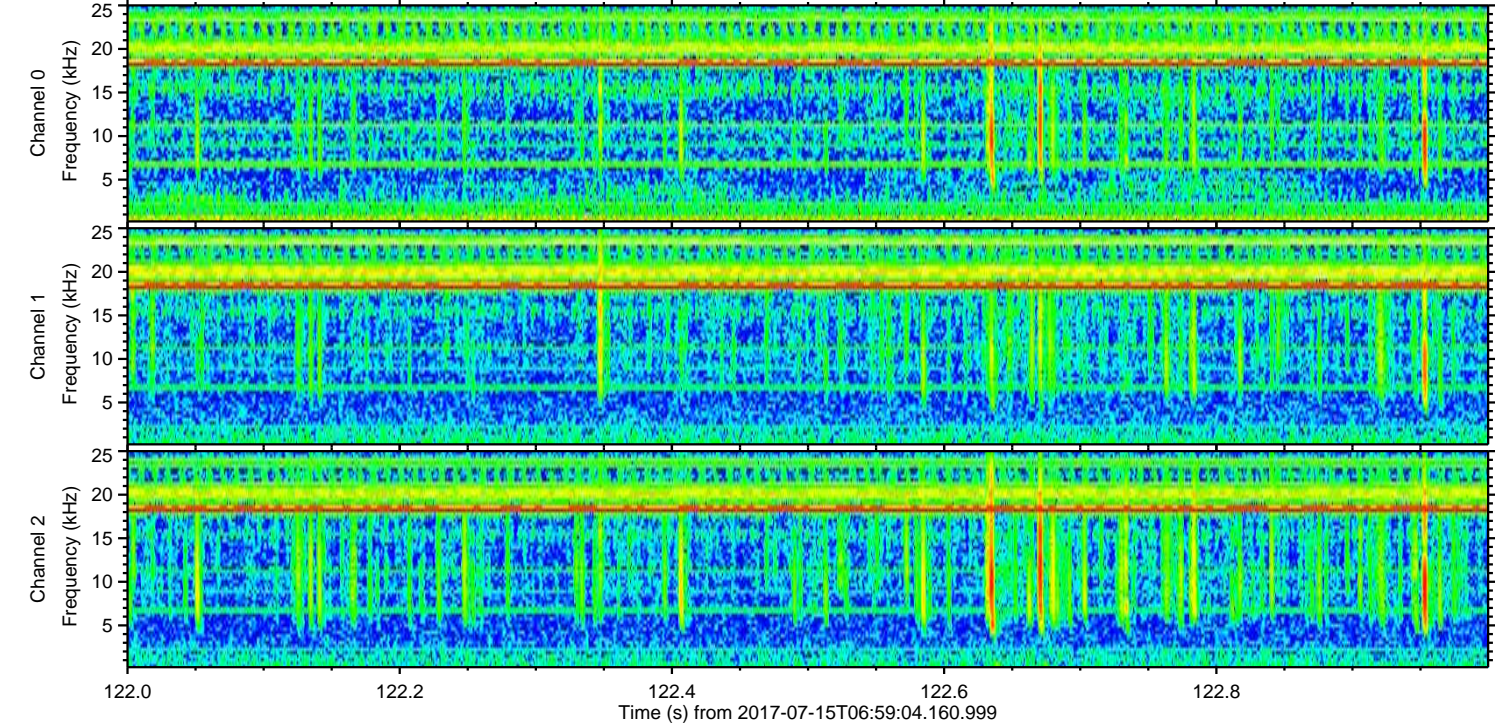
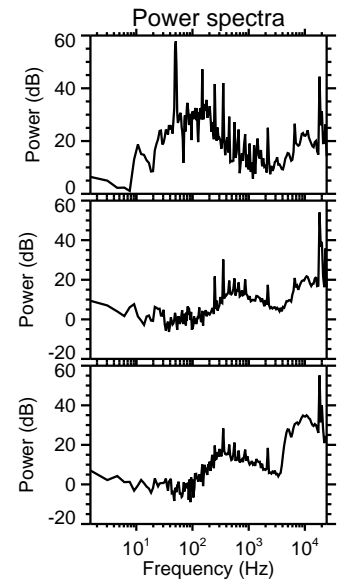
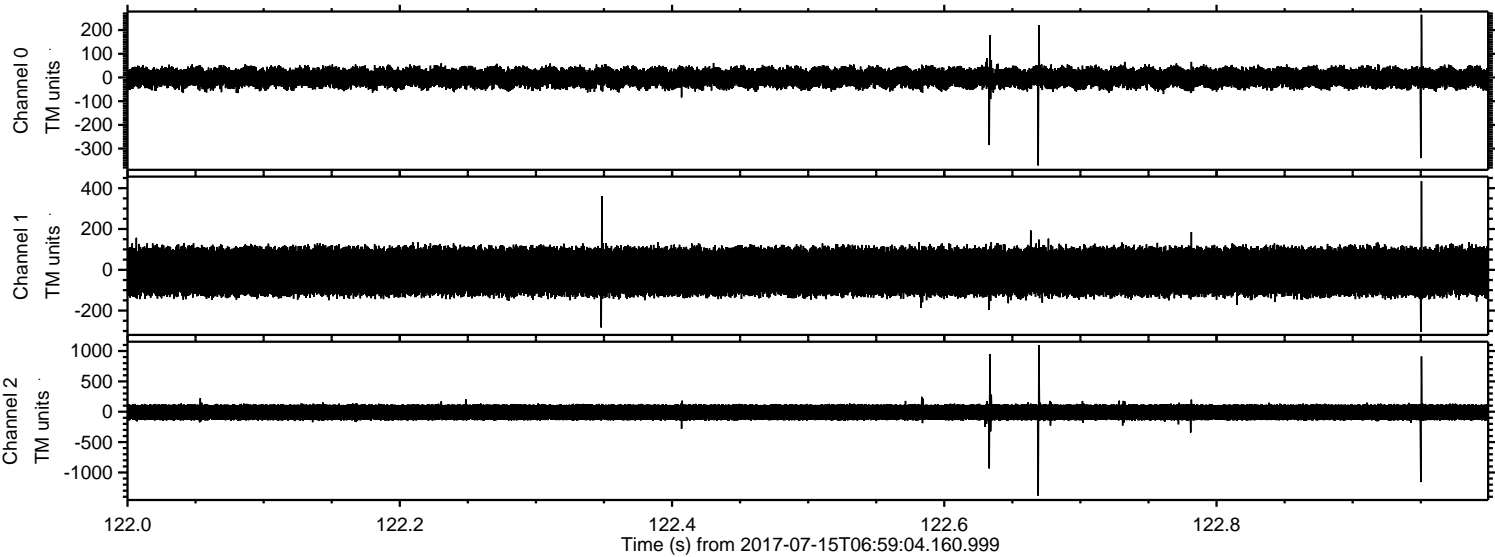


Processed Thu Jul 20 10:39:07 2017 by ELM ver.2012-10-06 from 001__elm20170715_065903__dat00.bin



ELMAVAN 3D WAVEFORMS (Measured data sampled at 50 kHz) 51000 packets of 144 samples from 2017-07-15T06:59:04.160.999. Part 123/147

Processed Thu Jul 20 10:39:08 2017 by ELM ver.2012-10-06 from 001__elm20170715_065903__dat00.bin



Channel 0
mn: -371
mx: 265
 μ : -1.5
 σ : 24.7

Channel 1
mn: -304
mx: 435
 μ : -8.9
 σ : 69.7

Channel 2
mn: -1384
mx: 1098
 μ : -9.1
 σ : 79.5

Processed Thu Jul 20 10:39:08 2017 by ELM ver.2012-10-06 from 001__elm20170715_065903__dat00.bin

