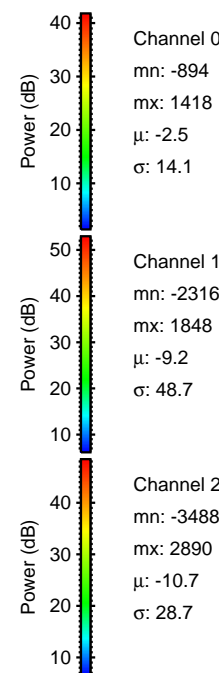
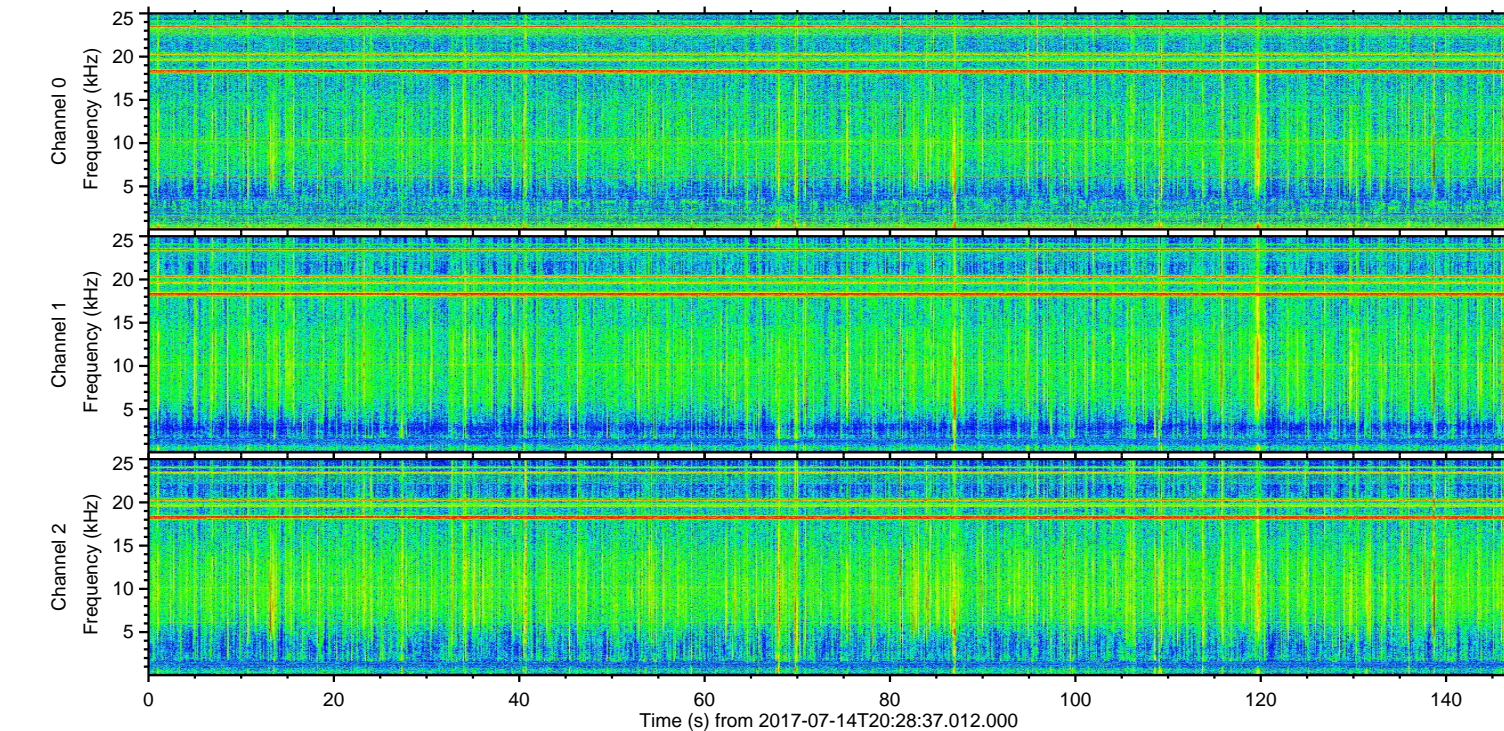
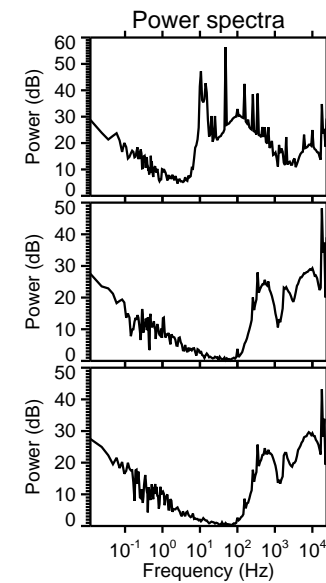
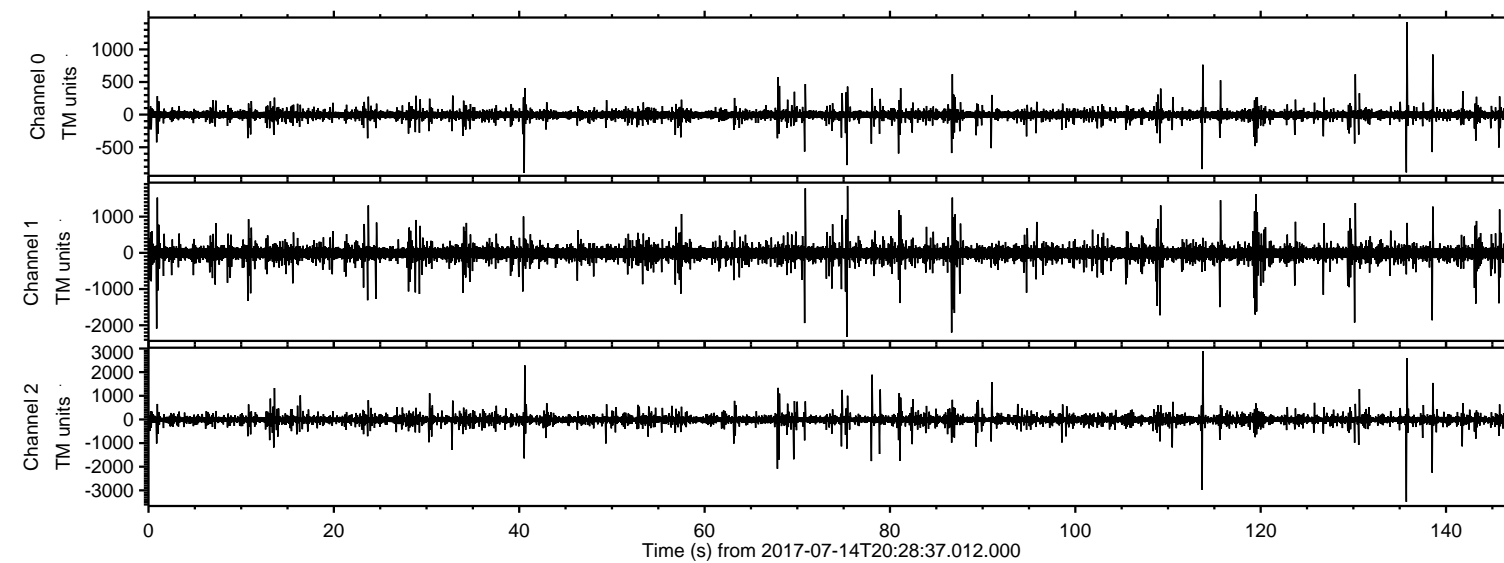


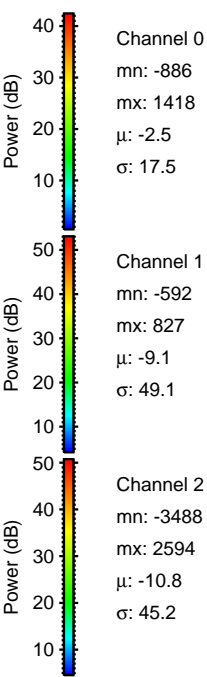
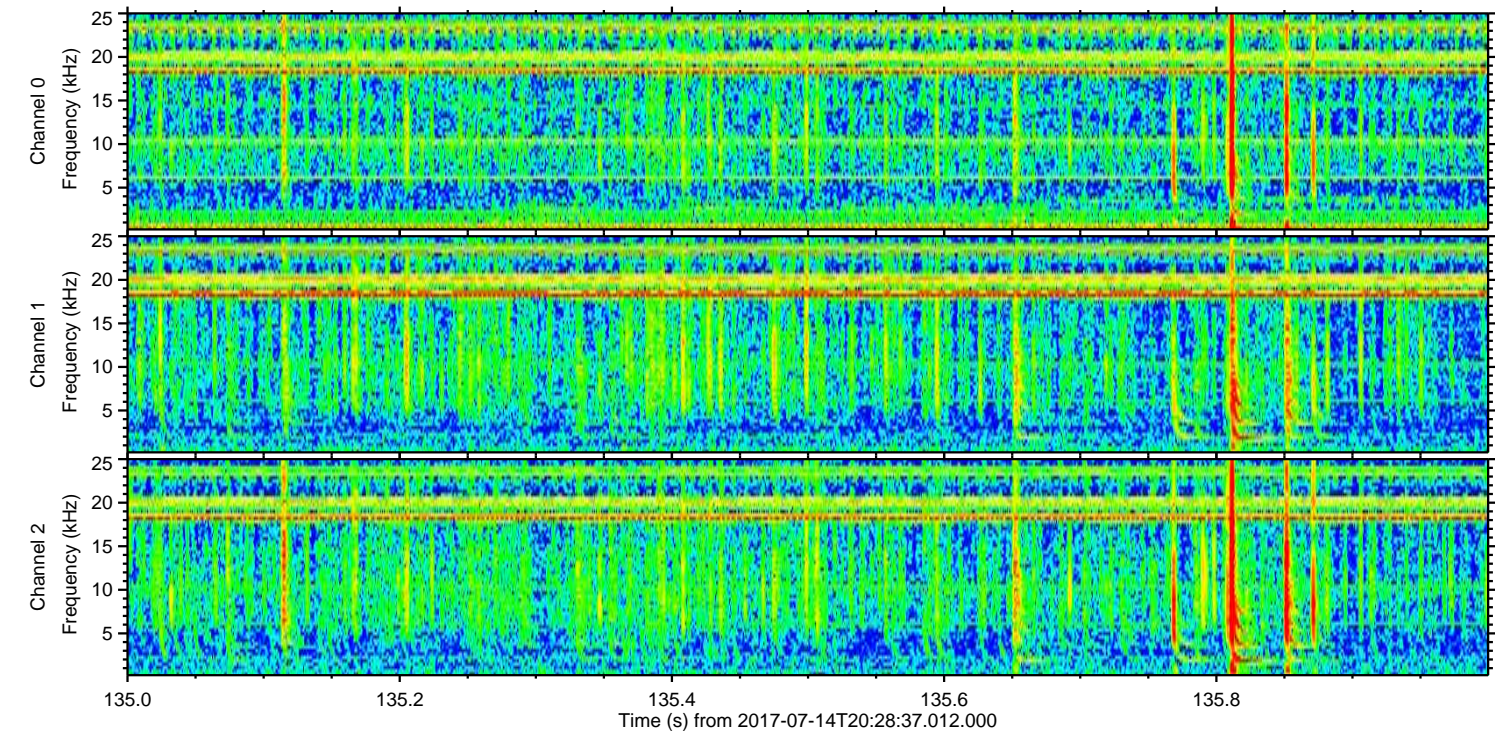
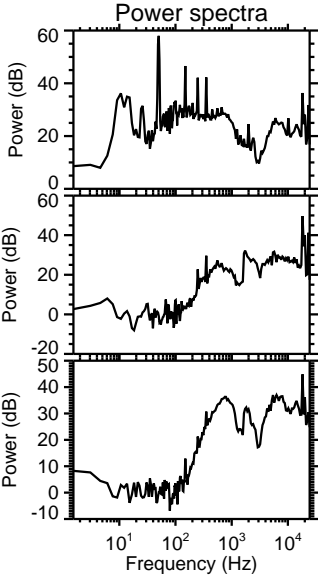
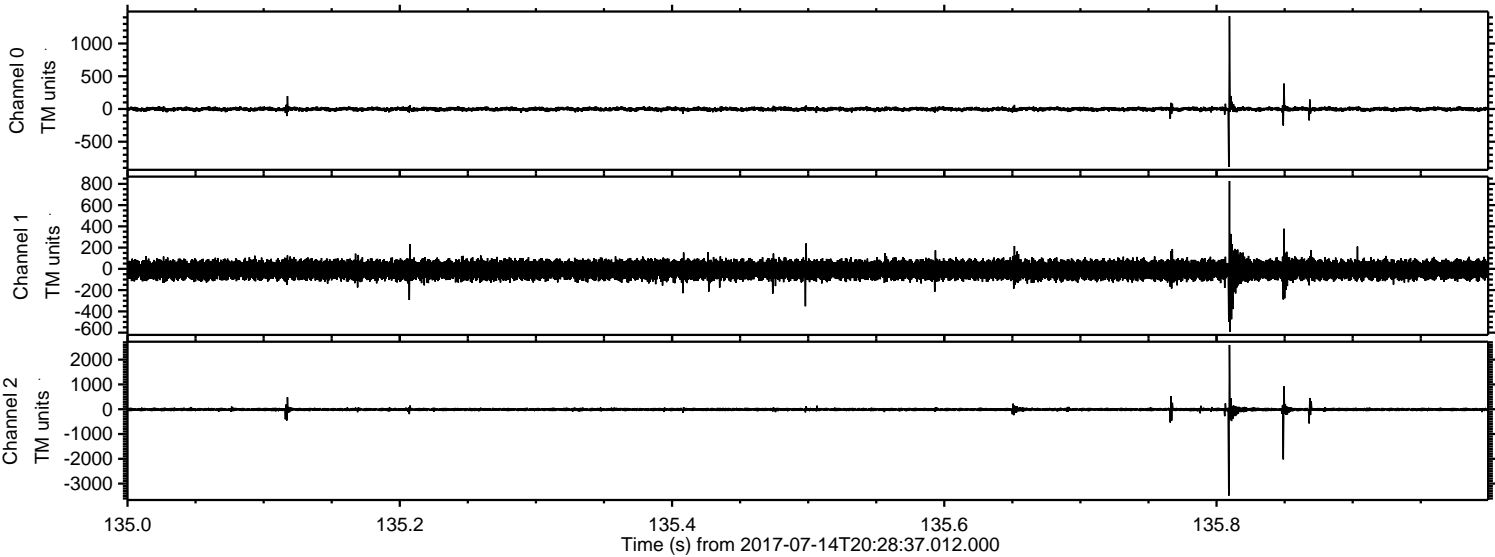
# ELMAVAN 3D WAVEFORMS (Measured data sampled at 50 kHz) 51000 packets of 144 samples from 2017-07-14T20:28:37.012.000.

Processed Thu Jul 20 09:06:56 2017 by ELM ver.2012-10-06 from 001\_\_elm20170714\_202836\_\_dat00.bin



ELMAVAN 3D WAVEFORMS (Measured data sampled at 50 kHz) 51000 packets of 144 samples from 2017-07-14T20:28:37.012.000. Part 136/147

Processed Thu Jul 20 09:07:04 2017 by ELM ver.2012-10-06 from 001\_\_elm20170714\_202836\_\_dat00.bin



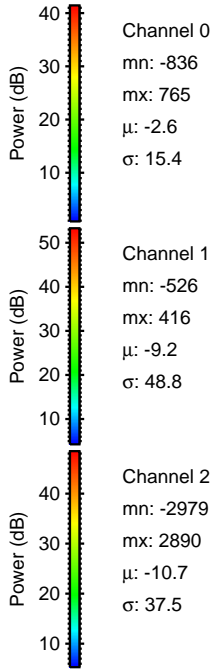
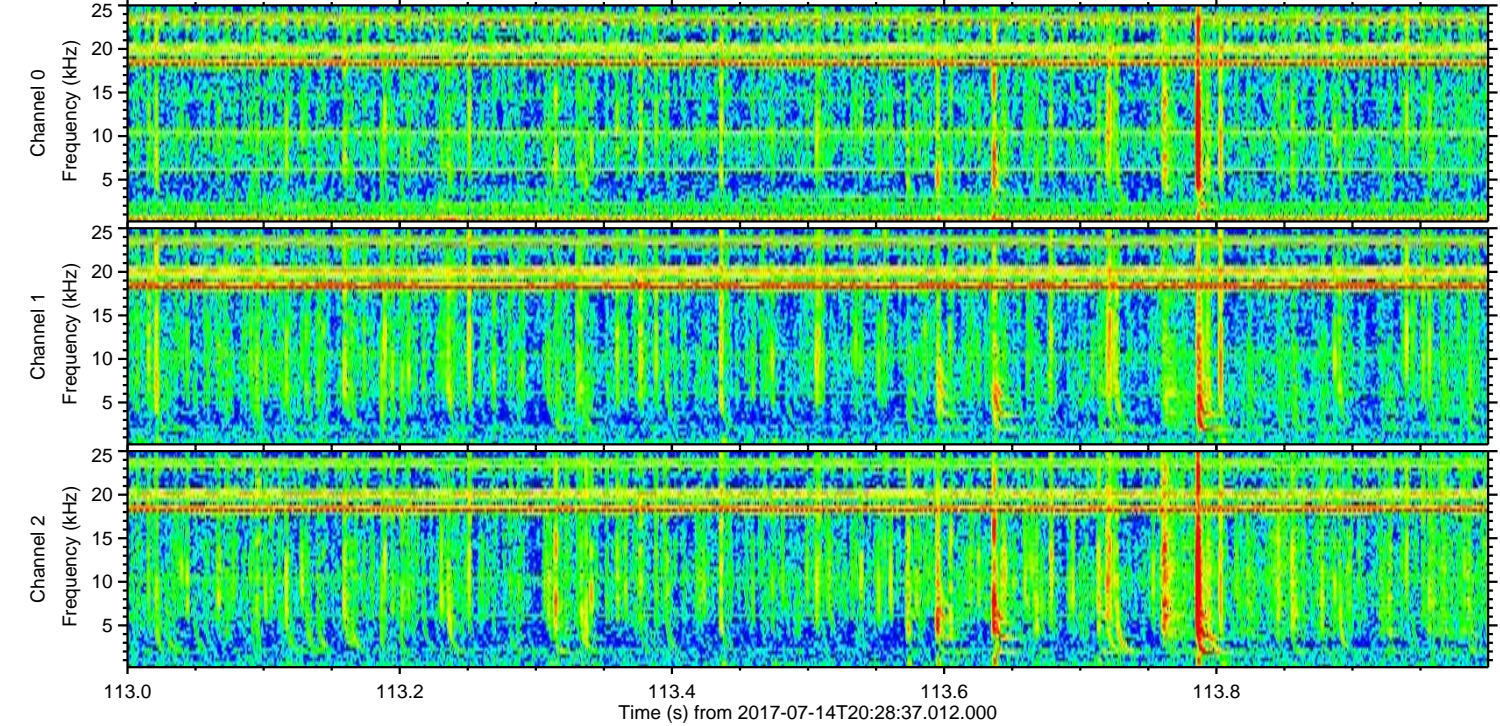
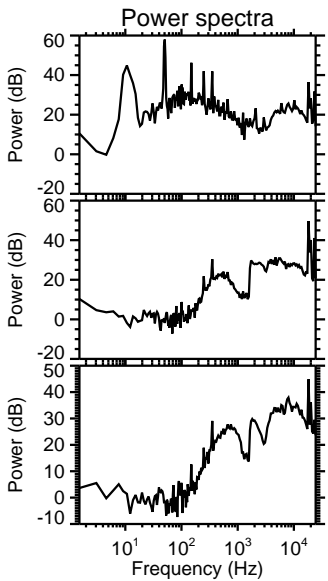
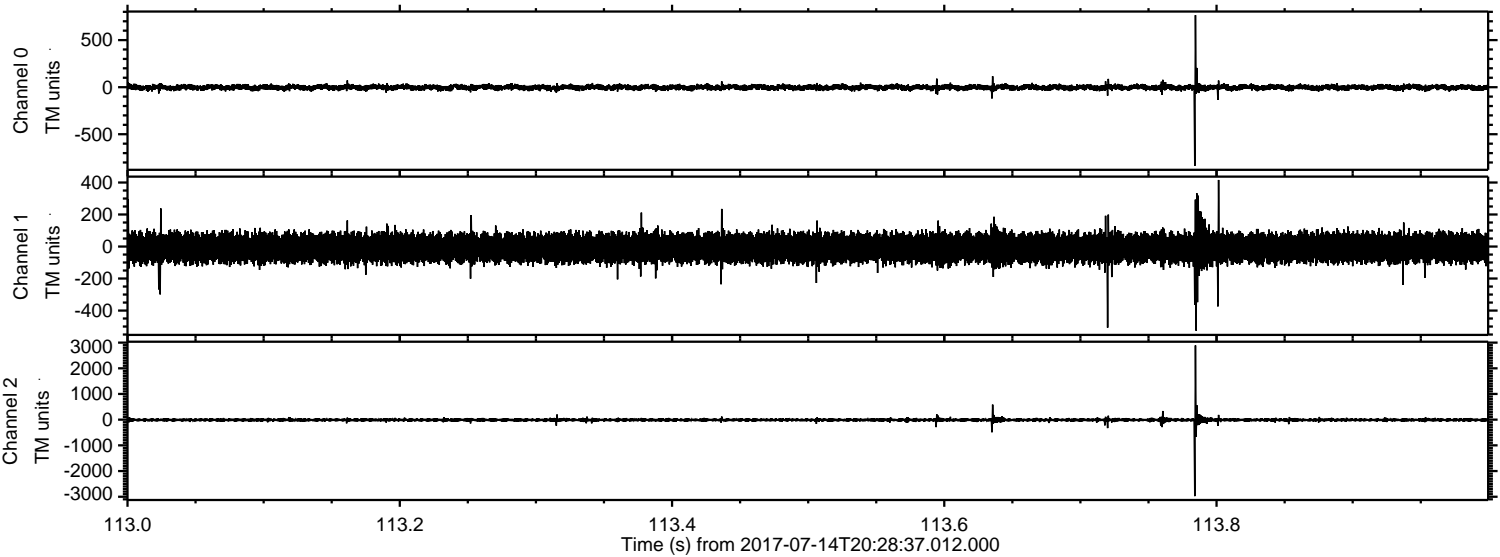
Channel 0  
mn: -886  
mx: 1418  
 $\mu$ : -2.5  
 $\sigma$ : 17.5

Channel 1  
mn: -592  
mx: 827  
 $\mu$ : -9.1  
 $\sigma$ : 49.1

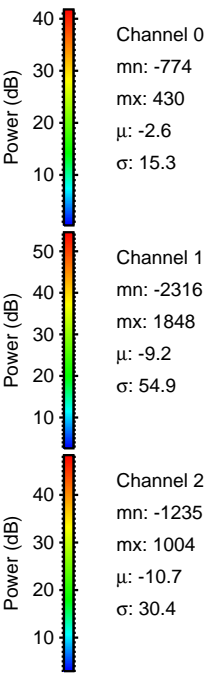
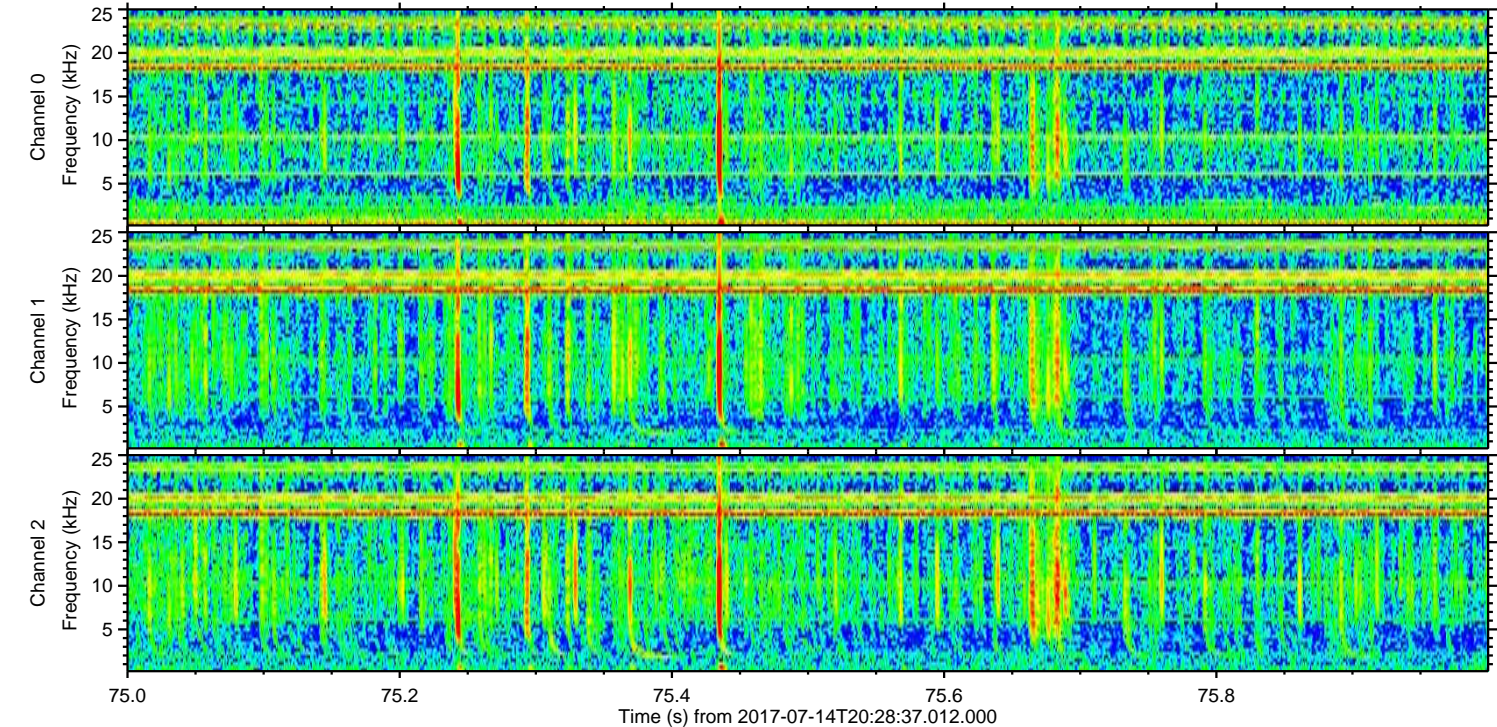
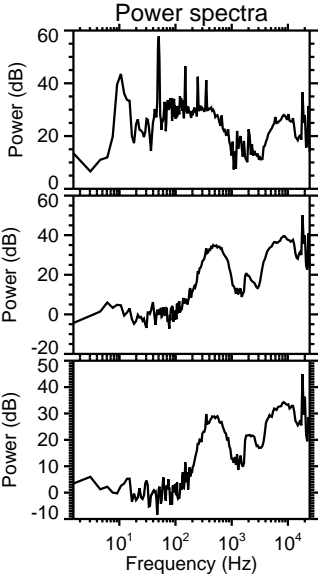
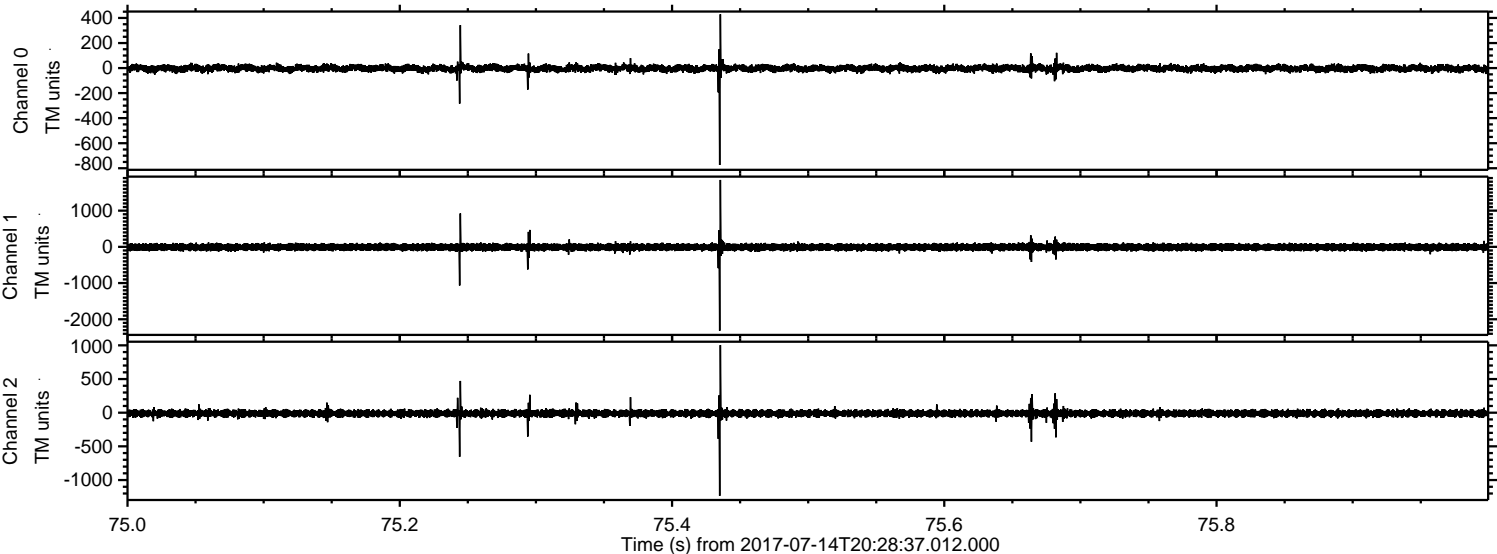
Channel 2  
mn: -3488  
mx: 2594  
 $\mu$ : -10.8  
 $\sigma$ : 45.2

ELMAVAN 3D WAVEFORMS (Measured data sampled at 50 kHz) 51000 packets of 144 samples from 2017-07-14T20:28:37.012.000. Part 114/147

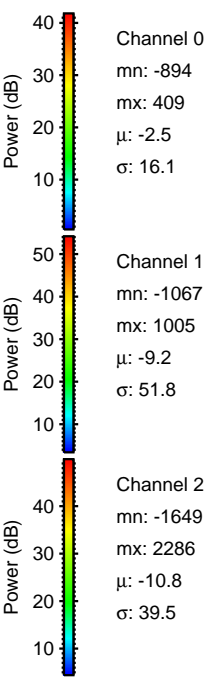
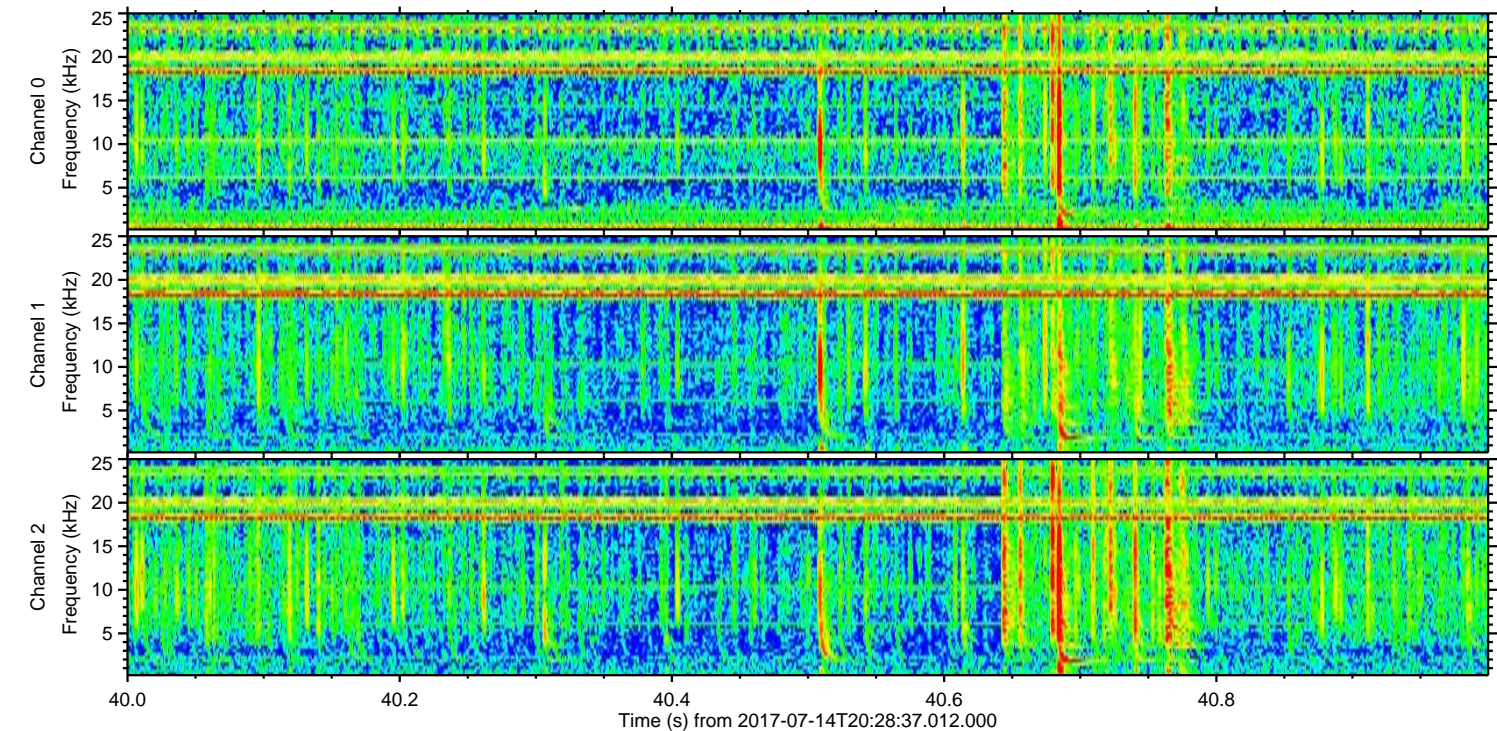
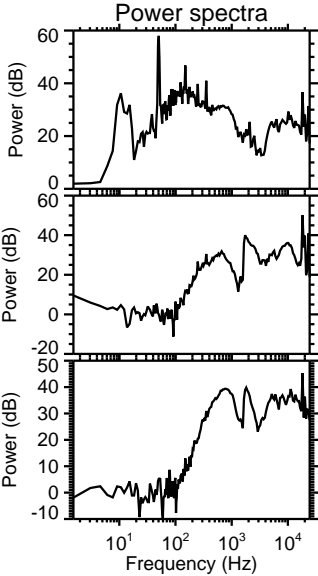
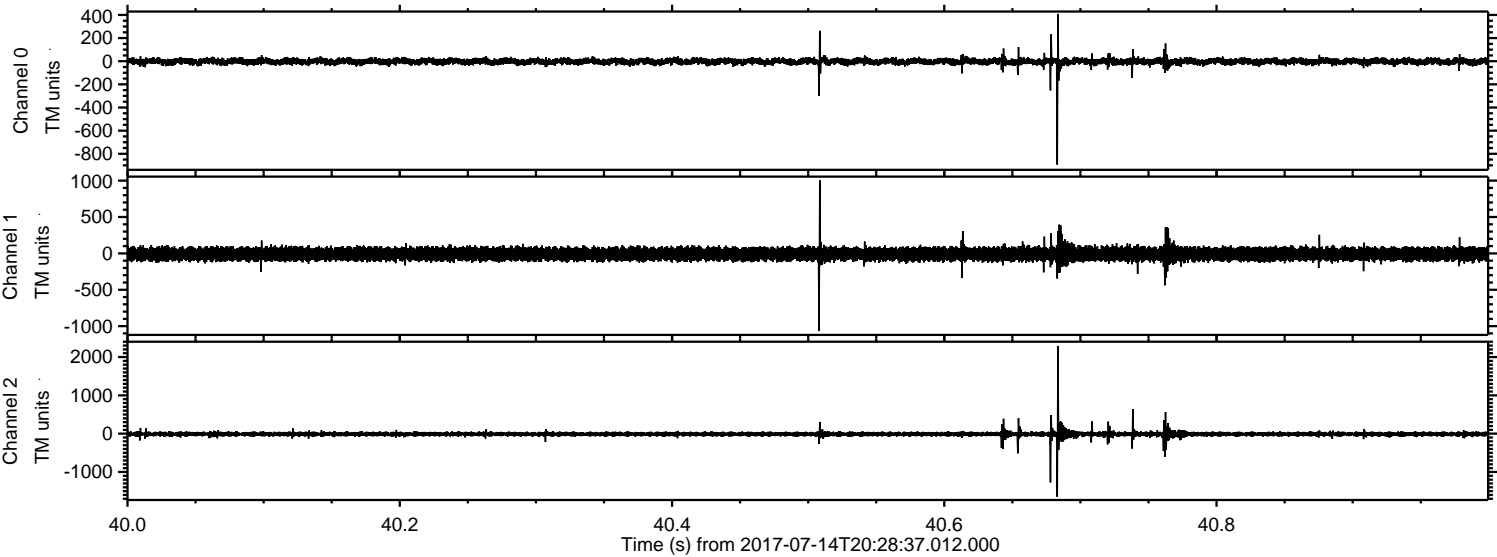
Processed Thu Jul 20 09:07:05 2017 by ELM ver.2012-10-06 from 001\_\_elm20170714\_202836\_\_dat00.bin



Processed Thu Jul 20 09:07:06 2017 by ELM ver.2012-10-06 from 001\_\_elm20170714\_202836\_\_dat00.bin

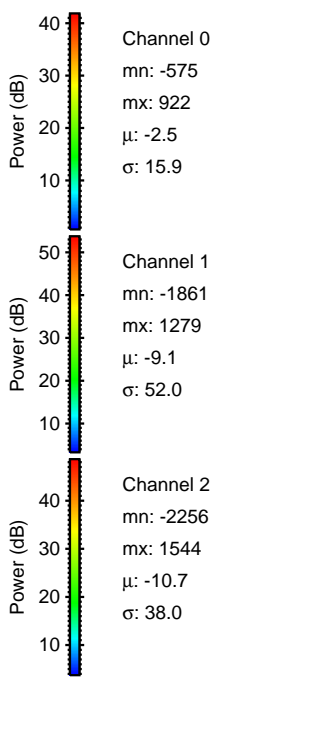
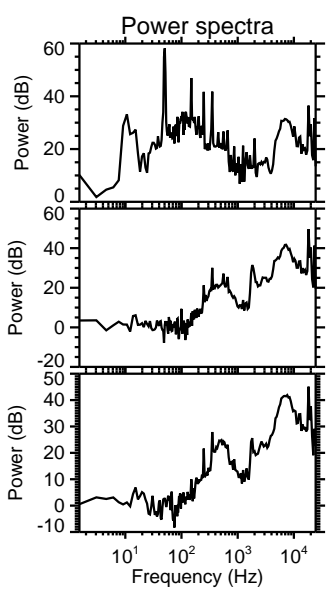
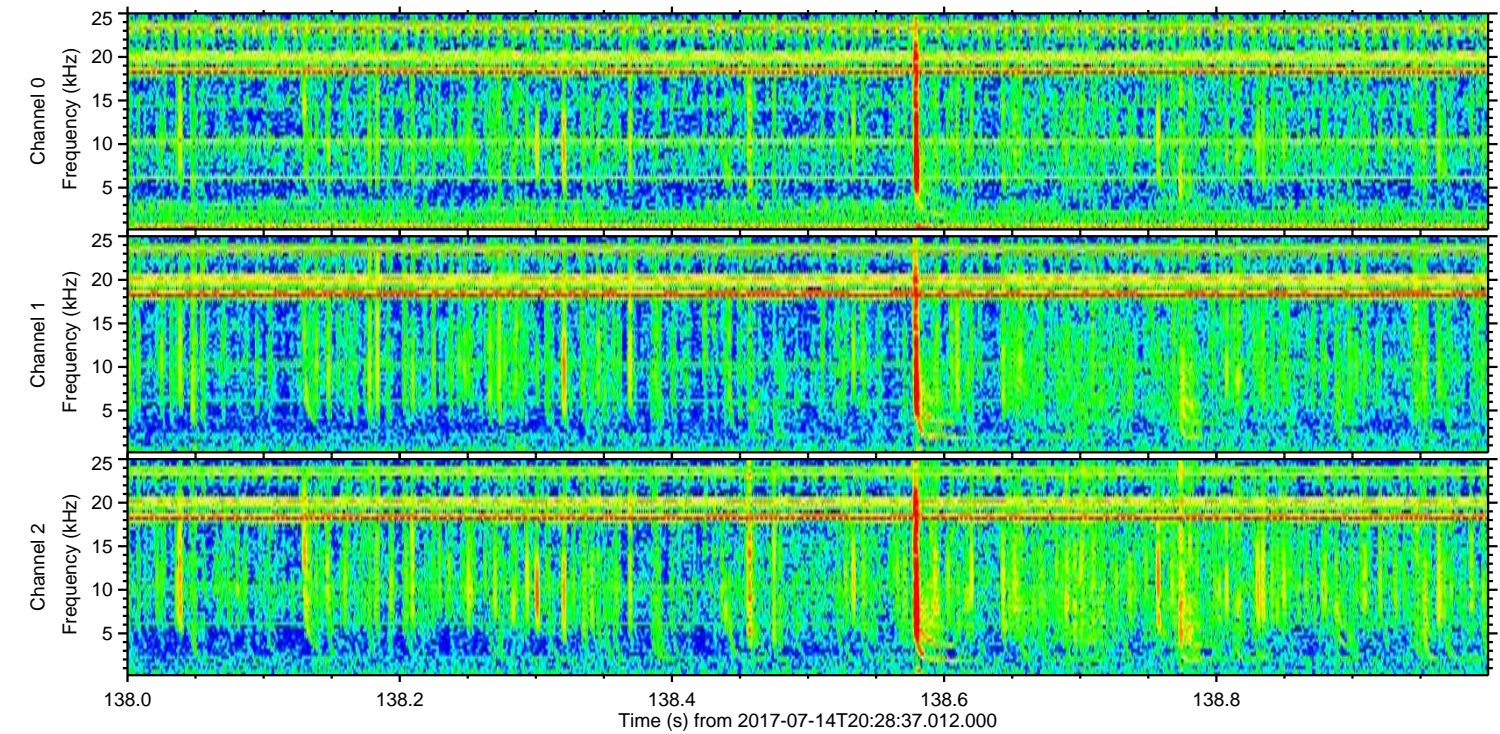
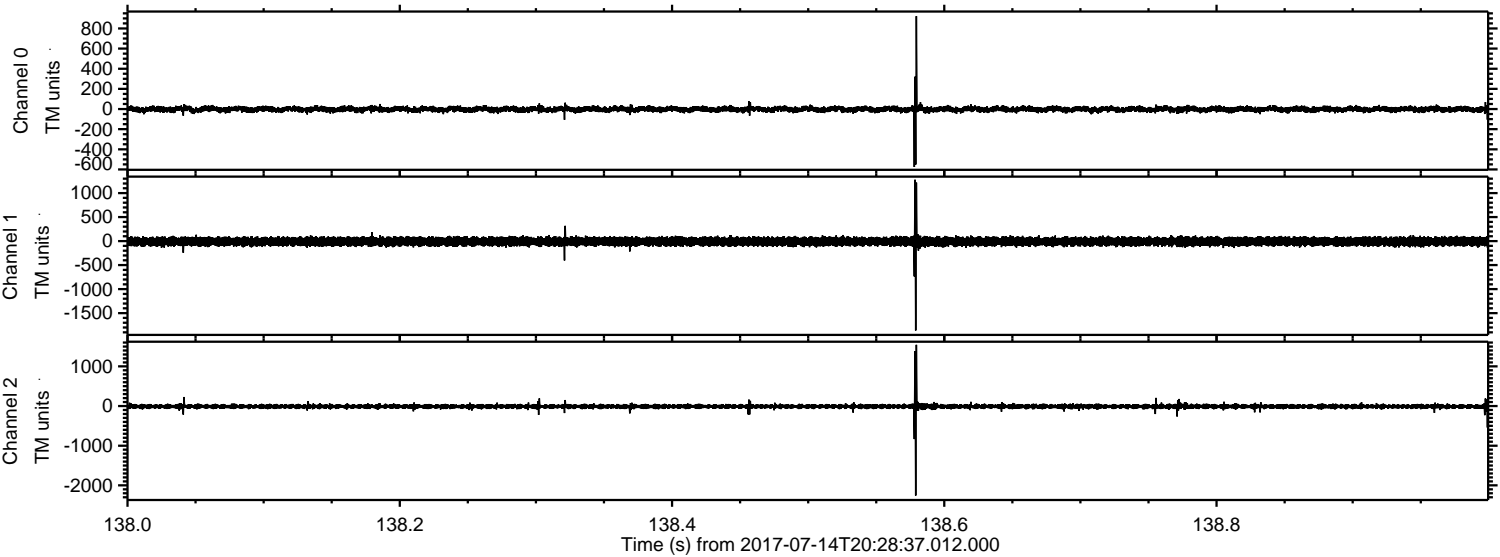


Processed Thu Jul 20 09:07:07 2017 by ELM ver.2012-10-06 from 001\_\_elm20170714\_202836\_\_dat00.bin



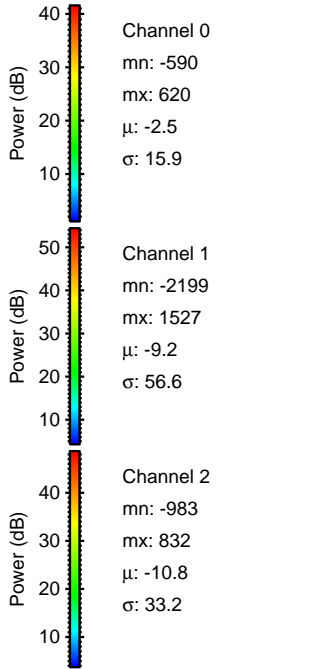
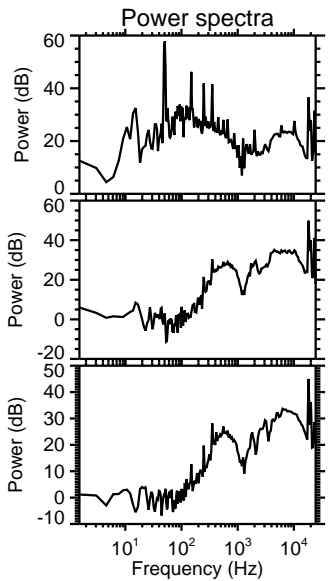
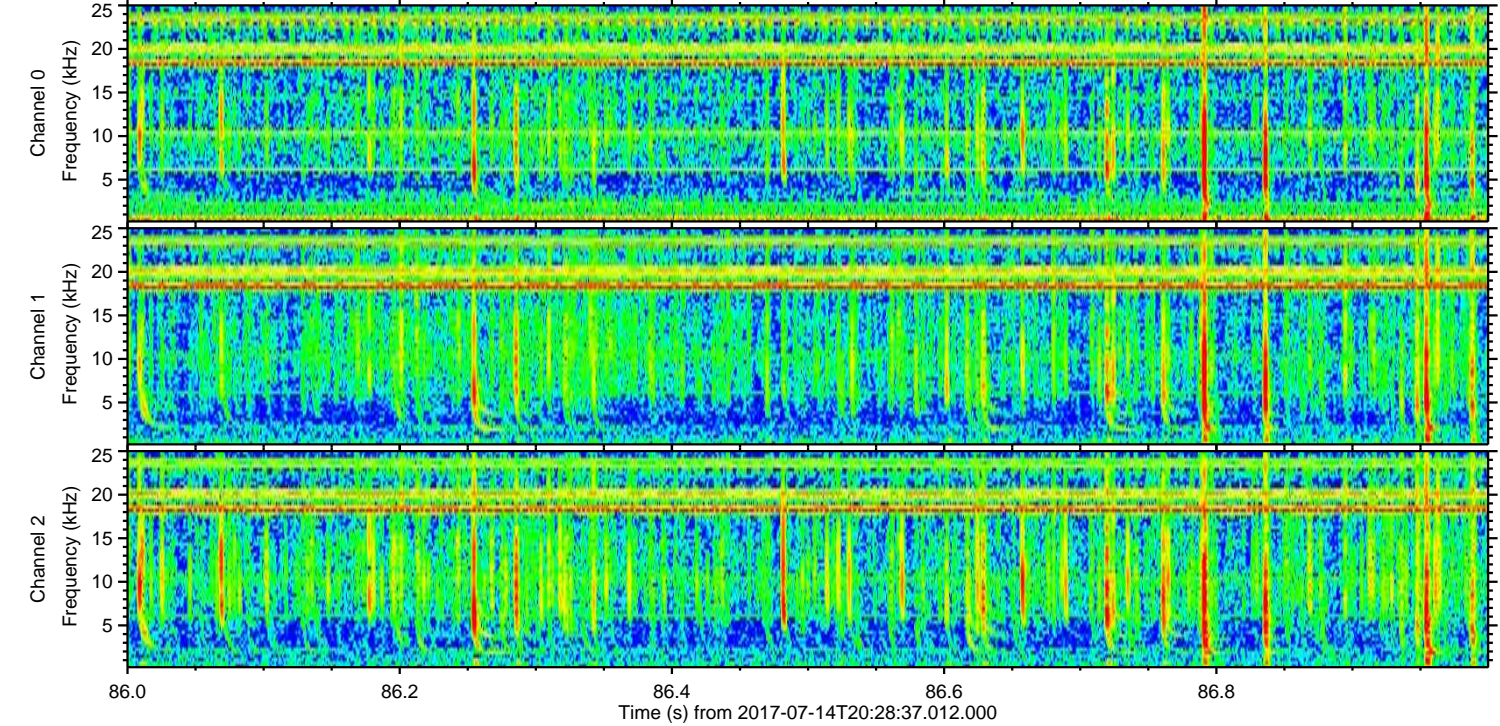
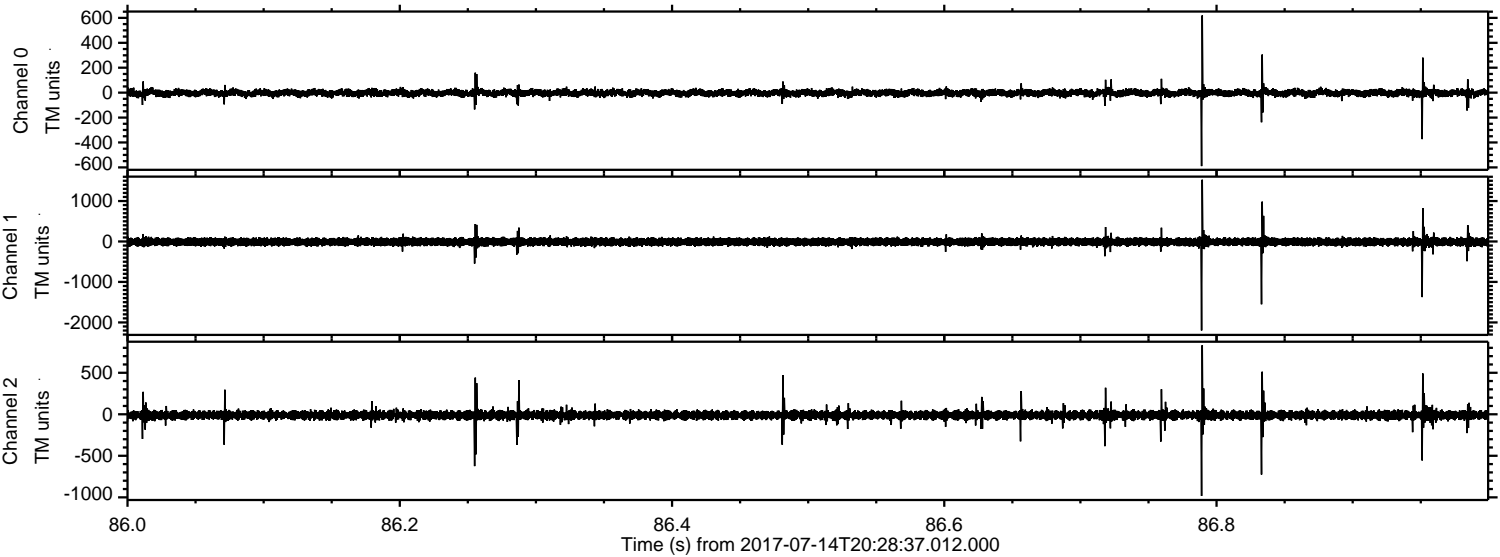
ELMAVAN 3D WAVEFORMS (Measured data sampled at 50 kHz) 51000 packets of 144 samples from 2017-07-14T20:28:37.012.000. Part 139/147

Processed Thu Jul 20 09:07:08 2017 by ELM ver.2012-10-06 from 001\_\_elm20170714\_202836\_\_dat00.bin

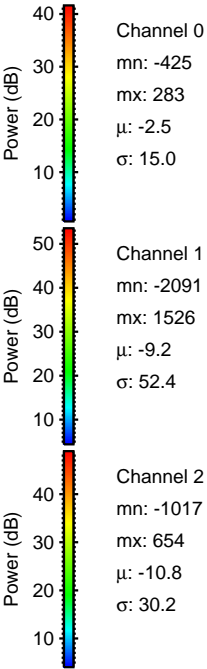
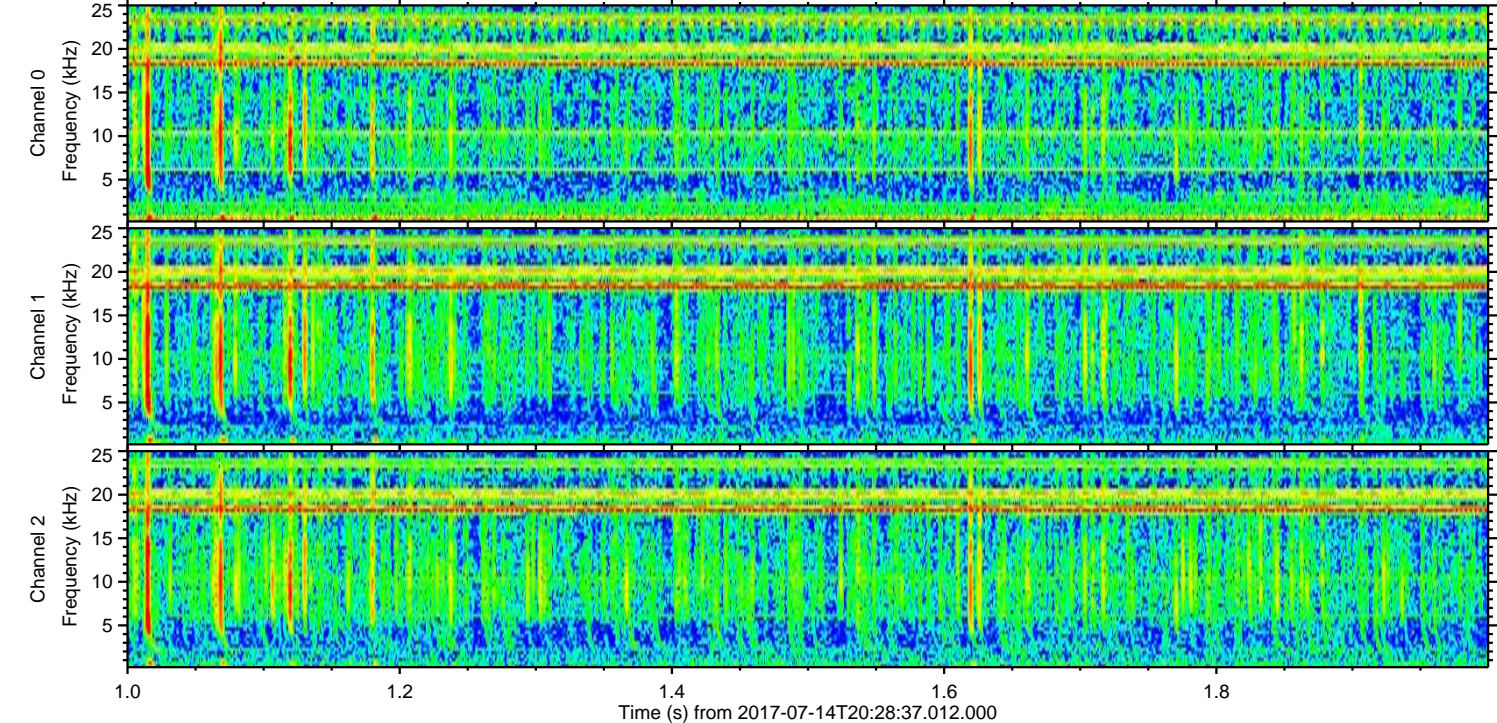
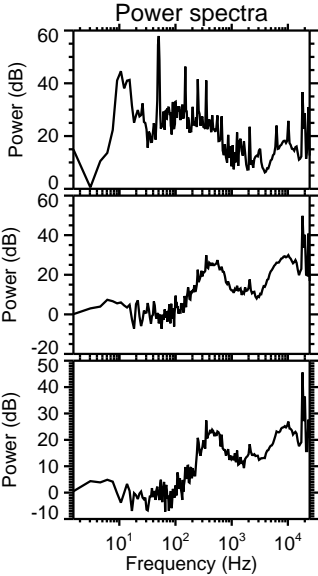
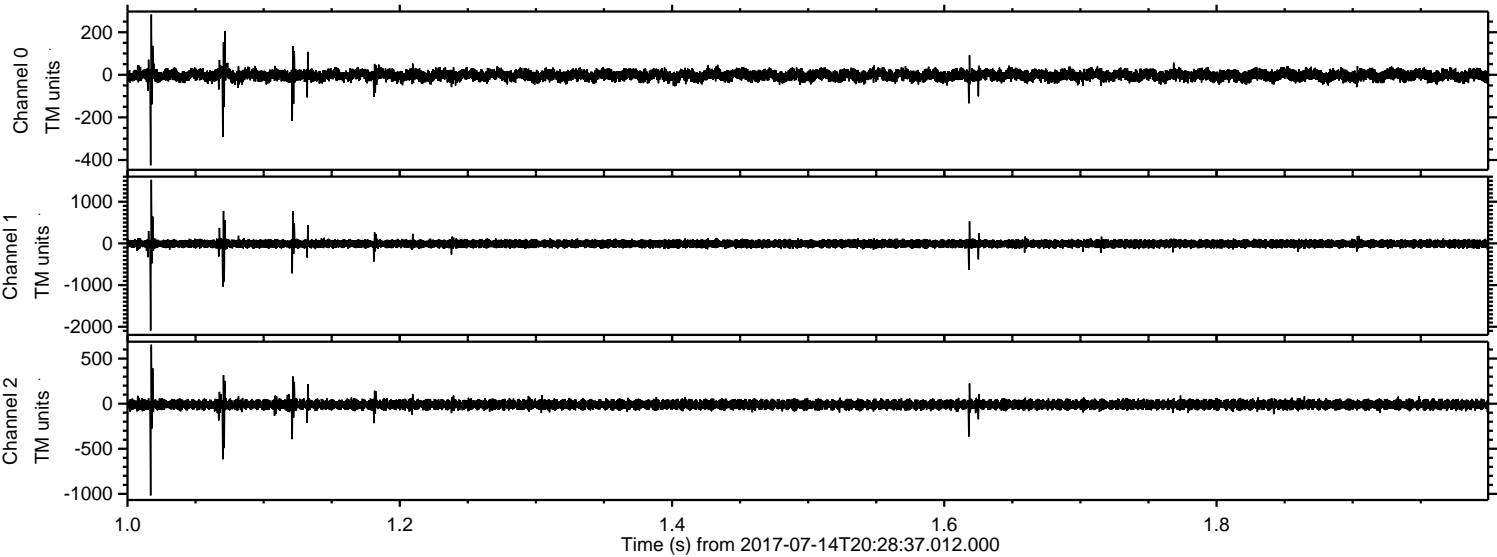


ELMAVAN 3D WAVEFORMS (Measured data sampled at 50 kHz) 51000 packets of 144 samples from 2017-07-14T20:28:37.012.000. Part 87/147

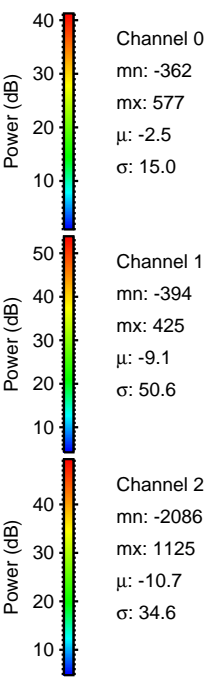
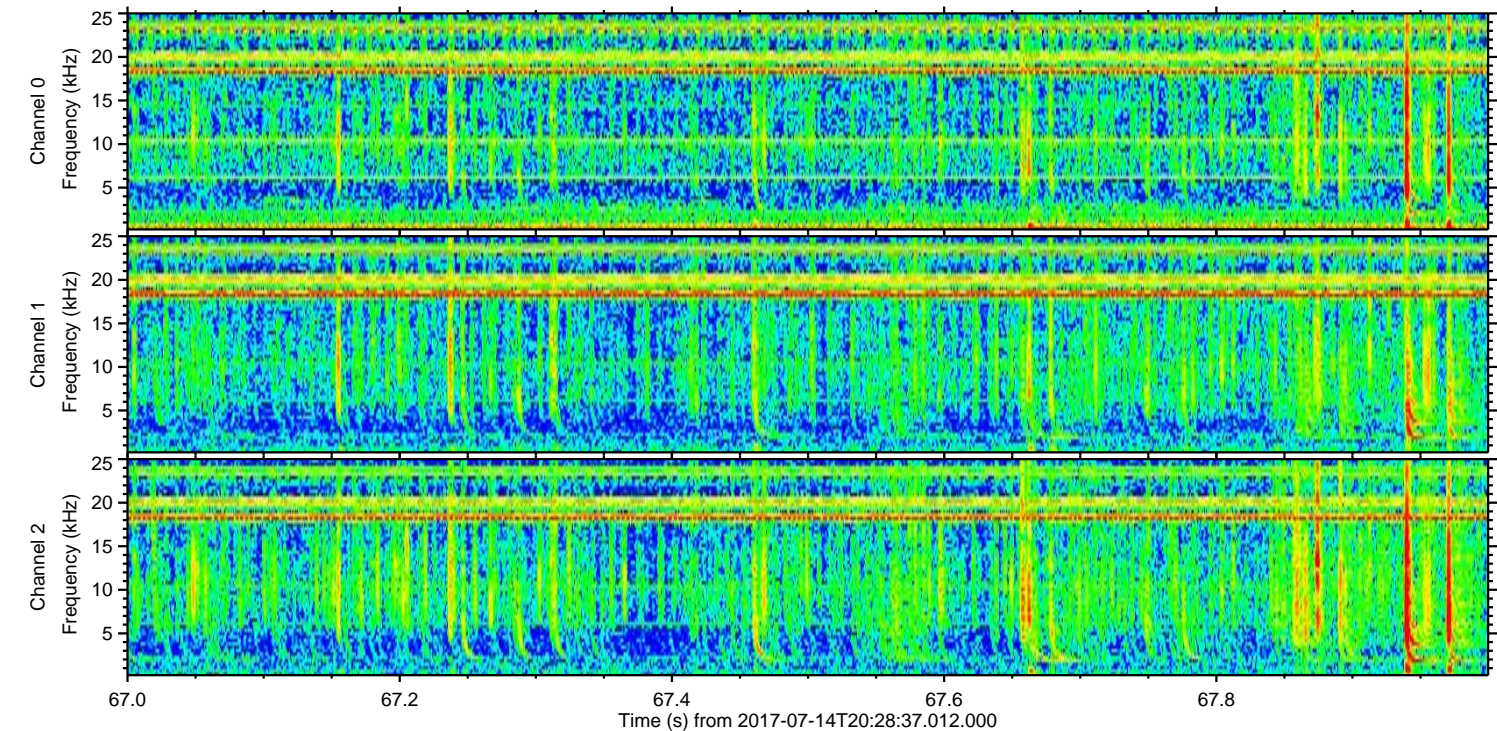
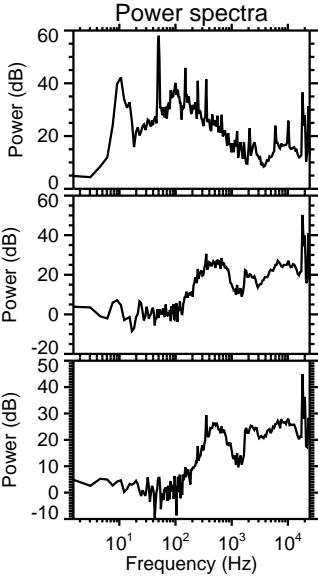
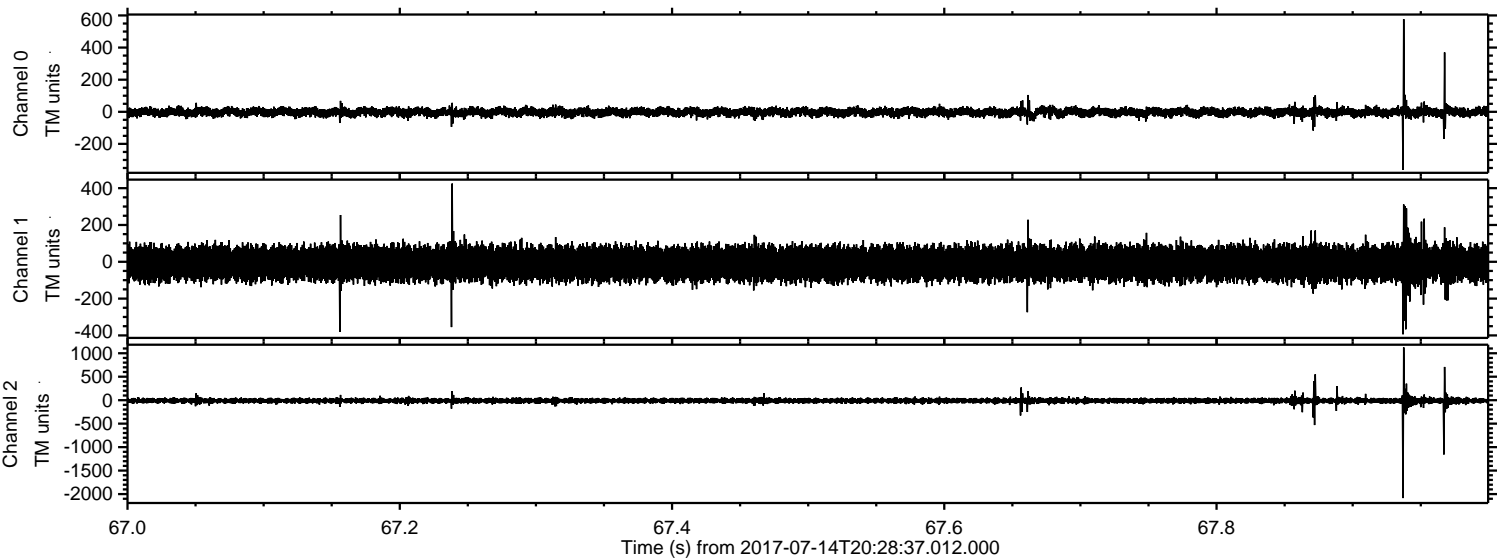
Processed Thu Jul 20 09:07:08 2017 by ELM ver.2012-10-06 from 001\_\_elm20170714\_202836\_\_dat00.bin



Processed Thu Jul 20 09:07:09 2017 by ELM ver.2012-10-06 from 001\_\_elm20170714\_202836\_\_dat00.bin



Processed Thu Jul 20 09:07:10 2017 by ELM ver.2012-10-06 from 001\_\_elm20170714\_202836\_\_dat00.bin



Channel 0  
mn: -362  
mx: 577  
 $\mu$ : -2.5  
 $\sigma$ : 15.0

Channel 1  
mn: -394  
mx: 425  
 $\mu$ : -9.1  
 $\sigma$ : 50.6

Channel 2  
mn: -2086  
mx: 1125  
 $\mu$ : -10.7  
 $\sigma$ : 34.6

Processed Thu Jul 20 09:07:11 2017 by ELM ver.2012-10-06 from 001\_\_elm20170714\_202836\_\_dat00.bin

