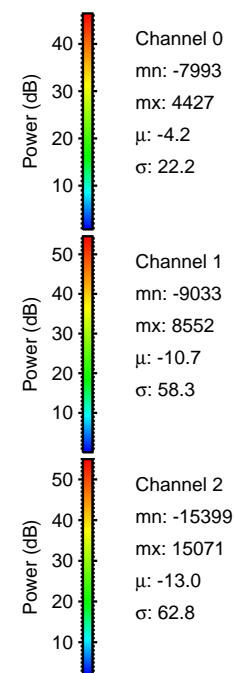
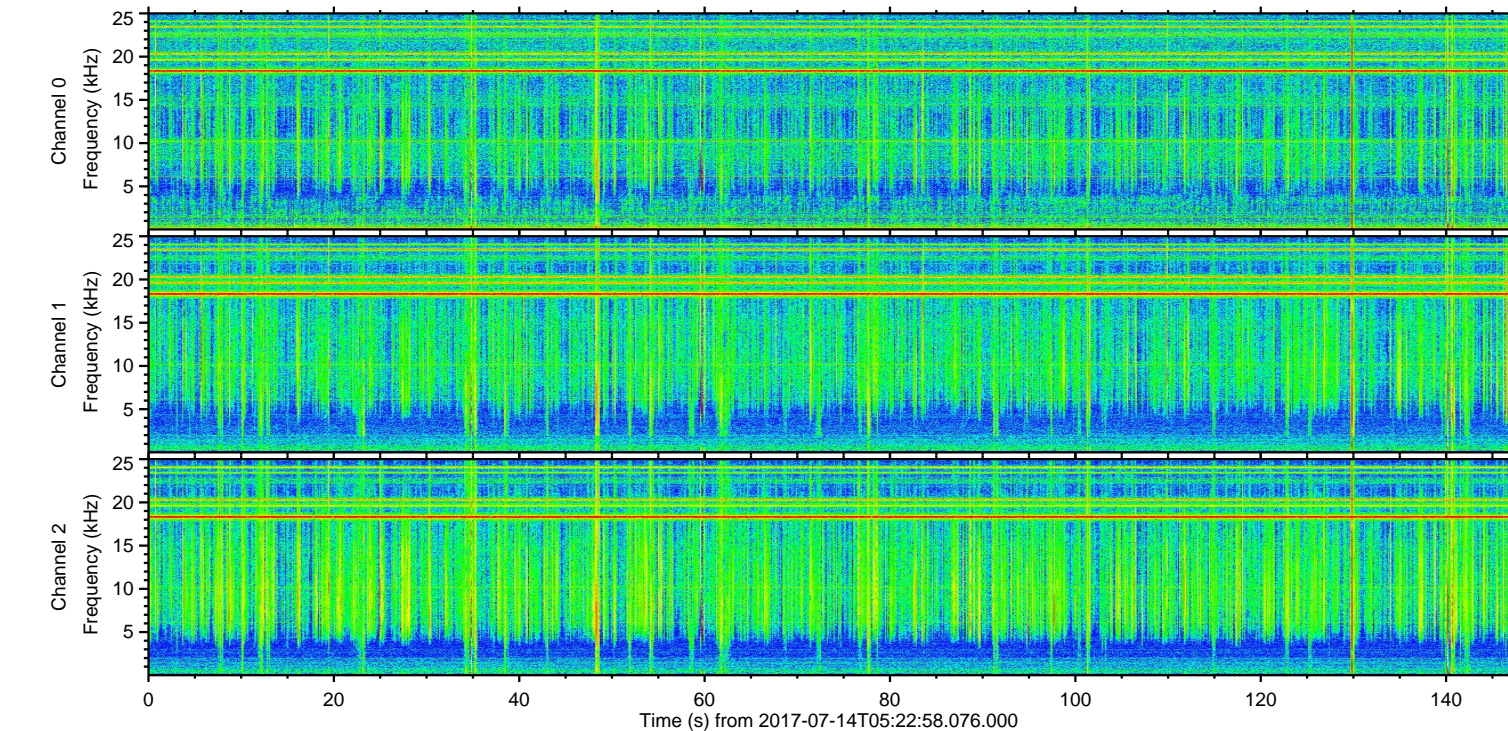
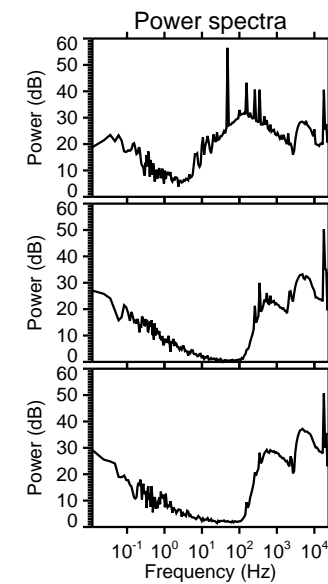
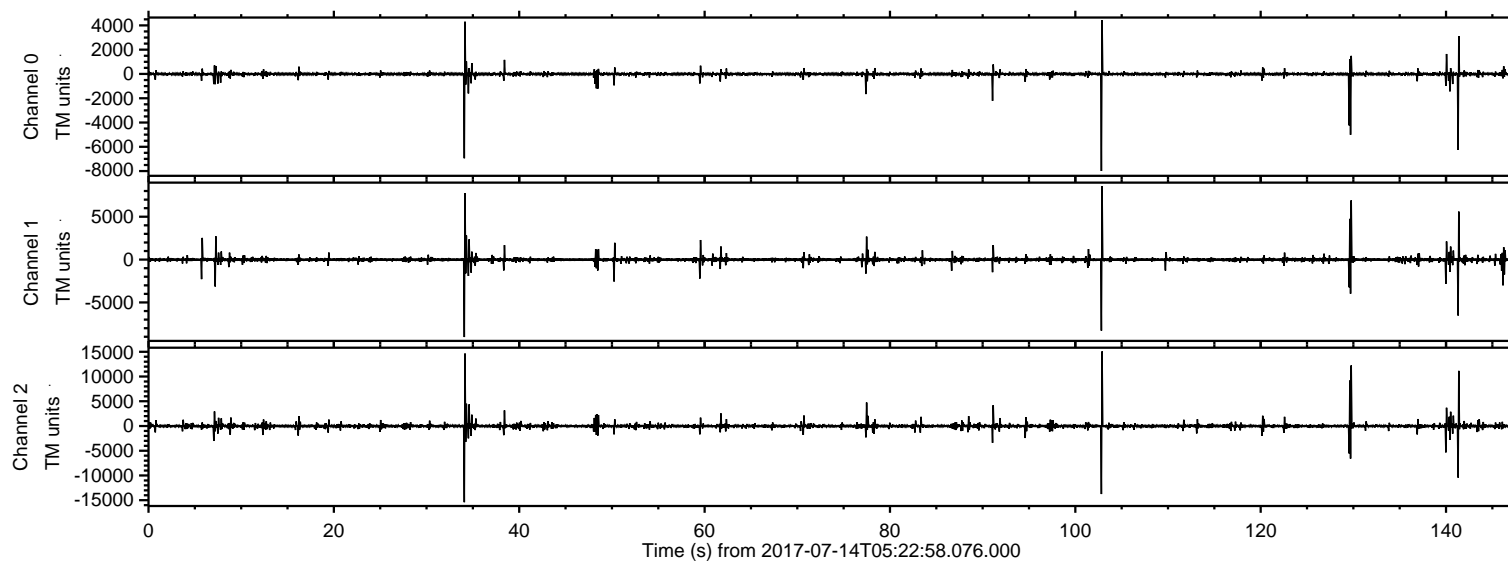


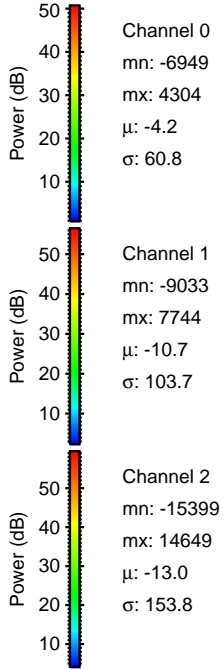
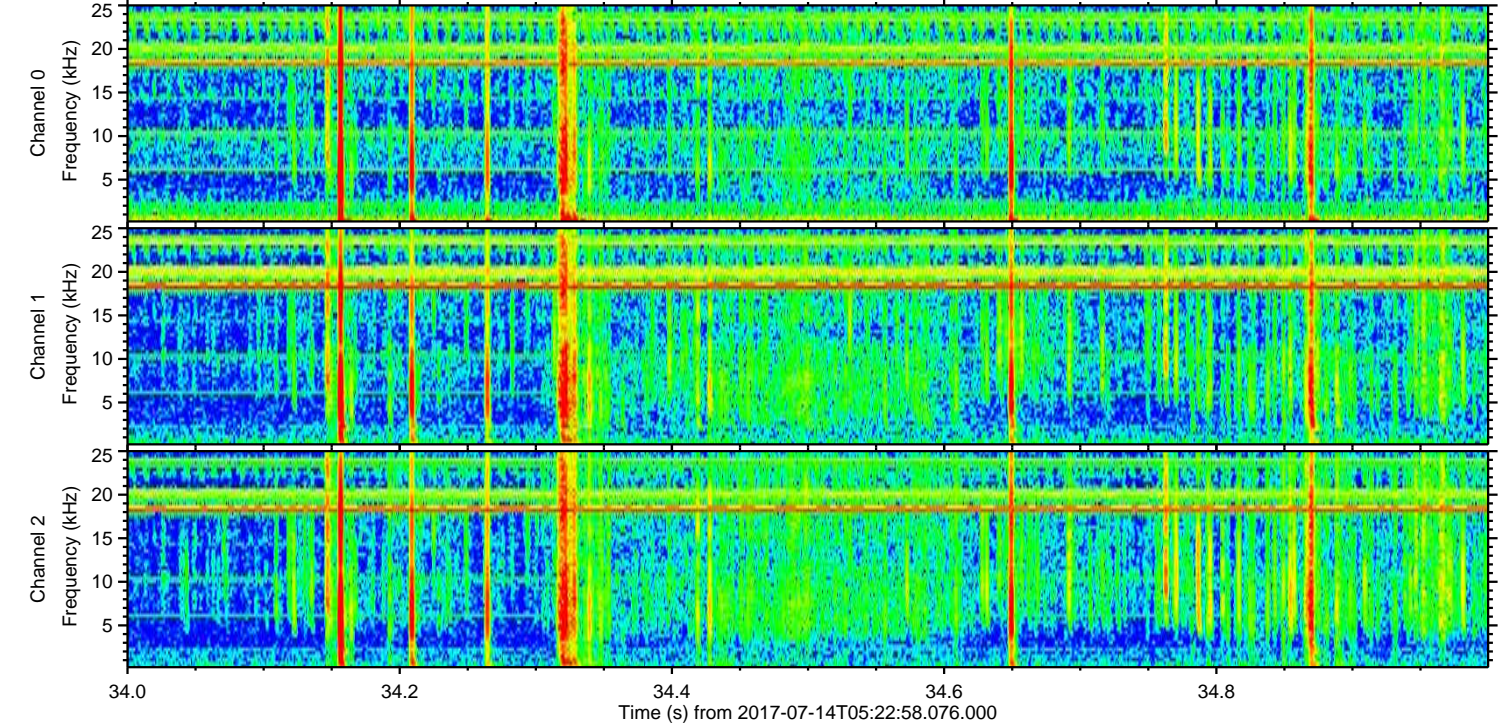
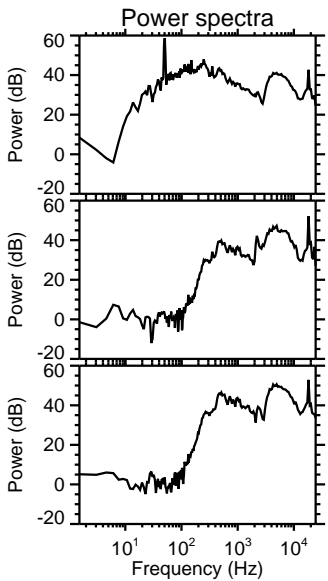
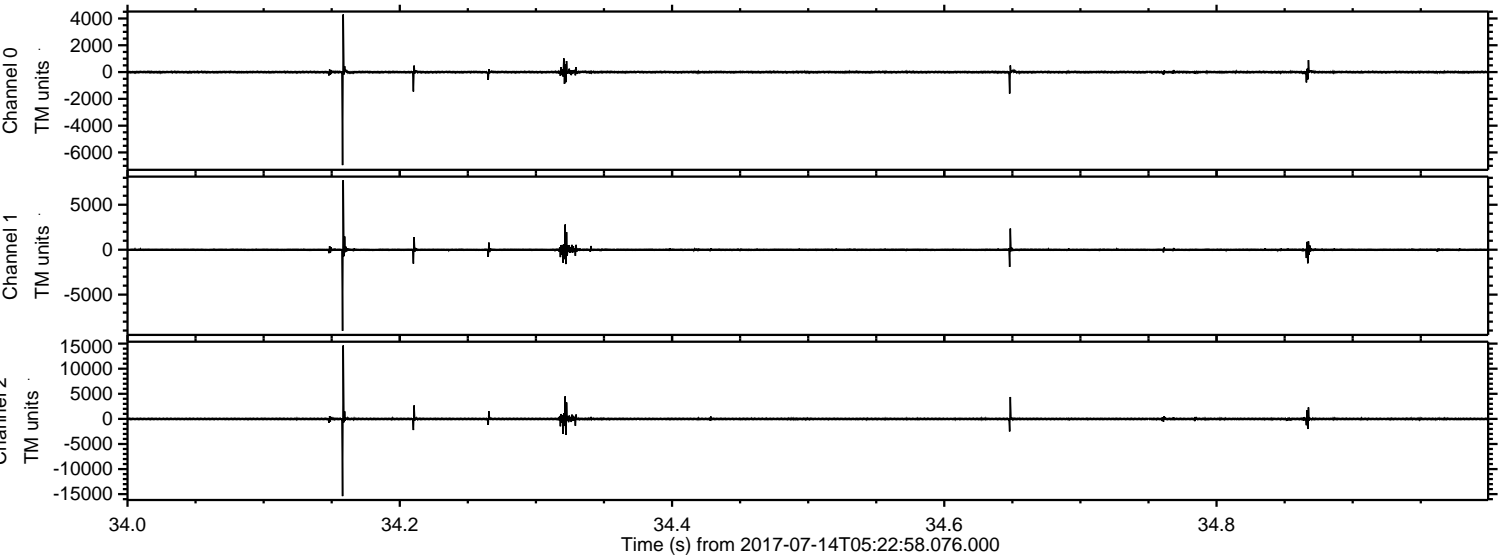
ELMAVAN 3D WAVEFORMS (Measured data sampled at 50 kHz) 51000 packets of 144 samples from 2017-07-14T05:22:58.076.000.

Processed Thu Jul 20 06:49:57 2017 by ELM ver.2012-10-06 from 001__elm20170714_052257__dat00.bin



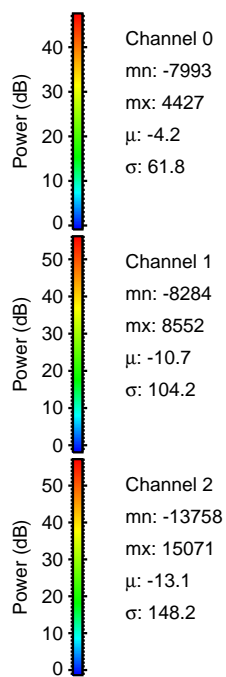
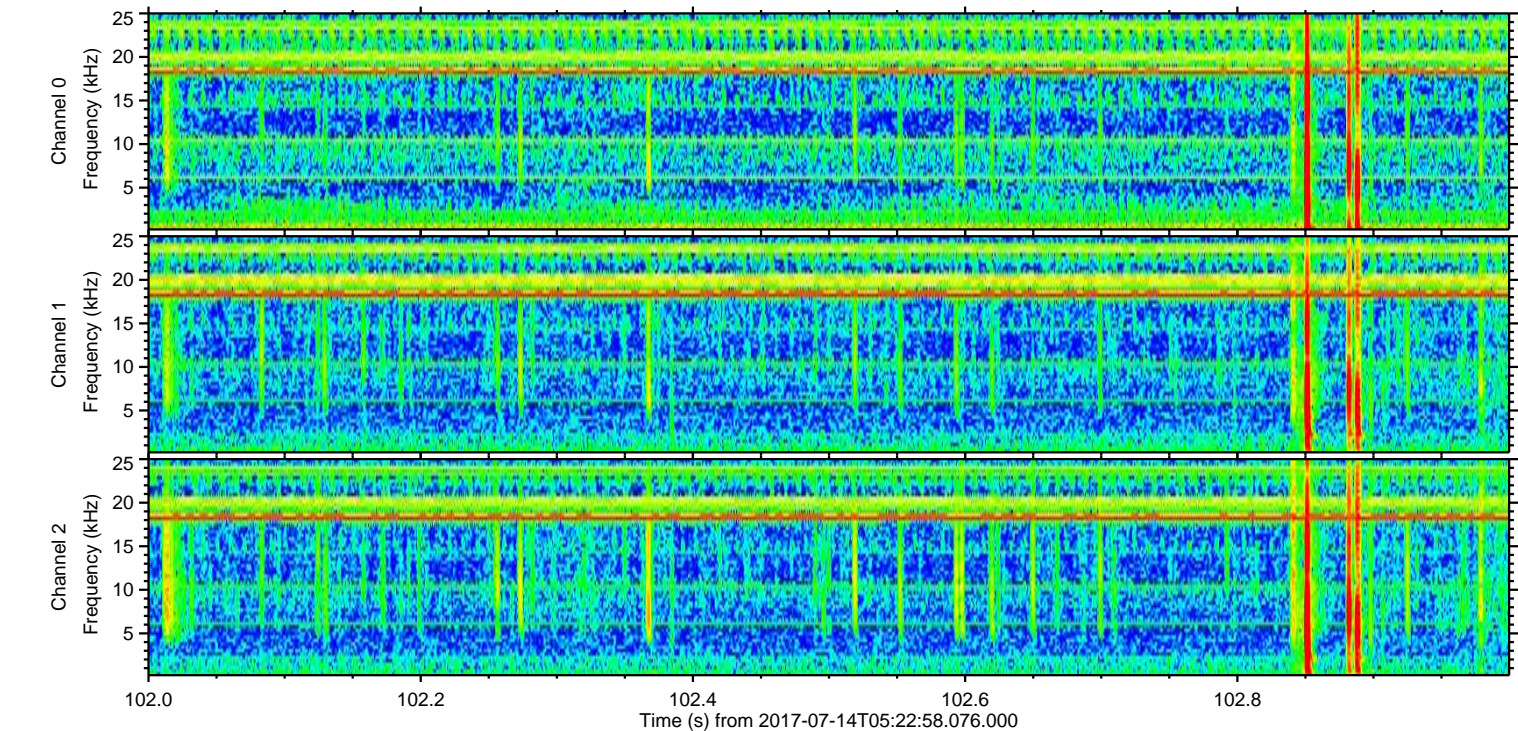
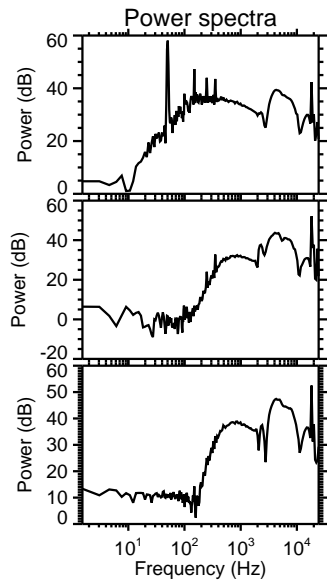
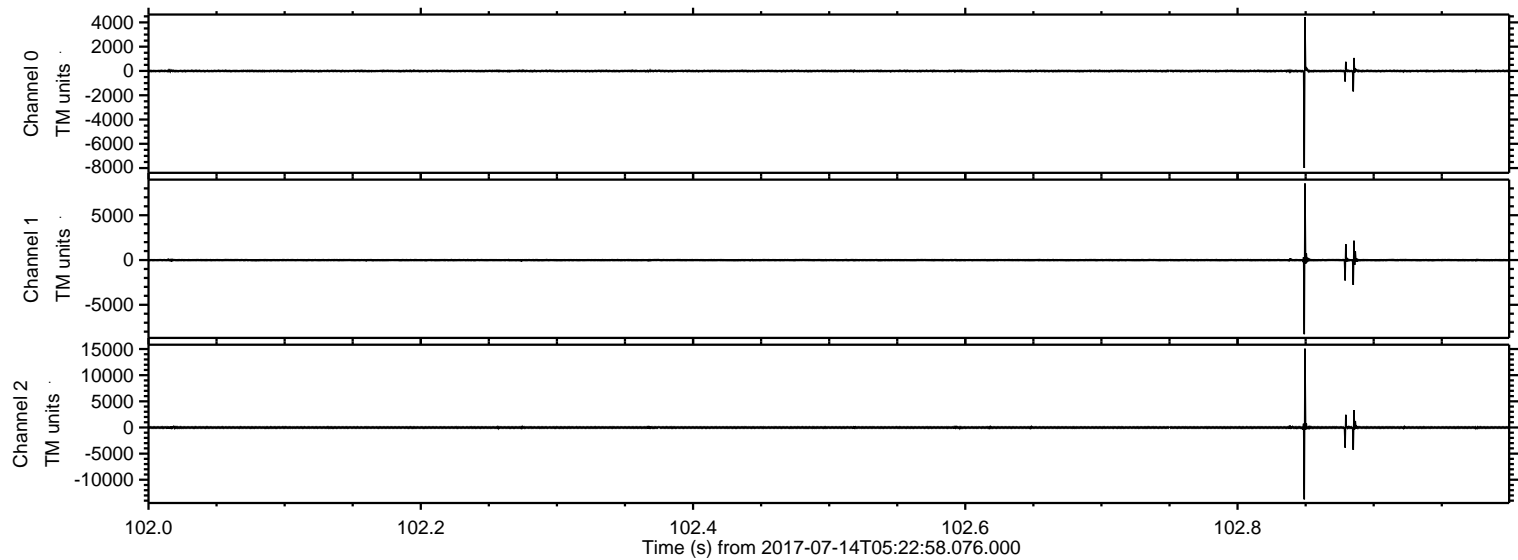
ELMAVAN 3D WAVEFORMS (Measured data sampled at 50 kHz) 51000 packets of 144 samples from 2017-07-14T05:22:58.076.000. Part 35/147

Processed Thu Jul 20 06:50:06 2017 by ELM ver.2012-10-06 from 001__elm20170714_052257__dat00.bin



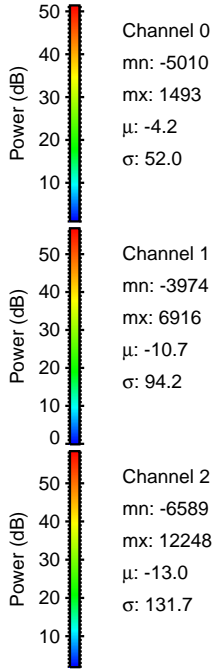
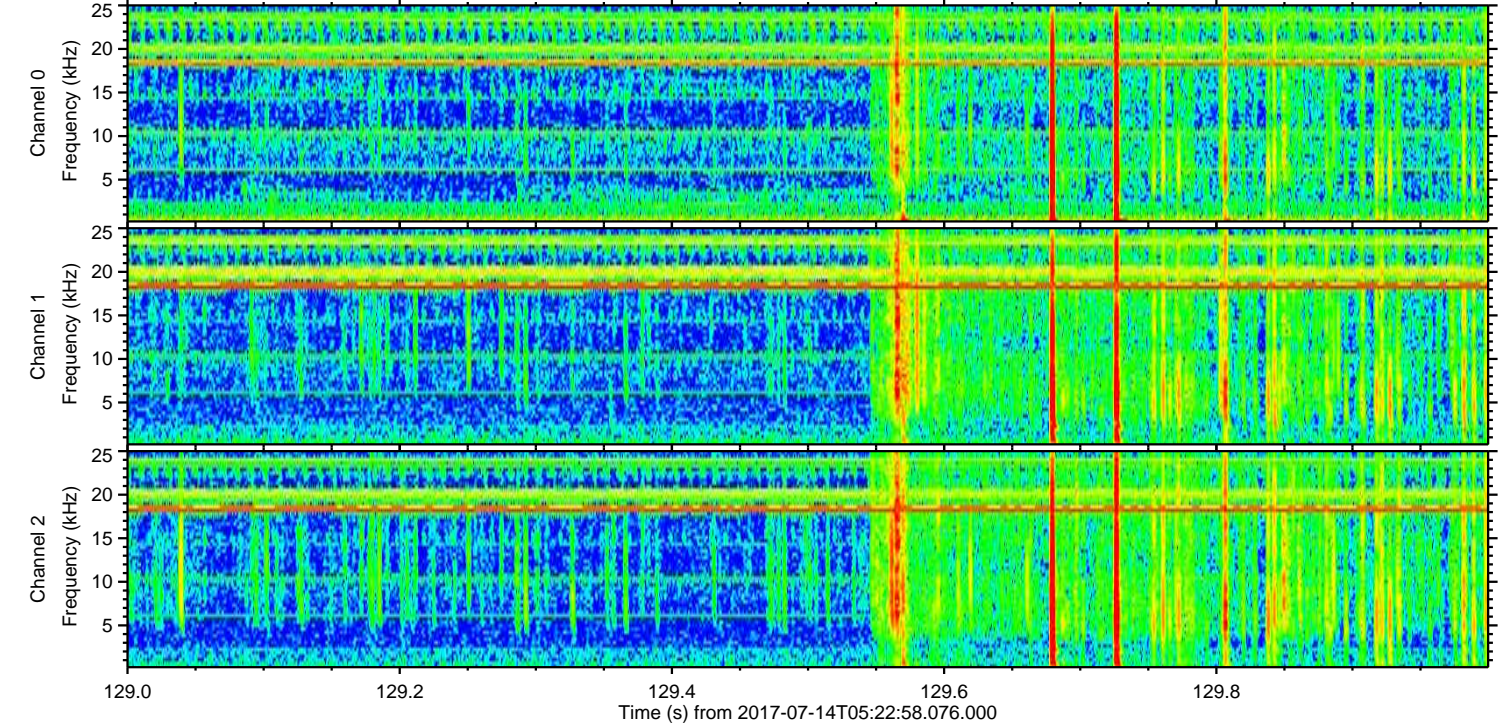
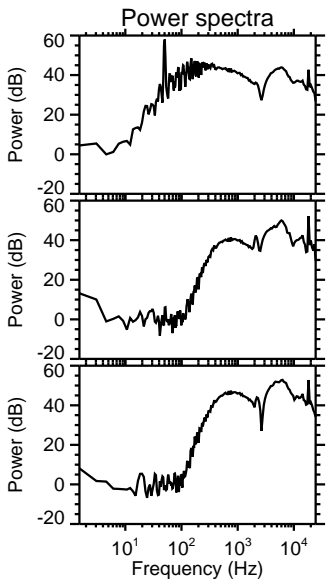
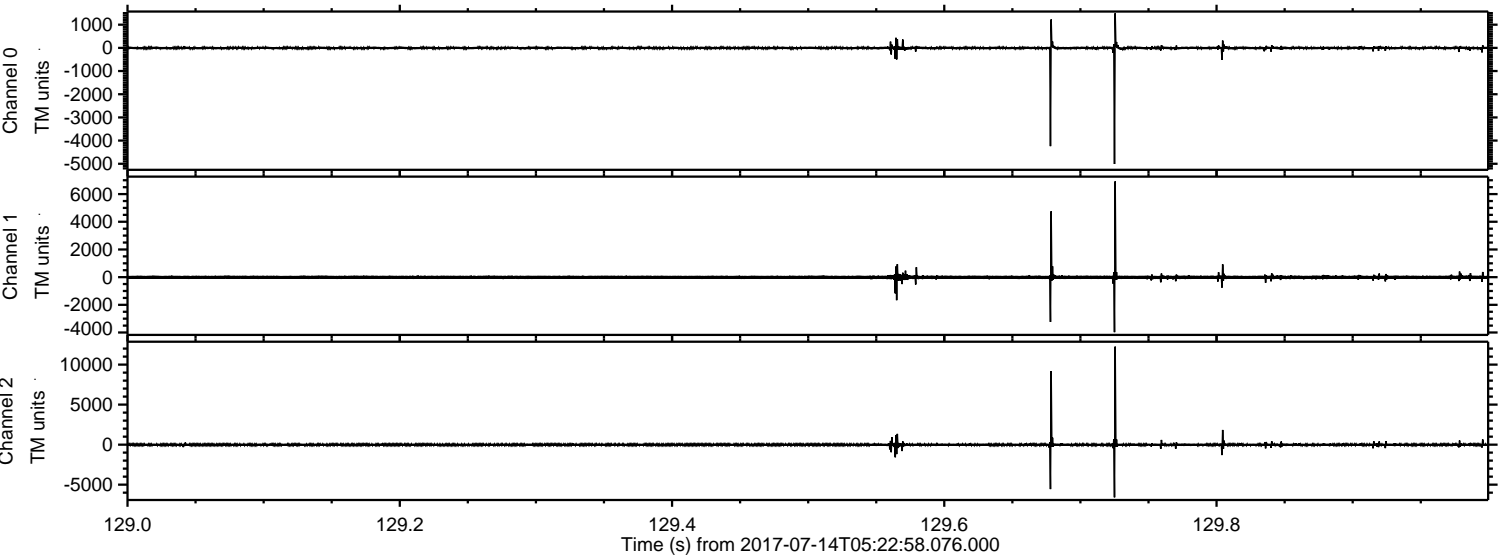
ELMAVAN 3D WAVEFORMS (Measured data sampled at 50 kHz) 51000 packets of 144 samples from 2017-07-14T05:22:58.076.000. Part 103/147

Processed Thu Jul 20 06:50:07 2017 by ELM ver.2012-10-06 from 001__elm20170714_052257__dat00.bin



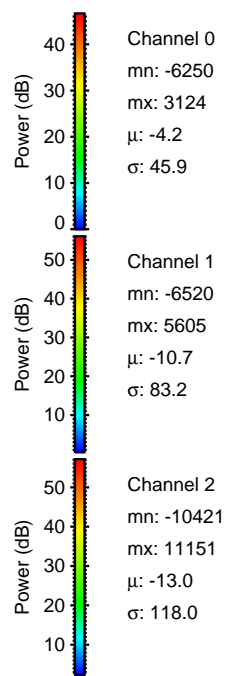
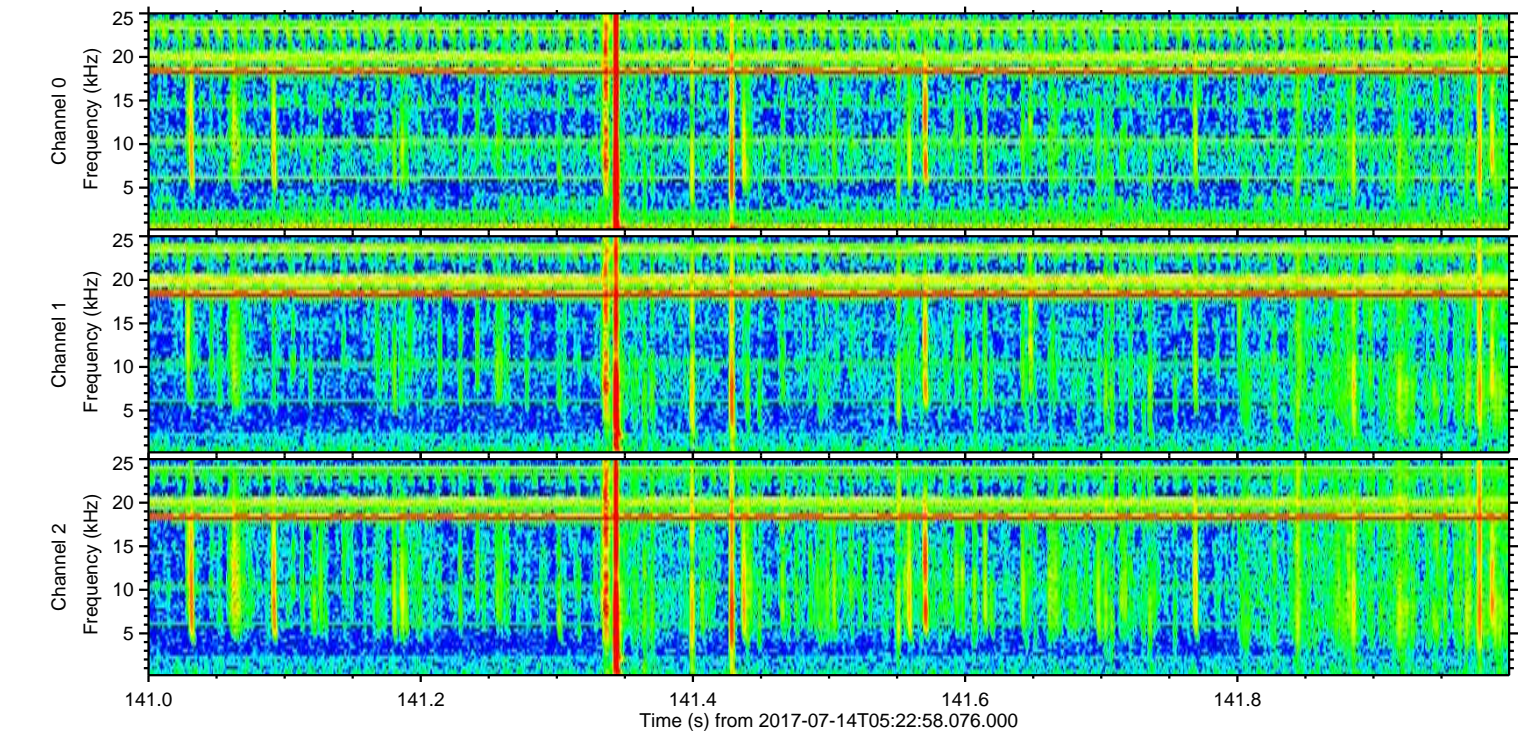
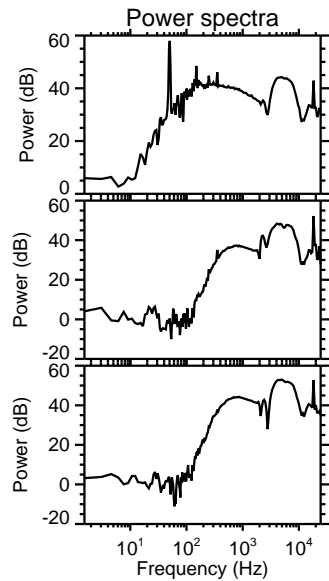
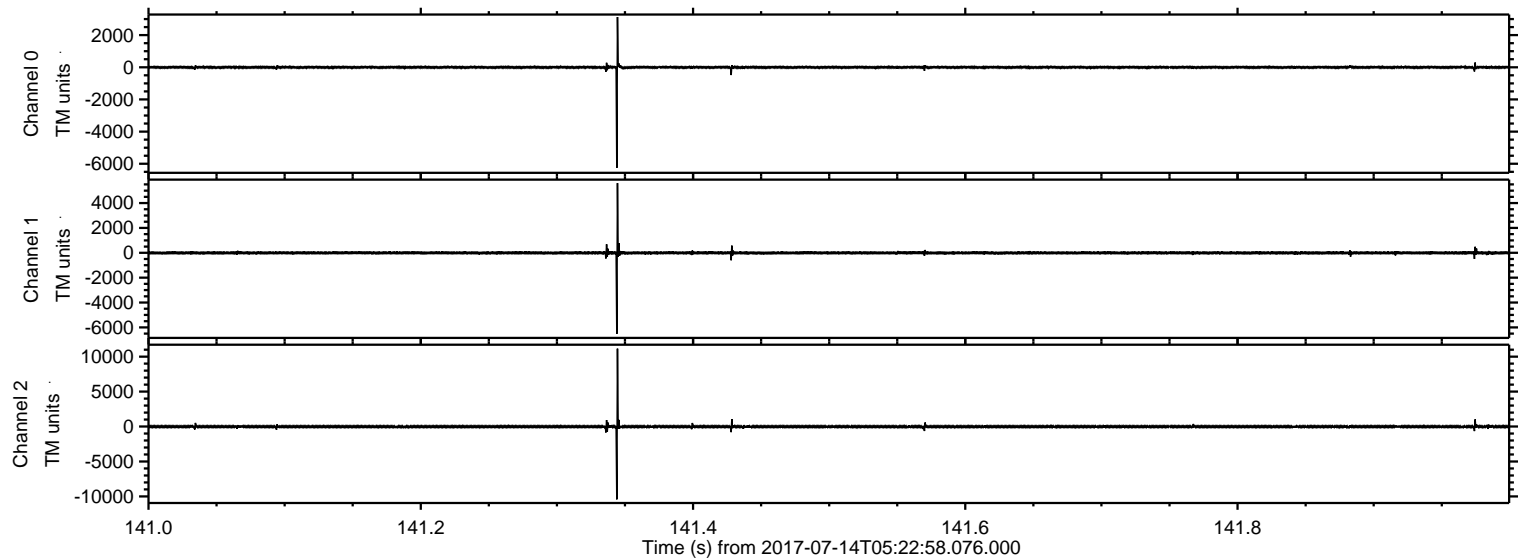
ELMAVAN 3D WAVEFORMS (Measured data sampled at 50 kHz) 51000 packets of 144 samples from 2017-07-14T05:22:58.076.000. Part 130/147

Processed Thu Jul 20 06:50:08 2017 by ELM ver.2012-10-06 from 001__elm20170714_052257__dat00.bin



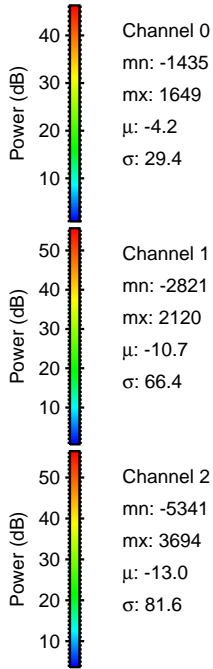
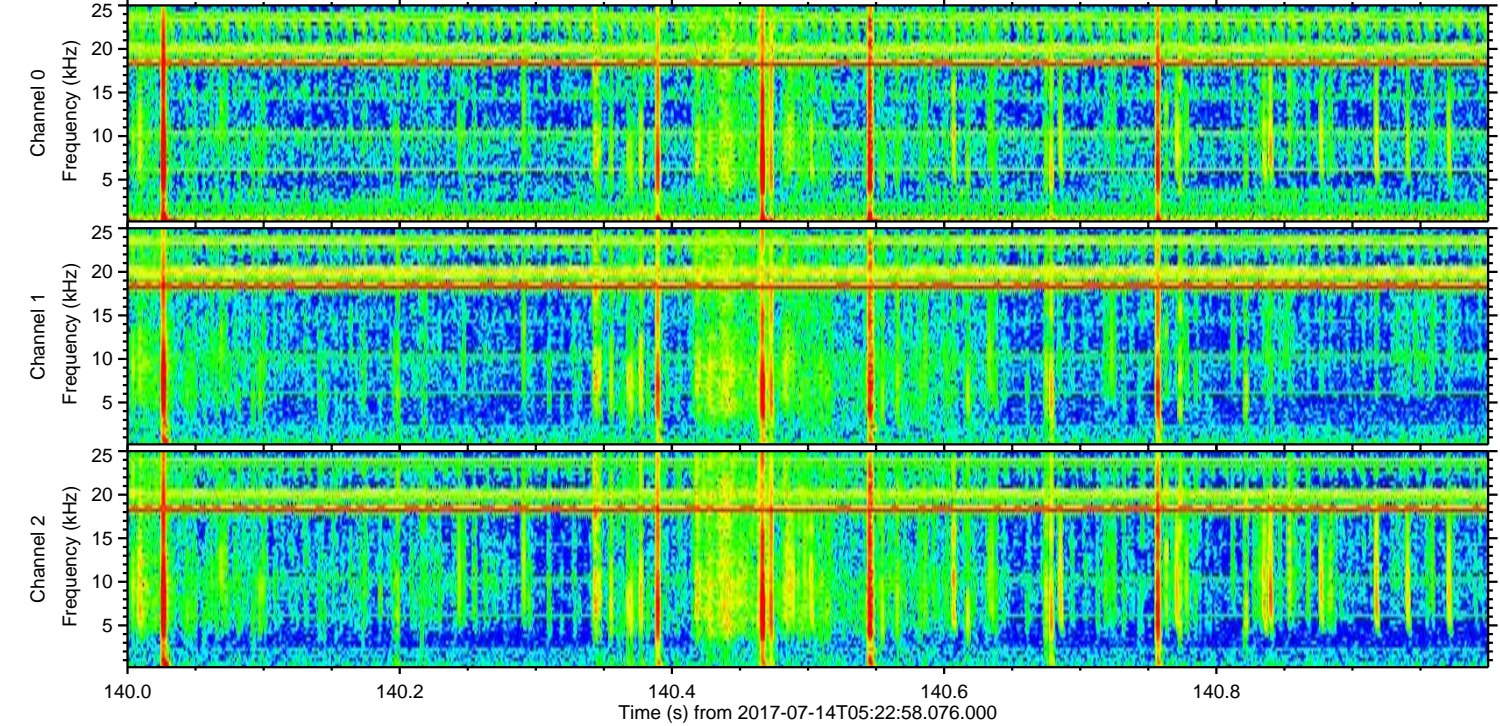
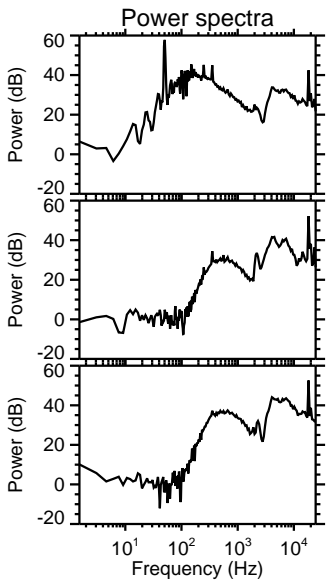
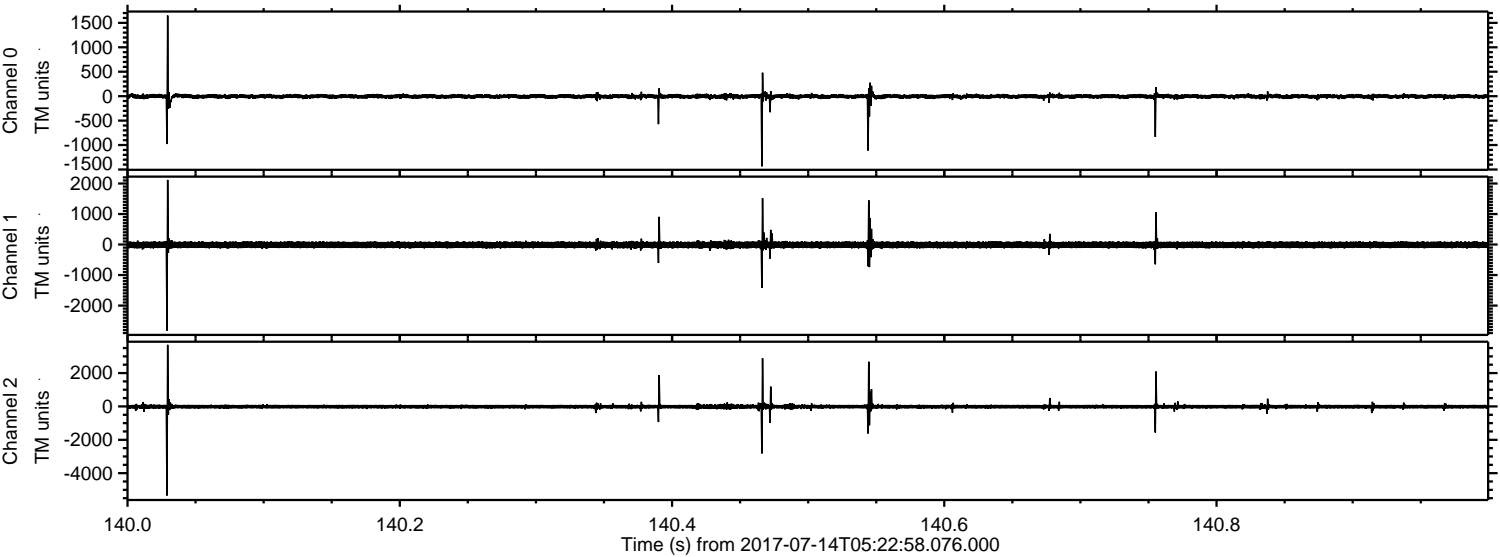
ELMAVAN 3D WAVEFORMS (Measured data sampled at 50 kHz) 51000 packets of 144 samples from 2017-07-14T05:22:58.076.000. Part 142/147

Processed Thu Jul 20 06:50:08 2017 by ELM ver.2012-10-06 from 001__elm20170714_052257__dat00.bin

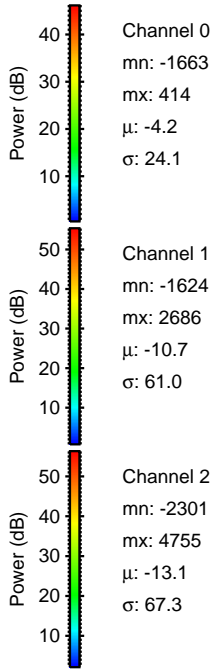
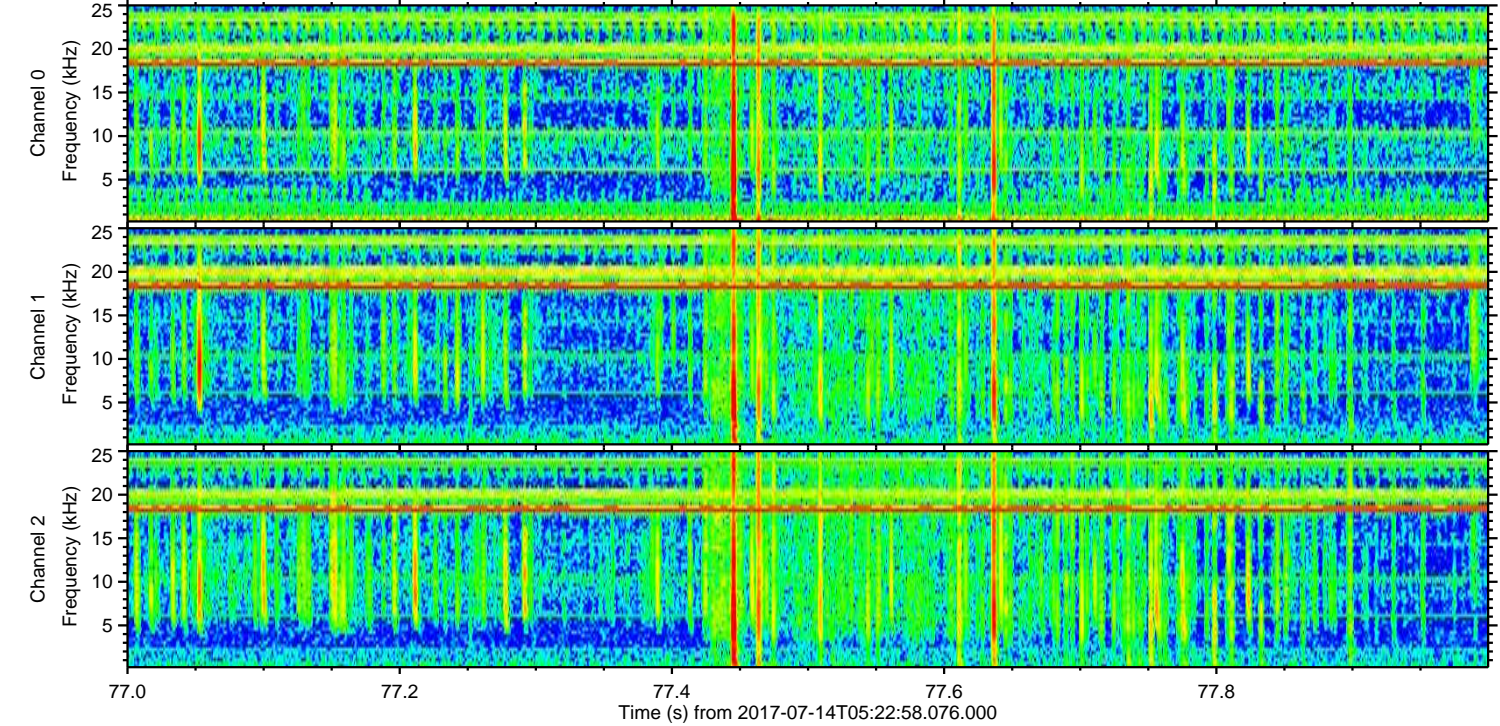
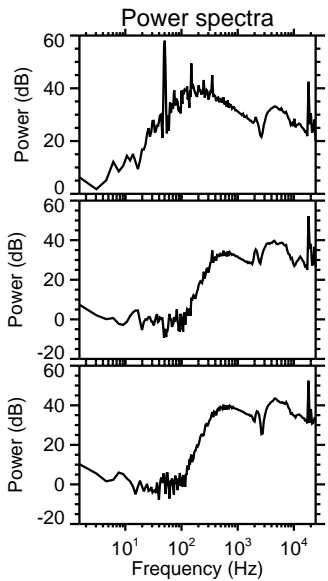
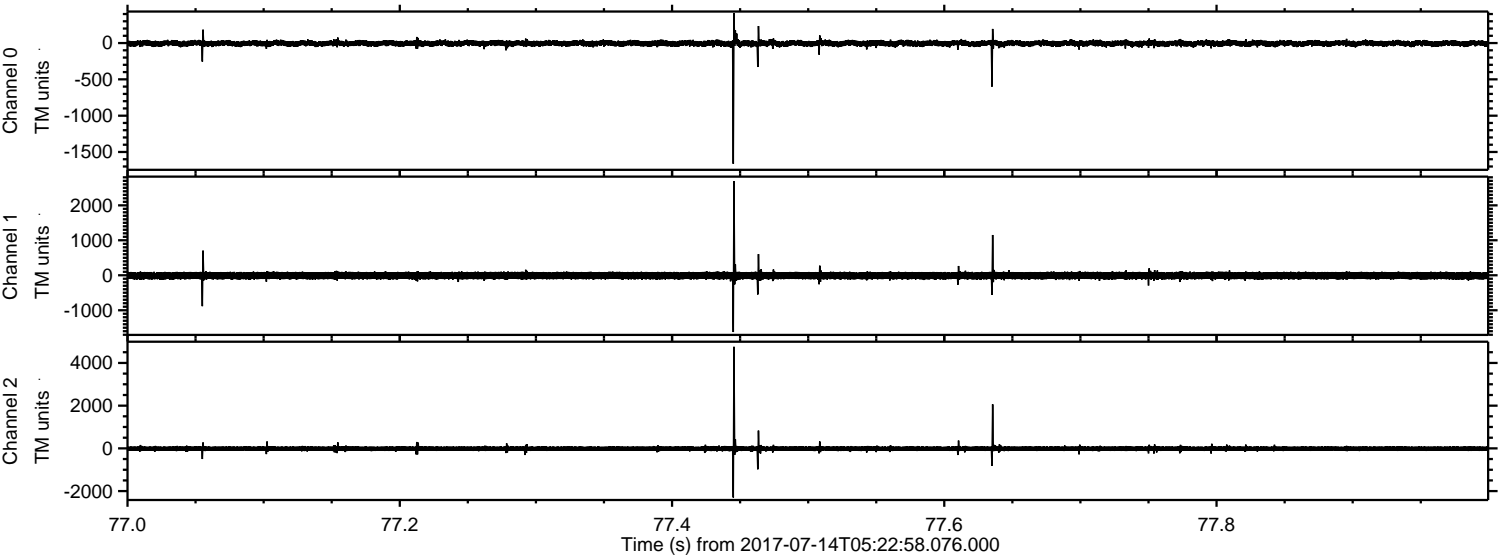


ELMAVAN 3D WAVEFORMS (Measured data sampled at 50 kHz) 51000 packets of 144 samples from 2017-07-14T05:22:58.076.000. Part 141/147

Processed Thu Jul 20 06:50:09 2017 by ELM ver.2012-10-06 from 001__elm20170714_052257__dat00.bin



Processed Thu Jul 20 06:50:10 2017 by ELM ver.2012-10-06 from 001__elm20170714_052257__dat00.bin

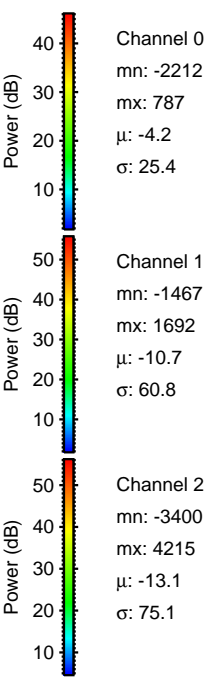
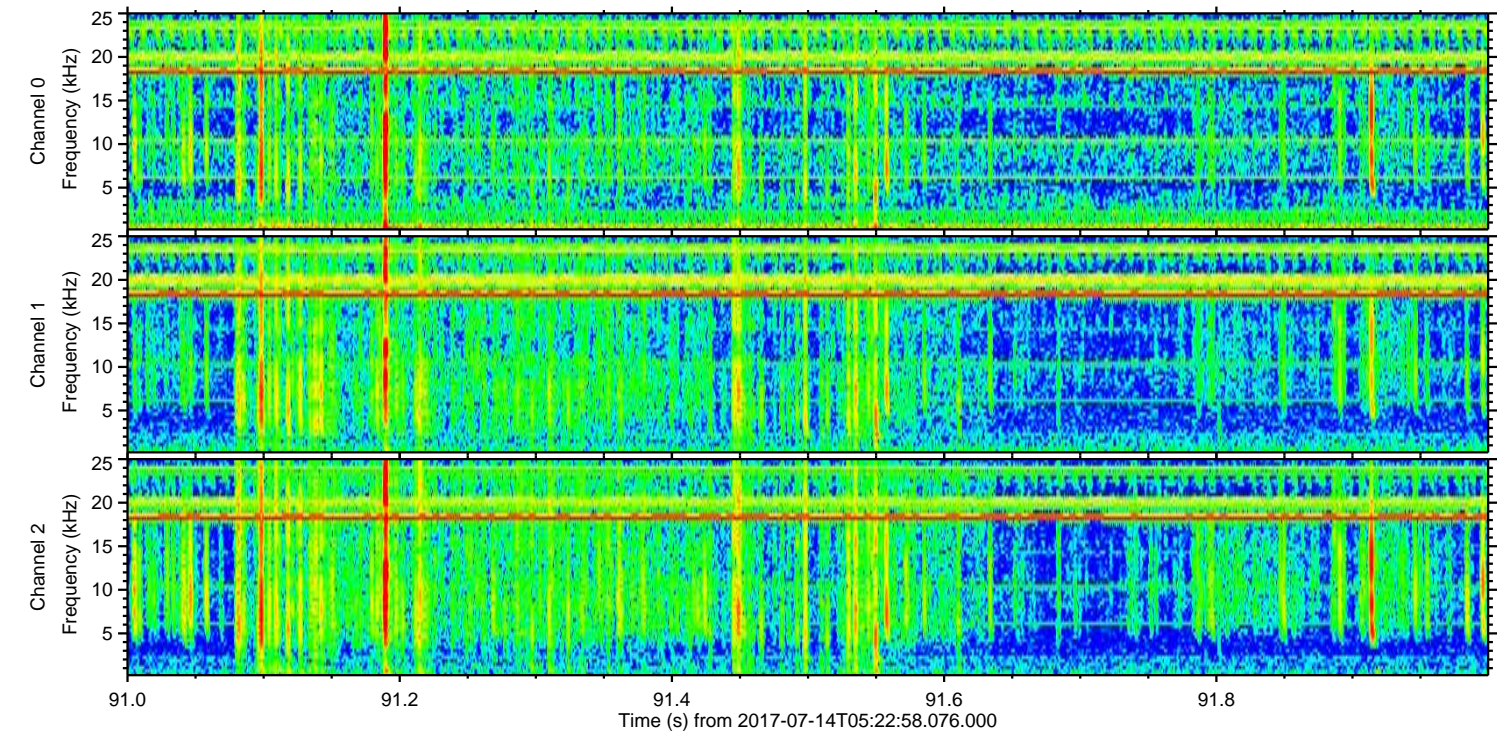
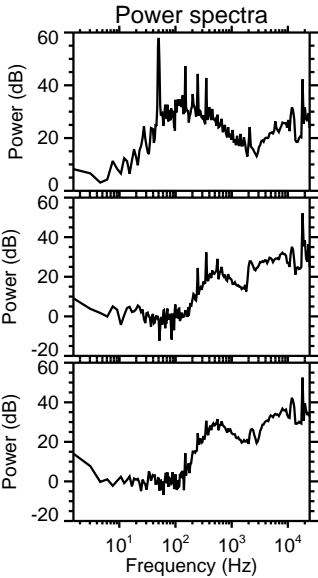
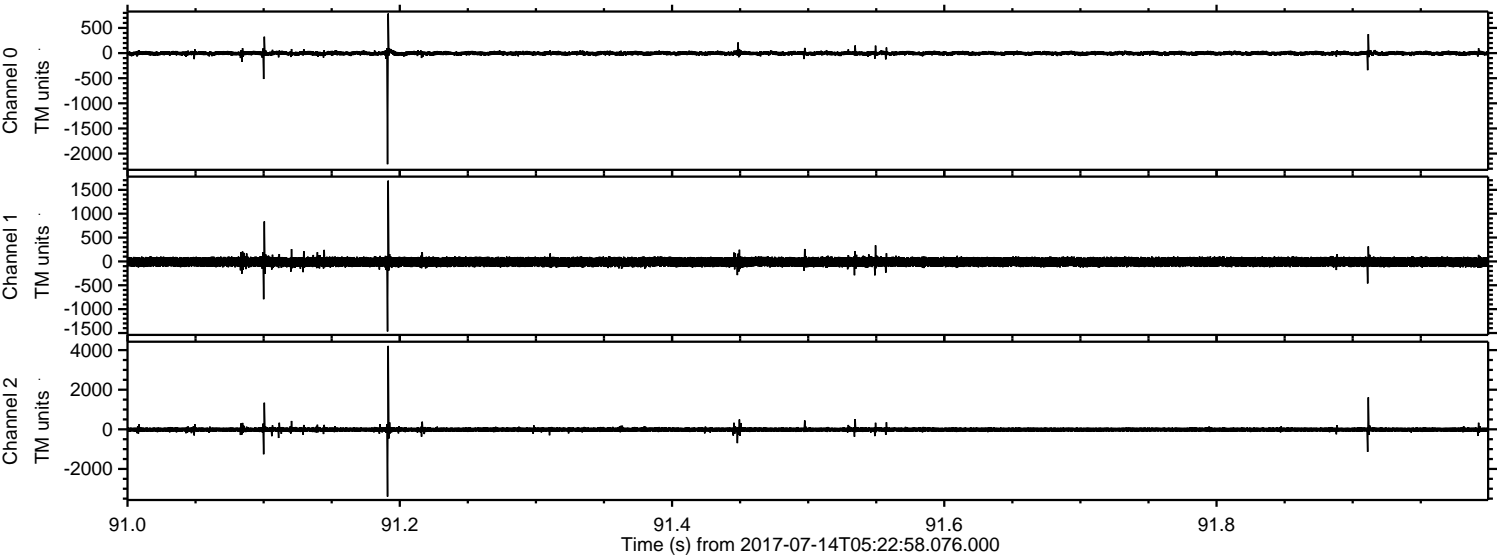


Channel 0
mn: -1663
mx: 414
 μ : -4.2
 σ : 24.1

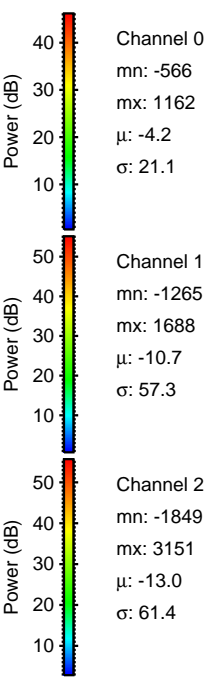
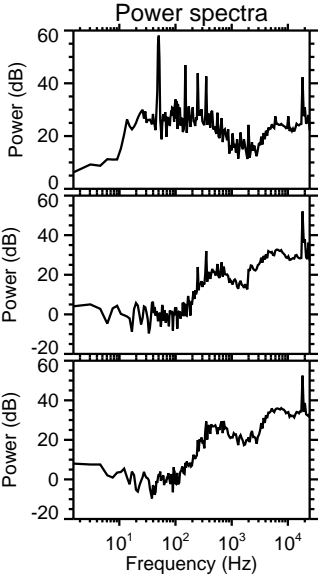
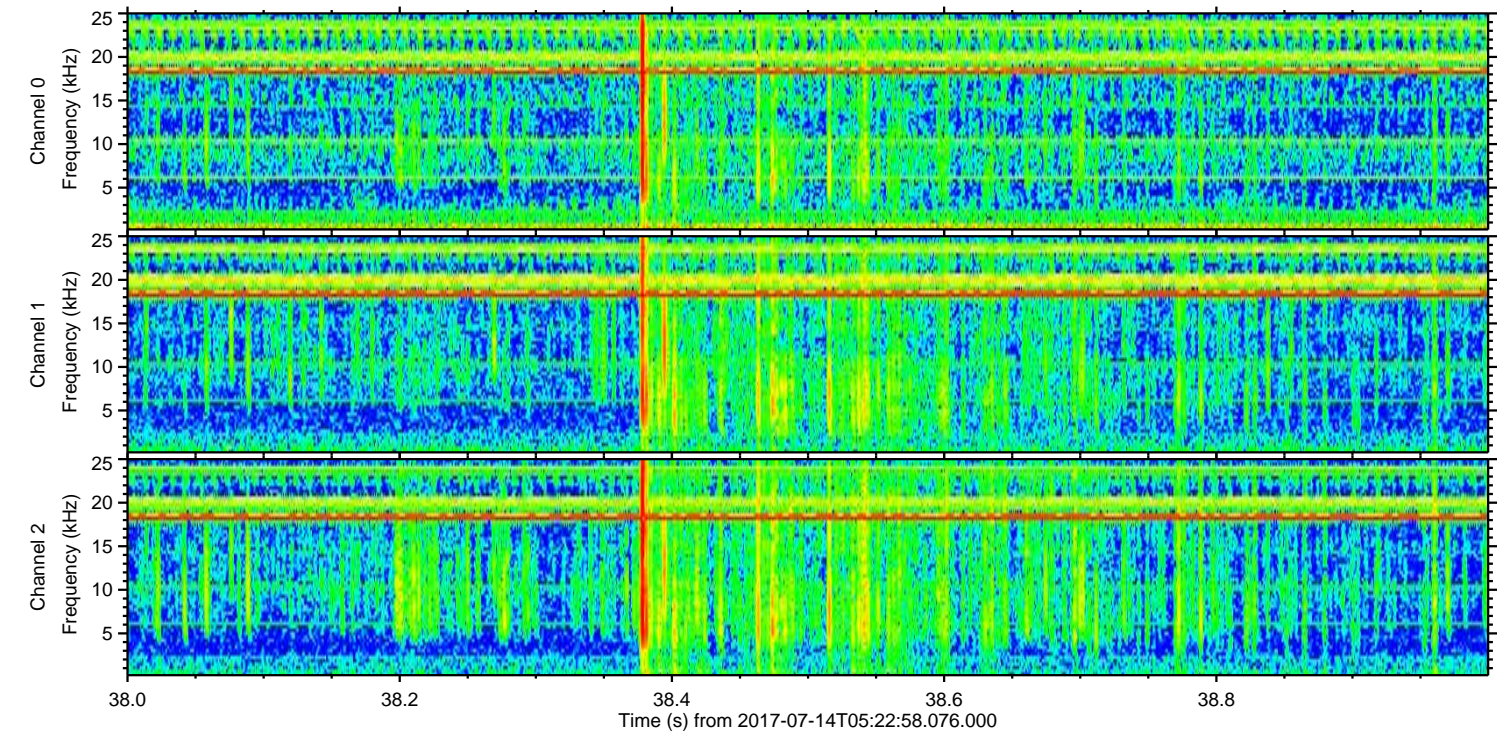
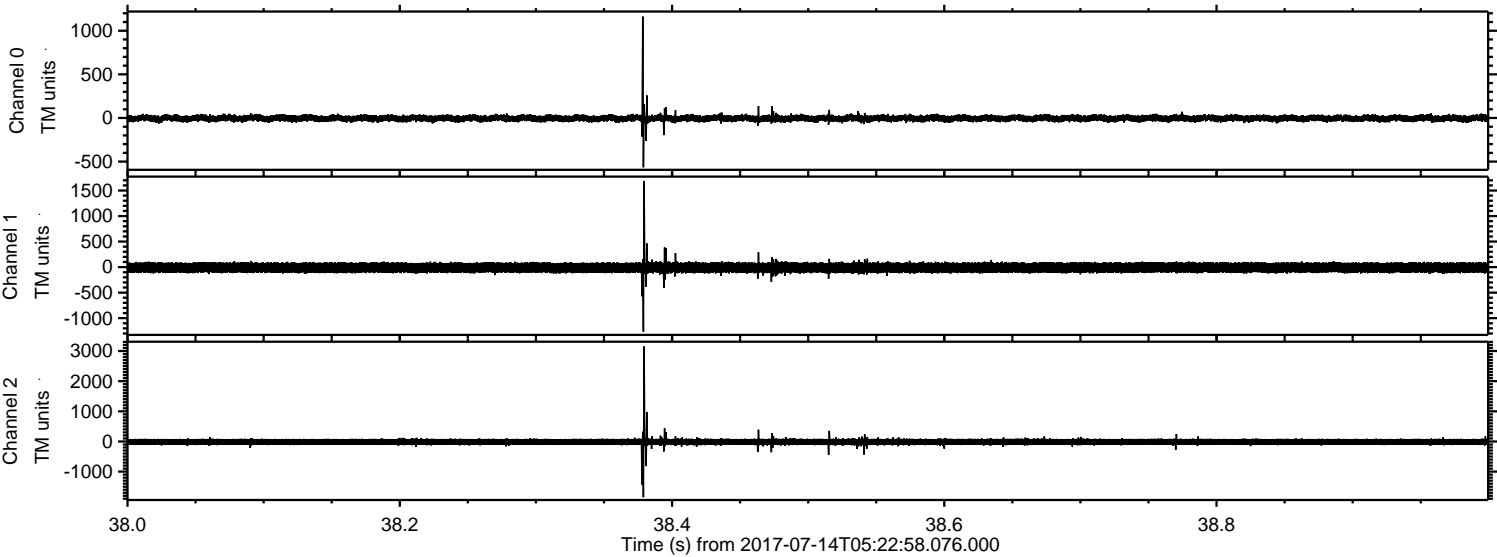
Channel 1
mn: -1624
mx: 2686
 μ : -10.7
 σ : 61.0

Channel 2
mn: -2301
mx: 4755
 μ : -13.1
 σ : 67.3

Processed Thu Jul 20 06:50:11 2017 by ELM ver.2012-10-06 from 001__elm20170714_052257__dat00.bin



Processed Thu Jul 20 06:50:12 2017 by ELM ver.2012-10-06 from 001__elm20170714_052257__dat00.bin



Channel 0
mn: -566
mx: 1162
 μ : -4.2
 σ : 21.1

Channel 1
mn: -1265
mx: 1688
 μ : -10.7
 σ : 57.3

Channel 2
mn: -1849
mx: 3151
 μ : -13.0
 σ : 61.4

Processed Thu Jul 20 06:50:12 2017 by ELM ver.2012-10-06 from 001__elm20170714_052257__dat00.bin

