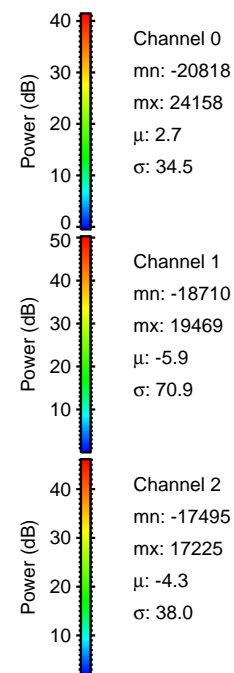
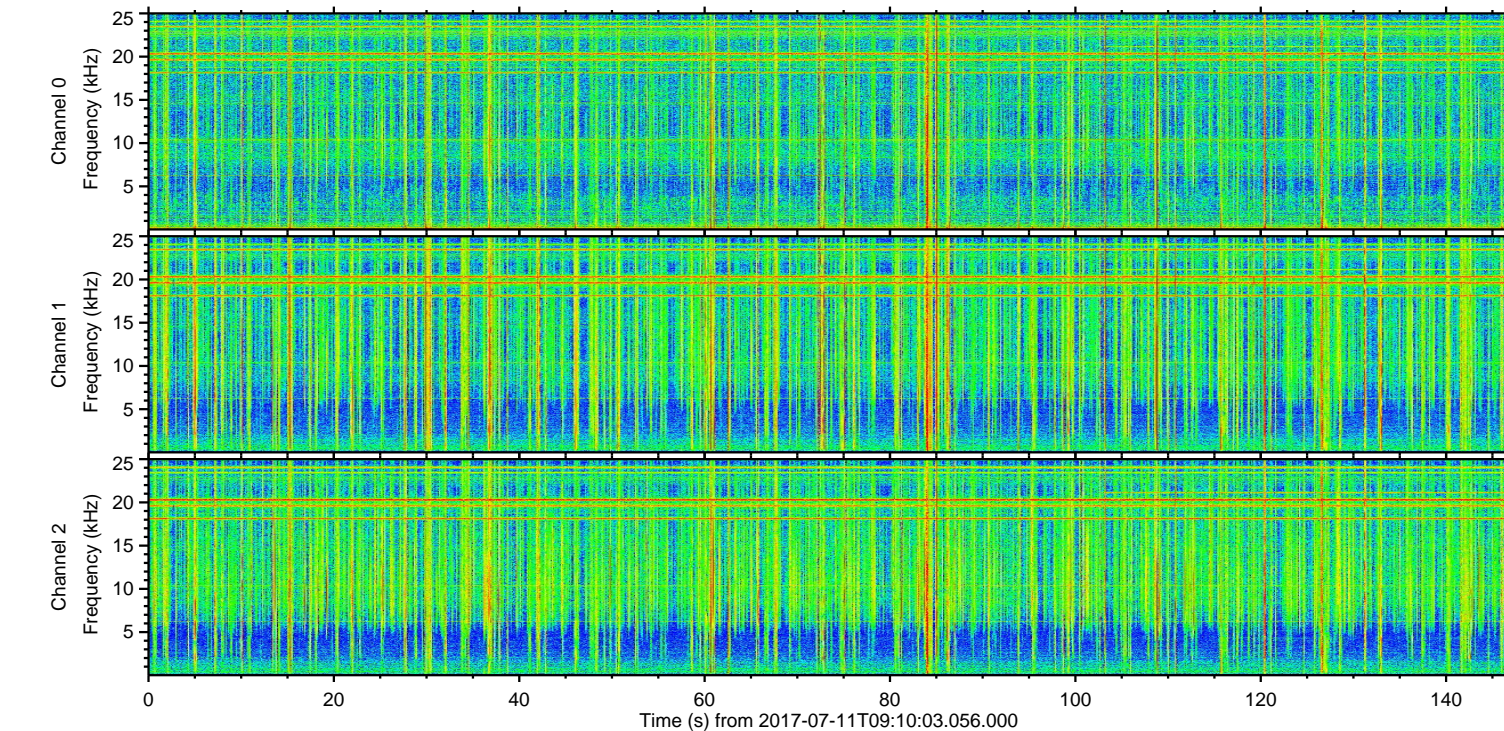
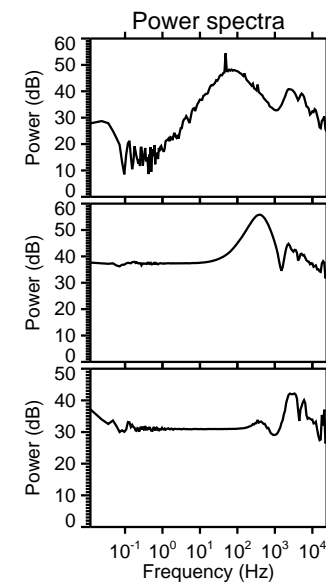
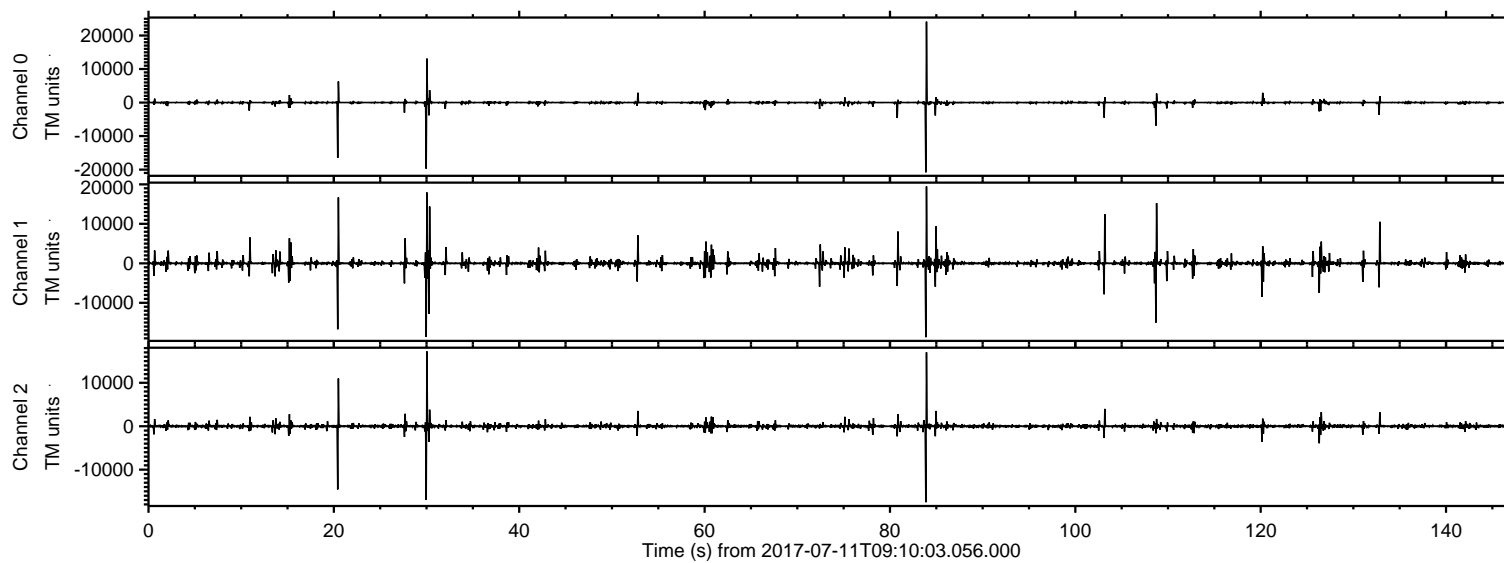
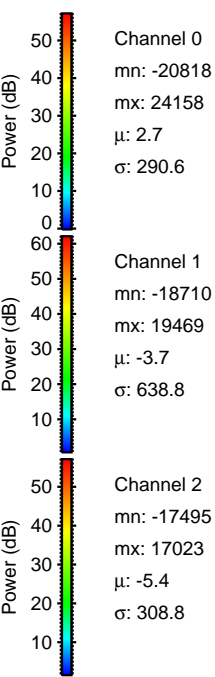
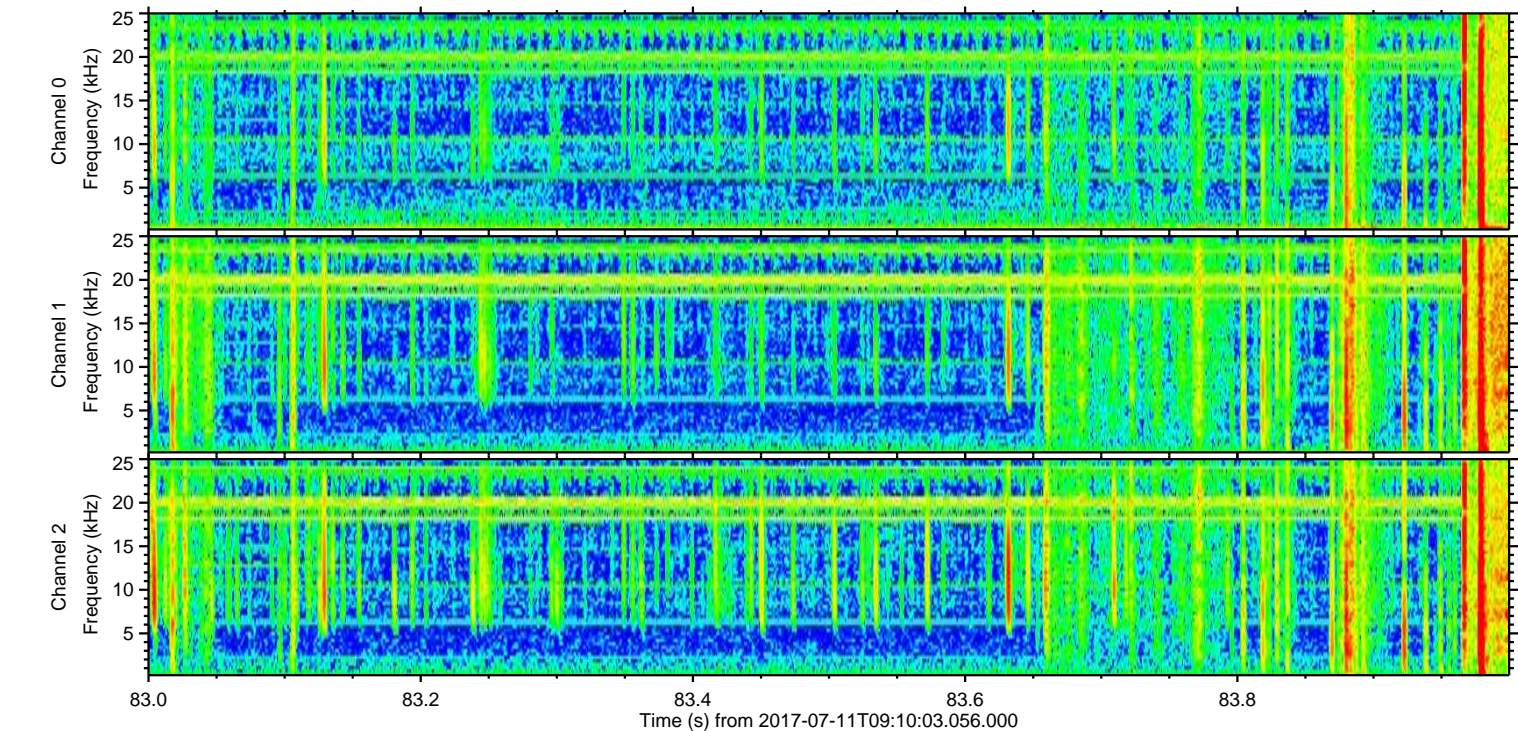
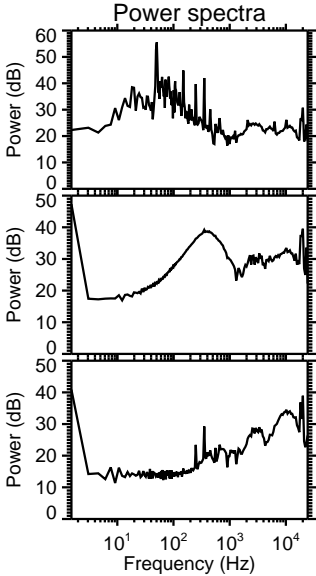
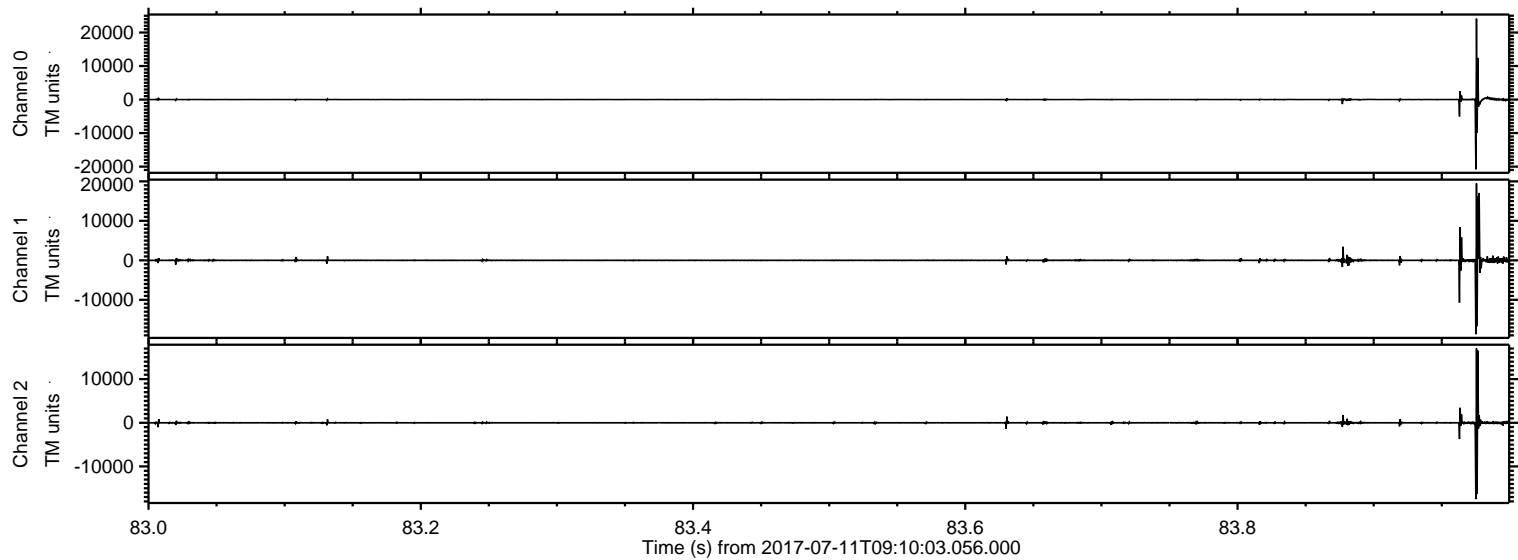


ELMAVAN 3D WAVEFORMS (Measured data sampled at 50 kHz) 51000 packets of 144 samples from 2017-07-11T09:10:03.056.000.

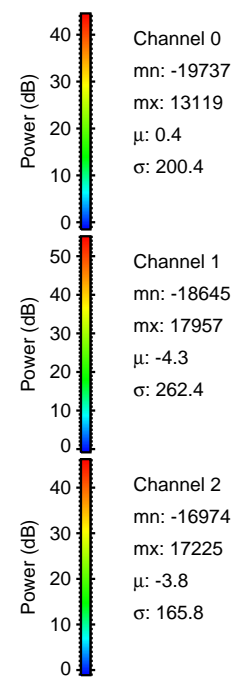
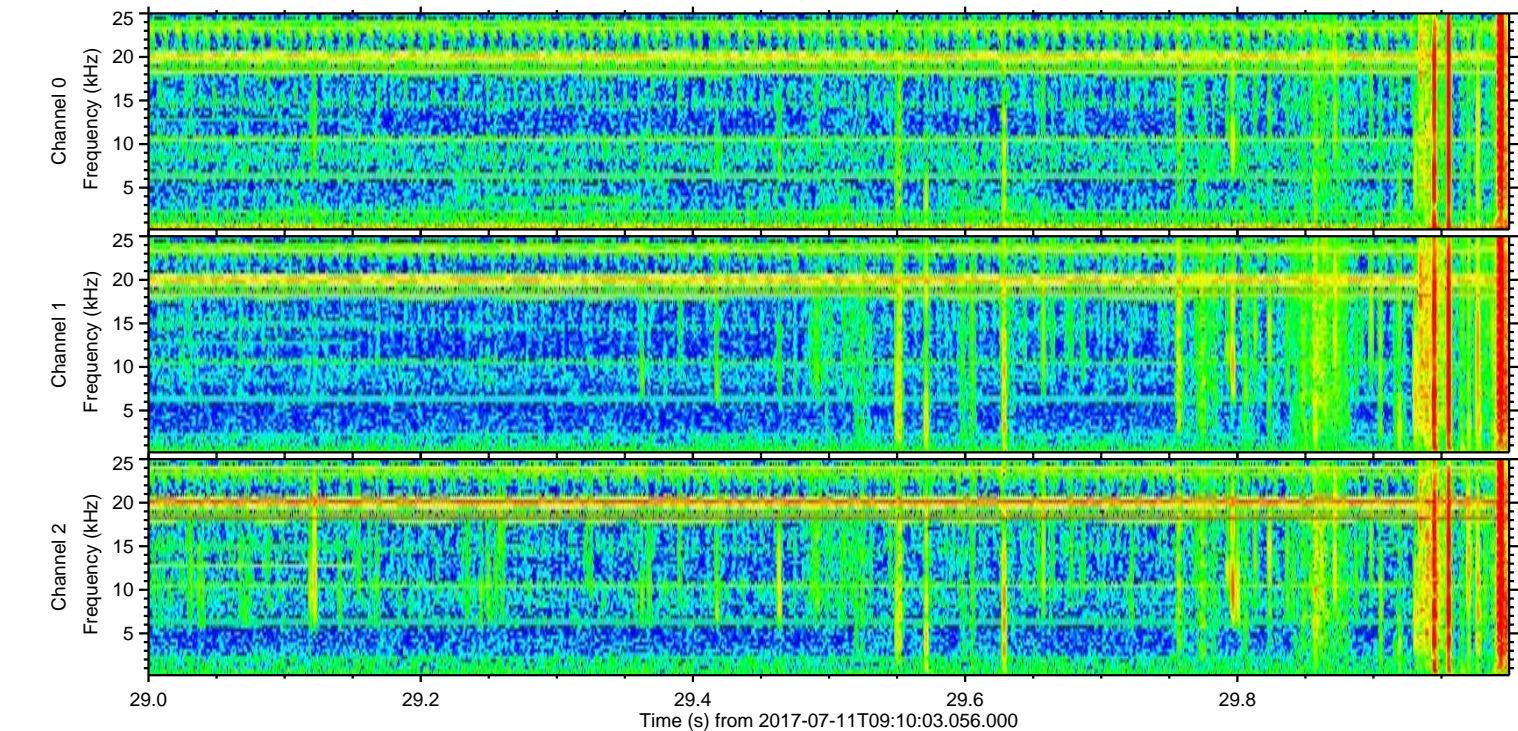
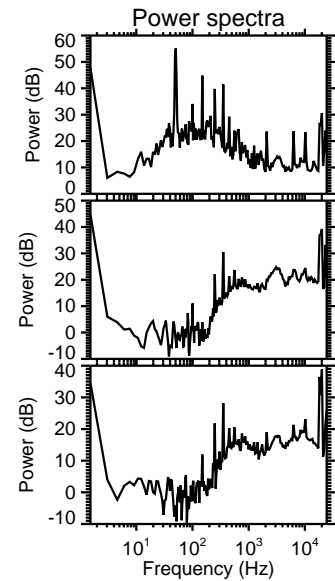
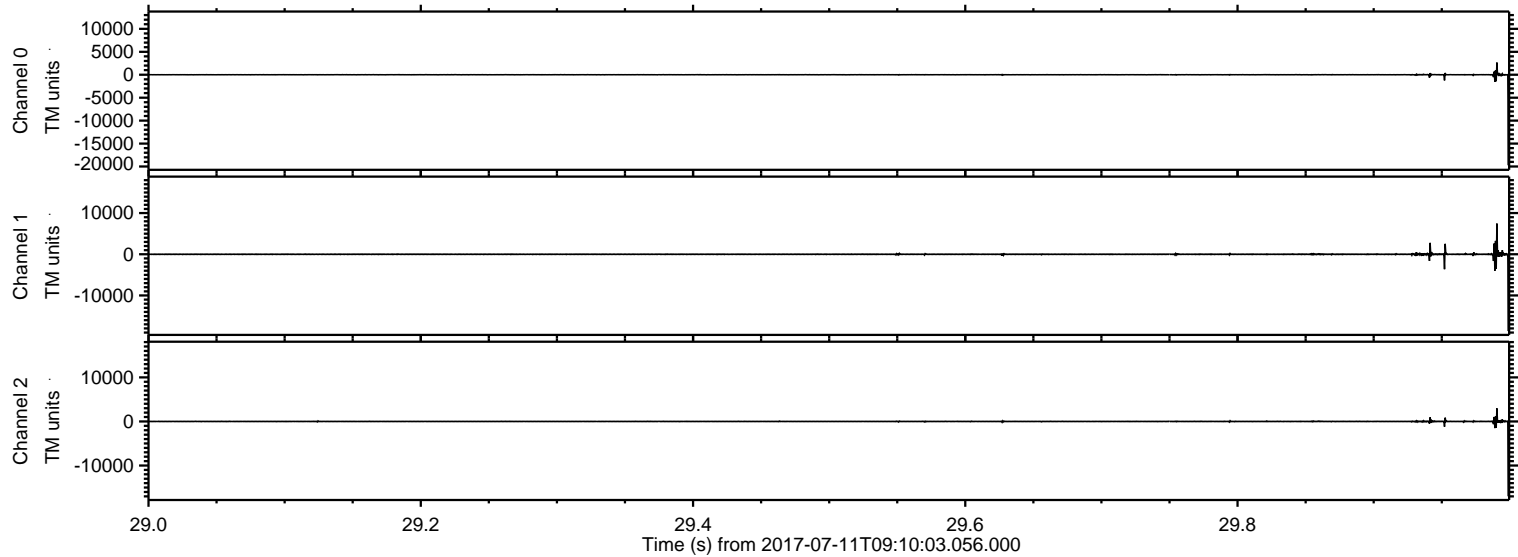
Processed Wed Jul 19 20:33:20 2017 by ELM ver.2012-10-06 from 001__elm20170711_091002__dat00.bin



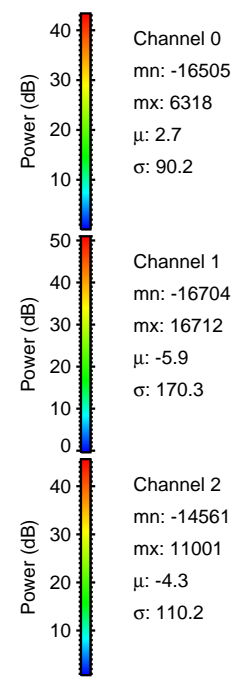
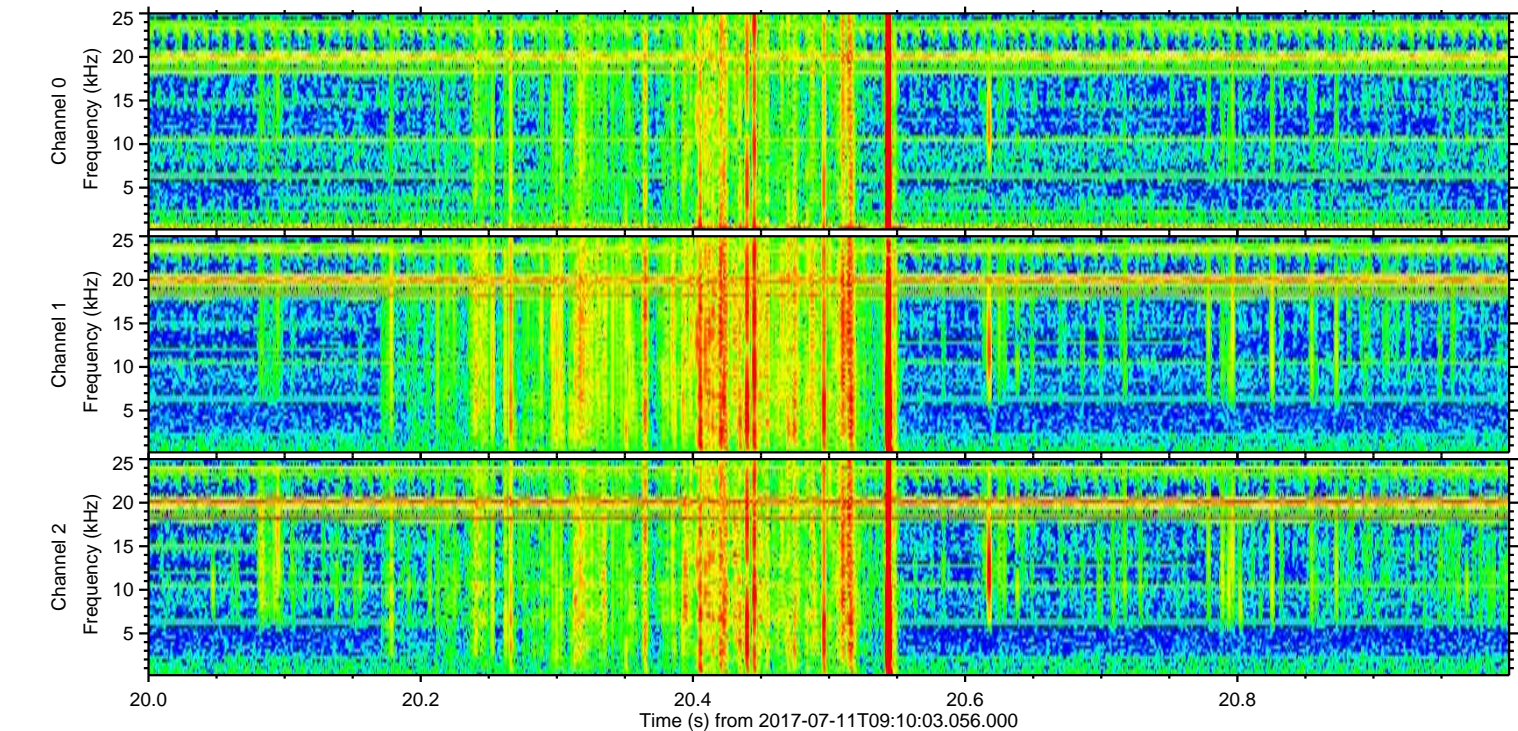
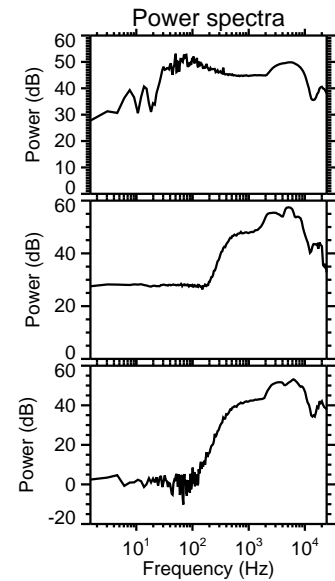
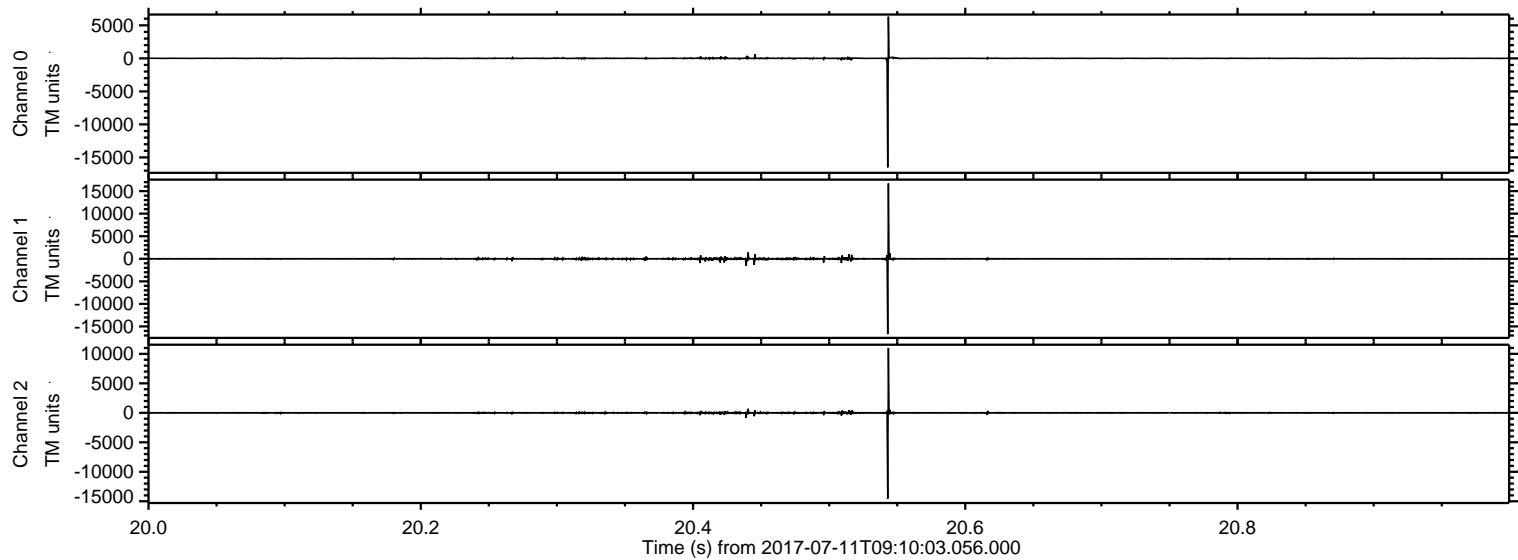
Processed Wed Jul 19 20:33:26 2017 by ELM ver.2012-10-06 from 001__elm20170711_091002__dat00.bin



Processed Wed Jul 19 20:33:27 2017 by ELM ver.2012-10-06 from 001__elm20170711_091002__dat00.bin



Processed Wed Jul 19 20:33:28 2017 by ELM ver.2012-10-06 from 001__elm20170711_091002__dat00.bin



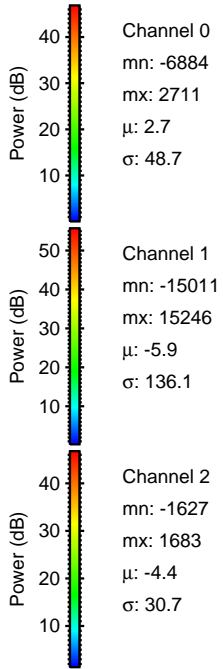
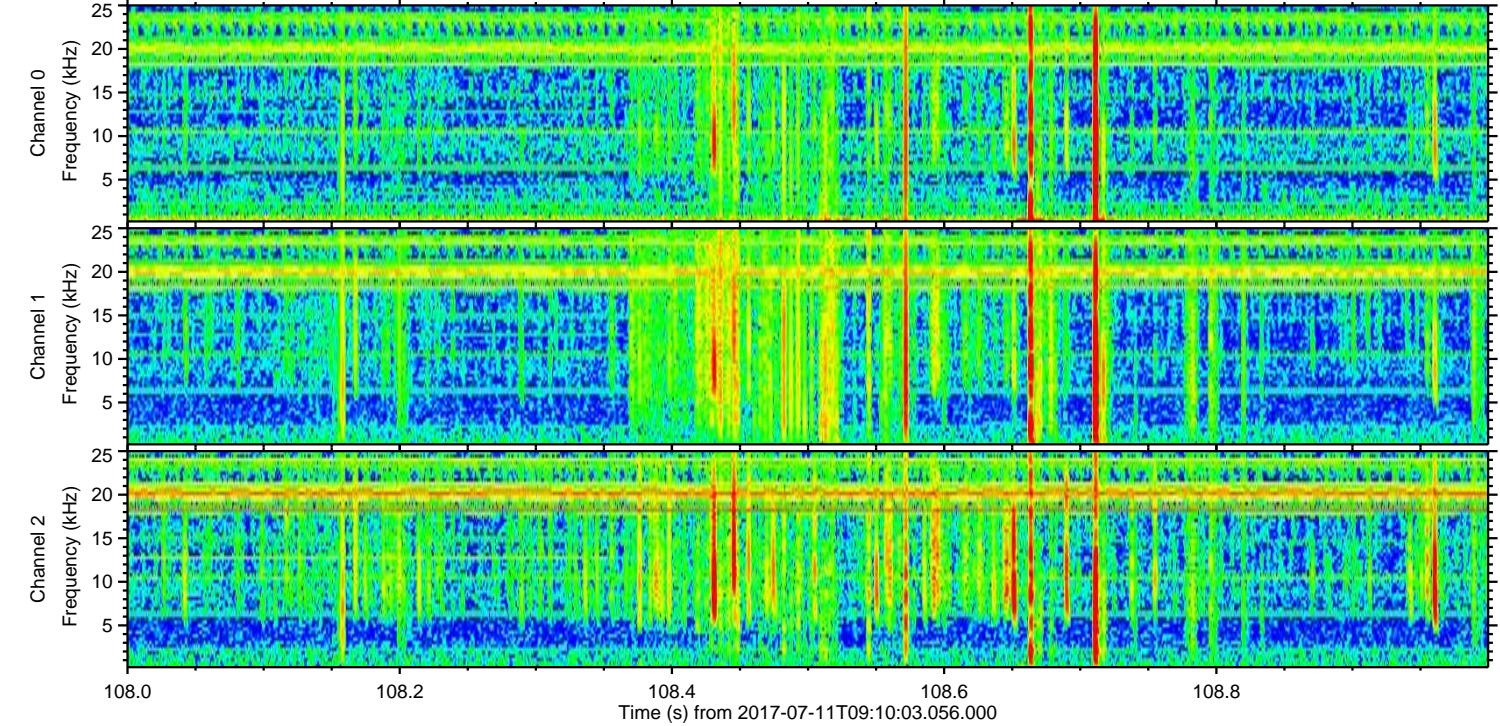
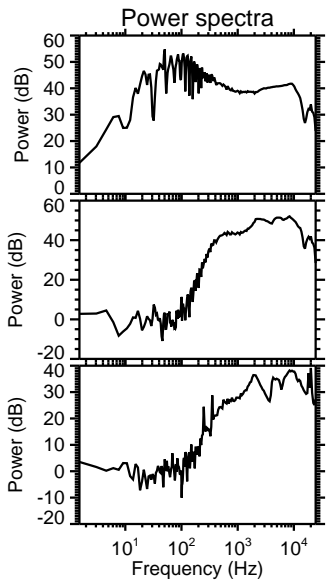
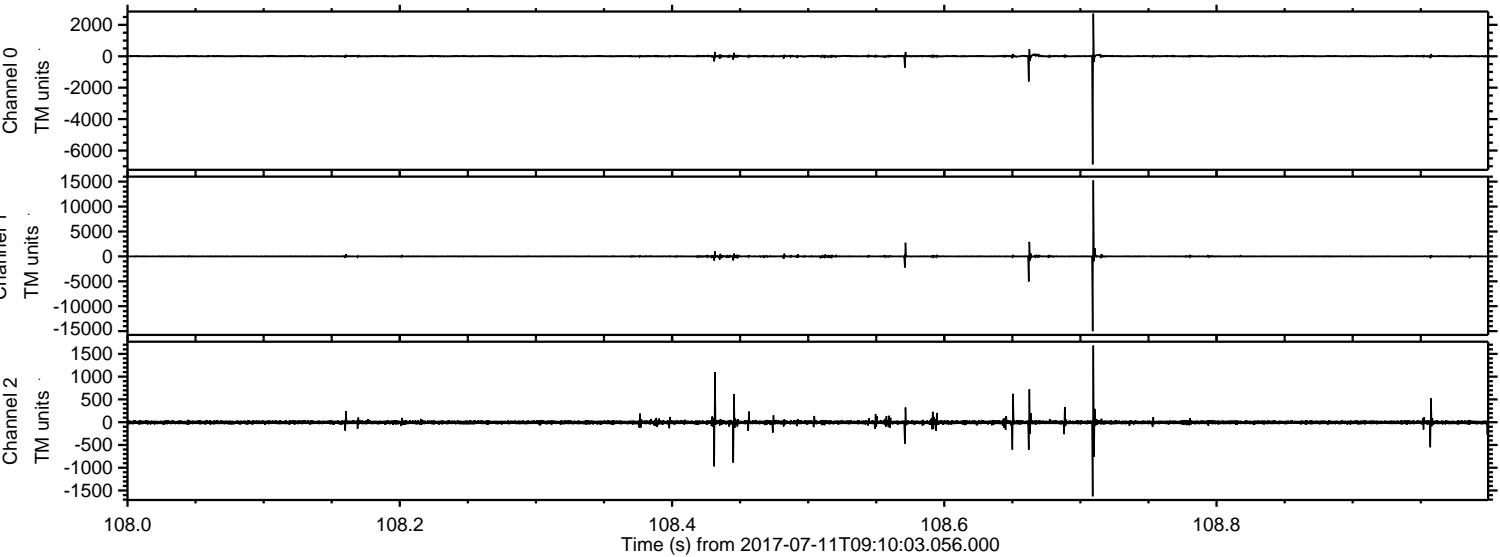
Channel 0
mn: -16505
mx: 6318
 μ : 2.7
 σ : 90.2

Channel 1
mn: -16704
mx: 16712
 μ : -5.9
 σ : 170.3

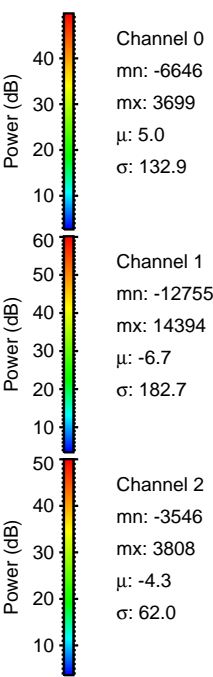
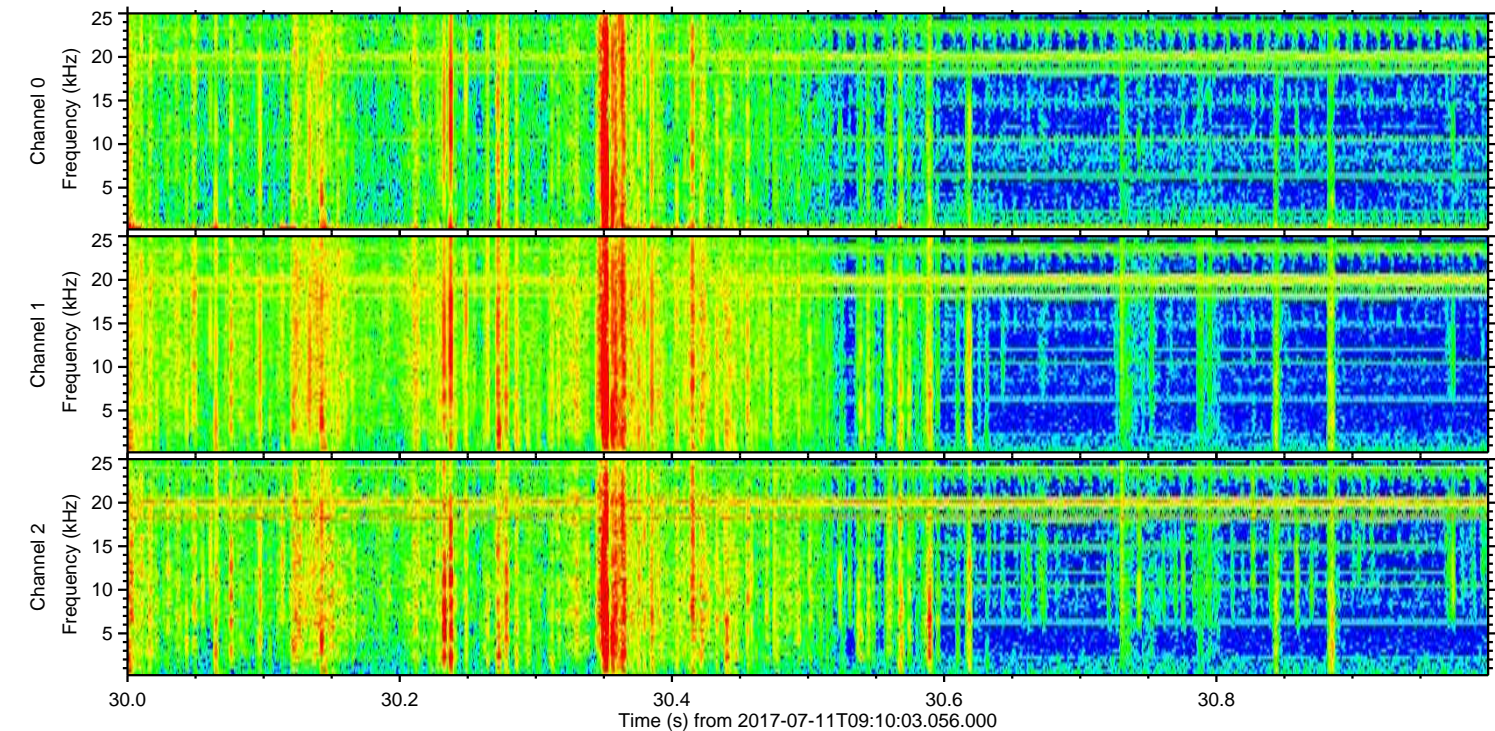
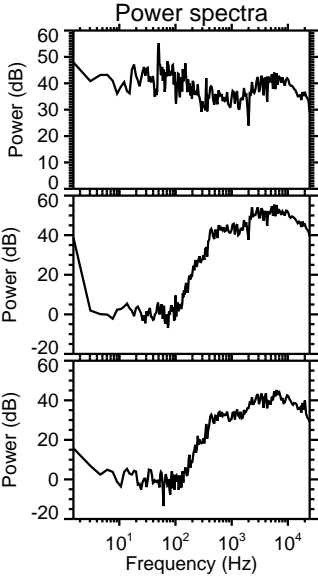
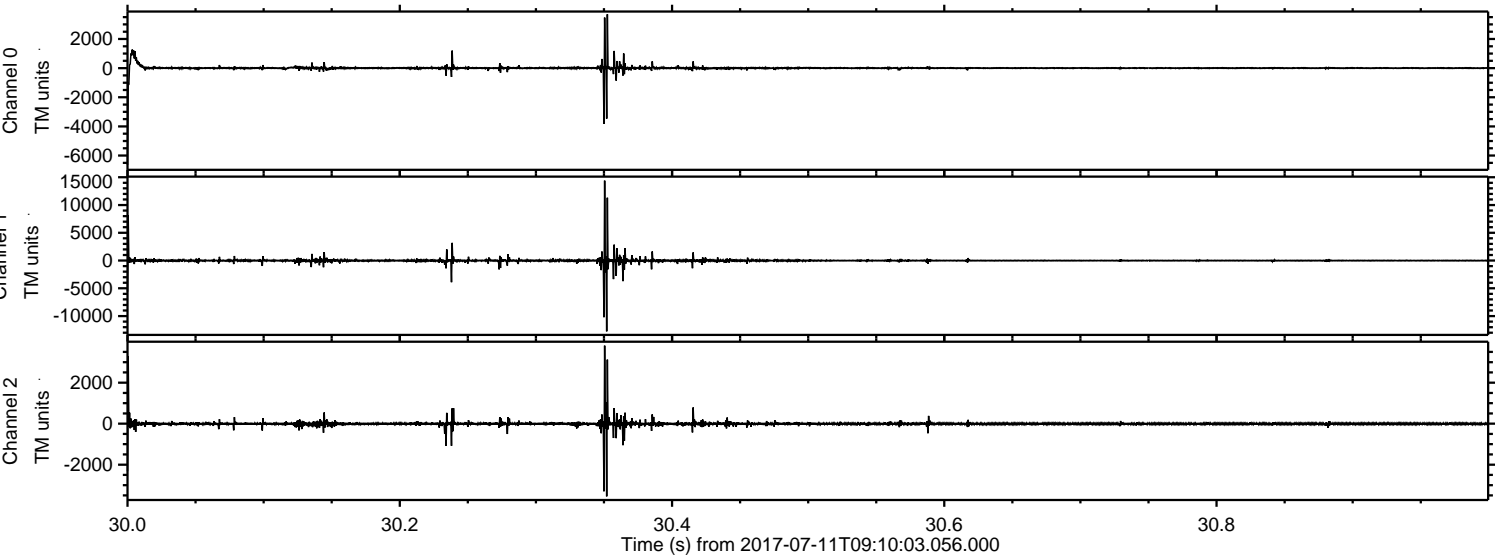
Channel 2
mn: -14561
mx: 11001
 μ : -4.3
 σ : 110.2

ELMAVAN 3D WAVEFORMS (Measured data sampled at 50 kHz) 51000 packets of 144 samples from 2017-07-11T09:10:03.056.000. Part 109/147

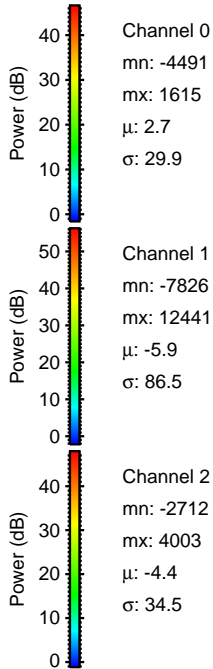
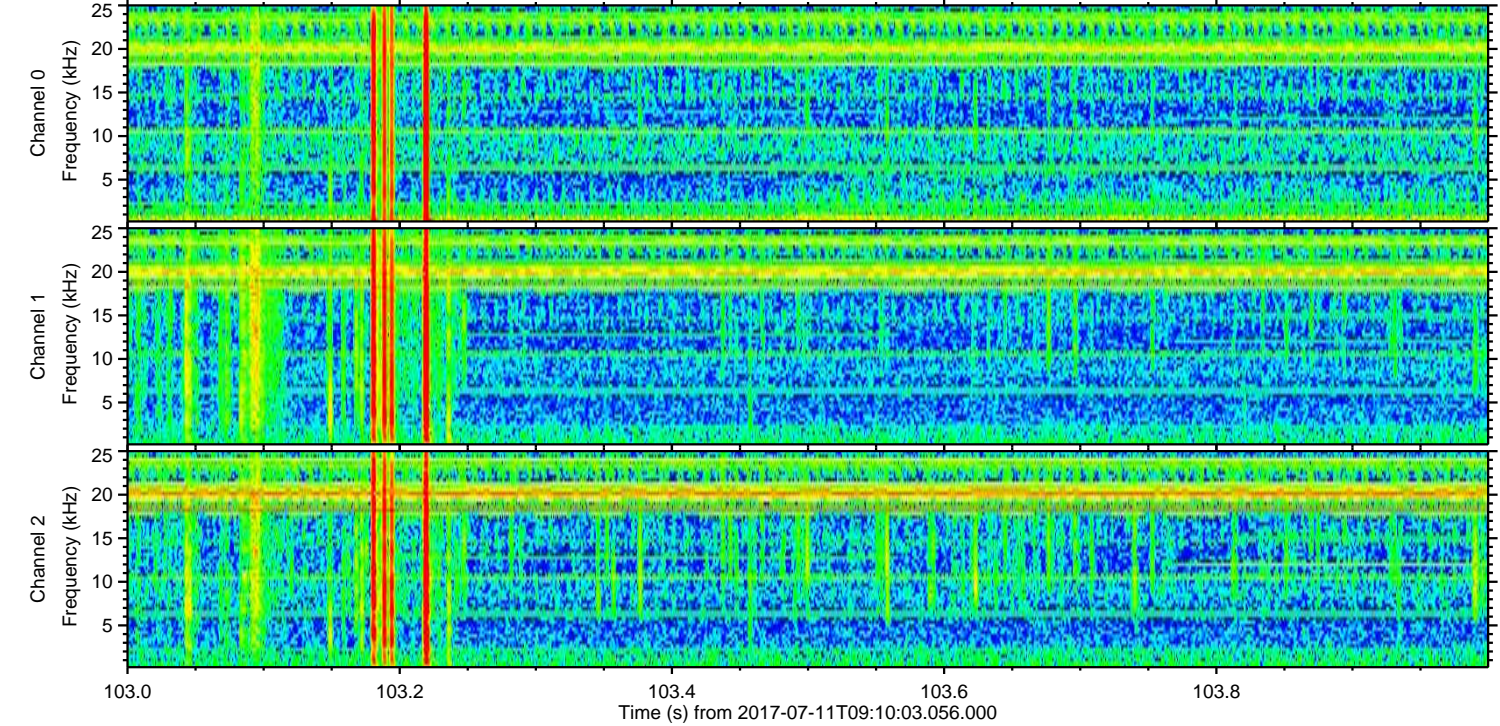
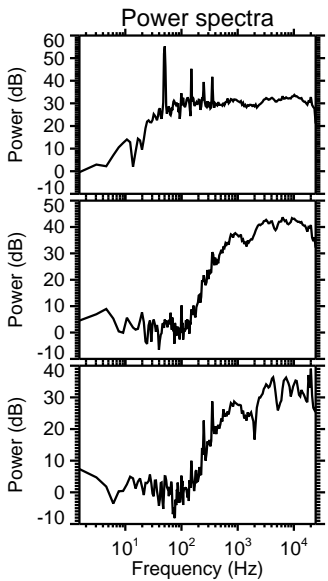
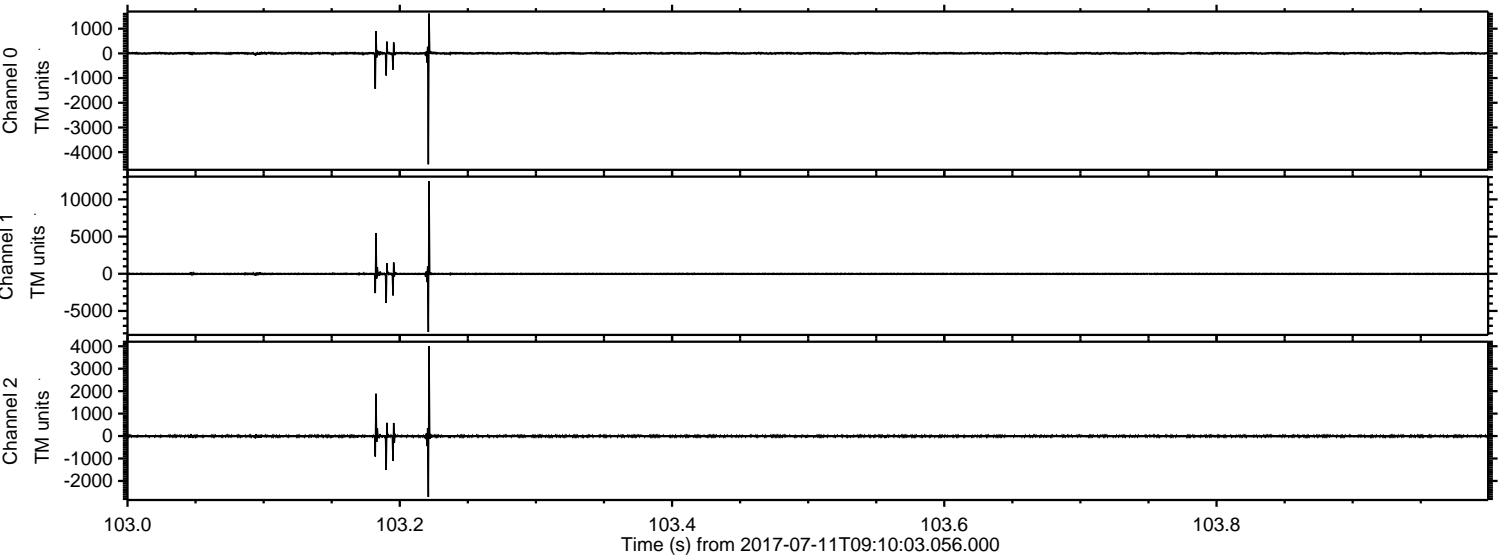
Processed Wed Jul 19 20:33:29 2017 by ELM ver.2012-10-06 from 001__elm20170711_091002__dat00.bin



Processed Wed Jul 19 20:33:29 2017 by ELM ver.2012-10-06 from 001__elm20170711_091002__dat00.bin

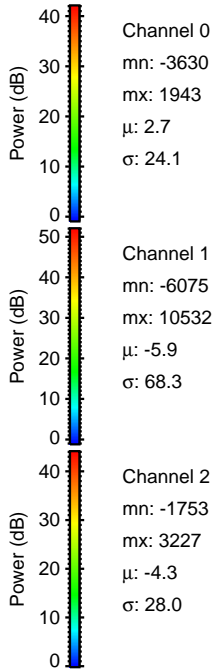
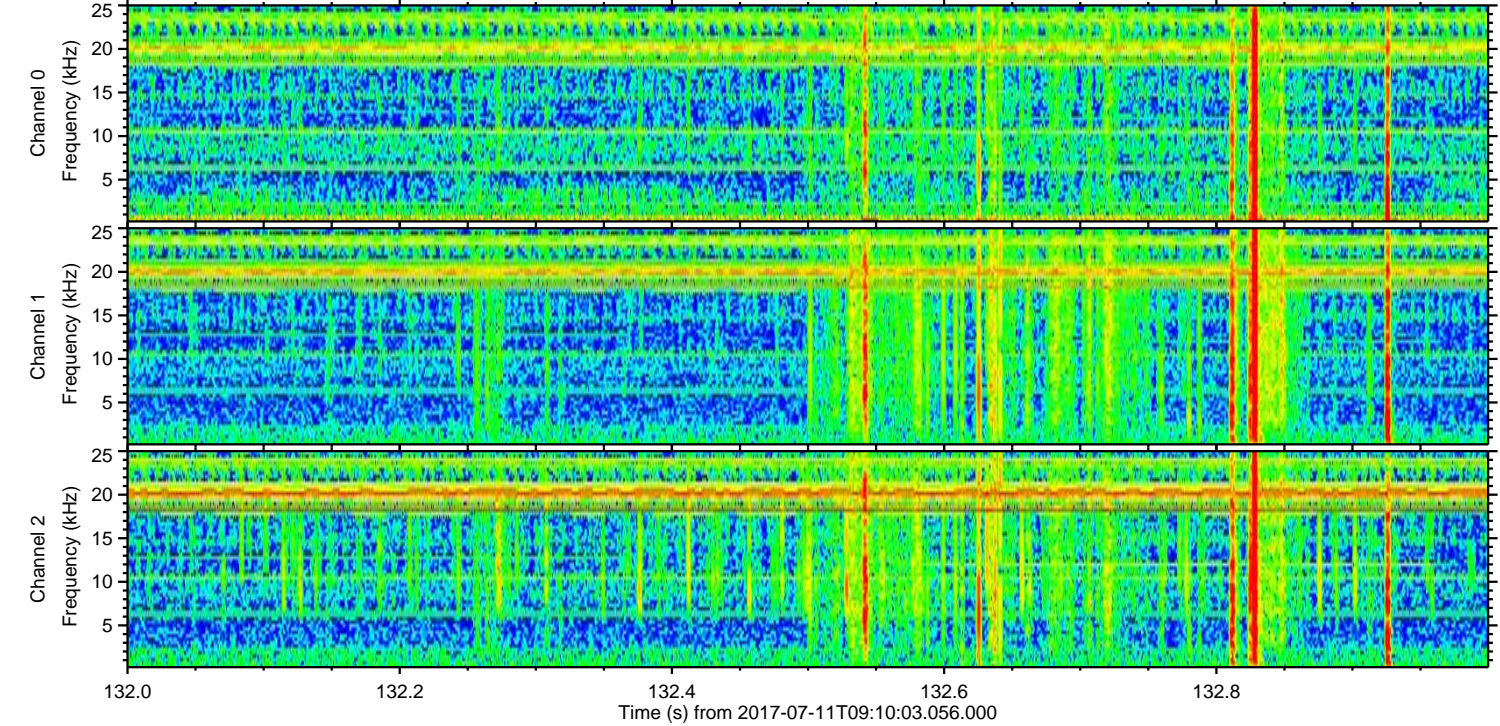
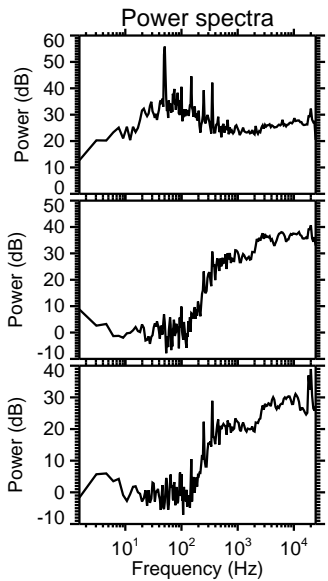
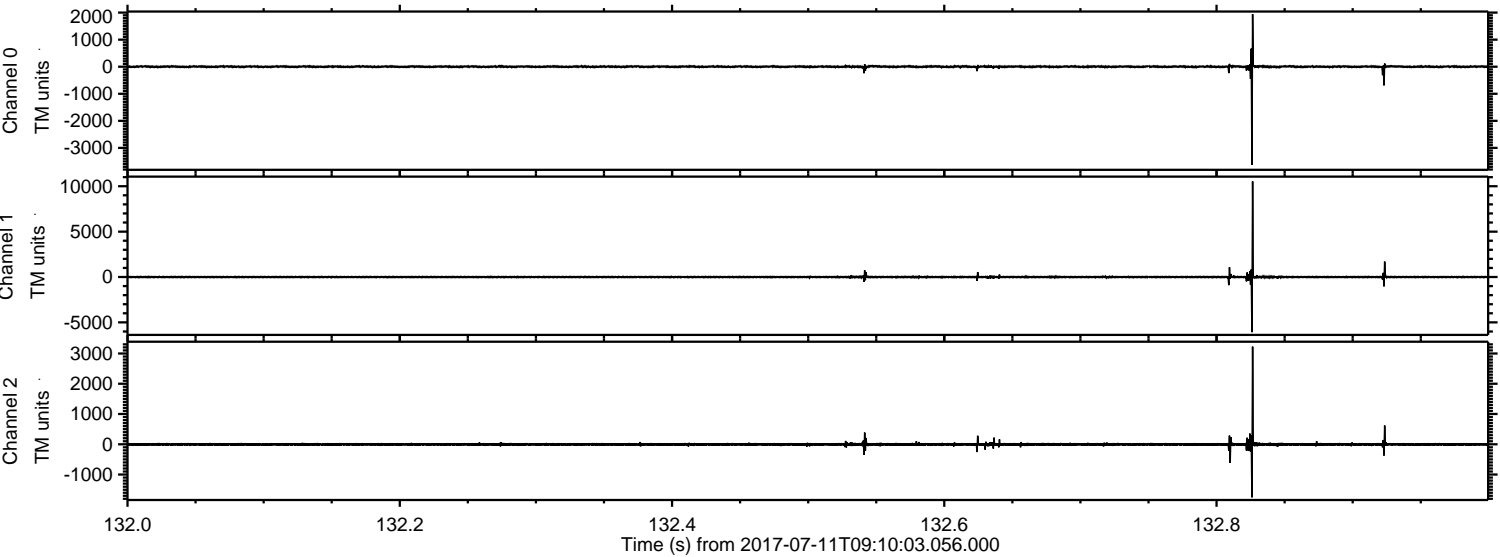


Processed Wed Jul 19 20:33:30 2017 by ELM ver.2012-10-06 from 001__elm20170711_091002__dat00.bin



ELMAVAN 3D WAVEFORMS (Measured data sampled at 50 kHz) 51000 packets of 144 samples from 2017-07-11T09:10:03.056.000. Part 133/147

Processed Wed Jul 19 20:33:31 2017 by ELM ver.2012-10-06 from 001__elm20170711_091002__dat00.bin

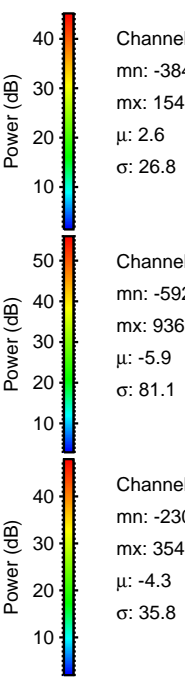
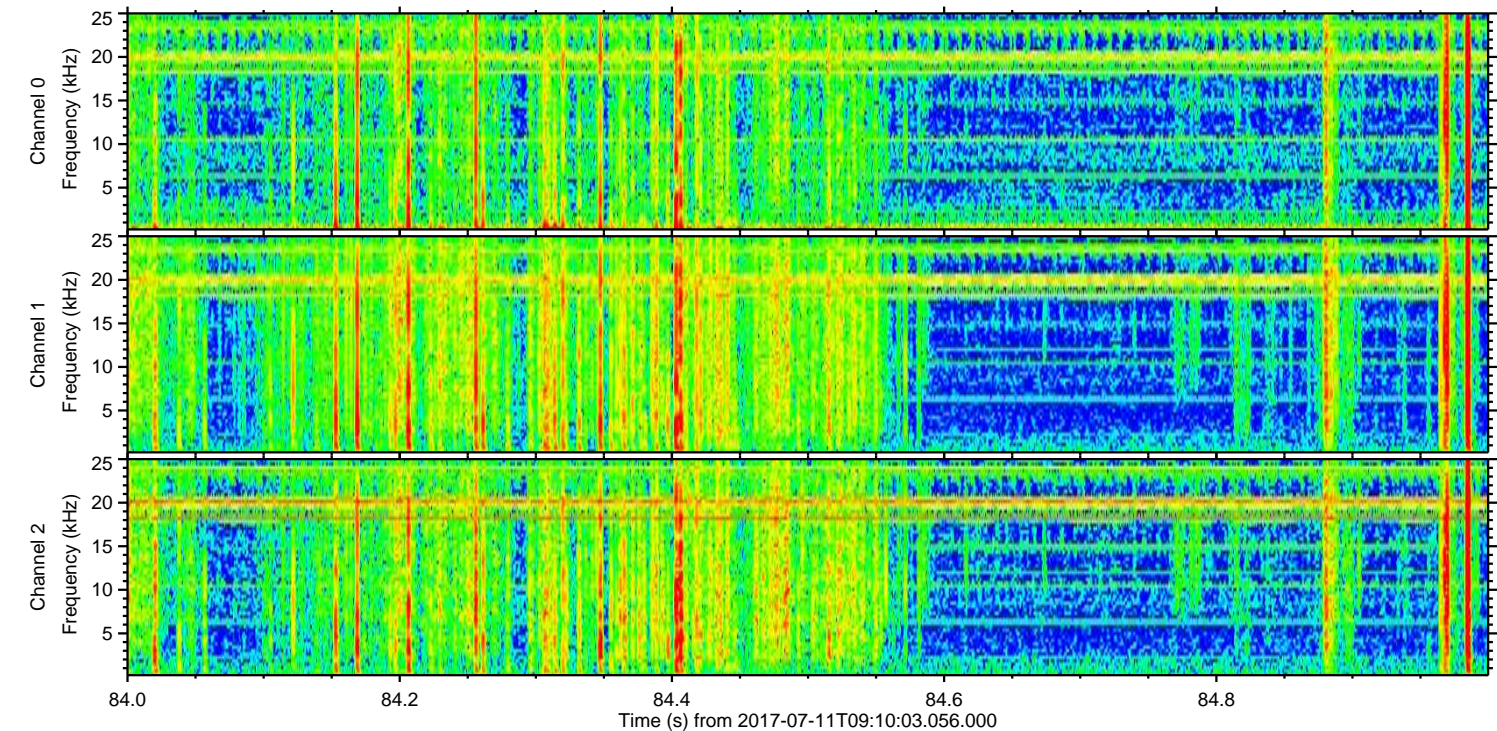
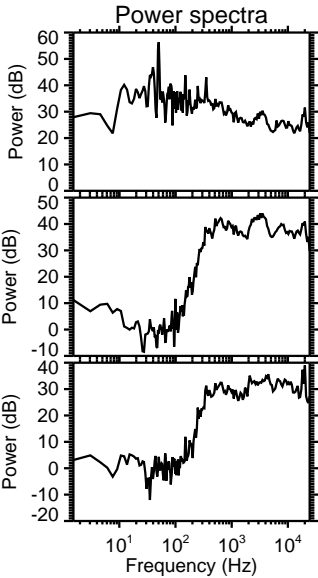
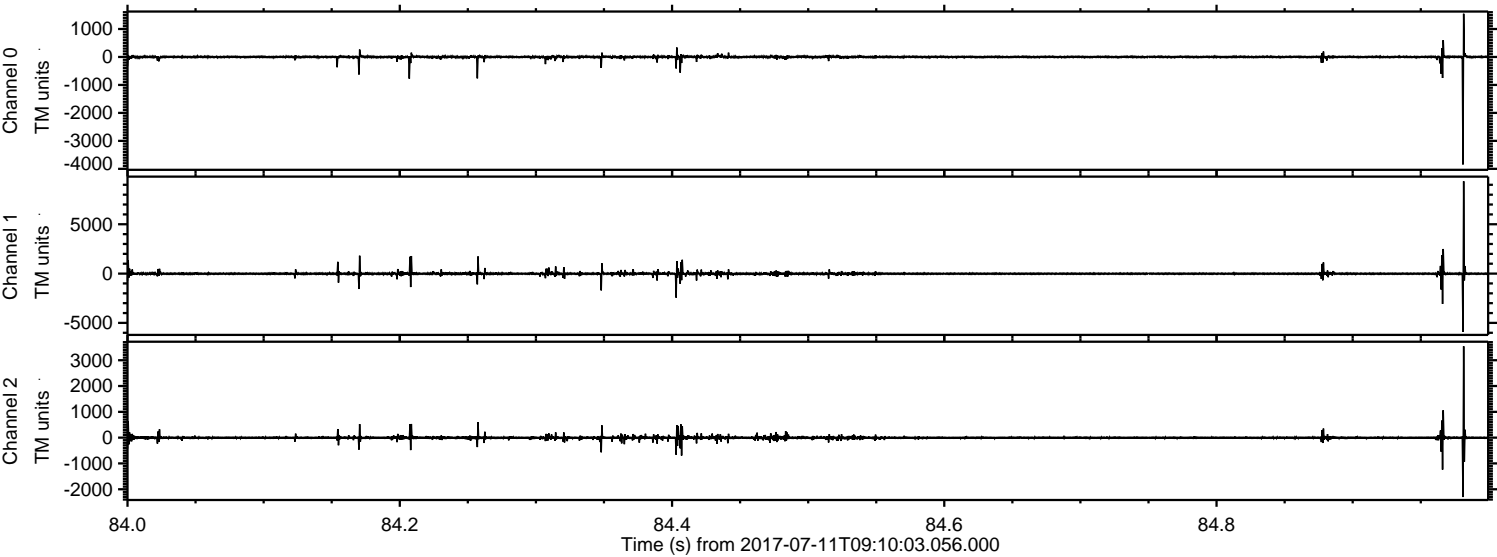


Channel 0
mn: -3630
mx: 1943
 μ : 2.7
 σ : 24.1

Channel 1
mn: -6075
mx: 10532
 μ : -5.9
 σ : 68.3

Channel 2
mn: -1753
mx: 3227
 μ : -4.3
 σ : 28.0

Processed Wed Jul 19 20:33:32 2017 by ELM ver.2012-10-06 from 001__elm20170711_091002__dat00.bin



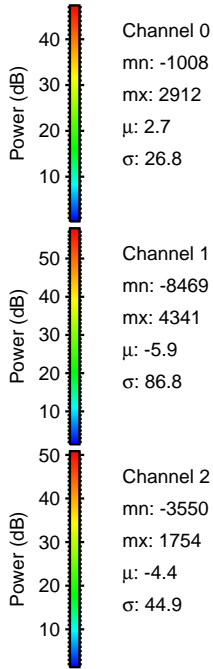
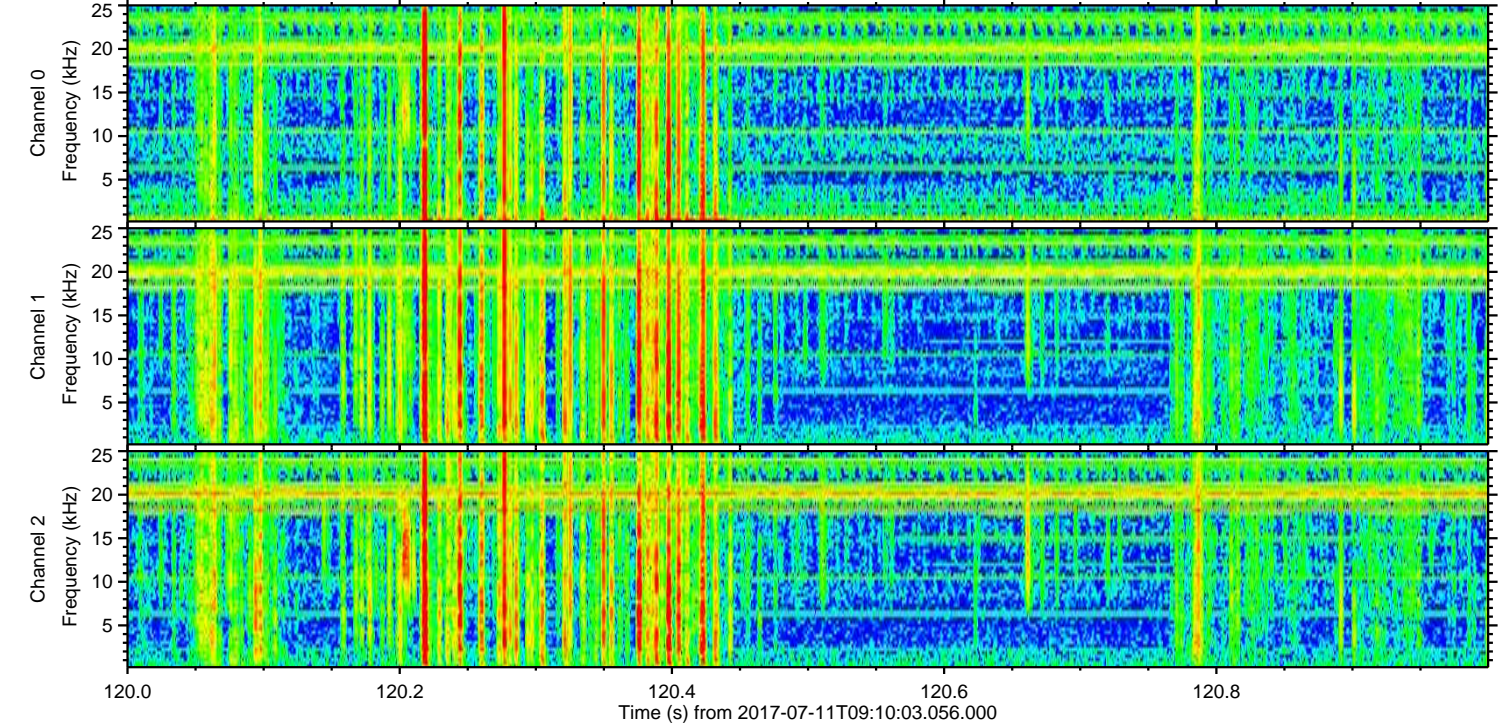
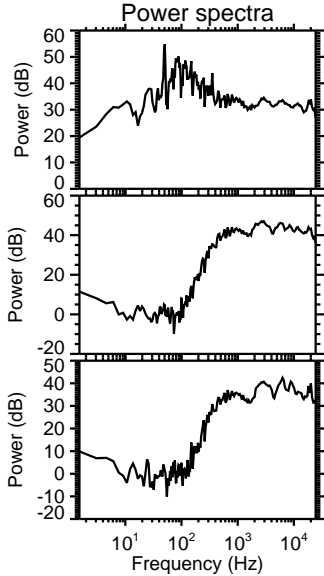
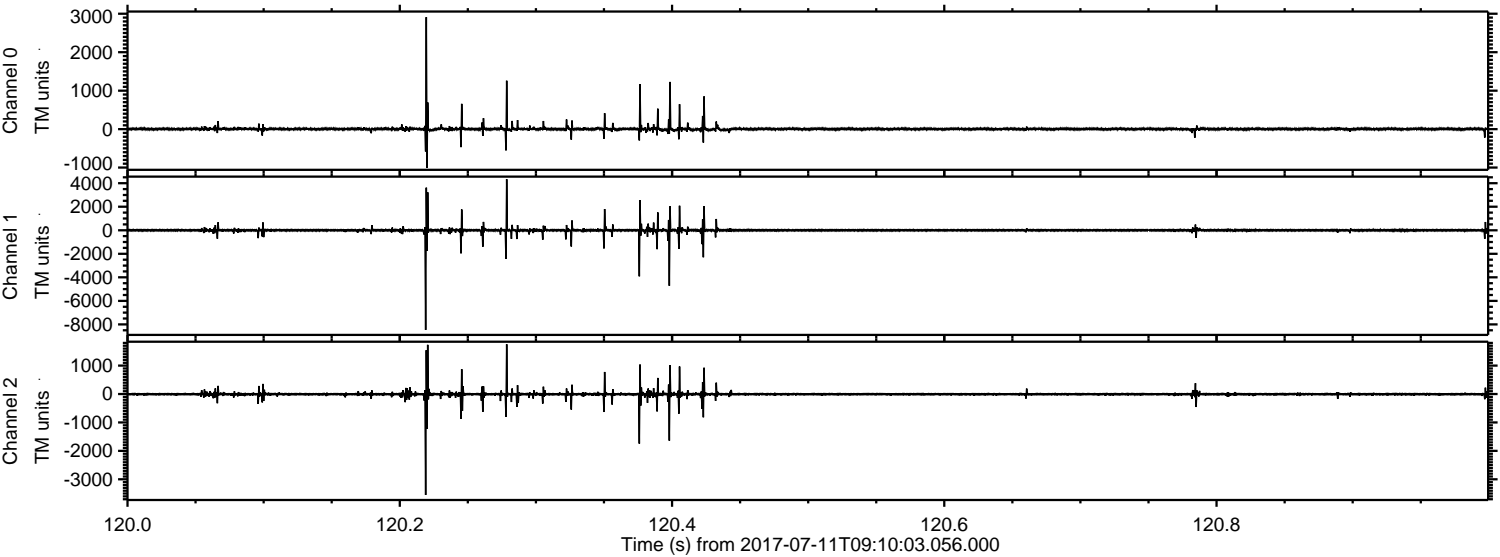
Channel 0
mn: -3842
mx: 1548
 μ : 2.6
 σ : 26.8

Channel 1
mn: -5920
mx: 9363
 μ : -5.9
 σ : 81.1

Channel 2
mn: -2302
mx: 3540
 μ : -4.3
 σ : 35.8

ELMAVAN 3D WAVEFORMS (Measured data sampled at 50 kHz) 51000 packets of 144 samples from 2017-07-11T09:10:03.056.000. Part 121/147

Processed Wed Jul 19 20:33:33 2017 by ELM ver.2012-10-06 from 001__elm20170711_091002__dat00.bin



Channel 0
mn: -1008
mx: 2912
 μ : 2.7
 σ : 26.8

Channel 1
mn: -8469
mx: 4341
 μ : -5.9
 σ : 86.8

Channel 2
mn: -3550
mx: 1754
 μ : -4.4
 σ : 44.9

ELMAVAN 3D WAVEFORMS (Measured data sampled at 50 kHz) 51000 packets of 144 samples from 2017-07-11T09:10:03.056.000. Part 134/147

