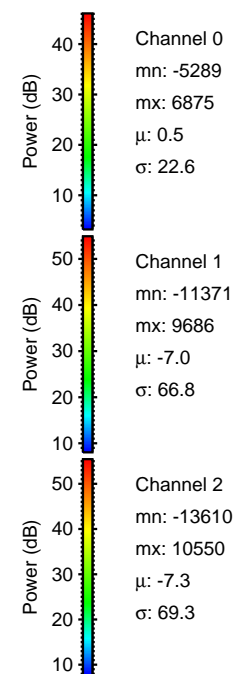
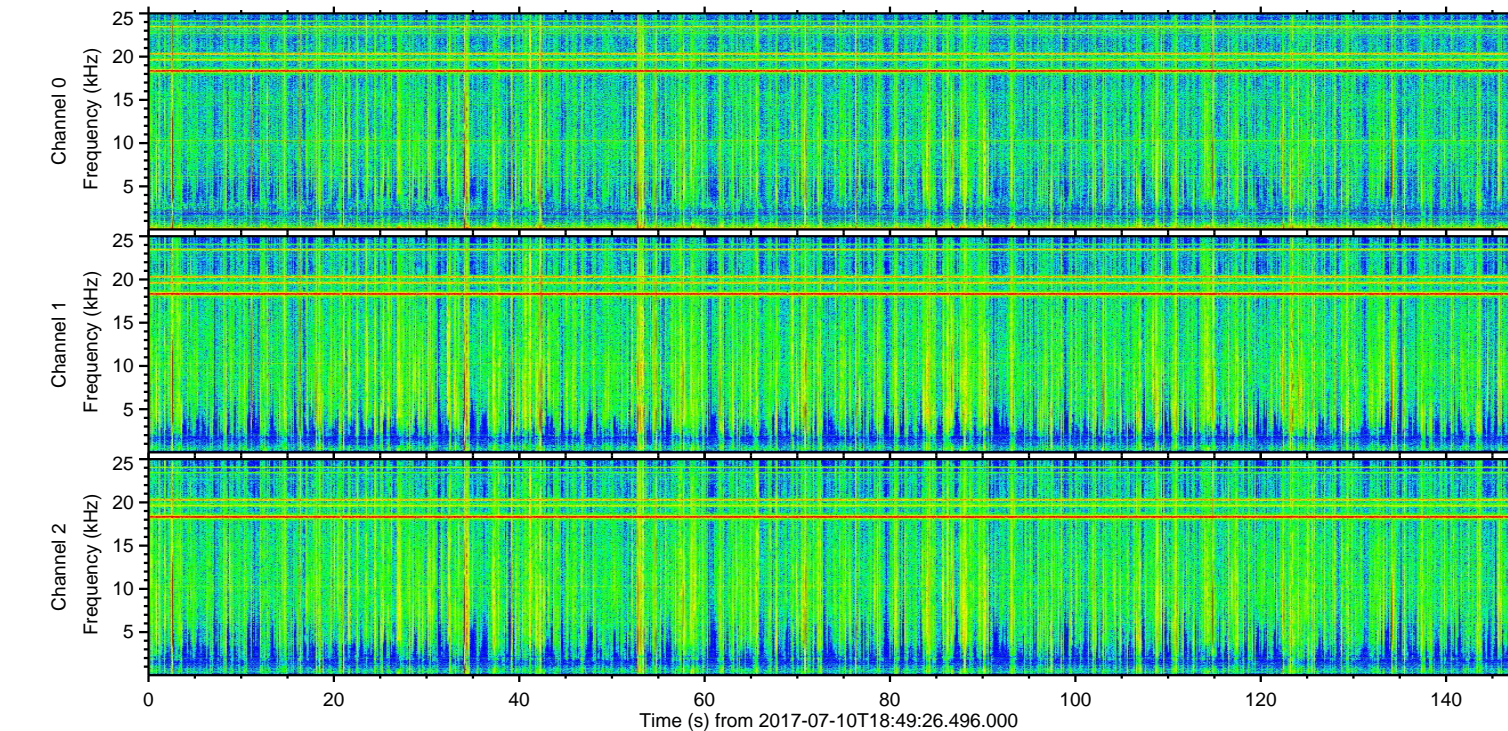
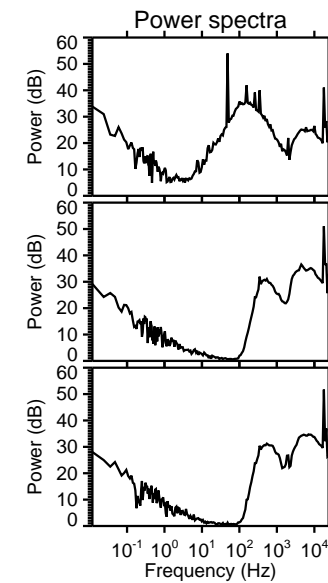
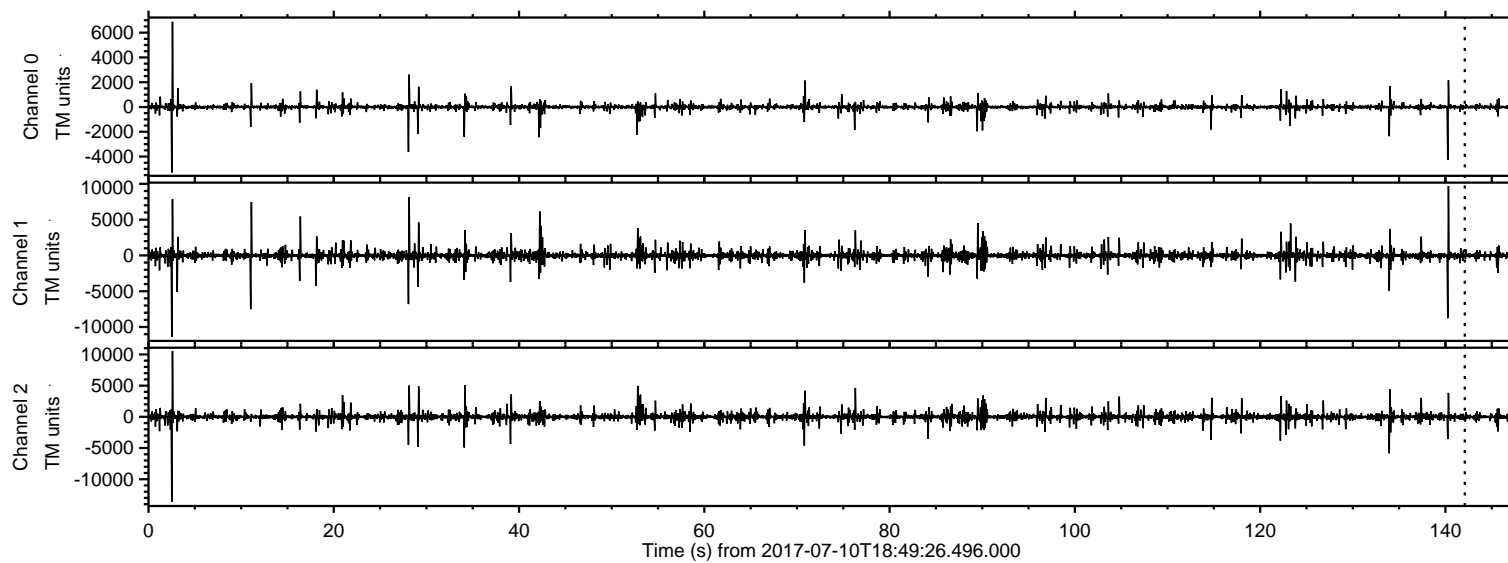


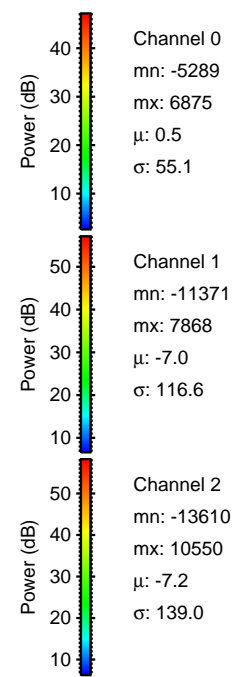
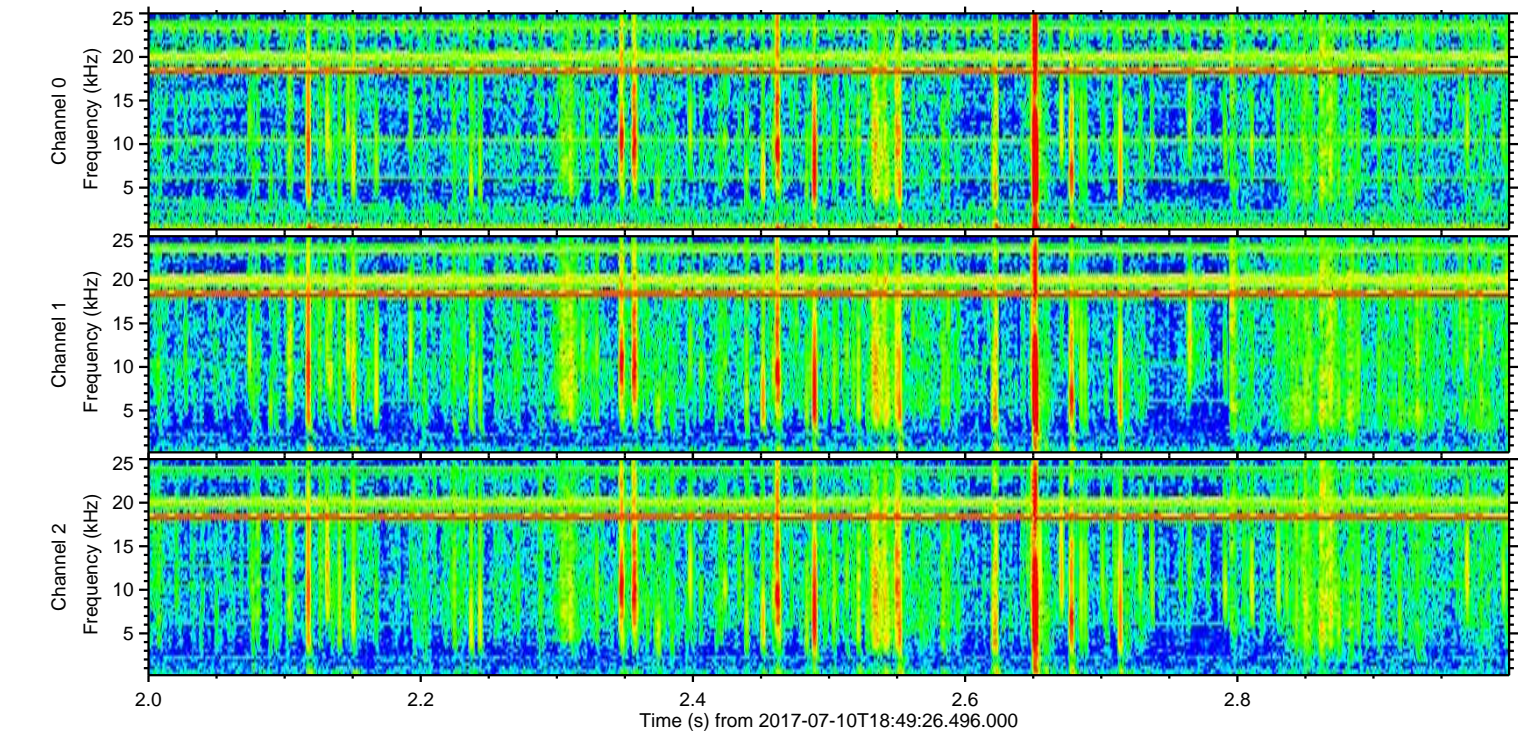
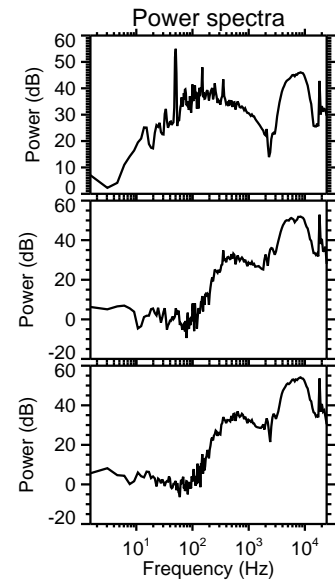
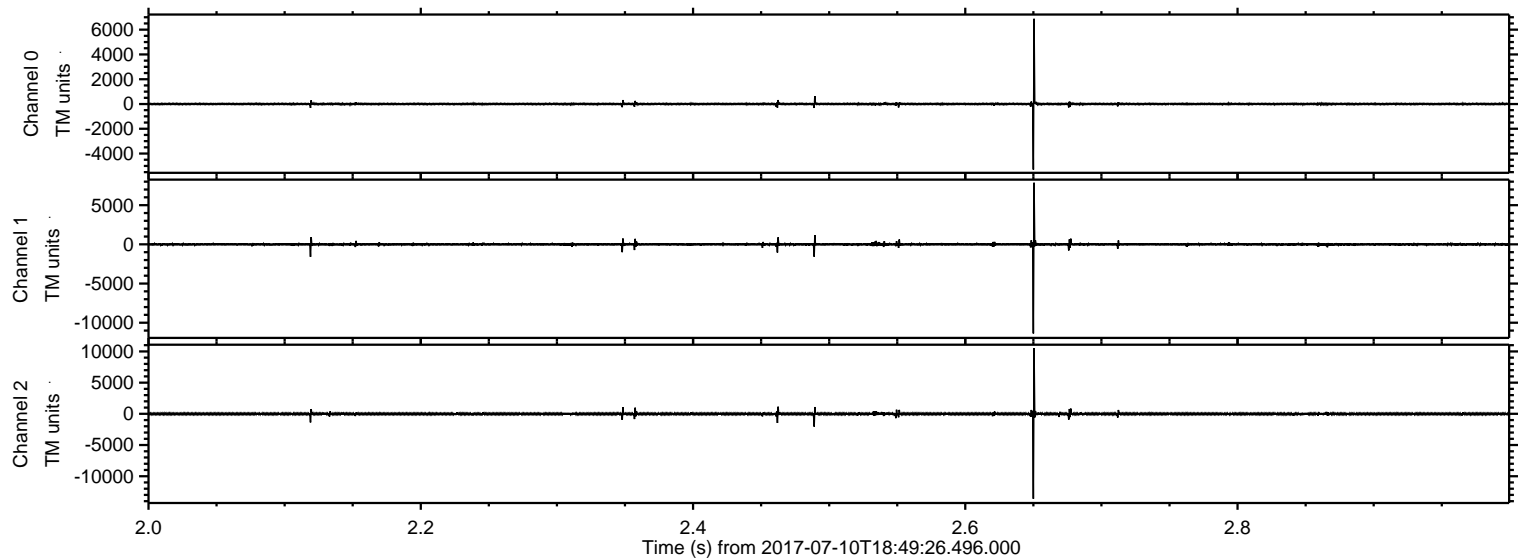
ELMAVAN 3D WAVEFORMS (Measured data sampled at 50 kHz) 50999 packets of 144 samples from 2017-07-10T18:49:26.496.000.

Processed Wed Jul 19 18:27:05 2017 by ELM ver.2012-10-06 from 001__elm20170710_184925__dat00.bin



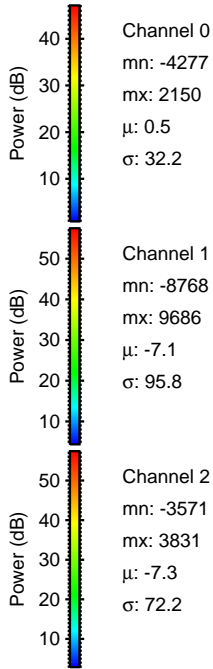
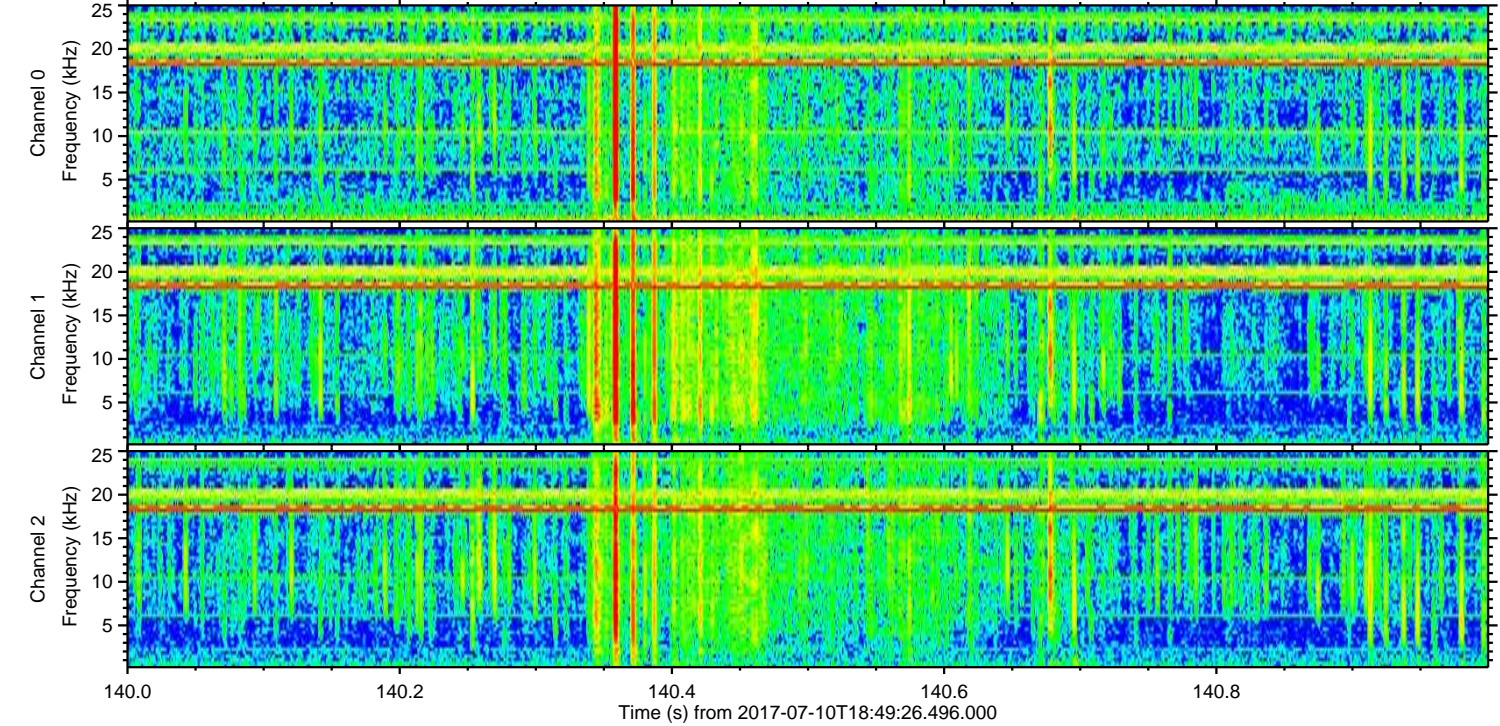
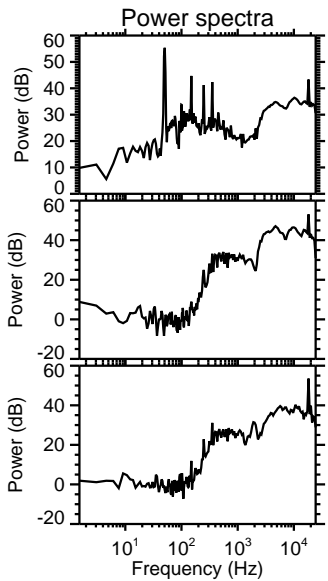
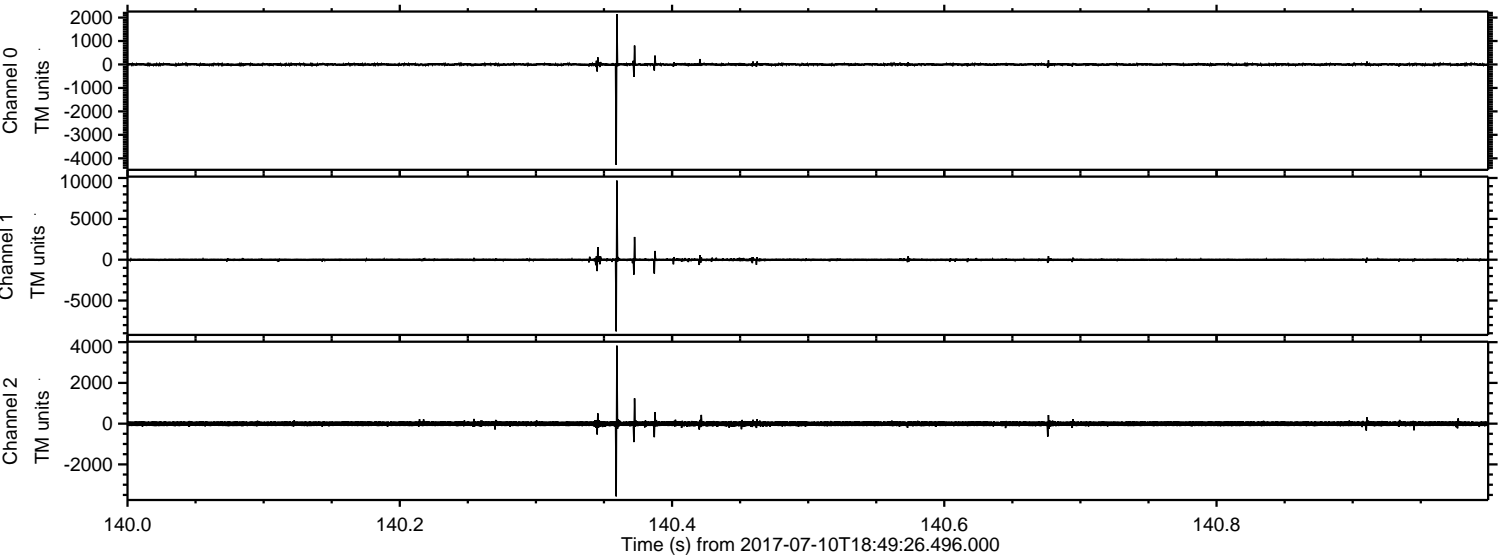
ELMAVAN 3D WAVEFORMS (Measured data sampled at 50 kHz) 50999 packets of 144 samples from 2017-07-10T18:49:26.496.000. Part 3/147

Processed Wed Jul 19 18:27:13 2017 by ELM ver.2012-10-06 from 001__elm20170710_184925__dat00.bin

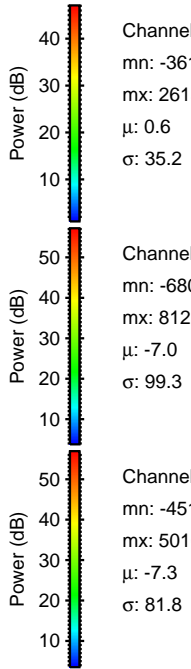
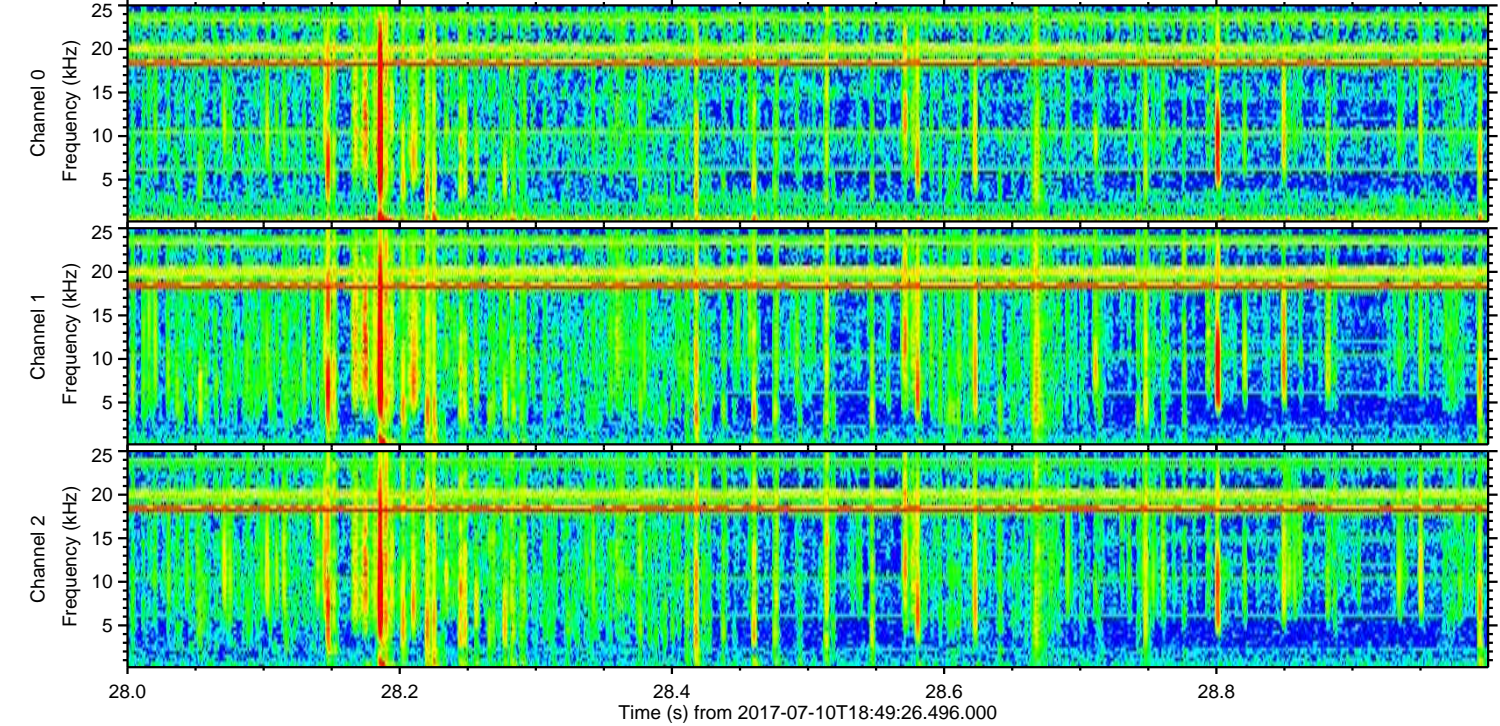
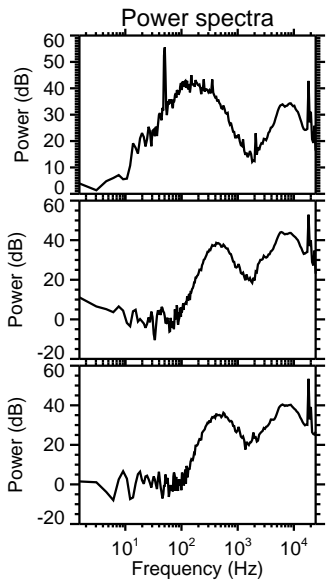
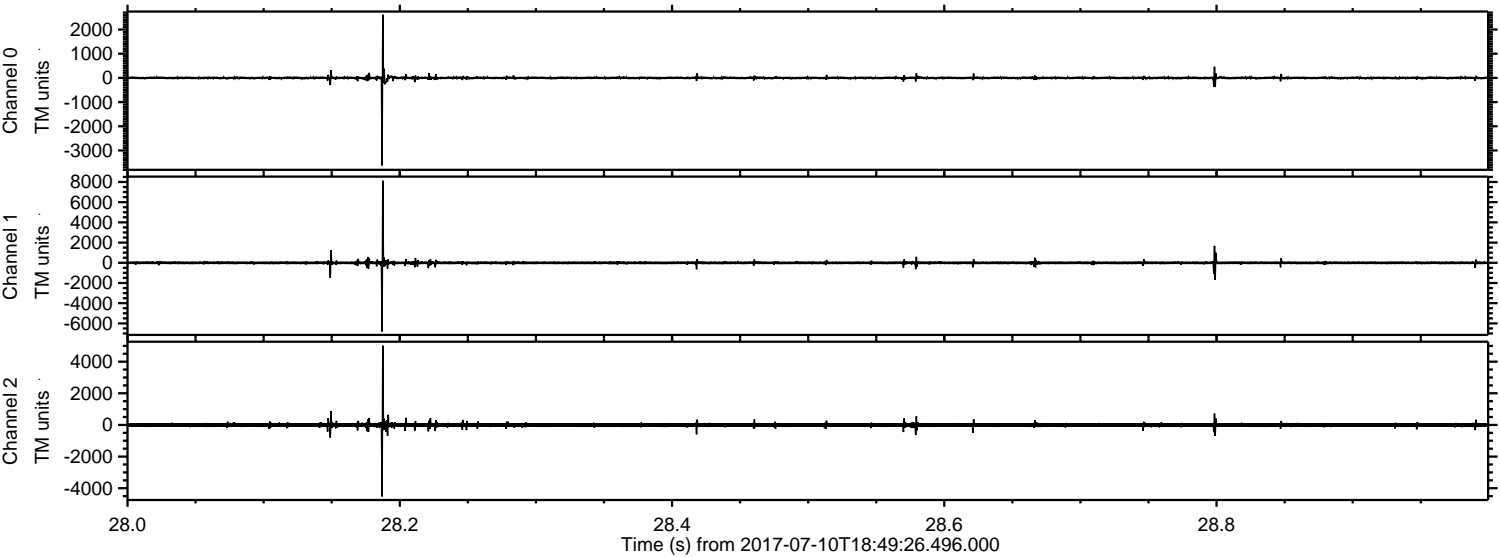


ELMAVAN 3D WAVEFORMS (Measured data sampled at 50 kHz) 50999 packets of 144 samples from 2017-07-10T18:49:26.496.000. Part 141/147

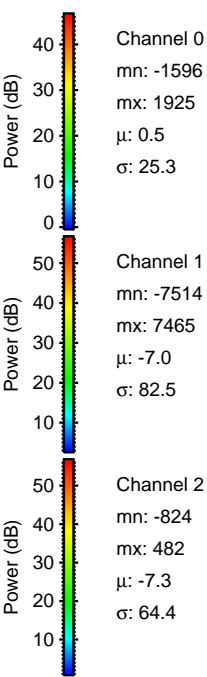
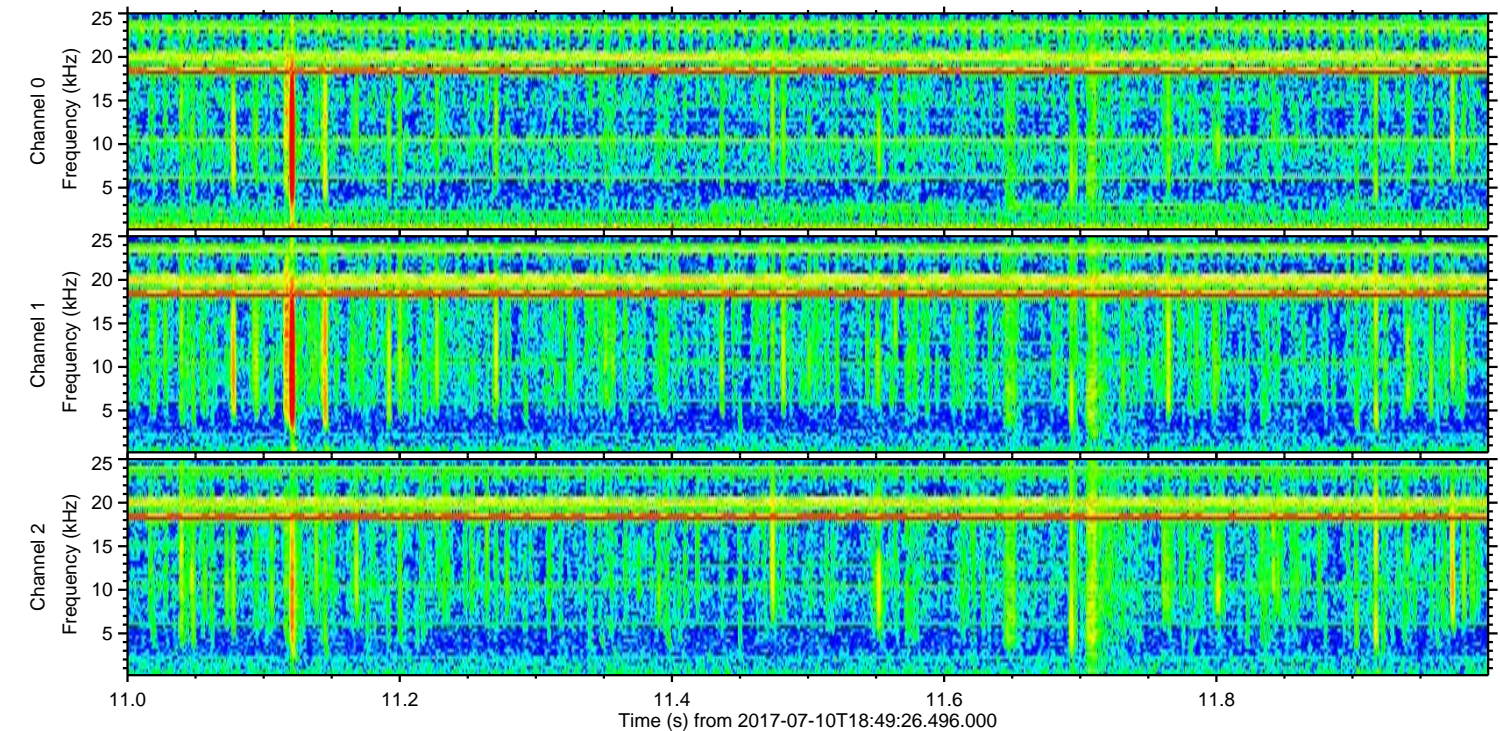
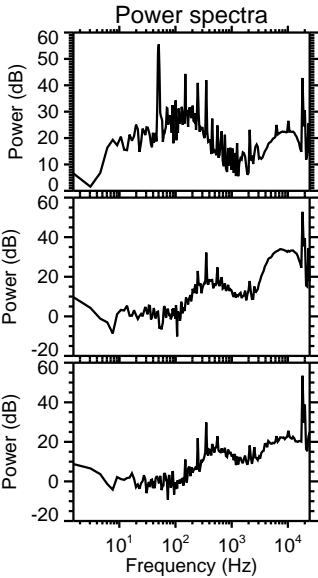
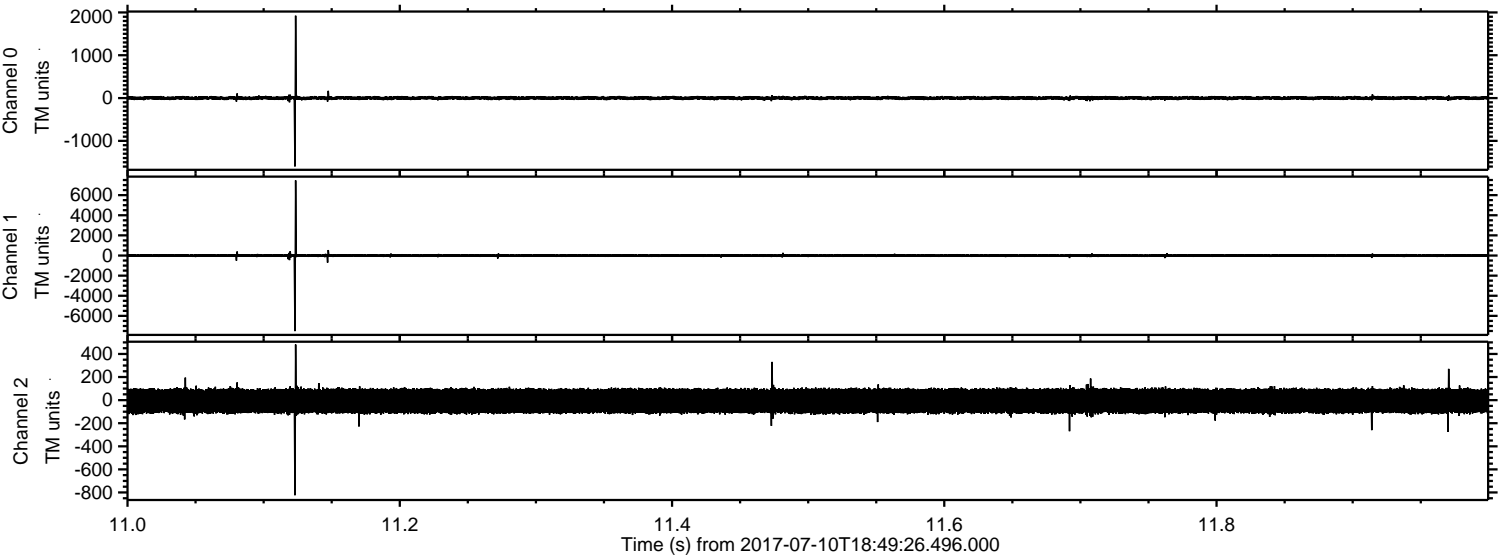
Processed Wed Jul 19 18:27:13 2017 by ELM ver.2012-10-06 from 001__elm20170710_184925__dat00.bin



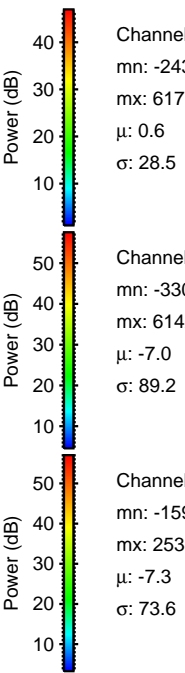
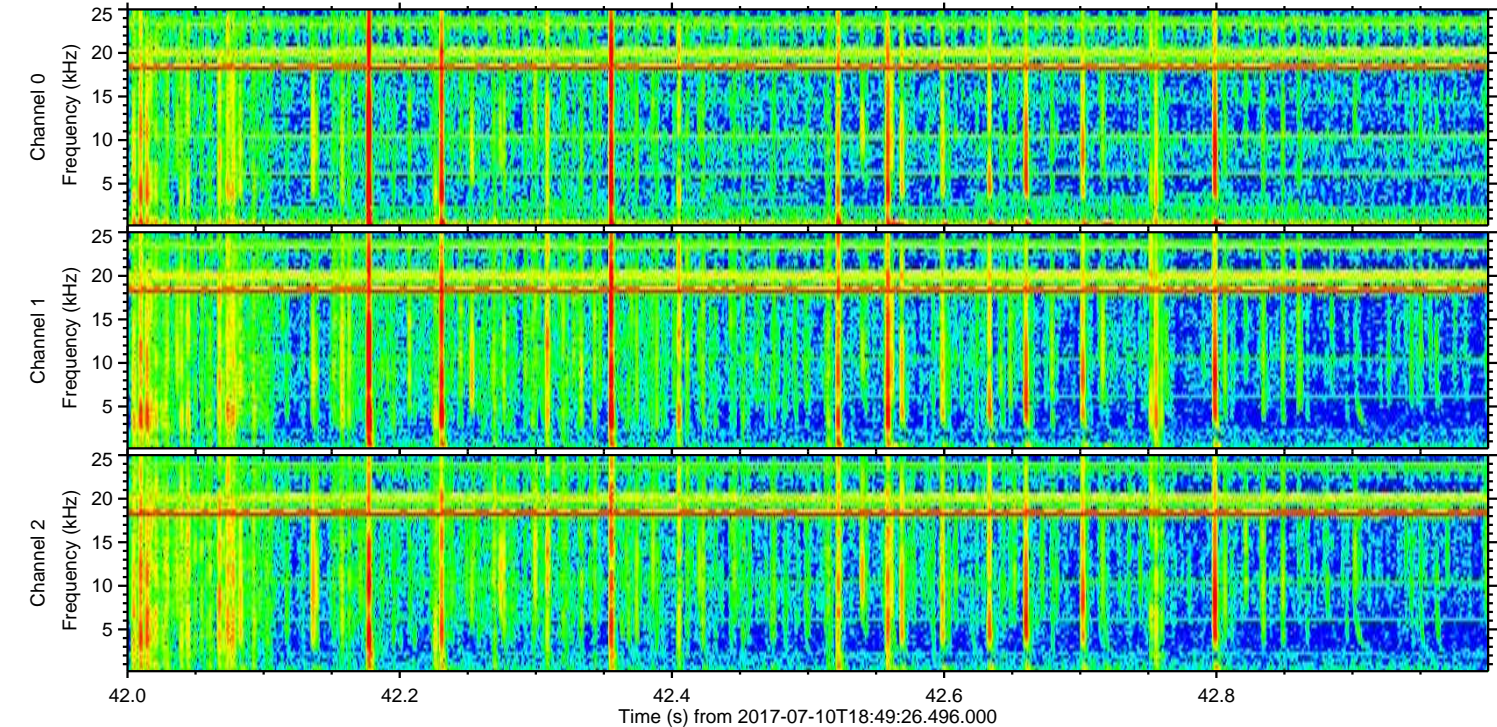
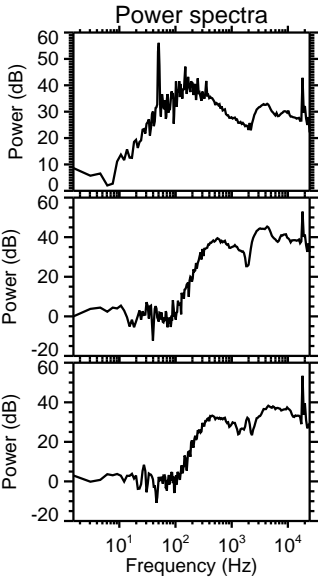
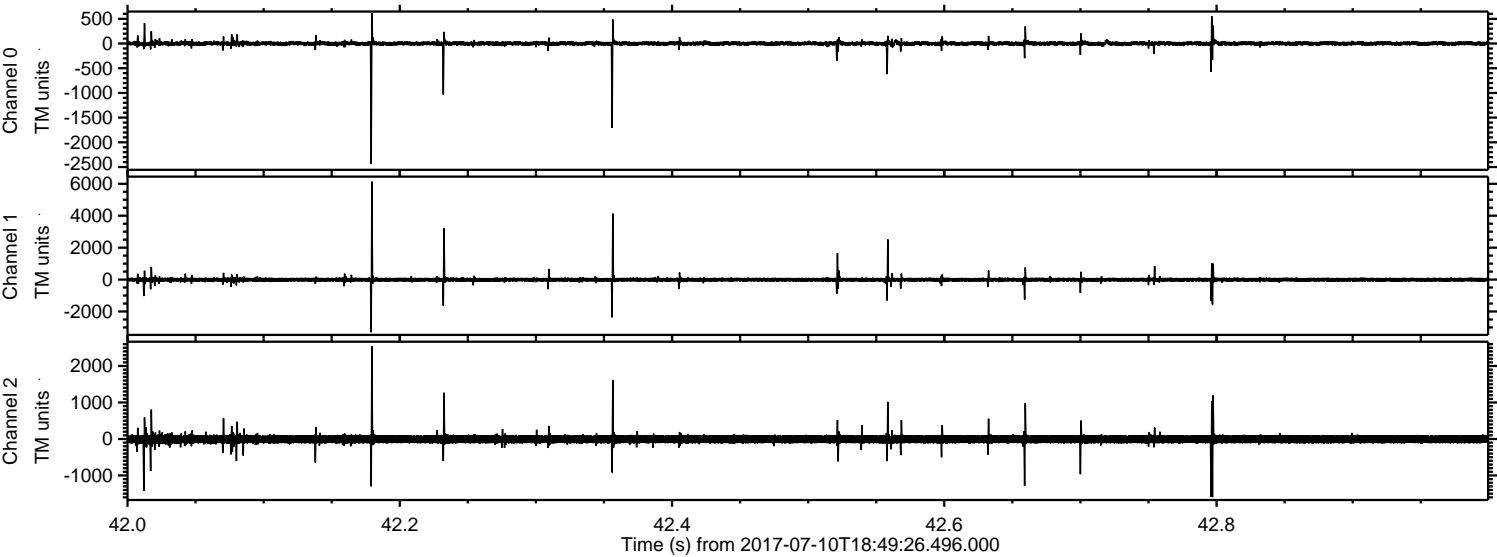
Processed Wed Jul 19 18:27:14 2017 by ELM ver.2012-10-06 from 001__elm20170710_184925__dat00.bin



Processed Wed Jul 19 18:27:15 2017 by ELM ver.2012-10-06 from 001__elm20170710_184925__dat00.bin

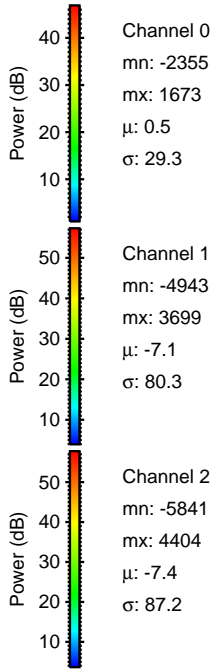
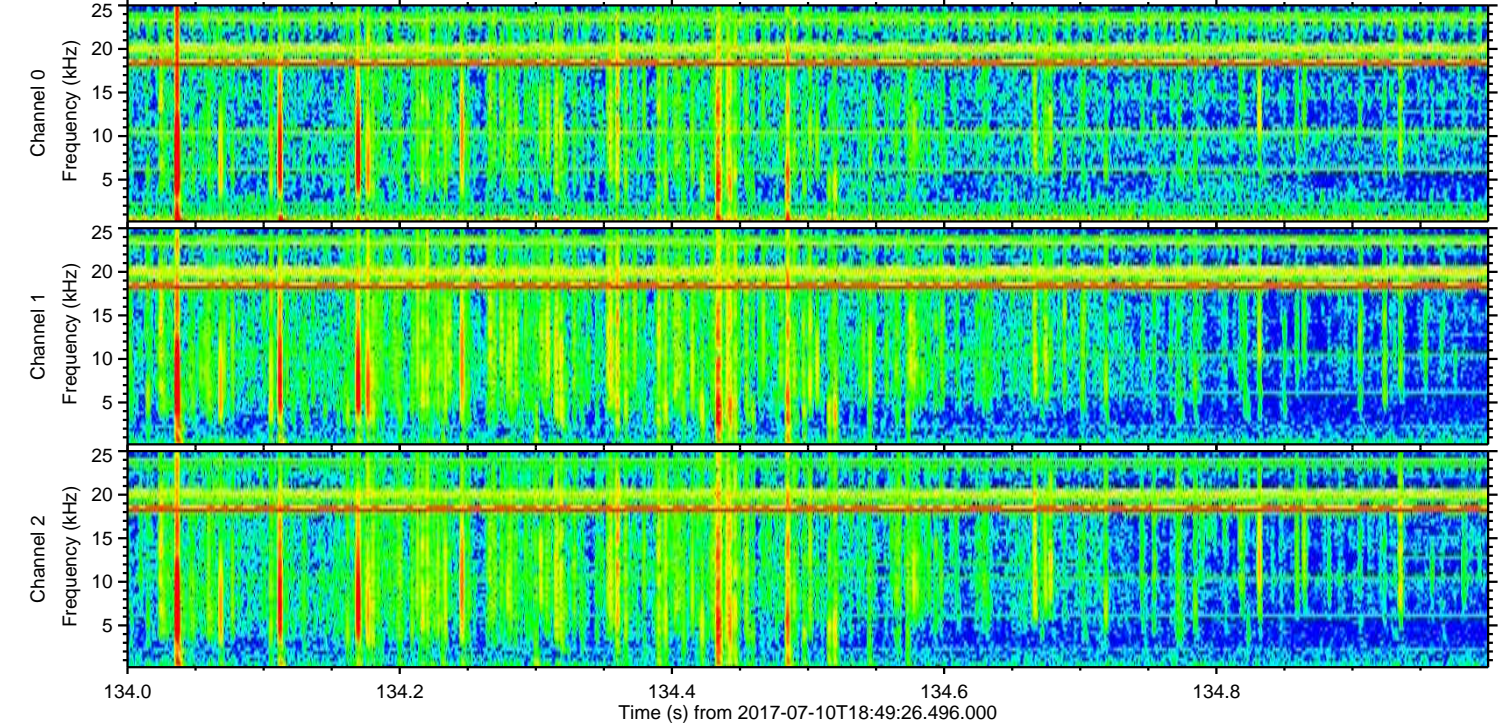
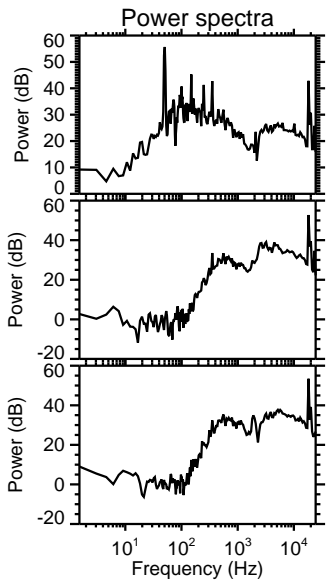
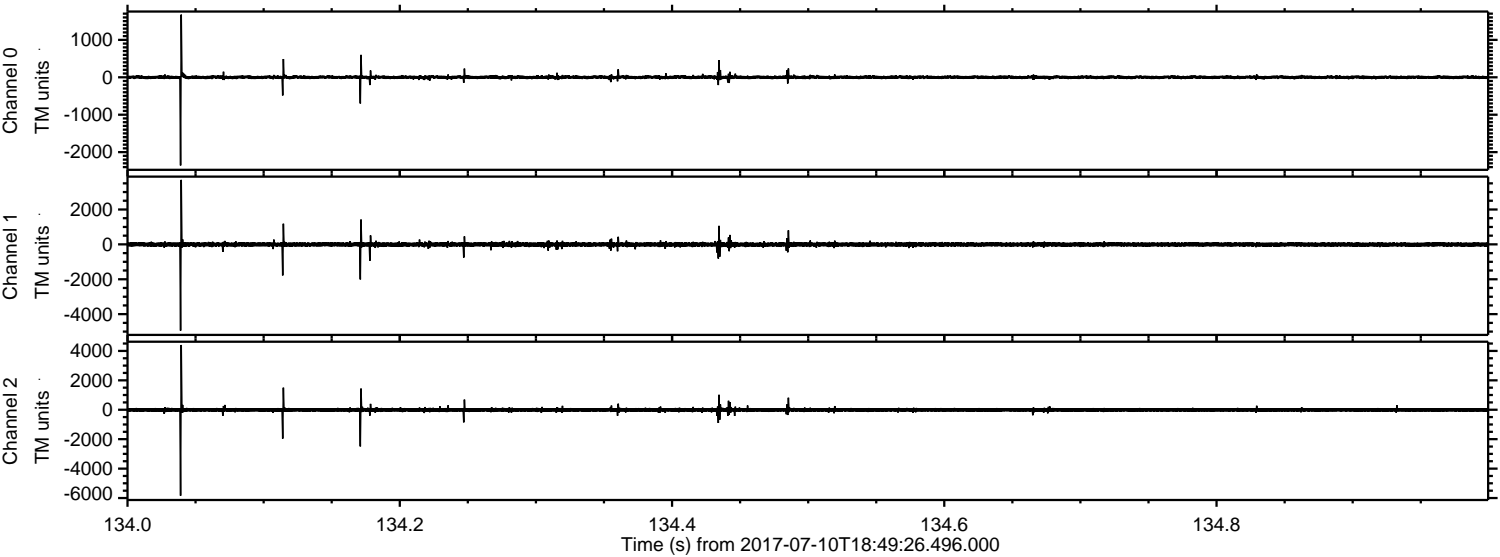


Processed Wed Jul 19 18:27:15 2017 by ELM ver.2012-10-06 from 001__elm20170710_184925__dat00.bin



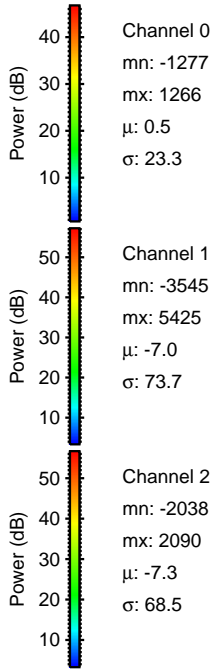
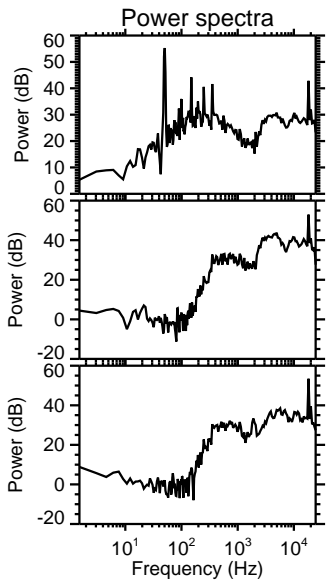
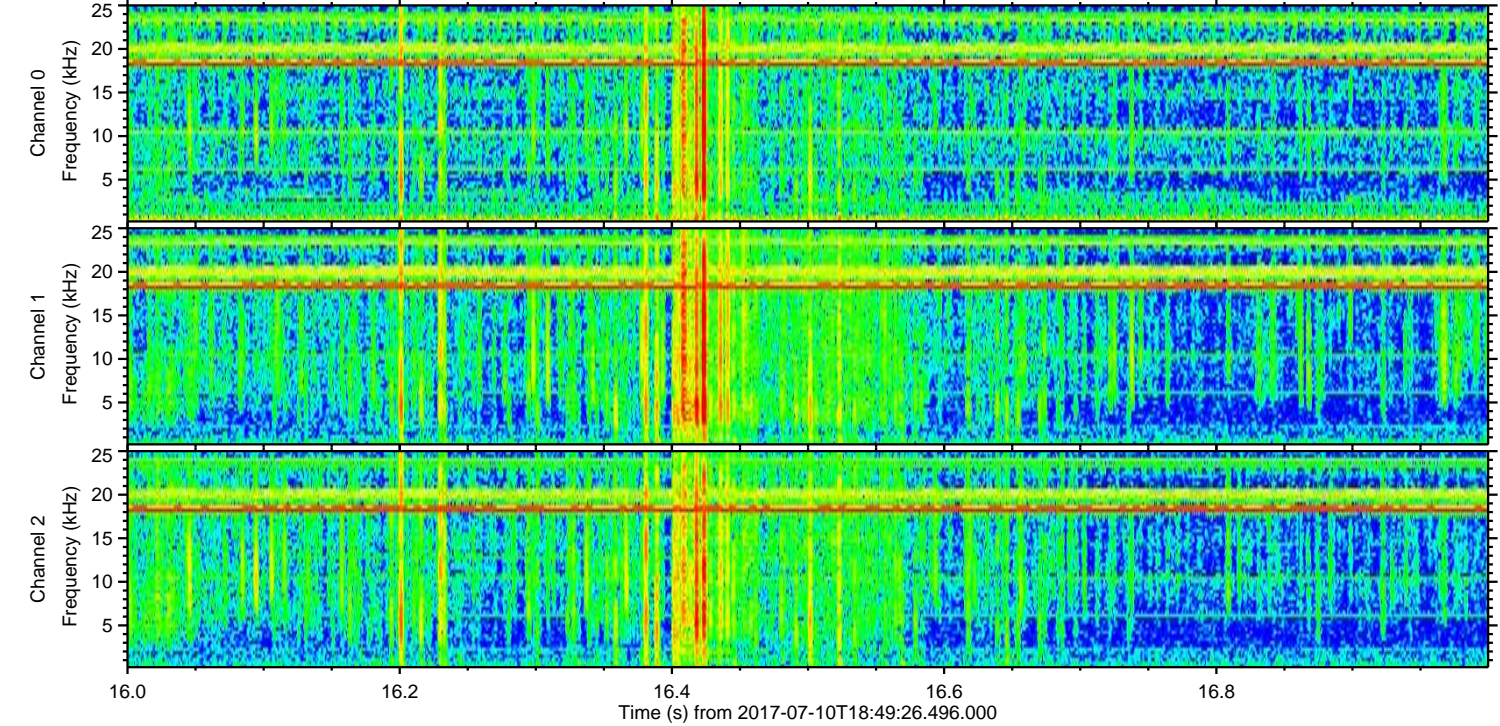
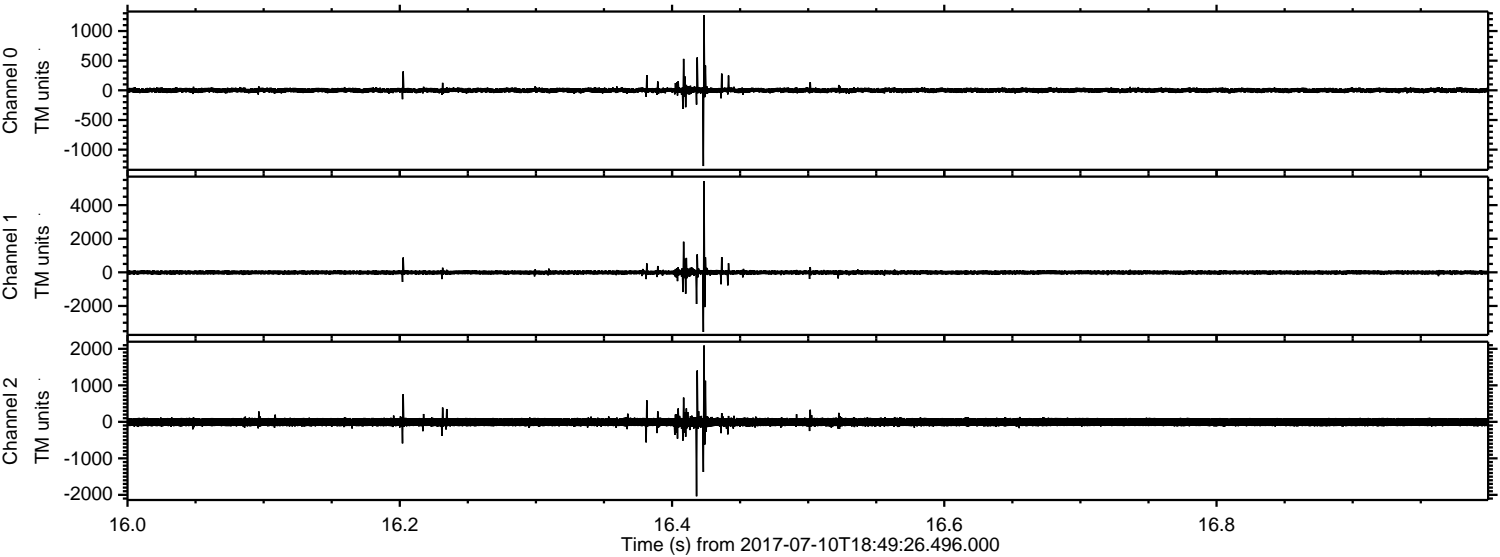
ELMAVAN 3D WAVEFORMS (Measured data sampled at 50 kHz) 50999 packets of 144 samples from 2017-07-10T18:49:26.496.000. Part 135/147

Processed Wed Jul 19 18:27:16 2017 by ELM ver.2012-10-06 from 001__elm20170710_184925__dat00.bin

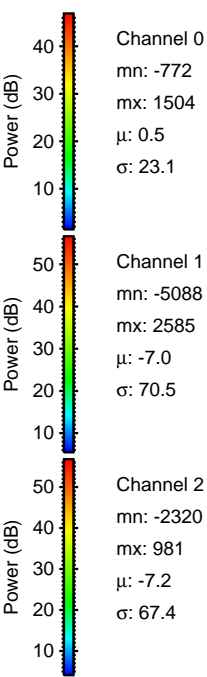
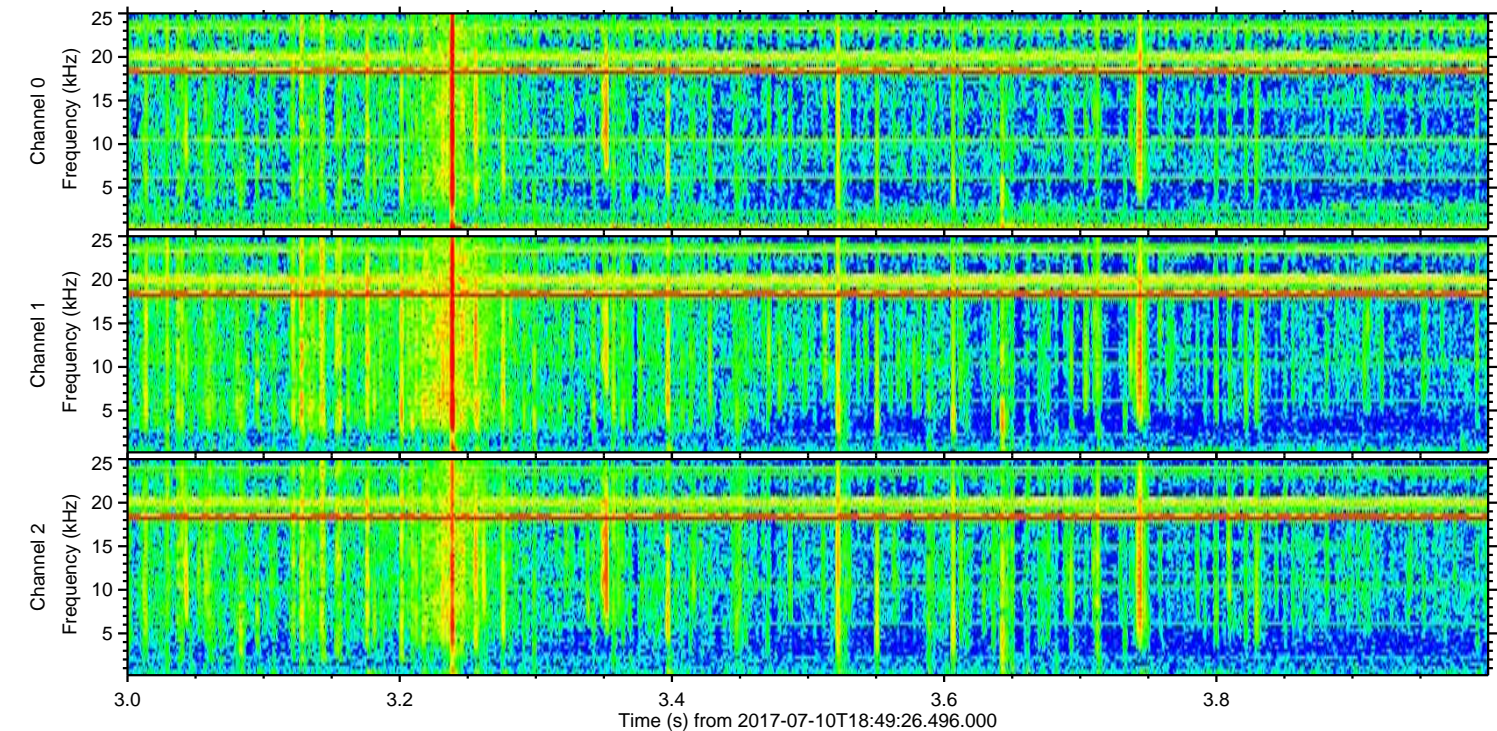
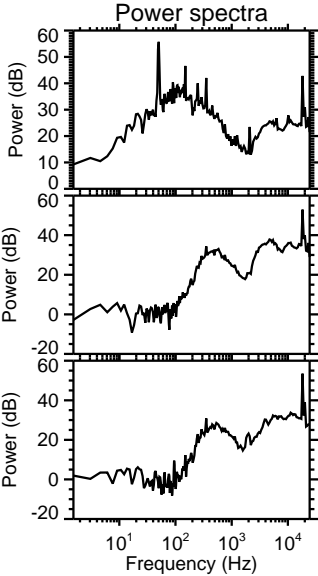
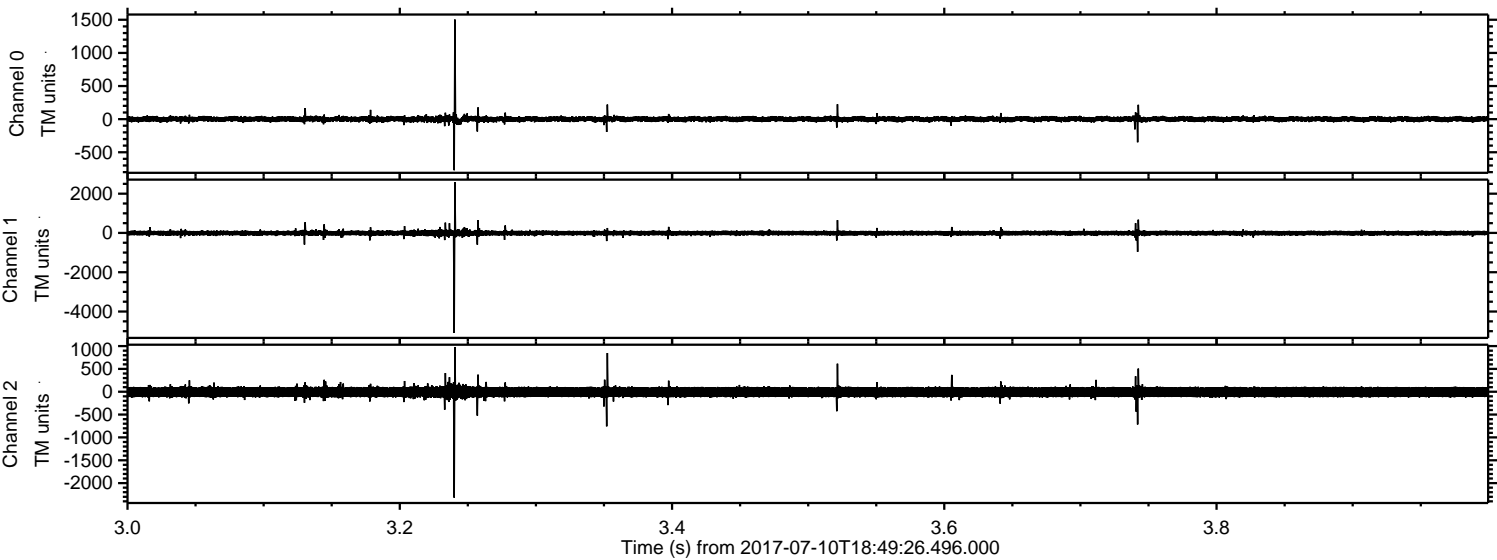


ELMAVAN 3D WAVEFORMS (Measured data sampled at 50 kHz) 50999 packets of 144 samples from 2017-07-10T18:49:26.496.000. Part 17/147

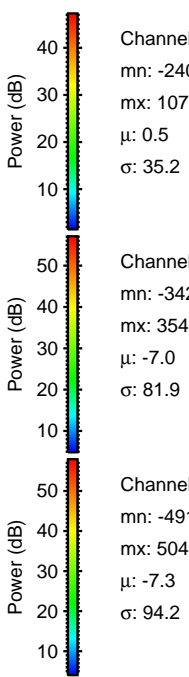
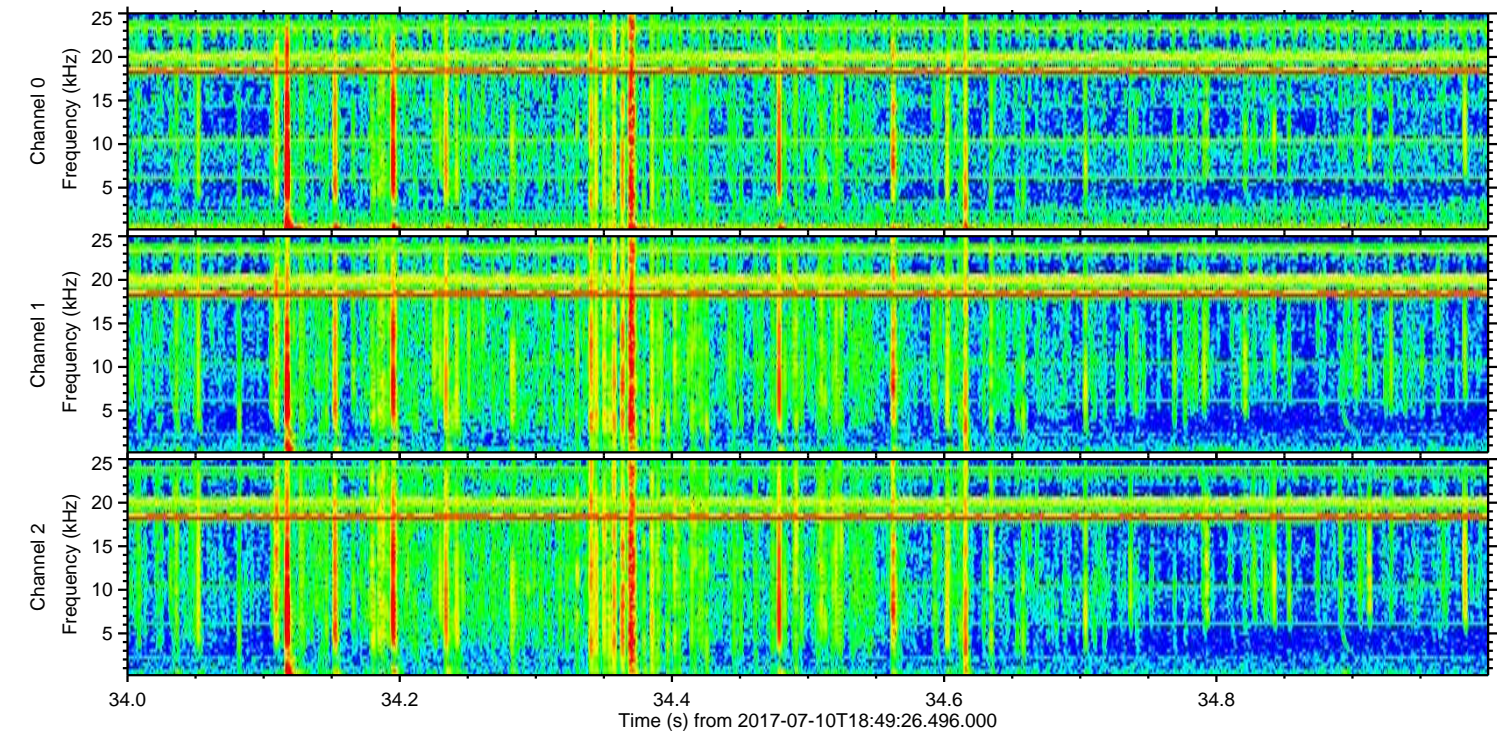
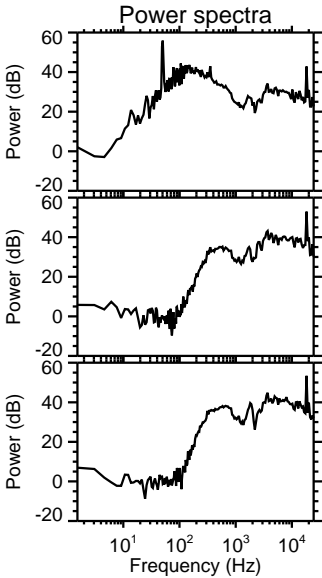
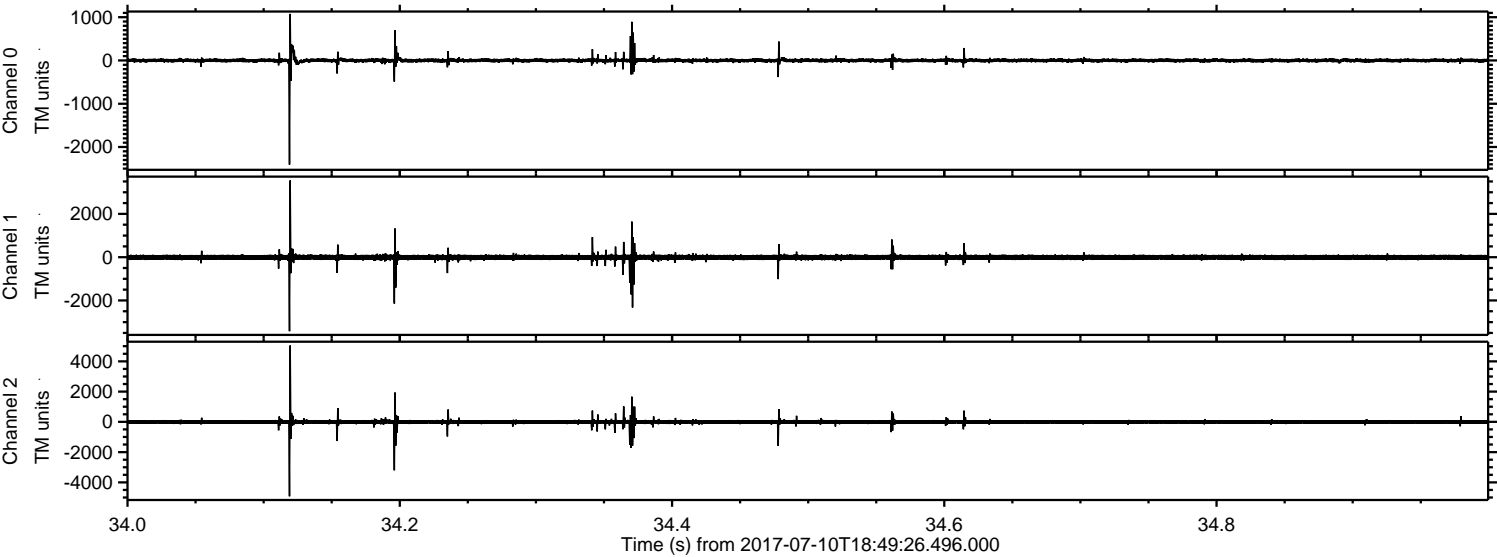
Processed Wed Jul 19 18:27:17 2017 by ELM ver.2012-10-06 from 001__elm20170710_184925__dat00.bin



Processed Wed Jul 19 18:27:18 2017 by ELM ver.2012-10-06 from 001__elm20170710_184925__dat00.bin



Processed Wed Jul 19 18:27:19 2017 by ELM ver.2012-10-06 from 001__elm20170710_184925__dat00.bin



Channel 0
mn: -2407
mx: 1077
 μ : 0.5
 σ : 35.2

Channel 1
mn: -3421
mx: 3546
 μ : -7.0
 σ : 81.9

Channel 2
mn: -4919
mx: 5045
 μ : -7.3
 σ : 94.2

Processed Wed Jul 19 18:27:19 2017 by ELM ver.2012-10-06 from 001__elm20170710_184925__dat00.bin

