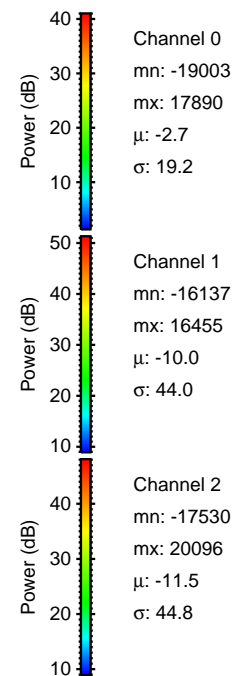
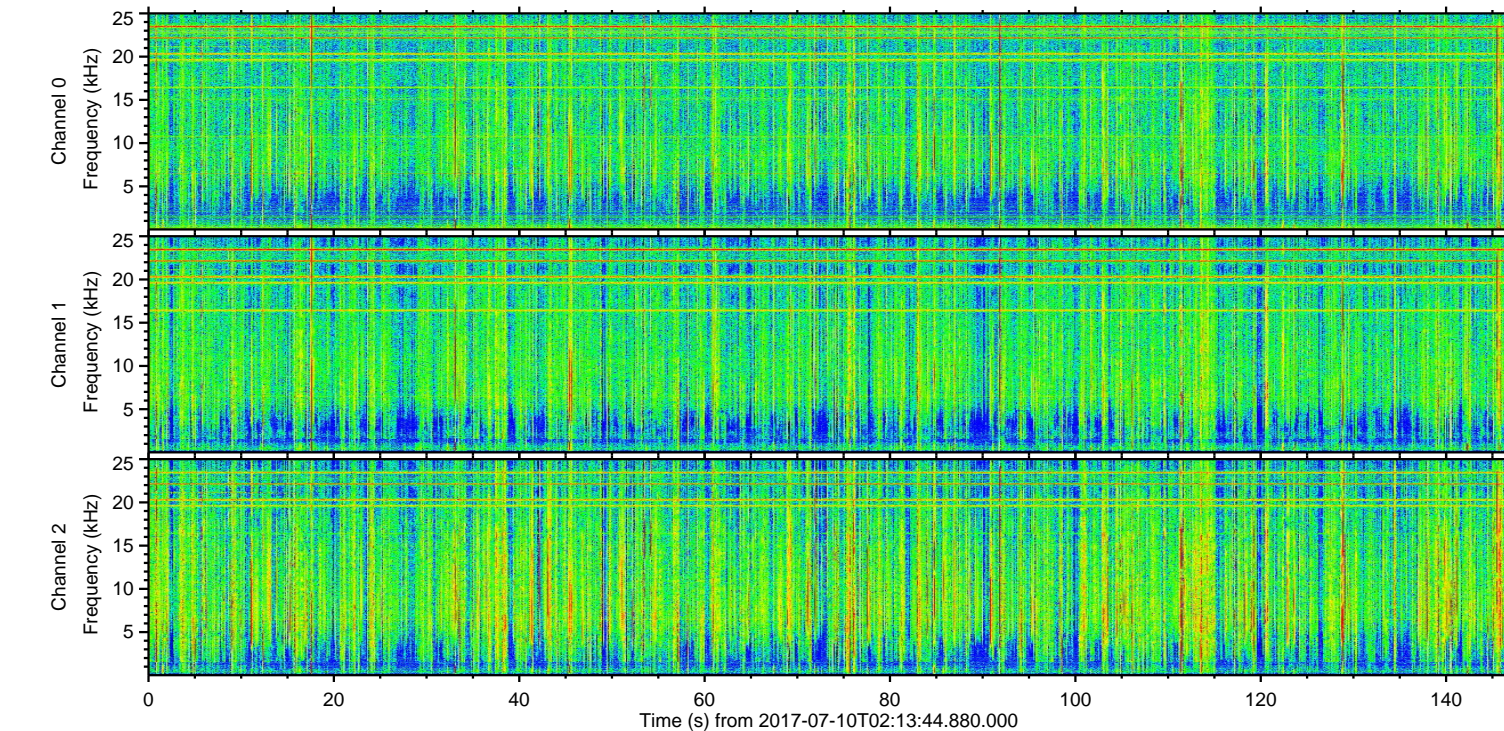
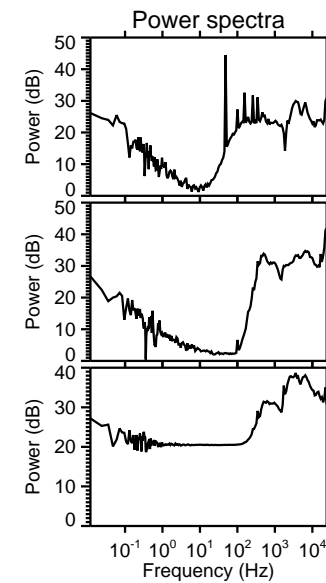
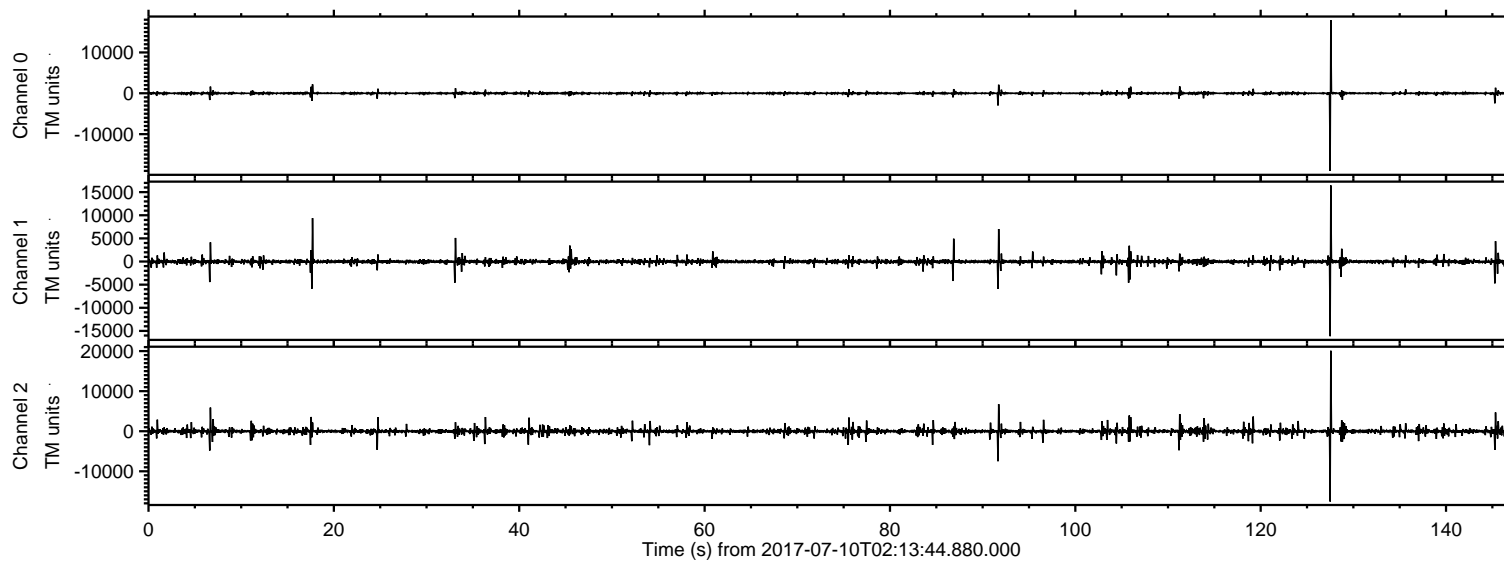


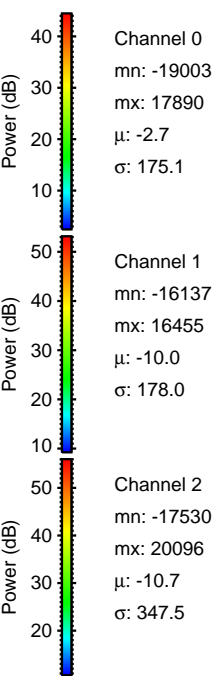
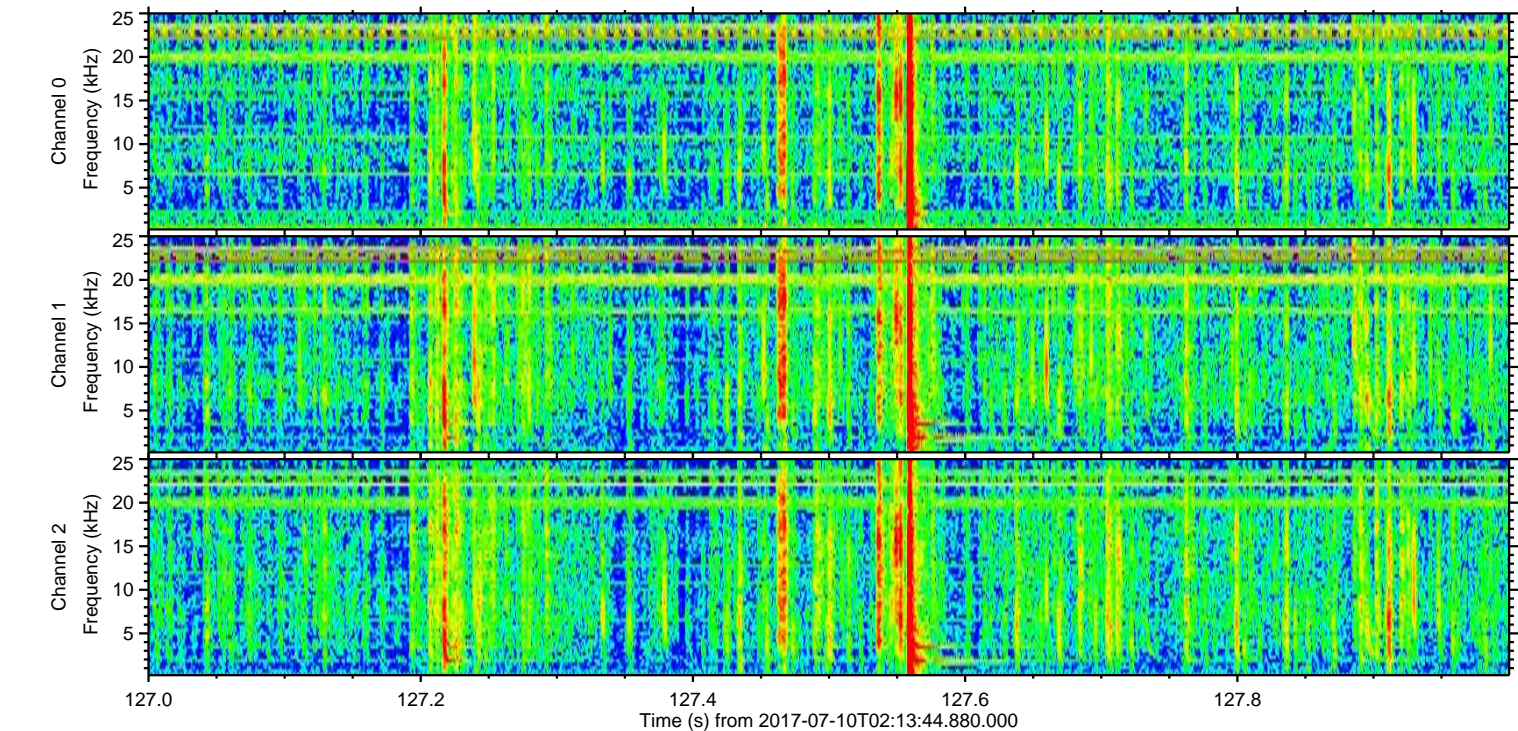
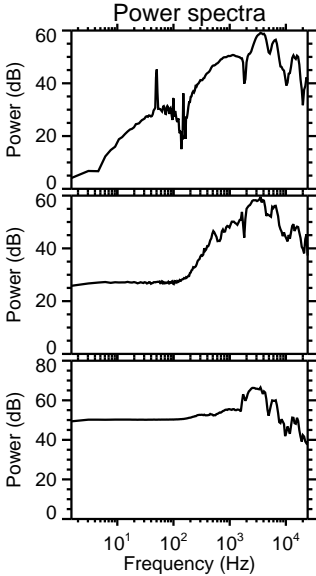
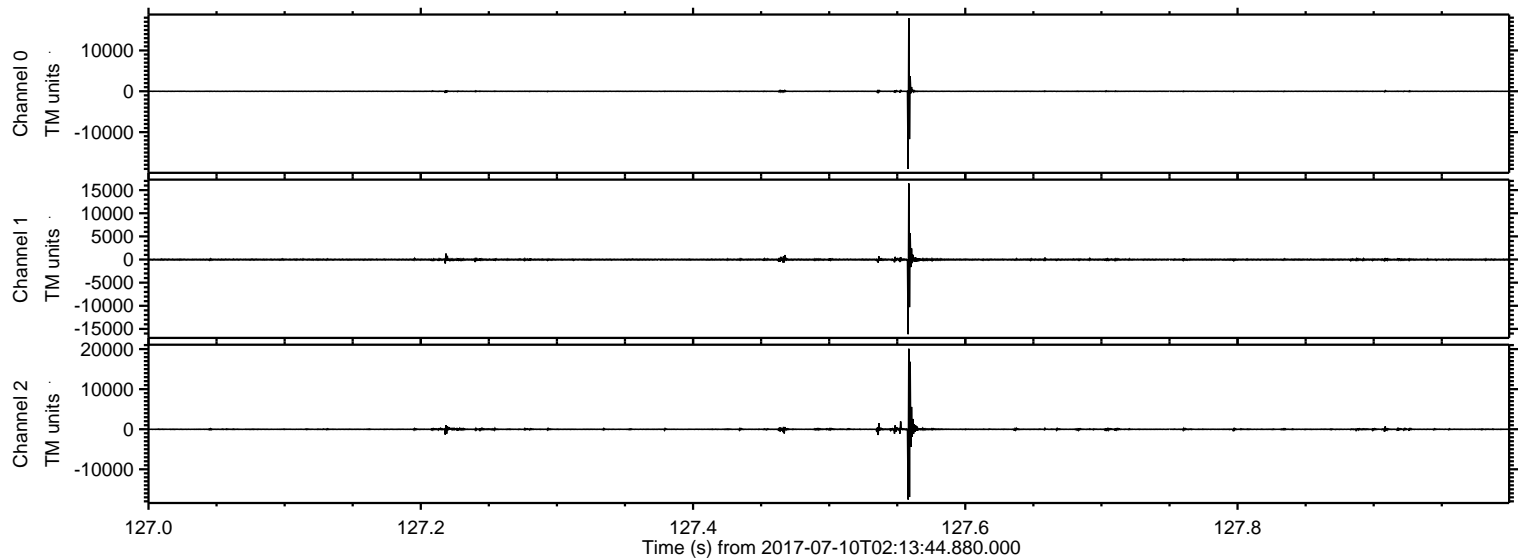
ELMAVAN 3D WAVEFORMS (Measured data sampled at 50 kHz) 51000 packets of 144 samples from 2017-07-10T02:13:44.880.000.

Processed Wed Jul 19 16:00:34 2017 by ELM ver.2012-10-06 from 001__elm20170710_021343__dat00.bin

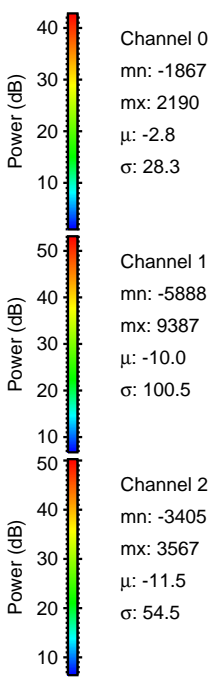
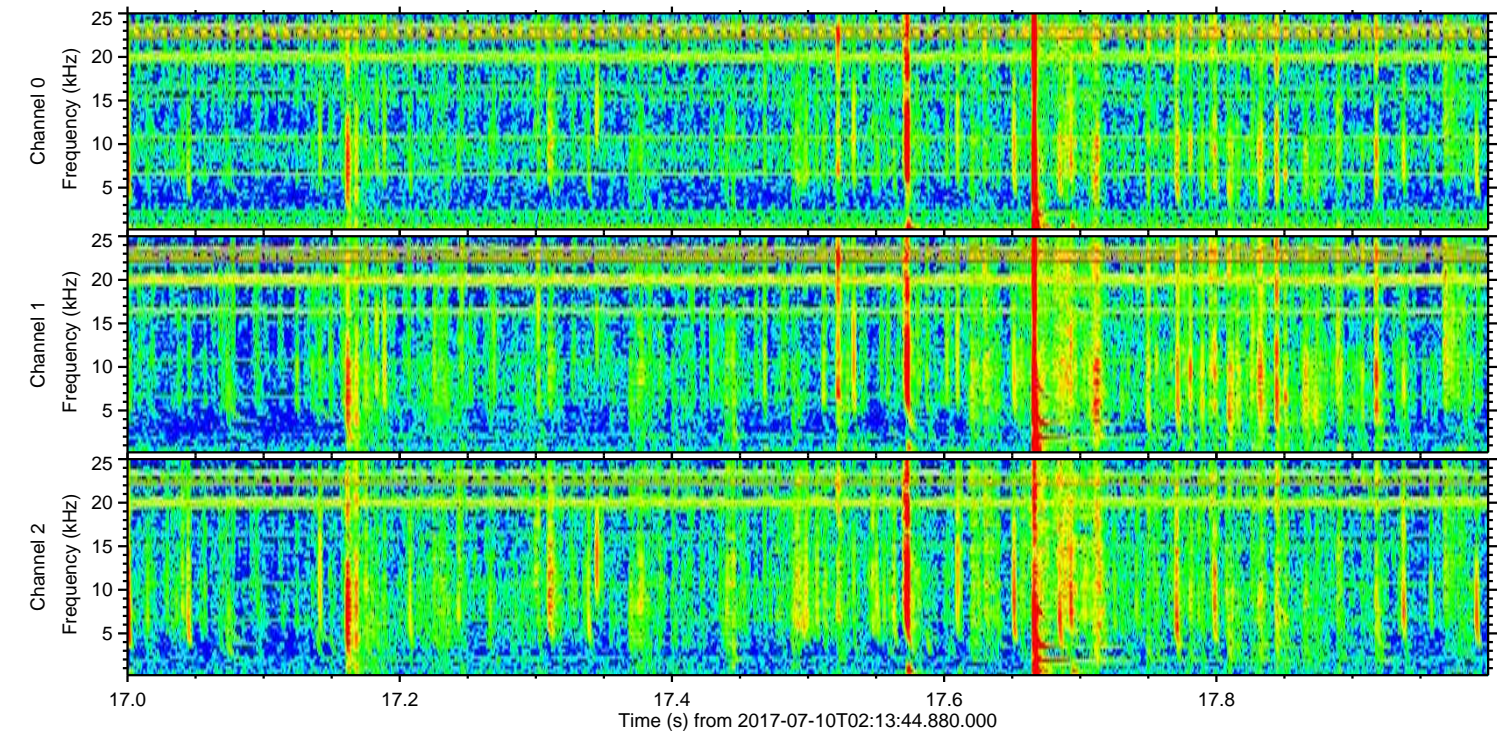
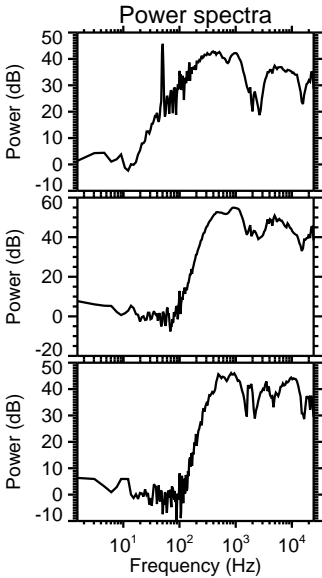
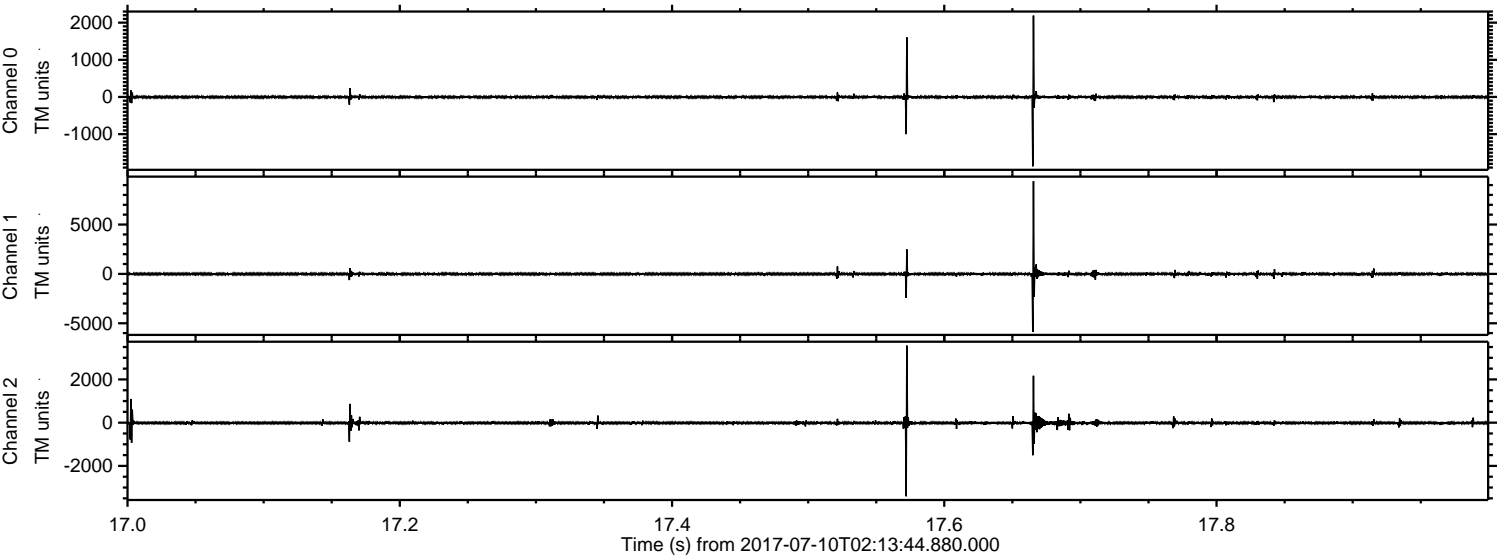


ELMAVAN 3D WAVEFORMS (Measured data sampled at 50 kHz) 51000 packets of 144 samples from 2017-07-10T02:13:44.880.000. Part 128/147

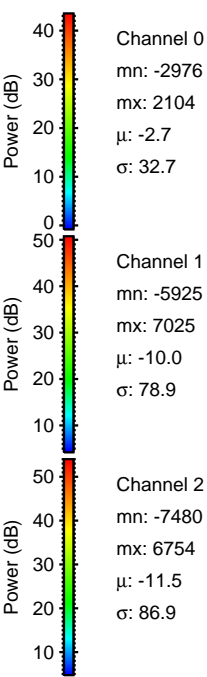
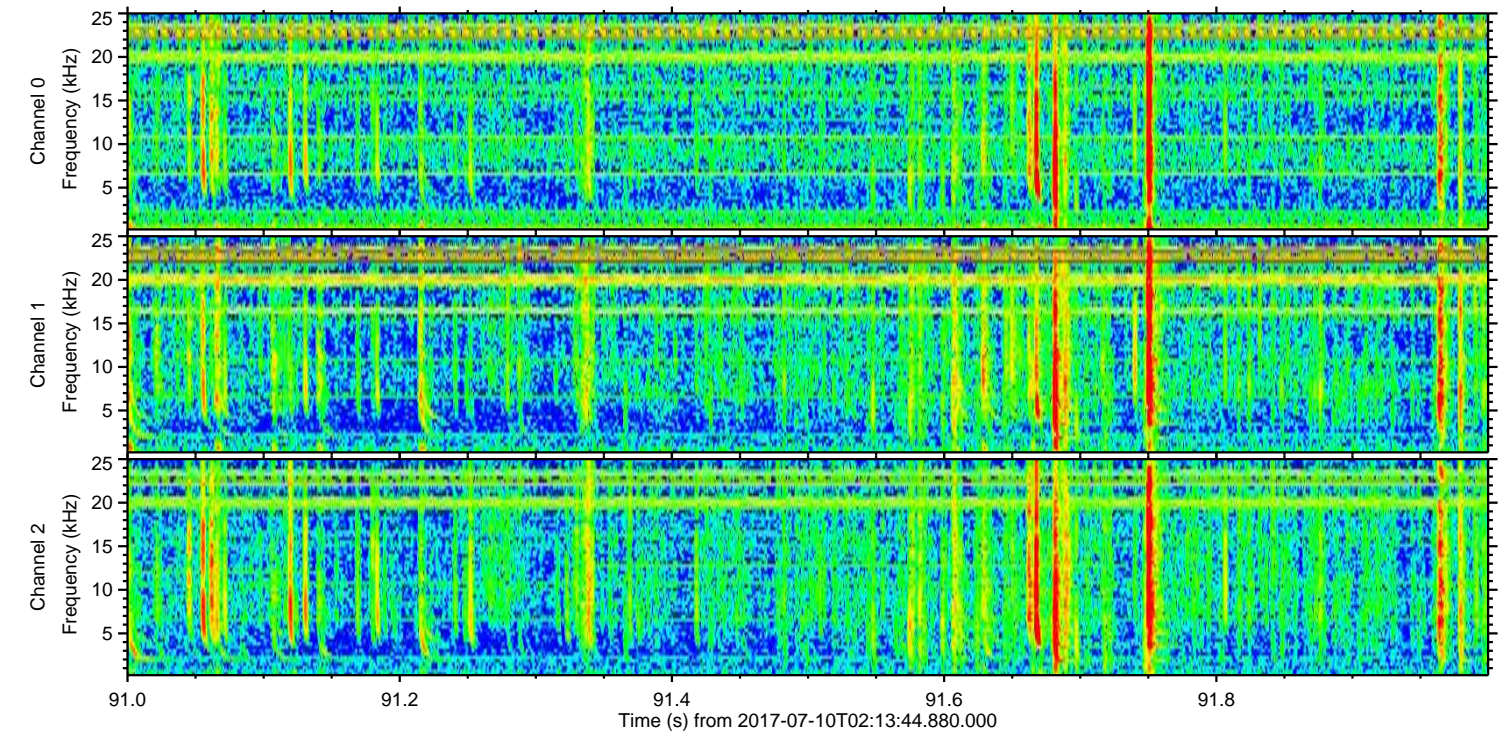
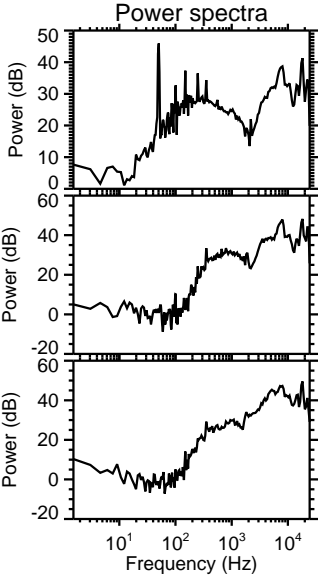
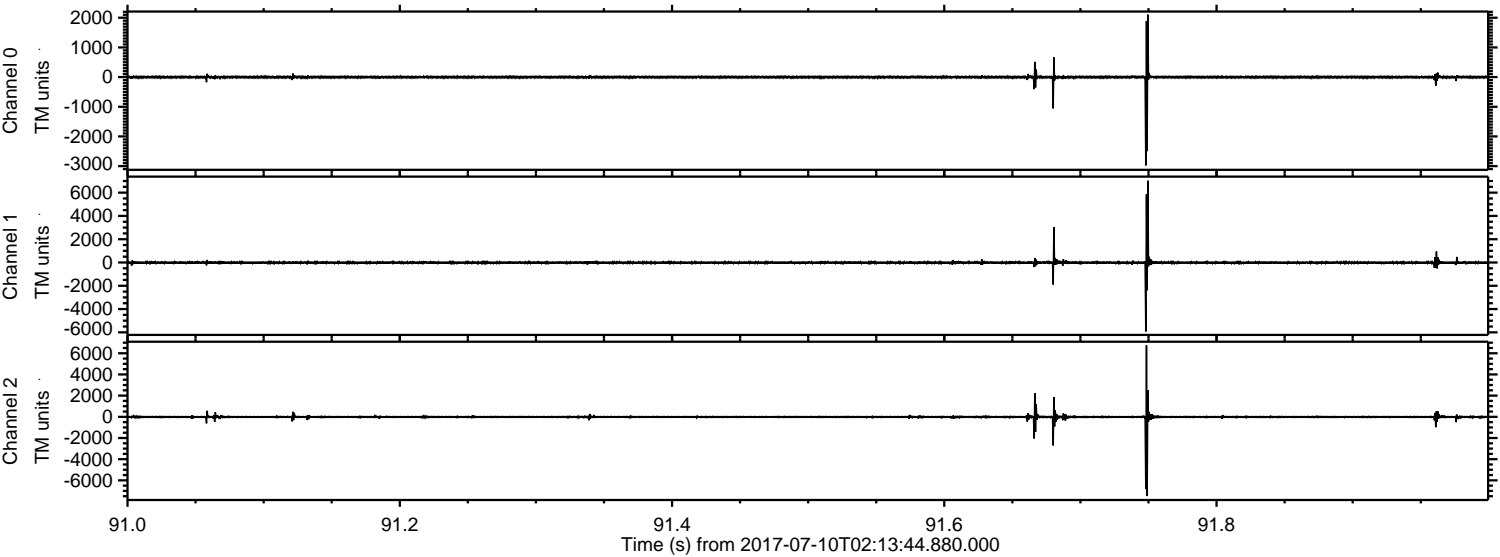
Processed Wed Jul 19 16:00:42 2017 by ELM ver.2012-10-06 from 001__elm20170710_021343__dat00.bin



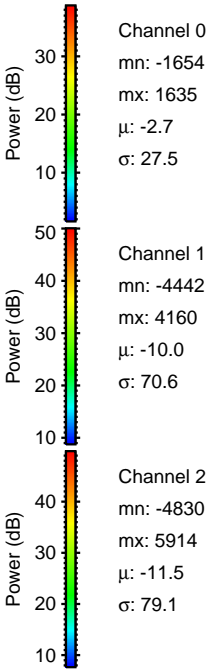
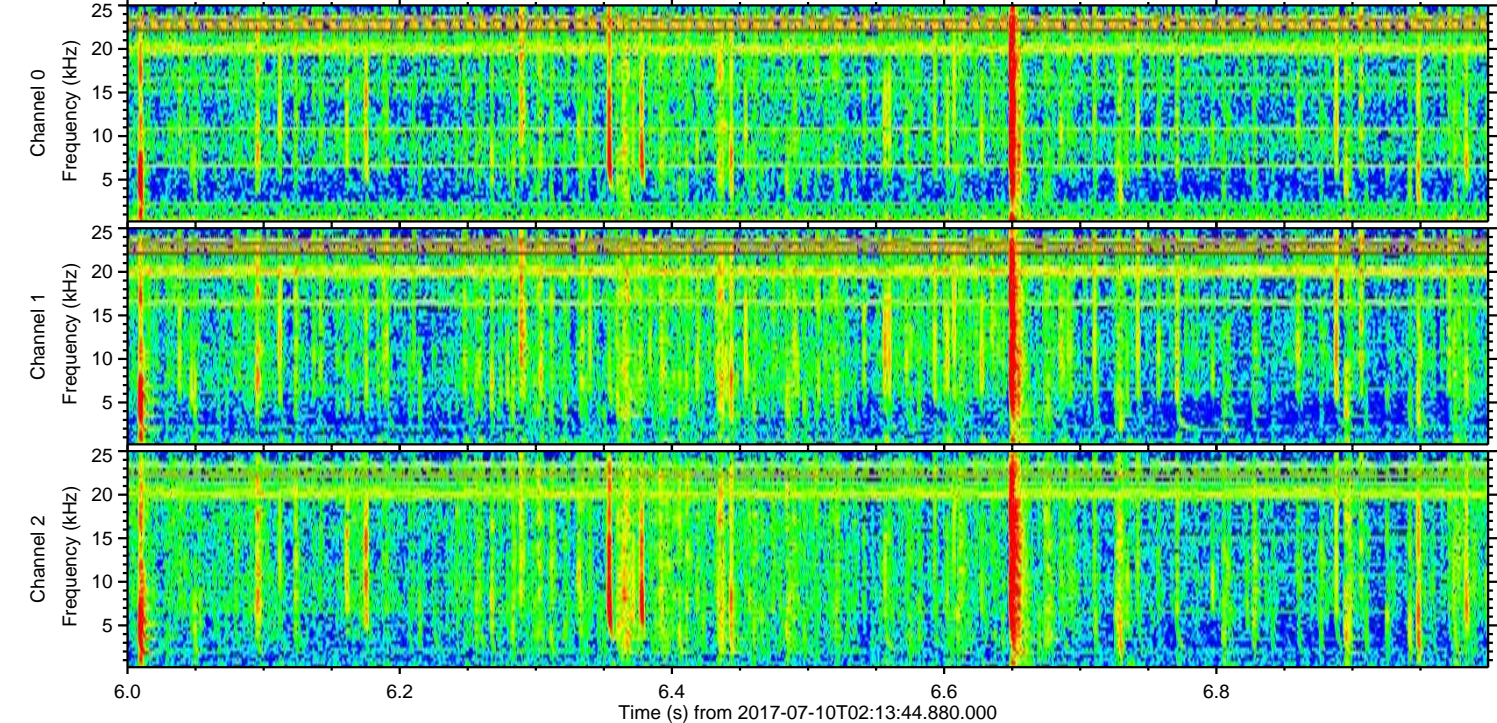
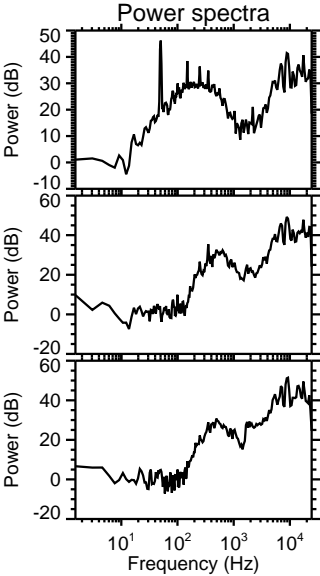
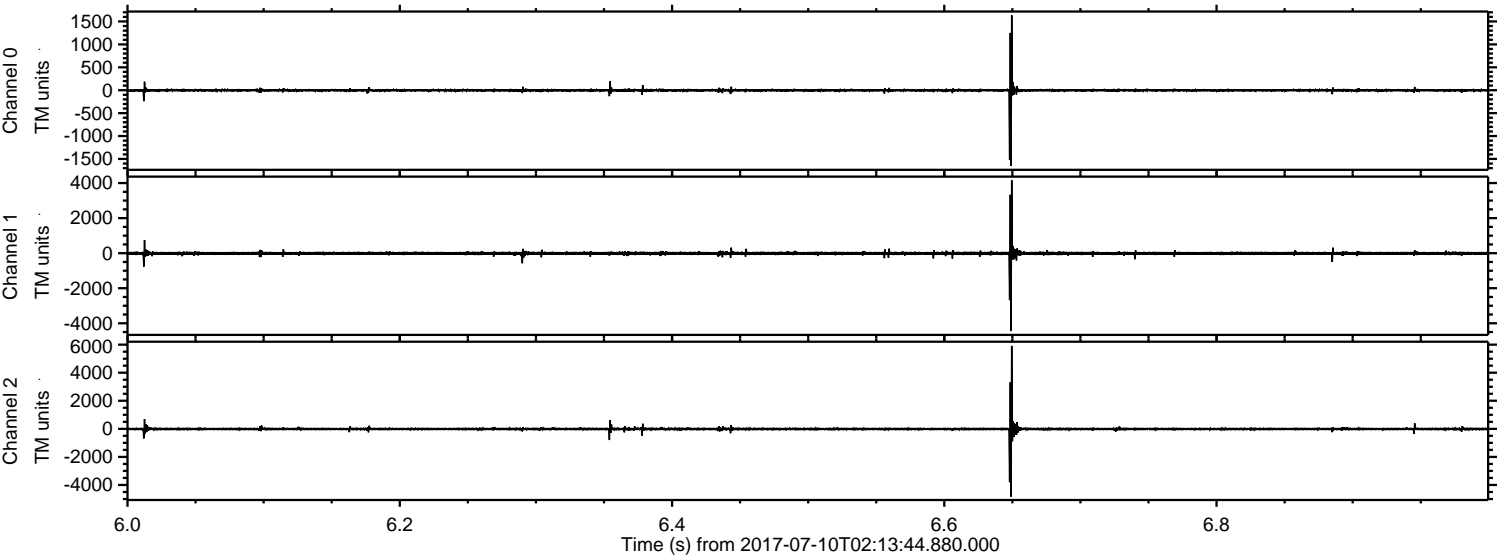
Processed Wed Jul 19 16:00:43 2017 by ELM ver.2012-10-06 from 001__elm20170710_021343__dat00.bin



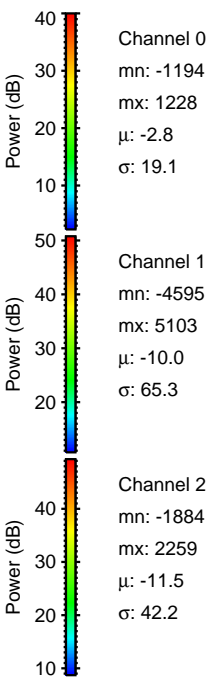
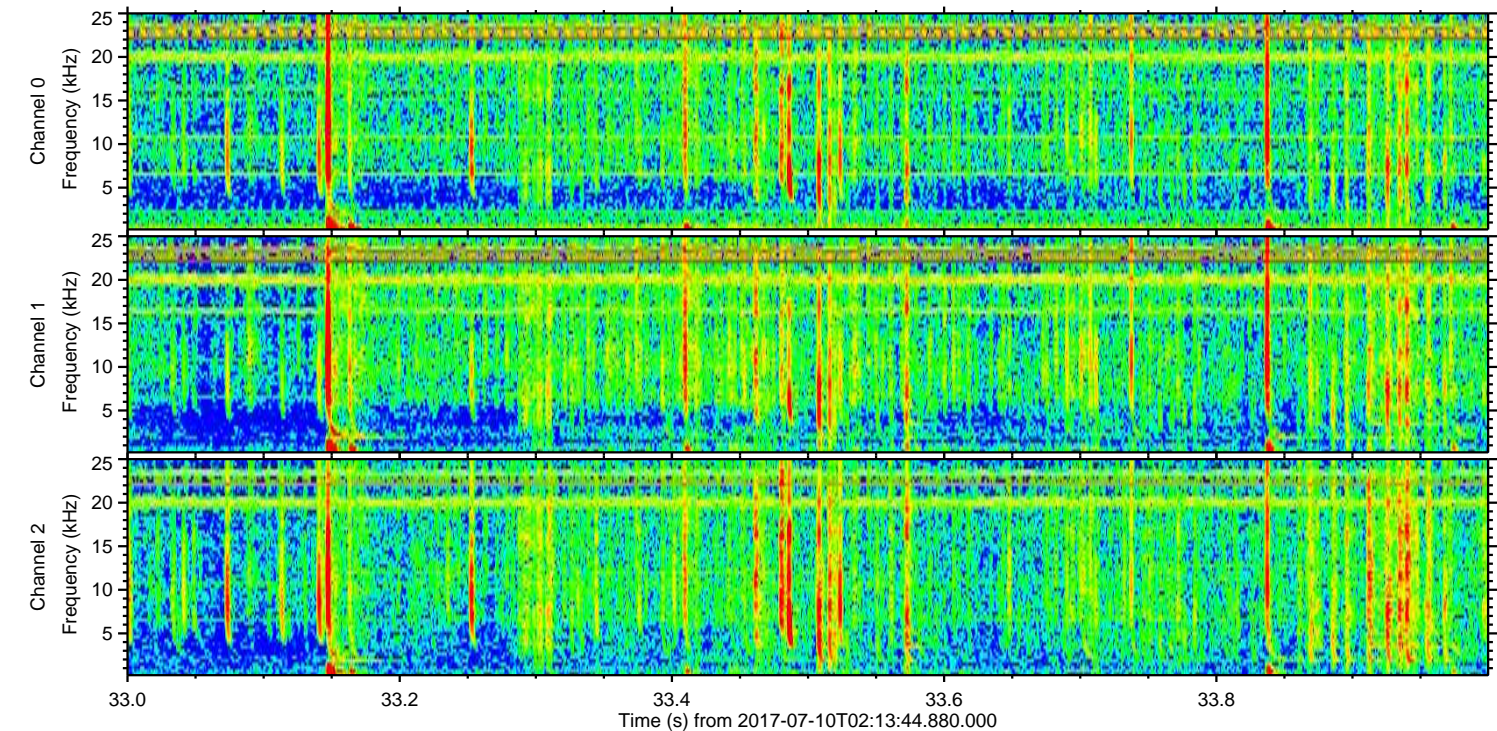
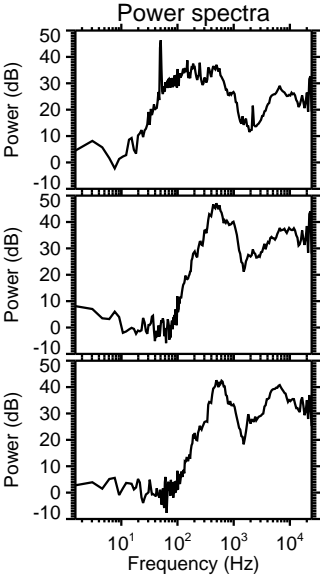
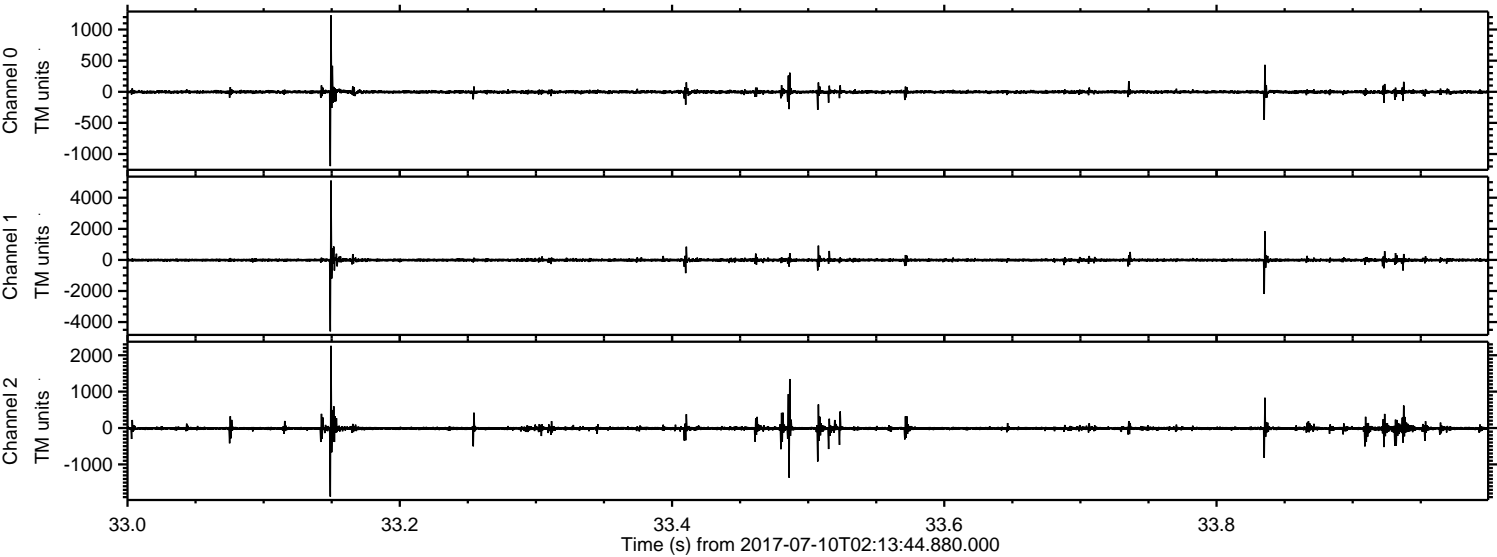
Processed Wed Jul 19 16:00:44 2017 by ELM ver.2012-10-06 from 001__elm20170710_021343__dat00.bin



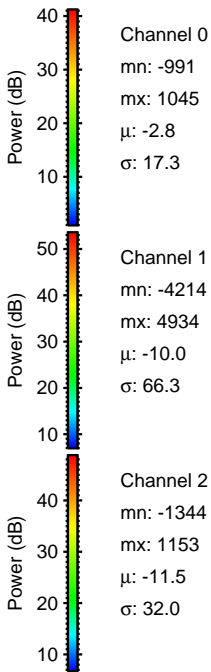
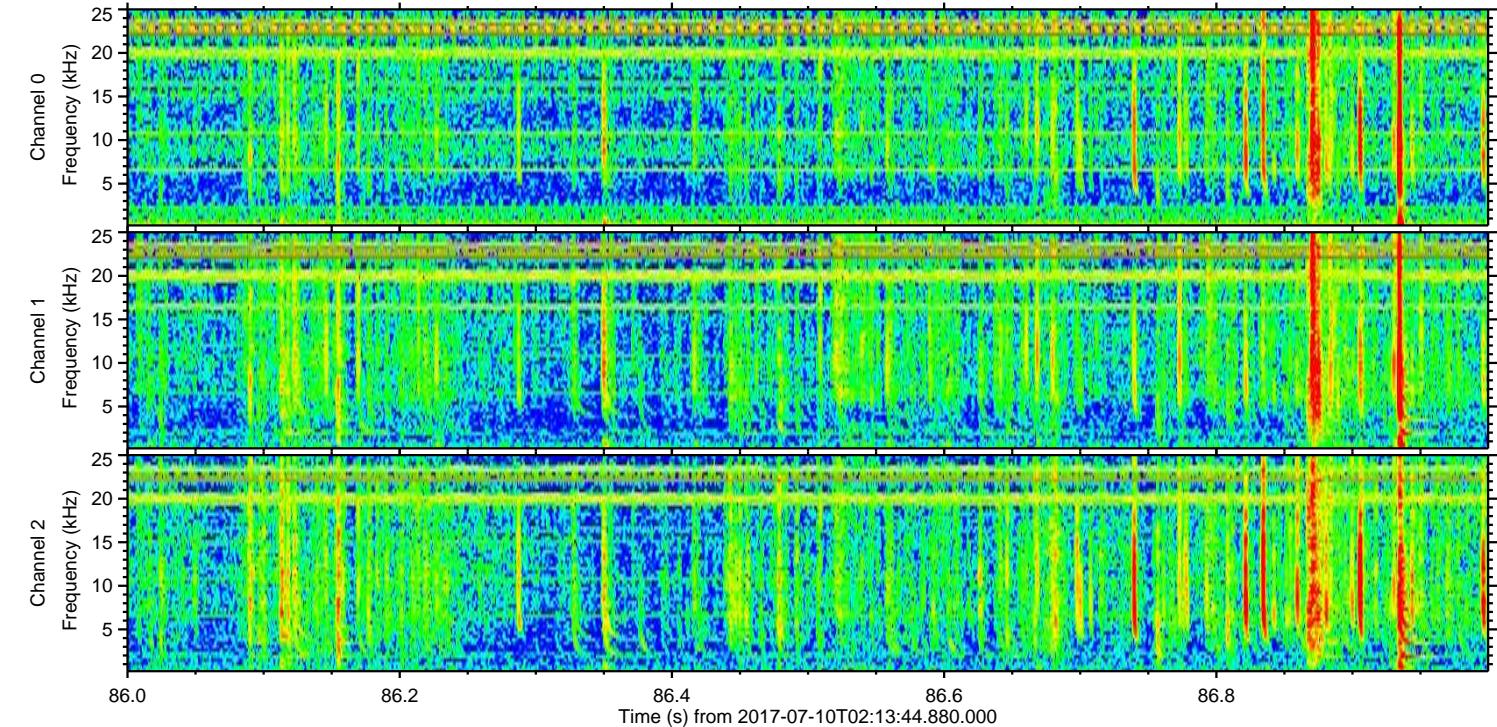
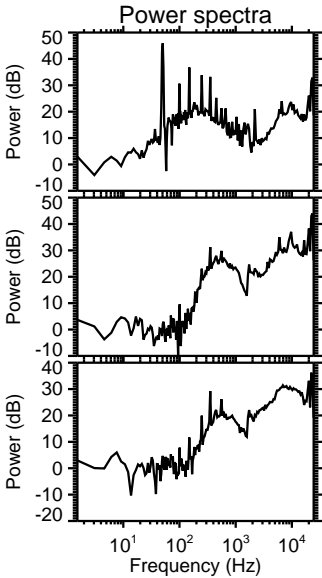
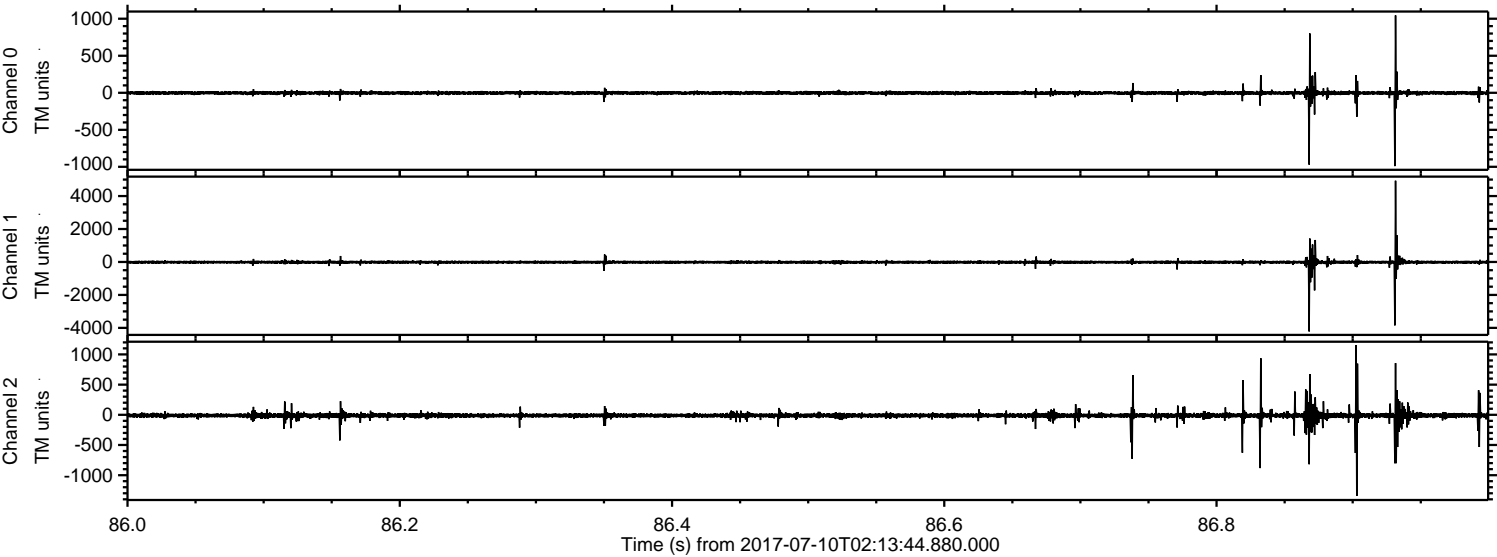
Processed Wed Jul 19 16:00:44 2017 by ELM ver.2012-10-06 from 001__elm20170710_021343__dat00.bin



Processed Wed Jul 19 16:00:45 2017 by ELM ver.2012-10-06 from 001__elm20170710_021343__dat00.bin

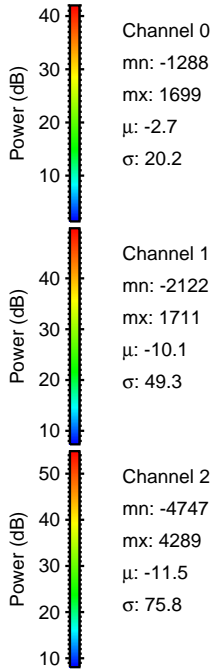
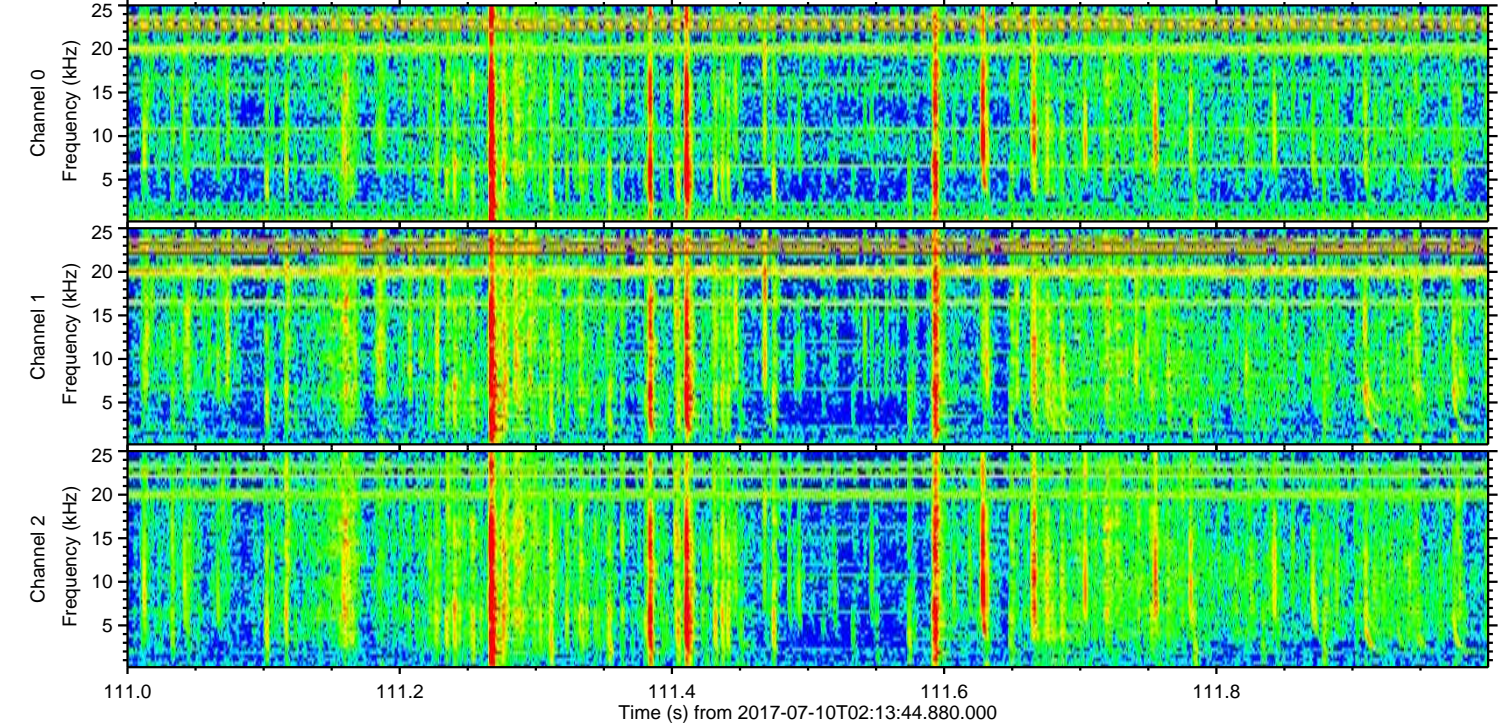
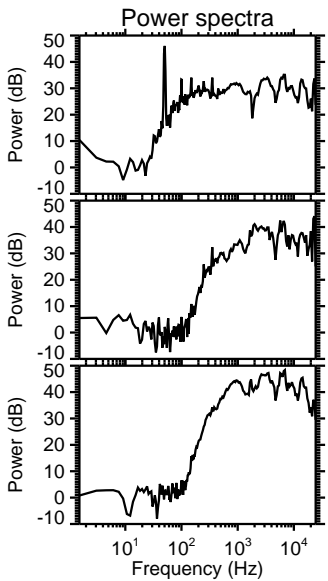
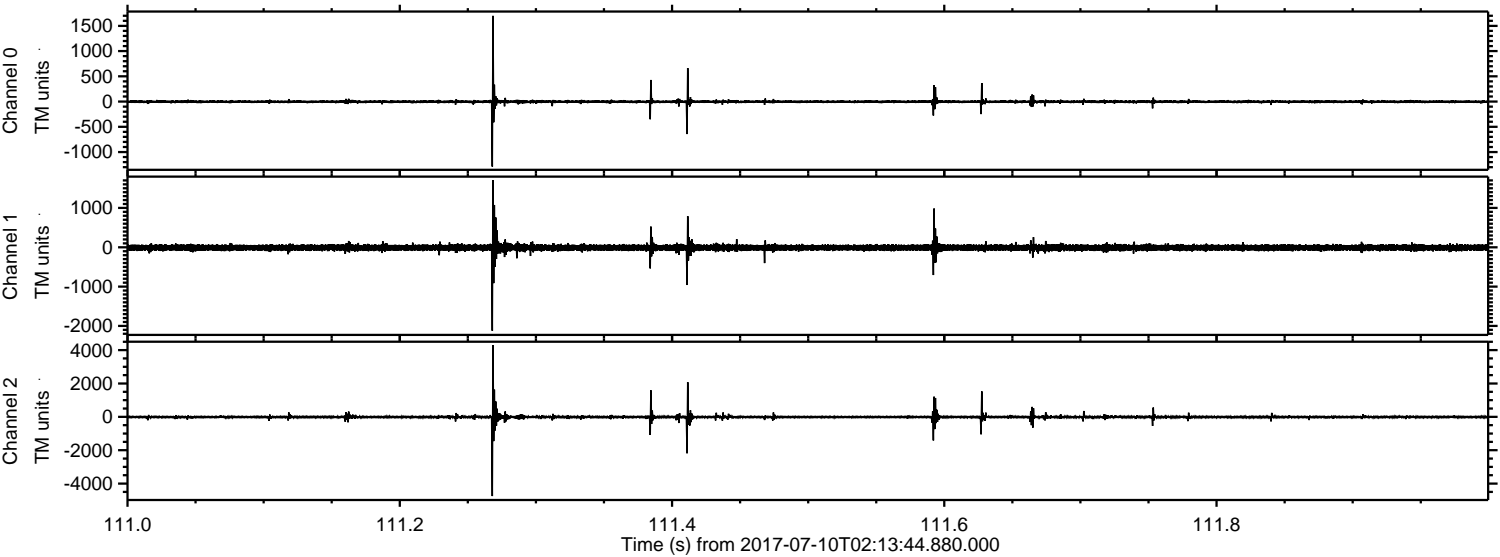


Processed Wed Jul 19 16:00:46 2017 by ELM ver.2012-10-06 from 001__elm20170710_021343__dat00.bin



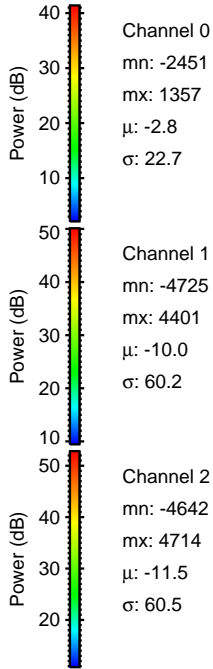
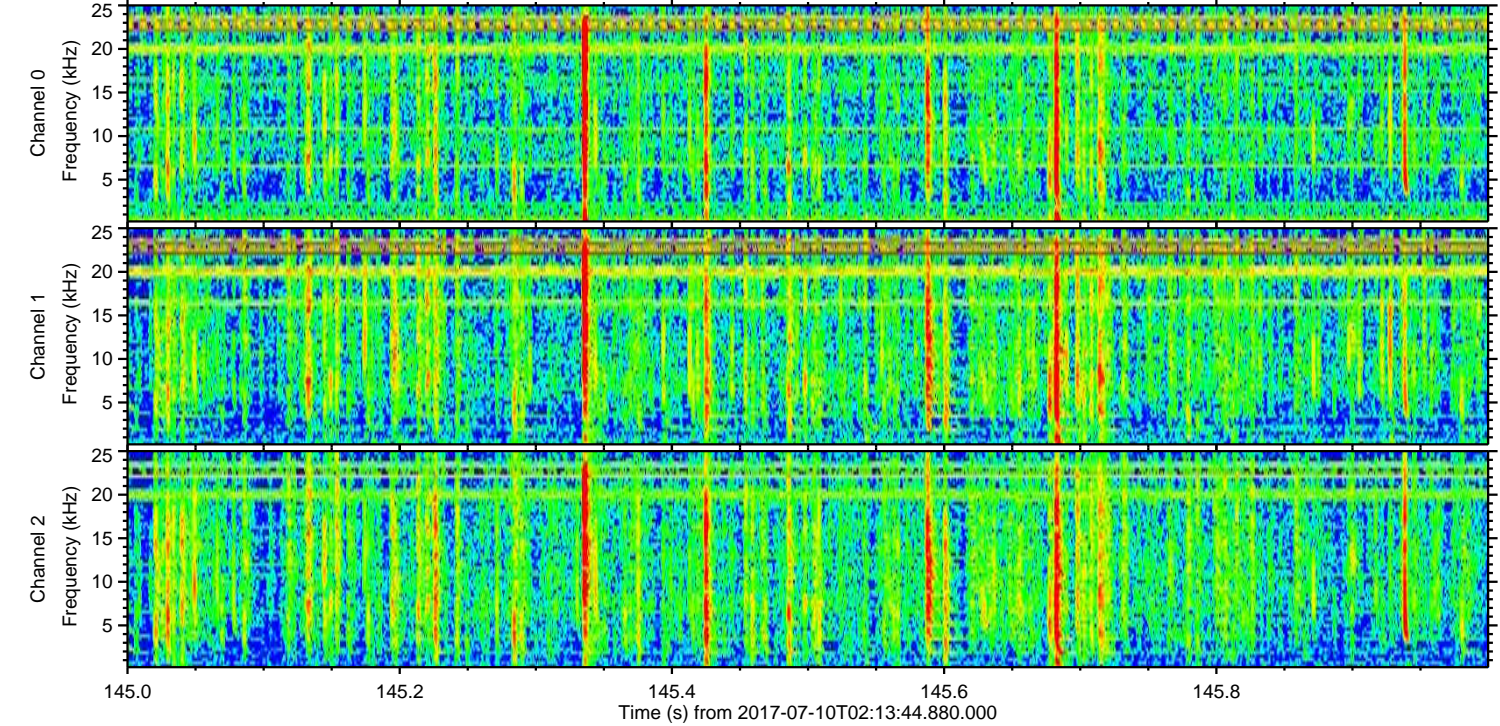
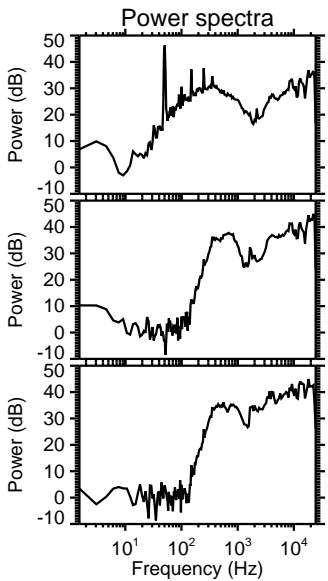
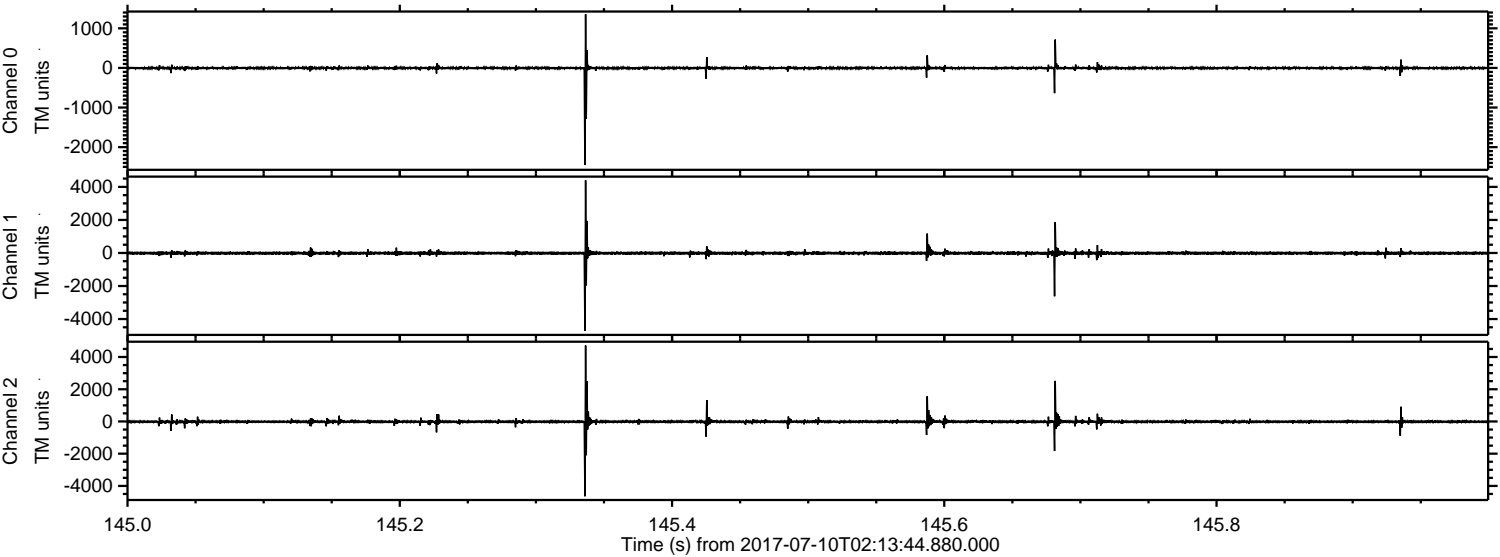
ELMAVAN 3D WAVEFORMS (Measured data sampled at 50 kHz) 51000 packets of 144 samples from 2017-07-10T02:13:44.880.000. Part 112/147

Processed Wed Jul 19 16:00:46 2017 by ELM ver.2012-10-06 from 001__elm20170710_021343__dat00.bin

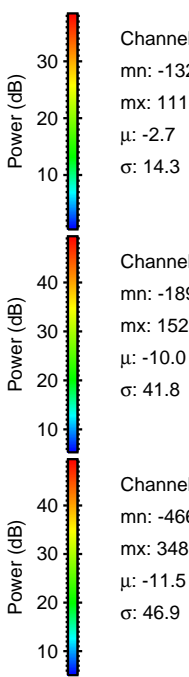
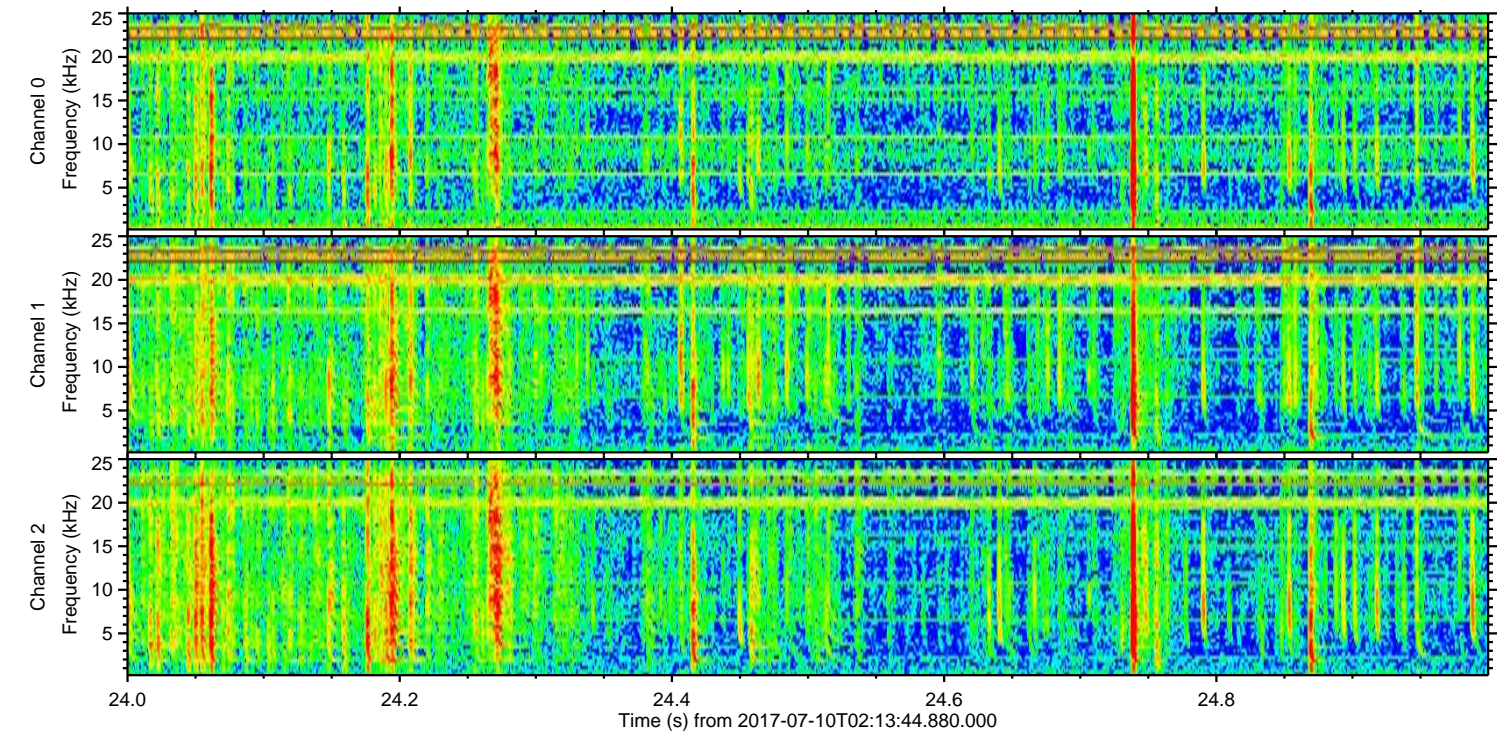
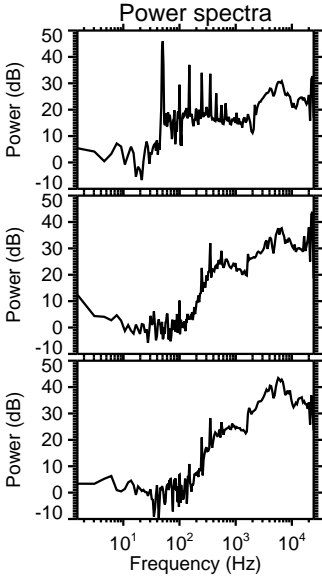
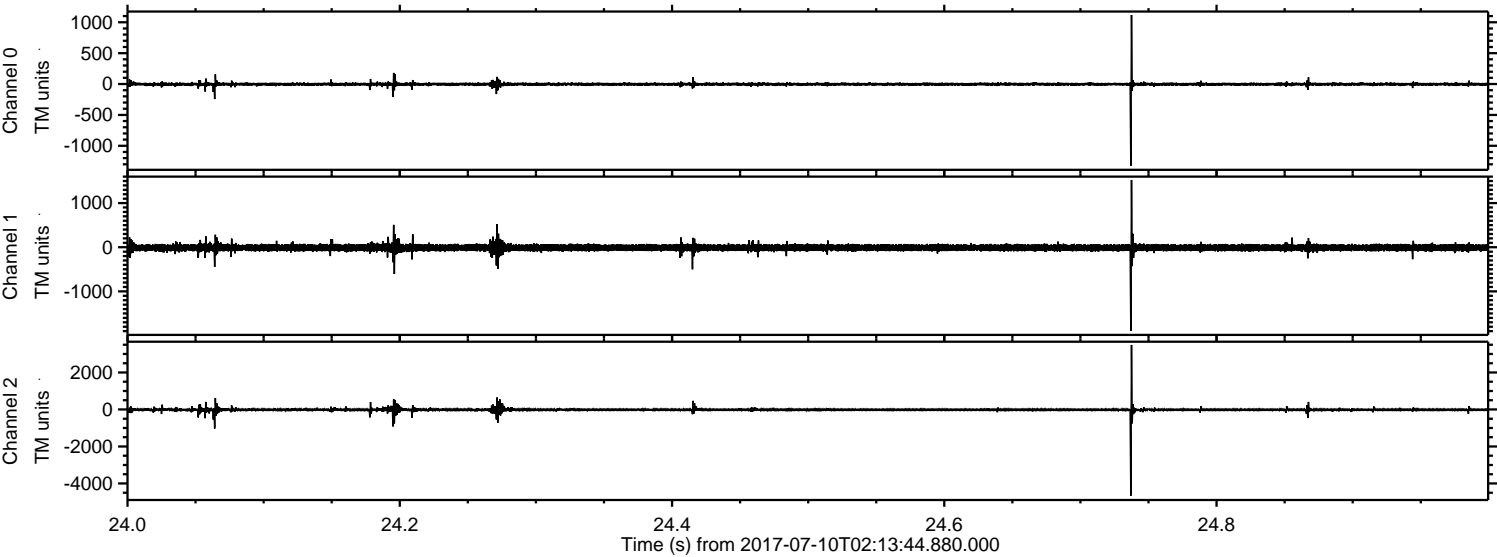


ELMAVAN 3D WAVEFORMS (Measured data sampled at 50 kHz) 51000 packets of 144 samples from 2017-07-10T02:13:44.880.000. Part 146/147

Processed Wed Jul 19 16:00:47 2017 by ELM ver.2012-10-06 from 001__elm20170710_021343__dat00.bin



Processed Wed Jul 19 16:00:48 2017 by ELM ver.2012-10-06 from 001__elm20170710_021343__dat00.bin



Channel 0
mn: -1323
mx: 1118
 μ : -2.7
 σ : 14.3

Channel 1
mn: -1891
mx: 1523
 μ : -10.0
 σ : 41.8

Channel 2
mn: -4661
mx: 3489
 μ : -11.5
 σ : 46.9

Processed Wed Jul 19 16:00:49 2017 by ELM ver.2012-10-06 from 001__elm20170710_021343__dat00.bin

