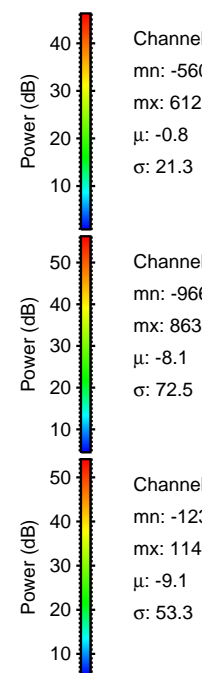
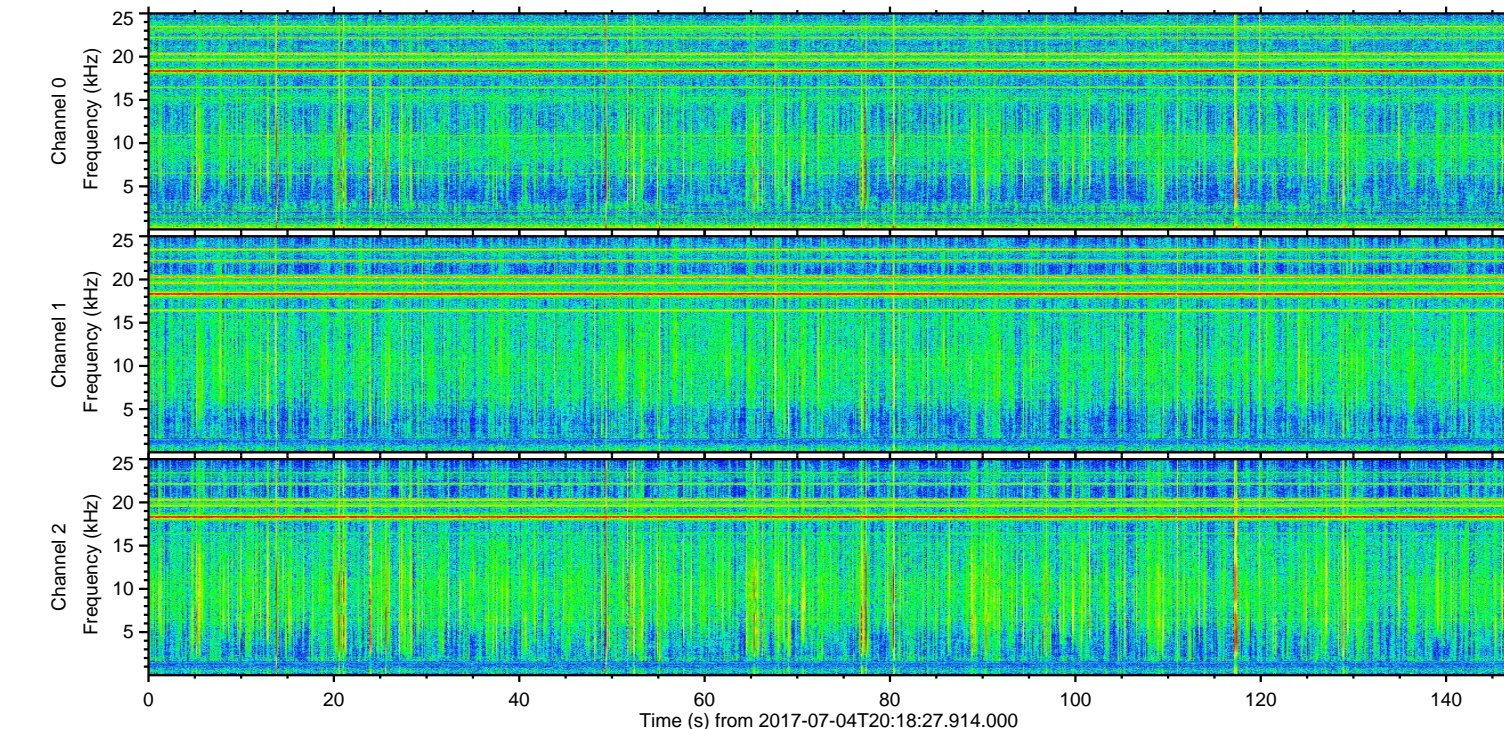
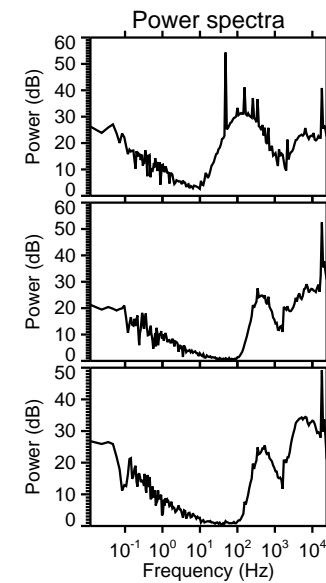
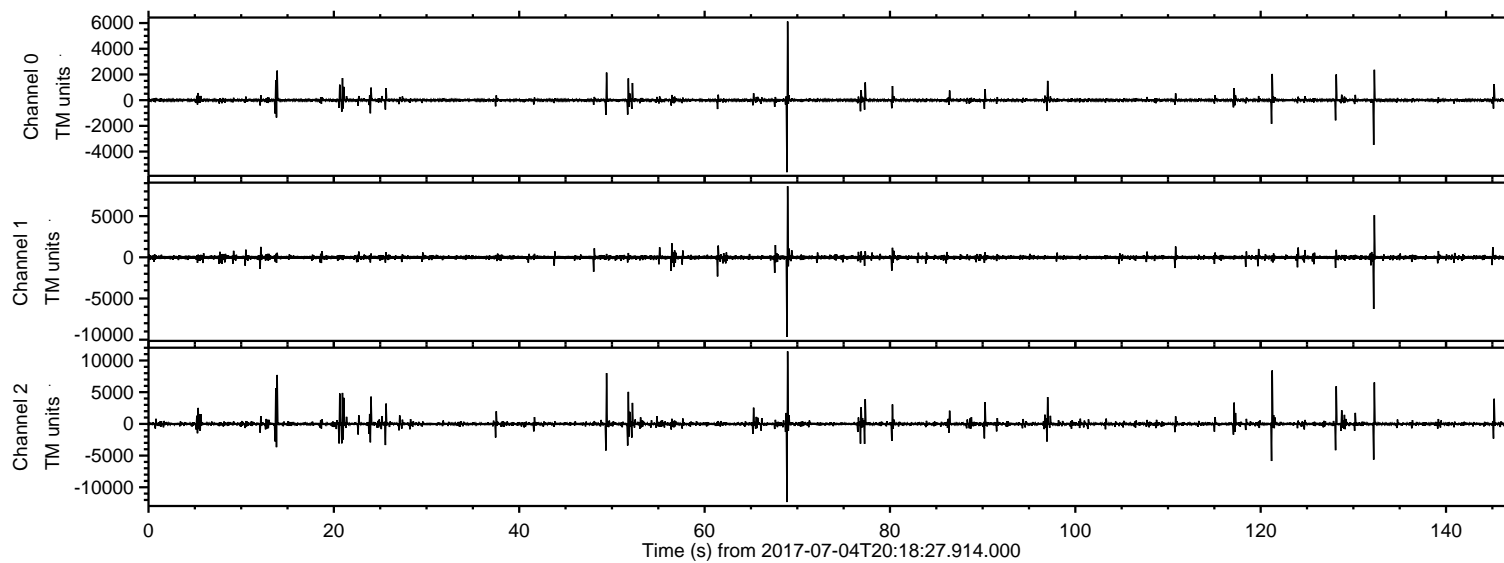


ELMAVAN 3D WAVEFORMS (Measured data sampled at 50 kHz) 51000 packets of 144 samples from 2017-07-04T20:18:27.914.000.

Processed Tue Jul 18 21:03:46 2017 by ELM ver.2012-10-06 from 001__elm20170704_201826__dat00.bin

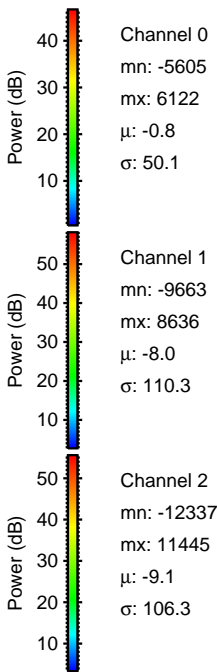
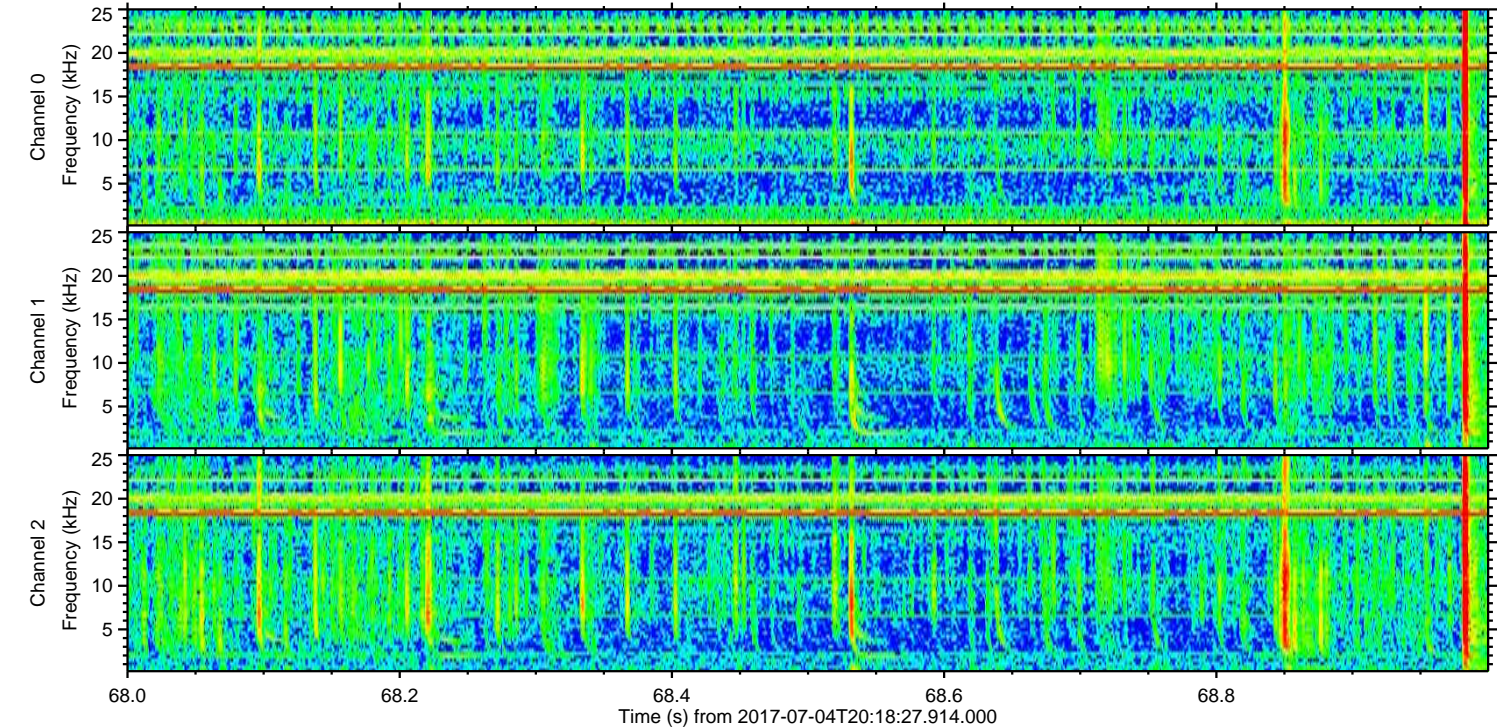
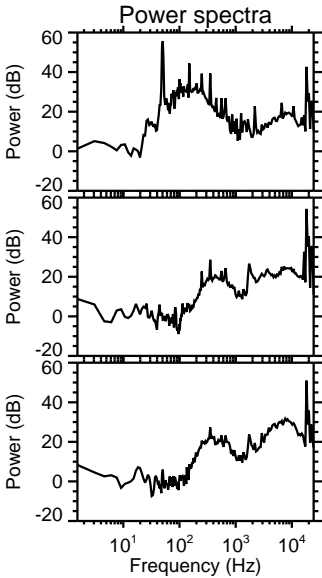
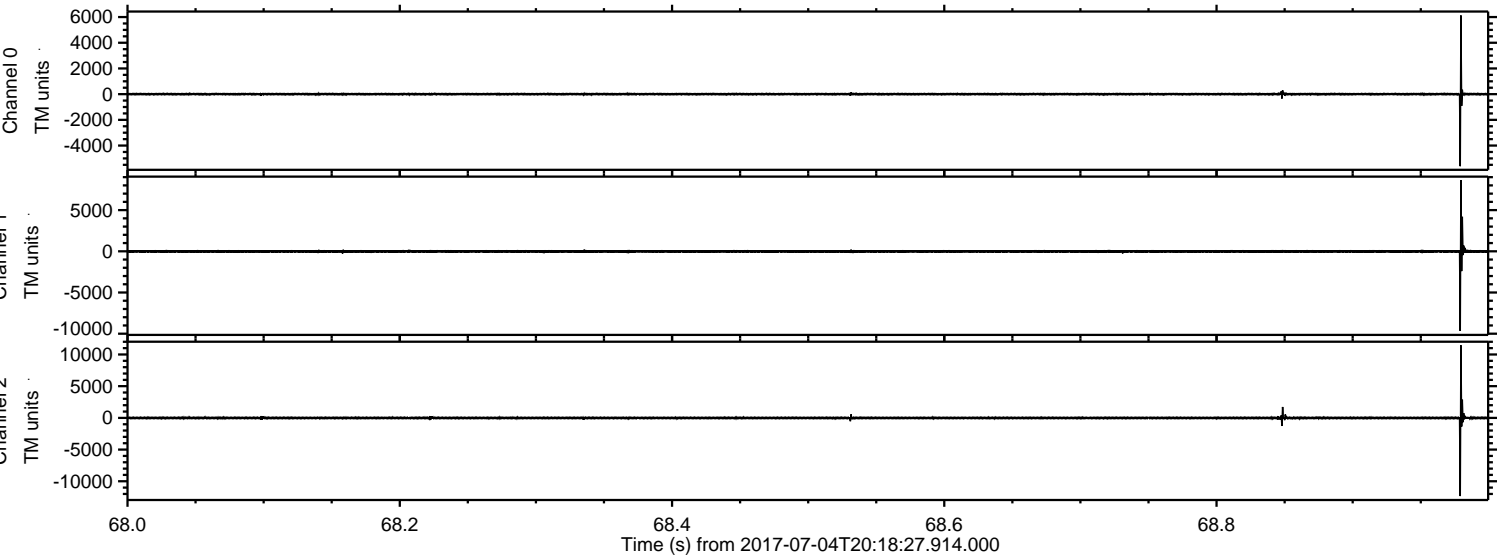


Channel 0
mn: -5605
mx: 6122
 μ : -0.8
 σ : 21.3

Channel 1
mn: -9663
mx: 8636
 μ : -8.1
 σ : 72.5

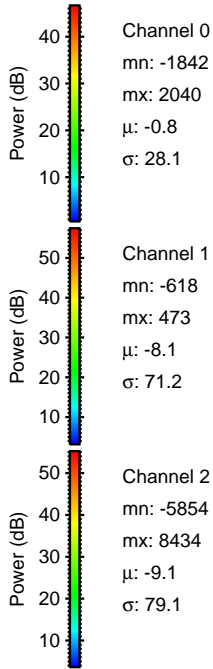
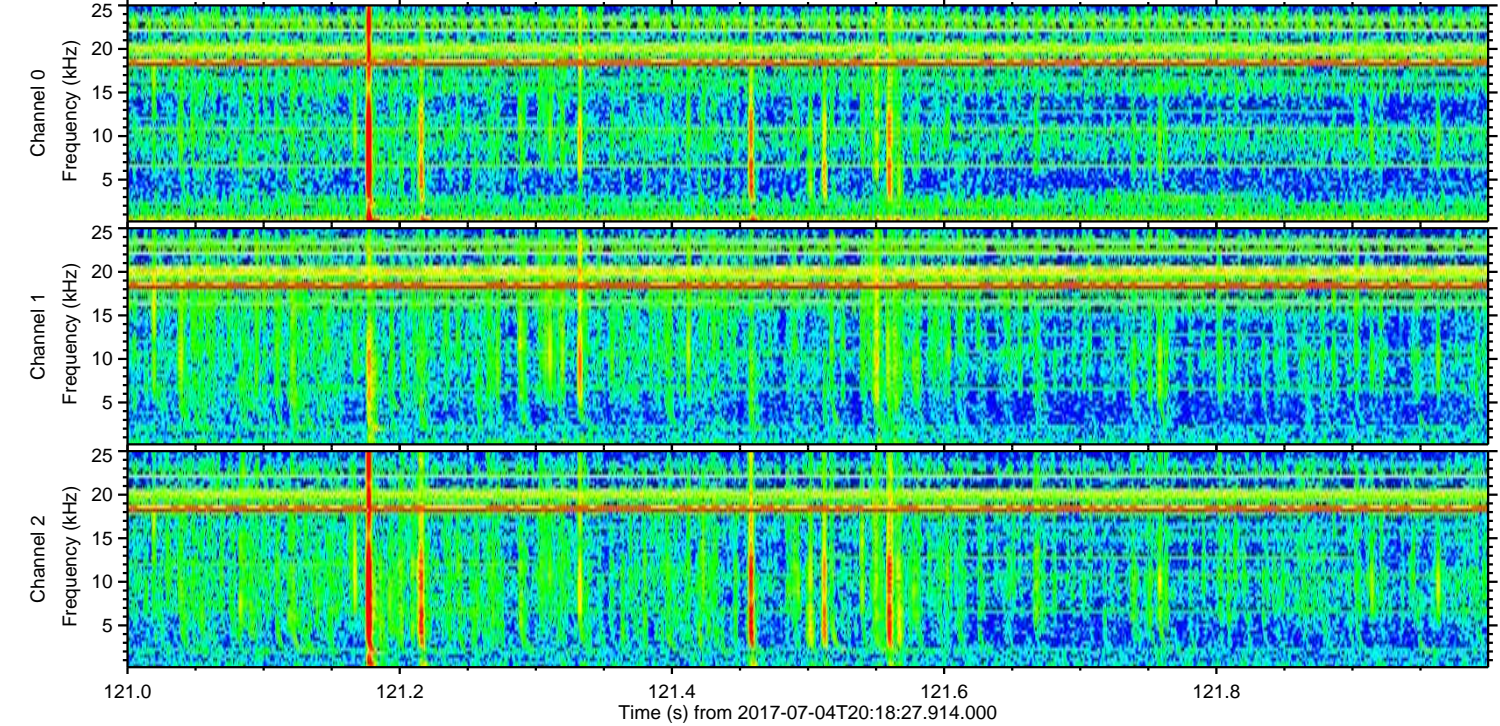
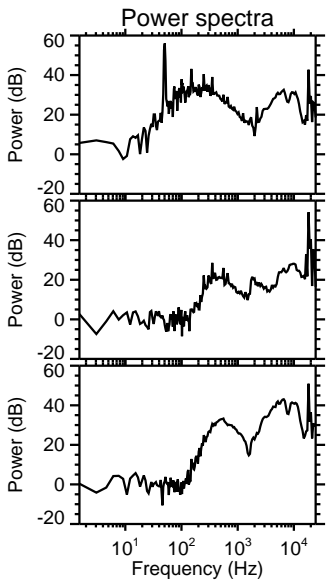
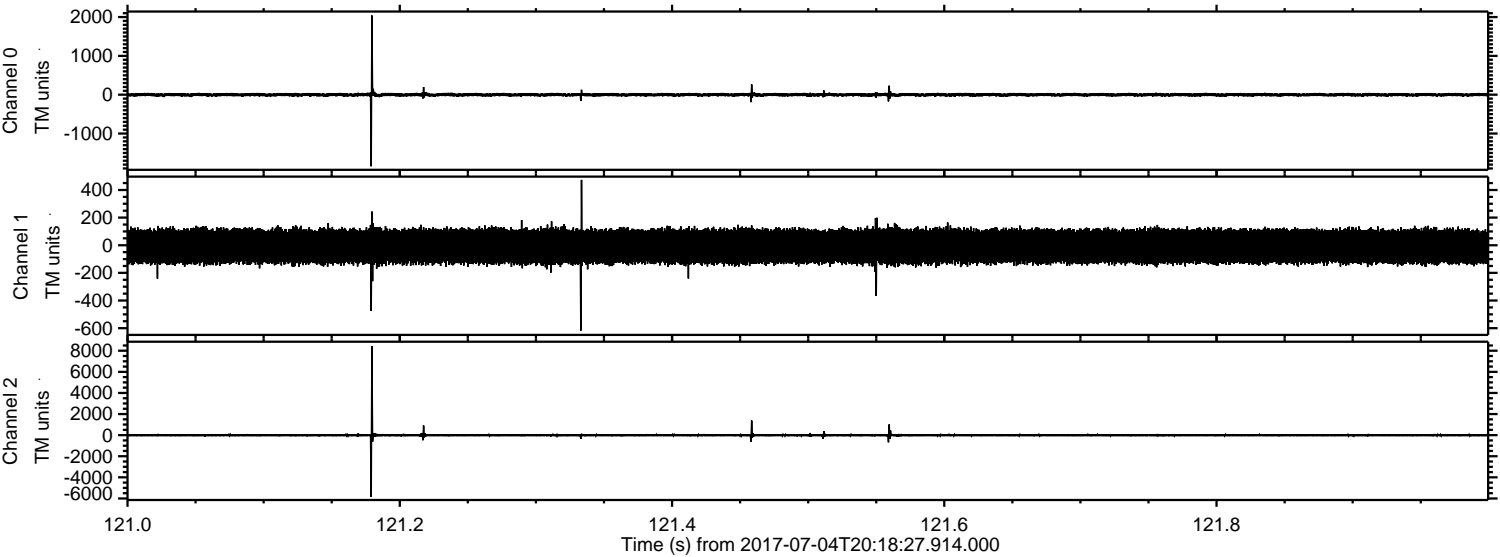
Channel 2
mn: -12337
mx: 11445
 μ : -9.1
 σ : 53.3

Processed Tue Jul 18 21:03:53 2017 by ELM ver.2012-10-06 from 001__elm20170704_201826__dat00.bin



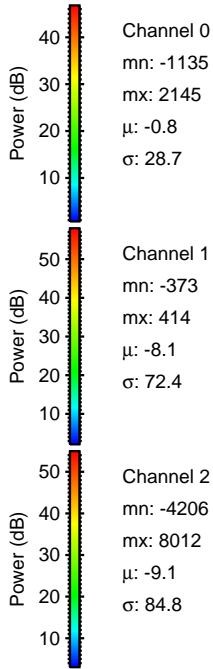
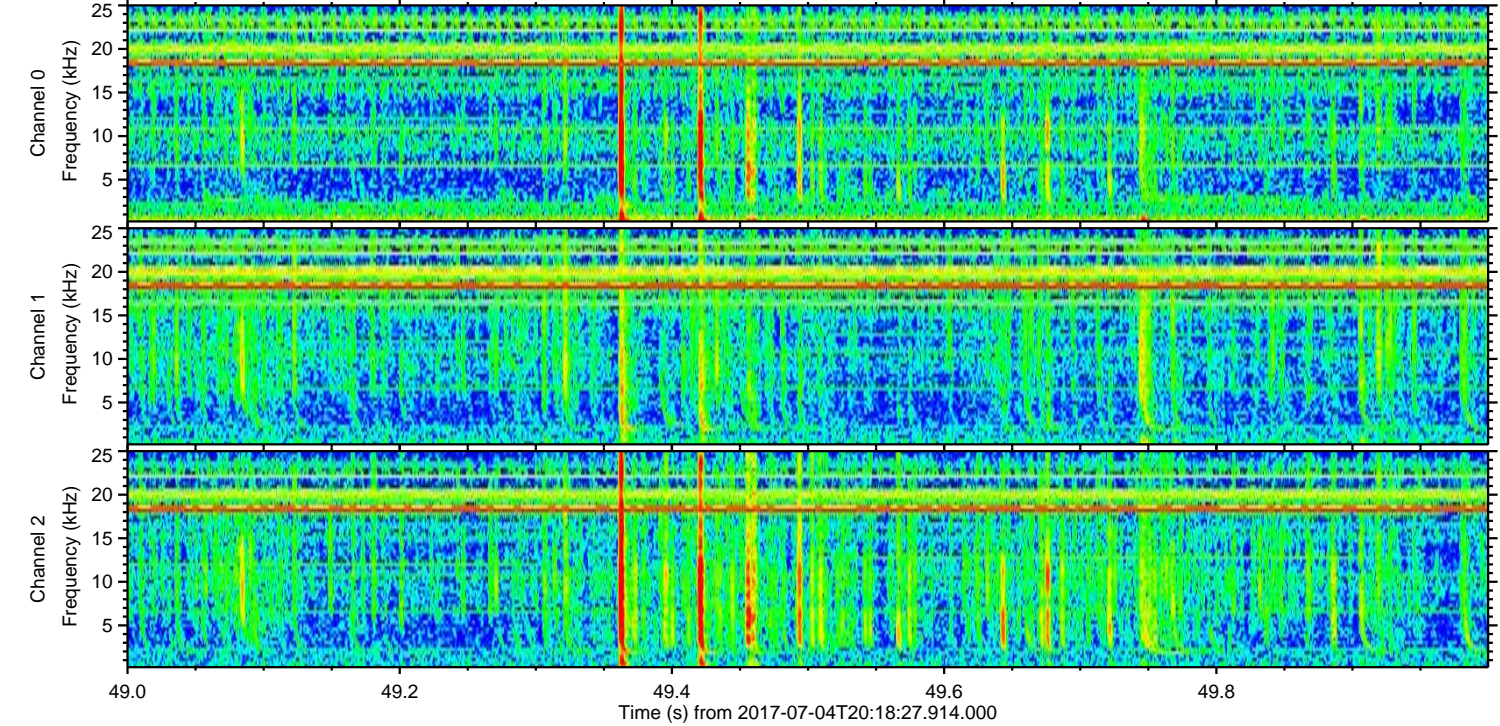
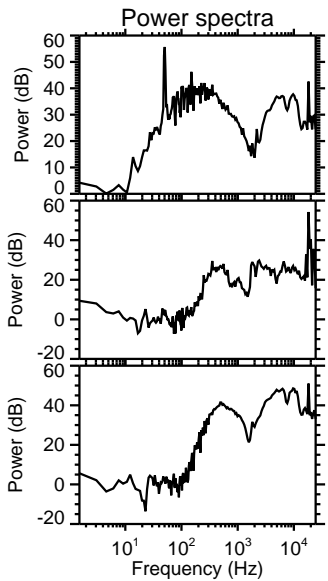
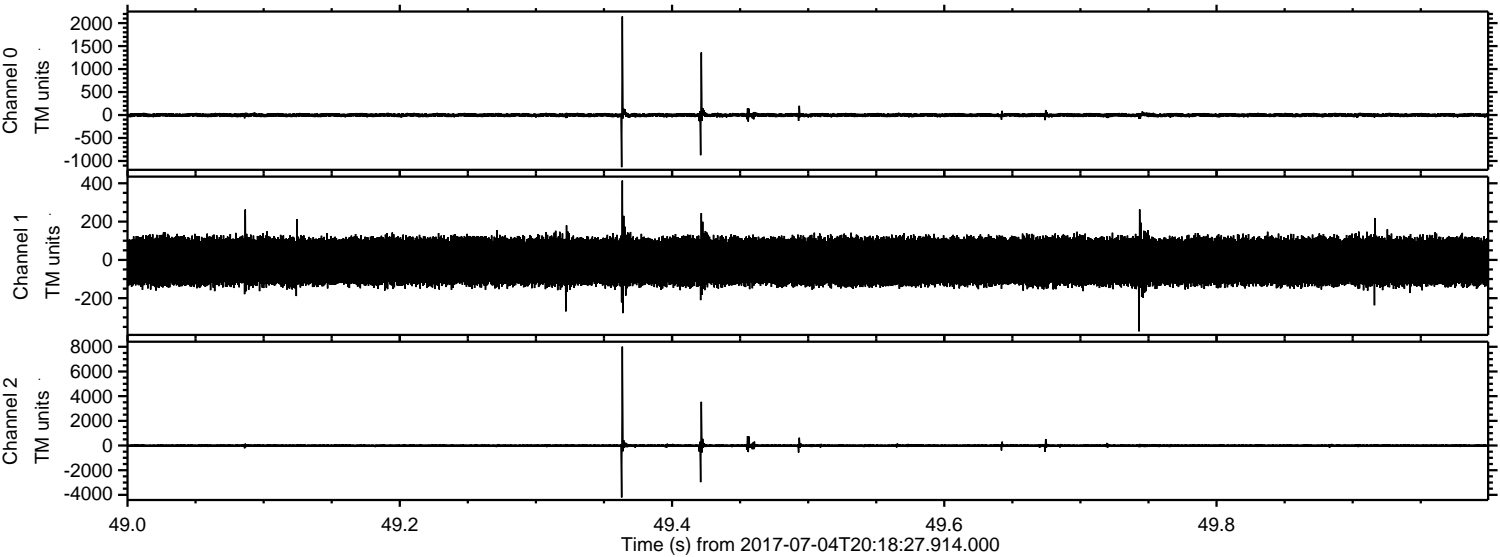
ELMAVAN 3D WAVEFORMS (Measured data sampled at 50 kHz) 51000 packets of 144 samples from 2017-07-04T20:18:27.914.000. Part 122/147

Processed Tue Jul 18 21:03:54 2017 by ELM ver.2012-10-06 from 001__elm20170704_201826__dat00.bin



ELMAVAN 3D WAVEFORMS (Measured data sampled at 50 kHz) 51000 packets of 144 samples from 2017-07-04T20:18:27.914.000. Part 50/147

Processed Tue Jul 18 21:03:55 2017 by ELM ver.2012-10-06 from 001__elm20170704_201826__dat00.bin



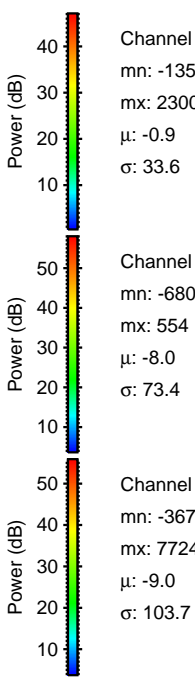
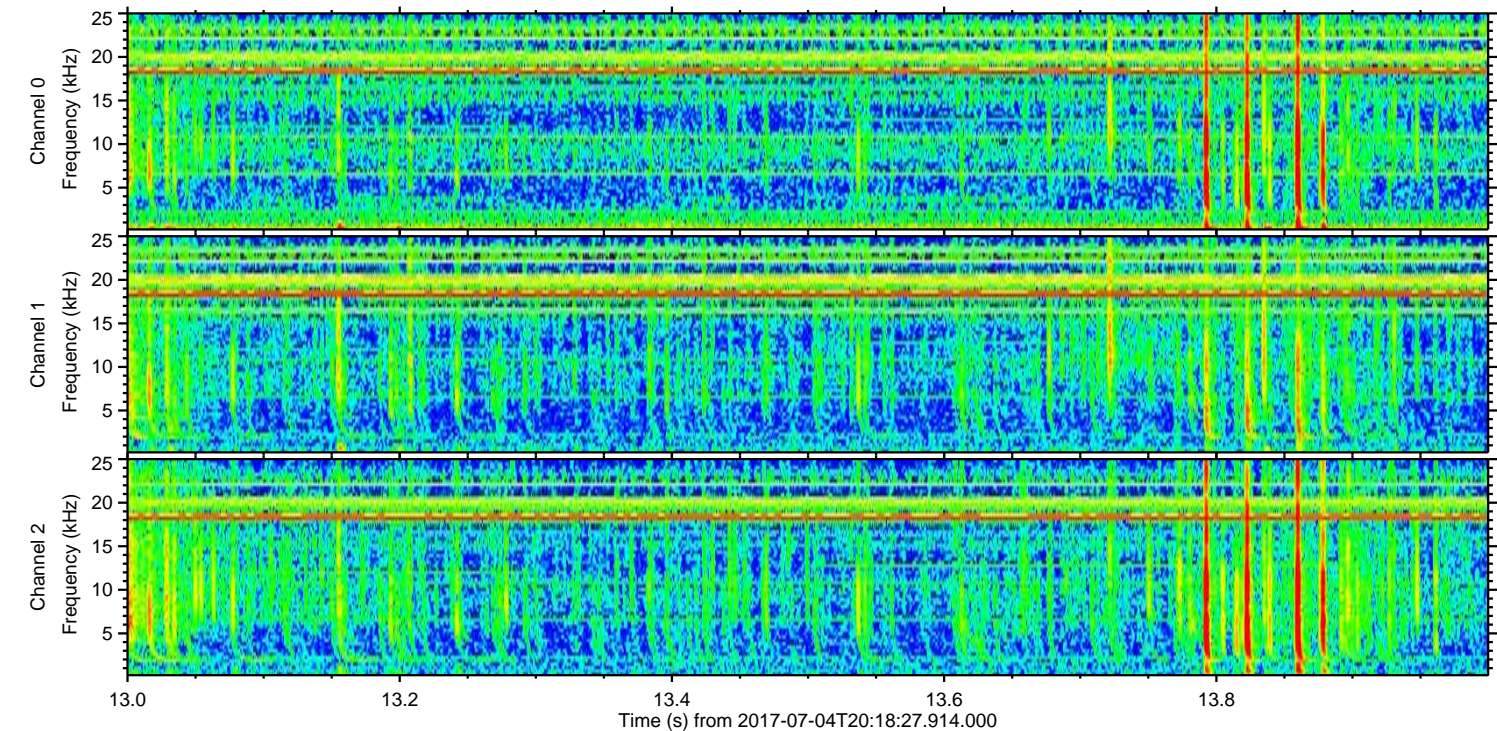
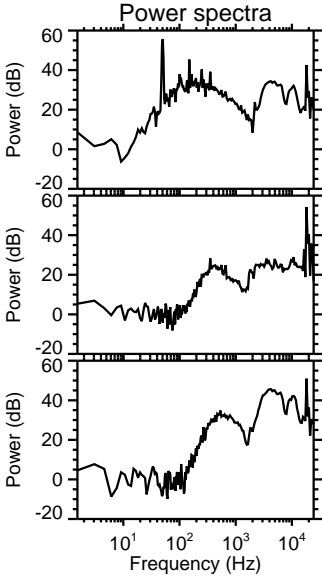
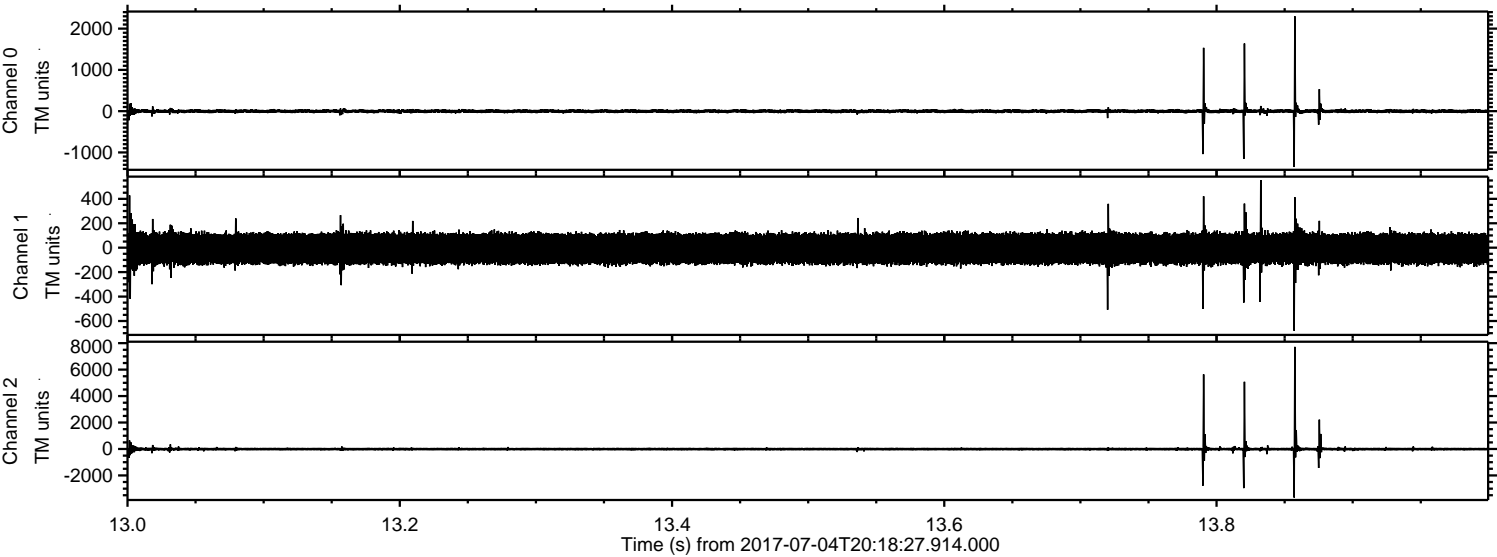
Channel 0
mn: -1135
mx: 2145
 μ : -0.8
 σ : 28.7

Channel 1
mn: -373
mx: 414
 μ : -8.1
 σ : 72.4

Channel 2
mn: -4206
mx: 8012
 μ : -9.1
 σ : 84.8

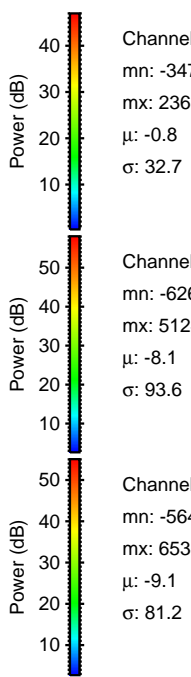
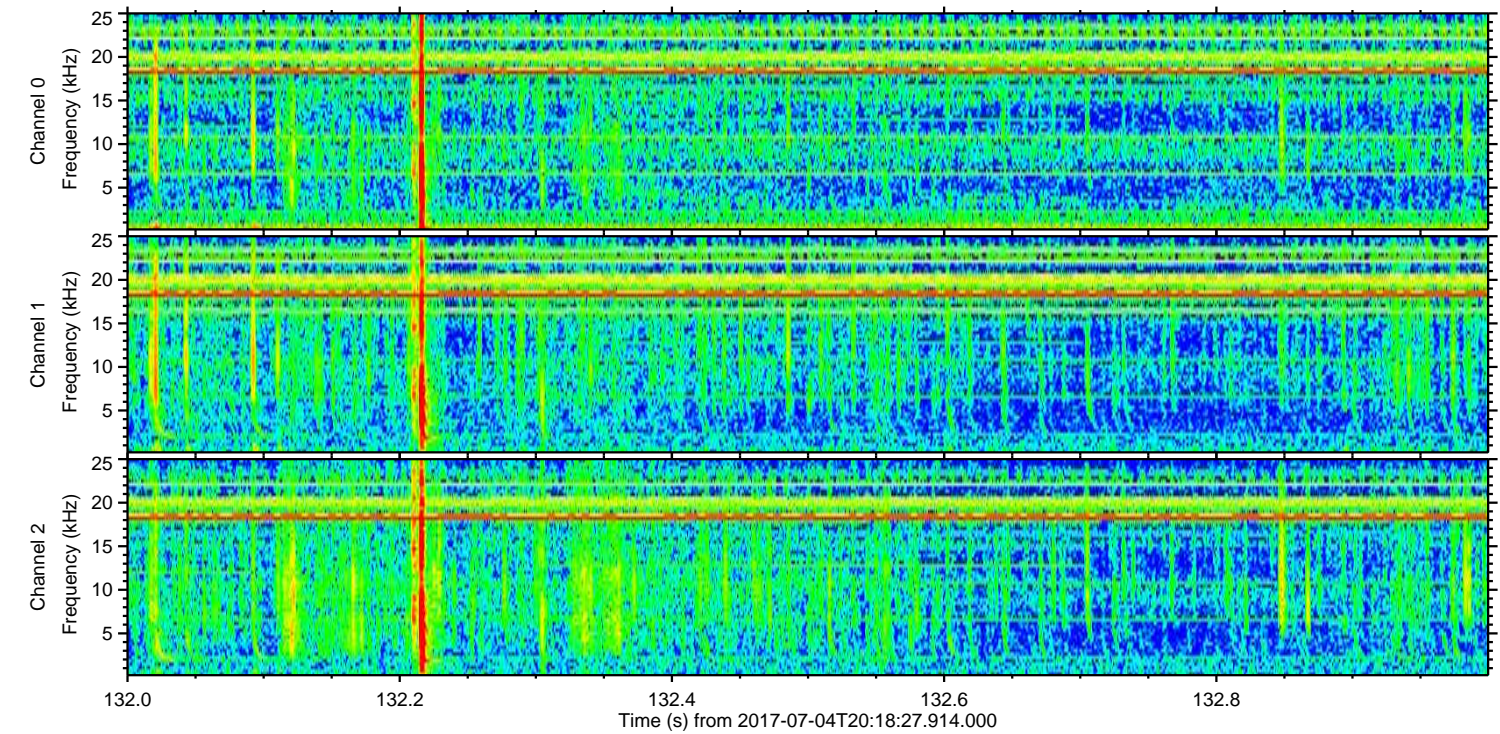
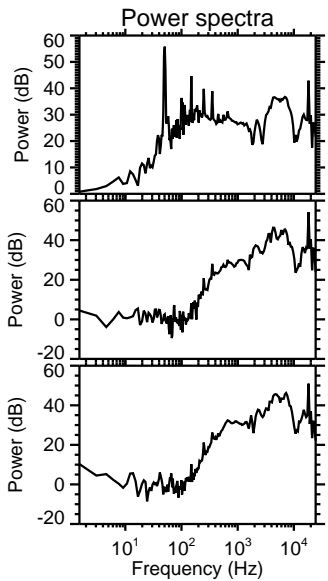
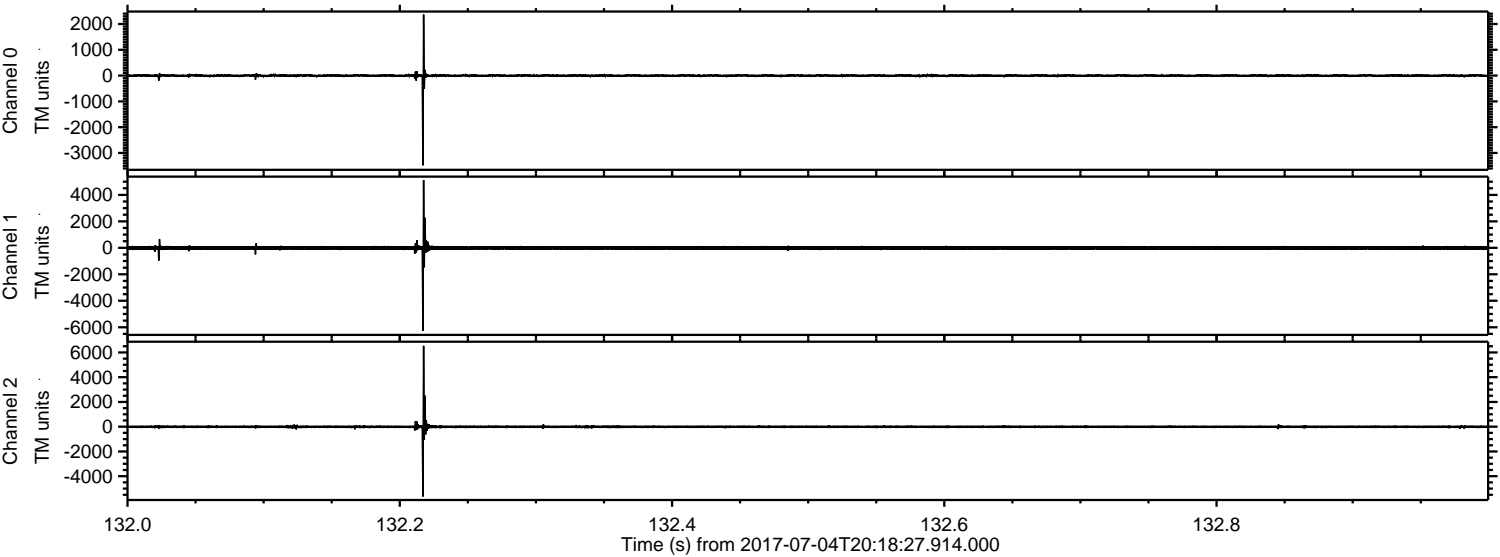
ELMAVAN 3D WAVEFORMS (Measured data sampled at 50 kHz) 51000 packets of 144 samples from 2017-07-04T20:18:27.914.000. Part 14/147

Processed Tue Jul 18 21:03:56 2017 by ELM ver.2012-10-06 from 001__elm20170704_201826__dat00.bin



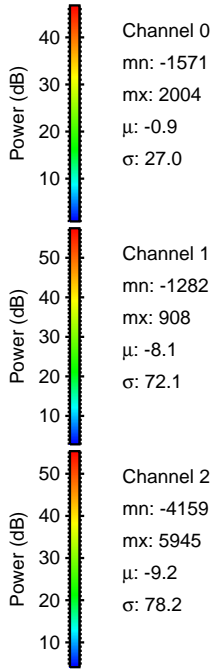
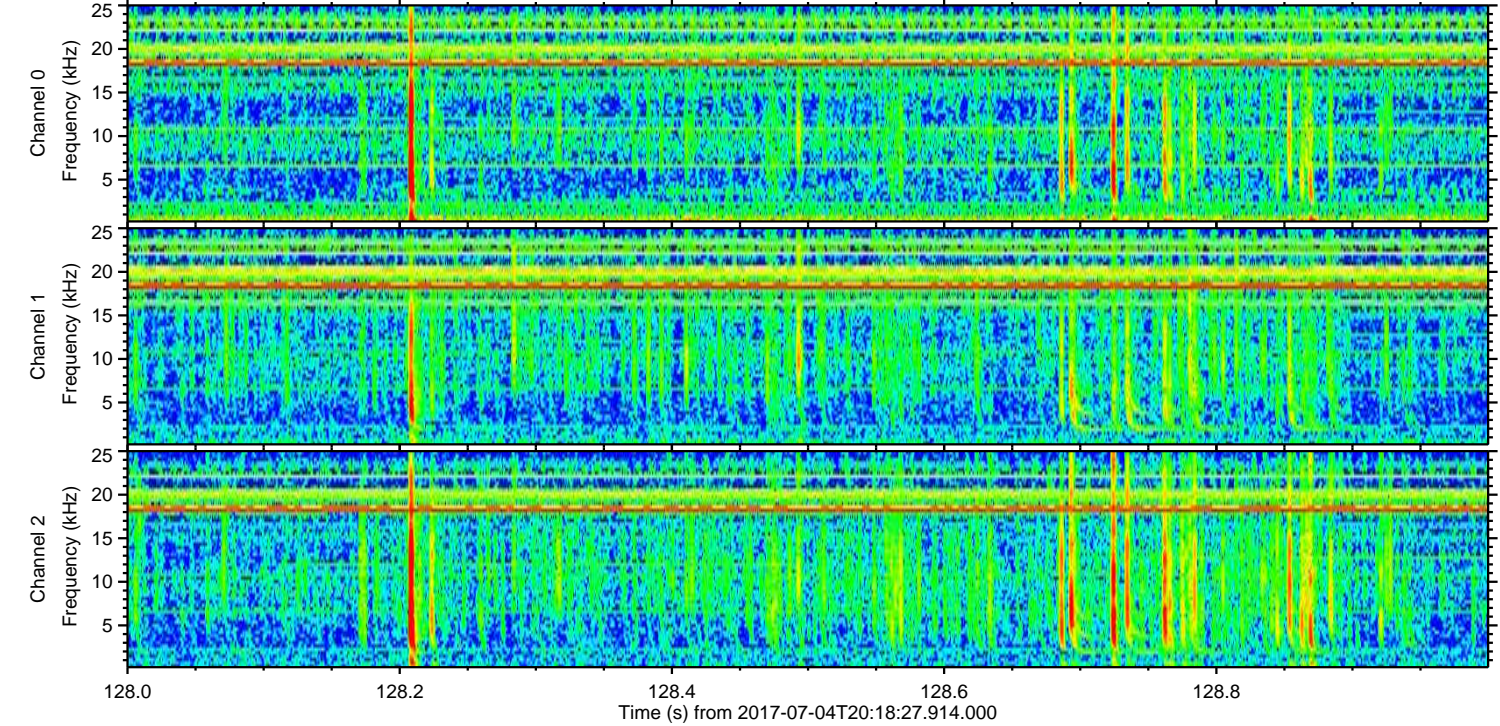
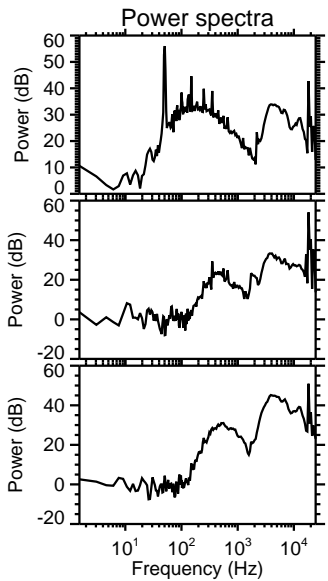
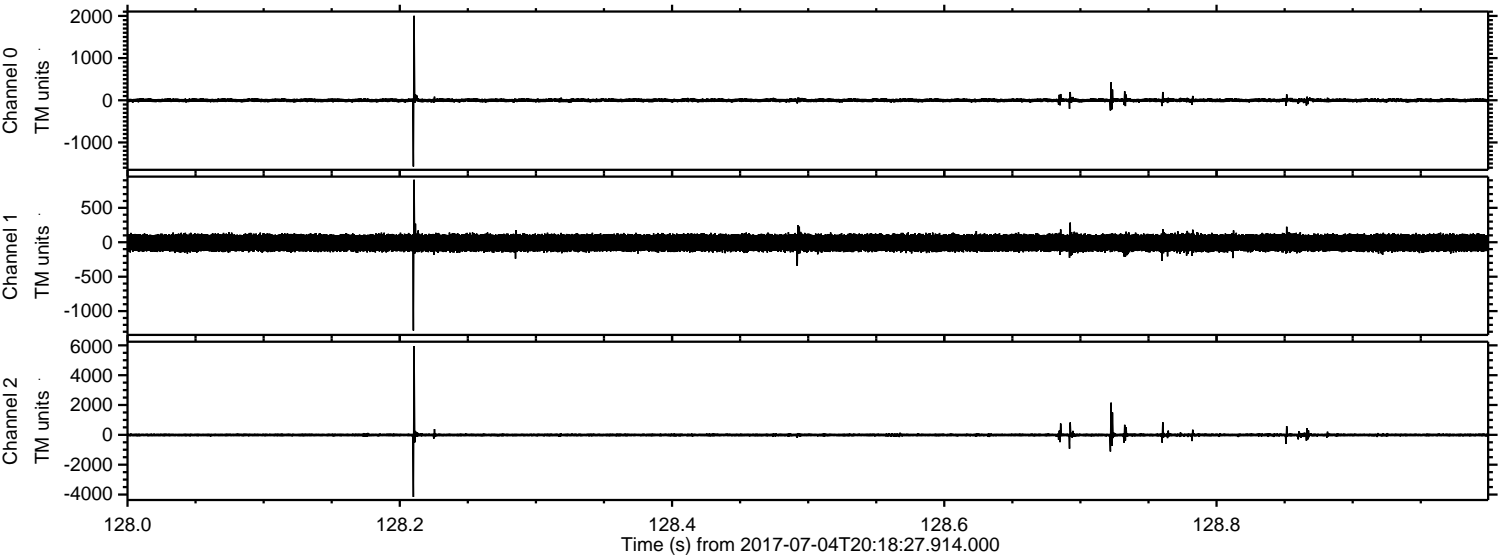
ELMAVAN 3D WAVEFORMS (Measured data sampled at 50 kHz) 51000 packets of 144 samples from 2017-07-04T20:18:27.914.000. Part 133/147

Processed Tue Jul 18 21:03:57 2017 by ELM ver.2012-10-06 from 001__elm20170704_201826__dat00.bin



ELMAVAN 3D WAVEFORMS (Measured data sampled at 50 kHz) 51000 packets of 144 samples from 2017-07-04T20:18:27.914.000. Part 129/147

Processed Tue Jul 18 21:03:57 2017 by ELM ver.2012-10-06 from 001__elm20170704_201826__dat00.bin



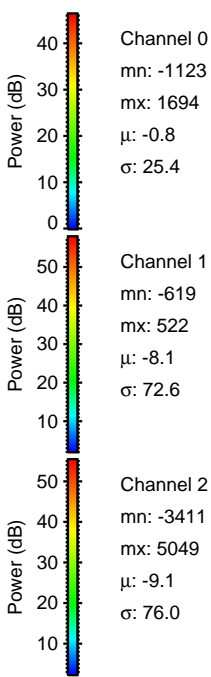
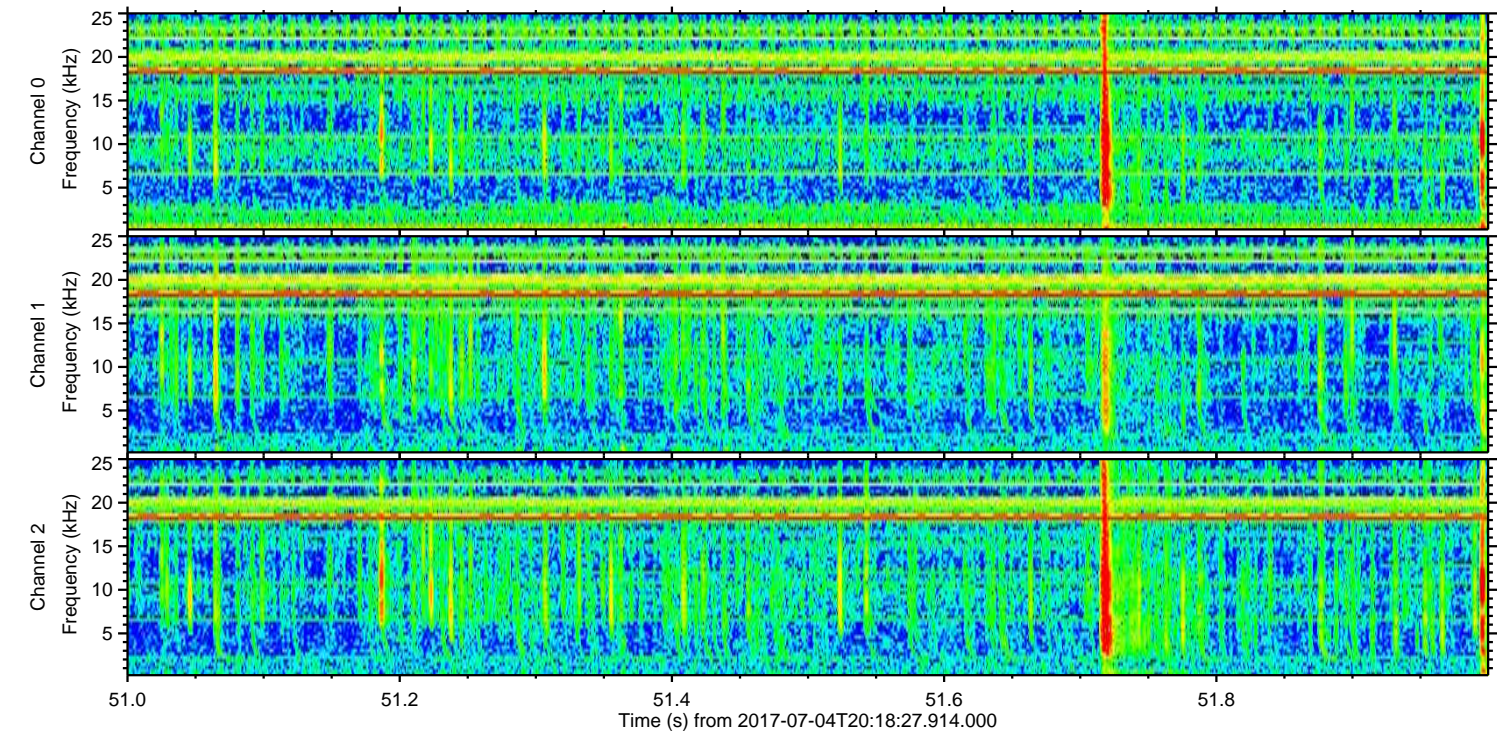
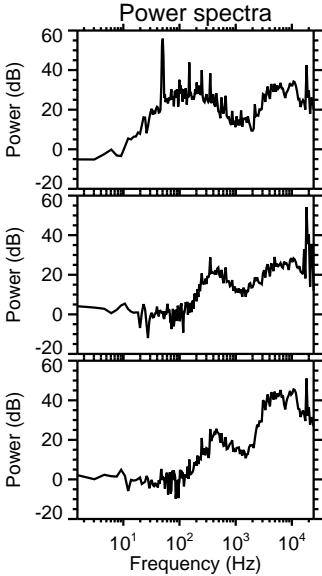
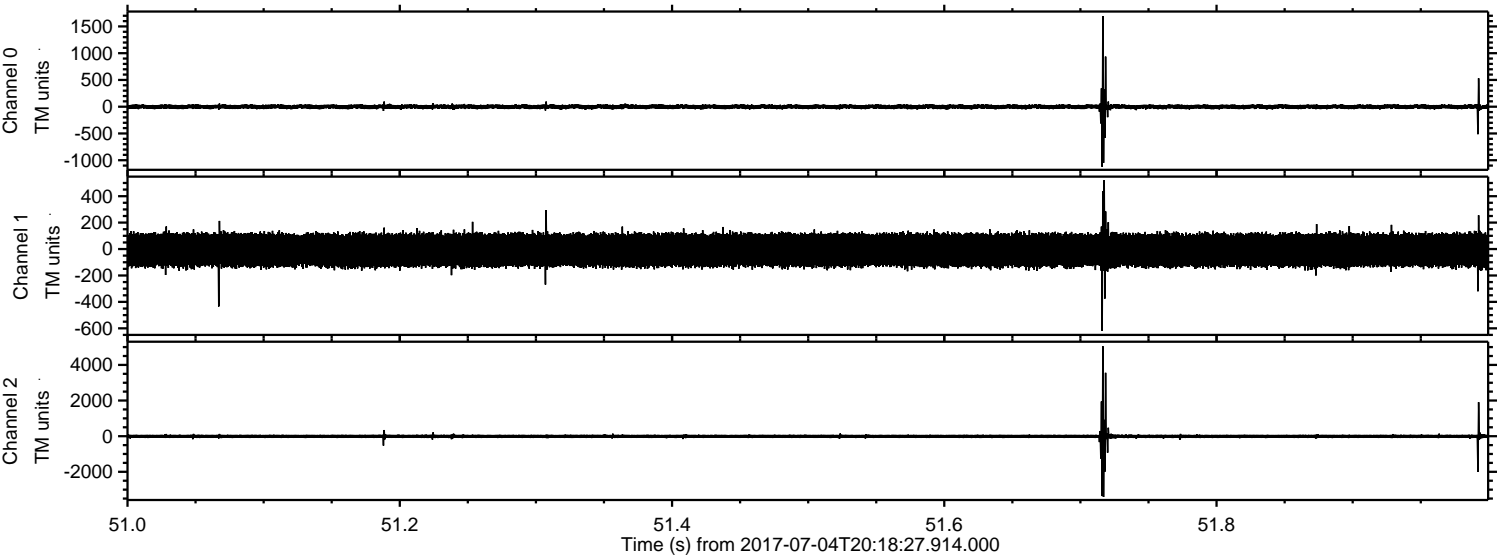
Channel 0
mn: -1571
mx: 2004
 μ : -0.9
 σ : 27.0

Channel 1
mn: -1282
mx: 908
 μ : -8.1
 σ : 72.1

Channel 2
mn: -4159
mx: 5945
 μ : -9.2
 σ : 78.2

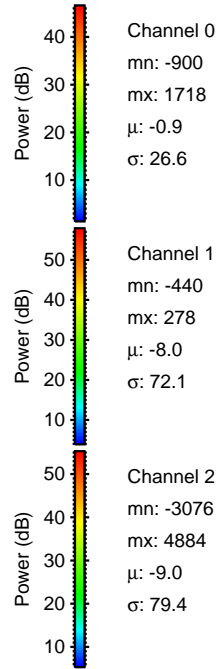
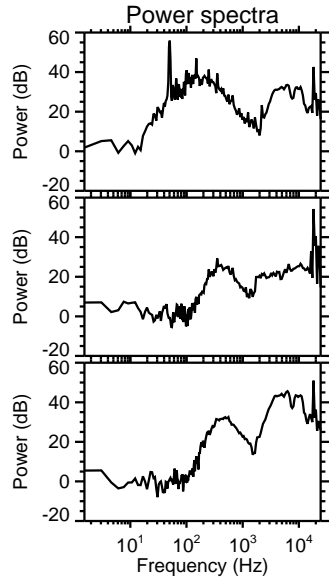
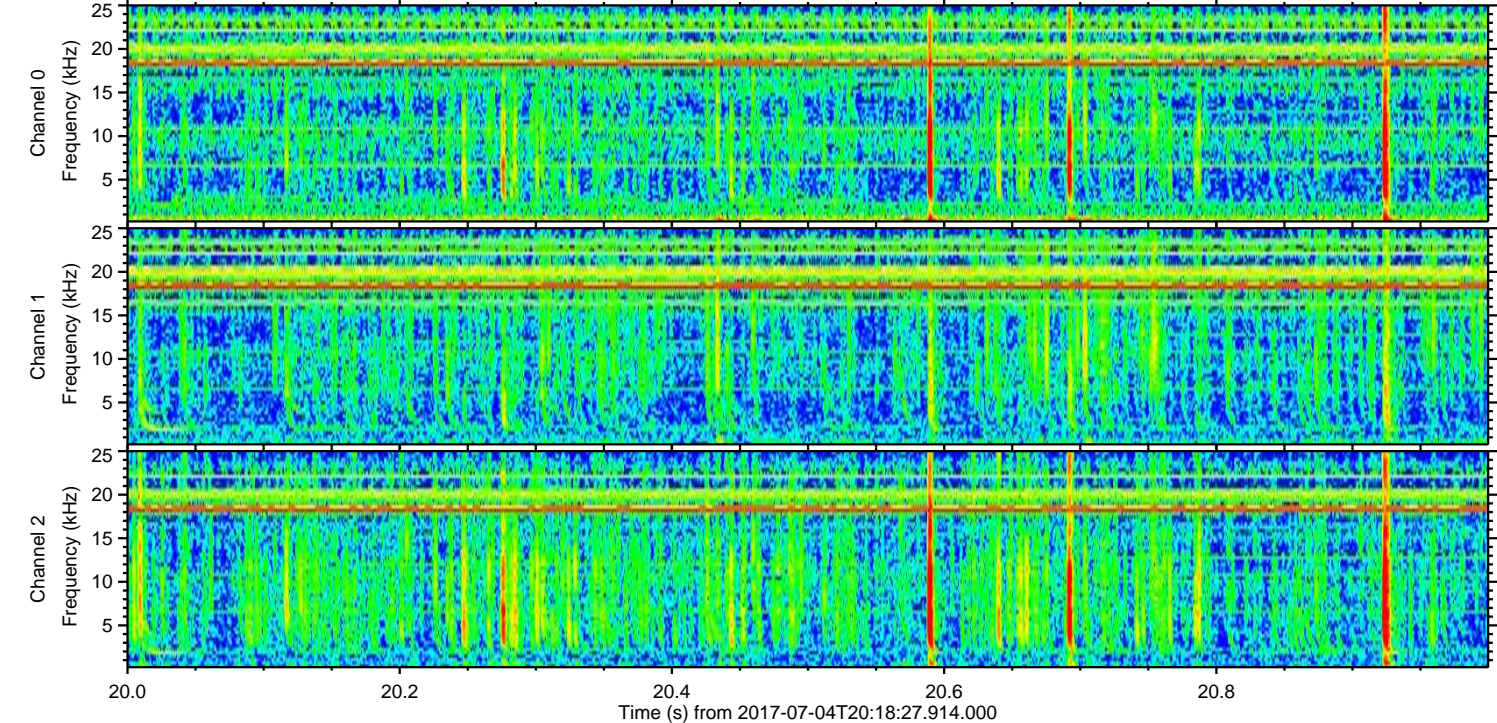
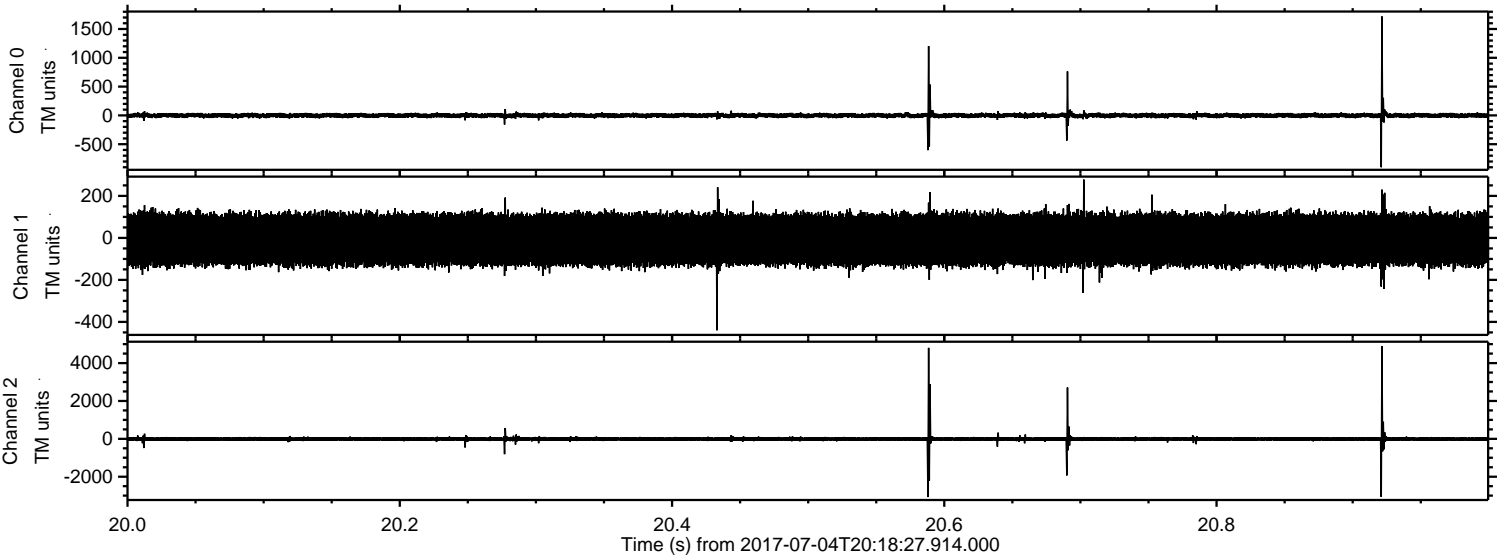
ELMAVAN 3D WAVEFORMS (Measured data sampled at 50 kHz) 51000 packets of 144 samples from 2017-07-04T20:18:27.914.000. Part 52/147

Processed Tue Jul 18 21:03:58 2017 by ELM ver.2012-10-06 from 001__elm20170704_201826__dat00.bin

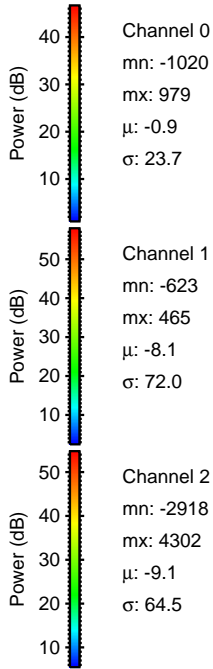
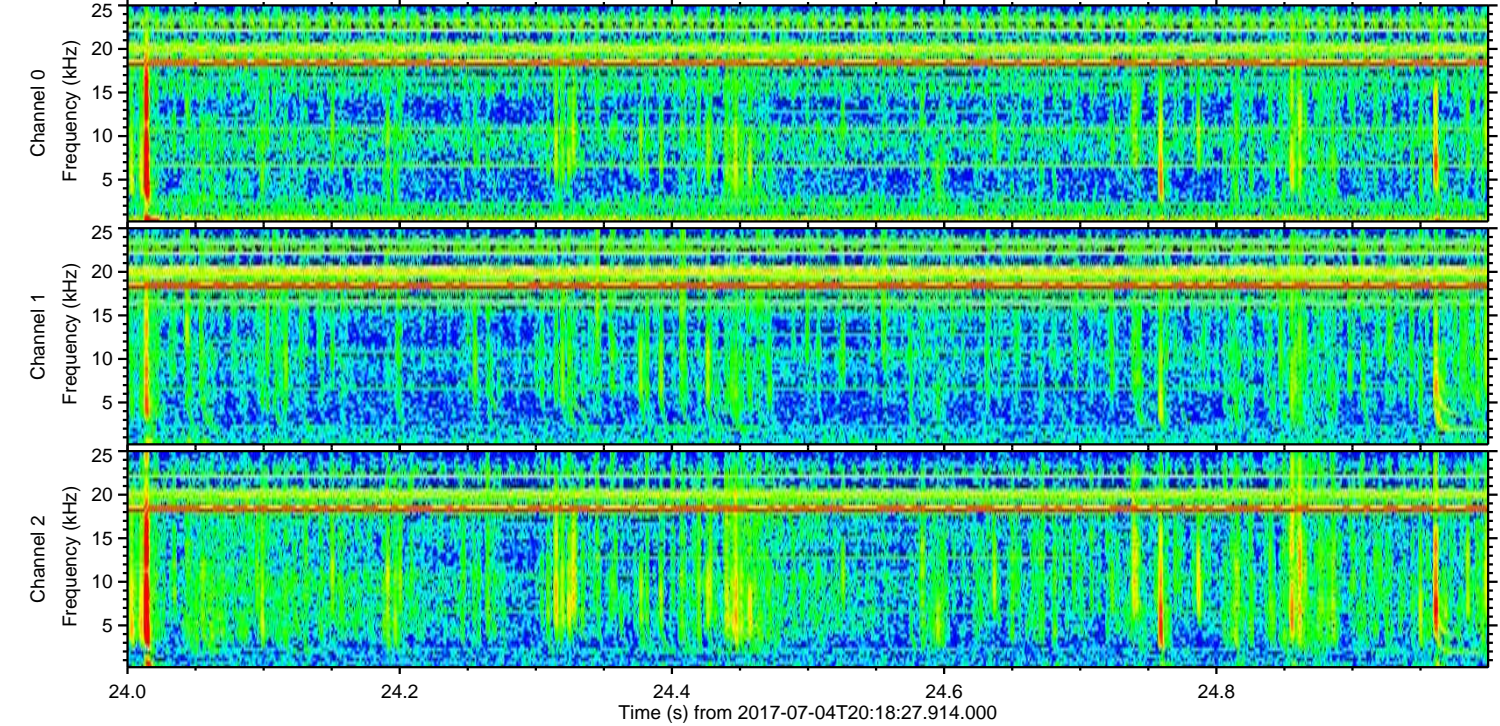
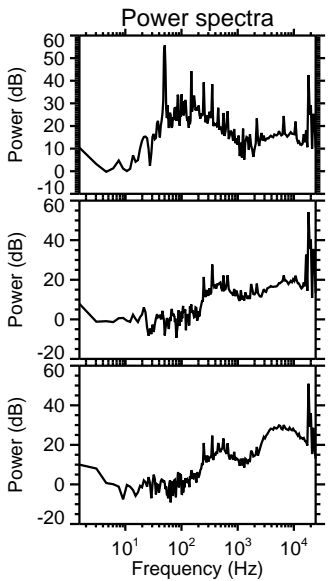
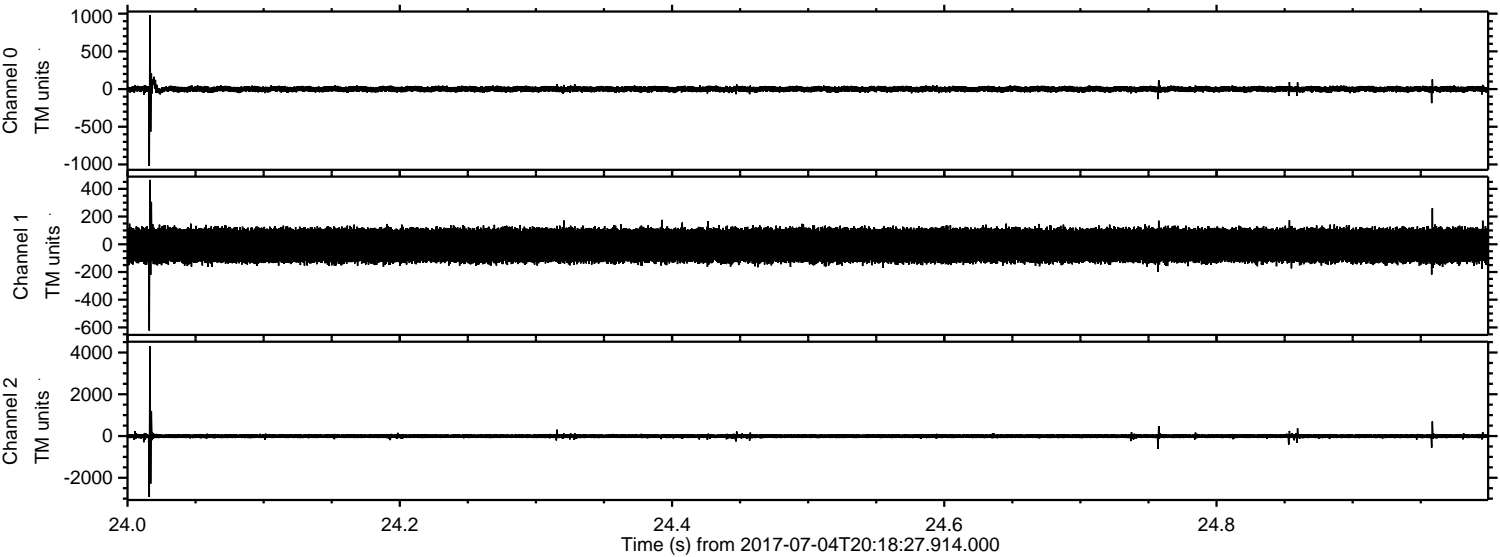


ELMAVAN 3D WAVEFORMS (Measured data sampled at 50 kHz) 51000 packets of 144 samples from 2017-07-04T20:18:27.914.000. Part 21/147

Processed Tue Jul 18 21:03:59 2017 by ELM ver.2012-10-06 from 001__elm20170704_201826__dat00.bin



Processed Tue Jul 18 21:04:00 2017 by ELM ver.2012-10-06 from 001__elm20170704_201826__dat00.bin



ELMAVAN 3D WAVEFORMS (Measured data sampled at 50 kHz) 51000 packets of 144 samples from 2017-07-04T20:18:27.914.000. Part 45/147

