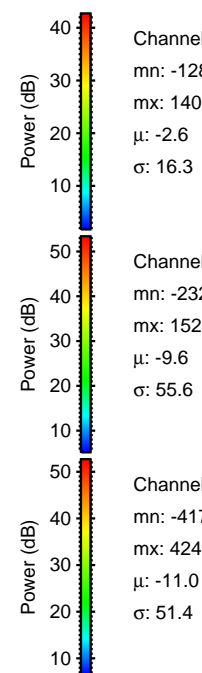
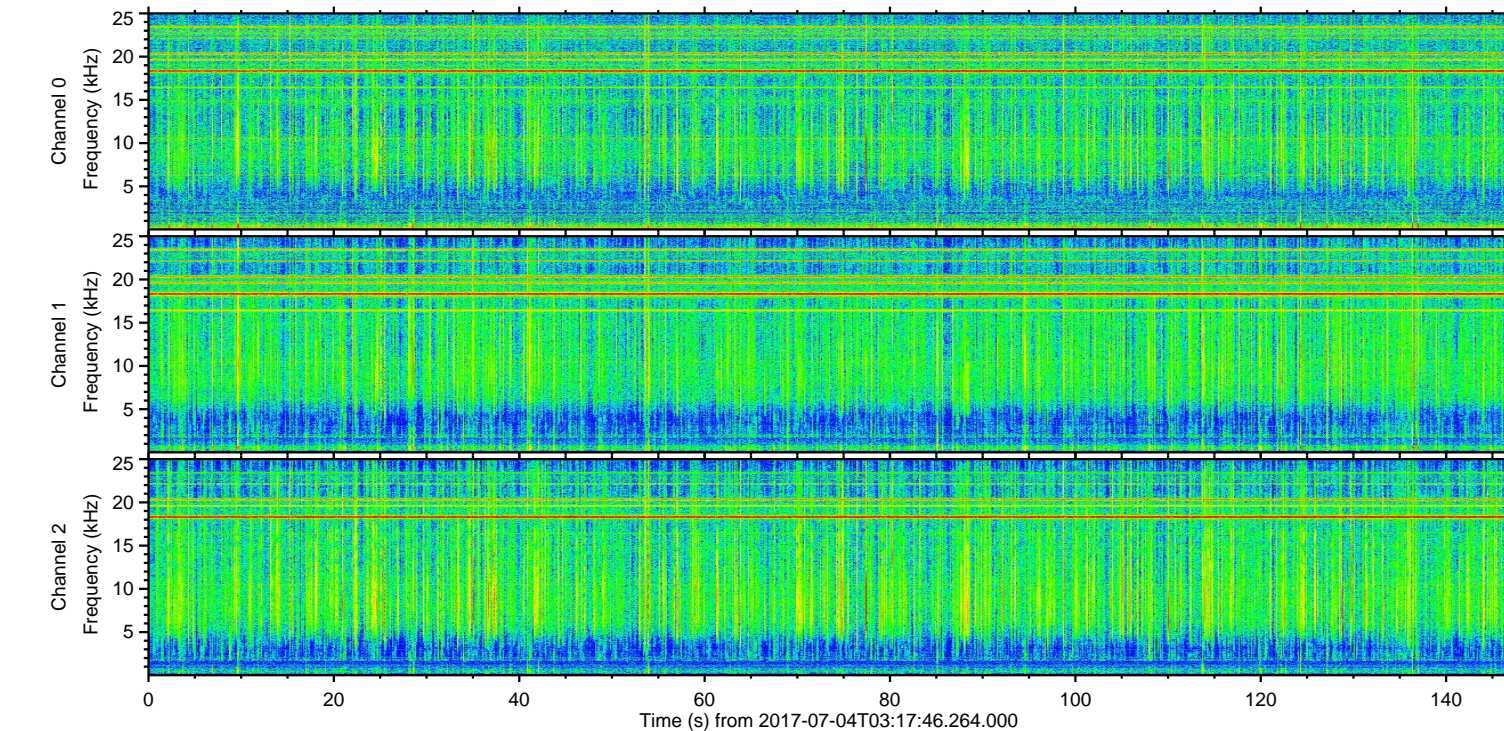
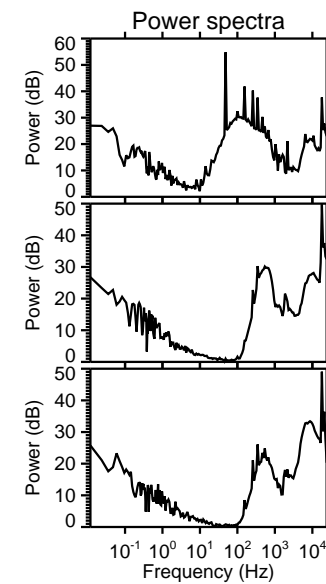
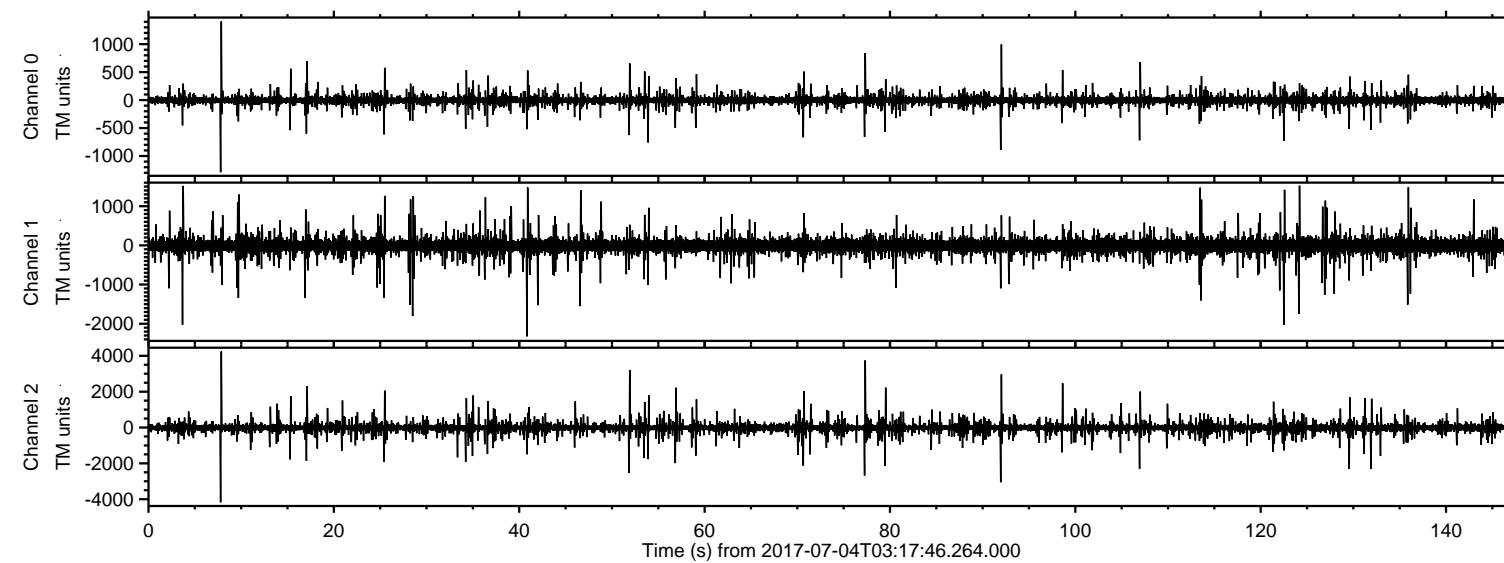


ELMAVAN 3D WAVEFORMS (Measured data sampled at 50 kHz) 51000 packets of 144 samples from 2017-07-04T03:17:46.264.000.

Processed Tue Jul 18 18:26:47 2017 by ELM ver.2012-10-06 from 001__elm20170704_031745__dat00.bin

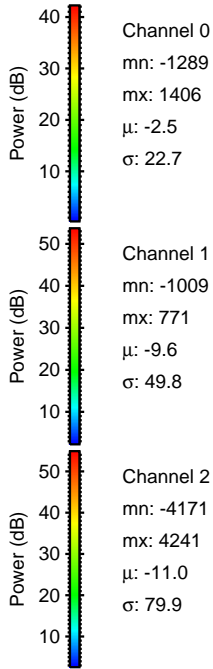
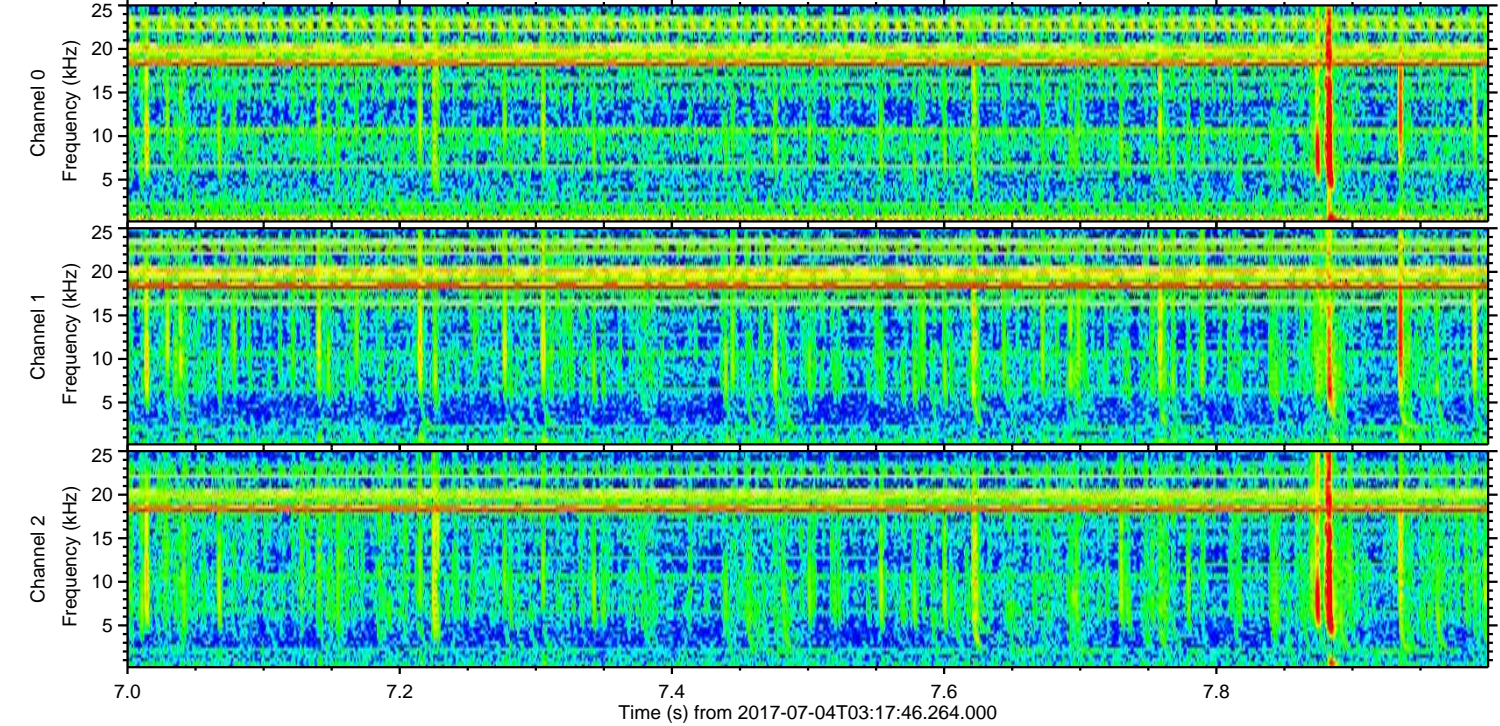
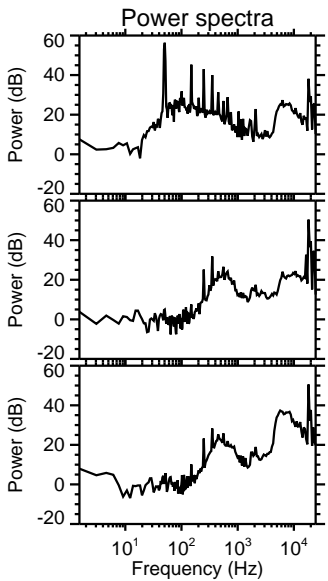
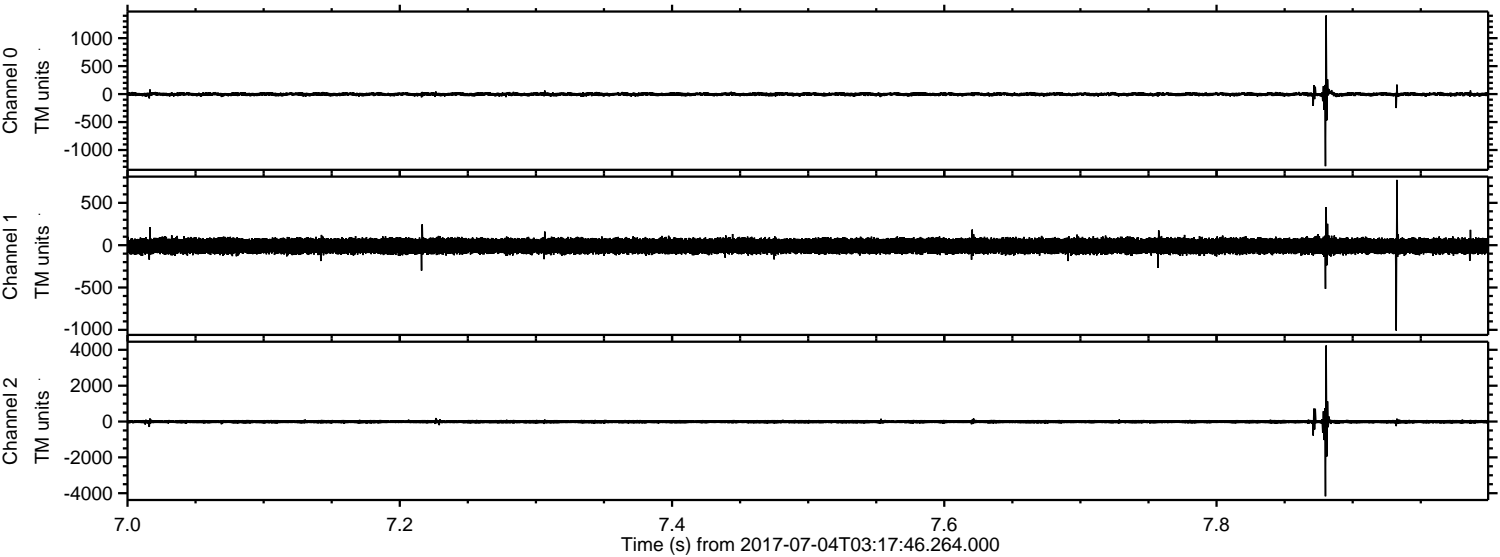


Channel 0
mn: -1289
mx: 1406
 μ : -2.6
 σ : 16.3

Channel 1
mn: -2322
mx: 1525
 μ : -9.6
 σ : 55.6

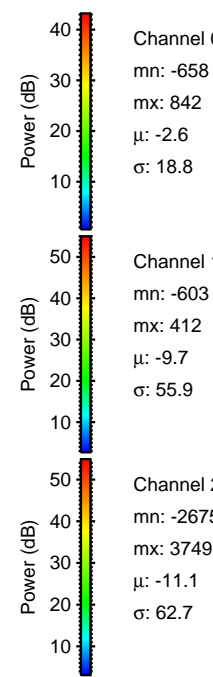
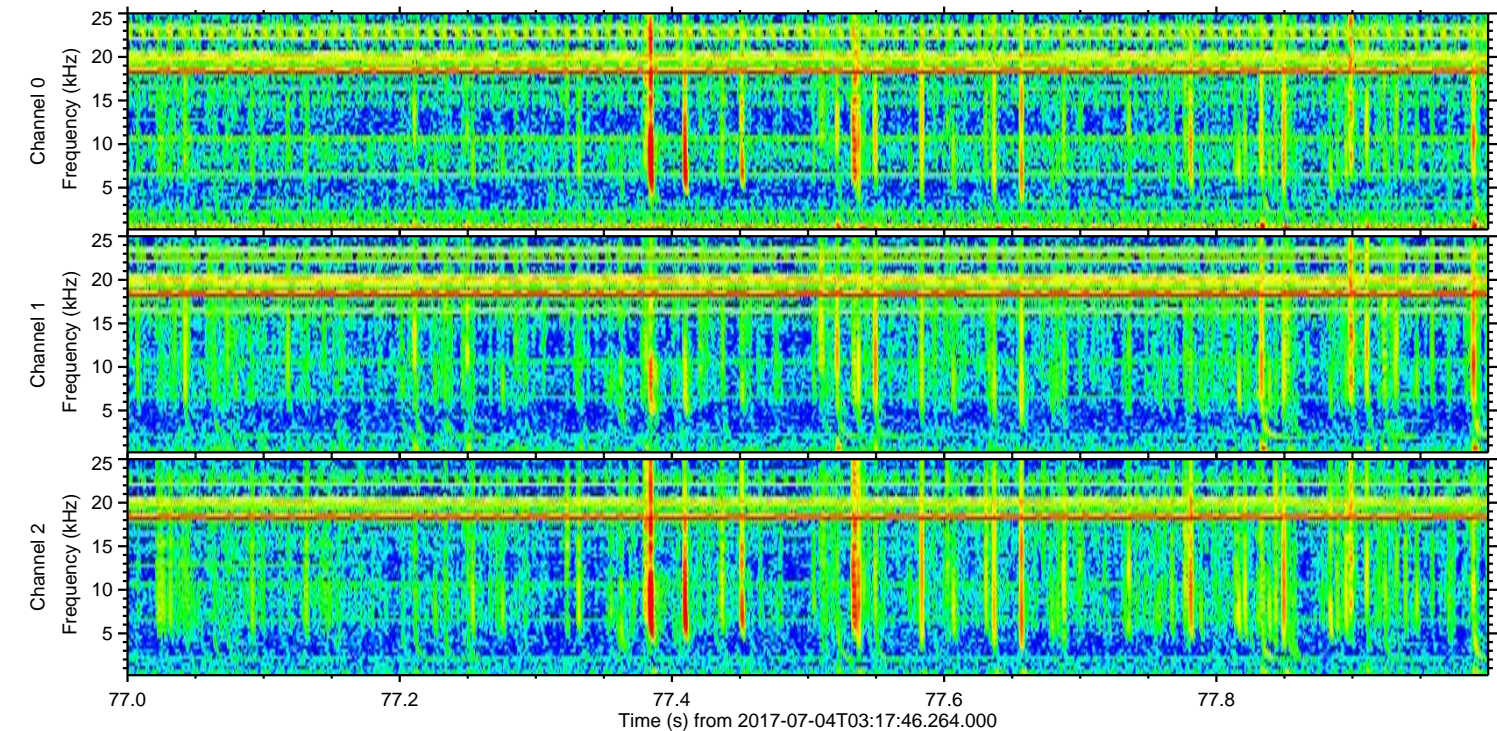
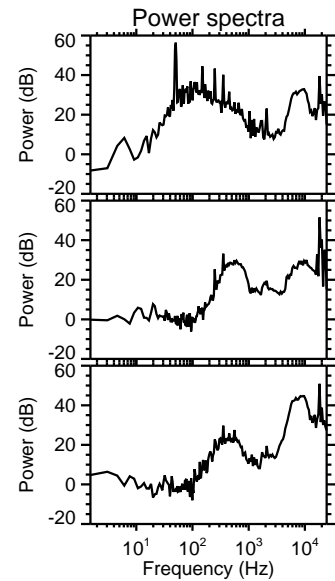
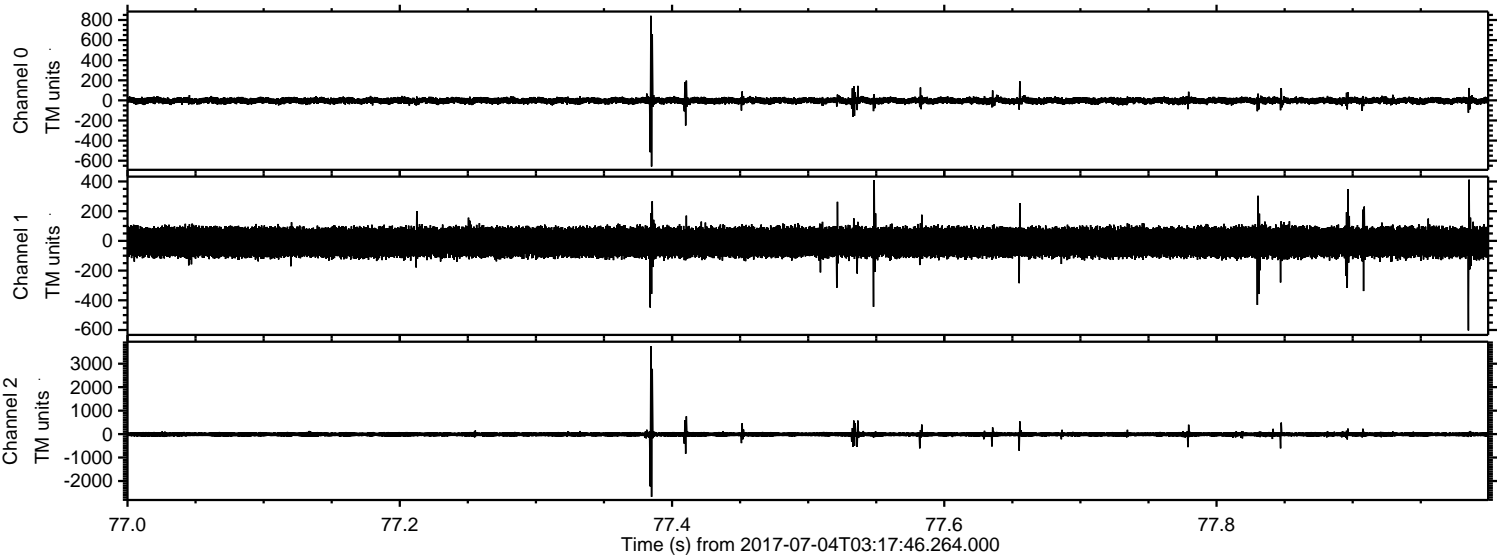
Channel 2
mn: -4171
mx: 4241
 μ : -11.0
 σ : 51.4

Processed Tue Jul 18 18:26:55 2017 by ELM ver.2012-10-06 from 001__elm20170704_031745__dat00.bin



ELMAVAN 3D WAVEFORMS (Measured data sampled at 50 kHz) 51000 packets of 144 samples from 2017-07-04T03:17:46.264.000. Part 78/147

Processed Tue Jul 18 18:26:56 2017 by ELM ver.2012-10-06 from 001__elm20170704_031745__dat00.bin

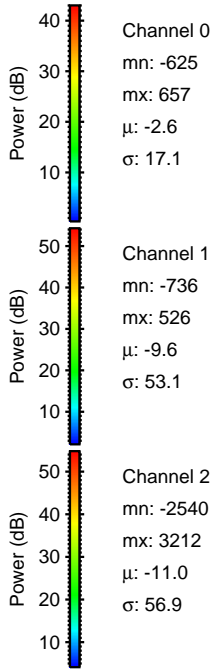
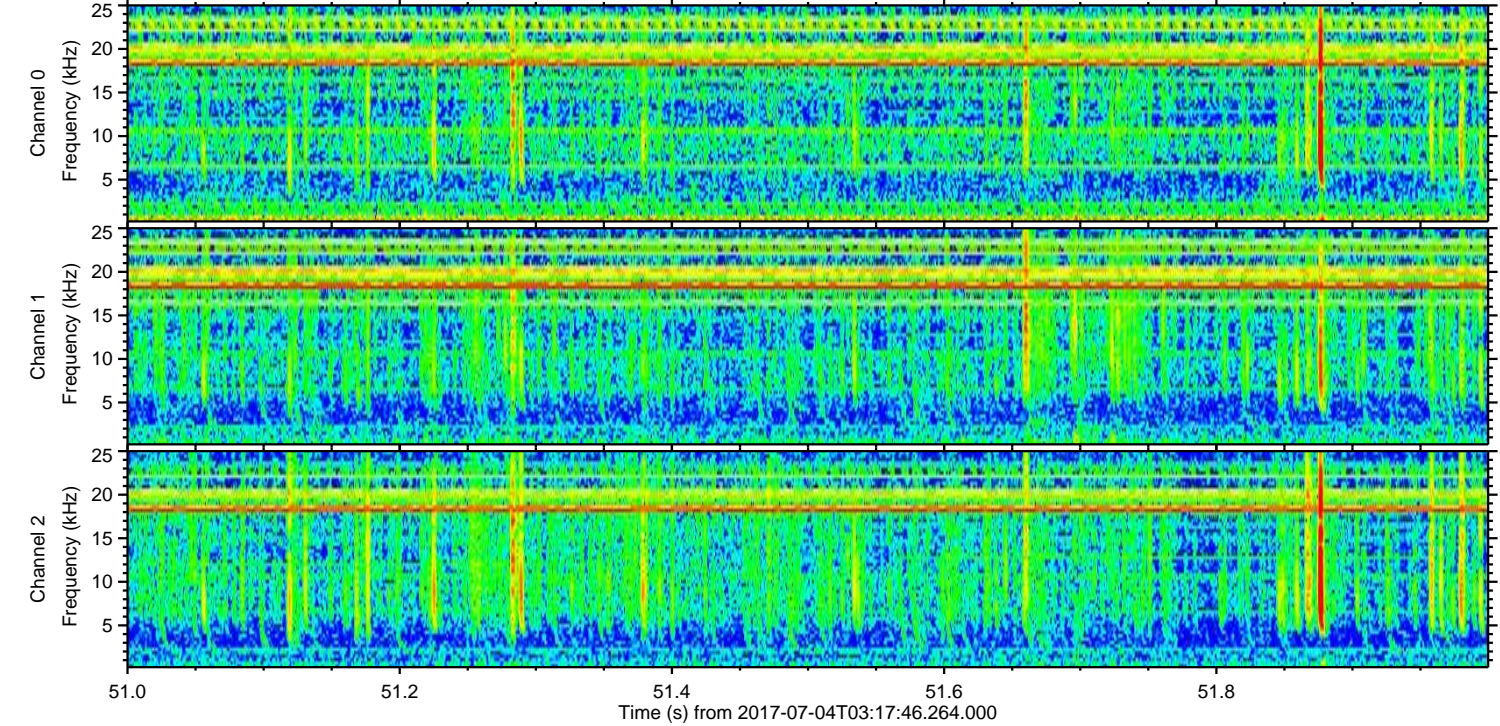
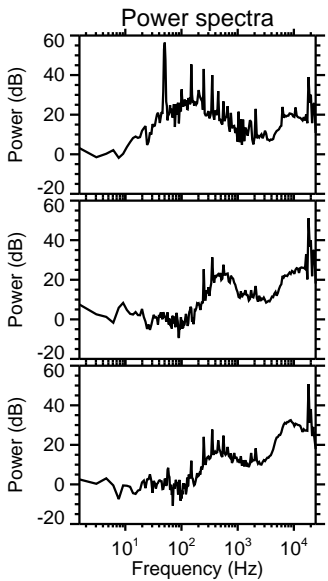
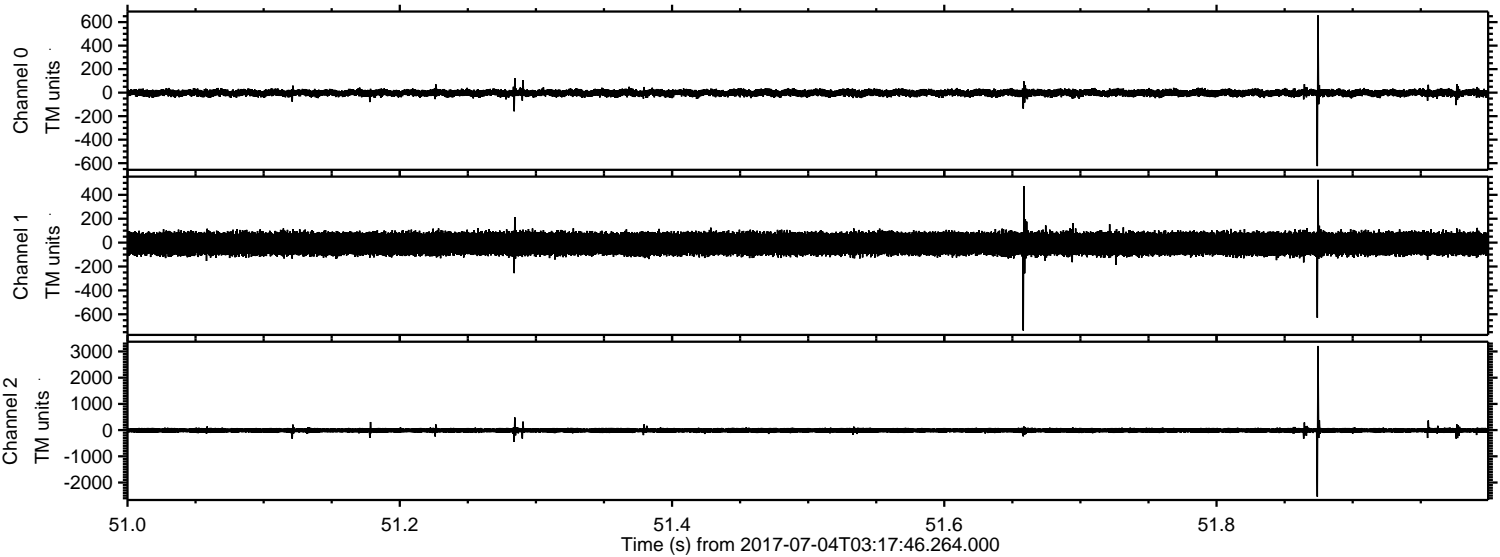


Channel 0
mn: -658
mx: 842
 μ : -2.6
 σ : 18.8

Channel 1
mn: -603
mx: 412
 μ : -9.7
 σ : 55.9

Channel 2
mn: -2675
mx: 3749
 μ : -11.1
 σ : 62.7

Processed Tue Jul 18 18:26:57 2017 by ELM ver.2012-10-06 from 001__elm20170704_031745__dat00.bin

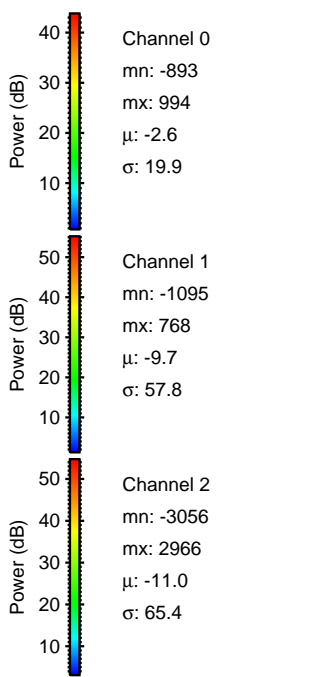
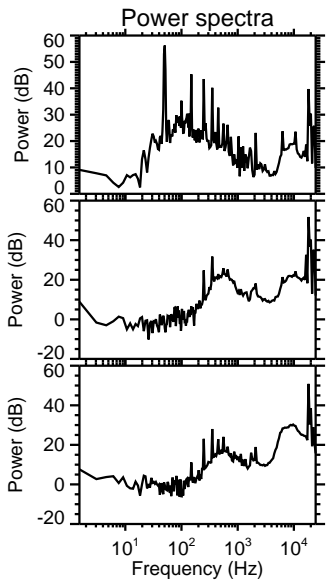
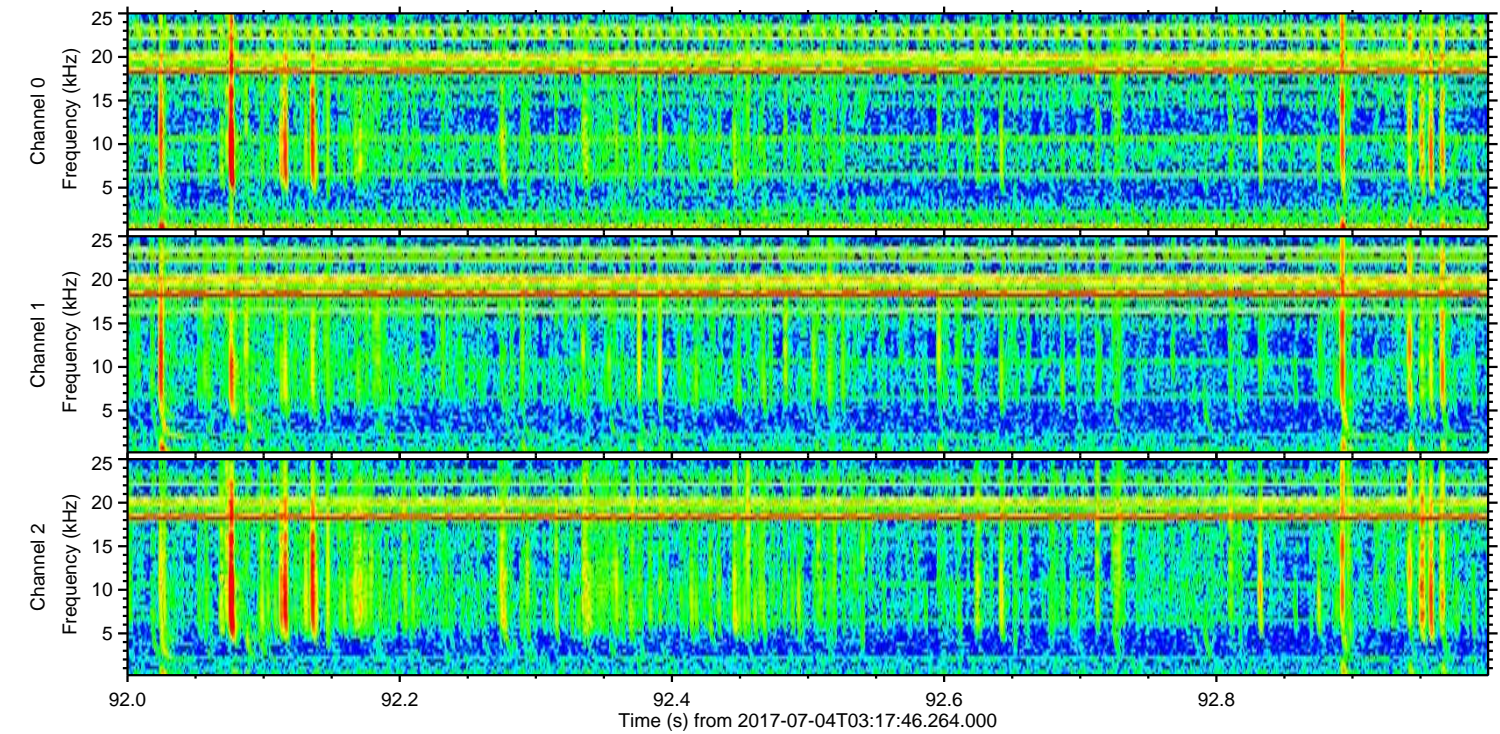
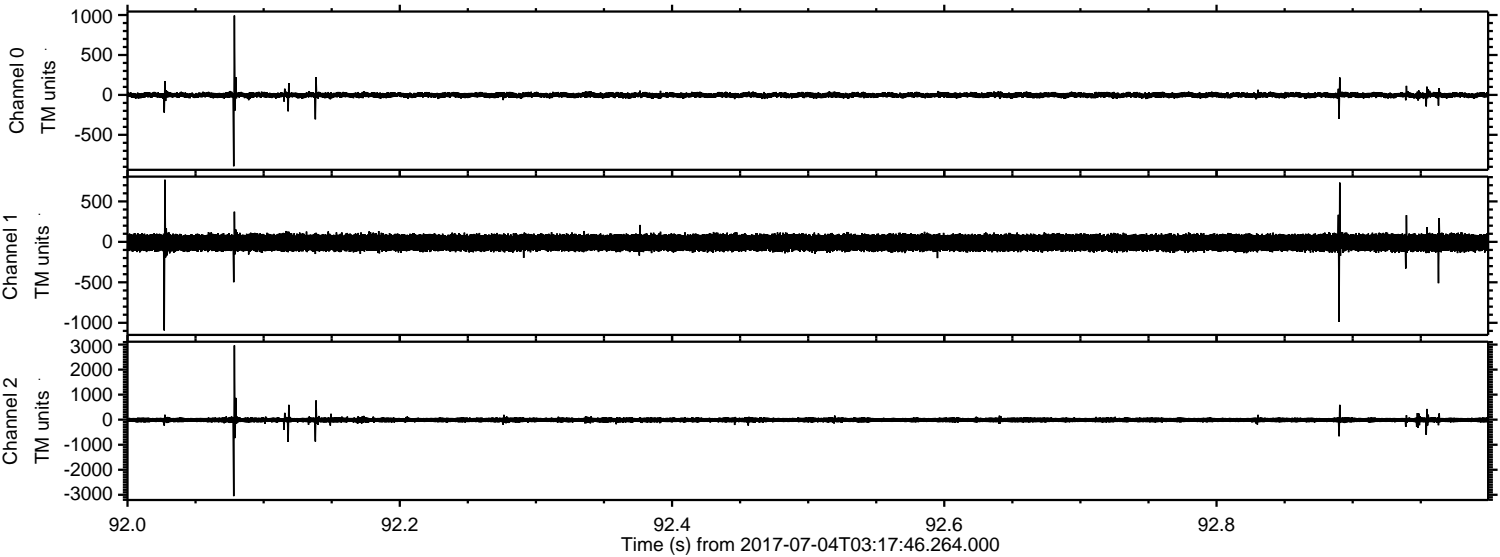


Channel 0
mn: -625
mx: 657
 μ : -2.6
 σ : 17.1

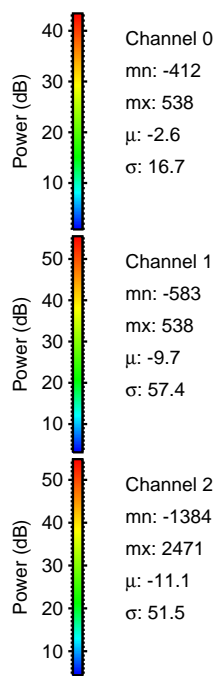
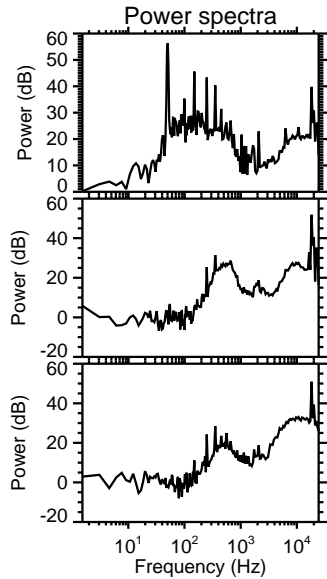
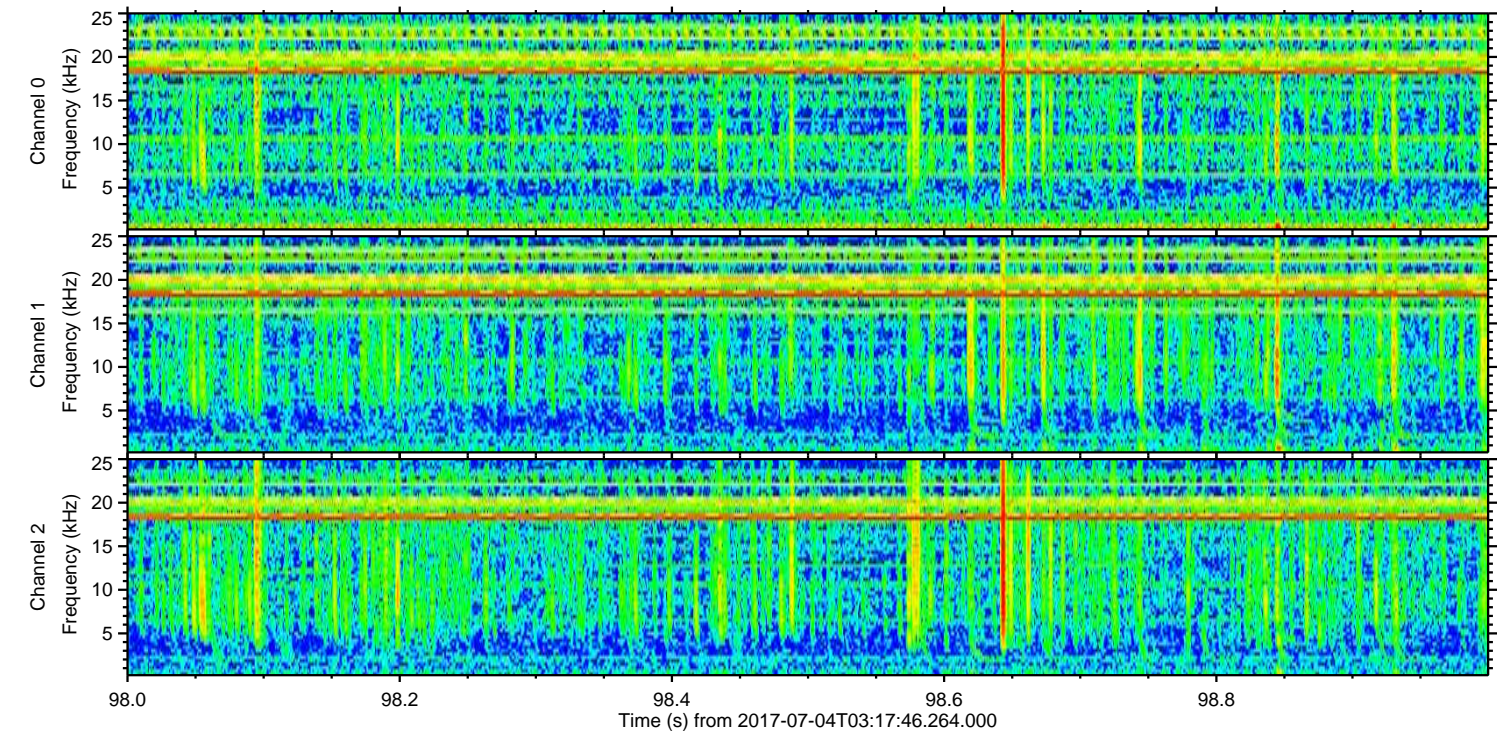
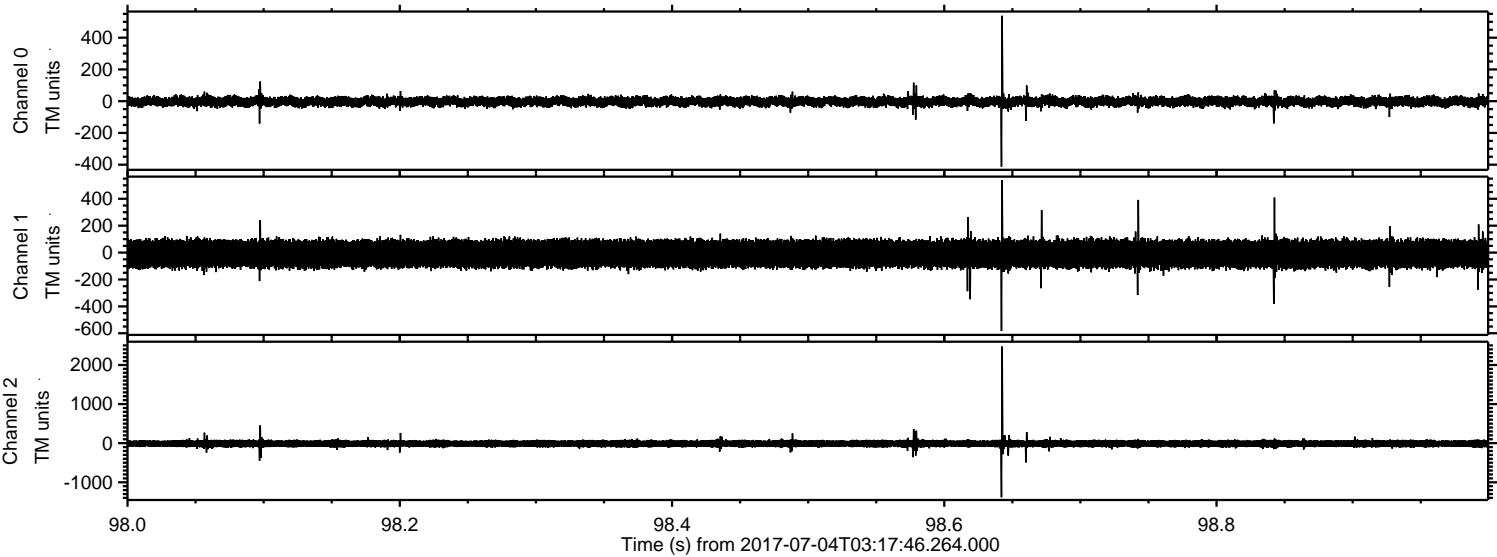
Channel 1
mn: -736
mx: 526
 μ : -9.6
 σ : 53.1

Channel 2
mn: -2540
mx: 3212
 μ : -11.0
 σ : 56.9

Processed Tue Jul 18 18:26:58 2017 by ELM ver.2012-10-06 from 001__elm20170704_031745__dat00.bin



Processed Tue Jul 18 18:26:58 2017 by ELM ver.2012-10-06 from 001__elm20170704_031745__dat00.bin



Power spectra

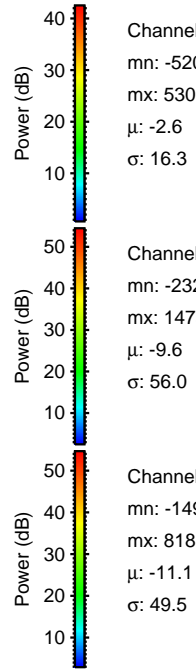
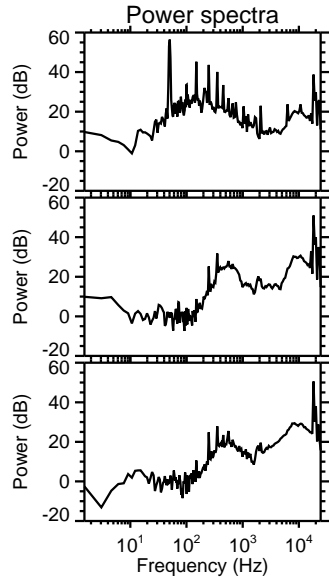
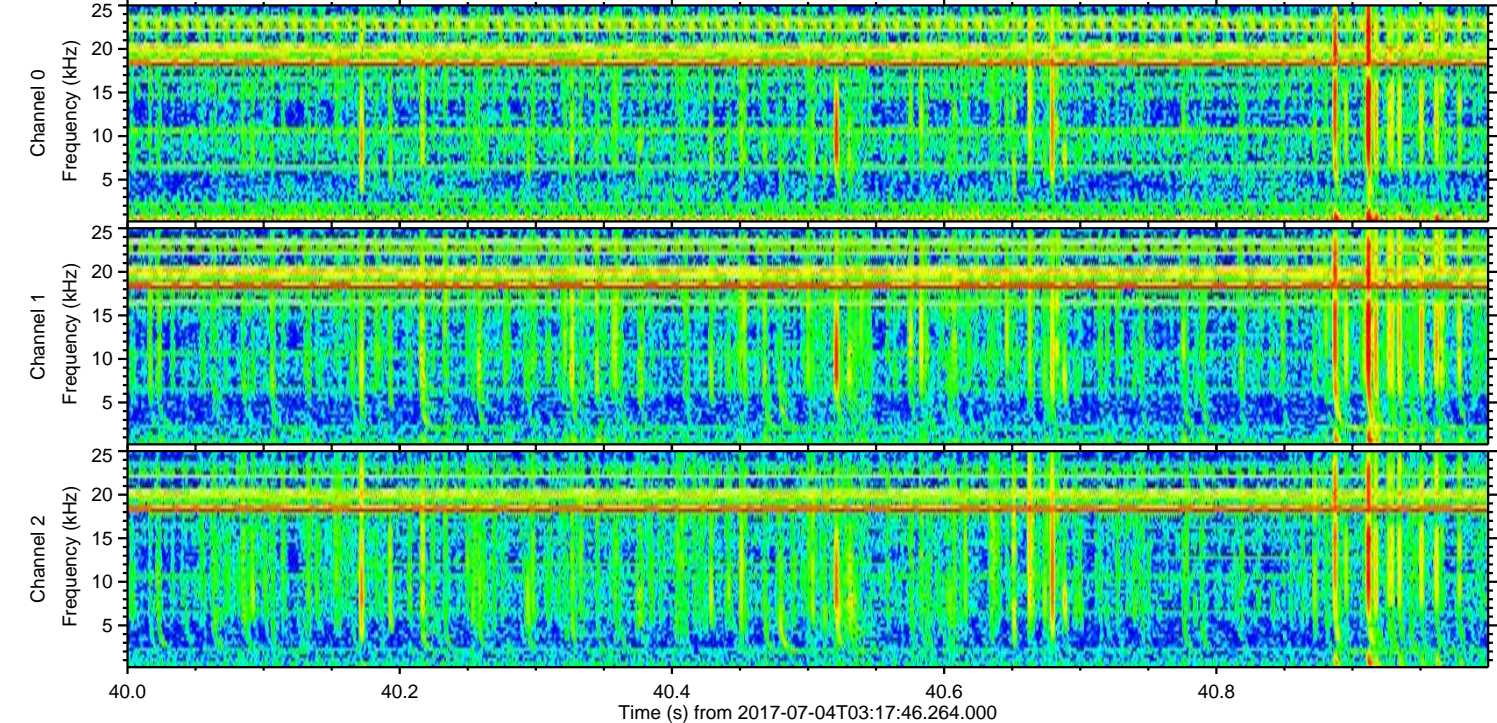
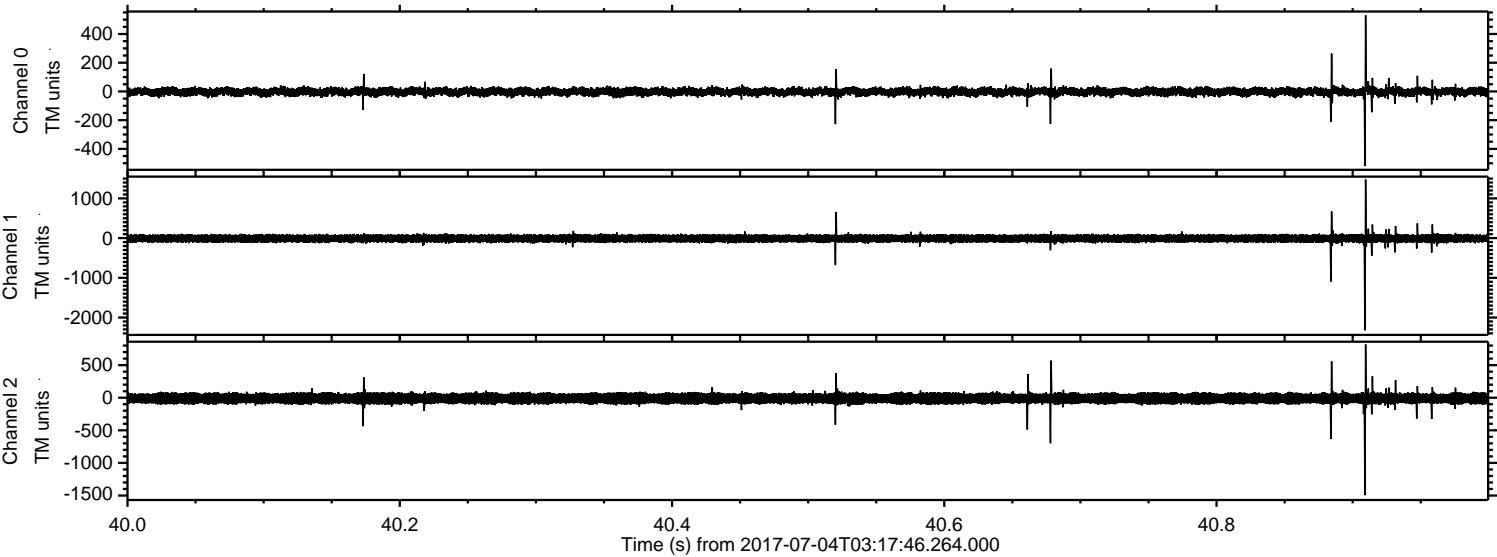
Channel 0
mn: -412
mx: 538
 μ : -2.6
 σ : 16.7

Channel 1
mn: -583
mx: 538
 μ : -9.7
 σ : 57.4

Channel 2
mn: -1384
mx: 2471
 μ : -11.1
 σ : 51.5

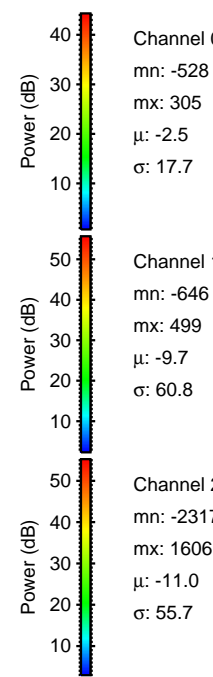
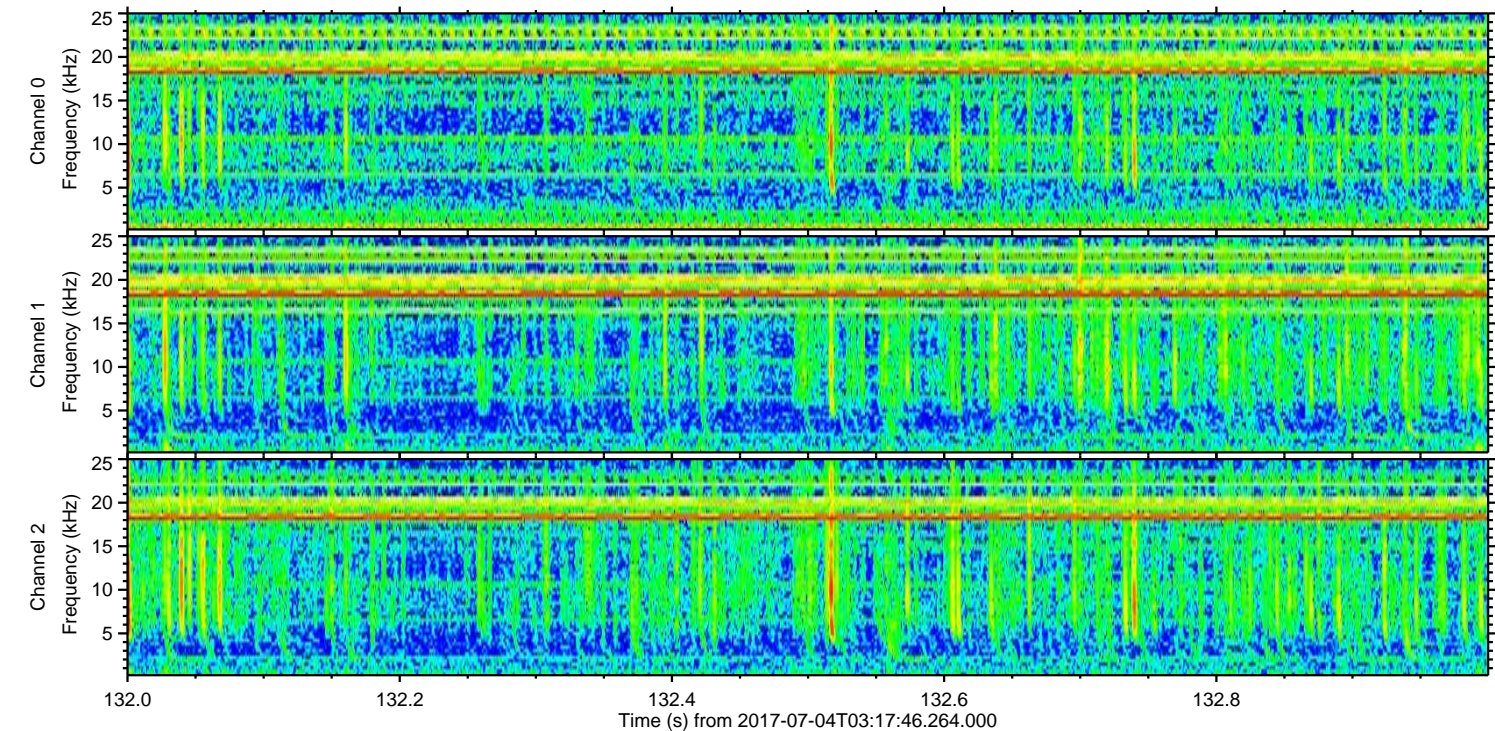
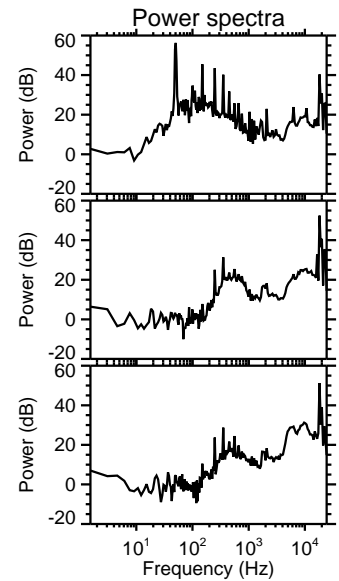
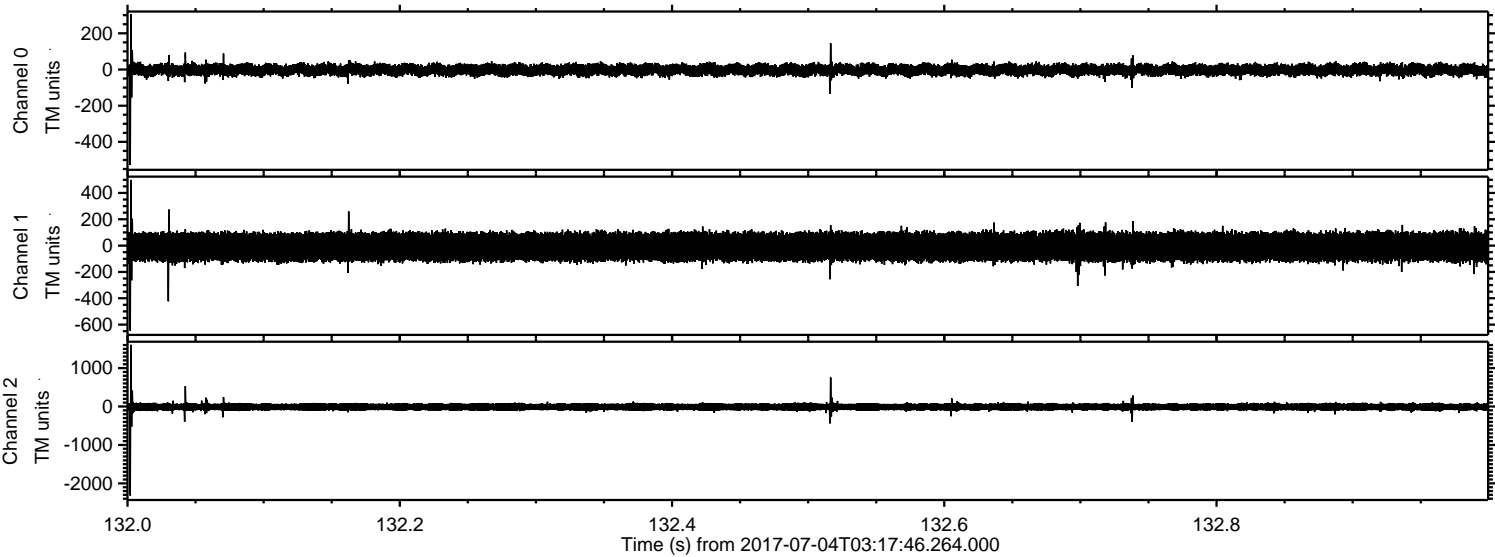
ELMAVAN 3D WAVEFORMS (Measured data sampled at 50 kHz) 51000 packets of 144 samples from 2017-07-04T03:17:46.264.000. Part 41/147

Processed Tue Jul 18 18:26:59 2017 by ELM ver.2012-10-06 from 001__elm20170704_031745__dat00.bin



ELMAVAN 3D WAVEFORMS (Measured data sampled at 50 kHz) 51000 packets of 144 samples from 2017-07-04T03:17:46.264.000. Part 133/147

Processed Tue Jul 18 18:27:00 2017 by ELM ver.2012-10-06 from 001__elm20170704_031745__dat00.bin



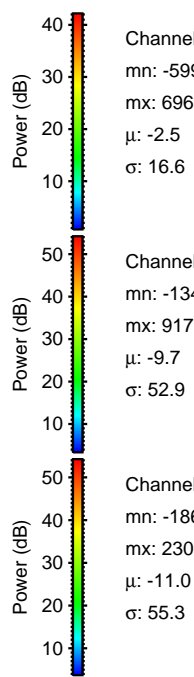
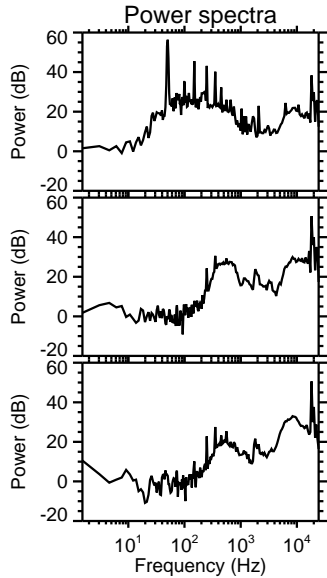
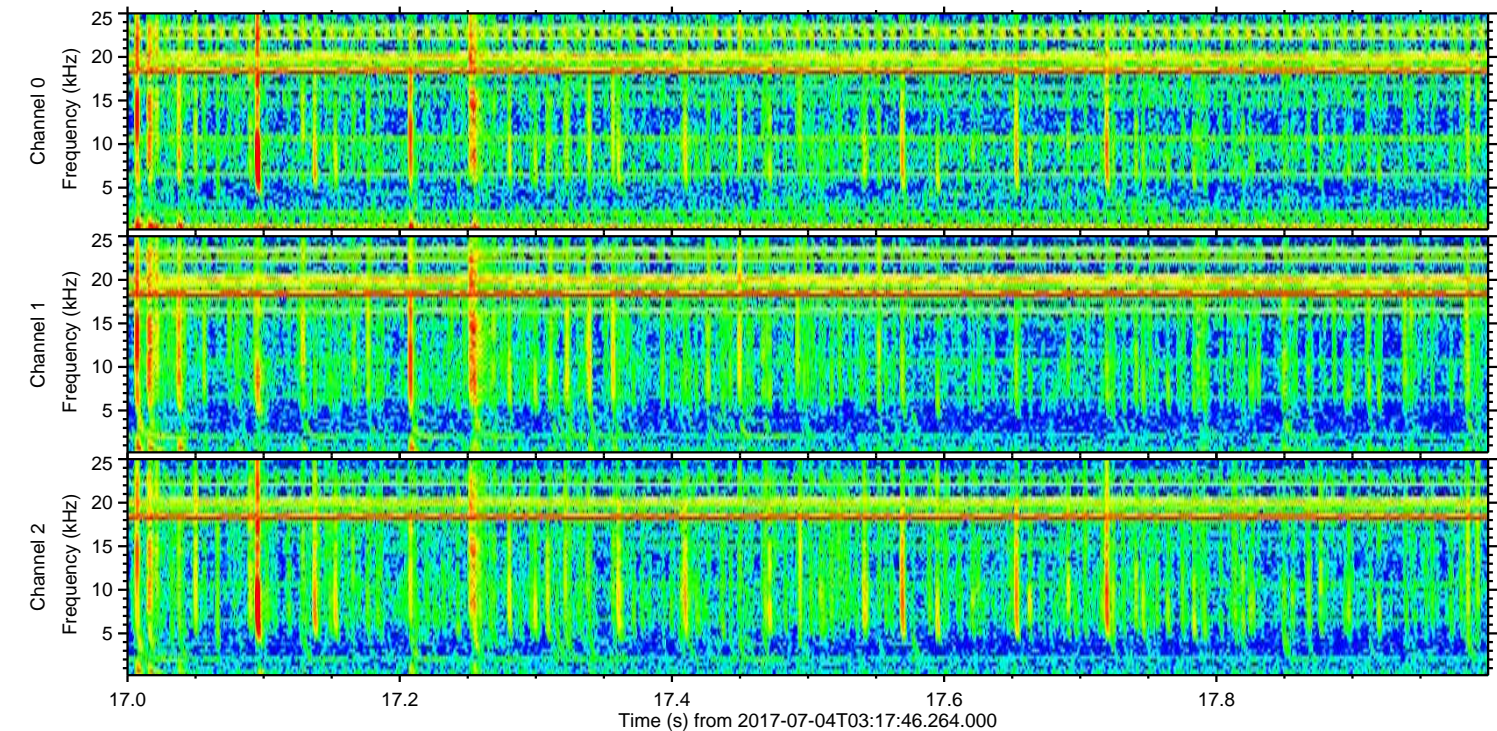
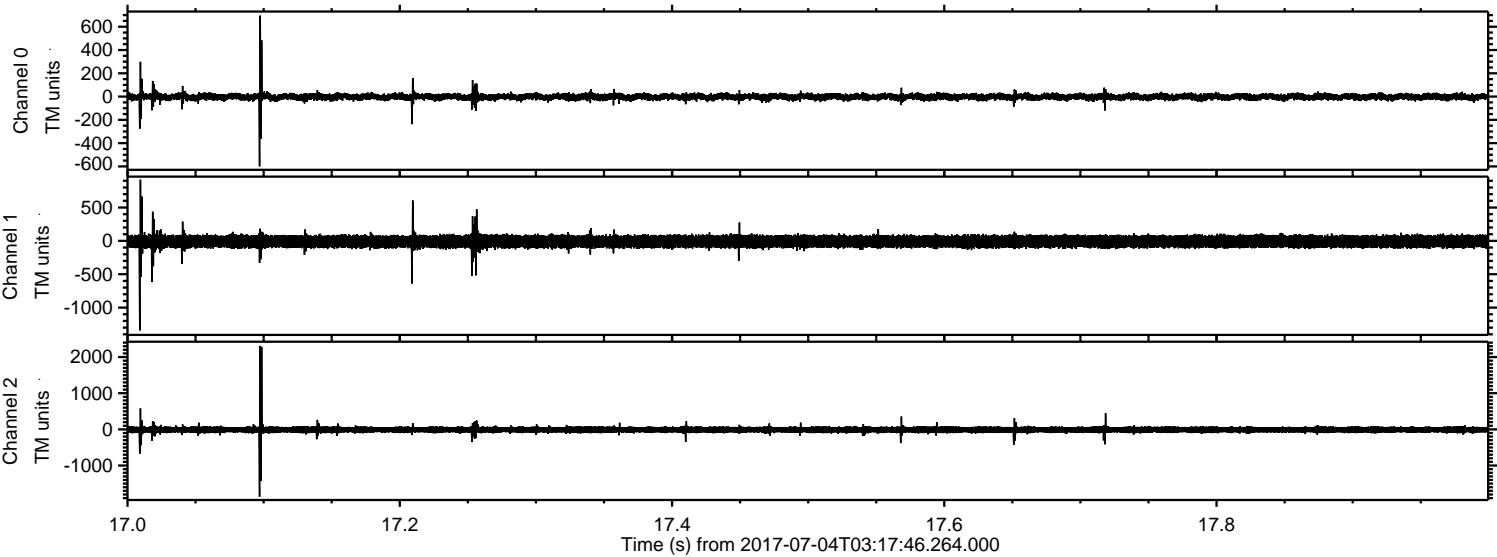
Channel 0
mn: -528
mx: 305
 μ : -2.5
 σ : 17.7

Channel 1
mn: -646
mx: 499
 μ : -9.7
 σ : 60.8

Channel 2
mn: -2317
mx: 1606
 μ : -11.0
 σ : 55.7

ELMAVAN 3D WAVEFORMS (Measured data sampled at 50 kHz) 51000 packets of 144 samples from 2017-07-04T03:17:46.264.000. Part 18/147

Processed Tue Jul 18 18:27:01 2017 by ELM ver.2012-10-06 from 001__elm20170704_031745__dat00.bin



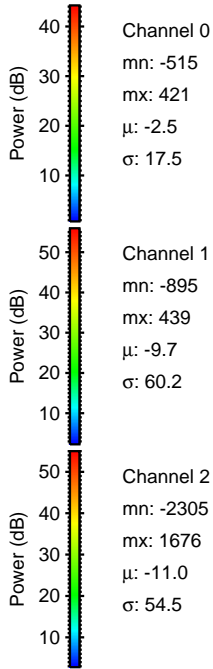
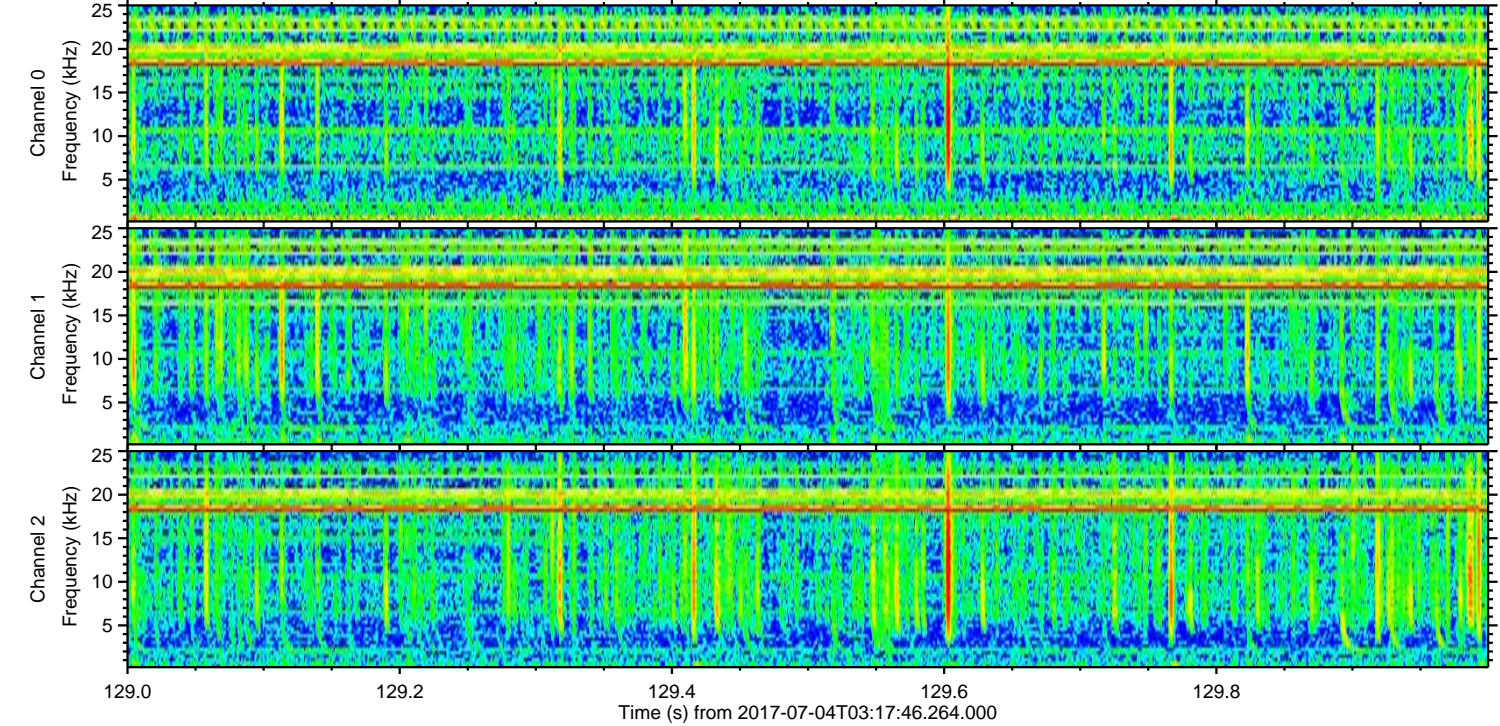
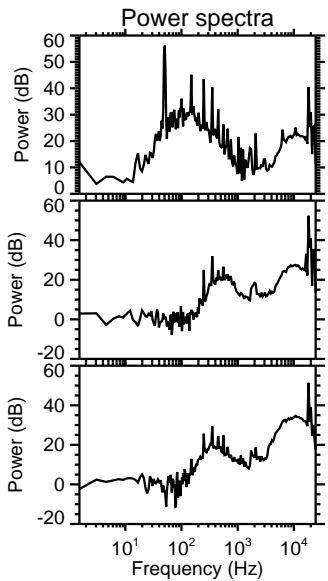
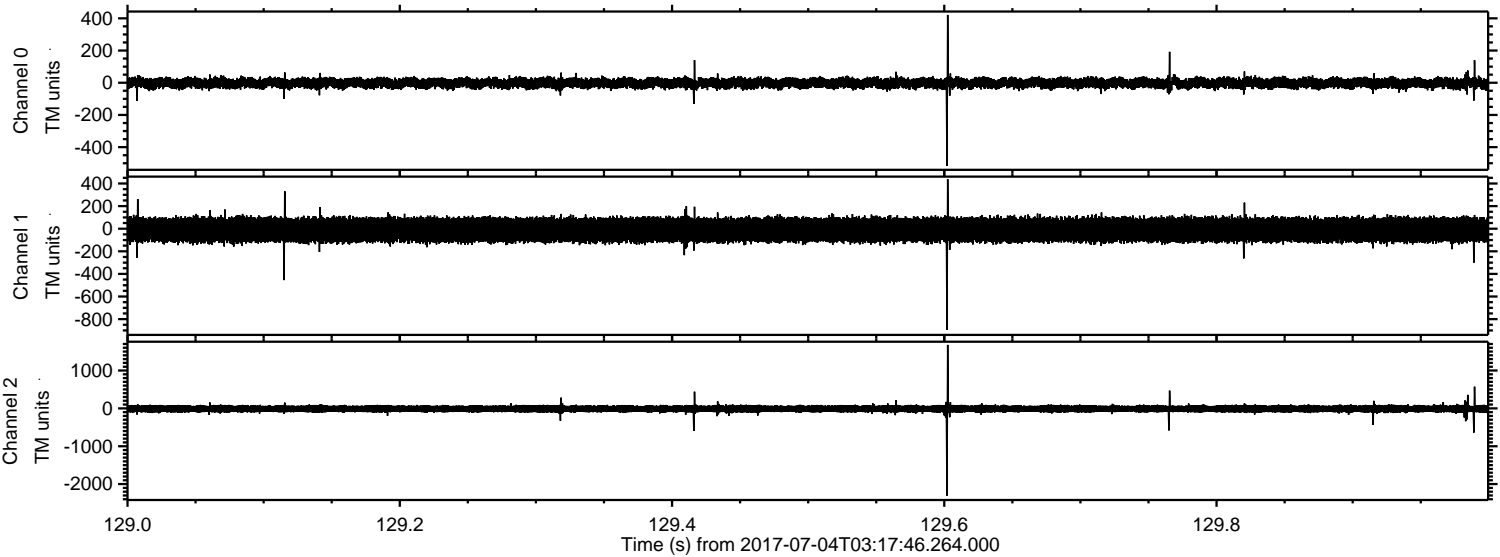
Channel 0
mn: -599
mx: 696
 μ : -2.5
 σ : 16.6

Channel 1
mn: -1342
mx: 917
 μ : -9.7
 σ : 52.9

Channel 2
mn: -1860
mx: 2309
 μ : -11.0
 σ : 55.3

ELMAVAN 3D WAVEFORMS (Measured data sampled at 50 kHz) 51000 packets of 144 samples from 2017-07-04T03:17:46.264.000. Part 130/147

Processed Tue Jul 18 18:27:02 2017 by ELM ver.2012-10-06 from 001__elm20170704_031745__dat00.bin



Processed Tue Jul 18 18:27:03 2017 by ELM ver.2012-10-06 from 001__elm20170704_031745__dat00.bin

