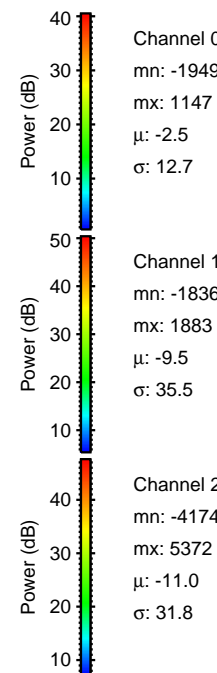
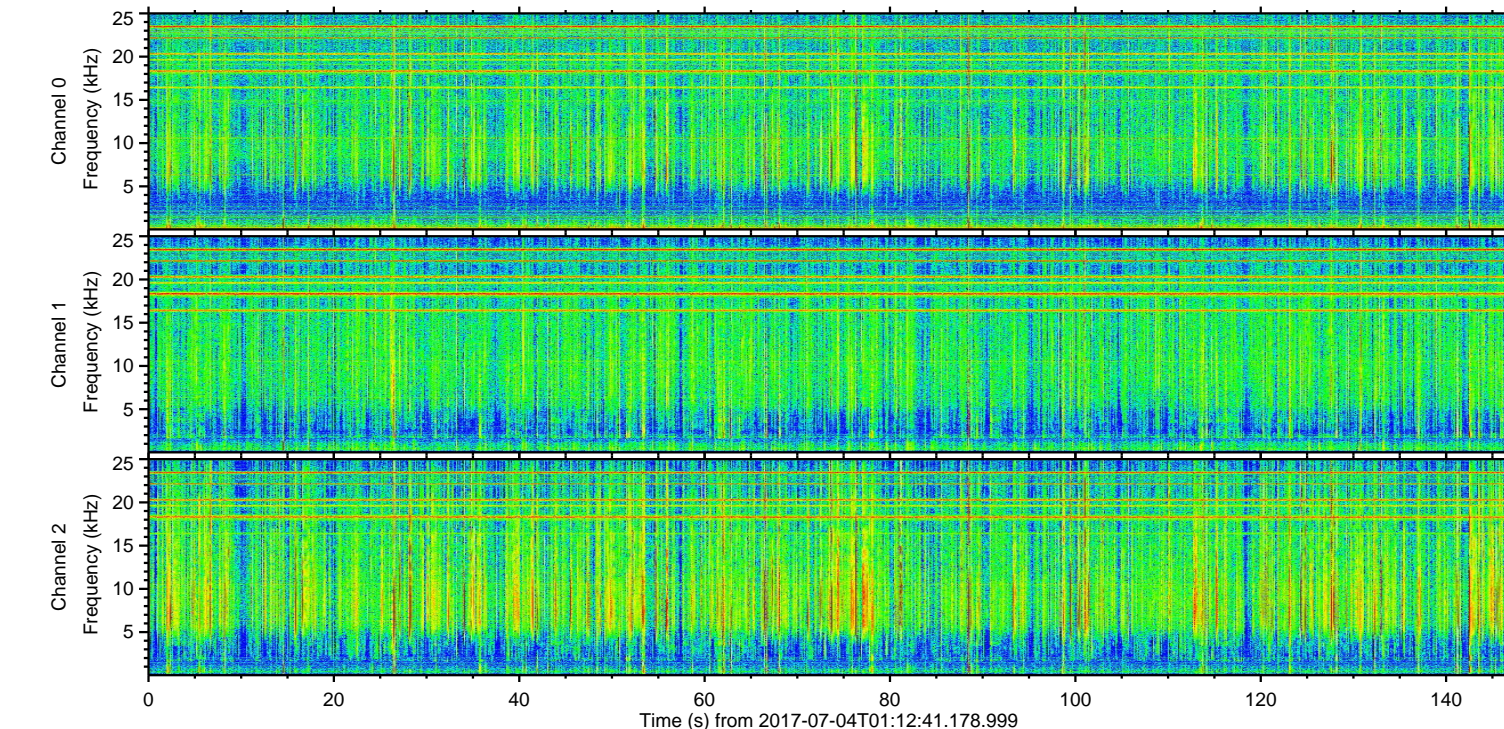
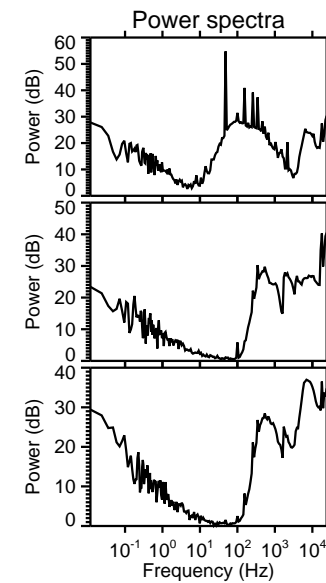
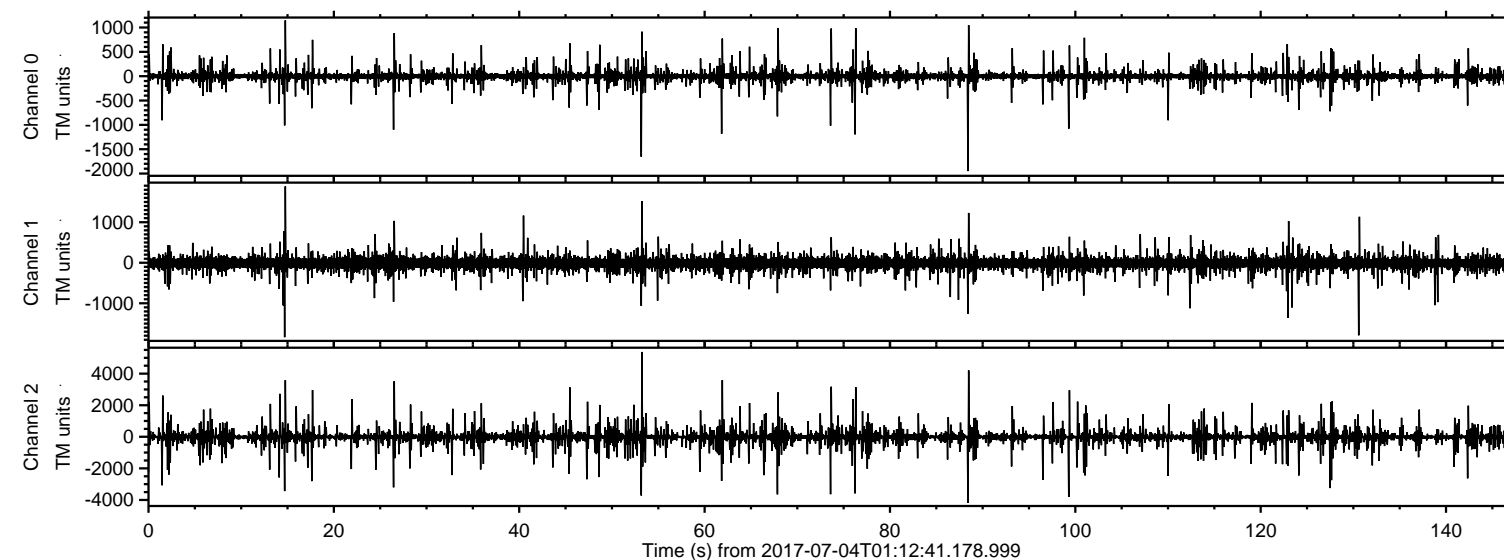
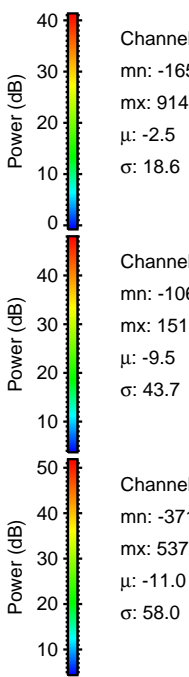
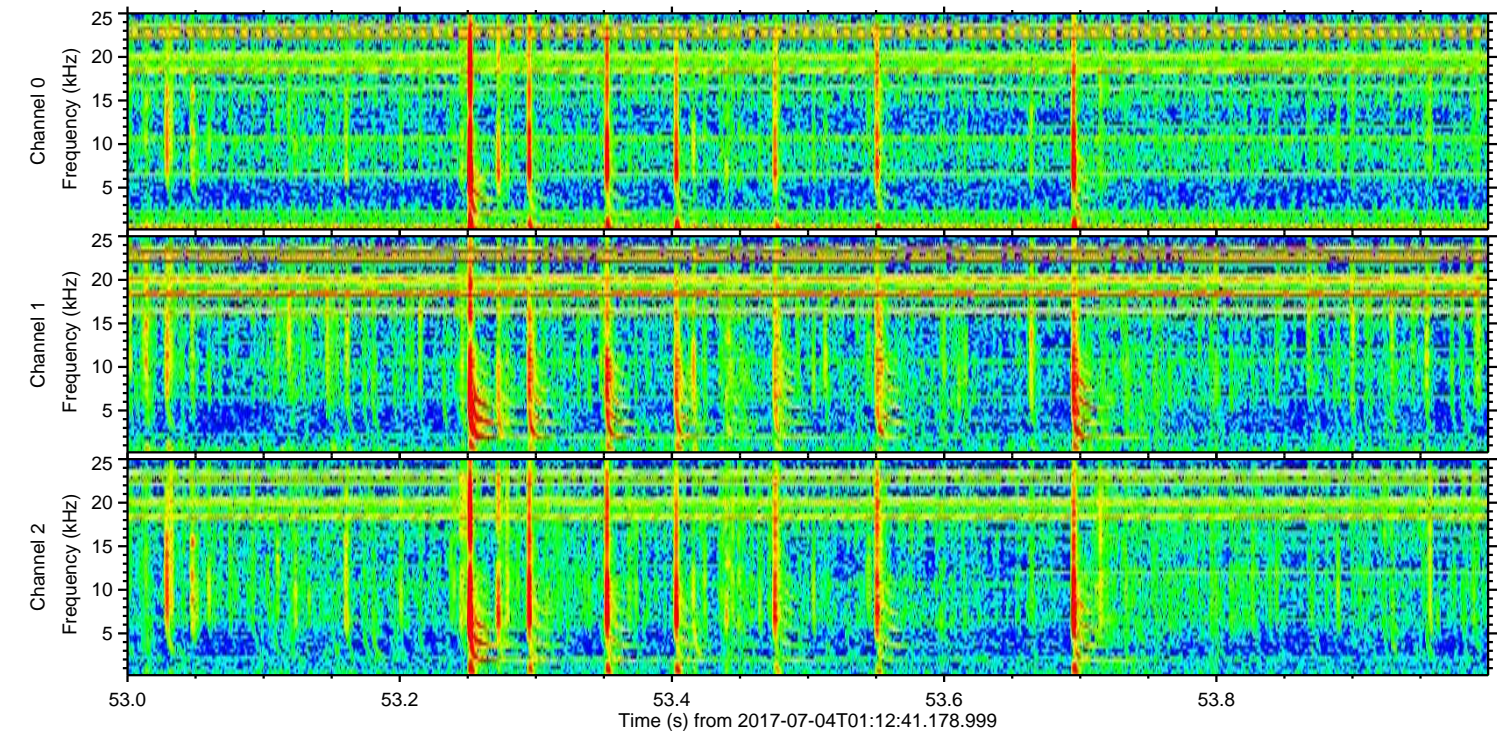
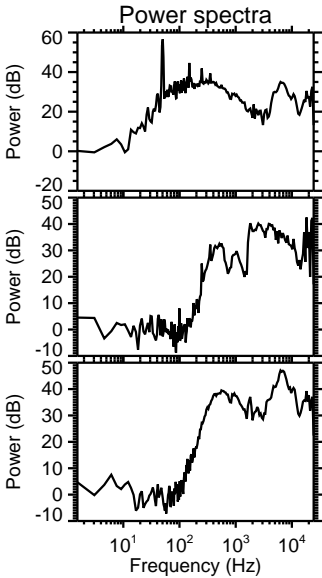
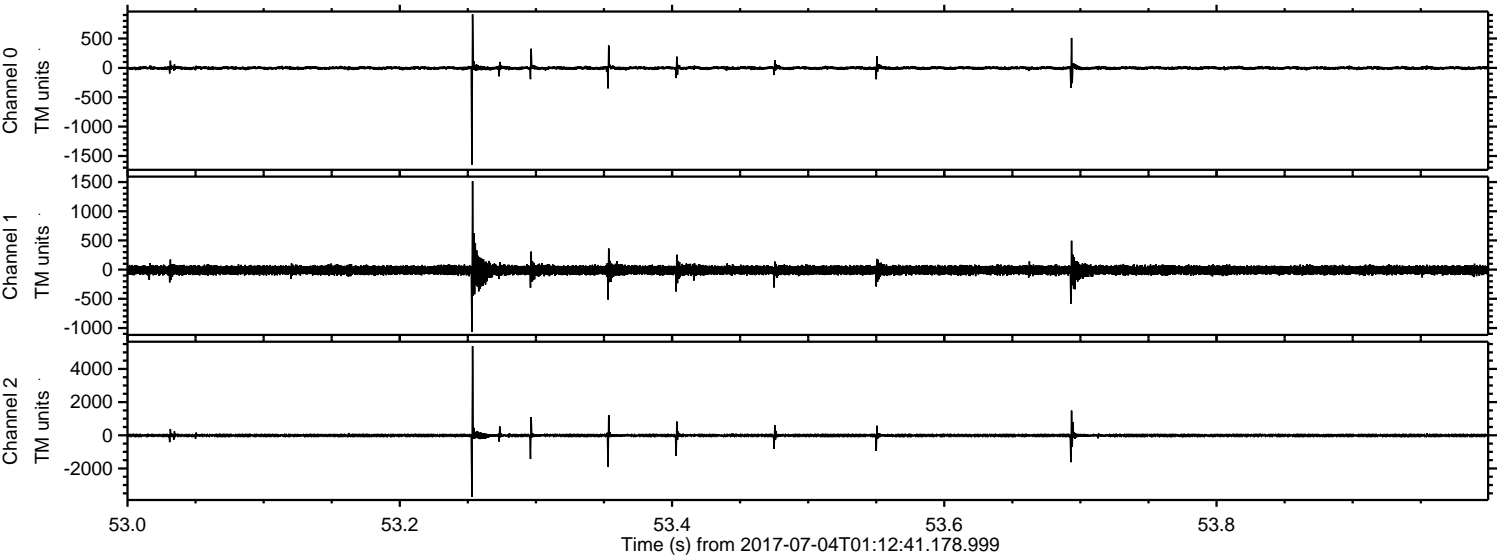


ELMAVAN 3D WAVEFORMS (Measured data sampled at 50 kHz) 51000 packets of 144 samples from 2017-07-04T01:12:41.178.999.

Processed Tue Jul 18 18:07:58 2017 by ELM ver.2012-10-06 from 001__elm20170704_011240__dat00.bin

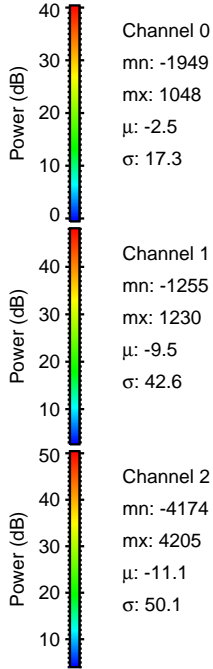
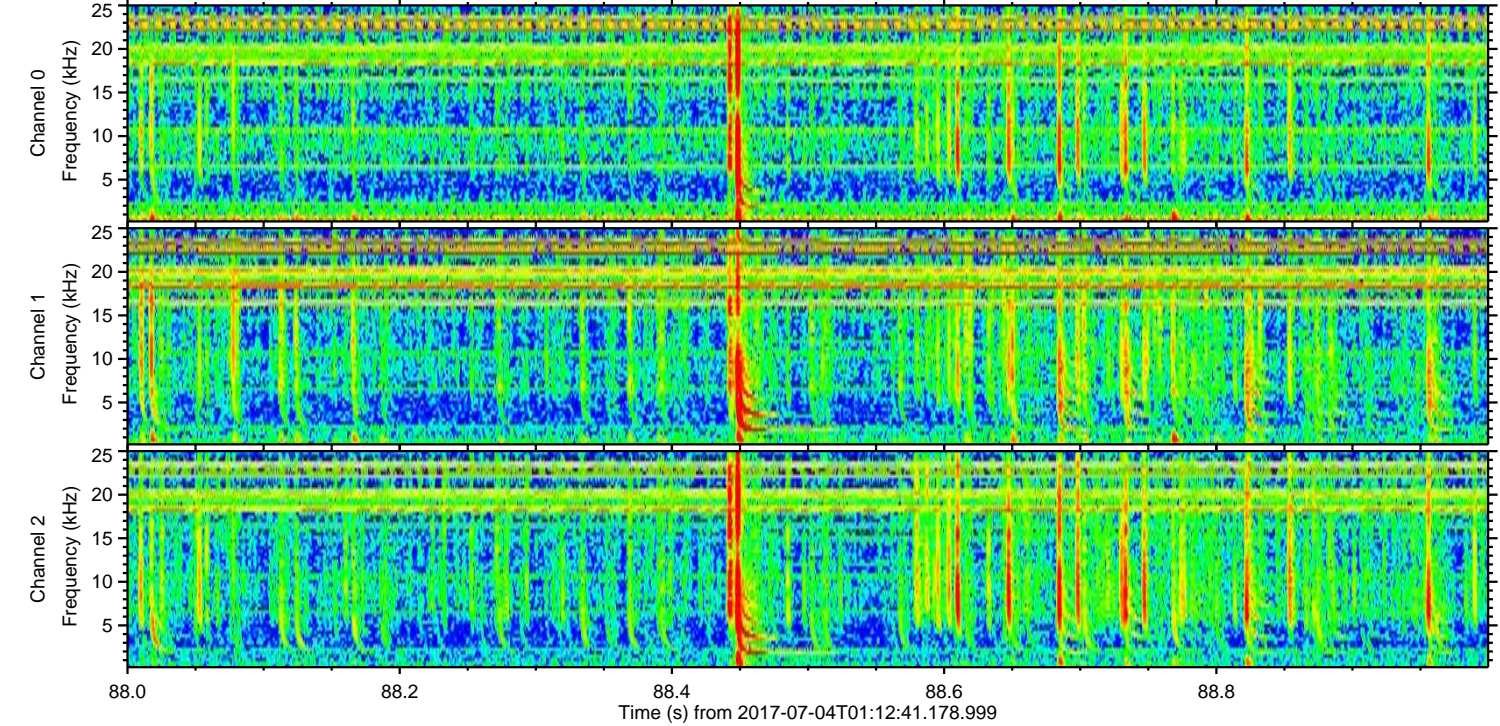
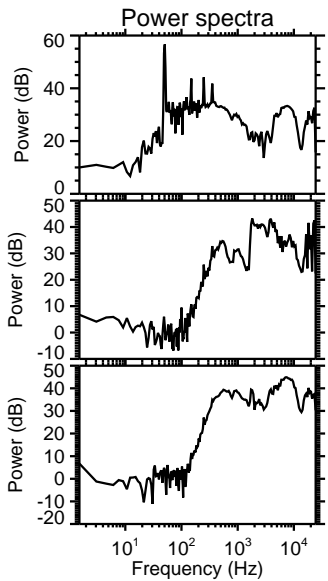
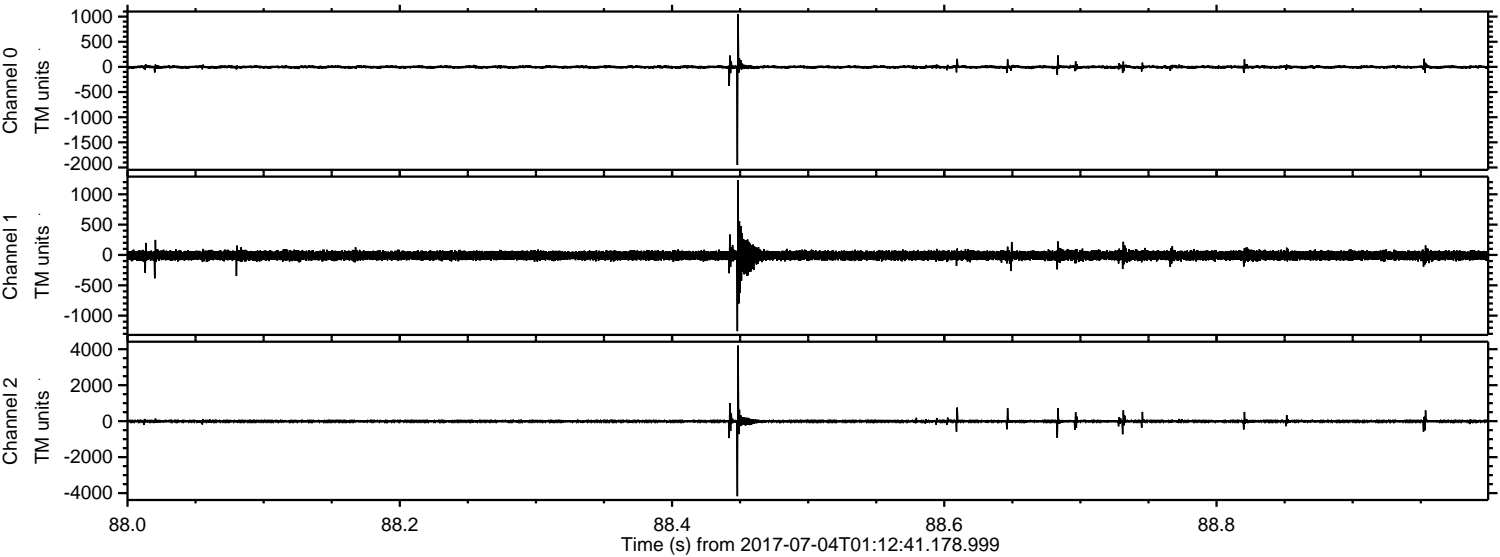


Processed Tue Jul 18 18:08:06 2017 by ELM ver.2012-10-06 from 001__elm20170704_011240__dat00.bin



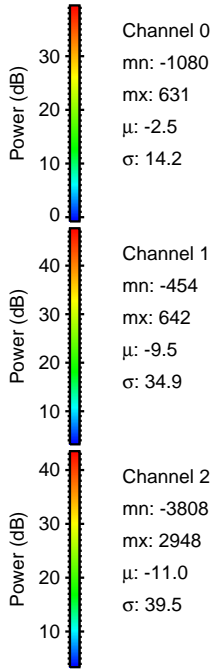
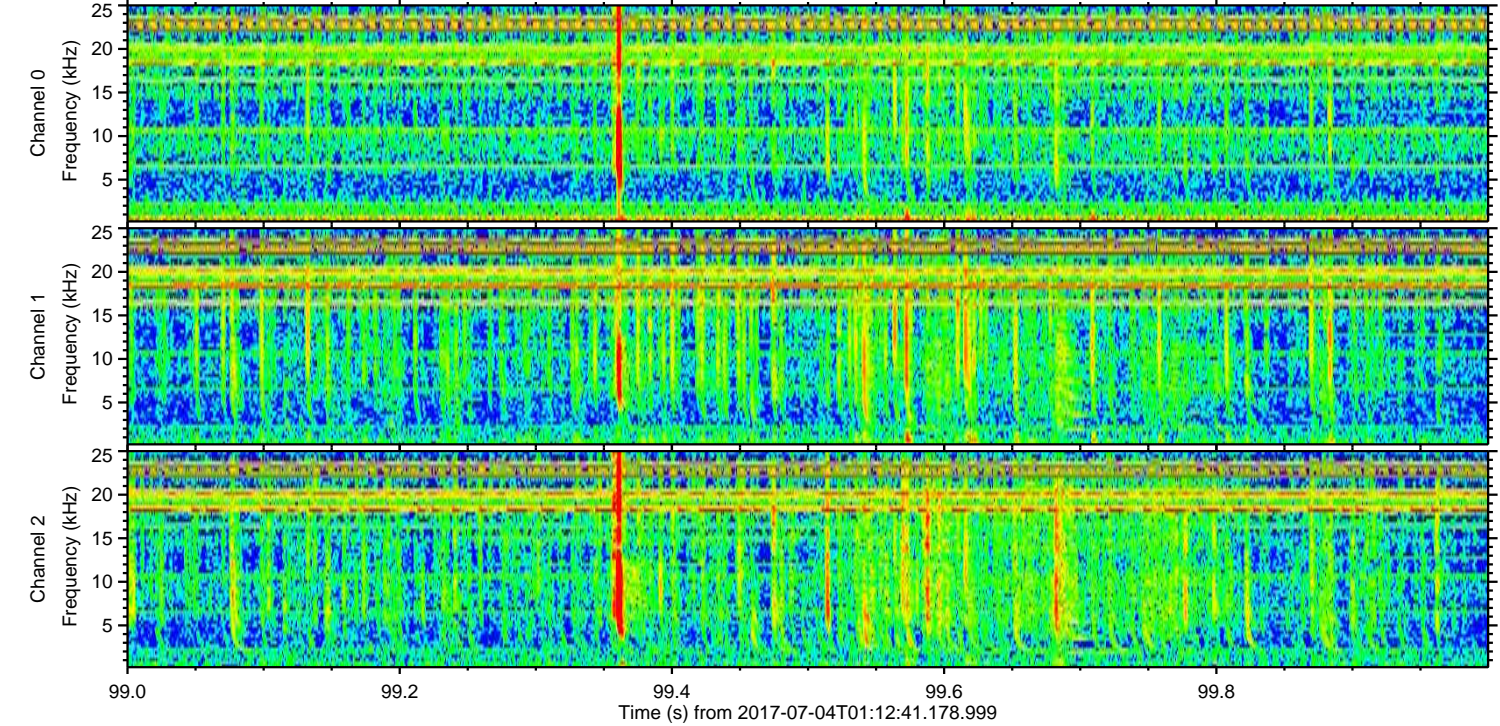
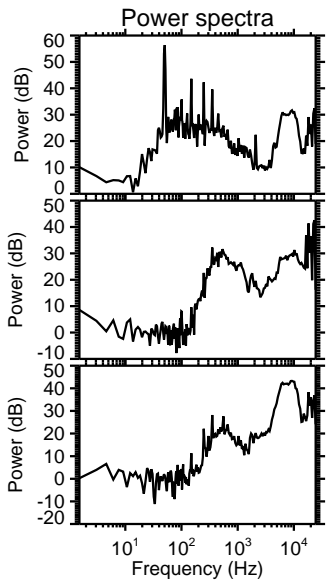
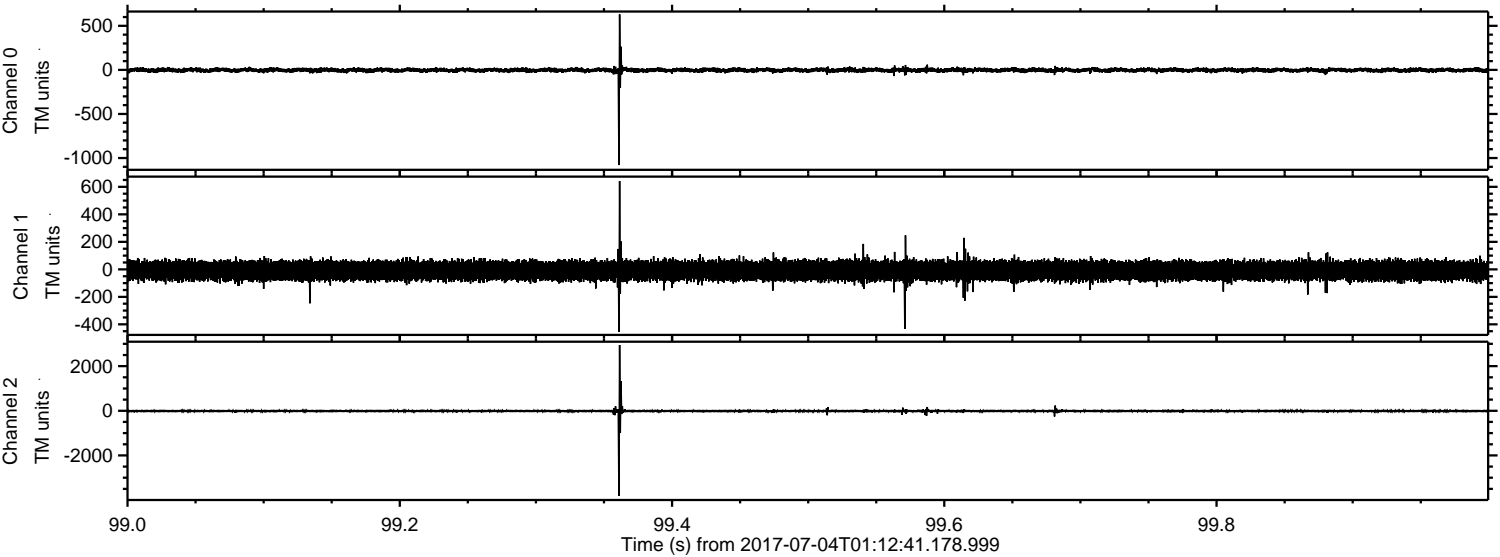
ELMAVAN 3D WAVEFORMS (Measured data sampled at 50 kHz) 51000 packets of 144 samples from 2017-07-04T01:12:41.178.999. Part 89/147

Processed Tue Jul 18 18:08:06 2017 by ELM ver.2012-10-06 from 001__elm20170704_011240__dat00.bin



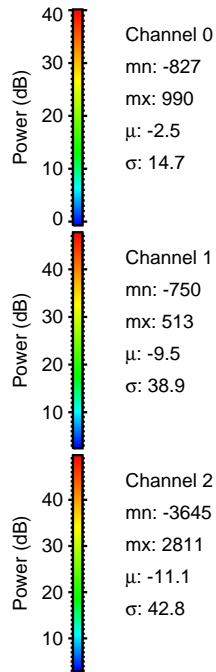
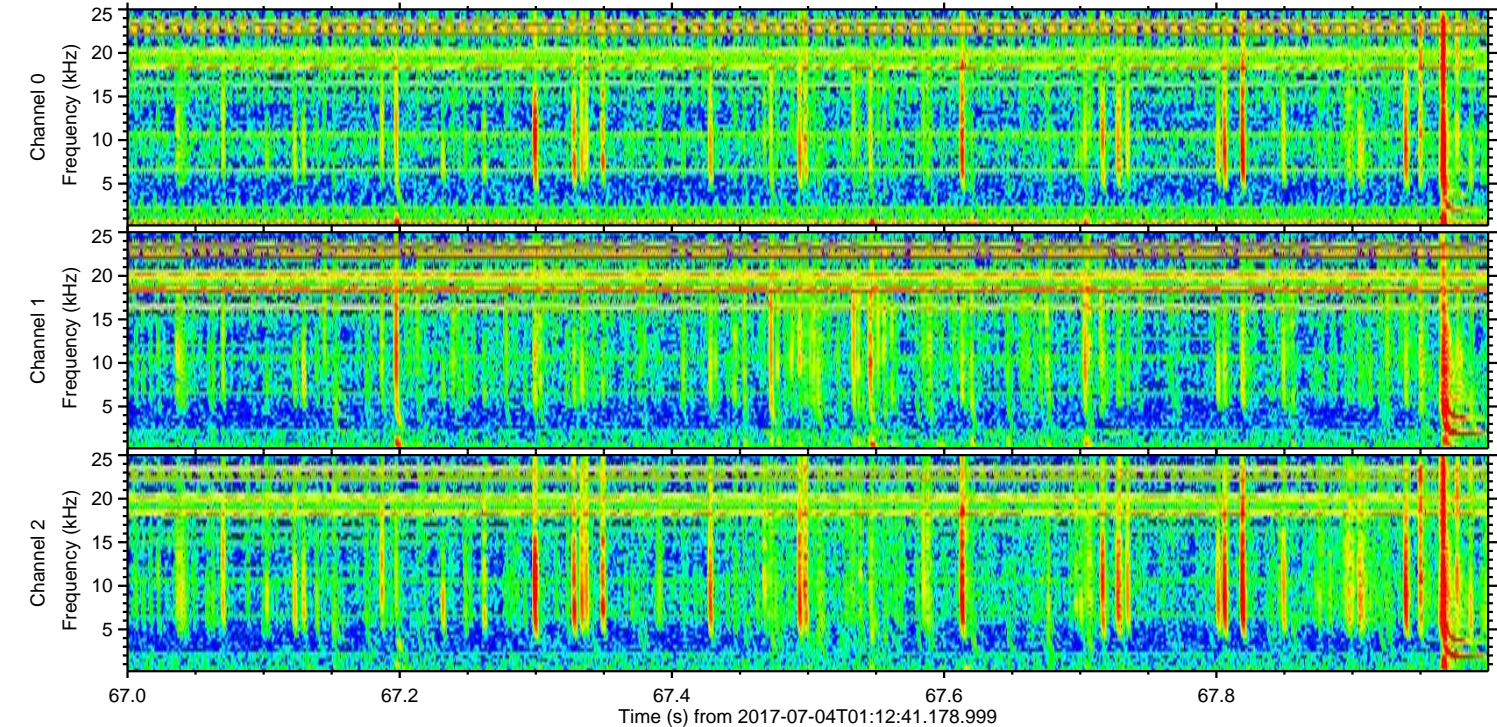
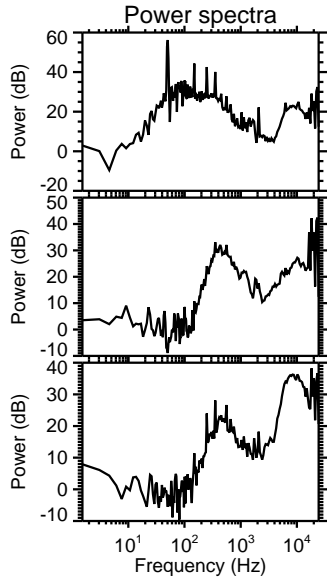
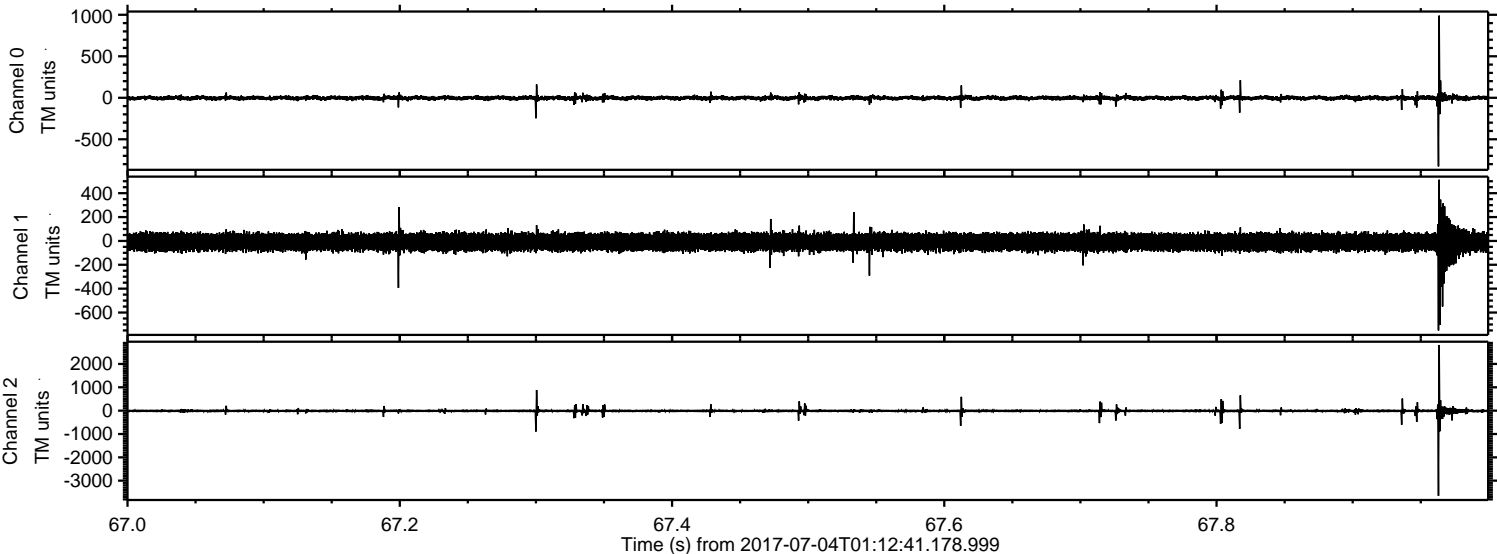
ELMAVAN 3D WAVEFORMS (Measured data sampled at 50 kHz) 51000 packets of 144 samples from 2017-07-04T01:12:41.178.999. Part 100/147

Processed Tue Jul 18 18:08:07 2017 by ELM ver.2012-10-06 from 001__elm20170704_011240__dat00.bin

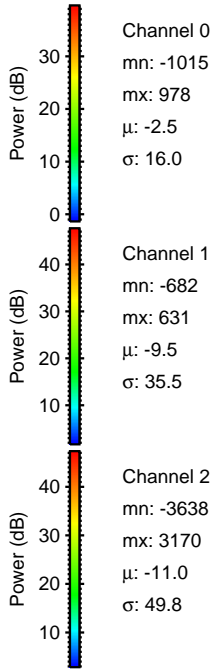
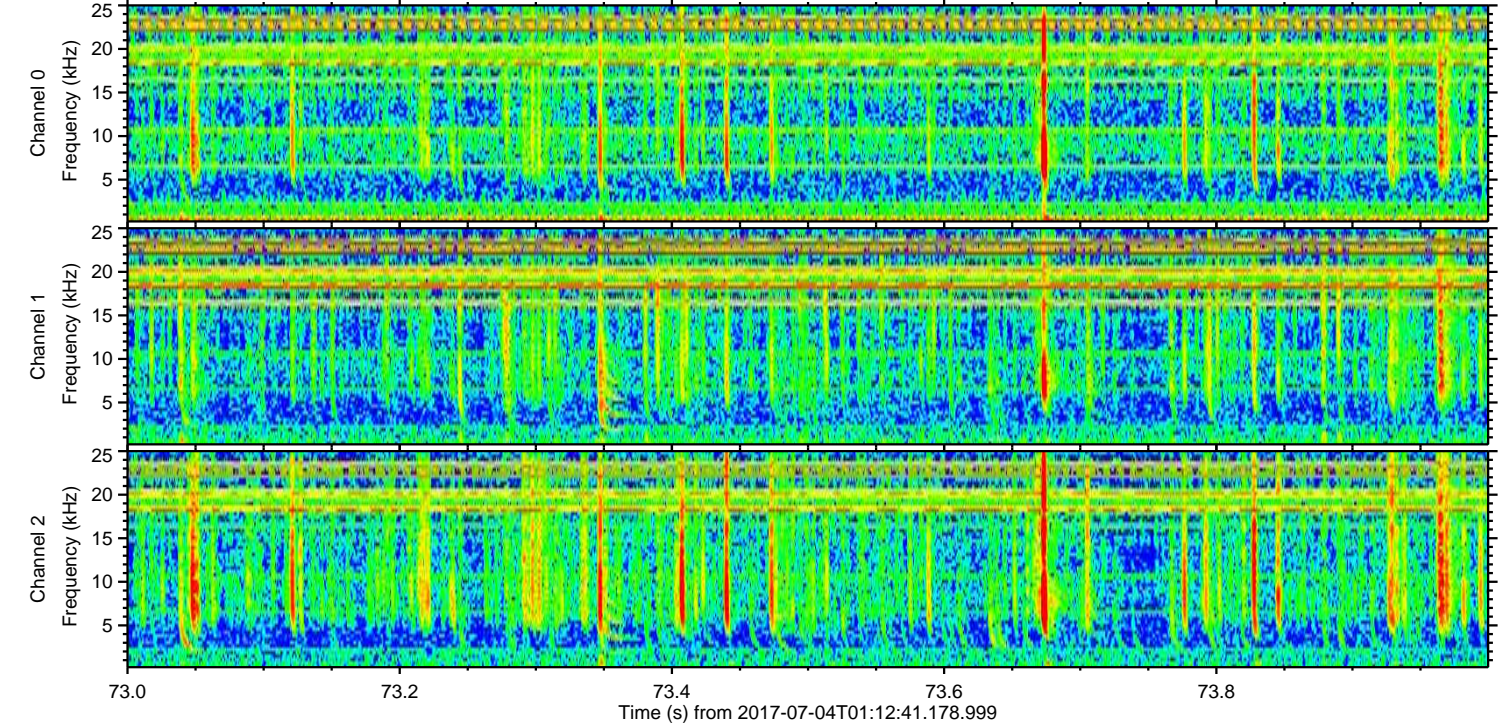
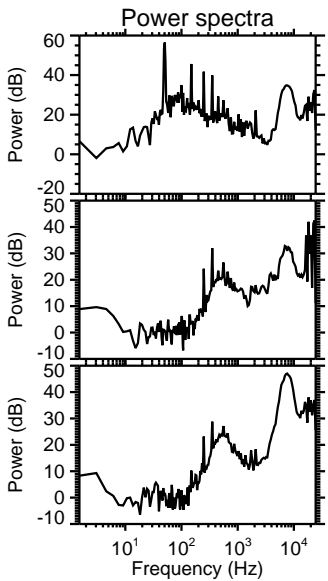
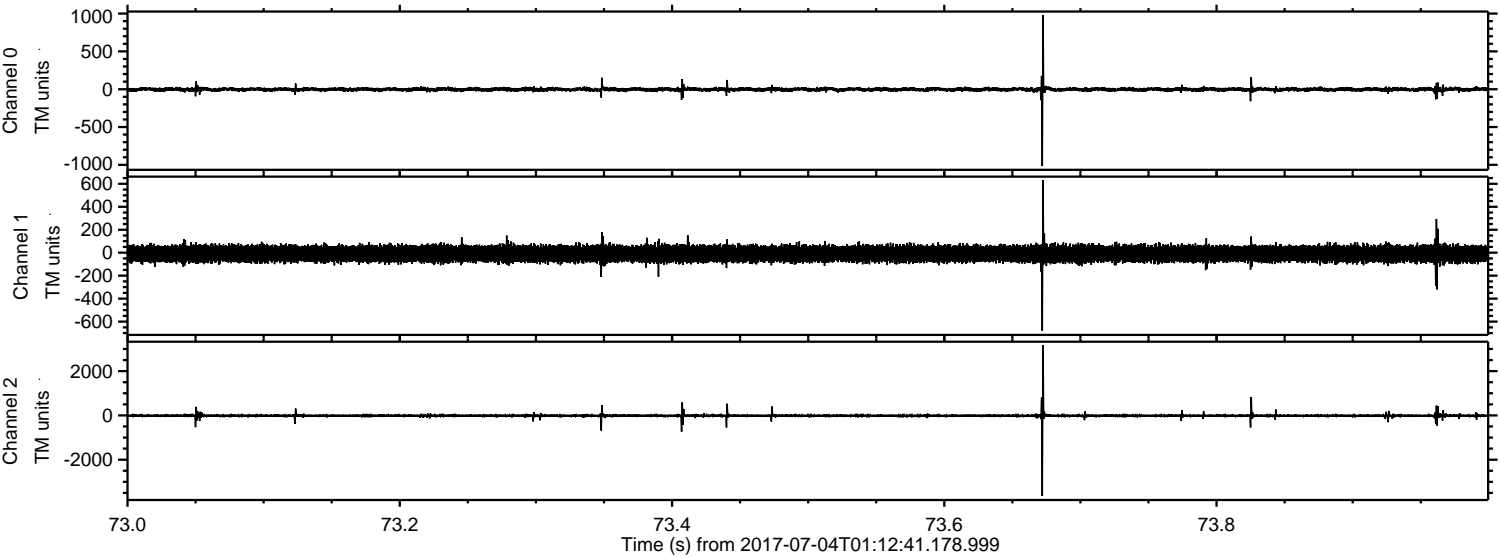


ELMAVAN 3D WAVEFORMS (Measured data sampled at 50 kHz) 51000 packets of 144 samples from 2017-07-04T01:12:41.178.999. Part 68/147

Processed Tue Jul 18 18:08:08 2017 by ELM ver.2012-10-06 from 001__elm20170704_011240__dat00.bin



Processed Tue Jul 18 18:08:09 2017 by ELM ver.2012-10-06 from 001__elm20170704_011240__dat00.bin



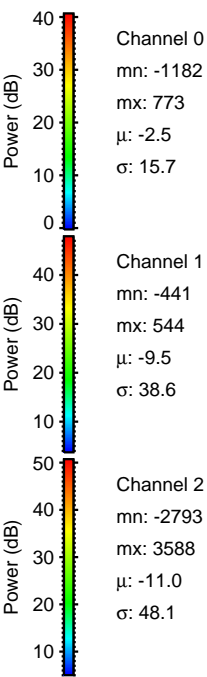
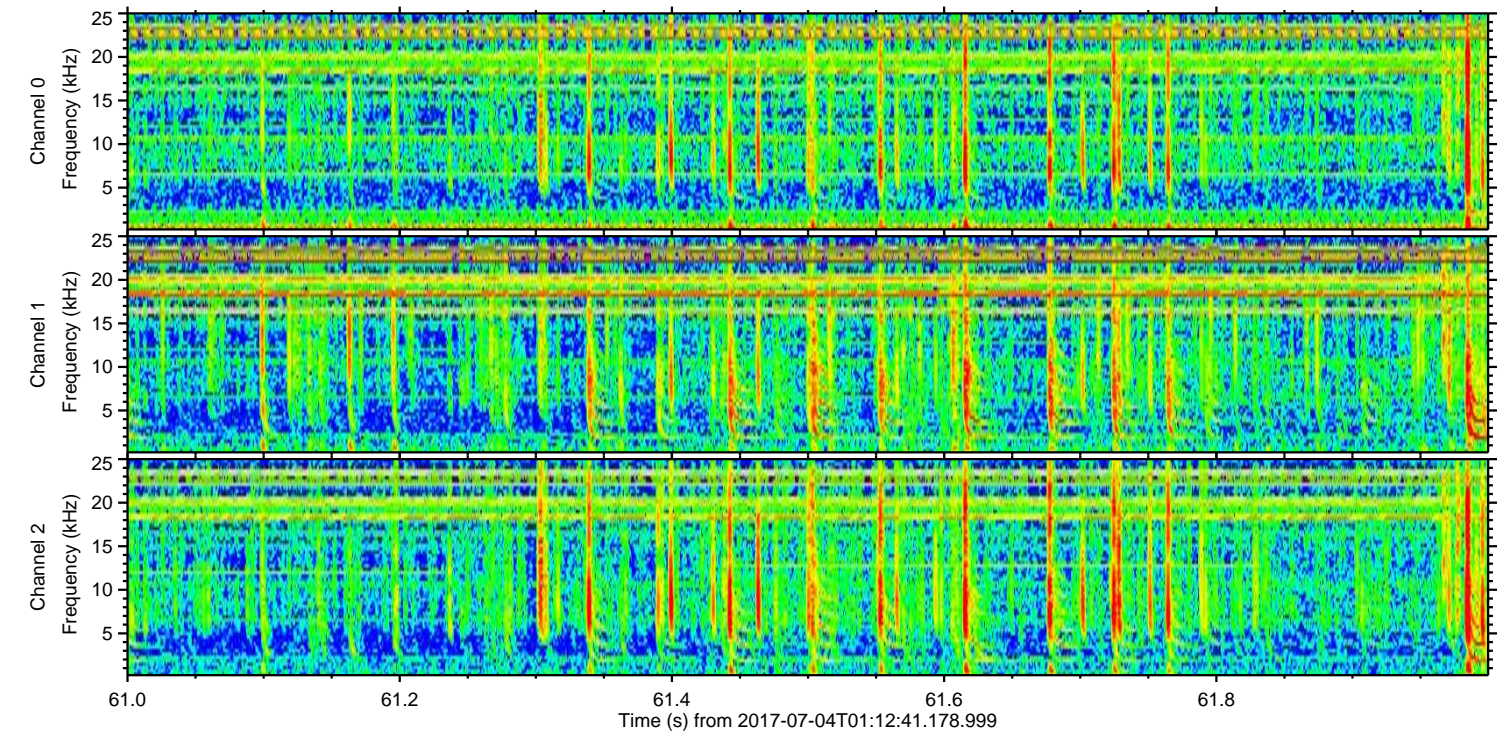
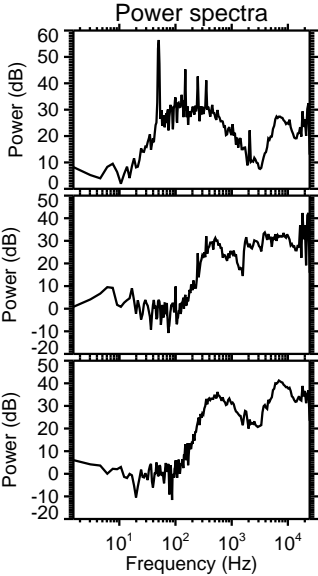
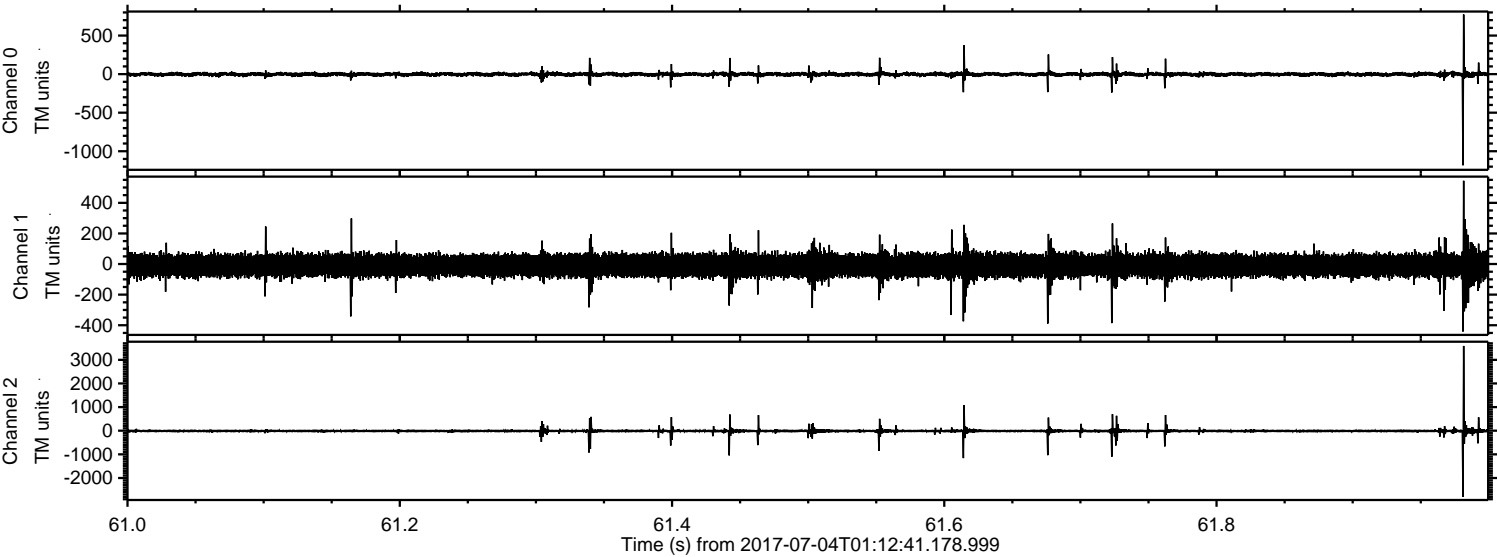
Channel 0
mn: -1015
mx: 978
 μ : -2.5
 σ : 16.0

Channel 1
mn: -682
mx: 631
 μ : -9.5
 σ : 35.5

Channel 2
mn: -3638
mx: 3170
 μ : -11.0
 σ : 49.8

ELMAVAN 3D WAVEFORMS (Measured data sampled at 50 kHz) 51000 packets of 144 samples from 2017-07-04T01:12:41.178.999. Part 62/147

Processed Tue Jul 18 18:08:10 2017 by ELM ver.2012-10-06 from 001__elm20170704_011240__dat00.bin

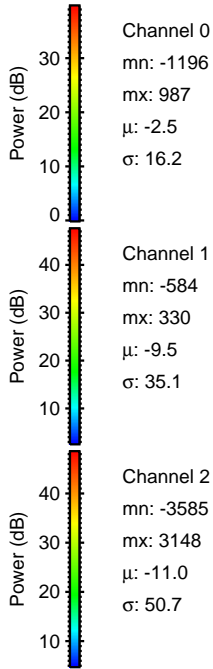
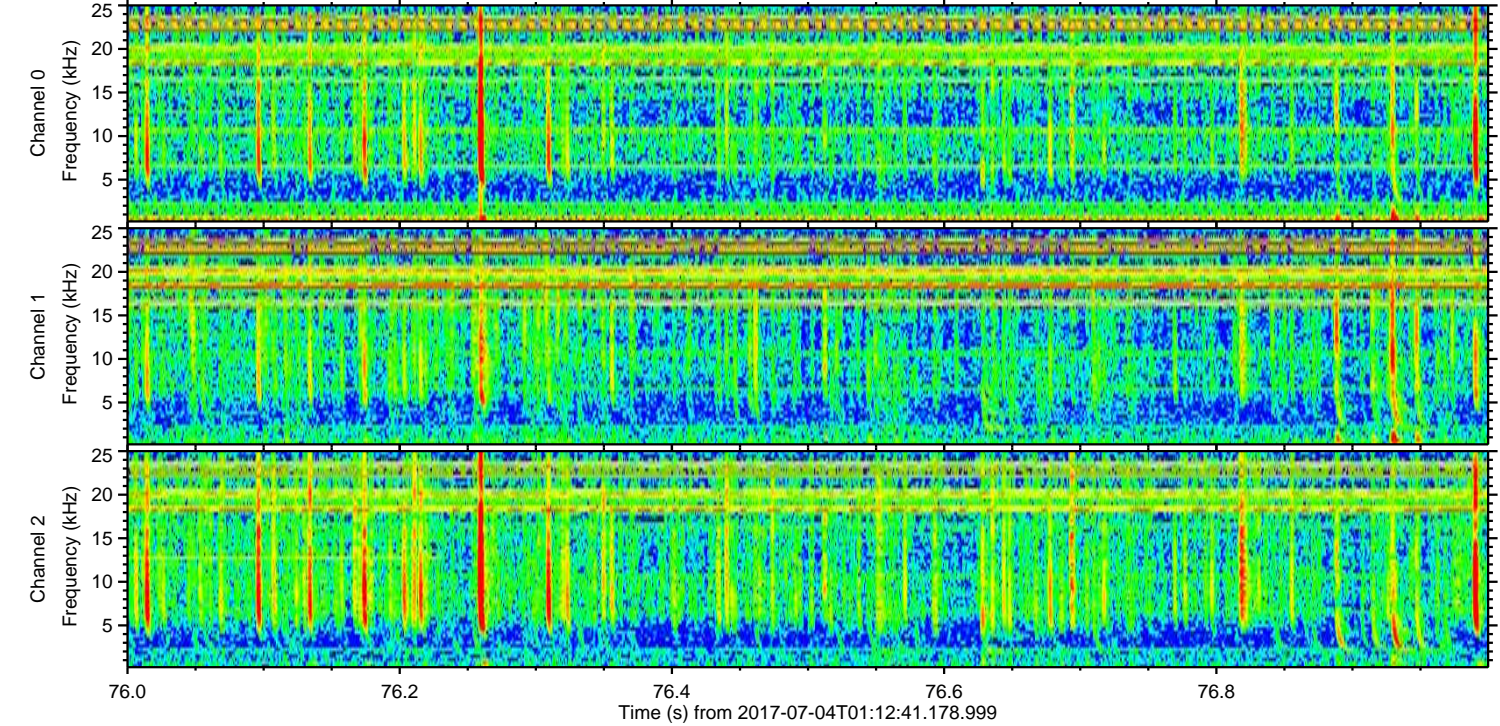
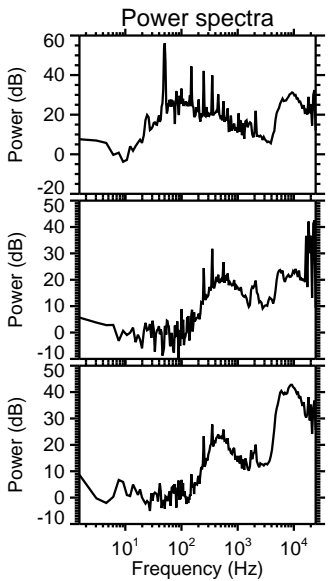
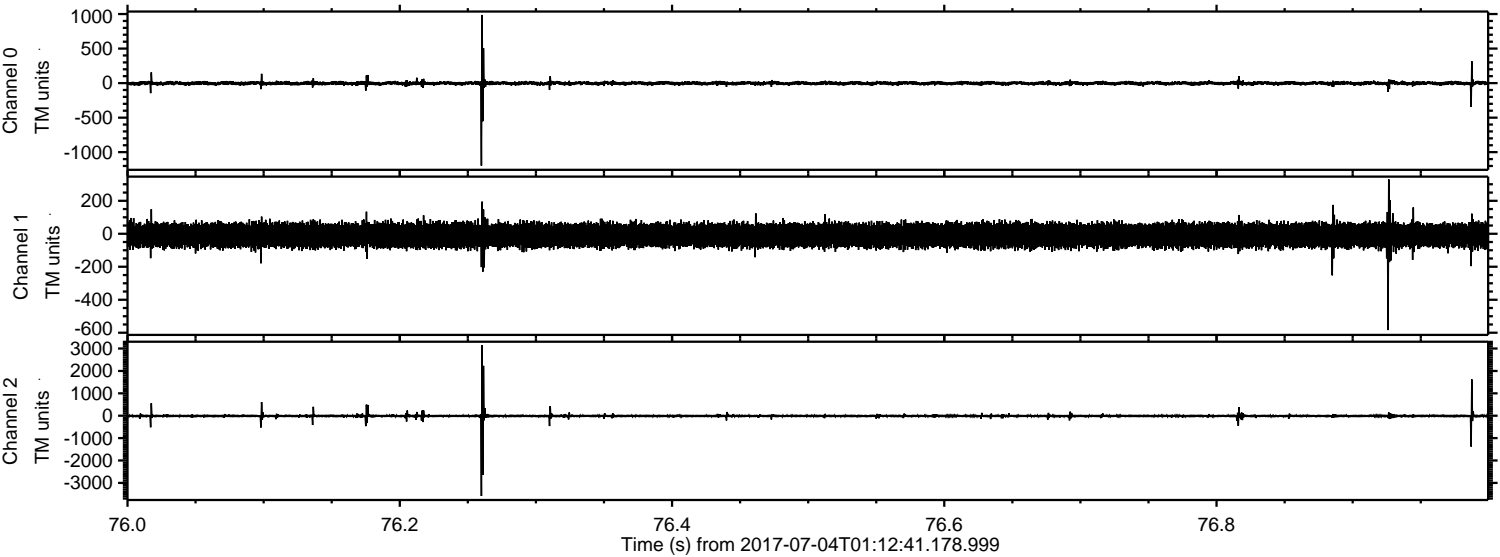


Channel 0
mn: -1182
mx: 773
 μ : -2.5
 σ : 15.7

Channel 1
mn: -441
mx: 544
 μ : -9.5
 σ : 38.6

Channel 2
mn: -2793
mx: 3588
 μ : -11.0
 σ : 48.1

Processed Tue Jul 18 18:08:10 2017 by ELM ver.2012-10-06 from 001__elm20170704_011240__dat00.bin



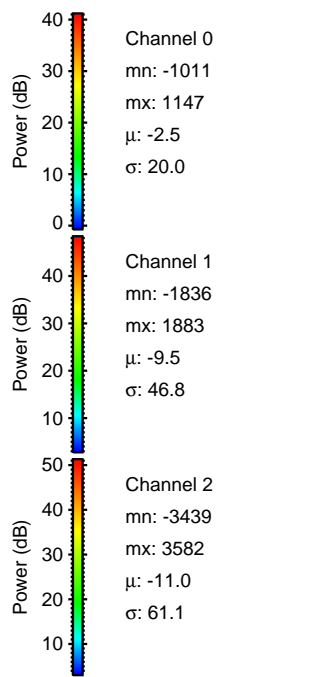
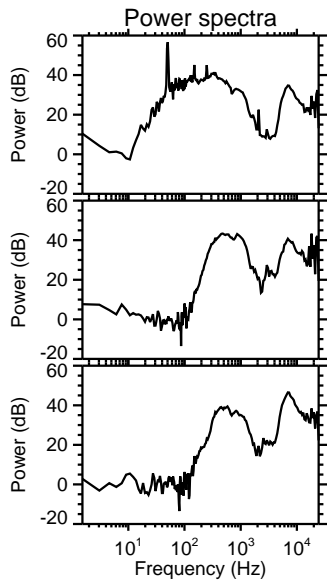
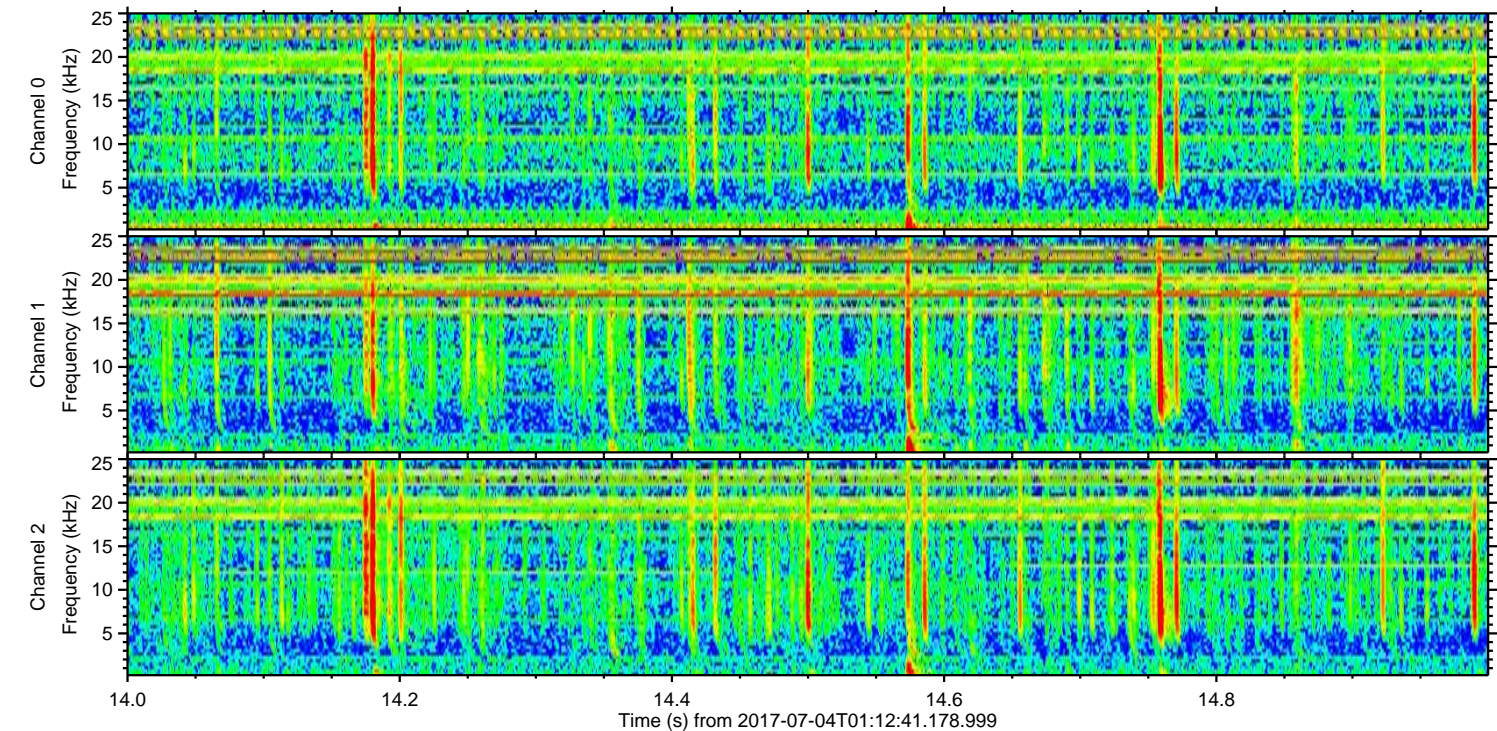
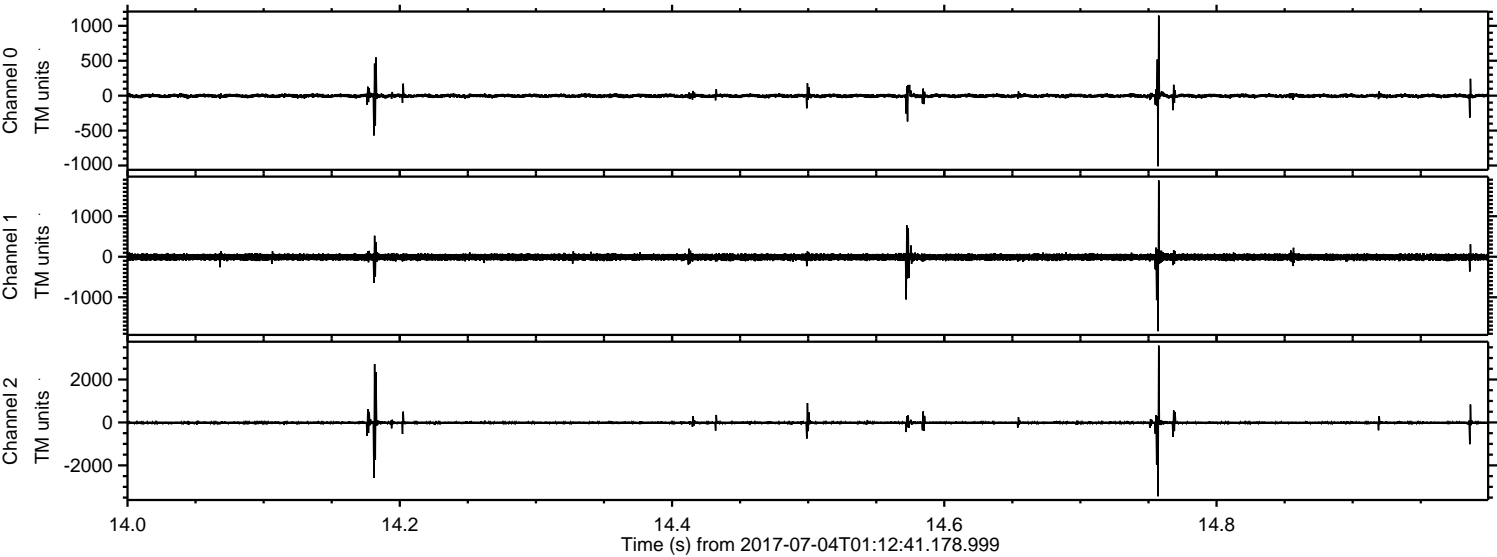
Channel 0
mn: -1196
mx: 987
 μ : -2.5
 σ : 16.2

Channel 1
mn: -584
mx: 330
 μ : -9.5
 σ : 35.1

Channel 2
mn: -3585
mx: 3148
 μ : -11.0
 σ : 50.7

ELMAVAN 3D WAVEFORMS (Measured data sampled at 50 kHz) 51000 packets of 144 samples from 2017-07-04T01:12:41.178.999. Part 15/147

Processed Tue Jul 18 18:08:11 2017 by ELM ver.2012-10-06 from 001__elm20170704_011240__dat00.bin



ELMAVAN 3D WAVEFORMS (Measured data sampled at 50 kHz) 51000 packets of 144 samples from 2017-07-04T01:12:41.178.999. Part 27/147

Processed Tue Jul 18 18:08:12 2017 by ELM ver.2012-10-06 from 001__elm20170704_011240__dat00.bin

