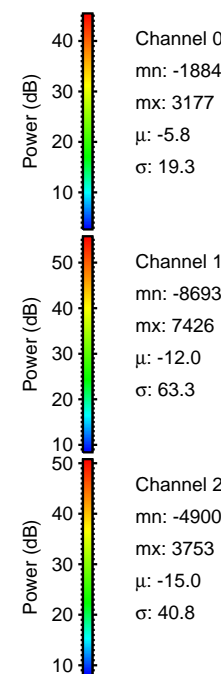
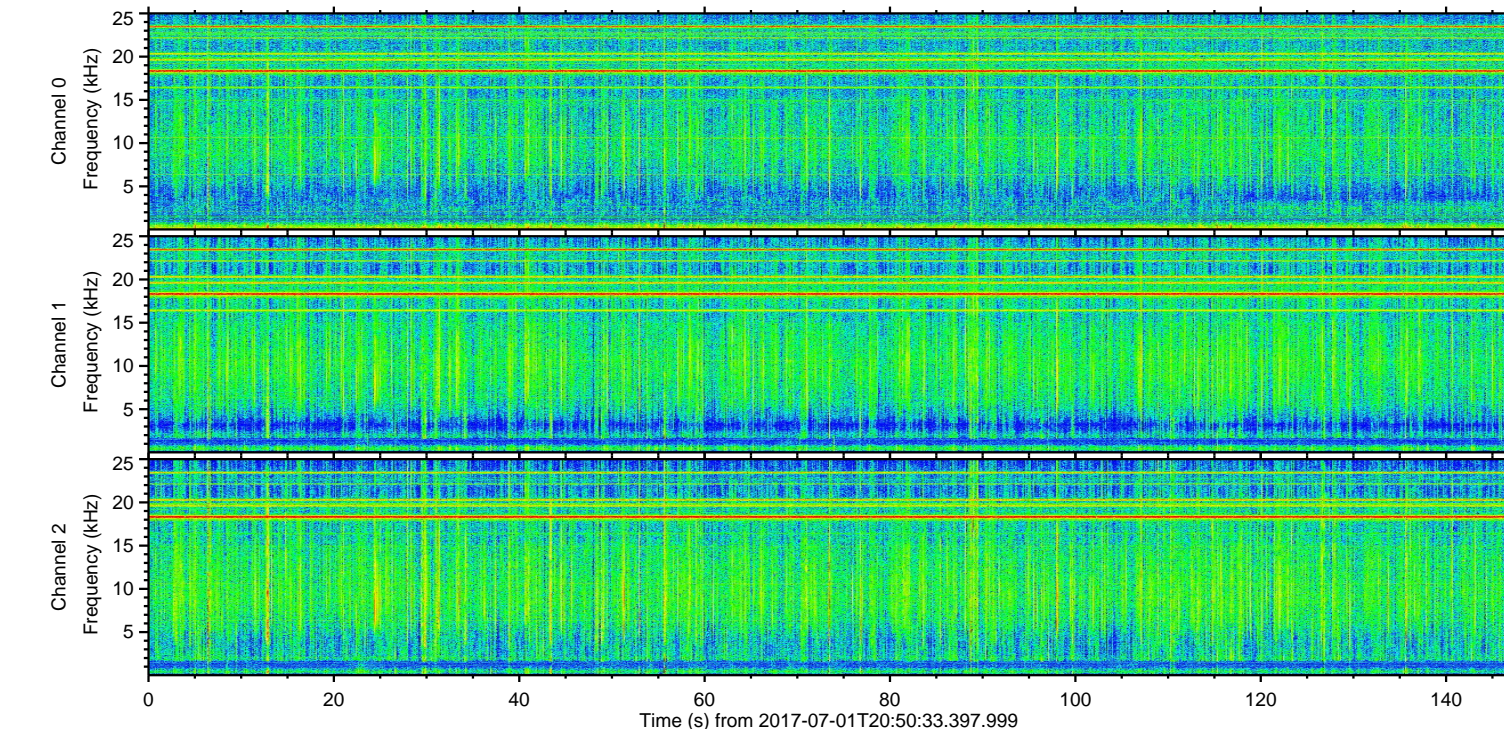
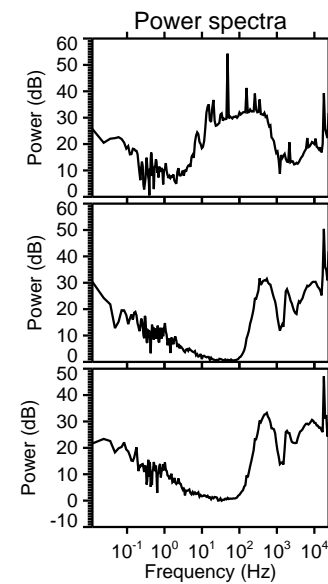
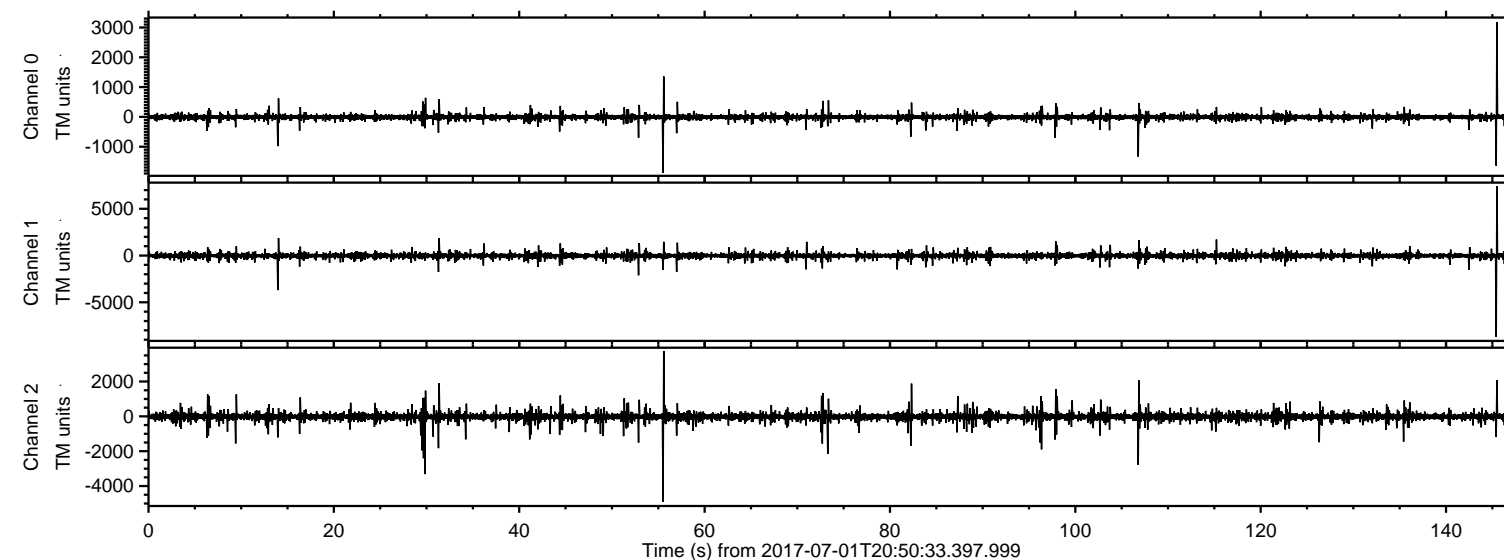


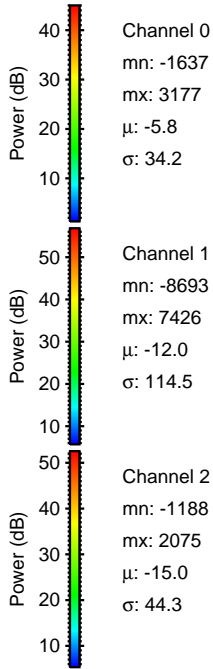
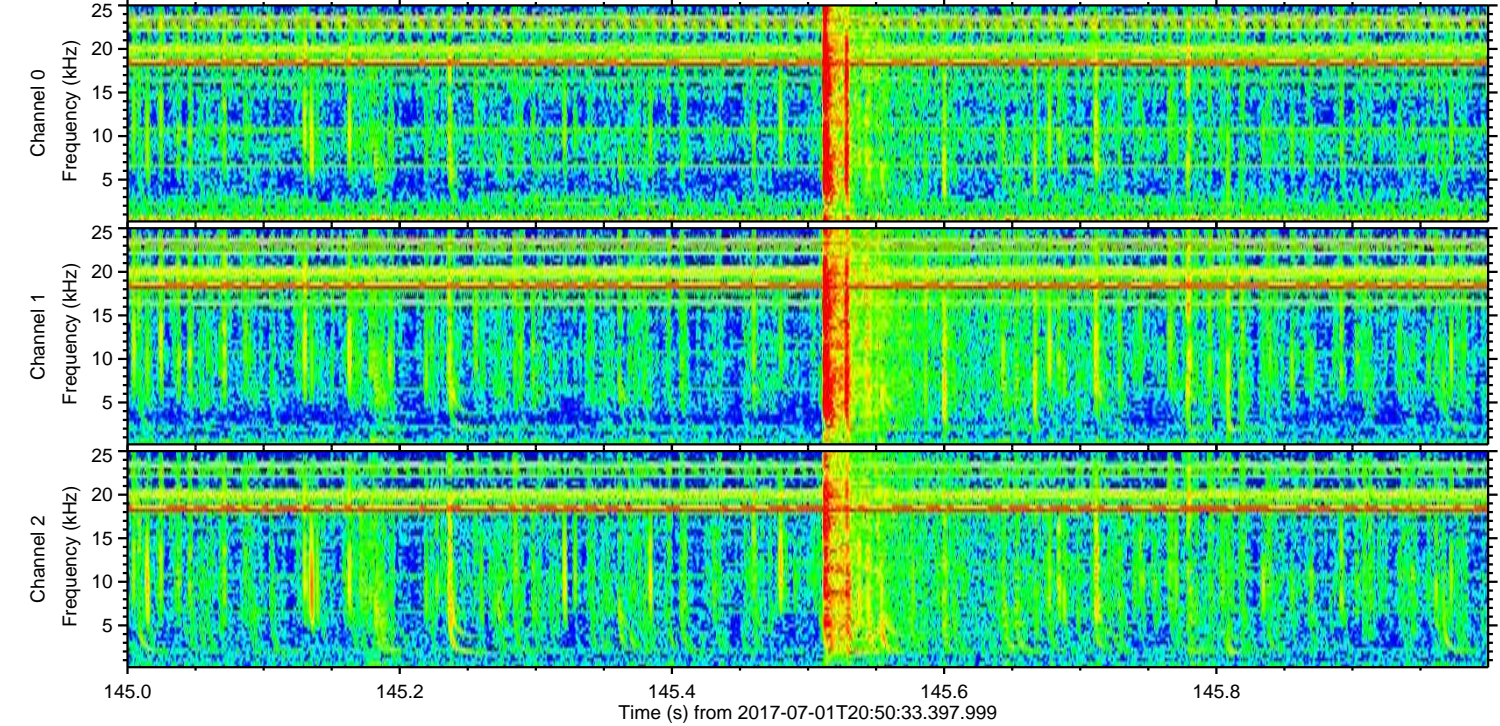
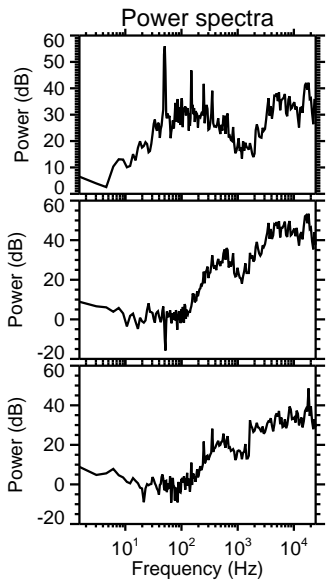
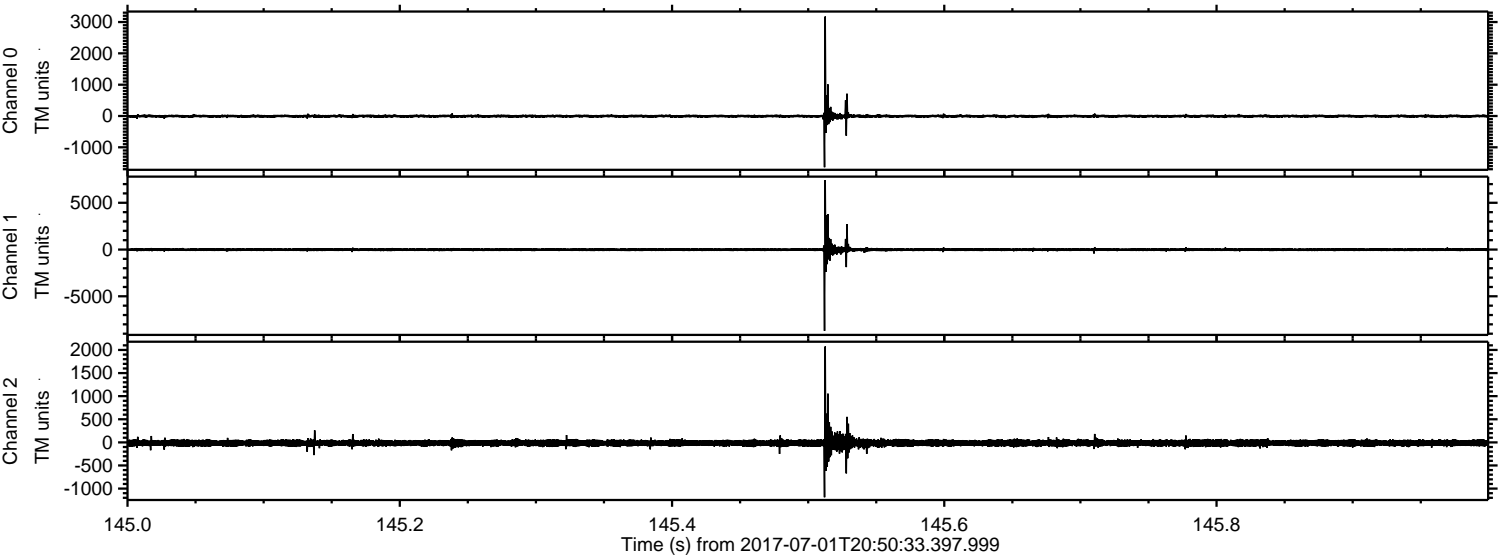
ELMAVAN 3D WAVEFORMS (Measured data sampled at 50 kHz) 51000 packets of 144 samples from 2017-07-01T20:50:33.397.999.

Processed Tue Jul 18 10:10:18 2017 by ELM ver.2012-10-06 from 001__elm20170701_205032__dat00.bin

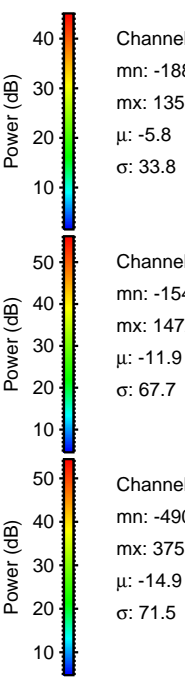
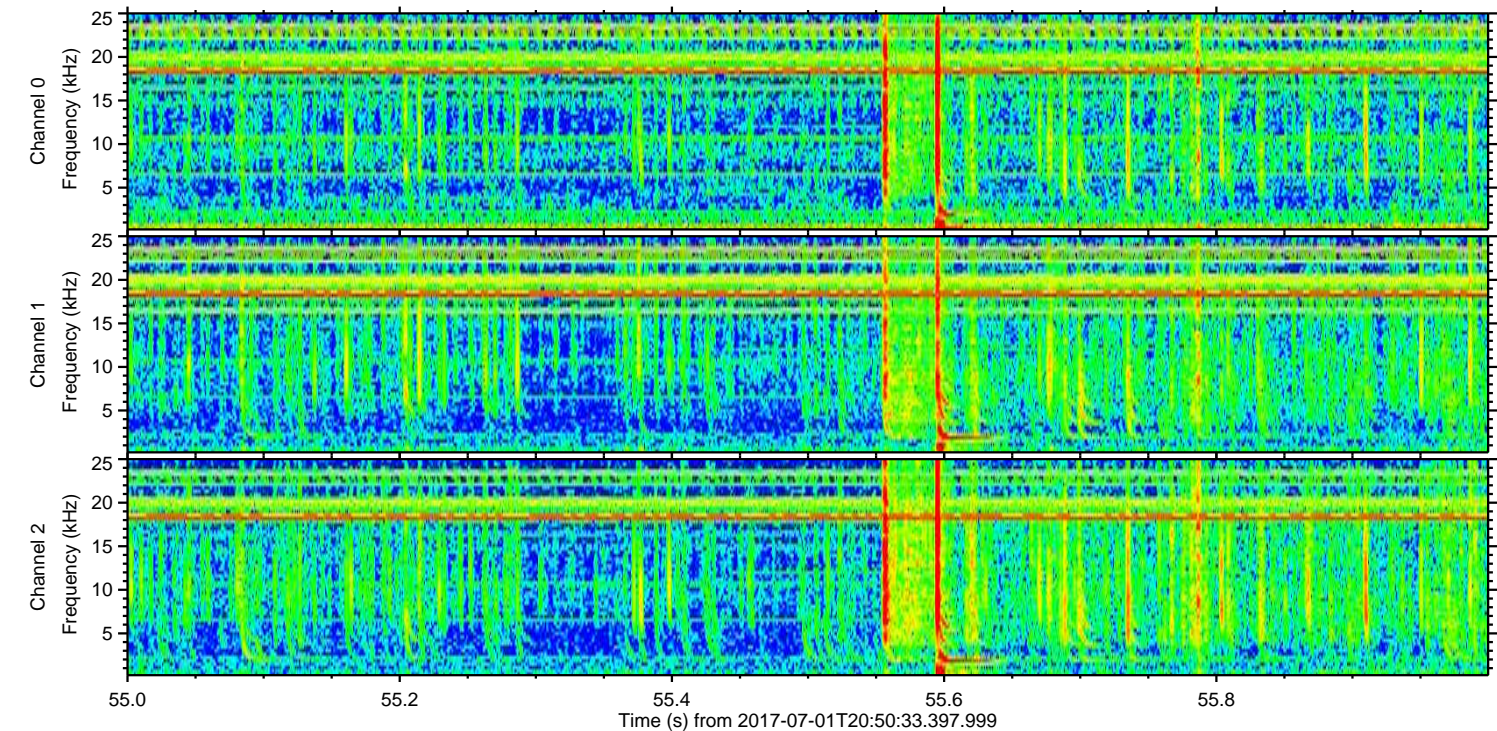
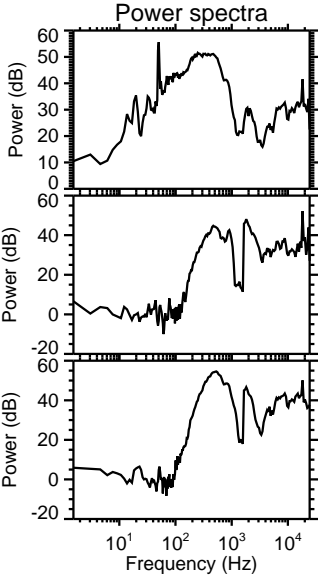
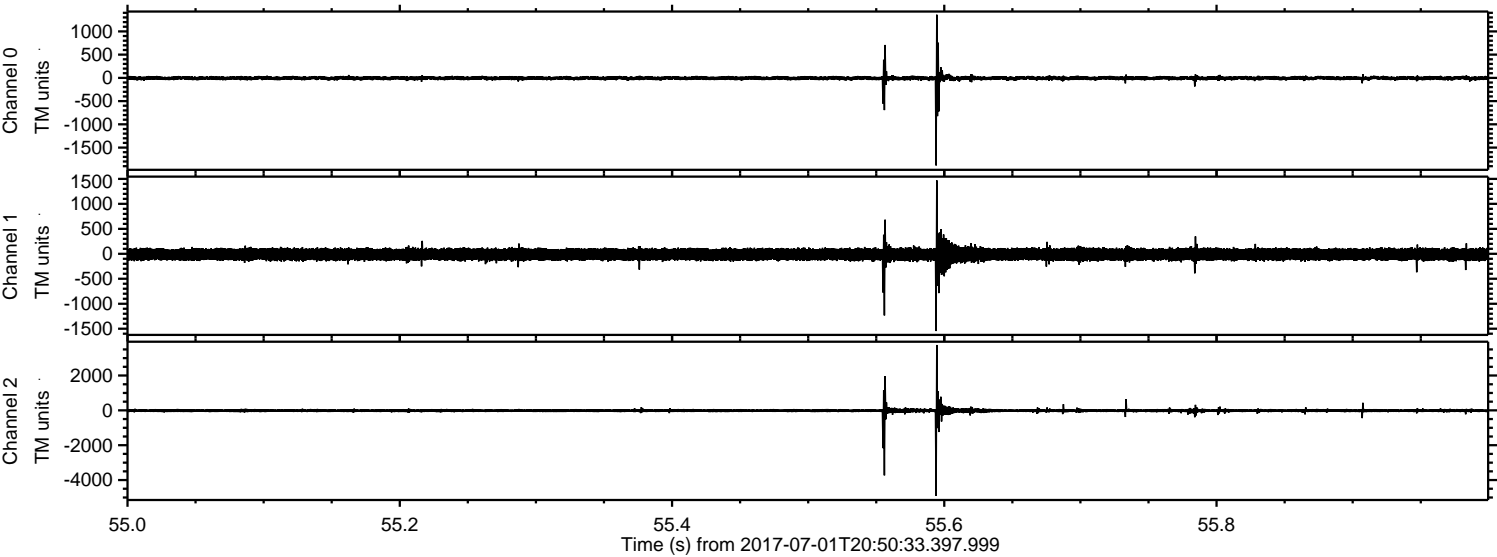


ELMAVAN 3D WAVEFORMS (Measured data sampled at 50 kHz) 51000 packets of 144 samples from 2017-07-01T20:50:33.397.999. Part 146/147

Processed Tue Jul 18 10:10:26 2017 by ELM ver.2012-10-06 from 001__elm20170701_205032__dat00.bin

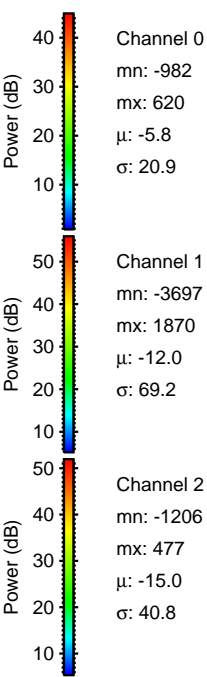
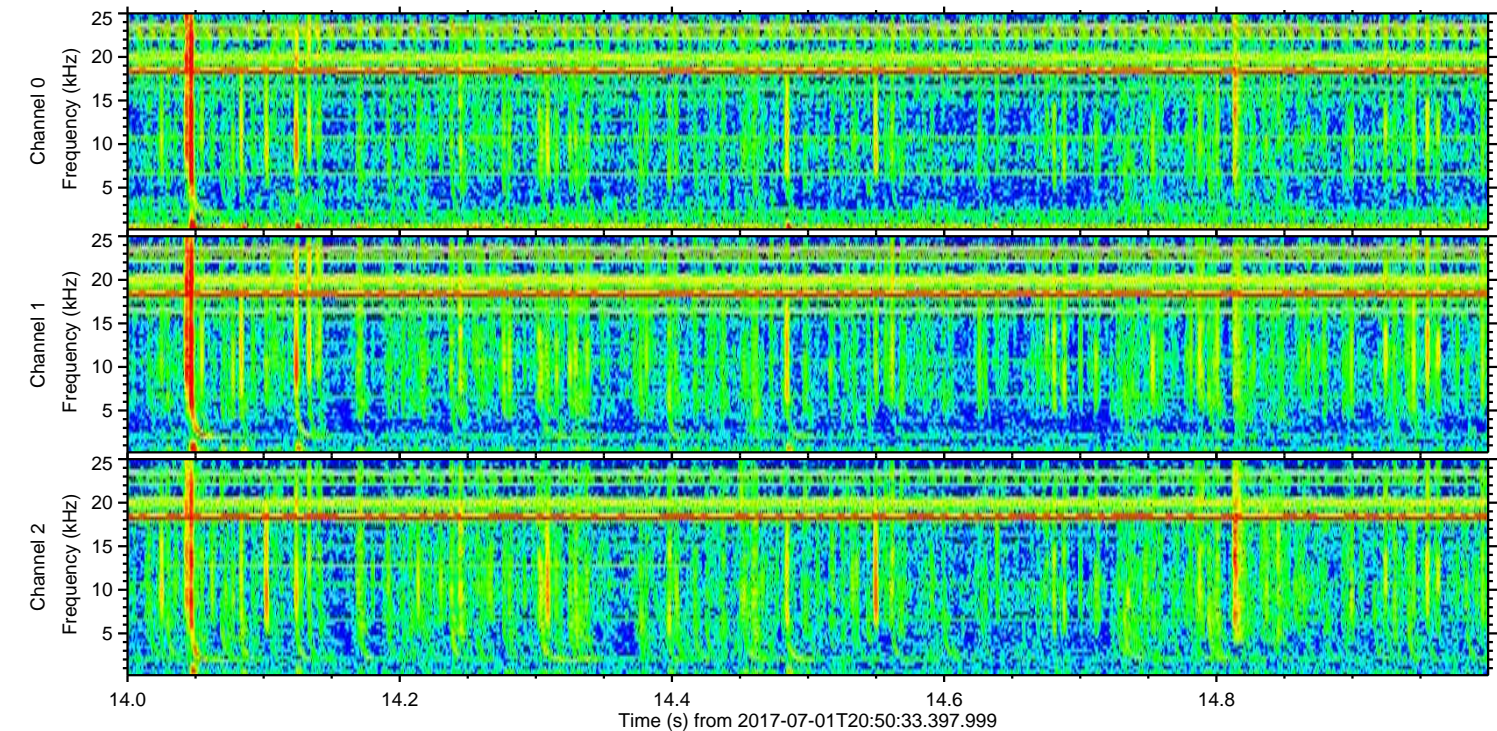
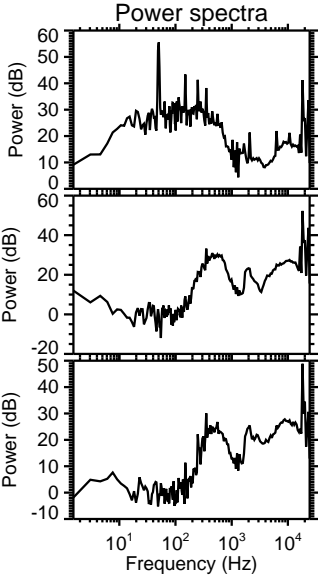
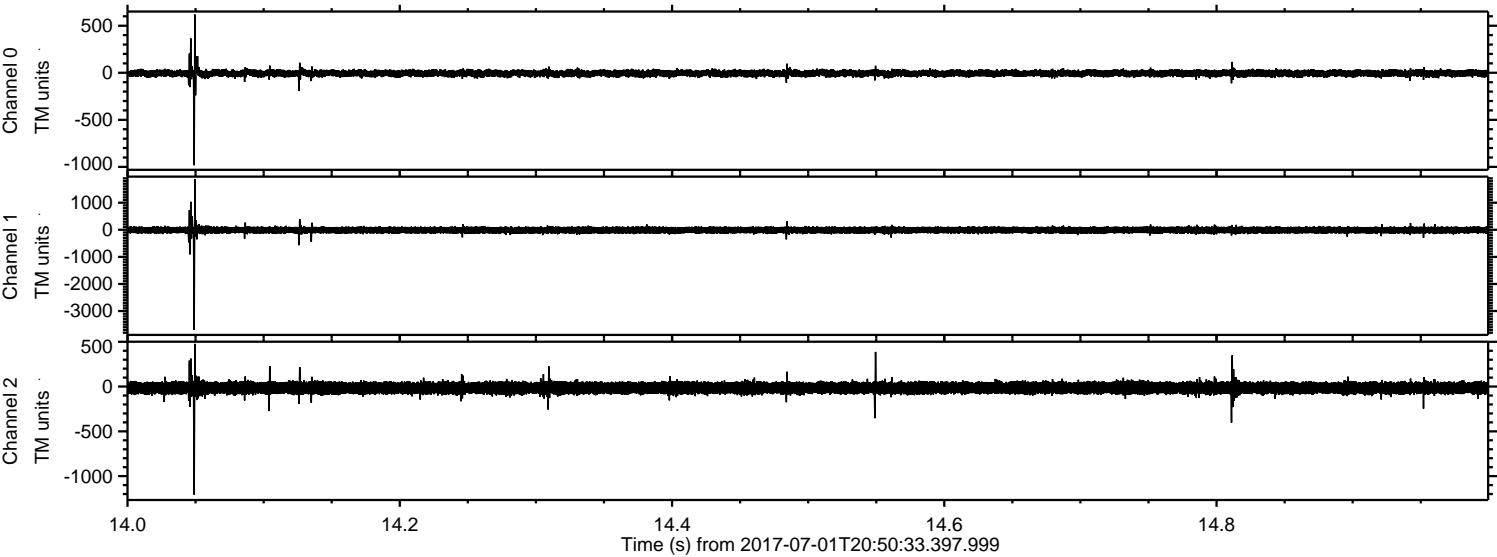


Processed Tue Jul 18 10:10:27 2017 by ELM ver.2012-10-06 from 001__elm20170701_205032__dat00.bin



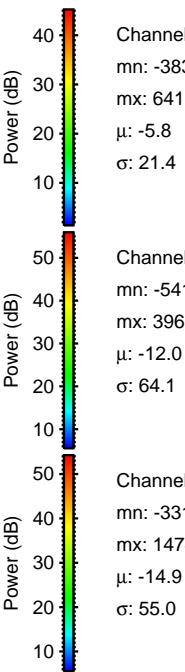
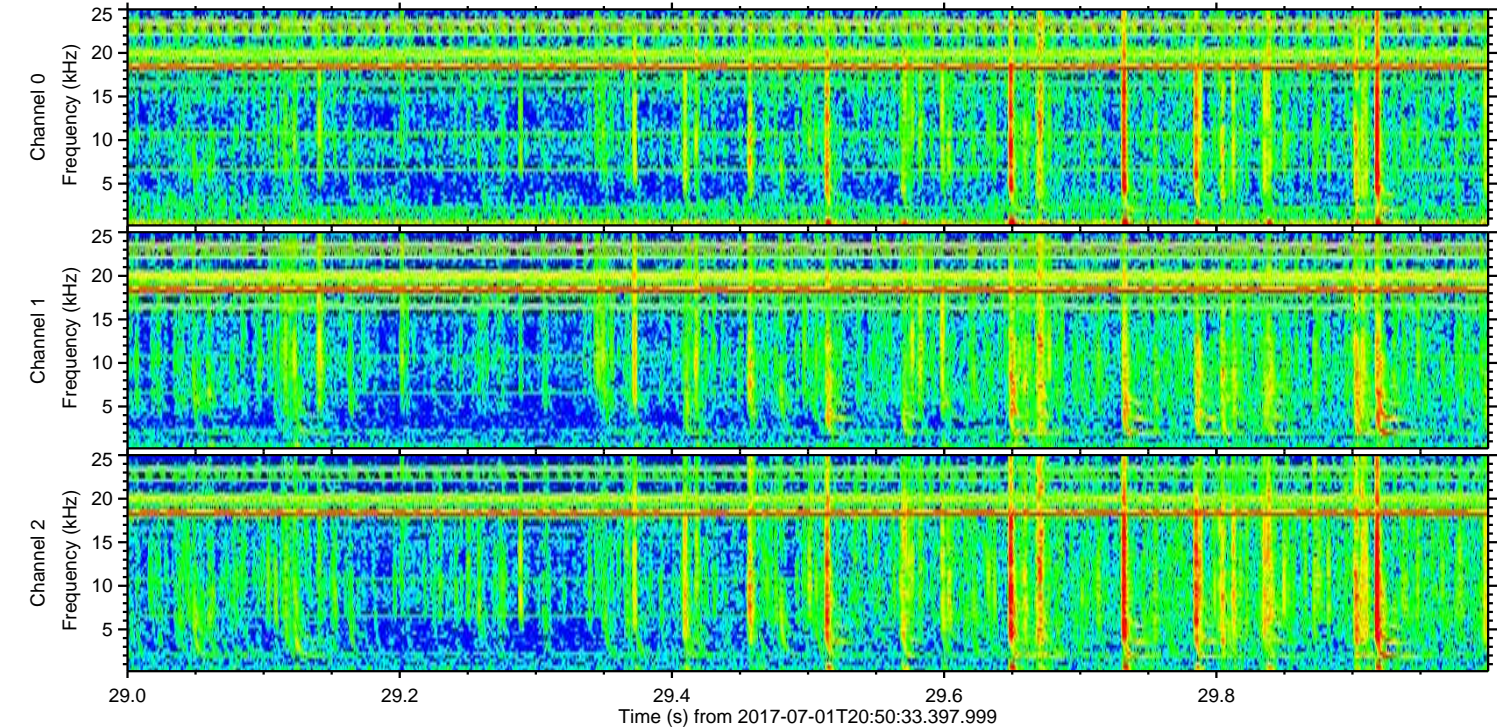
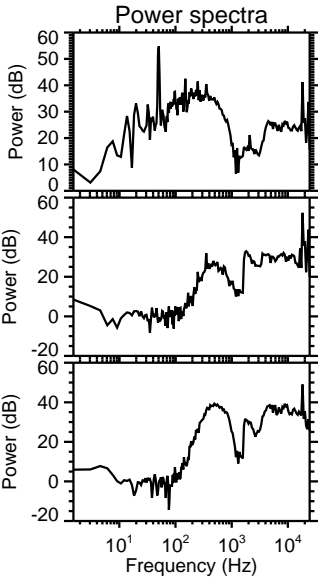
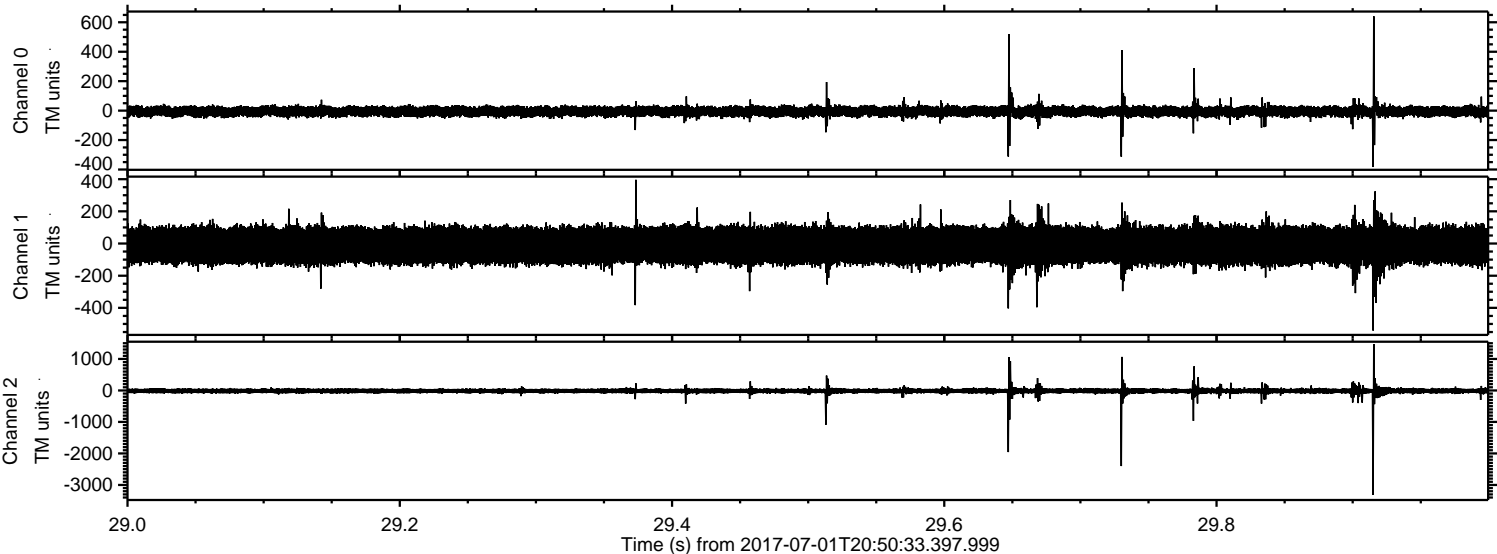
ELMAVAN 3D WAVEFORMS (Measured data sampled at 50 kHz) 51000 packets of 144 samples from 2017-07-01T20:50:33.397.999. Part 15/147

Processed Tue Jul 18 10:10:27 2017 by ELM ver.2012-10-06 from 001__elm20170701_205032__dat00.bin



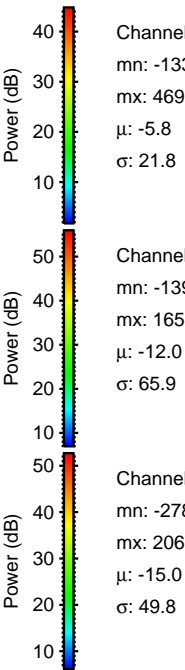
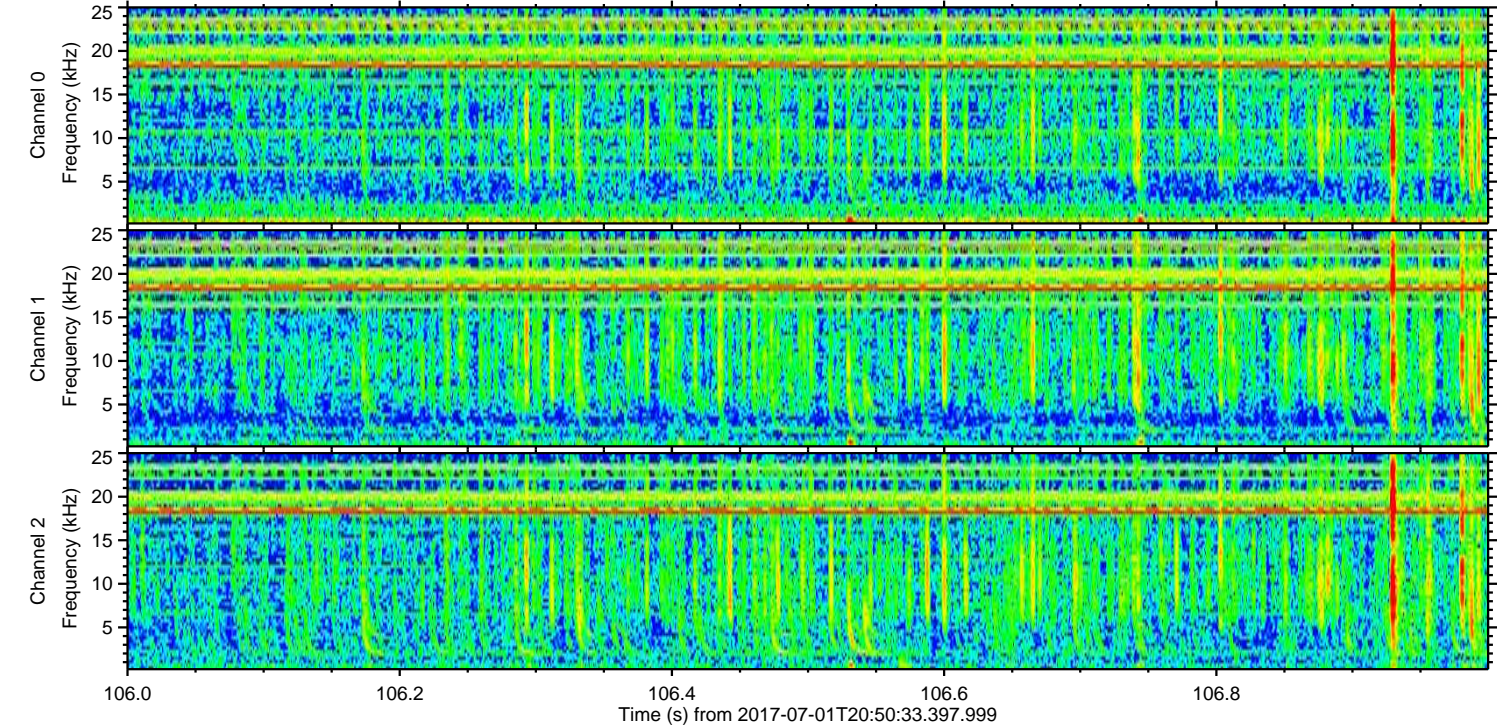
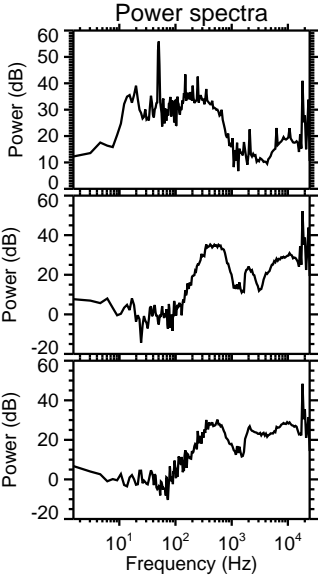
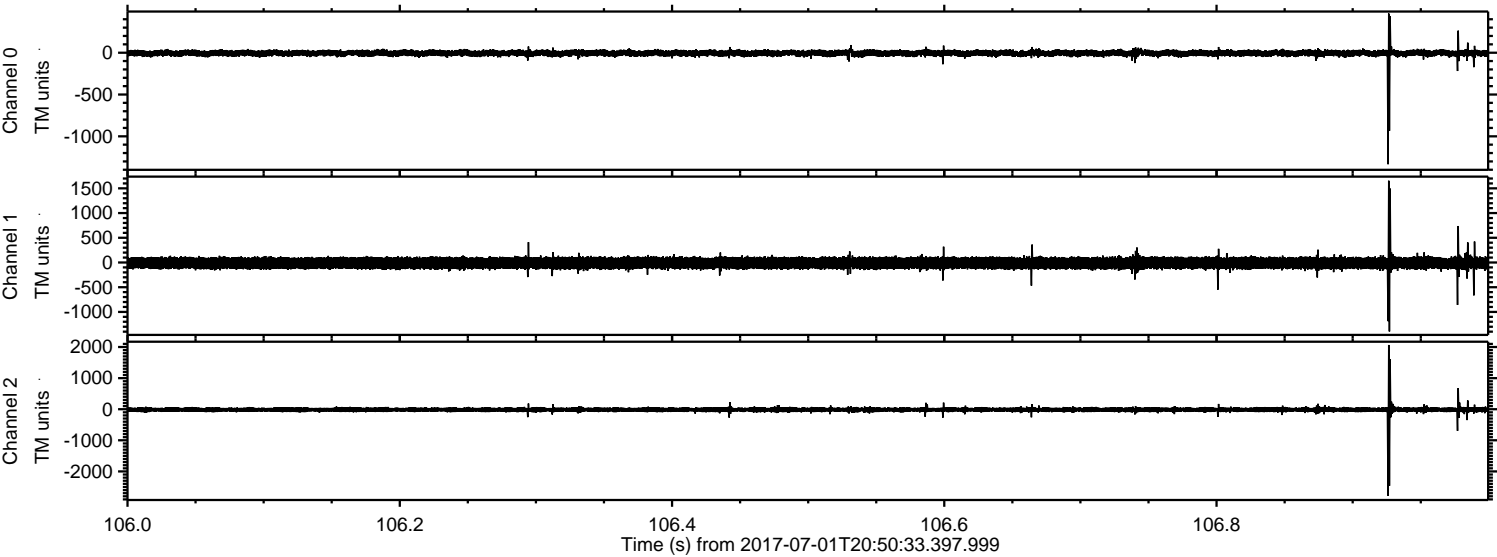
ELMAVAN 3D WAVEFORMS (Measured data sampled at 50 kHz) 51000 packets of 144 samples from 2017-07-01T20:50:33.397.999. Part 30/147

Processed Tue Jul 18 10:10:28 2017 by ELM ver.2012-10-06 from 001__elm20170701_205032__dat00.bin



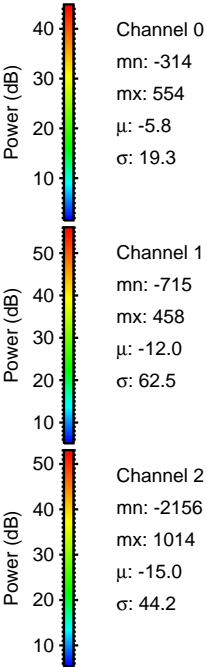
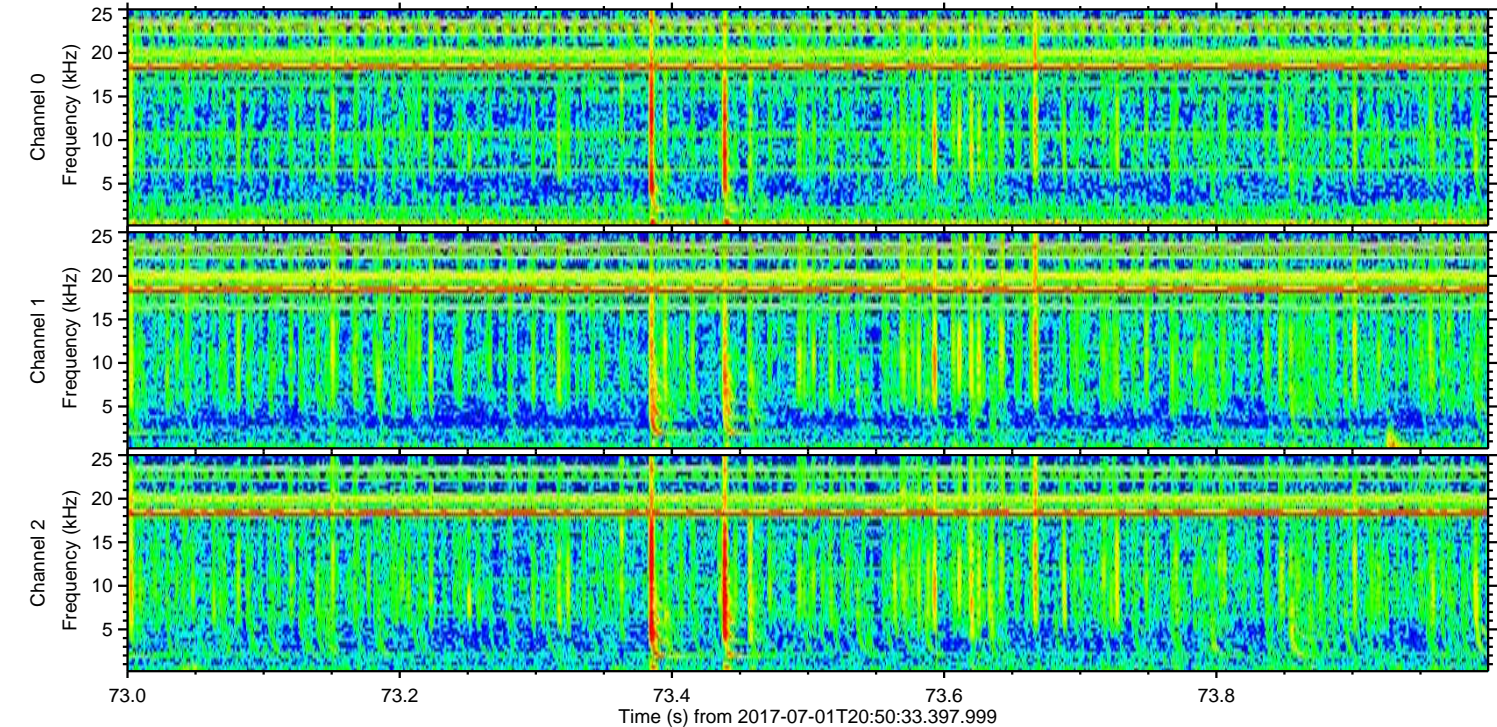
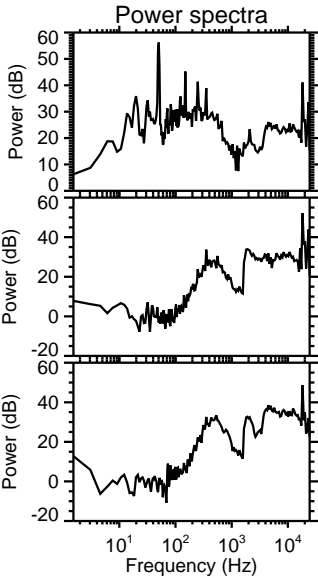
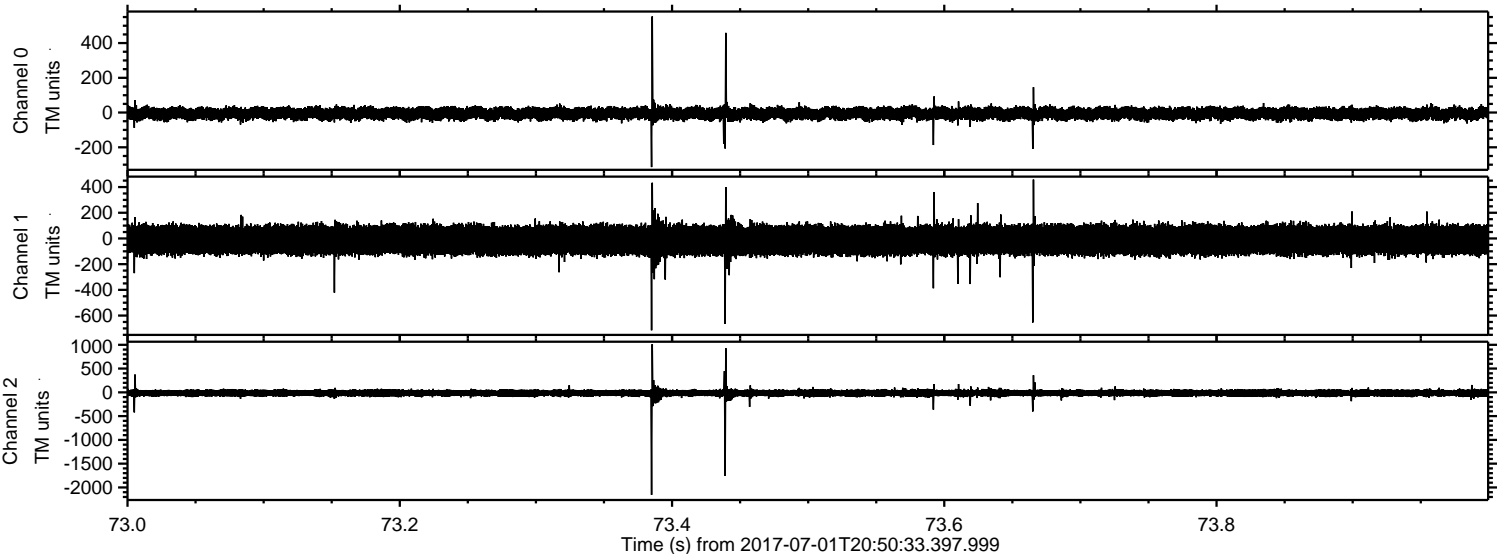
ELMAVAN 3D WAVEFORMS (Measured data sampled at 50 kHz) 51000 packets of 144 samples from 2017-07-01T20:50:33.397.999. Part 107/147

Processed Tue Jul 18 10:10:29 2017 by ELM ver.2012-10-06 from 001__elm20170701_205032__dat00.bin

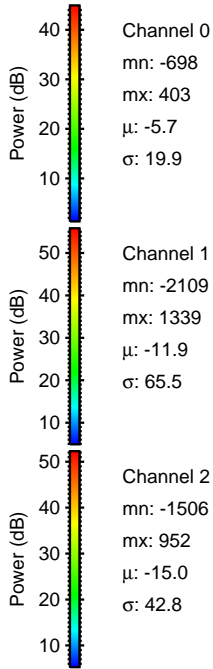
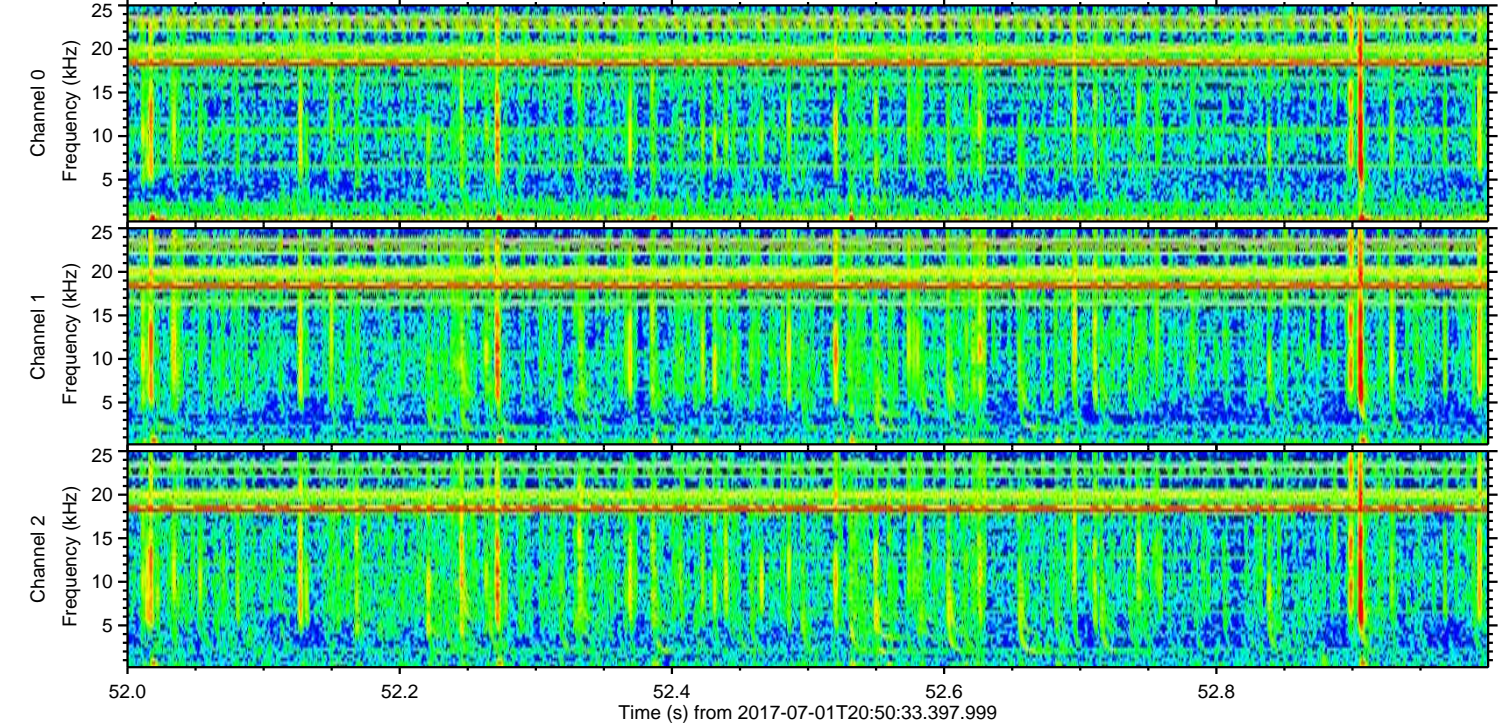
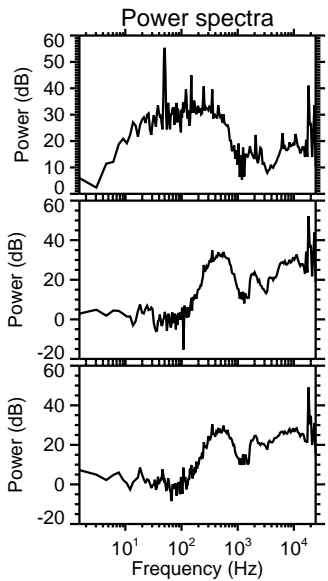
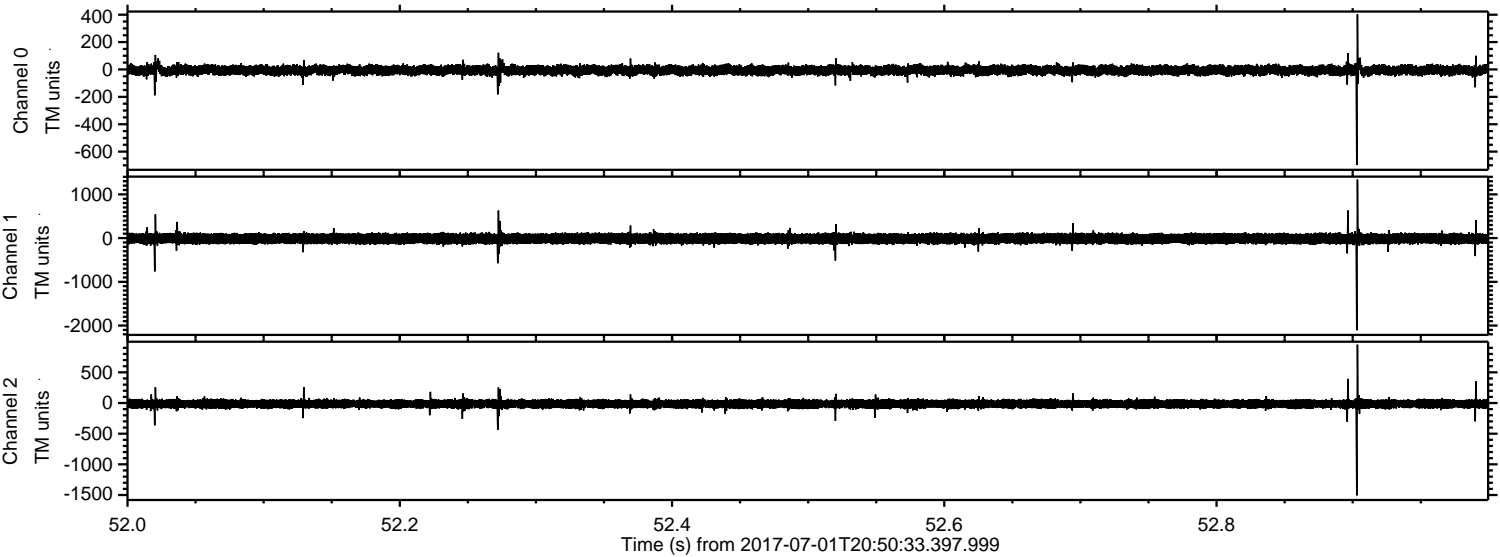


ELMAVAN 3D WAVEFORMS (Measured data sampled at 50 kHz) 51000 packets of 144 samples from 2017-07-01T20:50:33.397.999. Part 74/147

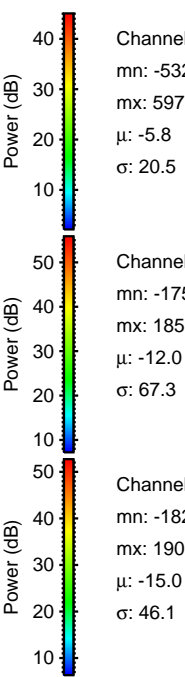
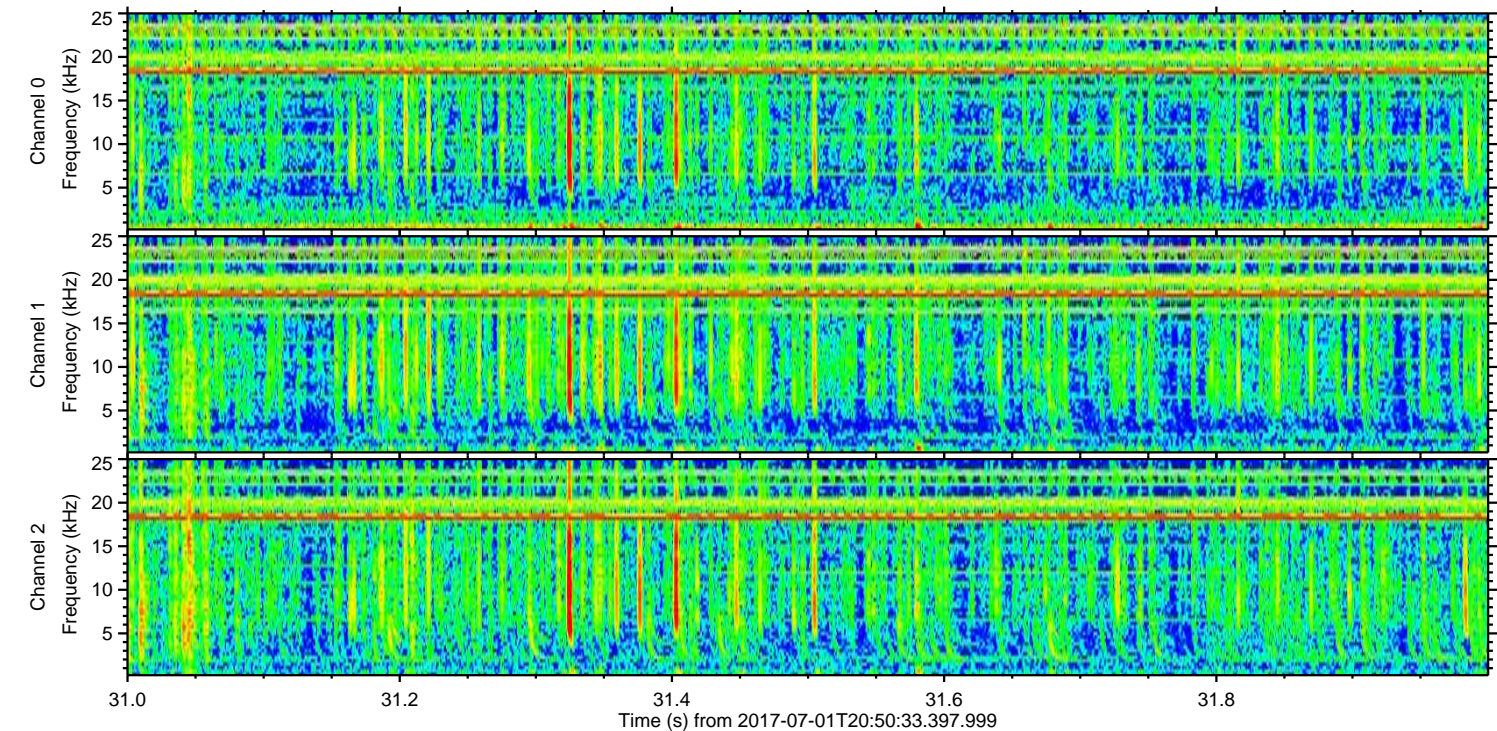
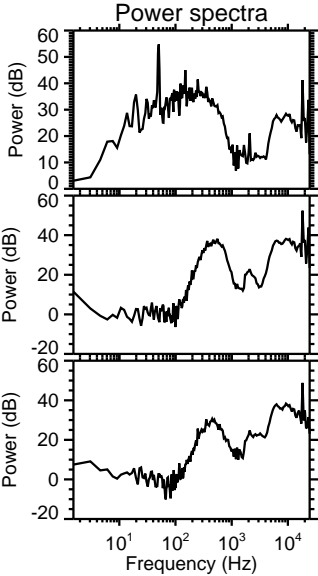
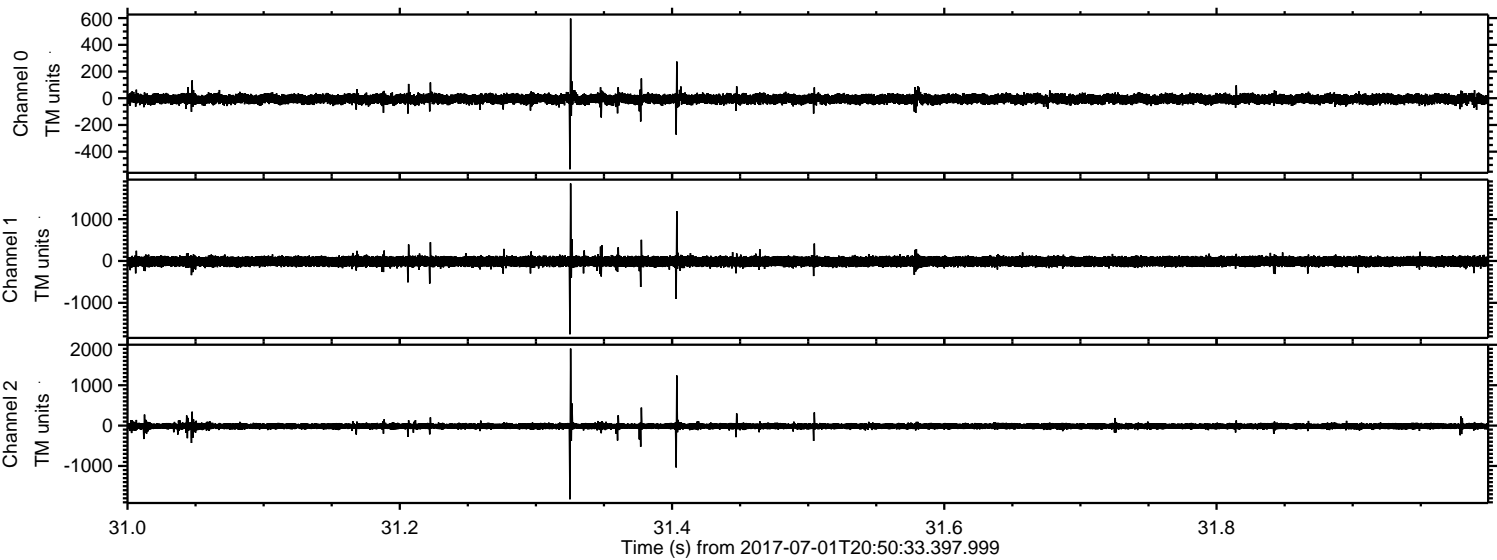
Processed Tue Jul 18 10:10:30 2017 by ELM ver.2012-10-06 from 001__elm20170701_205032__dat00.bin



Processed Tue Jul 18 10:10:31 2017 by ELM ver.2012-10-06 from 001__elm20170701_205032__dat00.bin



Processed Tue Jul 18 10:10:32 2017 by ELM ver.2012-10-06 from 001__elm20170701_205032__dat00.bin

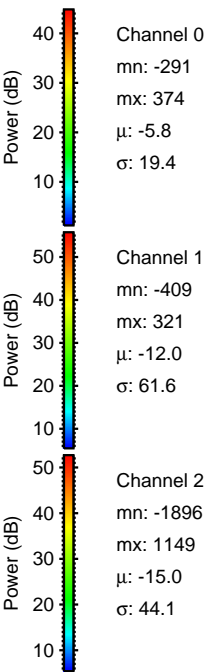
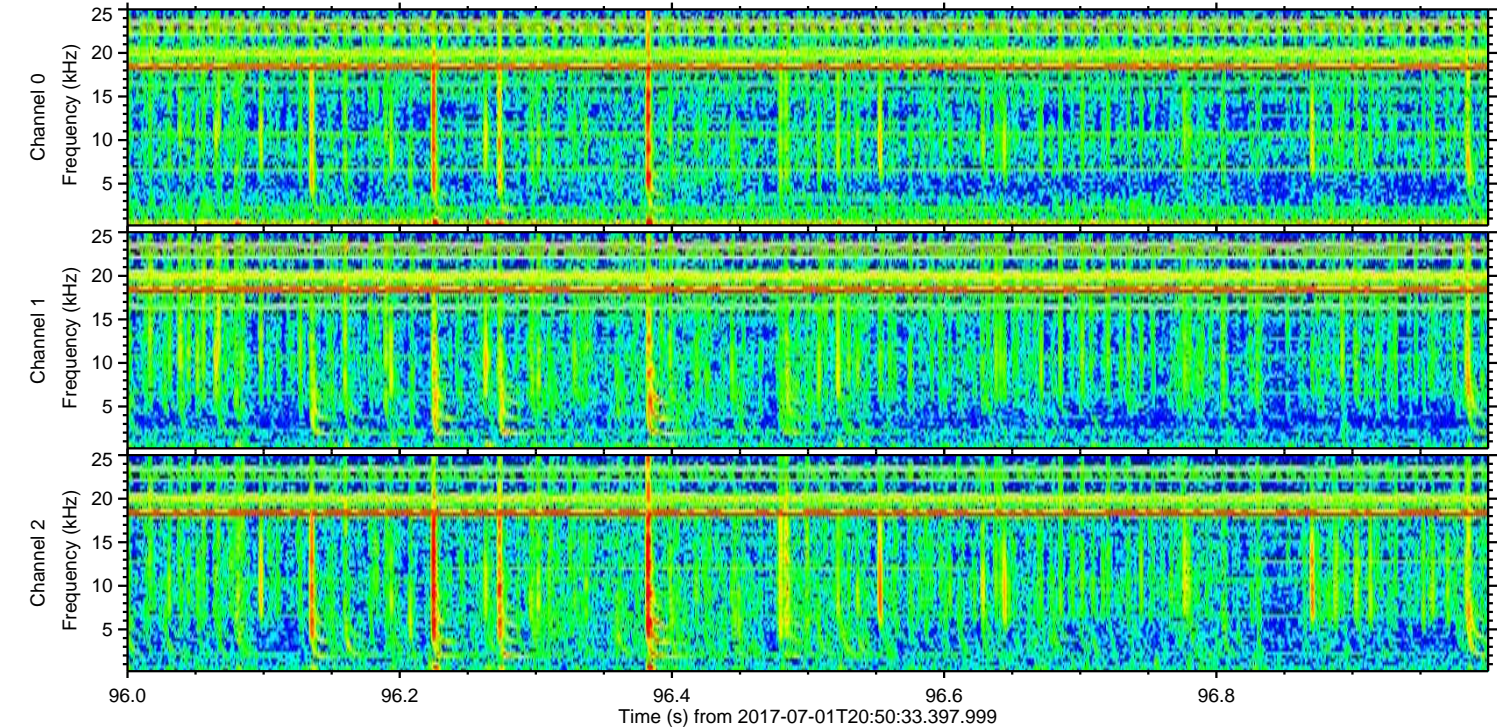
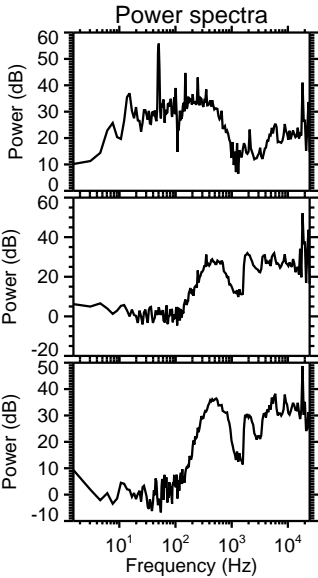
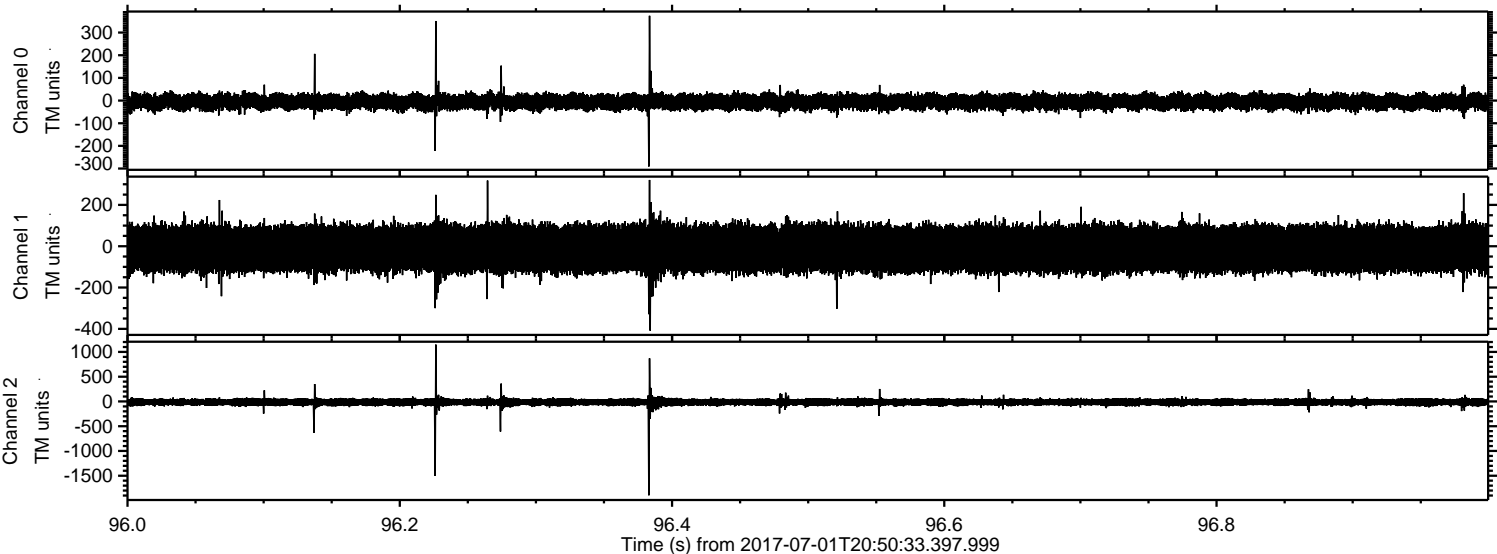


Channel 0
mn: -532
mx: 597
 μ : -5.8
 σ : 20.5

Channel 1
mn: -1750
mx: 1851
 μ : -12.0
 σ : 67.3

Channel 2
mn: -1825
mx: 1907
 μ : -15.0
 σ : 46.1

Processed Tue Jul 18 10:10:33 2017 by ELM ver.2012-10-06 from 001__elm20170701_205032__dat00.bin



Processed Tue Jul 18 10:10:33 2017 by ELM ver.2012-10-06 from 001__elm20170701_205032__dat00.bin

