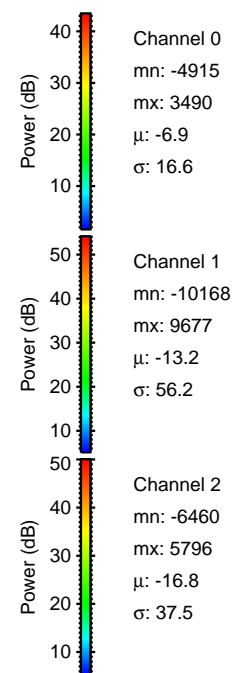
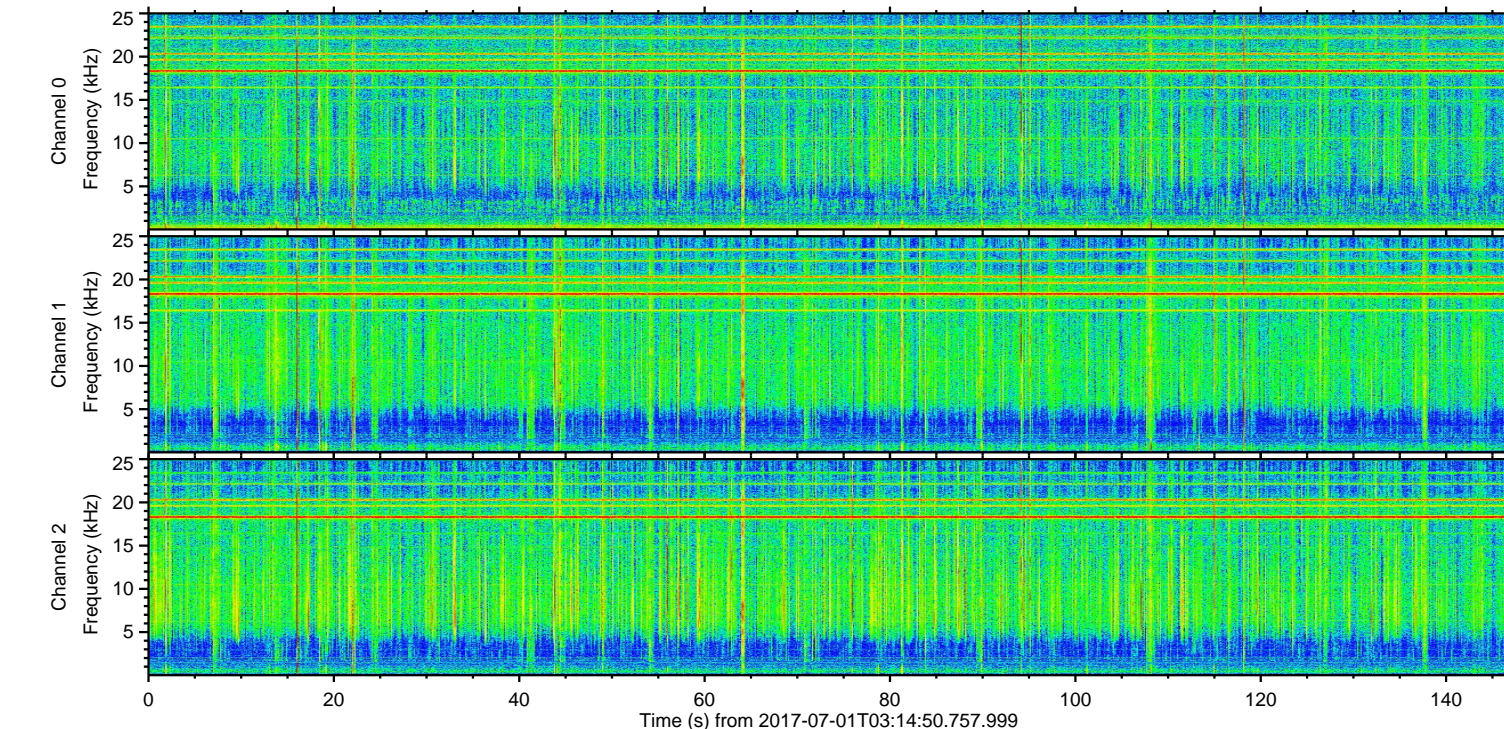
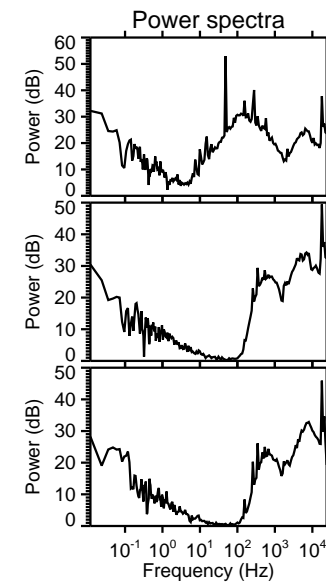
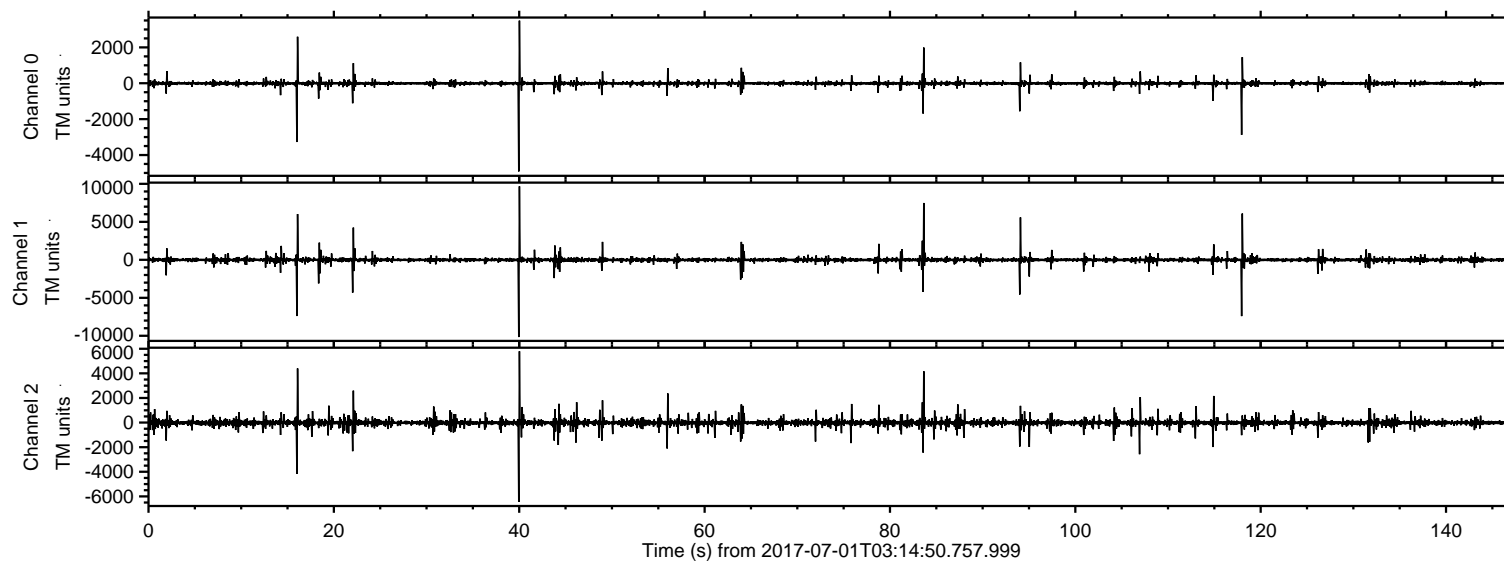


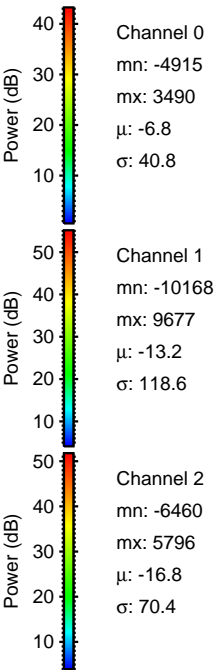
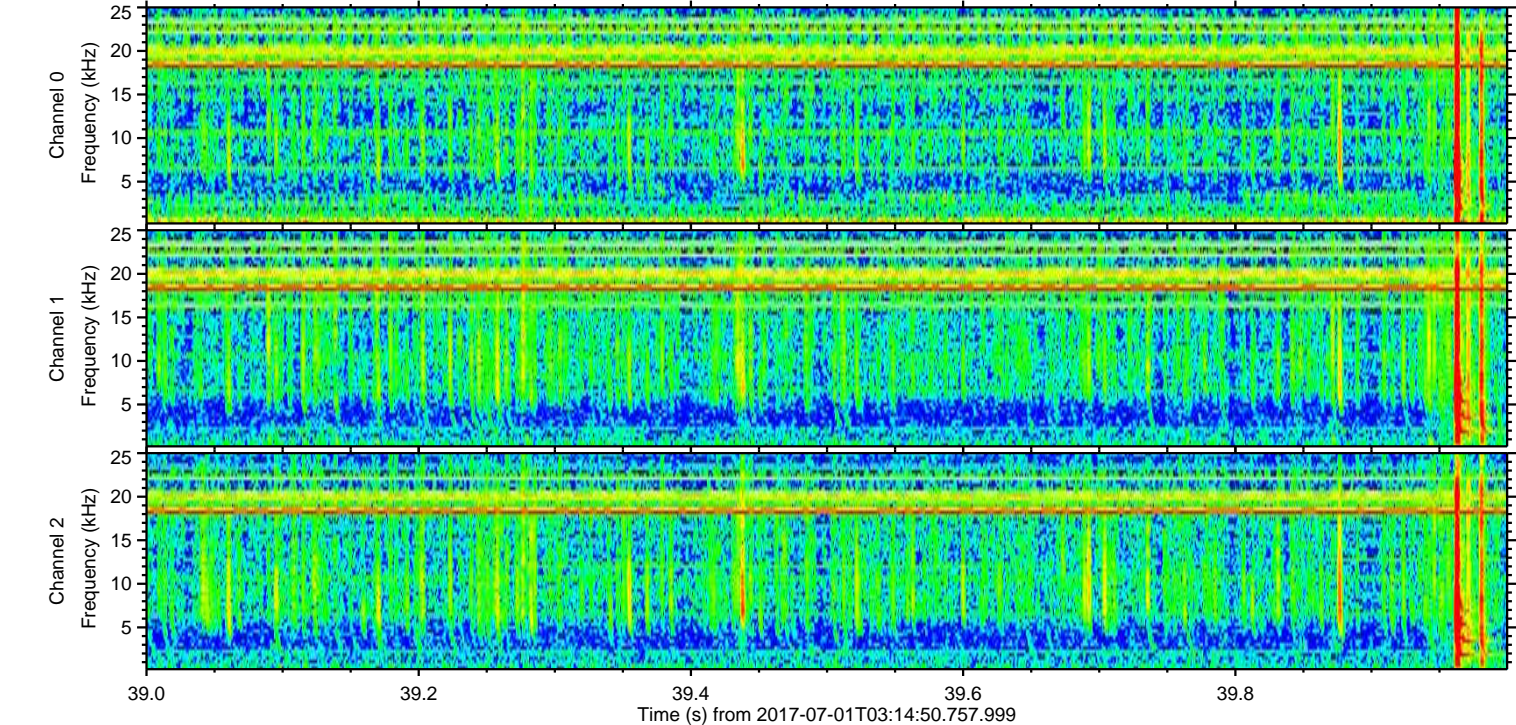
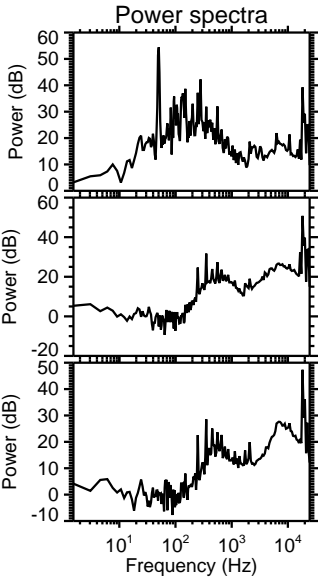
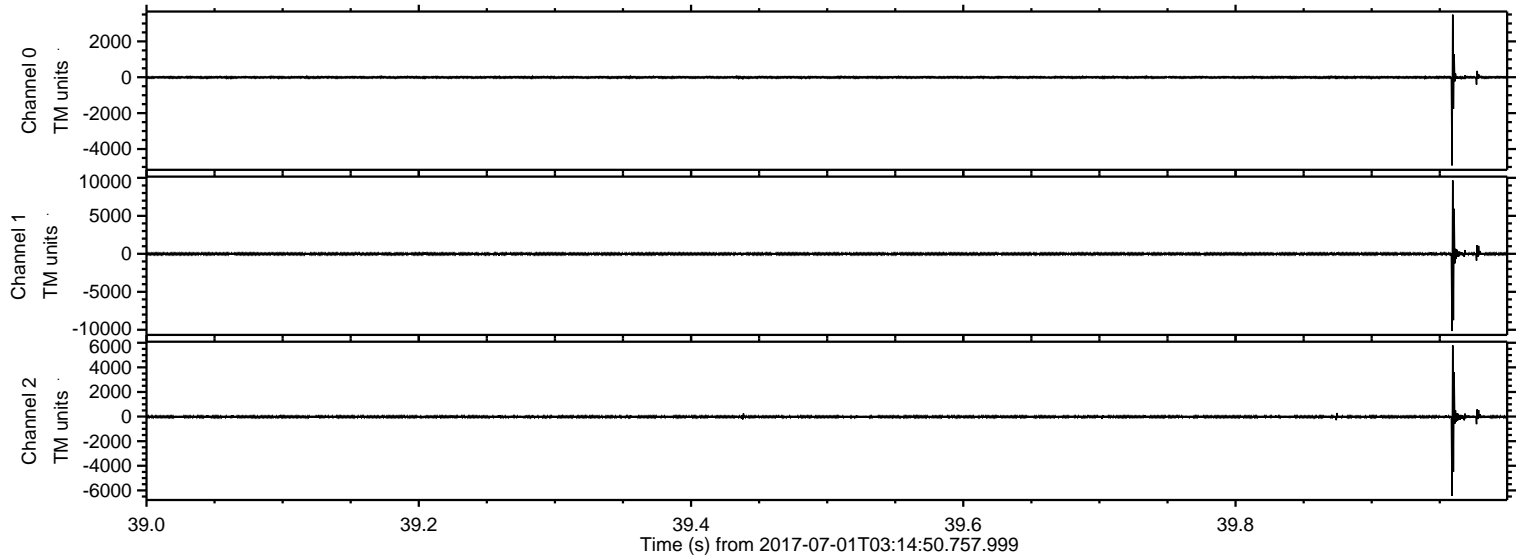
ELMAVAN 3D WAVEFORMS (Measured data sampled at 50 kHz) 51000 packets of 144 samples from 2017-07-01T03:14:50.757.999.

Processed Tue Jul 18 07:28:54 2017 by ELM ver.2012-10-06 from 001__elm20170701_031449__dat00.bin



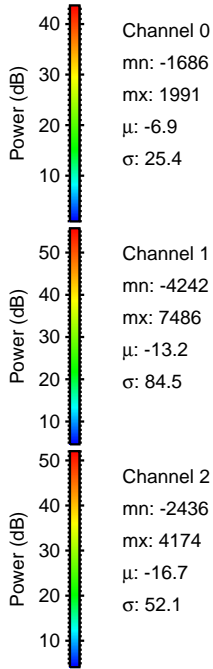
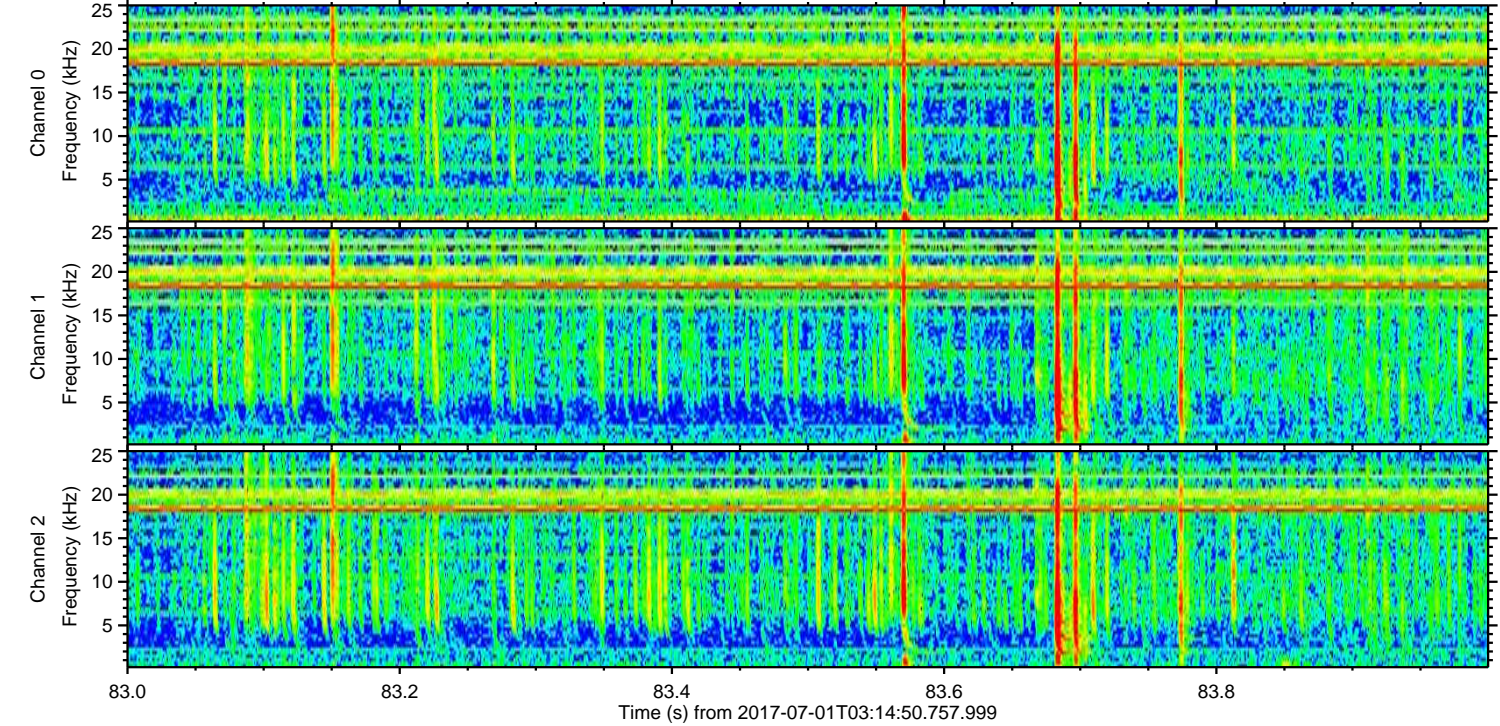
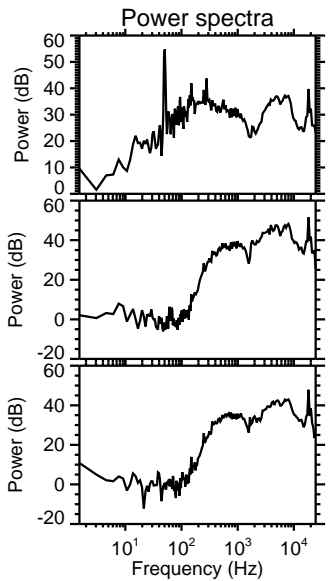
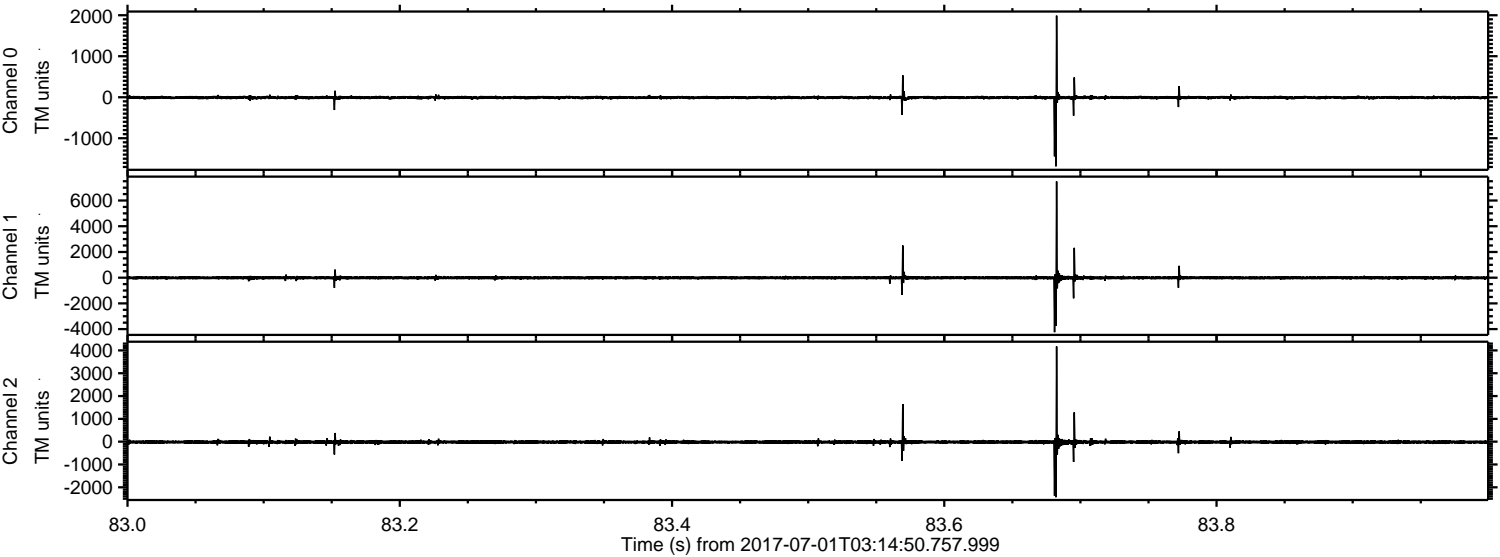
ELMAVAN 3D WAVEFORMS (Measured data sampled at 50 kHz) 51000 packets of 144 samples from 2017-07-01T03:14:50.757.999. Part 40/147

Processed Tue Jul 18 07:29:01 2017 by ELM ver.2012-10-06 from 001__elm20170701_031449__dat00.bin



ELMAVAN 3D WAVEFORMS (Measured data sampled at 50 kHz) 51000 packets of 144 samples from 2017-07-01T03:14:50.757.999. Part 84/147

Processed Tue Jul 18 07:29:02 2017 by ELM ver.2012-10-06 from 001__elm20170701_031449__dat00.bin



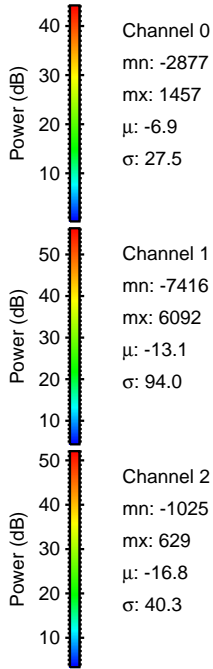
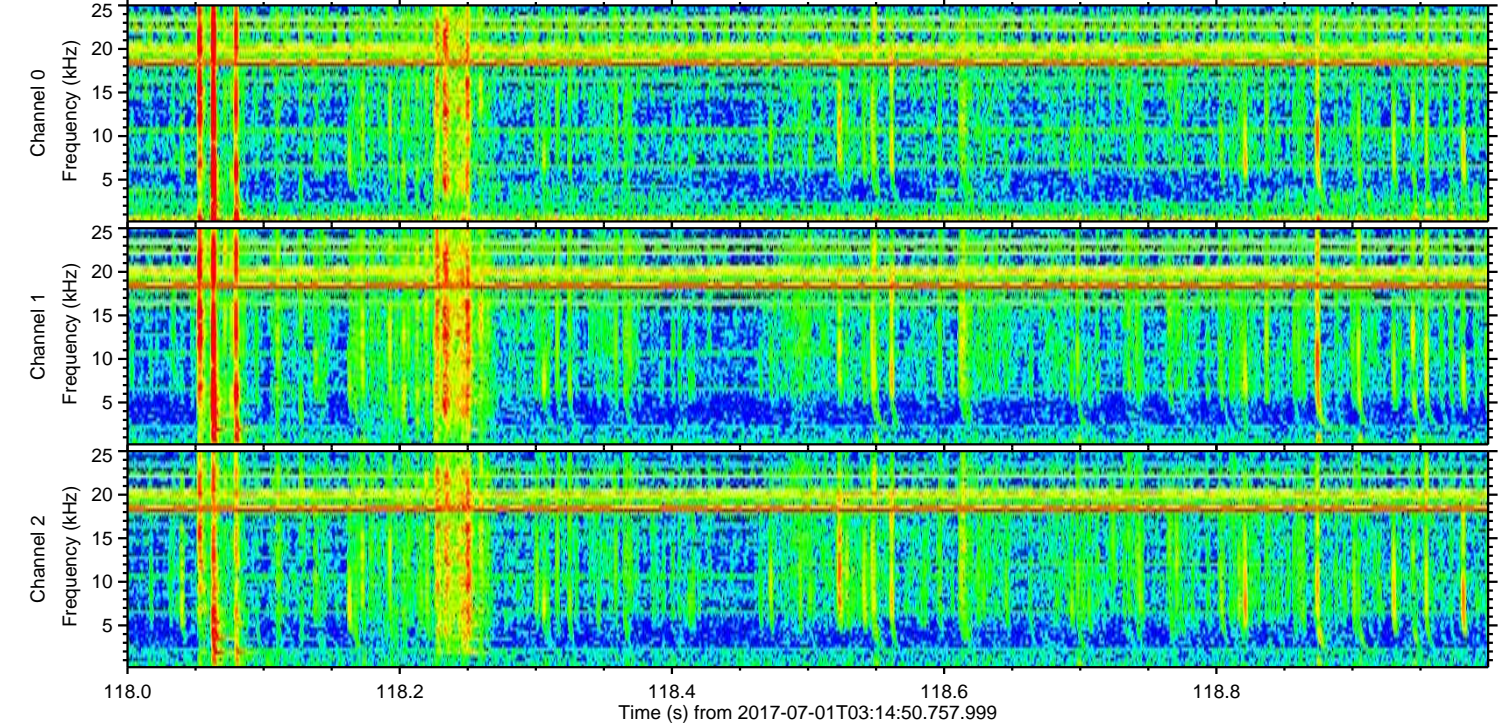
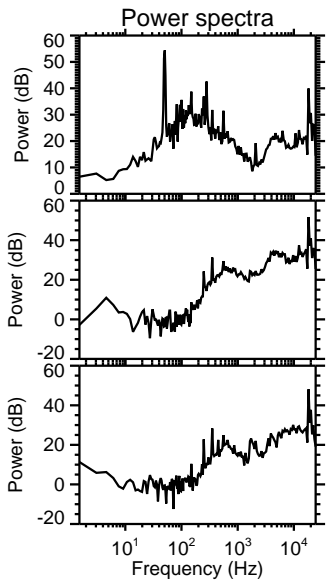
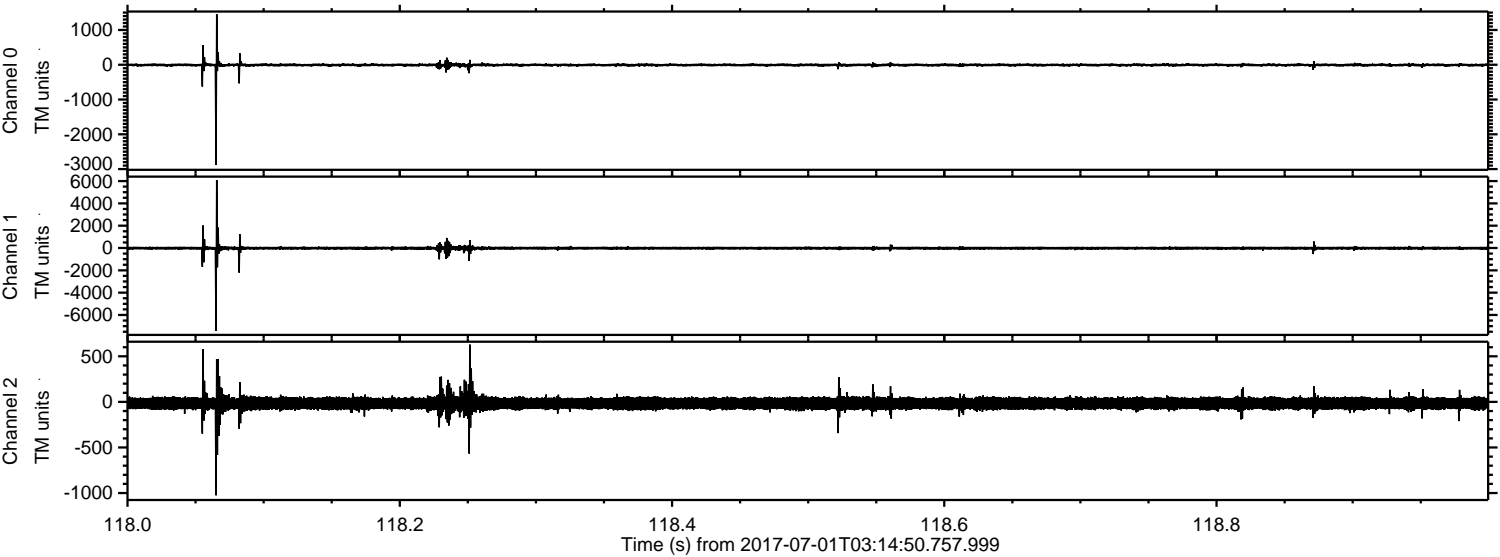
Channel 0
mn: -1686
mx: 1991
 μ : -6.9
 σ : 25.4

Channel 1
mn: -4242
mx: 7486
 μ : -13.2
 σ : 84.5

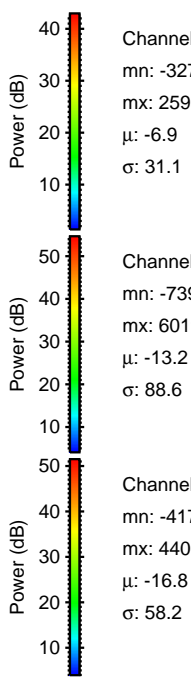
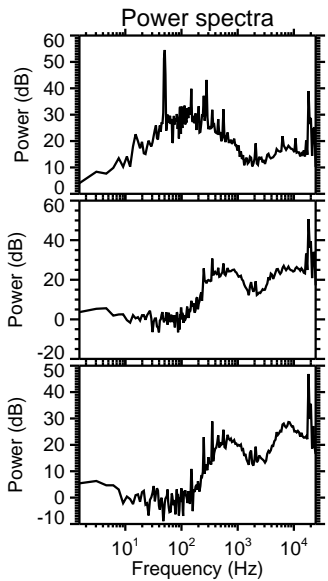
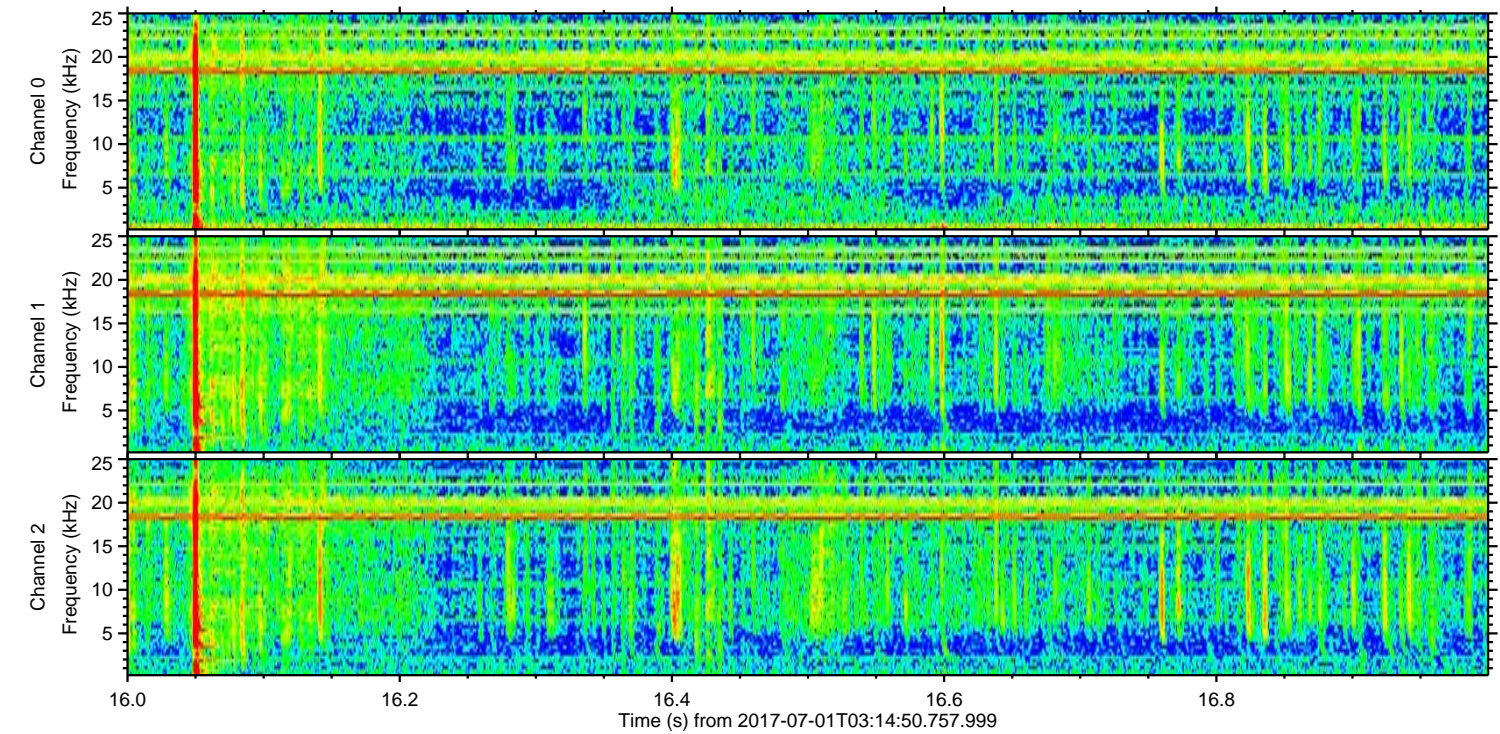
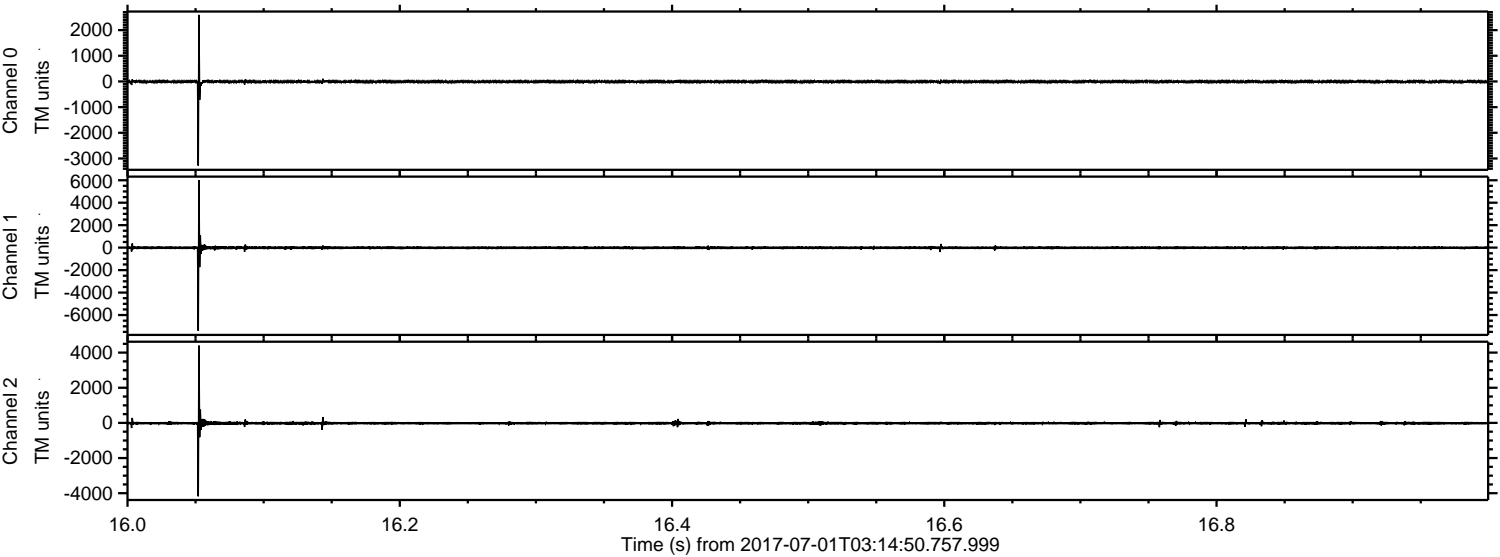
Channel 2
mn: -2436
mx: 4174
 μ : -16.7
 σ : 52.1

ELMAVAN 3D WAVEFORMS (Measured data sampled at 50 kHz) 51000 packets of 144 samples from 2017-07-01T03:14:50.757.999. Part 119/147

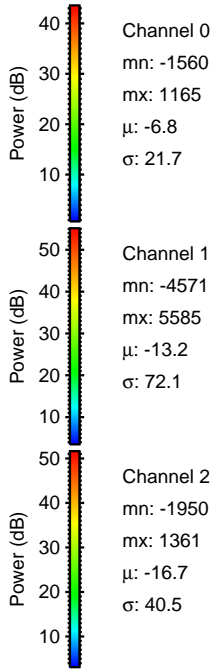
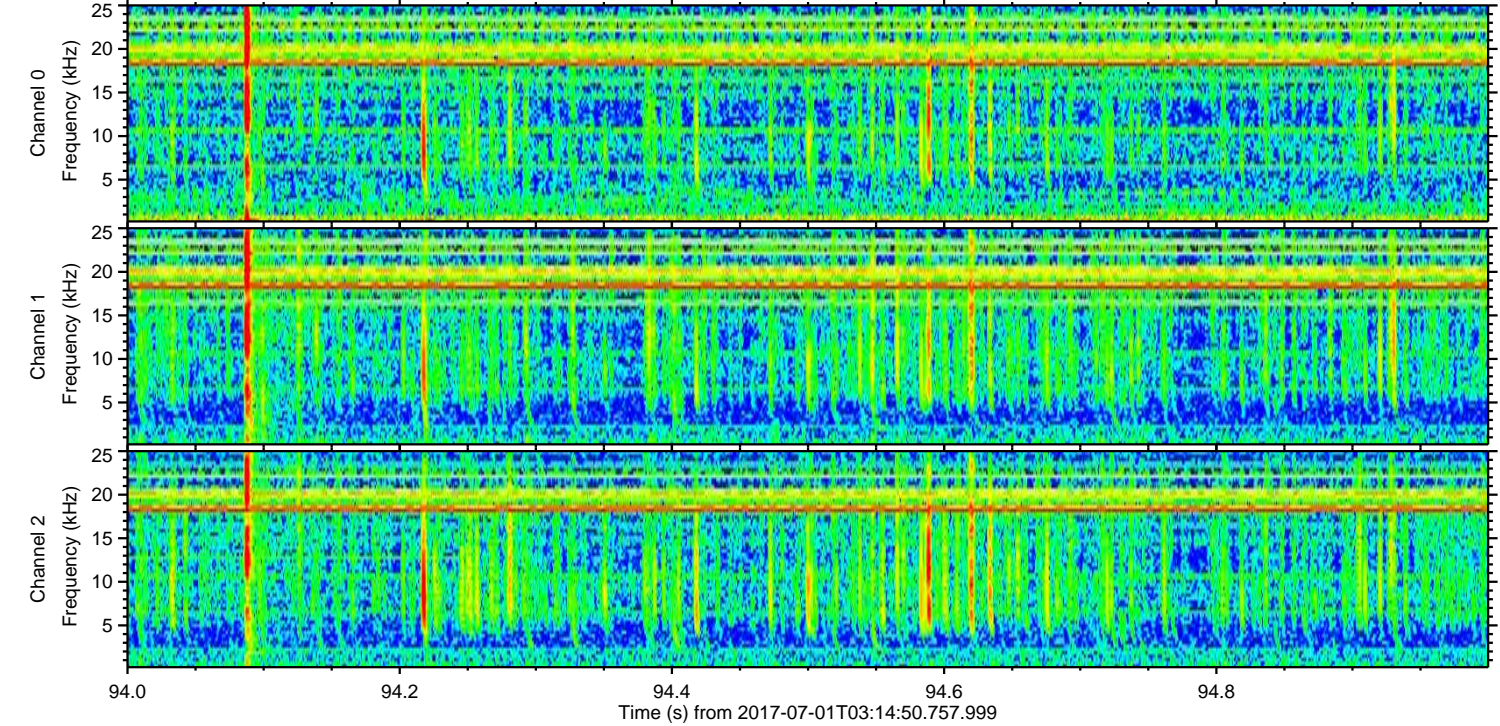
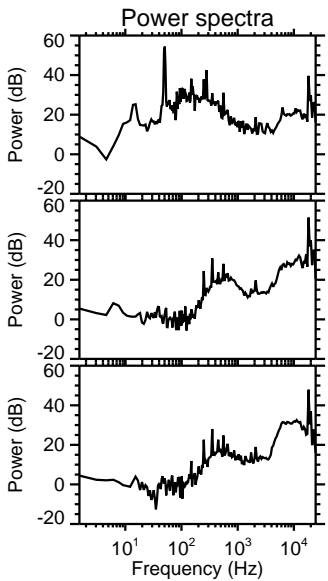
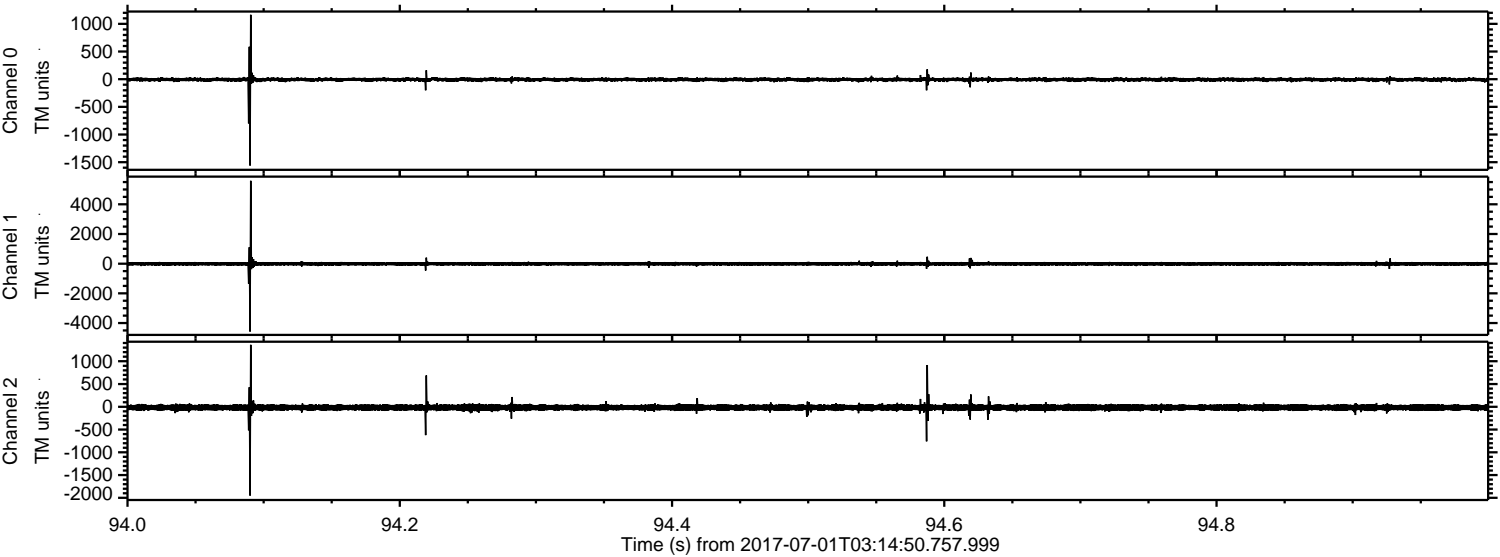
Processed Tue Jul 18 07:29:02 2017 by ELM ver.2012-10-06 from 001__elm20170701_031449__dat00.bin



Processed Tue Jul 18 07:29:03 2017 by ELM ver.2012-10-06 from 001__elm20170701_031449__dat00.bin



Processed Tue Jul 18 07:29:04 2017 by ELM ver.2012-10-06 from 001__elm20170701_031449__dat00.bin



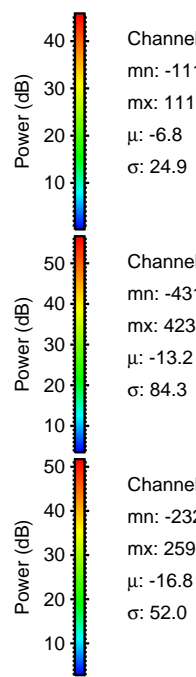
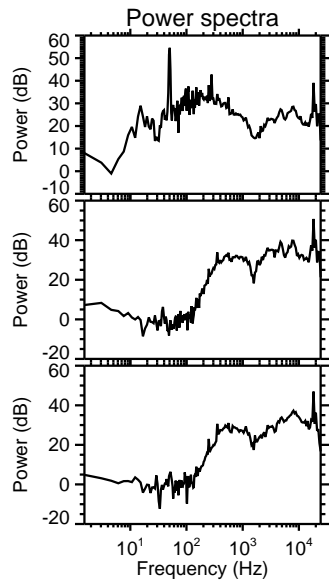
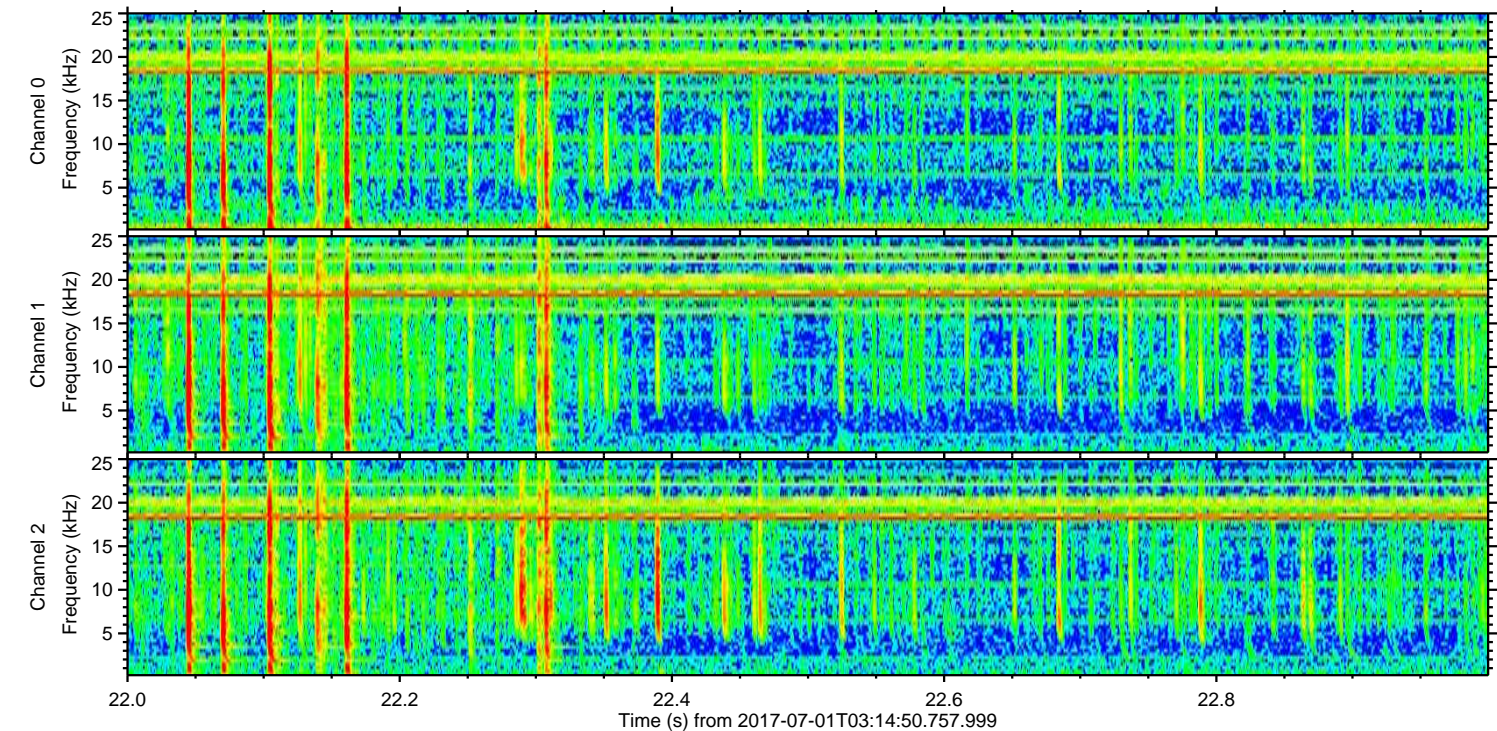
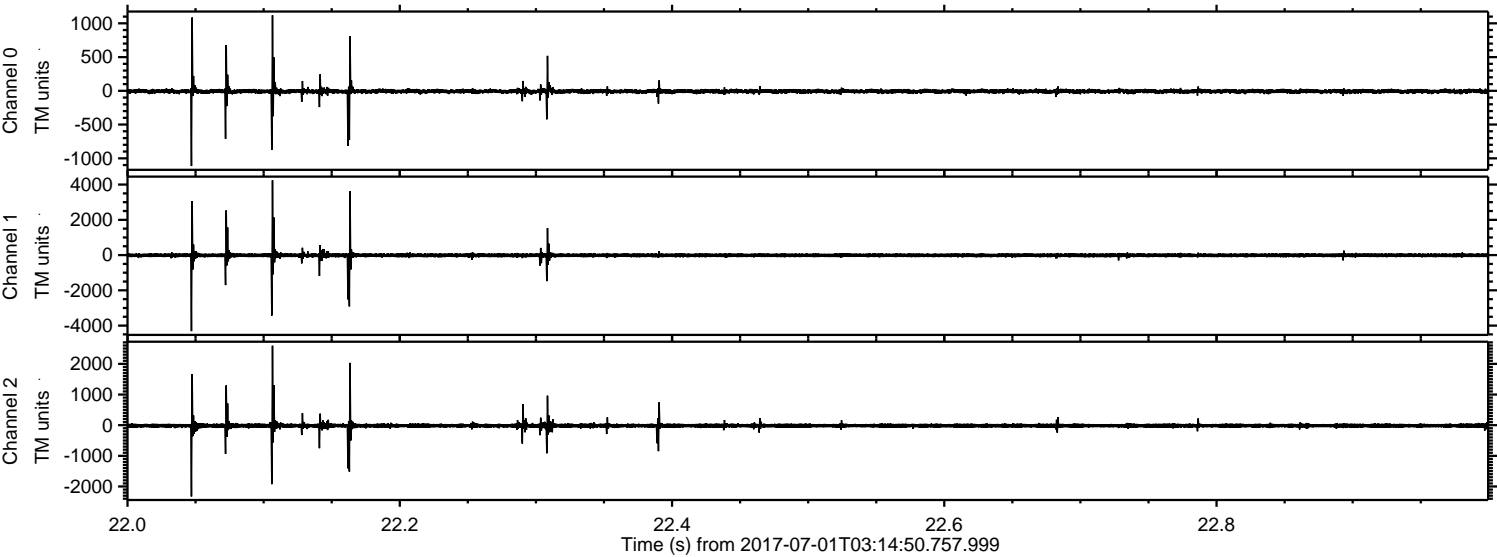
Channel 0
mn: -1560
mx: 1165
 μ : -6.8
 σ : 21.7

Channel 1
mn: -4571
mx: 5585
 μ : -13.2
 σ : 72.1

Channel 2
mn: -1950
mx: 1361
 μ : -16.7
 σ : 40.5

ELMAVAN 3D WAVEFORMS (Measured data sampled at 50 kHz) 51000 packets of 144 samples from 2017-07-01T03:14:50.757.999. Part 23/147

Processed Tue Jul 18 07:29:05 2017 by ELM ver.2012-10-06 from 001__elm20170701_031449__dat00.bin



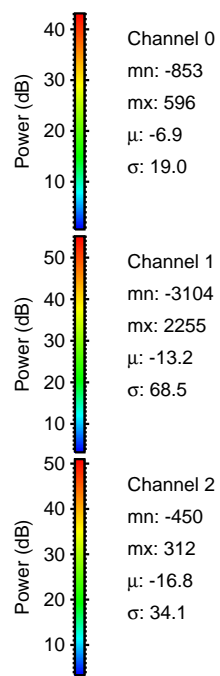
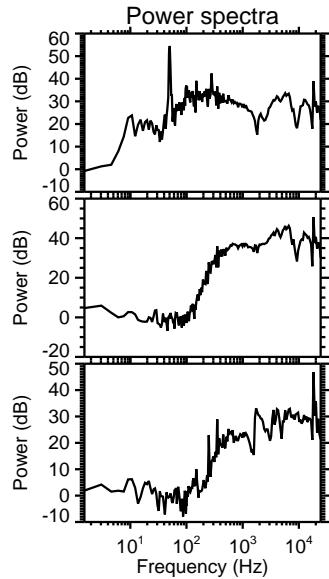
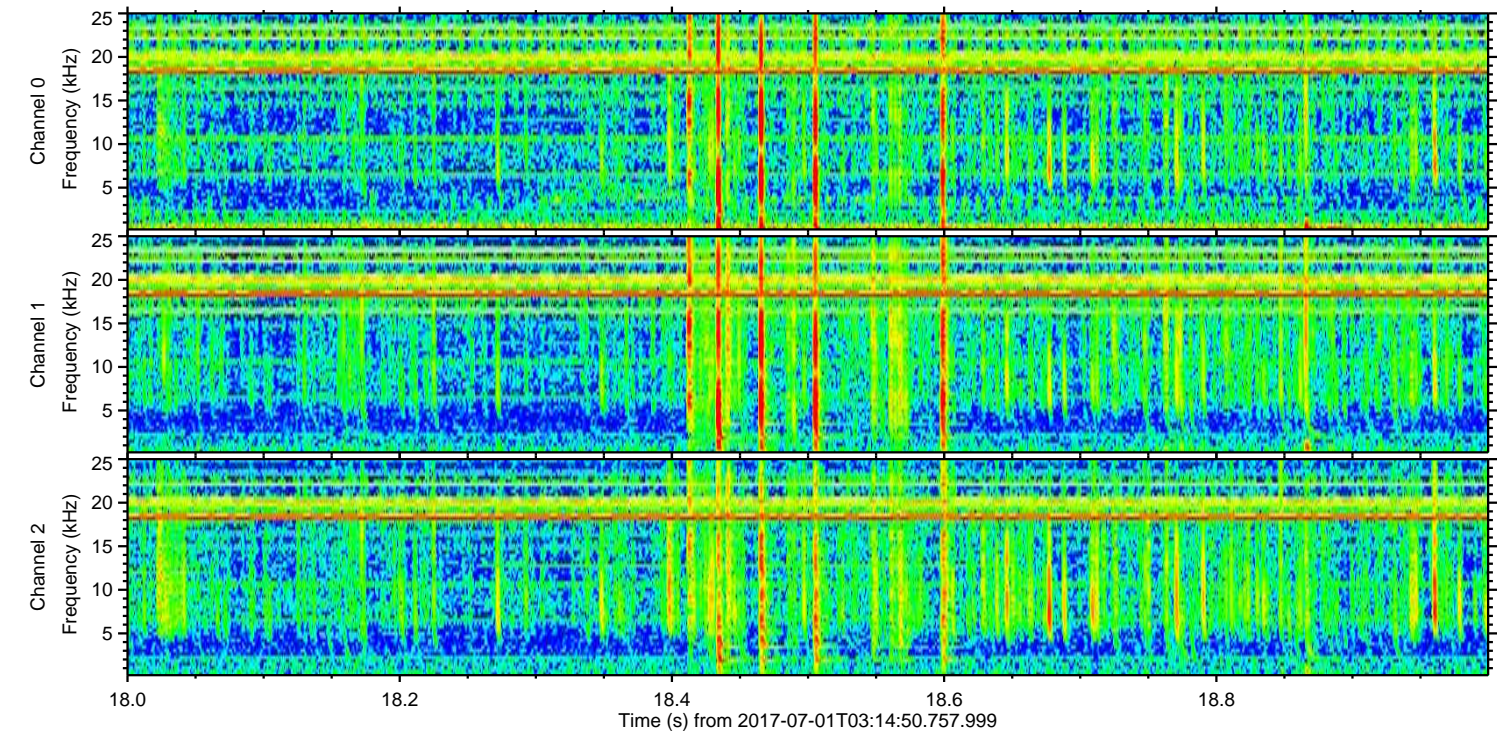
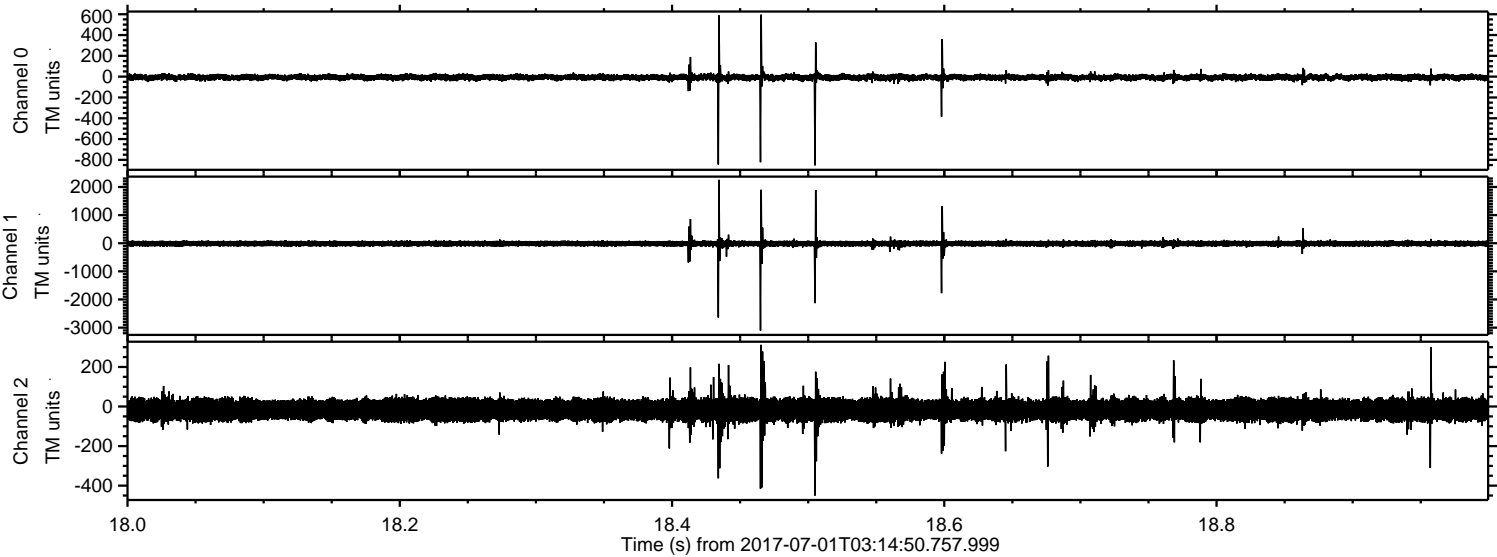
Channel 0
mn: -1115
mx: 1119
 μ : -6.8
 σ : 24.9

Channel 1
mn: -4313
mx: 4239
 μ : -13.2
 σ : 84.3

Channel 2
mn: -2325
mx: 2593
 μ : -16.8
 σ : 52.0

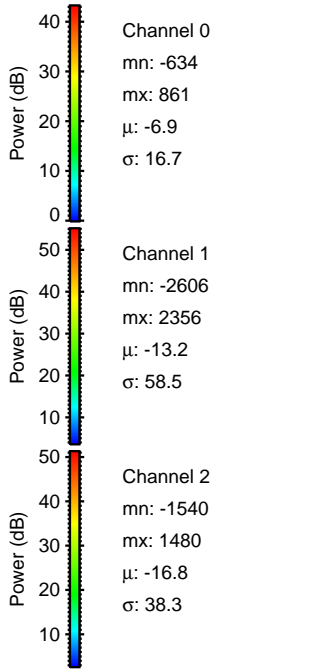
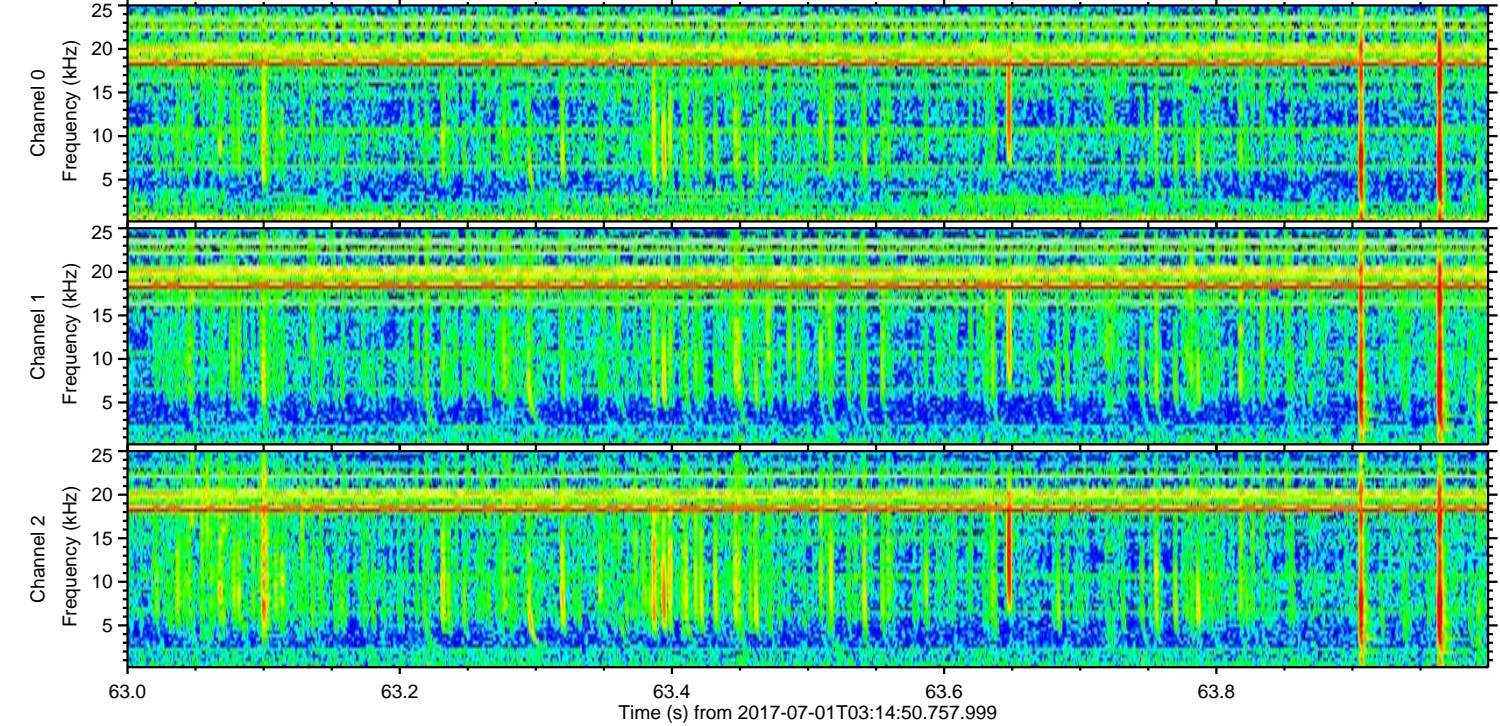
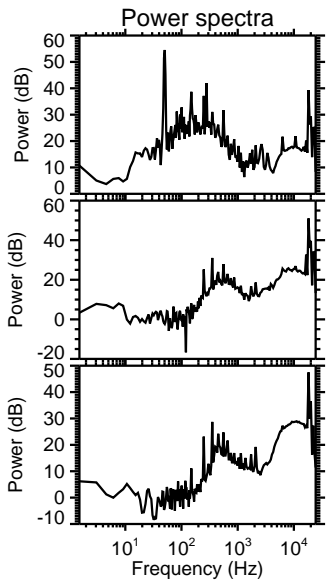
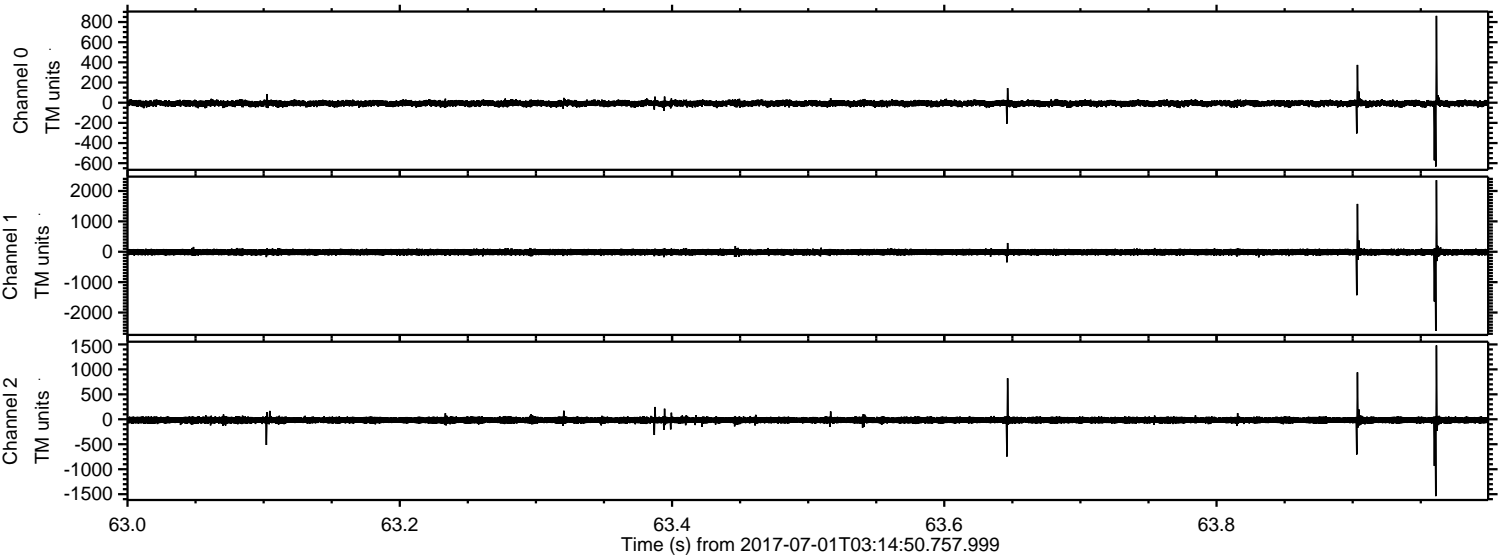
ELMAVAN 3D WAVEFORMS (Measured data sampled at 50 kHz) 51000 packets of 144 samples from 2017-07-01T03:14:50.757.999. Part 19/147

Processed Tue Jul 18 07:29:06 2017 by ELM ver.2012-10-06 from 001__elm20170701_031449__dat00.bin



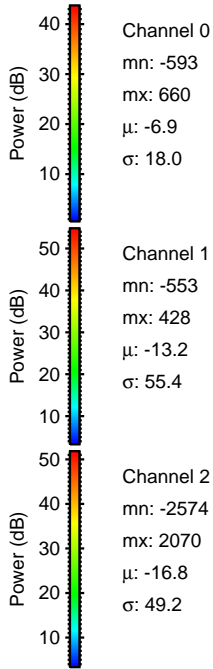
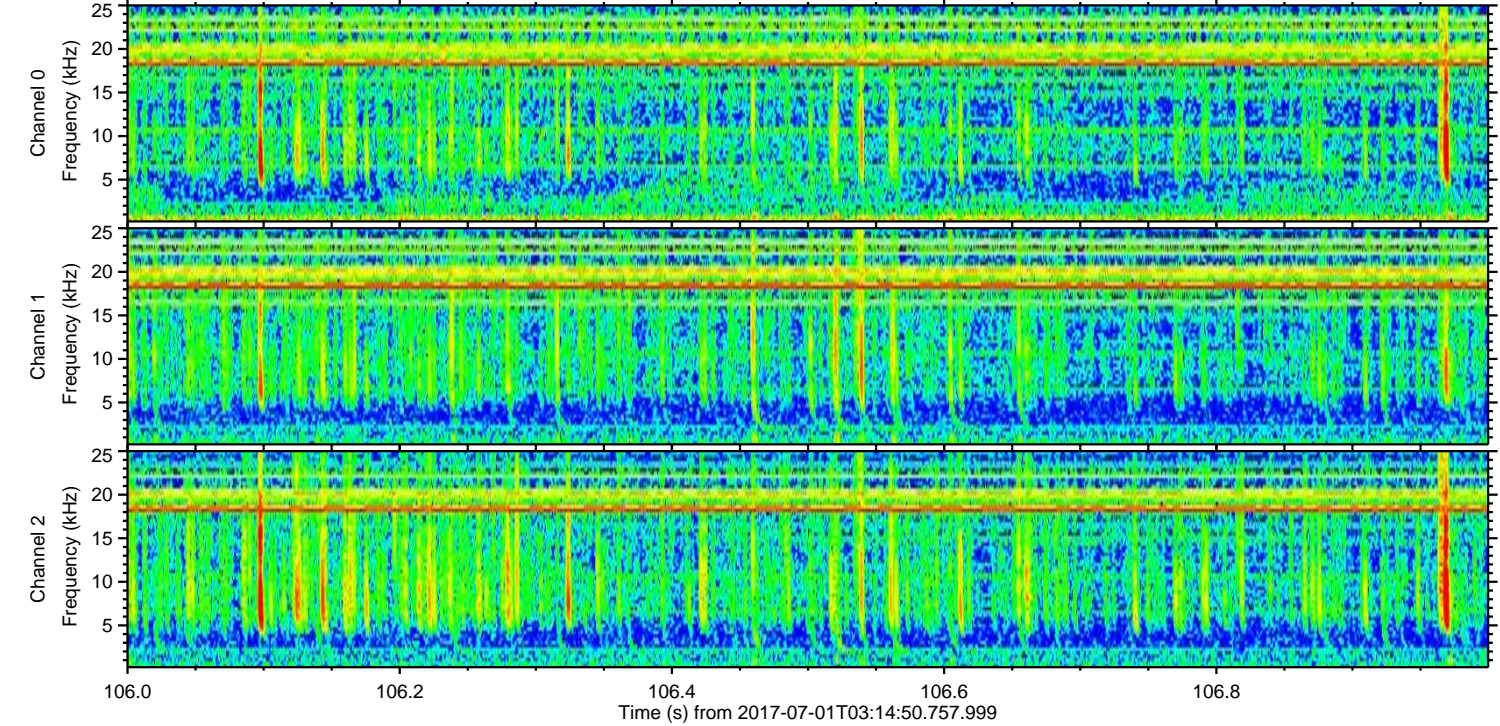
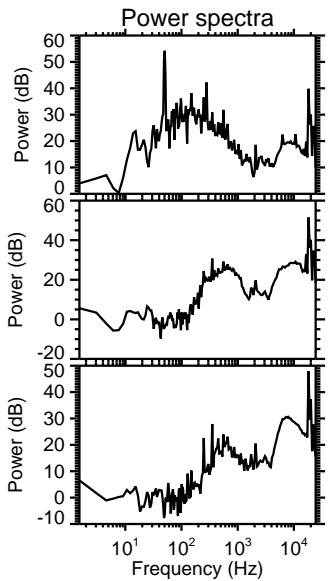
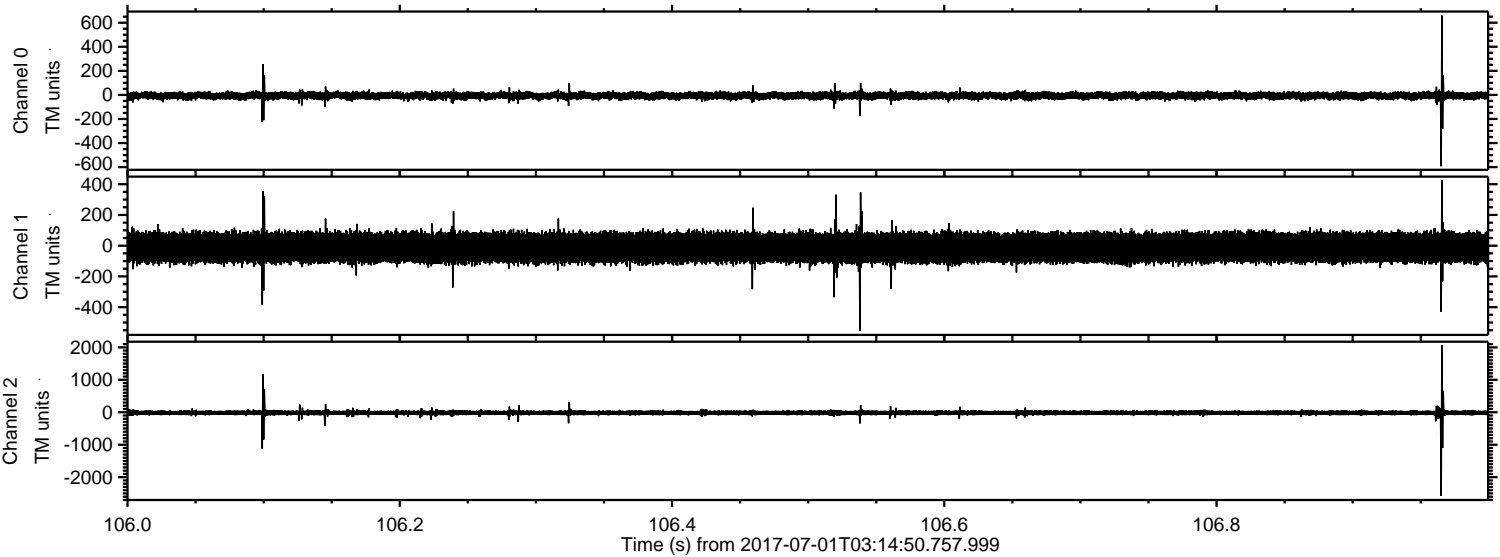
ELMAVAN 3D WAVEFORMS (Measured data sampled at 50 kHz) 51000 packets of 144 samples from 2017-07-01T03:14:50.757.999. Part 64/147

Processed Tue Jul 18 07:29:07 2017 by ELM ver.2012-10-06 from 001__elm20170701_031449__dat00.bin



ELMAVAN 3D WAVEFORMS (Measured data sampled at 50 kHz) 51000 packets of 144 samples from 2017-07-01T03:14:50.757.999. Part 107/147

Processed Tue Jul 18 07:29:08 2017 by ELM ver.2012-10-06 from 001__elm20170701_031449__dat00.bin



Channel 0
mn: -593
mx: 660
 μ : -6.9
 σ : 18.0

Channel 1
mn: -553
mx: 428
 μ : -13.2
 σ : 55.4

Channel 2
mn: -2574
mx: 2070
 μ : -16.8
 σ : 49.2

Processed Tue Jul 18 07:29:08 2017 by ELM ver.2012-10-06 from 001__elm20170701_031449__dat00.bin

