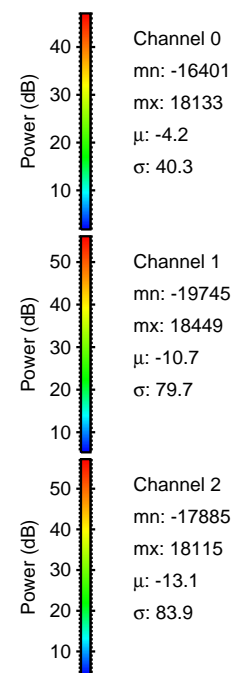
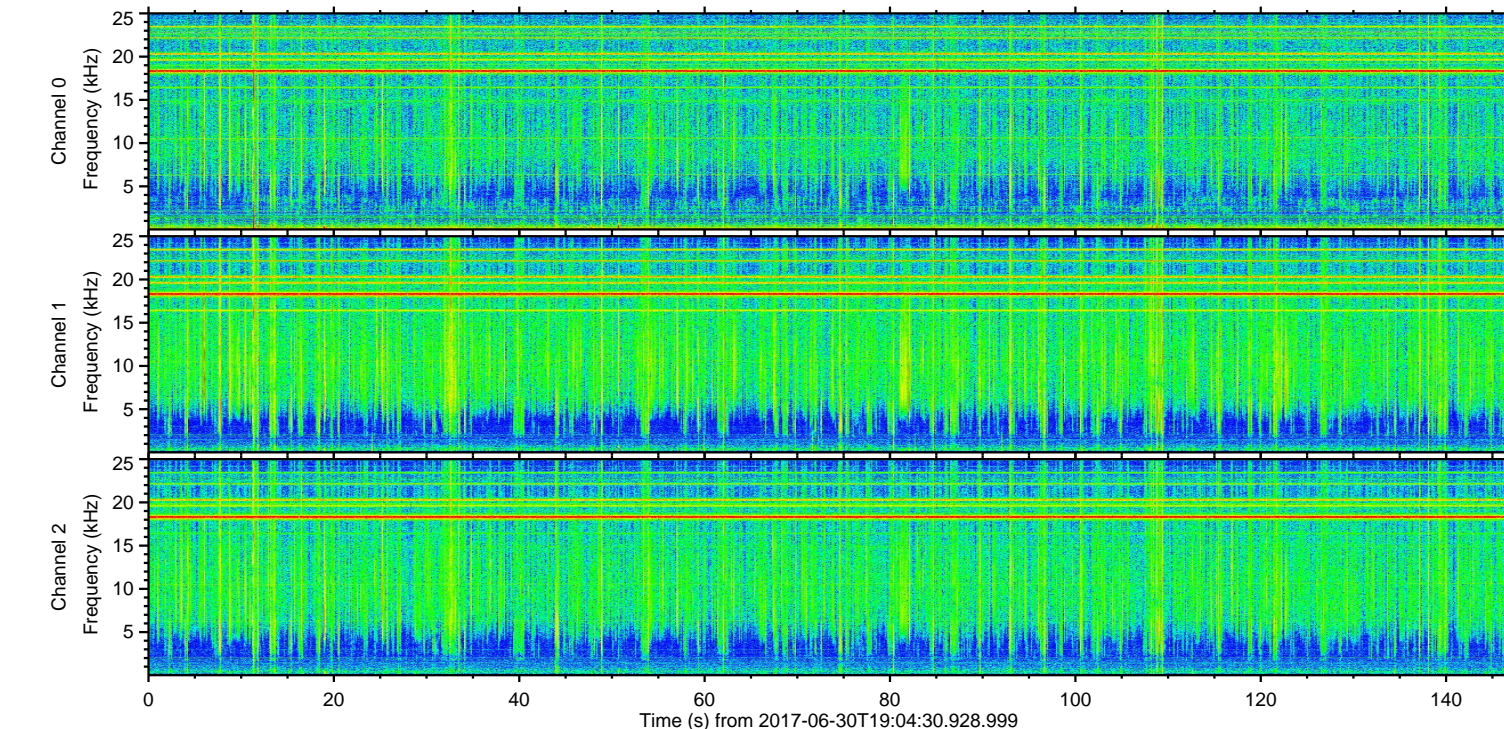
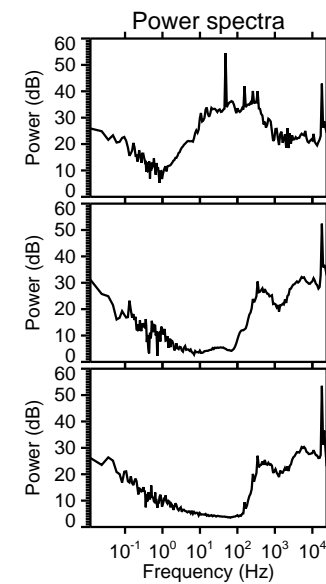
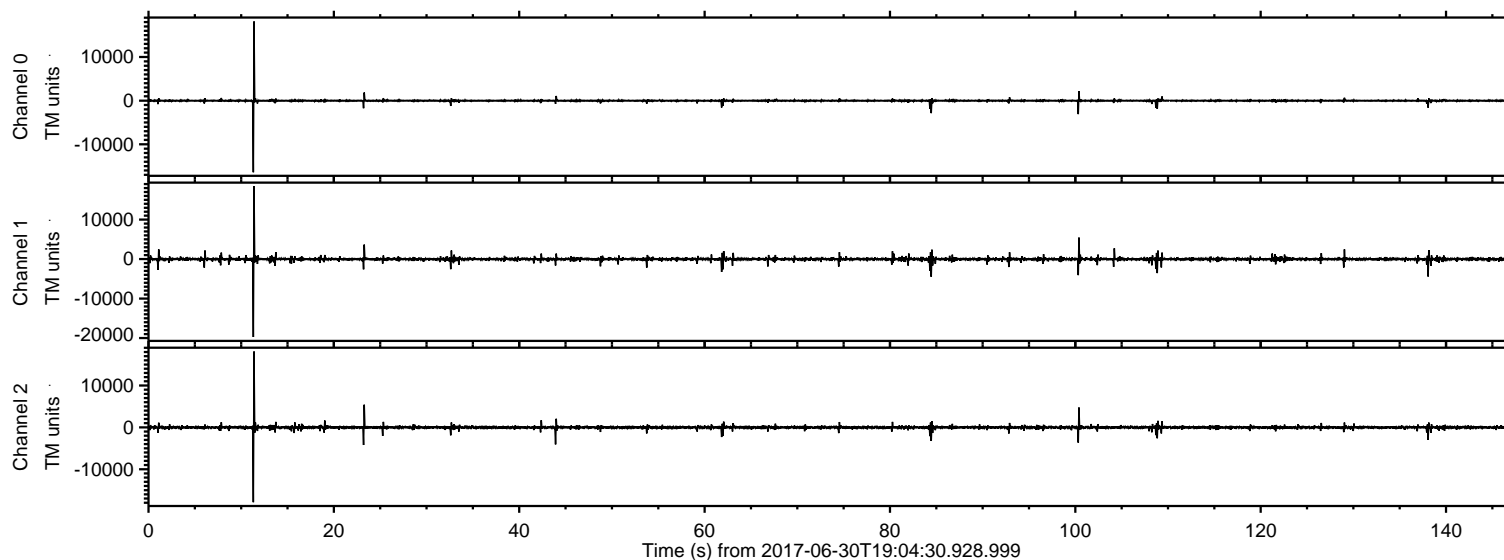
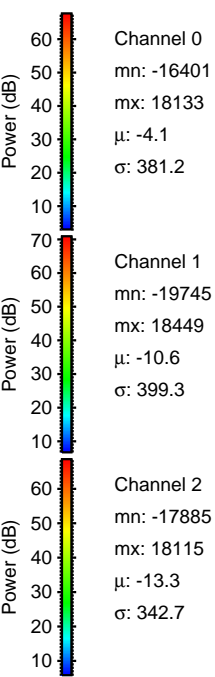
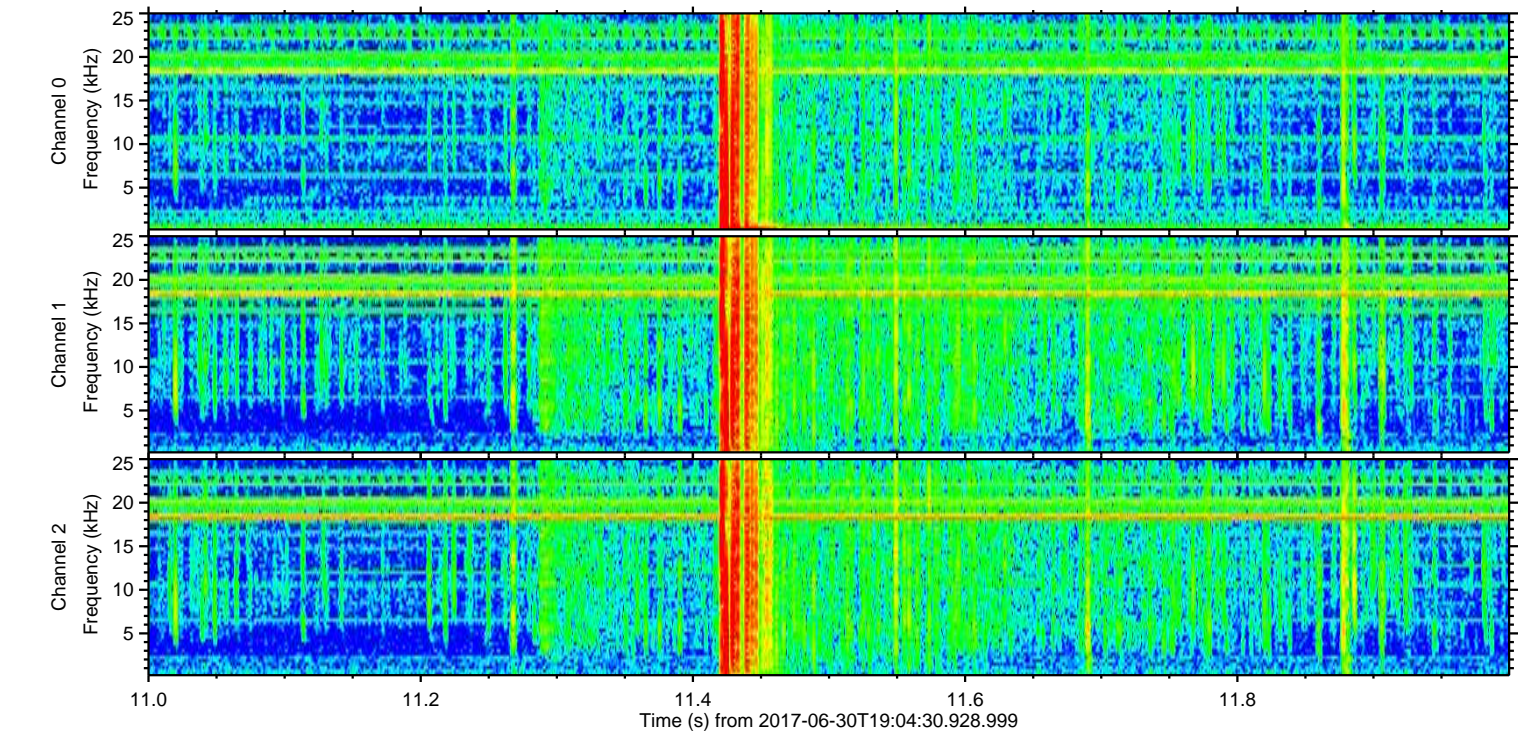
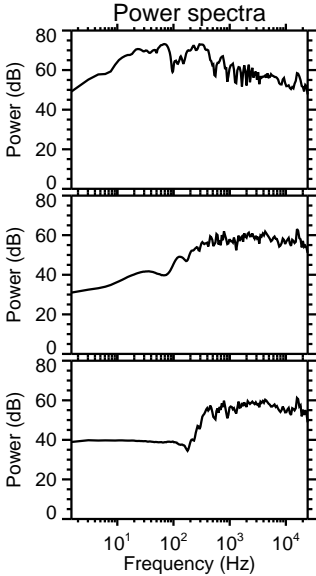
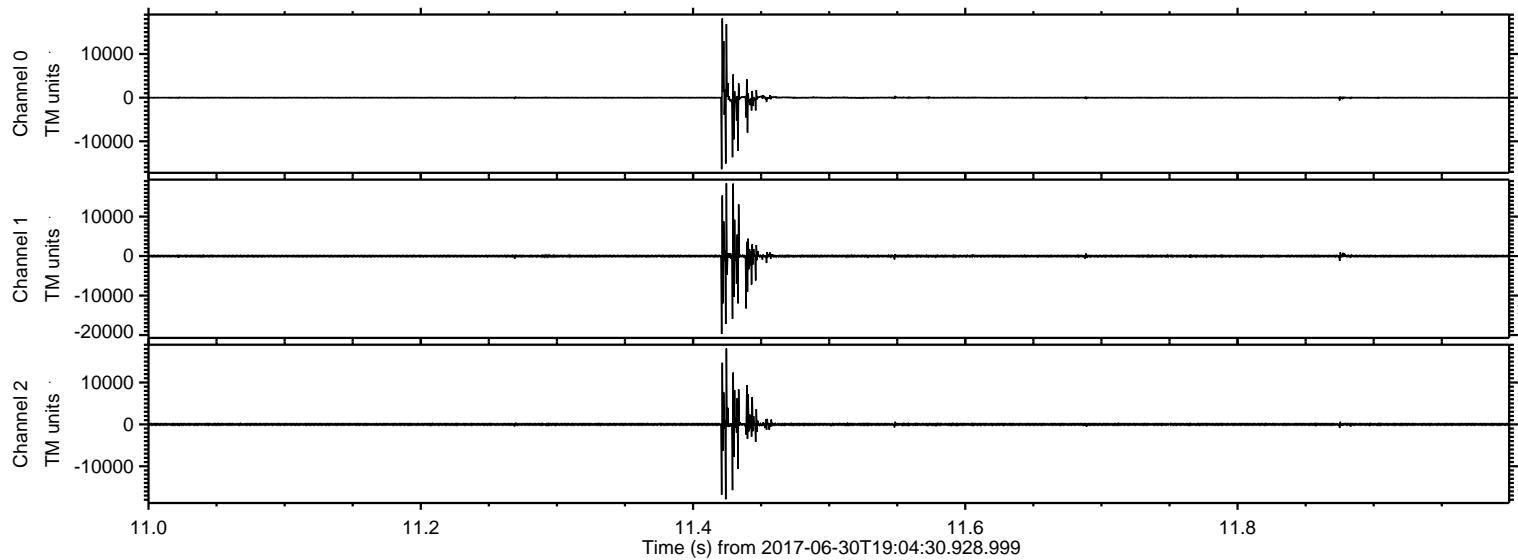


ELMAVAN 3D WAVEFORMS (Measured data sampled at 50 kHz) 51000 packets of 144 samples from 2017-06-30T19:04:30.928.999.

Processed Tue Jul 18 06:13:02 2017 by ELM ver.2012-10-06 from 001__elm20170630_190429__dat00.bin

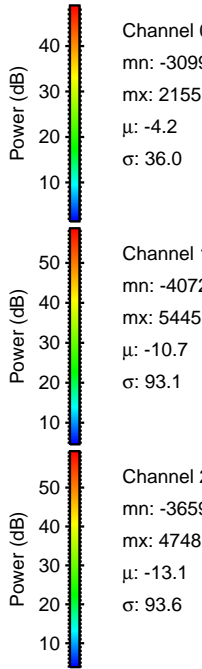
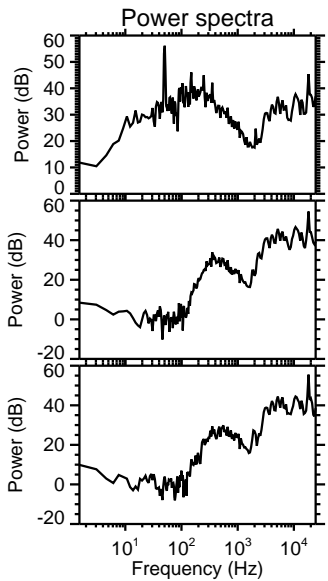
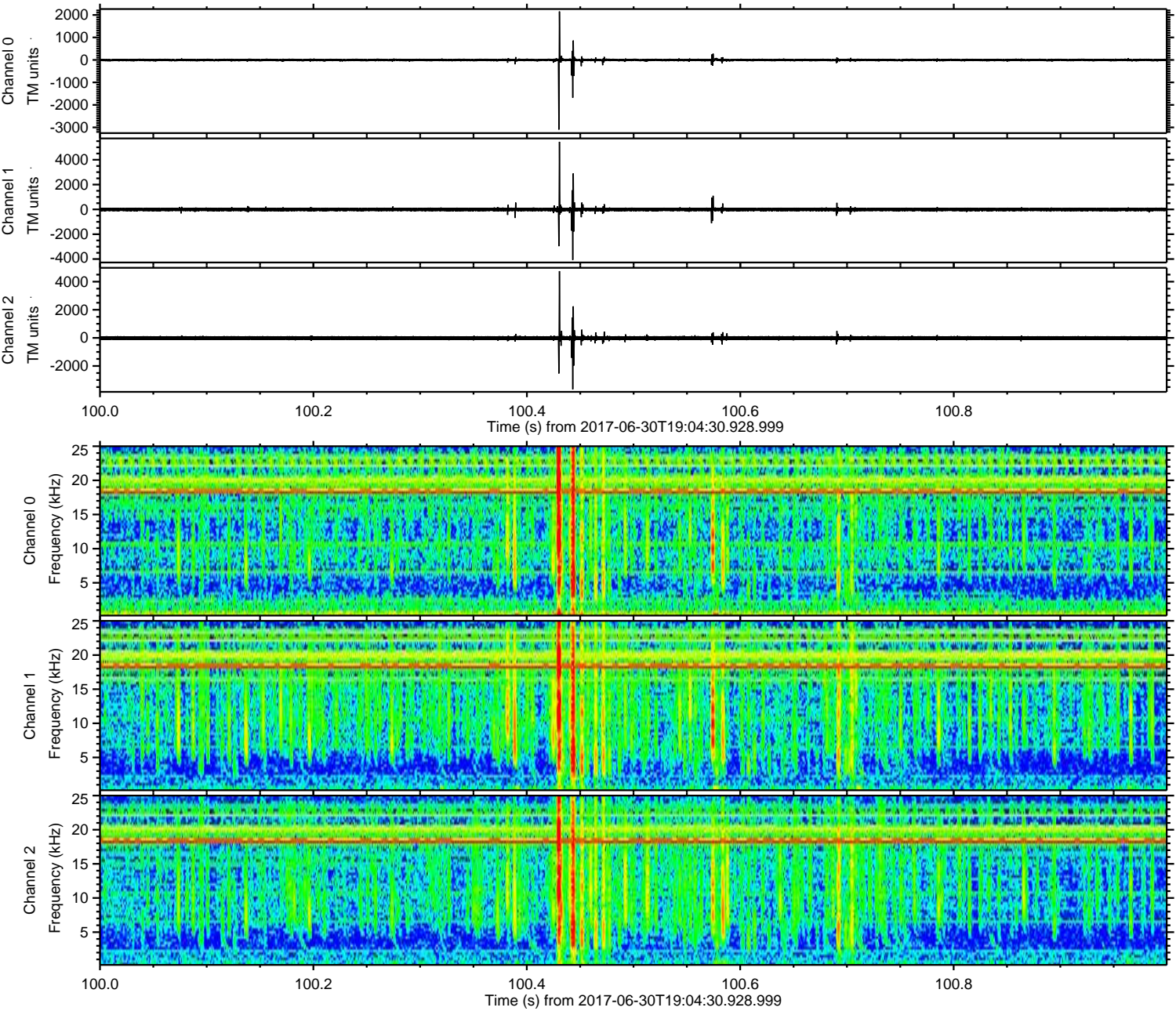


Processed Tue Jul 18 06:13:10 2017 by ELM ver.2012-10-06 from 001__elm20170630_190429__dat00.bin



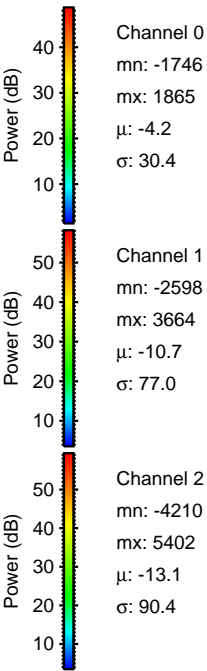
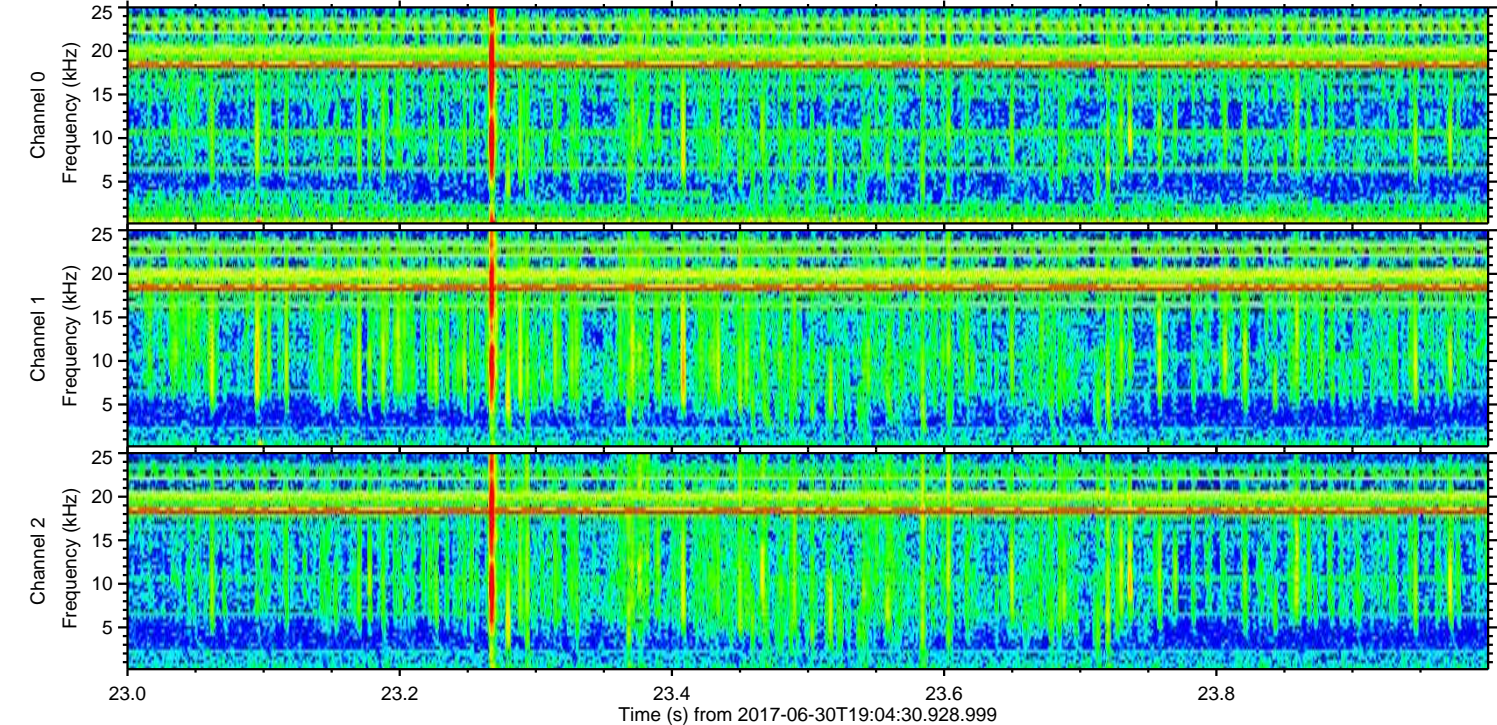
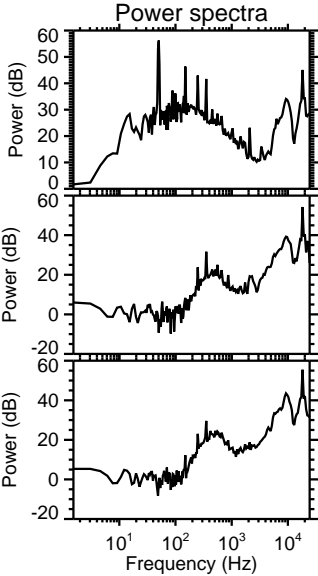
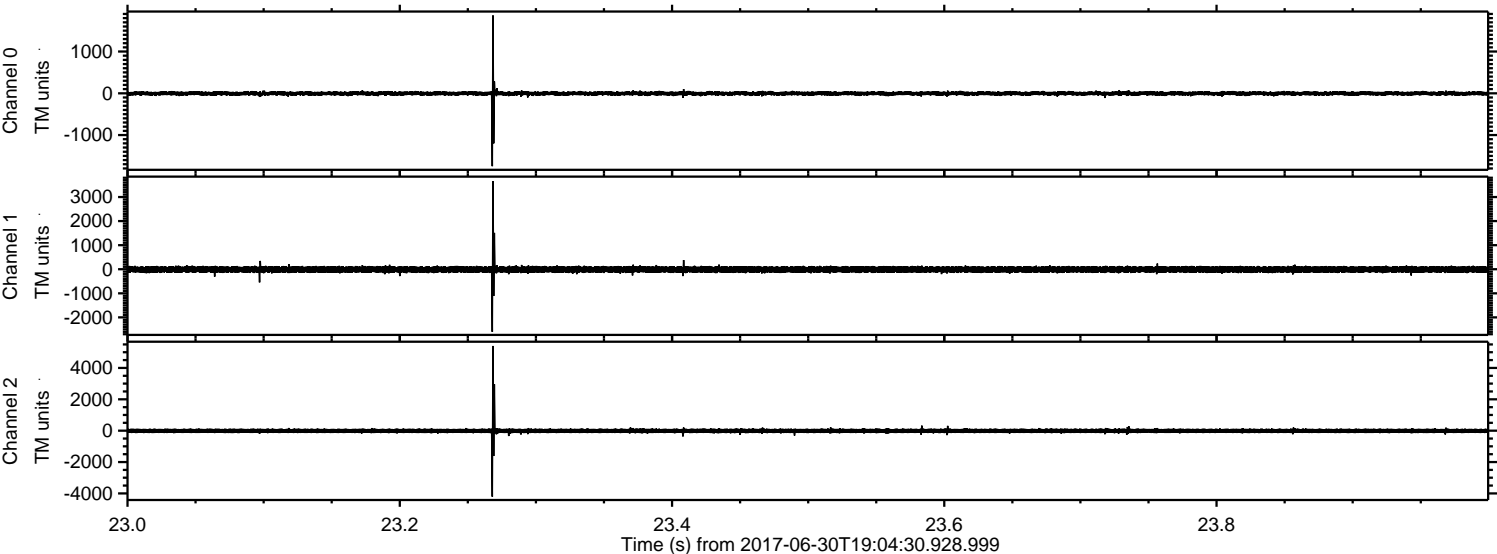
ELMAVAN 3D WAVEFORMS (Measured data sampled at 50 kHz) 51000 packets of 144 samples from 2017-06-30T19:04:30.928.999. Part 101/147

Processed Tue Jul 18 06:13:10 2017 by ELM ver.2012-10-06 from 001__elm20170630_190429__dat00.bin

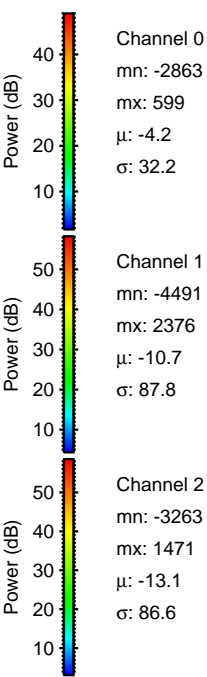
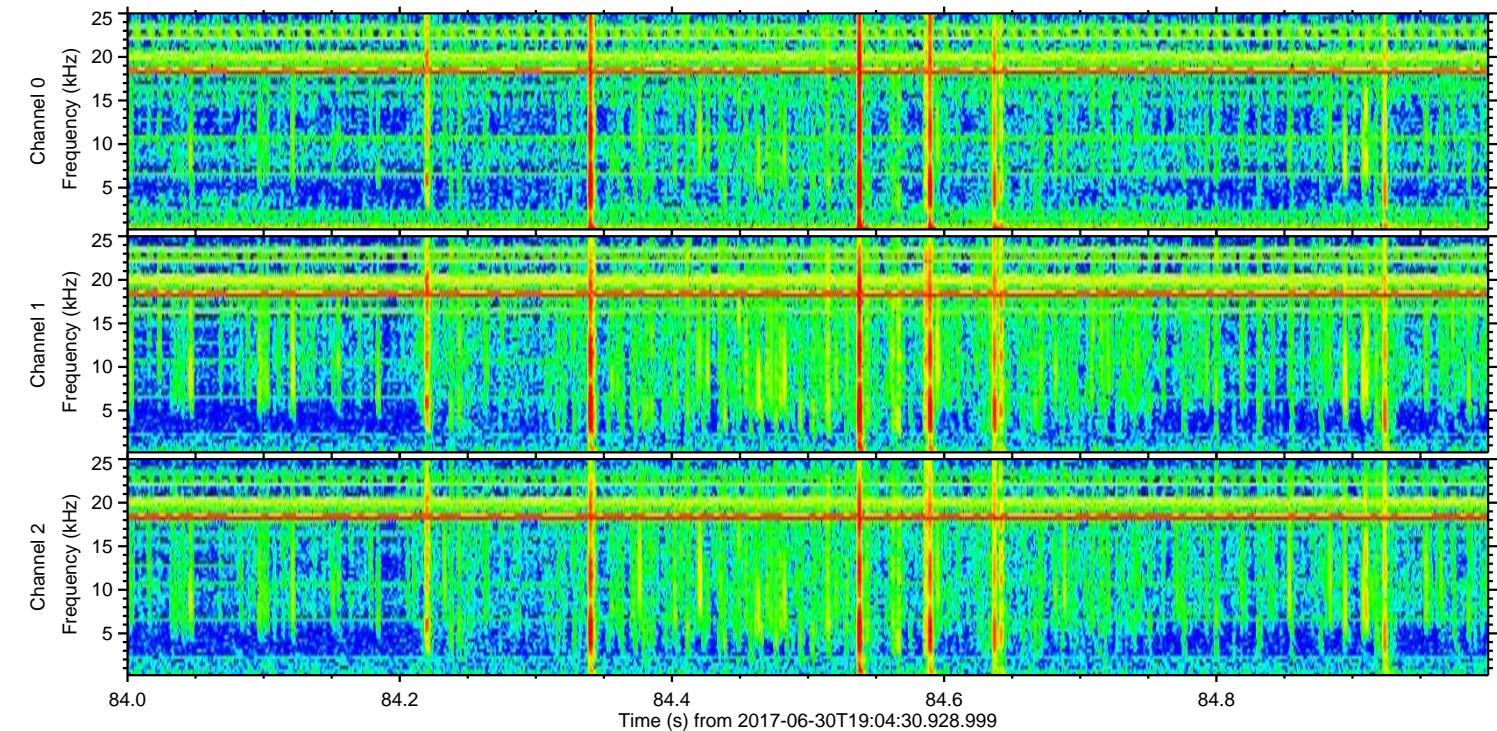
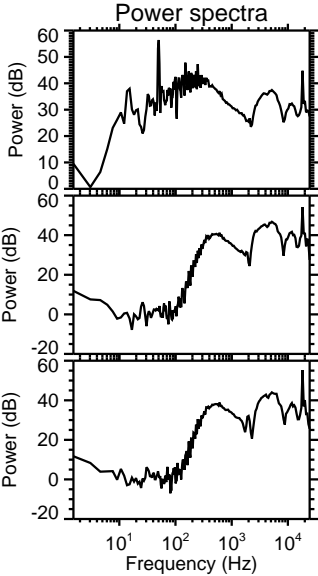
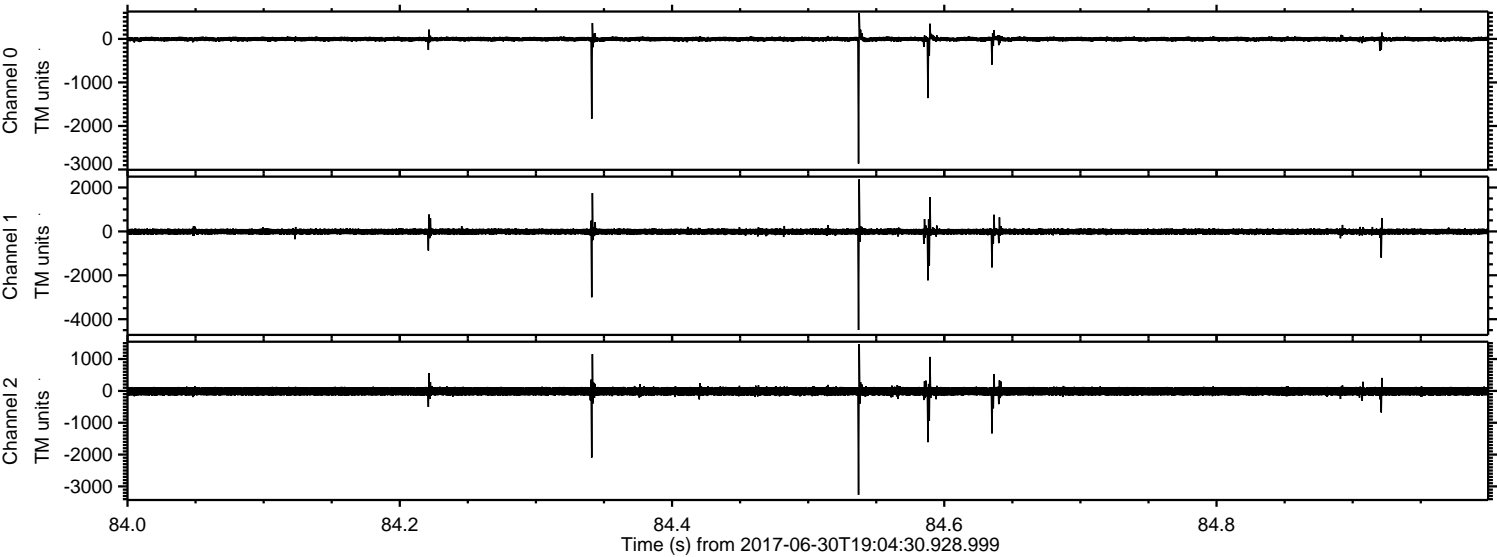


ELMAVAN 3D WAVEFORMS (Measured data sampled at 50 kHz) 51000 packets of 144 samples from 2017-06-30T19:04:30.928.999. Part 24/147

Processed Tue Jul 18 06:13:11 2017 by ELM ver.2012-10-06 from 001__elm20170630_190429__dat00.bin

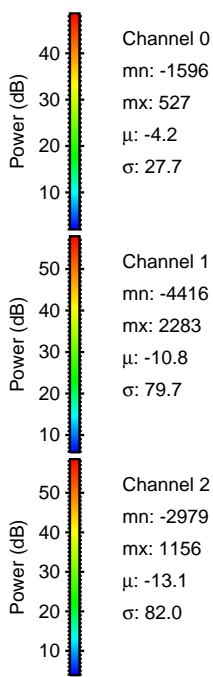
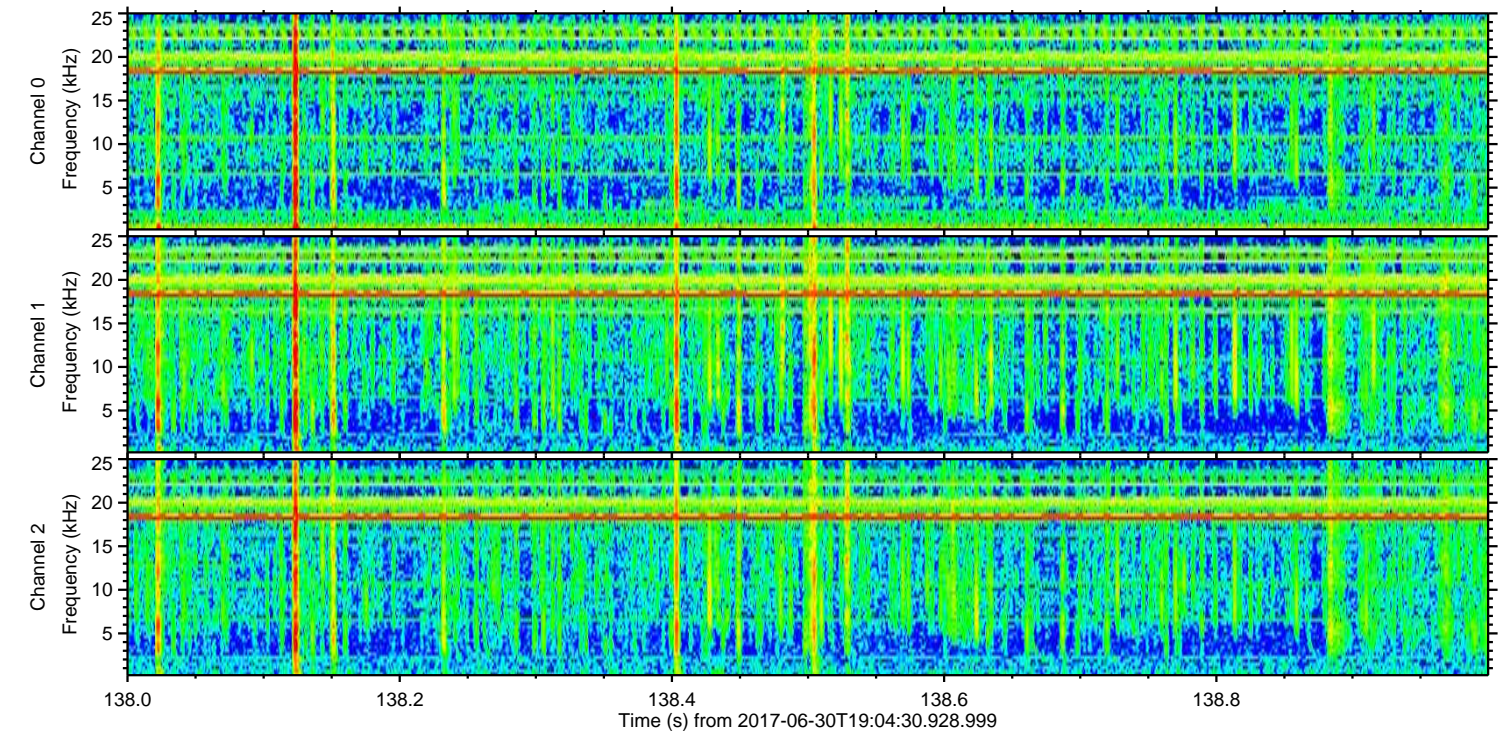
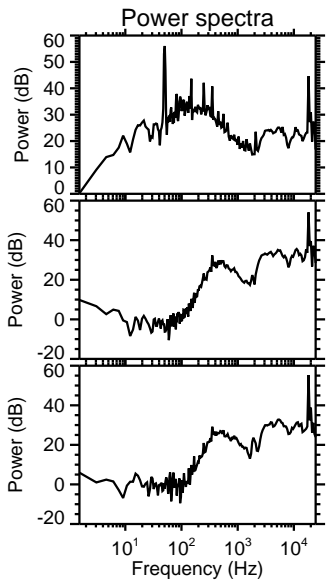
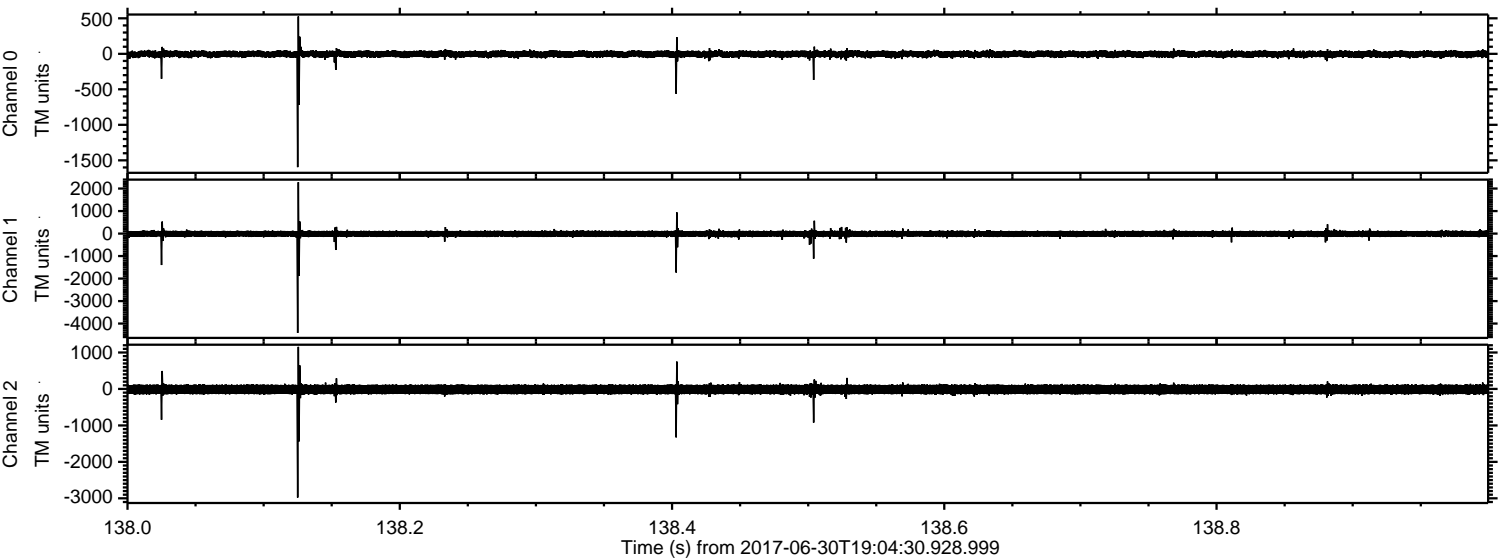


Processed Tue Jul 18 06:13:12 2017 by ELM ver.2012-10-06 from 001__elm20170630_190429__dat00.bin

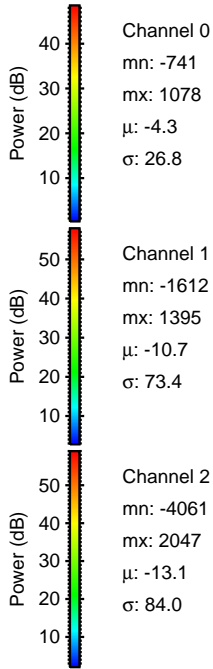
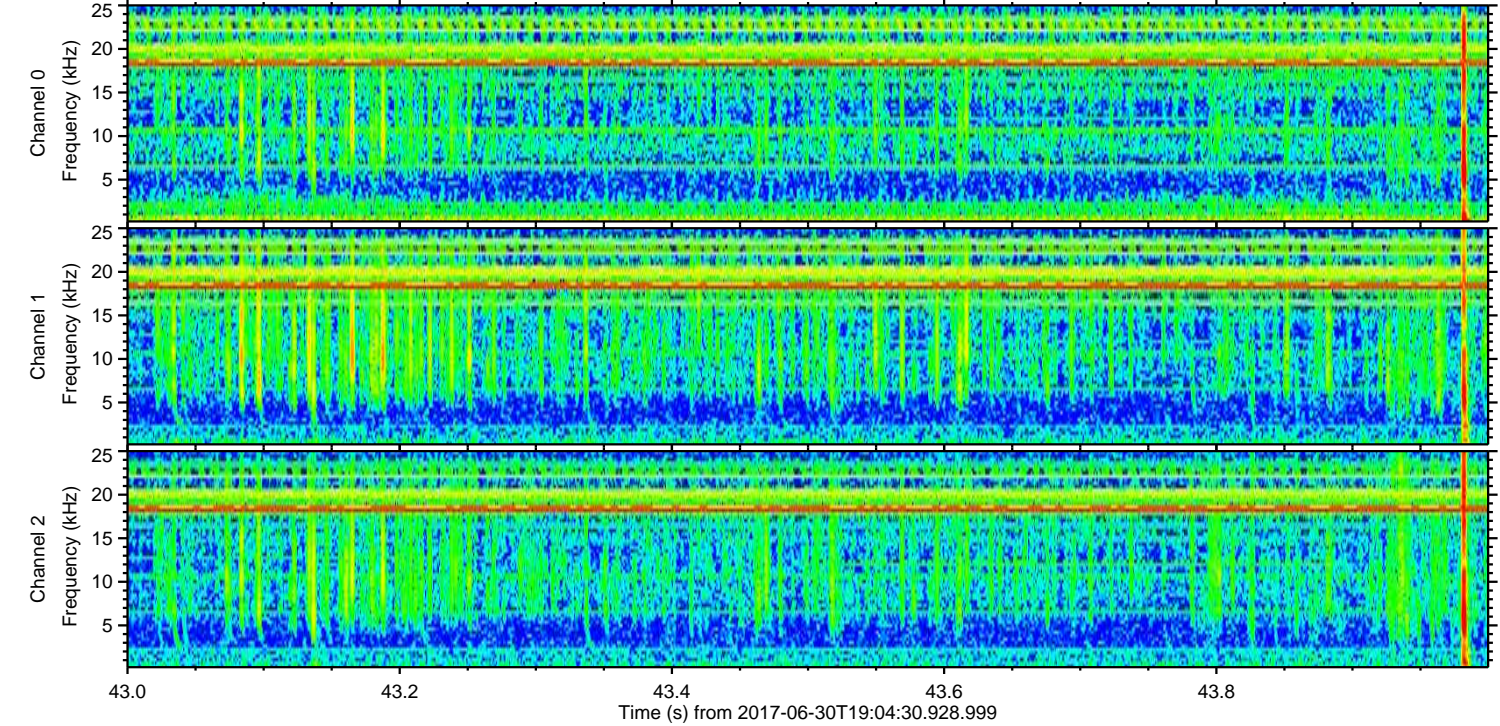
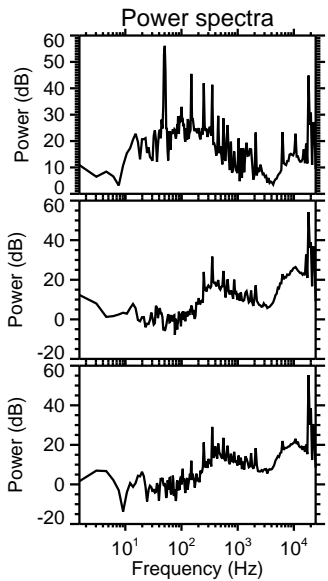
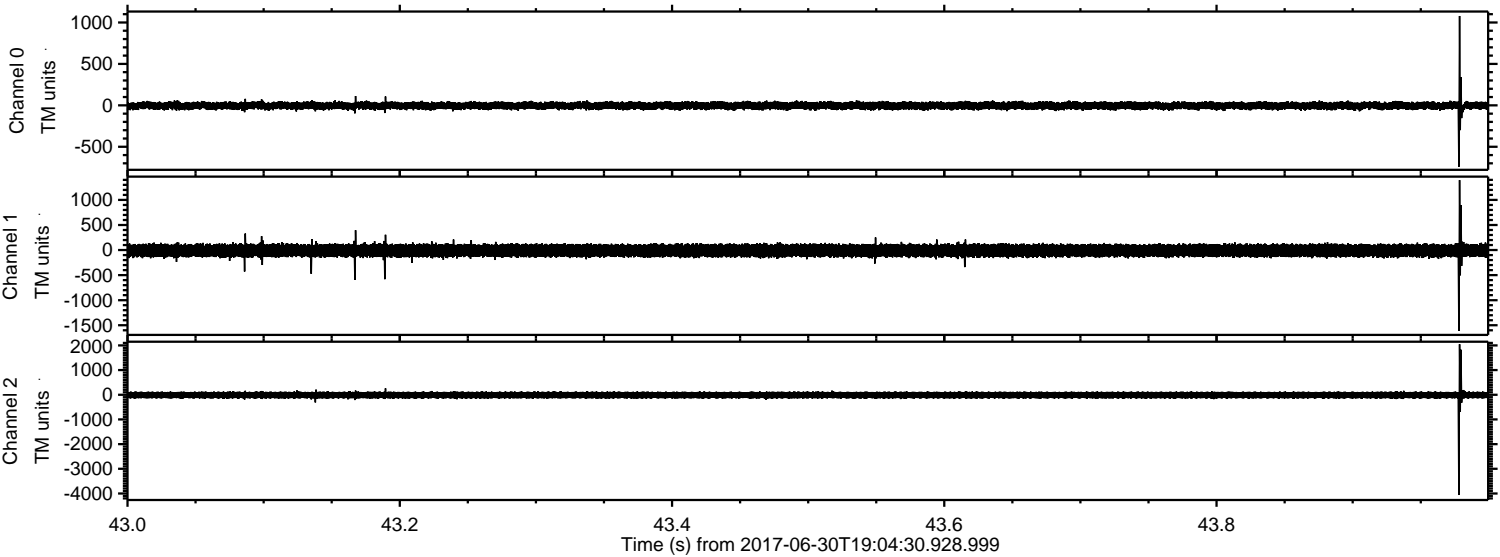


ELMAVAN 3D WAVEFORMS (Measured data sampled at 50 kHz) 51000 packets of 144 samples from 2017-06-30T19:04:30.928.999. Part 139/147

Processed Tue Jul 18 06:13:13 2017 by ELM ver.2012-10-06 from 001__elm20170630_190429__dat00.bin

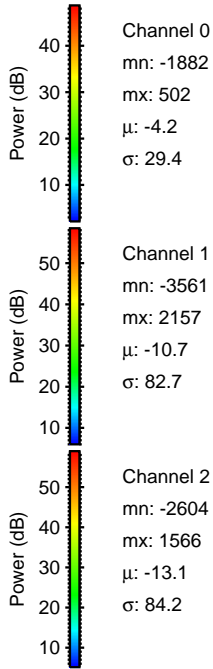
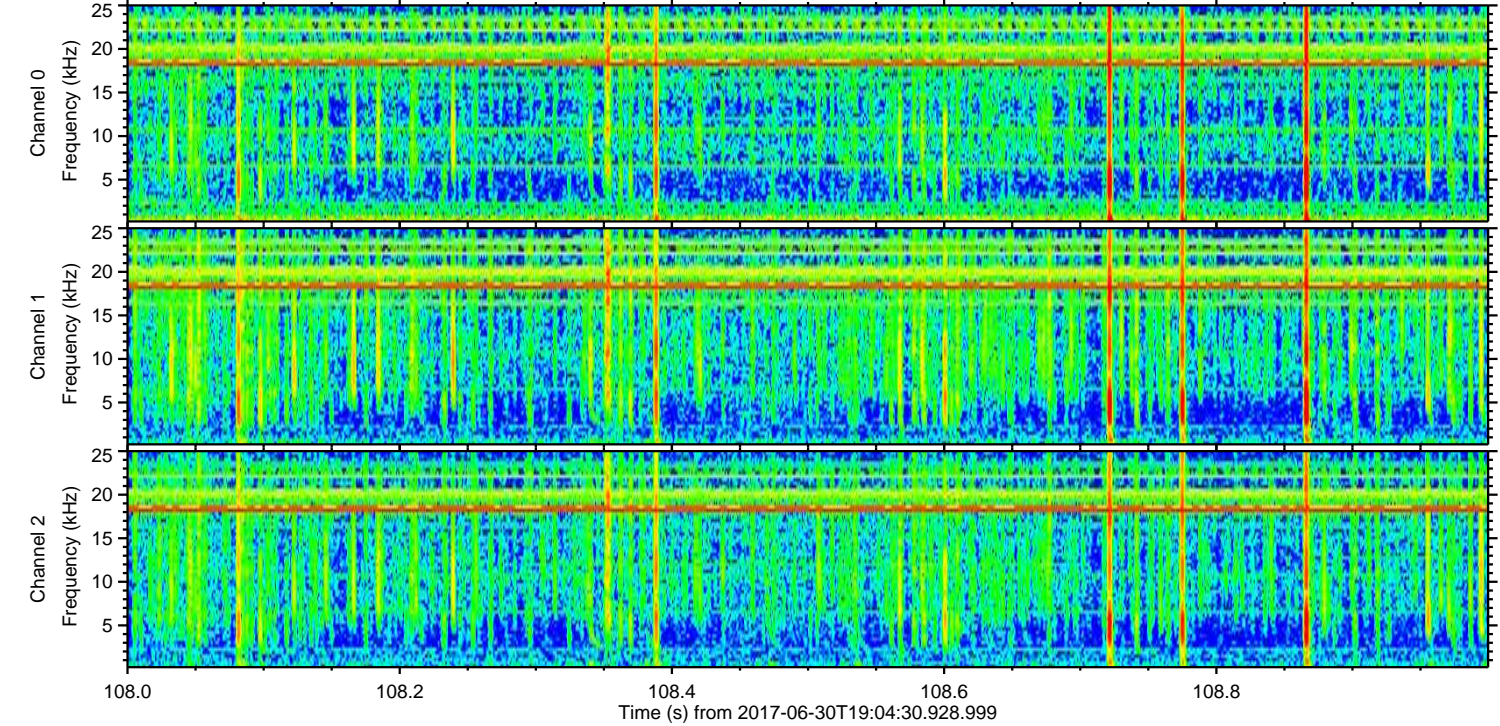
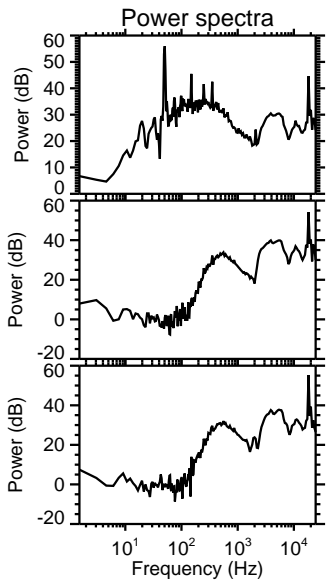
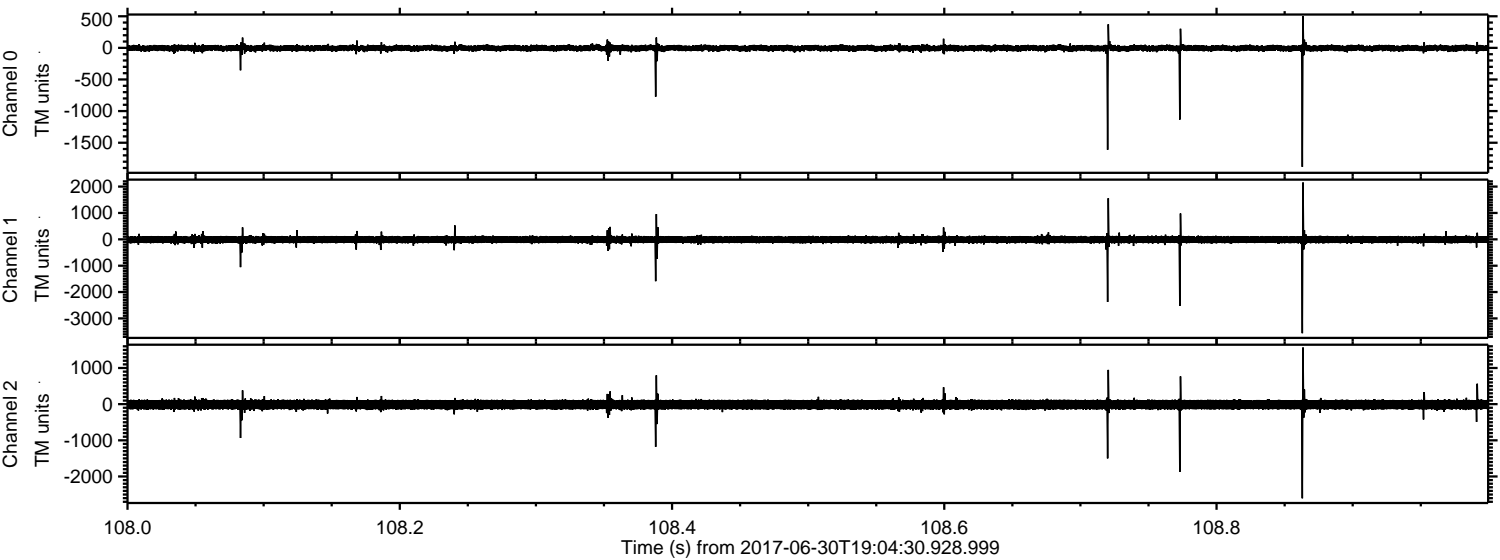


Processed Tue Jul 18 06:13:13 2017 by ELM ver.2012-10-06 from 001__elm20170630_190429__dat00.bin

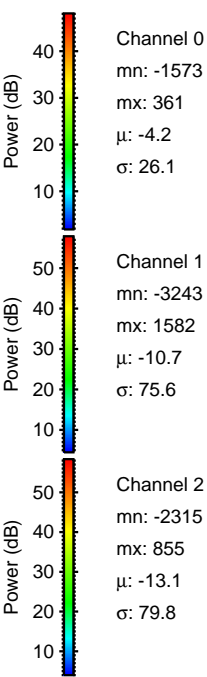
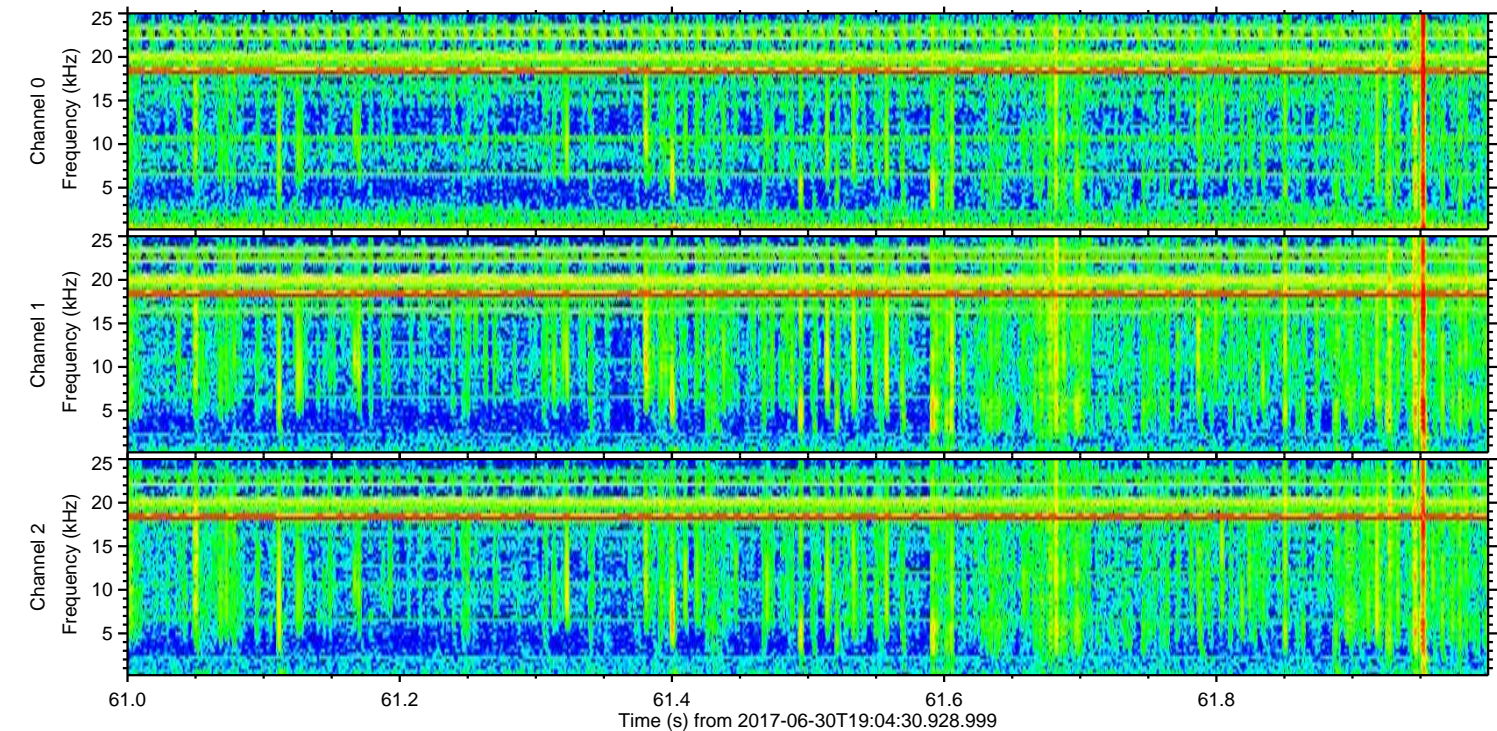
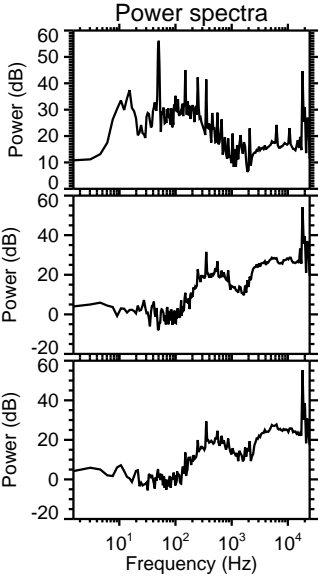
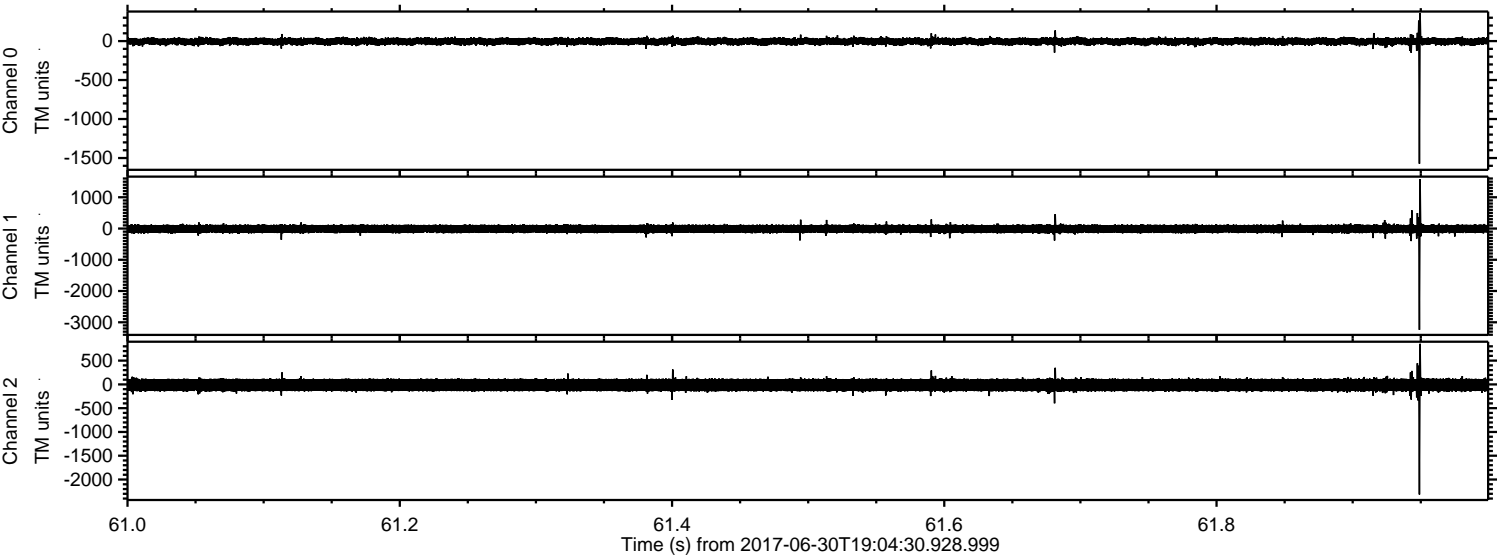


ELMAVAN 3D WAVEFORMS (Measured data sampled at 50 kHz) 51000 packets of 144 samples from 2017-06-30T19:04:30.928.999. Part 109/147

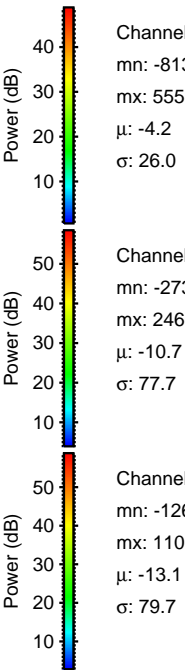
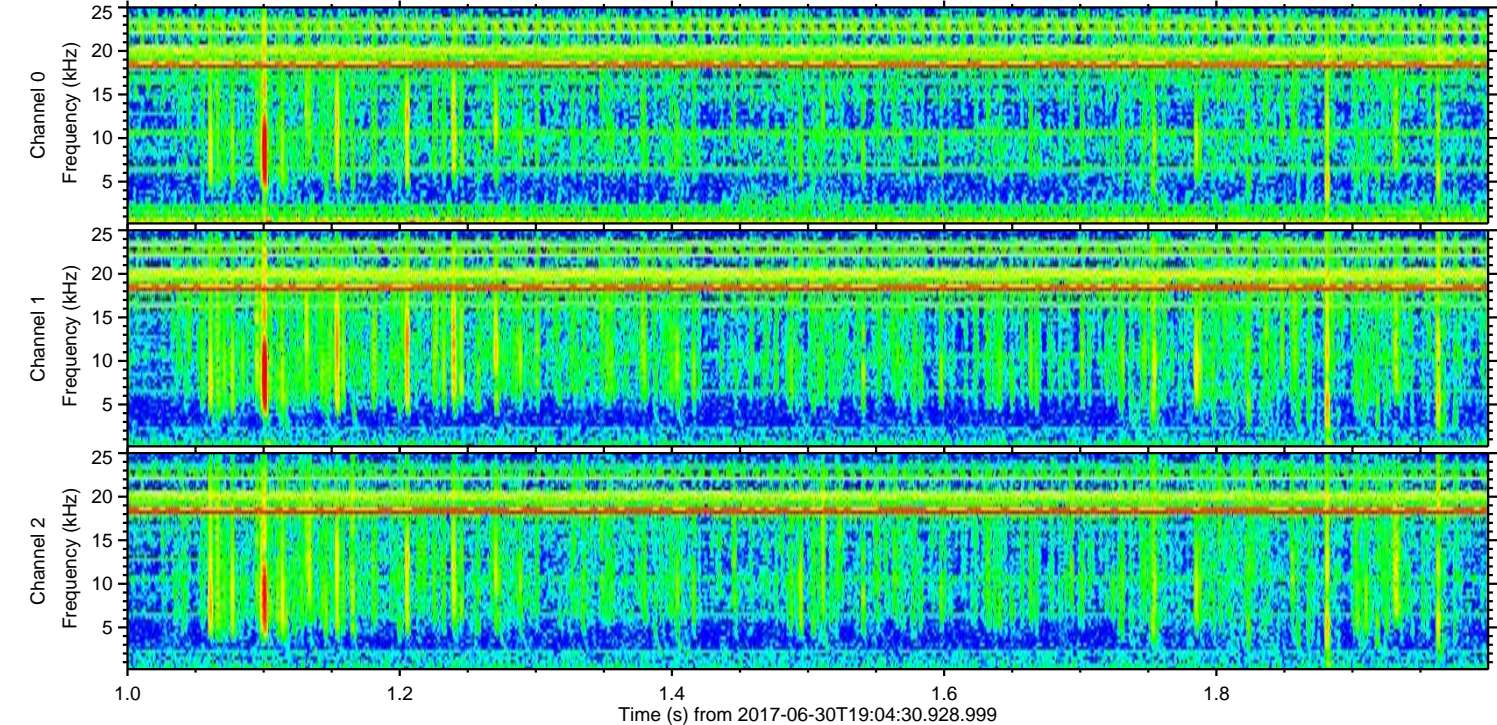
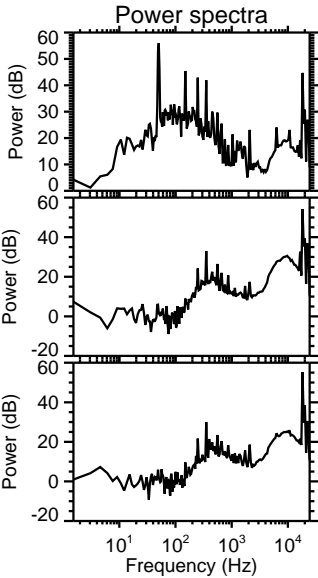
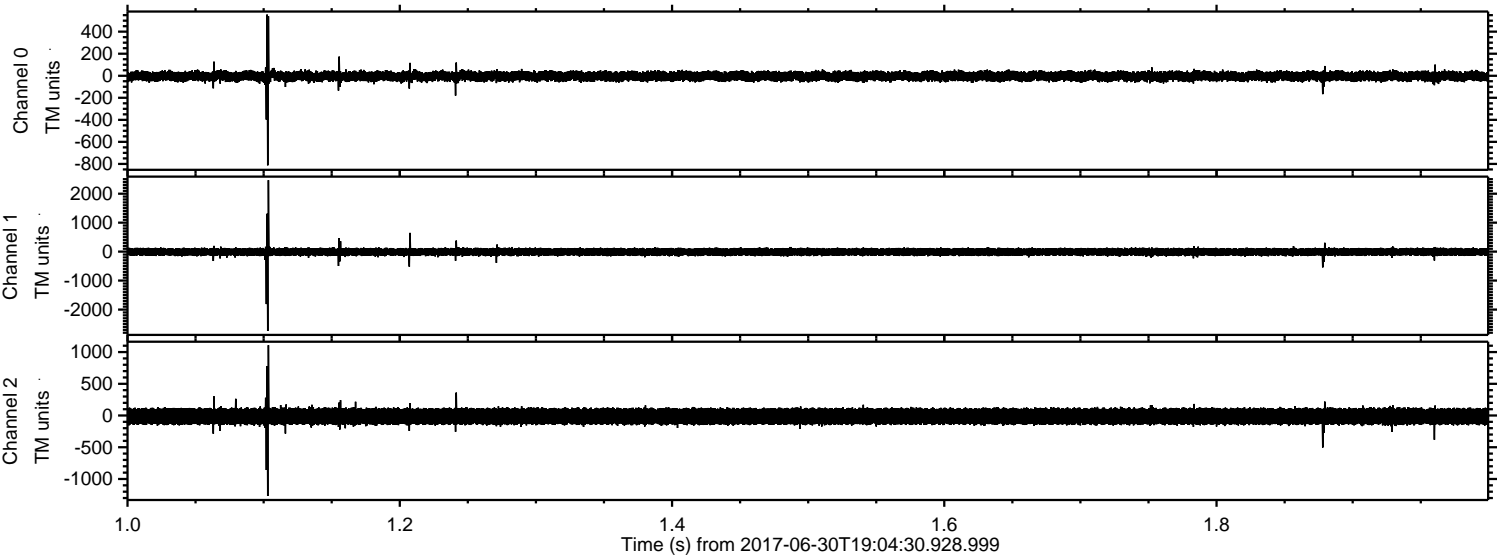
Processed Tue Jul 18 06:13:14 2017 by ELM ver.2012-10-06 from 001__elm20170630_190429__dat00.bin



Processed Tue Jul 18 06:13:15 2017 by ELM ver.2012-10-06 from 001__elm20170630_190429__dat00.bin



Processed Tue Jul 18 06:13:15 2017 by ELM ver.2012-10-06 from 001__elm20170630_190429__dat00.bin



Processed Tue Jul 18 06:13:16 2017 by ELM ver.2012-10-06 from 001__elm20170630_190429__dat00.bin

