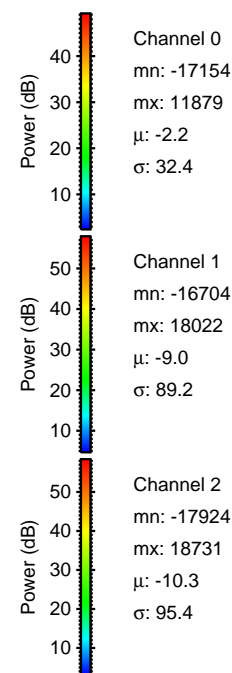
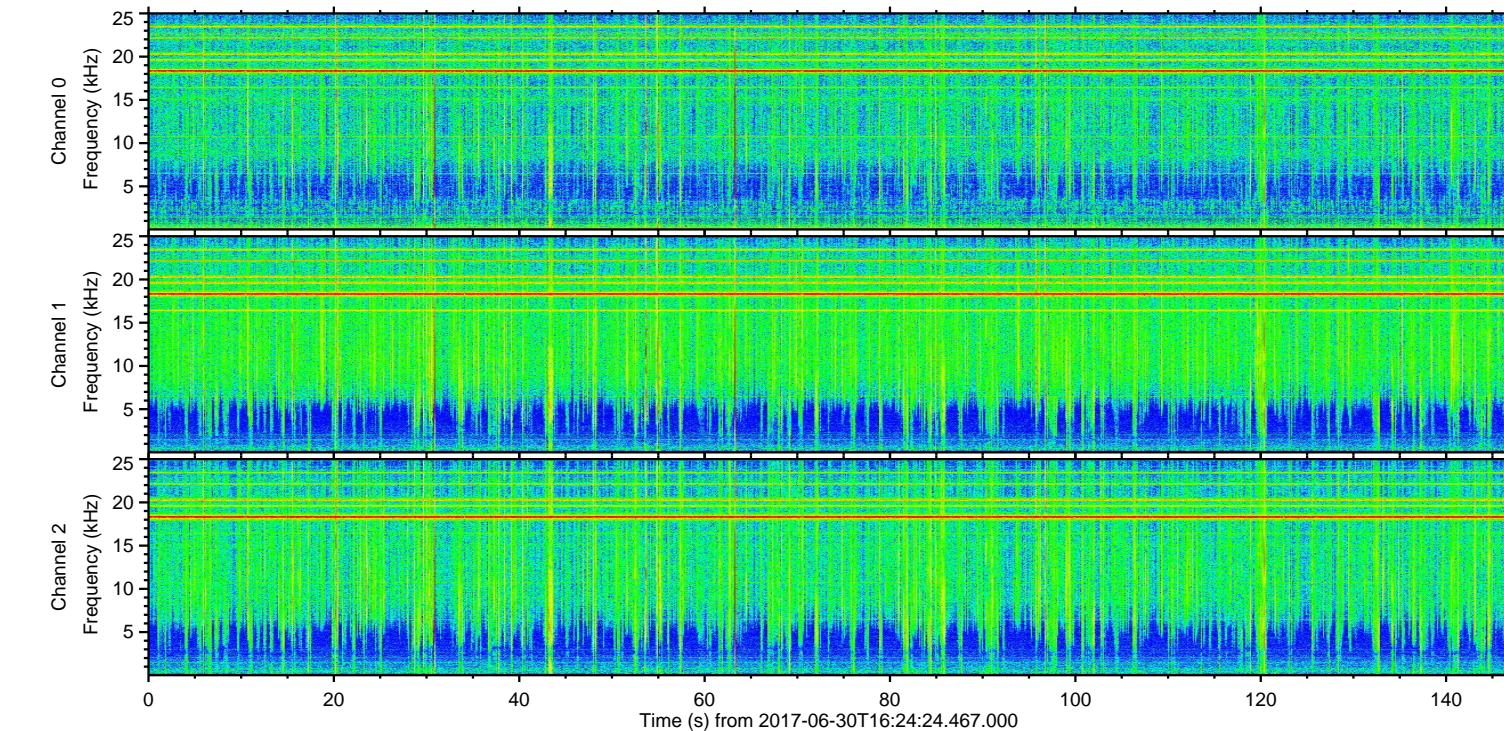
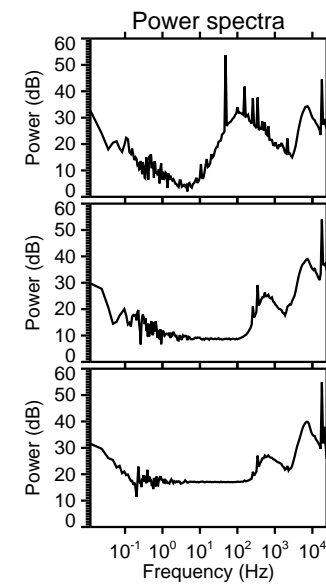
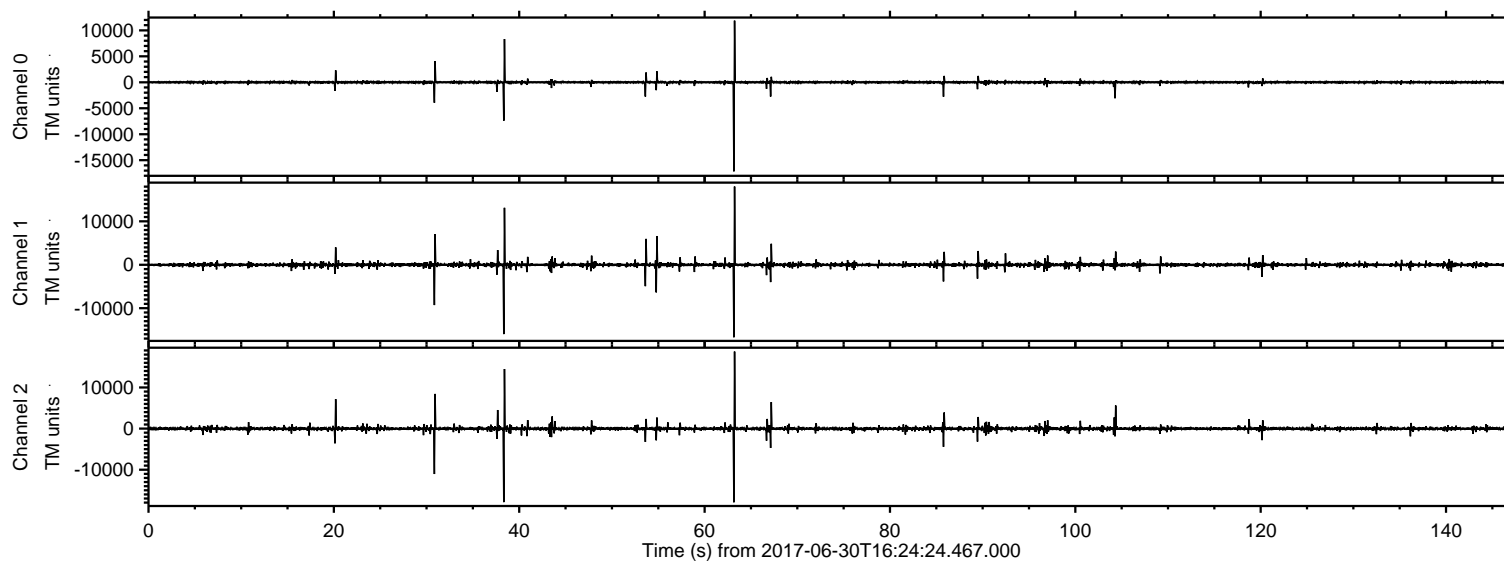
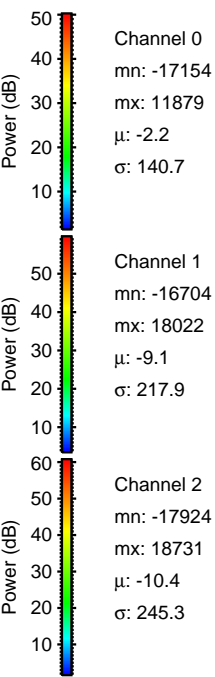
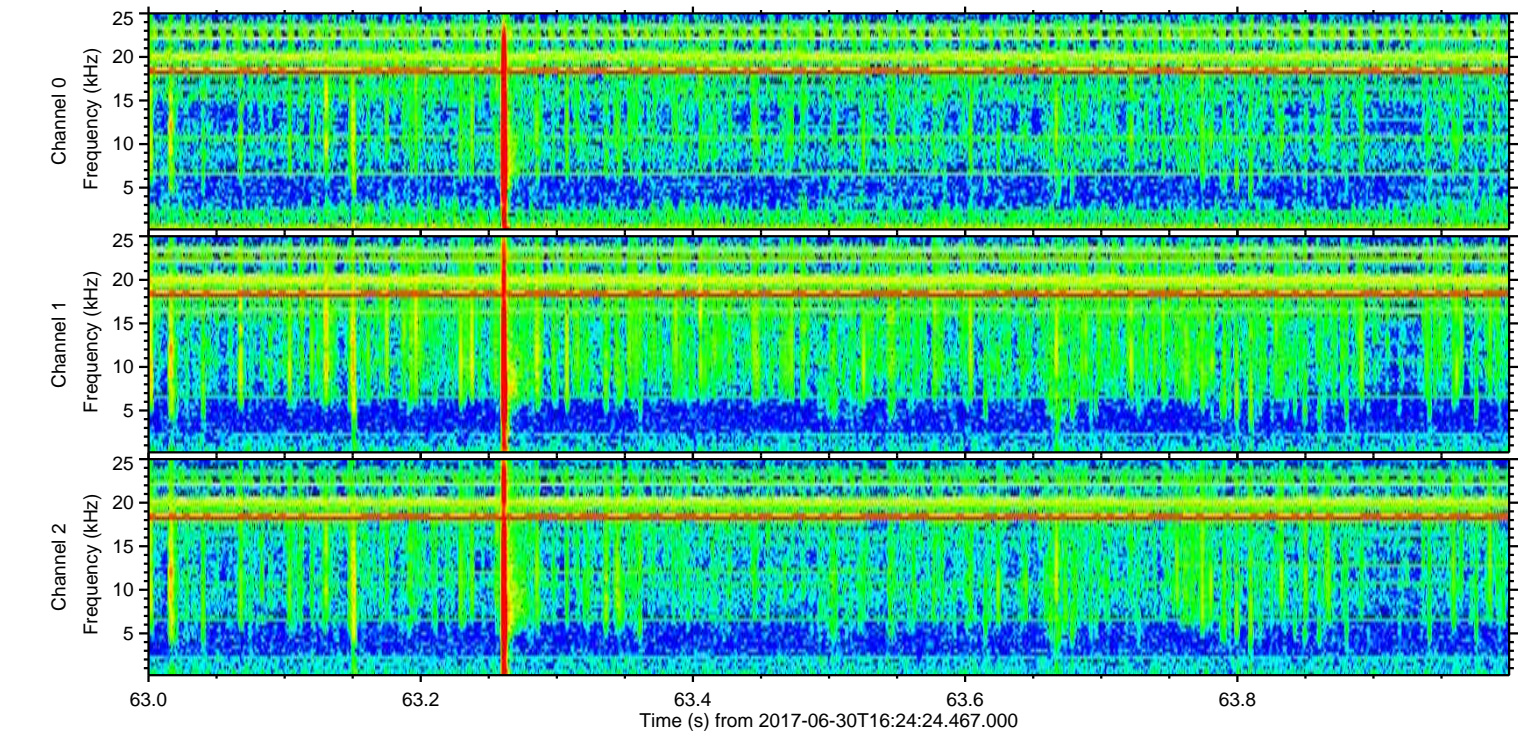
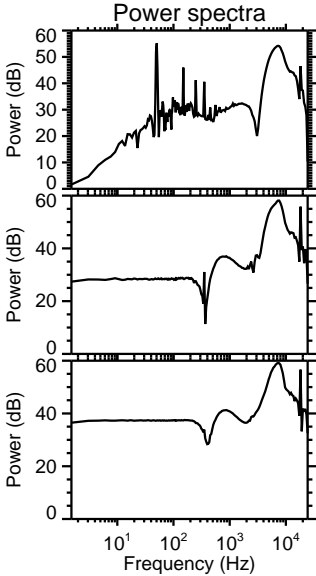
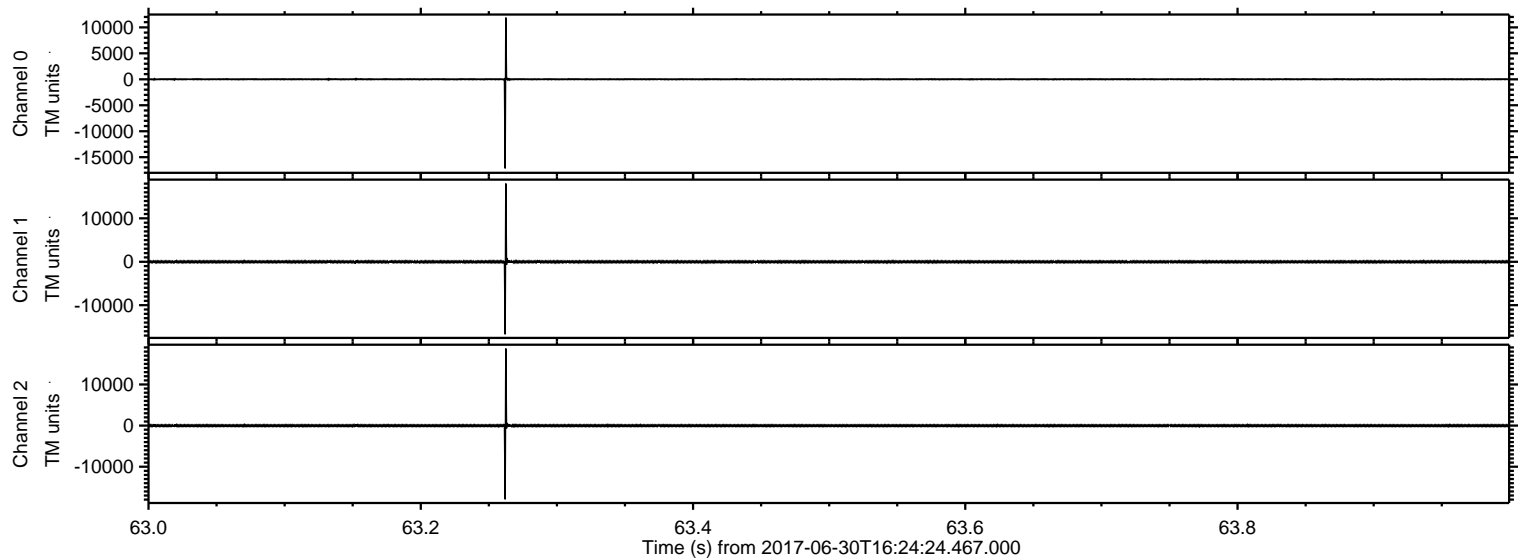


ELMAVAN 3D WAVEFORMS (Measured data sampled at 50 kHz) 51000 packets of 144 samples from 2017-06-30T16:24:24.467.000.

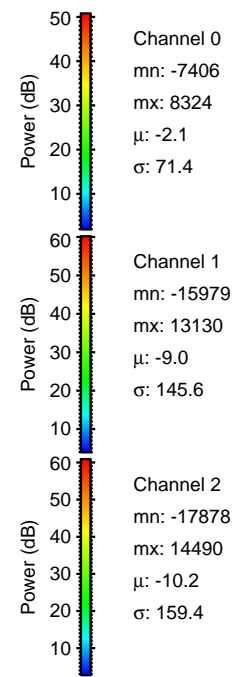
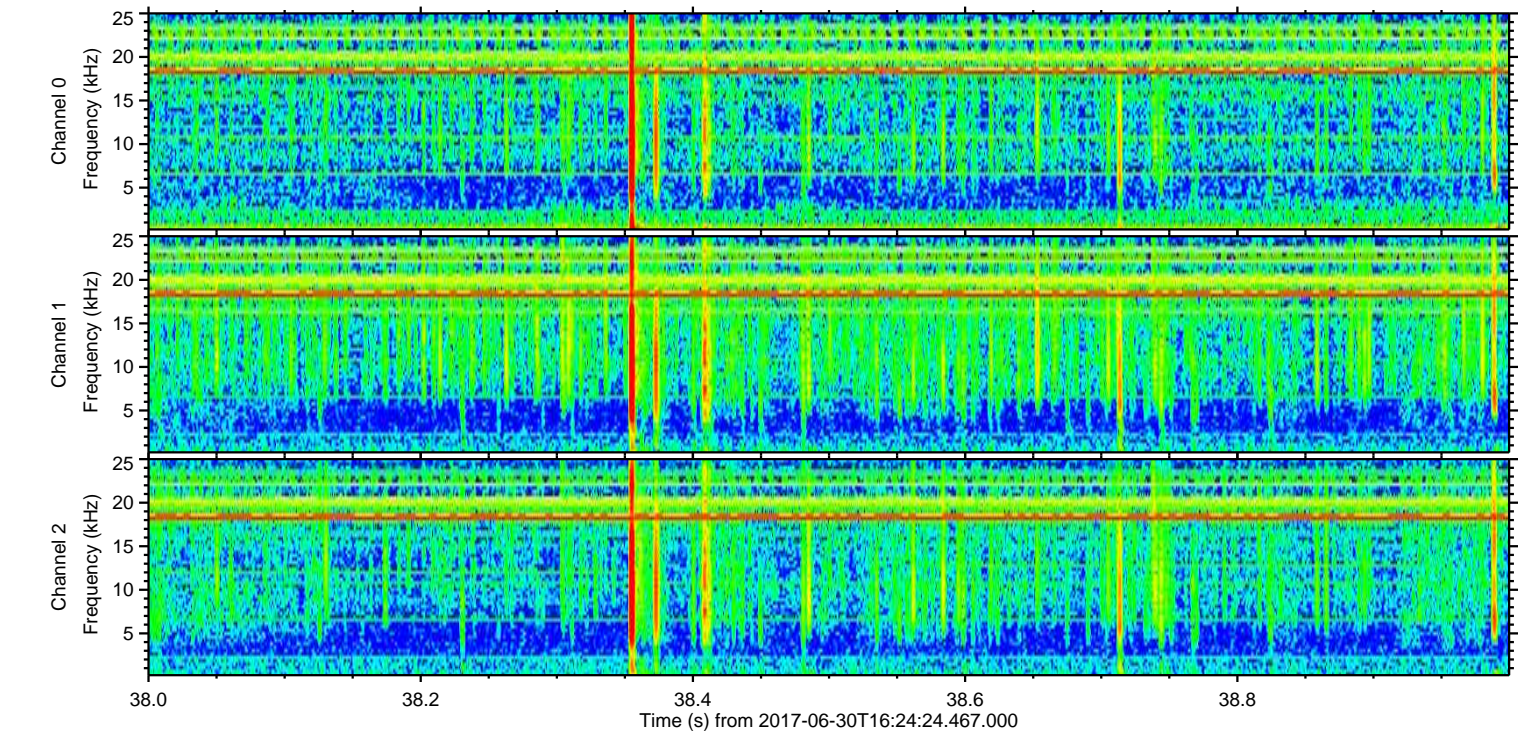
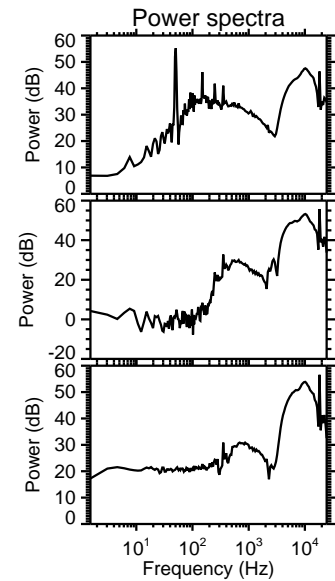
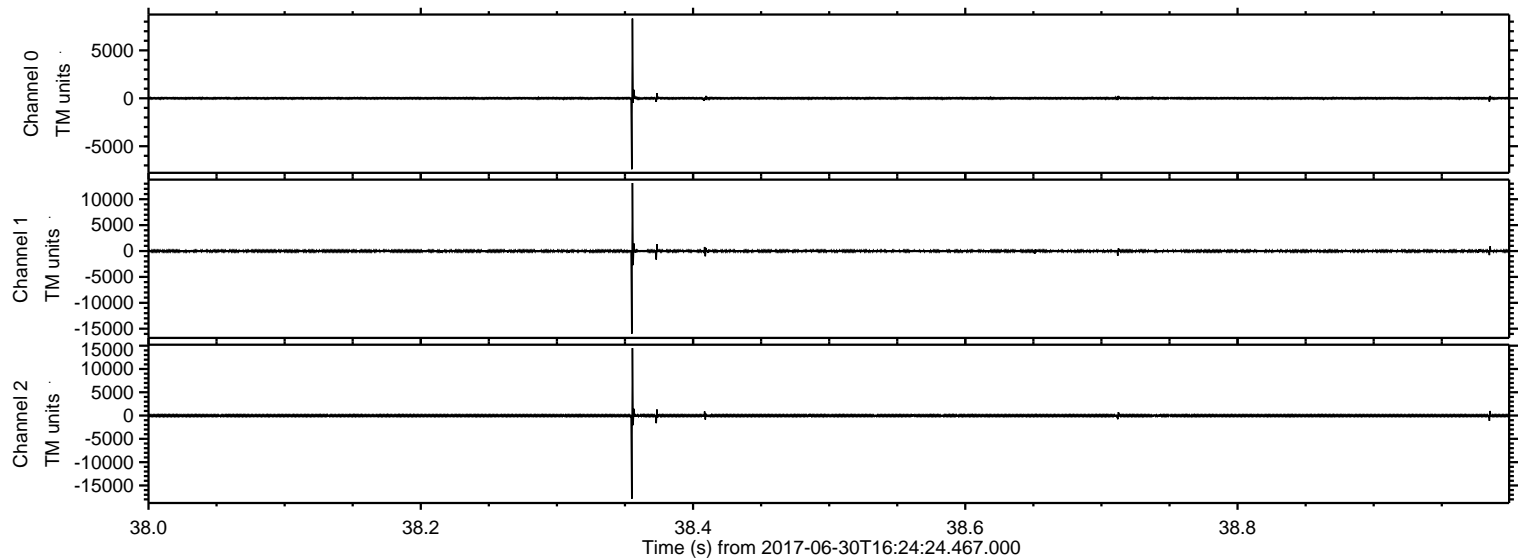
Processed Tue Jul 18 05:47:48 2017 by ELM ver.2012-10-06 from 001__elm20170630_162423__dat00.bin



Processed Tue Jul 18 05:47:57 2017 by ELM ver.2012-10-06 from 001__elm20170630_162423__dat00.bin

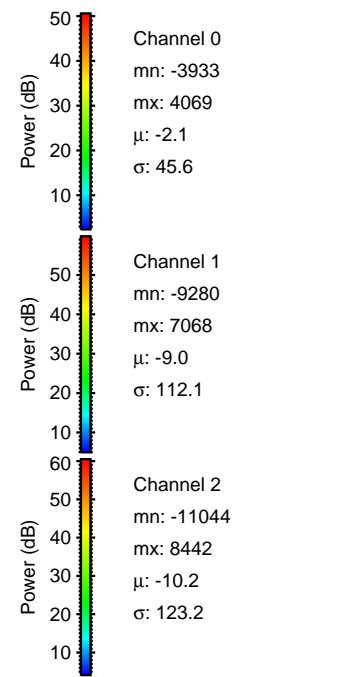
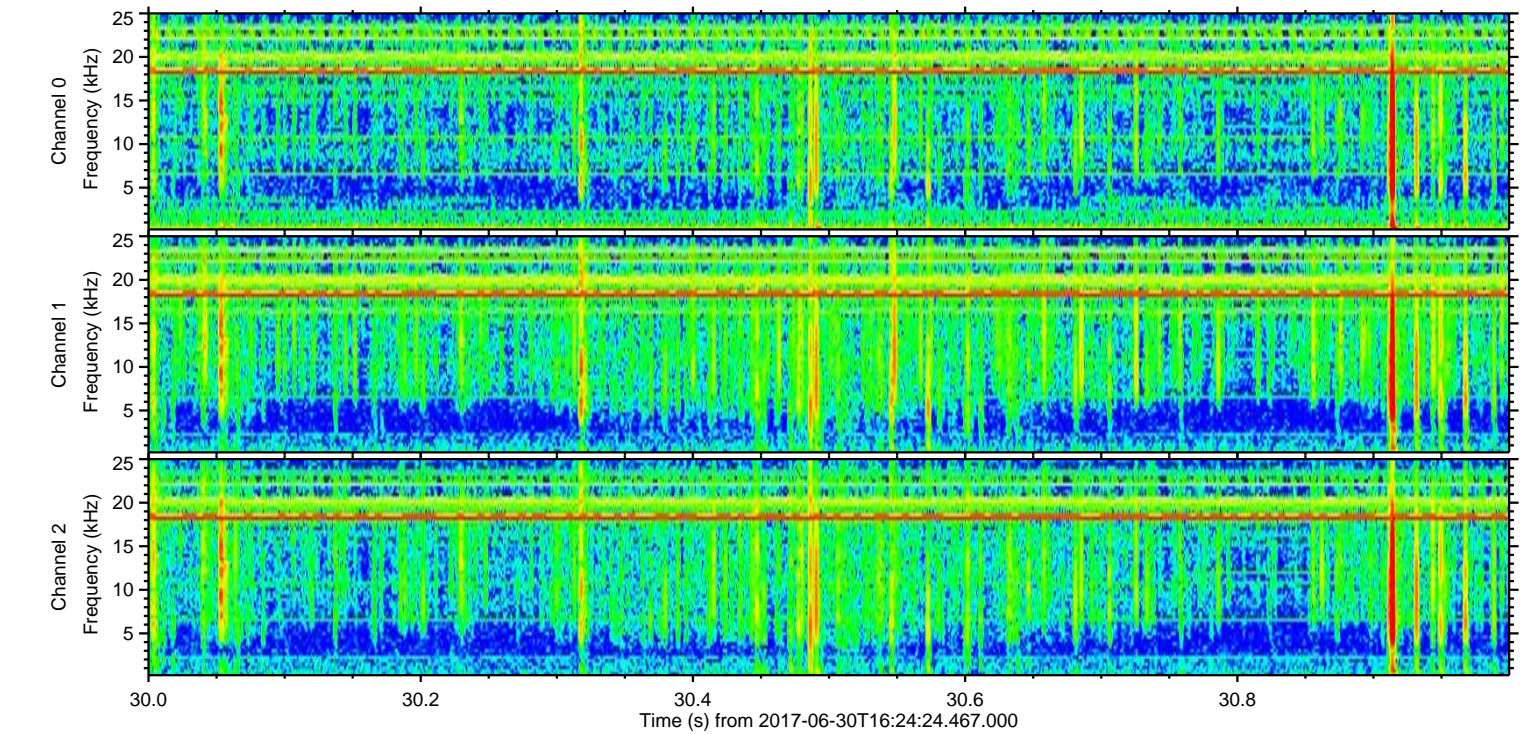
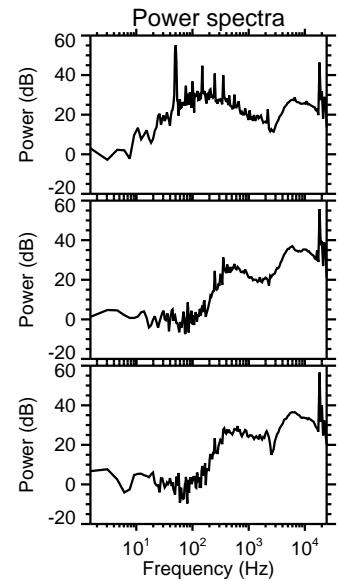
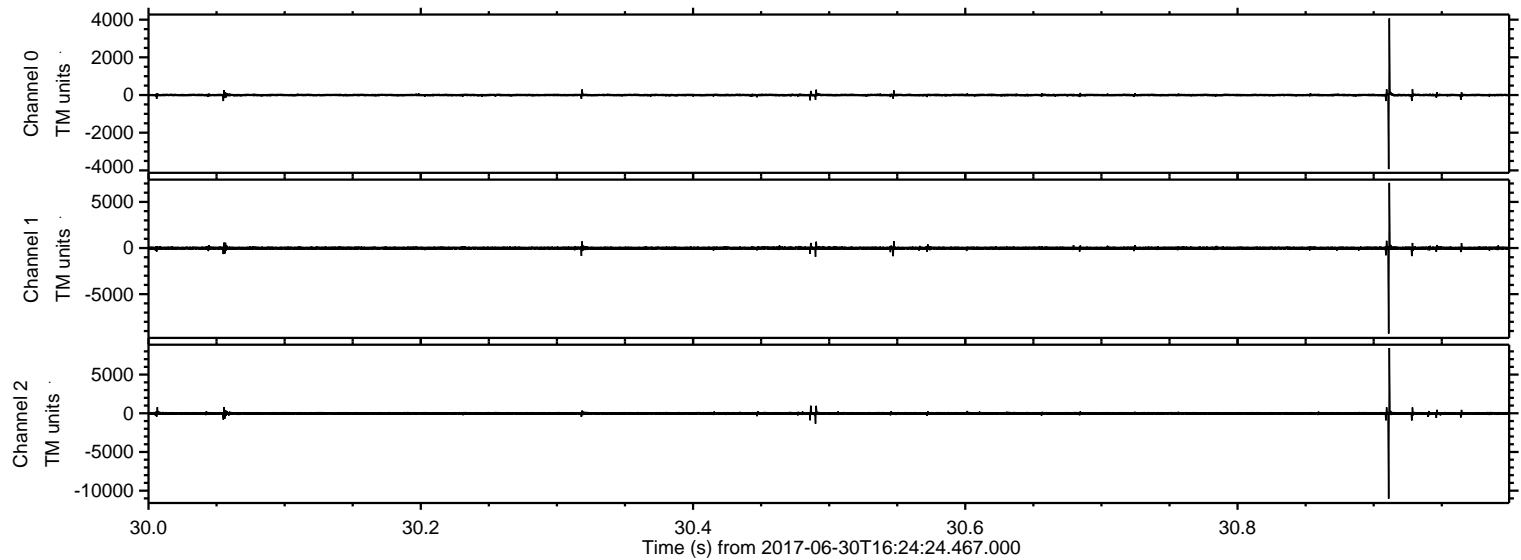


Processed Tue Jul 18 05:47:58 2017 by ELM ver.2012-10-06 from 001__elm20170630_162423__dat00.bin



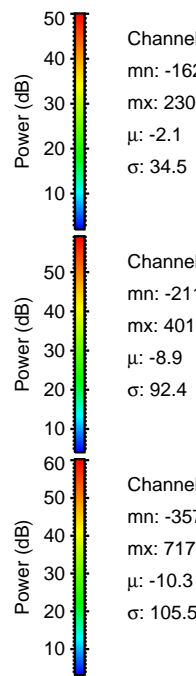
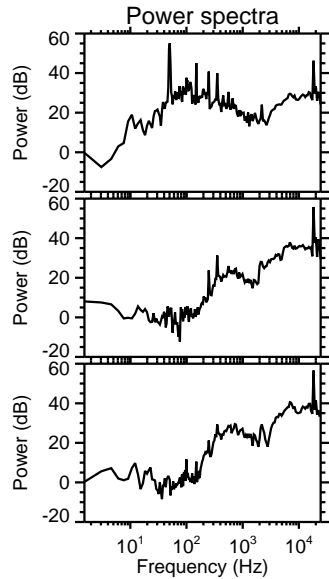
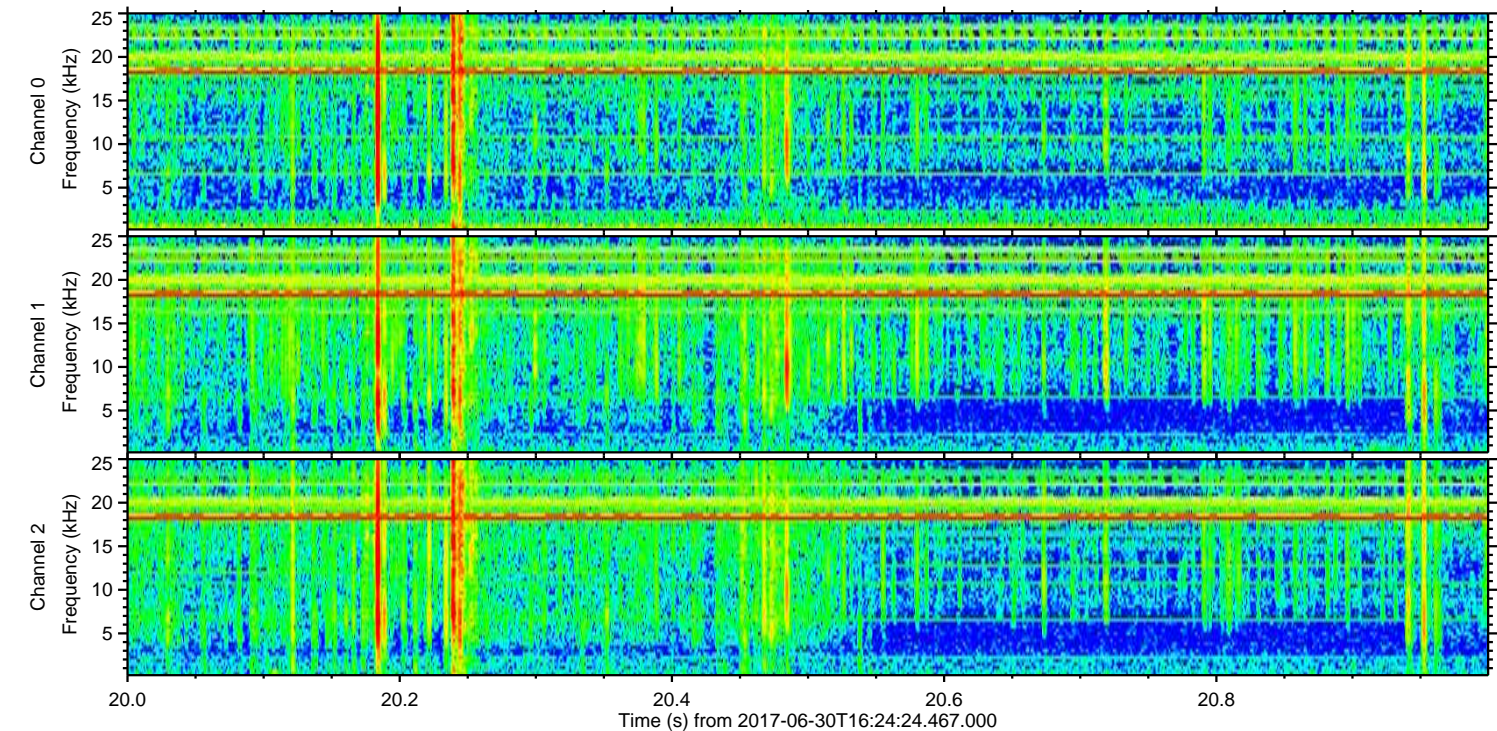
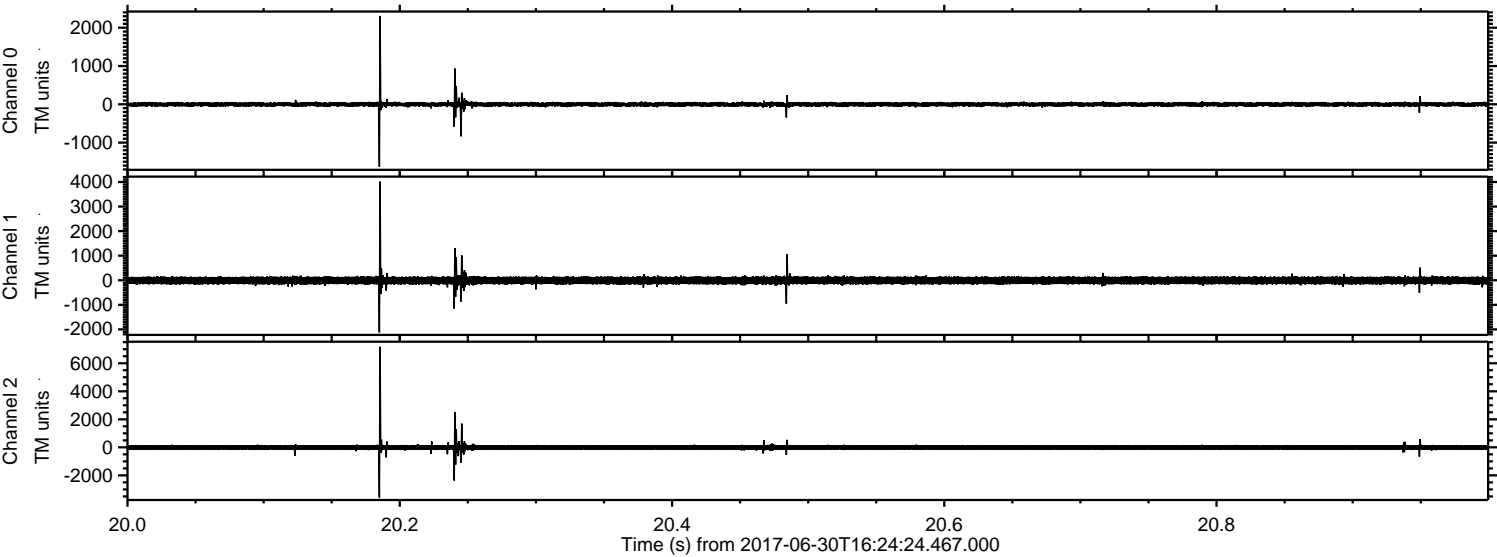
ELMAVAN 3D WAVEFORMS (Measured data sampled at 50 kHz) 51000 packets of 144 samples from 2017-06-30T16:24:24.467.000. Part 31/147

Processed Tue Jul 18 05:47:59 2017 by ELM ver.2012-10-06 from 001__elm20170630_162423__dat00.bin



ELMAVAN 3D WAVEFORMS (Measured data sampled at 50 kHz) 51000 packets of 144 samples from 2017-06-30T16:24:24.467.000. Part 21/147

Processed Tue Jul 18 05:47:59 2017 by ELM ver.2012-10-06 from 001__elm20170630_162423__dat00.bin

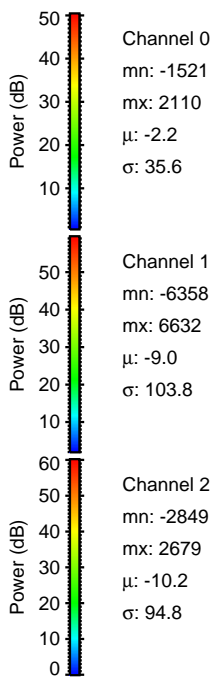
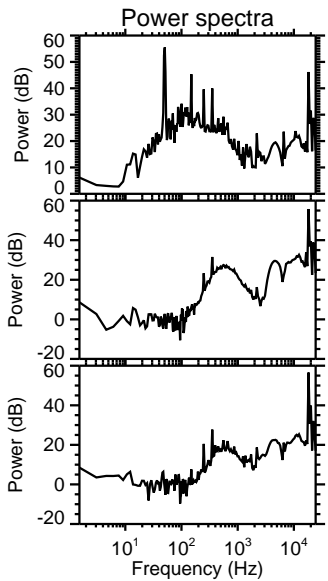
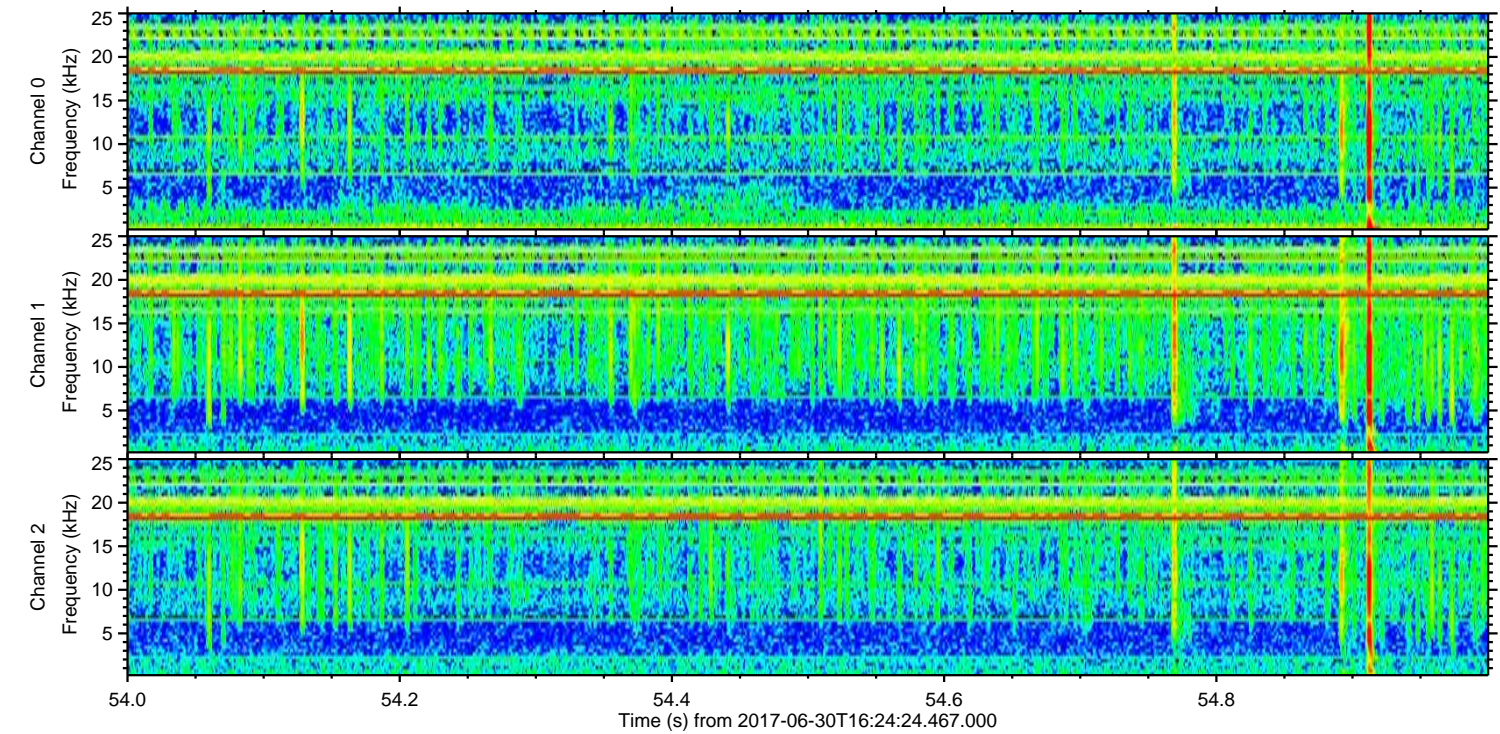
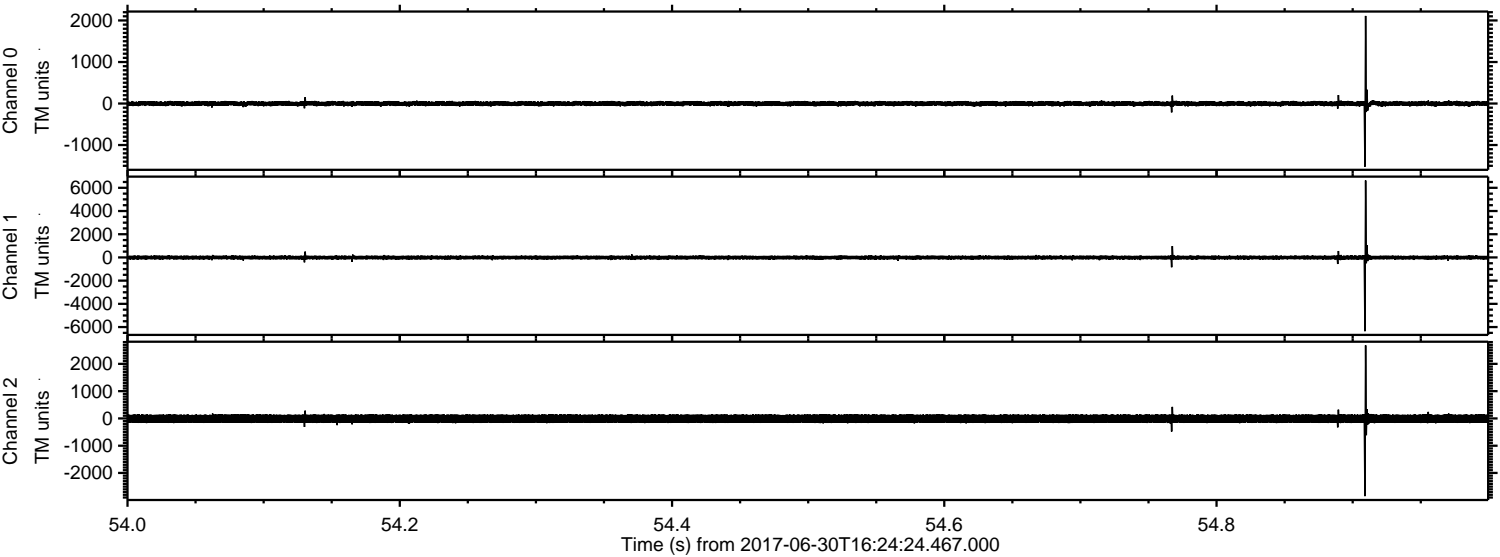


Channel 0
mn: -1629
mx: 2307
μ: -2.1
σ: 34.5

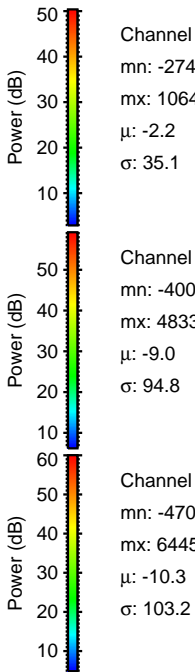
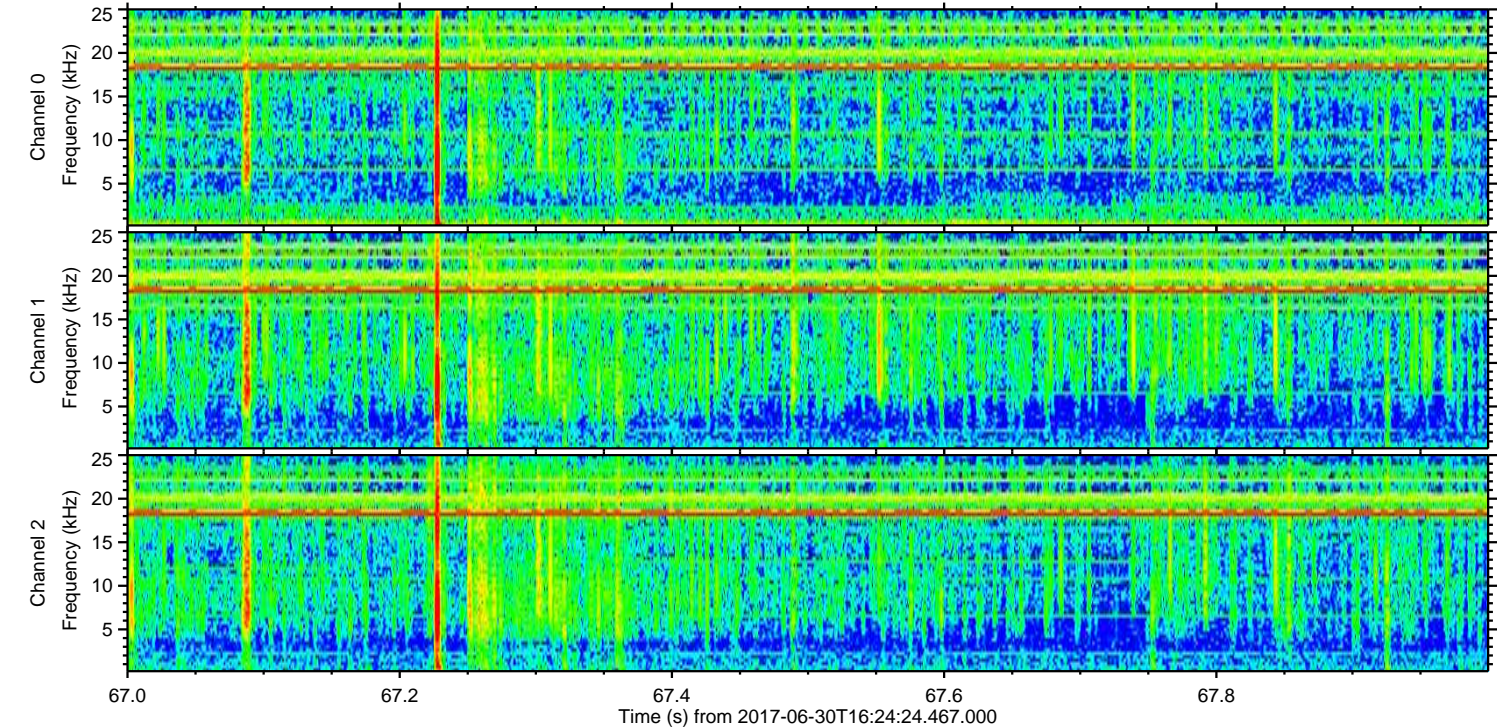
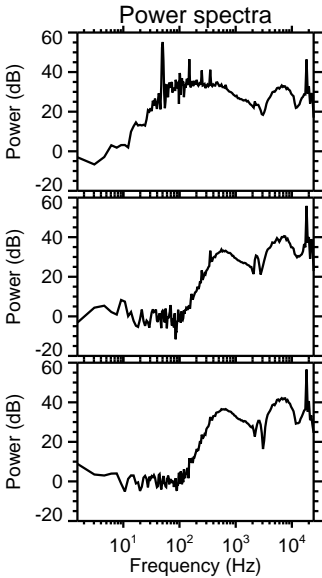
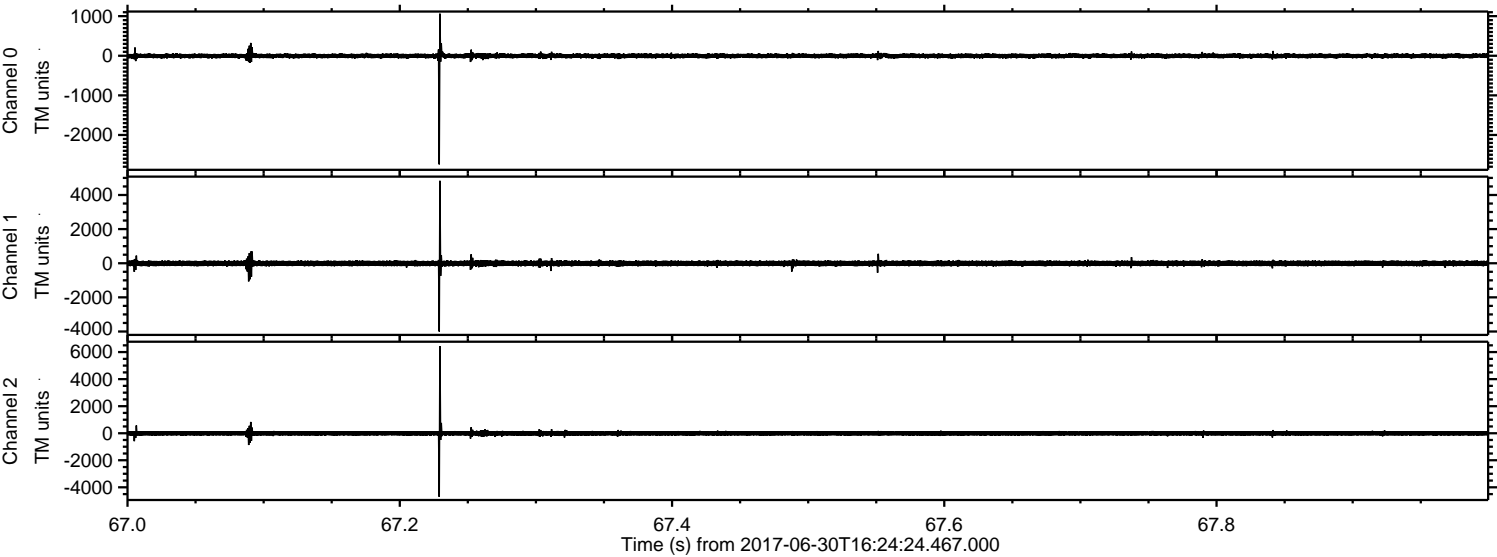
Channel 1
mn: -2118
mx: 4018
μ: -8.9
σ: 92.4

Channel 2
mn: -3577
mx: 7176
μ: -10.3
σ: 105.5

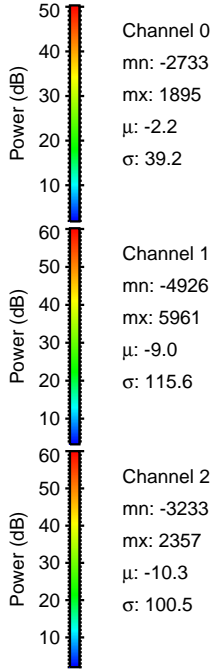
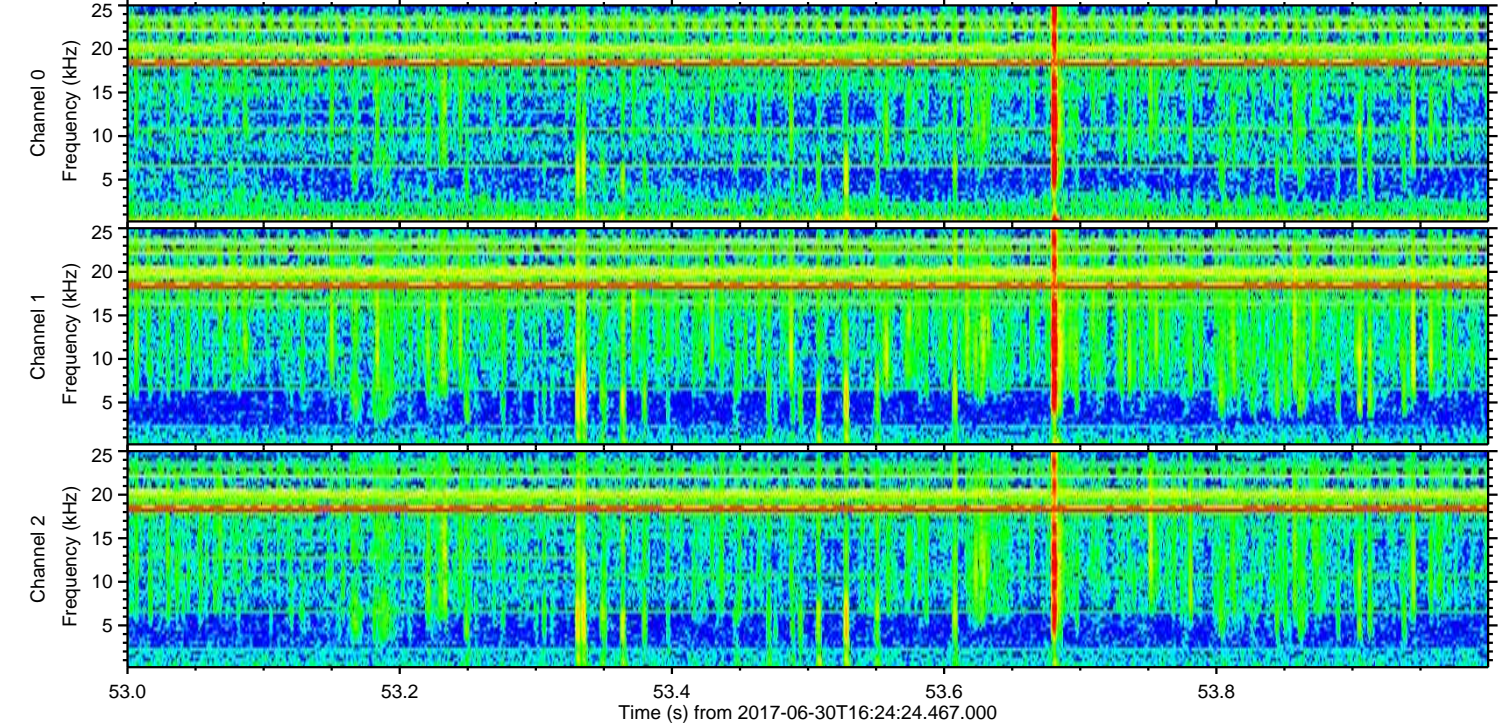
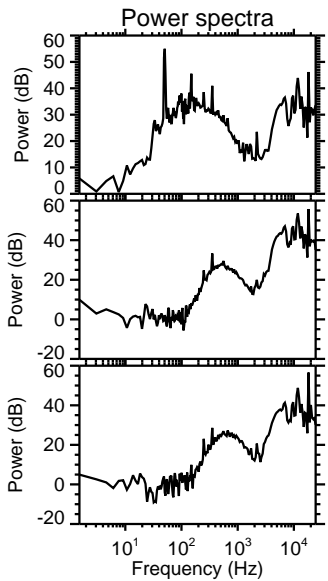
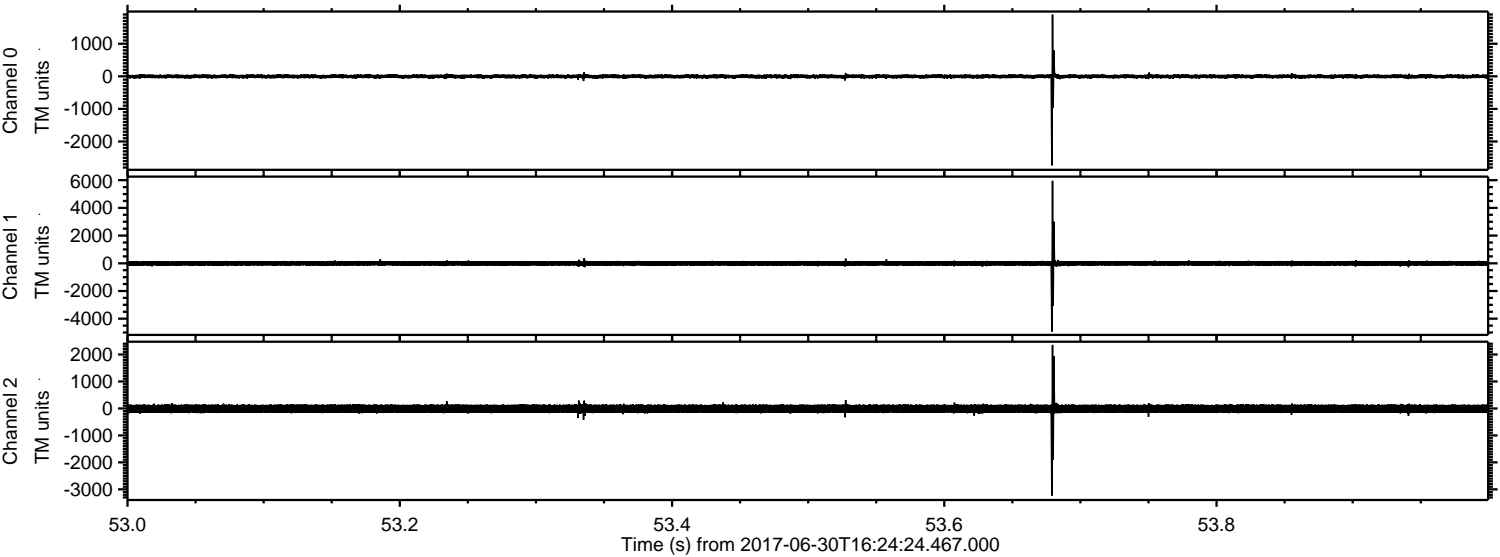
Processed Tue Jul 18 05:48:00 2017 by ELM ver.2012-10-06 from 001__elm20170630_162423__dat00.bin



Processed Tue Jul 18 05:48:01 2017 by ELM ver.2012-10-06 from 001__elm20170630_162423__dat00.bin

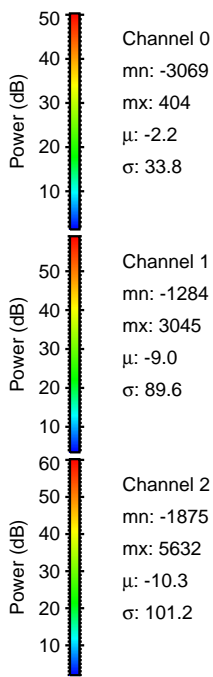
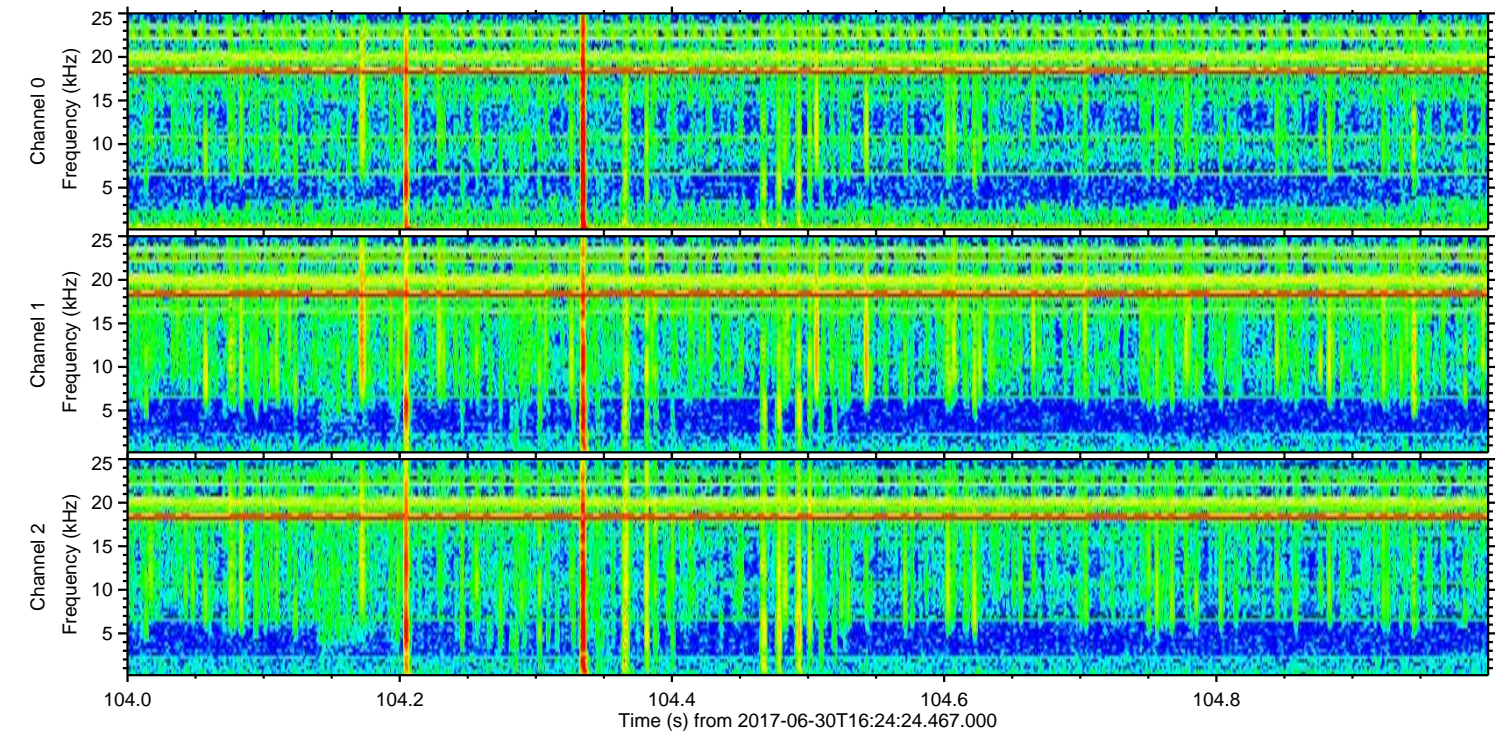
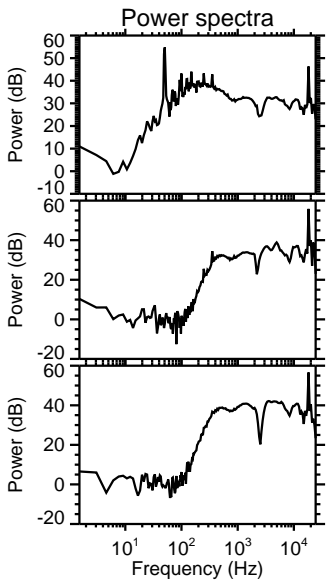
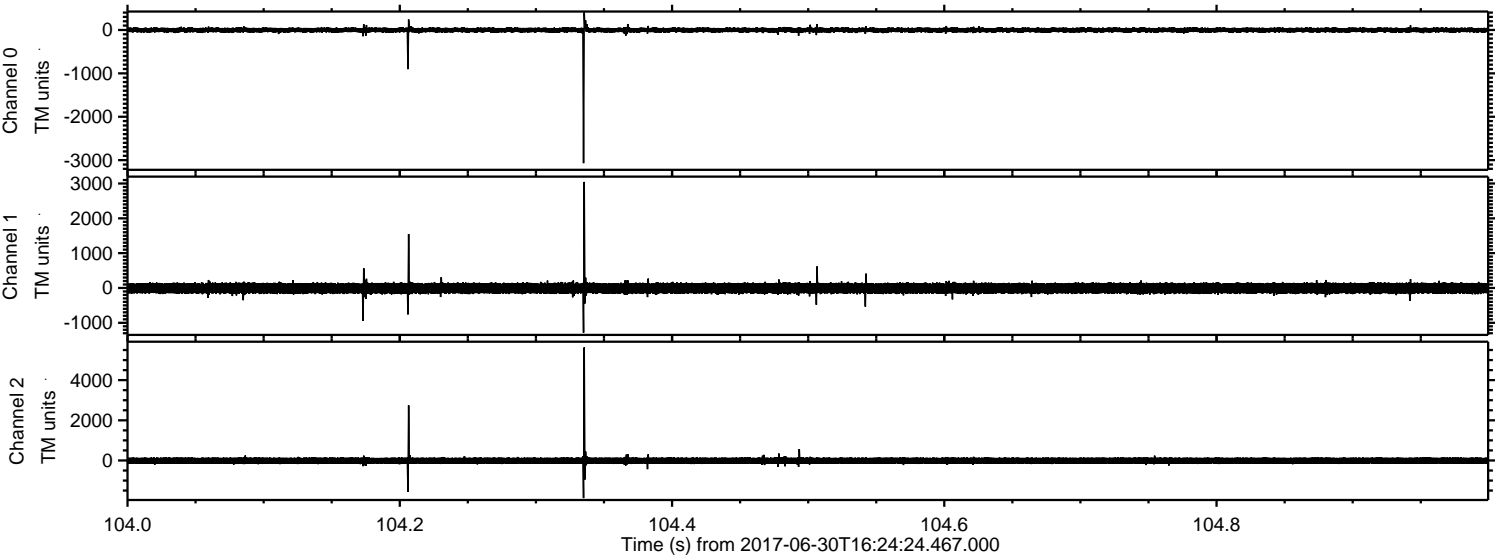


Processed Tue Jul 18 05:48:01 2017 by ELM ver.2012-10-06 from 001__elm20170630_162423__dat00.bin

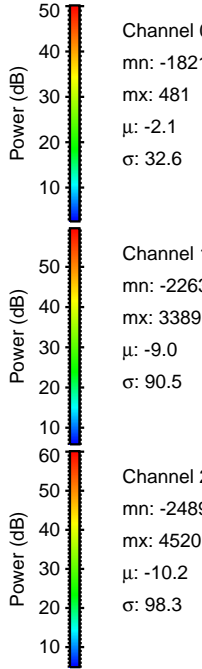
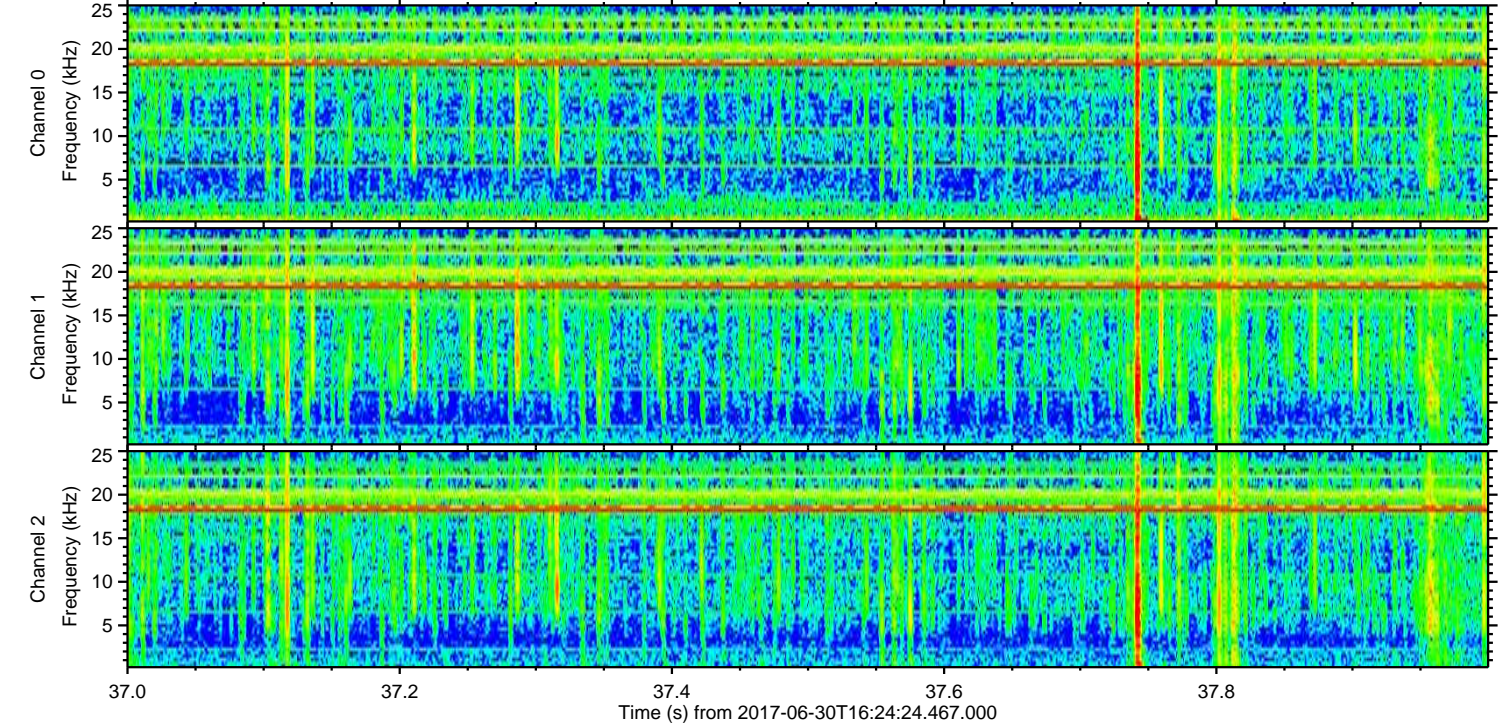
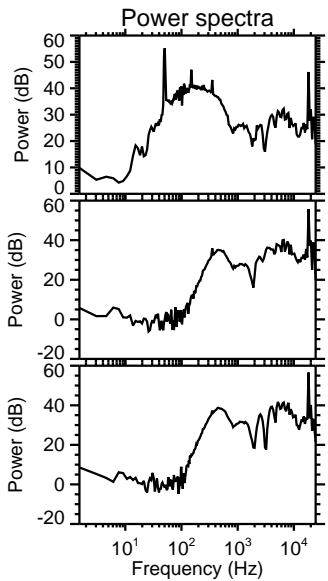
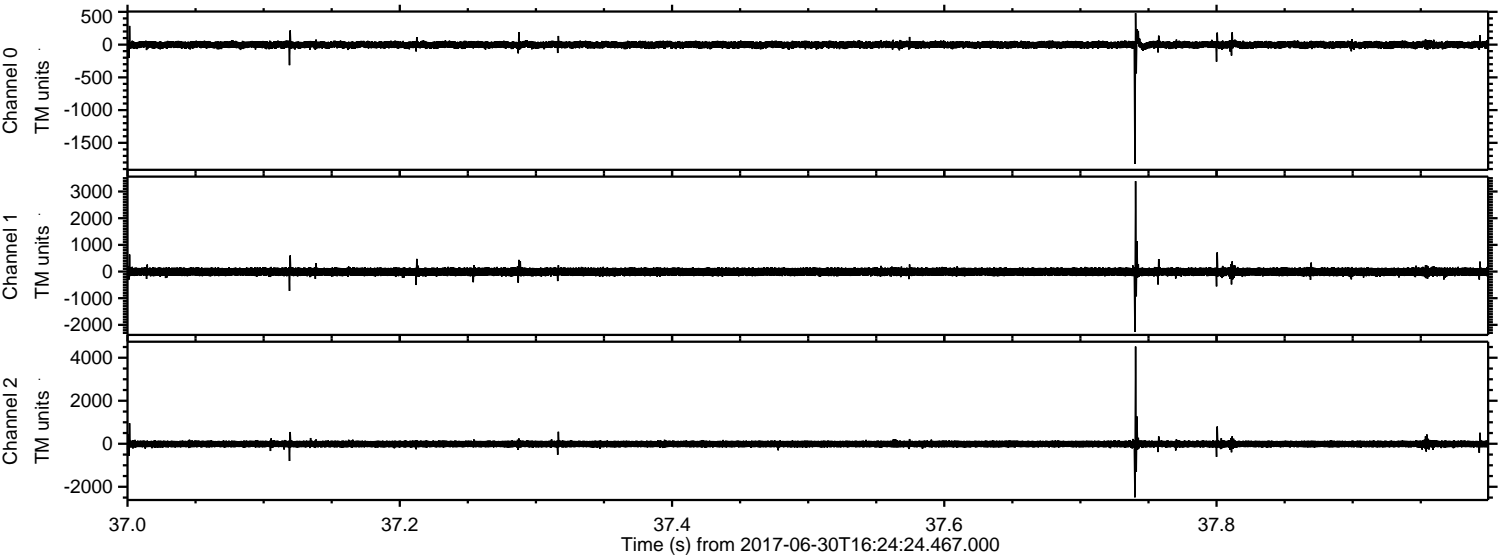


ELMAVAN 3D WAVEFORMS (Measured data sampled at 50 kHz) 51000 packets of 144 samples from 2017-06-30T16:24:24.467.000. Part 105/147

Processed Tue Jul 18 05:48:02 2017 by ELM ver.2012-10-06 from 001__elm20170630_162423__dat00.bin



Processed Tue Jul 18 05:48:03 2017 by ELM ver.2012-10-06 from 001__elm20170630_162423__dat00.bin



Channel 0
mn: -1821
mx: 481
 μ : -2.1
 σ : 32.6

Channel 1
mn: -2263
mx: 3389
 μ : -9.0
 σ : 90.5

Channel 2
mn: -2489
mx: 4520
 μ : -10.2
 σ : 98.3

Processed Tue Jul 18 05:48:04 2017 by ELM ver.2012-10-06 from 001__elm20170630_162423__dat00.bin

