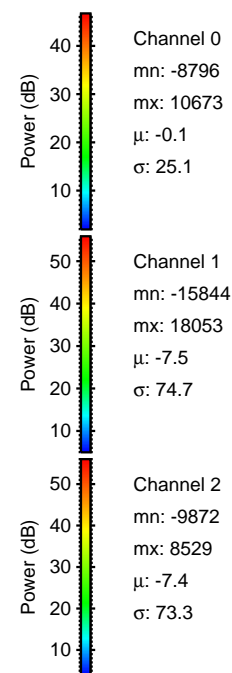
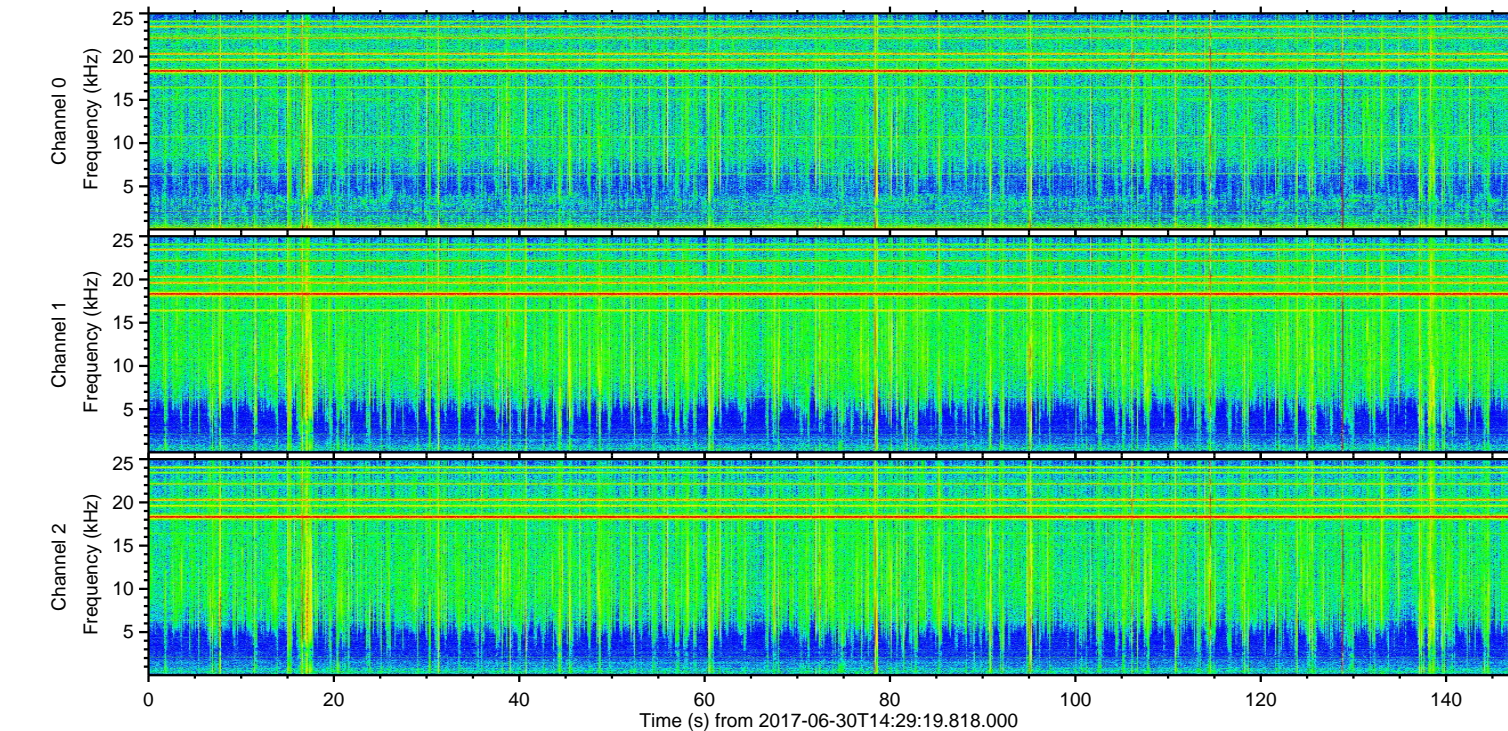
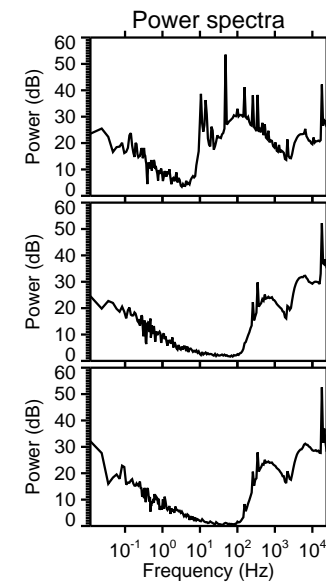
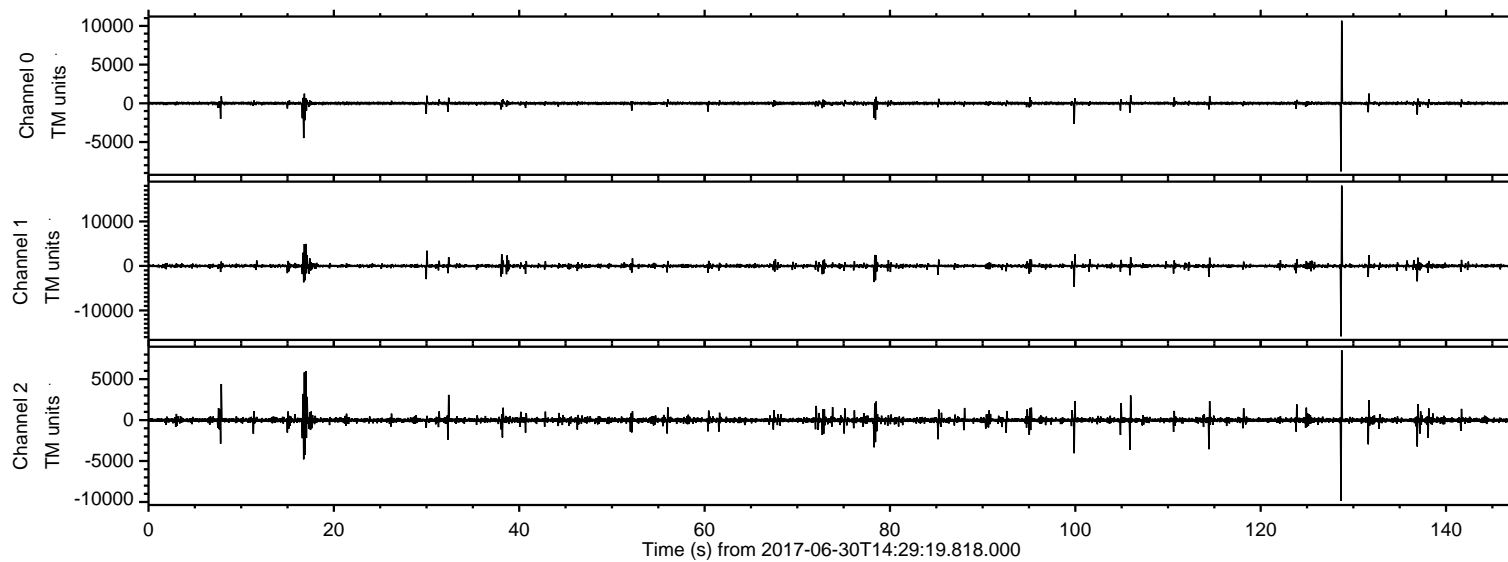


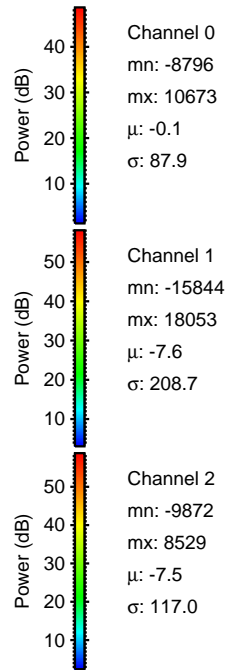
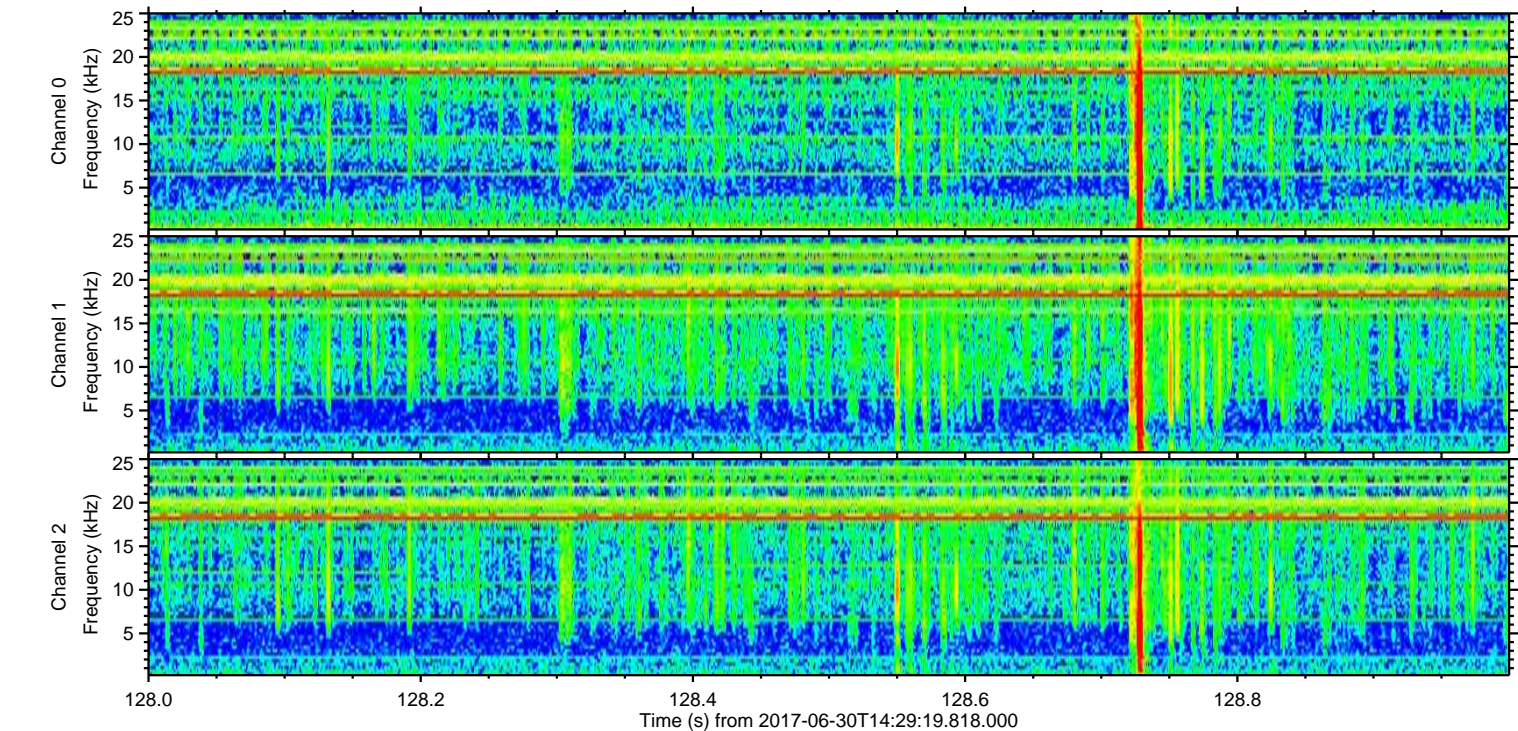
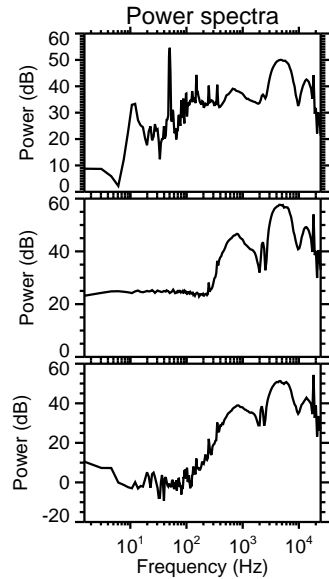
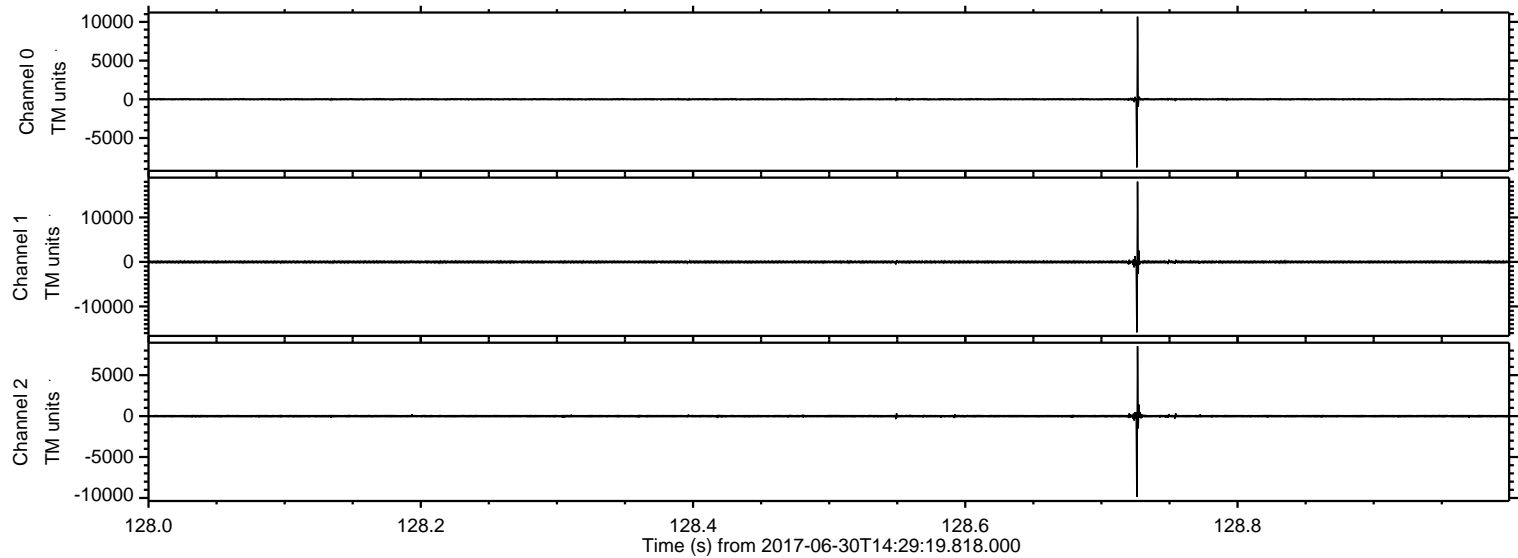
ELMAVAN 3D WAVEFORMS (Measured data sampled at 50 kHz) 51000 packets of 144 samples from 2017-06-30T14:29:19.818.000.

Processed Tue Jul 18 05:29:49 2017 by ELM ver.2012-10-06 from 001__elm20170630_142918__dat00.bin



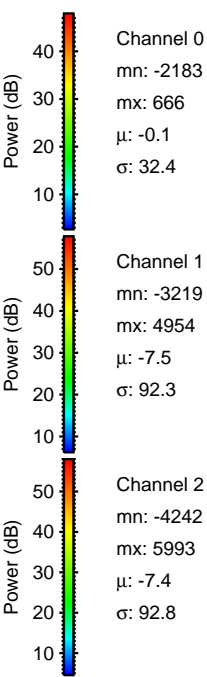
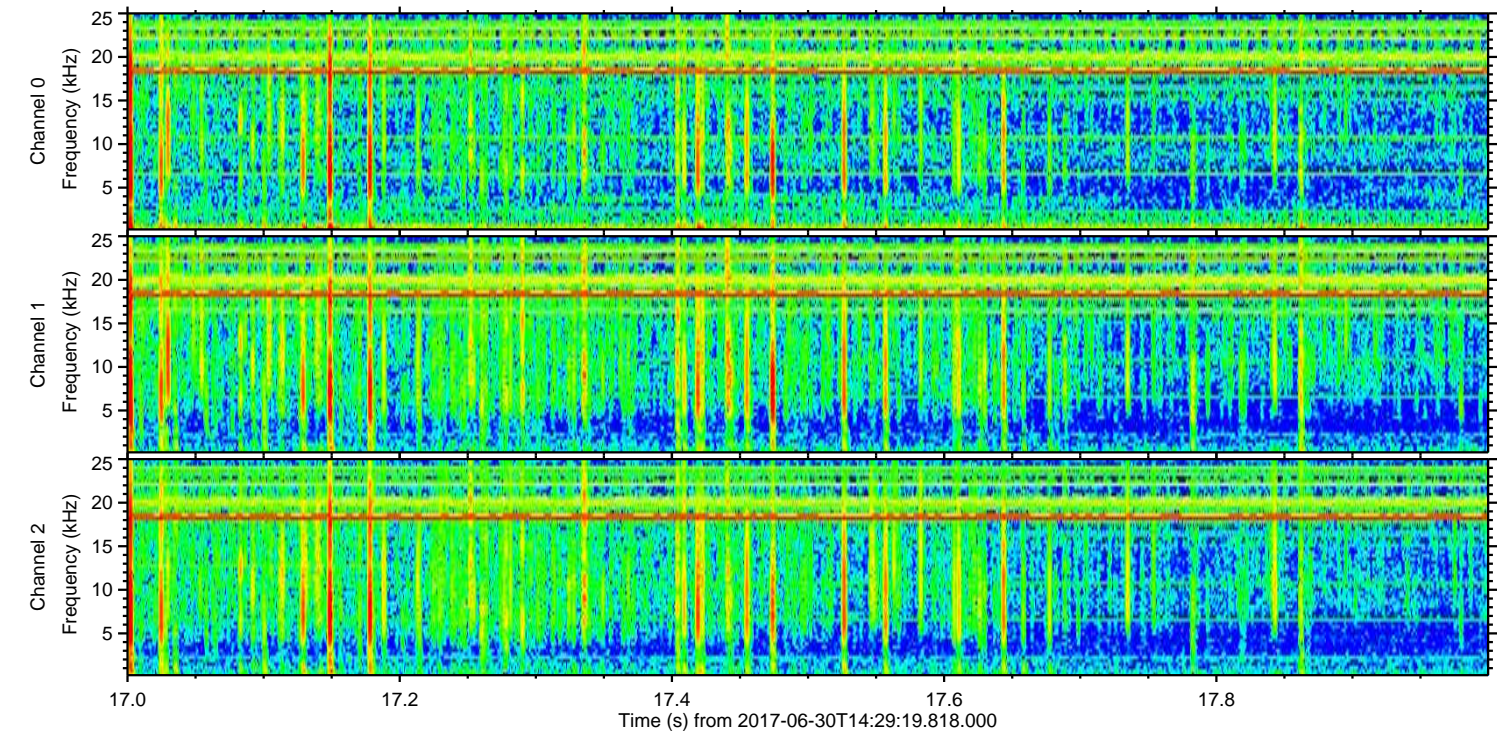
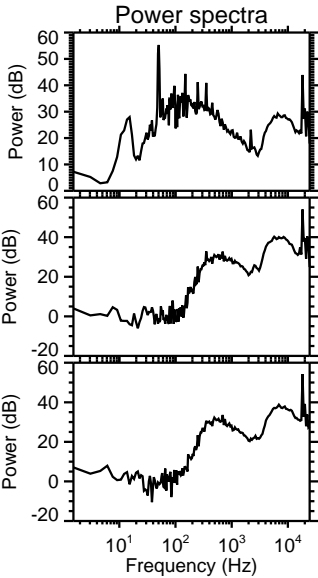
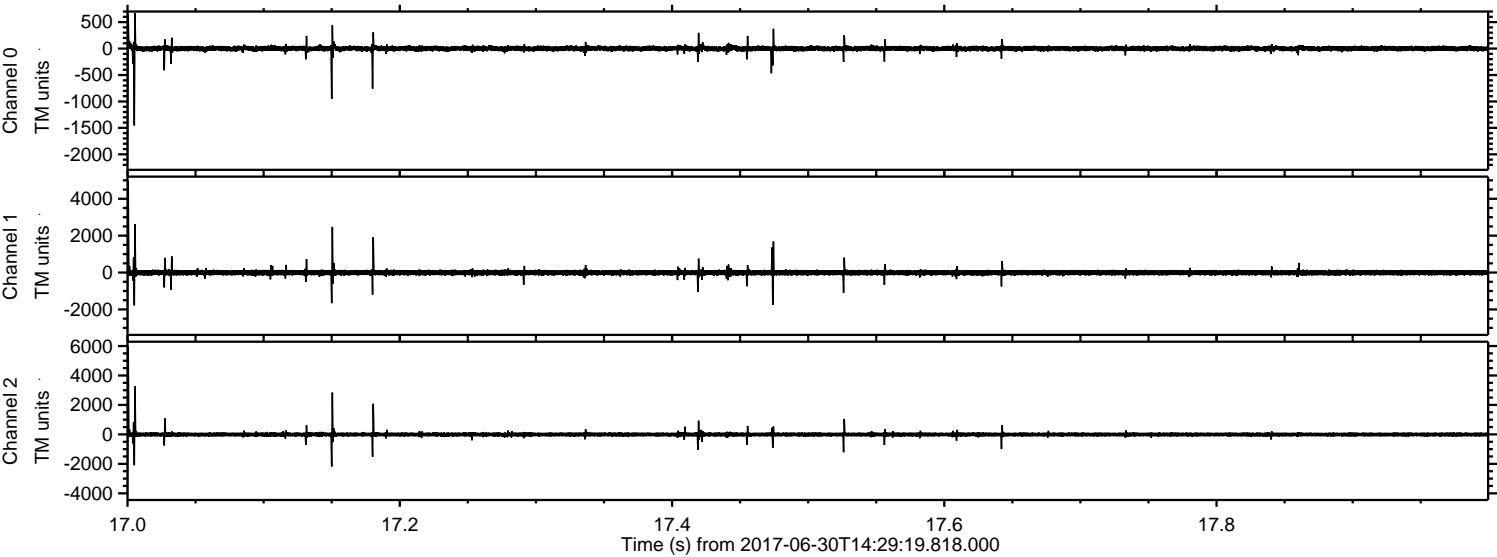
ELMAVAN 3D WAVEFORMS (Measured data sampled at 50 kHz) 51000 packets of 144 samples from 2017-06-30T14:29:19.818.000. Part 129/147

Processed Tue Jul 18 05:29:59 2017 by ELM ver.2012-10-06 from 001__elm20170630_142918__dat00.bin



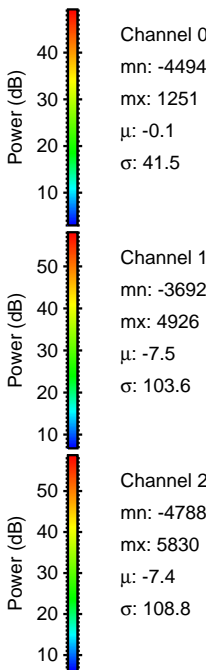
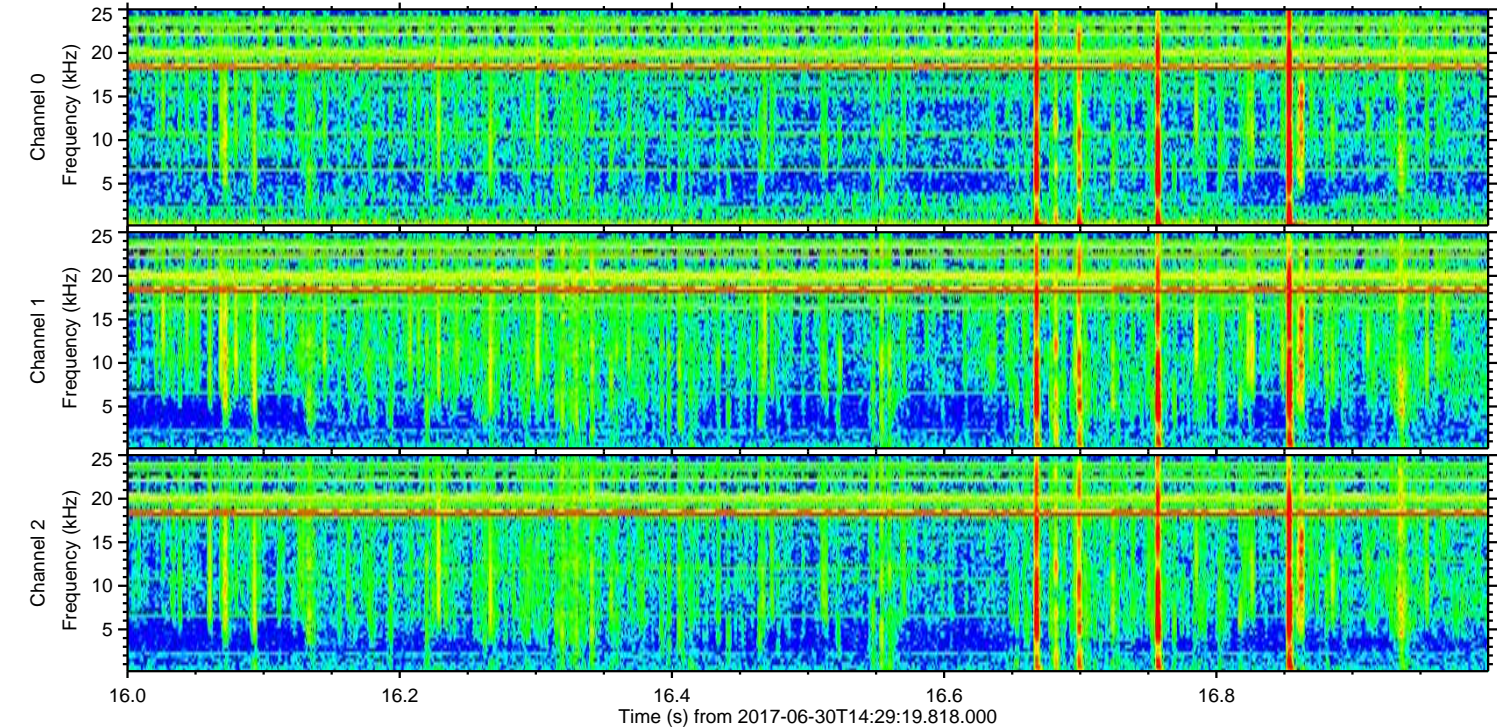
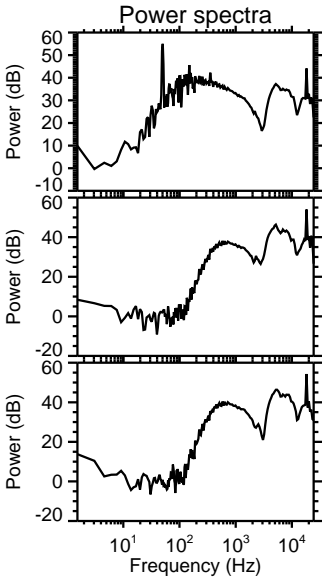
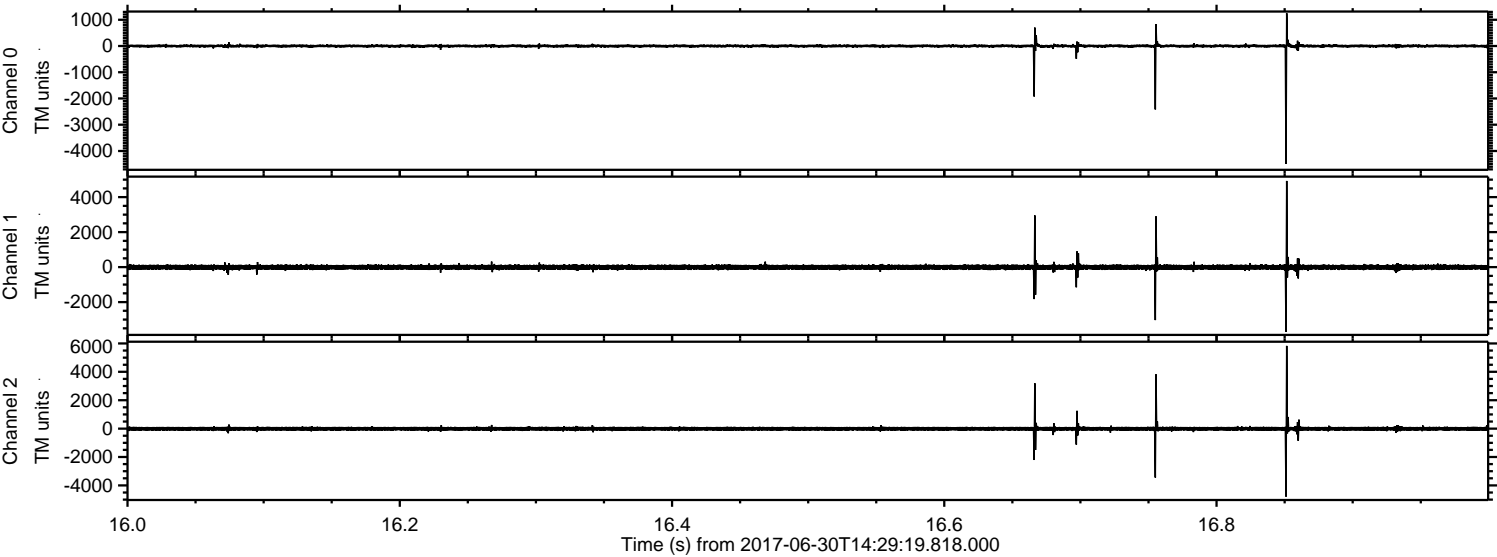
ELMAVAN 3D WAVEFORMS (Measured data sampled at 50 kHz) 51000 packets of 144 samples from 2017-06-30T14:29:19.818.000. Part 18/147

Processed Tue Jul 18 05:30:00 2017 by ELM ver.2012-10-06 from 001__elm20170630_142918__dat00.bin



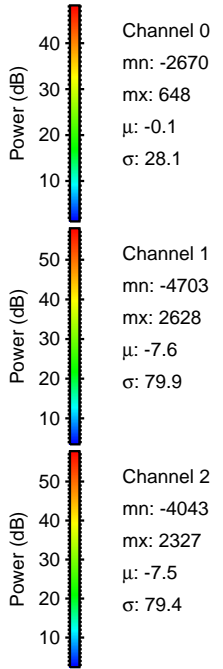
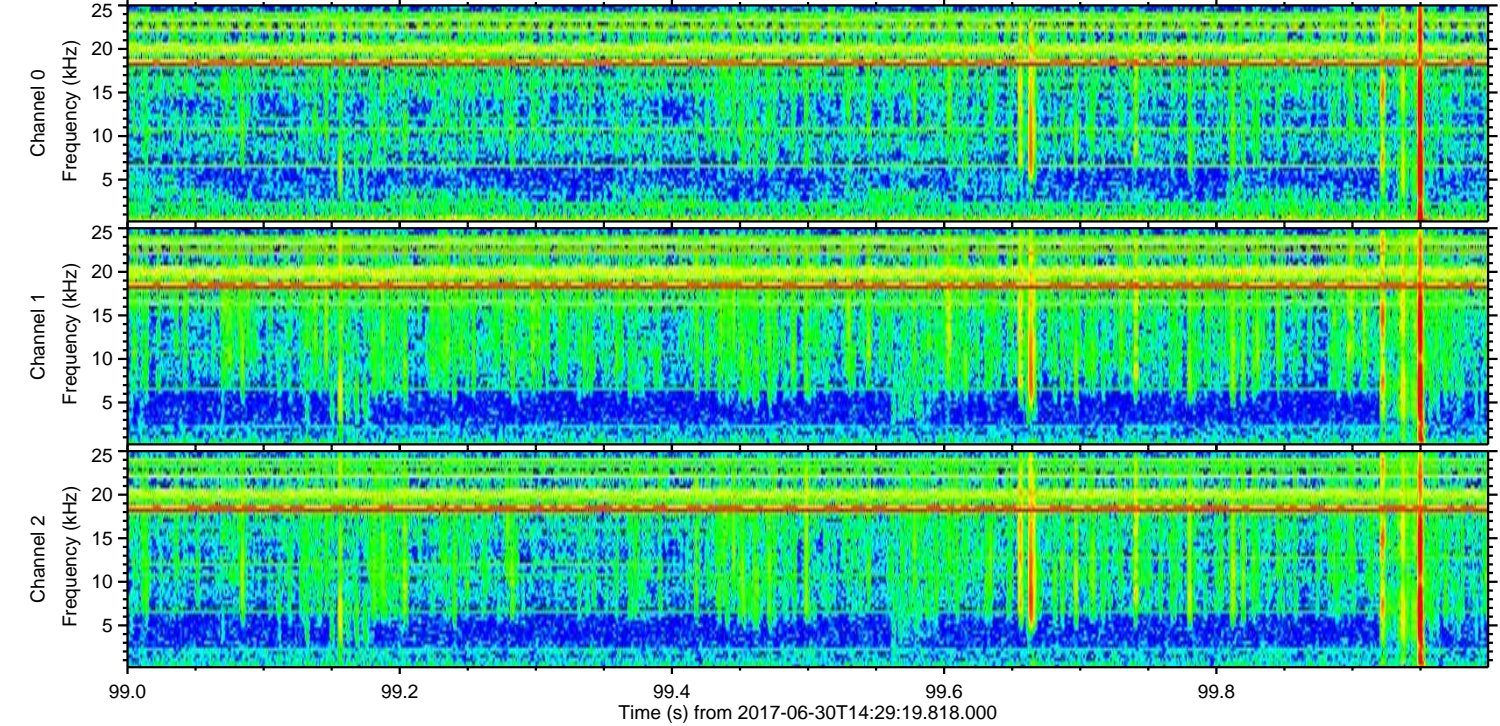
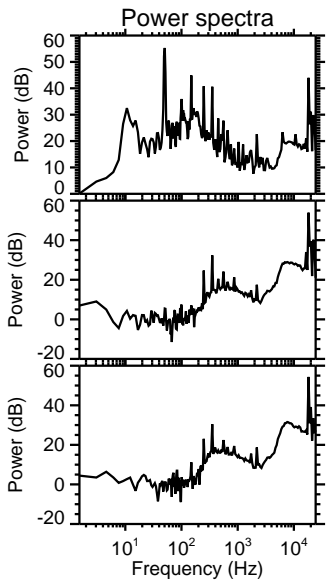
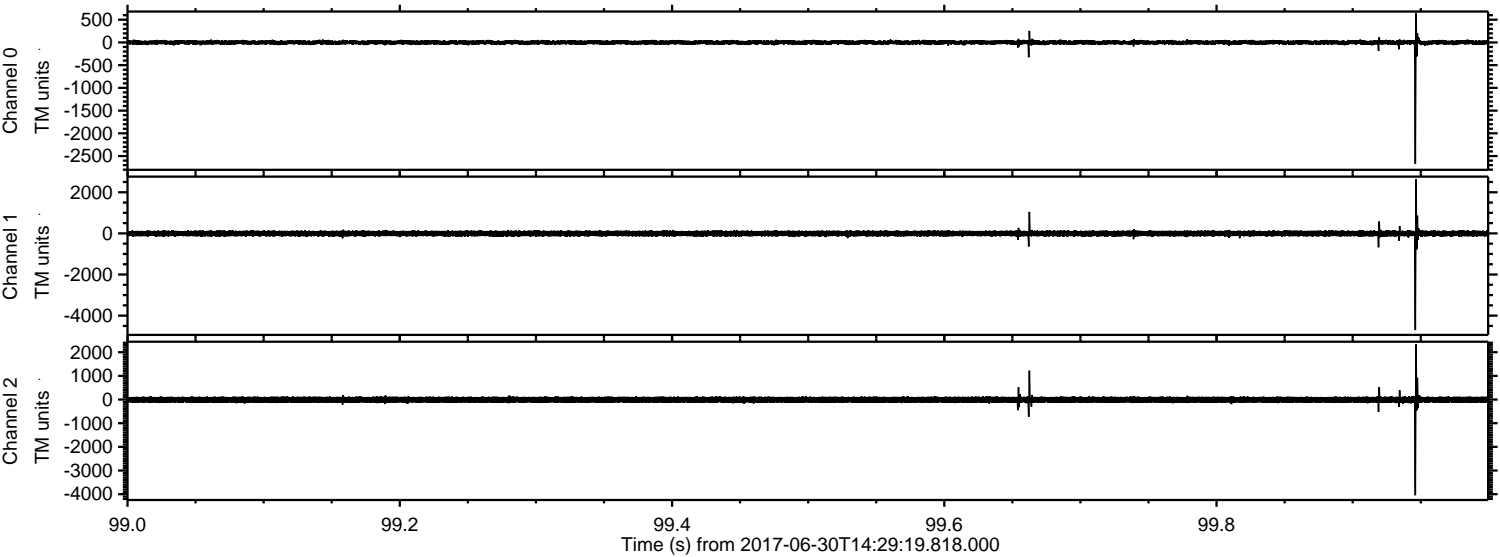
ELMAVAN 3D WAVEFORMS (Measured data sampled at 50 kHz) 51000 packets of 144 samples from 2017-06-30T14:29:19.818.000. Part 17/147

Processed Tue Jul 18 05:30:01 2017 by ELM ver.2012-10-06 from 001__elm20170630_142918__dat00.bin



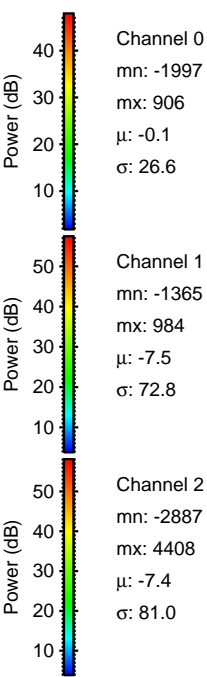
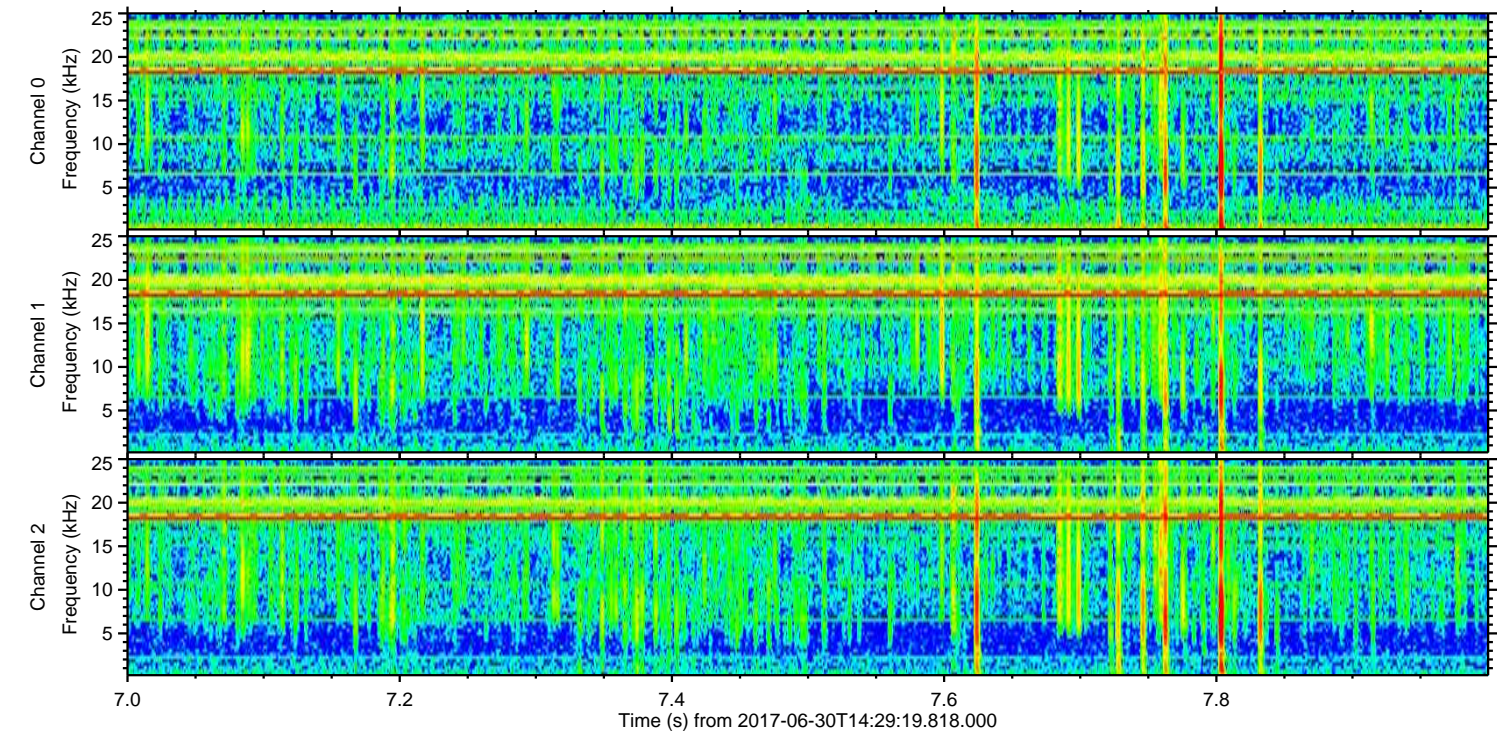
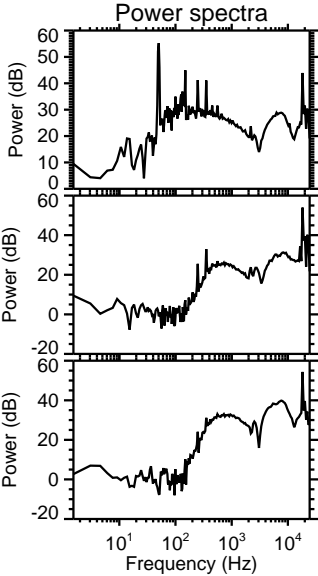
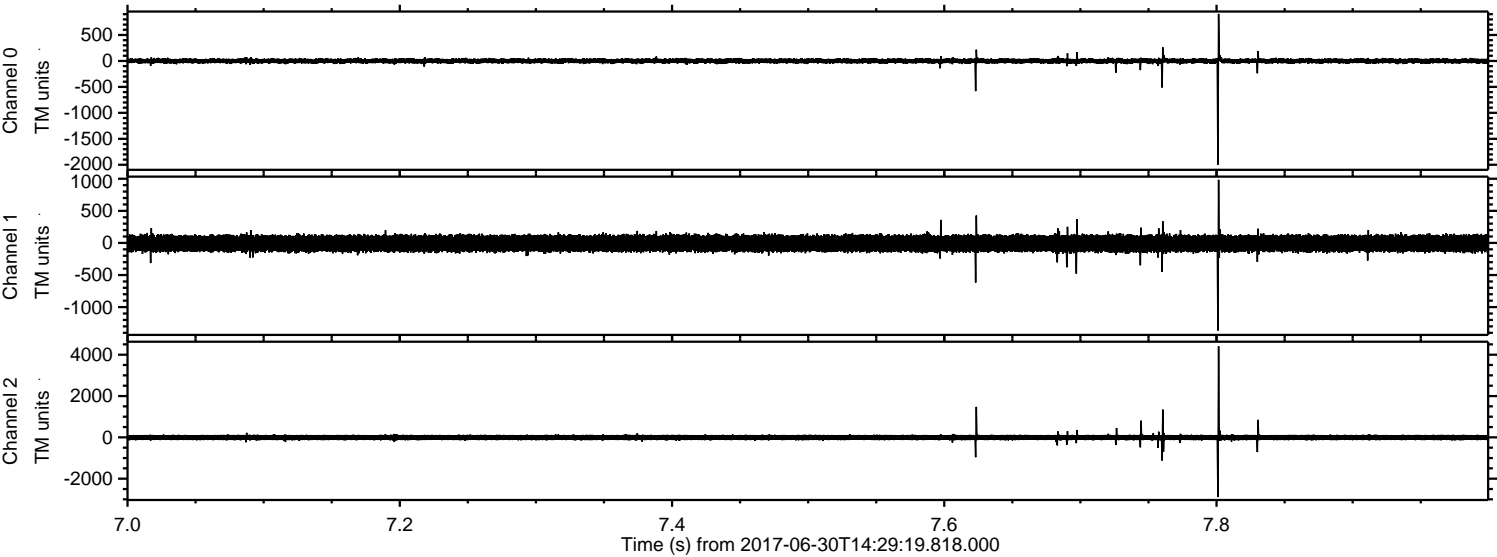
ELMAVAN 3D WAVEFORMS (Measured data sampled at 50 kHz) 51000 packets of 144 samples from 2017-06-30T14:29:19.818.000. Part 100/147

Processed Tue Jul 18 05:30:02 2017 by ELM ver.2012-10-06 from 001__elm20170630_142918__dat00.bin



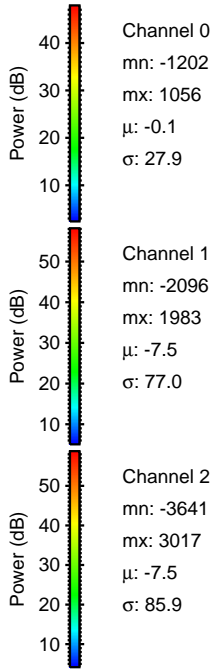
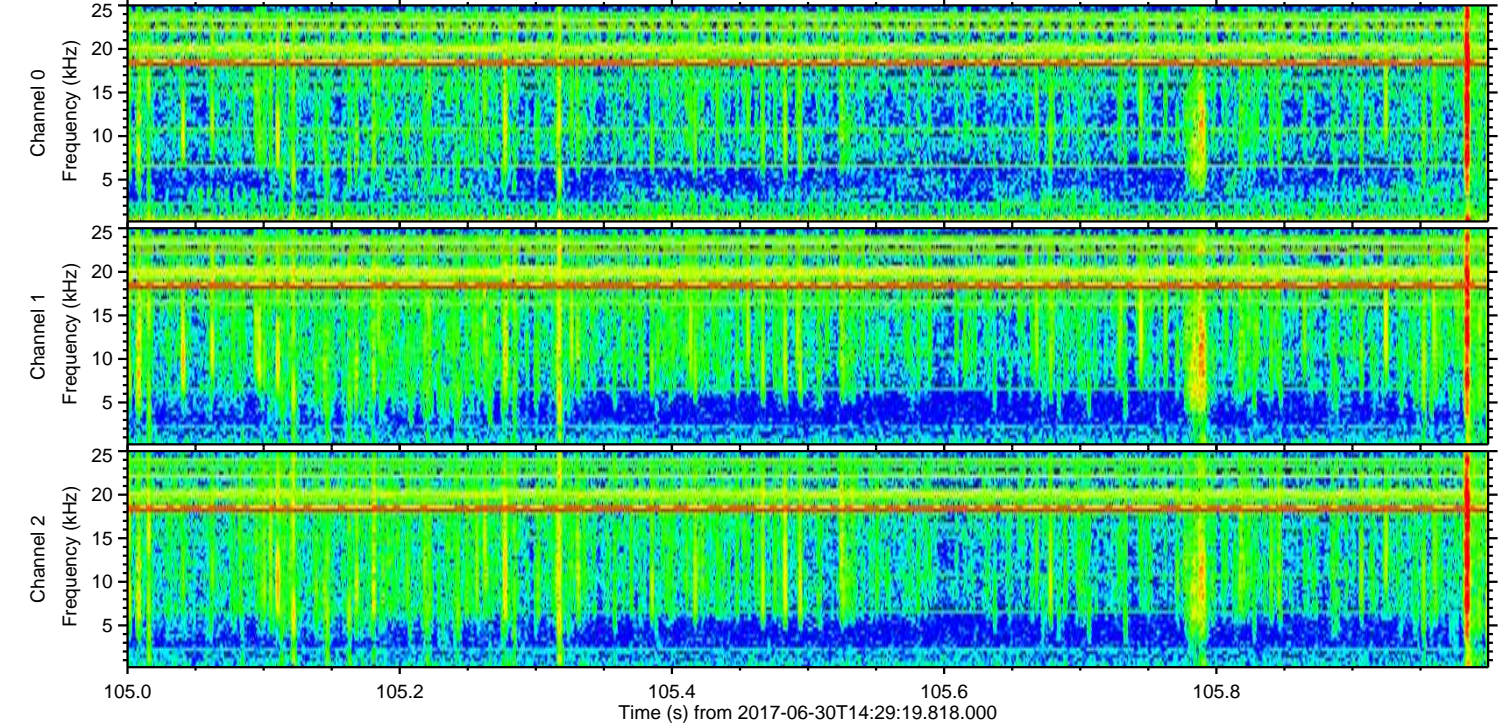
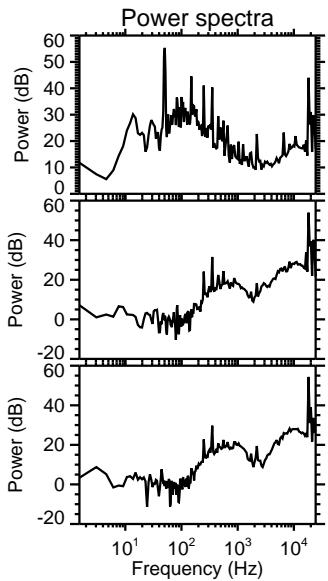
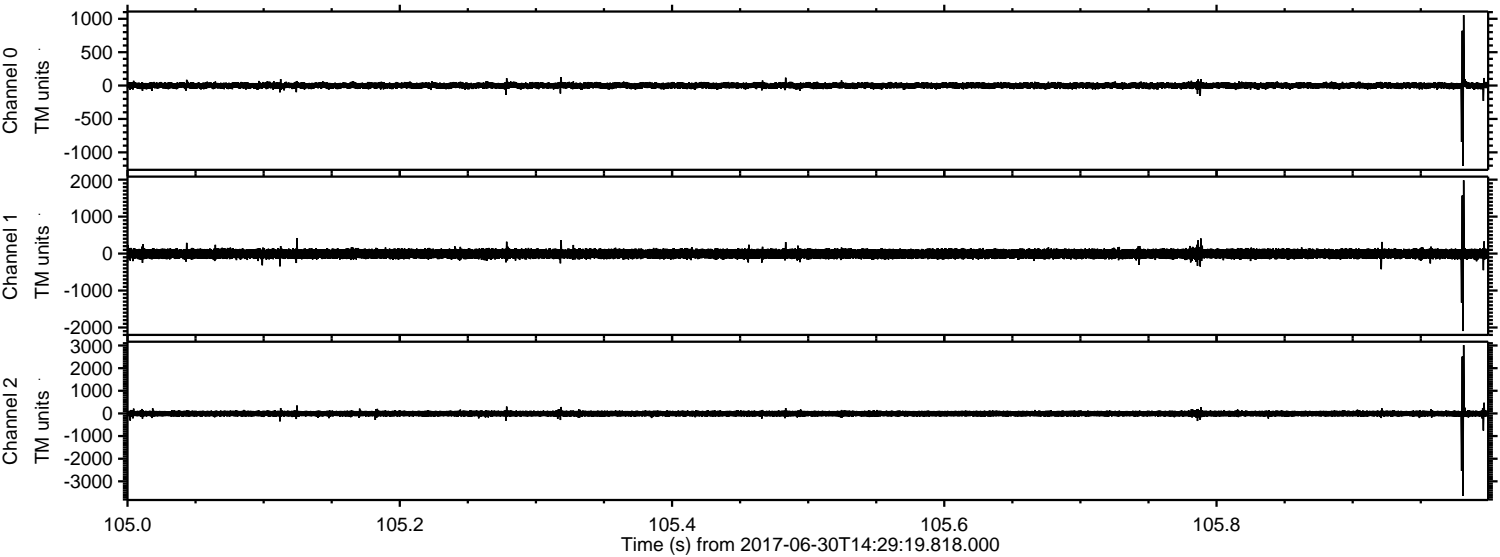
ELMAVAN 3D WAVEFORMS (Measured data sampled at 50 kHz) 51000 packets of 144 samples from 2017-06-30T14:29:19.818.000. Part 8/147

Processed Tue Jul 18 05:30:03 2017 by ELM ver.2012-10-06 from 001__elm20170630_142918__dat00.bin



ELMAVAN 3D WAVEFORMS (Measured data sampled at 50 kHz) 51000 packets of 144 samples from 2017-06-30T14:29:19.818.000. Part 106/147

Processed Tue Jul 18 05:30:03 2017 by ELM ver.2012-10-06 from 001__elm20170630_142918__dat00.bin

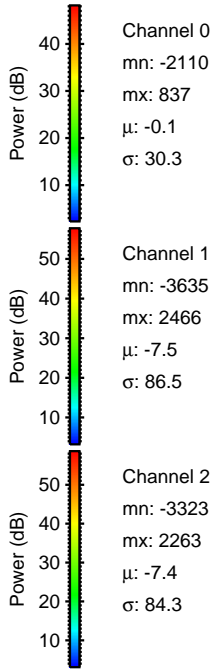
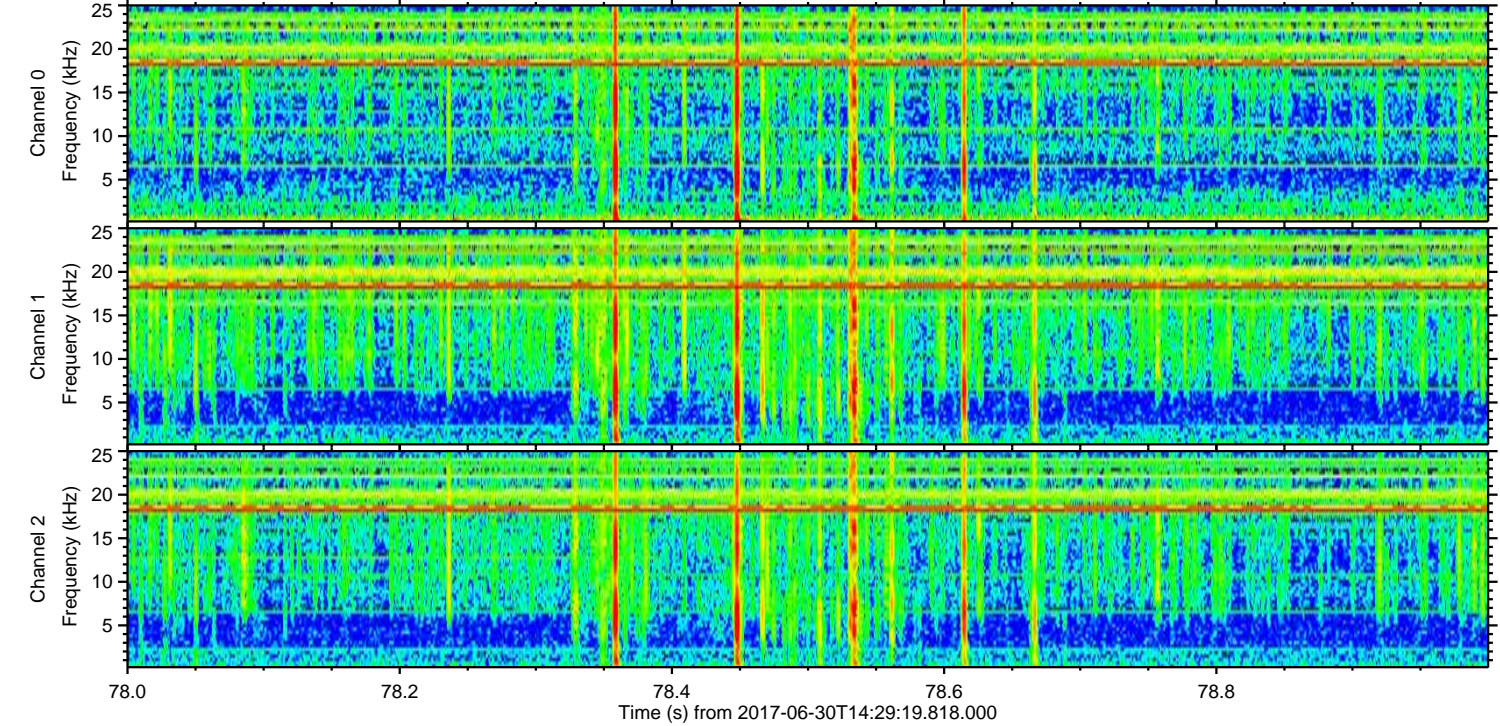
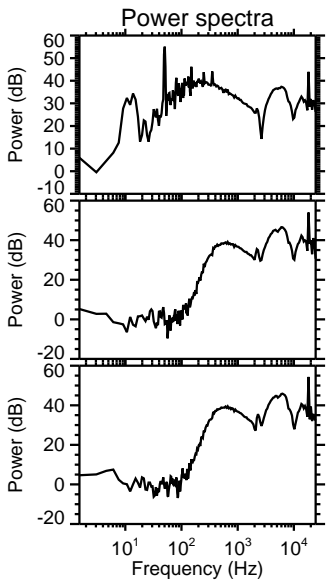
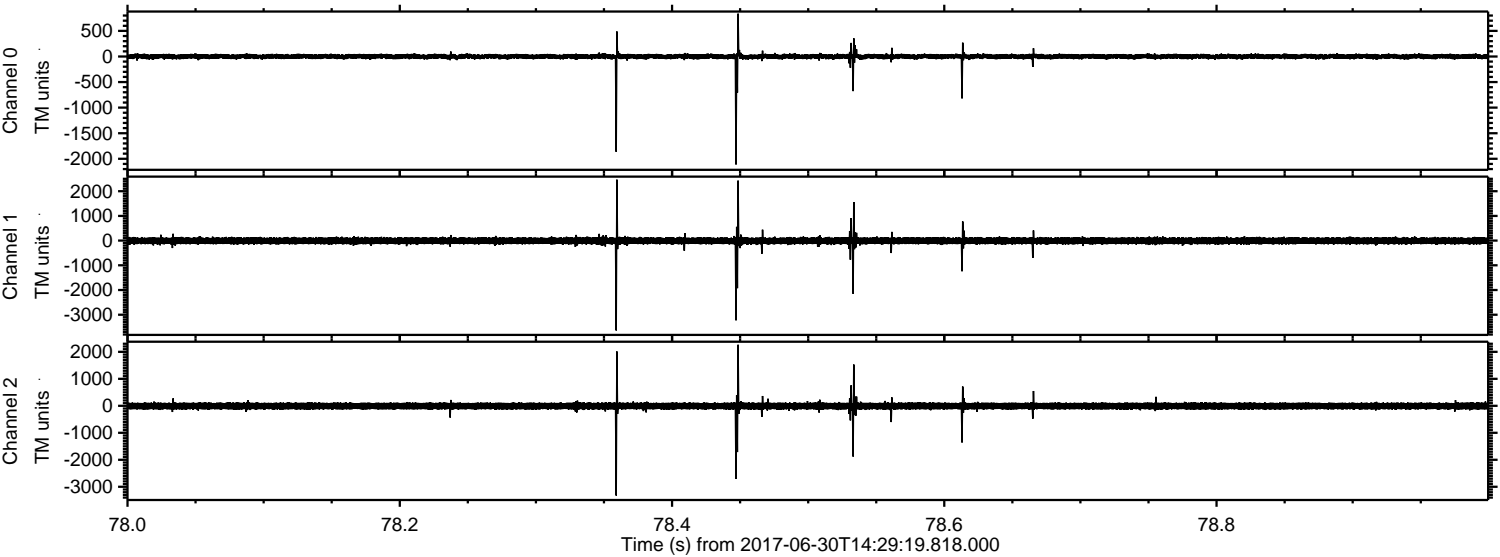


Channel 0
mn: -1202
mx: 1056
 μ : -0.1
 σ : 27.9

Channel 1
mn: -2096
mx: 1983
 μ : -7.5
 σ : 77.0

Channel 2
mn: -3641
mx: 3017
 μ : -7.5
 σ : 85.9

Processed Tue Jul 18 05:30:04 2017 by ELM ver.2012-10-06 from 001__elm20170630_142918__dat00.bin



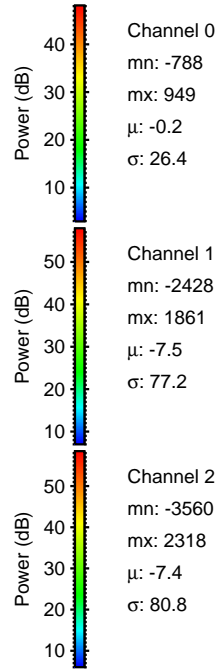
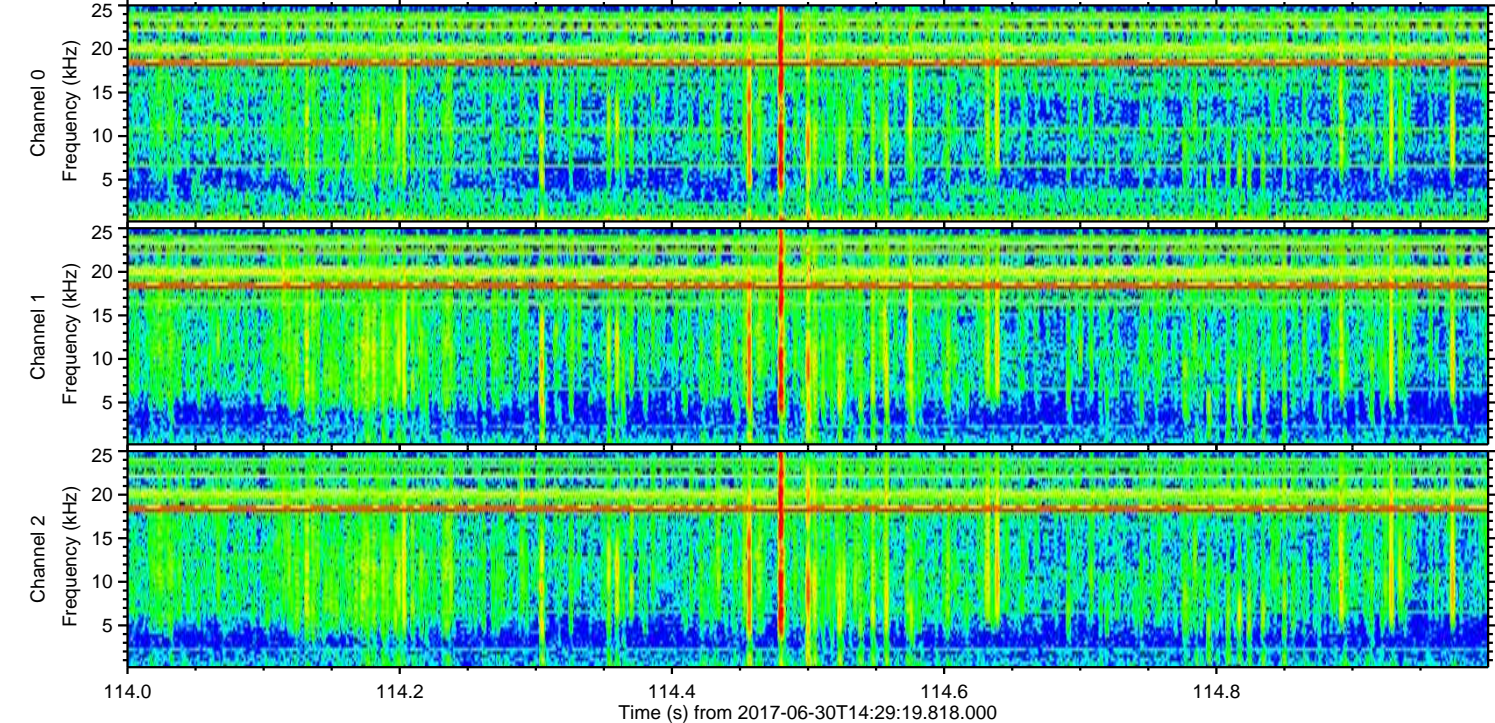
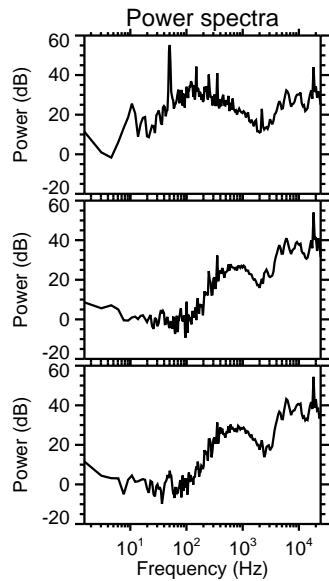
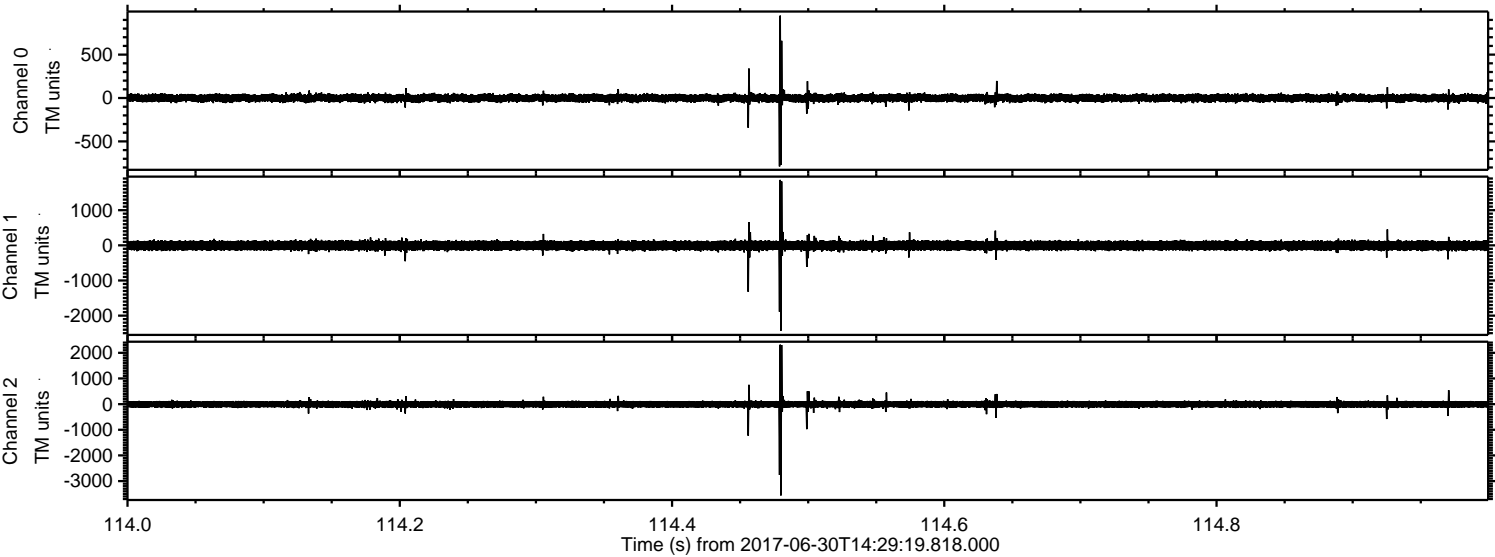
Channel 0
mn: -2110
mx: 837
 μ : -0.1
 σ : 30.3

Channel 1
mn: -3635
mx: 2466
 μ : -7.5
 σ : 86.5

Channel 2
mn: -3323
mx: 2263
 μ : -7.4
 σ : 84.3

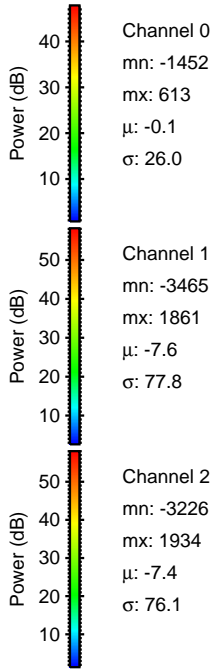
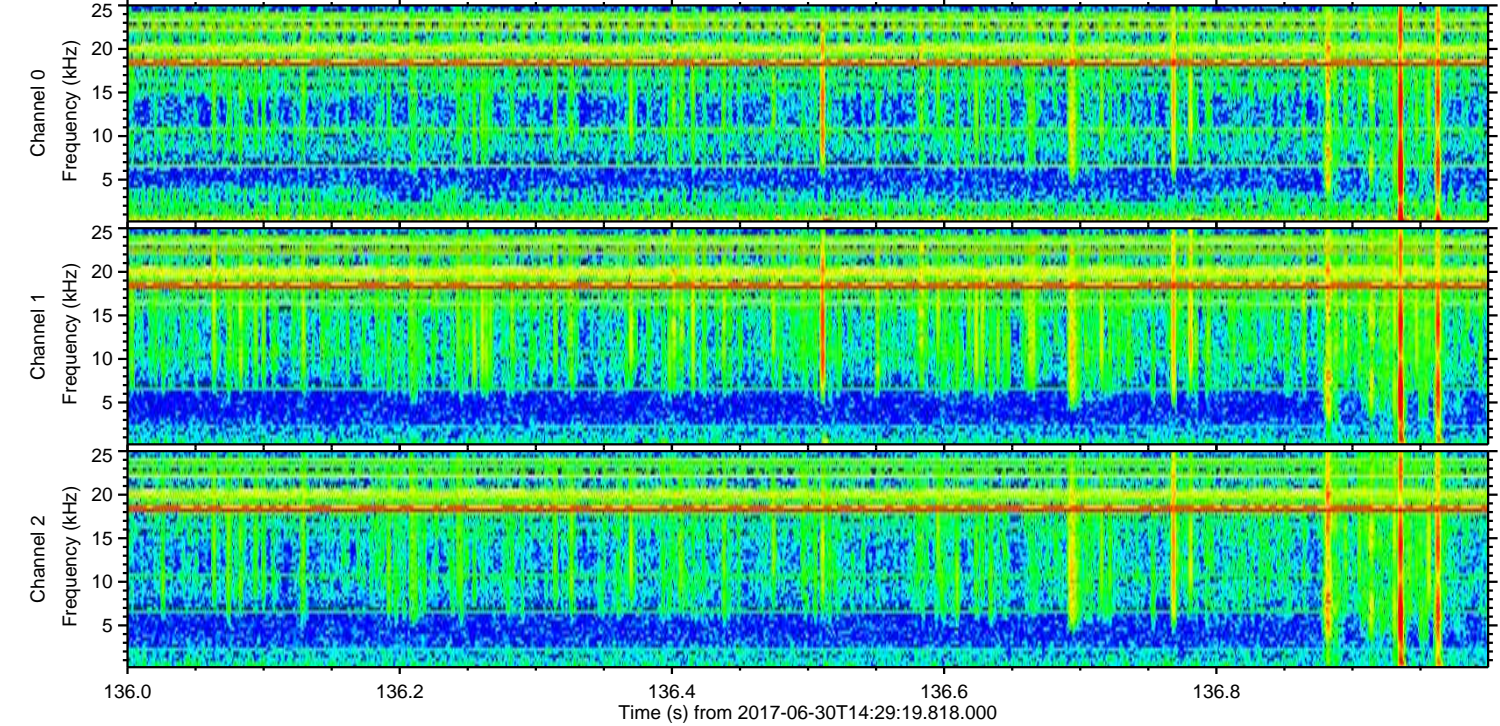
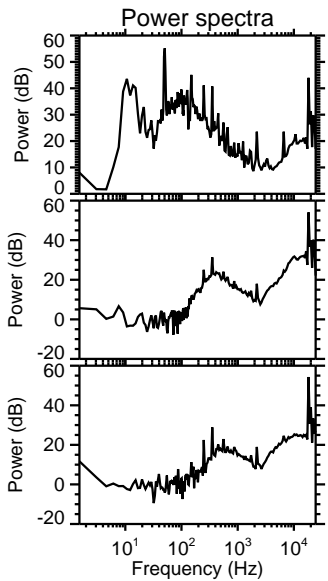
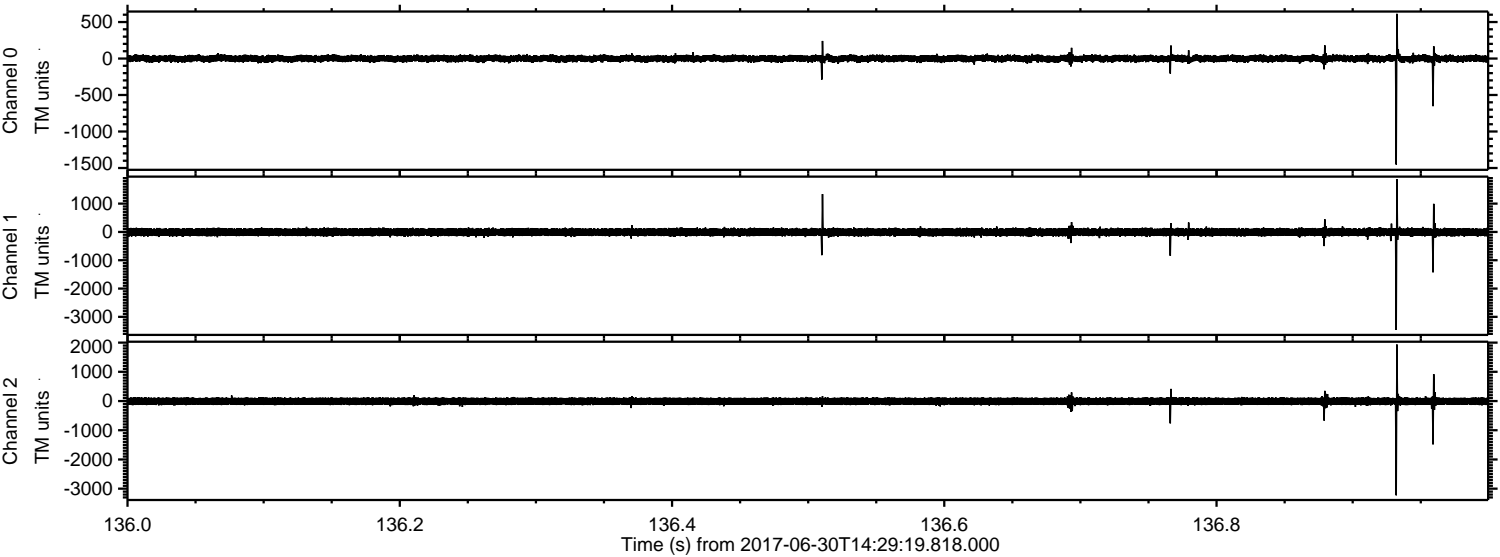
ELMAVAN 3D WAVEFORMS (Measured data sampled at 50 kHz) 51000 packets of 144 samples from 2017-06-30T14:29:19.818.000. Part 115/147

Processed Tue Jul 18 05:30:05 2017 by ELM ver.2012-10-06 from 001__elm20170630_142918__dat00.bin



ELMAVAN 3D WAVEFORMS (Measured data sampled at 50 kHz) 51000 packets of 144 samples from 2017-06-30T14:29:19.818.000. Part 137/147

Processed Tue Jul 18 05:30:06 2017 by ELM ver.2012-10-06 from 001__elm20170630_142918__dat00.bin



Channel 0
mn: -1452
mx: 613
 μ : -0.1
 σ : 26.0

Channel 1
mn: -3465
mx: 1861
 μ : -7.6
 σ : 77.8

Channel 2
mn: -3226
mx: 1934
 μ : -7.4
 σ : 76.1

Processed Tue Jul 18 05:30:06 2017 by ELM ver.2012-10-06 from 001__elm20170630_142918__dat00.bin

