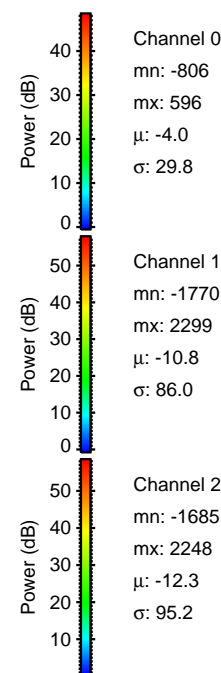
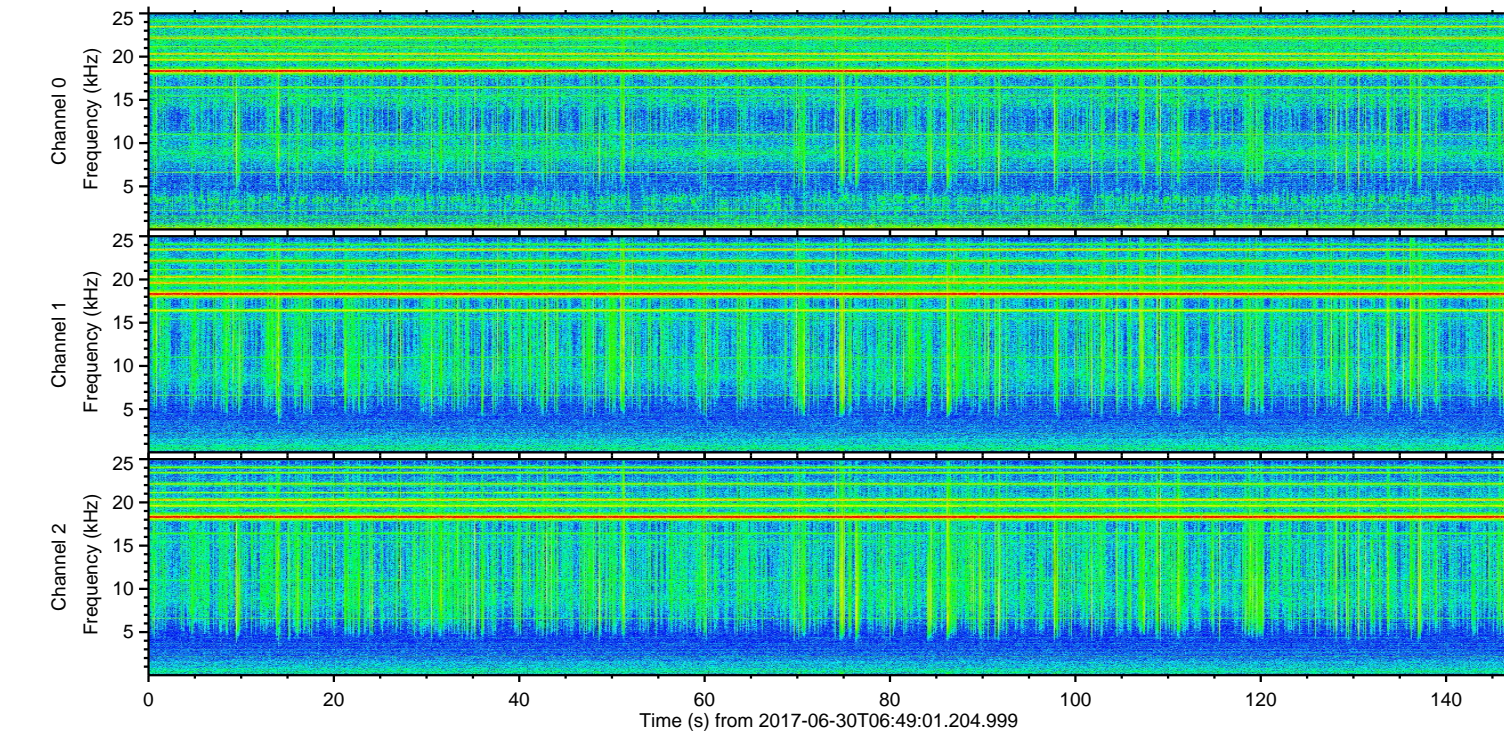
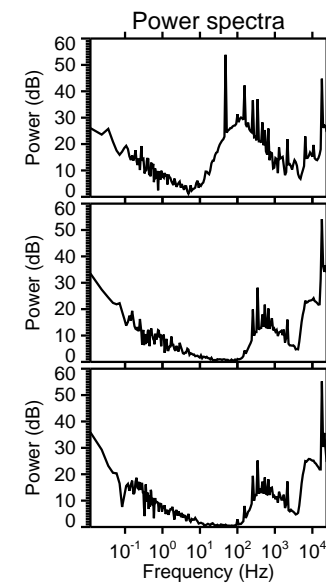
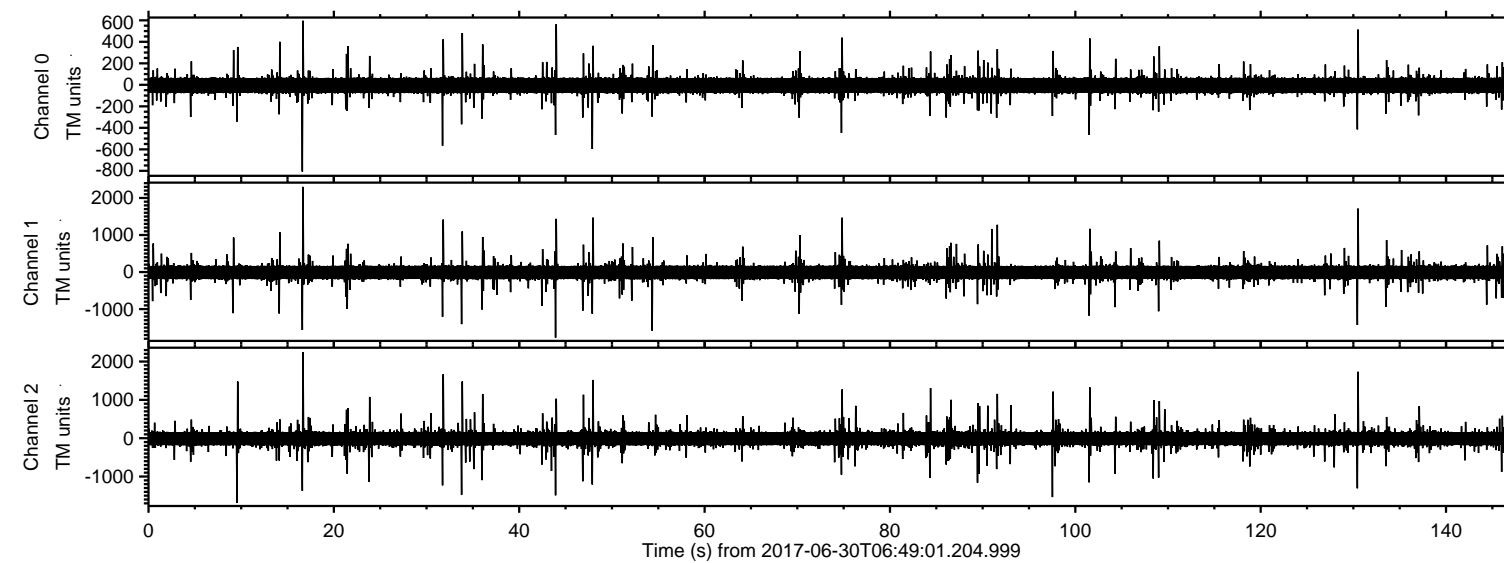
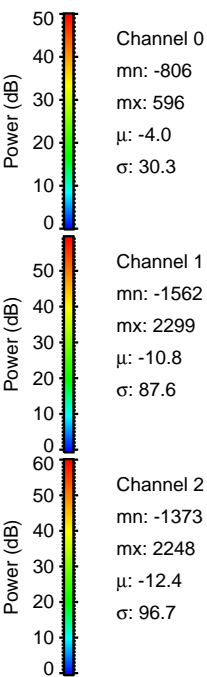
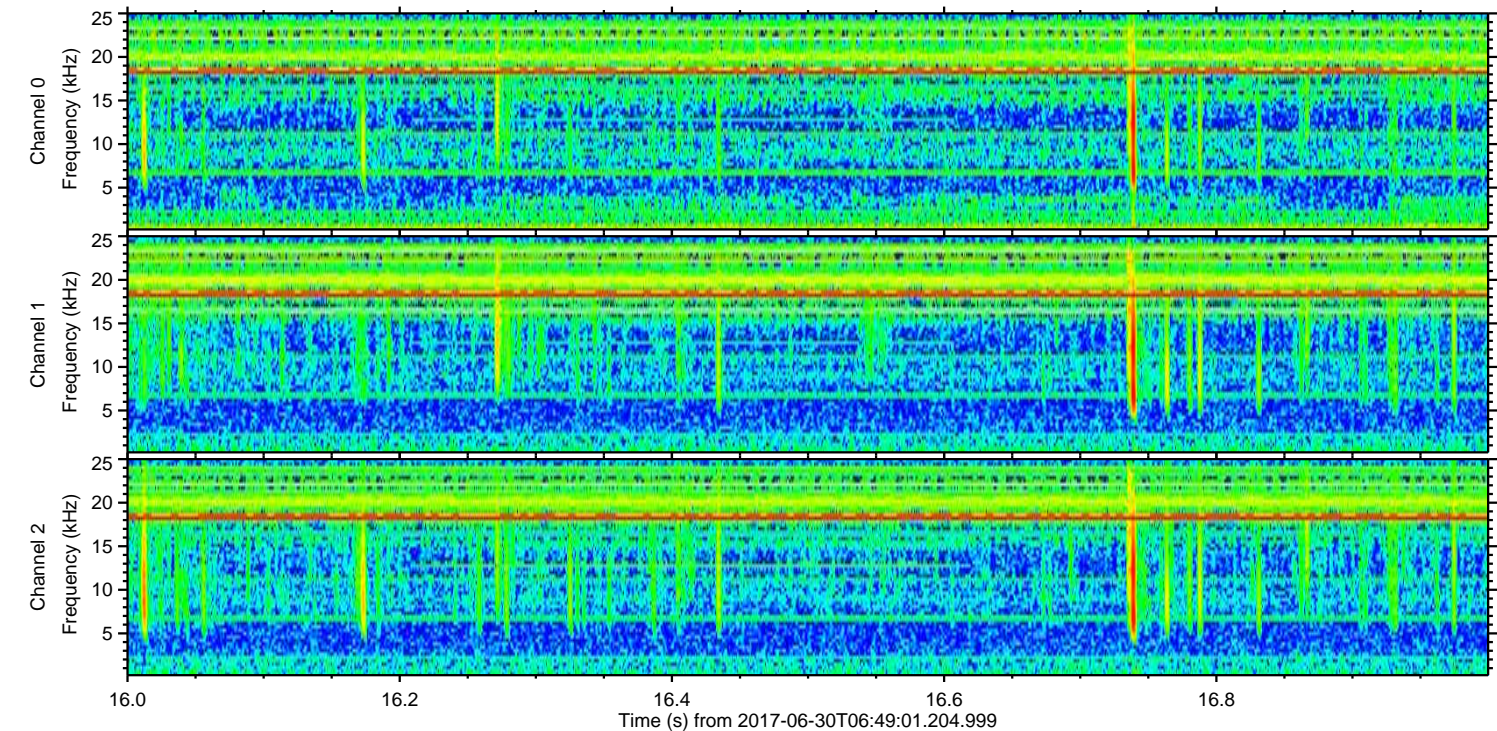
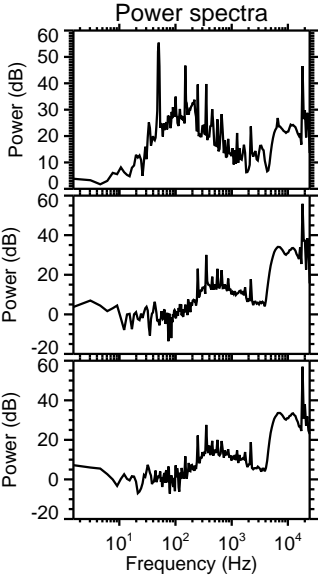
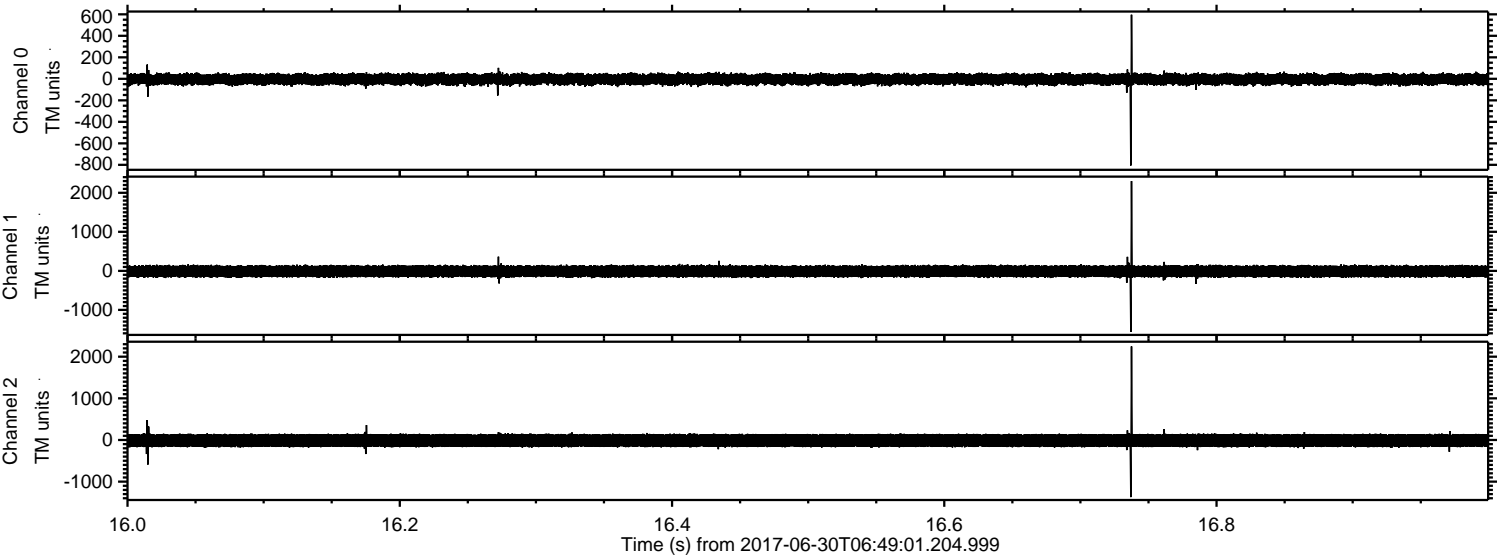


ELMAVAN 3D WAVEFORMS (Measured data sampled at 50 kHz) 51000 packets of 144 samples from 2017-06-30T06:49:01.204.999.

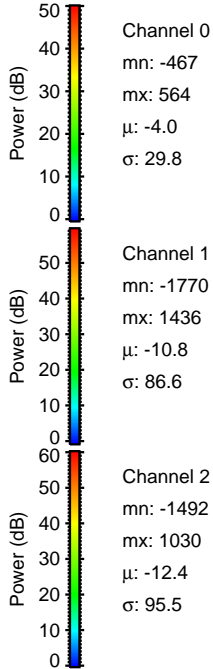
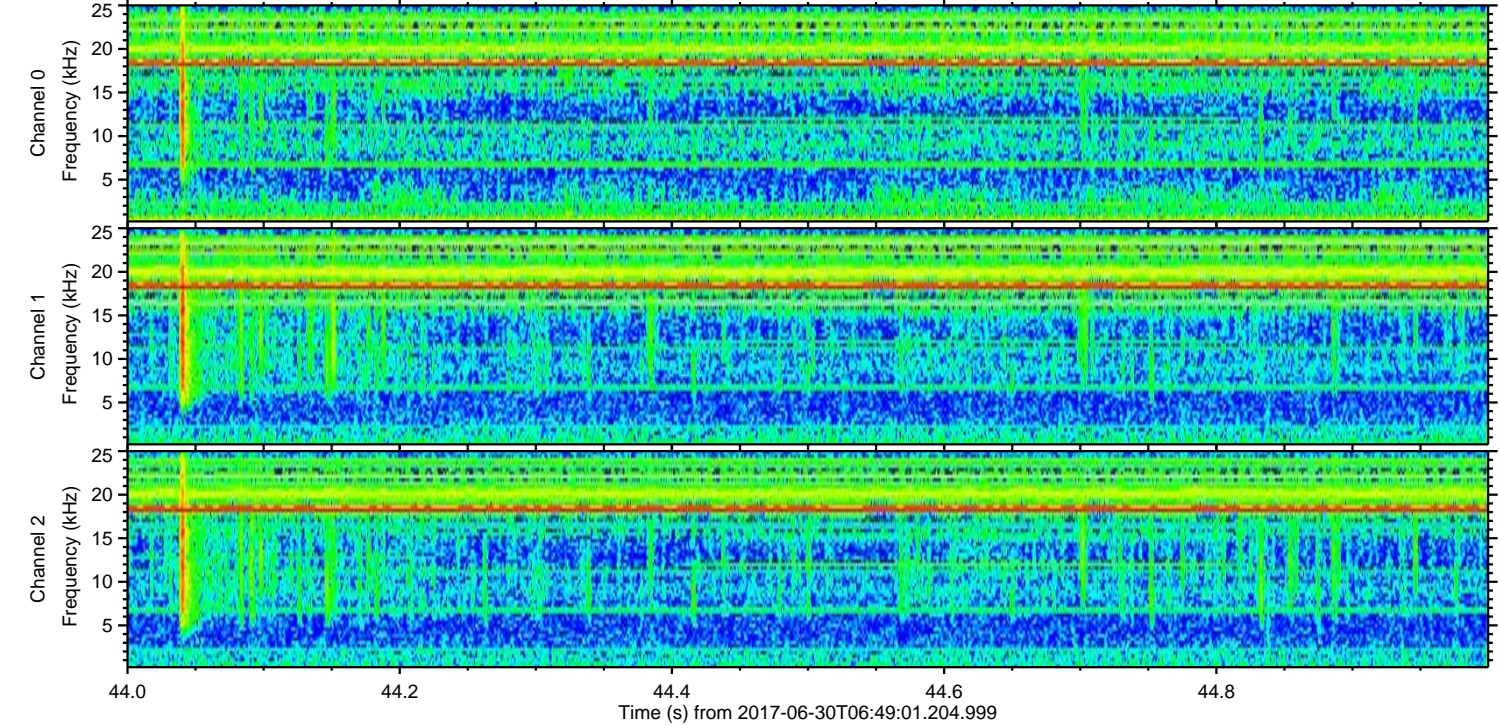
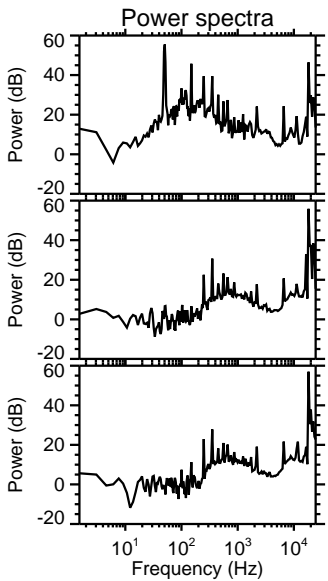
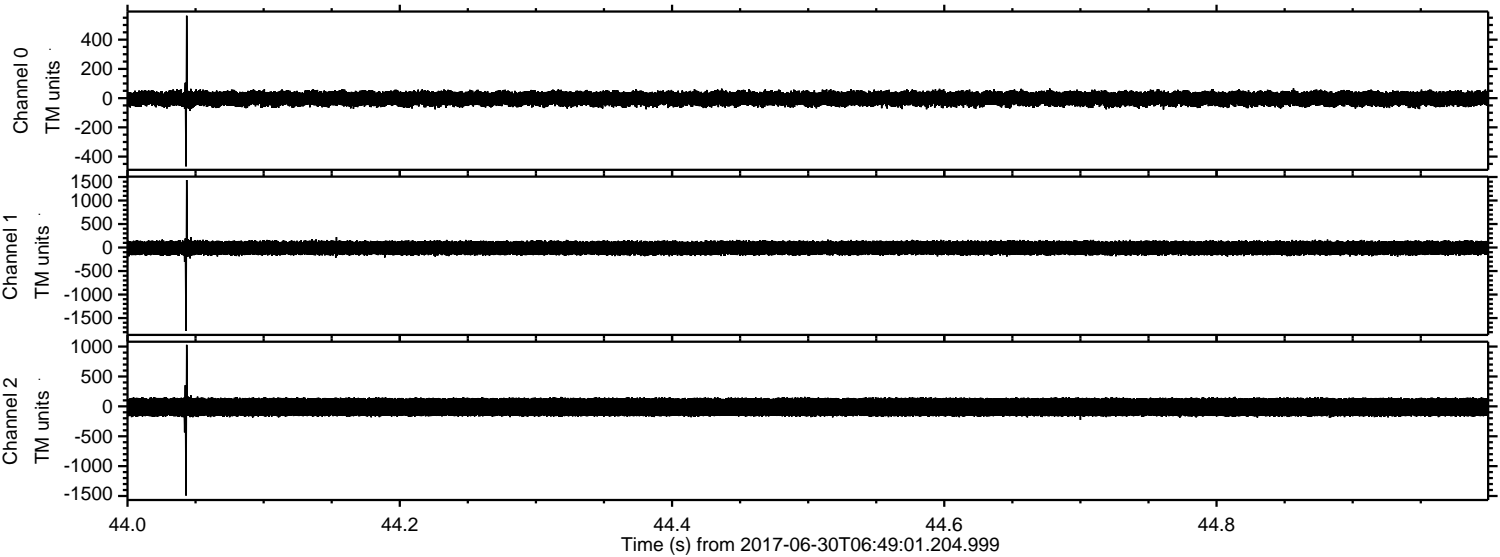
Processed Tue Jul 18 04:18:07 2017 by ELM ver.2012-10-06 from 001__elm20170630_064900__dat00.bin



Processed Tue Jul 18 04:18:18 2017 by ELM ver.2012-10-06 from 001__elm20170630_064900__dat00.bin

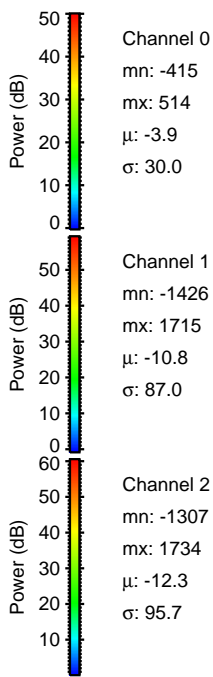
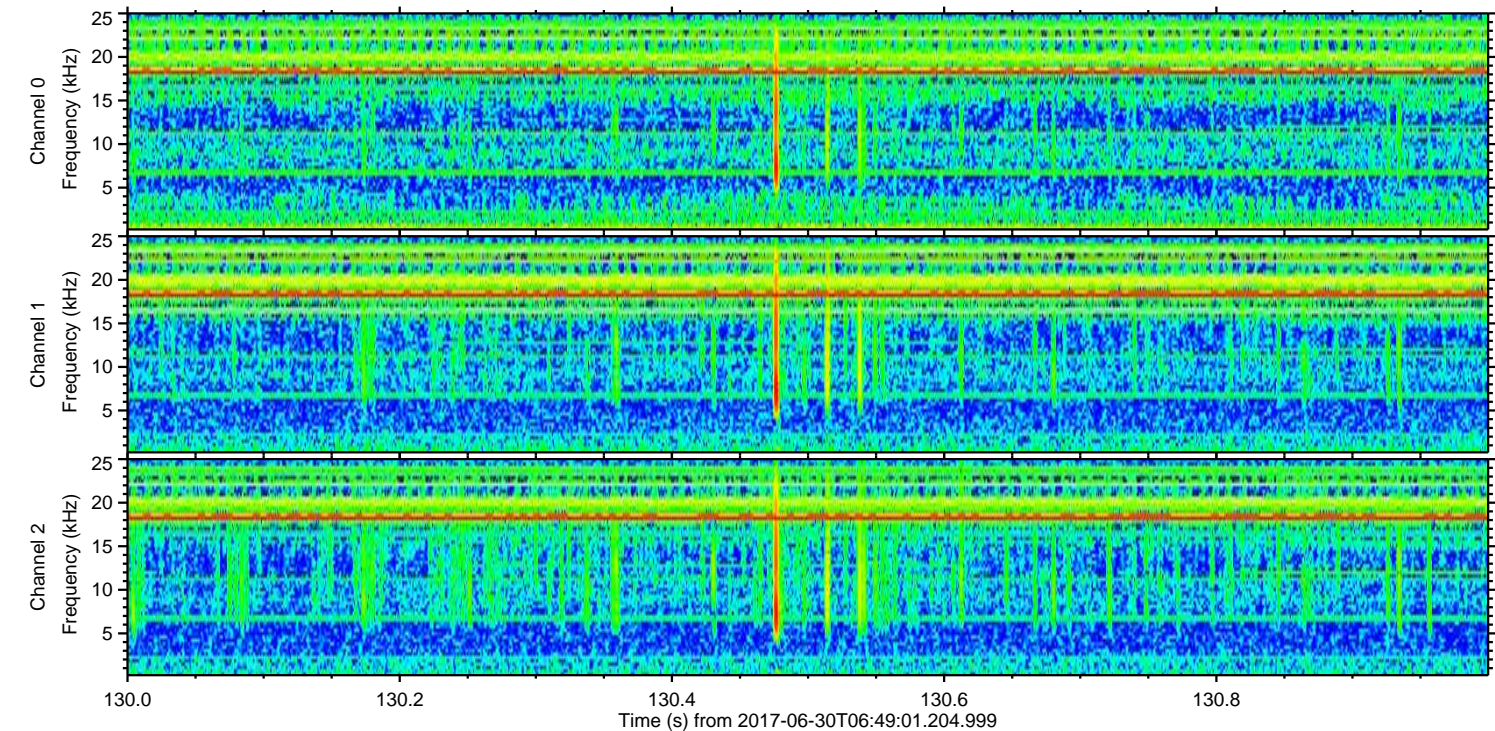
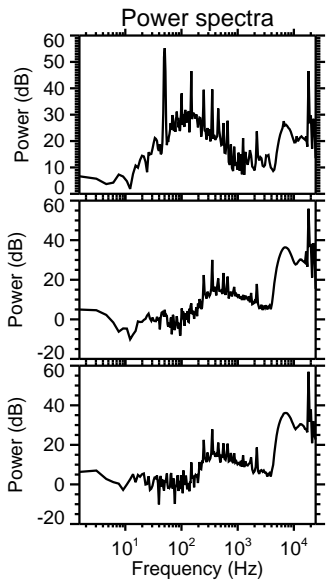
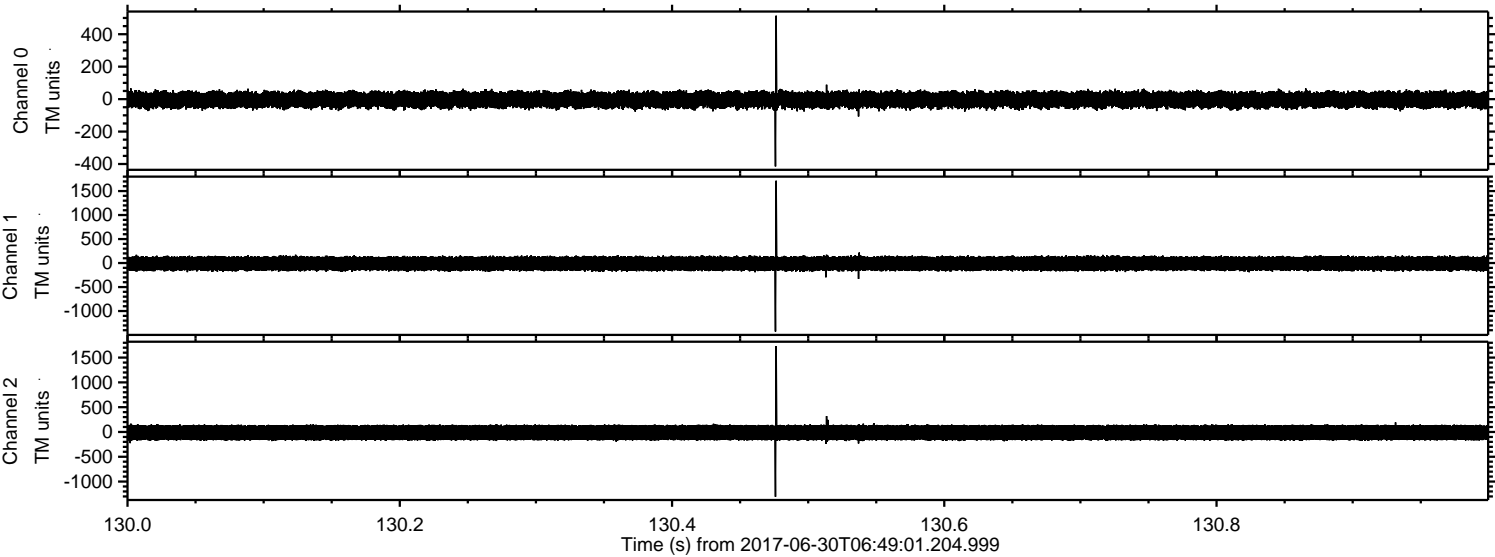


Processed Tue Jul 18 04:18:19 2017 by ELM ver.2012-10-06 from 001__elm20170630_064900__dat00.bin

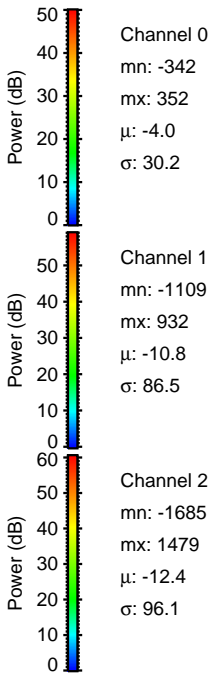
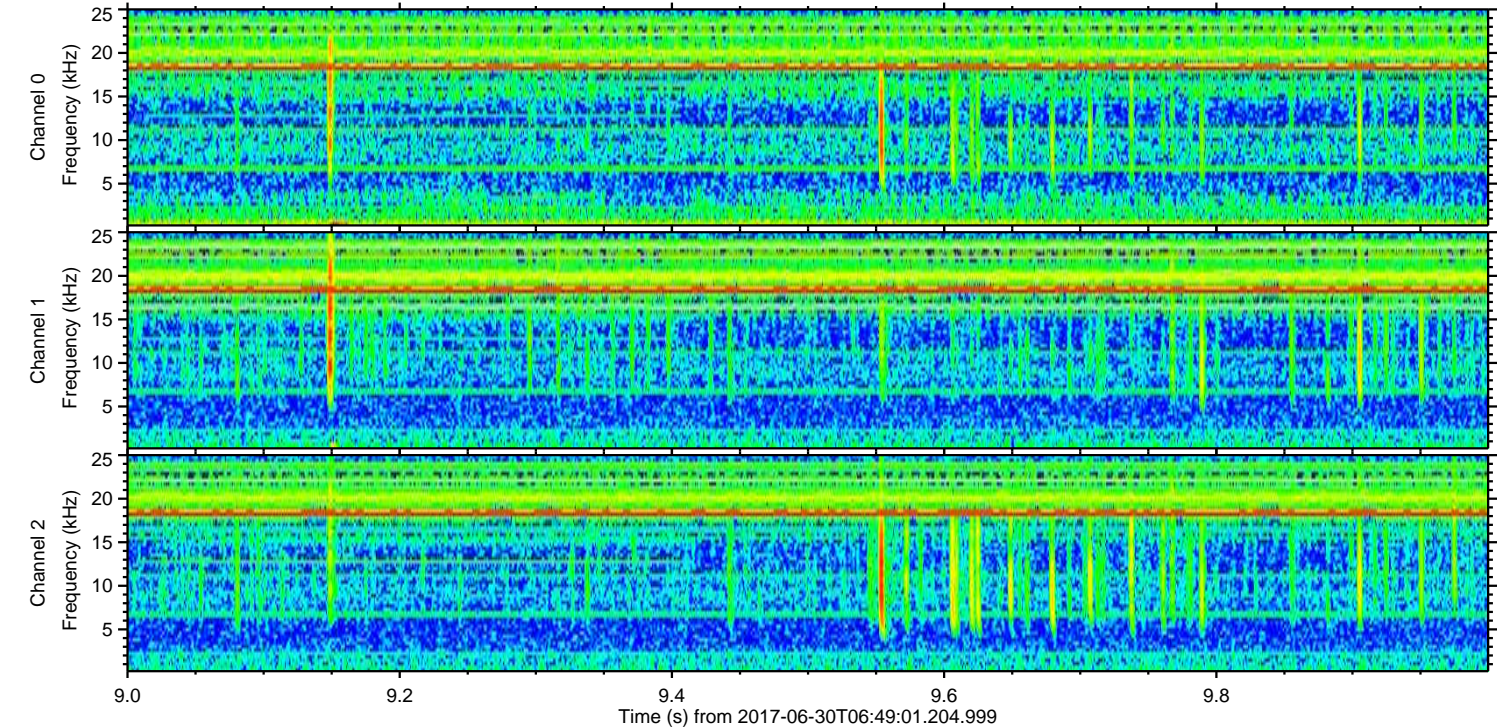
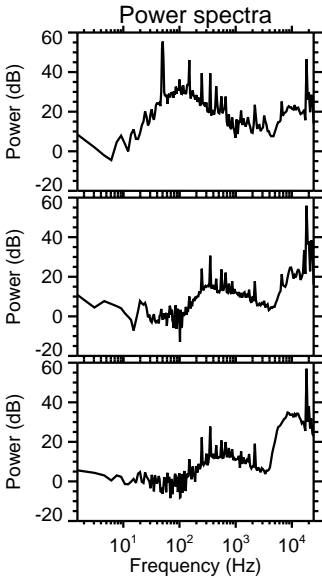
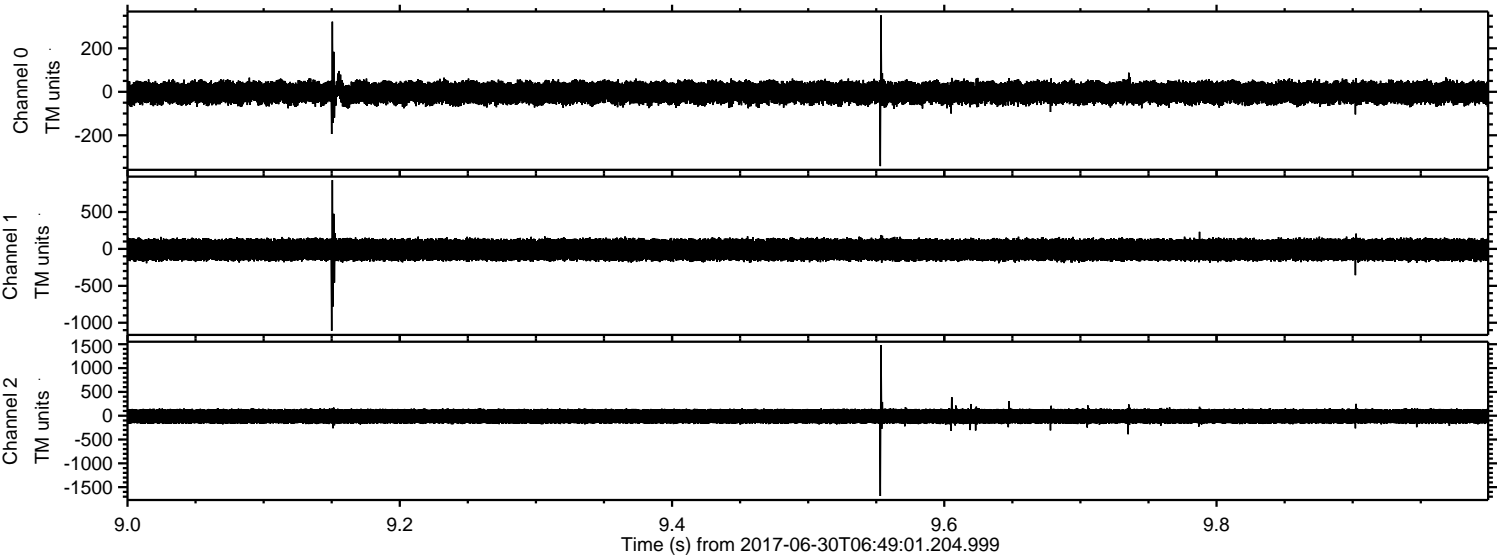


ELMAVAN 3D WAVEFORMS (Measured data sampled at 50 kHz) 51000 packets of 144 samples from 2017-06-30T06:49:01.204.999. Part 131/147

Processed Tue Jul 18 04:18:21 2017 by ELM ver.2012-10-06 from 001__elm20170630_064900__dat00.bin

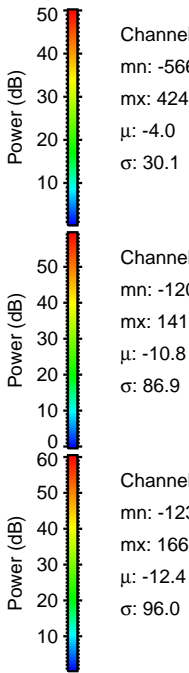
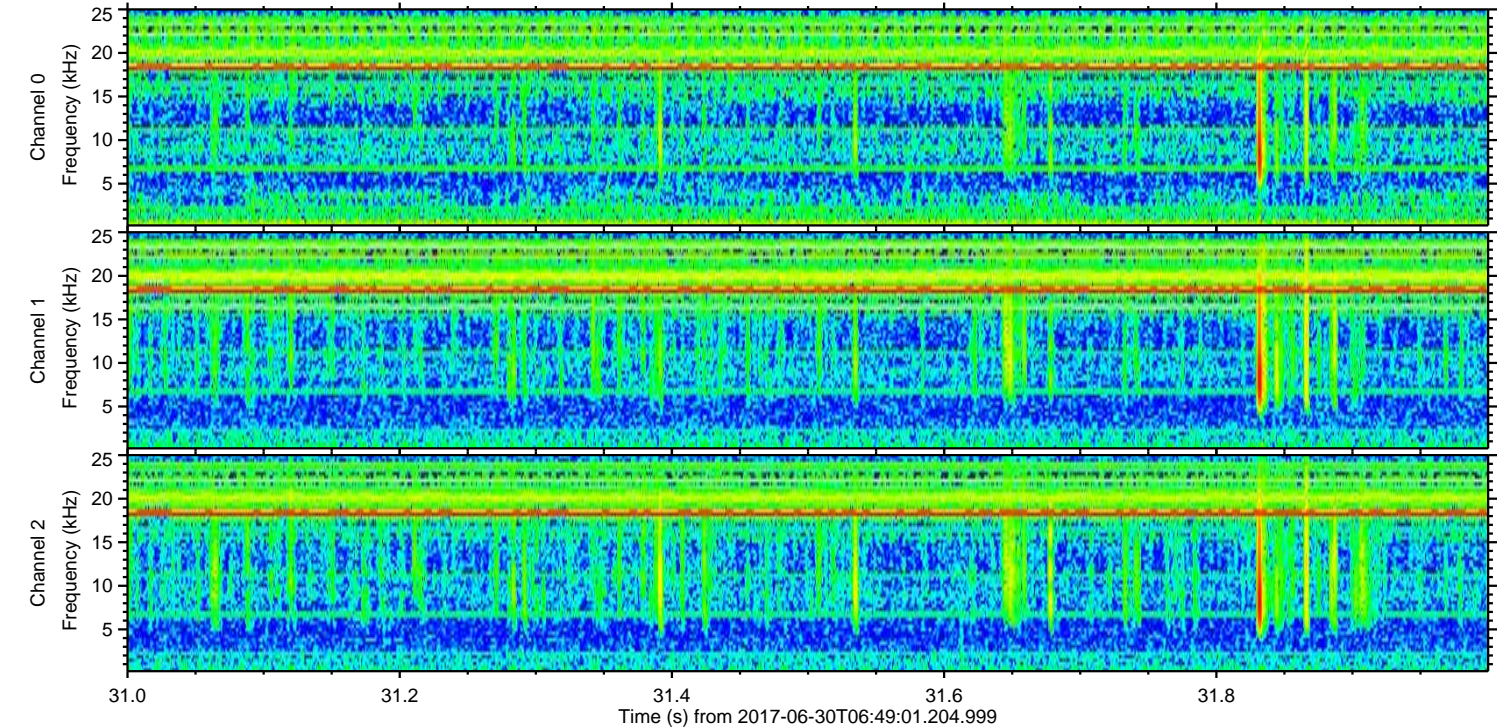
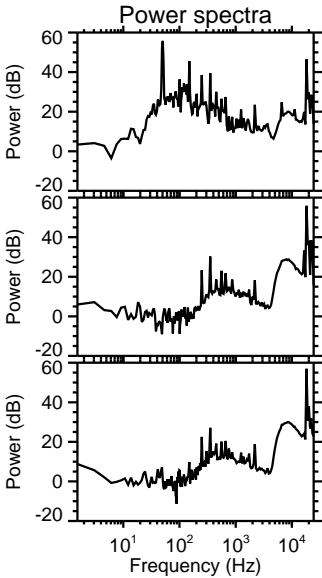
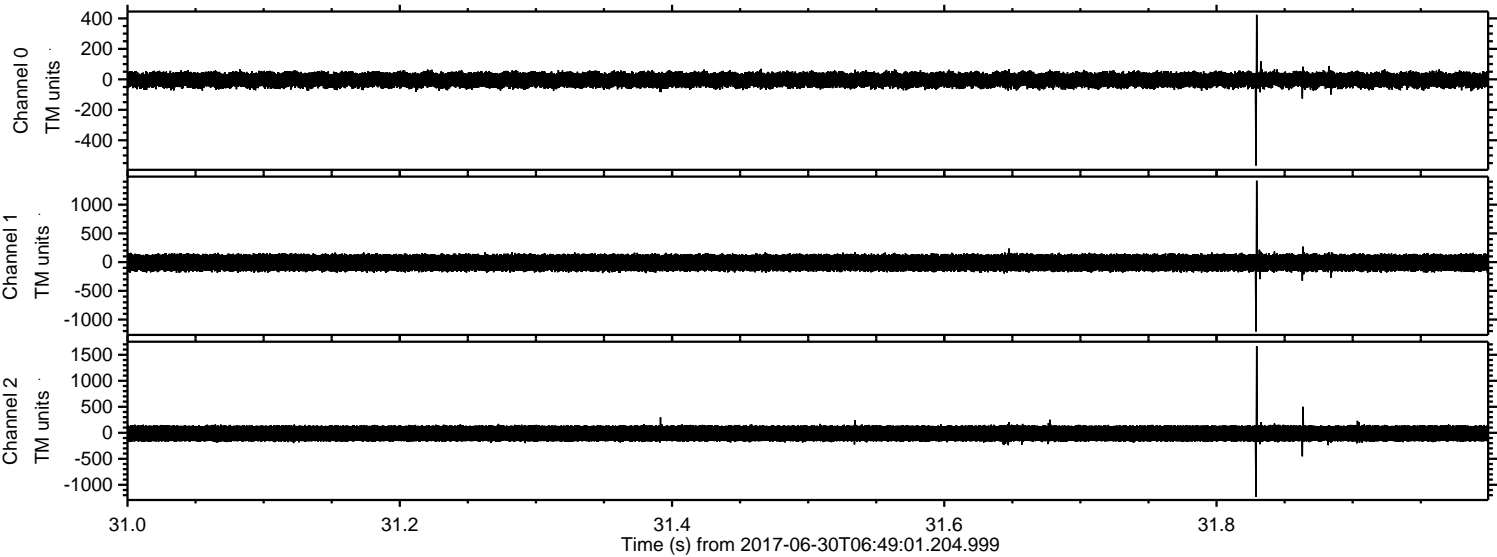


Processed Tue Jul 18 04:18:22 2017 by ELM ver.2012-10-06 from 001__elm20170630_064900__dat00.bin

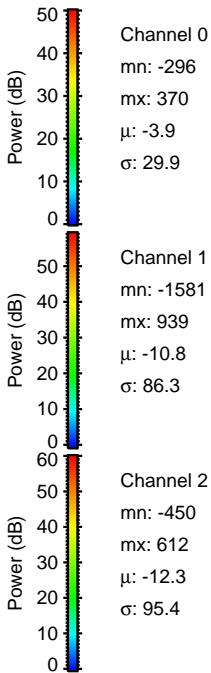
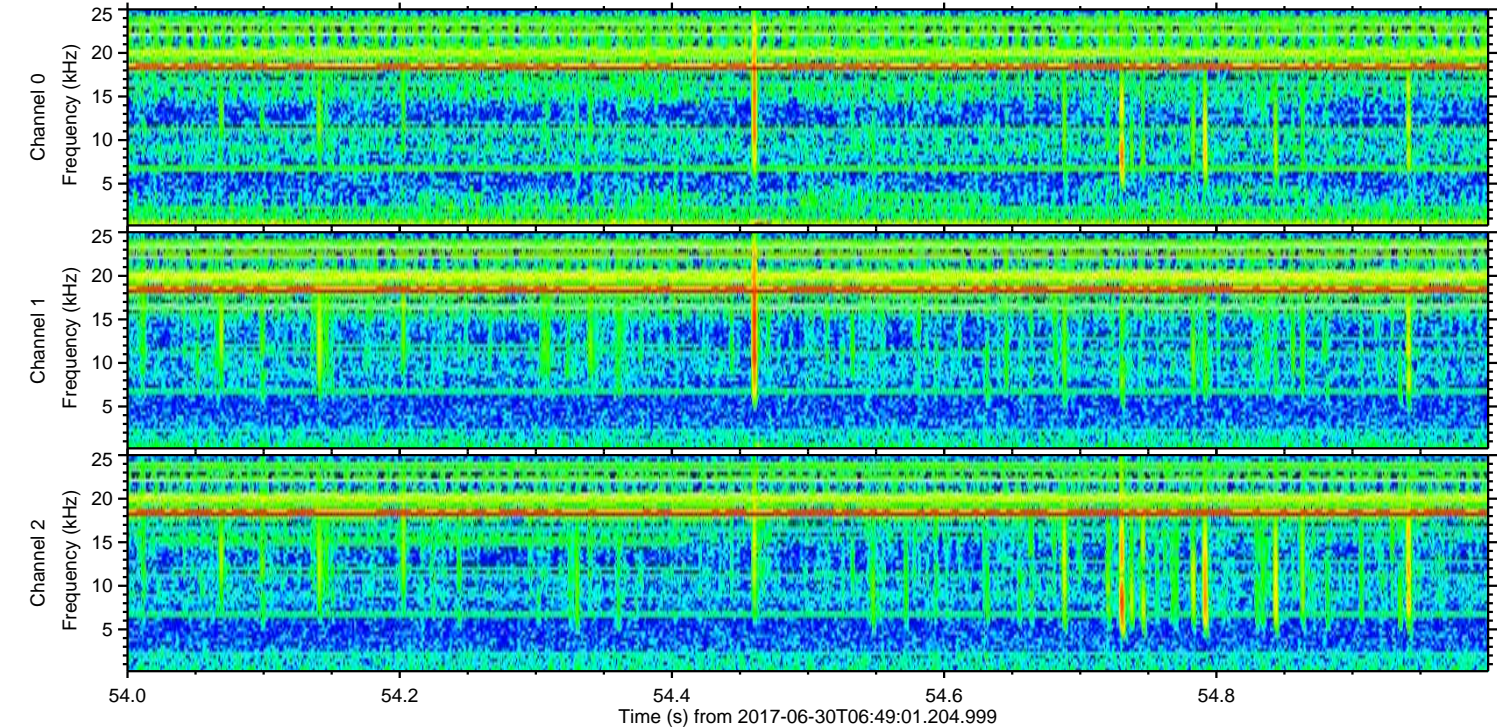
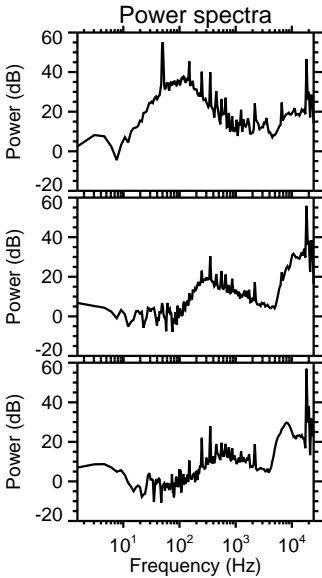
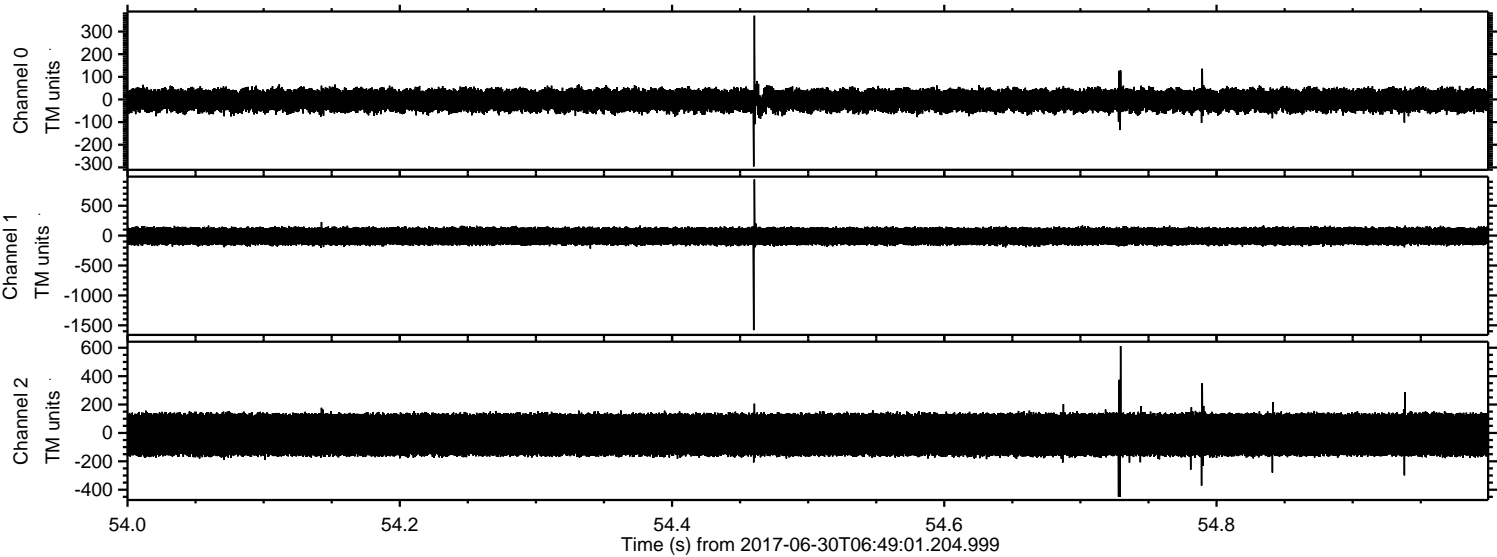


ELMAVAN 3D WAVEFORMS (Measured data sampled at 50 kHz) 51000 packets of 144 samples from 2017-06-30T06:49:01.204.999. Part 32/147

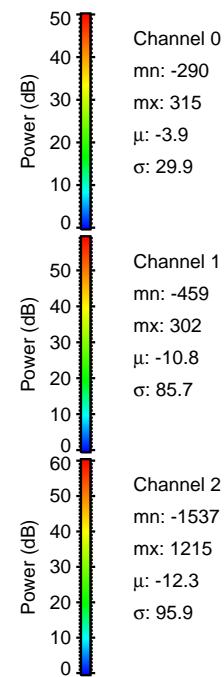
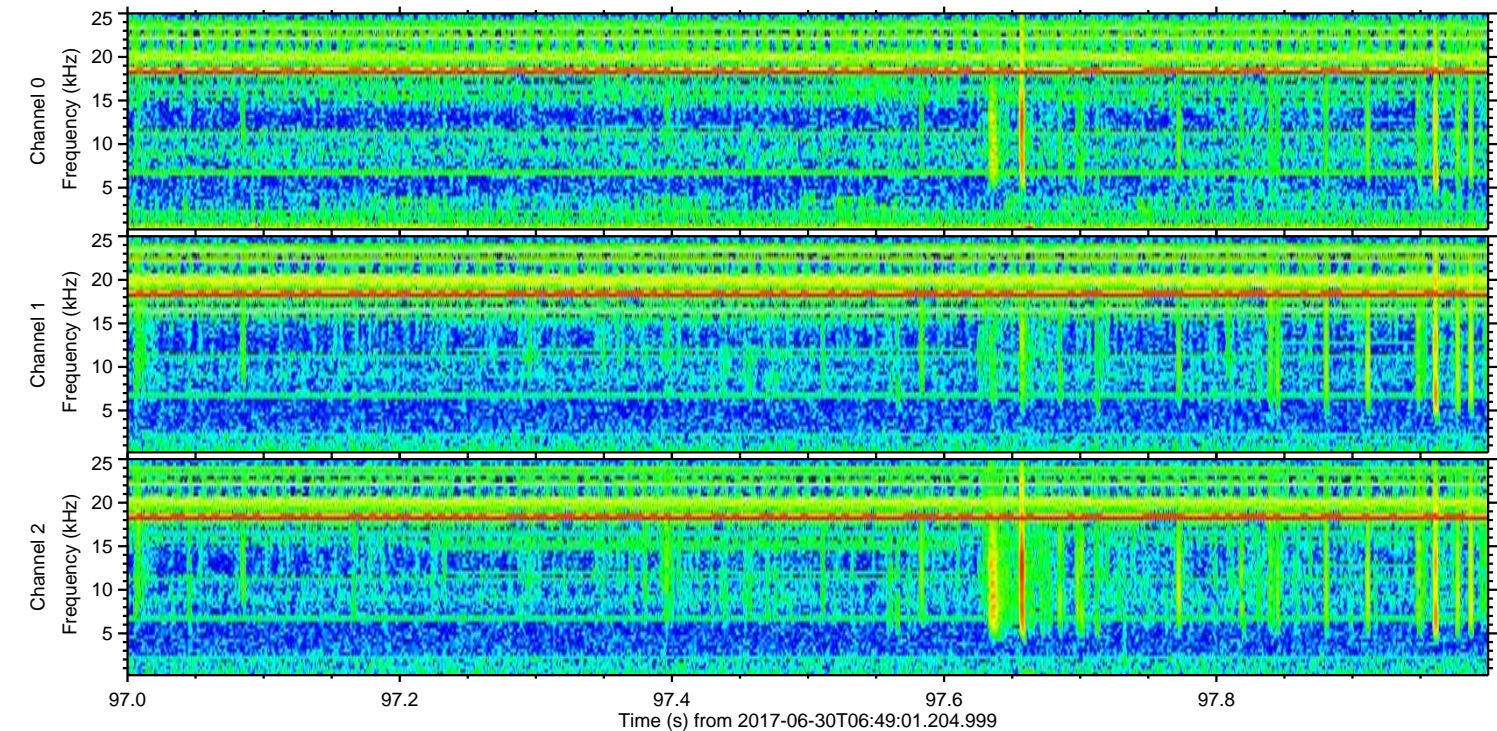
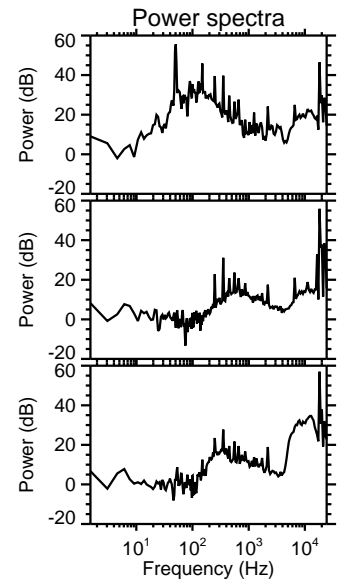
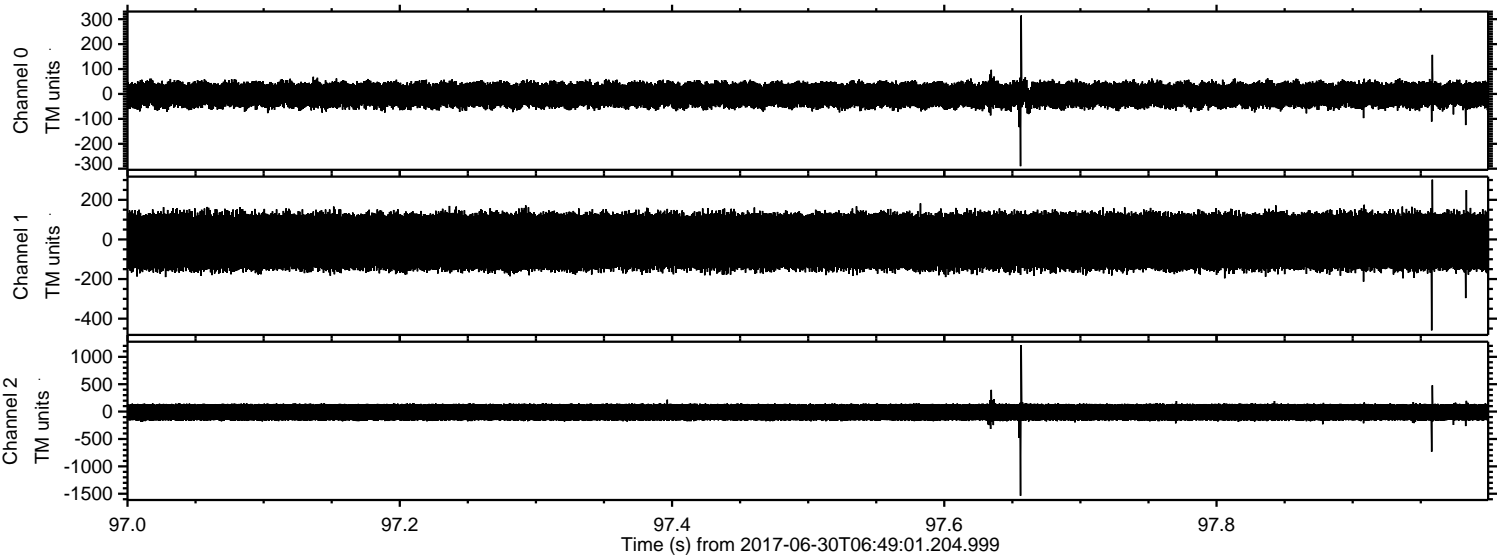
Processed Tue Jul 18 04:18:22 2017 by ELM ver.2012-10-06 from 001__elm20170630_064900__dat00.bin



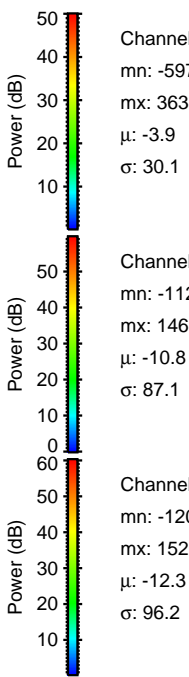
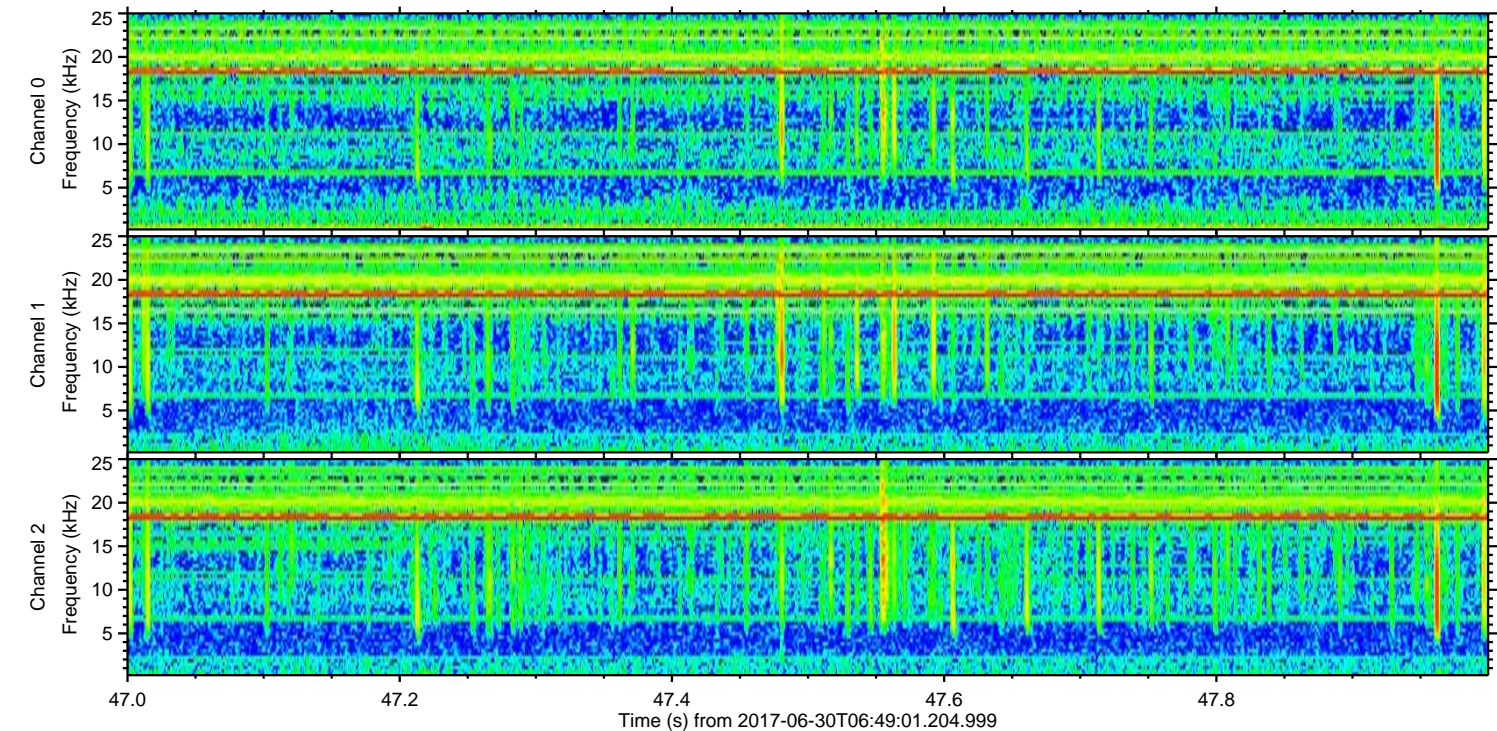
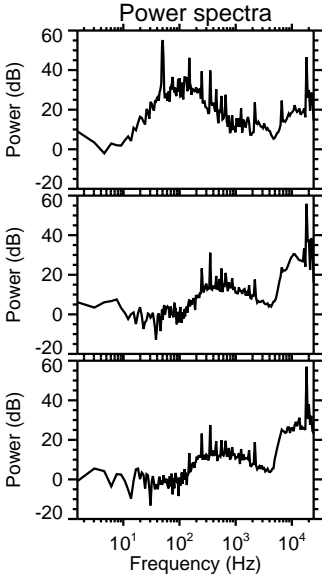
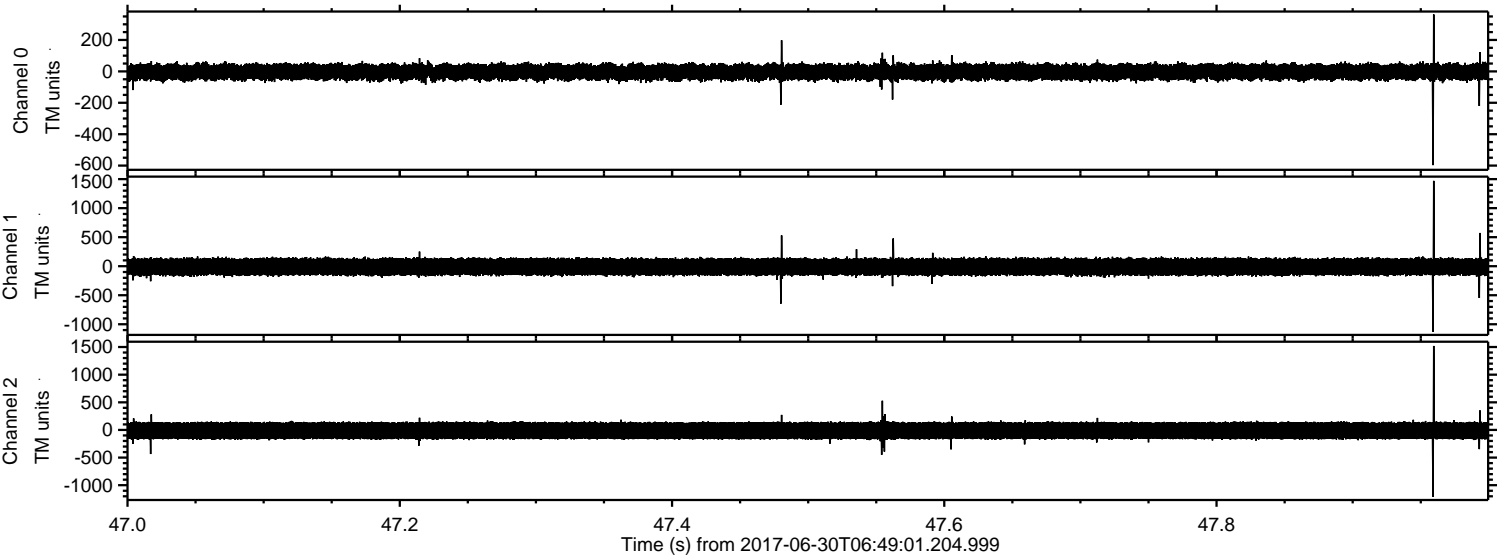
Processed Tue Jul 18 04:18:23 2017 by ELM ver.2012-10-06 from 001__elm20170630_064900__dat00.bin



Processed Tue Jul 18 04:18:24 2017 by ELM ver.2012-10-06 from 001__elm20170630_064900__dat00.bin



Processed Tue Jul 18 04:18:25 2017 by ELM ver.2012-10-06 from 001__elm20170630_064900__dat00.bin

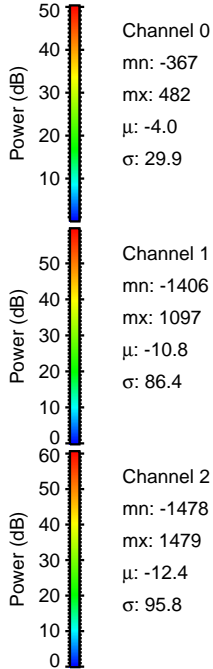
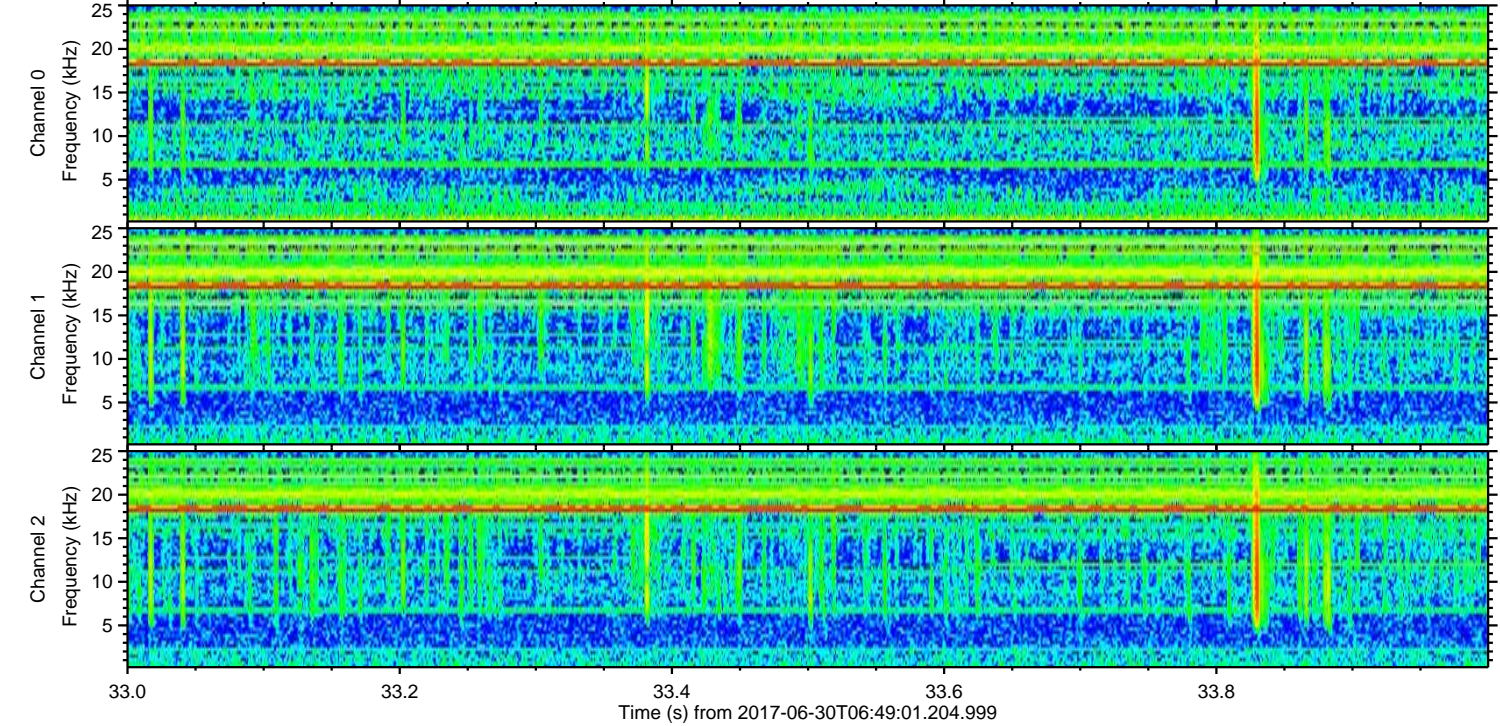
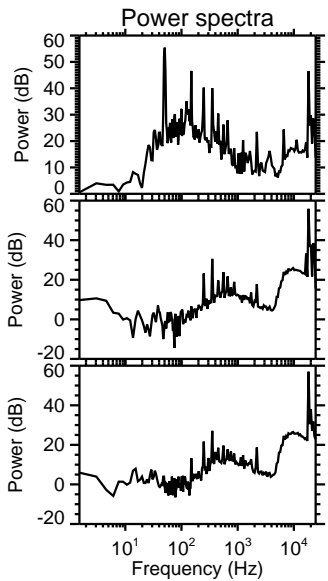
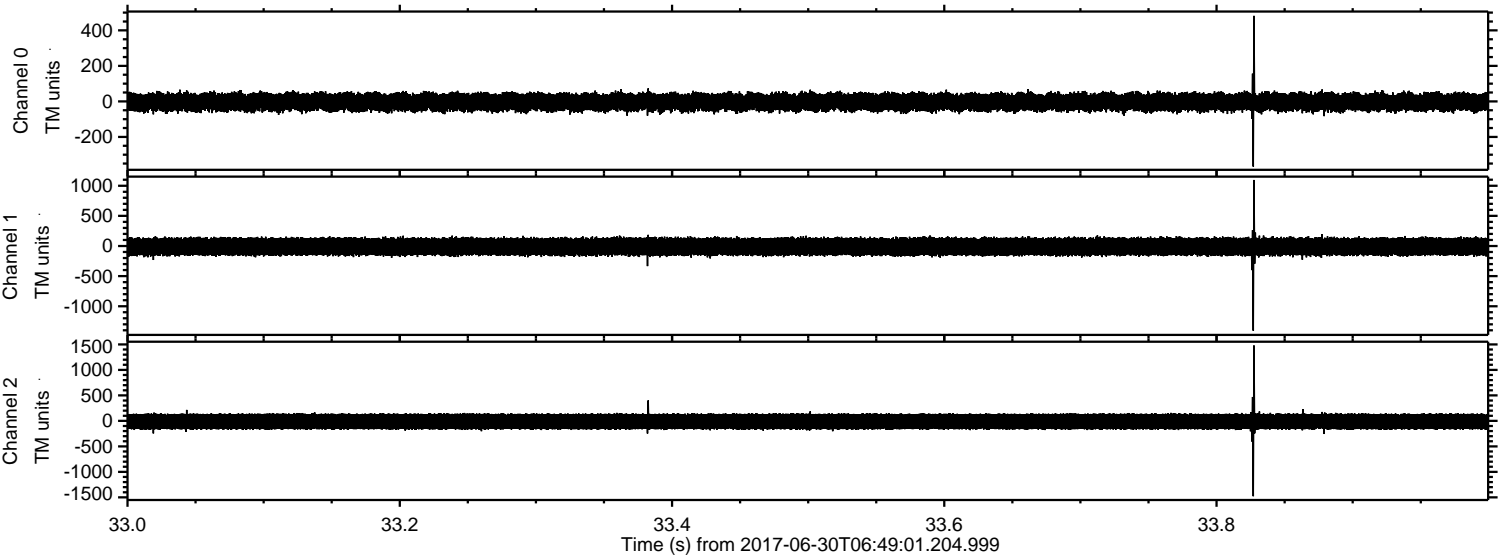


Channel 0
mn: -597
mx: 363
 μ : -3.9
 σ : 30.1

Channel 1
mn: -1127
mx: 1469
 μ : -10.8
 σ : 87.1

Channel 2
mn: -1207
mx: 1520
 μ : -12.3
 σ : 96.2

Processed Tue Jul 18 04:18:26 2017 by ELM ver.2012-10-06 from 001__elm20170630_064900__dat00.bin



Processed Tue Jul 18 04:18:27 2017 by ELM ver.2012-10-06 from 001__elm20170630_064900__dat00.bin

