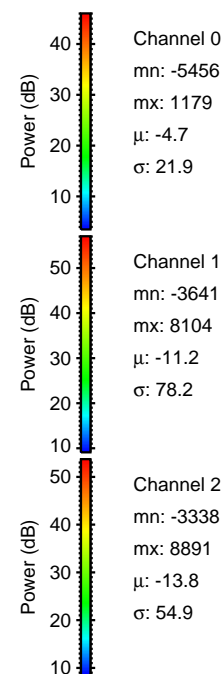
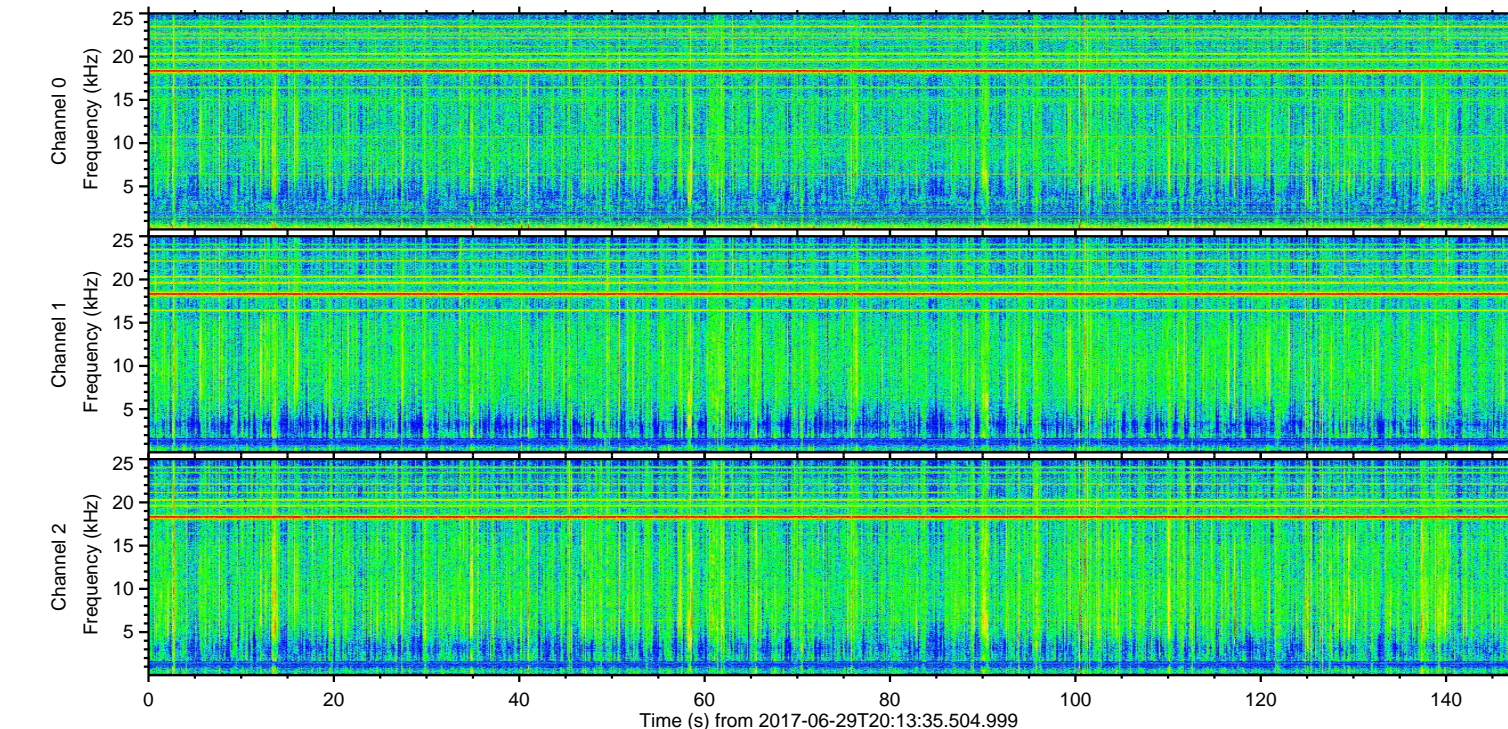
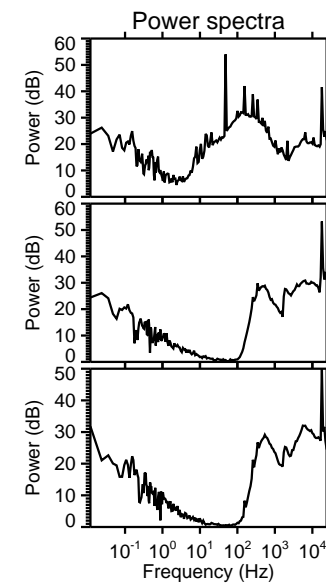
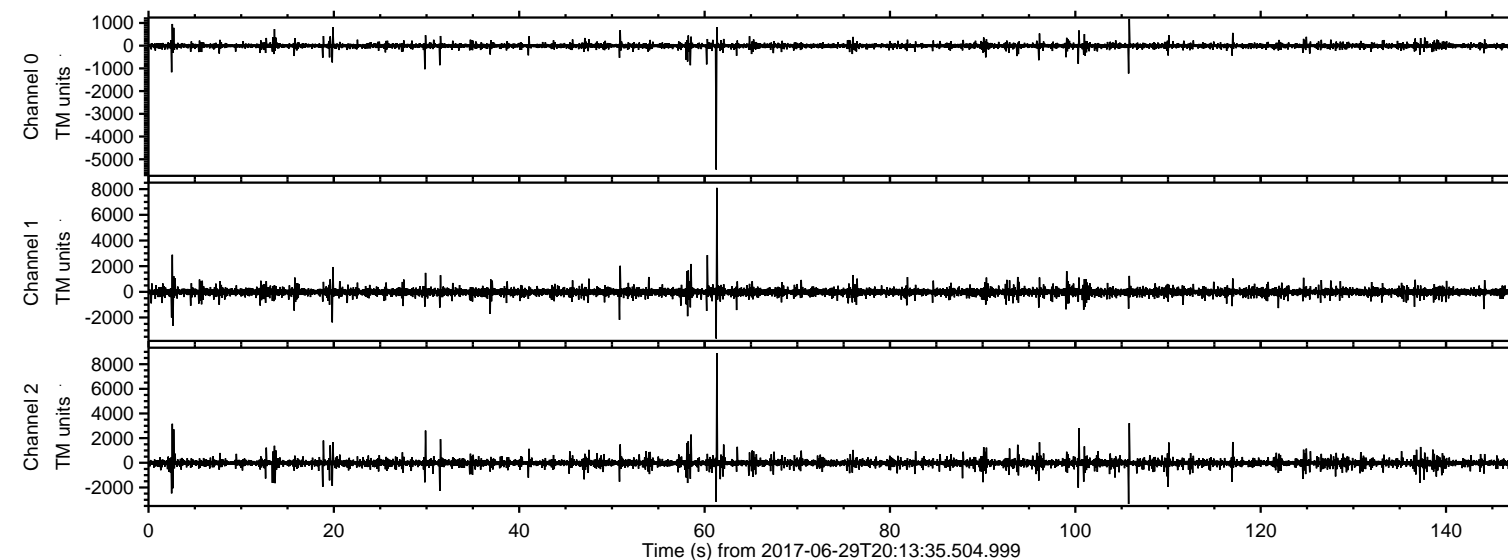


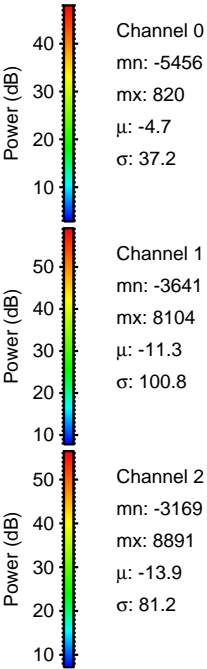
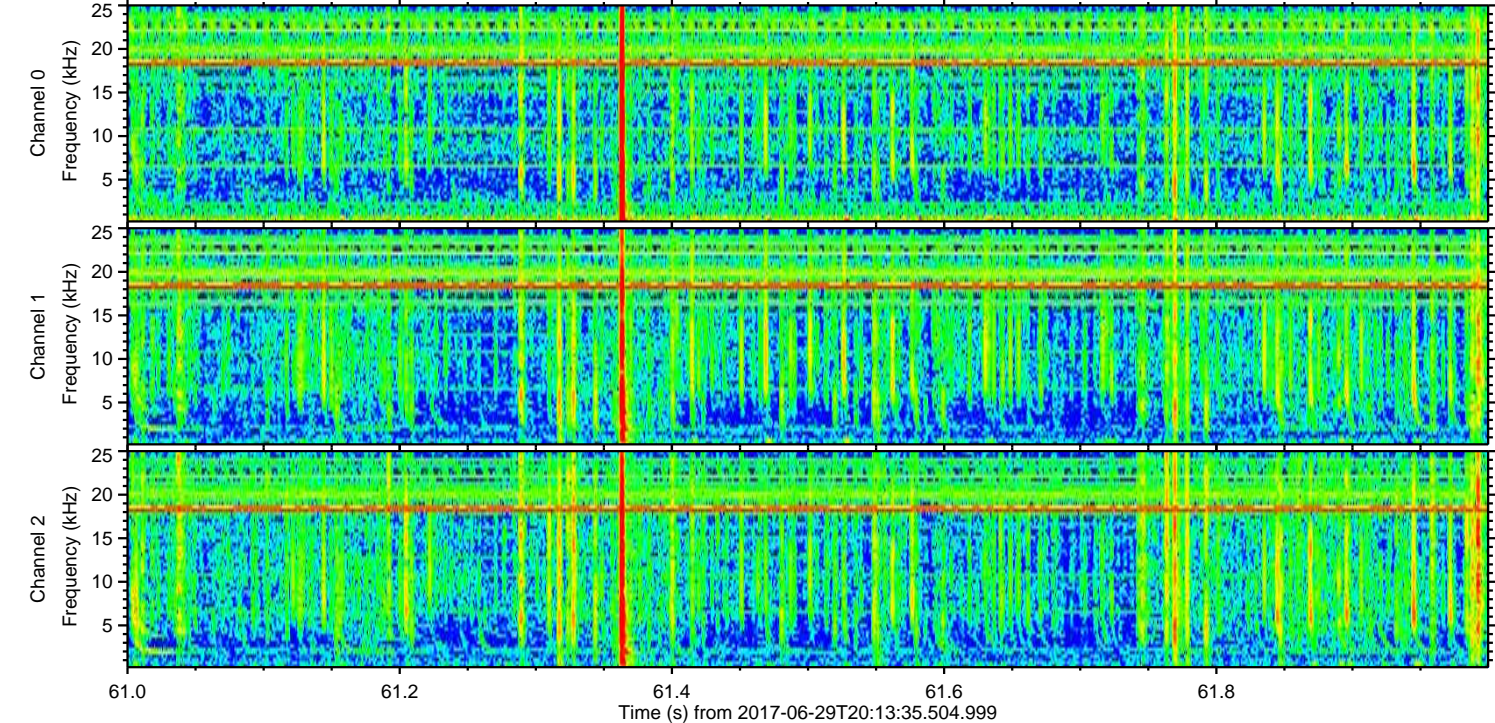
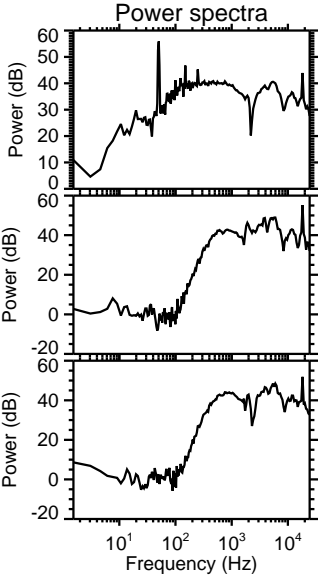
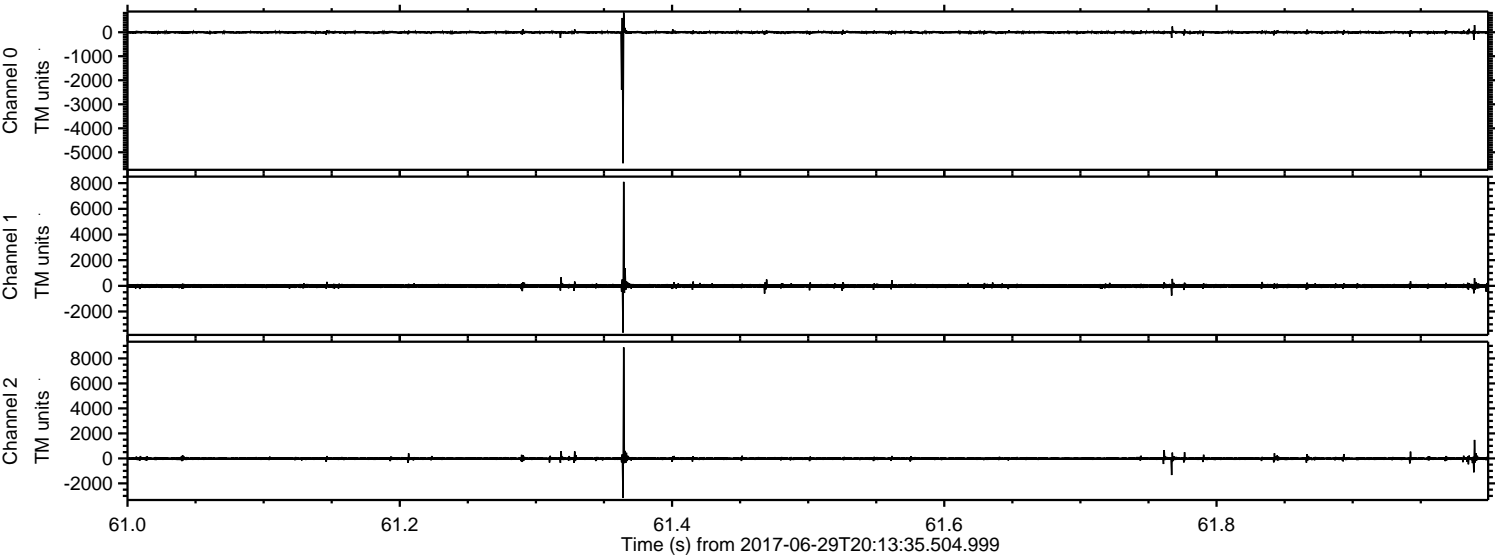
# ELMAVAN 3D WAVEFORMS (Measured data sampled at 50 kHz) 51000 packets of 144 samples from 2017-06-29T20:13:35.504.999.

Processed Tue Jul 18 02:37:42 2017 by ELM ver.2012-10-06 from 001\_\_elm20170629\_201334\_\_dat00.bin





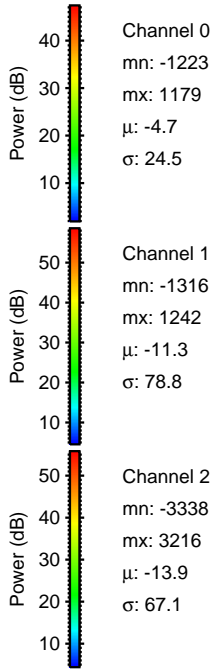
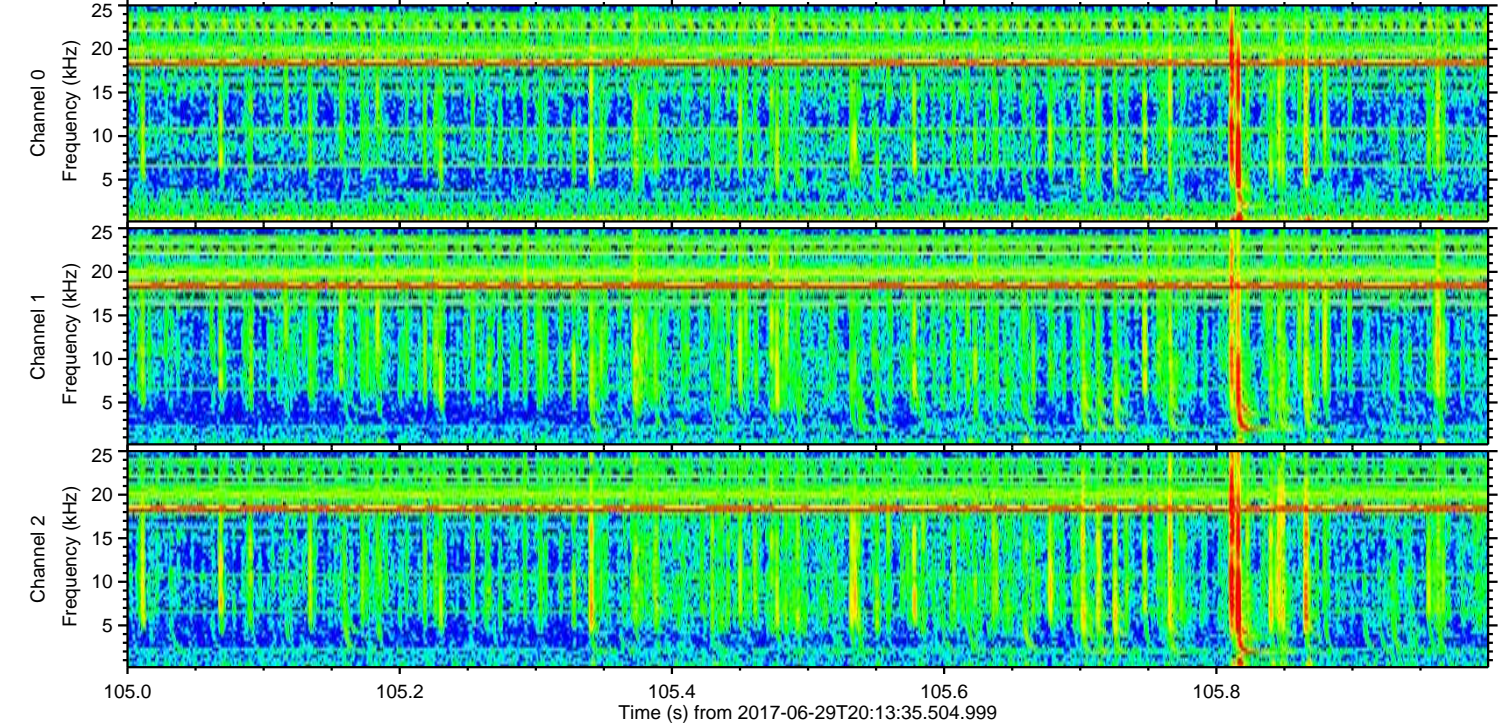
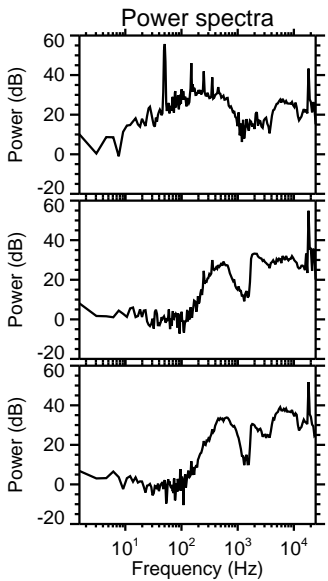
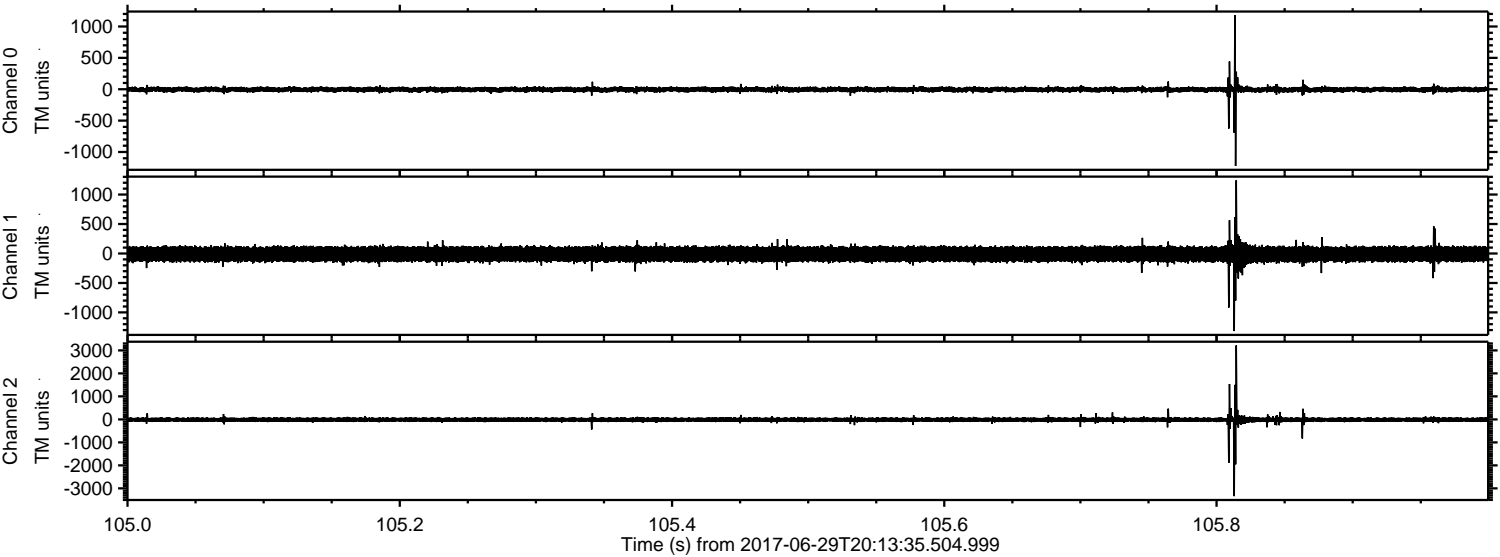
Processed Tue Jul 18 02:37:50 2017 by ELM ver.2012-10-06 from 001\_\_elm20170629\_201334\_\_dat00.bin





ELMAVAN 3D WAVEFORMS (Measured data sampled at 50 kHz) 51000 packets of 144 samples from 2017-06-29T20:13:35.504.999. Part 106/147

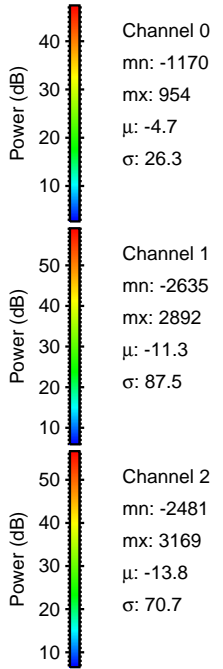
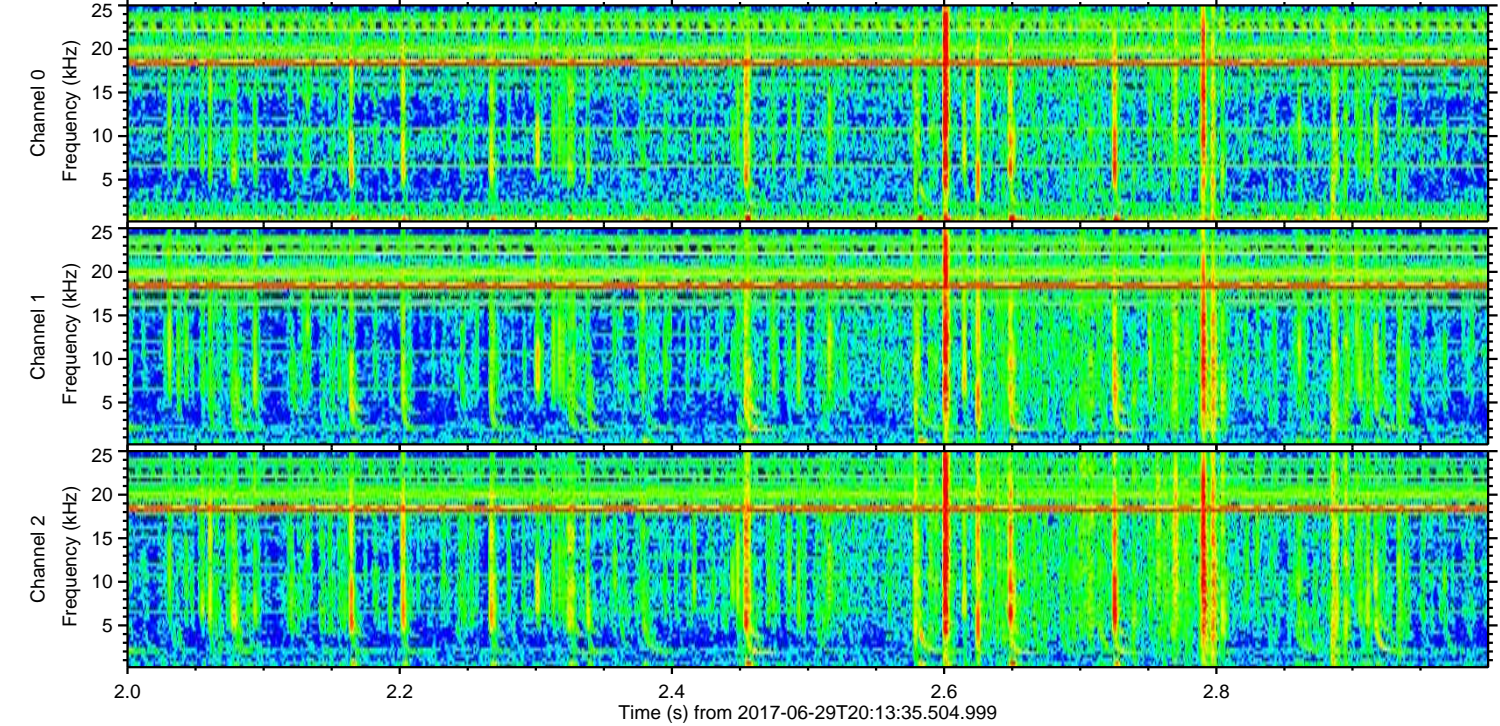
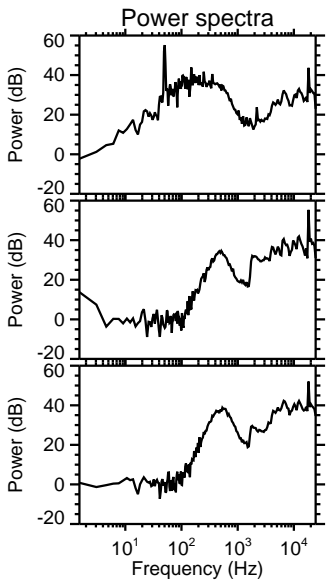
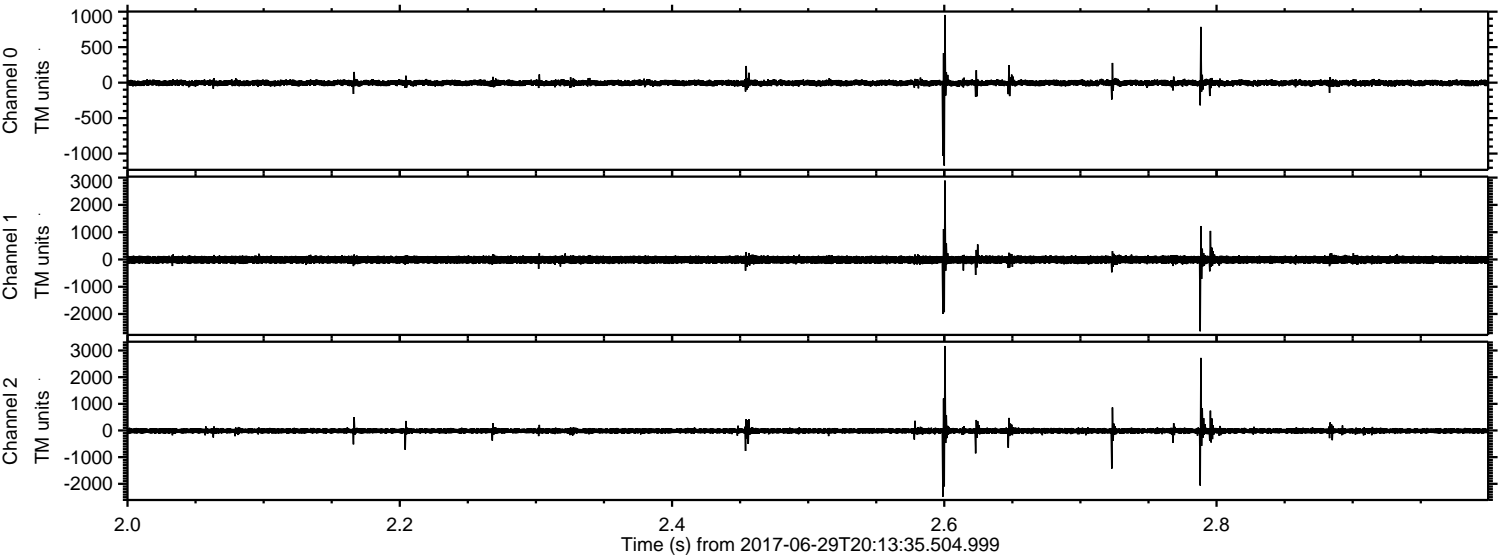
Processed Tue Jul 18 02:37:51 2017 by ELM ver.2012-10-06 from 001\_\_elm20170629\_201334\_\_dat00.bin





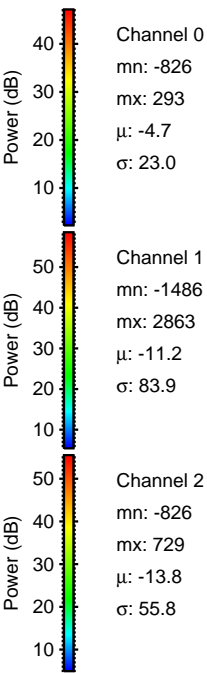
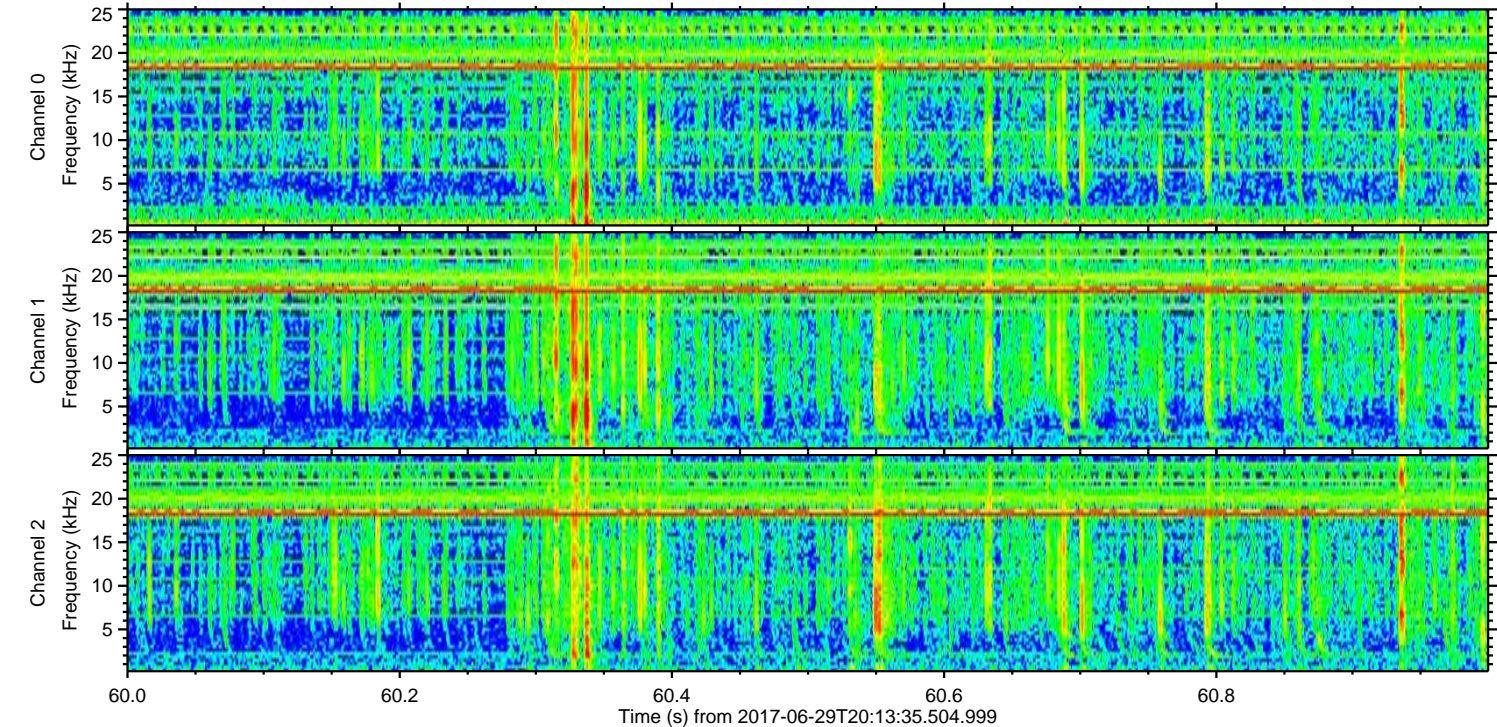
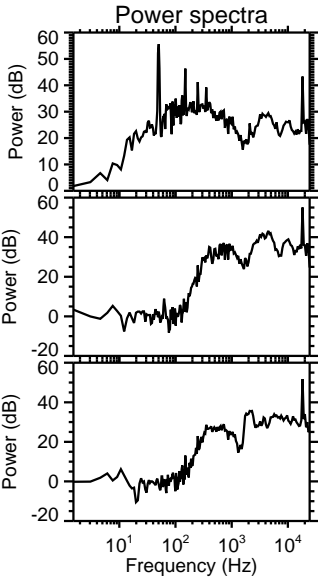
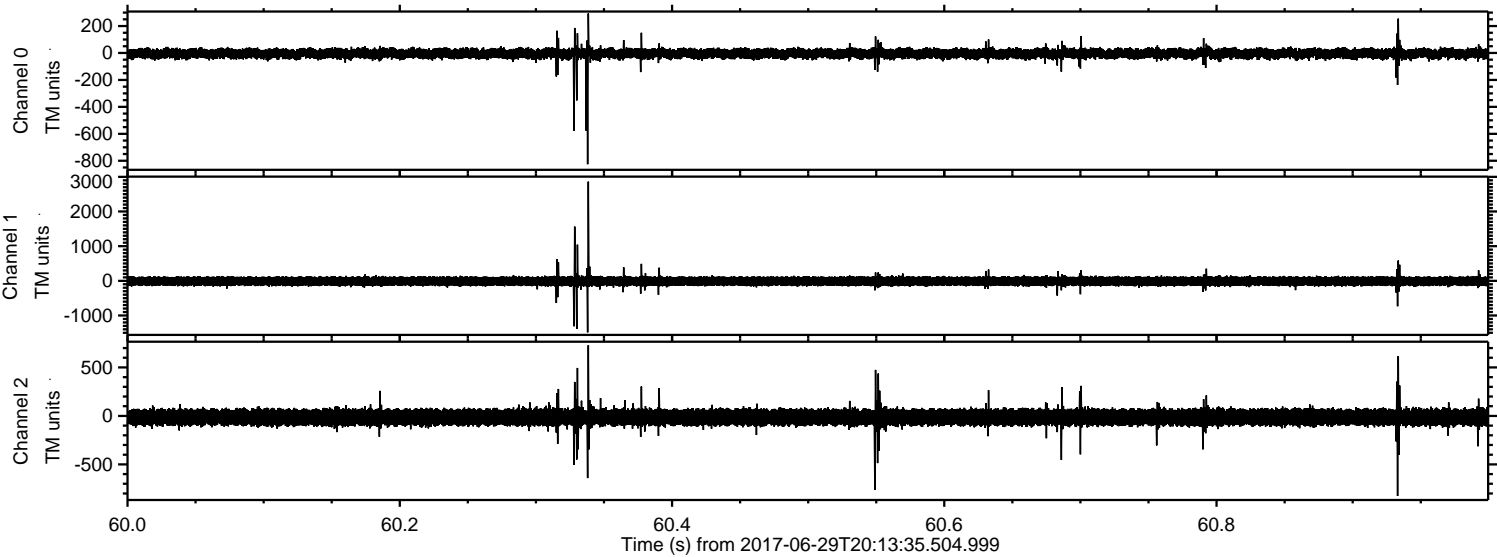
ELMAVAN 3D WAVEFORMS (Measured data sampled at 50 kHz) 51000 packets of 144 samples from 2017-06-29T20:13:35.504.999. Part 3/147

Processed Tue Jul 18 02:37:52 2017 by ELM ver.2012-10-06 from 001\_\_elm20170629\_201334\_\_dat00.bin





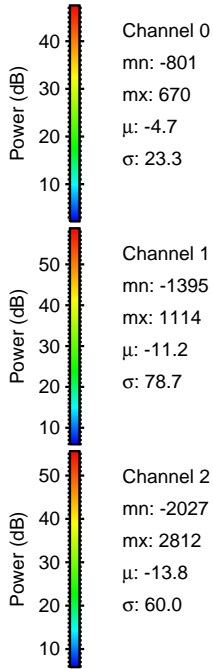
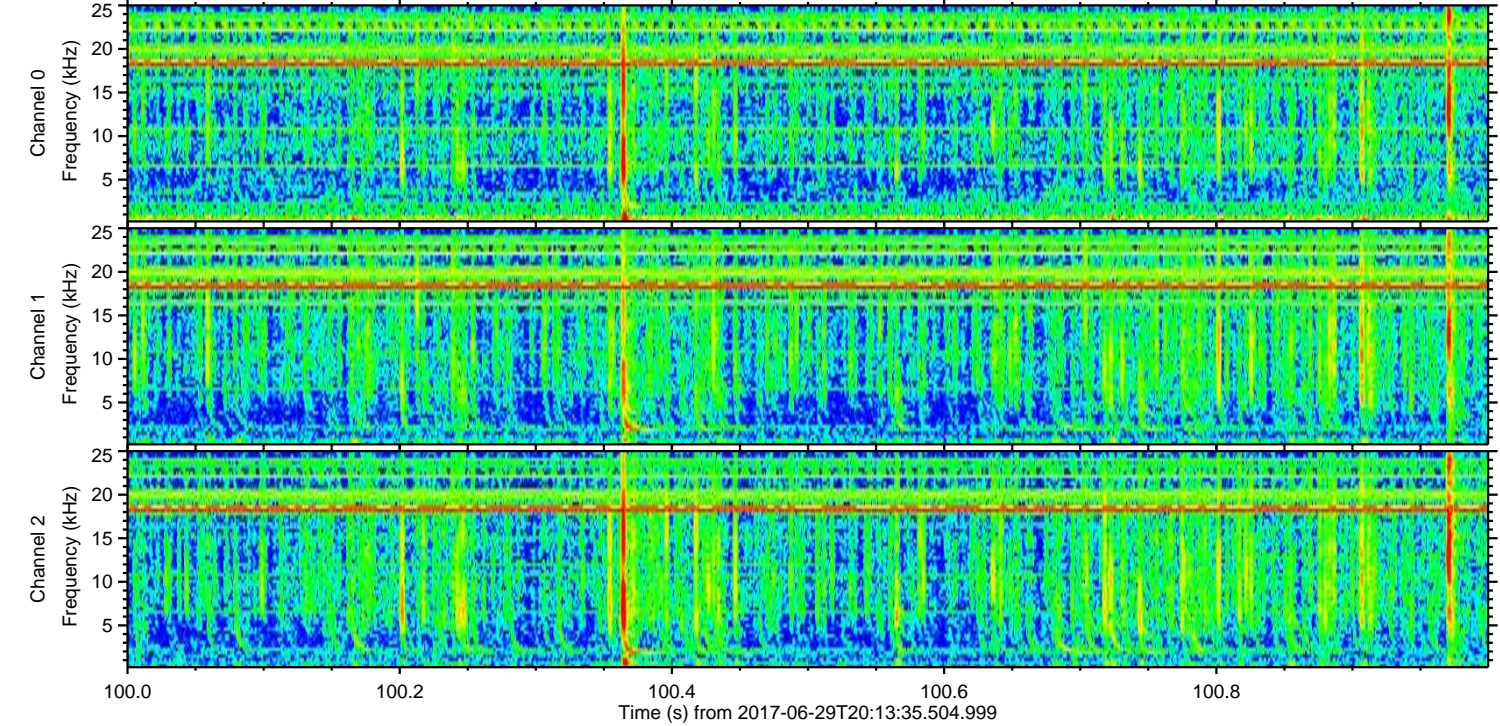
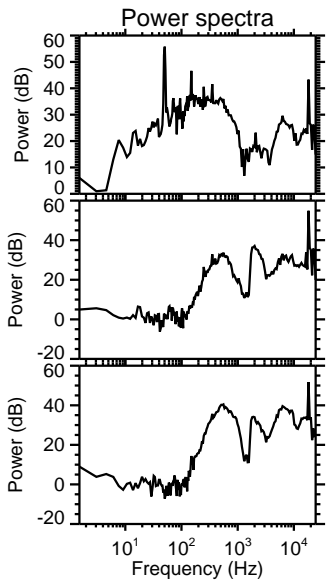
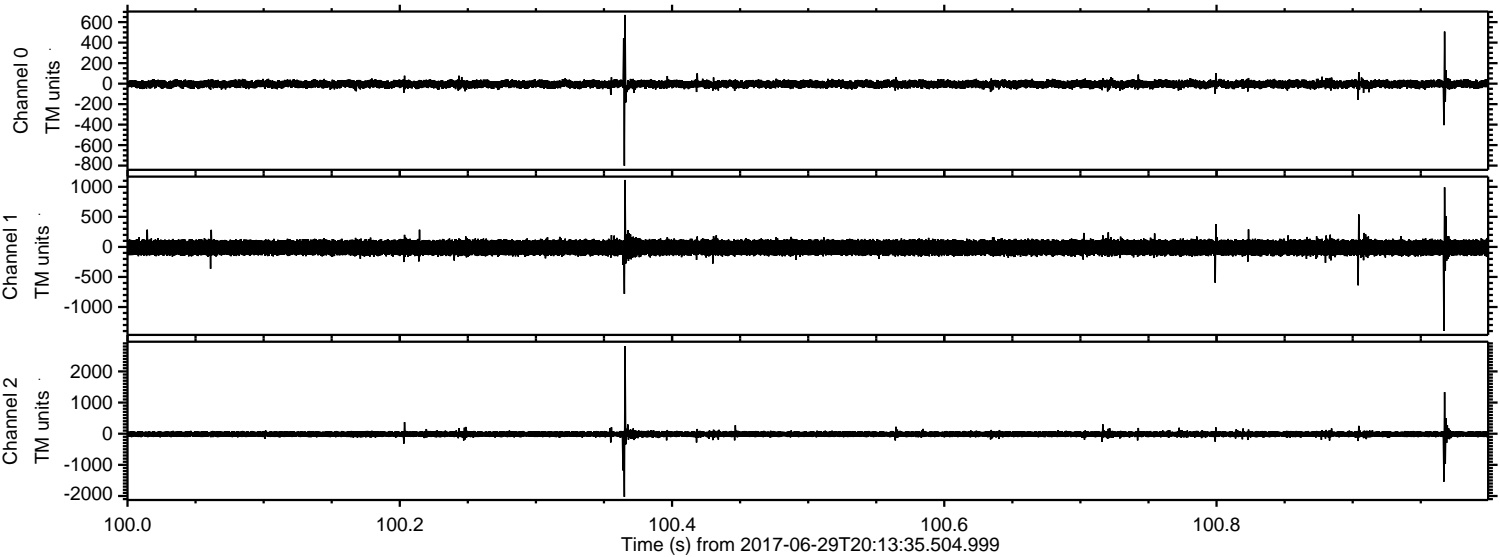
Processed Tue Jul 18 02:37:53 2017 by ELM ver.2012-10-06 from 001\_\_elm20170629\_201334\_\_dat00.bin





ELMAVAN 3D WAVEFORMS (Measured data sampled at 50 kHz) 51000 packets of 144 samples from 2017-06-29T20:13:35.504.999. Part 101/147

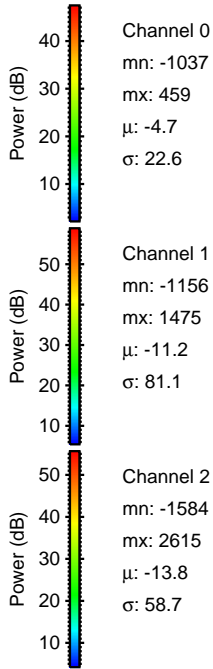
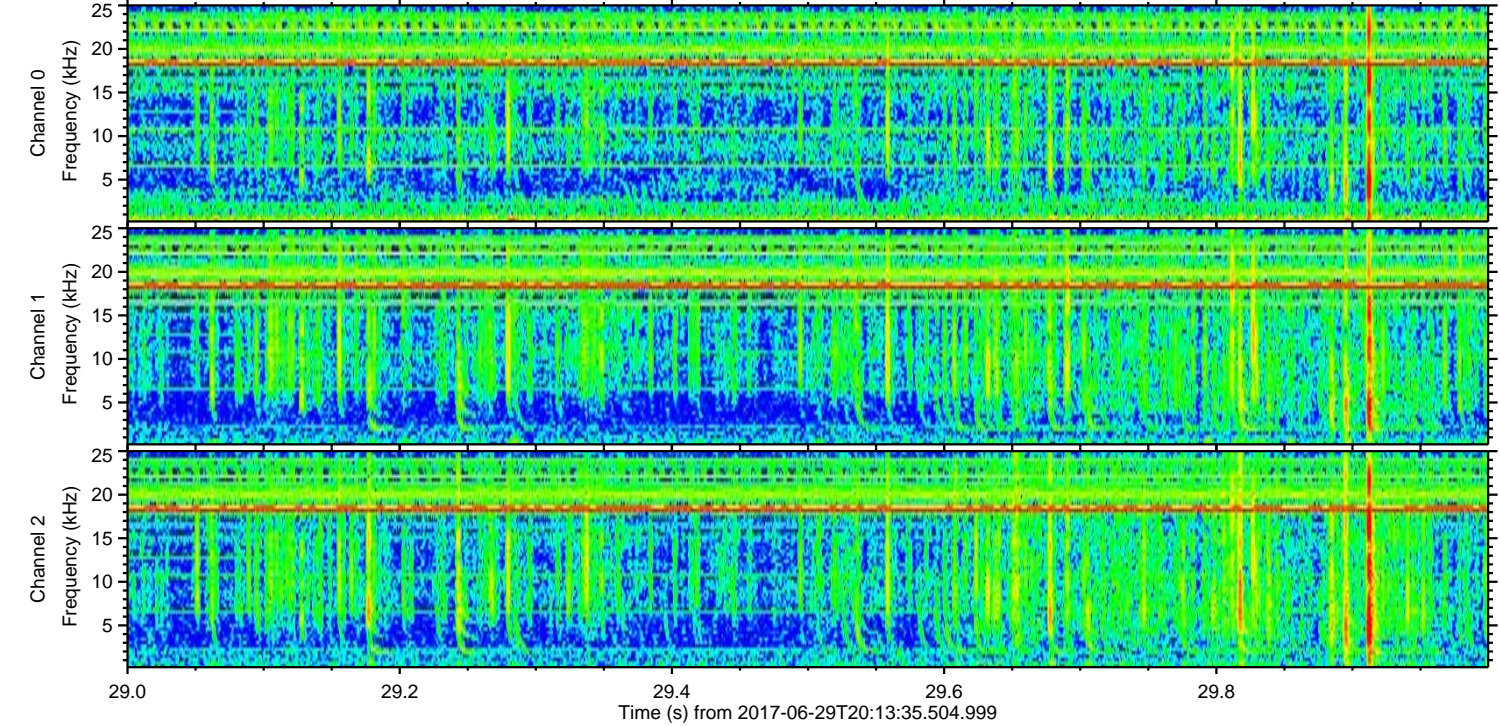
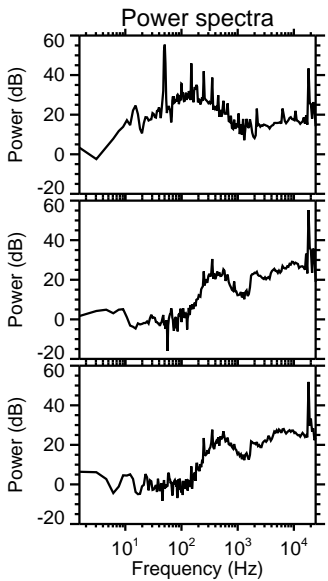
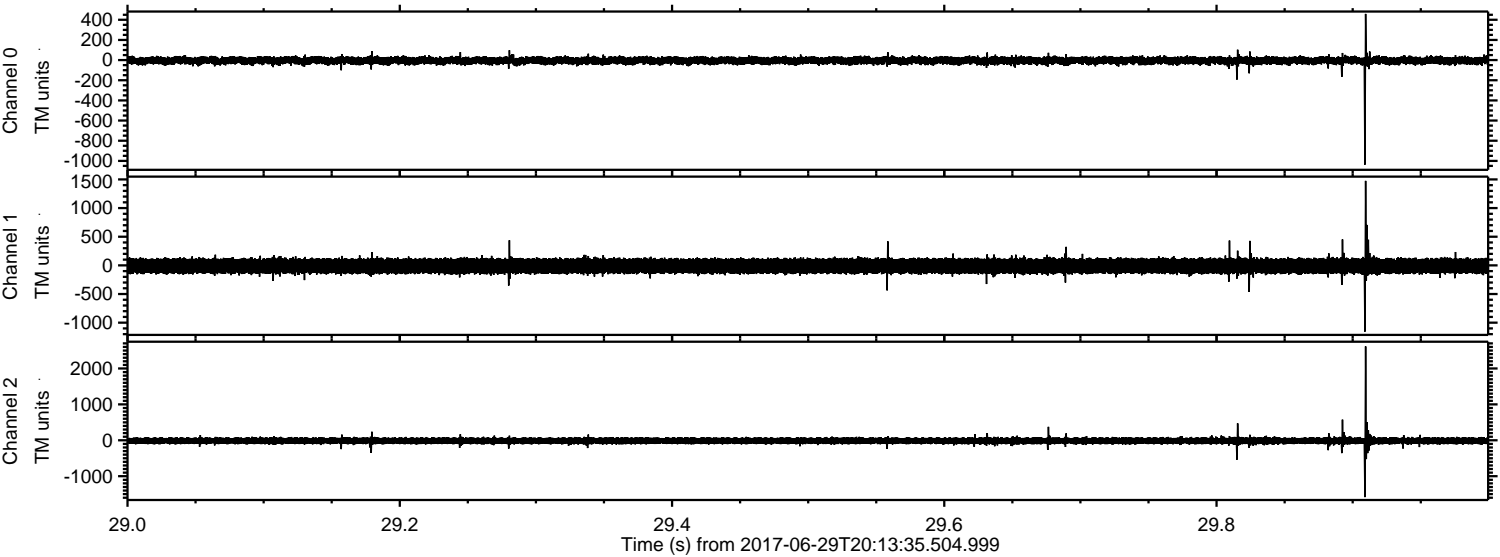
Processed Tue Jul 18 02:37:53 2017 by ELM ver.2012-10-06 from 001\_\_elm20170629\_201334\_\_dat00.bin





ELMAVAN 3D WAVEFORMS (Measured data sampled at 50 kHz) 51000 packets of 144 samples from 2017-06-29T20:13:35.504.999. Part 30/147

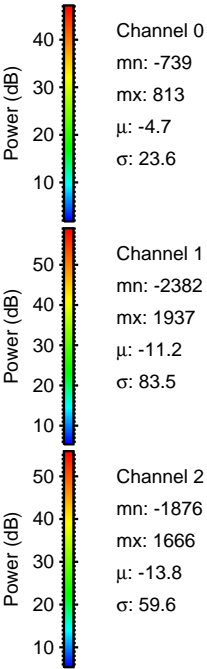
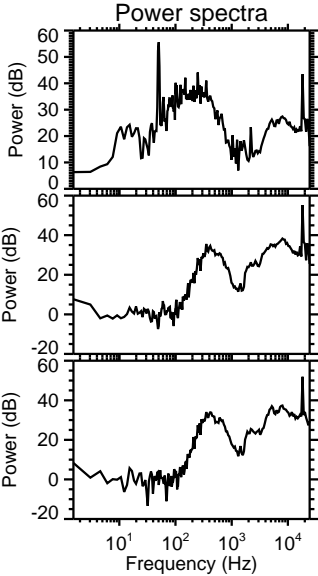
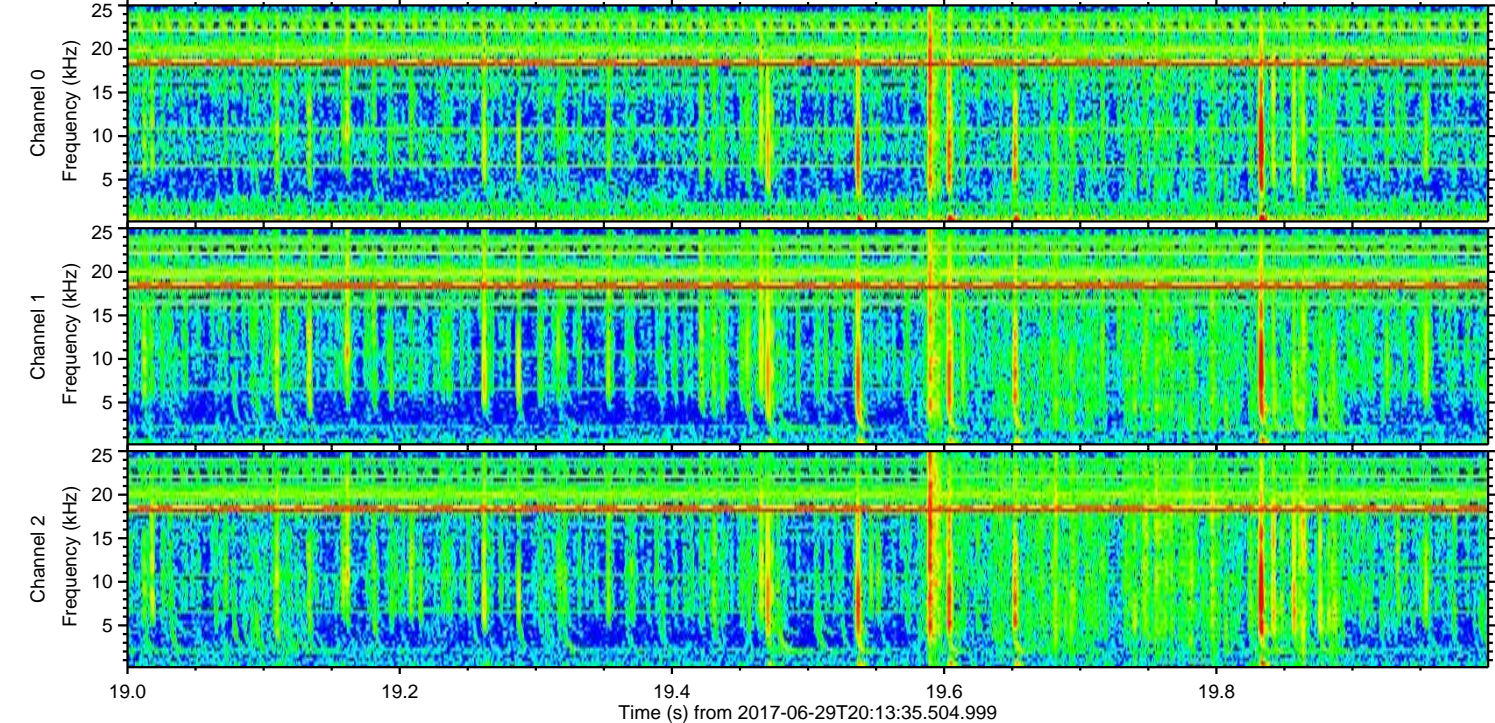
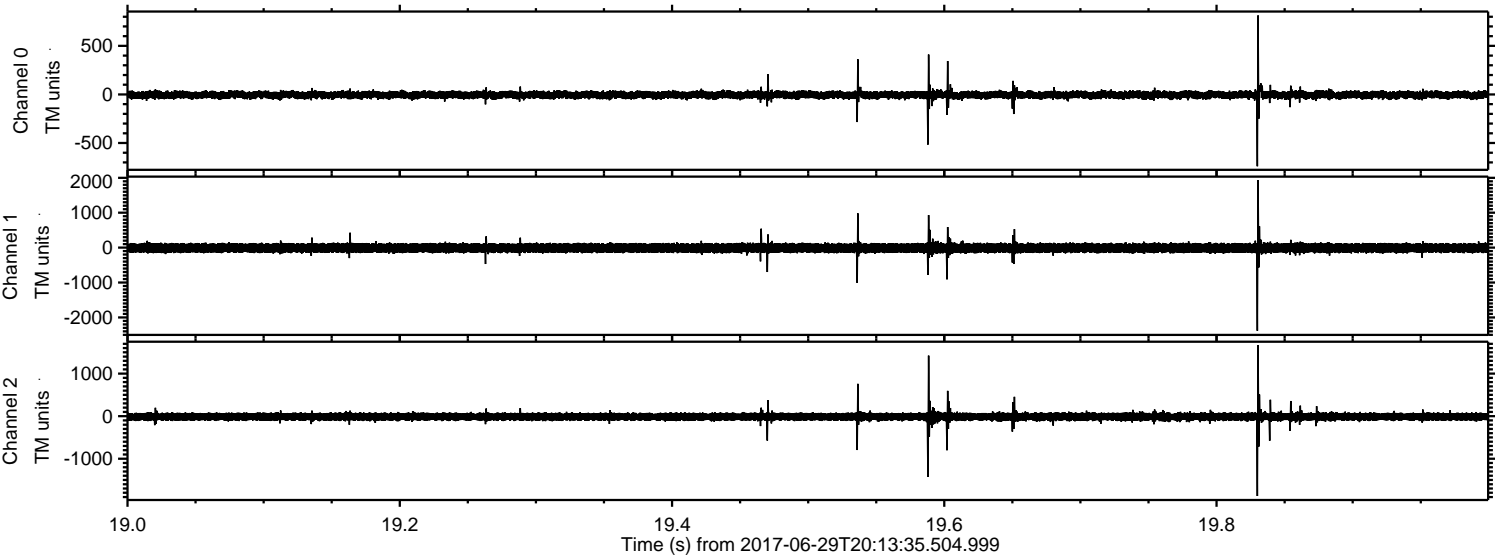
Processed Tue Jul 18 02:37:54 2017 by ELM ver.2012-10-06 from 001\_\_elm20170629\_201334\_\_dat00.bin





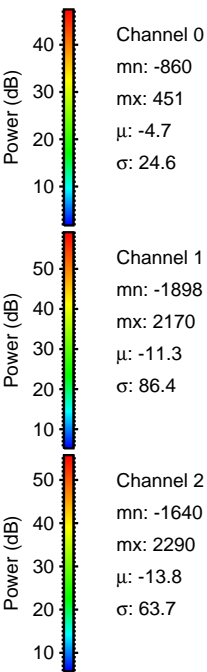
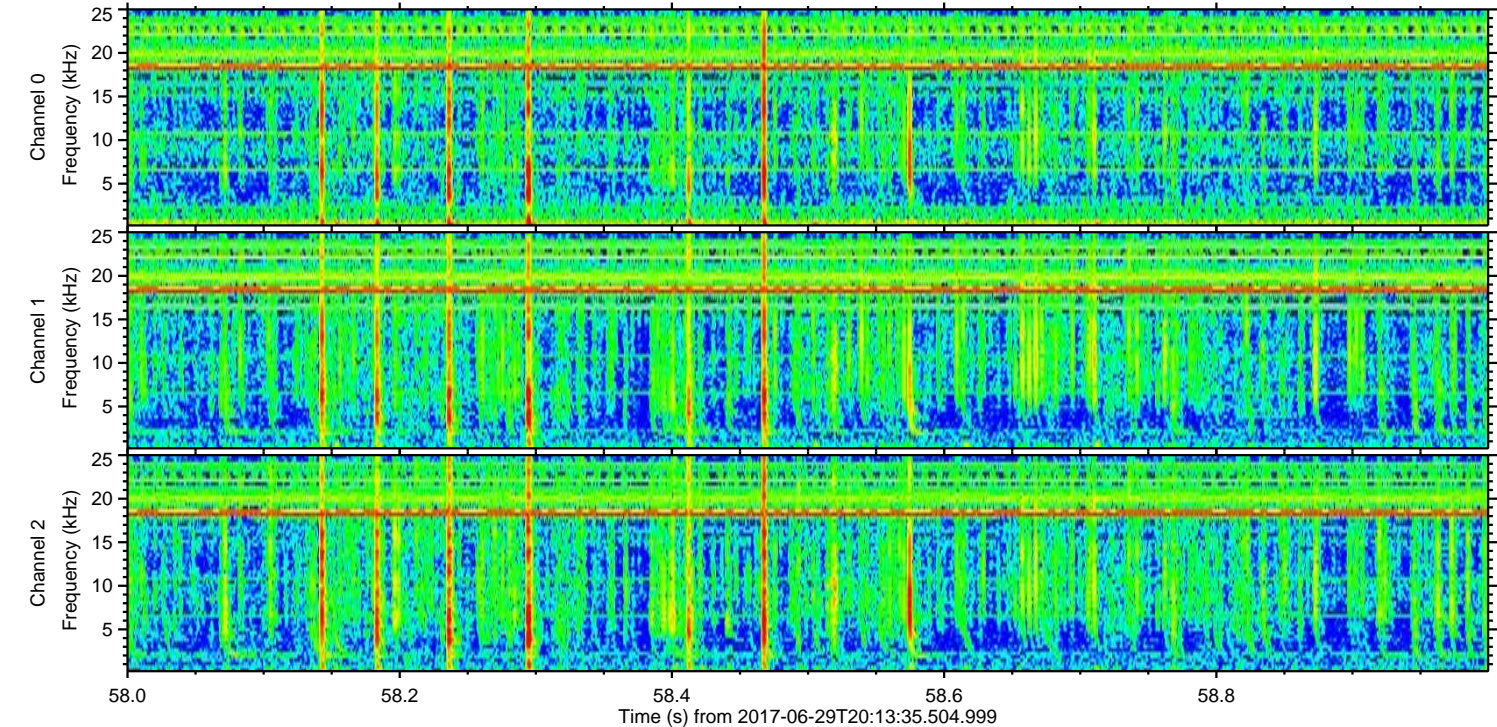
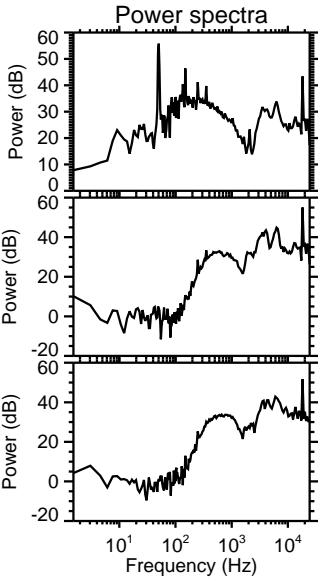
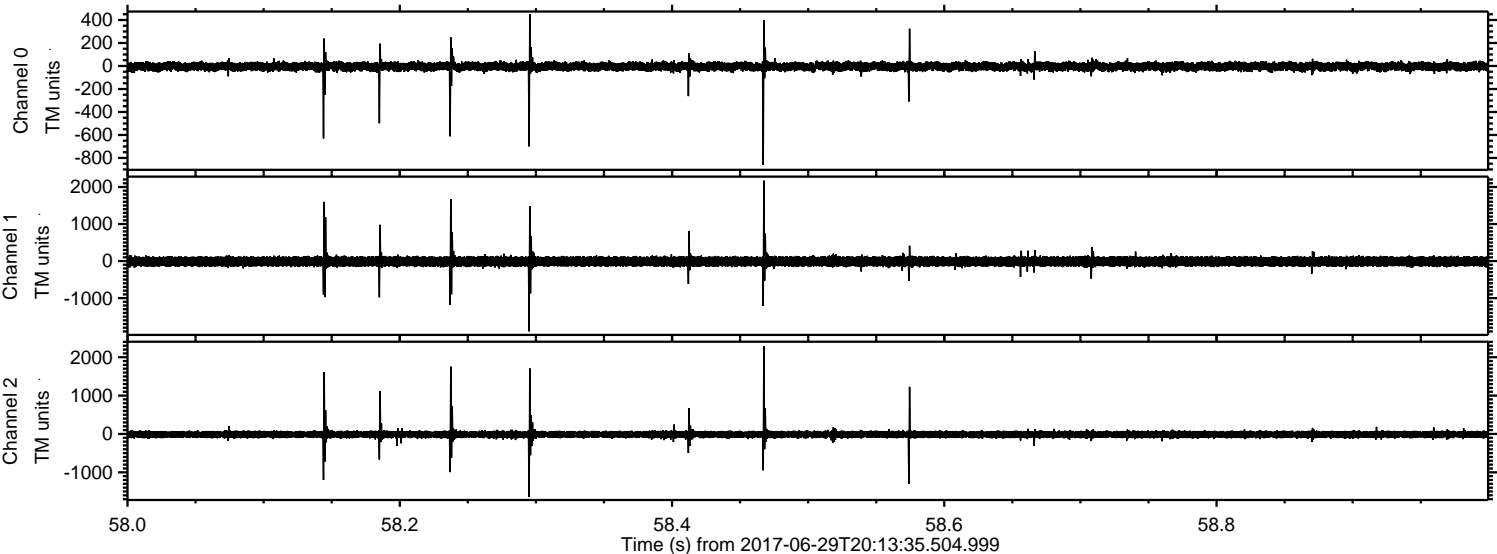
ELMAVAN 3D WAVEFORMS (Measured data sampled at 50 kHz) 51000 packets of 144 samples from 2017-06-29T20:13:35.504.999. Part 20/147

Processed Tue Jul 18 02:37:55 2017 by ELM ver.2012-10-06 from 001\_\_elm20170629\_201334\_\_dat00.bin



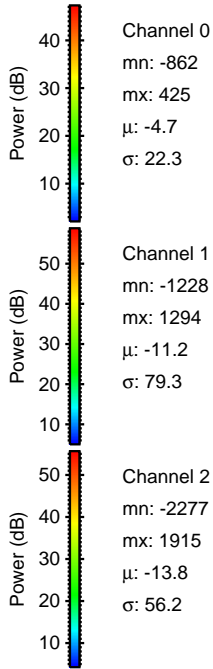
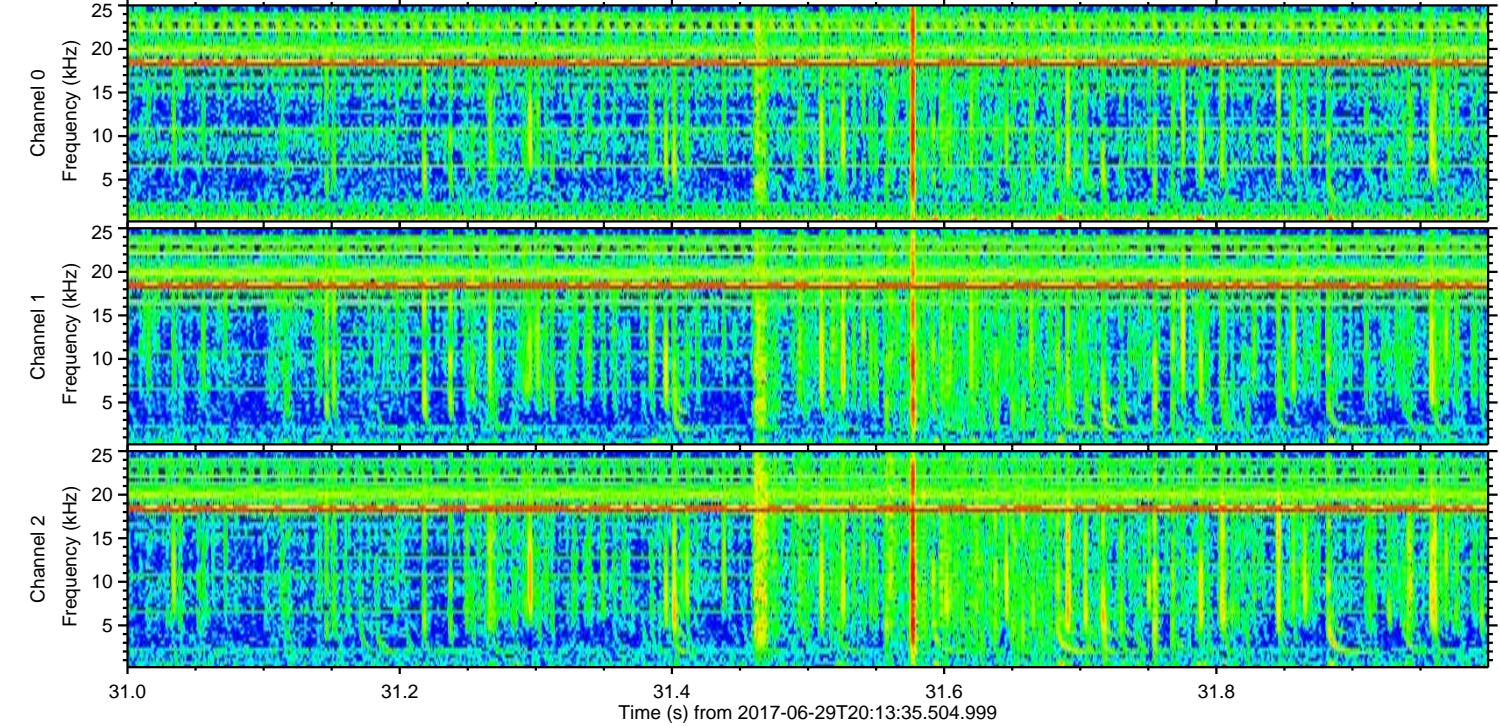
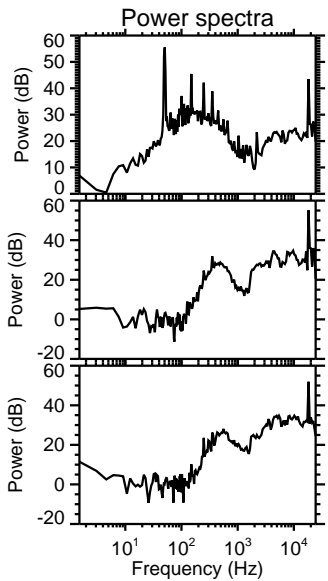
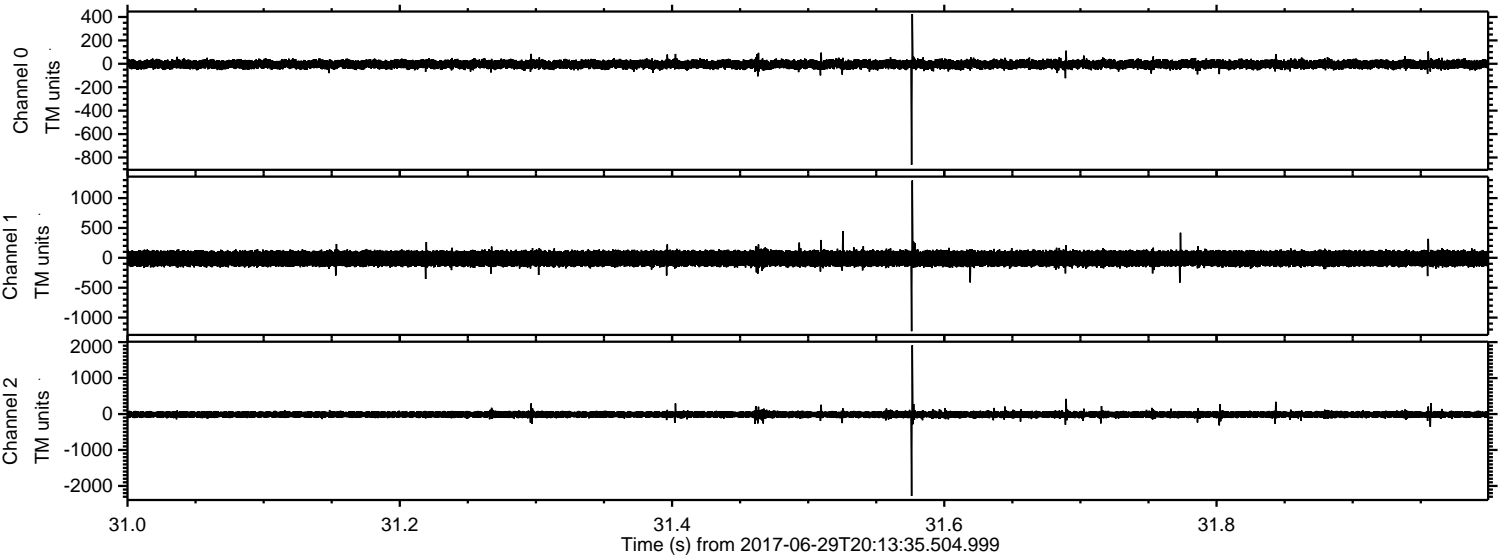


Processed Tue Jul 18 02:37:56 2017 by ELM ver.2012-10-06 from 001\_\_elm20170629\_201334\_\_dat00.bin



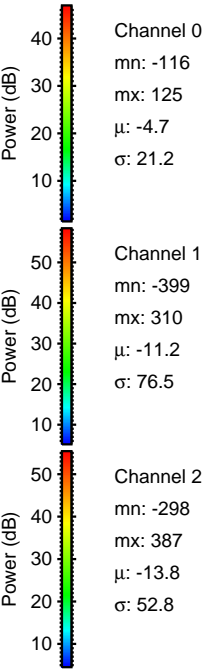
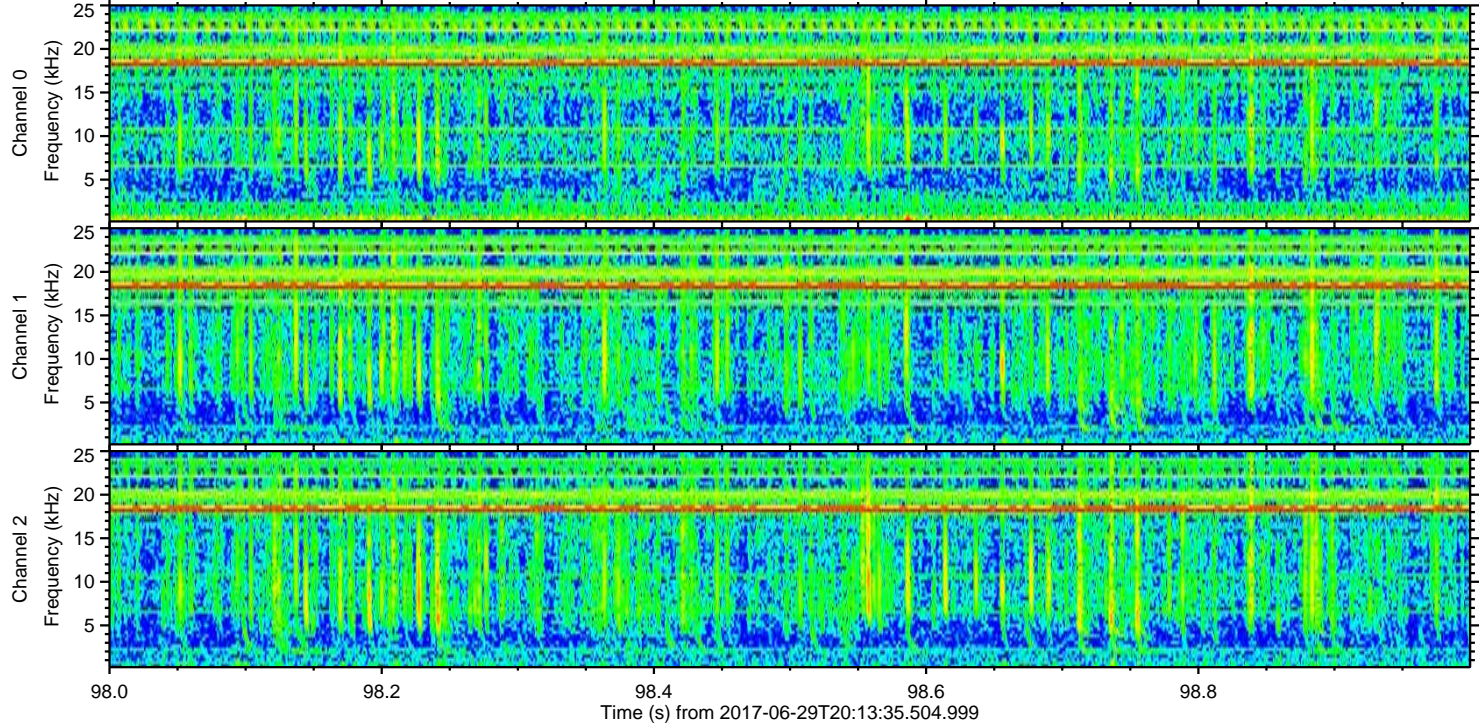
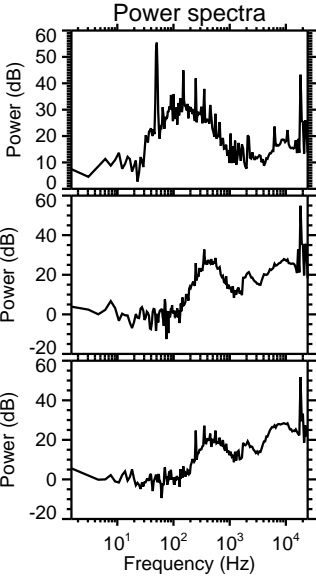
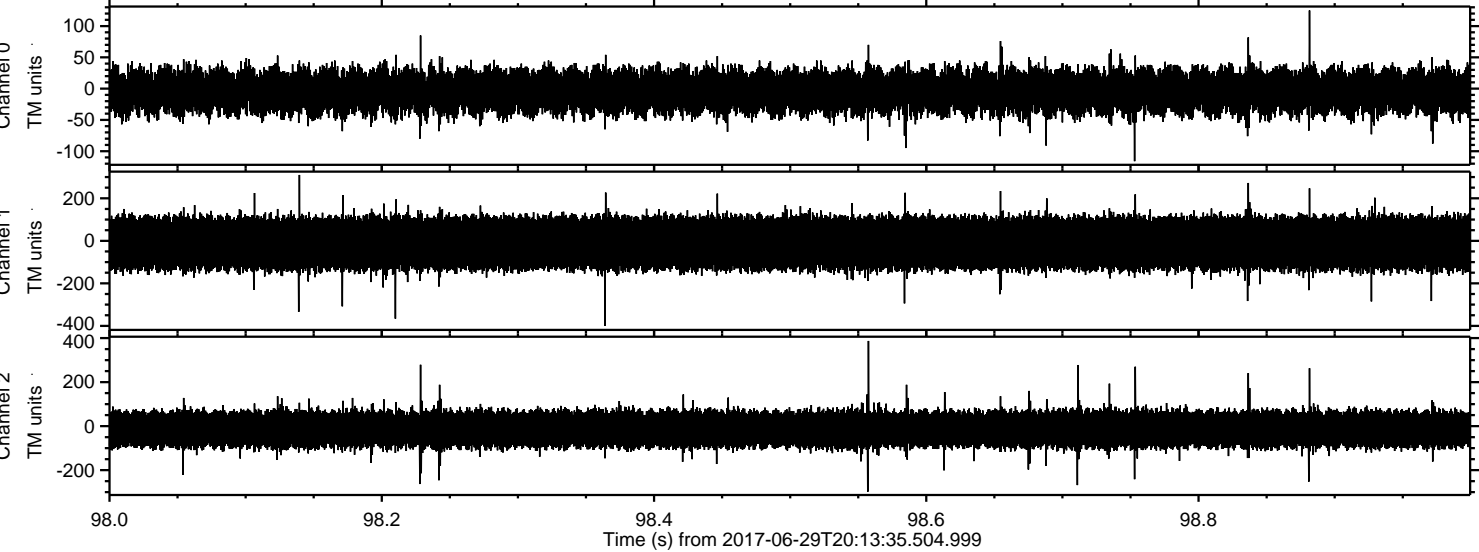


Processed Tue Jul 18 02:37:56 2017 by ELM ver.2012-10-06 from 001\_\_elm20170629\_201334\_\_dat00.bin





Processed Tue Jul 18 02:37:57 2017 by ELM ver.2012-10-06 from 001\_\_elm20170629\_201334\_\_dat00.bin



Channel 0  
mn: -116  
mx: 125  
 $\mu$ : -4.7  
 $\sigma$ : 21.2

Channel 1  
mn: -399  
mx: 310  
 $\mu$ : -11.2  
 $\sigma$ : 76.5

Channel 2  
mn: -298  
mx: 387  
 $\mu$ : -13.8  
 $\sigma$ : 52.8