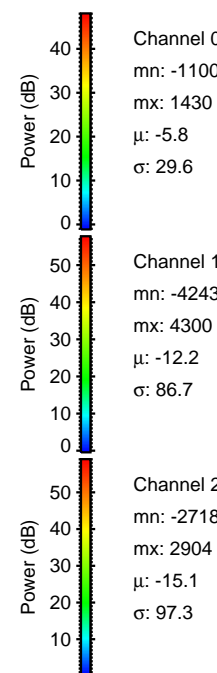
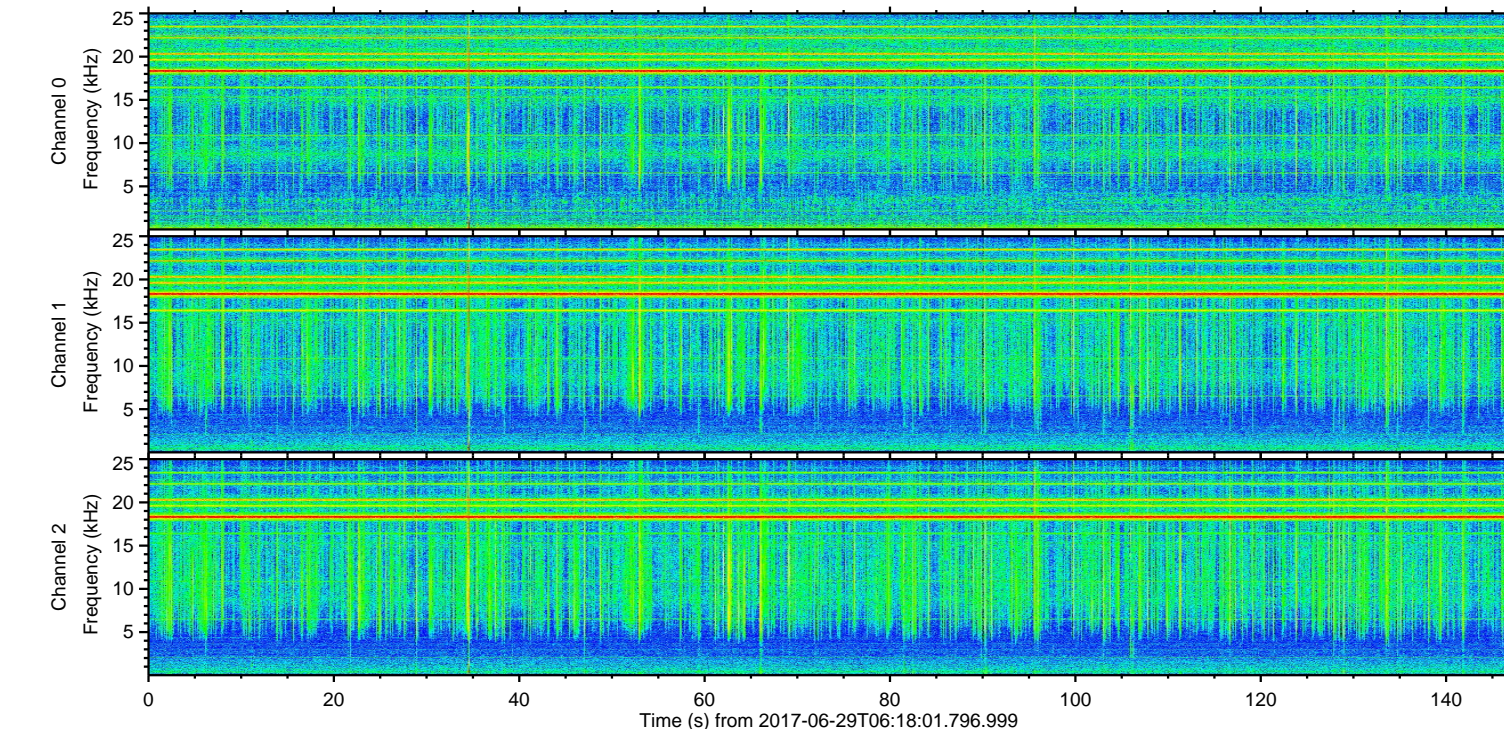
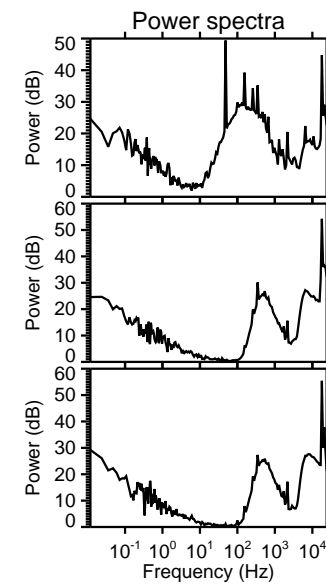
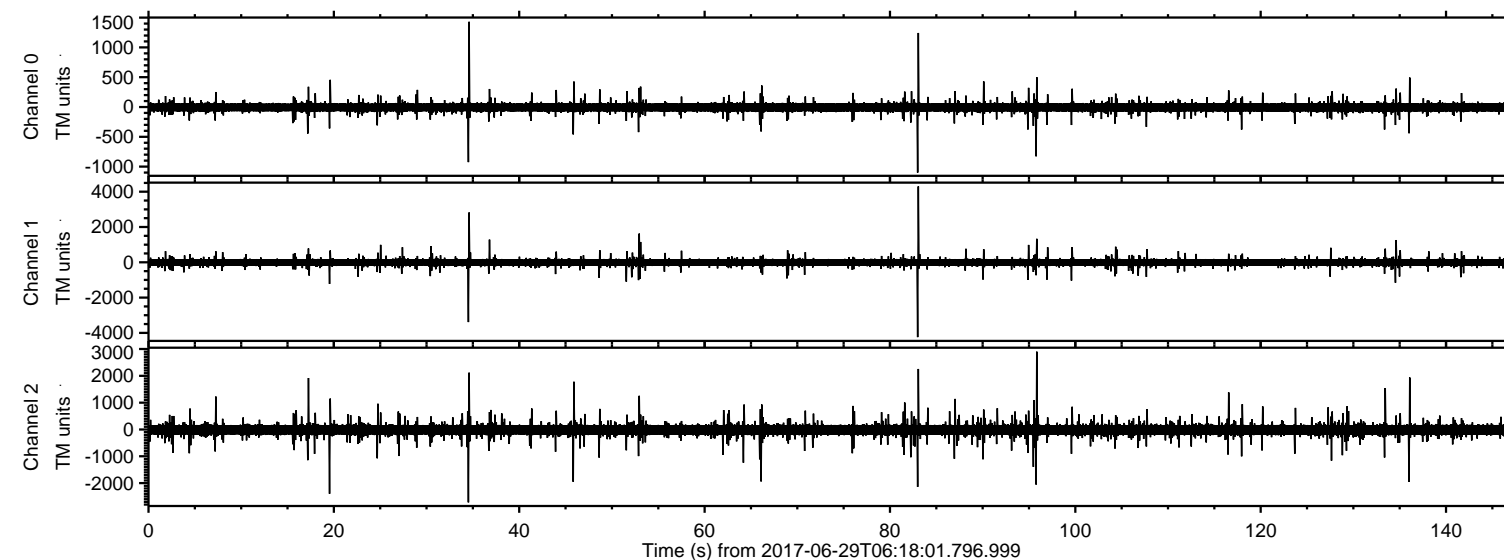
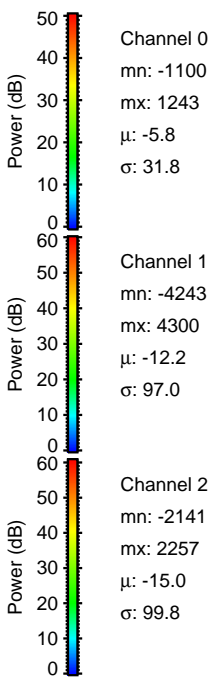
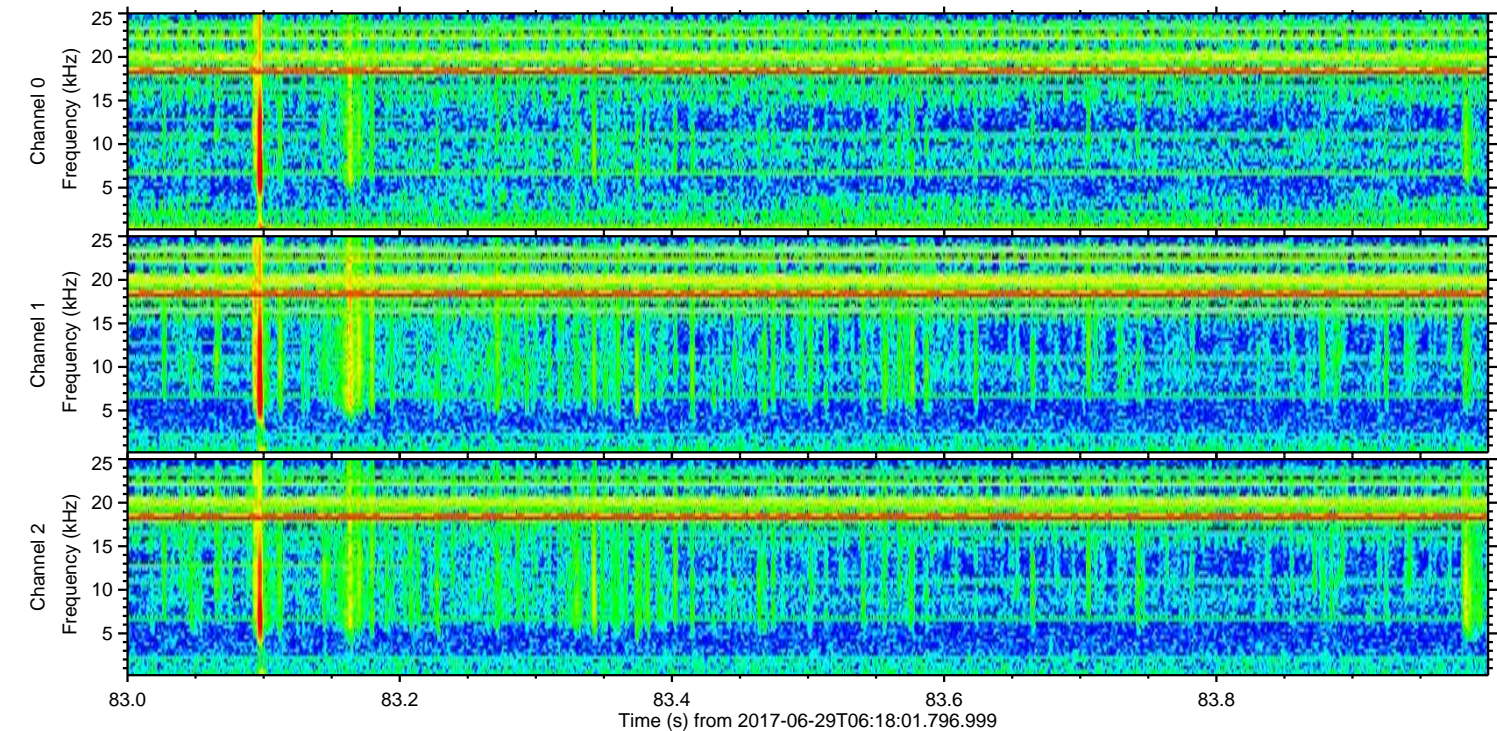
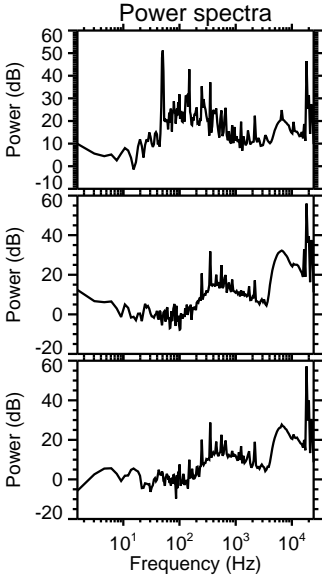
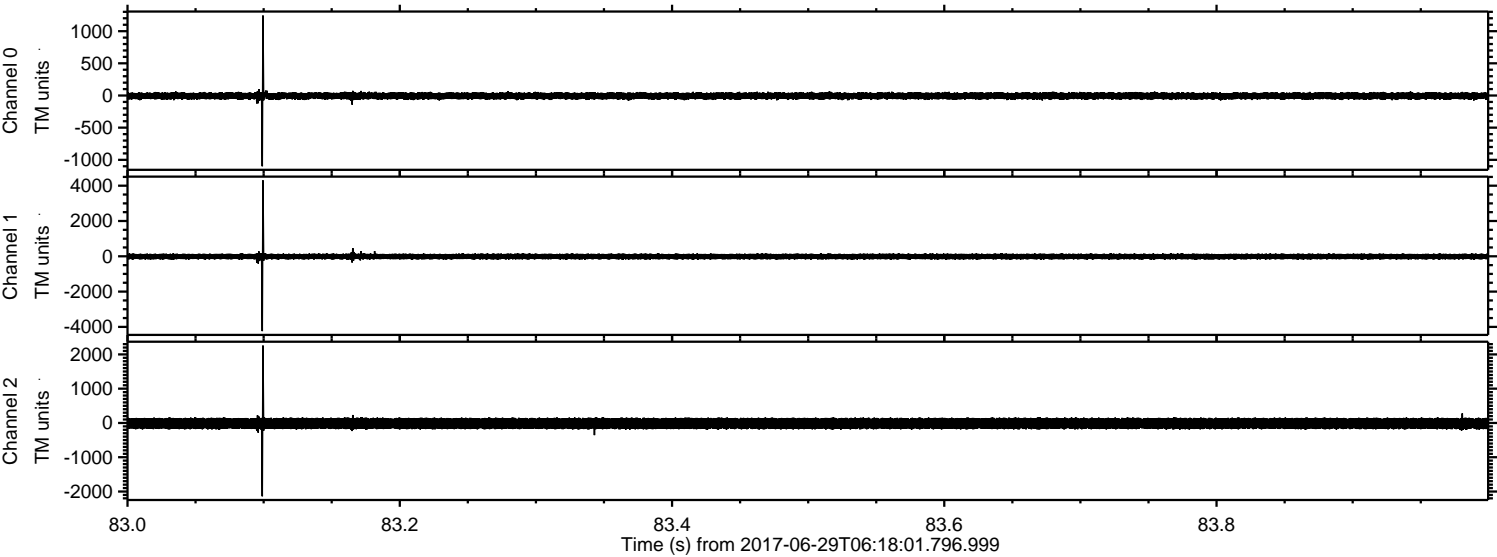


ELMAVAN 3D WAVEFORMS (Measured data sampled at 50 kHz) 51000 packets of 144 samples from 2017-06-29T06:18:01.796.999.

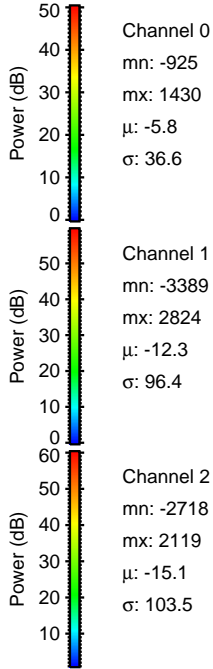
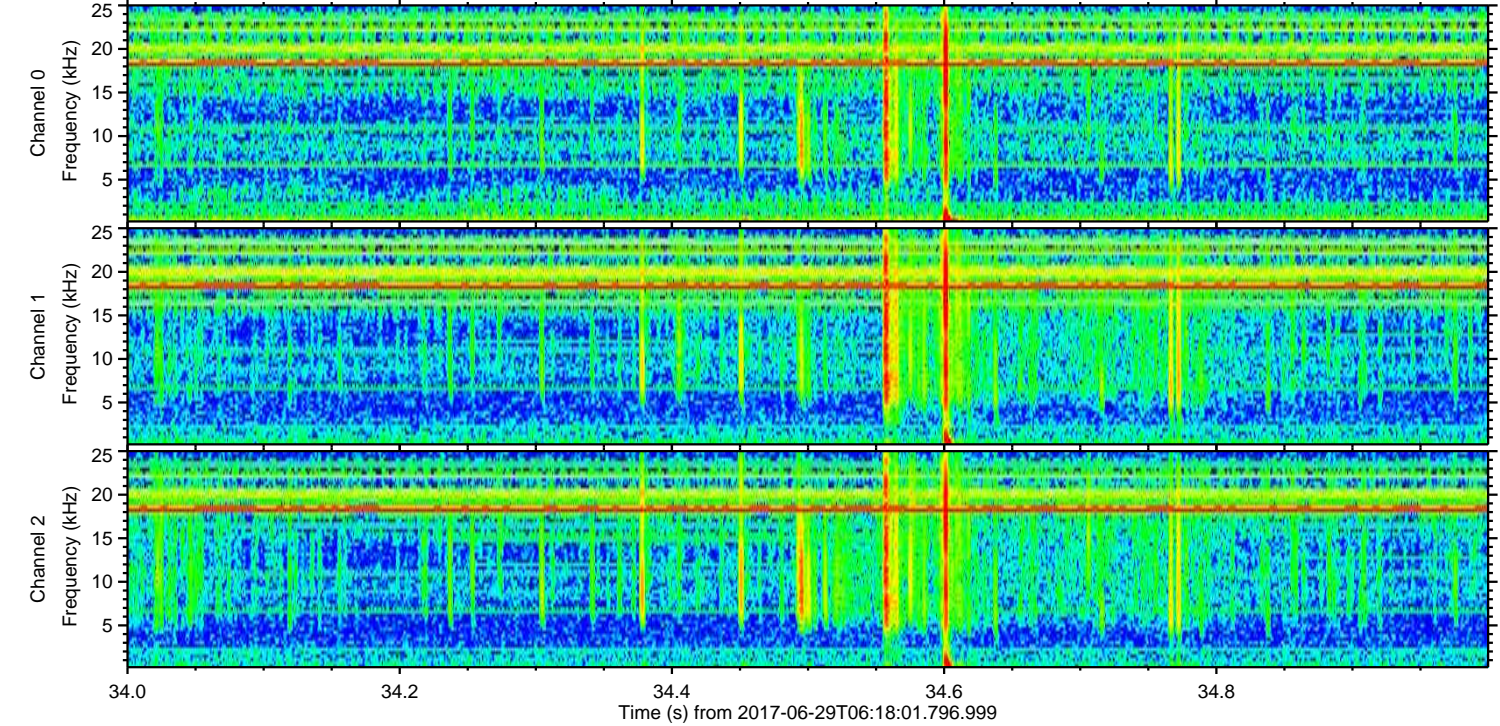
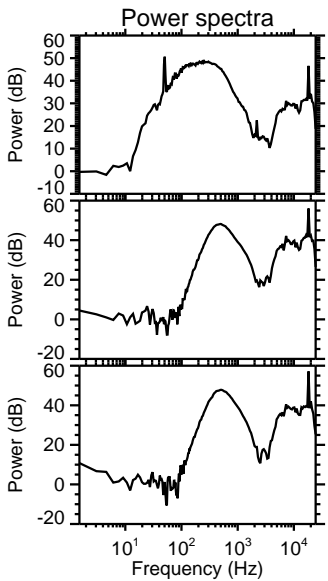
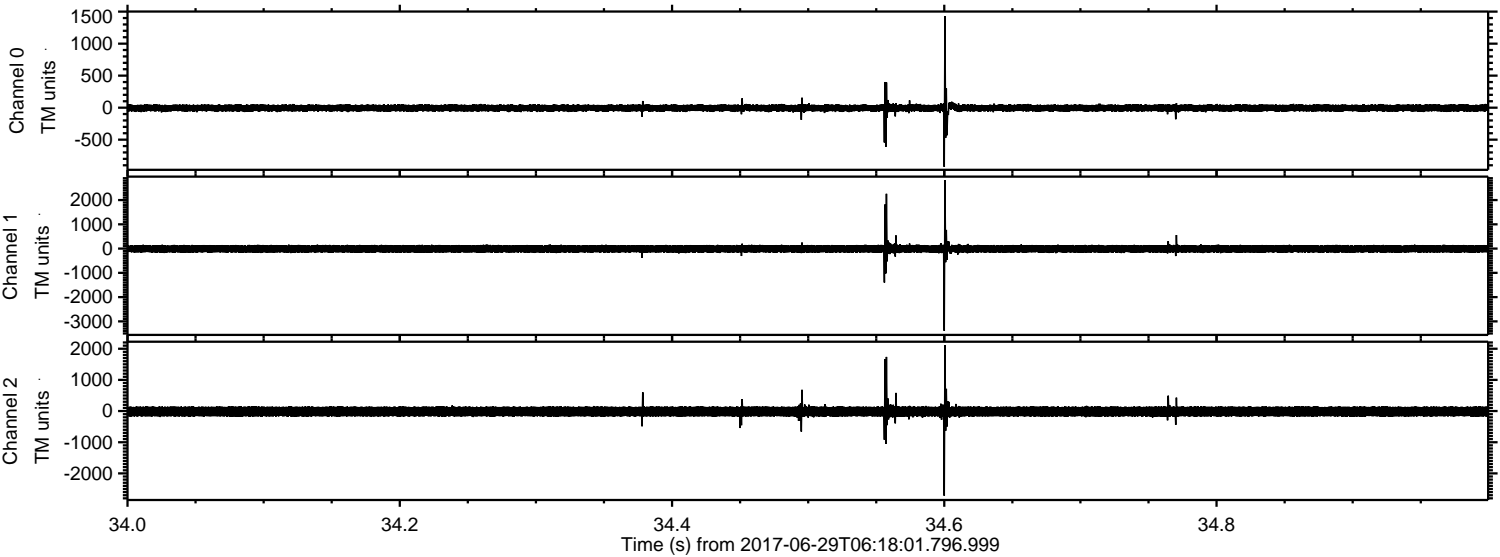
Processed Tue Jul 18 00:29:06 2017 by ELM ver.2012-10-06 from 001__elm20170629_061800__dat00.bin



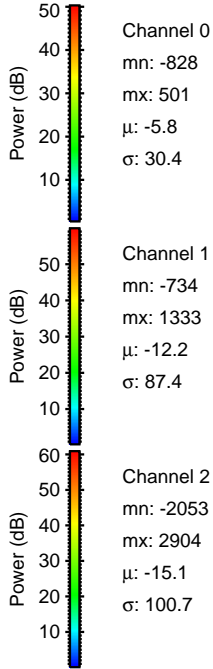
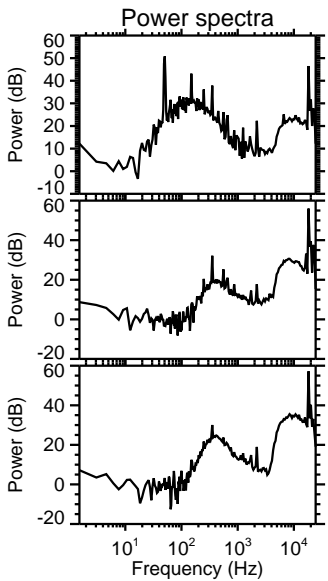
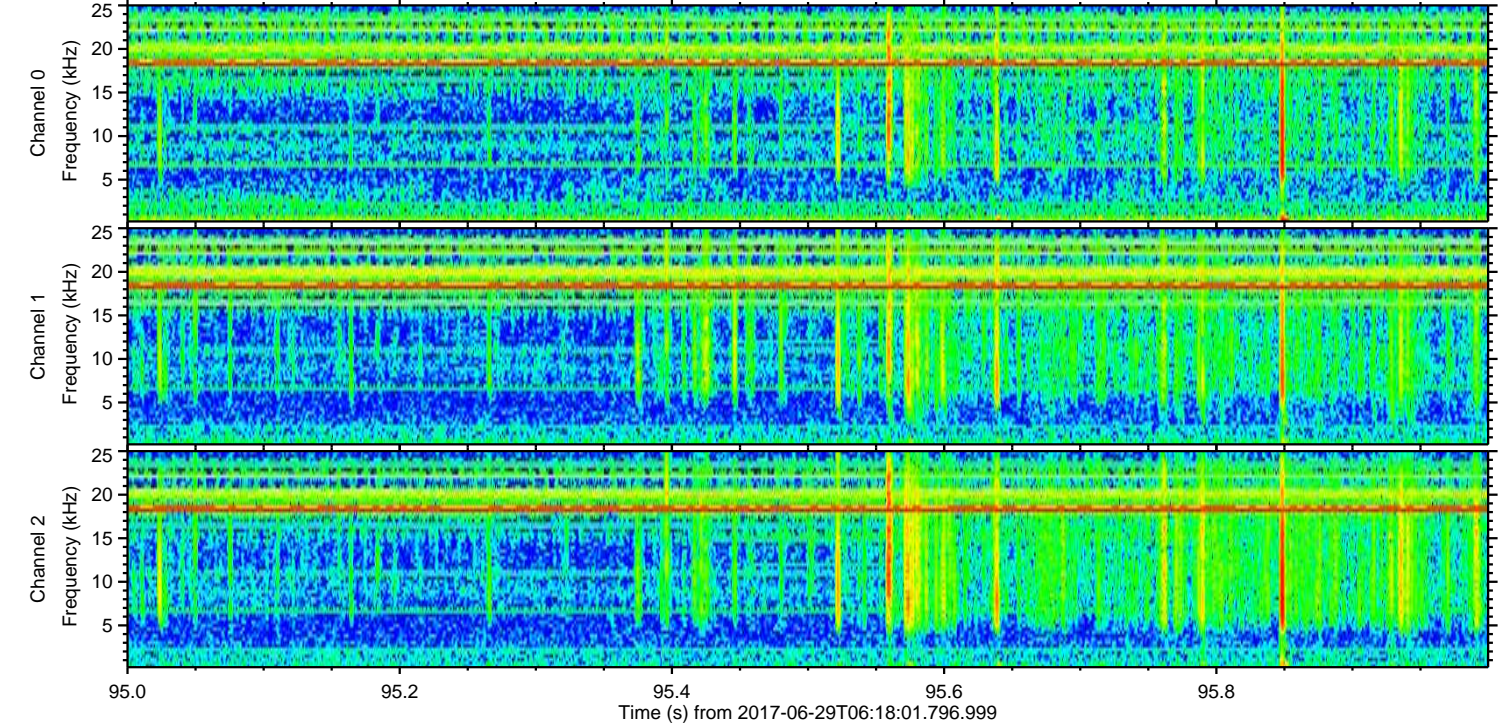
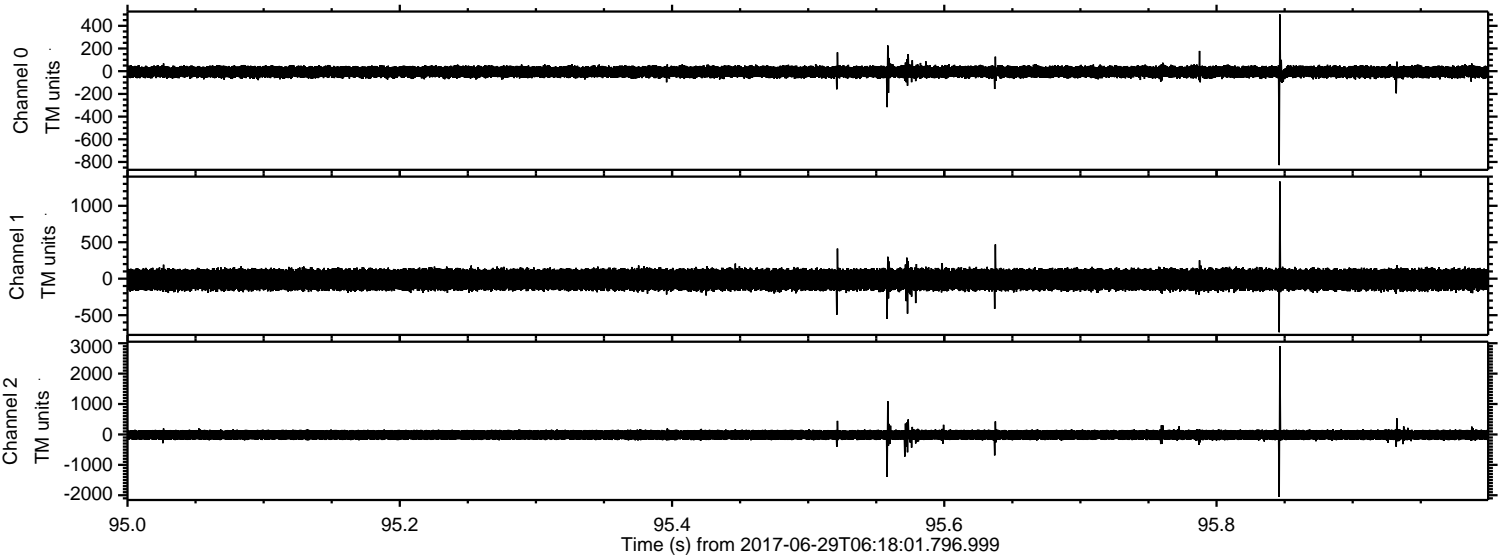
Processed Tue Jul 18 00:29:14 2017 by ELM ver.2012-10-06 from 001__elm20170629_061800__dat00.bin



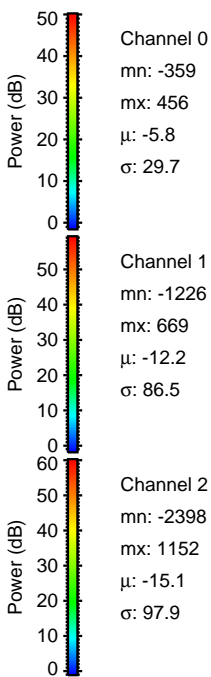
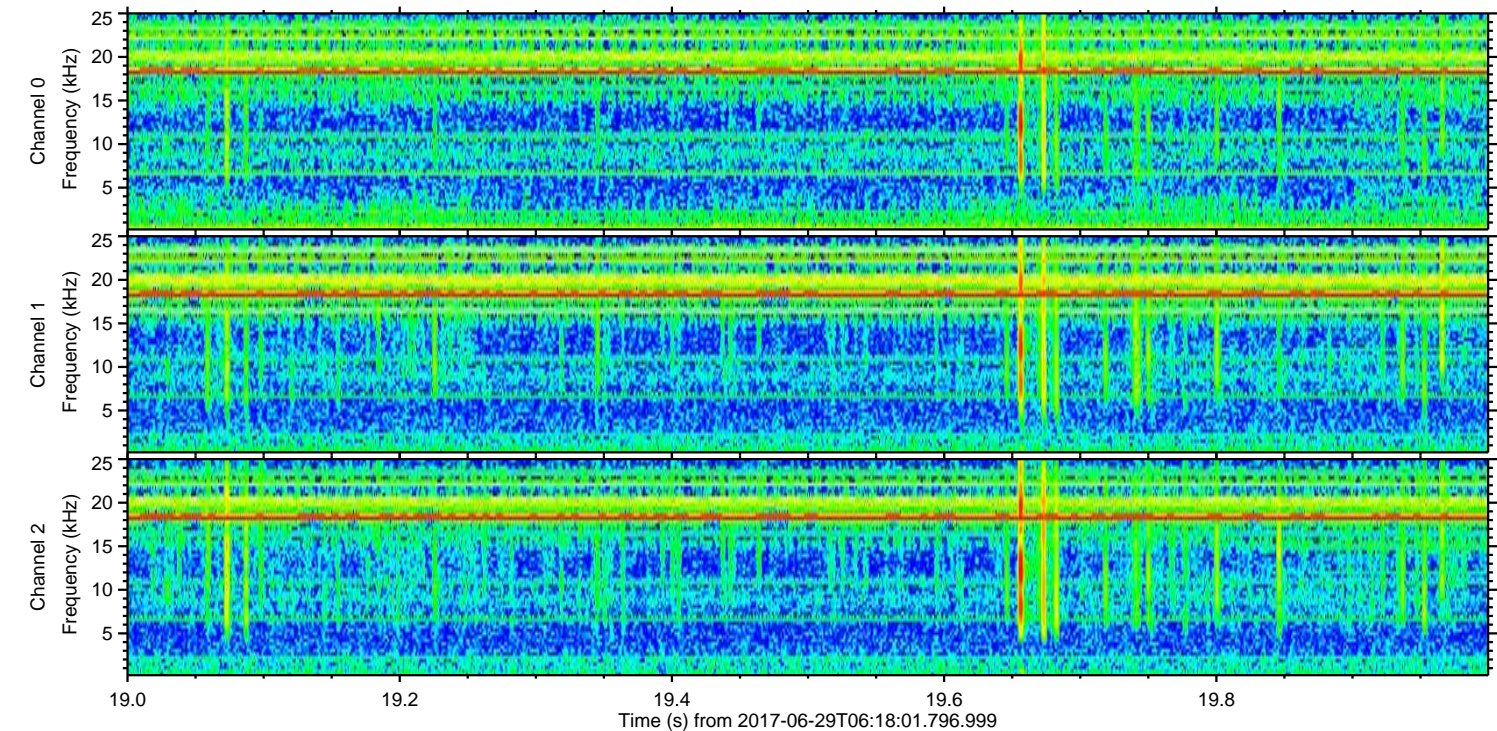
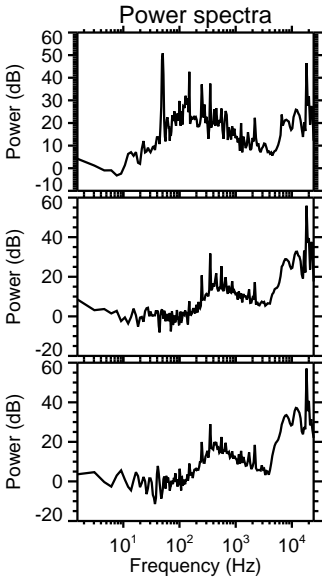
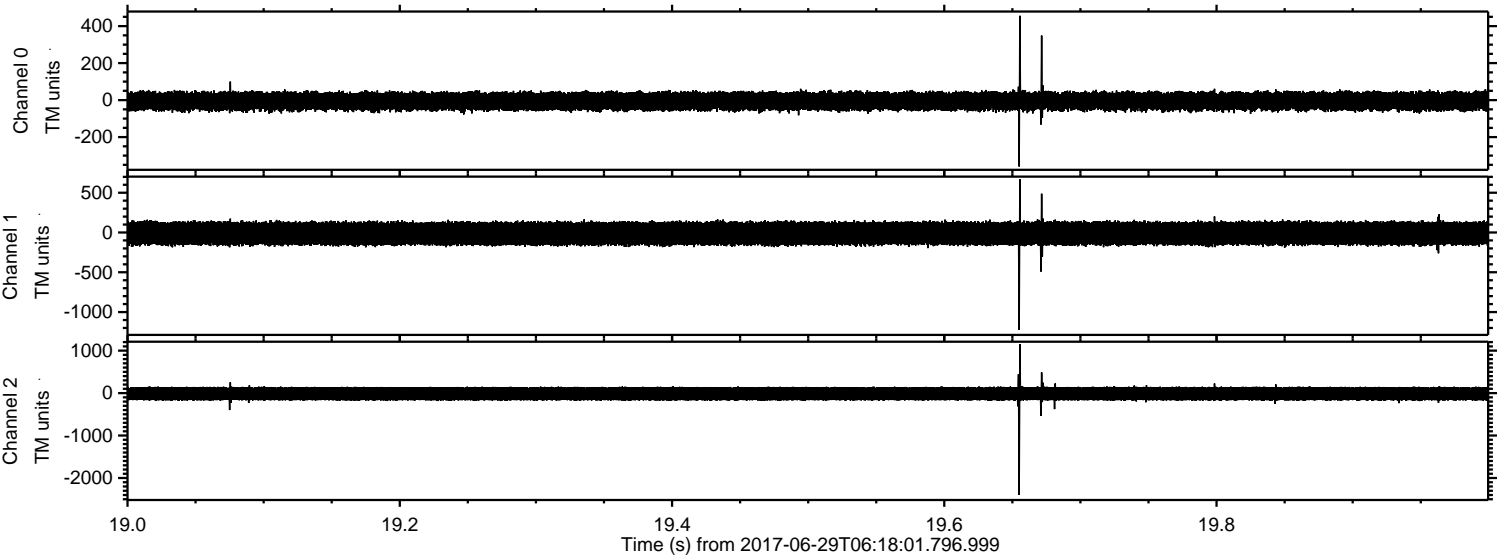
Processed Tue Jul 18 00:29:15 2017 by ELM ver.2012-10-06 from 001__elm20170629_061800__dat00.bin



Processed Tue Jul 18 00:29:16 2017 by ELM ver.2012-10-06 from 001__elm20170629_061800__dat00.bin

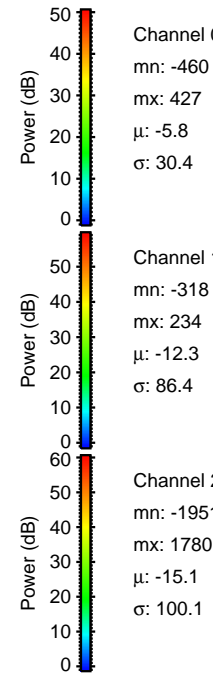
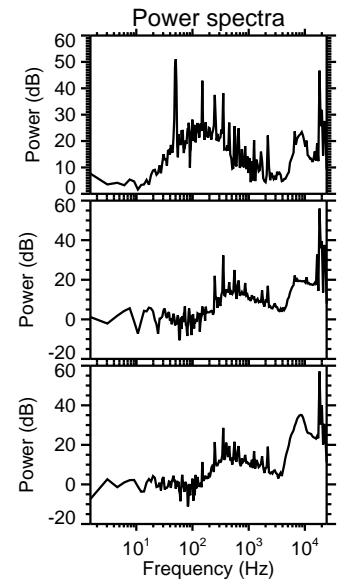
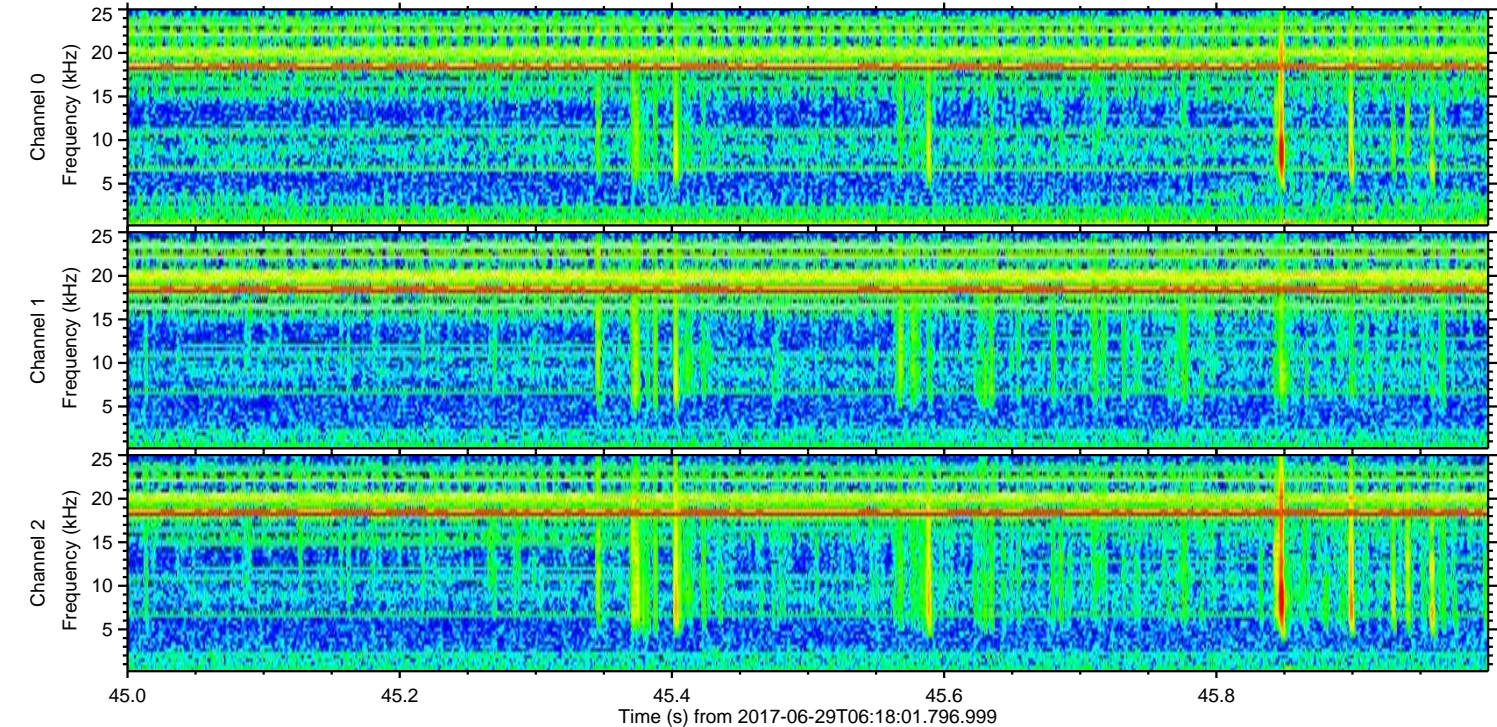
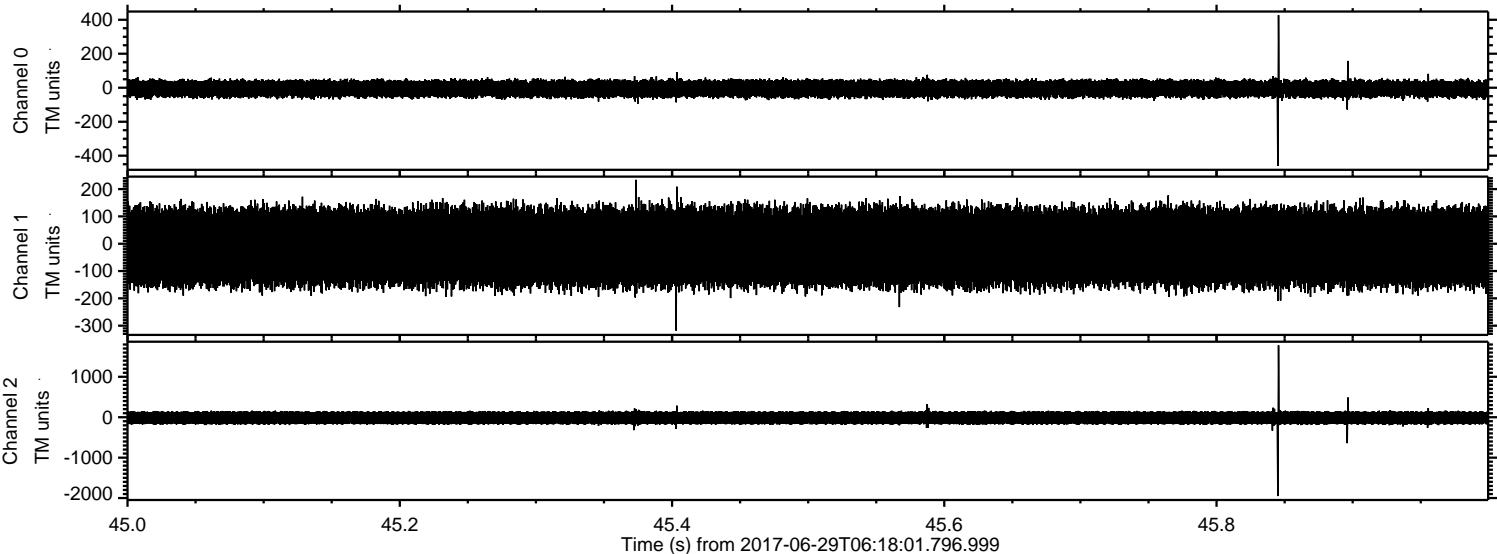


Processed Tue Jul 18 00:29:16 2017 by ELM ver.2012-10-06 from 001__elm20170629_061800__dat00.bin



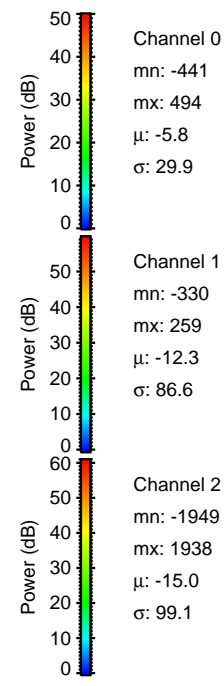
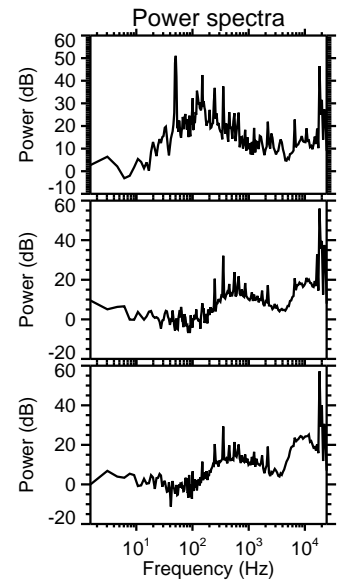
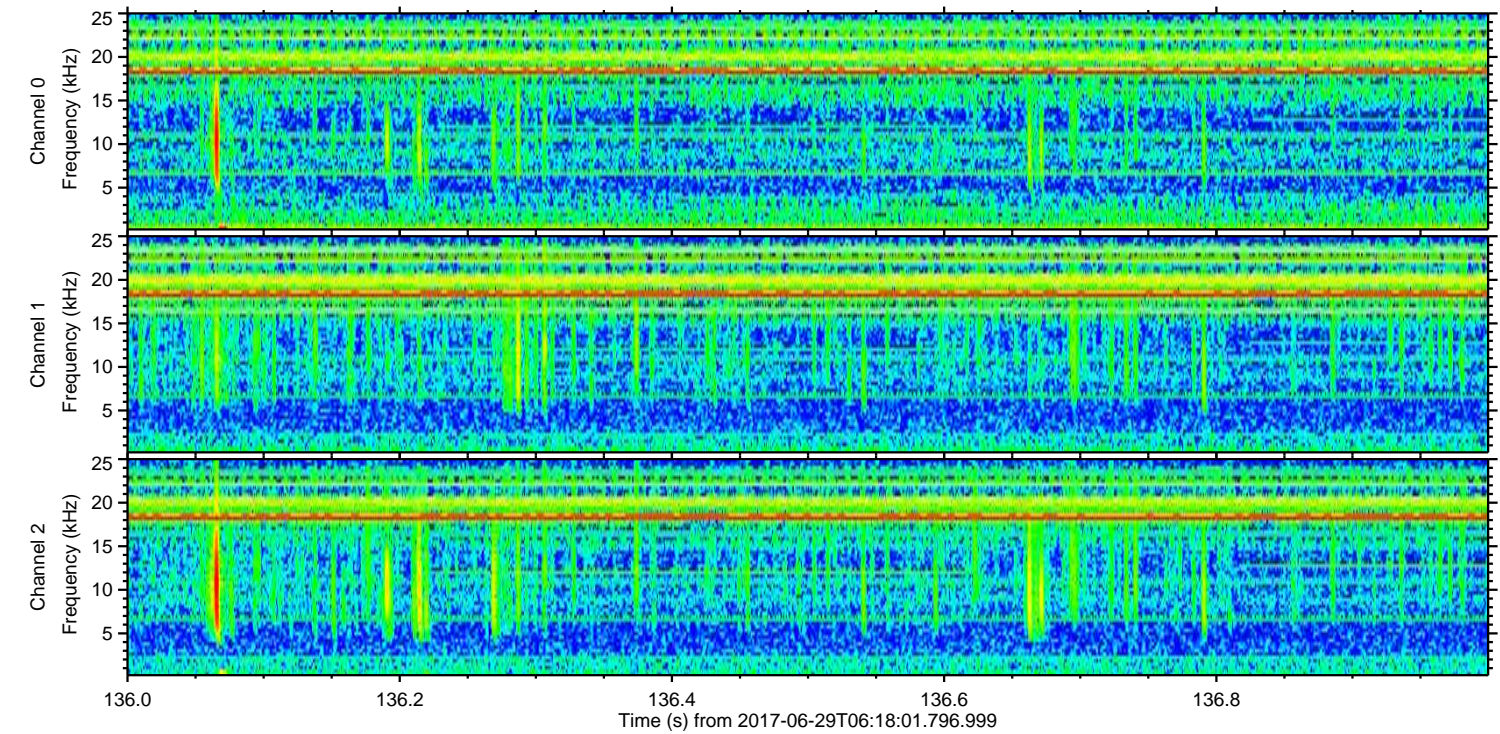
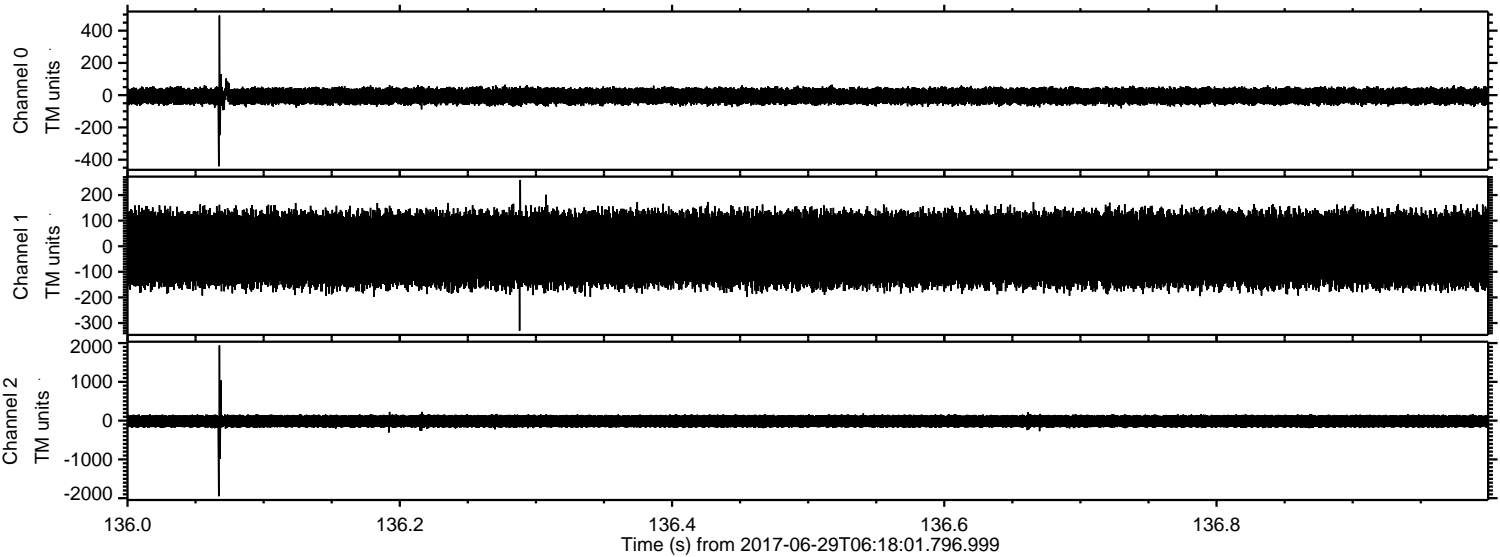
ELMAVAN 3D WAVEFORMS (Measured data sampled at 50 kHz) 51000 packets of 144 samples from 2017-06-29T06:18:01.796.999. Part 46/147

Processed Tue Jul 18 00:29:17 2017 by ELM ver.2012-10-06 from 001__elm20170629_061800__dat00.bin

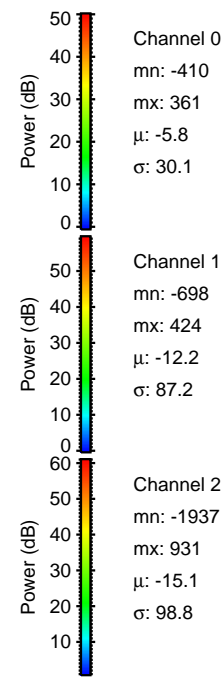
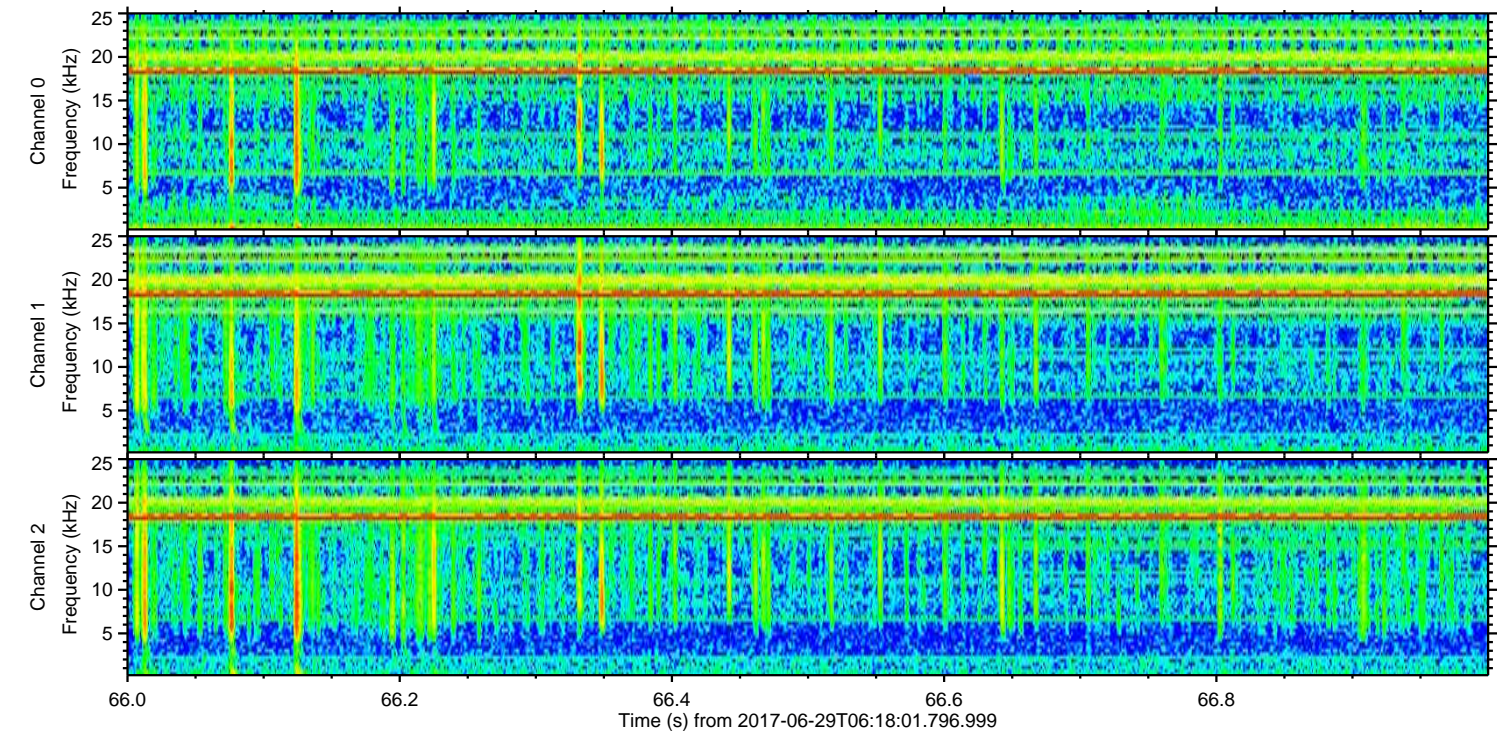
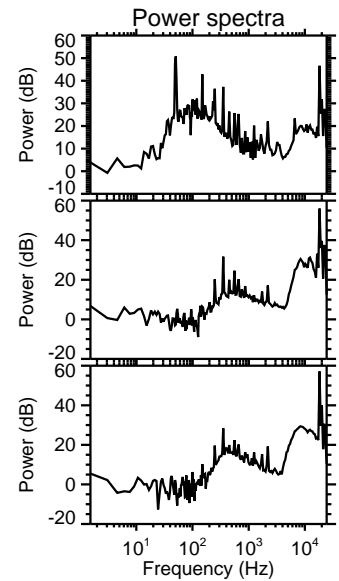
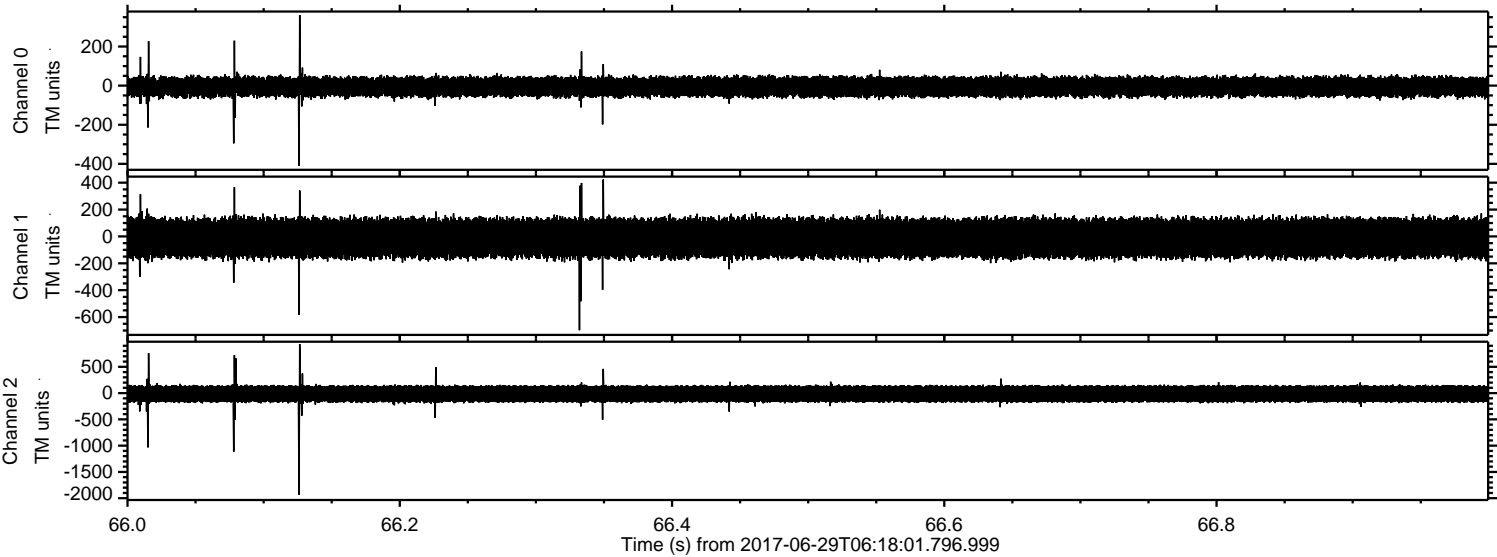


ELMAVAN 3D WAVEFORMS (Measured data sampled at 50 kHz) 51000 packets of 144 samples from 2017-06-29T06:18:01.796.999. Part 137/147

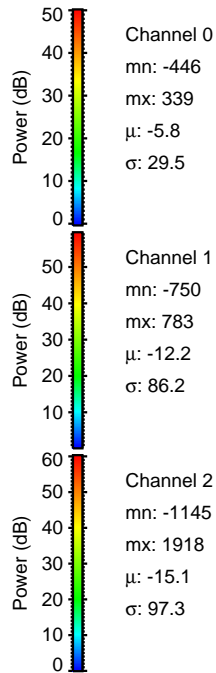
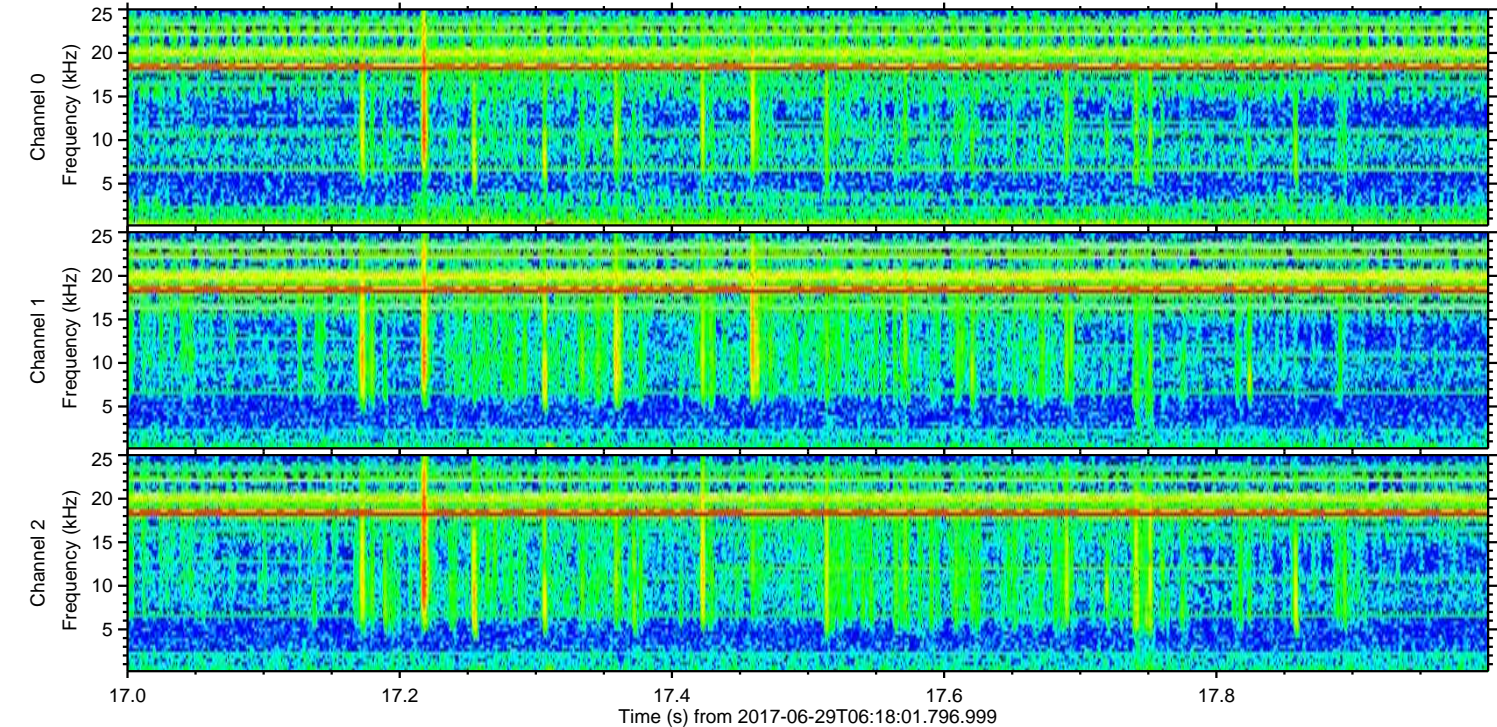
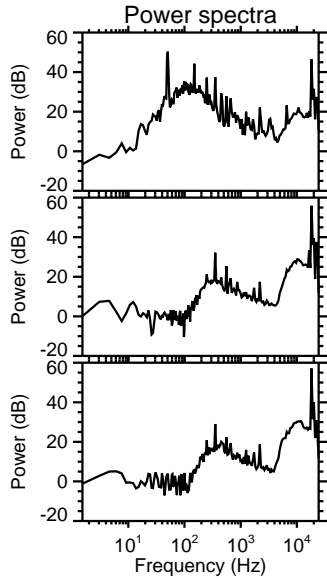
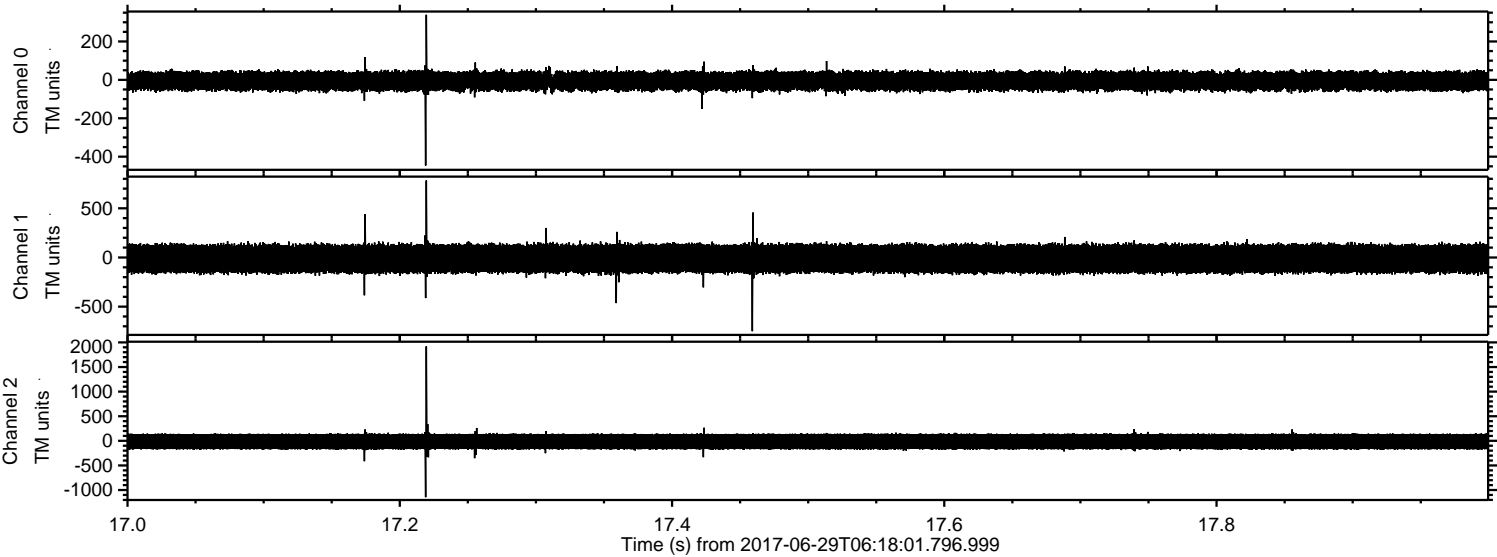
Processed Tue Jul 18 00:29:18 2017 by ELM ver.2012-10-06 from 001__elm20170629_061800__dat00.bin



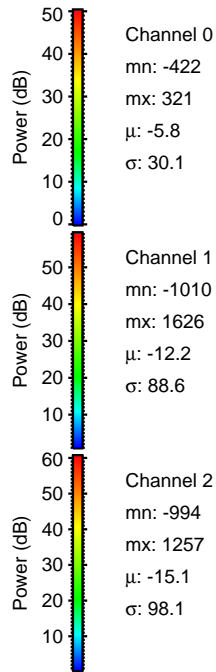
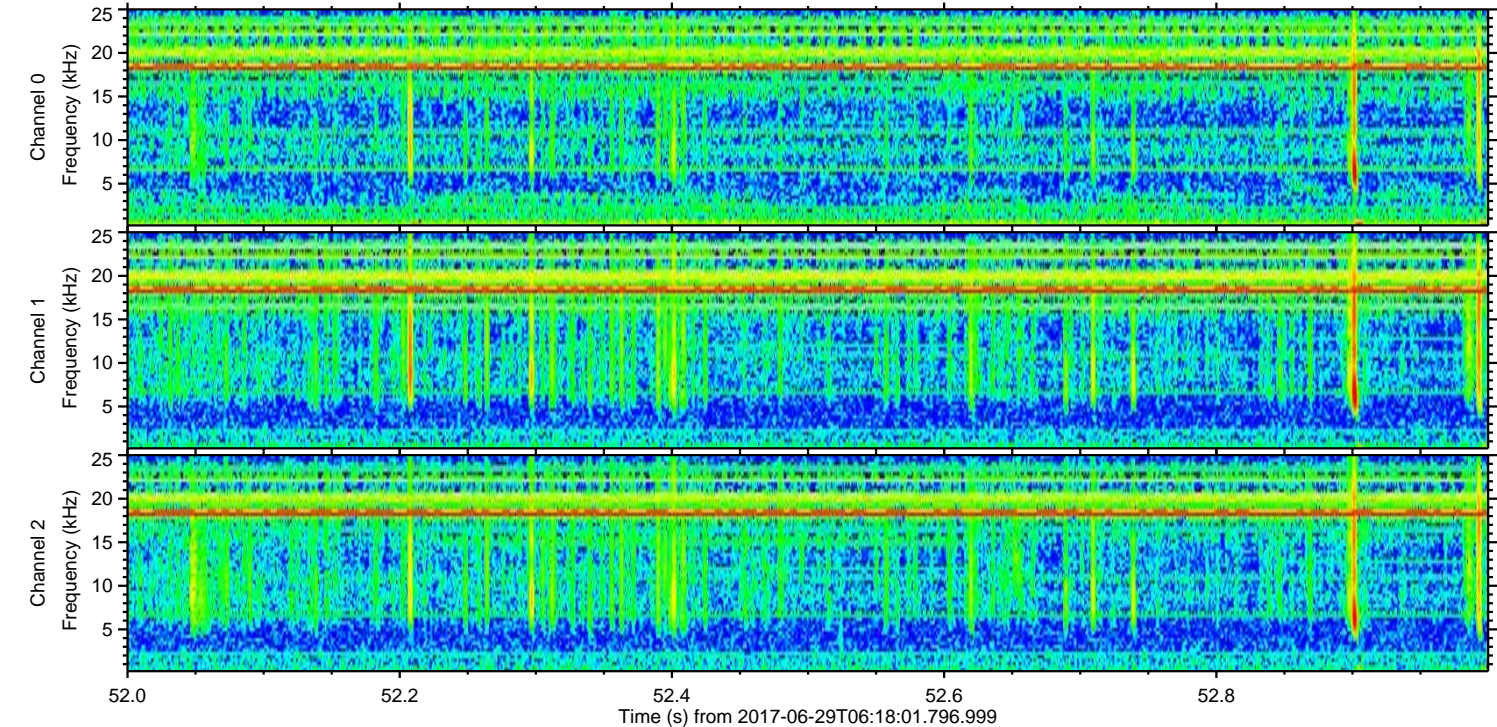
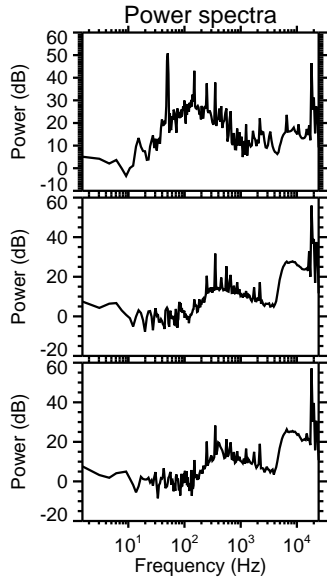
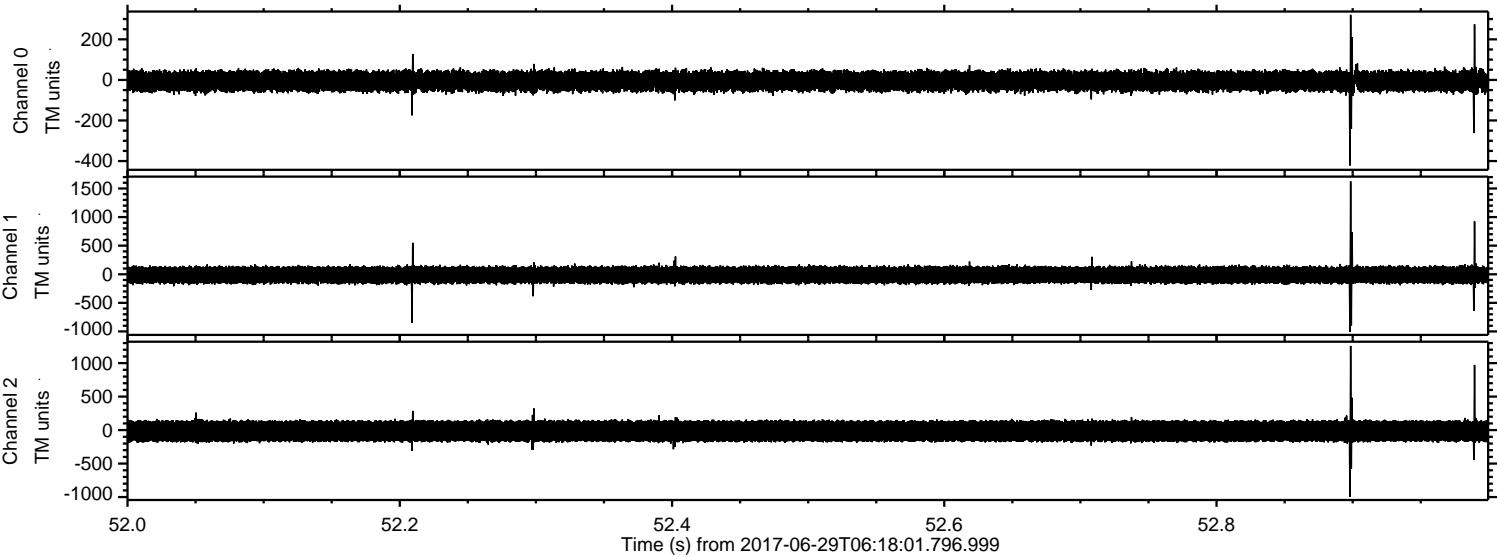
Processed Tue Jul 18 00:29:19 2017 by ELM ver.2012-10-06 from 001__elm20170629_061800__dat00.bin



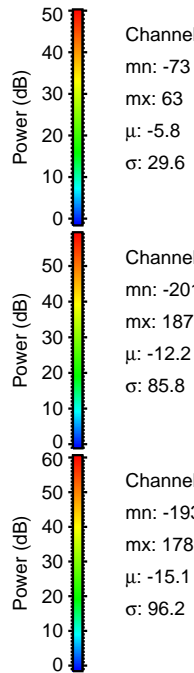
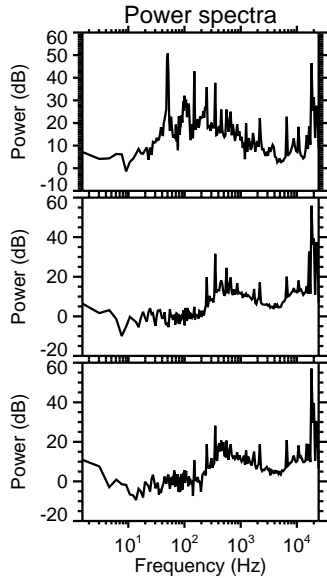
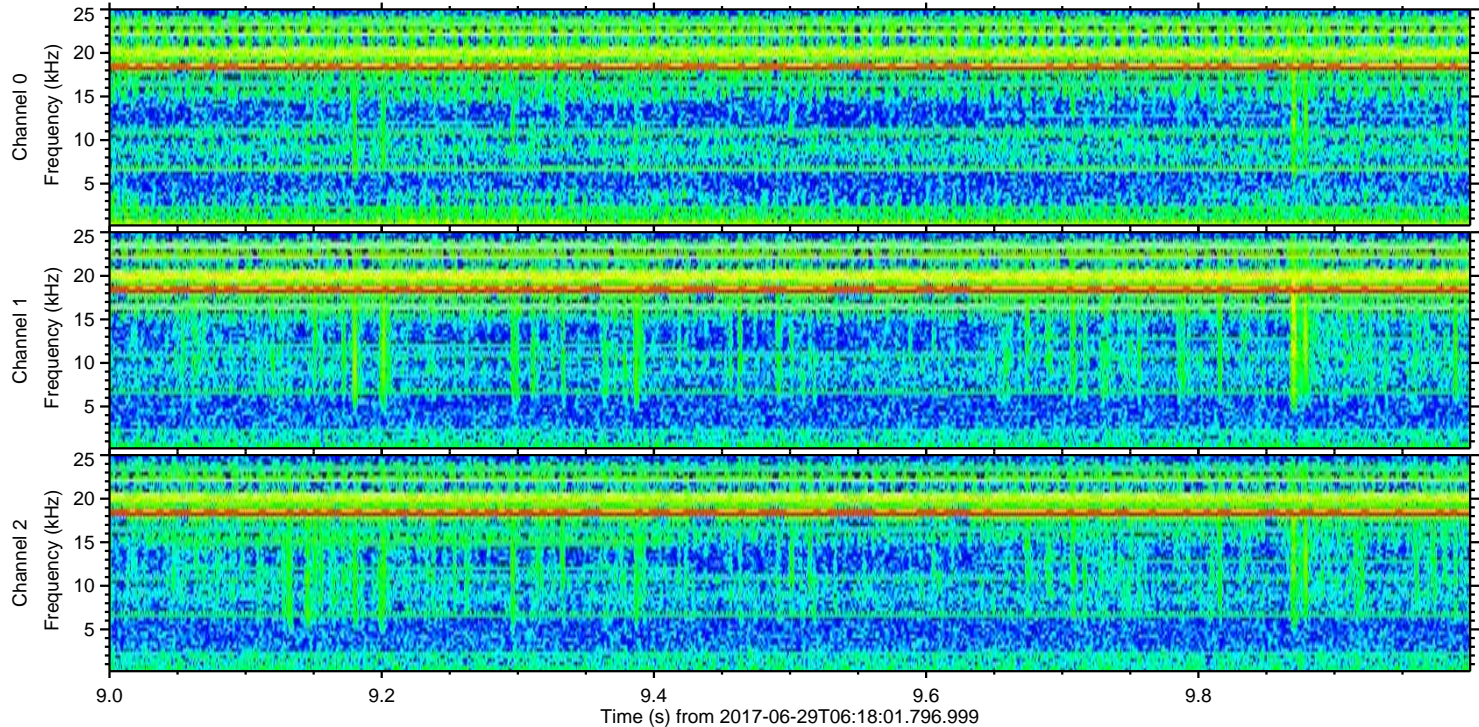
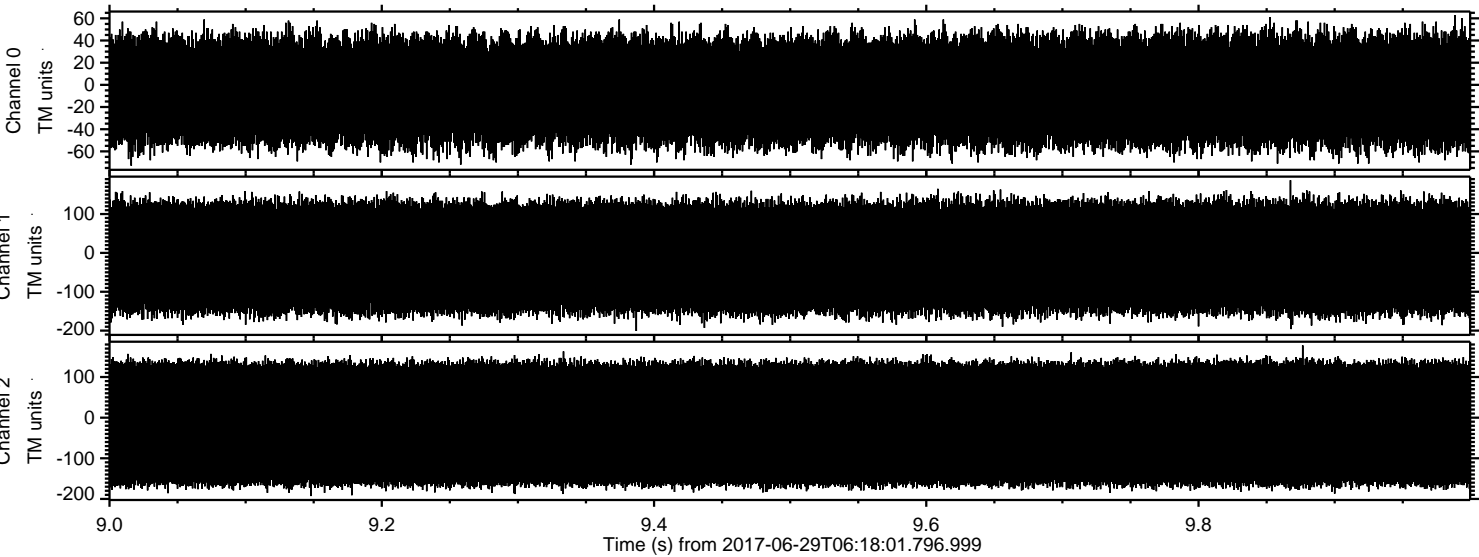
Processed Tue Jul 18 00:29:19 2017 by ELM ver.2012-10-06 from 001__elm20170629_061800__dat00.bin



Processed Tue Jul 18 00:29:20 2017 by ELM ver.2012-10-06 from 001__elm20170629_061800__dat00.bin



Processed Tue Jul 18 00:29:21 2017 by ELM ver.2012-10-06 from 001__elm20170629_061800__dat00.bin



Channel 0
mn: -73
mx: 63
 μ : -5.8
 σ : 29.6

Channel 1
mn: -201
mx: 187
 μ : -12.2
 σ : 85.8

Channel 2
mn: -193
mx: 178
 μ : -15.1
 σ : 96.2