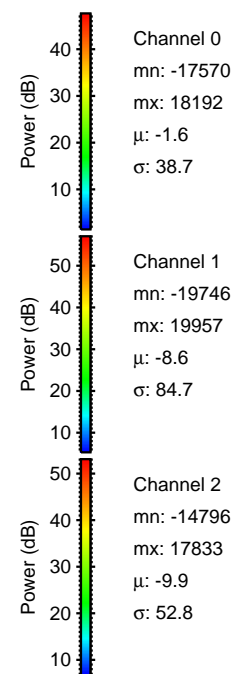
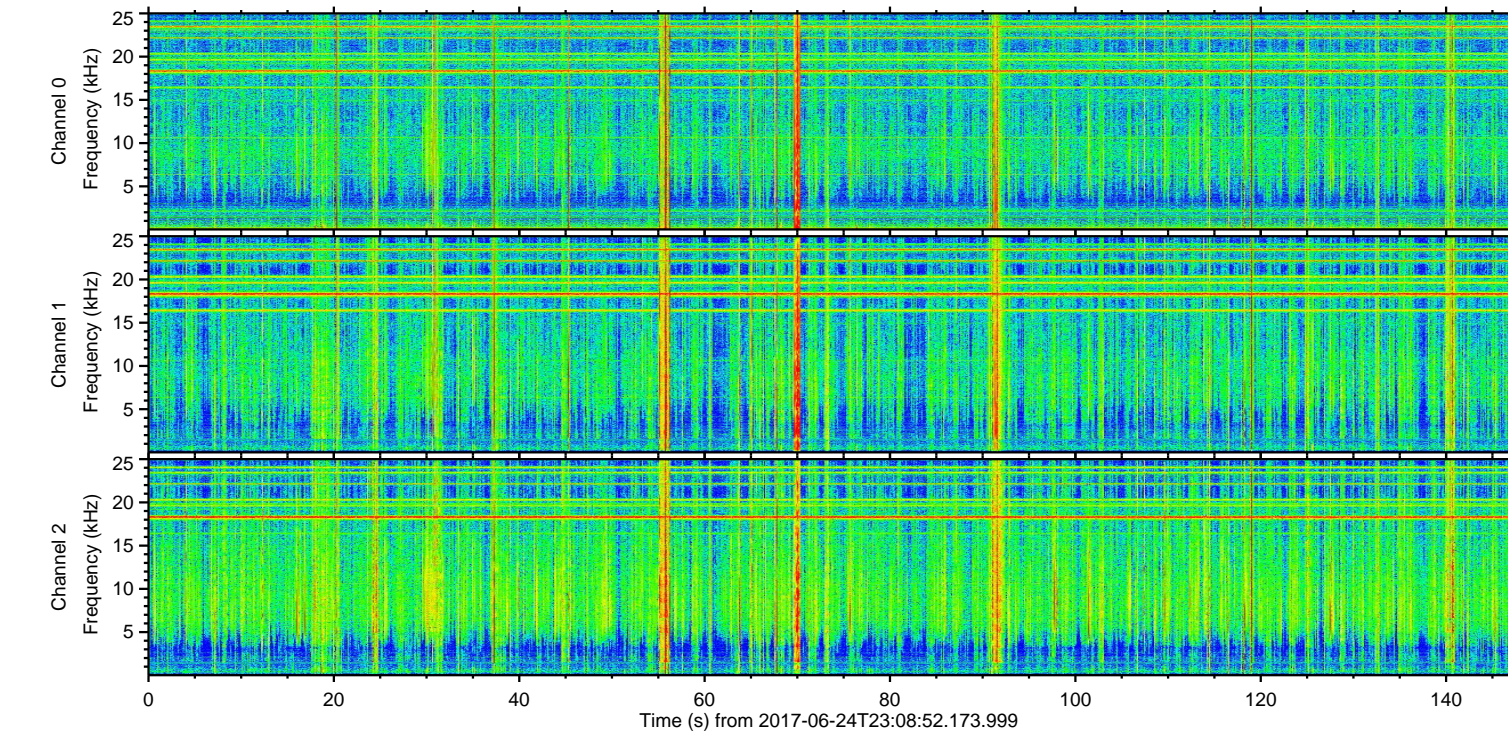
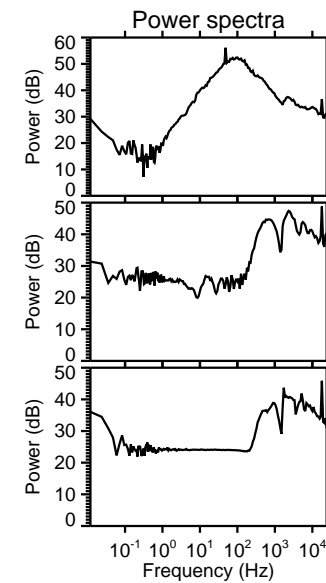
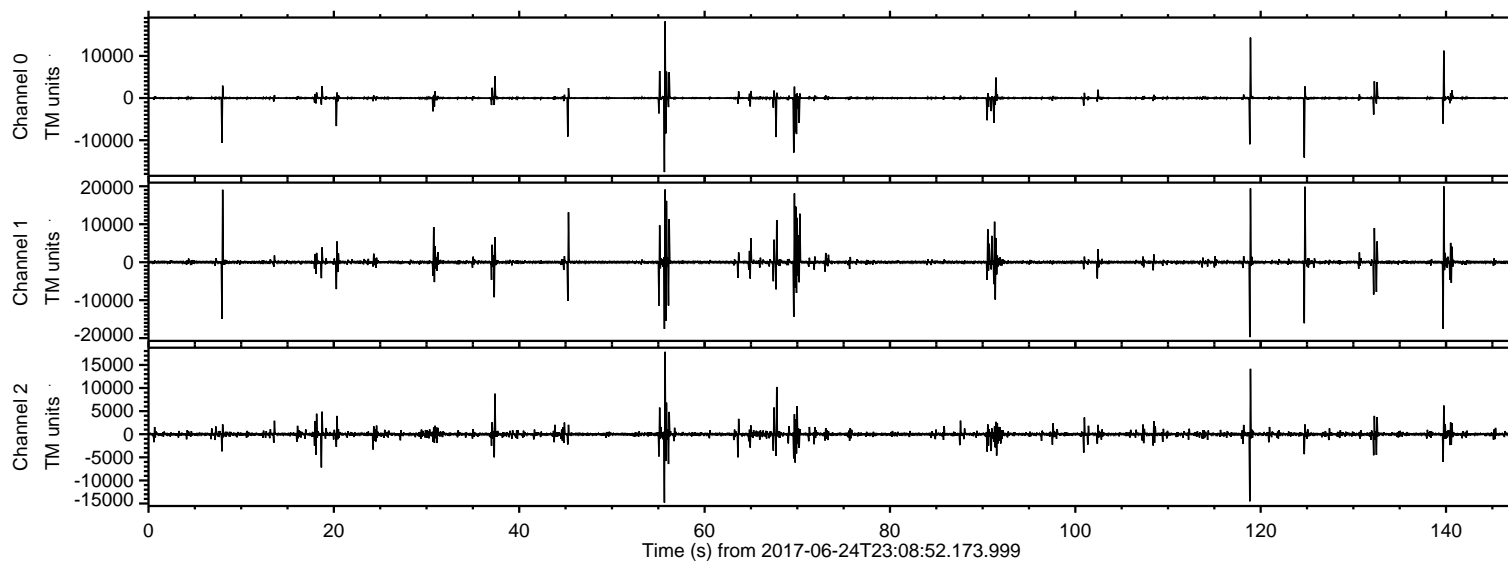


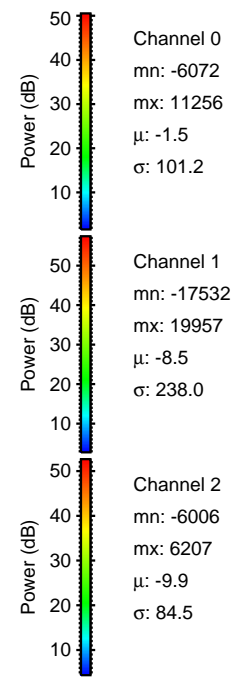
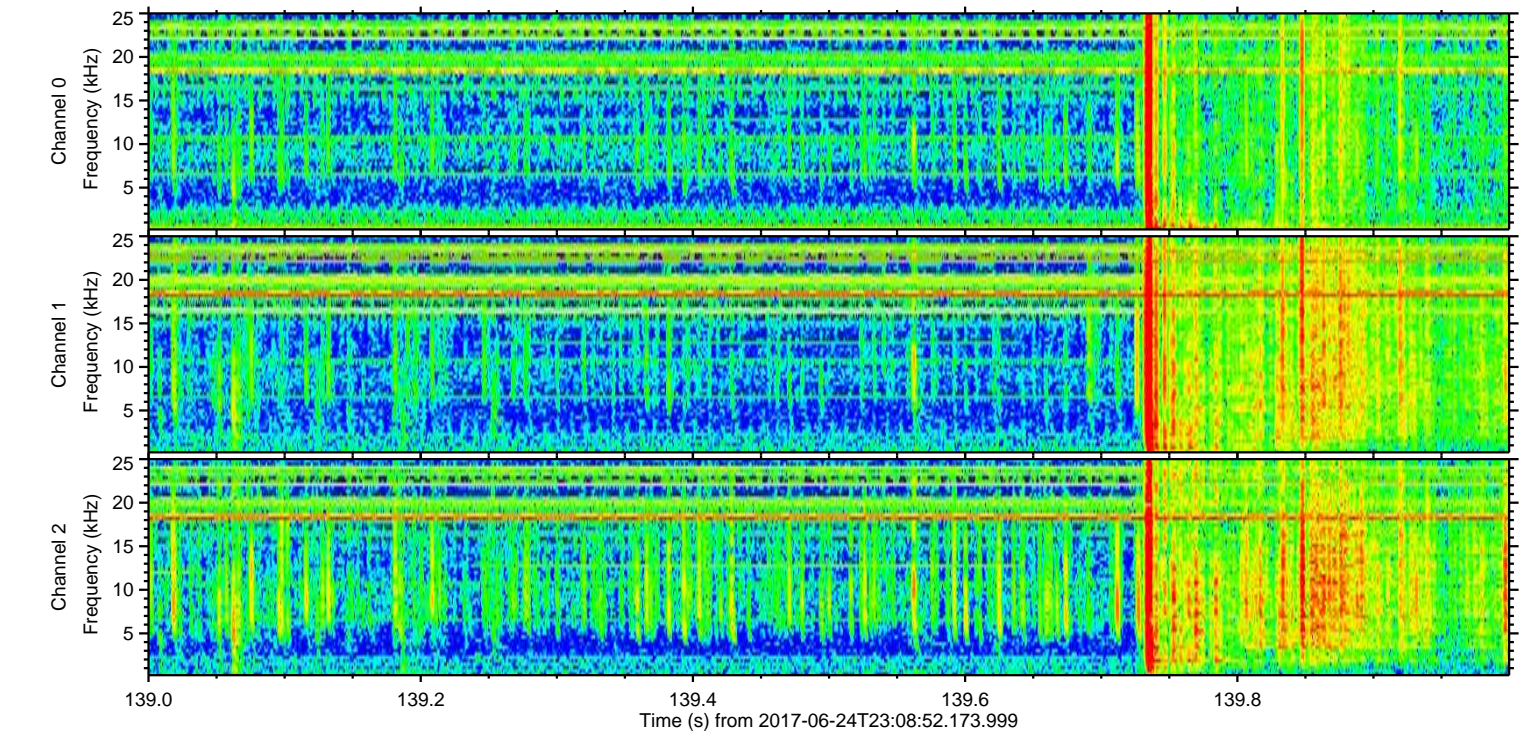
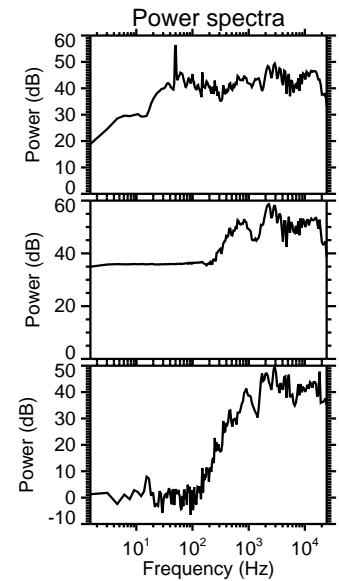
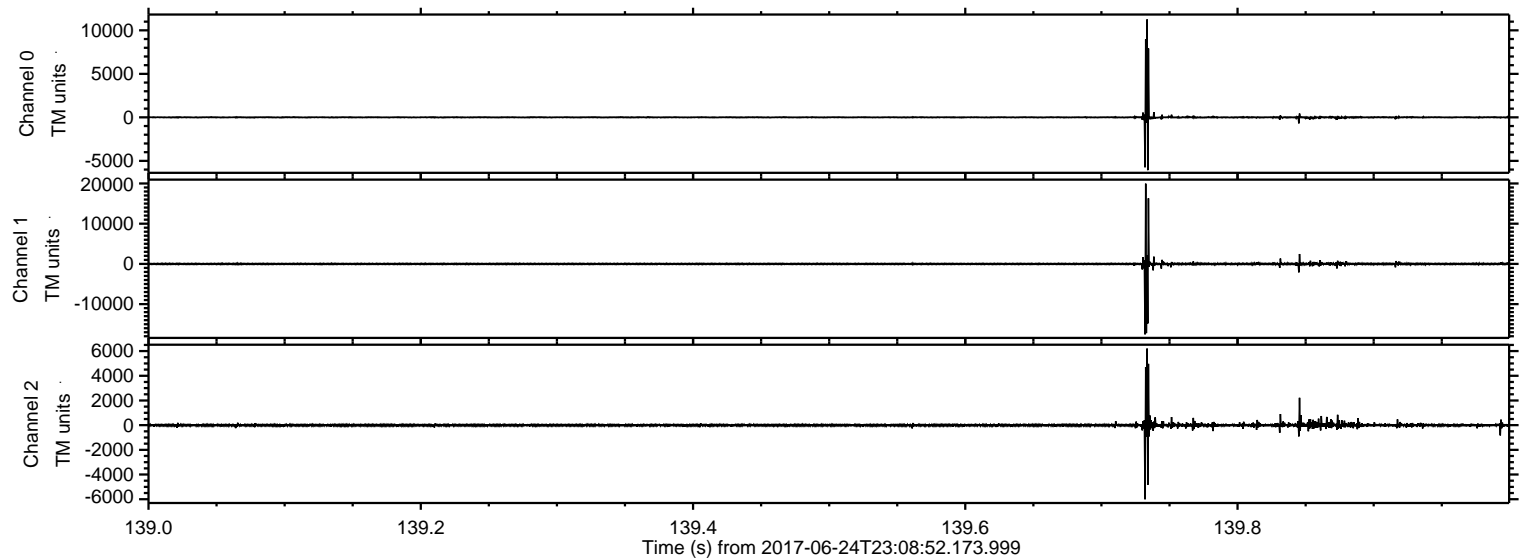
ELMAVAN 3D WAVEFORMS (Measured data sampled at 50 kHz) 51000 packets of 144 samples from 2017-06-24T23:08:52.173.999.

Processed Sun Jun 25 01:17:01 2017 by ELM ver.2012-10-06 from 001__elm20170624_230851__dat00.bin



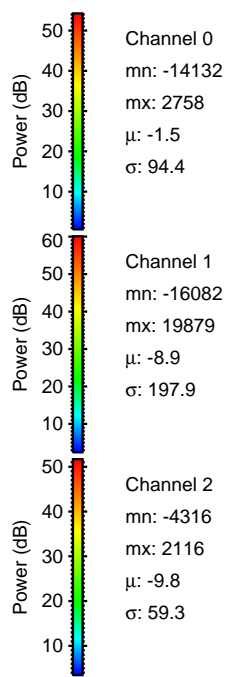
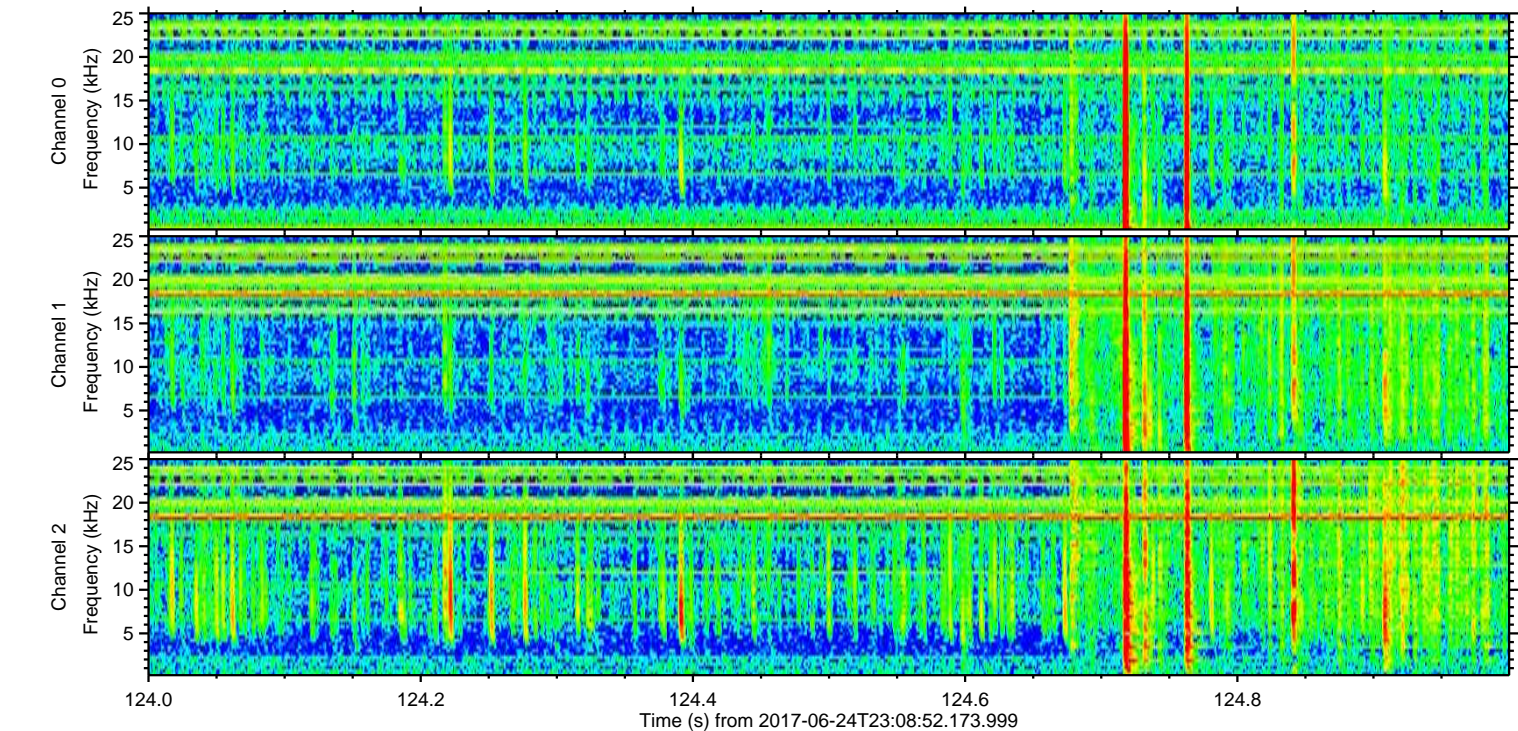
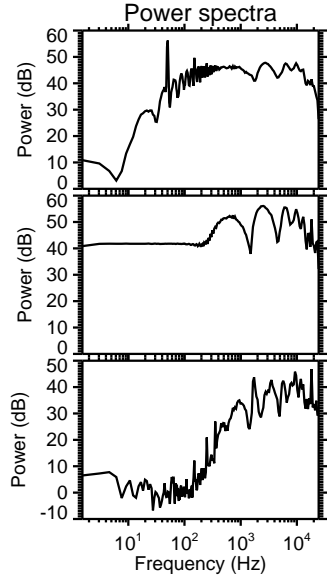
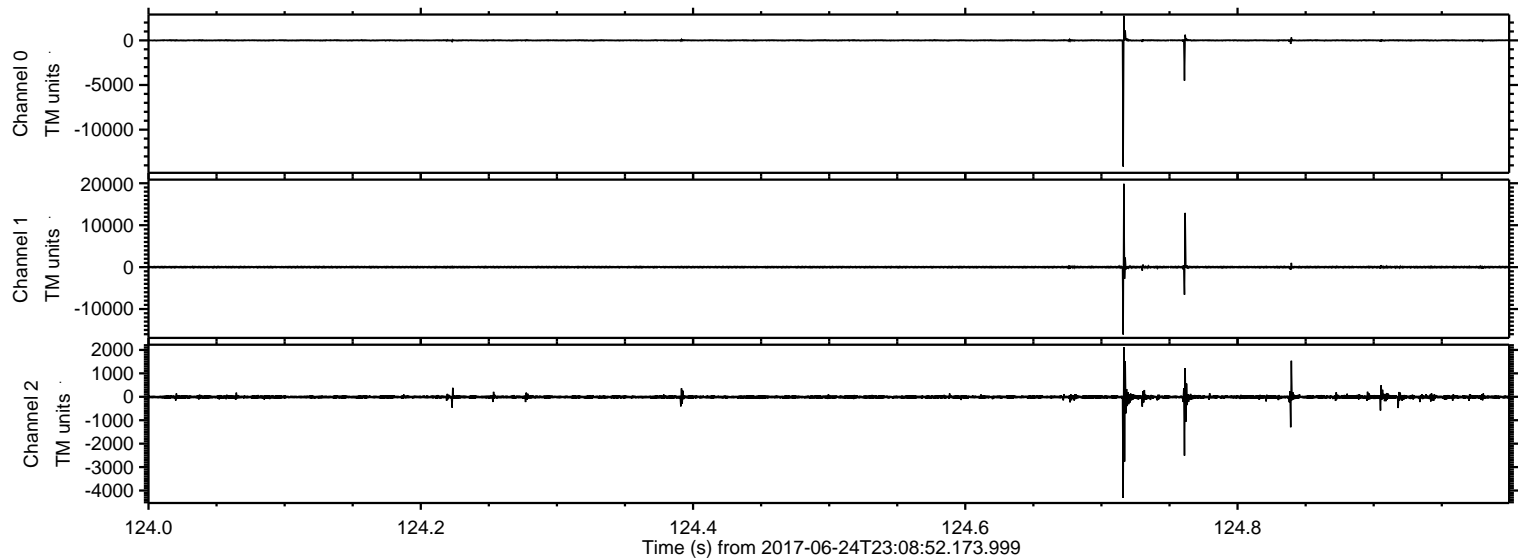
ELMAVAN 3D WAVEFORMS (Measured data sampled at 50 kHz) 51000 packets of 144 samples from 2017-06-24T23:08:52.173.999. Part 140/147

Processed Sun Jun 25 01:17:08 2017 by ELM ver.2012-10-06 from 001__elm20170624_230851__dat00.bin



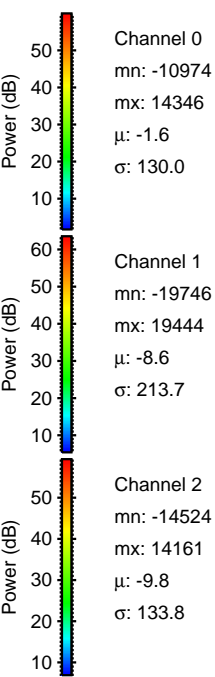
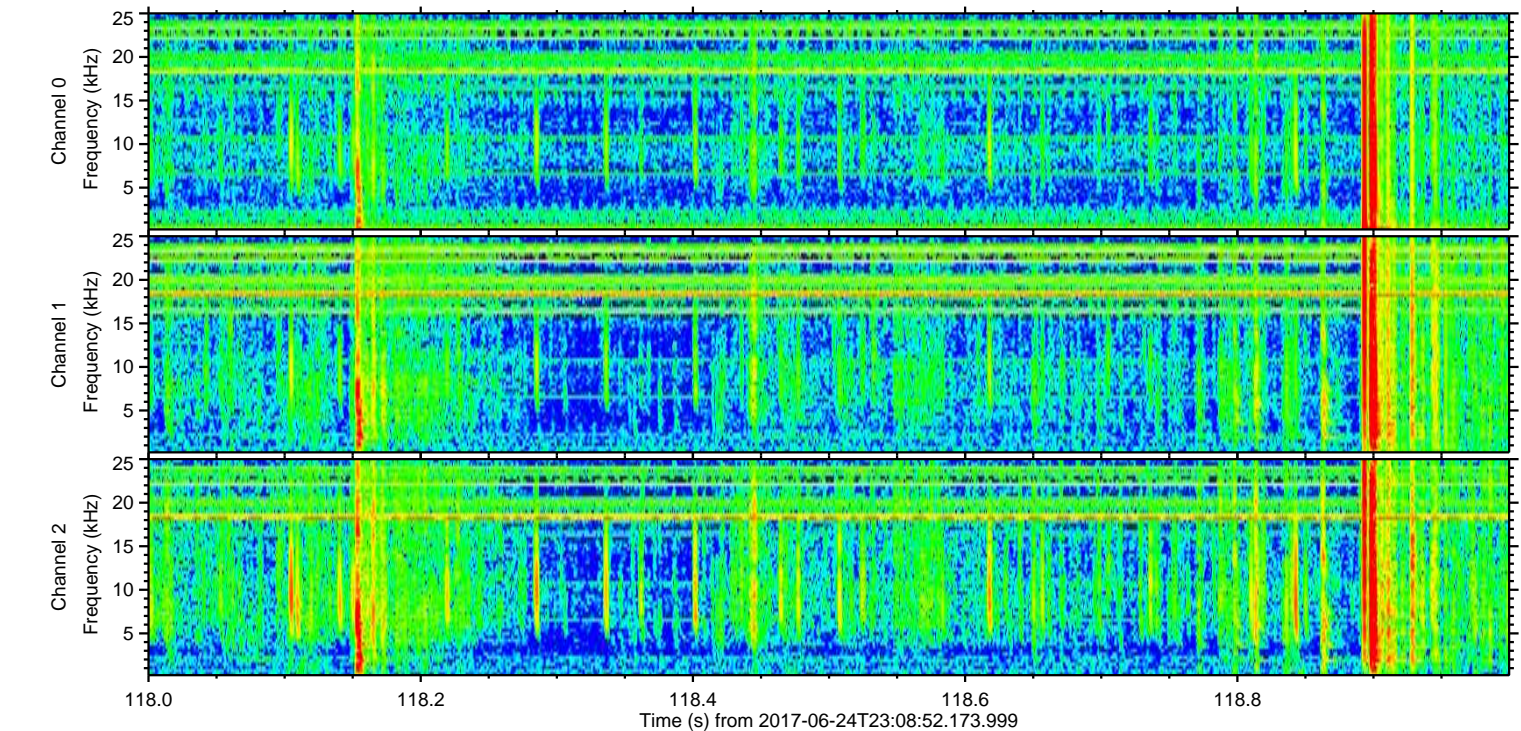
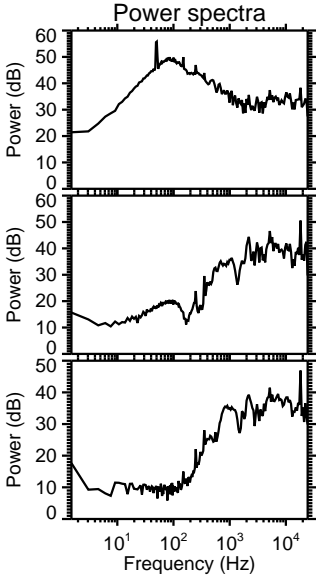
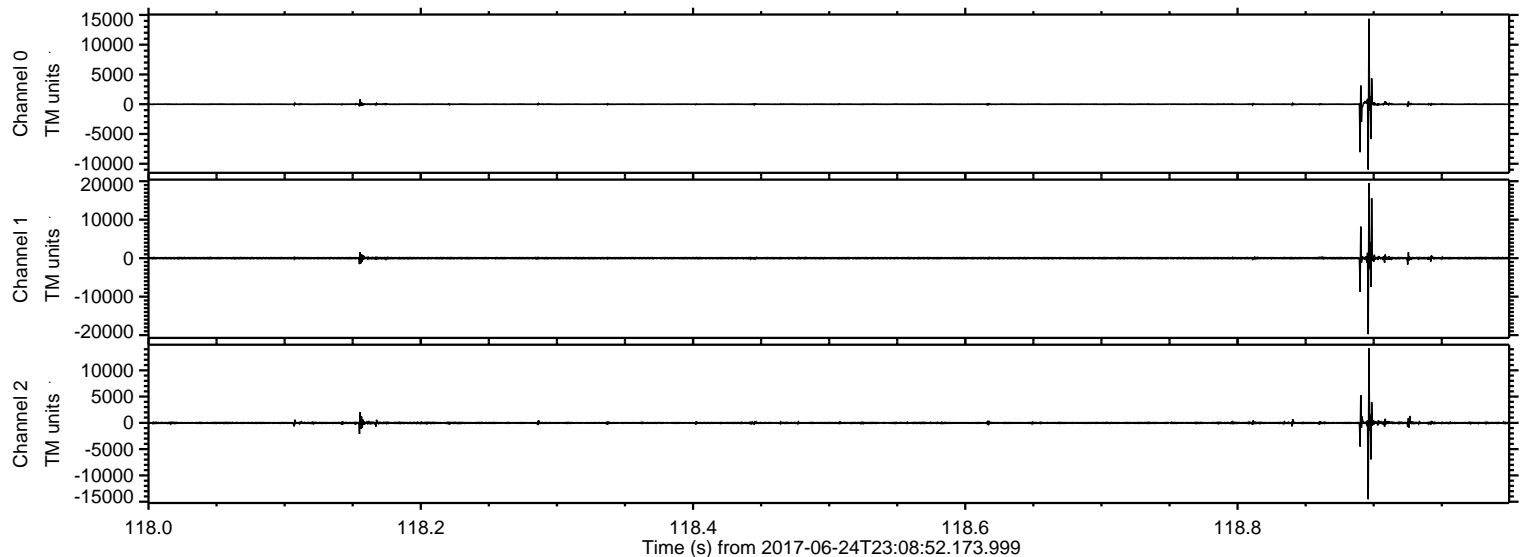
ELMAVAN 3D WAVEFORMS (Measured data sampled at 50 kHz) 51000 packets of 144 samples from 2017-06-24T23:08:52.173.999. Part 125/147

Processed Sun Jun 25 01:17:09 2017 by ELM ver.2012-10-06 from 001__elm20170624_230851__dat00.bin

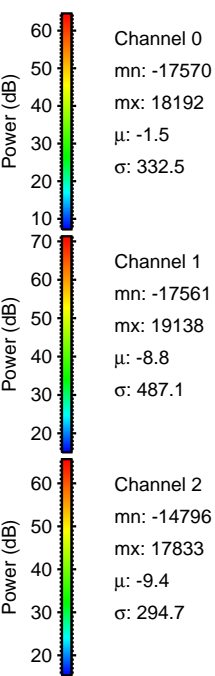
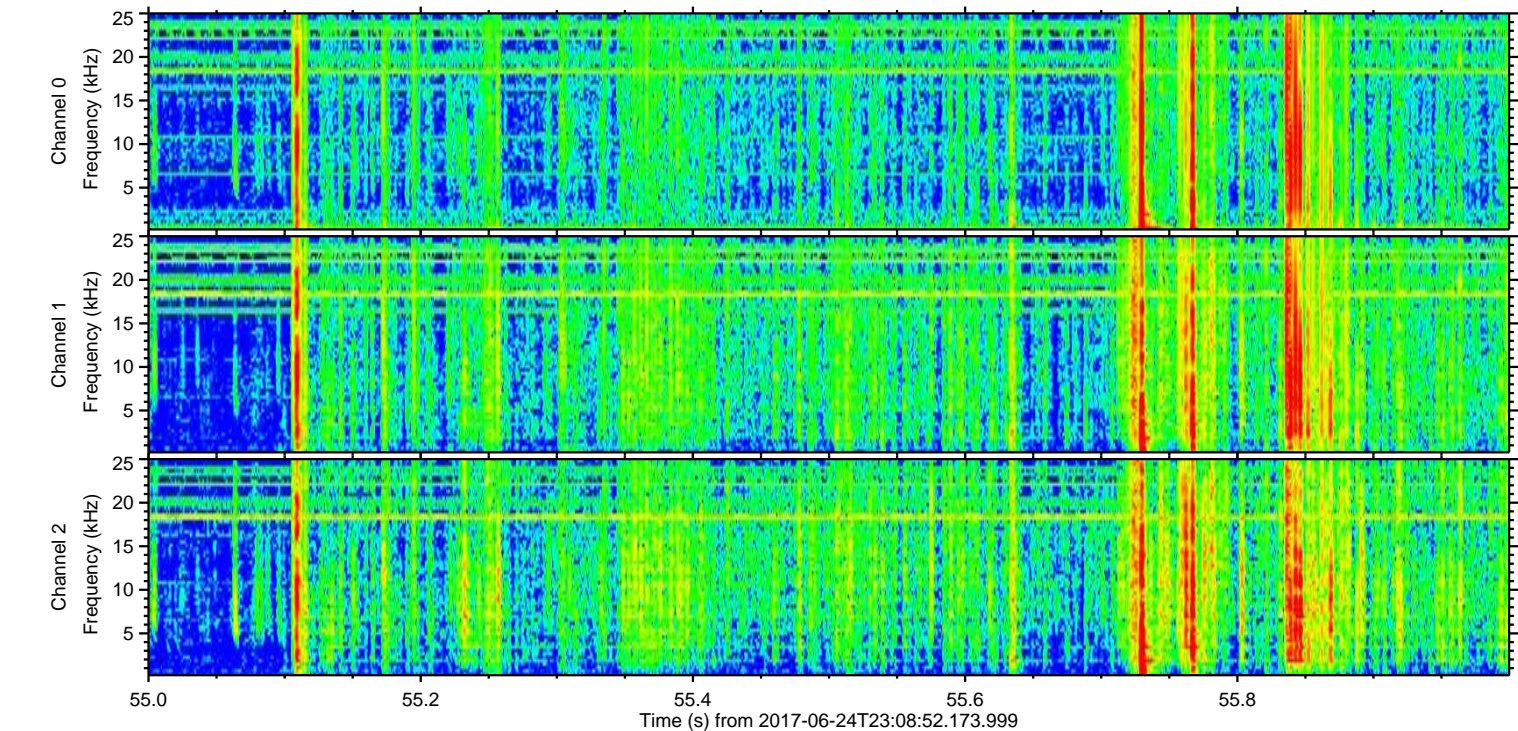
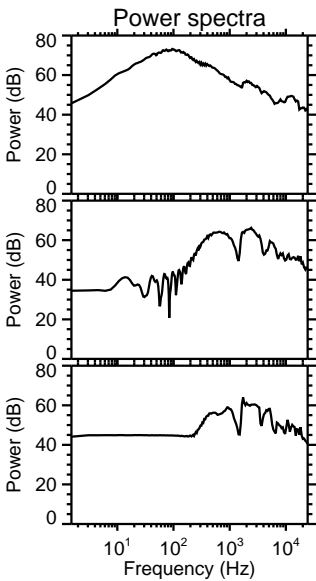
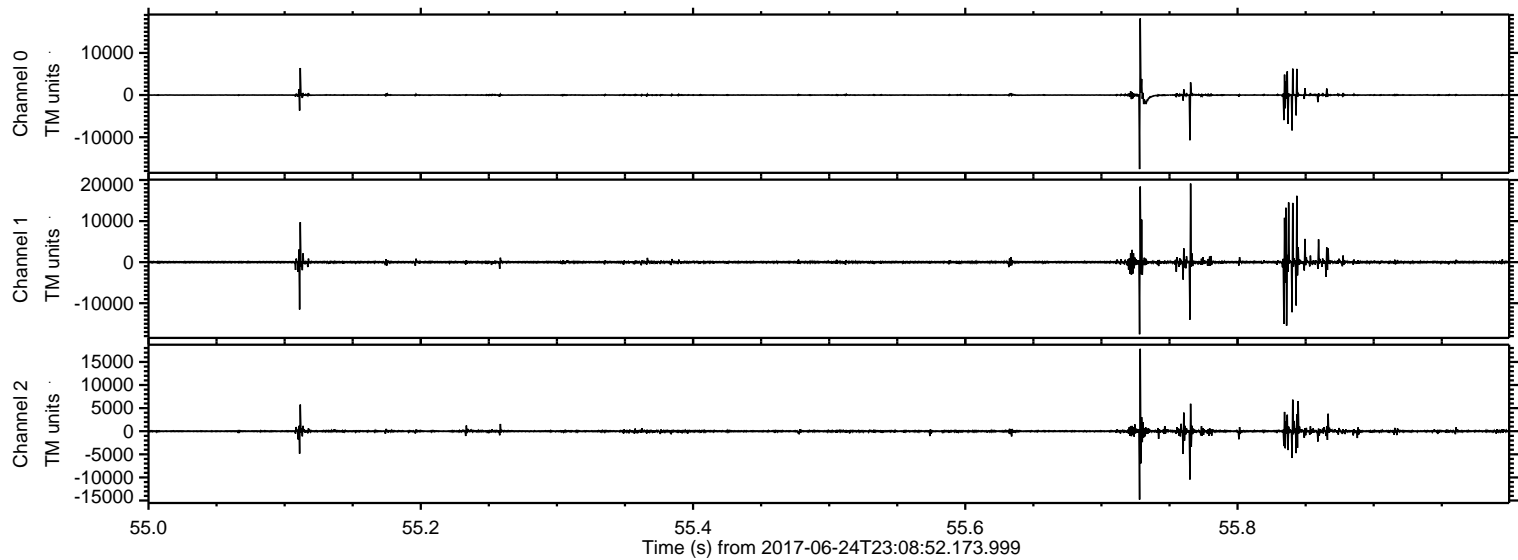


ELMAVAN 3D WAVEFORMS (Measured data sampled at 50 kHz) 51000 packets of 144 samples from 2017-06-24T23:08:52.173.999. Part 119/147

Processed Sun Jun 25 01:17:10 2017 by ELM ver.2012-10-06 from 001__elm20170624_230851__dat00.bin

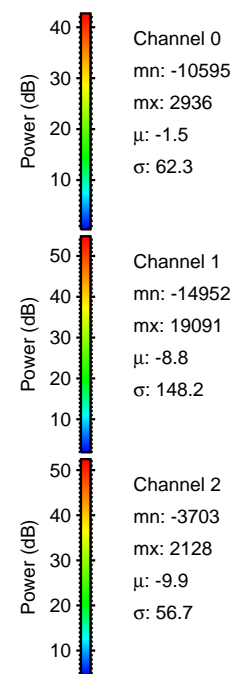
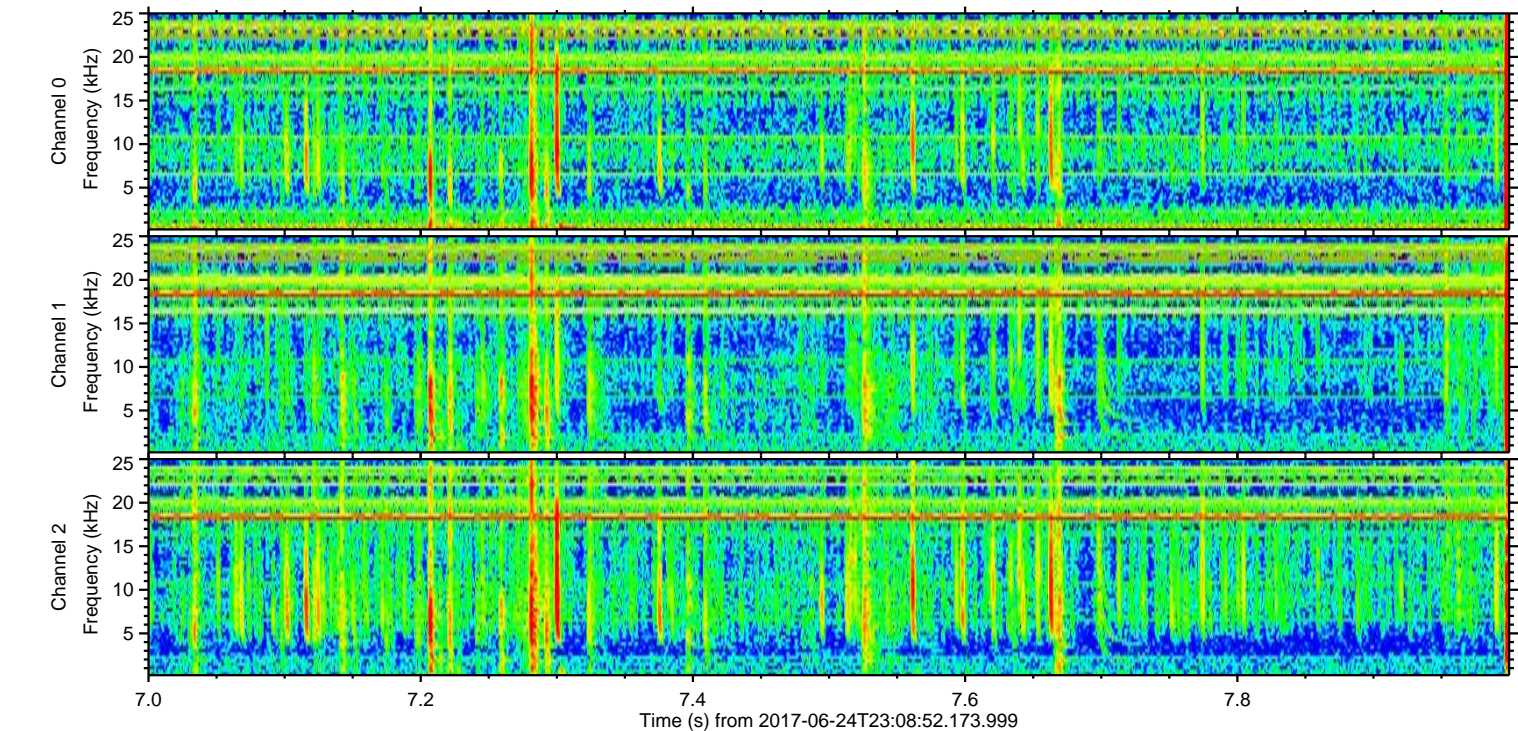
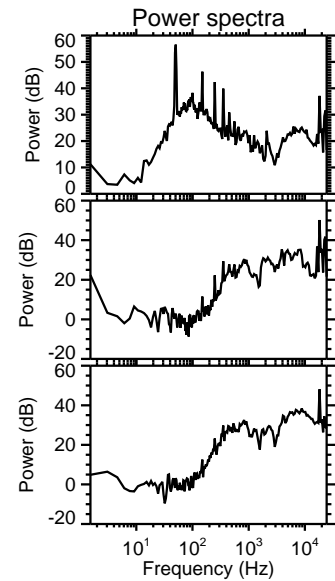
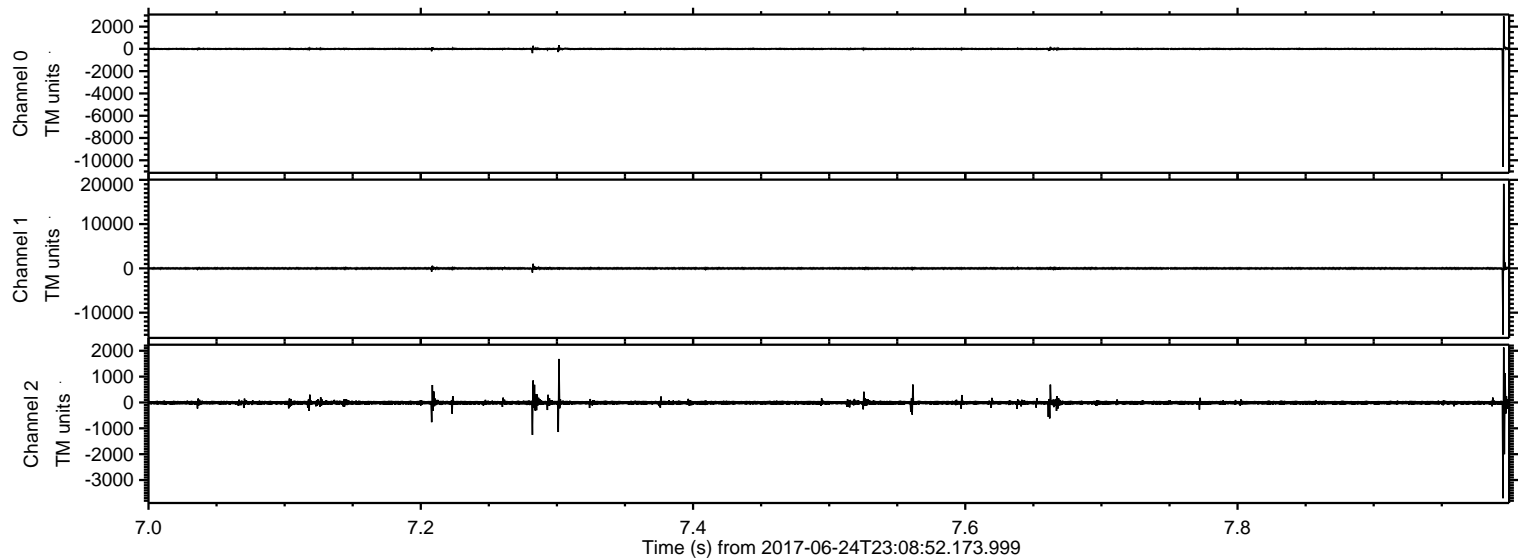


Processed Sun Jun 25 01:17:11 2017 by ELM ver.2012-10-06 from 001__elm20170624_230851__dat00.bin



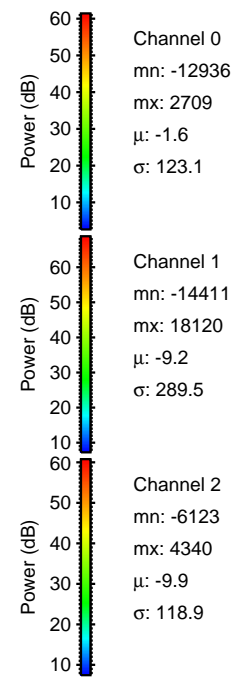
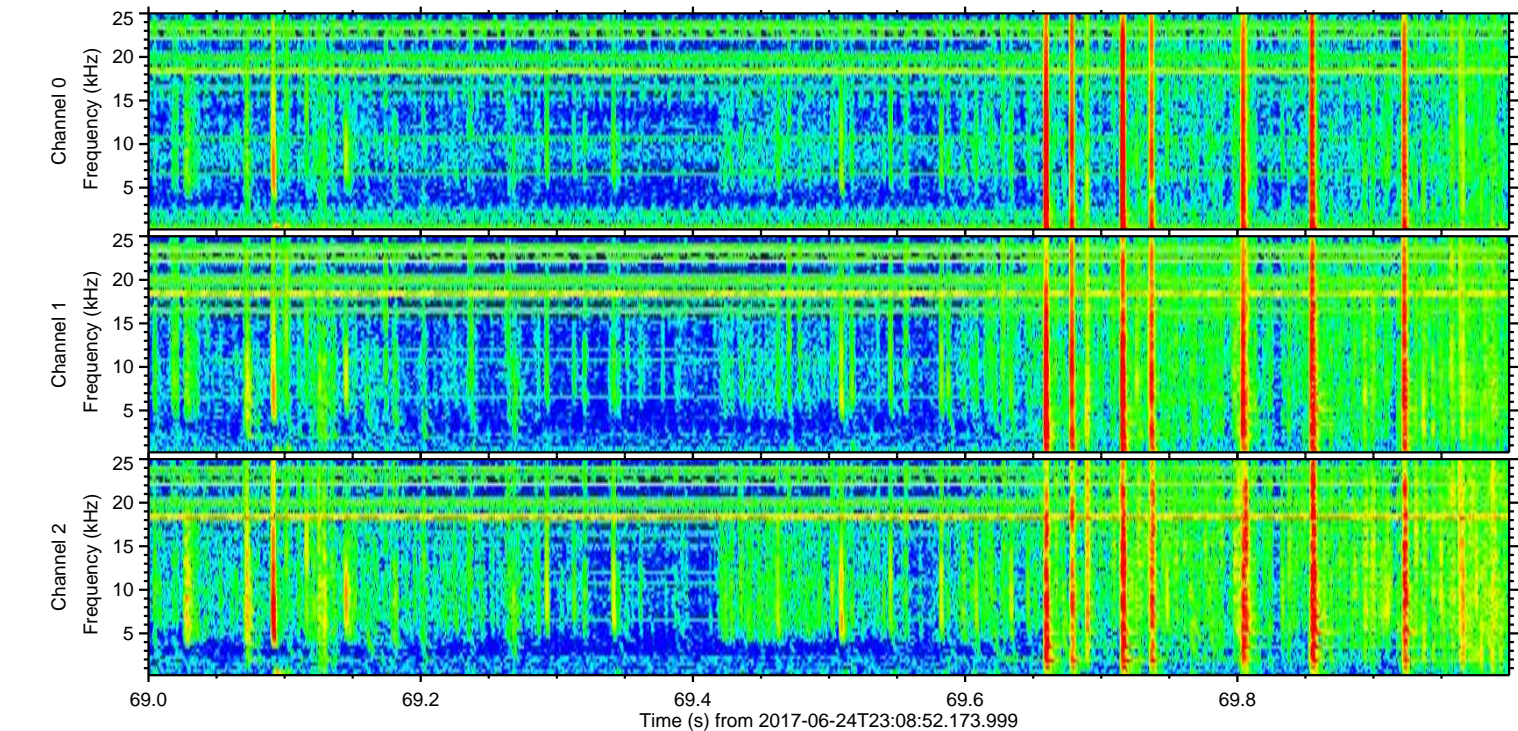
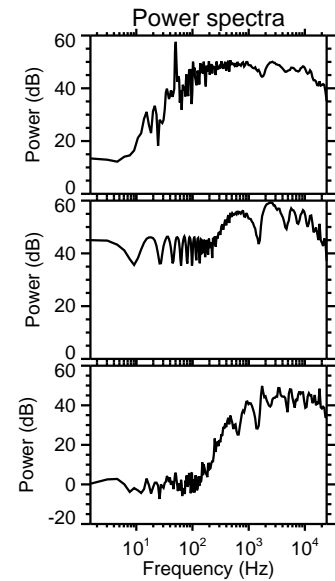
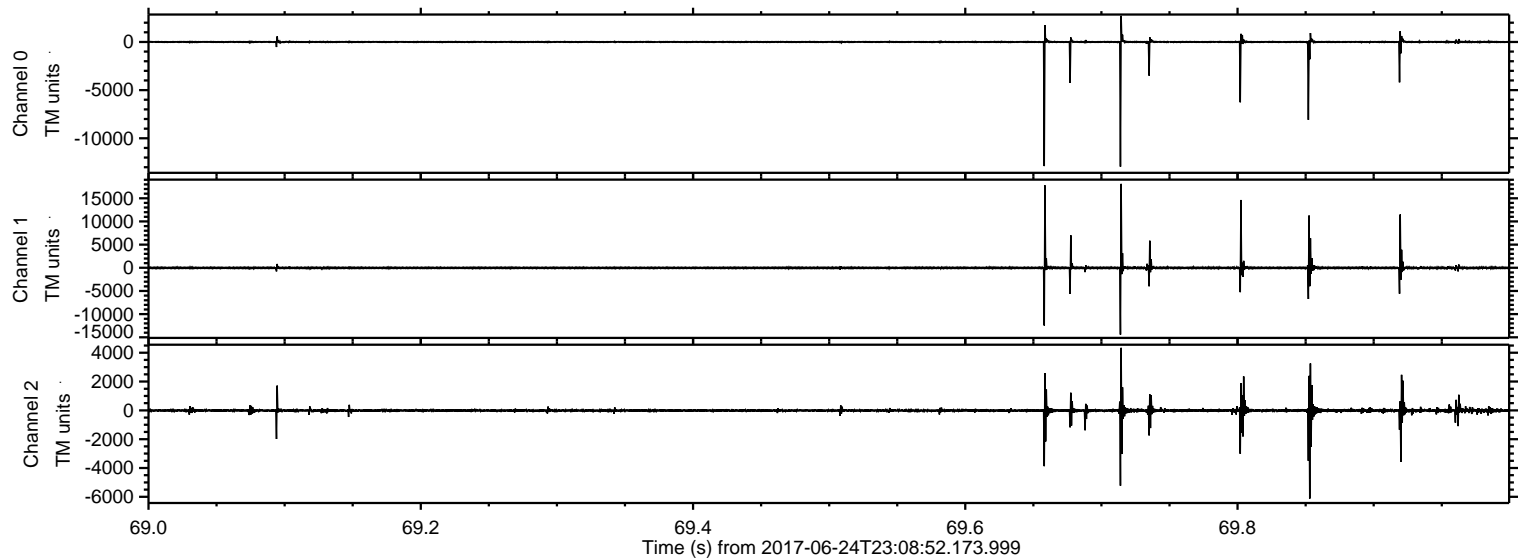
ELMAVAN 3D WAVEFORMS (Measured data sampled at 50 kHz) 51000 packets of 144 samples from 2017-06-24T23:08:52.173.999. Part 8/147

Processed Sun Jun 25 01:17:12 2017 by ELM ver.2012-10-06 from 001__elm20170624_230851__dat00.bin



ELMAVAN 3D WAVEFORMS (Measured data sampled at 50 kHz) 51000 packets of 144 samples from 2017-06-24T23:08:52.173.999. Part 70/147

Processed Sun Jun 25 01:17:13 2017 by ELM ver.2012-10-06 from 001__elm20170624_230851__dat00.bin

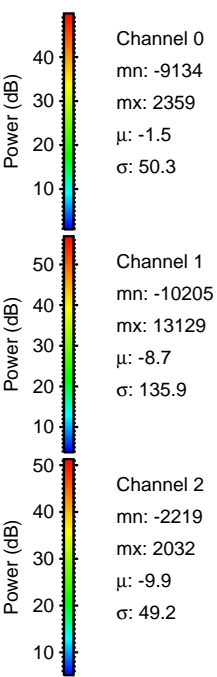
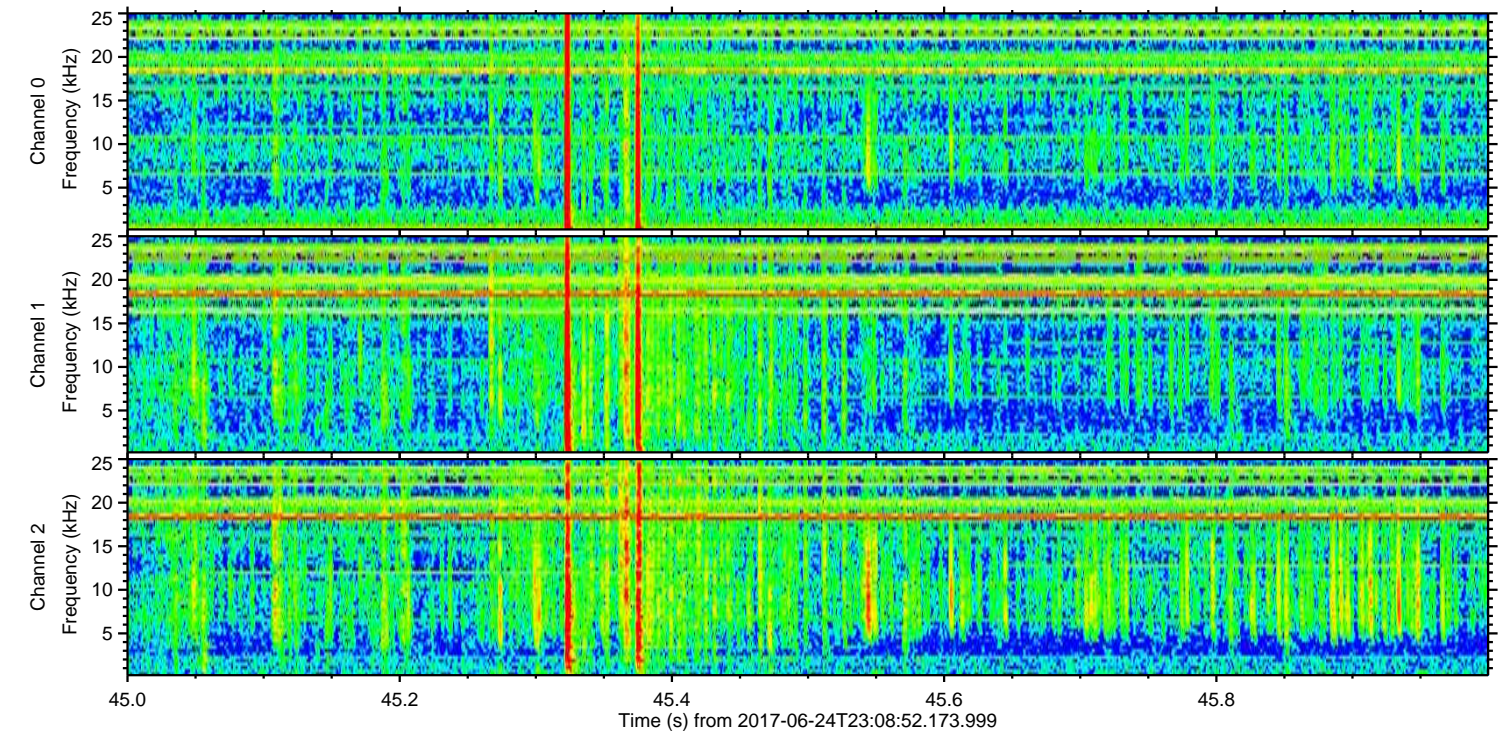
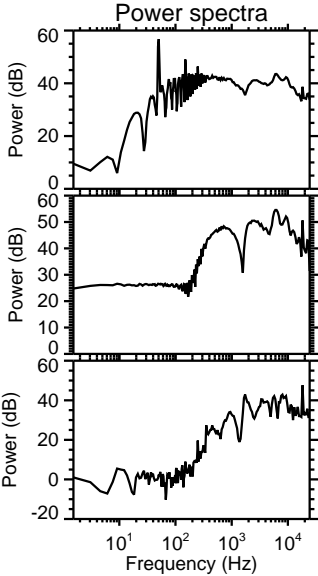
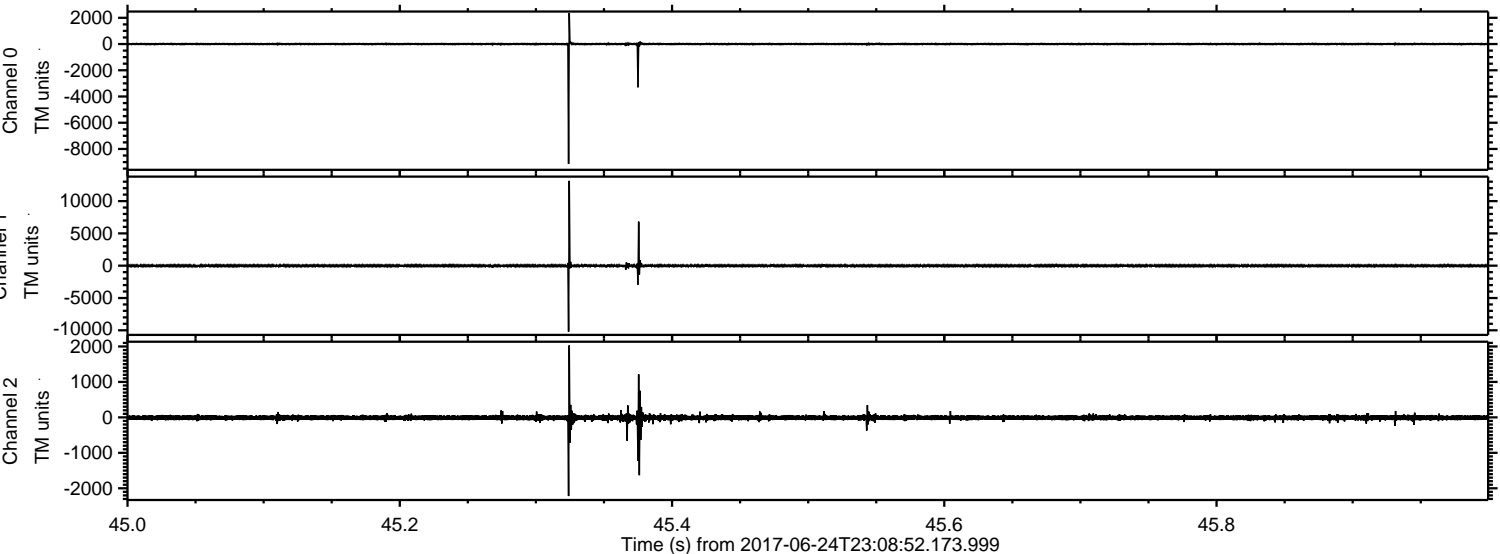


Channel 0
mn: -12936
mx: 2709
 μ : -1.6
 σ : 123.1

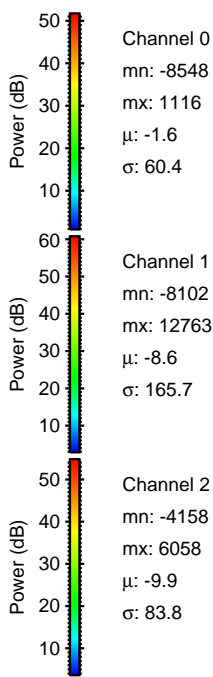
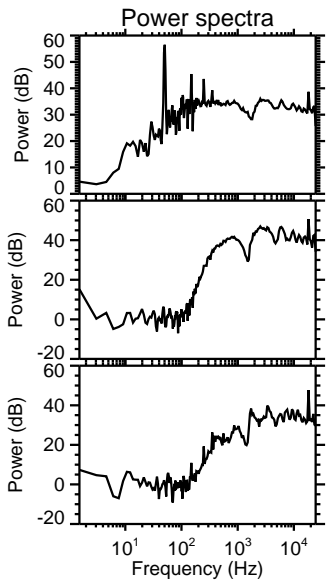
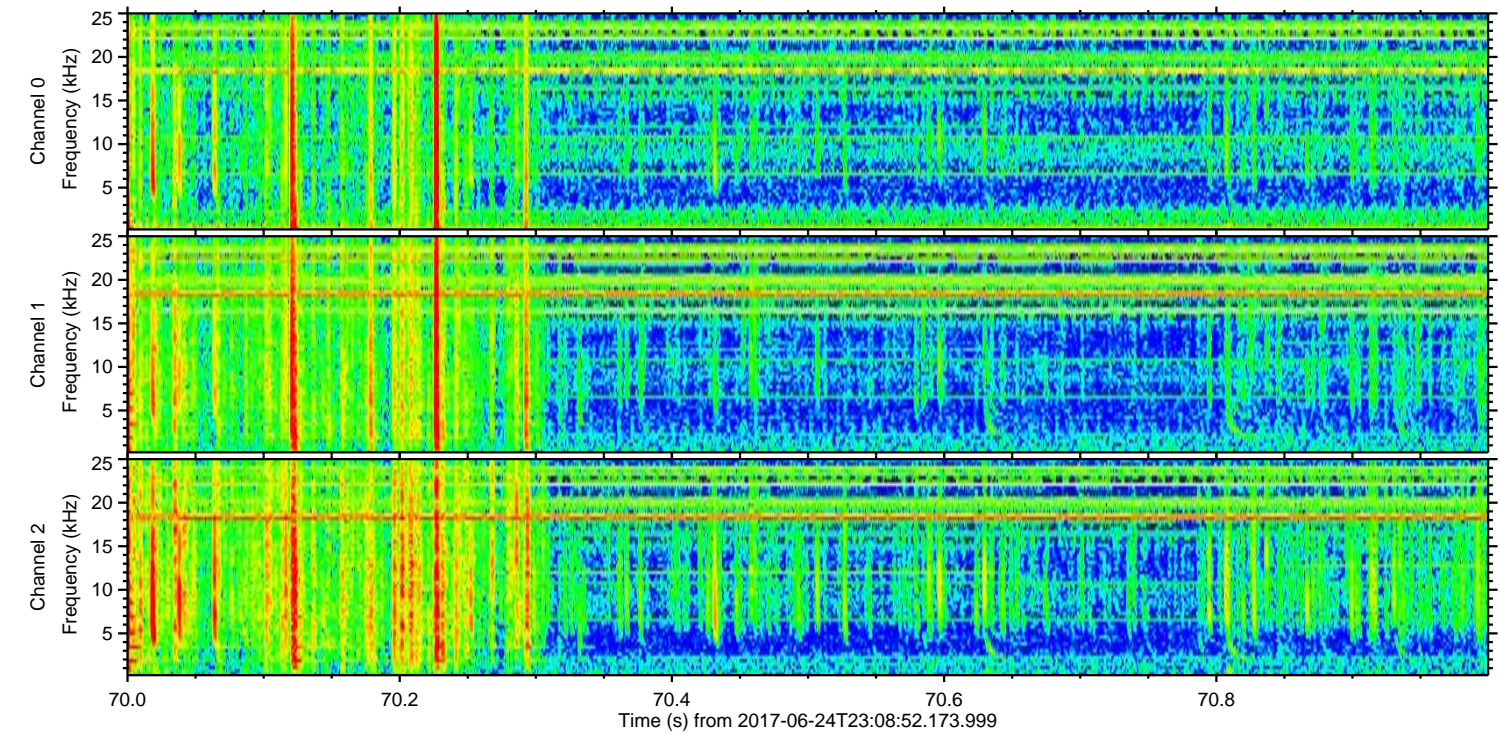
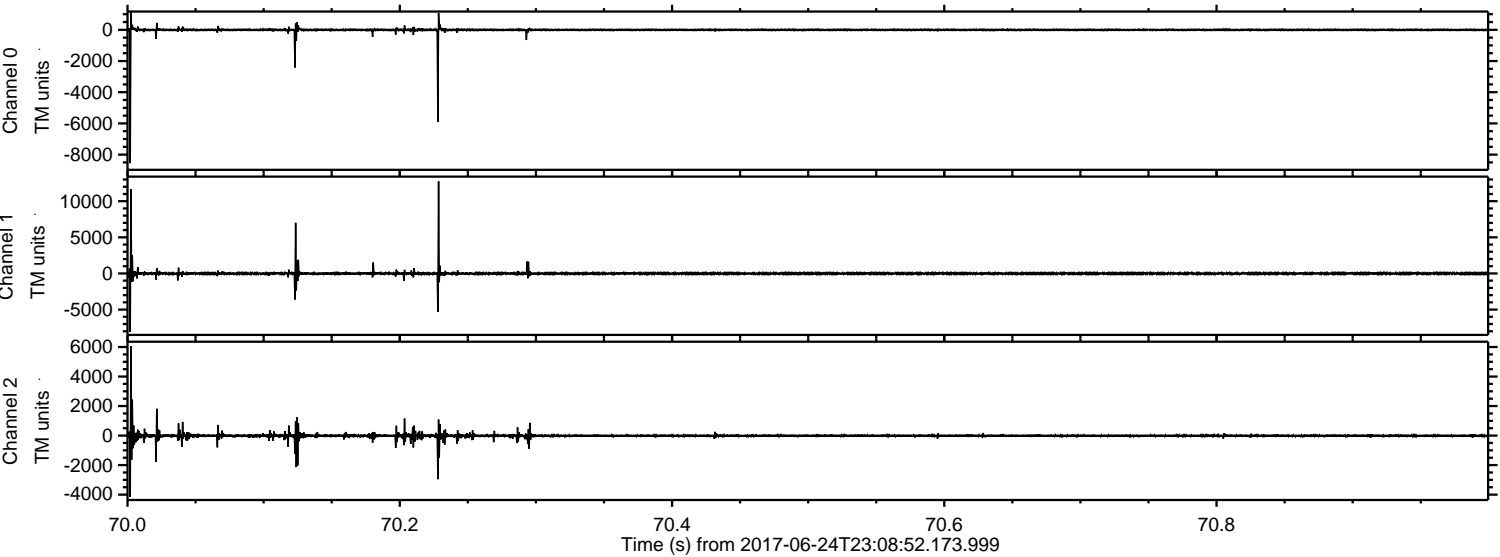
Channel 1
mn: -14411
mx: 18120
 μ : -9.2
 σ : 289.5

Channel 2
mn: -6123
mx: 4340
 μ : -9.9
 σ : 118.9

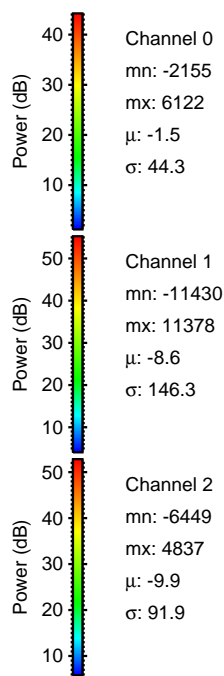
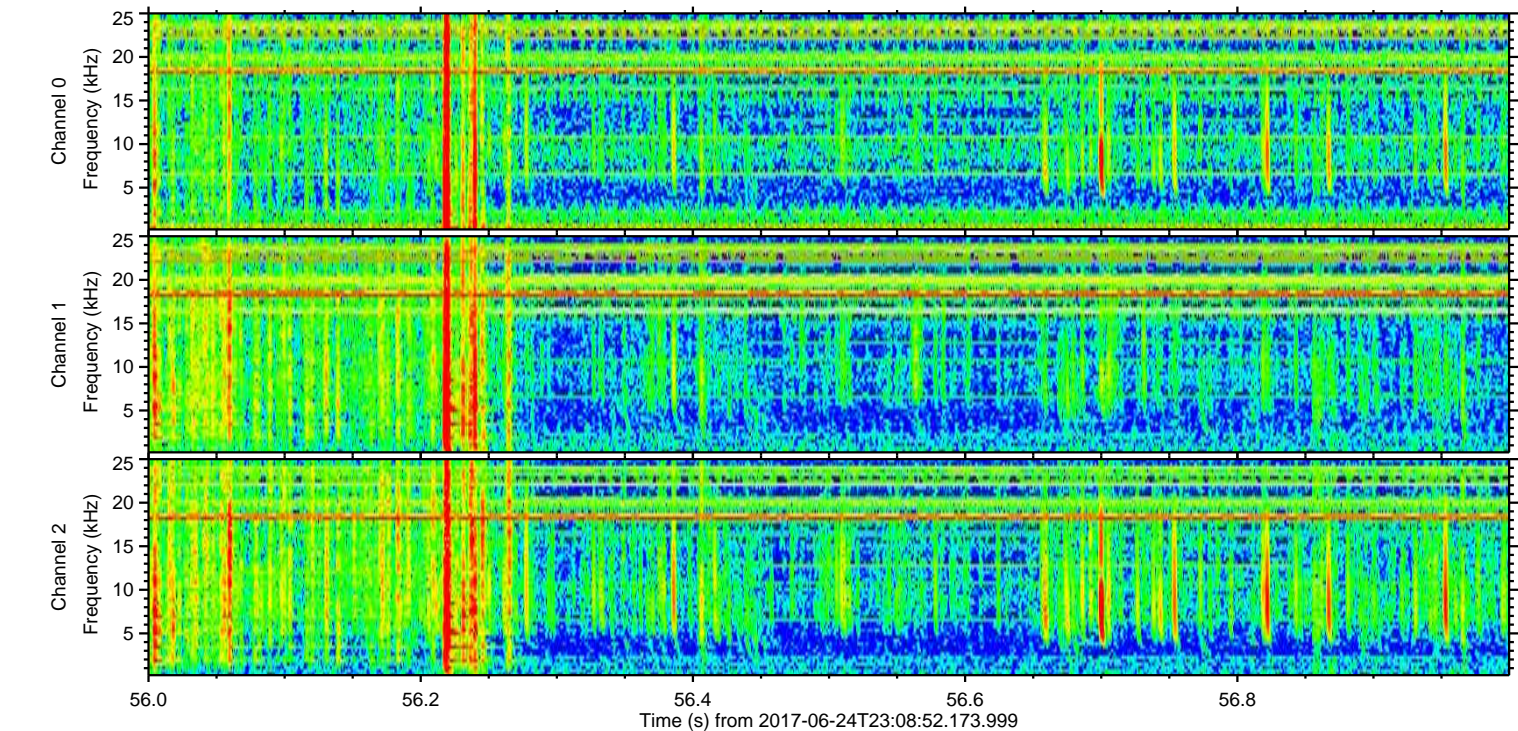
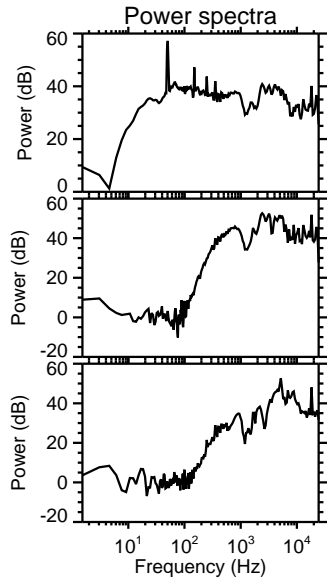
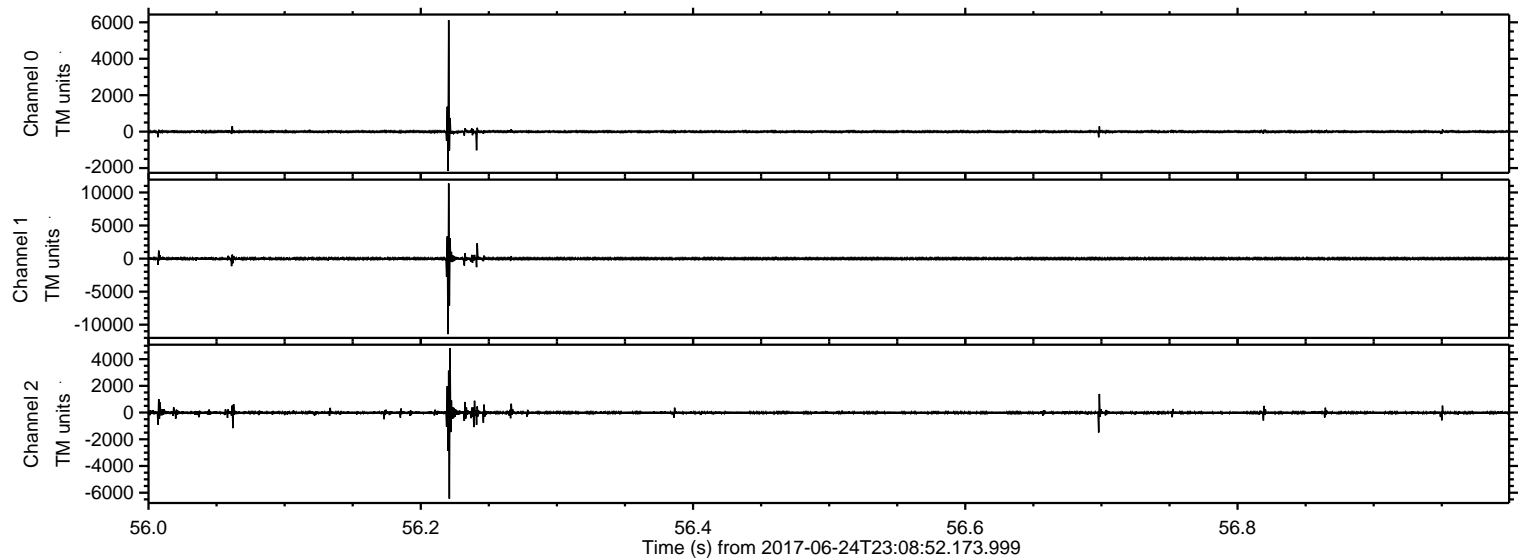
Processed Sun Jun 25 01:17:13 2017 by ELM ver.2012-10-06 from 001__elm20170624_230851__dat00.bin



Processed Sun Jun 25 01:17:14 2017 by ELM ver.2012-10-06 from 001__elm20170624_230851__dat00.bin



Processed Sun Jun 25 01:17:15 2017 by ELM ver.2012-10-06 from 001__elm20170624_230851__dat00.bin



Processed Sun Jun 25 01:17:16 2017 by ELM ver.2012-10-06 from 001__elm20170624_230851__dat00.bin

