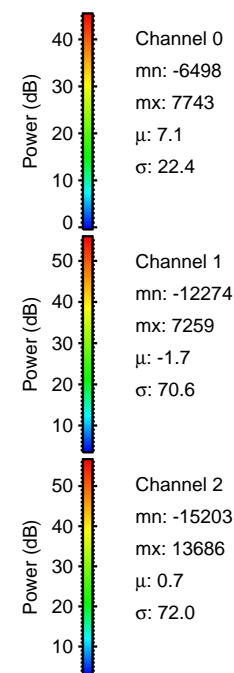
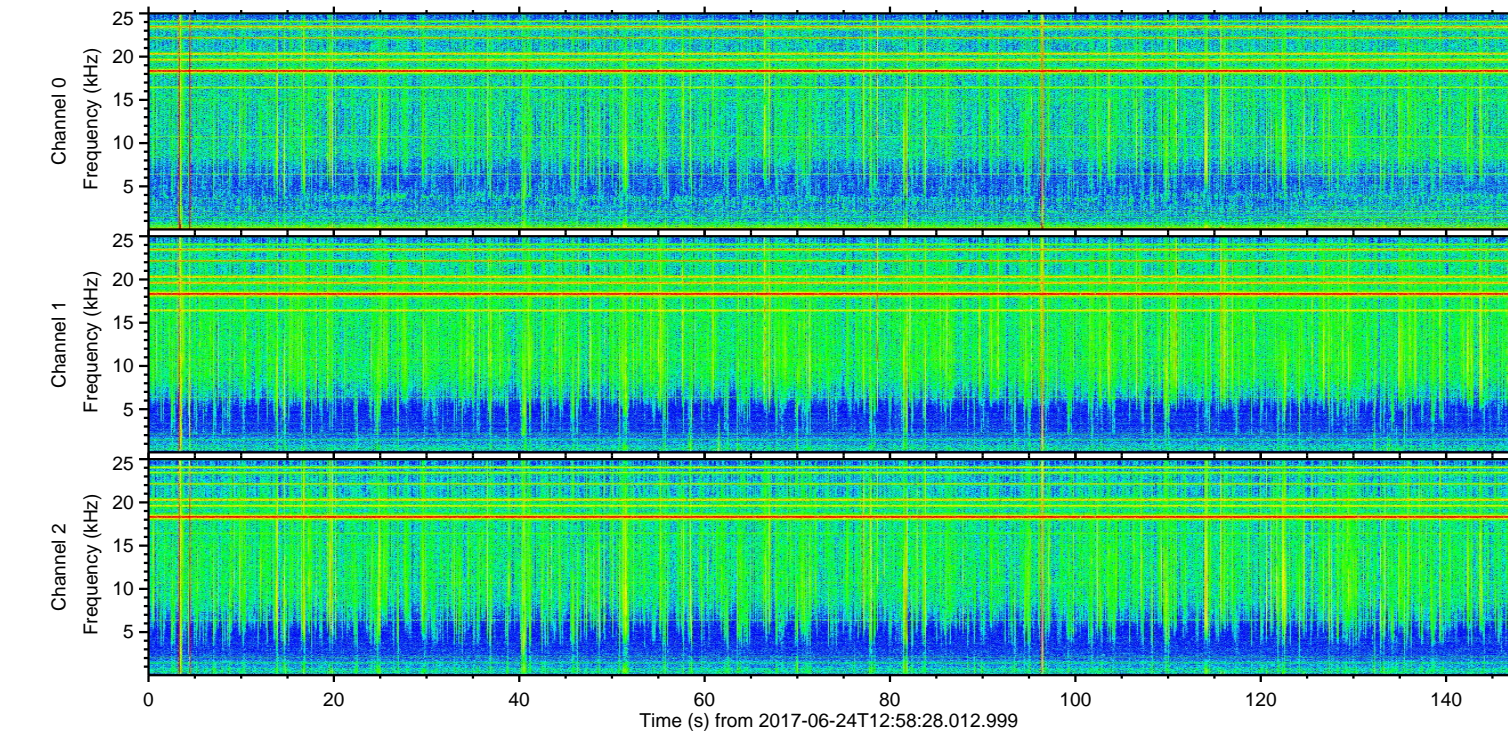
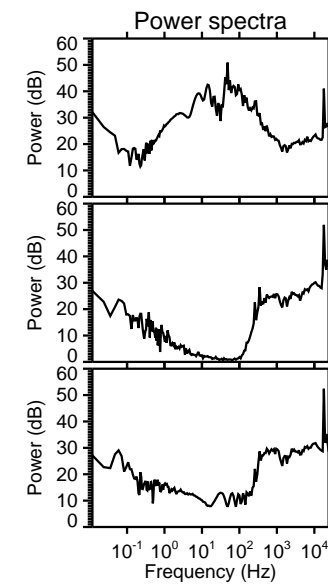
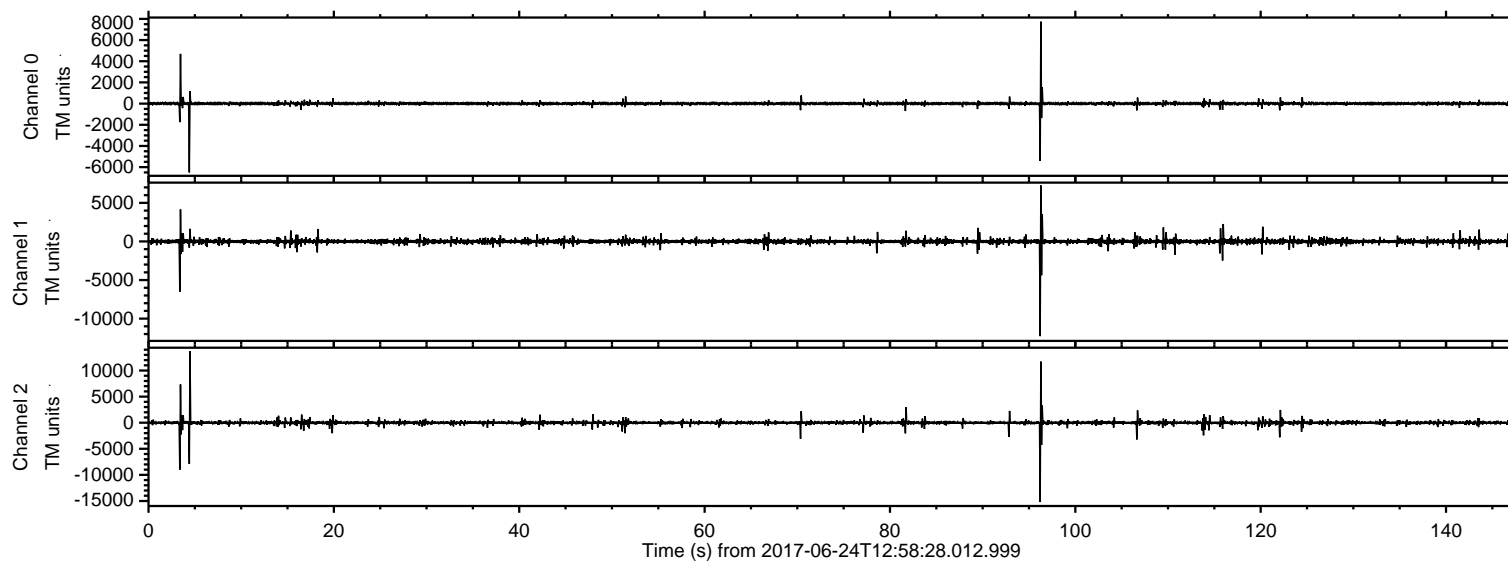


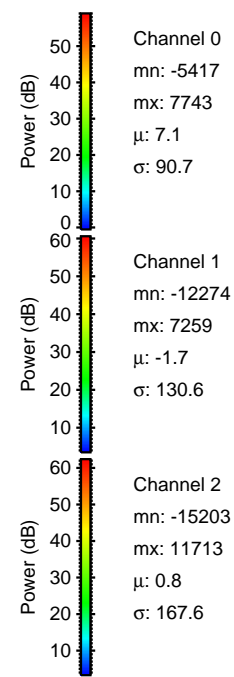
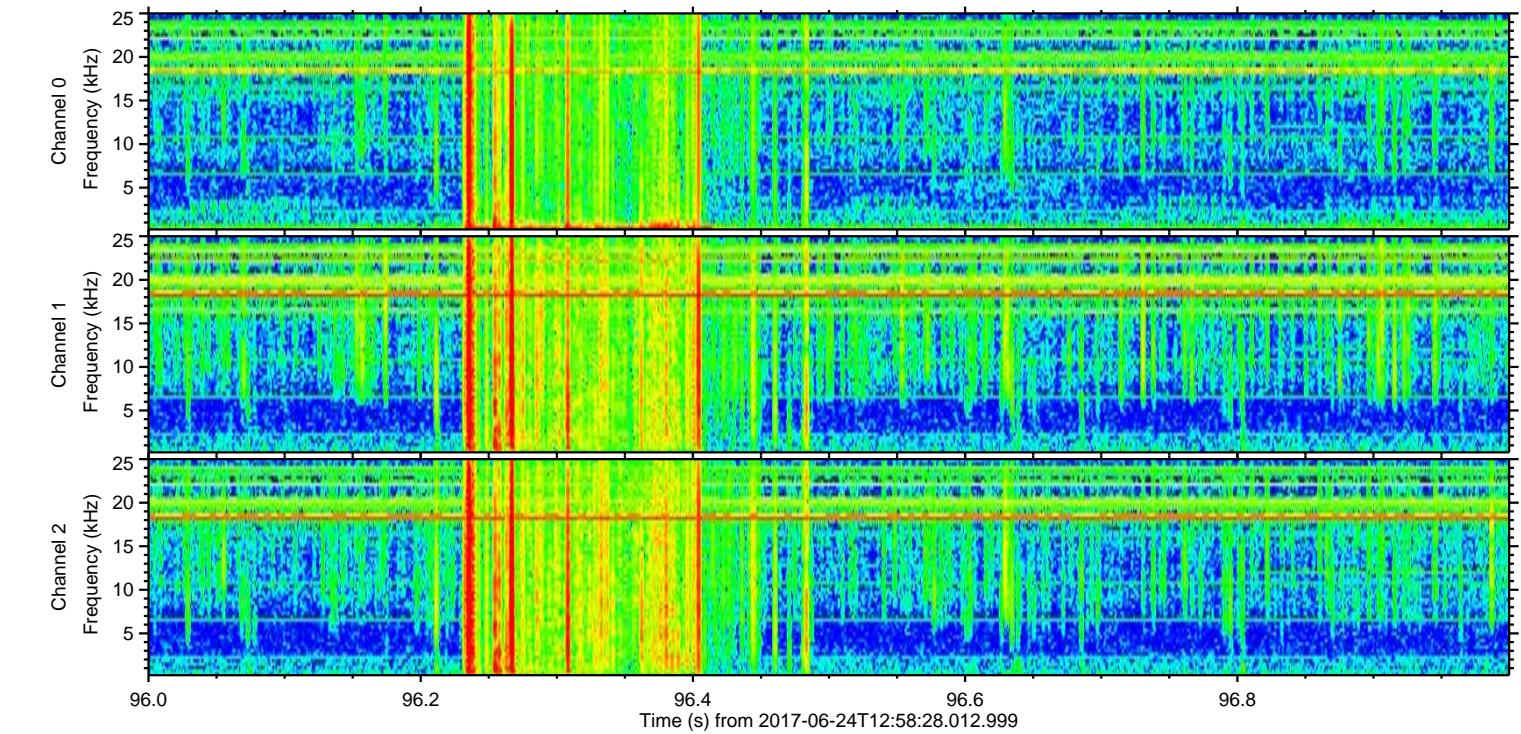
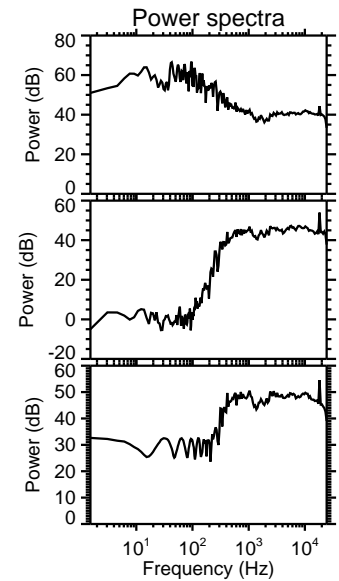
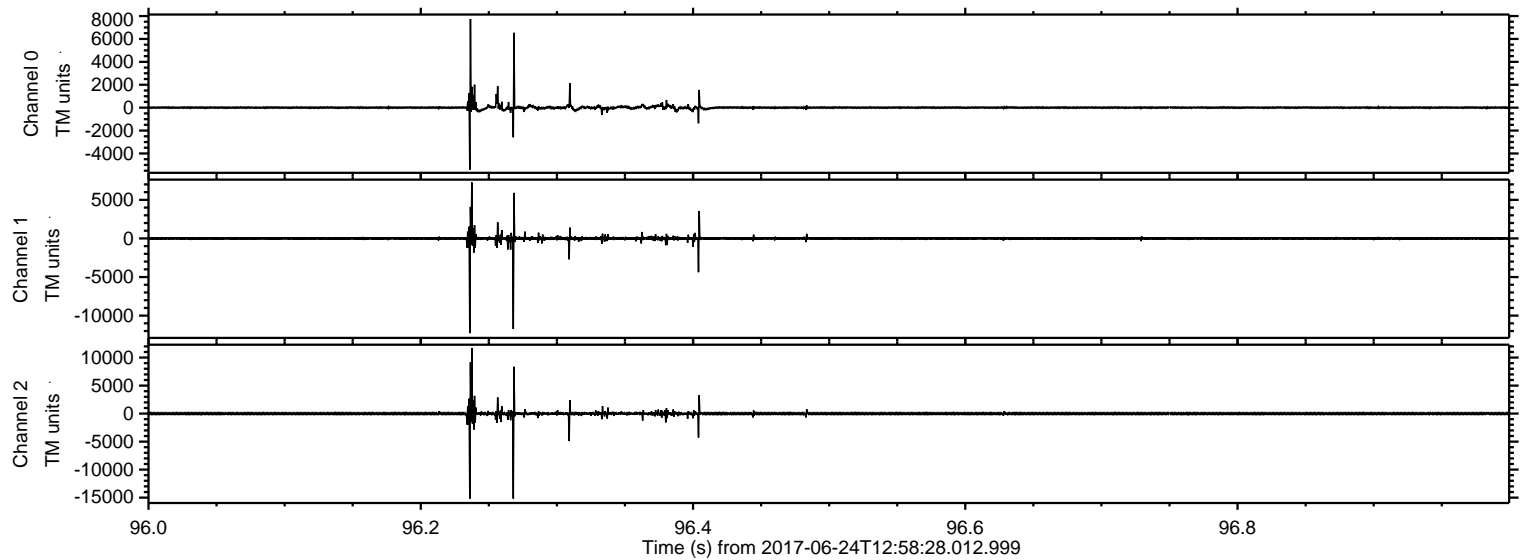
ELMAVAN 3D WAVEFORMS (Measured data sampled at 50 kHz) 51000 packets of 144 samples from 2017-06-24T12:58:28.012.999.

Processed Sat Jun 24 15:06:17 2017 by ELM ver.2012-10-06 from 001__elm20170624_125827__dat00.bin

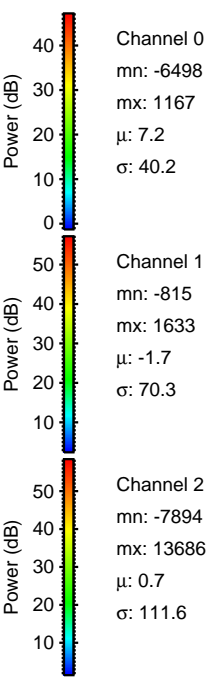
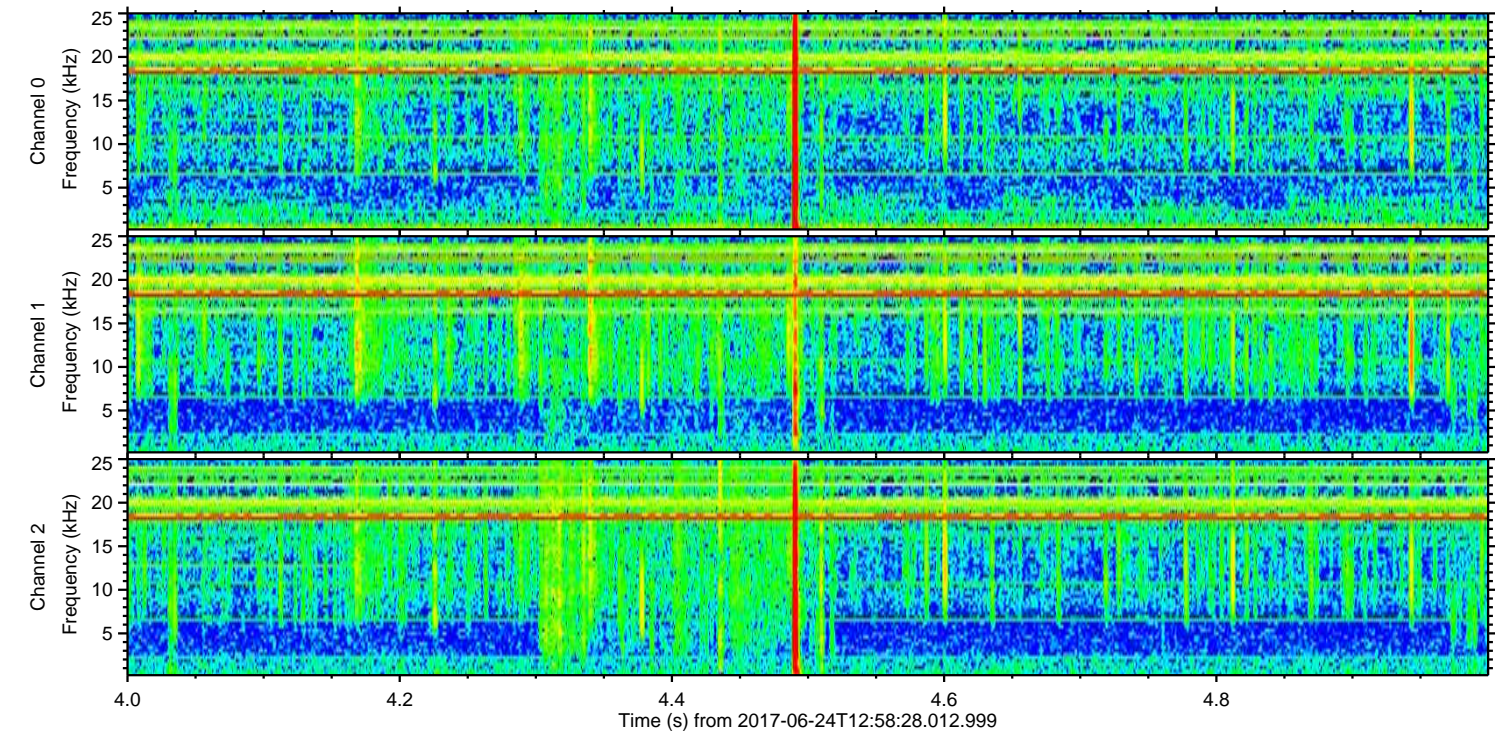
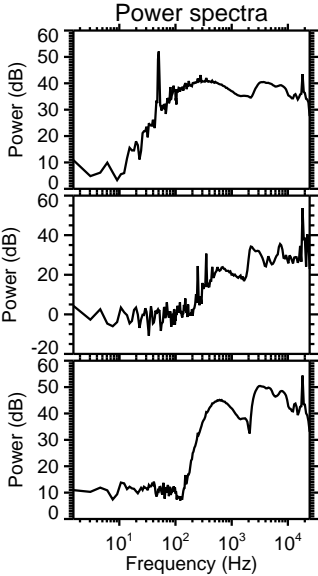
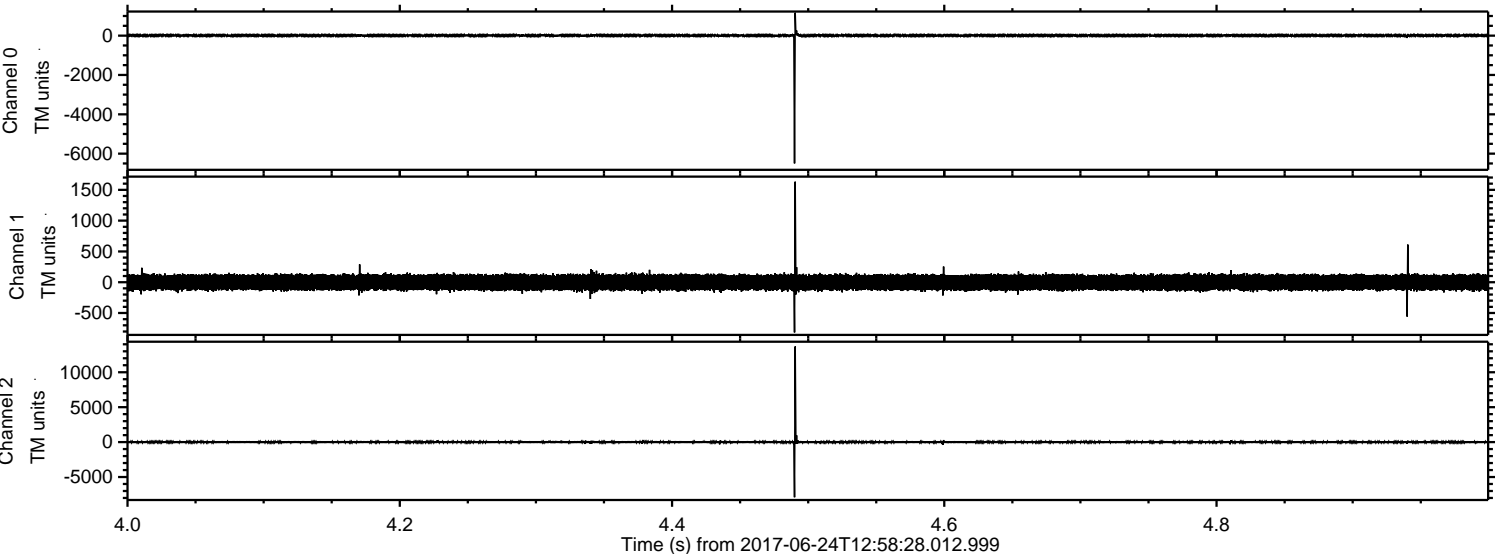


ELMAVAN 3D WAVEFORMS (Measured data sampled at 50 kHz) 51000 packets of 144 samples from 2017-06-24T12:58:28.012.999. Part 97/147

Processed Sat Jun 24 15:06:23 2017 by ELM ver.2012-10-06 from 001__elm20170624_125827__dat00.bin

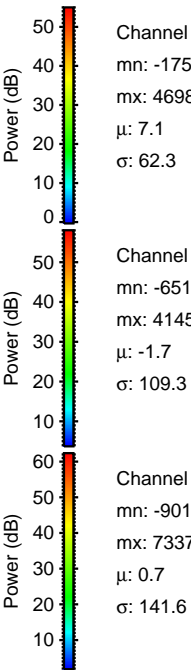
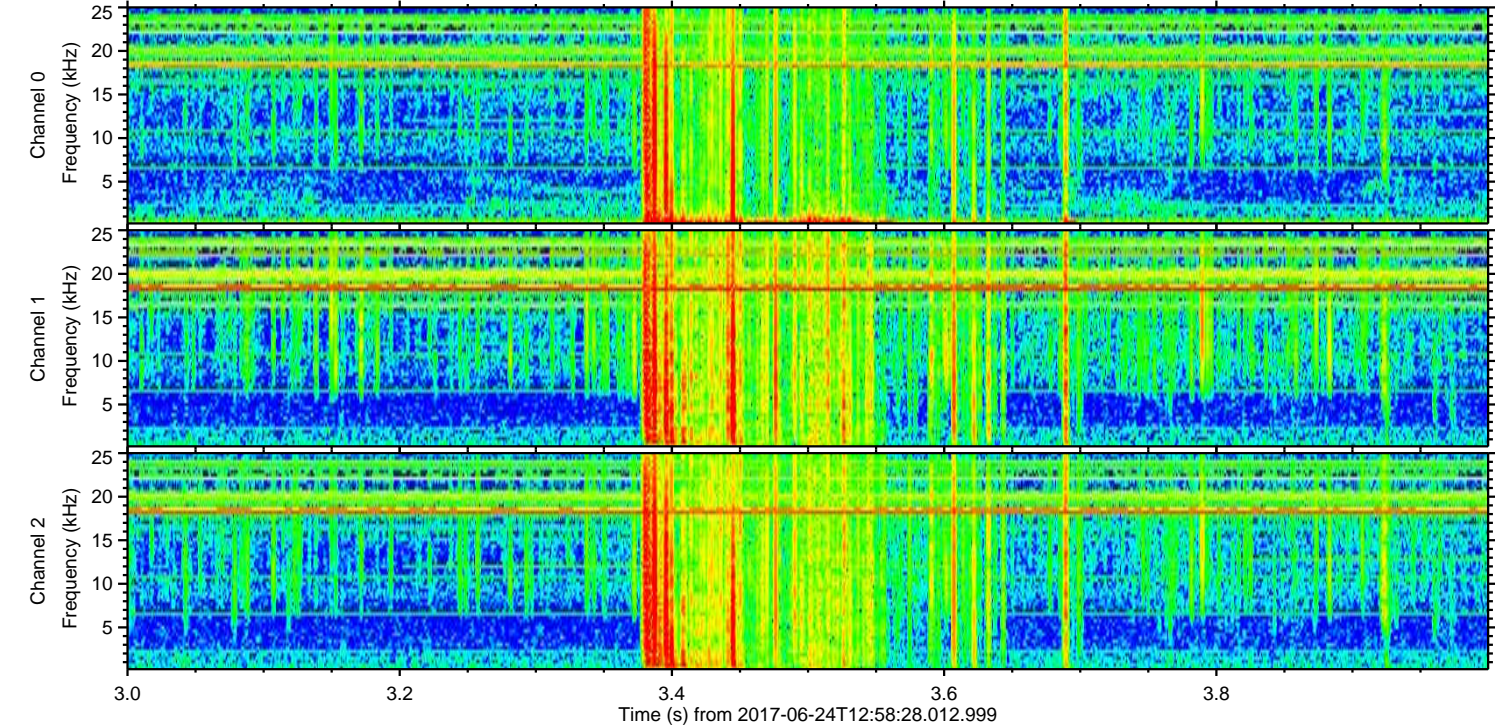
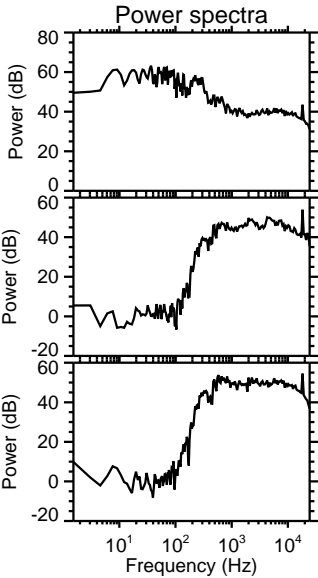
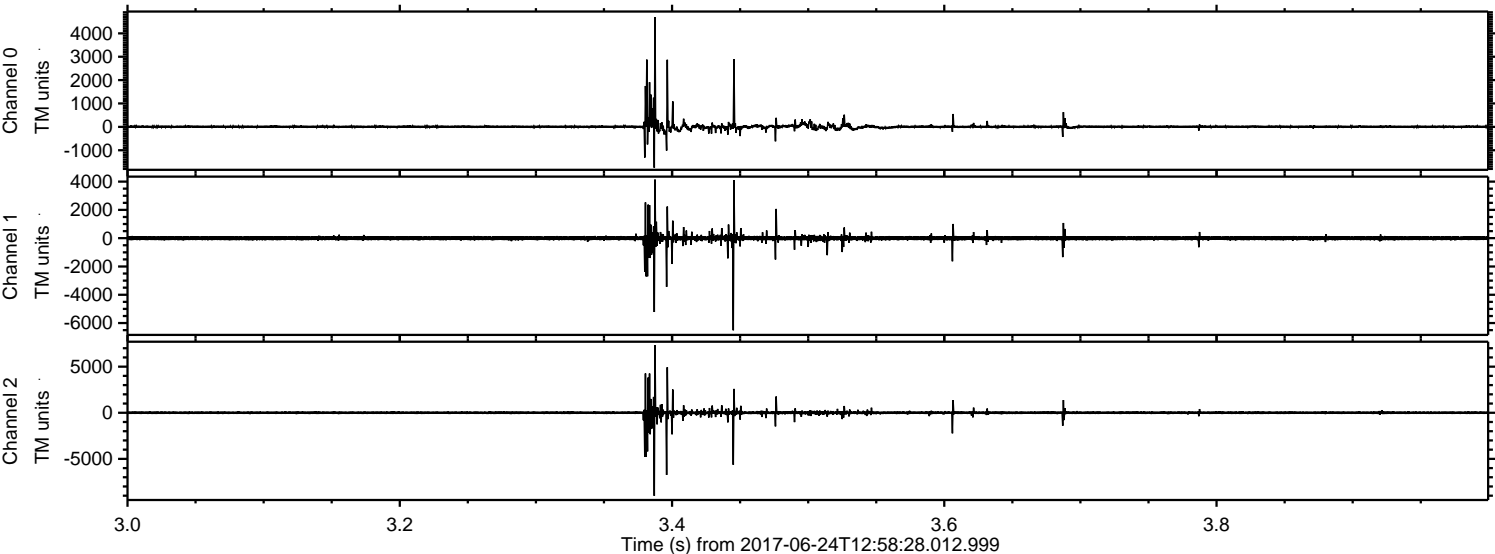


Processed Sat Jun 24 15:06:24 2017 by ELM ver.2012-10-06 from 001__elm20170624_125827__dat00.bin



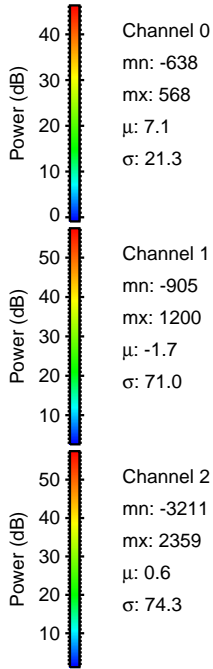
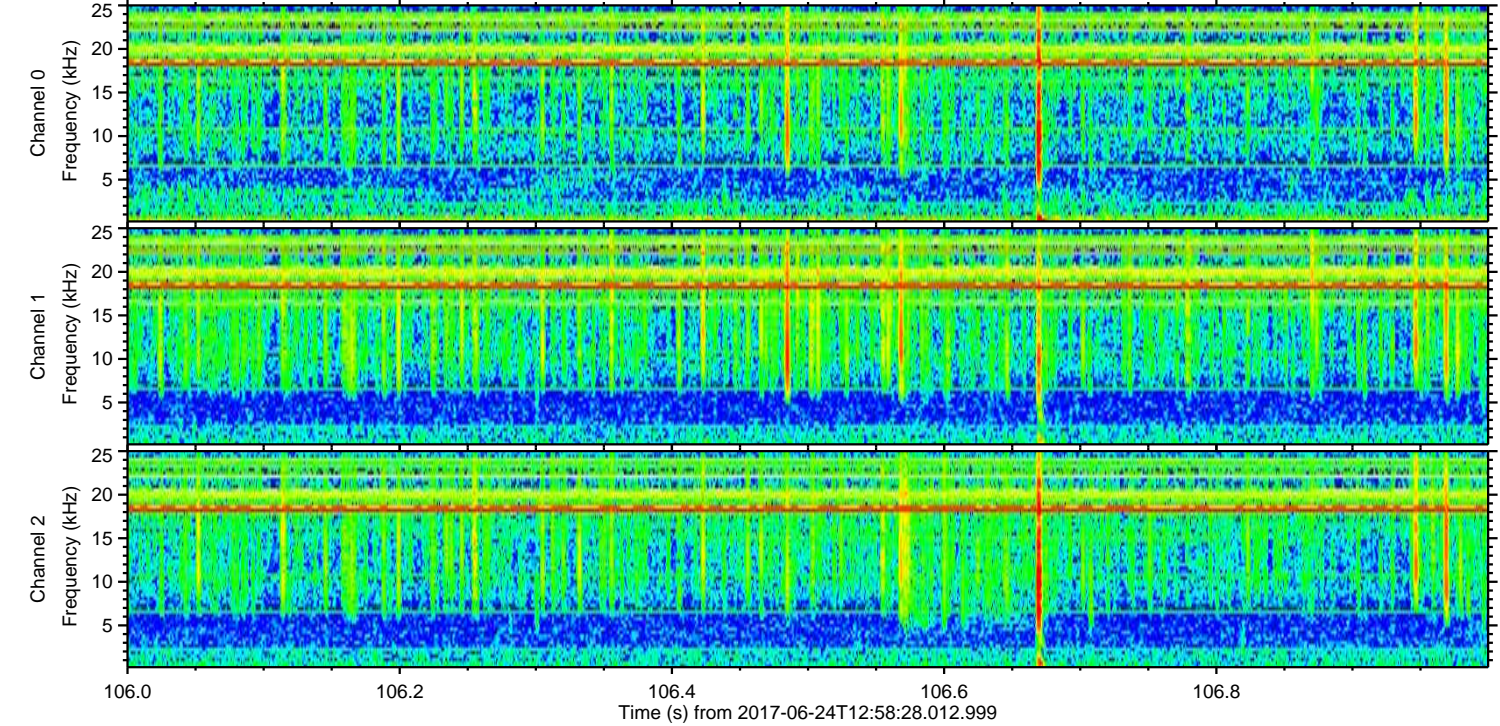
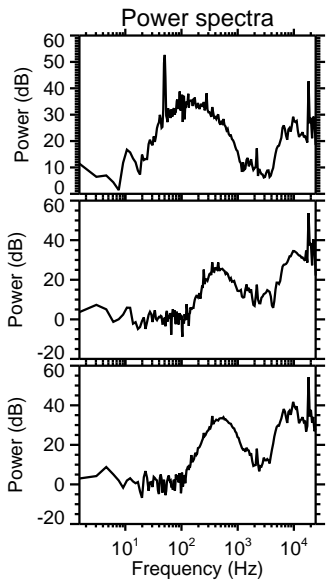
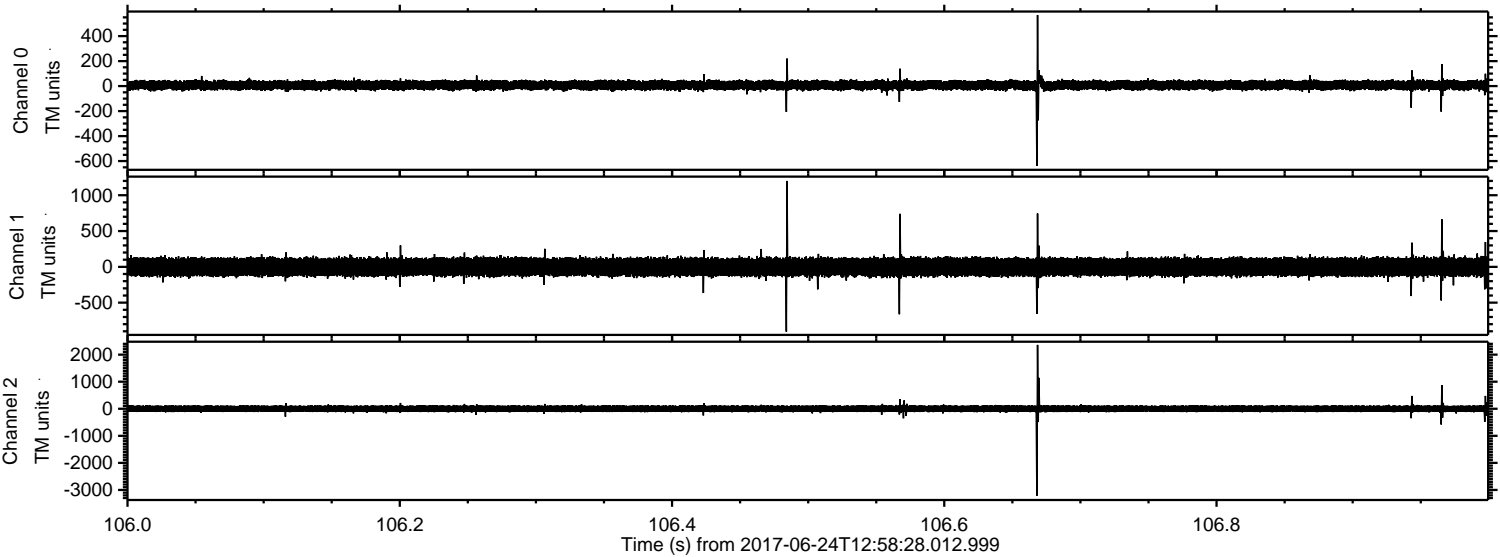
ELMAVAN 3D WAVEFORMS (Measured data sampled at 50 kHz) 51000 packets of 144 samples from 2017-06-24T12:58:28.012.999. Part 4/147

Processed Sat Jun 24 15:06:25 2017 by ELM ver.2012-10-06 from 001__elm20170624_125827__dat00.bin



ELMAVAN 3D WAVEFORMS (Measured data sampled at 50 kHz) 51000 packets of 144 samples from 2017-06-24T12:58:28.012.999. Part 107/147

Processed Sat Jun 24 15:06:25 2017 by ELM ver.2012-10-06 from 001__elm20170624_125827__dat00.bin

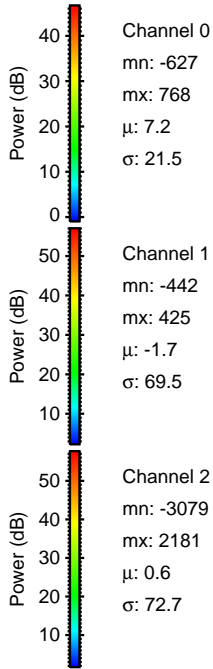
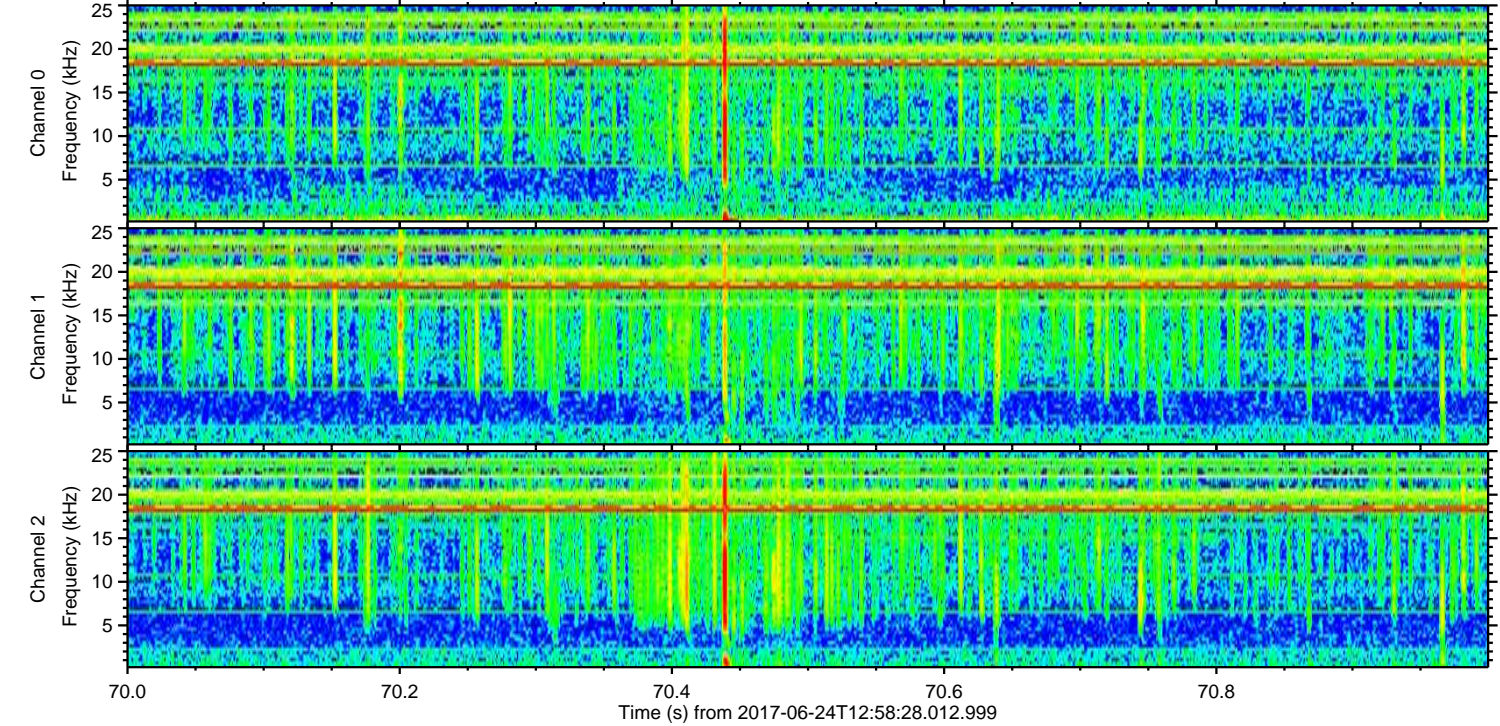
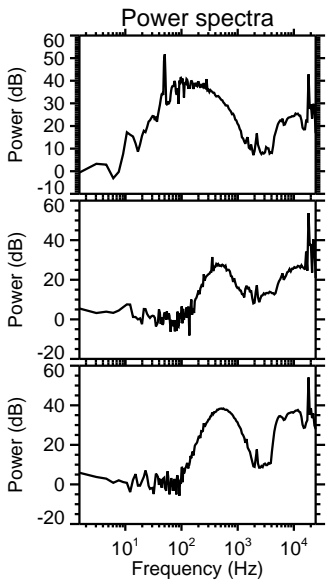
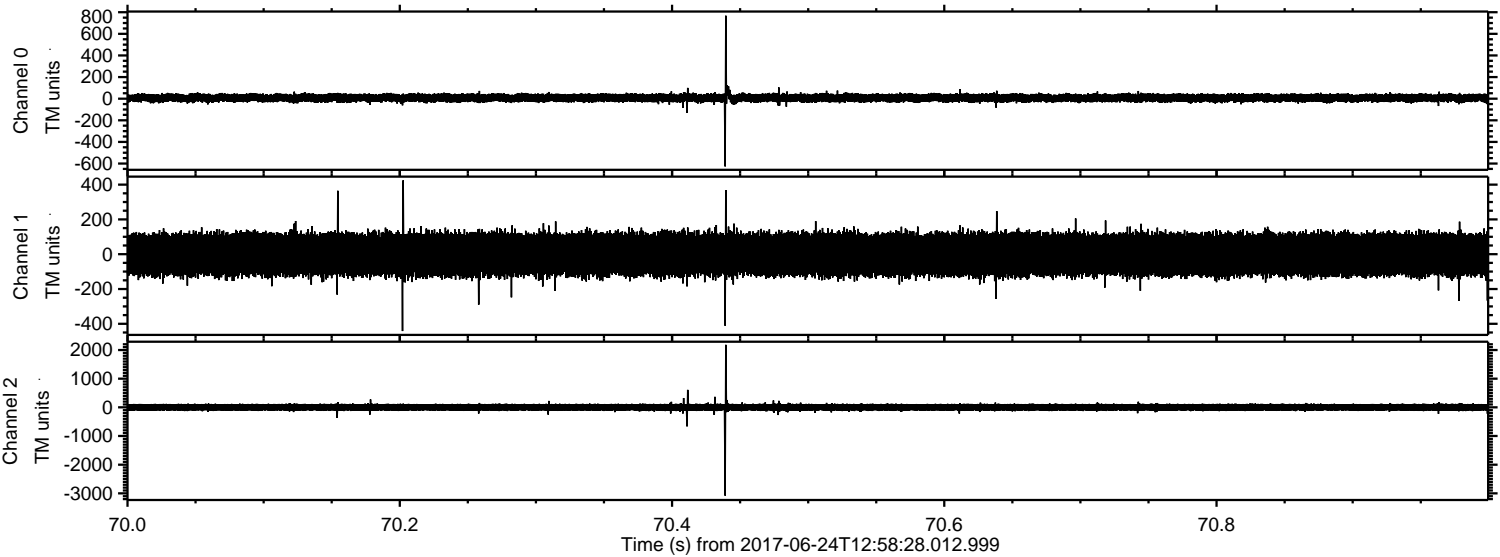


Channel 0
mn: -638
mx: 568
 μ : 7.1
 σ : 21.3

Channel 1
mn: -905
mx: 1200
 μ : -1.7
 σ : 71.0

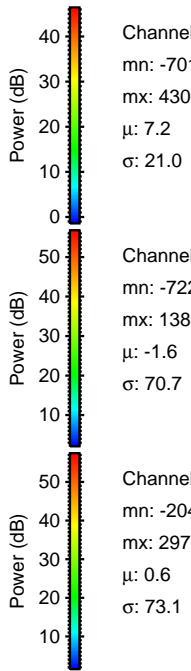
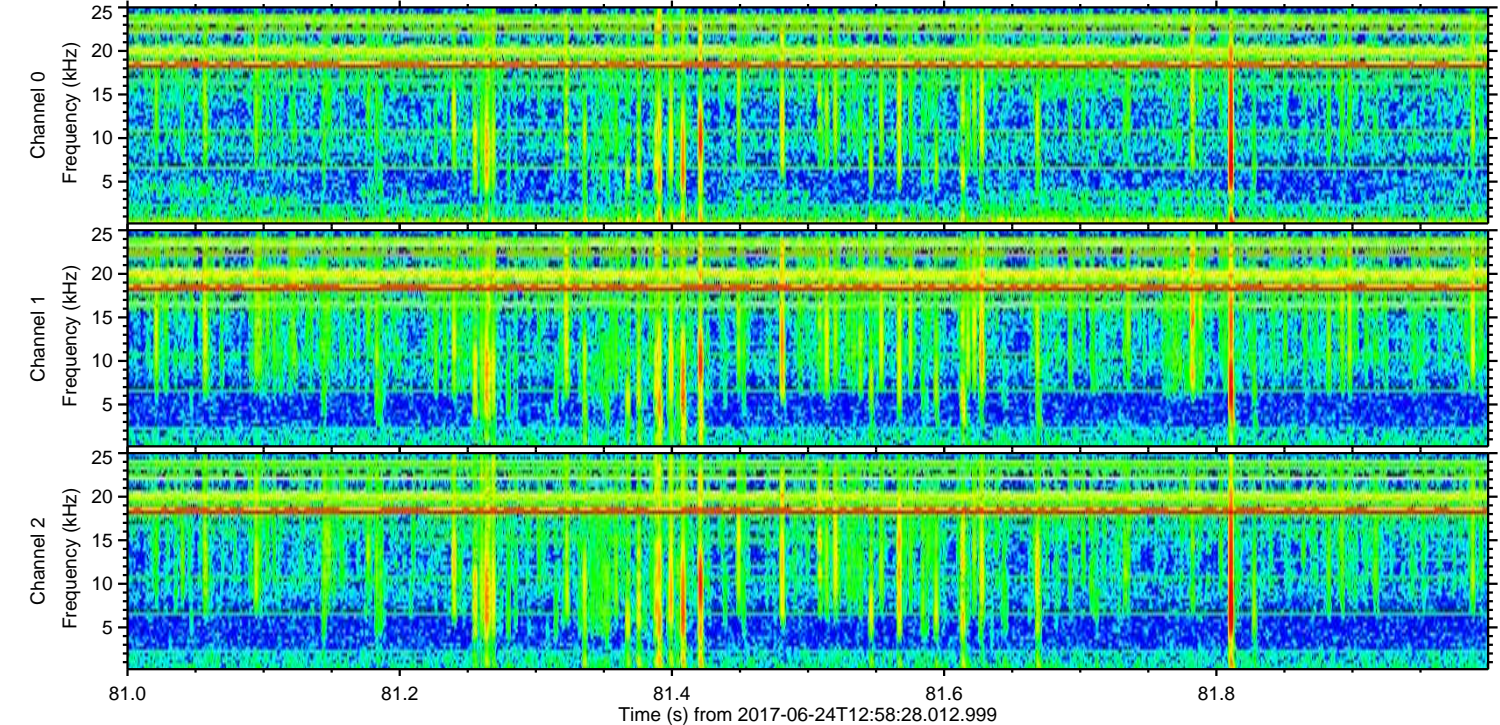
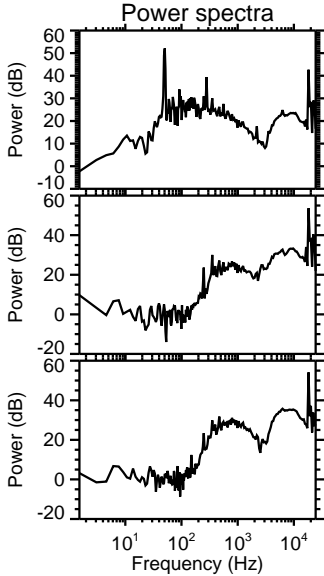
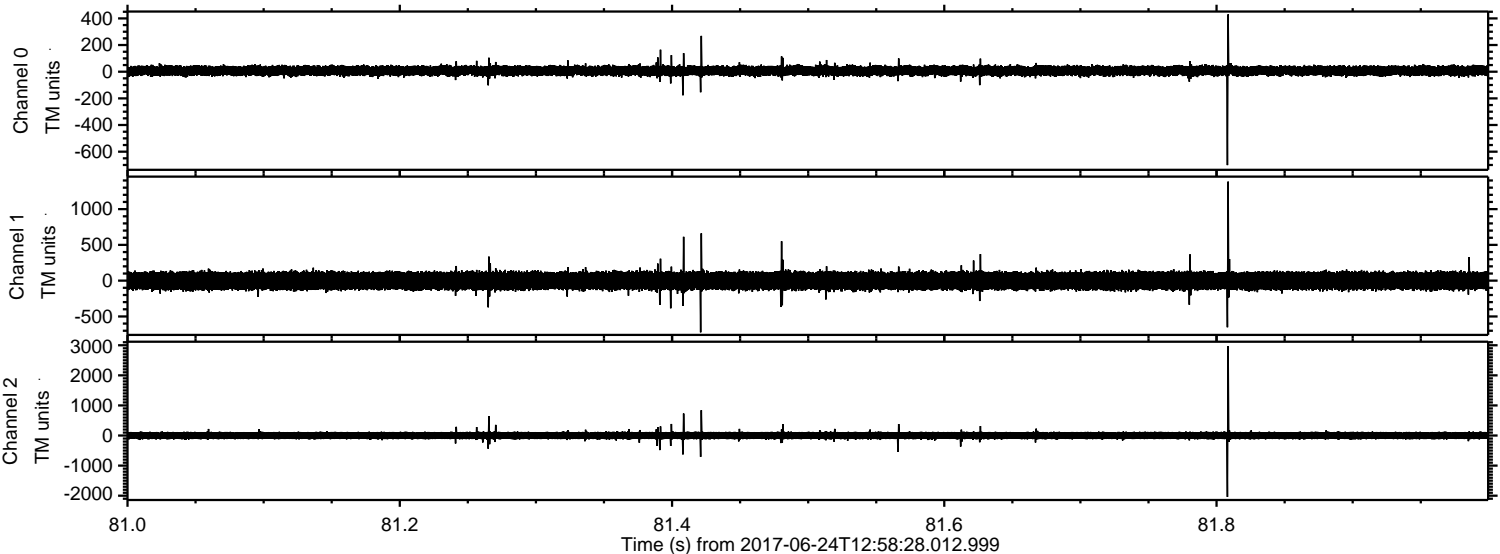
Channel 2
mn: -3211
mx: 2359
 μ : 0.6
 σ : 74.3

Processed Sat Jun 24 15:06:26 2017 by ELM ver.2012-10-06 from 001__elm20170624_125827__dat00.bin



ELMAVAN 3D WAVEFORMS (Measured data sampled at 50 kHz) 51000 packets of 144 samples from 2017-06-24T12:58:28.012.999. Part 82/147

Processed Sat Jun 24 15:06:27 2017 by ELM ver.2012-10-06 from 001__elm20170624_125827__dat00.bin



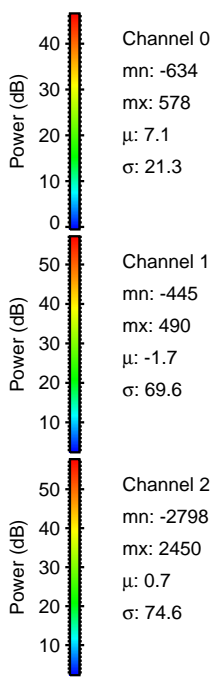
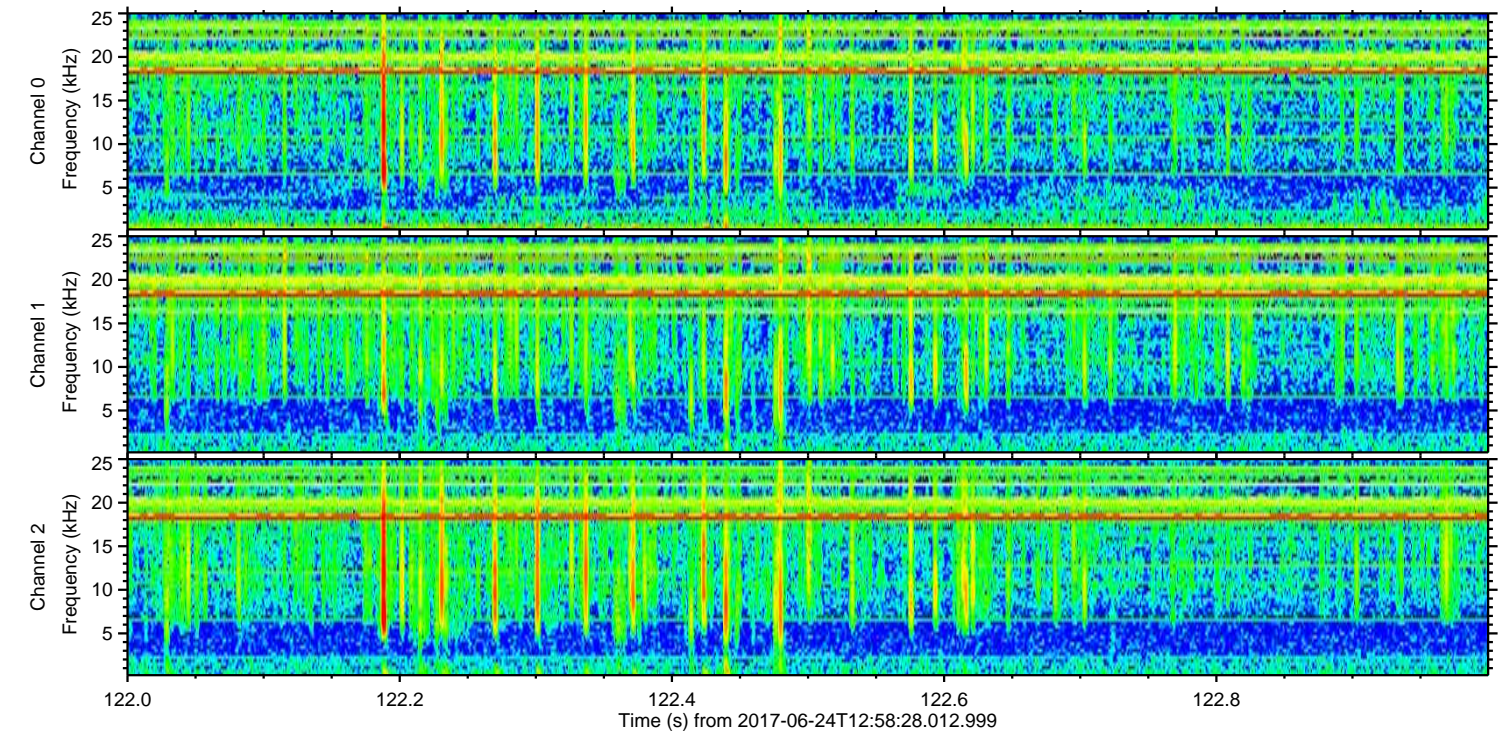
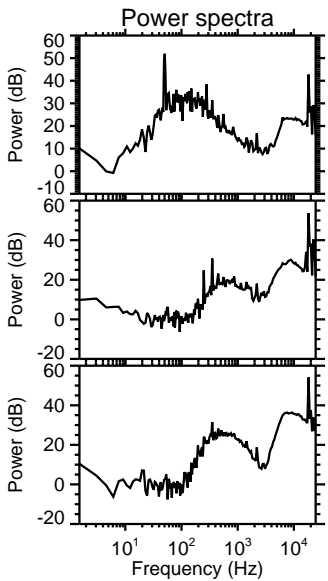
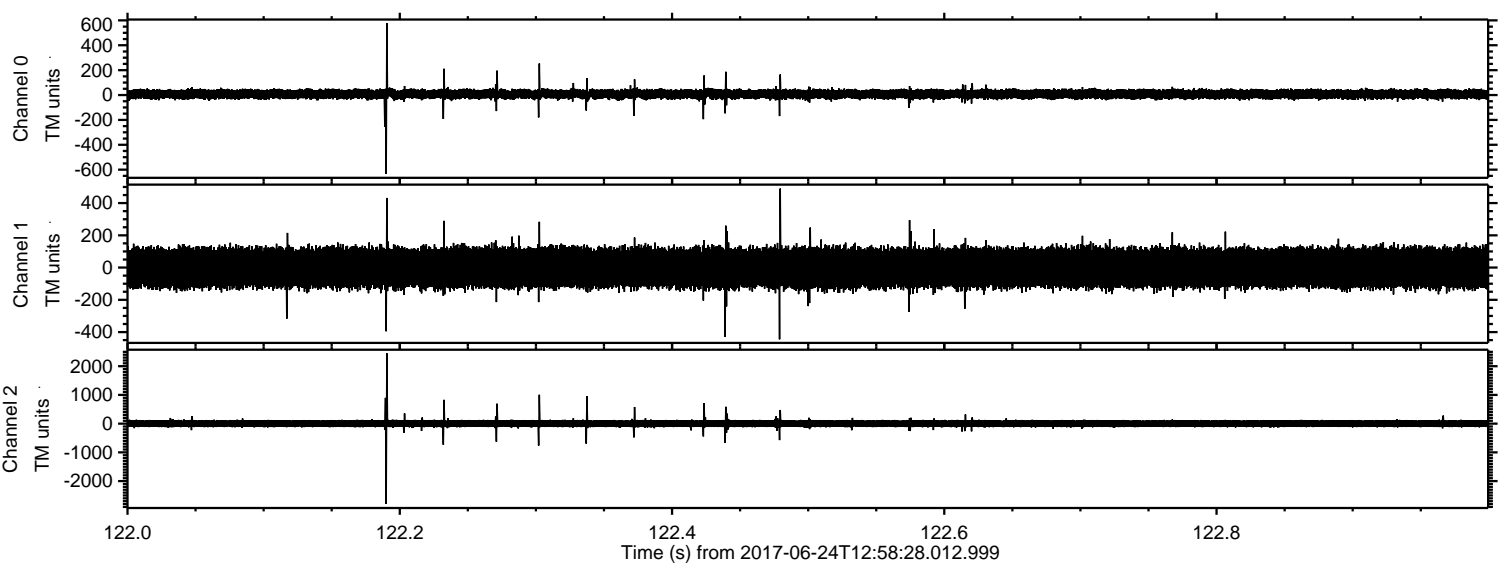
Channel 0
mn: -701
mx: 430
 μ : 7.2
 σ : 21.0

Channel 1
mn: -722
mx: 1385
 μ : -1.6
 σ : 70.7

Channel 2
mn: -2040
mx: 2970
 μ : 0.6
 σ : 73.1

ELMAVAN 3D WAVEFORMS (Measured data sampled at 50 kHz) 51000 packets of 144 samples from 2017-06-24T12:58:28.012.999. Part 123/147

Processed Sat Jun 24 15:06:27 2017 by ELM ver.2012-10-06 from 001__elm20170624_125827__dat00.bin



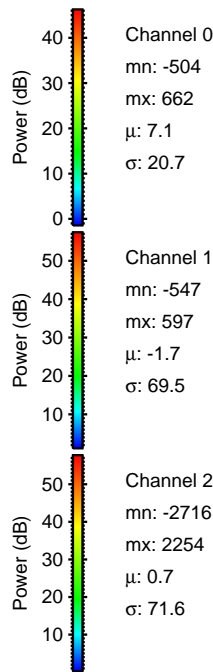
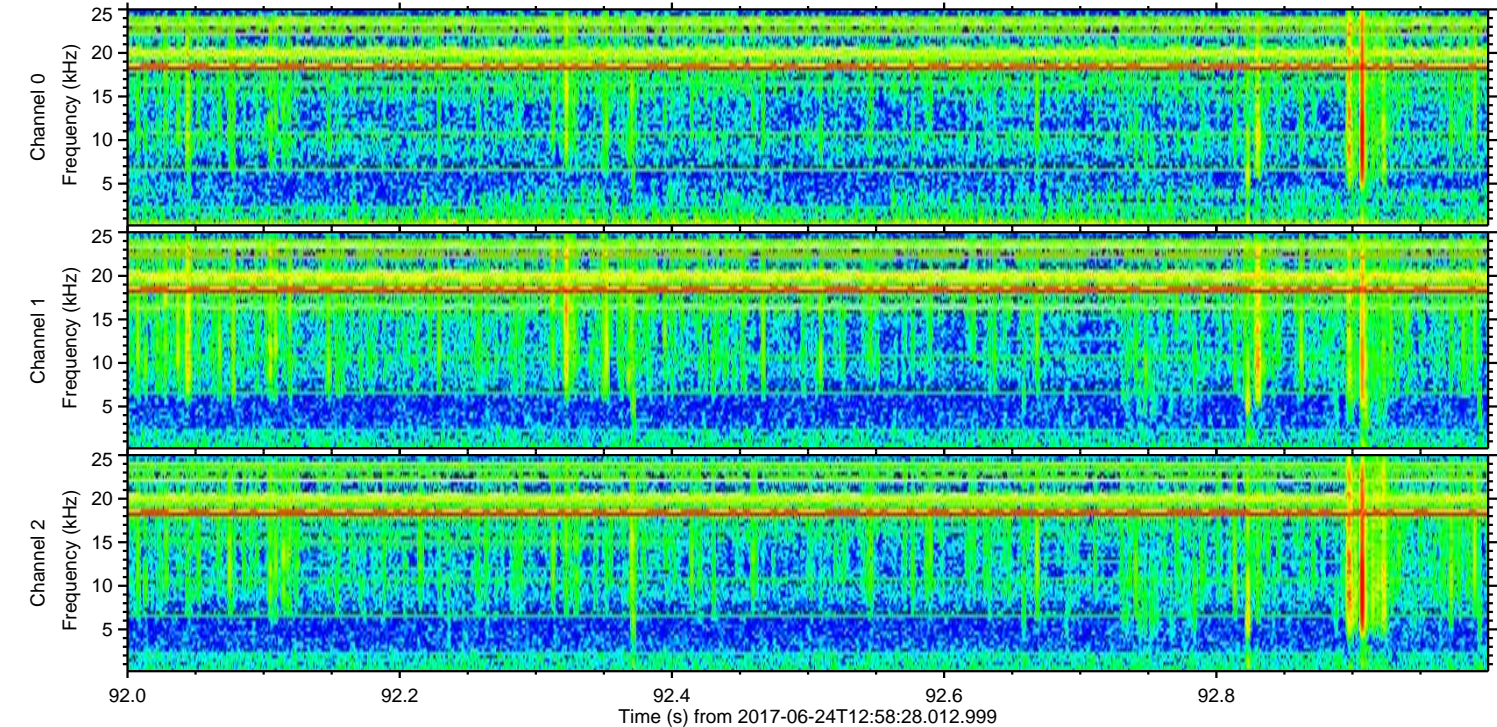
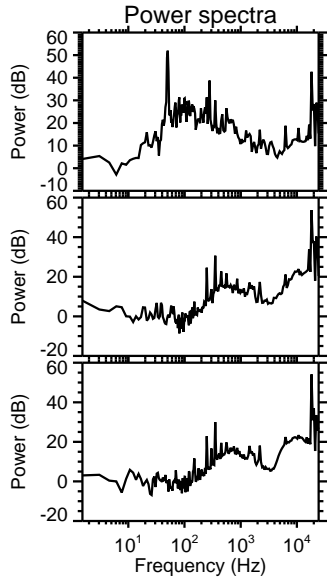
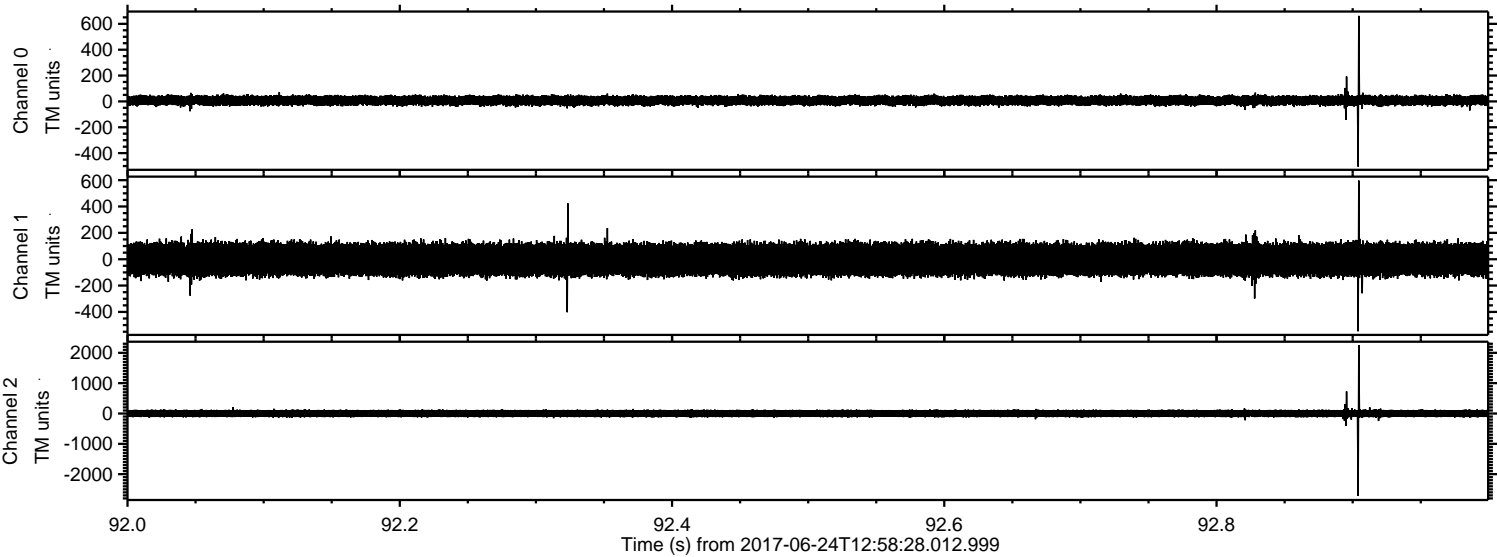
Channel 0
mn: -634
mx: 578
 μ : 7.1
 σ : 21.3

Channel 1
mn: -445
mx: 490
 μ : -1.7
 σ : 69.6

Channel 2
mn: -2798
mx: 2450
 μ : 0.7
 σ : 74.6

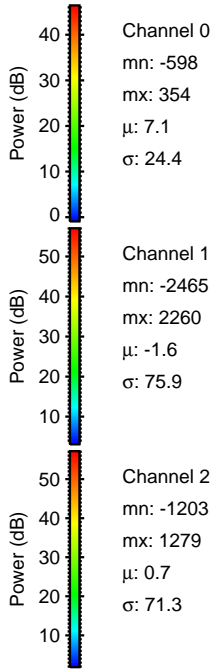
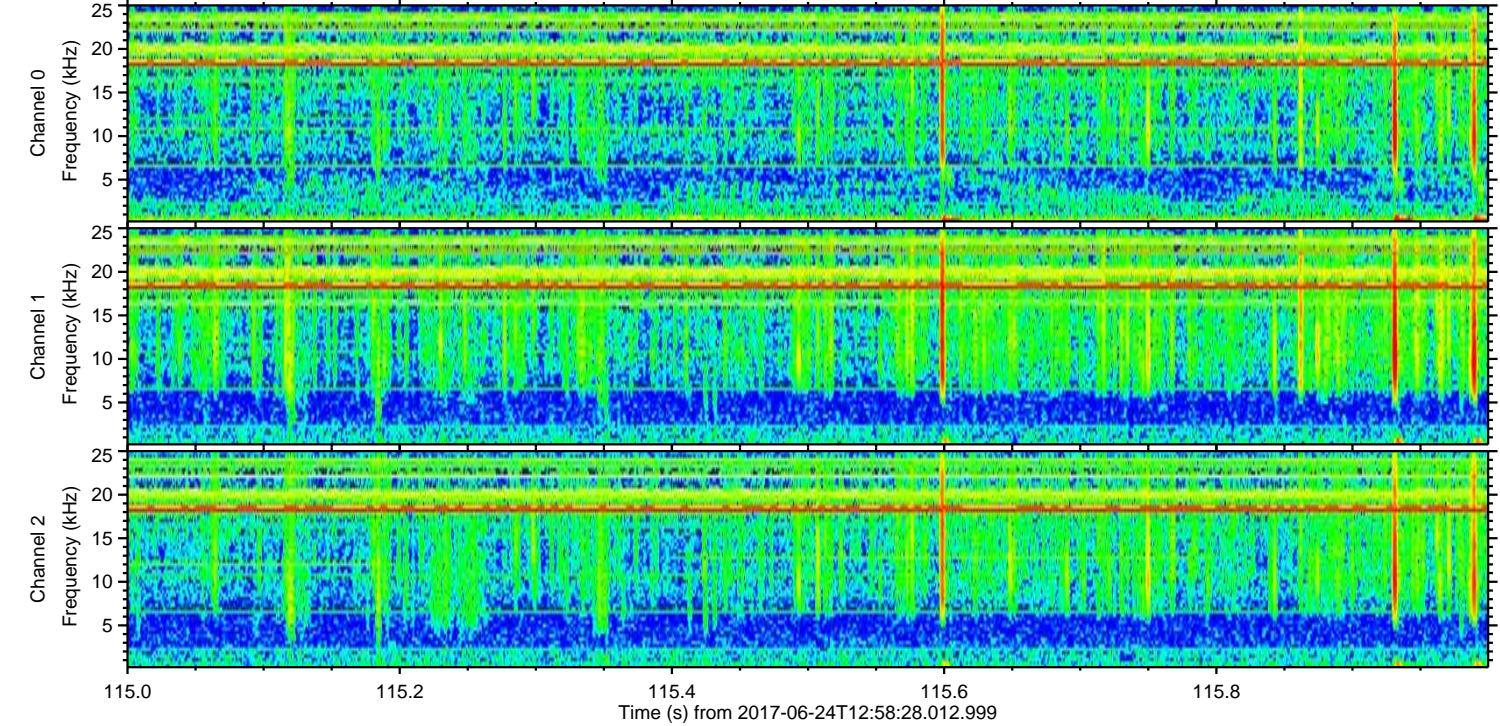
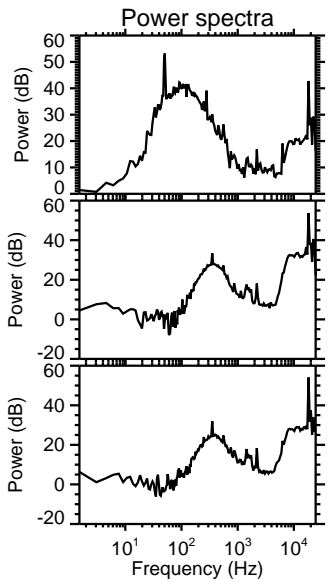
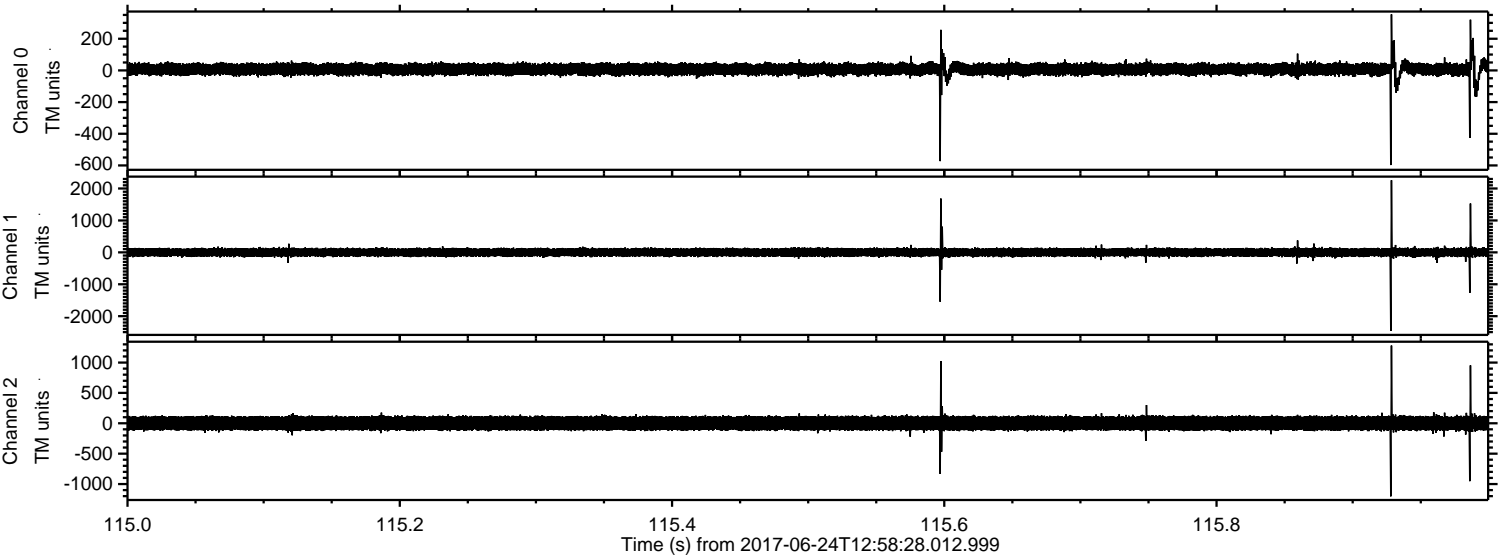
ELMAVAN 3D WAVEFORMS (Measured data sampled at 50 kHz) 51000 packets of 144 samples from 2017-06-24T12:58:28.012.999. Part 93/147

Processed Sat Jun 24 15:06:28 2017 by ELM ver.2012-10-06 from 001__elm20170624_125827__dat00.bin



ELMAVAN 3D WAVEFORMS (Measured data sampled at 50 kHz) 51000 packets of 144 samples from 2017-06-24T12:58:28.012.999. Part 116/147

Processed Sat Jun 24 15:06:28 2017 by ELM ver.2012-10-06 from 001__elm20170624_125827__dat00.bin



Channel 0
mn: -598
mx: 354
 μ : 7.1
 σ : 24.4

Channel 1
mn: -2465
mx: 2260
 μ : -1.6
 σ : 75.9

Channel 2
mn: -1203
mx: 1279
 μ : 0.7
 σ : 71.3

