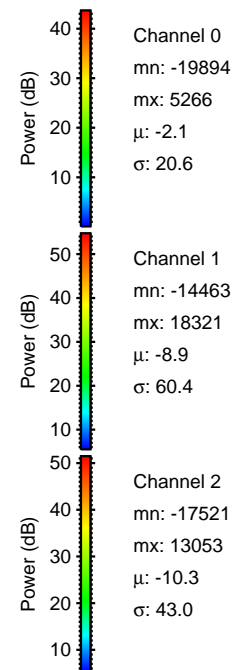
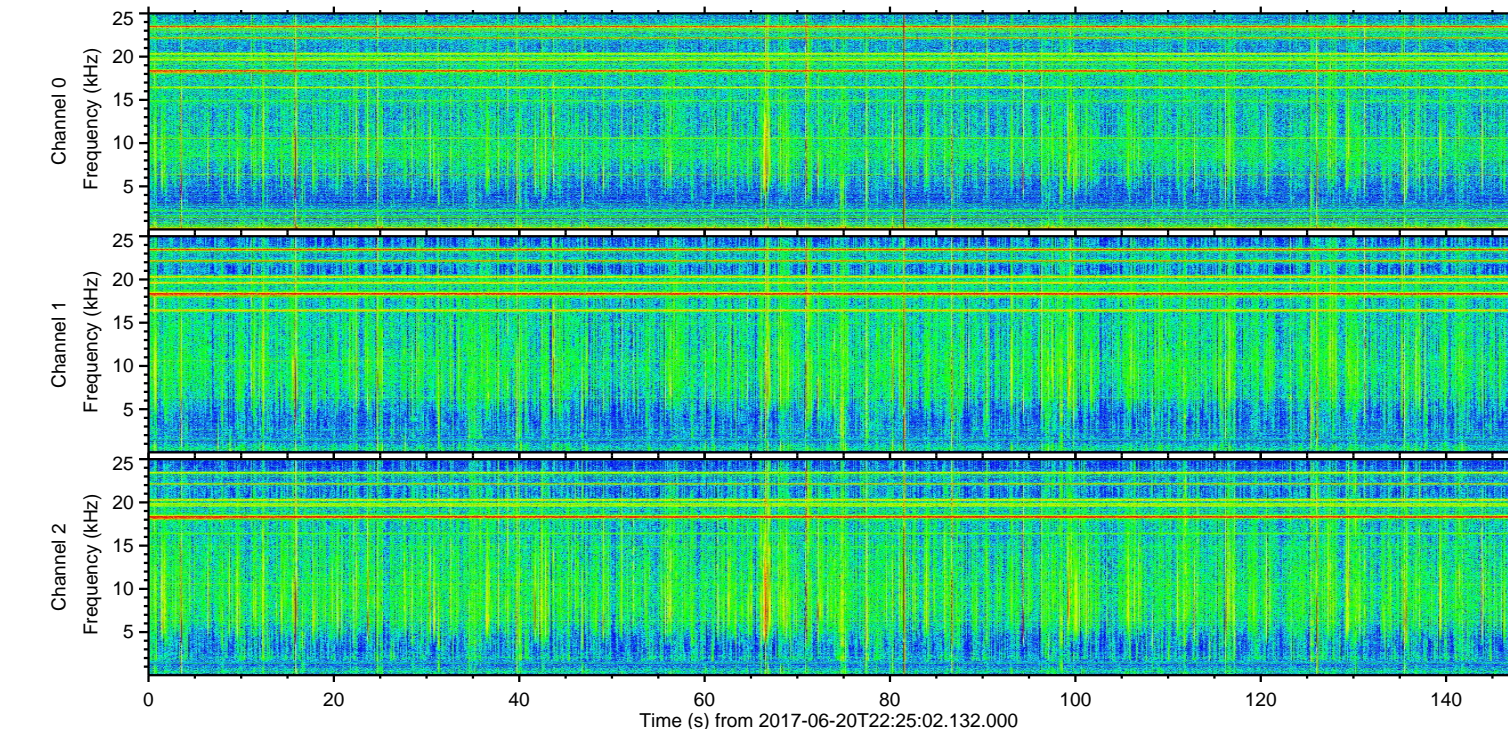
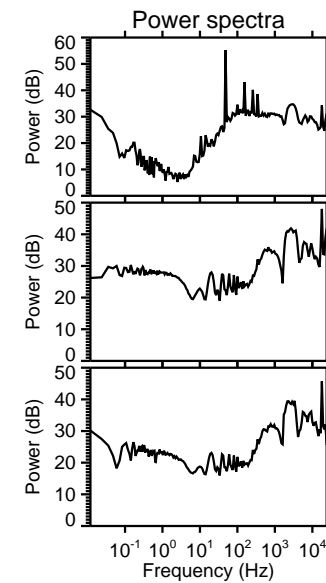
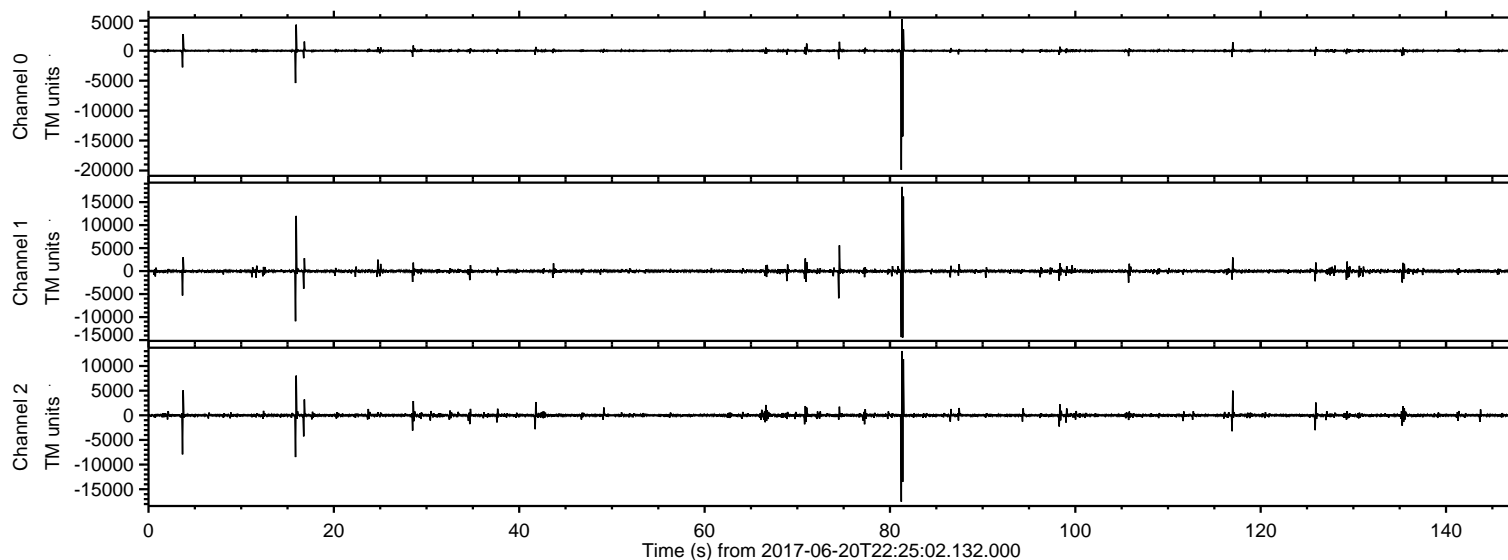


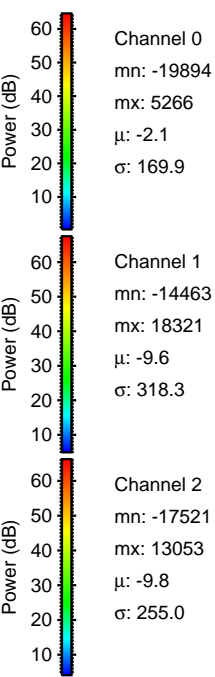
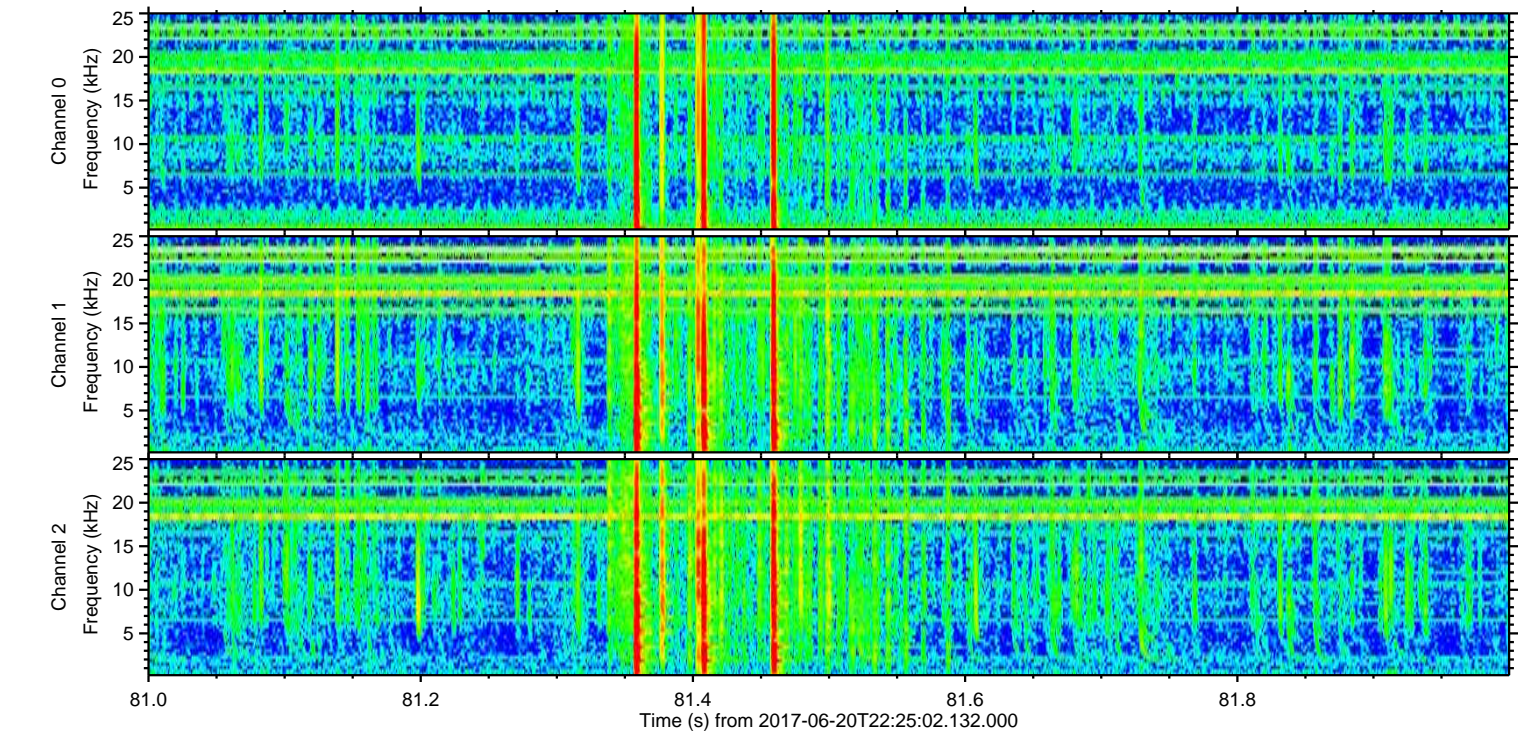
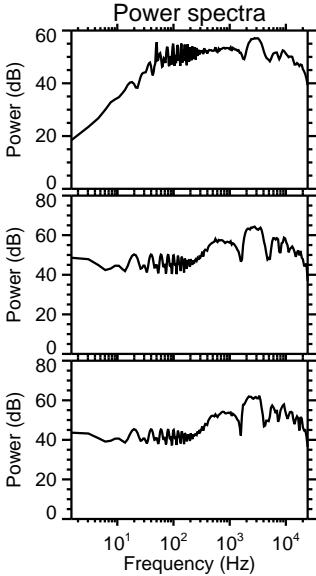
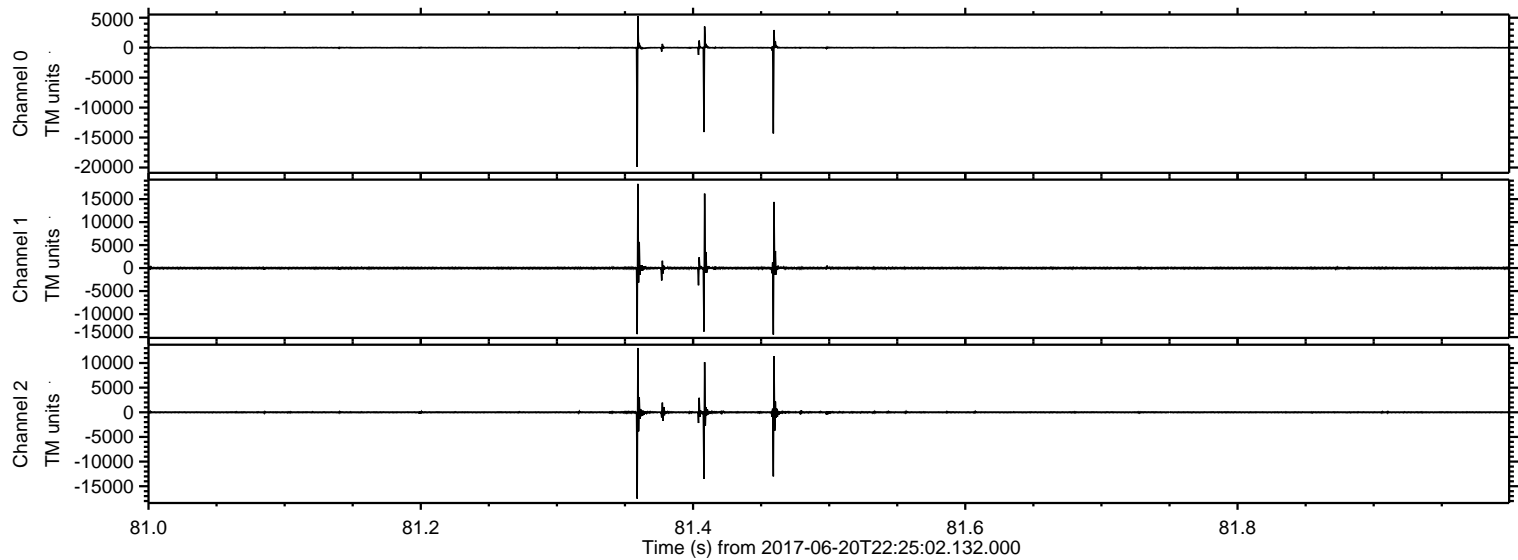
ELMAVAN 3D WAVEFORMS (Measured data sampled at 50 kHz) 51000 packets of 144 samples from 2017-06-20T22:25:02.132.000.

Processed Wed Jun 21 00:32:43 2017 by ELM ver.2012-10-06 from 001__elm20170620_222501__dat00.bin



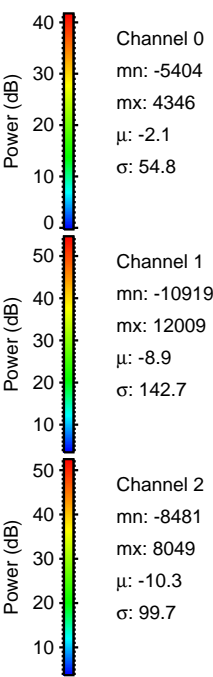
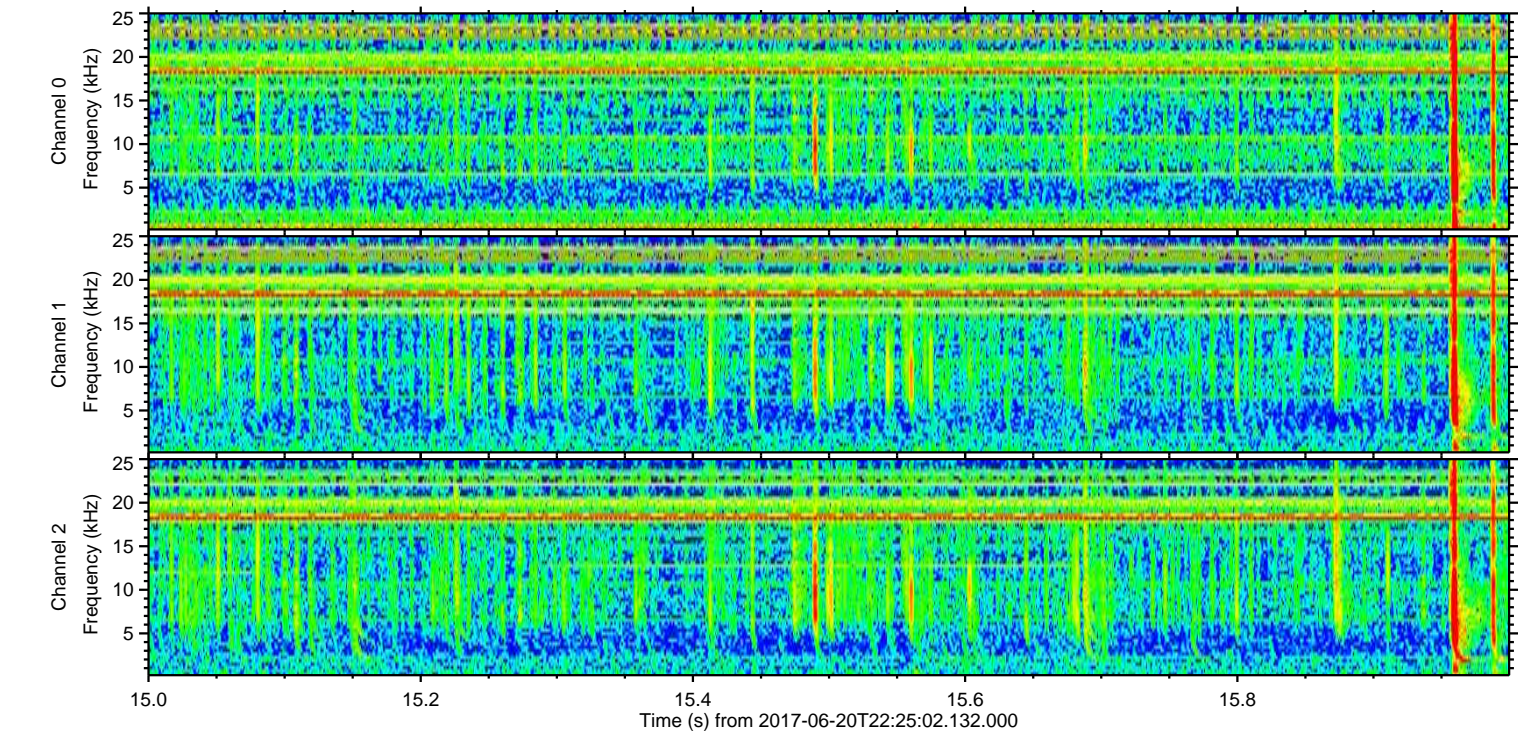
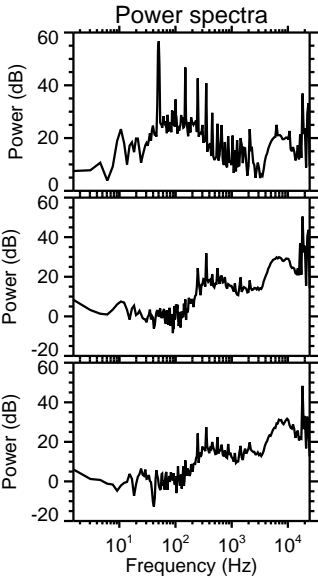
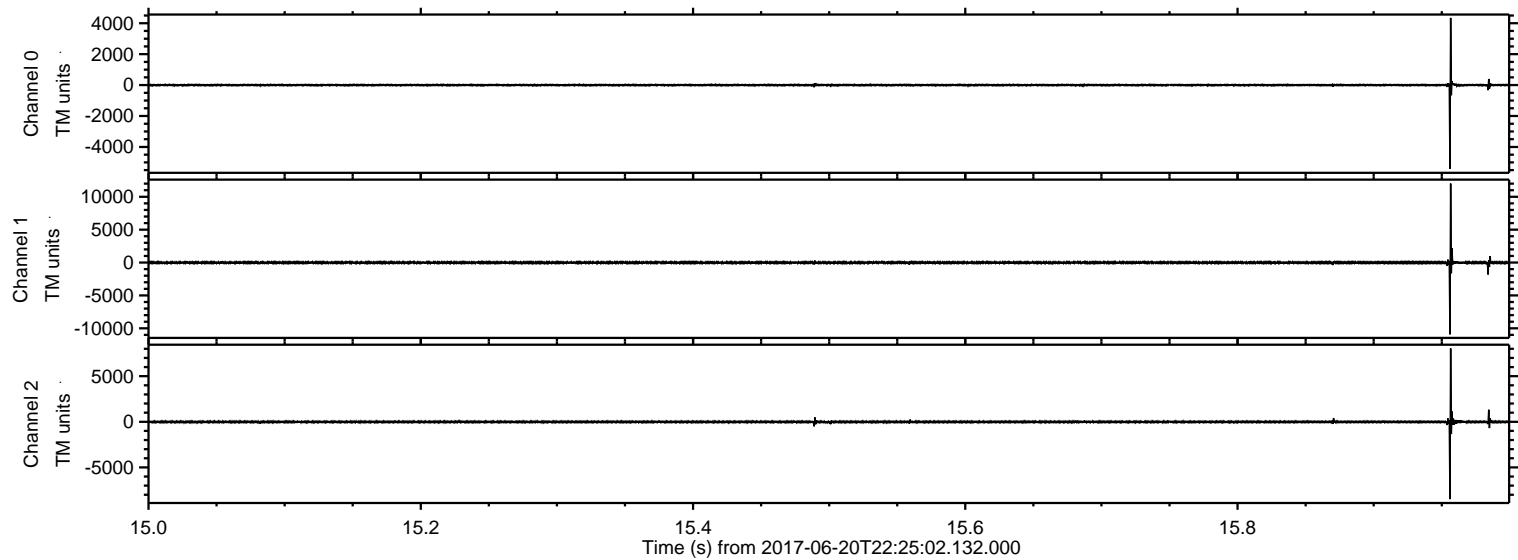
ELMAVAN 3D WAVEFORMS (Measured data sampled at 50 kHz) 51000 packets of 144 samples from 2017-06-20T22:25:02.132.000. Part 82/147

Processed Wed Jun 21 00:32:50 2017 by ELM ver.2012-10-06 from 001__elm20170620_222501__dat00.bin



ELMAVAN 3D WAVEFORMS (Measured data sampled at 50 kHz) 51000 packets of 144 samples from 2017-06-20T22:25:02.132.000. Part 16/147

Processed Wed Jun 21 00:32:51 2017 by ELM ver.2012-10-06 from 001__elm20170620_222501__dat00.bin



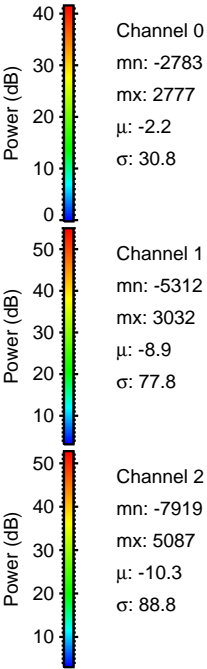
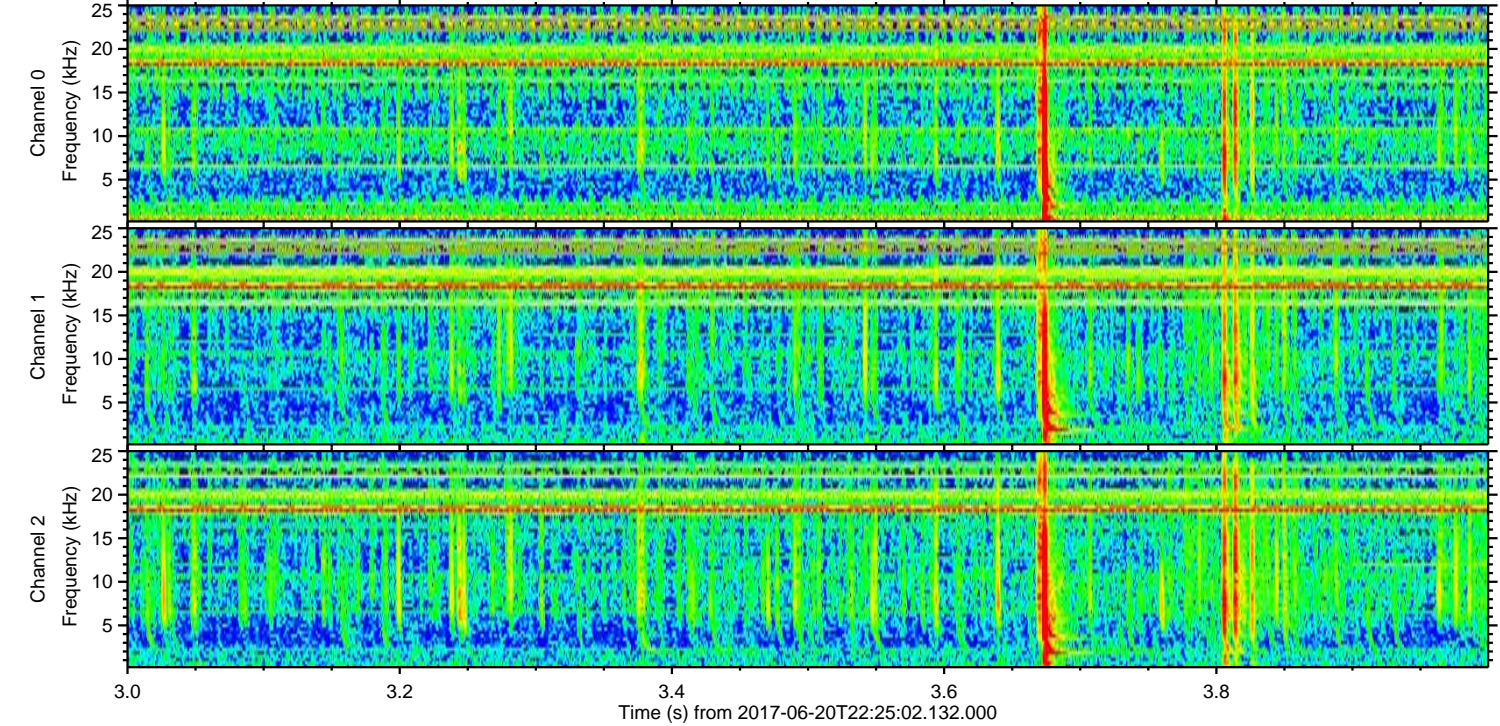
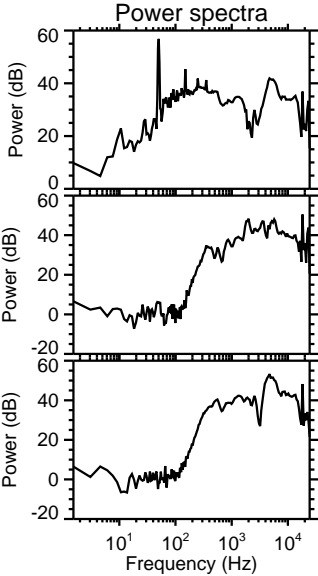
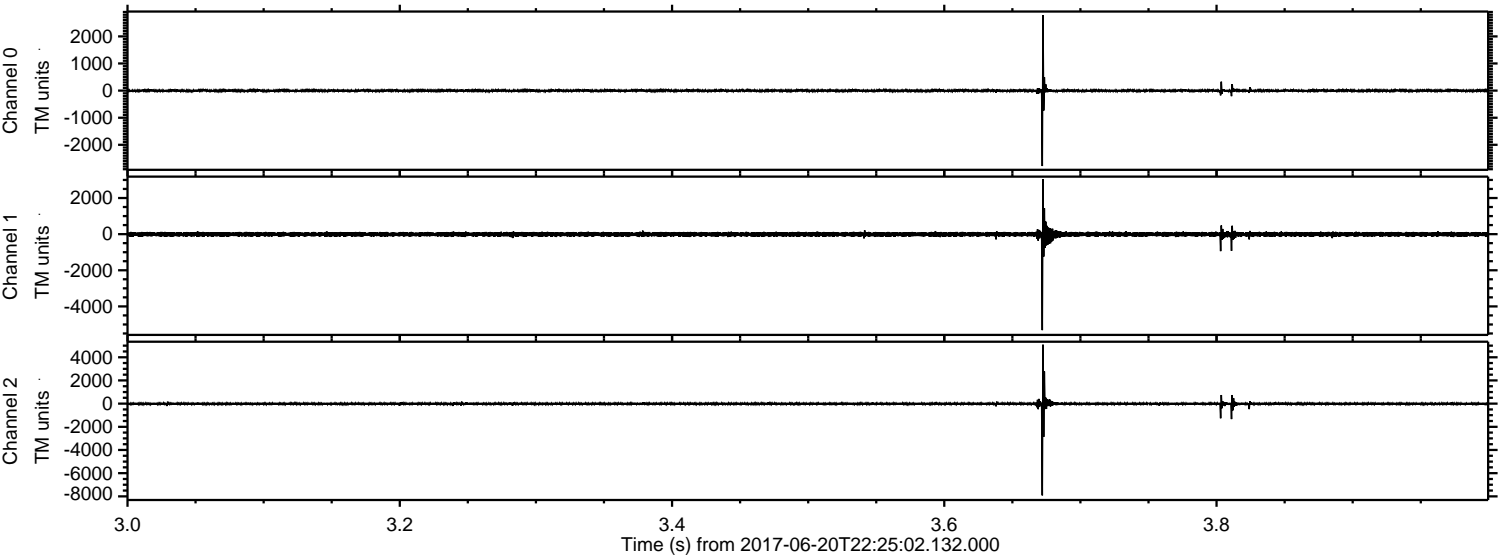
Channel 0
mn: -5404
mx: 4346
 μ : -2.1
 σ : 54.8

Channel 1
mn: -10919
mx: 12009
 μ : -8.9
 σ : 142.7

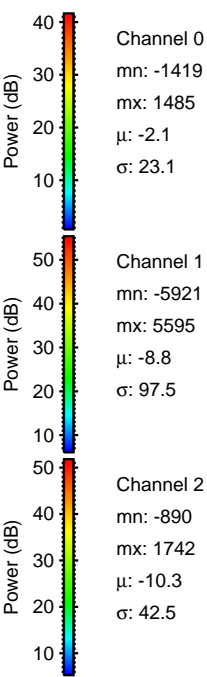
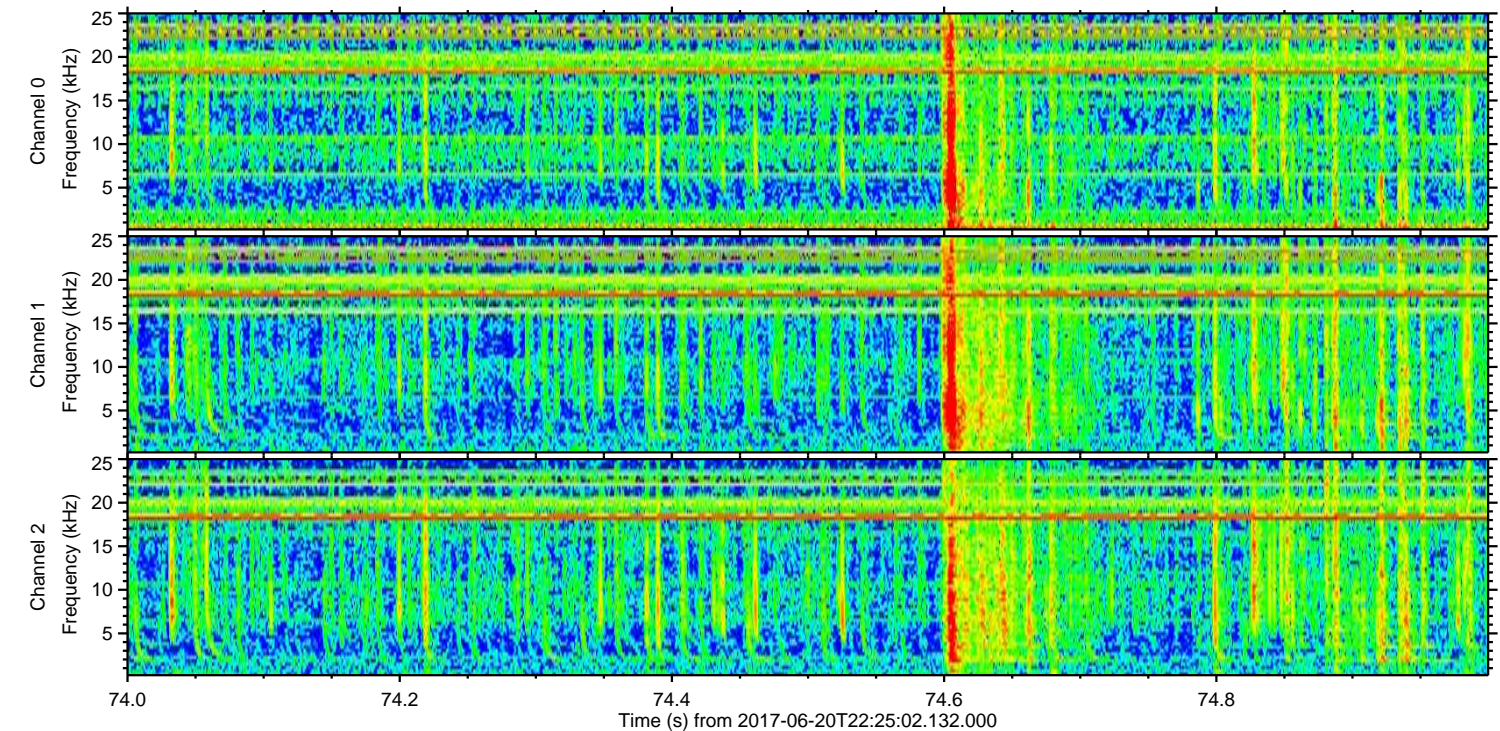
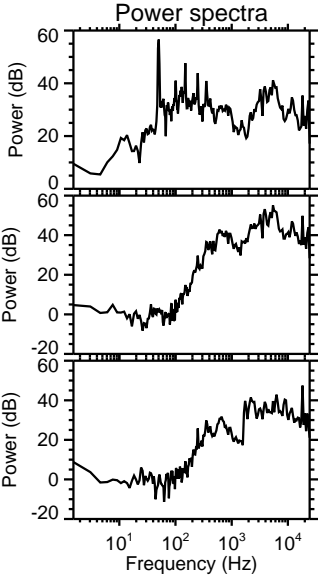
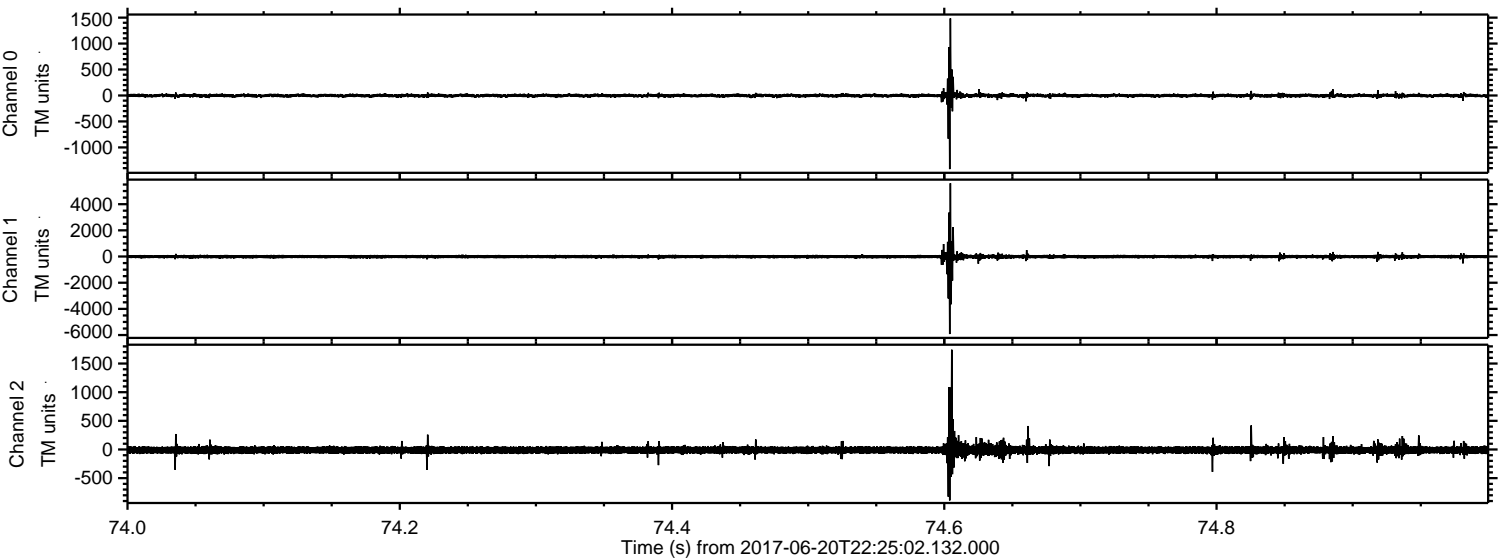
Channel 2
mn: -8481
mx: 8049
 μ : -10.3
 σ : 99.7

ELMAVAN 3D WAVEFORMS (Measured data sampled at 50 kHz) 51000 packets of 144 samples from 2017-06-20T22:25:02.132.000. Part 4/147

Processed Wed Jun 21 00:32:52 2017 by ELM ver.2012-10-06 from 001__elm20170620_222501__dat00.bin

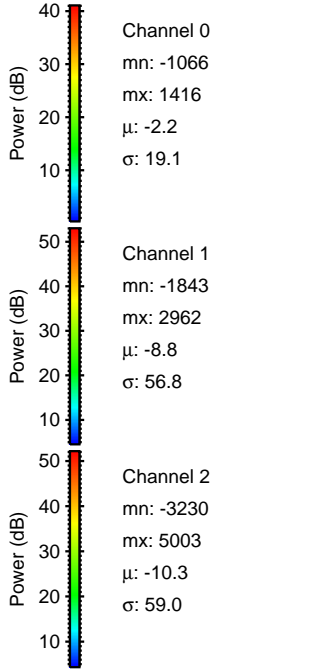
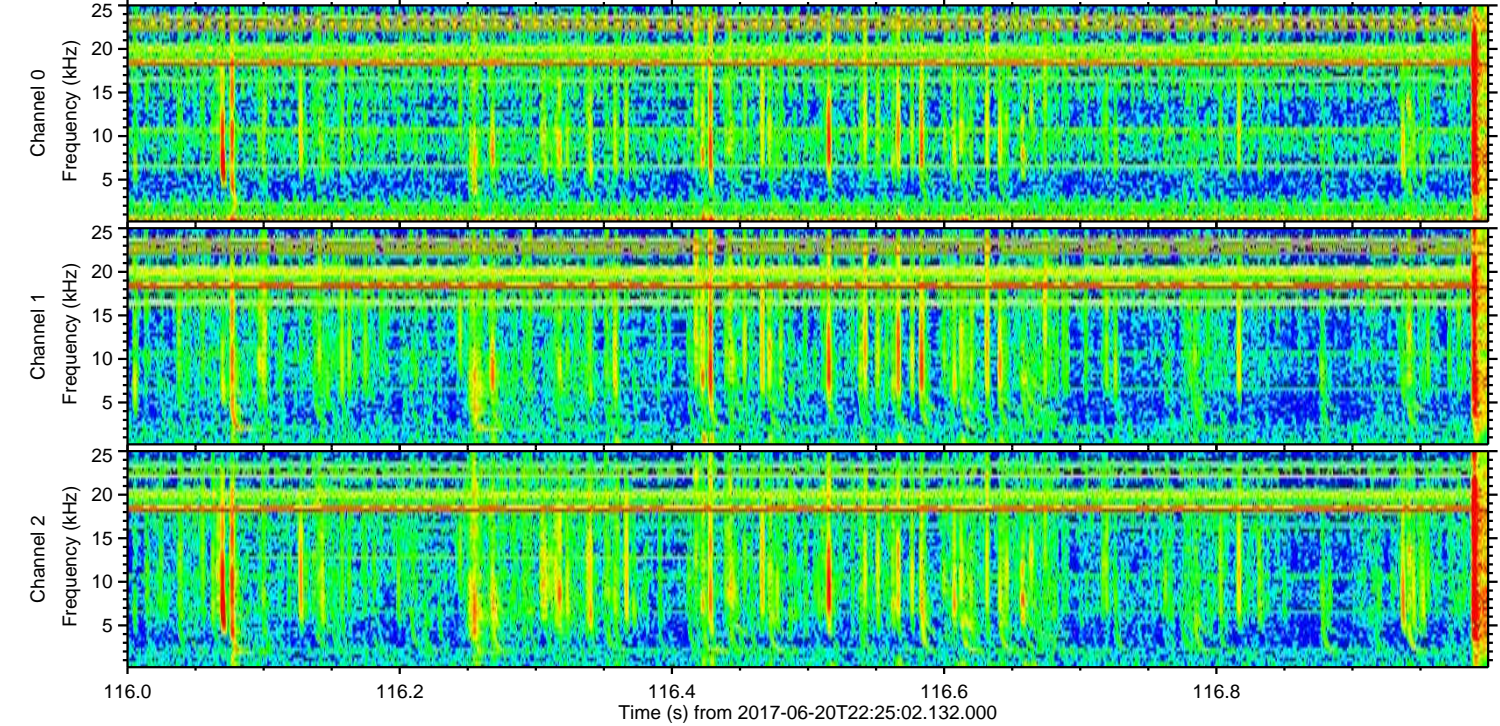
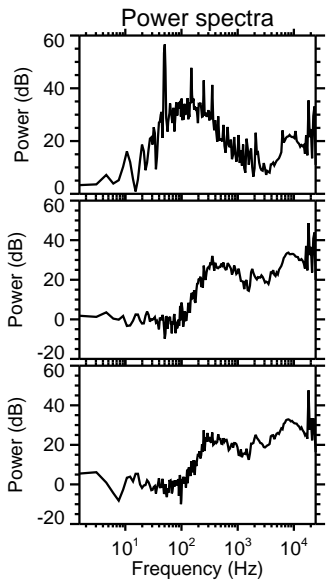
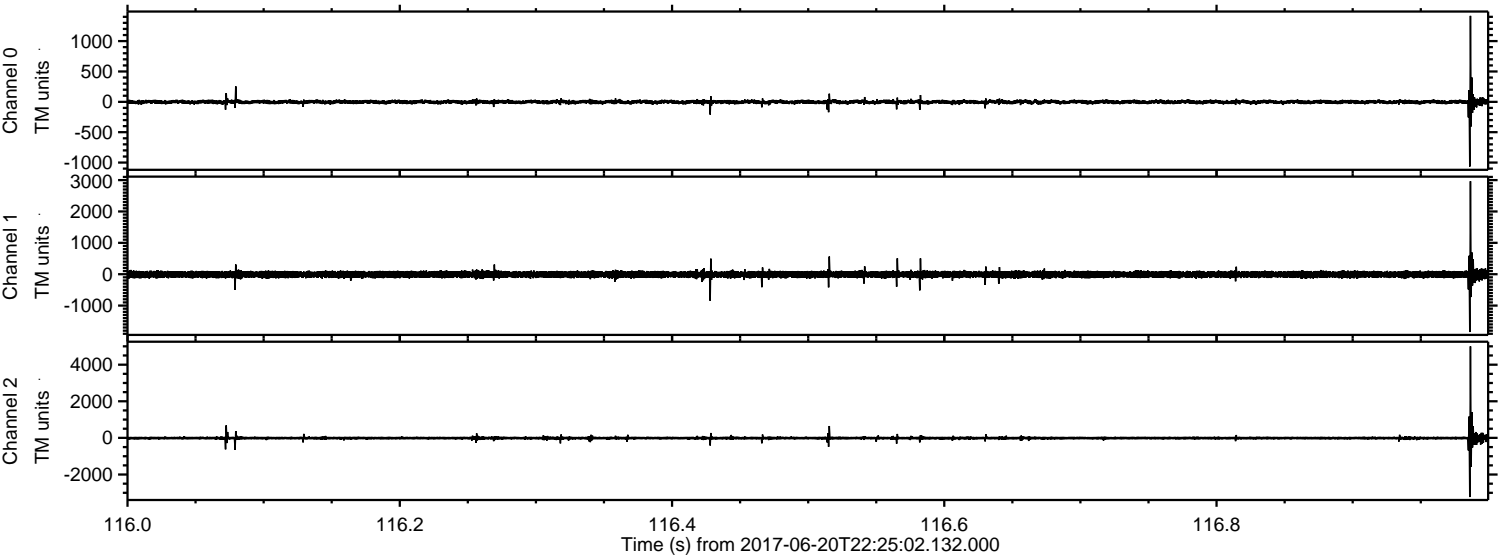


Processed Wed Jun 21 00:32:53 2017 by ELM ver.2012-10-06 from 001__elm20170620_222501__dat00.bin



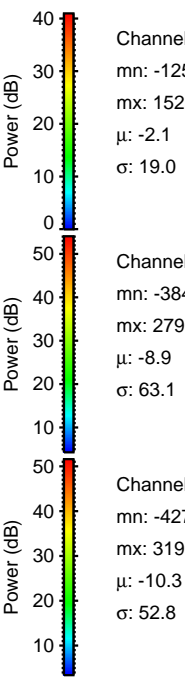
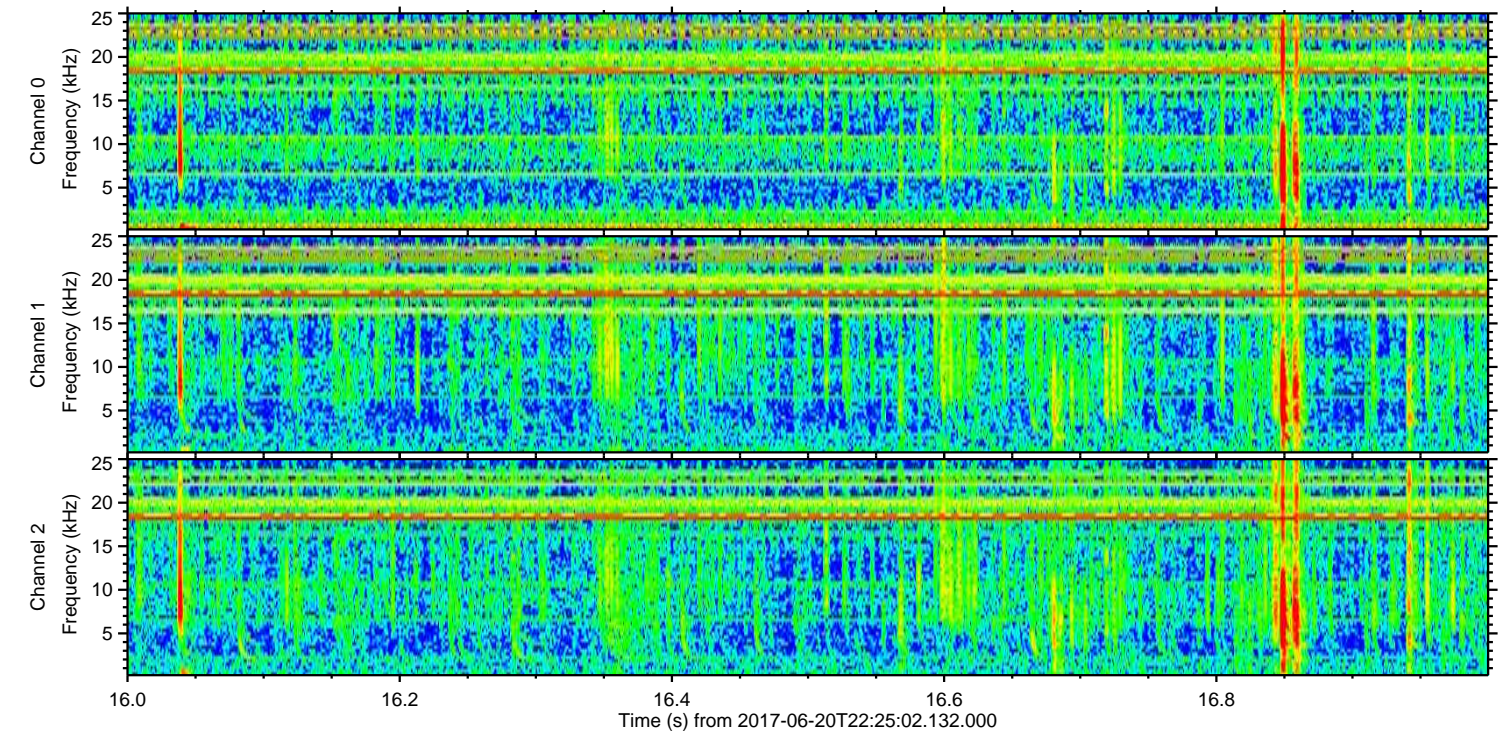
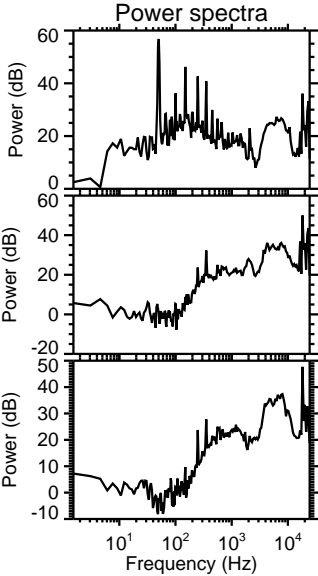
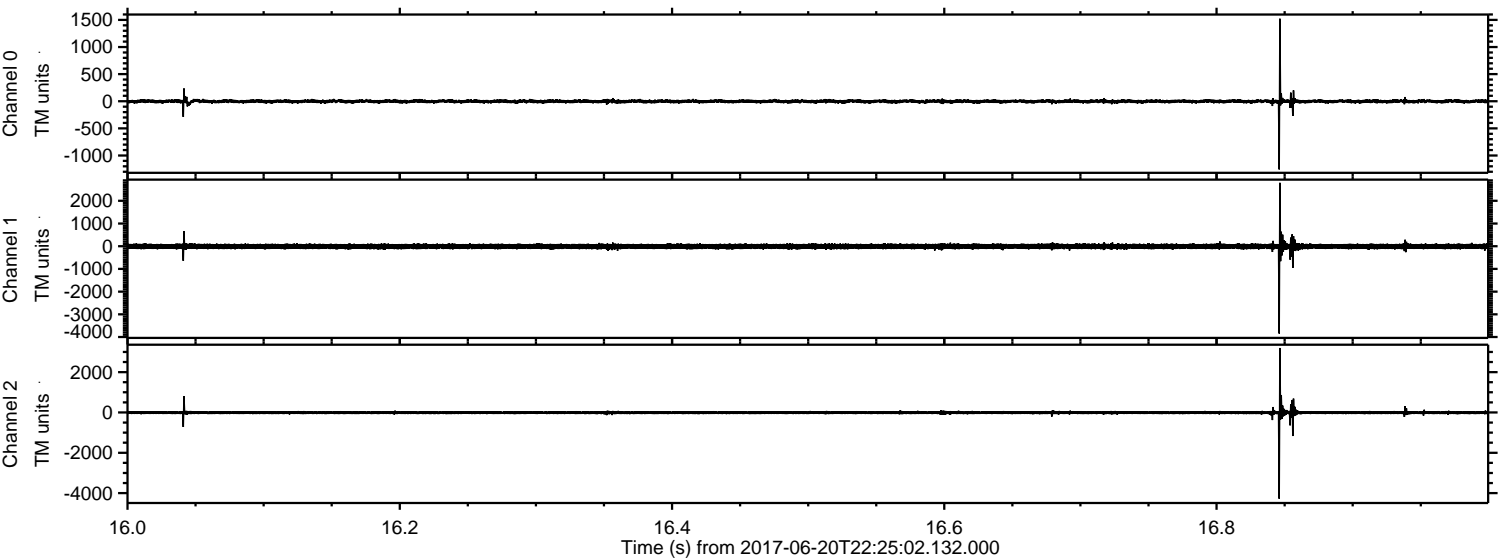
ELMAVAN 3D WAVEFORMS (Measured data sampled at 50 kHz) 51000 packets of 144 samples from 2017-06-20T22:25:02.132.000. Part 117/147

Processed Wed Jun 21 00:32:53 2017 by ELM ver.2012-10-06 from 001__elm20170620_222501__dat00.bin



ELMAVAN 3D WAVEFORMS (Measured data sampled at 50 kHz) 51000 packets of 144 samples from 2017-06-20T22:25:02.132.000. Part 17/147

Processed Wed Jun 21 00:32:54 2017 by ELM ver.2012-10-06 from 001__elm20170620_222501__dat00.bin

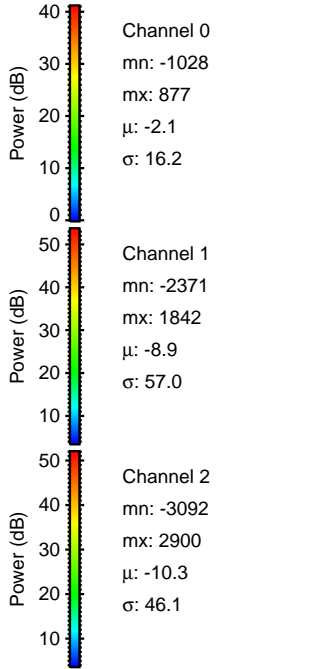
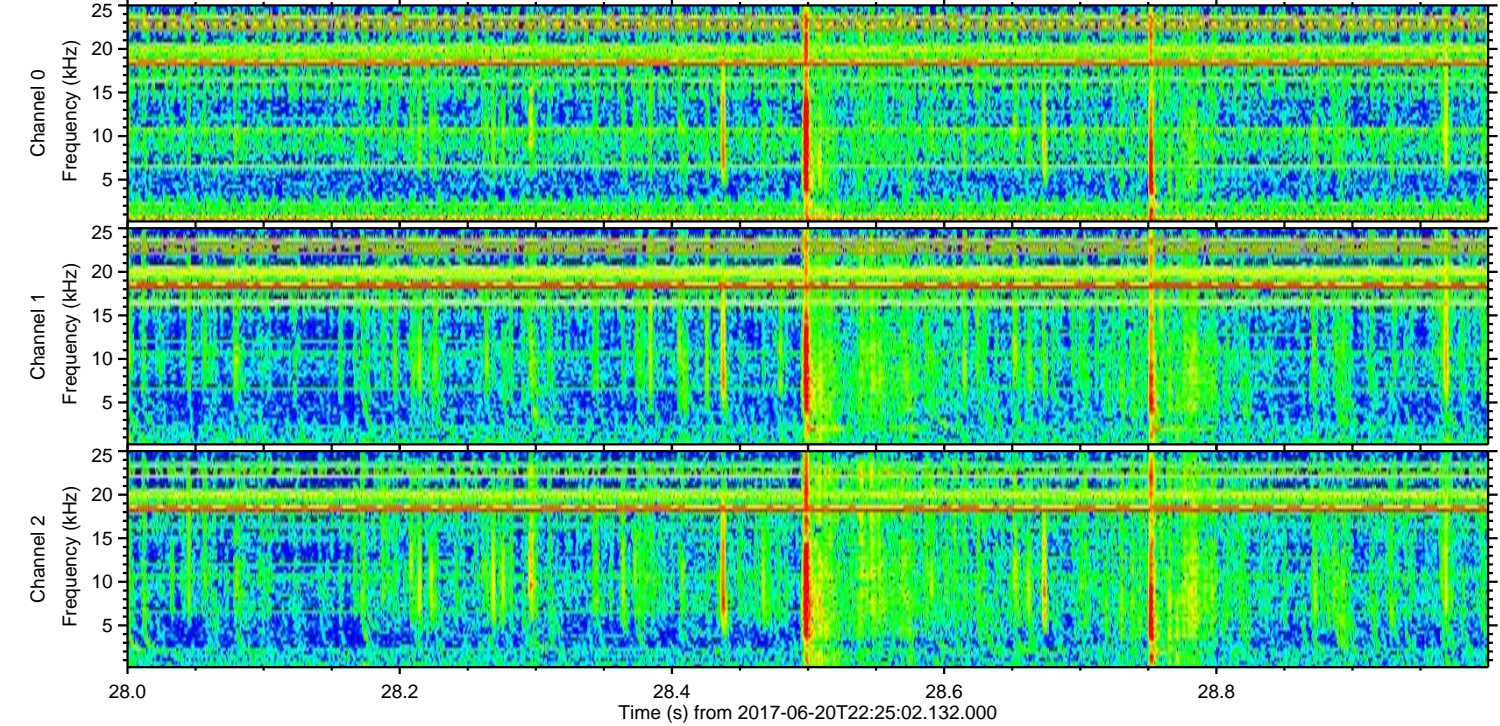
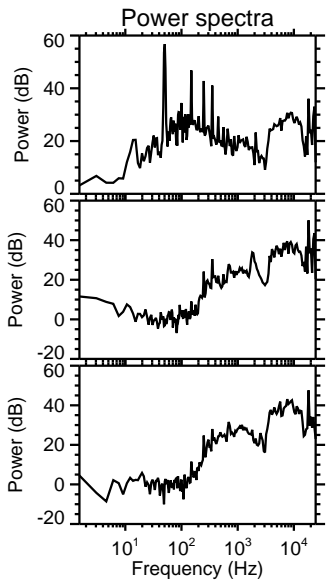
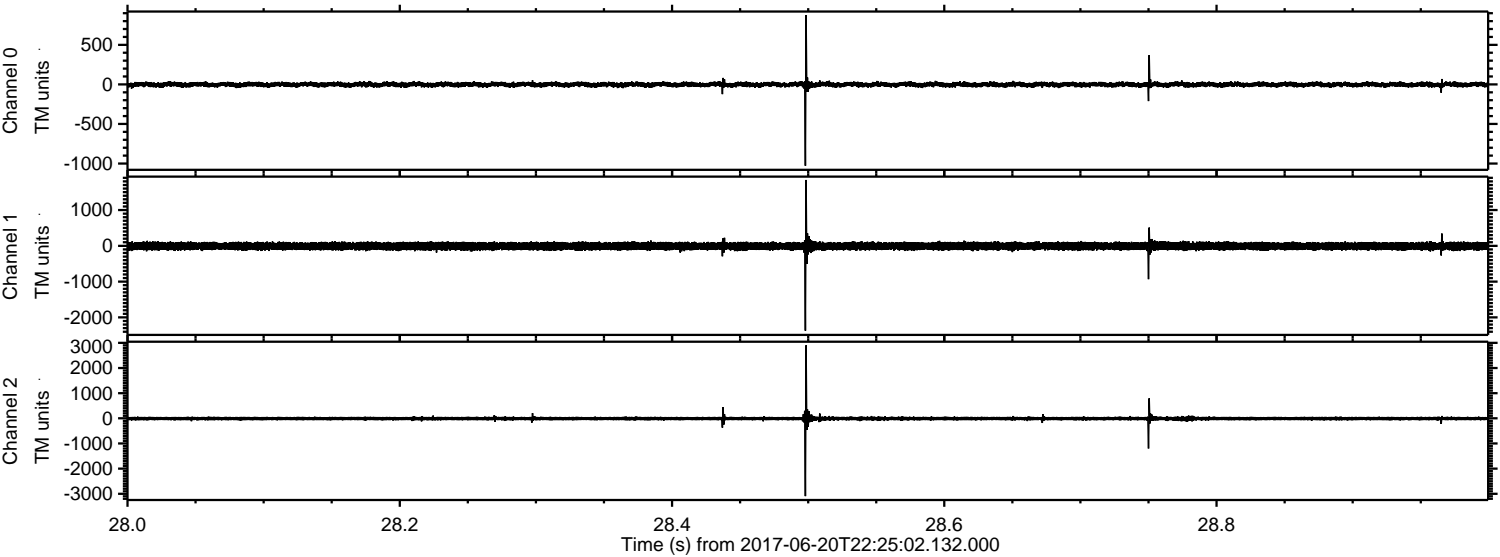


Channel 0
mn: -1257
mx: 1523
 μ : -2.1
 σ : 19.0

Channel 1
mn: -3846
mx: 2793
 μ : -8.9
 σ : 63.1

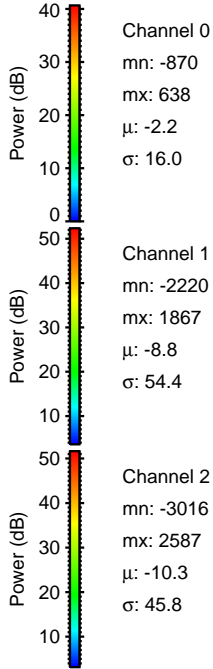
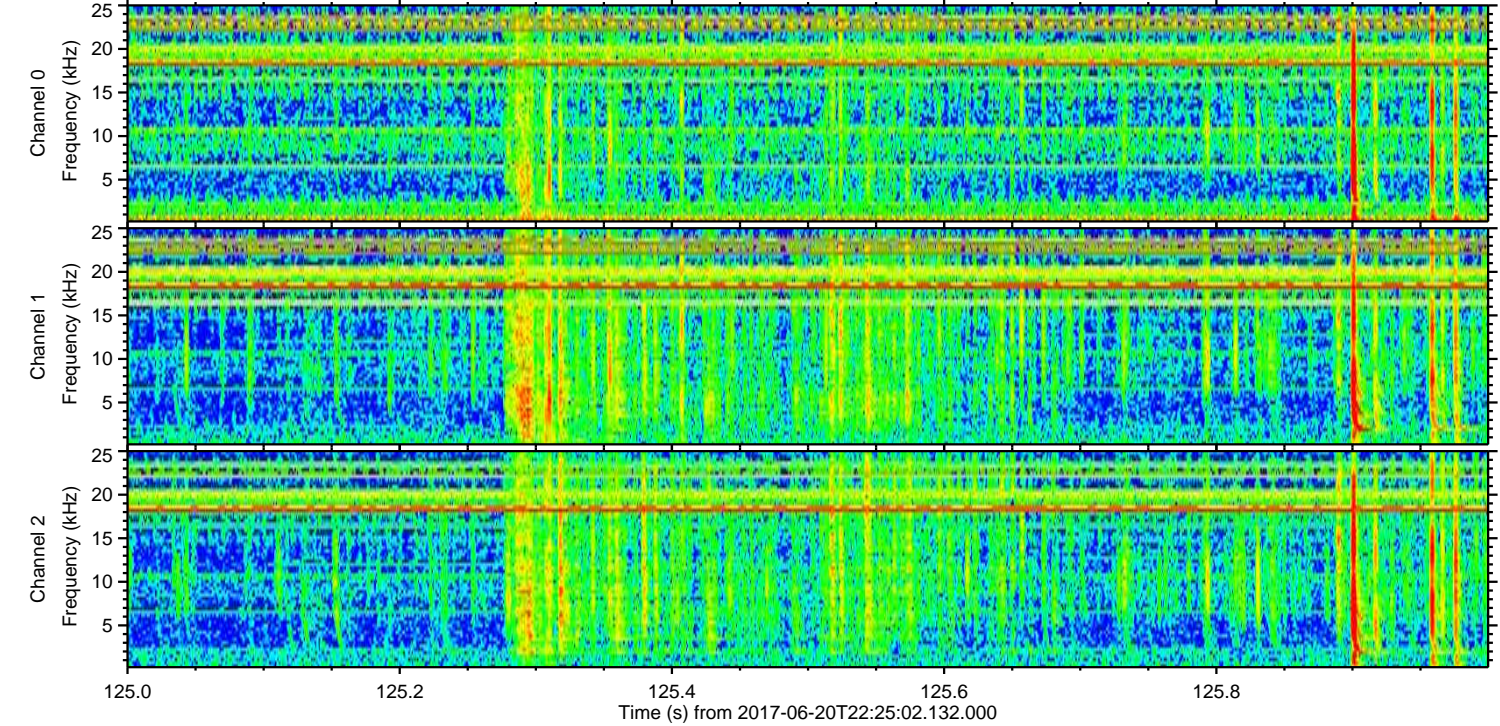
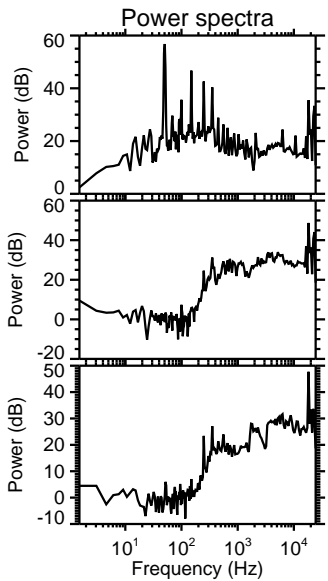
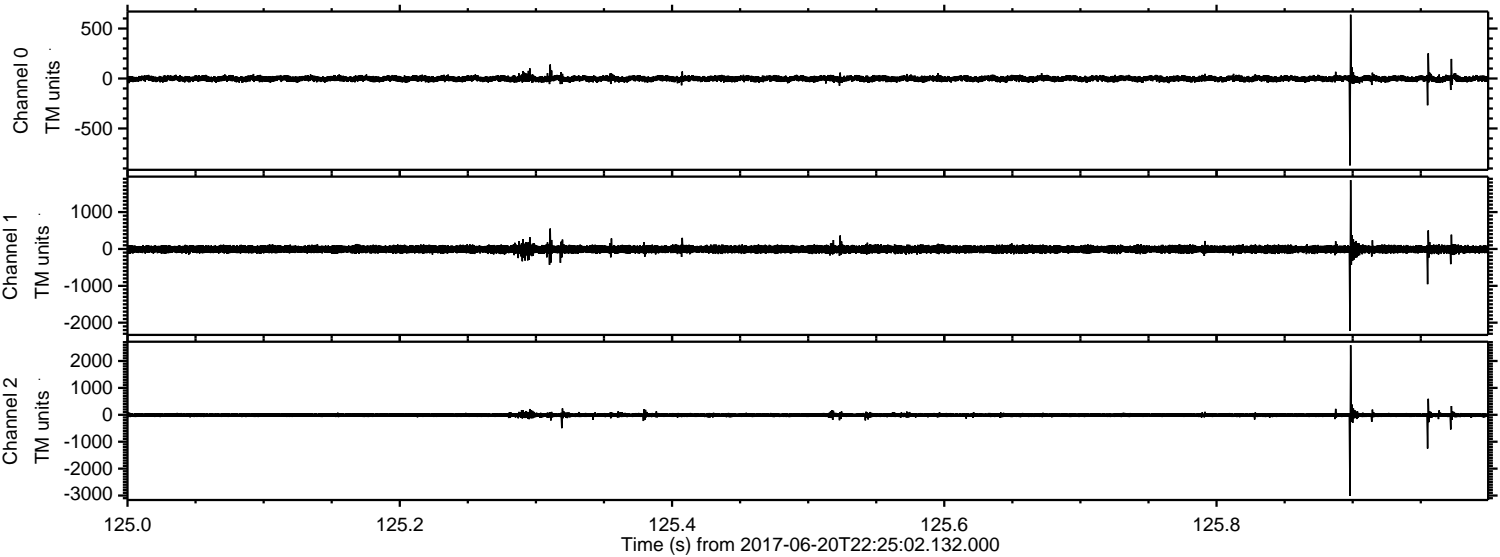
Channel 2
mn: -4276
mx: 3199
 μ : -10.3
 σ : 52.8

Processed Wed Jun 21 00:32:55 2017 by ELM ver.2012-10-06 from 001__elm20170620_222501__dat00.bin



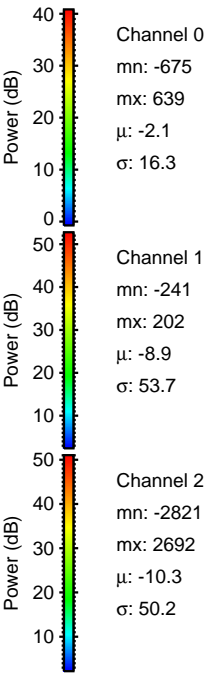
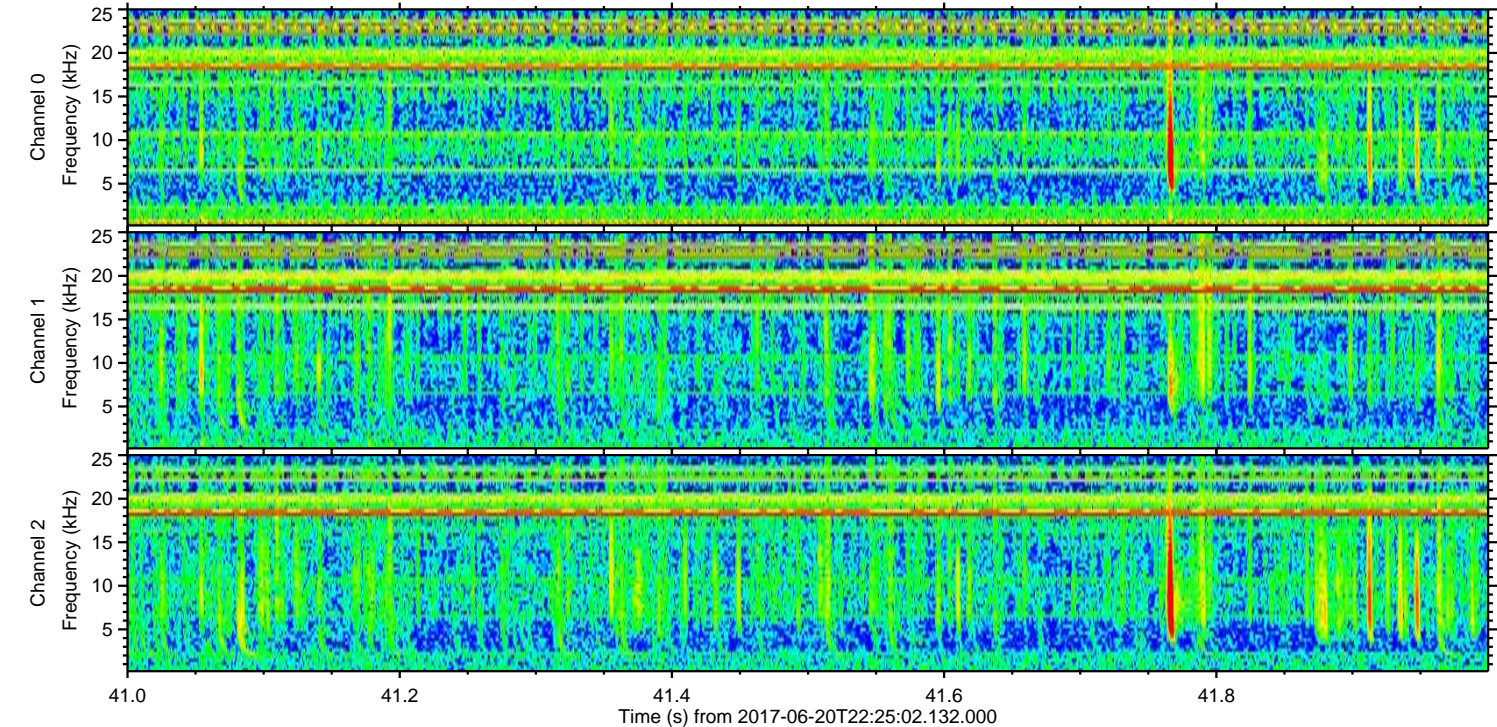
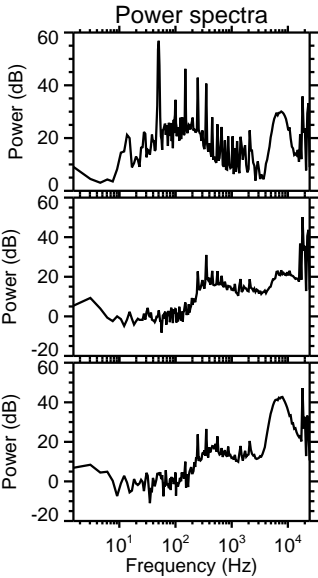
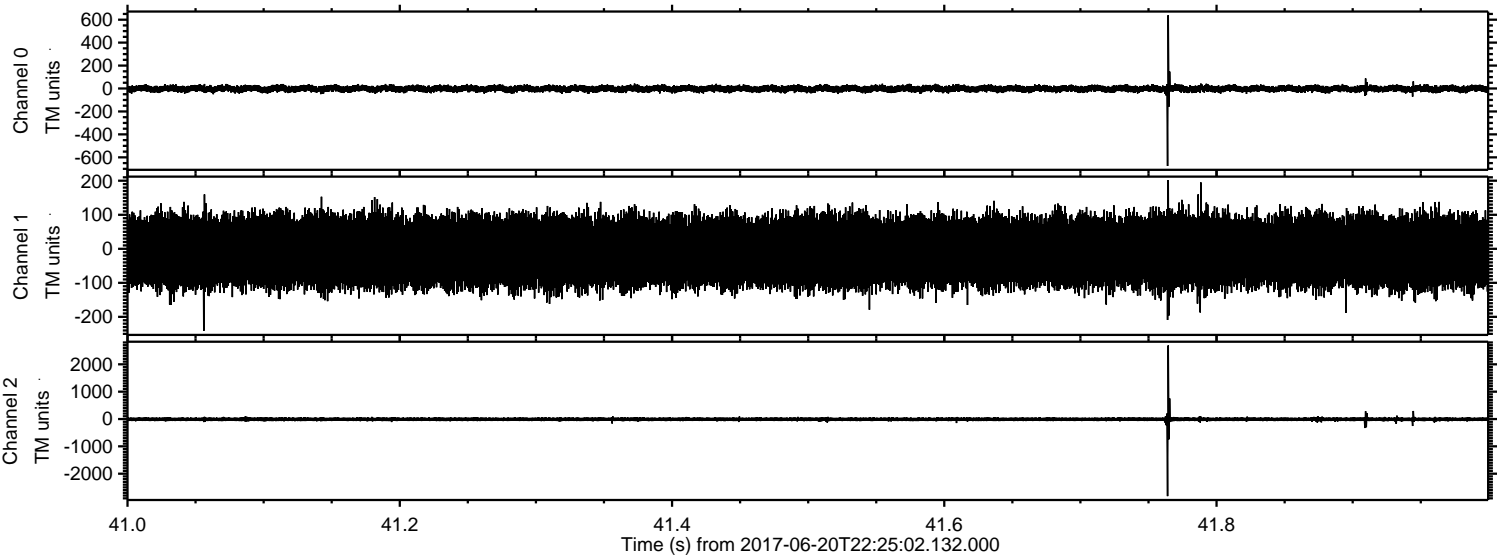
ELMAVAN 3D WAVEFORMS (Measured data sampled at 50 kHz) 51000 packets of 144 samples from 2017-06-20T22:25:02.132.000. Part 126/147

Processed Wed Jun 21 00:32:56 2017 by ELM ver.2012-10-06 from 001__elm20170620_222501__dat00.bin

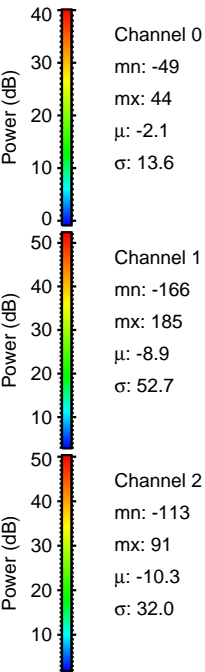
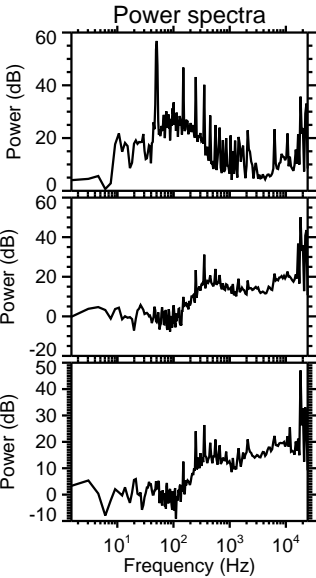
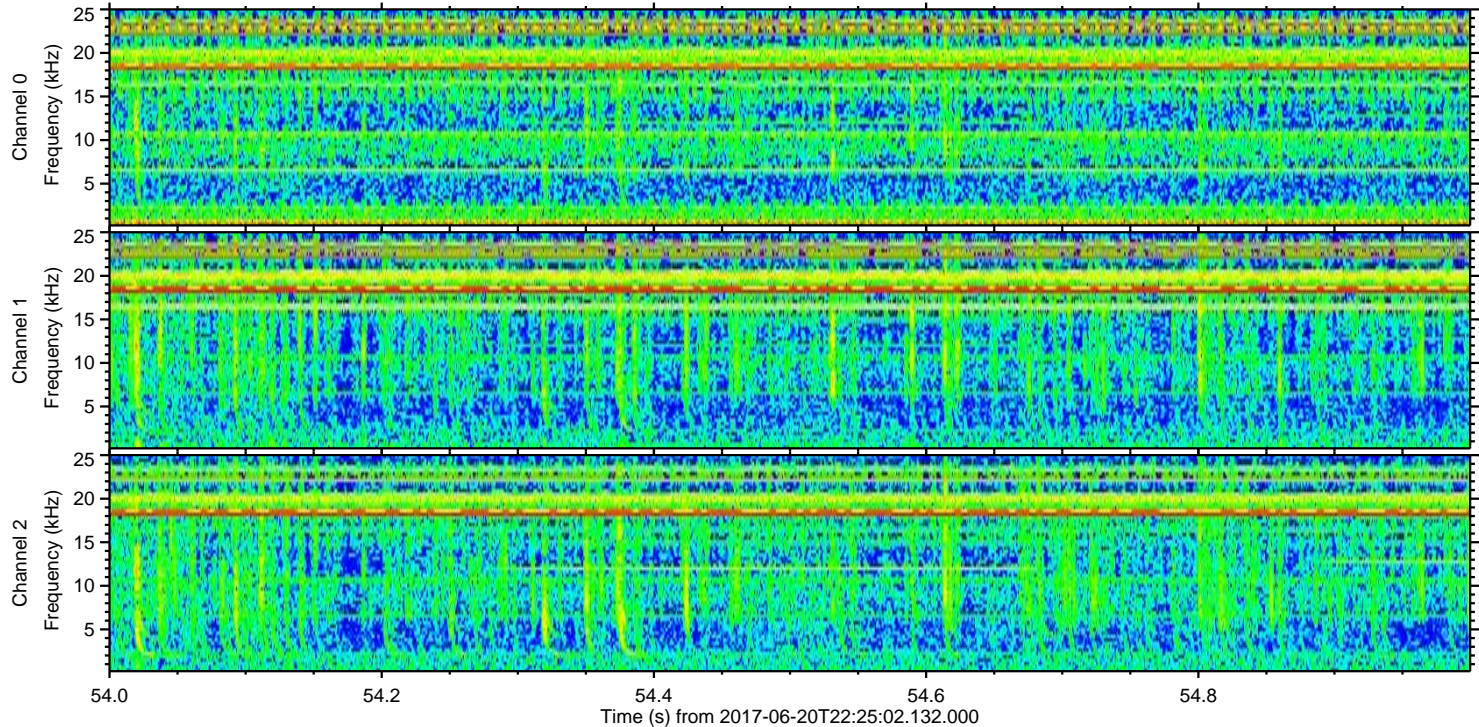
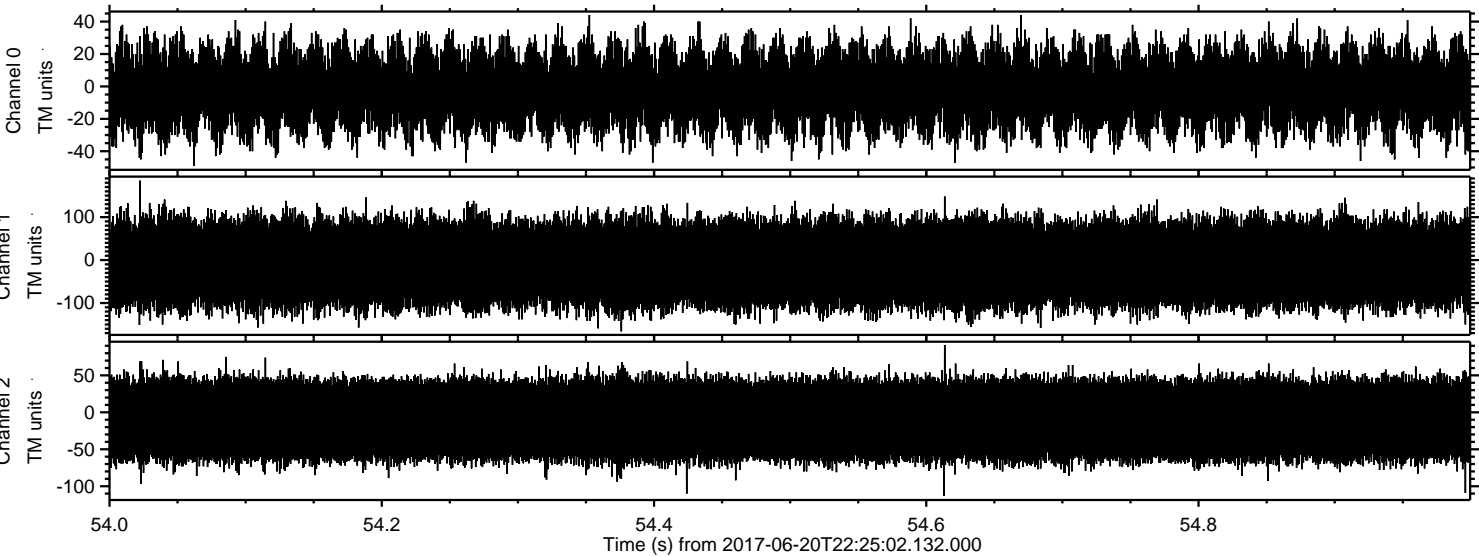


ELMAVAN 3D WAVEFORMS (Measured data sampled at 50 kHz) 51000 packets of 144 samples from 2017-06-20T22:25:02.132.000. Part 42/147

Processed Wed Jun 21 00:32:57 2017 by ELM ver.2012-10-06 from 001__elm20170620_222501__dat00.bin



Processed Wed Jun 21 00:32:57 2017 by ELM ver.2012-10-06 from 001__elm20170620_222501__dat00.bin



Channel 0
mn: -49
mx: 44
 μ : -2.1
 σ : 13.6

Channel 1
mn: -166
mx: 185
 μ : -8.9
 σ : 52.7

Channel 2
mn: -113
mx: 91
 μ : -10.3
 σ : 32.0