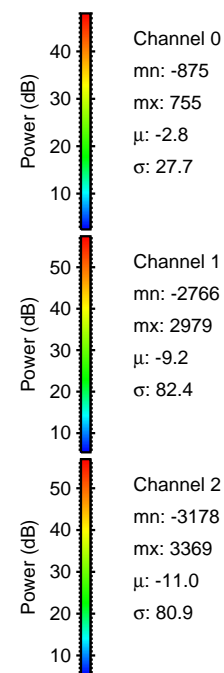
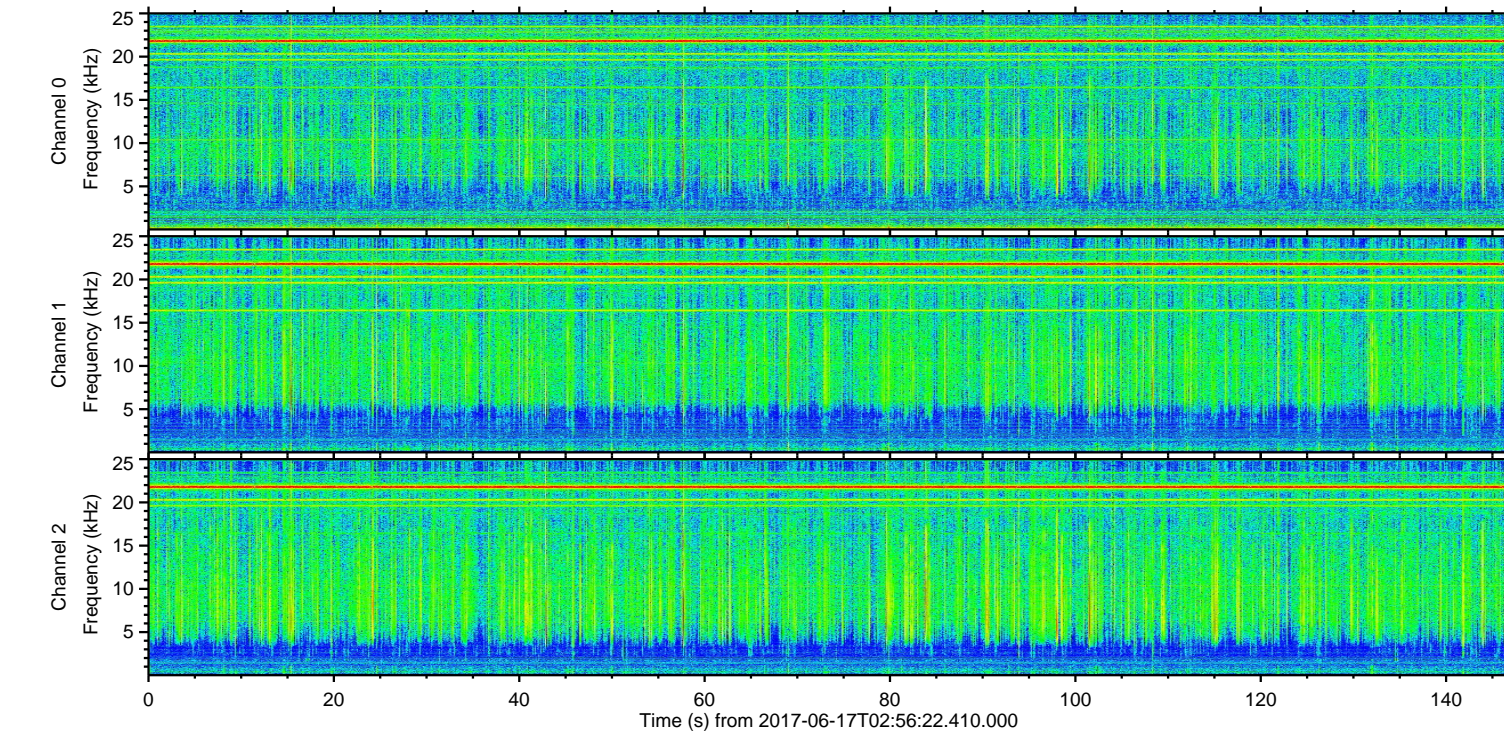
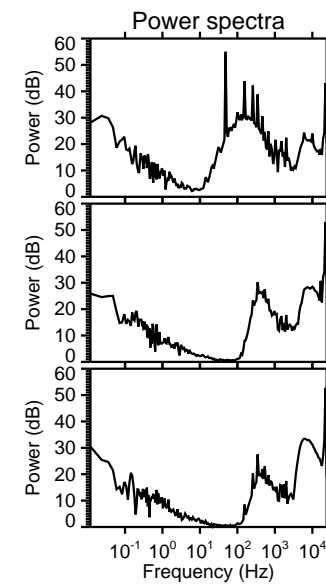
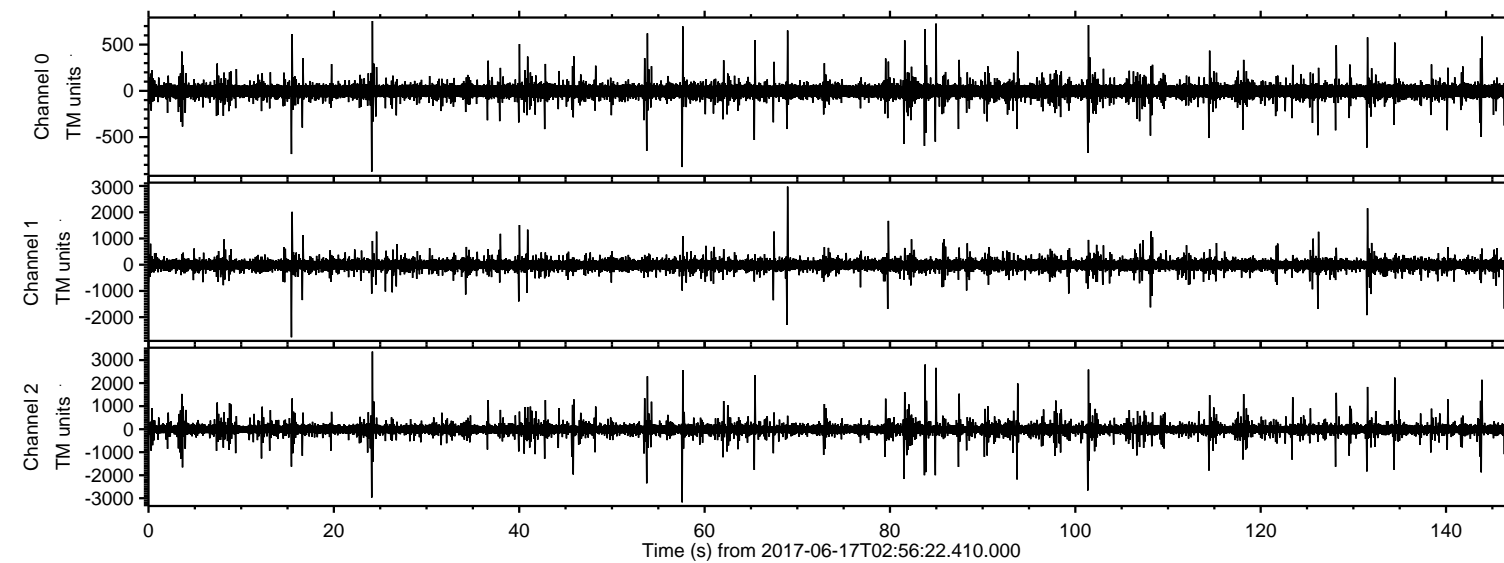


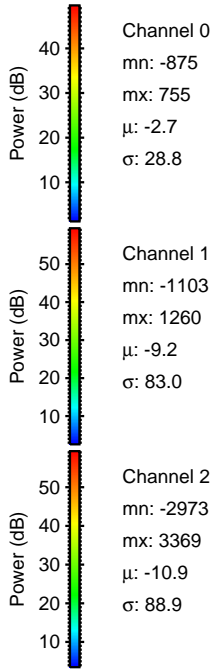
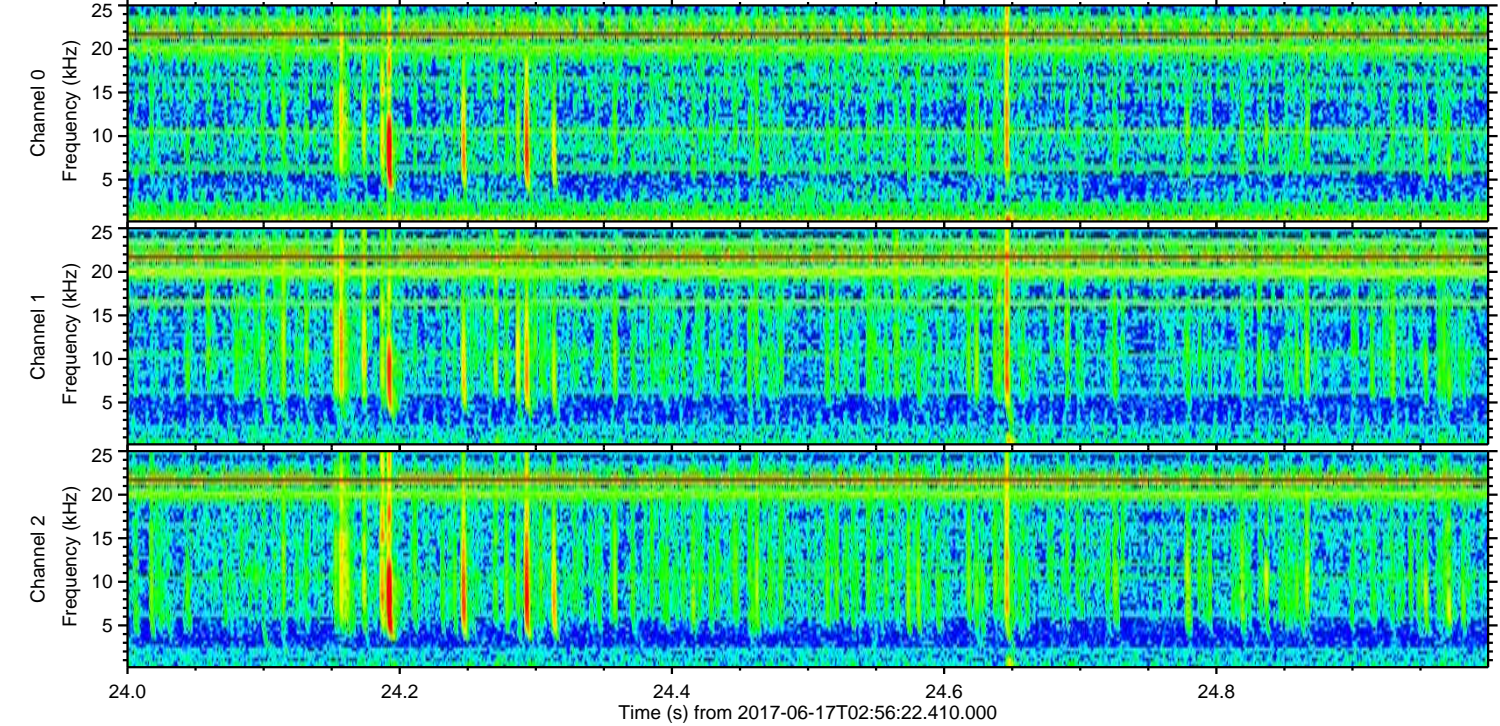
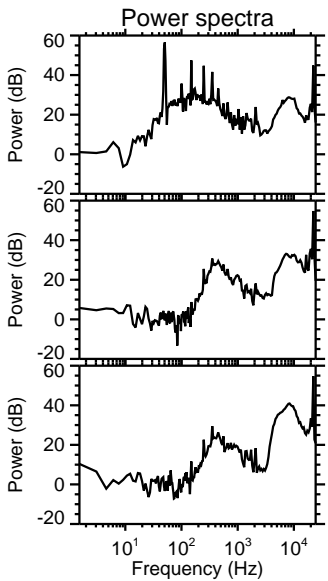
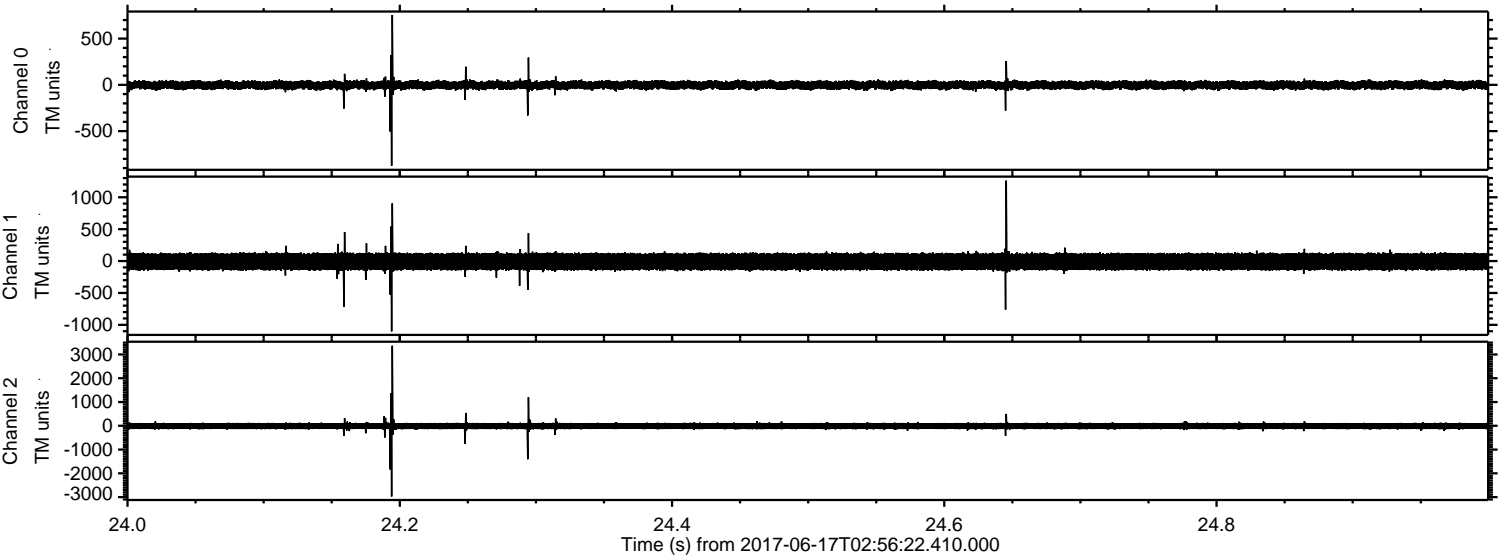
# ELMAVAN 3D WAVEFORMS (Measured data sampled at 50 kHz) 51000 packets of 144 samples from 2017-06-17T02:56:22.410.000.

Processed Sat Jun 17 05:03:53 2017 by ELM ver.2012-10-06 from 001\_\_elm20170617\_025621\_\_dat00.bin



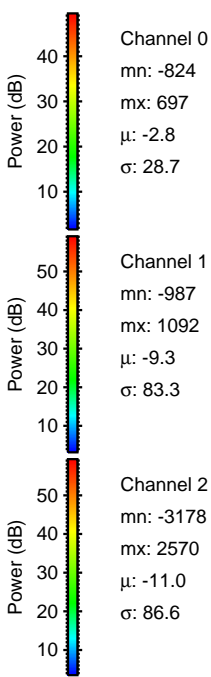
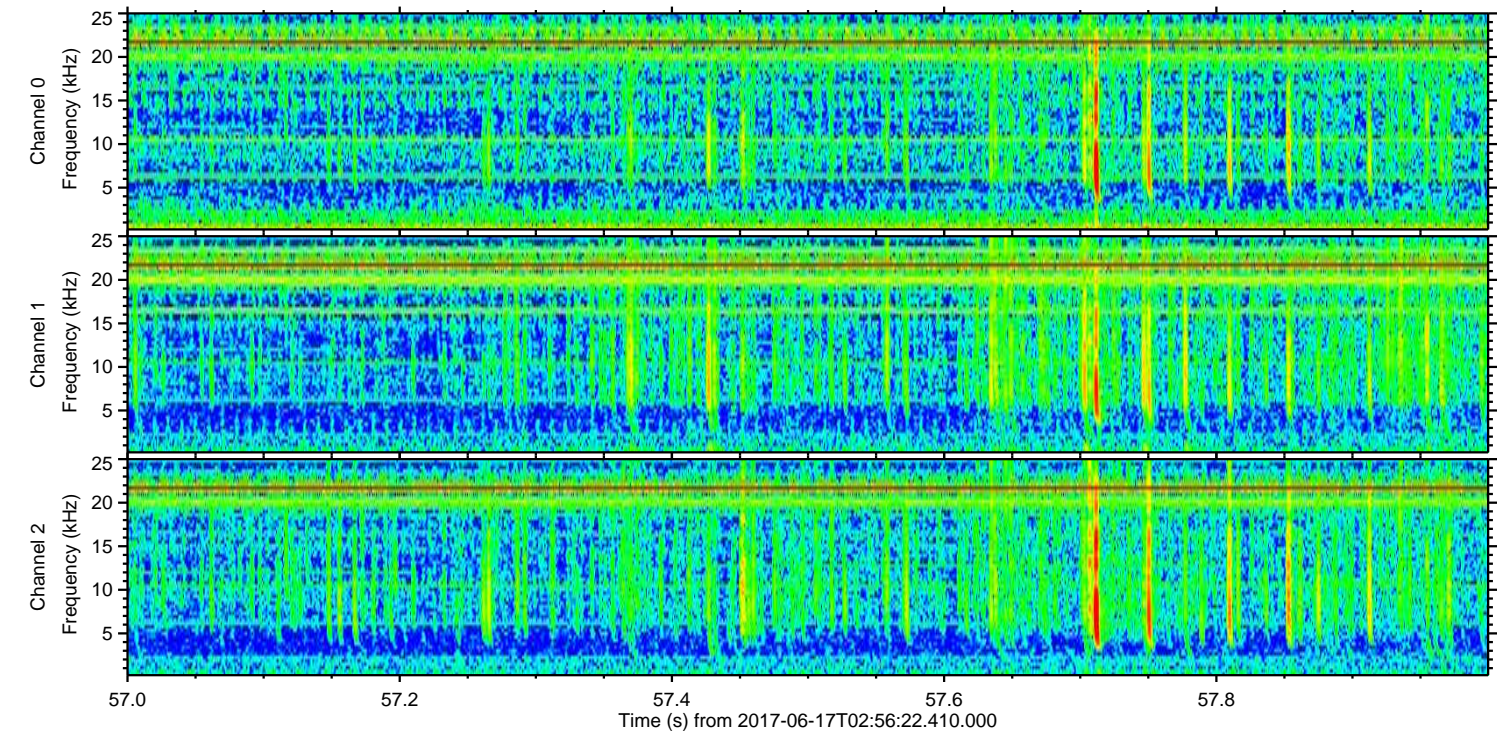
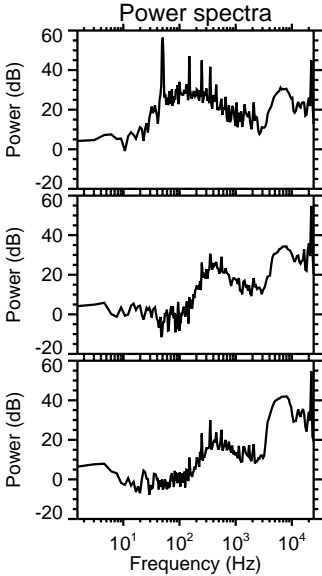
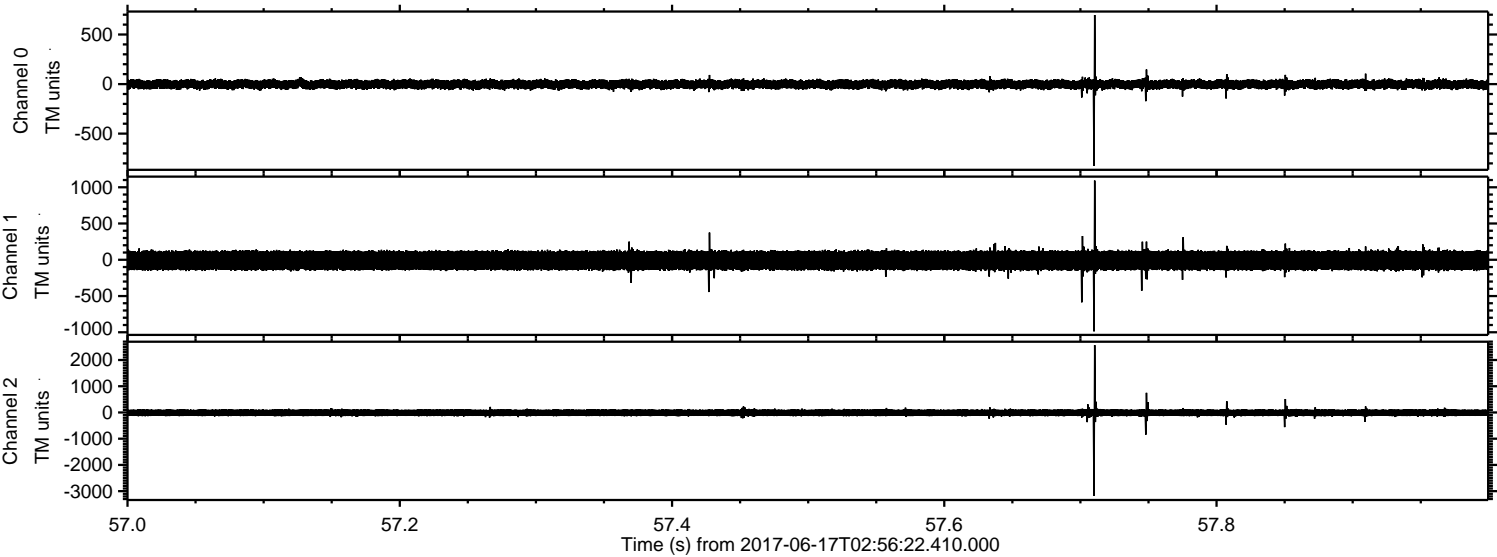


Processed Sat Jun 17 05:03:59 2017 by ELM ver.2012-10-06 from 001\_\_elm20170617\_025621\_\_dat00.bin





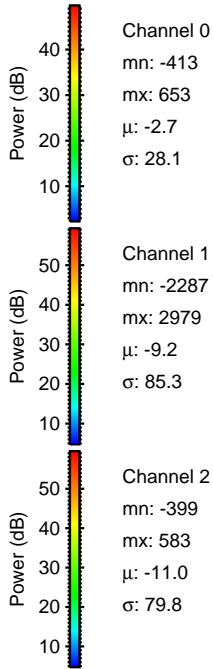
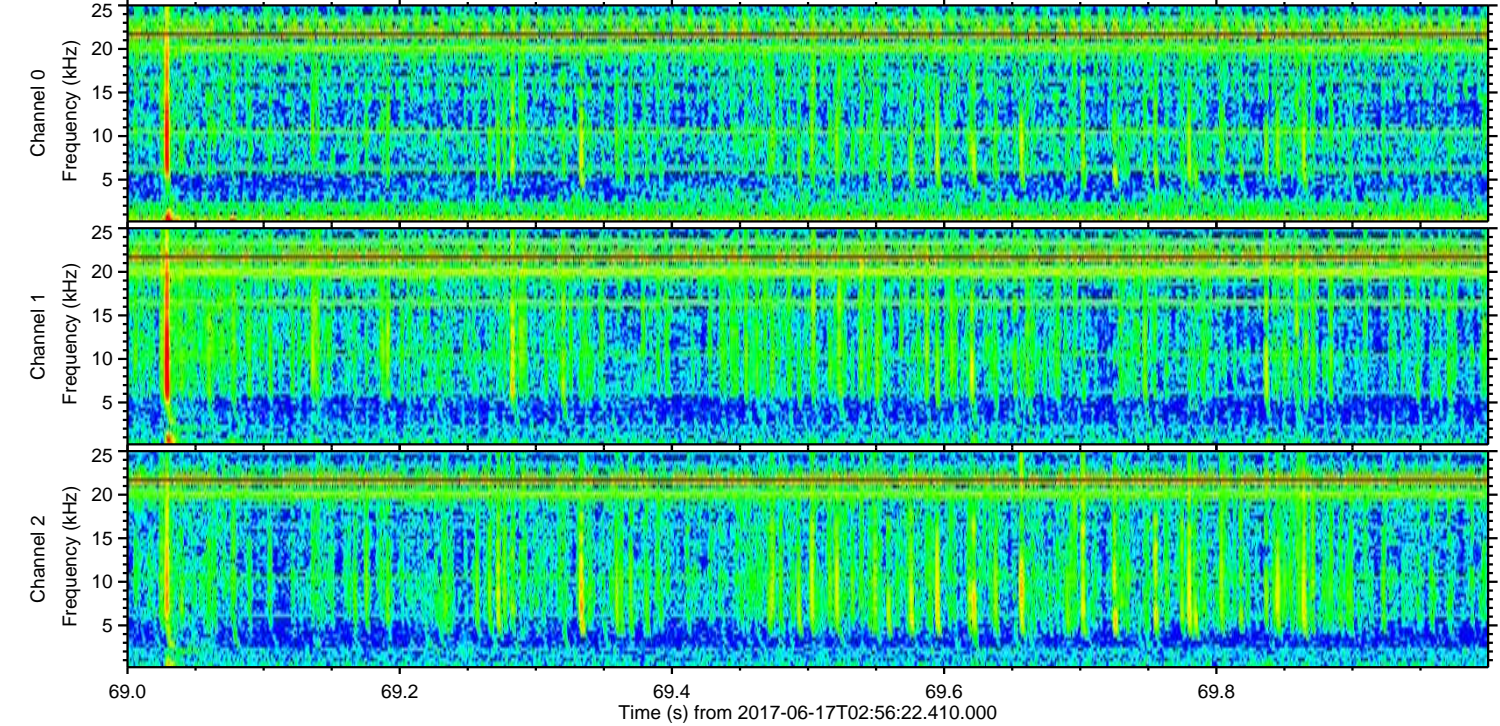
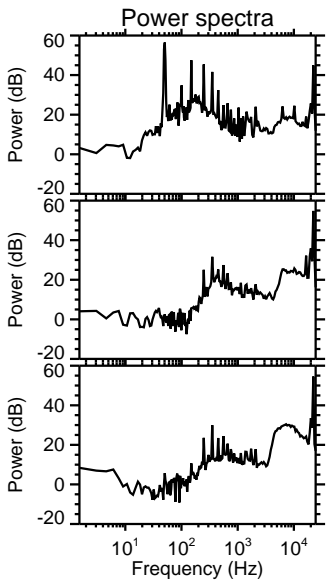
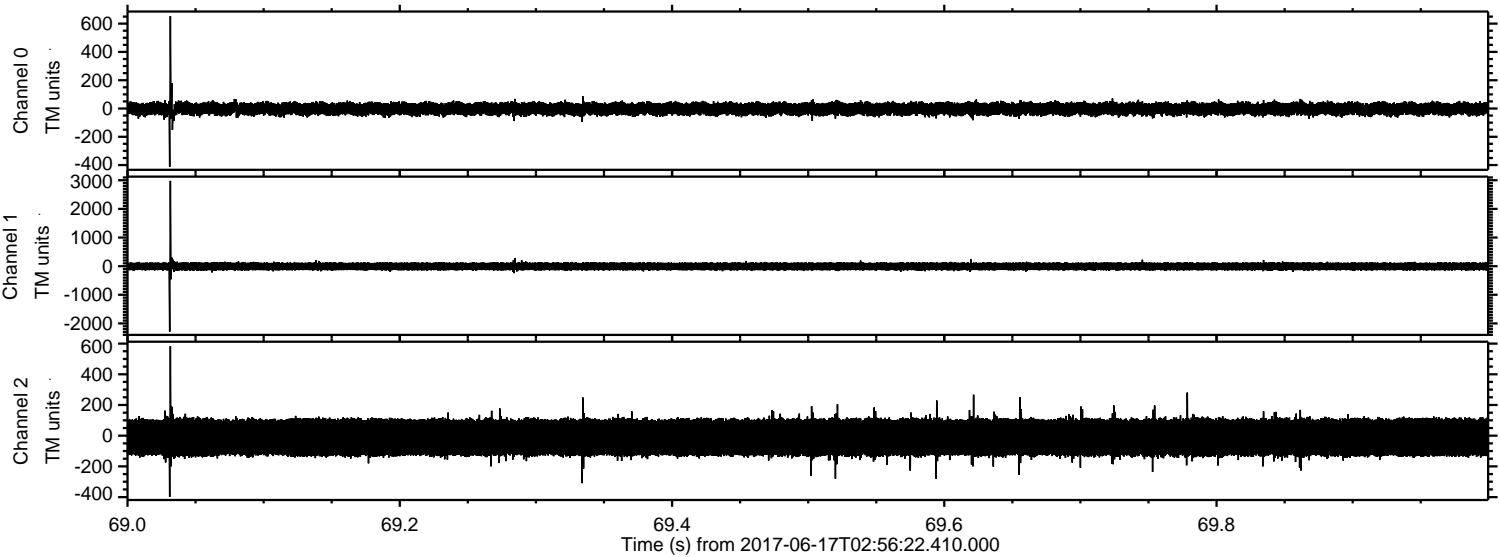
Processed Sat Jun 17 05:04:00 2017 by ELM ver.2012-10-06 from 001\_\_elm20170617\_025621\_\_dat00.bin





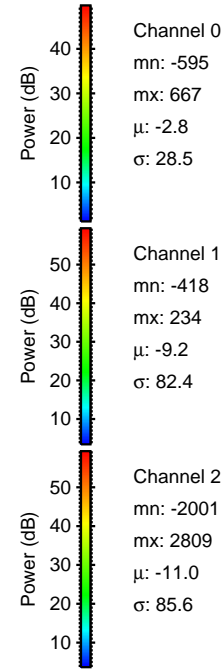
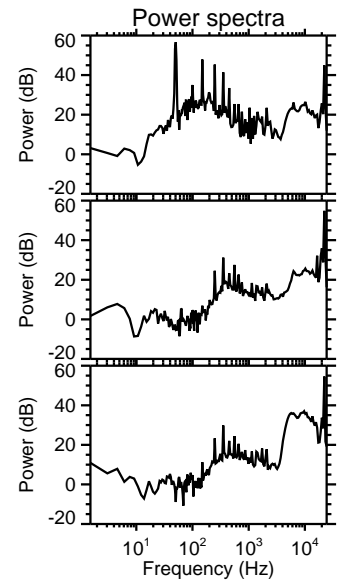
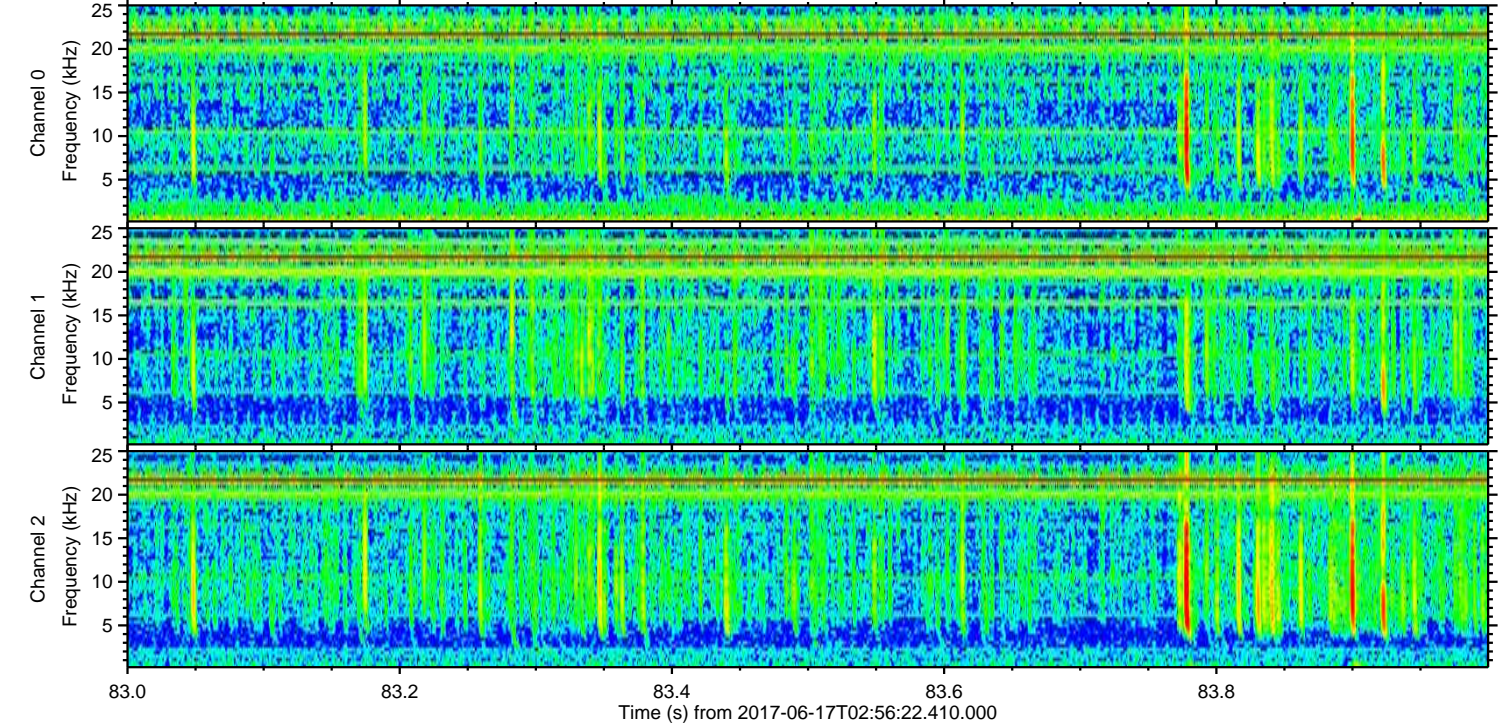
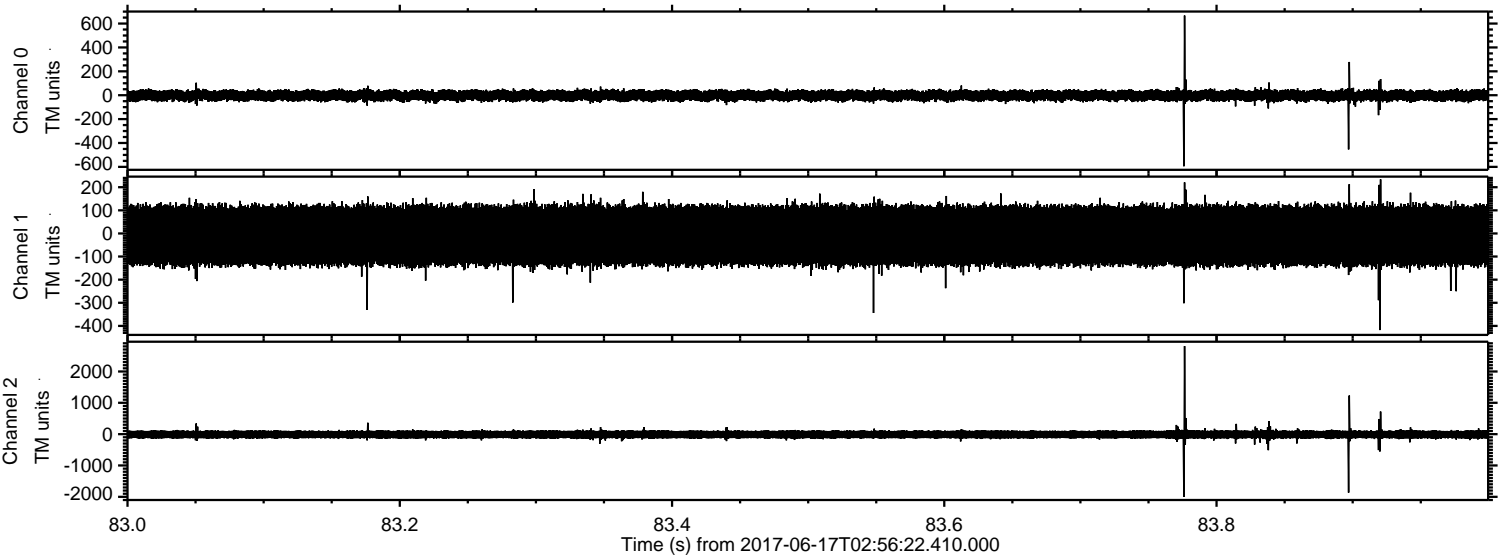
ELMAVAN 3D WAVEFORMS (Measured data sampled at 50 kHz) 51000 packets of 144 samples from 2017-06-17T02:56:22.410.000. Part 70/147

Processed Sat Jun 17 05:04:00 2017 by ELM ver.2012-10-06 from 001\_\_elm20170617\_025621\_\_dat00.bin





Processed Sat Jun 17 05:04:01 2017 by ELM ver.2012-10-06 from 001\_\_elm20170617\_025621\_\_dat00.bin



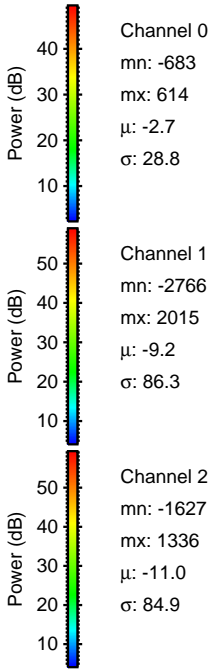
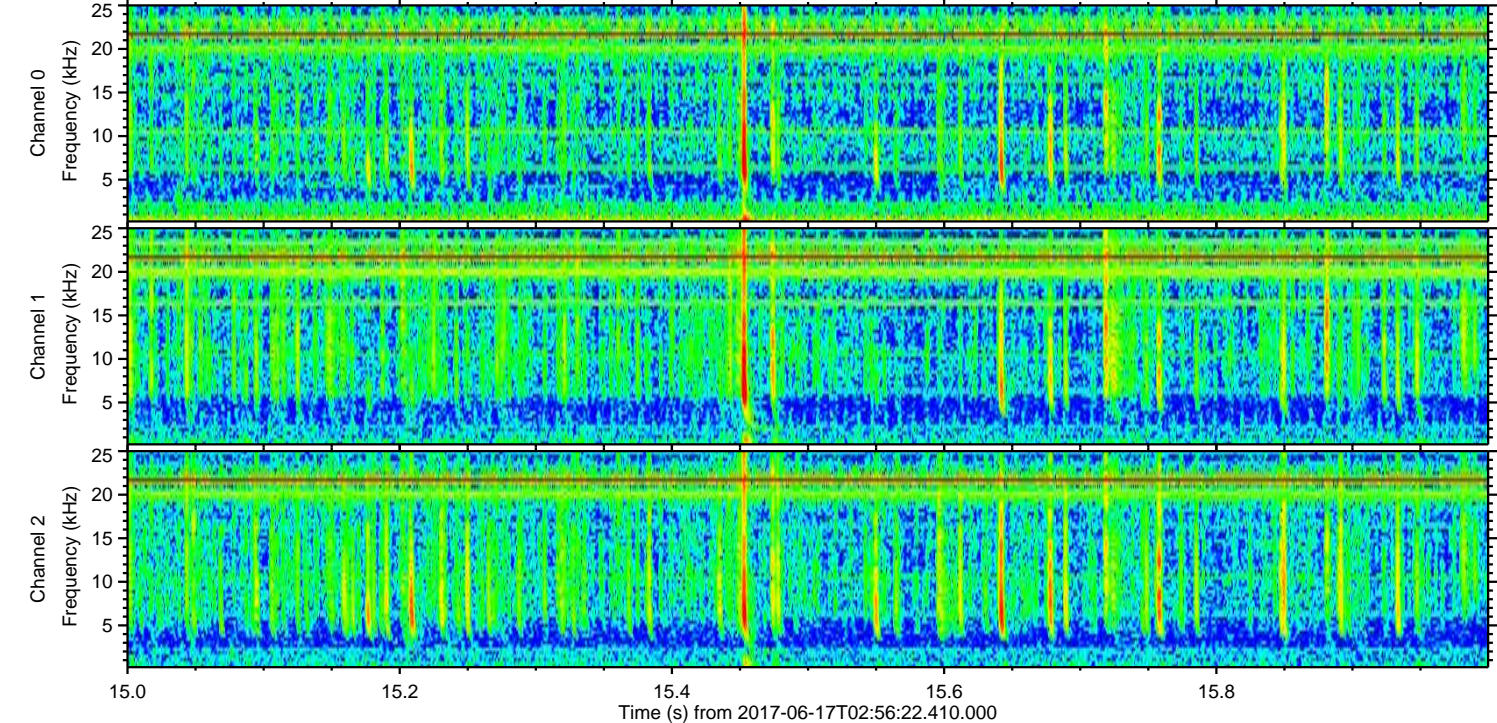
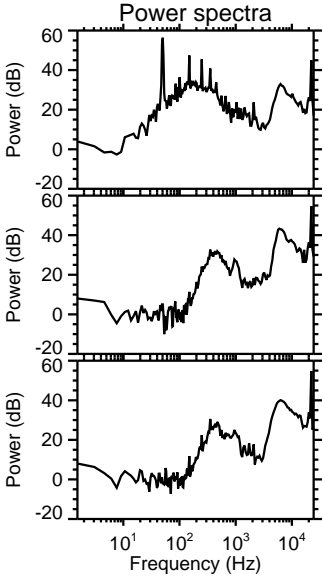
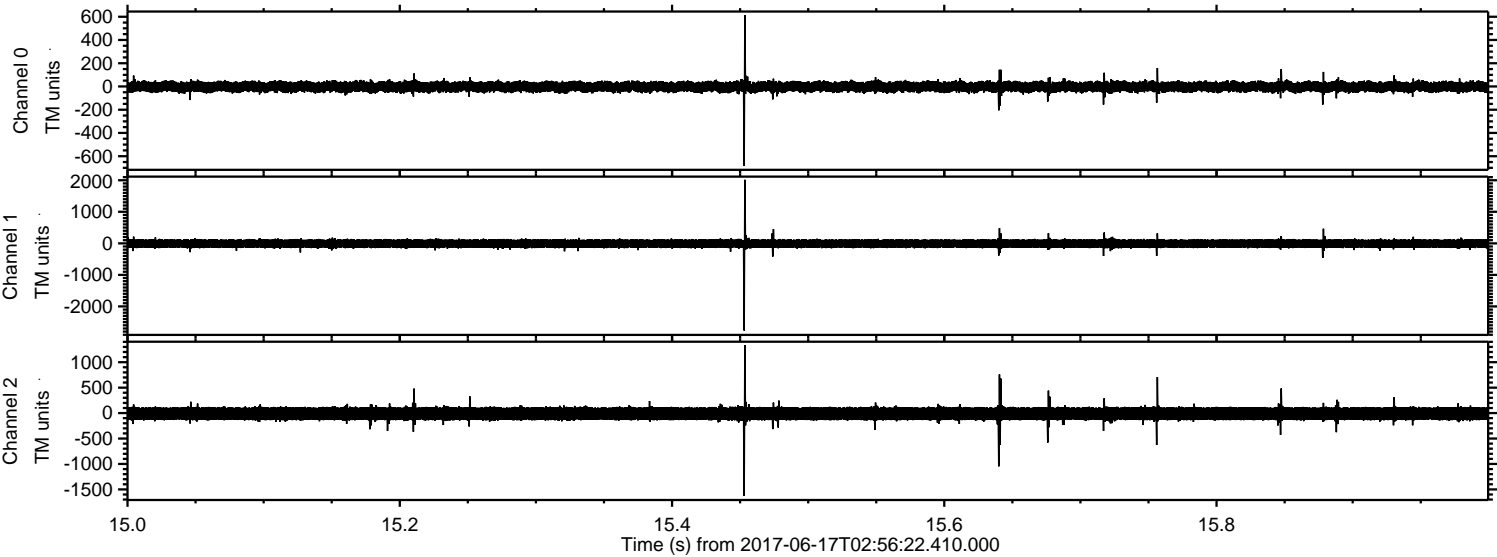
Channel 0  
mn: -595  
mx: 667  
 $\mu$ : -2.8  
 $\sigma$ : 28.5

Channel 1  
mn: -418  
mx: 234  
 $\mu$ : -9.2  
 $\sigma$ : 82.4

Channel 2  
mn: -2001  
mx: 2809  
 $\mu$ : -11.0  
 $\sigma$ : 85.6

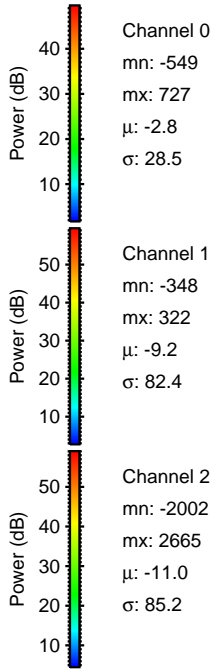
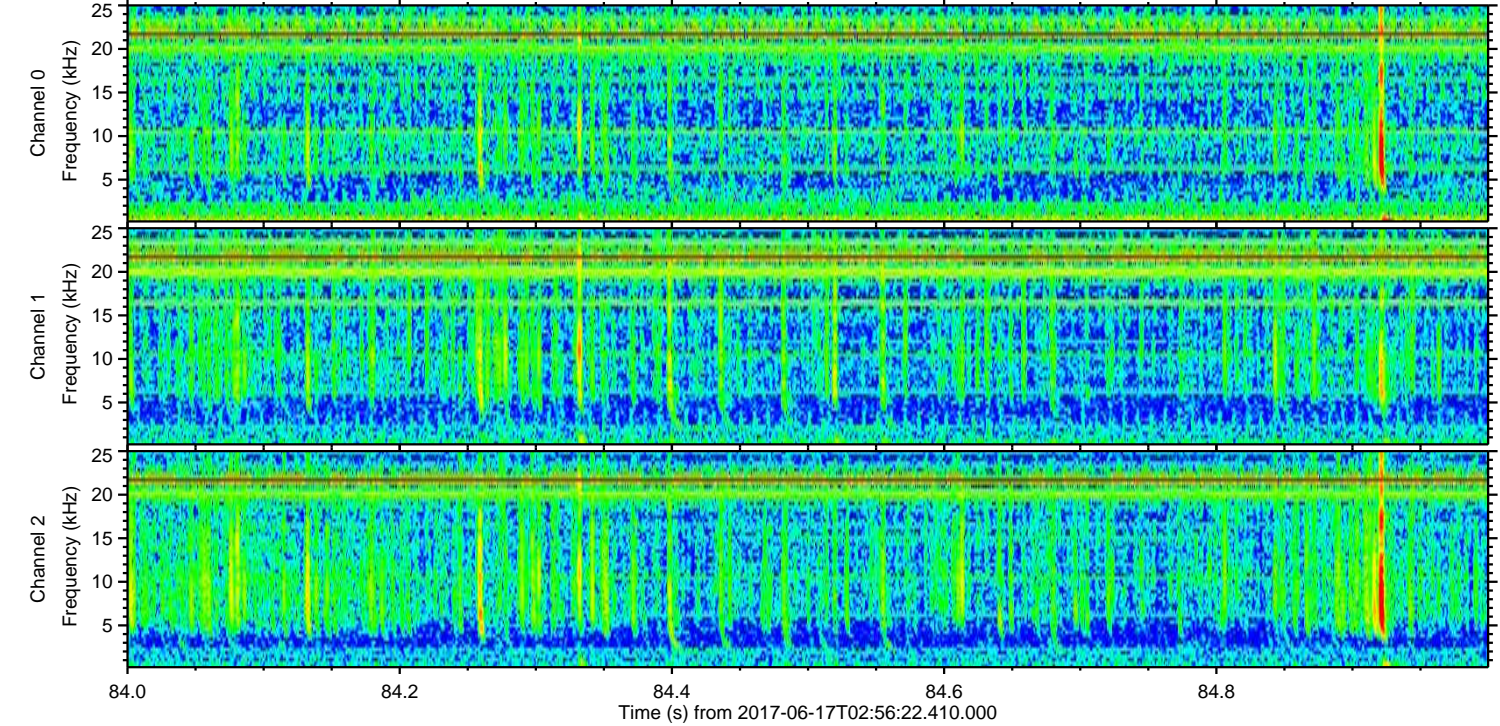
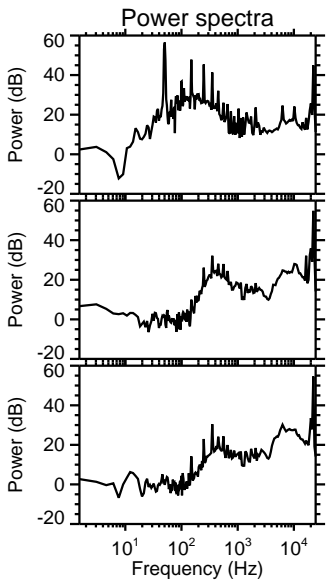
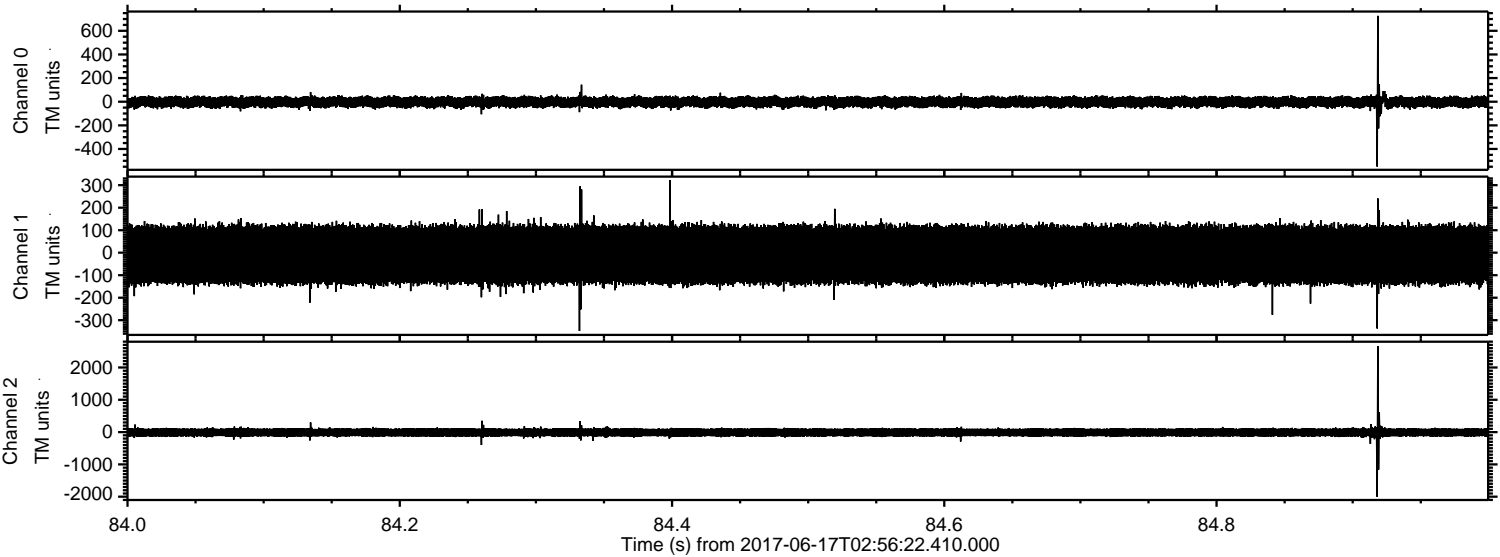


Processed Sat Jun 17 05:04:02 2017 by ELM ver.2012-10-06 from 001\_\_elm20170617\_025621\_\_dat00.bin





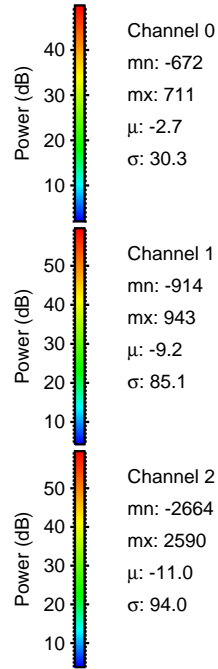
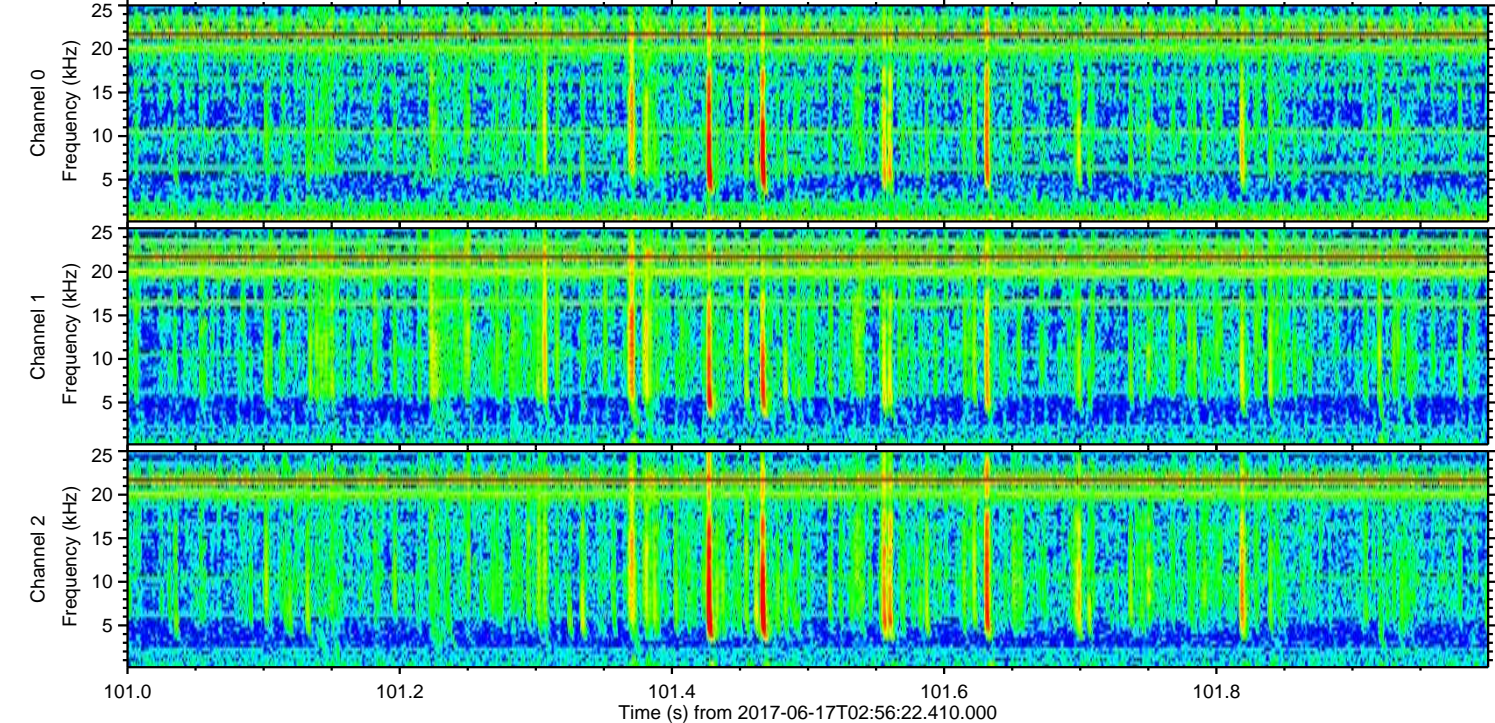
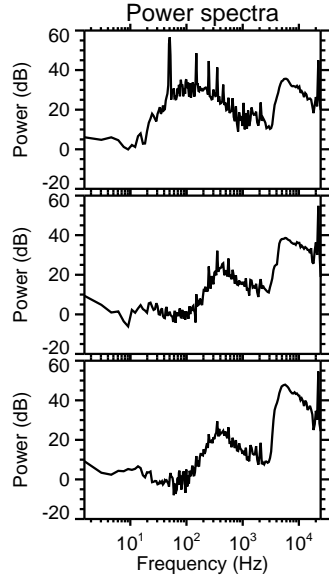
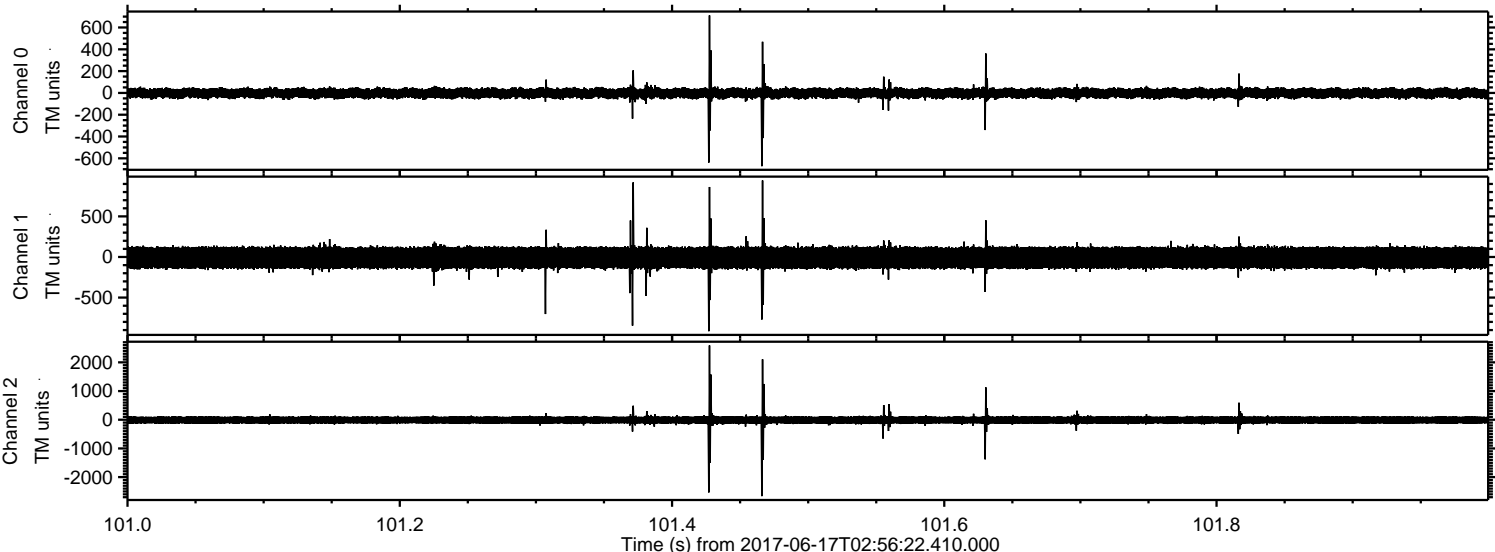
Processed Sat Jun 17 05:04:02 2017 by ELM ver.2012-10-06 from 001\_\_elm20170617\_025621\_\_dat00.bin





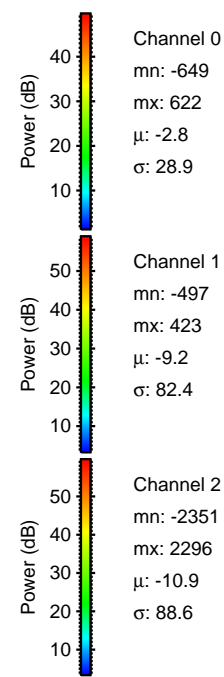
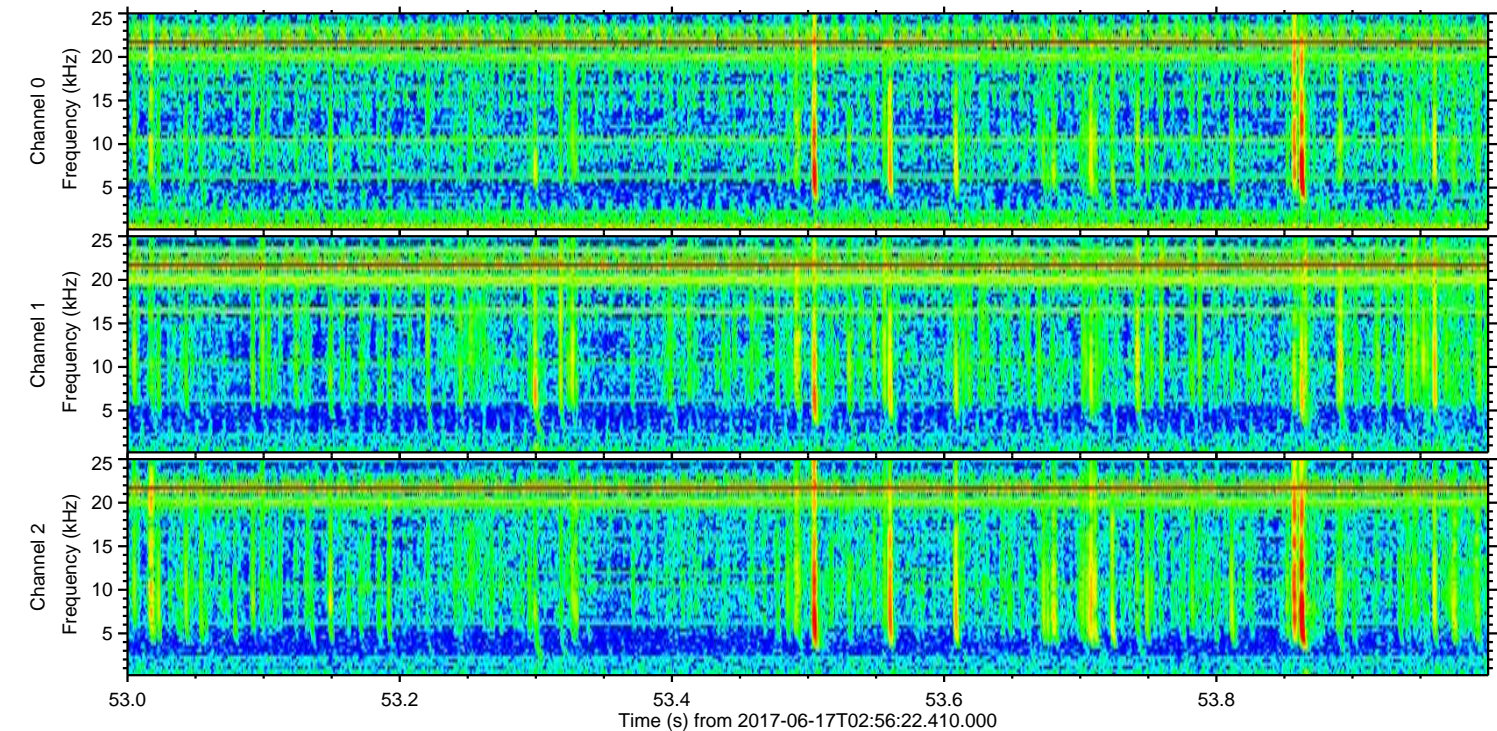
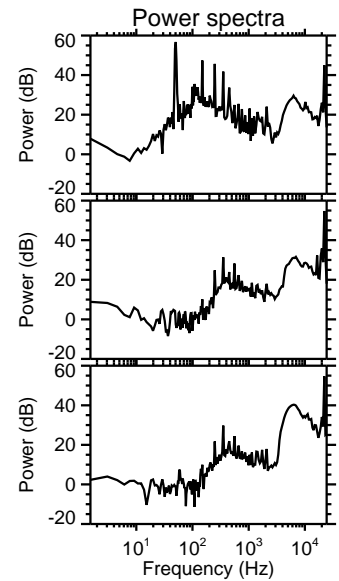
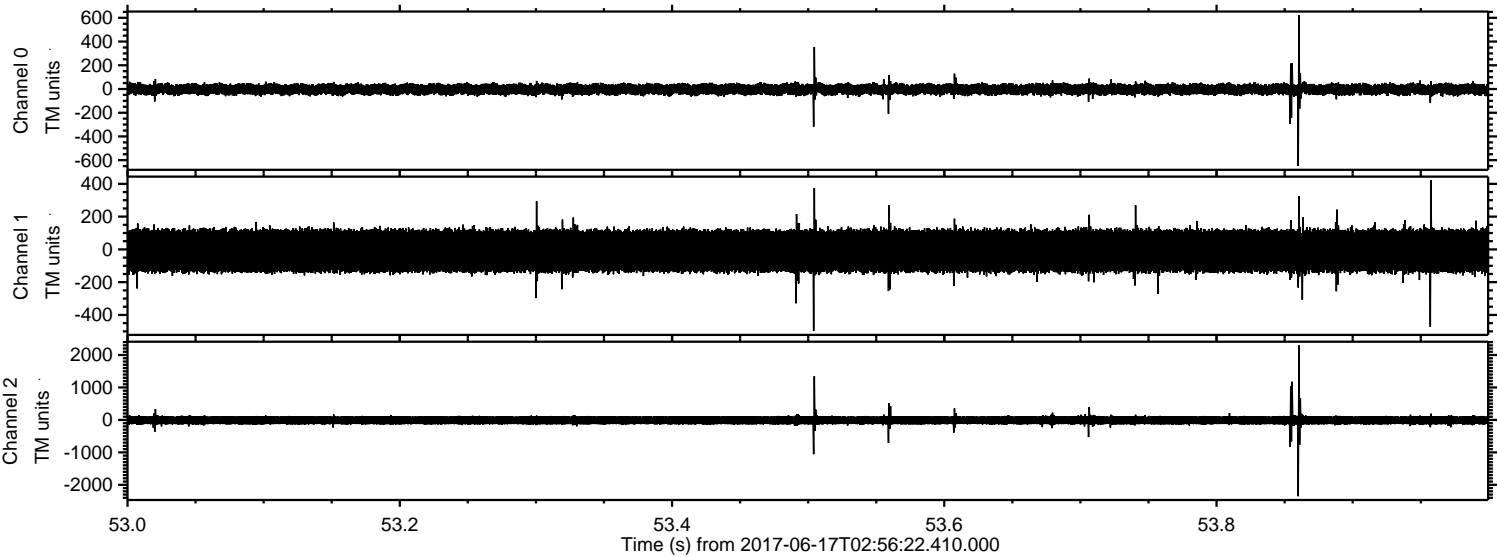
ELMAVAN 3D WAVEFORMS (Measured data sampled at 50 kHz) 51000 packets of 144 samples from 2017-06-17T02:56:22.410.000. Part 102/147

Processed Sat Jun 17 05:04:03 2017 by ELM ver.2012-10-06 from 001\_\_elm20170617\_025621\_\_dat00.bin



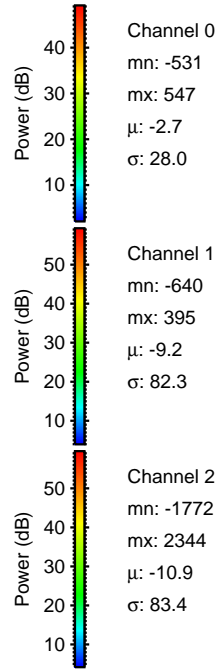
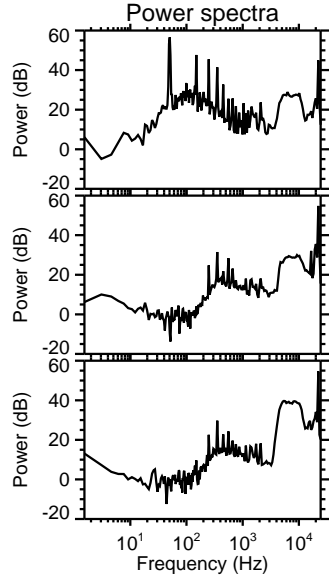
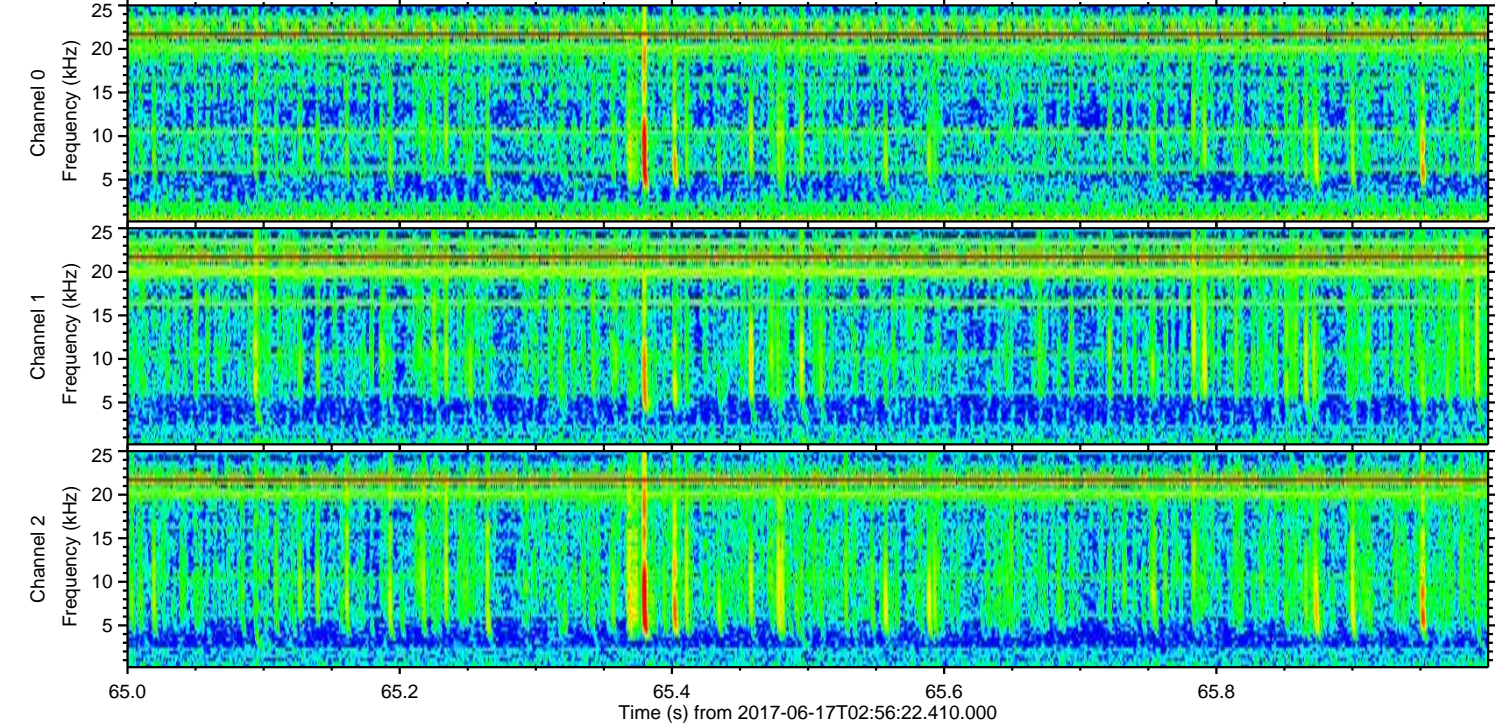
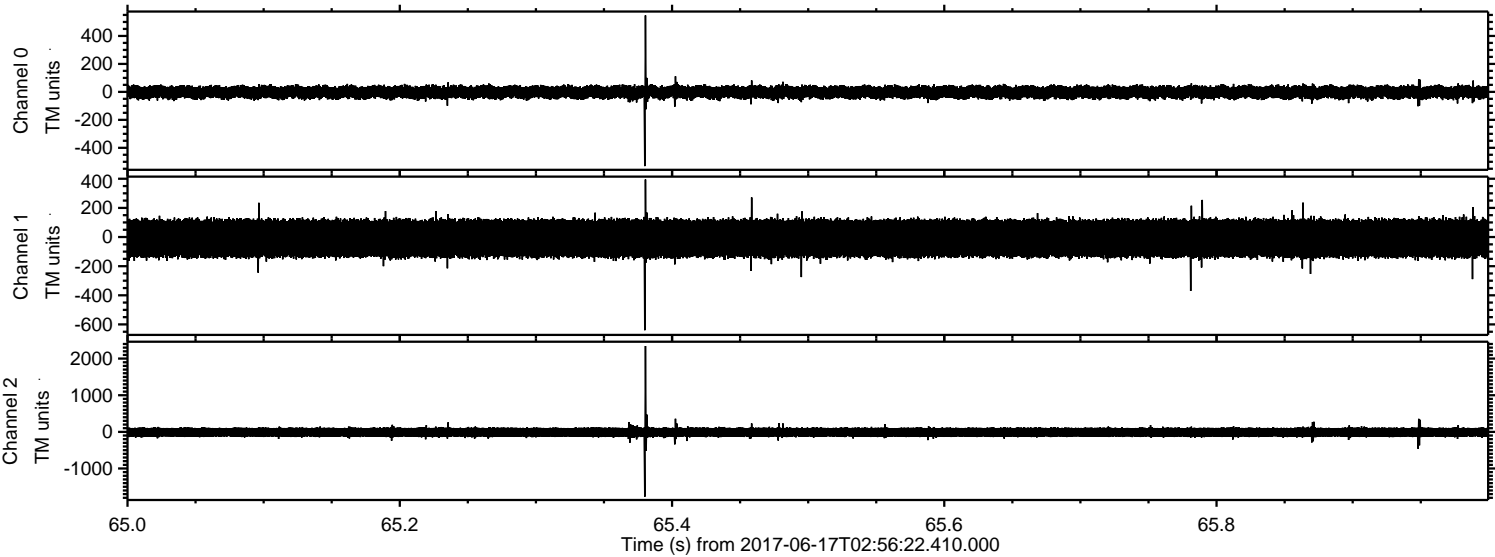


Processed Sat Jun 17 05:04:04 2017 by ELM ver.2012-10-06 from 001\_\_elm20170617\_025621\_\_dat00.bin





Processed Sat Jun 17 05:04:04 2017 by ELM ver.2012-10-06 from 001\_\_elm20170617\_025621\_\_dat00.bin





Processed Sat Jun 17 05:04:05 2017 by ELM ver.2012-10-06 from 001\_\_elm20170617\_025621\_\_dat00.bin

