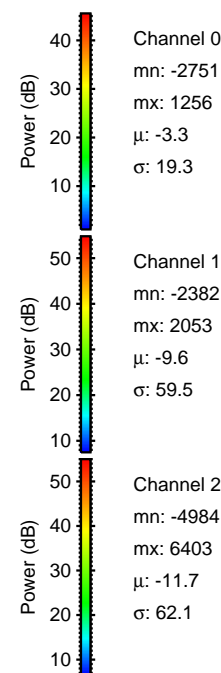
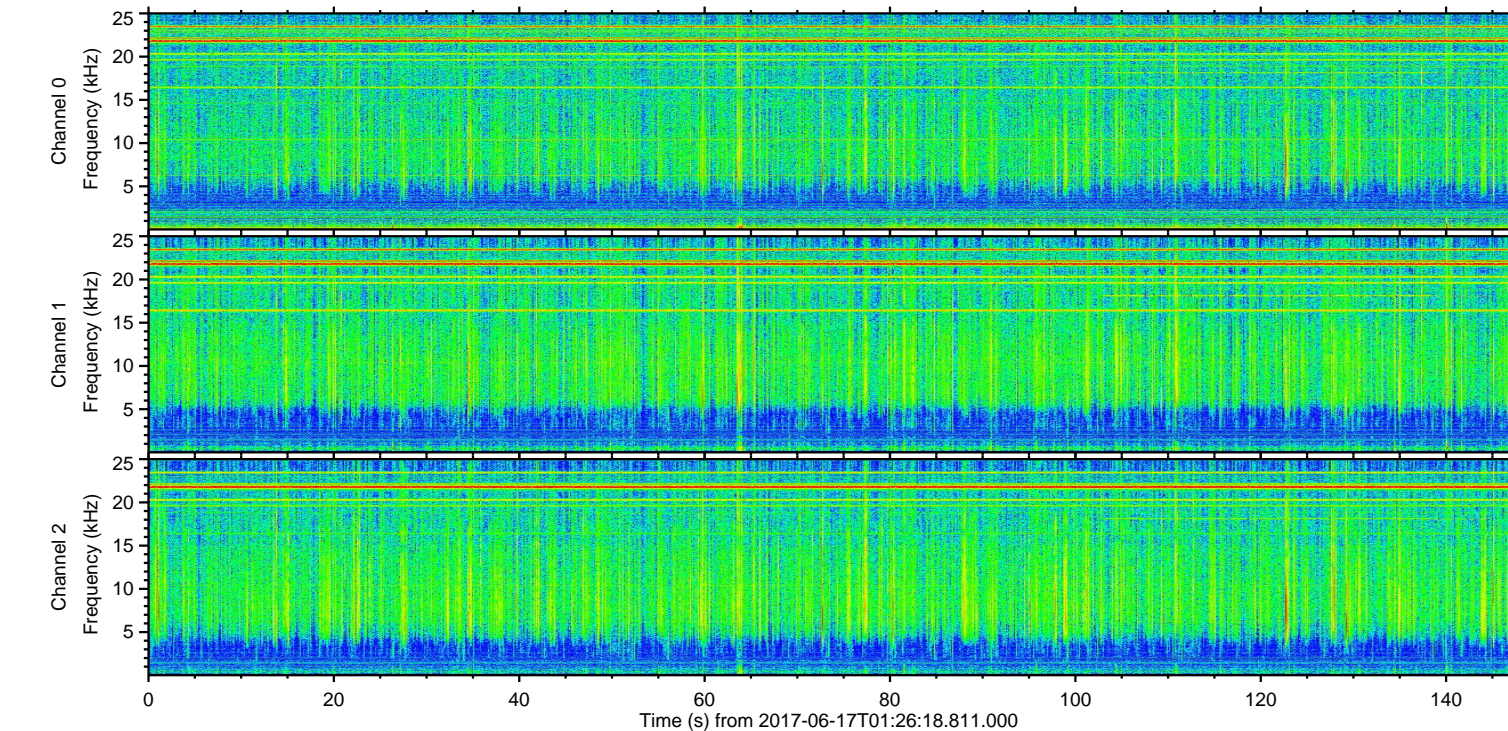
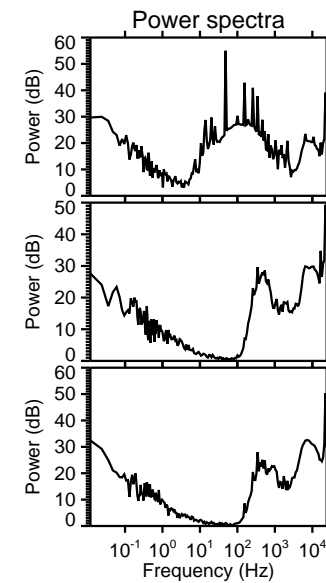
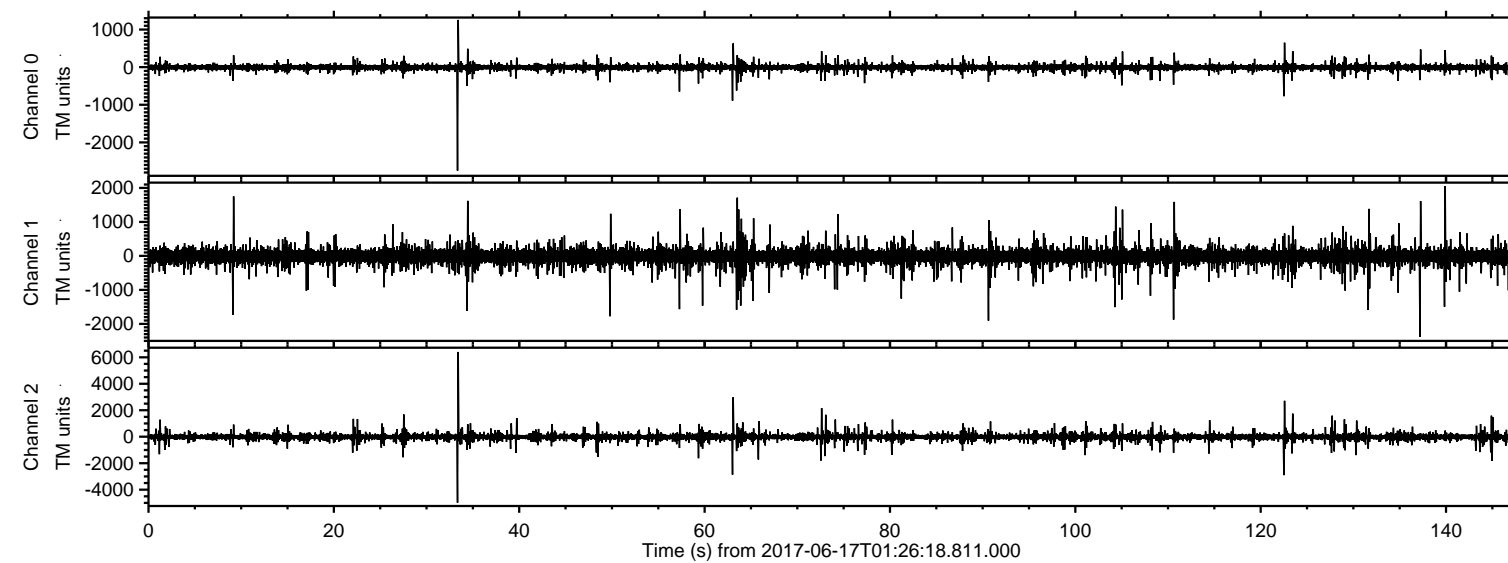


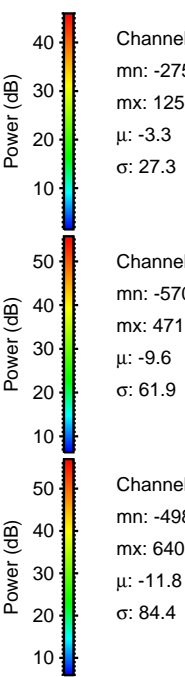
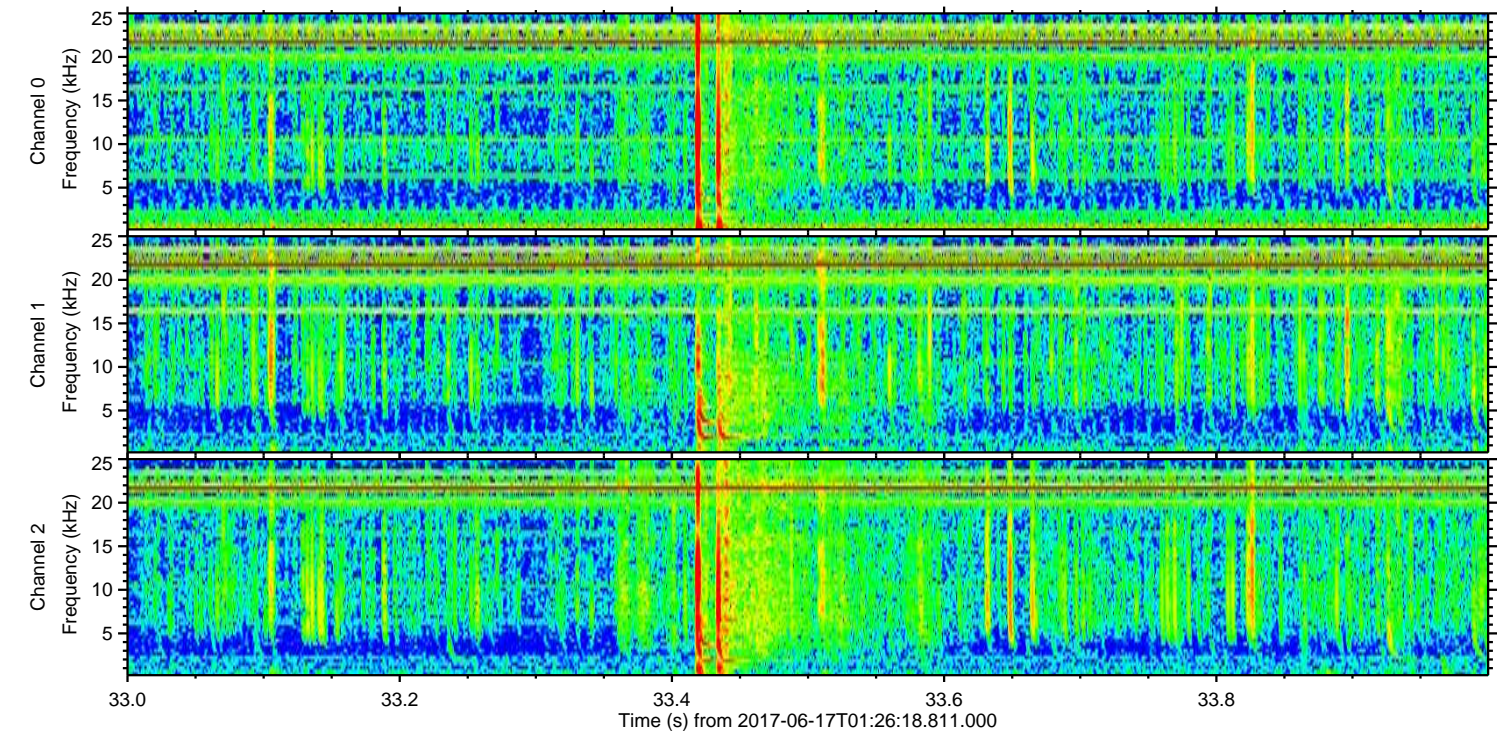
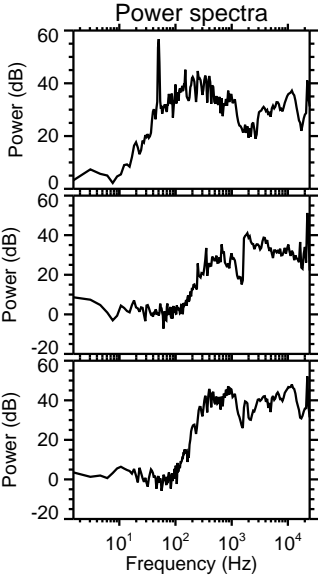
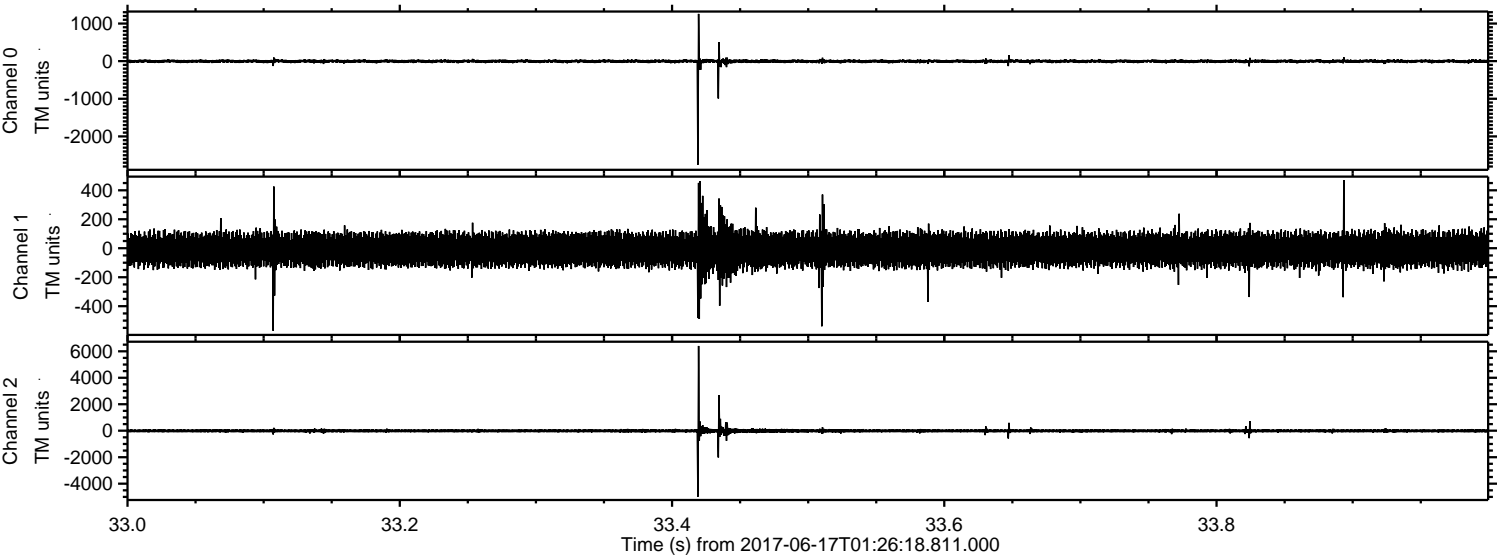
ELMAVAN 3D WAVEFORMS (Measured data sampled at 50 kHz) 51000 packets of 144 samples from 2017-06-17T01:26:18.811.000.

Processed Sat Jun 17 03:34:29 2017 by ELM ver.2012-10-06 from 001__elm20170617_012617__dat00.bin

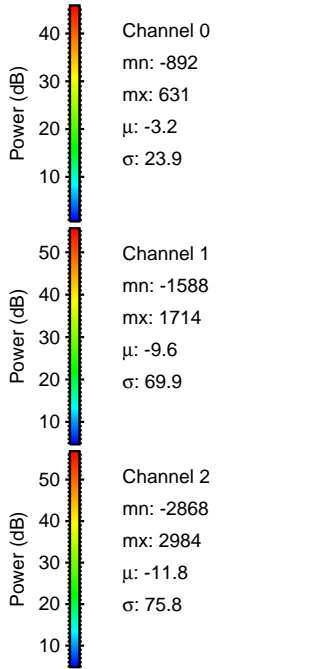
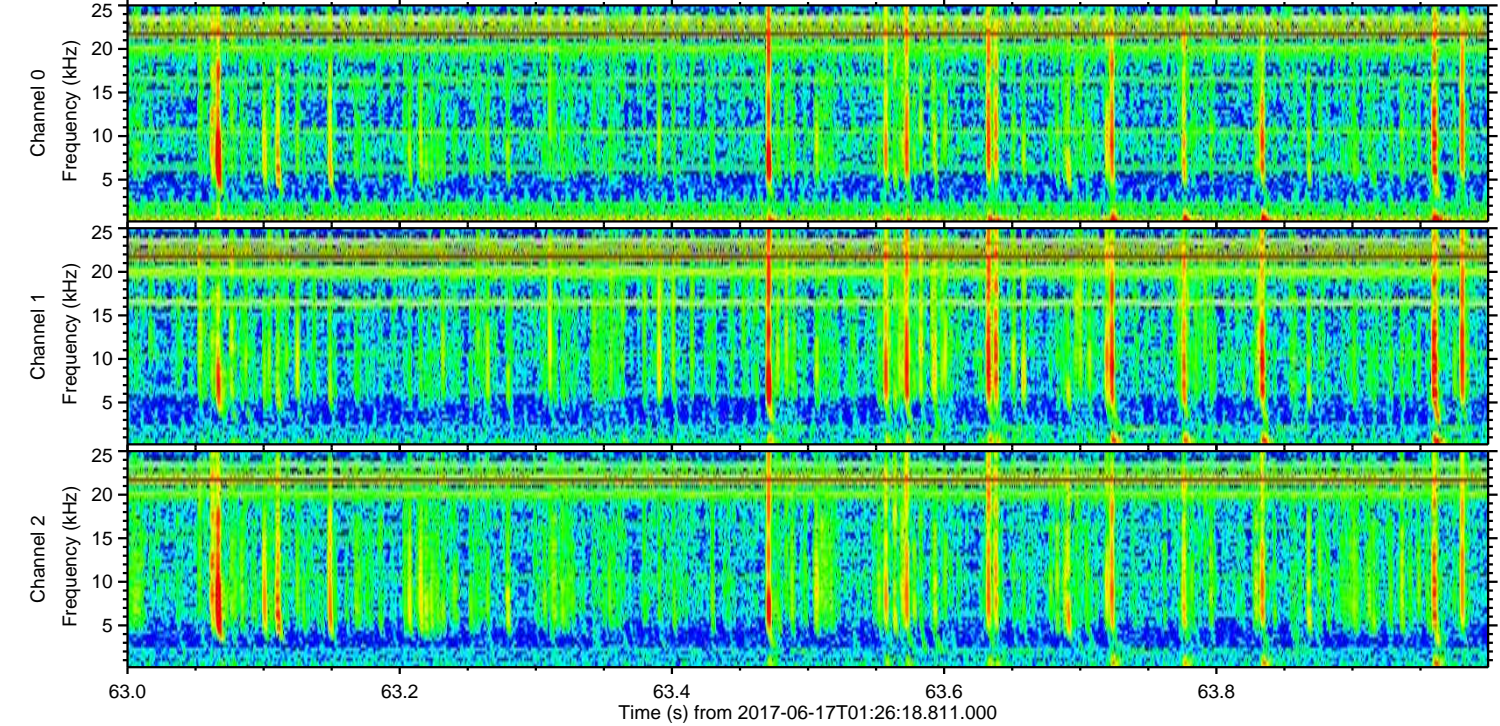
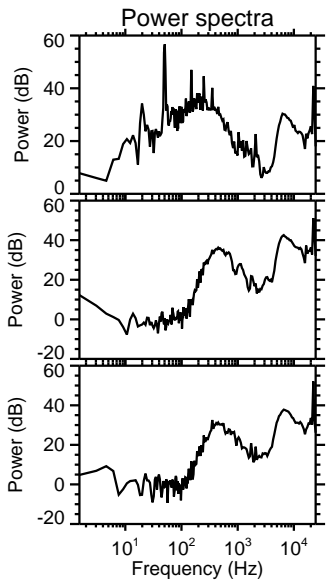
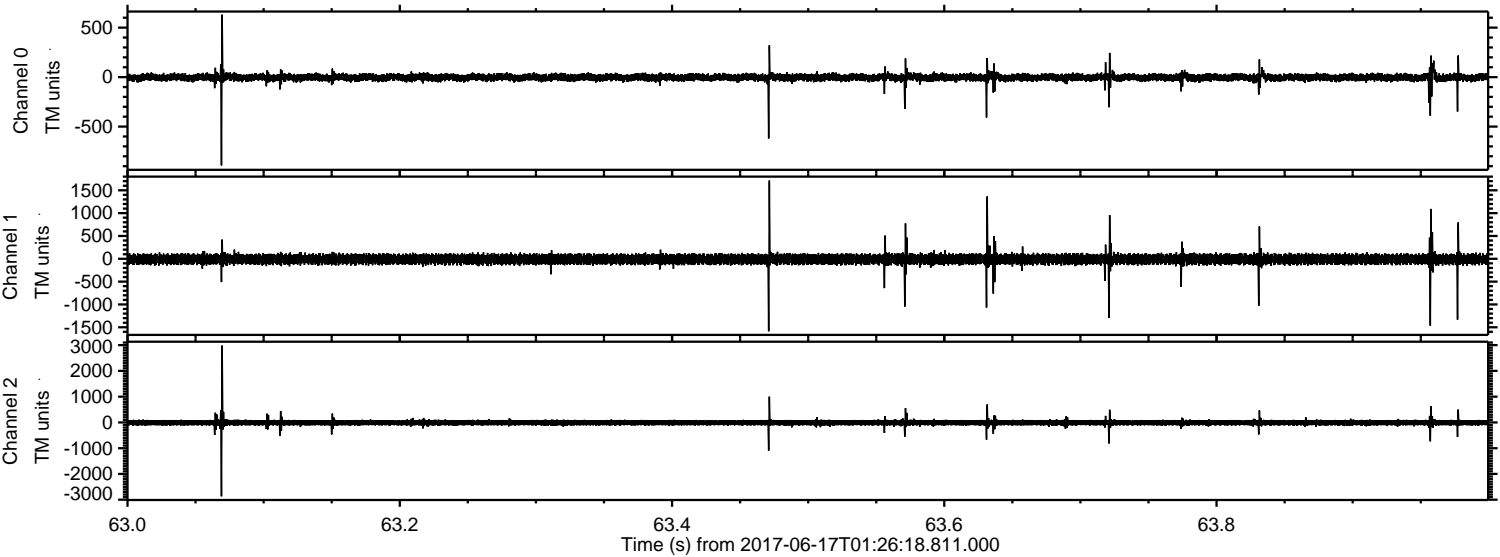


ELMAVAN 3D WAVEFORMS (Measured data sampled at 50 kHz) 51000 packets of 144 samples from 2017-06-17T01:26:18.811.000. Part 34/147

Processed Sat Jun 17 03:34:36 2017 by ELM ver.2012-10-06 from 001__elm20170617_012617__dat00.bin

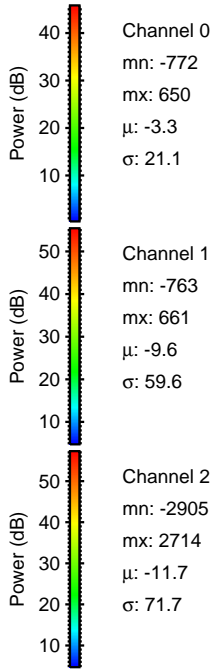
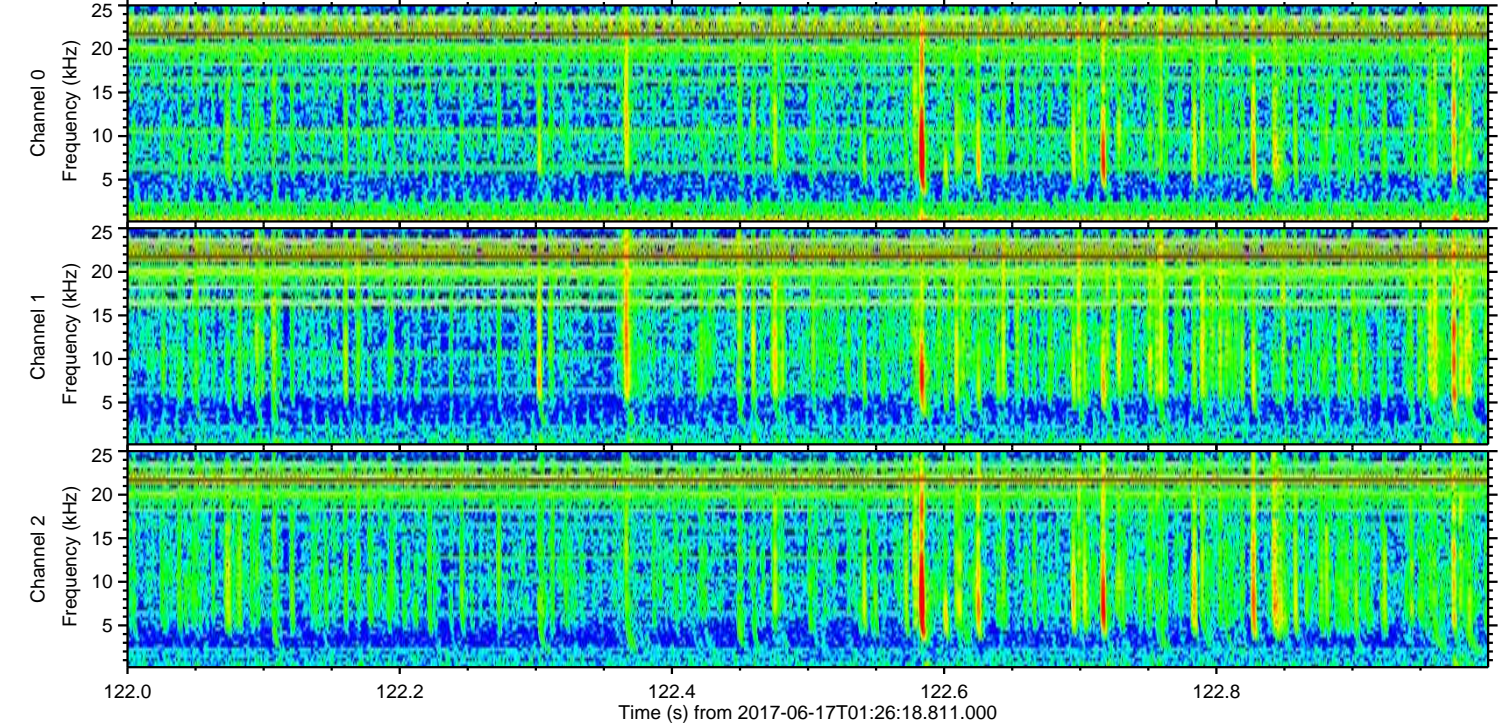
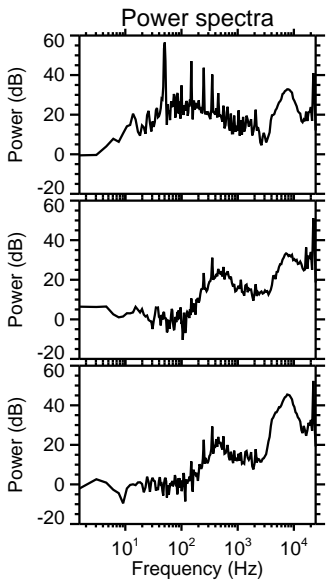
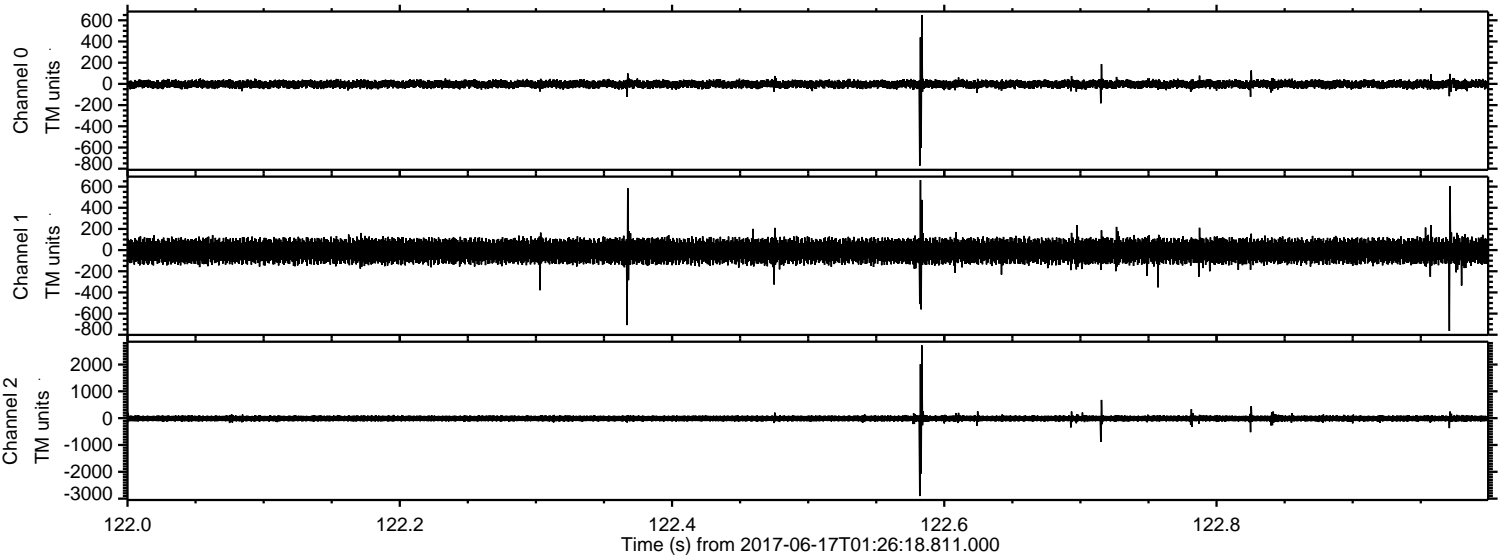


Processed Sat Jun 17 03:34:37 2017 by ELM ver.2012-10-06 from 001__elm20170617_012617__dat00.bin



ELMAVAN 3D WAVEFORMS (Measured data sampled at 50 kHz) 51000 packets of 144 samples from 2017-06-17T01:26:18.811.000. Part 123/147

Processed Sat Jun 17 03:34:37 2017 by ELM ver.2012-10-06 from 001__elm20170617_012617__dat00.bin



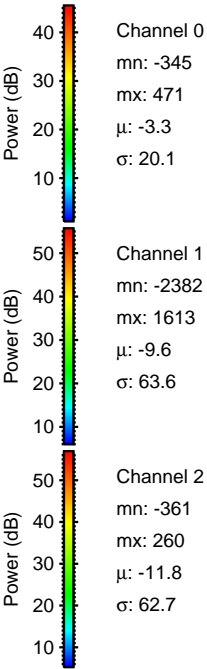
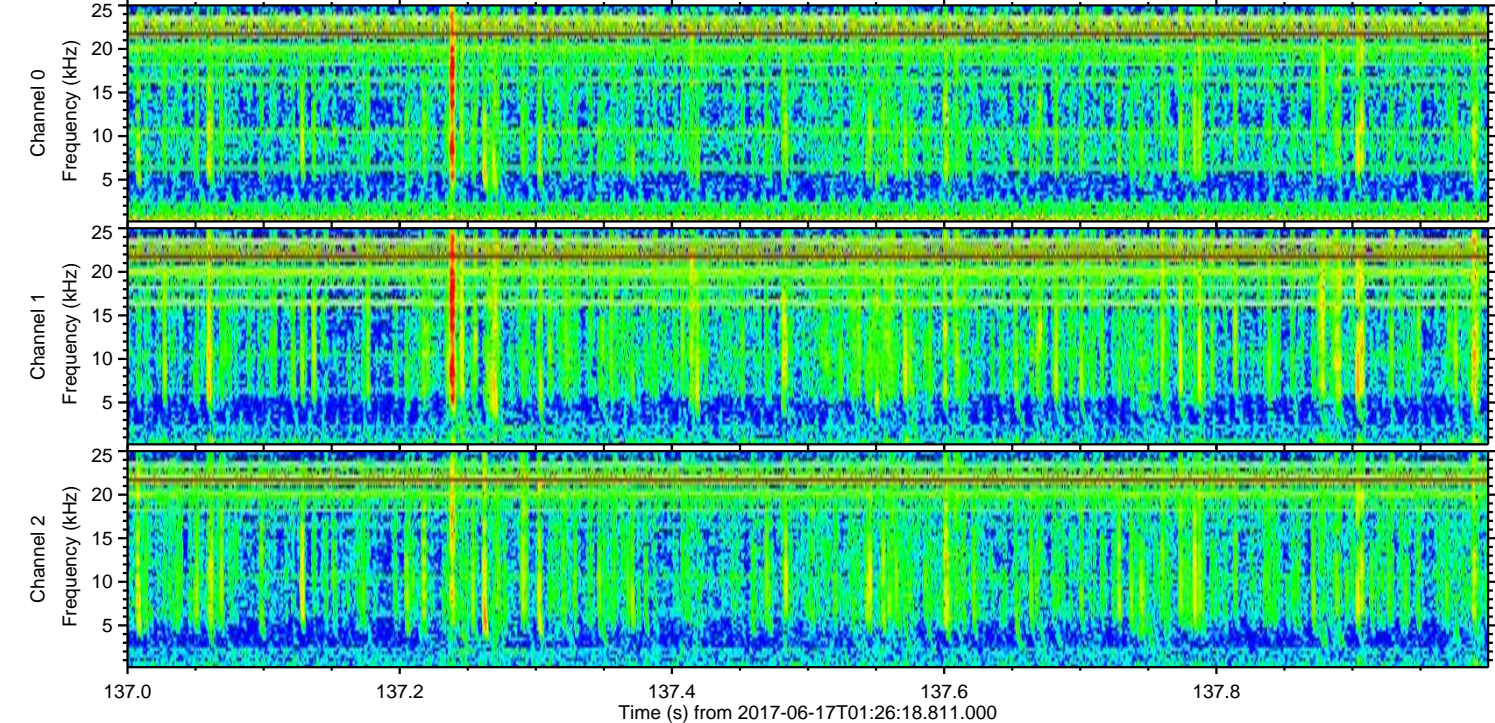
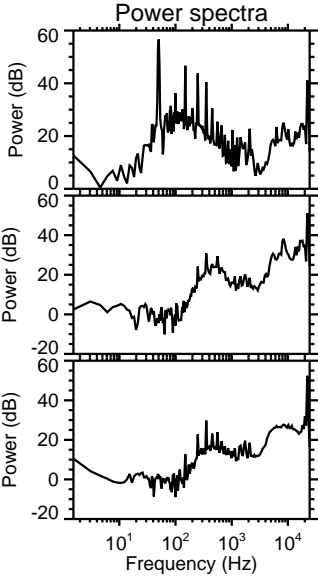
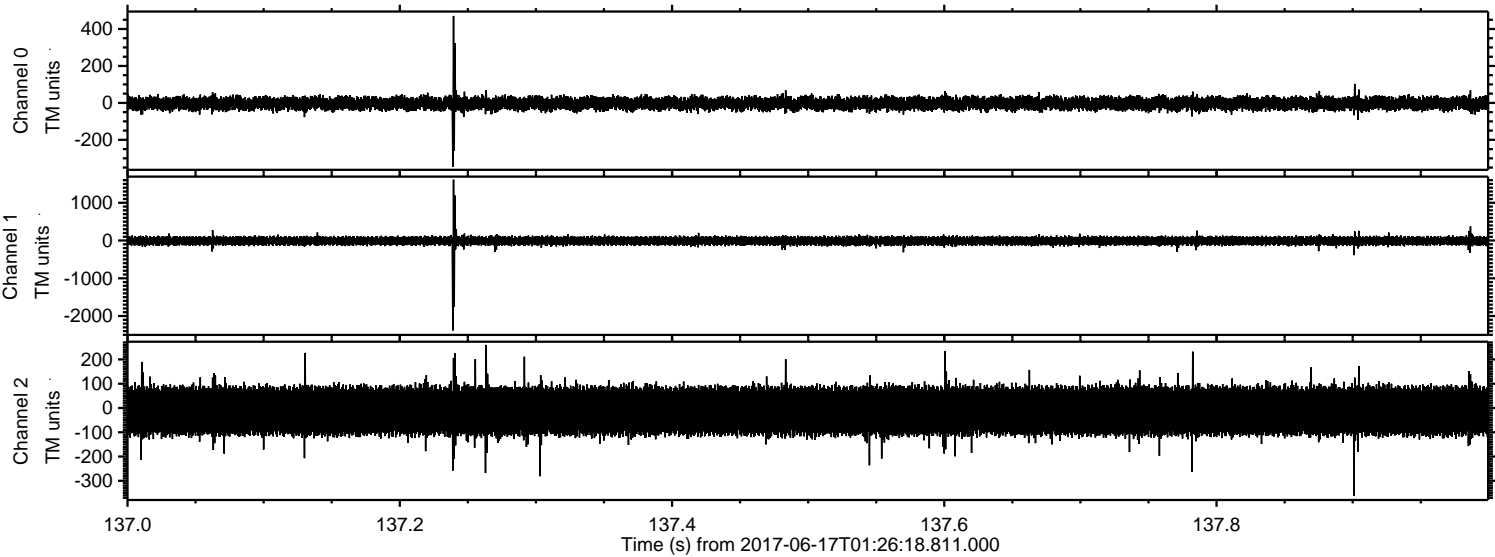
Channel 0
mn: -772
mx: 650
 μ : -3.3
 σ : 21.1

Channel 1
mn: -763
mx: 661
 μ : -9.6
 σ : 59.6

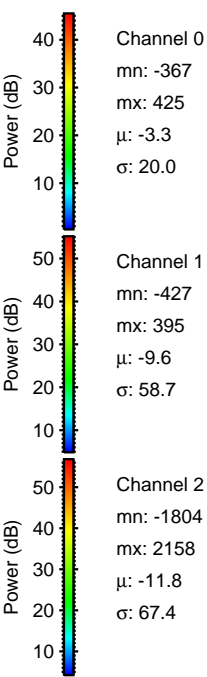
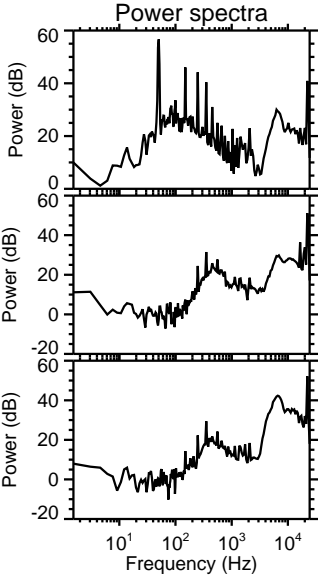
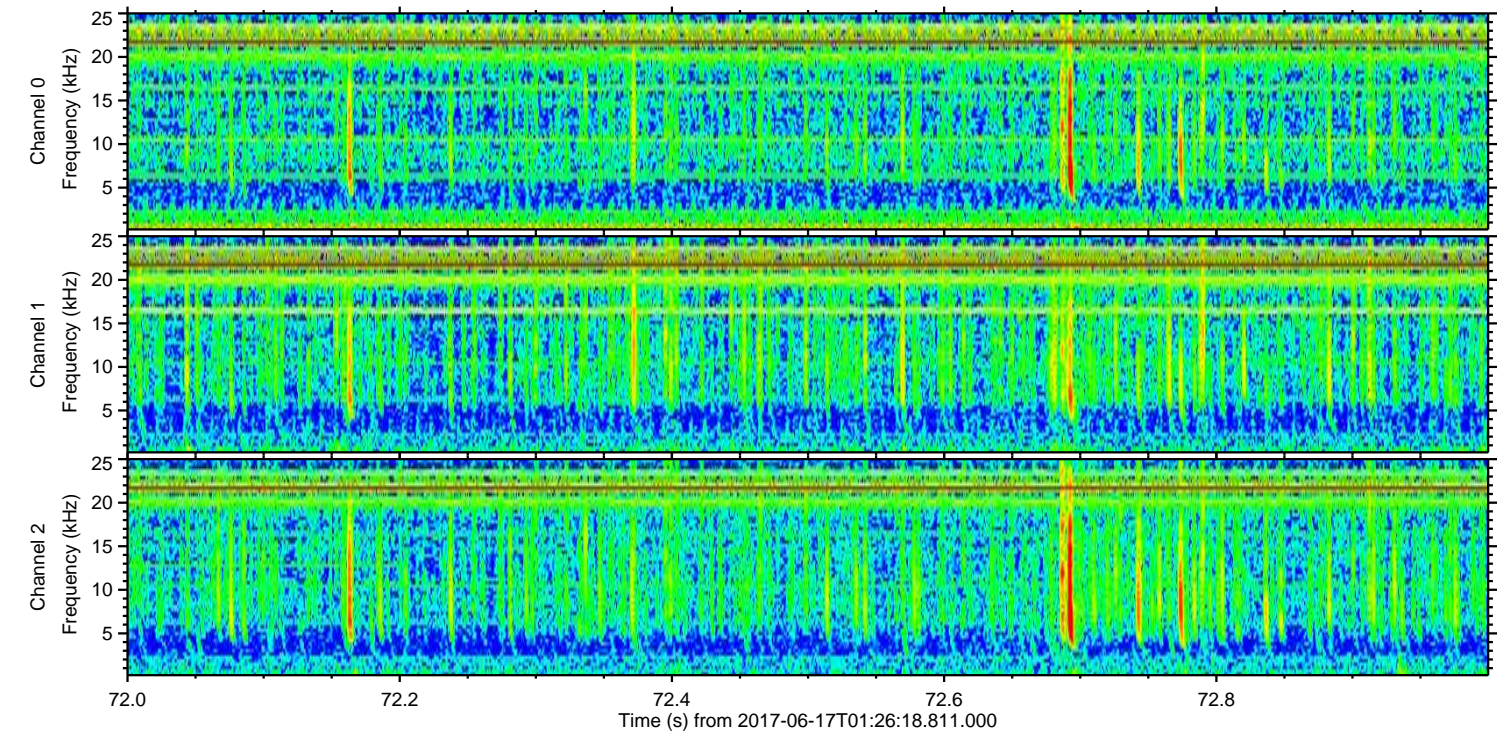
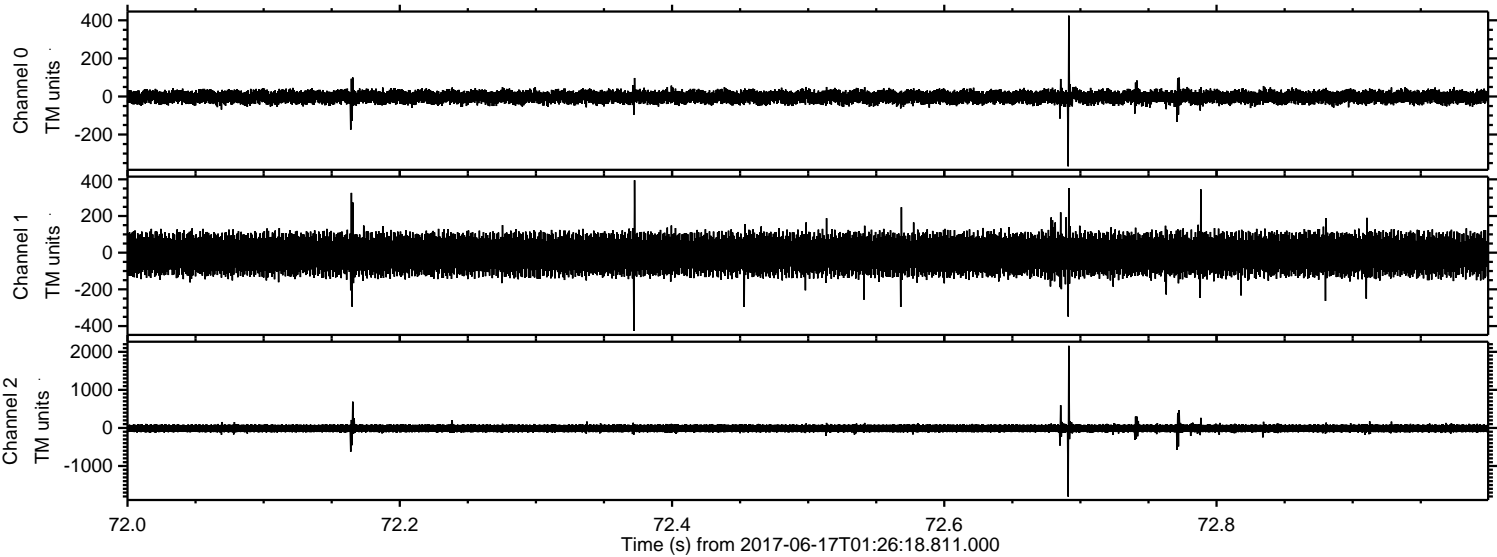
Channel 2
mn: -2905
mx: 2714
 μ : -11.7
 σ : 71.7

ELMAVAN 3D WAVEFORMS (Measured data sampled at 50 kHz) 51000 packets of 144 samples from 2017-06-17T01:26:18.811.000. Part 138/147

Processed Sat Jun 17 03:34:38 2017 by ELM ver.2012-10-06 from 001__elm20170617_012617__dat00.bin



Processed Sat Jun 17 03:34:39 2017 by ELM ver.2012-10-06 from 001__elm20170617_012617__dat00.bin



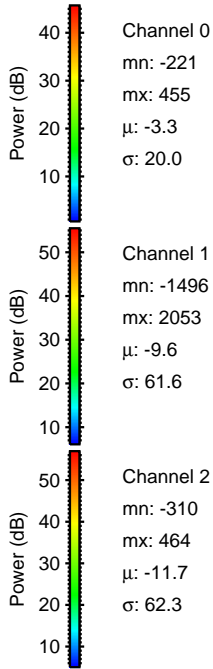
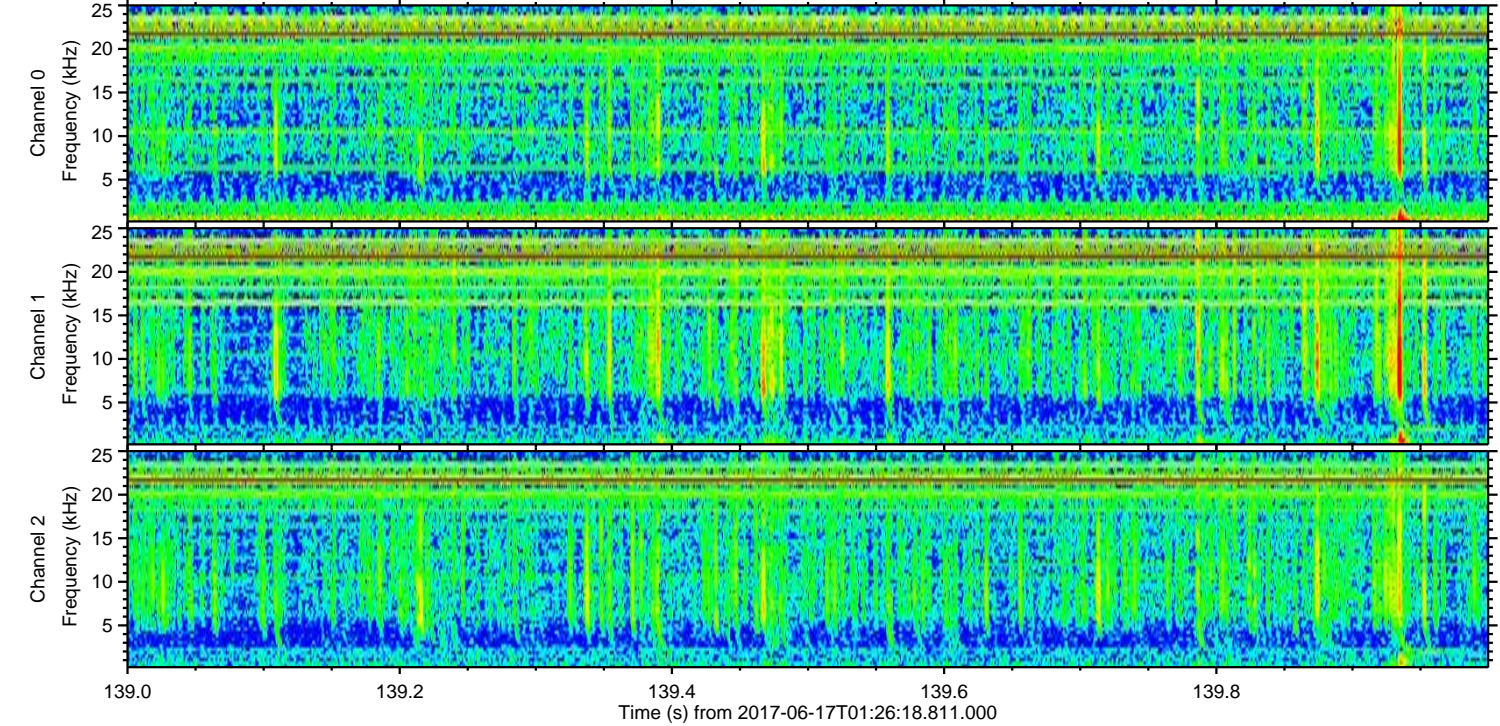
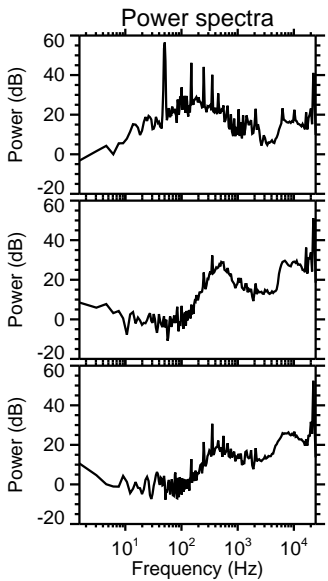
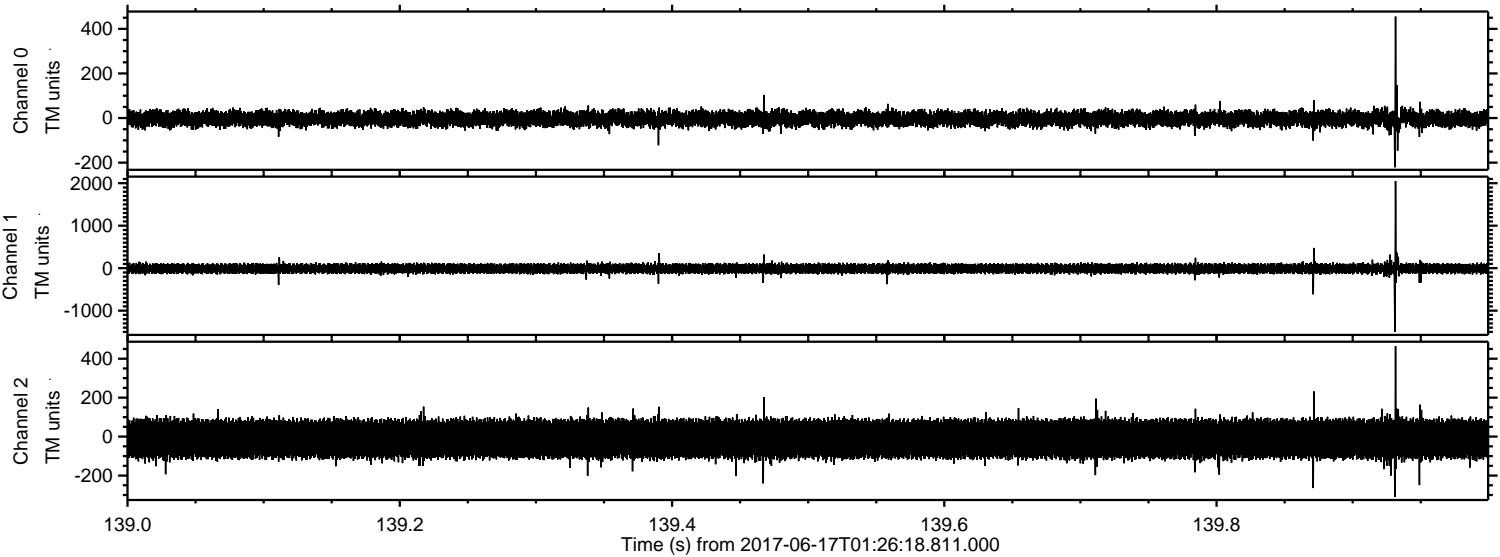
Channel 0
mn: -367
mx: 425
 μ : -3.3
 σ : 20.0

Channel 1
mn: -427
mx: 395
 μ : -9.6
 σ : 58.7

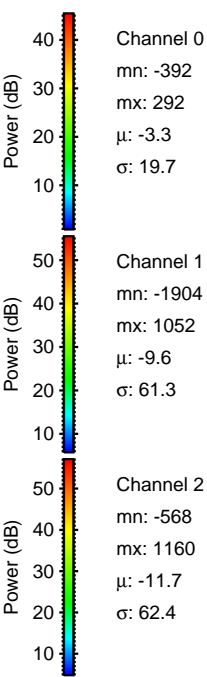
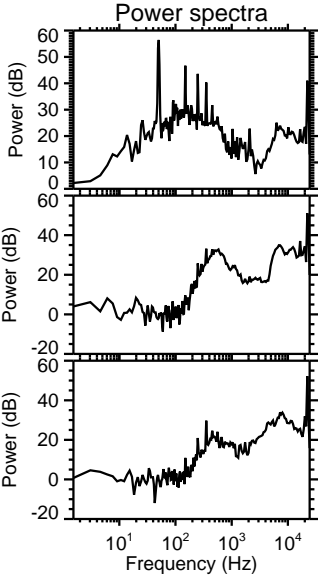
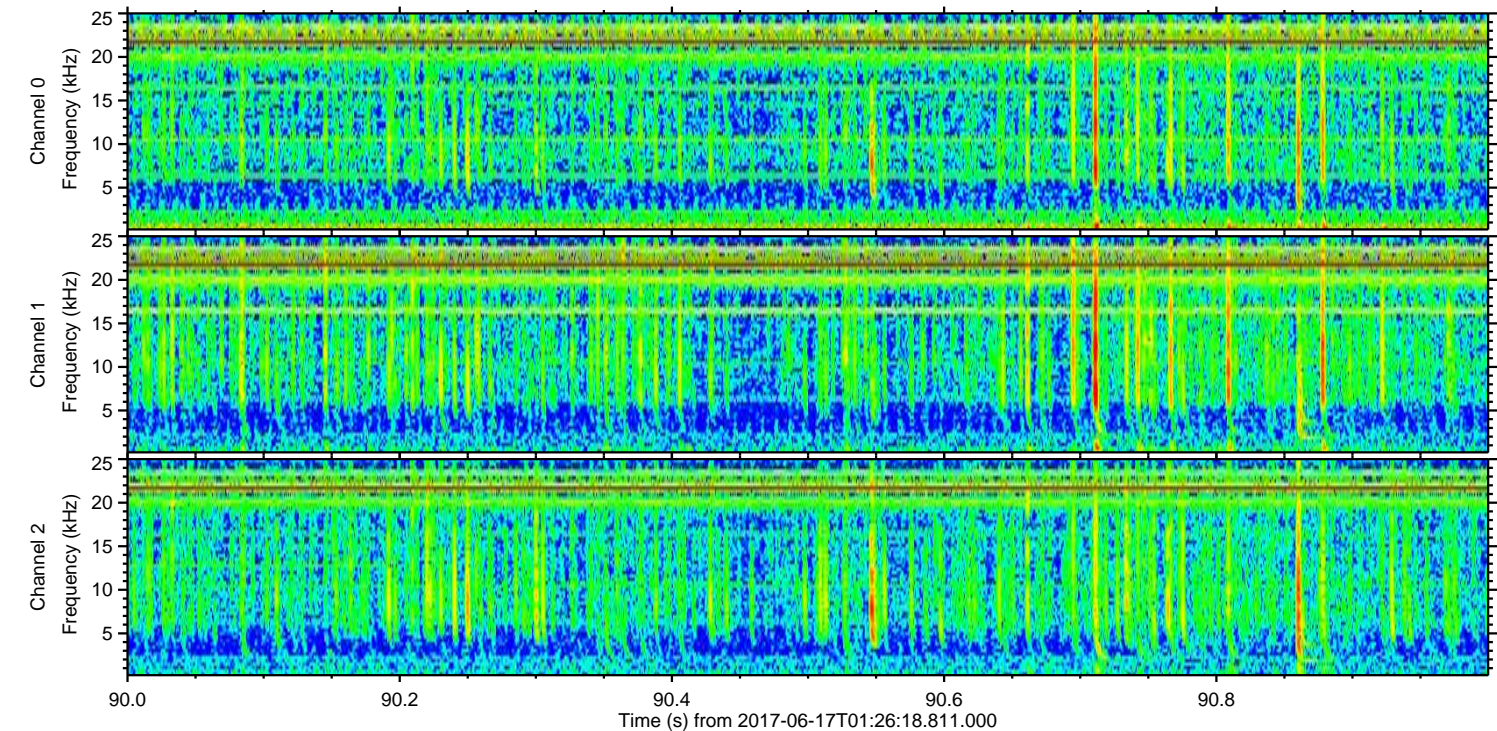
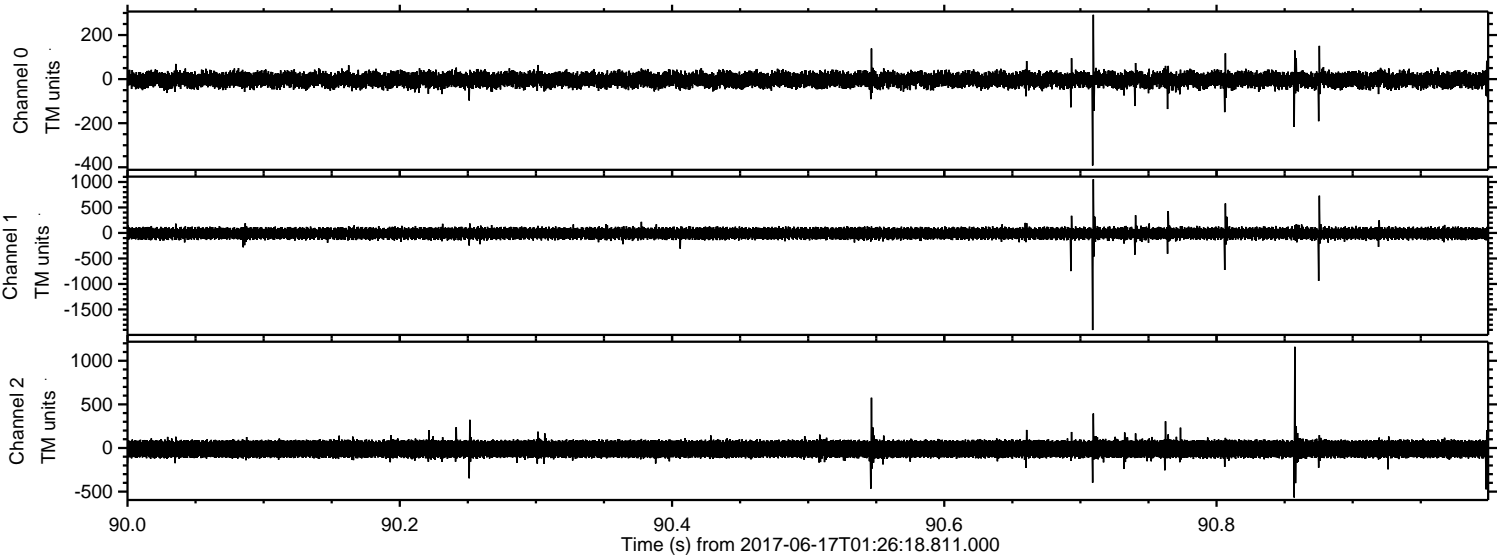
Channel 2
mn: -1804
mx: 2158
 μ : -11.8
 σ : 67.4

ELMAVAN 3D WAVEFORMS (Measured data sampled at 50 kHz) 51000 packets of 144 samples from 2017-06-17T01:26:18.811.000. Part 140/147

Processed Sat Jun 17 03:34:39 2017 by ELM ver.2012-10-06 from 001__elm20170617_012617__dat00.bin

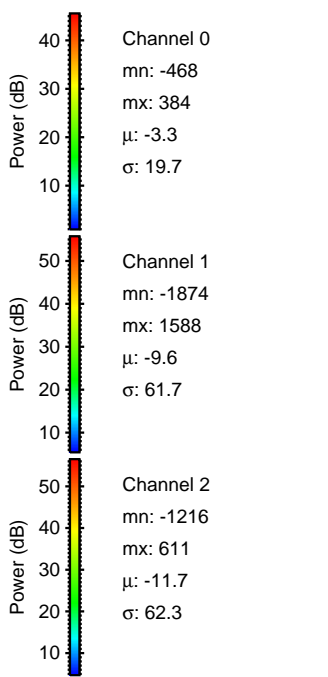
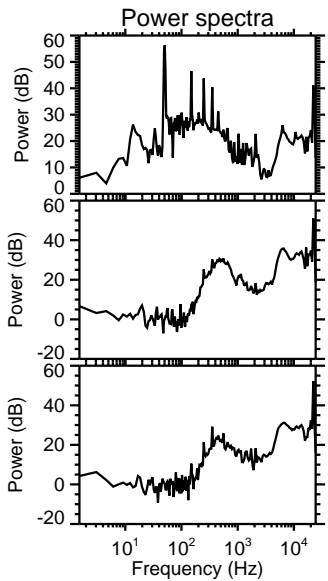
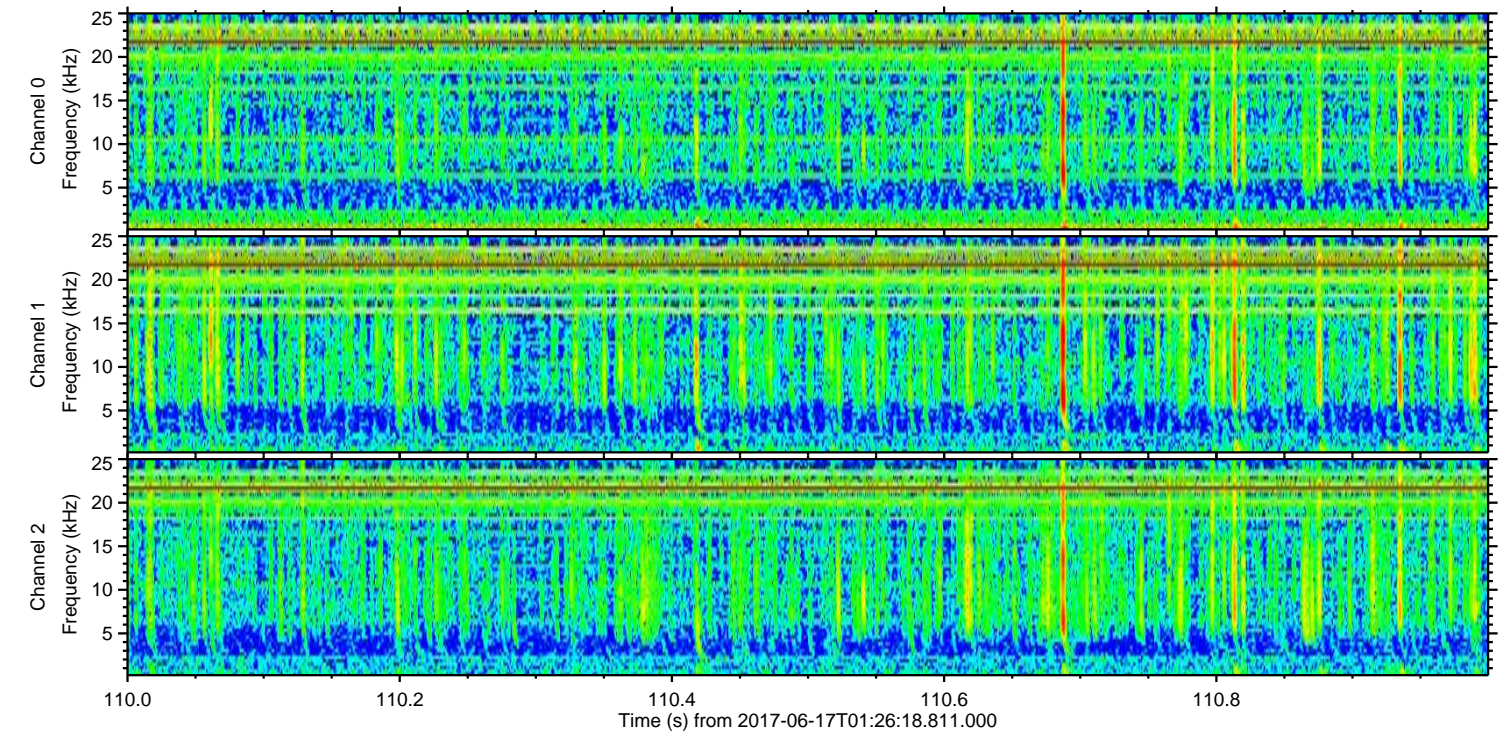
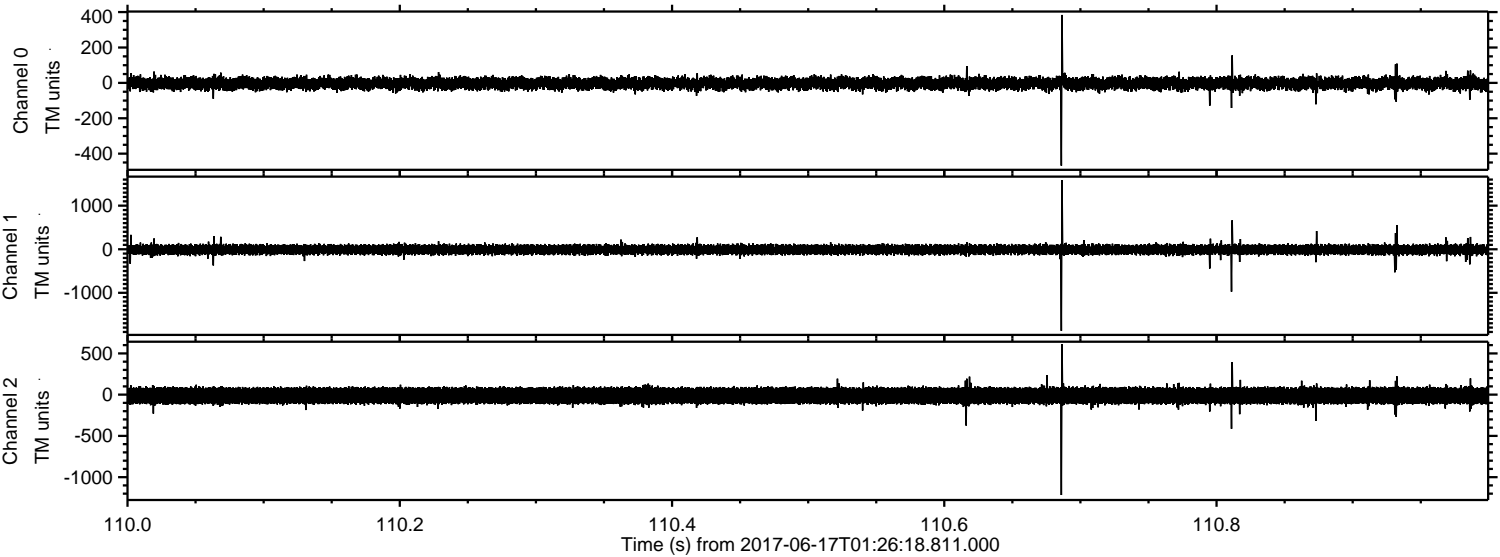


Processed Sat Jun 17 03:34:40 2017 by ELM ver.2012-10-06 from 001__elm20170617_012617__dat00.bin



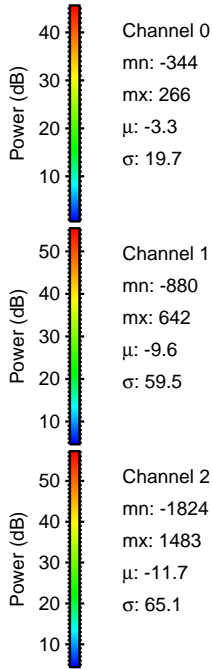
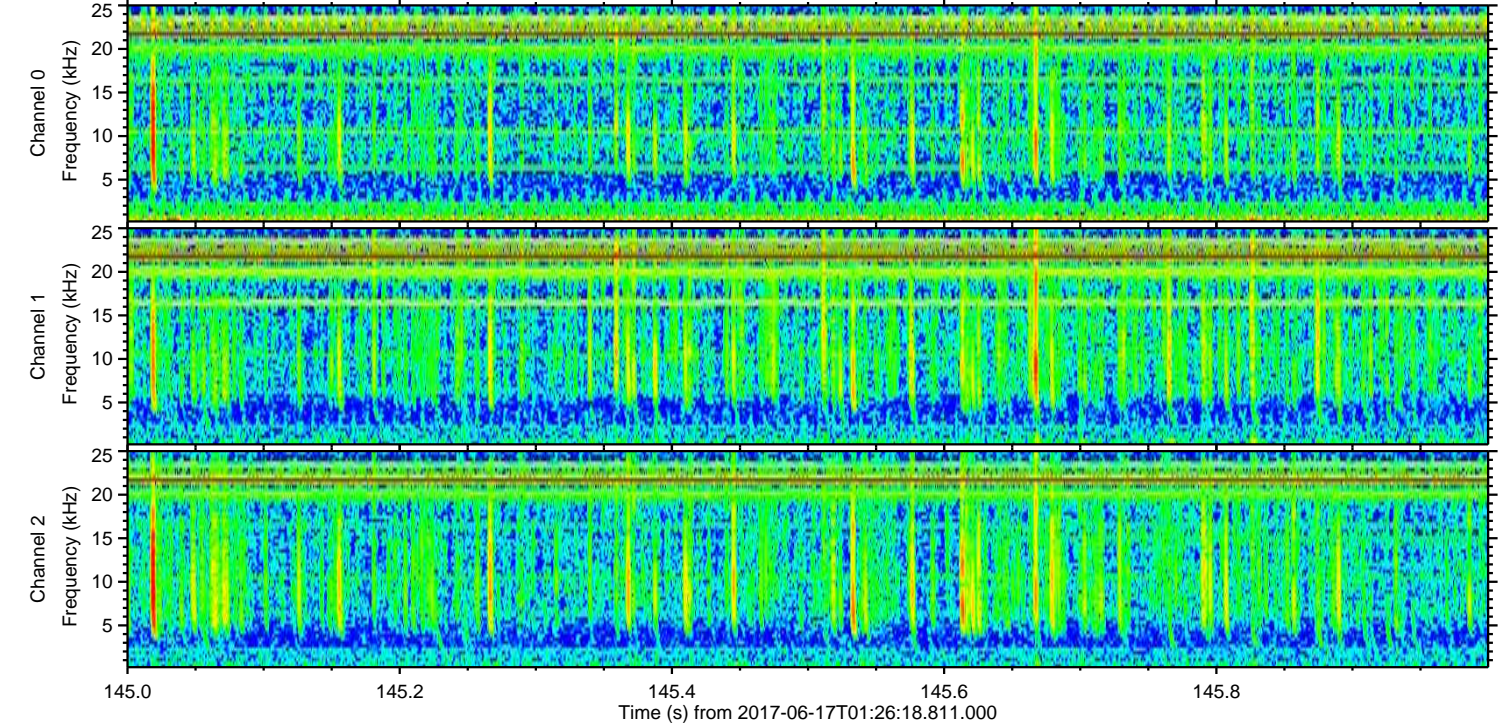
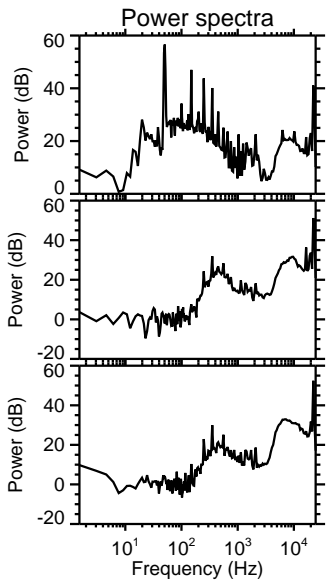
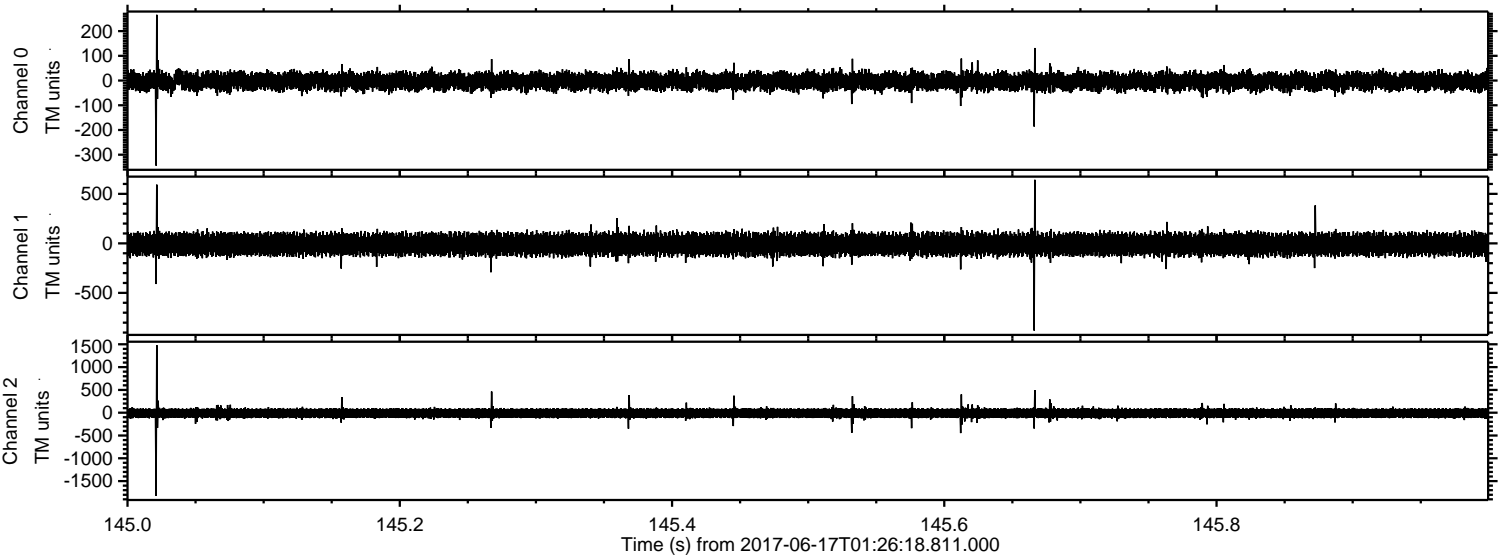
ELMAVAN 3D WAVEFORMS (Measured data sampled at 50 kHz) 51000 packets of 144 samples from 2017-06-17T01:26:18.811.000. Part 111/147

Processed Sat Jun 17 03:34:41 2017 by ELM ver.2012-10-06 from 001__elm20170617_012617__dat00.bin



ELMAVAN 3D WAVEFORMS (Measured data sampled at 50 kHz) 51000 packets of 144 samples from 2017-06-17T01:26:18.811.000. Part 146/147

Processed Sat Jun 17 03:34:42 2017 by ELM ver.2012-10-06 from 001__elm20170617_012617__dat00.bin



Channel 0
mn: -344
mx: 266
 μ : -3.3
 σ : 19.7

Channel 1
mn: -880
mx: 642
 μ : -9.6
 σ : 59.5

Channel 2
mn: -1824
mx: 1483
 μ : -11.7
 σ : 65.1

Processed Sat Jun 17 03:34:42 2017 by ELM ver.2012-10-06 from 001__elm20170617_012617__dat00.bin

