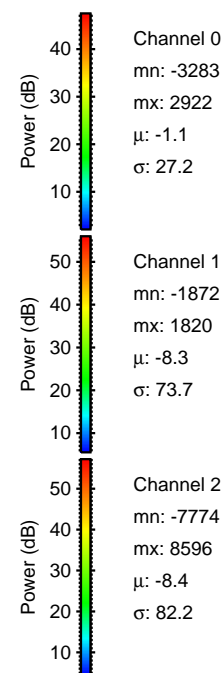
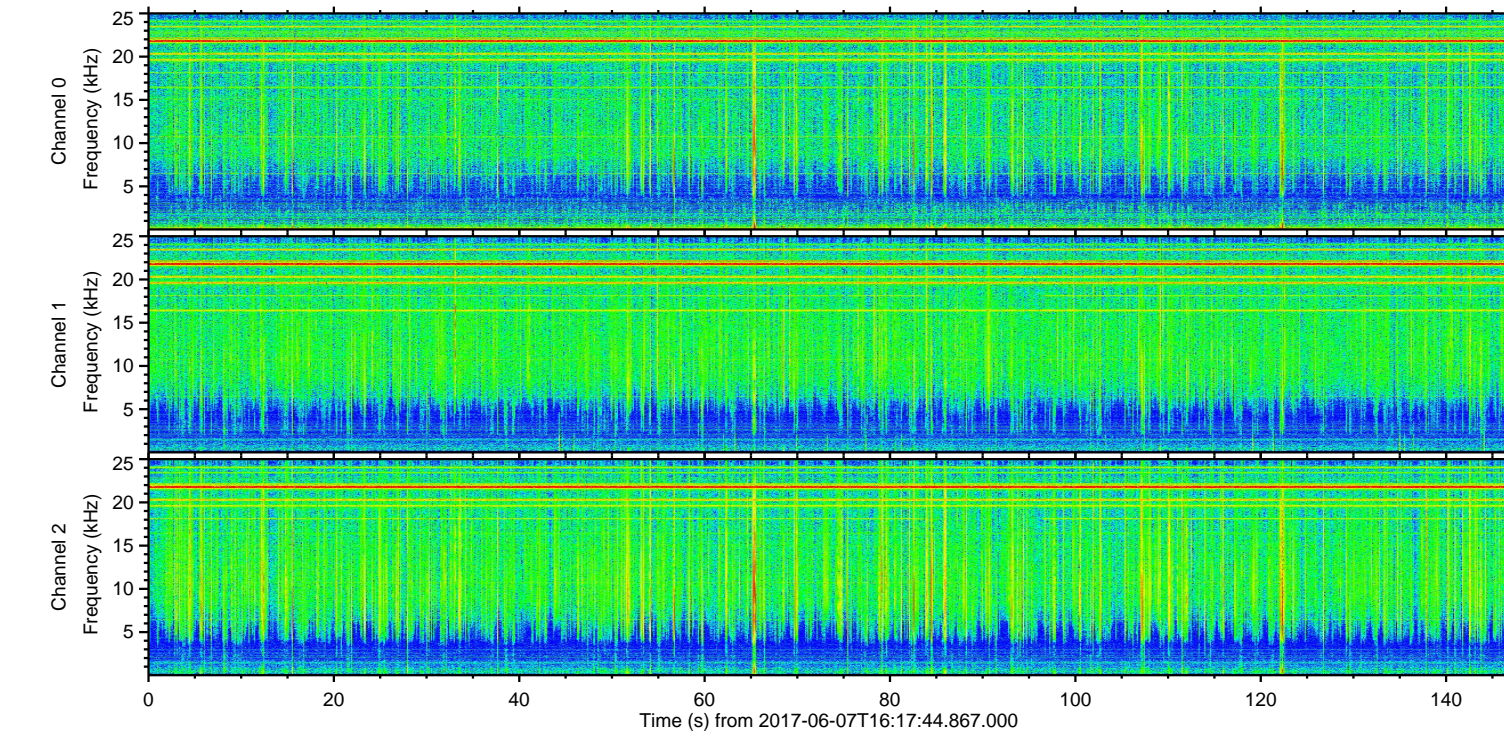
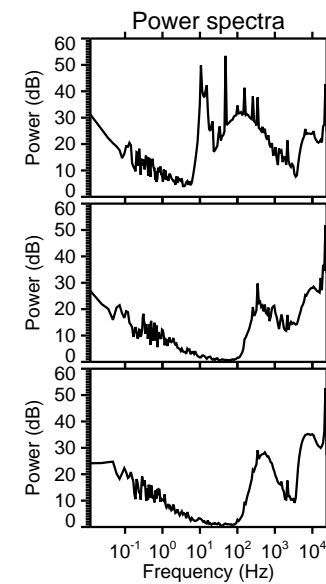
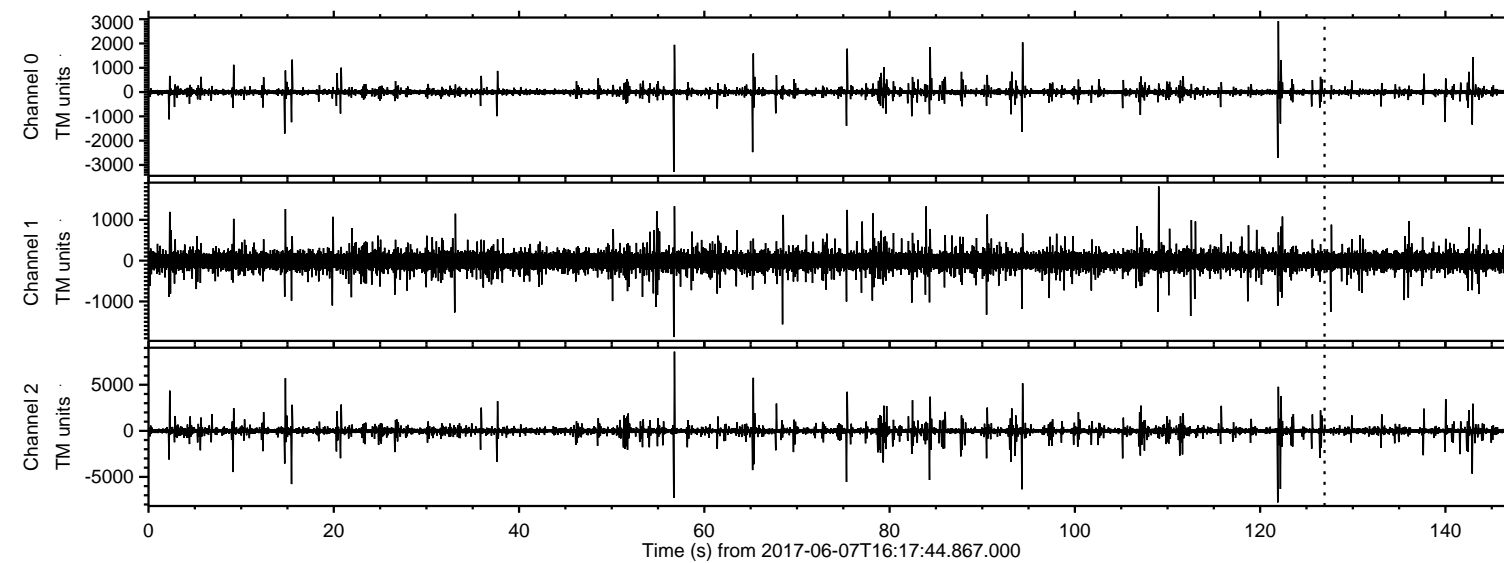


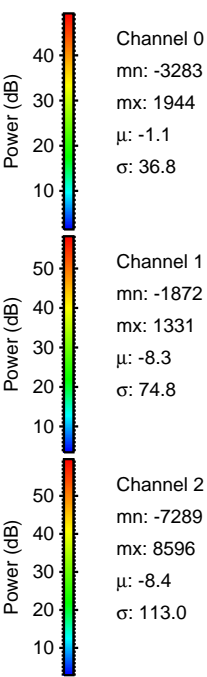
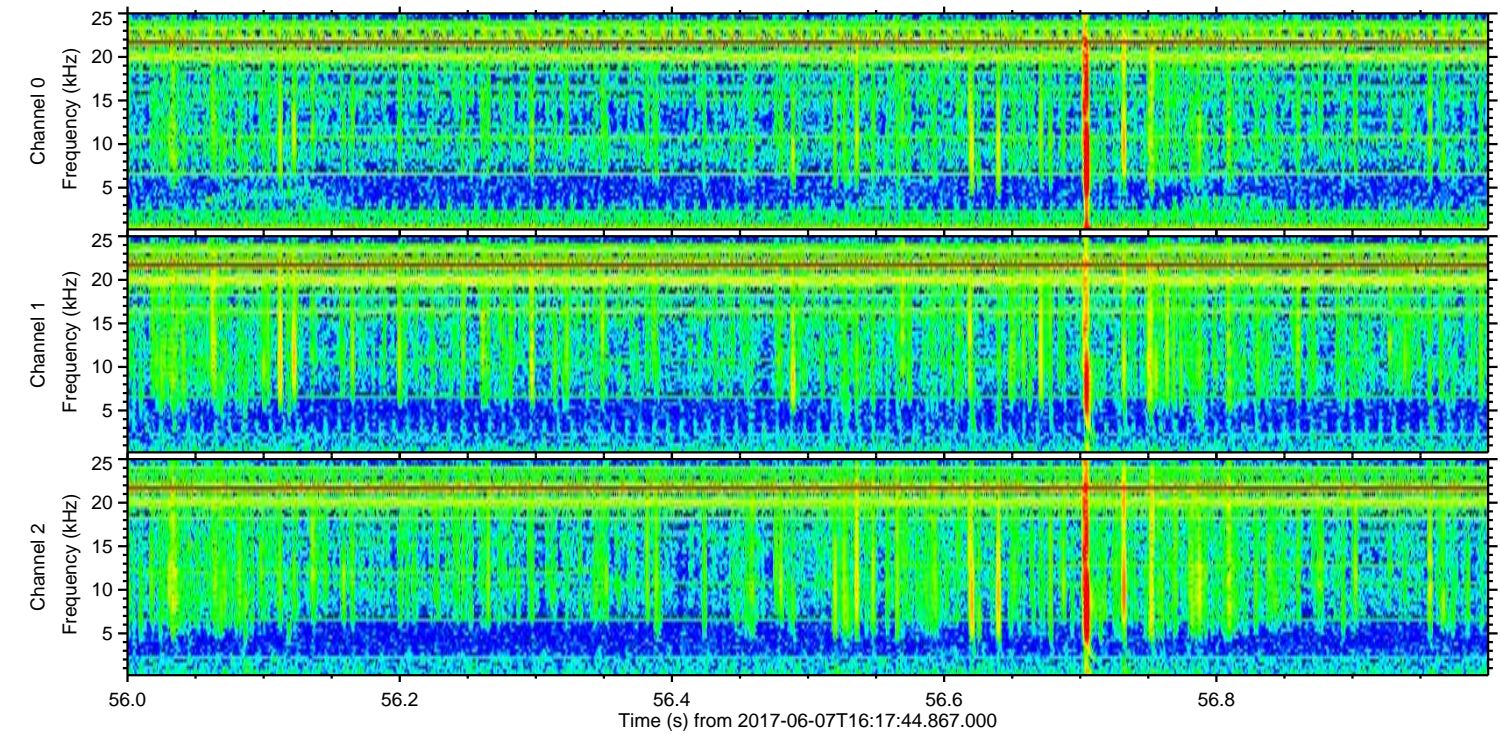
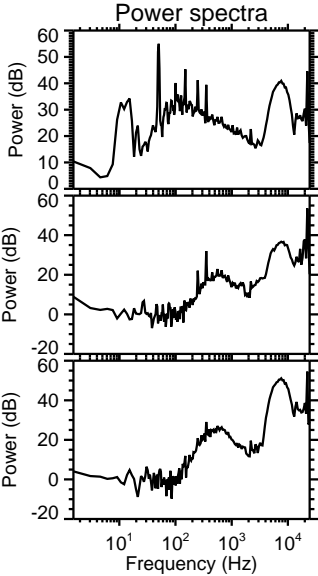
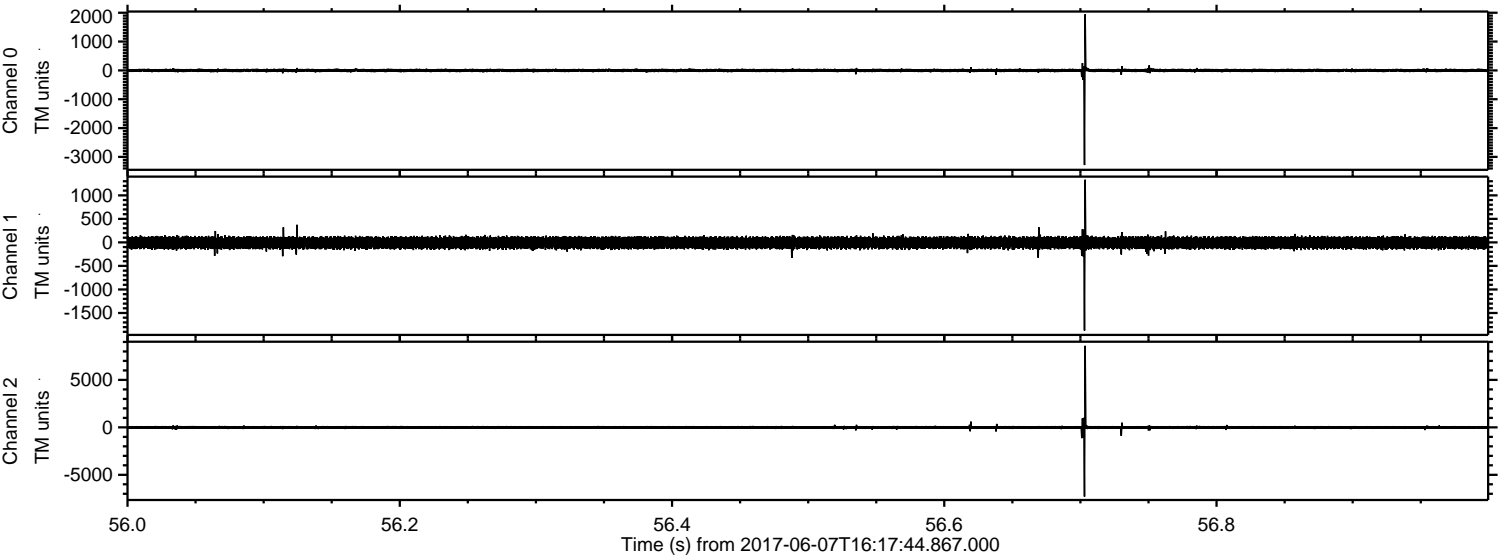
# ELMAVAN 3D WAVEFORMS (Measured data sampled at 50 kHz) 50999 packets of 144 samples from 2017-06-07T16:17:44.867.000.

Processed Wed Jun 7 18:25:42 2017 by ELM ver.2012-10-06 from 001\_\_elm20170607\_161743\_\_dat00.bin





Processed Wed Jun 7 18:25:48 2017 by ELM ver.2012-10-06 from 001\_\_elm20170607\_161743\_\_dat00.bin



Channel 0  
mn: -3283  
mx: 1944  
 $\mu$ : -1.1  
 $\sigma$ : 36.8

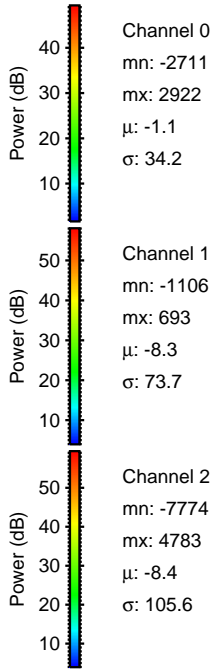
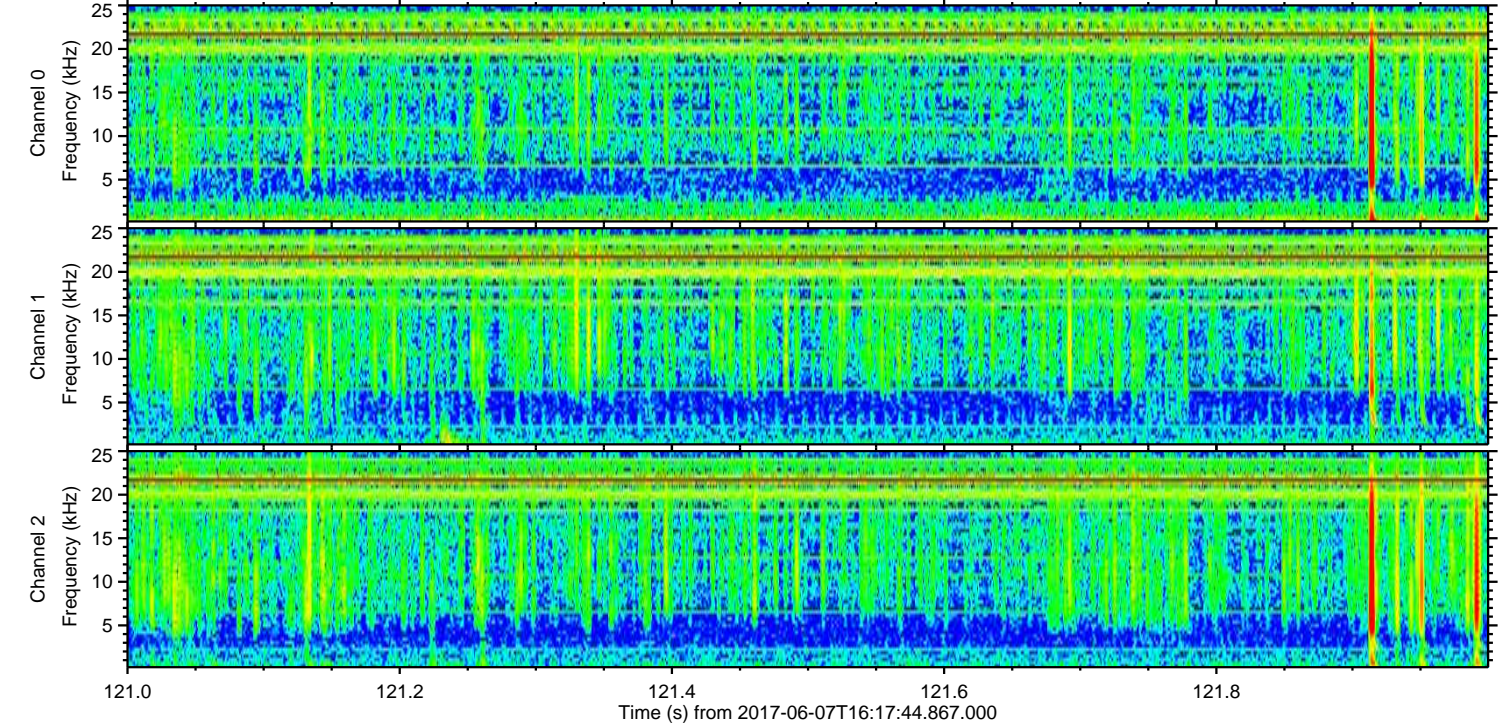
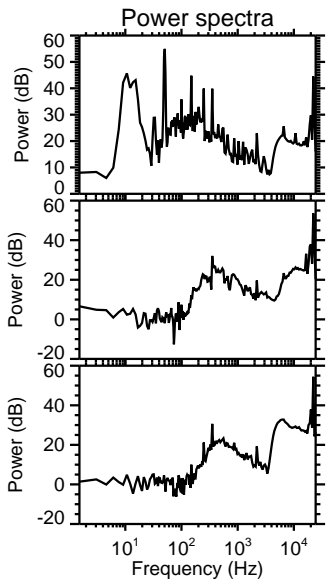
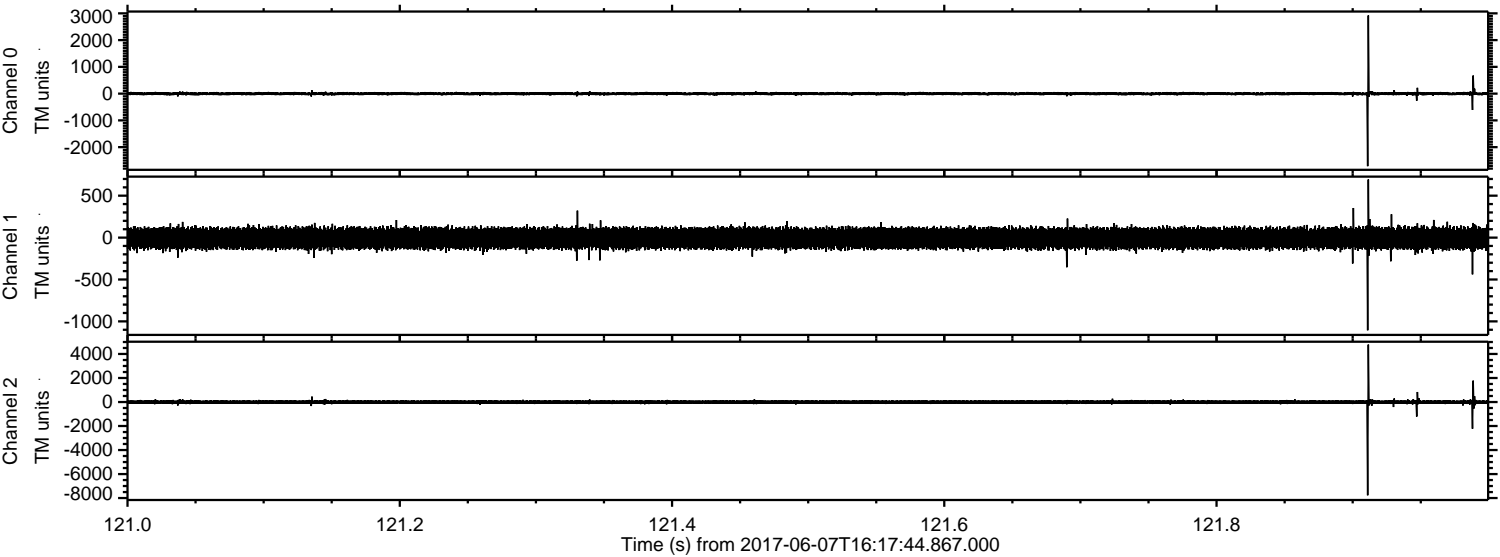
Channel 1  
mn: -1872  
mx: 1331  
 $\mu$ : -8.3  
 $\sigma$ : 74.8

Channel 2  
mn: -7289  
mx: 8596  
 $\mu$ : -8.4  
 $\sigma$ : 113.0



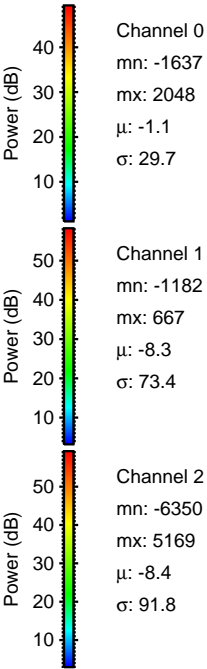
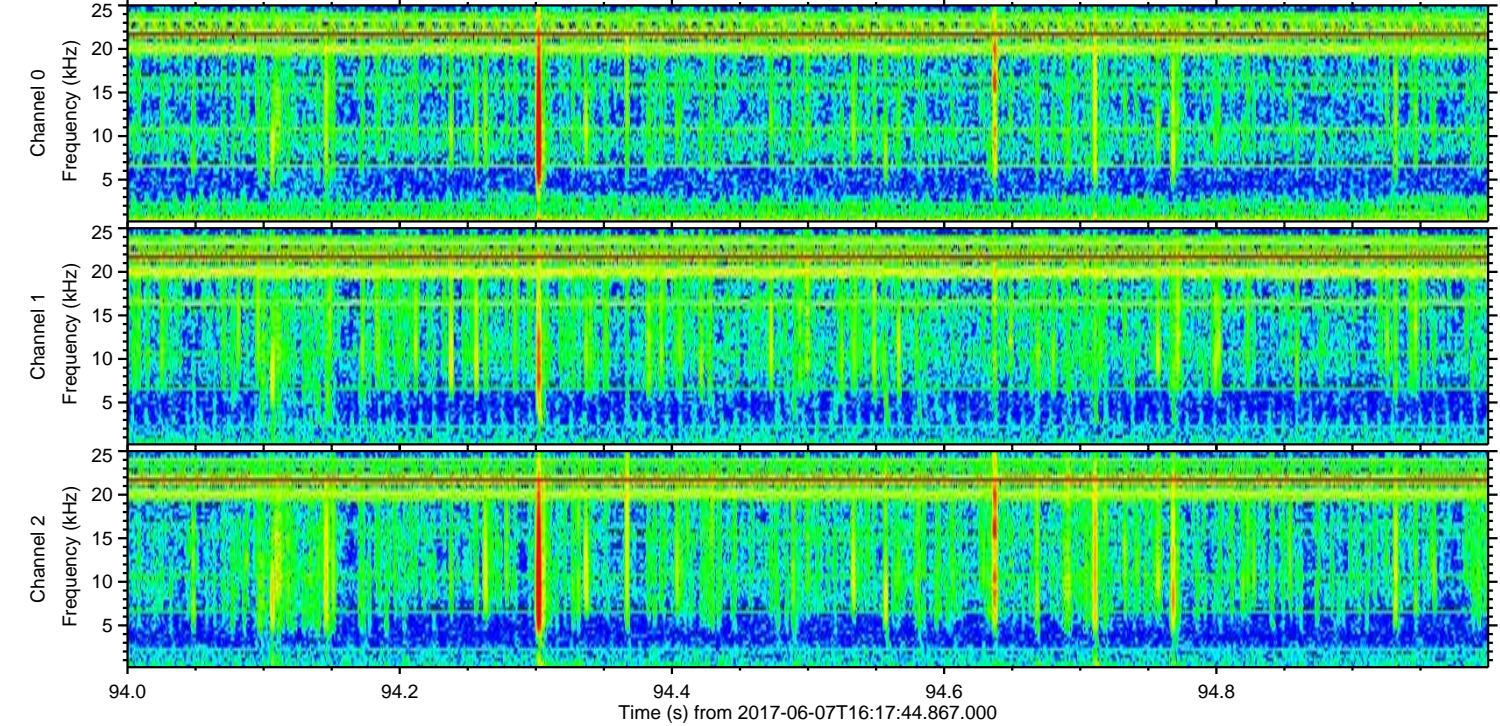
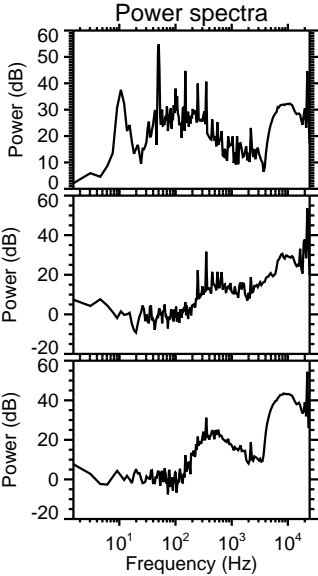
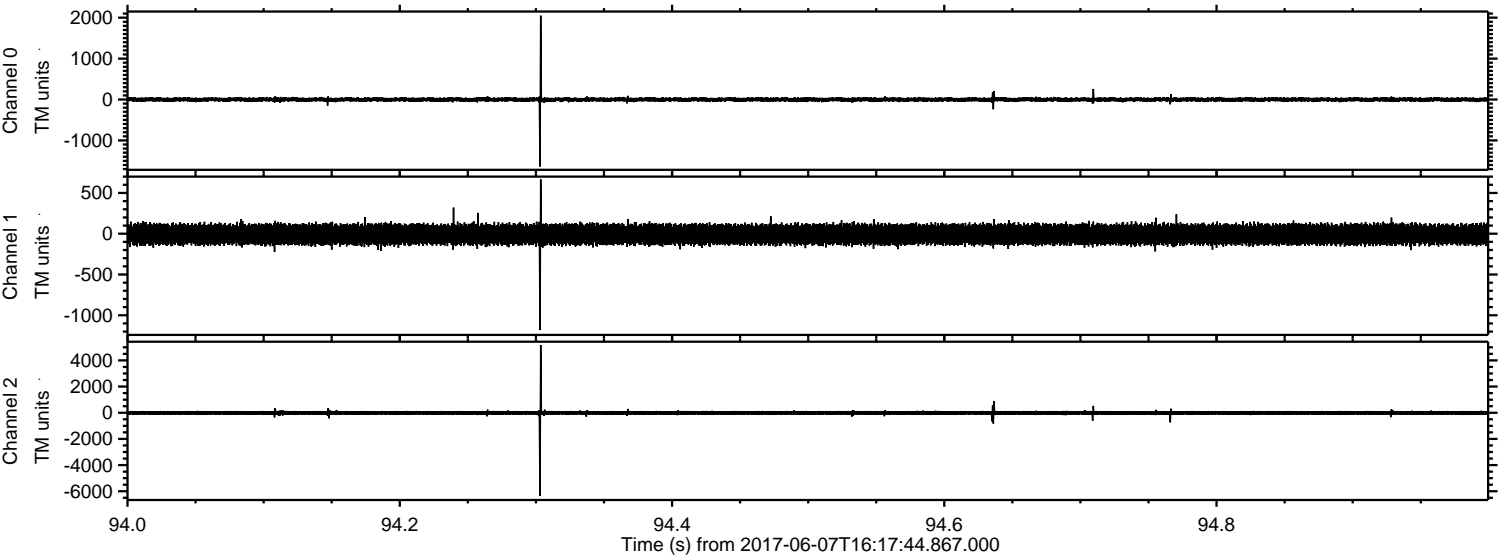
ELMAVAN 3D WAVEFORMS (Measured data sampled at 50 kHz) 50999 packets of 144 samples from 2017-06-07T16:17:44.867.000. Part 122/147

Processed Wed Jun 7 18:25:48 2017 by ELM ver.2012-10-06 from 001\_\_elm20170607\_161743\_\_dat00.bin





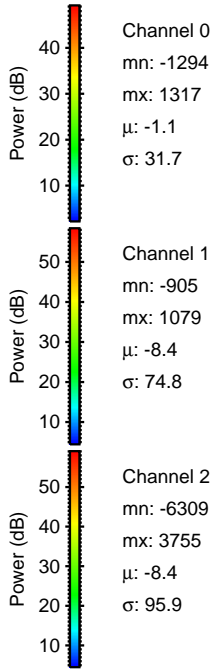
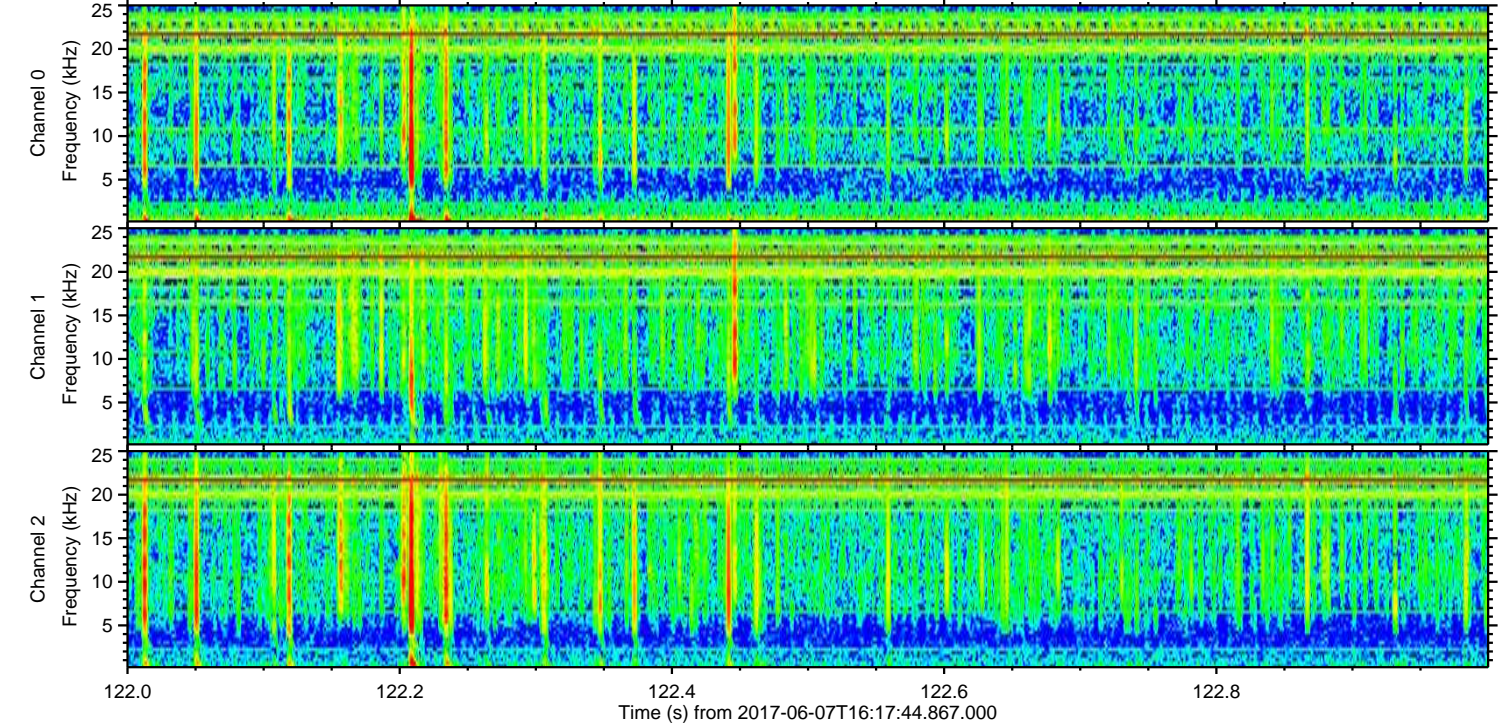
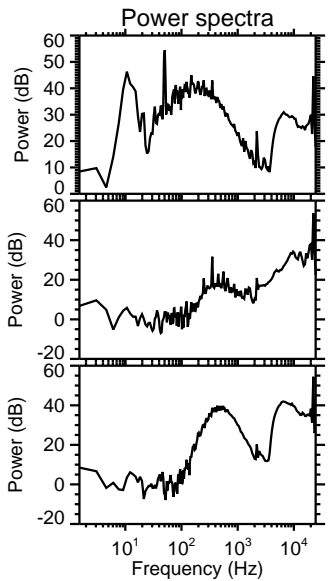
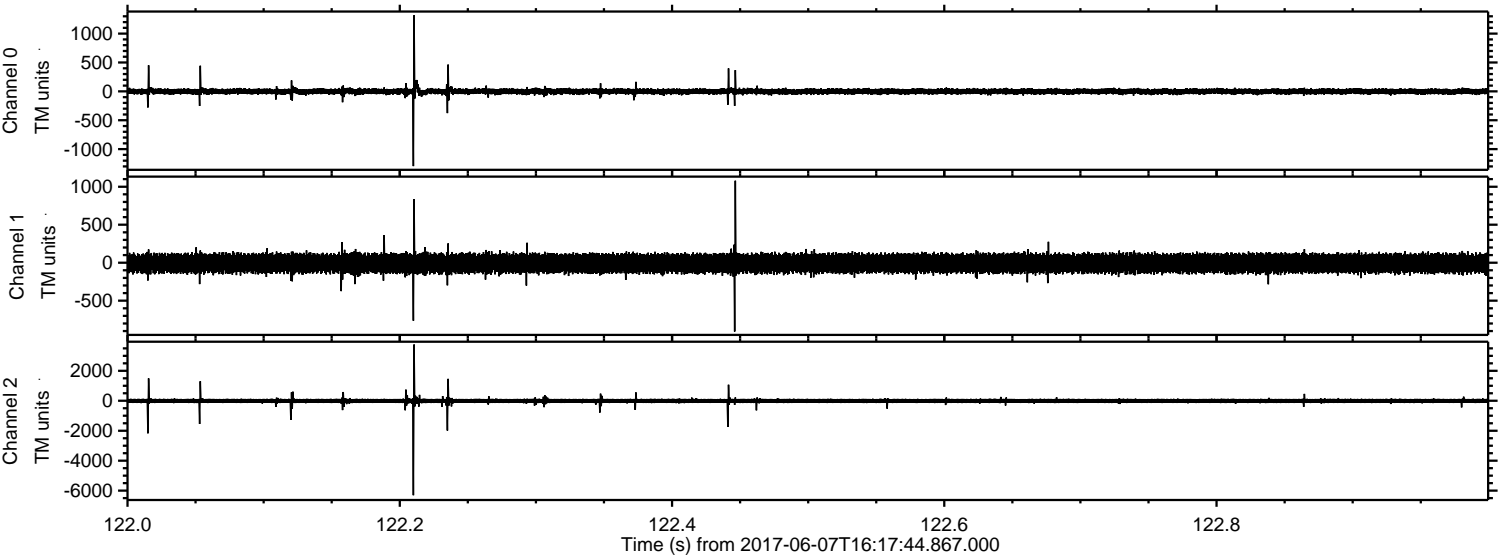
Processed Wed Jun 7 18:25:49 2017 by ELM ver.2012-10-06 from 001\_\_elm20170607\_161743\_\_dat00.bin





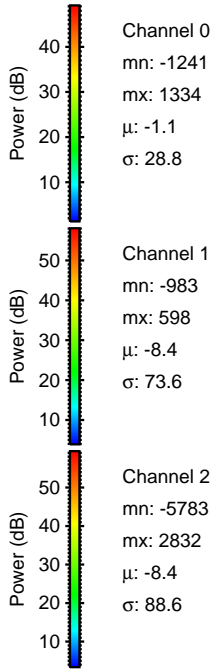
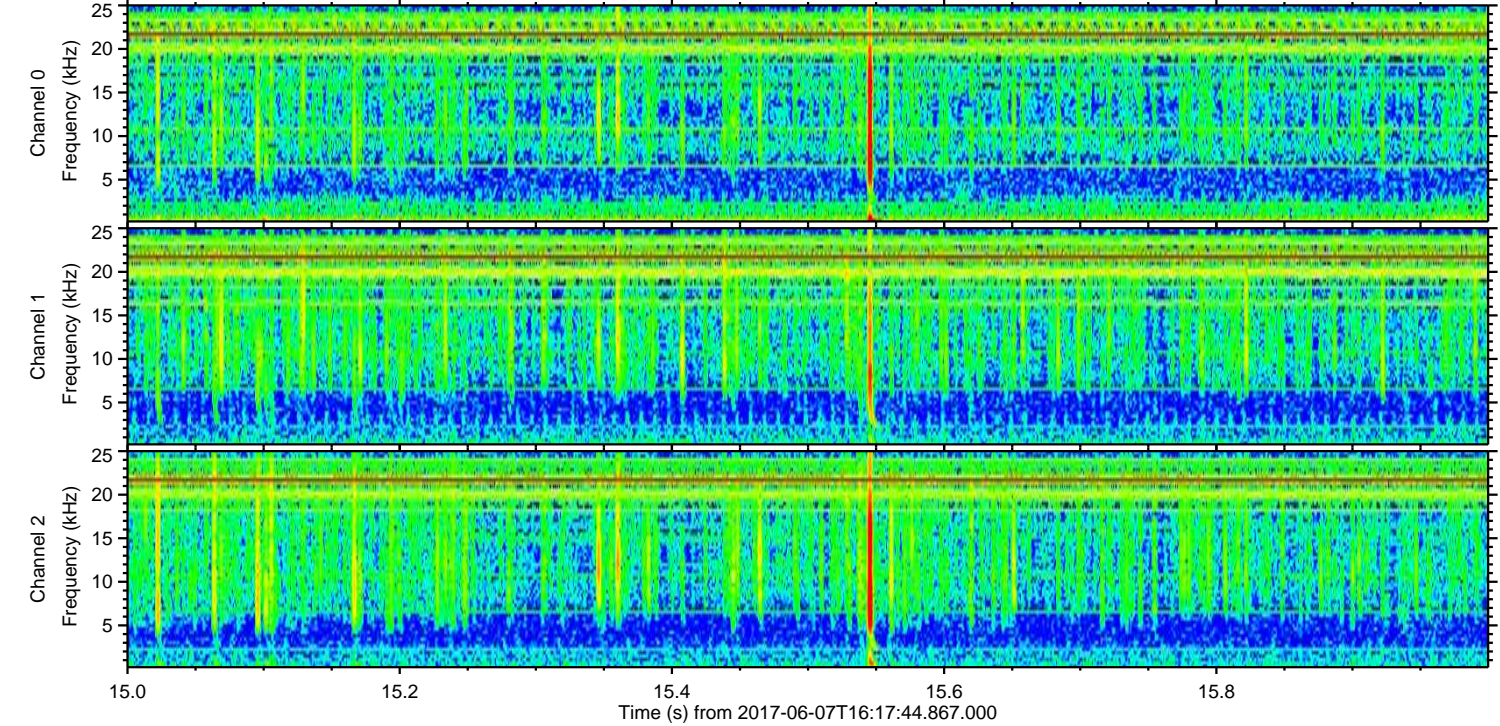
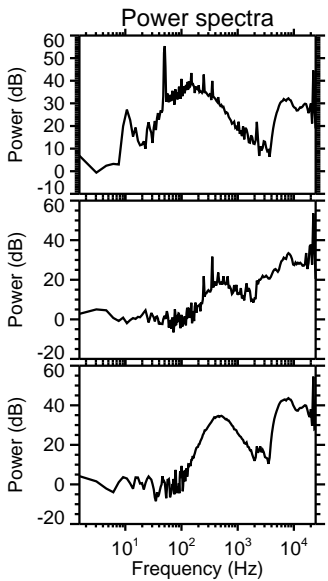
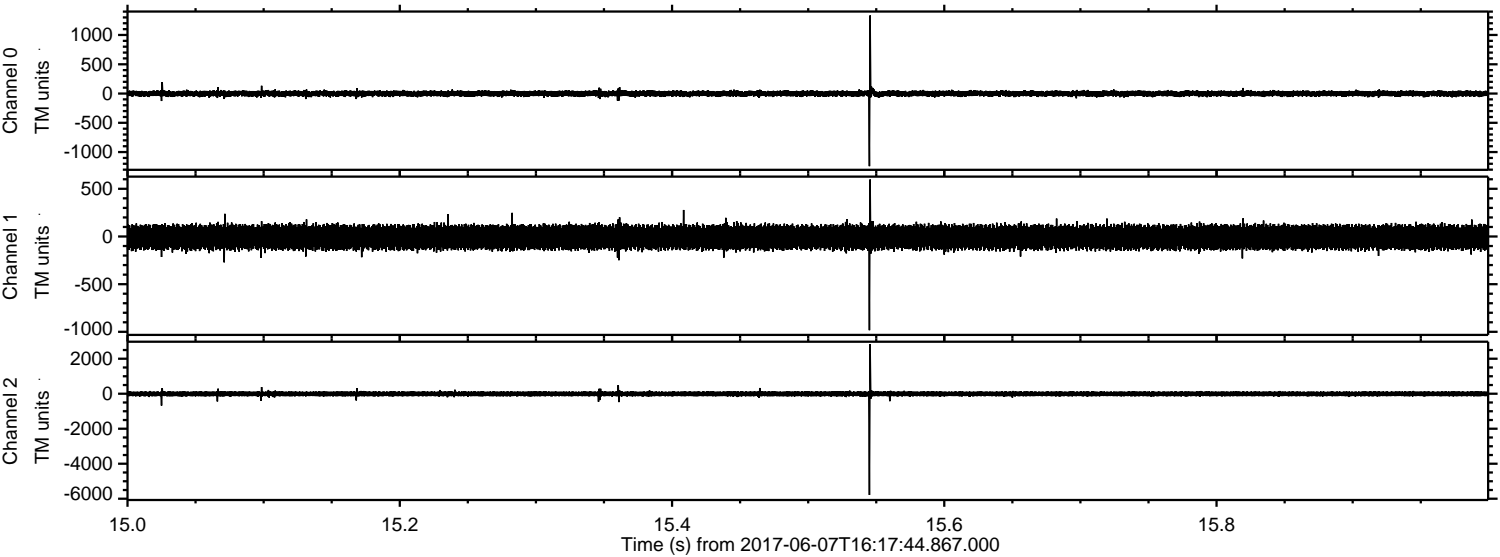
ELMAVAN 3D WAVEFORMS (Measured data sampled at 50 kHz) 50999 packets of 144 samples from 2017-06-07T16:17:44.867.000. Part 123/147

Processed Wed Jun 7 18:25:50 2017 by ELM ver.2012-10-06 from 001\_\_elm20170607\_161743\_\_dat00.bin



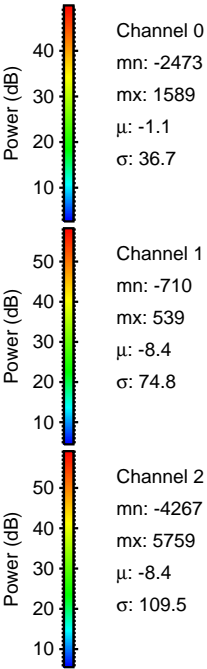
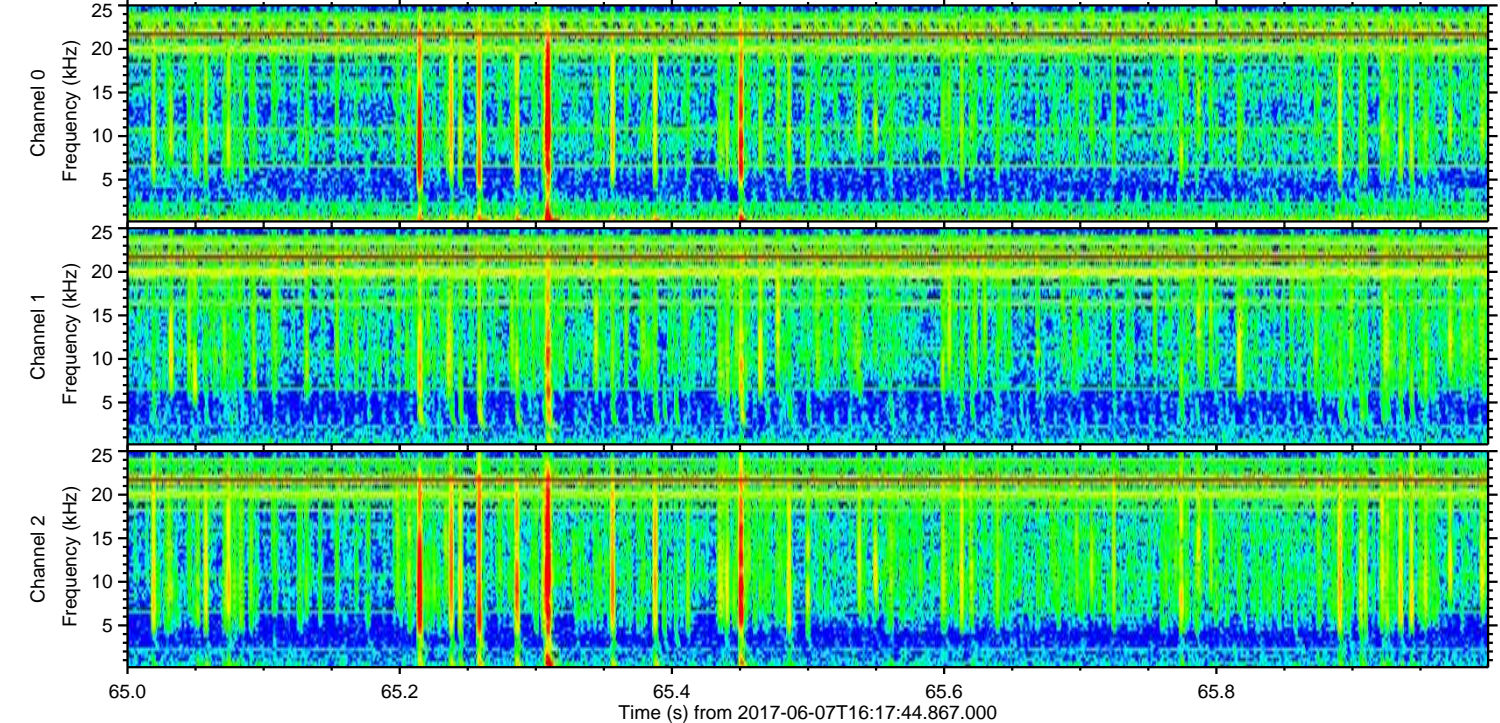
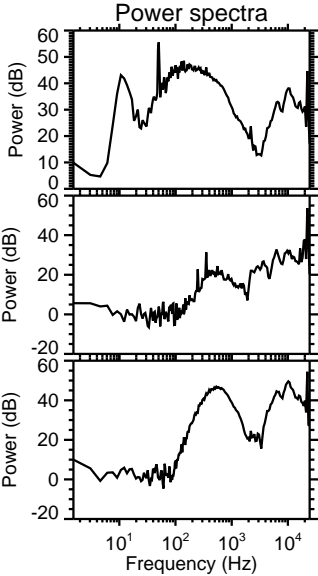
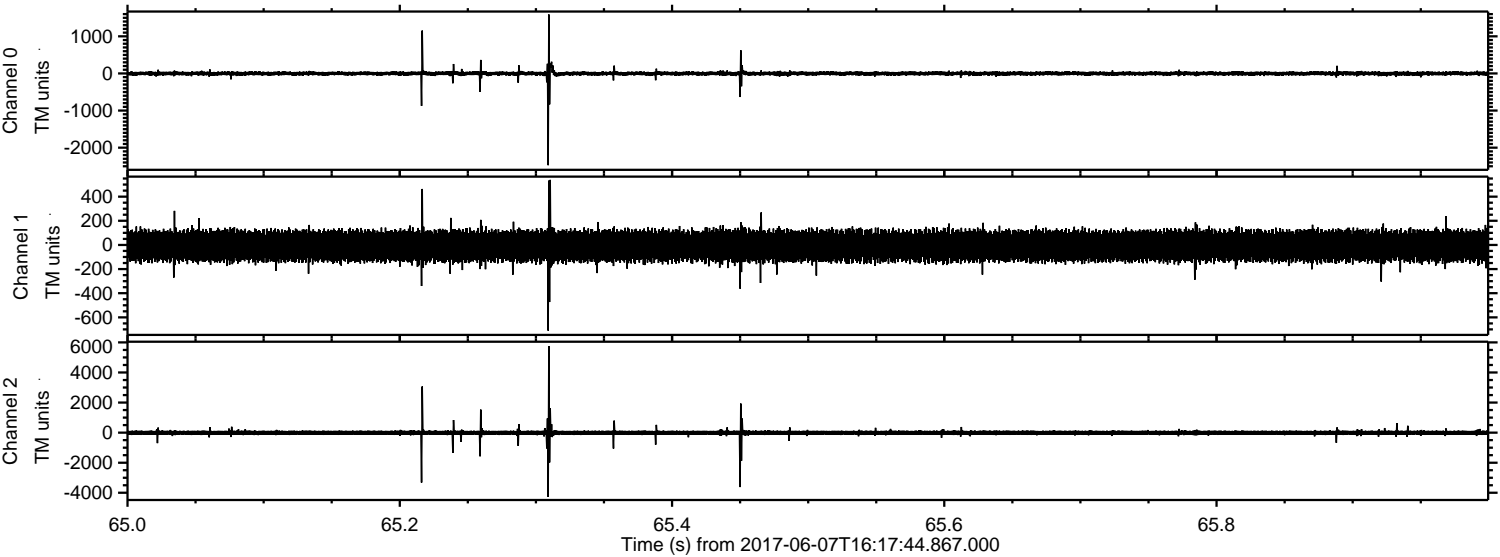


Processed Wed Jun 7 18:25:50 2017 by ELM ver.2012-10-06 from 001\_\_elm20170607\_161743\_\_dat00.bin



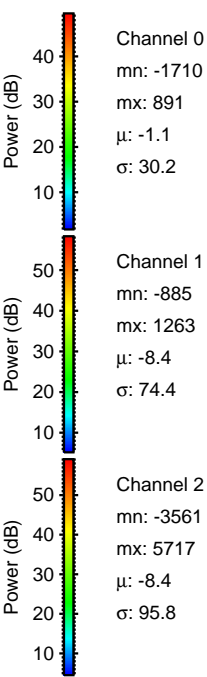
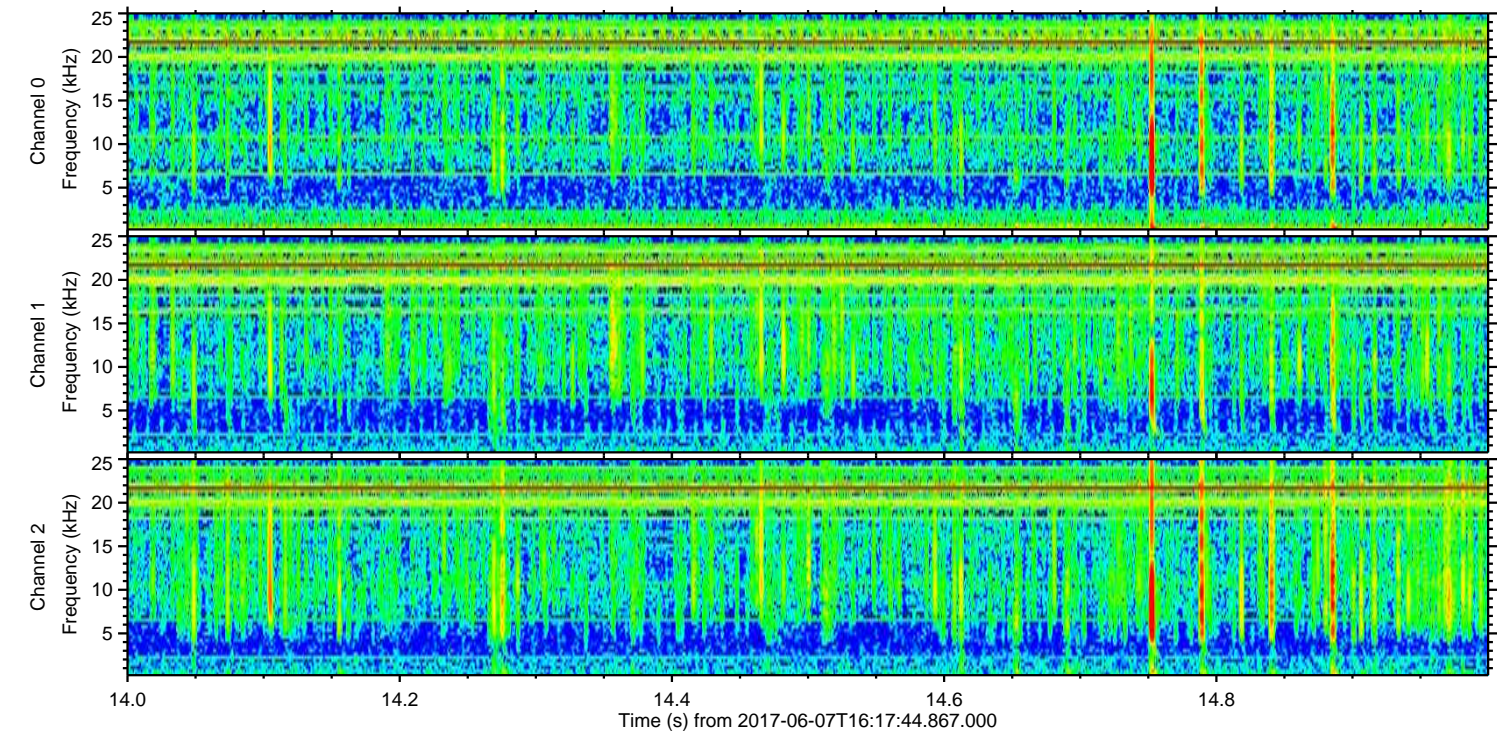
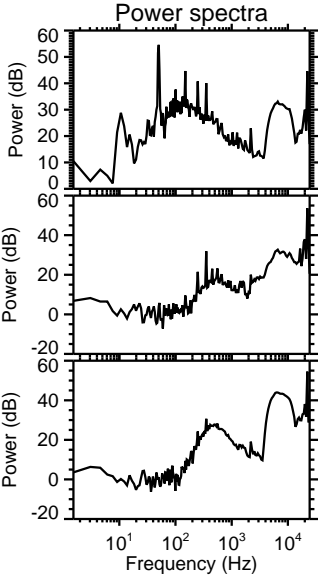
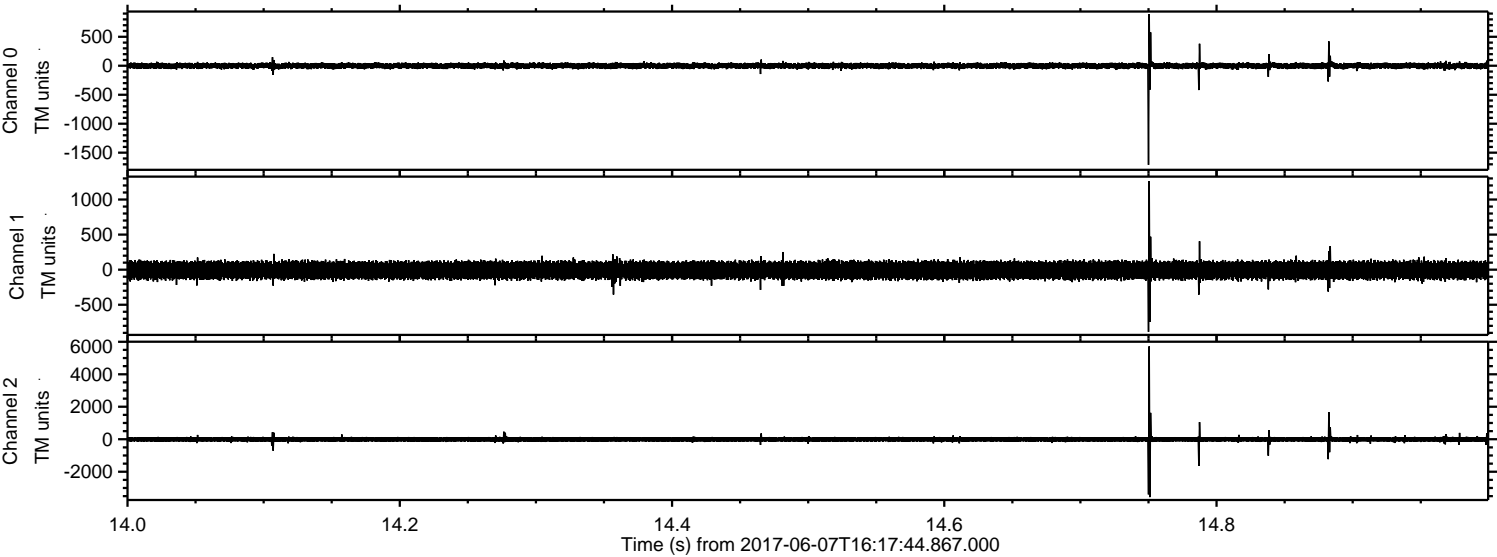


Processed Wed Jun 7 18:25:51 2017 by ELM ver.2012-10-06 from 001\_\_elm20170607\_161743\_\_dat00.bin



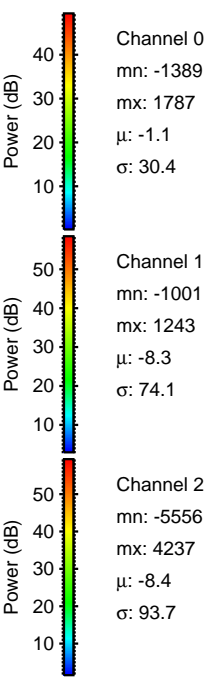
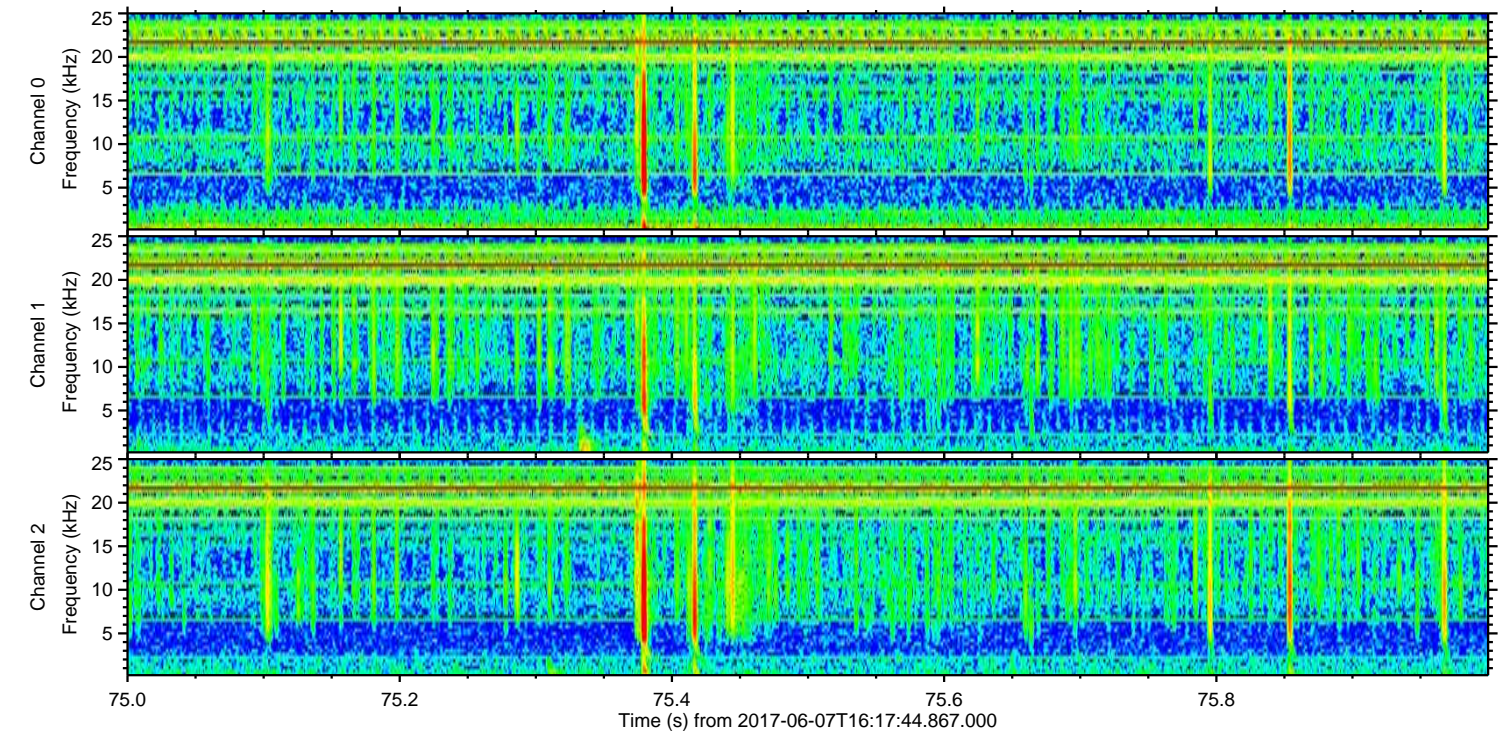
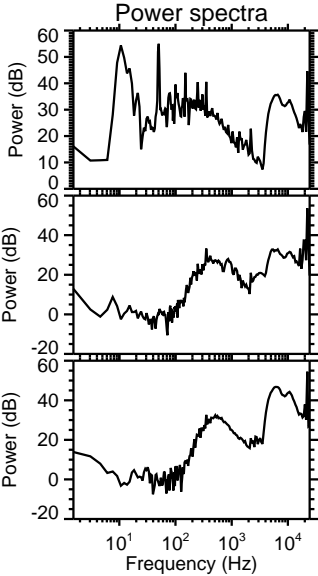
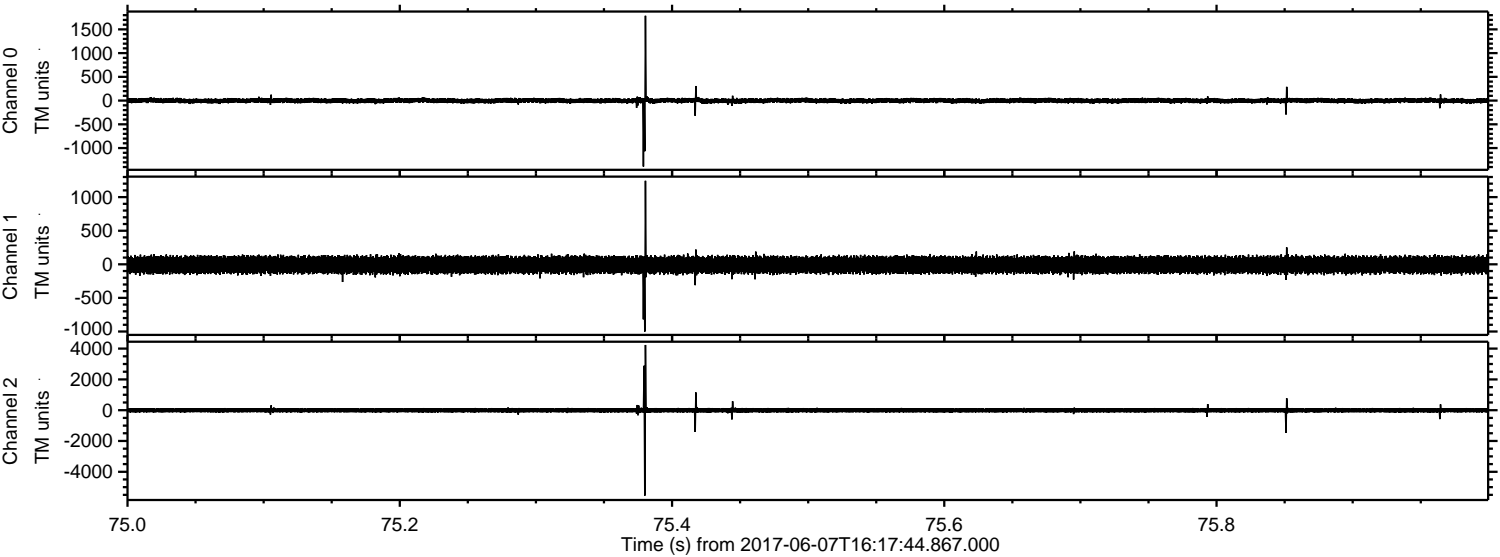


Processed Wed Jun 7 18:25:51 2017 by ELM ver.2012-10-06 from 001\_\_elm20170607\_161743\_\_dat00.bin



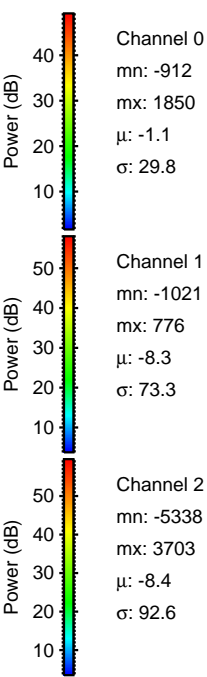
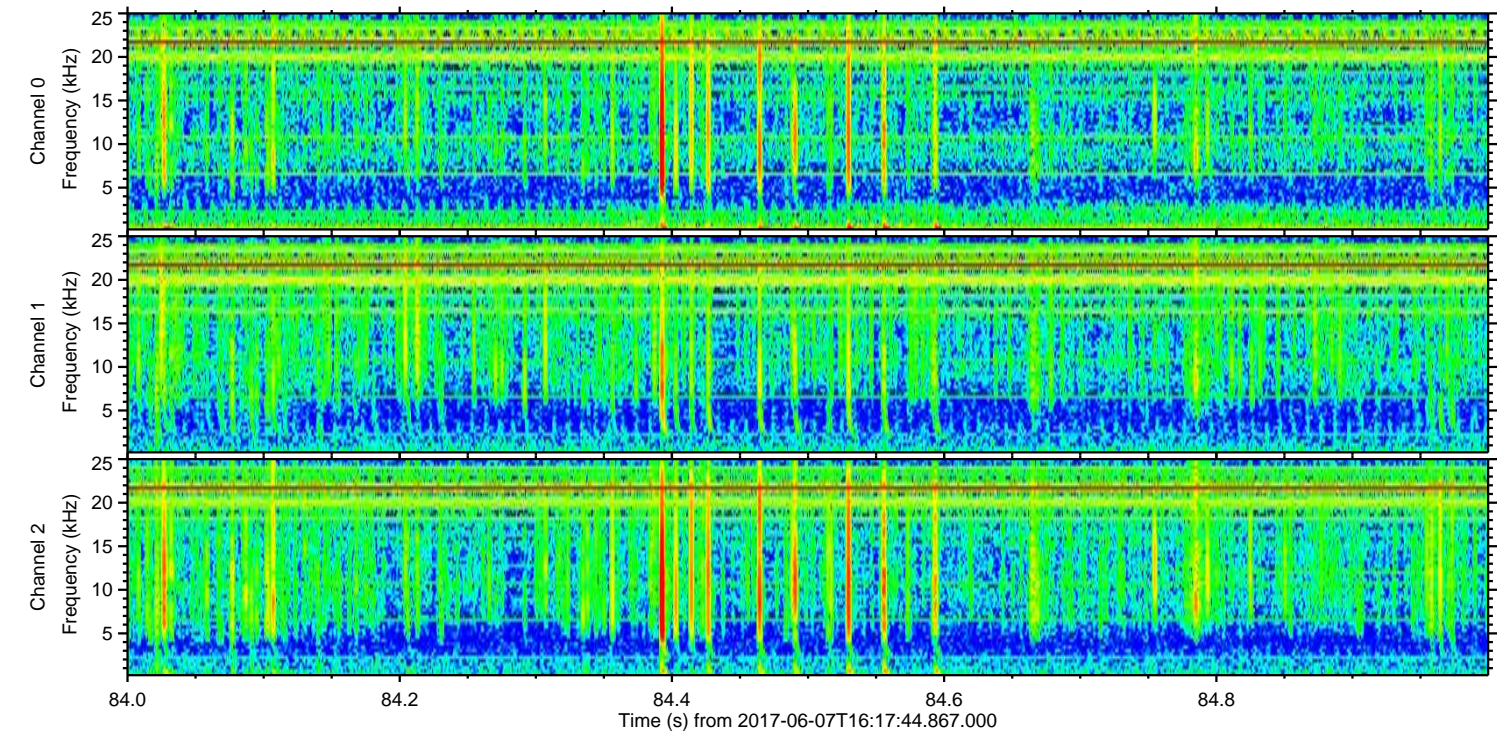
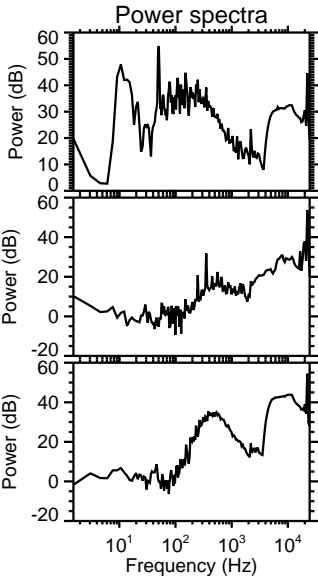
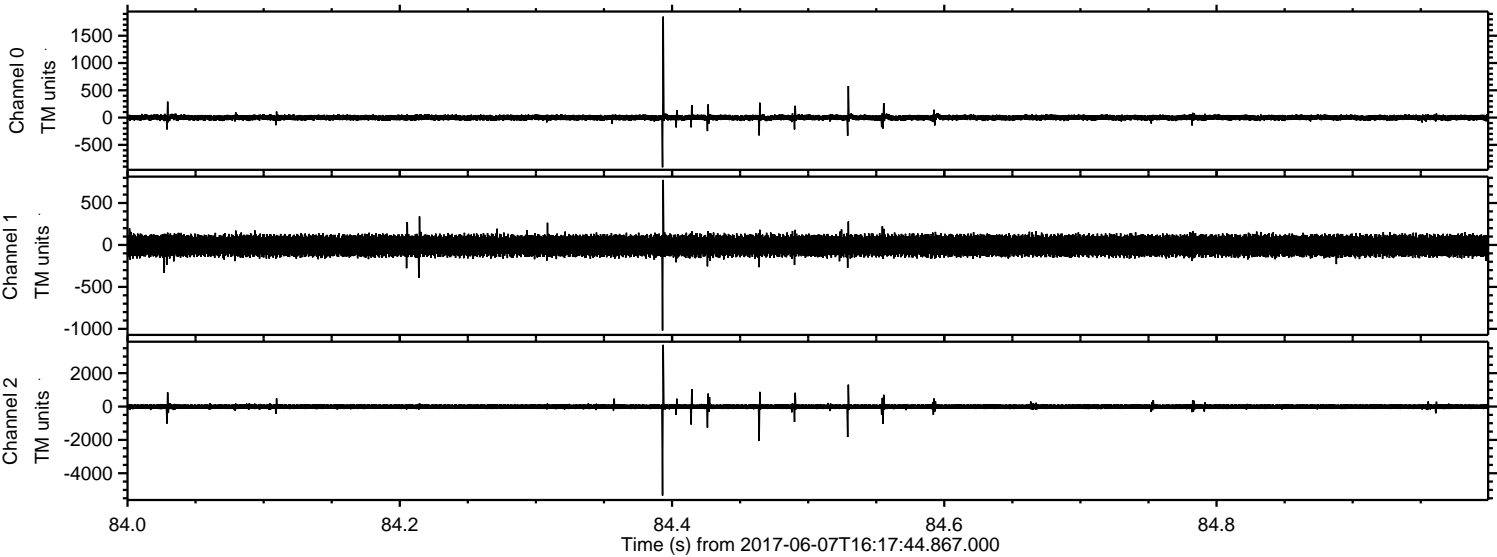


Processed Wed Jun 7 18:25:52 2017 by ELM ver.2012-10-06 from 001\_\_elm20170607\_161743\_\_dat00.bin





Processed Wed Jun 7 18:25:53 2017 by ELM ver.2012-10-06 from 001\_\_elm20170607\_161743\_\_dat00.bin





Processed Wed Jun 7 18:25:53 2017 by ELM ver.2012-10-06 from 001\_\_elm20170607\_161743\_\_dat00.bin

