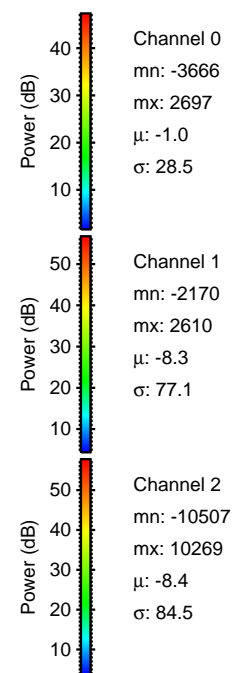
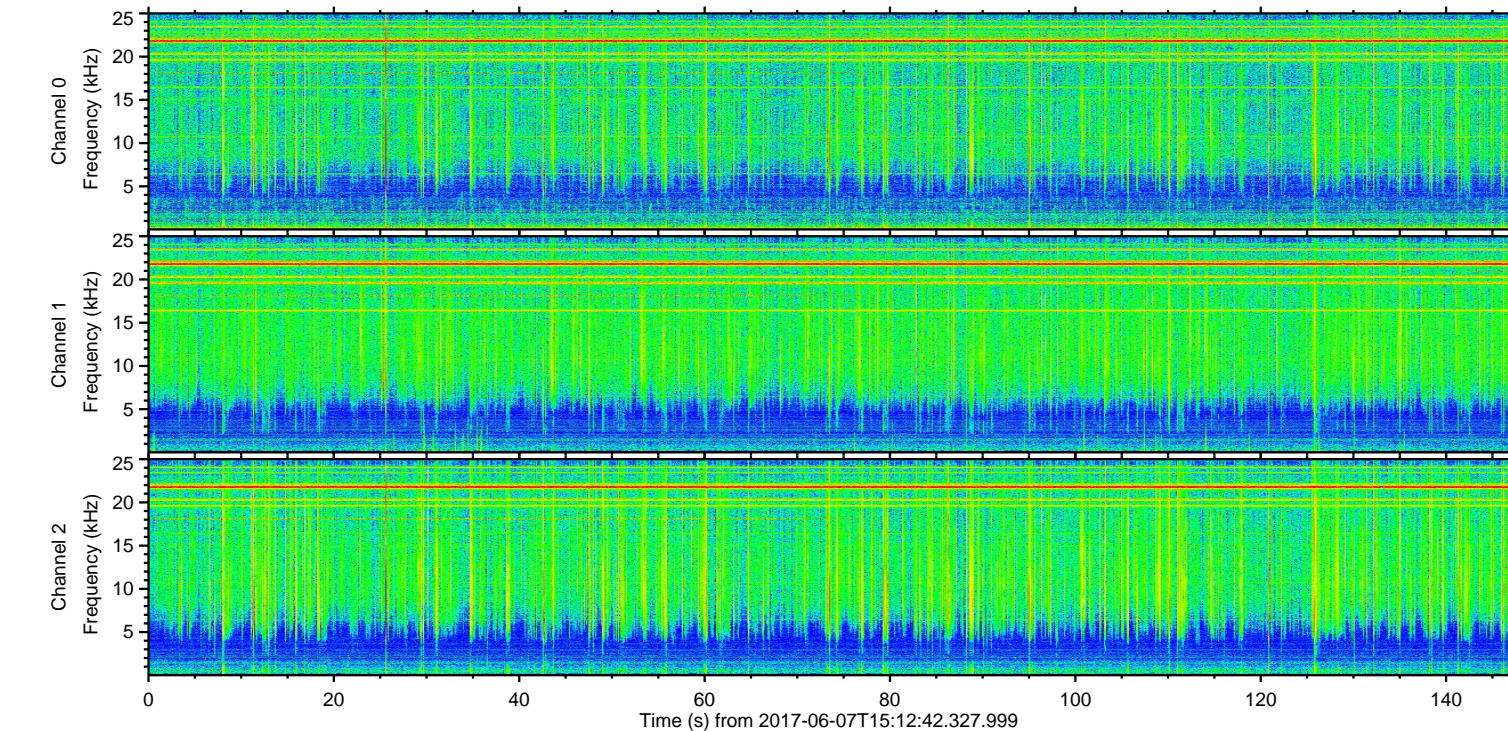
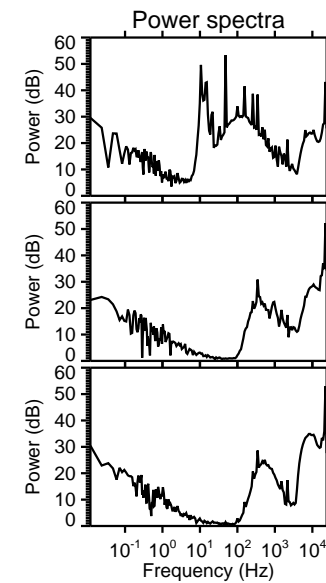
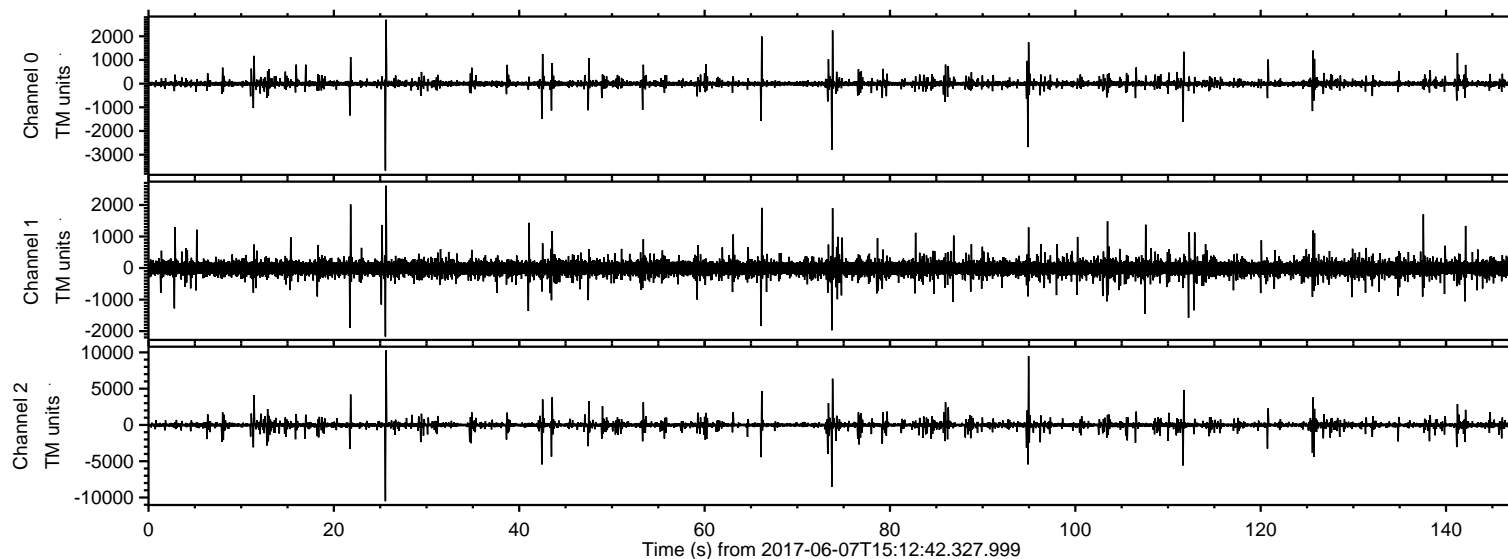
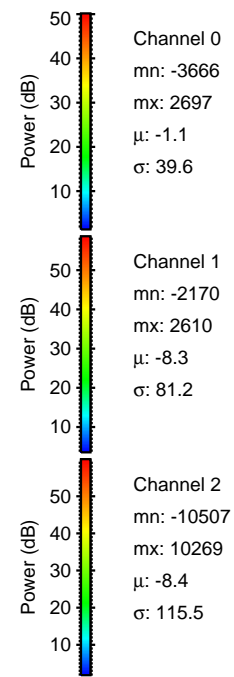
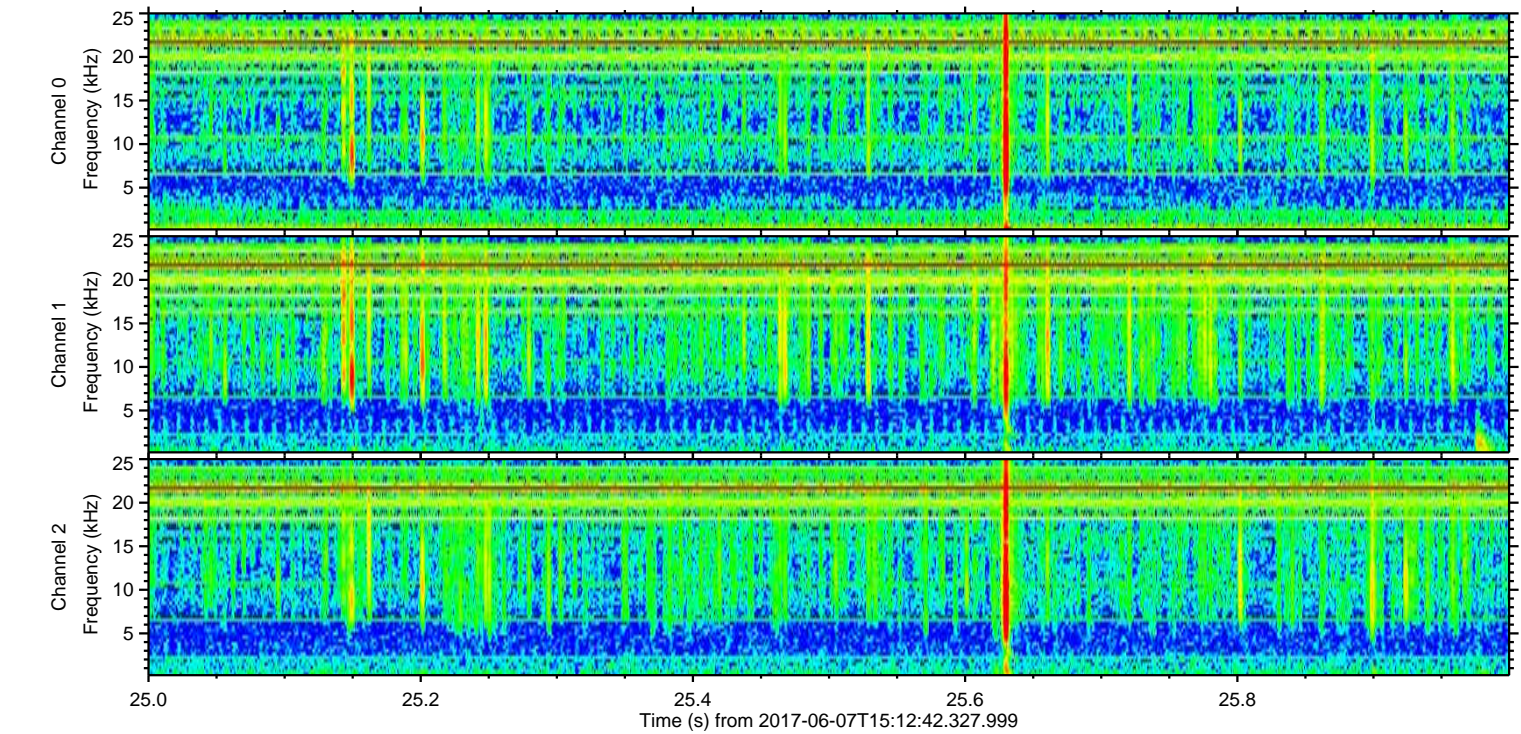
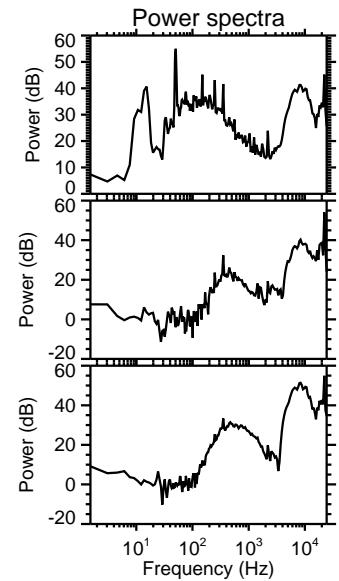
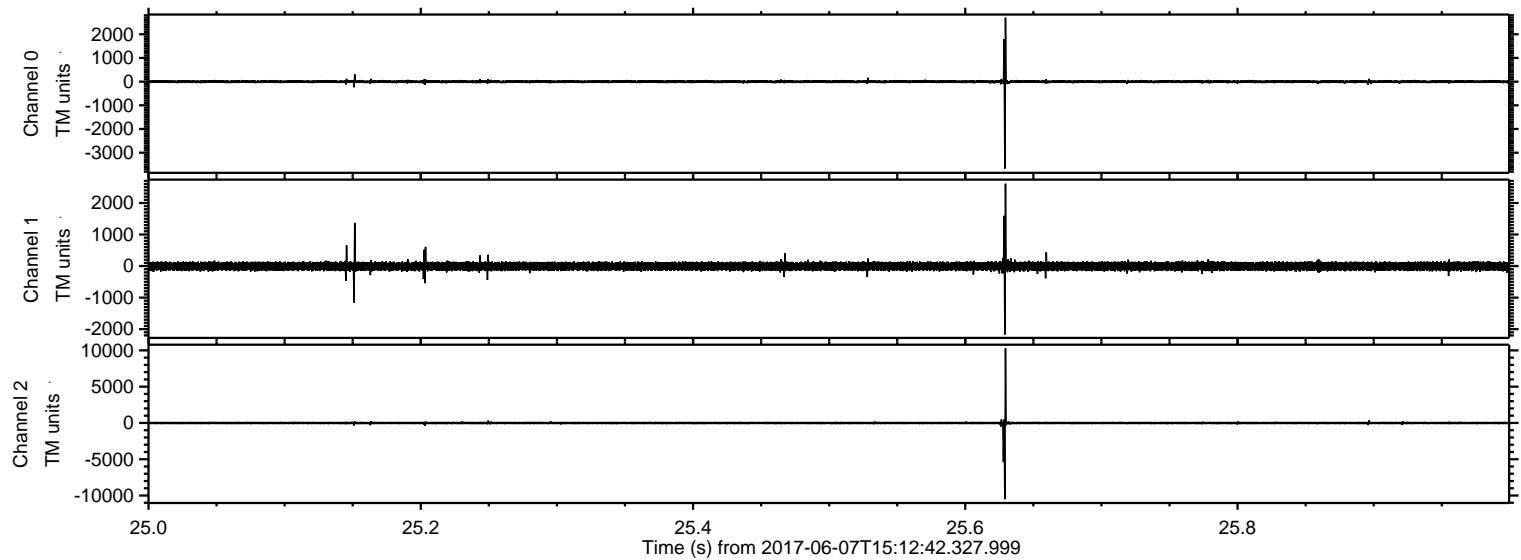


ELMAVAN 3D WAVEFORMS (Measured data sampled at 50 kHz) 51000 packets of 144 samples from 2017-06-07T15:12:42.327.999.

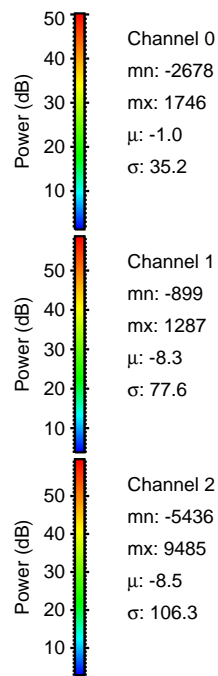
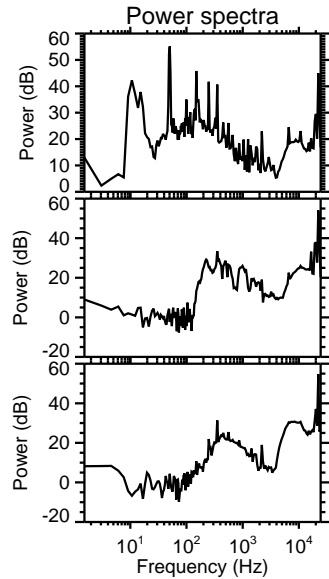
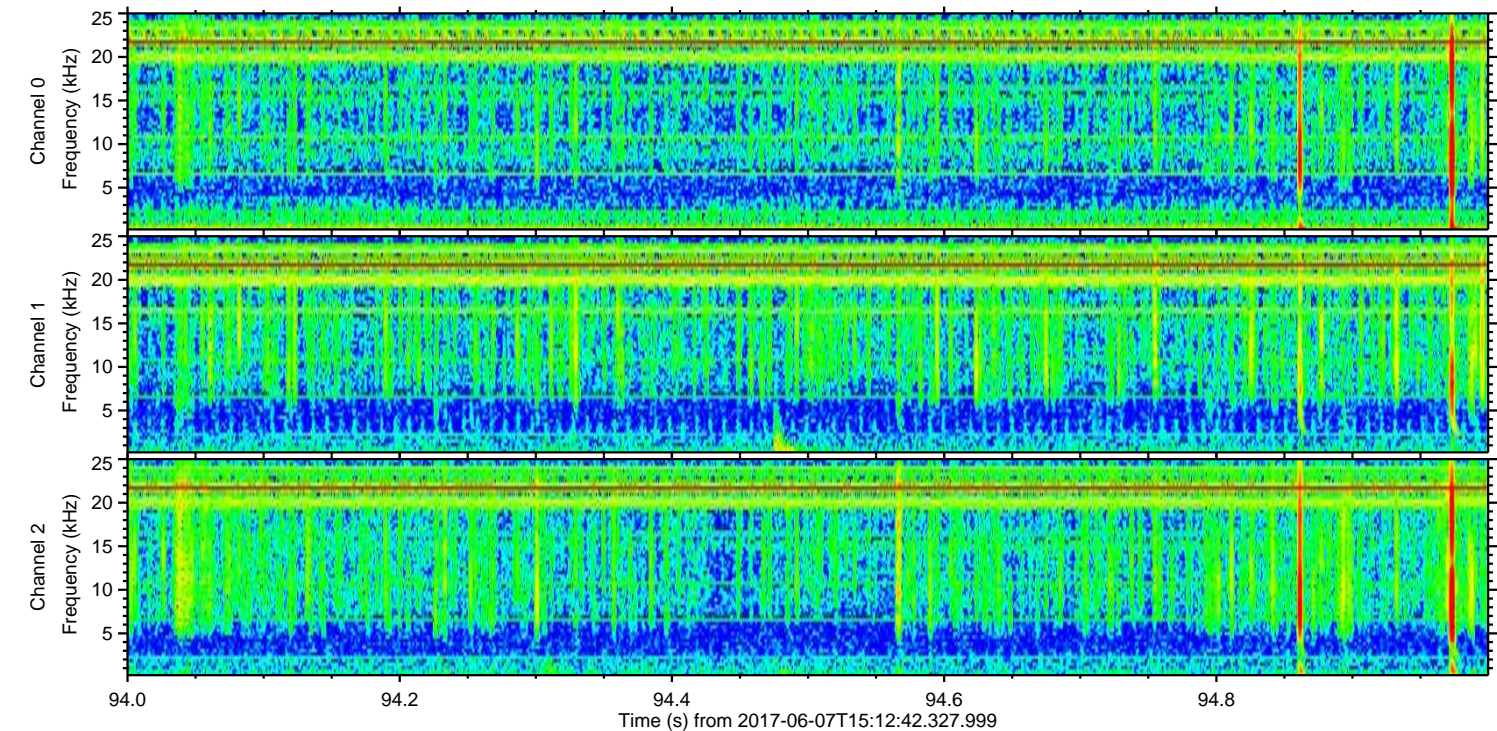
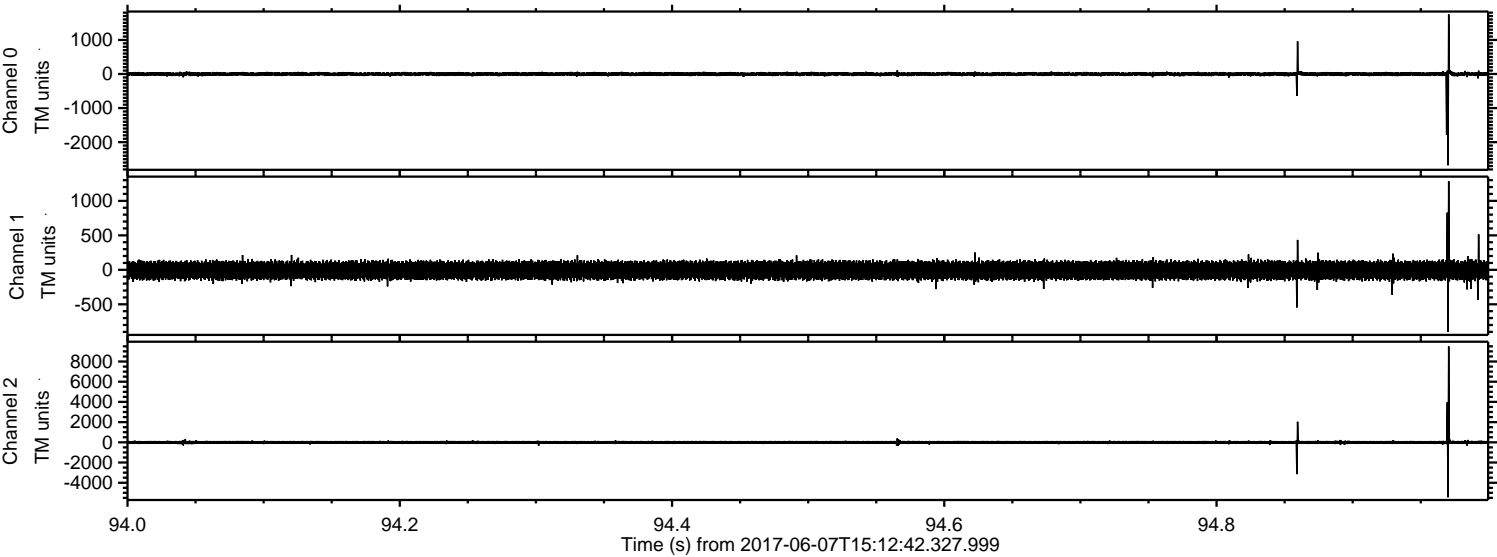
Processed Wed Jun 7 17:19:54 2017 by ELM ver.2012-10-06 from 001__elm20170607_151241__dat00.bin



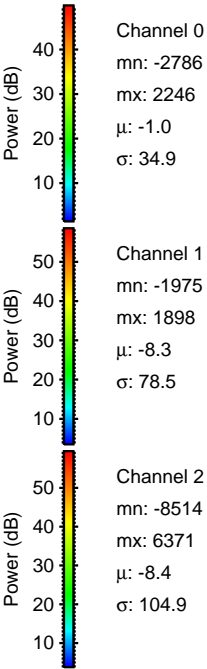
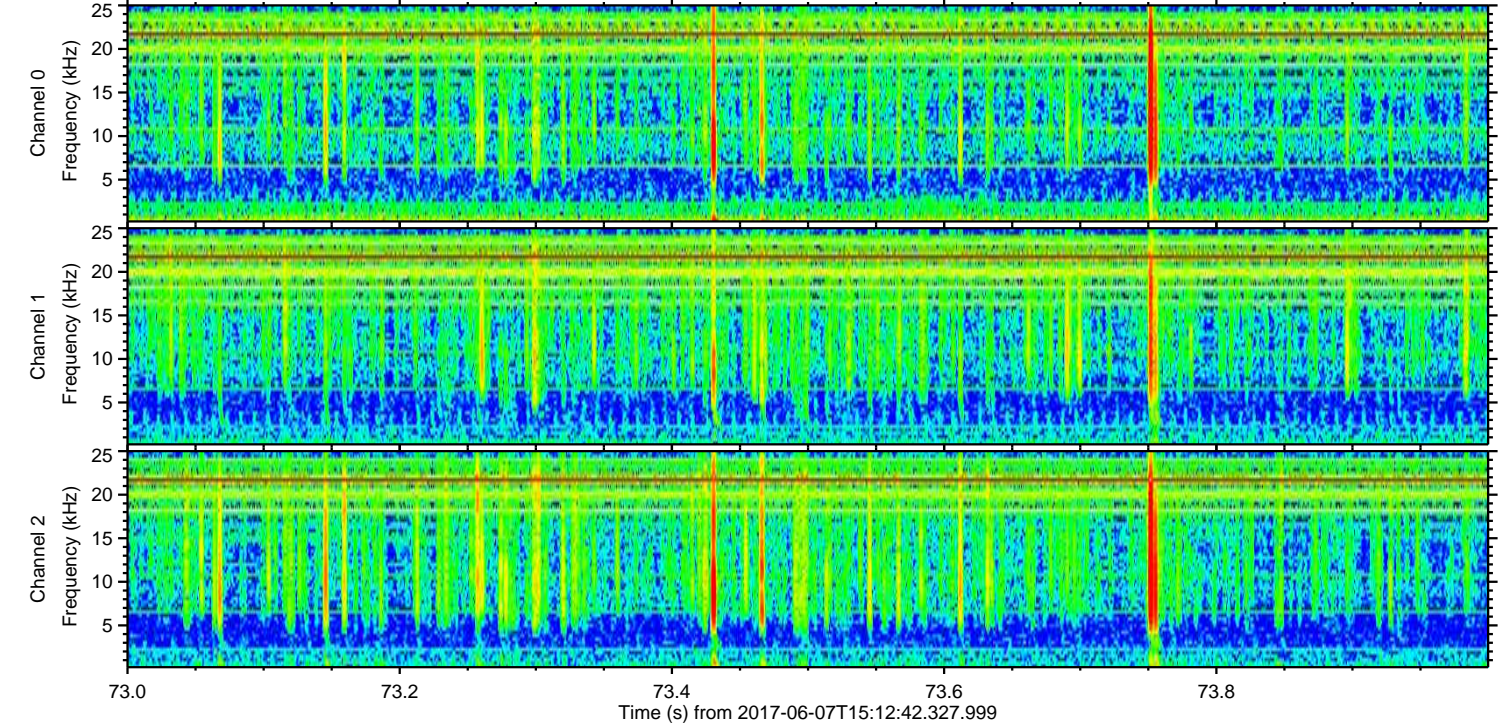
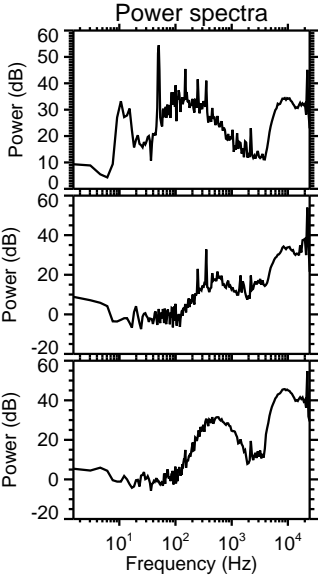
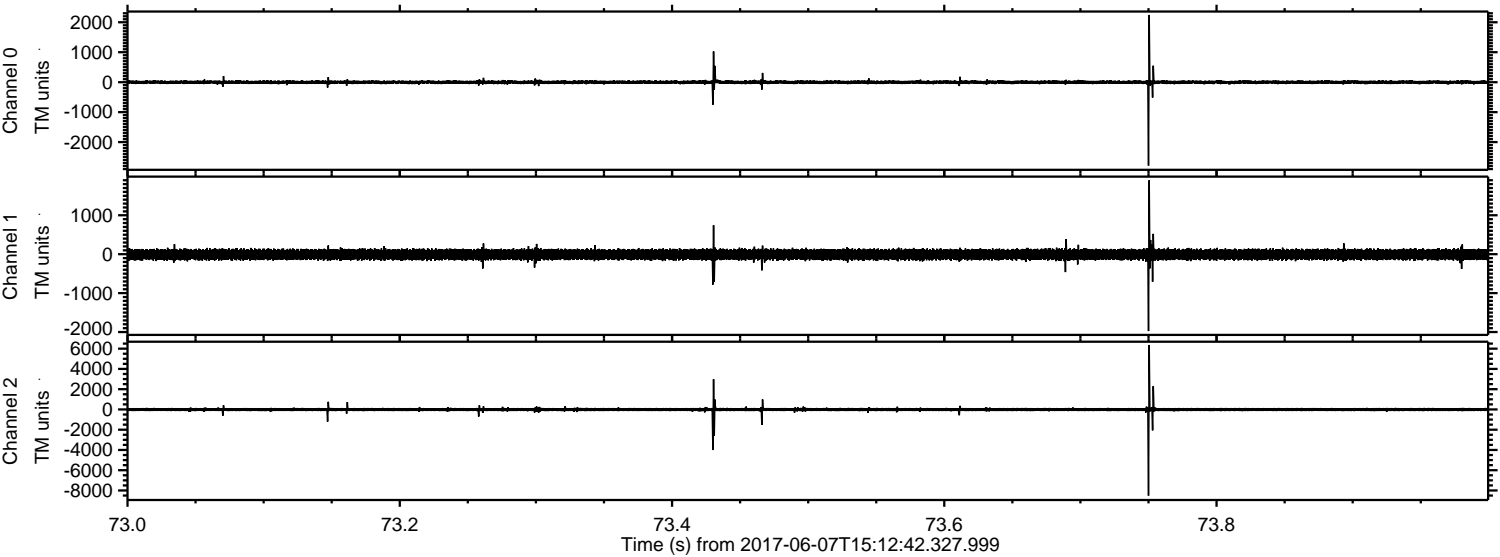
Processed Wed Jun 7 17:20:00 2017 by ELM ver.2012-10-06 from 001__elm20170607_151241__dat00.bin



Processed Wed Jun 7 17:20:01 2017 by ELM ver.2012-10-06 from 001__elm20170607_151241__dat00.bin

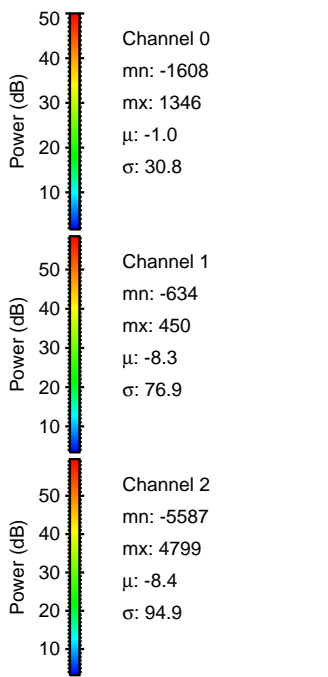
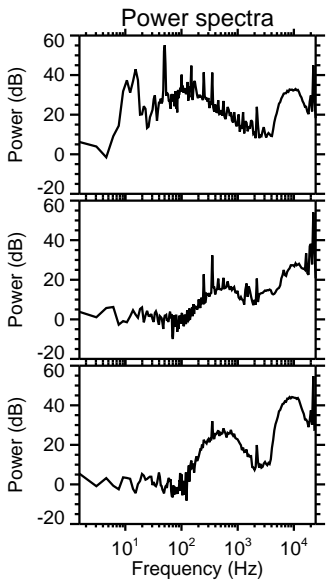
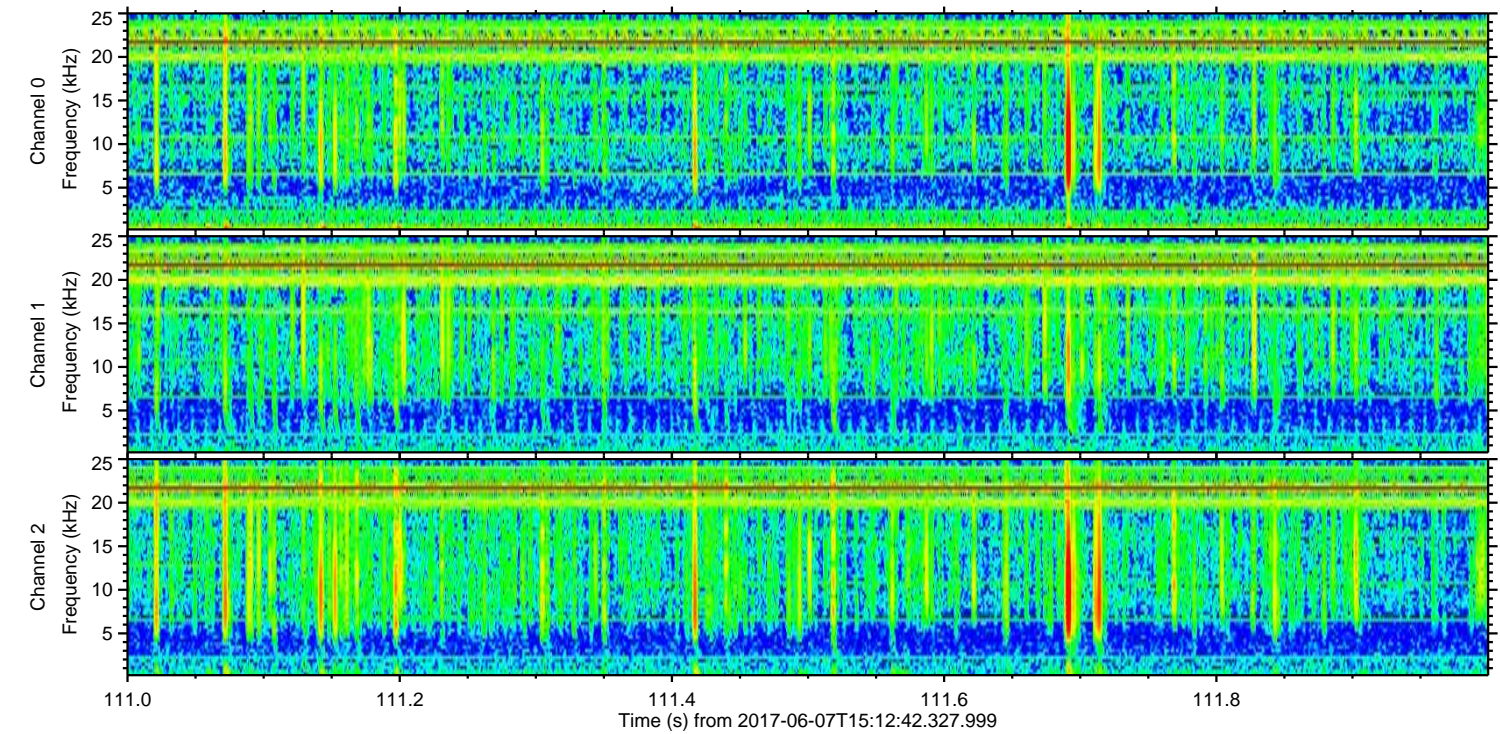
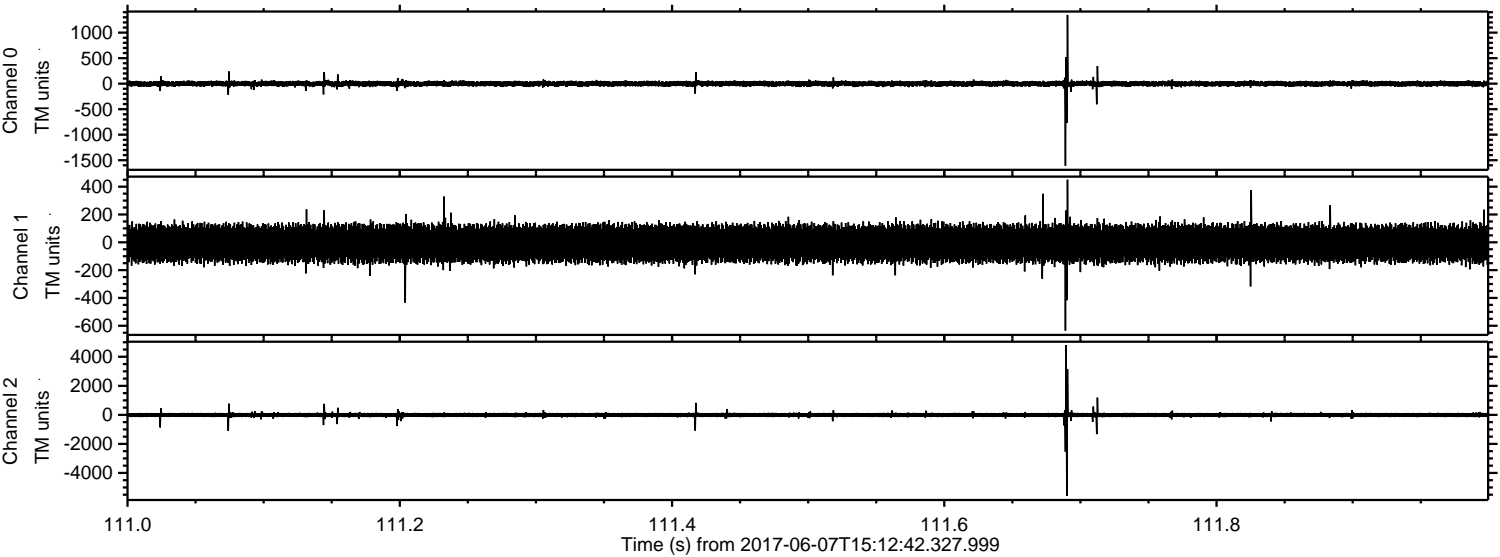


Processed Wed Jun 7 17:20:01 2017 by ELM ver.2012-10-06 from 001__elm20170607_151241__dat00.bin



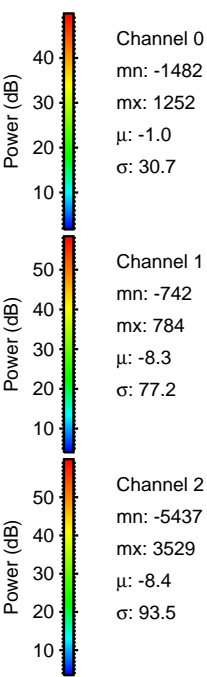
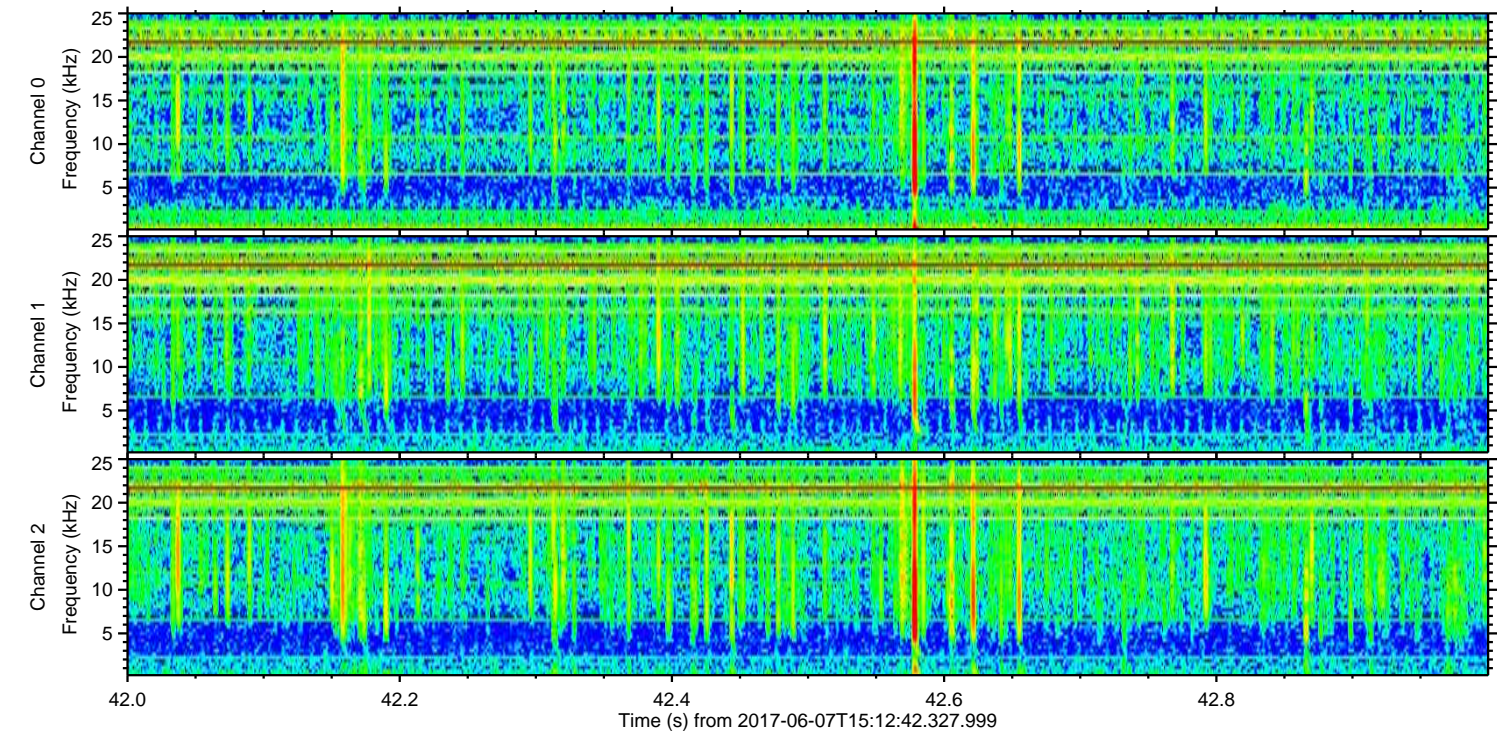
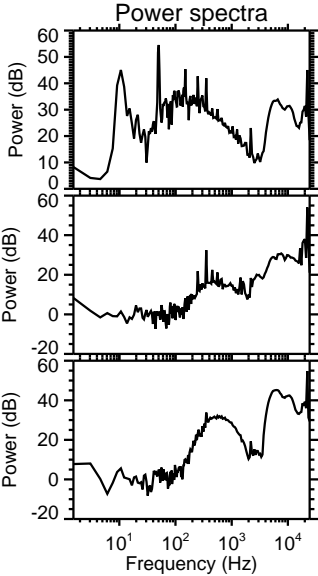
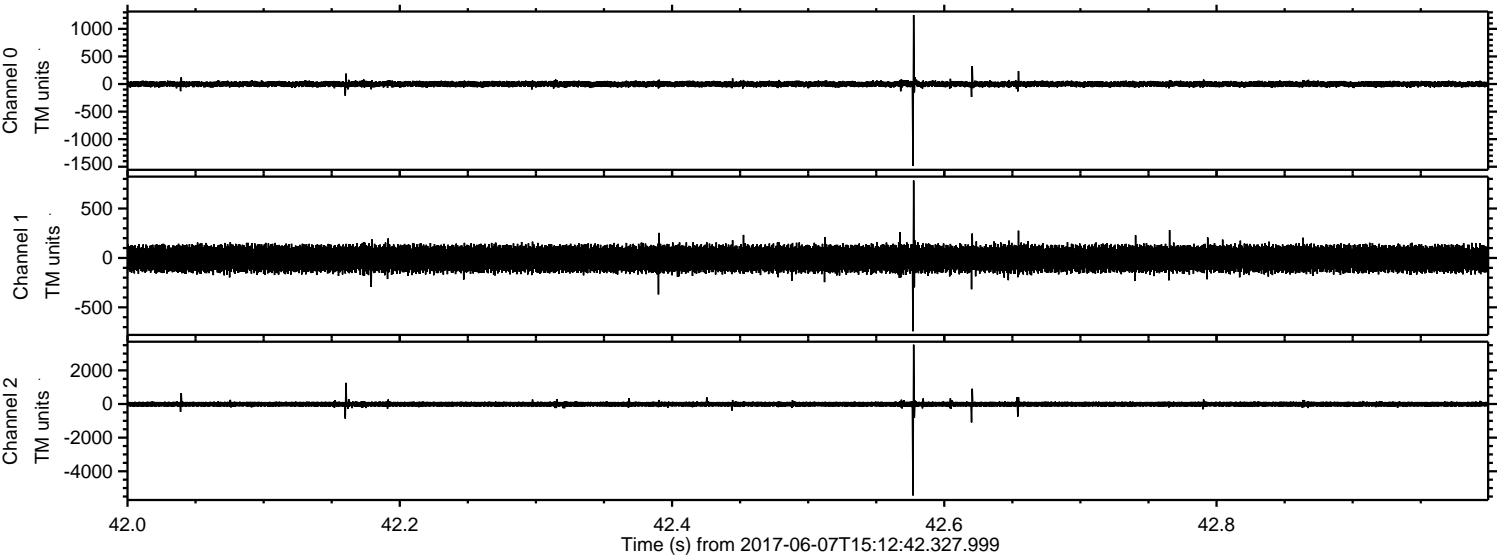
ELMAVAN 3D WAVEFORMS (Measured data sampled at 50 kHz) 51000 packets of 144 samples from 2017-06-07T15:12:42.327.999. Part 112/147

Processed Wed Jun 7 17:20:02 2017 by ELM ver.2012-10-06 from 001__elm20170607_151241__dat00.bin

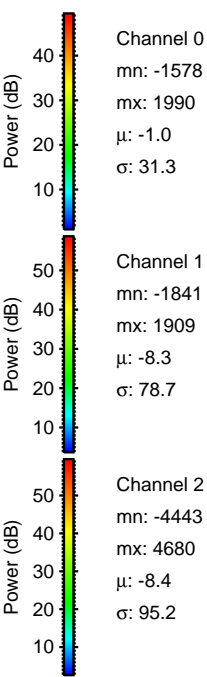
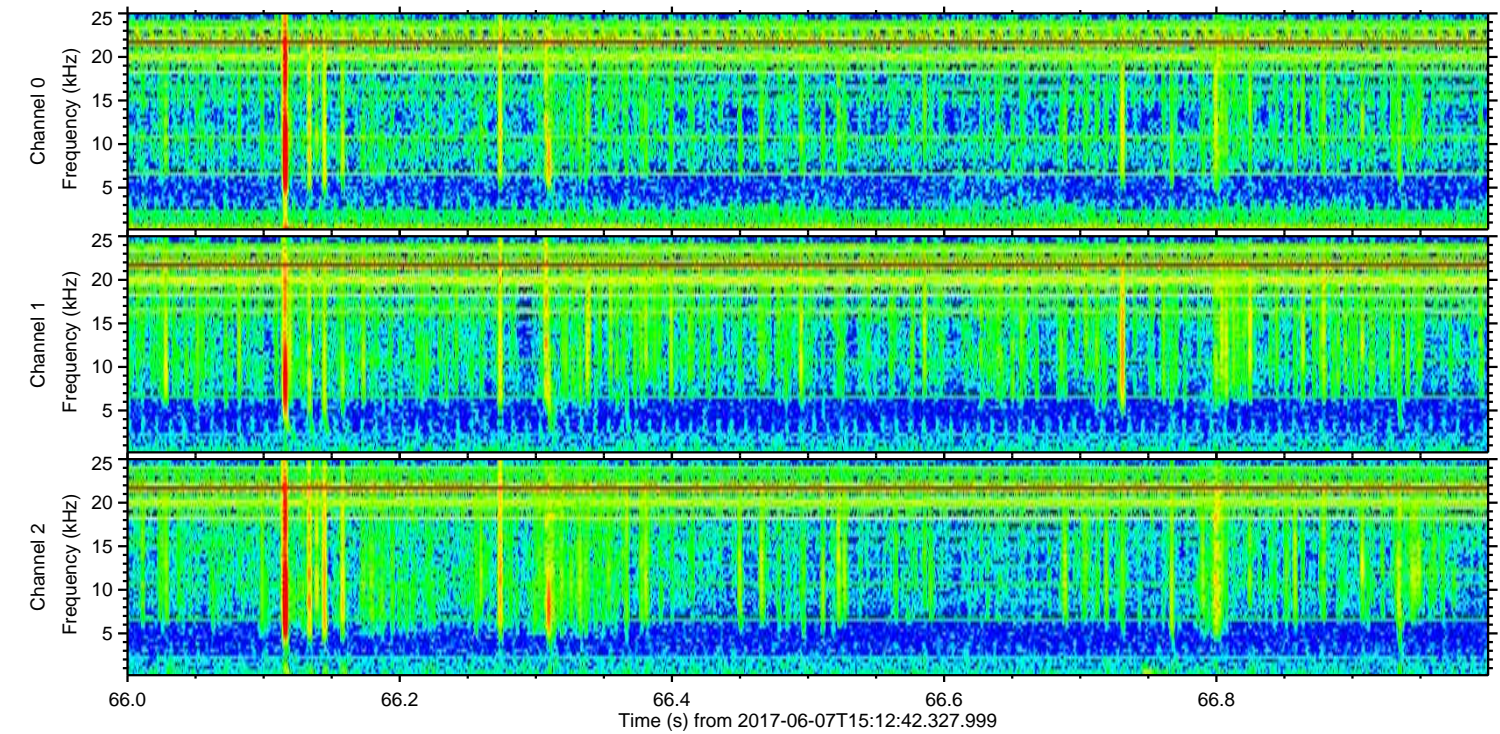
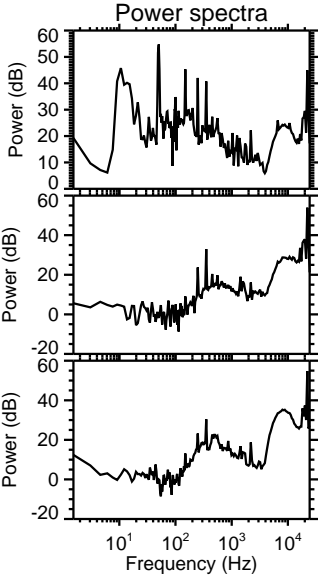
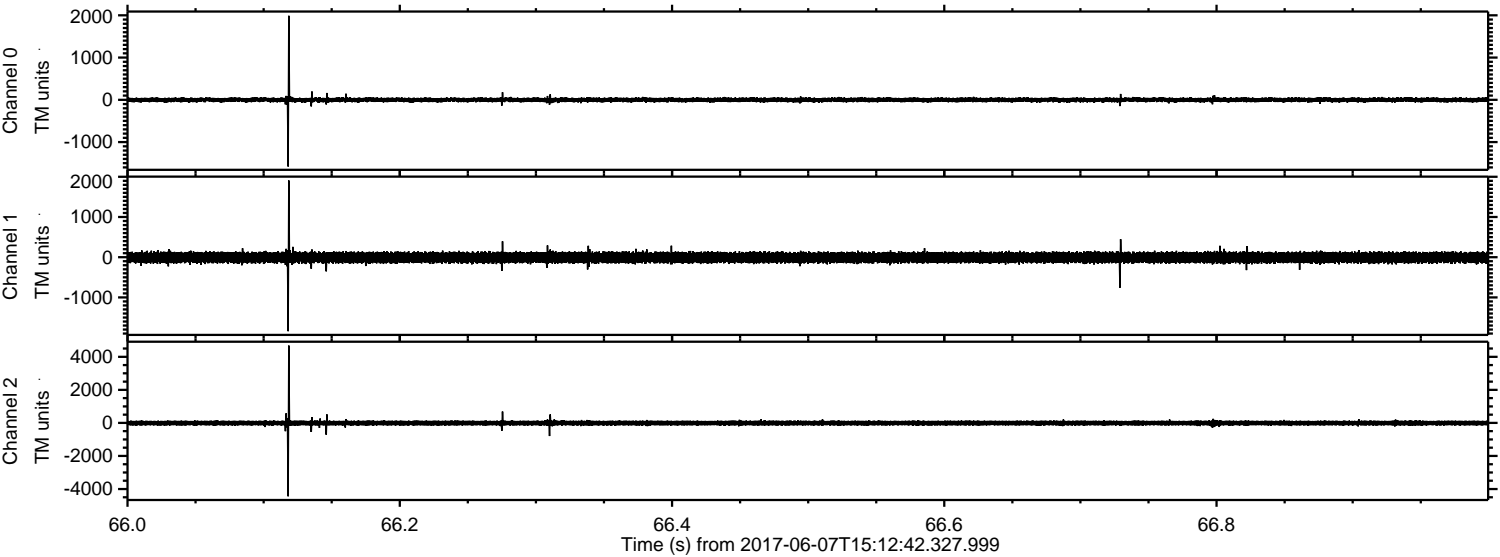


ELMAVAN 3D WAVEFORMS (Measured data sampled at 50 kHz) 51000 packets of 144 samples from 2017-06-07T15:12:42.327.999. Part 43/147

Processed Wed Jun 7 17:20:02 2017 by ELM ver.2012-10-06 from 001__elm20170607_151241__dat00.bin

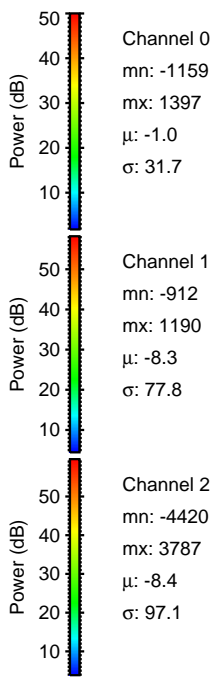
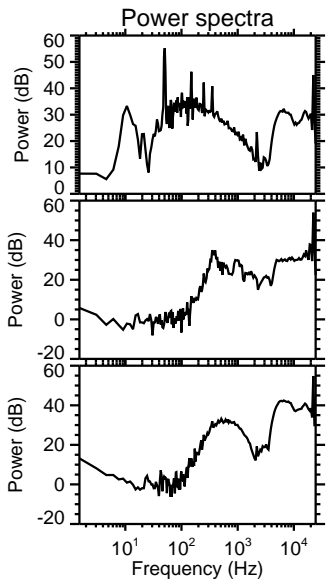
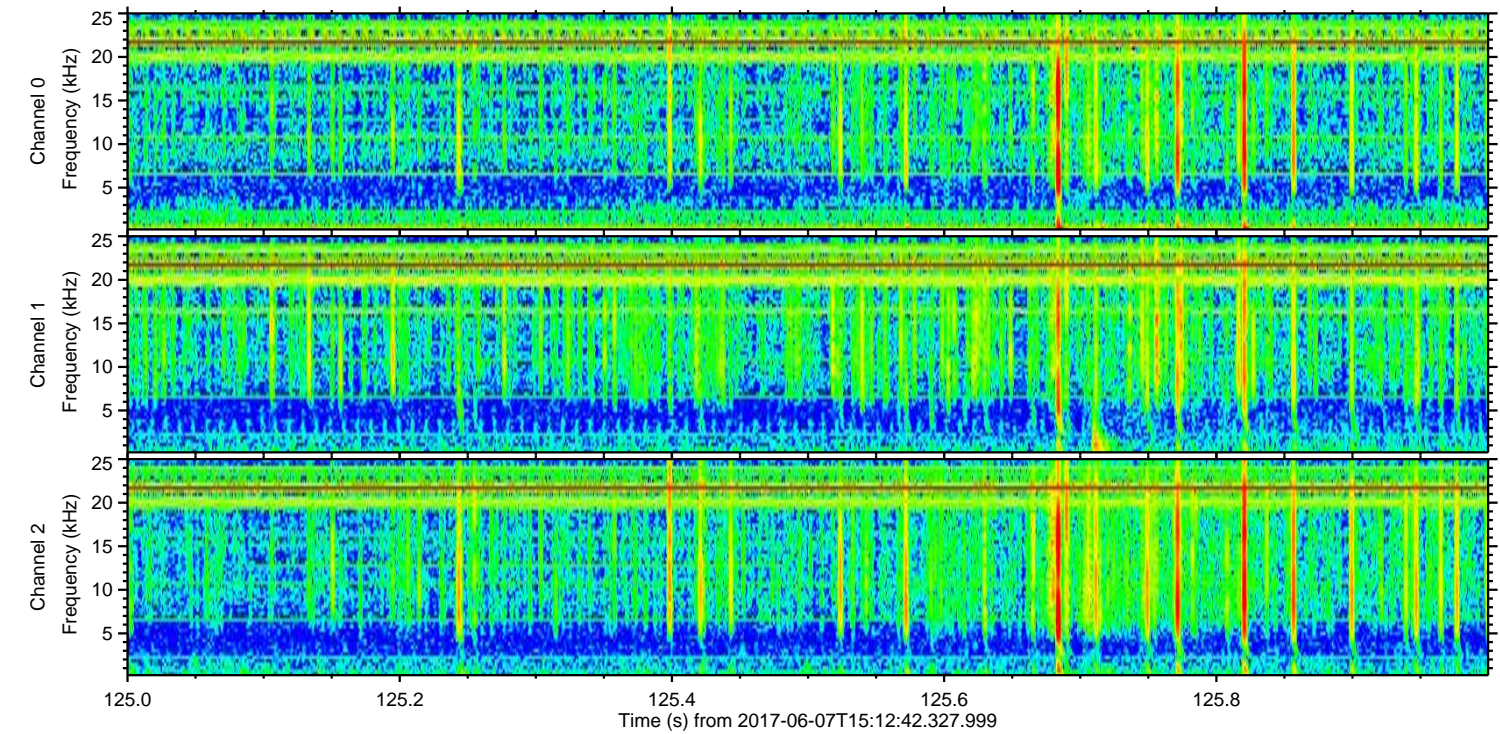
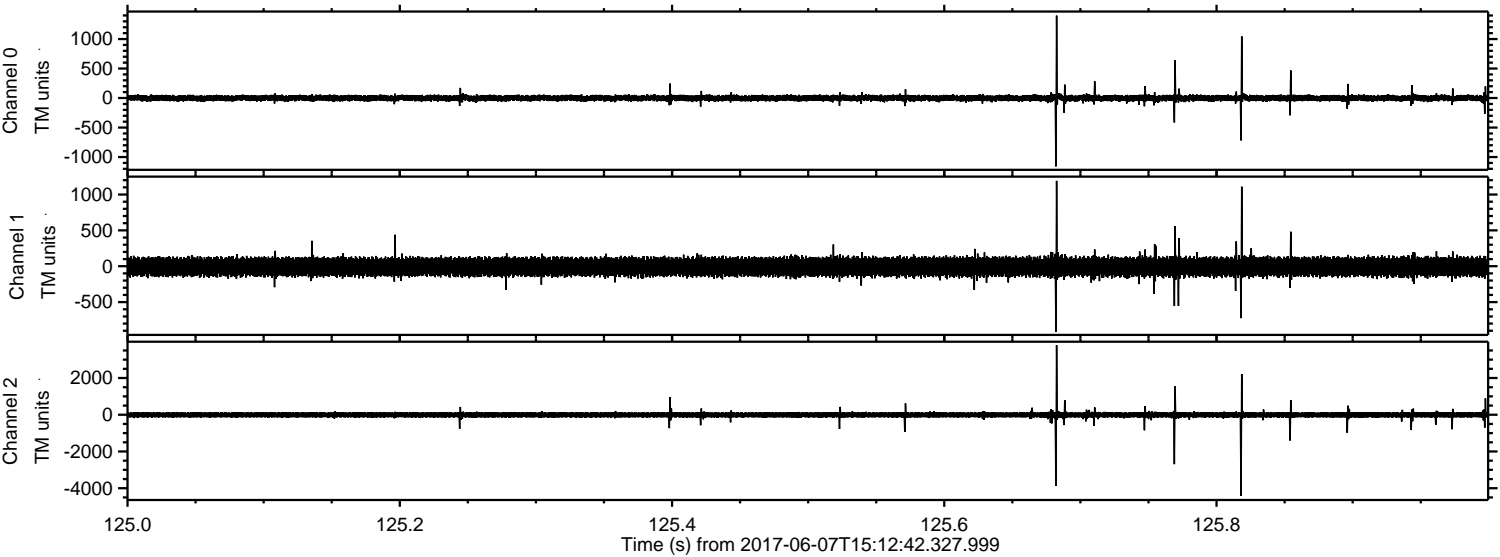


Processed Wed Jun 7 17:20:03 2017 by ELM ver.2012-10-06 from 001__elm20170607_151241__dat00.bin

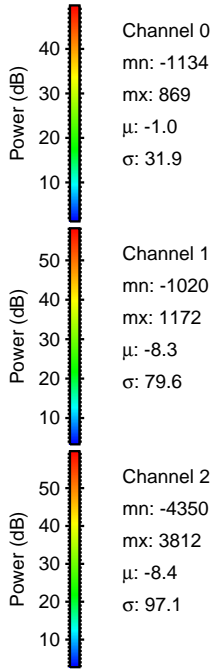
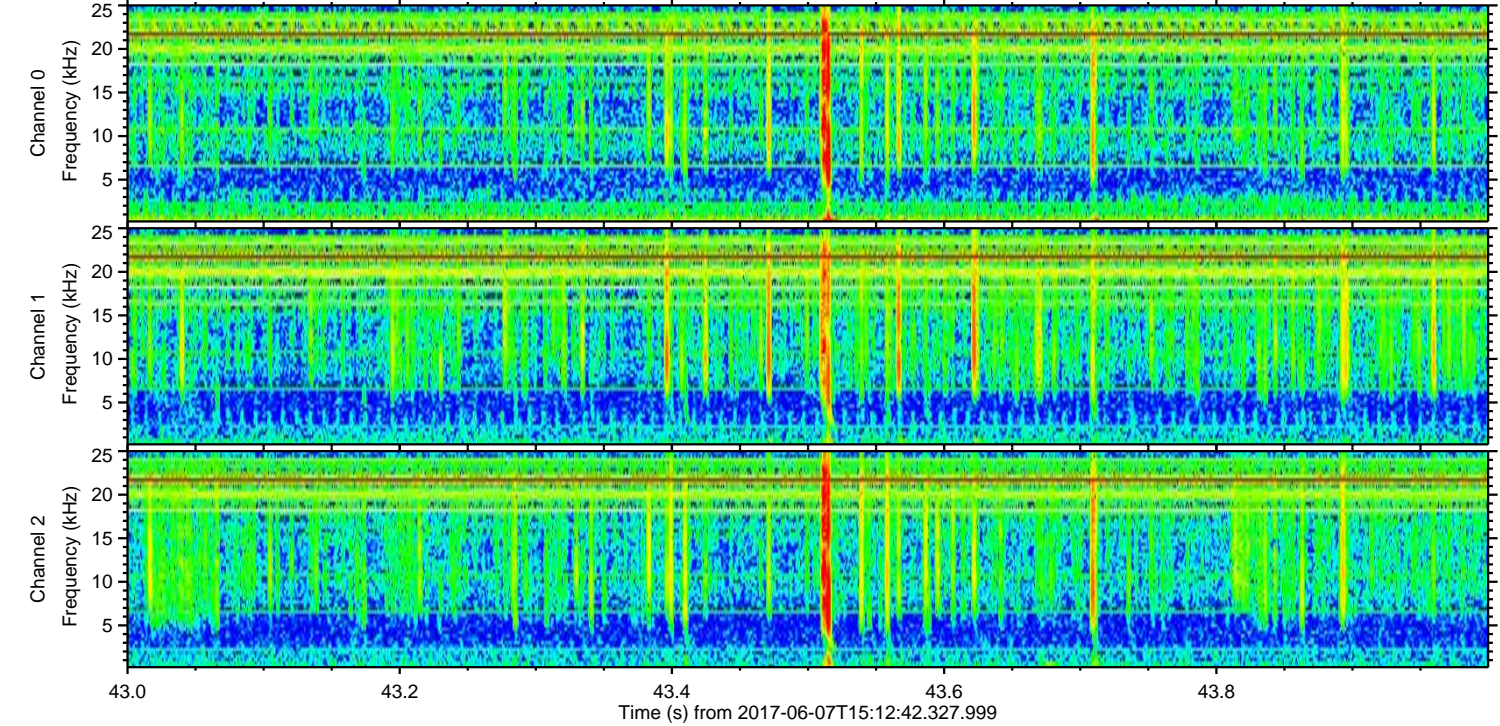
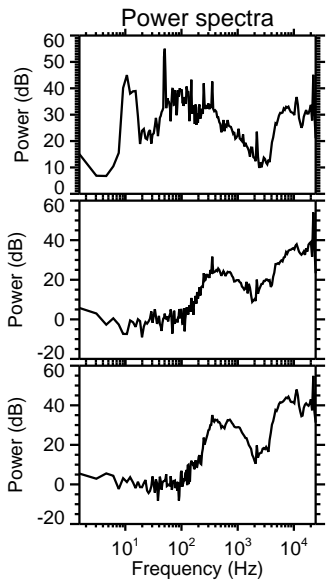
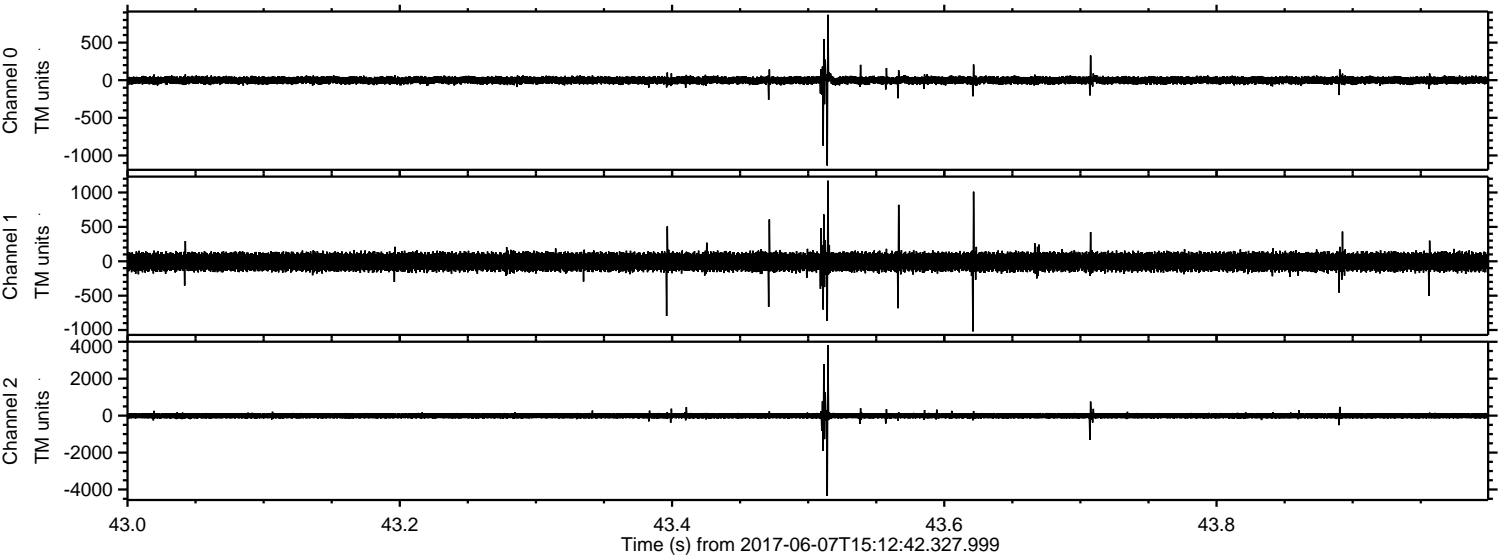


ELMAVAN 3D WAVEFORMS (Measured data sampled at 50 kHz) 51000 packets of 144 samples from 2017-06-07T15:12:42.327.999. Part 126/147

Processed Wed Jun 7 17:20:04 2017 by ELM ver.2012-10-06 from 001__elm20170607_151241__dat00.bin



Processed Wed Jun 7 17:20:04 2017 by ELM ver.2012-10-06 from 001__elm20170607_151241__dat00.bin

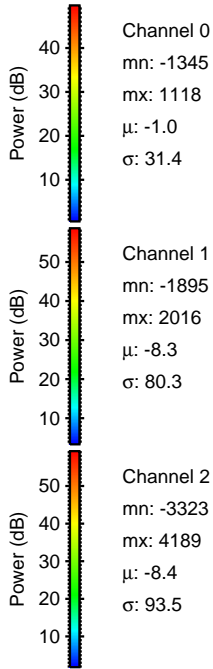
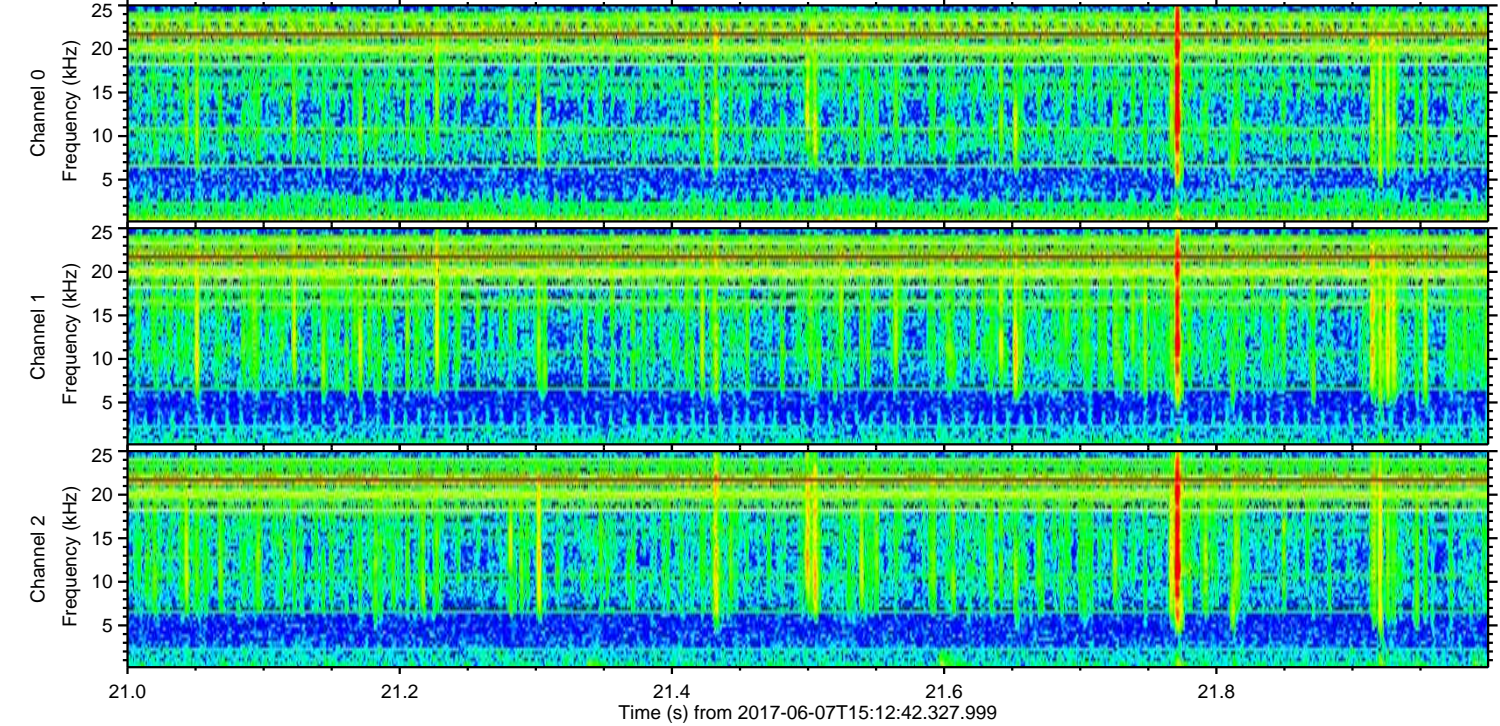
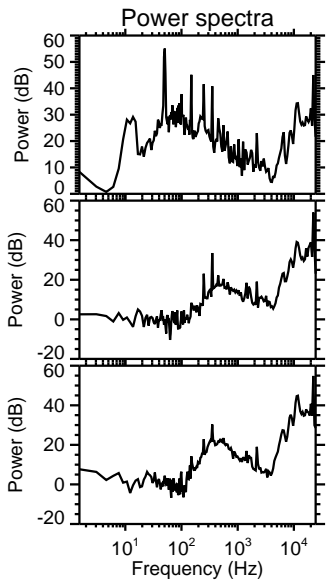
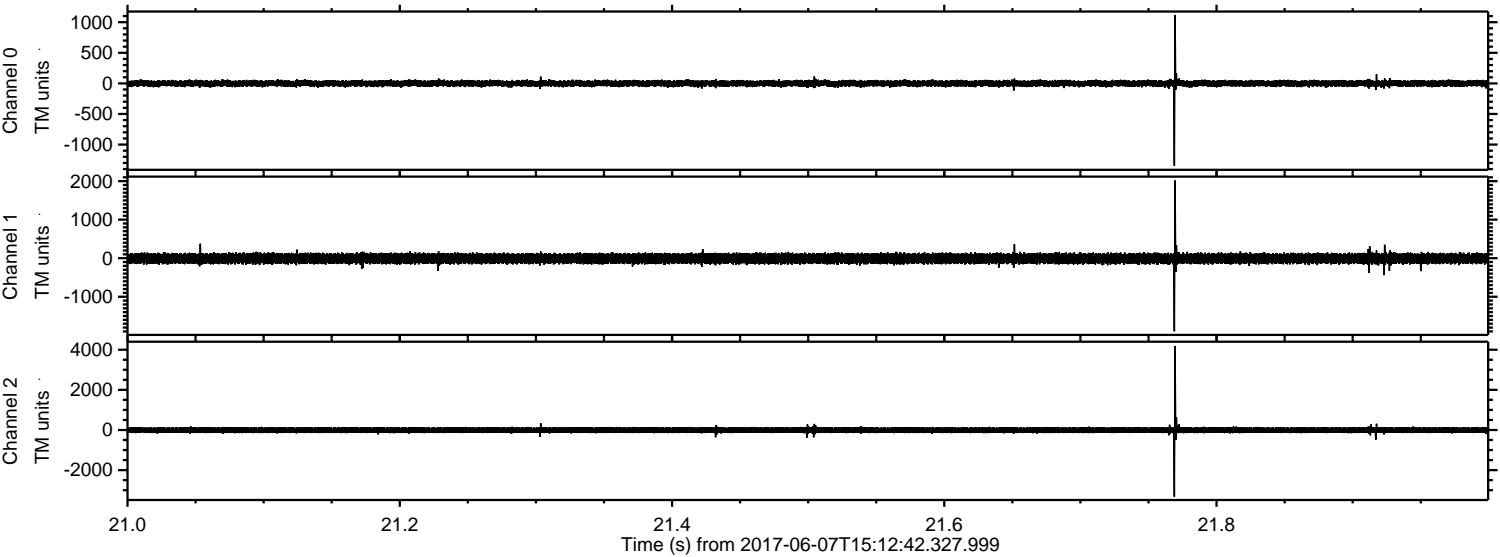


Channel 0
mn: -1134
mx: 869
μ: -1.0
σ: 31.9

Channel 1
mn: -1020
mx: 1172
μ: -8.3
σ: 79.6

Channel 2
mn: -4350
mx: 3812
μ: -8.4
σ: 97.1

Processed Wed Jun 7 17:20:05 2017 by ELM ver.2012-10-06 from 001__elm20170607_151241__dat00.bin



Processed Wed Jun 7 17:20:06 2017 by ELM ver.2012-10-06 from 001__elm20170607_151241__dat00.bin

