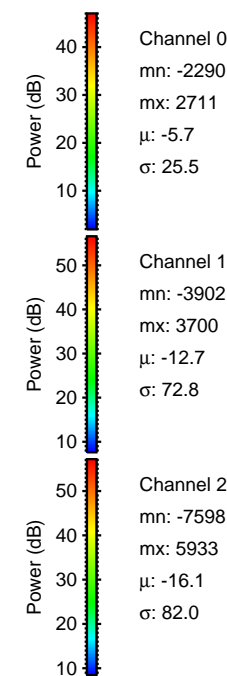
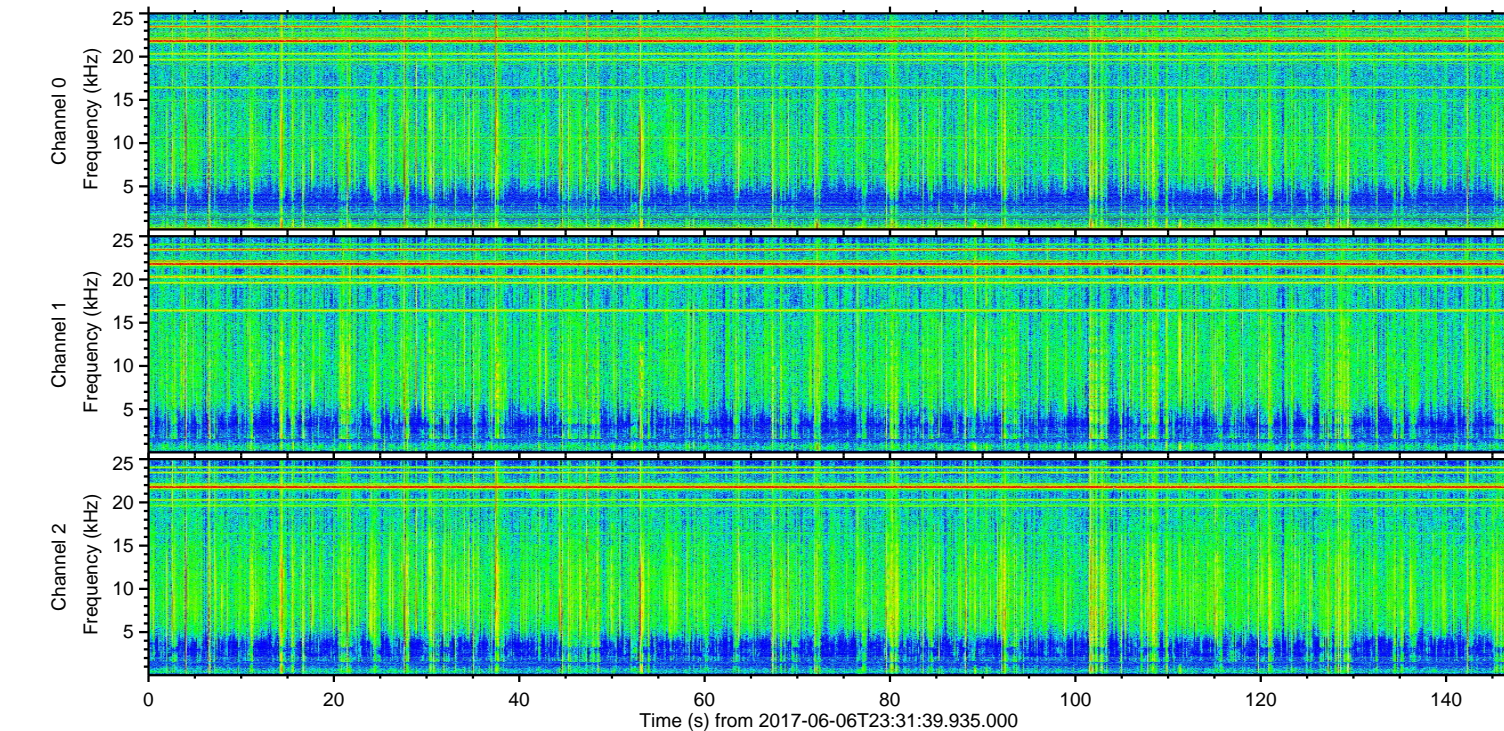
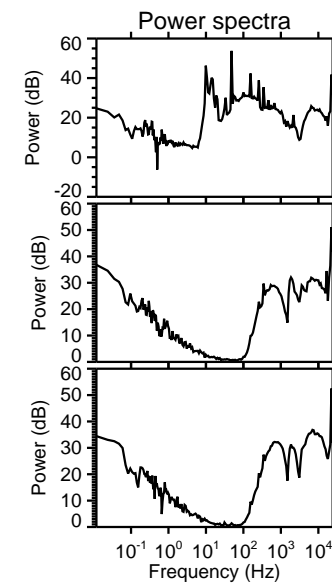
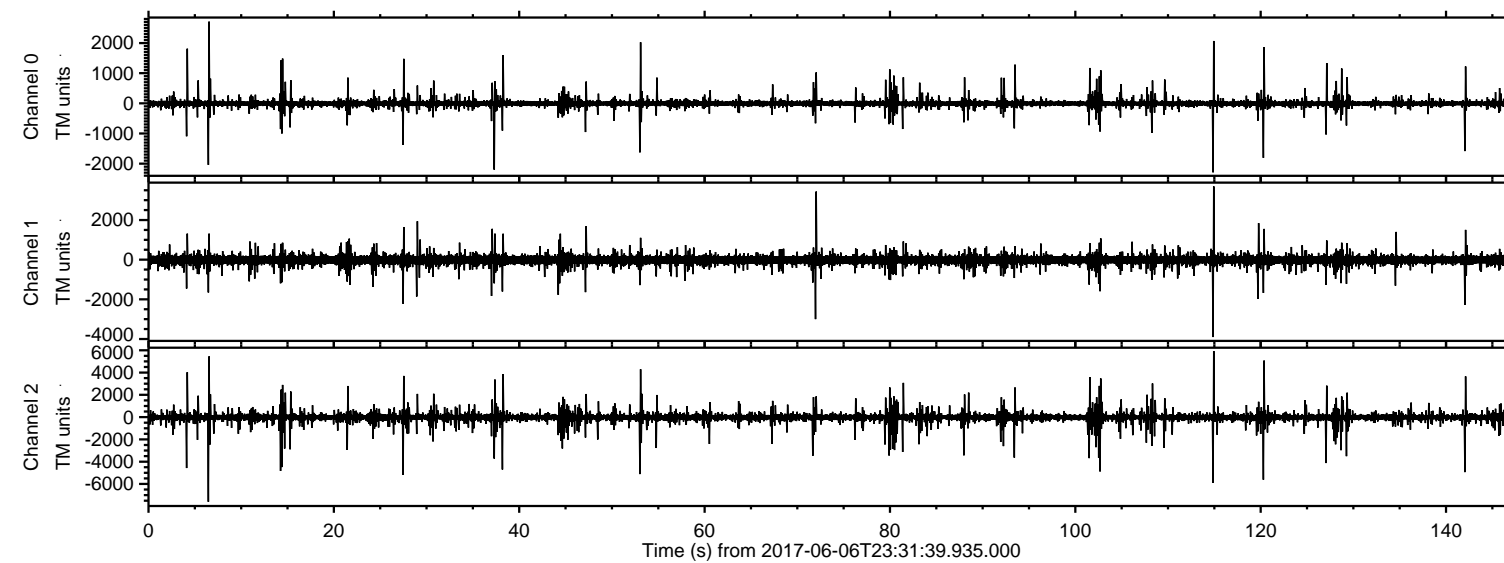
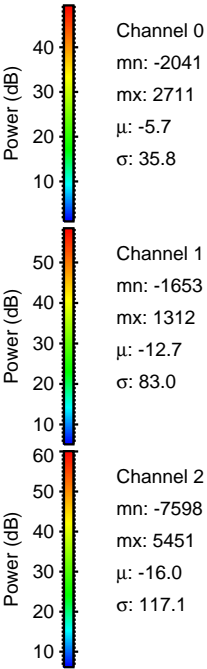
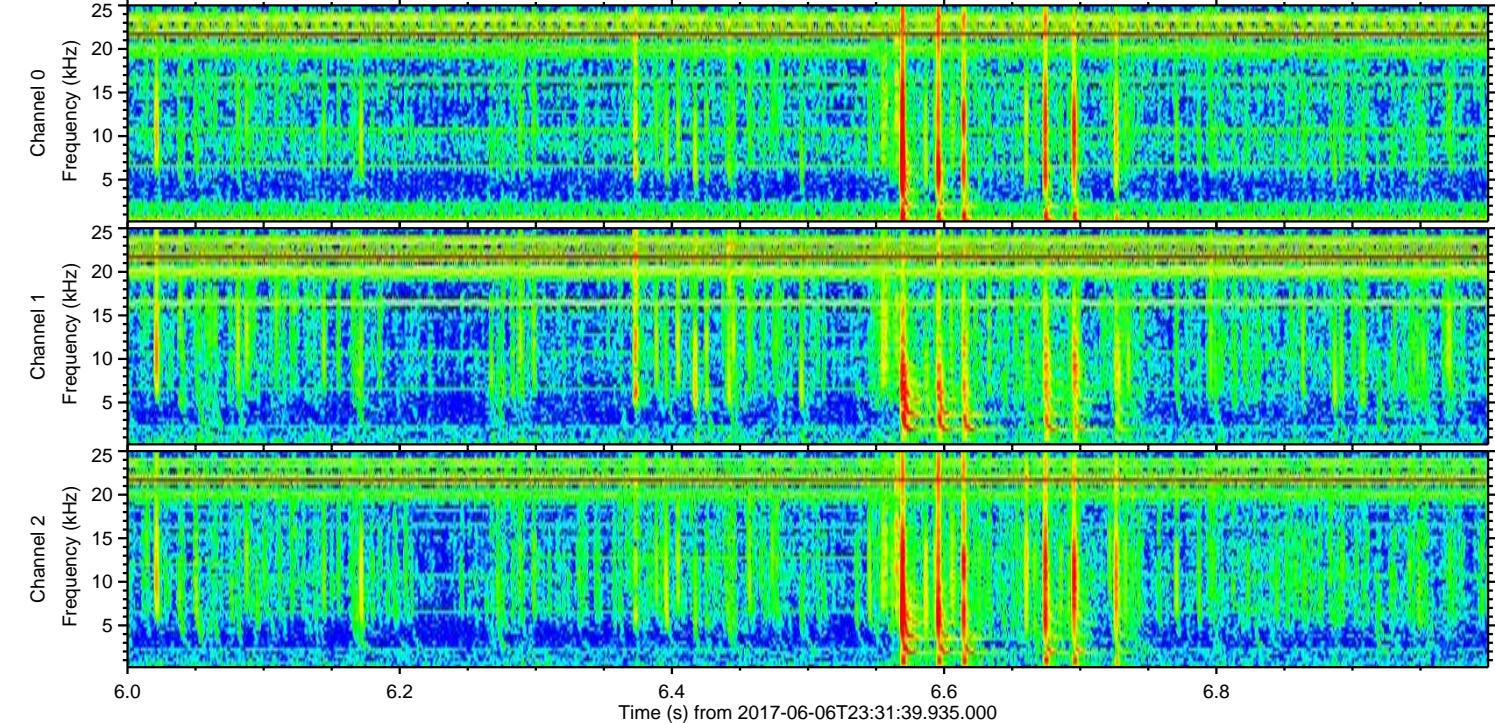
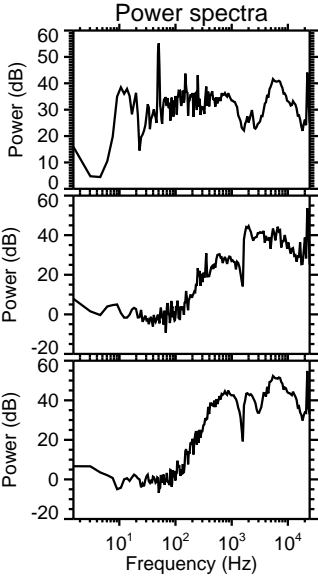
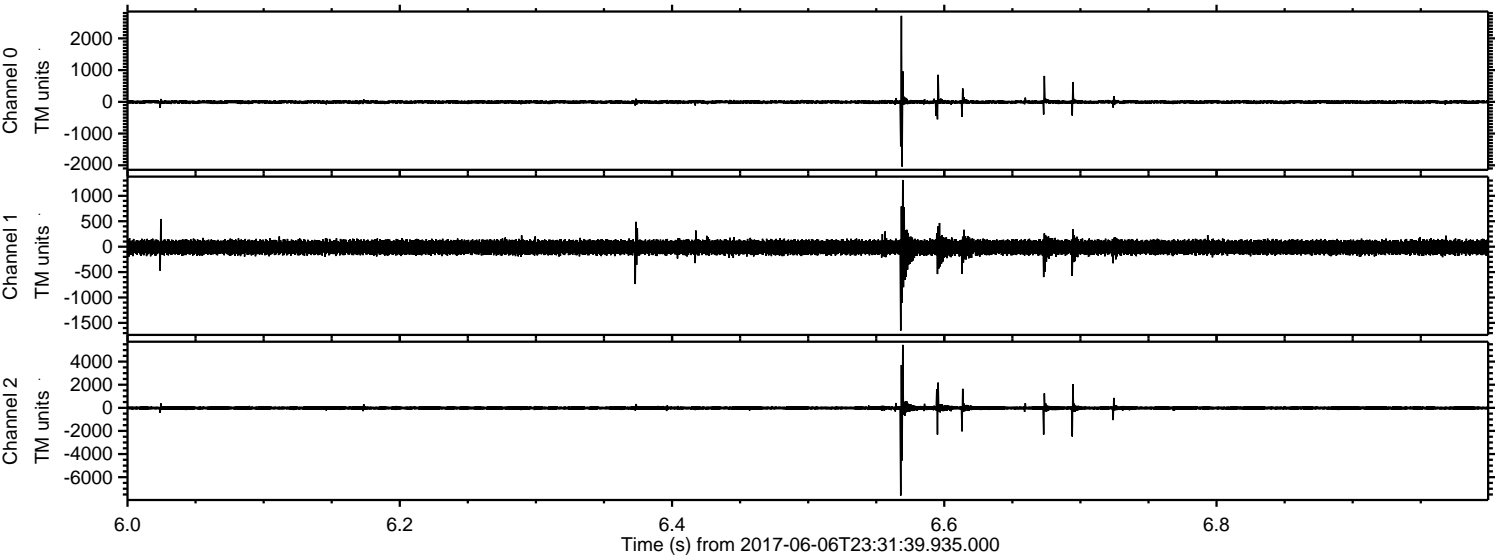


ELMAVAN 3D WAVEFORMS (Measured data sampled at 50 kHz) 51000 packets of 144 samples from 2017-06-06T23:31:39.935.000.

Processed Wed Jun 7 01:39:35 2017 by ELM ver.2012-10-06 from 001__elm20170606_233138__dat00.bin

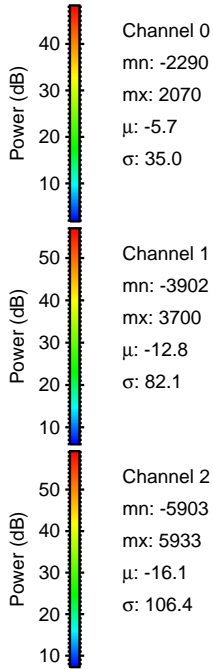
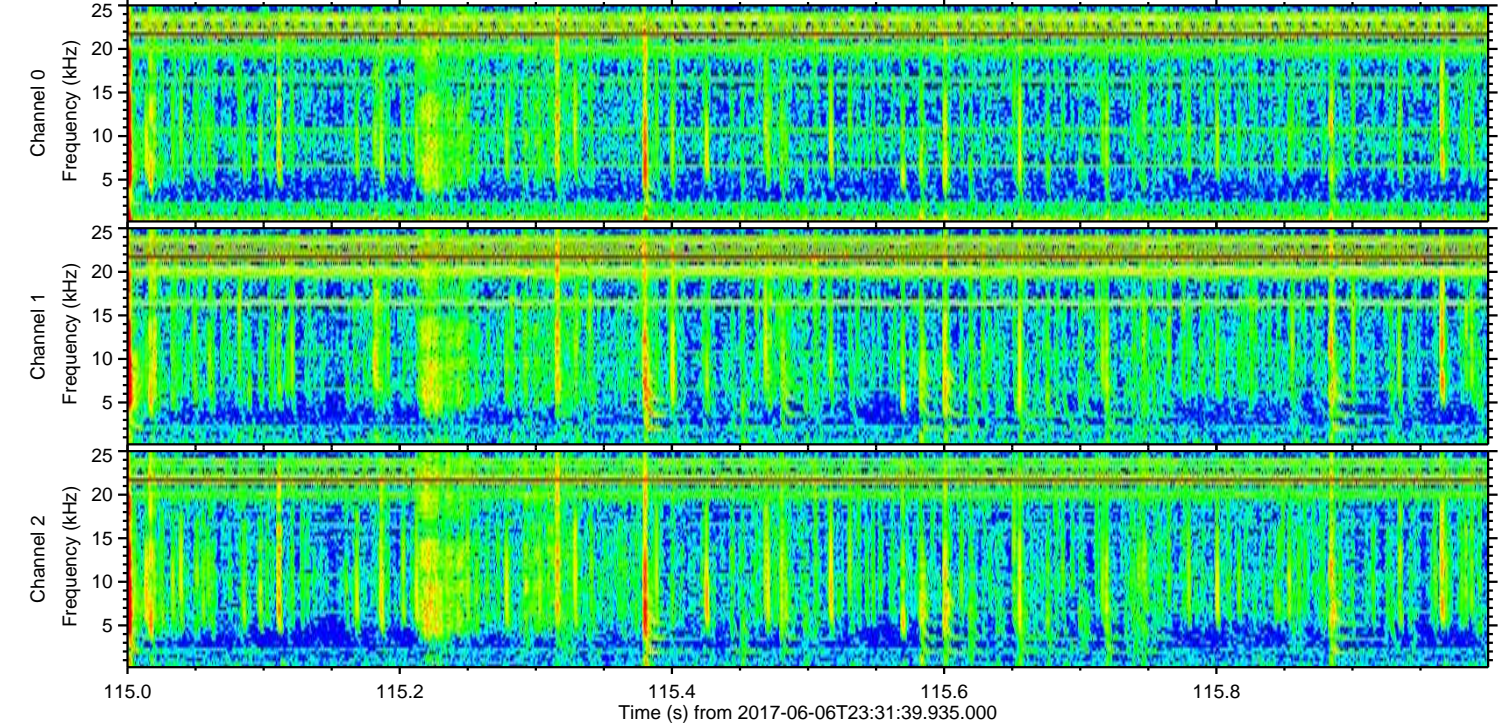
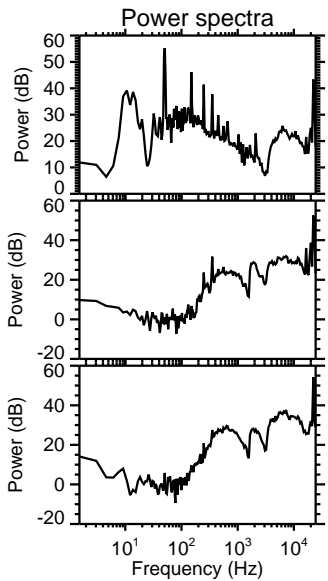
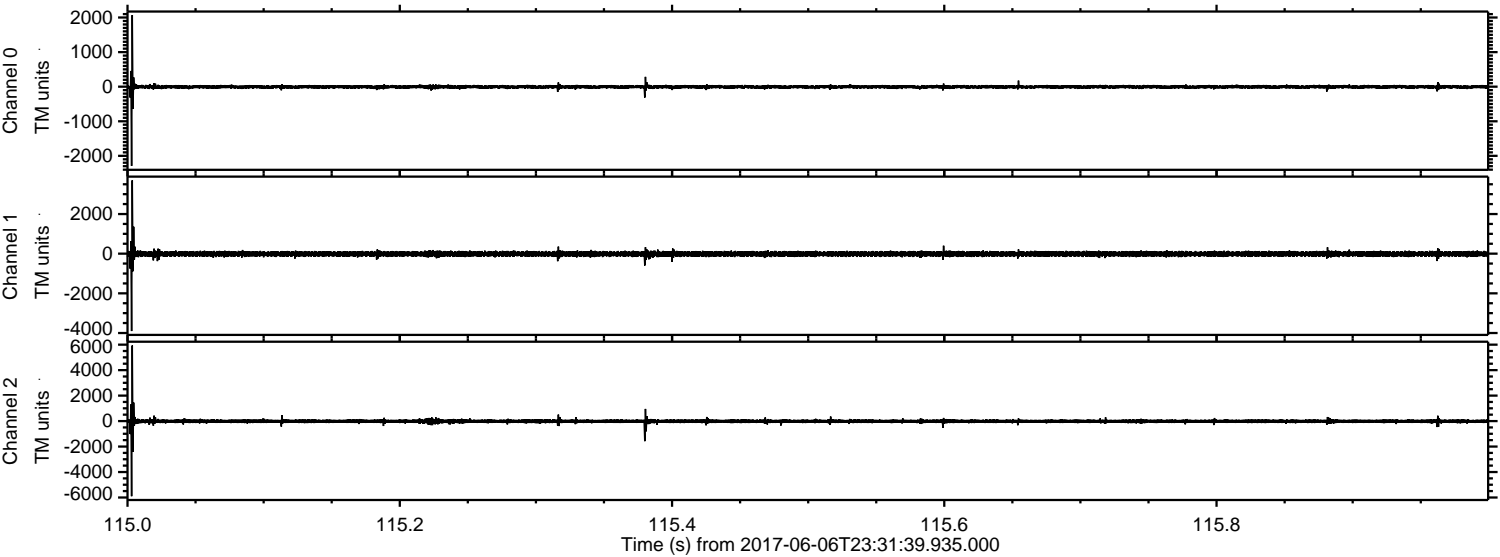


Processed Wed Jun 7 01:39:41 2017 by ELM ver.2012-10-06 from 001__elm20170606_233138__dat00.bin



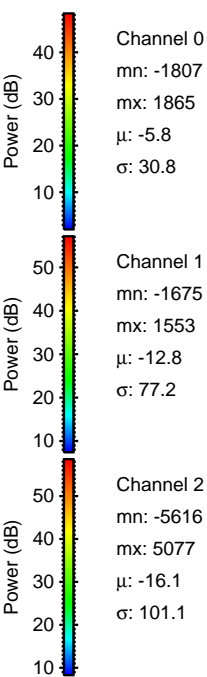
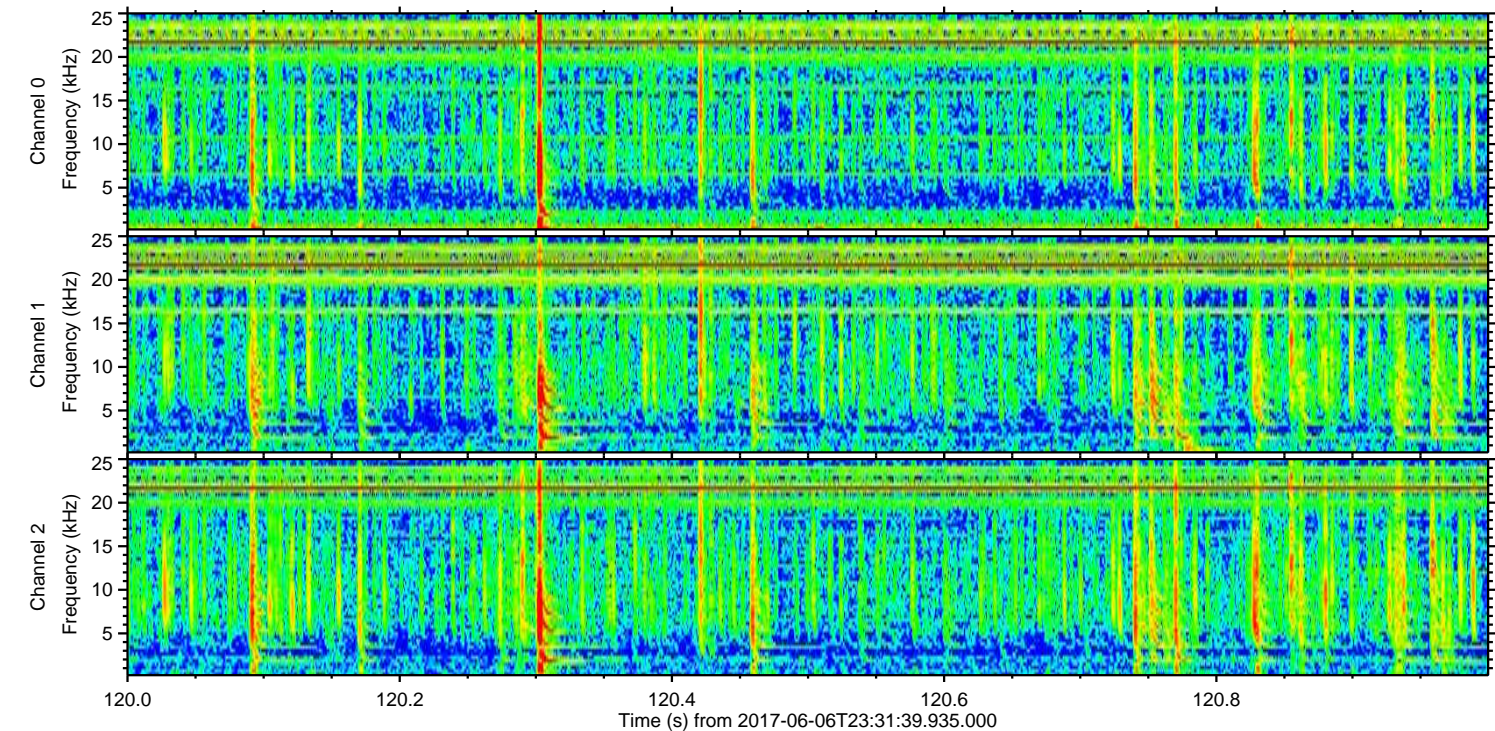
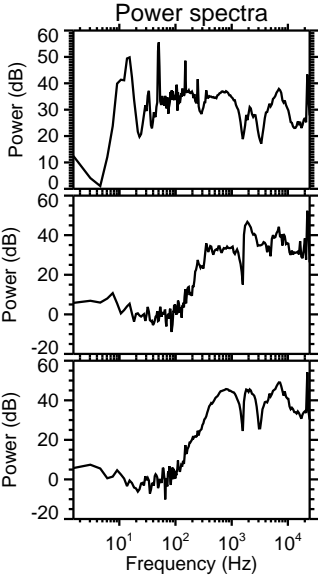
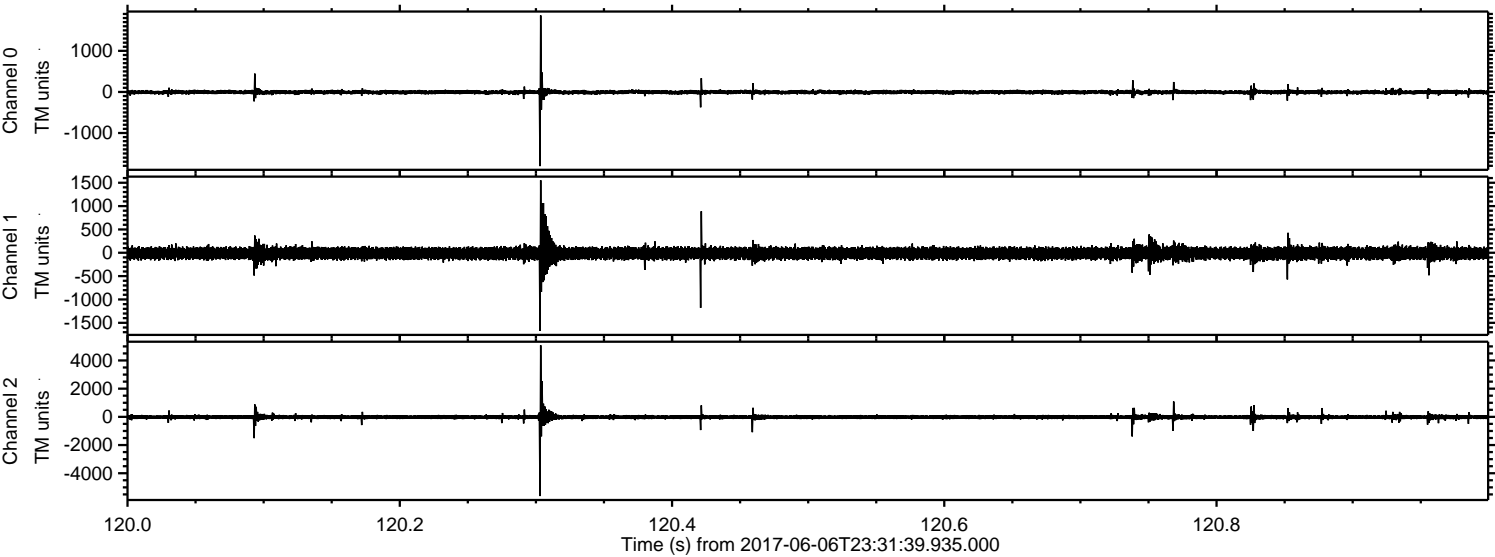
ELMAVAN 3D WAVEFORMS (Measured data sampled at 50 kHz) 51000 packets of 144 samples from 2017-06-06T23:31:39.935.000. Part 116/147

Processed Wed Jun 7 01:39:42 2017 by ELM ver.2012-10-06 from 001__elm20170606_233138__dat00.bin



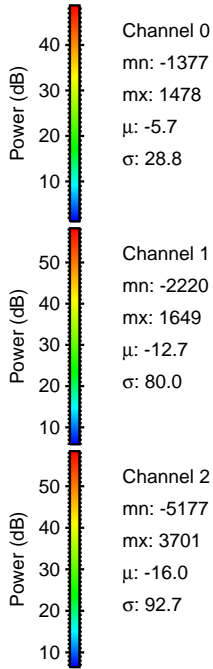
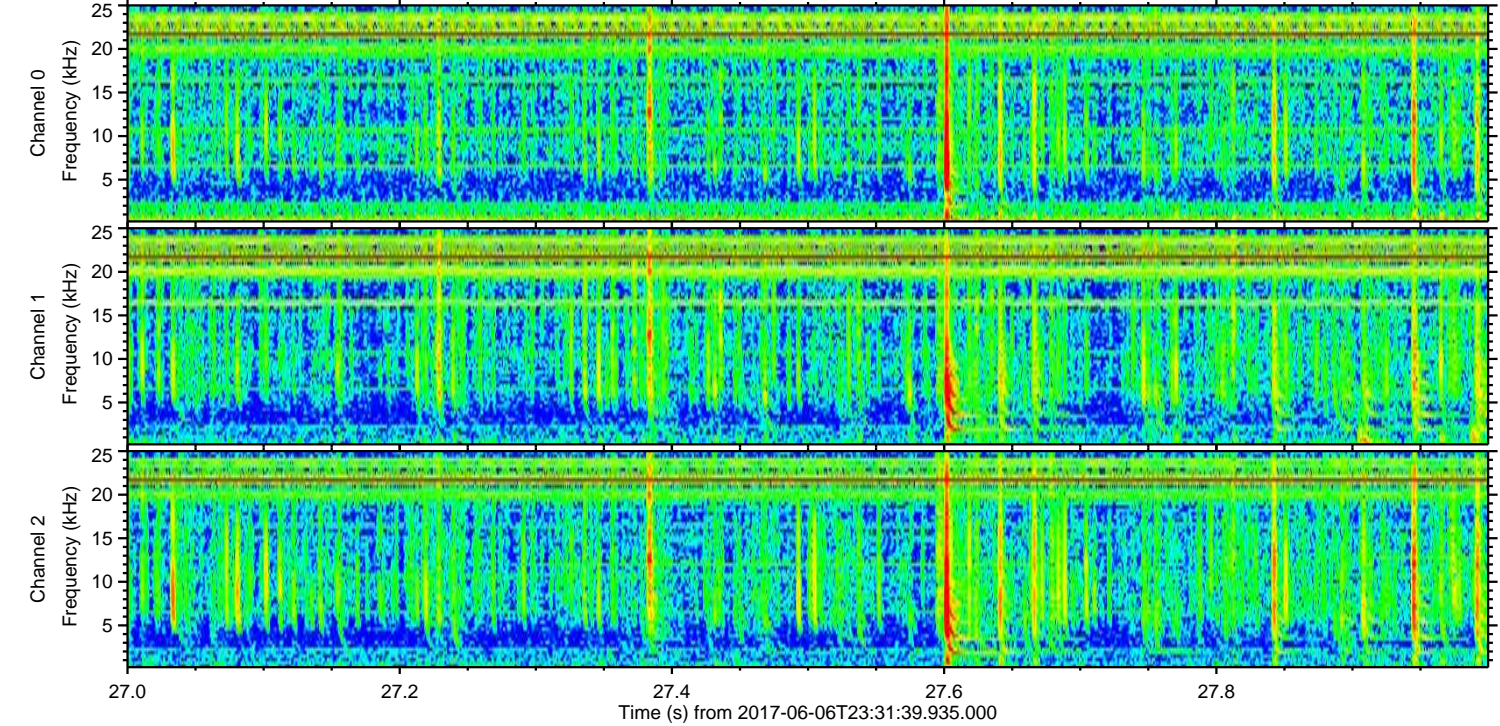
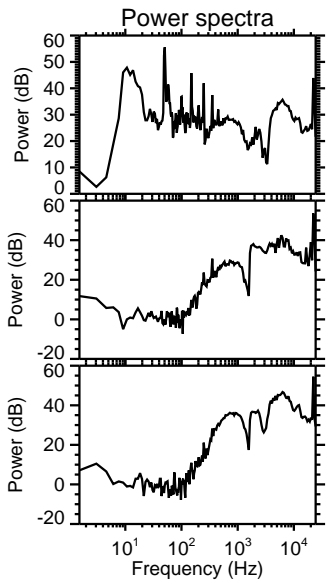
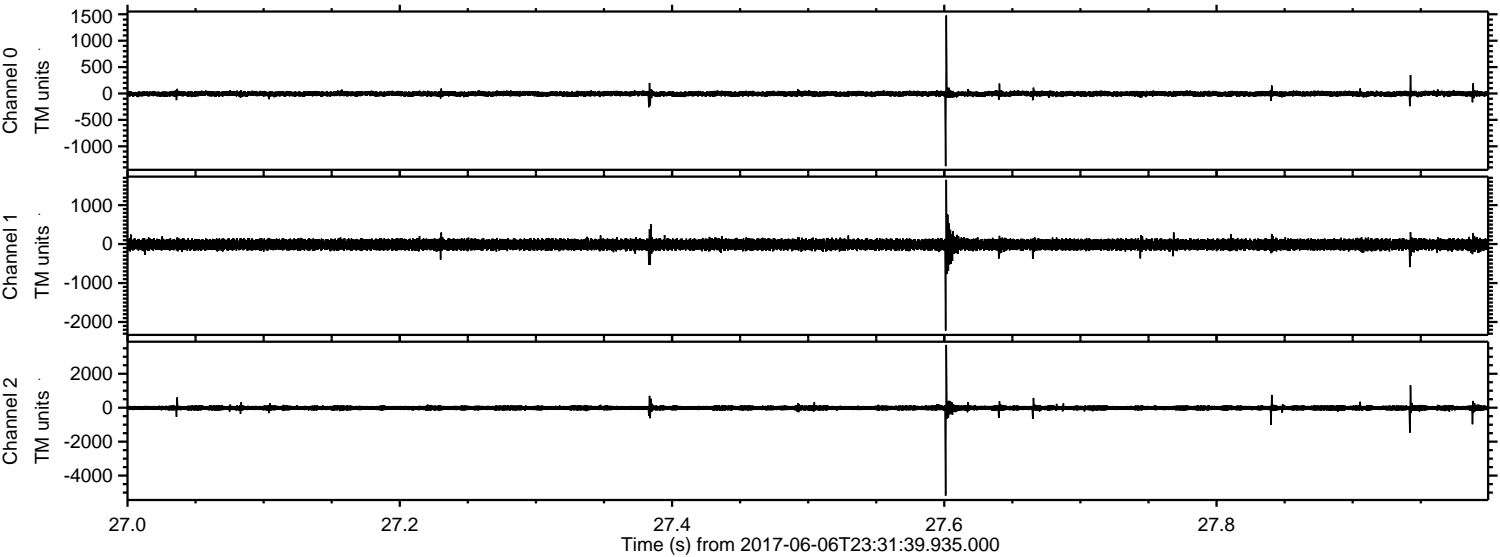
ELMAVAN 3D WAVEFORMS (Measured data sampled at 50 kHz) 51000 packets of 144 samples from 2017-06-06T23:31:39.935.000. Part 121/147

Processed Wed Jun 7 01:39:42 2017 by ELM ver.2012-10-06 from 001__elm20170606_233138__dat00.bin



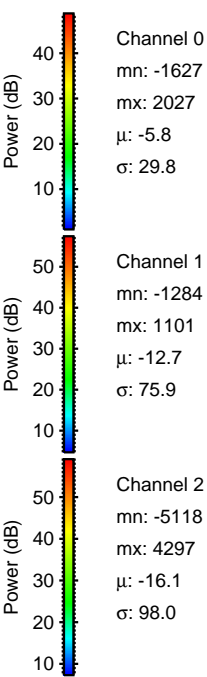
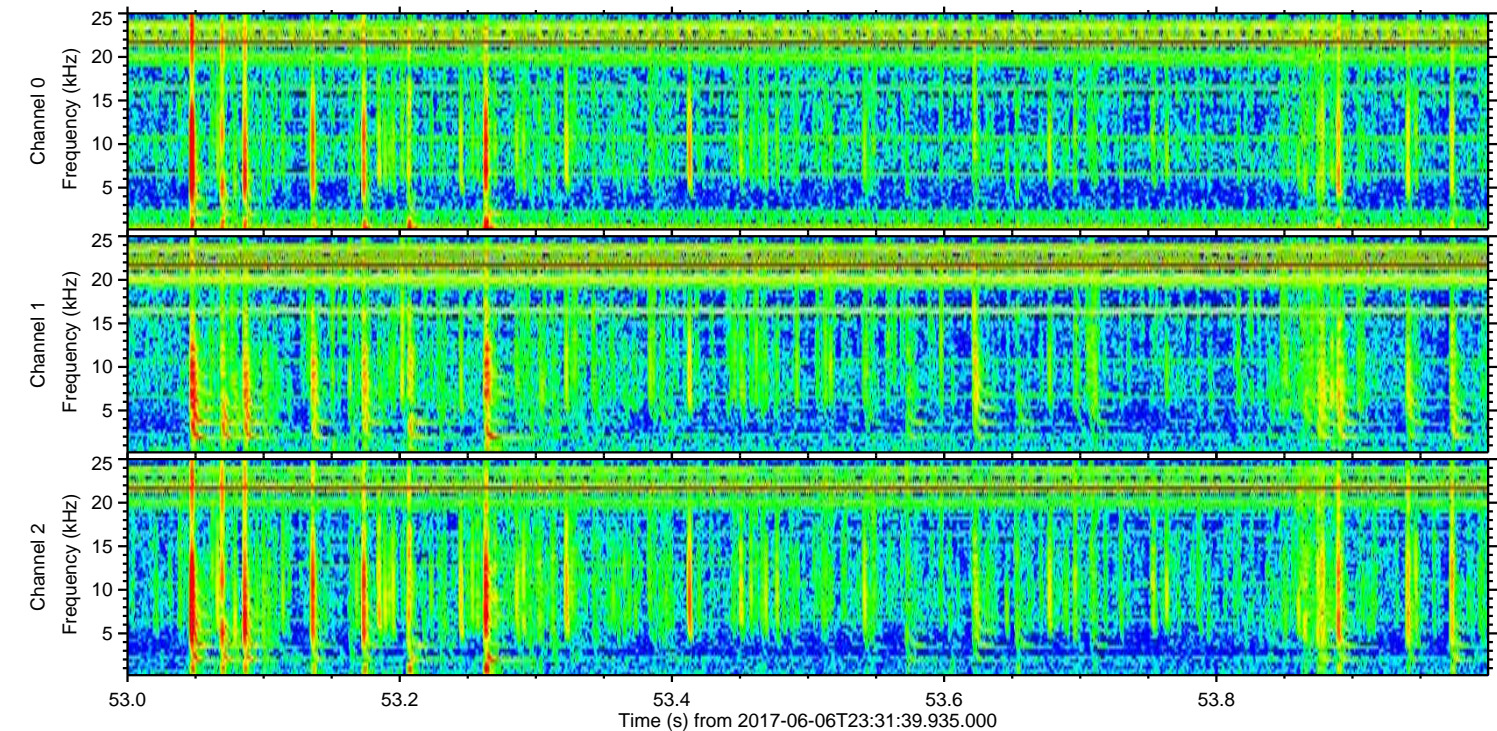
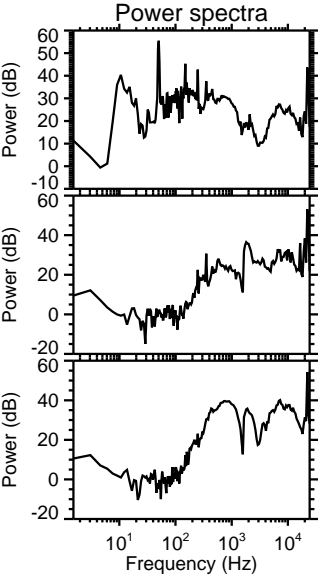
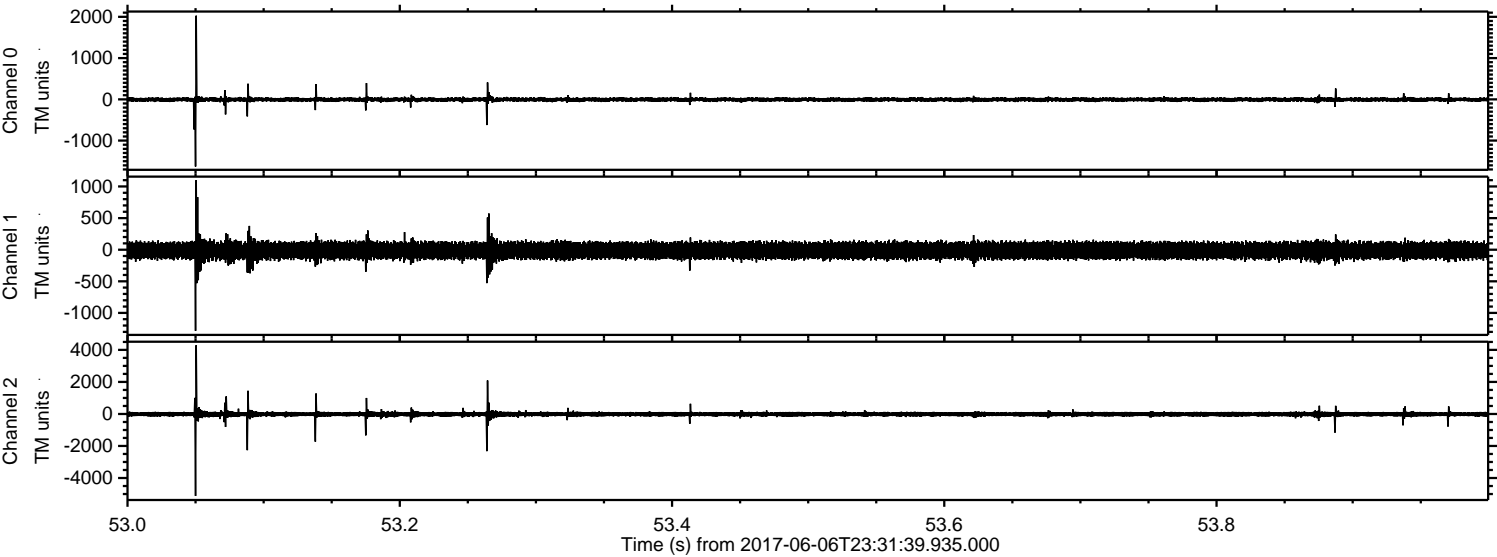
ELMAVAN 3D WAVEFORMS (Measured data sampled at 50 kHz) 51000 packets of 144 samples from 2017-06-06T23:31:39.935.000. Part 28/147

Processed Wed Jun 7 01:39:43 2017 by ELM ver.2012-10-06 from 001__elm20170606_233138__dat00.bin



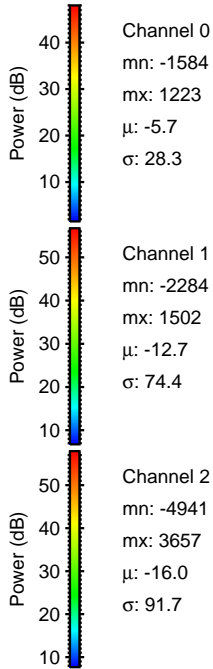
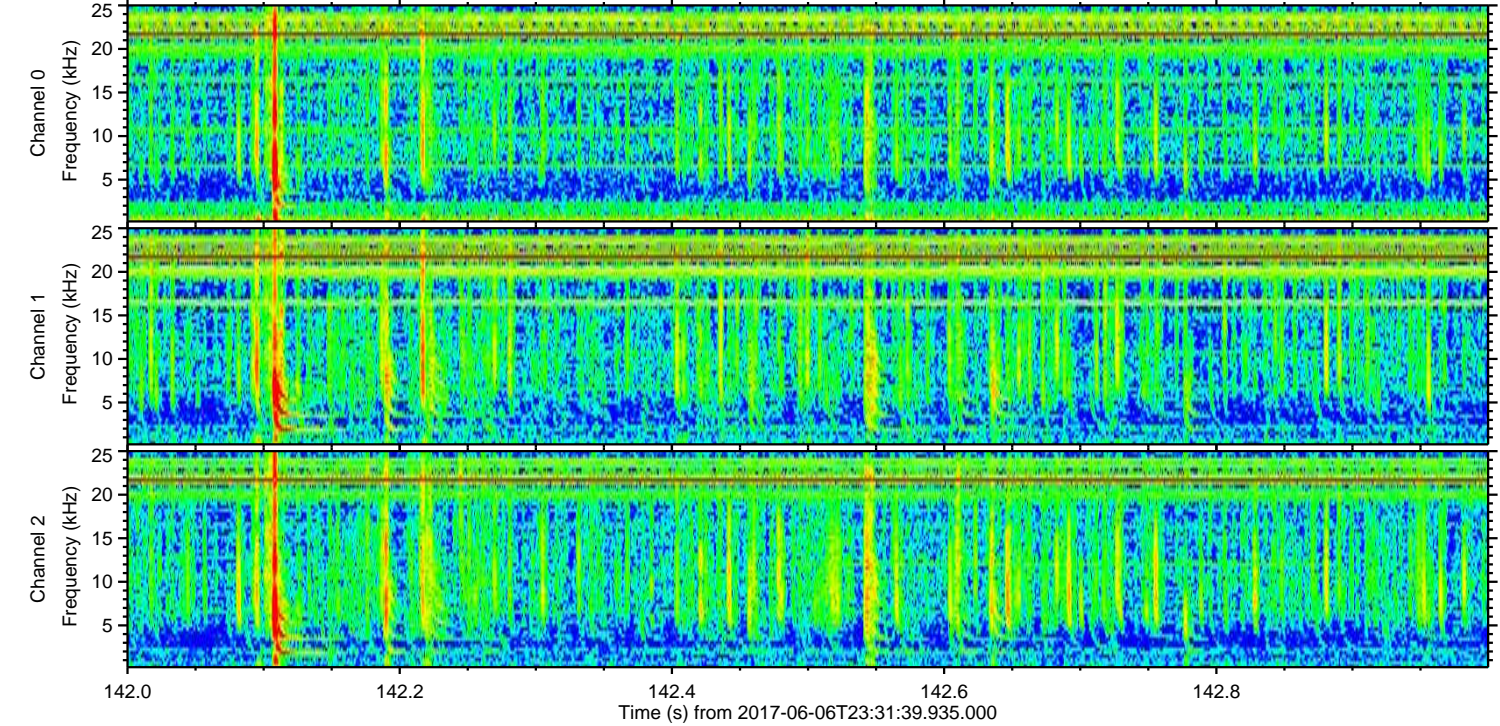
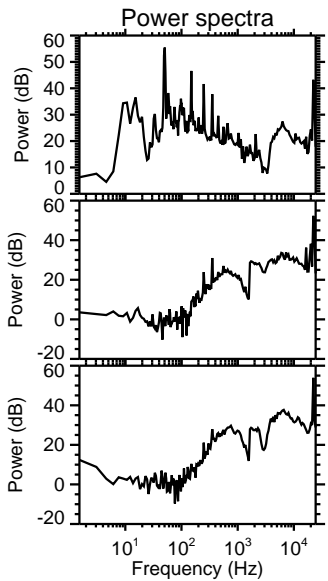
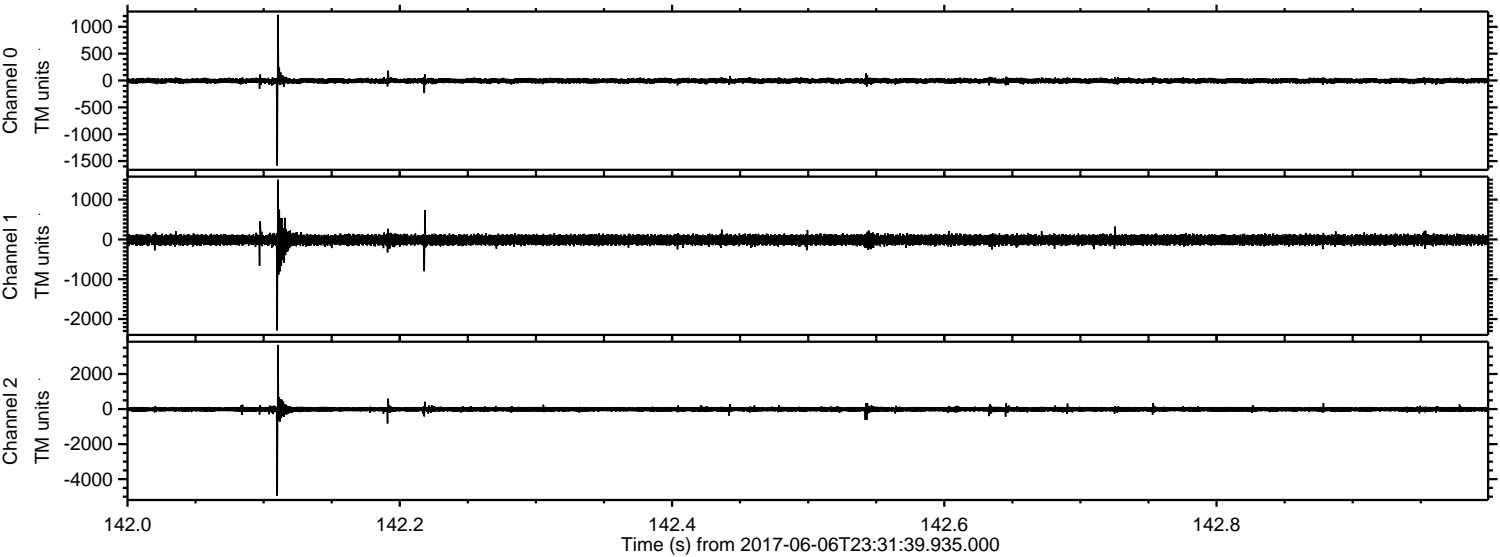
ELMAVAN 3D WAVEFORMS (Measured data sampled at 50 kHz) 51000 packets of 144 samples from 2017-06-06T23:31:39.935.000. Part 54/147

Processed Wed Jun 7 01:39:44 2017 by ELM ver.2012-10-06 from 001__elm20170606_233138__dat00.bin



ELMAVAN 3D WAVEFORMS (Measured data sampled at 50 kHz) 51000 packets of 144 samples from 2017-06-06T23:31:39.935.000. Part 143/147

Processed Wed Jun 7 01:39:45 2017 by ELM ver.2012-10-06 from 001__elm20170606_233138__dat00.bin

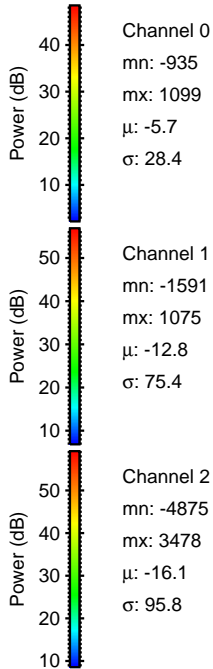
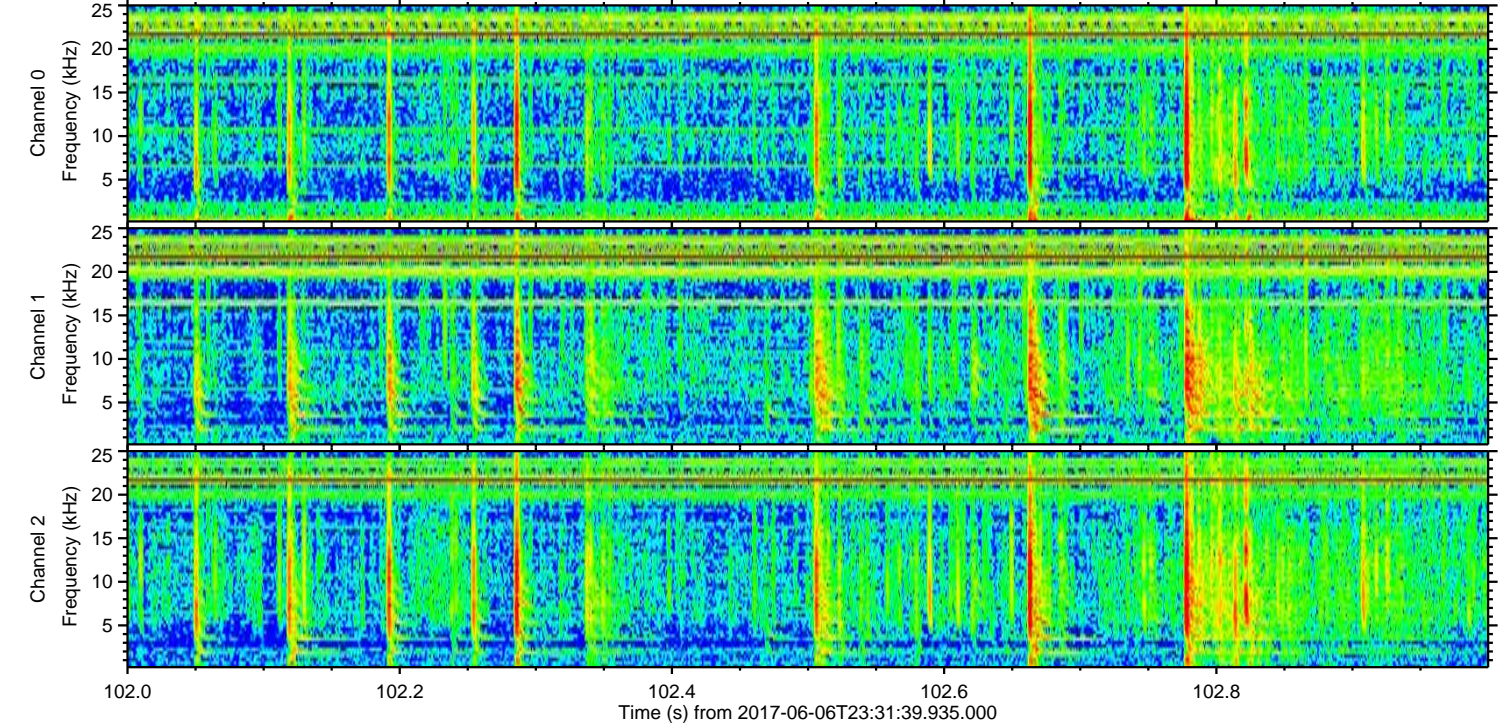
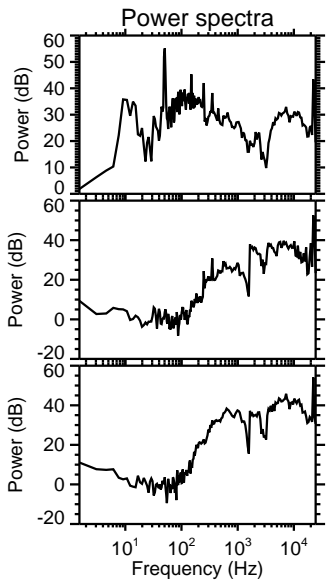
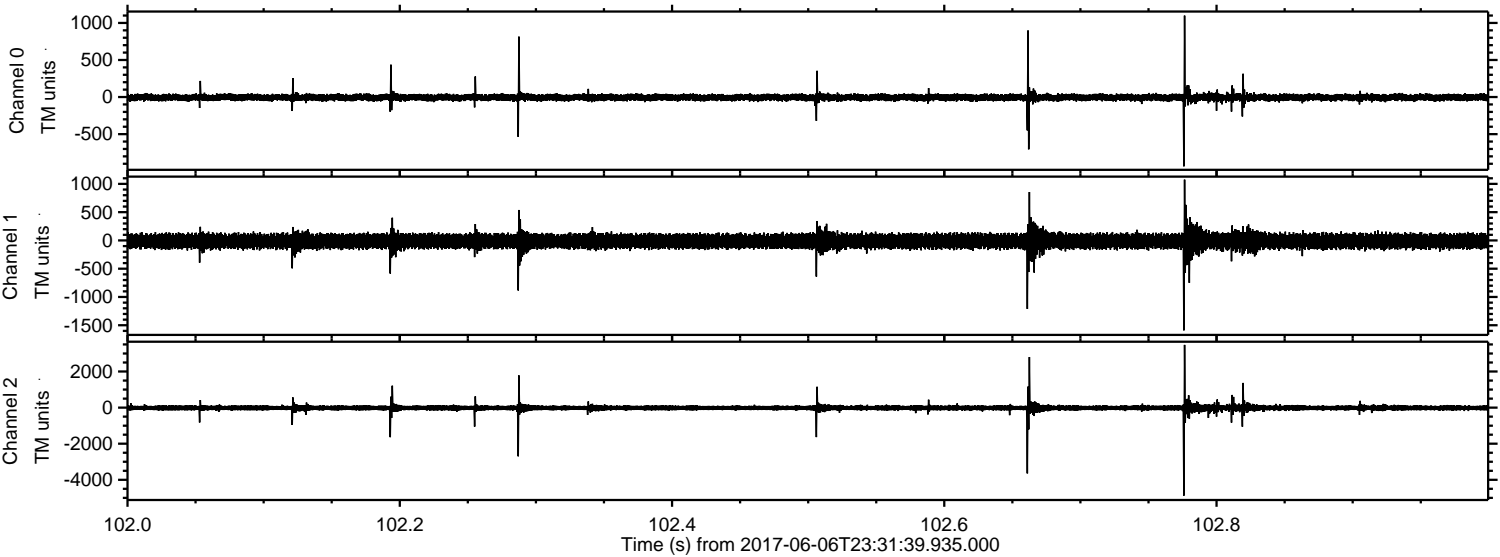


Channel 0
mn: -1584
mx: 1223
 μ : -5.7
 σ : 28.3

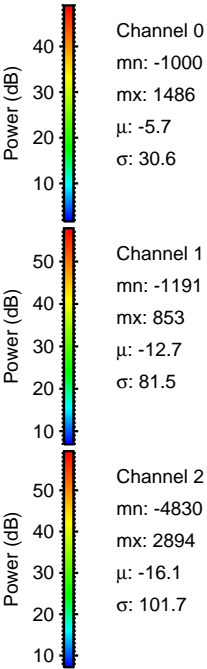
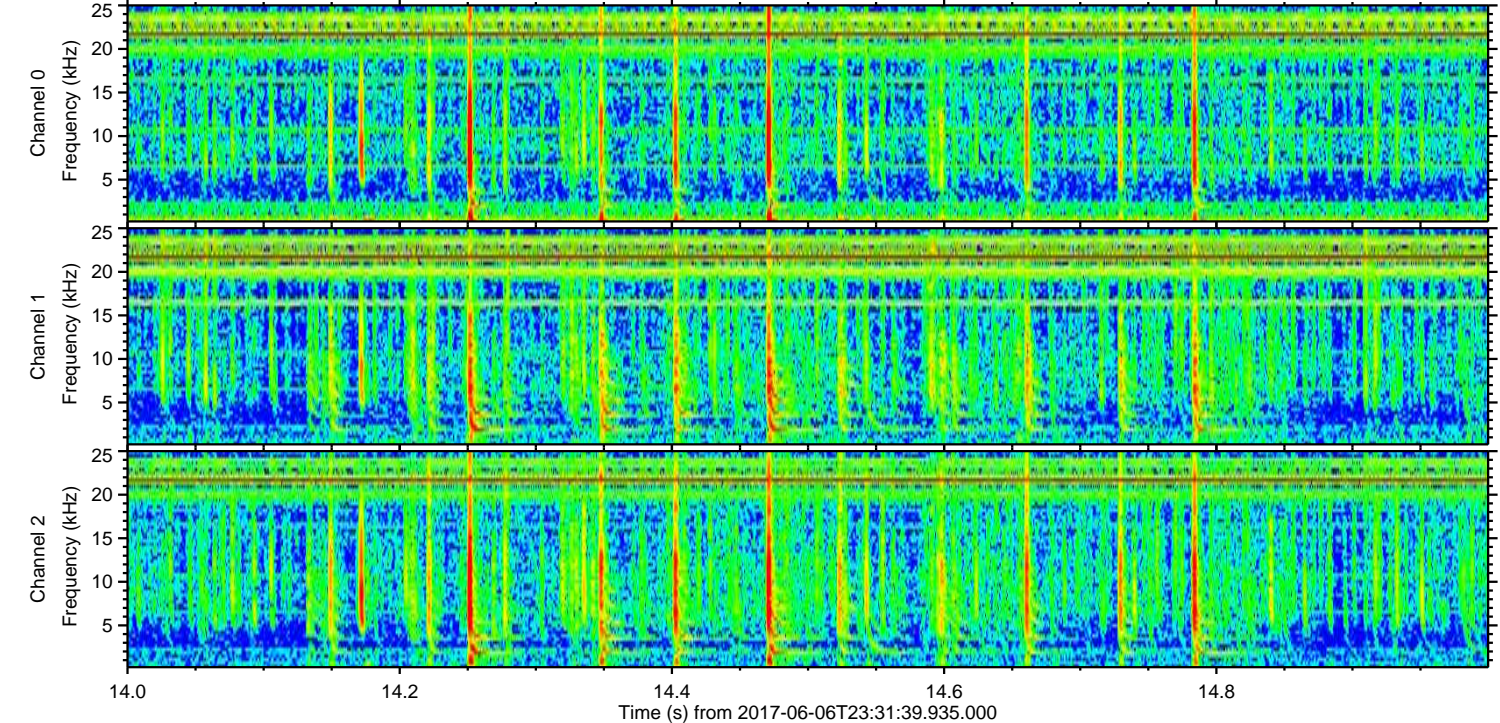
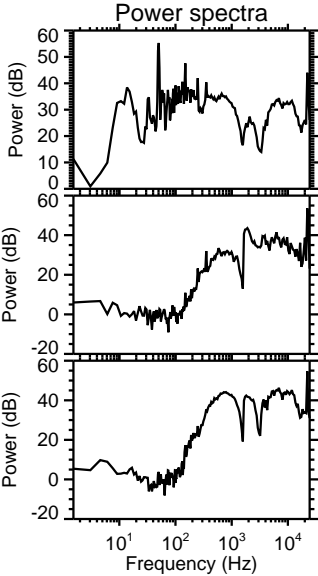
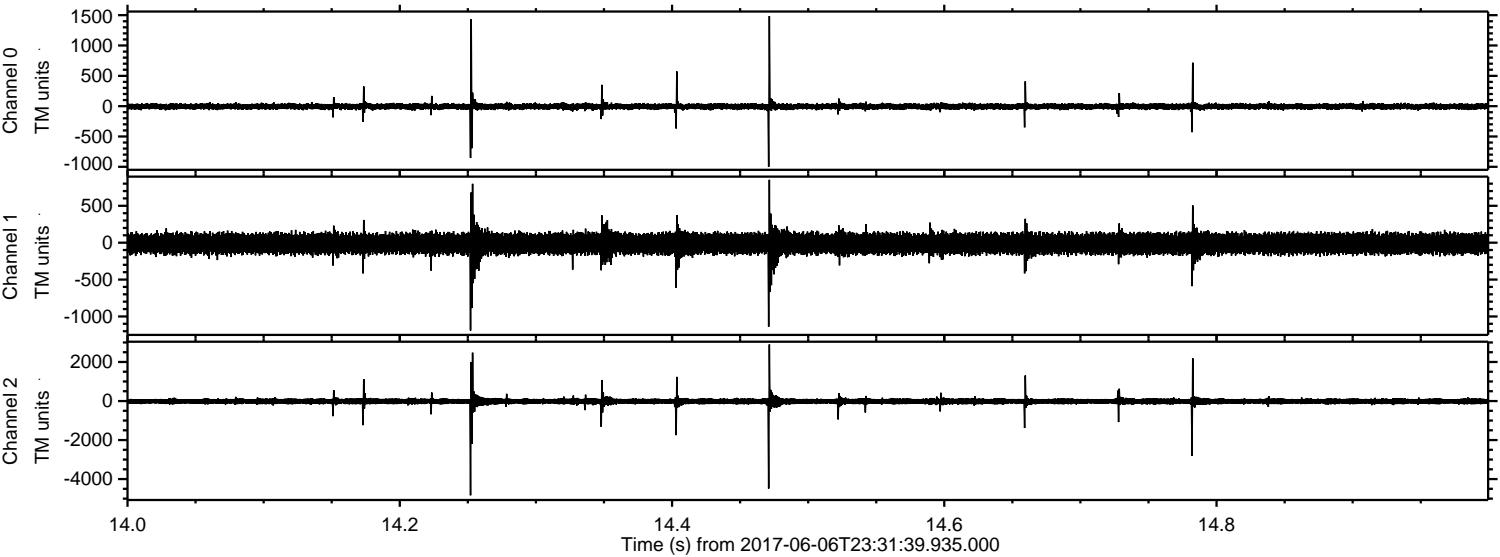
Channel 1
mn: -2284
mx: 1502
 μ : -12.7
 σ : 74.4

Channel 2
mn: -4941
mx: 3657
 μ : -16.0
 σ : 91.7

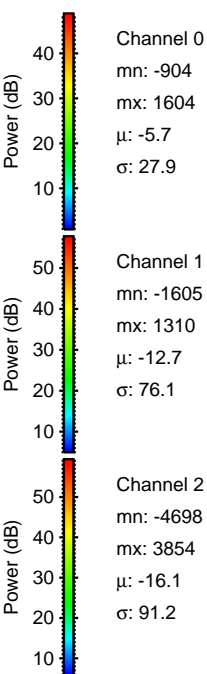
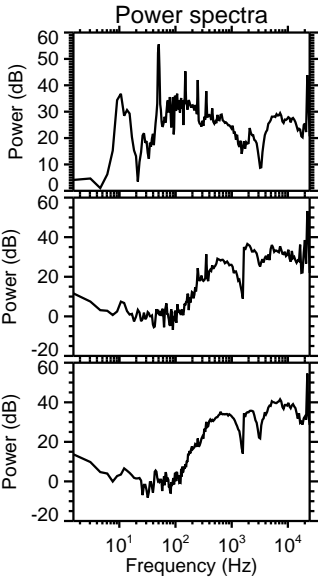
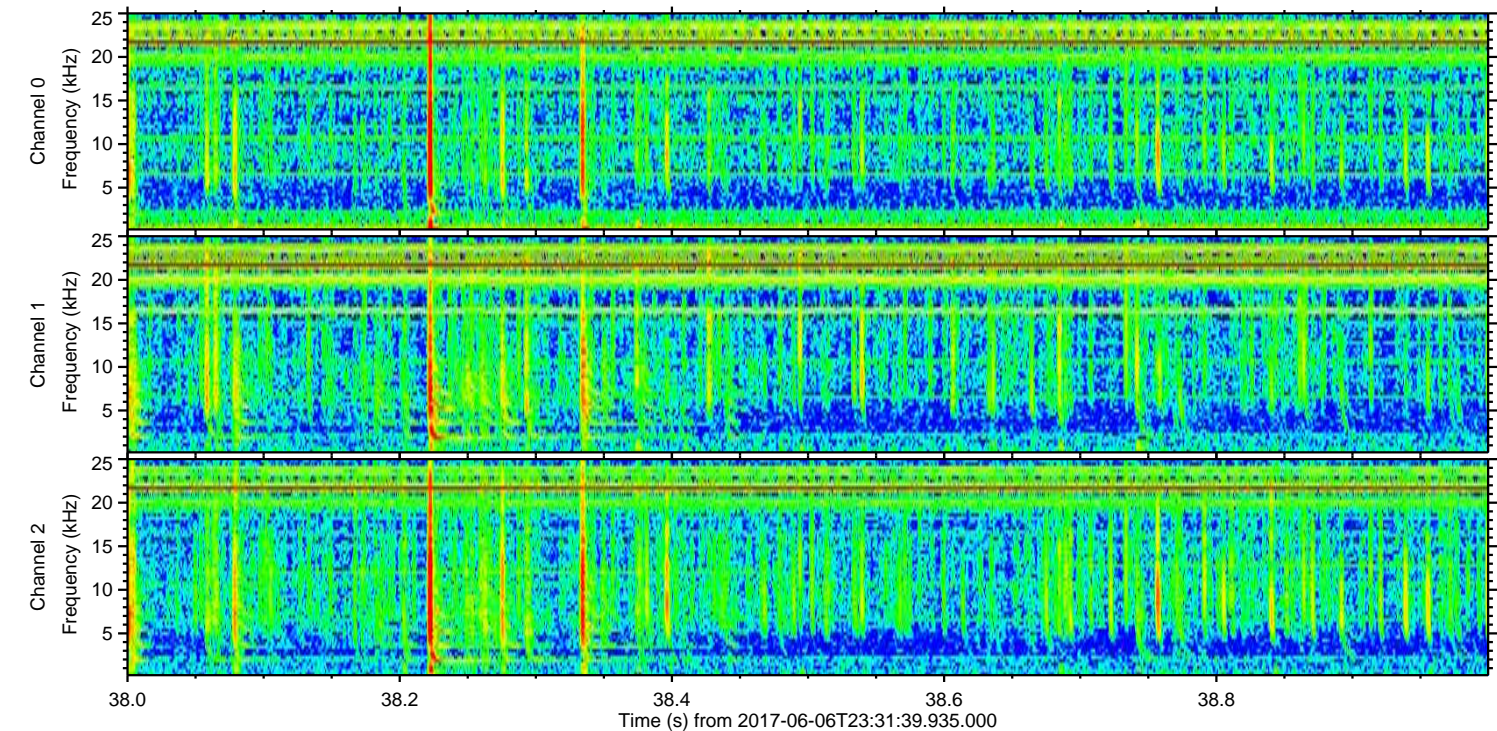
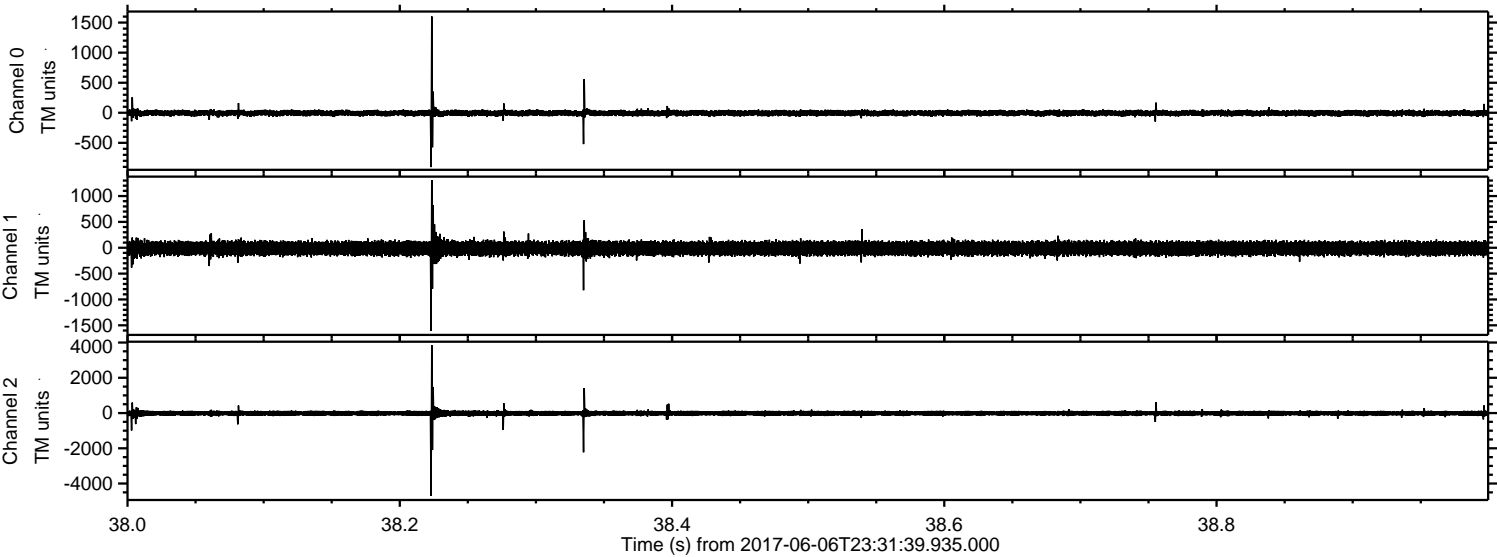
Processed Wed Jun 7 01:39:45 2017 by ELM ver.2012-10-06 from 001__elm20170606_233138__dat00.bin



Processed Wed Jun 7 01:39:46 2017 by ELM ver.2012-10-06 from 001__elm20170606_233138__dat00.bin



Processed Wed Jun 7 01:39:47 2017 by ELM ver.2012-10-06 from 001__elm20170606_233138__dat00.bin



Processed Wed Jun 7 01:39:48 2017 by ELM ver.2012-10-06 from 001__elm20170606_233138__dat00.bin

