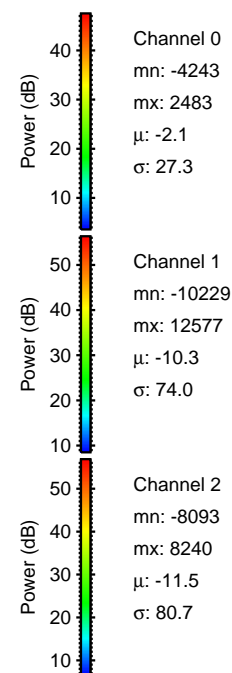
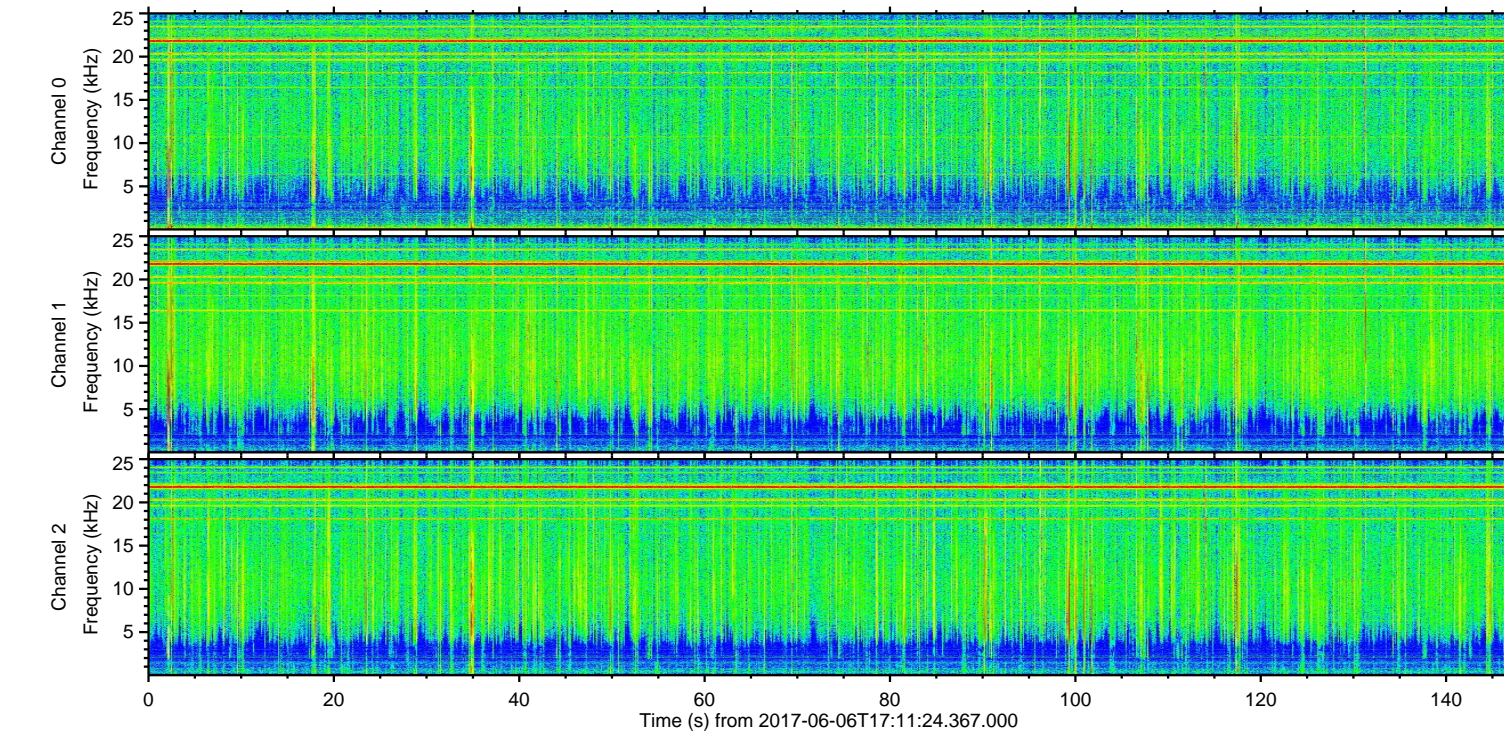
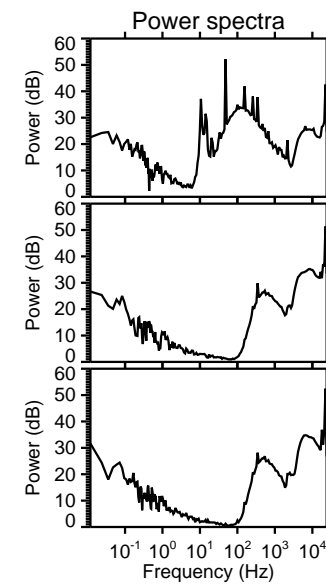
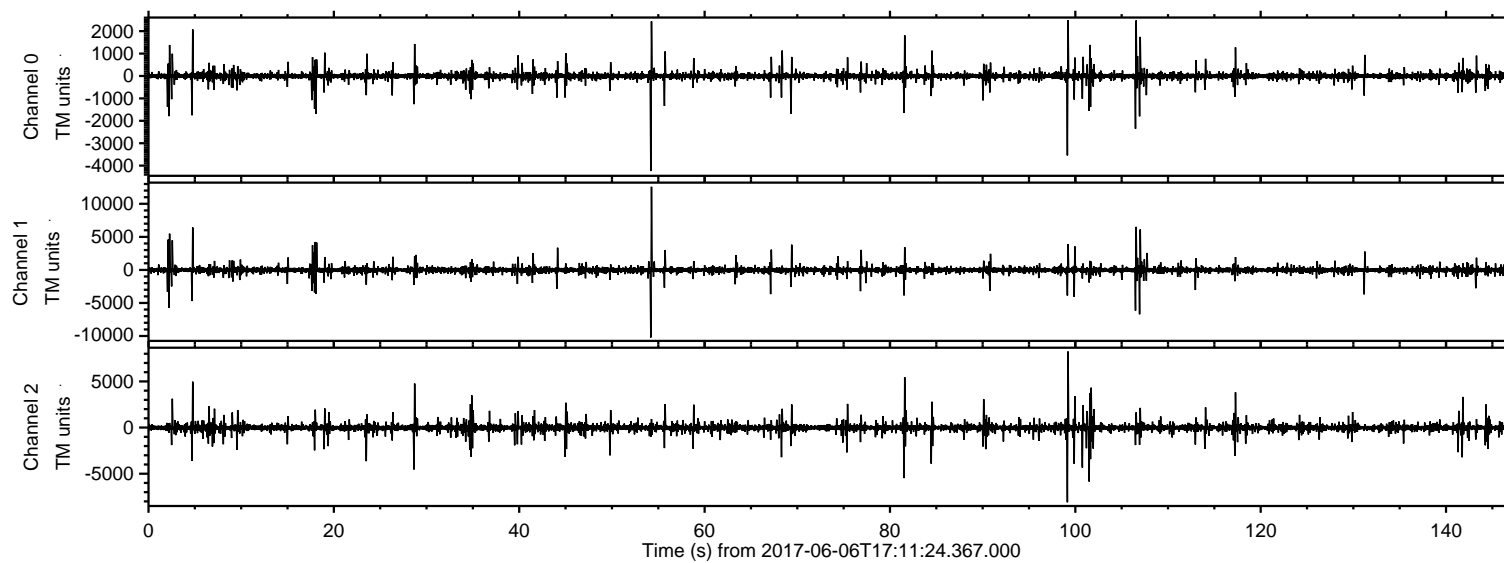


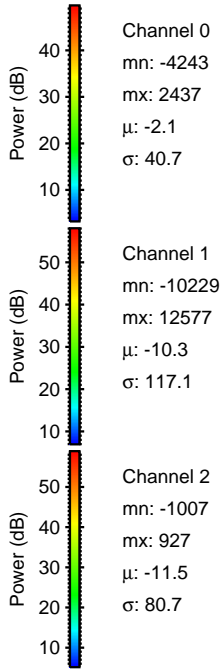
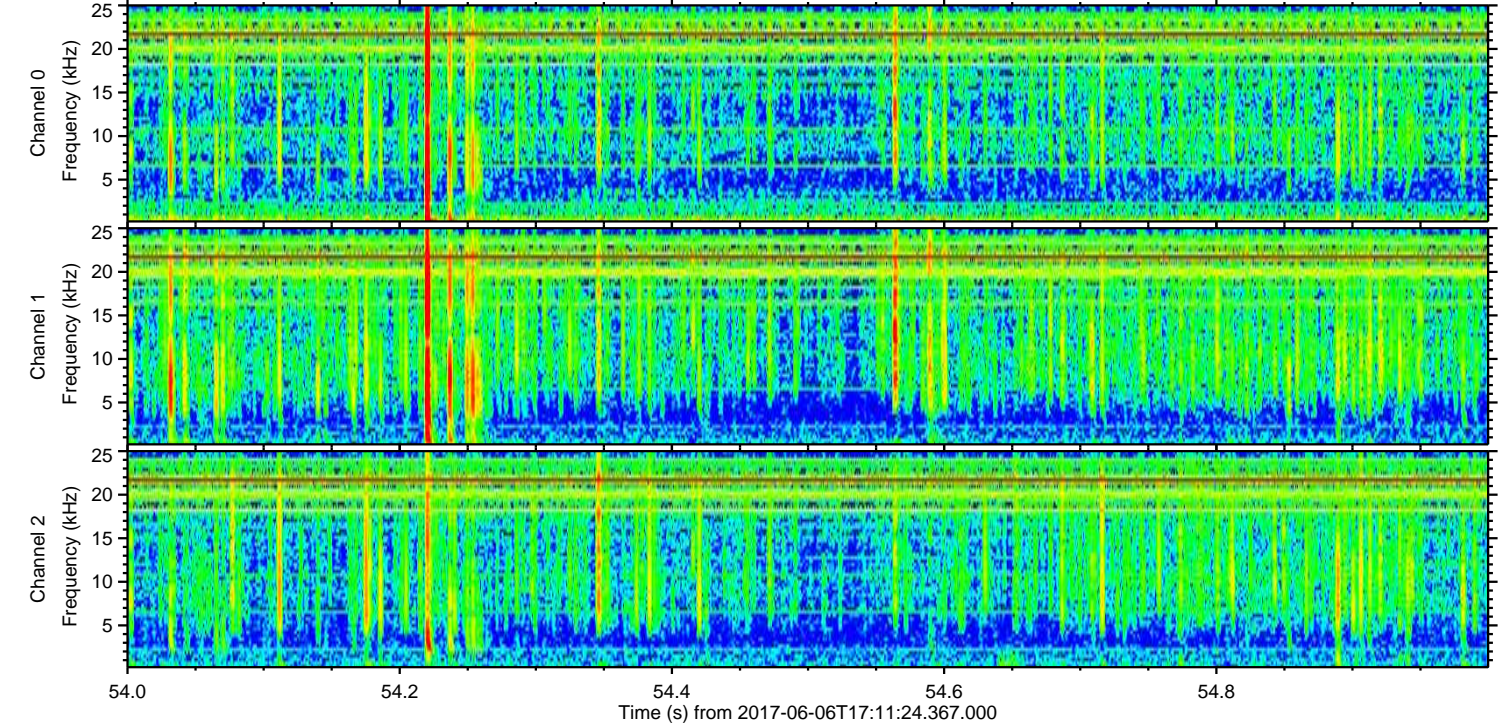
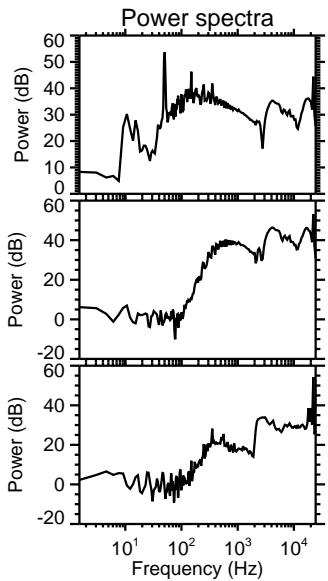
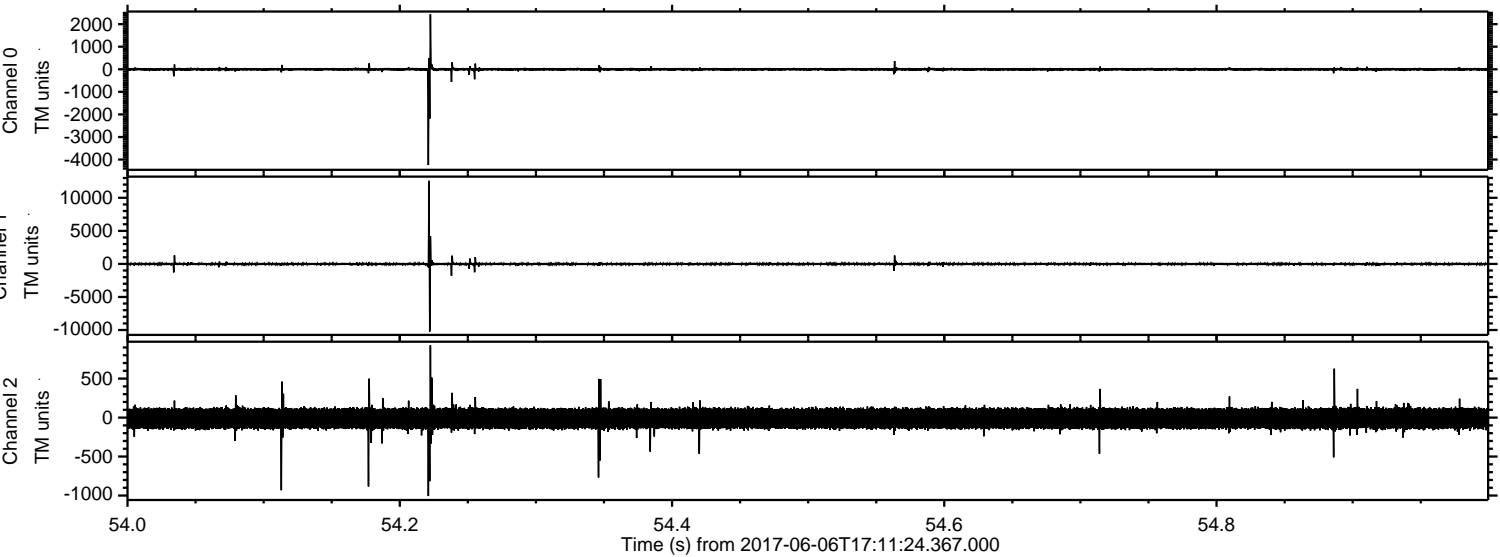
# ELMAVAN 3D WAVEFORMS (Measured data sampled at 50 kHz) 51000 packets of 144 samples from 2017-06-06T17:11:24.367.000.

Processed Tue Jun 6 19:20:05 2017 by ELM ver.2012-10-06 from 001\_\_elm20170606\_171123\_\_dat00.bin





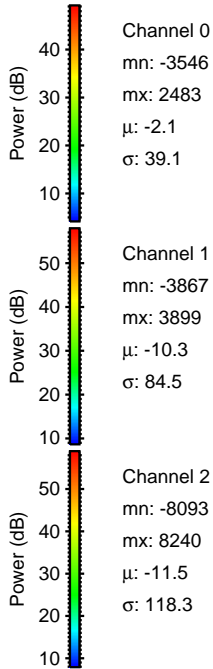
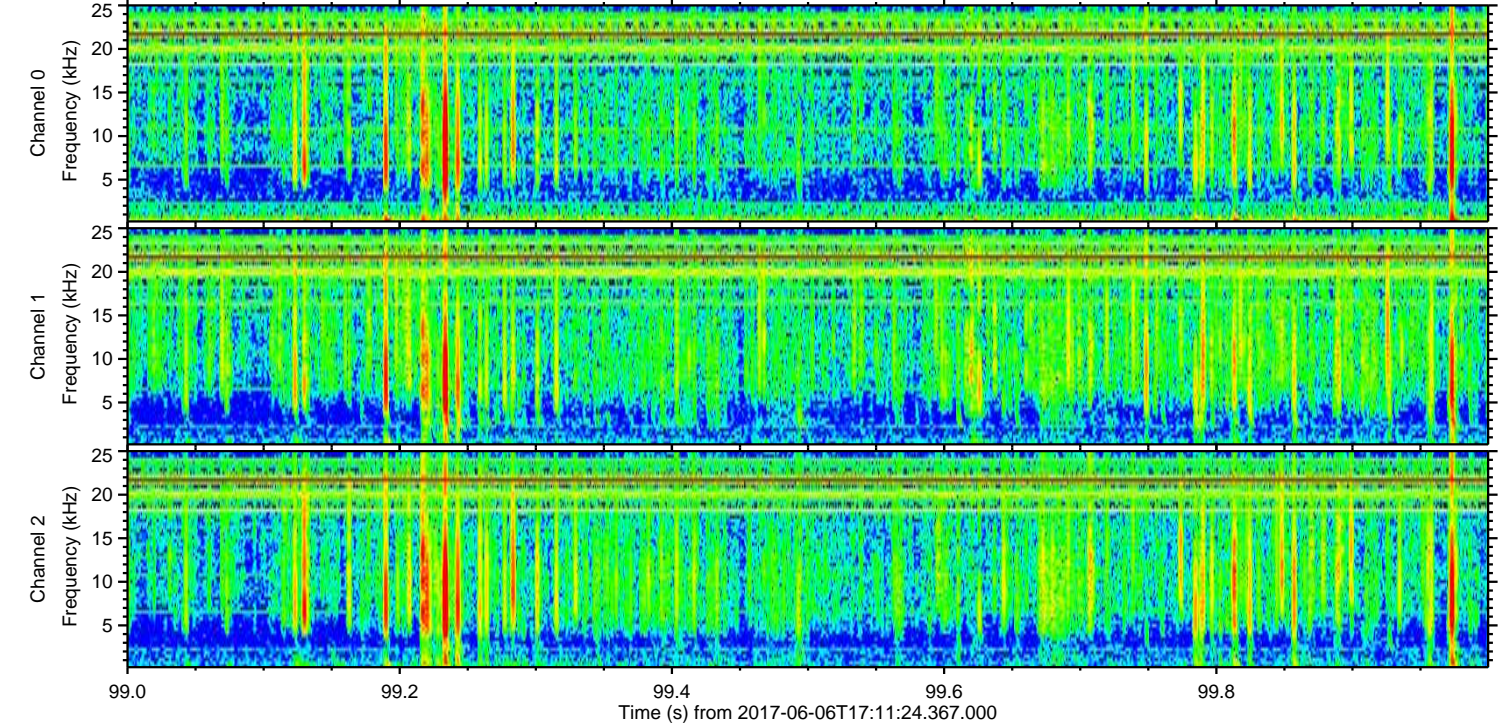
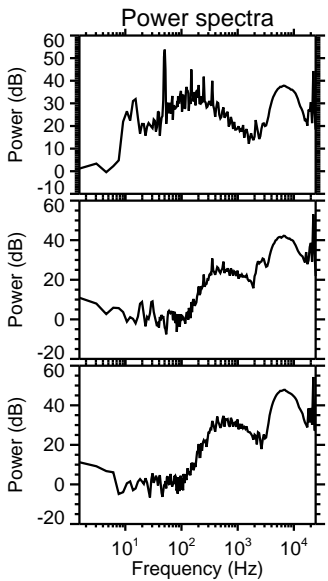
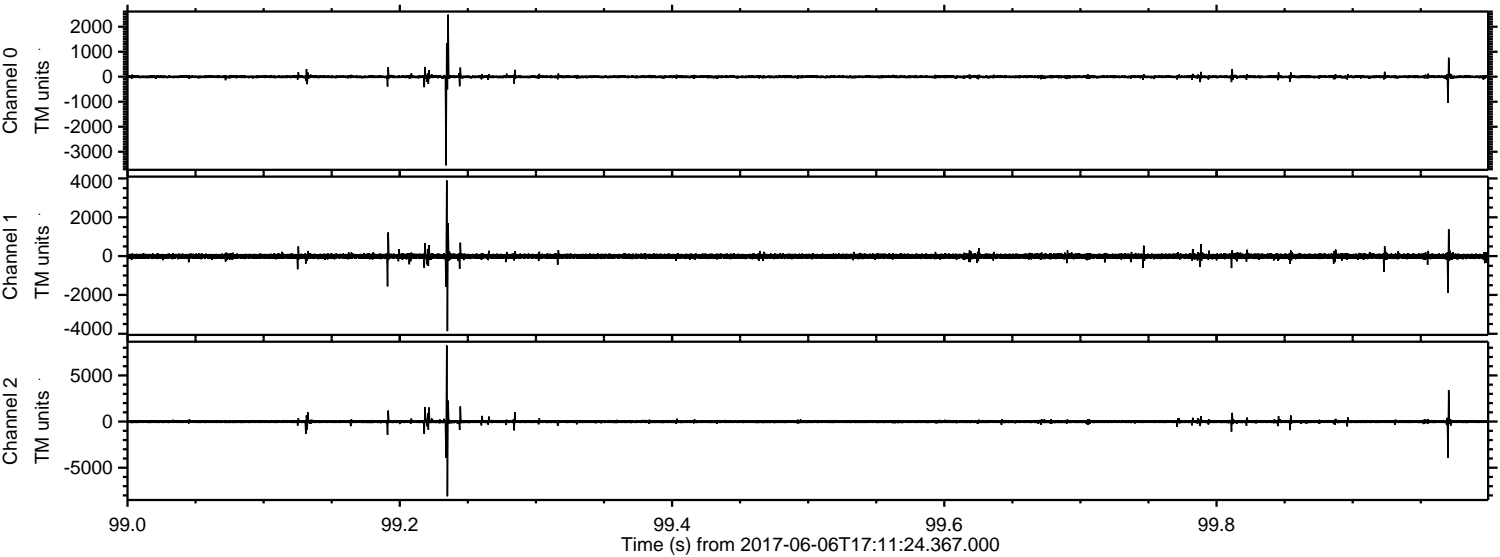
Processed Tue Jun 6 19:20:12 2017 by ELM ver.2012-10-06 from 001\_\_elm20170606\_171123\_\_dat00.bin





ELMAVAN 3D WAVEFORMS (Measured data sampled at 50 kHz) 51000 packets of 144 samples from 2017-06-06T17:11:24.367.000. Part 100/147

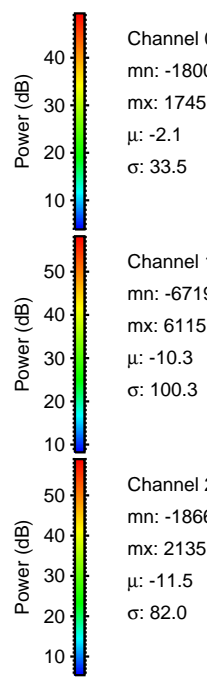
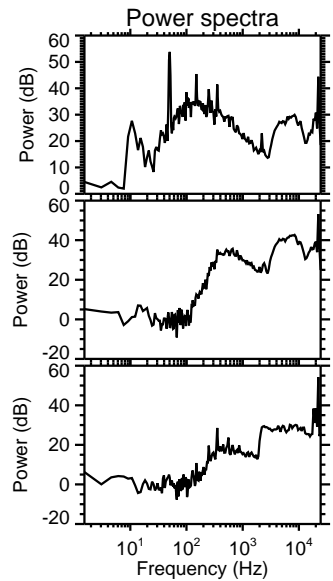
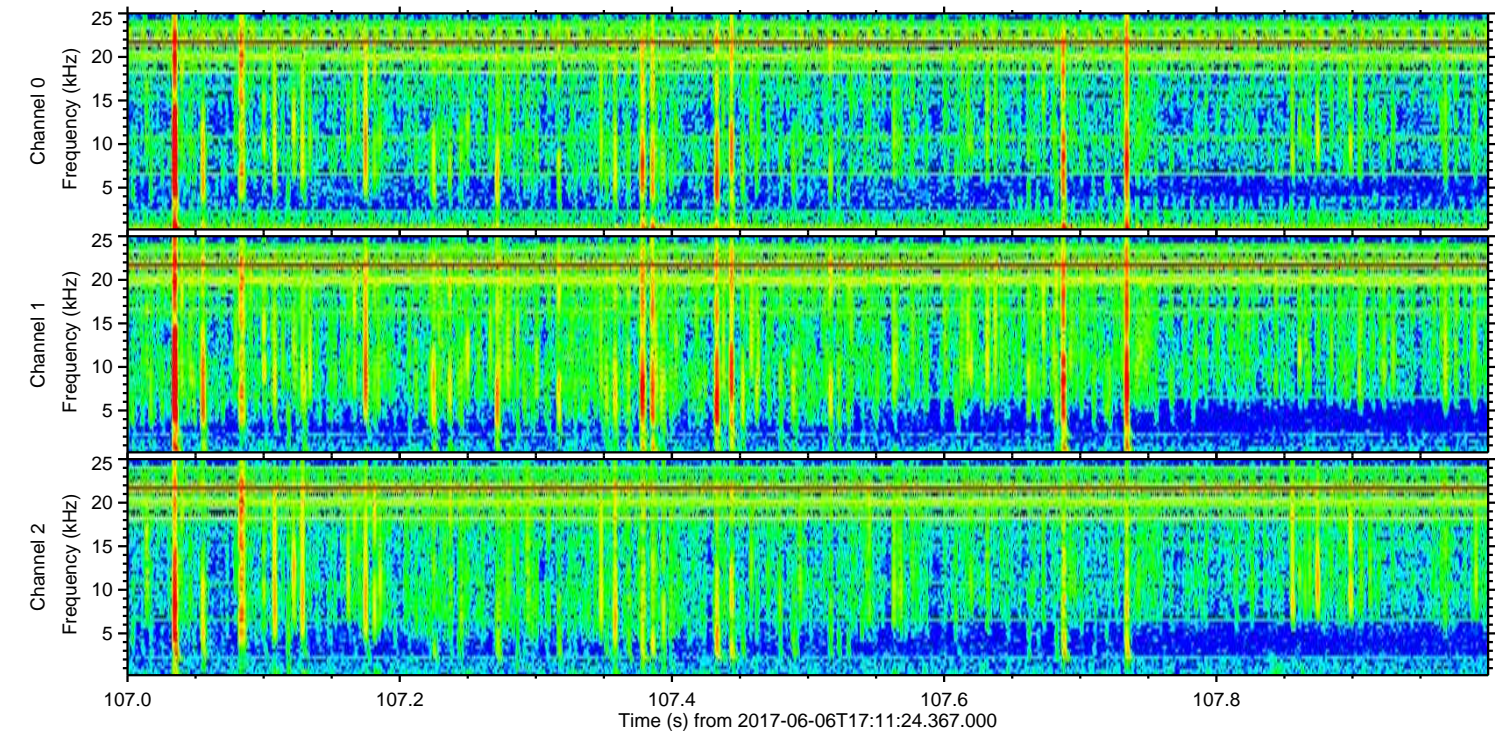
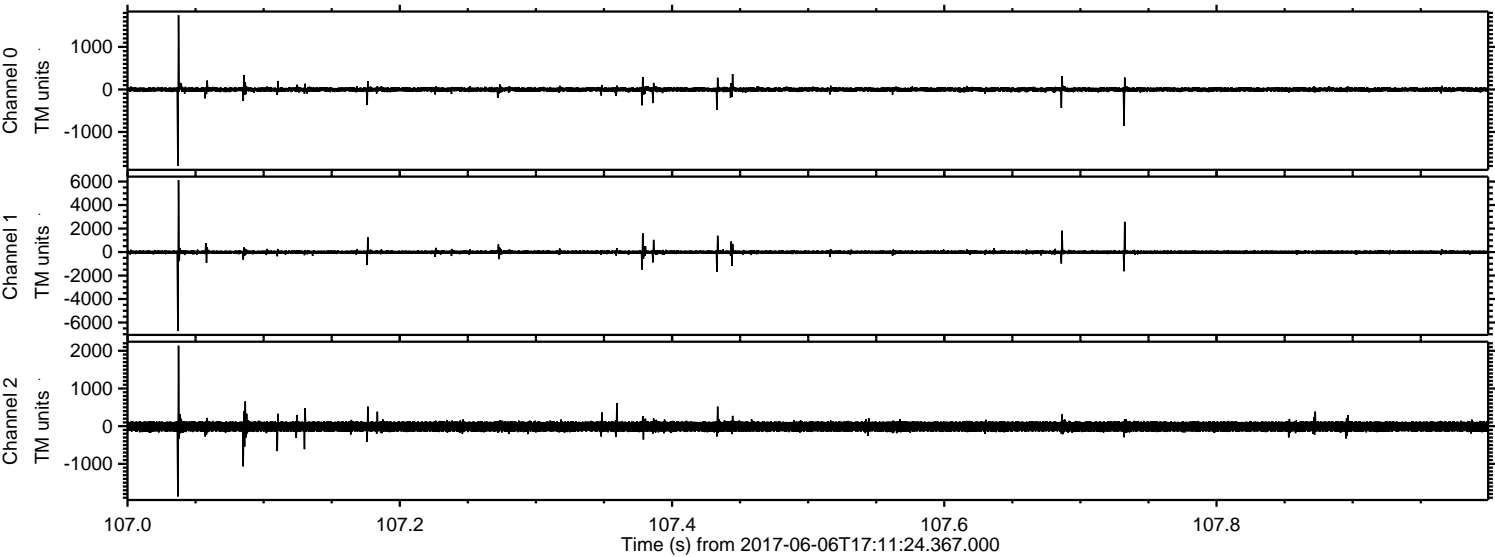
Processed Tue Jun 6 19:20:13 2017 by ELM ver.2012-10-06 from 001\_\_elm20170606\_171123\_\_dat00.bin





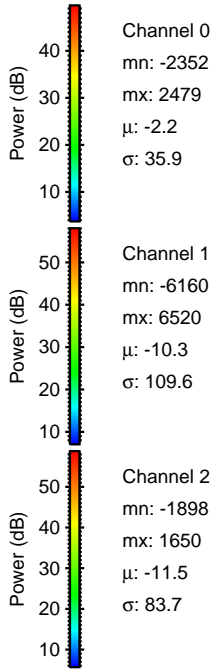
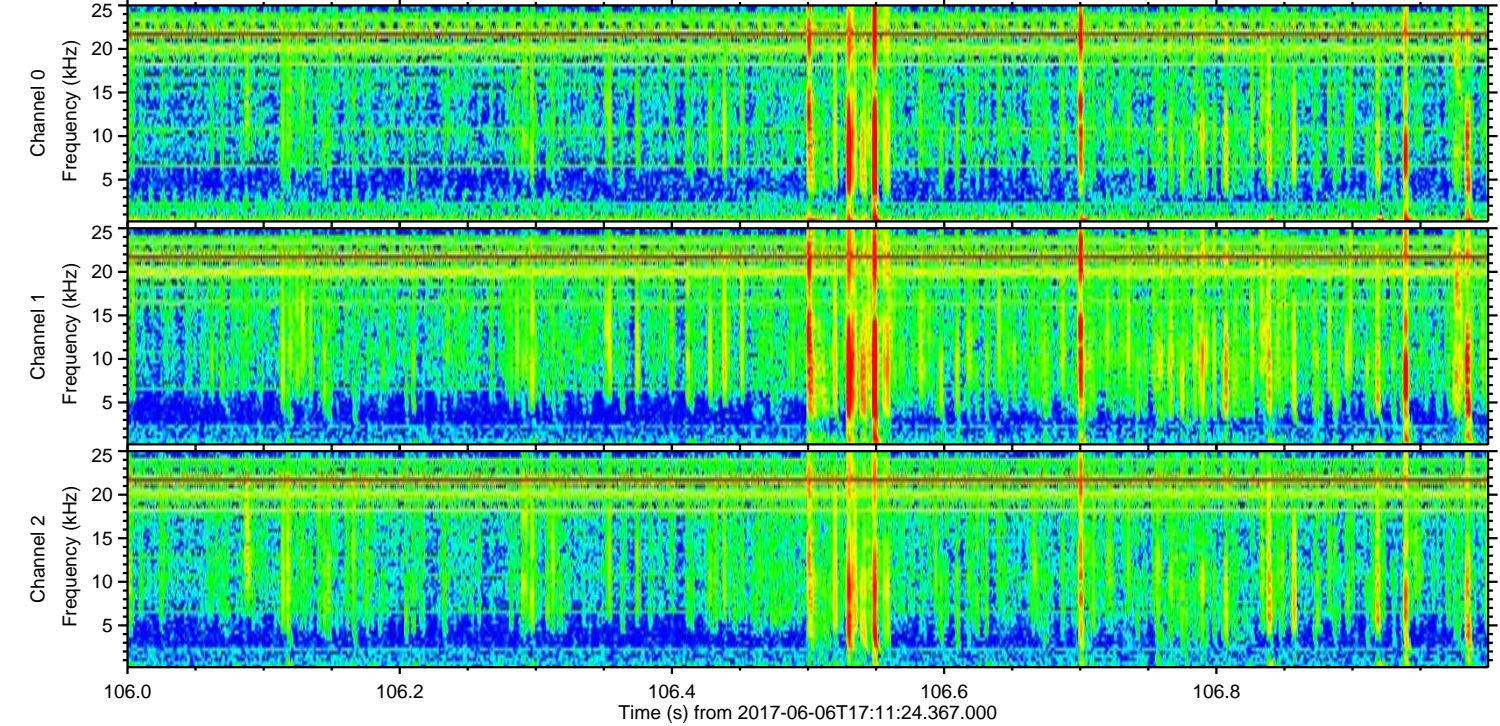
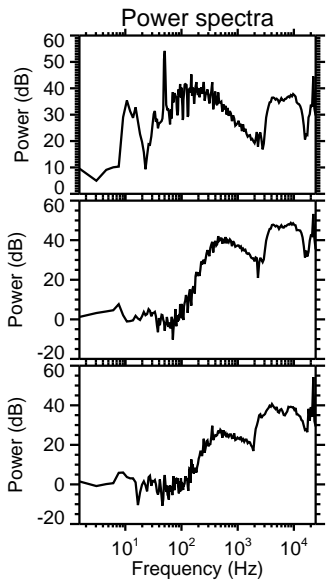
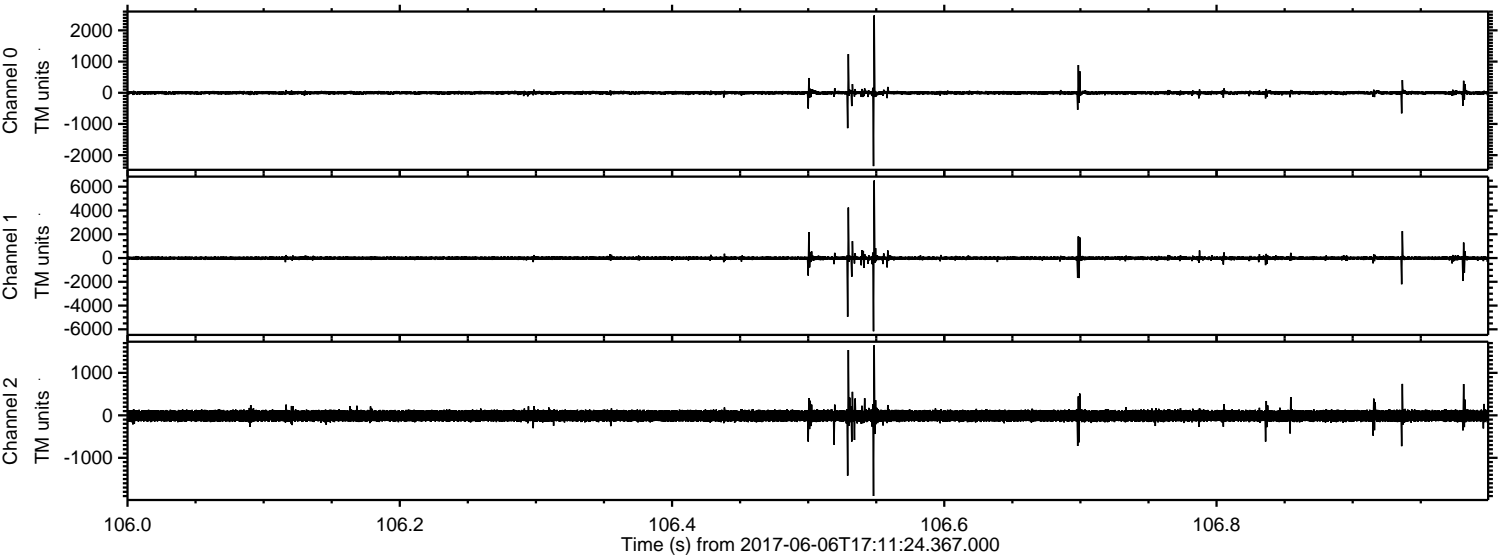
ELMAVAN 3D WAVEFORMS (Measured data sampled at 50 kHz) 51000 packets of 144 samples from 2017-06-06T17:11:24.367.000. Part 108/147

Processed Tue Jun 6 19:20:14 2017 by ELM ver.2012-10-06 from 001\_\_elm20170606\_171123\_\_dat00.bin



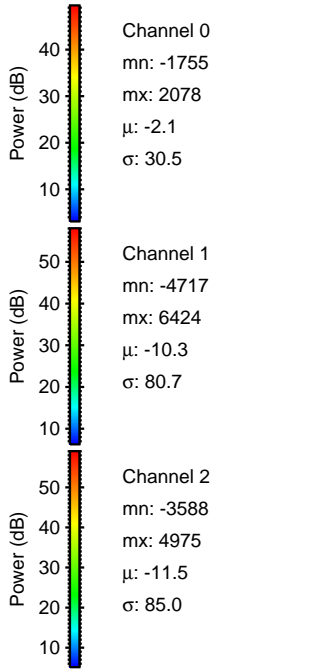
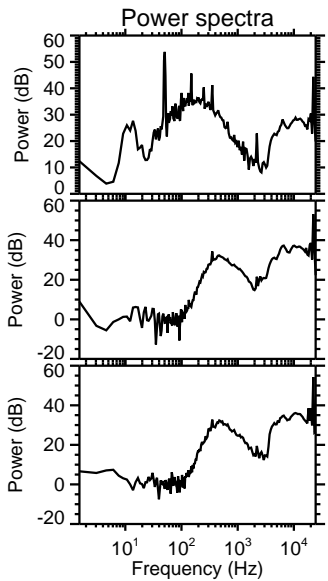
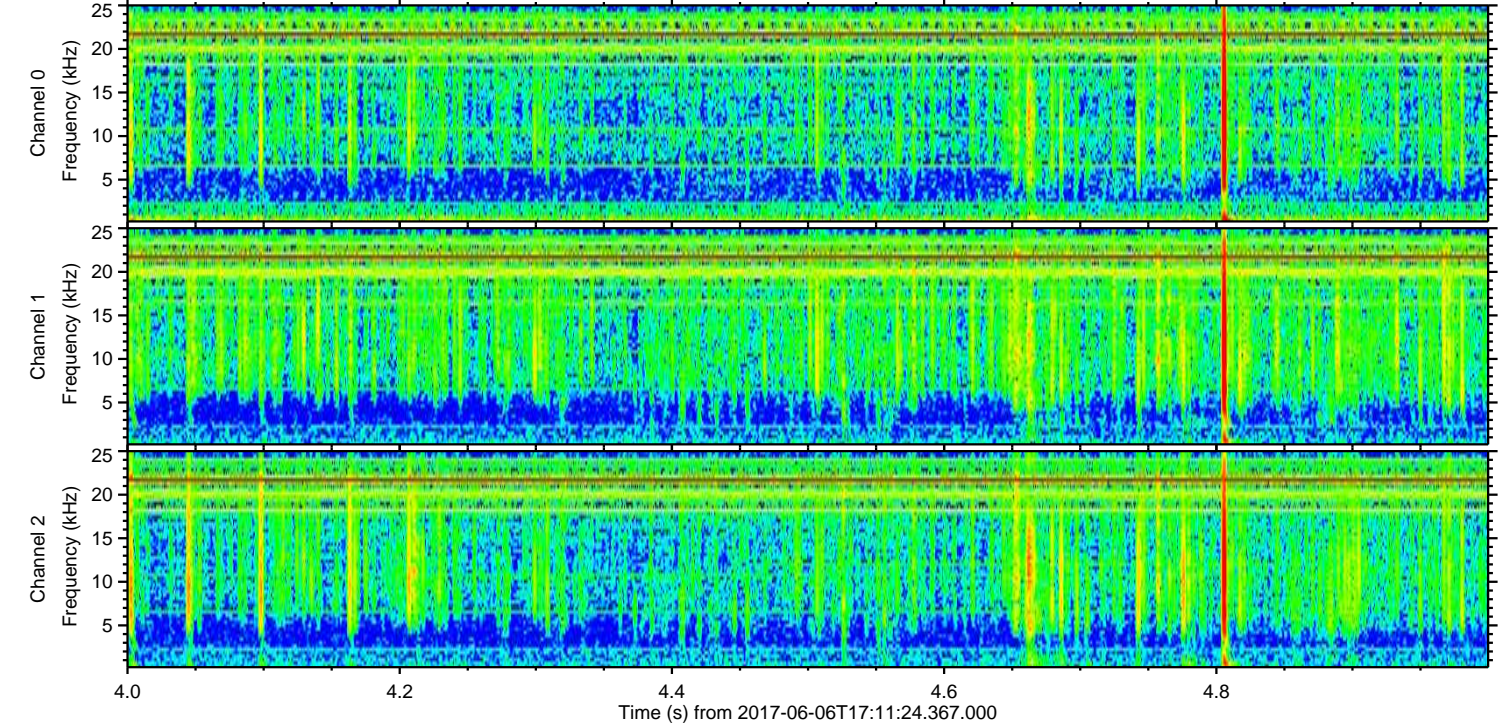
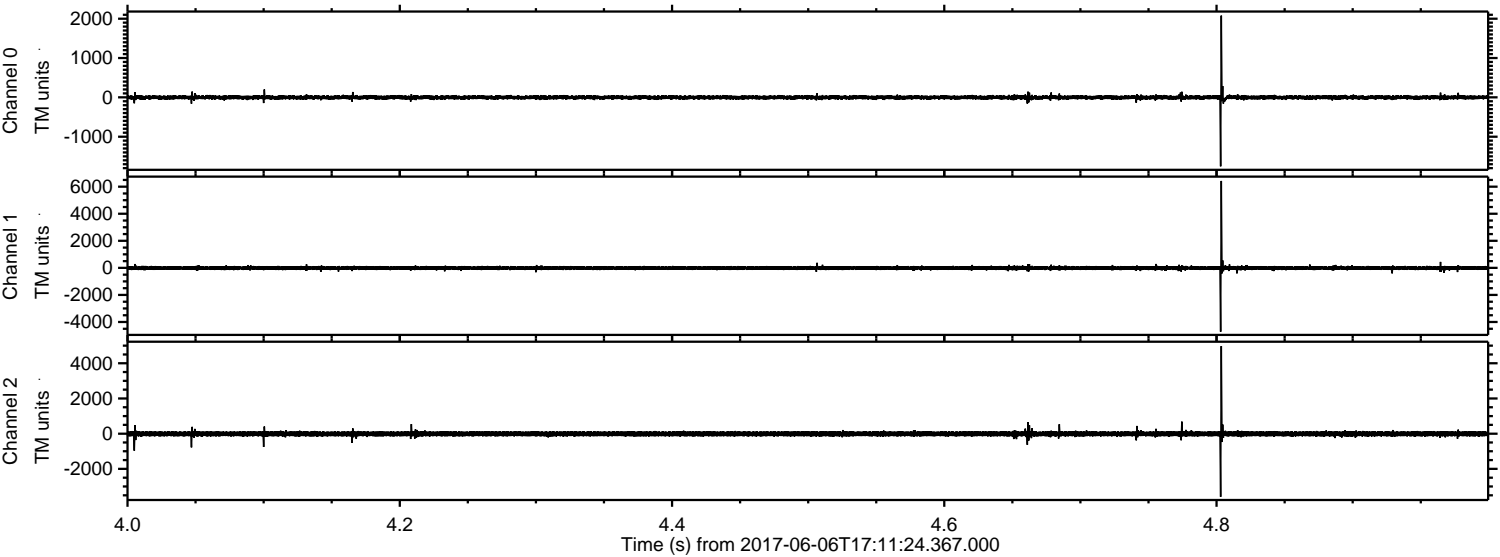
ELMAVAN 3D WAVEFORMS (Measured data sampled at 50 kHz) 51000 packets of 144 samples from 2017-06-06T17:11:24.367.000. Part 107/147

Processed Tue Jun 6 19:20:15 2017 by ELM ver.2012-10-06 from 001\_\_elm20170606\_171123\_\_dat00.bin



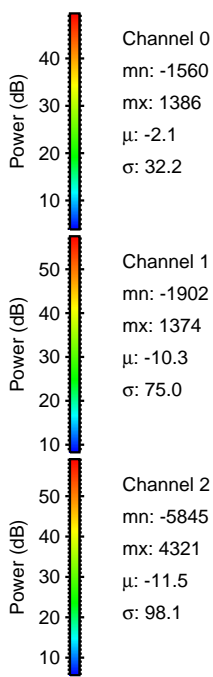
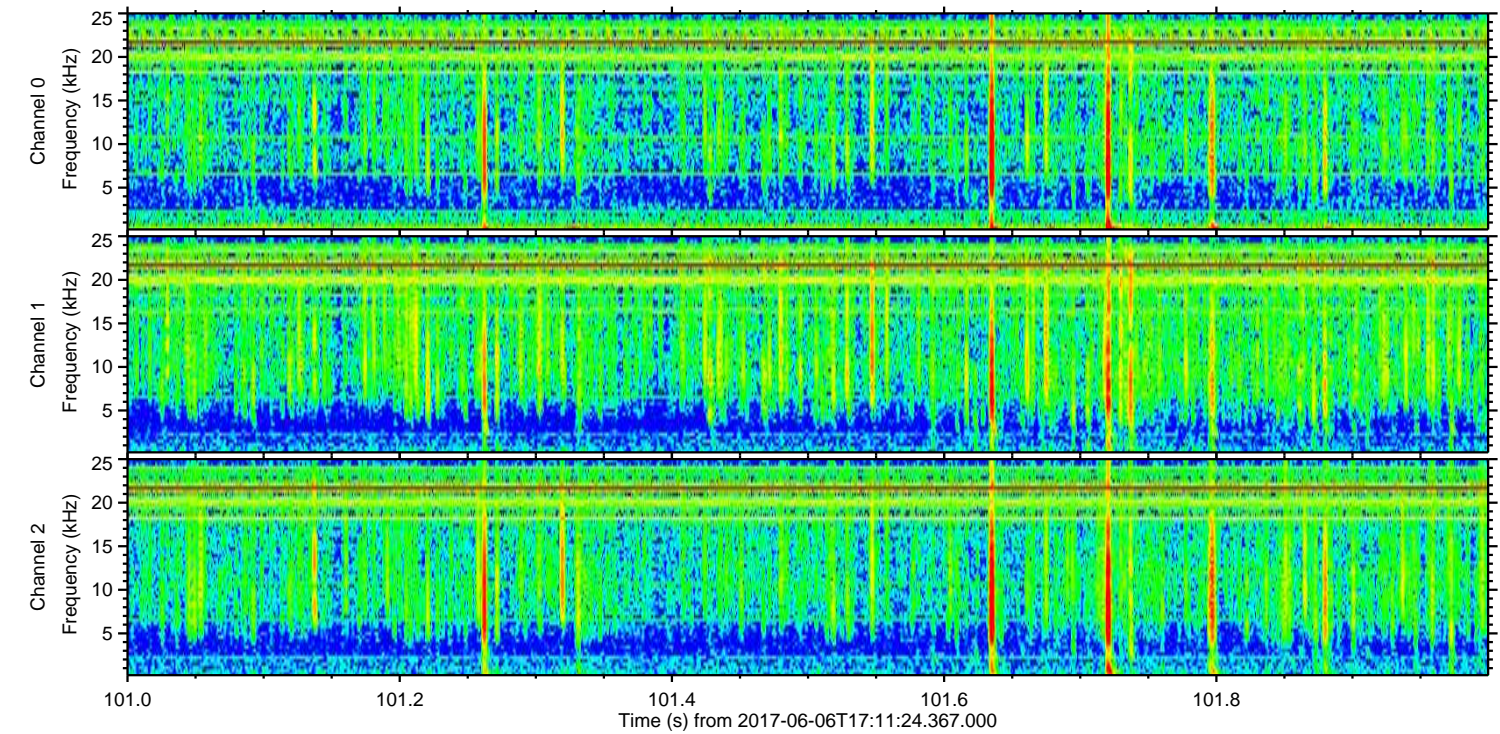
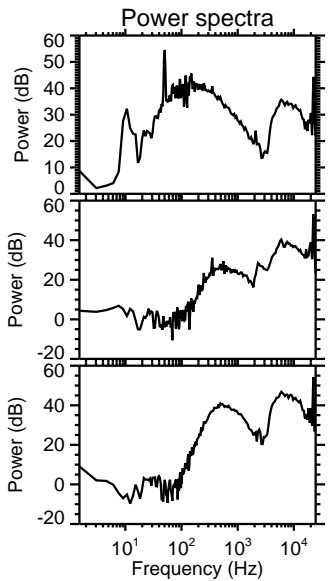
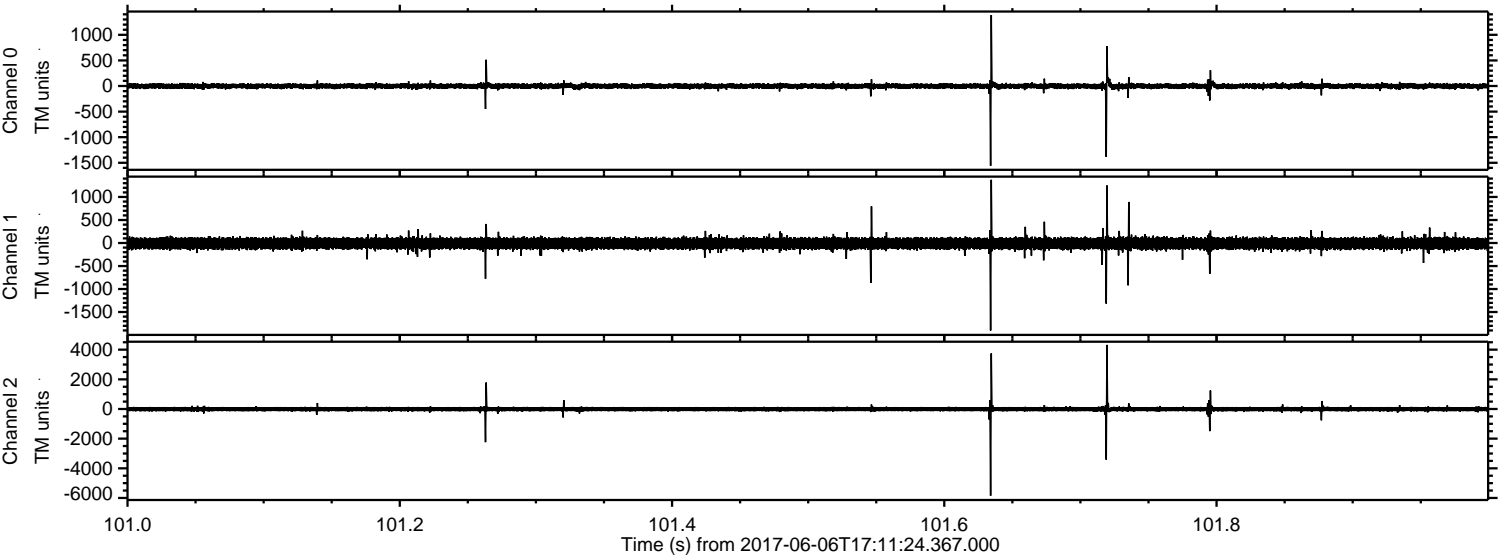


Processed Tue Jun 6 19:20:15 2017 by ELM ver.2012-10-06 from 001\_\_elm20170606\_171123\_\_dat00.bin



ELMAVAN 3D WAVEFORMS (Measured data sampled at 50 kHz) 51000 packets of 144 samples from 2017-06-06T17:11:24.367.000. Part 102/147

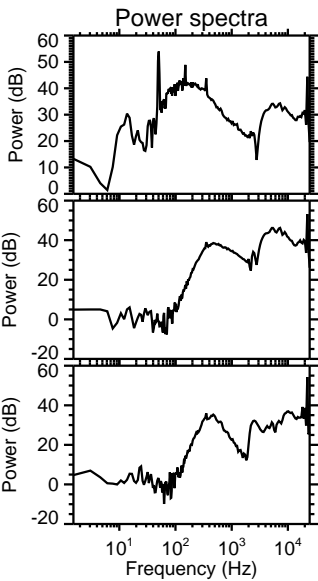
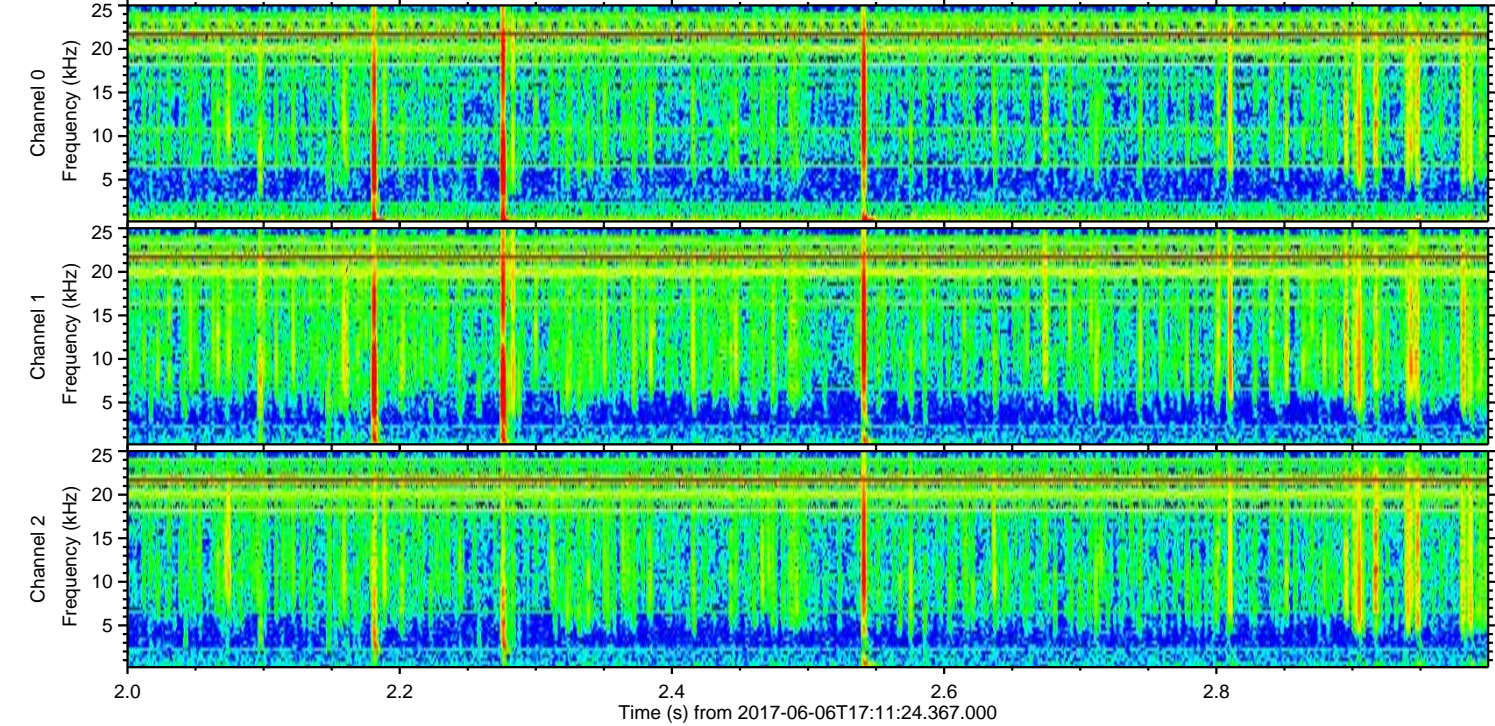
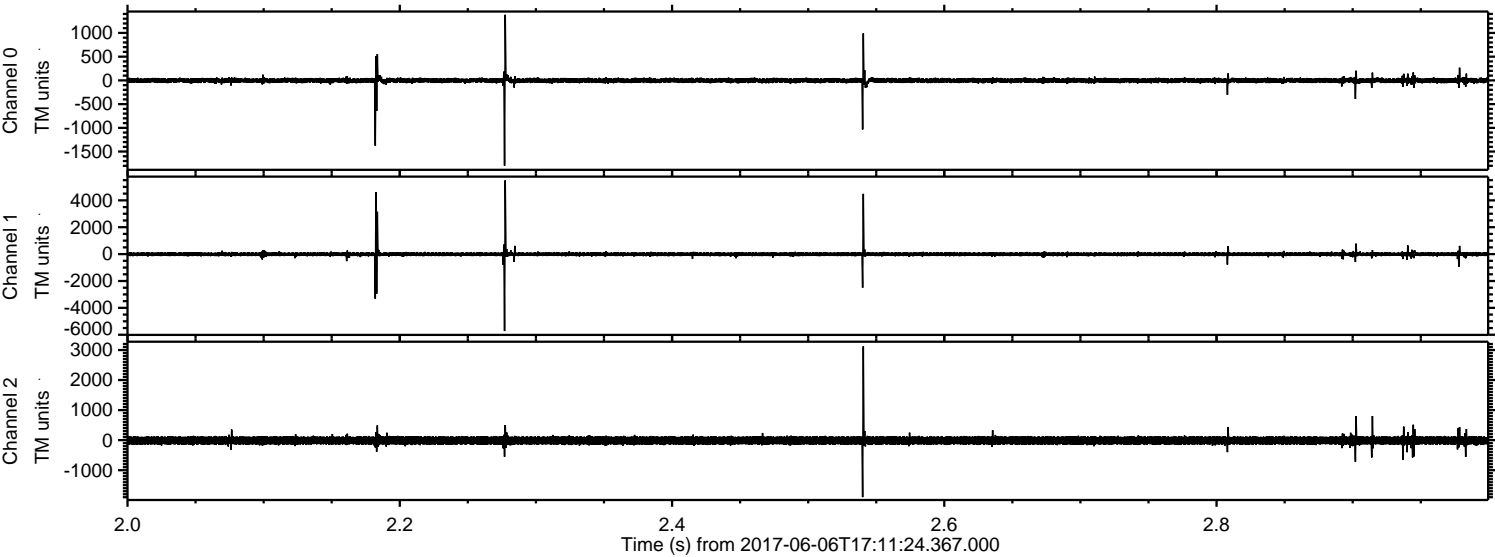
Processed Tue Jun 6 19:20:16 2017 by ELM ver.2012-10-06 from 001\_\_elm20170606\_171123\_\_dat00.bin





ELMAVAN 3D WAVEFORMS (Measured data sampled at 50 kHz) 51000 packets of 144 samples from 2017-06-06T17:11:24.367.000. Part 3/147

Processed Tue Jun 6 19:20:17 2017 by ELM ver.2012-10-06 from 001\_\_elm20170606\_171123\_\_dat00.bin



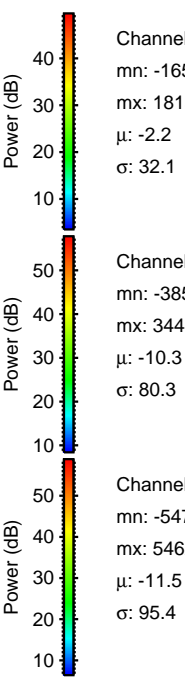
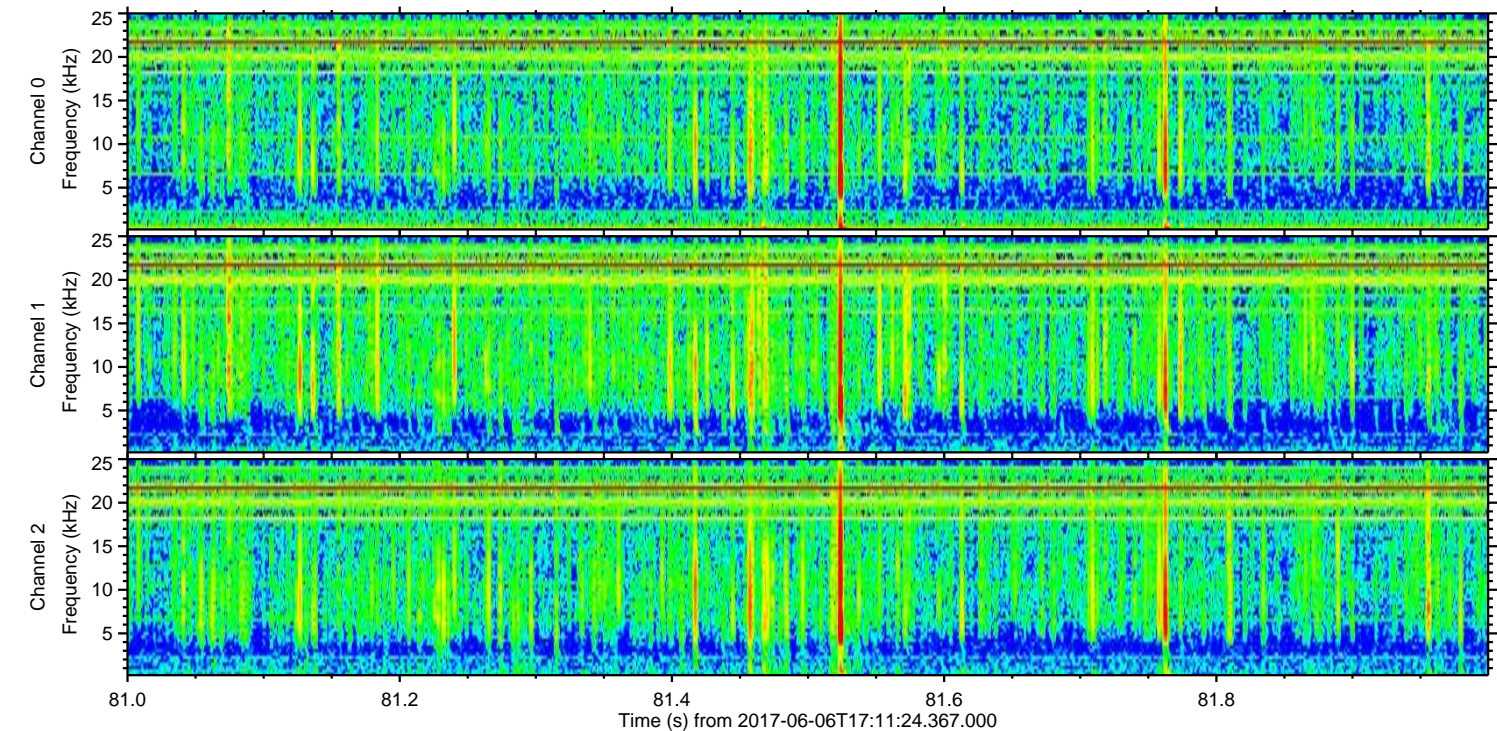
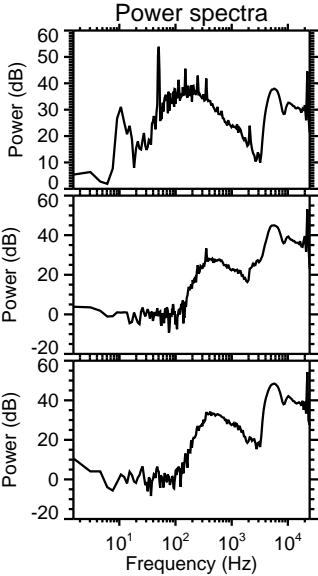
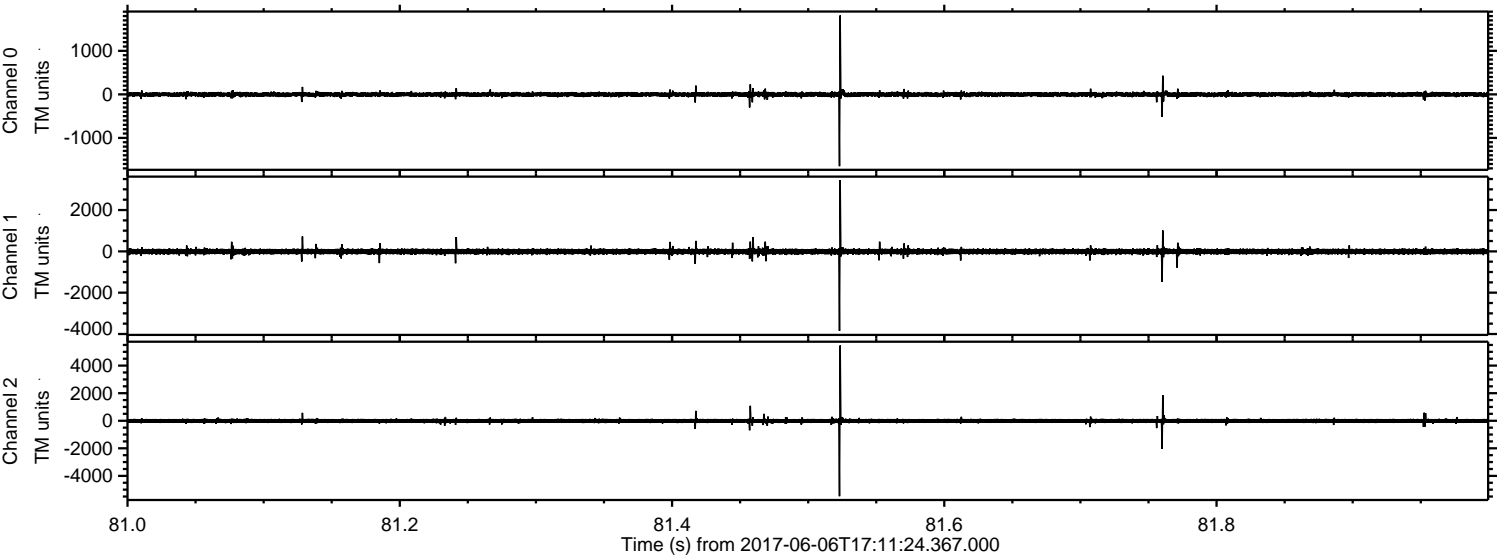
Channel 0  
mn: -1795  
mx: 1382  
 $\mu$ : -2.1  
 $\sigma$ : 33.5

Channel 1  
mn: -5725  
mx: 5489  
 $\mu$ : -10.4  
 $\sigma$ : 98.8

Channel 2  
mn: -1897  
mx: 3120  
 $\mu$ : -11.5  
 $\sigma$ : 82.1

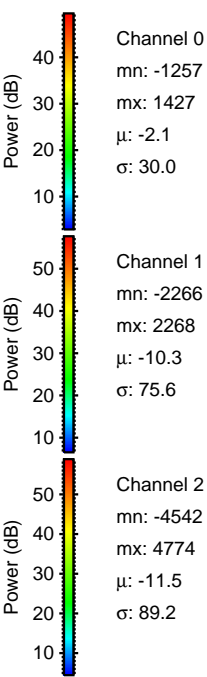
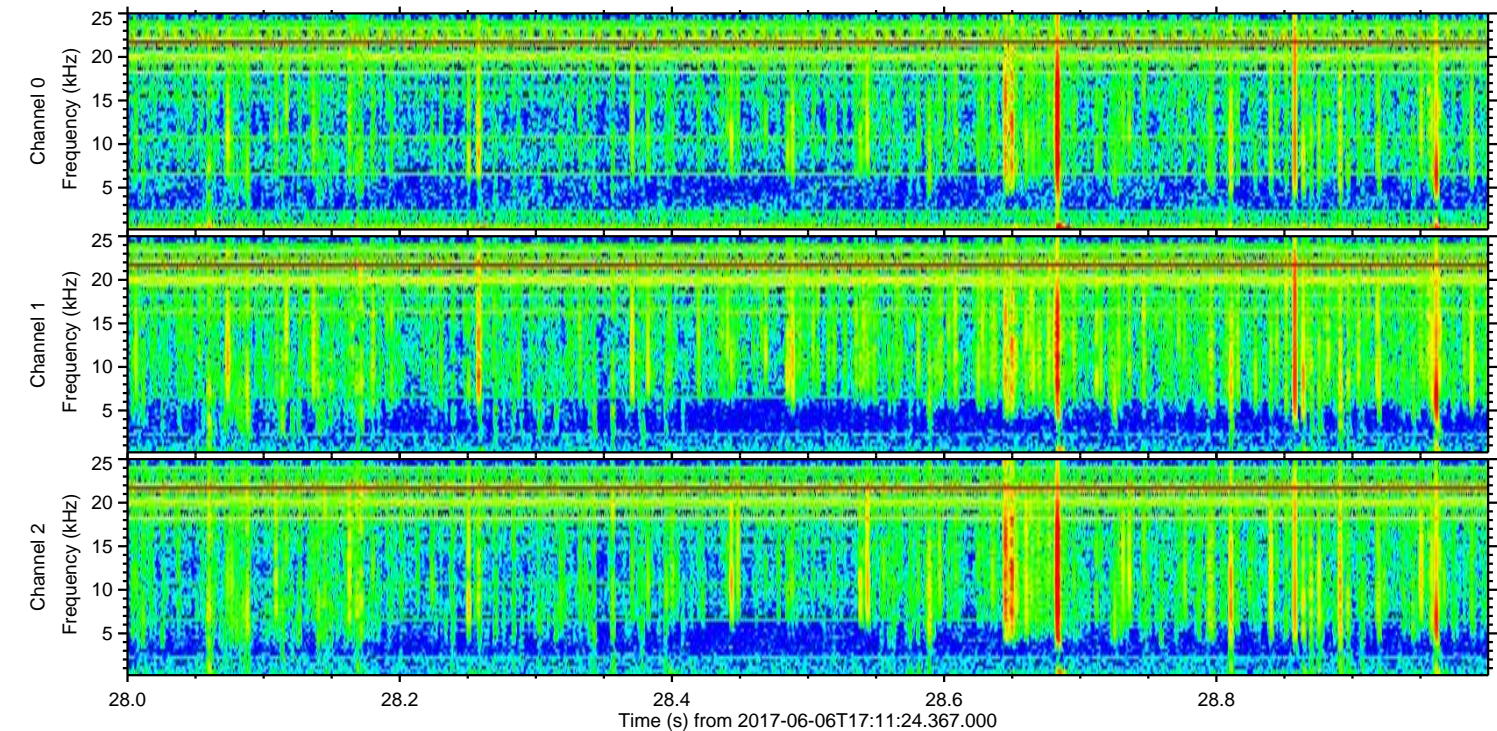
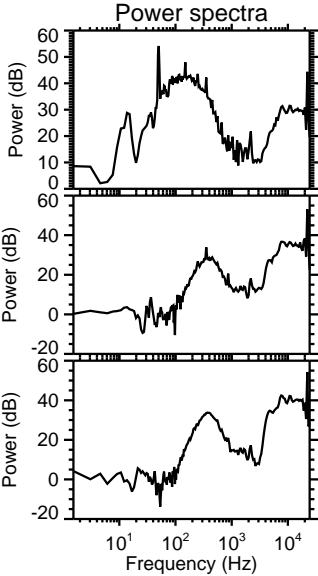
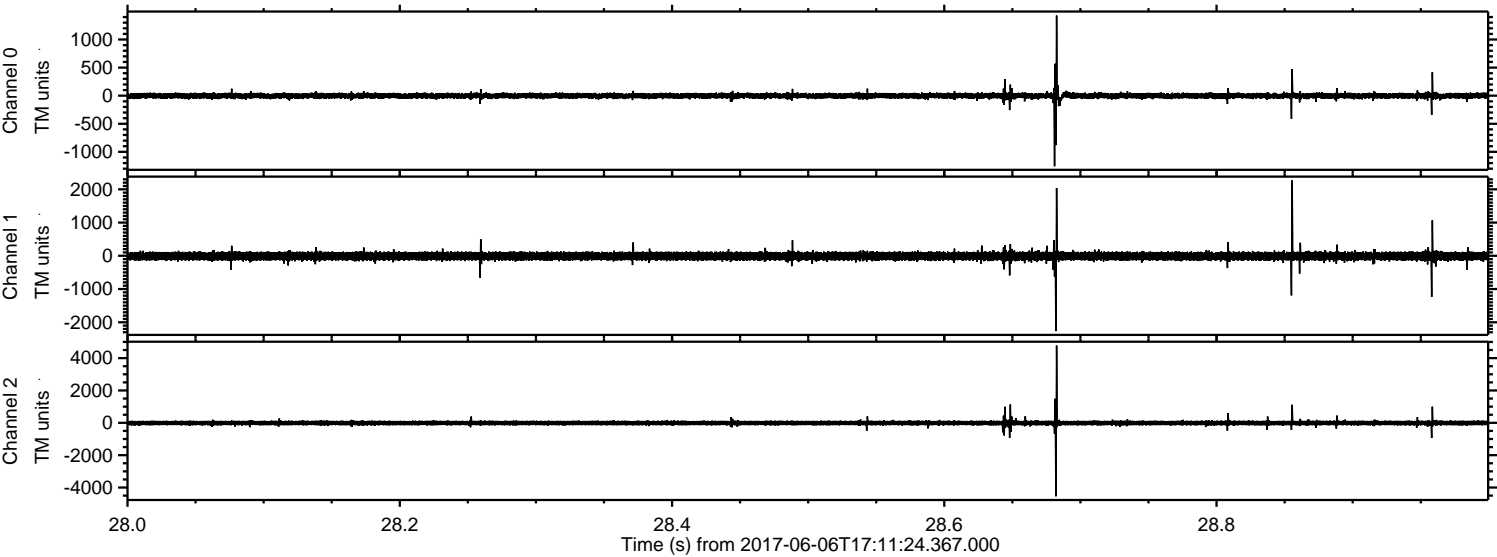


Processed Tue Jun 6 19:20:18 2017 by ELM ver.2012-10-06 from 001\_\_elm20170606\_171123\_\_dat00.bin





Processed Tue Jun 6 19:20:18 2017 by ELM ver.2012-10-06 from 001\_\_elm20170606\_171123\_\_dat00.bin





Processed Tue Jun 6 19:20:19 2017 by ELM ver.2012-10-06 from 001\_\_elm20170606\_171123\_\_dat00.bin

