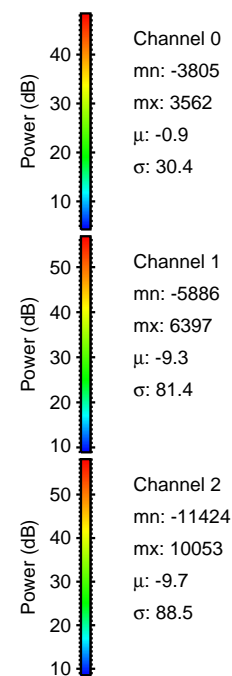
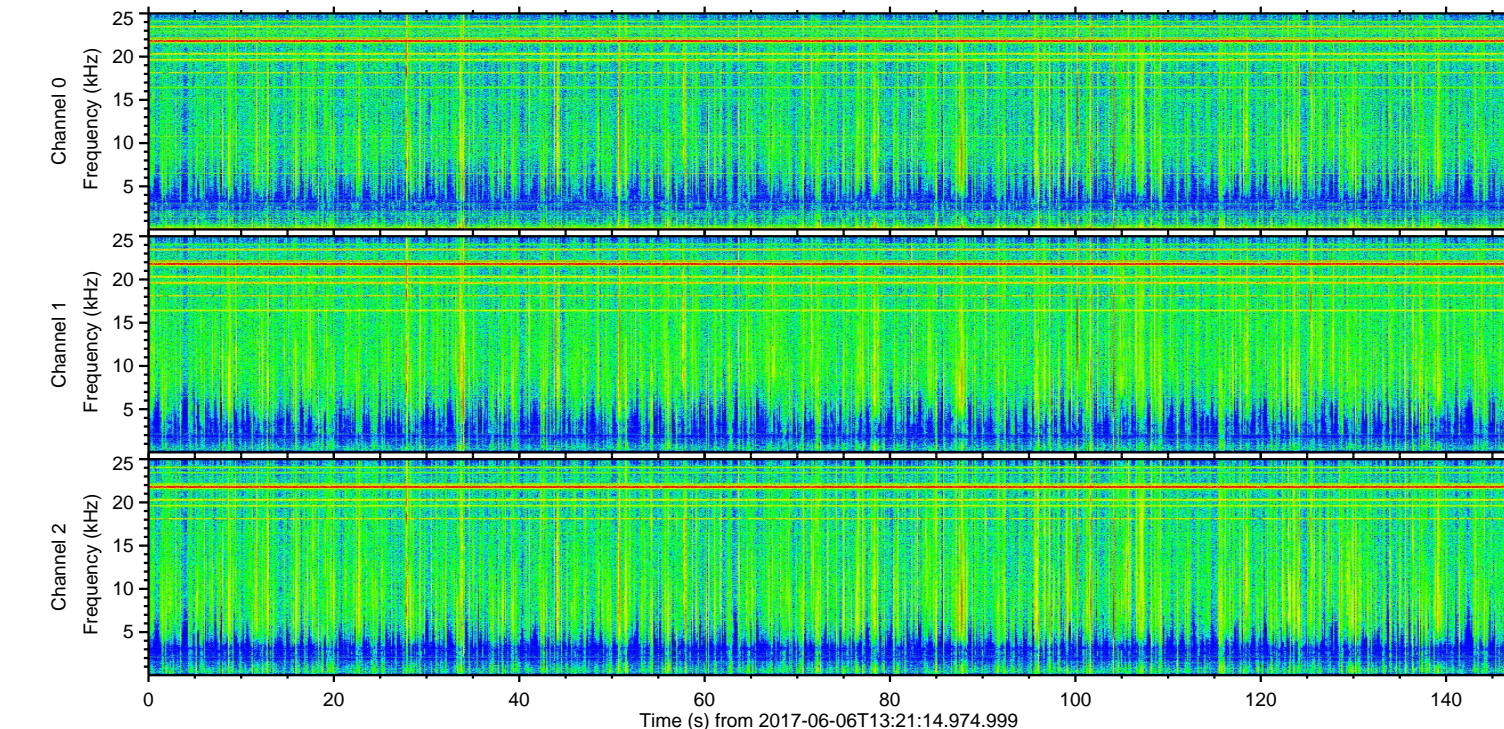
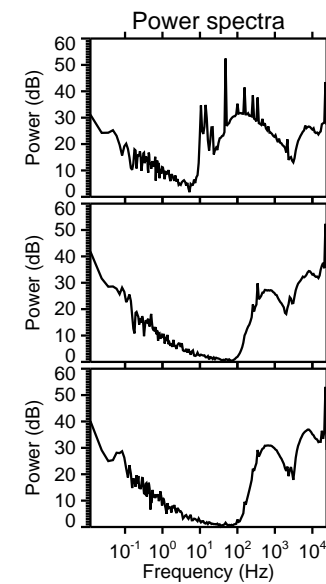
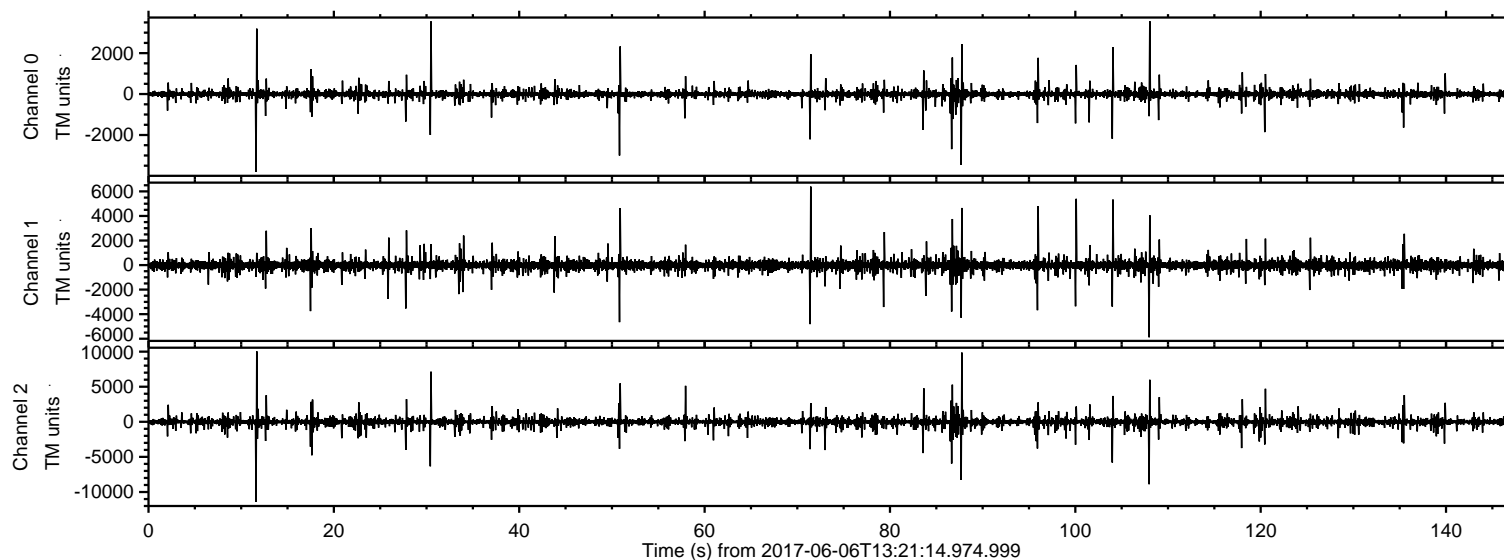


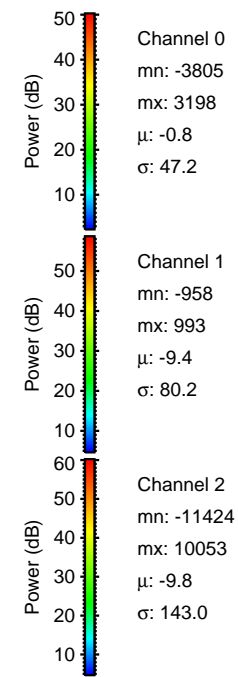
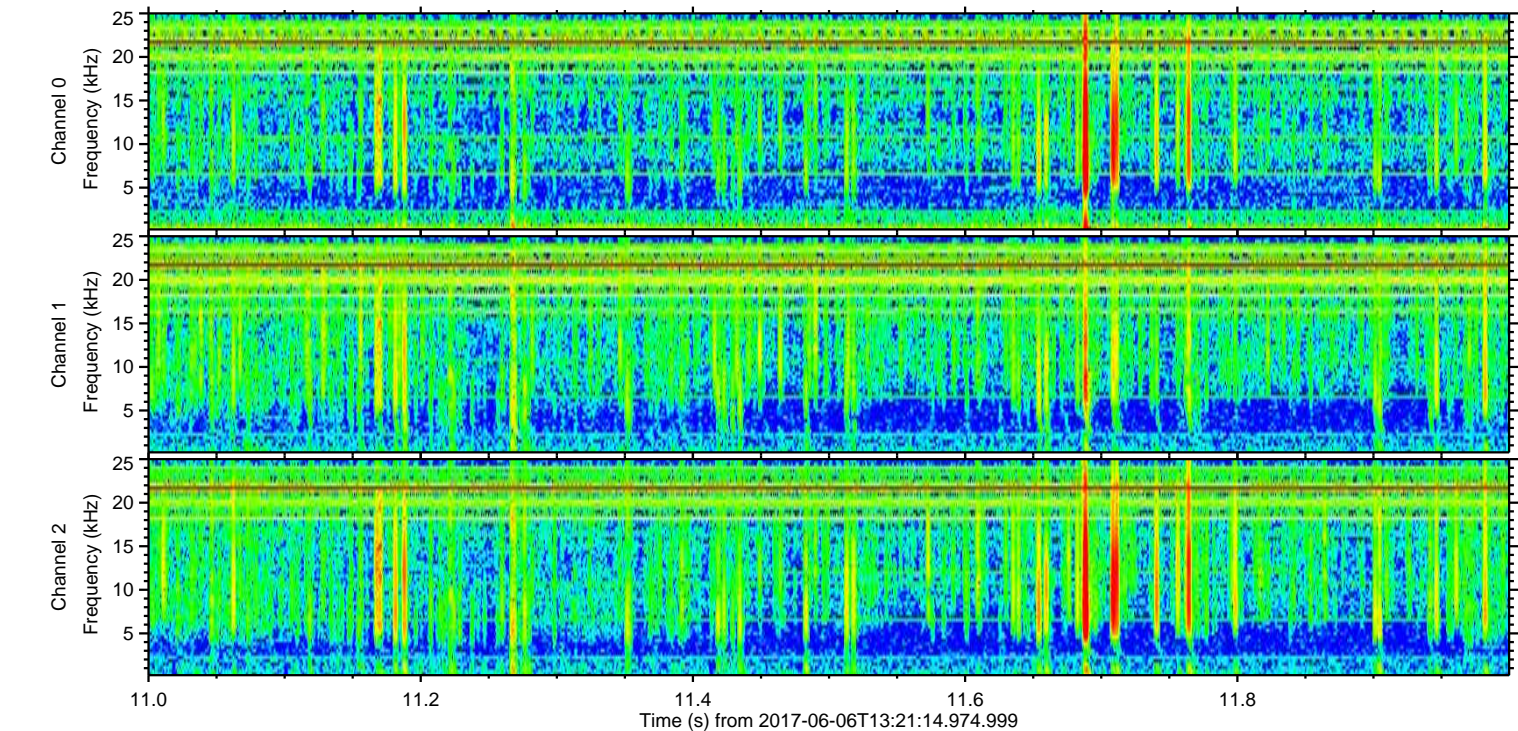
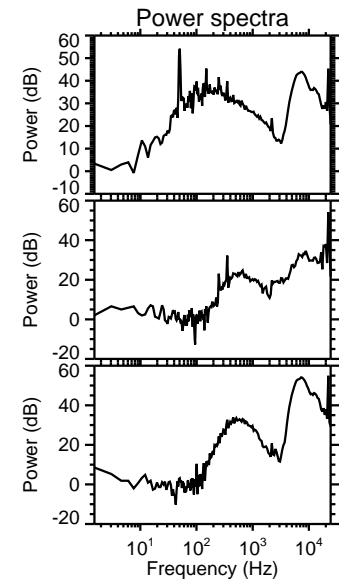
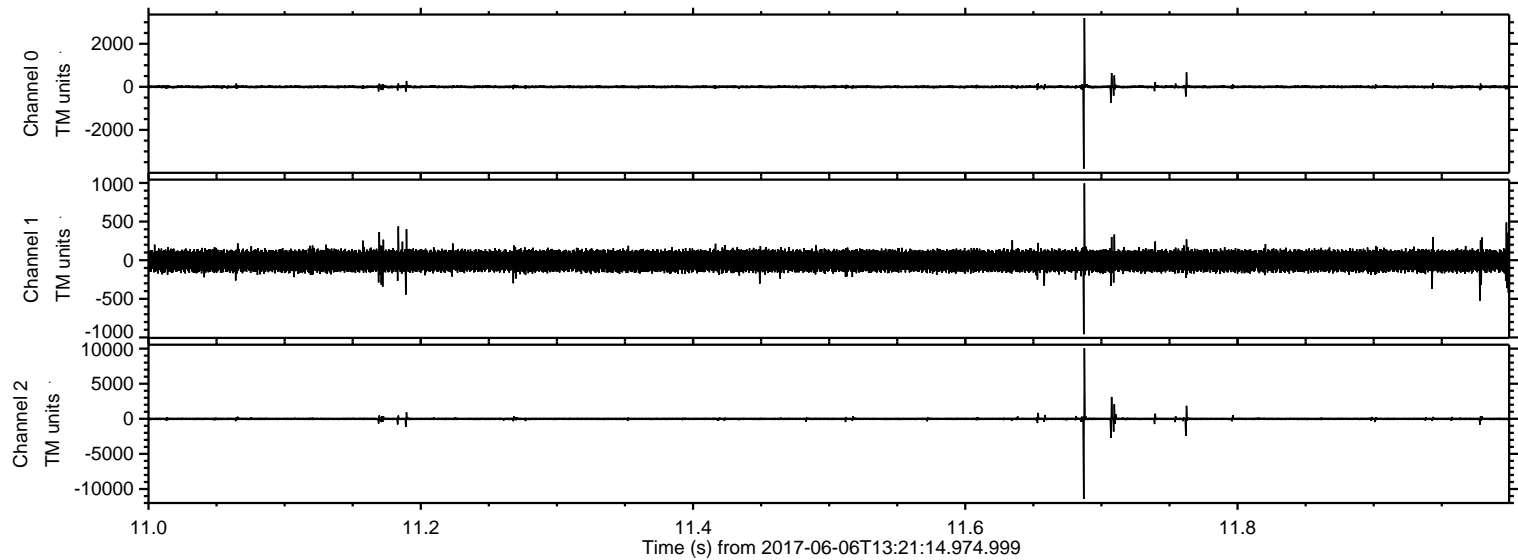
ELMAVAN 3D WAVEFORMS (Measured data sampled at 50 kHz) 51000 packets of 144 samples from 2017-06-06T13:21:14.974.999.

Processed Tue Jun 6 15:28:43 2017 by ELM ver.2012-10-06 from 001__elm20170606_132113__dat00.bin

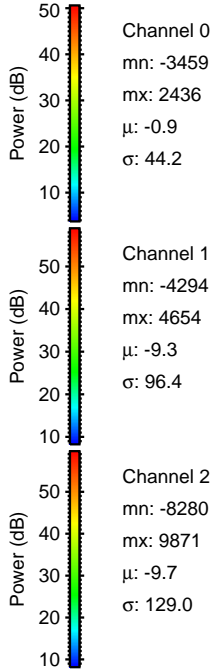
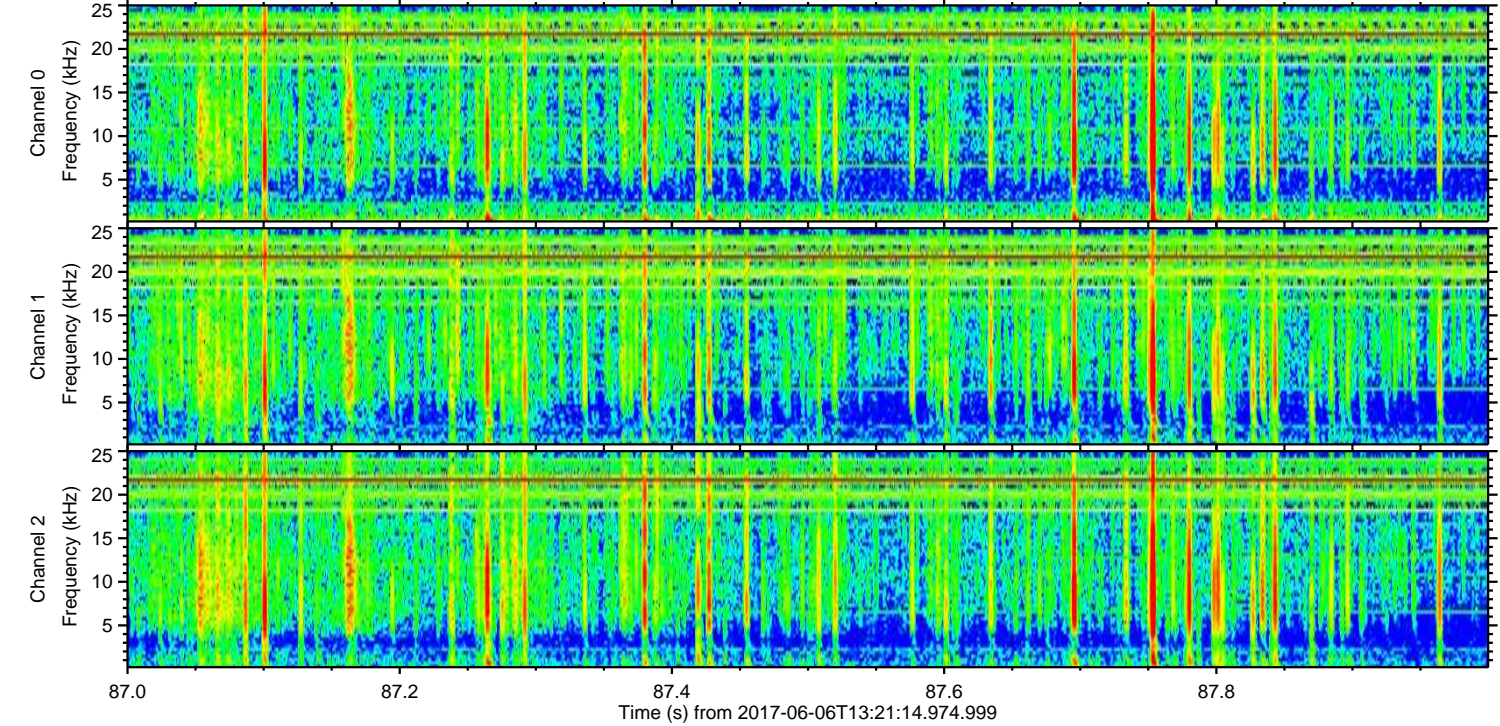
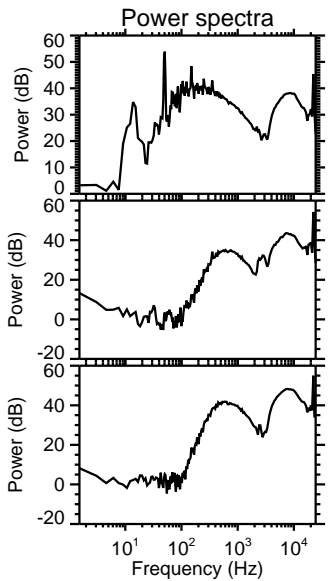
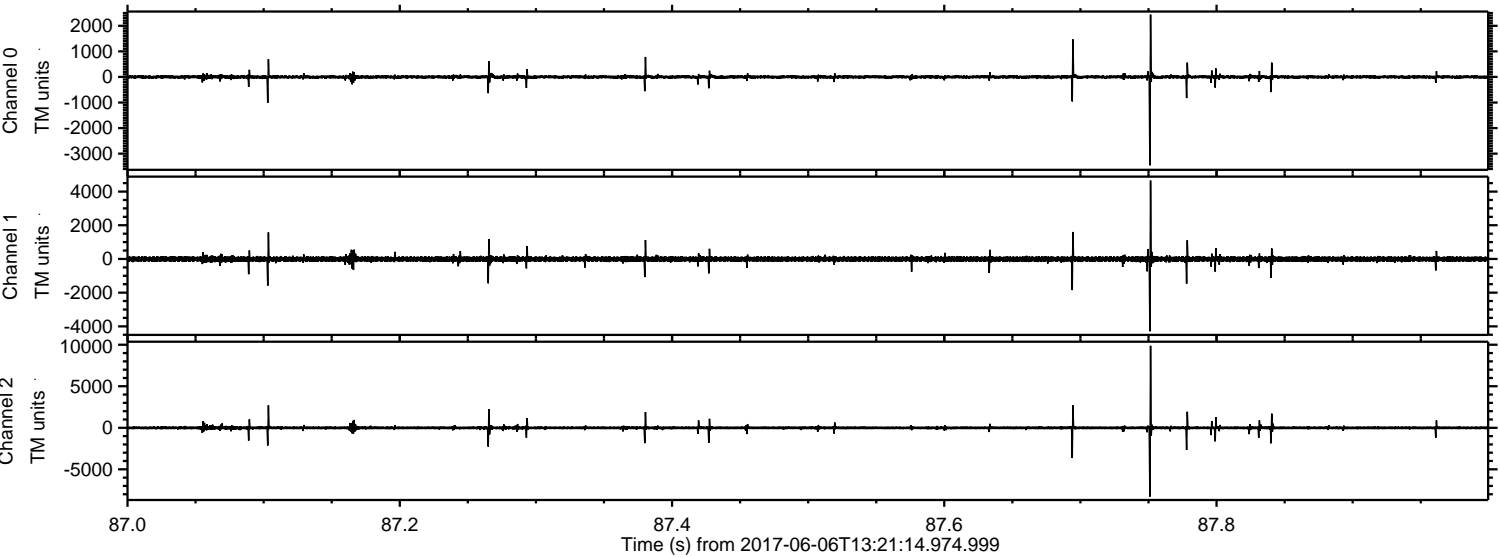


ELMAVAN 3D WAVEFORMS (Measured data sampled at 50 kHz) 51000 packets of 144 samples from 2017-06-06T13:21:14.974.999. Part 12/147

Processed Tue Jun 6 15:28:49 2017 by ELM ver.2012-10-06 from 001__elm20170606_132113__dat00.bin

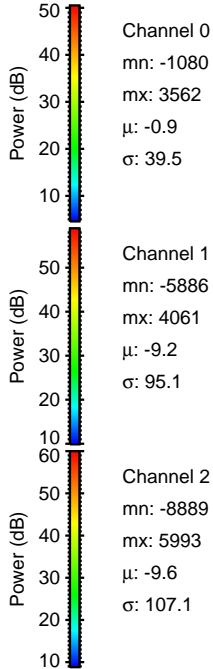
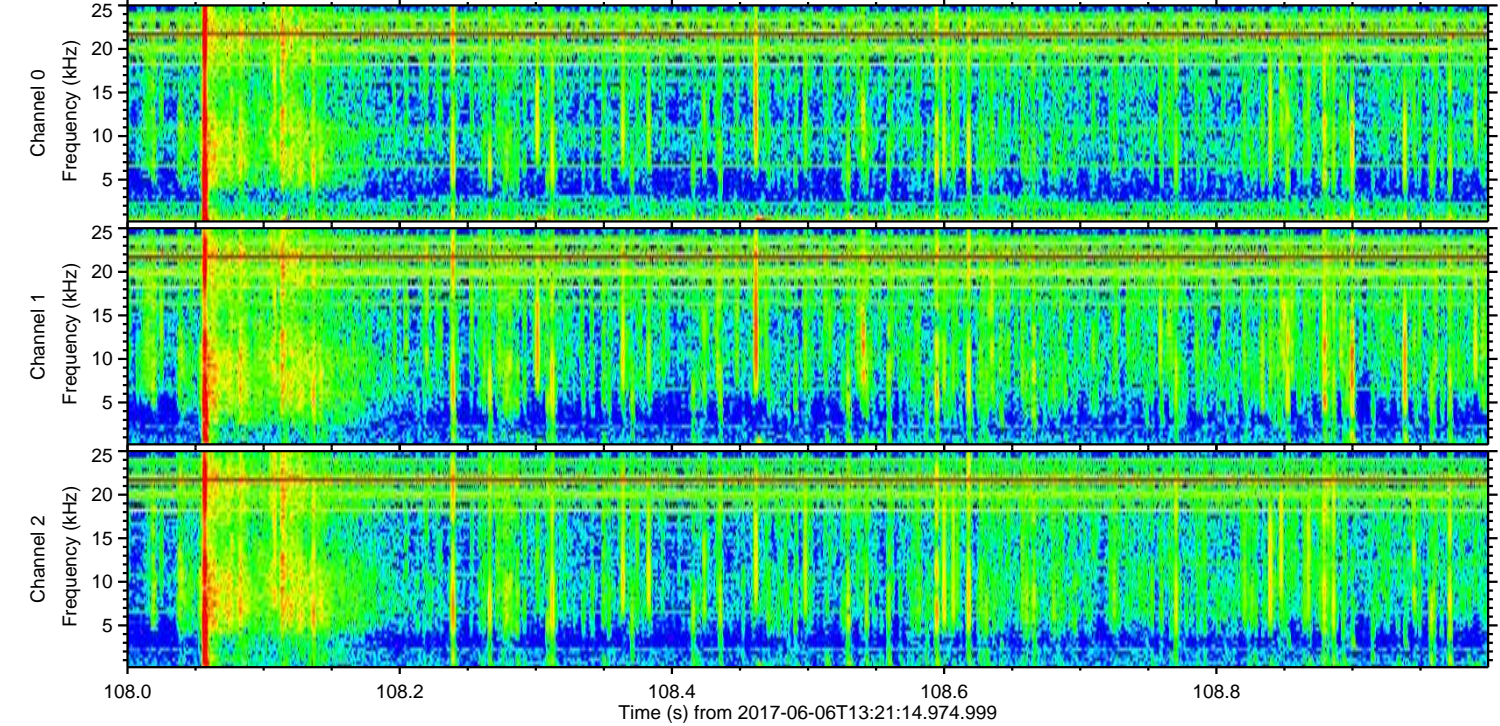
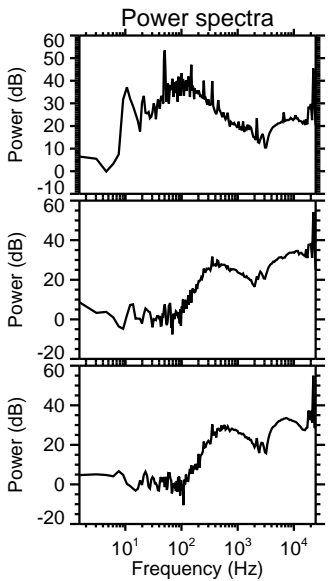
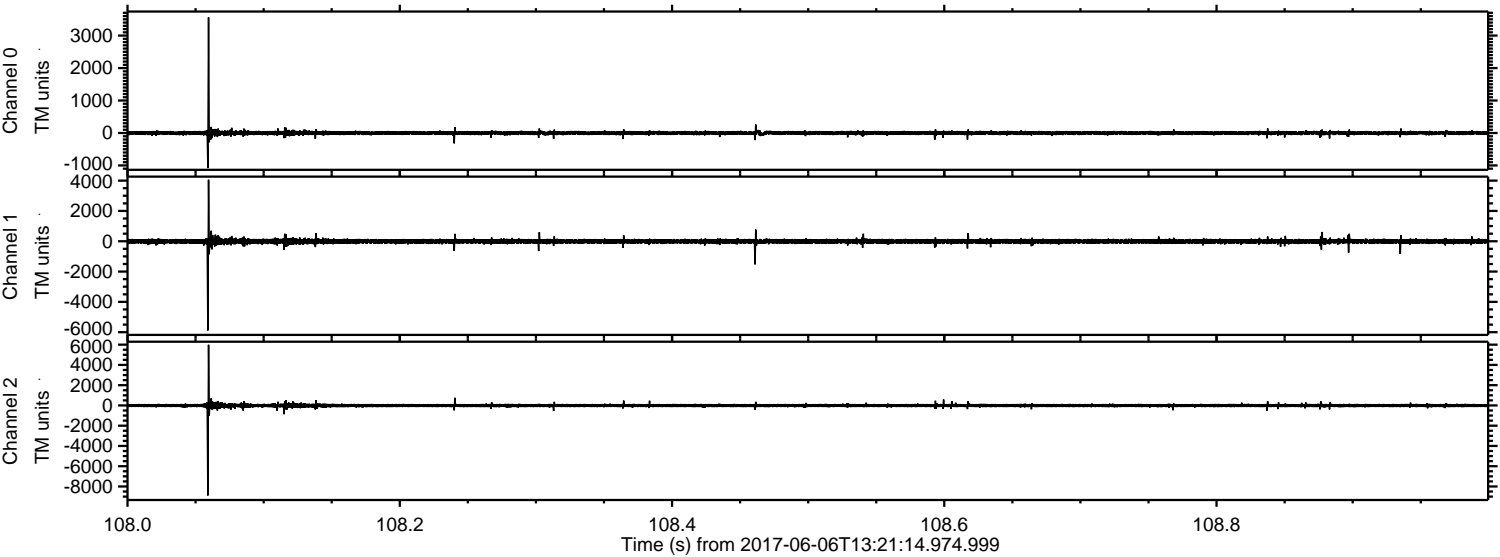


Processed Tue Jun 6 15:28:50 2017 by ELM ver.2012-10-06 from 001__elm20170606_132113__dat00.bin



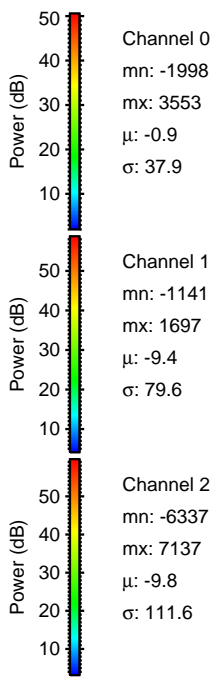
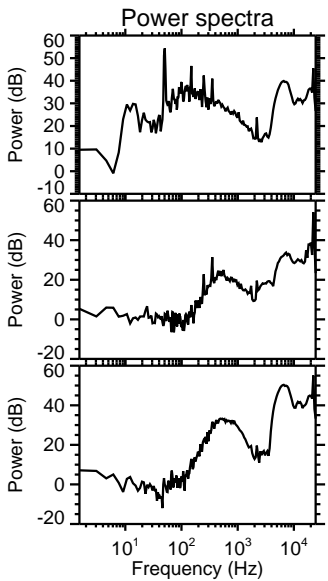
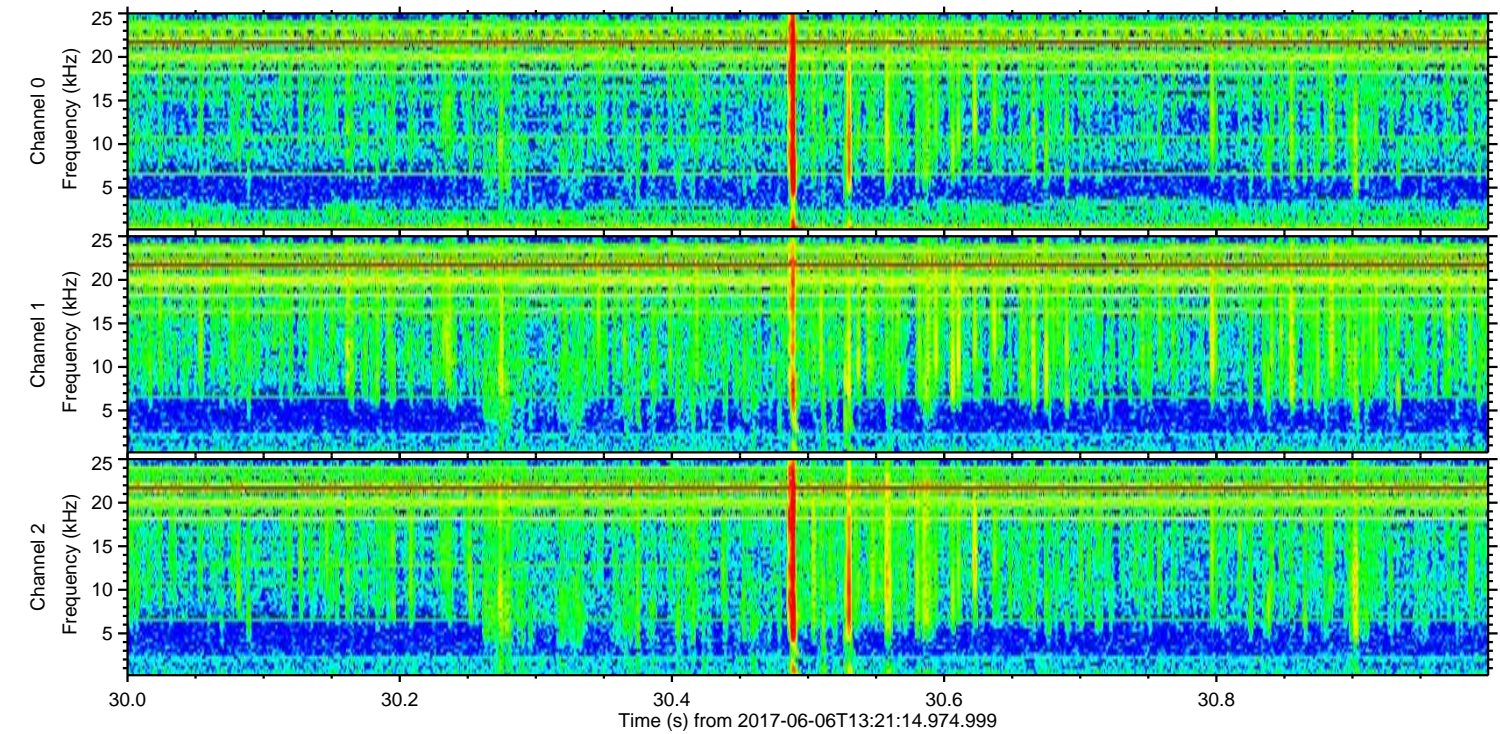
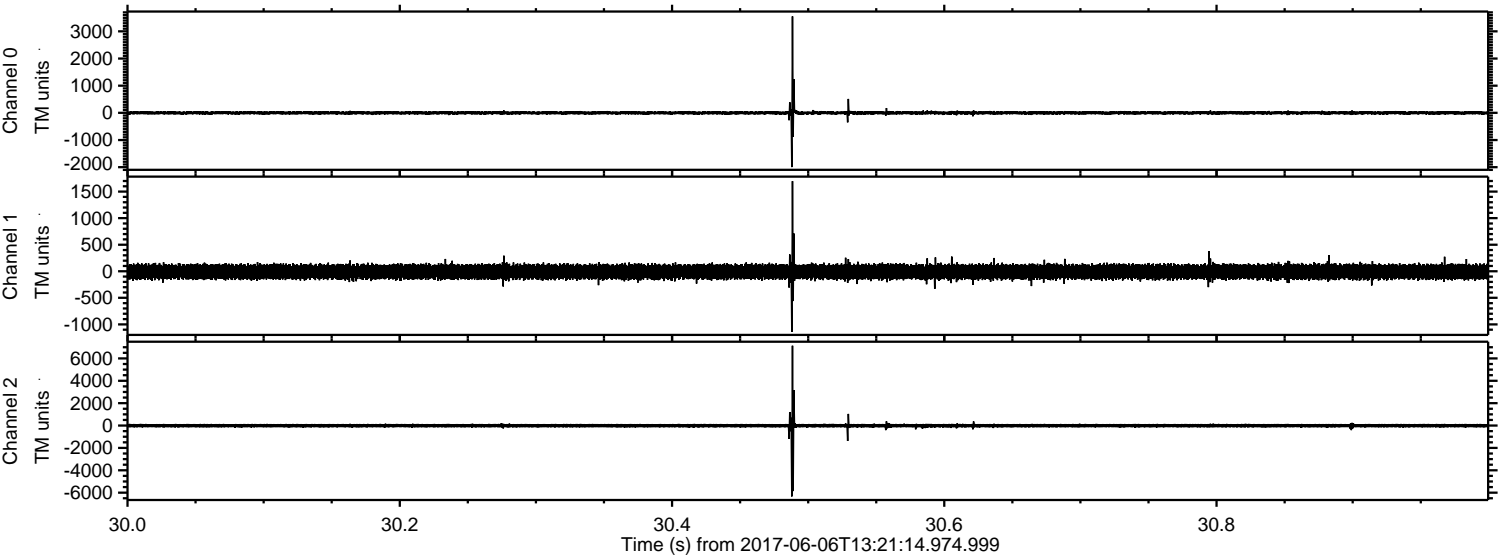
ELMAVAN 3D WAVEFORMS (Measured data sampled at 50 kHz) 51000 packets of 144 samples from 2017-06-06T13:21:14.974.999. Part 109/147

Processed Tue Jun 6 15:28:51 2017 by ELM ver.2012-10-06 from 001__elm20170606_132113__dat00.bin

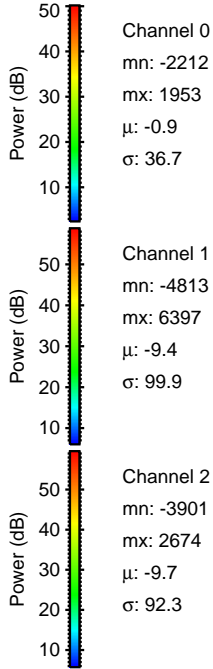
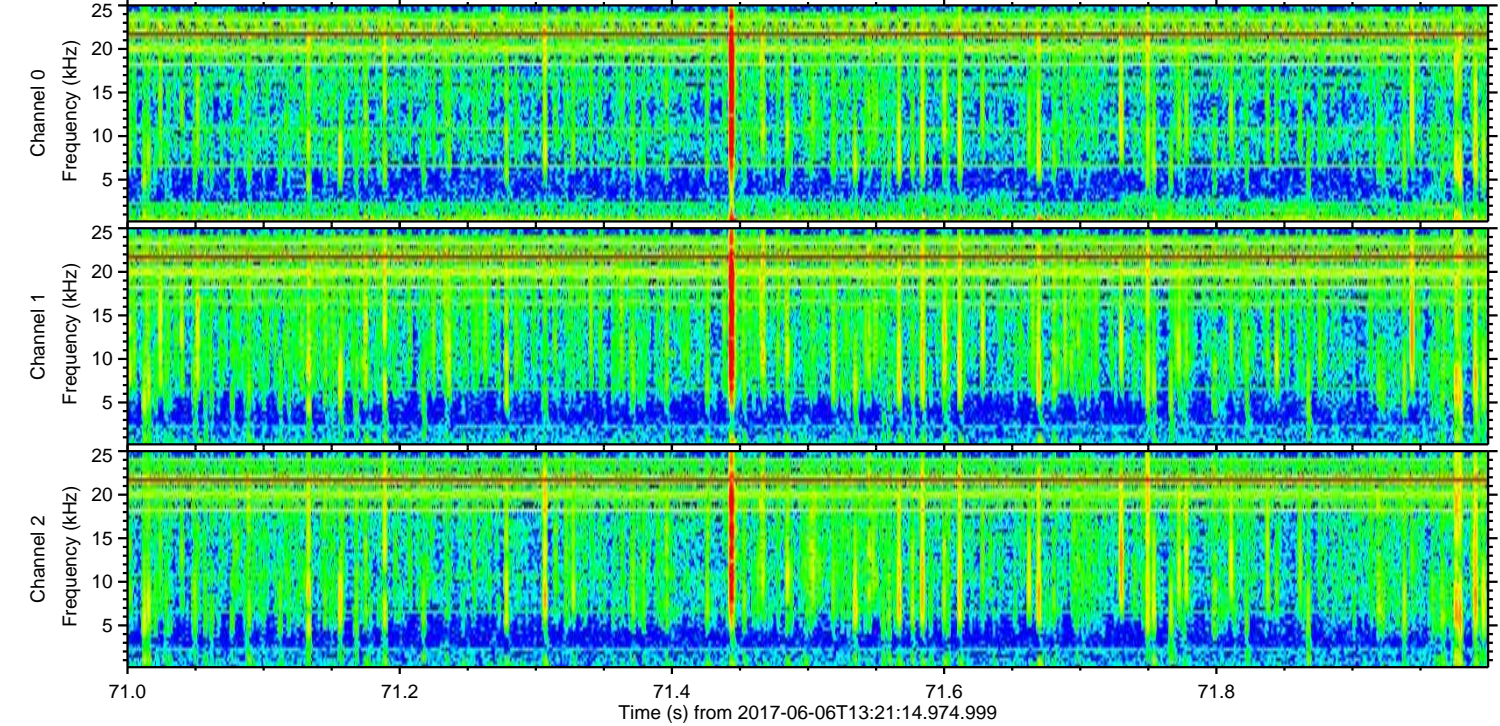
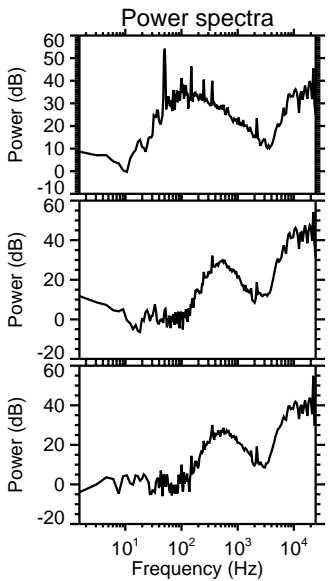
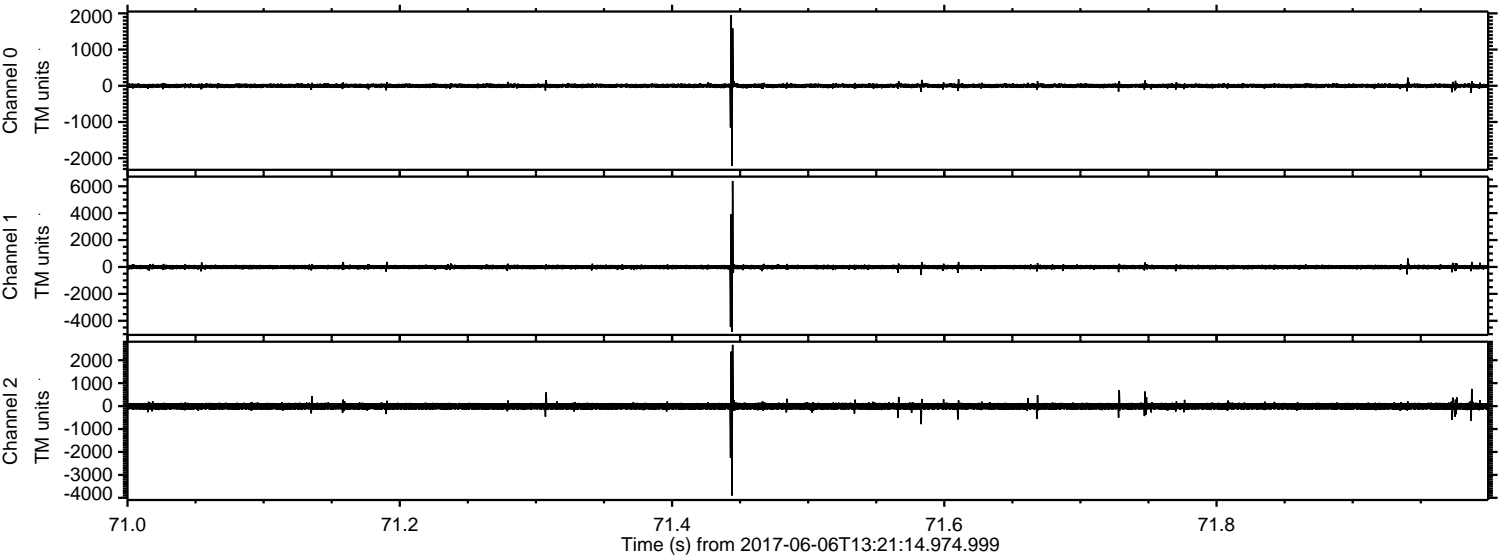


ELMAVAN 3D WAVEFORMS (Measured data sampled at 50 kHz) 51000 packets of 144 samples from 2017-06-06T13:21:14.974.999. Part 31/147

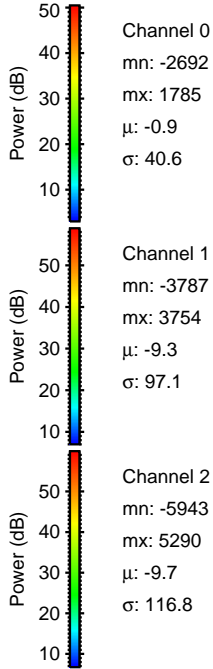
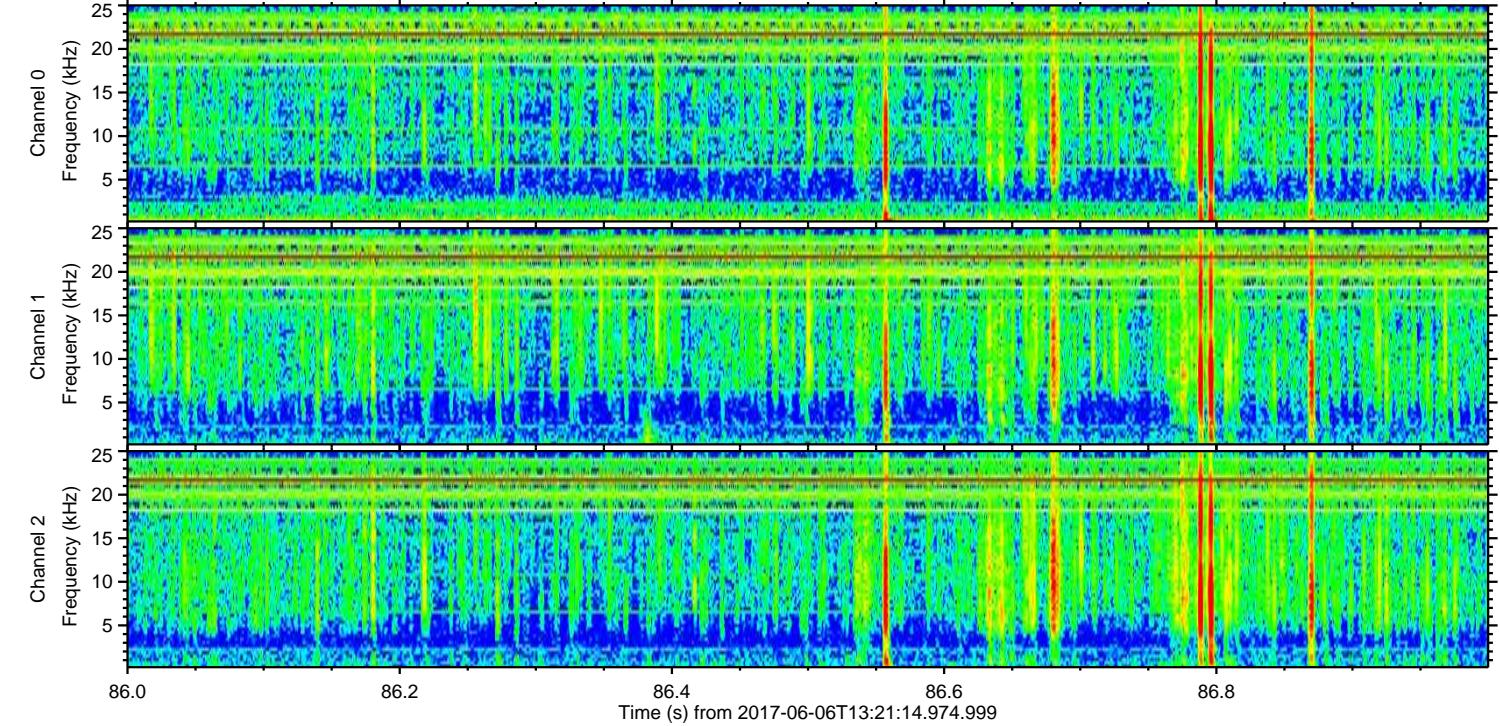
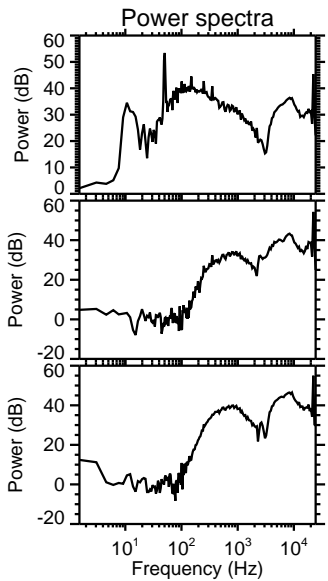
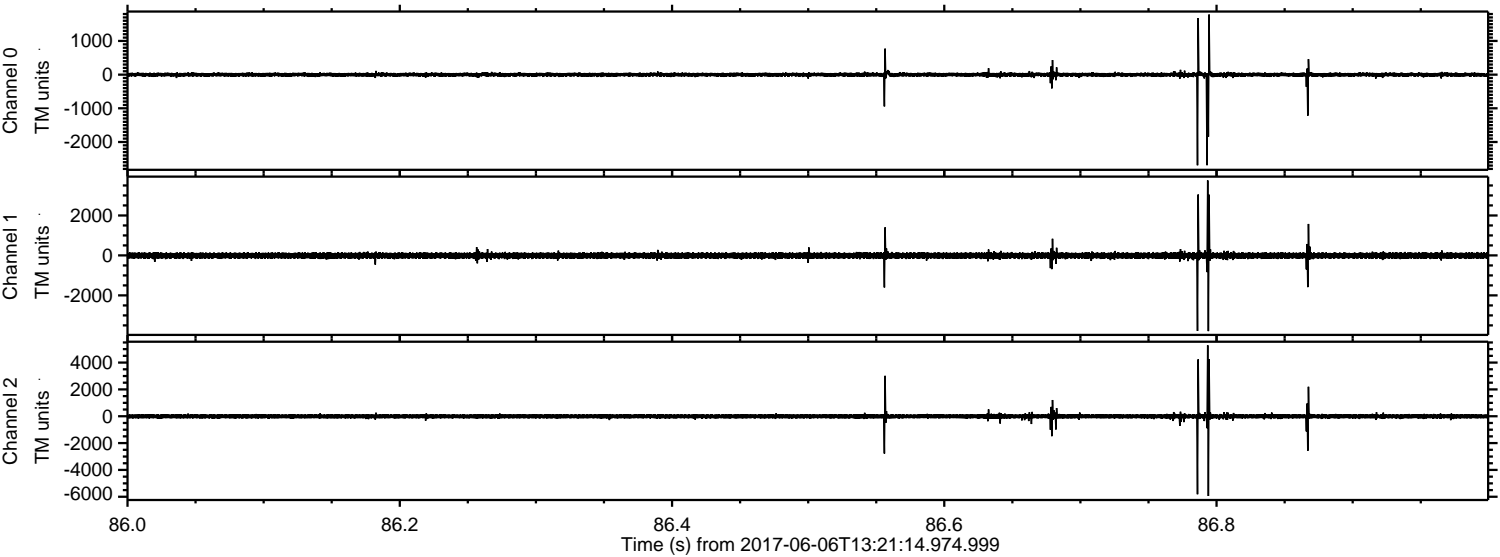
Processed Tue Jun 6 15:28:51 2017 by ELM ver.2012-10-06 from 001__elm20170606_132113__dat00.bin



Processed Tue Jun 6 15:28:52 2017 by ELM ver.2012-10-06 from 001__elm20170606_132113__dat00.bin

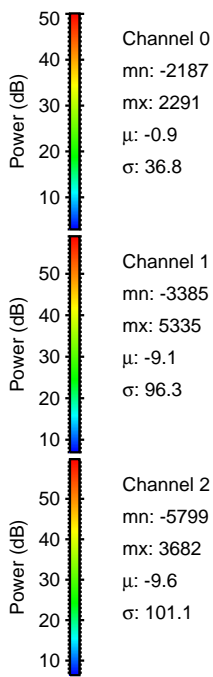
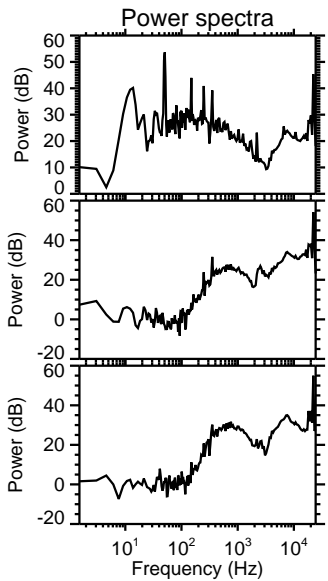
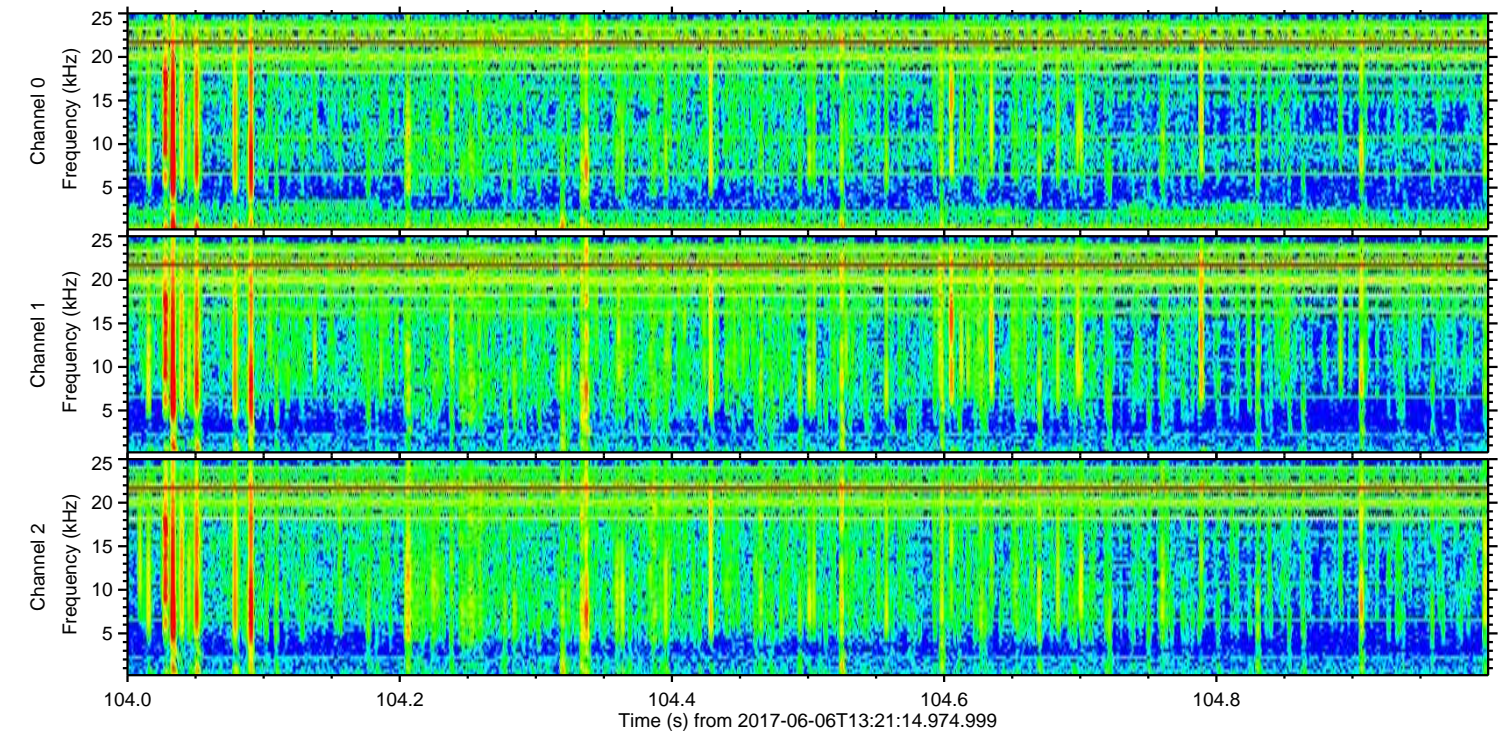
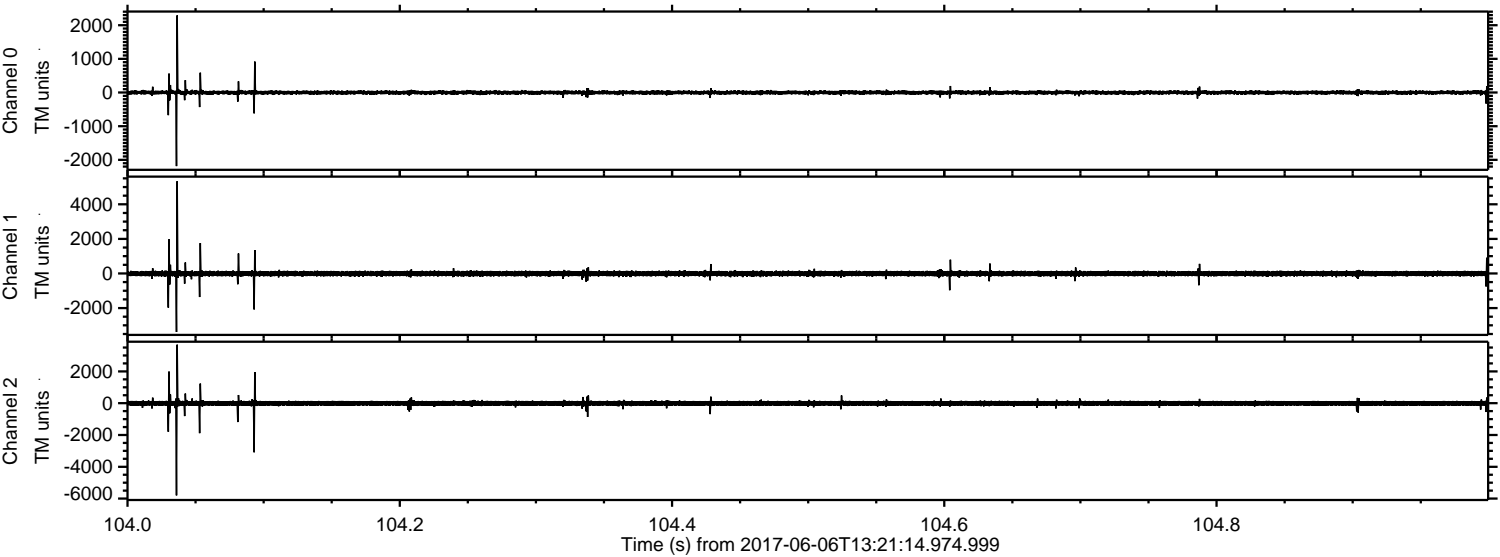


Processed Tue Jun 6 15:28:53 2017 by ELM ver.2012-10-06 from 001__elm20170606_132113__dat00.bin



ELMAVAN 3D WAVEFORMS (Measured data sampled at 50 kHz) 51000 packets of 144 samples from 2017-06-06T13:21:14.974.999. Part 105/147

Processed Tue Jun 6 15:28:53 2017 by ELM ver.2012-10-06 from 001__elm20170606_132113__dat00.bin

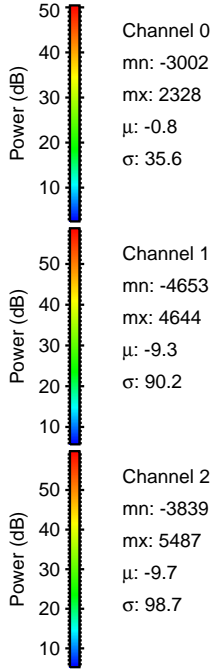
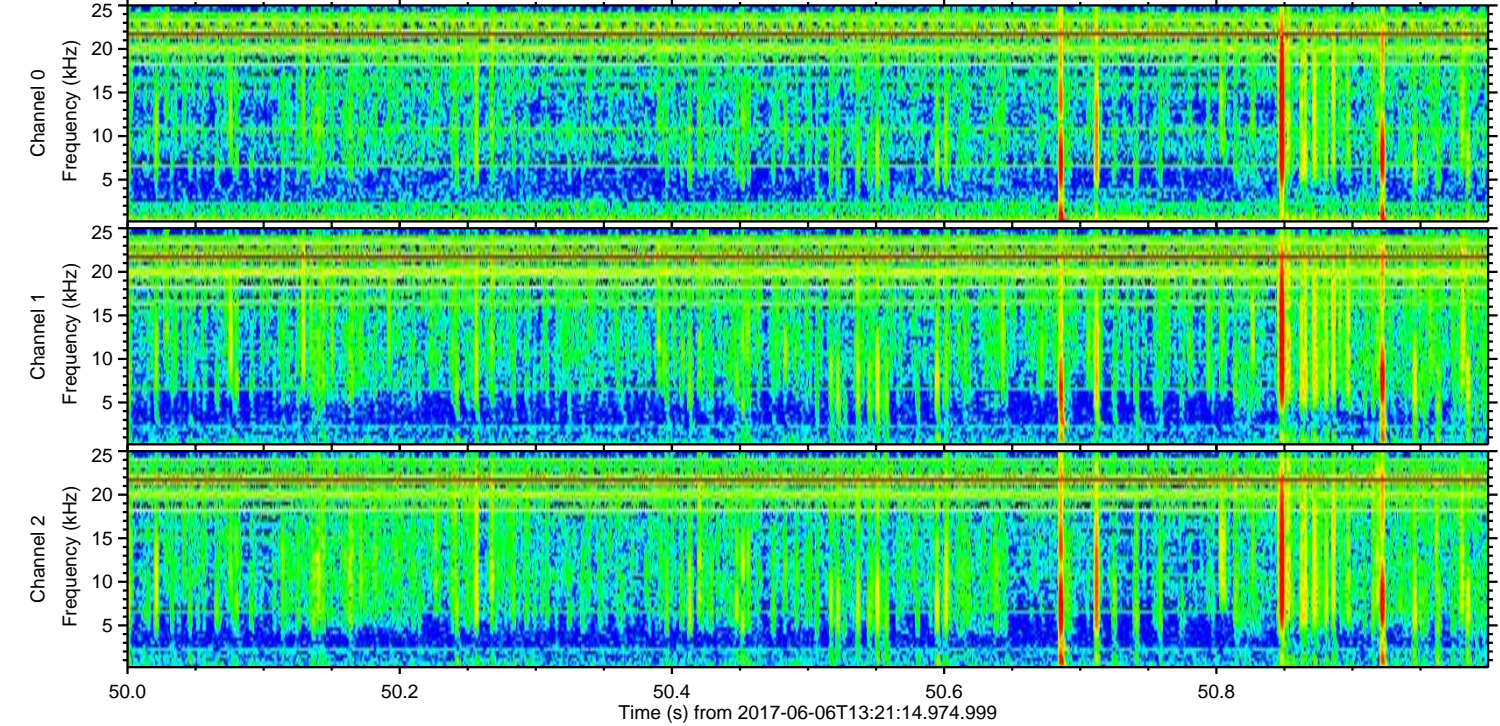
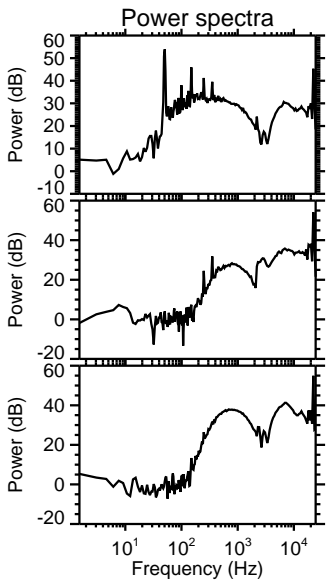
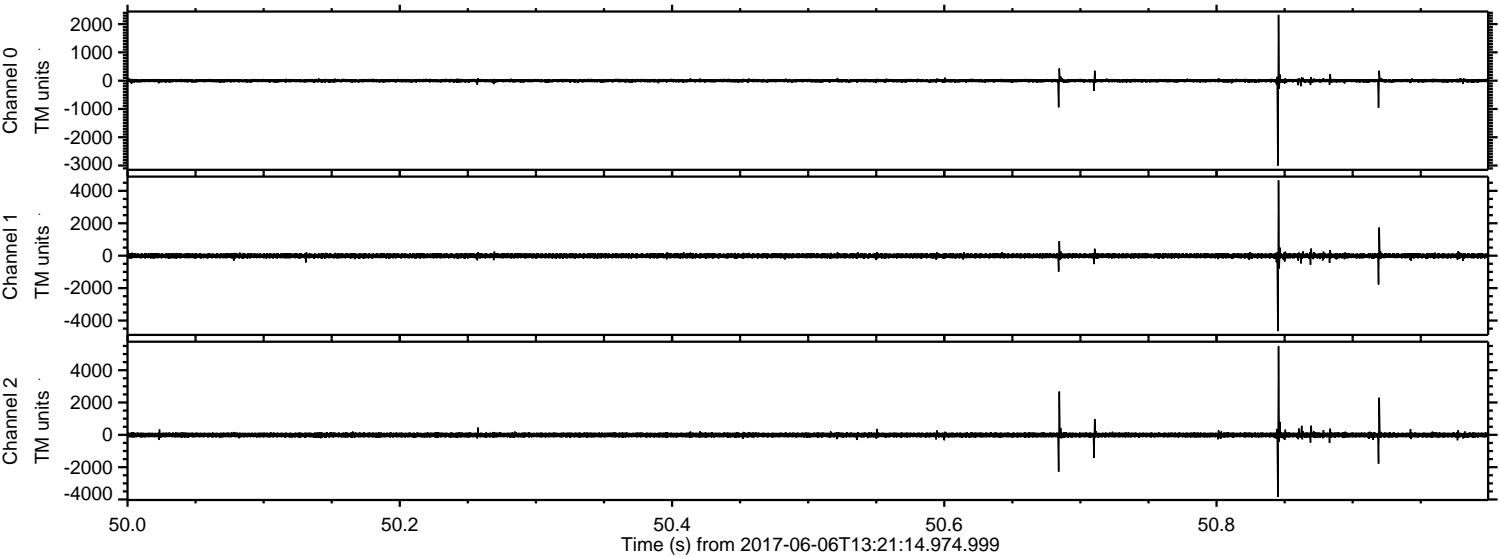


Channel 0
mn: -2187
mx: 2291
 μ : -0.9
 σ : 36.8

Channel 1
mn: -3385
mx: 5335
 μ : -9.1
 σ : 96.3

Channel 2
mn: -5799
mx: 3682
 μ : -9.6
 σ : 101.1

Processed Tue Jun 6 15:28:54 2017 by ELM ver.2012-10-06 from 001__elm20170606_132113__dat00.bin



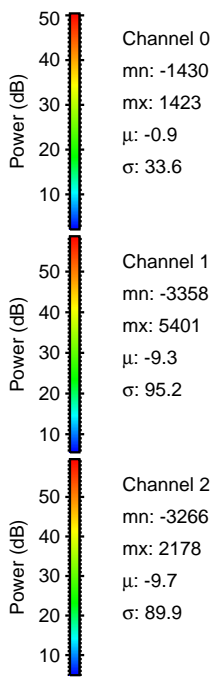
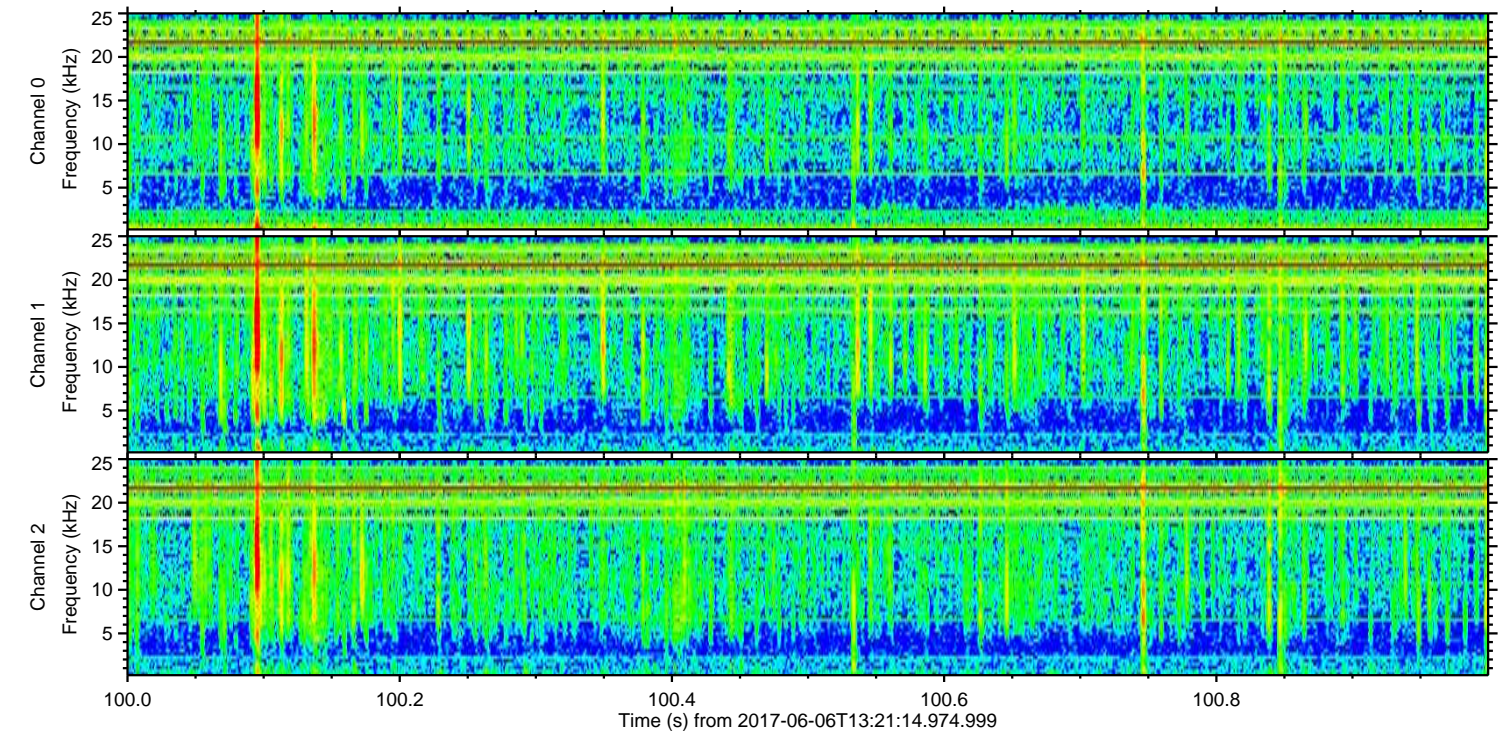
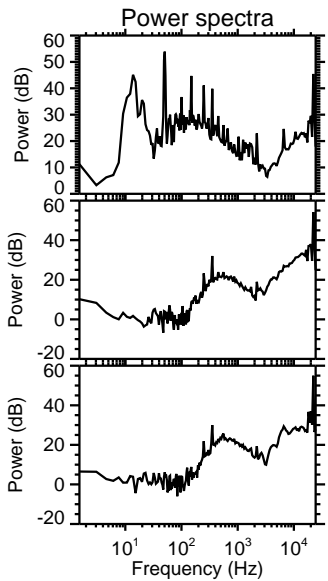
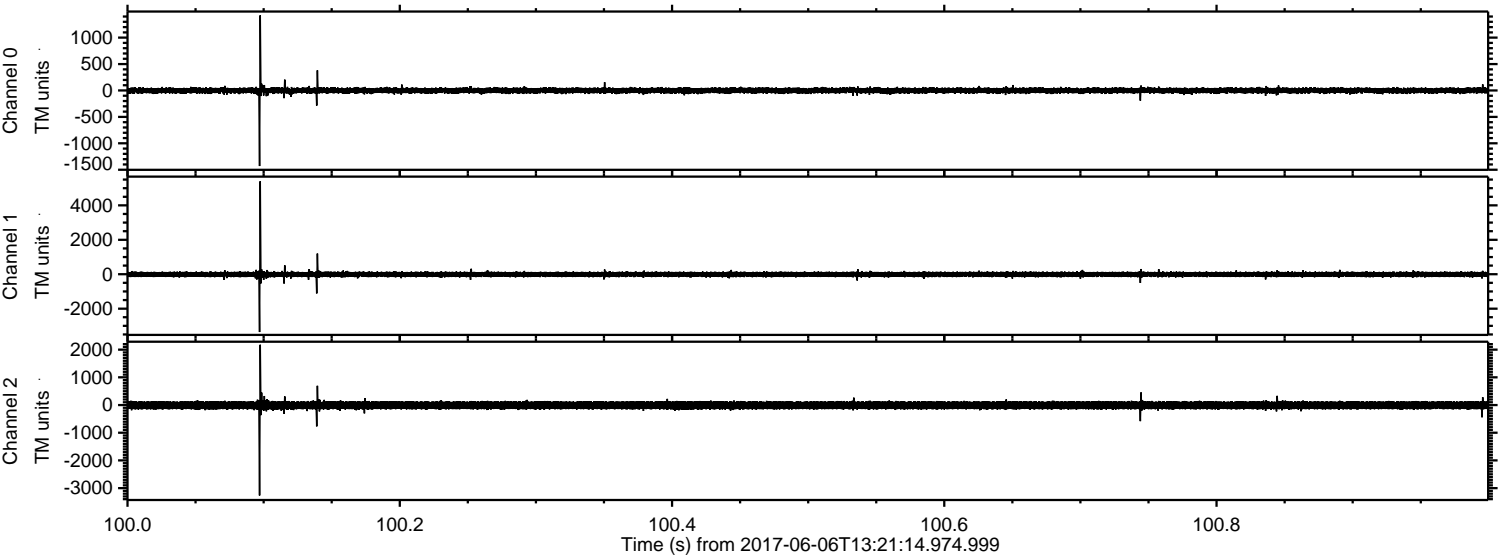
Channel 0
mn: -3002
mx: 2328
 μ : -0.8
 σ : 35.6

Channel 1
mn: -4653
mx: 4644
 μ : -9.3
 σ : 90.2

Channel 2
mn: -3839
mx: 5487
 μ : -9.7
 σ : 98.7

ELMAVAN 3D WAVEFORMS (Measured data sampled at 50 kHz) 51000 packets of 144 samples from 2017-06-06T13:21:14.974.999. Part 101/147

Processed Tue Jun 6 15:28:55 2017 by ELM ver.2012-10-06 from 001__elm20170606_132113__dat00.bin



Channel 0
mn: -1430
mx: 1423
 μ : -0.9
 σ : 33.6

Channel 1
mn: -3358
mx: 5401
 μ : -9.3
 σ : 95.2

Channel 2
mn: -3266
mx: 2178
 μ : -9.7
 σ : 89.9

ELMAVAN 3D WAVEFORMS (Measured data sampled at 50 kHz) 51000 packets of 144 samples from 2017-06-06T13:21:14.974.999. Part 95/147

Processed Tue Jun 6 15:28:55 2017 by ELM ver.2012-10-06 from 001__elm20170606_132113__dat00.bin

