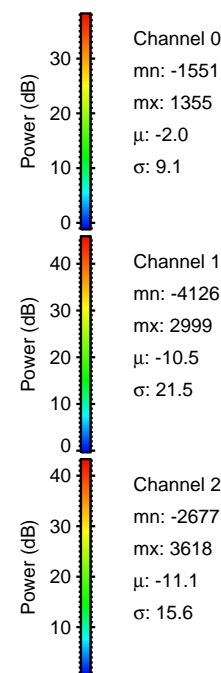
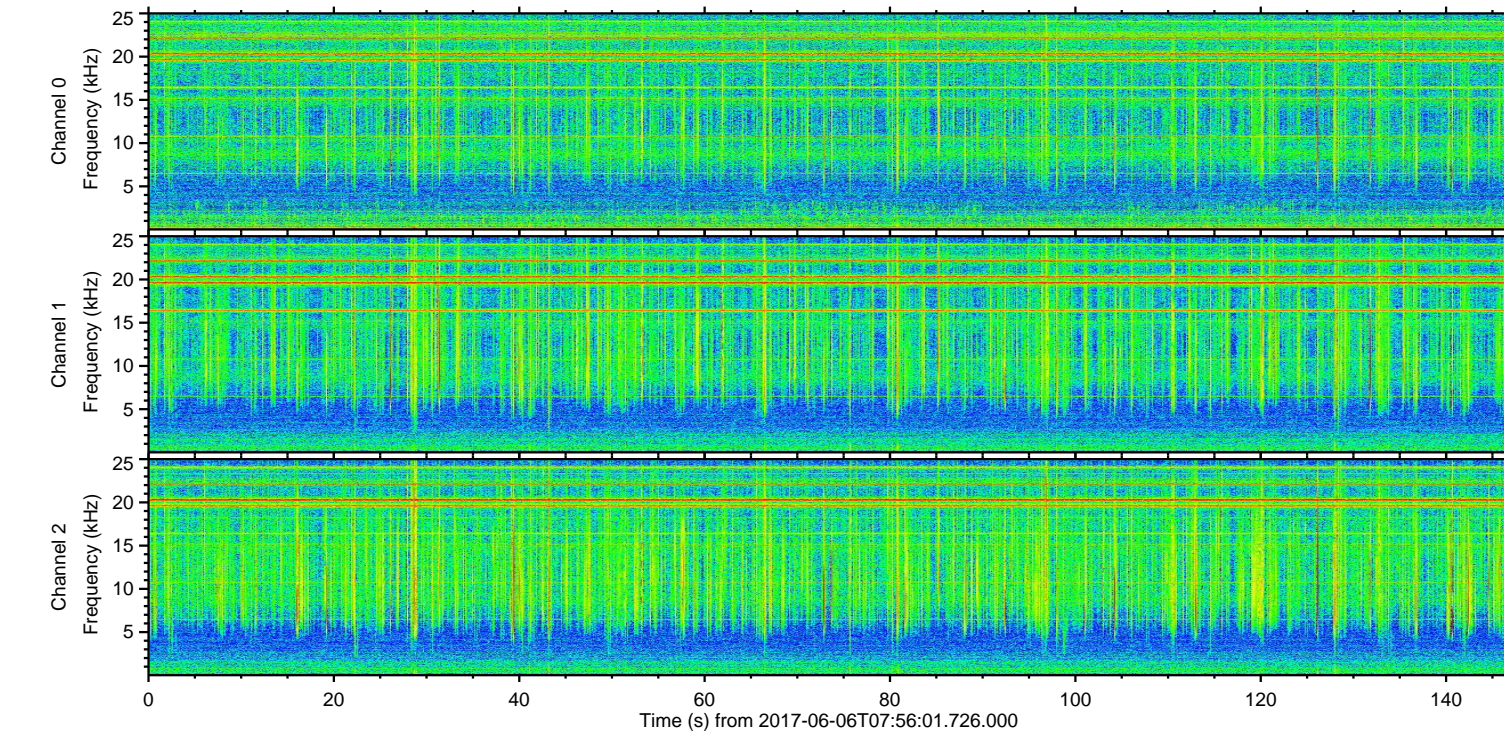
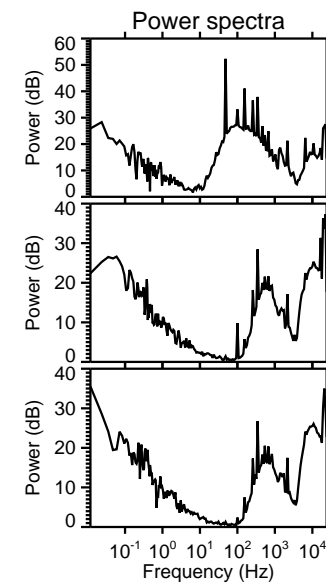
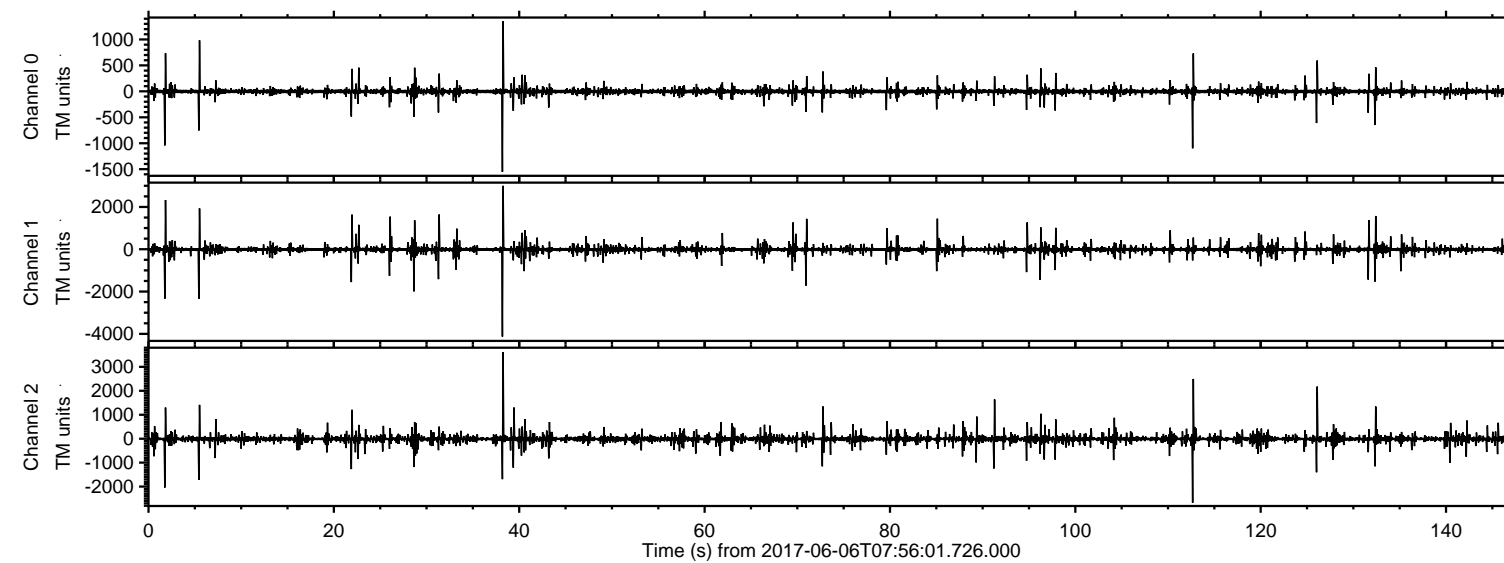


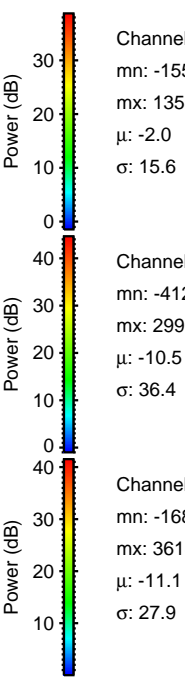
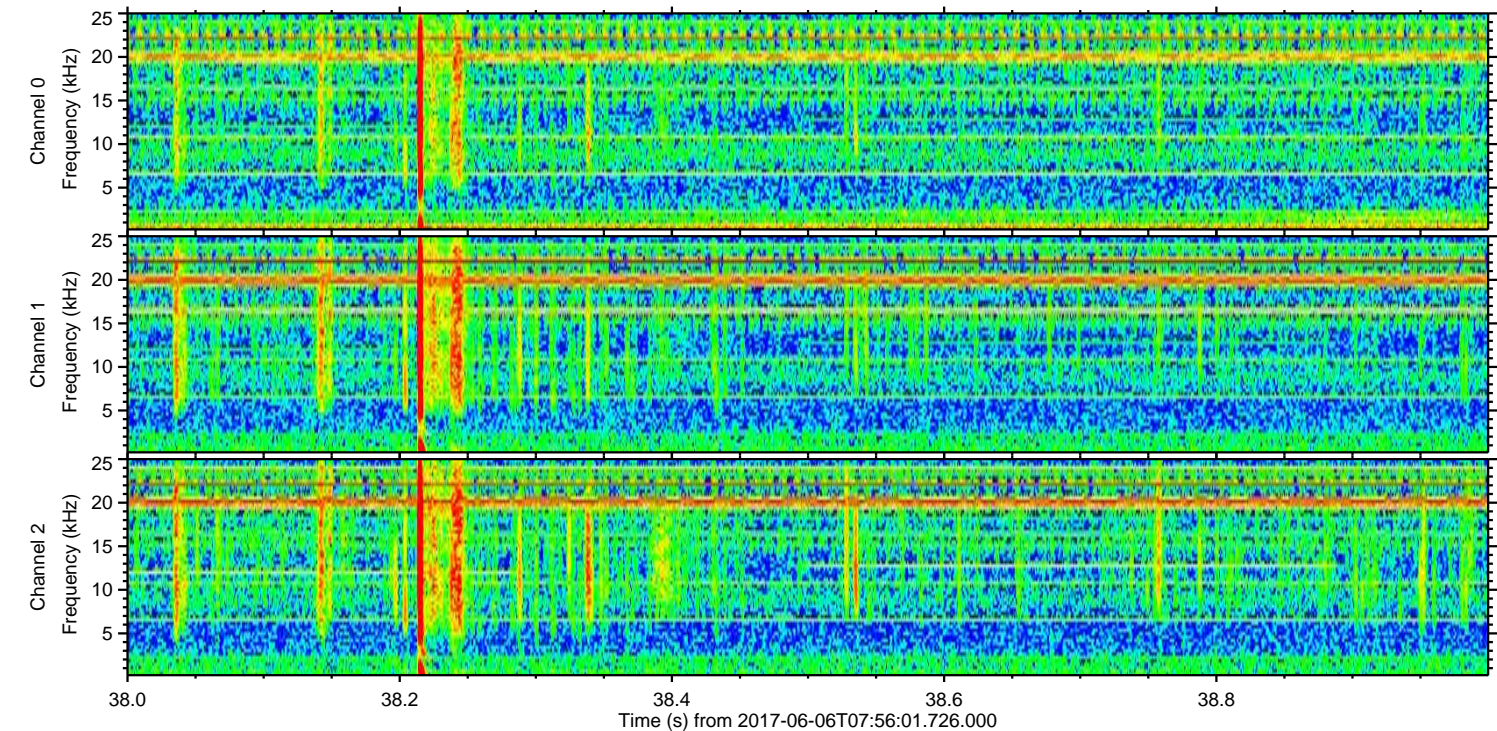
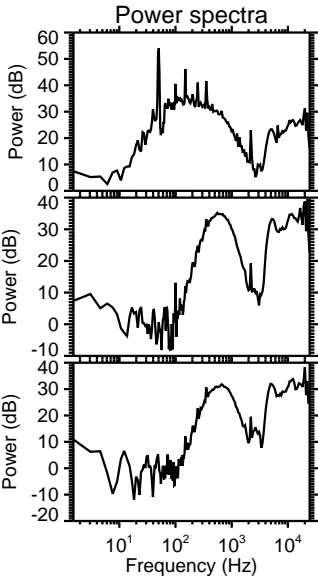
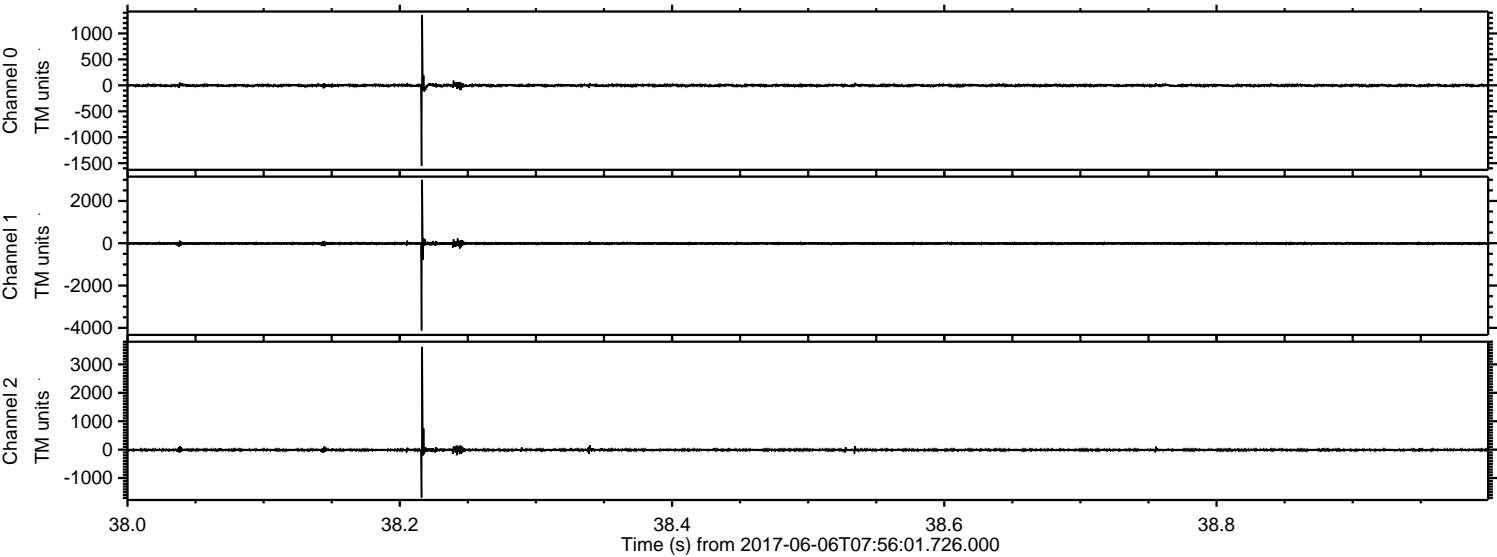
# ELMAVAN 3D WAVEFORMS (Measured data sampled at 50 kHz) 51000 packets of 144 samples from 2017-06-06T07:56:01.726.000.

Processed Tue Jun 6 10:03:49 2017 by ELM ver.2012-10-06 from 001\_\_elm20170606\_075600\_\_dat00.bin





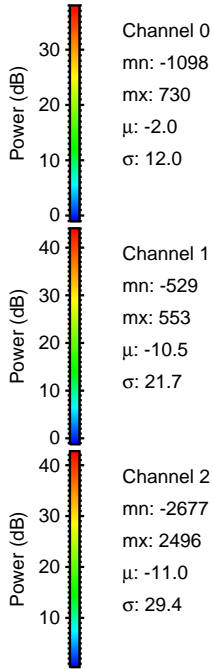
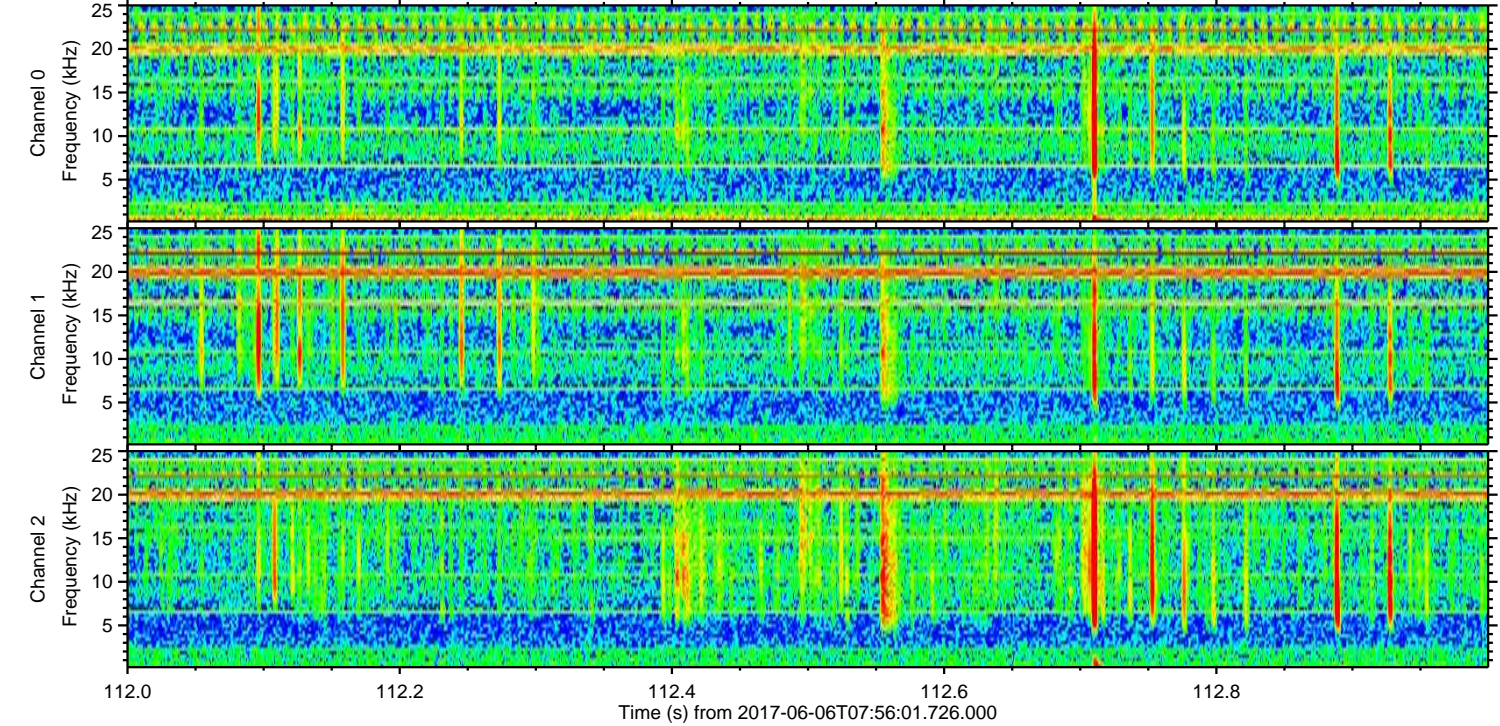
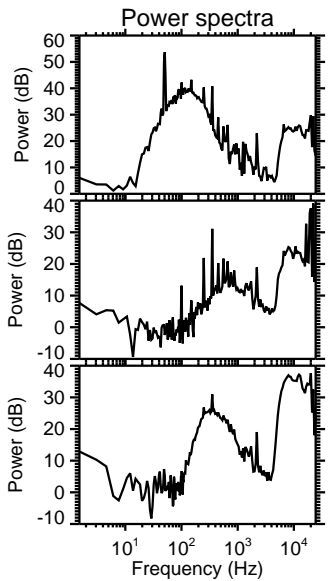
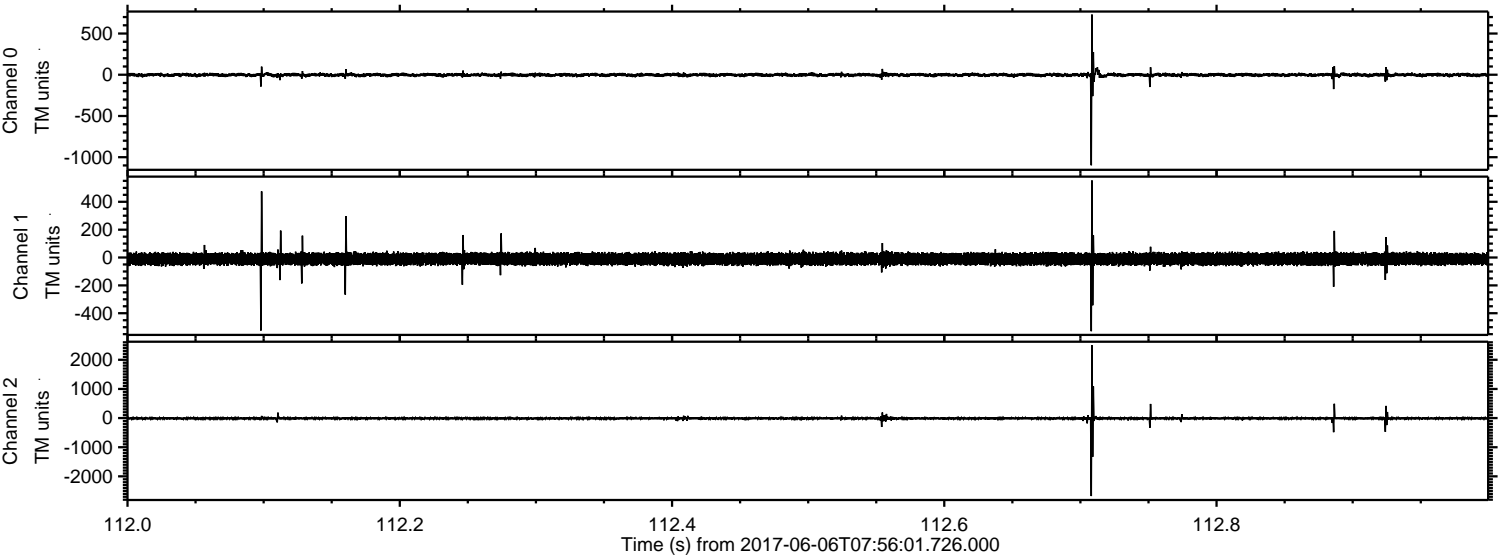
Processed Tue Jun 6 10:03:58 2017 by ELM ver.2012-10-06 from 001\_\_elm20170606\_075600\_\_dat00.bin





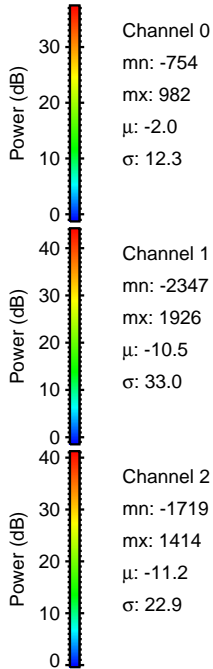
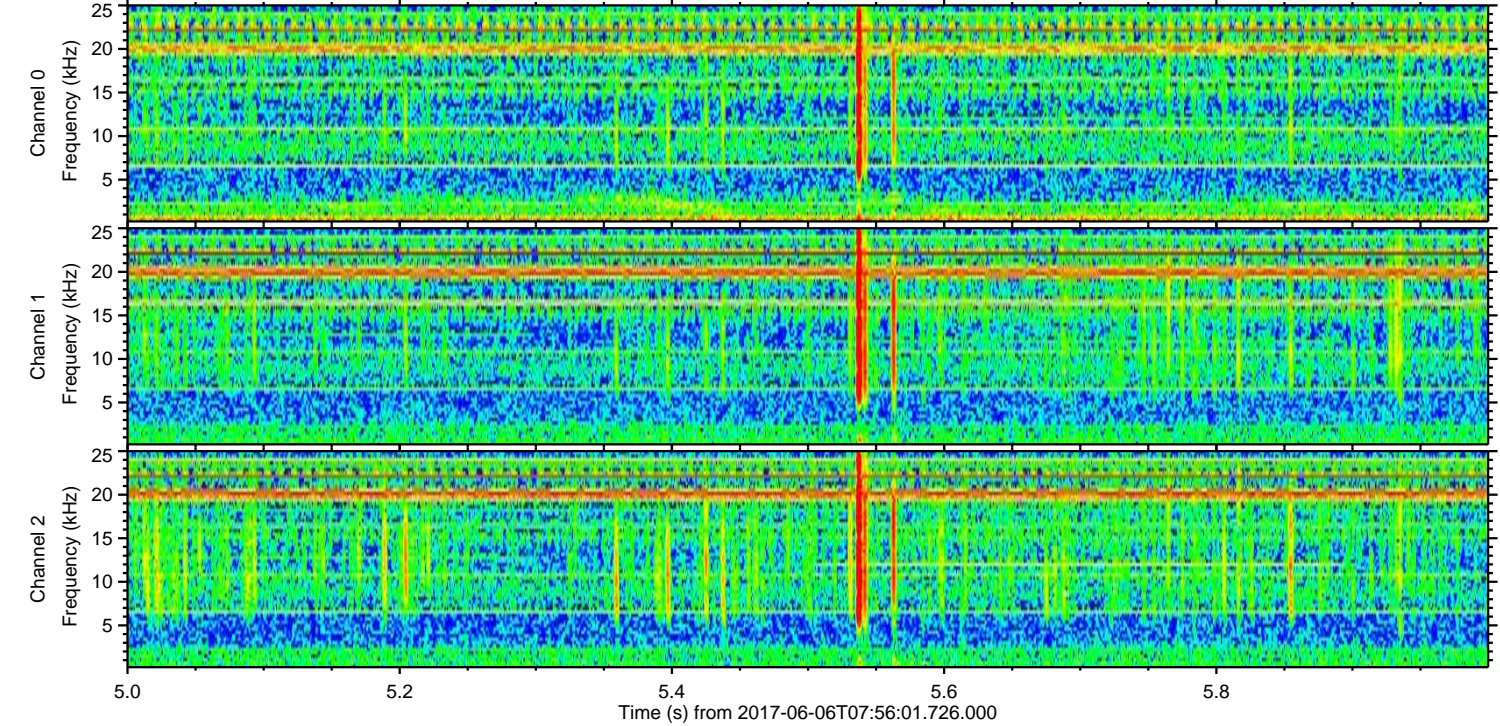
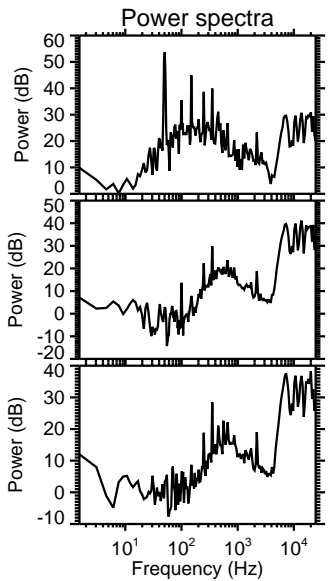
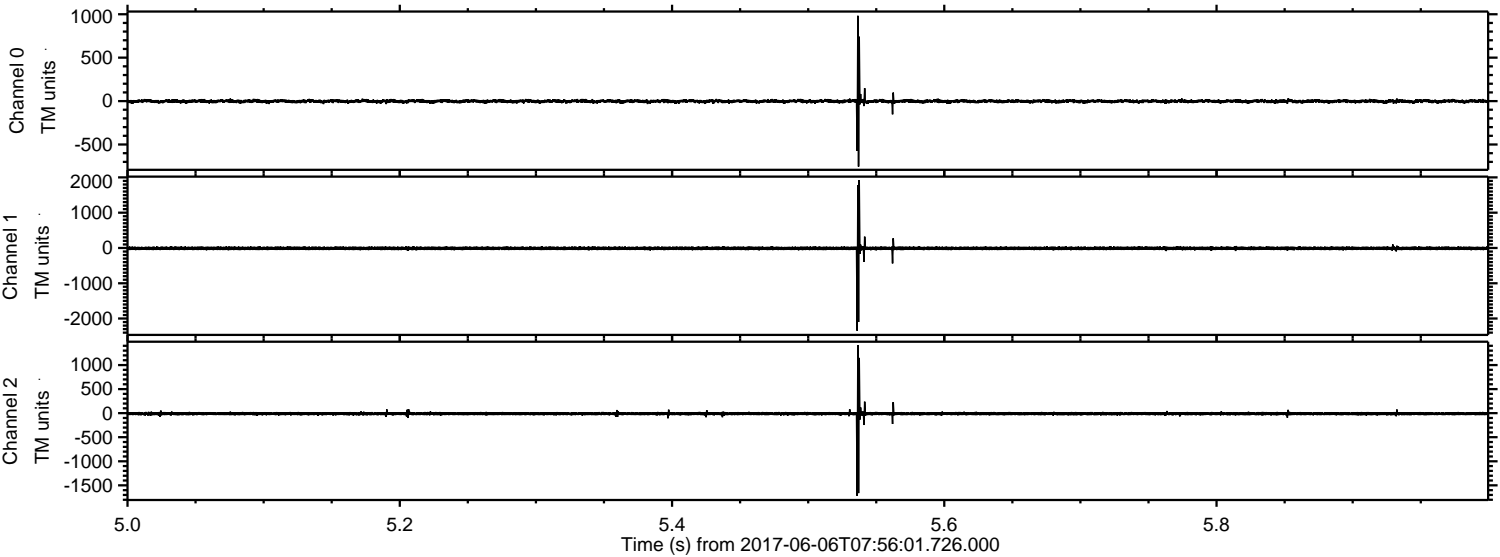
ELMAVAN 3D WAVEFORMS (Measured data sampled at 50 kHz) 51000 packets of 144 samples from 2017-06-06T07:56:01.726.000. Part 113/147

Processed Tue Jun 6 10:03:59 2017 by ELM ver.2012-10-06 from 001\_\_elm20170606\_075600\_\_dat00.bin



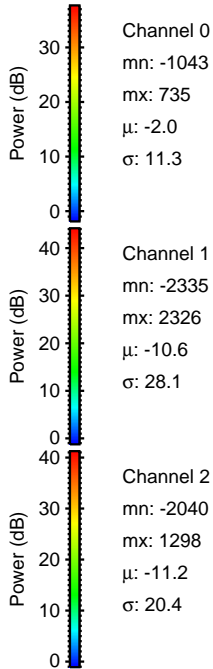
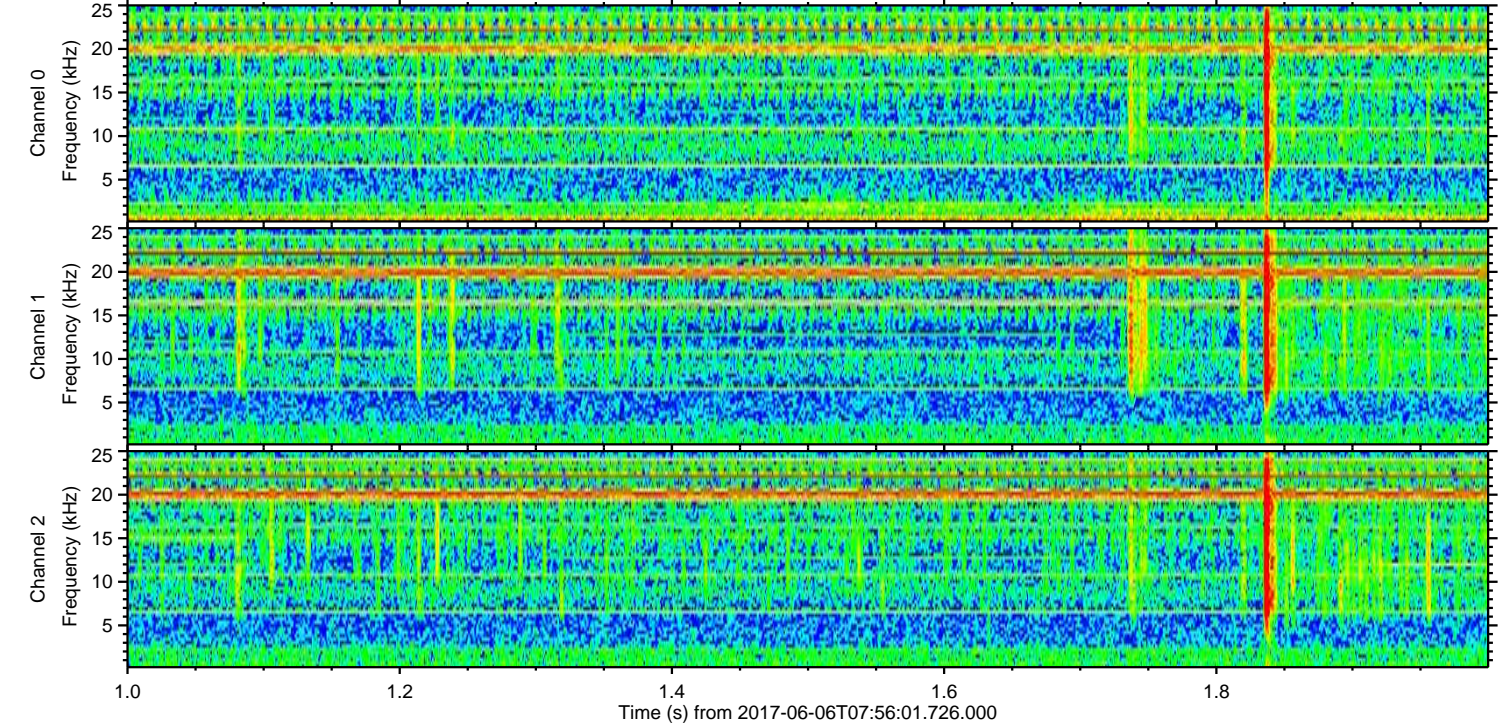
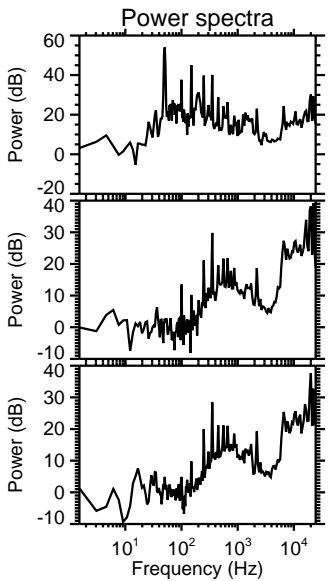
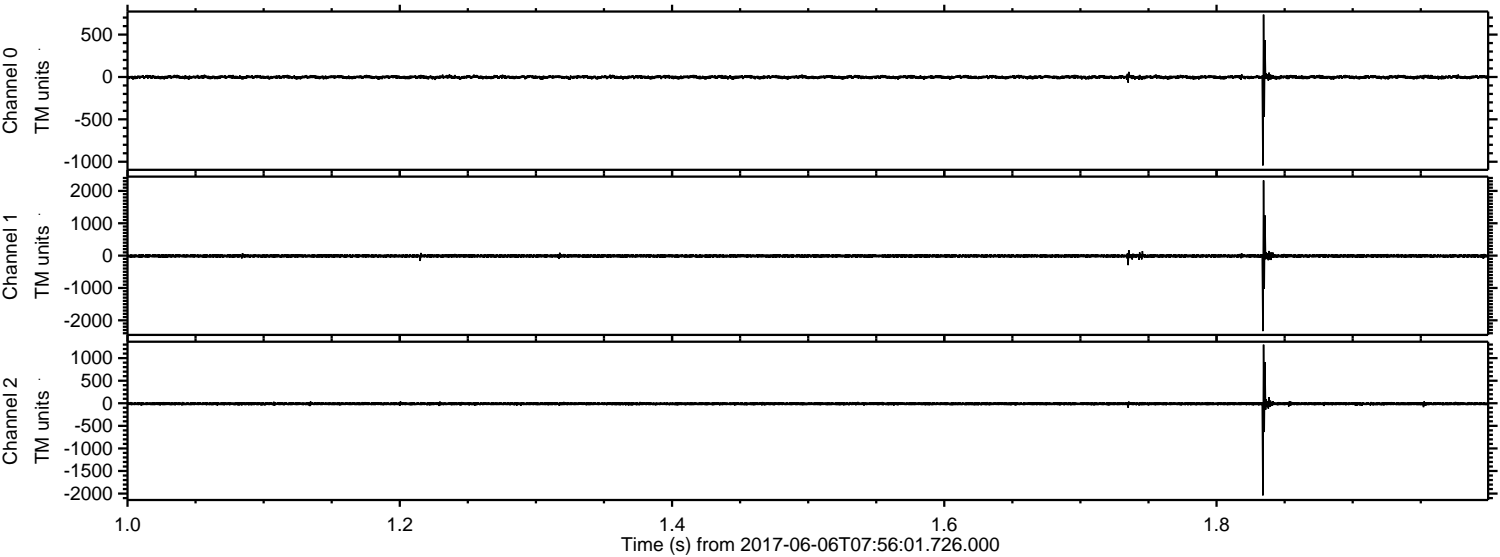


Processed Tue Jun 6 10:04:00 2017 by ELM ver.2012-10-06 from 001\_\_elm20170606\_075600\_\_dat00.bin





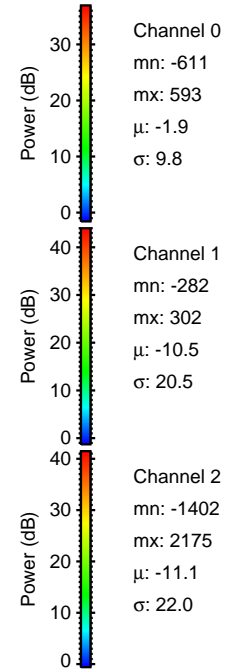
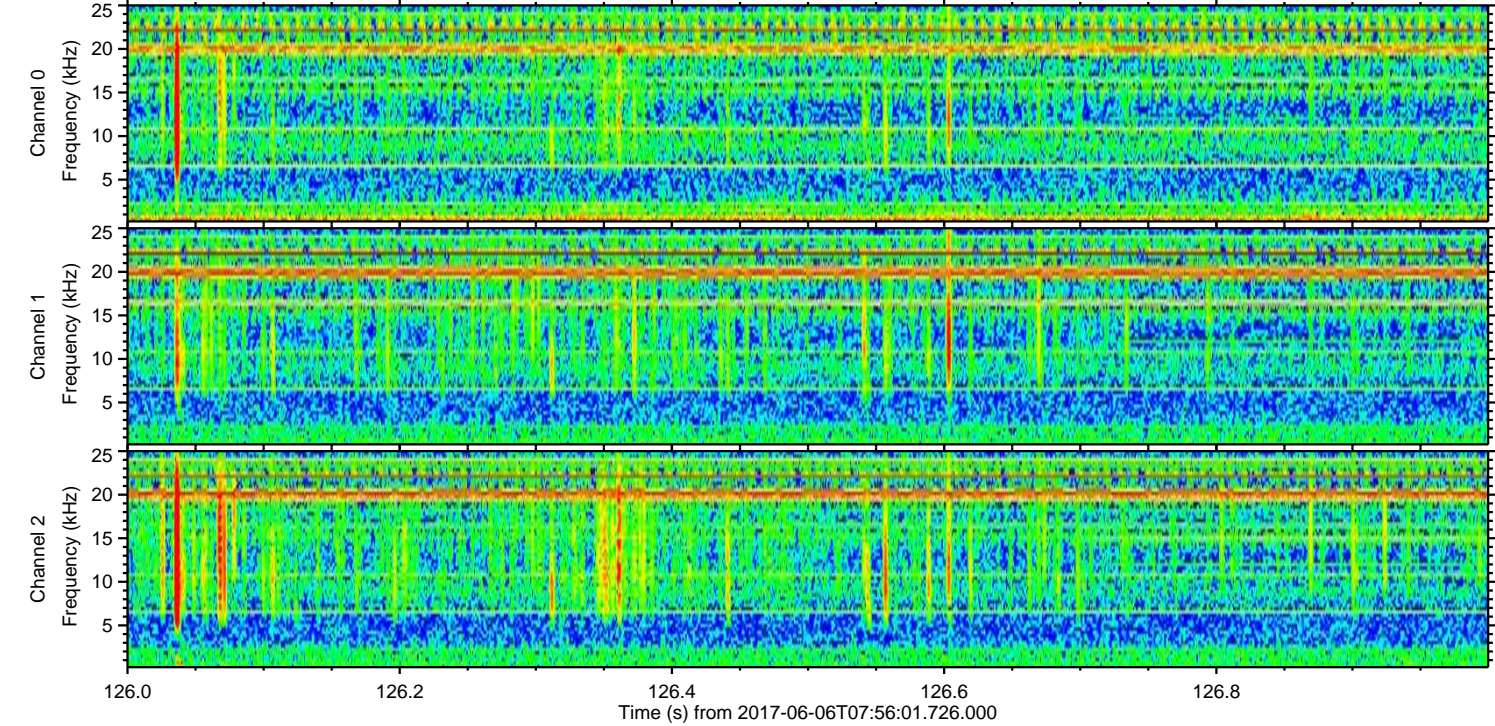
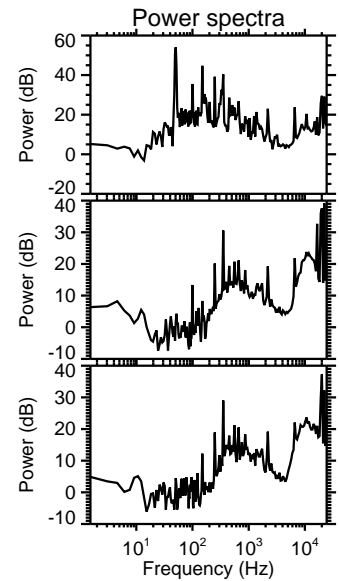
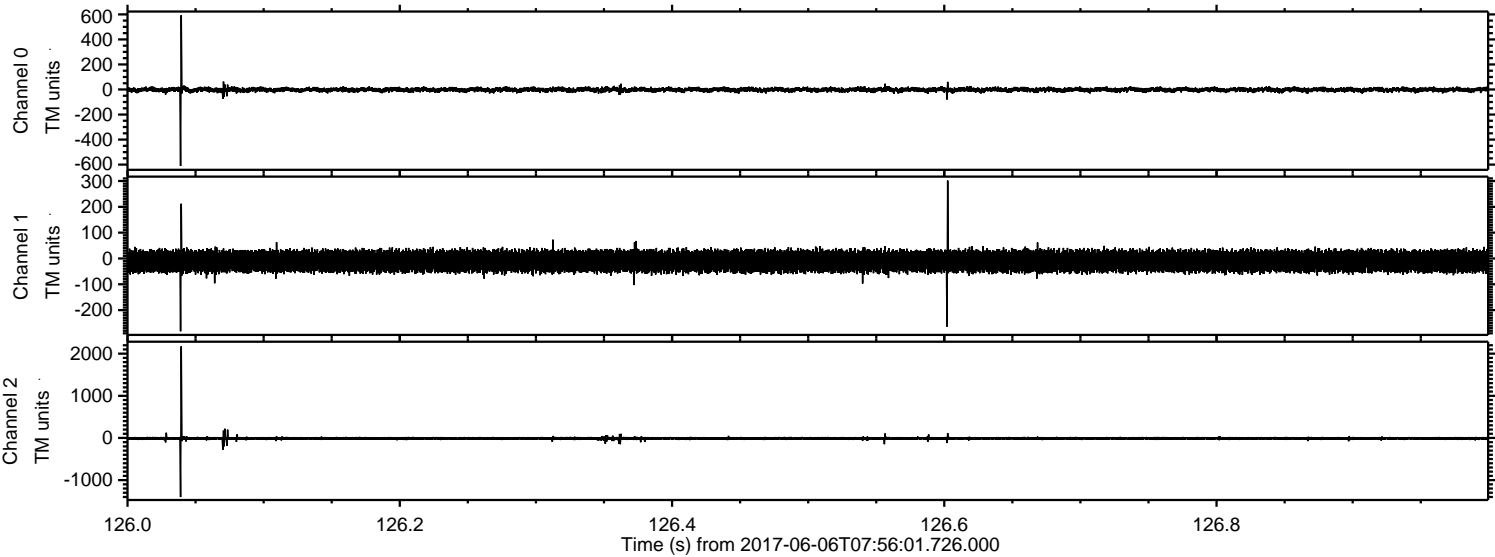
Processed Tue Jun 6 10:04:01 2017 by ELM ver.2012-10-06 from 001\_\_elm20170606\_075600\_\_dat00.bin





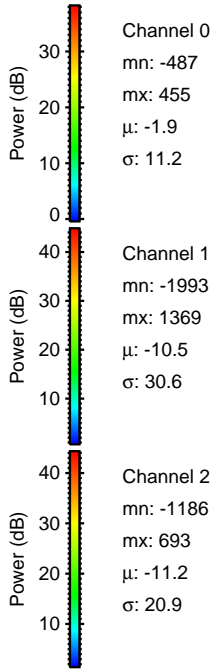
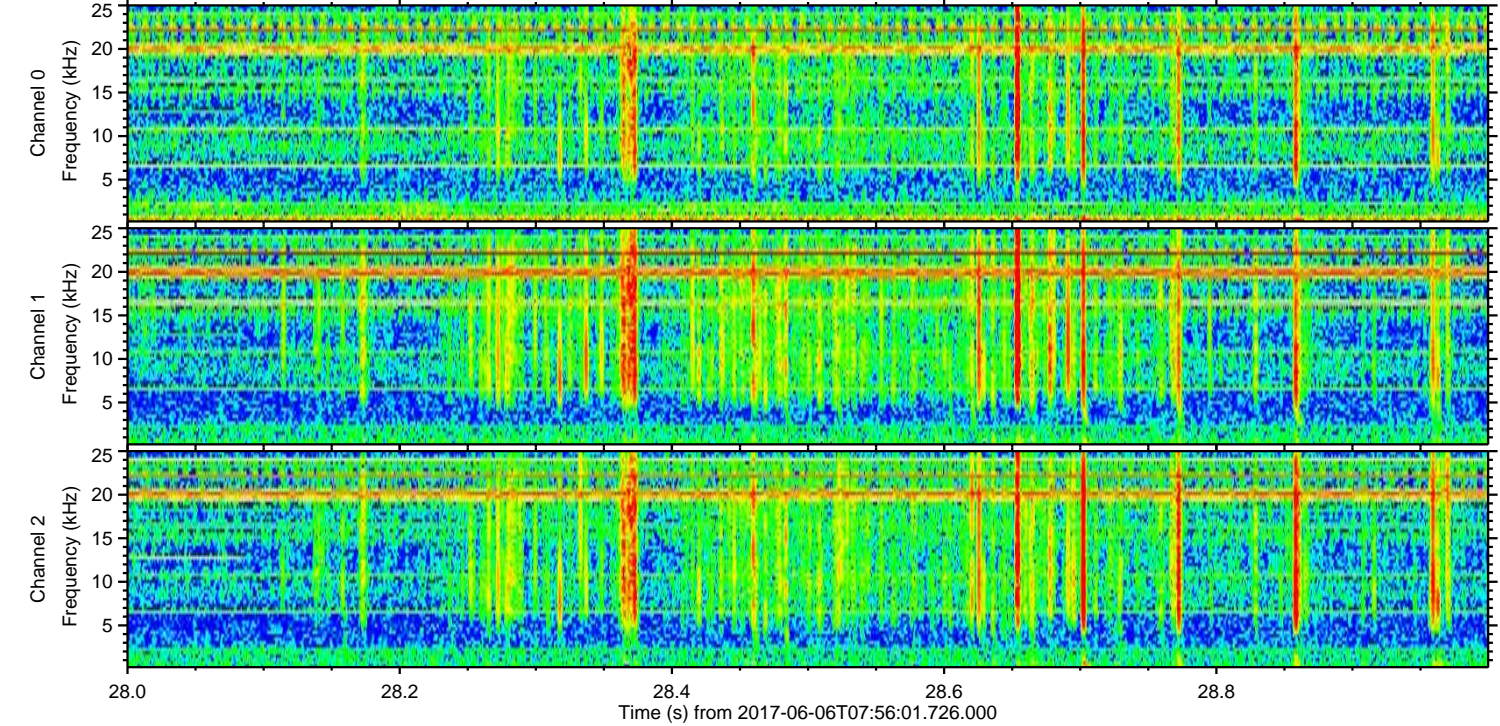
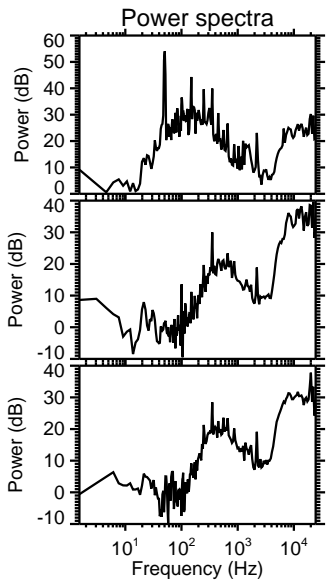
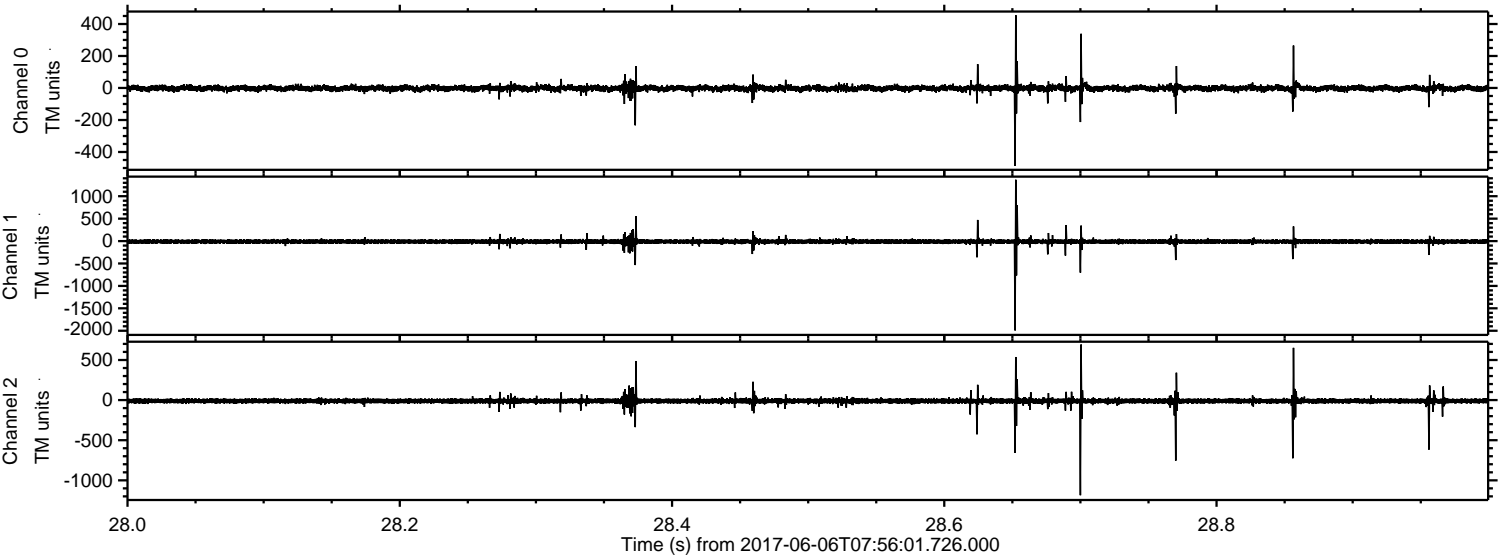
ELMAVAN 3D WAVEFORMS (Measured data sampled at 50 kHz) 51000 packets of 144 samples from 2017-06-06T07:56:01.726.000. Part 127/147

Processed Tue Jun 6 10:04:02 2017 by ELM ver.2012-10-06 from 001\_\_elm20170606\_075600\_\_dat00.bin



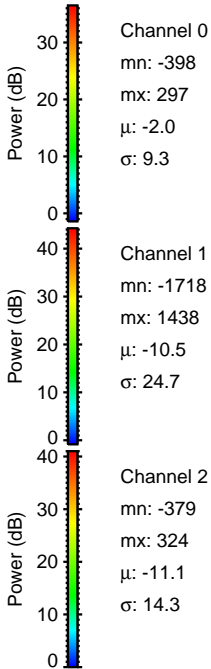
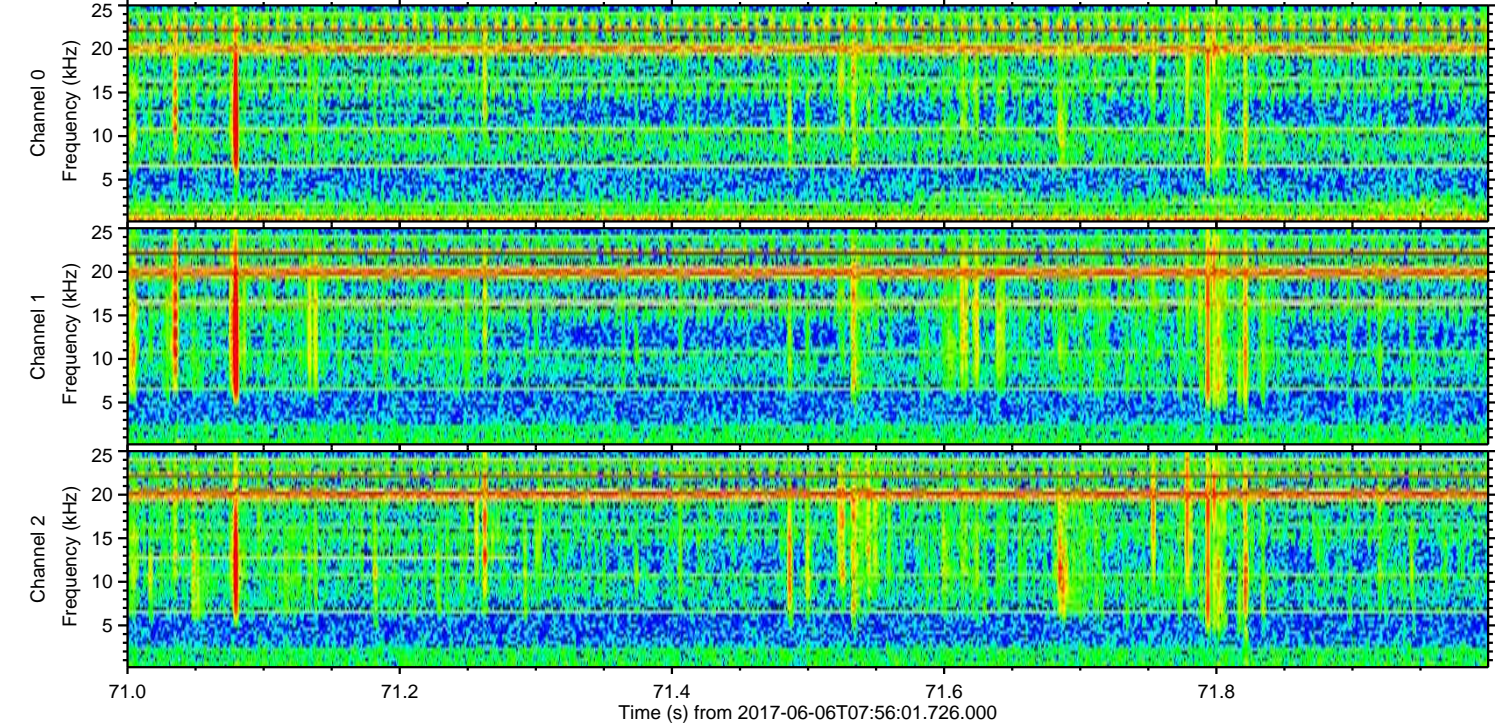
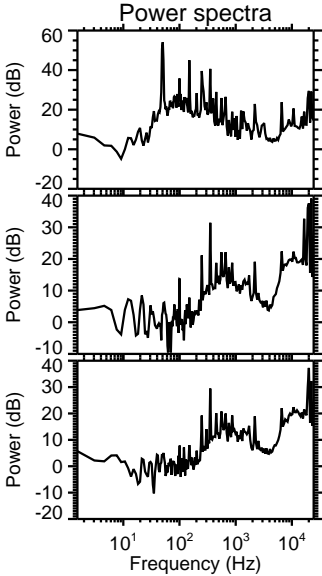
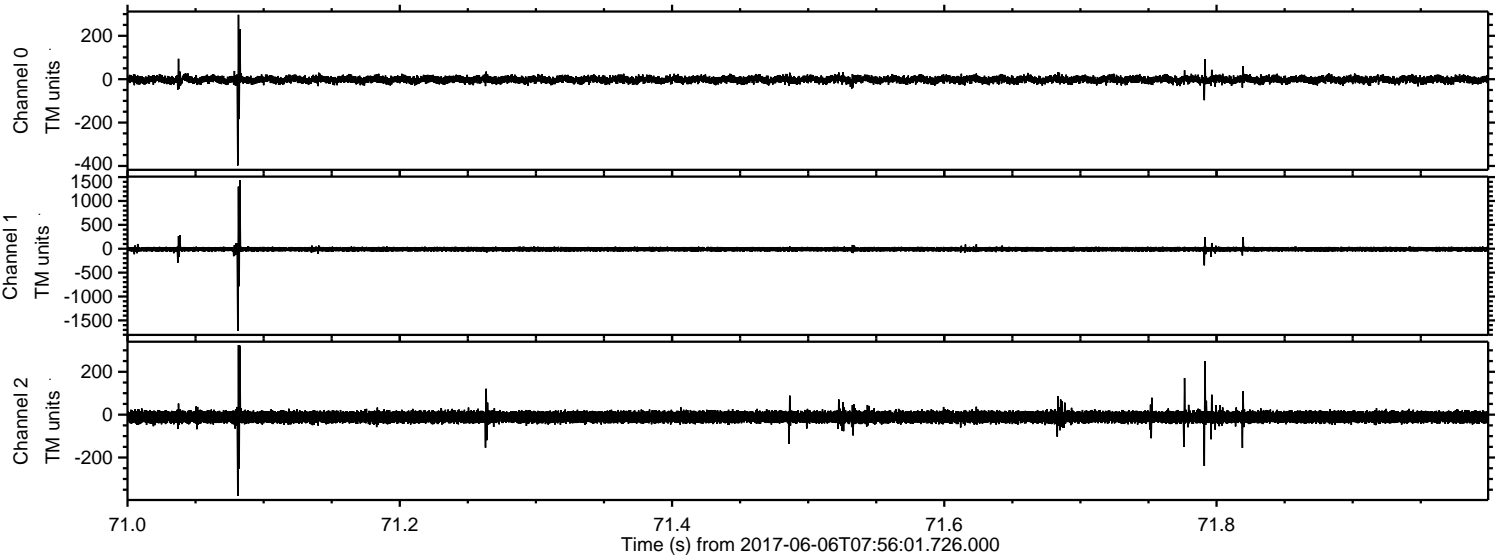


Processed Tue Jun 6 10:04:03 2017 by ELM ver.2012-10-06 from 001\_\_elm20170606\_075600\_\_dat00.bin



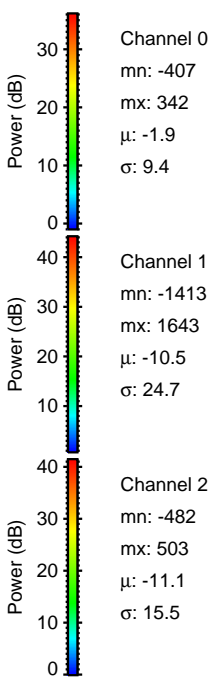
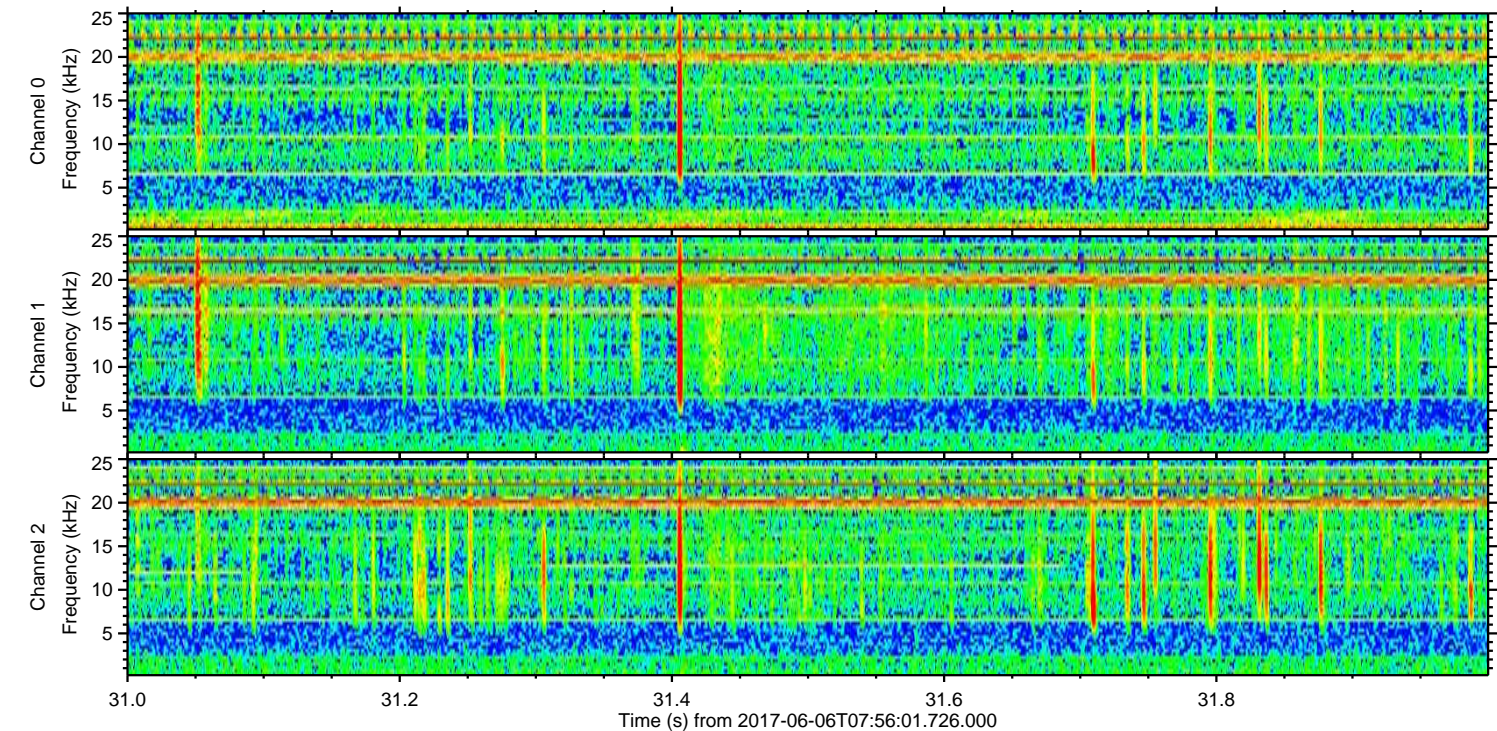
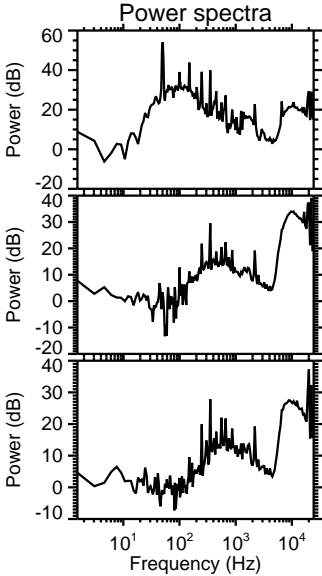
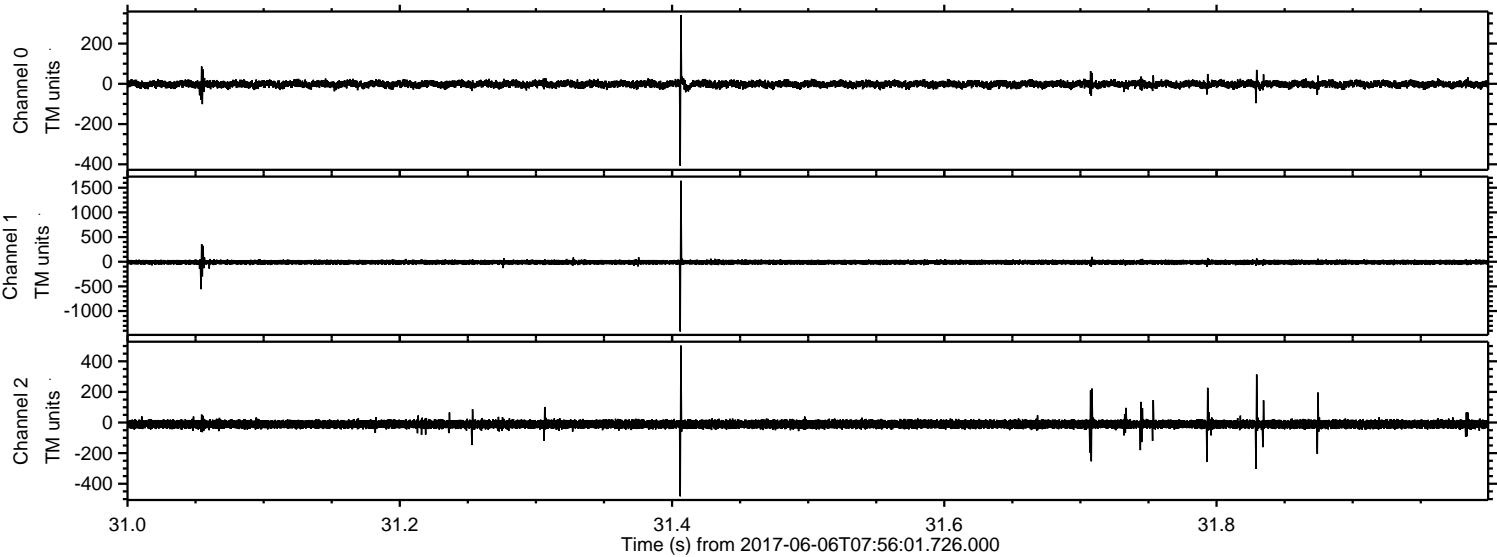


Processed Tue Jun 6 10:04:04 2017 by ELM ver.2012-10-06 from 001\_\_elm20170606\_075600\_\_dat00.bin





Processed Tue Jun 6 10:04:05 2017 by ELM ver.2012-10-06 from 001\_\_elm20170606\_075600\_\_dat00.bin





Processed Tue Jun 6 10:04:06 2017 by ELM ver.2012-10-06 from 001\_\_elm20170606\_075600\_\_dat00.bin

