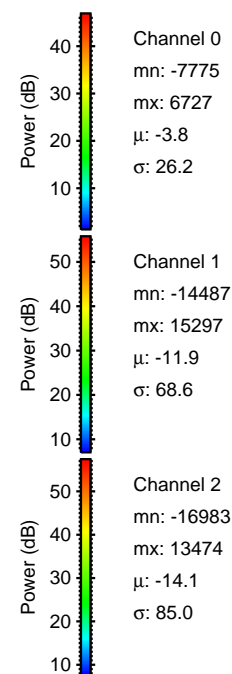
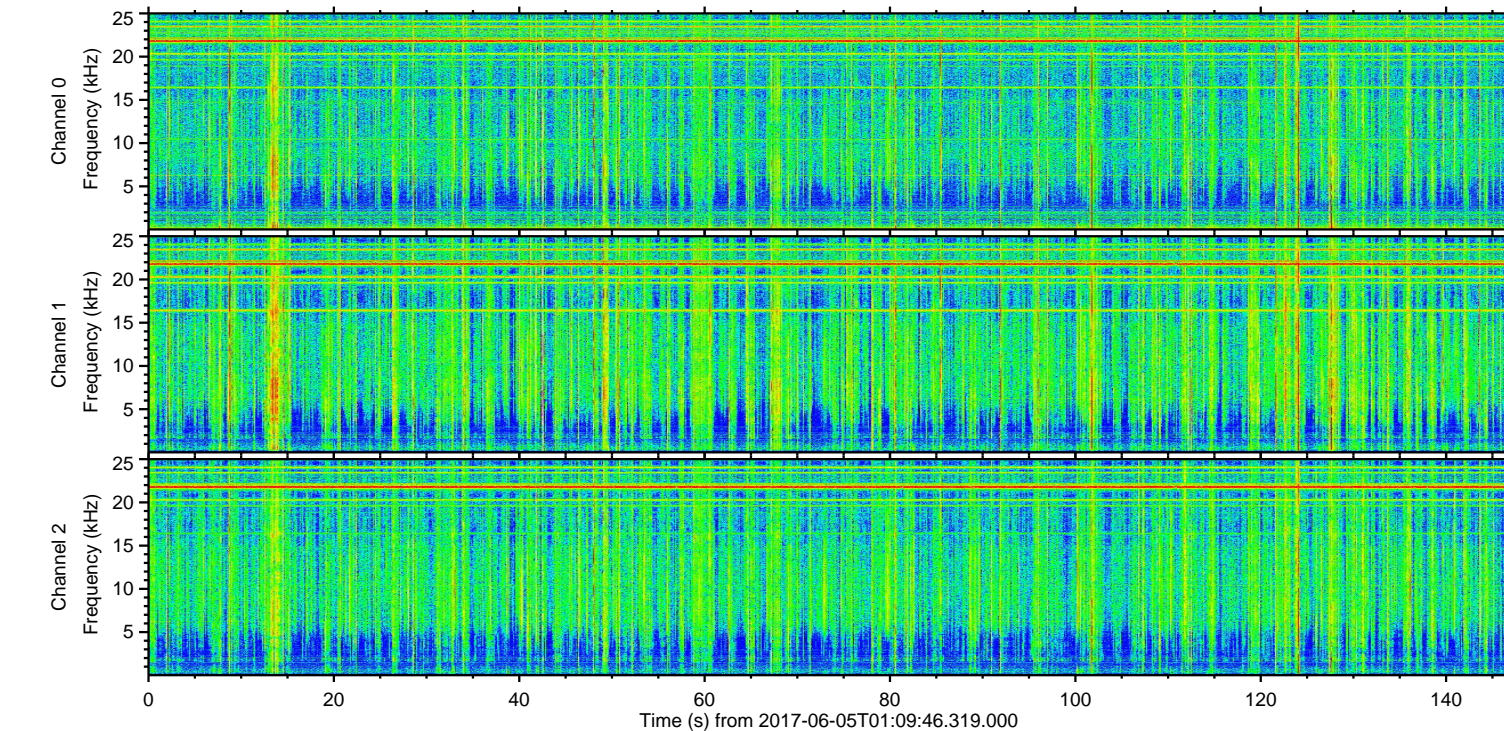
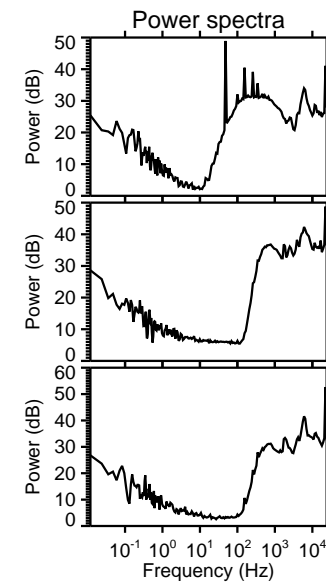
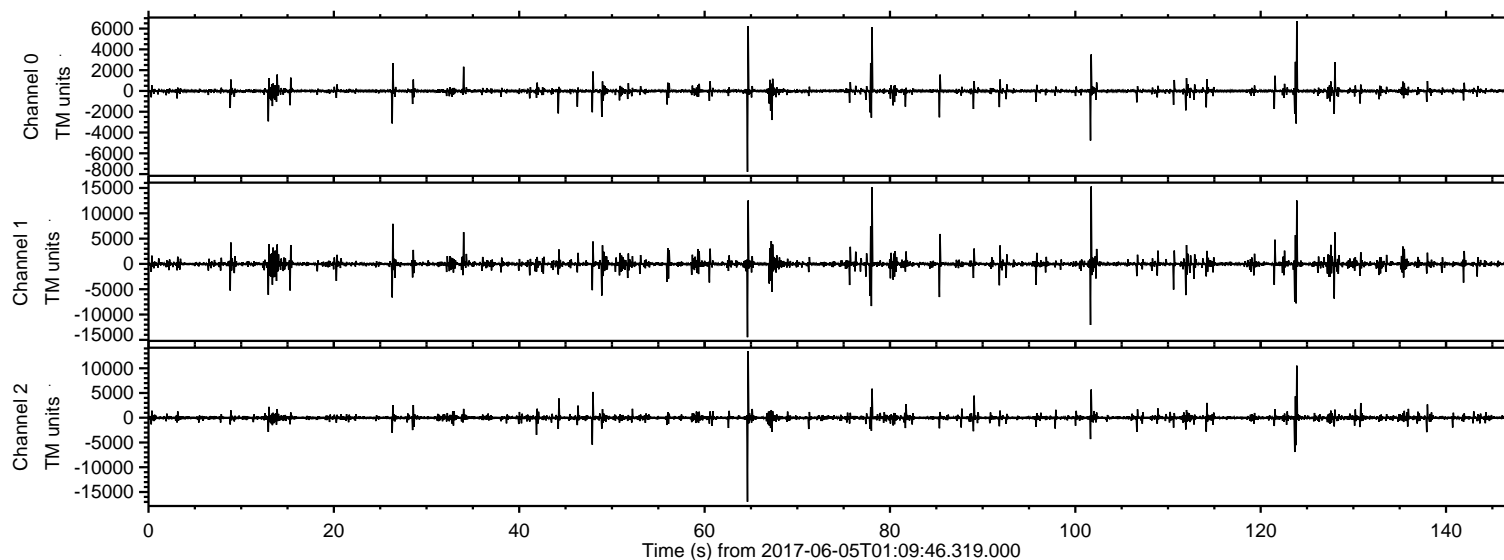
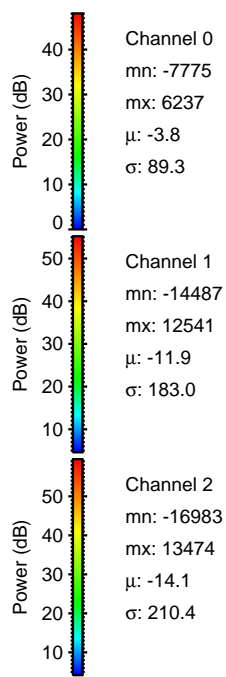
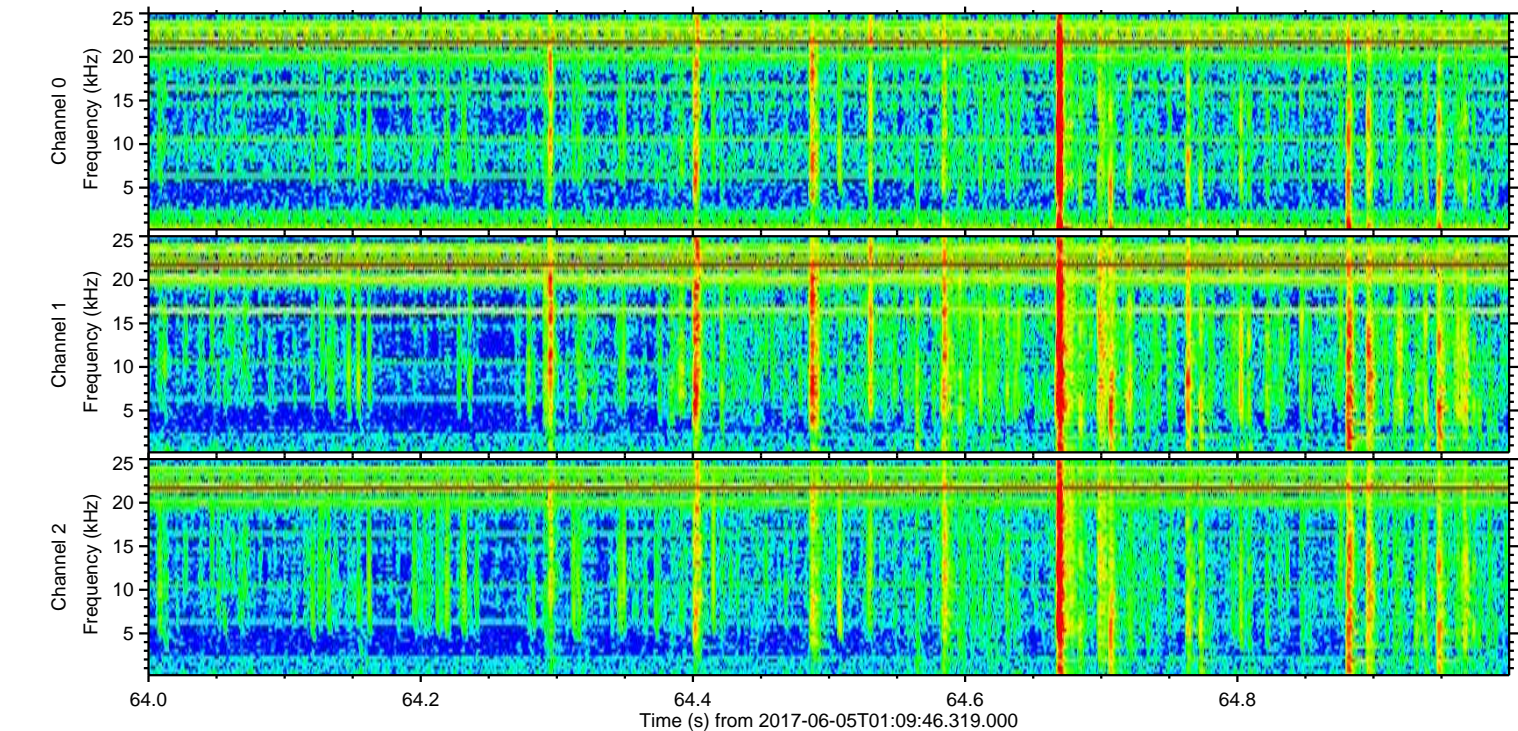
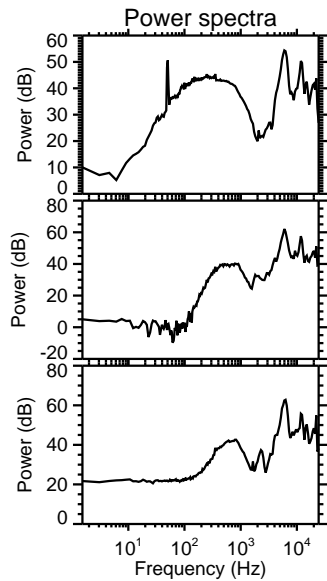
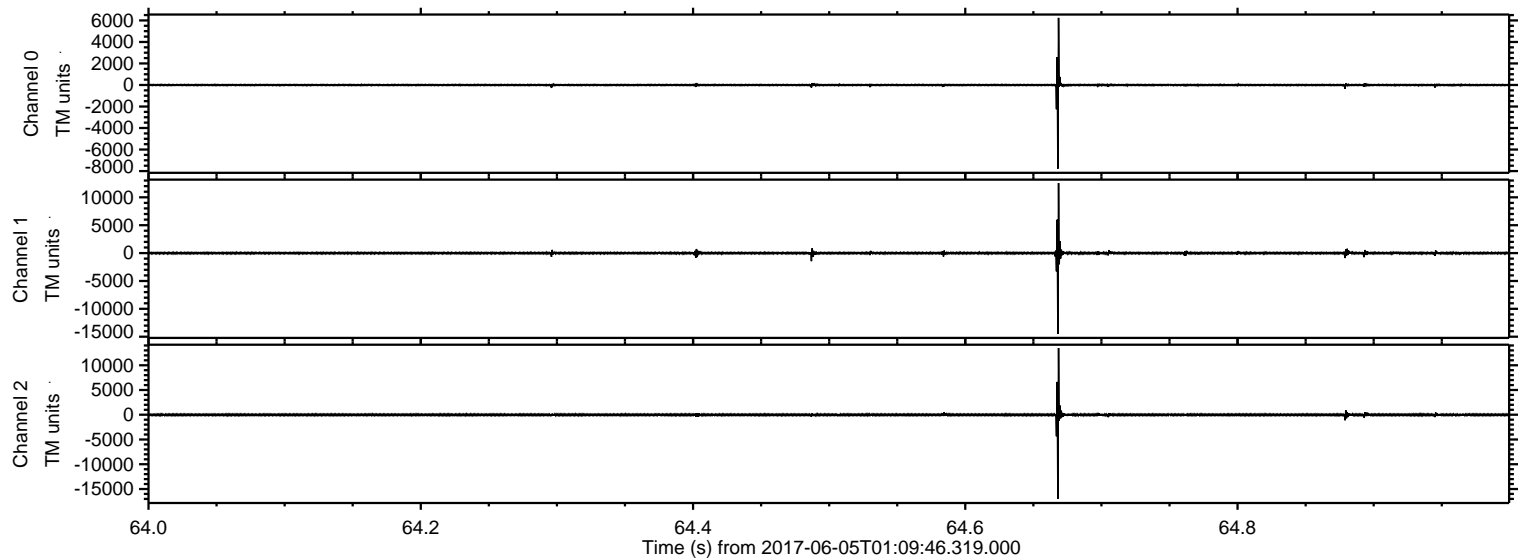


ELMAVAN 3D WAVEFORMS (Measured data sampled at 50 kHz) 51000 packets of 144 samples from 2017-06-05T01:09:46.319.000.

Processed Mon Jun 5 03:17:09 2017 by ELM ver.2012-10-06 from 001__elm20170605_010945__dat00.bin

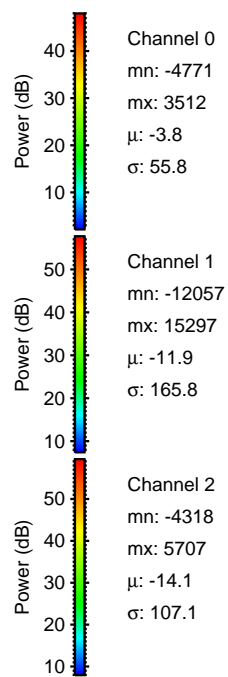
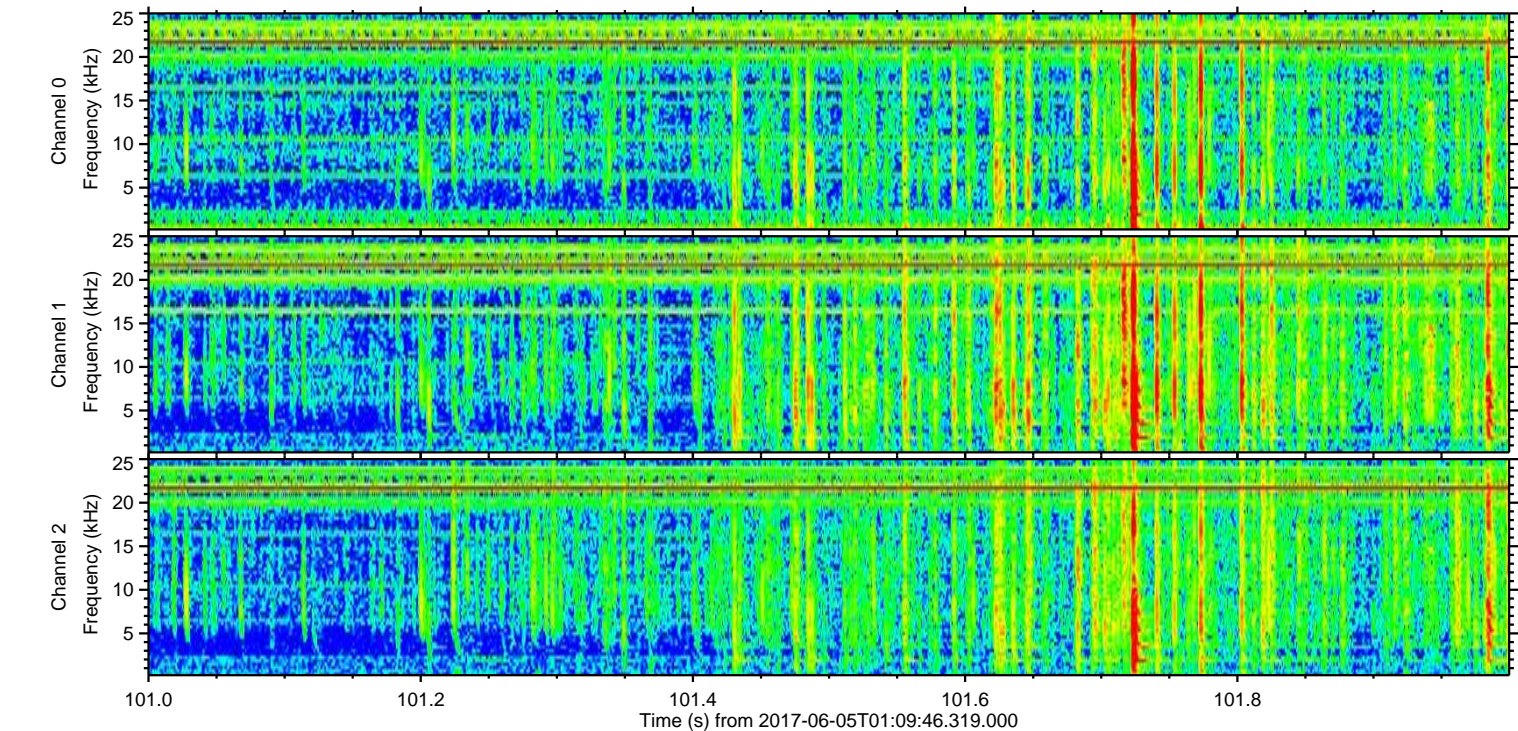
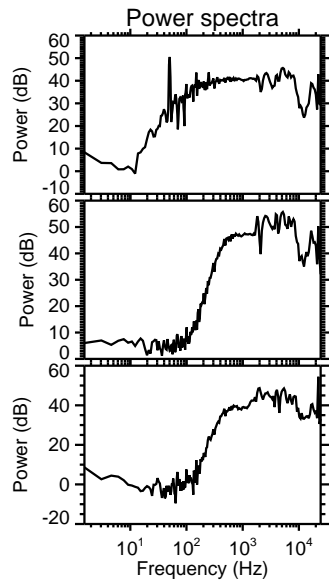
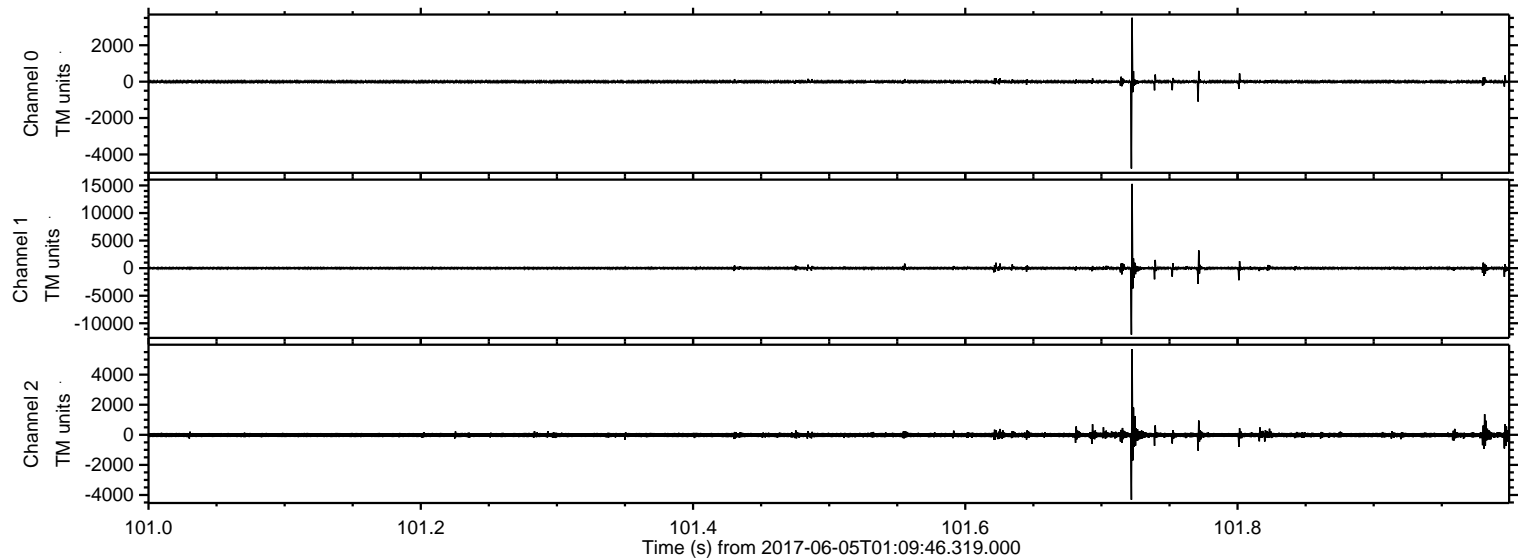


Processed Mon Jun 5 03:17:15 2017 by ELM ver.2012-10-06 from 001__elm20170605_010945__dat00.bin

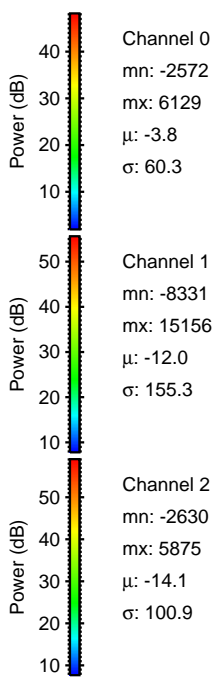
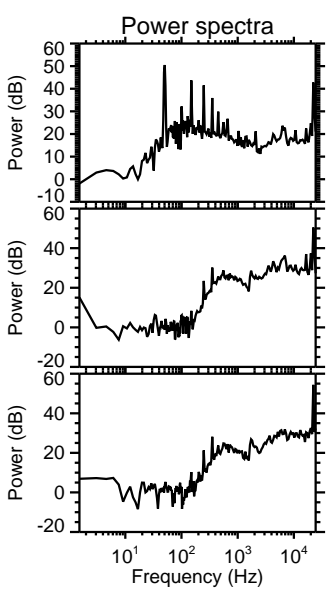
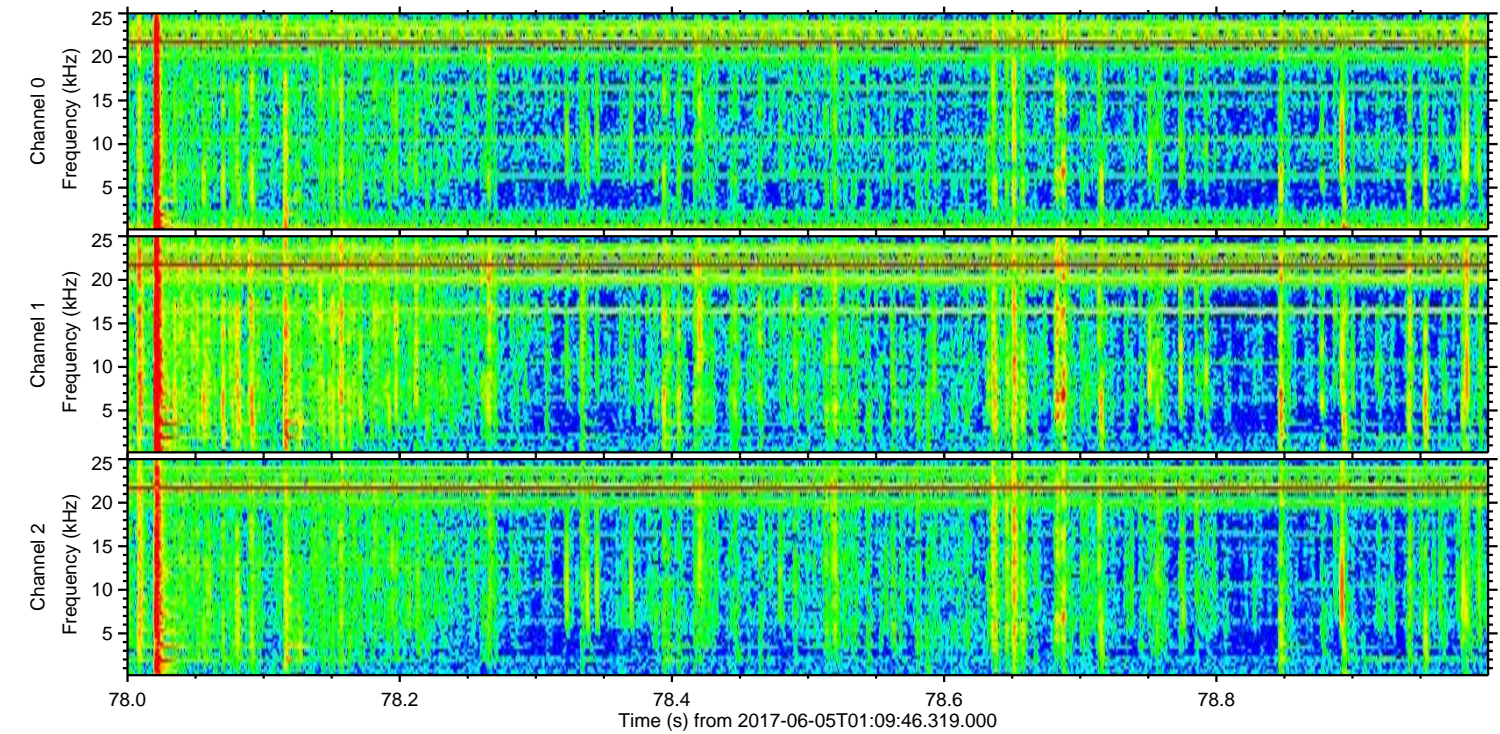
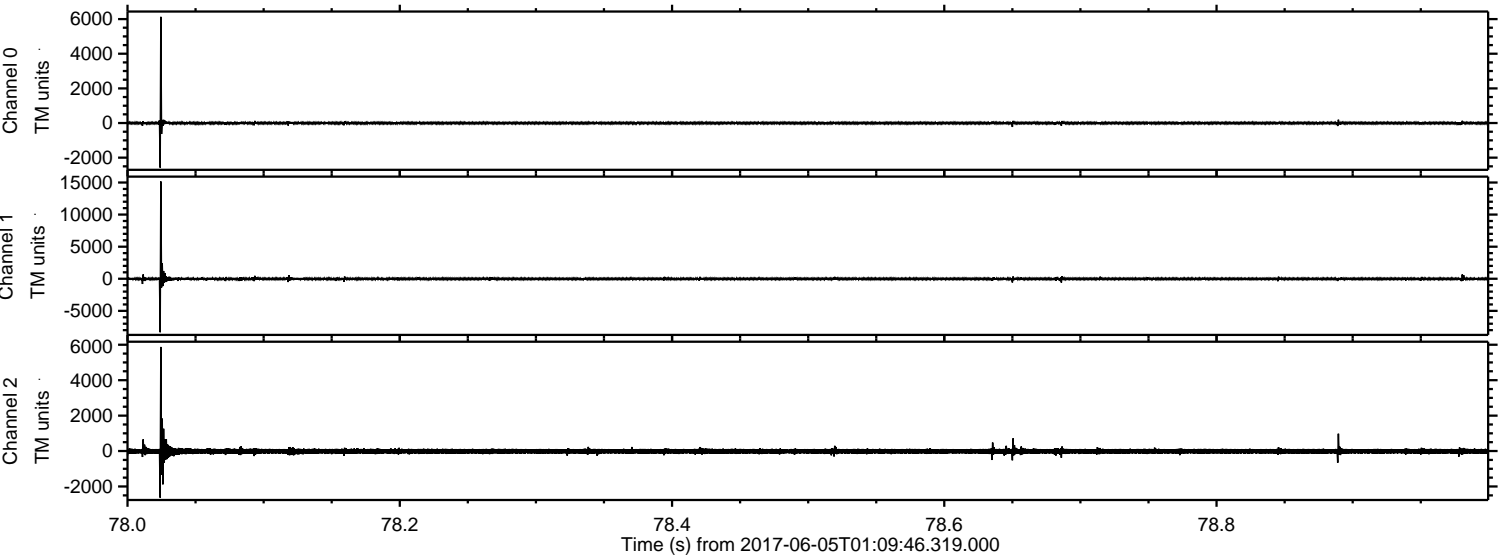


ELMAVAN 3D WAVEFORMS (Measured data sampled at 50 kHz) 51000 packets of 144 samples from 2017-06-05T01:09:46.319.000. Part 102/147

Processed Mon Jun 5 03:17:16 2017 by ELM ver.2012-10-06 from 001__elm20170605_010945__dat00.bin

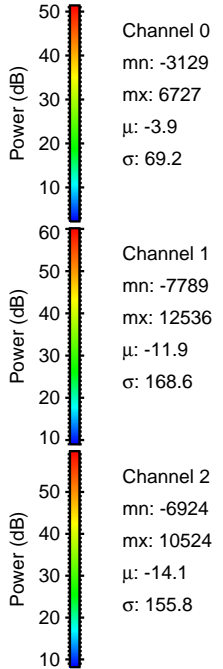
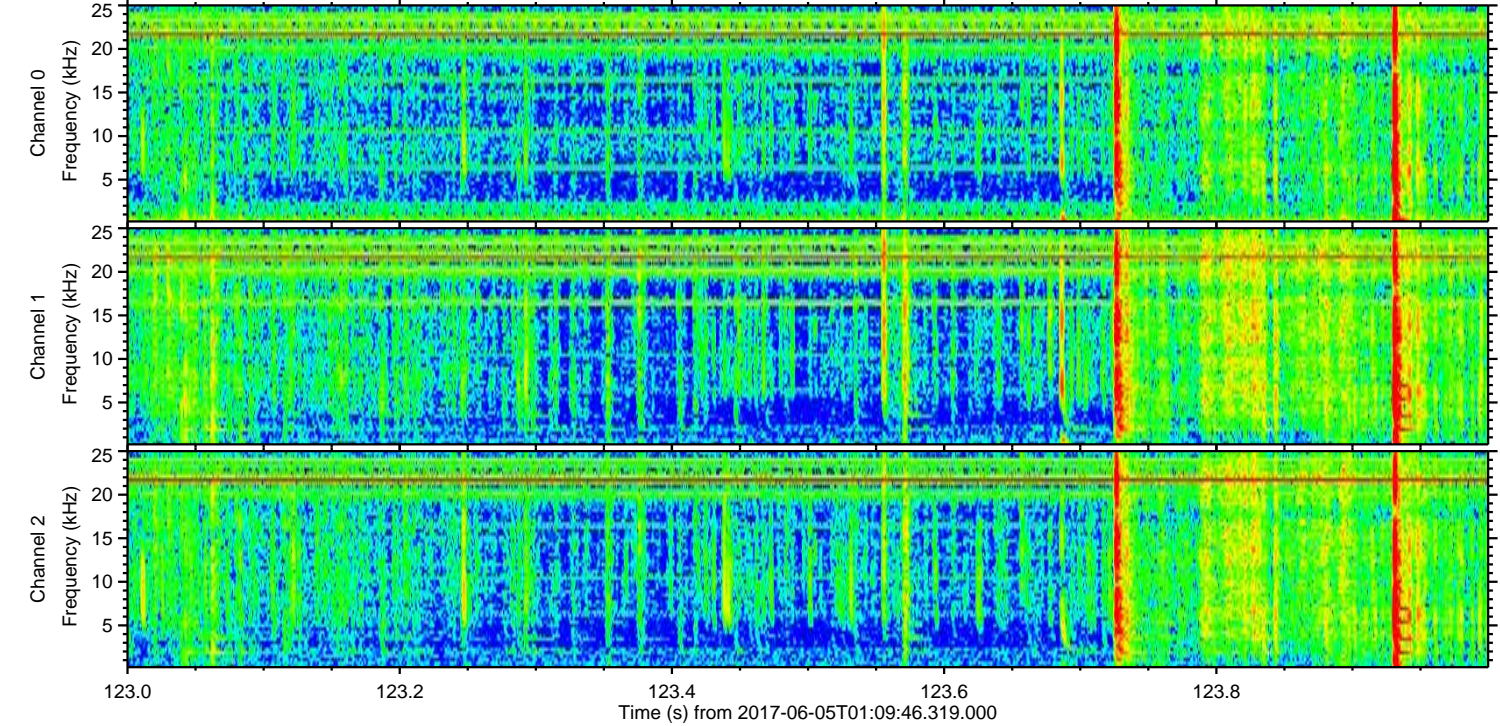
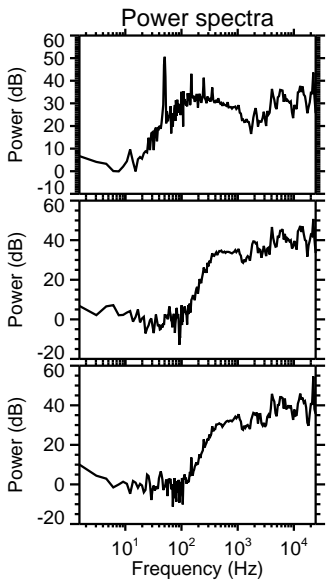
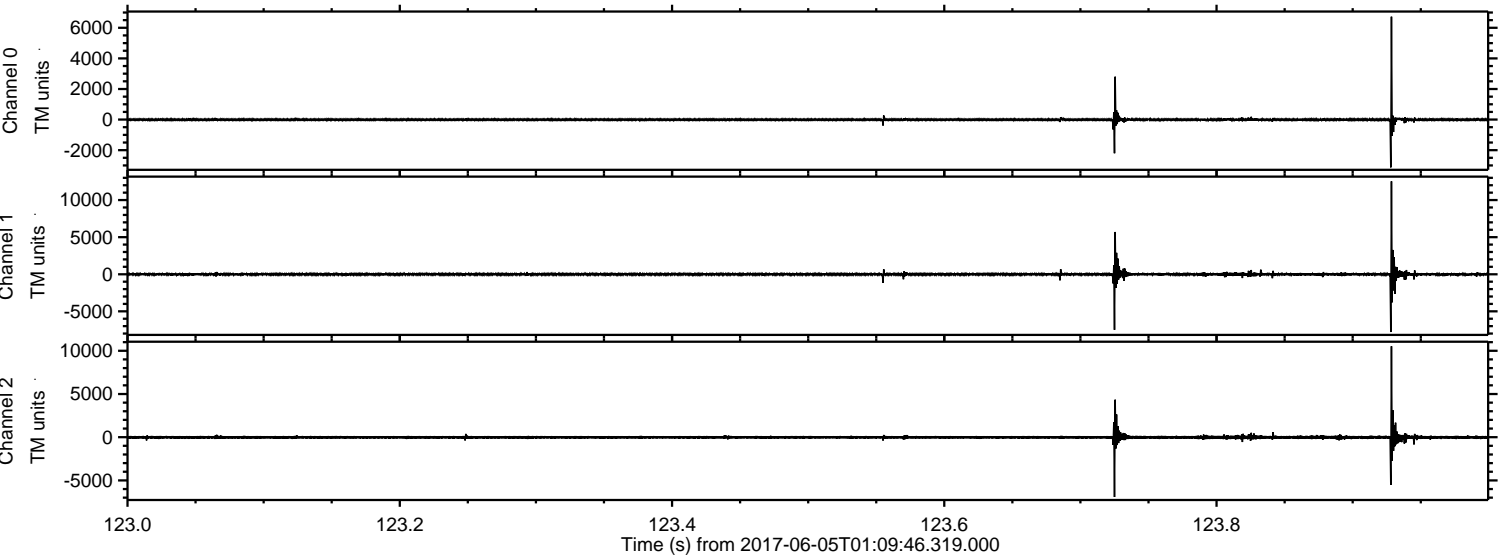


Processed Mon Jun 5 03:17:17 2017 by ELM ver.2012-10-06 from 001__elm20170605_010945__dat00.bin

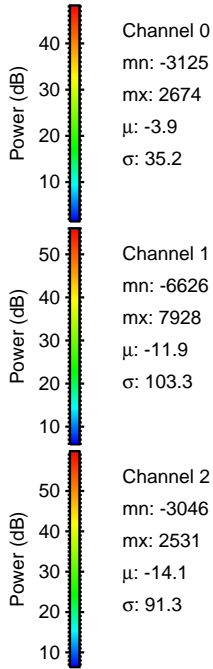
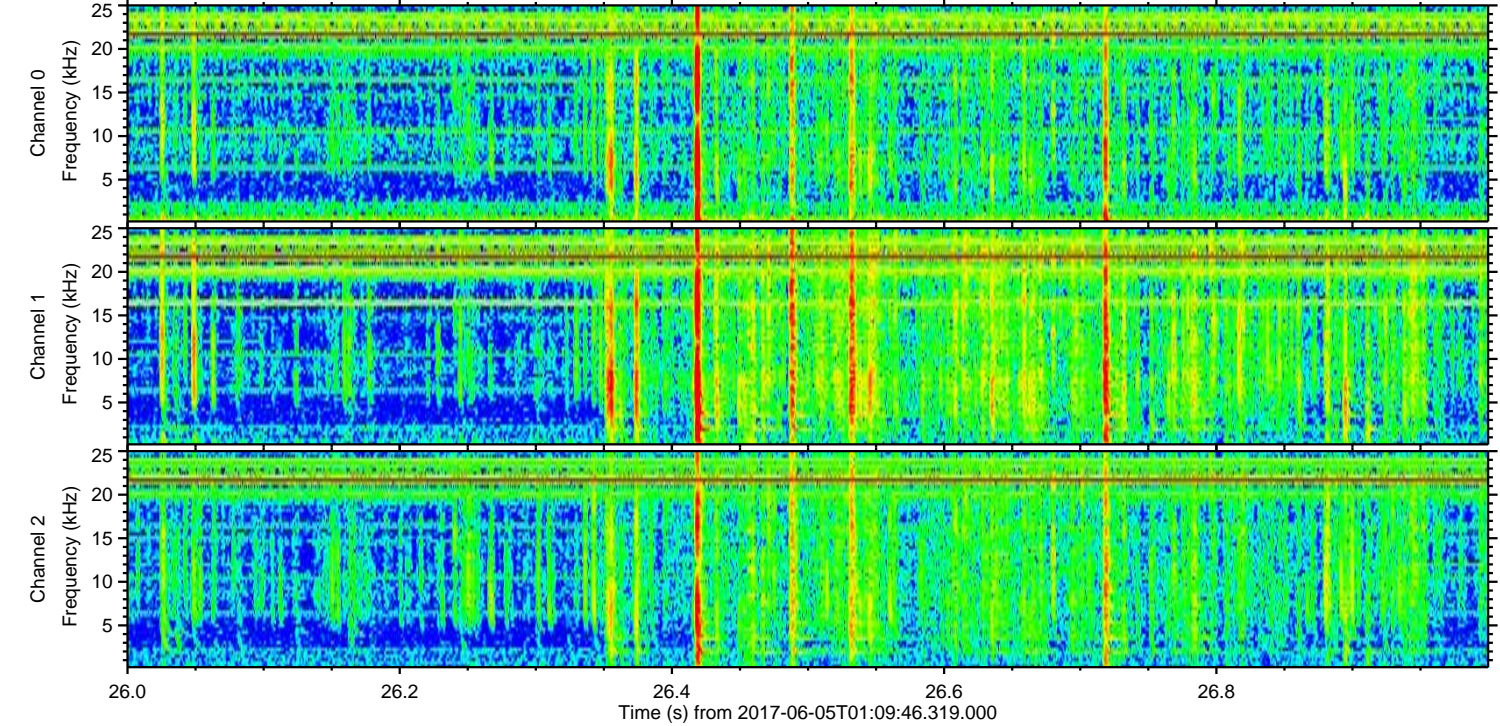
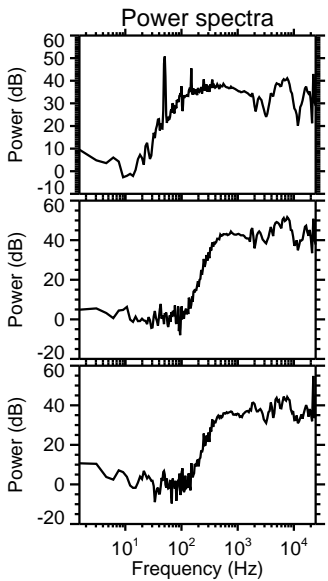
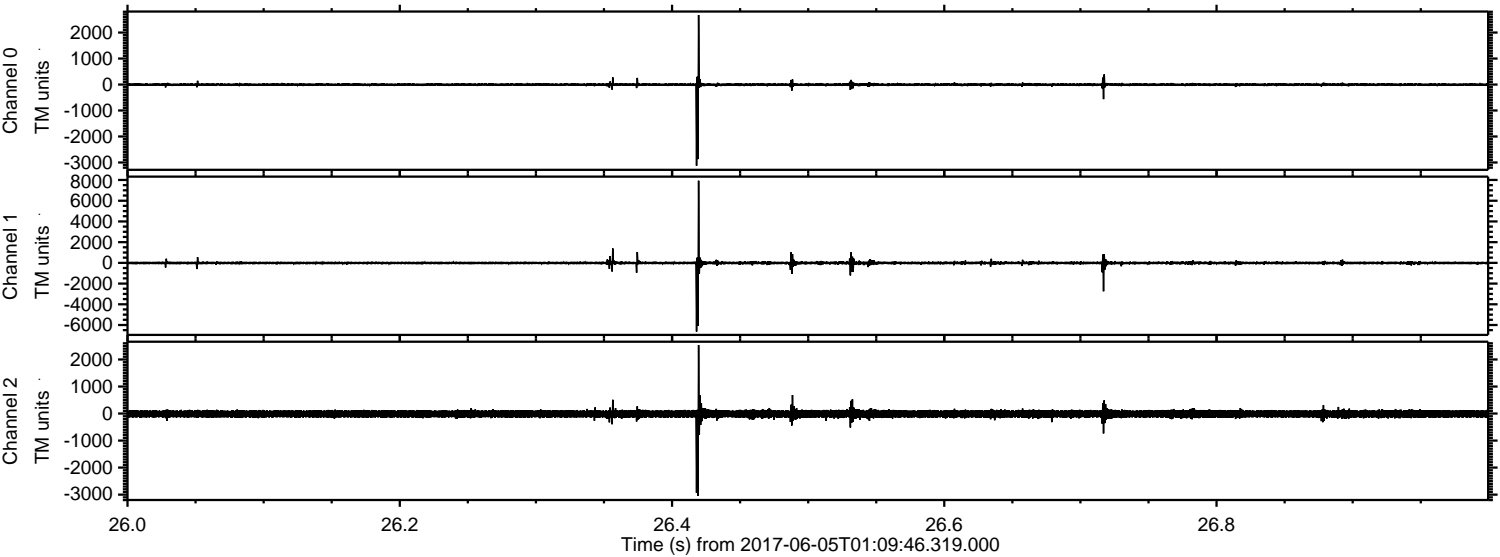


ELMAVAN 3D WAVEFORMS (Measured data sampled at 50 kHz) 51000 packets of 144 samples from 2017-06-05T01:09:46.319.000. Part 124/147

Processed Mon Jun 5 03:17:18 2017 by ELM ver.2012-10-06 from 001__elm20170605_010945__dat00.bin

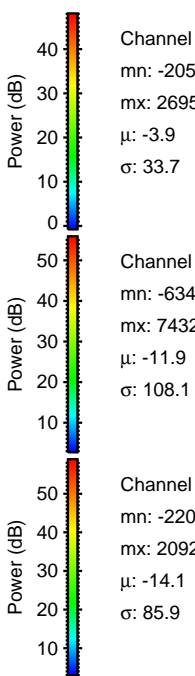
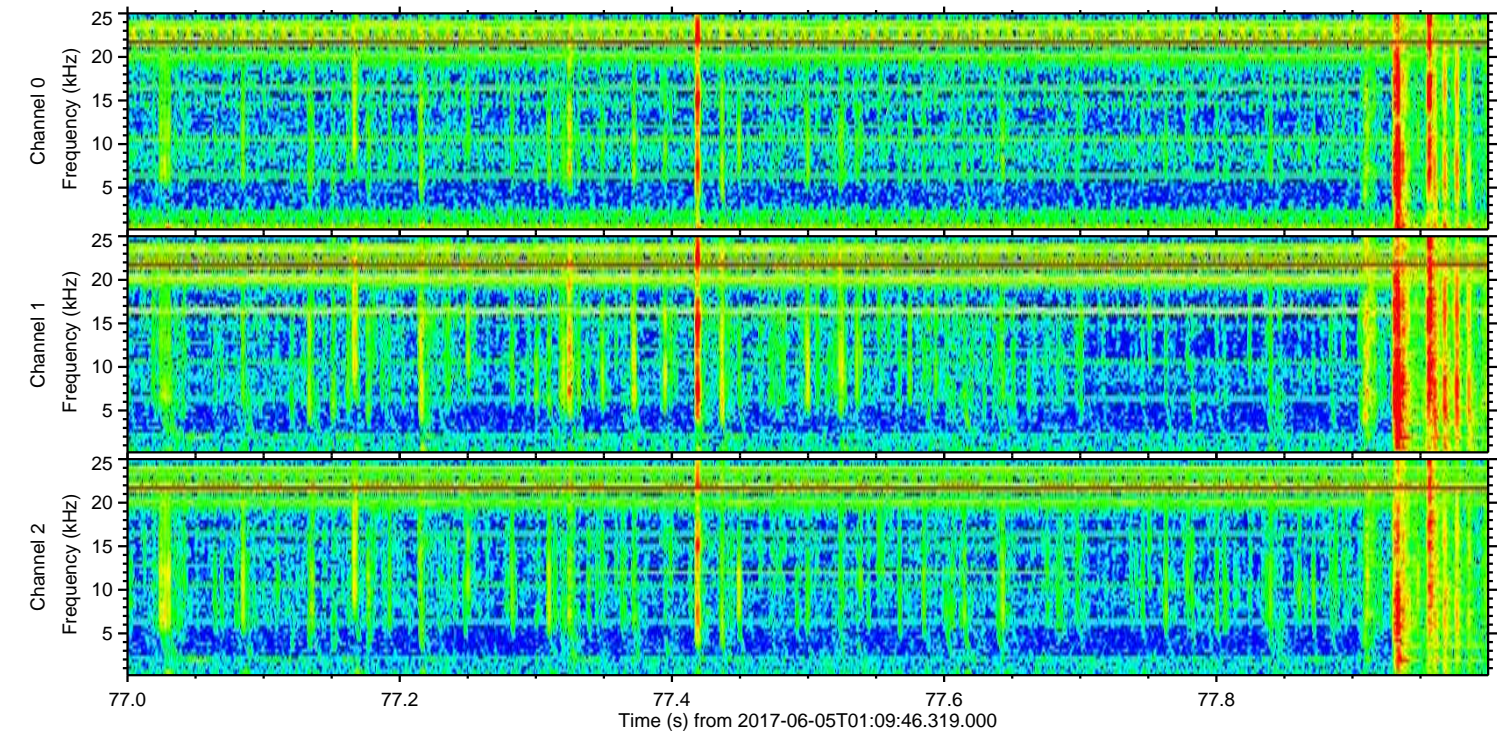
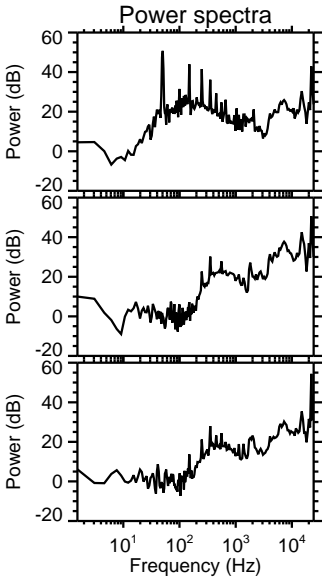
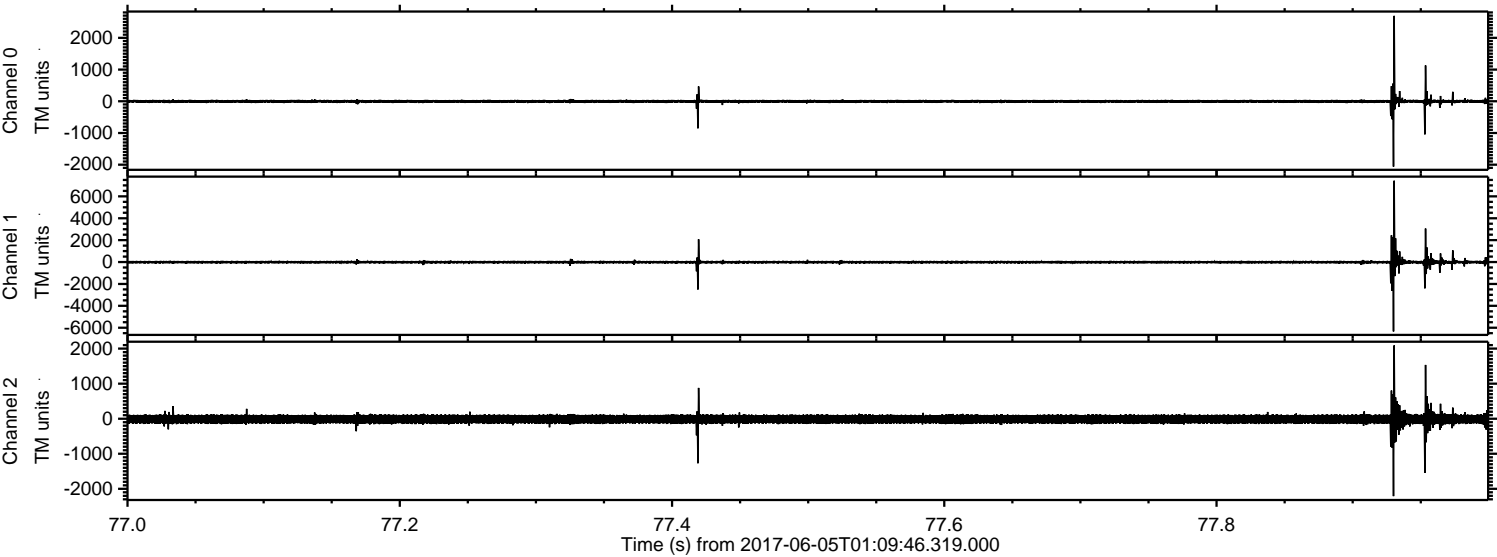


Processed Mon Jun 5 03:17:18 2017 by ELM ver.2012-10-06 from 001__elm20170605_010945__dat00.bin



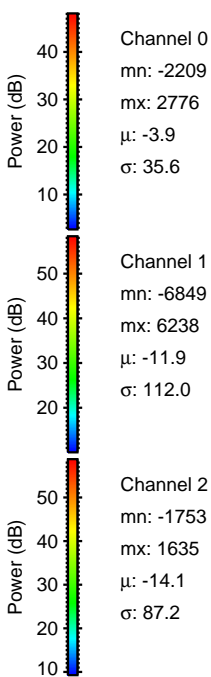
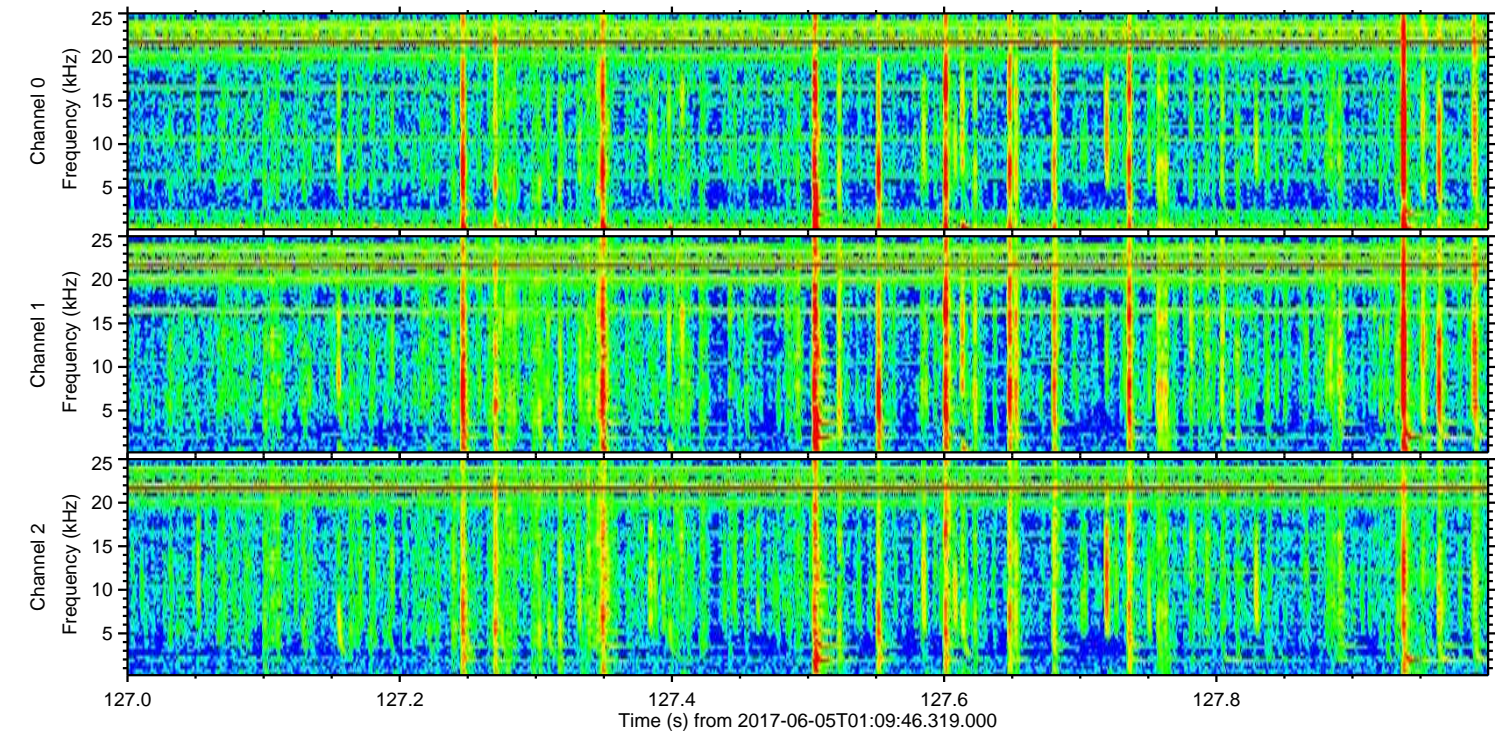
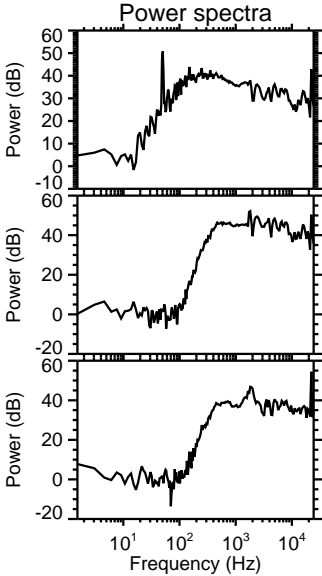
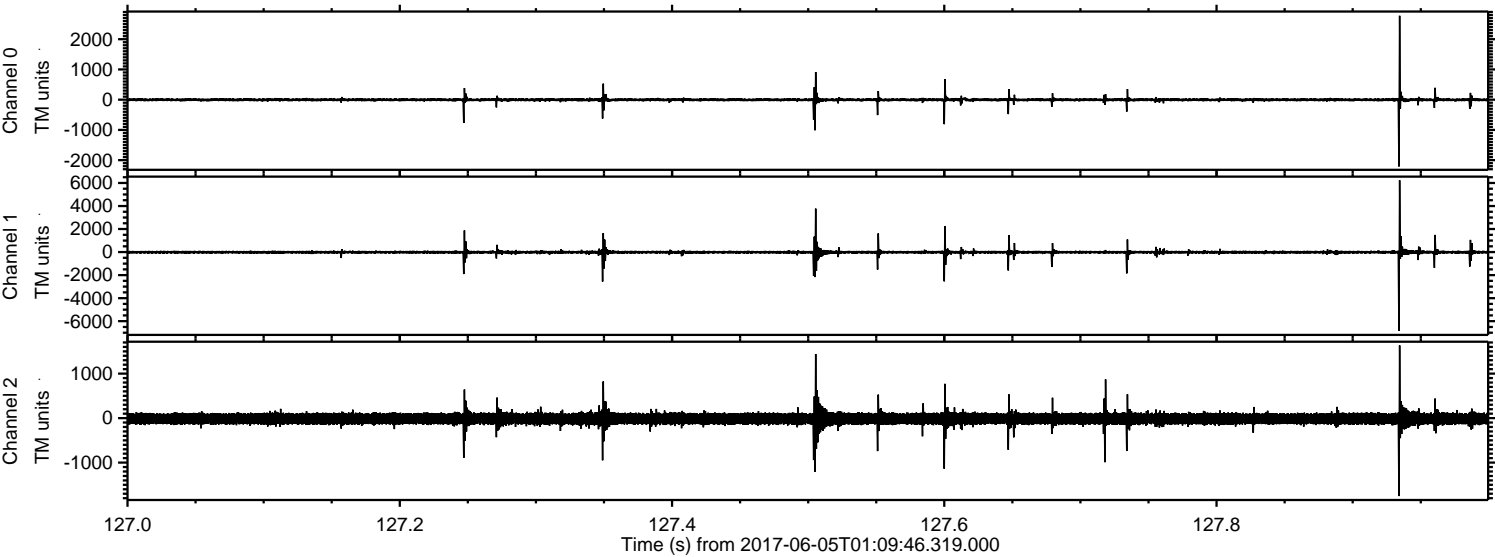
ELMAVAN 3D WAVEFORMS (Measured data sampled at 50 kHz) 51000 packets of 144 samples from 2017-06-05T01:09:46.319.000. Part 78/147

Processed Mon Jun 5 03:17:19 2017 by ELM ver.2012-10-06 from 001__elm20170605_010945__dat00.bin

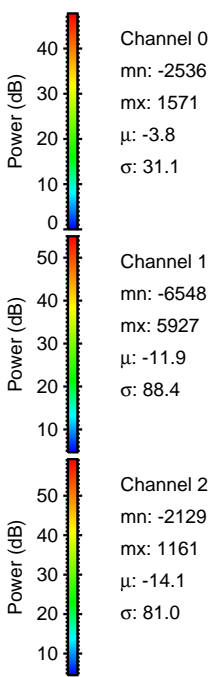
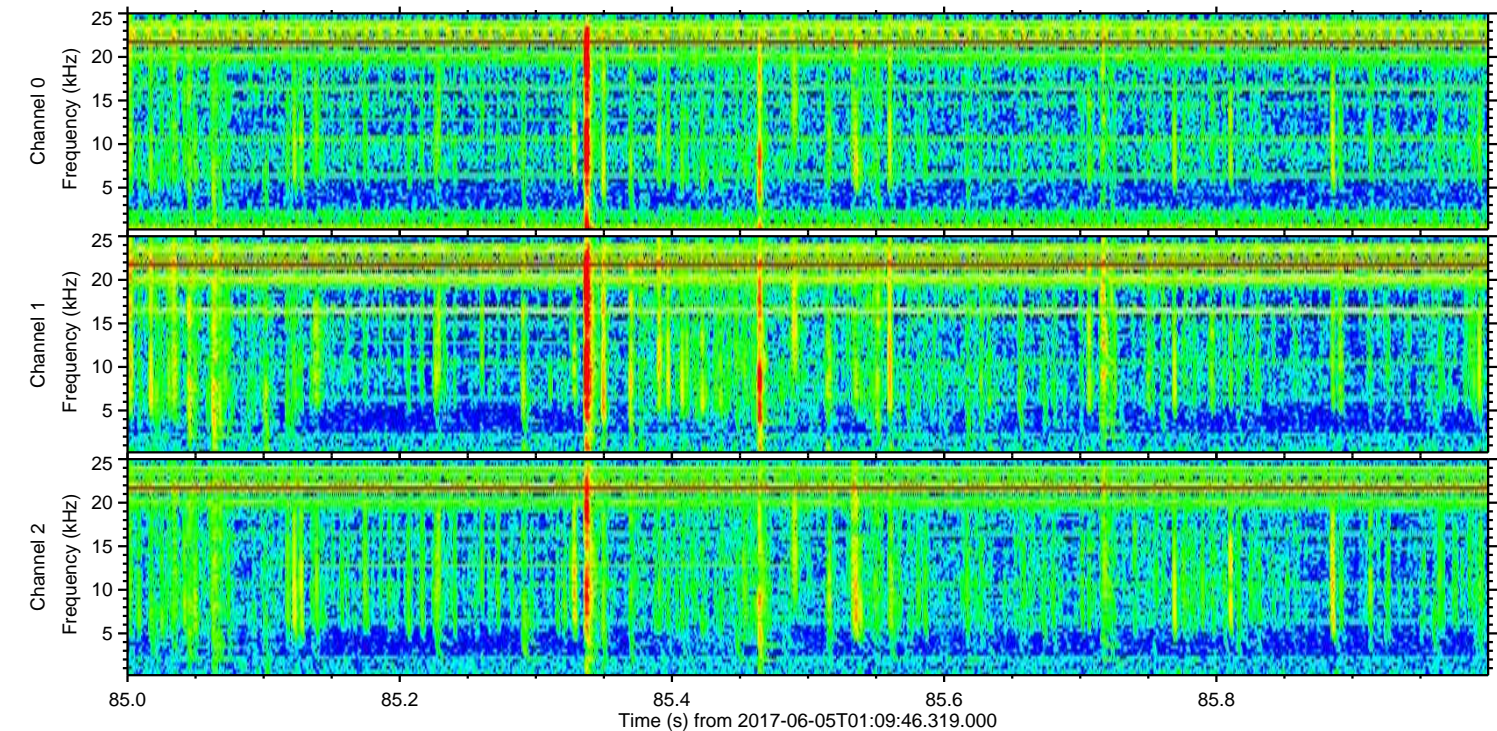
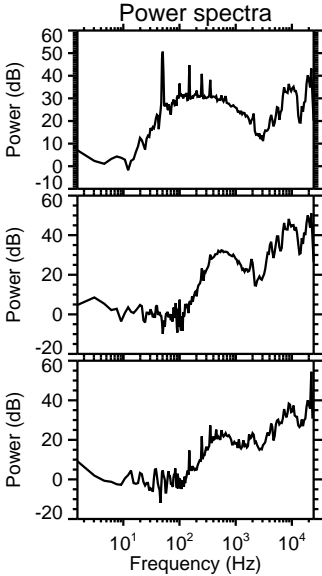
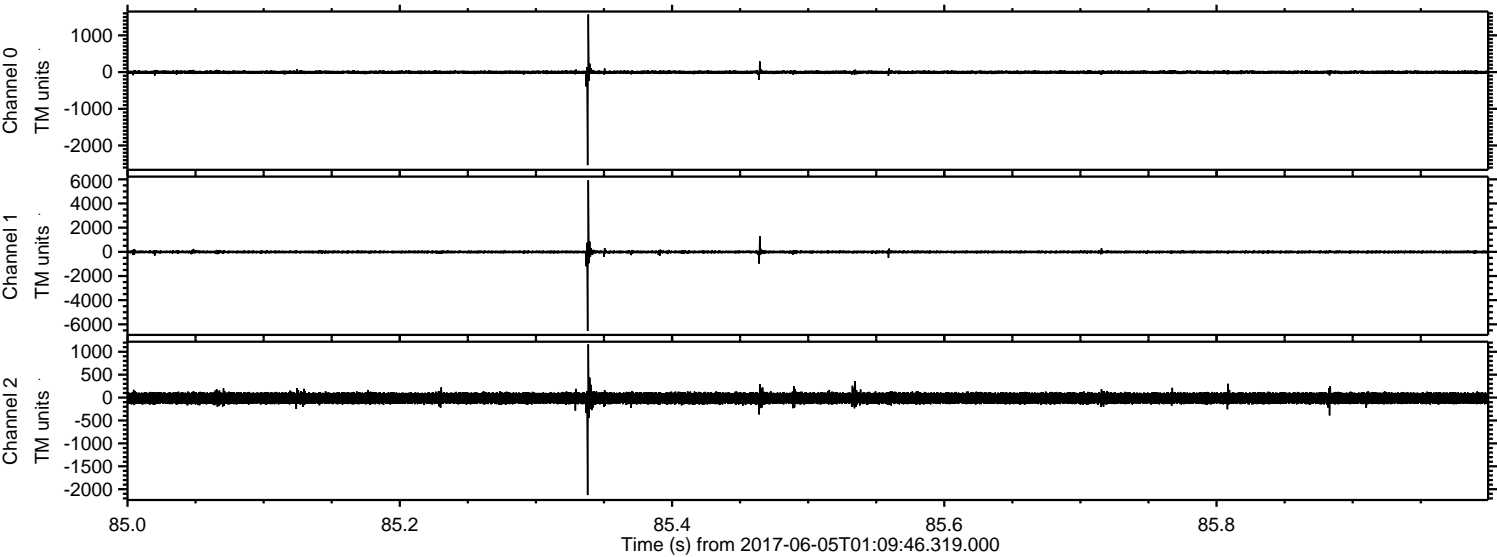


ELMAVAN 3D WAVEFORMS (Measured data sampled at 50 kHz) 51000 packets of 144 samples from 2017-06-05T01:09:46.319.000. Part 128/147

Processed Mon Jun 5 03:17:20 2017 by ELM ver.2012-10-06 from 001__elm20170605_010945__dat00.bin



Processed Mon Jun 5 03:17:20 2017 by ELM ver.2012-10-06 from 001__elm20170605_010945__dat00.bin

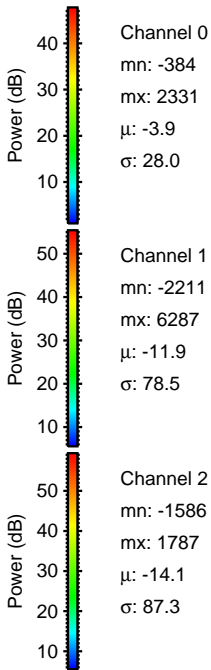
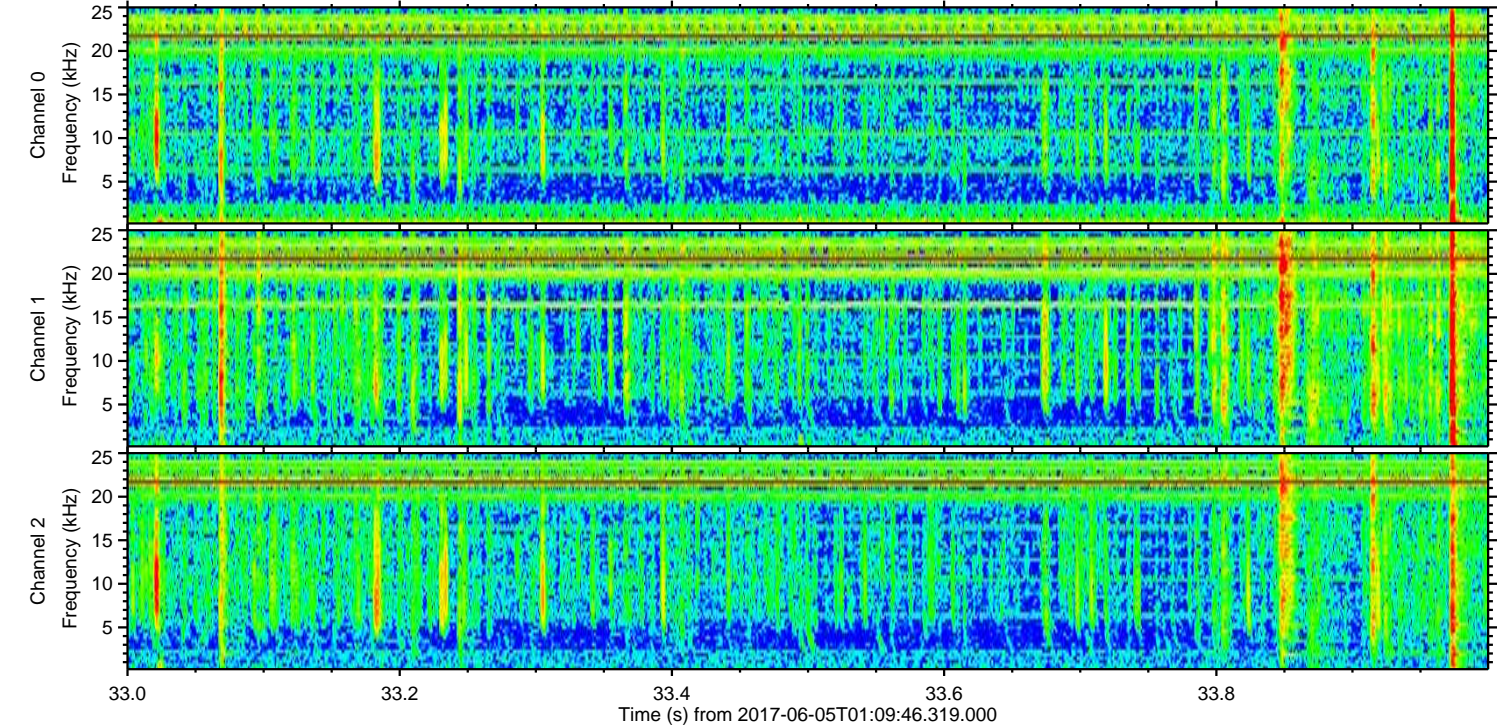
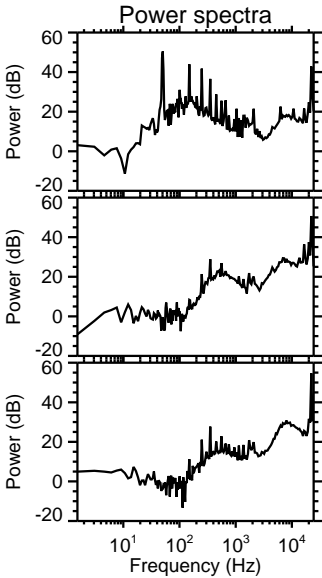
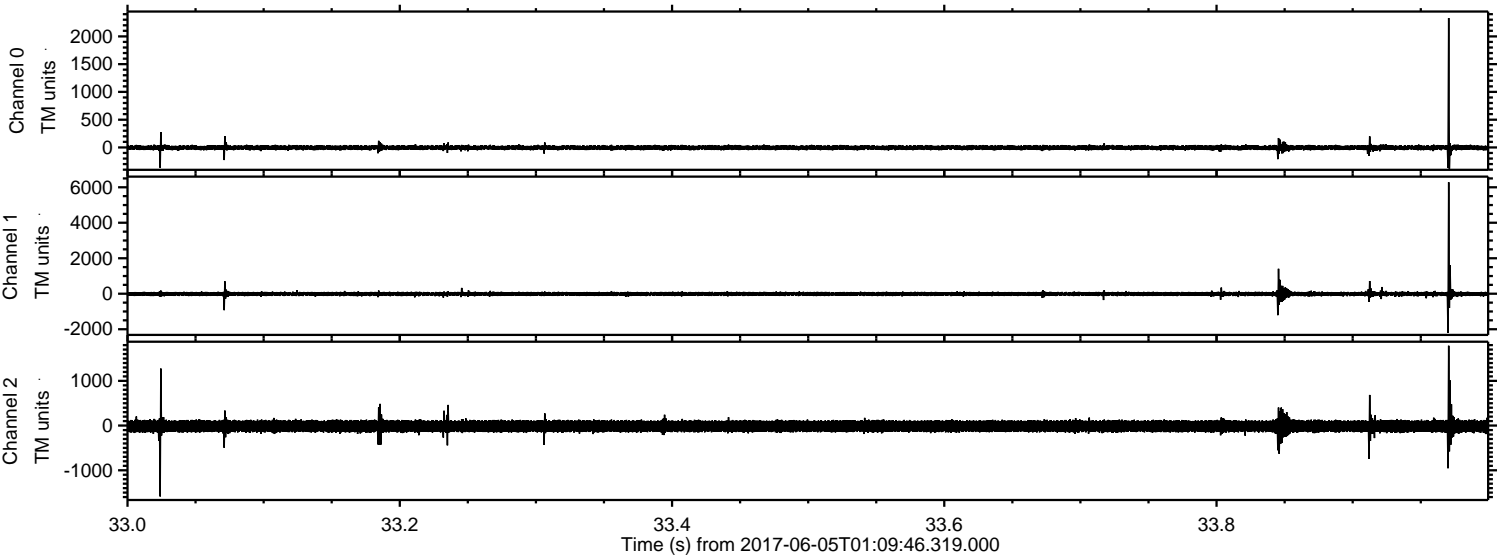


Channel 0
mn: -2536
mx: 1571
 μ : -3.8
 σ : 31.1

Channel 1
mn: -6548
mx: 5927
 μ : -11.9
 σ : 88.4

Channel 2
mn: -2129
mx: 1161
 μ : -14.1
 σ : 81.0

Processed Mon Jun 5 03:17:21 2017 by ELM ver.2012-10-06 from 001__elm20170605_010945__dat00.bin



Channel 0
mn: -384
mx: 2331
 μ : -3.9
 σ : 28.0

Channel 1
mn: -2211
mx: 6287
 μ : -11.9
 σ : 78.5

Channel 2
mn: -1586
mx: 1787
 μ : -14.1
 σ : 87.3

Processed Mon Jun 5 03:17:21 2017 by ELM ver.2012-10-06 from 001__elm20170605_010945__dat00.bin

