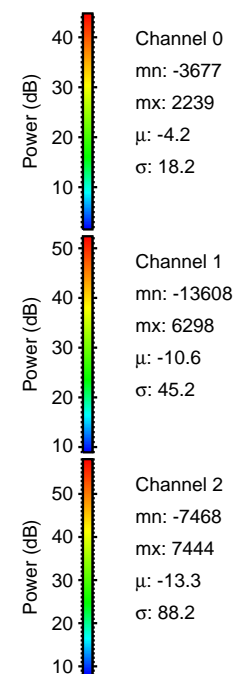
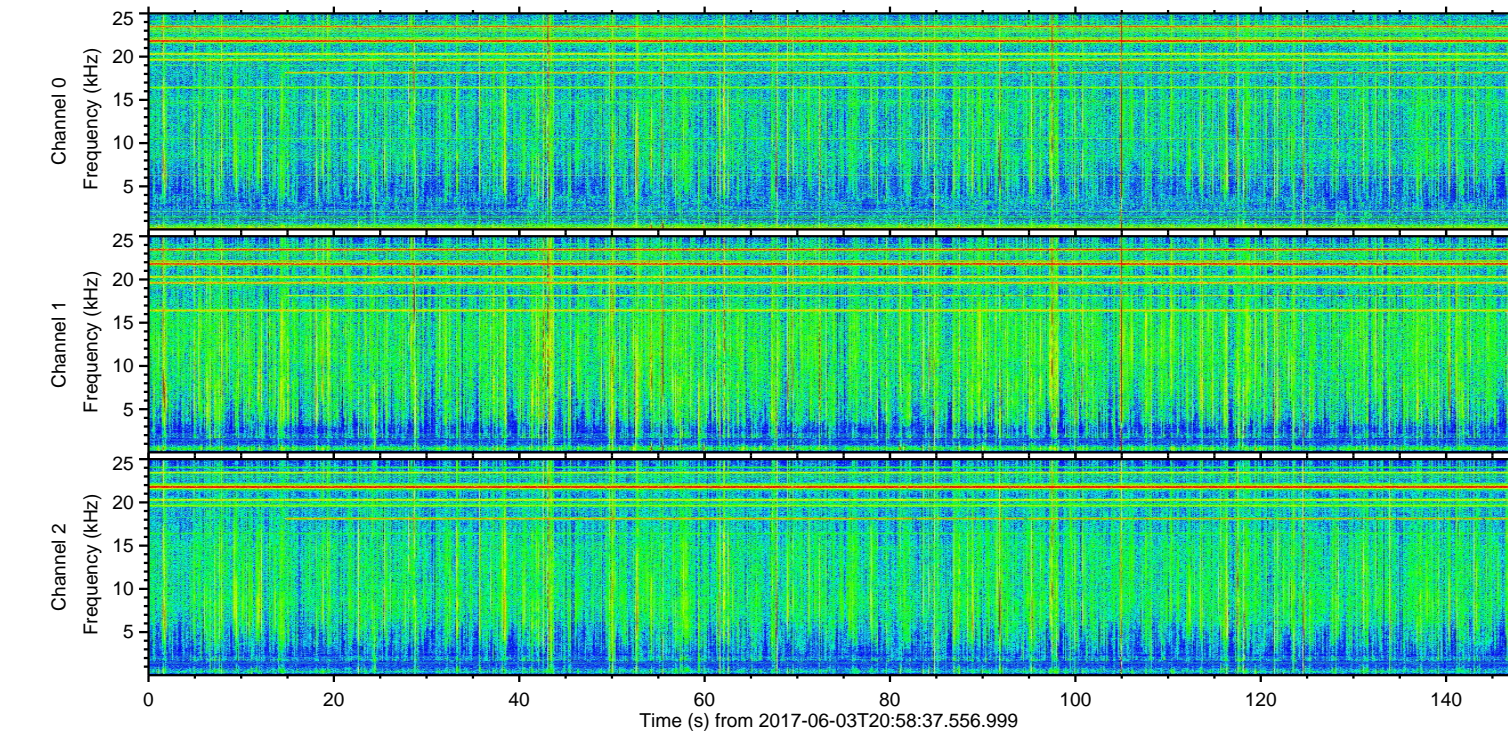
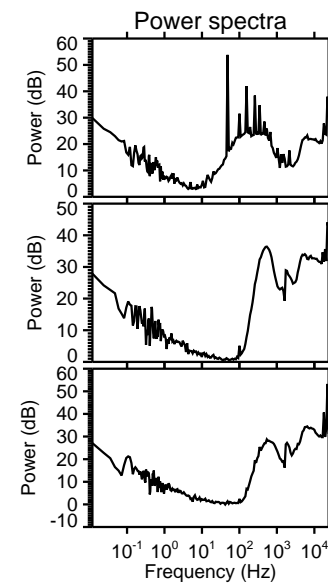
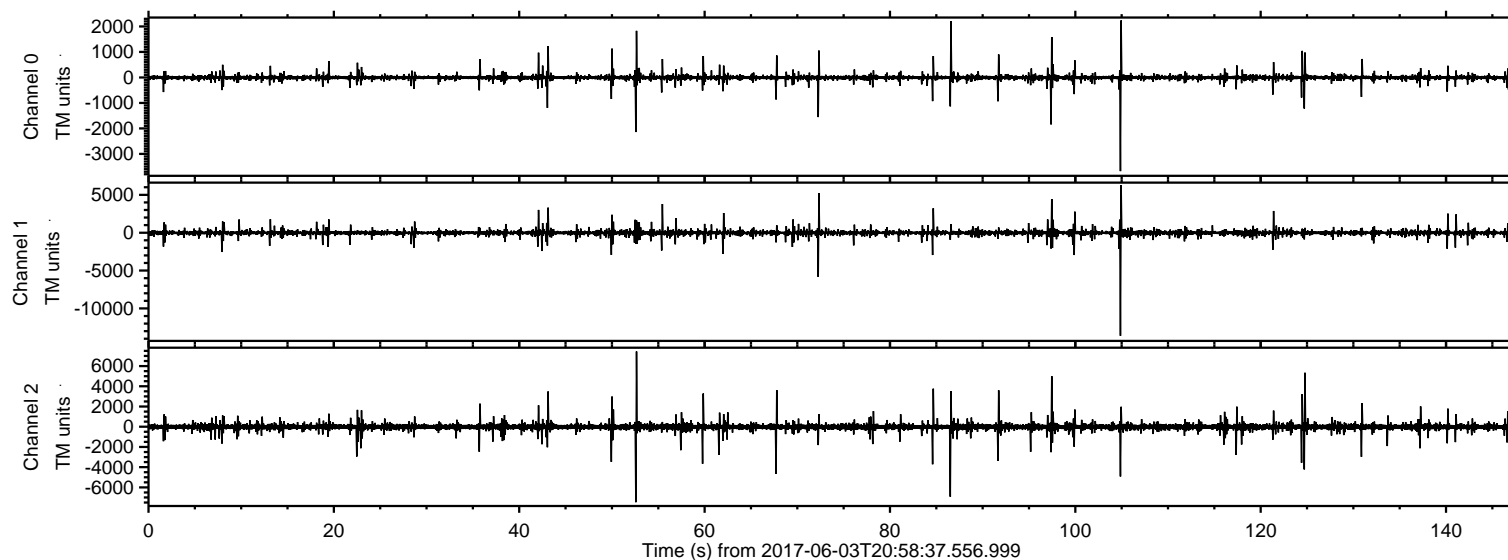


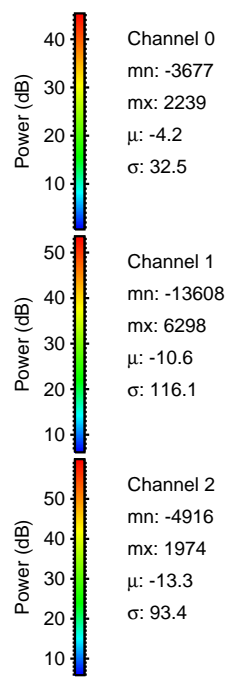
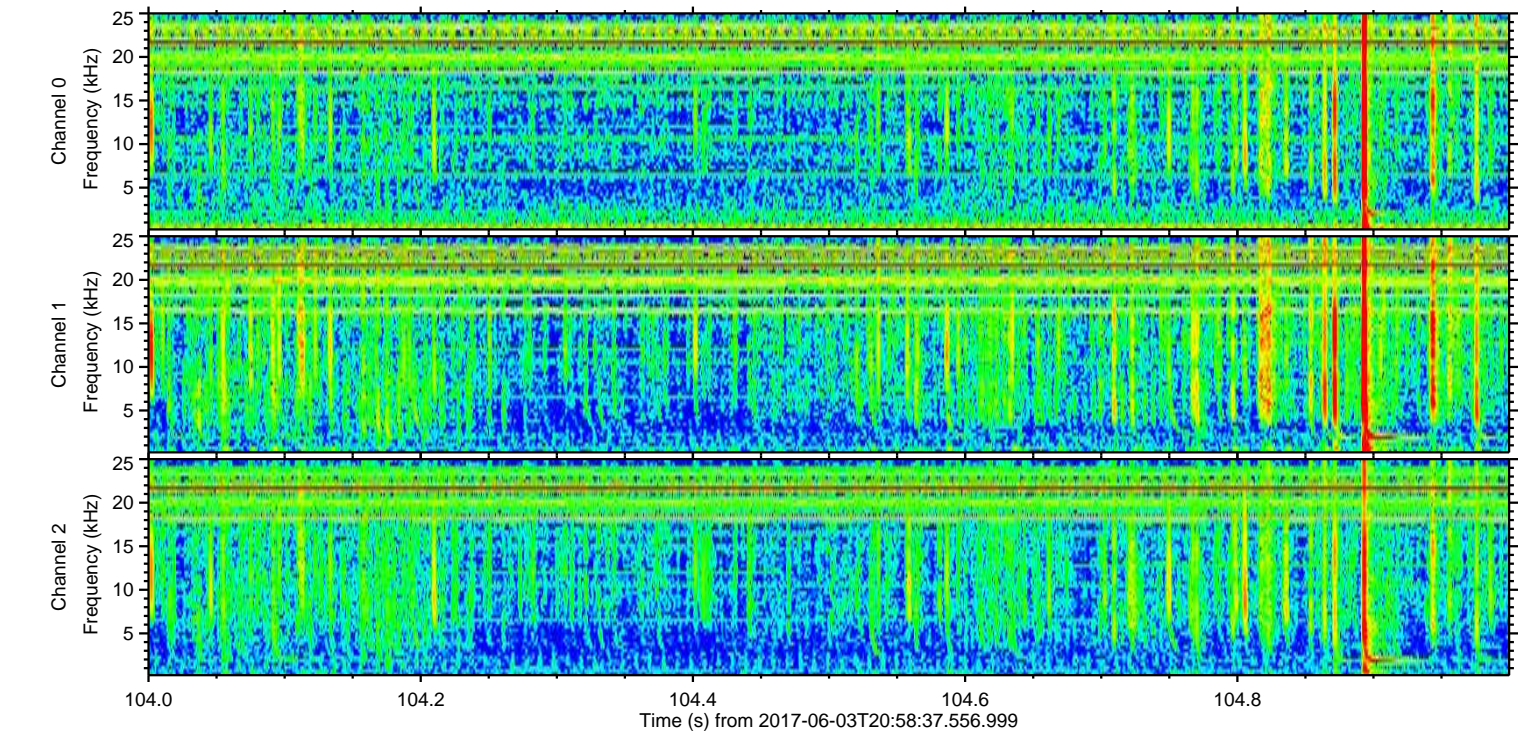
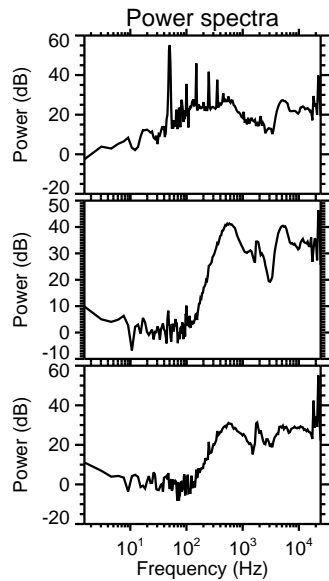
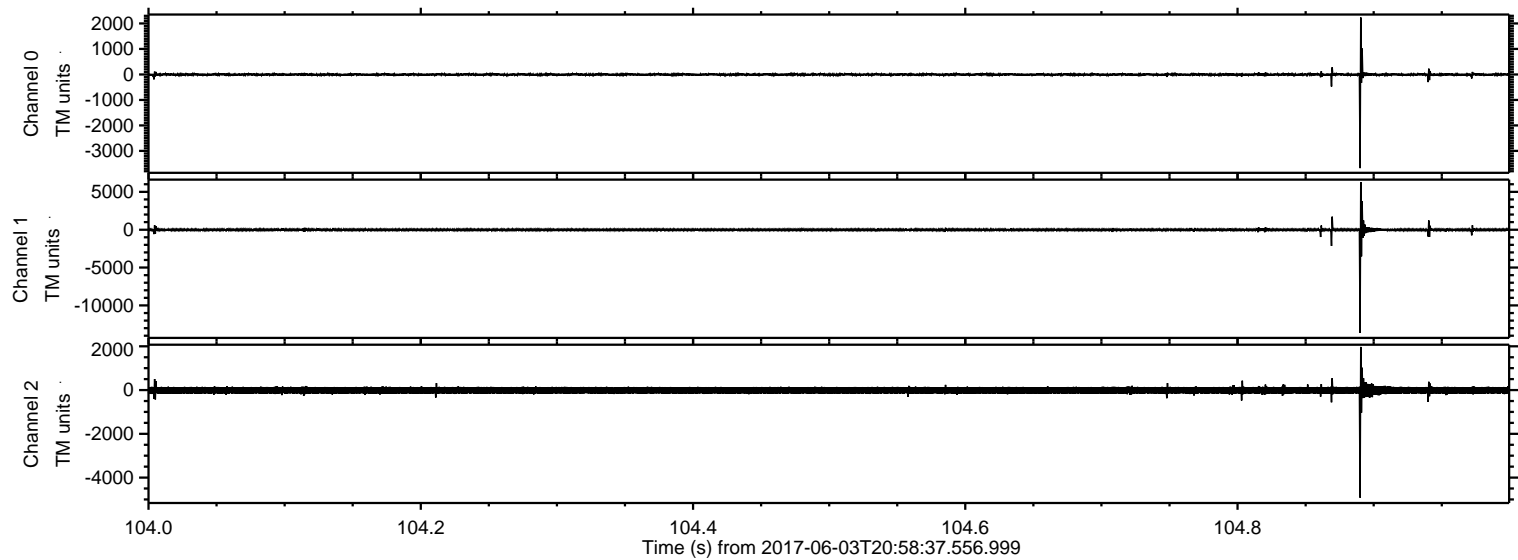
ELMAVAN 3D WAVEFORMS (Measured data sampled at 50 kHz) 51000 packets of 144 samples from 2017-06-03T20:58:37.556.999.

Processed Sat Jun 3 23:06:44 2017 by ELM ver.2012-10-06 from 001__elm20170603_205836__dat00.bin

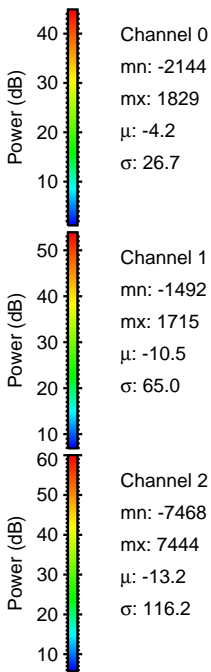
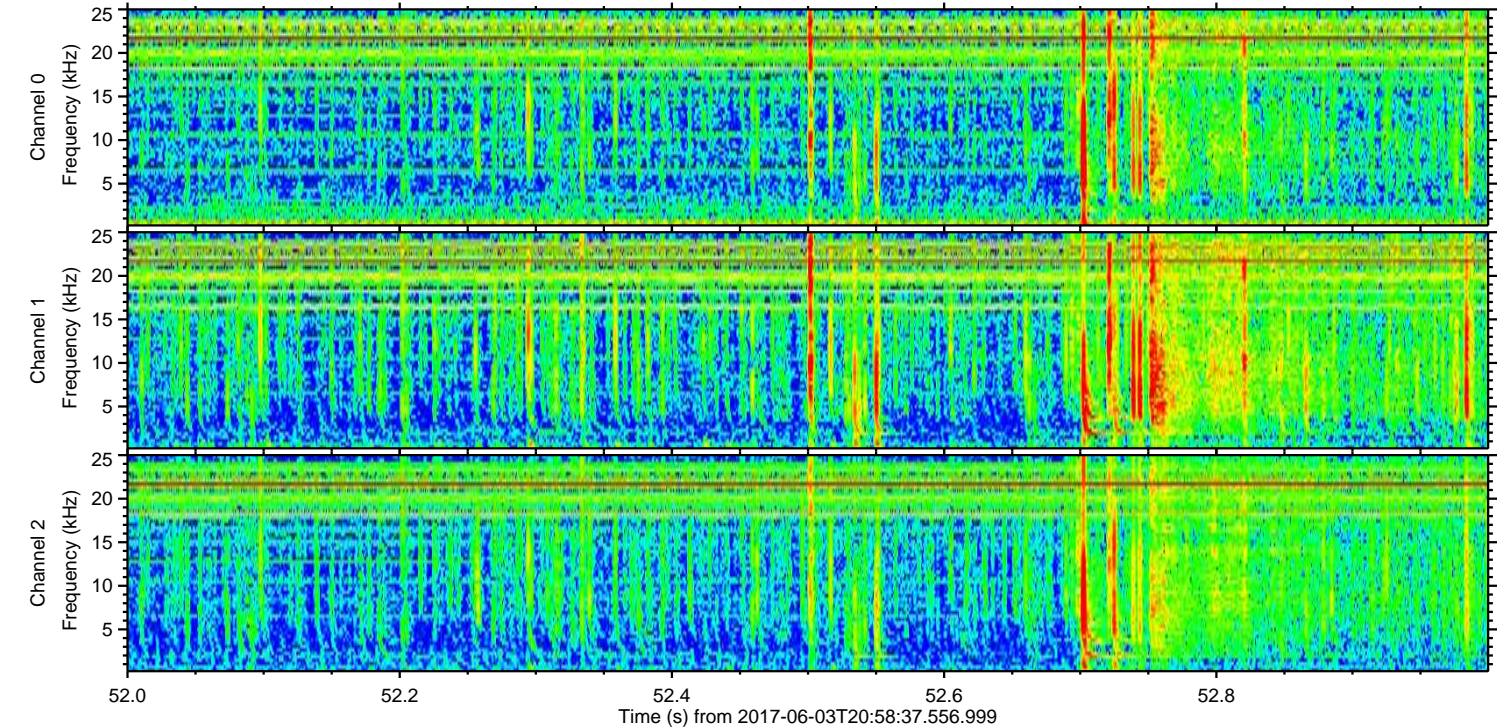
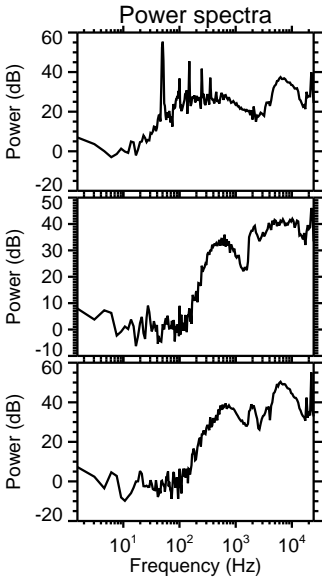
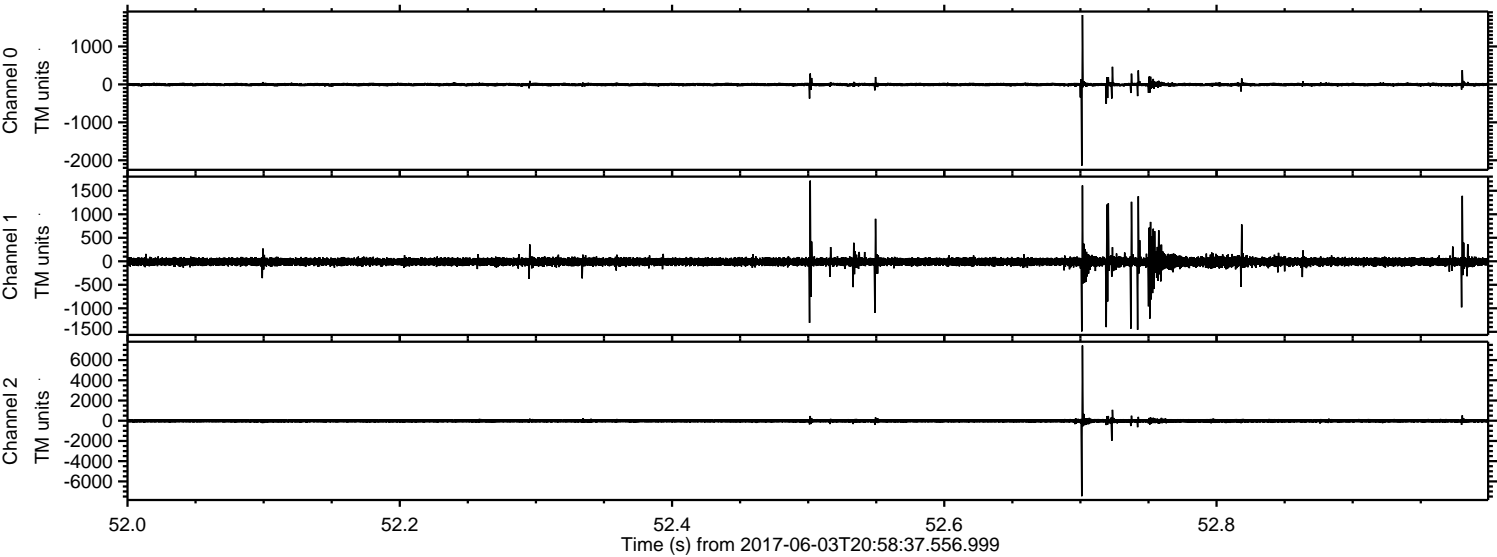


ELMAVAN 3D WAVEFORMS (Measured data sampled at 50 kHz) 51000 packets of 144 samples from 2017-06-03T20:58:37.556.999. Part 105/147

Processed Sat Jun 3 23:06:50 2017 by ELM ver.2012-10-06 from 001__elm20170603_205836__dat00.bin

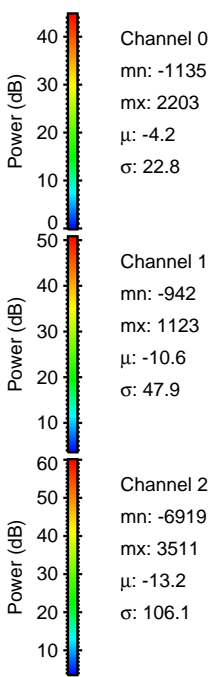
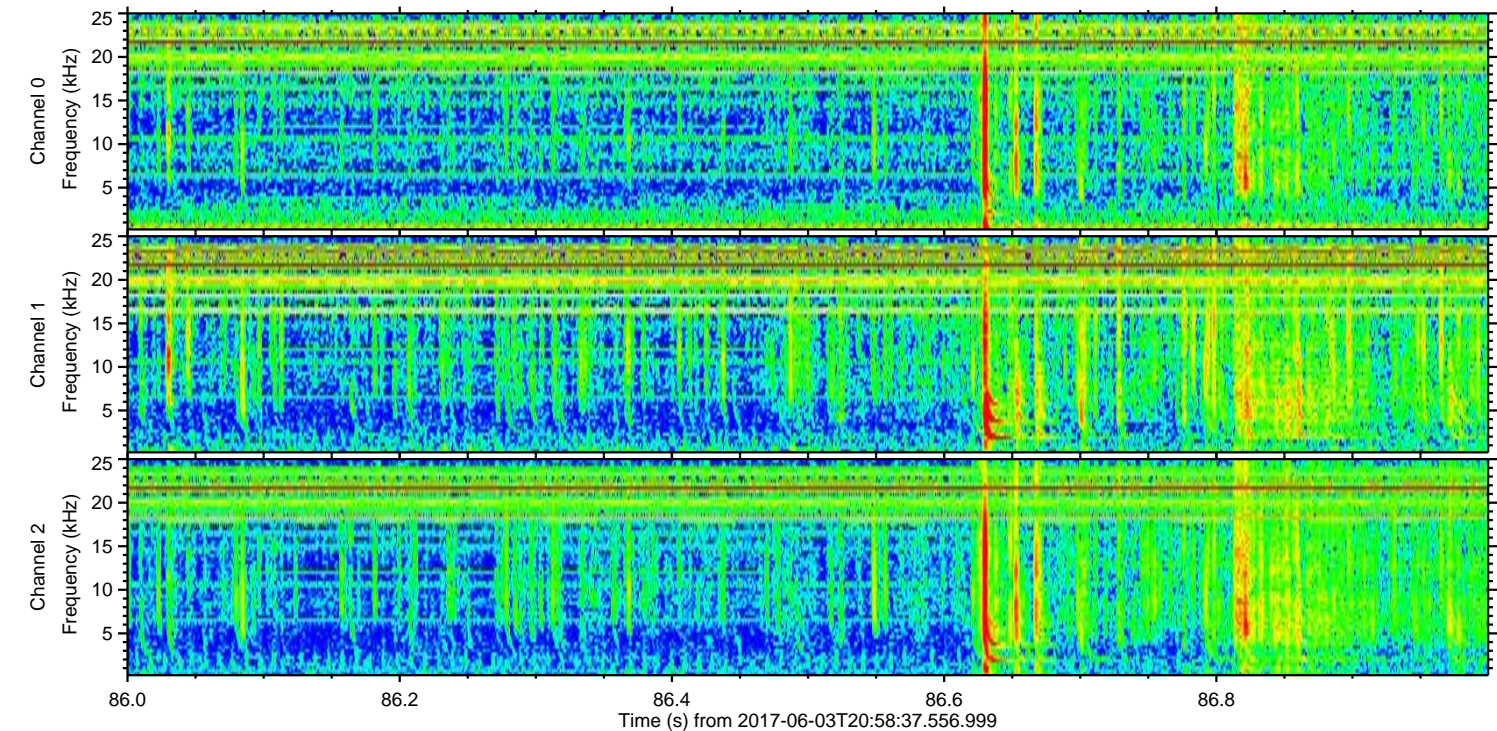
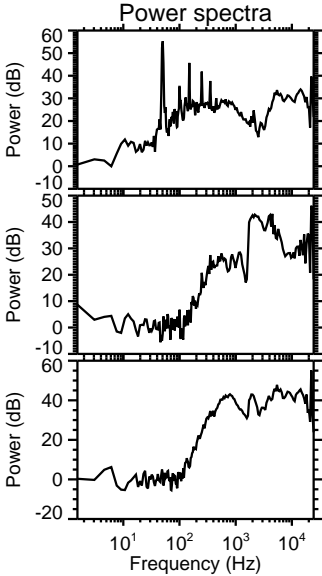
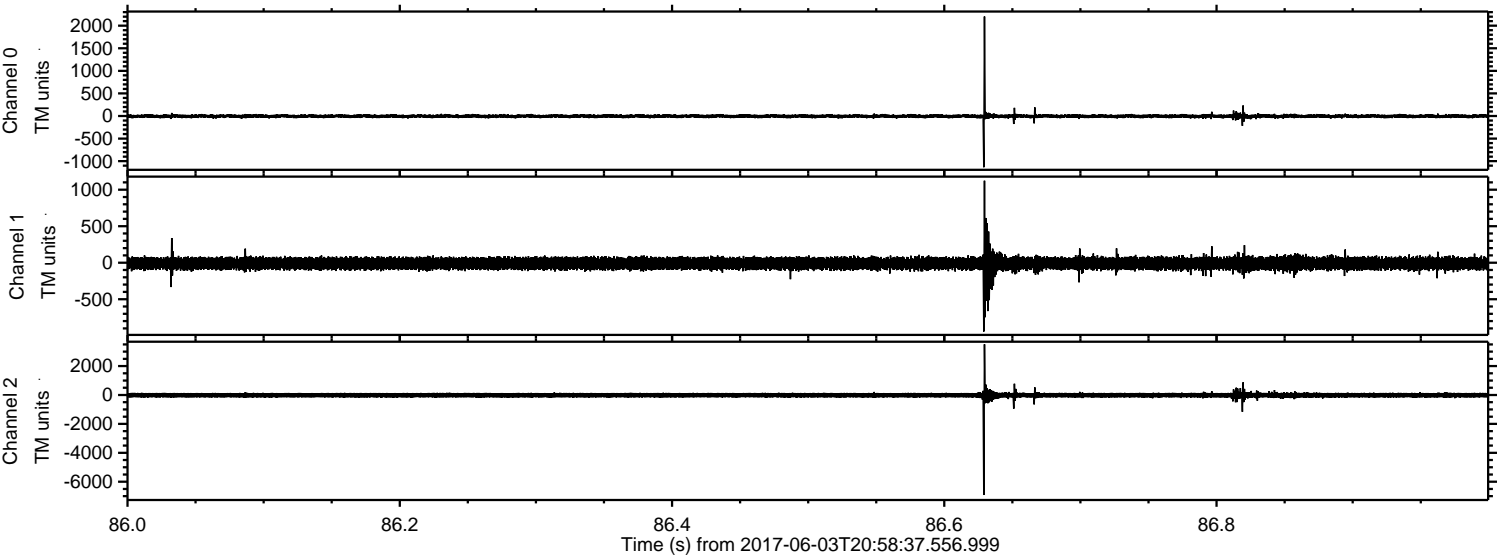


Processed Sat Jun 3 23:06:51 2017 by ELM ver.2012-10-06 from 001__elm20170603_205836__dat00.bin



ELMAVAN 3D WAVEFORMS (Measured data sampled at 50 kHz) 51000 packets of 144 samples from 2017-06-03T20:58:37.556.999. Part 87/147

Processed Sat Jun 3 23:06:52 2017 by ELM ver.2012-10-06 from 001__elm20170603_205836__dat00.bin



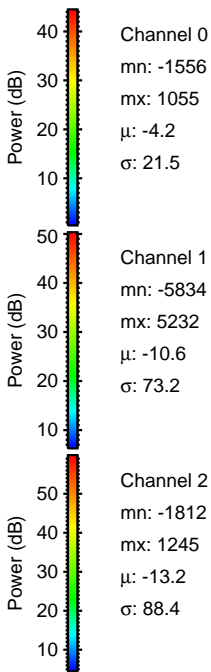
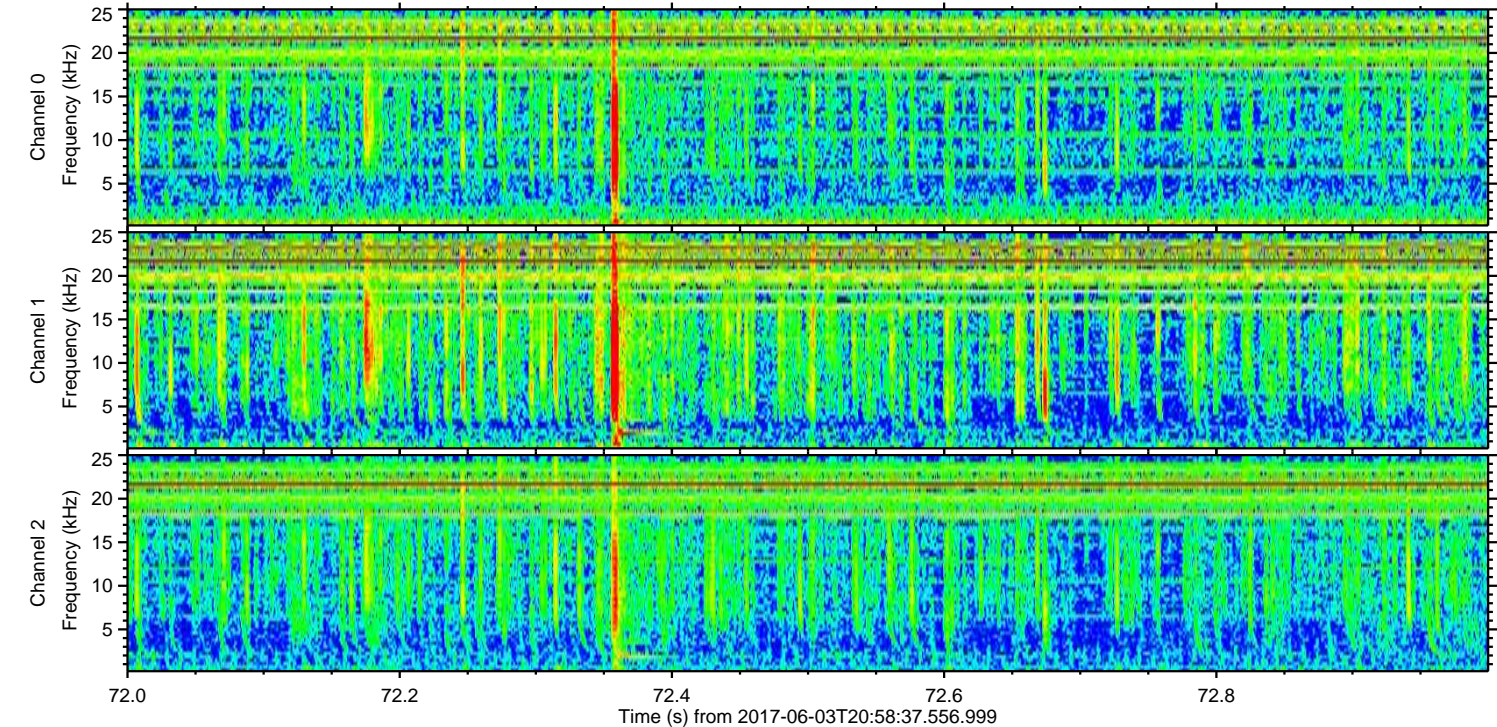
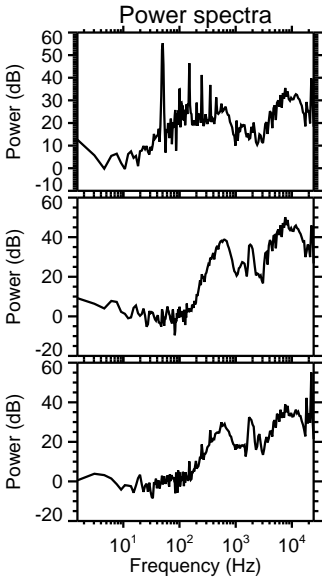
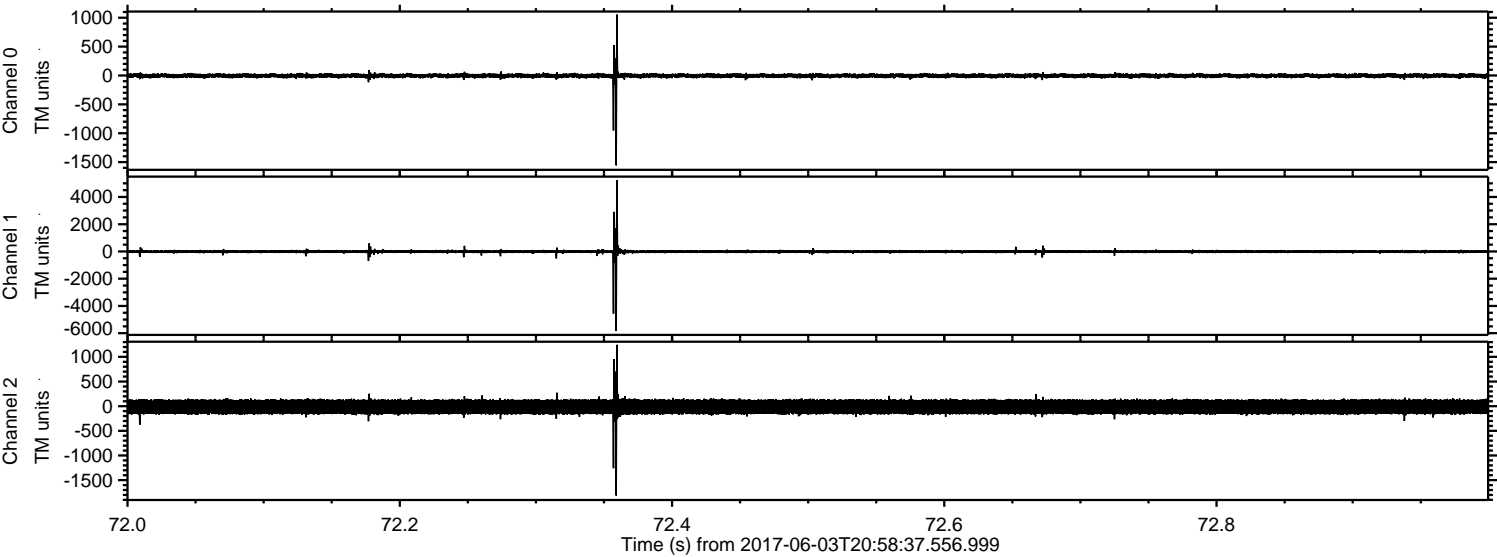
Channel 0
mn: -1135
mx: 2203
 μ : -4.2
 σ : 22.8

Channel 1
mn: -942
mx: 1123
 μ : -10.6
 σ : 47.9

Channel 2
mn: -6919
mx: 3511
 μ : -13.2
 σ : 106.1

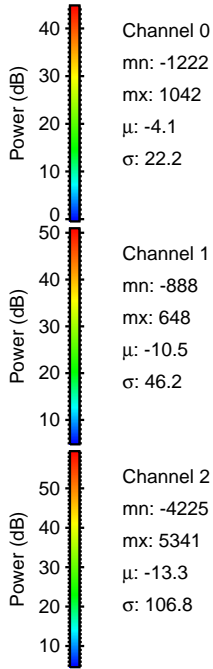
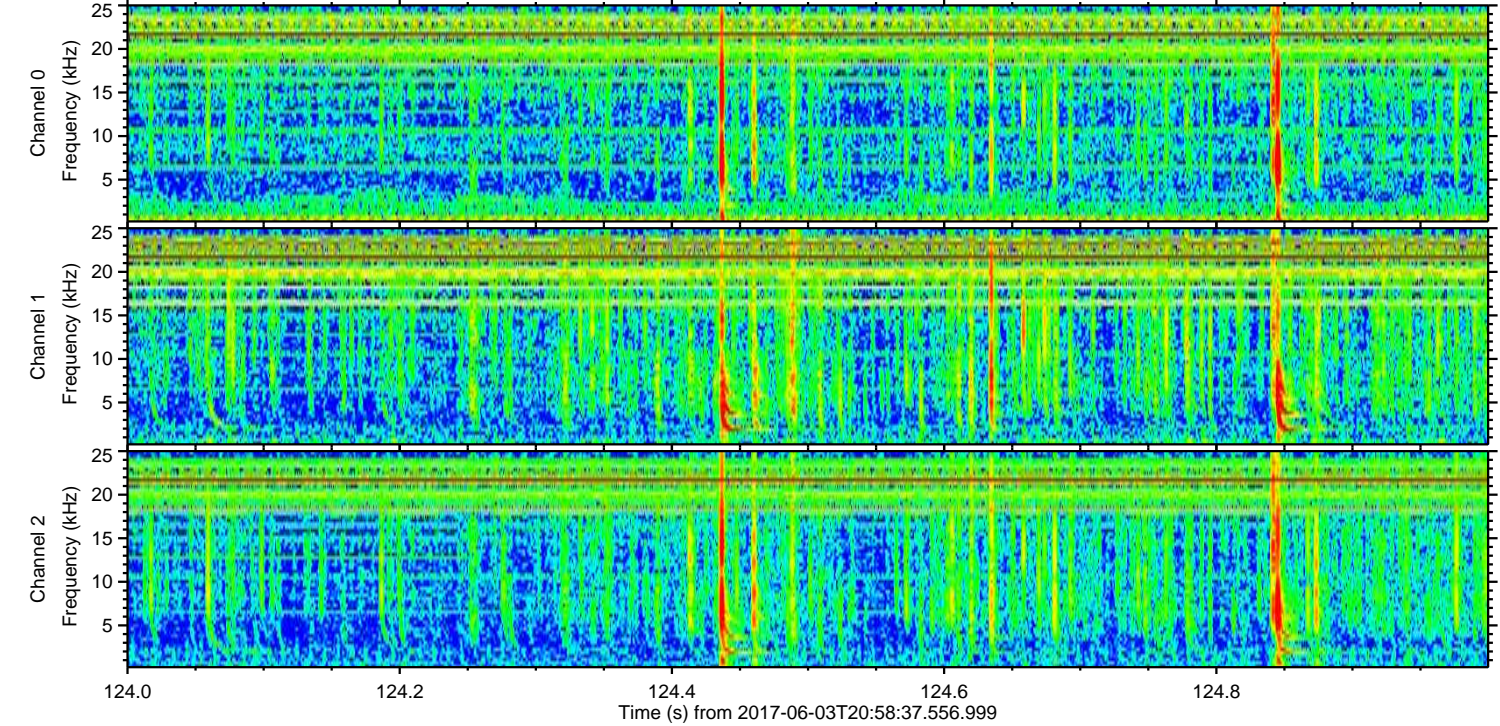
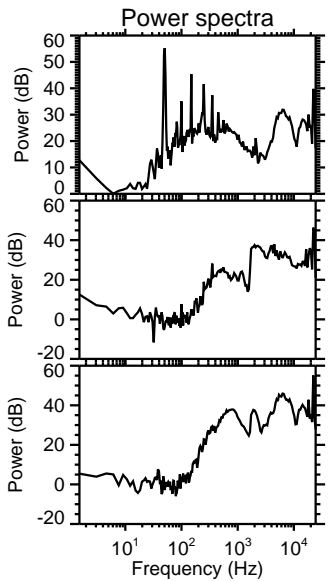
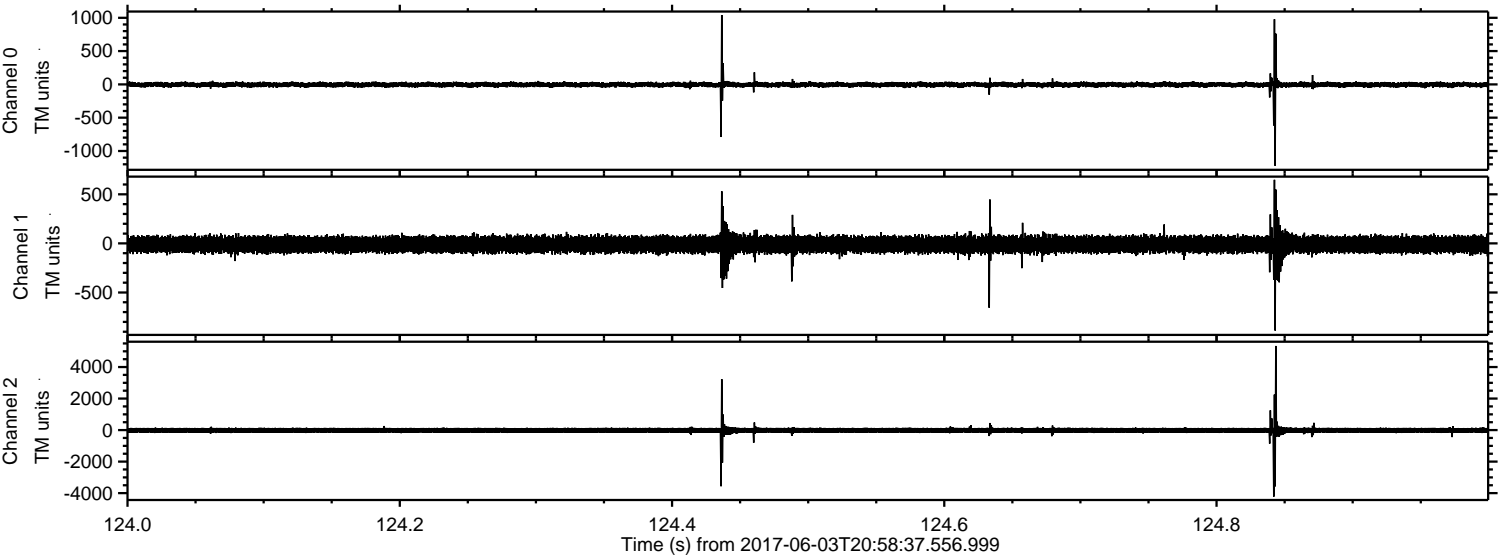
ELMAVAN 3D WAVEFORMS (Measured data sampled at 50 kHz) 51000 packets of 144 samples from 2017-06-03T20:58:37.556.999. Part 73/147

Processed Sat Jun 3 23:06:52 2017 by ELM ver.2012-10-06 from 001__elm20170603_205836__dat00.bin

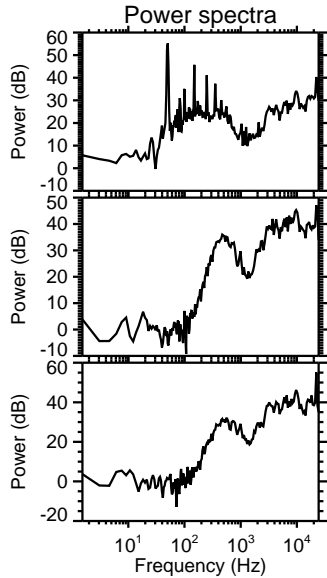
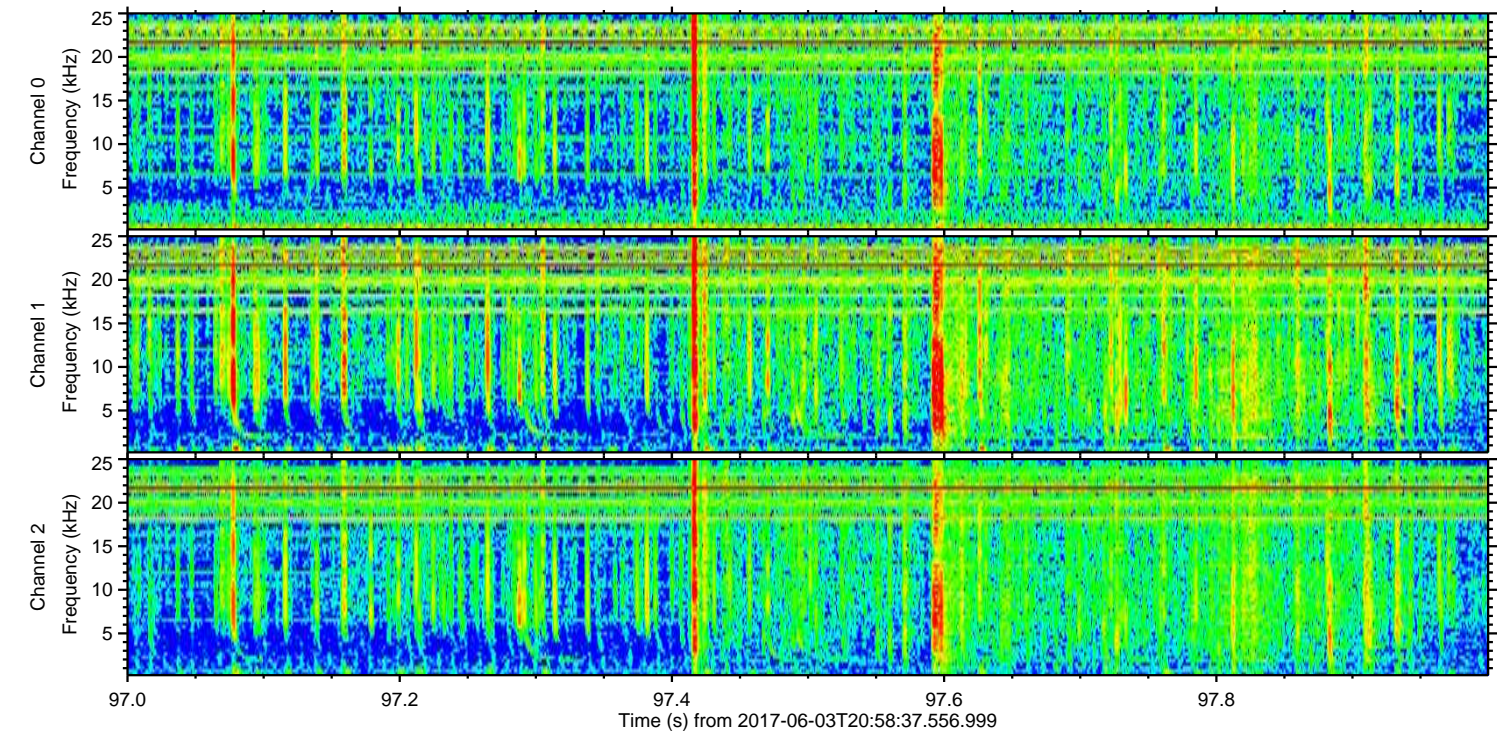
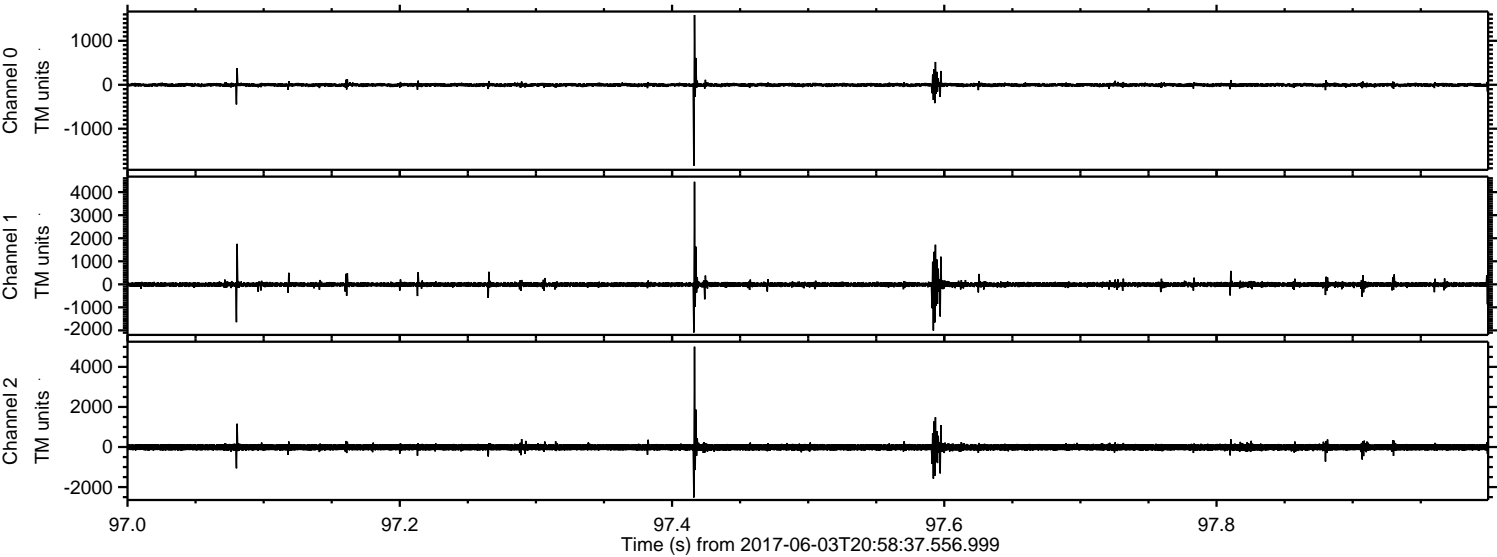


ELMAVAN 3D WAVEFORMS (Measured data sampled at 50 kHz) 51000 packets of 144 samples from 2017-06-03T20:58:37.556.999. Part 125/147

Processed Sat Jun 3 23:06:53 2017 by ELM ver.2012-10-06 from 001__elm20170603_205836__dat00.bin



Processed Sat Jun 3 23:06:53 2017 by ELM ver.2012-10-06 from 001__elm20170603_205836__dat00.bin

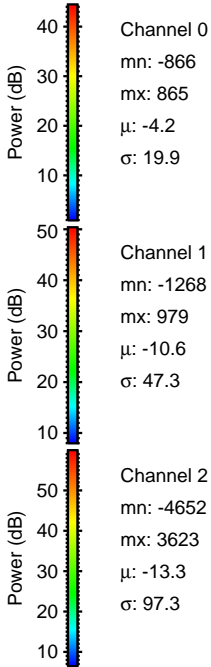
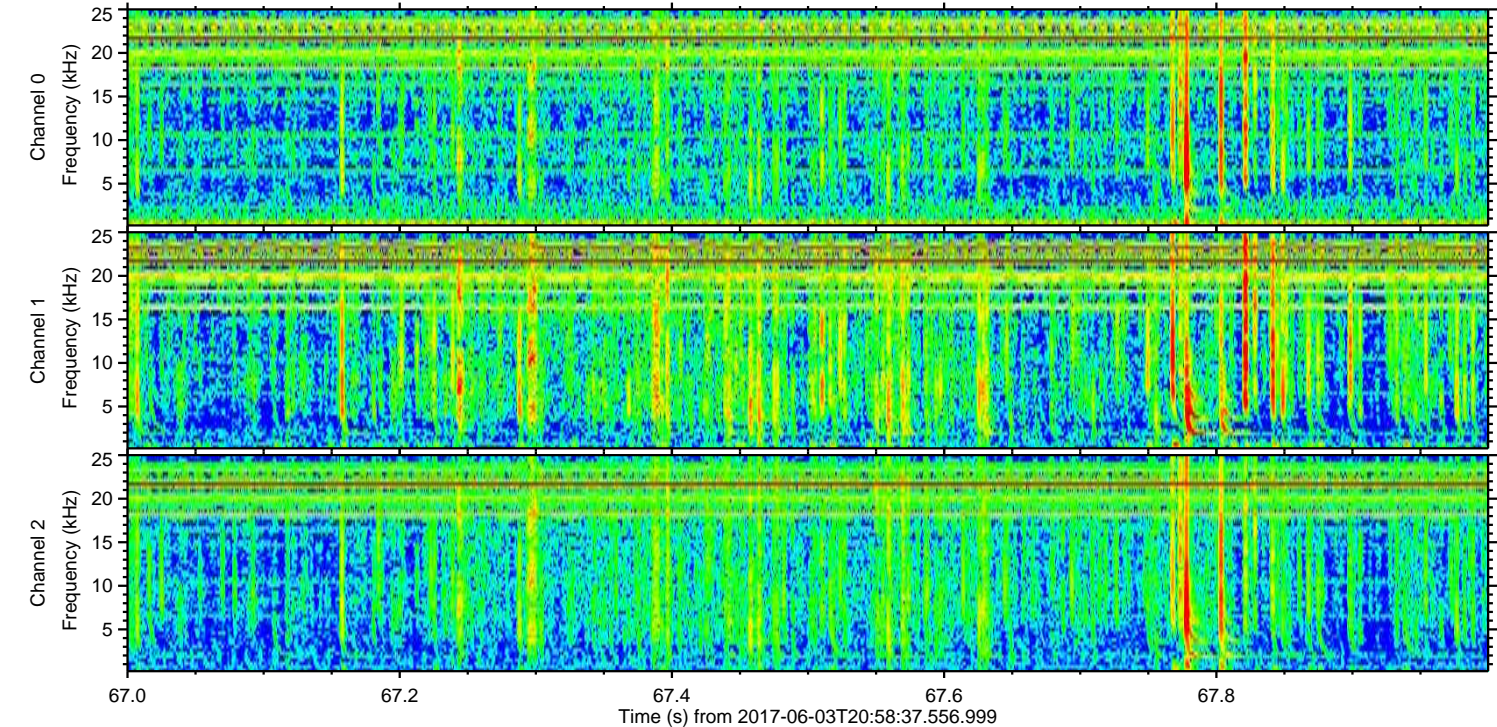
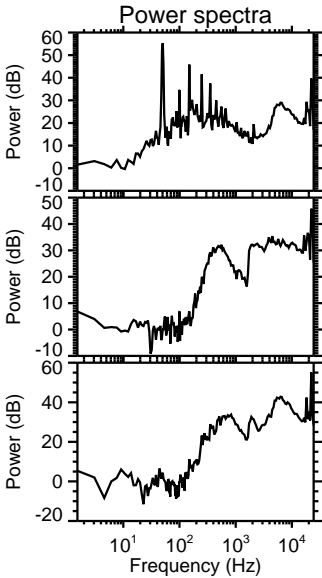
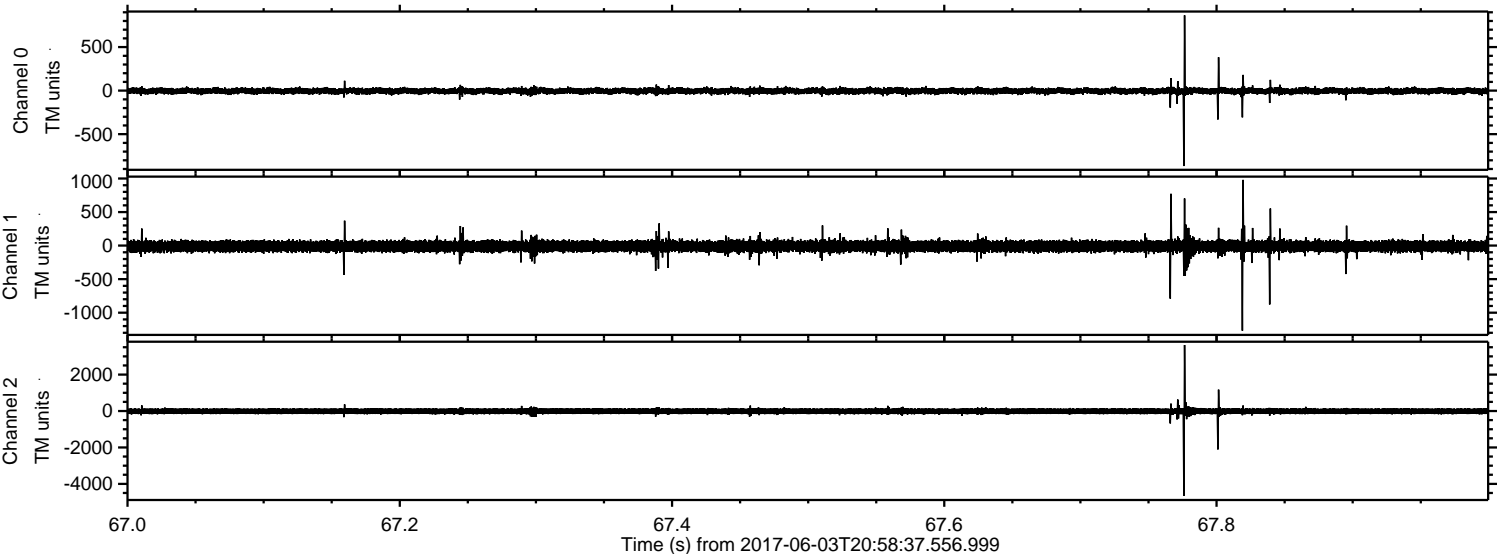


Channel 0
mn: -1843
mx: 1586
 μ : -4.2
 σ : 23.2

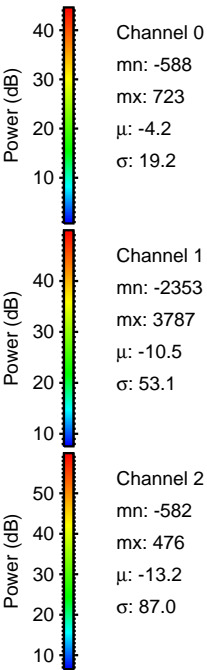
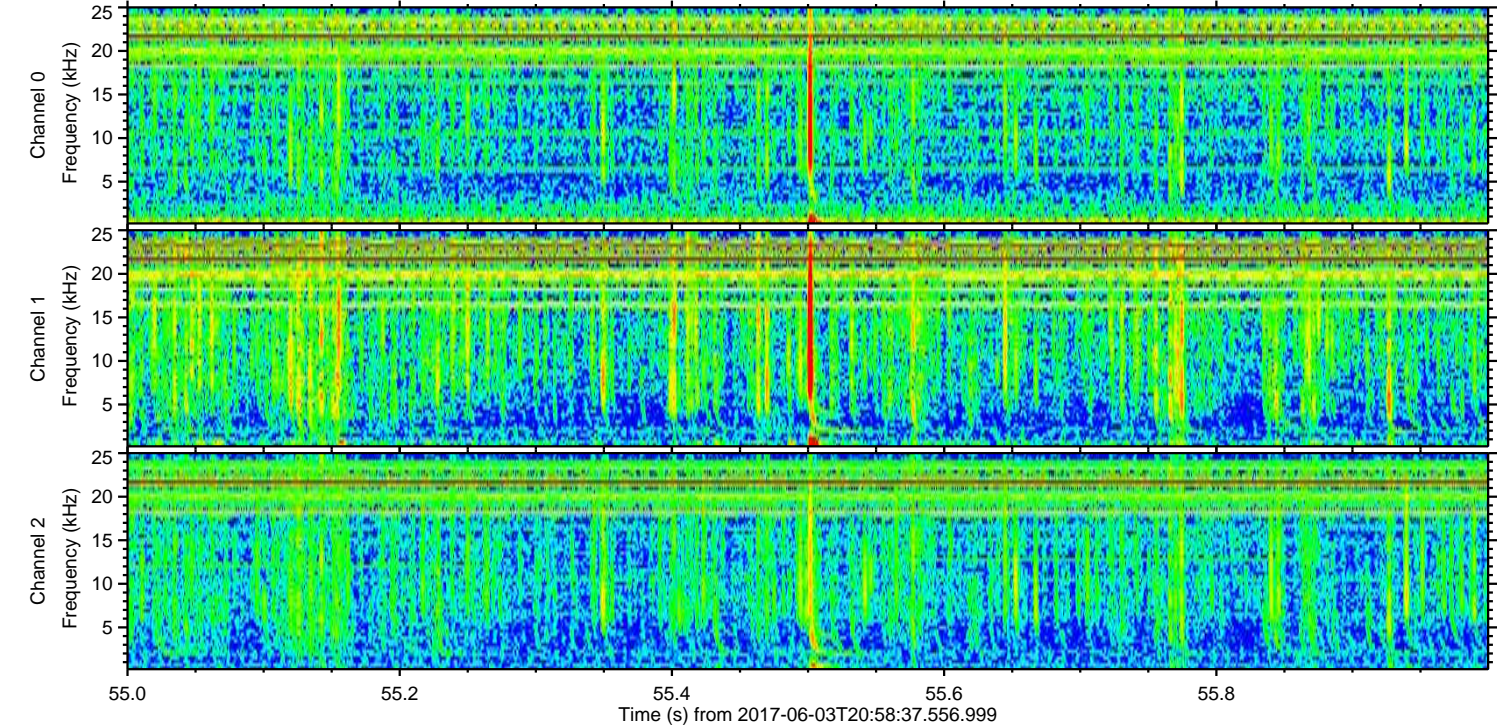
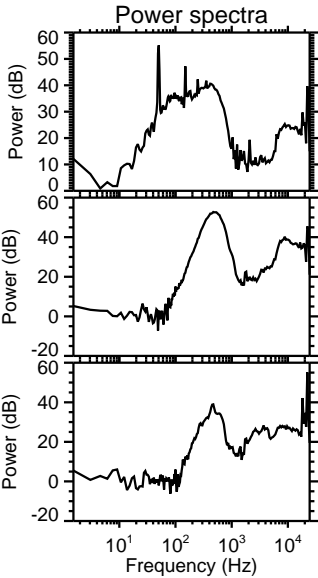
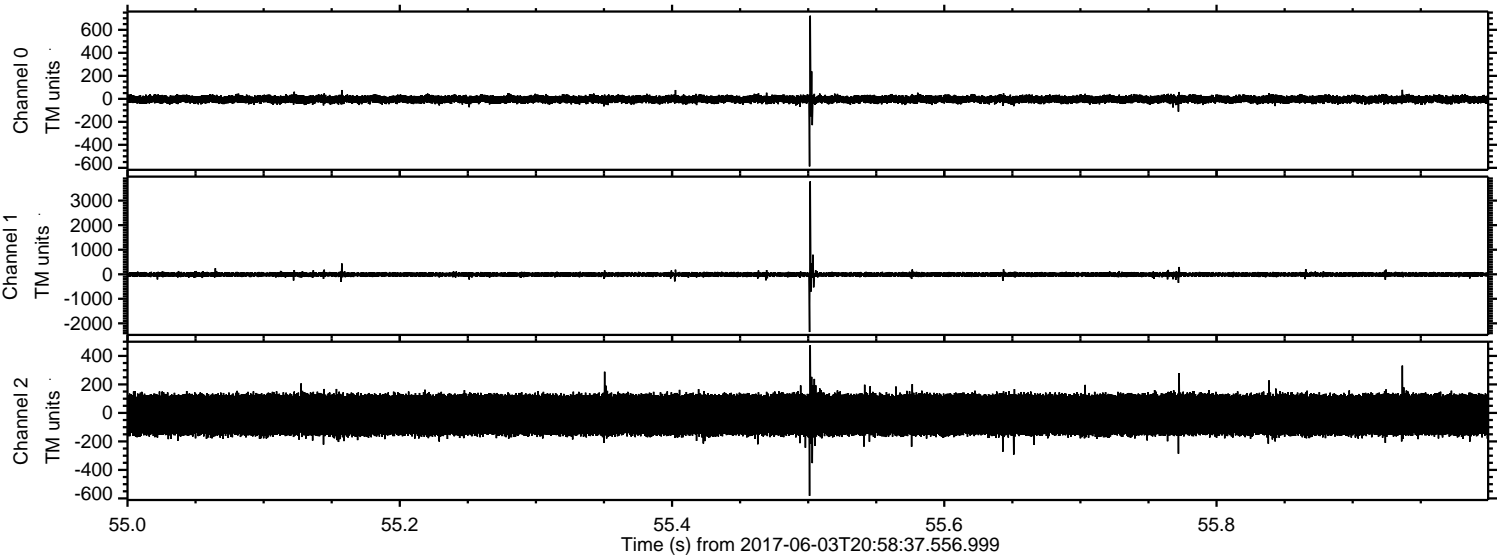
Channel 1
mn: -2091
mx: 4450
 μ : -10.6
 σ : 66.5

Channel 2
mn: -2518
mx: 5008
 μ : -13.3
 σ : 98.9

Processed Sat Jun 3 23:06:54 2017 by ELM ver.2012-10-06 from 001__elm20170603_205836__dat00.bin



Processed Sat Jun 3 23:06:55 2017 by ELM ver.2012-10-06 from 001__elm20170603_205836__dat00.bin



Processed Sat Jun 3 23:06:55 2017 by ELM ver.2012-10-06 from 001__elm20170603_205836__dat00.bin

