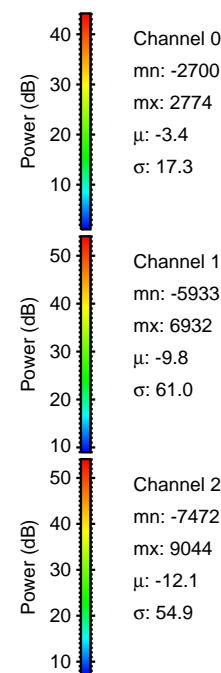
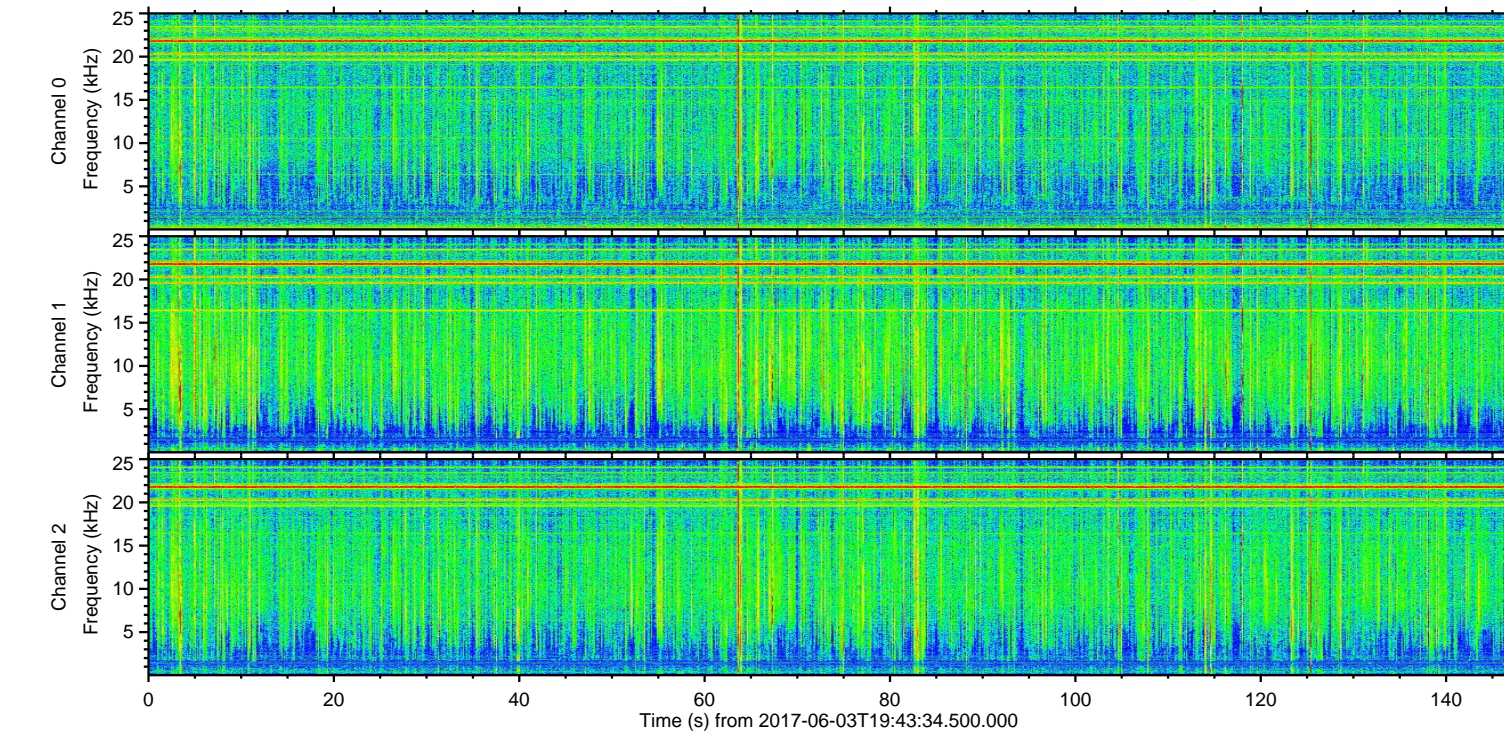
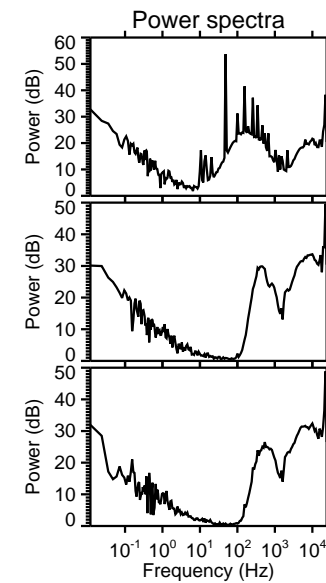
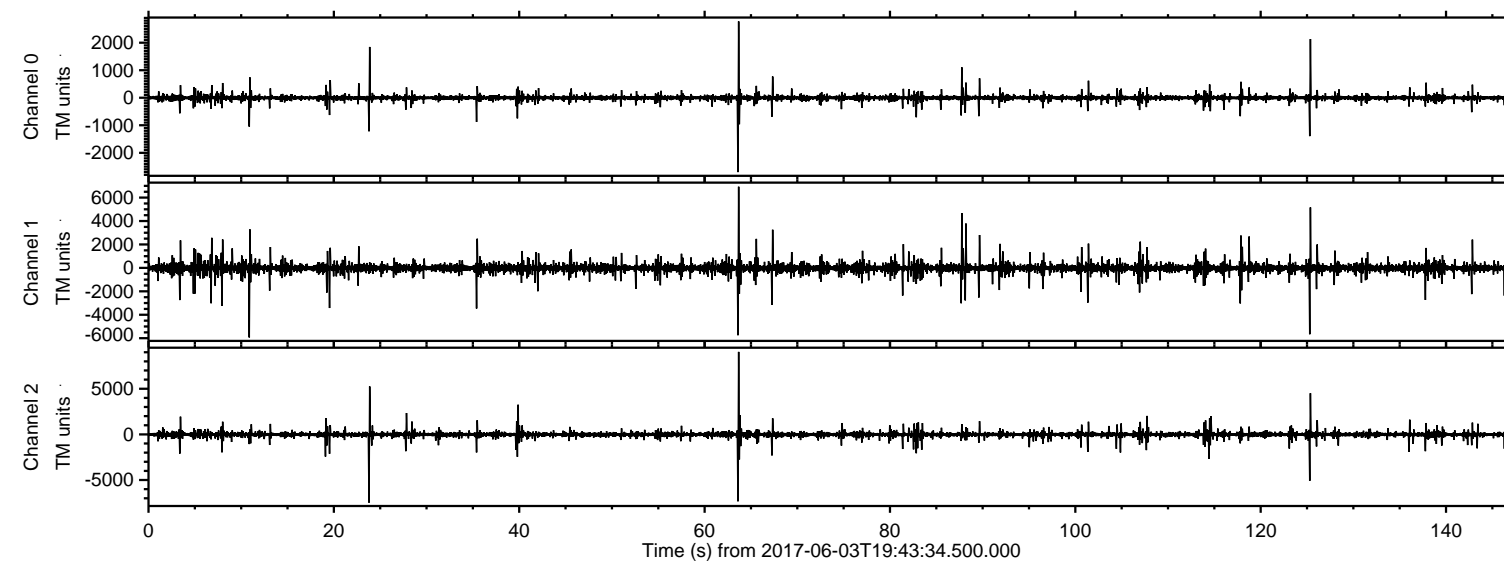
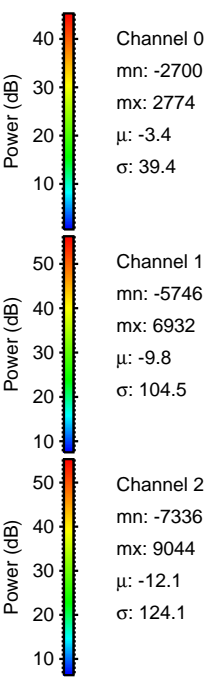
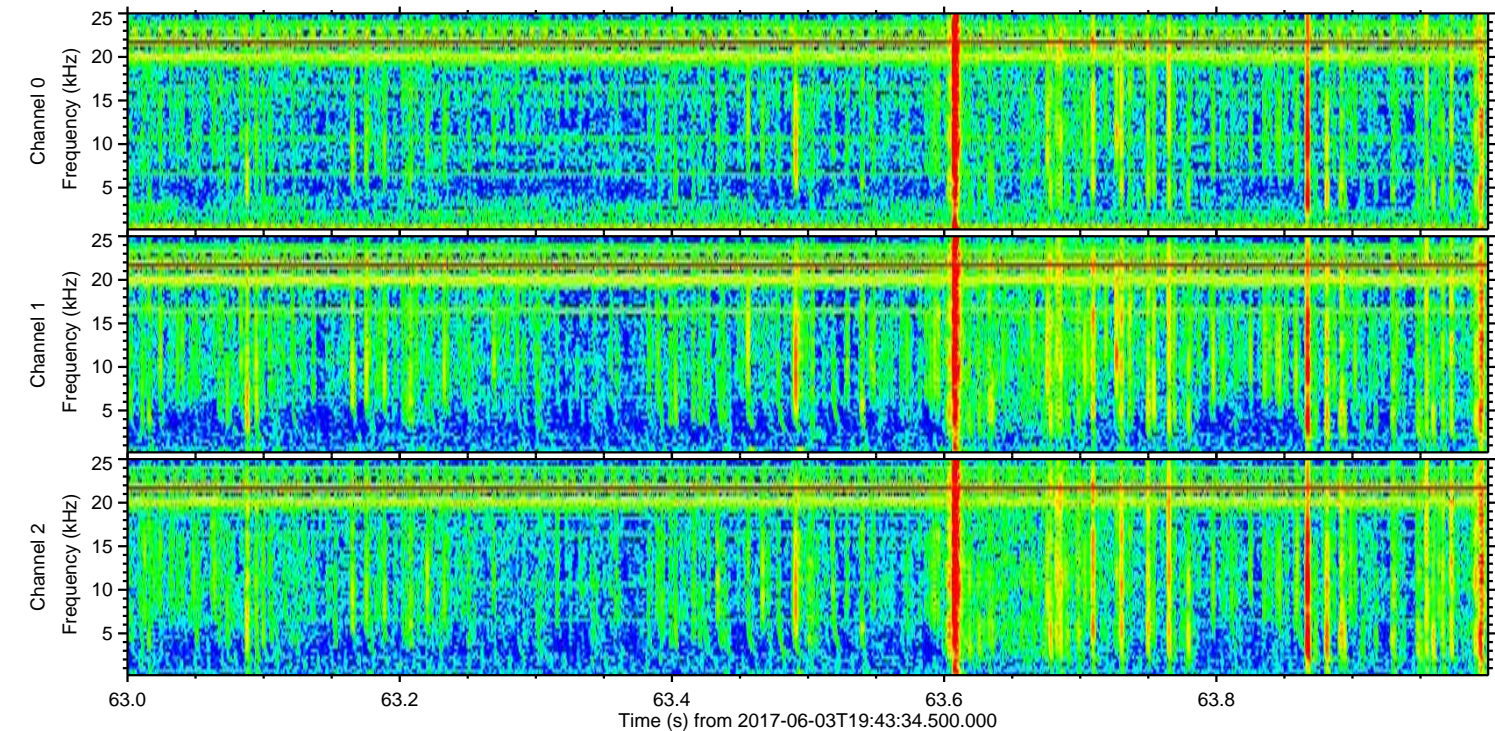
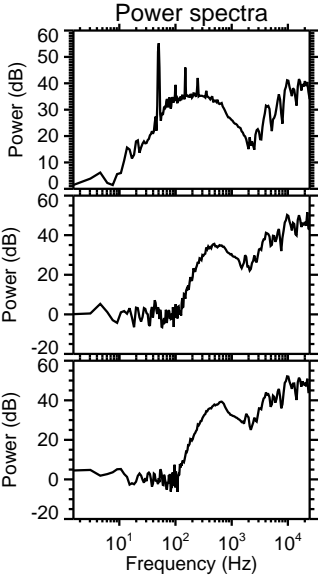
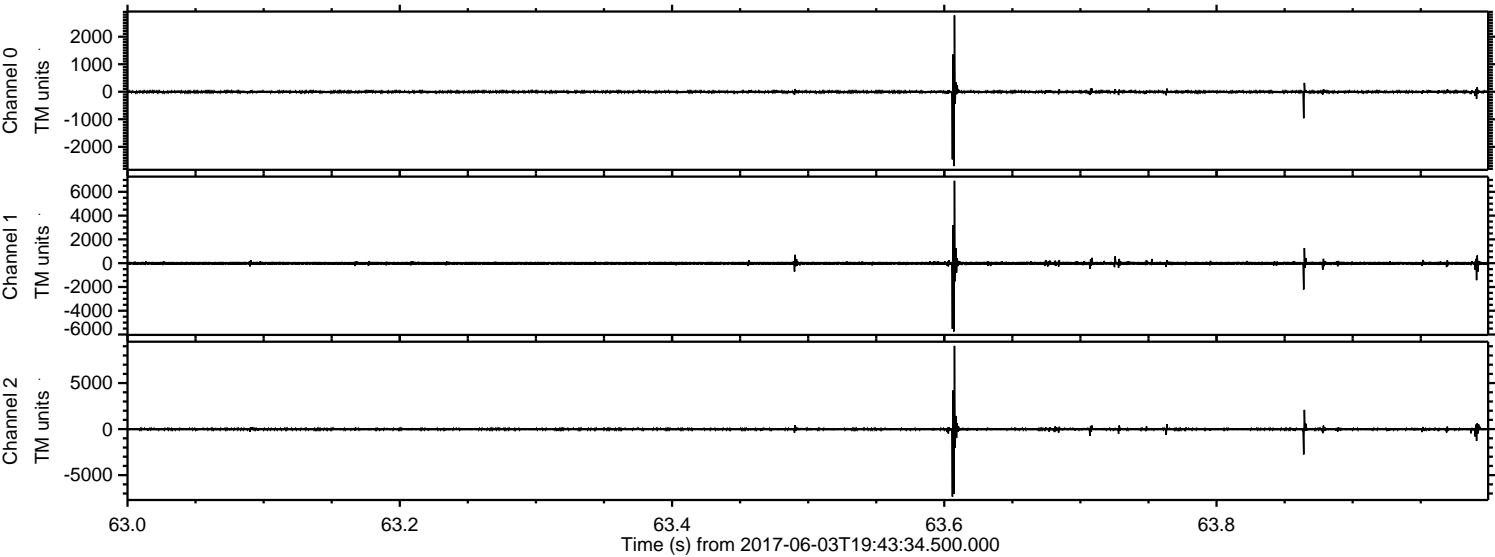


ELMAVAN 3D WAVEFORMS (Measured data sampled at 50 kHz) 51000 packets of 144 samples from 2017-06-03T19:43:34.500.000.

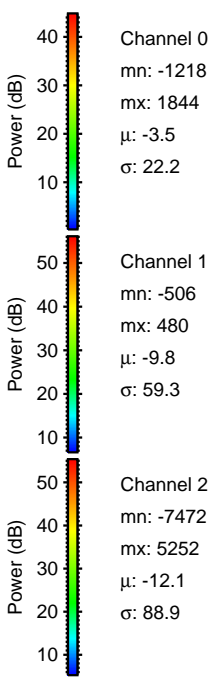
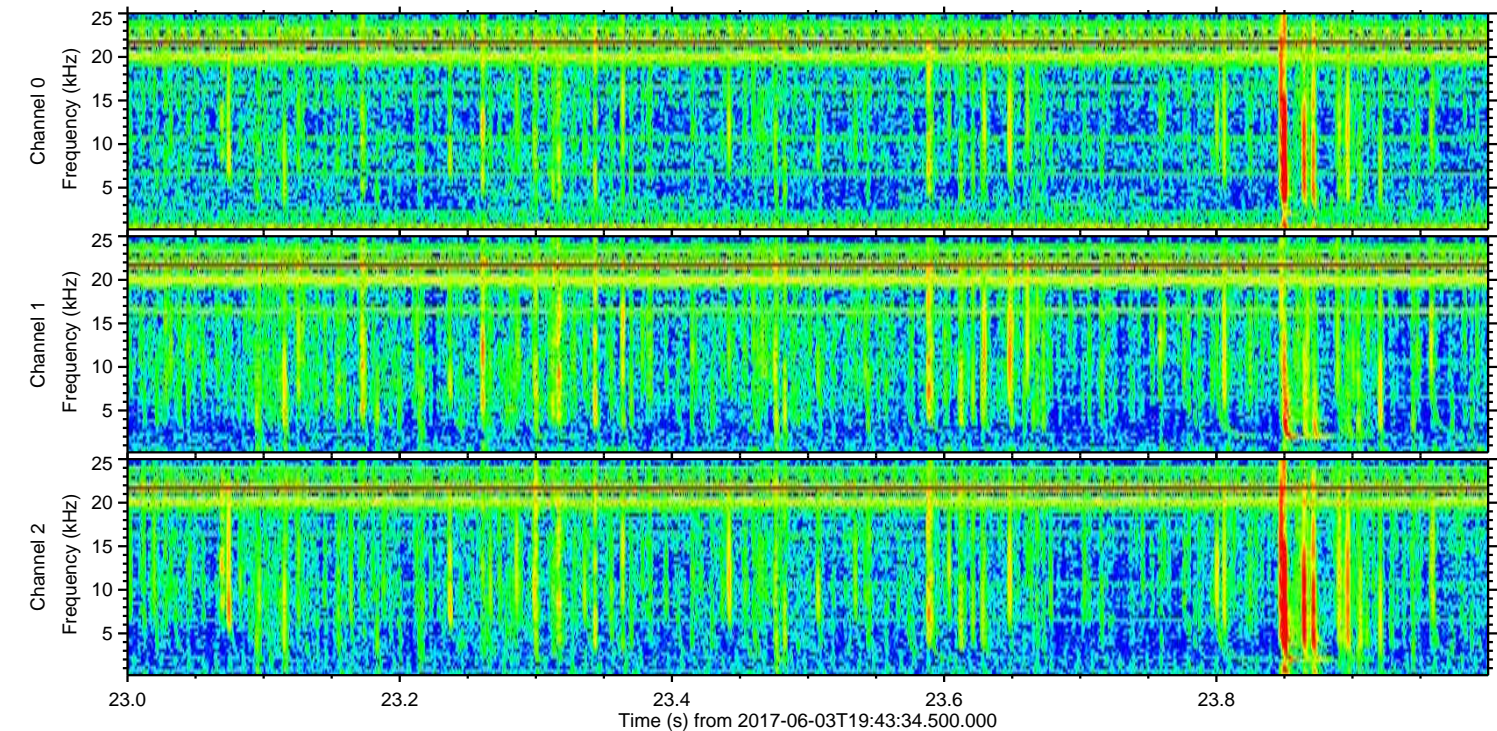
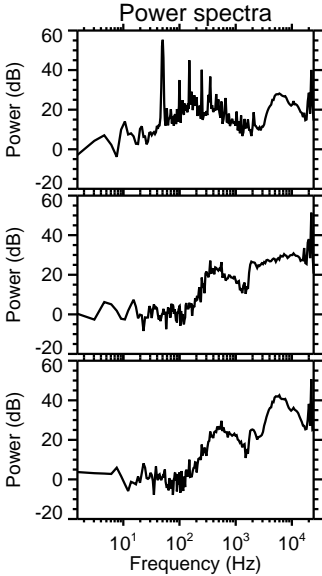
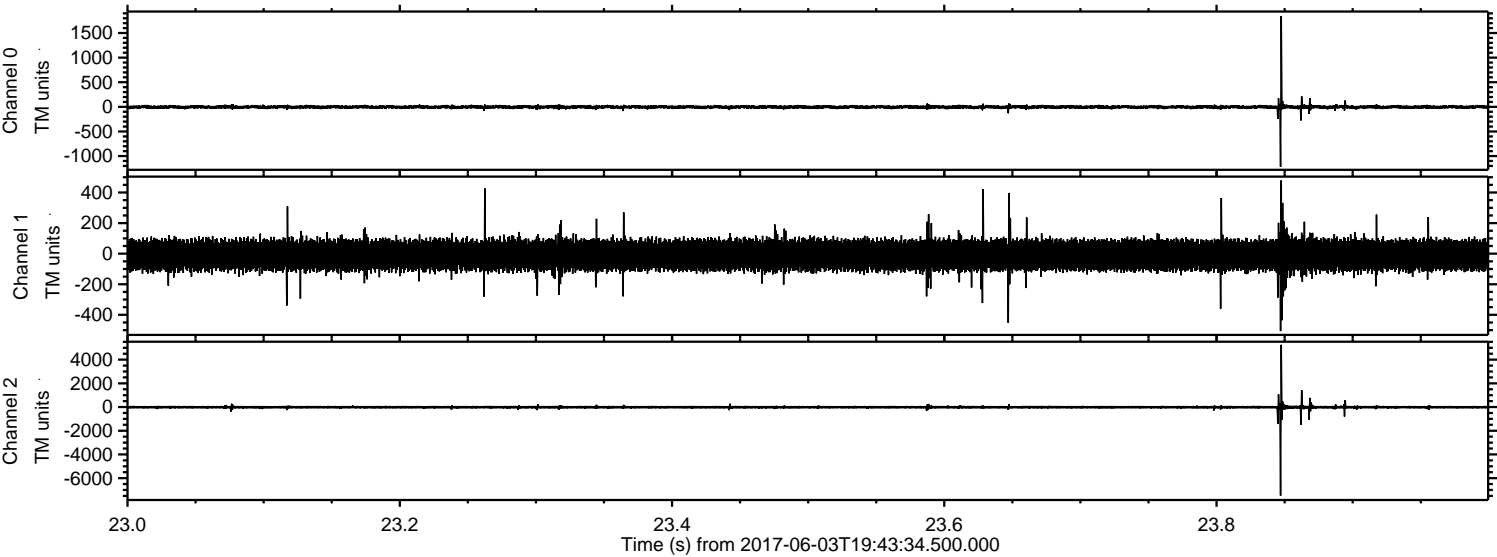
Processed Sat Jun 3 21:51:57 2017 by ELM ver.2012-10-06 from 001__elm20170603_194333__dat00.bin



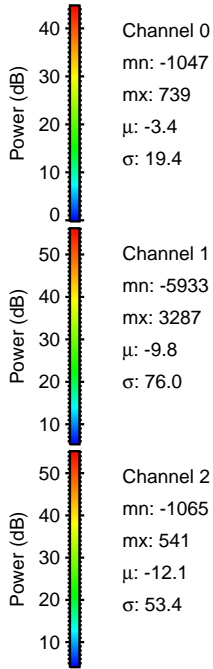
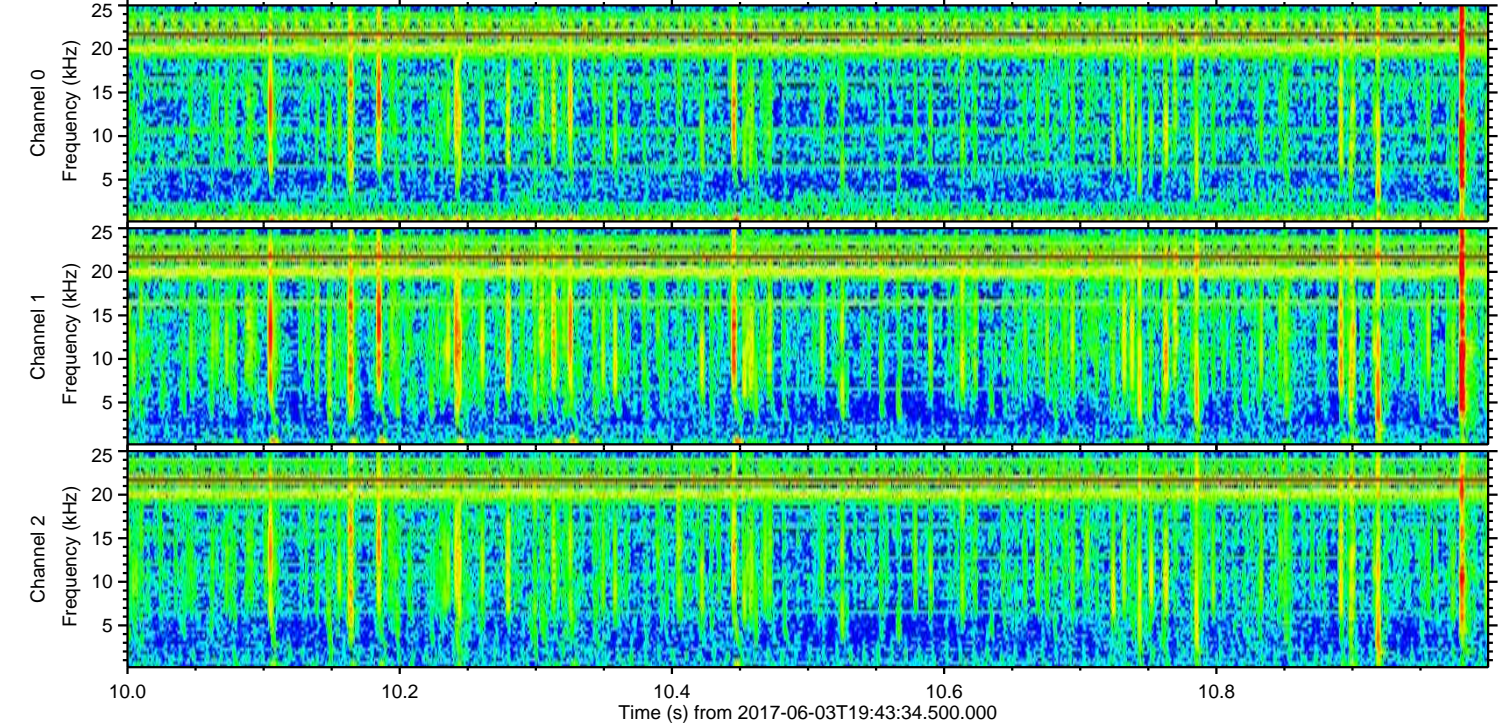
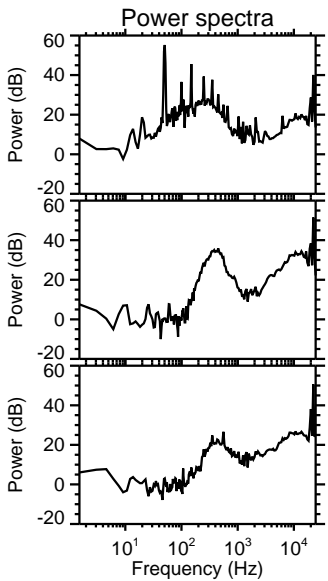
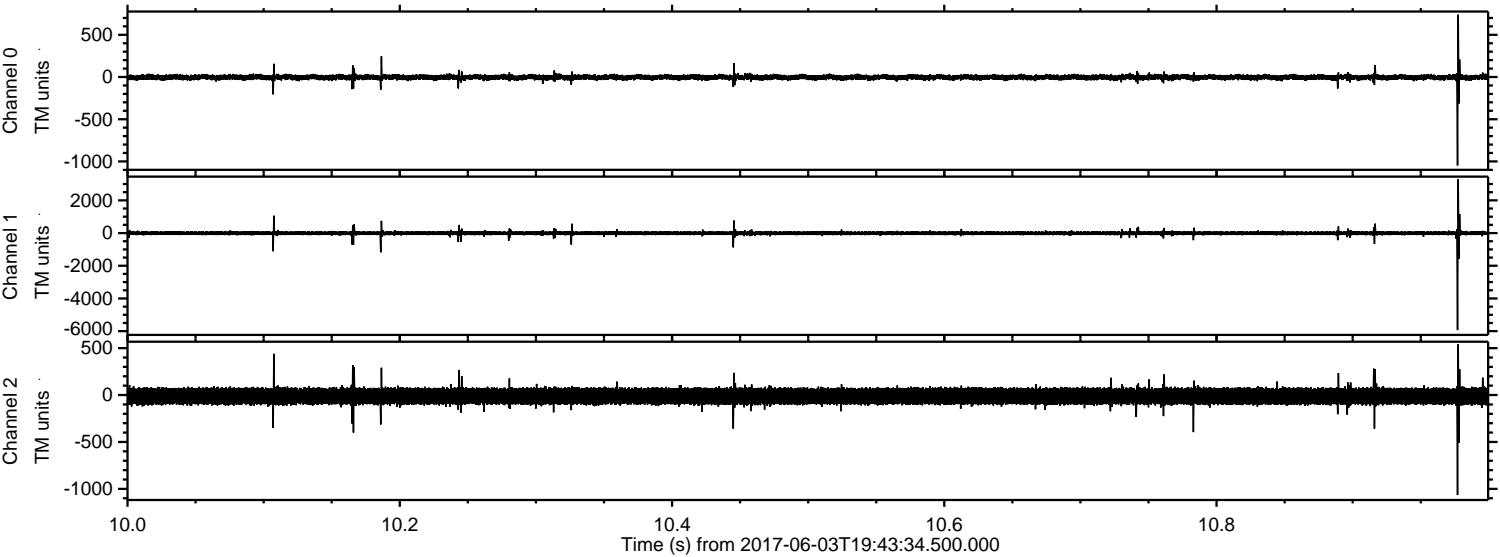
Processed Sat Jun 3 21:52:03 2017 by ELM ver.2012-10-06 from 001__elm20170603_194333__dat00.bin



Processed Sat Jun 3 21:52:04 2017 by ELM ver.2012-10-06 from 001__elm20170603_194333__dat00.bin

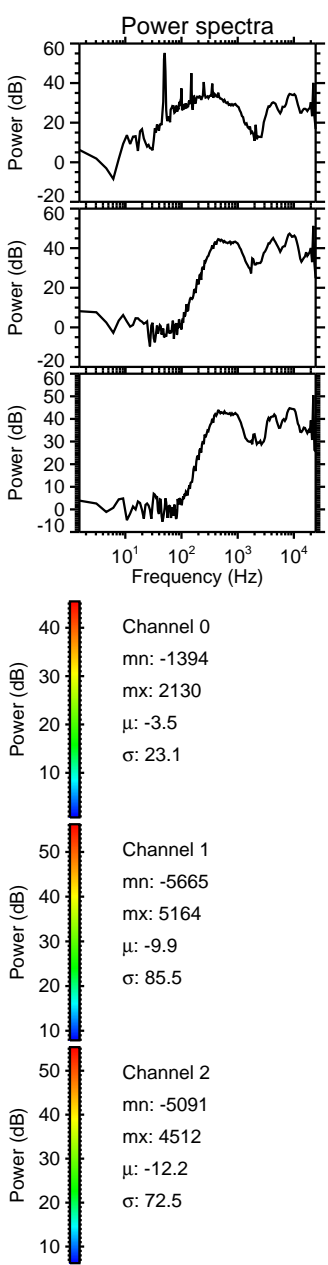
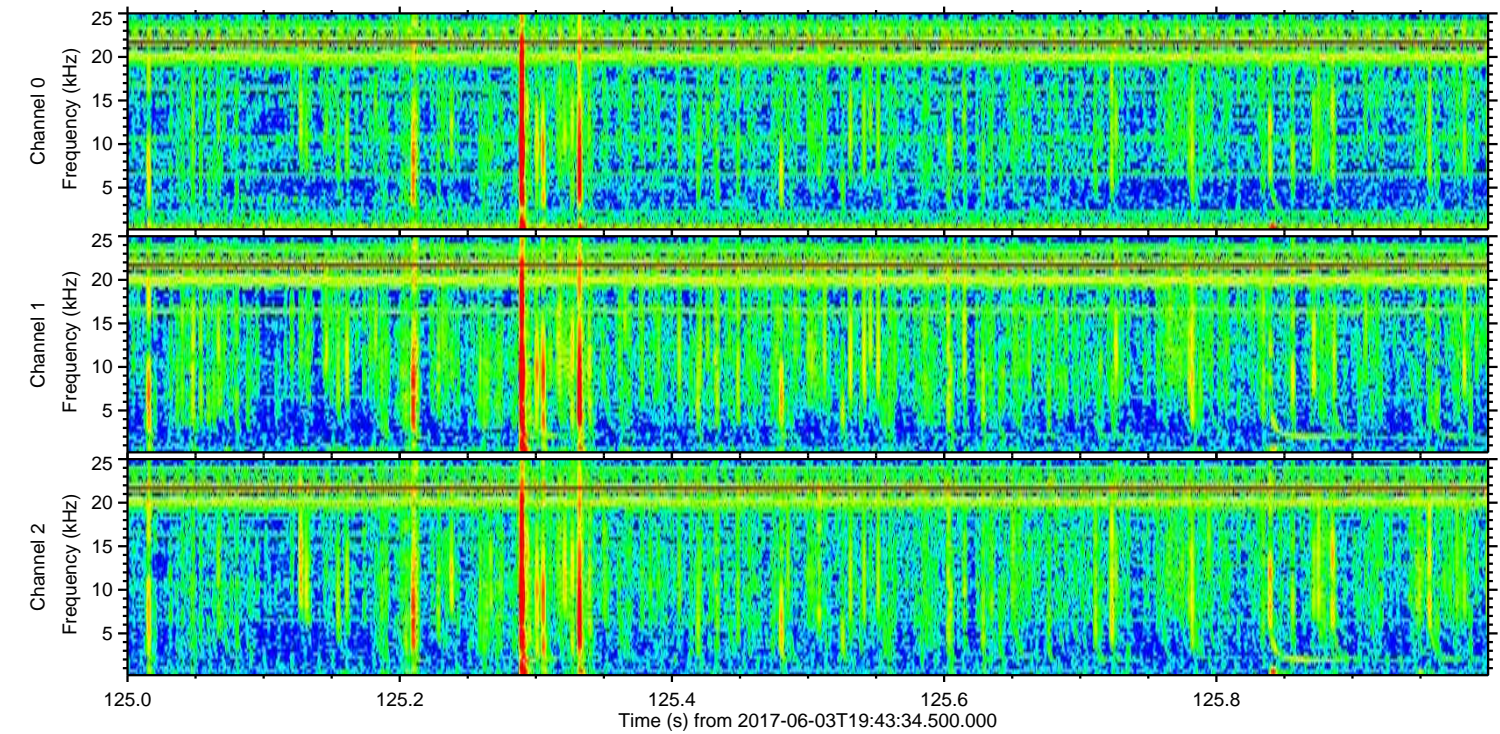
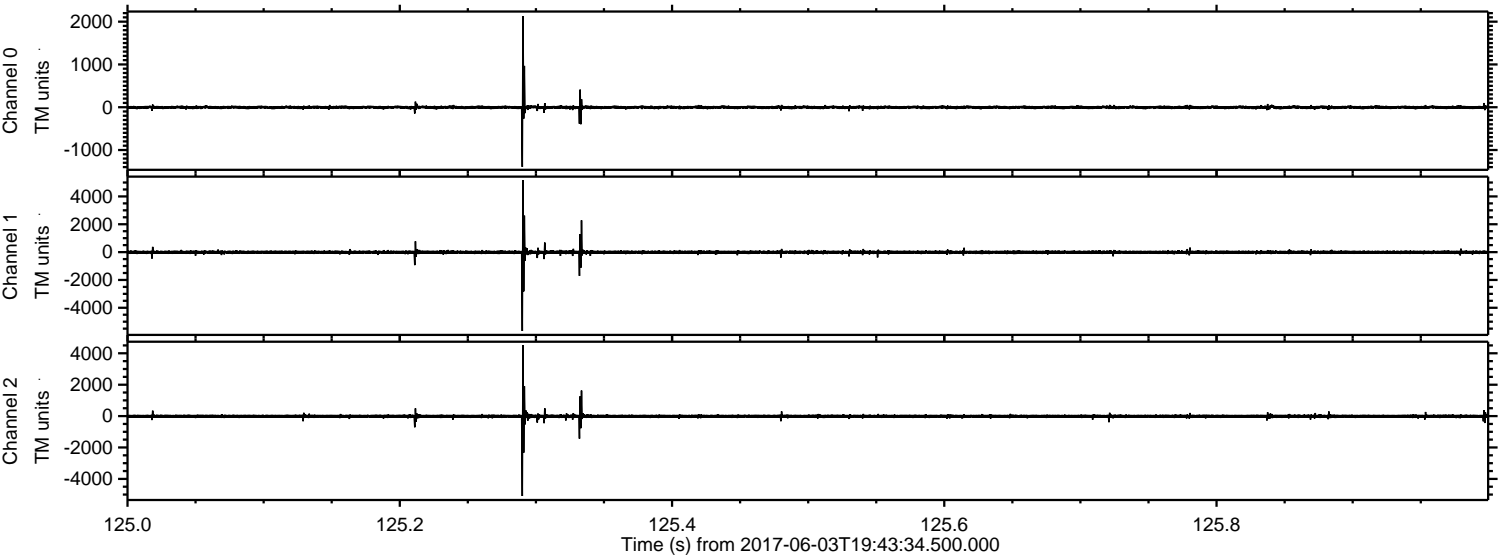


Processed Sat Jun 3 21:52:04 2017 by ELM ver.2012-10-06 from 001__elm20170603_194333__dat00.bin

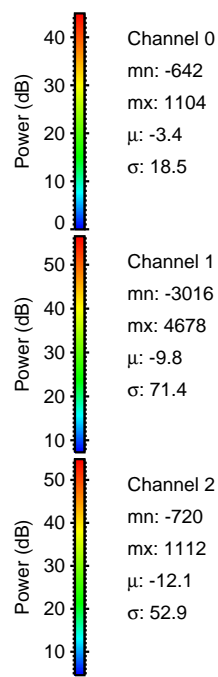
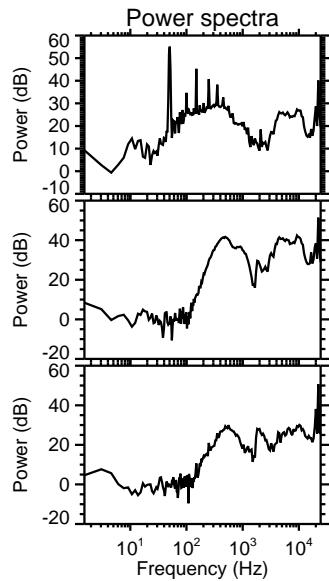
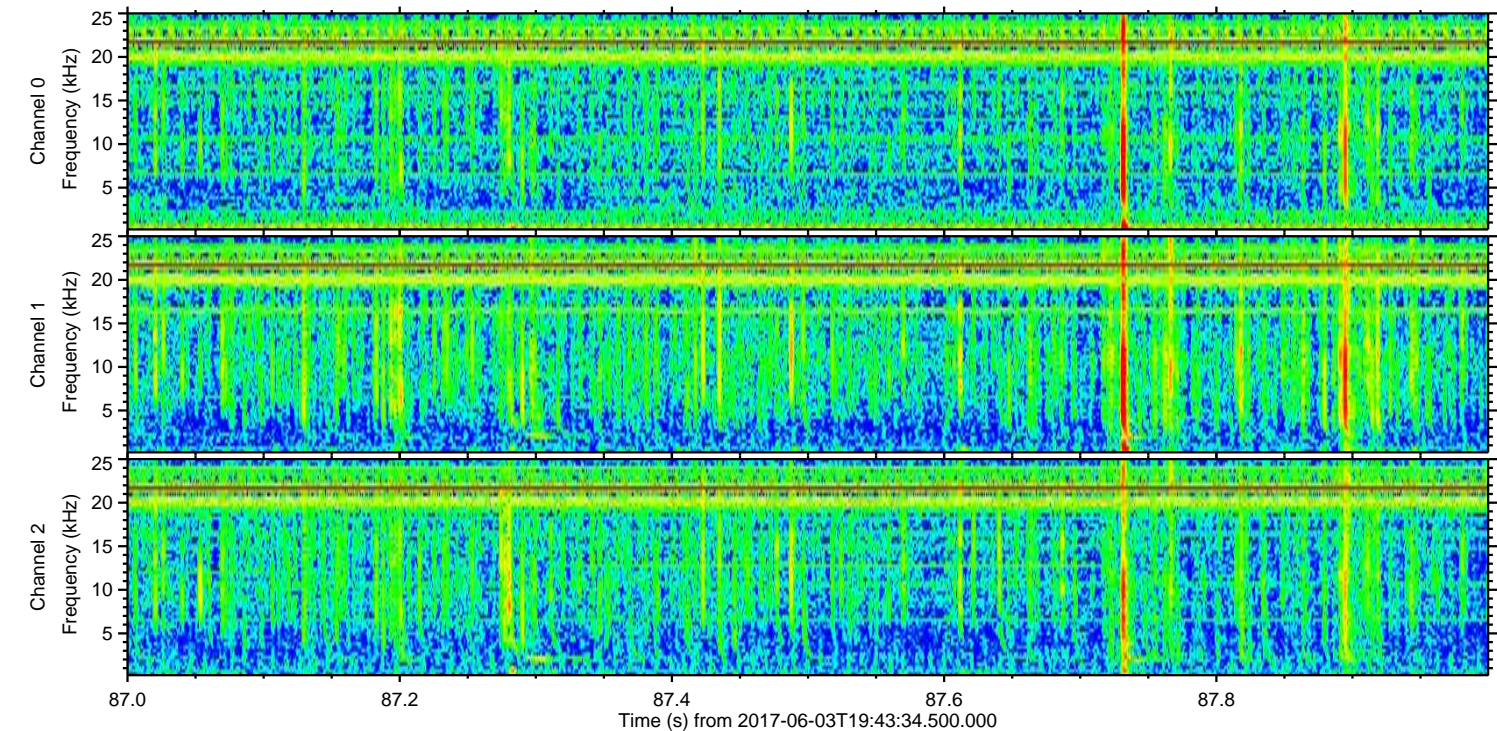
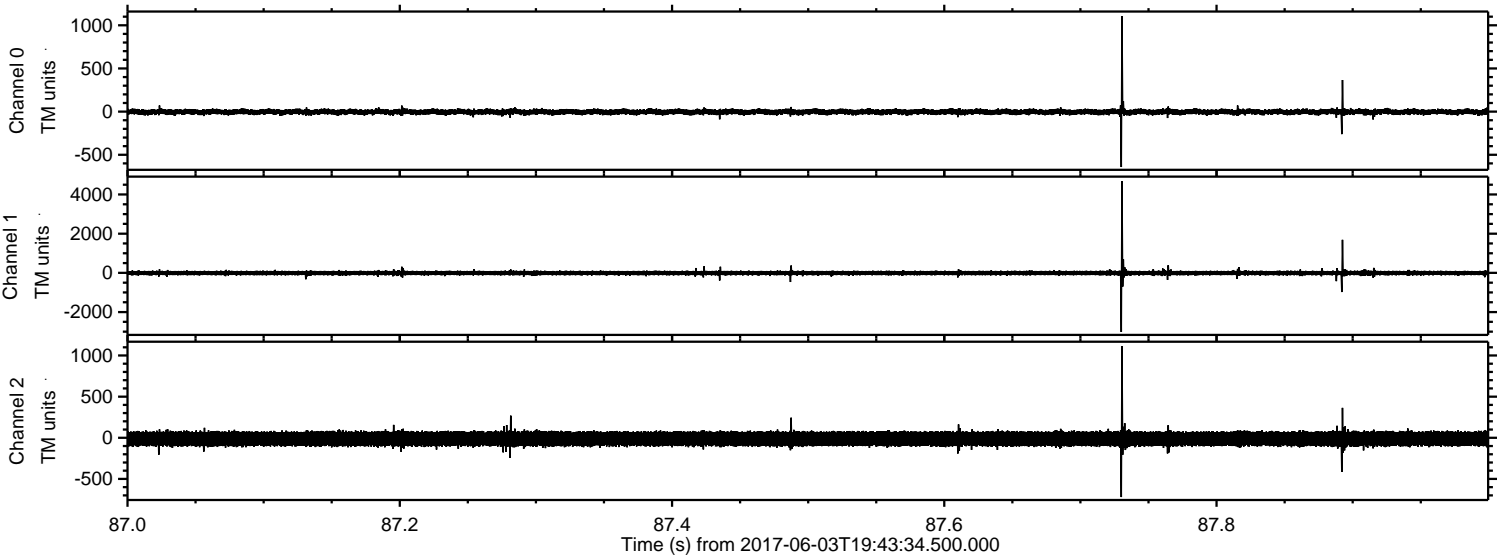


ELMAVAN 3D WAVEFORMS (Measured data sampled at 50 kHz) 51000 packets of 144 samples from 2017-06-03T19:43:34.500.000. Part 126/147

Processed Sat Jun 3 21:52:05 2017 by ELM ver.2012-10-06 from 001__elm20170603_194333__dat00.bin



Processed Sat Jun 3 21:52:05 2017 by ELM ver.2012-10-06 from 001__elm20170603_194333__dat00.bin

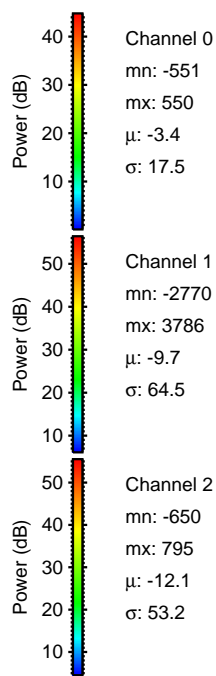
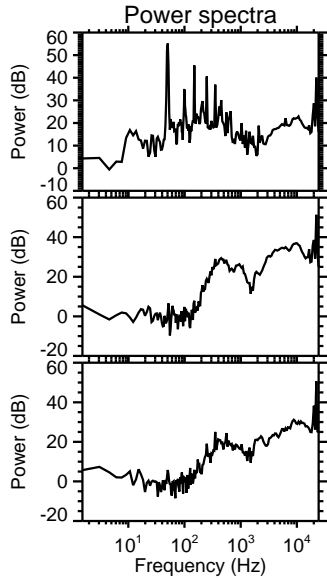
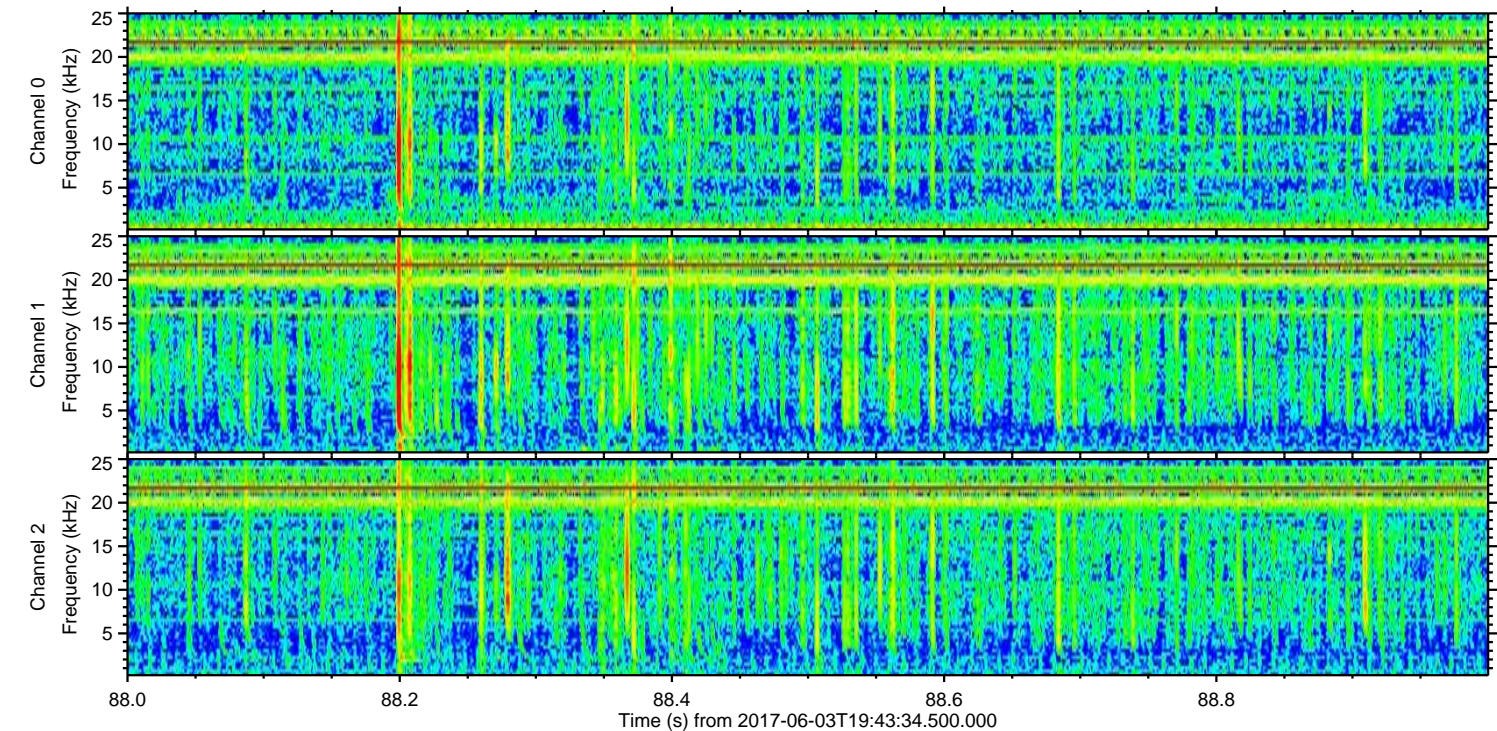
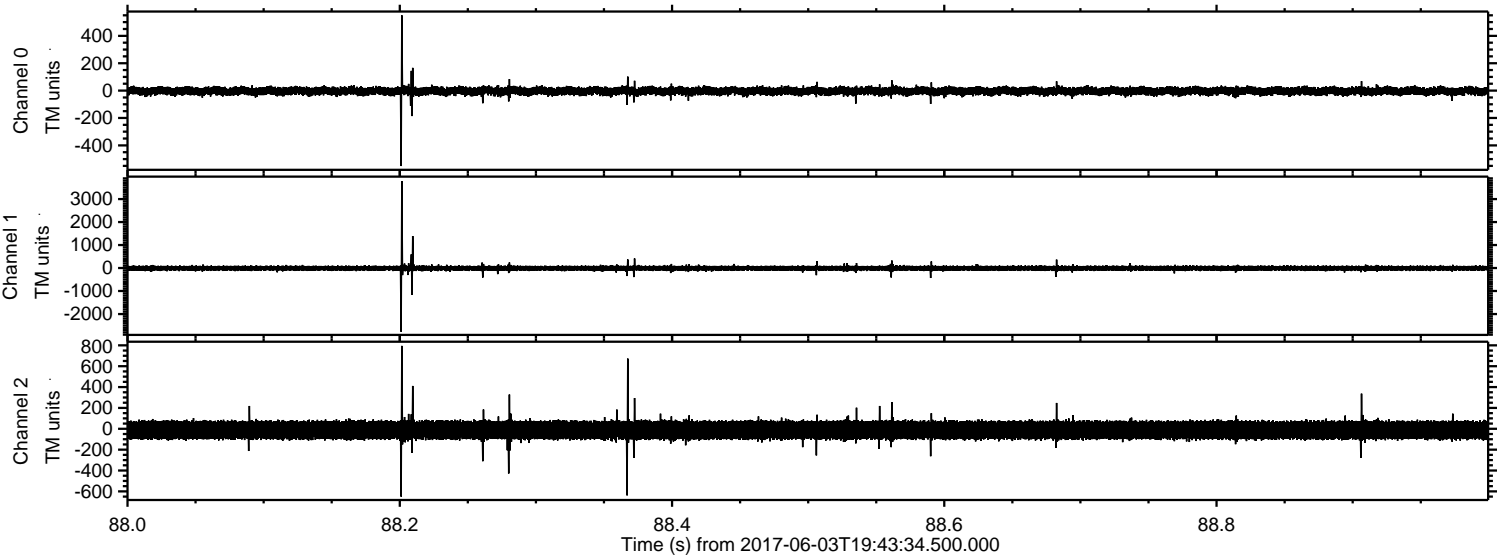


Channel 0
mn: -642
mx: 1104
 μ : -3.4
 σ : 18.5

Channel 1
mn: -3016
mx: 4678
 μ : -9.8
 σ : 71.4

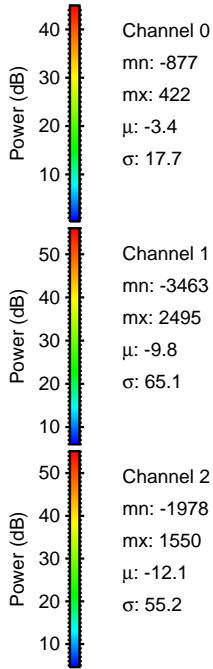
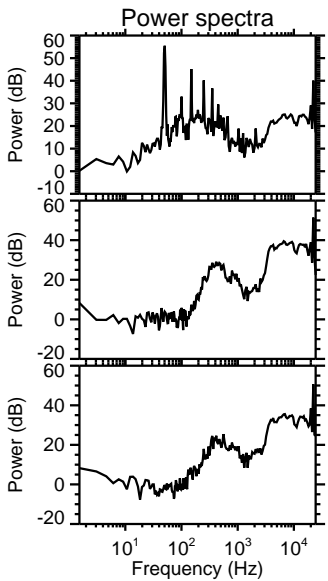
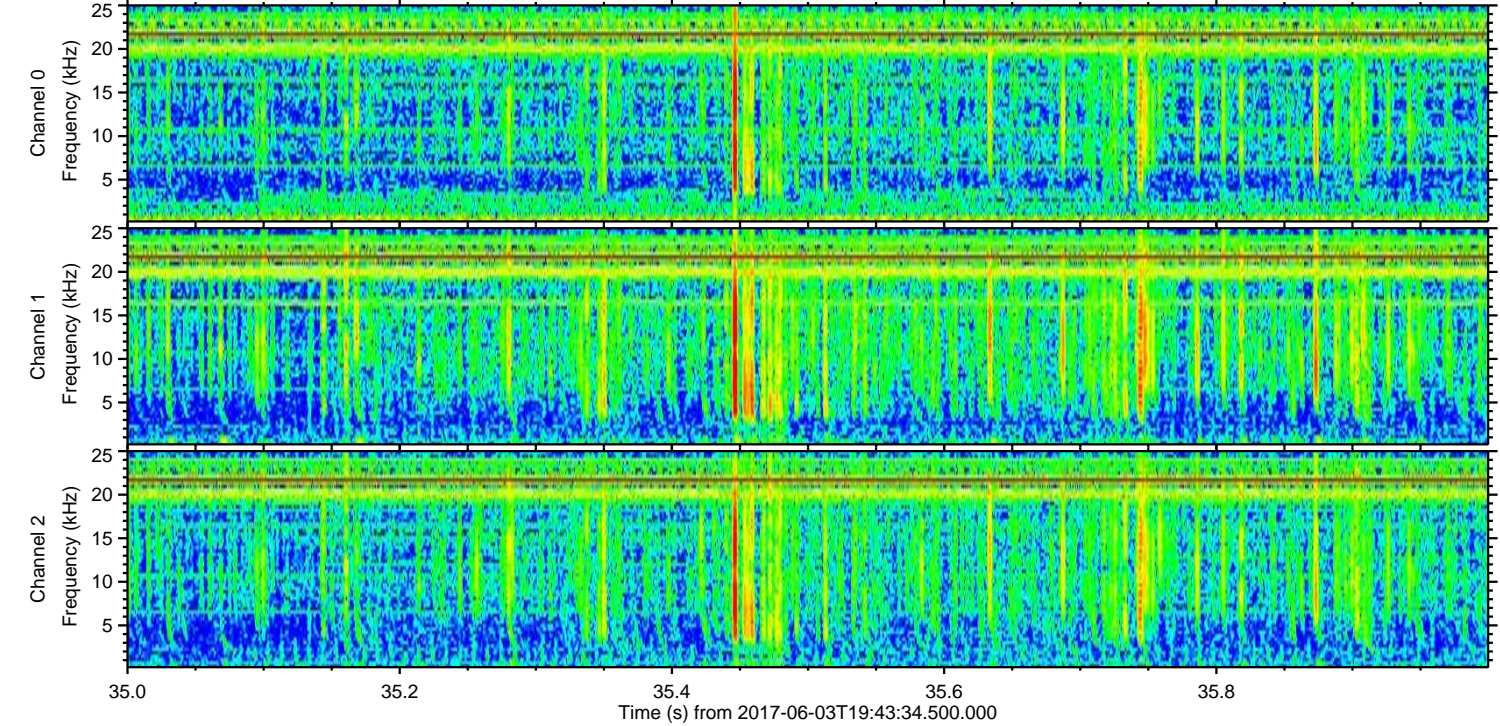
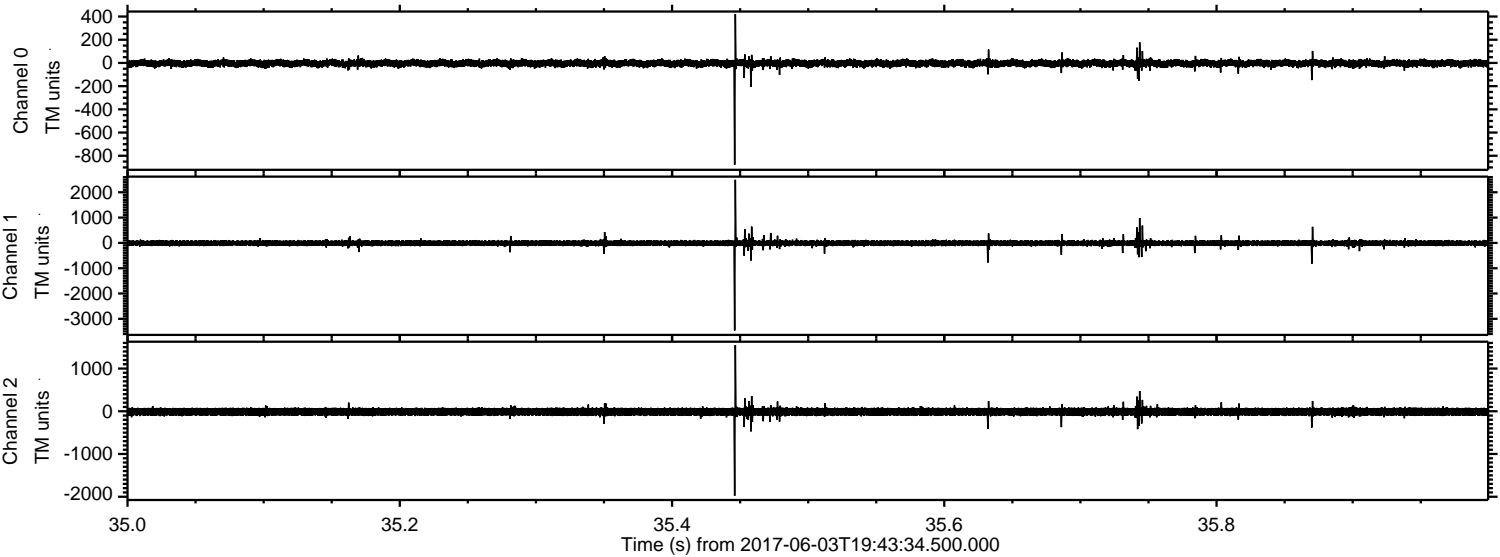
Channel 2
mn: -720
mx: 1112
 μ : -12.1
 σ : 52.9

Processed Sat Jun 3 21:52:06 2017 by ELM ver.2012-10-06 from 001__elm20170603_194333__dat00.bin



ELMAVAN 3D WAVEFORMS (Measured data sampled at 50 kHz) 51000 packets of 144 samples from 2017-06-03T19:43:34.500.000. Part 36/147

Processed Sat Jun 3 21:52:07 2017 by ELM ver.2012-10-06 from 001__elm20170603_194333__dat00.bin

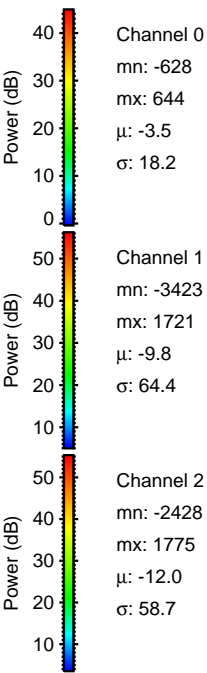
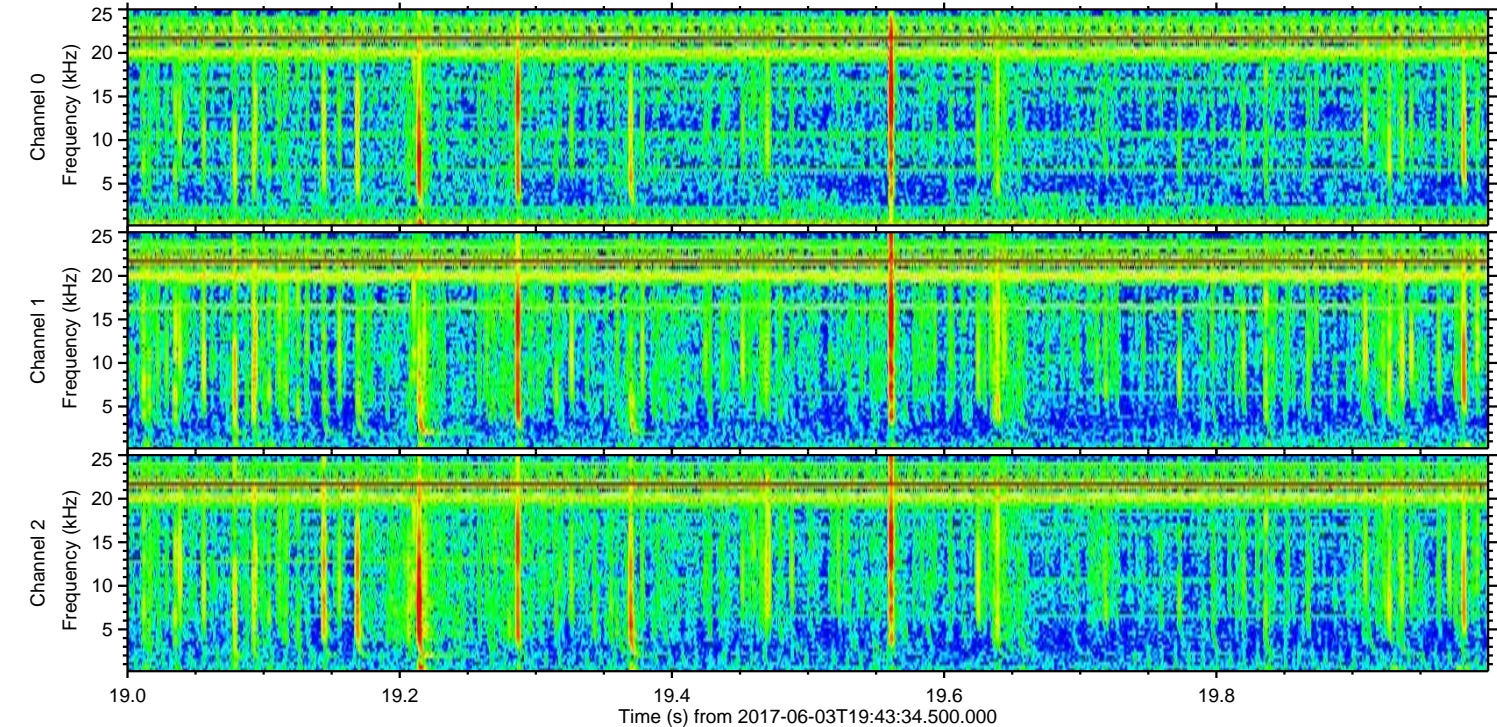
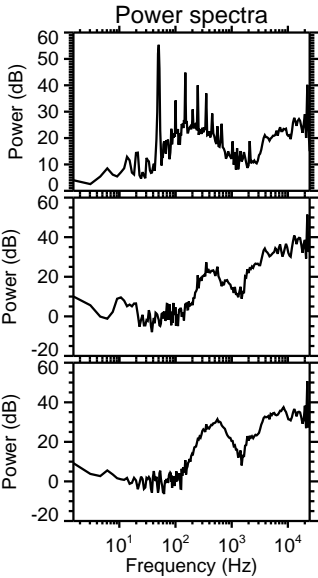
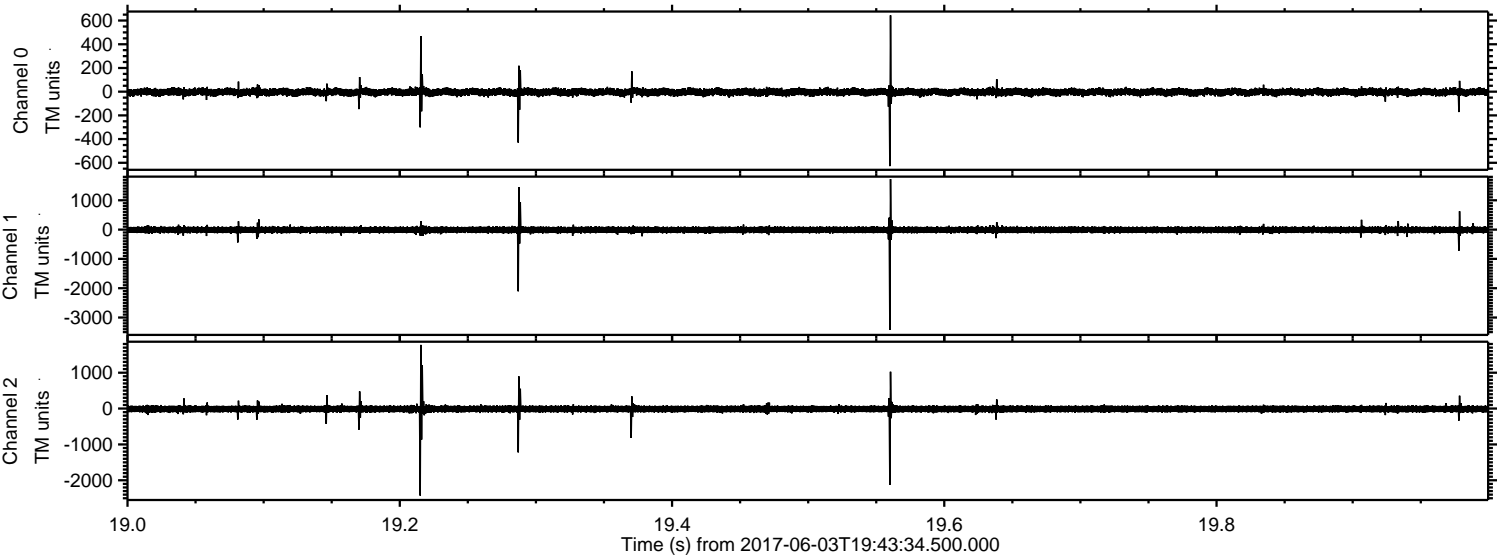


Channel 0
mn: -877
mx: 422
 μ : -3.4
 σ : 17.7

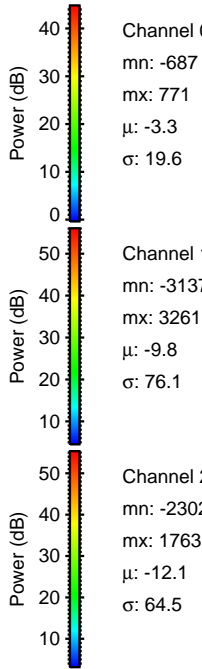
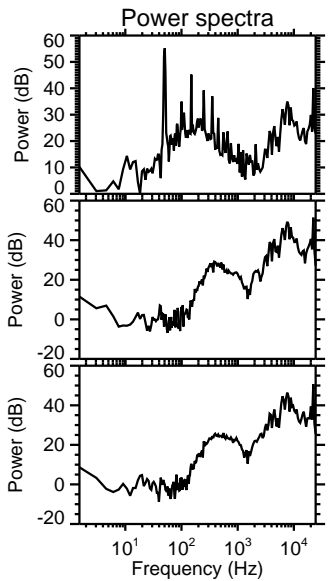
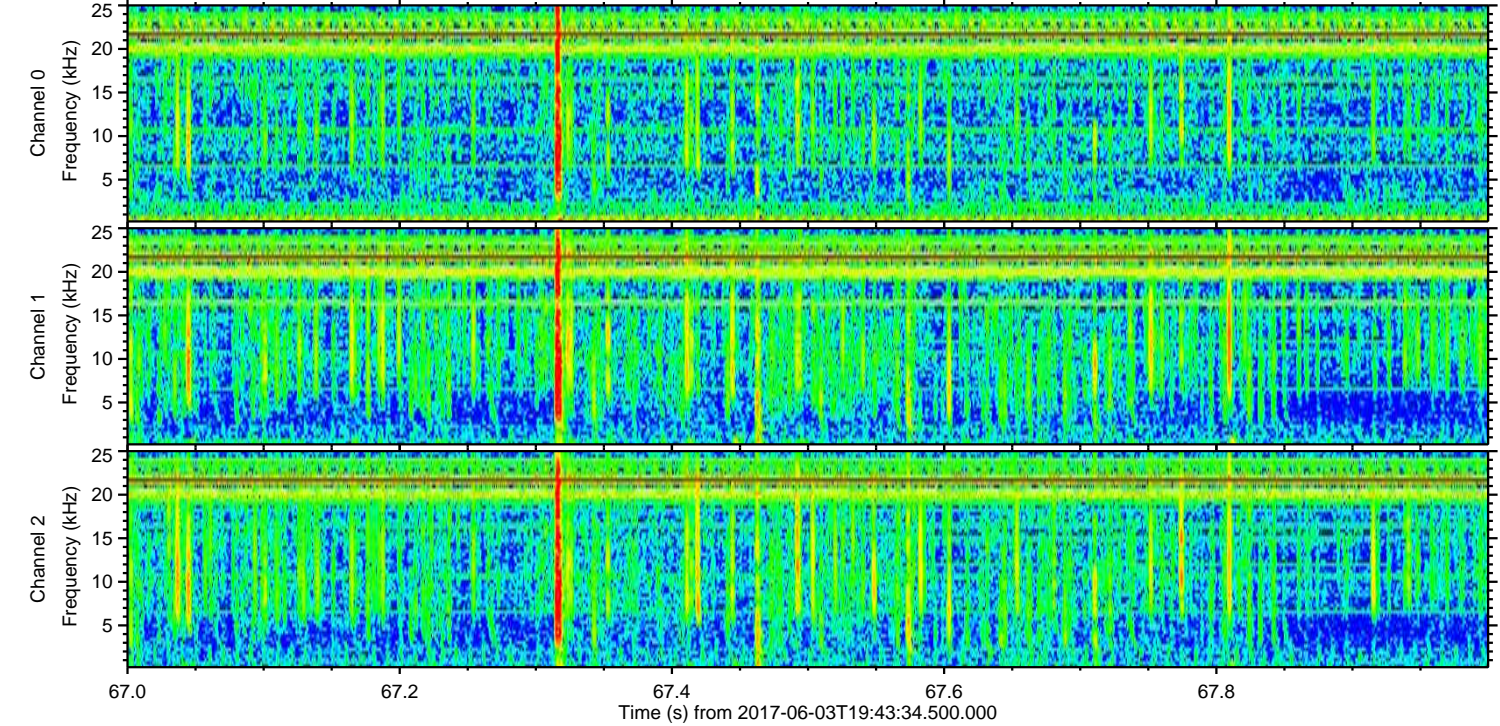
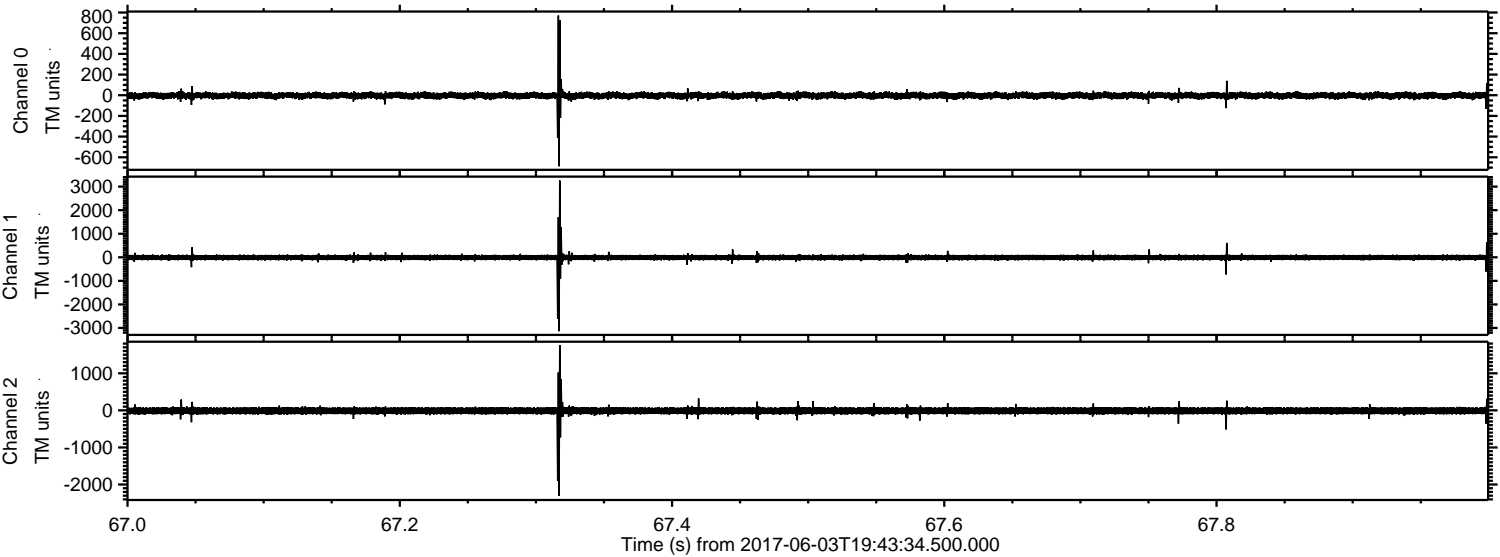
Channel 1
mn: -3463
mx: 2495
 μ : -9.8
 σ : 65.1

Channel 2
mn: -1978
mx: 1550
 μ : -12.1
 σ : 55.2

Processed Sat Jun 3 21:52:07 2017 by ELM ver.2012-10-06 from 001__elm20170603_194333__dat00.bin



Processed Sat Jun 3 21:52:08 2017 by ELM ver.2012-10-06 from 001__elm20170603_194333__dat00.bin



Channel 0
mn: -687
mx: 771
 μ : -3.3
 σ : 19.6

Channel 1
mn: -3137
mx: 3261
 μ : -9.8
 σ : 76.1

Channel 2
mn: -2302
mx: 1763
 μ : -12.1
 σ : 64.5

Processed Sat Jun 3 21:52:08 2017 by ELM ver.2012-10-06 from 001__elm20170603_194333__dat00.bin

