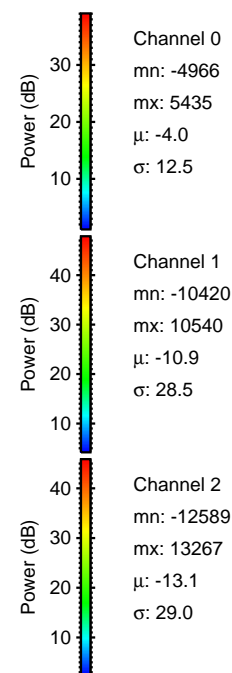
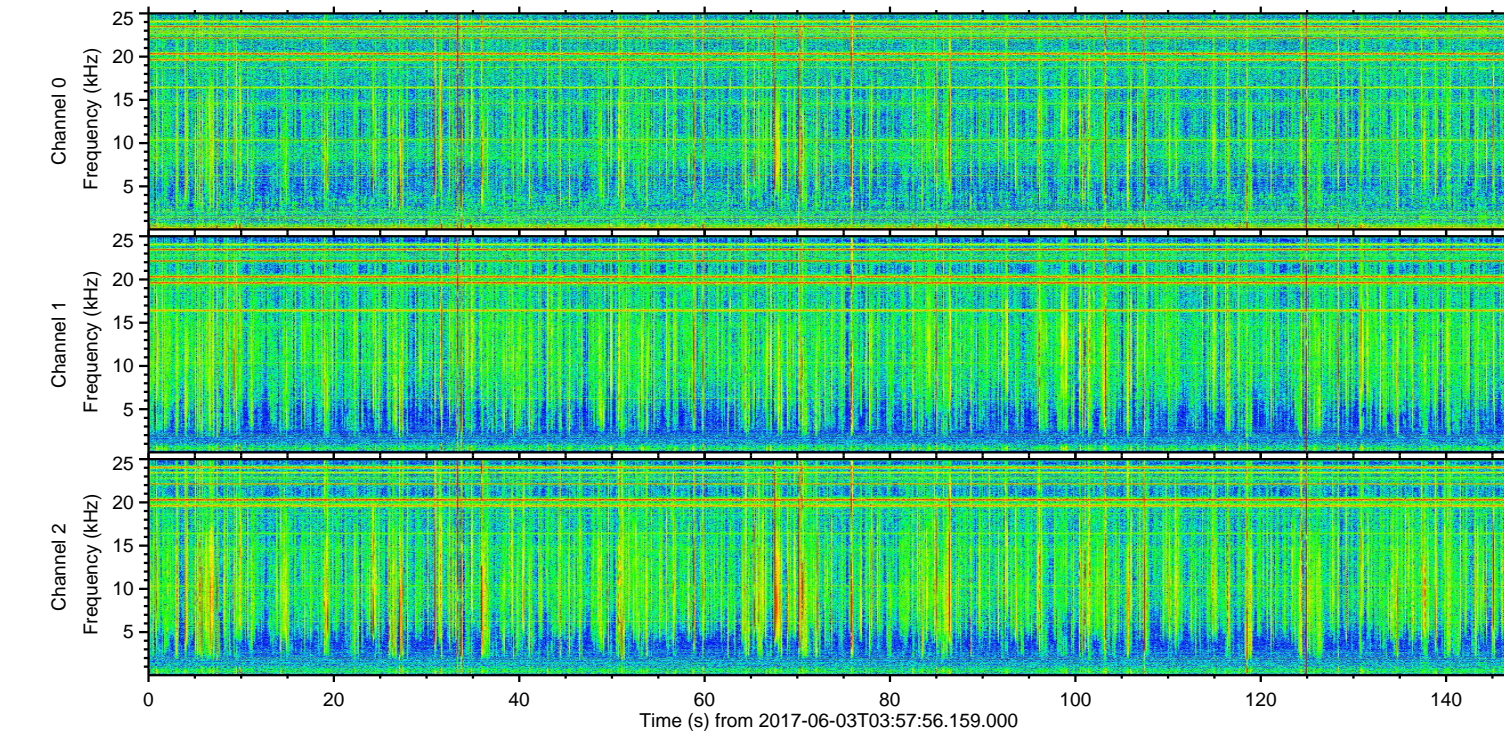
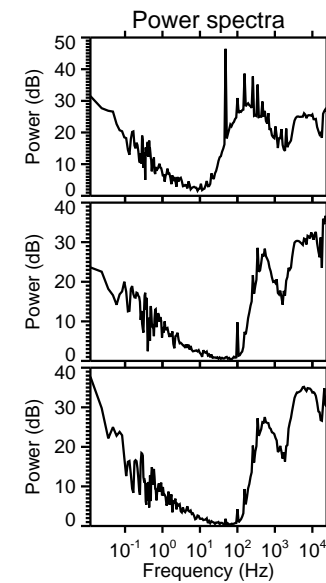
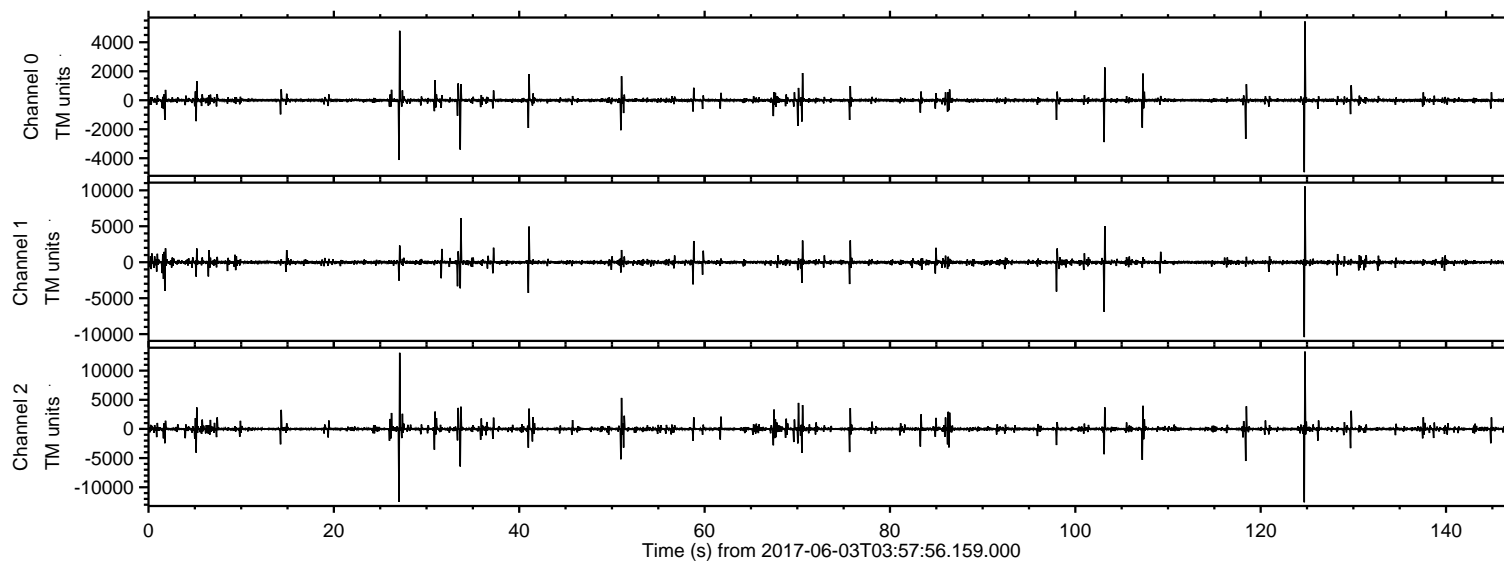


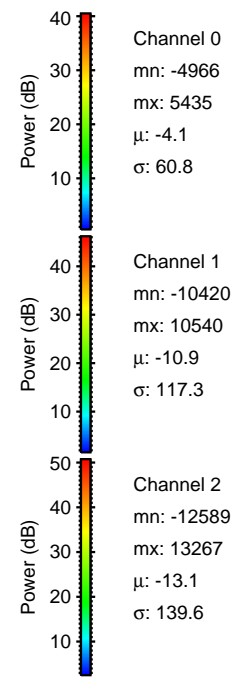
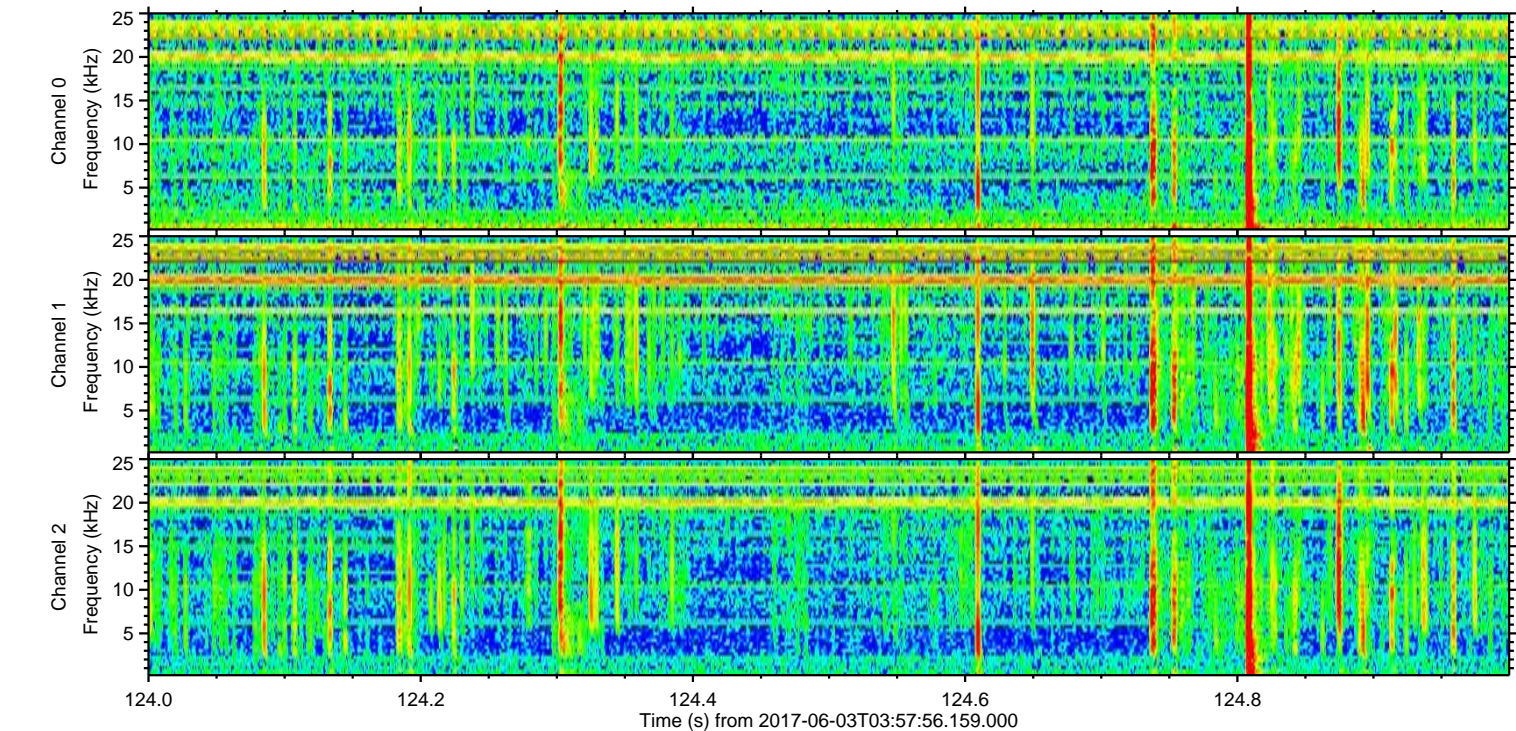
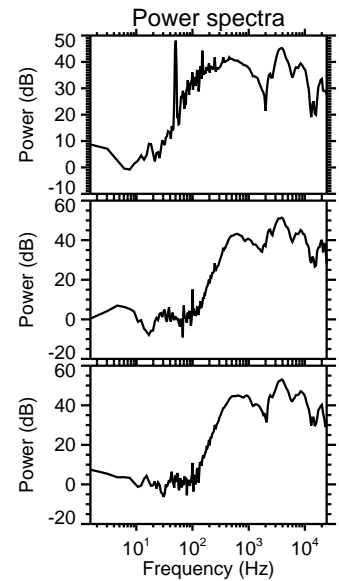
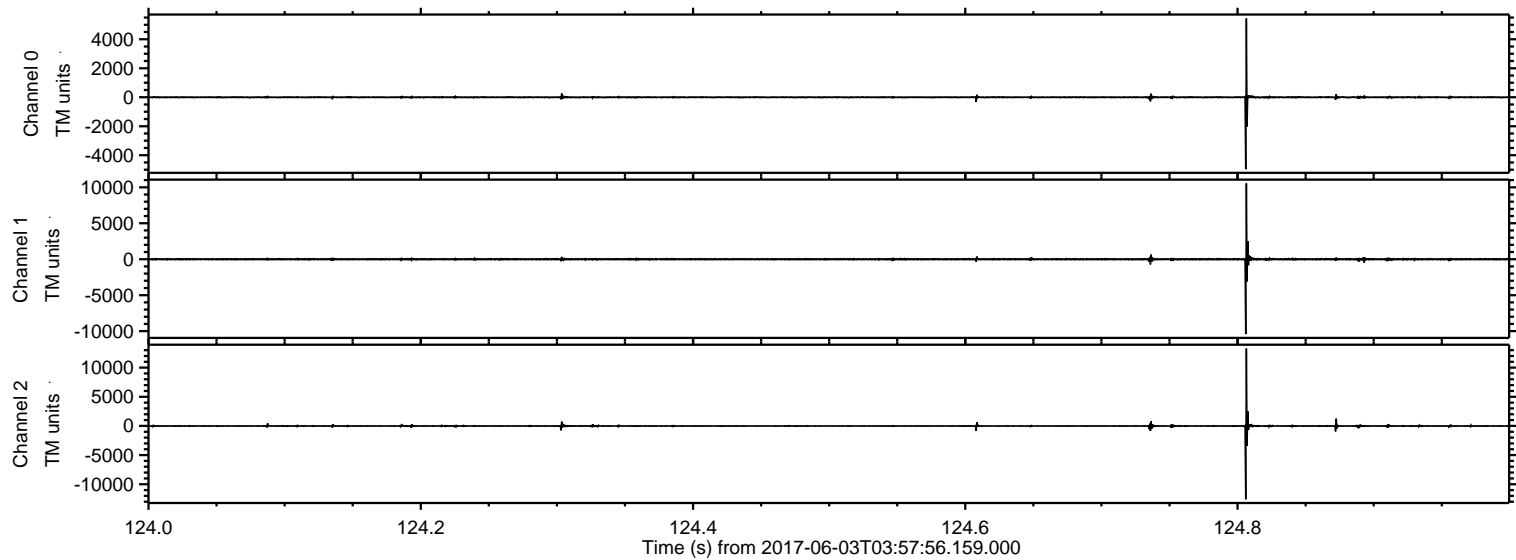
ELMAVAN 3D WAVEFORMS (Measured data sampled at 50 kHz) 51000 packets of 144 samples from 2017-06-03T03:57:56.159.000.

Processed Sat Jun 3 06:06:13 2017 by ELM ver.2012-10-06 from 001__elm20170603_035755__dat00.bin

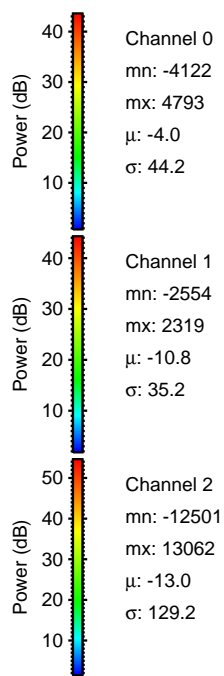
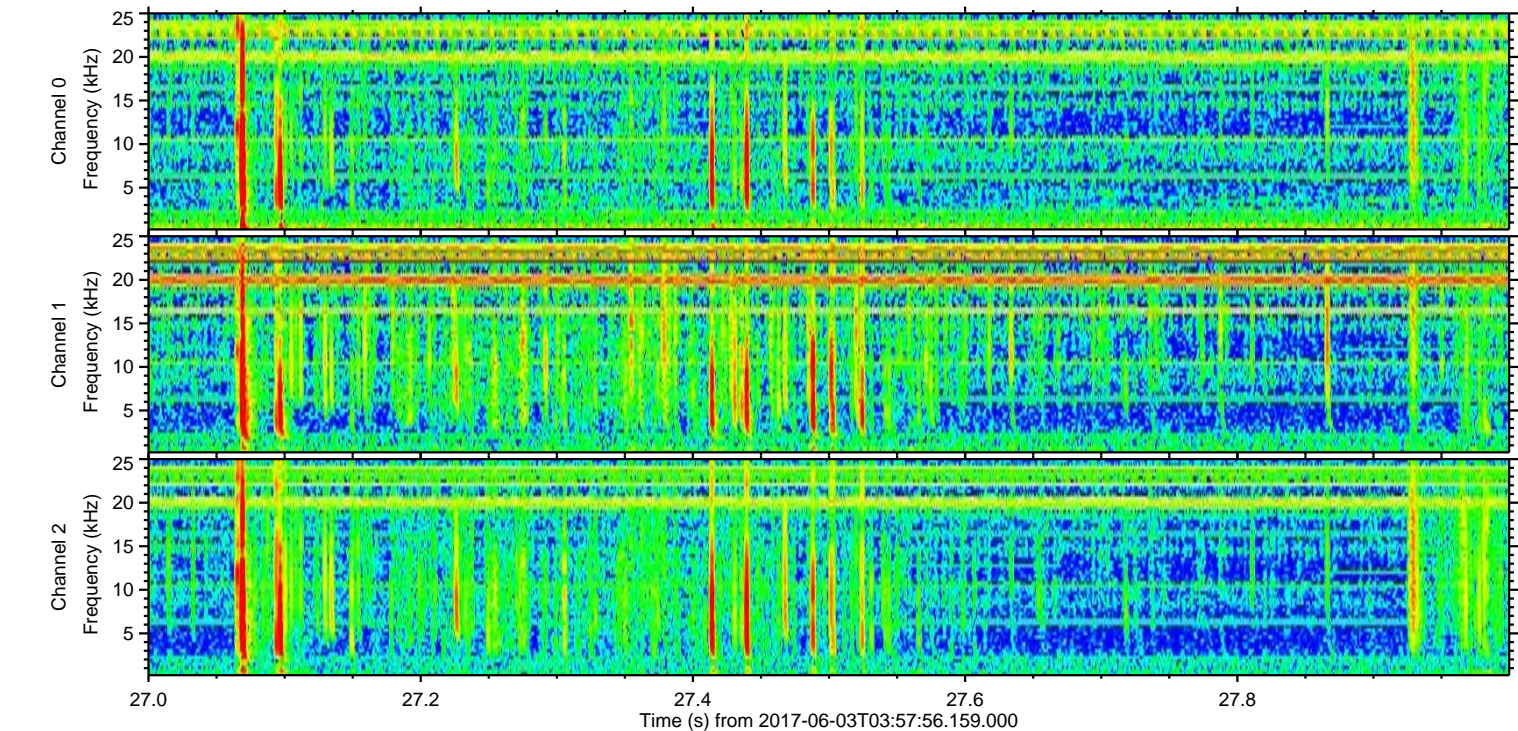
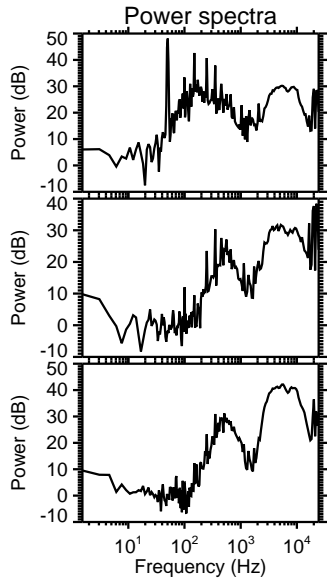
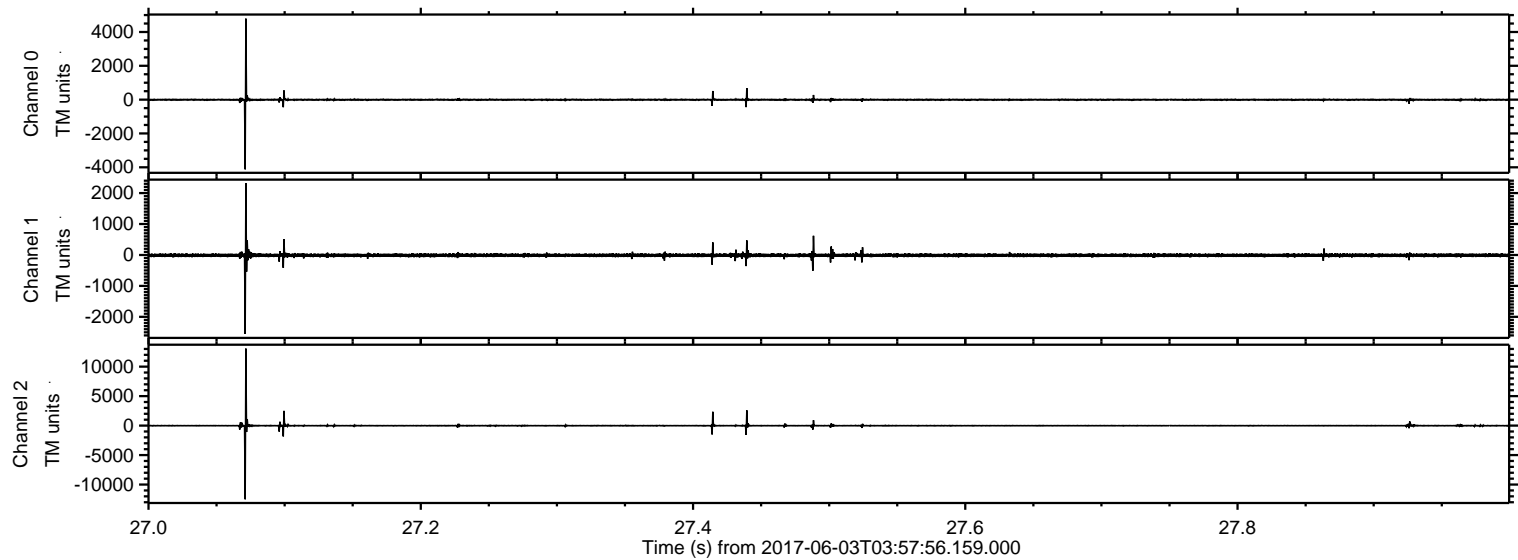


ELMAVAN 3D WAVEFORMS (Measured data sampled at 50 kHz) 51000 packets of 144 samples from 2017-06-03T03:57:56.159.000. Part 125/147

Processed Sat Jun 3 06:06:20 2017 by ELM ver.2012-10-06 from 001__elm20170603_035755__dat00.bin

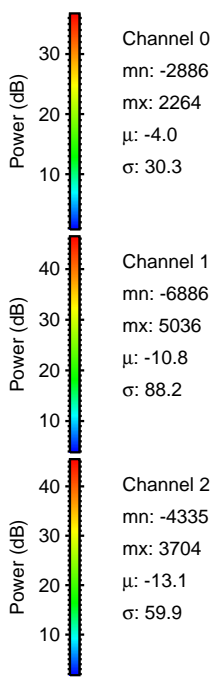
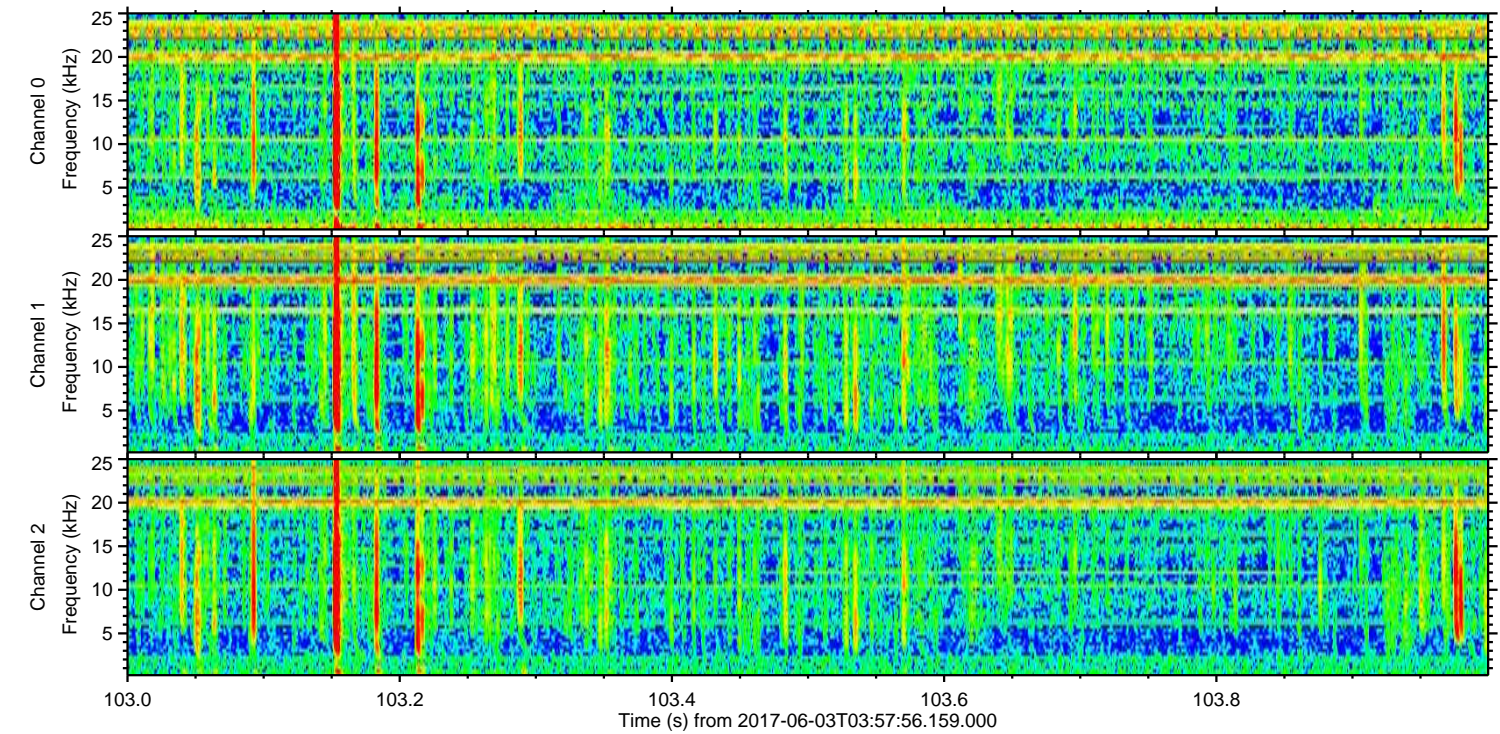
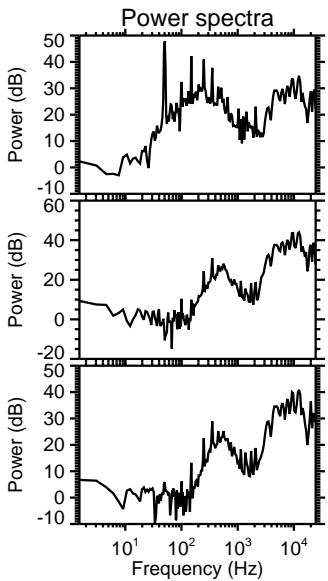
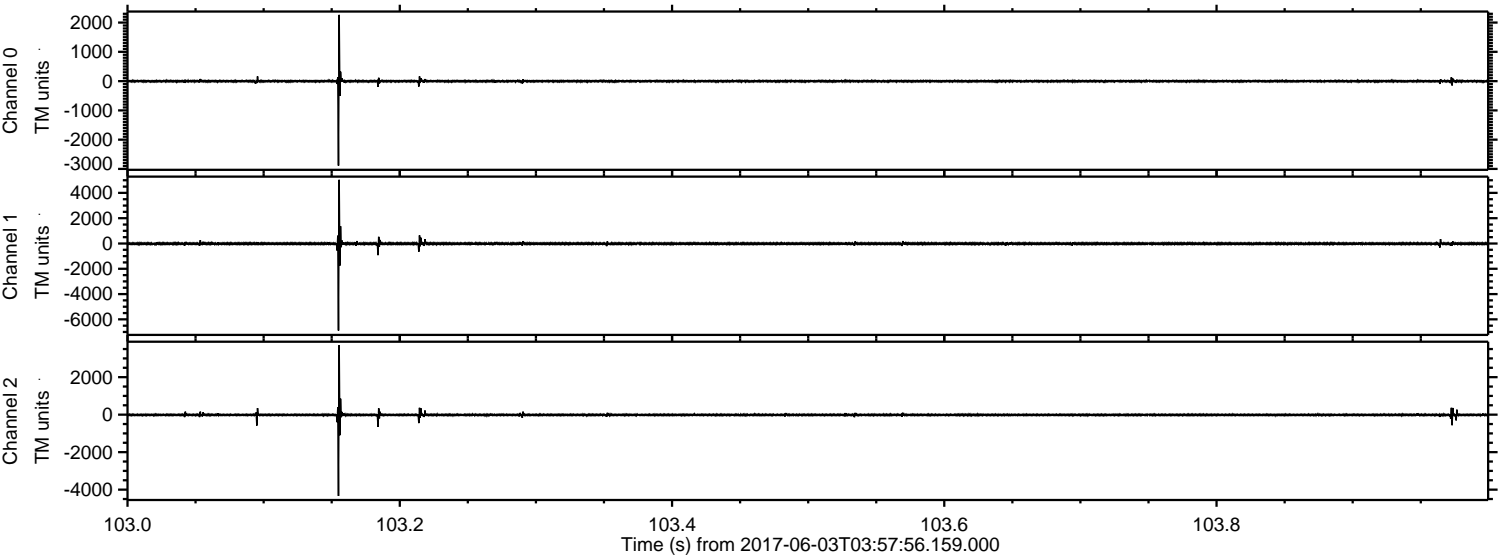


Processed Sat Jun 3 06:06:21 2017 by ELM ver.2012-10-06 from 001__elm20170603_035755__dat00.bin

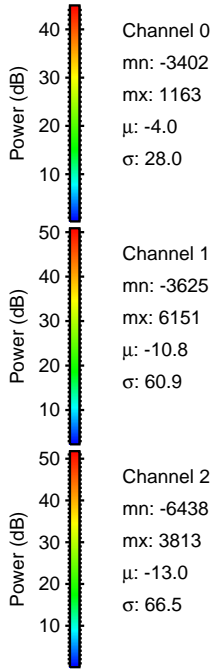
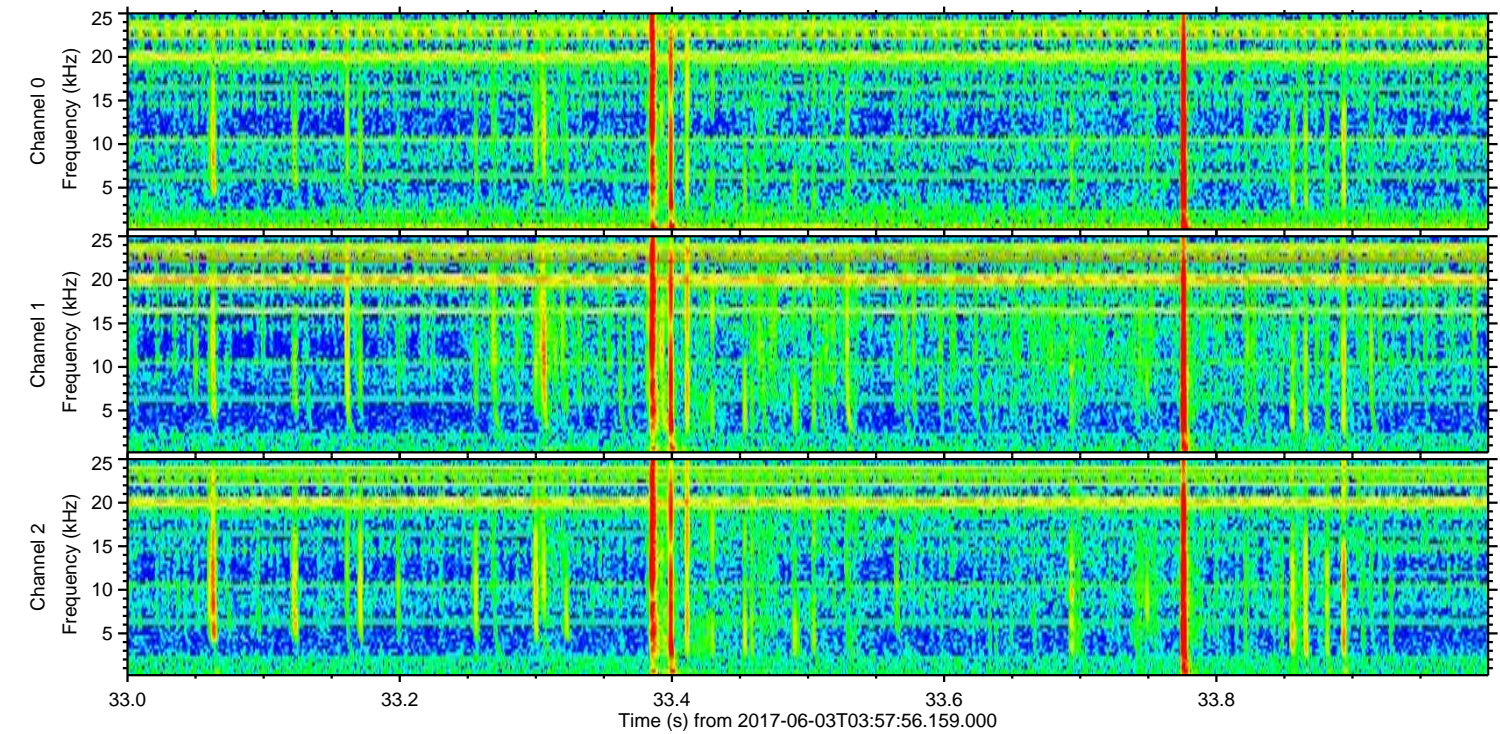
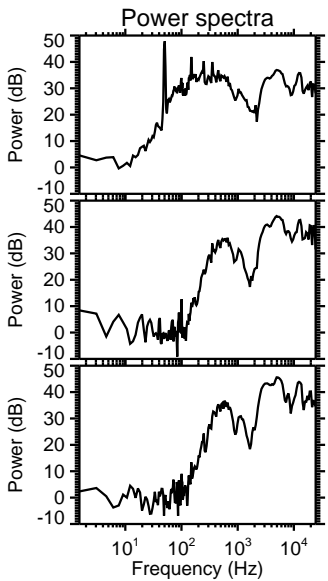
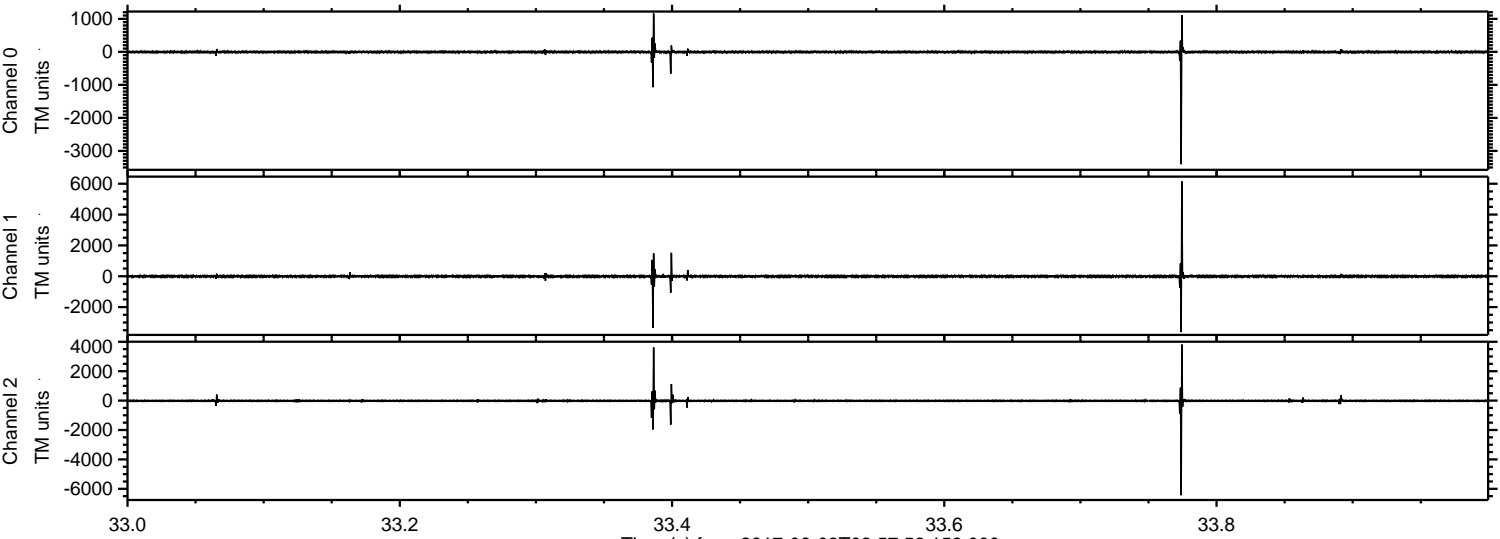


ELMAVAN 3D WAVEFORMS (Measured data sampled at 50 kHz) 51000 packets of 144 samples from 2017-06-03T03:57:56.159.000. Part 104/147

Processed Sat Jun 3 06:06:22 2017 by ELM ver.2012-10-06 from 001__elm20170603_035755__dat00.bin

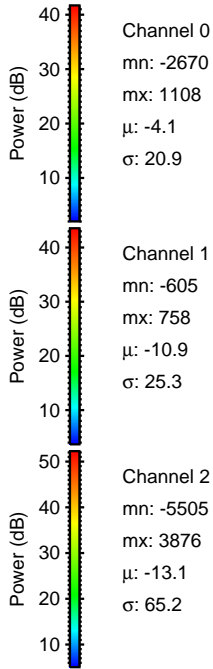
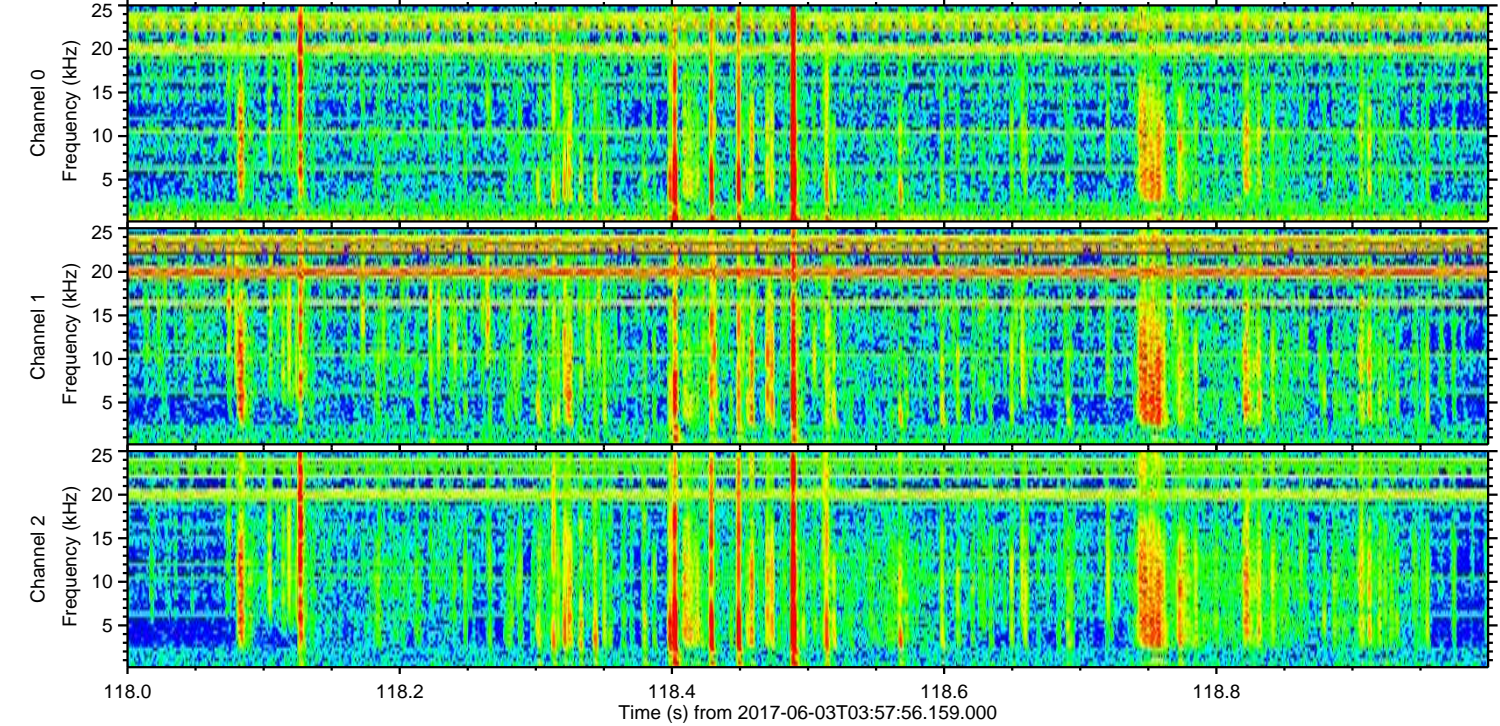
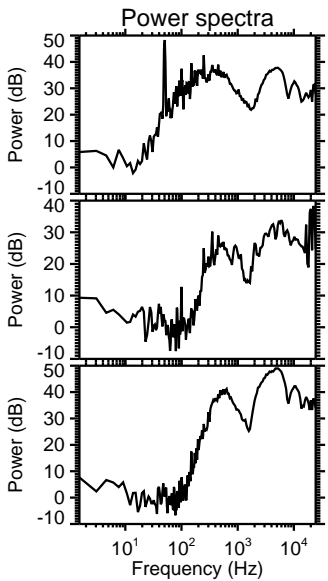
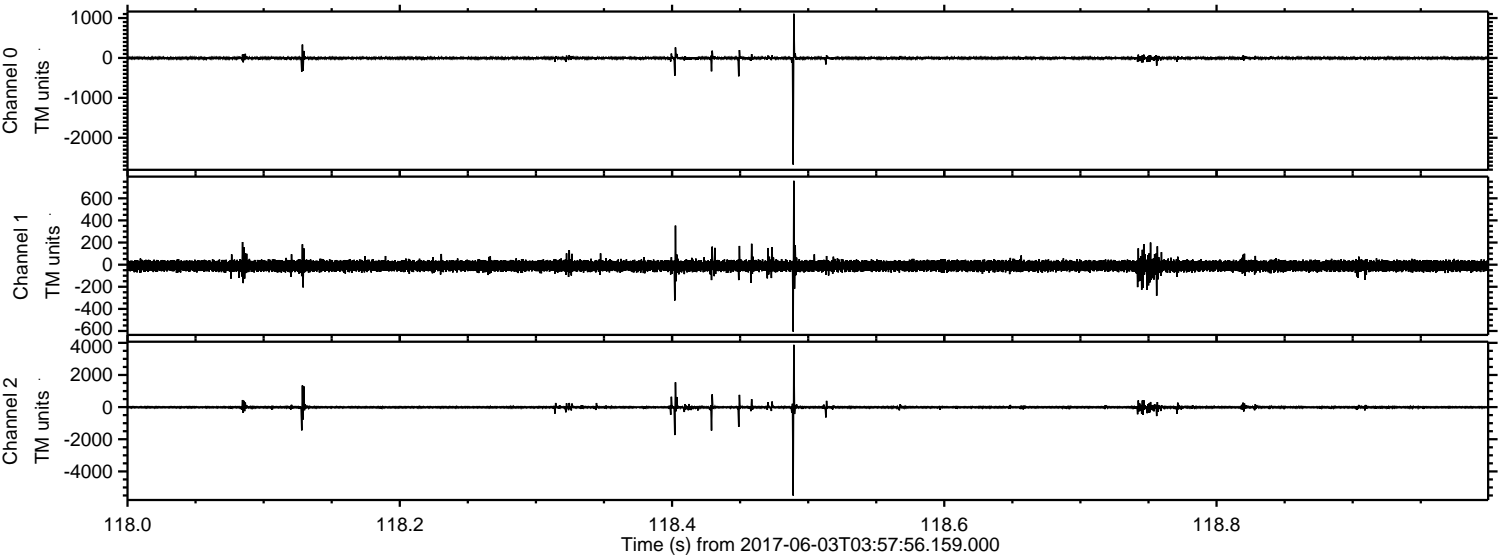


Processed Sat Jun 3 06:06:23 2017 by ELM ver.2012-10-06 from 001__elm20170603_035755__dat00.bin

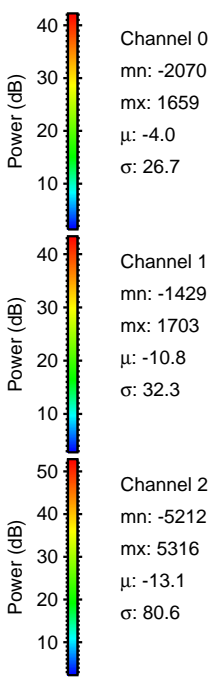
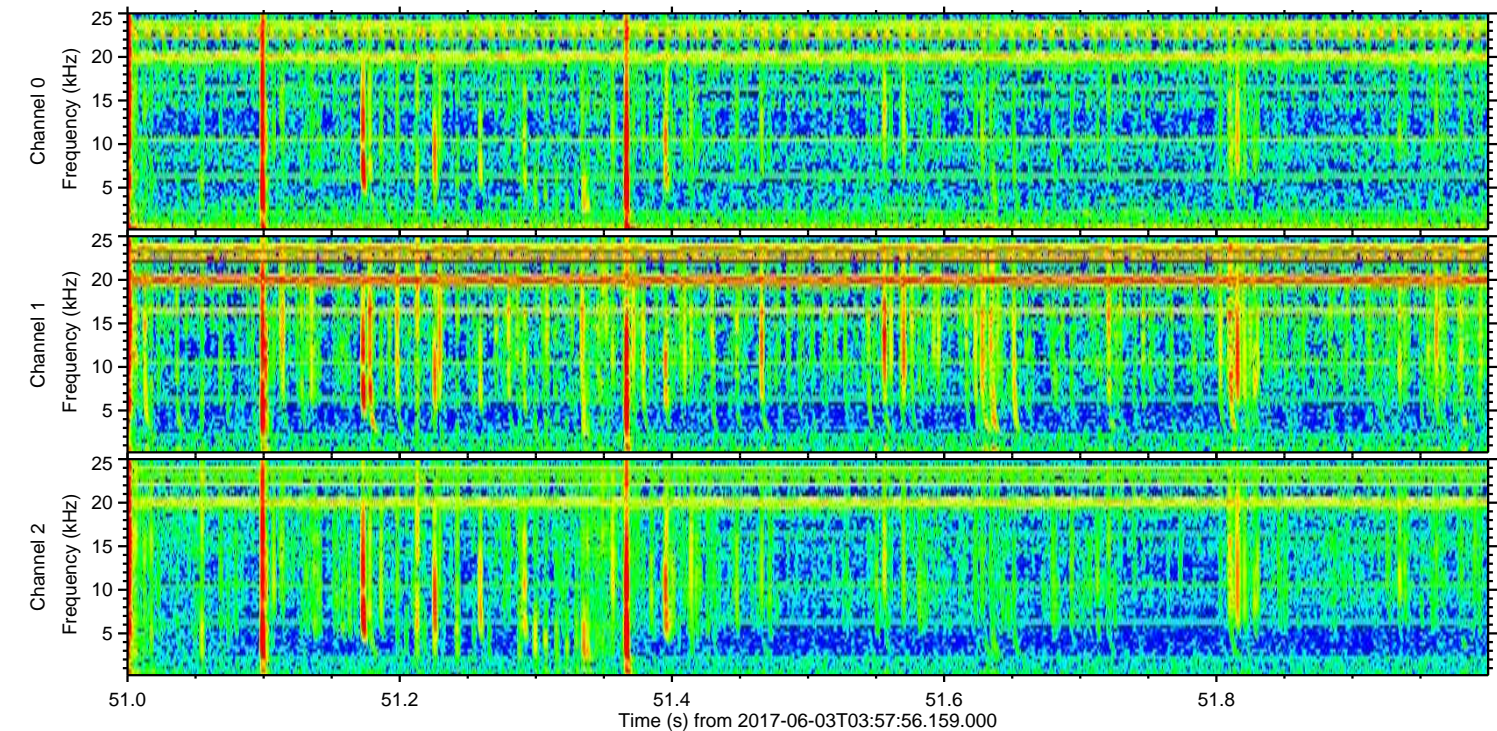
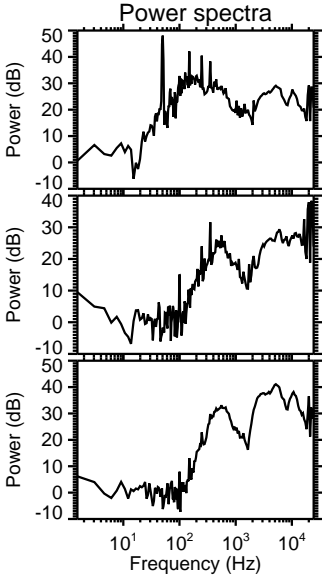
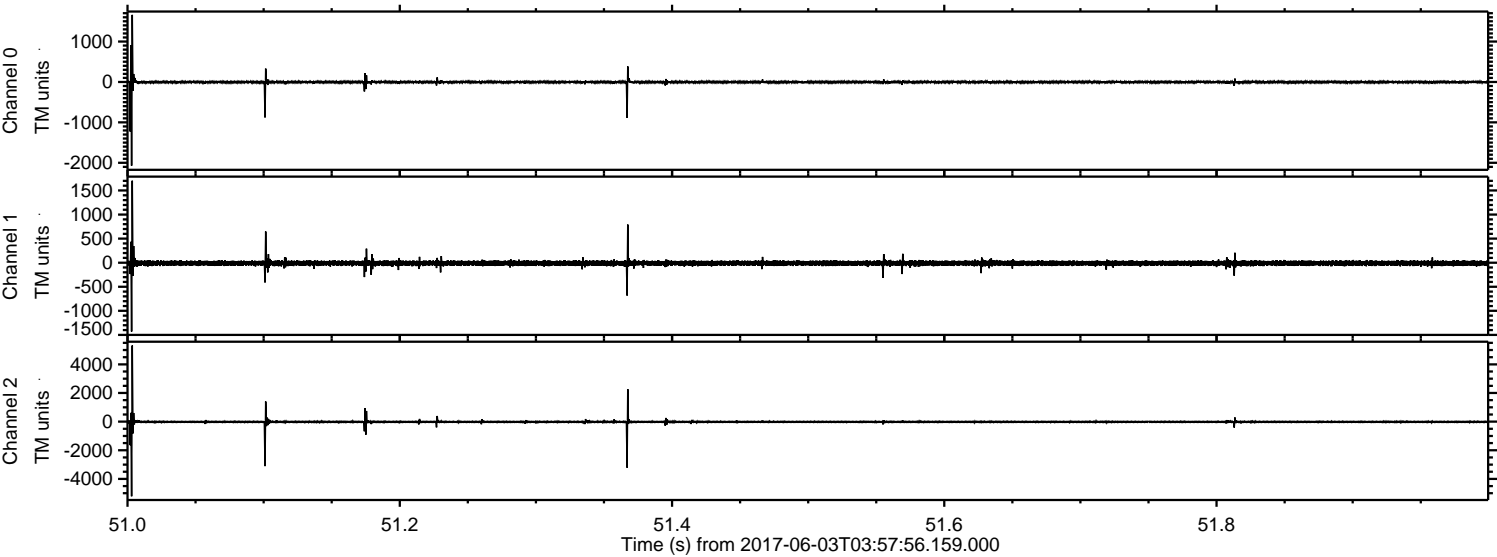


ELMAVAN 3D WAVEFORMS (Measured data sampled at 50 kHz) 51000 packets of 144 samples from 2017-06-03T03:57:56.159.000. Part 119/147

Processed Sat Jun 3 06:06:24 2017 by ELM ver.2012-10-06 from 001__elm20170603_035755__dat00.bin

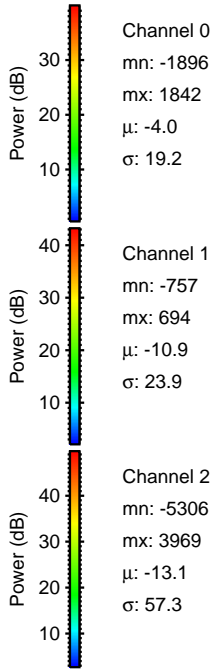
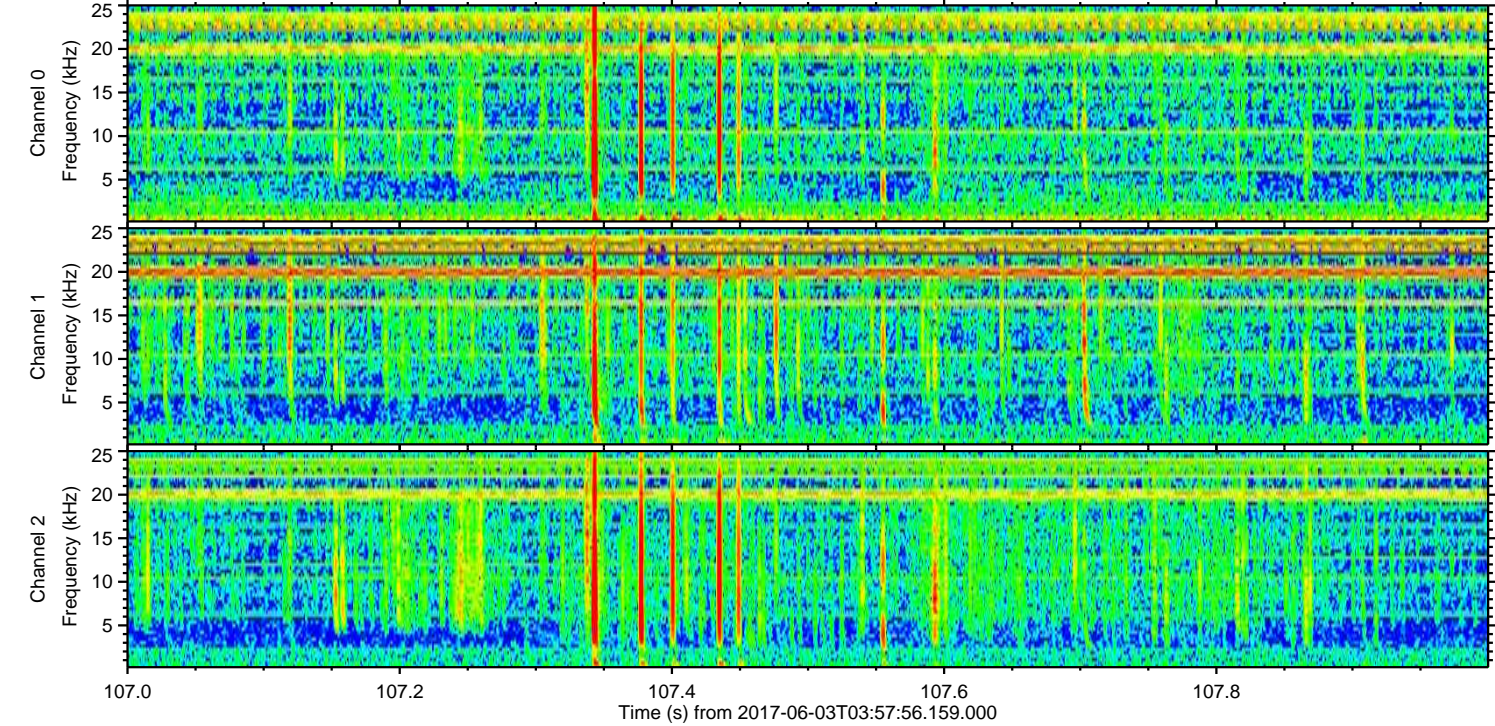
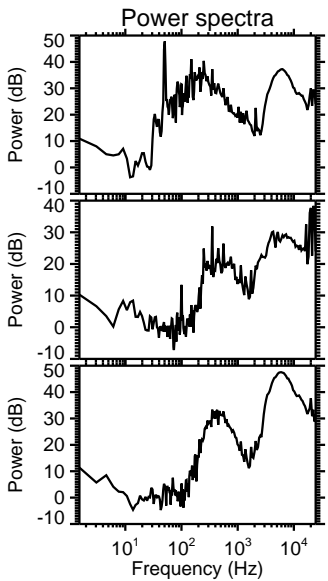
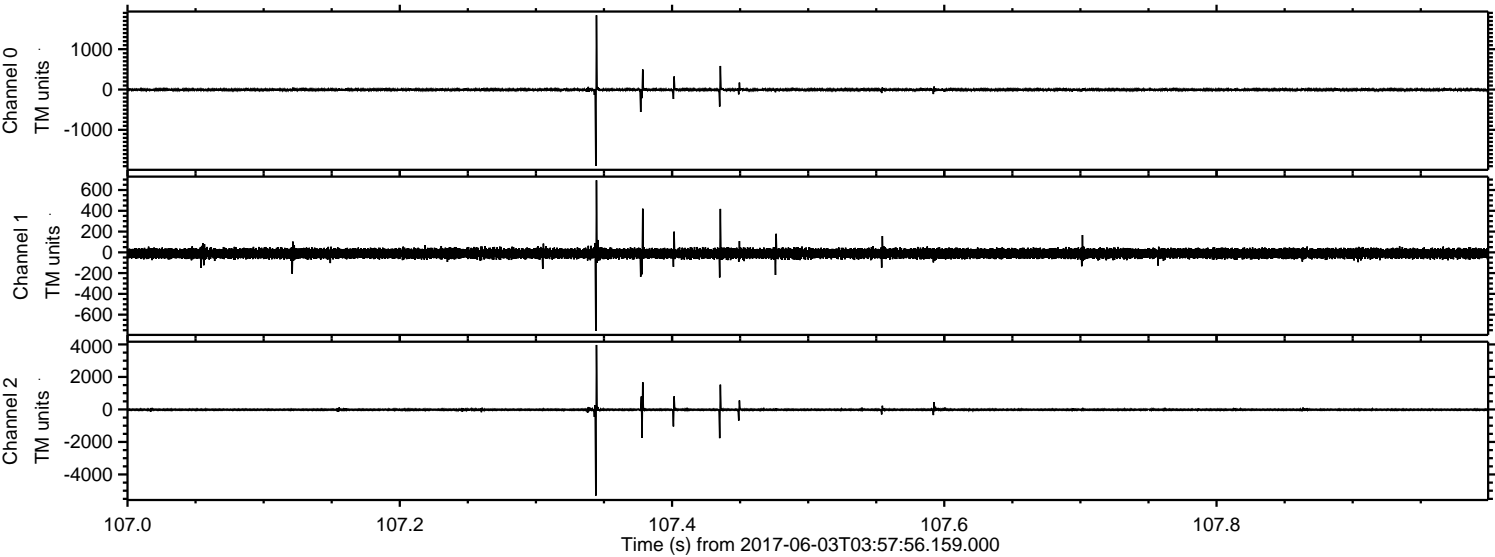


Processed Sat Jun 3 06:06:24 2017 by ELM ver.2012-10-06 from 001__elm20170603_035755__dat00.bin

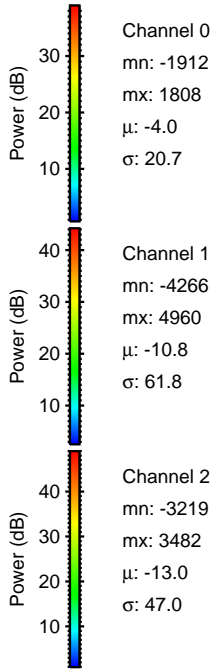
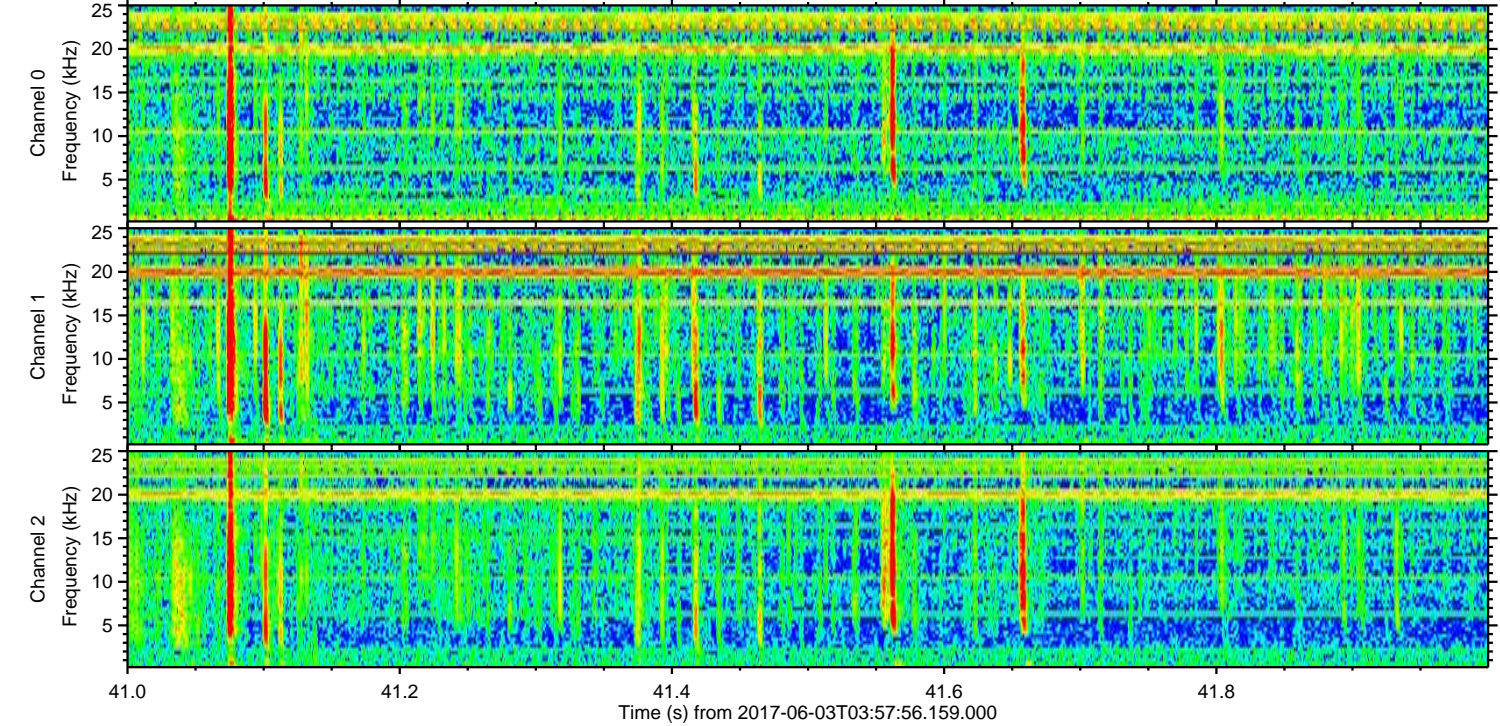
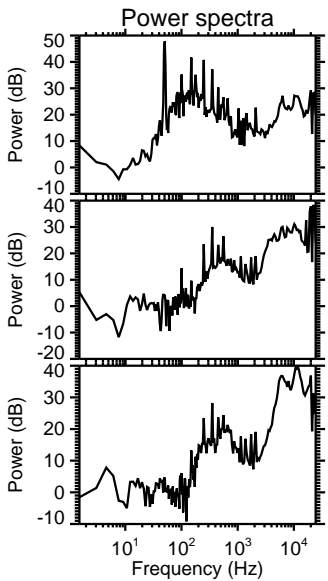
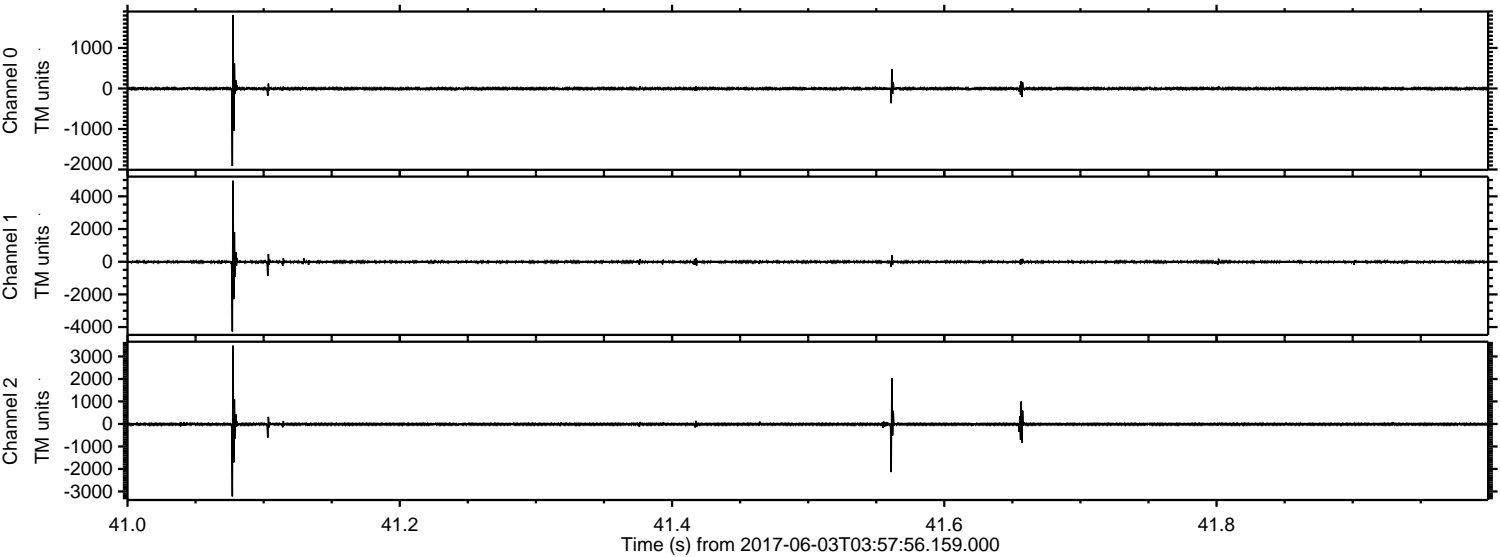


ELMAVAN 3D WAVEFORMS (Measured data sampled at 50 kHz) 51000 packets of 144 samples from 2017-06-03T03:57:56.159.000. Part 108/147

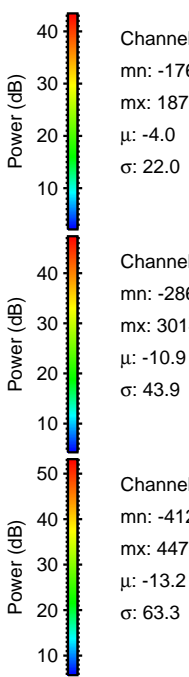
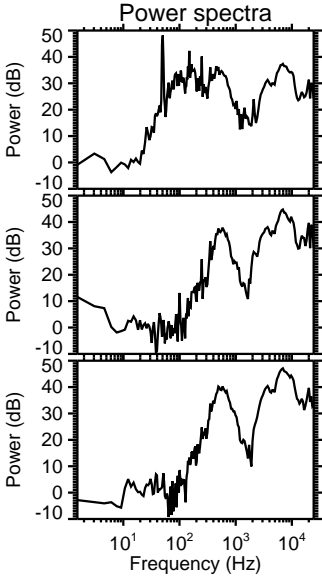
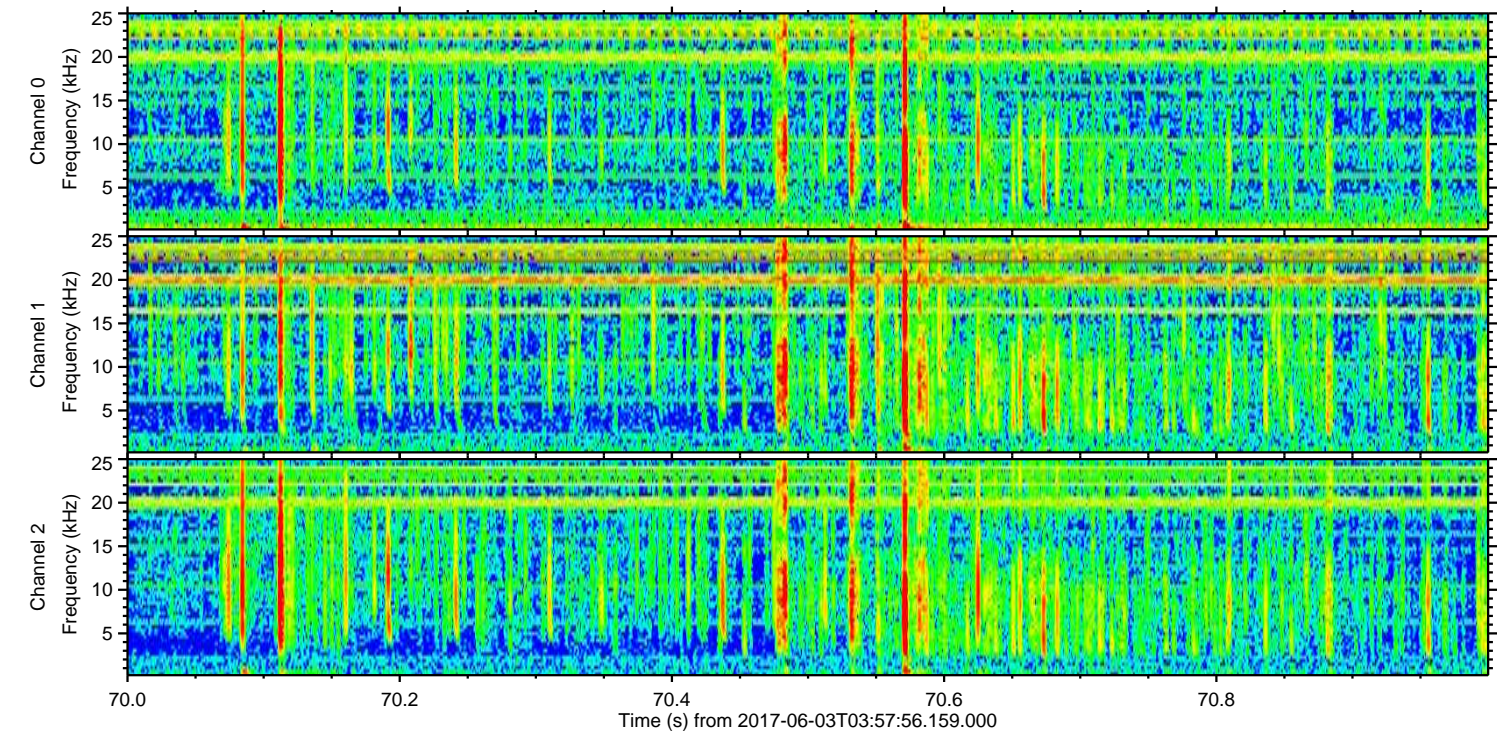
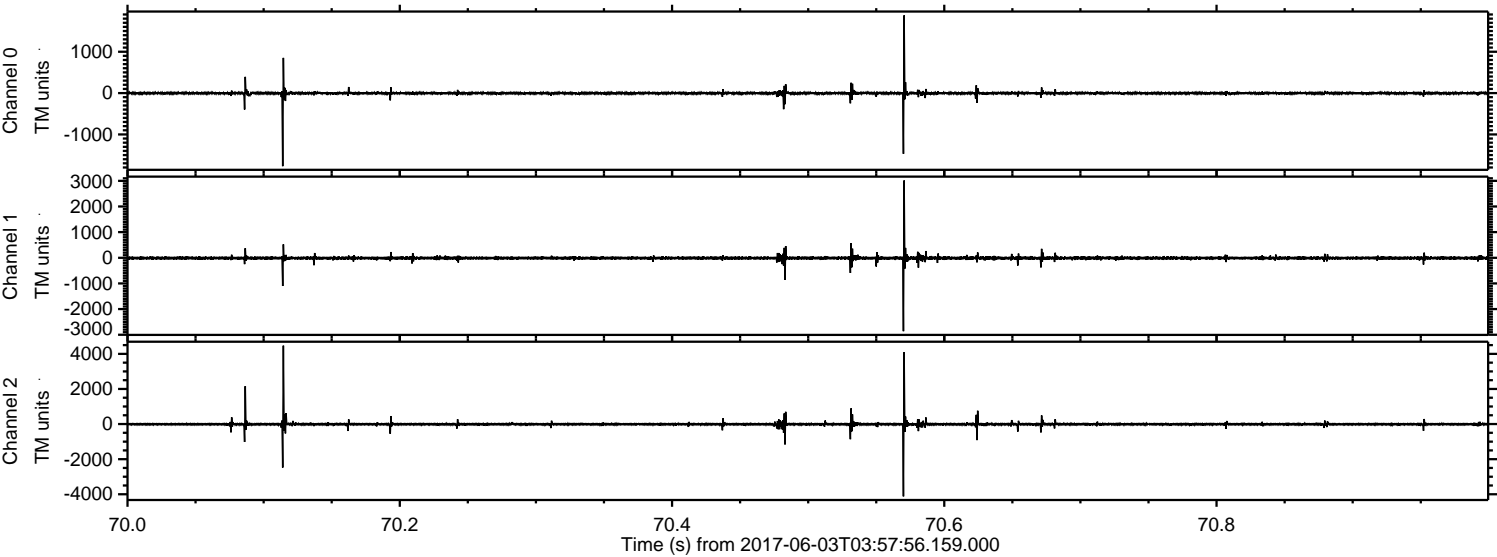
Processed Sat Jun 3 06:06:25 2017 by ELM ver.2012-10-06 from 001__elm20170603_035755__dat00.bin



Processed Sat Jun 3 06:06:26 2017 by ELM ver.2012-10-06 from 001__elm20170603_035755__dat00.bin



Processed Sat Jun 3 06:06:26 2017 by ELM ver.2012-10-06 from 001__elm20170603_035755__dat00.bin



Channel 0
mn: -1768
mx: 1878
 μ : -4.0
 σ : 22.0

Channel 1
mn: -2864
mx: 3014
 μ : -10.9
 σ : 43.9

Channel 2
mn: -4122
mx: 4470
 μ : -13.2
 σ : 63.3

