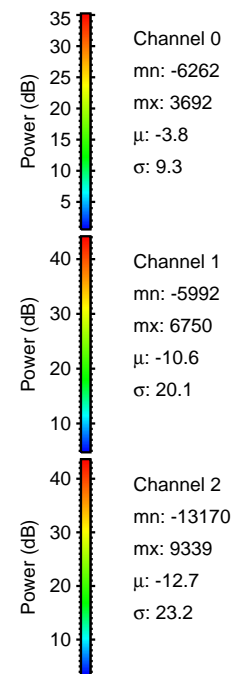
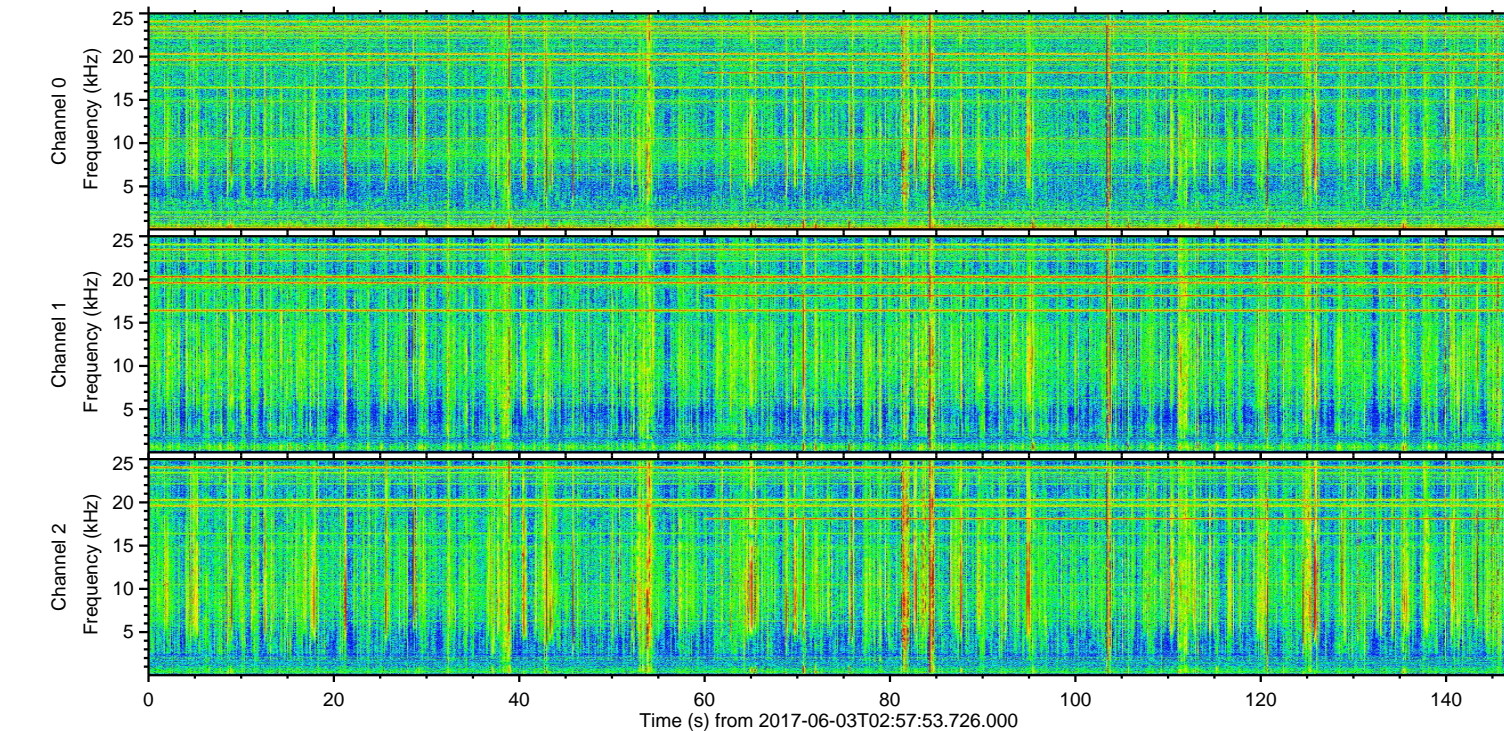
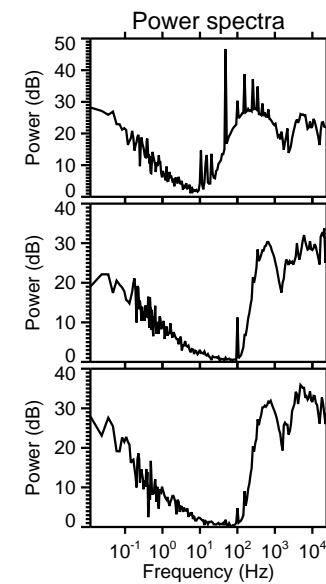
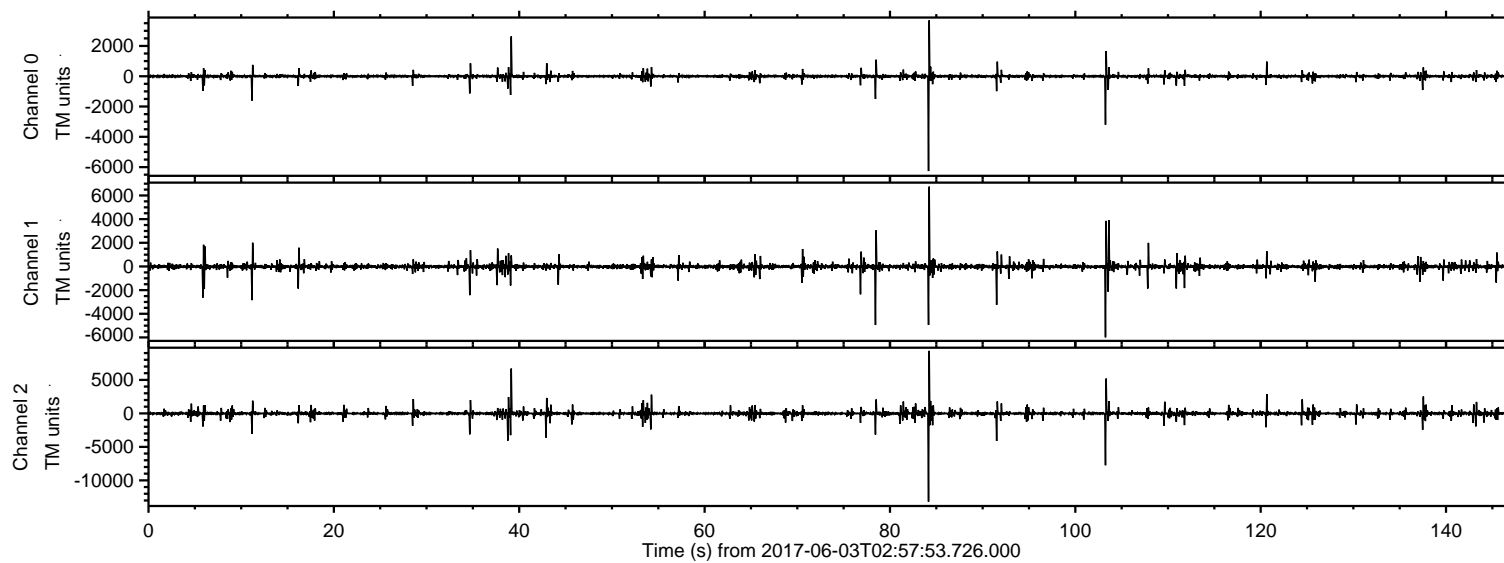


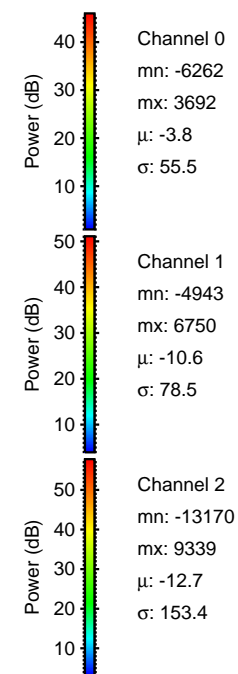
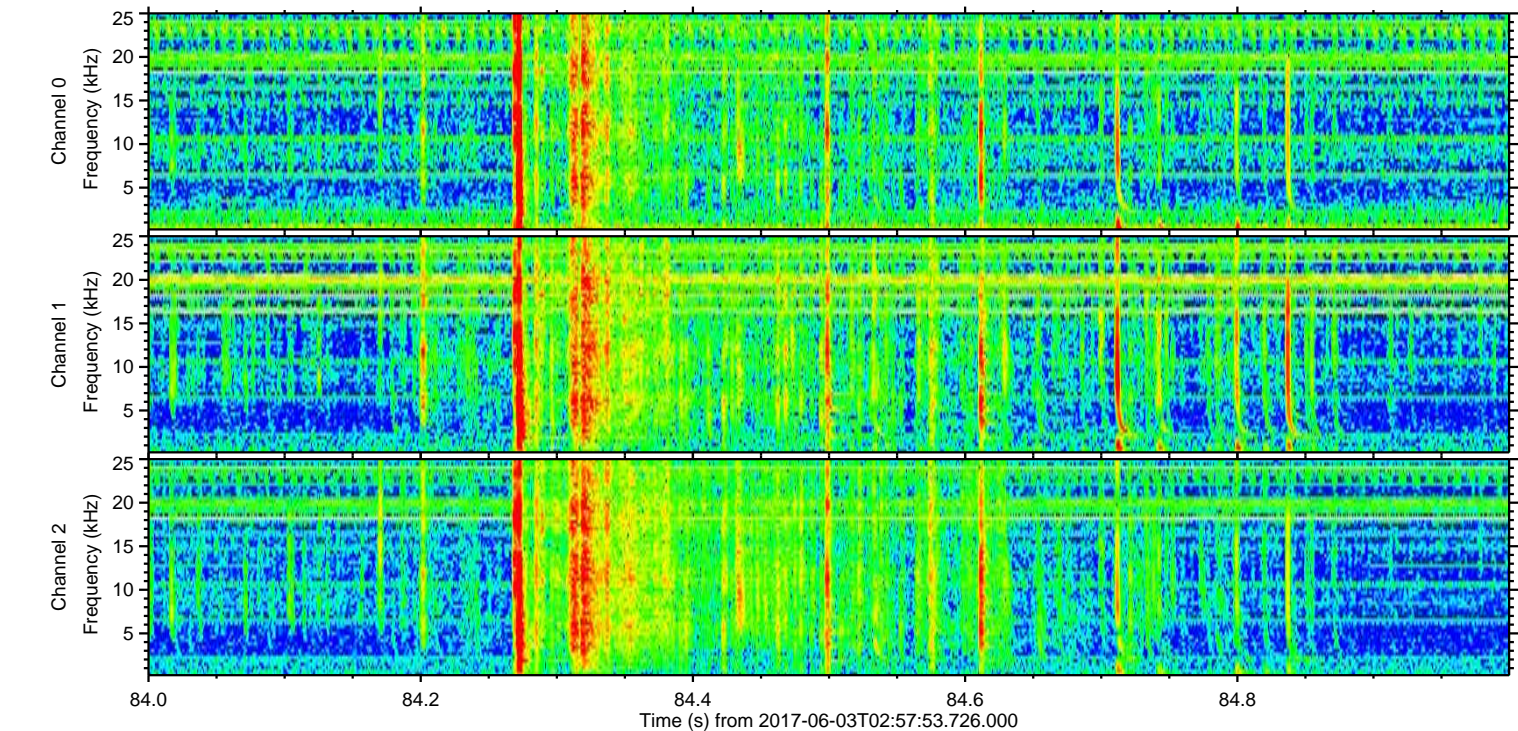
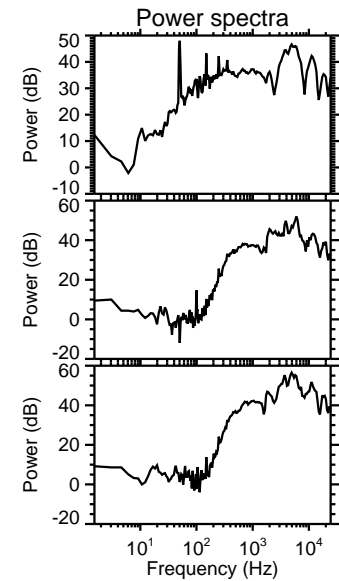
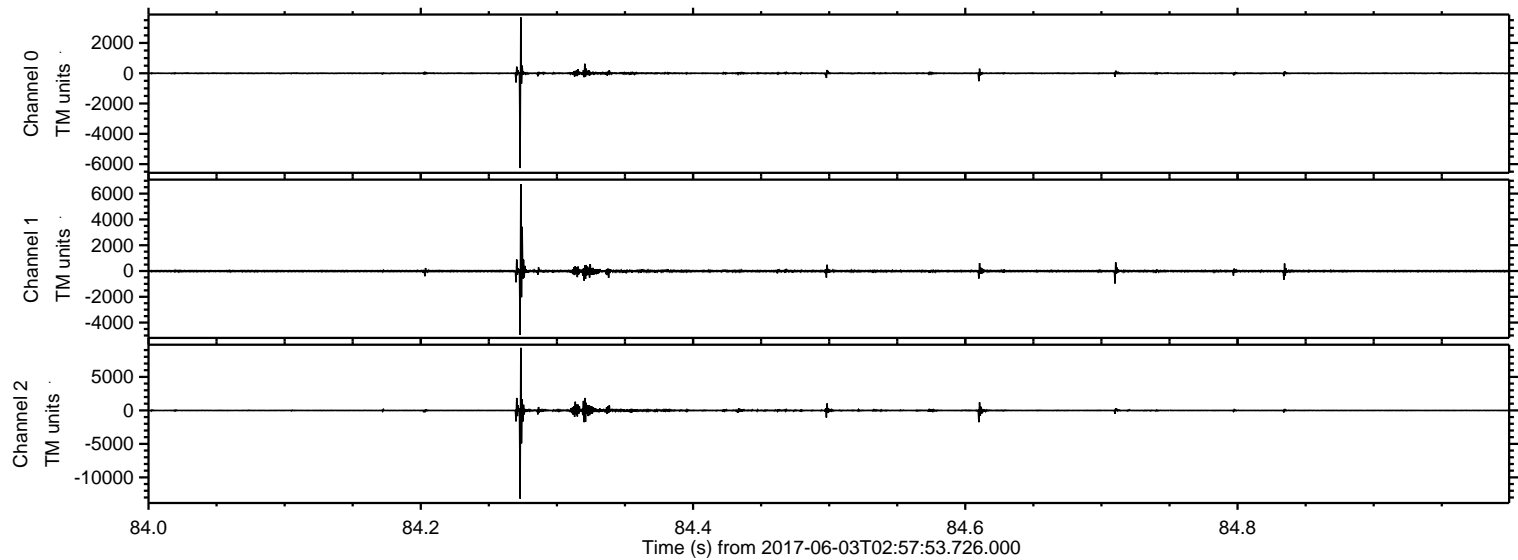
ELMAVAN 3D WAVEFORMS (Measured data sampled at 50 kHz) 51000 packets of 144 samples from 2017-06-03T02:57:53.726.000.

Processed Sat Jun 3 05:05:36 2017 by ELM ver.2012-10-06 from 001__elm20170603_025752__dat00.bin



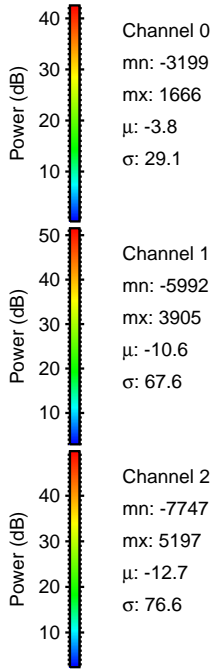
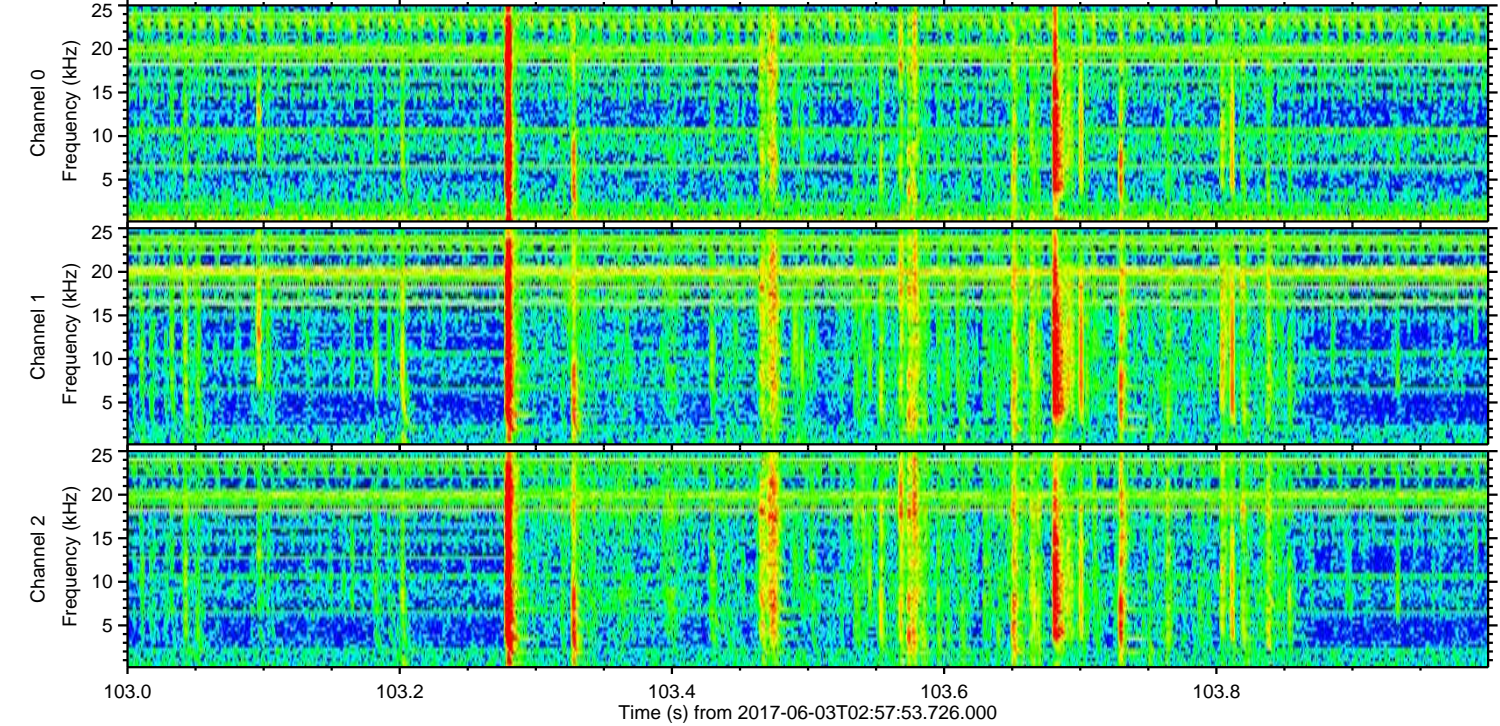
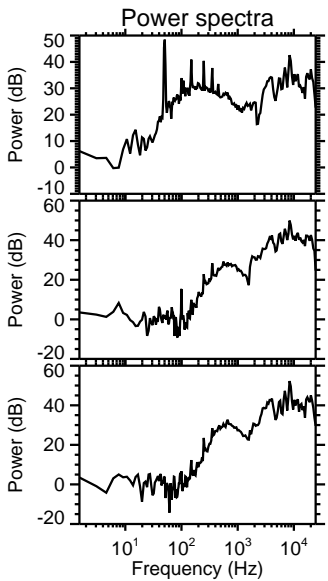
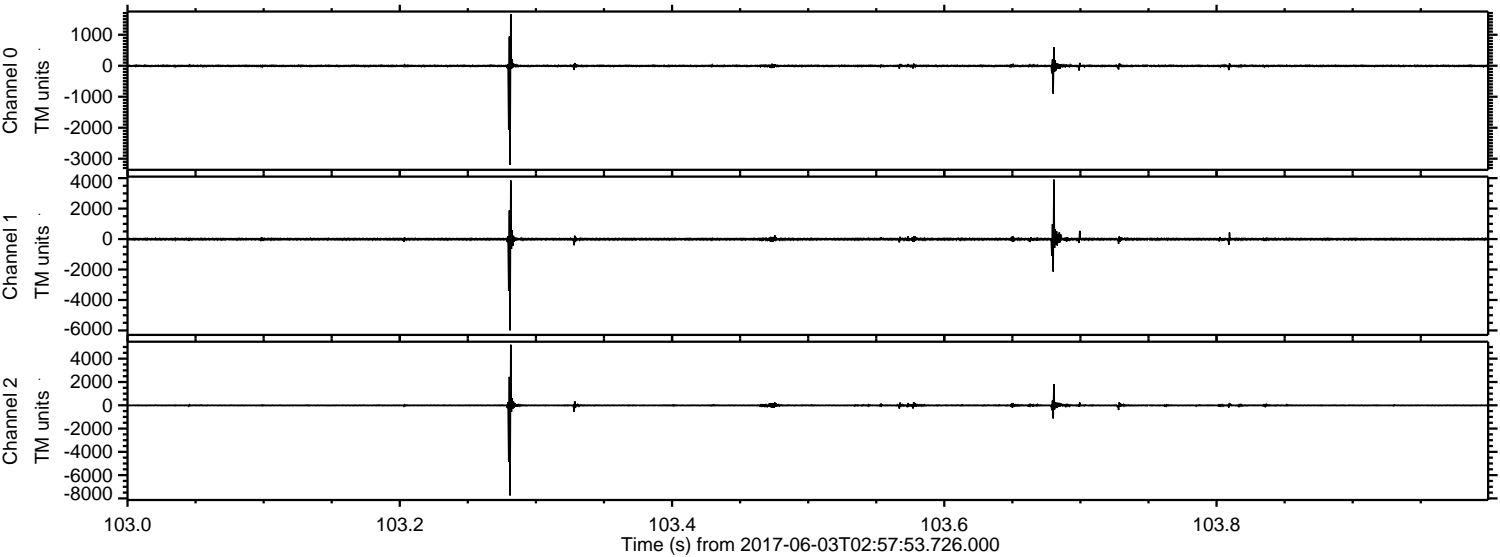
ELMAVAN 3D WAVEFORMS (Measured data sampled at 50 kHz) 51000 packets of 144 samples from 2017-06-03T02:57:53.726.000. Part 85/147

Processed Sat Jun 3 05:05:42 2017 by ELM ver.2012-10-06 from 001__elm20170603_025752__dat00.bin

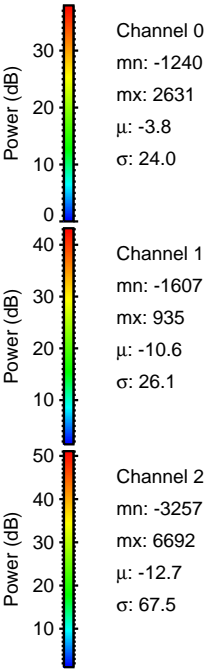
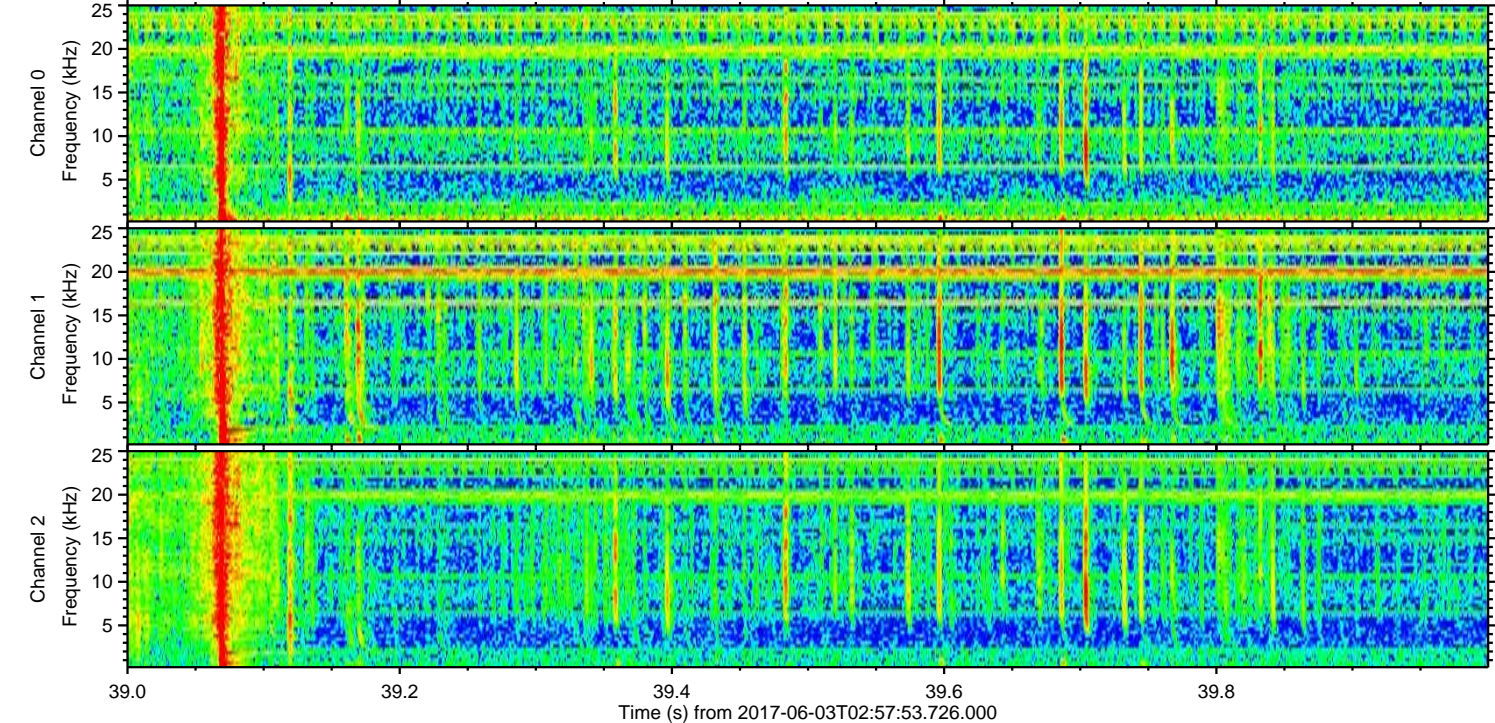
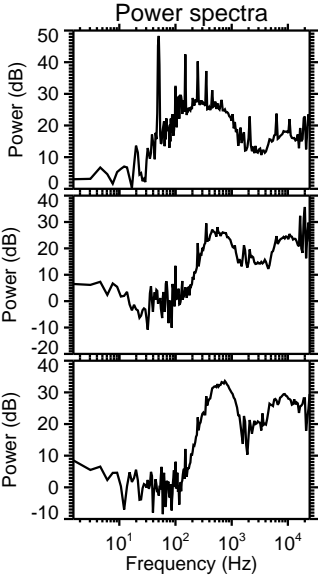
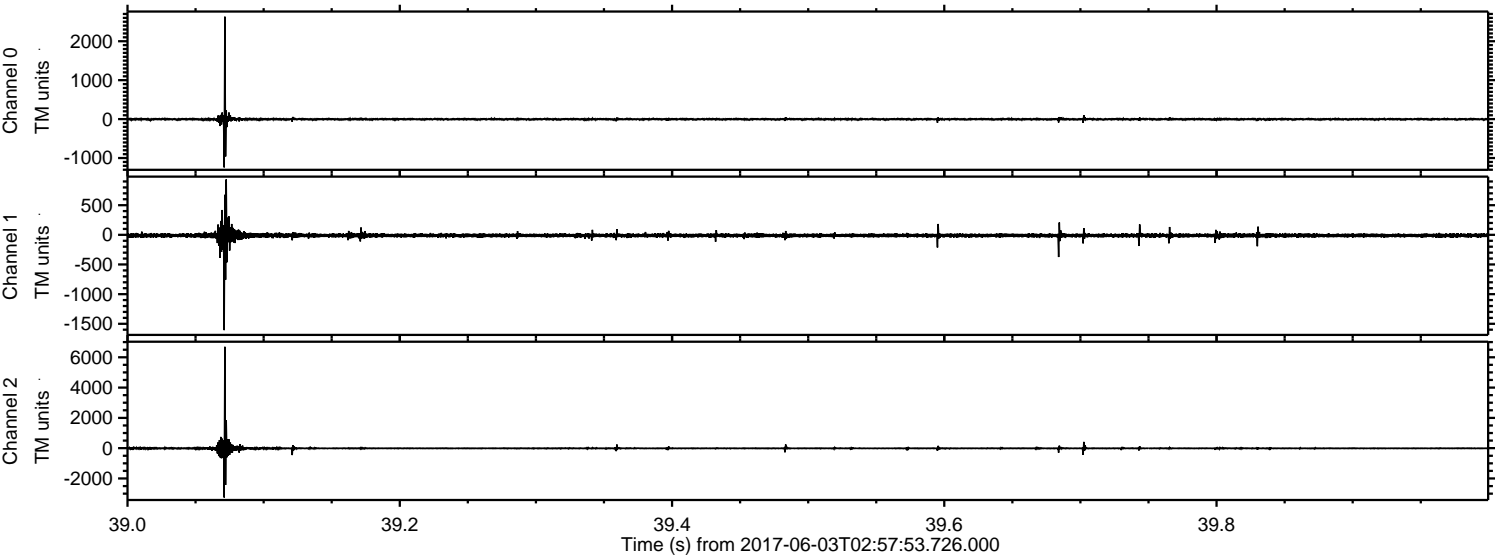


ELMAVAN 3D WAVEFORMS (Measured data sampled at 50 kHz) 51000 packets of 144 samples from 2017-06-03T02:57:53.726.000. Part 104/147

Processed Sat Jun 3 05:05:43 2017 by ELM ver.2012-10-06 from 001__elm20170603_025752__dat00.bin

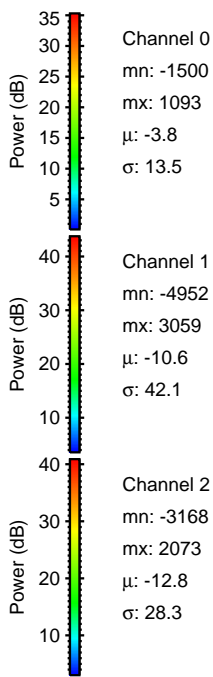
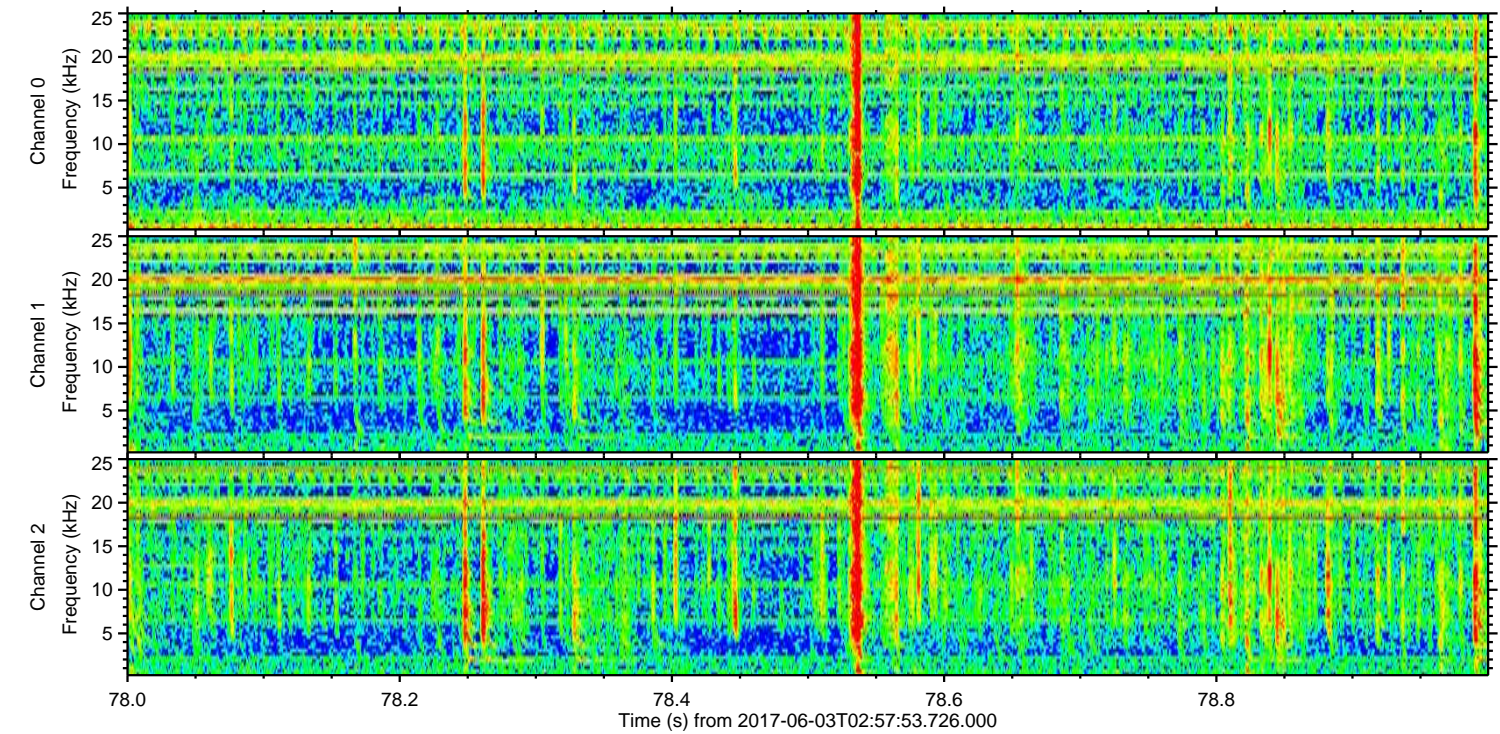
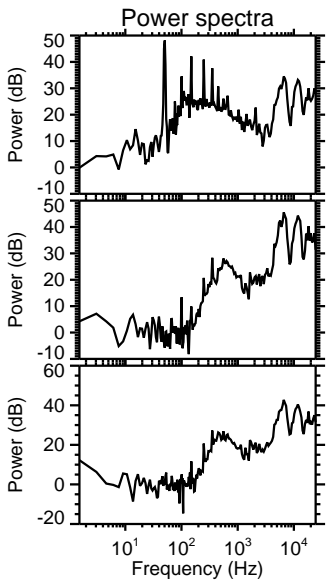
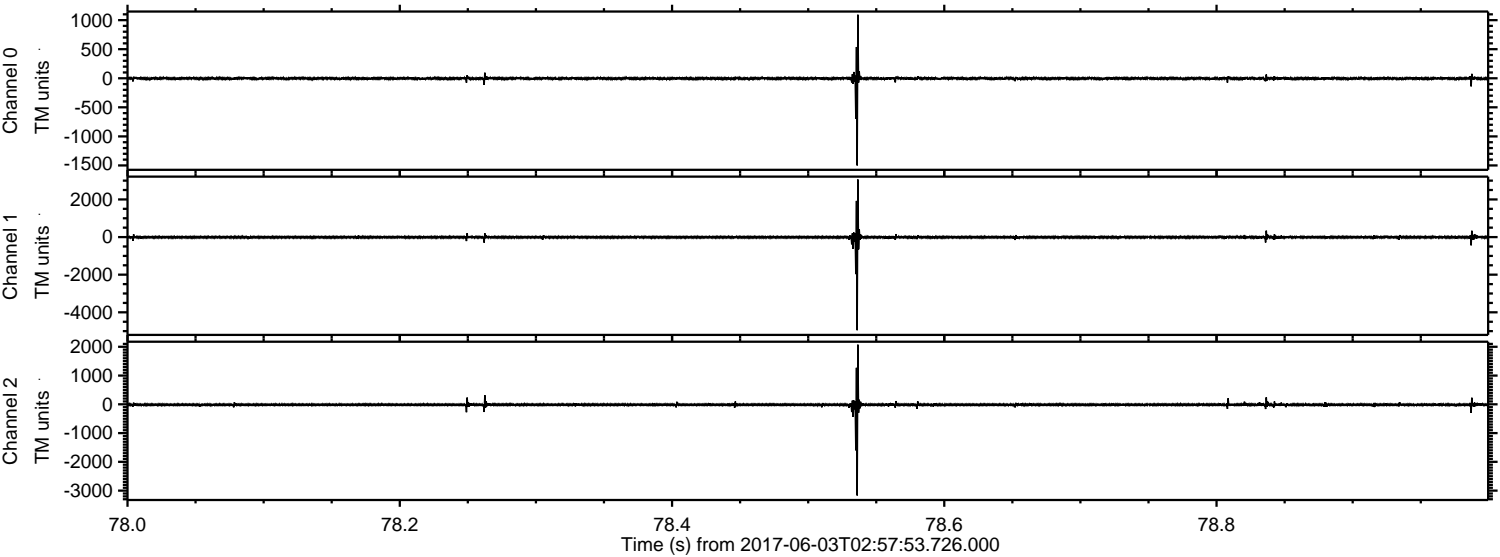


Processed Sat Jun 3 05:05:43 2017 by ELM ver.2012-10-06 from 001__elm20170603_025752__dat00.bin



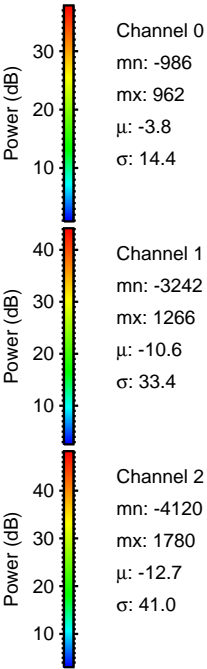
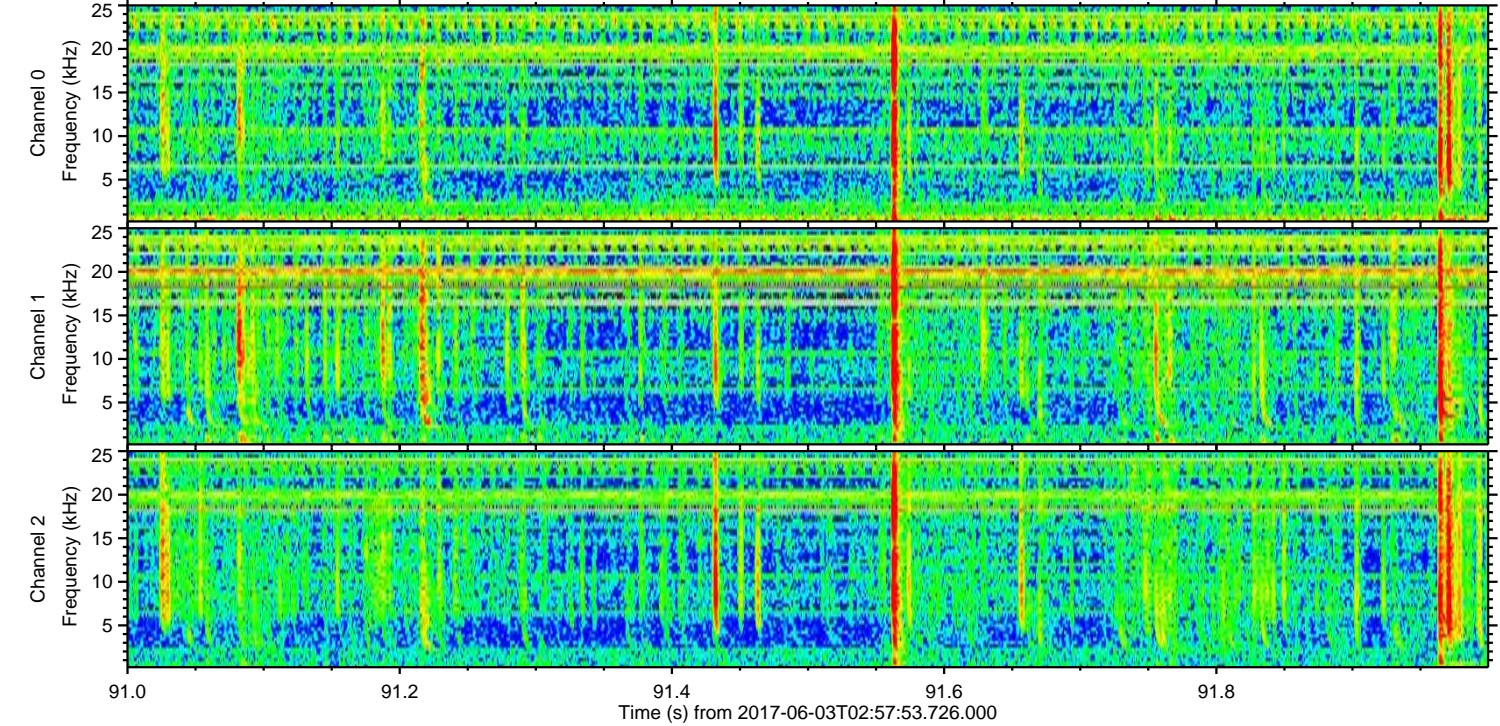
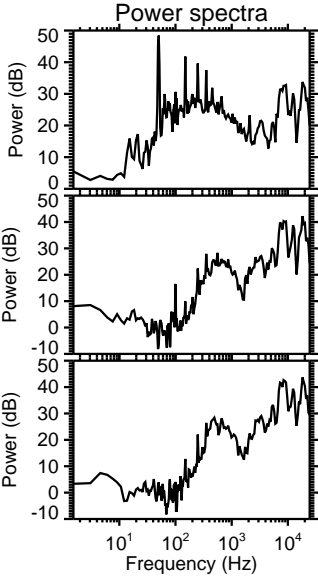
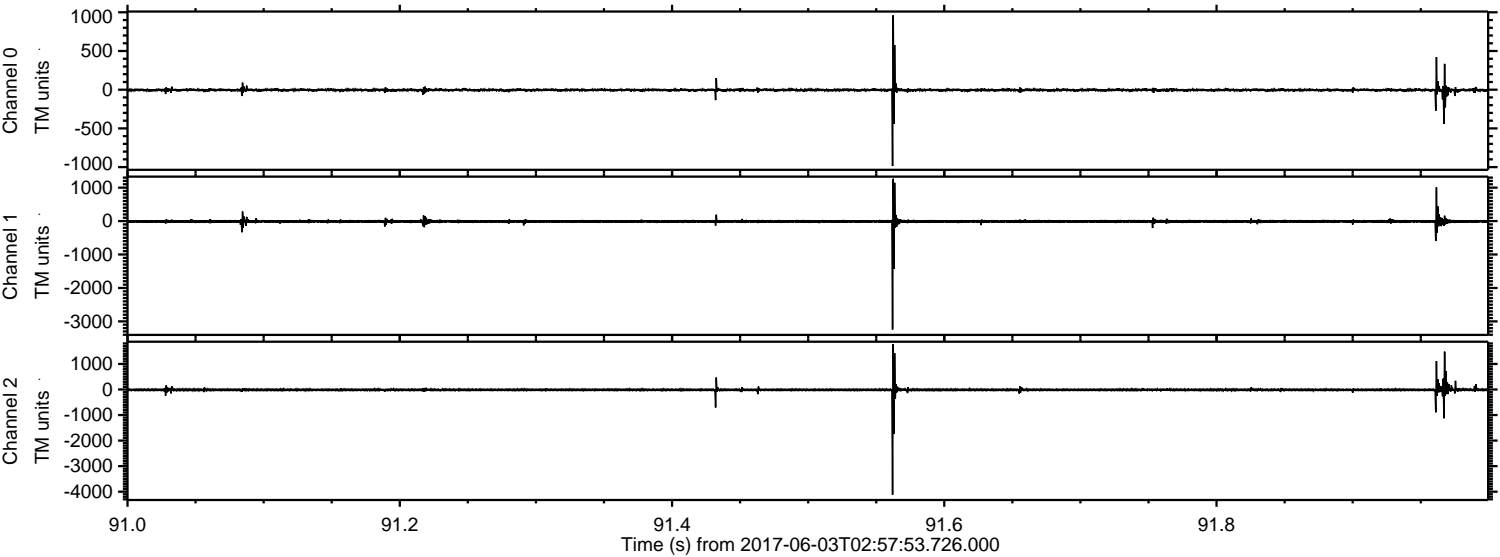
ELMAVAN 3D WAVEFORMS (Measured data sampled at 50 kHz) 51000 packets of 144 samples from 2017-06-03T02:57:53.726.000. Part 79/147

Processed Sat Jun 3 05:05:44 2017 by ELM ver.2012-10-06 from 001__elm20170603_025752__dat00.bin

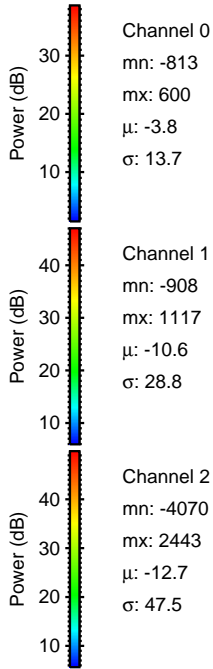
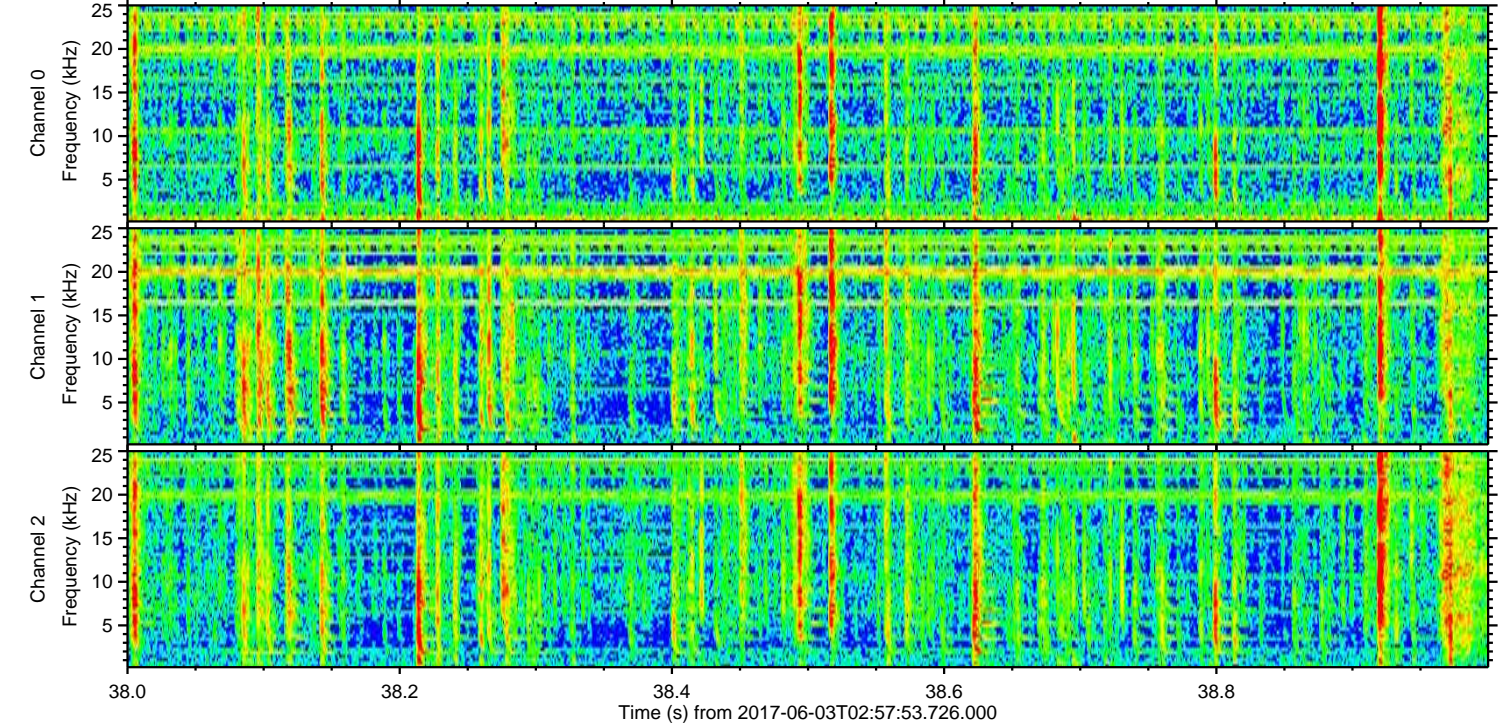
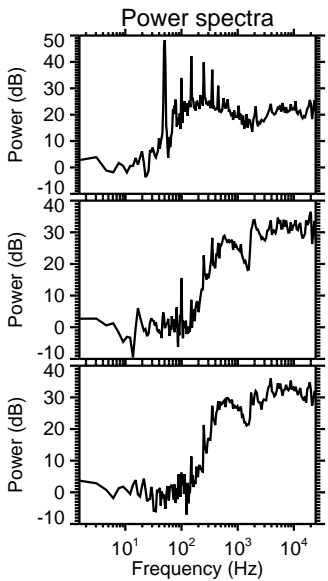
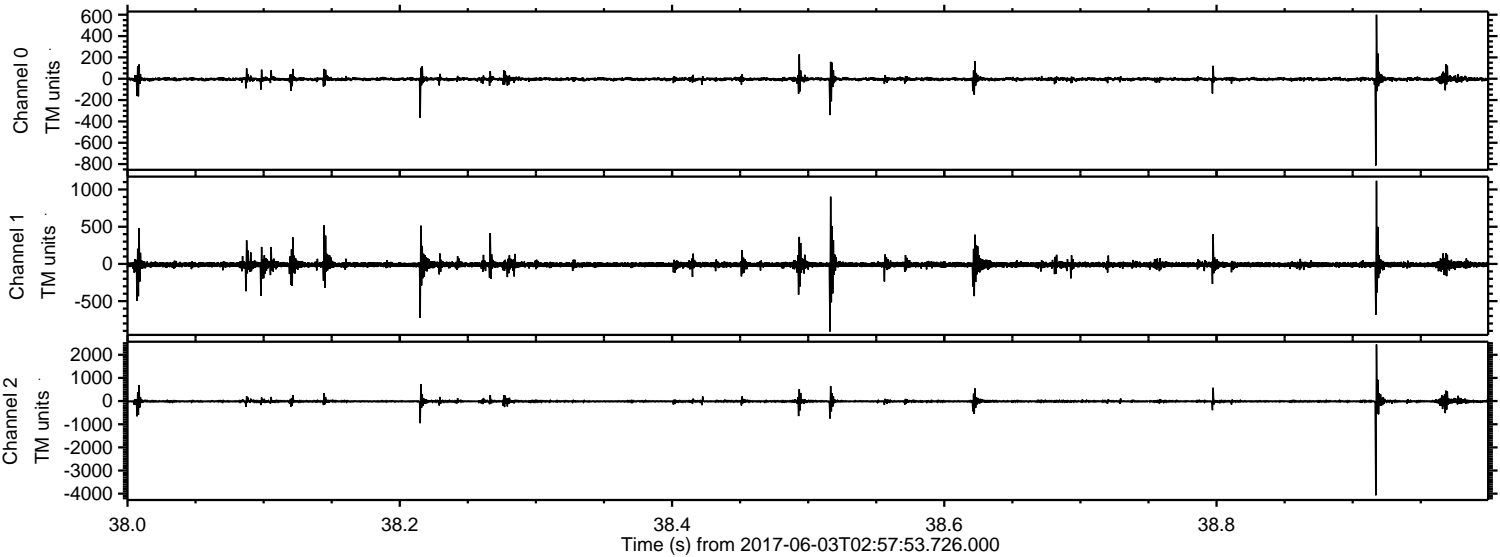


ELMAVAN 3D WAVEFORMS (Measured data sampled at 50 kHz) 51000 packets of 144 samples from 2017-06-03T02:57:53.726.000. Part 92/147

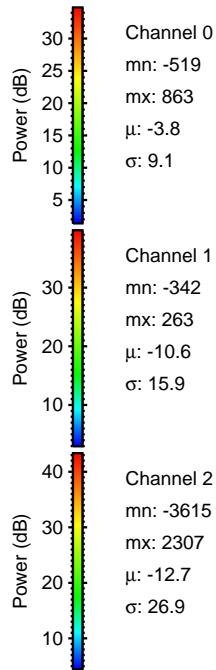
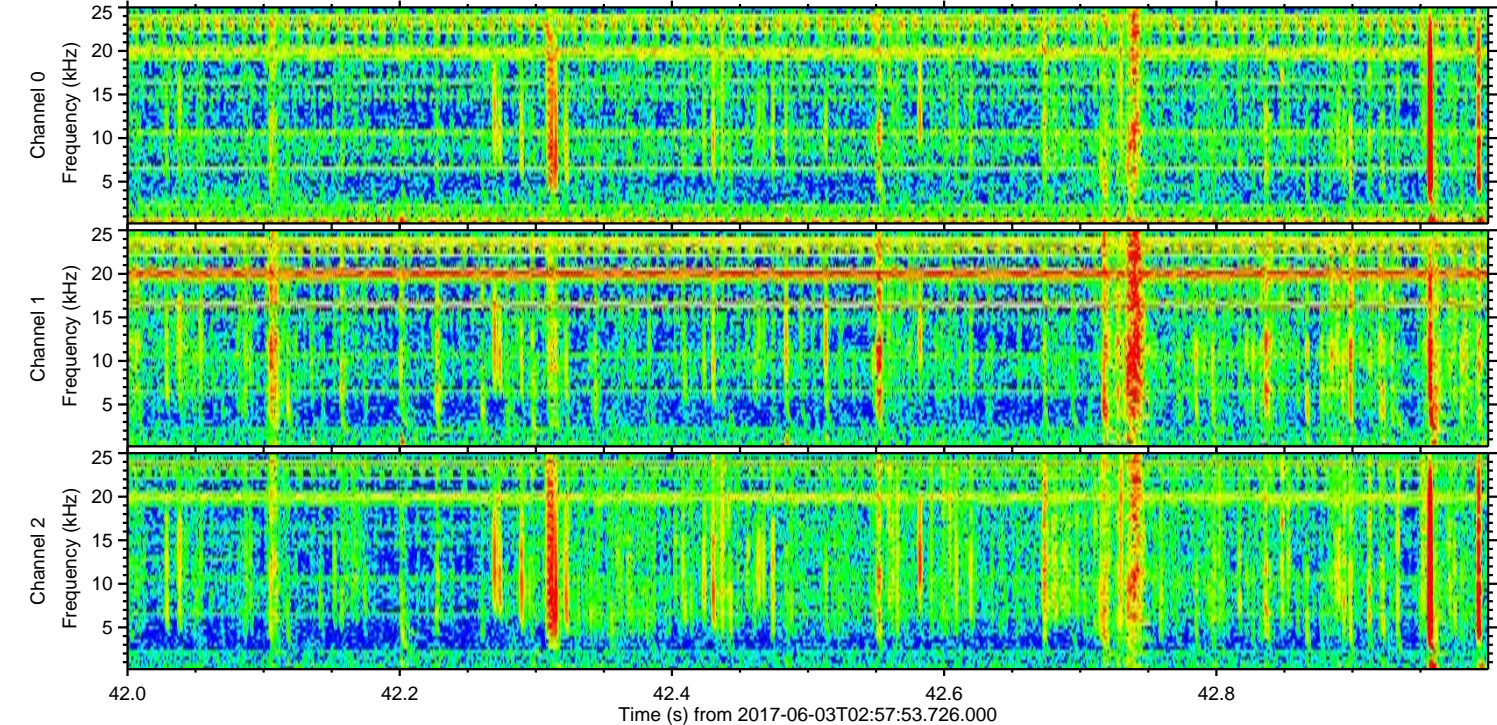
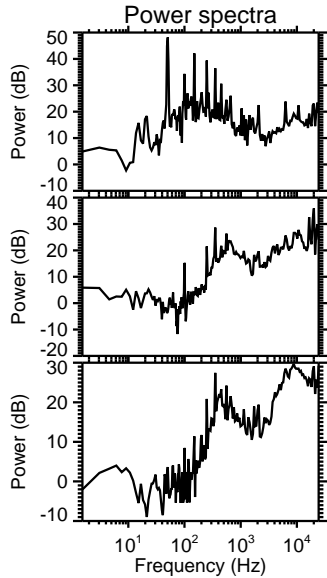
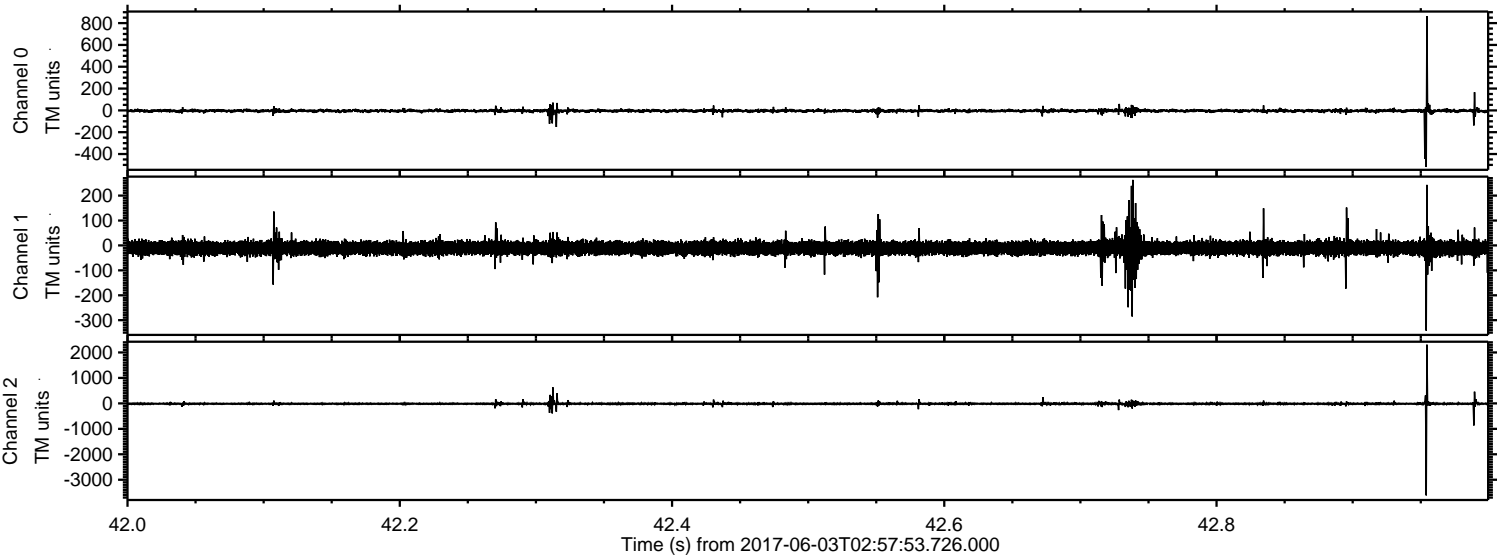
Processed Sat Jun 3 05:05:44 2017 by ELM ver.2012-10-06 from 001__elm20170603_025752__dat00.bin



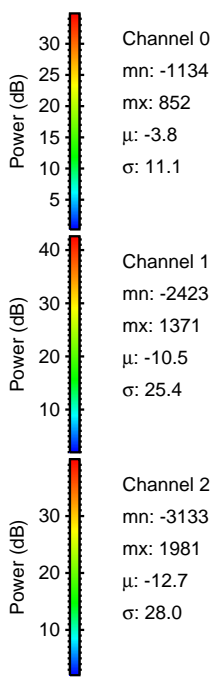
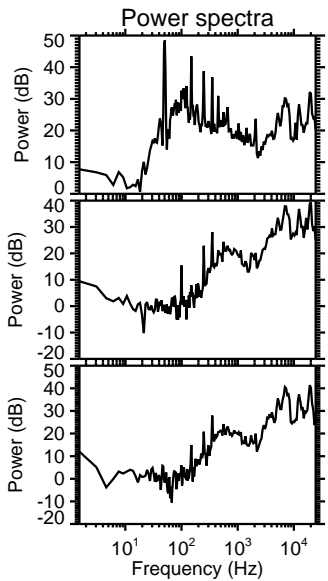
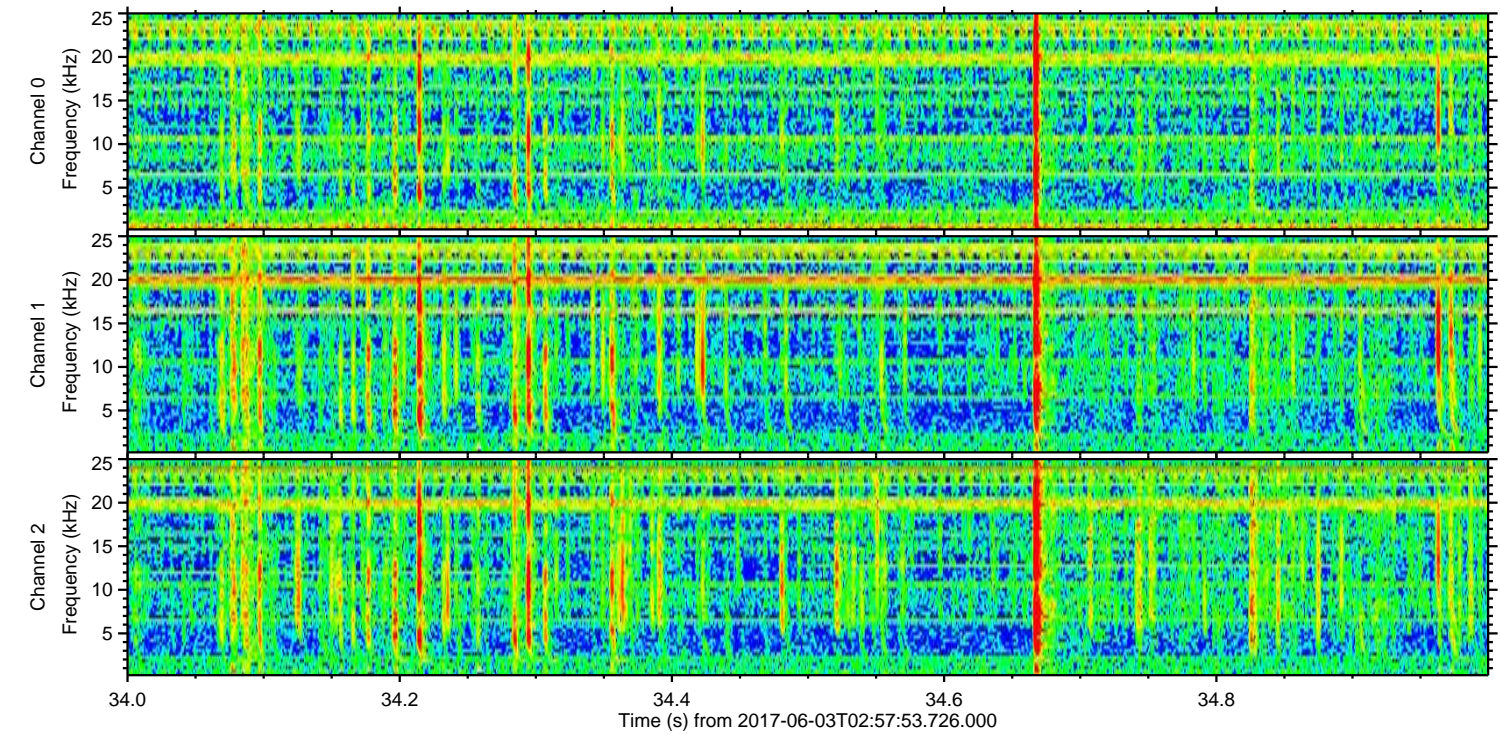
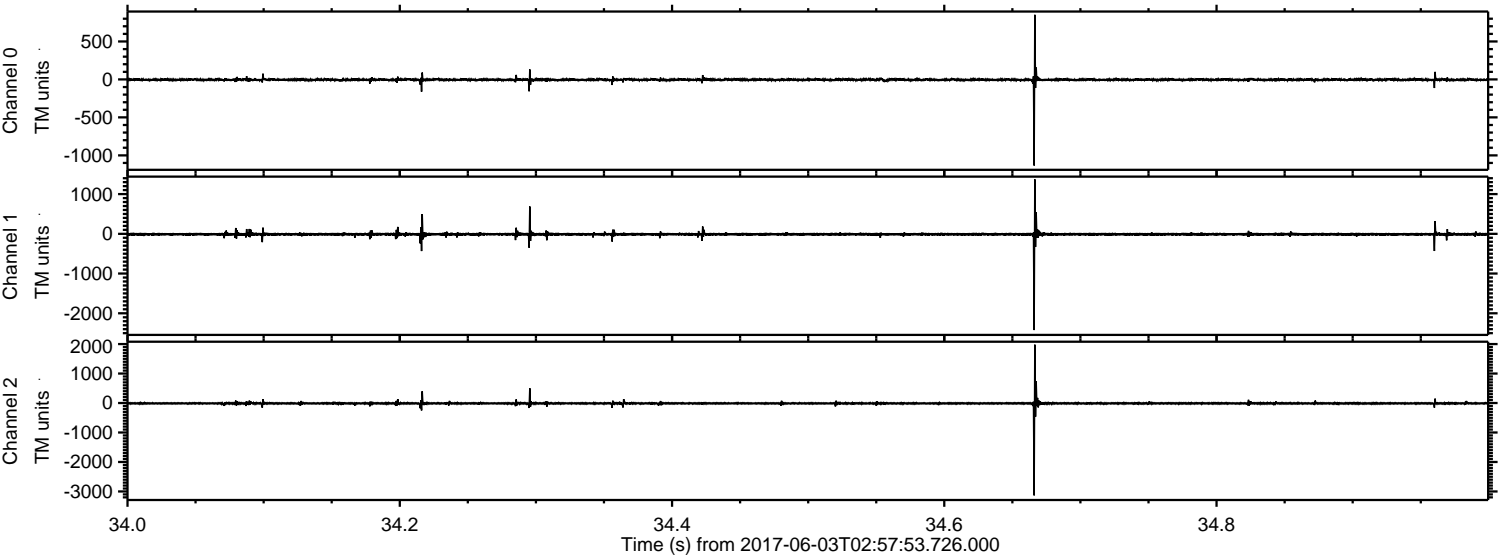
Processed Sat Jun 3 05:05:45 2017 by ELM ver.2012-10-06 from 001__elm20170603_025752__dat00.bin



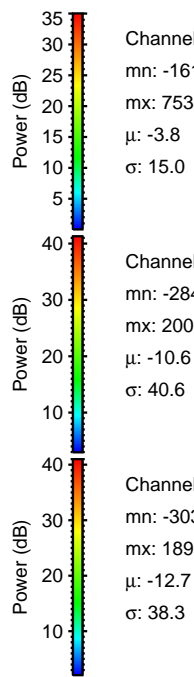
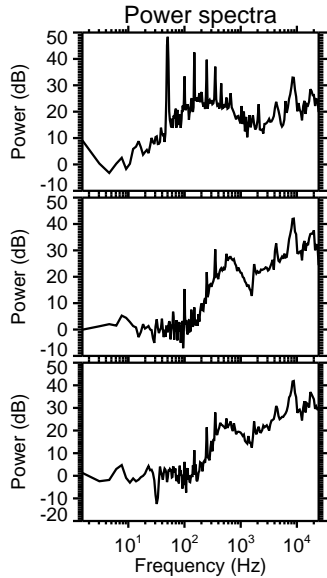
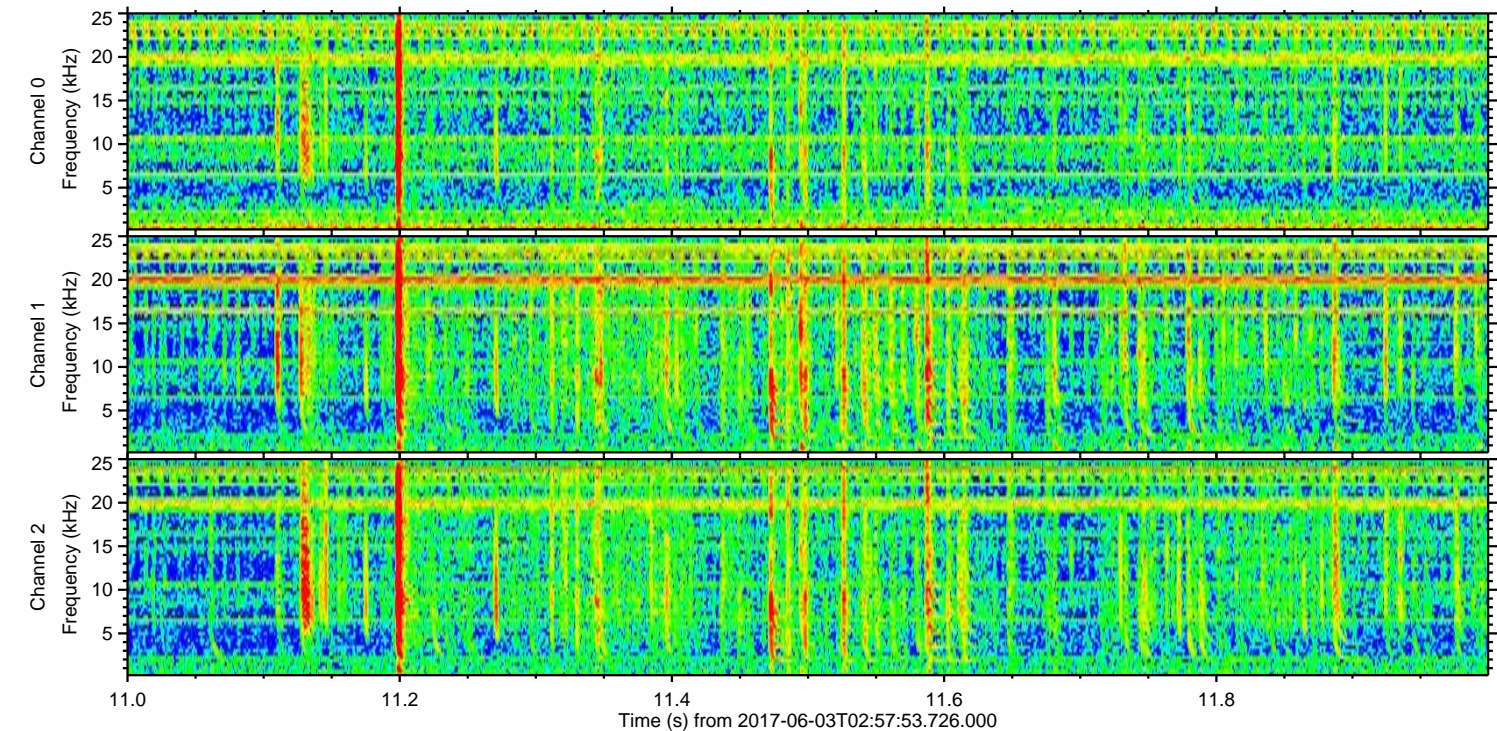
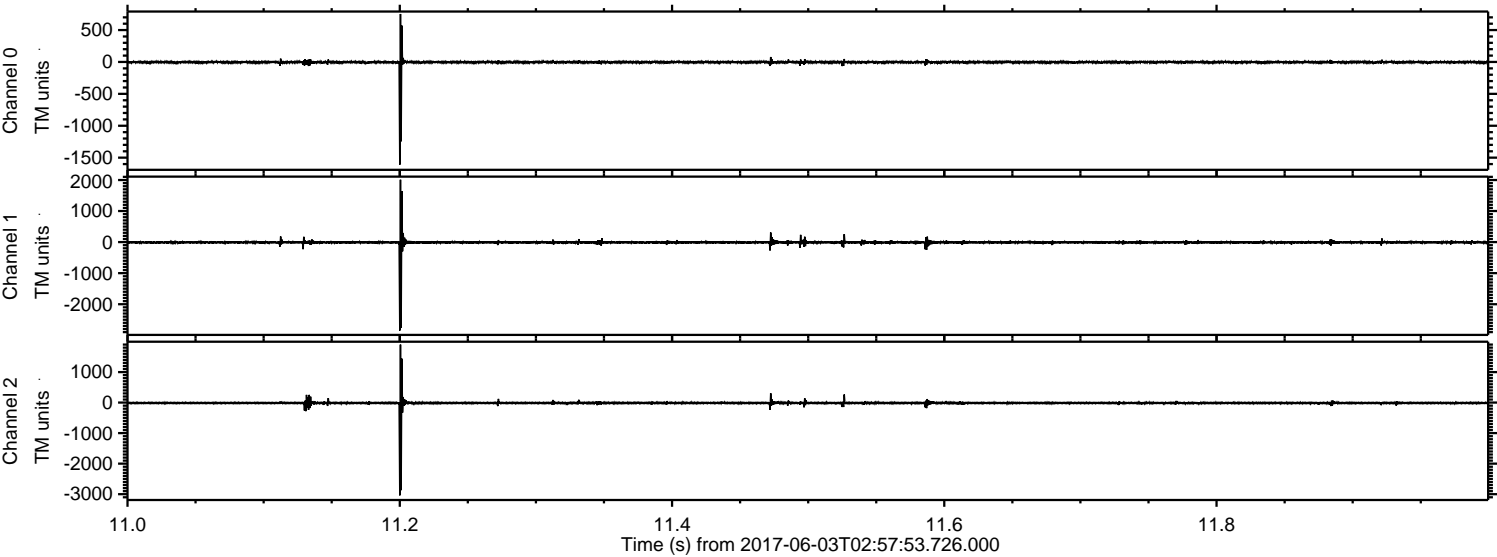
Processed Sat Jun 3 05:05:46 2017 by ELM ver.2012-10-06 from 001__elm20170603_025752__dat00.bin



Processed Sat Jun 3 05:05:46 2017 by ELM ver.2012-10-06 from 001__elm20170603_025752__dat00.bin



Processed Sat Jun 3 05:05:47 2017 by ELM ver.2012-10-06 from 001__elm20170603_025752__dat00.bin



Channel 0
mn: -1610
mx: 753
 μ : -3.8
 σ : 15.0

Channel 1
mn: -2847
mx: 2008
 μ : -10.6
 σ : 40.6

Channel 2
mn: -3038
mx: 1899
 μ : -12.7
 σ : 38.3

Processed Sat Jun 3 05:05:48 2017 by ELM ver.2012-10-06 from 001__elm20170603_025752__dat00.bin

