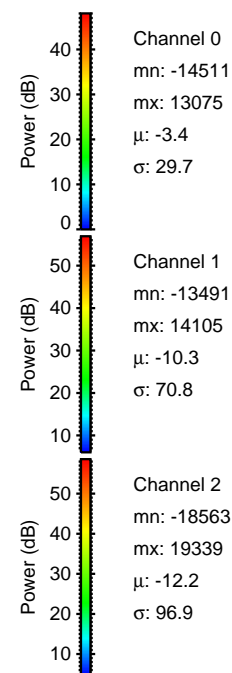
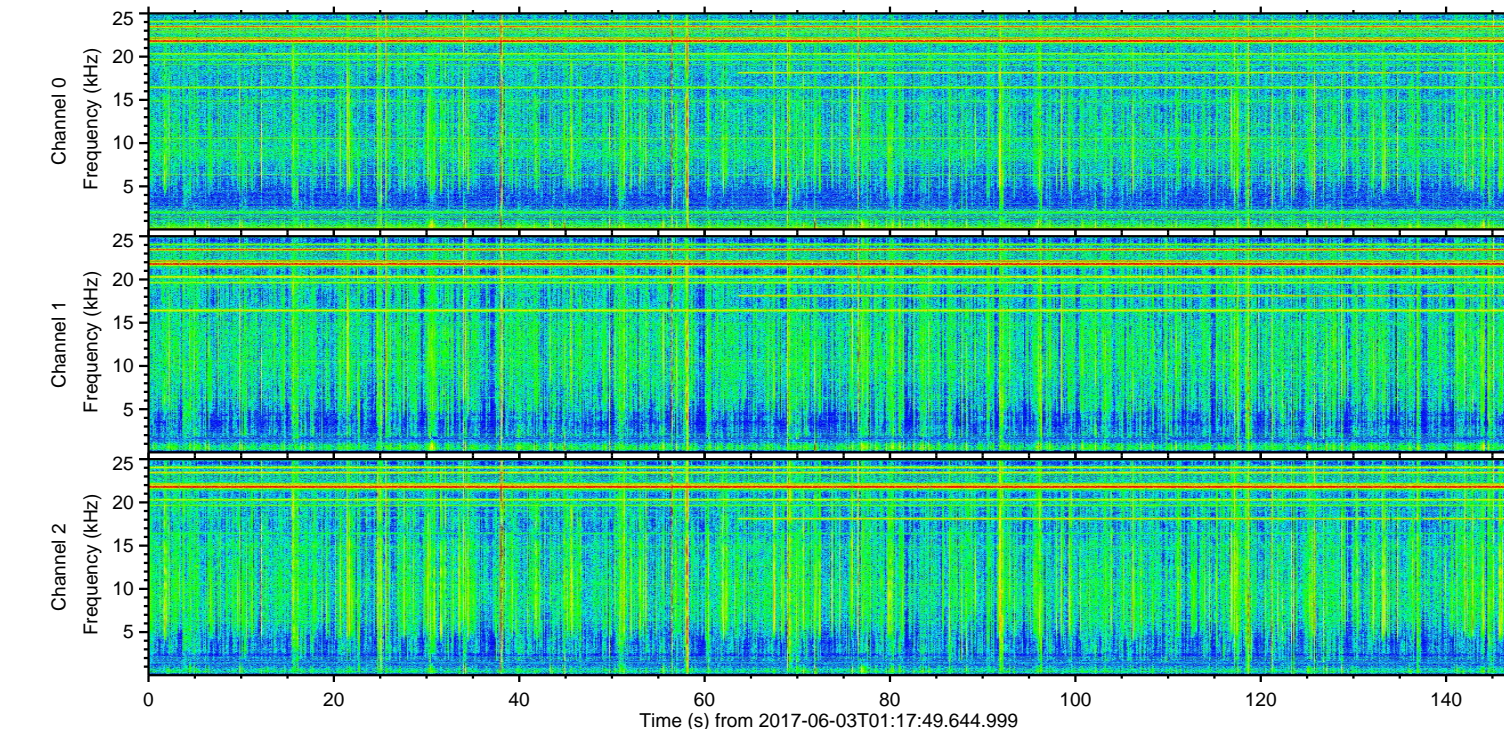
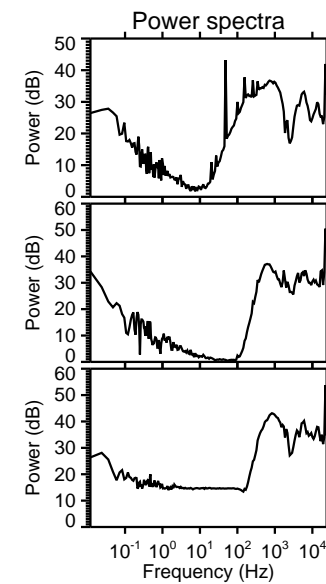
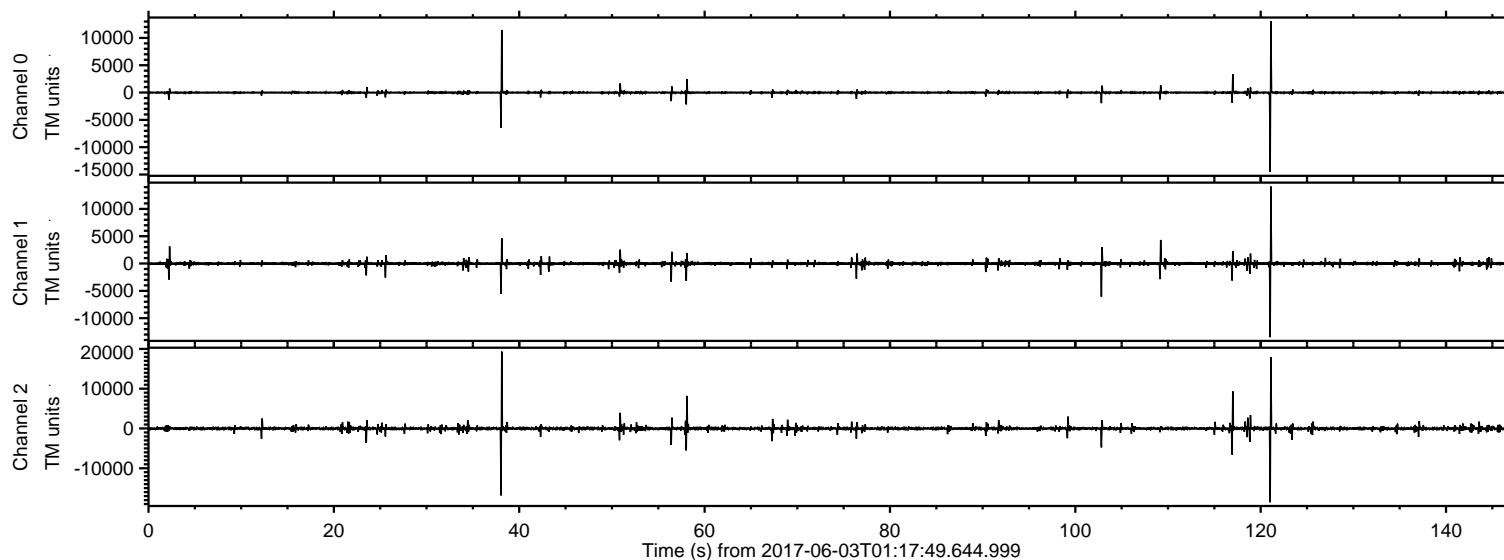


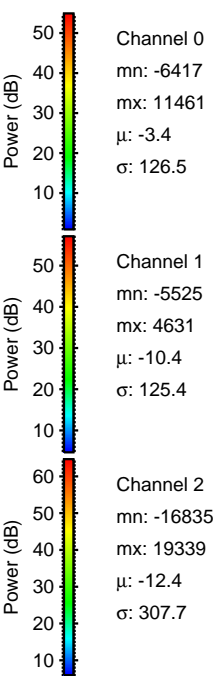
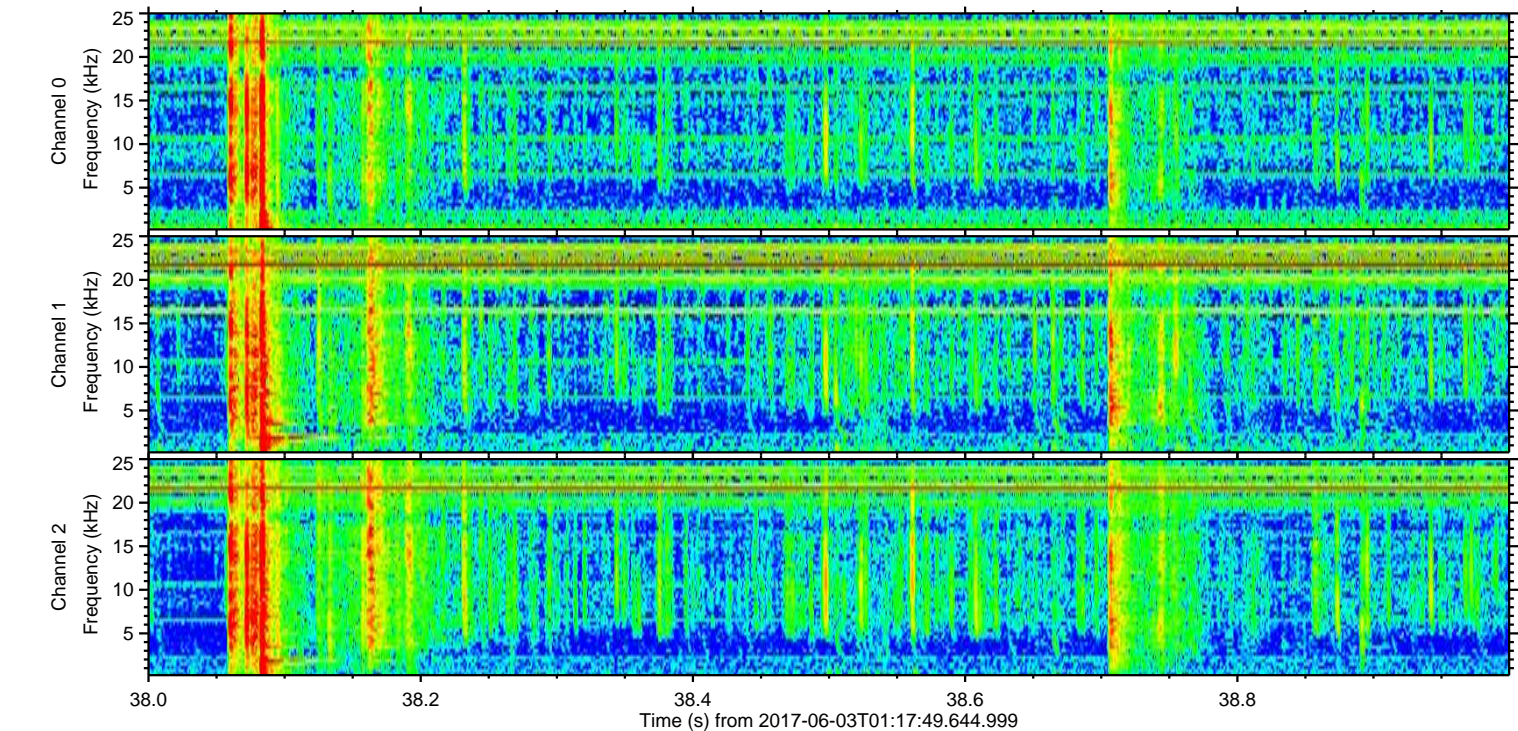
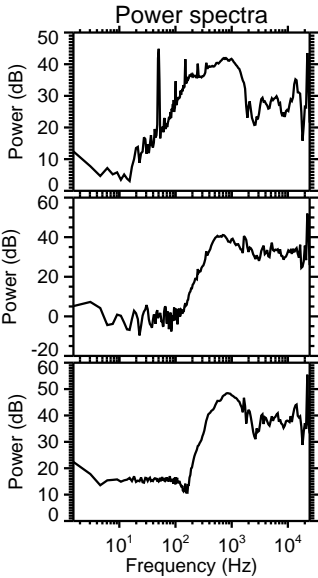
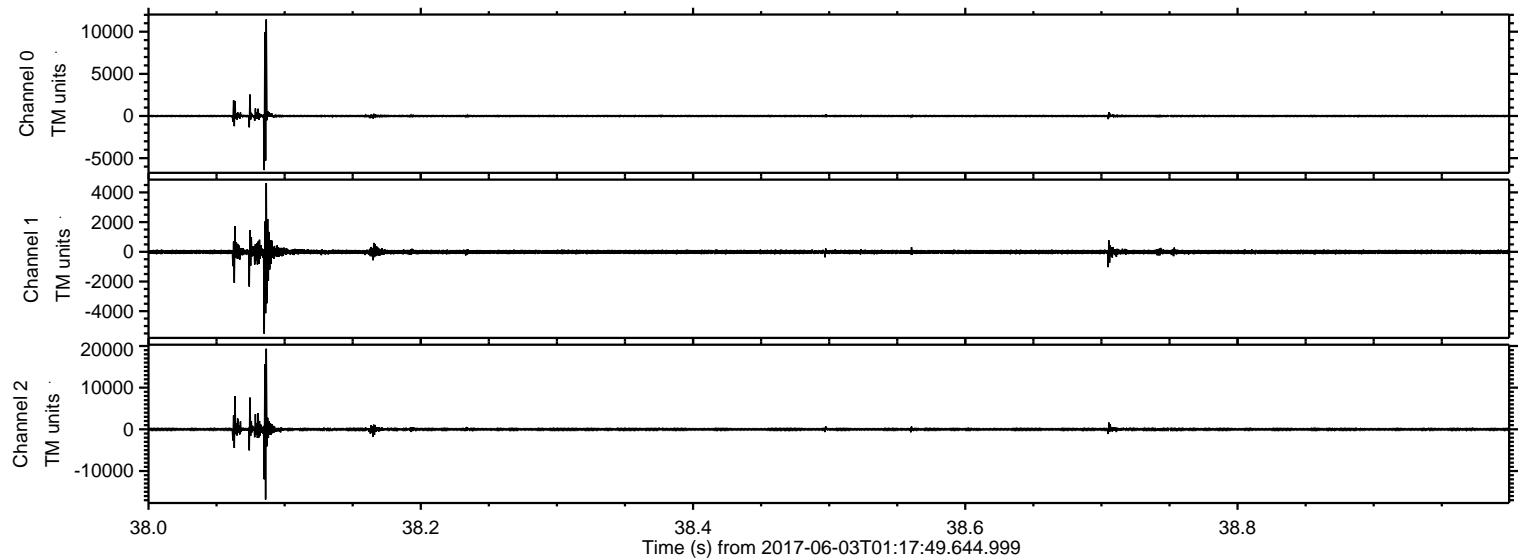
ELMAVAN 3D WAVEFORMS (Measured data sampled at 50 kHz) 51000 packets of 144 samples from 2017-06-03T01:17:49.644.999.

Processed Sat Jun 3 03:25:34 2017 by ELM ver.2012-10-06 from 001__elm20170603_011748__dat00.bin



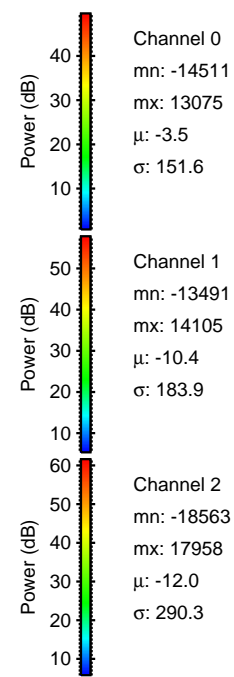
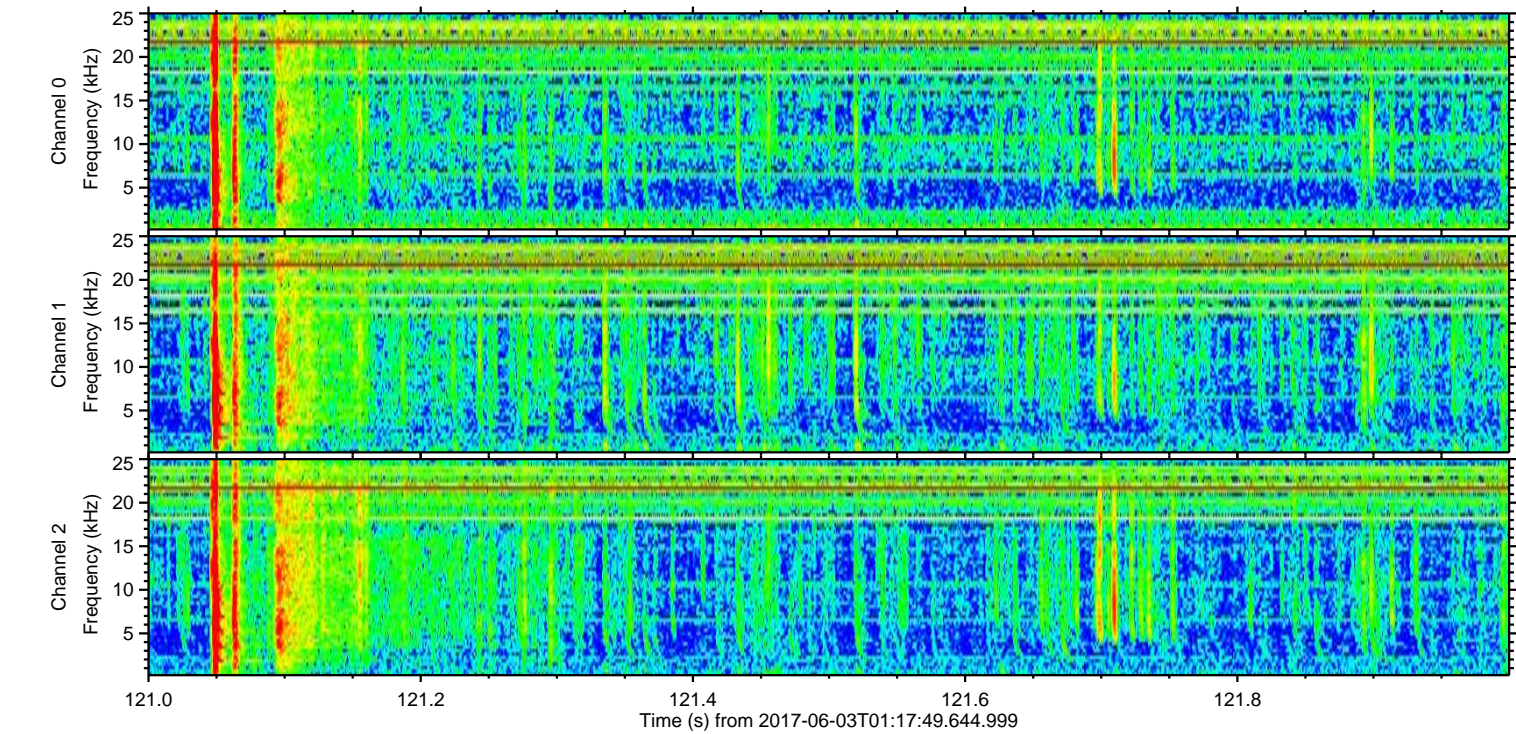
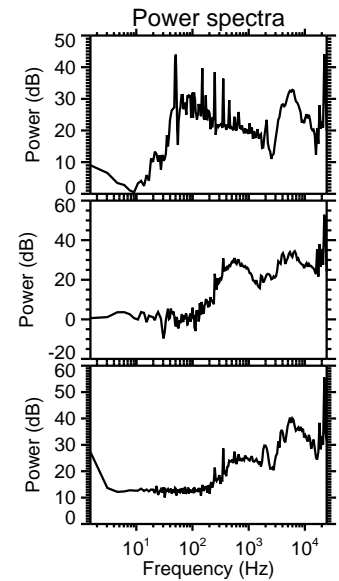
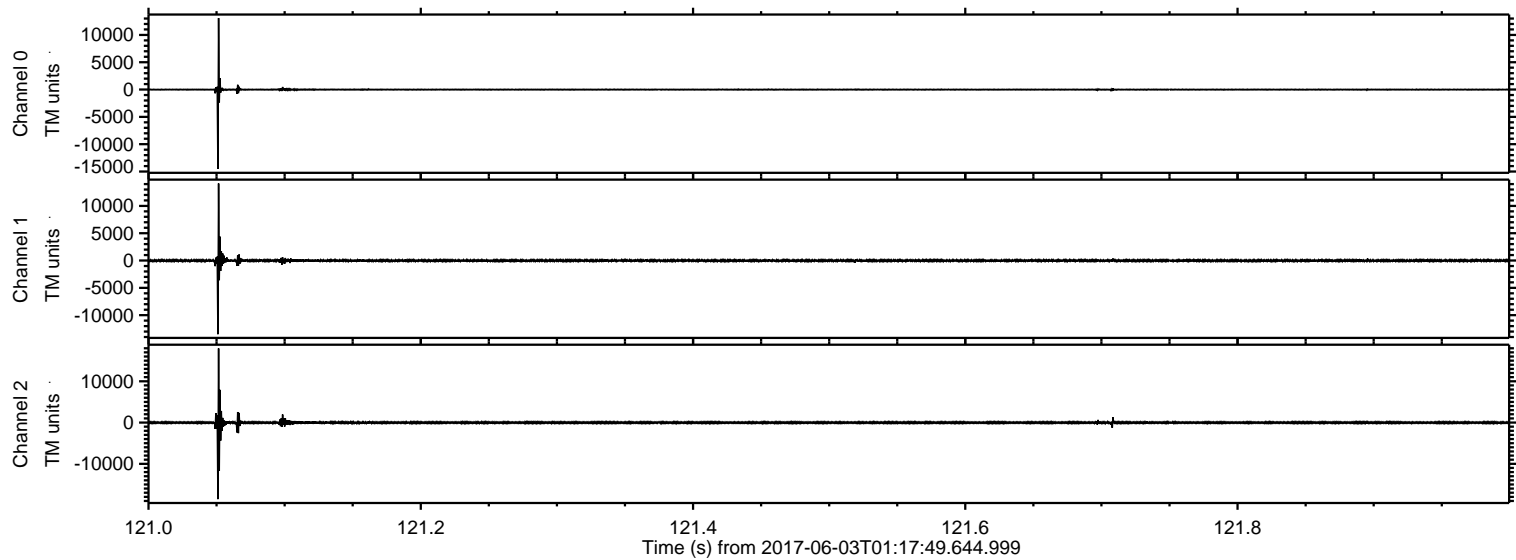
ELMAVAN 3D WAVEFORMS (Measured data sampled at 50 kHz) 51000 packets of 144 samples from 2017-06-03T01:17:49.644.999. Part 39/147

Processed Sat Jun 3 03:25:40 2017 by ELM ver.2012-10-06 from 001__elm20170603_011748__dat00.bin



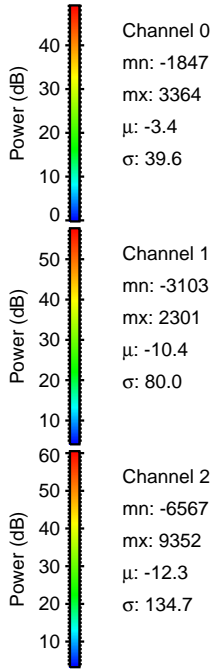
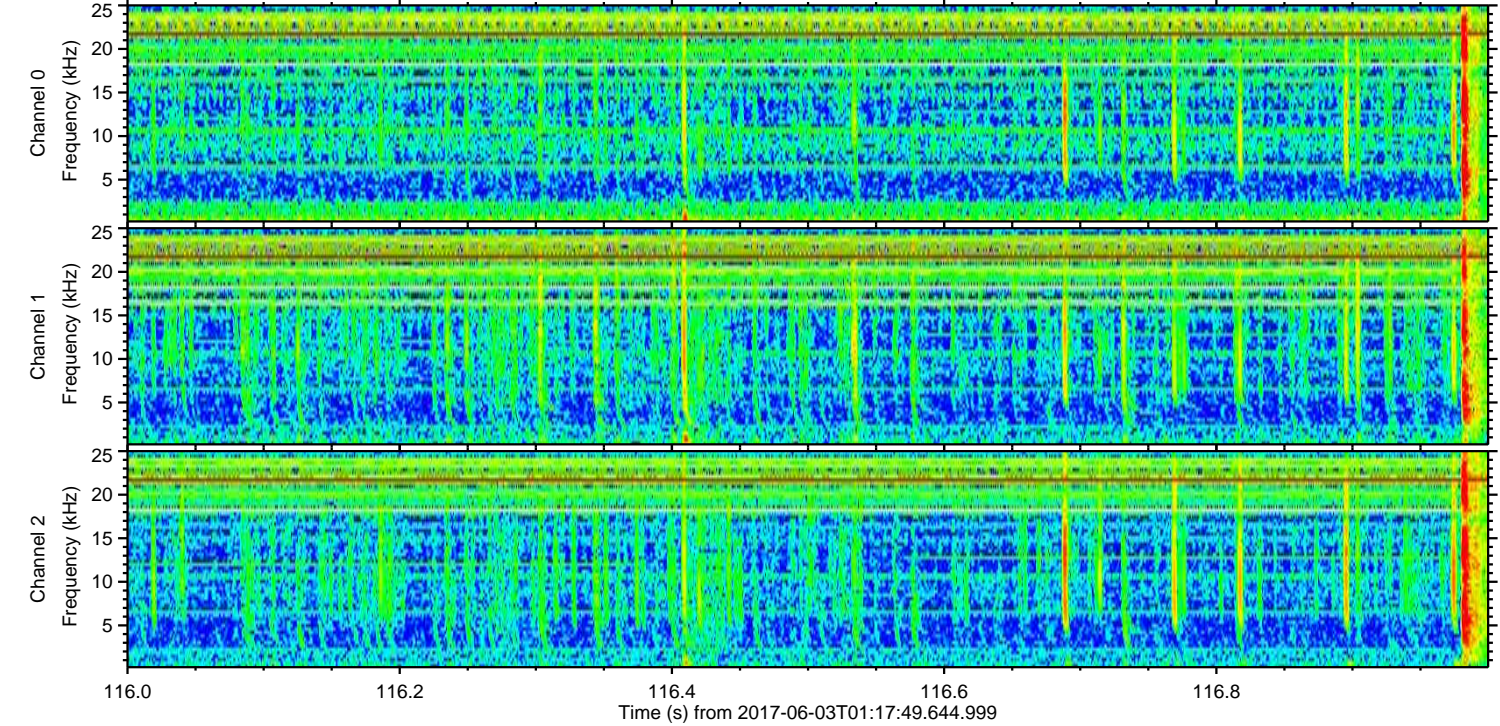
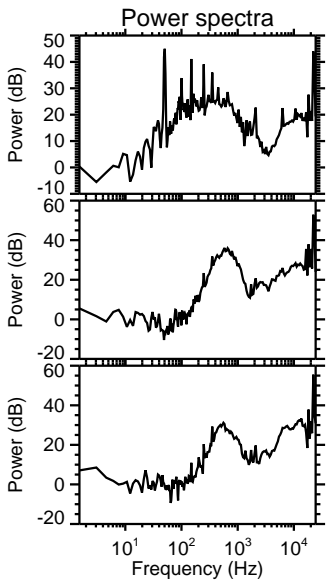
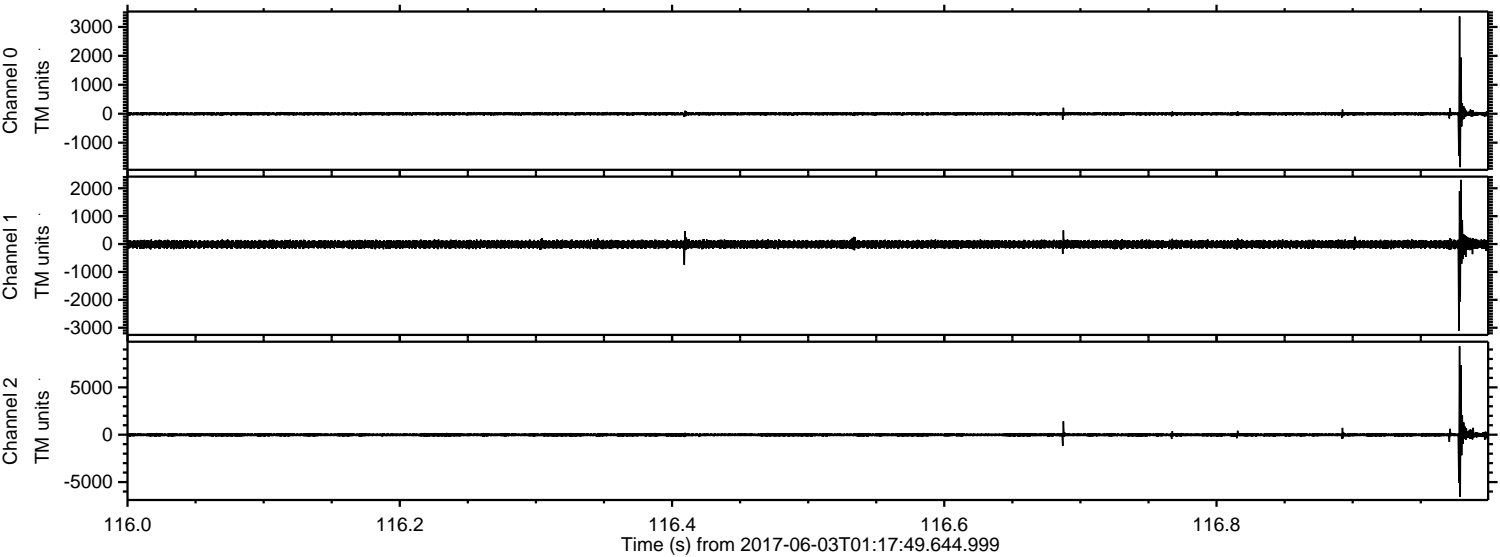
ELMAVAN 3D WAVEFORMS (Measured data sampled at 50 kHz) 51000 packets of 144 samples from 2017-06-03T01:17:49.644.999. Part 122/147

Processed Sat Jun 3 03:25:41 2017 by ELM ver.2012-10-06 from 001__elm20170603_011748__dat00.bin

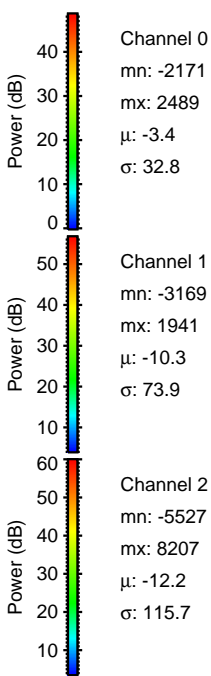
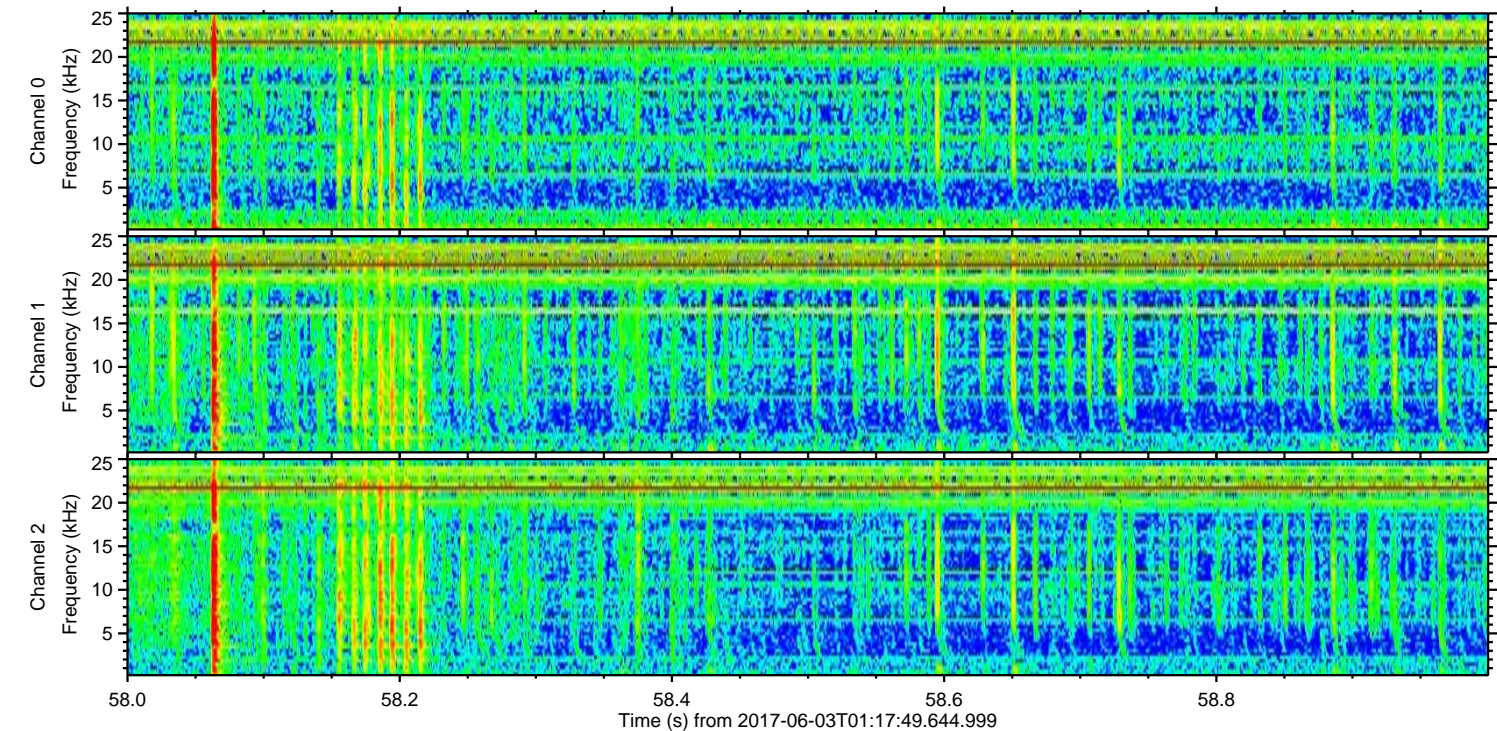
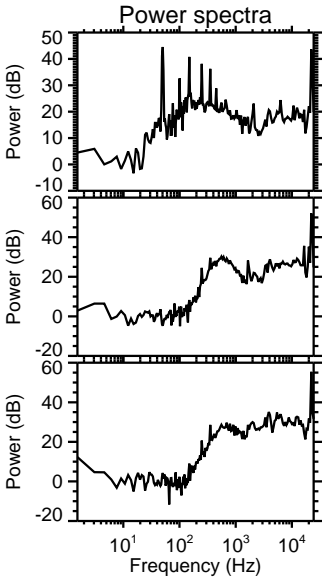
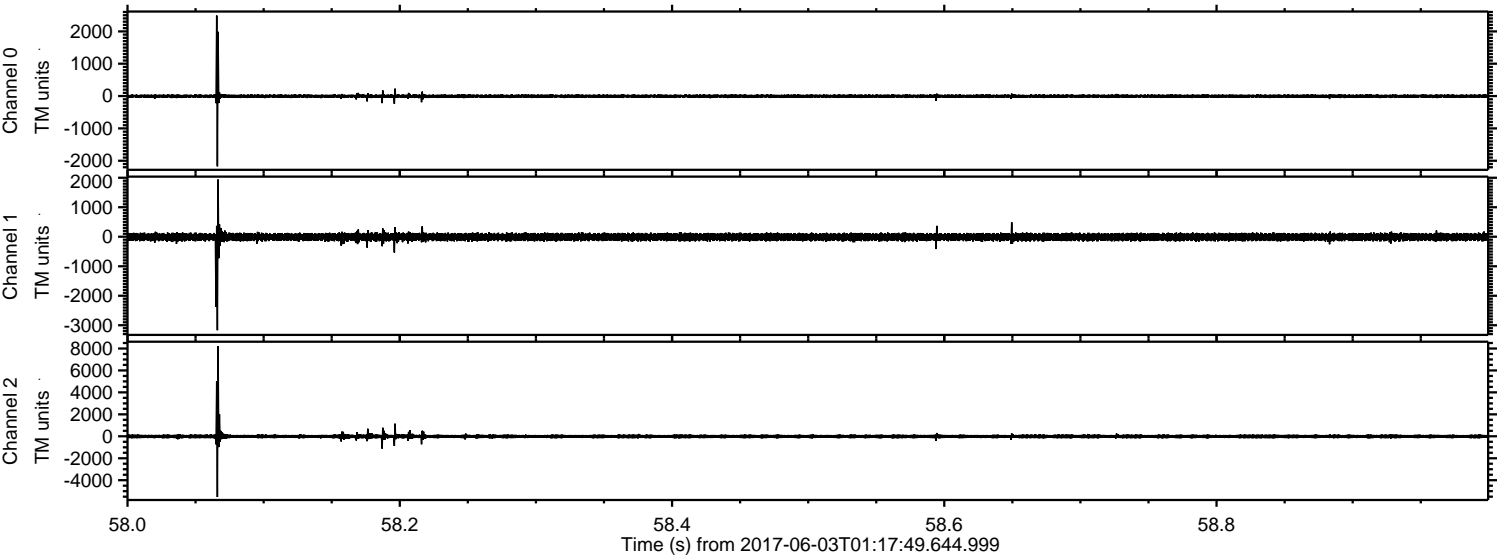


ELMAVAN 3D WAVEFORMS (Measured data sampled at 50 kHz) 51000 packets of 144 samples from 2017-06-03T01:17:49.644.999. Part 117/147

Processed Sat Jun 3 03:25:42 2017 by ELM ver.2012-10-06 from 001__elm20170603_011748__dat00.bin

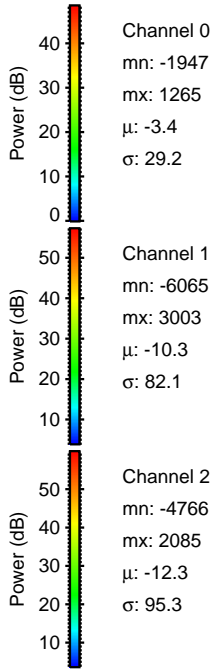
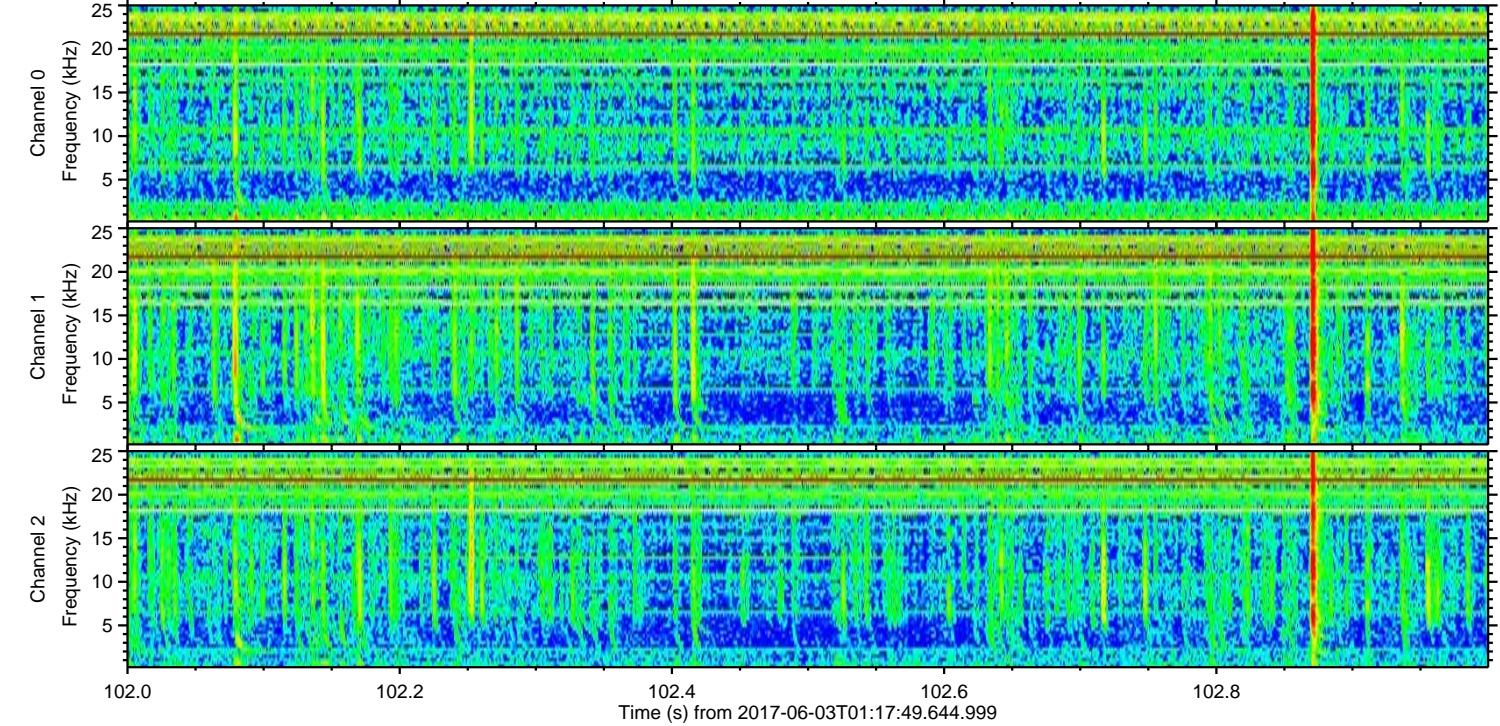
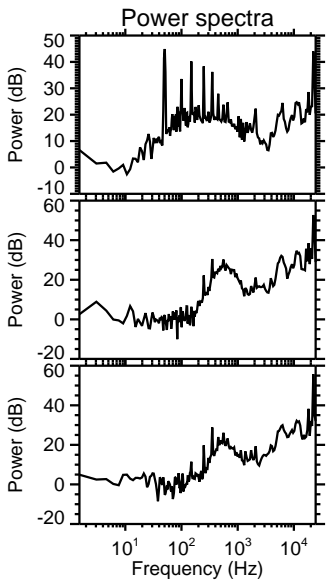
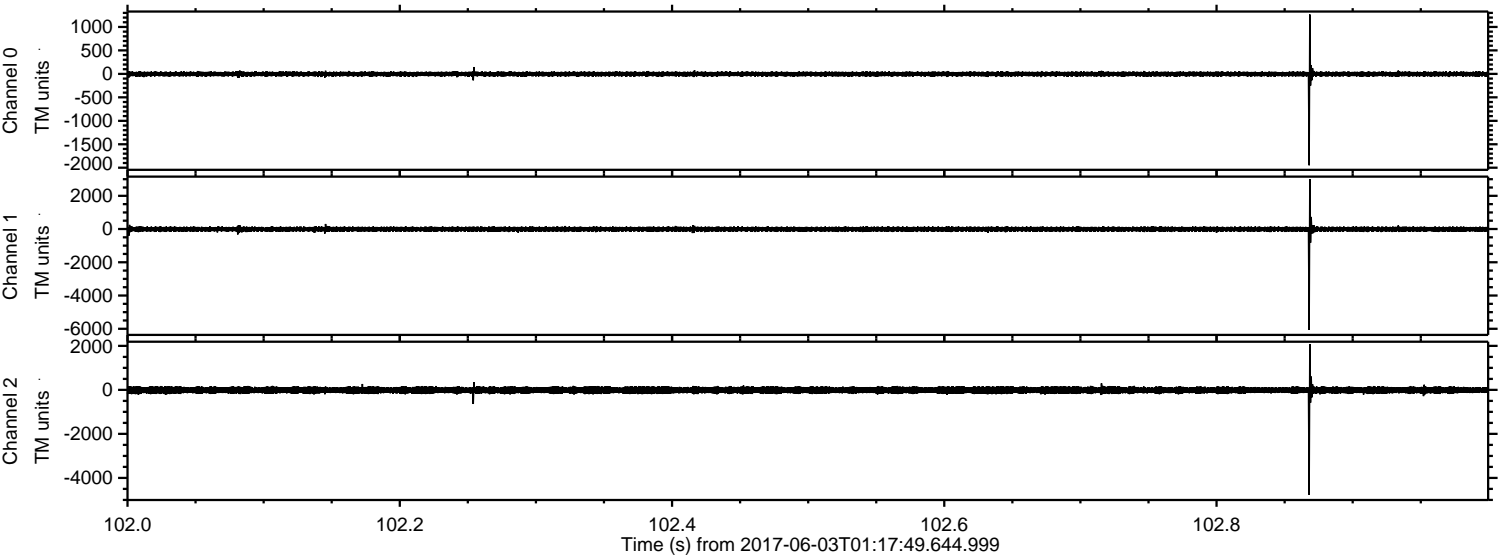


Processed Sat Jun 3 03:25:42 2017 by ELM ver.2012-10-06 from 001__elm20170603_011748__dat00.bin



ELMAVAN 3D WAVEFORMS (Measured data sampled at 50 kHz) 51000 packets of 144 samples from 2017-06-03T01:17:49.644.999. Part 103/147

Processed Sat Jun 3 03:25:43 2017 by ELM ver.2012-10-06 from 001__elm20170603_011748__dat00.bin



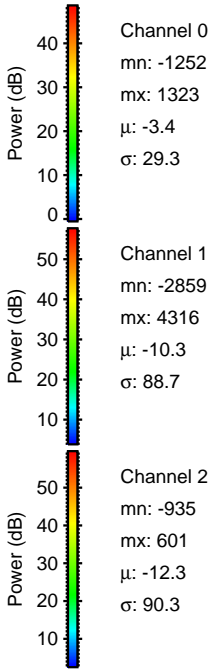
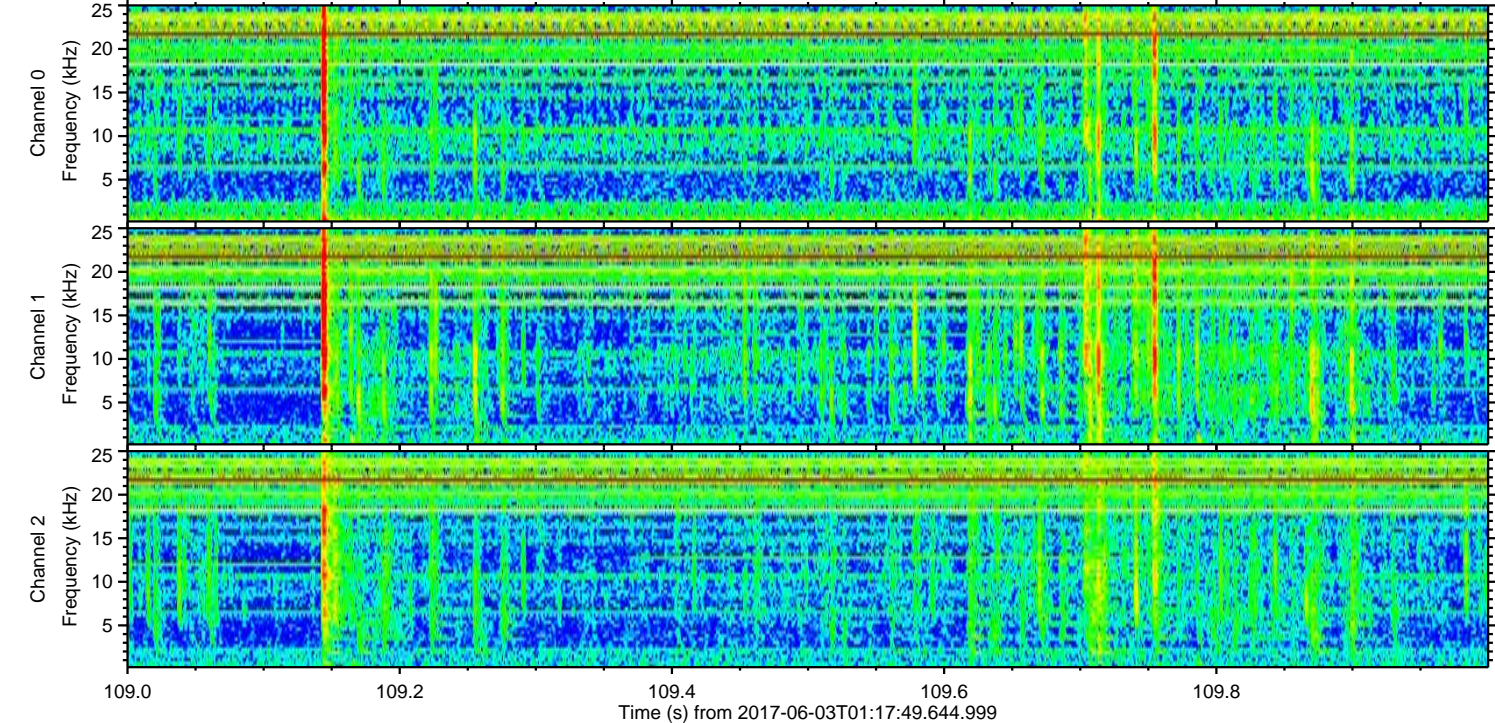
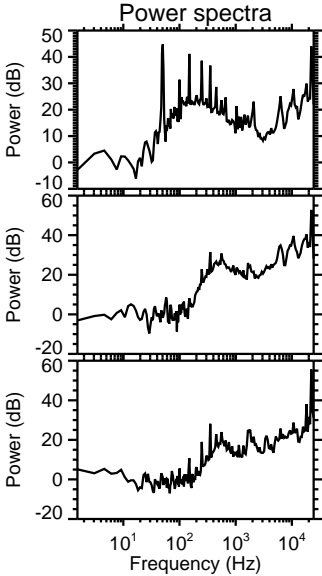
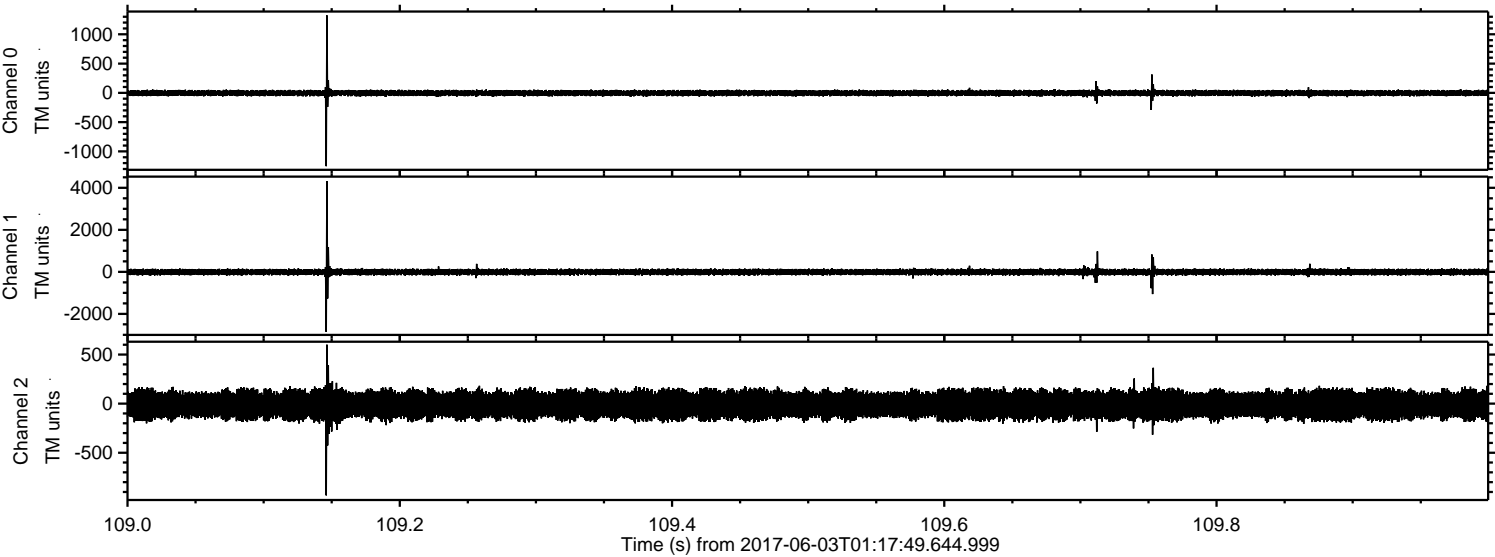
Channel 0
mn: -1947
mx: 1265
 μ : -3.4
 σ : 29.2

Channel 1
mn: -6065
mx: 3003
 μ : -10.3
 σ : 82.1

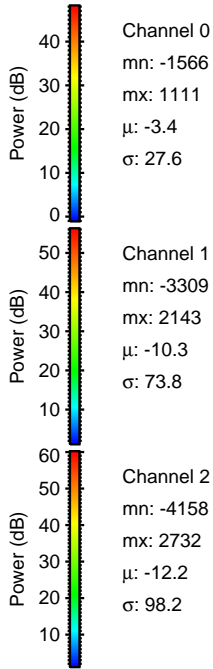
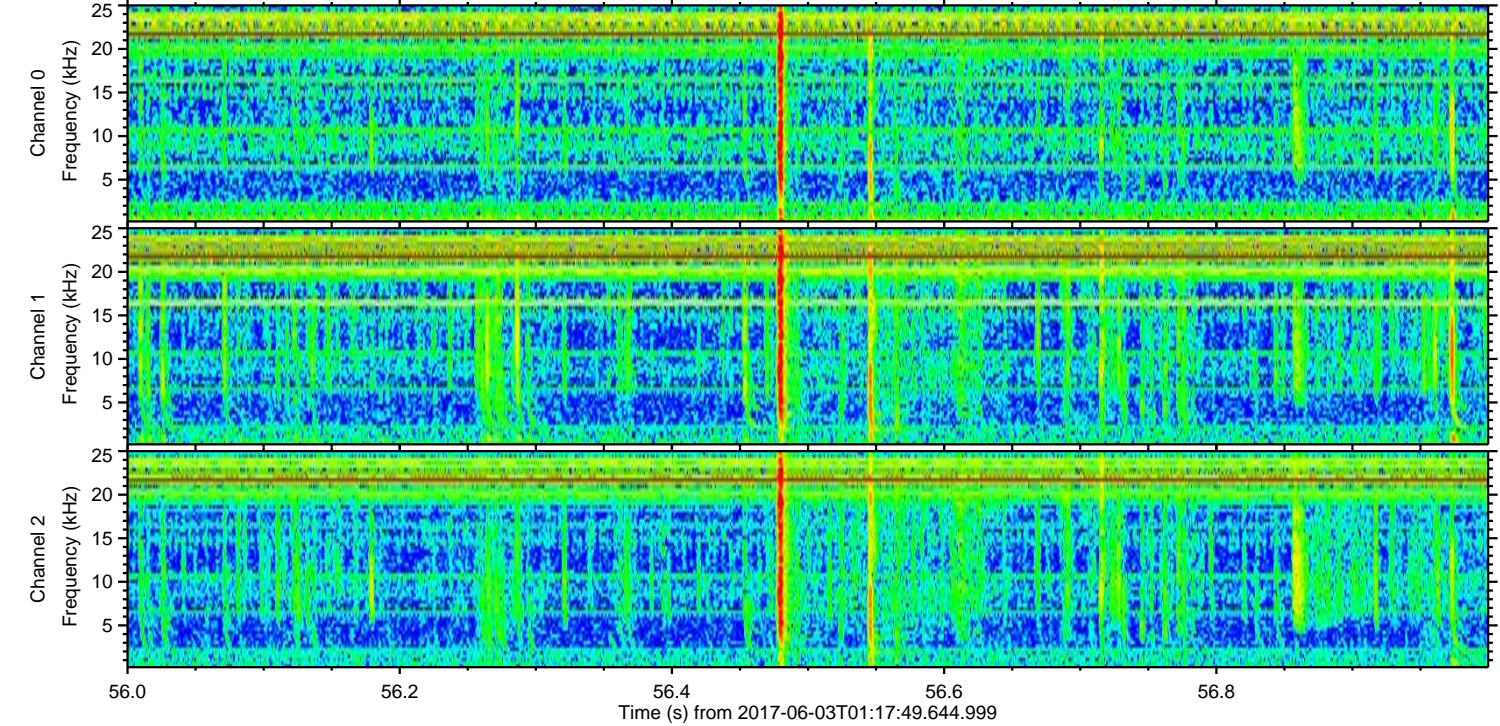
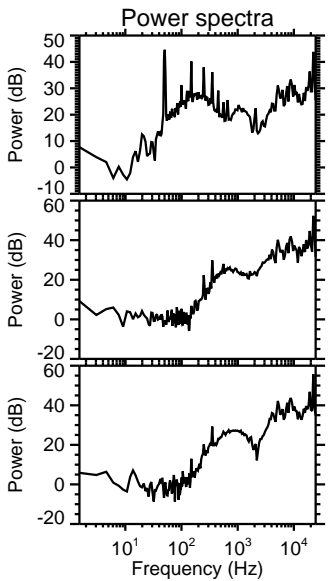
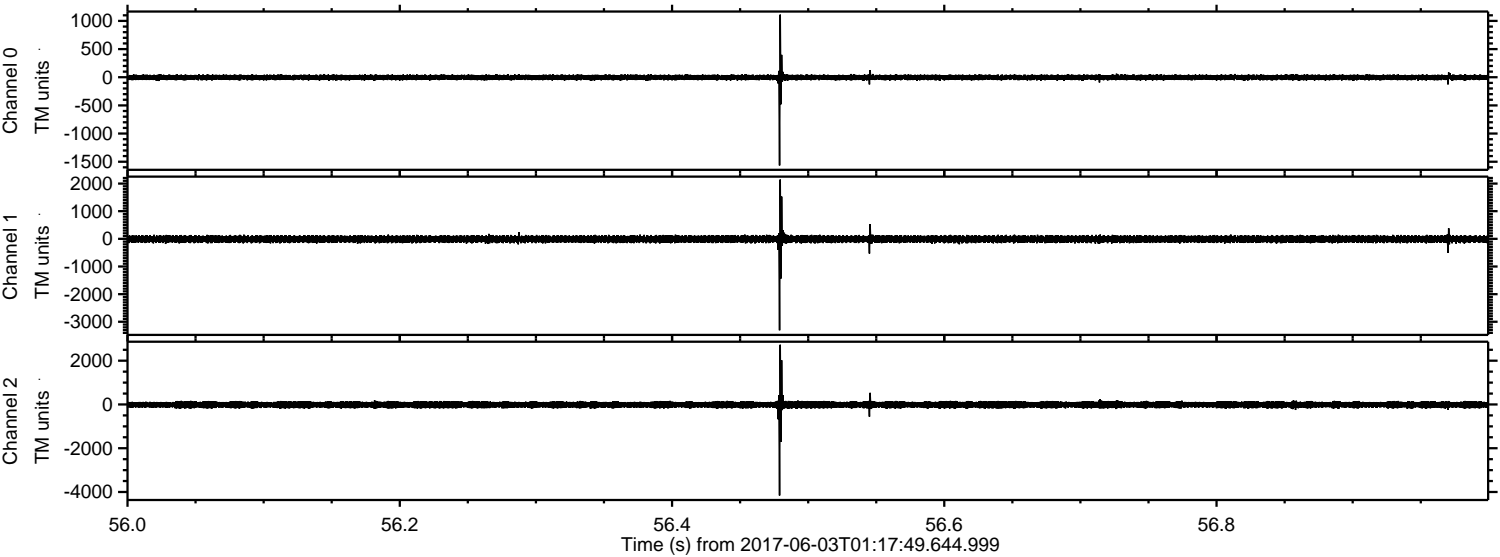
Channel 2
mn: -4766
mx: 2085
 μ : -12.3
 σ : 95.3

ELMAVAN 3D WAVEFORMS (Measured data sampled at 50 kHz) 51000 packets of 144 samples from 2017-06-03T01:17:49.644.999. Part 110/147

Processed Sat Jun 3 03:25:44 2017 by ELM ver.2012-10-06 from 001__elm20170603_011748__dat00.bin



Processed Sat Jun 3 03:25:44 2017 by ELM ver.2012-10-06 from 001__elm20170603_011748__dat00.bin

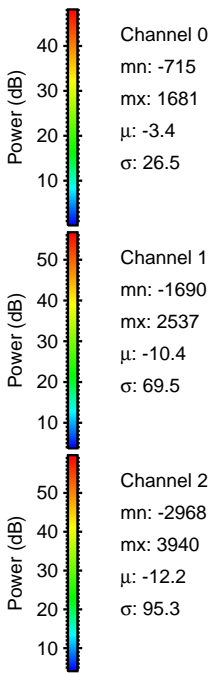
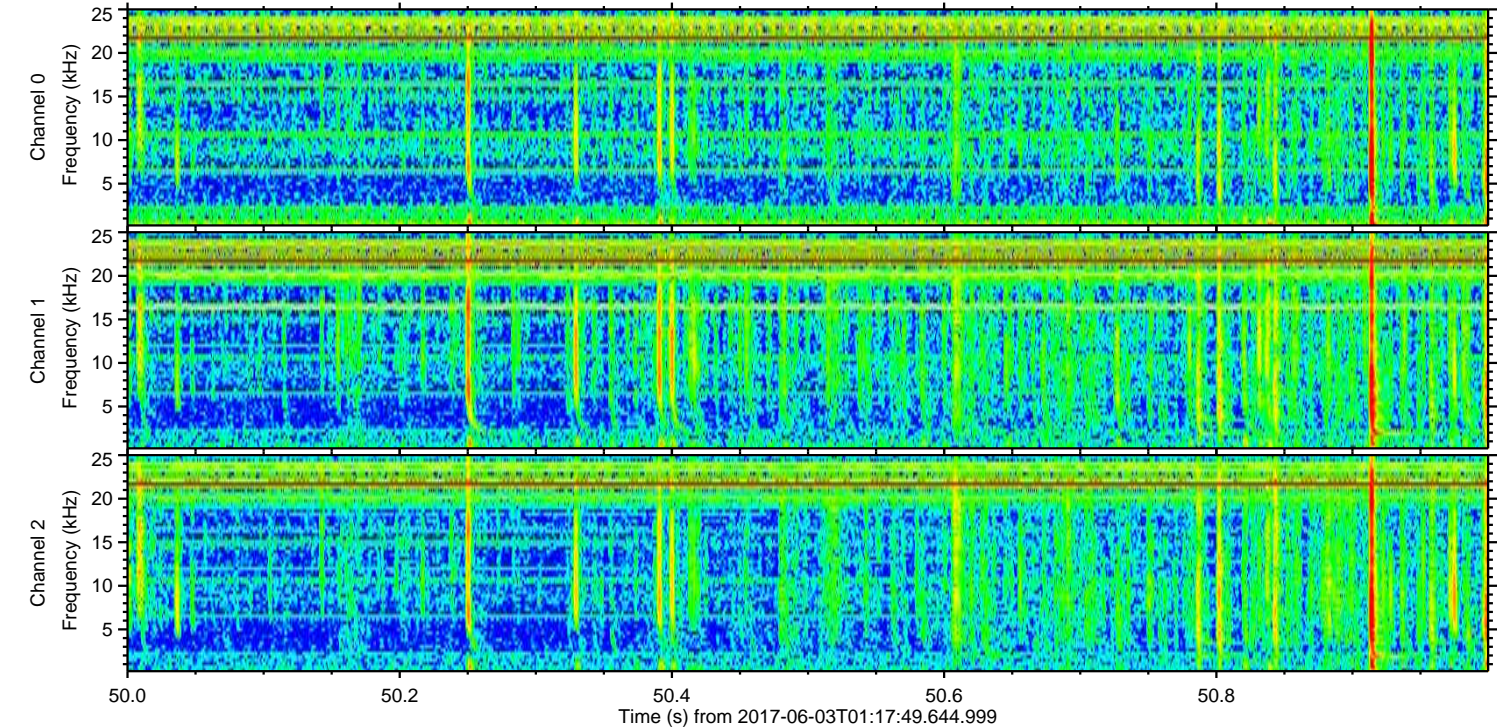
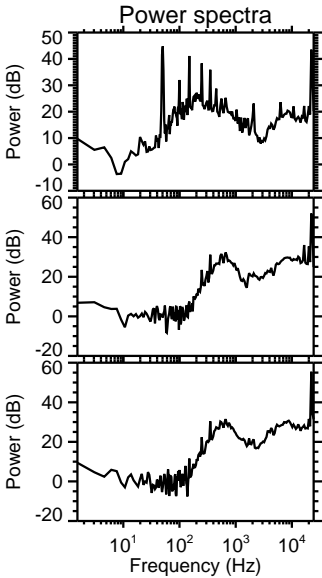
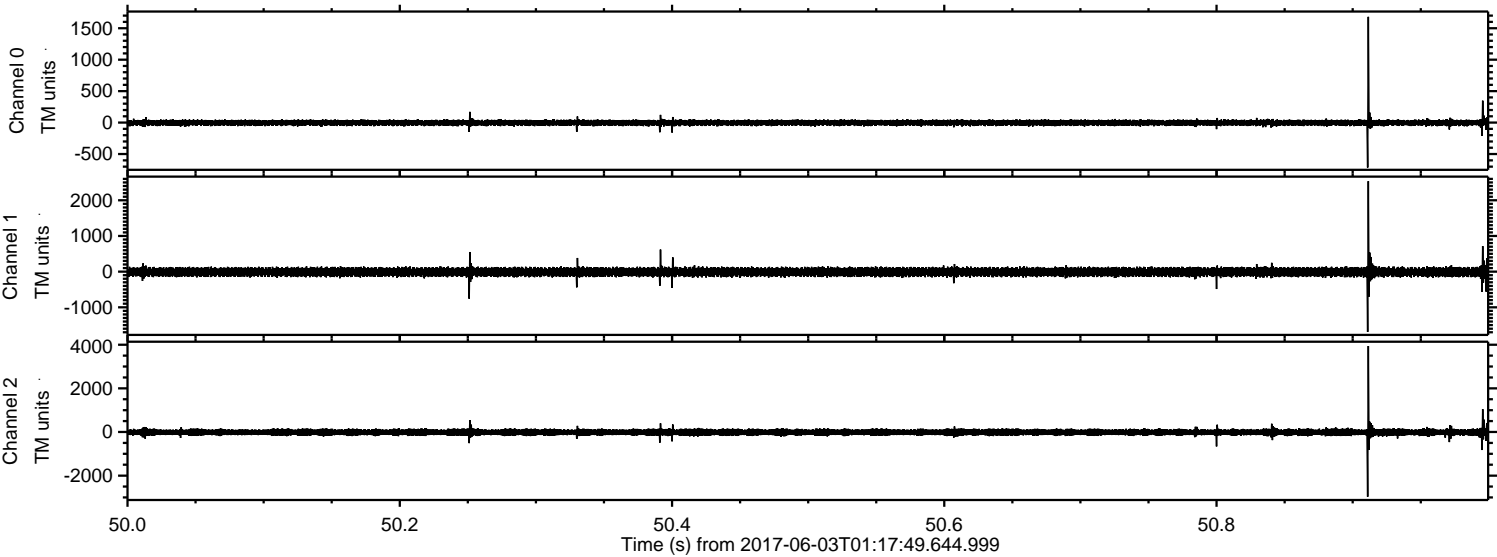


Channel 0
mn: -1566
mx: 1111
 μ : -3.4
 σ : 27.6

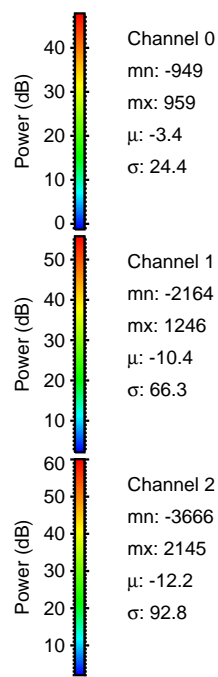
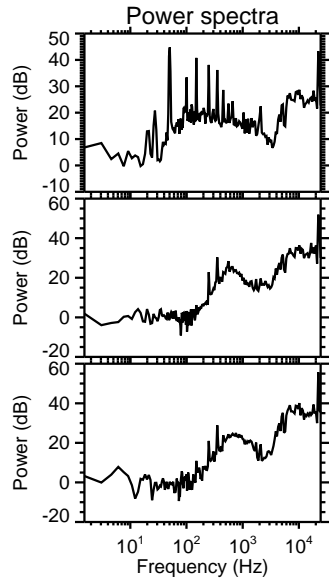
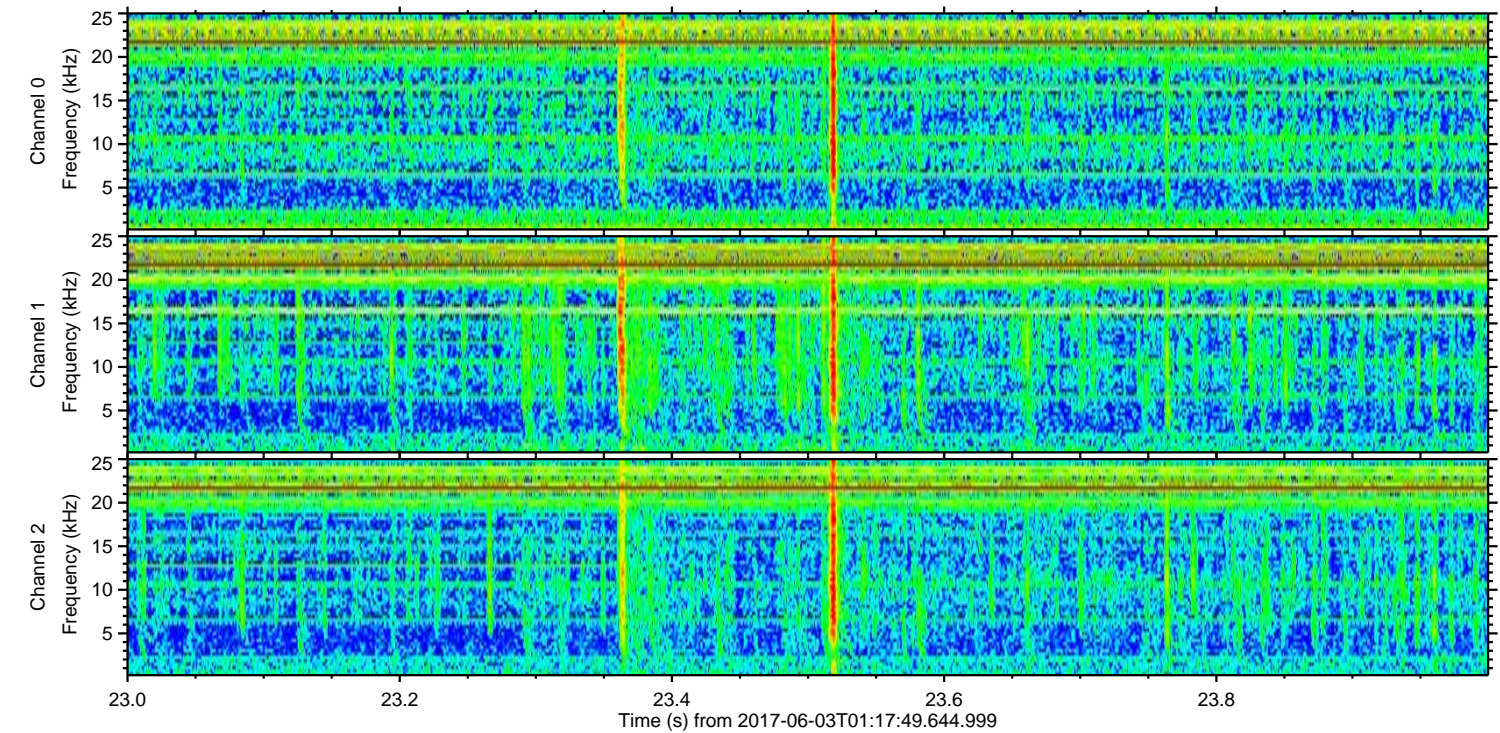
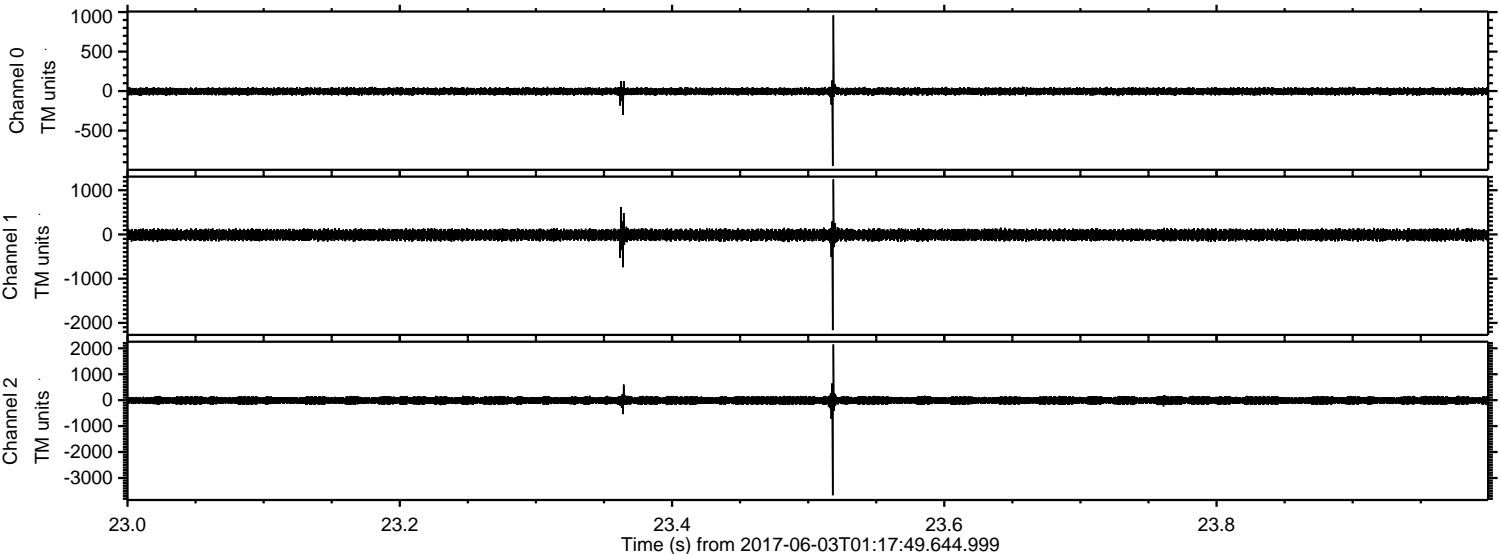
Channel 1
mn: -3309
mx: 2143
 μ : -10.3
 σ : 73.8

Channel 2
mn: -4158
mx: 2732
 μ : -12.2
 σ : 98.2

Processed Sat Jun 3 03:25:45 2017 by ELM ver.2012-10-06 from 001__elm20170603_011748__dat00.bin



Processed Sat Jun 3 03:25:46 2017 by ELM ver.2012-10-06 from 001__elm20170603_011748__dat00.bin



Processed Sat Jun 3 03:25:46 2017 by ELM ver.2012-10-06 from 001__elm20170603_011748__dat00.bin

