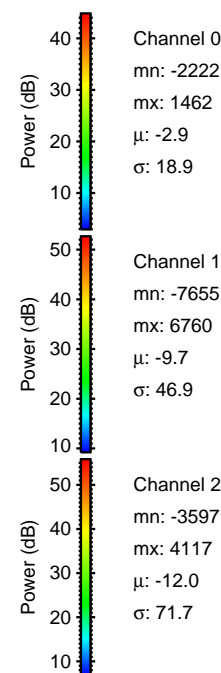
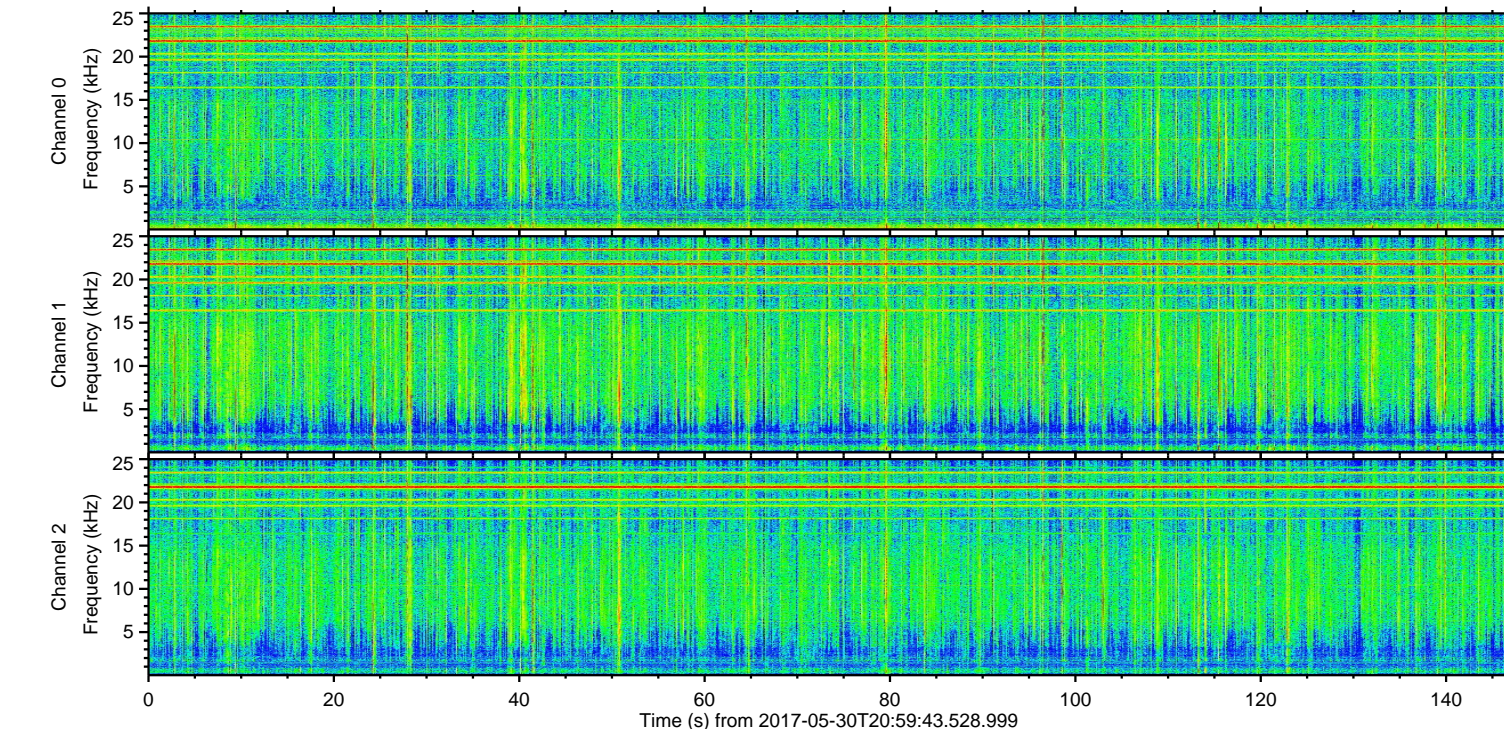
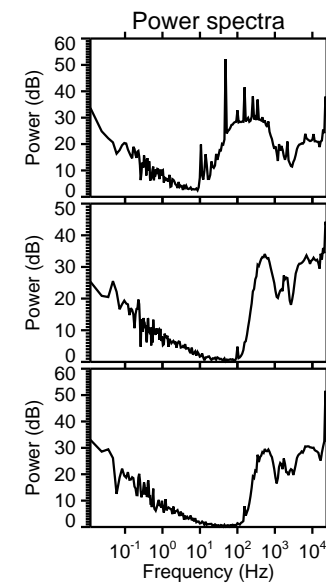
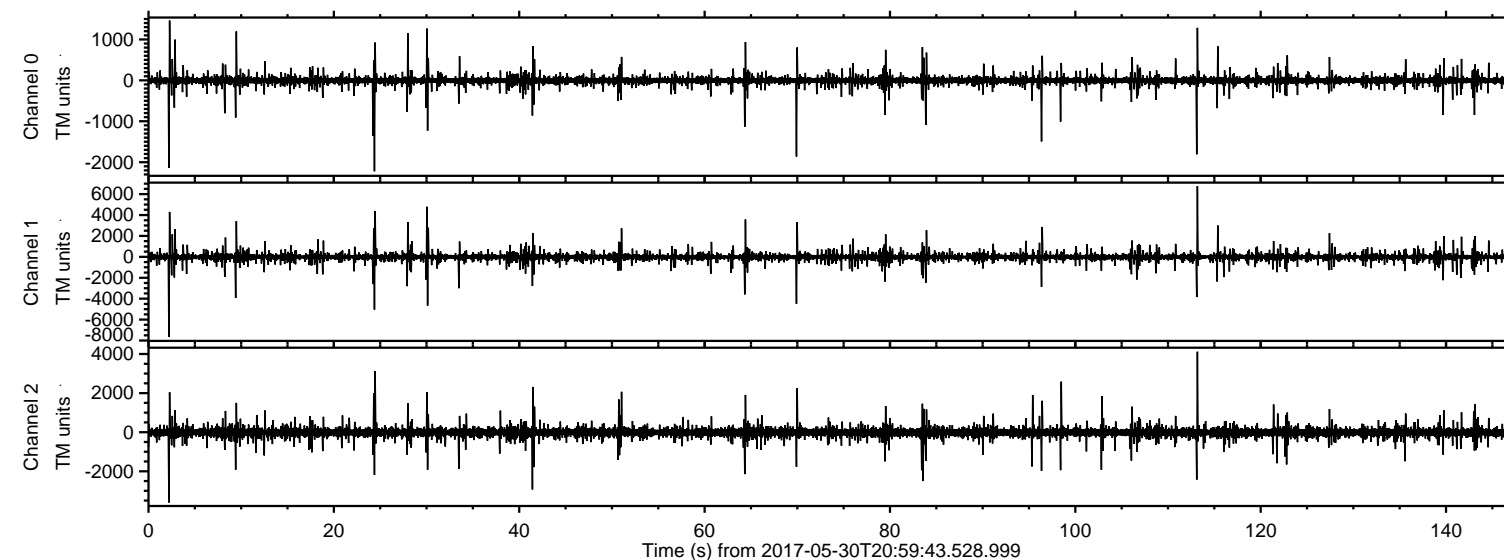


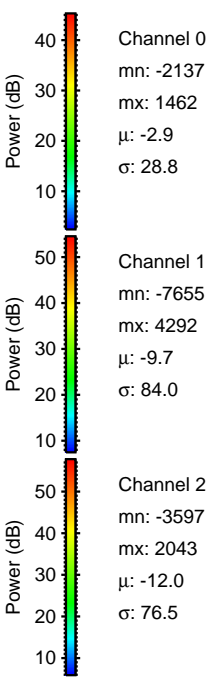
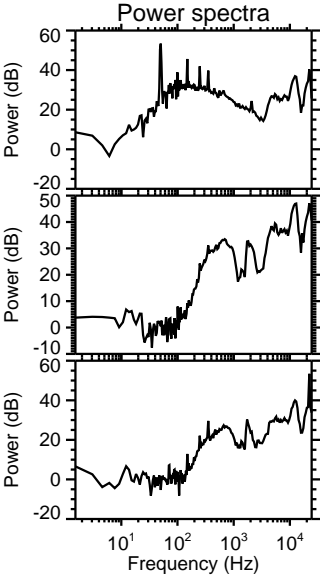
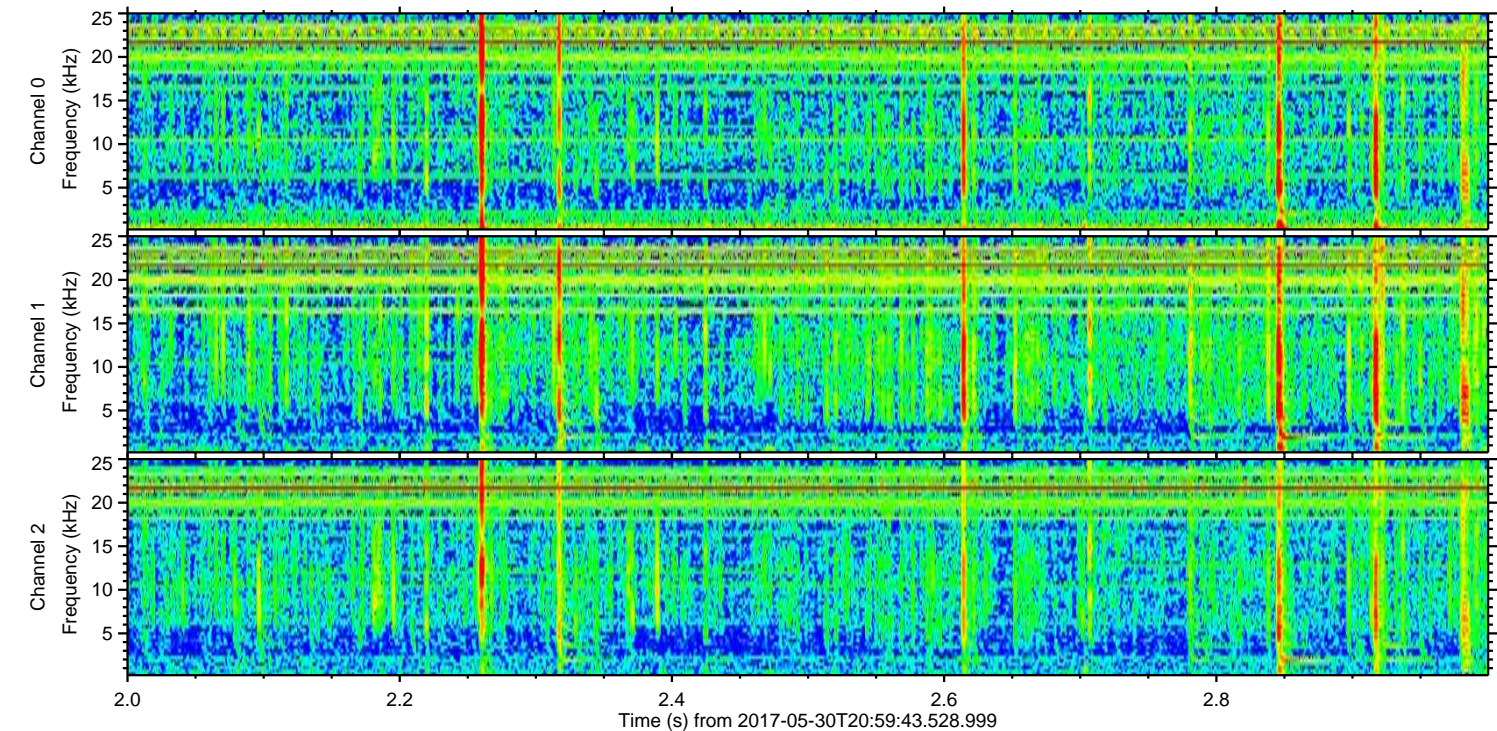
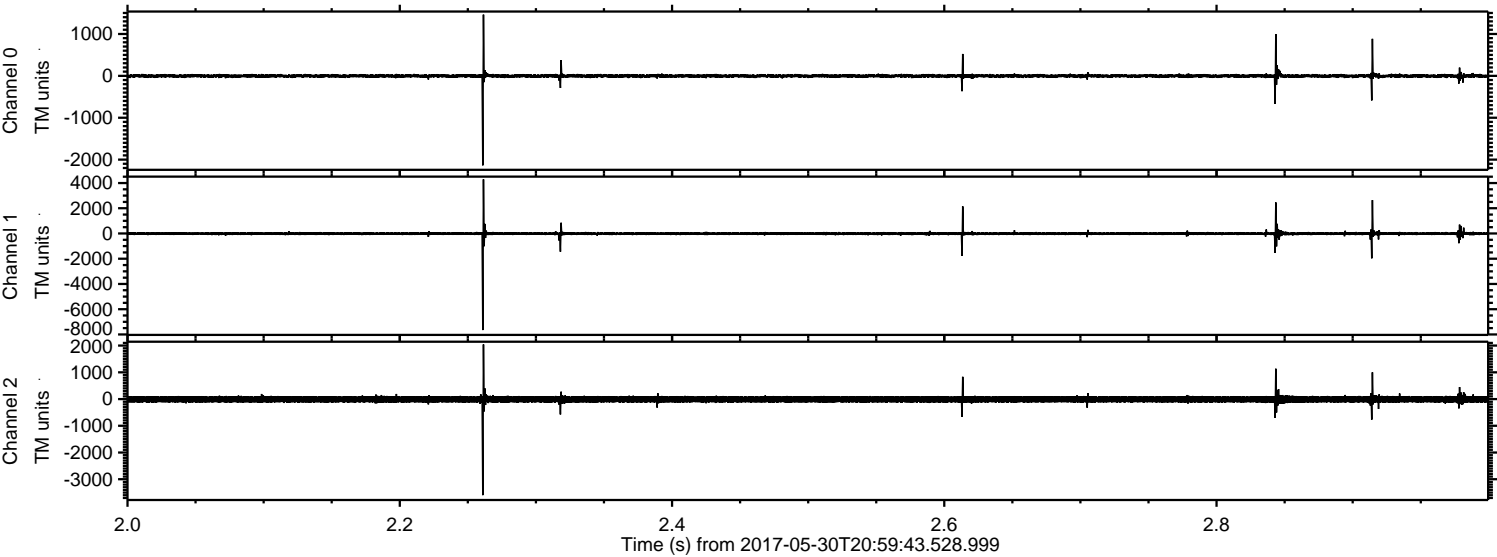
ELMAVAN 3D WAVEFORMS (Measured data sampled at 50 kHz) 51000 packets of 144 samples from 2017-05-30T20:59:43.528.999.

Processed Tue May 30 23:07:29 2017 by ELM ver.2012-10-06 from 001__elm20170530_205942__dat00.bin



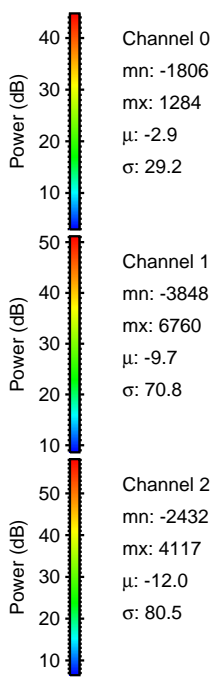
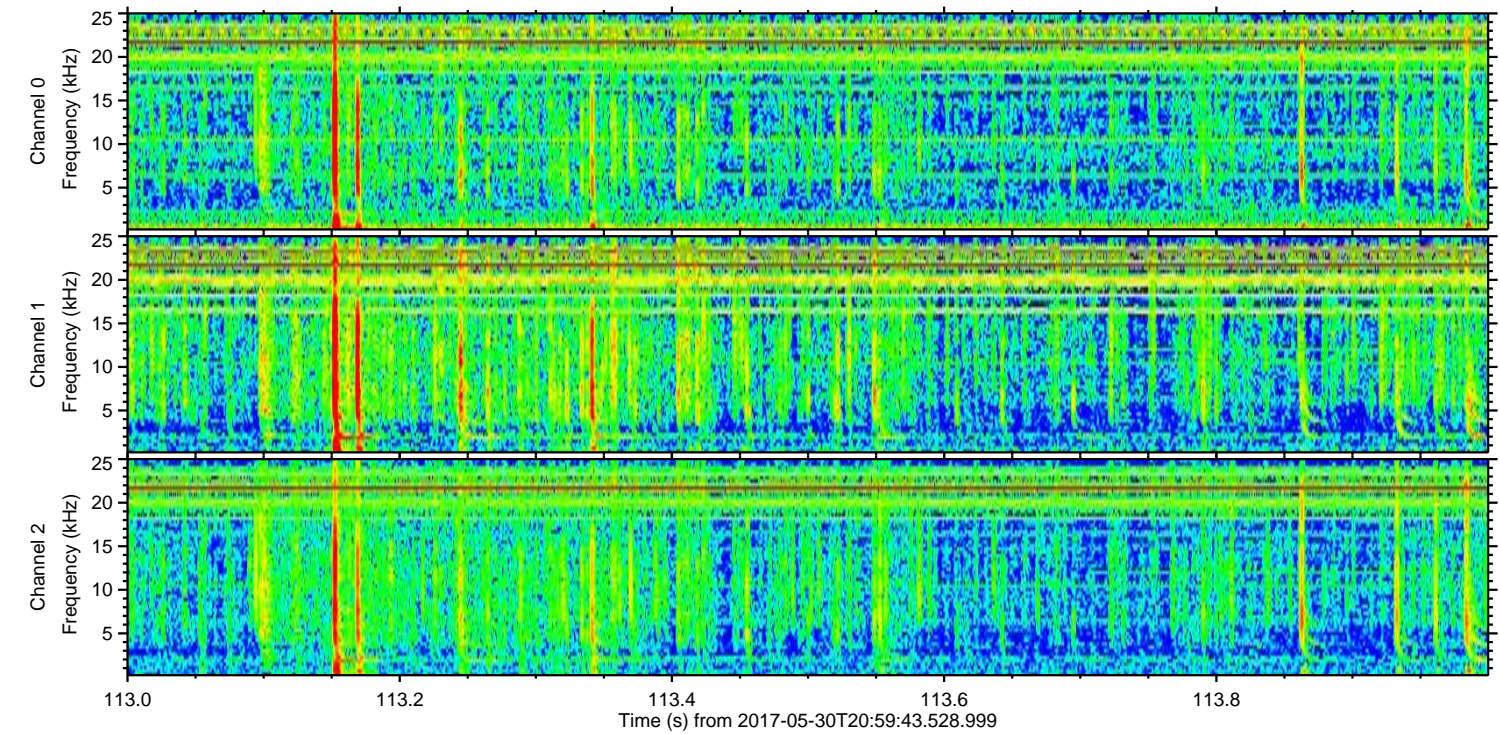
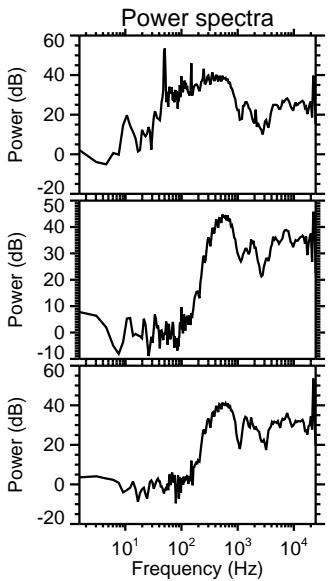
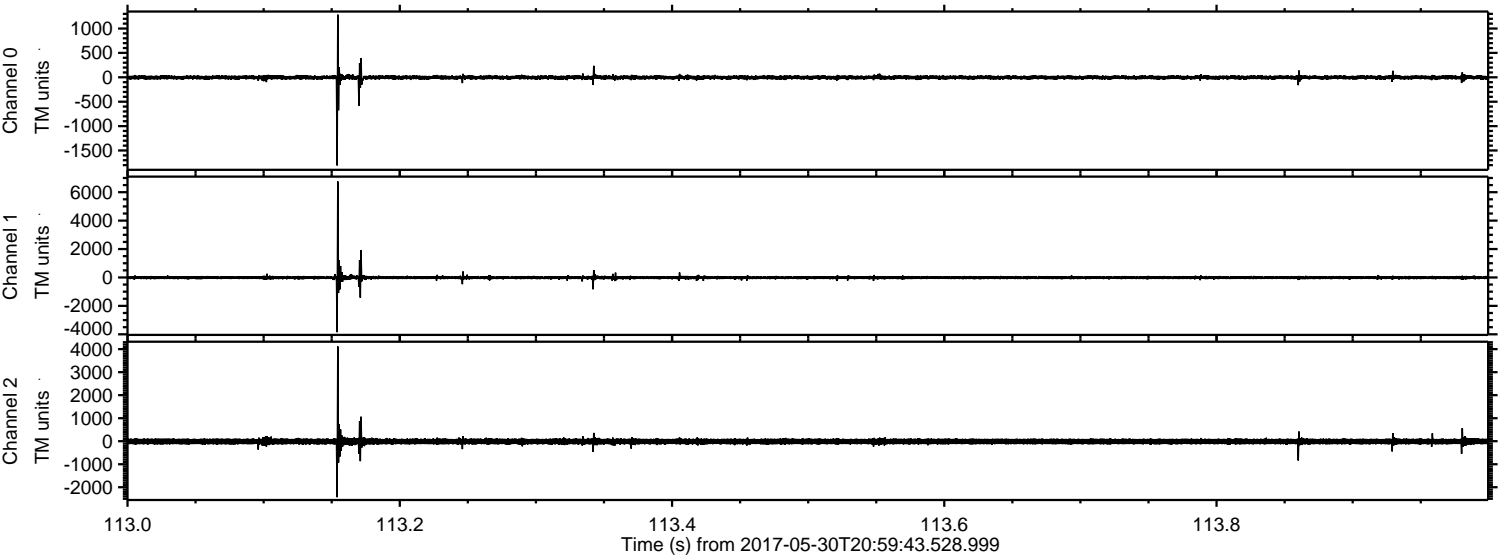
ELMAVAN 3D WAVEFORMS (Measured data sampled at 50 kHz) 51000 packets of 144 samples from 2017-05-30T20:59:43.528.999. Part 3/147

Processed Tue May 30 23:07:38 2017 by ELM ver.2012-10-06 from 001__elm20170530_205942__dat00.bin



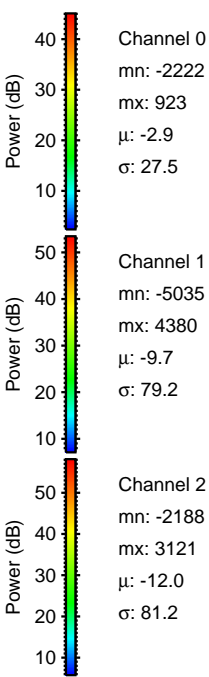
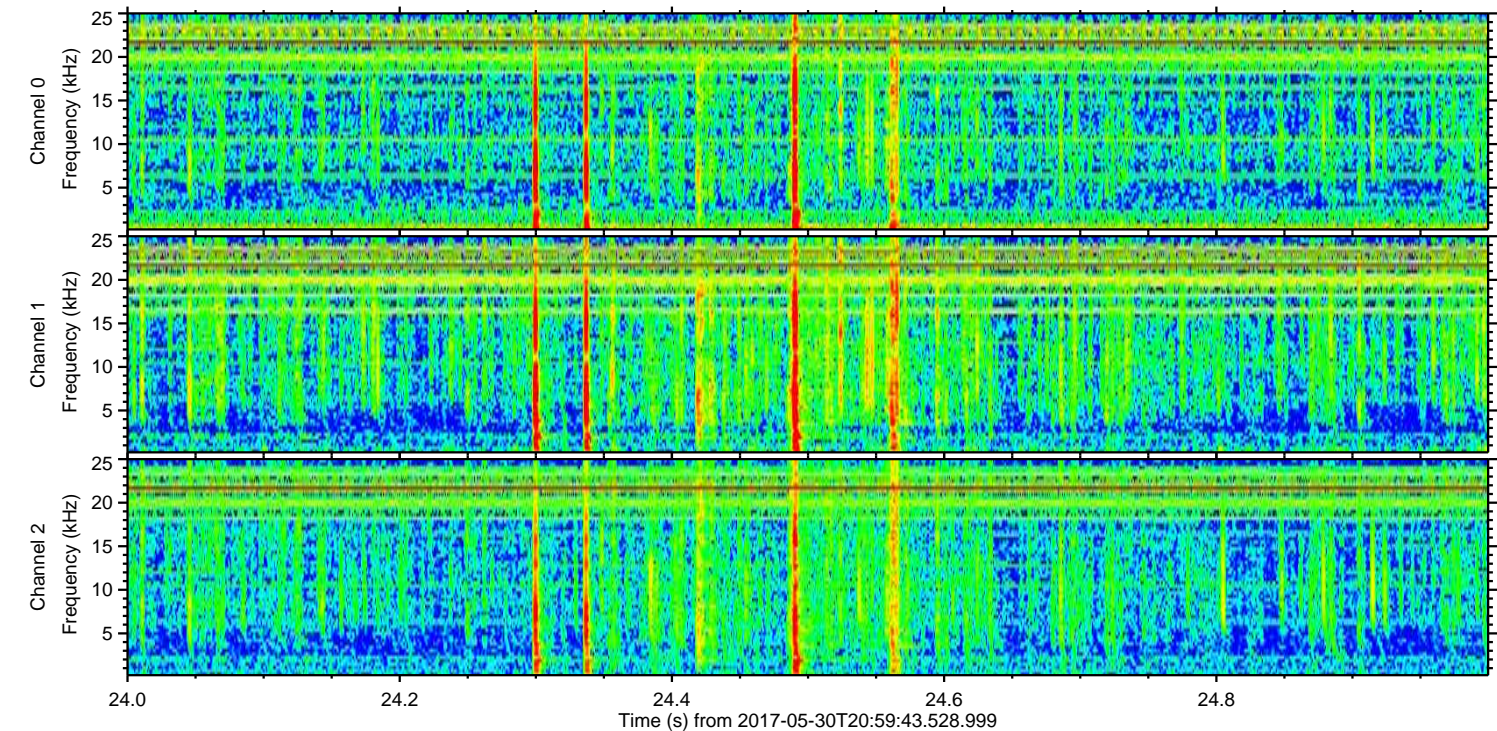
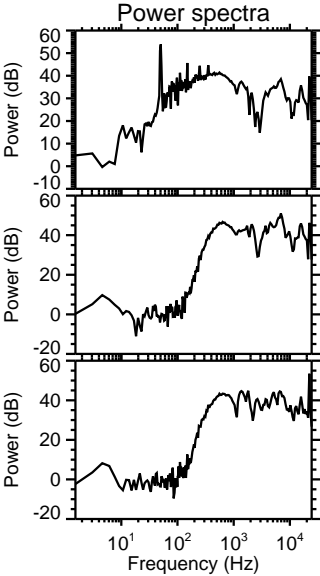
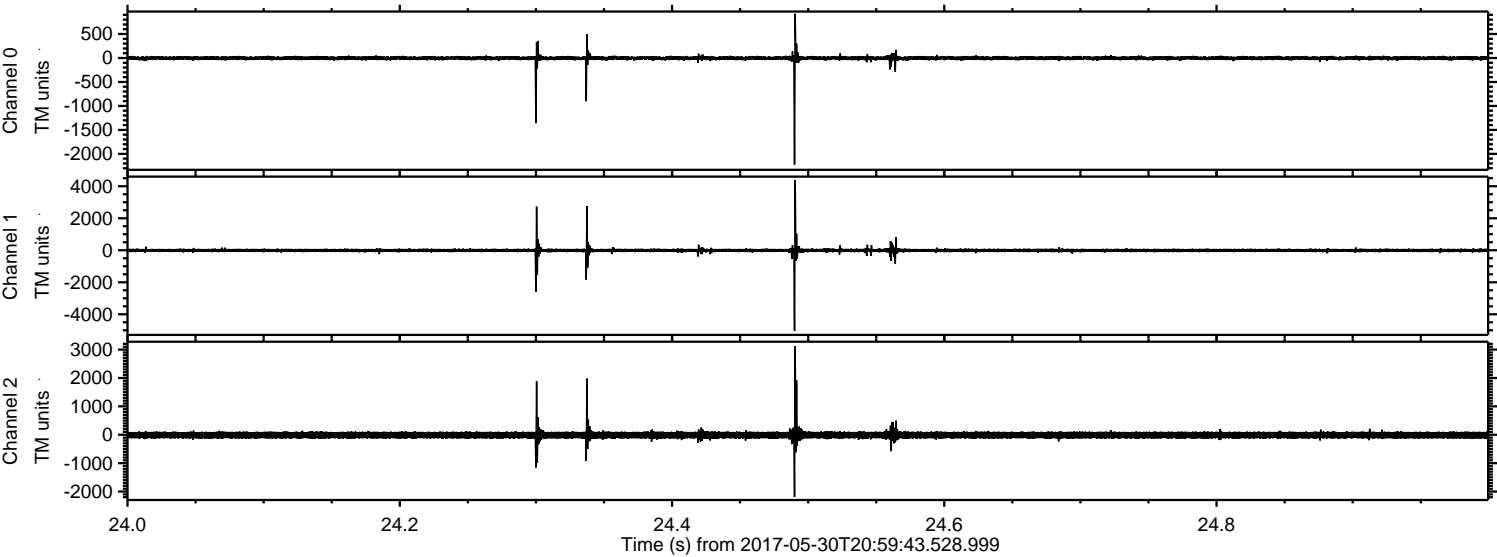
ELMAVAN 3D WAVEFORMS (Measured data sampled at 50 kHz) 51000 packets of 144 samples from 2017-05-30T20:59:43.528.999. Part 114/147

Processed Tue May 30 23:07:38 2017 by ELM ver.2012-10-06 from 001__elm20170530_205942__dat00.bin



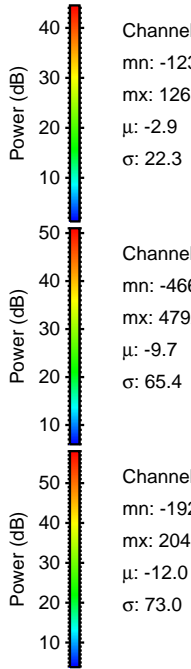
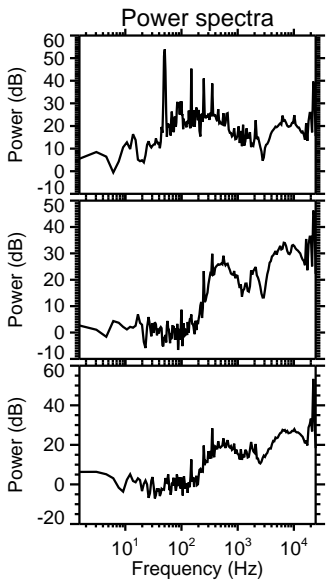
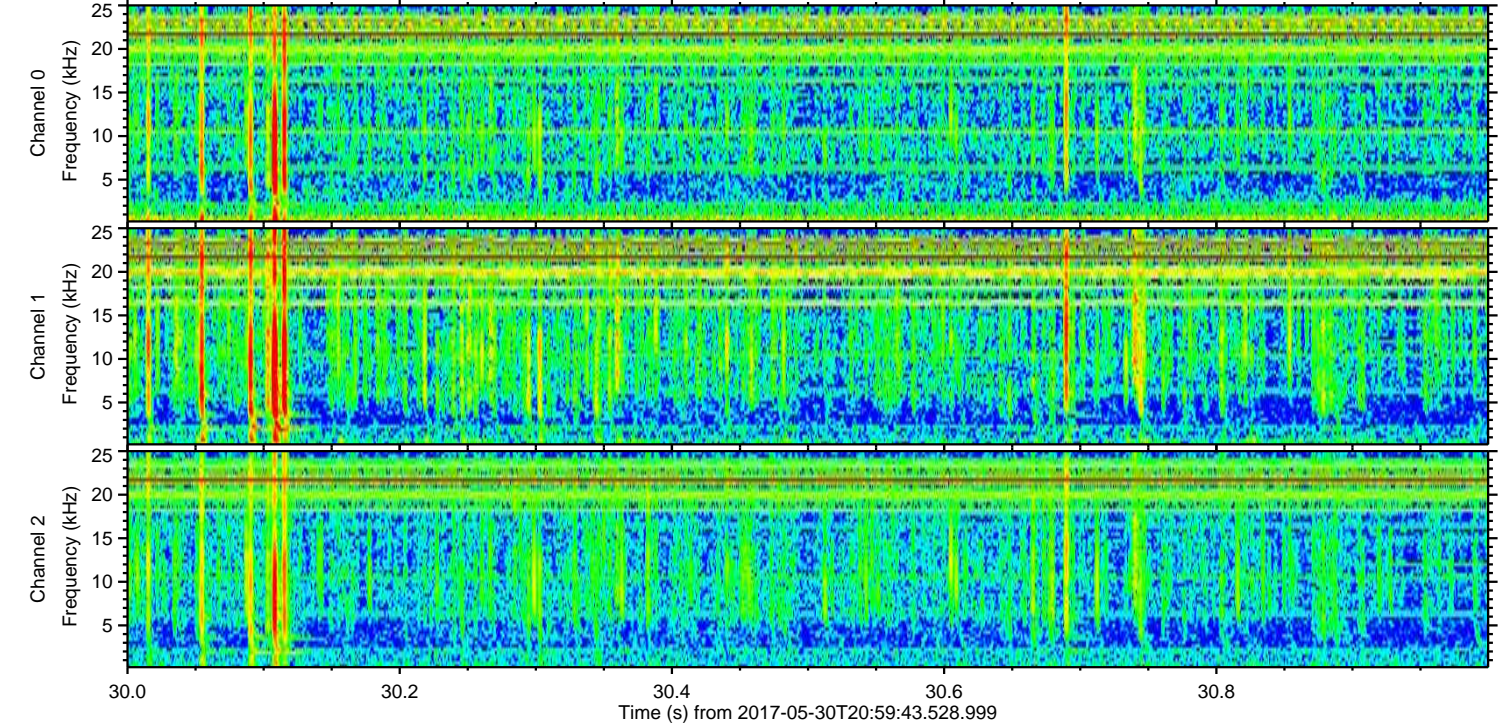
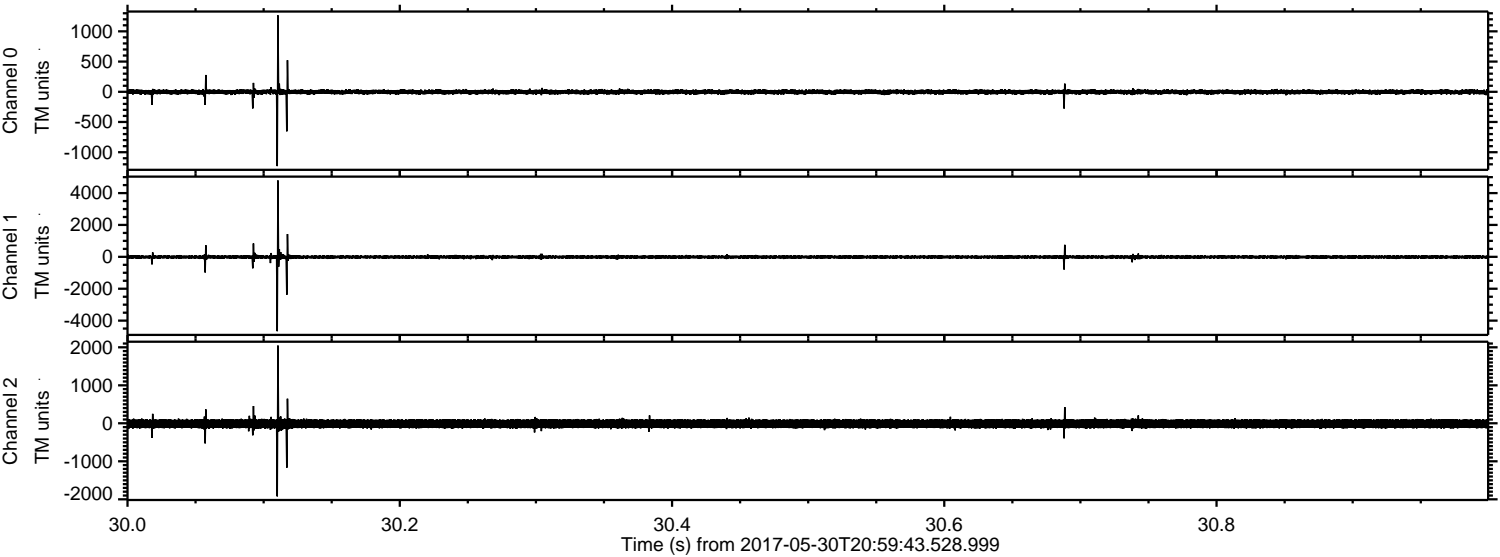
ELMAVAN 3D WAVEFORMS (Measured data sampled at 50 kHz) 51000 packets of 144 samples from 2017-05-30T20:59:43.528.999. Part 25/147

Processed Tue May 30 23:07:39 2017 by ELM ver.2012-10-06 from 001__elm20170530_205942__dat00.bin



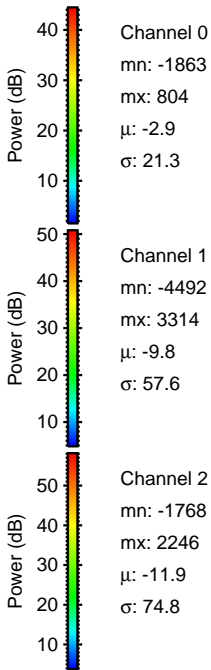
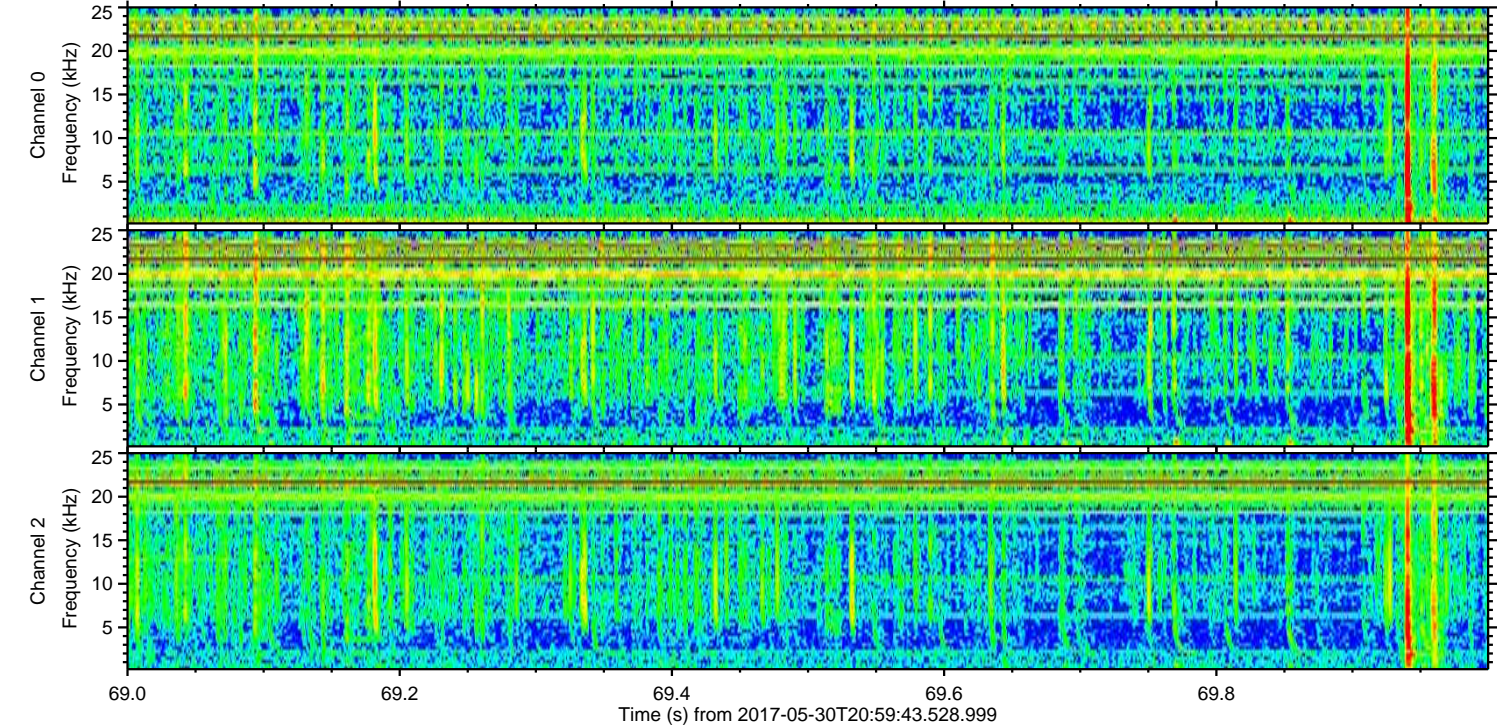
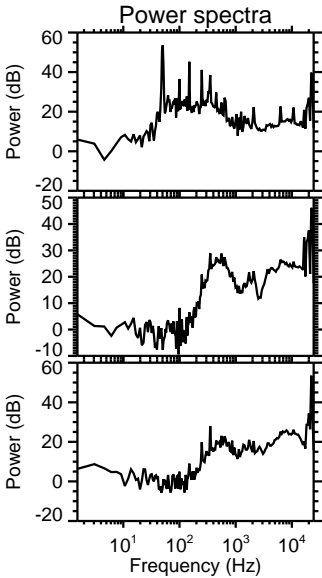
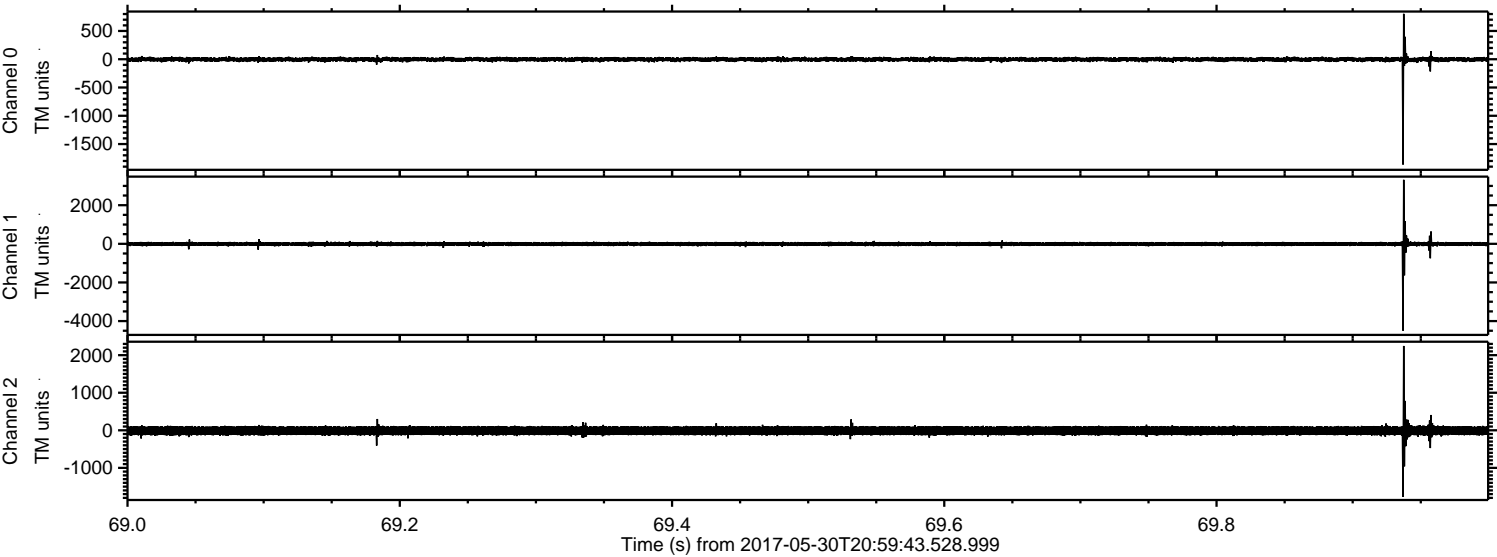
ELMAVAN 3D WAVEFORMS (Measured data sampled at 50 kHz) 51000 packets of 144 samples from 2017-05-30T20:59:43.528.999. Part 31/147

Processed Tue May 30 23:07:40 2017 by ELM ver.2012-10-06 from 001__elm20170530_205942__dat00.bin

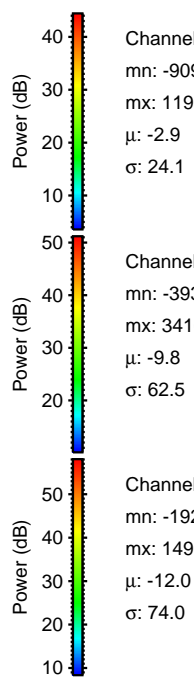
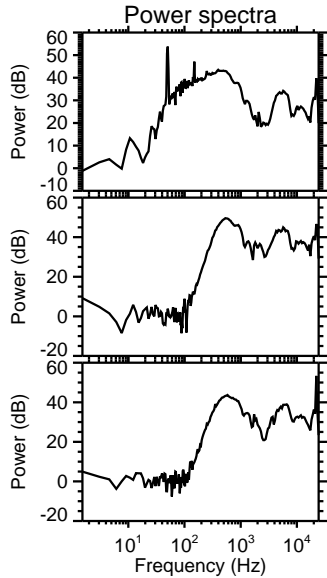
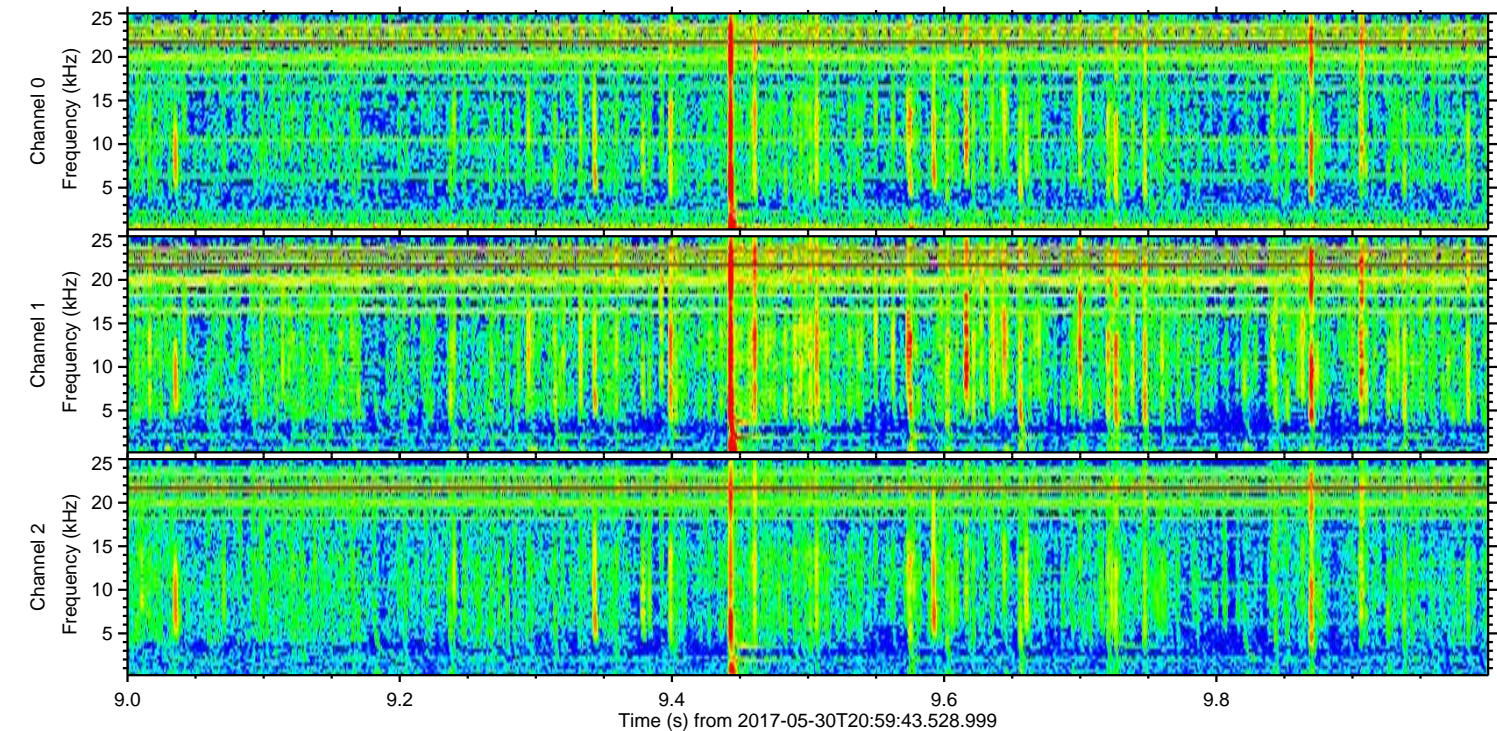
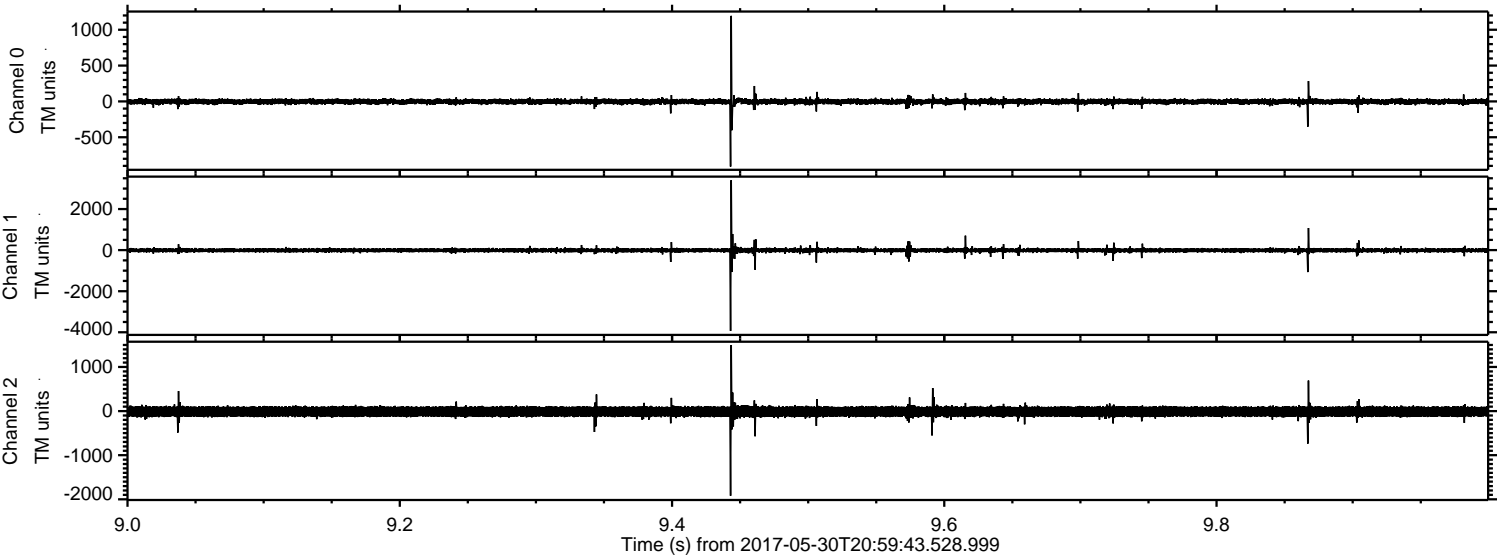


ELMAVAN 3D WAVEFORMS (Measured data sampled at 50 kHz) 51000 packets of 144 samples from 2017-05-30T20:59:43.528.999. Part 70/147

Processed Tue May 30 23:07:40 2017 by ELM ver.2012-10-06 from 001__elm20170530_205942__dat00.bin



Processed Tue May 30 23:07:41 2017 by ELM ver.2012-10-06 from 001__elm20170530_205942__dat00.bin

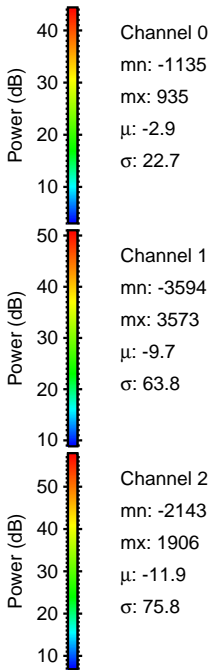
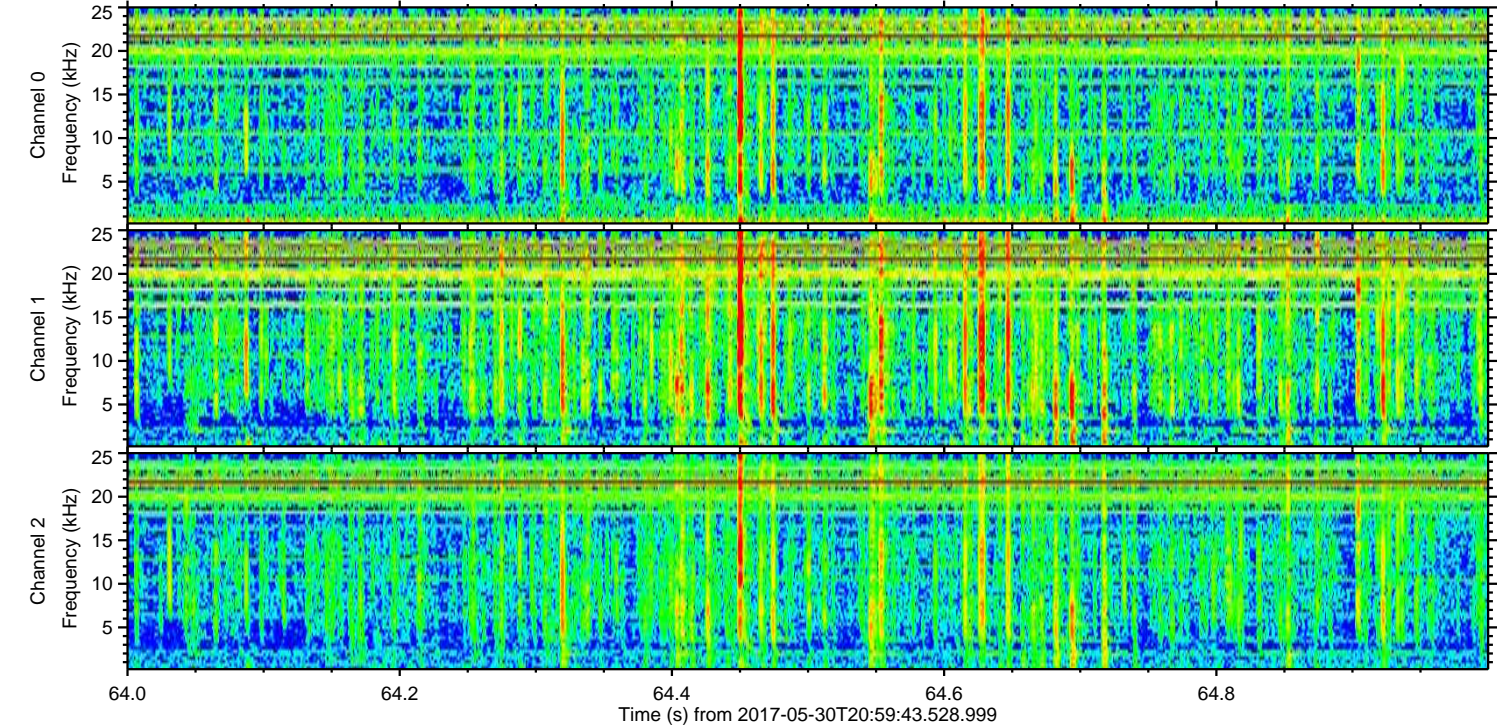
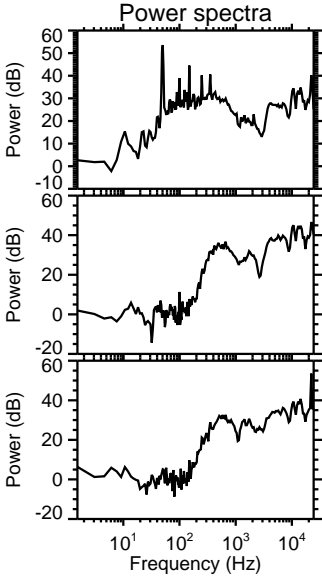
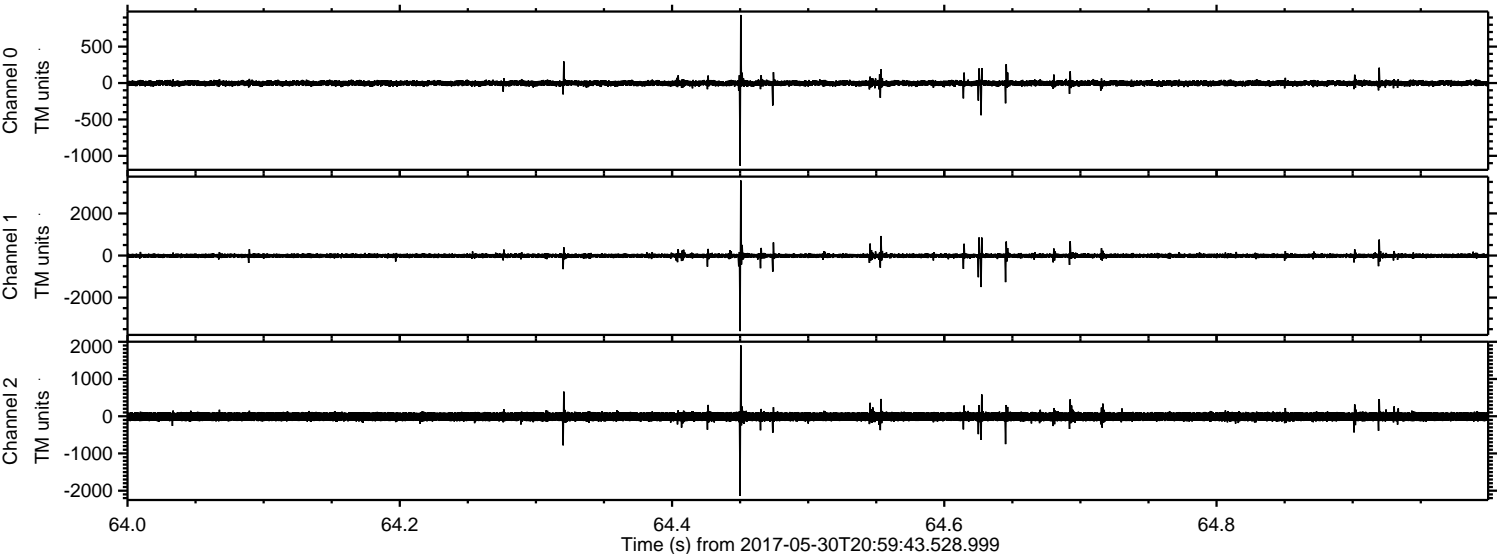


Channel 0
mn: -909
mx: 1195
 μ : -2.9
 σ : 24.1

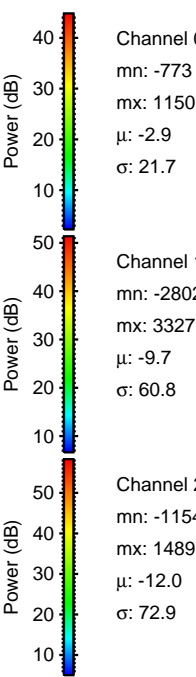
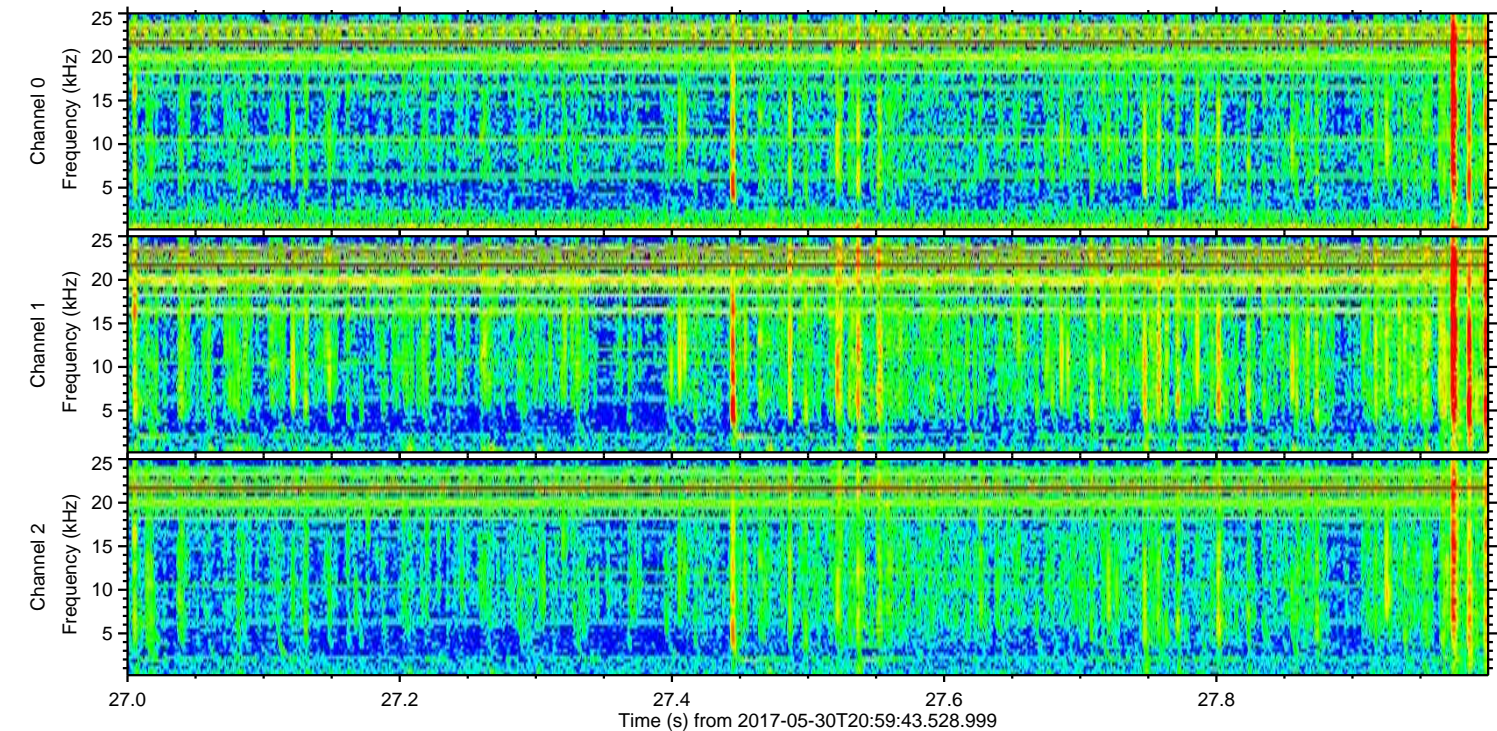
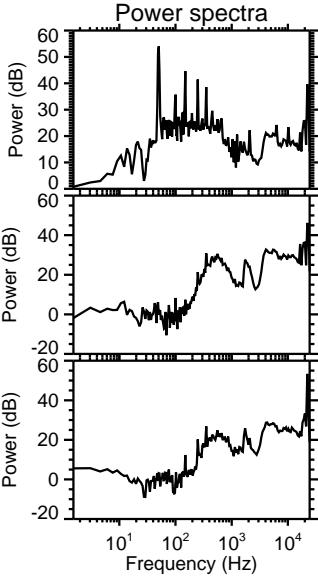
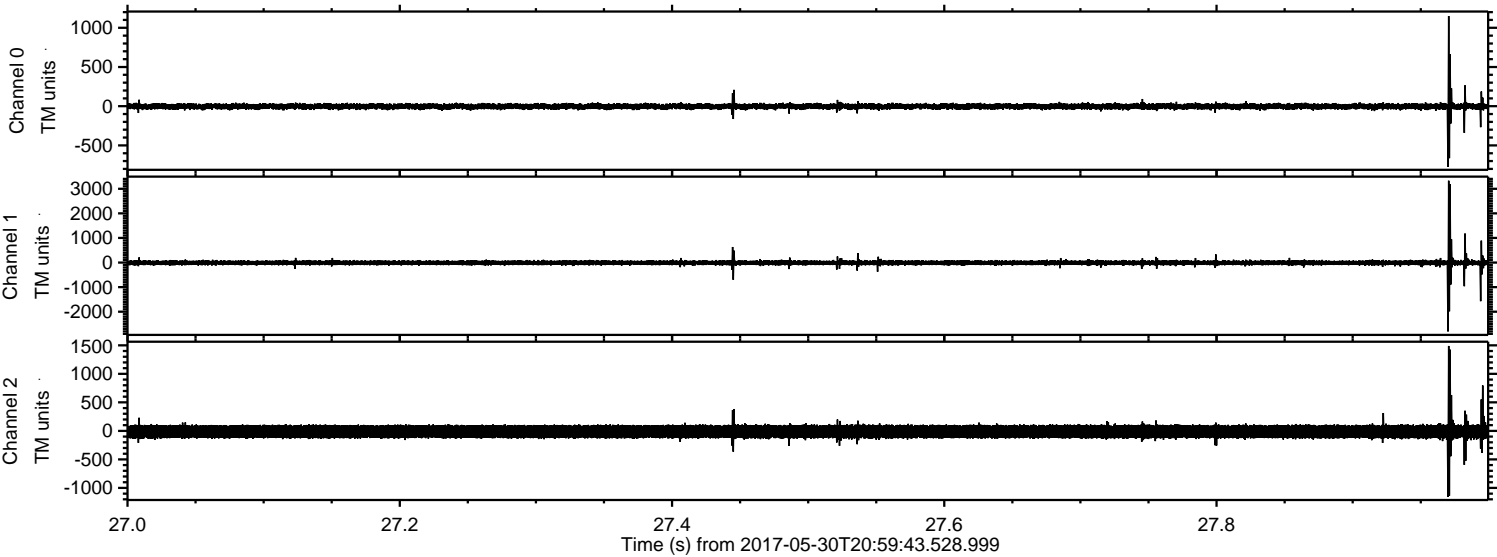
Channel 1
mn: -3933
mx: 3410
 μ : -9.8
 σ : 62.5

Channel 2
mn: -1920
mx: 1498
 μ : -12.0
 σ : 74.0

Processed Tue May 30 23:07:42 2017 by ELM ver.2012-10-06 from 001__elm20170530_205942__dat00.bin



Processed Tue May 30 23:07:42 2017 by ELM ver.2012-10-06 from 001__elm20170530_205942__dat00.bin



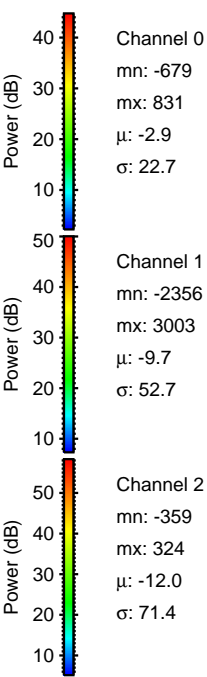
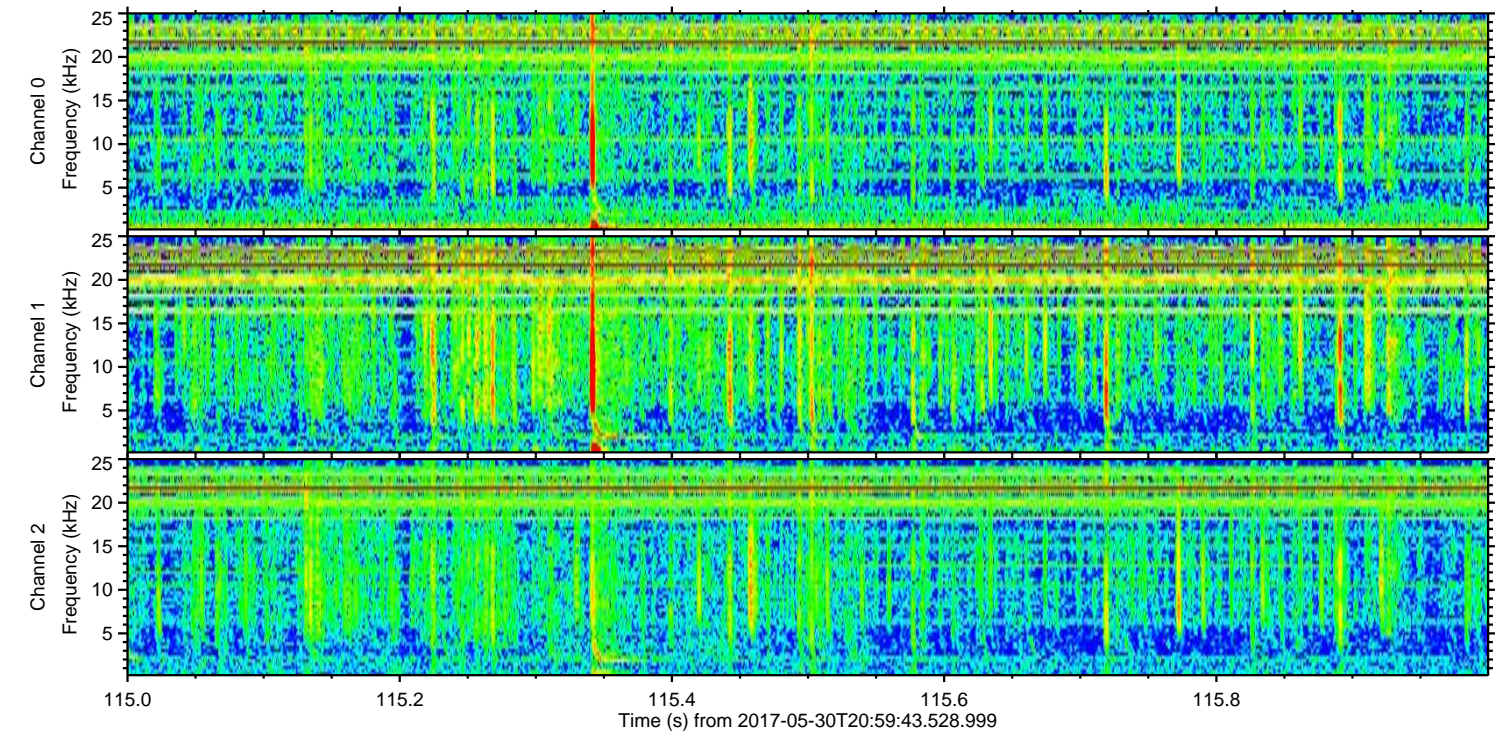
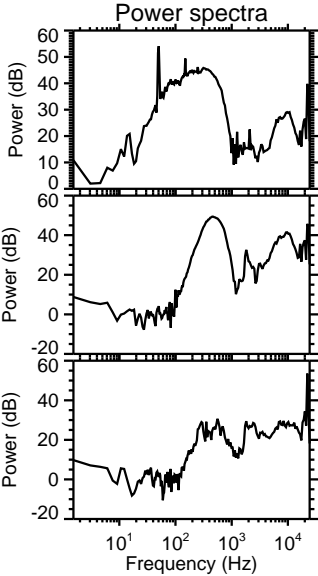
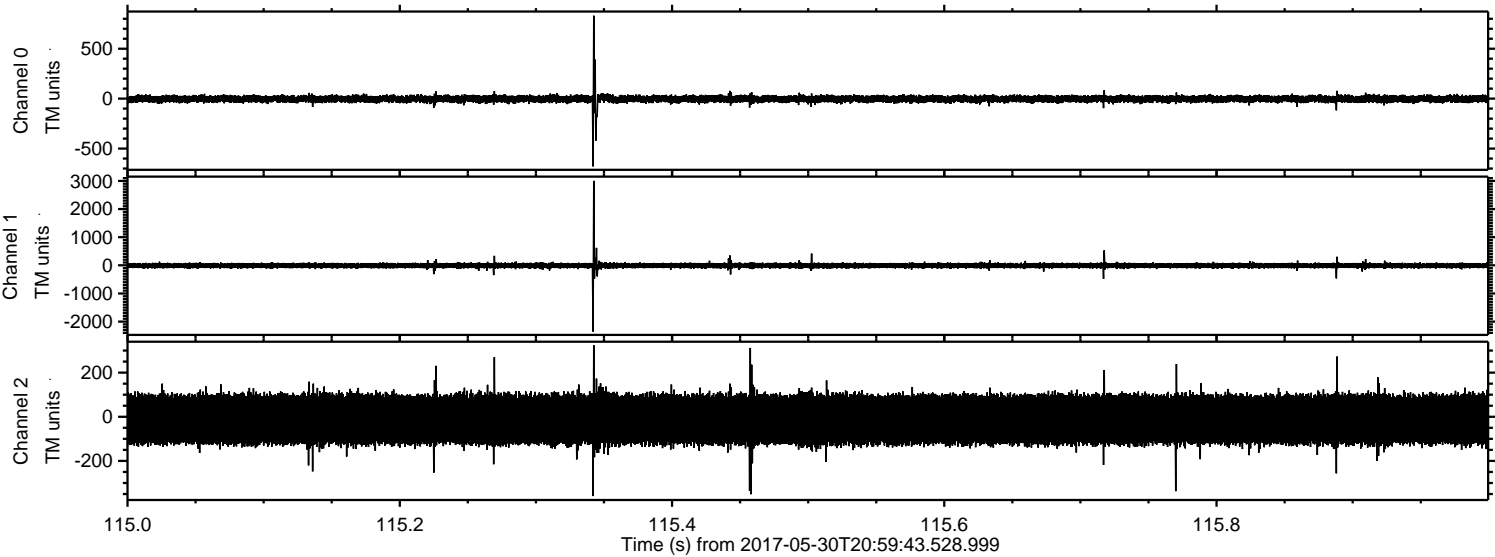
Channel 0
mn: -773
mx: 1150
 μ : -2.9
 σ : 21.7

Channel 1
mn: -2802
mx: 3327
 μ : -9.7
 σ : 60.8

Channel 2
mn: -1154
mx: 1489
 μ : -12.0
 σ : 72.9

ELMAVAN 3D WAVEFORMS (Measured data sampled at 50 kHz) 51000 packets of 144 samples from 2017-05-30T20:59:43.528.999. Part 116/147

Processed Tue May 30 23:07:43 2017 by ELM ver.2012-10-06 from 001__elm20170530_205942__dat00.bin



ELMAVAN 3D WAVEFORMS (Measured data sampled at 50 kHz) 51000 packets of 144 samples from 2017-05-30T20:59:43.528.999. Part 104/147

Processed Tue May 30 23:07:43 2017 by ELM ver.2012-10-06 from 001__elm20170530_205942__dat00.bin

