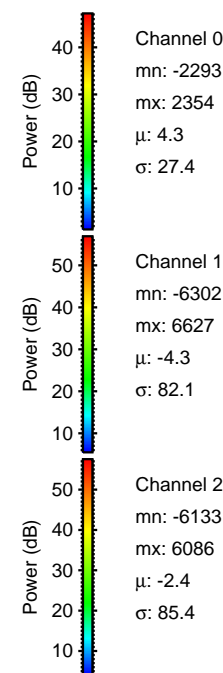
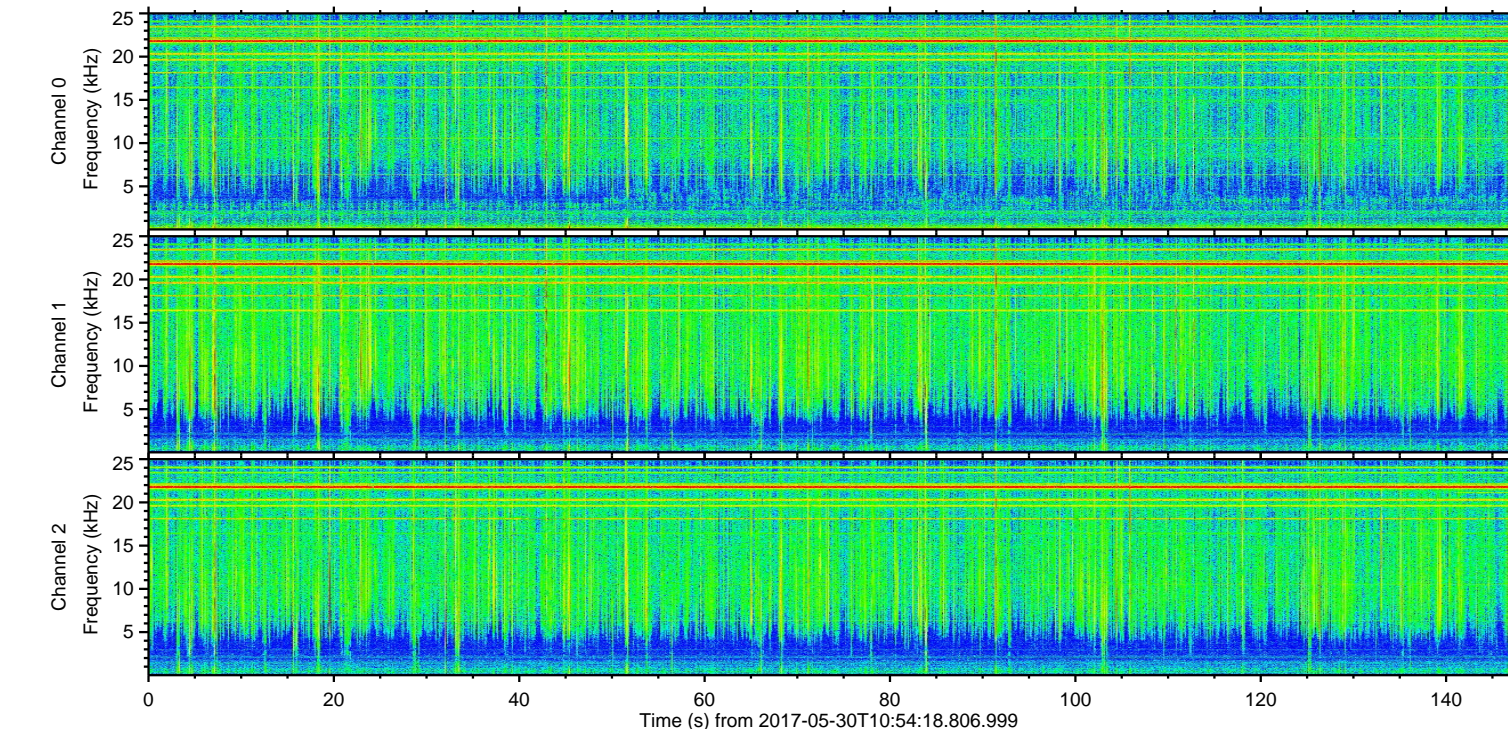
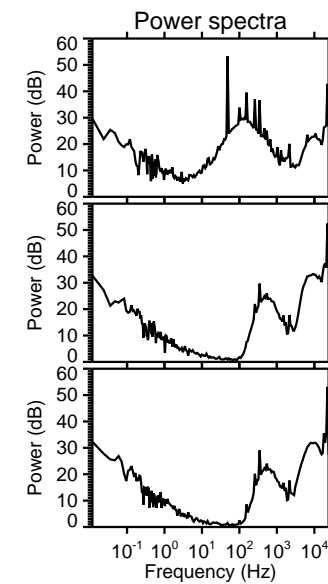
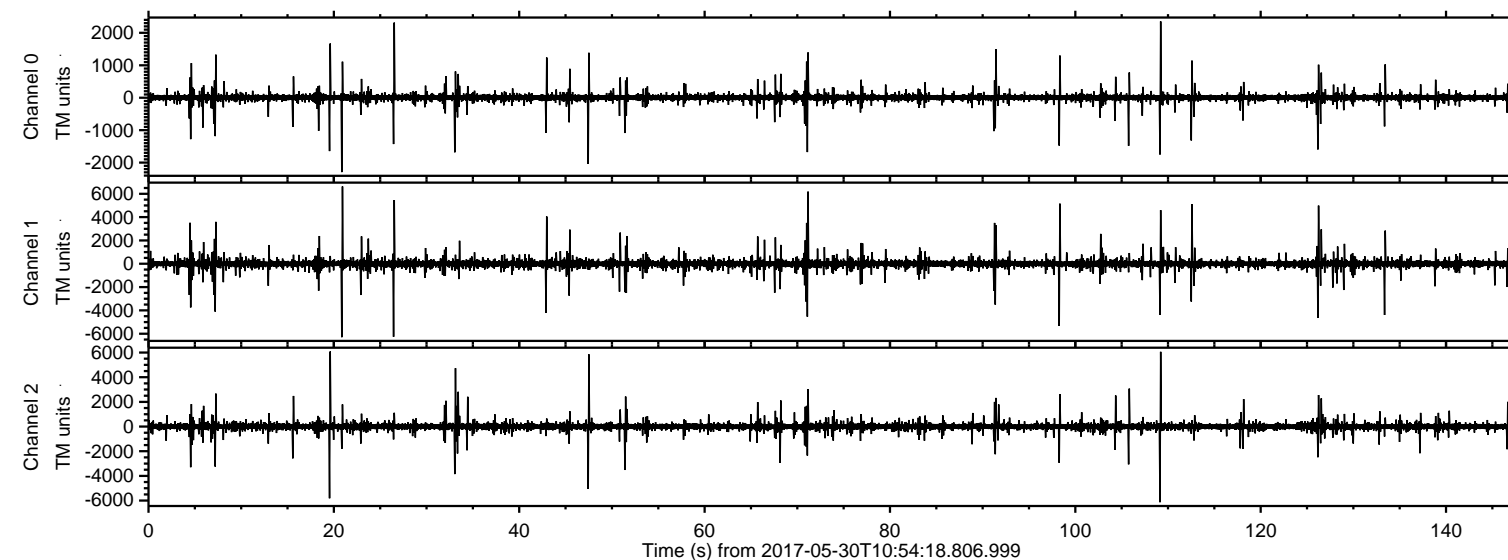


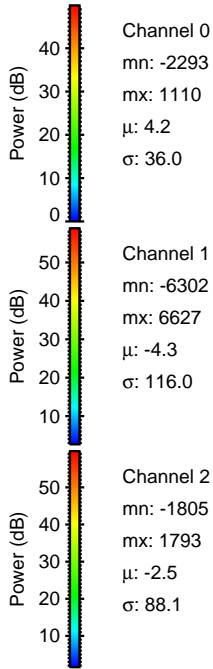
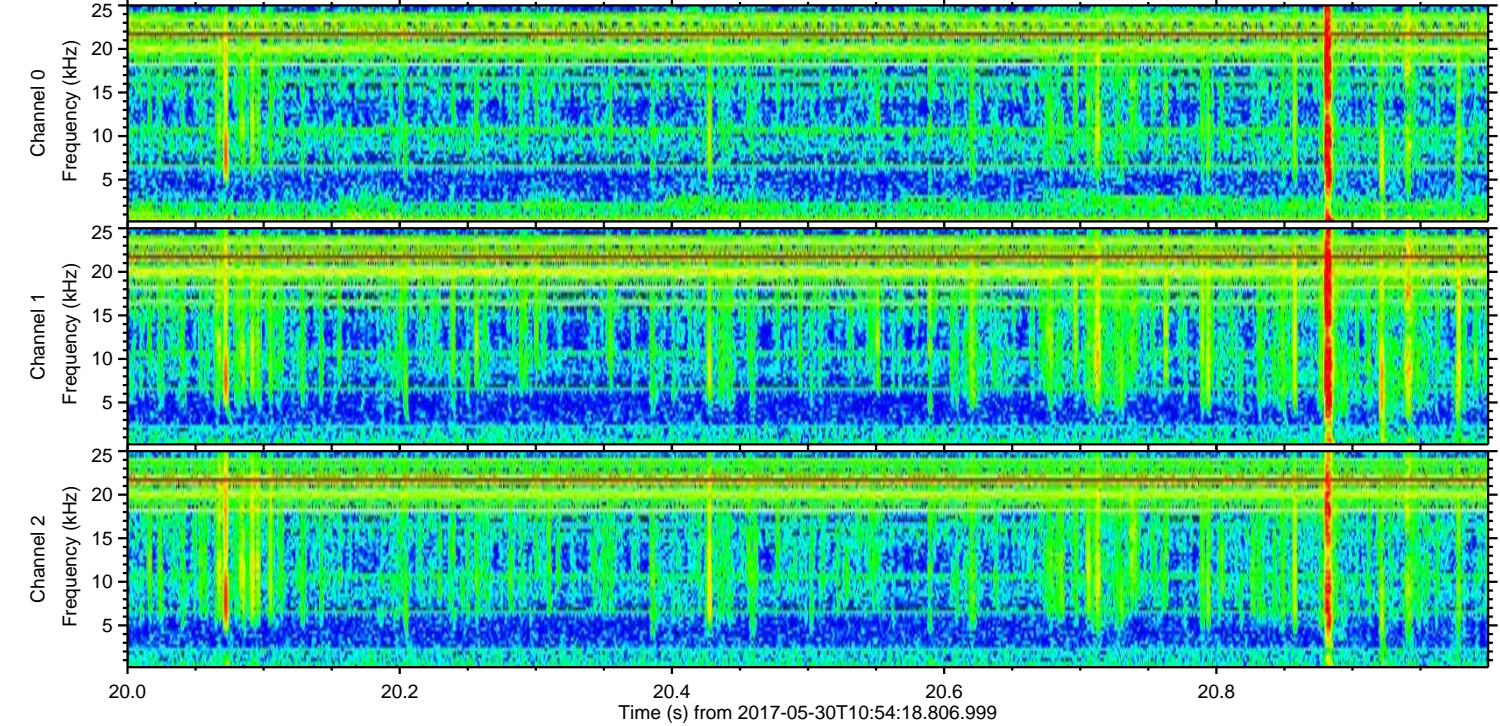
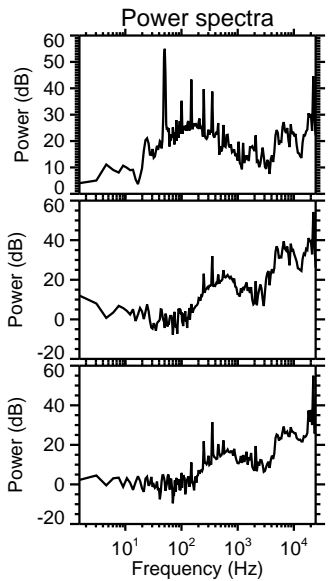
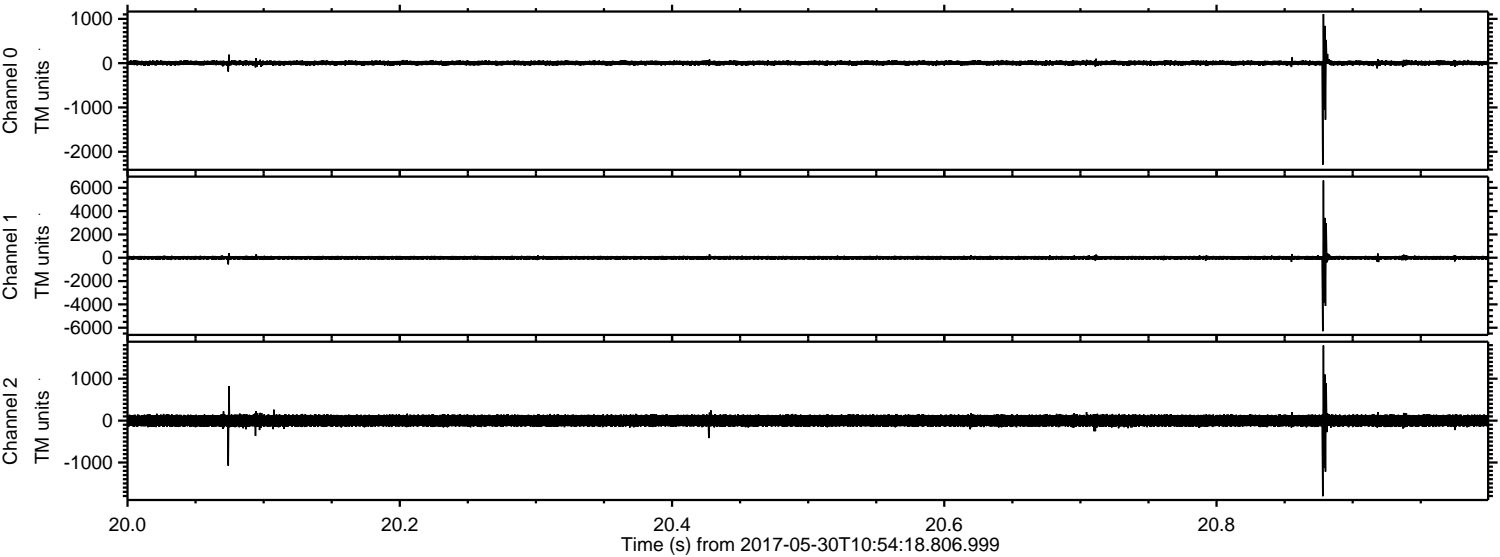
ELMAVAN 3D WAVEFORMS (Measured data sampled at 50 kHz) 51000 packets of 144 samples from 2017-05-30T10:54:18.806.999.

Processed Tue May 30 13:02:02 2017 by ELM ver.2012-10-06 from 001__elm20170530_105417__dat00.bin



ELMAVAN 3D WAVEFORMS (Measured data sampled at 50 kHz) 51000 packets of 144 samples from 2017-05-30T10:54:18.806.999. Part 21/147

Processed Tue May 30 13:02:07 2017 by ELM ver.2012-10-06 from 001__elm20170530_105417__dat00.bin



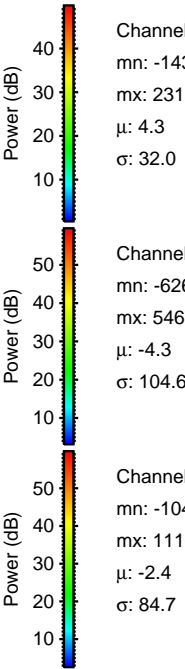
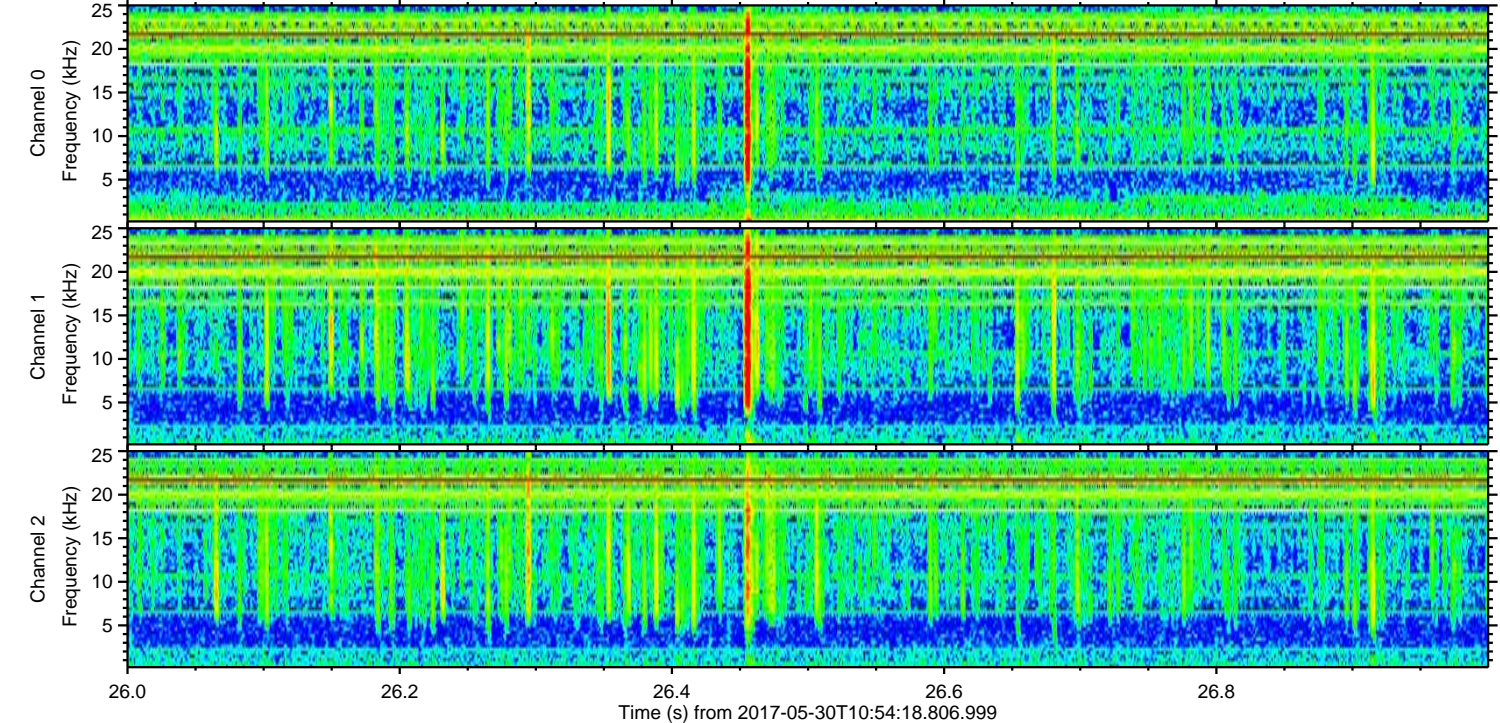
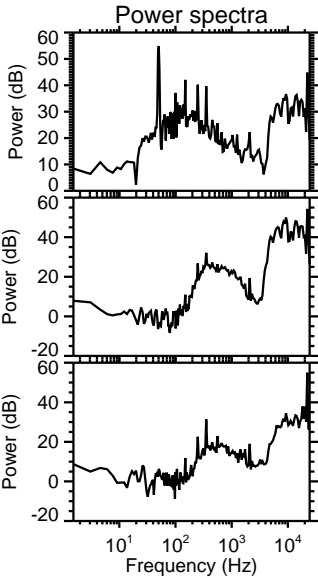
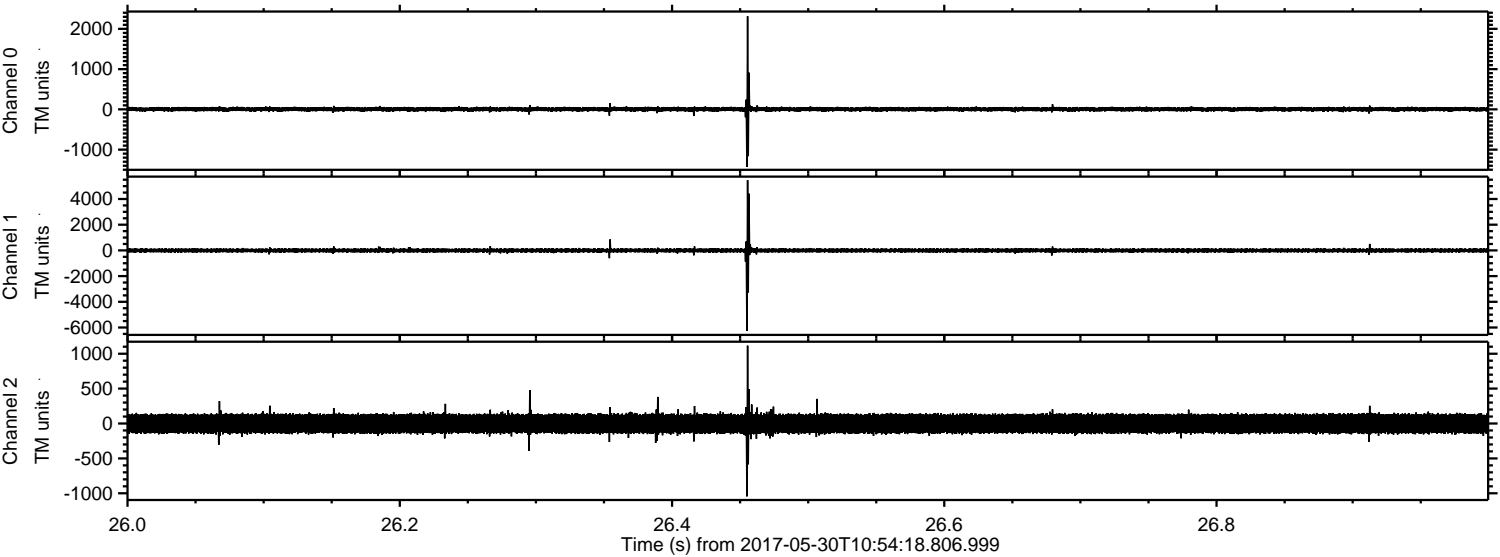
Channel 0
mn: -2293
mx: 1110
 μ : 4.2
 σ : 36.0

Channel 1
mn: -6302
mx: 6627
 μ : -4.3
 σ : 116.0

Channel 2
mn: -1805
mx: 1793
 μ : -2.5
 σ : 88.1

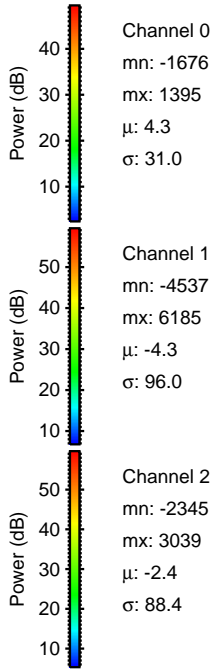
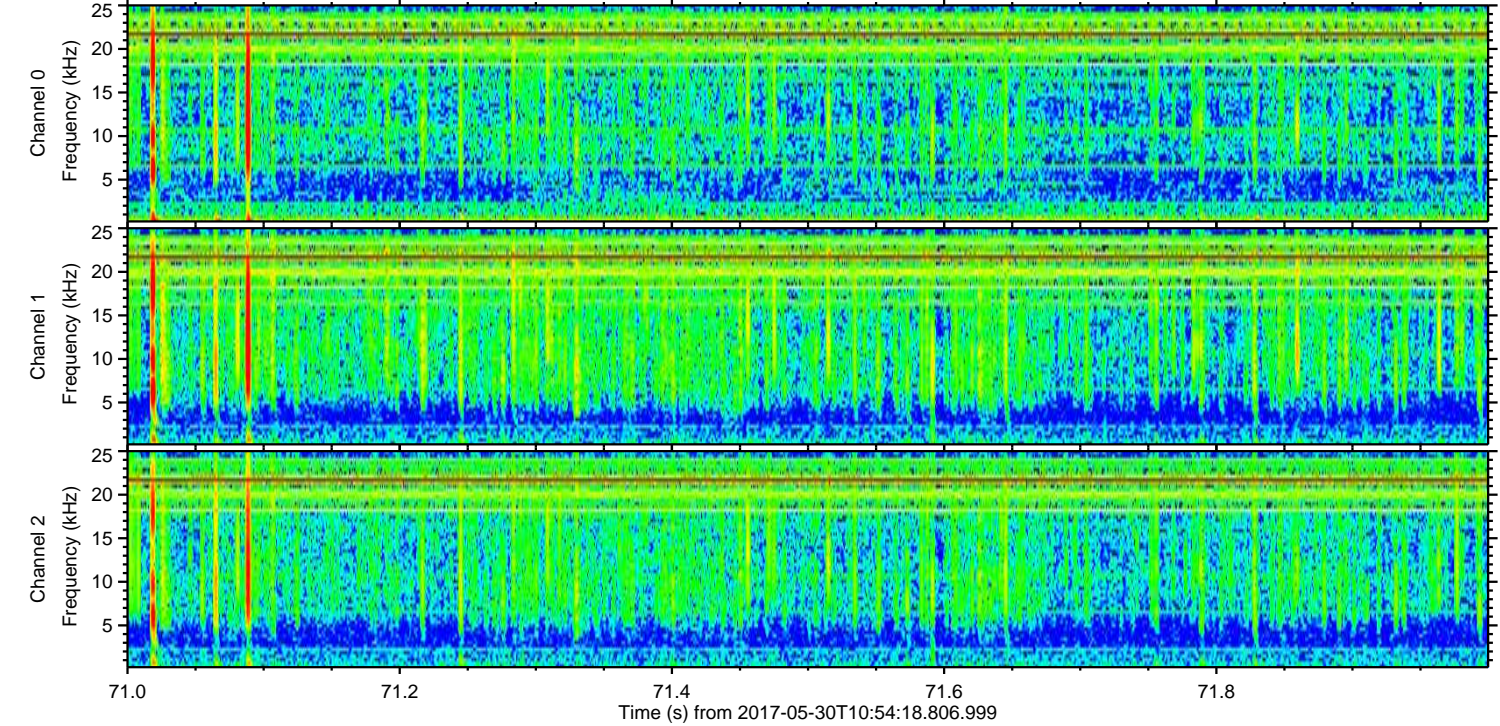
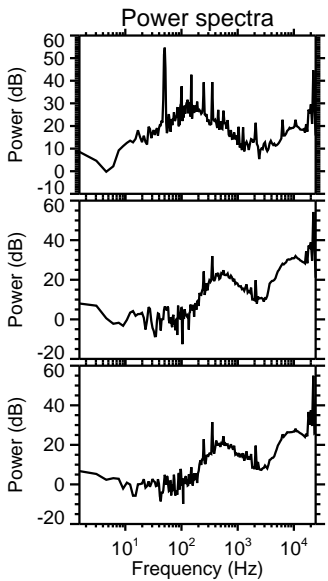
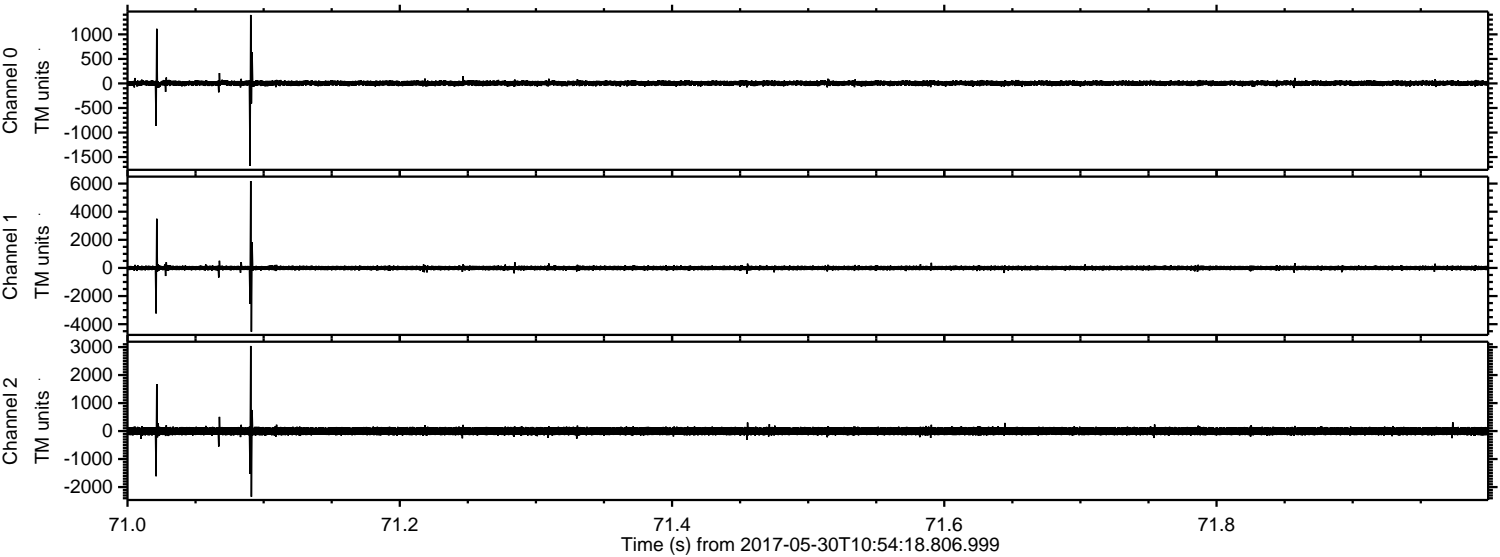
ELMAVAN 3D WAVEFORMS (Measured data sampled at 50 kHz) 51000 packets of 144 samples from 2017-05-30T10:54:18.806.999. Part 27/147

Processed Tue May 30 13:02:08 2017 by ELM ver.2012-10-06 from 001_elm20170530_105417__dat00.bin



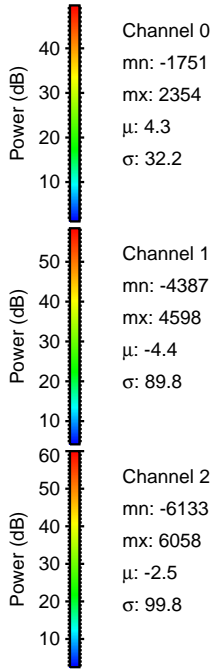
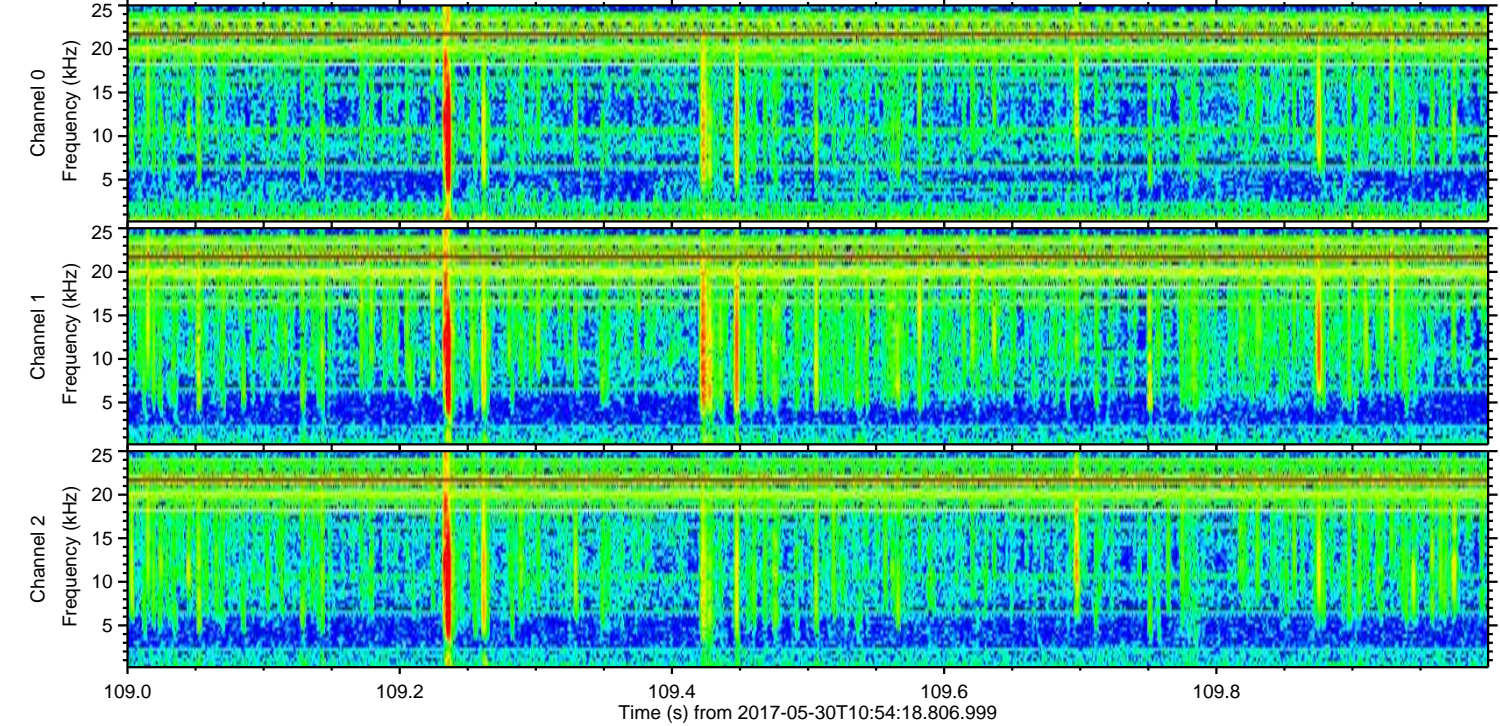
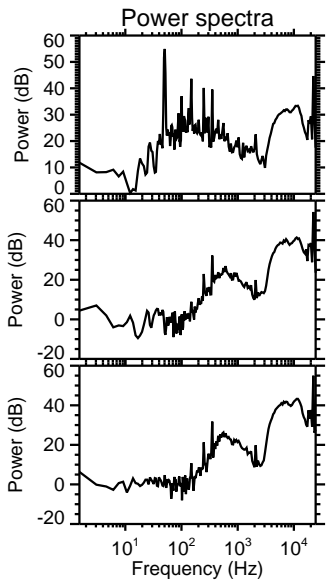
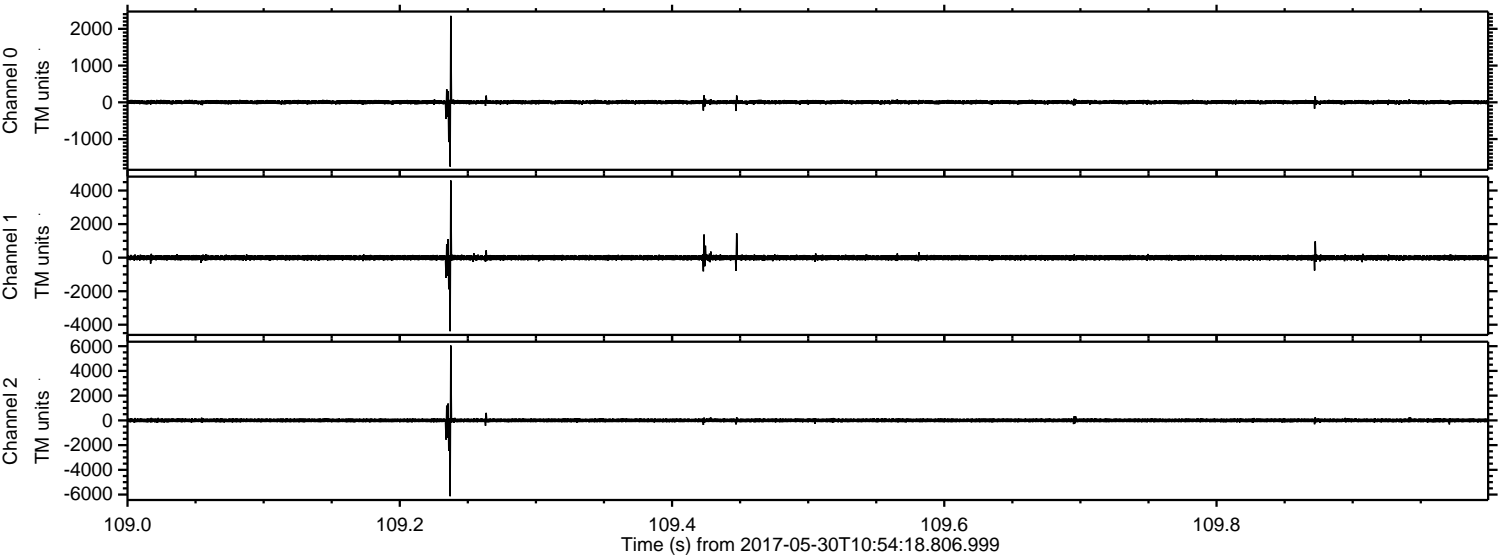
ELMAVAN 3D WAVEFORMS (Measured data sampled at 50 kHz) 51000 packets of 144 samples from 2017-05-30T10:54:18.806.999. Part 72/147

Processed Tue May 30 13:02:09 2017 by ELM ver.2012-10-06 from 001__elm20170530_105417__dat00.bin

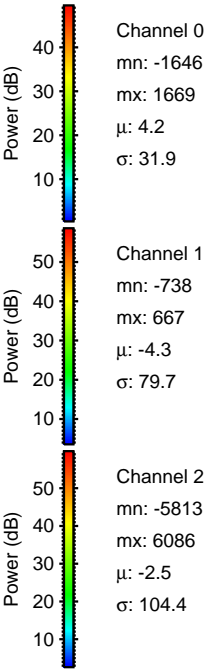
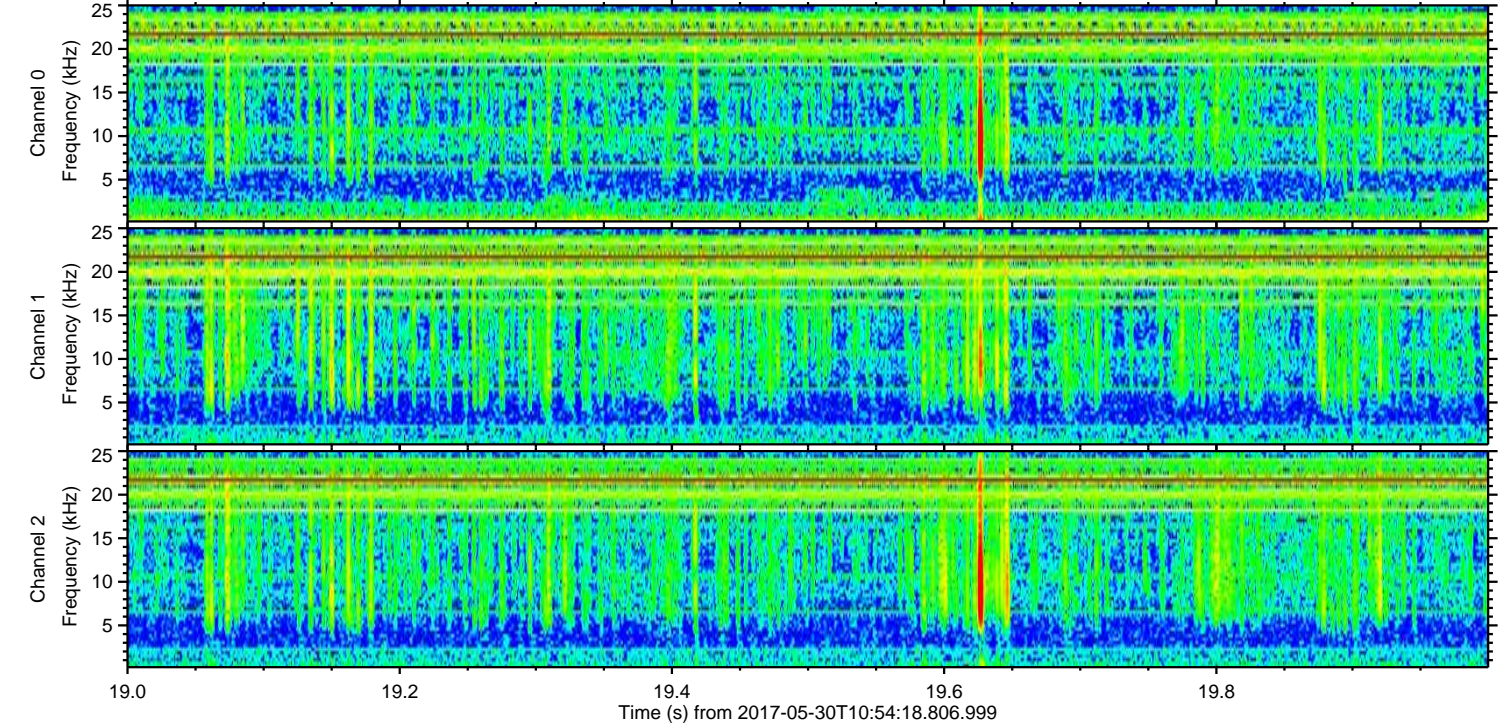
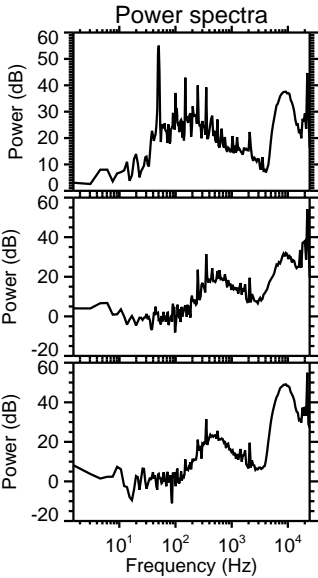
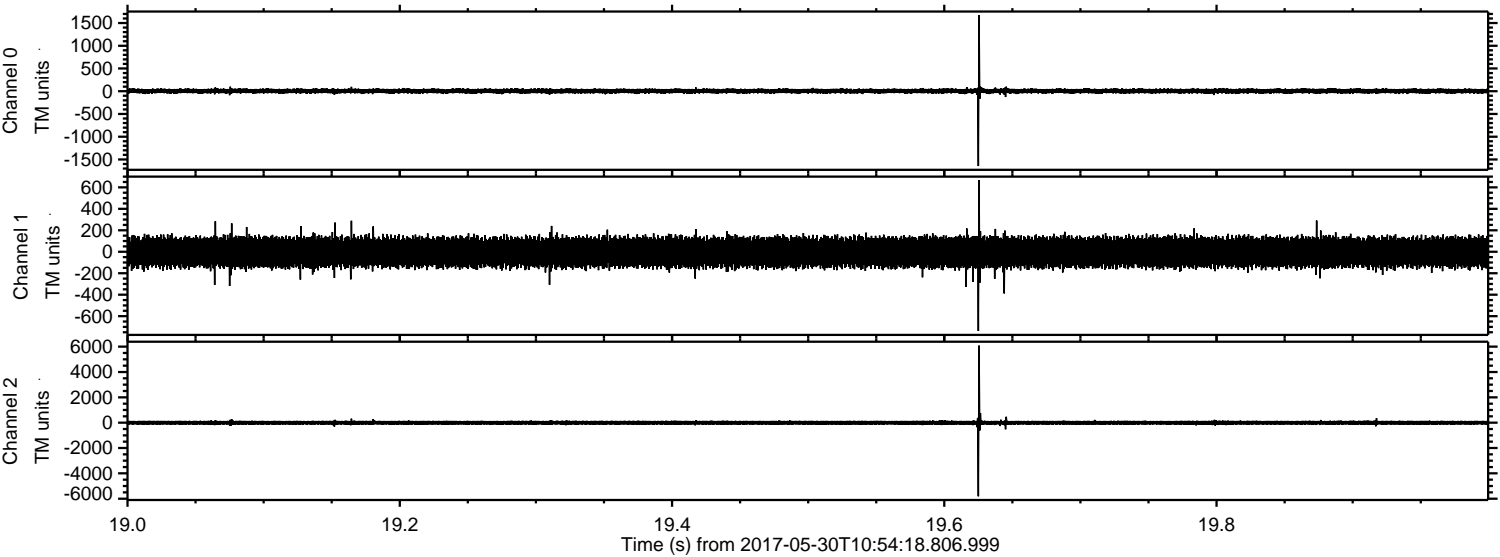


ELMAVAN 3D WAVEFORMS (Measured data sampled at 50 kHz) 51000 packets of 144 samples from 2017-05-30T10:54:18.806.999. Part 110/147

Processed Tue May 30 13:02:09 2017 by ELM ver.2012-10-06 from 001__elm20170530_105417__dat00.bin

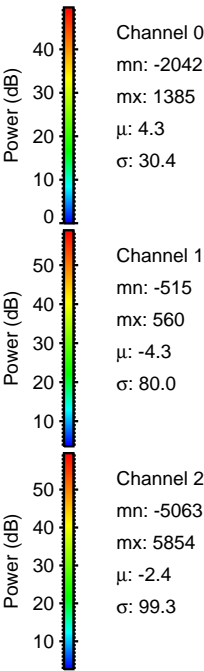
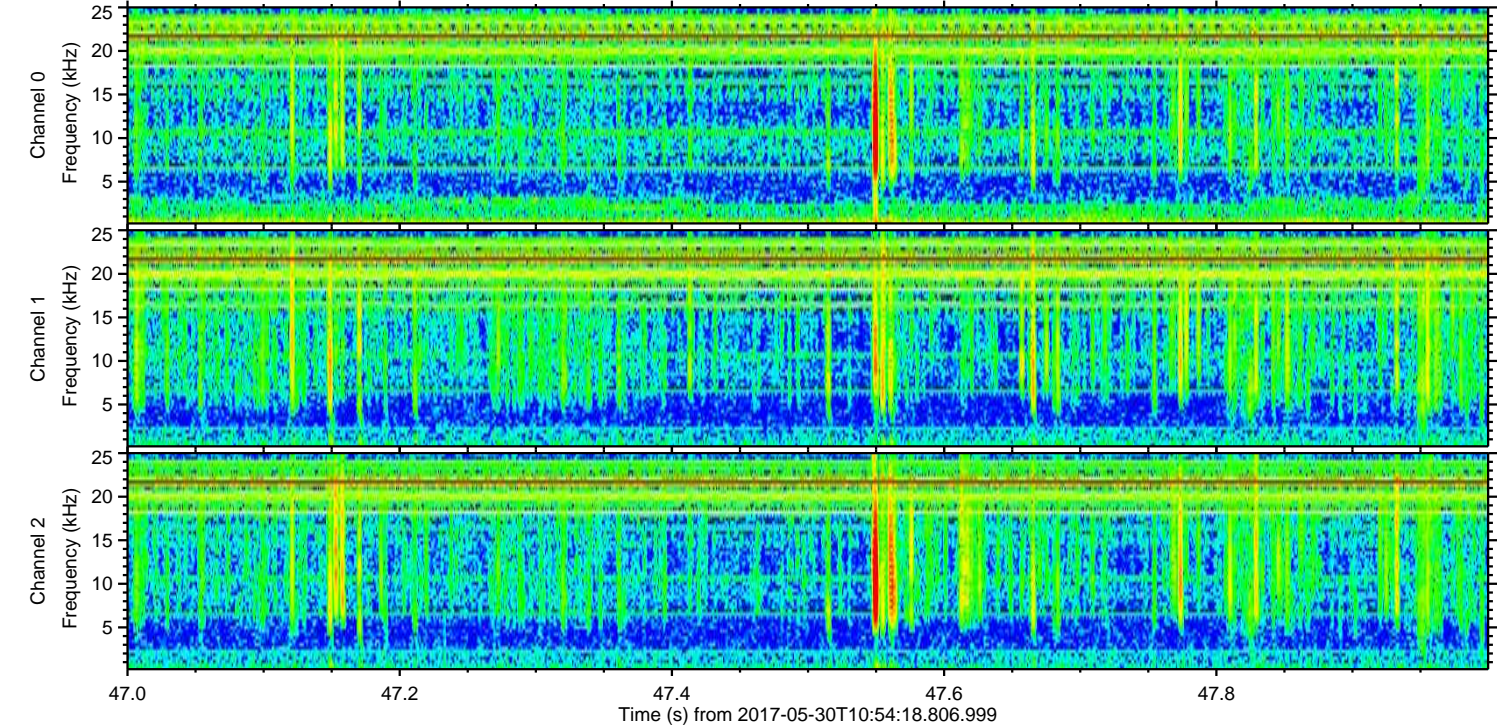
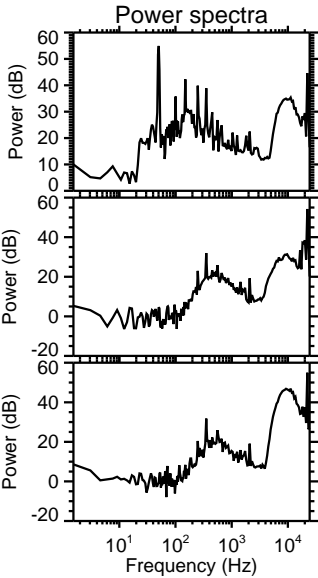
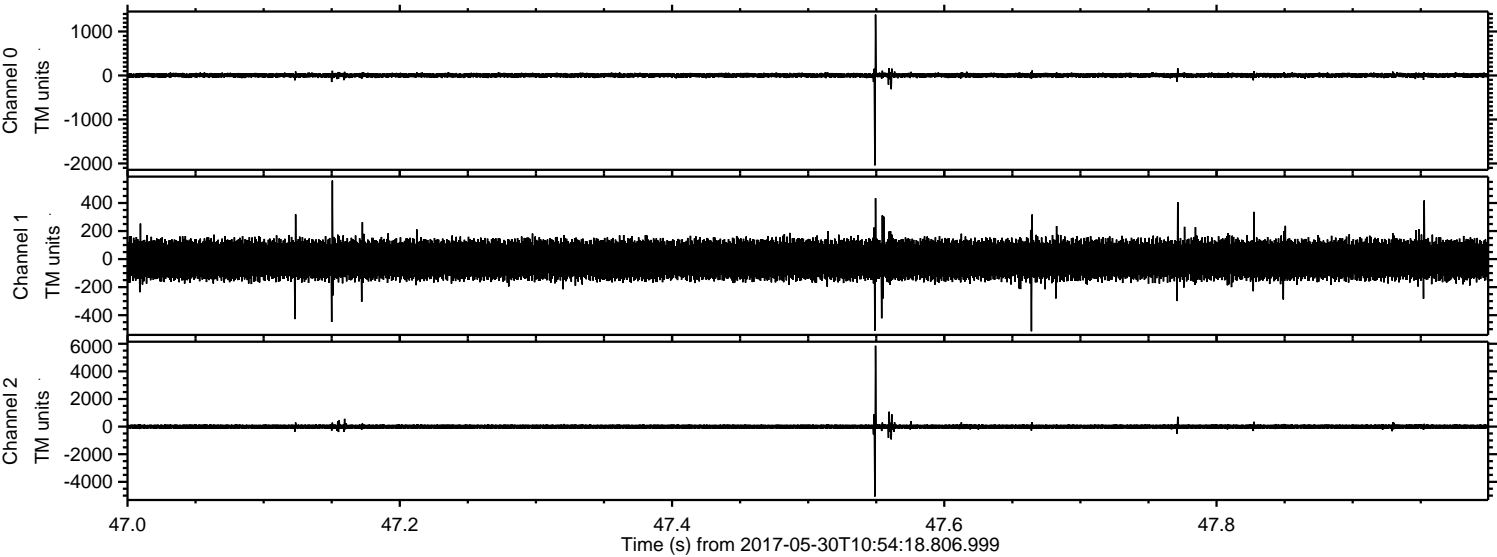


Processed Tue May 30 13:02:10 2017 by ELM ver.2012-10-06 from 001__elm20170530_105417__dat00.bin

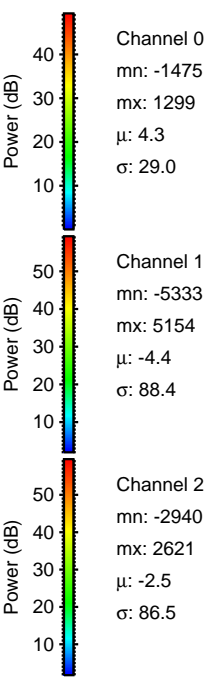
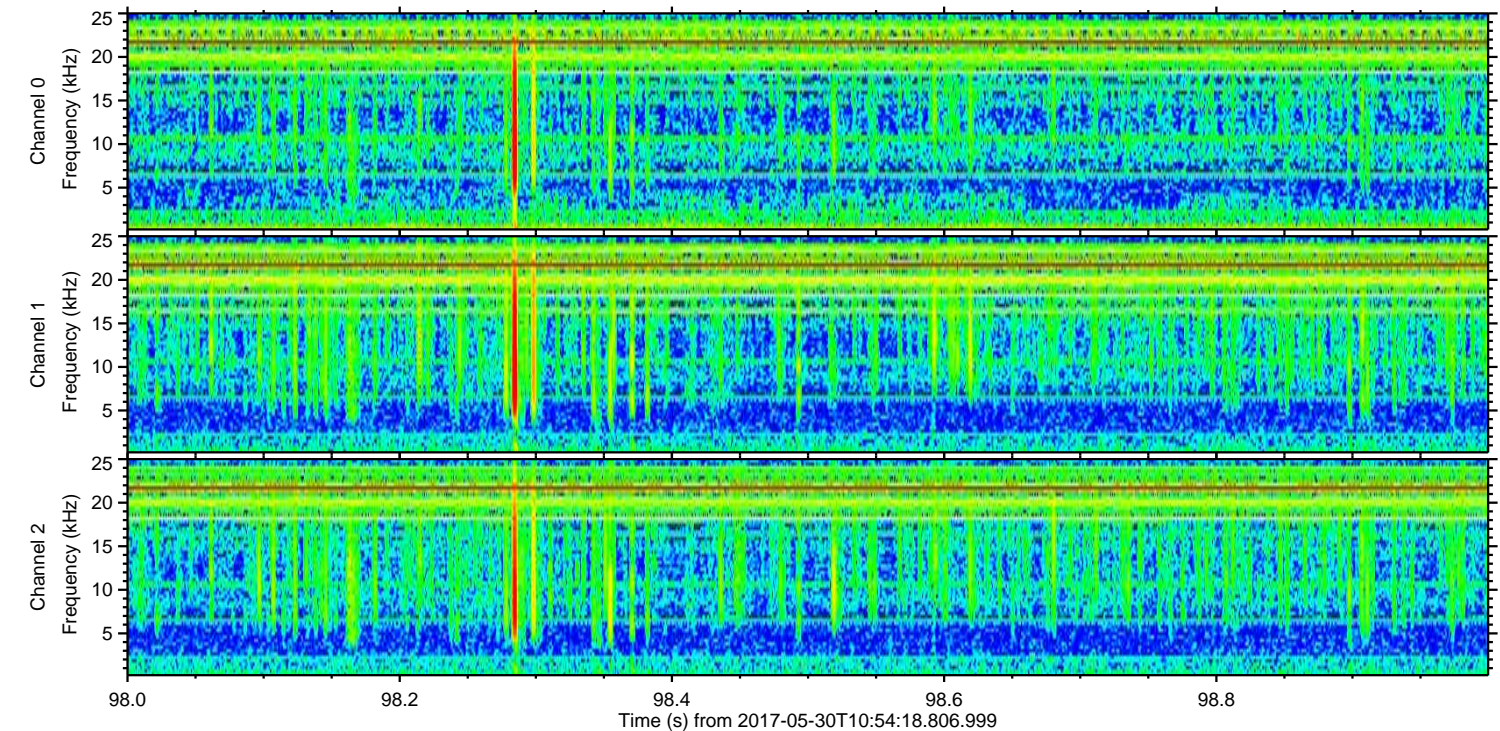
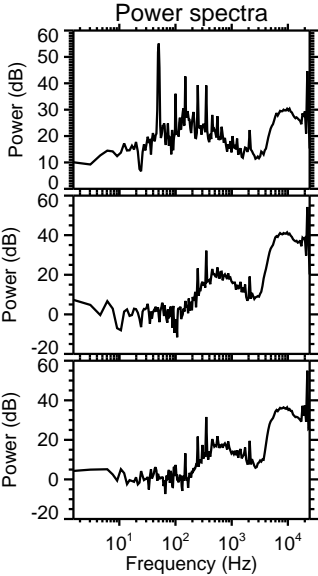
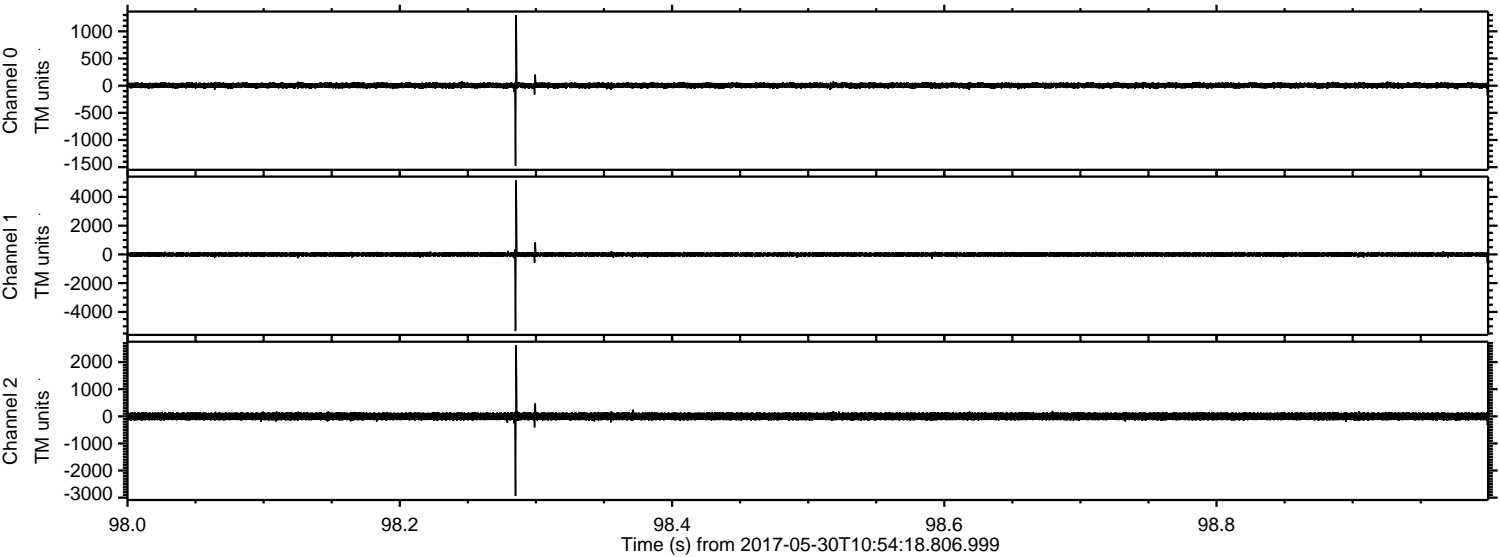


ELMAVAN 3D WAVEFORMS (Measured data sampled at 50 kHz) 51000 packets of 144 samples from 2017-05-30T10:54:18.806.999. Part 48/147

Processed Tue May 30 13:02:11 2017 by ELM ver.2012-10-06 from 001__elm20170530_105417__dat00.bin

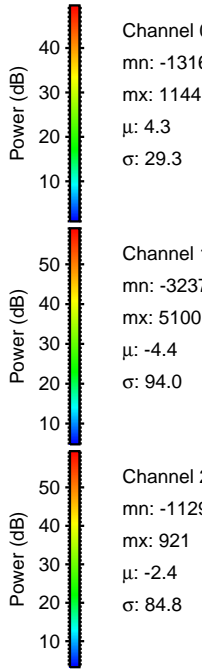
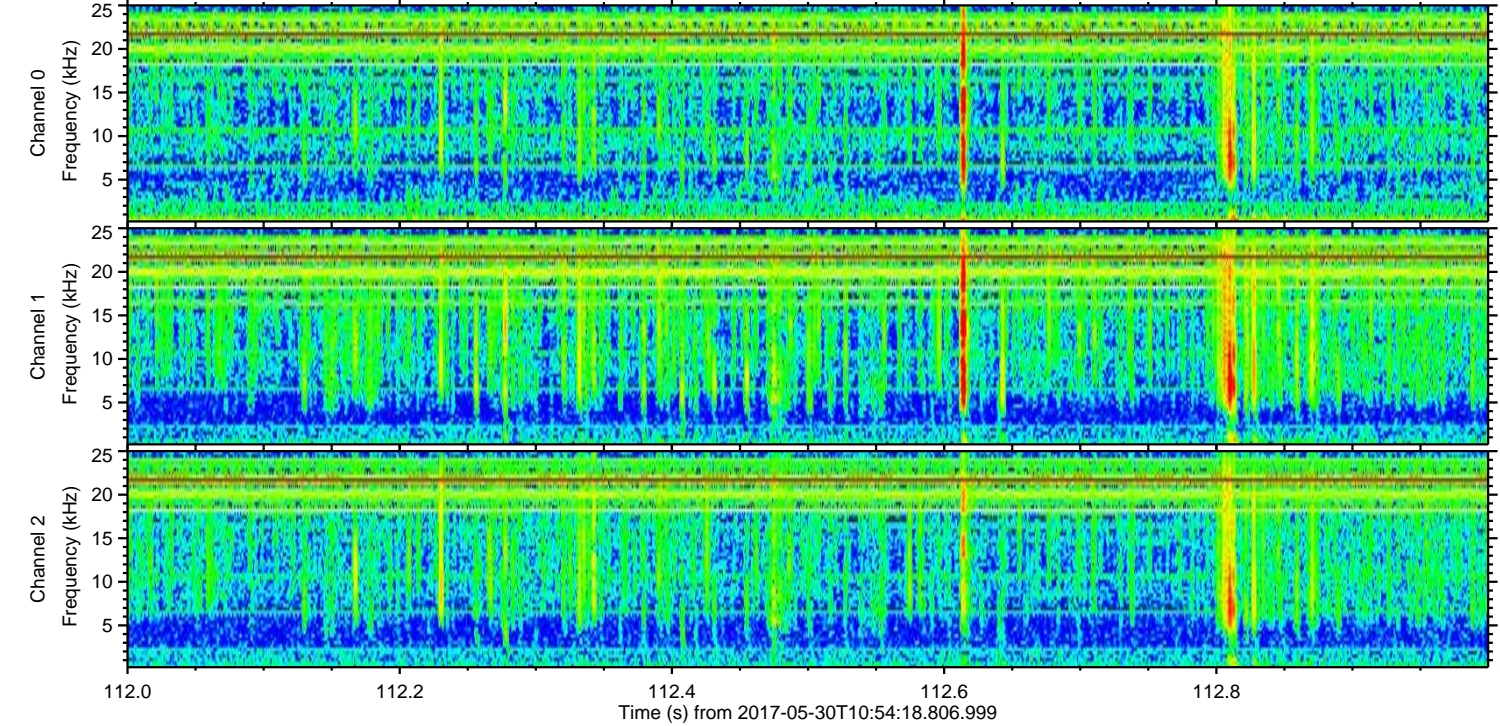
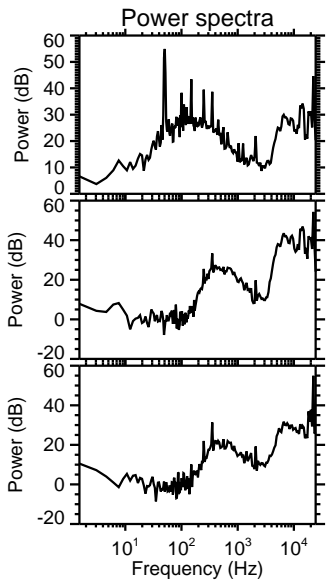
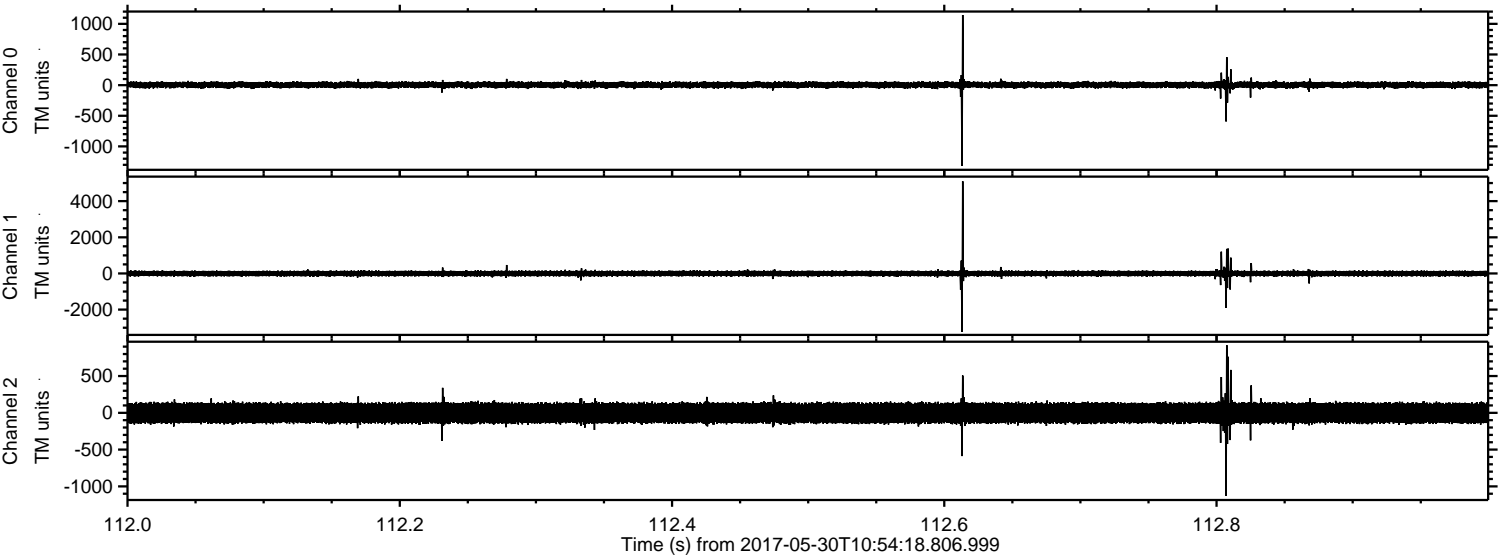


Processed Tue May 30 13:02:11 2017 by ELM ver.2012-10-06 from 001__elm20170530_105417__dat00.bin



ELMAVAN 3D WAVEFORMS (Measured data sampled at 50 kHz) 51000 packets of 144 samples from 2017-05-30T10:54:18.806.999. Part 113/147

Processed Tue May 30 13:02:12 2017 by ELM ver.2012-10-06 from 001__elm20170530_105417__dat00.bin



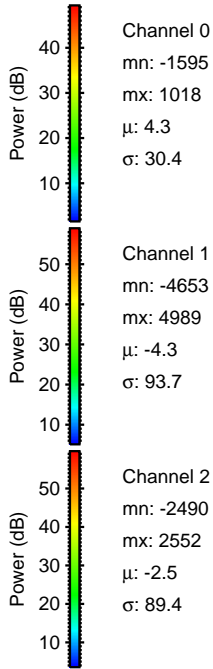
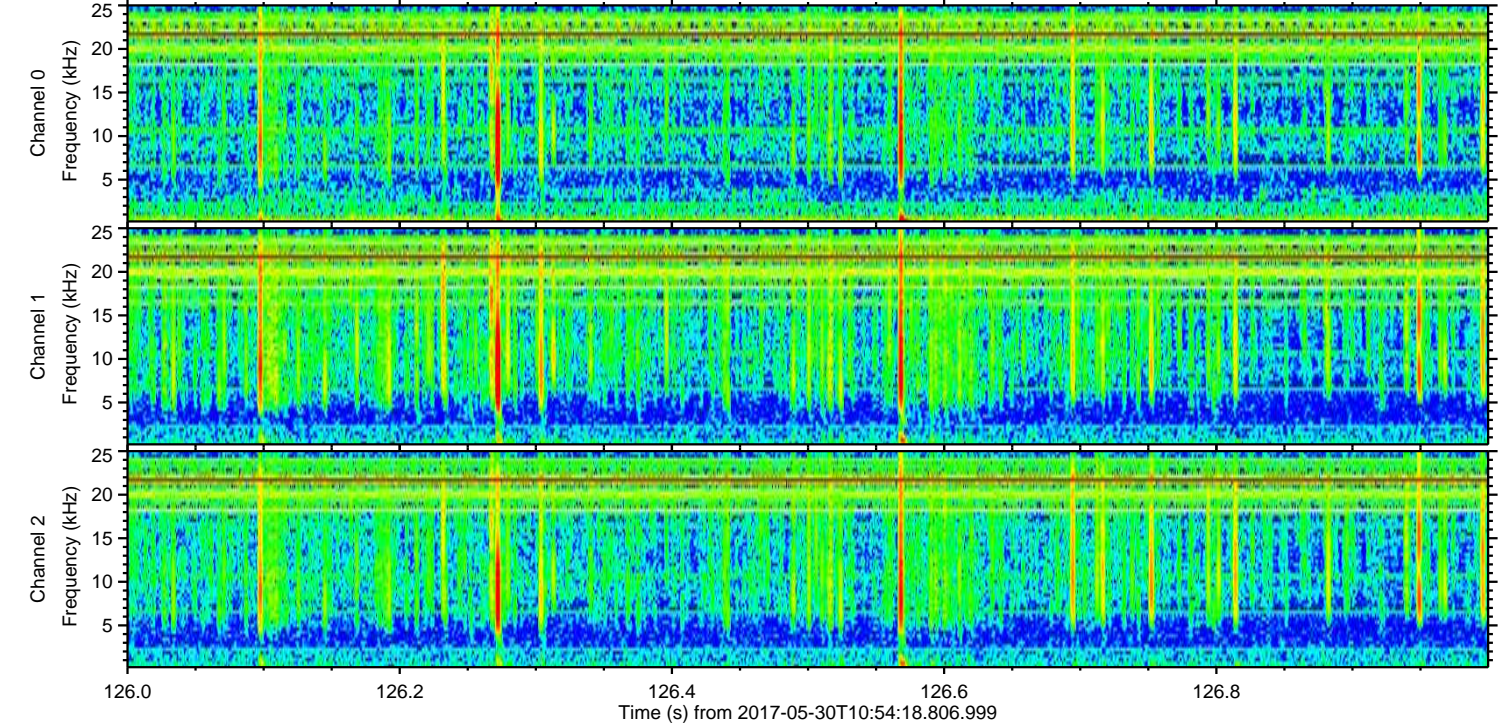
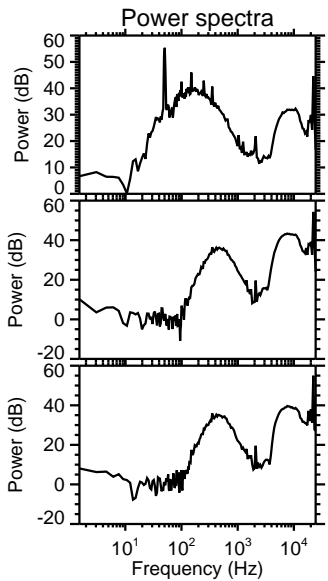
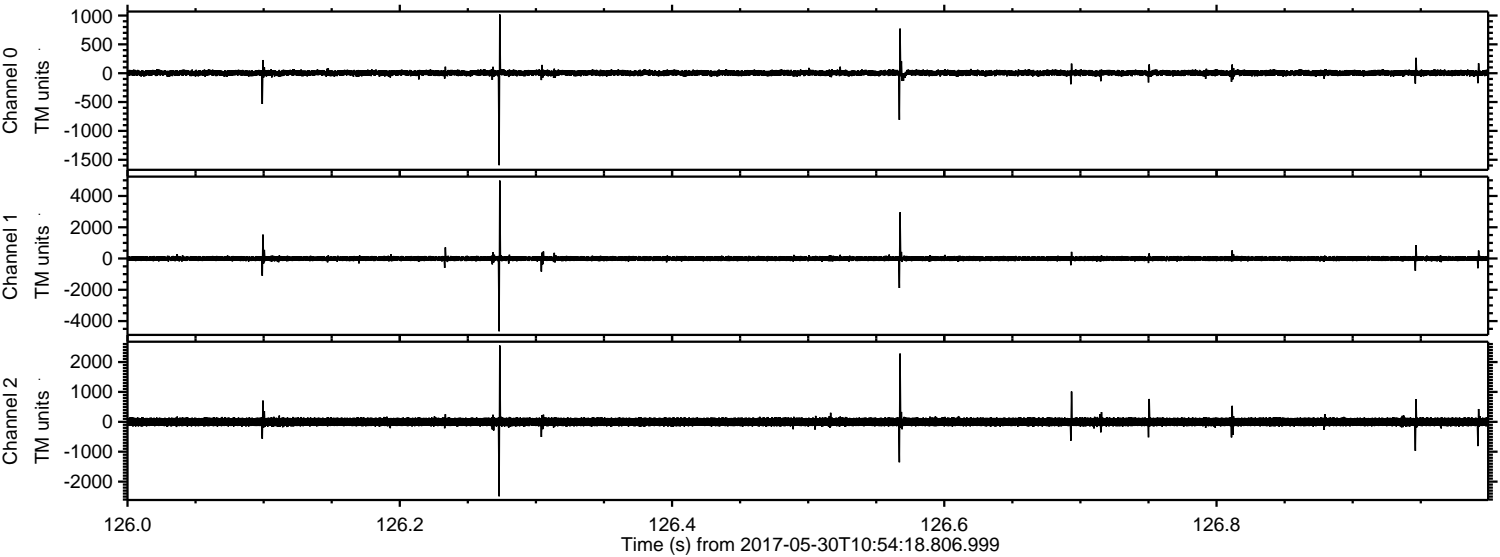
Channel 0
mn: -1316
mx: 1144
 μ : 4.3
 σ : 29.3

Channel 1
mn: -3237
mx: 5100
 μ : -4.4
 σ : 94.0

Channel 2
mn: -1129
mx: 921
 μ : -2.4
 σ : 84.8

ELMAVAN 3D WAVEFORMS (Measured data sampled at 50 kHz) 51000 packets of 144 samples from 2017-05-30T10:54:18.806.999. Part 127/147

Processed Tue May 30 13:02:13 2017 by ELM ver.2012-10-06 from 001__elm20170530_105417__dat00.bin



Channel 0
mn: -1595
mx: 1018
 μ : 4.3
 σ : 30.4

Channel 1
mn: -4653
mx: 4989
 μ : -4.3
 σ : 93.7

Channel 2
mn: -2490
mx: 2552
 μ : -2.5
 σ : 89.4

ELMAVAN 3D WAVEFORMS (Measured data sampled at 50 kHz) 51000 packets of 144 samples from 2017-05-30T10:54:18.806.999. Part 143/147

