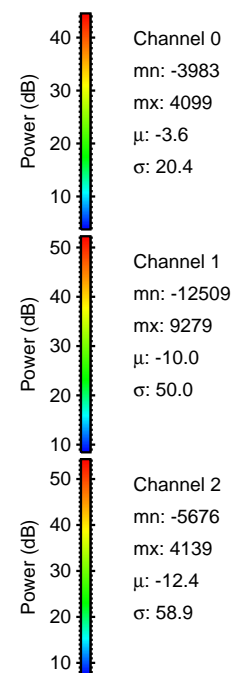
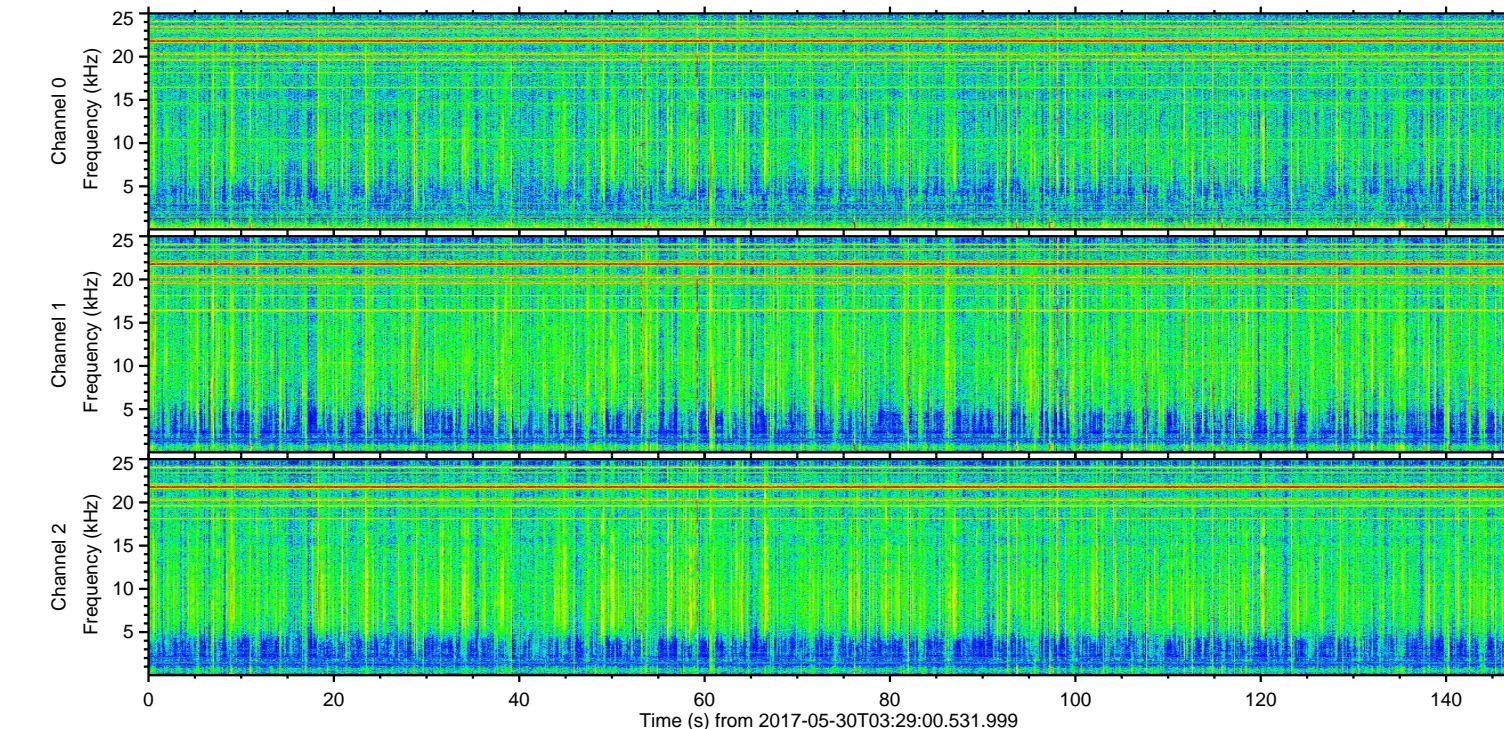
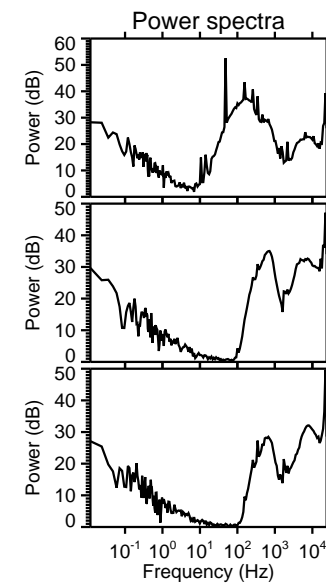
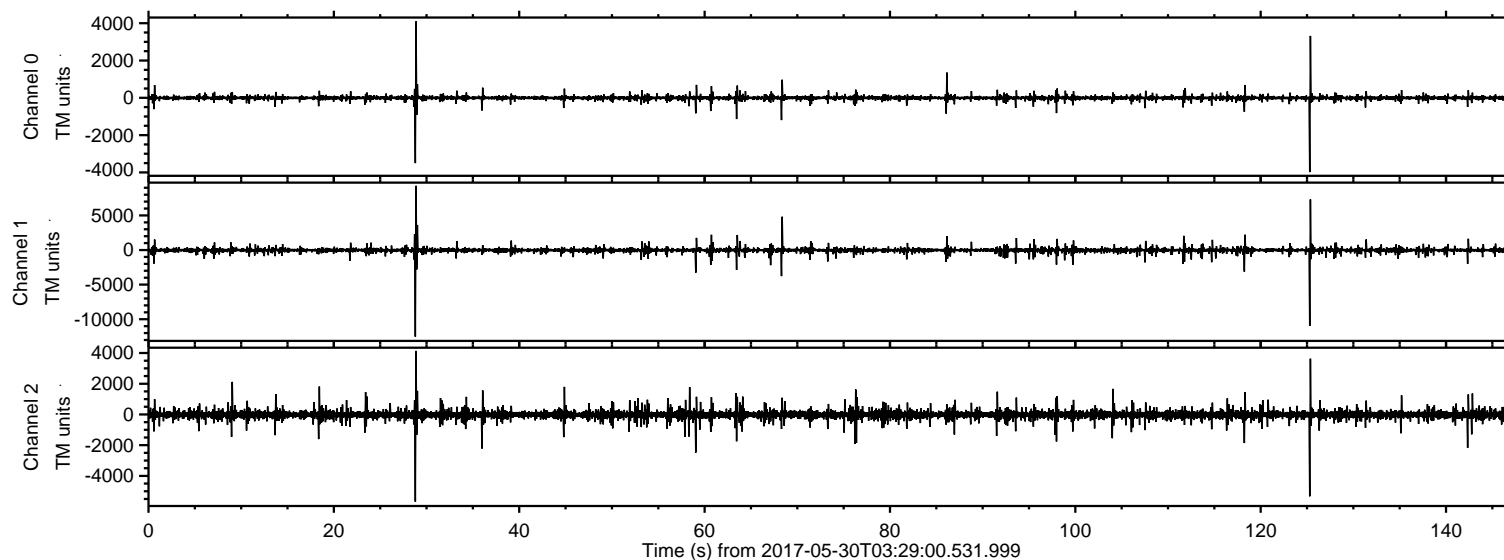
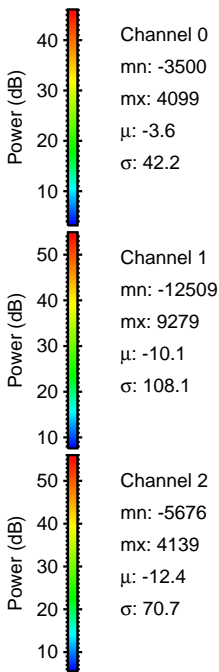
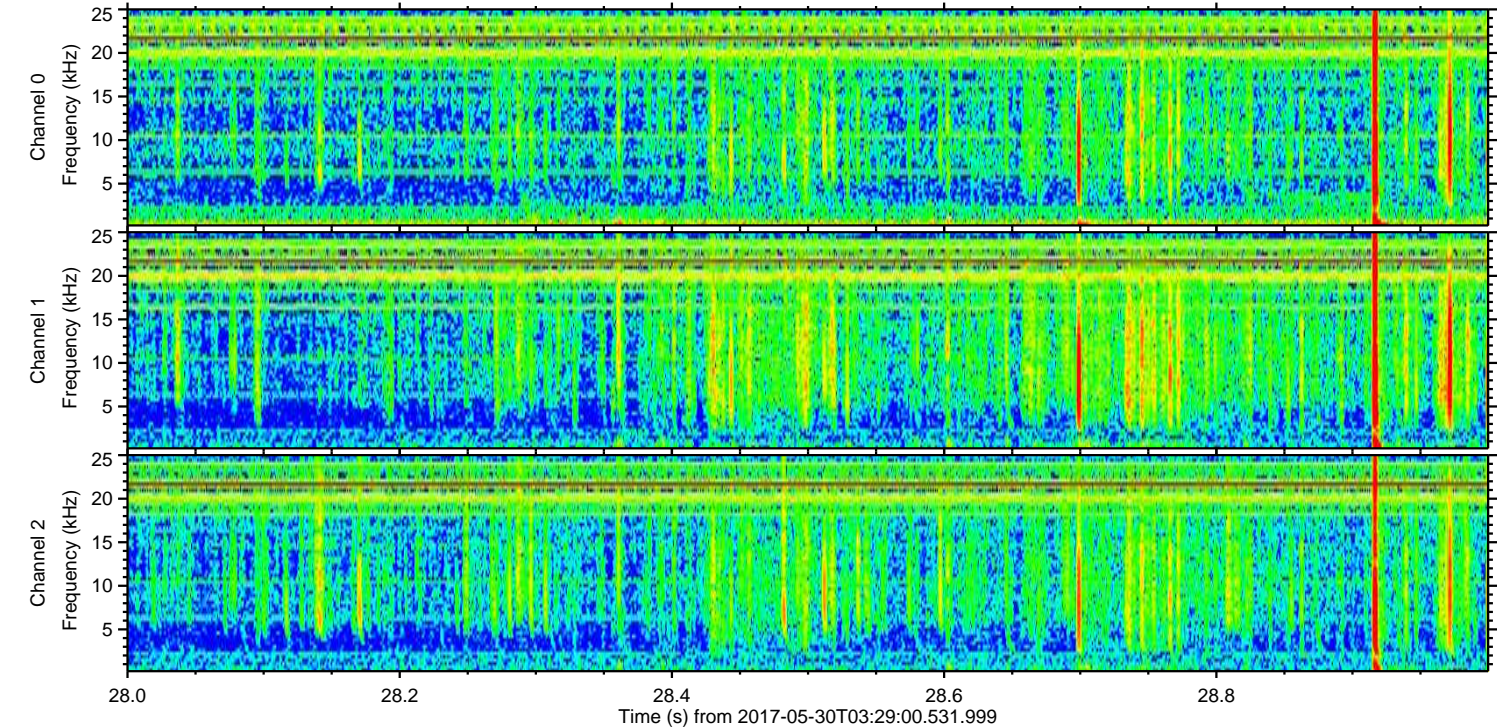
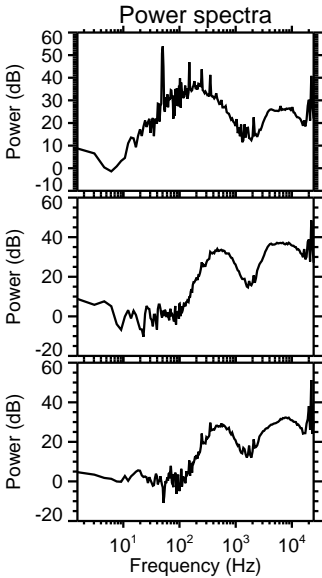
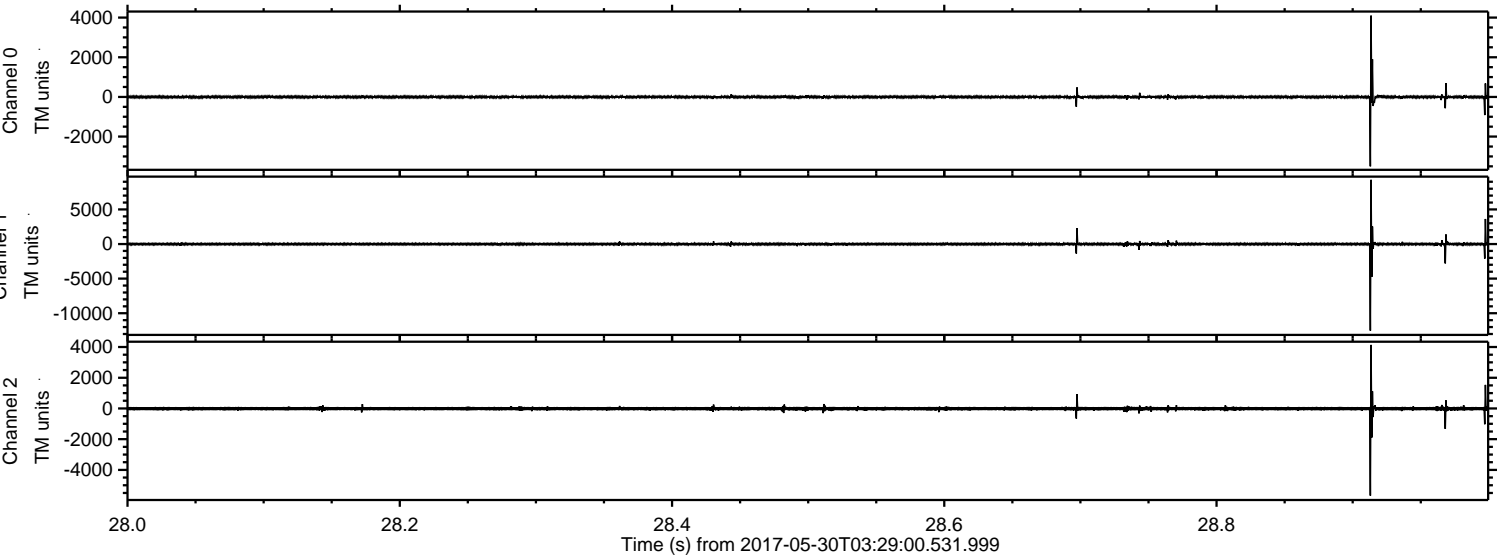


ELMAVAN 3D WAVEFORMS (Measured data sampled at 50 kHz) 51000 packets of 144 samples from 2017-05-30T03:29:00.531.999.

Processed Tue May 30 05:36:24 2017 by ELM ver.2012-10-06 from 001__elm20170530_032859__dat00.bin

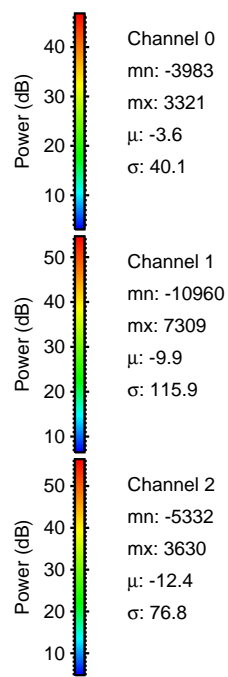
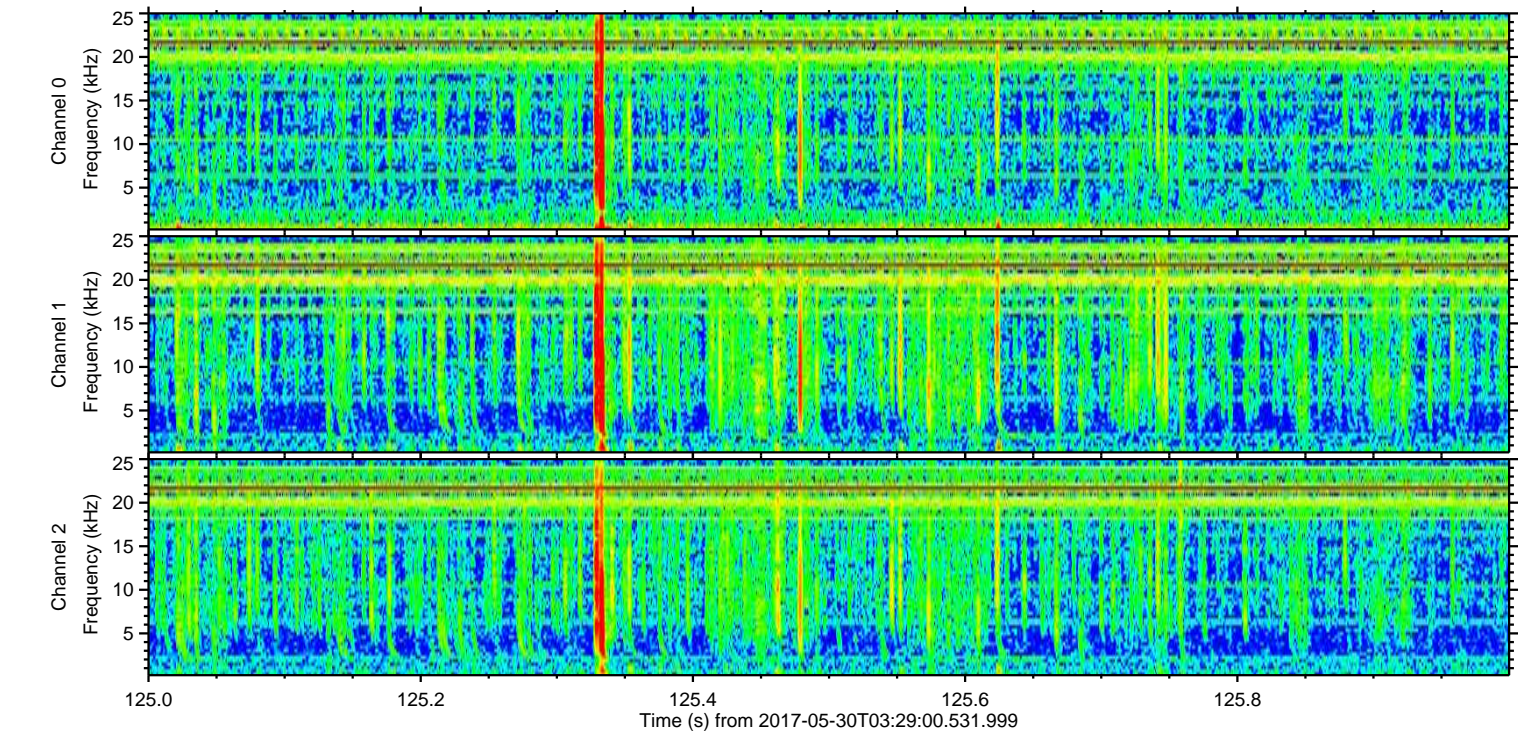
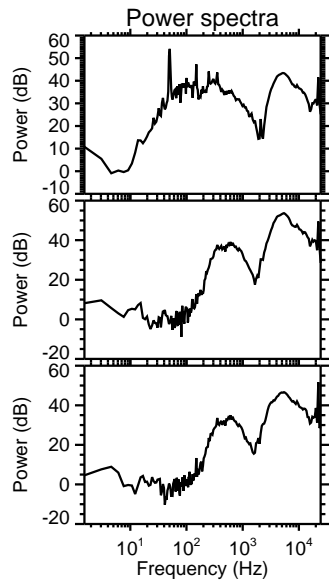
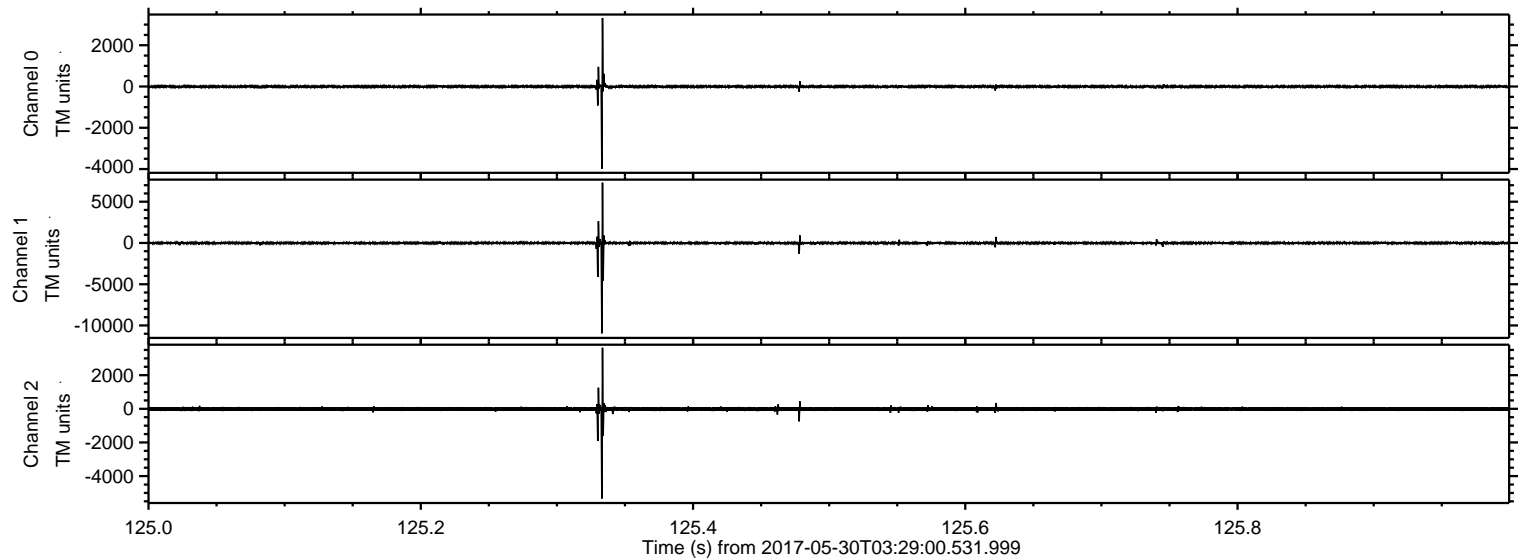


Processed Tue May 30 05:36:31 2017 by ELM ver.2012-10-06 from 001__elm20170530_032859__dat00.bin

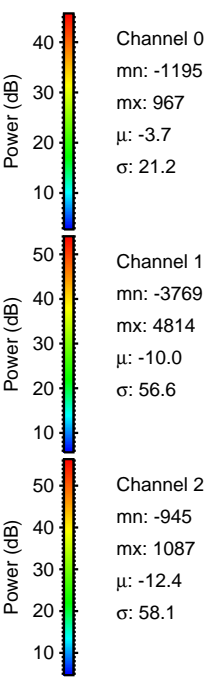
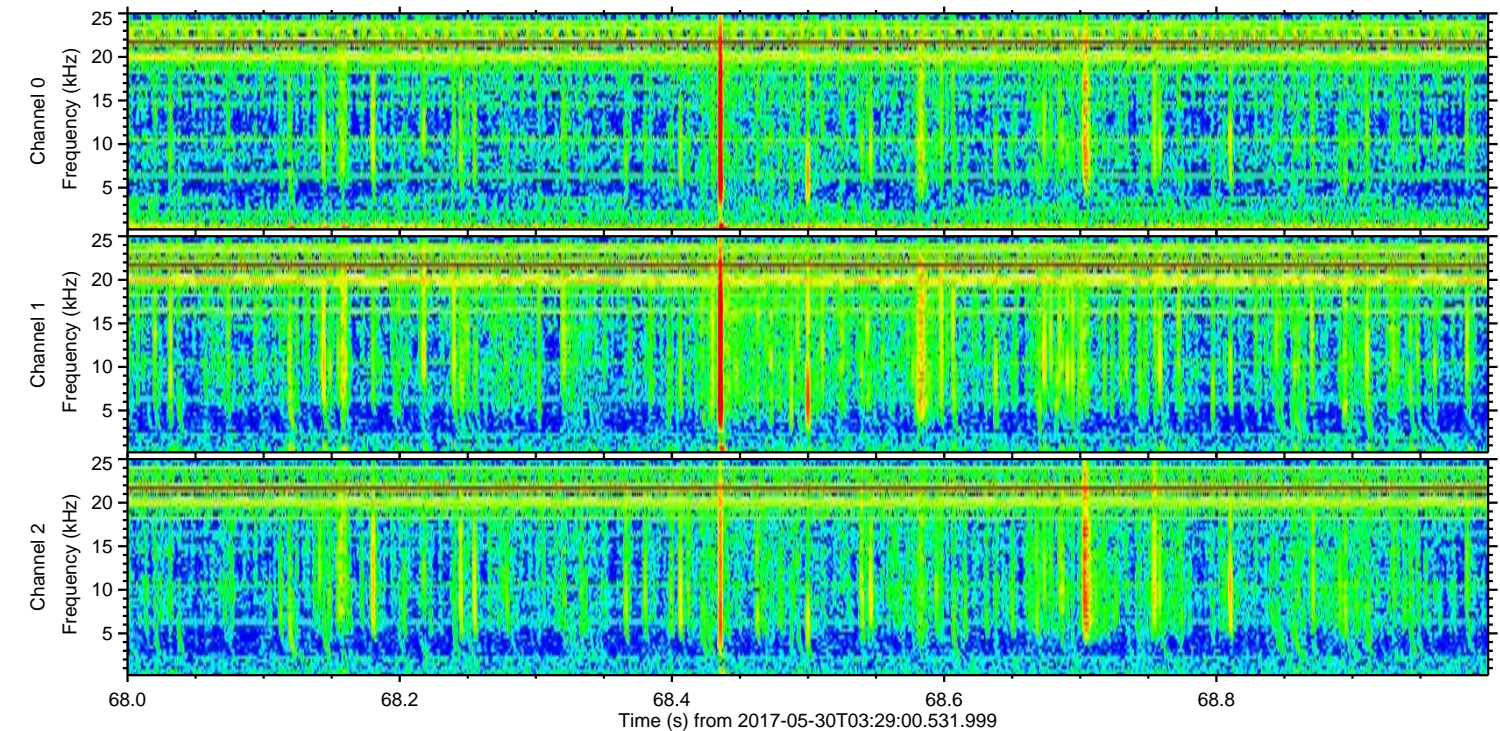
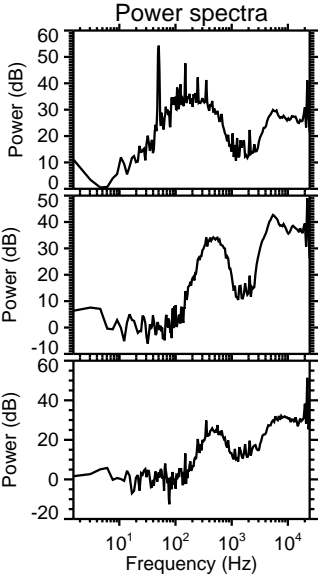
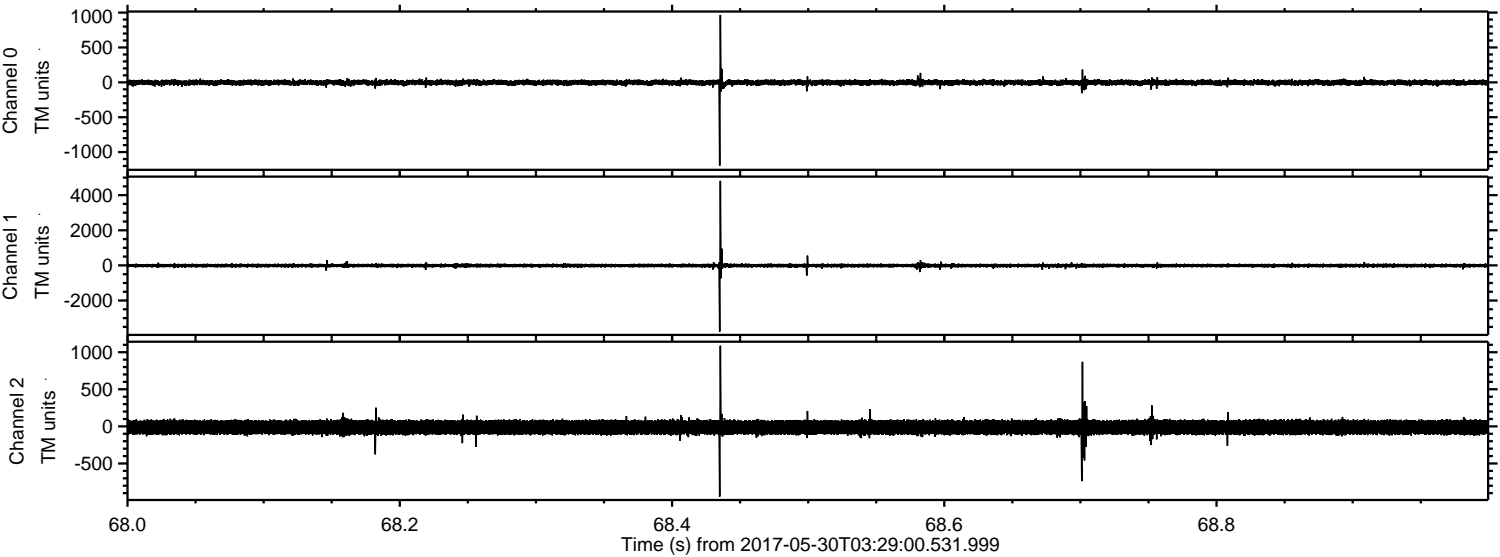


ELMAVAN 3D WAVEFORMS (Measured data sampled at 50 kHz) 51000 packets of 144 samples from 2017-05-30T03:29:00.531.999. Part 126/147

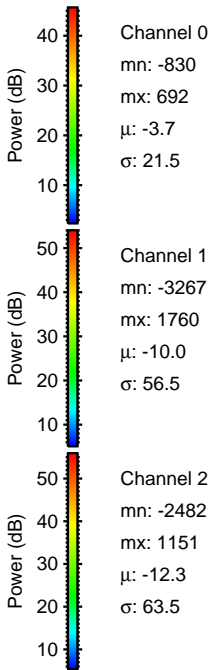
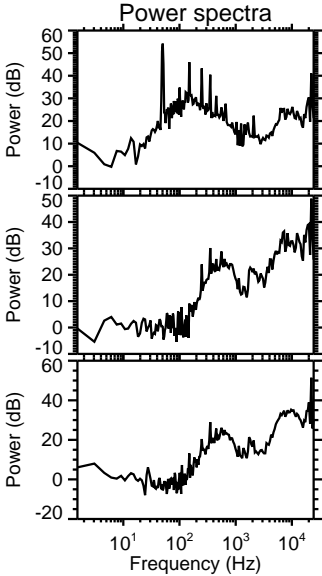
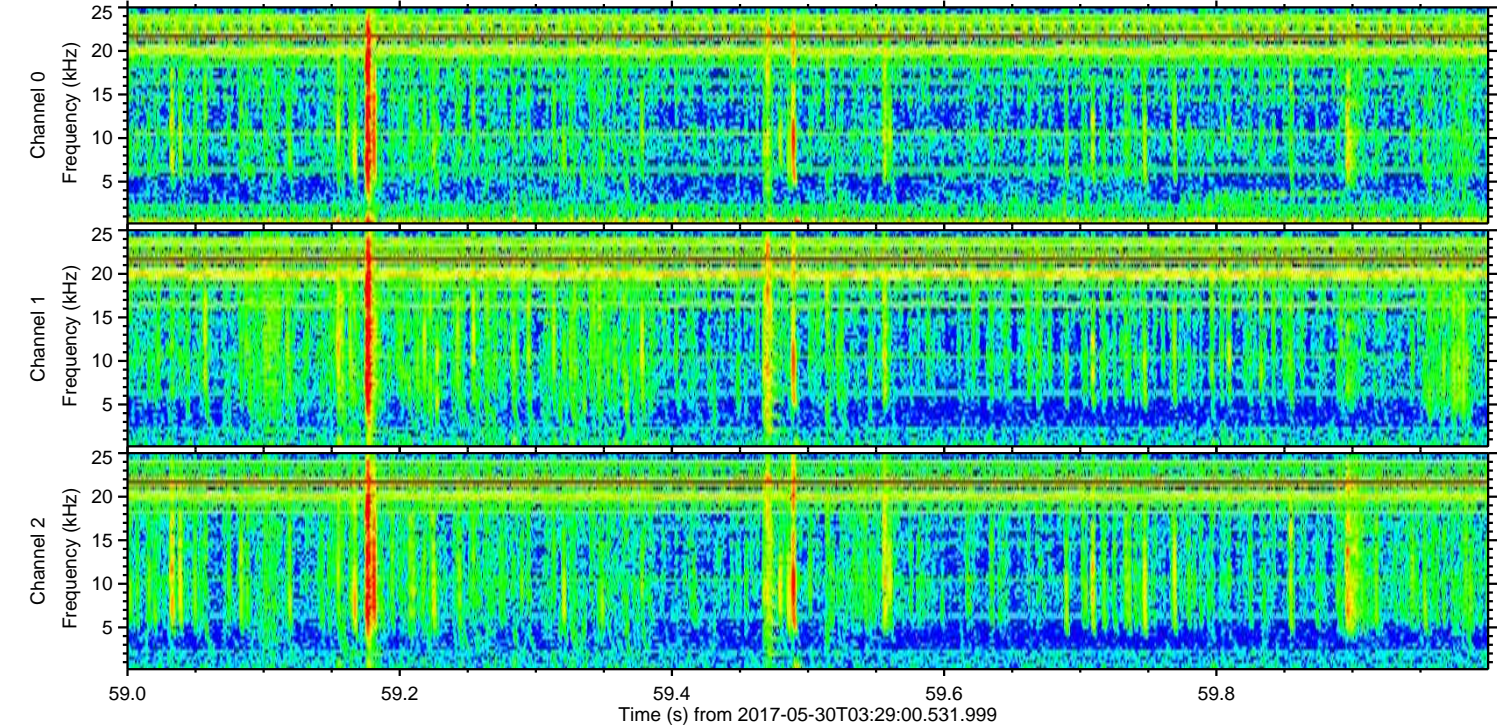
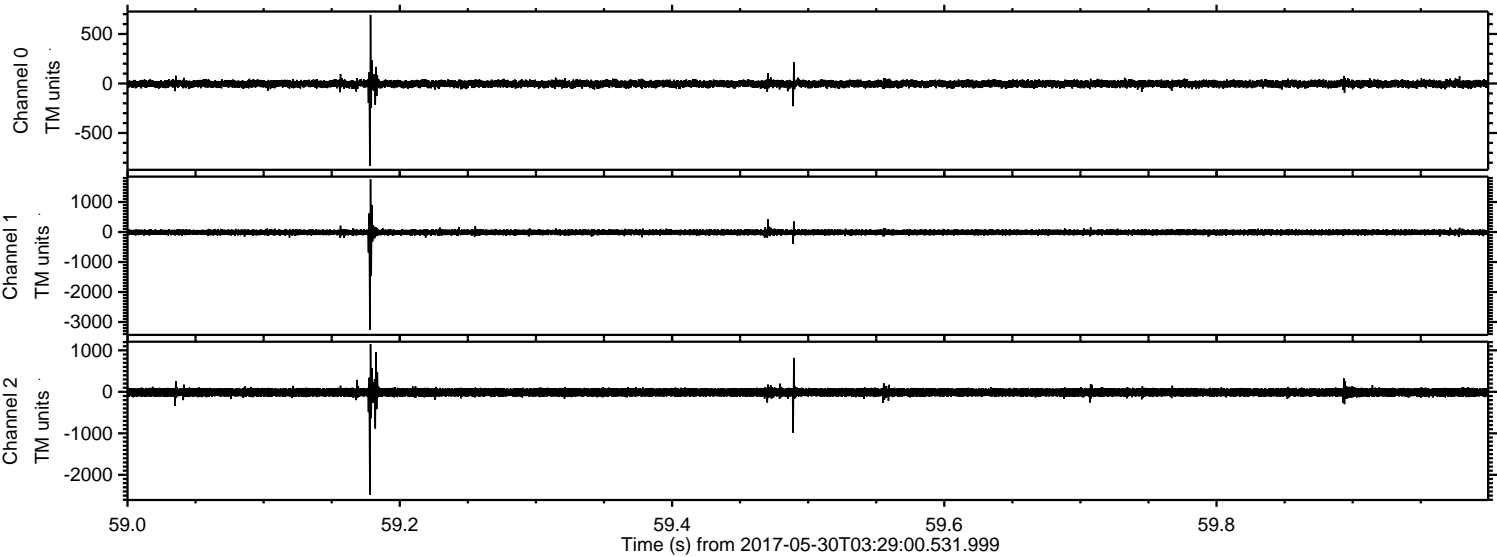
Processed Tue May 30 05:36:32 2017 by ELM ver.2012-10-06 from 001__elm20170530_032859__dat00.bin



Processed Tue May 30 05:36:32 2017 by ELM ver.2012-10-06 from 001__elm20170530_032859__dat00.bin

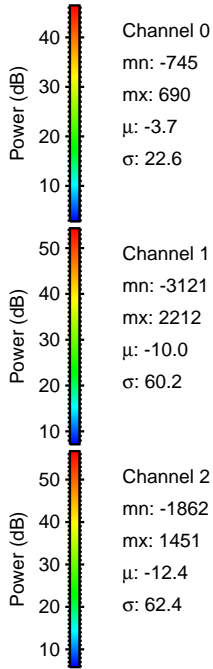
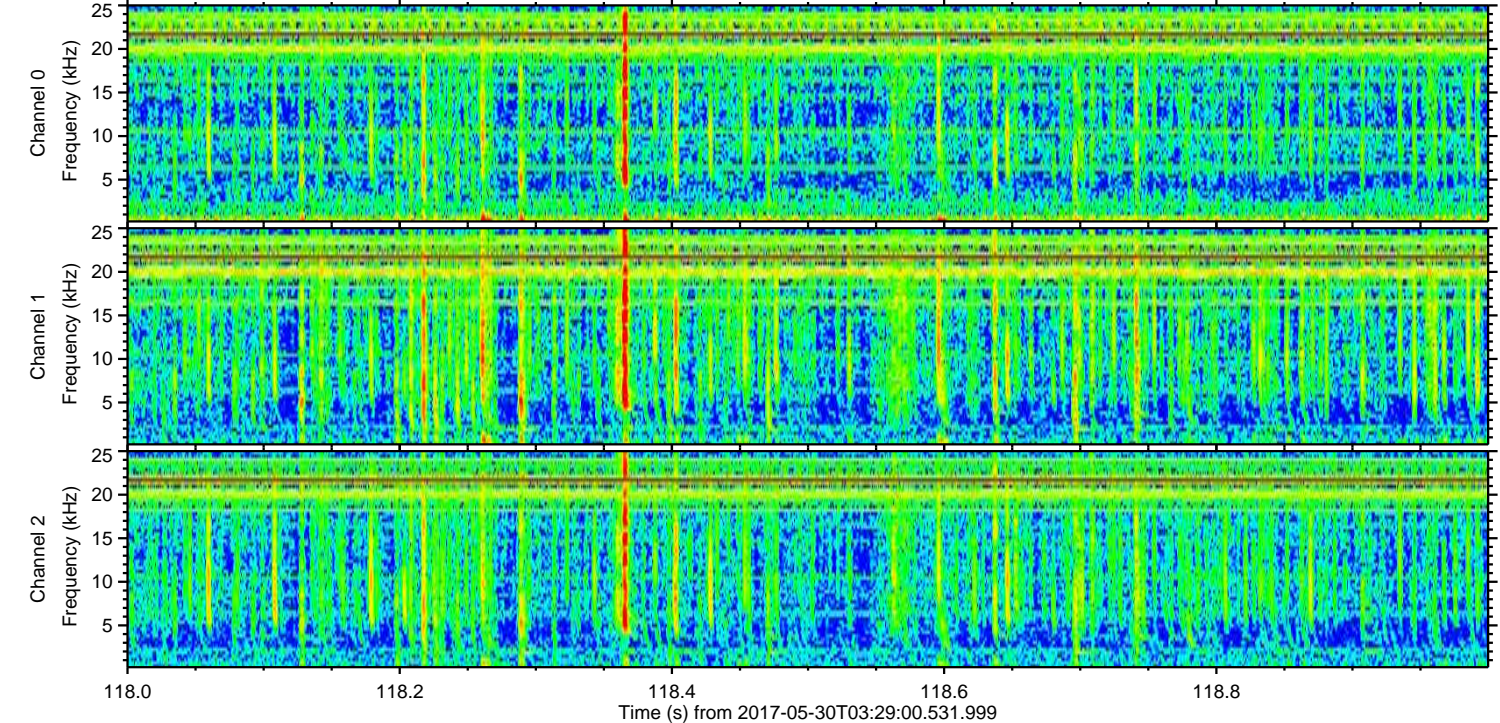
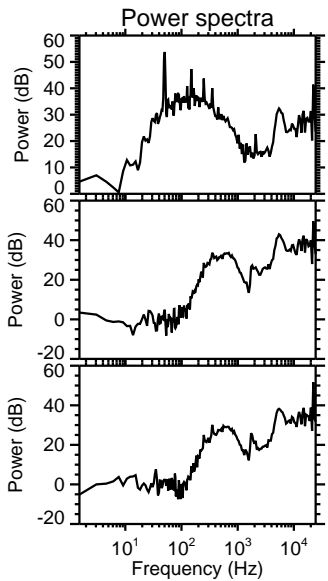
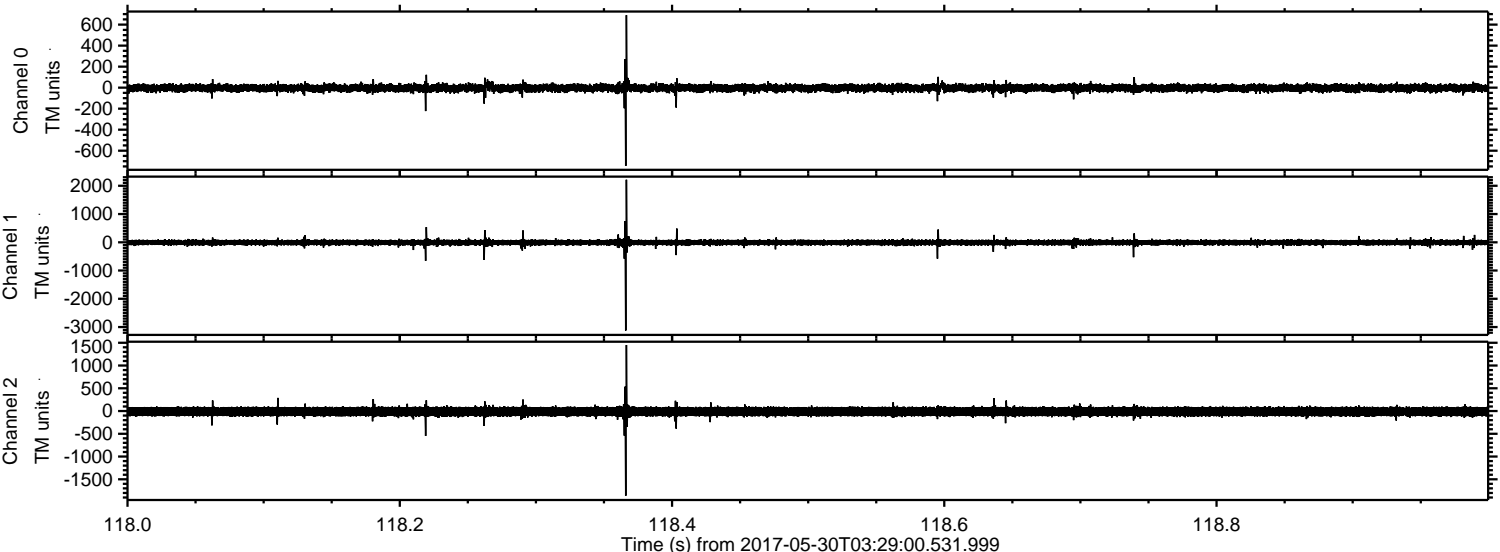


Processed Tue May 30 05:36:33 2017 by ELM ver.2012-10-06 from 001__elm20170530_032859__dat00.bin

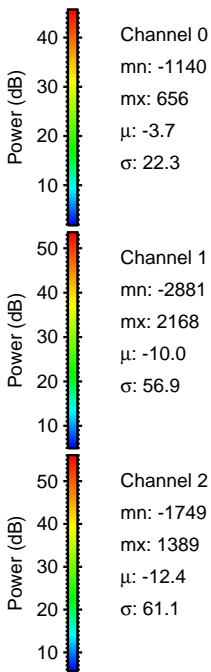
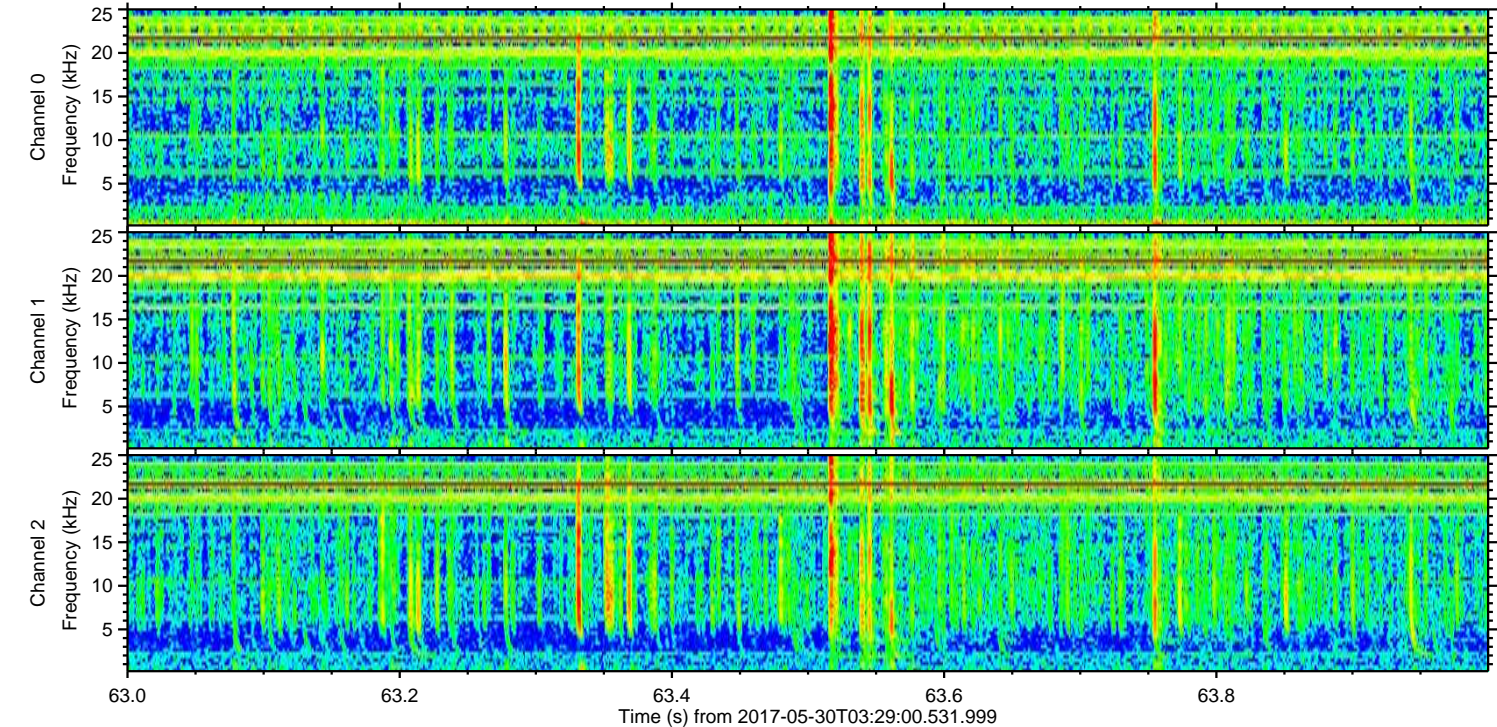
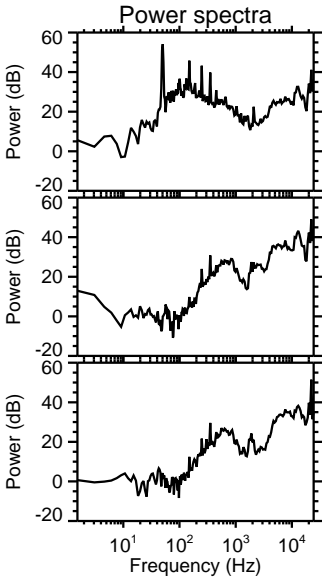
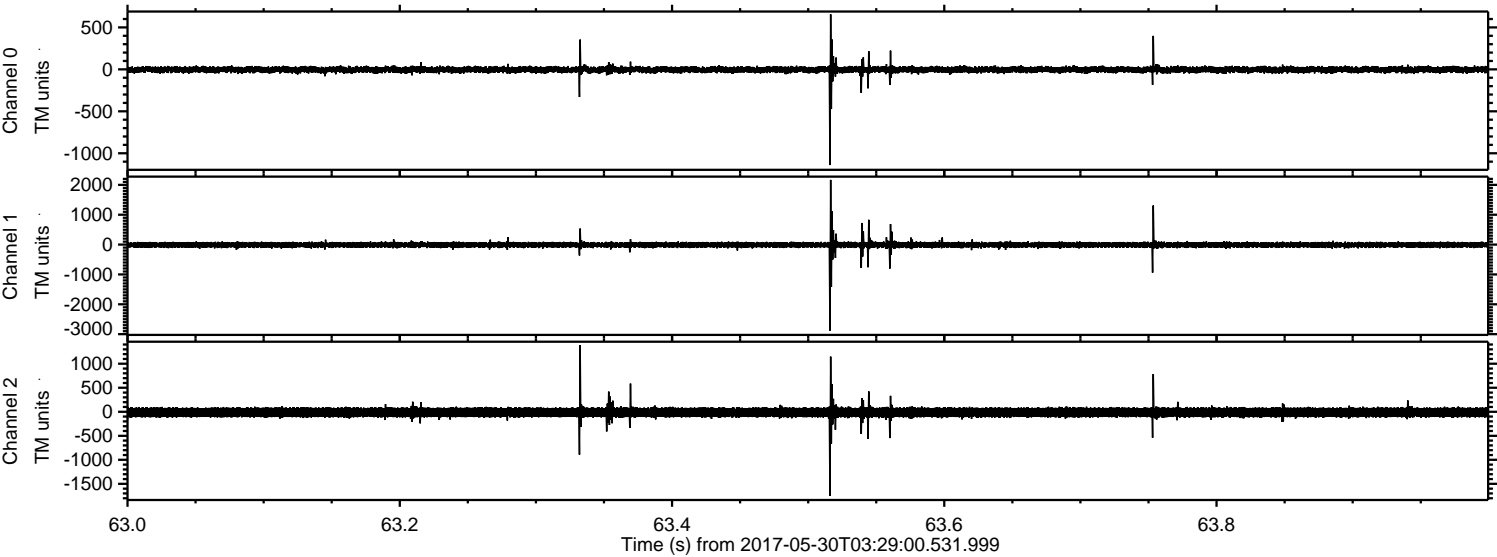


ELMAVAN 3D WAVEFORMS (Measured data sampled at 50 kHz) 51000 packets of 144 samples from 2017-05-30T03:29:00.531.999. Part 119/147

Processed Tue May 30 05:36:34 2017 by ELM ver.2012-10-06 from 001__elm20170530_032859__dat00.bin

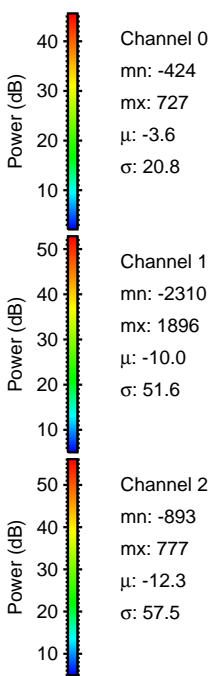
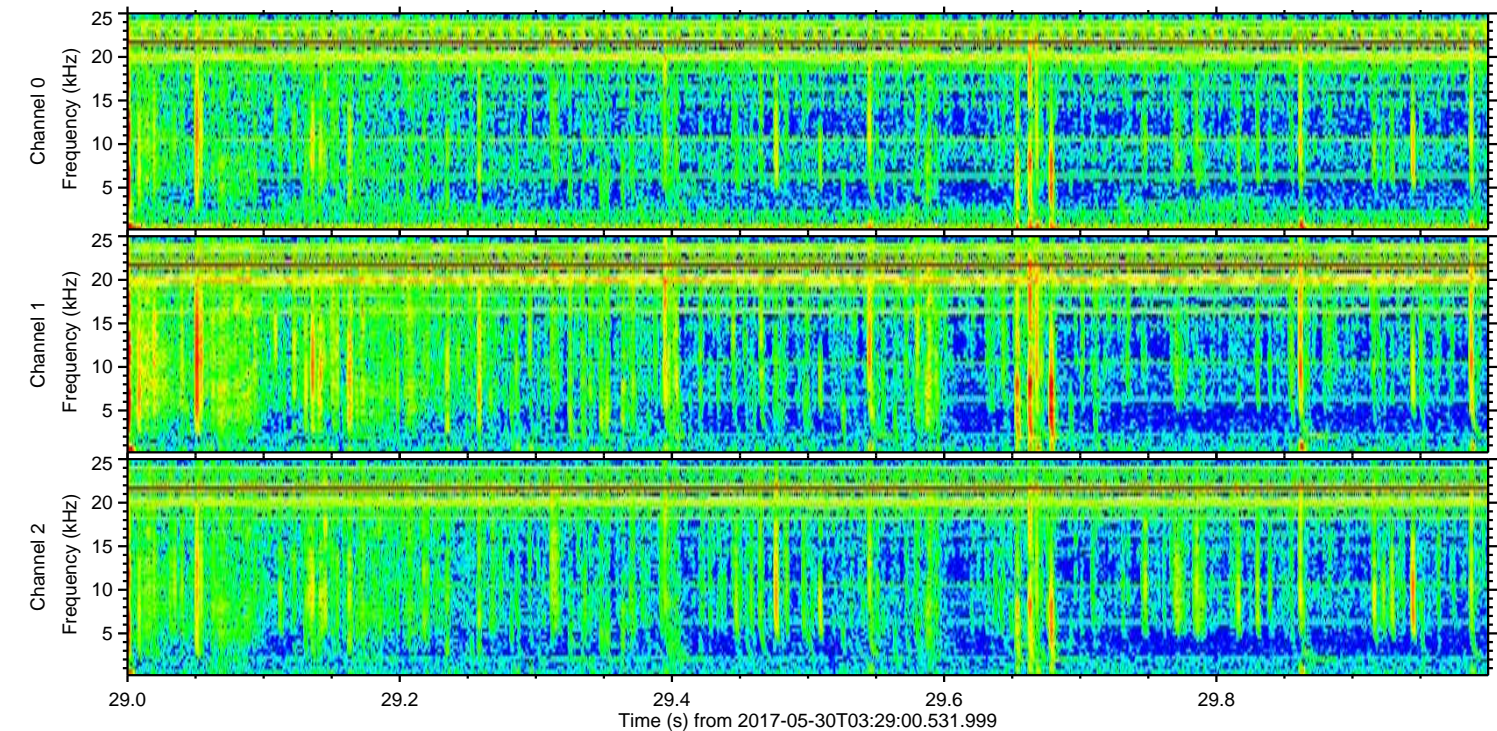
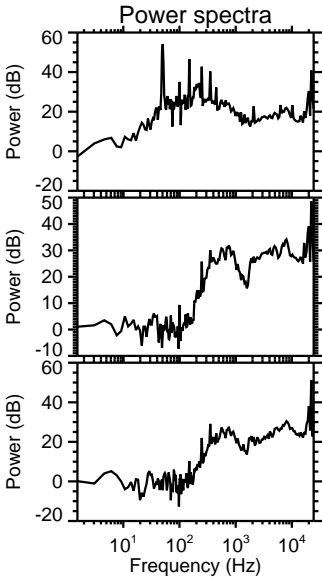
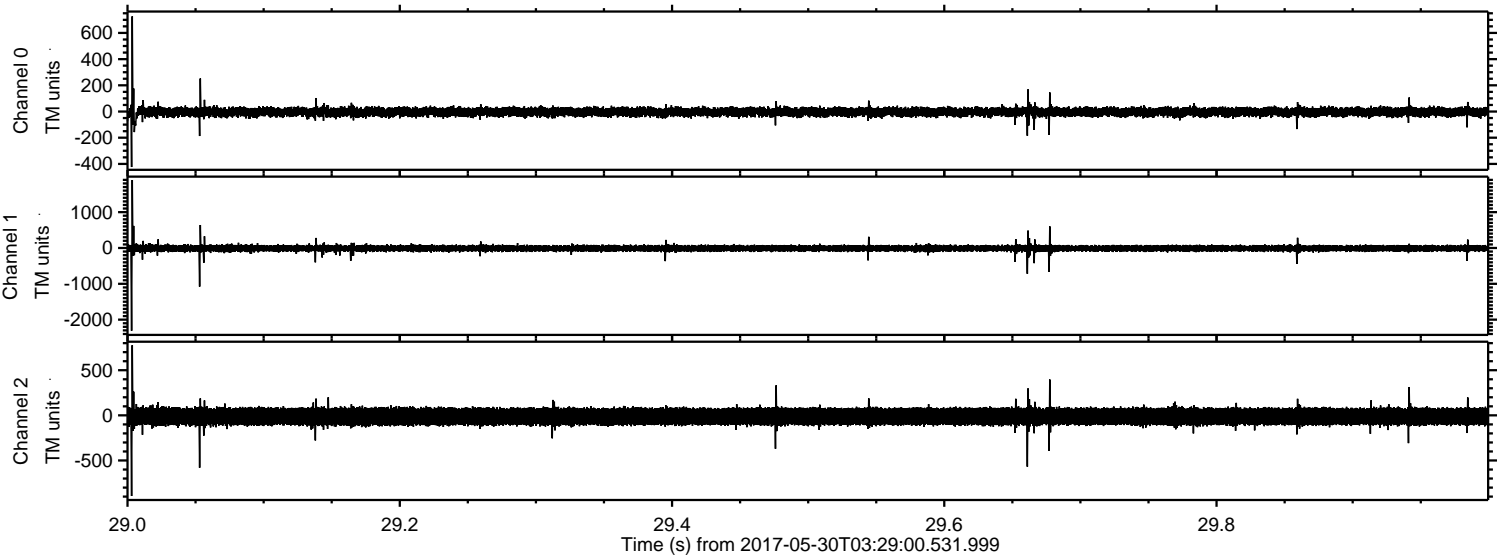


Processed Tue May 30 05:36:35 2017 by ELM ver.2012-10-06 from 001__elm20170530_032859__dat00.bin

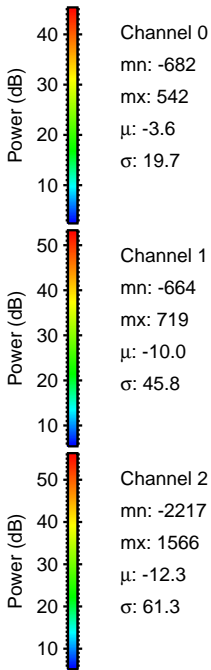
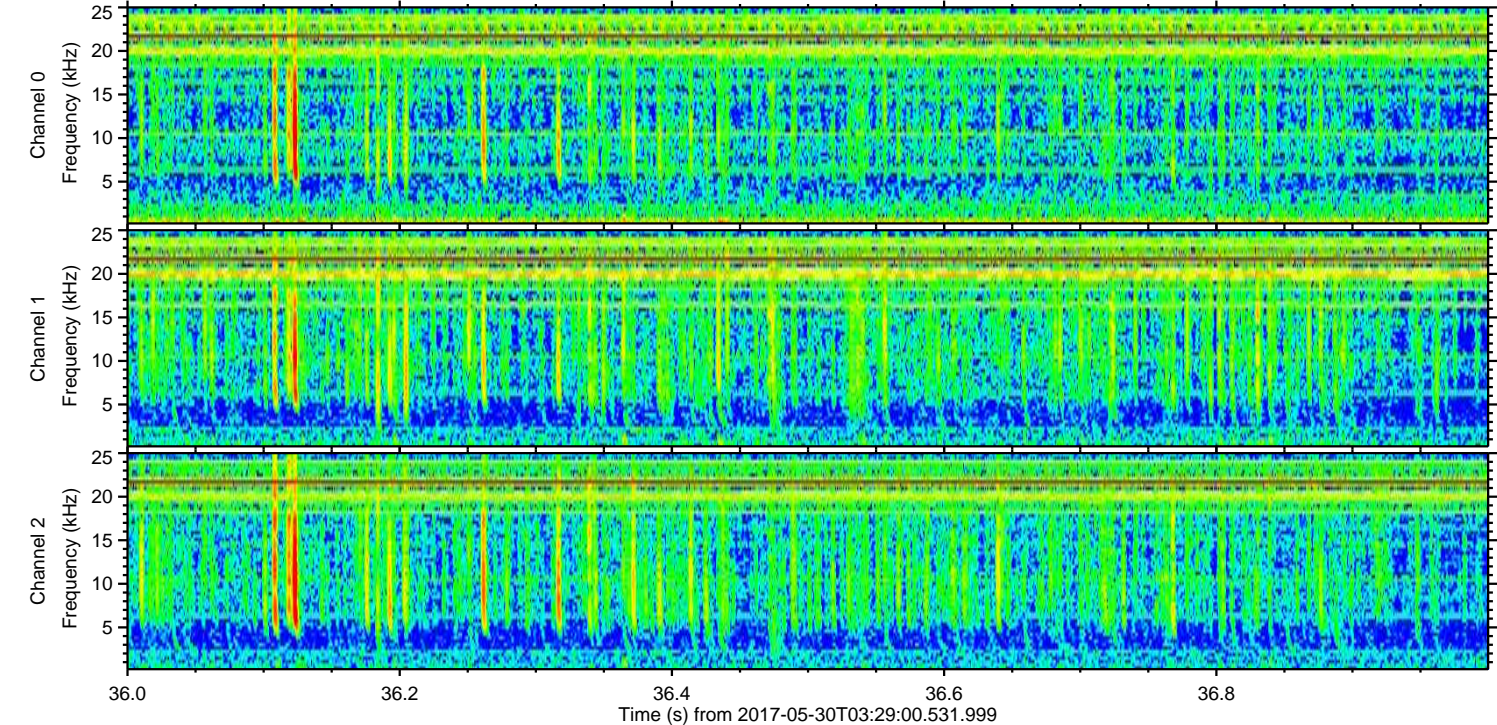
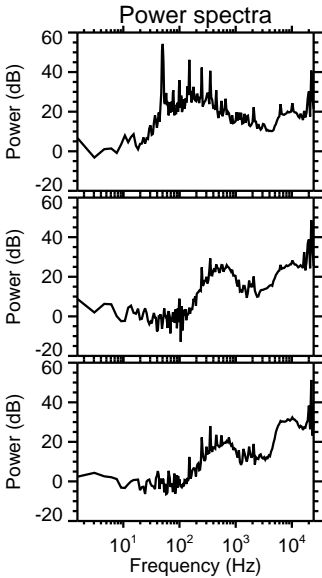
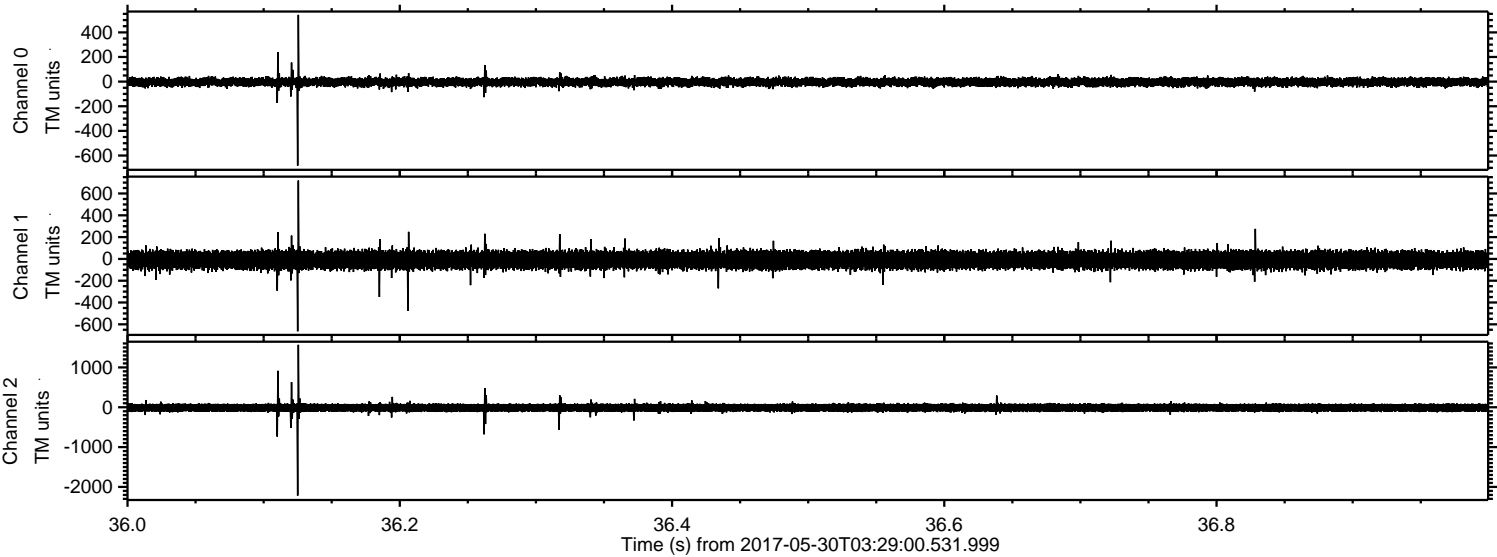


ELMAVAN 3D WAVEFORMS (Measured data sampled at 50 kHz) 51000 packets of 144 samples from 2017-05-30T03:29:00.531.999. Part 30/147

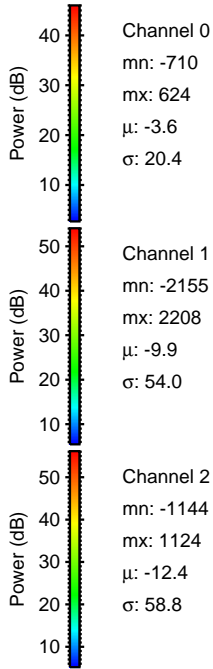
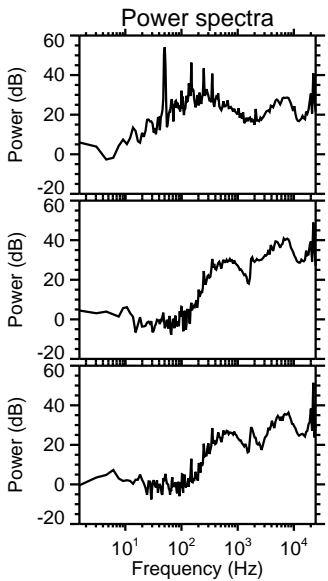
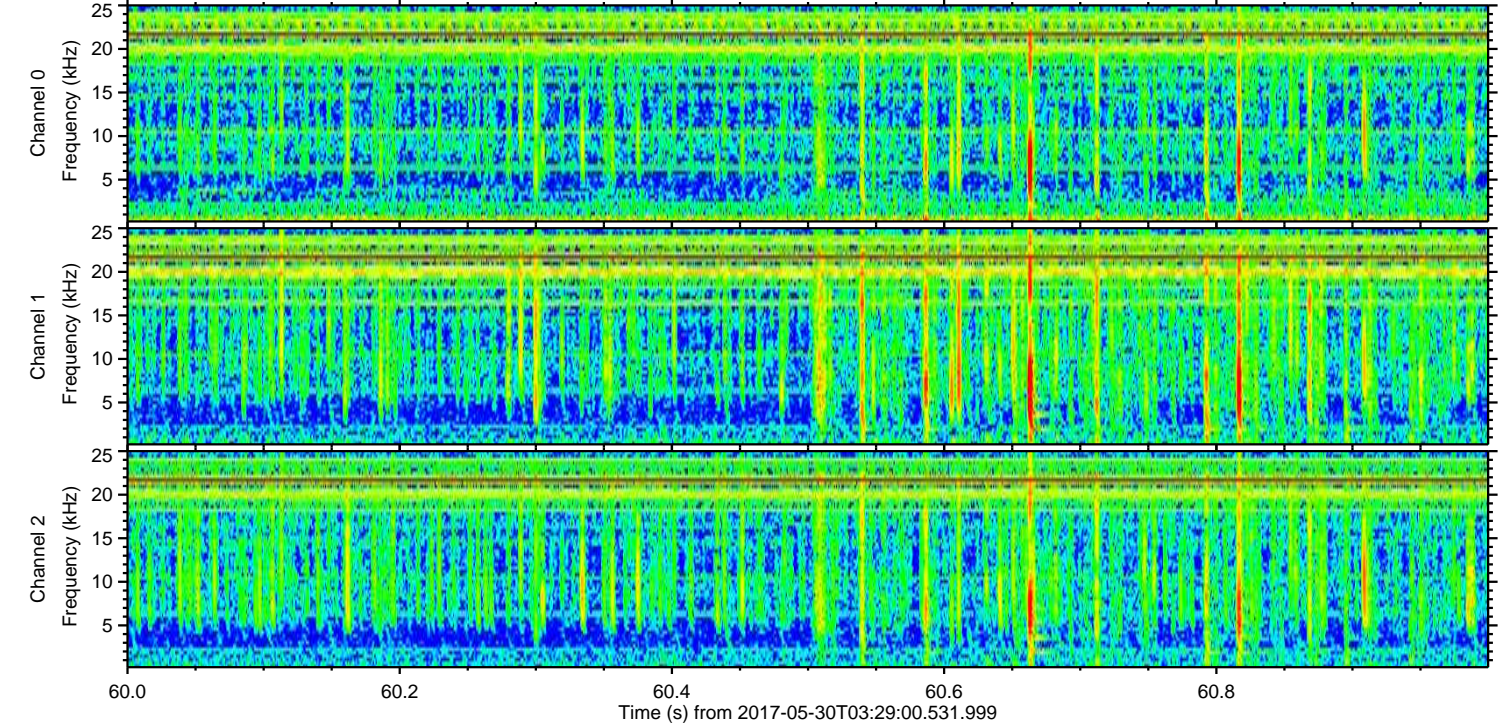
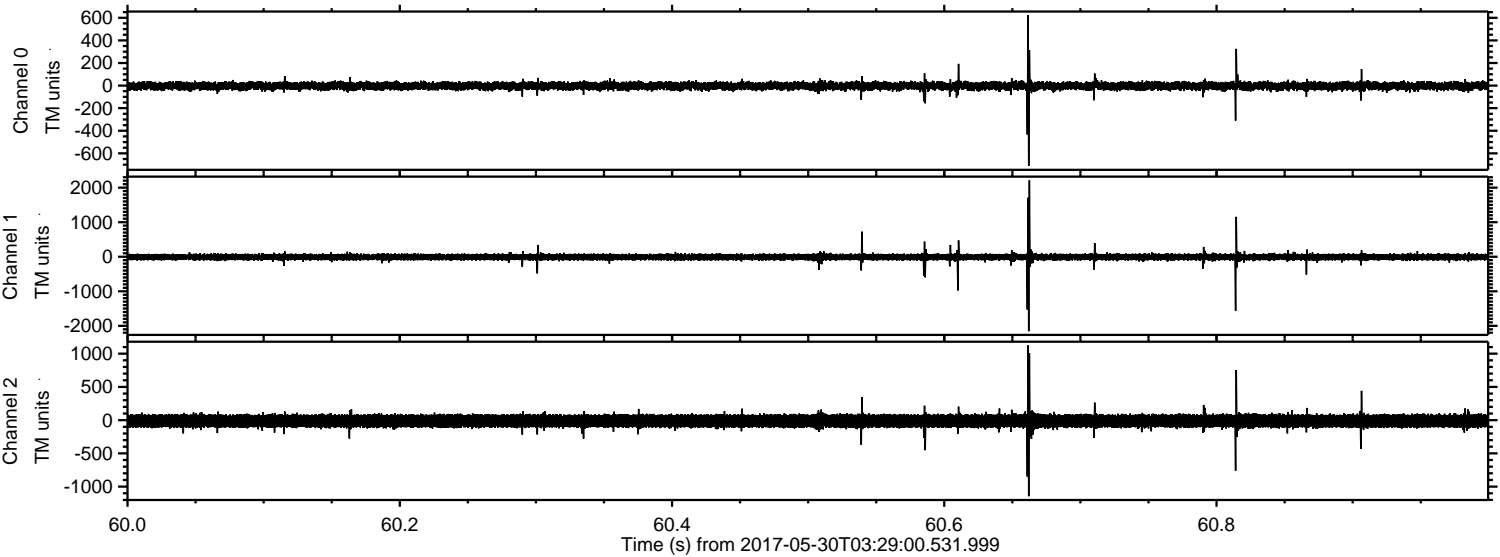
Processed Tue May 30 05:36:35 2017 by ELM ver.2012-10-06 from 001__elm20170530_032859__dat00.bin



Processed Tue May 30 05:36:36 2017 by ELM ver.2012-10-06 from 001__elm20170530_032859__dat00.bin



Processed Tue May 30 05:36:37 2017 by ELM ver.2012-10-06 from 001__elm20170530_032859__dat00.bin



Channel 0
mn: -710
mx: 624
 μ : -3.6
 σ : 20.4

Channel 1
mn: -2155
mx: 2208
 μ : -9.9
 σ : 54.0

Channel 2
mn: -1144
mx: 1124
 μ : -12.4
 σ : 58.8

Processed Tue May 30 05:36:38 2017 by ELM ver.2012-10-06 from 001__elm20170530_032859__dat00.bin

