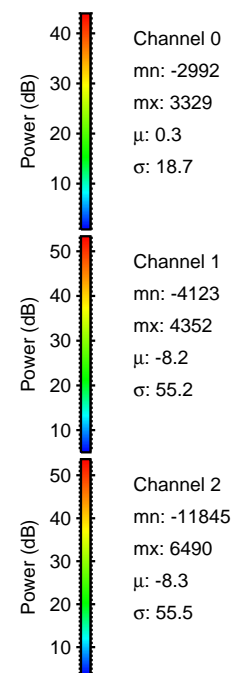
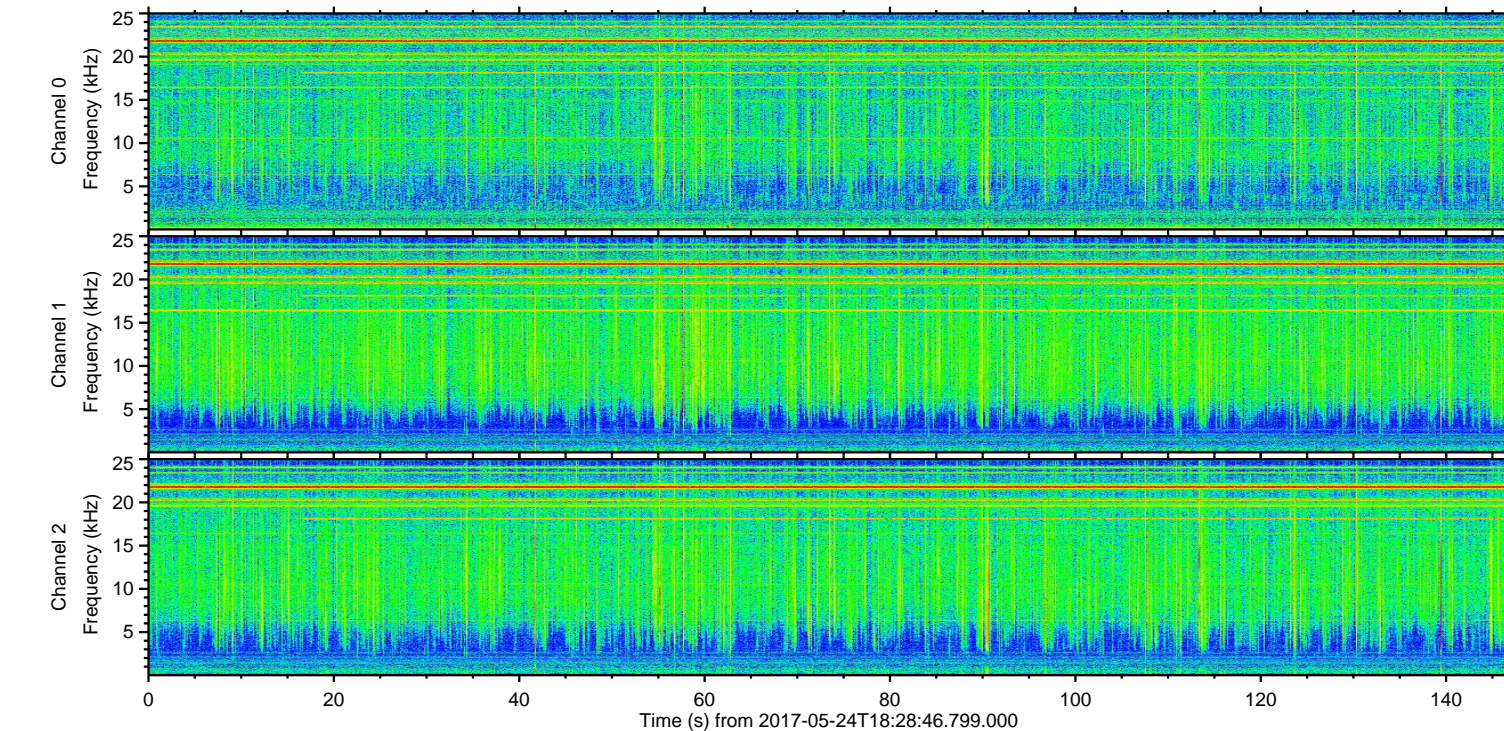
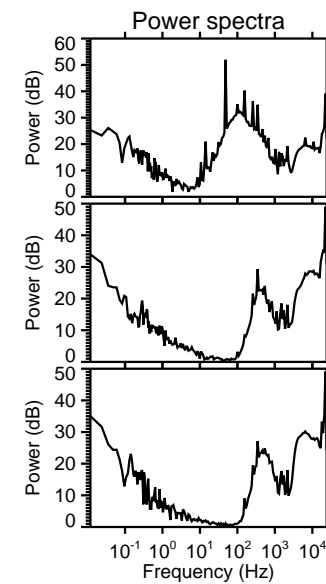
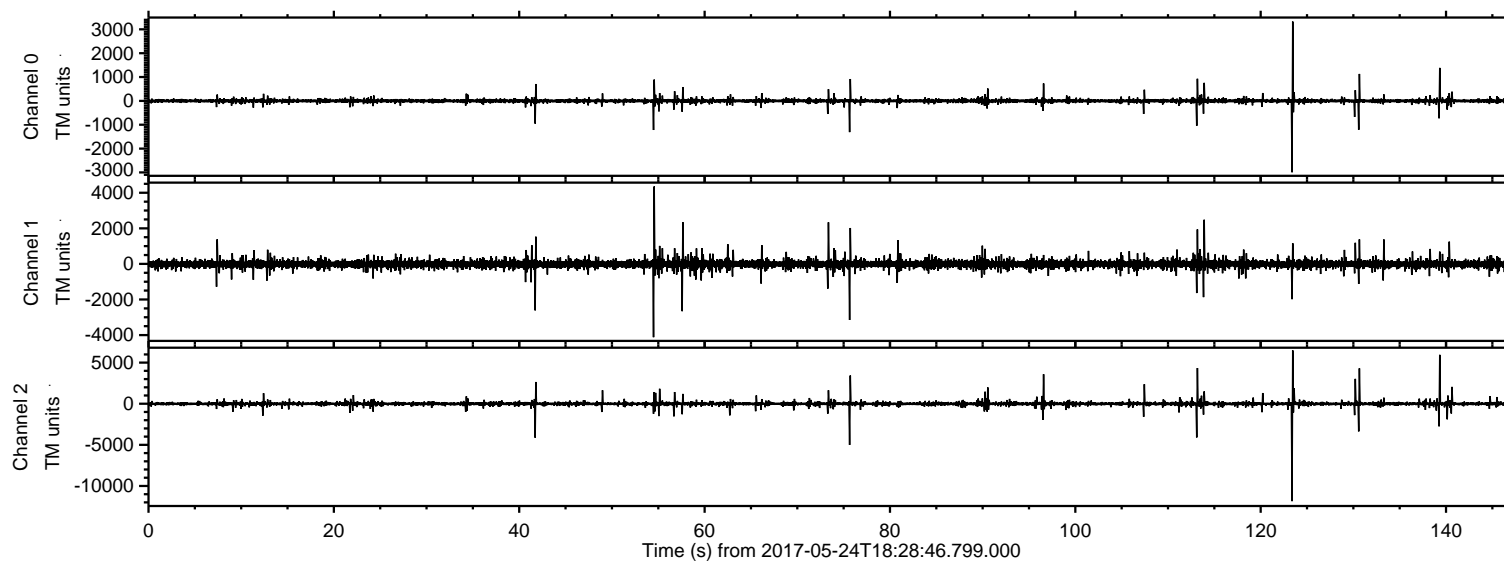


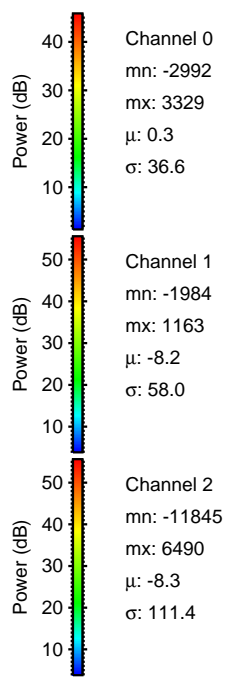
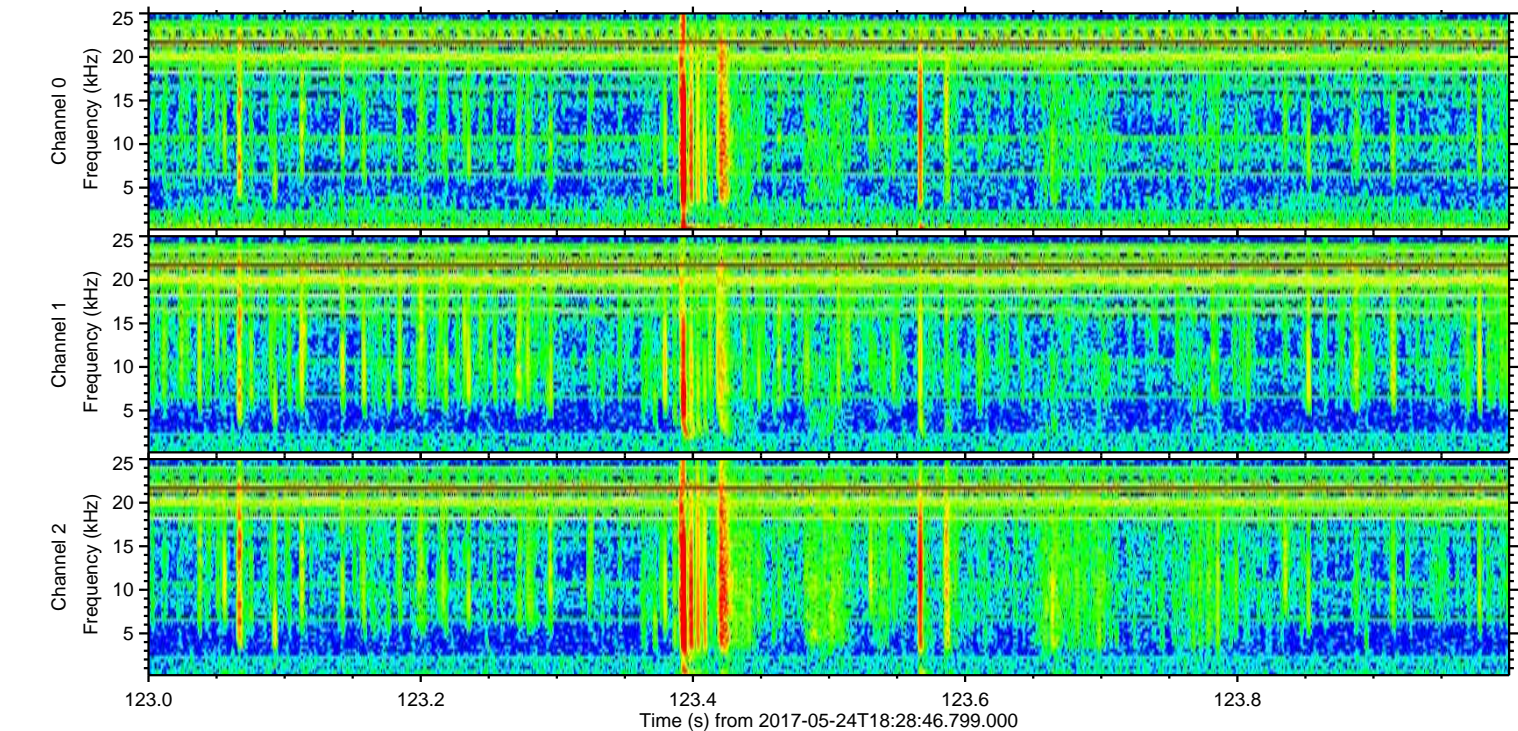
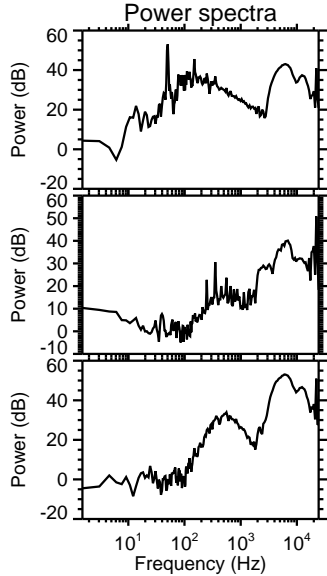
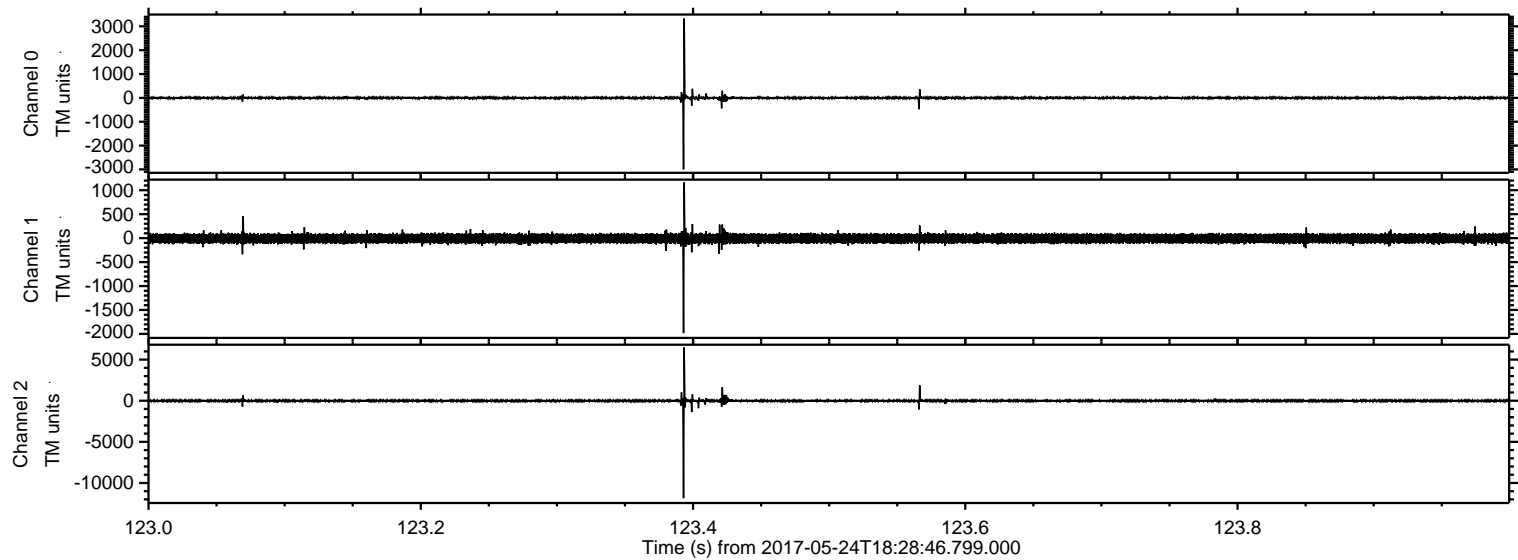
ELMAVAN 3D WAVEFORMS (Measured data sampled at 50 kHz) 51000 packets of 144 samples from 2017-05-24T18:28:46.799.000.

Processed Wed May 24 20:36:59 2017 by ELM ver.2012-10-06 from 001__elm20170524_182845__dat00.bin



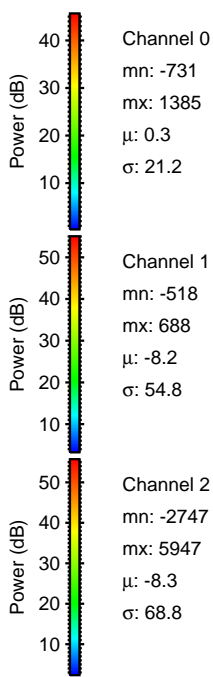
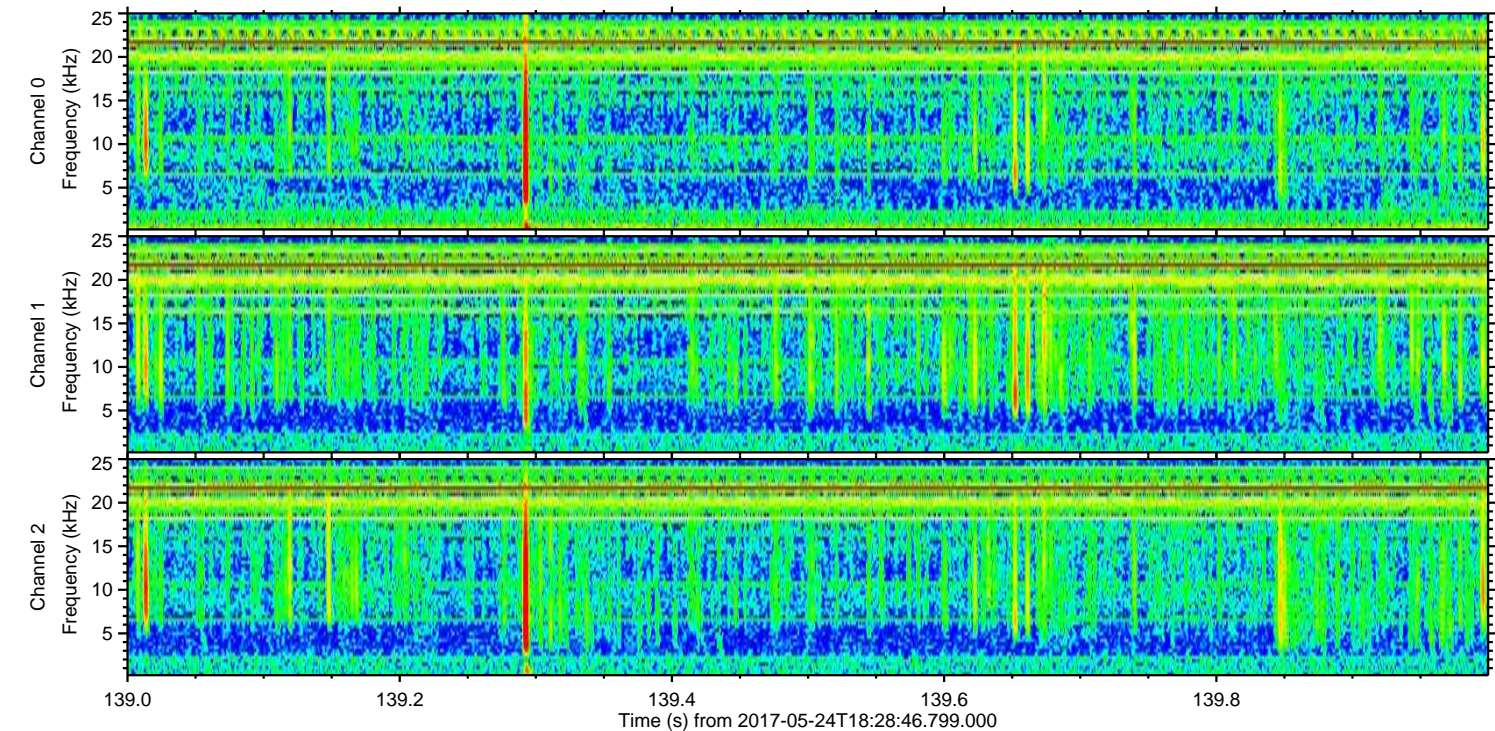
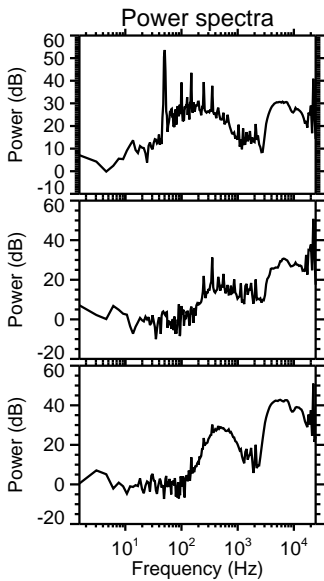
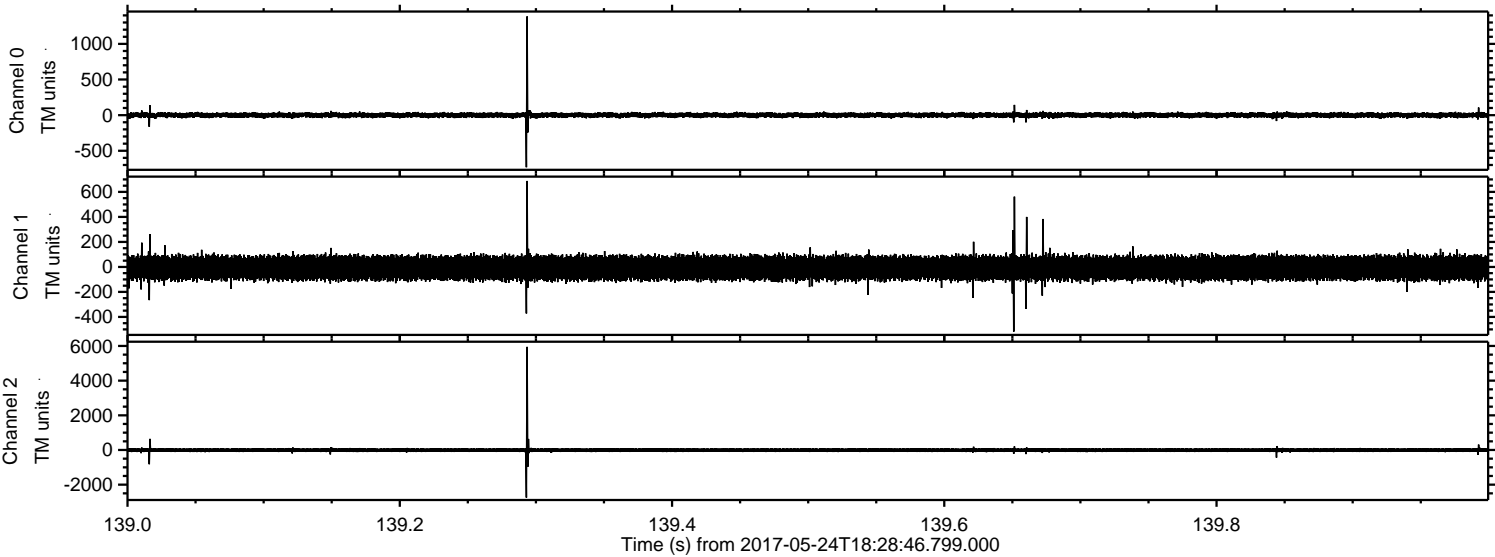
ELMAVAN 3D WAVEFORMS (Measured data sampled at 50 kHz) 51000 packets of 144 samples from 2017-05-24T18:28:46.799.000. Part 124/147

Processed Wed May 24 20:37:07 2017 by ELM ver.2012-10-06 from 001__elm20170524_182845__dat00.bin

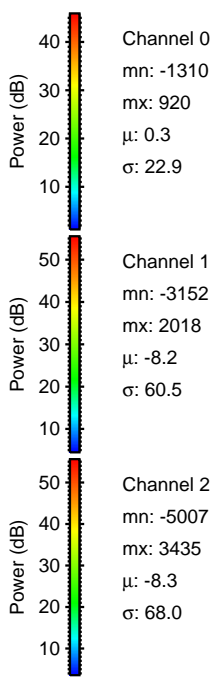
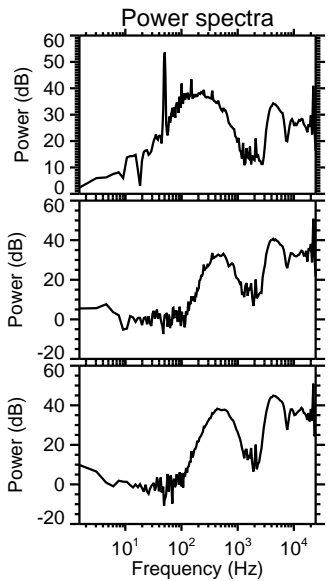
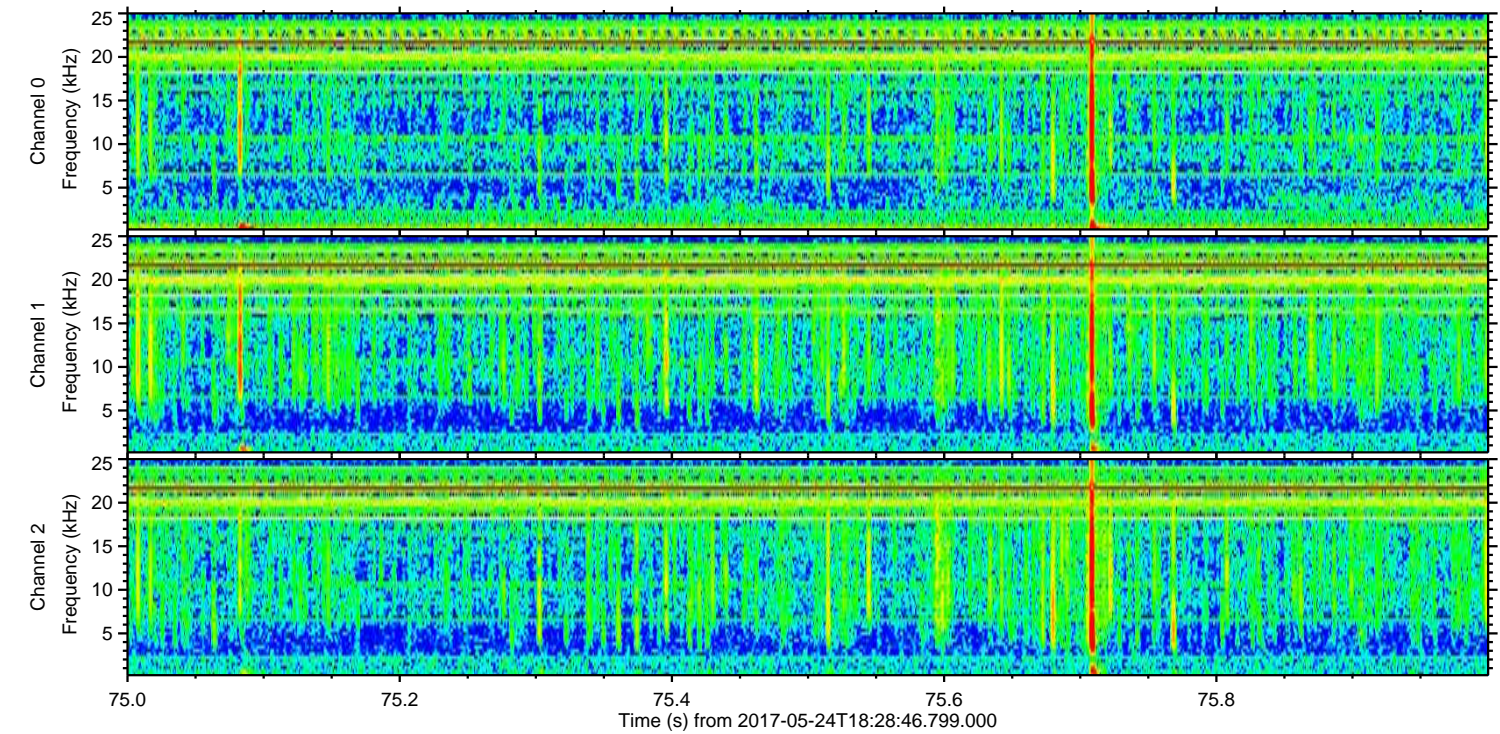
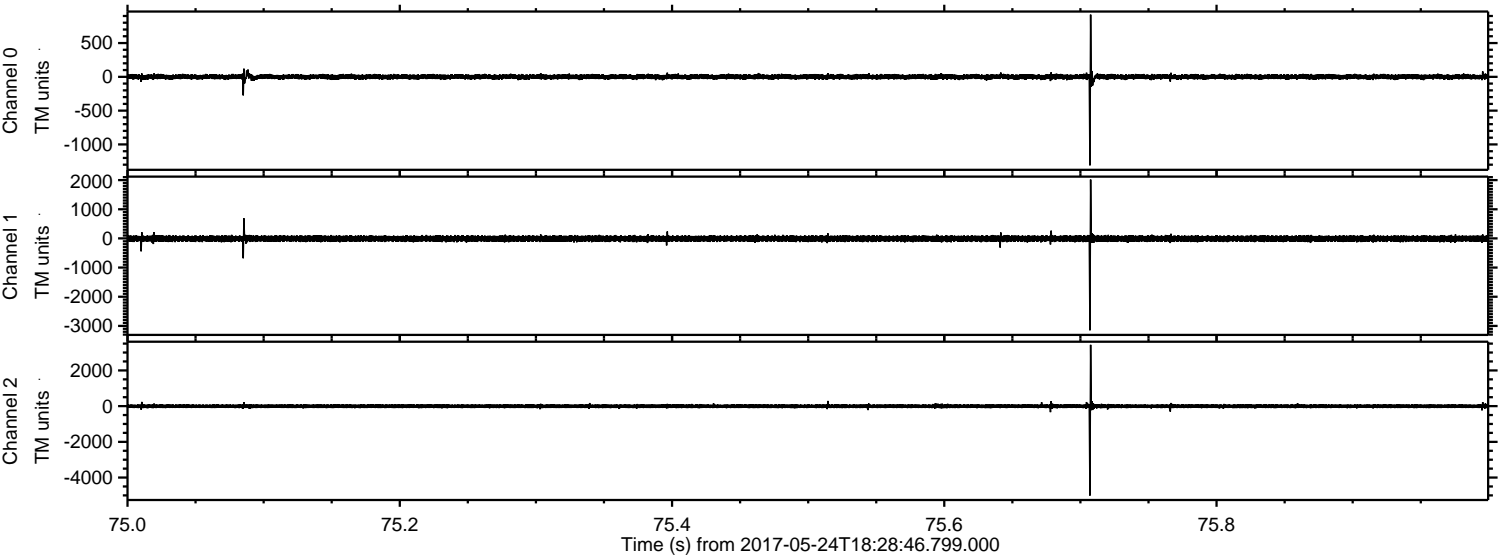


ELMAVAN 3D WAVEFORMS (Measured data sampled at 50 kHz) 51000 packets of 144 samples from 2017-05-24T18:28:46.799.000. Part 140/147

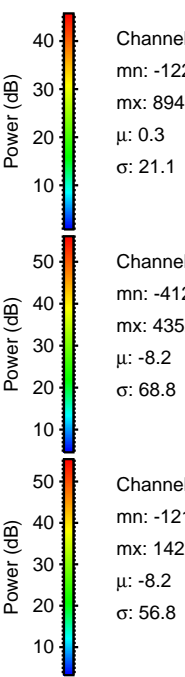
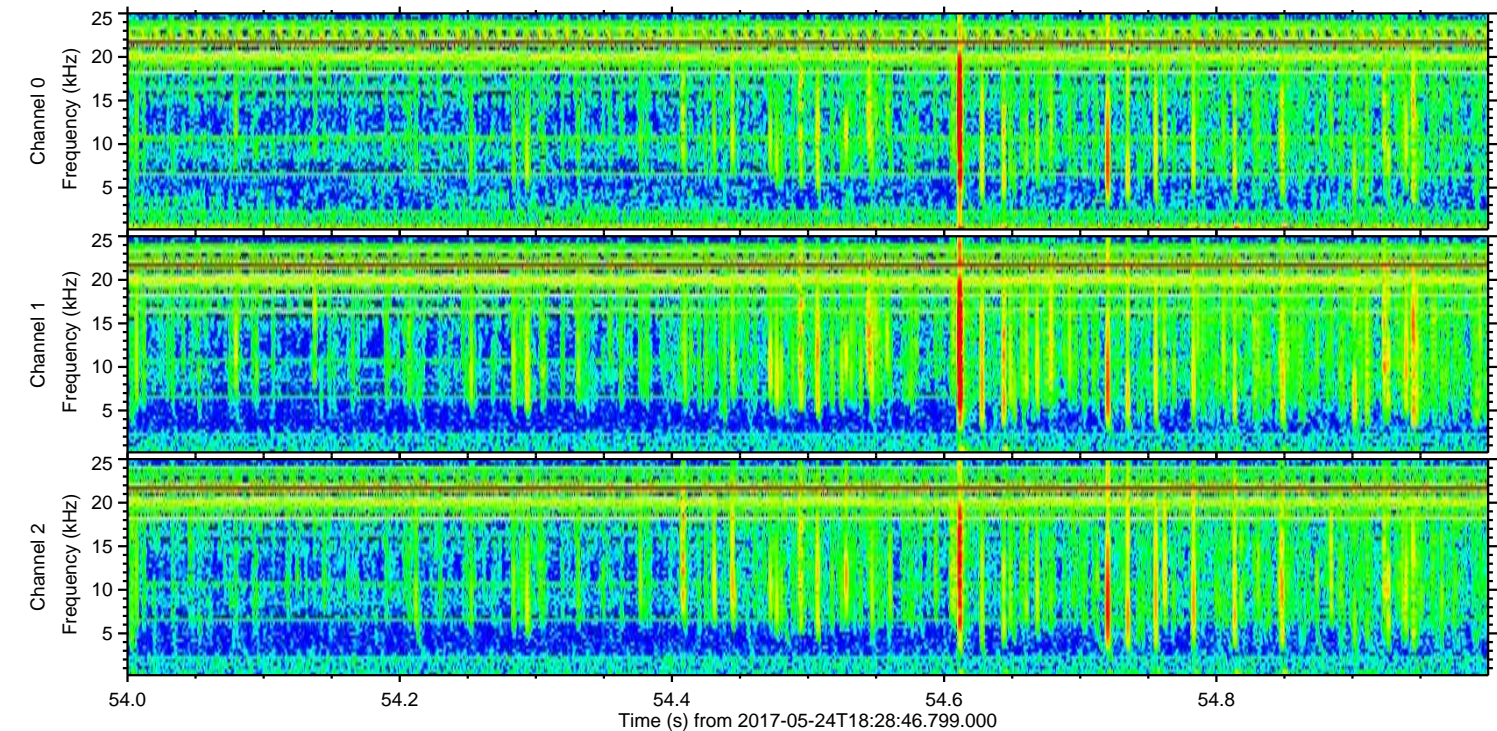
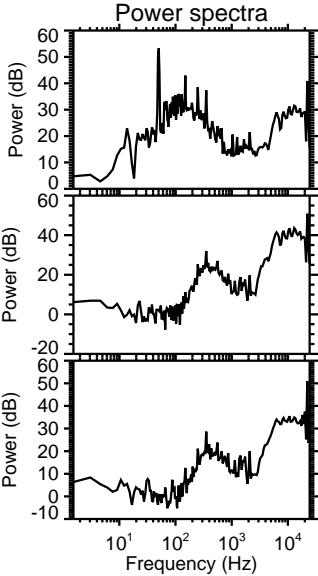
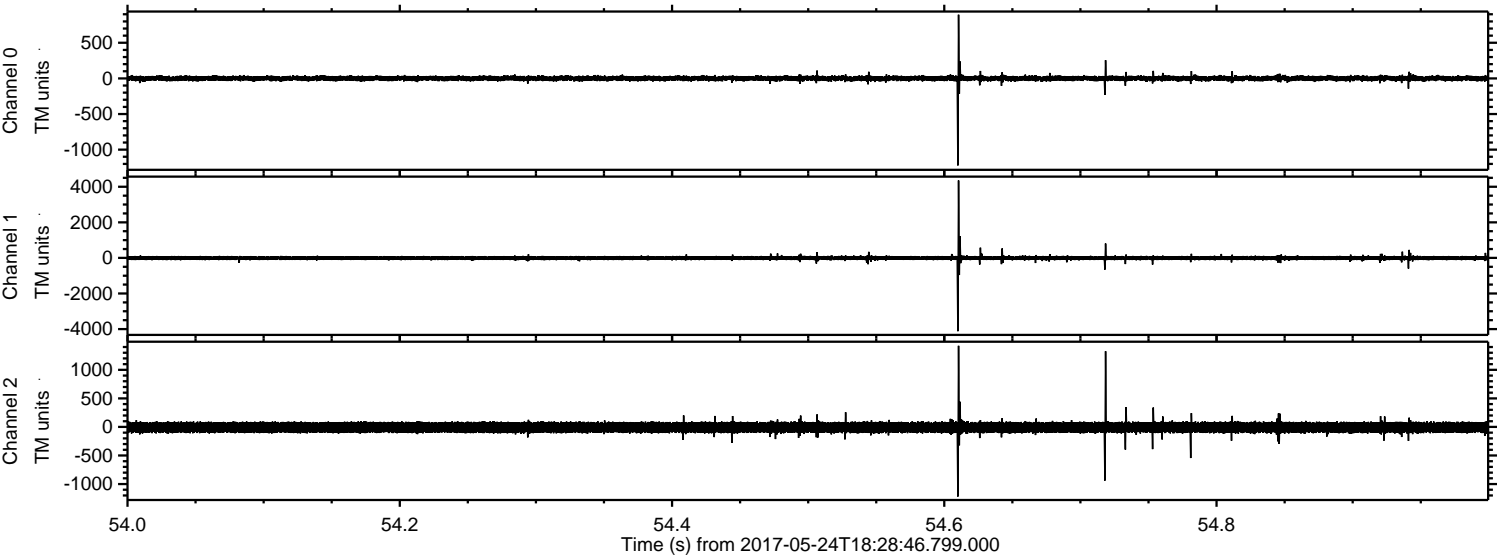
Processed Wed May 24 20:37:08 2017 by ELM ver.2012-10-06 from 001__elm20170524_182845__dat00.bin



Processed Wed May 24 20:37:09 2017 by ELM ver.2012-10-06 from 001__elm20170524_182845__dat00.bin

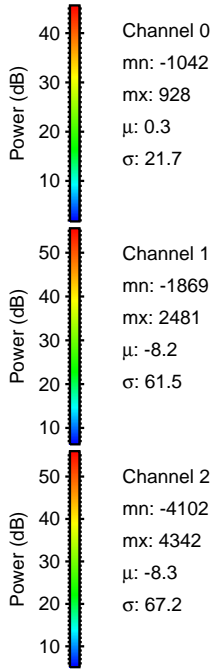
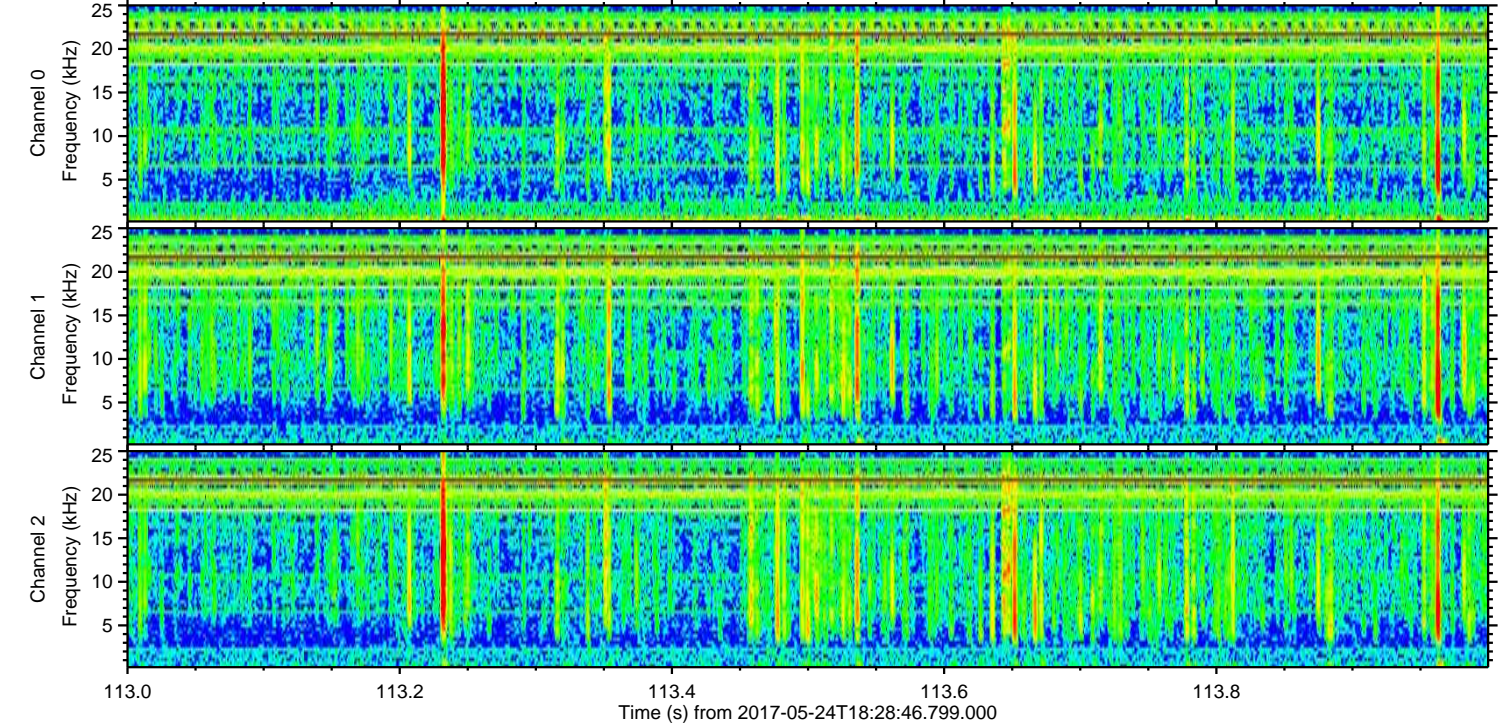
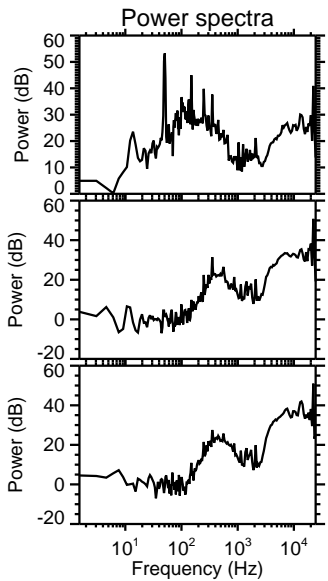
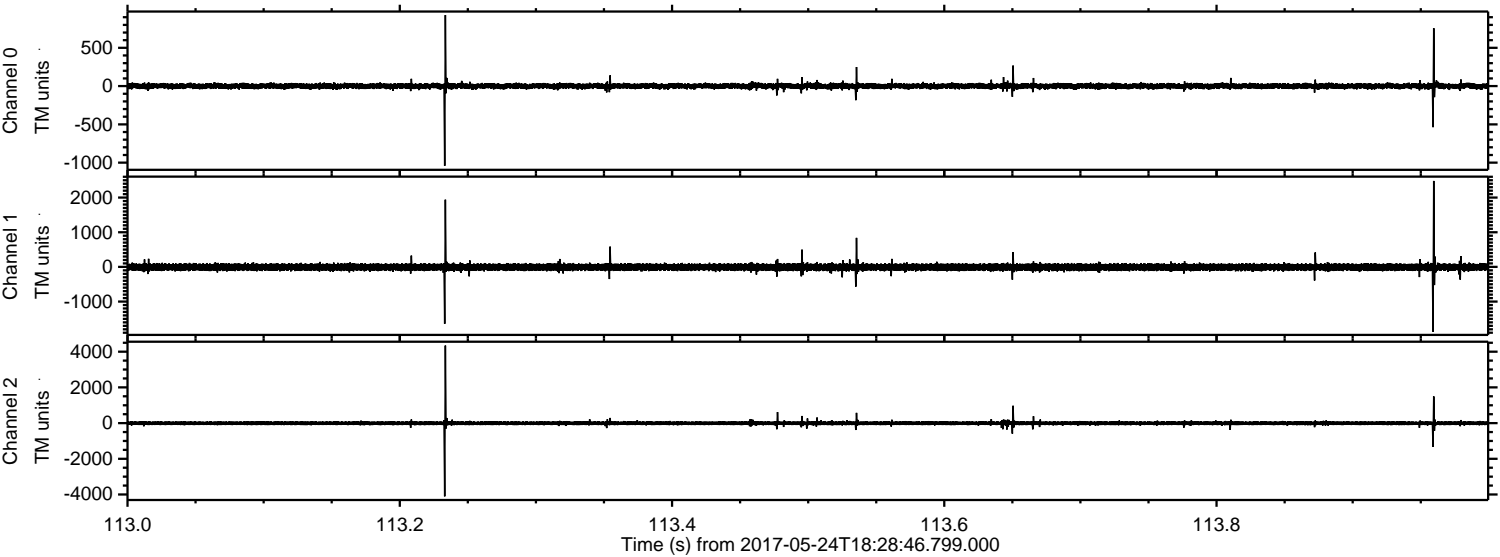


Processed Wed May 24 20:37:09 2017 by ELM ver.2012-10-06 from 001__elm20170524_182845__dat00.bin



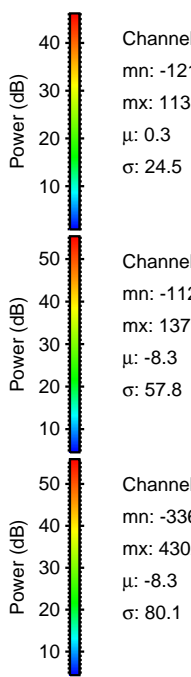
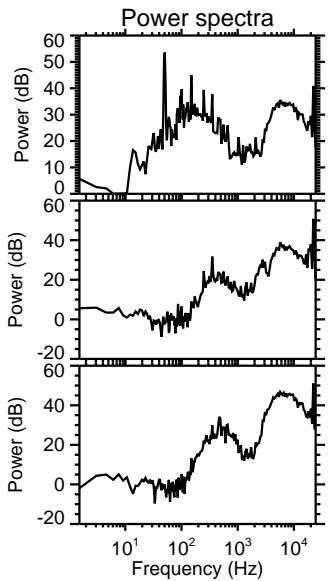
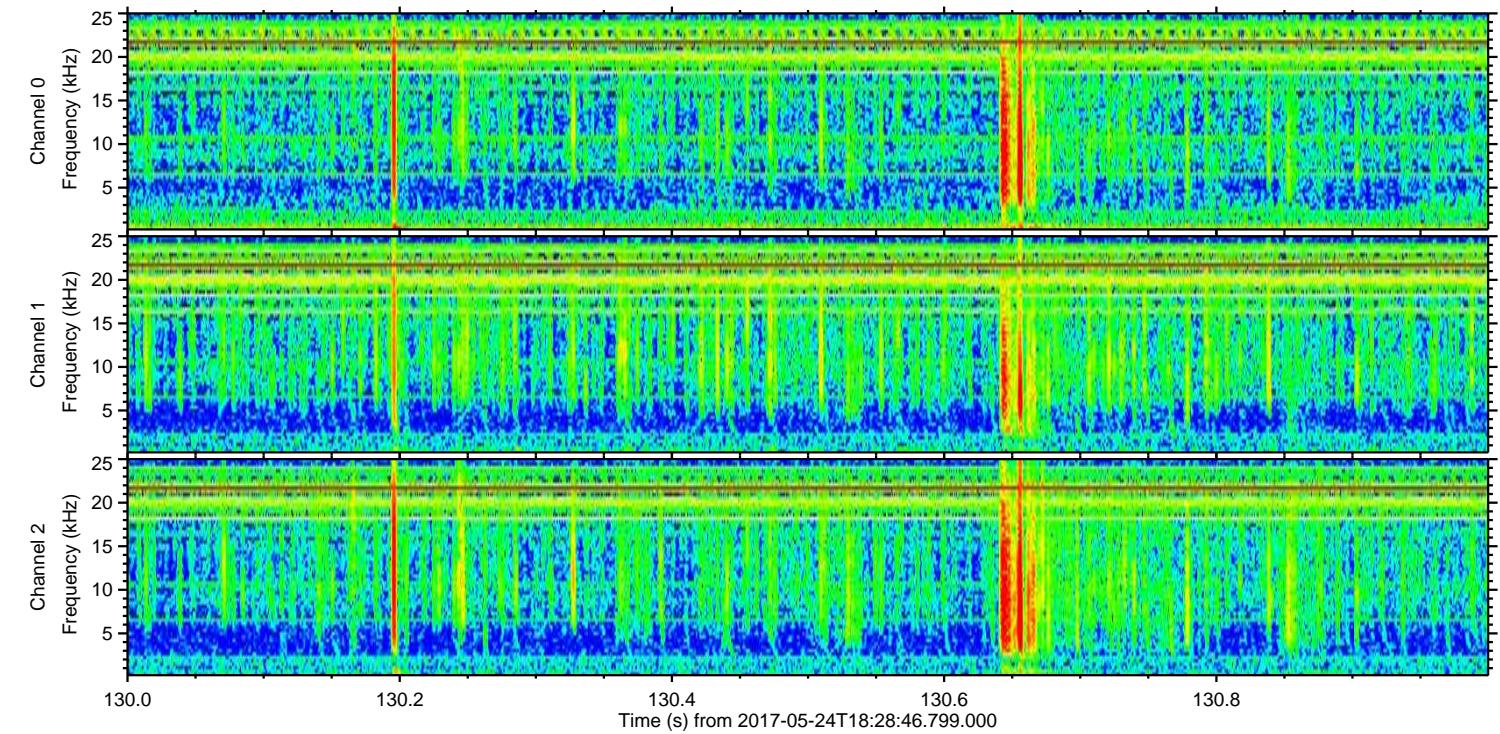
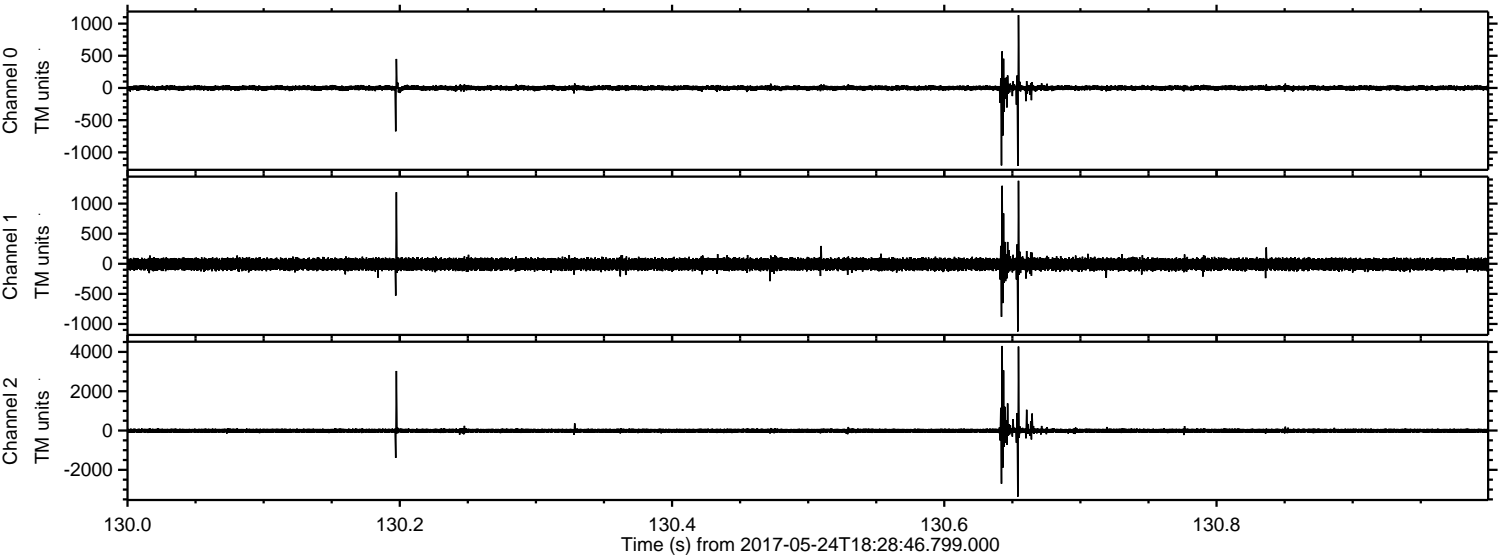
ELMAVAN 3D WAVEFORMS (Measured data sampled at 50 kHz) 51000 packets of 144 samples from 2017-05-24T18:28:46.799.000. Part 114/147

Processed Wed May 24 20:37:10 2017 by ELM ver.2012-10-06 from 001__elm20170524_182845__dat00.bin



ELMAVAN 3D WAVEFORMS (Measured data sampled at 50 kHz) 51000 packets of 144 samples from 2017-05-24T18:28:46.799.000. Part 131/147

Processed Wed May 24 20:37:11 2017 by ELM ver.2012-10-06 from 001__elm20170524_182845__dat00.bin

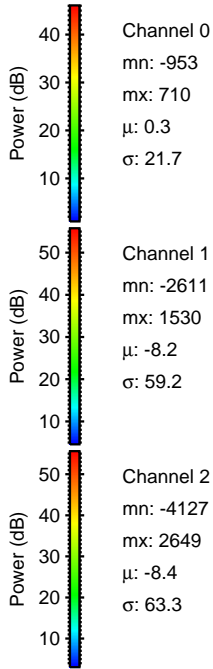
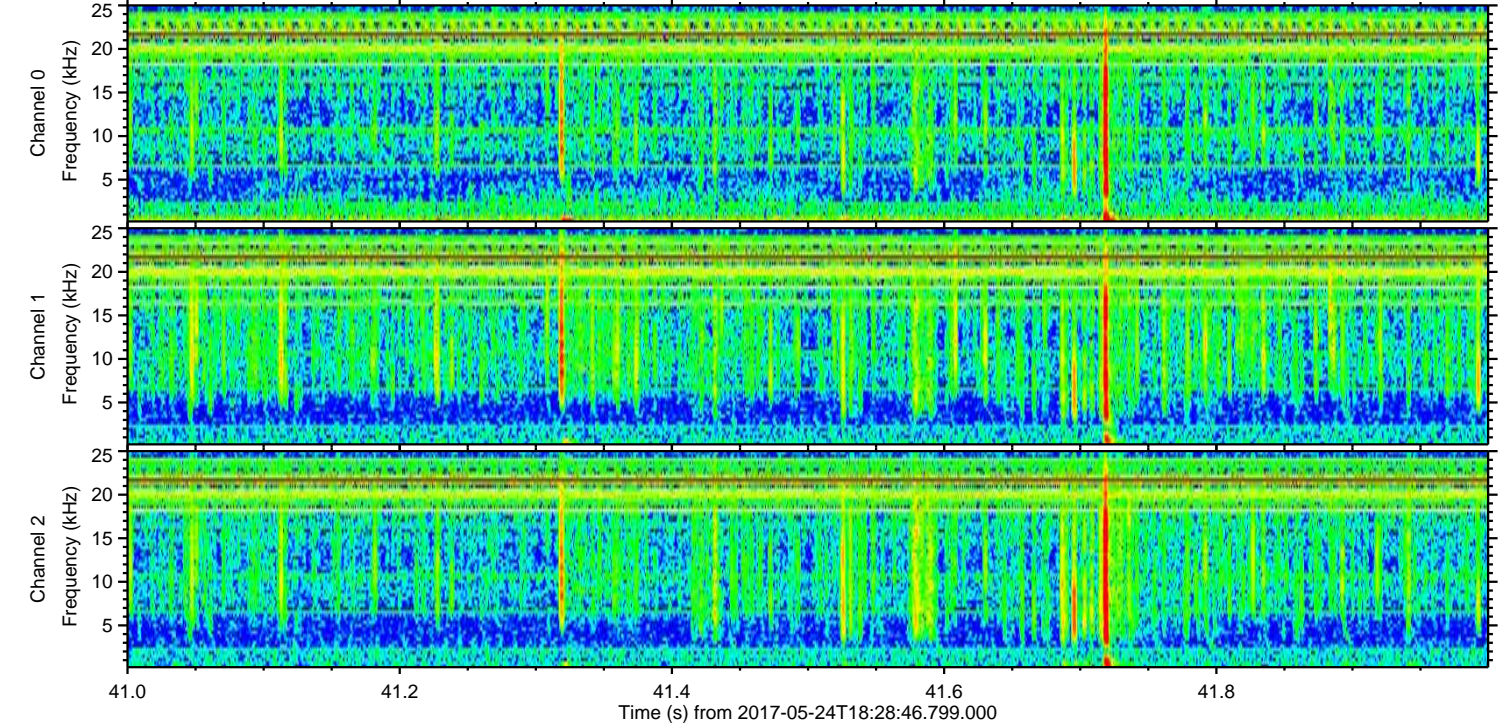
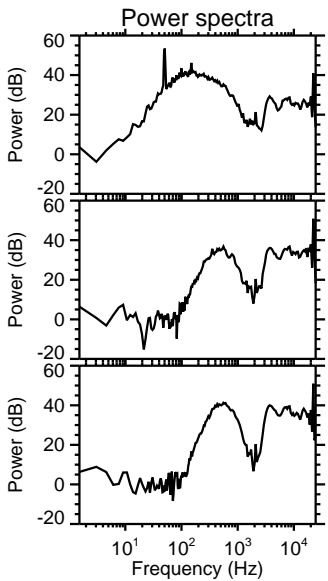
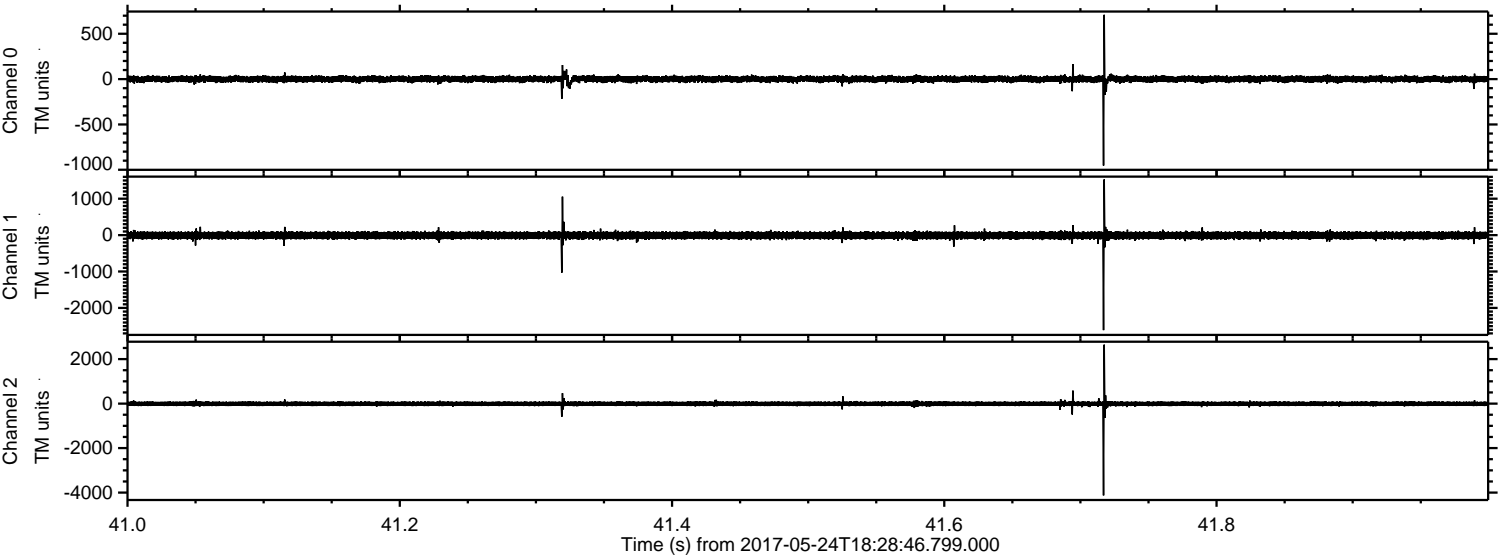


Channel 0
mn: -1211
mx: 1131
μ: 0.3
σ: 24.5

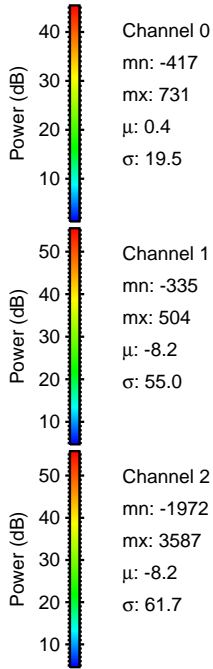
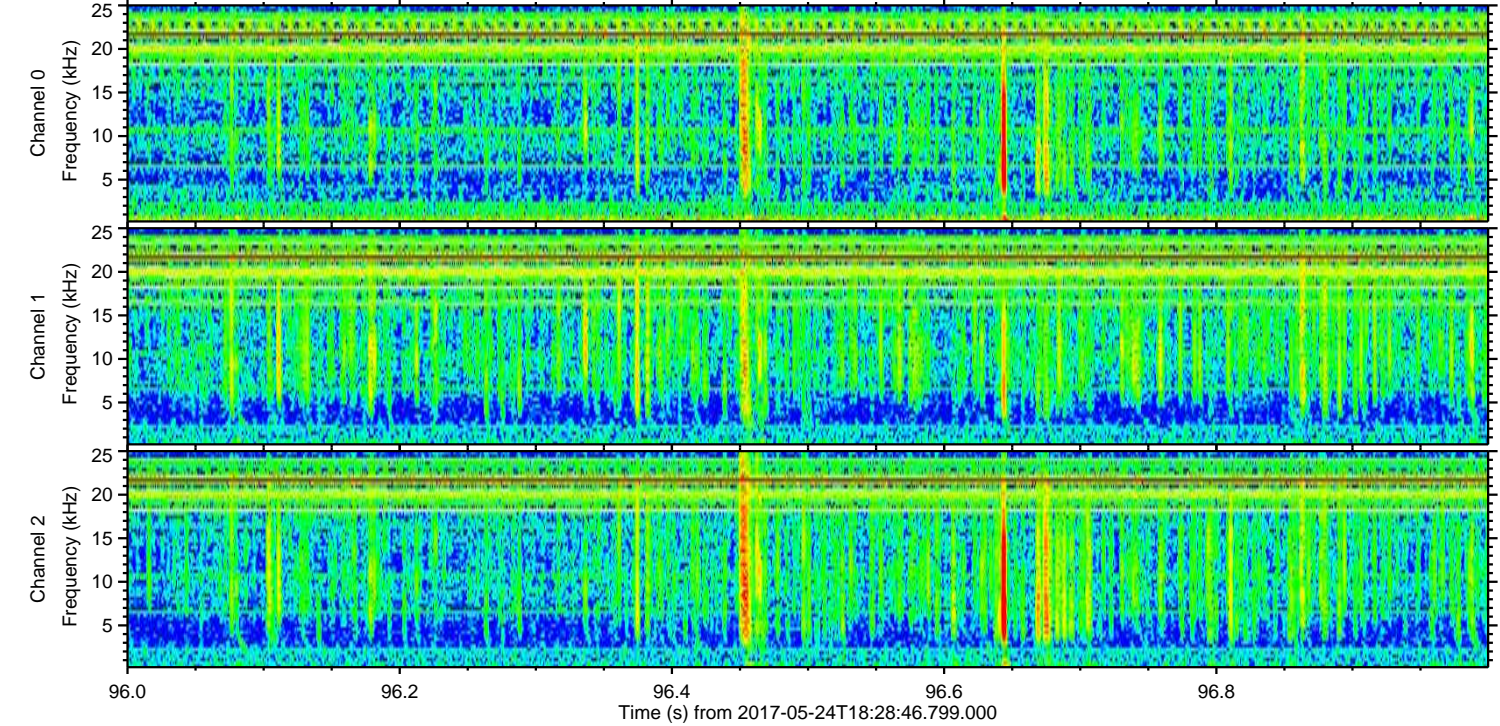
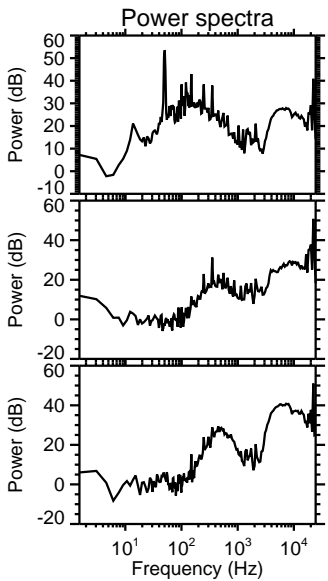
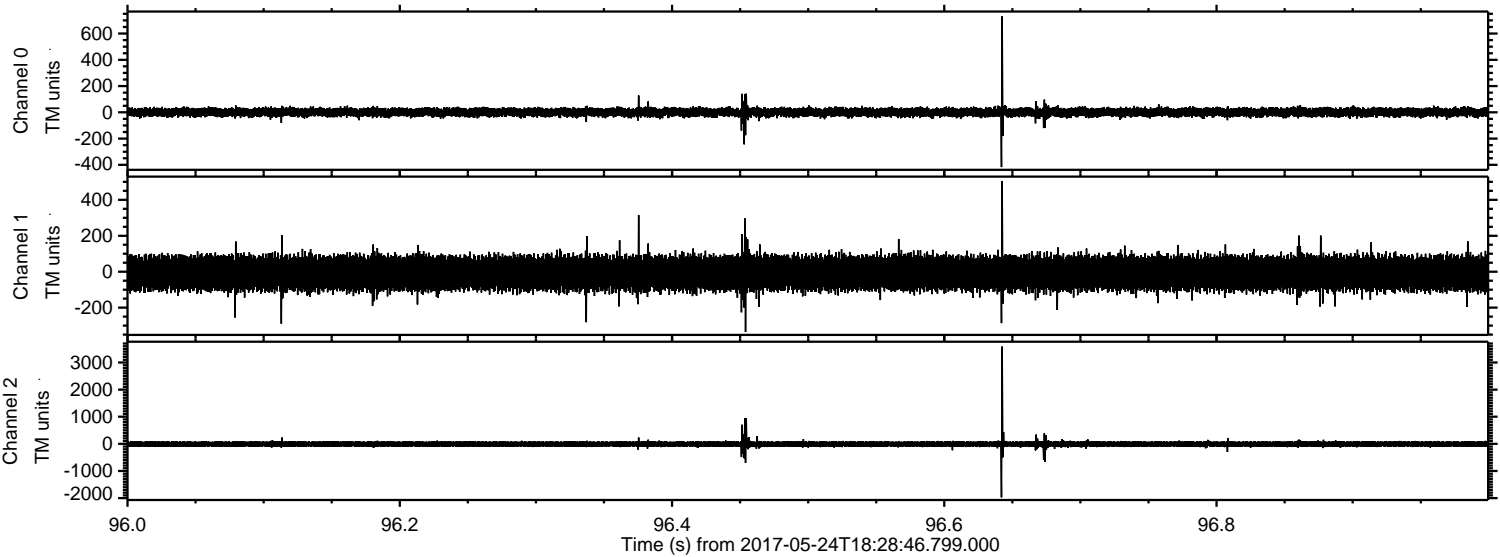
Channel 1
mn: -1126
mx: 1379
μ: -8.3
σ: 57.8

Channel 2
mn: -3364
mx: 4302
μ: -8.3
σ: 80.1

Processed Wed May 24 20:37:12 2017 by ELM ver.2012-10-06 from 001__elm20170524_182845__dat00.bin



Processed Wed May 24 20:37:12 2017 by ELM ver.2012-10-06 from 001__elm20170524_182845__dat00.bin



Channel 0
mn: -417
mx: 731
 μ : 0.4
 σ : 19.5

Channel 1
mn: -335
mx: 504
 μ : -8.2
 σ : 55.0

Channel 2
mn: -1972
mx: 3587
 μ : -8.2
 σ : 61.7

Processed Wed May 24 20:37:13 2017 by ELM ver.2012-10-06 from 001__elm20170524_182845__dat00.bin

