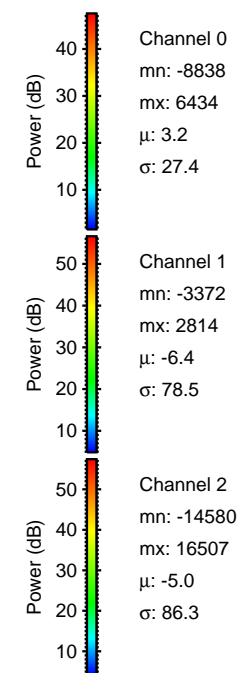
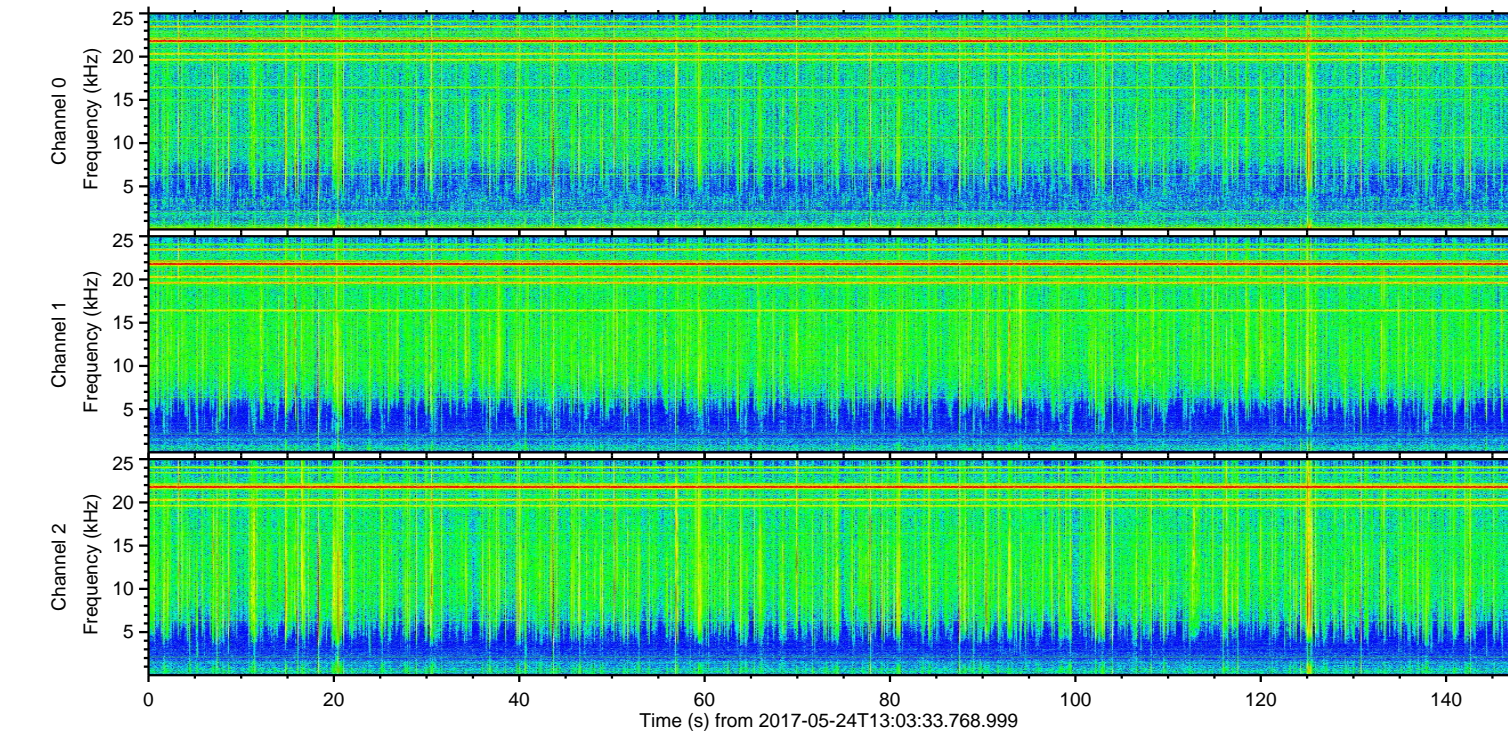
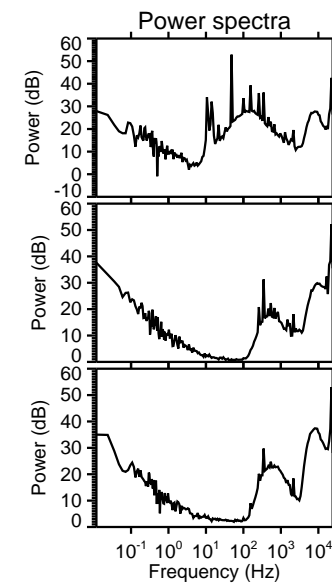
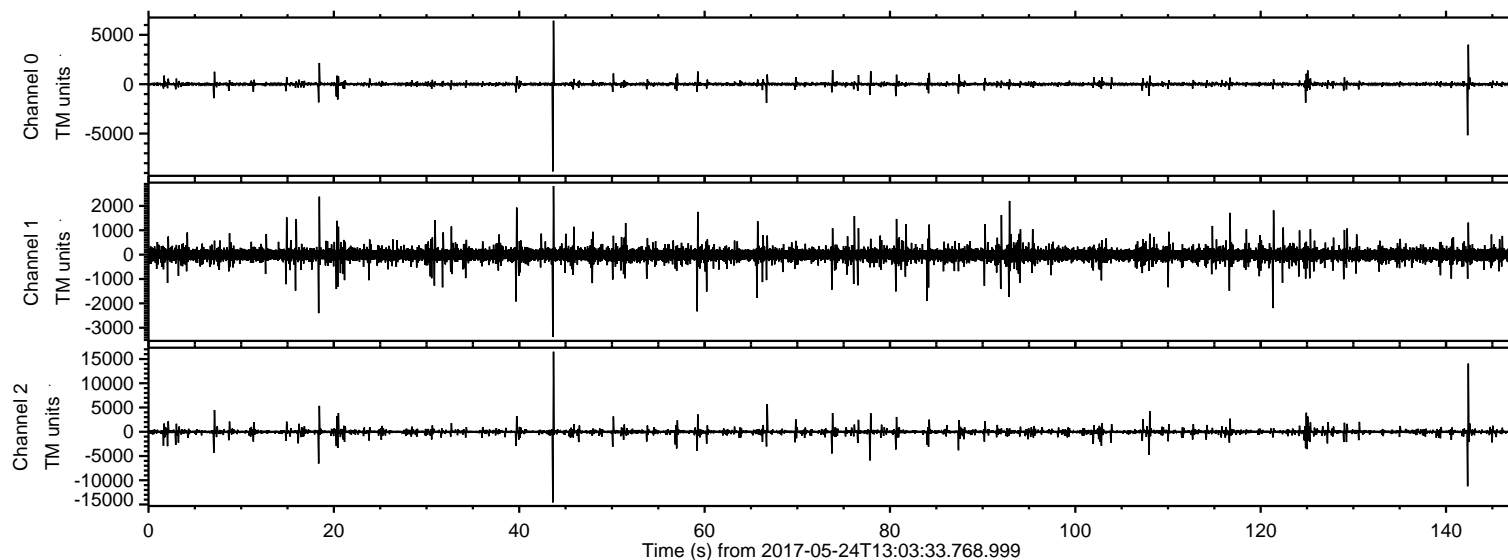
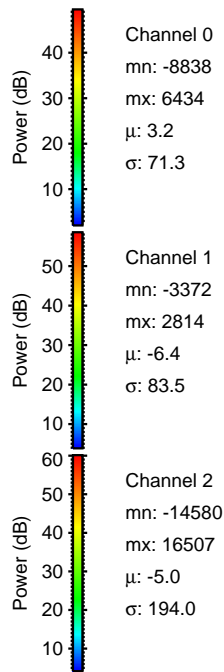
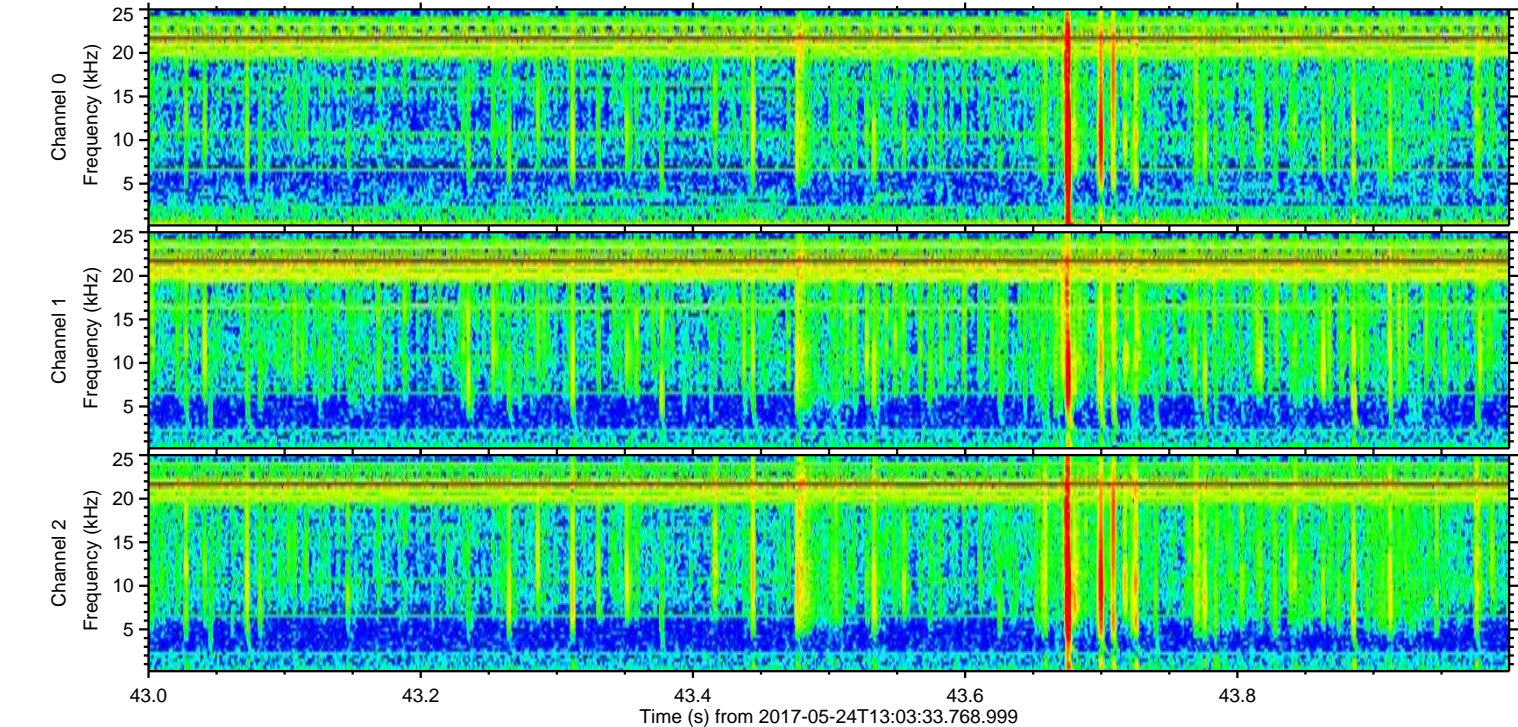
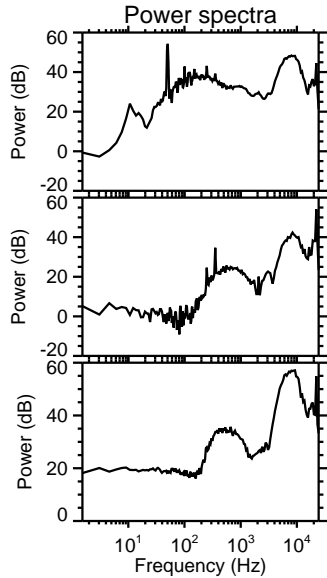
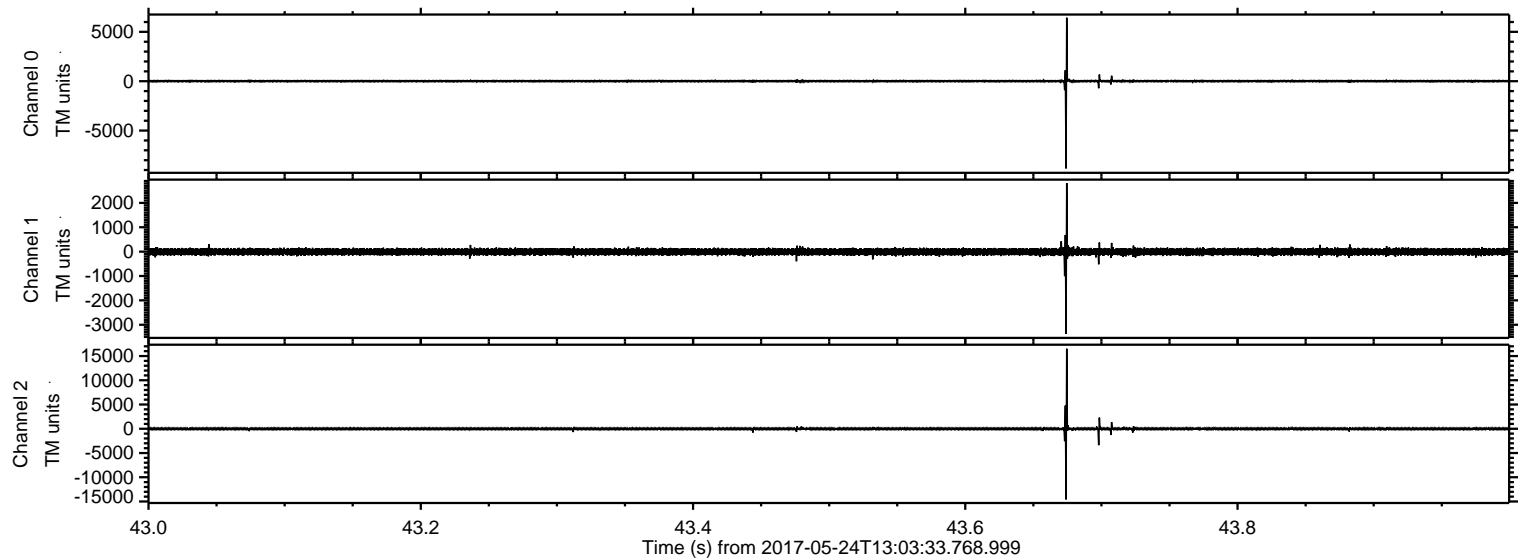


ELMAVAN 3D WAVEFORMS (Measured data sampled at 50 kHz) 51000 packets of 144 samples from 2017-05-24T13:03:33.768.999.

Processed Wed May 24 15:11:13 2017 by ELM ver.2012-10-06 from 001__elm20170524_130332__dat00.bin

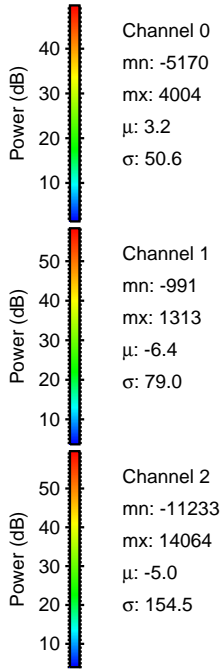
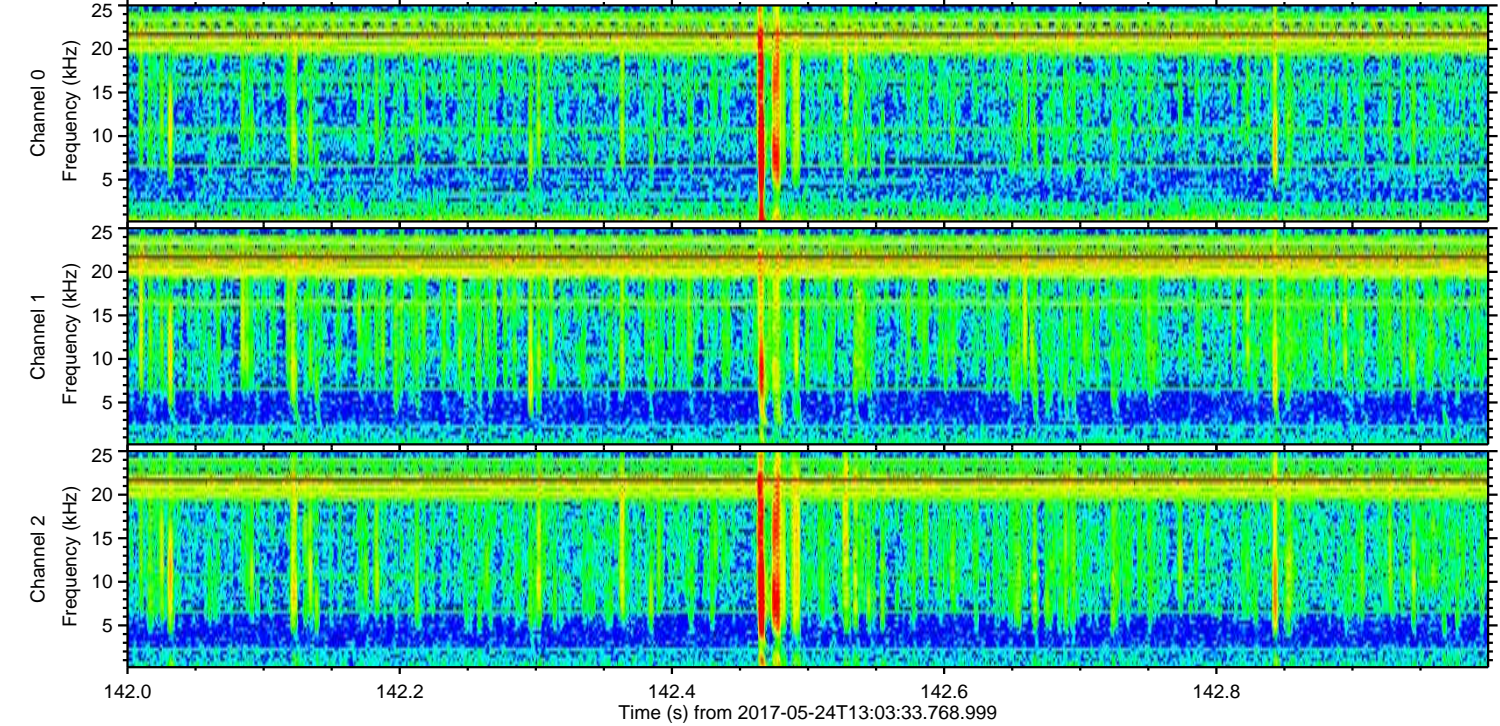
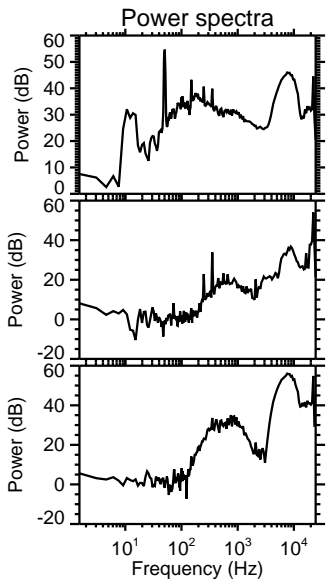
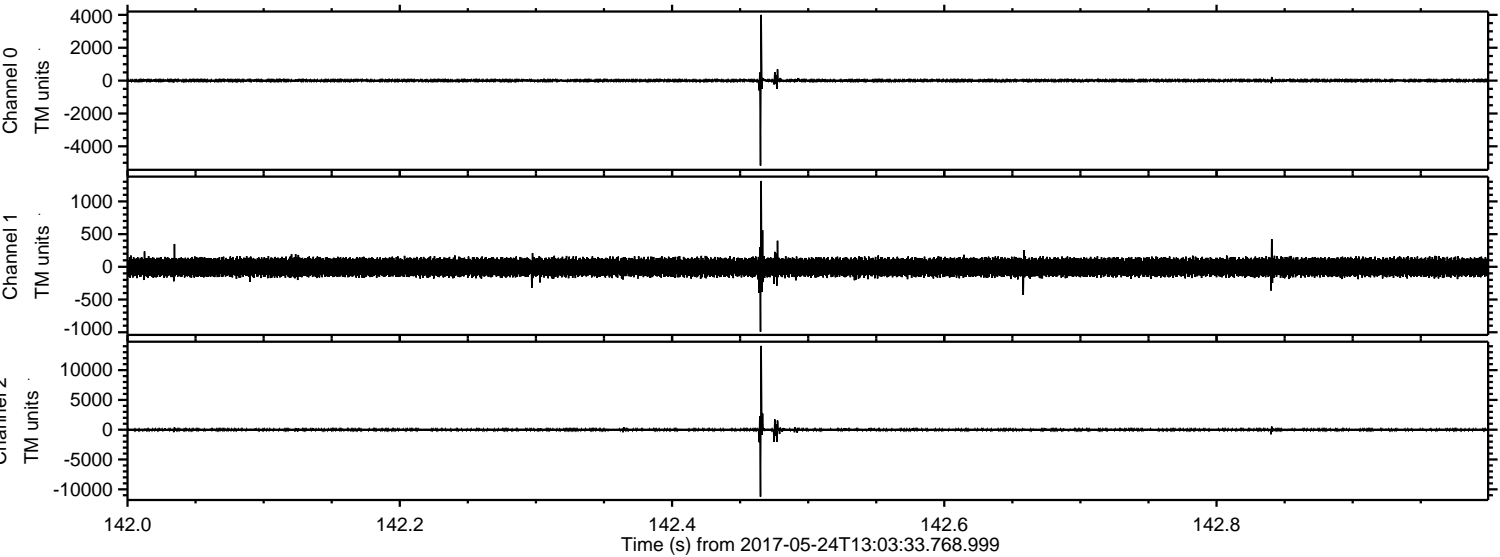


Processed Wed May 24 15:11:18 2017 by ELM ver.2012-10-06 from 001__elm20170524_130332__dat00.bin



ELMAVAN 3D WAVEFORMS (Measured data sampled at 50 kHz) 51000 packets of 144 samples from 2017-05-24T13:03:33.768.999. Part 143/147

Processed Wed May 24 15:11:19 2017 by ELM ver.2012-10-06 from 001__elm20170524_130332__dat00.bin

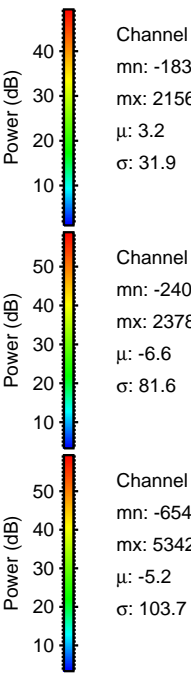
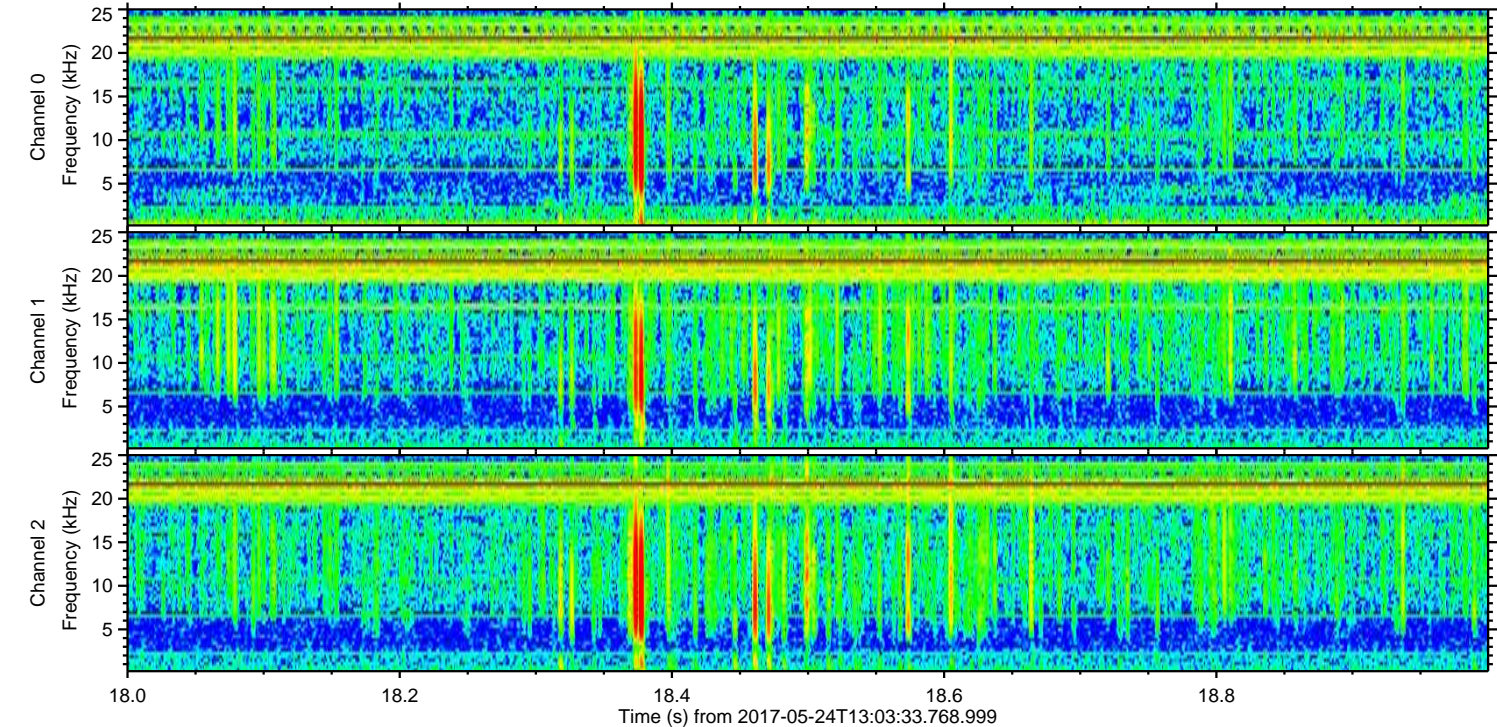
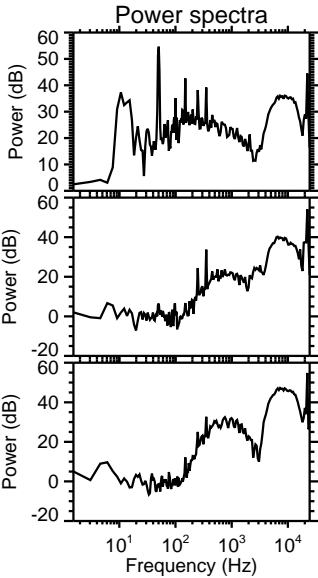
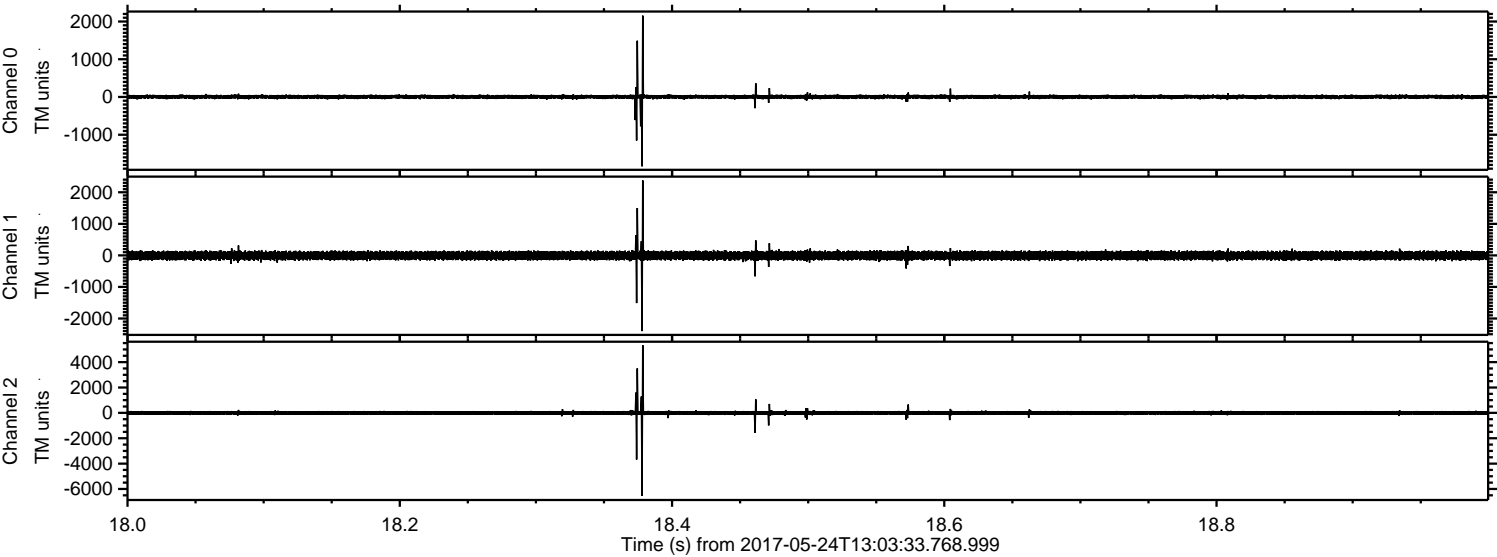


Channel 0
mn: -5170
mx: 4004
 μ : 3.2
 σ : 50.6

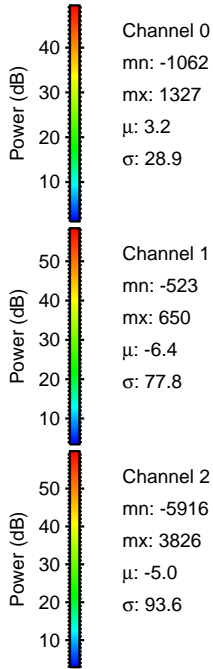
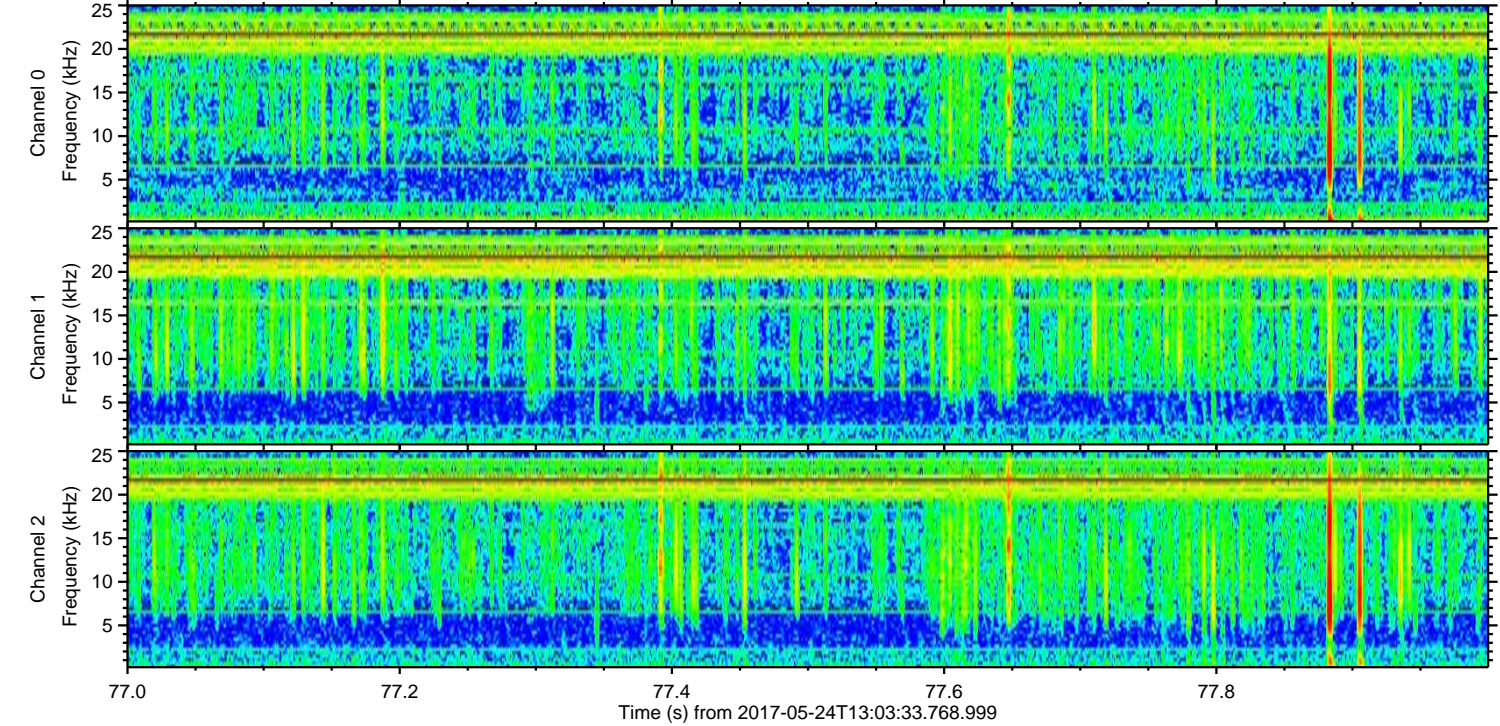
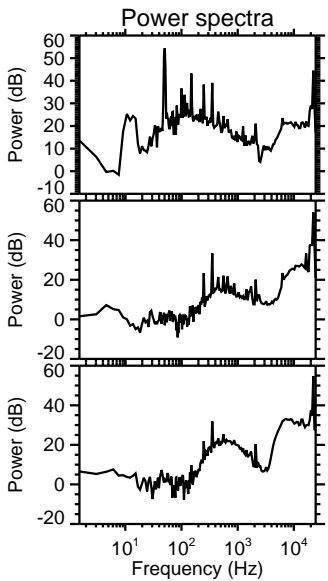
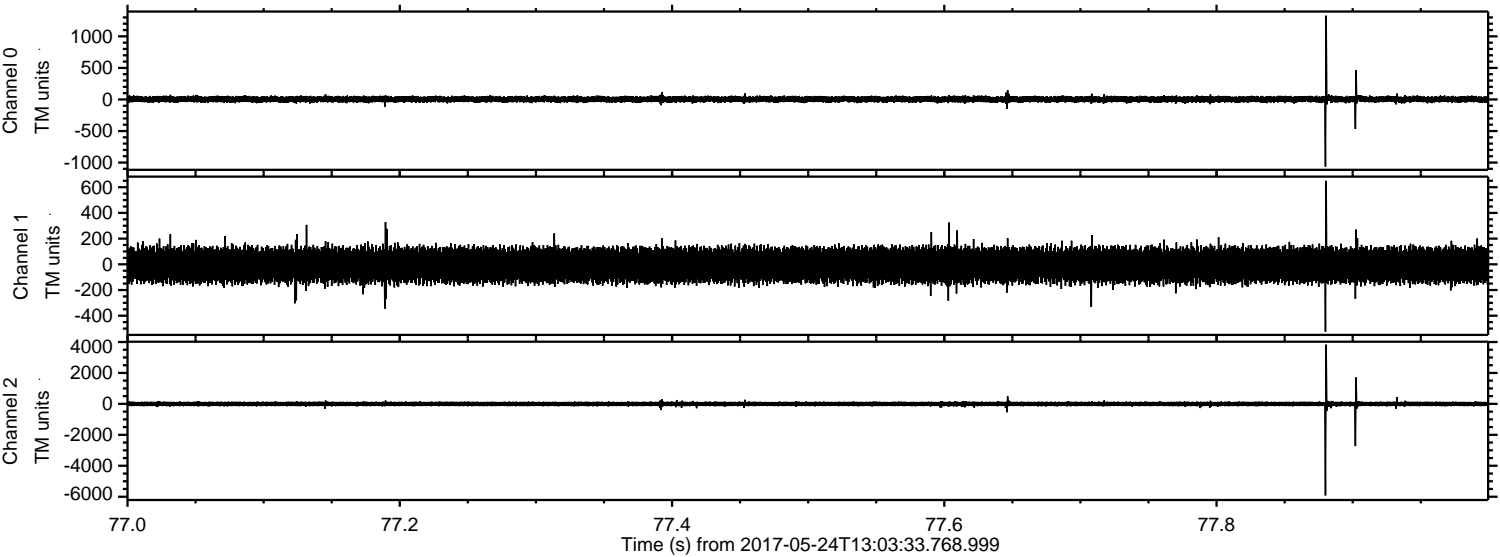
Channel 1
mn: -991
mx: 1313
 μ : -6.4
 σ : 79.0

Channel 2
mn: -11233
mx: 14064
 μ : -5.0
 σ : 154.5

Processed Wed May 24 15:11:20 2017 by ELM ver.2012-10-06 from 001__elm20170524_130332__dat00.bin



Processed Wed May 24 15:11:20 2017 by ELM ver.2012-10-06 from 001__elm20170524_130332__dat00.bin

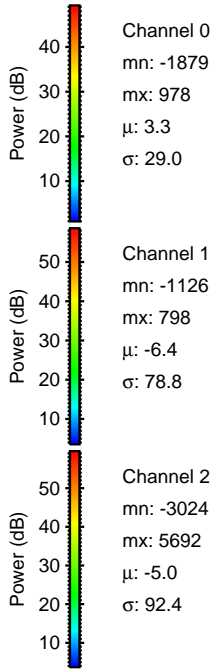
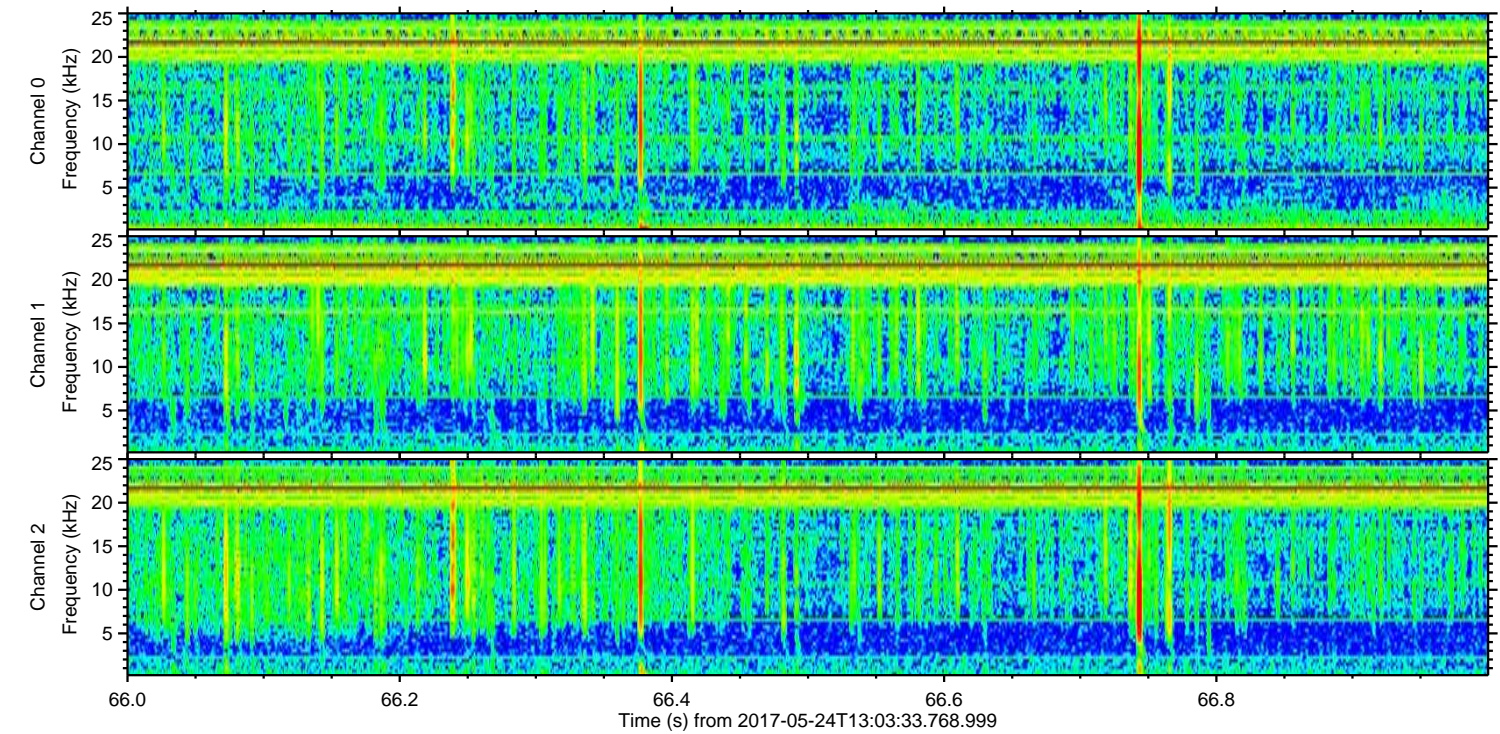
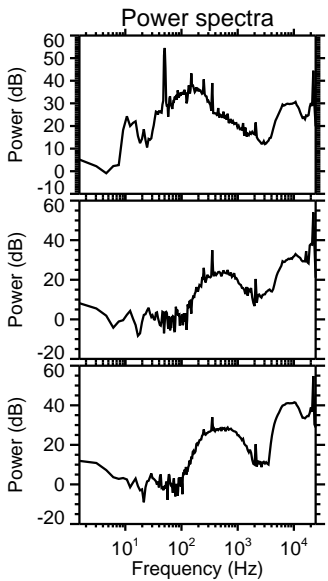
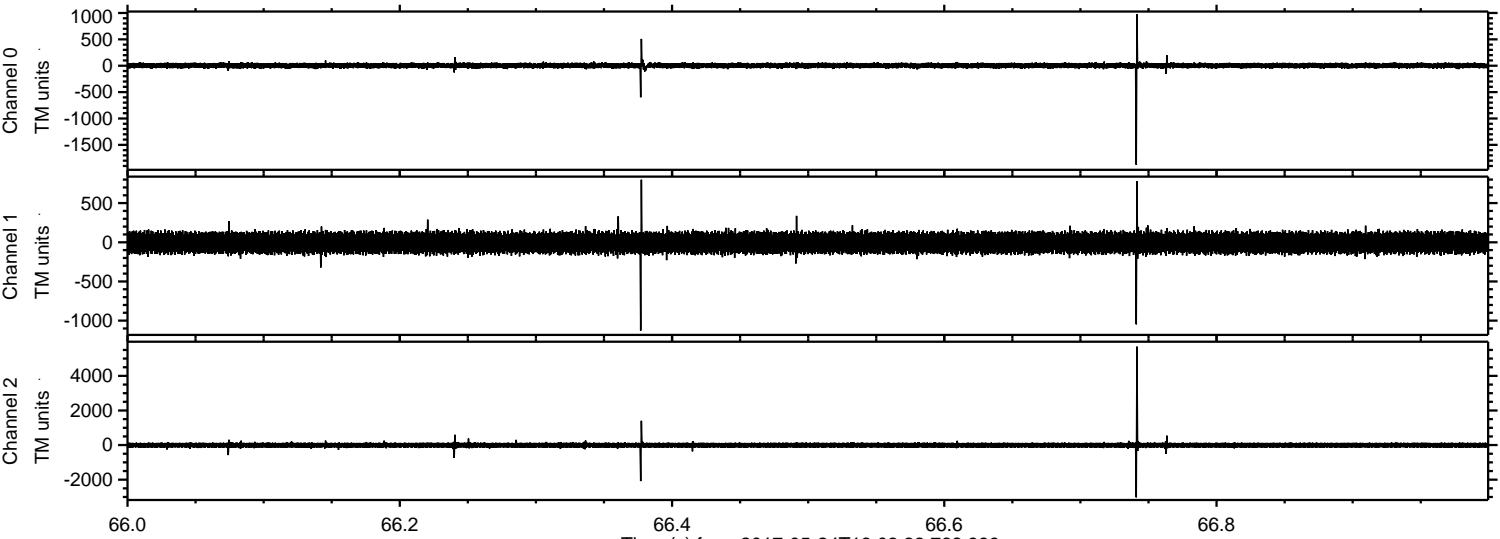


Channel 0
mn: -1062
mx: 1327
 μ : 3.2
 σ : 28.9

Channel 1
mn: -523
mx: 650
 μ : -6.4
 σ : 77.8

Channel 2
mn: -5916
mx: 3826
 μ : -5.0
 σ : 93.6

Processed Wed May 24 15:11:21 2017 by ELM ver.2012-10-06 from 001__elm20170524_130332__dat00.bin



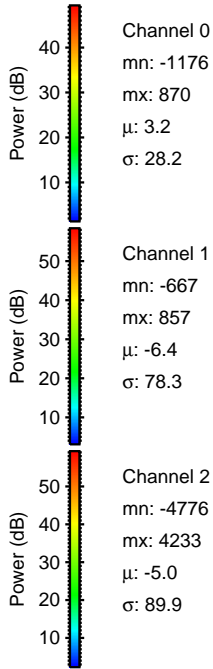
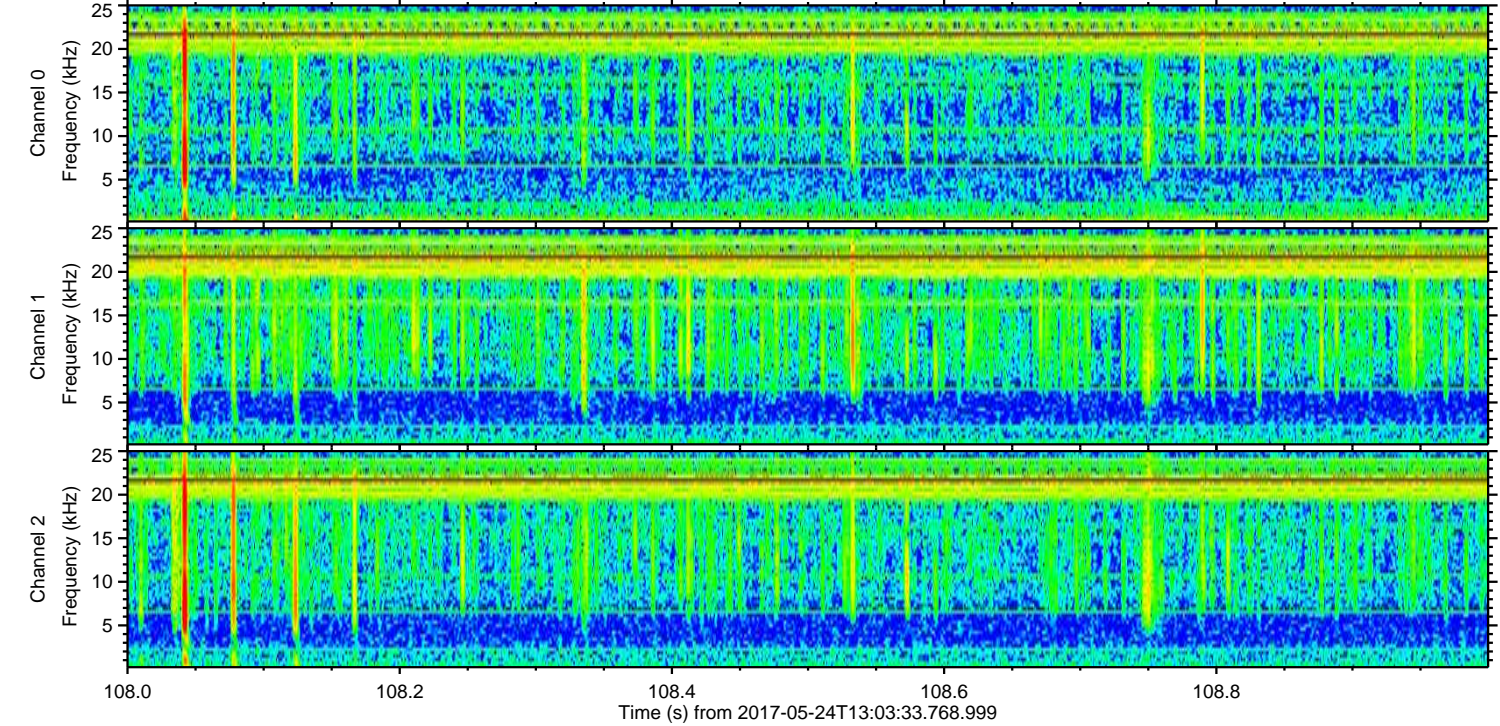
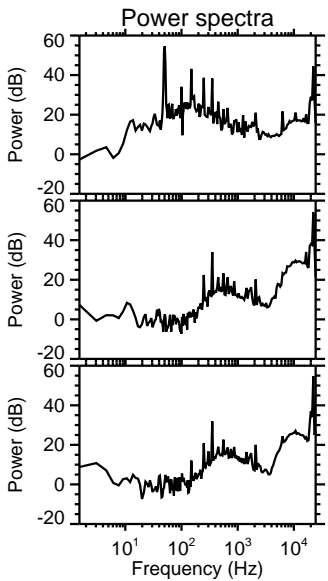
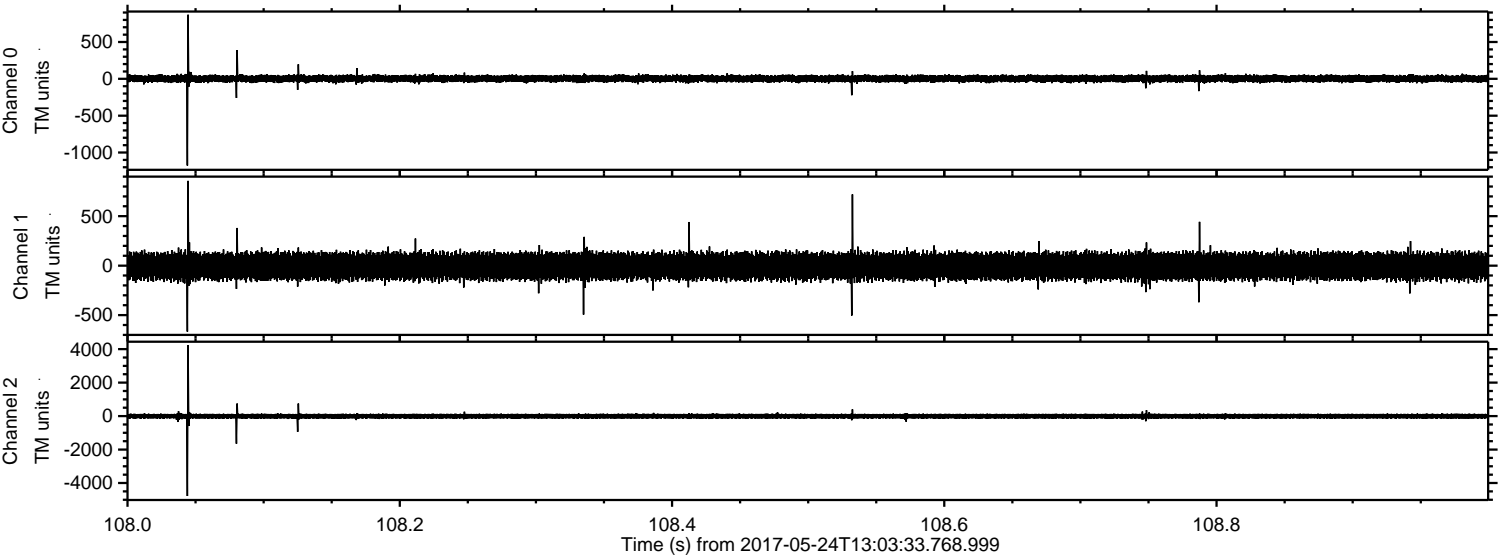
Channel 0
mn: -1879
mx: 978
 μ : 3.3
 σ : 29.0

Channel 1
mn: -1126
mx: 798
 μ : -6.4
 σ : 78.8

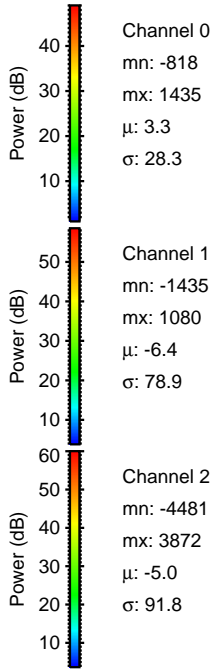
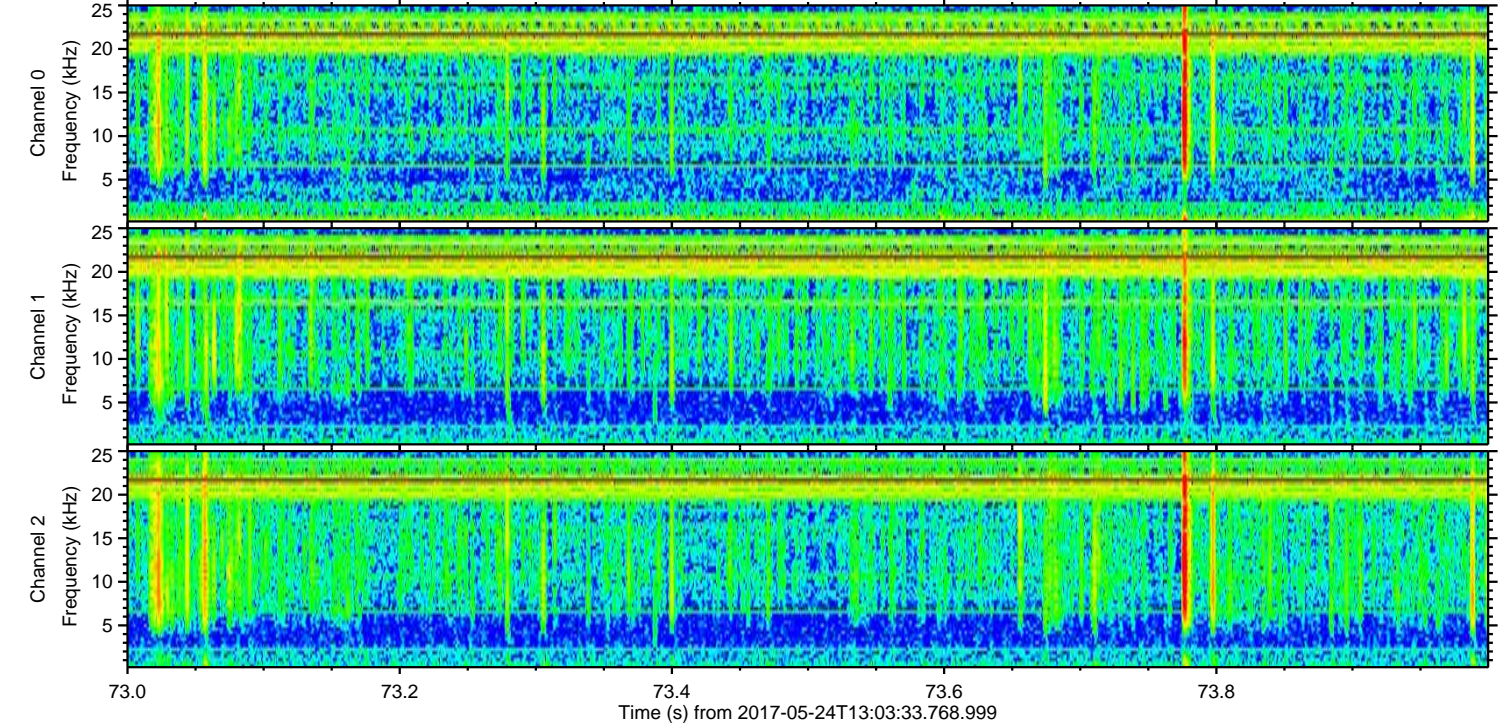
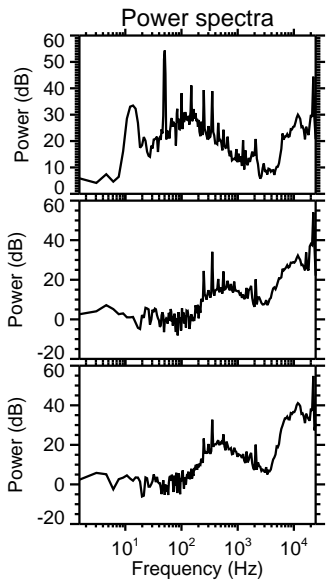
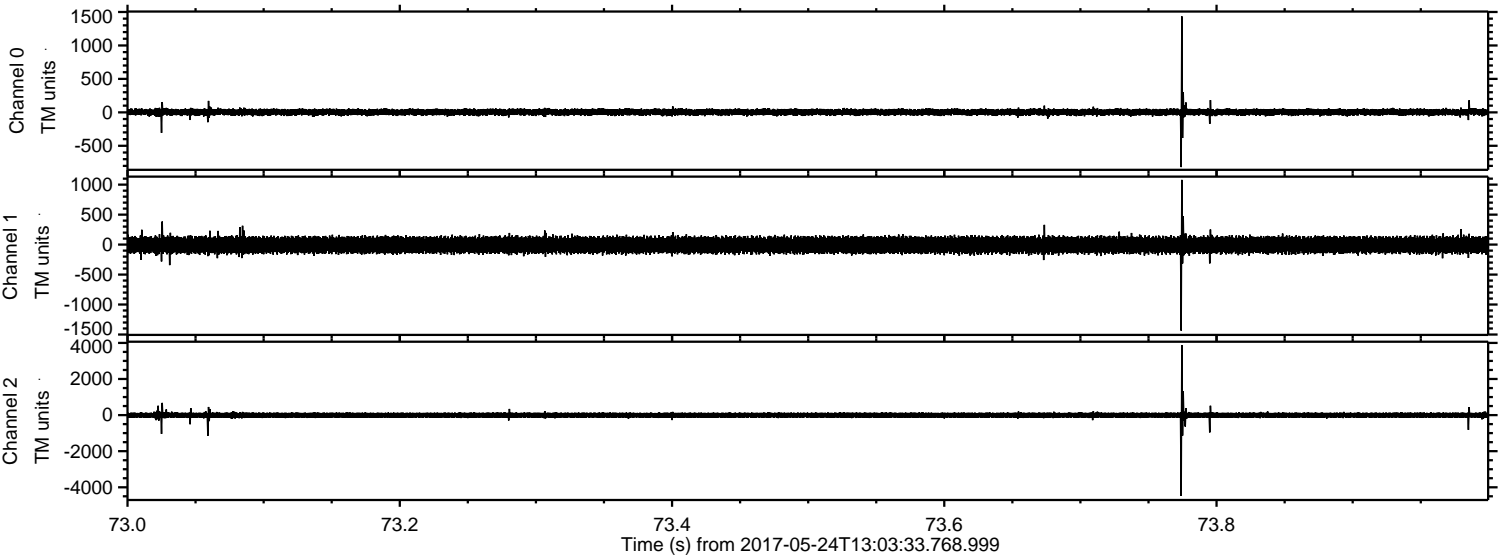
Channel 2
mn: -3024
mx: 5692
 μ : -5.0
 σ : 92.4

ELMAVAN 3D WAVEFORMS (Measured data sampled at 50 kHz) 51000 packets of 144 samples from 2017-05-24T13:03:33.768.999. Part 109/147

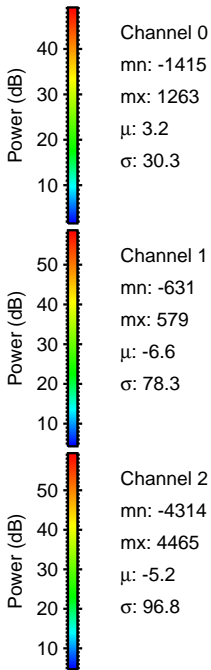
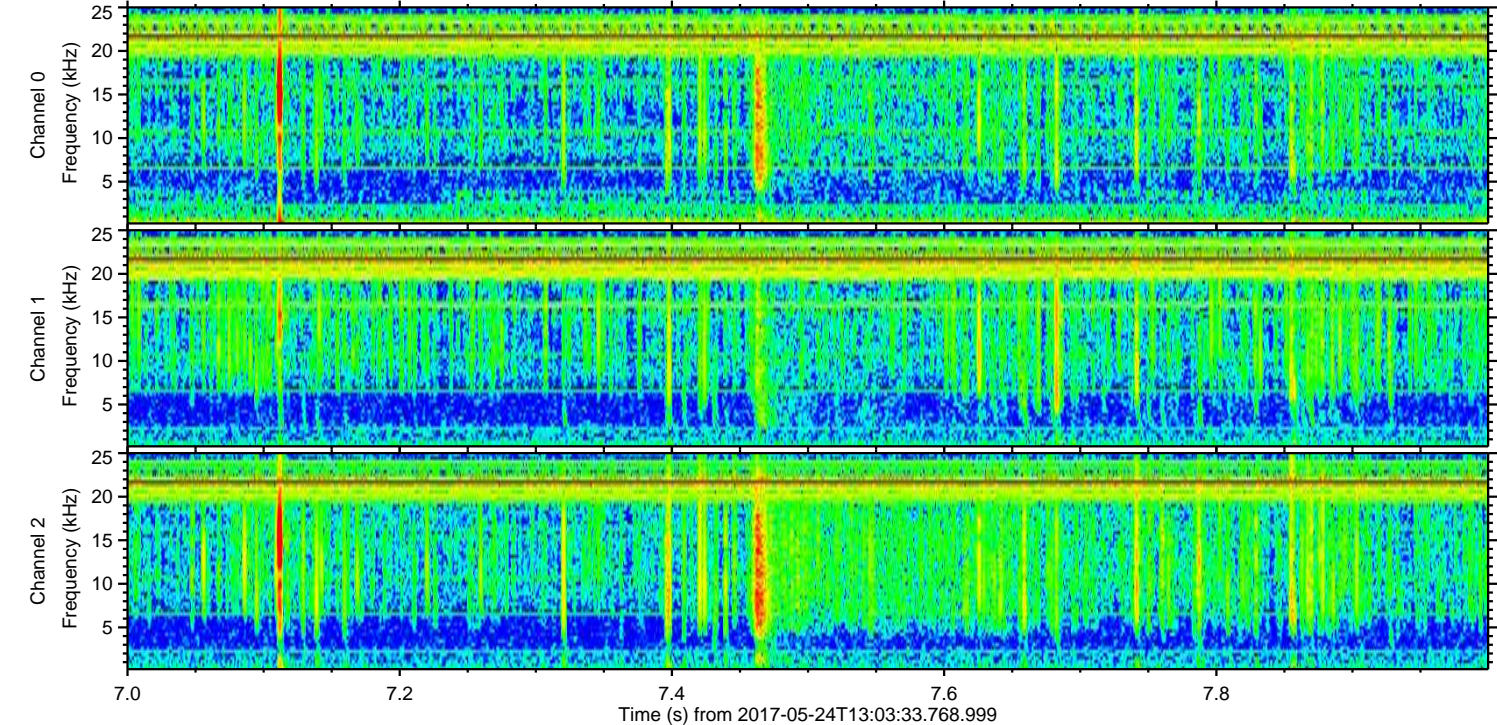
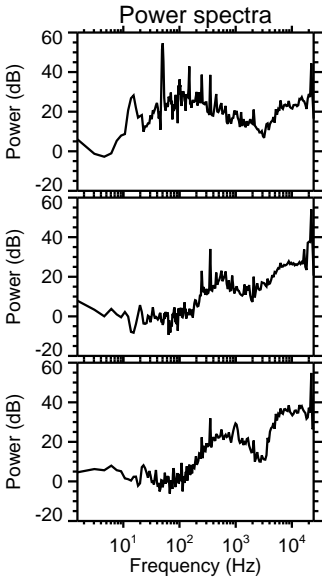
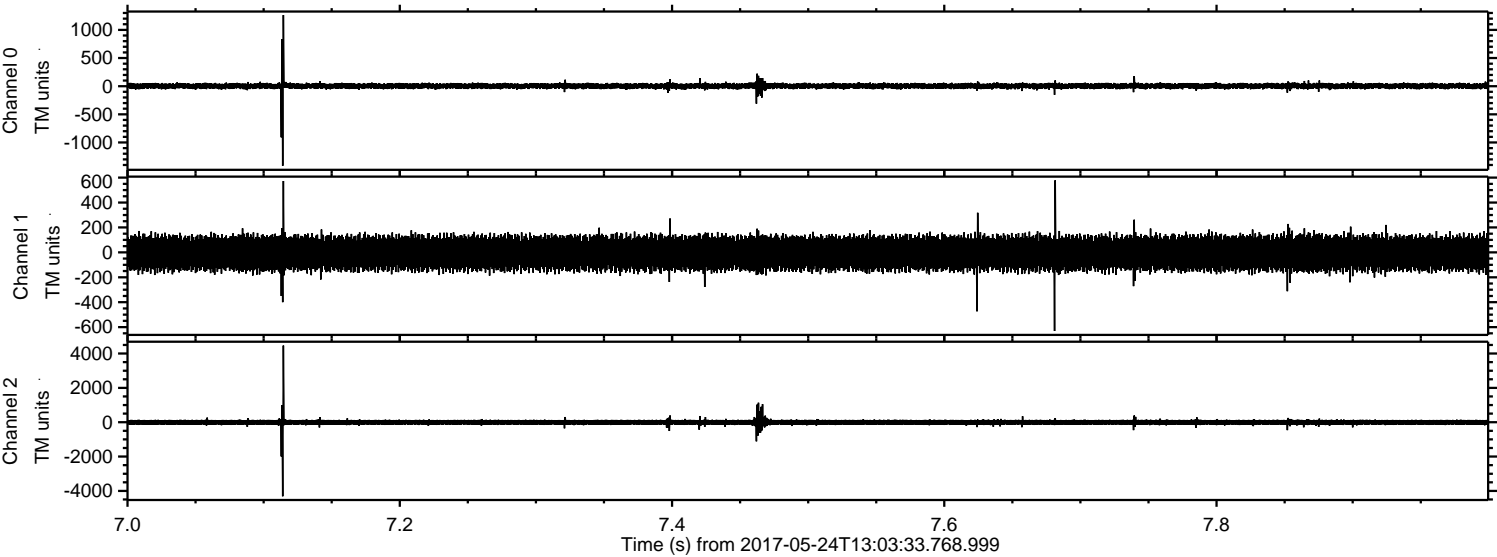
Processed Wed May 24 15:11:22 2017 by ELM ver.2012-10-06 from 001__elm20170524_130332__dat00.bin



Processed Wed May 24 15:11:22 2017 by ELM ver.2012-10-06 from 001__elm20170524_130332__dat00.bin



Processed Wed May 24 15:11:23 2017 by ELM ver.2012-10-06 from 001__elm20170524_130332__dat00.bin



Channel 0
mn: -1415
mx: 1263
 μ : 3.2
 σ : 30.3

Channel 1
mn: -631
mx: 579
 μ : -6.6
 σ : 78.3

Channel 2
mn: -4314
mx: 4465
 μ : -5.2
 σ : 96.8

Processed Wed May 24 15:11:23 2017 by ELM ver.2012-10-06 from 001__elm20170524_130332__dat00.bin

