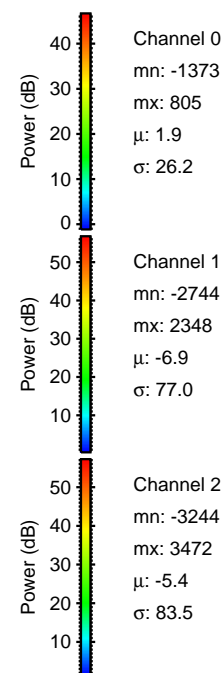
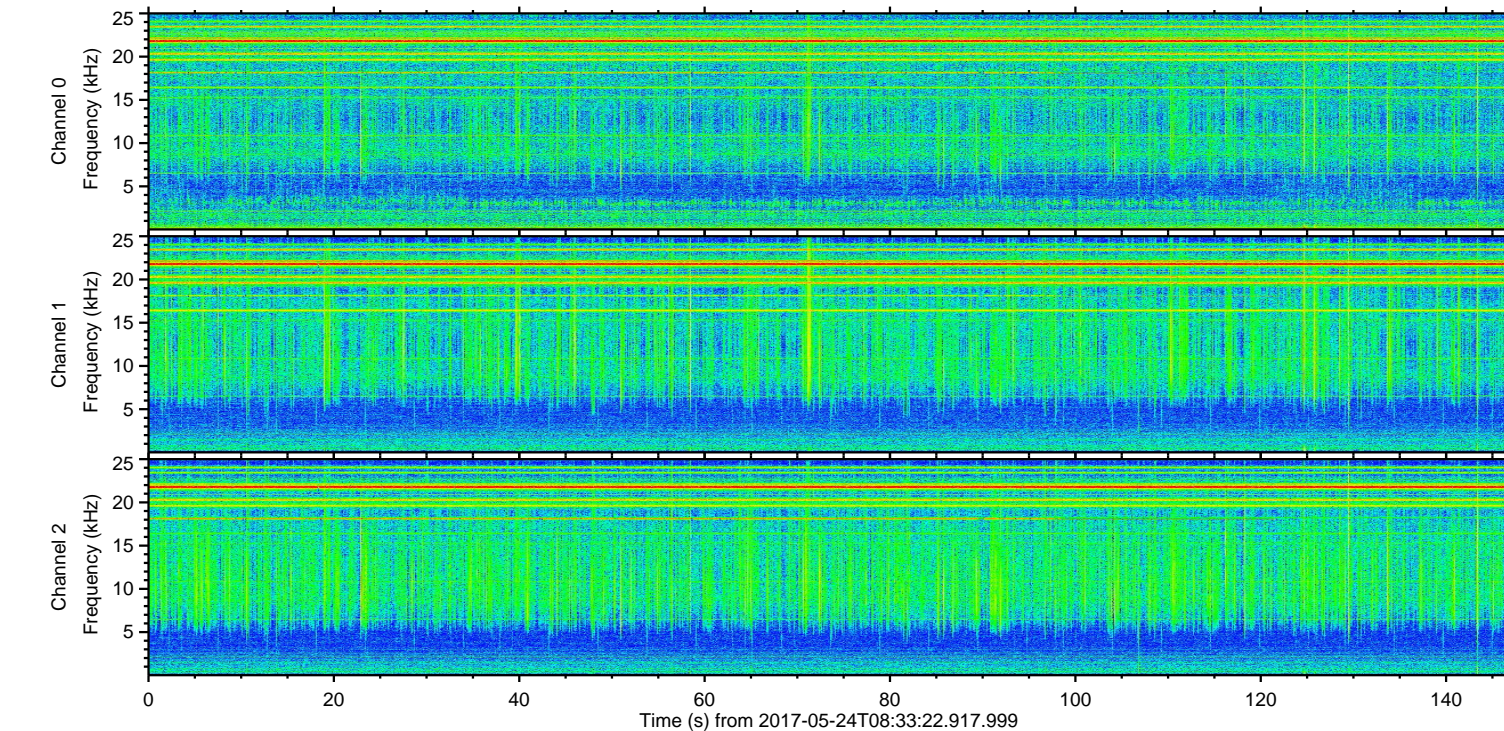
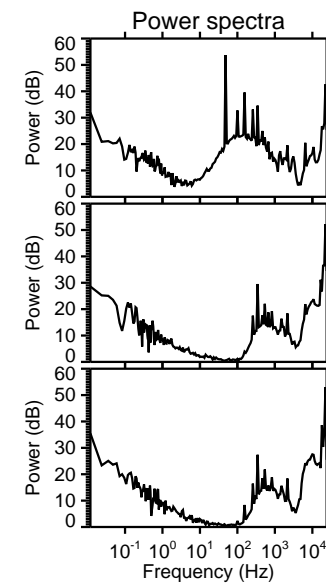
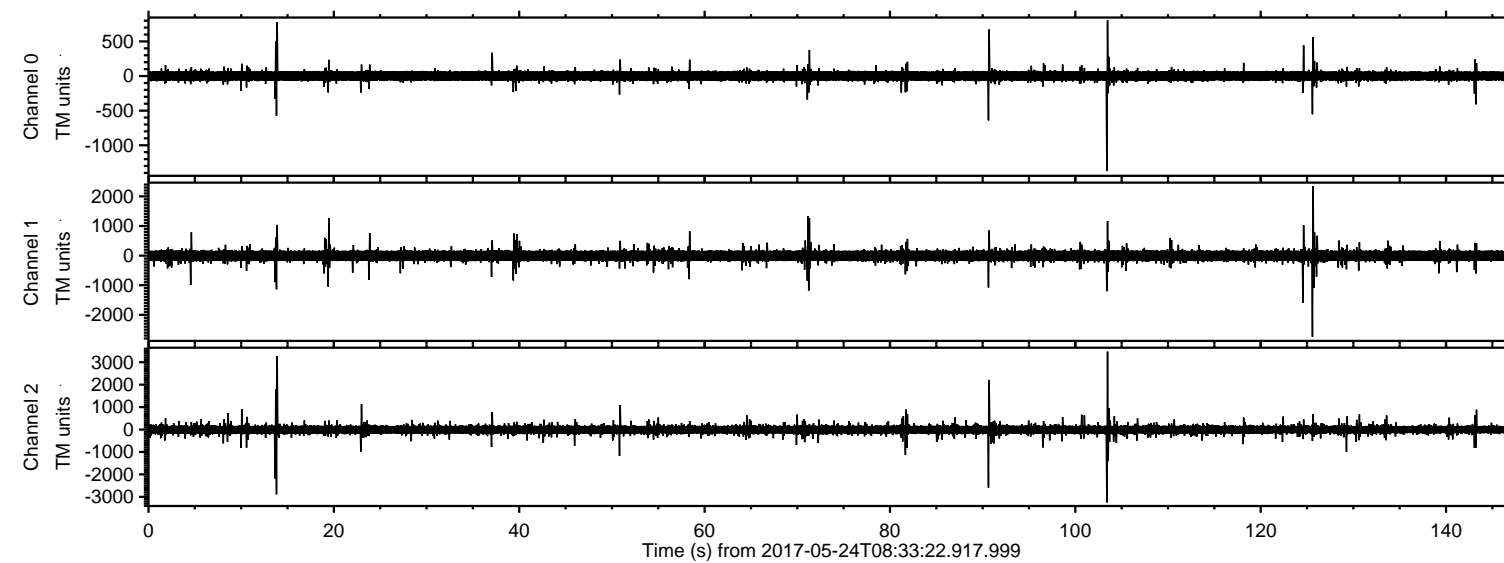


ELMAVAN 3D WAVEFORMS (Measured data sampled at 50 kHz) 51000 packets of 144 samples from 2017-05-24T08:33:22.917.999.

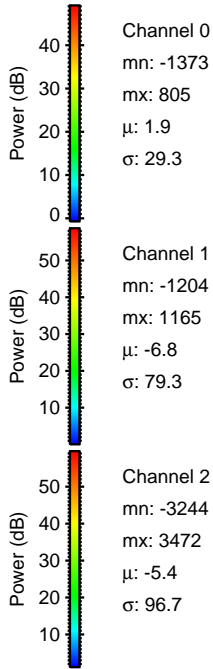
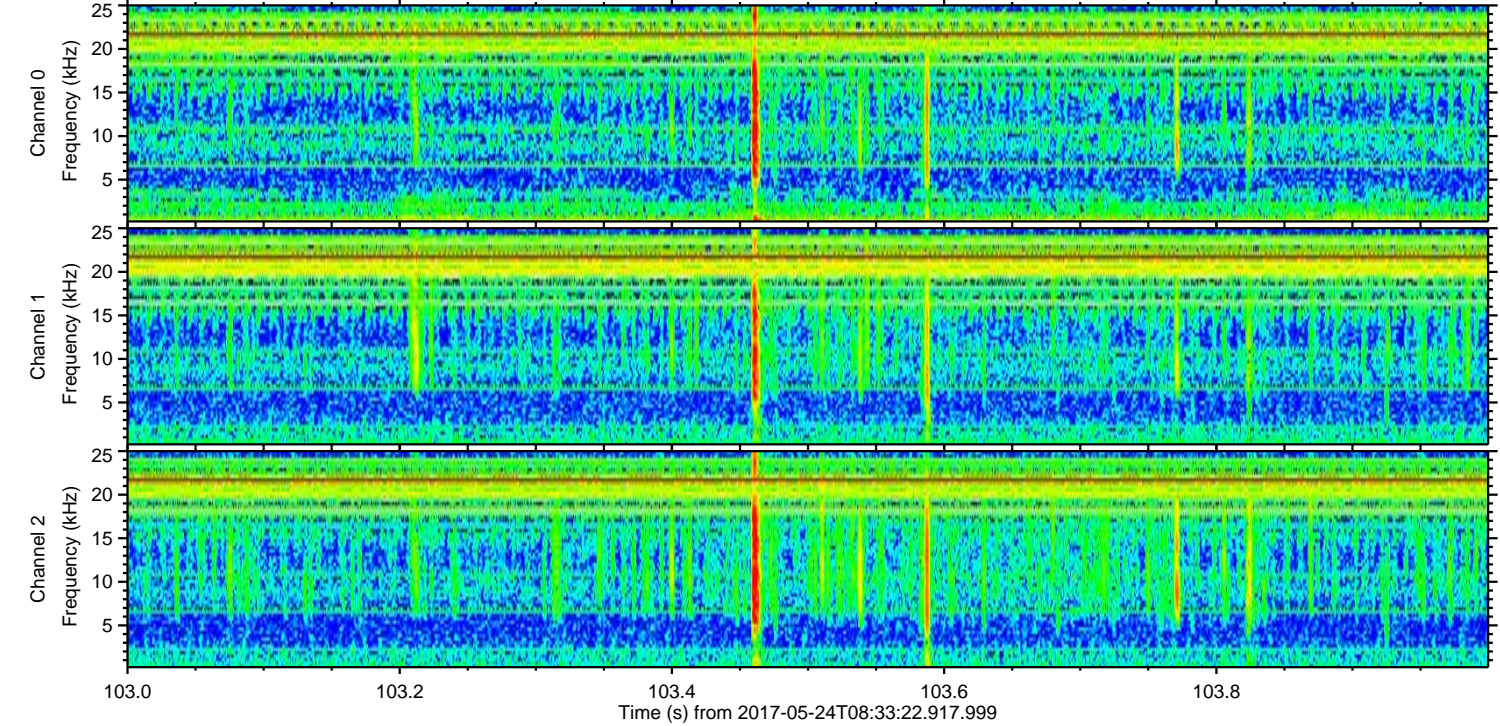
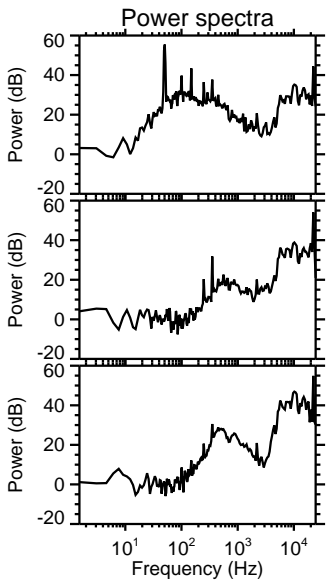
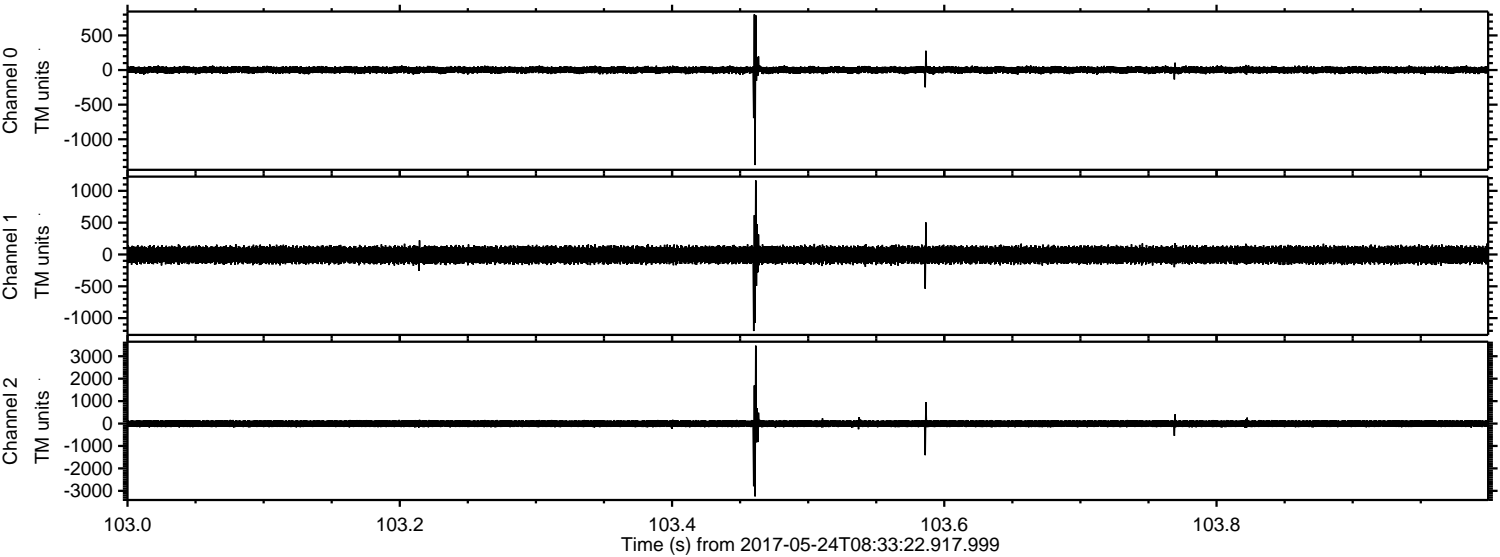
Processed Wed May 24 10:41:34 2017 by ELM ver.2012-10-06 from 001\_\_elm20170524\_083321\_\_dat00.bin





ELMAVAN 3D WAVEFORMS (Measured data sampled at 50 kHz) 51000 packets of 144 samples from 2017-05-24T08:33:22.917.999. Part 104/147

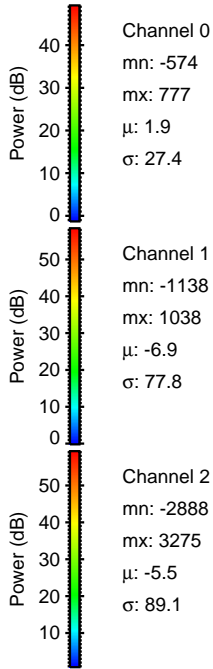
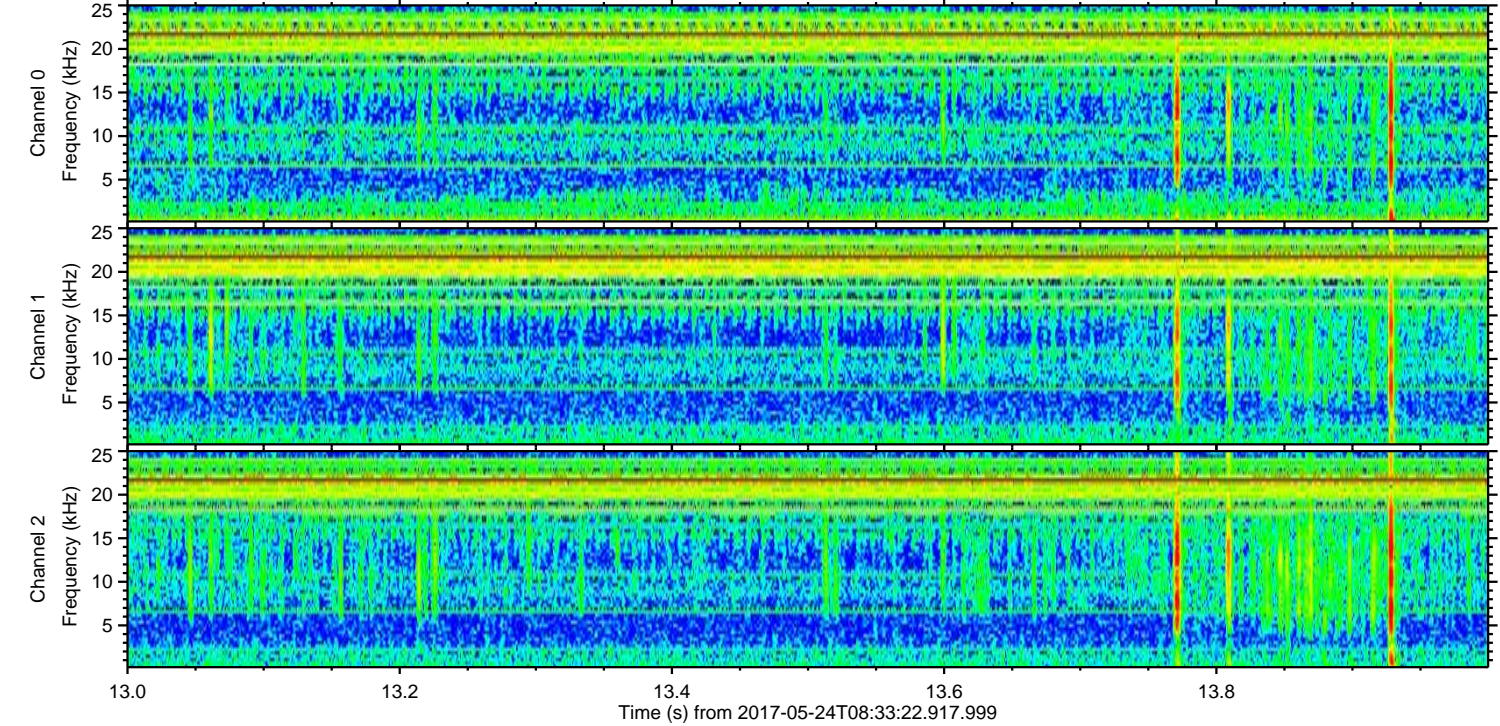
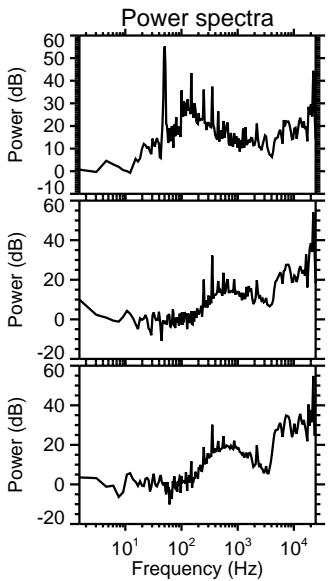
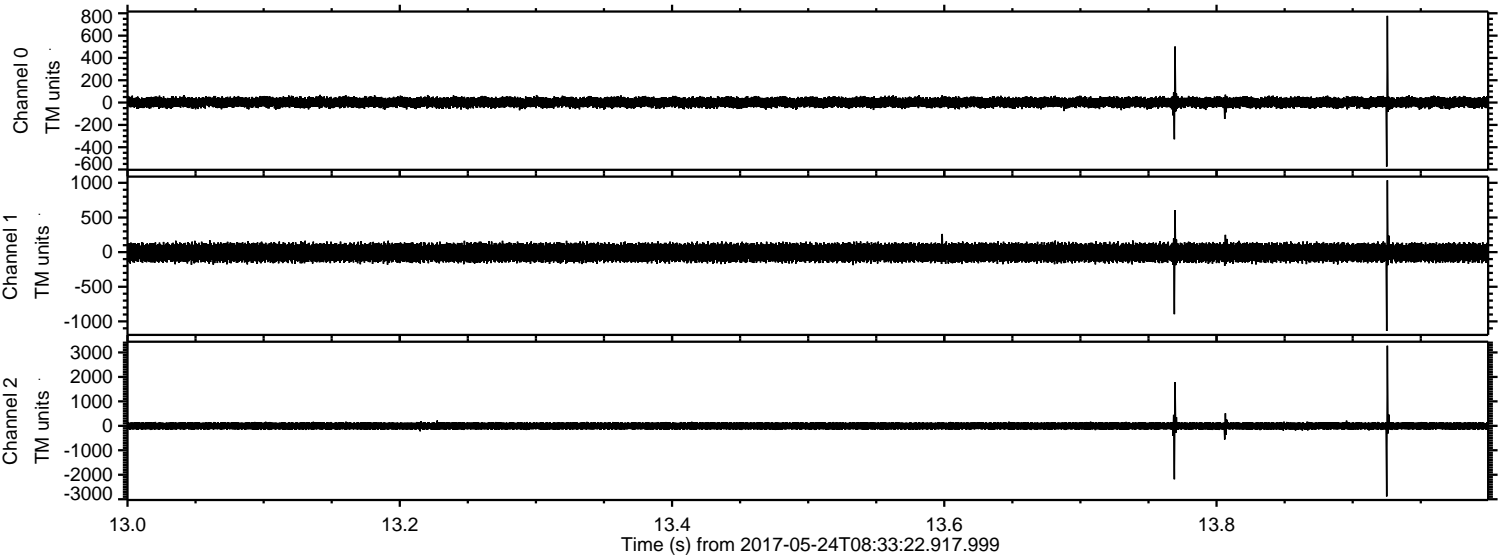
Processed Wed May 24 10:41:42 2017 by ELM ver.2012-10-06 from 001\_\_elm20170524\_083321\_\_dat00.bin





ELMAVAN 3D WAVEFORMS (Measured data sampled at 50 kHz) 51000 packets of 144 samples from 2017-05-24T08:33:22.917.999. Part 14/147

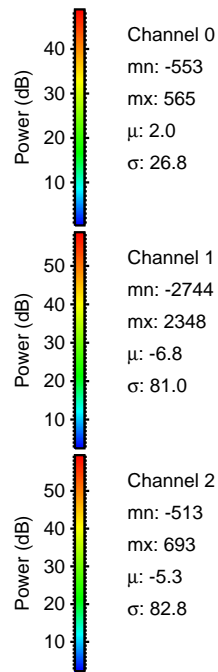
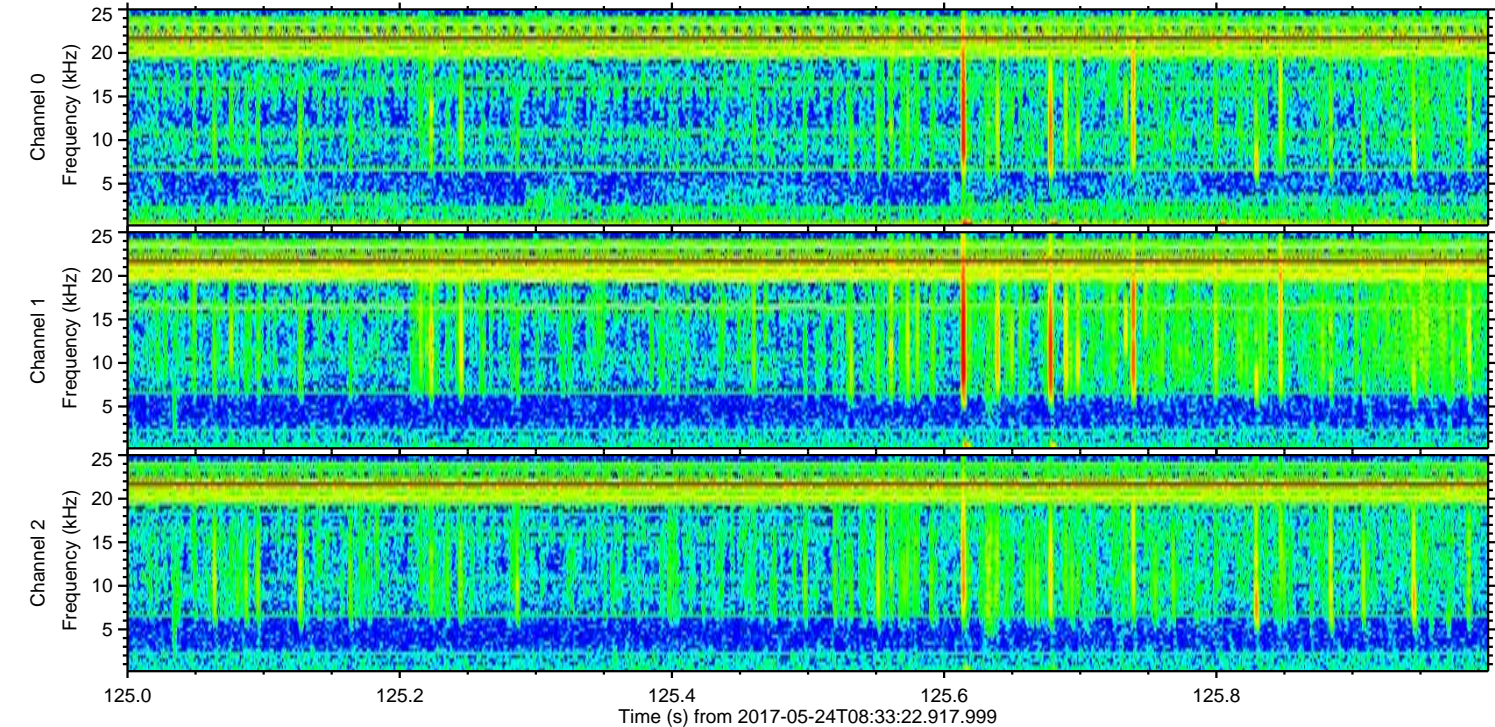
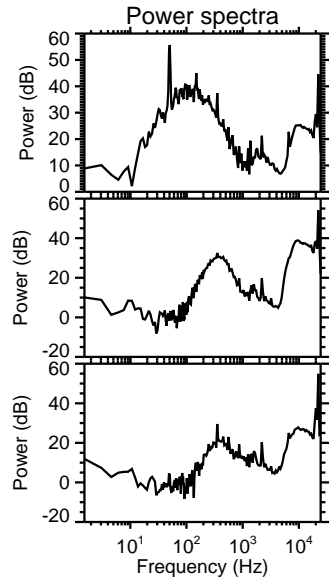
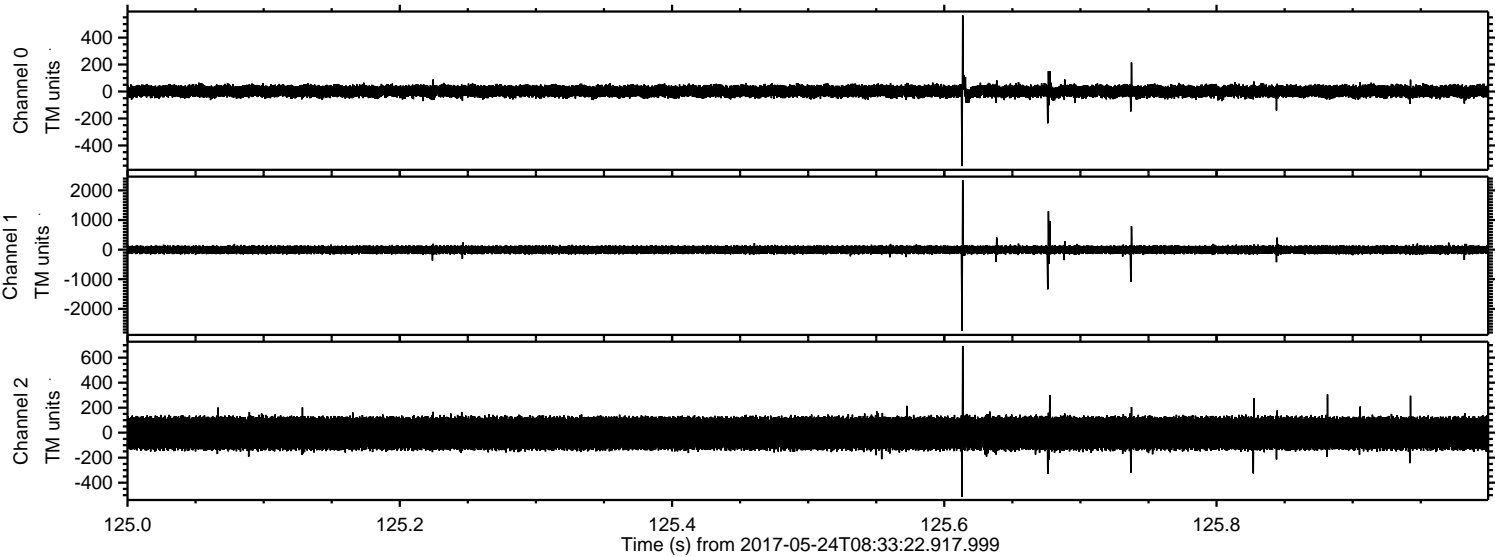
Processed Wed May 24 10:41:43 2017 by ELM ver.2012-10-06 from 001\_\_elm20170524\_083321\_\_dat00.bin





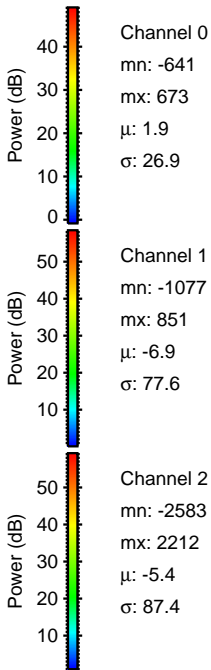
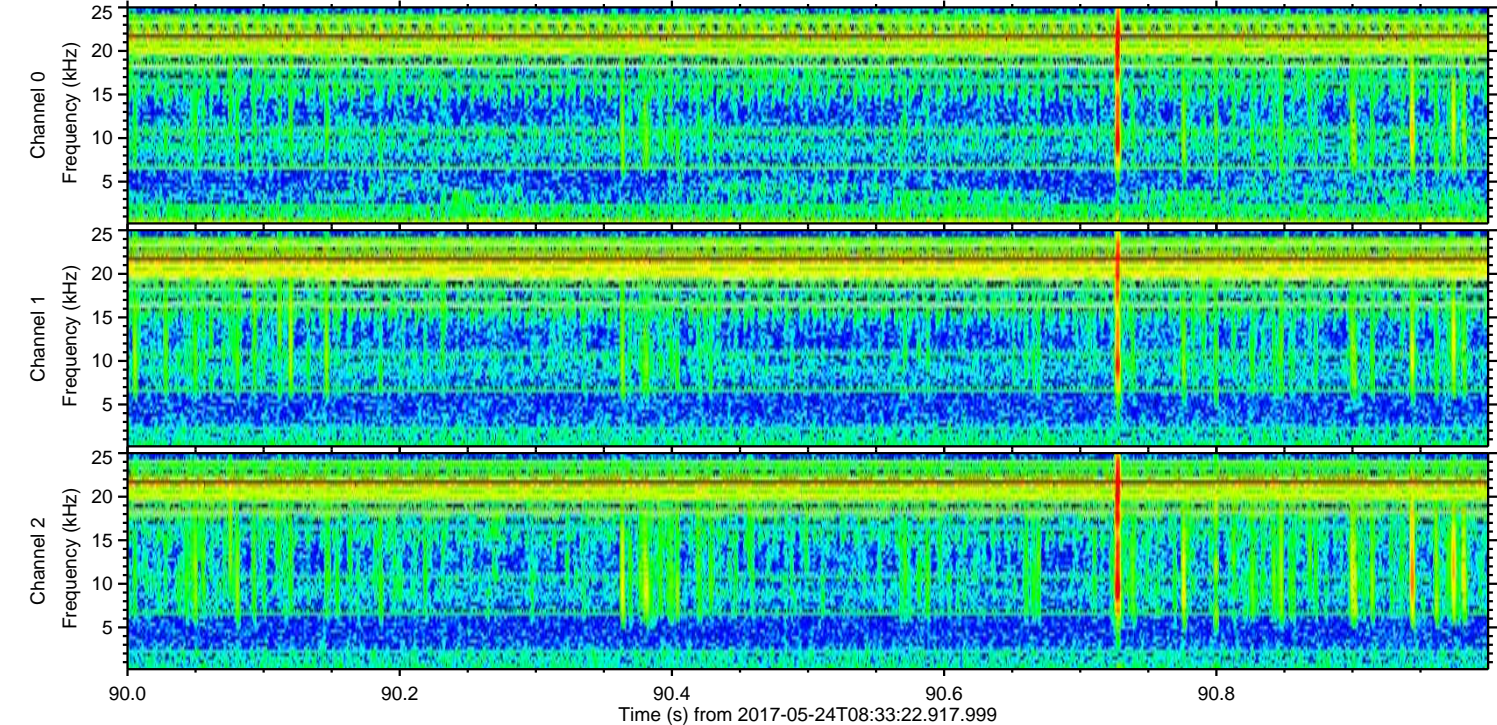
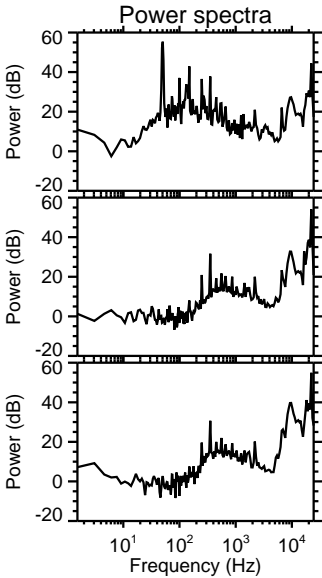
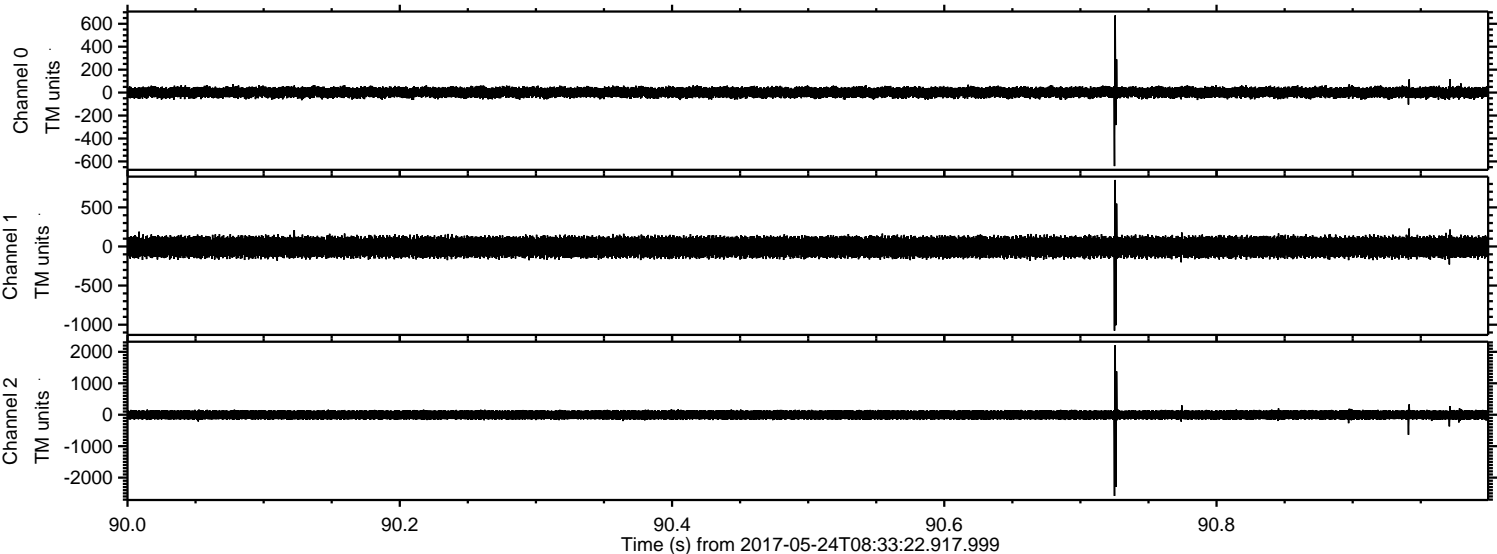
ELMAVAN 3D WAVEFORMS (Measured data sampled at 50 kHz) 51000 packets of 144 samples from 2017-05-24T08:33:22.917.999. Part 126/147

Processed Wed May 24 10:41:44 2017 by ELM ver.2012-10-06 from 001\_\_elm20170524\_083321\_\_dat00.bin





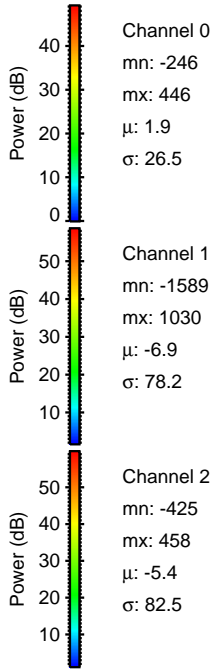
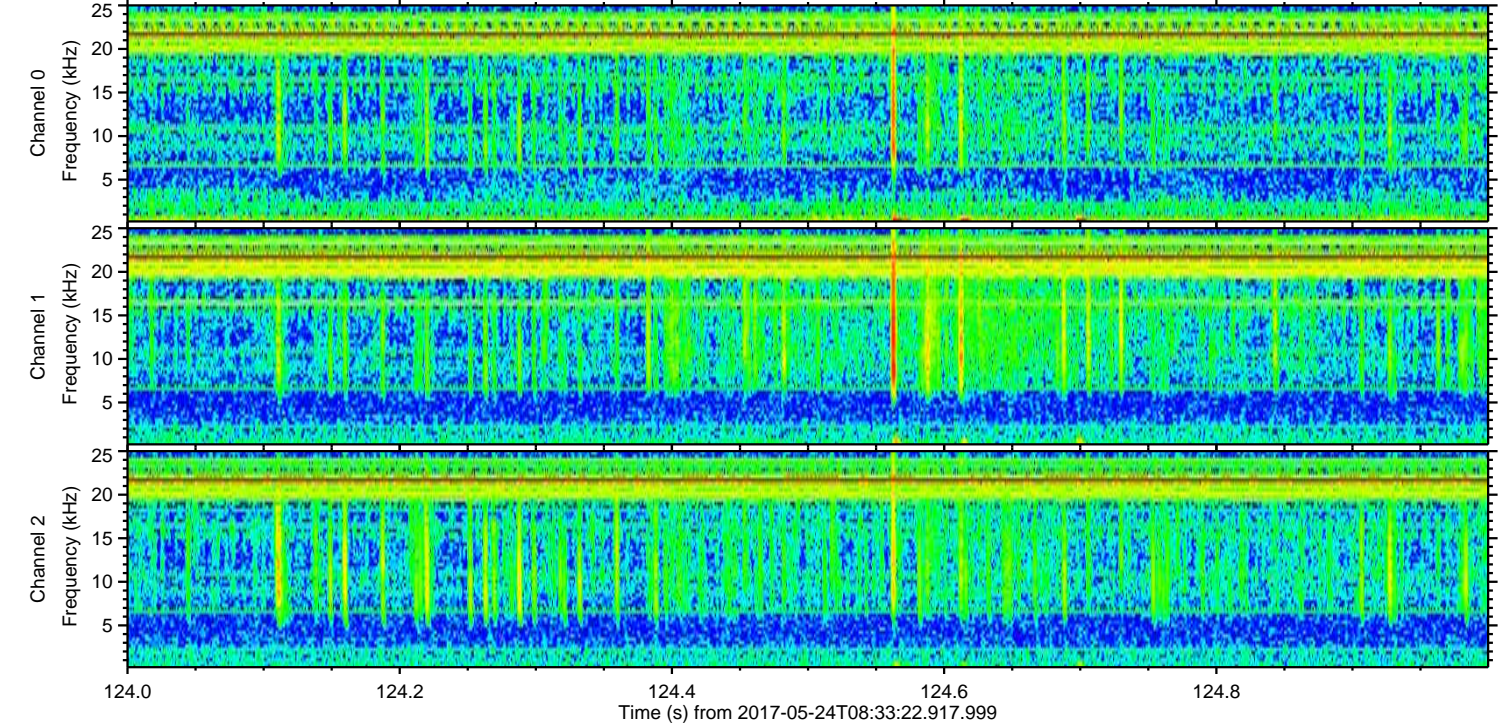
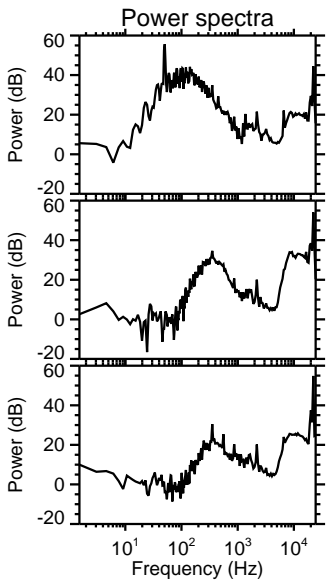
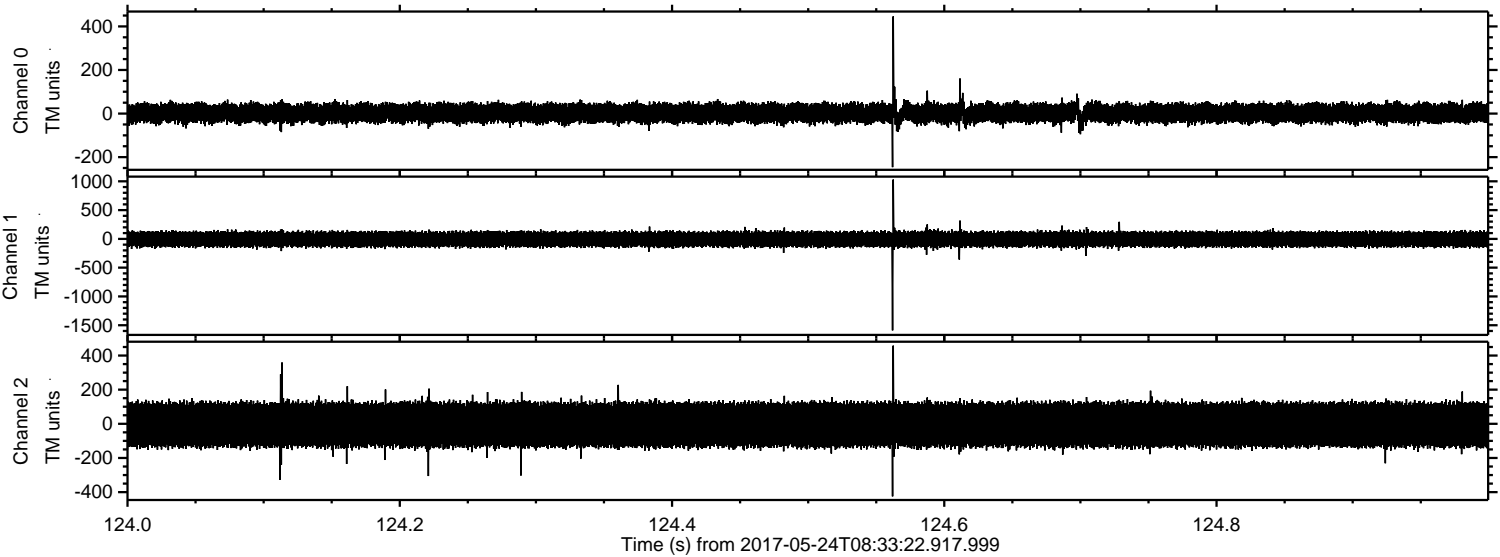
Processed Wed May 24 10:41:44 2017 by ELM ver.2012-10-06 from 001\_\_elm20170524\_083321\_\_dat00.bin





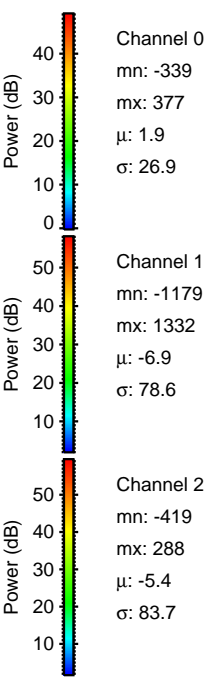
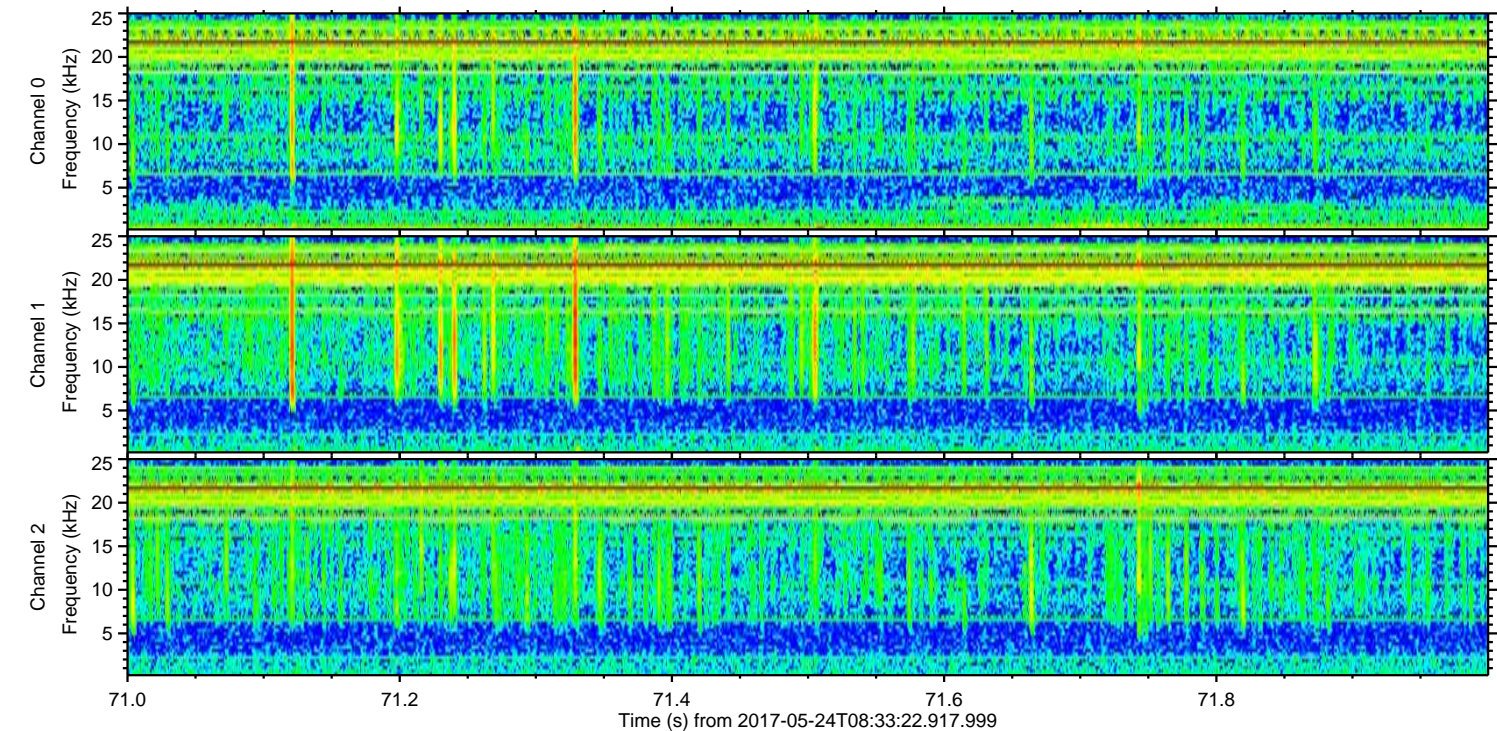
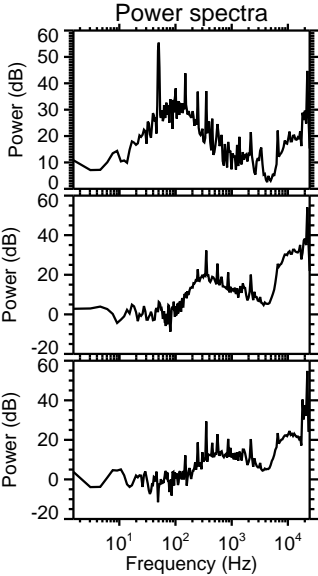
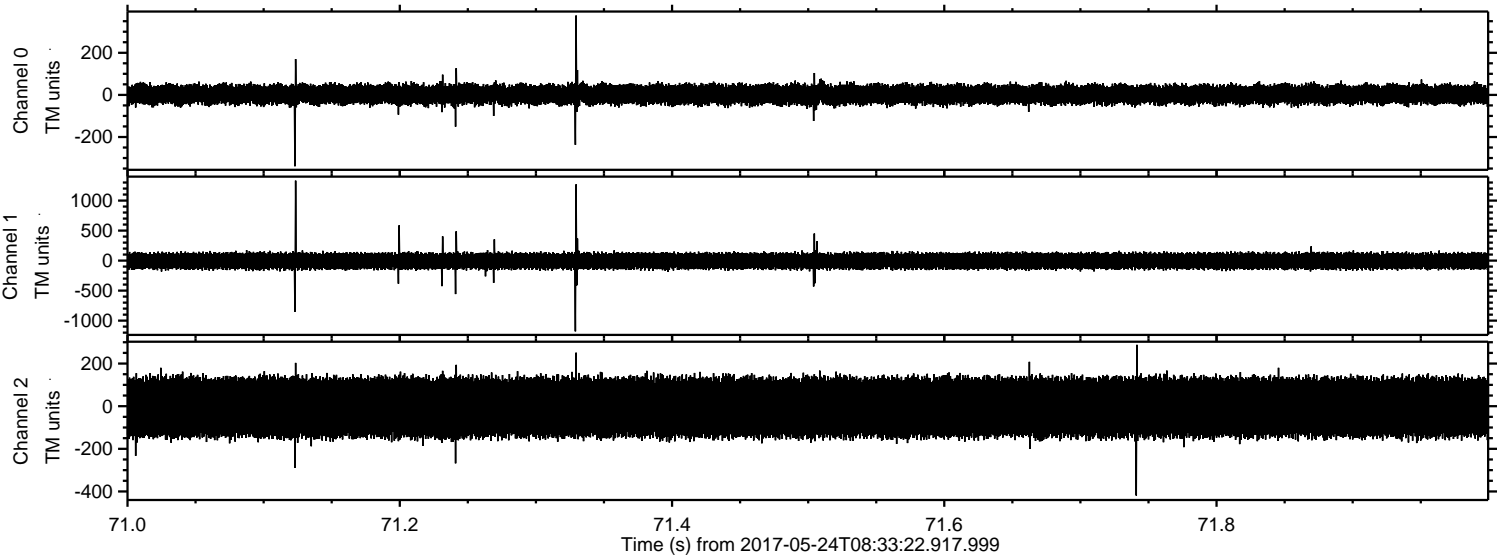
ELMAVAN 3D WAVEFORMS (Measured data sampled at 50 kHz) 51000 packets of 144 samples from 2017-05-24T08:33:22.917.999. Part 125/147

Processed Wed May 24 10:41:46 2017 by ELM ver.2012-10-06 from 001\_\_elm20170524\_083321\_\_dat00.bin





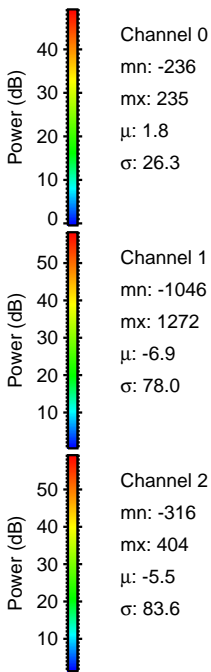
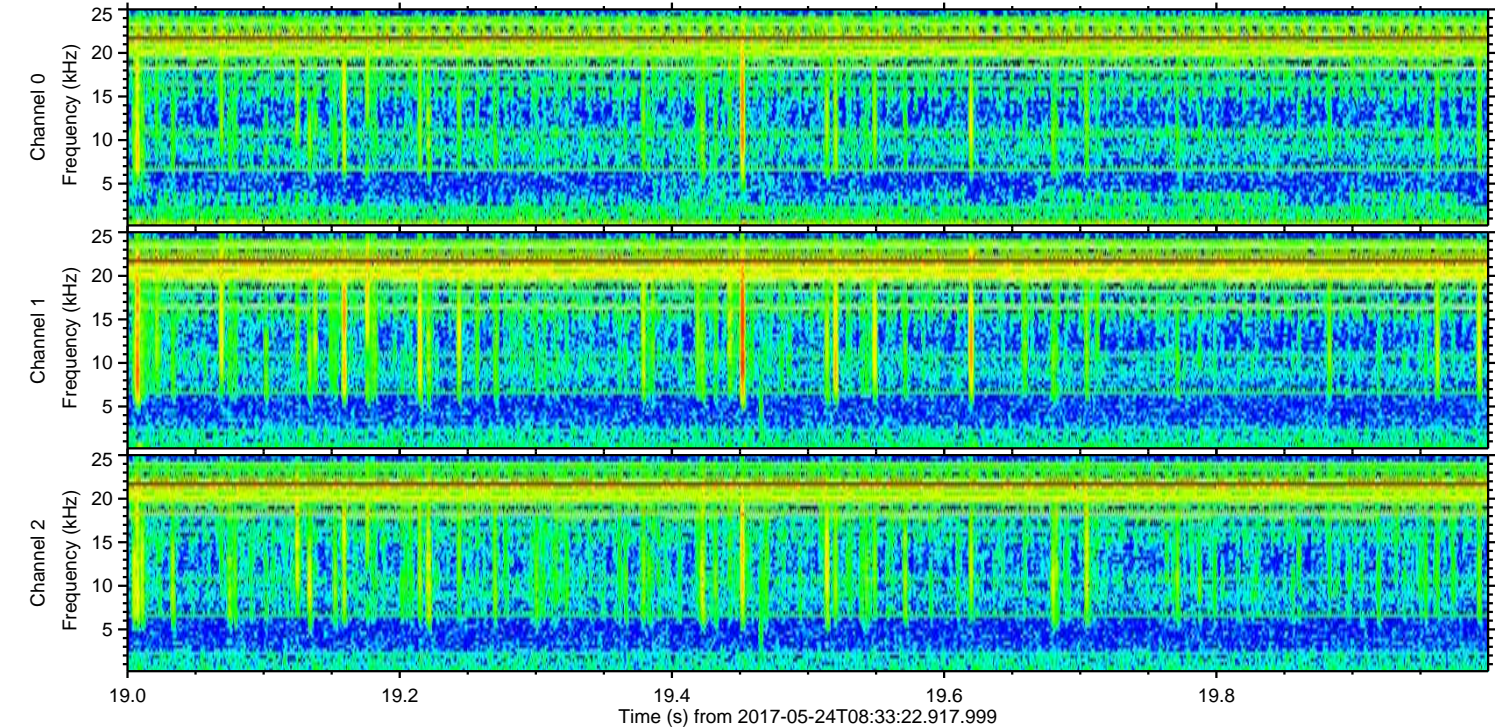
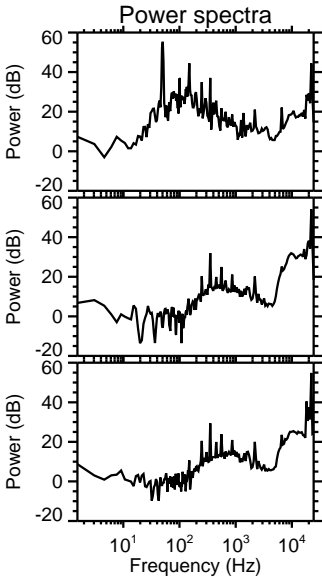
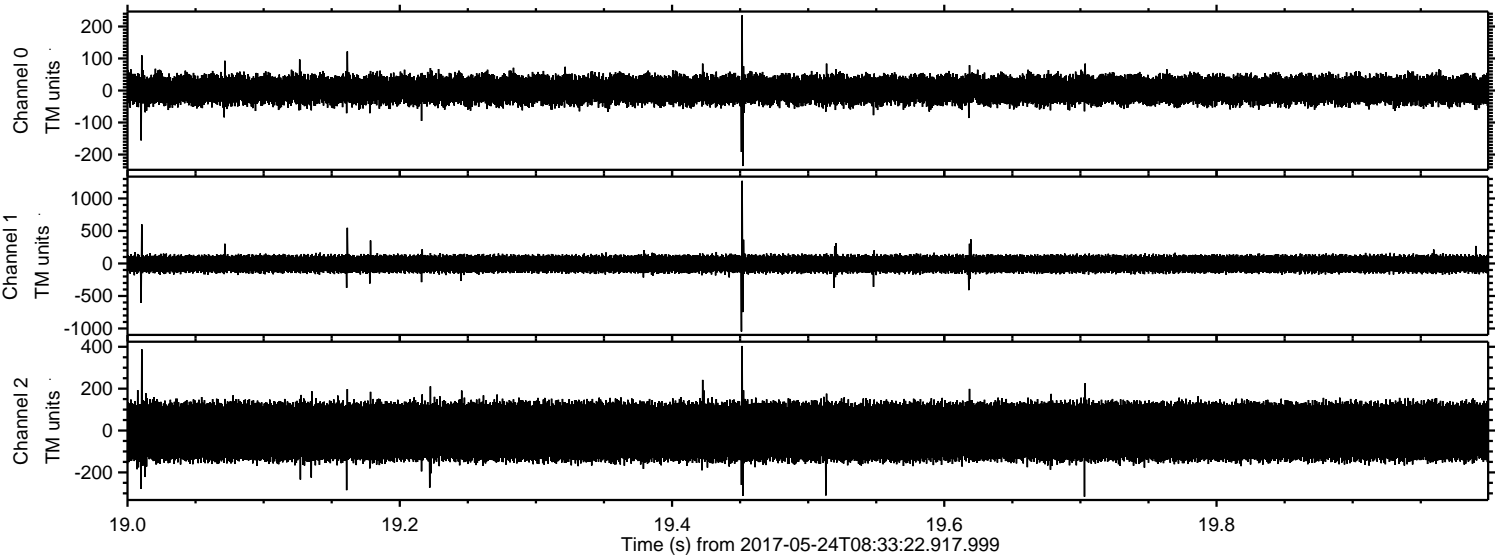
Processed Wed May 24 10:41:46 2017 by ELM ver.2012-10-06 from 001\_\_elm20170524\_083321\_\_dat00.bin





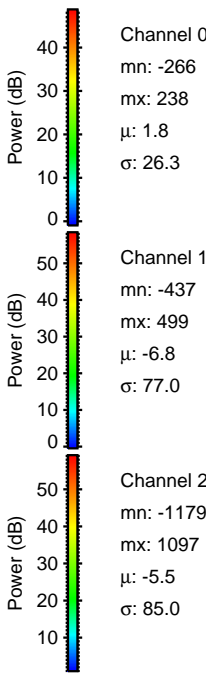
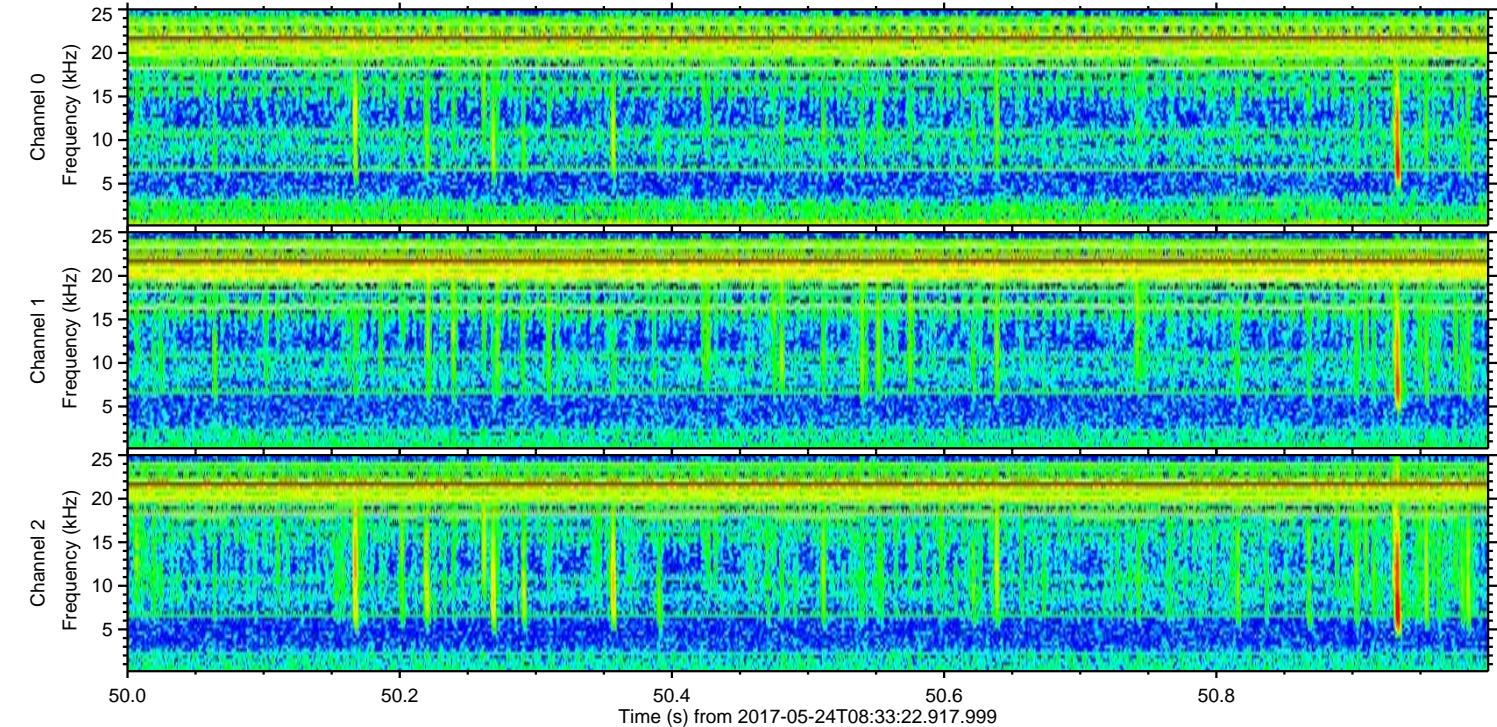
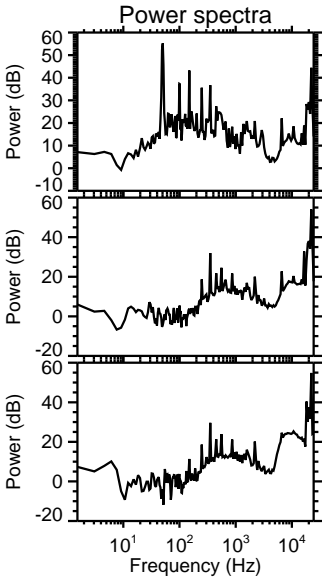
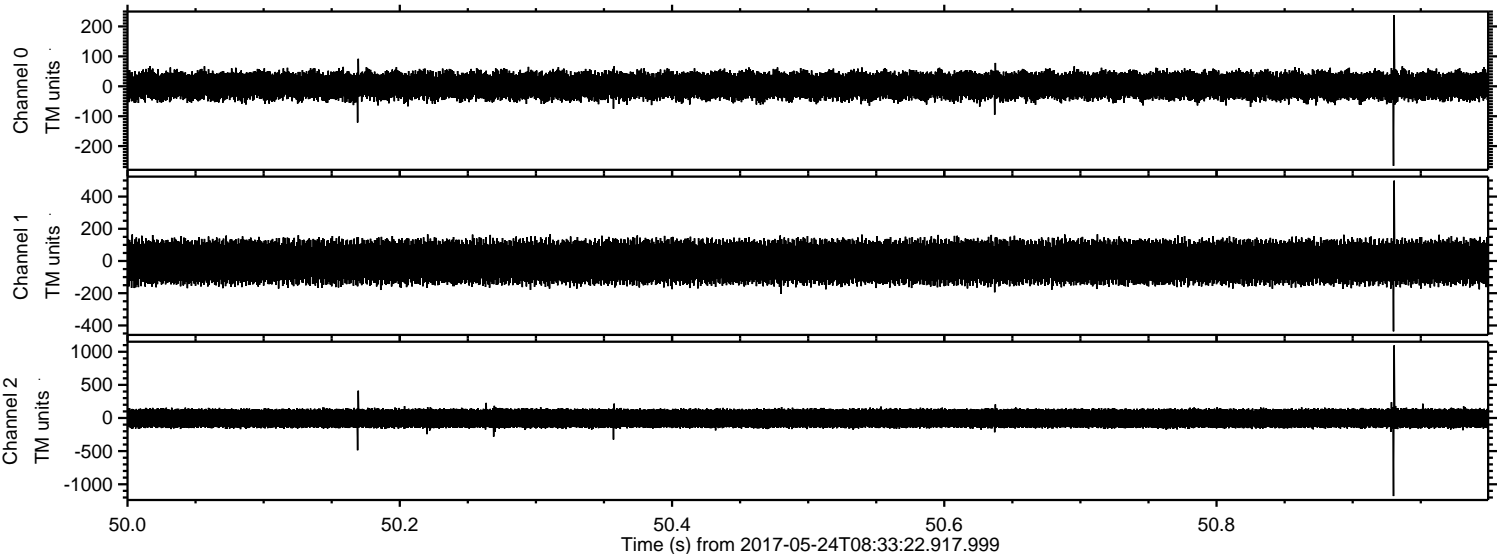
ELMAVAN 3D WAVEFORMS (Measured data sampled at 50 kHz) 51000 packets of 144 samples from 2017-05-24T08:33:22.917.999. Part 20/147

Processed Wed May 24 10:41:47 2017 by ELM ver.2012-10-06 from 001\_\_elm20170524\_083321\_\_dat00.bin





Processed Wed May 24 10:41:48 2017 by ELM ver.2012-10-06 from 001\_\_elm20170524\_083321\_\_dat00.bin



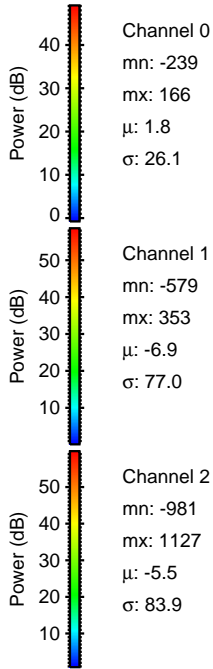
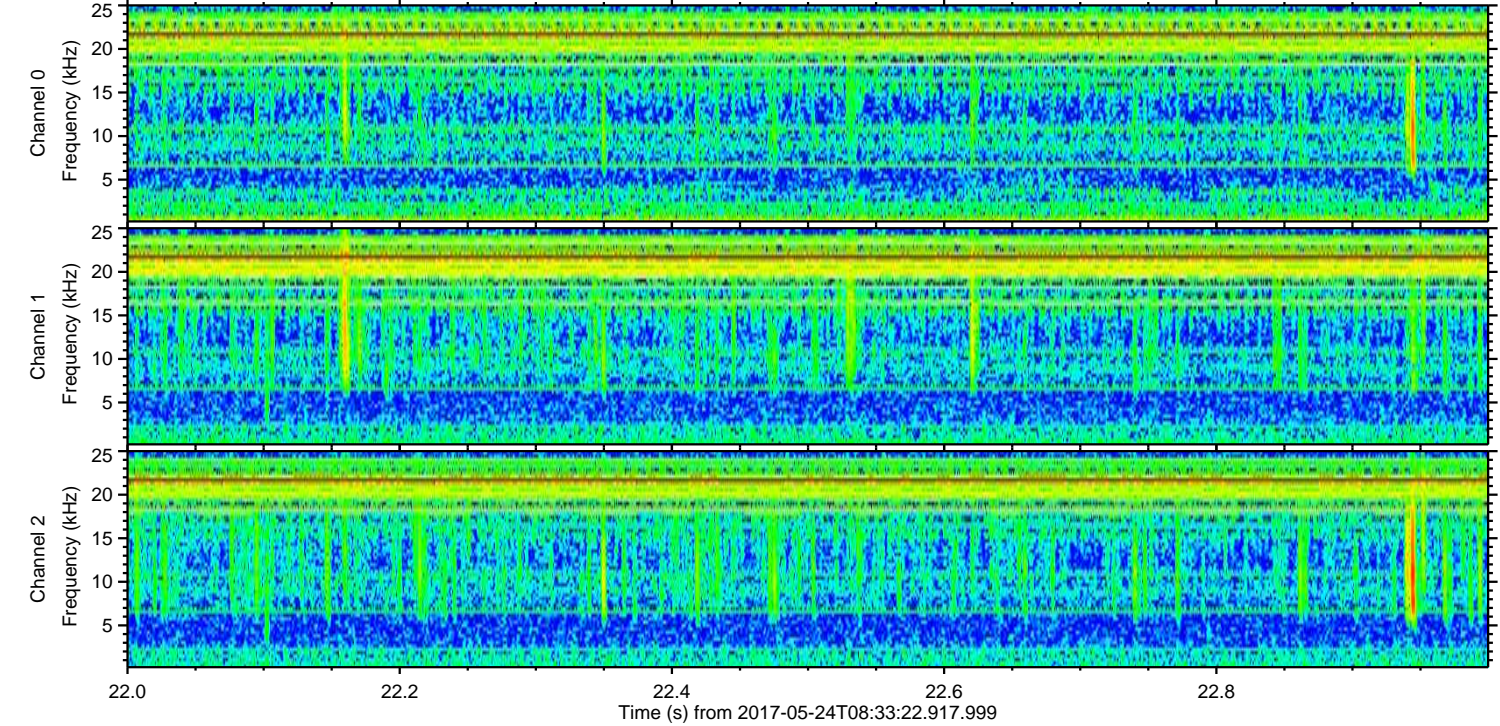
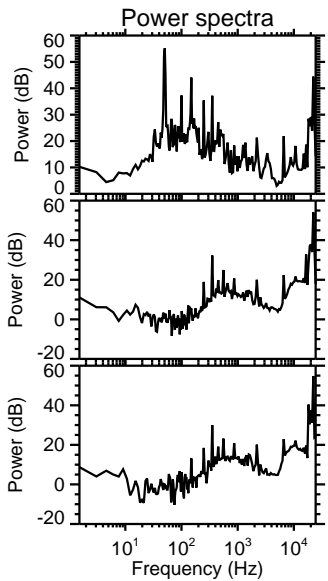
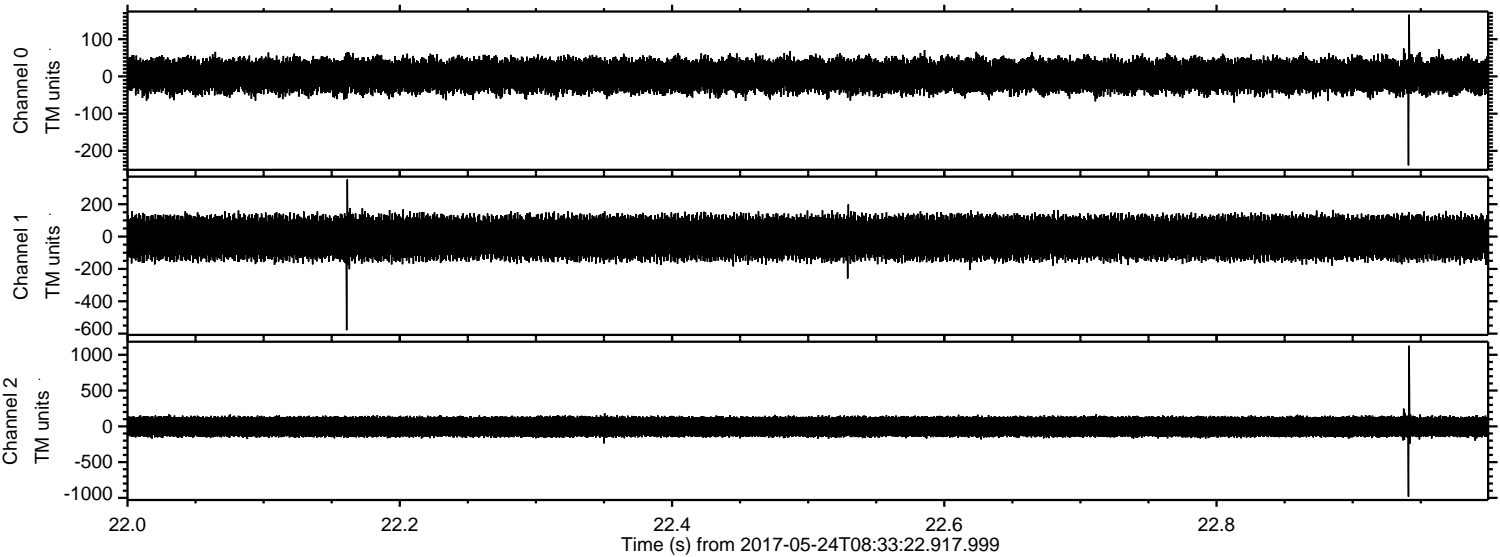
Channel 0  
mn: -266  
mx: 238  
 $\mu$ : 1.8  
 $\sigma$ : 26.3

Channel 1  
mn: -437  
mx: 499  
 $\mu$ : -6.8  
 $\sigma$ : 77.0

Channel 2  
mn: -1179  
mx: 1097  
 $\mu$ : -5.5  
 $\sigma$ : 85.0



Processed Wed May 24 10:41:49 2017 by ELM ver.2012-10-06 from 001\_\_elm20170524\_083321\_\_dat00.bin





Processed Wed May 24 10:41:49 2017 by ELM ver.2012-10-06 from 001\_\_elm20170524\_083321\_\_dat00.bin

