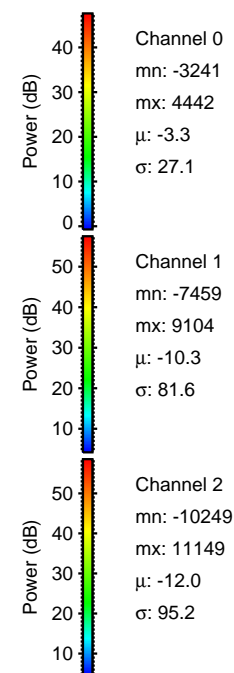
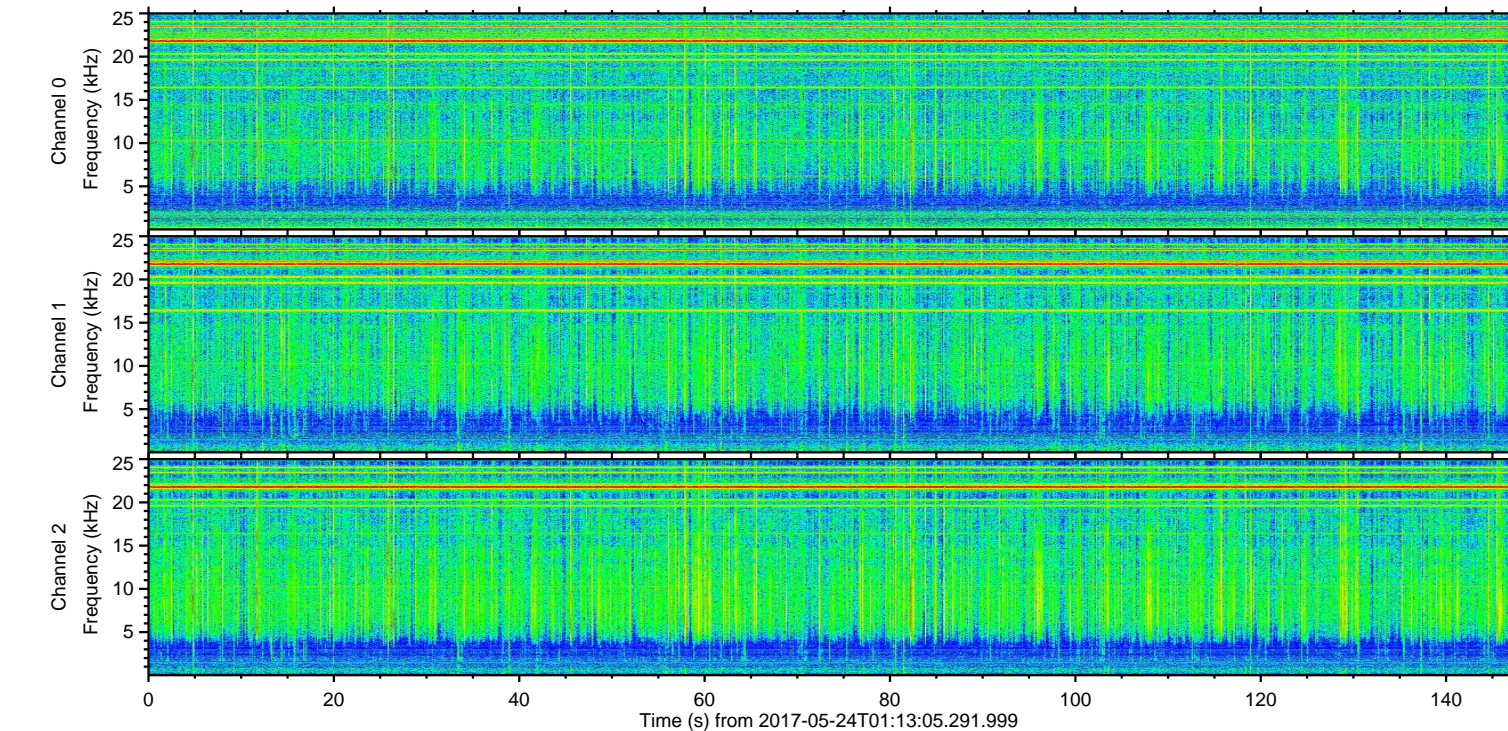
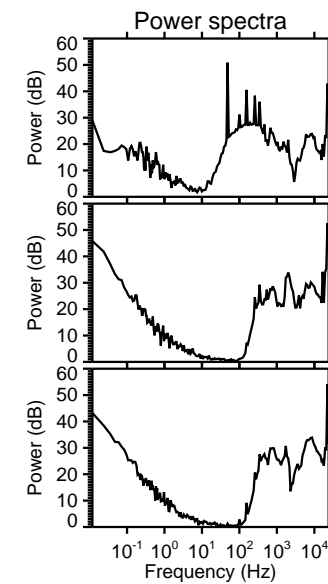
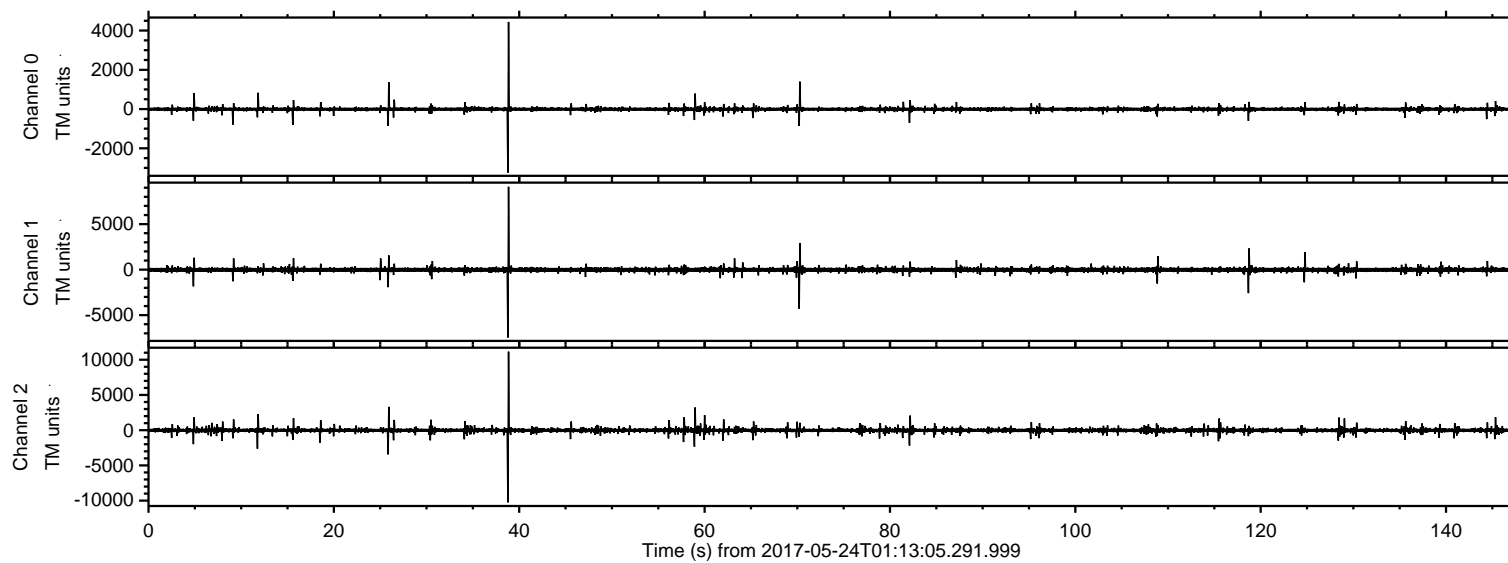
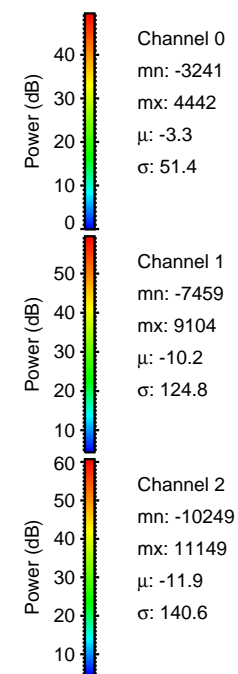
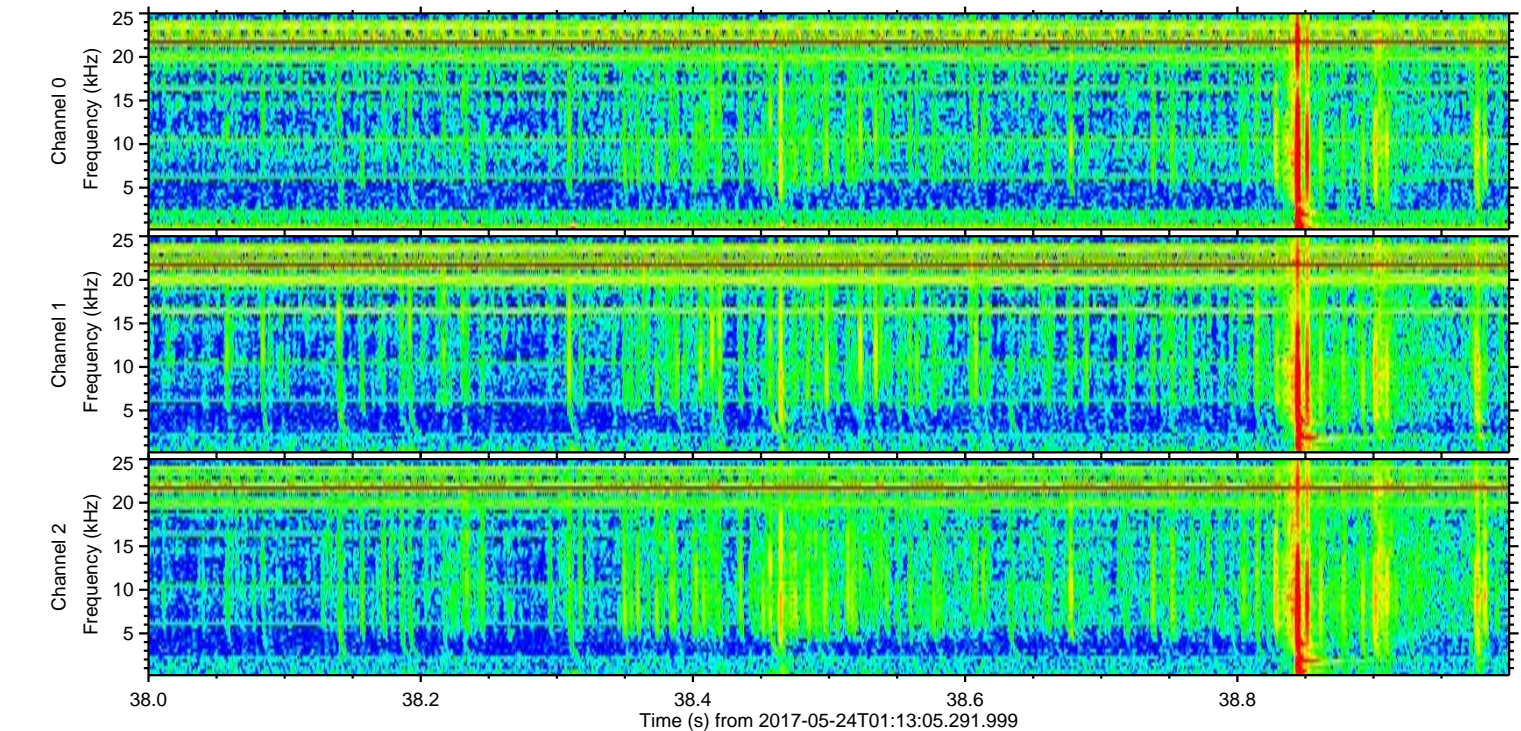
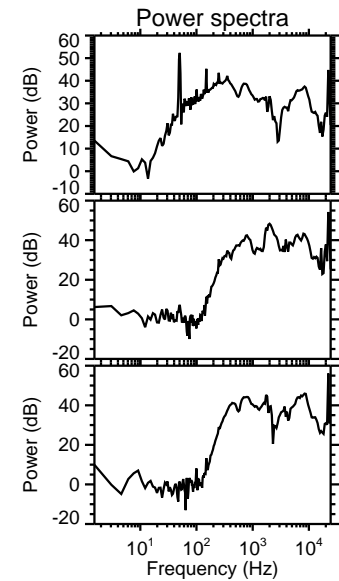
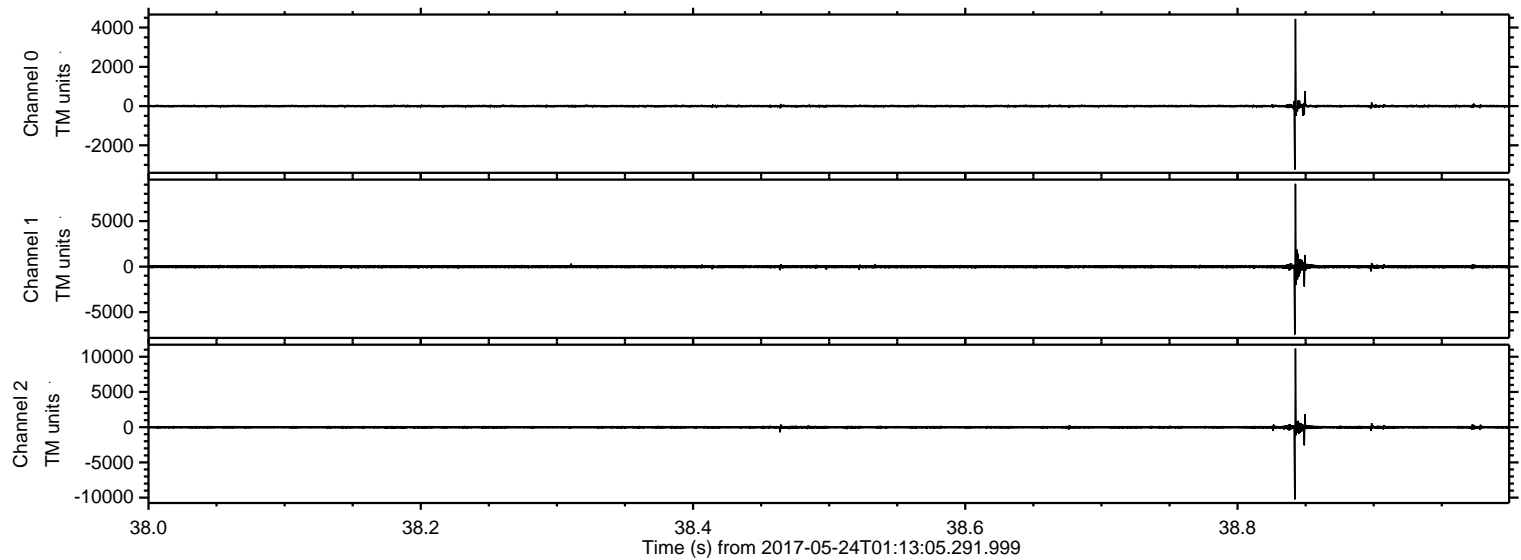


ELMAVAN 3D WAVEFORMS (Measured data sampled at 50 kHz) 51000 packets of 144 samples from 2017-05-24T01:13:05.291.999.

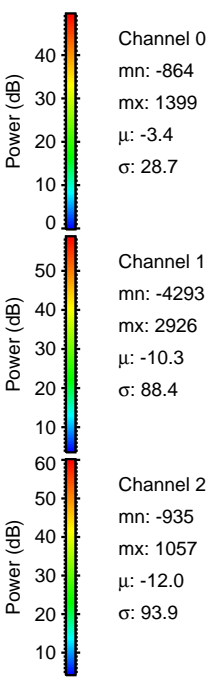
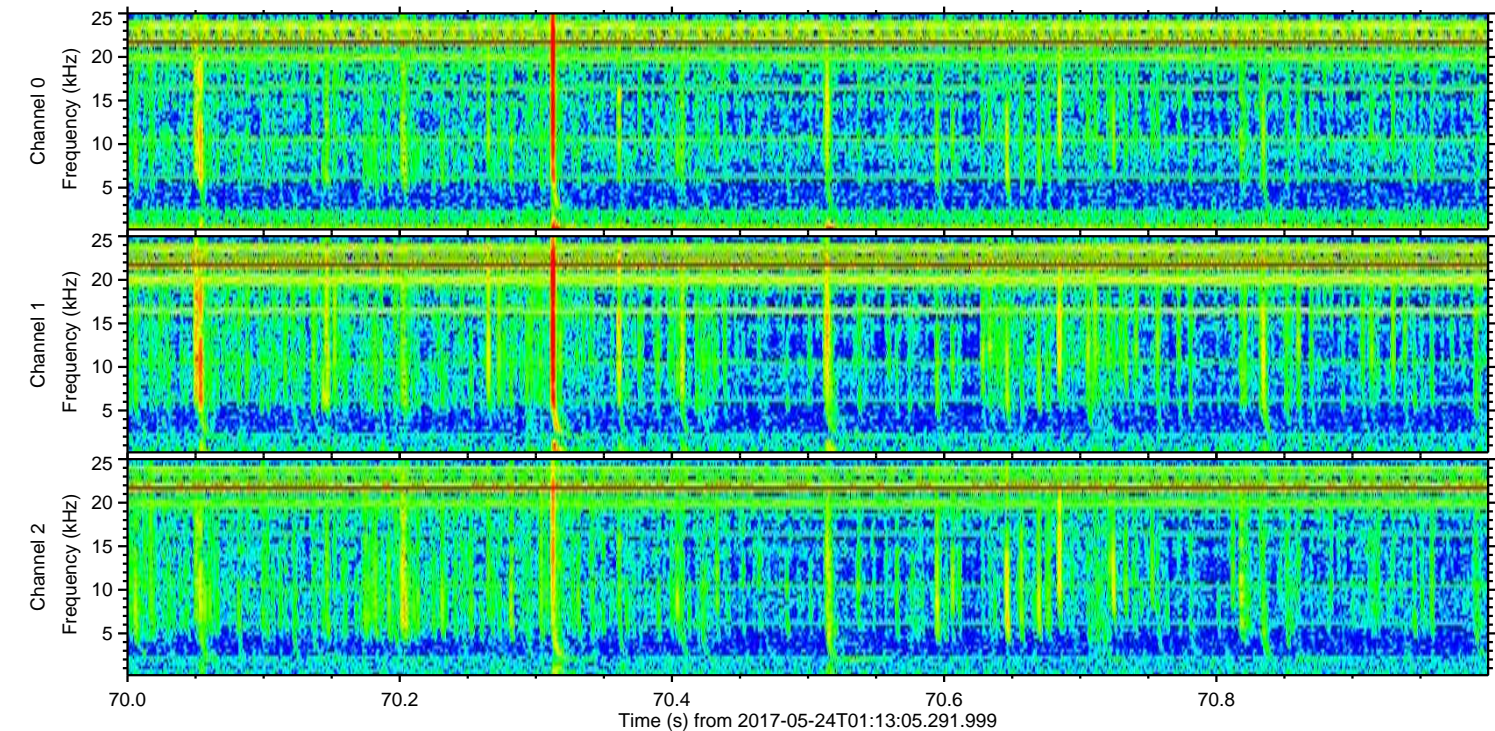
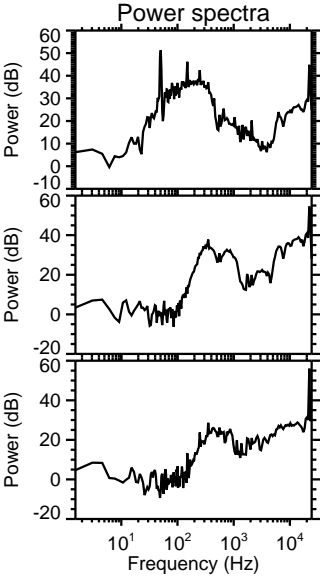
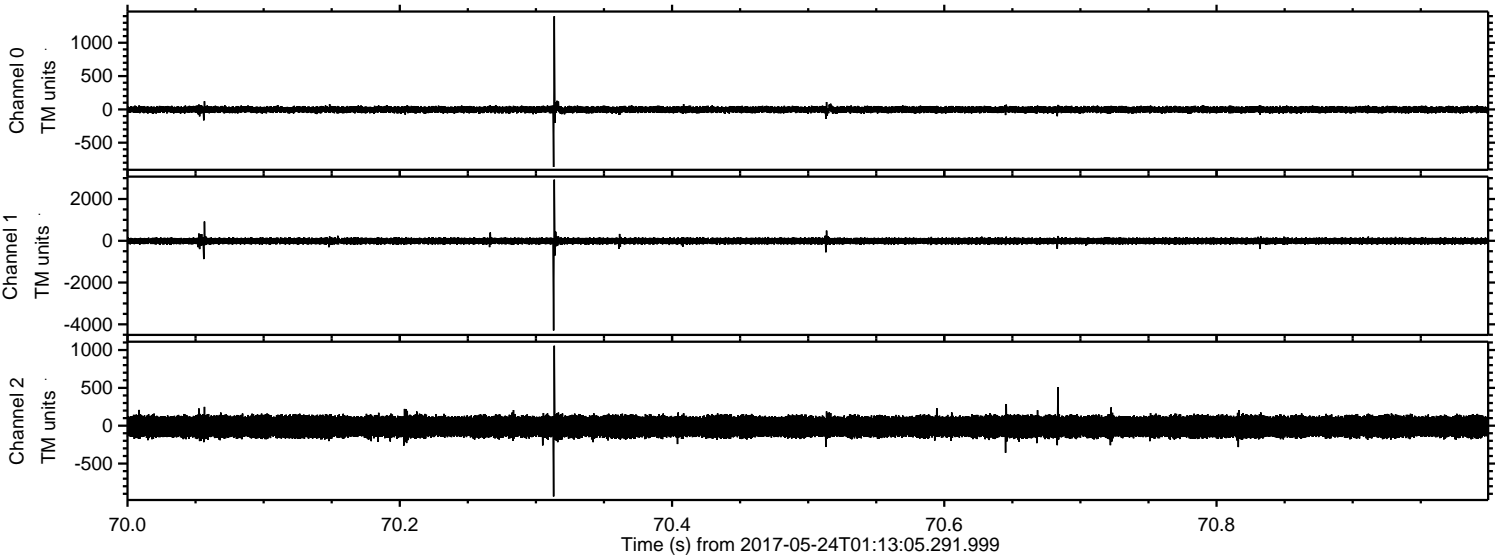
Processed Wed May 24 03:21:09 2017 by ELM ver.2012-10-06 from 001__elm20170524_011304__dat00.bin



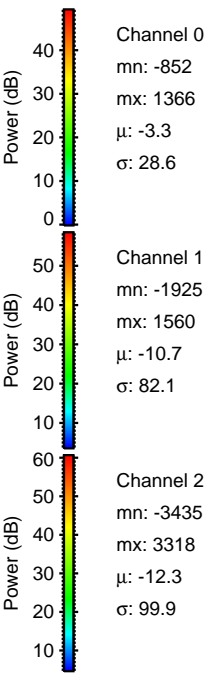
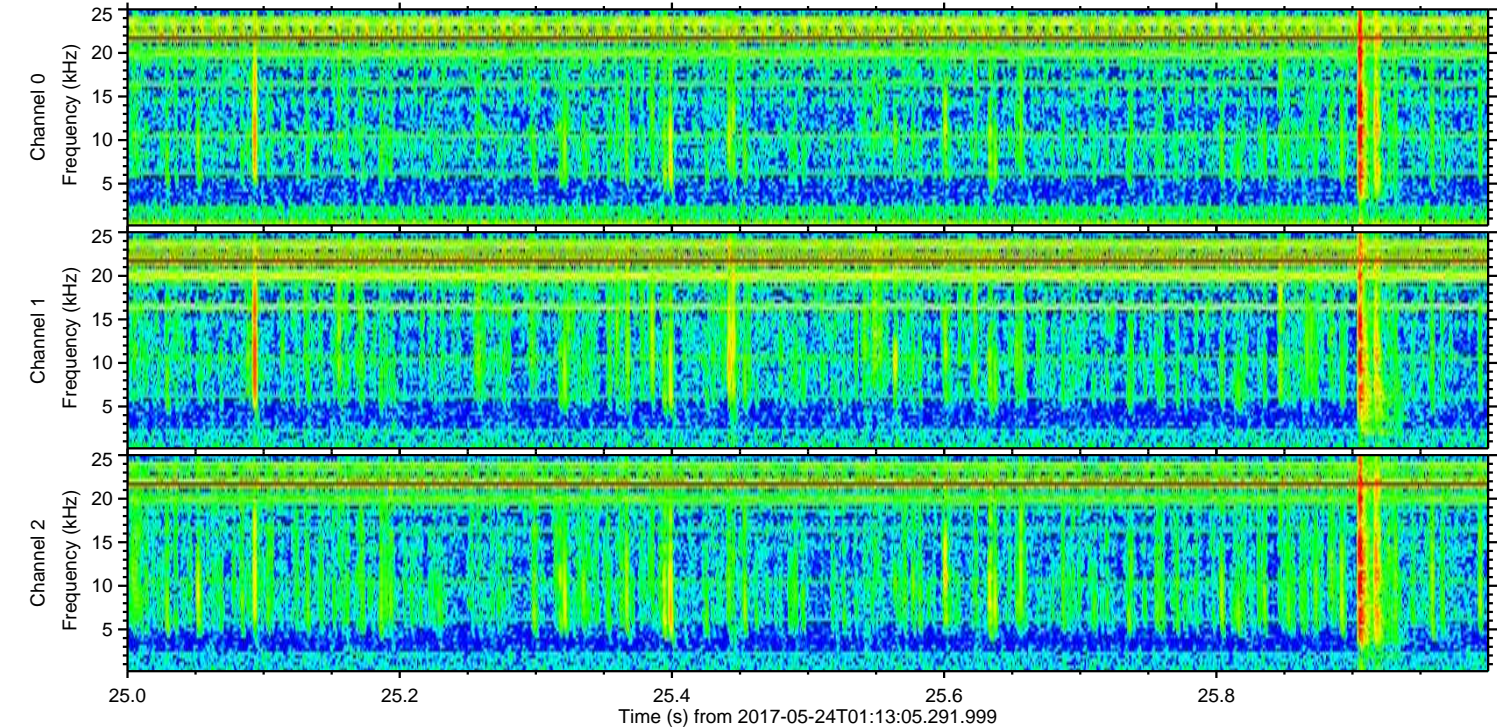
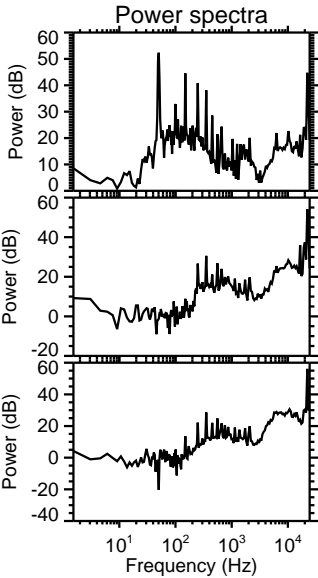
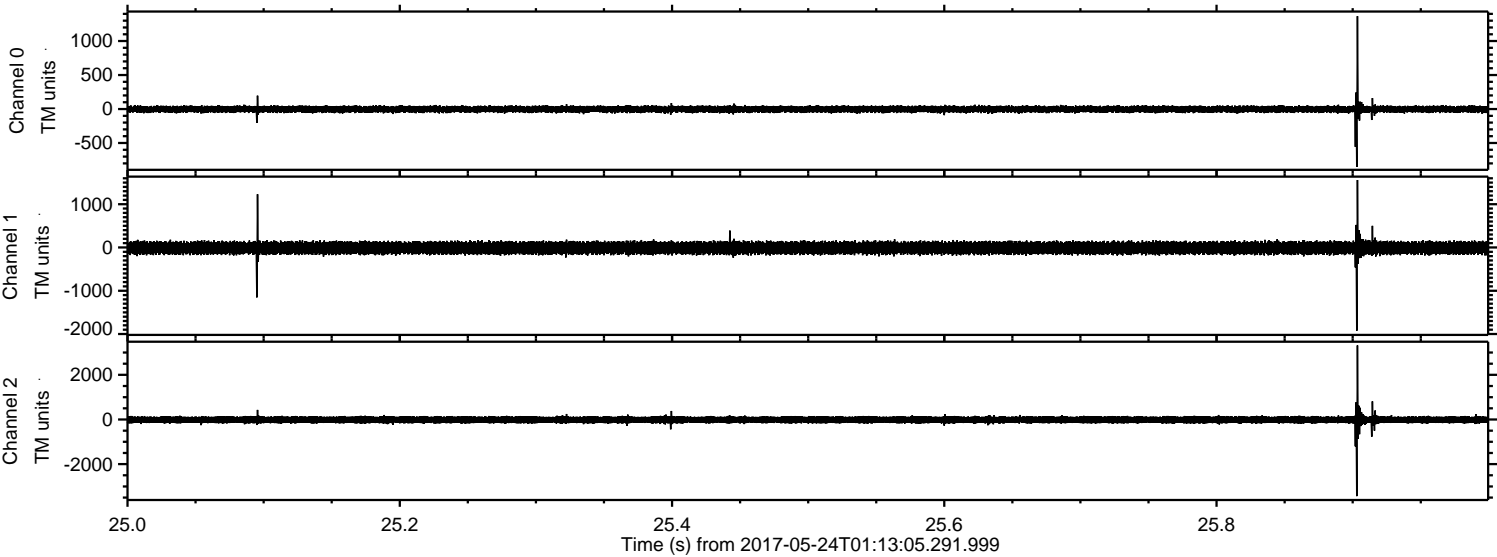
Processed Wed May 24 03:21:15 2017 by ELM ver.2012-10-06 from 001__elm20170524_011304__dat00.bin



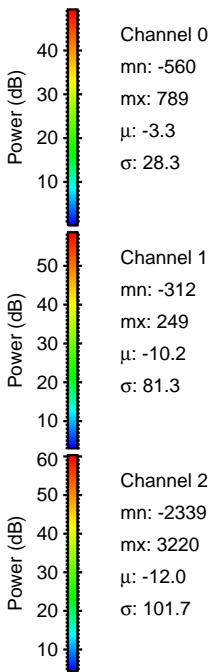
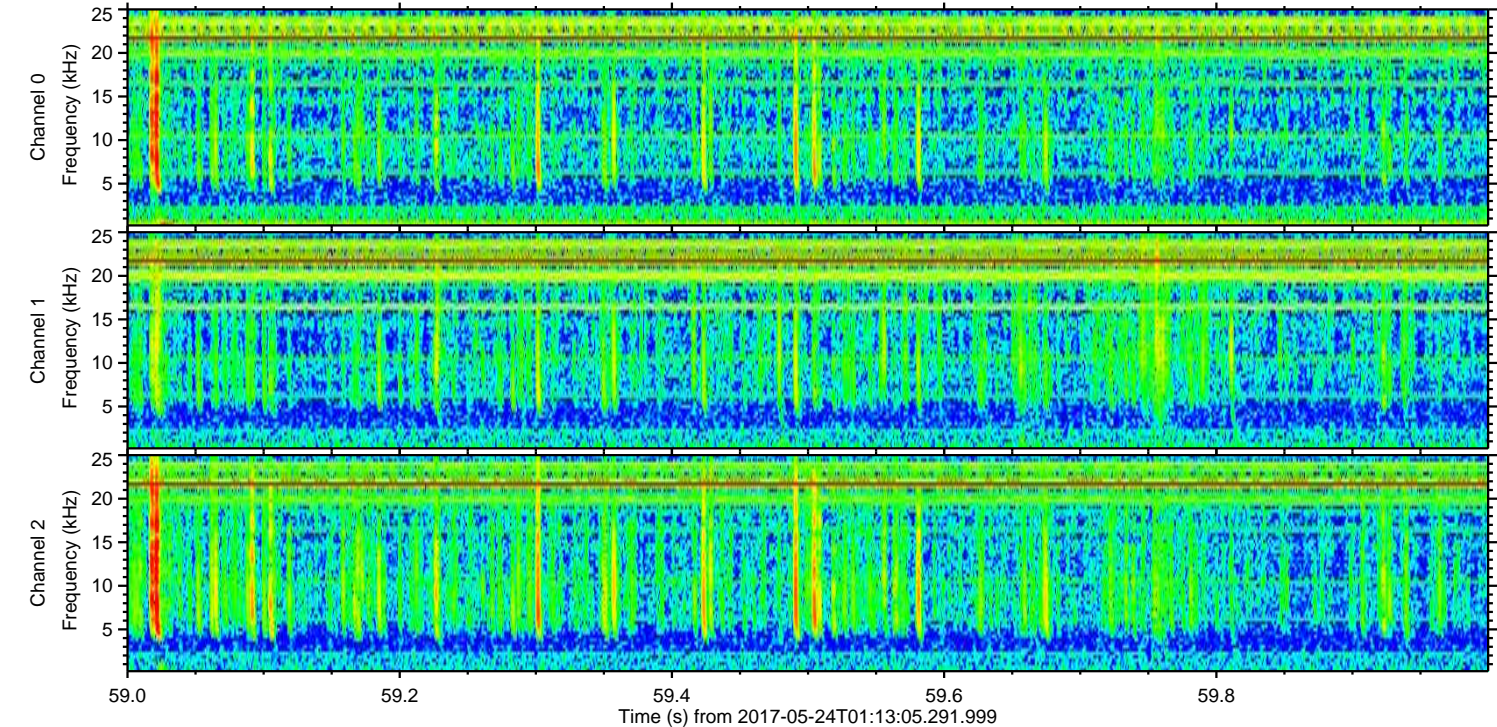
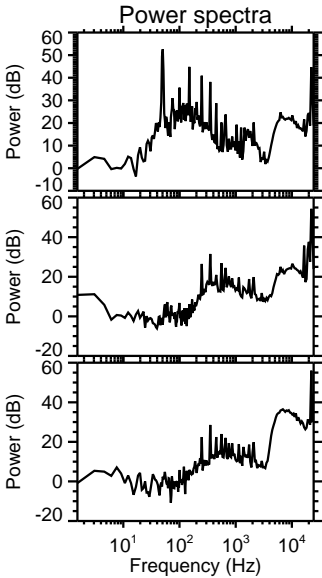
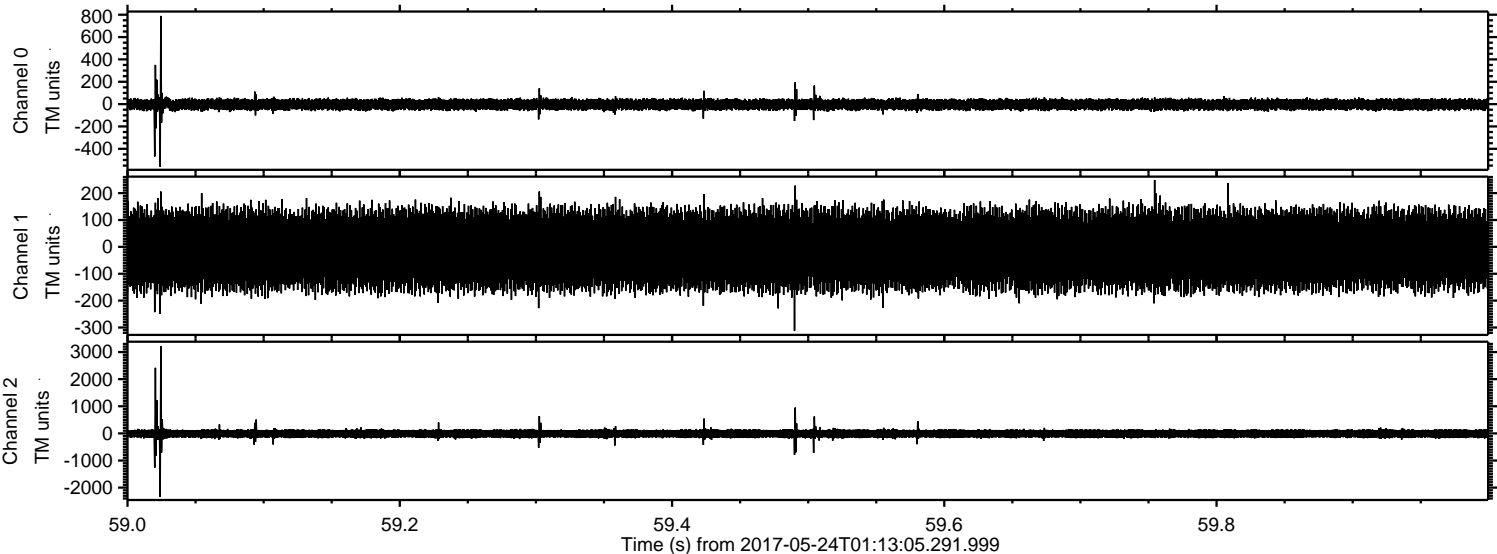
Processed Wed May 24 03:21:16 2017 by ELM ver.2012-10-06 from 001__elm20170524_011304__dat00.bin



Processed Wed May 24 03:21:16 2017 by ELM ver.2012-10-06 from 001__elm20170524_011304__dat00.bin

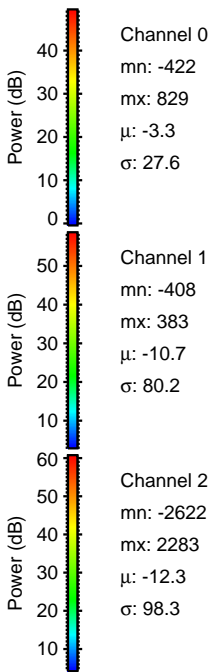
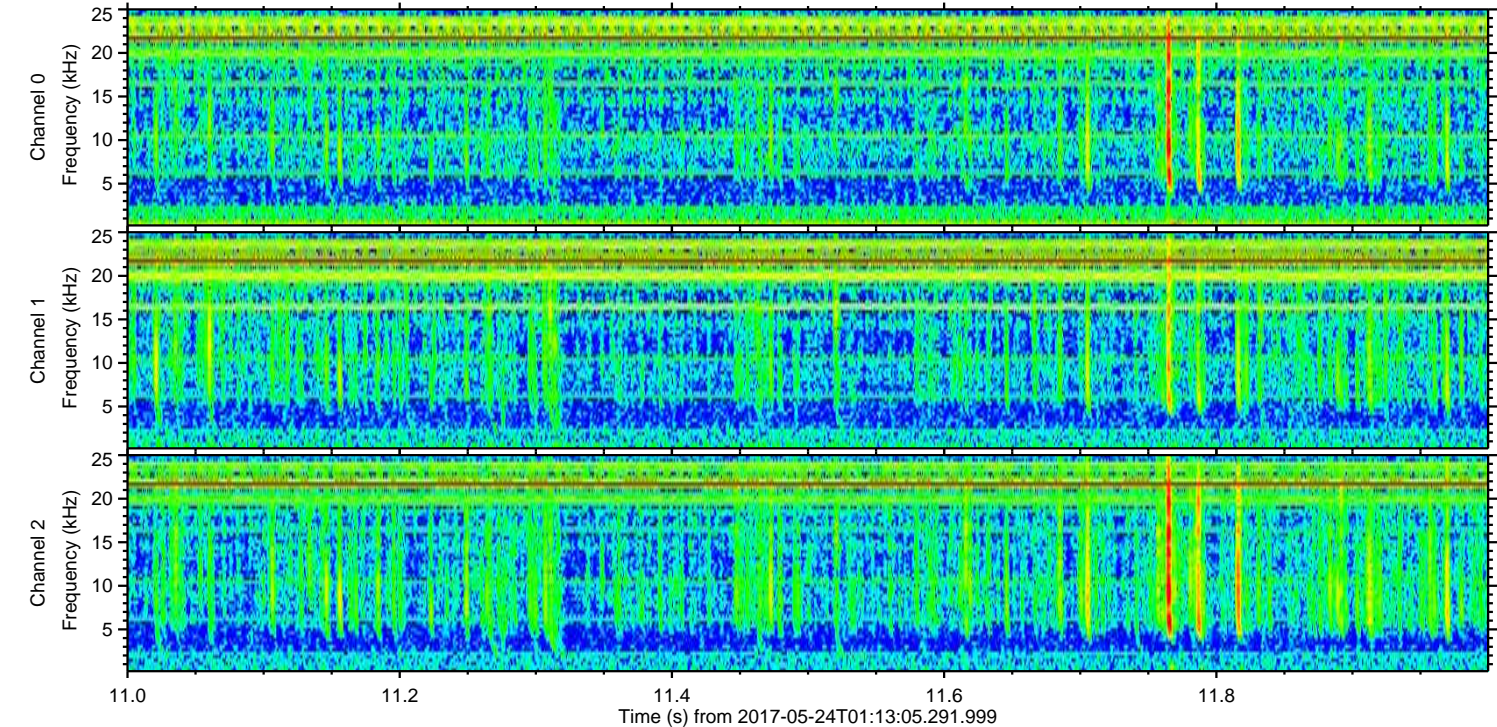
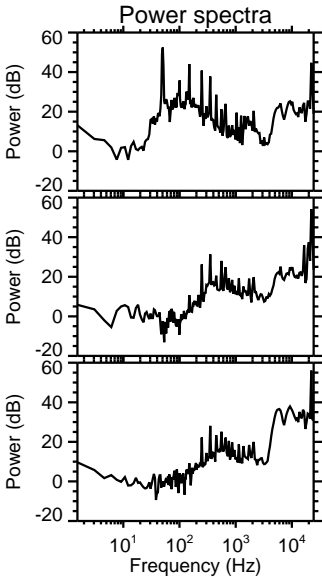
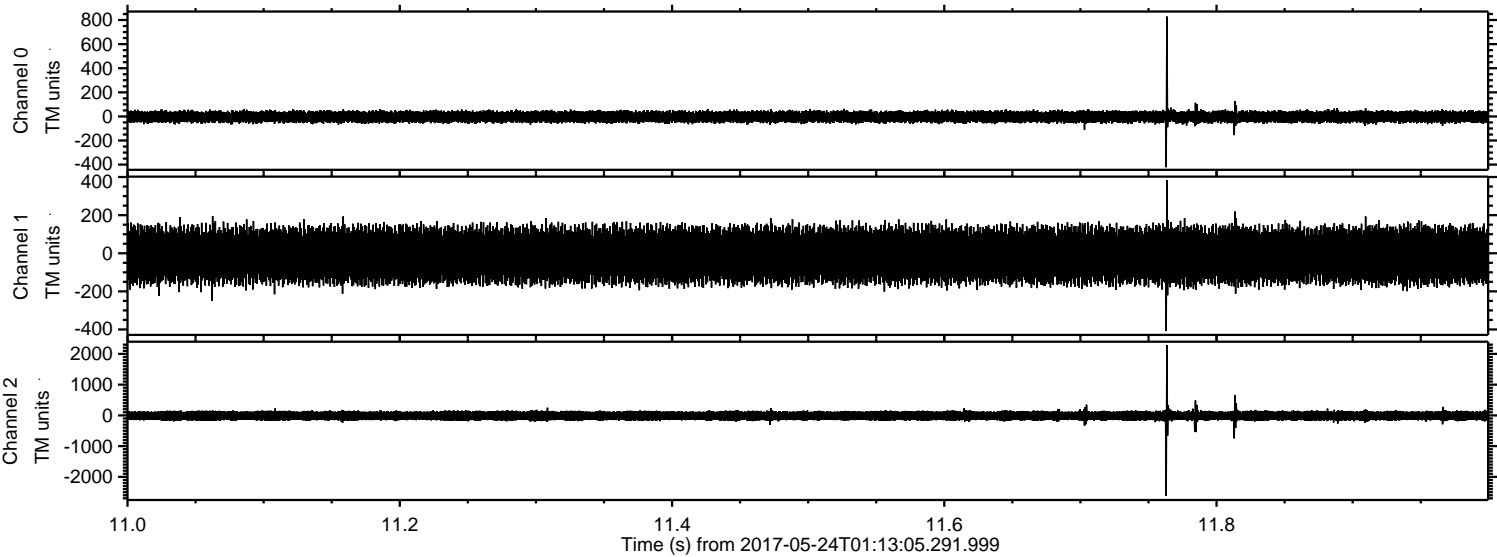


Processed Wed May 24 03:21:17 2017 by ELM ver.2012-10-06 from 001__elm20170524_011304__dat00.bin



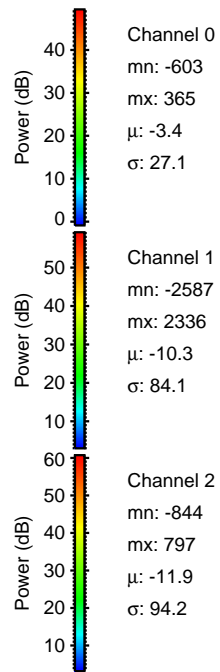
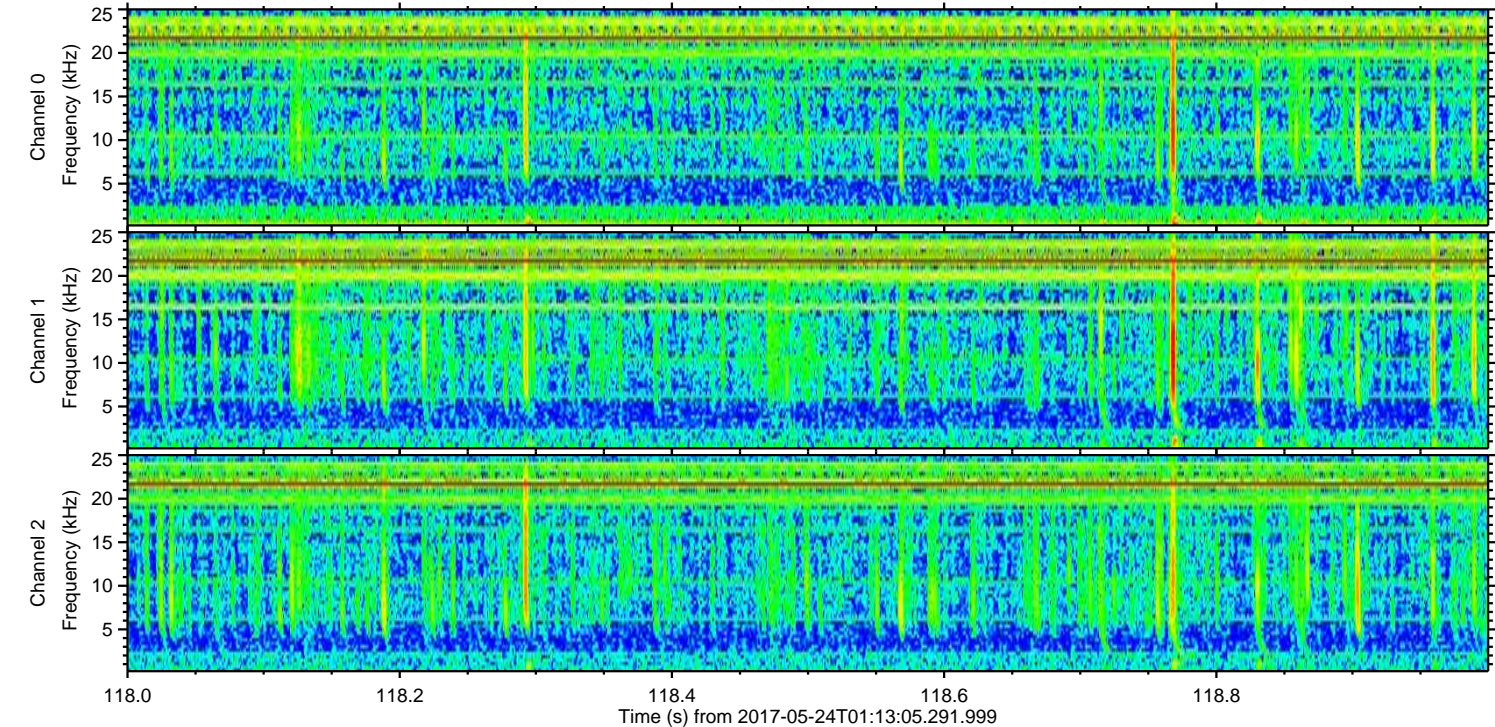
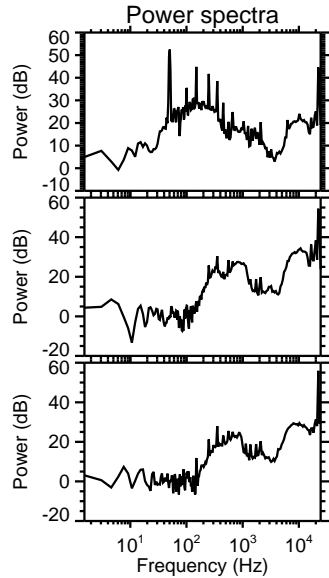
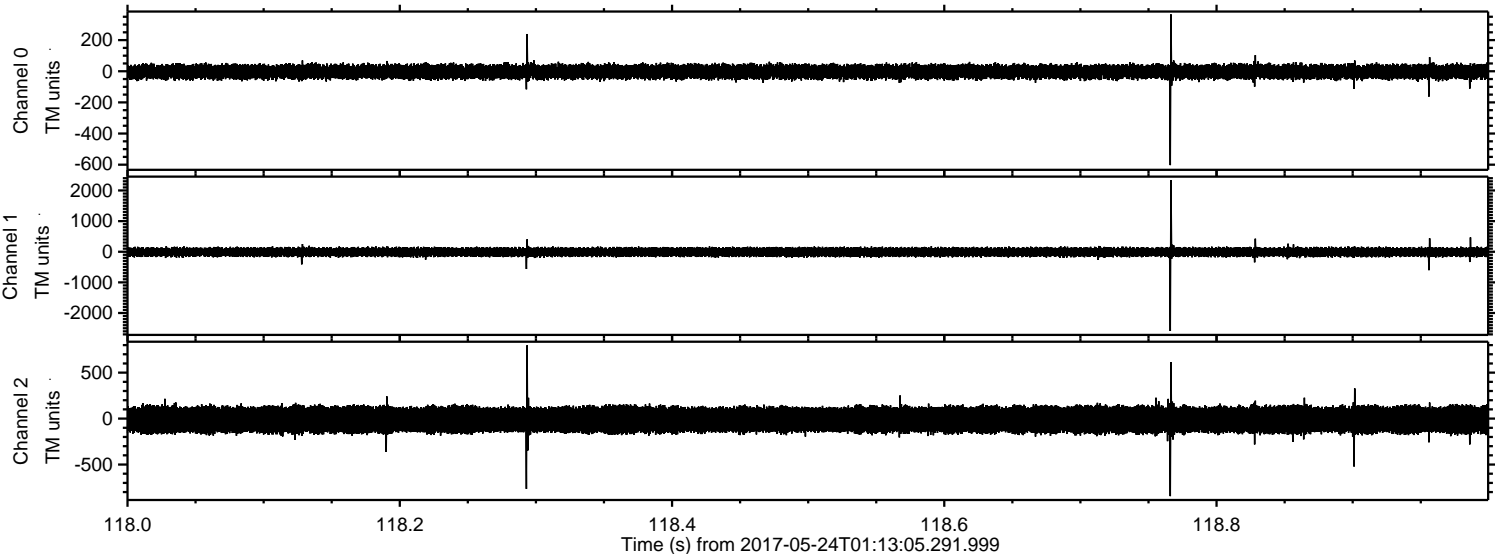
ELMAVAN 3D WAVEFORMS (Measured data sampled at 50 kHz) 51000 packets of 144 samples from 2017-05-24T01:13:05.291.999. Part 12/147

Processed Wed May 24 03:21:18 2017 by ELM ver.2012-10-06 from 001__elm20170524_011304__dat00.bin

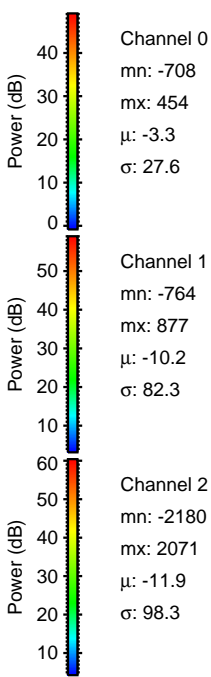
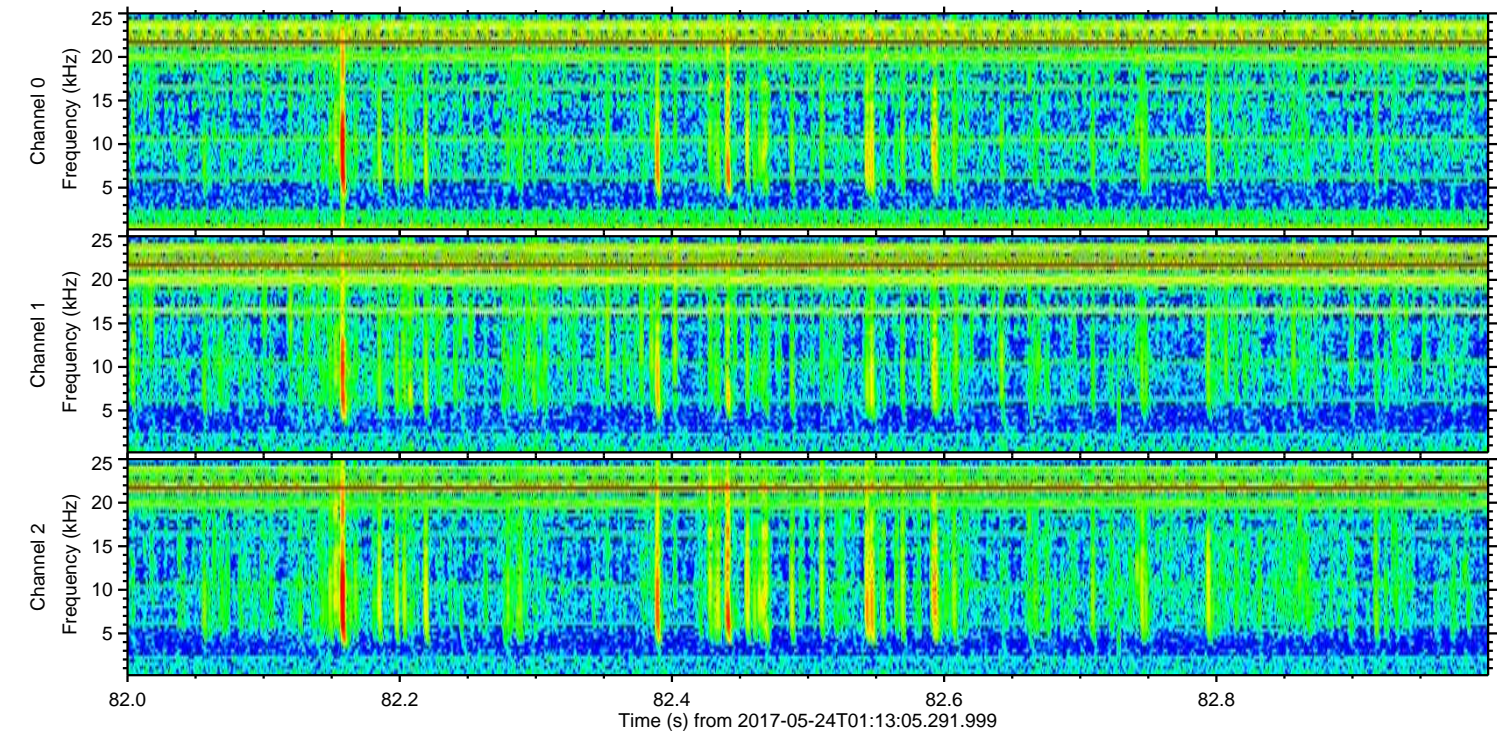
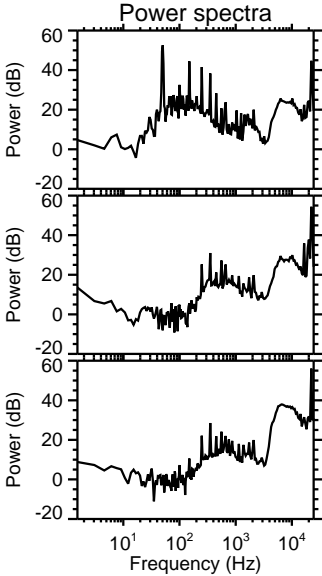
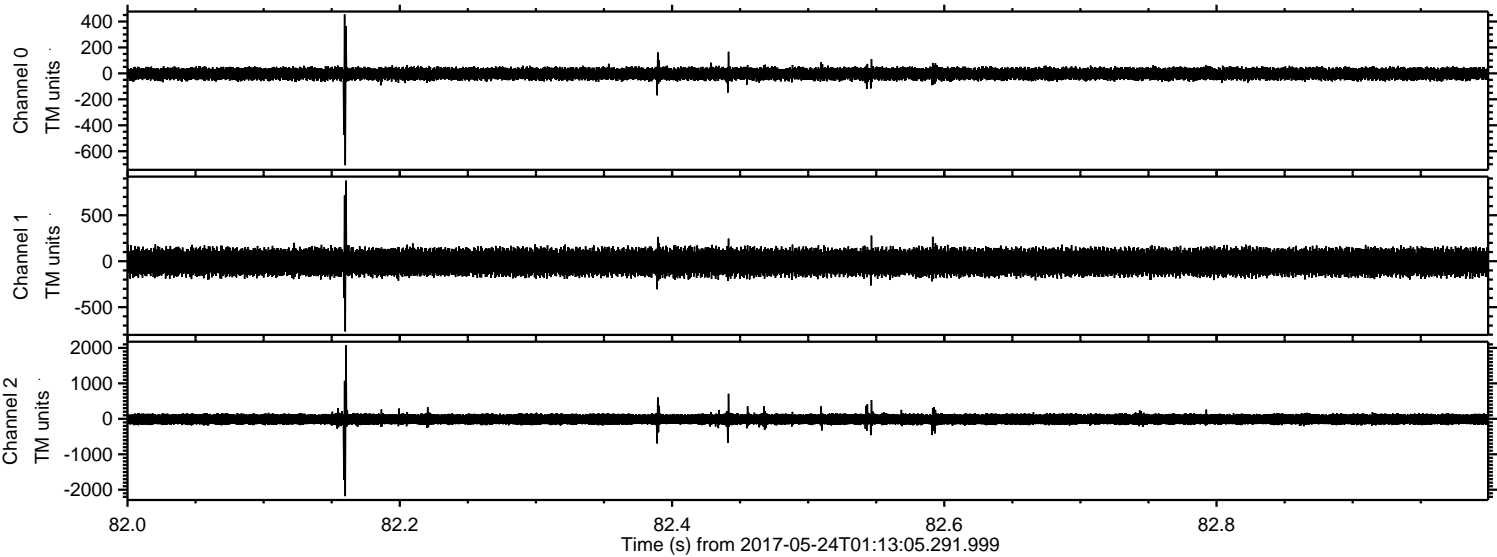


ELMAVAN 3D WAVEFORMS (Measured data sampled at 50 kHz) 51000 packets of 144 samples from 2017-05-24T01:13:05.291.999. Part 119/147

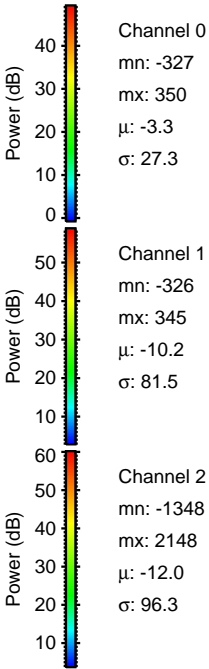
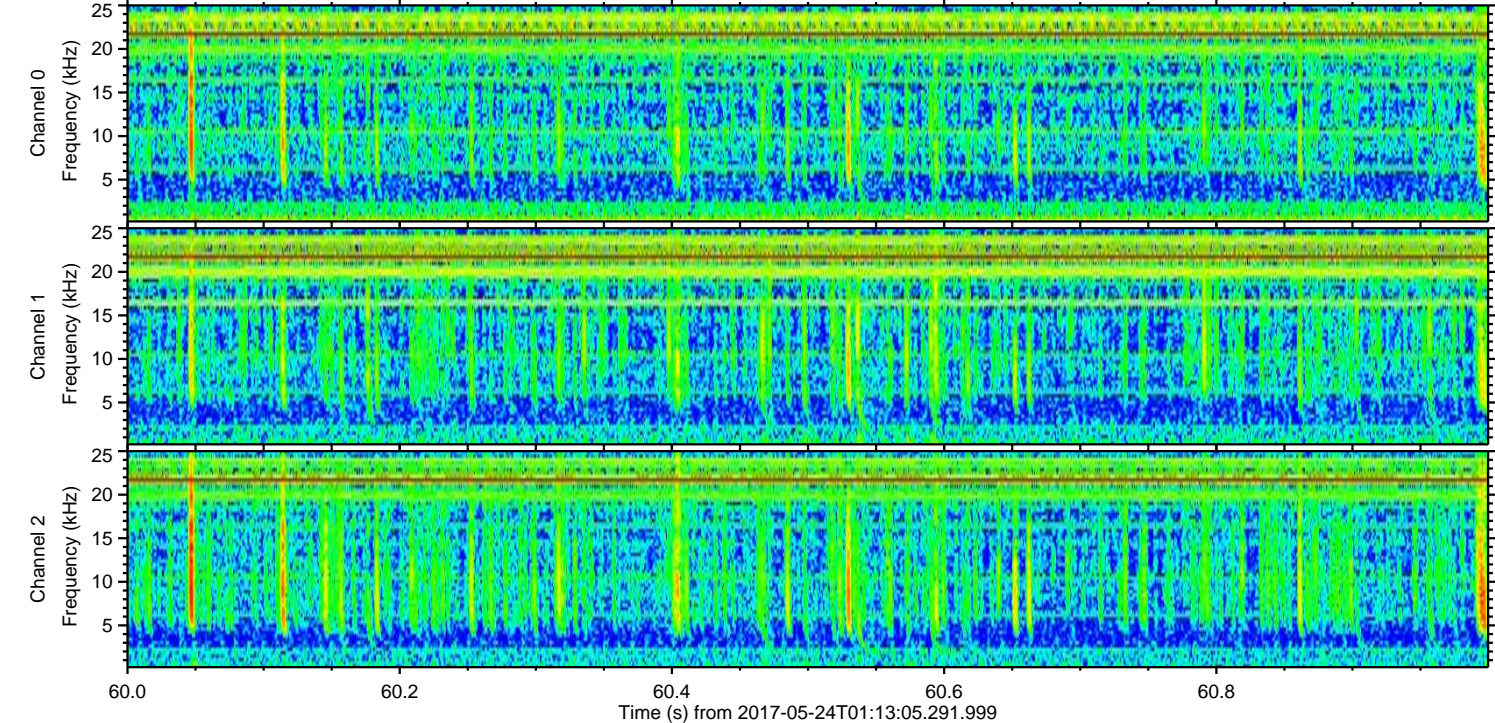
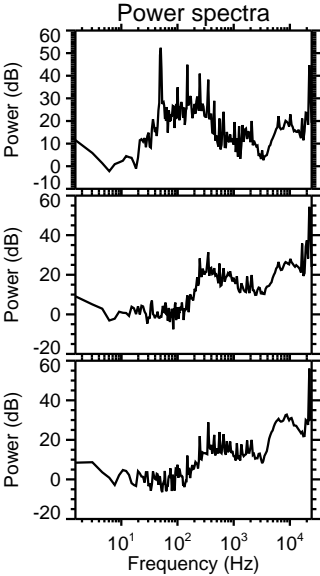
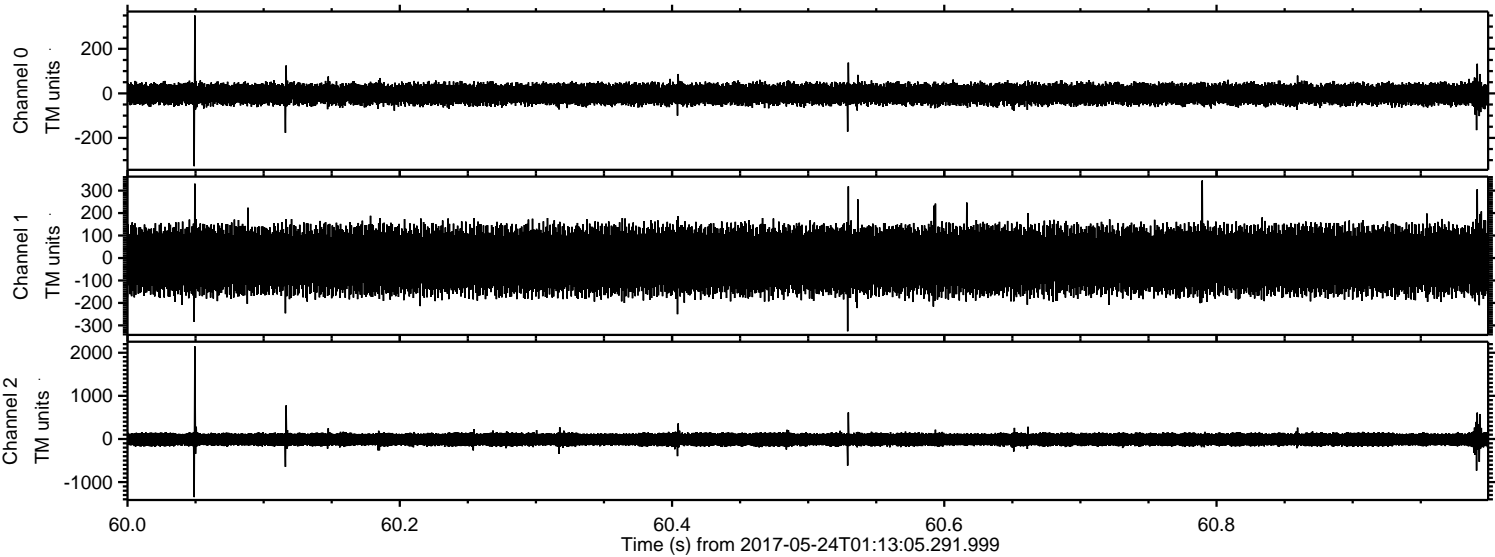
Processed Wed May 24 03:21:18 2017 by ELM ver.2012-10-06 from 001__elm20170524_011304__dat00.bin



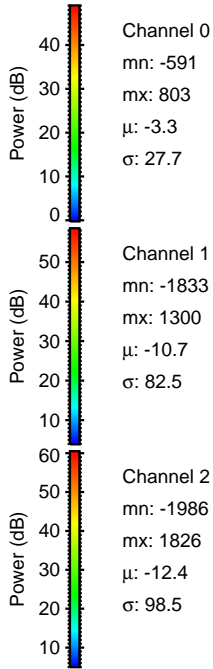
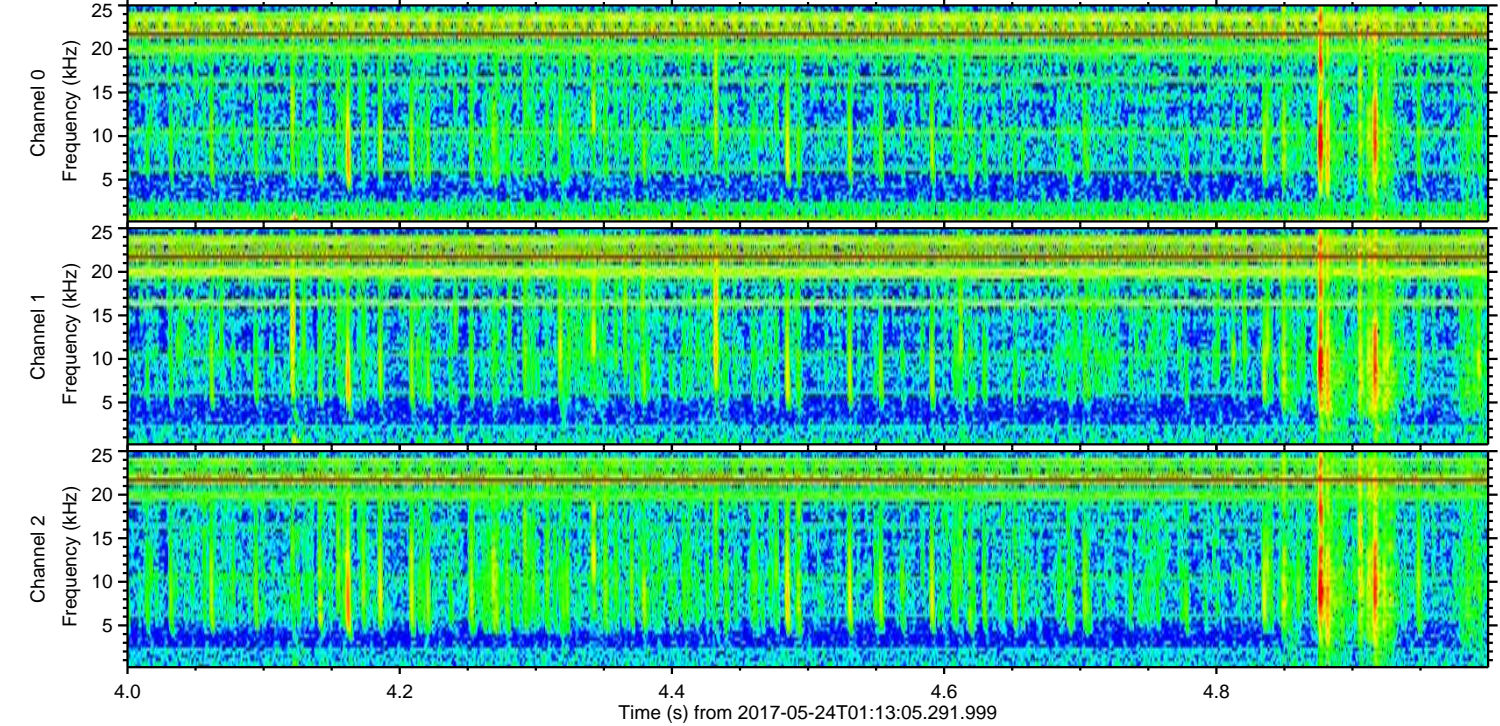
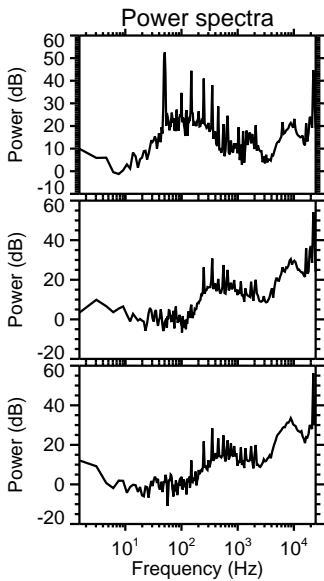
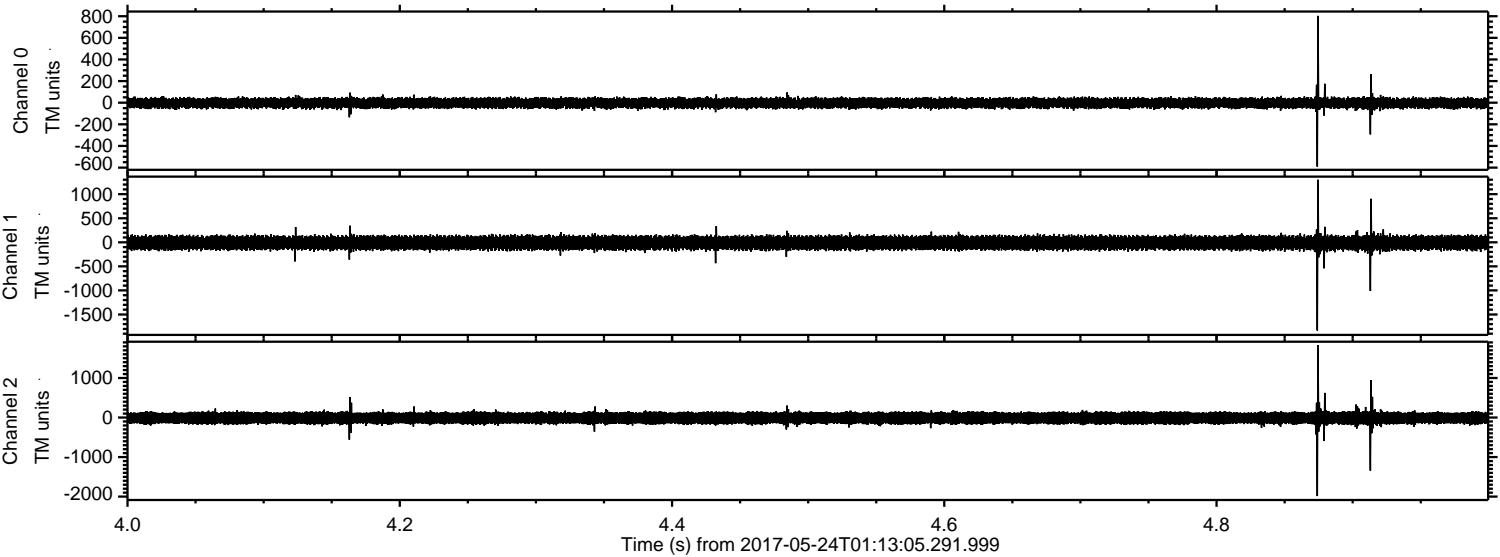
Processed Wed May 24 03:21:19 2017 by ELM ver.2012-10-06 from 001__elm20170524_011304__dat00.bin



Processed Wed May 24 03:21:19 2017 by ELM ver.2012-10-06 from 001__elm20170524_011304__dat00.bin



Processed Wed May 24 03:21:20 2017 by ELM ver.2012-10-06 from 001__elm20170524_011304__dat00.bin



Channel 0
mn: -591
mx: 803
 μ : -3.3
 σ : 27.7

Channel 1
mn: -1833
mx: 1300
 μ : -10.7
 σ : 82.5

Channel 2
mn: -1986
mx: 1826
 μ : -12.4
 σ : 98.5

