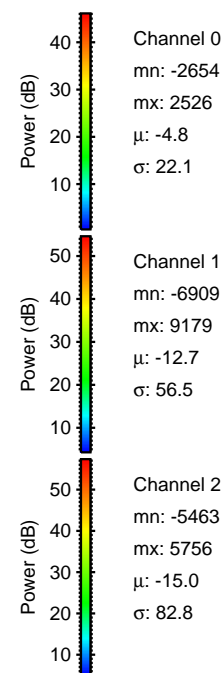
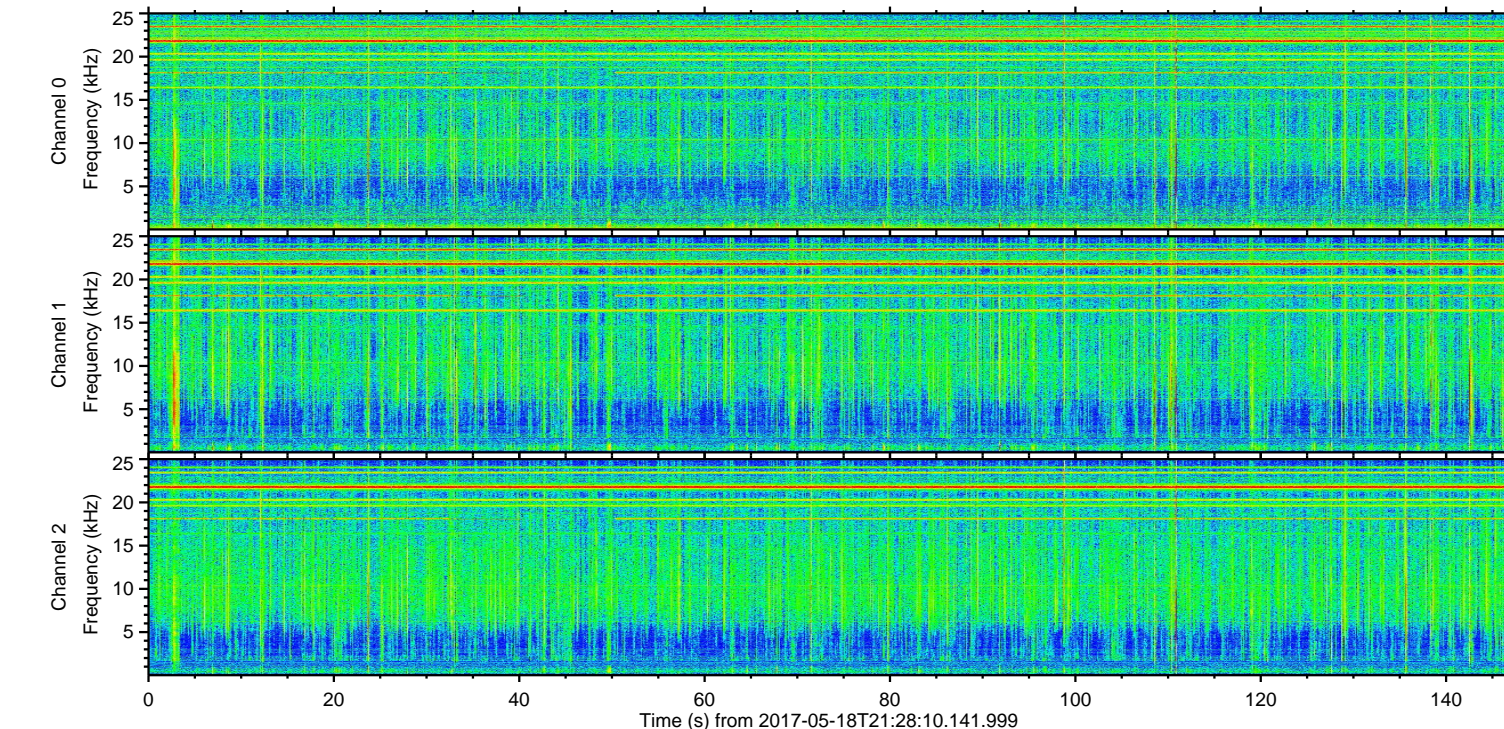
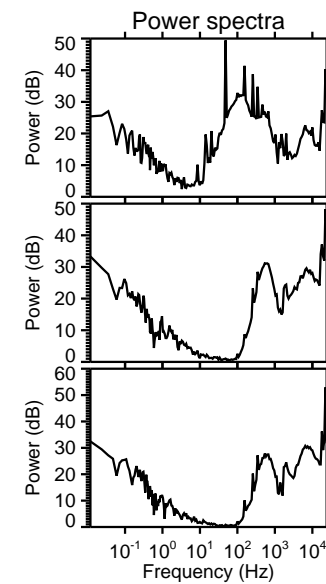
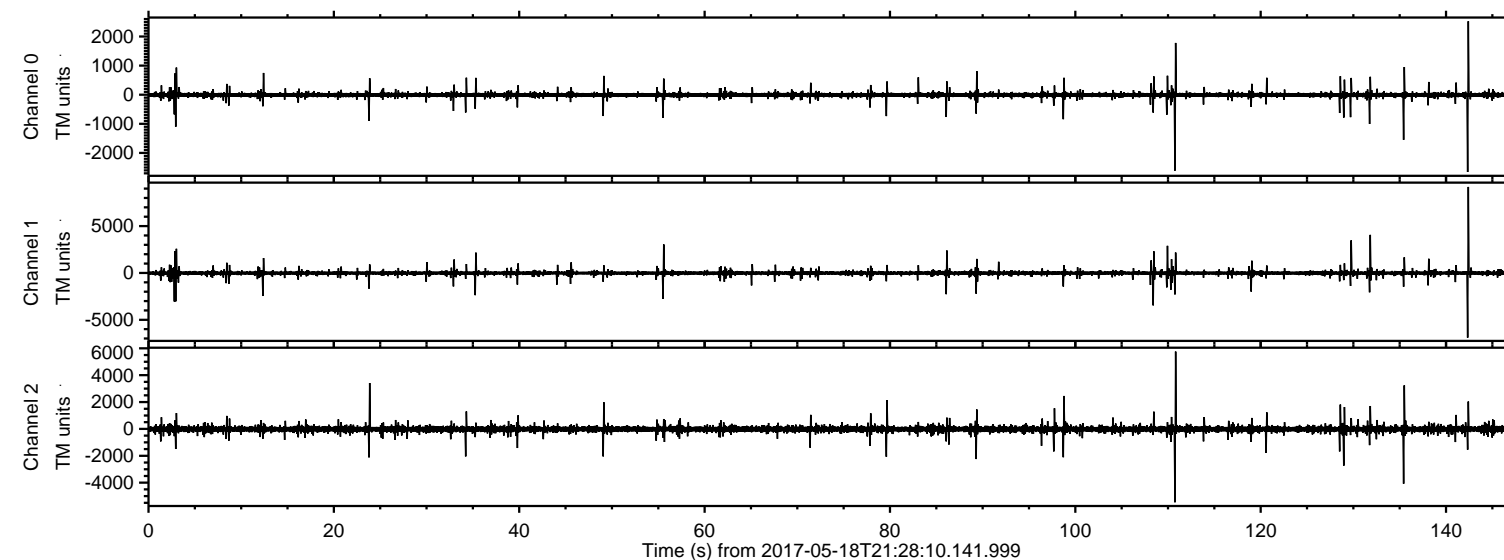


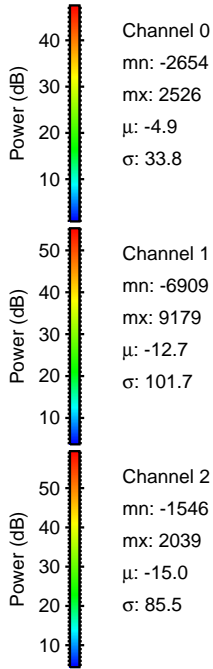
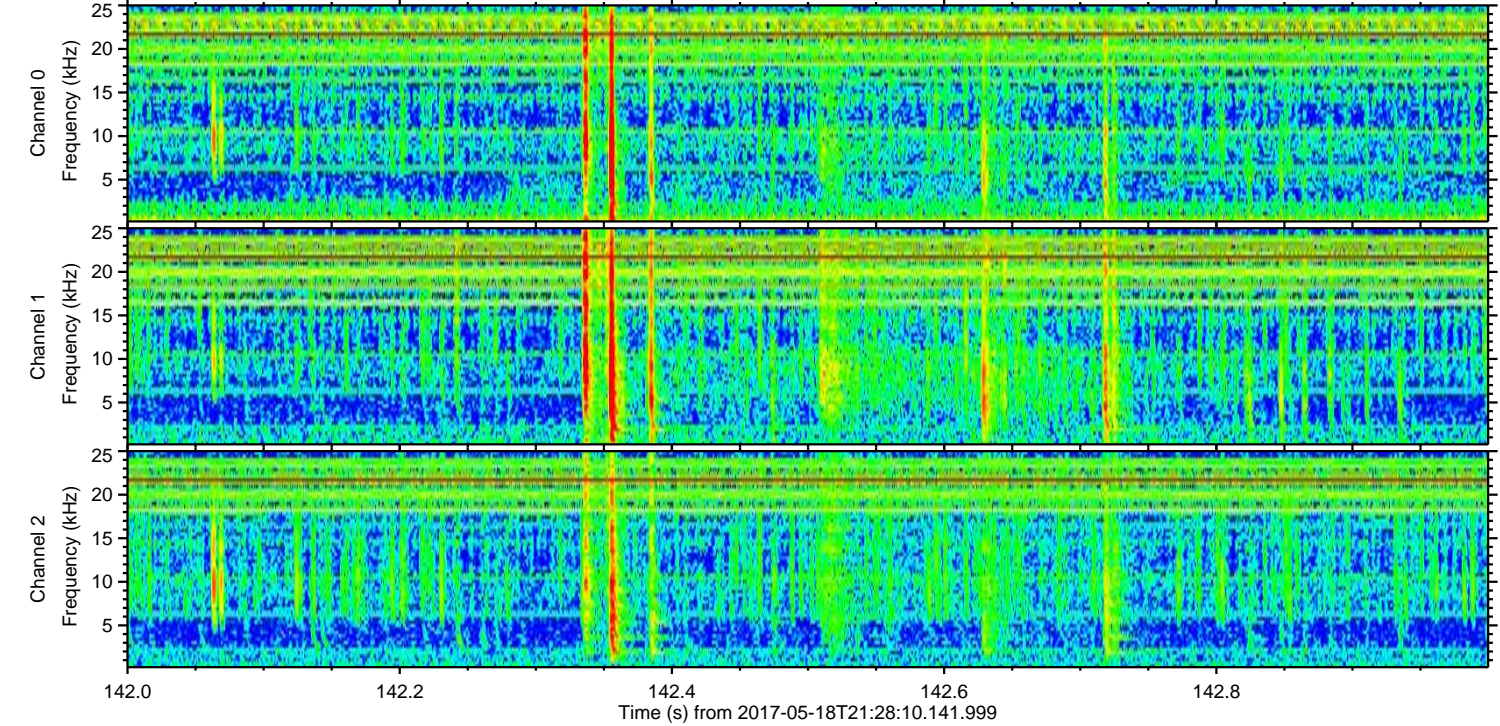
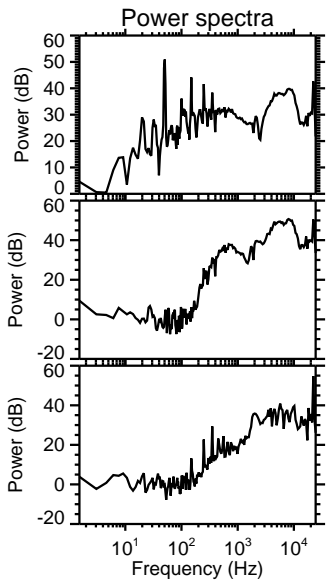
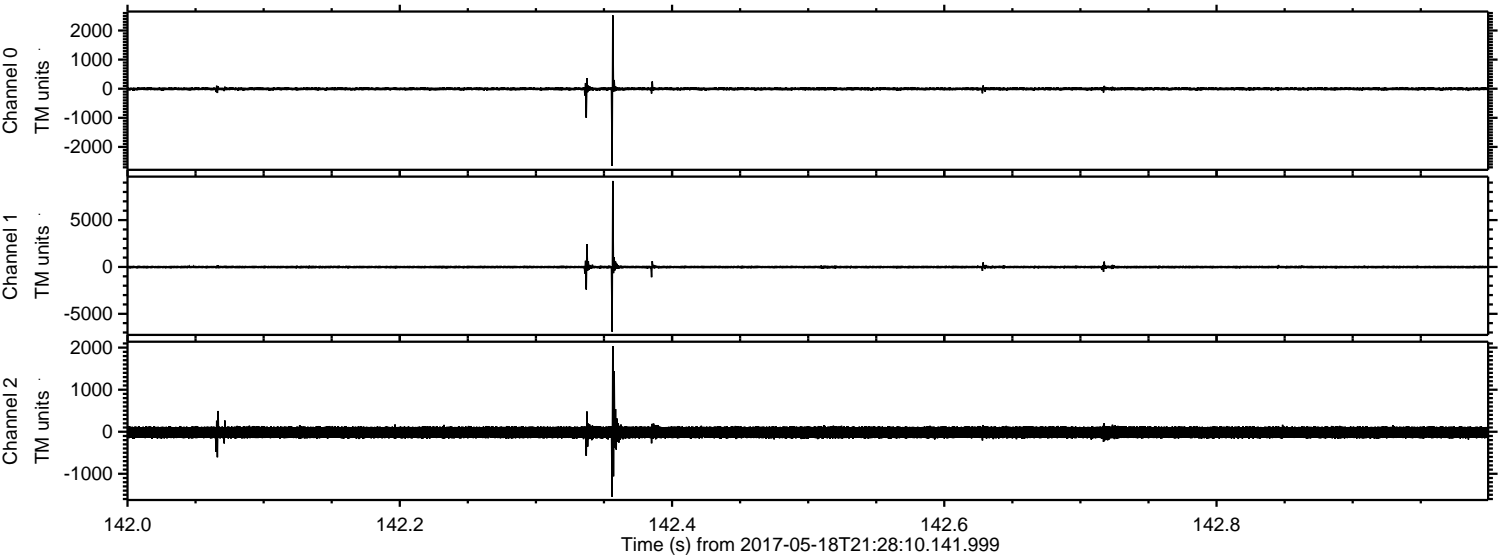
ELMAVAN 3D WAVEFORMS (Measured data sampled at 50 kHz) 51000 packets of 144 samples from 2017-05-18T21:28:10.141.999.

Processed Thu May 18 23:35:55 2017 by ELM ver.2012-10-06 from 001__elm20170518_212809__dat00.bin



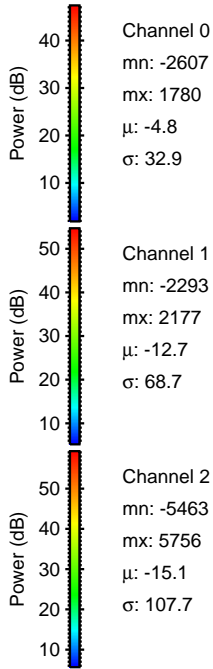
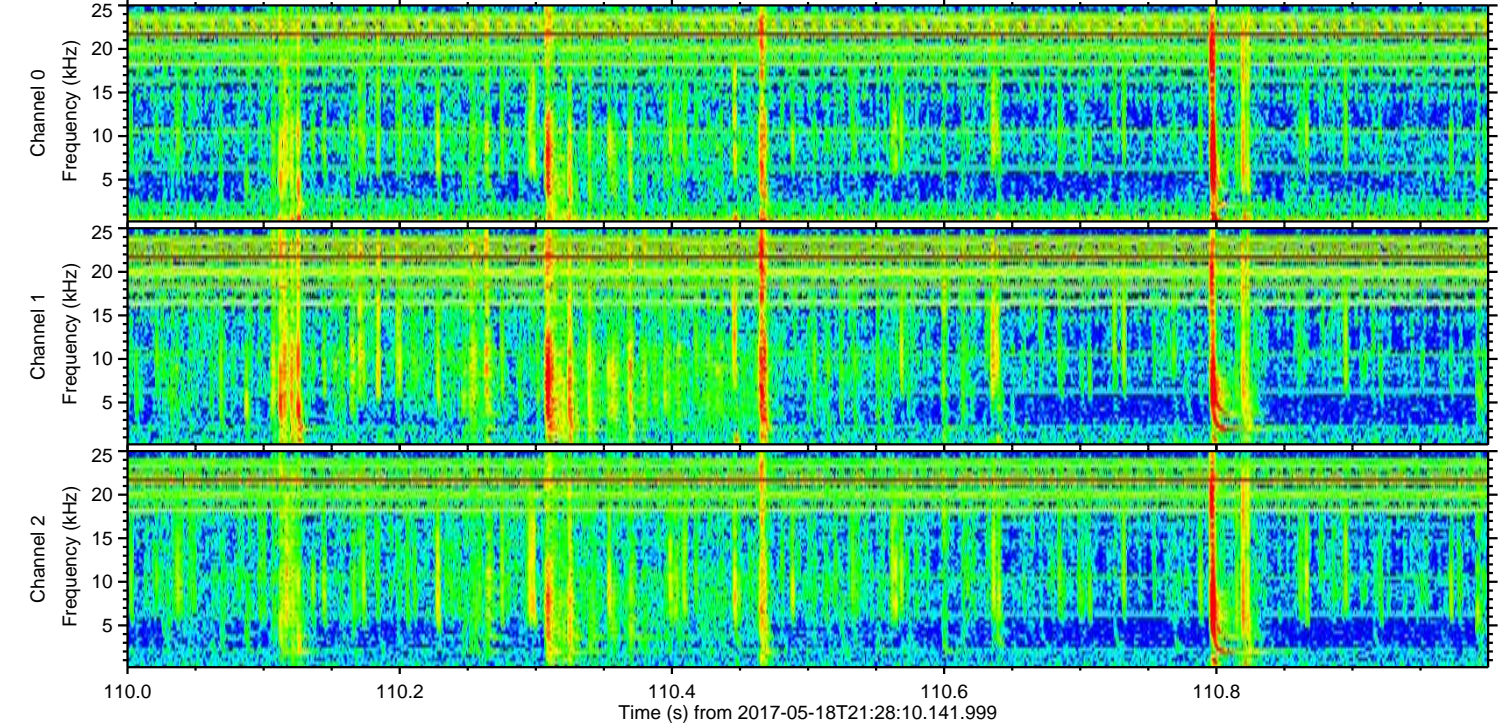
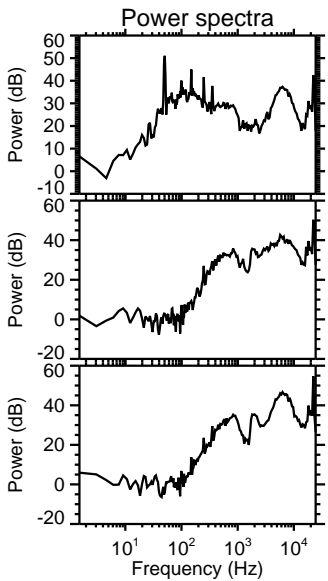
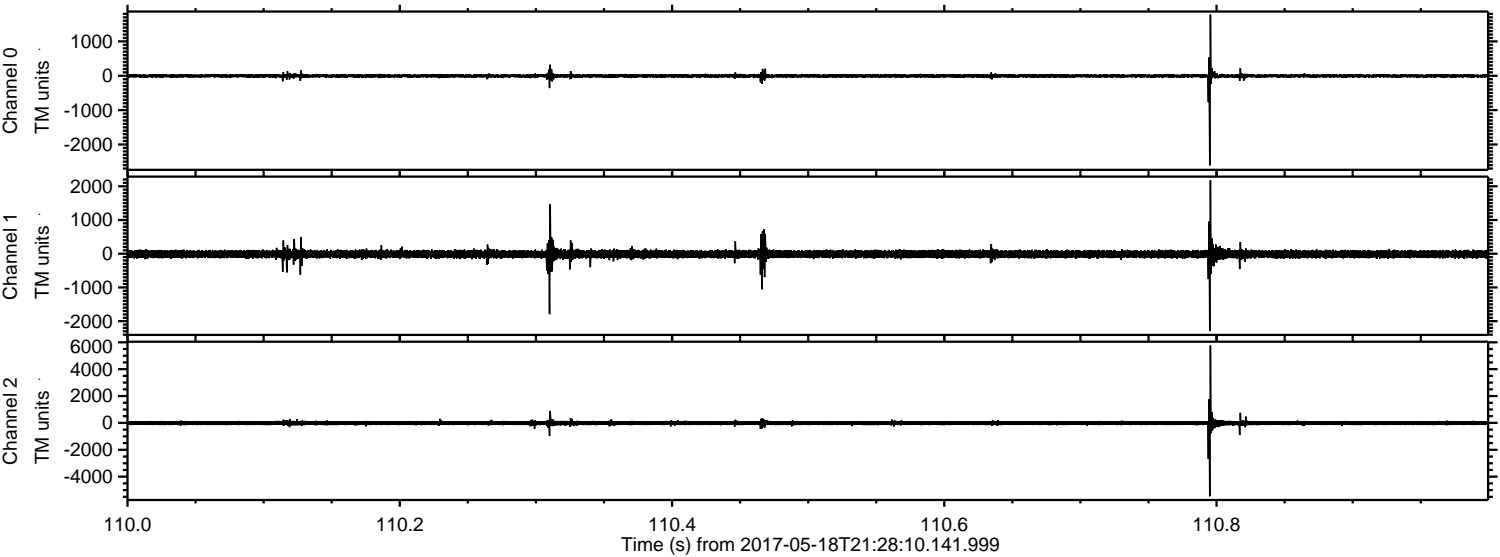
ELMAVAN 3D WAVEFORMS (Measured data sampled at 50 kHz) 51000 packets of 144 samples from 2017-05-18T21:28:10.141.999. Part 143/147

Processed Thu May 18 23:36:01 2017 by ELM ver.2012-10-06 from 001__elm20170518_212809__dat00.bin



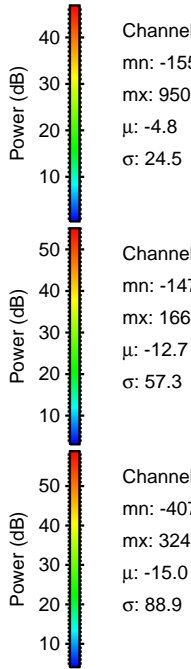
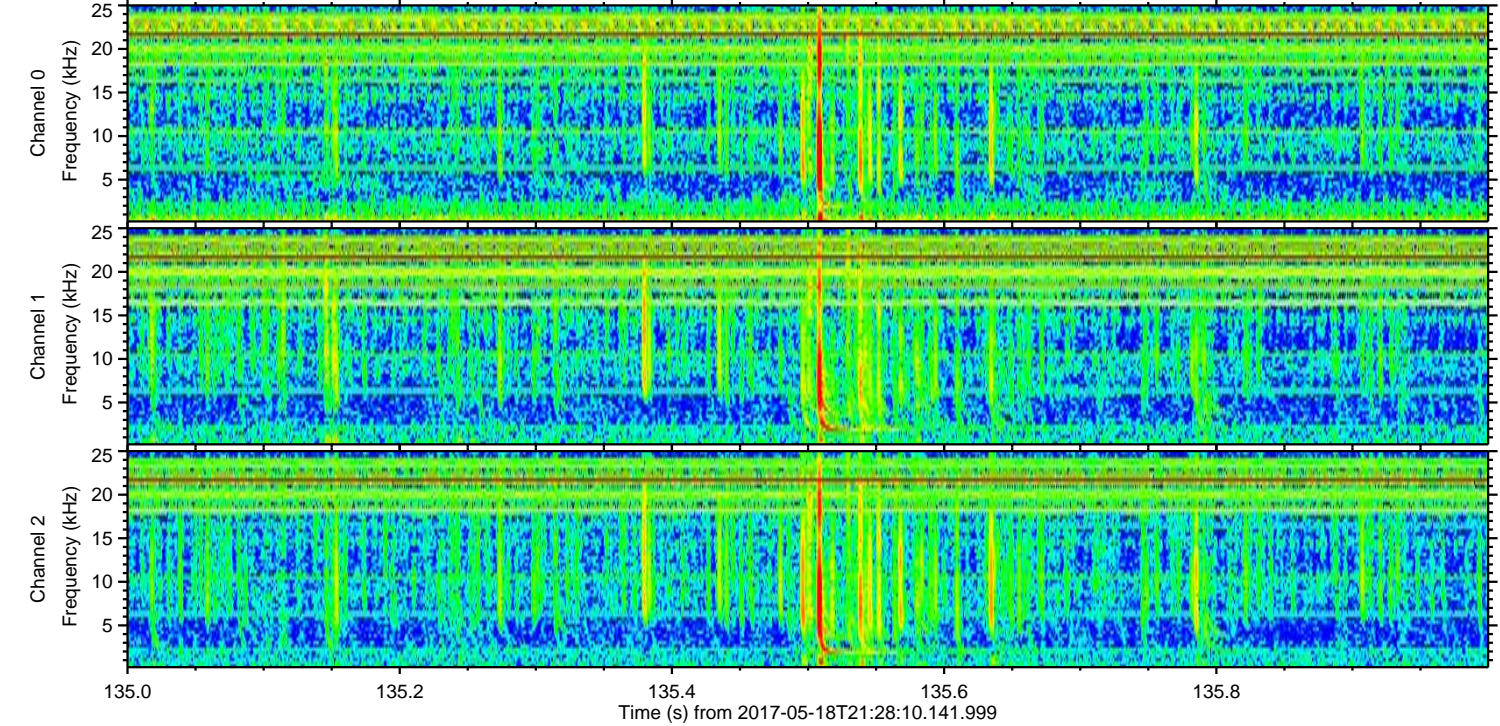
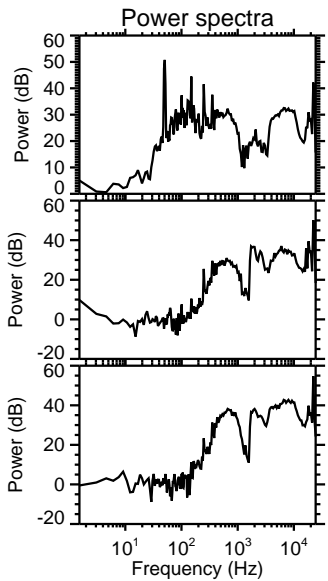
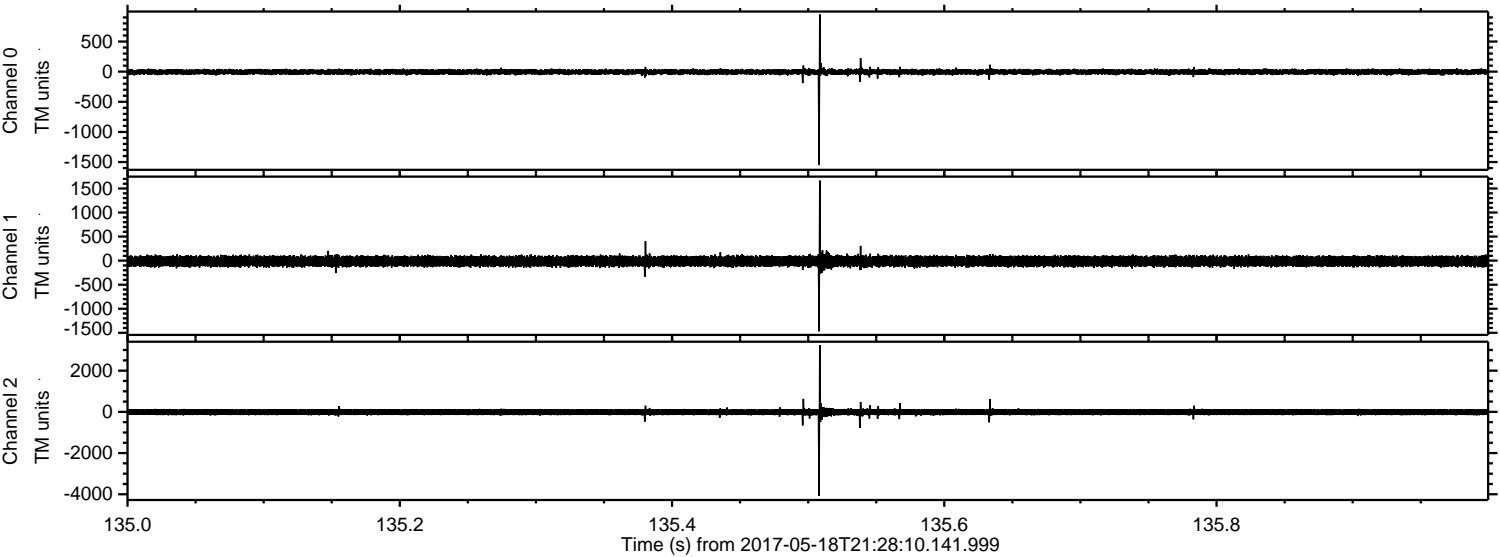
ELMAVAN 3D WAVEFORMS (Measured data sampled at 50 kHz) 51000 packets of 144 samples from 2017-05-18T21:28:10.141.999. Part 111/147

Processed Thu May 18 23:36:01 2017 by ELM ver.2012-10-06 from 001__elm20170518_212809__dat00.bin



ELMAVAN 3D WAVEFORMS (Measured data sampled at 50 kHz) 51000 packets of 144 samples from 2017-05-18T21:28:10.141.999. Part 136/147

Processed Thu May 18 23:36:02 2017 by ELM ver.2012-10-06 from 001__elm20170518_212809__dat00.bin



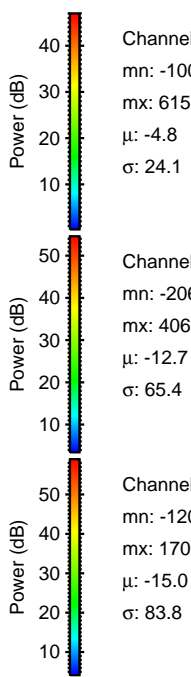
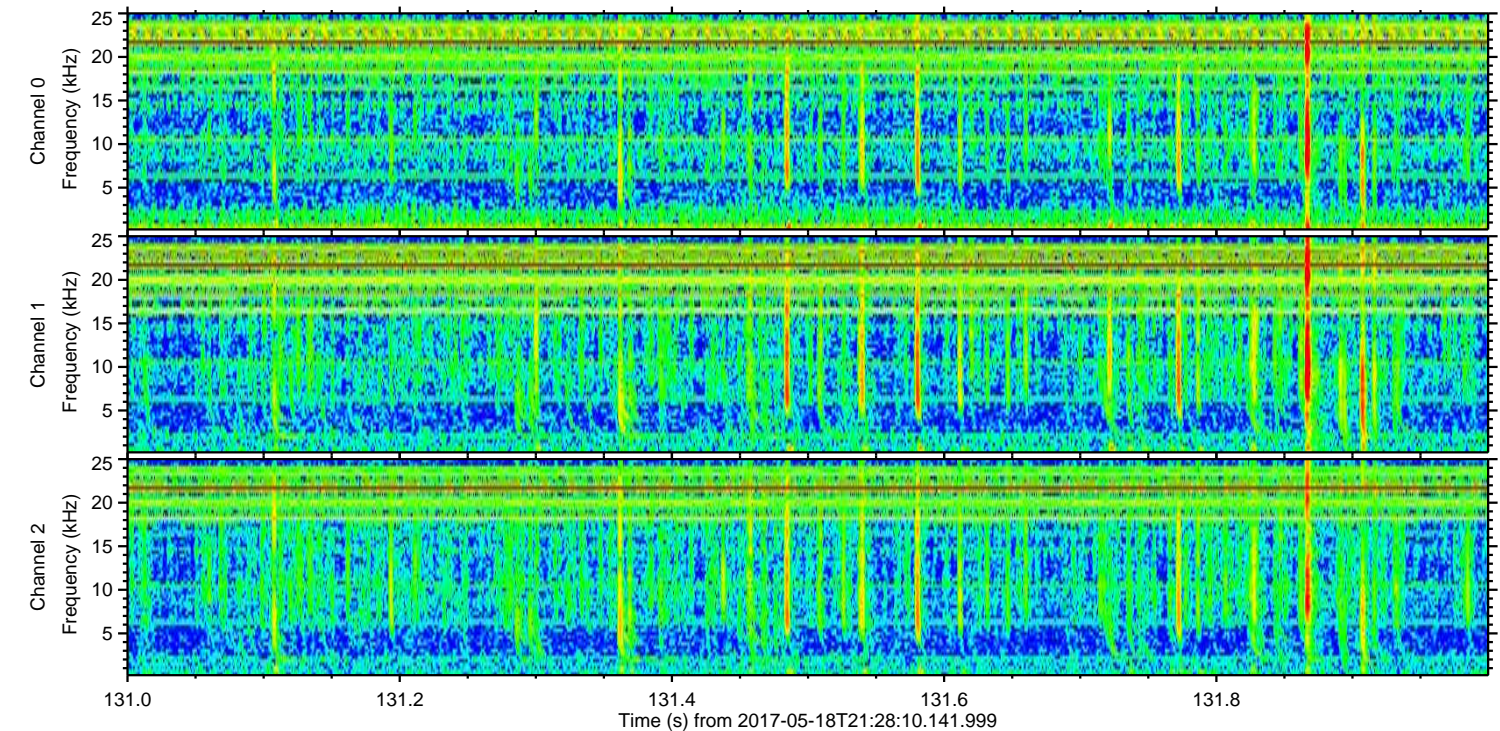
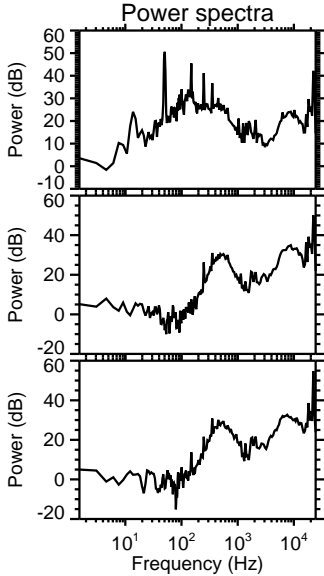
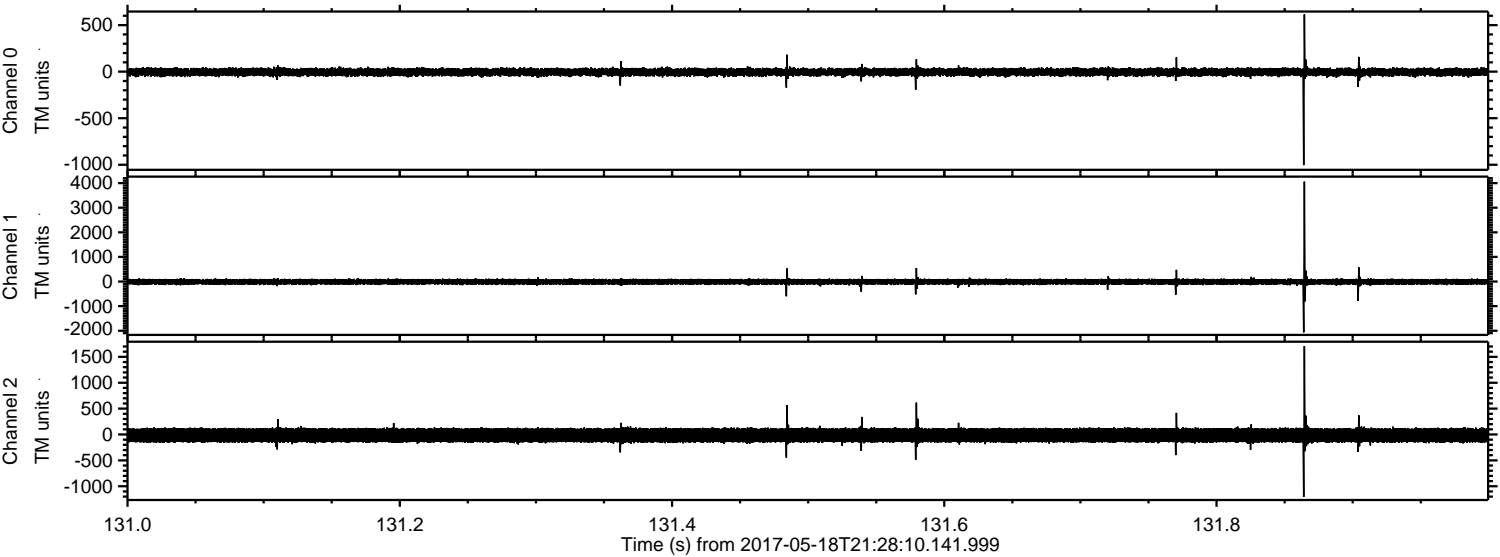
Channel 0
mn: -1551
mx: 950
 μ : -4.8
 σ : 24.5

Channel 1
mn: -1471
mx: 1664
 μ : -12.7
 σ : 57.3

Channel 2
mn: -4074
mx: 3243
 μ : -15.0
 σ : 88.9

ELMAVAN 3D WAVEFORMS (Measured data sampled at 50 kHz) 51000 packets of 144 samples from 2017-05-18T21:28:10.141.999. Part 132/147

Processed Thu May 18 23:36:03 2017 by ELM ver.2012-10-06 from 001__elm20170518_212809__dat00.bin



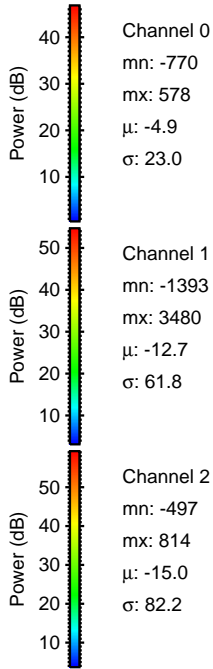
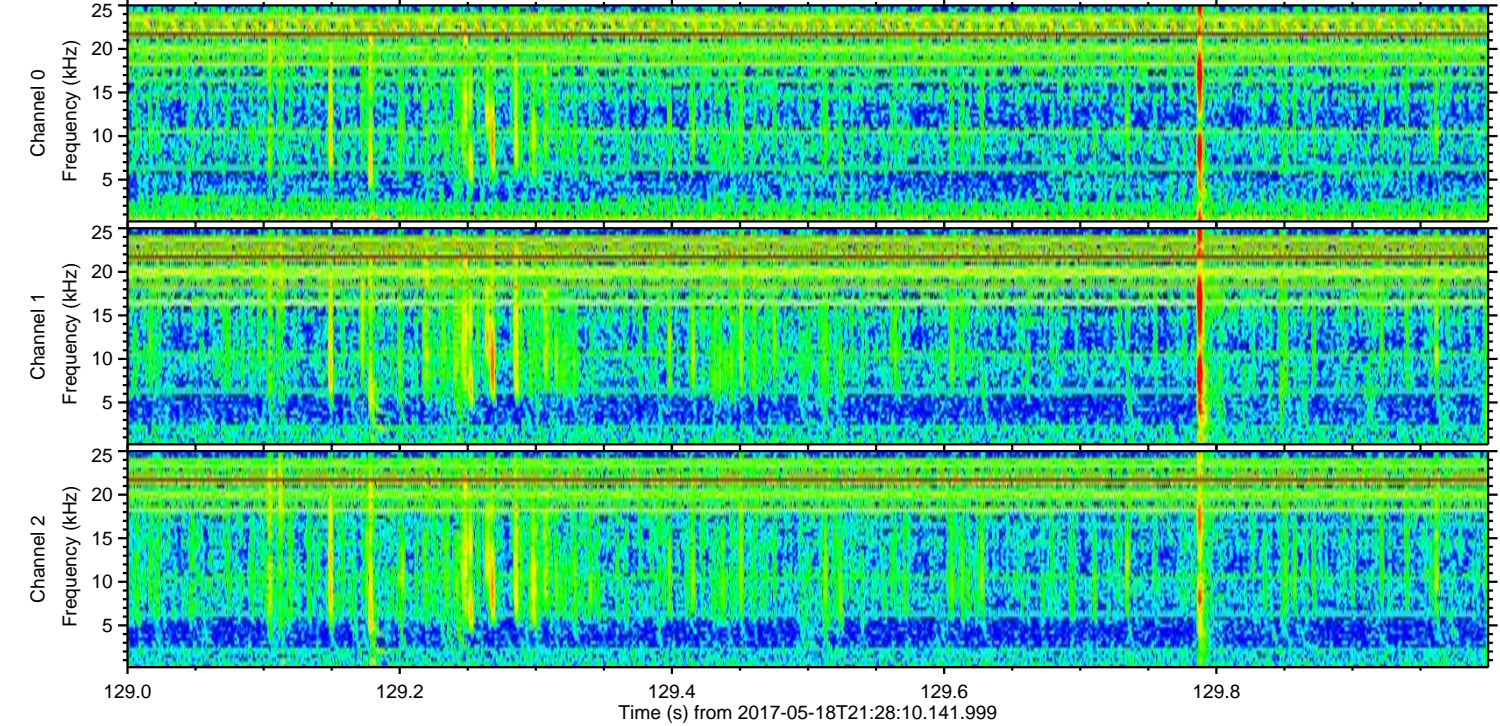
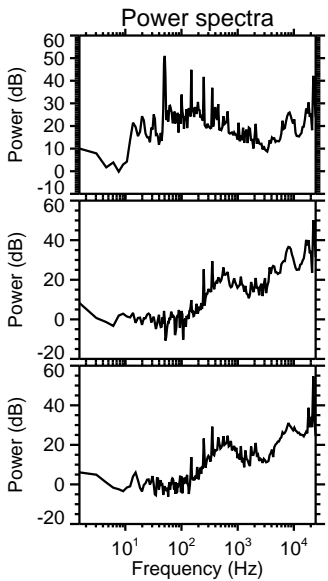
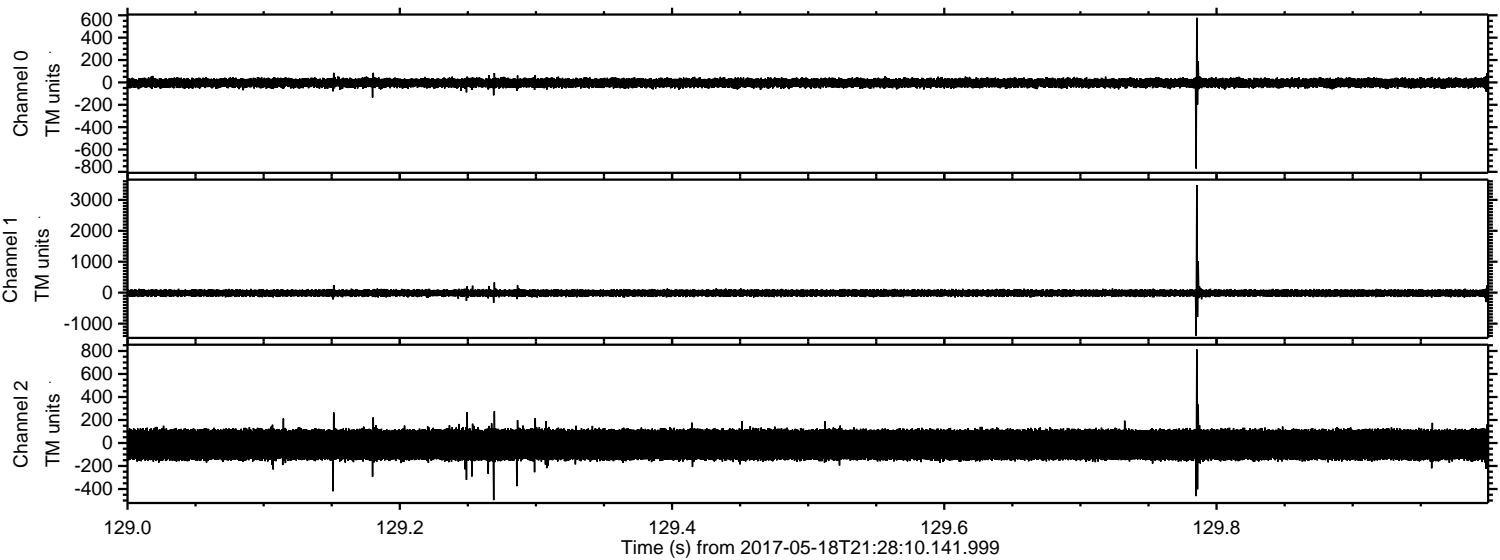
Channel 0
mn: -1004
mx: 615
 μ : -4.8
 σ : 24.1

Channel 1
mn: -2067
mx: 4061
 μ : -12.7
 σ : 65.4

Channel 2
mn: -1205
mx: 1707
 μ : -15.0
 σ : 83.8

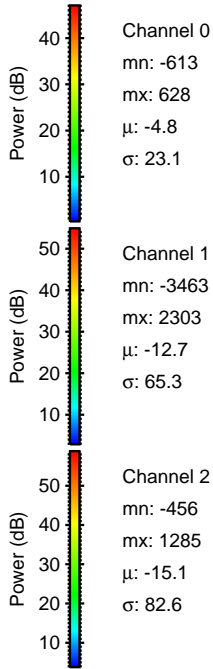
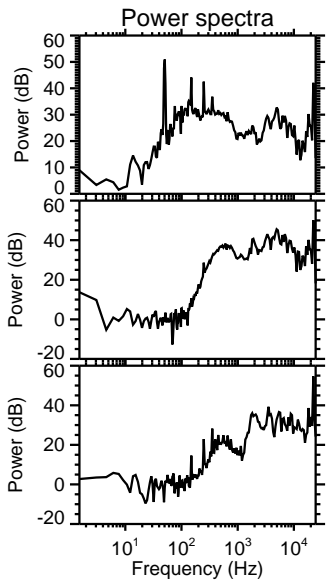
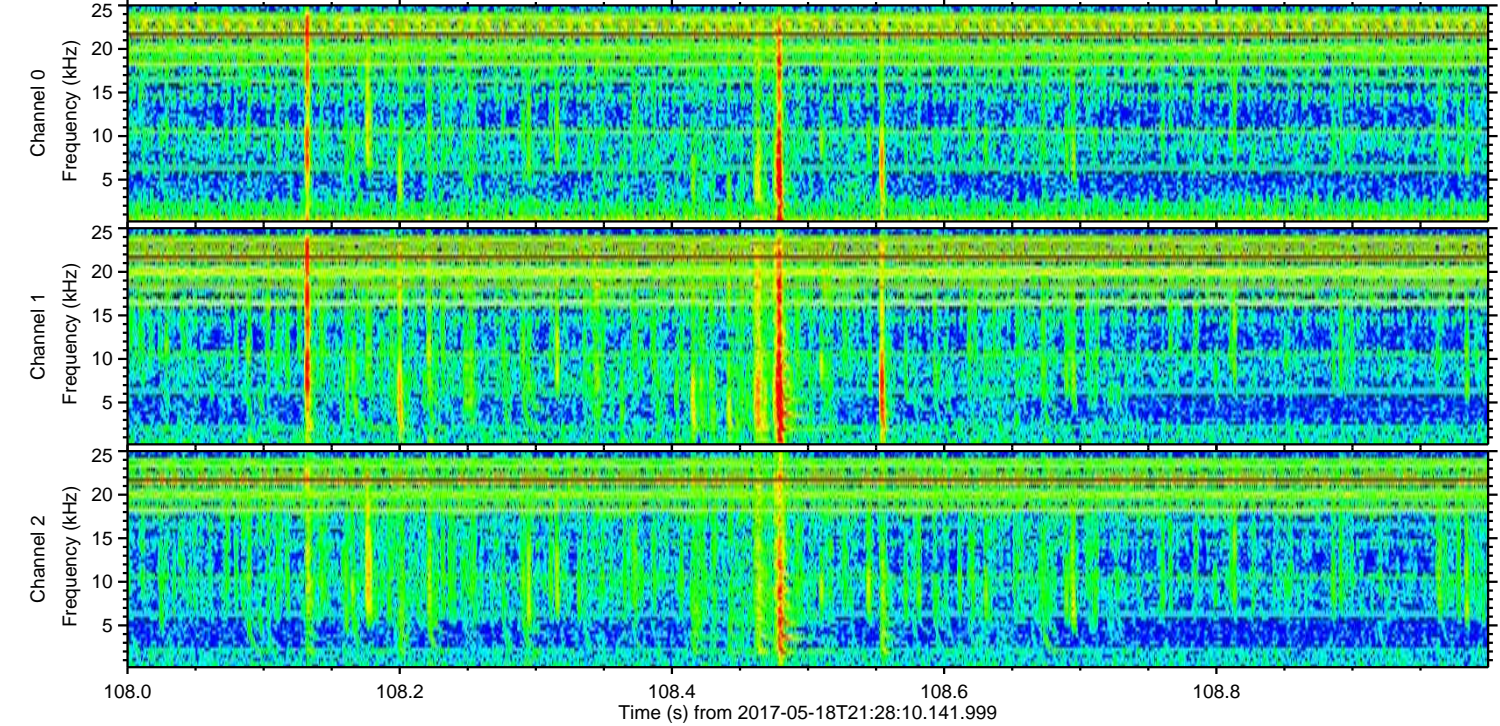
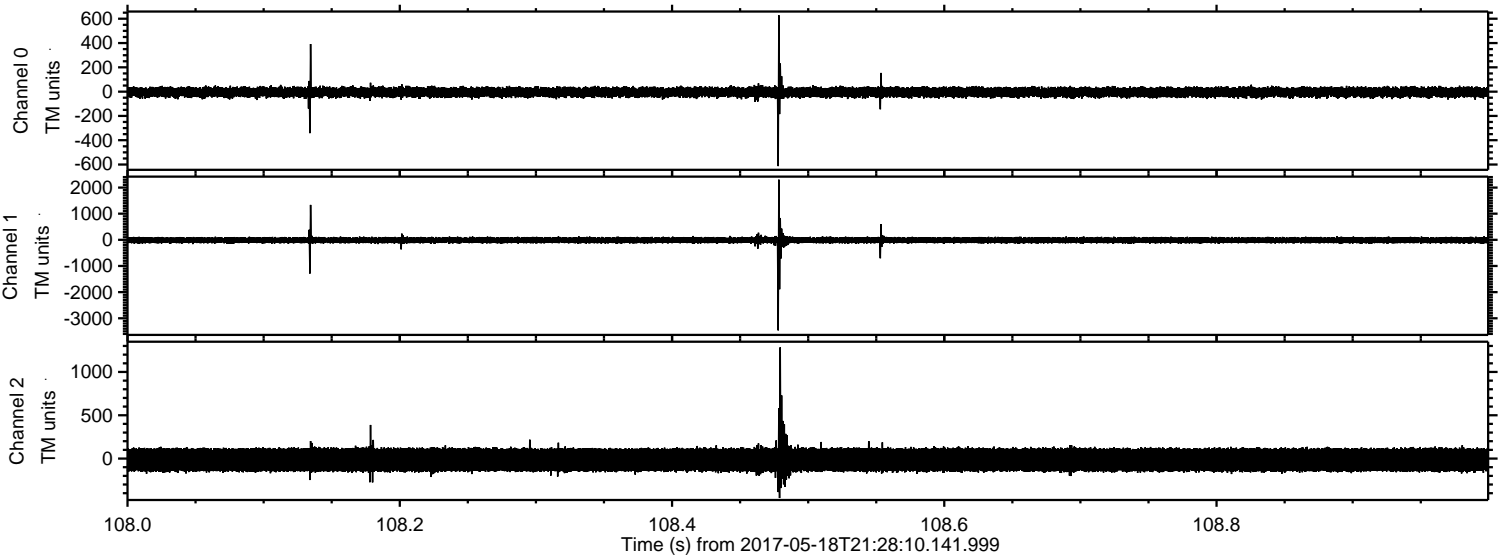
ELMAVAN 3D WAVEFORMS (Measured data sampled at 50 kHz) 51000 packets of 144 samples from 2017-05-18T21:28:10.141.999. Part 130/147

Processed Thu May 18 23:36:03 2017 by ELM ver.2012-10-06 from 001__elm20170518_212809__dat00.bin



ELMAVAN 3D WAVEFORMS (Measured data sampled at 50 kHz) 51000 packets of 144 samples from 2017-05-18T21:28:10.141.999. Part 109/147

Processed Thu May 18 23:36:04 2017 by ELM ver.2012-10-06 from 001__elm20170518_212809__dat00.bin



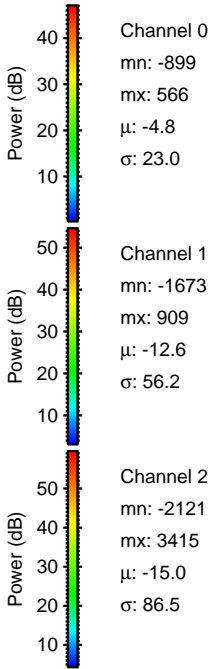
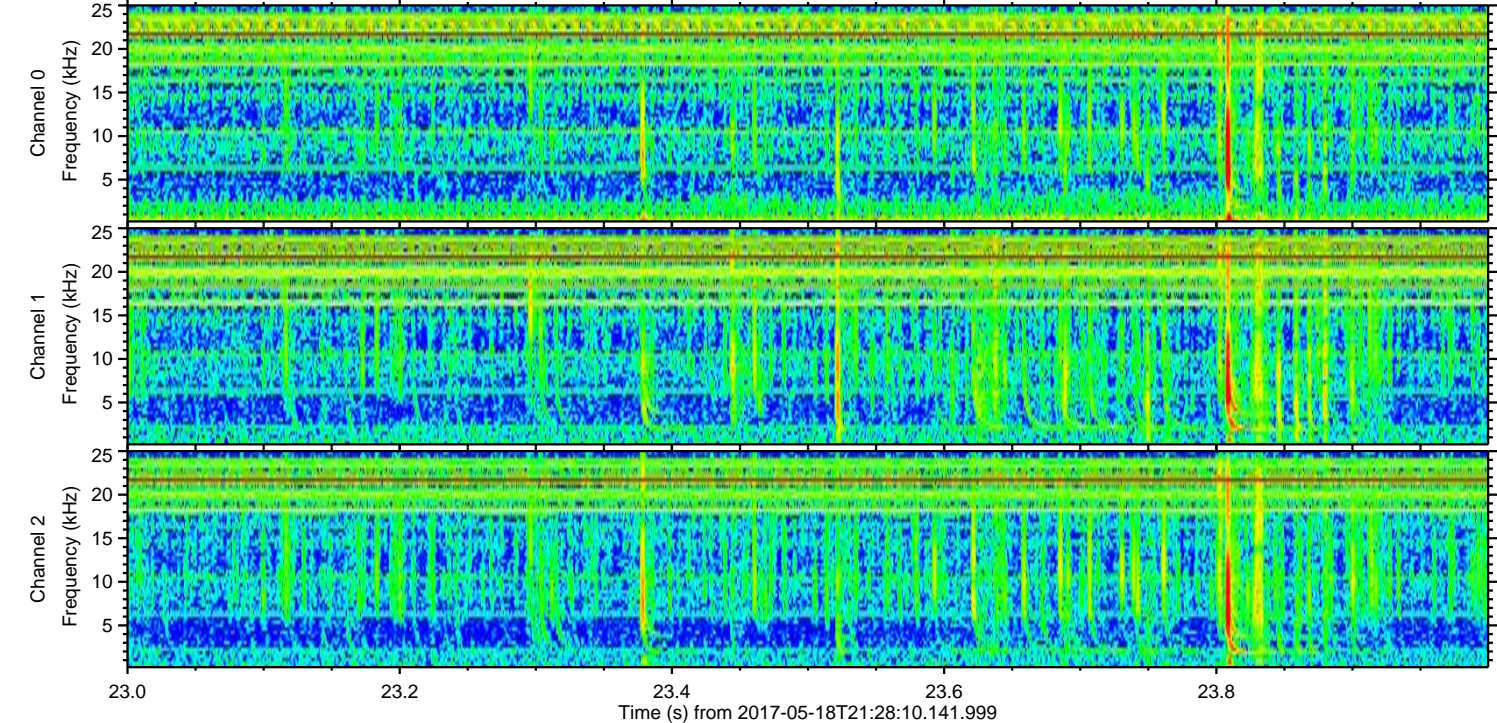
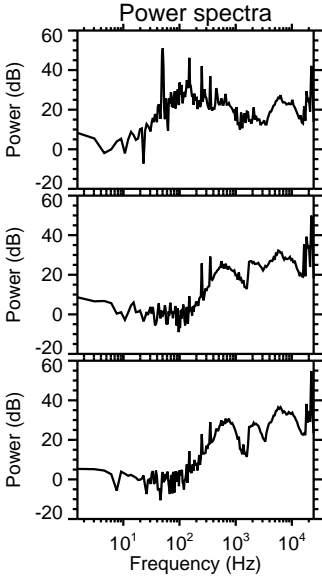
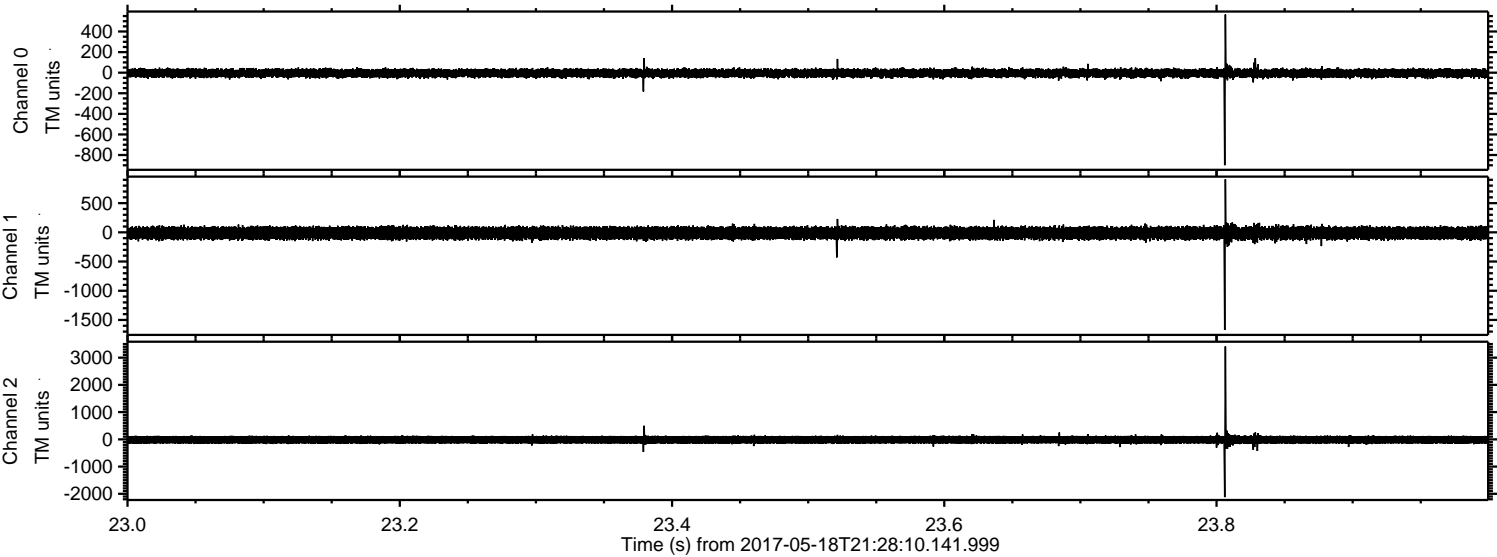
Channel 0
mn: -613
mx: 628
 μ : -4.8
 σ : 23.1

Channel 1
mn: -3463
mx: 2303
 μ : -12.7
 σ : 65.3

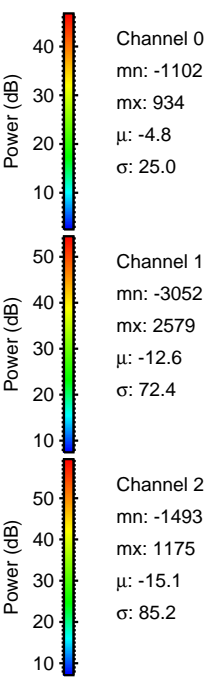
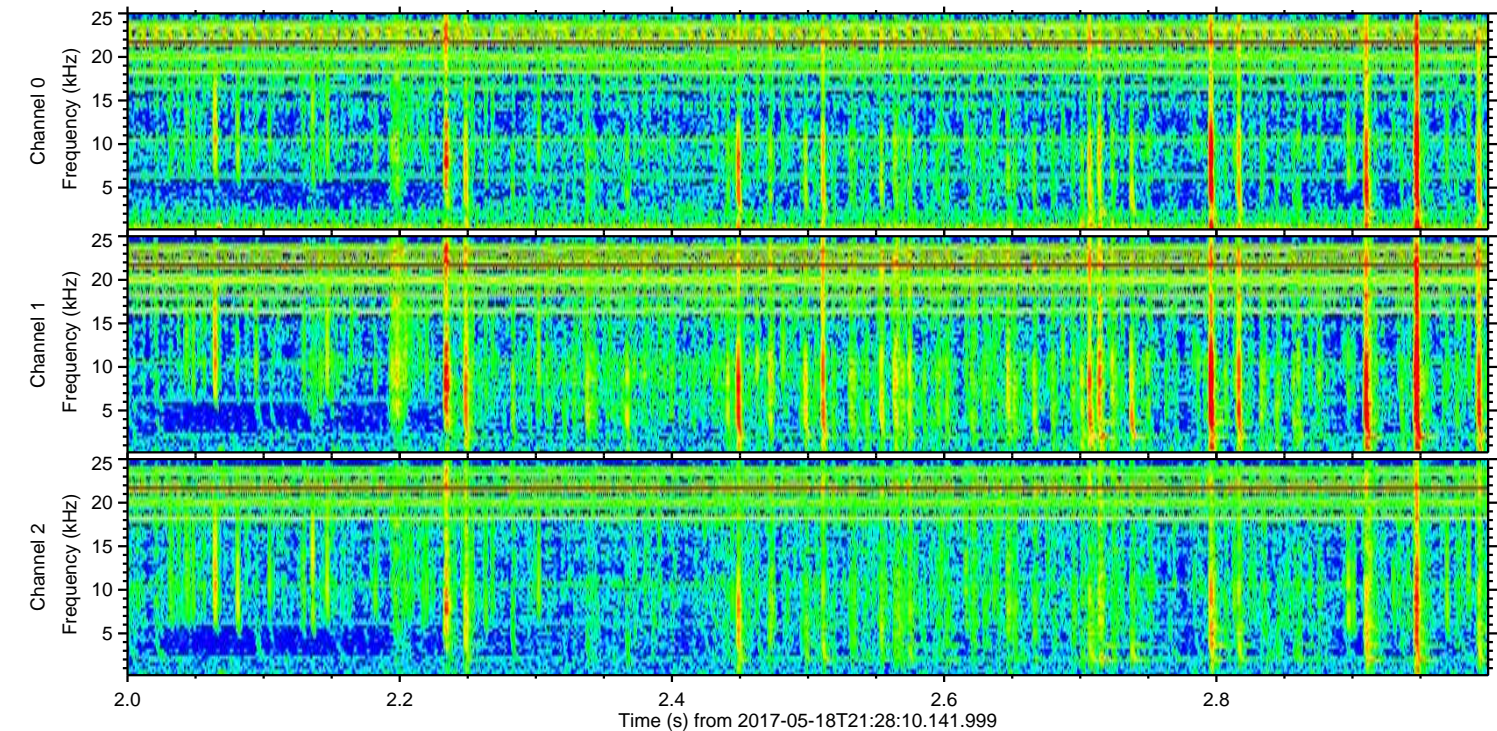
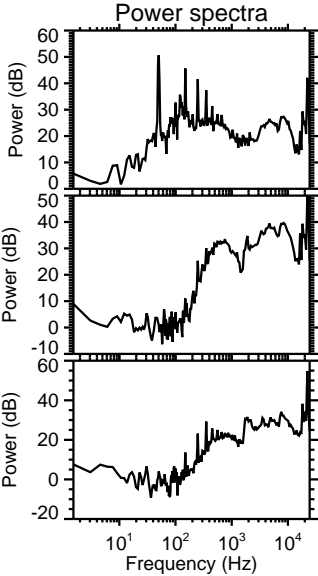
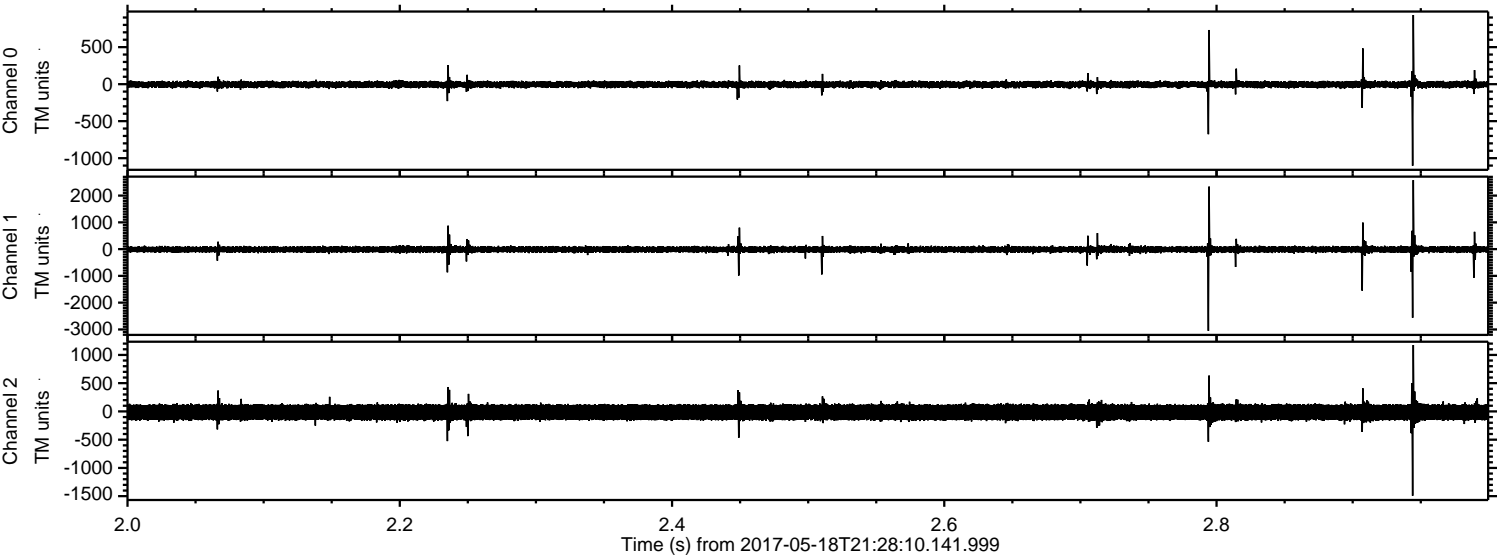
Channel 2
mn: -456
mx: 1285
 μ : -15.1
 σ : 82.6

ELMAVAN 3D WAVEFORMS (Measured data sampled at 50 kHz) 51000 packets of 144 samples from 2017-05-18T21:28:10.141.999. Part 24/147

Processed Thu May 18 23:36:04 2017 by ELM ver.2012-10-06 from 001__elm20170518_212809__dat00.bin



Processed Thu May 18 23:36:05 2017 by ELM ver.2012-10-06 from 001__elm20170518_212809__dat00.bin

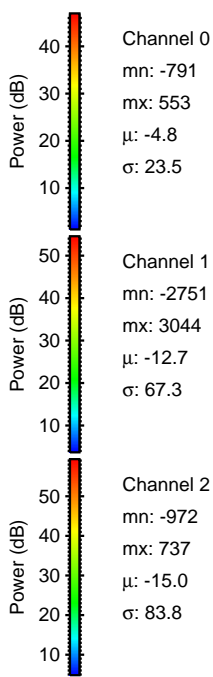
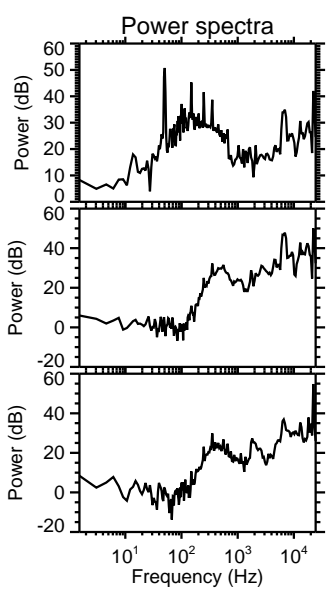
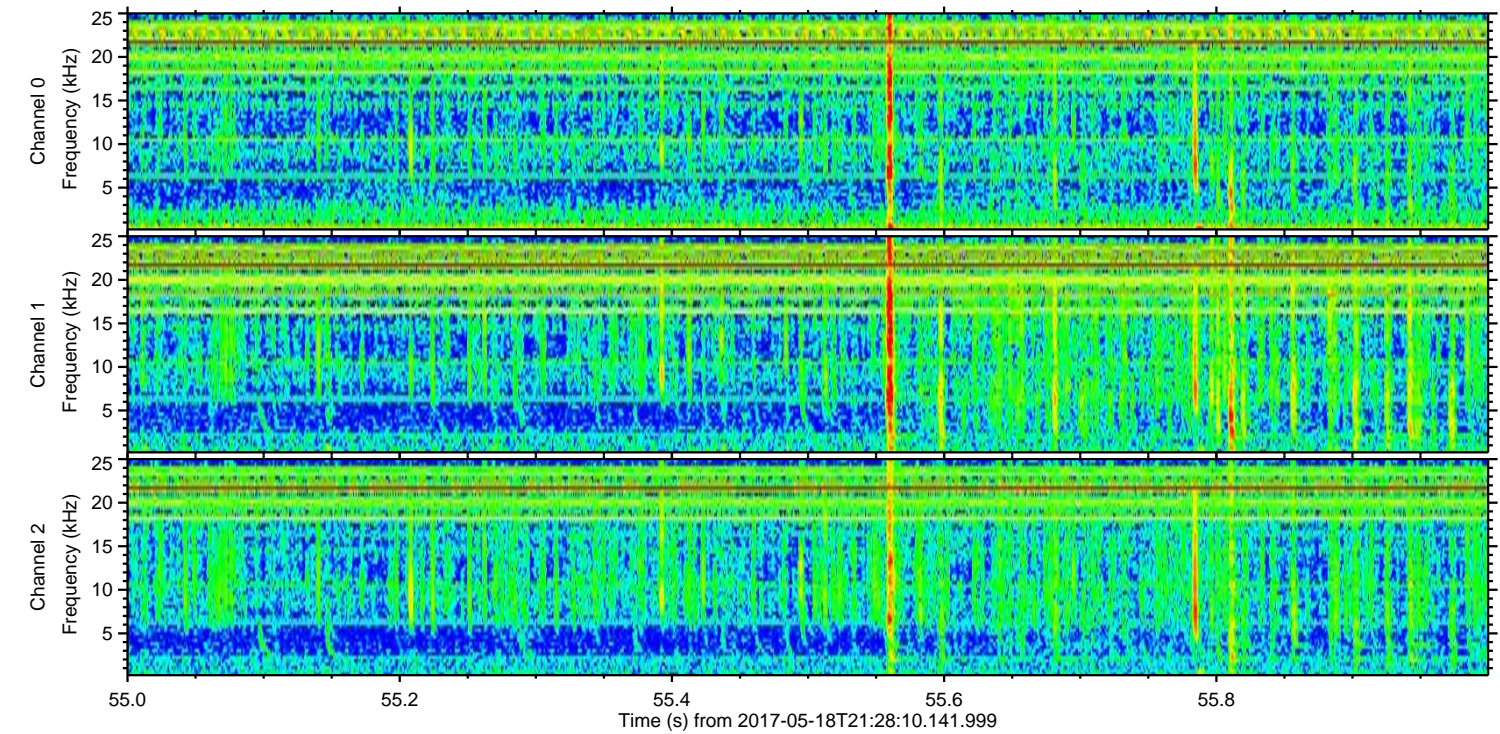
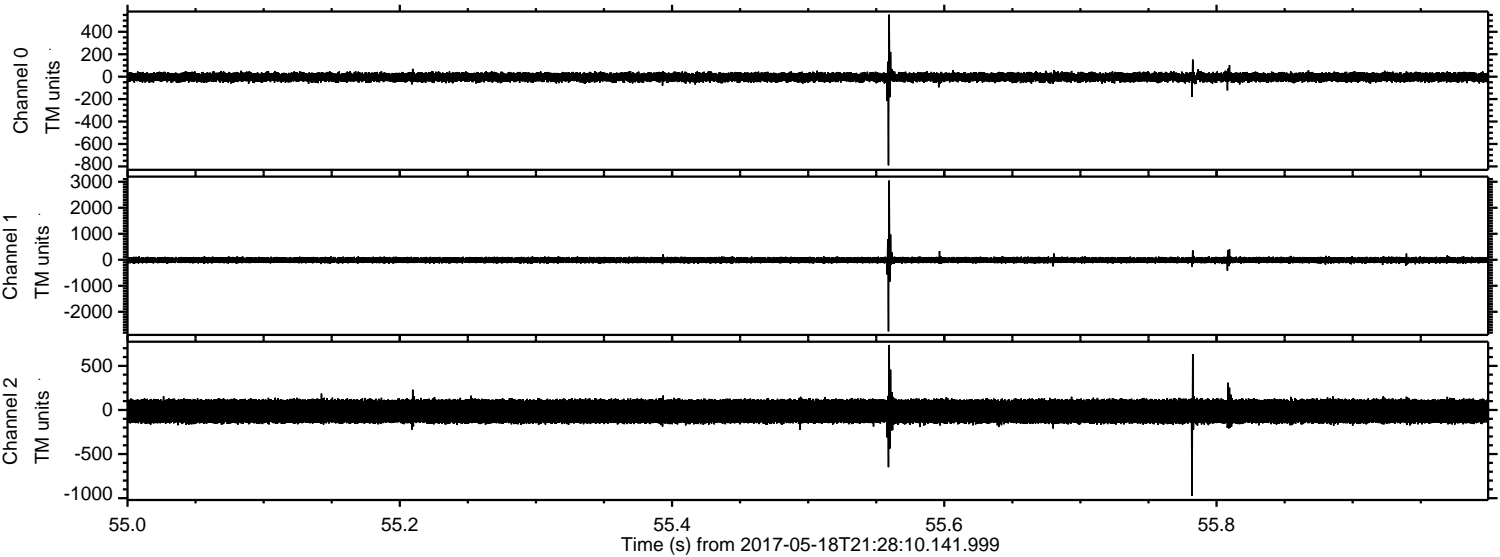


Channel 0
mn: -1102
mx: 934
 μ : -4.8
 σ : 25.0

Channel 1
mn: -3052
mx: 2579
 μ : -12.6
 σ : 72.4

Channel 2
mn: -1493
mx: 1175
 μ : -15.1
 σ : 85.2

Processed Thu May 18 23:36:06 2017 by ELM ver.2012-10-06 from 001__elm20170518_212809__dat00.bin



Processed Thu May 18 23:36:06 2017 by ELM ver.2012-10-06 from 001__elm20170518_212809__dat00.bin

