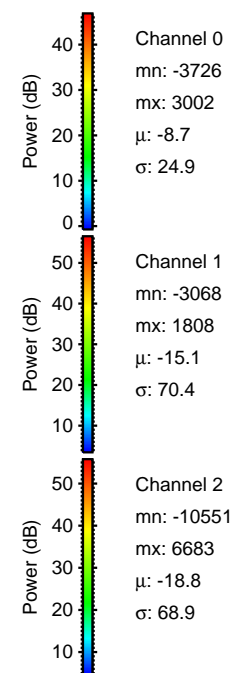
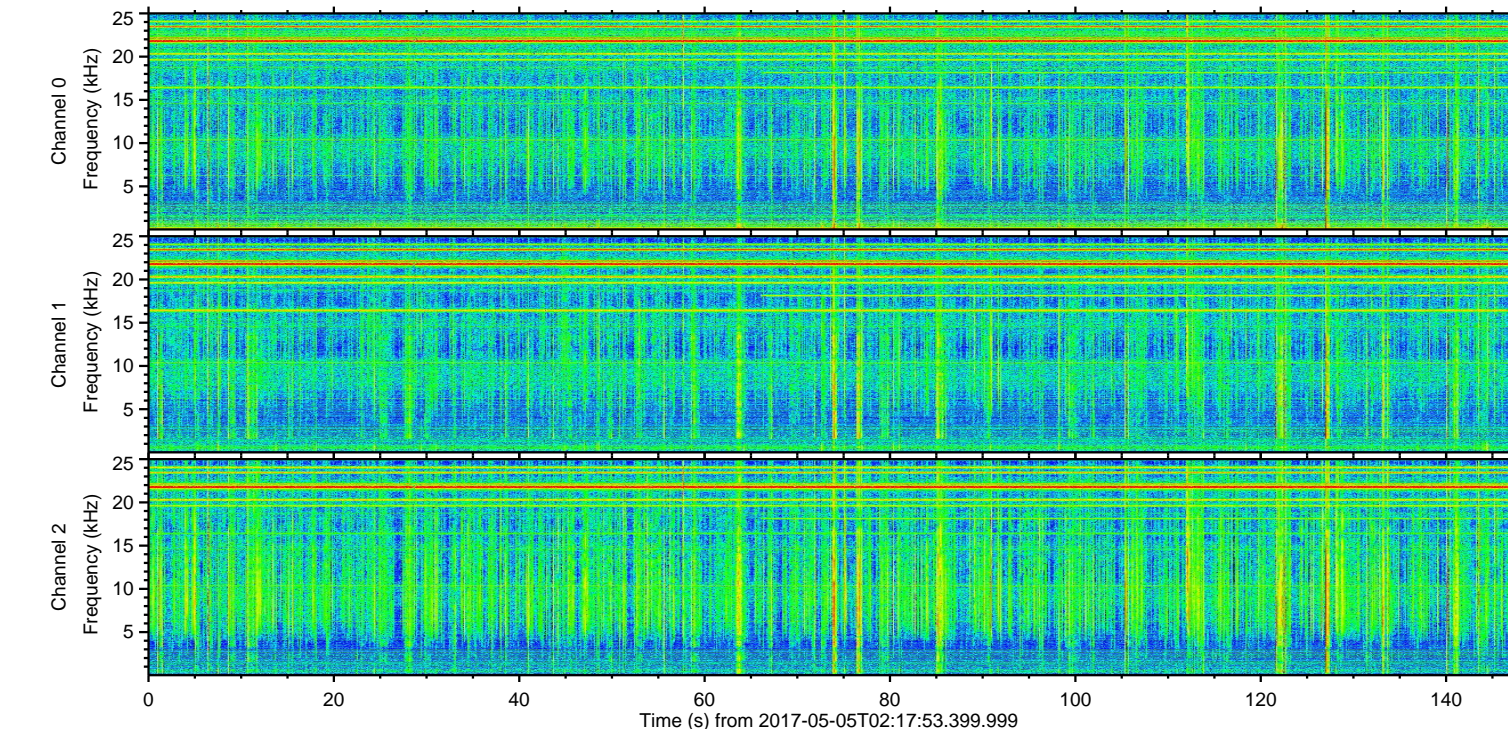
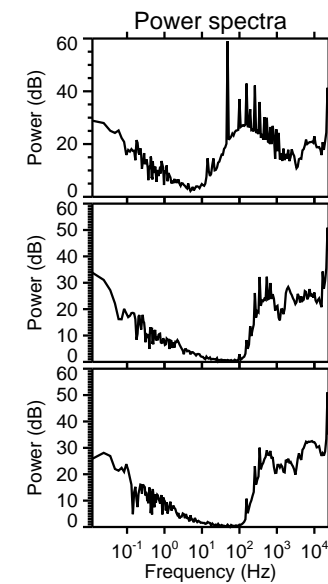
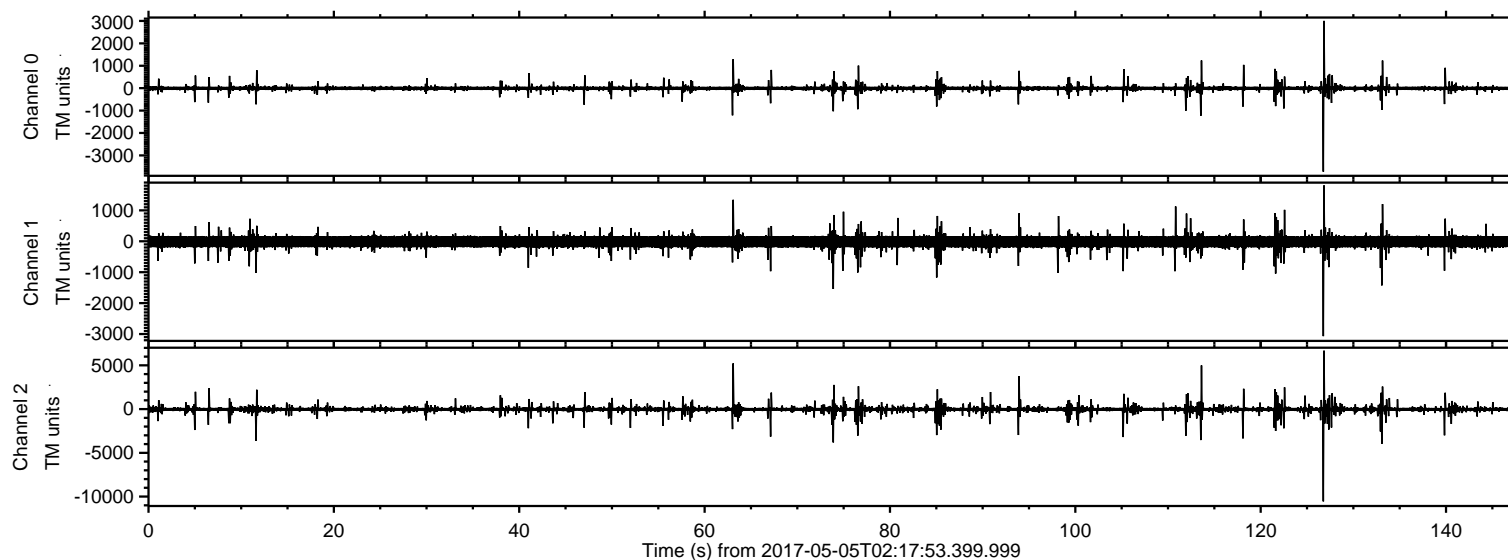


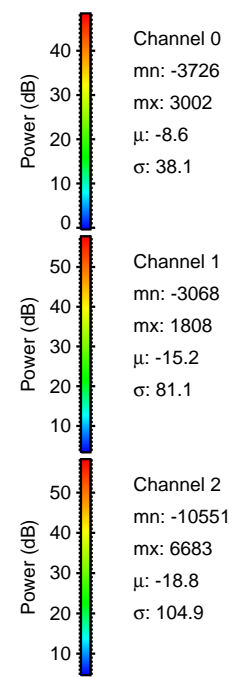
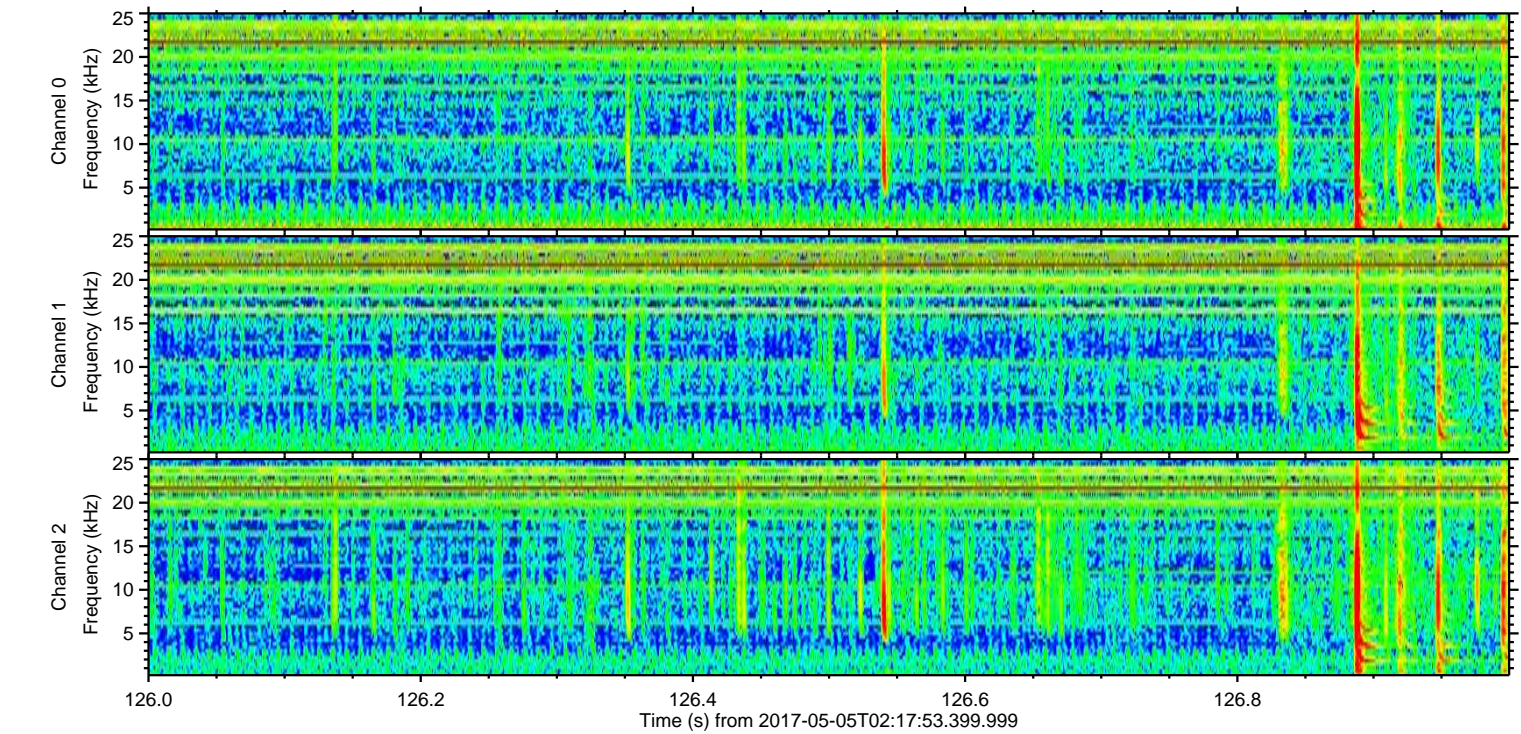
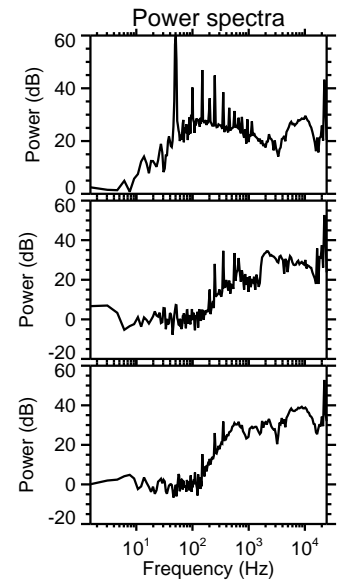
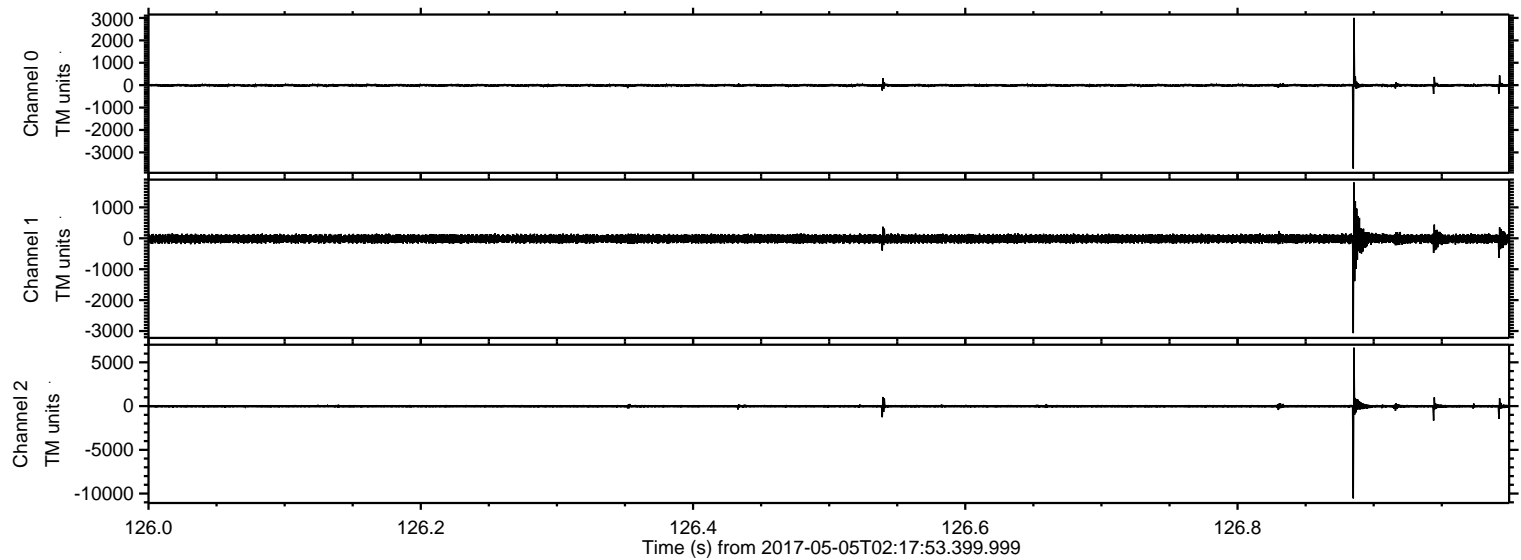
ELMAVAN 3D WAVEFORMS (Measured data sampled at 50 kHz) 51000 packets of 144 samples from 2017-05-05T02:17:53.399.999.

Processed Fri May 5 04:25:49 2017 by ELM ver.2012-10-06 from 001__elm20170505_021752__dat00.bin

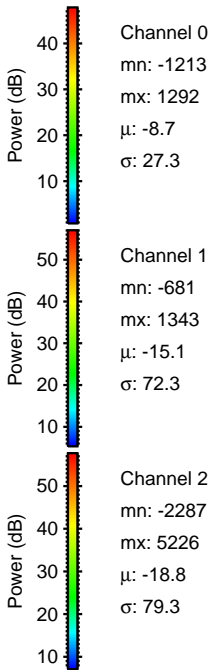
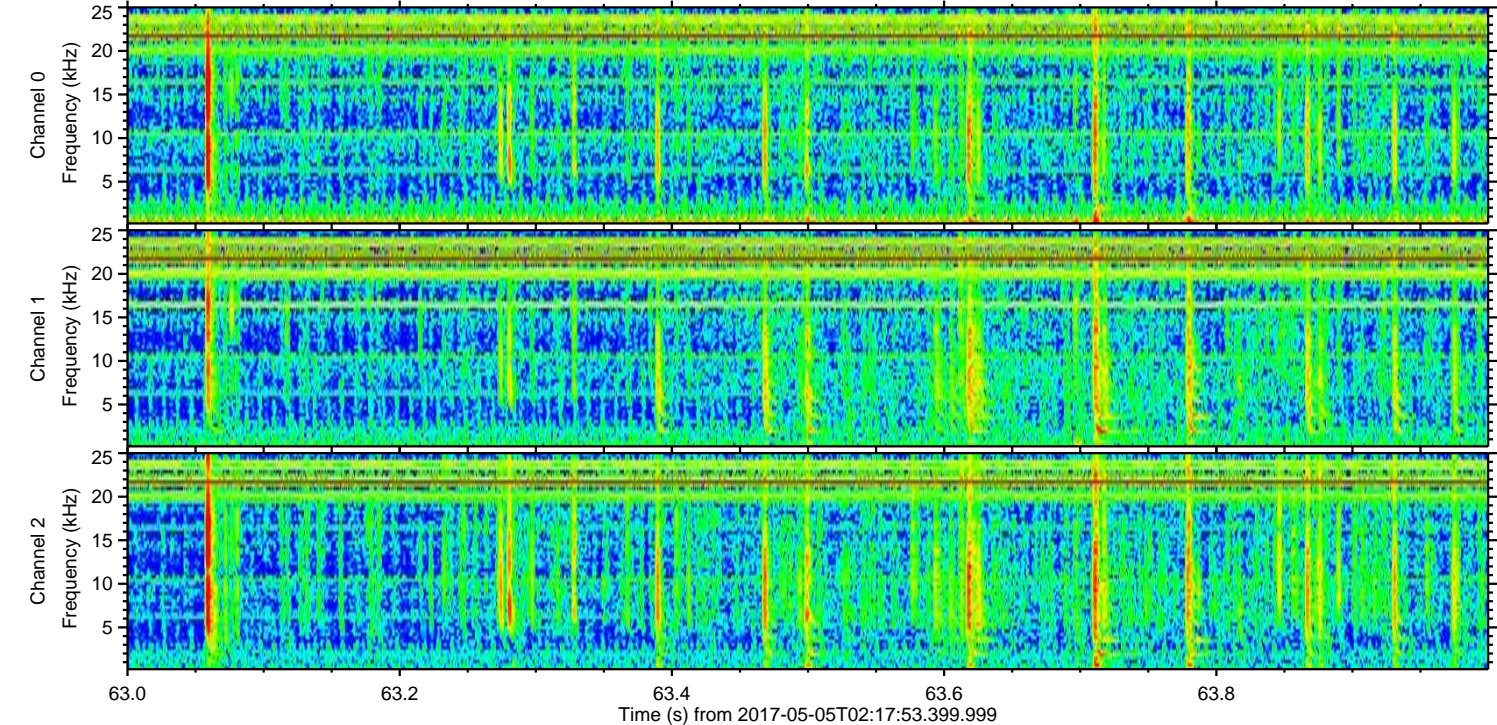
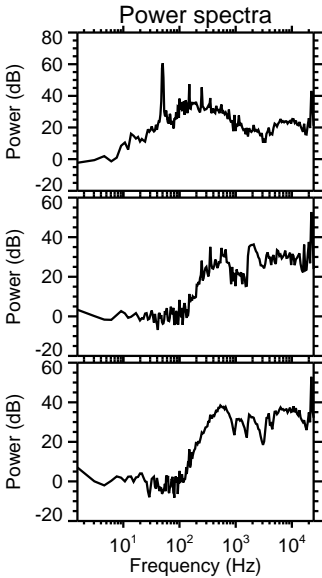
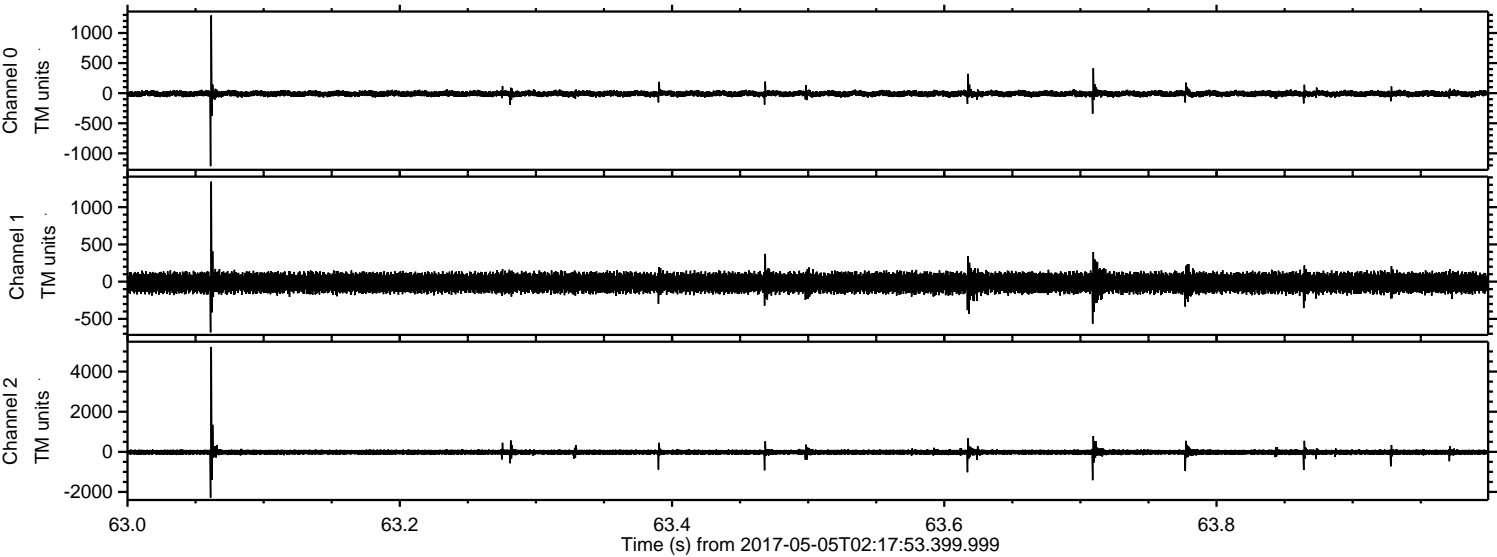


ELMAVAN 3D WAVEFORMS (Measured data sampled at 50 kHz) 51000 packets of 144 samples from 2017-05-05T02:17:53.399.999. Part 127/147

Processed Fri May 5 04:26:04 2017 by ELM ver.2012-10-06 from 001__elm20170505_021752__dat00.bin

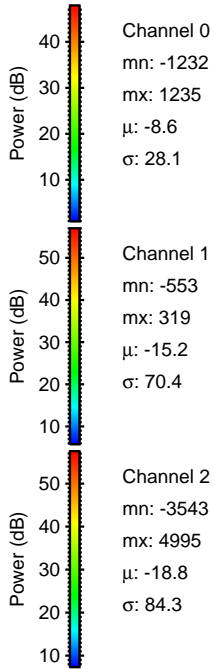
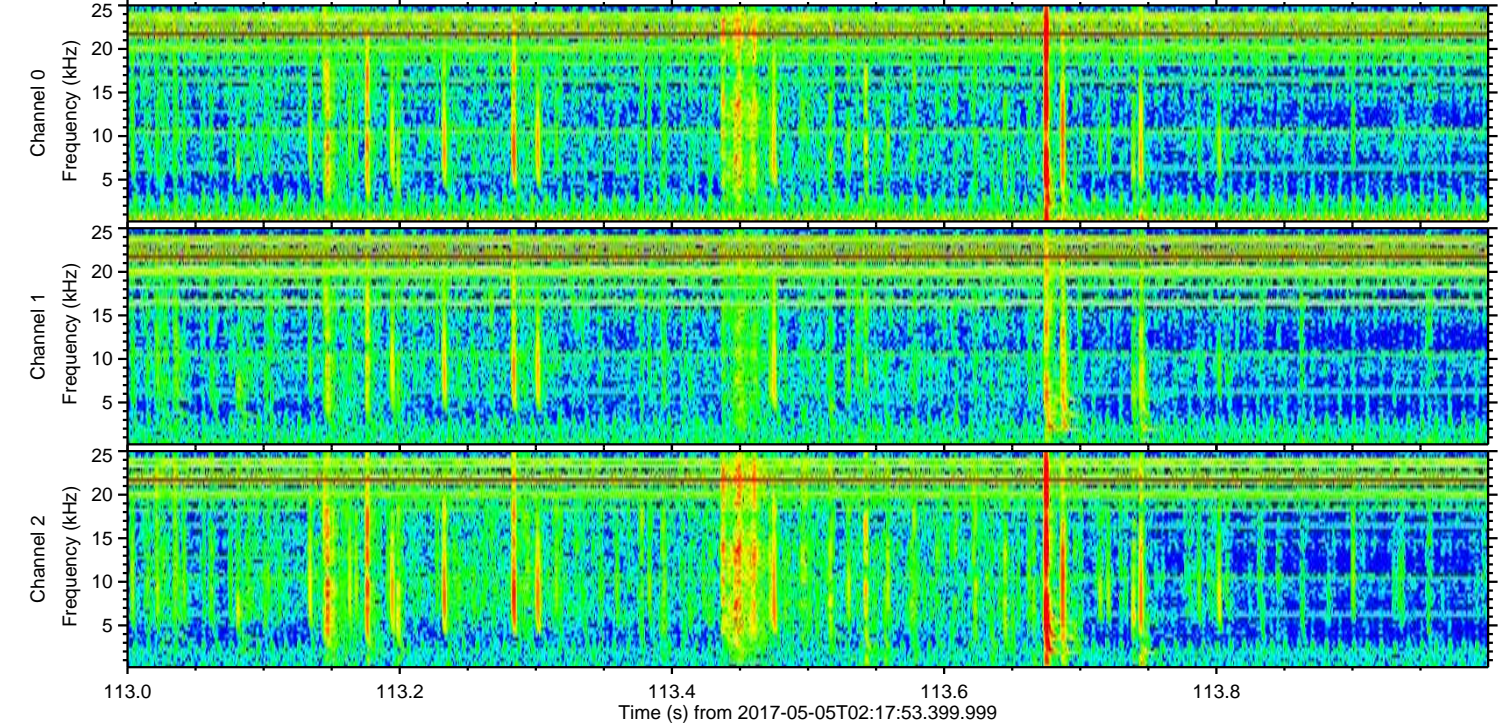
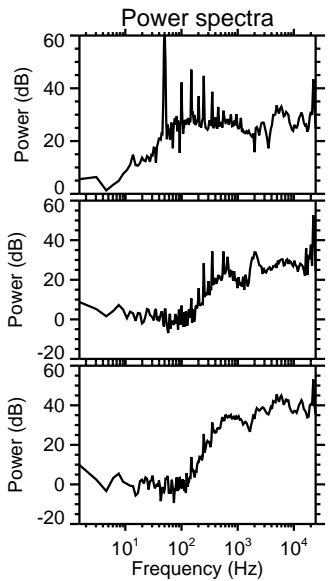
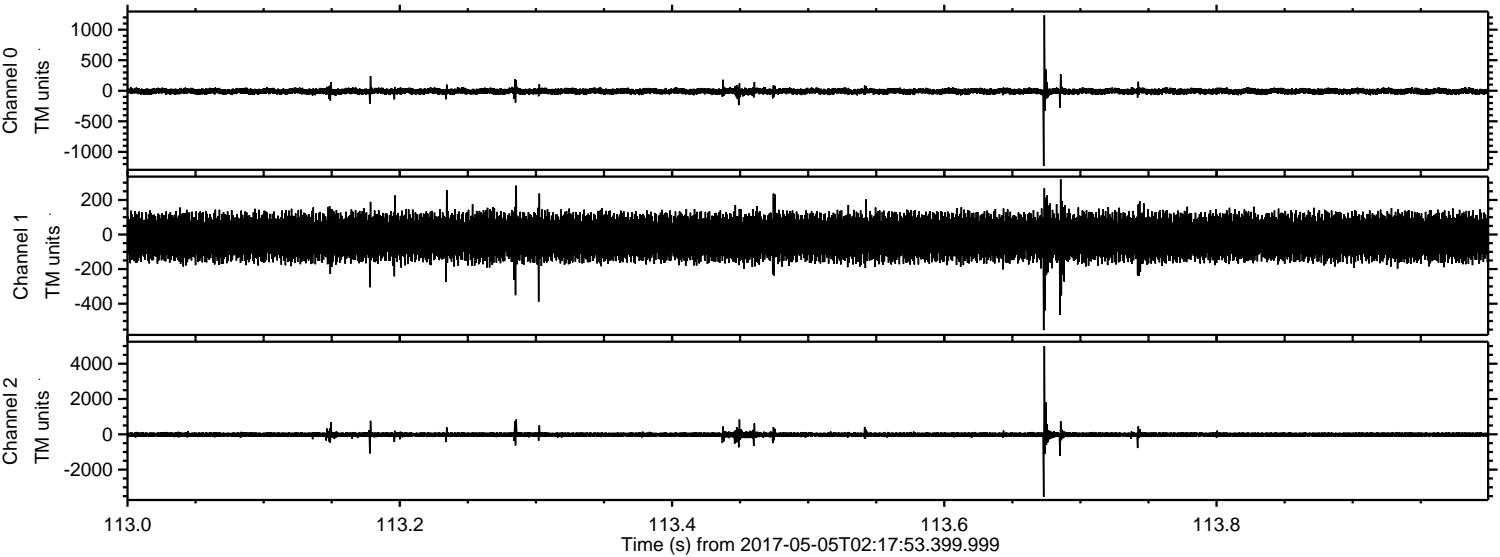


Processed Fri May 5 04:26:05 2017 by ELM ver.2012-10-06 from 001__elm20170505_021752__dat00.bin



ELMAVAN 3D WAVEFORMS (Measured data sampled at 50 kHz) 51000 packets of 144 samples from 2017-05-05T02:17:53.399.999. Part 114/147

Processed Fri May 5 04:26:06 2017 by ELM ver.2012-10-06 from 001__elm20170505_021752__dat00.bin



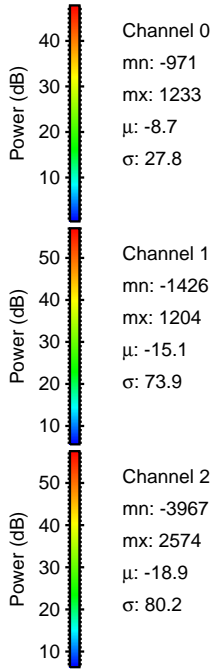
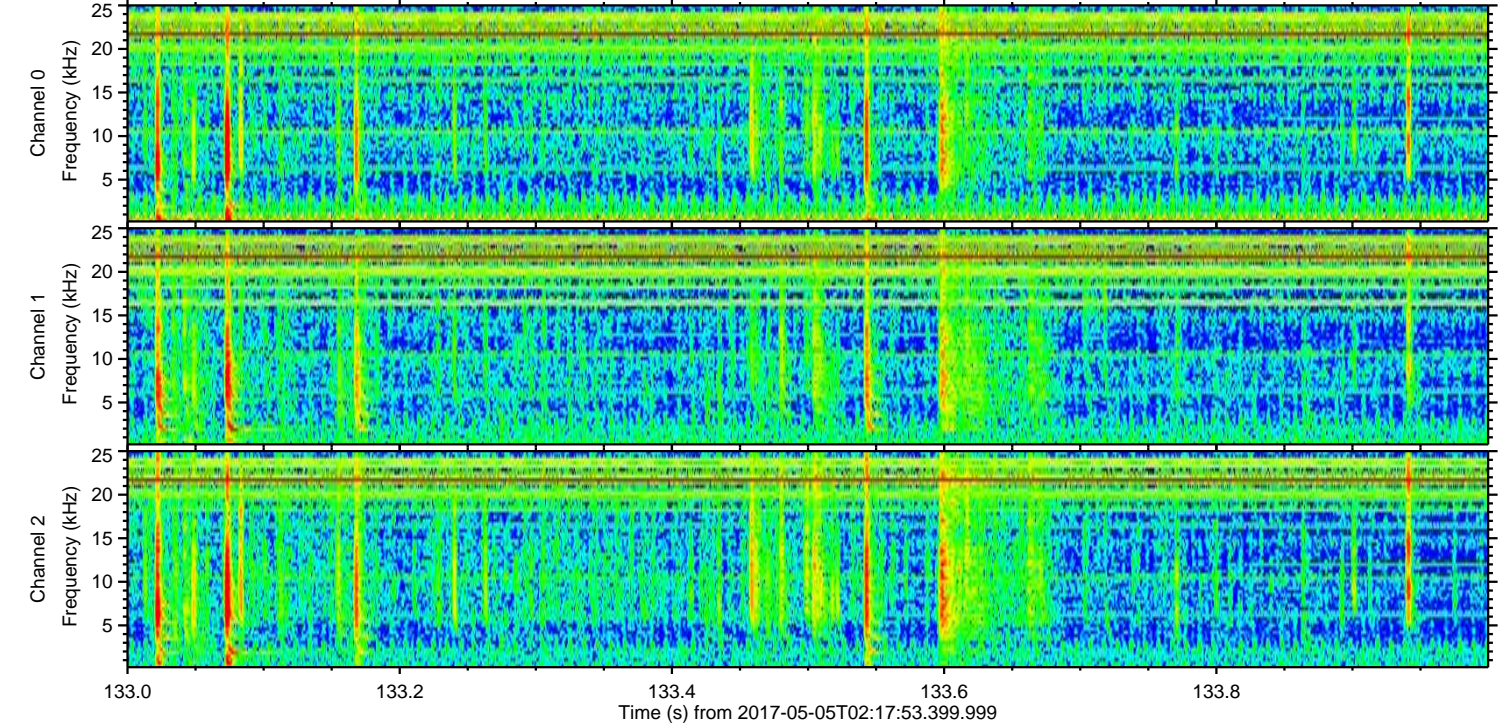
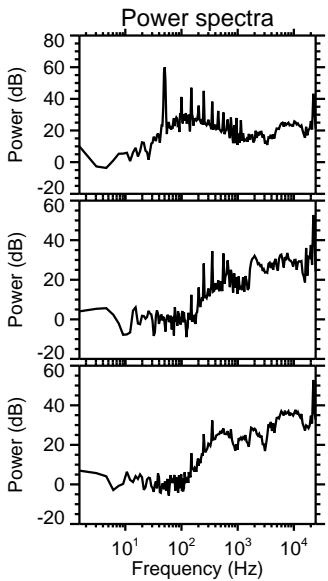
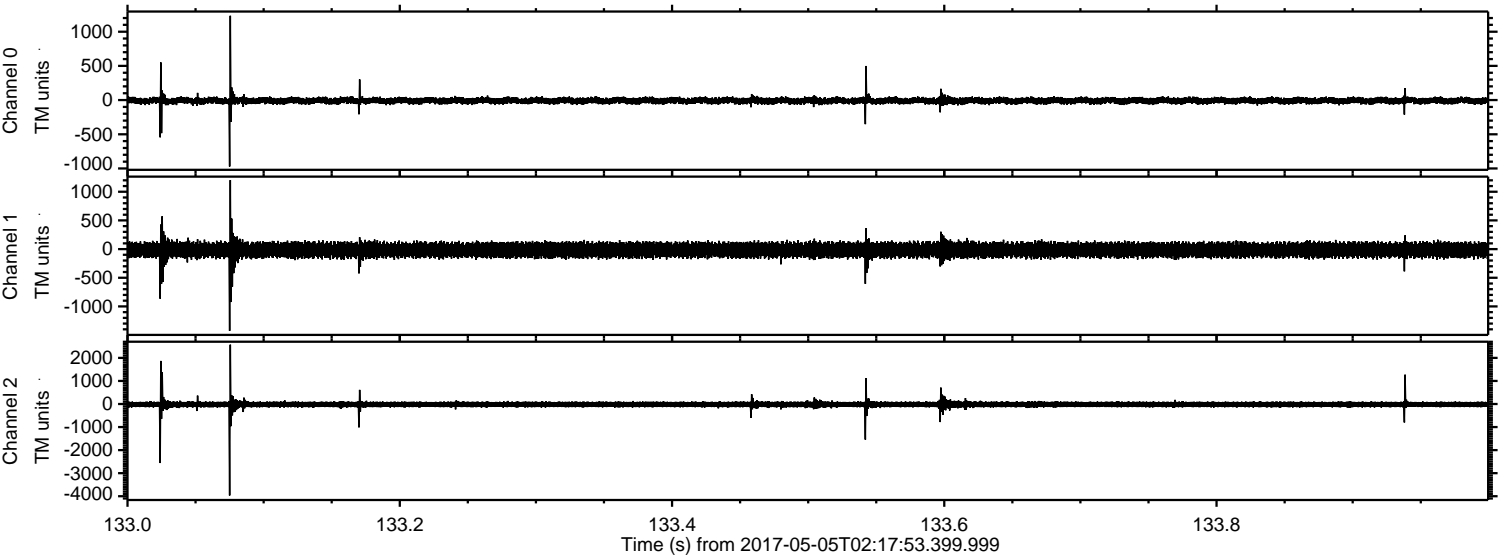
Channel 0
mn: -1232
mx: 1235
 μ : -8.6
 σ : 28.1

Channel 1
mn: -553
mx: 319
 μ : -15.2
 σ : 70.4

Channel 2
mn: -3543
mx: 4995
 μ : -18.8
 σ : 84.3

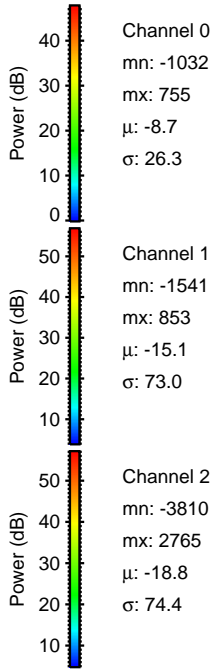
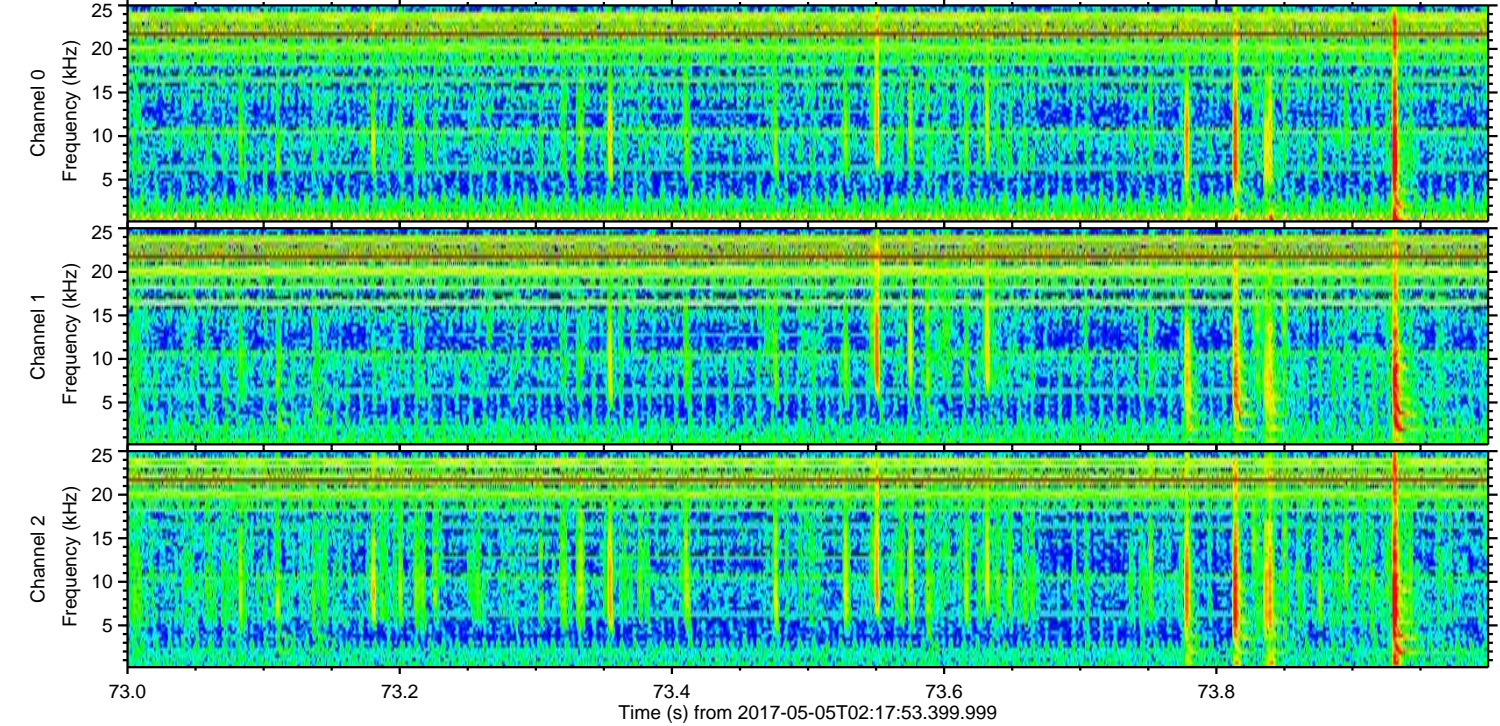
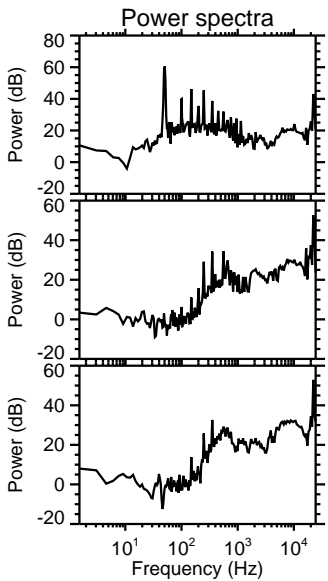
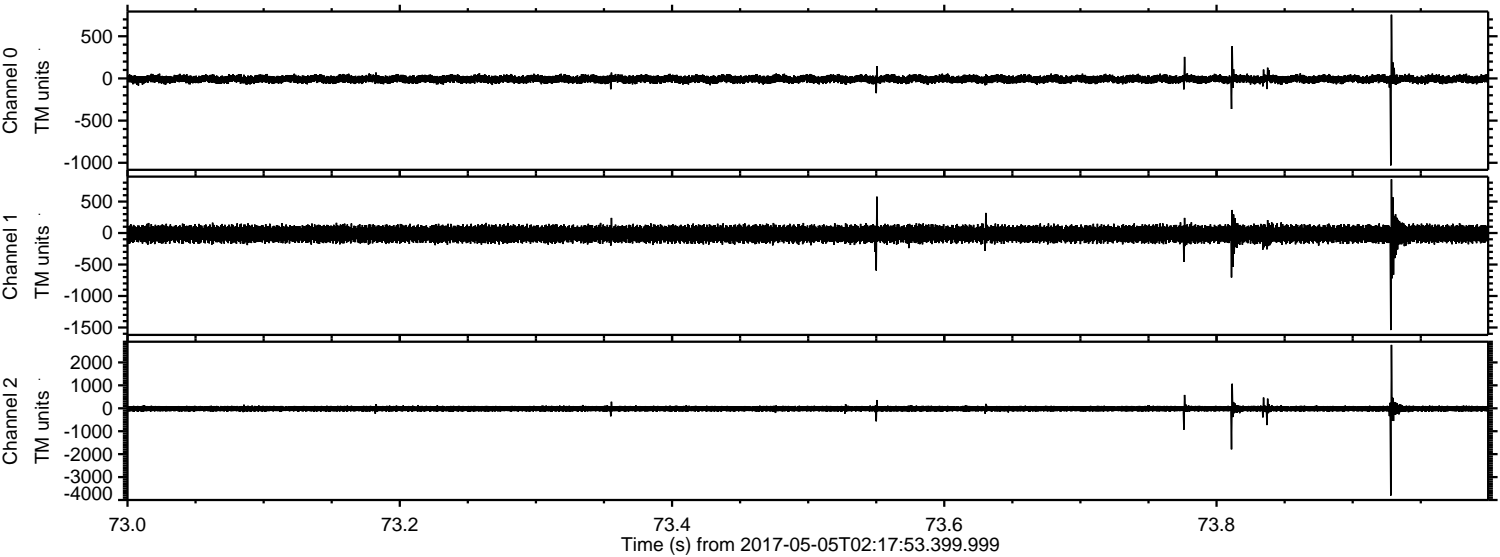
ELMAVAN 3D WAVEFORMS (Measured data sampled at 50 kHz) 51000 packets of 144 samples from 2017-05-05T02:17:53.399.999. Part 134/147

Processed Fri May 5 04:26:07 2017 by ELM ver.2012-10-06 from 001__elm20170505_021752__dat00.bin



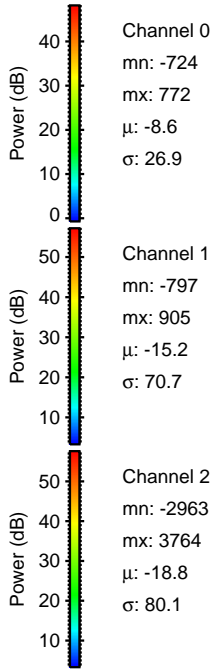
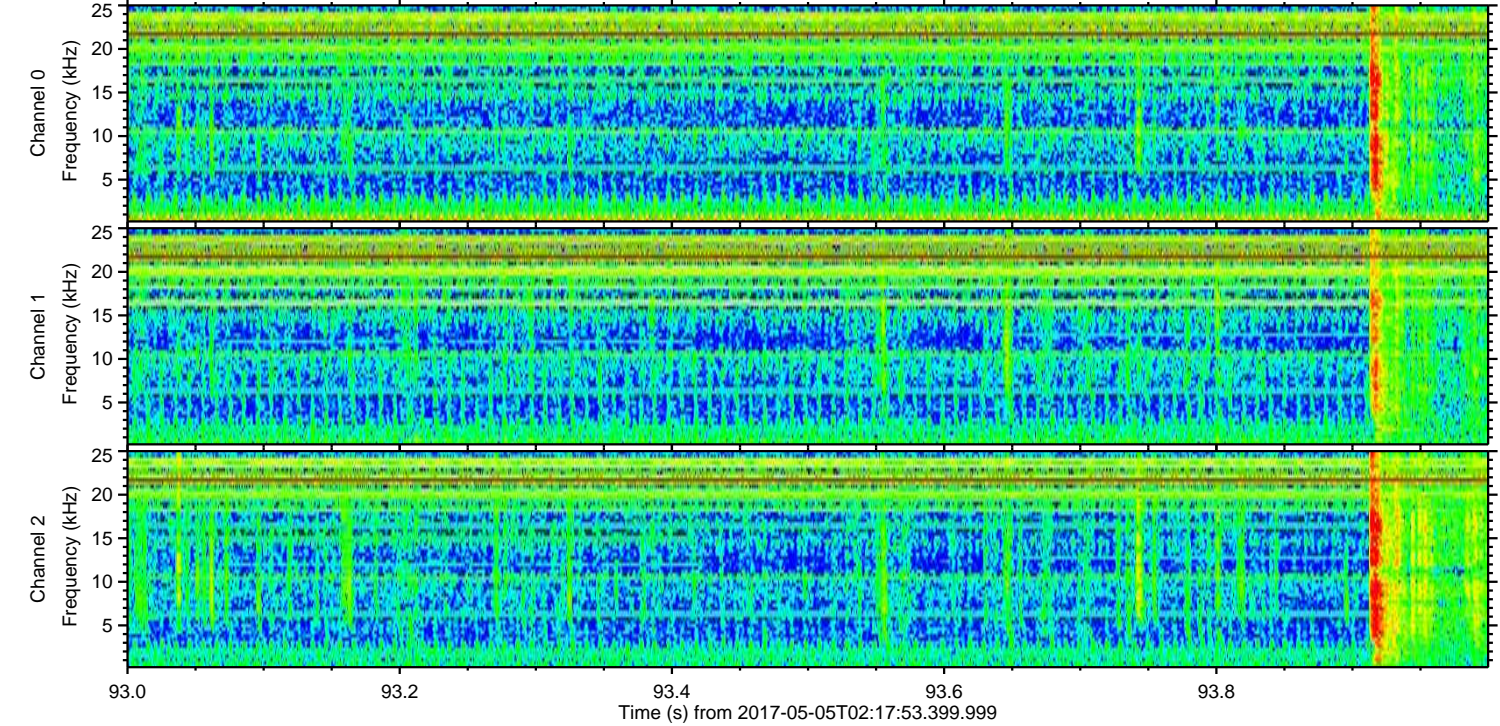
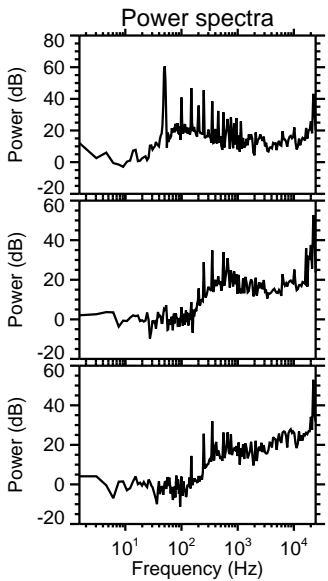
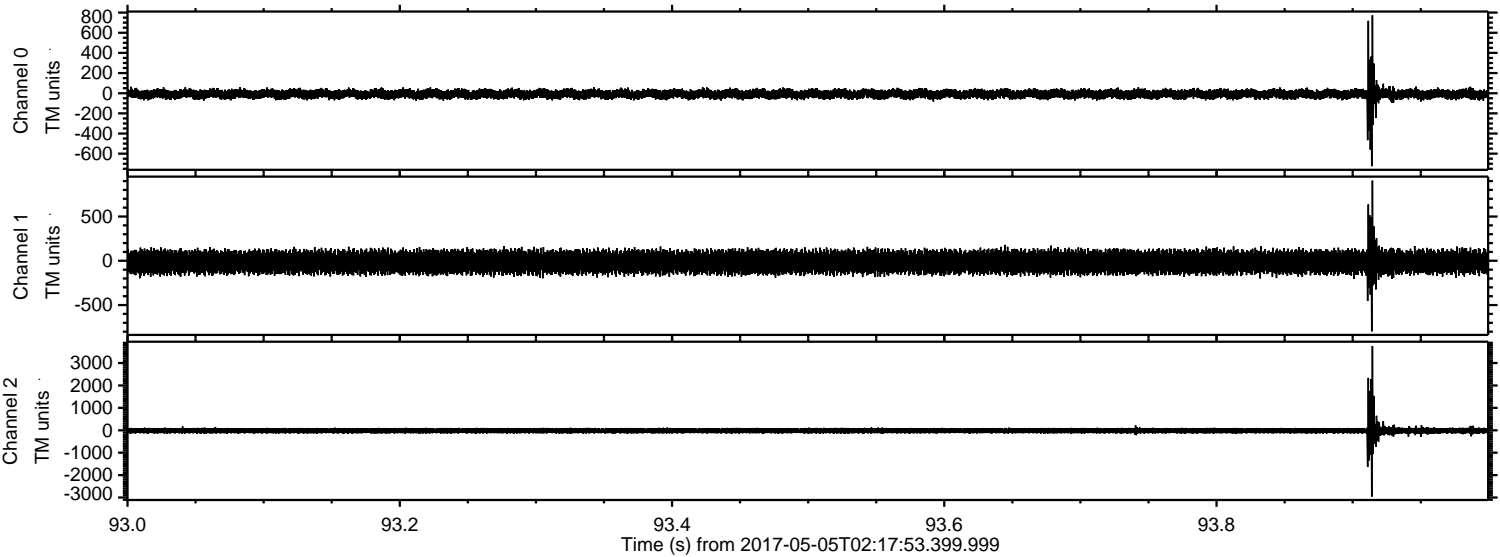
ELMAVAN 3D WAVEFORMS (Measured data sampled at 50 kHz) 51000 packets of 144 samples from 2017-05-05T02:17:53.399.999. Part 74/147

Processed Fri May 5 04:26:08 2017 by ELM ver.2012-10-06 from 001__elm20170505_021752__dat00.bin



ELMAVAN 3D WAVEFORMS (Measured data sampled at 50 kHz) 51000 packets of 144 samples from 2017-05-05T02:17:53.399.999. Part 94/147

Processed Fri May 5 04:26:10 2017 by ELM ver.2012-10-06 from 001__elm20170505_021752__dat00.bin

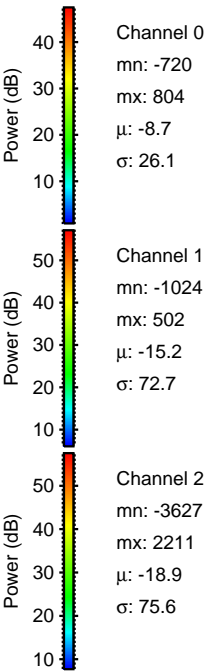
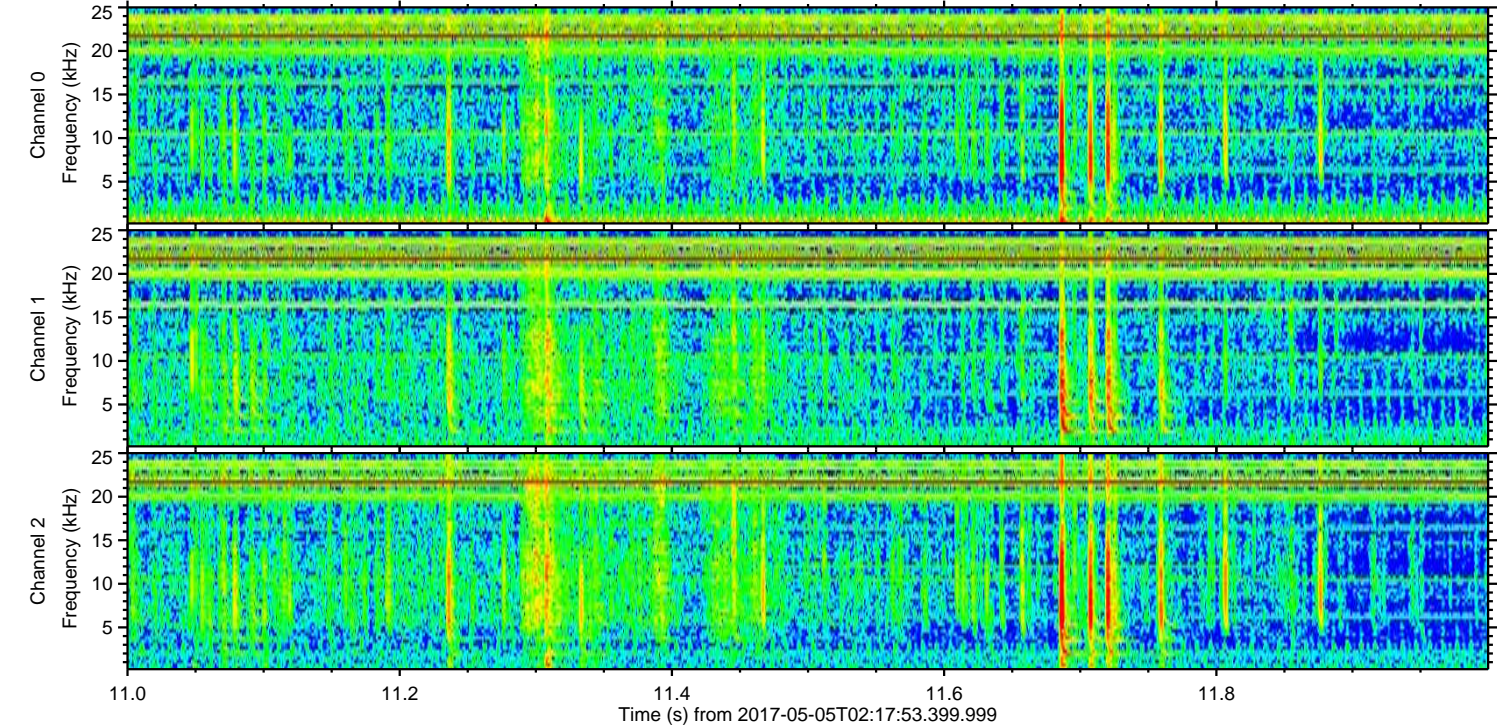
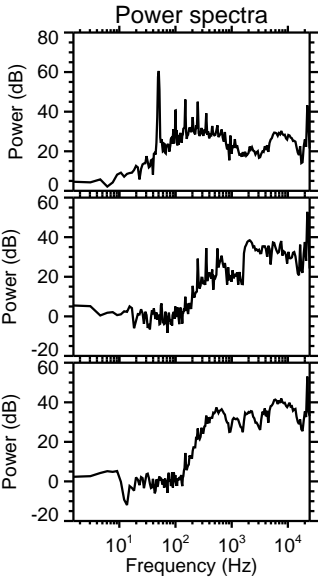
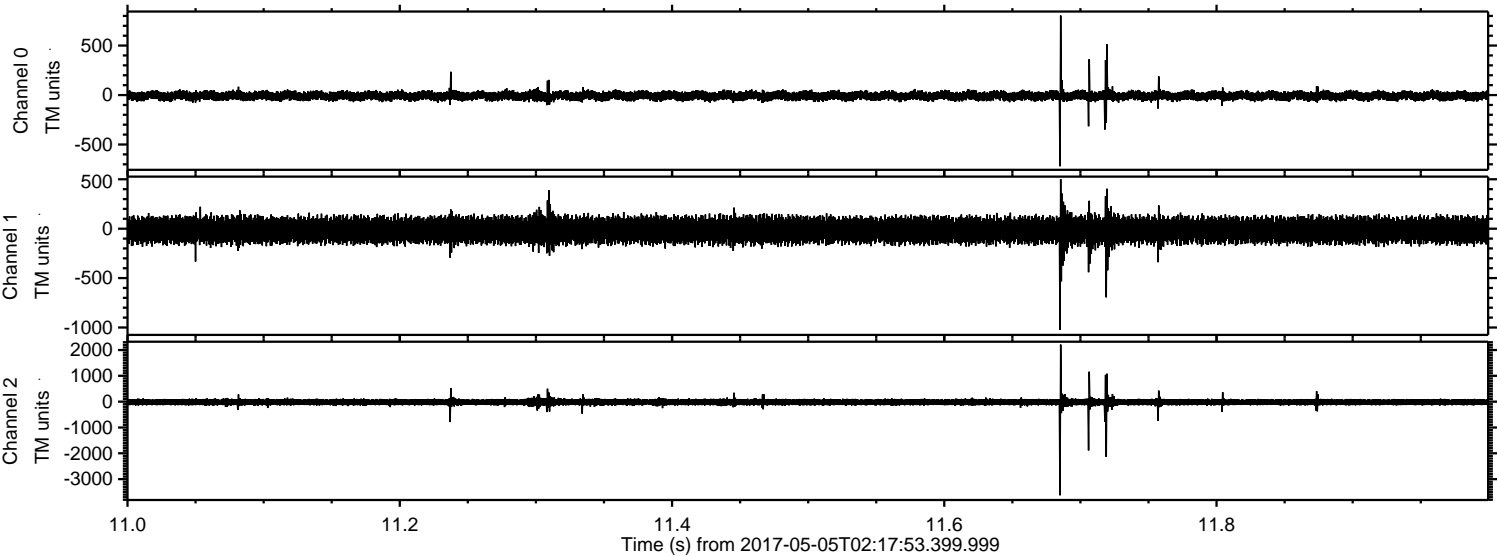


Channel 0
mn: -724
mx: 772
 μ : -8.6
 σ : 26.9

Channel 1
mn: -797
mx: 905
 μ : -15.2
 σ : 70.7

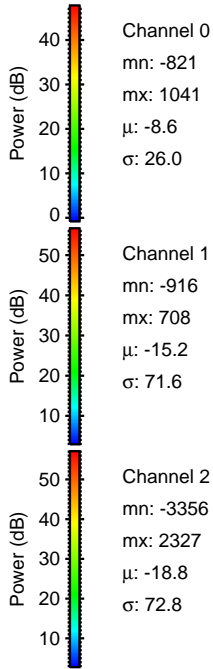
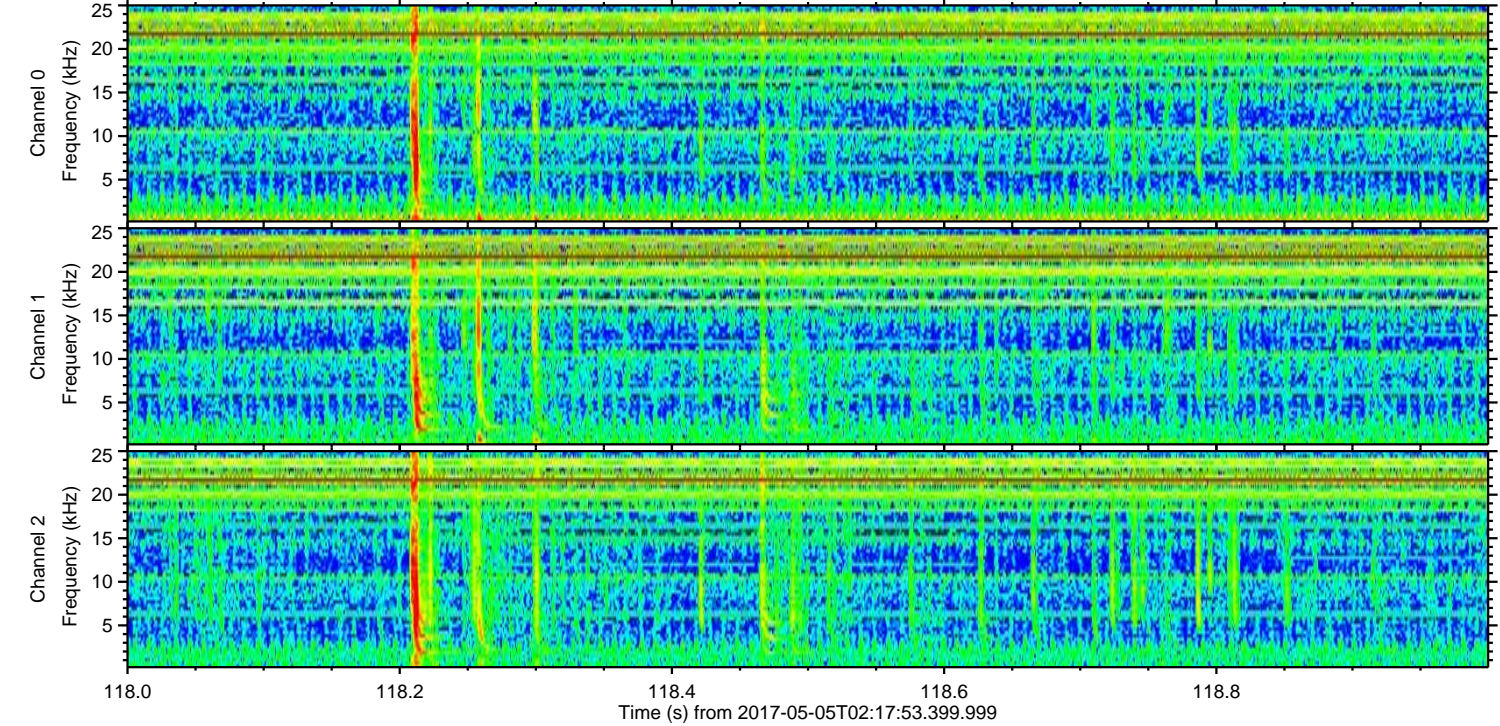
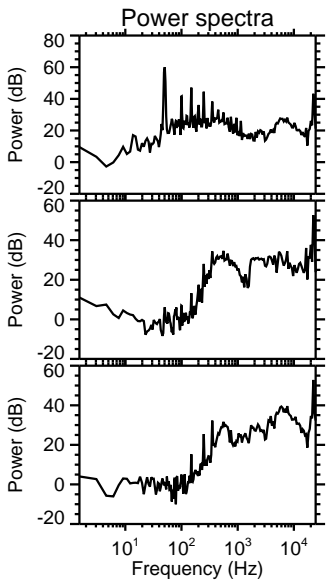
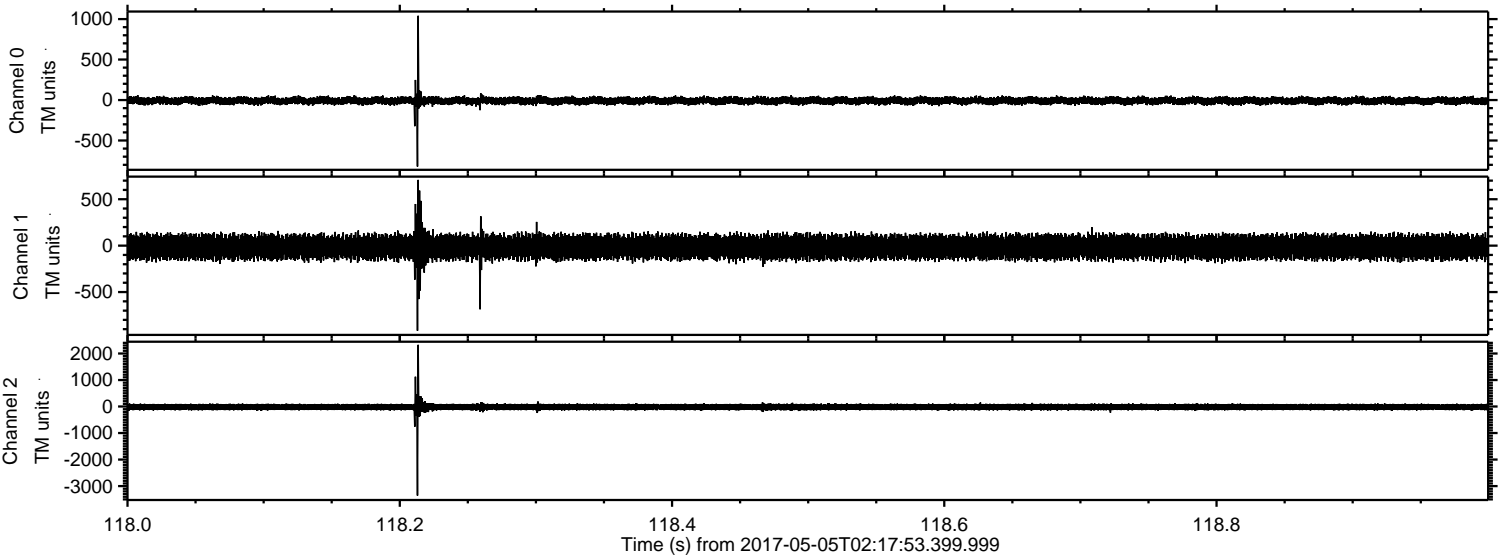
Channel 2
mn: -2963
mx: 3764
 μ : -18.8
 σ : 80.1

Processed Fri May 5 04:26:11 2017 by ELM ver.2012-10-06 from 001__elm20170505_021752__dat00.bin



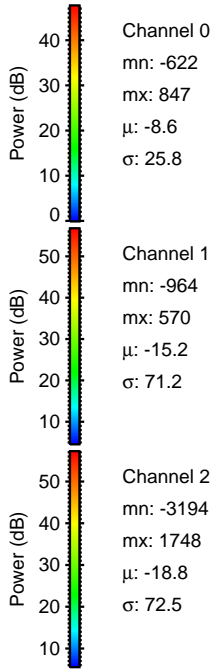
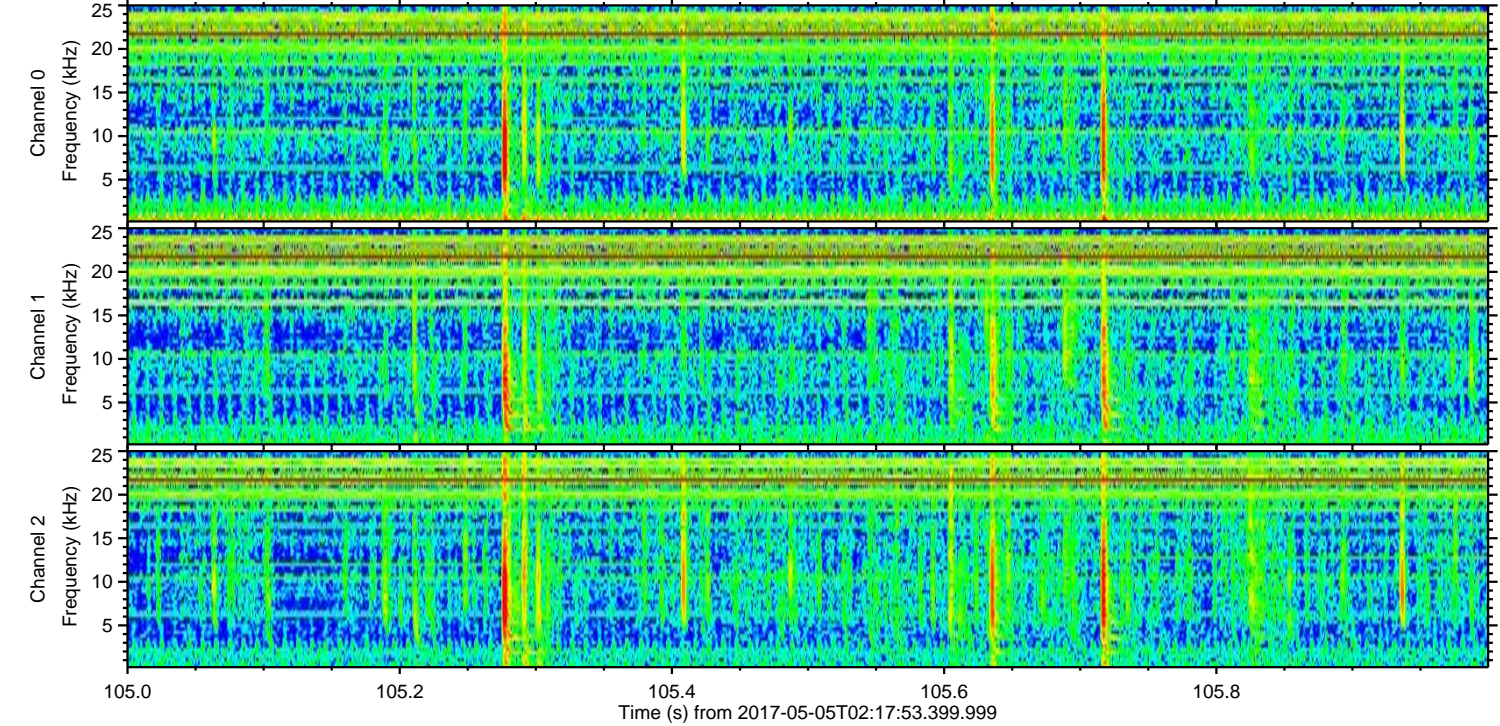
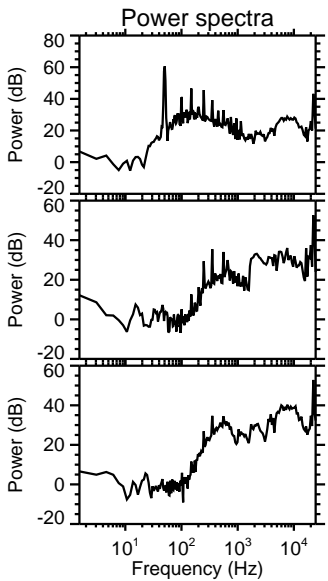
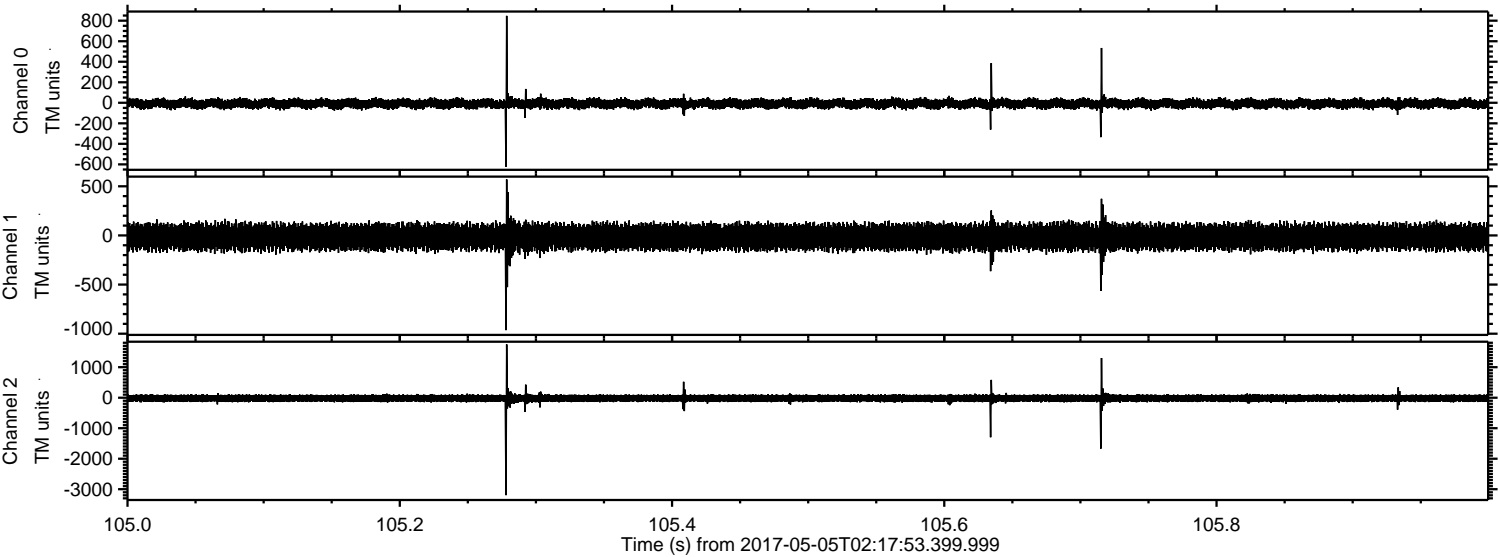
ELMAVAN 3D WAVEFORMS (Measured data sampled at 50 kHz) 51000 packets of 144 samples from 2017-05-05T02:17:53.399.999. Part 119/147

Processed Fri May 5 04:26:11 2017 by ELM ver.2012-10-06 from 001__elm20170505_021752__dat00.bin



ELMAVAN 3D WAVEFORMS (Measured data sampled at 50 kHz) 51000 packets of 144 samples from 2017-05-05T02:17:53.399.999. Part 106/147

Processed Fri May 5 04:26:12 2017 by ELM ver.2012-10-06 from 001__elm20170505_021752__dat00.bin



Channel 0
mn: -622
mx: 847
 μ : -8.6
 σ : 25.8

Channel 1
mn: -964
mx: 570
 μ : -15.2
 σ : 71.2

Channel 2
mn: -3194
mx: 1748
 μ : -18.8
 σ : 72.5

