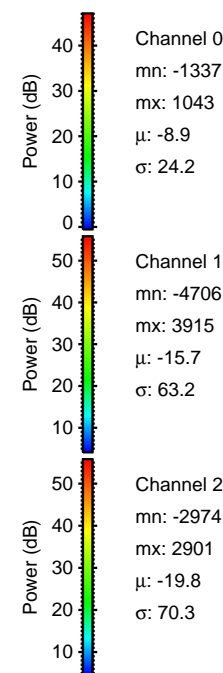
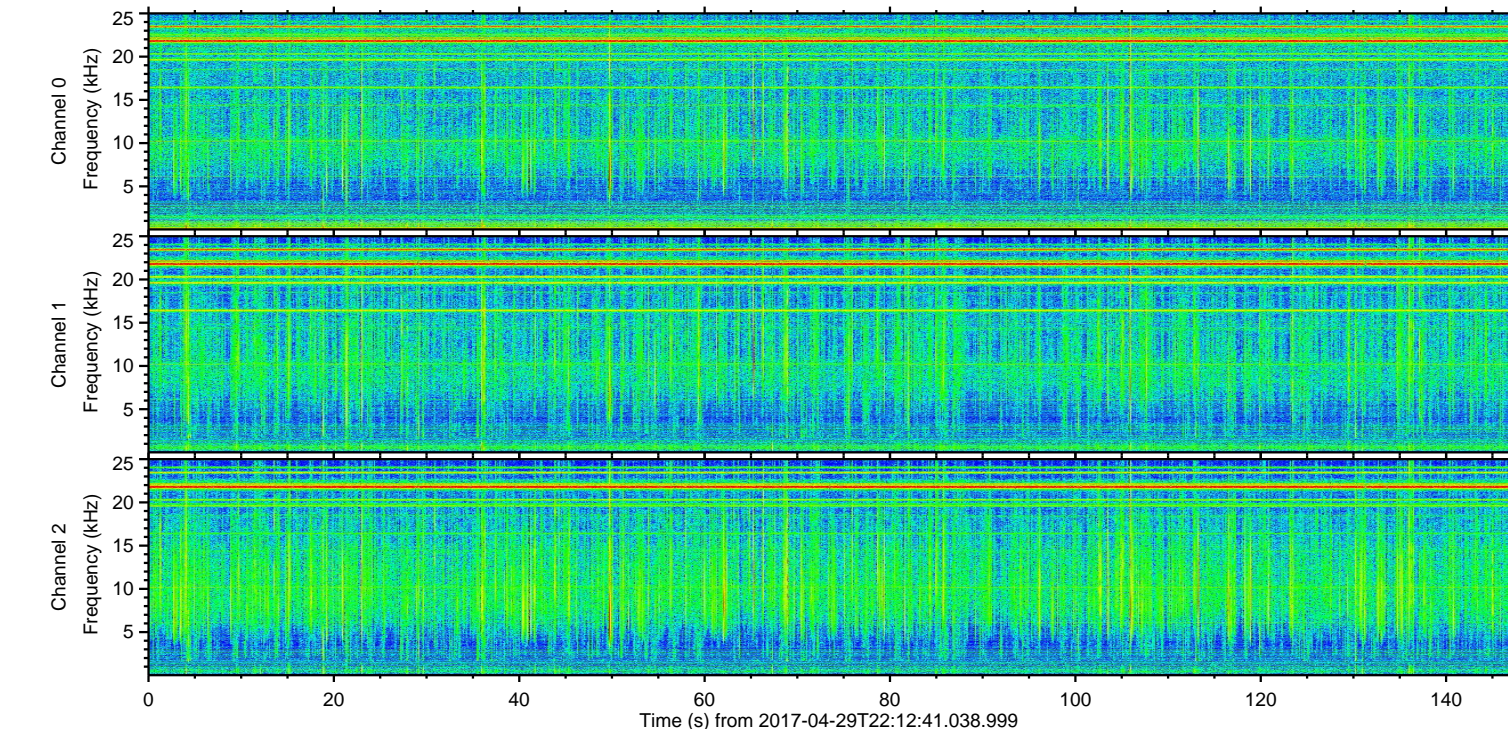
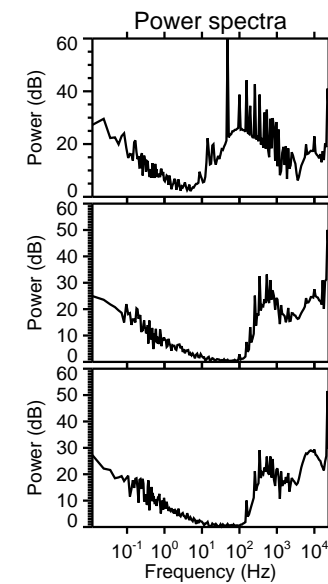
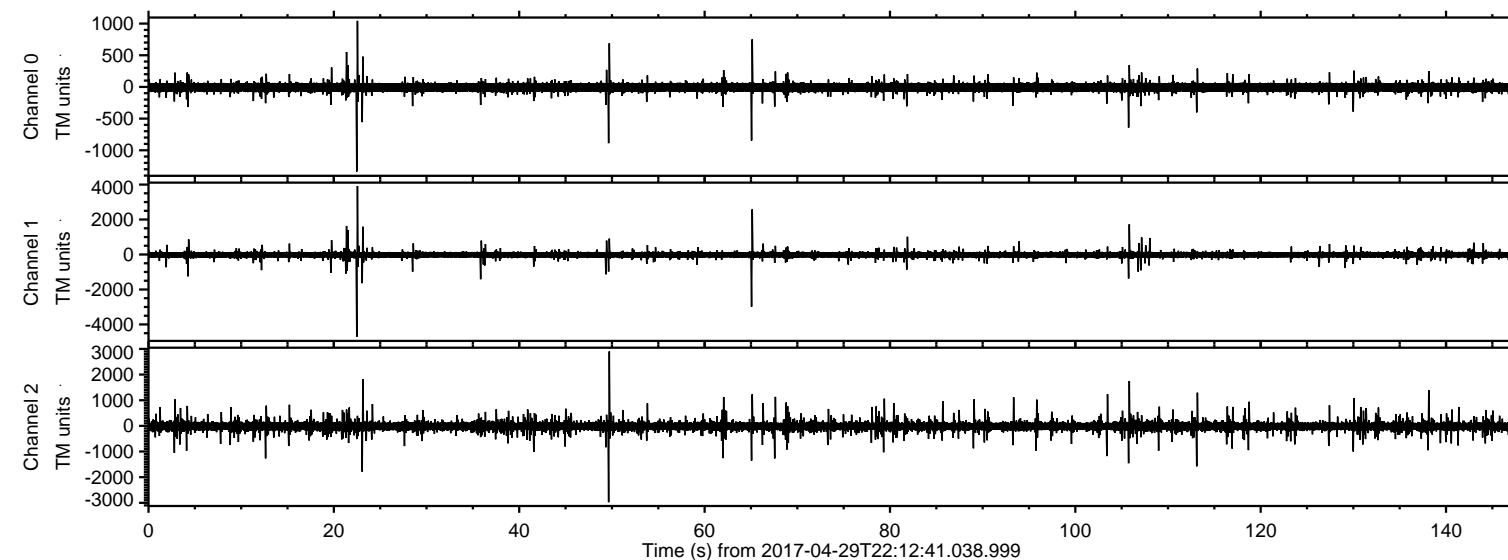


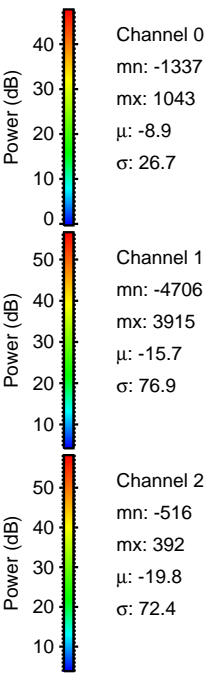
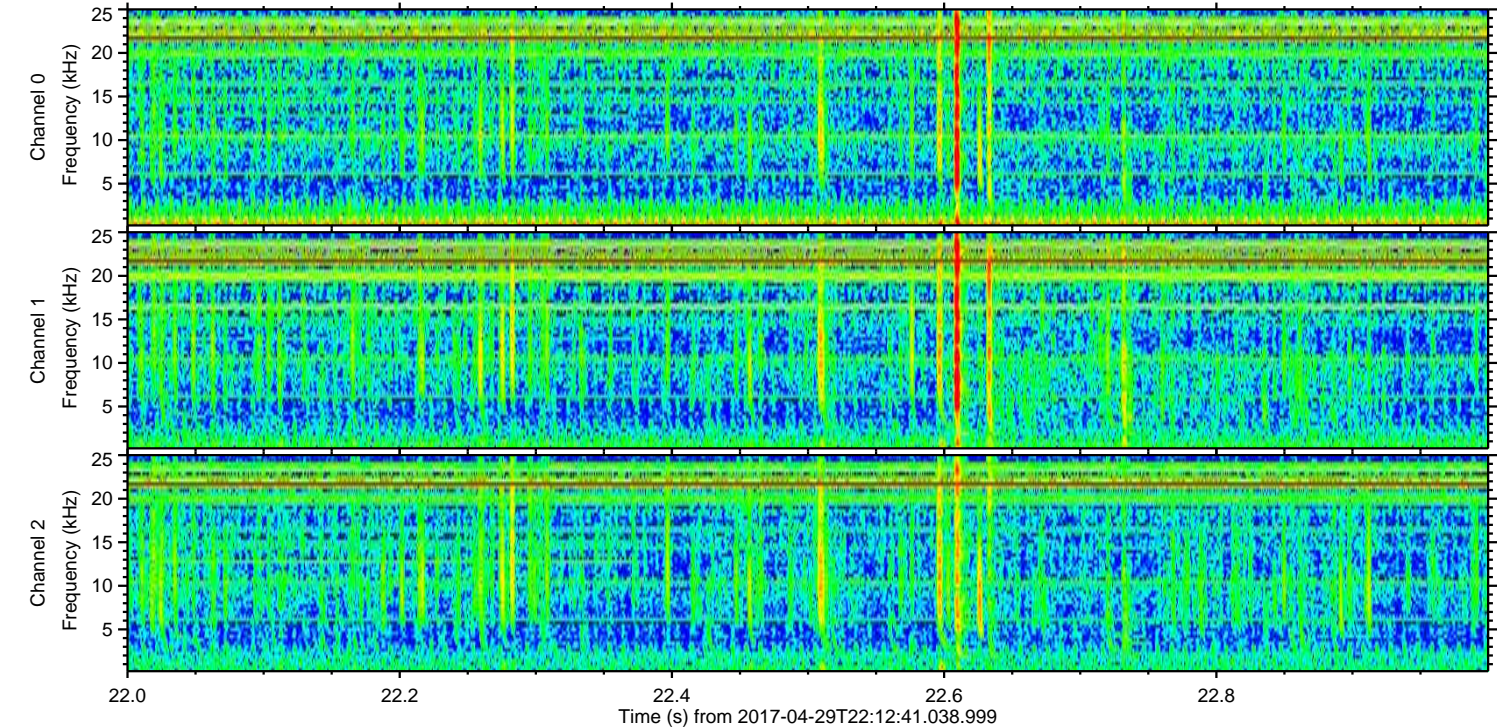
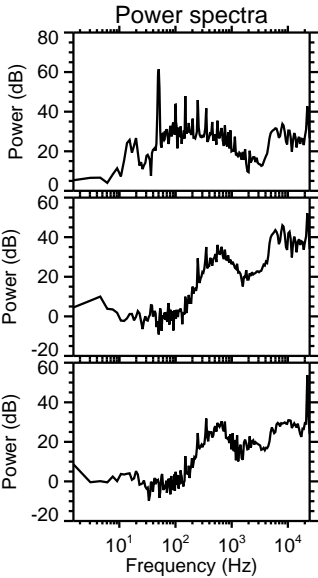
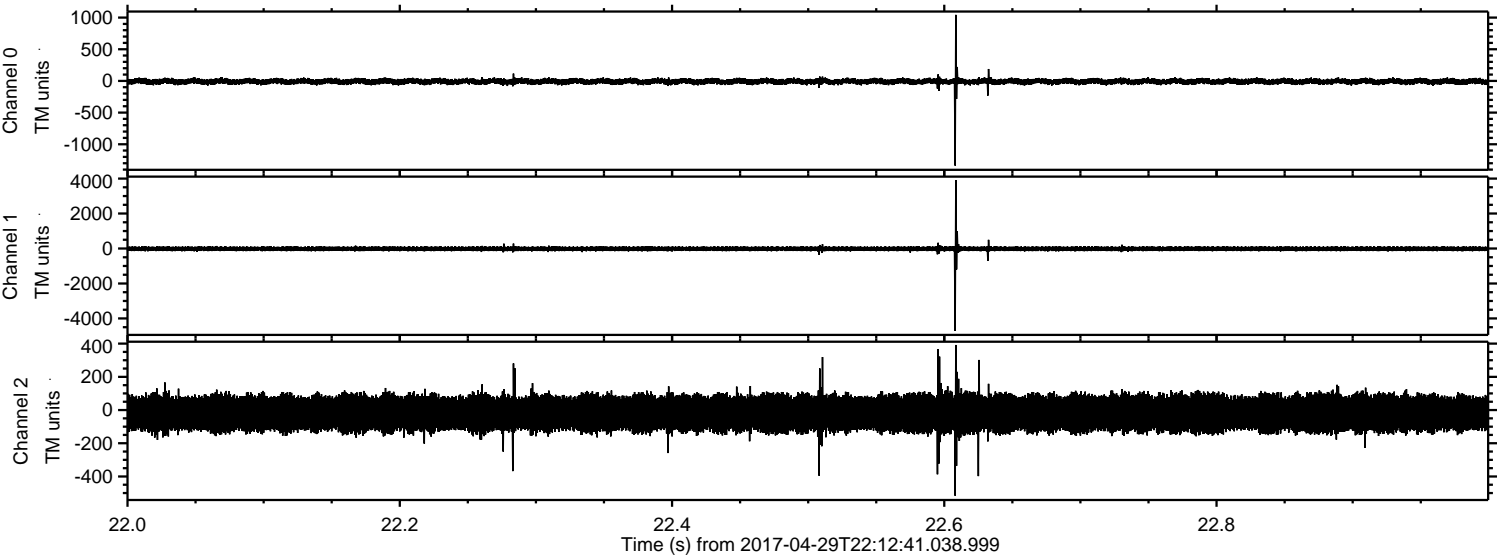
# ELMAVAN 3D WAVEFORMS (Measured data sampled at 50 kHz) 51000 packets of 144 samples from 2017-04-29T22:12:41.038.999.

Processed Sun Apr 30 00:21:00 2017 by ELM ver.2012-10-06 from 001\_\_elm20170429\_221240\_\_dat00.bin



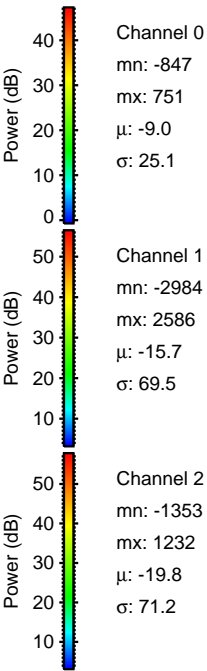
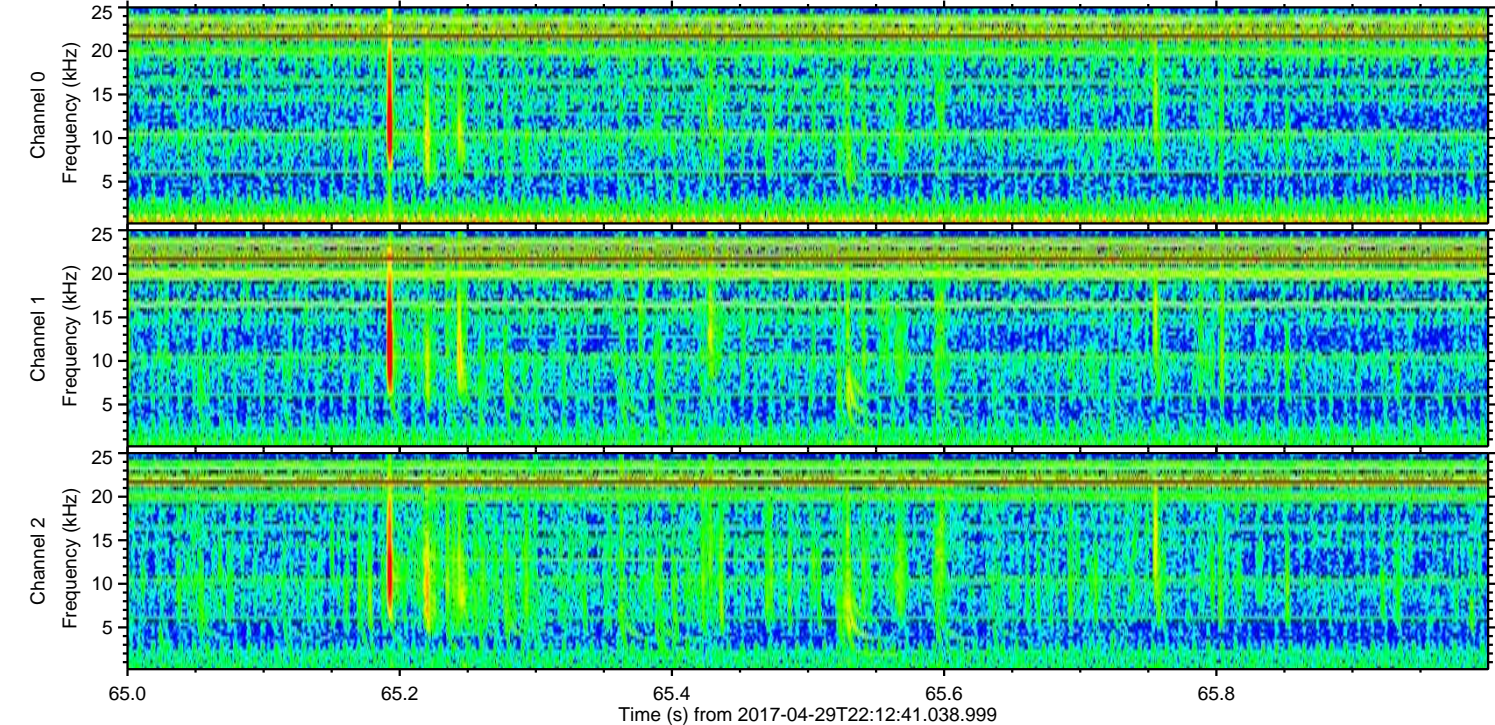
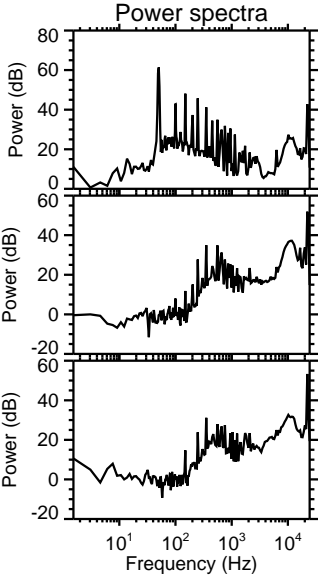
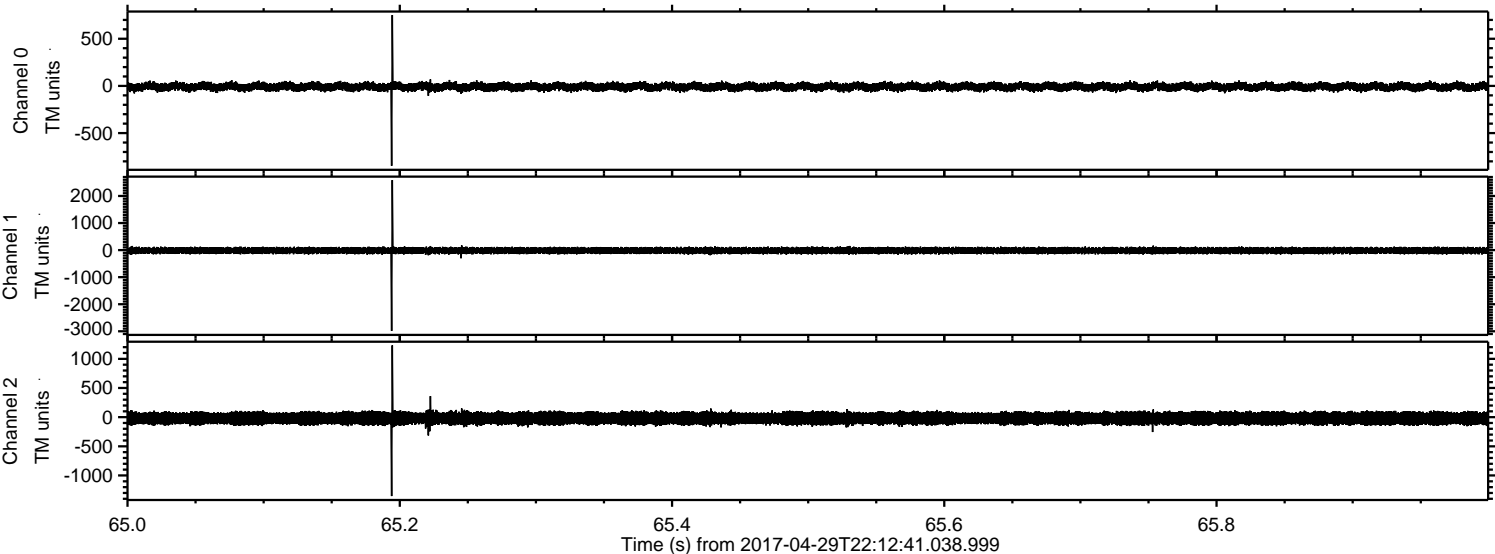


Processed Sun Apr 30 00:21:12 2017 by ELM ver.2012-10-06 from 001\_\_elm20170429\_221240\_\_dat00.bin





Processed Sun Apr 30 00:21:13 2017 by ELM ver.2012-10-06 from 001\_\_elm20170429\_221240\_\_dat00.bin



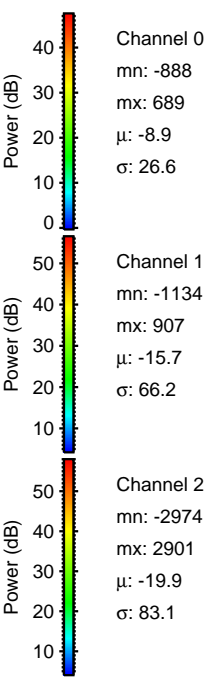
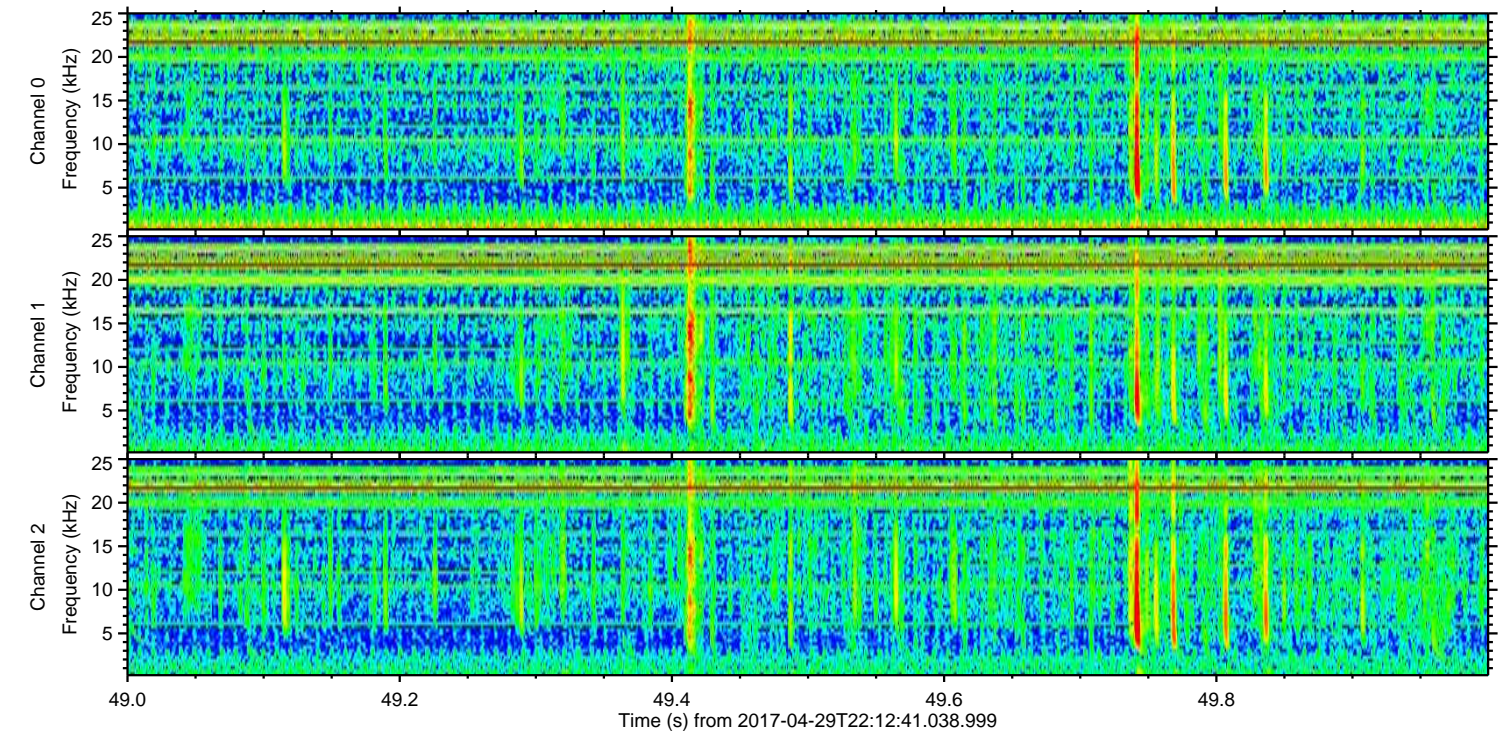
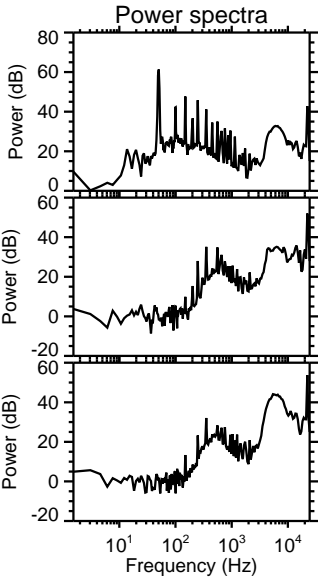
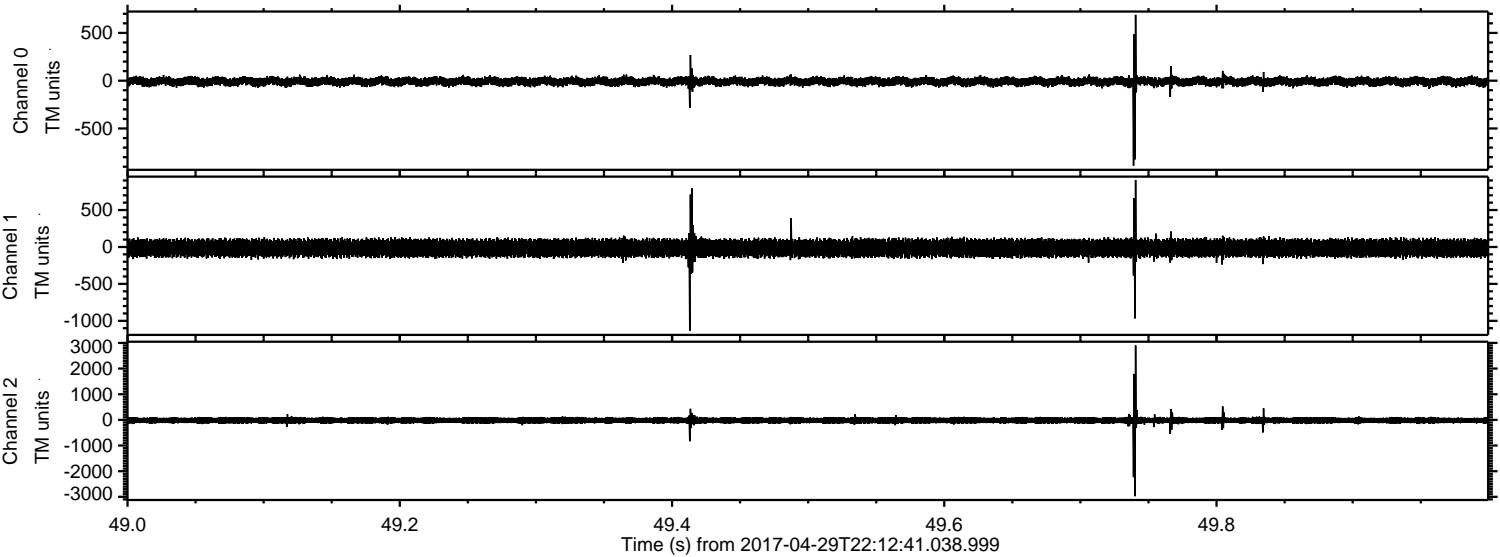
Channel 0  
mn: -847  
mx: 751  
 $\mu$ : -9.0  
 $\sigma$ : 25.1

Channel 1  
mn: -2984  
mx: 2586  
 $\mu$ : -15.7  
 $\sigma$ : 69.5

Channel 2  
mn: -1353  
mx: 1232  
 $\mu$ : -19.8  
 $\sigma$ : 71.2

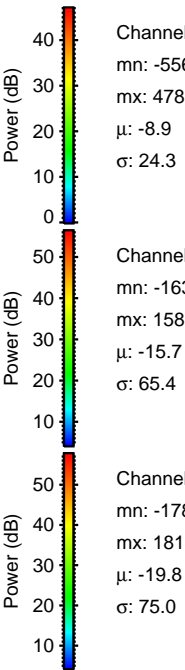
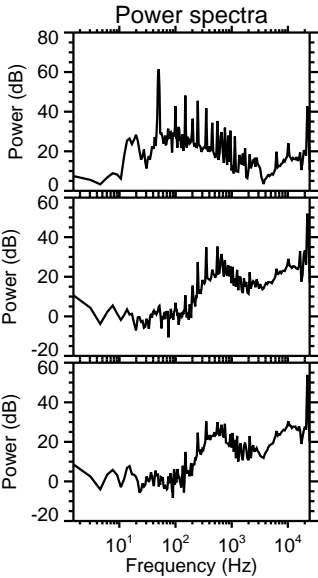
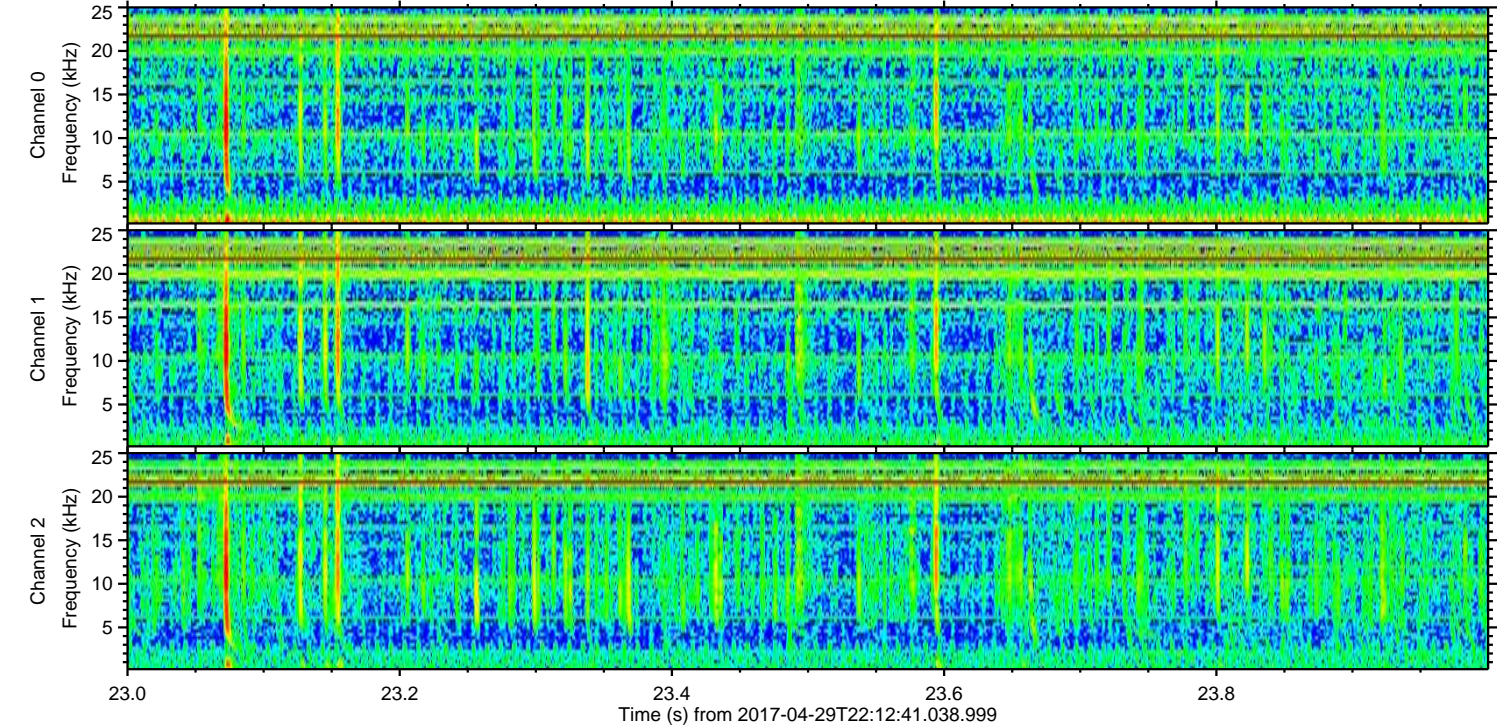
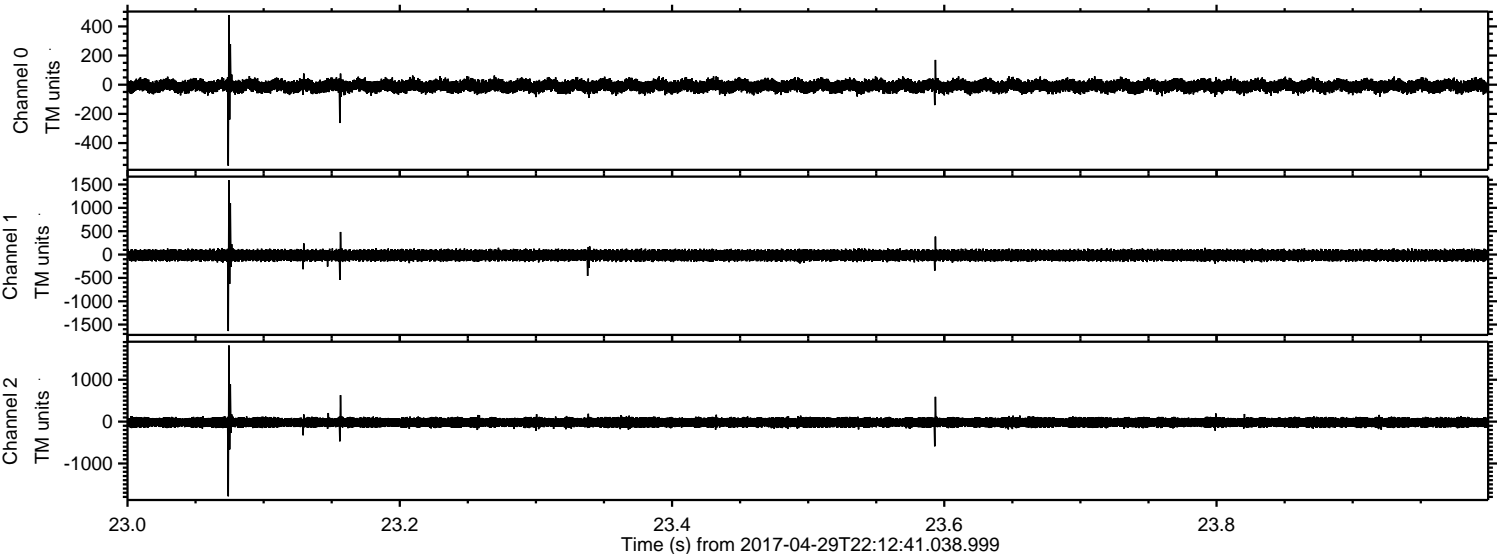


Processed Sun Apr 30 00:21:13 2017 by ELM ver.2012-10-06 from 001\_\_elm20170429\_221240\_\_dat00.bin





Processed Sun Apr 30 00:21:14 2017 by ELM ver.2012-10-06 from 001\_\_elm20170429\_221240\_\_dat00.bin



Channel 0  
mn: -556  
mx: 478  
 $\mu$ : -8.9  
 $\sigma$ : 24.3

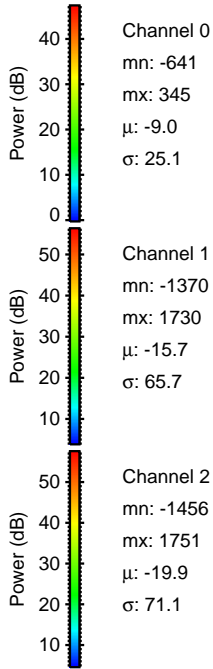
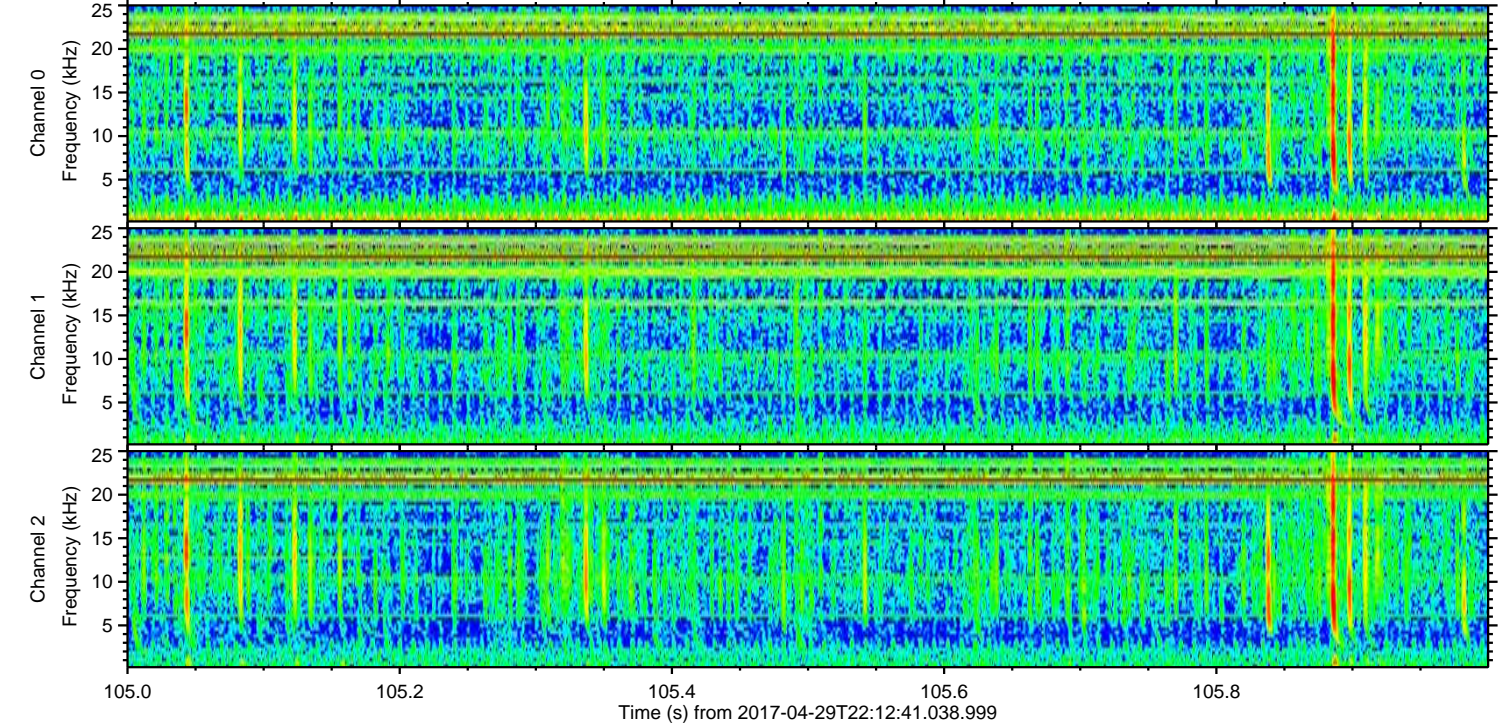
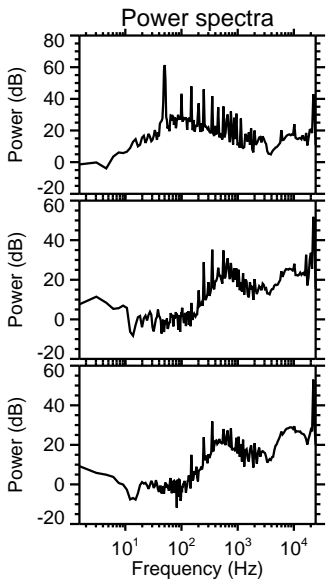
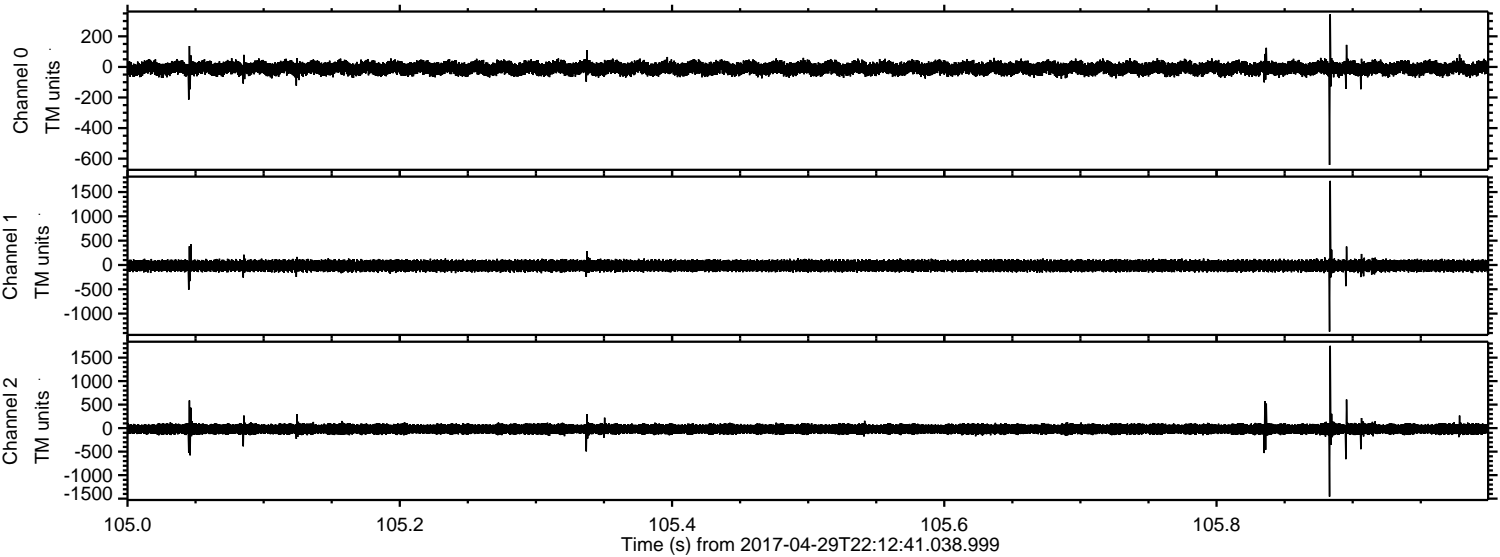
Channel 1  
mn: -1639  
mx: 1589  
 $\mu$ : -15.7  
 $\sigma$ : 65.4

Channel 2  
mn: -1784  
mx: 1818  
 $\mu$ : -19.8  
 $\sigma$ : 75.0



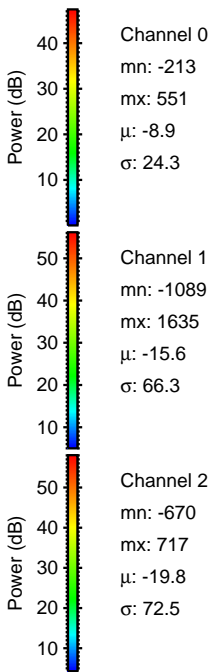
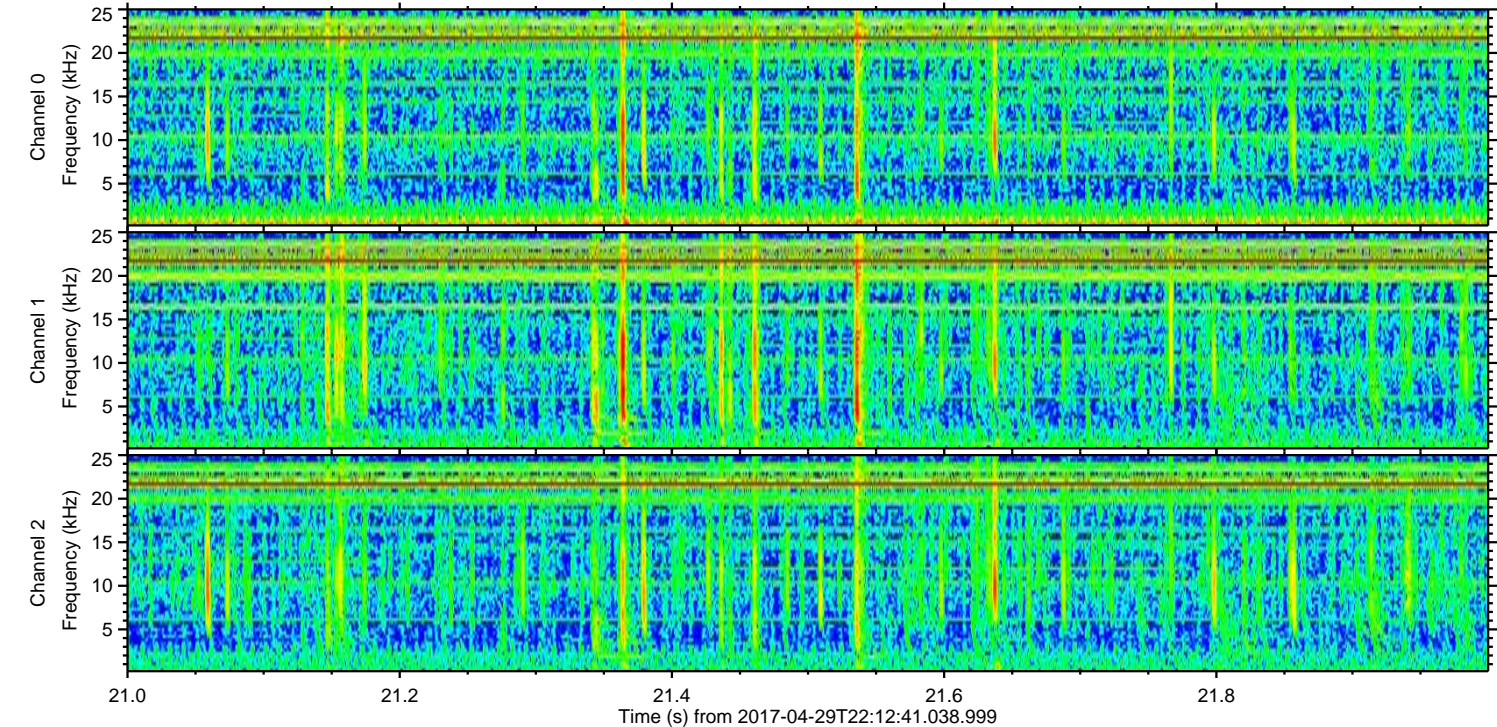
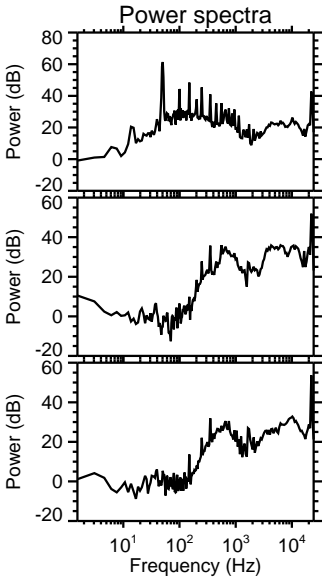
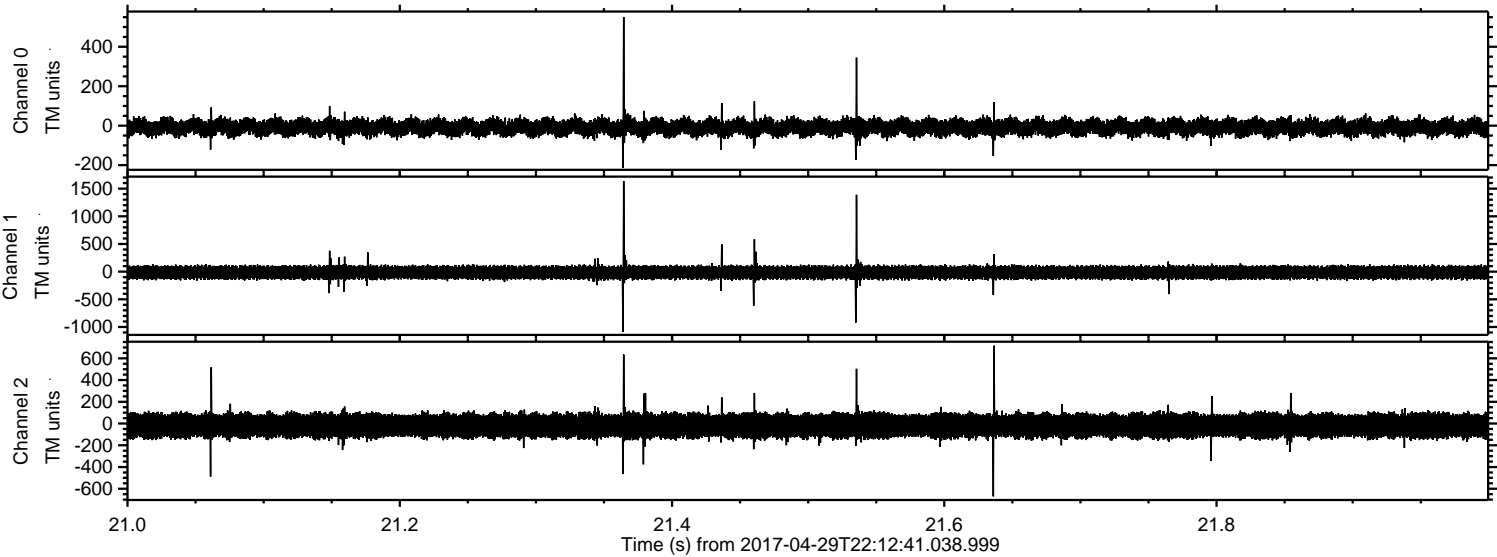
ELMAVAN 3D WAVEFORMS (Measured data sampled at 50 kHz) 51000 packets of 144 samples from 2017-04-29T22:12:41.038.999. Part 106/147

Processed Sun Apr 30 00:21:15 2017 by ELM ver.2012-10-06 from 001\_\_elm20170429\_221240\_\_dat00.bin





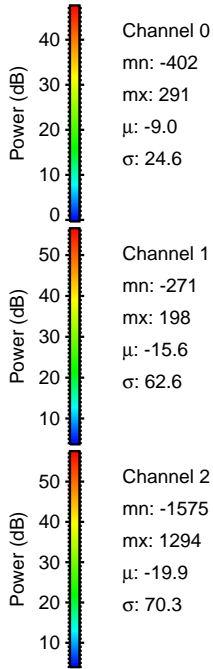
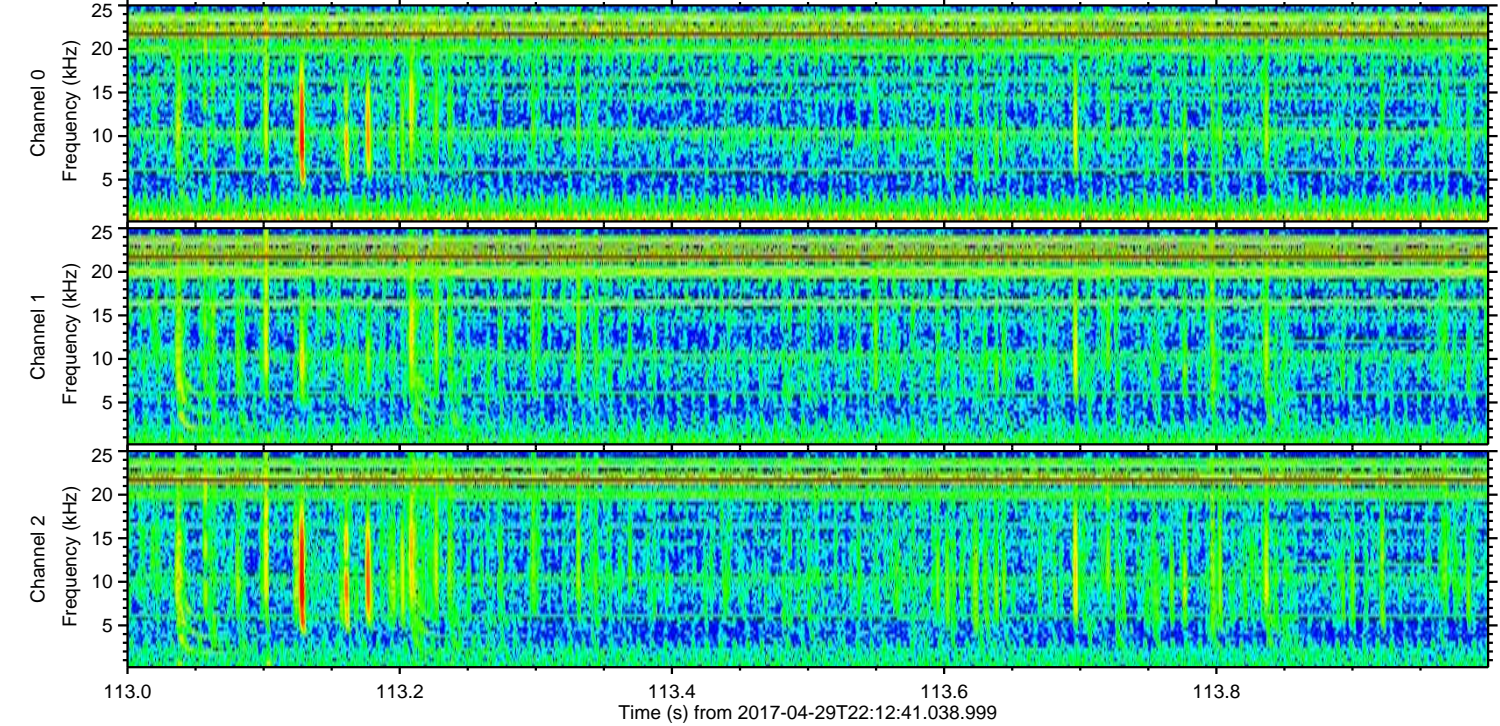
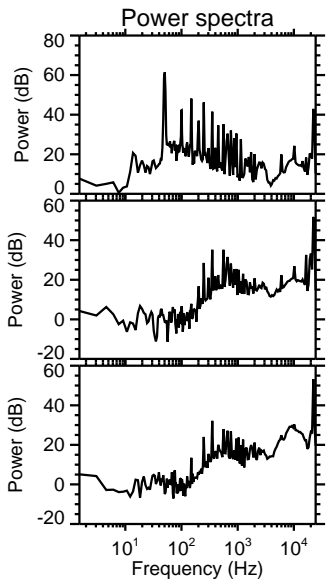
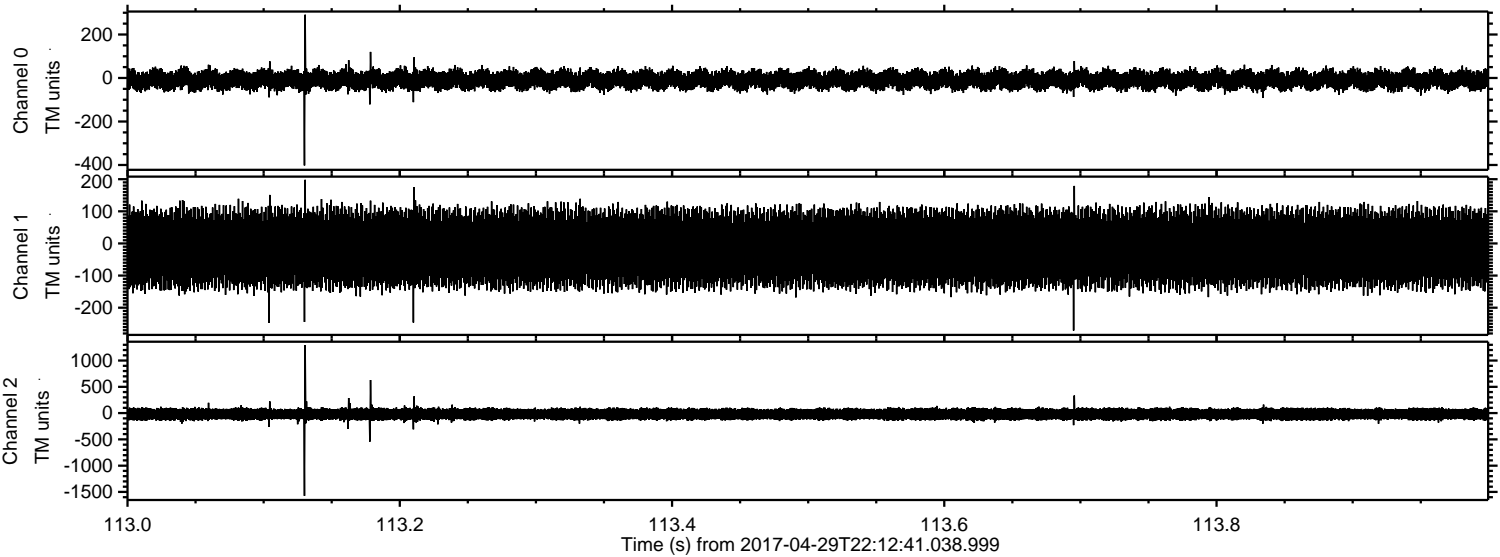
Processed Sun Apr 30 00:21:16 2017 by ELM ver.2012-10-06 from 001\_\_elm20170429\_221240\_\_dat00.bin





ELMAVAN 3D WAVEFORMS (Measured data sampled at 50 kHz) 51000 packets of 144 samples from 2017-04-29T22:12:41.038.999. Part 114/147

Processed Sun Apr 30 00:21:17 2017 by ELM ver.2012-10-06 from 001\_\_elm20170429\_221240\_\_dat00.bin



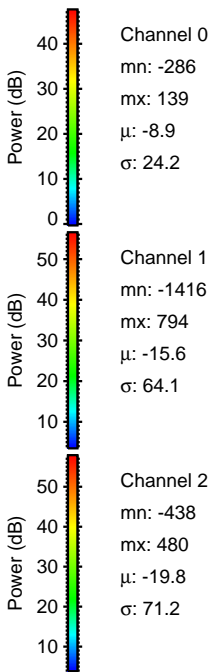
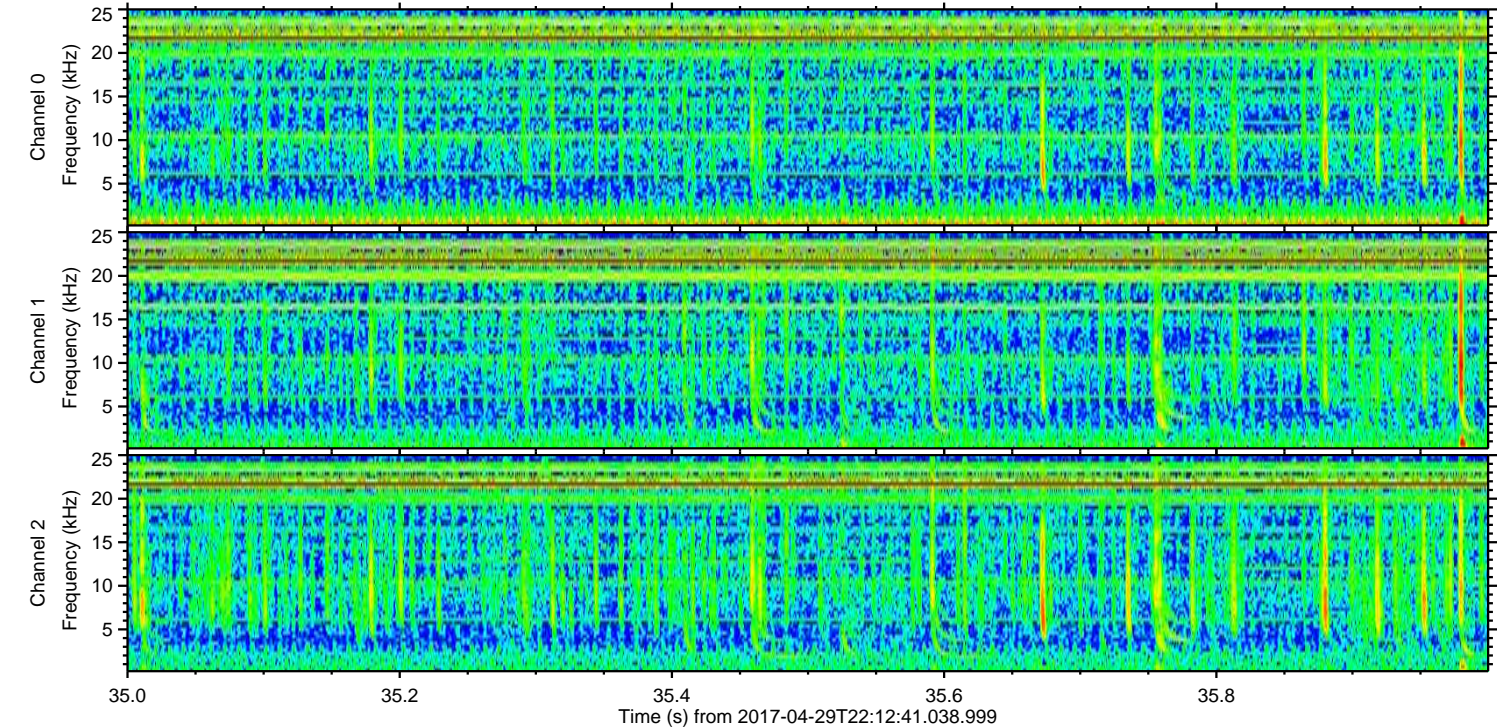
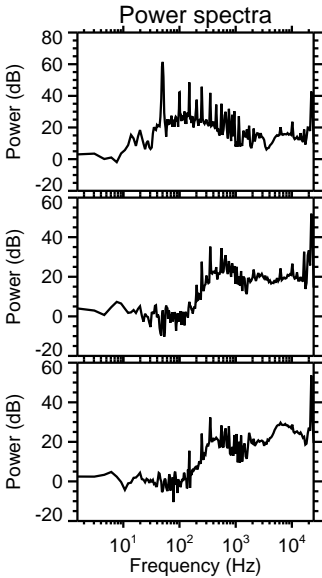
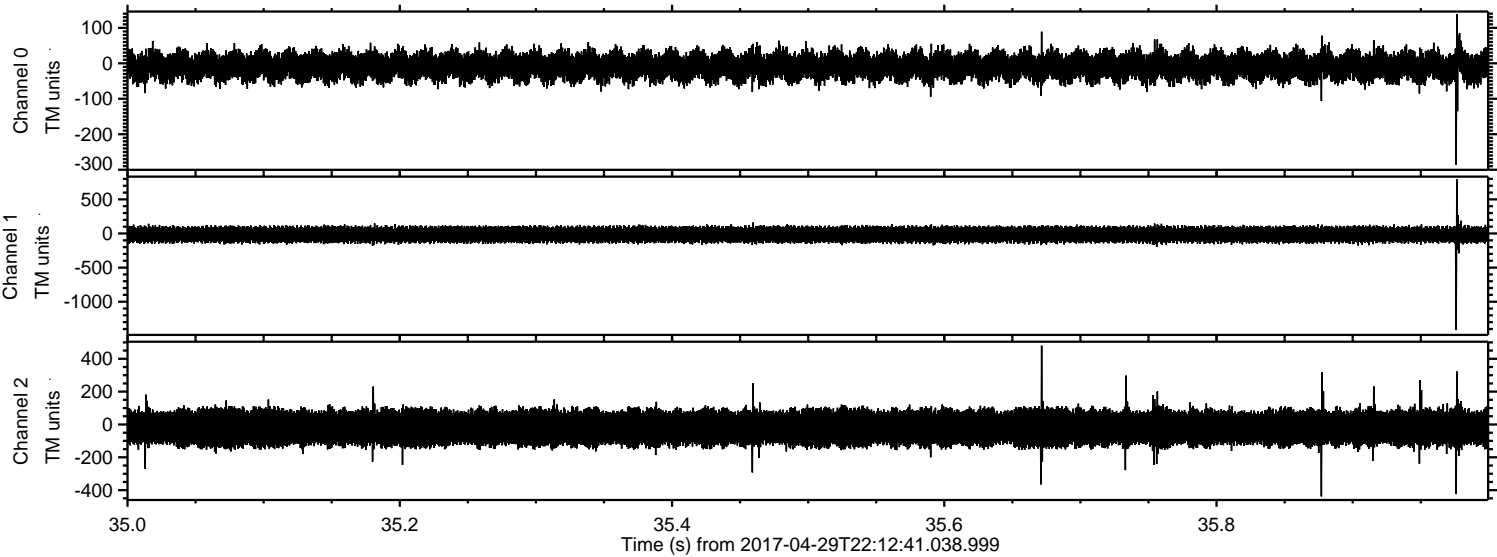
Channel 0  
mn: -402  
mx: 291  
 $\mu$ : -9.0  
 $\sigma$ : 24.6

Channel 1  
mn: -271  
mx: 198  
 $\mu$ : -15.6  
 $\sigma$ : 62.6

Channel 2  
mn: -1575  
mx: 1294  
 $\mu$ : -19.9  
 $\sigma$ : 70.3



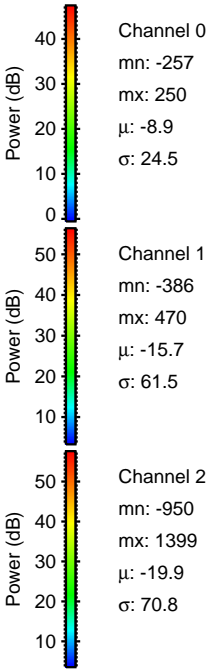
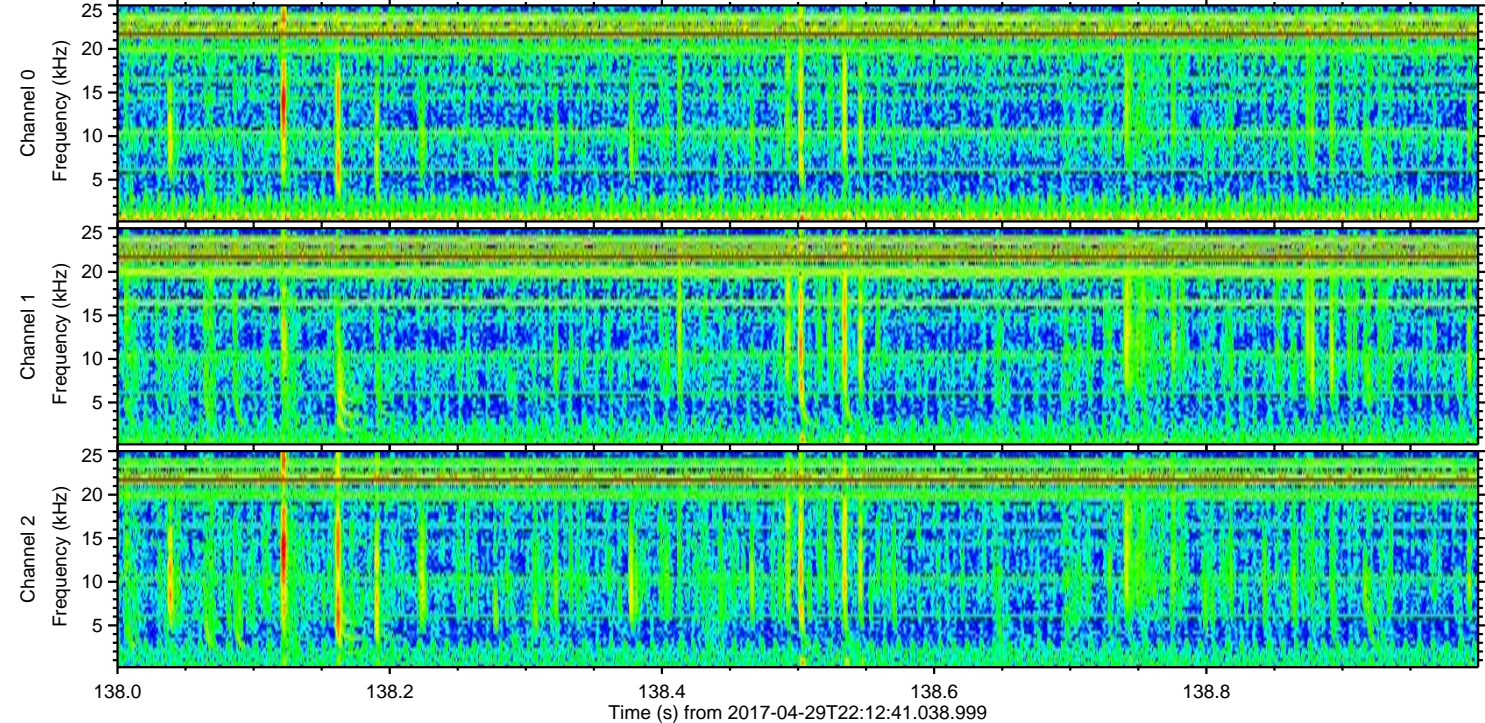
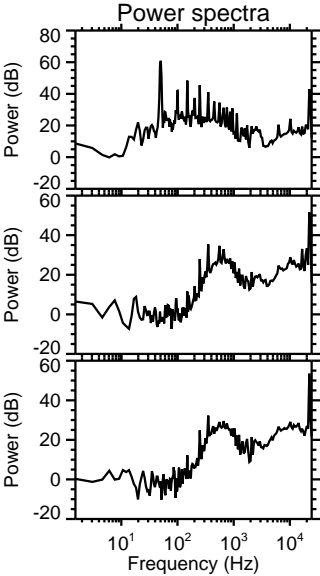
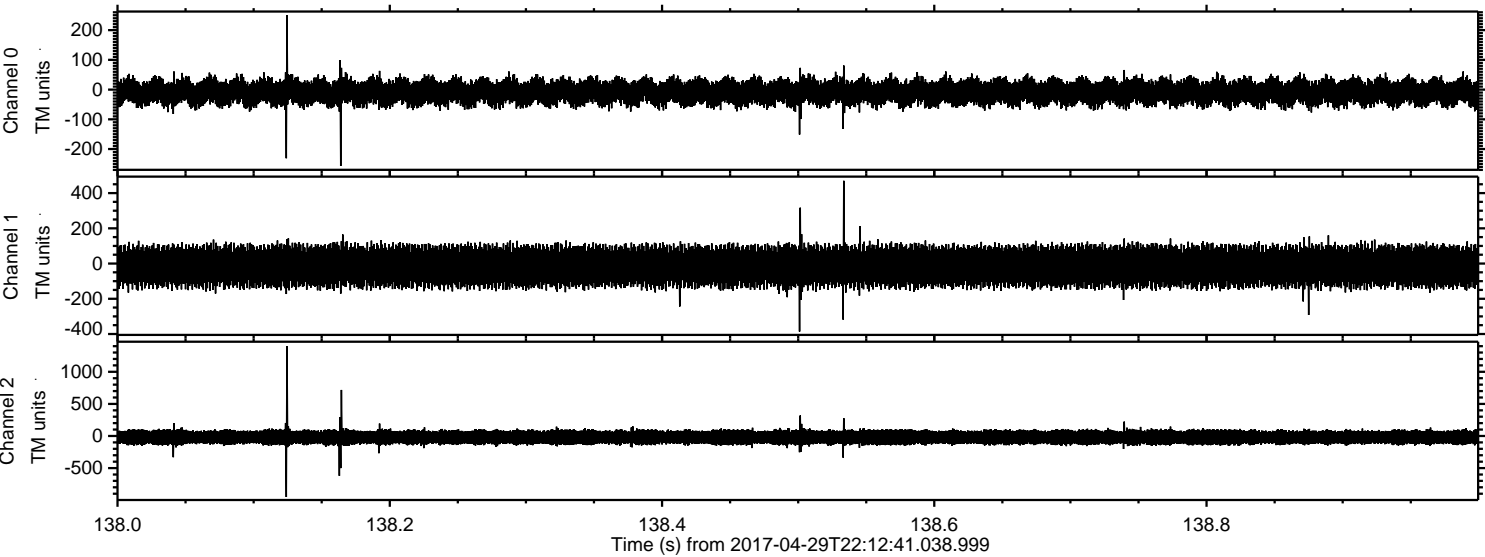
Processed Sun Apr 30 00:21:18 2017 by ELM ver.2012-10-06 from 001\_\_elm20170429\_221240\_\_dat00.bin





ELMAVAN 3D WAVEFORMS (Measured data sampled at 50 kHz) 51000 packets of 144 samples from 2017-04-29T22:12:41.038.999. Part 139/147

Processed Sun Apr 30 00:21:19 2017 by ELM ver.2012-10-06 from 001\_\_elm20170429\_221240\_\_dat00.bin





ELMAVAN 3D WAVEFORMS (Measured data sampled at 50 kHz) 51000 packets of 144 samples from 2017-04-29T22:12:41.038.999. Part 27/147

Processed Sun Apr 30 00:21:20 2017 by ELM ver.2012-10-06 from 001\_\_elm20170429\_221240\_\_dat00.bin

